

1

♠ J108
♥ AK6
♦ 2
♣ J107652

♠ 952
♥ 9
♦ AK965
♣ AKQ3

♠ AK743
♥ Q832
♦ 74
♣ 94

♠ Q6
♥ J10754
♦ QJ1083
♣ 8

Av: NS=-90

N-S	E-W	Contract	N-S	E-W	IMP
17	10	3D W-2	100		5
2	15	3D W-2	100		5
7	12	5S E-1	50		4
1	13	4S E-1	50		4
14	4	4S E-1	50		4
16	3	3NT W-1	50		4
12	7	3NT E-1	50		4
13	1	3NT E-1	50		4
6	18	3NT E-1	50		4
15	2	2NT W 3	150		-2
10	17	2S E 4	170		-2
4	14	2S E 4	170		-2
3	16	2Cx N-2	300		-5
18	6	4S E 4	420		-8
11	8	4S E 5	450		-8
8	11	3Cx N-4	800		-12

2

♠ J1096
♥ 103
♦ J94
♣ A832

♠ A5
♥ AK
♦ A87653
♣ 654

♠ Q743
♥ Q962
♦ KQ10
♣ Q10

♠ K82
♥ J8754
♦ 2
♣ KJ97

Av: NS=-410

N-S	E-W	Contract	N-S	E-W	IMP
12	7	5D W-1	50		10
17	10	2NT W 4	180		6
8	11	3NT E 3	400		0
14	4	3NT E 3	400		0
4	14	3NT E 3	400		0
16	3	3NT W 4	430		-1
2	15	3NT W 4	430		-1
10	17	3NT W 4	430		-1
13	1	3NT W 4	430		-1
11	8	3NT W 4	430		-1
15	2	3NT W 4	430		-1
1	13	3NT E 4	430		-1
18	6	3NT E 4	430		-1
7	12	3NT E 4	430		-1
6	18	3NT E 4	430		-1
3	16	3NT E 5	460		-2

3

♠ KJ3
♥ 1094
♦ Q102
♣ 8763

♠ Q82
♥ AQJ3
♦ J973
♣ A10

♠ A765
♥ K8752
♦ K4
♣ J9

♠ 1094
♥ 6
♦ A865
♣ KQ542

Av: NS=+120

N-S	E-W	Contract	N-S	E-W	IMP
16	3	5H W-2	200		2
17	10	4H E-2	200		2
10	17	4H E-2	200		2
13	1	4H E-2	200		2
11	8	4H E-2	200		2
4	14	4H E-2	200		2
7	12	2C S 3	110		0
12	7	4H E-1	100		-1
1	13	4H E-1	100		-1
8	11	4H E-1	100		-1
18	6	4H E-1	100		-1
14	4	4H E-1	100		-1
3	16	4H E-1	100		-1
6	18	4H E-1	100		-1
2	15	3H E 3	140		-6
15	2	5Cx S-2	300		-9

4

♠ AK96
♥ KQ6
♦ KJ4
♣ 962

♠ Q87432
♥ 93
♦ 83
♣ 854

♠ J5
♥ 854
♦ Q10652
♣ AQ3

♠ 10
♥ AJ1072
♦ A97
♣ KJ107

Av: NS=+890

N-S	E-W	Contract	N-S	E-W	IMP
3	16	6H S 6	1430		11
16	3	6H N 6	1430		11
14	4	6H N 6	1430		11
10	17	6H N 6	1430		11
15	2	6H N 6	1430		11
1	13	3NT N 6	690		-5
17	10	4H N 6	680		-5
8	11	4H N 6	680		-5
2	15	4H N 6	680		-5
7	12	4H N 6	680		-5
11	8	4H N 6	680		-5
4	14	4H N 6	680		-5
12	7	4H N 5	650		-6
13	1	4H N 5	650		-6
18	6	4H N 4	620		-7
6	18	6H N-1	100		-14

5

♠ J8
♥ A
♦ AJ764
♣ AQJ62

♠ AK73
♥ KJ983
♦ 85
♣ K10

♠ Q654
♥ Q642
♦ K103
♣ 97

♠ 1092
♥ 1075
♦ Q92
♣ 8543

Av: NS=-80

N-S	E-W	Contract	N-S	E-W	IMP
15	2	4D N 4	130		5
6	18	4C N 4	130		5
12	7	3C N 3	110		5
2	15	5H W-1	50		4
10	17	4H W-1	50		4
17	10	3H W 3	140		-2
8	11	3H W 3	140		-2
7	12	3H W 3	140		-2
13	1	3H W 3	140		-2
4	14	3H E 3	140		-2
16	3	2H W 3	140		-2
14	4	2H W 3	140		-2
1	13	3H W 4	170		-3
18	6	3H W 4	170		-3
11	8	3H W 4	170		-3
3	16	2H W 4	170		-3

6

♠ J98
♥ 106432
♦ K10
♣ 1098

♠ A1062
♥ AK8
♦ QJ4
♣ Q72

♠ K543
♥ Q7
♦ 96
♣ AJ654

♠ Q7
♥ J95
♦ A87532
♣ K3

Av: NS=-170

N-S	E-W	Contract	N-S	E-W	IMP
17	10	4S W-1	100		7
2	15	4S W-1	100		7
14	4	4S W-1	100		7
10	17	4S W-1	100		7
7	12	4S W-1	100		7
13	1	4S W-1	100		7
11	8	4S W-1	100		7
6	18	4S W-1	100		7
4	14	4S W-1	100		7
1	13	2S E 3	140		1
16	3	3NT W 3	600		-10
12	7	4S W 4	620		-10
8	11	4S W 4	620		-10
18	6	4S W 4	620		-10
15	2	4S W 4	620		-10
3	16	4S E 4	620		-10

木村六郎杯 OPEN TEAMS Session 1 Flight C 2023年2月18日(土)

7

♠Q8
♥Q1062
♦1073
♣10843

♠97
♥K43
♦K9852
♣965

♠AK105
♥J985
♦AQ
♣Q72

W N E S

♠J6432
♥A7
♦J64
♣AKJ

Av: NS=-120

N-S	E-W	Contract	N-S	E-W	IMP
7	9	1NT E-2	200		8
1	14	3NT E-1	100		6
4	13	2D W-1	100		6
14	1	1NT E-1	100		6
3	15	2D W 2		90	1
5	11	1NT E 1		90	1
16	2	1NT E 2		120	0
8	18	2NT E 3		150	-1
2	16	1NT E 3		150	-1
13	4	1NT E 3		150	-1
18	8	1NT E 3		150	-1
17	12	1NT E 3		150	-1
11	5	1NT E 3		150	-1
15	3	1NT E 4		180	-2
9	7	3NT E 3		600	-10
12	17	3NT E 3		600	-10

8

♠A
♥AQ75
♦J105
♣Q10872

♠Q10876
♥KJ862
♦A4
♣K

♠93
♥1093
♦Q97632
♣53

W N E S

♠KJ542
♥4
♦K8
♣AJ964

Av: NS=+380

N-S	E-W	Contract	N-S	E-W	IMP
1	14	3NT S 5	460		2
5	11	3NT S 4	430		2
4	13	3NT S 4	430		2
8	18	3NT S 4	430		2
3	15	3NT S 4	430		2
15	3	3NT N 4	430		2
17	12	3NT N 4	430		2
14	1	5C N 6	420		1
11	5	5C N 5	400		1
13	4	3NT S 3	400		1
18	8	3NT S 3	400		1
9	7	3NT S 3	400		1
7	9	3NT S 3	400		1
12	17	2NT S 5	210		-5
2	16	2C S 6	170		-5
16	2	3NT S-1		50	-10

9

♠Q32
♥3
♦AQJ9865
♣74

♠AJ
♥AKQ10864
♦2
♣J96

♠K975
♥2
♦K104
♣A10853

W N E S

♠10864
♥J975
♦73
♣KQ2

Av: NS=-470

N-S	E-W	Contract	N-S	E-W	IMP
17	12	4H W-1	100		11
7	9	4H W-1	100		11
1	14	3H W 3		140	8
5	11	3H W 4		170	7
3	15	3H W 4		170	7
4	13	3NT E 3		600	-4
13	4	4H W 4		620	-4
18	8	4H W 4		620	-4
9	7	4H W 4		620	-4
16	2	4H W 4		620	-4
11	5	4H W 4		620	-4
14	1	4H W 4		620	-4
12	17	4H W 4		620	-4
2	16	4H E 4		620	-4
8	18	3NT E 5		660	-5
15	3	5Dx N-5		1100	-12

10

♠Q1097654
♥
♦Q94
♣J42

♠K8
♥AQ10753
♦107
♣AQ9

♠2
♥J9842
♦A653
♣K86

W N E S

♠AJ3
♥K6
♦KJ82
♣10753

Av: NS=-190

N-S	E-W	Contract	N-S	E-W	IMP
18	8	5H W-1	100		7
16	2	5H W-1	100		7
14	1	5H W-1	100		7
7	9	5S N-2		200	0
2	16	4Sx N-1		200	0
4	13	4Sx N-1		200	0
1	14	4S N-2		200	0
15	3	4S N-2		200	0
17	12	4S N-2		200	0
9	7	4S N-2		200	0
8	18	4S N-2		200	0
13	4	5S N-3		300	-3
5	11	5S N-3		300	-3
11	5	5S N-3		300	-3
3	15	5S N-3		300	-3
12	17	4Sx N-2		500	-7

11

♠1063
♥AK93
♦K54
♣KJ7

♠95
♥Q5
♦1062
♣Q108532

♠AKQ874
♥1076
♦Q83
♣6

W N E S

♠J2
♥J842
♦AJ97
♣A94

Av: NS=+210

N-S	E-W	Contract	N-S	E-W	IMP
16	2	3Sx E-3	500		7
3	15	3NT S 5	460		6
17	12	4H N 4	420		5
7	9	4H N 4	420		5
15	3	3H N 5	200		0
8	18	3H N 5	200		0
12	17	3H N 5	200		0
14	1	2H N 5	200		0
1	14	3H N 4	170		-1
2	16	3H N 3	140		-2
13	4	3H N 3	140		-2
9	7	3H N 3	140		-2
11	5	3H N 3	140		-2
4	13	3S E-2	100		-3
5	11	4H N-1		50	-6
18	8	4H N-1		50	-6

12

♠K76
♥J84
♦K643
♣AK9

♠84
♥102
♦Q982
♣87643

♠AQ109532
♥7
♦J10
♣Q102

W N E S

♠J
♥AKQ9653
♦A75
♣J5

Av: NS=+670

N-S	E-W	Contract	N-S	E-W	IMP
1	14	6H S 6	1430		13
3	15	6H S 6	1430		13
13	4	5Sx E-4	800		4
5	11	4H N 6	680		0
18	8	5H S 5	650		-1
4	13	5H S 5	650		-1
8	18	5H S 5	650		-1
15	3	4H S 5	650		-1
17	12	4H S 5	650		-1
9	7	4H S 5	650		-1
16	2	4H S 5	650		-1
11	5	4H S 5	650		-1
14	1	4H S 5	650		-1
12	17	4H S 5	650		-1
2	16	6H S-1		100	-13
7	9	6H S-1		100	-13

13

Hand 13: ♠KQJ7, ♥1093, ♦985, ♣AJ9. Opponent: ♠A832, ♥K6, ♦AJ1074, ♣102. Contract: ♠1054, ♥Q87, ♦Q2, ♣86543.

Av: NS=-330

Table with 5 columns: N-S, E-W, Contract, N-S, E-W, IMP. Rows 2-10, 15-18, 2-10.

14

Hand 14: ♠9, ♥QJ5, ♦AQJ5, ♣KJ1052. Opponent: ♠AJ10, ♥AK1062, ♦8, ♣Q843. Contract: ♠K832, ♥873, ♦10942, ♣97.

Av: NS=-30

Table with 5 columns: N-S, E-W, Contract, N-S, E-W, IMP. Rows 15, 4, 17, 9, 16, 13, 1, 10, 6, 5, 2, 3, 18, 12, 8, 14.

15

Hand 15: ♠7, ♥AQ10982, ♦Q87, ♣AK4. Opponent: ♠AK10864, ♥K64, ♦AK10, ♣9. Contract: ♠532, ♥, ♦6543, ♣Q106532.

Av: NS=-280

Table with 5 columns: N-S, E-W, Contract, N-S, E-W, IMP. Rows 2, 1, 9, 17, 3, 4, 15, 5, 10, 8, 6, 13, 12, 14, 18, 16.

16

Hand 16: ♠QJ82, ♥Q102, ♦AK10942, ♣. Opponent: ♠K75, ♥A763, ♦QJ, ♣J1062. Contract: ♠1063, ♥5, ♦853, ♣KQ9743.

Av: NS=+100

Table with 5 columns: N-S, E-W, Contract, N-S, E-W, IMP. Rows 8, 15, 17, 18, 3, 1, 2, 6, 12, 14, 16, 10, 4, 9, 13, 5.

17

Hand 17: ♠K6, ♥J1092, ♦QJ85, ♣AKQ. Opponent: ♠A42, ♥53, ♦A102, ♣J10982. Contract: ♠Q875, ♥864, ♦K9743, ♣4.

Av: NS=+50

Table with 5 columns: N-S, E-W, Contract, N-S, E-W, IMP. Rows 2, 3, 15, 10, 12, 17, 18, 9, 6, 1, 16, 14, 8, 5, 13, 4.

18

Hand 18: ♠AK975, ♥AQ42, ♦A84, ♣4. Opponent: ♠J6, ♥J, ♦J10972, ♣Q87532. Contract: ♠Q43, ♥K10753, ♦Q6, ♣AK9.

Av: NS=+1220

Table with 5 columns: N-S, E-W, Contract, N-S, E-W, IMP. Rows 13, 18, 9, 5, 10, 12, 17, 14, 8, 16, 2, 3, 6, 15, 4, 1.

19

♠A1043
♥K103
♦A105
♣A73

♠Q8752
♥8
♦KQ86
♣Q106

N
W—E
S

♠J754
♥32
♦KJ98542
♣KJ96

♠KJ96
♥AQ962
♦J974
♣

Av: NS=+330

N-S	E-W	Contract	N-S	E-W	IMP
7	18	4S	N 6	480	4
17	11	4H	S 6	480	4
16	1	4H	N 6	480	4
2	14	4S	S 5	450	3
14	2	4H	S 5	450	3
3	13	4H	S 5	450	3
11	17	4H	S 5	450	3
5	10	4H	S 5	450	3
6	9	4S	N 4	420	3
15	4	4S	N 4	420	3
9	6	4S	N 4	420	3
13	3	4H	S 4	420	3
1	16	4S	N-1	50	-9
4	15	7S	N-2	100	-10
18	7	6S	N-2	100	-10
10	5	4S	N-2	100	-10

20

♠1074
♥AJ32
♦K1098
♣KJ

♠63
♥Q98
♦J762
♣9643

N
W—E
S

♠QJ952
♥K106
♦3
♣10752

♠AK8
♥754
♦AQ54
♣AQ8

Av: NS=+50

N-S	E-W	Contract	N-S	E-W	IMP
17	11	4NT	S 4	630	11
10	5	4NT	N 4	630	11
18	7	4NT	N 4	630	11
1	16	4NT	N 4	630	11
5	10	3NT	N 4	630	11
7	18	6D	N-1	100	-4
14	2	4NT	N-1	100	-4
4	15	6NT	N-2	200	-6
3	13	6NT	N-2	200	-6
6	9	6NT	N-2	200	-6
15	4	6NT	N-2	200	-6
2	14	6NT	N-2	200	-6
13	3	6NT	N-2	200	-6
9	6	6NT	N-2	200	-6
16	1	6D	N-2	200	-6
11	17	6NT	N-3	300	-8

21

♠QJ6
♥Q109
♦Q976
♣Q109

♠AK8
♥K743
♦A852
♣A6

N
W—E
S

♠102
♥AJ5
♦K104
♣KJ432

♠97543
♥862
♦J3
♣875

Av: NS=-490

N-S	E-W	Contract	N-S	E-W	IMP
4	15	3NT	E 3	400	3
5	10	3NT	E 4	430	2
17	11	4NT	E 5	460	1
10	5	3NT	E 5	460	1
6	9	4NT	E 6	490	0
9	6	4NT	E 6	490	0
18	7	3NT	E 6	490	0
13	3	3NT	E 6	490	0
1	16	3NT	E 6	490	0
16	1	4NT	W 7	520	-1
2	14	4NT	E 7	520	-1
14	2	3NT	E 7	520	-1
7	18	3NT	E 7	520	-1
3	13	3NT	E 7	520	-1
11	17	3NT	E 7	520	-1
15	4	6NT	E 7	1020	-11

22

♠KQ87
♥42
♦A73
♣J973

♠963
♥AJ975
♦5
♣AK106

N
W—E
S

♠104
♥108
♦KQJ4
♣Q8542

♠AJ52
♥KQ63
♦109862
♣

Av: NS=+90

N-S	E-W	Contract	N-S	E-W	IMP
3	13	3S	N 4	170	2
2	14	3S	S 3	140	2
7	18	2S	S 3	140	2
6	9	2S	S 3	140	2
9	6	2S	S 2	110	1
15	4	2D	S 3	110	1
10	5	3C	W-1	100	0
5	10	3C	W-1	100	0
1	16	3C	W-1	100	0
18	7	3C	E-1	100	0
4	15	2H	W-1	100	0
11	17	2H	W-1	100	0
17	11	2H	W-1	100	0
16	1	3S	N-1	50	-4
13	3	4S	S-2	100	-5
14	2	2C	W 3	110	-5

23

♠743
♥K65
♦KQ103
♣A107

♠J95
♥QJ107
♦A96
♣Q43

N
W—E
S

♠AKQ
♥8432
♦72
♣8652

♠10862
♥A9
♦J854
♣KJ9

Av: NS=+110

N-S	E-W	Contract	N-S	E-W	IMP
10	5	1NT	N 3	150	1
9	6	1S	S 3	140	1
4	15	1NT	N 2	120	0
14	2	1NT	N 2	120	0
7	18	1NT	N 2	120	0
16	1	1NT	N 2	120	0
15	4	1NT	N 2	120	0
2	14	1NT	N 2	120	0
5	10	1NT	N 2	120	0
13	3	1NT	N 2	120	0
6	9	3D	N 3	110	0
1	16	1S	S 2	110	0
3	13	1NT	N 1	90	-1
18	7	1NT	N 1	90	-1
11	17	1S	S 1	80	-1
17	11	1S	S 1	80	-1

24

♠J98653
♥8
♦Q108
♣J87

♠42
♥10765
♦AK963
♣32

N
W—E
S

♠KQ10
♥Q932
♦J75
♣AQ9

♠A7
♥AKJ4
♦42
♣K10654

Av: NS=+70

N-S	E-W	Contract	N-S	E-W	IMP
17	11	3Hx	W-2	300	6
4	15	2S	S 2	110	1
14	2	2S	S 2	110	1
6	9	2S	S 2	110	1
11	17	2S	S 2	110	1
2	14	2S	S 2	110	1
18	7	2S	S 2	110	1
5	10	2S	S 2	110	1
9	6	2S	S 2	110	1
16	1	2S	N 2	110	1
1	16	3D	W-2	100	1
15	4	2H	W-1	50	-1
7	18	3S	S-1	50	-3
10	5	2S	S-1	50	-3
3	13	2D	W 2	90	-4
13	3	1NT	E 1	90	-4

25

♠ J102
♥ J9853
♦ 7
♣ 9762

♠ AQ983 ♠ 54
♥ 64 ♥ AK102
♦ KQ65 ♦ A9842
♣ Q5 ♣ A4

W — E
S

♠ K76
♥ Q7
♦ J103
♣ KJ1083

Av: NS=-660

N-S	E-W	Contract	N-S	E-W	IMP
9	8	4D	E 6	170	10
11	6	3NT	E 4	630	1
12	5	3NT	E 5	660	0
6	11	3NT	E 5	660	0
10	7	3NT	E 5	660	0
5	12	3NT	E 5	660	0
7	10	4S	W 6	680	-1
8	9	3NT	E 7	720	-2

26

♠ Q97532
♥ K5
♦ J103
♣ K9

♠ K8 ♠ 10
♥ J1043 ♥ A2
♦ AK652 ♦ Q94
♣ 74 ♣ AQJ10832

W — E
S

♠ AJ64
♥ Q9876
♦ 87
♣ 65

Av: NS=-160

N-S	E-W	Contract	N-S	E-W	IMP
10	7	3S	N 3	140	7
8	9	3S	N-1	100	2
11	6	3C	E 5	150	0
7	10	4C	E 6	170	0
12	5	4C	E 6	170	0
6	11	4C	E 6	170	0
5	12	4C	E 6	170	0
9	8	5D	W 6	620	-10

27

♠ J94
♥ J107
♦ A109643
♣ K

♠ 10 ♠ A873
♥ AK9653 ♥ Q2
♦ 2 ♦ Q75
♣ 75432 ♣ QJ96

W — E
S

♠ KQ652
♥ 84
♦ KJ8
♣ A108

Av: NS=+200

N-S	E-W	Contract	N-S	E-W	IMP
6	11	3Sx	S 3	530	8
9	8	4S	S 4	420	6
7	10	3S	S 4	170	-1
12	5	2S	S 4	170	-1
10	7	2S	S 4	170	-1
11	6	2S	S 3	140	-2
5	12	2S	S 3	140	-2
8	9	4H	W 4	420	-12

28

♠ 73
♥ AKJ5
♦ A642
♣ KQ9

♠ AJ109 ♠ 862
♥ Q9862 ♥ 1074
♦ Q108 ♦ KJ95
♣ A ♣ 876

W — E
S

♠ KQ54
♥ 3
♦ 73
♣ J105432

Av: NS=+150

N-S	E-W	Contract	N-S	E-W	IMP
8	9	3NT	N 4	630	10
11	6	1NT	N 5	210	2
7	10	1NT	N 4	180	1
6	11	1NT	N 4	180	1
5	12	1NT	N 4	180	1
12	5	1NT	N 2	120	-1
10	7	2H	W-1	50	-3
9	8	2S	N-1	100	-6

29

♠ 63
♥ 982
♦ KQ96
♣ KJ92

♠ Q5 ♠ A107
♥ 754 ♥ AK10
♦ J754 ♦ A1082
♣ A864 ♣ Q105

W — E
S

♠ KJ9842
♥ QJ63
♦ 3
♣ 73

Av: NS=-120

N-S	E-W	Contract	N-S	E-W	IMP
12	5	1NT	E-1	100	6
5	12	1NT	E 1	90	1
11	6	2S	S-1	100	1
7	10	2S	S-1	100	1
6	11	2S	S-1	100	1
10	7	1NT	E 2	120	0
8	9	2S	S-2	200	-2
9	8	2S	S-2	200	-2

30

♠ A62
♥ K5
♦ K754
♣ AJ103

♠ K4 ♠ 987
♥ A8763 ♥ Q1094
♦ AJ92 ♦ Q1083
♣ K6 ♣ 92

W — E
S

♠ QJ1053
♥ J2
♦ 6
♣ Q8754

Av: NS=+20

N-S	E-W	Contract	N-S	E-W	IMP
11	6	4S	S 4	420	9
8	9	3S	S 4	170	4
7	10	3S	S 4	170	4
12	5	3S	S 4	170	4
9	8	1NT	W 1	90	-3
10	7	3H	W 3	140	-4
6	11	1NT	W 3	150	-5
5	12	1NT	W 3	150	-5

木村六郎杯 OPEN TEAMS Session 2 Flight C 2023年2月18日(土)

1

♠64
♥AKJ98
♦QJ102
♣QJ

♠J
♥Q10752
♦873
♣9764

♠KQ97532
♥
♦A5
♣A1032

W N E S

♠A108
♥643
♦K964
♣K85

Av: NS=+30

N-S	E-W	Contract	N-S	E-W	IMP
16	7	3Hx N 3	530		11
2	17	4H N 4	420		9
6	15	4Sx E-2	300		7
13	5	3H N 4	170		4
17	2	4Sx E-1	100		2
5	13	4Sx E-1	100		2
10	18	4S E-2	100		2
14	8	4S E-1	50		1
11	4	4S E-1	50		1
15	6	4H N-1	50		-2
8	14	4H N-1	50		-2
4	11	4H N-2	100		-4
7	16	3S E 3	140		-5
3	12	3S E 3	140		-5
12	3	4S E 4	420		-10
18	10	4Sx E 4	590		-12

2

♠A1053
♥A74
♦KQ76
♣87

♠KQ9872
♥103
♦1085
♣A10

♠J64
♥K2
♦A432
♣Q963

W N E S

♠
♥QJ9865
♦J9
♣KJ542

Av: NS=+210

N-S	E-W	Contract	N-S	E-W	IMP
5	13	4H S 4	620		9
2	17	4H S 4	620		9
3	12	4H S 4	620		9
8	14	4H S 4	620		9
7	16	4Sx W-3	500		7
6	15	3H S 4	170		-1
13	5	3H S 3	140		-2
15	6	4Sx W-1	100		-3
12	3	4S W-2	100		-3
10	18	3Sx W-1	100		-3
17	2	3S W-1	50		-4
18	10	3S W-1	50		-4
11	4	3S W-1	50		-4
4	11	5H S-1	100		-7
16	7	2S W 2	110		-8
14	8	2S W 2	110		-8

3

♠J92
♥AJ864
♦10
♣A1032

♠AK1053
♥1075
♦J32
♣J4

♠86
♥KQ3
♦AKQ54
♣975

W N E S

♠Q74
♥92
♦9876
♣KQ86

Av: NS=-90

N-S	E-W	Contract	N-S	E-W	IMP
8	14	3D E-2	200		7
10	18	3NT E-1	100		5
5	13	2H N-1	50		1
2	17	2H N-1	50		1
11	4	2H N-1	50		1
16	7	3D E 3	110		-1
13	5	3D E 3	110		-1
7	16	3D E 3	110		-1
17	2	2S W 2	110		-1
12	3	2D E 3	110		-1
18	10	2D E 3	110		-1
6	15	2D E 3	110		-1
3	12	3D E 4	130		-1
4	11	2S W 3	140		-2
14	8	2S W 3	140		-2
15	6	2S W 3	140		-2

4

♠109854
♥Q
♦AK10986
♣4

♠J6
♥AJ5
♦32
♣KQJ982

♠Q7
♥97642
♦QJ54
♣63

W N E S

♠AK32
♥K1083
♦7
♣A1075

Av: NS=+510

N-S	E-W	Contract	N-S	E-W	IMP
14	8	4S N 7	710		5
13	5	4S N 7	710		5
7	16	4S N 7	710		5
10	18	4S N 7	710		5
5	13	4S N 6	680		5
4	11	4S N 6	680		5
11	4	4S N 6	680		5
17	2	4S N 4	620		3
2	17	Av+			3
3	12	Av+			3
12	3	Average			0
8	14	2H E-3	300		-5
18	10	3S N 6	230		-7
6	15	2NT S 4	180		-8
16	7	2D N 5	150		-8
15	6	2D N 4	130		-9

5

♠A73
♥1054
♦J6
♣AJ1063

♠KQ4
♥K972
♦AKQ5
♣K2

♠J52
♥AJ
♦932
♣Q9875

W N E S

♠10986
♥Q863
♦10874
♣4

Av: NS=-410

N-S	E-W	Contract	N-S	E-W	IMP
17	2	3NT W 3	400		0
16	7	3NT W 3	400		0
5	13	3NT W 3	400		0
4	11	3NT W 3	400		0
6	15	3NT W 3	400		0
2	17	3NT W 3	400		0
11	4	3NT W 3	400		0
3	12	3NT W 3	400		0
10	18	3NT W 3	400		0
8	14	3NT W 3	400		0
18	10	3NT E 3	400		0
14	8	3NT W 4	430		-1
12	3	3NT W 4	430		-1
15	6	3NT W 4	430		-1
13	5	3NT E 4	430		-1
7	16	3NT W 5	460		-2

6

♠A8
♥K974
♦Q107
♣Q853

♠KQ3
♥AJ2
♦K6
♣A10764

♠97542
♥85
♦9543
♣J2

W N E S

♠J106
♥Q1063
♦AJ82
♣K9

Av: NS=-40

N-S	E-W	Contract	N-S	E-W	IMP
3	12	3NTxW-6	1700		17
16	7	3H N 3	140		5
5	13	2S W-1	100		4
4	11	2S W-1	100		4
6	15	2S W-1	100		4
7	16	2S W-1	100		4
12	3	2S W 2	110		-2
11	4	2S W 2	110		-2
13	5	2S W 2	110		-2
8	14	2S W 2	110		-2
2	17	3S W 3	140		-3
17	2	2S W 3	140		-3
14	8	2S W 3	140		-3
18	10	2S W 3	140		-3
10	18	2S W 3	140		-3
15	6	2S W 3	140		-3

7

♠K10432
♥3
♦AJ
♣AJ542

♠Q875
♥AJ98
♦92
♣Q87

N
W—E
S

♠AJ
♥K10742
♦K10764
♣3

♠96
♥Q65
♦Q853
♣K1096

Av: NS=-120

N-S	E-W	Contract	N-S	E-W	IMP
7	15	4H E-2	200		8
13	8	3H W-1	100		6
3	9	3H W-1	100		6
6	16	3S N-1		100	1
18	12	3H W 3		140	-1
5	14	3H W 3		140	-1
17	4	3H W 3		140	-1
4	17	3H W 3		140	-1
11	1	3H E 3		140	-1
15	7	3H W 4		170	-2
14	5	3H W 4		170	-2
9	3	3H E 4		170	-2
16	6	3H E 4		170	-2
8	13	3H E 4		170	-2
12	18	3H E 4		170	-2
1	11	4C N-2	200		-2

8

♠K7
♥KQ10864
♦K10
♣1098

♠92
♥J
♦AJ53
♣KQ7642

N
W—E
S

♠AQ53
♥A52
♦Q864
♣A3

♠J10864
♥973
♦972
♣J5

Av: NS=-440

N-S	E-W	Contract	N-S	E-W	IMP
7	15	3H N-2	100		8
12	18	3NT E 3		400	1
14	5	3NT E 3		400	1
8	13	5D E 6		420	1
13	8	3NT E 4		430	0
6	16	3NT E 4		430	0
9	3	3NT E 4		430	0
18	12	3NT E 4		430	0
15	7	3NT E 4		430	0
17	4	3NT E 4		430	0
3	9	3NT E 4		430	0
4	17	3NT E 4		430	0
5	14	3NT E 6		490	-2
1	11	3NT E 6		490	-2
16	6	3NT E 6		490	-2
11	1	3NT E 6		490	-2

9

♠1053
♥A102
♦K1072
♣K86

♠AJ97
♥85
♦54
♣AQ1094

N
W—E
S

♠Q84
♥9643
♦QJ86
♣75

♠K62
♥KQJ7
♦A93
♣J32

Av: NS=+110

N-S	E-W	Contract	N-S	E-W	IMP
9	3	1NT S 4	180		2
6	16	1NT S 3	150		1
5	14	1NT N 3	150		1
7	15	1NT N 3	150		1
17	4	1NT S 2	120		0
14	5	1NT S 2	120		0
13	8	1NT N 2	120		0
1	11	1NT N 2	120		0
16	6	1NT N 2	120		0
12	18	1NT N 2	120		0
4	17	1NT N 2	120		0
15	7	2H S 2	110		0
18	12	1NT S 1	90		-1
11	1	1NT N 1	90		-1
3	9	3NT N-1		50	-4
8	13	1NT N-1		50	-4

10

♠AKJ104
♥J1042
♦K
♣J105

♠85
♥K97653
♦
♣KQ982

N
W—E
S

♠632
♥Q
♦A109653
♣A43

♠Q97
♥A8
♦QJ8742
♣76

Av: NS=+100

N-S	E-W	Contract	N-S	E-W	IMP
3	9	4S N 4	620		11
6	16	3S N 3	140		1
9	3	3S N 3	140		1
5	14	3S N 3	140		1
15	7	3S N 3	140		1
1	11	3S N 3	140		1
7	15	3S N 3	140		1
18	12	2S N 3	140		1
16	6	2S N 3	140		1
8	13	2S N 3	140		1
14	5	2S N 3	140		1
17	4	3H W-1	100		0
13	8	2D S 2	90		0
12	18	4S N-1		100	-5
4	17	3S N-1		100	-5
11	1	2H W 2		110	-5

11

♠QJ82
♥A7
♦9
♣KQJ742

♠K
♥KJ1096543
♦KJ87
♣

N
W—E
S

♠A965
♥
♦106532
♣10865

♠10743
♥Q82
♦AQ4
♣A93

Av: NS=+120

N-S	E-W	Contract	N-S	E-W	IMP
5	14	4S S 4	420		7
14	5	4S S 4	420		7
15	7	4S N 4	420		7
16	6	5C S 5	400		7
4	17	5C S 5	400		7
6	16	5Hx W-2	300		5
3	9	5Hx W-2	300		5
7	15	5S S-1		50	-5
17	4	5C S-1		50	-5
11	1	5C S-1		50	-5
8	13	4S S-1		50	-5
12	18	4S S-1		50	-5
18	12	3NT N-1		50	-5
1	11	5S S-2		100	-6
13	8	5C S-2		100	-6
9	3	5Dx W 5		550	-12

12

♠Q109543
♥KQ10
♦9
♣K65

♠K7
♥A72
♦Q105432
♣AJ

N
W—E
S

♠A86
♥95
♦AJ8
♣98742

♠J2
♥J8643
♦K76
♣Q103

Av: NS=-110

N-S	E-W	Contract	N-S	E-W	IMP
4	17	2S N 3	140		6
8	13	2S N 2	110		6
12	18	2D W 3		110	0
9	3	2NT W 2		120	0
13	8	3D W 4		130	-1
18	12	3D W 4		130	-1
17	4	3D W 4		130	-1
1	11	3D W 4		130	-1
16	6	3D W 4		130	-1
14	5	3D W 4		130	-1
7	15	3D W 4		130	-1
11	1	3D W 4		130	-1
15	7	2D W 4		130	-1
3	9	2D W 4		130	-1
6	16	2D W 5		150	-1
5	14	1NT E 3		150	-1

13

Hand 13: ♠AJ85, ♥K83, ♦1096432, ♣. N: ♠742, ♥A7, ♦AJ8, ♣106432. E: ♠106, ♥QJ9654, ♦75, ♣KJ8. S: ♠KQ93, ♥102, ♦KQ, ♣AQ975.

Table for Hand 13: Av: NS=+330. Columns: N-S, E-W, Contract, N-S, E-W, IMP. Rows: 2 12 3NT S 5 660 8, 10 4 3NT S 4 630 7, 13 6 3NT S 4 630 7, 8 16 3NT S 3 600 7, 17 1 3NT S 3 600 7, 6 13 3NT S 3 600 7, 4 10 3NT N 3 600 7, 16 8 3NT N 3 600 7, 7 14 4H E-2 200 -4, 5 15 3H E-2 200 -4, 1 17 2NT S 3 150 -5, 15 5 4C S 4 130 -5, 9 18 4C S-1 100 -10, 12 2 4C S-1 100 -10, 14 7 3H E 4 170 -11, 18 9 3NT N-3 300 -12.

14

Hand 14: ♠KQ63, ♥10863, ♦KQ, ♣J72. N: ♠AJ, ♥AKQJ7, ♦A9, ♣8653. E: ♠1087, ♥52, ♦8763, ♣KQ109. S: ♠9542, ♥94, ♦J10542, ♣A4.

Table for Hand 14: Av: NS=-190. Columns: N-S, E-W, Contract, N-S, E-W, IMP. Rows: 9 18 3NT E-1 50 6, 2 12 2S S-2 100 3, 6 13 2S N-2 100 3, 7 14 1H E 3 140 2, 17 1 4C E 5 150 1, 10 4 3S N-3 150 1, 8 16 3C E 5 150 1, 16 8 3C E 5 150 1, 15 5 3H E 4 170 1, 5 15 3H E 4 170 1, 1 17 1H E 4 170 1, 4 10 1H E 4 170 1, 18 9 2NT W 5 210 -1, 13 6 4H E 4 420 -6, 14 7 3NT W 5 460 -7, 12 2 3NT W 5 460 -7.

15

Hand 15: ♠AKJ10982, ♥A7, ♦A3, ♣Q4. N: ♠Q7, ♥K965, ♦10, ♣J108752. E: ♠64, ♥Q1084, ♦KQ9652, ♣9. S: ♠53, ♥J32, ♦J874, ♣AK63.

Table for Hand 15: Av: NS=+690. Columns: N-S, E-W, Contract, N-S, E-W, IMP. Rows: 7 14 6S N 7 1460 13, 17 1 3NT S 7 720 1, 5 15 4S N 7 710 1, 18 9 3NT S 6 690 0, 10 4 4S N 6 680 0, 15 5 4S N 6 680 0, 9 18 4S N 6 680 0, 2 12 4S N 6 680 0, 8 16 4S N 6 680 0, 13 6 4S N 6 680 0, 4 10 4S N 6 680 0, 14 7 4S N 6 680 0, 12 2 4S N 6 680 0, 16 8 4S N 6 680 0, 6 13 4S N 6 680 0, 1 17 3DX W-2 300 -9.

16

Hand 16: ♠K964, ♥K75, ♦J83, ♣J76. N: ♠732, ♥AQ63, ♦Q7, ♣AKQ10. E: ♠Q1085, ♥J42, ♦K9, ♣9842. S: ♠AJ, ♥1098, ♦A106542, ♣53.

Table for Hand 16: Av: NS=+40. Columns: N-S, E-W, Contract, N-S, E-W, IMP. Rows: 5 15 1NT E-2 200 4, 6 13 1NT E-2 200 4, 14 7 1NT E-1 100 2, 18 9 1NT E-1 100 2, 7 14 2D N 2 90 2, 15 5 2D N 2 90 2, 9 18 2D N 2 90 2, 2 12 2D N 2 90 2, 13 6 2D N 2 90 2, 4 10 2D N 2 90 2, 16 8 2D N 2 90 2, 1 17 1NT E 1 90 -4, 10 4 1NT E 1 90 -4, 8 16 3D S-2 100 -4, 17 1 1NT E 3 150 -5, 12 2 1NT E 3 150 -5.

17

Hand 17: ♠AK62, ♥76, ♦AK, ♣J10873. N: ♠Q105, ♥Q854, ♦J853, ♣K9. E: ♠7, ♥J10932, ♦Q1042, ♣AQ5. S: ♠J9843, ♥AK, ♦976, ♣642.

Table for Hand 17: Av: NS=+120. Columns: N-S, E-W, Contract, N-S, E-W, IMP. Rows: 16 8 4S S 4 420 7, 9 18 4S N 4 420 7, 14 7 4S N 4 420 7, 12 2 4S N 4 420 7, 2 12 2S S 4 170 2, 1 17 2S N 3 140 1, 15 5 2S N 3 140 1, 13 6 2S N 3 140 1, 18 9 2S N 3 140 1, 7 14 4S S-1 50 -5, 17 1 4S S-1 50 -5, 10 4 4S N-1 50 -5, 8 16 4S N-1 50 -5, 4 10 4S N-1 50 -5, 5 15 4S N-1 50 -5, 6 13 4S N-1 50 -5.

18

Hand 18: ♠AKQ10, ♥A9872, ♦A32, ♣2. N: ♠4, ♥J5, ♦KJ108654, ♣863. E: ♠972, ♥K43, ♦Q97, ♣AK94. S: ♠J8653, ♥Q106, ♦, ♣QJ1075.

Table for Hand 18: Av: NS=+590. Columns: N-S, E-W, Contract, N-S, E-W, IMP. Rows: 1 17 5S S 5 650 2, 13 6 5S S 5 650 2, 14 7 5S S 5 650 2, 9 18 4S S 5 650 2, 16 8 4S S 5 650 2, 6 13 4S S 5 650 2, 15 5 4H N 5 650 2, 2 12 4H N 5 650 2, 8 16 4H N 5 650 2, 5 15 4H N 5 650 2, 18 9 4S S 4 620 1, 4 10 4H N 4 620 1, 17 1 4H N 4 620 1, 12 2 4H N 4 620 1, 10 4 4H N-1 100 -12, 7 14 4H N-1 100 -12.

19

♠ KJ102
♥ 109
♦ AK98
♣ 943

♠ 94
♥ A6532
♦ QJ2
♣ AQ6

N
W — E
S

♠ Q8
♥ KJ74
♦ 1074
♣ KJ108

♠ A7653
♥ Q8
♦ 653
♣ 752

Av: NS=-210

N-S	E-W	Contract	N-S	E-W	IMP
8	15	5H W-2	200		
1	10	4H W-2	200		
11	18	4H W-1	100		
16	5	3S S-2		100	
10	1	3S S-2		100	
17	3	3S S-2		100	
7	13	2S S-2		100	
5	16	4S N-3		150	
15	8	3H W 4		170	
18	11	3H W 4		170	
6	14	4S S-4		200	
3	17	4Sx S-3		500	
9	2	4Sx S-3		500	
13	7	4Sx S-3		500	
14	6	4H W 4		620	
2	9	4H W 4		620	

20

♠ Q7
♥
♦ KQJ92
♣ KJ10872

♠ 942
♥ K984
♦ A7
♣ A953

N
W — E
S

♠ AJ108
♥ QJ10653
♦ 1084
♣

♠ K653
♥ A72
♦ 653
♣ Q64

Av: NS=-400

N-S	E-W	Contract	N-S	E-W	IMP
6	14	2D N 3	110		
1	10	5D N-1		100	
7	13	5C N-1		100	
5	16	4D N-1		100	
14	6	3H E 4		170	
10	1	3H E 4		170	
16	5	2H E 4		170	
2	9	5Dx N-2		500	
3	17	5Dx N-2		500	
11	18	4H E 4		620	
15	8	4H E 4		620	
18	11	4H E 4		620	
13	7	4H E 4		620	
17	3	4H E 4		620	
9	2	4H E 5		650	
8	15	4Hx E 5		990	

21

♠ J873
♥ AKQ10952
♦
♣ 43

♠ Q1042
♥
♦ KQJ972
♣ J87

N
W — E
S

♠ AK95
♥ 863
♦ 4
♣ AKQ92

♠ 6
♥ J74
♦ A108653
♣ 1065

Av: NS=-250

N-S	E-W	Contract	N-S	E-W	IMP
7	13	4Hx N 4	790		14
13	7	5D W-2	100		8
1	10	5C E-2	100		8
8	15	4C E-2	100		8
15	8	5C E-1	50		7
18	11	5H N-1		100	4
2	9	4H N-1		100	4
5	16	5Hx N-1		200	2
14	6	5C E 6		420	-5
10	1	5C E 6		420	-5
6	14	4S W 4		420	-5
11	18	4S E 4		420	-5
16	5	4S E 5		450	-5
9	2	4S E 5		450	-5
17	3	5Hx N-3		800	-11
3	17	6Sx E 6		1210	-14

22

♠ 98
♥ J108
♦ KJ6
♣ A9862

♠ 1032
♥ A65
♦ A842
♣ KJ4

N
W — E
S

♠ Q74
♥ Q72
♦ Q973
♣ 1073

♠ AKJ65
♥ K943
♦ 105
♣ Q5

Av: NS=+150

N-S	E-W	Contract	N-S	E-W	IMP
2	9	2S S 5	200		2
3	17	2S S 5	200		2
7	13	2S S 4	170		1
6	14	2S S 4	170		1
13	7	2S S 4	170		1
17	3	2S S 4	170		1
11	18	2H S 4	170		1
14	6	2S S 3	140		0
16	5	2S S 3	140		0
10	1	2S S 3	140		0
9	2	2S S 3	140		0
5	16	2S S 3	140		0
1	10	2S S 3	140		0
15	8	2NT N 2	120		-1
18	11	2S S 2	110		-1
8	15	2NT N-1	50		-5

23

♠ AQ9
♥ 96
♦ J97
♣ AQ986

♠ K3
♥ KQ7542
♦ 8
♣ KJ102

N
W — E
S

♠ J864
♥ J103
♦ KQ6542
♣

♠ 10752
♥ A8
♦ A103
♣ 7543

Av: NS=+40

N-S	E-W	Contract	N-S	E-W	IMP
11	18	4H W-2	200		4
10	1	4H W-2	200		4
3	17	4H W-2	200		4
5	16	4H W-2	200		4
16	5	4H W-1	100		2
6	14	4H W-1	100		2
13	7	4H W-1	100		2
14	6	3H W-1	100		2
8	15	3H W-1	100		2
18	11	3H W-1	100		2
7	13	3C N-1		100	-4
2	9	3H W 3		140	-5
9	2	3H W 3		140	-5
1	10	3H W 3		140	-5
17	3	3H W 3		140	-5
15	8	5Cx N-3		800	-13

24

♠ Q94
♥
♦ KJ1052
♣ 98543

♠ 1083
♥ AKQ8
♦ A98
♣ KQ6

N
W — E
S

♠ 7
♥ J109643
♦ Q6
♣ AJ107

♠ AKJ652
♥ 752
♦ 743
♣ 2

Av: NS=-450

N-S	E-W	Contract	N-S	E-W	IMP
6	14	4S S 4	420		13
5	16	5H W 5		450	0
11	18	5H E 5		450	0
8	15	5H E 5		450	0
2	9	5H E 5		450	0
7	13	5H E 5		450	0
10	1	5H E 5		450	0
3	17	5H E 5		450	0
9	2	5H E 5		450	0
13	7	5H E 5		450	0
1	10	5H E 5		450	0
14	6	4H E 5		450	0
16	5	4H E 5		450	0
18	11	4H E 5		450	0
17	3	4H E 5		450	0
15	8	4H W 6		480	-1

25

♠ Q7
♥ KQJ8
♦ A8
♣ AQ843

♠ 86 ♠ AK9543
♥ A6432 ♥
♦ K102 ♠ QJ7
♣ 1095 ♣ J762

W — E
S

♠ J102
♥ 10975
♦ 96543
♣ K

Av: NS=-30

N-S	E-W	Contract	N-S	E-W	IMP
11	2	3H	N 3	140	5
4	9	3H	N 3	140	5
12	1	3H	N-1	50	-1
1	12	3H	N-1	50	-1
10	3	3H	N-1	50	-1
2	11	3H	N-1	50	-1
3	10	2S	E 2	110	-2
9	4	4H	N-3	150	-3

26

♠ J76432
♥ 107
♦ QJ4
♣ Q7

♠ 9 ♠ KQ105
♥ 432 ♥ AJ865
♦ AK1075 ♠ QJ7
♣ K954 ♣ J3

W — E
S

♠ A8
♥ KQ9
♦ 863
♣ A10862

Av: NS=+40

N-S	E-W	Contract	N-S	E-W	IMP
12	1	4H	E-2	200	4
3	10	3H	E-2	200	4
11	2	4H	E-1	100	2
10	3	4H	E-1	100	2
4	9	3H	E-1	100	2
2	11	3H	E 3	140	-5
1	12	2H	E 3	140	-5
9	4	2S	N-2	200	-6

27

♠ A52
♥ K105
♦ KQJ874
♣ Q

♠ 10643 ♠ 987
♥ A764 ♥ QJ982
♦ 10 ♠ QJ7
♣ 10975 ♣ K62

W — E
S

♠ KQJ
♥ 3
♦ A653
♣ AJ843

Av: NS=+700

N-S	E-W	Contract	N-S	E-W	IMP
3	10	6D	N 6	920	6
10	3	6D	N 6	920	6
2	11	6D	N 6	920	6
9	4	6D	N 6	920	6
1	12	3NT	N 6	490	-5
12	1	3NT	S 5	460	-6
11	2	3NT	N 5	460	-6
4	9	3NT	N 5	460	-6

28

♠ 1052
♥ 86
♦ K853
♣ A1042

♠ 863 ♠ Q74
♥ 53 ♥ AJ1042
♦ J1064 ♠ A7
♣ QJ86 ♣ K53

W — E
S

♠ AKJ9
♥ KQ97
♦ Q92
♣ 97

Av: NS=+140

N-S	E-W	Contract	N-S	E-W	IMP
3	10	4S	S 4	620	10
1	12	1NT	S 3	150	0
10	3	1NT	S 3	150	0
9	4	1NT	S 3	150	0
12	1	1NT	S 2	120	-1
11	2	1NT	S 2	120	-1
4	9	1NT	S 2	120	-1
2	11	1NT	S 2	120	-1

29

♠ A2
♥ AJ2
♦ K105
♣ J9543

♠ KQ1087 ♠ J9
♥ Q ♥ 109743
♦ J7643 ♠ A982
♣ AQ ♣ 102

W — E
S

♠ 6543
♥ K865
♦ Q
♣ K876

Av: NS=-110

N-S	E-W	Contract	N-S	E-W	IMP
1	12	2C	N 2	90	5
2	11	3C	N-1	100	0
3	10	1NT	N-1	100	0
11	2	3D	W 3	110	0
4	9	3D	W 3	110	0
10	3	2D	W 3	110	0
9	4	2D	W 3	110	0
12	1	3D	W 4	130	-1

30

♠ K9543
♥ 104
♦ 94
♣ 8653

♠ AQJ10 ♠ 762
♥ KQ73 ♥ 65
♦ K85 ♠ A732
♣ Q2 ♣ AK107

W — E
S

♠ 8
♥ AJ982
♦ QJ106
♣ J94

Av: NS=-450

N-S	E-W	Contract	N-S	E-W	IMP
3	10	3NT	W 3	400	2
12	1	3NT	W 4	430	1
4	9	3NT	W 4	430	1
2	11	3NT	W 4	430	1
11	2	3NT	W 5	460	0
1	12	3NT	W 5	460	0
10	3	3NT	W 5	460	0
9	4	3NT	W 5	460	0

1

♠ 1073
♥ J75
♦ 109732
♣ 103

♠ A82
♥ AQ1043
♦ 6
♣ AKJ4

♠ KQJ4
♥ K98
♦ K54
♣ 975

♠ 965
♥ 62
♦ AQJ8
♣ Q862

W N E S

Av: NS=-610

N-S	E-W	Contract	N-S	E-W	IMP
16	17	6H W-1	50		12
5	6	6H W-1	50		12
12	4	6H W-1	50		12
2	10	2C E 4		130	10
8	7	5H W 6		480	4
11	3	5H W 6		480	4
18	15	5H W 6		480	4
14	13	4H W 6		480	4
15	18	4H W 6		480	4
7	8	4H W 7		510	3
13	14	6H W 6		980	-9
6	5	6H W 6		980	-9
1	9	6H W 6		980	-9
10	2	6H W 6		980	-9
4	12	6H W 6		980	-9
3	11	6H W 6		980	-9
17	16	6H W 6		980	-9
9	1	6H W 7	1010		-9

2

♠ A1076
♥ 8764
♦ A7
♣ Q42

♠ K982
♥ QJ105
♦ 109
♣ AK9

♠ QJ54
♥ A932
♦ K82
♣ 73

♠ 3
♥ K
♦ QJ6543
♣ J10865

W N E S

Av: NS=-250

N-S	E-W	Contract	N-S	E-W	IMP
13	14	2H E 3		140	3
7	8	2H E 3		140	3
10	2	3H W 4		170	2
18	15	3H E 4		170	2
15	18	3H E 4		170	2
8	7	3H E 4		170	2
5	6	3H E 4		170	2
17	16	3H E 4		170	2
1	9	2H E 4		170	2
6	5	2H E 4		170	2
12	4	2H E 4		170	2
14	13	1H E 4		170	2
11	3	4H W 4		420	-5
4	12	4H E 4		420	-5
16	17	4H E 4		420	-5
2	10	4H E 4		420	-5
3	11	4H E 4		420	-5
9	1	4H E 4		420	-5

3

♠ Q85
♥ K864
♦ Q62
♣ 873

♠ 764
♥ 10952
♦ K987
♣ A6

♠ K92
♥ Q7
♦ A43
♣ Q10942

♠ AJ103
♥ AJ3
♦ J105
♣ KJ5

W N E S

Av: NS=+140

N-S	E-W	Contract	N-S	E-W	IMP
6	5	1NT S 4	180		1
14	13	1NT S 4	180		1
3	11	1NT N 4	180		1
15	18	1NT S 3	150		0
2	10	1NT S 3	150		0
12	4	1NT S 3	150		0
11	3	1NT S 3	150		0
1	9	1NT S 3	150		0
9	1	1NT S 3	150		0
5	6	1NT S 3	150		0
10	2	1NT S 3	150		0
4	12	1NT S 2	120		-1
17	16	1NT S 2	120		-1
13	14	1NT S 2	120		-1
7	8	1NT S 2	120		-1
18	15	1NT S 2	120		-1
8	7	1NT S 2	120		-1
16	17	1NT S 2	120		-1

4

♠ 873
♥ J109
♦ 1098
♣ A863

♠ 2
♥ A854
♦ Q74
♣ Q10954

♠ J106
♥ 7632
♦ AKJ5
♣ J7

♠ AKQ954
♥ KQ
♦ 632
♣ K2

W N E S

Av: NS=+70

N-S	E-W	Contract	N-S	E-W	IMP
15	18	4S S 4	620		11
1	9	3S S 5	200		4
12	4	3S S 4	170		3
3	11	2S S 4	170		3
16	17	1S S 4	170		3
5	6	3S S 3	140		2
2	10	3S S 3	140		2
6	5	3S S 3	140		2
11	3	3S S 3	140		2
8	7	3S S 3	140		2
7	8	2S S 3	140		2
18	15	2S S 3	140		2
13	14	4S S-1		100	-5
4	12	4S S-1		100	-5
9	1	4S S-1		100	-5
10	2	4S S-1		100	-5
14	13	4S S-1		100	-5
17	16	4Sx S-1		200	-7

5

♠ J103
♥ A94
♦ A109852
♣ J

♠ A875
♥ 75
♦ K
♣ AKQ954

♠ Q
♥ KQ1086
♦ 74
♣ 108632

♠ K9642
♥ J32
♦ QJ63
♣ 7

W N E S

Av: NS=-230

N-S	E-W	Contract	N-S	E-W	IMP
7	8	5D N 5	600		13
13	14	4H W-1	50		7
1	9	4C W 5		150	2
11	3	4C W 5		150	2
6	5	4C W 5		150	2
2	10	4C W 5		150	2
4	12	4C W 5		150	2
3	11	4C W 5		150	2
5	6	4C W 5		150	2
14	13	4C W 5		150	2
18	15	4D N-2	200		1
9	1	5C W 5	400		-5
16	17	5C W 5	400		-5
17	16	5C W 5	400		-5
8	7	5C W 5	400		-5
10	2	5C W 5	400		-5
12	4	5C W 5	400		-5
15	18	4H E 5	450		-6

6

♠ 983
♥ J87
♦ K642
♣ Q103

♠ Q4
♥ 542
♦ Q98753
♣ 72

♠ J1072
♥ Q109
♦ AJ
♣ J985

♠ AK65
♥ AK63
♦ 10
♣ AK64

W N E S

Av: NS=+120

N-S	E-W	Contract	N-S	E-W	IMP
6	5	3NT S 3	400		7
7	8	3NT S 3	400		7
4	12	3NT S 3	400		7
18	15	3NT S 3	400		7
2	10	3NT S 3	400		7
16	17	3NT N 3	400		7
3	11	3NT N 3	400		7
5	6	2NT S 2	120		0
14	13	3NT S-1		50	-5
15	18	3NT S-1		50	-5
10	2	3NT S-1		50	-5
13	14	3NT S-1		50	-5
1	9	3NT S-1		50	-5
12	4	3NT S-2		100	-6
11	3	3NT S-2		100	-6
8	7	3NT S-2		100	-6
9	1	3NT S-2		100	-6
17	16	5H S-3		150	-7

7

♠Q6
♥65
♦AKQ75
♣Q1075

♠AJ108
♥97
♦9632
♣A82

♠43
♥AQJ82
♦J8
♣KJ94

♠K9752
♥K1043
♦104
♣63

Av: NS=-70

N-S	E-W	Contract	N-S	E-W	IMP
7	6	2S	S 2	110	5
3	4	2S	S 2	110	5
2	1	2D	N 3	110	5
15	17	2D	N 2	90	4
8	12	2D	N 2	90	4
6	7	2D	N-1	100	-1
12	8	2D	N-1	100	-1
16	14	2D	N-1	100	-1
9	5	2D	N-1	100	-1
10	11	2D	N-1	100	-1
1	2	2D	N-1	100	-1
4	3	2D	N-1	100	-1
18	13	2D	N-1	100	-1
5	9	2H	E 2	110	-1
11	10	2H	E 3	140	-2
17	15	3S	S-2	200	-4
13	18	2D	N-2	200	-4
14	16	2D	N-2	200	-4

8

♠AQJ93
♥A
♦AJ10752
♣9

♠52
♥KQ95
♦KQ964
♣73

♠K10874
♥J8743
♦3
♣42

♠6
♥1062
♦8
♣AKQJ10865

Av: NS=+610

N-S	E-W	Contract	N-S	E-W	IMP
9	5	6C	S 6	920	7
13	18	6C	S 6	920	7
5	9	6C	S 6	920	7
4	3	6C	S 6	920	7
1	2	6C	S 6	920	7
10	11	6C	S 6	920	7
3	4	6C	N 6	920	7
14	16	3NT	N 5	460	-4
7	6	5C	S 6	420	-5
6	7	5C	S 6	420	-5
11	10	5C	S 6	420	-5
8	12	5C	S 6	420	-5
18	13	5C	S 6	420	-5
16	14	5C	S 6	420	-5
12	8	5C	S 6	420	-5
2	1	5C	S 6	420	-5
17	15	5C	S 5	400	-5
15	17	6Dx	N-3	500	-15

9

♠AJ
♥J52
♦AQ875
♣A106

♠Q10865
♥AK10
♦63
♣Q73

♠973
♥73
♦K1042
♣J952

♠K42
♥Q9864
♦J9
♣K84

Av: NS=+220

N-S	E-W	Contract	N-S	E-W	IMP
10	11	4H	N 5	450	6
18	13	3NT	N 4	430	5
17	15	4H	S 4	420	5
4	3	4H	N 4	420	5
12	8	4H	N 4	420	5
7	6	4H	N 4	420	5
15	17	4H	N 4	420	5
1	2	4H	N 4	420	5
11	10	4H	N 4	420	5
16	14	4H	N 4	420	5
3	4	4H	S-1	50	-7
8	12	4H	N-1	50	-7
5	9	4H	N-1	50	-7
2	1	4H	N-1	50	-7
6	7	4H	N-1	50	-7
13	18	4H	N-1	50	-7
9	5	4H	N-1	50	-7
14	16	4H	N-2	100	-8

10

♠AQ975
♥Q74
♦5
♣AK95

♠KJ10
♥AKJ98
♦K762
♣7

♠432
♥1032
♦QJ10
♣J1084

♠86
♥65
♦A9843
♣Q632

Av: NS=+90

N-S	E-W	Contract	N-S	E-W	IMP
1	2	3H	W-3	300	5
8	12	3H	W-2	200	3
17	15	3H	W-2	200	3
11	10	3H	W-2	200	3
10	11	3H	W-2	200	3
18	13	1S	N 3	140	2
13	18	1S	N 3	140	2
15	17	3C	N 4	130	1
12	8	3H	W-1	100	0
5	9	3H	W-1	100	0
2	1	3H	W-1	100	0
6	7	2H	W-1	100	0
3	4	2H	W-1	100	0
4	3	2H	W-1	100	0
14	16	2H	W 2	110	-5
16	14	2H	W 2	110	-5
9	5	2H	W 2	110	-5
7	6	5C	N-2	200	-7

11

♠AKQ1076
♥AQ84
♦87
♣7

♠54
♥J932
♦J63
♣Q1085

♠83
♥K106
♦Q52
♣K9642

♠J92
♥75
♦AK1094
♣AJ3

Av: NS=+670

N-S	E-W	Contract	N-S	E-W	IMP
13	18	6S	N 7	1010	8
3	4	6S	S 6	980	7
7	6	6S	N 6	980	7
1	2	6S	N 6	980	7
10	11	6S	N 6	980	7
6	7	6S	N 6	980	7
2	1	6S	N 6	980	7
16	14	6S	N 6	980	7
8	12	4S	N 7	510	-4
5	9	4S	N 6	480	-5
9	5	4S	N 6	480	-5
14	16	4S	N 6	480	-5
4	3	4S	N 6	480	-5
12	8	4S	N 6	480	-5
15	17	4S	N 6	480	-5
11	10	4S	N 5	450	-6
18	13	6S	N-1	50	-12
17	15	7S	N-2	100	-13

12

♠AQ953
♥Q5
♦Q73
♣K42

♠K
♥J1076
♦94
♣QJ8753

♠J6
♥A92
♦A10862
♣A109

♠108742
♥K843
♦KJ5
♣6

Av: NS=+500

N-S	E-W	Contract	N-S	E-W	IMP
15	17	4S	N 4	620	3
12	8	4S	N 4	620	3
14	16	4S	N 4	620	3
9	5	4S	N 4	620	3
18	13	4S	N 4	620	3
5	9	4S	N 4	620	3
4	3	4S	N 4	620	3
16	14	4S	N 4	620	3
11	10	4S	N 4	620	3
10	11	4S	N 4	620	3
1	2	4S	N 4	620	3
3	4	4S	N 4	620	3
2	1	4S	N 4	620	3
8	12	3S	N 4	170	-8
7	6	3S	N 4	170	-8
17	15	2S	N 4	170	-8
13	18	5C	W-1	50	-10
6	7	3C	W-1	50	-10

13

♠KQJ8
♥A109742
♦102
♣5

♠9732
♥QJ
♦AKJ8
♣AKJ

♠A105
♥865
♦Q9
♣109876

♠64
♥K3
♦76543
♣Q432

Av: NS=-50

N-S	E-W	Contract	N-S	E-W	IMP
14	17	4S	E-5	500	11
2	4	3H	N 3	140	5
15	13	1H	N 3	140	5
4	2	2H	N 2	110	4
7	5	2H	N 2	110	4
8	6	2H	N 2	110	4
18	16	3H	N-1	100	-2
6	8	3C	E 3	110	-2
17	14	3C	E 3	110	-2
5	7	2S	E 2	110	-2
9	10	2C	E 3	110	-2
1	3	3C	E 4	130	-2
16	18	3C	E 4	130	-2
3	1	3C	E 4	130	-2
12	11	2C	E 4	130	-2
11	12	2C	E 4	130	-2
13	15	2S	W 3	140	-3
10	9	2S	N-4	400	-8

14

♠Q64
♥K1096
♦76
♣QJ75

♠109
♥87542
♦1084
♣A108

♠AK32
♥Q
♦AKQJ952
♣4

♠J875
♥AJ3
♦3
♣K9632

Av: NS=-450

N-S	E-W	Contract	N-S	E-W	IMP
17	14	4S	E-5	250	12
13	15	2S	E-2	100	11
10	9	5D	E 5	400	2
9	10	5D	E 5	400	2
1	3	5D	W 6	420	1
3	1	5D	W 6	420	1
14	17	5D	E 6	420	1
6	8	5D	E 6	420	1
8	6	5D	E 6	420	1
15	13	5D	E 6	420	1
16	18	5D	E 6	420	1
11	12	5D	E 6	420	1
7	5	5D	E 6	420	1
2	4	3NT	W 4	430	1
5	7	3NT	E 4	430	1
18	16	6D	W 6	920	-10
4	2	6D	E 6	920	-10
12	11	6D	E 6	920	-10

15

♠QJ9
♥QJ109
♦J4
♣J987

♠A86
♥A3
♦AK983
♣Q63

♠1075
♥K8742
♦1065
♣54

♠K432
♥65
♦Q72
♣AK102

Av: NS=-20

N-S	E-W	Contract	N-S	E-W	IMP
14	17	2H	W-2	100	3
17	14	2H	W-2	100	3
9	10	2H	W-2	100	3
11	12	2H	W-1	50	2
16	18	2H	W-1	50	2
8	6	2H	W-1	50	2
15	13	2H	W-1	50	2
5	7	2H	W-1	50	2
6	8	2H	W-1	50	2
2	4	2H	W-1	50	2
12	11	2H	W 2	110	-3
4	2	2H	W 2	110	-3
18	16	2D	W 3	110	-3
13	15	2D	E 3	110	-3
1	3	2NT	W 2	120	-3
7	5	2H	W 3	140	-3
3	1	3C	N-2	200	-5
10	9	1NT	S-2	200	-5

16

♠982
♥984
♦Q1094
♣AJ8

♠Q1064
♥AQJ5
♦AK8
♣73

♠AKJ53
♥K63
♦75
♣K95

♠7
♥1072
♦J632
♣Q10642

Av: NS=-1060

N-S	E-W	Contract	N-S	E-W	IMP
9	10	6S	E-1	100	15
12	11	4S	W 6	680	9
13	15	4S	W 6	680	9
7	5	4S	W 6	680	9
1	3	4S	W 6	680	9
15	13	4S	W 6	680	9
4	2	4S	W 6	680	9
8	6	4S	W 6	680	9
18	16	4S	E 6	680	9
11	12	6S	W 6	1430	-9
10	9	6S	W 6	1430	-9
16	18	6S	W 6	1430	-9
14	17	6S	W 6	1430	-9
2	4	6S	W 6	1430	-9
3	1	6S	W 6	1430	-9
17	14	6S	W 6	1430	-9
6	8	6S	W 6	1430	-9
5	7	6S	W 6	1430	-9

17

♠KQJ10
♥7652
♦Q72
♣K3

♠98
♥KQ109
♦J8643
♣96

♠643
♥A83
♦K105
♣J875

♠A752
♥J4
♦A9
♣AQ1042

Av: NS=+420

N-S	E-W	Contract	N-S	E-W	IMP
3	1	4S	N 5	450	1
18	16	4S	S 4	420	0
10	9	4S	S 4	420	0
16	18	4S	S 4	420	0
13	15	4S	S 4	420	0
11	12	4S	S 4	420	0
9	10	4S	S 4	420	0
1	3	4S	S 4	420	0
14	17	4S	S 4	420	0
2	4	4S	S 4	420	0
7	5	4S	S 4	420	0
8	6	4S	S 4	420	0
17	14	4S	S 4	420	0
4	2	4S	S 4	420	0
6	8	4S	S 4	420	0
12	11	4S	S 4	420	0
5	7	4S	N 4	420	0
15	13	3NT	N 3	400	-1

18

♠8
♥65
♦AJ1087532
♣84

♠J97654
♥87
♦4
♣A765

♠A2
♥10432
♦KQ9
♣K932

♠KQ103
♥AKQJ9
♦6
♣QJ10

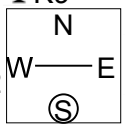
Av: NS=+20

N-S	E-W	Contract	N-S	E-W	IMP
1	3	4Dx	N 4	710	12
11	12	4H	S 4	620	12
9	10	4H	S 4	620	12
6	8	3NT	S 3	600	11
12	11	2S	W-1	50	1
18	16	5H	S-1	100	-3
17	14	5H	S-1	100	-3
3	1	5D	N-1	100	-3
13	15	5D	N-1	100	-3
2	4	5D	N-1	100	-3
16	18	4H	S-1	100	-3
5	7	3NT	S-1	100	-3
8	6	3NT	S-1	100	-3
10	9	5D	N-2	200	-6
15	13	4H	S-2	200	-6
14	17	4H	S-2	200	-6
7	5	3NT	S-2	200	-6
4	2	5Hx	S-2	500	-11

19

♠A1082
♥Q74
♦Q1063
♣K9

♠3
♥AK5
♦AK942
♣Q654



♠754
♥1082
♦J7
♣AJ732

♠KQJ96
♥J963
♦85
♣108

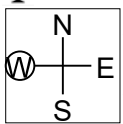
Av: NS=-120

Table with 6 columns: N-S, E-W, Contract, N-S, E-W, IMP. Lists 20 rows of match results for hand 19.

20

♠AK6
♥Q10765
♦KJ1093
♣

♠9
♥A2
♦Q62
♣AQJ10874



♠J1083
♥J9843
♦A75
♣9

♠Q7542
♥K
♦84
♣K6532

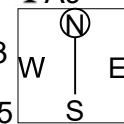
Av: NS=+30

Table with 6 columns: N-S, E-W, Contract, N-S, E-W, IMP. Lists 20 rows of match results for hand 20.

21

♠AJ9842
♥K4
♦1082
♣A9

♠K
♥AJ963
♦KQ4
♣Q1075



♠Q106
♥Q8
♦975
♣J8643

♠753
♥10752
♦AJ63
♣K2

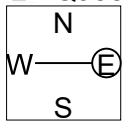
Av: NS=-10

Table with 6 columns: N-S, E-W, Contract, N-S, E-W, IMP. Lists 20 rows of match results for hand 21.

22

♠KQ
♥3
♦Q63
♣KQJ8543

♠J54
♥A65
♦K8542
♣109



♠A9872
♥K10987
♦J
♣A2

♠1063
♥QJ42
♦A1097
♣76

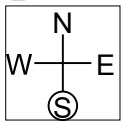
Av: NS=-20

Table with 6 columns: N-S, E-W, Contract, N-S, E-W, IMP. Lists 20 rows of match results for hand 22.

23

♠KQ9872
♥932
♦843
♣7

♠J
♥AQJ107
♦AK
♣96532



♠A5
♥864
♦J762
♣AKJ8

♠10643
♥K5
♦Q1095
♣Q104

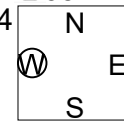
Av: NS=-870

Table with 6 columns: N-S, E-W, Contract, N-S, E-W, IMP. Lists 20 rows of match results for hand 23.

24

♠3
♥KJ10975
♦942
♣J54

♠K9874
♥AQ3
♦8765
♣3



♠10652
♥84
♦J
♣AQ8762

♠AQJ
♥62
♦AKQ103
♣K109

Av: NS=+380

Table with 6 columns: N-S, E-W, Contract, N-S, E-W, IMP. Lists 20 rows of match results for hand 24.

1

♠AK4
♥10
♦AJ10874
♣A109

♠10752
♥987542
♦Q
♣J4

♠QJ6
♥KQ63
♦952
♣752

W N E S

♠983
♥AJ
♦K63
♣KQ863

Av: NS=+890

N-S	E-W	Contract	N-S	E-W	IMP
17	6	7D	N 7	1440	11
13	9	6D	N 7	940	2
9	13	6D	N 7	940	2
16	11	6D	N 7	940	2
10	15	6D	N 7	940	2
5	1	6D	N 7	940	2
4	7	6D	N 7	940	2
11	16	6D	N 7	940	2
3	8	6D	N 7	940	2
15	10	6D	N 7	940	2
12	14	6D	N 7	940	2
7	4	6D	N 7	940	2
1	5	6D	N 7	940	2
8	3	6C	S 7	940	2
2	18	6D	N 6	920	1
18	2	3NT	N 7	520	-9
14	12	3NT	N 7	520	-9
6	17	3NT	N 6	490	-9

2

♠J8632
♥K109
♦K108
♣A7

♠AQ75
♥A87
♦Q3
♣9432

♠4
♥6542
♦J65
♣QJ865

W N E S

♠K109
♥QJ3
♦A9742
♣K10

Av: NS=+50

N-S	E-W	Contract	N-S	E-W	IMP
15	10	4S	N 5	650	12
17	6	2NT	S 4	180	4
16	11	2S	N 4	170	3
9	13	1NT	S 3	150	3
13	9	3S	N 3	140	3
1	5	3S	N 3	140	3
18	2	3S	N 3	140	3
7	4	3S	N 3	140	3
8	3	2S	N 3	140	3
14	12	3D	S 4	130	2
12	14	3D	S 3	110	2
3	8	4S	N-1	100	-4
5	1	4S	N-1	100	-4
4	7	4S	N-1	100	-4
10	15	4S	N-1	100	-4
6	17	3D	S-1	100	-4
11	16	5D	S-2	200	-6
2	18	4Sx	N-1	200	-6

3

♠73
♥10
♦AQJ953
♣K964

♠J10982
♥AJ42
♦108
♣Q7

♠K65
♥9853
♦74
♣8532

W N E S

♠AQ4
♥KQ76
♦K62
♣AJ10

Av: NS=+530

N-S	E-W	Contract	N-S	E-W	IMP
4	7	6NT	S 6	990	10
3	8	6D	S 6	920	9
8	3	6D	N 6	920	9
11	16	3NT	S 6	490	-1
7	4	3NT	S 6	490	-1
15	10	3NT	S 6	490	-1
5	1	3NT	S 6	490	-1
1	5	3NT	S 6	490	-1
18	2	3NT	S 6	490	-1
16	11	3NT	S 6	490	-1
13	9	3NT	S 6	490	-1
6	17	3NT	S 6	490	-1
10	15	3NT	S 5	460	-2
14	12	3NT	S 5	460	-2
12	14	3NT	S 5	460	-2
17	6	3NT	S 5	460	-2
2	18	3NT	S 5	460	-2
9	13	6C	S-1	50	-11

4

♠9762
♥943
♦Q942
♣Q8

♠543
♥107
♦A10853
♣942

♠Q10
♥KJ2
♦J76
♣KJ753

W N E S

♠AKJ8
♥AQ865
♦K
♣A106

Av: NS=+130

N-S	E-W	Contract	N-S	E-W	IMP
10	15	4S	S 4	620	10
9	13	4H	S 4	620	10
11	16	4H	S 4	620	10
5	1	1H	S 5	200	2
14	12	1H	S 4	170	1
1	5	1H	S 4	170	1
6	17	1H	S 4	170	1
8	3	1H	S 4	170	1
4	7	2S	S 3	140	0
7	4	1H	S 3	140	0
16	11	1H	S 3	140	0
17	6	1H	S 3	140	0
2	18	4S	S-1	100	-6
15	10	4S	N-1	100	-6
18	2	2NT	S-1	100	-6
12	14	2NT	S-1	100	-6
13	9	4S	S-2	200	-8
3	8	4H	S-2	200	-8

5

♠AJ982
♥J54
♦74
♣A63

♠54
♥A872
♦Q1095
♣KJ8

♠7
♥KQ963
♦AK82
♣1094

W N E S

♠KQ1063
♥10
♦J63
♣Q752

Av: NS=-130

N-S	E-W	Contract	N-S	E-W	IMP
12	14	3S	N 3	140	7
1	5	3S	N 3	140	7
9	13	4H	W-2	100	6
17	6	5H	W-1	50	5
14	12	5H	W-1	50	5
18	2	5H	W-1	50	5
10	15	5H	W-1	50	5
3	8	5H	W-1	50	5
15	10	4S	N-1	100	1
2	18	4Sx	N-1	200	-2
7	4	4Sx	N-1	200	-2
6	17	4Sx	N-1	200	-2
11	16	4Sx	N-1	200	-2
13	9	4H	W 4	420	-7
5	1	4H	W 4	420	-7
4	7	4H	W 4	420	-7
16	11	4H	W 4	420	-7
8	3	4H	W 4	420	-7

6

♠J7653
♥J87
♦A93
♣75

♠AK9
♥3
♦Q75
♣J109432

♠1084
♥KQ42
♦K86
♣AK8

W N E S

♠Q2
♥A10965
♦J1042
♣Q6

Av: NS=-630

N-S	E-W	Contract	N-S	E-W	IMP
10	15	Passout			12
9	13	3NT	W 3	600	1
7	4	3NT	W 3	600	1
6	17	3NT	W 3	600	1
4	7	3NT	W 4	630	0
5	1	3NT	W 4	630	0
1	5	3NT	W 4	630	0
3	8	3NT	W 4	630	0
12	14	3NT	W 4	630	0
17	6	3NT	W 4	630	0
14	12	3NT	W 4	630	0
18	2	3NT	W 4	630	0
8	3	3NT	W 4	630	0
11	16	3NT	E 4	630	0
13	9	3NT	W 5	660	-1
15	10	3NT	W 5	660	-1
16	11	3NT	W 6	690	-2
2	18	4Hx	S-4	800	-5

7

♠532
♥AQJ32
♦A86
♣107

♠KQ987
♥105
♦J72
♣AQ3

♠AJ1064
♥96
♦K104
♣K98

♠K874
♥Q953
♦J6542

Av: NS=+110

N-S	E-W	Contract	N-S	E-W	IMP
1	7	5S	W-2	200	3
14	9	5S	W-2	200	3
16	10	5S	W-2	200	3
18	4	4S	W-1	100	0
3	5	4S	W-1	100	0
8	17	4S	W-1	100	0
11	15	4S	W-1	100	0
4	18	4S	W-1	100	0
12	13	4S	W-1	100	0
6	2	4S	W-1	100	0
9	14	4S	W-1	100	0
17	8	4S	W-1	100	0
10	16	4S	W-1	100	0
5	3	4S	W-1	100	0
13	12	4S	W-1	100	0
15	11	4S	W-1	100	0
7	1	4S	W-1	100	0
2	6	5H	N-1	100	-5

8

♠A107
♥9532
♦K82
♣J72

♠86532
♥J
♦63
♣AK963

♠Q4
♥K84
♦AQJ74
♣854

♠KJ9
♥AQ1076
♦1095
♣Q10

Av: NS=-20

N-S	E-W	Contract	N-S	E-W	IMP
12	13	2H	S 2	110	4
13	12	2H	S 2	110	4
2	6	2H	S 2	110	4
3	5	2H	S 2	110	4
16	10	2H	S 2	110	4
11	15	4S	W-2	100	3
7	1	3H	S-1	50	-1
10	16	3H	S-1	50	-1
14	9	2H	S-1	50	-1
5	3	2H	S-1	50	-1
6	2	2H	S-1	50	-1
15	11	3H	S-2	100	-2
17	8	3H	S-2	100	-2
18	4	3H	S-2	100	-2
9	14	3H	S-2	100	-2
1	7	3H	S-2	100	-2
4	18	2H	S-2	100	-2
8	17	3H	S-3	150	-4

9

♠K943
♥J
♦A762
♣J1053

♠Q876
♥632
♦83
♣KQ94

♠A5
♥AK954
♦QJ104
♣86

♠J102
♥Q1087
♦K95
♣A72

Av: NS=+130

N-S	E-W	Contract	N-S	E-W	IMP
4	18	3H	E-3	300	5
1	7	3H	E-2	200	2
2	6	3H	E-2	200	2
16	10	3H	E-2	200	2
7	1	3H	E-2	200	2
10	16	3H	E-2	200	2
3	5	2H	E-2	200	2
9	14	2NT	S 2	120	0
8	17	2NT	S 2	120	0
6	2	2H	E-1	100	-1
5	3	2H	E-1	100	-1
14	9	2H	E-1	100	-1
11	15	2H	E-1	100	-1
13	12	2H	E-1	100	-1
18	4	2H	E-1	100	-1
12	13	2H	E-1	100	-1
15	11	2NT	S-1	50	-5
17	8	3C	N-3	150	-7

10

♠643
♥6
♦873
♣K109654

♠Q10
♥Q1074
♦QJ962
♣32

♠752
♥AJ985
♦A4
♣QJ8

♠AKJ98
♥K32
♦K105
♣A7

Av: NS=+200

N-S	E-W	Contract	N-S	E-W	IMP
3	5	4S	S 4	620	9
17	8	4S	S 4	620	9
11	15	4S	S 4	620	9
13	12	3H	E-2	200	0
16	10	3H	E-2	200	0
1	7	3S	S 4	170	-1
8	17	3S	S 4	170	-1
14	9	3S	S 4	170	-1
12	13	3S	S 4	170	-1
18	4	2S	S 4	170	-1
4	18	3S	S 3	140	-2
5	3	3S	S 3	140	-2
2	6	3S	S 3	140	-2
7	1	3S	S 3	140	-2
6	2	2S	S 3	140	-2
10	16	2S	S 3	140	-2
15	11	4S	S-1	100	-7
9	14	4S	S-2	200	-9

11

♠J97
♥QJ43
♦K842
♣85

♠AKQ1042
♥106
♦A106
♣Q2

♠863
♥A98
♦J3
♣AK974

♠5
♥K752
♦Q975
♣J1063

Av: NS=-360

N-S	E-W	Contract	N-S	E-W	IMP
4	18	6S	W-2	100	10
7	1	6S	W-1	50	9
18	4	6S	W-1	50	9
14	9	6S	W-1	50	9
15	11	4S	W 5	450	-3
2	6	4S	W 5	450	-3
8	17	4S	W 5	450	-3
11	15	4S	W 5	450	-3
1	7	4S	W 5	450	-3
17	8	4S	W 5	450	-3
10	16	4S	W 5	450	-3
5	3	4S	W 5	450	-3
13	12	4S	W 5	450	-3
16	10	4S	W 5	450	-3
6	2	4S	W 6	480	-3
12	13	4S	W 6	480	-3
3	5	4S	W 6	480	-3
9	14	6S	W 6	980	-12

12

♠9852
♥J73
♦K7
♣Q1093

♠10
♥K10986
♦AQ83
♣852

♠AQ764
♥AQ54
♦109
♣A6

♠KJ3
♥2
♦J6542
♣KJ74

Av: NS=-410

N-S	E-W	Contract	N-S	E-W	IMP
7	1	4H	E-1	50	10
16	10	4H	E-1	50	10
2	6	4H	E 4	420	0
3	5	4H	E 4	420	0
15	11	4H	E 4	420	0
9	14	4H	E 4	420	0
1	7	4H	E 4	420	0
12	13	4H	E 4	420	0
17	8	4H	W 5	450	-1
6	2	4H	E 5	450	-1
18	4	4H	E 5	450	-1
13	12	4H	E 5	450	-1
10	16	4H	E 5	450	-1
11	15	4H	E 5	450	-1
14	9	4H	E 5	450	-1
4	18	4H	E 5	450	-1
8	17	4H	E 5	450	-1
5	3	4H	W 7	510	-3

13

Hand 13: ♠3, ♥Q5, ♦AJ107, ♣K109732. Opponent: ♠52, ♥AJ10, ♦K653, ♣AJ84. Contract: ♠Q84, ♥98732, ♦Q982, ♣6.

Table for Hand 13 with columns: N-S, E-W, Contract, N-S, E-W, IMP. Average: Av: NS=-570.

14

Hand 14: ♠J5, ♥KJ83, ♦, ♣AQJ10863. Opponent: ♠A10974, ♥A962, ♦AK, ♣K4. Contract: ♠K8632, ♥Q, ♦1087532, ♣2.

Table for Hand 14 with columns: N-S, E-W, Contract, N-S, E-W, IMP. Average: Av: NS=+10.

15

Hand 15: ♠J976543, ♥K7, ♦A, ♣874. Opponent: ♠8, ♥63, ♦Q962, ♣AQJ962. Contract: ♠AQ, ♥QJ109, ♦K108743, ♣10.

Table for Hand 15 with columns: N-S, E-W, Contract, N-S, E-W, IMP. Average: Av: NS=+200.

16

Hand 16: ♠J108, ♥QJ9, ♦9654, ♣KJ9. Opponent: ♠Q632, ♥AK8762, ♦2, ♣65. Contract: ♠K75, ♥105, ♦Q1073, ♣A872.

Table for Hand 16 with columns: N-S, E-W, Contract, N-S, E-W, IMP. Average: Av: NS=-100.

17

Hand 17: ♠A3, ♥QJ62, ♦98543, ♣A7. Opponent: ♠985, ♥5, ♦A72, ♣K108654. Contract: ♠Q64, ♥K98743, ♦K6, ♣QJ.

Table for Hand 17 with columns: N-S, E-W, Contract, N-S, E-W, IMP. Average: Av: NS=+110.

18

Hand 18: ♠A1094, ♥KJ109, ♦Q, ♣Q1098. Opponent: ♠K875, ♥875, ♦1043, ♣A65. Contract: ♠QJ62, ♥62, ♦K965, ♣K42.

Table for Hand 18 with columns: N-S, E-W, Contract, N-S, E-W, IMP. Average: Av: NS=-50.

19

♠ 7654
♥ K864
♦ Q9642
♣

♠ 754
♥ QJ109
♦ Q2
♣ AJ105

N
W — E
S

♠ KQJ1063
♥ A8
♦ 9
♣ K873

♠ A982
♥ K32
♦ AJ10753
♣

Av: NS=+130

N-S	E-W	Contract	N-S	E-W	IMP
7	17	5Dx S 5	550		9
17	7	5Dx S 5	550		9
1	6	5Dx S 5	550		9
13	11	5Sx E-2	500		9
5	2	5Sx E-2	500		9
16	9	5D S 5	400		7
9	16	5D S 5	400		7
10	14	5D S 5	400		7
2	5	5Sx E-1	200		2
8	4	5S E-2	200		2
3	18	5S E-2	200		2
12	15	3D S 5	150		1
4	8	3S E-1	100		-1
6	1	2S E 4	170		-7
15	12	4S E 4	620		-13
18	3	4S E 4	620		-13
14	10	4S E 4	620		-13
11	13	5Sx E 5	850		-14

20

♠ 6
♥ J7654
♦ 1092
♣ A854

♠ Q54
♥ AQ103
♦ K86
♣ KJ7

N
W — E
S

♠ KJ983
♥ 8
♦ A53
♣ Q1062

♠ A1072
♥ K92
♦ QJ74
♣ 93

Av: NS=-490

N-S	E-W	Contract	N-S	E-W	IMP
13	11	4S W-1	100		11
8	4	4S W-1	100		11
17	7	4S W-1	100		11
5	2	4S W-1	100		11
1	6	3NT W 3	600		-3
15	12	4S W 4	620		-4
6	1	4S W 4	620		-4
4	8	4S W 4	620		-4
16	9	4S W 4	620		-4
10	14	4S W 4	620		-4
3	18	4S W 4	620		-4
2	5	4S W 4	620		-4
12	15	4S W 4	620		-4
7	17	4S W 4	620		-4
9	16	4S W 4	620		-4
11	13	4S W 4	620		-4
18	3	3NT W 5	660		-5
14	10	3NT W 5	660		-5

21

♠ 9532
♥ J1065
♦ KQ87
♣ 9

♠ K
♥ Q82
♦ A642
♣ AKQ102

N
W — E
S

♠ 1086
♥ K973
♦ 109
♣ J743

♠ AQJ74
♥ A4
♦ J53
♣ 865

Av: NS=+90

N-S	E-W	Contract	N-S	E-W	IMP
6	1	4S S 4	620		11
3	18	4Hx E-3	500		9
18	3	3S S 5	200		3
11	13	2S S 4	170		2
13	11	2S S 4	170		2
2	5	2S S 4	170		2
8	4	5C W-3	150		2
14	10	3S S 3	140		2
16	9	5Cx W-1	100		0
12	15	4C W-2	100		0
10	14	4C E-2	100		0
1	6	4C W-1	50		-1
9	16	4C W-1	50		-1
5	2	4C W-1	50		-1
17	7	4C W 4	130		-6
4	8	4C W 4	130		-6
7	17	4Sx S-1	200		-7
15	12	4S S-2	200		-7

22

♠ J3
♥ 54
♦ KQ107642
♣ 53

♠ A9752
♥ 10
♦ 985
♣ KQ74

N
W — E
S

♠ KQ84
♥ K987
♦ A
♣ A1086

♠ 106
♥ AQJ632
♦ J3
♣ J92

Av: NS=-680

N-S	E-W	Contract	N-S	E-W	IMP
5	2	5Dx N-3	500		5
13	11	4S E 5	650		1
10	14	4S W 6	680		0
6	1	4S W 6	680		0
17	7	4S W 6	680		0
9	16	4S W 6	680		0
14	10	4S W 6	680		0
1	6	4S W 6	680		0
8	4	4S W 6	680		0
2	5	4S W 6	680		0
3	18	4S W 6	680		0
12	15	4S W 6	680		0
7	17	4S W 6	680		0
18	3	4S W 6	680		0
4	8	4S E 6	680		0
11	13	4S E 6	680		0
16	9	4S E 6	680		0
15	12	5Dx N-4	800		-3

23

♠ K9
♥ AJ8754
♦ J62
♣ 83

♠ 104
♥ Q963
♦ AK109
♣ J54

N
W — E
S

♠ QJ87532
♥ 2
♦ Q74
♣ 72

♠ A6
♥ K10
♦ 853
♣ AKQ1096

Av: NS=+380

N-S	E-W	Contract	N-S	E-W	IMP
16	9	4H N 7	710		8
5	2	3NT S 5	660		7
14	10	4H S 5	650		7
7	17	4H N 5	650		7
1	6	4H N 5	650		7
15	12	4H N 5	650		7
17	7	3NT N 4	630		6
18	3	3NT N 4	630		6
6	1	4H N 4	620		6
11	13	4H N 4	620		6
8	4	4H N 4	620		6
3	18	3H N 5	200		-5
2	5	4H S-1	100		-10
12	15	4H S-1	100		-10
9	16	4H S-1	100		-10
13	11	4H S-1	100		-10
4	8	4H N-1	100		-10
10	14	4H N-1	100		-10

24

♠ AJ5
♥ 10742
♦ K4
♣ AKQ4

♠ KQ86
♥ J983
♦ 97
♣ J75

N
W — E
S

♠ 1072
♥ Q5
♦ A10865
♣ 1098

♠ 943
♥ AK6
♦ QJ32
♣ 632

Av: NS=+430

N-S	E-W	Contract	N-S	E-W	IMP
7	17	3NT N 5	460		1
4	8	3NT N 5	460		1
16	9	3NT N 5	460		1
5	2	3NT N 5	460		1
10	14	3NT N 4	430		0
13	11	3NT N 4	430		0
6	1	3NT N 4	430		0
15	12	3NT N 4	430		0
2	5	3NT N 4	430		0
12	15	3NT N 4	430		0
1	6	3NT N 4	430		0
8	4	3NT N 4	430		0
3	18	3NT S 3	400		-1
17	7	3NT N 3	400		-1
14	10	3NT N 3	400		-1
18	3	3NT N 3	400		-1
9	16	3NT N 3	400		-1
11	13	3NT N 3	400		-1

25

♠ J72
♥ AK82
♦ AJ3
♣ K107

♠ 65
♥ QJ1073
♦ KQ95
♣ A2

♠ K843
♥ 954
♦ 64
♣ 9843

♠ AQ109
♥ 6
♦ 10872
♣ QJ65

W — E
N — S

Av: NS=+430

N-S	E-W	Contract	N-S	E-W	IMP
9	11	3NT N 6	490		2
5	4	3NT N 6	490		2
16	13	3NT N 5	460		1
7	2	3NT N 5	460		1
14	15	3NT N 5	460		1
12	10	3NT N 5	460		1
13	16	3NT N 5	460		1
2	7	3NT N 4	430		0
15	14	3NT N 4	430		0
4	5	3NT N 4	430		0
6	3	3NT N 4	430		0
8	1	3NT N 4	430		0
3	6	3NT N 4	430		0
10	12	3NT N 4	430		0
18	17	3NT N 4	430		0
17	18	3NT N 3	400		-1
1	8	2NT N 5	210		-6
11	9	2NT N 4	180		-6

26

♠ 632
♥ J542
♦ 10742
♣ K4

♠ 987
♥ 6
♦ AQJ53
♣ A876

♠ AJ54
♥ KQ98
♦ 9
♣ J1032

♠ KQ10
♥ A1073
♦ K86
♣ Q95

W — E
N — S

Av: NS=-80

N-S	E-W	Contract	N-S	E-W	IMP
8	1	3NT E-1	100		5
18	17	3D W-1	100		5
2	7	3C E-1	100		5
9	11	2NT E-1	100		5
13	16	1NT S-1	100		-1
6	3	3C E 3	110		-1
4	5	2NT E 2	120		-1
17	18	2NT E 2	120		-1
15	14	2NT E 2	120		-1
5	4	2NT E 2	120		-1
12	10	2NT E 2	120		-1
3	6	2NT E 2	120		-1
16	13	2NT E 2	120		-1
10	12	1NT E 2	120		-1
14	15	3C E 4	130		-2
1	8	2NT E 3	150		-2
11	9	2Hx N-1	200		-3
7	2	3NT E 3	600		-11

27

♠ QJ7
♥ Q8
♦ A764
♣ AK94

♠ 632
♥ 62
♦ QJ108532
♣ Q

♠ 10854
♥ K9754
♦
♣ 8765

♠ AK9
♥ AJ103
♦ K9
♣ J1032

W — E
N — S

Av: NS=+800

N-S	E-W	Contract	N-S	E-W	IMP
14	15	6NT S 7	1020		6
10	12	6NT S 6	990		5
17	18	6NT S 6	990		5
1	8	6NT S 6	990		5
8	1	6NT S 6	990		5
4	5	6NT S 6	990		5
18	17	6NT S 6	990		5
5	4	6NT S 6	990		5
11	9	6NT S 6	990		5
16	13	6NT S 6	990		5
3	6	6NT N 6	990		5
9	11	4NT S 7	520		-7
13	16	5NT S 6	490		-7
7	2	5NT S 6	490		-7
12	10	3NT S 6	490		-7
6	3	3NT S 6	490		-7
2	7	3NT S 6	490		-7
15	14	3NT S 6	490		-7

28

♠ AQJ
♥ 64
♦ J10642
♣ 1076

♠ 876
♥ AJ32
♦ AQ873
♣ Q

♠ 10943
♥ Q95
♦
♣ AJ9854

♠ K52
♥ K1087
♦ K95
♣ K32

W — E
N — S

Av: NS=0

N-S	E-W	Contract	N-S	E-W	IMP
12	10	1NT W-3	150		4
7	2	1NT W-2	100		3
1	8	1NT W-2	100		3
4	5	2S E-1	50		2
6	3	2H W-1	50		2
8	1	2D W-1	50		2
10	12	2D W-1	50		2
13	16	2D W-1	50		2
5	4	1NT W-1	50		2
3	6	1NT W-1	50		2
16	13	1NT W-1	50		2
15	14	1NT W 1	90		-3
17	18	1NT W 1	90		-3
11	9	1NT W 1	90		-3
9	11	3C E 3	110		-3
14	15	3S E 3	140		-4
18	17	2S E 3	140		-4
2	7	2S E 3	140		-4

29

♠ AKQJ32
♥ 10985
♦ 987
♣ 987

♠ KQ1098
♥ 94
♦ AKQ64
♣ 4

♠ A642
♥ 75
♦ J72
♣ QJ53

♠ J753
♥ 1086
♦ 3
♣ AK1062

W — E
N — S

Av: NS=+40

N-S	E-W	Contract	N-S	E-W	IMP
7	2	4H N 6	680		12
17	18	4H N 6	680		12
3	6	4H N 4	620		11
14	15	4H N 4	620		11
5	4	4H N 4	620		11
10	12	4H N 4	620		11
8	1	2H N 5	200		4
11	9	5D W-1	100		2
18	17	5D W-1	100		2
12	10	4H N-1	100		-4
2	7	4H N-1	100		-4
15	14	4H N-1	100		-4
13	16	2S W 4	170		-5
9	11	4S W 4	620		-12
4	5	4S W 4	620		-12
16	13	4S W 4	620		-12
6	3	4S W 4	620		-12
1	8	4Sx W 4	790		-13

30

♠ 1074
♥ 10942
♦ 105
♣ K843

♠ KQJ
♥ K765
♦ 982
♣ A75

♠ 98653
♥ Q3
♦ AKQ
♣ QJ2

♠ A2
♥ AJ8
♦ J7643
♣ 1096

W — E
N — S

Av: NS=-420

N-S	E-W	Contract	N-S	E-W	IMP
16	13	3NT E 3	400		1
17	18	3NT E 3	400		1
7	2	4S E 4	420		0
15	14	4S E 4	420		0
9	11	4S E 4	420		0
1	8	4S E 4	420		0
6	3	4S E 4	420		0
10	12	4S E 4	420		0
4	5	4S E 4	420		0
2	7	4S E 4	420		0
5	4	4S E 4	420		0
12	10	4S E 4	420		0
14	15	4S E 4	420		0
18	17	4S E 4	420		0
3	6	4S E 4	420		0
8	1	4S E 4	420		0
13	16	4S E 4	420		0
11	9	4S E 4	420		0