

全日本オープンペア選手権 OPEN PAIRS Session 1 Section AB 2022年12月3日(土)

**1**

♠5  
♥K1095  
♦A6543  
♣Q98

♠AQJ98  
♥J742  
♦J82  
♣3

♠K106432  
♥863  
♦10  
♣J64

♠7  
♥AQ  
♦KQ97  
♣AK10752

N-S	E-W	Contract	N-S	E-W	MP
B07	B21	6D N 7	940		20
A05	A21	6C S 6	920		18
A01	A14	6C S 6	920		18
A02	A16	6C S 6	920		18
B18	B11	5Sx W-3	500		15
A09	A19	5Sx W-3	500		15
B12	B08	5Sx E-3	500		15
B03	B13	5C S 7	440		12.5
A13	A06	5C S 7	440		12.5
B06	B19	5D S 6	420		7
B05	B17	5D N 6	420		7
A18	A03	5C S 6	420		7
B16	B10	5C S 6	420		7
A20	A04	5C S 6	420		7
A11	A12	5C S 6	420		7
B02	B15	5C S 6	420		7
A15	A07	5C S 6	420		7
A10	A22	5C S 6	420		7
B20	B01	4Sx W-2	300		1
A17	A08	4Sx W-2	300		1
B14	B09	4Sx E-2	300		1

**2**

♠QJ83  
♥KJ73  
♦KQ52  
♣8

♠AK94  
♥985  
♦J1094  
♣J9

♠1076  
♥42  
♦73  
♣AQ10762

♠52  
♥AQ106  
♦A86  
♣K543

N-S	E-W	Contract	N-S	E-W	MP
B14	B09	4H N 5	650		19.5
B03	B13	4H N 5	650		19.5
A15	A07	4H S 4	620		12.5
A01	A14	4H S 4	620		12.5
B02	B15	4H S 4	620		12.5
B05	B17	4H S 4	620		12.5
A09	A19	4H N 4	620		12.5
A10	A22	4H N 4	620		12.5
A11	A12	4H N 4	620		12.5
A17	A08	4H N 4	620		12.5
B16	B10	4H N 4	620		12.5
A18	A03	4H N 4	620		12.5
A05	A21	4H N 4	620		12.5
B18	B11	4H N 4	620		12.5
A13	A06	2NT N 4	180		6
A20	A04	3H N 4	170		4.5
A02	A16	3H N 4	170		4.5
B12	B08	3C E-2	100		2
B07	B21	3C E-2	100		2
B20	B01	3C E-2	100		2
B06	B19	4H N-2	200		0

**3**

♠J  
♥76532  
♦A932  
♣983

♠KQ54  
♥AJ98  
♦K64  
♣K6

♠A9  
♥104  
♦QJ1085  
♣AQ54

♠1087632  
♥KQ  
♦7  
♣J1072

N-S	E-W	Contract	N-S	E-W	MP
B03	B13	1NT W 5	210		20
B06	B19	3NT W 4	630		19
B16	B10	3NT W 5	660		13
B12	B08	3NT W 5	660		13
B20	B01	3NT W 5	660		13
A13	A06	3NT W 5	660		13
A10	A22	3NT W 5	660		13
A01	A14	3NT W 5	660		13
A09	A19	3NT W 5	660		13
A11	A12	3NT W 5	660		13
B07	B21	3NT W 5	660		13
A15	A07	3NT W 5	660		13
A17	A08	3NT E 5	660		13
B02	B15	3NT W 6	690		3.5
B05	B17	3NT W 6	690		3.5
A18	A03	3NT W 6	690		3.5
A05	A21	3NT W 6	690		3.5
B18	B11	3NT W 6	690		3.5
B14	B09	3NT W 6	690		3.5
A02	A16	3NT W 6	690		3.5
A20	A04	3NT W 6	690		3.5

**4**

♠K543  
♥3  
♦KJ963  
♣J73

♠J8  
♥86542  
♦542  
♣1086

♠AQ962  
♥AQJ9  
♦  
♣Q954

♠107  
♥K107  
♦AQ1087  
♣AK2

N-S	E-W	Contract	N-S	E-W	MP
A07	A20	3Dx N 4	870		20
B12	B07	5Hx W-3	800		18.5
B16	B09	3Sx E-3	800		18.5
B21	B06	3NT N 3	600		16
B14	B08	3NT N 3	600		16
A21	A02	3NT N 3	600		16
B05	B19	4Hx W-1	200		13.5
A04	A14	3H W-2	200		13.5
B18	B10	4D S 4	130		7.5
A08	A16	4D S 4	130		7.5
A12	A03	4D S 4	130		7.5
B03	B15	4D S 4	130		7.5
B01	B13	4D S 4	130		7.5
A15	A10	4D S 4	130		7.5
A17	A11	4D N 4	130		7.5
A19	A01	3D S 4	130		7.5
B04	B17	3D N 4	130		7.5
A06	A18	3D N 4	130		7.5
B20	B11	3H E-1	100		2
A05	A22	1S E 3	140		1
A13	A09	5Dx S-1	200		0

**5**

♠8632  
♥A107  
♦KQ  
♣AQ95

♠KQJ975  
♥KQ64  
♦  
♣1074

♠A  
♥9853  
♦AJ108742  
♣K

♠104  
♥J2  
♦9653  
♣J8632

N-S	E-W	Contract	N-S	E-W	MP
B12	B07	3NT E-2	100		20
A07	A20	4S W-1	50		17.5
B18	B10	4S W-1	50		17.5
B14	B08	4D E-1	50		17.5
A13	A09	4D E-1	50		17.5
B21	B06	3D E 3	110		12.5
A21	A02	3D E 3	110		12.5
B05	B19	3D E 3	110		12.5
A04	A14	3D E 3	110		12.5
A15	A10	2S W 2	110		12.5
B20	B11	2D W 3	110		12.5
A08	A16	3D E 4	130		8.5
A17	A11	2D W 4	130		8.5
A12	A03	3S W 3	140		5.5
B01	B13	3S W 3	140		5.5
A06	A18	3S W 3	140		5.5
B16	B09	2S W 3	140		5.5
A19	A01	4D E 5	150		3
A05	A22	2S W 4	170		2
B03	B15	4H W 4	420		0.5
B04	B17	4H E 4	420		0.5

**6**

♠A2  
♥J10853  
♦A2  
♣J1064

♠10654  
♥  
♦KQJ1094  
♣973

♠KQ87  
♥76  
♦653  
♣AQ85

♠J93  
♥AKQ942  
♦87  
♣K2

N-S	E-W	Contract	N-S	E-W	MP
B05	B19	4Hx S 4	590		20
B14	B08	4Sx E-2	500		19
B21	B06	4H S 5	450		18
B01	B13	4H S 4	420		9.5
B03	B15	4H S 4	420		9.5
B04	B17	4H S 4	420		9.5
B18	B10	4H S 4	420		9.5
B12	B07	4H S 4	420		9.5
B20	B11	4H S 4	420		9.5
B16	B09	4H S 4	420		9.5
A06	A18	4H S 4	420		9.5
A21	A02	4H S 4	420		9.5
A15	A10	4H S 4	420		9.5
A04	A14	4H S 4	420		9.5
A12	A03	4H S 4	420		9.5
A19	A01	4H S 4	420		9.5
A17	A11	4H S 4	420		9.5
A05	A22	4H S 4	420		9.5
A13	A09	4H S 4	420		9.5
A08	A16	3H S 4	170		1
A07	A20	5H S-1	50		0

全日本オープンペア選手権 OPEN PAIRS Session 1 Section AB 2022年12月3日(土)

7

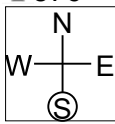
♠KQ1065

♥

◇98543

♣876

♠982  
♥J1097  
◇J6  
♣KQ54



♠A74  
♥A86432  
◇KQ  
♣J10

♠J3  
♥KQ5  
◇A1072  
♣A932

N-S	E-W	Contract	N-S	E-W	MP
B19	B10	5Hx E-4	1100		20
A20	A03	4Hx E-3	800		19
A11	A14	4H E-2	200		15
B11	B21	4H E-2	200		15
A08	A22	3Hx E-1	200		15
A04	A19	3H E-2	200		15
B20	B05	3H E-2	200		15
B13	B07	3H E-2	200		15
B06	B12	3H E-2	200		15
B02	B14	4D S 4	130		10
A15	A06	4D S 4	130		10
B03	B16	4D S 4	130		10
A13	A05	3H E-1	100		5.5
B15	B08	3H E-1	100		5.5
A18	A02	3H E-1	100		5.5
A07	A17	3H E-1	100		5.5
A16	A01	3H E-1	100		5.5
A10	A12	2H E-1	100		5.5
B17	B09	4D S-1		100	2
A09	A21	5Dx S-1		200	1
B04	B18	5Dx S-2		500	0

8

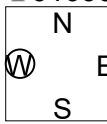
♠QJ96

♥J107

◇75

♣J1098

♠843  
♥AQ843  
◇K32  
♣64



♠A7  
♥K92  
◇AQJ96  
♣Q73

♠K1052  
♥65  
◇1084  
♣AK52

N-S	E-W	Contract	N-S	E-W	MP
A16	A01	2H E 5	200		20
A08	A22	4H E 4	420		19
A09	A21	4H E 5	450		10
B06	B12	4H E 5	450		10
B02	B14	4H E 5	450		10
B03	B16	4H E 5	450		10
B20	B05	4H E 5	450		10
B17	B09	4H E 5	450		10
B11	B21	4H E 5	450		10
B19	B10	4H E 5	450		10
B15	B08	4H E 5	450		10
A10	A12	4H E 5	450		10
A04	A19	4H E 5	450		10
A18	A02	4H E 5	450		10
A15	A06	4H E 5	450		10
A11	A14	4H E 5	450		10
A20	A03	4H E 5	450		10
B13	B07	4H E 5	450		10
B04	B18	4H E 5	450		10
A13	A05	3NT E 5	460		1
A07	A17	4H E 6	480		0

9

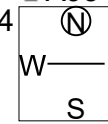
♠Q975

♥K103

◇KJ4

♣A95

♠J10864  
♥Q7  
◇A98  
♣Q64



♠AK32  
♥A6  
◇Q2  
♣J10873

♠  
♥J98542  
◇107653  
♣K2

N-S	E-W	Contract	N-S	E-W	MP
A11	A14	4H S 4	420		20
B03	B16	5S W-2	200		18.5
B02	B14	2H S 5	200		18.5
B04	B18	2H S 4	170		14
A08	A22	2H S 4	170		14
A15	A06	2H S 4	170		14
B06	B12	2H S 4	170		14
A13	A05	2H S 4	170		14
B17	B09	2H S 4	170		14
B15	B08	2H S 4	170		14
B19	B10	2H S 3	140		10
A20	A03	4S W-1	100		7.1
B11	B21	4S W-1	100		7.1
A16	A01	4S E-1	100		7.1
A09	A21	3S E-1	100		7.1
A18	A02	Weighted			5.8
B20	B05	2D N-1		50	4.2
B13	B07	1C N-2		100	3.2
A04	A19	3S W 3		140	2.2
A07	A17	3S E 4		170	1.2
A10	A12	4Sx E 4		790	0

10

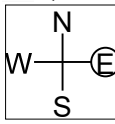
♠KJ86

♥K854

◇64

♣QJ2

♠975  
♥J962  
◇Q105  
♣K106



♠AQ2  
♥AQ3  
◇AK97  
♣A54

♠1043  
♥107  
◇J832  
♣9873

N-S	E-W	Contract	N-S	E-W	MP
A16	A10	3NT E 3	600		18.5
A18	A11	3NT E 3	600		18.5
A03	A13	3NT E 3	600		18.5
B13	B04	3NT E 3	600		18.5
A12	A08	3NT E 4	630		10.5
A02	A15	3NT E 4	630		10.5
A07	A21	3NT E 4	630		10.5
A04	A22	3NT E 4	630		10.5
A14	A09	3NT E 4	630		10.5
B18	B01	3NT E 4	630		10.5
B09	B12	3NT E 4	630		10.5
B07	B19	3NT E 4	630		10.5
B08	B21	3NT E 4	630		10.5
B16	B11	3NT E 4	630		10.5
B14	B10	3NT E 4	630		10.5
A06	A19	3NT E 4	630		10.5
A05	A17	3NT E 5	660		3
B05	B15	3NT E 5	660		3
B03	B17	3NT E 5	660		3
B20	B02	3NT E 6	690		1
A20	A01	6NT E 6	1440		0

11

♠K3

♥9

◇AJ2

♣KQ98532

♠J1098  
♥87653  
◇K104  
♣J



♠AQ764  
♥K  
◇Q8753  
♣104

♠52  
♥AQJ1042  
◇96  
♣A76

N-S	E-W	Contract	N-S	E-W	MP
A16	A10	6C N 7	940		20
A02	A15	6C N 6	920		17
B16	B11	6C N 6	920		17
A04	A22	6C N 6	920		17
A03	A13	6C N 6	920		17
A06	A19	6C N 6	920		17
B07	B19	3NT N 7	520		12.5
B09	B12	3NT N 7	520		12.5
A05	A17	3NT N 7	520		12.5
A07	A21	3NT N 7	520		12.5
A14	A09	3NT N 6	490		8.5
A20	A01	3NT N 6	490		8.5
B03	B17	3NT N 6	490		8.5
A12	A08	3NT N 6	490		8.5
A18	A11	5C N 7	440		6
B14	B10	5C N 6	420		4.5
B08	B21	5C N 6	420		4.5
B05	B15	5C N 5	400		3
B18	B01	5Sx E-2	300		2
B20	B02	3NT S-1		50	1
B13	B04	5H S-3		150	0

12

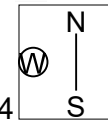
♠10

♥J9632

◇10543

♣J93

♠K985  
♥K75  
◇K  
♣AK1054



♠A432  
♥AQ8  
◇AQJ97  
♣Q

♠QJ76  
♥104  
◇862  
♣8762

N-S	E-W	Contract	N-S	E-W	MP
A12	A08	6S W-1	50		19
A06	A19	6S W-1	50		19
B14	B10	6S W-1	50		19
A14	A09	5S E 6		480	17
B05	B15	4NT W 7		520	16
A05	A17	6S W 6		980	13.5
A04	A22	6S W 6		980	13.5
A03	A13	6S W 6		980	13.5
B13	B04	6S W 6		980	13.5
B09	B12	6NT W 7		1020	6.5
A02	A15	6NT W 7		1020	6.5
B08	B21	6NT W 7		1020	6.5
A07	A21	6NT W 7		1020	6.5
A20	A01	6NT W 7		1020	6.5
A16	A10	6NT W 7		1020	6.5
B18	B01	6NT W 7		1020	6.5
A18	A11	6NT E 7		1020	6.5
B07	B19	6NT E 7		1020	6.5
B16	B11	6NT E 7		1020	6.5
B20	B02	7NT W 7		1520	0.5
B03	B17	7NT W 7		1520	0.5

13

♠K985  
♥Q963  
♦J8  
♣Q75

♠AQJ4  
♥A872  
♦10754  
♣9

♠1073  
♥J5  
♦AK63  
♣8432

♠62  
♥K104  
♦Q92  
♣AKJ106

N-S	E-W	Contract	N-S	E-W	MP
B17	B10	1NT S 3	150		20
A01	A13	1NT S 2	120		17
B04	B16	1NT S 2	120		17
B02	B12	1NT S 2	120		17
B07	B14	1NT S 2	120		17
A02	A22	1NT N 2	120		17
A16	A09	3C S 3	110		13
B19	B11	2H N 2	110		13
B15	B09	1H N 2	110		13
A03	A15	1NT S 1	90		10
A05	A19	1NT S 1	90		10
A20	A11	1NT S 1	90		10
A12	A07	3C S-1		100	7.5
A04	A17	2H N-1		100	7.5
A21	A06	3D E 3		110	3.5
B13	B08	3D E 3		110	3.5
B05	B18	3D E 3		110	3.5
A14	A08	3D E 3		110	3.5
B21	B01	3D E 3		110	3.5
B06	B20	2S W 2		110	3.5
A18	A10	2D E 4		130	0

14

♠J542  
♥J10  
♦A865  
♣QJ2

♠109  
♥K9  
♦KJ9742  
♣K107

♠KQ63  
♥Q876532  
♦10  
♣A

♠A87  
♥A4  
♦Q3  
♣986543

N-S	E-W	Contract	N-S	E-W	MP
B06	B20	4H E-1	50		20
B02	B12	3H E 3		140	19
B13	B08	3H E 4		170	18
A12	A07	2H E 5		200	17
A20	A11	4H E 4		420	9
B04	B16	4H E 4		420	9
B05	B18	4H E 4		420	9
B19	B11	4H E 4		420	9
B07	B14	4H E 4		420	9
B17	B10	4H E 4		420	9
B15	B09	4H E 4		420	9
A02	A22	4H E 4		420	9
A16	A09	4H E 4		420	9
A05	A19	4H E 4		420	9
A14	A08	4H E 4		420	9
A01	A13	4H E 4		420	9
A21	A06	4H E 4		420	9
A03	A15	4H E 4		420	9
A04	A17	4H E 4		420	9
A18	A10	4H E 5		450	0.5
B21	B01	4H E 5		450	0.5

15

♠Q107  
♥AK10954  
♦K  
♣K32

♠J2  
♥Q87  
♦AJ10874  
♣64

♠984  
♥J632  
♦Q953  
♣108

♠AK653  
♥  
♦62  
♣AQJ975

N-S	E-W	Contract	N-S	E-W	MP
A04	A17	6S S 6	1430		15.5
B19	B11	6S S 6	1430		15.5
B02	B12	6S S 6	1430		15.5
B07	B14	6S S 6	1430		15.5
B17	B10	6S S 6	1430		15.5
B06	B20	6S S 6	1430		15.5
A05	A19	6S S 6	1430		15.5
A01	A13	6S S 6	1430		15.5
A20	A11	6S S 6	1430		15.5
B13	B08	6S N 6	1430		15.5
B21	B01	5Dx W-6	1400		10
A21	A06	6C S 6	1370		7.5
B15	B09	6C S 6	1370		7.5
A02	A22	6C S 6	1370		7.5
A03	A15	6C S 6	1370		7.5
A12	A07	4S S 7	710		4.5
A14	A08	4S S 7	710		4.5
A18	A10	4S S 6	680		2
A16	A09	4S S 6	680		2
B05	B18	4S S 6	680		2
B04	B16	4H N 4	620		0

16

♠KQ108  
♥8432  
♦4  
♣J986

♠9542  
♥A5  
♦AQ93  
♣A107

♠AJ7  
♥J109  
♦KJ875  
♣K2

♠63  
♥KQ76  
♦1062  
♣Q543

N-S	E-W	Contract	N-S	E-W	MP
B10	B13	3NT W 3	600		20
A02	A14	3NT W 4	630		14.5
A20	A05	3NT W 4	630		14.5
A04	A18	3NT W 4	630		14.5
B15	B11	3NT E 4	630		14.5
B12	B04	3NT E 4	630		14.5
A11	A21	3NT E 4	630		14.5
B17	B01	3NT E 4	630		14.5
B14	B05	3NT E 4	630		14.5
B06	B16	3NT E 4	630		14.5
B09	B18	3NT E 4	630		14.5
A15	A08	3NT W 5	660		4.5
A01	A22	3NT W 5	660		4.5
A03	A16	3NT W 5	660		4.5
A06	A12	3NT W 5	660		4.5
A19	A10	3NT E 5	660		4.5
A13	A07	3NT E 5	660		4.5
B08	B20	3NT E 5	660		4.5
A17	A09	3NT E 5	660		4.5
B19	B02	3NT E 5	660		4.5
B21	B03	3NT E 5	660		4.5

17

♠A2  
♥1093  
♦J76  
♣AQ1073

♠KJ4  
♥AKJ62  
♦AK843  
♣

♠109763  
♥87  
♦10952  
♣J5

♠Q85  
♥Q54  
♦Q  
♣K98642

N-S	E-W	Contract	N-S	E-W	MP
B08	B20	4H W-3	150		20
A17	A09	5D W-1	50		18.5
B14	B05	5D E-1	50		18.5
A13	A07	1H W 1		80	17
B10	B13	4C N-2		100	15.5
A20	A05	4C N-2		100	15.5
B17	B01	1H W 2		110	13.5
A03	A16	1H W 2		110	13.5
B15	B11	3D W 4		130	12
A19	A10	4D W 5		150	9.5
A04	A18	4D W 5		150	9.5
B21	B03	3D W 5		150	9.5
A02	A14	3D W 5		150	9.5
B09	B18	1H W 4		170	6.5
B06	B16	1H W 4		170	6.5
B19	B02	4Cx N-2		300	4.5
B12	B04	4Cx N-2		300	4.5
A15	A08	4S E 4		420	2
A11	A21	4S E 4		420	2
A01	A22	4S E 4		420	2
A06	A12	5Cx S-3		500	0

18

♠74  
♥A32  
♦8  
♣AKJ9854

♠Q93  
♥Q10984  
♦32  
♣1063

♠AK862  
♥K6  
♦K1094  
♣Q2

♠J105  
♥J75  
♦AQJ765  
♣7

N-S	E-W	Contract	N-S	E-W	MP
A04	A18	3Sx E-2	300		20
B08	B20	3S E-3	150		17
A13	A07	3C N 5	150		17
B14	B05	3C N 5	150		17
A17	A09	3C N 5	150		17
A11	A21	3C N 5	150		17
A02	A14	4C N 4	130		11.5
A03	A16	4C N 4	130		11.5
A01	A22	4C N 4	130		11.5
B19	B02	3C N 4	130		11.5
B06	B16	3C N 4	130		11.5
B12	B04	3C N 4	130		11.5
A06	A12	3D S 3	110		7
A19	A10	3C N 3	110		7
B15	B11	3C N 3	110		7
B09	B18	3S E-2	100		4.5
B10	B13	3S E-2	100		4.5
B21	B03	2S E-1	50		3
A15	A08	4C N-1		100	1.5
B17	B01	3C N-1		100	1.5
A20	A05	3H N-2		200	0

全日本オープンペア選手権 OPEN PAIRS Session 1 Section AB 2022年12月3日(土)

19

♠ Q962  
♥ 86  
♦ A1032  
♣ K87

♠ 853  
♥ AKJ1072  
♦ 9  
♣ A104

♠ J74  
♥ Q3  
♦ KJ65  
♣ Q963

♠ AK10  
♥ 954  
♦ Q874  
♣ J52

N E  
W — E  
S (S)

N-S	E-W	Contract	N-S	E-W	MP
B11	B13	2S S 2	110		19.5
B14	B06	2S S 2	110		19.5
A07	A19	3H E-1	100		18
A16	A11	3S N-1		50	16
A14	A10	3D S-1		50	16
B12	B05	2S S-1		50	16
B21	B04	3D S-2		100	14
B08	B18	2H E 2		110	11
B01	B15	2H E 2		110	11
B17	B02	2H E 2		110	11
A09	A12	2H E 2		110	11
B16	B07	2H E 2		110	11
B10	B20	3H E 3		140	6
A20	A02	2H E 3		140	6
B19	B03	2H E 3		140	6
A03	A17	2H E 3		140	6
A18	A01	2H E 3		140	6
A06	A22	3D S-3		150	2.5
A08	A21	3D S-3		150	2.5
A05	A15	2H E 4		170	1
A13	A04	3Sx S-4		800	0

20

♠ 64  
♥ K962  
♦ 863  
♣ Q1032

♠ AKJ52  
♥ 1073  
♦ AK74  
♣ 5

♠ 1073  
♥ AQJ854  
♦ 109  
♣ 64

♠ Q98  
♥  
♦ QJ52  
♣ AKJ987

N E  
W — E  
S (S)

N-S	E-W	Contract	N-S	E-W	MP
B10	B20	5Hx W-1	200		18.5
A16	A11	5Hx W-1	200		18.5
A09	A12	4S E-2	200		18.5
A03	A17	4Hx W-1	200		18.5
B12	B05	5H W-1	100		15
A20	A02	4H W-1	100		15
B14	B06	4H W-1	100		15
B08	B18	4C S-2		200	13
B19	B03	4S E 4		620	8
A14	A10	4S E 4		620	8
B21	B04	4H W 4		620	8
B11	B13	4H W 4		620	8
A08	A21	4H W 4		620	8
B16	B07	4H W 4		620	8
A06	A22	4H W 4		620	8
A18	A01	4H W 4		620	8
A07	A19	4H W 4		620	8
A05	A15	4Hx W 4		790	2.5
A13	A04	4Hx W 4		790	2.5
B17	B02	5Cx S-3		800	0.5
B01	B15	5Cx N-3		800	0.5

21

♠ 72  
♥ AKQ7  
♦ 10  
♣ AJ10932

♠ AK105  
♥ 9  
♦ A87542  
♣ K5

♠ 863  
♥ 1032  
♦ KJ63  
♣ Q84

♠ QJ94  
♥ J8654  
♦ Q9  
♣ 76

N E  
W — E  
S (S)

N-S	E-W	Contract	N-S	E-W	MP
A07	A19	3H N 3	140		20
B16	B07	5Dx E-1	100		17.5
A05	A15	5Dx E-1	100		17.5
B01	B15	5Dx E-1	100		17.5
A03	A17	5Dx E-1	100		17.5
A08	A21	5D E-1		50	15
B10	B20	4H S-1		100	11.5
B11	B13	4H S-1		100	11.5
B08	B18	4H S-1		100	11.5
B12	B05	4H N-1		100	11.5
B14	B06	4H N-1		100	11.5
A14	A10	4H N-1		100	11.5
A13	A04	4D E 4		130	7
A09	A12	4D E 4		130	7
B21	B04	4D E 4		130	7
B17	B02	4Hx S-1		200	3.5
A20	A02	4Hx N-1		200	3.5
A06	A22	4Hx N-1		200	3.5
B19	B03	4Hx N-1		200	3.5
A16	A11	5Hx N-2		500	0.5
A18	A01	5Hx N-2		500	0.5

22

♠ 4  
♥ KQ1043  
♦ Q43  
♣ Q982

♠ 852  
♥ J762  
♦ J1085  
♣ 74

♠ AKJ107  
♥ 9  
♦ AK76  
♣ AK5

♠ Q963  
♥ A85  
♦ 92  
♣ J1063

N E  
W — E  
S (S)

N-S	E-W	Contract	N-S	E-W	MP
A21	A01	4S W-2	200		19.5
A13	A08	4S W-2	200		19.5
A15	A09	4S W-1	100		14.5
A06	A20	4S W-1	100		14.5
B18	B03	4S W-1	100		14.5
A07	A14	4S W-1	100		14.5
B20	B04	4S W-1	100		14.5
B11	B12	4S W-1	100		14.5
A04	A16	3NT E-1	100		14.5
A05	A18	3NT E-1	100		14.5
A03	A22	3D W 4		130	10
B13	B06	3S W 4		170	8
B17	B08	2S W 4		170	8
B01	B14	1S W 4		170	8
B09	B19	4S W 4		620	3
B05	B21	4S W 4		620	3
A02	A12	4S W 4		620	3
B15	B07	4S W 4		620	3
A17	A10	4S W 4		620	3
A19	A11	4S W 4		620	3
B02	B16	4S W 4		620	3

23

♠ K76  
♥ 8  
♦ 10932  
♣ AQJ43

♠ A832  
♥ Q52  
♦ Q87  
♣ 875

♠ Q9  
♥ AK10643  
♦ 54  
♣ K92

♠ J1054  
♥ J97  
♦ AKJ6  
♣ 106

N E  
W — E  
S (S)

N-S	E-W	Contract	N-S	E-W	MP
A06	A20	4H W-2	200		17.5
A04	A16	3H W-2	200		17.5
B13	B06	3H W-2	200		17.5
B11	B12	3H W-2	200		17.5
B02	B16	3H W-2	200		17.5
A15	A09	3H W-2	200		17.5
A13	A08	2S S 4	170		14
A05	A18	2S S 3	140		13
B01	B14	4C N 4	130		12
B17	B08	2S N 2	110		11
B09	B19	3H W-1	100		5.5
A02	A12	3H W-1	100		5.5
A19	A11	3H W-1	100		5.5
A17	A10	3H W-1	100		5.5
A07	A14	3H W-1	100		5.5
B05	B21	3H W-1	100		5.5
B15	B07	3H W-1	100		5.5
B18	B03	3H W-1	100		5.5
A21	A01	3H W-1	100		5.5
A03	A22	2H W-1	100		5.5
B20	B04	3H W 3		140	0

24

♠ K2  
♥  
♦ AKJ96  
♣ AKQ764

♠ AJ9  
♥ AKQ1052  
♦ 8543  
♣

♠ 1084  
♥ 9743  
♦ Q1072  
♣ 32

♠ Q7653  
♥ J86  
♦  
♣ J10985

N E  
W — E  
S (S)

N-S	E-W	Contract	N-S	E-W	MP
A04	A16	6C N 6	920		15
B15	B07	6C N 6	920		15
B17	B08	6C N 6	920		15
A13	A08	6C N 6	920		15
A02	A12	6C N 6	920		15
A05	A18	6C N 6	920		15
A07	A14	6C N 6	920		15
A17	A10	6C N 6	920		15
A15	A09	6C N 6	920		15
A21	A01	6C N 6	920		15
B02	B16	6C N 6	920		15
A03	A22	6Hx E-4	800		9
B11	B12	6Hx E-3	500		7.5
A06	A20	5Hx E-3	500		7.5
B18	B03	5C N 6	420		3.5
B01	B14	5C N 6	420		3.5
A19	A11	5C N 6	420		3.5
B13	B06	5C N 6	420		3.5
B05	B21	5C N 6	420		3.5
B20	B04	5C N 6	420		3.5
B09	B19	5D N-5		250	0

### 25

♠A2  
 ♥84  
 ♦AK97643  
 ♣K7  
 ♠Q109764  
 ♥KJ75  
 ♦J5  
 ♣9  
 (N)  
 W—E  
 S  
 ♠KJ53  
 ♥A3  
 ♦Q2  
 ♣J6432  
 ♠8  
 ♥Q10962  
 ♦108  
 ♣AQ1085

N-S	E-W	Contract	N-S	E-W	MP
A21	A03	6D N 6	920		20
B13	B09	3NT N 7	520		18
A07	A22	3NT N 7	520		18
B17	B11	3NT N 7	520		18
A15	A11	3NT N 6	490		15.5
B04	B14	3NT N 6	490		15.5
A06	A16	3NT N 5	460		13.5
A10	A13	3NT N 5	460		13.5
A14	A05	5D N 7	440		12
A08	A20	5D N 6	420		10
A12	A04	5D N 6	420		10
B08	B16	5D N 6	420		10
B07	B20	4D N 6	170		5
B06	B18	4D N 6	170		5
B19	B01	4D N 6	170		5
A19	A02	4D N 6	170		5
B21	B02	4D N 6	170		5
A09	A18	3D N 6	170		5
B15	B10	3D N 6	170		5
A17	A01	4S W-1	100		1
B12	B03	3S W 3		140	0

### 26

♠KJ76  
 ♥108  
 ♦AJ105  
 ♣1054  
 ♠932  
 ♥AQ4  
 ♦6432  
 ♣A97  
 (N)  
 W—E  
 S  
 ♠AQ104  
 ♥J92  
 ♦K97  
 ♣KQ6  
 ♠85  
 ♥K7653  
 ♦Q8  
 ♣J832

N-S	E-W	Contract	N-S	E-W	MP
A07	A22	3NT E 3	600		18
B08	B16	3NT E 3	600		18
B04	B14	3NT E 3	600		18
A15	A11	3NT E 3	600		18
B17	B11	3NT E 3	600		18
A14	A05	3NT E 4	630		10
A06	A16	3NT E 4	630		10
A17	A01	3NT E 4	630		10
A12	A04	3NT E 4	630		10
A21	A03	3NT E 4	630		10
B19	B01	3NT E 4	630		10
A10	A13	3NT E 4	630		10
B15	B10	3NT E 4	630		10
A19	A02	3NT E 4	630		10
B07	B20	3NT E 4	630		10
A08	A20	3NT E 4	630		10
B06	B18	3NT E 5	660		2
B12	B03	3NT E 5	660		2
B21	B02	3NT E 5	660		2
B13	B09	3NT E 5	660		2
A09	A18	3NT E 5	660		2

### 27

♠4  
 ♥QJ  
 ♦AK1054  
 ♣QJ1082  
 ♠108652  
 ♥K105  
 ♦96  
 ♣AK7  
 (N)  
 W—E  
 S  
 ♠AKQJ7  
 ♥A9843  
 ♦QJ  
 ♣4  
 ♠93  
 ♥762  
 ♦8732  
 ♣9653

N-S	E-W	Contract	N-S	E-W	MP
B17	B11	4S W 4	420		19.5
B19	B01	4S W 4	420		19.5
A15	A11	5S W 5	450		10.5
A08	A20	5S W 5	450		10.5
A09	A18	5S W 5	450		10.5
A19	A02	5S E 5	450		10.5
B06	B18	4S W 5	450		10.5
A06	A16	4S W 5	450		10.5
A17	A01	4S W 5	450		10.5
A12	A04	4S W 5	450		10.5
A21	A03	4S W 5	450		10.5
B12	B03	4S W 5	450		10.5
B04	B14	4S W 5	450		10.5
B13	B09	4S W 5	450		10.5
B07	B20	4S W 5	450		10.5
A07	A22	4S W 5	450		10.5
A10	A13	4S W 5	450		10.5
B15	B10	4S E 5	450		10.5
B21	B02	4S W 7	510		2
A14	A05	6Dx N-5	1100		0.5
B08	B16	6Dx N-5	1100		0.5

### 28

♠Q  
 ♥J63  
 ♦9743  
 ♣87532  
 ♠K1087  
 ♥KQ9854  
 ♦K5  
 ♣Q  
 (N)  
 W—E  
 S  
 ♠J9642  
 ♥72  
 ♦A8  
 ♣J1096  
 ♠A53  
 ♥A10  
 ♦QJ1062  
 ♣AK4

N-S	E-W	Contract	N-S	E-W	MP
A12	A05	4D S 4	130		20
B10	B12	4H W-2	100		19
B15	B06	3H W-1	50		18
A17	A02	4D S-1	100		16.5
B18	B02	4D S-1	100		16.5
A21	A04	3S E 3	140		11.5
A01	A15	3S E 3	140		11.5
A16	A07	3S E 3	140		11.5
B04	B19	3S E 3	140		11.5
A11	A13	3S E 3	140		11.5
B07	B17	3S E 3	140		11.5
A10	A20	2S E 3	140		11.5
B16	B01	2S E 3	140		11.5
B13	B05	3S E 4	170		5.5
B11	B14	2S E 4	170		5.5
A14	A06	2S E 4	170		5.5
A19	A03	2S E 4	170		5.5
A09	A22	5D S-2	200		2.5
B20	B03	4Dx S-1	200		2.5
B09	B21	4C N-4	400		1
A08	A18	4Sx E 4	590		0

### 29

♠865  
 ♥KQ  
 ♦AQJ8  
 ♣J1086  
 ♠Q432  
 ♥J875  
 ♦104  
 ♣A52  
 (N)  
 W—E  
 S  
 ♠K97  
 ♥A642  
 ♦K952  
 ♣KQ  
 ♠AJ10  
 ♥1093  
 ♦763  
 ♣9743

N-S	E-W	Contract	N-S	E-W	MP
A12	A05	3NT E-2	200		20
B15	B06	3H E-1	100		19
B13	B05	1D N 2	90		18
B11	B14	1S W 1	80		17
B10	B12	1NT E 1	90		15.5
A16	A07	1NT E 1	90		15.5
B16	B01	1NT E 2	120		12
A01	A15	1NT E 2	120		12
A21	A04	1NT E 2	120		12
A10	A20	1NT E 2	120		12
A08	A18	1NT E 2	120		12
B18	B02	2H W 3	140		7.5
B09	B21	2H W 3	140		7.5
A17	A02	1H W 3	140		7.5
B07	B17	1H W 3	140		7.5
A11	A13	1NT E 3	150		3.5
B20	B03	1NT E 3	150		3.5
A14	A06	1NT E 3	150		3.5
A09	A22	1NT E 3	150		3.5
A19	A03	2H E 4	170		1
B04	B19	4H E 4	620		0

### 30

♠3  
 ♥K8  
 ♦AKJ632  
 ♣K963  
 ♠10942  
 ♥AQ5  
 ♦Q8  
 ♣QJ42  
 (N)  
 W—E  
 S  
 ♠KQ7  
 ♥J109732  
 ♦94  
 ♣85  
 ♠AJ865  
 ♥64  
 ♦1075  
 ♣A107

N-S	E-W	Contract	N-S	E-W	MP
A01	A15	4Hx E-4	800		20
A10	A20	3Hx E-3	500		19
A17	A02	3NT N 5	460		18
A21	A04	3NT N 4	430		16
B04	B19	3NT N 4	430		16
A19	A03	3NT N 4	430		16
A16	A07	5D N 5	400		13.5
B18	B02	5D N 5	400		13.5
B16	B01	4D N 6	170		11.5
A14	A06	4D N 6	170		11.5
B11	B14	4D N 5	150		7
A11	A13	4D N 5	150		7
B07	B17	4D N 5	150		7
B20	B03	3H W-3	150		7
B13	B05	2D N 5	150		7
B10	B12	2D N 5	150		7
B15	B06	2D N 5	150		7
A08	A18	2S S 3	140		3
A12	A05	2S S 2	110		2
B09	B21	3H E-2	100		1
A09	A22	2S S-1	50		0

<p><b>1</b> N/-</p> <p>♠ 5 ♥ KT95 ♦ A6543 ♣ Q98</p> <p>♠ AQJ98 ♥ J742 ♦ J82 ♣ 3</p> <p>♠ KT6432 ♥ 863 ♦ T ♣ J64</p> <p>♠ 7 ♥ AQ ♦ KQ97 ♣ AKT752</p> <p>9 9 4 18</p> <p>N S N 7 7 ♥ 5 5 ♦ 9 9 ♣ 12 12 12 12</p> <p>Opt res: EW 6SX;800</p> <p>E W N - - ♥ 8 8 ♦ 2 2 ♣ - -</p>	<p><b>2</b> E/NS</p> <p>♠ QJ83 ♥ KJ73 ♦ KQ52 ♣ 8</p> <p>♠ AK94 ♥ 985 ♦ JT94 ♣ J9</p> <p>♠ T76 ♥ 42 ♦ 73 ♣ AQT762</p> <p>♠ 52 ♥ AQT6 ♦ A86 ♣ K543</p> <p>12 9 6 13</p> <p>N S N 9 9 ♥ 9 9 ♦ 10 10 ♣ 9 9 6 6</p> <p>Opt res: NS 4H;620</p> <p>E W N 4 4 ♥ 4 4 ♦ 3 3 ♣ 4 4 7 7</p>	<p><b>3</b> S/EW</p> <p>♠ J ♥ 76532 ♦ A932 ♣ 983</p> <p>♠ KQ54 ♥ AJ98 ♦ K64 ♣ K6</p> <p>♠ A9 ♥ T4 ♦ QJT85 ♣ AQ54</p> <p>♠ T87632 ♥ KQ ♦ 7 ♣ JT72</p> <p>5 16 13 6</p> <p>N S N 1 1 ♥ 5 5 ♦ 3 3 ♣ 1 1 2 2</p> <p>Opt res: EW 3N;-660</p> <p>E W N 11 11 ♥ 8 8 ♦ 10 10 ♣ 11 11 10 10</p>
<p><b>4</b> W/All</p> <p>♠ K543 ♥ 3 ♦ KJ963 ♣ J73</p> <p>♠ J8 ♥ 86542 ♦ 542 ♣ T86</p> <p>♠ AQ962 ♥ AQJ9 ♦ - ♣ Q954</p> <p>♠ T7 ♥ KT7 ♦ AQT87 ♣ AK2</p> <p>8 1 15 16</p> <p>N S N 9 9 ♥ 6 6 ♦ 5 4 ♣ 10 10 6 6</p> <p>Opt res: EW 4HX;500</p> <p>E W N 4 4 ♥ 7 7 ♦ 8 8 ♣ 3 3 6 6</p>	<p><b>5</b> N/NS</p> <p>♠ 8632 ♥ AT7 ♦ KQ ♣ AQ95</p> <p>♠ KQJ975 ♥ KQ64 ♦ - ♣ T74</p> <p>♠ A ♥ 9853 ♦ AJT8742 ♣ K</p> <p>♠ T4 ♥ J2 ♦ 9653 ♣ J8632</p> <p>15 11 12 2</p> <p>N S N 6 6 ♥ 4 4 ♦ 3 3 ♣ 4 4 8 8</p> <p>Opt res: EW 4H;-420</p> <p>E W N 5 5 ♥ 9 9 ♦ 10 10 ♣ 8 9 4 4</p>	<p><b>6</b> E/EW</p> <p>♠ A2 ♥ JT853 ♦ A2 ♣ JT64</p> <p>♠ T654 ♥ - ♦ KQJT94 ♣ 973</p> <p>♠ KQ87 ♥ 76 ♦ 653 ♣ AQ85</p> <p>♠ J93 ♥ AKQ942 ♦ 87 ♣ K2</p> <p>10 6 11 13</p> <p>N S N 8 8 ♥ 3 3 ♦ 10 10 ♣ 3 3 5 5</p> <p>Opt res: E 5DX;200</p> <p>E W N 4 4 ♥ 9 9 ♦ 3 3 ♣ 10 9 6 6</p>
<p><b>7</b> S/All</p> <p>♠ KQT65 ♥ - ♦ 98543 ♣ 876</p> <p>♠ 982 ♥ JT97 ♦ J6 ♣ KQ54</p> <p>♠ A74 ♥ A86432 ♦ KQ ♣ JT</p> <p>♠ J3 ♥ KQ5 ♦ AT72 ♣ A932</p> <p>5 7 14 14</p> <p>N S N 8 8 ♥ 9 9 ♦ 5 5 ♣ 10 10 8 7</p> <p>Opt res: NS 2S;140</p> <p>E W N 4 4 ♥ 3 3 ♦ 8 8 ♣ 3 3 5 5</p>	<p><b>8</b> W/-</p> <p>♠ QJ96 ♥ JT7 ♦ 75 ♣ JT98</p> <p>♠ 843 ♥ AQ843 ♦ K32 ♣ 64</p> <p>♠ A7 ♥ K92 ♦ AQJ96 ♣ Q73</p> <p>♠ KT52 ♥ 65 ♦ T84 ♣ AK52</p> <p>5 9 16 10</p> <p>N S N 2 2 ♥ 8 8 ♦ 2 2 ♣ 2 2 8 8</p> <p>Opt res: E 4N;-460</p> <p>E W N 11 9 ♥ 5 5 ♦ 11 11 ♣ 11 11 5 5</p>	<p><b>9</b> N/EW</p> <p>♠ Q975 ♥ KT3 ♦ KJ4 ♣ A95</p> <p>♠ JT864 ♥ Q7 ♦ A98 ♣ Q64</p> <p>♠ AK32 ♥ A6 ♦ Q2 ♣ JT873</p> <p>♠ - ♥ J98542 ♦ T7653 ♣ K2</p> <p>13 9 14 4</p> <p>N S N 7 7 ♥ 4 4 ♦ 10 10 ♣ 10 10 4 4</p> <p>Opt res: W 4SX;200</p> <p>E W N 5 6 ♥ 8 9 ♦ 3 3 ♣ 3 3 8 8</p>
<p><b>10</b> E/All</p> <p>♠ KJ86 ♥ K854 ♦ 64 ♣ QJ2</p> <p>♠ 975 ♥ J962 ♦ QT5 ♣ KT6</p> <p>♠ AQ2 ♥ AQ3 ♦ AK97 ♣ A54</p> <p>♠ T43 ♥ T7 ♦ J832 ♣ 9873</p> <p>10 6 23 1</p> <p>N S N 2 2 ♥ 3 3 ♦ 2 2 ♣ 2 2 3 3</p> <p>Opt res: EW 3N;-660</p> <p>E W N 11 11 ♥ 10 10 ♦ 11 11 ♣ 11 11 10 10</p>	<p><b>11</b> S/-</p> <p>♠ K3 ♥ 9 ♦ AJ2 ♣ KQ98532</p> <p>♠ JT98 ♥ 87653 ♦ KT4 ♣ J</p> <p>♠ AQ764 ♥ K ♦ Q8753 ♣ T4</p> <p>♠ 52 ♥ AQJT42 ♦ 96 ♣ A76</p> <p>13 5 11 11</p> <p>N S N 12 8 ♥ 3 3 ♦ 10 9 ♣ 3 3 12 11</p> <p>Opt res: EW 7SX;800</p> <p>E W N 1 1 ♥ 9 9 ♦ 2 2 ♣ 9 9 -</p>	<p><b>12</b> W/NS</p> <p>♠ T ♥ J9632 ♦ T543 ♣ J93</p> <p>♠ K985 ♥ K75 ♦ K ♣ AKT54</p> <p>♠ A432 ♥ AQ8 ♦ AQJ97 ♣ Q</p> <p>♠ QJ76 ♥ T4 ♦ 862 ♣ 8762</p> <p>2 16 19 3</p> <p>N S N - - ♥ 1 1 ♦ 2 2 ♣ - - -</p> <p>Opt res: EW 7N;-1520</p> <p>E W N 13 13 ♥ 12 12 ♦ 11 11 ♣ 13 13 13 13</p>
<p><b>13</b> N/All</p> <p>♠ K985 ♥ Q963 ♦ J8 ♣ Q75</p> <p>♠ AQJ4 ♥ A872 ♦ T754 ♣ 9</p> <p>♠ T73 ♥ J5 ♦ AK63 ♣ 8432</p> <p>♠ 62 ♥ KT4 ♦ Q92 ♣ AKJT6</p> <p>8 11 8 13</p> <p>N S N 7 7 ♥ 6 6 ♦ 7 7 ♣ 4 4 9 9</p> <p>Opt res: EW 3D;-110</p> <p>E W N 4 4 ♥ 7 7 ♦ 5 4 ♣ 9 9 4 4</p>	<p><b>14</b> E/-</p> <p>♠ J542 ♥ JT ♦ A865 ♣ QJ2</p> <p>♠ T9 ♥ K9 ♦ KJ9742 ♣ KT7</p> <p>♠ KQ63 ♥ Q876532 ♦ T ♣ A</p> <p>♠ A87 ♥ A4 ♦ Q3 ♣ 986543</p> <p>9 10 11 10</p> <p>N S N 4 4 ♥ 5 5 ♦ 3 3 ♣ 5 5 7 7</p> <p>Opt res: EW 4H;-420</p> <p>E W N 9 9 ♥ 8 8 ♦ 10 10 ♣ 8 8 6 6</p>	<p><b>15</b> S/NS</p> <p>♠ QT7 ♥ AKT954 ♦ K ♣ K32</p> <p>♠ J2 ♥ Q87 ♦ AJT874 ♣ 64</p> <p>♠ 984 ♥ J632 ♦ Q953 ♣ T8</p> <p>♠ AK653 ♥ - ♦ 62 ♣ AQJ975</p> <p>15 8 3 14</p> <p>N S N 7 7 ♥ 12 12 ♦ 10 10 ♣ 6 6 12 12</p> <p>Opt res: NS 6S;1430</p> <p>E W N - - ♥ - - ♦ 3 3 ♣ 6 6 -</p>

<p><b>16</b> W/EW</p> <p>♠ KQT8 ♥ 8432 ♦ 4 ♣ J986</p> <p>♠ 9542 ♥ A5 ♦ AQ93 ♣ AT7</p> <p>♠ AJ7 ♥ JT9 ♦ KJ875 ♣ K2</p> <p>6 63 14 13 ♥ KQ76 7 ♦ T62 ♣ Q543</p> <table border="1"> <tr><th>N</th><th>S</th></tr> <tr><td>2</td><td>2</td></tr> <tr><td>3</td><td>3</td></tr> <tr><td>5</td><td>6</td></tr> <tr><td>2</td><td>2</td></tr> <tr><td>6</td><td>6</td></tr> </table> <p>Opt res: EW 3N;-630</p> <table border="1"> <tr><th>E</th><th>W</th></tr> <tr><td>10</td><td>10</td></tr> <tr><td>10</td><td>10</td></tr> <tr><td>7</td><td>7</td></tr> <tr><td>11</td><td>11</td></tr> <tr><td>7</td><td>7</td></tr> </table>	N	S	2	2	3	3	5	6	2	2	6	6	E	W	10	10	10	10	7	7	11	11	7	7	<p><b>17</b> N/-</p> <p>♠ A2 ♥ T93 ♦ J76 ♣ AQT73</p> <p>♠ KJ4 ♥ AKJ62 ♦ AK843 ♣ -</p> <p>♠ T9763 ♥ 87 ♦ T952 ♣ J5</p> <p>11 Q85 19 ♥ Q54 9 ♦ Q ♣ K98642</p> <table border="1"> <tr><th>N</th><th>S</th></tr> <tr><td>6</td><td>8</td></tr> <tr><td>3</td><td>3</td></tr> <tr><td>2</td><td>4</td></tr> <tr><td>2</td><td>2</td></tr> <tr><td>8</td><td>8</td></tr> </table> <p>Opt res: EW 4S;-420</p> <table border="1"> <tr><th>E</th><th>W</th></tr> <tr><td>5</td><td>5</td></tr> <tr><td>10</td><td>10</td></tr> <tr><td>9</td><td>9</td></tr> <tr><td>11</td><td>11</td></tr> <tr><td>4</td><td>4</td></tr> </table>	N	S	6	8	3	3	2	4	2	2	8	8	E	W	5	5	10	10	9	9	11	11	4	4	<p><b>18</b> E/NS</p> <p>♠ 74 ♥ A32 ♦ 8 ♣ AKJ9854</p> <p>♠ Q93 ♥ QT984 ♦ 32 ♣ T63</p> <p>♠ AK862 ♥ K6 ♦ KT94 ♣ Q2</p> <p>12 JT5 4 ♥ J75 15 ♦ AQJ765 9 ♣ 7</p> <table border="1"> <tr><th>N</th><th>S</th></tr> <tr><td>8</td><td>8</td></tr> <tr><td>6</td><td>6</td></tr> <tr><td>6</td><td>6</td></tr> <tr><td>8</td><td>8</td></tr> <tr><td>10</td><td>10</td></tr> </table> <p>Opt res: NS 3C;130</p> <table border="1"> <tr><th>E</th><th>W</th></tr> <tr><td>3</td><td>3</td></tr> <tr><td>7</td><td>7</td></tr> <tr><td>6</td><td>6</td></tr> <tr><td>5</td><td>4</td></tr> <tr><td>3</td><td>3</td></tr> </table>	N	S	8	8	6	6	6	6	8	8	10	10	E	W	3	3	7	7	6	6	5	4	3	3
N	S																																																																									
2	2																																																																									
3	3																																																																									
5	6																																																																									
2	2																																																																									
6	6																																																																									
E	W																																																																									
10	10																																																																									
10	10																																																																									
7	7																																																																									
11	11																																																																									
7	7																																																																									
N	S																																																																									
6	8																																																																									
3	3																																																																									
2	4																																																																									
2	2																																																																									
8	8																																																																									
E	W																																																																									
5	5																																																																									
10	10																																																																									
9	9																																																																									
11	11																																																																									
4	4																																																																									
N	S																																																																									
8	8																																																																									
6	6																																																																									
6	6																																																																									
8	8																																																																									
10	10																																																																									
E	W																																																																									
3	3																																																																									
7	7																																																																									
6	6																																																																									
5	4																																																																									
3	3																																																																									
<p><b>19</b> S/EW</p> <p>♠ Q962 ♥ 86 ♦ AT32 ♣ K87</p> <p>♠ J74 ♥ Q3 ♦ KJ65 ♣ Q963</p> <p>♠ 853 ♥ AKJT72 ♦ 9 ♣ AT4</p> <p>9 AKT 9 ♥ 954 12 ♦ Q874 10 ♣ J52</p> <table border="1"> <tr><th>N</th><th>S</th></tr> <tr><td>5</td><td>5</td></tr> <tr><td>7</td><td>7</td></tr> <tr><td>5</td><td>5</td></tr> <tr><td>7</td><td>7</td></tr> <tr><td>5</td><td>5</td></tr> </table> <p>Opt res: EW 2N;-120</p> <table border="1"> <tr><th>E</th><th>W</th></tr> <tr><td>8</td><td>8</td></tr> <tr><td>6</td><td>6</td></tr> <tr><td>8</td><td>8</td></tr> <tr><td>5</td><td>5</td></tr> <tr><td>8</td><td>8</td></tr> </table>	N	S	5	5	7	7	5	5	7	7	5	5	E	W	8	8	6	6	8	8	5	5	8	8	<p><b>20</b> W/All</p> <p>♠ 64 ♥ K962 ♦ 863 ♣ QT32</p> <p>♠ T73 ♥ AQJ854 ♦ T9 ♣ 64</p> <p>♠ AKJ52 ♥ T73 ♦ AK74 ♣ 5</p> <p>5 Q98 7 ♥ - 15 ♦ QJ52 13 ♣ AKJ987</p> <table border="1"> <tr><th>N</th><th>S</th></tr> <tr><td>7</td><td>7</td></tr> <tr><td>3</td><td>3</td></tr> <tr><td>3</td><td>3</td></tr> <tr><td>6</td><td>6</td></tr> <tr><td>8</td><td>8</td></tr> </table> <p>Opt res: EW 4S/4H;-620</p> <table border="1"> <tr><th>E</th><th>W</th></tr> <tr><td>6</td><td>6</td></tr> <tr><td>10</td><td>10</td></tr> <tr><td>10</td><td>10</td></tr> <tr><td>6</td><td>6</td></tr> <tr><td>4</td><td>4</td></tr> </table>	N	S	7	7	3	3	3	3	6	6	8	8	E	W	6	6	10	10	10	10	6	6	4	4	<p><b>21</b> N/NS</p> <p>♠ 72 ♥ AKQ7 ♦ T ♣ AJT932</p> <p>♠ 863 ♥ T32 ♦ KJ63 ♣ Q84</p> <p>♠ AKT5 ♥ 9 ♦ A87542 ♣ K5</p> <p>14 QJ94 6 ♥ J8654 14 ♦ Q9 6 ♣ 76</p> <table border="1"> <tr><th>N</th><th>S</th></tr> <tr><td>5</td><td>5</td></tr> <tr><td>5</td><td>5</td></tr> <tr><td>9</td><td>9</td></tr> <tr><td>3</td><td>3</td></tr> <tr><td>8</td><td>8</td></tr> </table> <p>Opt res: EW 4D;-130</p> <table border="1"> <tr><th>E</th><th>W</th></tr> <tr><td>7</td><td>7</td></tr> <tr><td>7</td><td>7</td></tr> <tr><td>4</td><td>4</td></tr> <tr><td>10</td><td>10</td></tr> <tr><td>4</td><td>4</td></tr> </table>	N	S	5	5	5	5	9	9	3	3	8	8	E	W	7	7	7	7	4	4	10	10	4	4
N	S																																																																									
5	5																																																																									
7	7																																																																									
5	5																																																																									
7	7																																																																									
5	5																																																																									
E	W																																																																									
8	8																																																																									
6	6																																																																									
8	8																																																																									
5	5																																																																									
8	8																																																																									
N	S																																																																									
7	7																																																																									
3	3																																																																									
3	3																																																																									
6	6																																																																									
8	8																																																																									
E	W																																																																									
6	6																																																																									
10	10																																																																									
10	10																																																																									
6	6																																																																									
4	4																																																																									
N	S																																																																									
5	5																																																																									
5	5																																																																									
9	9																																																																									
3	3																																																																									
8	8																																																																									
E	W																																																																									
7	7																																																																									
7	7																																																																									
4	4																																																																									
10	10																																																																									
4	4																																																																									
<p><b>22</b> E/EW</p> <p>♠ 4 ♥ KQT43 ♦ Q43 ♣ Q982</p> <p>♠ AKJT7 ♥ 9 ♦ AK76 ♣ AK5</p> <p>♠ 852 ♥ J762 ♦ JT85 ♣ 74</p> <p>9 Q963 22 ♥ A85 7 ♦ 92 ♣ JT63</p> <table border="1"> <tr><th>N</th><th>S</th></tr> <tr><td>5</td><td>5</td></tr> <tr><td>2</td><td>2</td></tr> <tr><td>6</td><td>7</td></tr> <tr><td>2</td><td>2</td></tr> <tr><td>7</td><td>8</td></tr> </table> <p>Opt res: EW 4S;-620</p> <table border="1"> <tr><th>E</th><th>W</th></tr> <tr><td>8</td><td>7</td></tr> <tr><td>10</td><td>10</td></tr> <tr><td>6</td><td>5</td></tr> <tr><td>11</td><td>11</td></tr> <tr><td>5</td><td>5</td></tr> </table>	N	S	5	5	2	2	6	7	2	2	7	8	E	W	8	7	10	10	6	5	11	11	5	5	<p><b>23</b> S/All</p> <p>♠ K76 ♥ 8 ♦ T932 ♣ AQJ43</p> <p>♠ Q9 ♥ AKT643 ♦ 54 ♣ K92</p> <p>♠ A832 ♥ Q52 ♦ Q87 ♣ 875</p> <p>10 JT54 12 ♥ J97 8 ♦ AKJ6 10 ♣ T6</p> <table border="1"> <tr><th>N</th><th>S</th></tr> <tr><td>6</td><td>6</td></tr> <tr><td>10</td><td>10</td></tr> <tr><td>6</td><td>6</td></tr> <tr><td>11</td><td>11</td></tr> <tr><td>10</td><td>10</td></tr> </table> <p>Opt res: NS 4S;620</p> <table border="1"> <tr><th>E</th><th>W</th></tr> <tr><td>4</td><td>4</td></tr> <tr><td>3</td><td>3</td></tr> <tr><td>7</td><td>7</td></tr> <tr><td>2</td><td>2</td></tr> <tr><td>3</td><td>3</td></tr> </table>	N	S	6	6	10	10	6	6	11	11	10	10	E	W	4	4	3	3	7	7	2	2	3	3	<p><b>24</b> W/-</p> <p>♠ K2 ♥ - ♦ AKJ96 ♣ AKQ764</p> <p>♠ T84 ♥ 9743 ♦ QT72 ♣ 32</p> <p>♠ AJ9 ♥ AKQT52 ♦ 8543 ♣ -</p> <p>20 Q7653 2 ♥ J86 14 ♦ - 4 ♣ JT985</p> <table border="1"> <tr><th>N</th><th>S</th></tr> <tr><td>6</td><td>6</td></tr> <tr><td>11</td><td>10</td></tr> <tr><td>5</td><td>5</td></tr> <tr><td>6</td><td>6</td></tr> <tr><td>12</td><td>12</td></tr> </table> <p>Opt res: EW 6HX;800</p> <table border="1"> <tr><th>E</th><th>W</th></tr> <tr><td>5</td><td>5</td></tr> <tr><td>2</td><td>3</td></tr> <tr><td>8</td><td>8</td></tr> <tr><td>7</td><td>7</td></tr> <tr><td>1</td><td>1</td></tr> </table>	N	S	6	6	11	10	5	5	6	6	12	12	E	W	5	5	2	3	8	8	7	7	1	1
N	S																																																																									
5	5																																																																									
2	2																																																																									
6	7																																																																									
2	2																																																																									
7	8																																																																									
E	W																																																																									
8	7																																																																									
10	10																																																																									
6	5																																																																									
11	11																																																																									
5	5																																																																									
N	S																																																																									
6	6																																																																									
10	10																																																																									
6	6																																																																									
11	11																																																																									
10	10																																																																									
E	W																																																																									
4	4																																																																									
3	3																																																																									
7	7																																																																									
2	2																																																																									
3	3																																																																									
N	S																																																																									
6	6																																																																									
11	10																																																																									
5	5																																																																									
6	6																																																																									
12	12																																																																									
E	W																																																																									
5	5																																																																									
2	3																																																																									
8	8																																																																									
7	7																																																																									
1	1																																																																									
<p><b>25</b> N/EW</p> <p>♠ A2 ♥ 84 ♦ AK97643 ♣ K7</p> <p>♠ QT9764 ♥ KJ75 ♦ J5 ♣ 9</p> <p>♠ KJ53 ♥ A3 ♦ Q2 ♣ J6432</p> <p>14 8 7 ♥ QT962 11 ♦ T8 8 ♣ AQT85</p> <table border="1"> <tr><th>N</th><th>S</th></tr> <tr><td>10</td><td>10</td></tr> <tr><td>4</td><td>4</td></tr> <tr><td>9</td><td>9</td></tr> <tr><td>10</td><td>10</td></tr> <tr><td>8</td><td>8</td></tr> </table> <p>Opt res: NS 4N;430</p> <table border="1"> <tr><th>E</th><th>W</th></tr> <tr><td>1</td><td>1</td></tr> <tr><td>9</td><td>9</td></tr> <tr><td>4</td><td>4</td></tr> <tr><td>-</td><td>-</td></tr> <tr><td>1</td><td>1</td></tr> </table>	N	S	10	10	4	4	9	9	10	10	8	8	E	W	1	1	9	9	4	4	-	-	1	1	<p><b>26</b> E/All</p> <p>♠ KJ76 ♥ T8 ♦ AJT5 ♣ T54</p> <p>♠ 932 ♥ AQ4 ♦ 6432 ♣ A97</p> <p>♠ AQT4 ♥ J92 ♦ K97 ♣ KQ6</p> <p>9 85 10 ♥ K7653 15 ♦ Q8 6 ♣ J832</p> <table border="1"> <tr><th>N</th><th>S</th></tr> <tr><td>3</td><td>3</td></tr> <tr><td>3</td><td>3</td></tr> <tr><td>4</td><td>4</td></tr> <tr><td>3</td><td>3</td></tr> <tr><td>4</td><td>4</td></tr> </table> <p>Opt res: EW 3N;-630</p> <table border="1"> <tr><th>E</th><th>W</th></tr> <tr><td>10</td><td>10</td></tr> <tr><td>10</td><td>10</td></tr> <tr><td>9</td><td>9</td></tr> <tr><td>10</td><td>10</td></tr> <tr><td>9</td><td>9</td></tr> </table>	N	S	3	3	3	3	4	4	3	3	4	4	E	W	10	10	10	10	9	9	10	10	9	9	<p><b>27</b> S/-</p> <p>♠ 4 ♥ QJ ♦ AKT54 ♣ QJT82</p> <p>♠ T8652 ♥ KT5 ♦ 96 ♣ AK7</p> <p>♠ AKQJ7 ♥ A9843 ♦ QJ ♣ 4</p> <p>13 93 10 ♥ 762 17 ♦ 8732 0 ♣ 9653</p> <table border="1"> <tr><th>N</th><th>S</th></tr> <tr><td>1</td><td>1</td></tr> <tr><td>-</td><td>-</td></tr> <tr><td>1</td><td>1</td></tr> <tr><td>7</td><td>7</td></tr> <tr><td>8</td><td>8</td></tr> </table> <p>Opt res: EW 4S/4H;-450</p> <table border="1"> <tr><th>E</th><th>W</th></tr> <tr><td>8</td><td>8</td></tr> <tr><td>11</td><td>11</td></tr> <tr><td>11</td><td>11</td></tr> <tr><td>5</td><td>5</td></tr> <tr><td>5</td><td>5</td></tr> </table>	N	S	1	1	-	-	1	1	7	7	8	8	E	W	8	8	11	11	11	11	5	5	5	5
N	S																																																																									
10	10																																																																									
4	4																																																																									
9	9																																																																									
10	10																																																																									
8	8																																																																									
E	W																																																																									
1	1																																																																									
9	9																																																																									
4	4																																																																									
-	-																																																																									
1	1																																																																									
N	S																																																																									
3	3																																																																									
3	3																																																																									
4	4																																																																									
3	3																																																																									
4	4																																																																									
E	W																																																																									
10	10																																																																									
10	10																																																																									
9	9																																																																									
10	10																																																																									
9	9																																																																									
N	S																																																																									
1	1																																																																									
-	-																																																																									
1	1																																																																									
7	7																																																																									
8	8																																																																									
E	W																																																																									
8	8																																																																									
11	11																																																																									
11	11																																																																									
5	5																																																																									
5	5																																																																									
<p><b>28</b> W/NS</p> <p>♠ Q ♥ J63 ♦ 9743 ♣ 87532</p> <p>♠ KT87 ♥ KQ9854 ♦ K5 ♣ Q</p> <p>♠ J9642 ♥ 72 ♦ A8 ♣ JT96</p> <p>3 A53 13 ♥ AT 6 ♦ QJT62 18 ♣ AK4</p> <table border="1"> <tr><th>N</th><th>S</th></tr> <tr><td>4</td><td>4</td></tr> <tr><td>3</td><td>3</td></tr> <tr><td>5</td><td>5</td></tr> <tr><td>9</td><td>9</td></tr> <tr><td>8</td><td>8</td></tr> </table> <p>Opt res: EW 4S;-420</p> <table border="1"> <tr><th>E</th><th>W</th></tr> <tr><td>7</td><td>7</td></tr> <tr><td>10</td><td>10</td></tr> <tr><td>8</td><td>8</td></tr> <tr><td>4</td><td>4</td></tr> <tr><td>5</td><td>5</td></tr> </table>	N	S	4	4	3	3	5	5	9	9	8	8	E	W	7	7	10	10	8	8	4	4	5	5	<p><b>29</b> N/All</p> <p>♠ 865 ♥ KQ ♦ AQJ8 ♣ JT86</p> <p>♠ Q432 ♥ J875 ♦ T4 ♣ A52</p> <p>♠ K97 ♥ A642 ♦ K952 ♣ KQ</p> <p>13 AJT 7 ♥ T93 15 ♦ 763 5 ♣ 9743</p> <table border="1"> <tr><th>N</th><th>S</th></tr> <tr><td>5</td><td>5</td></tr> <tr><td>4</td><td>4</td></tr> <tr><td>3</td><td>3</td></tr> <tr><td>6</td><td>6</td></tr> <tr><td>6</td><td>6</td></tr> </table> <p>Opt res: EW 1S/1H;-140</p> <table border="1"> <tr><th>E</th><th>W</th></tr> <tr><td>8</td><td>8</td></tr> <tr><td>9</td><td>9</td></tr> <tr><td>9</td><td>9</td></tr> <tr><td>7</td><td>7</td></tr> <tr><td>6</td><td>6</td></tr> </table>	N	S	5	5	4	4	3	3	6	6	6	6	E	W	8	8	9	9	9	9	7	7	6	6	<p><b>30</b> E/-</p> <p>♠ 3 ♥ K8 ♦ AKJ632 ♣ K963</p> <p>♠ T942 ♥ AQ5 ♦ Q8 ♣ QJ42</p> <p>♠ KQ7 ♥ JT9732 ♦ 94 ♣ 85</p> <p>14 AJ865 11 ♥ 64 6 ♦ T75 9 ♣ AT7</p> <table border="1"> <tr><th>N</th><th>S</th></tr> <tr><td>10</td><td>10</td></tr> <tr><td>9</td><td>9</td></tr> <tr><td>6</td><td>6</td></tr> <tr><td>12</td><td>12</td></tr> <tr><td>10</td><td>10</td></tr> </table> <p>Opt res: NS 6D;920</p> <table border="1"> <tr><th>E</th><th>W</th></tr> <tr><td>2</td><td>2</td></tr> <tr><td>4</td><td>4</td></tr> <tr><td>6</td><td>6</td></tr> <tr><td>1</td><td>1</td></tr> <tr><td>3</td><td>3</td></tr> </table>	N	S	10	10	9	9	6	6	12	12	10	10	E	W	2	2	4	4	6	6	1	1	3	3
N	S																																																																									
4	4																																																																									
3	3																																																																									
5	5																																																																									
9	9																																																																									
8	8																																																																									
E	W																																																																									
7	7																																																																									
10	10																																																																									
8	8																																																																									
4	4																																																																									
5	5																																																																									
N	S																																																																									
5	5																																																																									
4	4																																																																									
3	3																																																																									
6	6																																																																									
6	6																																																																									
E	W																																																																									
8	8																																																																									
9	9																																																																									
9	9																																																																									
7	7																																																																									
6	6																																																																									
N	S																																																																									
10	10																																																																									
9	9																																																																									
6	6																																																																									
12	12																																																																									
10	10																																																																									
E	W																																																																									
2	2																																																																									
4	4																																																																									
6	6																																																																									
1	1																																																																									
3	3																																																																									