

兵庫県知事杯 OPEN TEAMS Session 1 Flight C 2017年10月7日(土)

1

♠ Q98765
♥ J8
♦ KJ75
♣ 4

♠ AJ2
♥ Q74
♦ A1086
♣ 982

♠ 103
♥ AK109
♦ Q432
♣ K65

♠ K4
♥ 6532
♦ 9
♣ AQJ1073

W N E S

Av: NS=-50

N-S	E-W	Contract	N-S	E-W	IMP
2	3	4H E-3	150		5
14	17	4H E-2	100		4
6	1	3NT W-2	100		4
3	2	3D E-2	100		4
15	13	3D E-2	100		4
5	4	3NT E-1	50		3
10	9	3NT E-1	50		3
9	10	3S N-1		50	0
18	16	3S N-1		50	0
16	18	3C S-1		50	0
4	5	2S N-1		50	0
1	6	3S N-2	100		-2
12	11	2NT W 2	120		-2
11	12	2NT E 2	120		-2
17	14	3D E 4	130		-2
7	8	4Sx N-2	300		-6
13	15	3NT E 3	400		-8
8	7	5Cx S-3	500		-10

2

♠ A10985
♥ K9752
♦ J
♣ A6

♠ J743
♥ A
♦ K10752
♣ K95

♠ K62
♥ 864
♦ Q643
♣ 1032

♠ Q
♥ QJ103
♦ A98
♣ QJ874

W N E S

Av: NS=+570

N-S	E-W	Contract	N-S	E-W	IMP
1	6	4H S 6	680		3
7	8	5H N 5	650		2
3	2	4H S 5	650		2
15	13	4H S 5	650		2
14	17	4H N 5	650		2
10	9	4H N 5	650		2
6	1	4H N 5	650		2
11	12	4H N 5	650		2
2	3	4H N 5	650		2
18	16	4H N 5	650		2
5	4	4H S 4	620		2
4	5	4H N 4	620		2
16	18	4H N 4	620		2
12	11	4H N 4	620		2
8	7	4H N 4	620		2
9	10	3H N 5	200		-9
17	14	5H S-1		100	-12
13	15	4H N-1		100	-12

3

♠ A6432
♥ 7
♦
♣ KQ109875

♠ Q7
♥ KJ
♦ 10943
♣ AJ632

♠ K98
♥ AQ9842
♦ QJ82
♣

♠ J105
♥ 10653
♦ AK765
♣ 4

W N E S

Av: NS=+20

N-S	E-W	Contract	N-S	E-W	IMP
1	6	5Hx E-3	800		13
6	1	4S N 4	420		9
9	10	4S N 4	420		9
14	17	4S N 4	420		9
18	16	5H E-2	200		5
3	2	4H E-2	200		5
8	7	5H E-1	100		2
12	11	4S N-1		50	-2
7	8	4S N-1		50	-2
2	3	4S N-1		50	-2
4	5	4S N-1		50	-2
5	4	3C N-1		50	-2
11	12	4Sx N-1	100		-3
10	9	4S N-2	100		-3
15	13	2H E 3	140		-4
16	18	3D S-4	200		-6
17	14	4H E 4	620		-12
13	15	3NT W 4	630		-12

4

♠ 9
♥ AKJ632
♦ K1042
♣ 97

♠ KJ10876
♥ Q
♦ AQJ7
♣ 65

♠ Q5432
♥ 1095
♦ 983
♣ A8

♠ A
♥ 874
♦ 65
♣ KQJ10432

W N E S

Av: NS=+170

N-S	E-W	Contract	N-S	E-W	IMP
12	11	5H N 6	680		11
18	16	5H N 5	650		10
13	15	5H N 5	650		10
14	17	5Sx W-2	500		8
8	7	5S W-2	200		1
3	2	5S W-2	200		1
11	12	5S W-2	200		1
2	3	4Sx W-1	200		1
7	8	4S W-1	100		-2
4	5	4S W-1	100		-2
6	1	4S W-1	100		-2
1	6	4S W-1	100		-2
10	9	4S W-1	100		-2
9	10	5H N-1		100	-7
15	13	5H N-1		100	-7
5	4	5H N-1		100	-7
17	14	5H N-1		100	-7
16	18	4S W 4	620		-13

5

♠ AQ764
♥ K1084
♦ QJ84
♣

♠ 53
♥ AJ
♦ 73
♣ AQJ9852

♠ 108
♥ 9762
♦ 10962
♣ K106

♠ KJ92
♥ Q53
♦ AK5
♣ 743

W N E S

Av: NS=+670

N-S	E-W	Contract	N-S	E-W	IMP
4	5	6S N 6	1430		13
16	18	5S N 6	680		0
7	8	5S N 6	680		0
10	9	5S N 6	680		0
8	7	5S N 6	680		0
3	2	4S N 6	680		0
15	13	4S N 6	680		0
6	1	4S N 6	680		0
13	15	4S N 6	680		0
18	16	4S N 6	680		0
12	11	4S N 6	680		0
9	10	4S N 6	680		0
1	6	4S N 6	680		0
2	3	4S N 6	680		0
11	12	4S N 6	680		0
17	14	5S N 5	650		-1
5	4	5Cx W-3	500		-5
14	17	4Cx W-2	300		-9

6

♠ AQJ10632
♥ K
♦ A7
♣ KJ5

♠ 954
♥ AQ874
♦ 432
♣ AQ

♠ K87
♥ J932
♦ KQ8
♣ 983

W N E S

Av: NS=+440

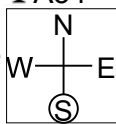
N-S	E-W	Contract	N-S	E-W	IMP
10	9	4S N 6	480		1
14	17	4S N 5	450		0
12	11	4S N 5	450		0
13	15	4S N 5	450		0
6	1	4S N 5	450		0
16	18	4S N 5	450		0
8	7	4S N 5	450		0
4	5	4S N 5	450		0
5	4	4S N 5	450		0
15	13	4S N 5	450		0
17	14	4S S 4	420		-1
18	16	4S S 4	420		-1
11	12	4S S 4	420		-1
9	10	4S N 4	420		-1
1	6	4S N 4	420		-1
7	8	4S N 4	420		-1
3	2	4S N 4	420		-1
2	3	4S N 4	420		-1

兵庫県知事杯 OPEN TEAMS Session 1 Flight C 2017年10月7日(土)

7

♠K108
♥7654
♦843
♣A54

♠72
♥AQJ93
♦KJ52
♣76



♠A543
♥K1082
♦Q106
♣82

♠QJ96
♥
♦A97
♣KQJ1093

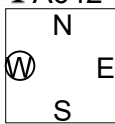
Av: NS=0

N-S	E-W	Contract	N-S	E-W	IMP
5	4	5Cx	S 5	750	13
1	6	5C	S 5	600	12
16	18	4C	S 5	150	4
9	10	3C	S 5	150	4
18	16	4C	S 4	130	4
11	12	4H	W-1	100	3
7	8	4H	W-1	100	3
2	3	4H	W-1	100	3
17	14	3H	W 3	140	-4
15	13	3H	W 3	140	-4
10	9	3H	W 3	140	-4
8	7	3H	W 3	140	-4
12	11	3H	W 3	140	-4
4	5	3H	W 3	140	-4
13	15	2H	W 3	140	-4
14	17	2H	W 3	140	-4
3	2	3H	W 4	170	-5
6	1	3Hx	W 4	930	-14

8

♠AJ10
♥J84
♦1094
♣A642

♠732
♥A7
♦AJ83
♣QJ83



♠9854
♥K95
♦K65
♣975

♠KQ6
♥Q10632
♦Q72
♣K10

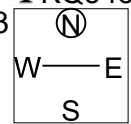
Av: NS=-30

N-S	E-W	Contract	N-S	E-W	IMP
11	12	1NT	W-3	150	5
13	15	3H	S 3	140	5
12	11	2NT	N 2	120	4
8	7	2H	S 2	110	4
6	1	2H	S 2	110	4
9	10	3H	S-1	50	-1
17	14	3H	S-1	50	-1
18	16	3H	S-1	50	-1
16	18	3H	S-1	50	-1
4	5	3H	S-1	50	-1
10	9	3H	S-1	50	-1
2	3	3H	S-1	50	-1
5	4	1NT	W 1	90	-2
1	6	1NT	W 1	90	-2
14	17	1NT	W 2	120	-3
15	13	1NT	W 2	120	-3
7	8	1NT	W 2	120	-3
3	2	1NT	W 3	150	-3

9

♠A5
♥KQ85
♦KQ
♣KQ543

♠Q9843
♥A743
♦A76
♣9



♠K1062
♥J9
♦1093
♣A1082

♠J7
♥1062
♦J8542
♣J76

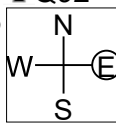
Av: NS=-100

N-S	E-W	Contract	N-S	E-W	IMP
1	6	1NT	N 1	90	5
3	2	3H	N-1	50	2
6	1	3C	N-1	50	2
9	10	3C	N-1	50	2
15	13	3C	N-1	50	2
13	15	4H	N-2	100	0
11	12	4C	N-2	100	0
10	9	3Cx	N-1	100	0
16	18	3C	N-2	100	0
12	11	2NT	N-2	100	0
8	7	2S	E 2	110	0
2	3	3S	W 3	140	-1
14	17	3S	E 3	140	-1
7	8	2S	W 3	140	-1
5	4	2S	W 3	140	-1
17	14	2S	E 3	140	-1
18	16	2S	E 3	140	-1
4	5	4Cx	N-2	300	-5

10

♠K842
♥KJ1065
♦7
♣Q92

♠AJ1075
♥3
♦J1082
♣J74



♠Q96
♥AQ9742
♦54
♣103

♠3
♥8
♦AKQ963
♣AK865

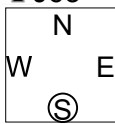
Av: NS=+390

N-S	E-W	Contract	N-S	E-W	IMP
4	2	2Hx	E-4	1100	12
12	7	2Hx	E-3	800	9
5	1	3NT	N 4	630	6
14	13	5C	S 5	600	5
6	3	5C	N 5	600	5
8	9	3NT	N 3	600	5
10	11	3NT	N 3	600	5
17	18	3NT	N 3	600	5
16	15	3NT	N 3	600	5
13	14	2Hx	E-2	500	3
2	4	4C	S 5	150	-6
9	8	3C	S 5	150	-6
3	6	2C	S 5	150	-6
7	12	2C	S 5	150	-6
18	17	3D	S 4	130	-6
1	5	2C	S 4	130	-6
15	16	5C	S-1	100	-10
11	10	4H	N-3	300	-12

11

♠A103
♥42
♦K9853
♣J63

♠7
♥Q9873
♦J64
♣AK102



♠KJ64
♥AKJ65
♦7
♣975

♠Q9852
♥10
♦AQ102
♣Q84

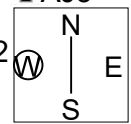
Av: NS=-370

N-S	E-W	Contract	N-S	E-W	IMP
17	18	5H	E-1	50	9
9	8	5H	E-1	50	9
6	3	5H	E-1	50	9
11	10	4H	E 4	420	-2
15	16	4H	E 4	420	-2
2	4	4H	E 4	420	-2
5	1	4H	E 4	420	-2
1	5	4H	E 4	420	-2
4	2	4H	E 4	420	-2
3	6	4H	E 4	420	-2
7	12	4H	E 4	420	-2
10	11	4H	E 4	420	-2
8	9	4H	E 4	420	-2
16	15	4H	E 4	420	-2
18	17	5H	E 5	450	-2
13	14	4H	W 5	450	-2
12	7	4H	W 6	480	-3
14	13	4Hx	E 4	590	-6

12

♠AK8
♥Q10
♦J10842
♣AJ3

♠1043
♥K98732
♦63
♣Q8



♠J965
♥J65
♦
♣976542

♠Q72
♥A4
♦AKQ975
♣K10

Av: NS=+1580

N-S	E-W	Contract	N-S	E-W	IMP
13	14	7NT	N 7	2220	12
4	2	7NT	N 7	2220	12
14	13	7D	S 7	2140	11
3	6	7D	N 7	2140	11
5	1	6NT	S 7	1470	-3
18	17	6NT	N 7	1470	-3
2	4	6NT	N 7	1470	-3
6	3	6NT	N 7	1470	-3
16	15	6NT	N 7	1470	-3
1	5	6NT	N 7	1470	-3
8	9	6NT	N 7	1470	-3
7	12	6NT	N 7	1470	-3
11	10	6NT	N 7	1470	-3
17	18	6NT	N 6	1440	-4
9	8	6D	S 7	1390	-5
10	11	6D	S 7	1390	-5
15	16	6D	S 7	1390	-5
12	7	6D	S 7	1390	-5

13

♠ KQJ5
♥ 85
♦ KJ
♣ QJ653

♠ 842
♥ A
♦ 109653
♣ 10984

♠ 973
♥ 10942
♦ AQ742
♣ A

♠ A106
♥ KQJ763
♦ 8
♣ K72

Av: NS=-100

N-S	E-W	Contract	N-S	E-W	IMP
15	16	4H S 4	620		12
6	3	3H S 3	140		6
17	18	3H S 3	140		6
3	6	4H S-1	100		0
12	7	4H S-1	100		0
8	9	4H S-1	100		0
10	11	4H S-1	100		0
7	12	4H S-1	100		0
16	15	4H S-1	100		0
5	1	4H S-1	100		0
2	4	4H S-1	100		0
18	17	4H S-1	100		0
4	2	4H S-1	100		0
9	8	5H S-2	200		-3
13	14	5C N-2	200		-3
14	13	5C N-2	200		-3
1	5	3NT N-2	200		-3
11	10	3NT N-2	200		-3

14

♠ J10975
♥ Q8
♦ J8
♣ AQ42

♠ A
♥ J7432
♦ K10542
♣ 95

♠ Q8432
♥ AK5
♦ A3
♣ J76

♠ K6
♥ 1096
♦ Q976
♣ K1083

Av: NS=-20

N-S	E-W	Contract	N-S	E-W	IMP
1	5	2S E-2	100		3
15	16	2S E-2	100		3
5	1	2S E-2	100		3
10	11	2S E-2	100		3
11	10	3NT W-1	50		2
16	15	2S E-1	50		2
2	4	2S E-1	50		2
7	12	2S E-1	50		2
14	13	2S E-1	50		2
8	9	2S E-1	50		2
13	14	2C E 2	90		-2
12	7	3C N-2	100		-2
18	17	2S E 2	110		-3
6	3	2D W 3	110		-3
3	6	2H W 3	140		-3
4	2	2H W 4	170		-4
9	8	2H W 4	170		-4
17	18	1NT W 4	180		-4

15

♠ 8763
♥ AQJ7
♦ 108
♣ KJ10

♠ K102
♥ 962
♦ AQ32
♣ 874

♠ Q54
♥ 105
♦ KJ9764
♣ 53

♠ AJ9
♥ K843
♦ 5
♣ AQ962

Av: NS=+620

N-S	E-W	Contract	N-S	E-W	IMP
5	1	4H N 6	680		2
3	6	4H N 6	680		2
1	5	5H N 5	650		1
4	2	4H N 5	650		1
18	17	4H N 5	650		1
17	18	4H N 5	650		1
15	16	4H N 5	650		1
2	4	4H N 5	650		1
6	3	4H N 5	650		1
7	12	4H N 5	650		1
10	11	4H N 5	650		1
8	9	4H N 5	650		1
12	7	4H N 5	650		1
16	15	4H N 5	650		1
13	14	4H N 5	650		1
11	10	4H N 5	650		1
9	8	2H N 5	200		-9
14	13	6H N-1	100		-12

16

♠ A1097
♥ J4
♦ J76
♣ AJ102

♠ 8
♥ AQ96
♦ A1094
♣ K875

♠ 52
♥ K102
♦ KQ853
♣ 943

♠ KQJ643
♥ 8753
♦ 2
♣ Q6

Av: NS=+170

N-S	E-W	Contract	N-S	E-W	IMP
13	14	4S S 4	420		6
5	1	4S S 4	420		6
9	8	3S S 5	200		1
6	3	3S S 5	200		1
18	17	2S S 5	200		1
8	9	1NT E-2	200		1
14	13	3S S 4	170		0
17	18	3S S 4	170		0
11	10	3S S 4	170		0
3	6	3S S 4	170		0
7	12	3S S 4	170		0
16	15	3S S 4	170		0
4	2	3S N 4	170		0
12	7	3S N 4	170		0
15	16	3S S 3	140		-1
1	5	4D E-1	100		-2
2	4	4D W 4	130		-7
10	11	4D E 5	150		-8

17

♠ A982
♥ K98
♦ K1065
♣ K2

♠ 10
♥ QJ7643
♦ Q4
♣ Q1076

♠ KQJ74
♥ 5
♦ 92
♣ AJ953

♠ 653
♥ A102
♦ AJ873
♣ 84

Av: NS=+60

N-S	E-W	Contract	N-S	E-W	IMP
12	7	3H W-4	200		4
13	14	4D N 4	130		2
1	5	3D N 4	130		2
9	8	3D N 4	130		2
3	6	2NT N 2	120		2
5	1	2NT N 2	120		2
6	3	3D N 3	110		2
7	12	3D N 3	110		2
18	17	5C E-2	100		1
14	13	2S E-2	100		1
4	2	4C E-1	50		0
16	15	4C E-1	50		0
11	10	3H W-1	50		0
8	9	3NT N-1	50		-3
10	11	3D N-1	50		-3
2	4	3D N-1	50		-3
17	18	1NT W 1	90		-4
15	16	3S E 3	140		-5

18

♠ 85
♥ AKJ86
♦ Q109
♣ 983

♠ A9
♥ 103
♦ AKJ7
♣ A10754

♠ QJ103
♥ 9754
♦ 432
♣ Q2

♠ K7642
♥ Q2
♦ 865
♣ KJ6

Av: NS=-20

N-S	E-W	Contract	N-S	E-W	IMP
14	13	1NT W-3	150		5
10	11	1NT W-3	150		5
16	15	2H N 2	110		4
6	3	3C W-2	100		3
11	10	2D W-2	100		3
2	4	3C W-1	50		2
1	5	1NT W-1	50		2
12	7	1NT W-1	50		2
13	14	2D W 2	90		-2
18	17	2D W 2	90		-2
7	12	2D W 2	90		-2
9	8	2D W 2	90		-2
15	16	2D W 2	90		-2
5	1	1NT W 1	90		-2
17	18	2H N-1	100		-2
3	6	1NT W 2	120		-3
4	2	1NT W 2	120		-3
8	9	2S S-2	200		-5

19

♠ K10542
♥ A3
♦ J42
♣ A52

♠ Q8
♥ 865
♦ K10653
♣ QJ3

N
W — E
S

♠ AJ73
♥ QJ10
♦ AQ
♣ K864

♠ 96
♥ K9742
♦ 987
♣ 1097

Av: NS=-570

N-S	E-W	Contract	N-S	E-W	IMP
8	10	3NT E-2	200		13
5	3	1NT E 2		120	10
12	9	1NT E 4		180	9
17	16	3NT E 3		600	-1
14	15	3NT E 4		630	-2
2	6	3NT E 4		630	-2
6	2	3NT E 4		630	-2
4	1	3NT E 4		630	-2
3	5	3NT E 4		630	-2
11	7	3NT E 4		630	-2
10	8	3NT E 4		630	-2
7	11	3NT E 4		630	-2
16	17	3NT E 4		630	-2
15	14	3NT E 4		630	-2
18	13	3NT E 4		630	-2
13	18	3NT E 4		630	-2
1	4	3NT E 4		630	-2
9	12	3NT E 5		660	-3

20

♠ AK52
♥ 82
♦ 10863
♣ Q109

♠ Q3
♥ KQ9
♦ QJ952
♣ 762

N
W — E
S

♠ J9874
♥ J43
♦ A
♣ AJ83

♠ 106
♥ A10765
♦ K74
♣ K54

Av: NS=+10

N-S	E-W	Contract	N-S	E-W	IMP
6	2	2D W-3	300		7
13	18	4S E-2	200		5
14	15	2S E-2	200		5
17	16	2NTxW-1	200		5
18	13	2NT W-2	200		5
11	7	2S E-1	100		3
1	4	2NT W-1	100		3
7	11	2D W-1	100		3
3	5	Passout			0
4	1	1NT W 1		90	-3
15	14	1NT W 1		90	-3
2	6	1NT S-1		100	-3
5	3	1NT W 2		120	-4
10	8	2NT W 3		150	-4
12	9	2NT W 3		150	-4
8	10	2NT W 3		150	-4
9	12	1NT W 3		150	-4
16	17	2H S-3	300		-7

21

♠ 872
♥ KQ1075
♦ K7
♣ 1065

♠ AJ3
♥ J632
♦ 982
♣ AQ7

N
W — E
S

♠ KQ10
♥ 84
♦ QJ1063
♣ KJ2

♠ 9654
♥ A9
♦ A54
♣ 9843

Av: NS=-220

N-S	E-W	Contract	N-S	E-W	IMP
10	8	3NT E-4	200		9
12	9	5D W-3	150		9
18	13	3NT W-2	100		8
6	2	3NT W-2	100		8
8	10	2D E 3		110	3
7	11	2NT E 3		150	2
17	16	2NT E 3		150	2
1	4	2NT E 3		150	2
11	7	2NT E 3		150	2
13	18	3NT E 3		400	-5
9	12	3NT E 3		400	-5
5	3	3NT E 3		400	-5
2	6	3NT E 3		400	-5
4	1	3NT E 3		400	-5
14	15	3NT E 3		400	-5
16	17	3NT E 3		400	-5
15	14	3NT E 3		400	-5
3	5	3NT E 3		400	-5

22

♠ A65
♥ KQ543
♦ AK10
♣ K3

♠ 83
♥ AJ72
♦ 532
♣ 10972

N
W — E
S

♠ K10972
♥ 1086
♦ Q76
♣ 85

♠ QJ4
♥ 9
♦ J984
♣ AQJ64

Av: NS=+320

N-S	E-W	Contract	N-S	E-W	IMP
6	2	4NT S 5	460		4
2	6	3NT S 5	460		4
8	10	3NT S 5	460		4
12	9	3NT N 5	460		4
7	11	4NT S 4	430		3
3	5	4NT S 4	430		3
15	14	3NT S 4	430		3
10	8	3NT S 4	430		3
11	7	3NT S 4	430		3
4	1	3NT S 4	430		3
5	3	3NT S 4	430		3
16	17	3NT N 4	430		3
18	13	3NT N 4	430		3
17	16	4C S 5	150		-5
1	4	7C S-2		100	-9
13	18	6NT S-2		100	-9
14	15	6NT N-2		100	-9
9	12	6NT N-2		100	-9

23

♠ 985
♥ Q863
♦ J9742
♣ 9

♠ 1063
♥ J10742
♦ 105
♣ J63

N
W — E
S

♠ AQJ
♥ K5
♦ K8
♣ AK10872

♠ K742
♥ A9
♦ AQ63
♣ Q54

Av: NS=+80

N-S	E-W	Contract	N-S	E-W	IMP
8	10	4C E-3	300		6
3	5	3C E-2	200		3
11	7	2S E-2	200		3
9	12	2Dx N 2	180		3
10	8	1NT S 2	120		1
13	18	3D N 3	110		1
16	17	2S S 2	110		1
15	14	2S S 2	110		1
12	9	2D N 3	110		1
5	3	3C E-1	100		1
7	11	3C E-1	100		1
6	2	1NT S 1	90		0
18	13	1NT S 1	90		0
14	15	1NT S 1	90		0
1	4	2S S-1		100	-5
17	16	3C E 3		110	-5
2	6	3C E 3		110	-5
4	1	3NT E 3		600	-12

24

♠ 5
♥ 107543
♦ K1076
♣ K85

♠ AQ10
♥ AJ8
♦ 85
♣ AJ963

N
W — E
S

♠ J42
♥ KQ92
♦ J943
♣ Q10

♠ K98763
♥ 6
♦ AQ2
♣ 742

Av: NS=-420

N-S	E-W	Contract	N-S	E-W	IMP
9	12	3NT W-1	50		10
6	2	2NT W 5		210	5
14	15	3NT W 3		400	1
12	9	3NT W 3		400	1
7	11	3NT W 3		400	1
13	18	3NT W 3		400	1
8	10	3NT W 4		430	0
1	4	3NT W 4		430	0
18	13	3NT W 4		430	0
4	1	3NT W 4		430	0
5	3	3NT W 4		430	0
16	17	3NT W 5		460	-1
10	8	3NT W 5		460	-1
15	14	3NT W 5		460	-1
11	7	3NT W 5		460	-1
2	6	3NT W 5		460	-1
17	16	3NT W 5		460	-1
3	5	3NT W 5		460	-1

25

♠ Q63
♥ 2
♦ K1094
♣ KJ752

♠ K52
♥ AQJ963
♦ Q8
♣ 106

♠ A108
♥ 10875
♦ A76
♣ A94

♠ J974
♥ K4
♦ J532
♣ Q83

W — E
N — S

Av: NS=-600

N-S	E-W	Contract	N-S	E-W	IMP
8	10	4H W-1	100		12
12	9	3H W 5	200		9
1	4	4H W 4	620		-1
14	15	4H W 4	620		-1
11	7	4H W 4	620		-1
17	16	4H W 4	620		-1
4	1	4H W 4	620		-1
18	13	4H W 4	620		-1
10	8	4H W 4	620		-1
3	5	4H W 4	620		-1
7	11	4H W 4	620		-1
16	17	4H E 4	620		-1
5	3	4H W 5	650		-2
2	6	4H W 5	650		-2
9	12	4H W 5	650		-2
15	14	4H W 5	650		-2
6	2	4H W 5	650		-2
13	18	4H W 6	680		-2

26

♠ J9
♥ A10
♦ J97632
♣ KQ3

♠ 54
♥ 965
♦ A108
♣ 109842

♠ A632
♥ KQ874
♦ Q4
♣ 65

♠ KQ1087
♥ J32
♦ K5
♣ AJ7

W — E
N — S

Av: NS=+270

N-S	E-W	Contract	N-S	E-W	IMP
3	5	3NT N 5	660		9
12	9	3NT N 5	660		9
5	3	3NT N 3	600		8
2	6	3NT N 3	600		8
4	1	3NT N 3	600		8
7	11	3NT N 3	600		8
18	13	3NT N 3	600		8
16	17	1NT N 5	210		-2
1	4	1NT N 3	150		-3
17	16	2S S 3	140		-4
11	7	3D N 3	110		-4
9	12	2S S 2	110		-4
6	2	2S S 2	110		-4
14	15	2S S 2	110		-4
10	8	4S S-1	100		-9
13	18	2S S-1	100		-9
15	14	2H W 2	110		-9
8	10	3NT S-3	300		-11

27

♠ K4
♥ AK10752
♦ QJ96
♣ 8

♠ J32
♥
♦ 743
♣ KQJ10654

♠ Q1085
♥ J84
♦ A8
♣ A973

♠ A976
♥ Q963
♦ K1052
♣ 2

W — E
N — S

Av: NS=+430

N-S	E-W	Contract	N-S	E-W	IMP
14	15	5H N 5	450		1
4	1	5H N 5	450		1
1	4	5H N 5	450		1
8	10	5H N 5	450		1
3	5	5H N 5	450		1
15	14	5H N 5	450		1
18	13	5H N 5	450		1
11	7	4H N 5	450		1
16	17	4H N 5	450		1
9	12	4H N 5	450		1
12	9	4H N 5	450		1
17	16	4H N 5	450		1
13	18	4H N 5	450		1
6	2	4H N 5	450		1
7	11	4H N 5	450		1
10	8	4H N 5	450		1
5	3	5Cx W-1	100		-8
2	6	5C W-1	50		-9

28

♠ J95
♥ KQ4
♦ KJ73
♣ 963

♠ AQ1064
♥ 1087
♦ 2
♣ Q1084

♠ 2
♥ J96
♦ AQ1094
♣ AKJ2

♠ K873
♥ A532
♦ 865
♣ 75

W — E
N — S

Av: NS=-30

N-S	E-W	Contract	N-S	E-W	IMP
11	9	4D E-3	150		5
9	11	3NT W-2	100		4
18	15	2S W-2	100		4
12	8	5C E-1	50		2
3	1	5C E-1	50		2
5	2	4C E-1	50		2
1	3	3NT E-1	50		2
15	18	3NT E-1	50		2
14	16	2S W-1	50		2
10	7	2C E 3	110		-2
8	12	2C E 3	110		-2
2	5	2C E 3	110		-2
4	6	2C E 3	110		-2
6	4	1NT E 2	120		-3
13	17	1NT E 2	120		-3
17	13	4C E 4	130		-3
16	14	2C E 4	130		-3
7	10	2C E 4	130		-3

29

♠ AKQ5
♥ 10542
♦ J7
♣ QJ3

♠ J2
♥ A9
♦ Q8642
♣ 10964

♠ 10973
♥ 763
♦ K953
♣ AK

♠ 864
♥ KQJ8
♦ A10
♣ 8752

W — E
N — S

Av: NS=+30

N-S	E-W	Contract	N-S	E-W	IMP
13	17	3H S 4	170		4
2	5	3H S 4	170		4
15	18	2H S 4	170		4
11	9	2H S 3	140		3
9	11	2H S 3	140		3
17	13	2H S 3	140		3
16	14	2H S 3	140		3
10	7	2S S 2	110		2
6	4	2H S 2	110		2
3	1	2H S 2	110		2
7	10	2H S 2	110		2
8	12	4H S-1	100		-4
5	2	4H S-1	100		-4
18	15	3S N-1	100		-4
4	6	4H S-2	200		-6
12	8	4H S-2	200		-6
14	16	4H N-2	200		-6
1	3	3NT N-2	200		-6

30

♠ 105
♥ Q10873
♦ Q7
♣ A1087

♠ Q762
♥ A64
♦ 4
♣ Q6542

♠ AKJ8
♥ K2
♦ KJ1095
♣ J3

♠ 943
♥ J95
♦ A8632
♣ K9

W — E
N — S

Av: NS=-390

N-S	E-W	Contract	N-S	E-W	IMP
5	2	4S W-2	100		10
6	4	4S E-1	50		10
15	18	4S W 4	420		-1
18	15	4S W 4	420		-1
10	7	4S W 4	420		-1
12	8	4S W 4	420		-1
14	16	4S W 4	420		-1
13	17	4S E 4	420		-1
1	3	4S E 4	420		-1
4	6	4S E 4	420		-1
2	5	4S E 4	420		-1
17	13	4S E 4	420		-1
7	10	4S E 4	420		-1
9	11	4S E 4	420		-1
16	14	4S E 4	420		-1
8	12	4S E 4	420		-1
11	9	4S E 4	420		-1
3	1	4S W 5	450		-2

31

♠ K102
♥ K102
♦ KQ109
♣ Q107

♠ AJ9864
♥ 63
♦ AJ86
♣ K

♠ Q
♥ J874
♦ 52
♣ A98432

♠ 753
♥ AQ95
♦ 743
♣ J65

W N E S

Av: NS=-80

N-S	E-W	Contract	N-S	E-W	IMP
18	15	3C	E-2	100	5
8	12	2S	W-1	50	4
12	8	2S	W-1	50	4
13	17	2D	W-1	50	4
1	3	2S	W 2	110	-1
6	4	2S	W 2	110	-1
4	6	2S	W 2	110	-1
2	5	2S	W 2	110	-1
3	1	2S	W 2	110	-1
11	9	2S	W 2	110	-1
15	18	2S	W 2	110	-1
7	10	2S	W 2	110	-1
16	14	2S	W 2	110	-1
14	16	2S	W 2	110	-1
17	13	2S	W 2	110	-1
5	2	2S	W 2	110	-1
9	11	2S	W 2	110	-1
10	7	2S	W 3	140	-2

32

♠ J976
♥ Q6
♦ AKJ64
♣ 102

♠ 52
♥ A2
♦ 108
♣ AK87654

♠ AKQ3
♥ J983
♦ 32
♣ Q93

♠ 1084
♥ K10754
♦ Q975
♣ J

W N E S

Av: NS=-320

N-S	E-W	Contract	N-S	E-W	IMP
15	18	3NT	E-1	100	9
5	2	Passout			8
9	11	3Dx	N-1	100	6
11	9	3Dx	N-1	100	6
3	1	3Dx	N-1	100	6
8	12	4C	W 5	150	5
14	16	4C	W 5	150	5
17	13	4C	W 5	150	5
2	5	4C	W 5	150	5
12	8	3C	W 5	150	5
6	4	5Dx	N-3	500	-5
1	3	5Dx	N-3	500	-5
4	6	5C	W 5	600	-7
16	14	5C	W 5	600	-7
18	15	5C	W 5	600	-7
10	7	5C	W 5	600	-7
7	10	5C	W 5	600	-7
13	17	5C	W 5	600	-7

33

♠ J104
♥ J106
♦ AKQ106
♣ J7

♠ AQ9
♥ K4
♦ J97
♣ AKQ83

♠ K7653
♥ AQ8
♦ 854
♣ 65

♠ 82
♥ 97532
♦ 32
♣ 10942

W N E S

Av: NS=-370

N-S	E-W	Contract	N-S	E-W	IMP
14	16	3C	W 3	110	6
7	10	3S	W 4	170	5
1	3	3S	E 4	170	5
12	8	3S	E 4	170	5
13	17	4S	E 4	420	-2
6	4	4S	E 4	420	-2
4	6	4S	E 4	420	-2
2	5	4S	E 4	420	-2
5	2	4S	E 4	420	-2
11	9	4S	E 4	420	-2
10	7	4S	E 4	420	-2
9	11	4S	E 4	420	-2
18	15	4S	E 4	420	-2
15	18	4S	E 4	420	-2
16	14	4S	E 4	420	-2
17	13	4S	E 4	420	-2
8	12	4S	E 4	420	-2
3	1	4S	E 4	420	-2

34

♠ K8
♥ AJ85
♦ J10865
♣ K3

♠ J109632
♥ Q102
♦ AK
♣ A9

♠ A75
♥ 7643
♦ 92
♣ J652

♠ Q4
♥ K9
♦ Q743
♣ Q10874

W N E S

Av: NS=-70

N-S	E-W	Contract	N-S	E-W	IMP
6	4	4S	W-2	100	5
13	17	4S	W-1	50	3
1	3	4S	W-1	50	3
15	18	4S	W-1	50	3
4	6	3S	W-1	50	3
12	8	3S	W-1	50	3
2	5	2S	W 2	110	-1
9	11	2S	W 2	110	-1
16	14	2S	W 2	110	-1
14	16	2S	W 2	110	-1
17	13	2S	W 2	110	-1
3	1	2S	W 2	110	-1
5	2	3S	W 3	140	-2
10	7	3S	W 3	140	-2
18	15	3S	W 3	140	-2
7	10	2S	W 3	140	-2
11	9	2S	W 3	140	-2
8	12	2S	W 3	140	-2

35

♠ 84
♥ KQ
♦ AQ1074
♣ K1075

♠ 1065
♥ A96432
♦ J5
♣ J4

♠ KQ932
♥ 5
♦ 632
♣ AQ32

♠ AJ7
♥ J1087
♦ K98
♣ 986

W N E S

Av: NS=+140

N-S	E-W	Contract	N-S	E-W	IMP
3	1	3NT	S 4	430	7
14	16	3NT	S 4	430	7
16	14	3NT	S 4	430	7
8	12	3NT	S 4	430	7
15	18	3S	E-3	300	4
1	3	2NT	N 3	150	0
4	6	3D	N 3	110	-1
2	5	3D	N 3	110	-1
9	11	3D	N 3	110	-1
18	15	3D	N 3	110	-1
13	17	3D	N 3	110	-1
17	13	3C	N 3	110	-1
5	2	2S	E-1	100	-1
7	10	2H	W-1	100	-1
10	7	2S	E 2	110	-6
6	4	2S	E 2	110	-6
11	9	3S	E 3	140	-7
12	8	3H	S-3	150	-7

36

♠ 872
♥ AK108
♦ Q532
♣ J2

♠ Q96
♥ J2
♦ J1087
♣ K1076

♠ 43
♥ 653
♦ K4
♣ A98543

♠ AKJ105
♥ Q974
♦ A96
♣ Q

W N E S

Av: NS=+230

N-S	E-W	Contract	N-S	E-W	IMP
1	3	4S	S 5	650	9
15	18	4S	S 4	620	9
2	5	4S	S 4	620	9
8	12	4S	S 4	620	9
9	11	4H	S 4	620	9
14	16	4H	S 4	620	9
12	8	4H	S 4	620	9
6	4	4H	N 4	620	9
11	9	2S	S 3	140	-3
4	6	4S	S-1	100	-8
13	17	4S	S-1	100	-8
5	2	4S	S-1	100	-8
10	7	4S	S-1	100	-8
18	15	4S	S-1	100	-8
16	14	4S	S-1	100	-8
7	10	4S	S-1	100	-8
3	1	4S	S-1	100	-8
17	13	4H	S-1	100	-8

37

♠ Q4
♥ 98
♦ KJ86
♣ K6542

♠ 1098
♥ 65432
♦ 32
♣ AQ10

♠ 7532
♥ KJ
♦ AQ97
♣ J97

♠ AKJ6
♥ AQ107
♦ 1054
♣ 83

W N E S

Av: NS=+160

N-S	E-W	Contract	N-S	E-W	IMP
14	18	1NTxN 4	780		12
9	7	2H W-4	200		1
3	4	1NT N 4	180		1
15	17	1NT N 4	180		1
18	14	1NT N 4	180		1
13	16	1NT N 4	180		1
7	9	1NT N 4	180		1
12	10	2NT S 3	150		0
11	8	2H W-3	150		0
4	3	1NT N 3	150		0
1	2	1NT N 3	150		0
5	6	1NT N 3	150		0
8	11	1NT N 3	150		0
2	1	1NT N 3	150		0
10	12	1NT N 3	150		0
16	13	1NT N 3	150		0
6	5	1NT N 2	120		-1
17	15	3D S-1	100		-6

38

♠ K2
♥ AKJ83
♦ AK108
♣ K5

♠ J865
♥ 10654
♦ Q9
♣ Q107

♠ Q109743
♥ 72
♦ 54
♣ J94

♠ A
♥ Q9
♦ J7632
♣ A8632

W N E S

Av: NS=+930

N-S	E-W	Contract	N-S	E-W	IMP
6	5	6NT S 7	1020		3
4	3	6NT N 7	1020		3
1	2	6NT N 7	1020		3
5	6	6NT N 7	1020		3
9	7	6NT N 7	1020		3
8	11	6NT N 7	1020		3
18	14	6NT N 7	1020		3
17	15	6NT N 7	1020		3
16	13	6NT N 7	1020		3
12	10	6D S 7	940		0
7	9	6D S 7	940		0
13	16	6D S 7	940		0
11	8	6D N 7	940		0
15	17	6D N 7	940		0
14	18	6D N 7	940		0
2	1	3NT S 7	520		-9
10	12	3NT S 7	520		-9
3	4	4D S 7	190		-12

39

♠ 103
♥ AKQ863
♦ Q102
♣ J9

♠ AKQJ85
♥ 1094
♦ KJ7
♣ 7

♠ 764
♥ 52
♦ A863
♣ A1083

♠ 92
♥ J7
♦ 954
♣ KQ6542

W N E S

Av: NS=-40

N-S	E-W	Contract	N-S	E-W	IMP
16	13	4S W-1	100		4
4	3	4S W-1	100		4
1	2	4S W-1	100		4
5	6	4S W-1	100		4
9	7	4S W-1	100		4
3	4	4S W-1	100		4
13	16	4S W-1	100		4
17	15	4S W-1	100		4
12	10	3S W 3	140		-3
18	14	3S W 3	140		-3
11	8	2S W 3	140		-3
2	1	2S W 3	140		-3
7	9	2S W 3	140		-3
6	5	2S W 3	140		-3
15	17	2S W 3	140		-3
8	11	2S W 3	140		-3
14	18	2S W 4	170		-4
10	12	4S W 5	650		-12

40

♠ K3
♥ 96542
♦ K
♣ KQ532

♠ A982
♥ A107
♦ J2
♣ A1098

♠ J654
♥ J
♦ A108764
♣ J4

♠ Q107
♥ KQ83
♦ Q953
♣ 76

W N E S

Av: NS=-10

N-S	E-W	Contract	N-S	E-W	IMP
6	5	3H N 3	140		4
5	6	4S W-2	100		3
3	4	4S E-2	100		3
15	17	4S E-2	100		3
8	11	3S E-2	100		3
17	15	4S W-1	50		2
9	7	4S E-1	50		2
7	9	3NT W-1	50		2
11	8	2S E-1	50		2
12	10	3H N-1	50		-1
10	12	3H N-1	50		-1
13	16	3H N-1	50		-1
18	14	2S W 2	110		-3
14	18	2S W 2	110		-3
1	2	2S W 2	110		-3
2	1	2S E 2	110		-3
16	13	2S E 2	110		-3
4	3	2S E 3	140		-4

41

♠ K4
♥ Q97
♦ KQ643
♣ 973

♠ 865
♥ AK62
♦ 109
♣ AKJ4

♠ A932
♥ J104
♦ A82
♣ Q85

♠ QJ107
♥ 853
♦ J75
♣ 1062

W N E S

Av: NS=-40

N-S	E-W	Contract	N-S	E-W	IMP
11	8	3NT W-2	200		6
2	1	3NT W-1	100		4
16	13	3NT W-1	100		4
4	3	3NT W-1	100		4
5	6	3NT W-1	100		4
10	12	3NT W-1	100		4
7	9	3NT W-1	100		4
8	11	3NT W-1	100		4
13	16	3NT W-1	100		4
18	14	3NT W-1	100		4
15	17	3NT W-1	100		4
14	18	3NT W-1	100		4
17	15	3NT W-1	100		4
12	10	2S E 2	110		-2
6	5	3NT W 3	600		-11
1	2	3NT W 3	600		-11
9	7	3NT W 3	600		-11
3	4	3NT W 4	630		-11

42

♠ K86
♥ J764
♦ K9
♣ J953

♠ 1032
♥ Q9853
♦ Q42
♣ 74

♠ AJ975
♥ 2
♦ 1085
♣ AK102

♠ Q4
♥ AK10
♦ AJ763
♣ Q86

W N E S

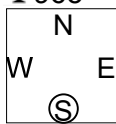
Av: NS=-40

N-S	E-W	Contract	N-S	E-W	IMP
4	3	3NT N 3	600		12
12	10	2NT N 2	120		4
14	18	2H N 2	110		4
9	7	2D S 3	110		4
2	1	2D S 3	110		4
3	4	2D S 3	110		4
16	13	2D S 2	90		4
13	16	3H S-1	100		-2
7	9	3H N-1	100		-2
6	5	3D S-1	100		-2
10	12	2D S-1	100		-2
18	14	2S E 2	110		-2
17	15	2S E 2	110		-2
8	11	2S E 2	110		-2
1	2	1S E 2	110		-2
11	8	2D S-2	200		-4
5	6	3NT N-3	300		-6
15	17	2D S-3	300		-6

43

♠852
♥8643
♦KJ7
♣965

♠K4
♥QJ92
♦AQ832
♣32



♠J106
♥AK75
♦9
♣AQ1087

♠AQ973
♥10
♦10654
♣KJ4

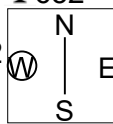
Av: NS=-100

N-S	E-W	Contract	N-S	E-W	IMP
4	3	4H E-2	100		5
3	4	5C E-1	50		4
1	2	4H W-1	50		4
9	7	4H E-1	50		4
5	6	4H E-1	50		4
14	18	4H E-1	50		4
17	15	4H E-1	50		4
13	16	4H E-1	50		4
12	10	4H E-1	50		4
16	13	3NT W-1	50		4
11	8	3NT W-1	50		4
6	5	2D W-1	50		4
8	11	4H E 4	420		-8
10	12	4H E 4	420		-8
7	9	4H E 4	420		-8
2	1	4H E 4	420		-8
15	17	4H E 4	420		-8
18	14	4H E 5	450		-8

44

♠A109
♥KQ10
♦QJ85
♣652

♠KJ85
♥A5432
♦2
♣QJ4



♠Q74
♥86
♦AK10
♣A10983

♠632
♥J97
♦97643
♣K7

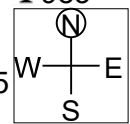
Av: NS=-310

N-S	E-W	Contract	N-S	E-W	IMP
9	7	3NT E-1	50		8
5	6	2C E 3	110		5
13	16	4C E 4	130		5
7	9	4C E 4	130		5
11	8	3H W 3	140		5
12	10	4C E 5	150		4
3	4	3C E 5	150		4
17	15	2NT E 5	210		3
10	12	3NT W 3	400		-3
16	13	3NT E 4	430		-3
15	17	3NT E 4	430		-3
1	2	3NT E 4	430		-3
8	11	3NT E 4	430		-3
18	14	3NT E 4	430		-3
4	3	3NT E 5	460		-4
2	1	3NT E 5	460		-4
6	5	3NT E 5	460		-4
14	18	2Dx N-2	500		-5

45

♠43
♥KJ832
♦K102
♣983

♠QJ9
♥Q6
♦QJ9765
♣J6



♠1087
♥A1074
♦A8
♣K1042

♠AK652
♥95
♦43
♣AQ75

Av: NS=+10

N-S	E-W	Contract	N-S	E-W	IMP
7	9	1NT W-3	300		7
15	17	1NT W-2	200		5
2	1	1NT W-2	200		5
1	2	2H N 4	170		4
12	10	1NT N 3	150		4
10	12	2S S 3	140		4
9	7	2H N 3	140		4
16	13	1NT N 2	120		3
5	6	1NT W-1	100		3
8	11	2S S-1	100		-3
13	16	2S S-1	100		-3
3	4	2S S-1	100		-3
14	18	2H N-1	100		-3
18	14	1NT E 2	120		-4
17	15	2S S-2	200		-5
6	5	2S S-2	200		-5
4	3	2S S-2	200		-5
11	8	2S S-2	200		-5

<p>1 N/-</p> <p>♠ Q98765 ♥ J8 ♦ KJ75 ♣ 4</p> <p>♠ AJ2 ♥ Q74 ♦ AT86 ♣ 982</p> <p>♠ T3 ♥ AKT9 ♦ Q432 ♣ K65</p> <p>♠ K4 ♥ 6532 ♦ 9 ♣ AQJT73</p> <p>7 11 12 10</p>	<table border="1"> <thead> <tr><th>N</th><th>S</th></tr> </thead> <tbody> <tr><td>4</td><td>4</td></tr> <tr><td>8</td><td>8</td></tr> <tr><td>5</td><td>5</td></tr> <tr><td>5</td><td>5</td></tr> <tr><td>6</td><td>6</td></tr> </tbody> </table> <p>Opt res: NS 3SX;-100</p> <table border="1"> <thead> <tr><th>E</th><th>W</th></tr> </thead> <tbody> <tr><td>8</td><td>8</td></tr> <tr><td>5</td><td>5</td></tr> <tr><td>8</td><td>8</td></tr> <tr><td>8</td><td>8</td></tr> <tr><td>7</td><td>7</td></tr> </tbody> </table>	N	S	4	4	8	8	5	5	5	5	6	6	E	W	8	8	5	5	8	8	8	8	7	7	<p>2 E/NS</p> <p>♠ AT985 ♥ K9752 ♦ J ♣ A6</p> <p>♠ J743 ♥ A ♦ KT752 ♣ K95</p> <p>♠ K62 ♥ 864 ♦ Q643 ♣ T32</p> <p>♠ Q ♥ QJT3 ♦ A98 ♣ QJ874</p> <p>12 11 5 12</p>	<table border="1"> <thead> <tr><th>N</th><th>S</th></tr> </thead> <tbody> <tr><td>8</td><td>8</td></tr> <tr><td>8</td><td>8</td></tr> <tr><td>12</td><td>12</td></tr> <tr><td>6</td><td>6</td></tr> <tr><td>10</td><td>10</td></tr> </tbody> </table> <p>Opt res: NS 6H;1430</p> <table border="1"> <thead> <tr><th>E</th><th>W</th></tr> </thead> <tbody> <tr><td>5</td><td>5</td></tr> <tr><td>5</td><td>5</td></tr> <tr><td>1</td><td>1</td></tr> <tr><td>6</td><td>6</td></tr> <tr><td>3</td><td>3</td></tr> </tbody> </table>	N	S	8	8	8	8	12	12	6	6	10	10	E	W	5	5	5	5	1	1	6	6	3	3	<p>3 S/EW</p> <p>♠ A6432 ♥ 7 ♦ - ♣ KQT9875</p> <p>♠ Q7 ♥ KJ ♦ T943 ♣ AJ632</p> <p>♠ K98 ♥ AQ9842 ♦ QJ82 ♣ -</p> <p>♠ JT5 ♥ T653 ♦ AK765 ♣ 4</p> <p>9 11 12 8</p>	<table border="1"> <thead> <tr><th>N</th><th>S</th></tr> </thead> <tbody> <tr><td>4</td><td>4</td></tr> <tr><td>8</td><td>8</td></tr> <tr><td>3</td><td>3</td></tr> <tr><td>3</td><td>3</td></tr> <tr><td>8</td><td>8</td></tr> </tbody> </table> <p>Opt res: NS 3SX;-100</p> <table border="1"> <thead> <tr><th>E</th><th>W</th></tr> </thead> <tbody> <tr><td>8</td><td>8</td></tr> <tr><td>4</td><td>5</td></tr> <tr><td>8</td><td>9</td></tr> <tr><td>9</td><td>9</td></tr> <tr><td>4</td><td>5</td></tr> </tbody> </table>	N	S	4	4	8	8	3	3	3	3	8	8	E	W	8	8	4	5	8	9	9	9	4	5
N	S																																																																												
4	4																																																																												
8	8																																																																												
5	5																																																																												
5	5																																																																												
6	6																																																																												
E	W																																																																												
8	8																																																																												
5	5																																																																												
8	8																																																																												
8	8																																																																												
7	7																																																																												
N	S																																																																												
8	8																																																																												
8	8																																																																												
12	12																																																																												
6	6																																																																												
10	10																																																																												
E	W																																																																												
5	5																																																																												
5	5																																																																												
1	1																																																																												
6	6																																																																												
3	3																																																																												
N	S																																																																												
4	4																																																																												
8	8																																																																												
3	3																																																																												
3	3																																																																												
8	8																																																																												
E	W																																																																												
8	8																																																																												
4	5																																																																												
8	9																																																																												
9	9																																																																												
4	5																																																																												
<p>4 W/All</p> <p>♠ 9 ♥ AKJ632 ♦ KT42 ♣ 97</p> <p>♠ KJT876 ♥ Q ♦ AQJ7 ♣ 65</p> <p>♠ Q5432 ♥ T95 ♦ 983 ♣ A8</p> <p>♠ A ♥ 874 ♦ 65 ♣ KQJT432</p> <p>11 13 6 10</p>	<table border="1"> <thead> <tr><th>N</th><th>S</th></tr> </thead> <tbody> <tr><td>7</td><td>7</td></tr> <tr><td>4</td><td>4</td></tr> <tr><td>10</td><td>10</td></tr> <tr><td>6</td><td>6</td></tr> <tr><td>10</td><td>10</td></tr> </tbody> </table> <p>Opt res: EW 4SX;200</p> <table border="1"> <thead> <tr><th>E</th><th>W</th></tr> </thead> <tbody> <tr><td>2</td><td>2</td></tr> <tr><td>9</td><td>9</td></tr> <tr><td>2</td><td>2</td></tr> <tr><td>6</td><td>6</td></tr> <tr><td>2</td><td>2</td></tr> </tbody> </table>	N	S	7	7	4	4	10	10	6	6	10	10	E	W	2	2	9	9	2	2	6	6	2	2	<p>5 N/NS</p> <p>♠ AQ764 ♥ KT84 ♦ QJ84 ♣ -</p> <p>♠ 53 ♥ AJ ♦ 73 ♣ AQJ9852</p> <p>♠ T8 ♥ 9762 ♦ T962 ♣ KT6</p> <p>♠ KJ92 ♥ Q53 ♦ AK5 ♣ 743</p> <p>12 12 3 13</p>	<table border="1"> <thead> <tr><th>N</th><th>S</th></tr> </thead> <tbody> <tr><td>5</td><td>5</td></tr> <tr><td>12</td><td>12</td></tr> <tr><td>10</td><td>10</td></tr> <tr><td>10</td><td>10</td></tr> <tr><td>5</td><td>5</td></tr> </tbody> </table> <p>Opt res: EW 7CX;1100</p> <table border="1"> <thead> <tr><th>E</th><th>W</th></tr> </thead> <tbody> <tr><td>4</td><td>4</td></tr> <tr><td>1</td><td>1</td></tr> <tr><td>2</td><td>2</td></tr> <tr><td>2</td><td>2</td></tr> <tr><td>8</td><td>8</td></tr> </tbody> </table>	N	S	5	5	12	12	10	10	10	10	5	5	E	W	4	4	1	1	2	2	2	2	8	8	<p>6 E/EW</p> <p>♠ AQJT632 ♥ K ♦ A7 ♣ KJ5</p> <p>♠ - ♥ T65 ♦ JT965 ♣ T7642</p> <p>♠ 954 ♥ AQ874 ♦ 432 ♣ AQ</p> <p>♠ K87 ♥ J932 ♦ KQ8 ♣ 983</p> <p>18 1 12 9</p>	<table border="1"> <thead> <tr><th>N</th><th>S</th></tr> </thead> <tbody> <tr><td>10</td><td>9</td></tr> <tr><td>10</td><td>10</td></tr> <tr><td>4</td><td>5</td></tr> <tr><td>5</td><td>4</td></tr> <tr><td>6</td><td>6</td></tr> </tbody> </table> <p>Opt res: N 3N;430</p> <table border="1"> <thead> <tr><th>E</th><th>W</th></tr> </thead> <tbody> <tr><td>3</td><td>3</td></tr> <tr><td>2</td><td>2</td></tr> <tr><td>8</td><td>8</td></tr> <tr><td>8</td><td>8</td></tr> <tr><td>7</td><td>7</td></tr> </tbody> </table>	N	S	10	9	10	10	4	5	5	4	6	6	E	W	3	3	2	2	8	8	8	8	7	7
N	S																																																																												
7	7																																																																												
4	4																																																																												
10	10																																																																												
6	6																																																																												
10	10																																																																												
E	W																																																																												
2	2																																																																												
9	9																																																																												
2	2																																																																												
6	6																																																																												
2	2																																																																												
N	S																																																																												
5	5																																																																												
12	12																																																																												
10	10																																																																												
10	10																																																																												
5	5																																																																												
E	W																																																																												
4	4																																																																												
1	1																																																																												
2	2																																																																												
2	2																																																																												
8	8																																																																												
N	S																																																																												
10	9																																																																												
10	10																																																																												
4	5																																																																												
5	4																																																																												
6	6																																																																												
E	W																																																																												
3	3																																																																												
2	2																																																																												
8	8																																																																												
8	8																																																																												
7	7																																																																												
<p>7 S/All</p> <p>♠ KT8 ♥ 7654 ♦ 843 ♣ A54</p> <p>♠ 72 ♥ AQJ93 ♦ KJ52 ♣ 76</p> <p>♠ A543 ♥ KT82 ♦ QT6 ♣ 82</p> <p>♠ QJ96 ♥ - ♦ A97 ♣ KQJT93</p> <p>7 11 9 13</p>	<table border="1"> <thead> <tr><th>N</th><th>S</th></tr> </thead> <tbody> <tr><td>7</td><td>7</td></tr> <tr><td>8</td><td>8</td></tr> <tr><td>4</td><td>4</td></tr> <tr><td>5</td><td>5</td></tr> <tr><td>10</td><td>10</td></tr> </tbody> </table> <p>Opt res: NS 4C;130</p> <table border="1"> <thead> <tr><th>E</th><th>W</th></tr> </thead> <tbody> <tr><td>6</td><td>6</td></tr> <tr><td>4</td><td>4</td></tr> <tr><td>9</td><td>9</td></tr> <tr><td>7</td><td>7</td></tr> <tr><td>2</td><td>2</td></tr> </tbody> </table>	N	S	7	7	8	8	4	4	5	5	10	10	E	W	6	6	4	4	9	9	7	7	2	2	<p>8 W/-</p> <p>♠ AJT ♥ J84 ♦ T94 ♣ A642</p> <p>♠ 732 ♥ A7 ♦ AJ83 ♣ QJ83</p> <p>♠ 9854 ♥ K95 ♦ K65 ♣ 975</p> <p>♠ KQ6 ♥ QT632 ♦ Q72 ♣ KT</p> <p>10 12 6 12</p>	<table border="1"> <thead> <tr><th>N</th><th>S</th></tr> </thead> <tbody> <tr><td>5</td><td>5</td></tr> <tr><td>6</td><td>6</td></tr> <tr><td>8</td><td>8</td></tr> <tr><td>5</td><td>5</td></tr> <tr><td>5</td><td>5</td></tr> </tbody> </table> <p>Opt res: EW 3CX;100</p> <table border="1"> <thead> <tr><th>E</th><th>W</th></tr> </thead> <tbody> <tr><td>6</td><td>6</td></tr> <tr><td>6</td><td>6</td></tr> <tr><td>5</td><td>5</td></tr> <tr><td>6</td><td>6</td></tr> <tr><td>8</td><td>8</td></tr> </tbody> </table>	N	S	5	5	6	6	8	8	5	5	5	5	E	W	6	6	6	6	5	5	6	6	8	8	<p>9 N/EW</p> <p>♠ A5 ♥ KQ85 ♦ KQ ♣ KQ543</p> <p>♠ Q9843 ♥ A743 ♦ A76 ♣ 9</p> <p>♠ KT62 ♥ J9 ♦ T93 ♣ AT82</p> <p>♠ J7 ♥ T62 ♦ J8542 ♣ J76</p> <p>19 10 8 3</p>	<table border="1"> <thead> <tr><th>N</th><th>S</th></tr> </thead> <tbody> <tr><td>6</td><td>6</td></tr> <tr><td>4</td><td>4</td></tr> <tr><td>7</td><td>7</td></tr> <tr><td>7</td><td>7</td></tr> <tr><td>8</td><td>8</td></tr> </tbody> </table> <p>Opt res: EW 3S;-140</p> <table border="1"> <thead> <tr><th>E</th><th>W</th></tr> </thead> <tbody> <tr><td>7</td><td>7</td></tr> <tr><td>9</td><td>9</td></tr> <tr><td>6</td><td>6</td></tr> <tr><td>6</td><td>6</td></tr> <tr><td>4</td><td>4</td></tr> </tbody> </table>	N	S	6	6	4	4	7	7	7	7	8	8	E	W	7	7	9	9	6	6	6	6	4	4
N	S																																																																												
7	7																																																																												
8	8																																																																												
4	4																																																																												
5	5																																																																												
10	10																																																																												
E	W																																																																												
6	6																																																																												
4	4																																																																												
9	9																																																																												
7	7																																																																												
2	2																																																																												
N	S																																																																												
5	5																																																																												
6	6																																																																												
8	8																																																																												
5	5																																																																												
5	5																																																																												
E	W																																																																												
6	6																																																																												
6	6																																																																												
5	5																																																																												
6	6																																																																												
8	8																																																																												
N	S																																																																												
6	6																																																																												
4	4																																																																												
7	7																																																																												
7	7																																																																												
8	8																																																																												
E	W																																																																												
7	7																																																																												
9	9																																																																												
6	6																																																																												
6	6																																																																												
4	4																																																																												
<p>10 E/All</p> <p>♠ K842 ♥ KJT65 ♦ 7 ♣ Q92</p> <p>♠ AJT75 ♥ 3 ♦ JT82 ♣ J74</p> <p>♠ Q96 ♥ AQ9742 ♦ 54 ♣ T3</p> <p>♠ 3 ♥ 8 ♦ AKQ963 ♣ AK865</p> <p>9 7 8 16</p>	<table border="1"> <thead> <tr><th>N</th><th>S</th></tr> </thead> <tbody> <tr><td>9</td><td>9</td></tr> <tr><td>7</td><td>7</td></tr> <tr><td>7</td><td>7</td></tr> <tr><td>10</td><td>10</td></tr> <tr><td>10</td><td>10</td></tr> </tbody> </table> <p>Opt res: NS 3N;600</p> <table border="1"> <thead> <tr><th>E</th><th>W</th></tr> </thead> <tbody> <tr><td>4</td><td>4</td></tr> <tr><td>6</td><td>6</td></tr> <tr><td>6</td><td>6</td></tr> <tr><td>3</td><td>3</td></tr> <tr><td>2</td><td>2</td></tr> </tbody> </table>	N	S	9	9	7	7	7	7	10	10	10	10	E	W	4	4	6	6	6	6	3	3	2	2	<p>11 S/-</p> <p>♠ AT3 ♥ 42 ♦ K9853 ♣ J63</p> <p>♠ 7 ♥ Q9873 ♦ J64 ♣ AKT2</p> <p>♠ KJ64 ♥ AKJ65 ♦ 7 ♣ 975</p> <p>♠ Q9852 ♥ T ♦ AQT2 ♣ Q84</p> <p>8 10 12 10</p>	<table border="1"> <thead> <tr><th>N</th><th>S</th></tr> </thead> <tbody> <tr><td>6</td><td>6</td></tr> <tr><td>7</td><td>7</td></tr> <tr><td>3</td><td>3</td></tr> <tr><td>9</td><td>9</td></tr> <tr><td>4</td><td>4</td></tr> </tbody> </table> <p>Opt res: NS 5DX;-300</p> <table border="1"> <thead> <tr><th>E</th><th>W</th></tr> </thead> <tbody> <tr><td>7</td><td>7</td></tr> <tr><td>4</td><td>4</td></tr> <tr><td>10</td><td>10</td></tr> <tr><td>4</td><td>4</td></tr> <tr><td>9</td><td>9</td></tr> </tbody> </table>	N	S	6	6	7	7	3	3	9	9	4	4	E	W	7	7	4	4	10	10	4	4	9	9	<p>12 W/NS</p> <p>♠ AK8 ♥ QT ♦ JT842 ♣ AJ3</p> <p>♠ T43 ♥ K98732 ♦ 63 ♣ Q8</p> <p>♠ J965 ♥ J65 ♦ - ♣ 976542</p> <p>♠ Q72 ♥ A4 ♦ AKQ975 ♣ KT</p> <p>15 5 2 18</p>	<table border="1"> <thead> <tr><th>N</th><th>S</th></tr> </thead> <tbody> <tr><td>13</td><td>13</td></tr> <tr><td>10</td><td>12</td></tr> <tr><td>7</td><td>7</td></tr> <tr><td>13</td><td>13</td></tr> <tr><td>8</td><td>8</td></tr> </tbody> </table> <p>Opt res: EW 8HX;2000</p> <table border="1"> <thead> <tr><th>E</th><th>W</th></tr> </thead> <tbody> <tr><td>-</td><td>-</td></tr> <tr><td>1</td><td>1</td></tr> <tr><td>6</td><td>6</td></tr> <tr><td>-</td><td>-</td></tr> <tr><td>5</td><td>5</td></tr> </tbody> </table>	N	S	13	13	10	12	7	7	13	13	8	8	E	W	-	-	1	1	6	6	-	-	5	5
N	S																																																																												
9	9																																																																												
7	7																																																																												
7	7																																																																												
10	10																																																																												
10	10																																																																												
E	W																																																																												
4	4																																																																												
6	6																																																																												
6	6																																																																												
3	3																																																																												
2	2																																																																												
N	S																																																																												
6	6																																																																												
7	7																																																																												
3	3																																																																												
9	9																																																																												
4	4																																																																												
E	W																																																																												
7	7																																																																												
4	4																																																																												
10	10																																																																												
4	4																																																																												
9	9																																																																												
N	S																																																																												
13	13																																																																												
10	12																																																																												
7	7																																																																												
13	13																																																																												
8	8																																																																												
E	W																																																																												
-	-																																																																												
1	1																																																																												
6	6																																																																												
-	-																																																																												
5	5																																																																												
<p>13 N/All</p> <p>♠ KQJ5 ♥ 85 ♦ KJ ♣ QJ653</p> <p>♠ 842 ♥ A ♦ T9653 ♣ T984</p> <p>♠ 973 ♥ T942 ♦ AQ742 ♣ A</p> <p>♠ AT6 ♥ KQJ763 ♦ 8 ♣ K72</p> <p>13 4 10 13</p>	<table border="1"> <thead> <tr><th>N</th><th>S</th></tr> </thead> <tbody> <tr><td>6</td><td>6</td></tr> <tr><td>7</td><td>7</td></tr> <tr><td>9</td><td>9</td></tr> <tr><td>3</td><td>3</td></tr> <tr><td>9</td><td>9</td></tr> </tbody> </table> <p>Opt res: EW 4D;-130</p> <table border="1"> <thead> <tr><th>E</th><th>W</th></tr> </thead> <tbody> <tr><td>7</td><td>7</td></tr> <tr><td>4</td><td>4</td></tr> <tr><td>3</td><td>3</td></tr> <tr><td>10</td><td>10</td></tr> <tr><td>4</td><td>4</td></tr> </tbody> </table>	N	S	6	6	7	7	9	9	3	3	9	9	E	W	7	7	4	4	3	3	10	10	4	4	<p>14 E/-</p> <p>♠ JT975 ♥ Q8 ♦ J8 ♣ AQ42</p> <p>♠ A ♥ J7432 ♦ KT542 ♣ 95</p> <p>♠ Q8432 ♥ AK5 ♦ A3 ♣ J76</p> <p>♠ K6 ♥ T96 ♦ Q976 ♣ KT83</p> <p>10 8 14 8</p>	<table border="1"> <thead> <tr><th>N</th><th>S</th></tr> </thead> <tbody> <tr><td>5</td><td>5</td></tr> <tr><td>6</td><td>6</td></tr> <tr><td>3</td><td>3</td></tr> <tr><td>3</td><td>3</td></tr> <tr><td>7</td><td>7</td></tr> </tbody> </table> <p>Opt res: EW 4H;-420</p> <table border="1"> <thead> <tr><th>E</th><th>W</th></tr> </thead> <tbody> <tr><td>8</td><td>8</td></tr> <tr><td>7</td><td>7</td></tr> <tr><td>10</td><td>10</td></tr> <tr><td>9</td><td>9</td></tr> <tr><td>6</td><td>6</td></tr> </tbody> </table>	N	S	5	5	6	6	3	3	3	3	7	7	E	W	8	8	7	7	10	10	9	9	6	6	<p>15 S/NS</p> <p>♠ 8763 ♥ AQJ7 ♦ T8 ♣ KJT</p> <p>♠ KT2 ♥ 962 ♦ AQ32 ♣ 874</p> <p>♠ Q54 ♥ T5 ♦ KJ9764 ♣ 53</p> <p>♠ AJ9 ♥ K843 ♦ 5 ♣ AQ962</p> <p>11 9 6 14</p>	<table border="1"> <thead> <tr><th>N</th><th>S</th></tr> </thead> <tbody> <tr><td>7</td><td>7</td></tr> <tr><td>9</td><td>9</td></tr> <tr><td>11</td><td>11</td></tr> <tr><td>5</td><td>5</td></tr> <tr><td>10</td><td>10</td></tr> </tbody> </table> <p>Opt res: NS 5H;650</p> <table border="1"> <thead> <tr><th>E</th><th>W</th></tr> </thead> <tbody> <tr><td>3</td><td>3</td></tr> <tr><td>4</td><td>4</td></tr> <tr><td>2</td><td>2</td></tr> <tr><td>8</td><td>8</td></tr> <tr><td>3</td><td>3</td></tr> </tbody> </table>	N	S	7	7	9	9	11	11	5	5	10	10	E	W	3	3	4	4	2	2	8	8	3	3
N	S																																																																												
6	6																																																																												
7	7																																																																												
9	9																																																																												
3	3																																																																												
9	9																																																																												
E	W																																																																												
7	7																																																																												
4	4																																																																												
3	3																																																																												
10	10																																																																												
4	4																																																																												
N	S																																																																												
5	5																																																																												
6	6																																																																												
3	3																																																																												
3	3																																																																												
7	7																																																																												
E	W																																																																												
8	8																																																																												
7	7																																																																												
10	10																																																																												
9	9																																																																												
6	6																																																																												
N	S																																																																												
7	7																																																																												
9	9																																																																												
11	11																																																																												
5	5																																																																												
10	10																																																																												
E	W																																																																												
3	3																																																																												
4	4																																																																												
2	2																																																																												
8	8																																																																												
3	3																																																																												

<p>16 W/EW</p> <p>♠ AT97 ♥ J4 ♦ J76 ♣ AJT2</p> <p>♠ 8 ♥ AQ96 ♦ AT94 ♣ K875</p> <p>♠ 52 ♥ KT2 ♦ KQ853 ♣ 943</p> <p>♠ KQJ643 ♥ 8753 ♦ 2 ♣ Q6</p> <p>11 13 8 8</p>	<table border="1"> <tr><td>N</td><td>S</td></tr> <tr><td>4</td><td>4</td></tr> <tr><td>10</td><td>10</td></tr> <tr><td>4</td><td>4</td></tr> <tr><td>3</td><td>3</td></tr> <tr><td>6</td><td>6</td></tr> </table> <p>Opt res: NS 4S;420</p> <table border="1"> <tr><td>E</td><td>W</td></tr> <tr><td>4</td><td>4</td></tr> <tr><td>2</td><td>2</td></tr> <tr><td>7</td><td>7</td></tr> <tr><td>9</td><td>9</td></tr> <tr><td>6</td><td>6</td></tr> </table>	N	S	4	4	10	10	4	4	3	3	6	6	E	W	4	4	2	2	7	7	9	9	6	6	<p>17 N/-</p> <p>♠ A982 ♥ K98 ♦ KT65 ♣ K2</p> <p>♠ T ♥ QJ7643 ♦ Q4 ♣ QT76</p> <p>♠ KQJ74 ♥ 5 ♦ 92 ♣ AJ953</p> <p>♠ 653 ♥ AT2 ♦ AJ873 ♣ 84</p> <p>13 7 11 9</p>	<table border="1"> <tr><td>N</td><td>S</td></tr> <tr><td>8</td><td>8</td></tr> <tr><td>7</td><td>4</td></tr> <tr><td>6</td><td>6</td></tr> <tr><td>9</td><td>8</td></tr> <tr><td>4</td><td>4</td></tr> </table> <p>Opt res: EW 4CX;100</p> <table border="1"> <tr><td>E</td><td>W</td></tr> <tr><td>4</td><td>4</td></tr> <tr><td>5</td><td>5</td></tr> <tr><td>7</td><td>7</td></tr> <tr><td>4</td><td>4</td></tr> <tr><td>9</td><td>9</td></tr> </table>	N	S	8	8	7	4	6	6	9	8	4	4	E	W	4	4	5	5	7	7	4	4	9	9	<p>18 E/NS</p> <p>♠ 85 ♥ AKJ86 ♦ QT9 ♣ 983</p> <p>♠ A9 ♥ T3 ♦ AKJ7 ♣ AT754</p> <p>♠ QJT3 ♥ 9754 ♦ 432 ♣ Q2</p> <p>♠ K7642 ♥ Q2 ♦ 865 ♣ KJ6</p> <p>10 16 5 9</p>	<table border="1"> <tr><td>N</td><td>S</td></tr> <tr><td>6</td><td>7</td></tr> <tr><td>6</td><td>6</td></tr> <tr><td>6</td><td>7</td></tr> <tr><td>5</td><td>5</td></tr> <tr><td>5</td><td>5</td></tr> </table> <p>Opt res: EW 2D/2C;-90</p> <table border="1"> <tr><td>E</td><td>W</td></tr> <tr><td>6</td><td>6</td></tr> <tr><td>7</td><td>7</td></tr> <tr><td>6</td><td>6</td></tr> <tr><td>8</td><td>8</td></tr> <tr><td>8</td><td>8</td></tr> </table>	N	S	6	7	6	6	6	7	5	5	5	5	E	W	6	6	7	7	6	6	8	8	8	8
N	S																																																																												
4	4																																																																												
10	10																																																																												
4	4																																																																												
3	3																																																																												
6	6																																																																												
E	W																																																																												
4	4																																																																												
2	2																																																																												
7	7																																																																												
9	9																																																																												
6	6																																																																												
N	S																																																																												
8	8																																																																												
7	4																																																																												
6	6																																																																												
9	8																																																																												
4	4																																																																												
E	W																																																																												
4	4																																																																												
5	5																																																																												
7	7																																																																												
4	4																																																																												
9	9																																																																												
N	S																																																																												
6	7																																																																												
6	6																																																																												
6	7																																																																												
5	5																																																																												
5	5																																																																												
E	W																																																																												
6	6																																																																												
7	7																																																																												
6	6																																																																												
8	8																																																																												
8	8																																																																												
<p>19 S/EW</p> <p>♠ KT542 ♥ A3 ♦ J42 ♣ A52</p> <p>♠ Q8 ♥ 865 ♦ KT653 ♣ QJ3</p> <p>♠ AJ73 ♥ QJT ♦ AQ ♣ K864</p> <p>♠ 96 ♥ K9742 ♦ 987 ♣ T97</p> <p>12 8 17 3</p>	<table border="1"> <tr><td>N</td><td>S</td></tr> <tr><td>3</td><td>3</td></tr> <tr><td>5</td><td>5</td></tr> <tr><td>5</td><td>5</td></tr> <tr><td>4</td><td>4</td></tr> <tr><td>4</td><td>4</td></tr> </table> <p>Opt res: EW 3N;-630</p> <table border="1"> <tr><td>E</td><td>W</td></tr> <tr><td>10</td><td>10</td></tr> <tr><td>8</td><td>8</td></tr> <tr><td>8</td><td>8</td></tr> <tr><td>9</td><td>9</td></tr> <tr><td>9</td><td>9</td></tr> </table>	N	S	3	3	5	5	5	5	4	4	4	4	E	W	10	10	8	8	8	8	9	9	9	9	<p>20 W/All</p> <p>♠ AK52 ♥ 82 ♦ T863 ♣ QT9</p> <p>♠ Q3 ♥ KQ9 ♦ QJ952 ♣ 762</p> <p>♠ J9874 ♥ J43 ♦ A ♣ AJ83</p> <p>♠ T6 ♥ AT765 ♦ K74 ♣ K54</p> <p>9 10 11 10</p>	<table border="1"> <tr><td>N</td><td>S</td></tr> <tr><td>6</td><td>6</td></tr> <tr><td>6</td><td>6</td></tr> <tr><td>7</td><td>7</td></tr> <tr><td>7</td><td>7</td></tr> <tr><td>5</td><td>5</td></tr> </table> <p>Opt res: EW 1S;-80</p> <table border="1"> <tr><td>E</td><td>W</td></tr> <tr><td>6</td><td>6</td></tr> <tr><td>7</td><td>7</td></tr> <tr><td>5</td><td>5</td></tr> <tr><td>5</td><td>5</td></tr> <tr><td>7</td><td>7</td></tr> </table>	N	S	6	6	6	6	7	7	7	7	5	5	E	W	6	6	7	7	5	5	5	5	7	7	<p>21 N/NS</p> <p>♠ 872 ♥ KQT75 ♦ K7 ♣ T65</p> <p>♠ AJ3 ♥ J632 ♦ 982 ♣ AQ7</p> <p>♠ KQT ♥ 84 ♦ QJT63 ♣ KJ2</p> <p>♠ 9654 ♥ A9 ♦ A54 ♣ 9843</p> <p>8 12 12 8</p>	<table border="1"> <tr><td>N</td><td>S</td></tr> <tr><td>7</td><td>7</td></tr> <tr><td>6</td><td>6</td></tr> <tr><td>7</td><td>7</td></tr> <tr><td>4</td><td>4</td></tr> <tr><td>6</td><td>6</td></tr> </table> <p>Opt res: EW 2D;-110</p> <table border="1"> <tr><td>E</td><td>W</td></tr> <tr><td>6</td><td>6</td></tr> <tr><td>6</td><td>6</td></tr> <tr><td>6</td><td>6</td></tr> <tr><td>9</td><td>9</td></tr> <tr><td>6</td><td>6</td></tr> </table>	N	S	7	7	6	6	7	7	4	4	6	6	E	W	6	6	6	6	6	6	9	9	6	6
N	S																																																																												
3	3																																																																												
5	5																																																																												
5	5																																																																												
4	4																																																																												
4	4																																																																												
E	W																																																																												
10	10																																																																												
8	8																																																																												
8	8																																																																												
9	9																																																																												
9	9																																																																												
N	S																																																																												
6	6																																																																												
6	6																																																																												
7	7																																																																												
7	7																																																																												
5	5																																																																												
E	W																																																																												
6	6																																																																												
7	7																																																																												
5	5																																																																												
5	5																																																																												
7	7																																																																												
N	S																																																																												
7	7																																																																												
6	6																																																																												
7	7																																																																												
4	4																																																																												
6	6																																																																												
E	W																																																																												
6	6																																																																												
6	6																																																																												
6	6																																																																												
9	9																																																																												
6	6																																																																												
<p>22 E/EW</p> <p>♠ A65 ♥ KQ543 ♦ AKT ♣ K3</p> <p>♠ 83 ♥ AJ72 ♦ 532 ♣ T972</p> <p>♠ KT972 ♥ T86 ♦ Q76 ♣ 85</p> <p>♠ QJ4 ♥ 9 ♦ J984 ♣ AQJ64</p> <p>19 5 5 11</p>	<table border="1"> <tr><td>N</td><td>S</td></tr> <tr><td>10</td><td>10</td></tr> <tr><td>9</td><td>9</td></tr> <tr><td>9</td><td>9</td></tr> <tr><td>11</td><td>10</td></tr> <tr><td>11</td><td>11</td></tr> </table> <p>Opt res: NS 3N;430</p> <table border="1"> <tr><td>E</td><td>W</td></tr> <tr><td>3</td><td>3</td></tr> <tr><td>4</td><td>4</td></tr> <tr><td>4</td><td>4</td></tr> <tr><td>2</td><td>2</td></tr> <tr><td>2</td><td>2</td></tr> </table>	N	S	10	10	9	9	9	9	11	10	11	11	E	W	3	3	4	4	4	4	2	2	2	2	<p>23 S/All</p> <p>♠ 985 ♥ Q863 ♦ J9742 ♣ 9</p> <p>♠ T63 ♥ JT742 ♦ T5 ♣ J63</p> <p>♠ AQJ ♥ K5 ♦ K8 ♣ AKT872</p> <p>♠ K742 ♥ A9 ♦ AQ63 ♣ Q54</p> <p>3 2 20 15</p>	<table border="1"> <tr><td>N</td><td>S</td></tr> <tr><td>6</td><td>6</td></tr> <tr><td>8</td><td>7</td></tr> <tr><td>7</td><td>6</td></tr> <tr><td>9</td><td>9</td></tr> <tr><td>5</td><td>4</td></tr> </table> <p>Opt res: NS 3D;110</p> <table border="1"> <tr><td>E</td><td>W</td></tr> <tr><td>6</td><td>5</td></tr> <tr><td>5</td><td>5</td></tr> <tr><td>6</td><td>6</td></tr> <tr><td>3</td><td>3</td></tr> <tr><td>9</td><td>8</td></tr> </table>	N	S	6	6	8	7	7	6	9	9	5	4	E	W	6	5	5	5	6	6	3	3	9	8	<p>24 W/-</p> <p>♠ 5 ♥ T7543 ♦ KT76 ♣ K85</p> <p>♠ AQT ♥ AJ8 ♦ 85 ♣ AJ963</p> <p>♠ J42 ♥ KQ92 ♦ J943 ♣ QT</p> <p>♠ K98763 ♥ 6 ♦ AQ2 ♣ 742</p> <p>6 16 9 9</p>	<table border="1"> <tr><td>N</td><td>S</td></tr> <tr><td>4</td><td>4</td></tr> <tr><td>7</td><td>7</td></tr> <tr><td>4</td><td>4</td></tr> <tr><td>6</td><td>6</td></tr> <tr><td>3</td><td>3</td></tr> </table> <p>Opt res: EW 3N;-400</p> <table border="1"> <tr><td>E</td><td>W</td></tr> <tr><td>9</td><td>9</td></tr> <tr><td>6</td><td>6</td></tr> <tr><td>8</td><td>8</td></tr> <tr><td>7</td><td>7</td></tr> <tr><td>9</td><td>9</td></tr> </table>	N	S	4	4	7	7	4	4	6	6	3	3	E	W	9	9	6	6	8	8	7	7	9	9
N	S																																																																												
10	10																																																																												
9	9																																																																												
9	9																																																																												
11	10																																																																												
11	11																																																																												
E	W																																																																												
3	3																																																																												
4	4																																																																												
4	4																																																																												
2	2																																																																												
2	2																																																																												
N	S																																																																												
6	6																																																																												
8	7																																																																												
7	6																																																																												
9	9																																																																												
5	4																																																																												
E	W																																																																												
6	5																																																																												
5	5																																																																												
6	6																																																																												
3	3																																																																												
9	8																																																																												
N	S																																																																												
4	4																																																																												
7	7																																																																												
4	4																																																																												
6	6																																																																												
3	3																																																																												
E	W																																																																												
9	9																																																																												
6	6																																																																												
8	8																																																																												
7	7																																																																												
9	9																																																																												
<p>25 N/EW</p> <p>♠ Q63 ♥ 2 ♦ KT94 ♣ KJ752</p> <p>♠ K52 ♥ AQJ963 ♦ Q8 ♣ T6</p> <p>♠ AT8 ♥ T875 ♦ A76 ♣ A94</p> <p>♠ J974 ♥ K4 ♦ J532 ♣ Q83</p> <p>9 12 12 7</p>	<table border="1"> <tr><td>N</td><td>S</td></tr> <tr><td>3</td><td>3</td></tr> <tr><td>6</td><td>6</td></tr> <tr><td>3</td><td>3</td></tr> <tr><td>7</td><td>7</td></tr> <tr><td>7</td><td>7</td></tr> </table> <p>Opt res: EW 4N;-630</p> <table border="1"> <tr><td>E</td><td>W</td></tr> <tr><td>10</td><td>10</td></tr> <tr><td>7</td><td>7</td></tr> <tr><td>10</td><td>10</td></tr> <tr><td>5</td><td>6</td></tr> <tr><td>5</td><td>5</td></tr> </table>	N	S	3	3	6	6	3	3	7	7	7	7	E	W	10	10	7	7	10	10	5	6	5	5	<p>26 E/All</p> <p>♠ J9 ♥ AT ♦ J97632 ♣ KQ3</p> <p>♠ 54 ♥ 965 ♦ AT8 ♣ T9842</p> <p>♠ A632 ♥ KQ874 ♦ Q4 ♣ 65</p> <p>♠ KQT87 ♥ J32 ♦ K5 ♣ AJ7</p> <p>11 4 11 14</p>	<table border="1"> <tr><td>N</td><td>S</td></tr> <tr><td>9</td><td>7</td></tr> <tr><td>9</td><td>8</td></tr> <tr><td>6</td><td>6</td></tr> <tr><td>9</td><td>9</td></tr> <tr><td>7</td><td>7</td></tr> </table> <p>Opt res: N 3N;600</p> <table border="1"> <tr><td>E</td><td>W</td></tr> <tr><td>4</td><td>4</td></tr> <tr><td>4</td><td>4</td></tr> <tr><td>7</td><td>7</td></tr> <tr><td>4</td><td>4</td></tr> <tr><td>6</td><td>6</td></tr> </table>	N	S	9	7	9	8	6	6	9	9	7	7	E	W	4	4	4	4	7	7	4	4	6	6	<p>27 S/-</p> <p>♠ K4 ♥ AKT752 ♦ QJ96 ♣ 8</p> <p>♠ J32 ♥ - ♦ 743 ♣ KQJT654</p> <p>♠ QT85 ♥ J84 ♦ A8 ♣ A973</p> <p>♠ A976 ♥ Q963 ♦ KT52 ♣ 2</p> <p>13 7 11 9</p>	<table border="1"> <tr><td>N</td><td>S</td></tr> <tr><td>5</td><td>5</td></tr> <tr><td>6</td><td>6</td></tr> <tr><td>11</td><td>11</td></tr> <tr><td>9</td><td>9</td></tr> <tr><td>3</td><td>3</td></tr> </table> <p>Opt res: NS 5H;450</p> <table border="1"> <tr><td>E</td><td>W</td></tr> <tr><td>5</td><td>5</td></tr> <tr><td>7</td><td>7</td></tr> <tr><td>2</td><td>2</td></tr> <tr><td>4</td><td>4</td></tr> <tr><td>9</td><td>9</td></tr> </table>	N	S	5	5	6	6	11	11	9	9	3	3	E	W	5	5	7	7	2	2	4	4	9	9
N	S																																																																												
3	3																																																																												
6	6																																																																												
3	3																																																																												
7	7																																																																												
7	7																																																																												
E	W																																																																												
10	10																																																																												
7	7																																																																												
10	10																																																																												
5	6																																																																												
5	5																																																																												
N	S																																																																												
9	7																																																																												
9	8																																																																												
6	6																																																																												
9	9																																																																												
7	7																																																																												
E	W																																																																												
4	4																																																																												
4	4																																																																												
7	7																																																																												
4	4																																																																												
6	6																																																																												
N	S																																																																												
5	5																																																																												
6	6																																																																												
11	11																																																																												
9	9																																																																												
3	3																																																																												
E	W																																																																												
5	5																																																																												
7	7																																																																												
2	2																																																																												
4	4																																																																												
9	9																																																																												
<p>28 W/NS</p> <p>♠ J95 ♥ KQ4 ♦ KJ73 ♣ 963</p> <p>♠ AQT64 ♥ T87 ♦ 2 ♣ QT84</p> <p>♠ 2 ♥ J96 ♦ AQT94 ♣ AKJ2</p> <p>♠ K873 ♥ A532 ♦ 865 ♣ 75</p> <p>10 8 15 7</p>	<table border="1"> <tr><td>N</td><td>S</td></tr> <tr><td>5</td><td>5</td></tr> <tr><td>4</td><td>4</td></tr> <tr><td>4</td><td>4</td></tr> <tr><td>4</td><td>4</td></tr> <tr><td>2</td><td>2</td></tr> </table> <p>Opt res: EW 2C;-130</p> <table border="1"> <tr><td>E</td><td>W</td></tr> <tr><td>8</td><td>8</td></tr> <tr><td>8</td><td>8</td></tr> <tr><td>7</td><td>7</td></tr> <tr><td>9</td><td>9</td></tr> <tr><td>10</td><td>10</td></tr> </table>	N	S	5	5	4	4	4	4	4	4	2	2	E	W	8	8	8	8	7	7	9	9	10	10	<p>29 N/All</p> <p>♠ AKQ5 ♥ T542 ♦ J7 ♣ QJ3</p> <p>♠ J2 ♥ A9 ♦ Q8642 ♣ T964</p> <p>♠ T973 ♥ 763 ♦ K953 ♣ AK</p> <p>♠ 864 ♥ KQJ8 ♦ AT ♣ 8752</p> <p>13 7 10 10</p>	<table border="1"> <tr><td>N</td><td>S</td></tr> <tr><td>6</td><td>6</td></tr> <tr><td>7</td><td>7</td></tr> <tr><td>8</td><td>8</td></tr> <tr><td>4</td><td>4</td></tr> <tr><td>7</td><td>7</td></tr> </table> <p>Opt res: EW 3D;-110</p> <table border="1"> <tr><td>E</td><td>W</td></tr> <tr><td>6</td><td>6</td></tr> <tr><td>6</td><td>6</td></tr> <tr><td>4</td><td>4</td></tr> <tr><td>9</td><td>9</td></tr> <tr><td>6</td><td>6</td></tr> </table>	N	S	6	6	7	7	8	8	4	4	7	7	E	W	6	6	6	6	4	4	9	9	6	6	<p>30 E/-</p> <p>♠ T5 ♥ QT873 ♦ Q7 ♣ AT87</p> <p>♠ Q762 ♥ A64 ♦ 4 ♣ Q6542</p> <p>♠ AKJ8 ♥ K2 ♦ KJT95 ♣ J3</p> <p>♠ 943 ♥ J95 ♦ A8632 ♣ K9</p> <p>8 8 16 8</p>	<table border="1"> <tr><td>N</td><td>S</td></tr> <tr><td>4</td><td>4</td></tr> <tr><td>3</td><td>3</td></tr> <tr><td>7</td><td>7</td></tr> <tr><td>4</td><td>4</td></tr> <tr><td>5</td><td>5</td></tr> </table> <p>Opt res: EW 4S;-420</p> <table border="1"> <tr><td>E</td><td>W</td></tr> <tr><td>9</td><td>9</td></tr> <tr><td>10</td><td>10</td></tr> <tr><td>6</td><td>6</td></tr> <tr><td>9</td><td>9</td></tr> <tr><td>8</td><td>8</td></tr> </table>	N	S	4	4	3	3	7	7	4	4	5	5	E	W	9	9	10	10	6	6	9	9	8	8
N	S																																																																												
5	5																																																																												
4	4																																																																												
4	4																																																																												
4	4																																																																												
2	2																																																																												
E	W																																																																												
8	8																																																																												
8	8																																																																												
7	7																																																																												
9	9																																																																												
10	10																																																																												
N	S																																																																												
6	6																																																																												
7	7																																																																												
8	8																																																																												
4	4																																																																												
7	7																																																																												
E	W																																																																												
6	6																																																																												
6	6																																																																												
4	4																																																																												
9	9																																																																												
6	6																																																																												
N	S																																																																												
4	4																																																																												
3	3																																																																												
7	7																																																																												
4	4																																																																												
5	5																																																																												
E	W																																																																												
9	9																																																																												
10	10																																																																												
6	6																																																																												
9	9																																																																												
8	8																																																																												

<p>31 ♠ KT2 ♥ KT2 ♦ KQT9 ♣ QT7</p> <p>♠ AJ9864 ♠ Q ♥ 63 ♥ J874 ♦ AJ86 ♦ 52 ♣ K ♣ A98432</p> <p>13 ♠ 753 13 7 ♥ AQ95 7 ♦ 743 ♣ J65</p>	<table border="1"> <tr><td>N</td><td>S</td></tr> <tr><td>6</td><td>6</td></tr> <tr><td>6</td><td>6</td></tr> <tr><td>6</td><td>6</td></tr> <tr><td>6</td><td>6</td></tr> <tr><td>5</td><td>5</td></tr> </table> <p>Opt res: EW 1S;-80</p> <table border="1"> <tr><td>E</td><td>W</td></tr> <tr><td>5</td><td>5</td></tr> <tr><td>7</td><td>7</td></tr> <tr><td>5</td><td>5</td></tr> <tr><td>6</td><td>6</td></tr> <tr><td>7</td><td>7</td></tr> </table>	N	S	6	6	6	6	6	6	6	6	5	5	E	W	5	5	7	7	5	5	6	6	7	7	<p>32 ♠ J976 ♥ Q6 ♦ AKJ64 ♣ T2</p> <p>♠ 52 ♠ AKQ3 ♥ A2 ♥ J983 ♦ T8 ♦ 32 ♣ AK87654 ♣ Q93</p> <p>11 ♠ T84 11 12 ♥ KT754 6 ♦ Q975 ♣ J</p>	<table border="1"> <tr><td>N</td><td>S</td></tr> <tr><td>2</td><td>2</td></tr> <tr><td>3</td><td>3</td></tr> <tr><td>6</td><td>6</td></tr> <tr><td>7</td><td>7</td></tr> <tr><td>2</td><td>2</td></tr> </table> <p>Opt res: EW 5C;-600</p> <table border="1"> <tr><td>E</td><td>W</td></tr> <tr><td>8</td><td>8</td></tr> <tr><td>8</td><td>8</td></tr> <tr><td>6</td><td>6</td></tr> <tr><td>5</td><td>5</td></tr> <tr><td>11</td><td>11</td></tr> </table>	N	S	2	2	3	3	6	6	7	7	2	2	E	W	8	8	8	8	6	6	5	5	11	11	<p>33 ♠ JT4 ♥ JT6 ♦ AKQT6 ♣ J7</p> <p>♠ AQ9 ♠ K7653 ♥ K4 ♥ AQ8 ♦ J97 ♦ 854 ♣ AKQ83 ♣ 65</p> <p>12 ♠ 82 19 9 ♥ 97532 0 ♦ 32 ♣ T942</p>	<table border="1"> <tr><td>N</td><td>S</td></tr> <tr><td>2</td><td>2</td></tr> <tr><td>1</td><td>1</td></tr> <tr><td>5</td><td>5</td></tr> <tr><td>5</td><td>5</td></tr> <tr><td>3</td><td>3</td></tr> </table> <p>Opt res: EW 4S;-420</p> <table border="1"> <tr><td>E</td><td>W</td></tr> <tr><td>8</td><td>8</td></tr> <tr><td>10</td><td>10</td></tr> <tr><td>7</td><td>7</td></tr> <tr><td>8</td><td>8</td></tr> <tr><td>9</td><td>9</td></tr> </table>	N	S	2	2	1	1	5	5	5	5	3	3	E	W	8	8	10	10	7	7	8	8	9	9		
N	S																																																																														
6	6																																																																														
6	6																																																																														
6	6																																																																														
6	6																																																																														
5	5																																																																														
E	W																																																																														
5	5																																																																														
7	7																																																																														
5	5																																																																														
6	6																																																																														
7	7																																																																														
N	S																																																																														
2	2																																																																														
3	3																																																																														
6	6																																																																														
7	7																																																																														
2	2																																																																														
E	W																																																																														
8	8																																																																														
8	8																																																																														
6	6																																																																														
5	5																																																																														
11	11																																																																														
N	S																																																																														
2	2																																																																														
1	1																																																																														
5	5																																																																														
5	5																																																																														
3	3																																																																														
E	W																																																																														
8	8																																																																														
10	10																																																																														
7	7																																																																														
8	8																																																																														
9	9																																																																														
<p>34 ♠ K8 ♥ AJ85 ♦ JT865 ♣ K3</p> <p>♠ JT9632 ♠ A75 ♥ QT2 ♥ 7643 ♦ AK ♦ 92 ♣ A9 ♣ J652</p> <p>12 ♠ Q4 14 5 ♥ K9 9 ♦ Q743 ♣ QT874</p>	<table border="1"> <tr><td>N</td><td>S</td></tr> <tr><td>5</td><td>5</td></tr> <tr><td>5</td><td>5</td></tr> <tr><td>7</td><td>7</td></tr> <tr><td>9</td><td>9</td></tr> <tr><td>9</td><td>9</td></tr> <tr><td>8</td><td>8</td></tr> </table> <p>Opt res: EW 3SX;100</p> <table border="1"> <tr><td>E</td><td>W</td></tr> <tr><td>6</td><td>6</td></tr> <tr><td>8</td><td>8</td></tr> <tr><td>6</td><td>6</td></tr> <tr><td>3</td><td>3</td></tr> <tr><td>5</td><td>5</td></tr> </table>	N	S	5	5	5	5	7	7	9	9	9	9	8	8	E	W	6	6	8	8	6	6	3	3	5	5	<p>35 ♠ 84 ♥ KQ ♦ AQT74 ♣ KT75</p> <p>♠ T65 ♠ KQ932 ♥ A96432 ♥ 5 ♦ J5 ♦ 632 ♣ J4 ♣ AQ32</p> <p>14 ♠ AJ7 6 11 ♥ JT87 9 ♦ K98 ♣ 986</p>	<table border="1"> <tr><td>N</td><td>S</td></tr> <tr><td>9</td><td>9</td></tr> <tr><td>5</td><td>5</td></tr> <tr><td>7</td><td>7</td></tr> <tr><td>8</td><td>8</td></tr> <tr><td>8</td><td>8</td></tr> </table> <p>Opt res: NS 3N;400</p> <table border="1"> <tr><td>E</td><td>W</td></tr> <tr><td>4</td><td>4</td></tr> <tr><td>7</td><td>7</td></tr> <tr><td>6</td><td>6</td></tr> <tr><td>4</td><td>4</td></tr> <tr><td>5</td><td>5</td></tr> </table>	N	S	9	9	5	5	7	7	8	8	8	8	E	W	4	4	7	7	6	6	4	4	5	5	<p>36 ♠ 872 ♥ AKT8 ♦ Q532 ♣ J2</p> <p>♠ Q96 ♠ 43 ♥ J2 ♥ 653 ♦ JT87 ♦ K4 ♣ KT76 ♣ A98543</p> <p>10 ♠ AKJT5 7 7 ♥ Q974 16 ♦ A96 ♣ Q</p>	<table border="1"> <tr><td>N</td><td>S</td></tr> <tr><td>7</td><td>7</td></tr> <tr><td>10</td><td>10</td></tr> <tr><td>10</td><td>10</td></tr> <tr><td>9</td><td>9</td></tr> <tr><td>5</td><td>5</td></tr> </table> <p>Opt res: NS 4S/4H;620</p> <table border="1"> <tr><td>E</td><td>W</td></tr> <tr><td>6</td><td>6</td></tr> <tr><td>3</td><td>3</td></tr> <tr><td>3</td><td>3</td></tr> <tr><td>4</td><td>4</td></tr> <tr><td>8</td><td>8</td></tr> </table>	N	S	7	7	10	10	10	10	9	9	5	5	E	W	6	6	3	3	3	3	4	4	8	8
N	S																																																																														
5	5																																																																														
5	5																																																																														
7	7																																																																														
9	9																																																																														
9	9																																																																														
8	8																																																																														
E	W																																																																														
6	6																																																																														
8	8																																																																														
6	6																																																																														
3	3																																																																														
5	5																																																																														
N	S																																																																														
9	9																																																																														
5	5																																																																														
7	7																																																																														
8	8																																																																														
8	8																																																																														
E	W																																																																														
4	4																																																																														
7	7																																																																														
6	6																																																																														
4	4																																																																														
5	5																																																																														
N	S																																																																														
7	7																																																																														
10	10																																																																														
10	10																																																																														
9	9																																																																														
5	5																																																																														
E	W																																																																														
6	6																																																																														
3	3																																																																														
3	3																																																																														
4	4																																																																														
8	8																																																																														
<p>37 ♠ Q4 ♥ 98 ♦ KJ86 ♣ K6542</p> <p>♠ T98 ♠ 7532 ♥ 65432 ♥ KJ ♦ 32 ♦ AQ97 ♣ AQT ♣ J97</p> <p>9 ♠ AKJ6 6 11 ♥ AQT7 14 ♦ T54 ♣ 83</p>	<table border="1"> <tr><td>N</td><td>S</td></tr> <tr><td>9</td><td>9</td></tr> <tr><td>9</td><td>9</td></tr> <tr><td>9</td><td>9</td></tr> <tr><td>9</td><td>9</td></tr> <tr><td>8</td><td>8</td></tr> </table> <p>Opt res: NS 3N;600</p> <table border="1"> <tr><td>E</td><td>W</td></tr> <tr><td>4</td><td>4</td></tr> <tr><td>4</td><td>4</td></tr> <tr><td>4</td><td>4</td></tr> <tr><td>3</td><td>3</td></tr> <tr><td>5</td><td>5</td></tr> </table>	N	S	9	9	9	9	9	9	9	9	8	8	E	W	4	4	4	4	4	4	3	3	5	5	<p>38 ♠ K2 ♥ AKJ83 ♦ AKT8 ♣ K5</p> <p>♠ J865 ♠ QT9743 ♥ T654 ♥ 72 ♦ Q9 ♦ 54 ♣ QT7 ♣ J94</p> <p>21 ♠ A 5 3 ♥ Q9 11 ♦ J7632 ♣ A8632</p>	<table border="1"> <tr><td>N</td><td>S</td></tr> <tr><td>13</td><td>13</td></tr> <tr><td>8</td><td>8</td></tr> <tr><td>13</td><td>13</td></tr> <tr><td>13</td><td>13</td></tr> <tr><td>12</td><td>12</td></tr> </table> <p>Opt res: NS 7N;1520</p> <table border="1"> <tr><td>E</td><td>W</td></tr> <tr><td>-</td><td>-</td></tr> <tr><td>4</td><td>4</td></tr> <tr><td>-</td><td>-</td></tr> <tr><td>-</td><td>-</td></tr> <tr><td>1</td><td>1</td></tr> </table>	N	S	13	13	8	8	13	13	13	13	12	12	E	W	-	-	4	4	-	-	-	-	1	1	<p>39 ♠ T3 ♥ AKQ863 ♦ QT2 ♣ J9</p> <p>♠ AKQJ85 ♠ 764 ♥ T94 ♥ 52 ♦ KJ7 ♦ A863 ♣ 7 ♣ AT83</p> <p>12 ♠ 92 14 8 ♥ J7 6 ♦ 954 ♣ KQ6542</p>	<table border="1"> <tr><td>N</td><td>S</td></tr> <tr><td>4</td><td>4</td></tr> <tr><td>3</td><td>3</td></tr> <tr><td>7</td><td>7</td></tr> <tr><td>3</td><td>3</td></tr> <tr><td>7</td><td>7</td></tr> </table> <p>Opt res: EW 1S;-140</p> <table border="1"> <tr><td>E</td><td>W</td></tr> <tr><td>7</td><td>7</td></tr> <tr><td>9</td><td>9</td></tr> <tr><td>6</td><td>6</td></tr> <tr><td>8</td><td>8</td></tr> <tr><td>5</td><td>5</td></tr> </table>	N	S	4	4	3	3	7	7	3	3	7	7	E	W	7	7	9	9	6	6	8	8	5	5		
N	S																																																																														
9	9																																																																														
9	9																																																																														
9	9																																																																														
9	9																																																																														
8	8																																																																														
E	W																																																																														
4	4																																																																														
4	4																																																																														
4	4																																																																														
3	3																																																																														
5	5																																																																														
N	S																																																																														
13	13																																																																														
8	8																																																																														
13	13																																																																														
13	13																																																																														
12	12																																																																														
E	W																																																																														
-	-																																																																														
4	4																																																																														
-	-																																																																														
-	-																																																																														
1	1																																																																														
N	S																																																																														
4	4																																																																														
3	3																																																																														
7	7																																																																														
3	3																																																																														
7	7																																																																														
E	W																																																																														
7	7																																																																														
9	9																																																																														
6	6																																																																														
8	8																																																																														
5	5																																																																														
<p>40 ♠ K3 ♥ 96542 ♦ K ♣ KQ532</p> <p>♠ A982 ♠ J654 ♥ AT7 ♥ J ♦ J2 ♦ AT8764 ♣ AT98 ♣ J4</p> <p>11 ♠ QT7 13 7 ♥ KQ83 9 ♦ Q953 ♣ 76</p>	<table border="1"> <tr><td>N</td><td>S</td></tr> <tr><td>6</td><td>6</td></tr> <tr><td>4</td><td>4</td></tr> <tr><td>8</td><td>8</td></tr> <tr><td>5</td><td>5</td></tr> <tr><td>6</td><td>6</td></tr> </table> <p>Opt res: NS 3HX;-100</p> <table border="1"> <tr><td>E</td><td>W</td></tr> <tr><td>6</td><td>6</td></tr> <tr><td>8</td><td>8</td></tr> <tr><td>5</td><td>5</td></tr> <tr><td>8</td><td>8</td></tr> <tr><td>6</td><td>6</td></tr> </table>	N	S	6	6	4	4	8	8	5	5	6	6	E	W	6	6	8	8	5	5	8	8	6	6	<p>41 ♠ K4 ♥ Q97 ♦ KQ643 ♣ 973</p> <p>♠ 865 ♠ A932 ♥ AK62 ♥ JT4 ♦ T9 ♦ A82 ♣ AKJ4 ♣ Q85</p> <p>10 ♠ QJT7 15 11 ♥ 853 4 ♦ J75 ♣ T62</p>	<table border="1"> <tr><td>N</td><td>S</td></tr> <tr><td>4</td><td>4</td></tr> <tr><td>4</td><td>4</td></tr> <tr><td>4</td><td>4</td></tr> <tr><td>6</td><td>6</td></tr> <tr><td>4</td><td>4</td></tr> </table> <p>Opt res: EW 1H;-140</p> <table border="1"> <tr><td>E</td><td>W</td></tr> <tr><td>8</td><td>8</td></tr> <tr><td>8</td><td>8</td></tr> <tr><td>9</td><td>9</td></tr> <tr><td>7</td><td>7</td></tr> <tr><td>9</td><td>9</td></tr> </table>	N	S	4	4	4	4	4	4	6	6	4	4	E	W	8	8	8	8	9	9	7	7	9	9	<p>42 ♠ K86 ♥ J764 ♦ K9 ♣ J953</p> <p>♠ T32 ♠ AJ975 ♥ Q9853 ♥ 2 ♦ Q42 ♦ T85 ♣ 74 ♣ AKT2</p> <p>8 ♠ Q4 4 12 ♥ AKT 16 ♦ AJ763 ♣ Q86</p>	<table border="1"> <tr><td>N</td><td>S</td></tr> <tr><td>8</td><td>8</td></tr> <tr><td>6</td><td>6</td></tr> <tr><td>8</td><td>8</td></tr> <tr><td>8</td><td>8</td></tr> <tr><td>8</td><td>8</td></tr> </table> <p>Opt res: NS 1N;120</p> <table border="1"> <tr><td>E</td><td>W</td></tr> <tr><td>5</td><td>5</td></tr> <tr><td>7</td><td>7</td></tr> <tr><td>5</td><td>5</td></tr> <tr><td>5</td><td>4</td></tr> <tr><td>5</td><td>5</td></tr> </table>	N	S	8	8	6	6	8	8	8	8	8	8	E	W	5	5	7	7	5	5	5	4	5	5		
N	S																																																																														
6	6																																																																														
4	4																																																																														
8	8																																																																														
5	5																																																																														
6	6																																																																														
E	W																																																																														
6	6																																																																														
8	8																																																																														
5	5																																																																														
8	8																																																																														
6	6																																																																														
N	S																																																																														
4	4																																																																														
4	4																																																																														
4	4																																																																														
6	6																																																																														
4	4																																																																														
E	W																																																																														
8	8																																																																														
8	8																																																																														
9	9																																																																														
7	7																																																																														
9	9																																																																														
N	S																																																																														
8	8																																																																														
6	6																																																																														
8	8																																																																														
8	8																																																																														
8	8																																																																														
E	W																																																																														
5	5																																																																														
7	7																																																																														
5	5																																																																														
5	4																																																																														
5	5																																																																														
<p>43 ♠ 852 ♥ 8643 ♦ KJ7 ♣ 965</p> <p>♠ K4 ♠ JT6 ♥ QJ92 ♥ AK75 ♦ AQ832 ♦ 9 ♣ 32 ♣ AQT87</p> <p>4 ♠ AQ973 12 14 ♥ T 10 ♦ T654 ♣ KJ4</p>	<table border="1"> <tr><td>N</td><td>S</td></tr> <tr><td>5</td><td>5</td></tr> <tr><td>7</td><td>7</td></tr> <tr><td>2</td><td>2</td></tr> <tr><td>5</td><td>5</td></tr> <tr><td>3</td><td>3</td></tr> </table> <p>Opt res: EW 4H;-420</p> <table border="1"> <tr><td>E</td><td>W</td></tr> <tr><td>7</td><td>7</td></tr> <tr><td>5</td><td>5</td></tr> <tr><td>10</td><td>10</td></tr> <tr><td>8</td><td>8</td></tr> <tr><td>10</td><td>10</td></tr> </table>	N	S	5	5	7	7	2	2	5	5	3	3	E	W	7	7	5	5	10	10	8	8	10	10	<p>44 ♠ AT9 ♥ KQT ♦ QJ85 ♣ 652</p> <p>♠ KJ85 ♠ Q74 ♥ A5432 ♥ 86 ♦ 2 ♦ AKT ♣ QJ4 ♣ AT983</p> <p>12 ♠ 632 11 13 ♥ J97 4 ♦ 97643 ♣ K7</p>	<table border="1"> <tr><td>N</td><td>S</td></tr> <tr><td>4</td><td>4</td></tr> <tr><td>3</td><td>3</td></tr> <tr><td>4</td><td>4</td></tr> <tr><td>6</td><td>6</td></tr> <tr><td>3</td><td>3</td></tr> </table> <p>Opt res: E 4S;-420</p> <table border="1"> <tr><td>E</td><td>W</td></tr> <tr><td>9</td><td>9</td></tr> <tr><td>10</td><td>9</td></tr> <tr><td>9</td><td>8</td></tr> <tr><td>7</td><td>7</td></tr> <tr><td>10</td><td>10</td></tr> </table>	N	S	4	4	3	3	4	4	6	6	3	3	E	W	9	9	10	9	9	8	7	7	10	10	<p>45 ♠ 43 ♥ KJ832 ♦ KT2 ♣ 983</p> <p>♠ QJ9 ♠ T87 ♥ Q6 ♥ AT74 ♦ QJ9765 ♦ A8 ♣ J6 ♣ KT42</p> <p>7 ♠ AK652 9 11 ♥ 95 13 ♦ 43 ♣ AQ75</p>	<table border="1"> <tr><td>N</td><td>S</td></tr> <tr><td>6</td><td>6</td></tr> <tr><td>7</td><td>7</td></tr> <tr><td>8</td><td>8</td></tr> <tr><td>6</td><td>6</td></tr> <tr><td>8</td><td>8</td></tr> </table> <p>Opt res: NS 1H;110</p> <table border="1"> <tr><td>E</td><td>W</td></tr> <tr><td>6</td><td>6</td></tr> <tr><td>5</td><td>5</td></tr> <tr><td>5</td><td>5</td></tr> <tr><td>6</td><td>6</td></tr> <tr><td>5</td><td>5</td></tr> </table>	N	S	6	6	7	7	8	8	6	6	8	8	E	W	6	6	5	5	5	5	6	6	5	5		
N	S																																																																														
5	5																																																																														
7	7																																																																														
2	2																																																																														
5	5																																																																														
3	3																																																																														
E	W																																																																														
7	7																																																																														
5	5																																																																														
10	10																																																																														
8	8																																																																														
10	10																																																																														
N	S																																																																														
4	4																																																																														
3	3																																																																														
4	4																																																																														
6	6																																																																														
3	3																																																																														
E	W																																																																														
9	9																																																																														
10	9																																																																														
9	8																																																																														
7	7																																																																														
10	10																																																																														
N	S																																																																														
6	6																																																																														
7	7																																																																														
8	8																																																																														
6	6																																																																														
8	8																																																																														
E	W																																																																														
6	6																																																																														
5	5																																																																														
5	5																																																																														
6	6																																																																														
5	5																																																																														

1

♠ QJ1053
♥ A107
♦ AQJ
♣ 75

♠ 4
♥ J9632
♦ K984
♣ K84

♠ A97
♥ Q5
♦ 10762
♣ AQJ10

♠ K862
♥ K84
♦ 53
♣ 9632

W N E S

Av: NS=+160

N-S	E-W	Contract	N-S	E-W	IMP
17	1	4S	N 4	420	6
9	4	3S	N 4	170	0
1	17	3S	N 4	170	0
16	2	3S	N 4	170	0
15	12	3S	N 4	170	0
6	8	2S	N 4	170	0
8	6	2S	N 4	170	0
5	7	2S	N 4	170	0
10	13	2S	N 4	170	0
14	11	2S	N 4	170	0
11	14	2S	N 4	170	0
18	3	2S	N 4	170	0
3	18	2S	N 4	170	0
2	16	2S	N 4	170	0
4	9	2S	N 4	170	0
7	5	1NT	N 2	120	-1
12	15	1NT	S 1	90	-2
13	10	4S	N-1	50	-5

2

♠ AQ98
♥ K97
♦ A2
♣ 10876

♠ K
♥ J1043
♦ J987
♣ KQ93

♠ J62
♥ A652
♦ K543
♣ 54

♠ 107543
♥ Q8
♦ Q106
♣ AJ2

W N E S

Av: NS=+110

N-S	E-W	Contract	N-S	E-W	IMP
3	18	3S	S 4	170	2
14	11	3S	S 4	170	2
12	15	1NT	N 3	150	1
6	8	3S	S 3	140	1
8	6	3S	S 3	140	1
7	5	3S	S 3	140	1
9	4	3S	S 3	140	1
1	17	3S	S 3	140	1
15	12	2S	S 3	140	1
11	14	2S	S 3	140	1
5	7	2S	S 3	140	1
18	3	2S	S 3	140	1
13	10	2S	S 3	140	1
4	9	2S	S 3	140	1
10	13	2H	E-1	50	-2
2	16	4S	S-1	100	-5
17	1	3S	S-1	100	-5
16	2	3S	S-1	100	-5

3

♠ A
♥ Q
♦ KJ109762
♣ AK109

♠ Q875
♥ K
♦ 84
♣ QJ8642

♠ 96
♥ J97632
♦ AQ3
♣ 75

♠ KJ10432
♥ A10854
♦ 5
♣ 3

W N E S

Av: NS=+100

N-S	E-W	Contract	N-S	E-W	IMP
6	8	4NT	N 4	430	8
8	6	5D	N 5	400	7
15	12	5D	N 5	400	7
7	5	5D	N 5	400	7
17	1	5D	N 5	400	7
12	15	5D	N 5	400	7
4	9	3NT	N 3	400	7
2	16	5D	N-1	50	-4
11	14	5D	N-1	50	-4
18	3	4S	S-1	50	-4
3	18	3NT	N-1	50	-4
14	11	6Dx	N-1	100	-5
16	2	4S	S-2	100	-5
5	7	4S	S-2	100	-5
13	10	4S	S-2	100	-5
10	13	3NT	S-2	100	-5
1	17	4S	S-3	150	-6
9	4	3NT	S-4	200	-7

4

♠ Q3
♥ QJ964
♦ A943
♣ 97

♠ 1097
♥ A1072
♦ 107
♣ J832

♠ J642
♥ K5
♦ K5
♣ AK1065

♠ AK85
♥ 83
♦ QJ862
♣ Q4

W N E S

Av: NS=0

N-S	E-W	Contract	N-S	E-W	IMP
8	6	2D	S 3	110	3
1	17	2D	S 3	110	3
13	10	2D	S 3	110	3
18	3	2D	S 2	90	3
4	9	2D	S 2	90	3
14	11	2D	S 2	90	3
5	7	2D	S 2	90	3
7	5	2D	S 2	90	3
17	1	1H	N 1	80	2
2	16	3D	S-1	100	-3
9	4	3D	S-1	100	-3
16	2	3D	S-1	100	-3
3	18	3D	S-1	100	-3
10	13	3D	S-1	100	-3
15	12	3D	N-1	100	-3
12	15	3D	N-1	100	-3
11	14	2C	E 3	110	-3
6	8	1S	E 3	140	-4

5

♠ 10
♥ AK632
♦ QJ8
♣ KQJ2

♠ AQ8
♥ J74
♦ A1062
♣ A107

♠ KJ76
♥ 9
♦ K9754
♣ 943

♠ 95432
♥ Q1085
♦ 3
♣ 865

W N E S

Av: NS=+120

N-S	E-W	Contract	N-S	E-W	IMP
1	17	4Sx	E-4	800	12
10	13	4H	N 4	620	11
6	8	2H	N 5	200	2
2	16	3H	N 4	170	2
8	6	3H	N 4	170	2
5	7	3H	N 4	170	2
12	15	3H	N 4	170	2
14	11	1H	N 4	170	2
15	12	1H	N 4	170	2
7	5	3S	E-3	150	1
9	4	3Sx	E-1	100	-1
3	18	2S	E-2	100	-1
18	3	2S	W-1	50	-2
17	1	2S	E-1	50	-2
13	10	4H	N-1	100	-6
11	14	4H	N-1	100	-6
16	2	4H	N-1	100	-6
4	9	3D	E 3	110	-6

6

♠ 92
♥ Q103
♦ K82
♣ K10842

♠ 543
♥ AJ82
♦ J1095
♣ A3

♠ AQ10
♥ 954
♦ AQ643
♣ 76

♠ KJ876
♥ K76
♦ 7
♣ QJ95

W N E S

Av: NS=-80

N-S	E-W	Contract	N-S	E-W	IMP
6	8	3H	E-1	100	5
17	1	3D	E-1	100	5
12	15	3D	E-1	100	5
7	5	4C	S-1	50	1
16	2	4C	N-1	50	1
14	11	2D	E 2	90	0
8	6	1NT	E 1	90	0
13	10	3D	E 3	110	-1
4	9	3D	E 3	110	-1
15	12	2D	E 3	110	-1
5	7	2D	E 3	110	-1
2	16	2D	E 3	110	-1
1	17	2D	E 3	110	-1
18	3	2NT	E 2	120	-1
3	18	1NT	E 2	120	-1
10	13	1NT	E 2	120	-1
11	14	1NT	E 3	150	-2
9	4	1NT	E 3	150	-2

7

♠ J102
♥ K765
♦ J98
♣ A103

♠ K95
♥ A4
♦ A74
♣ KQ984

N
W—E
S

♠ Q87643
♥ QJ98
♦ Q52
♣

♠ A
♥ 1032
♦ K1063
♣ J7652

Av: NS=-220

N-S	E-W	Contract	N-S	E-W	IMP
7	5	4H	E-4	400	12
2	16	4S	W-2	200	9
1	17	4S	W-2	200	9
10	13	4S	W-2	200	9
13	10	4S	W-1	100	8
17	1	4S	W-1	100	8
12	15	4S	W-1	100	8
9	4	4S	W-1	100	8
4	9	4S	W-1	100	8
14	11	2S	W 4	170	2
16	2	4S	W 4	620	-9
5	7	4S	W 4	620	-9
15	12	4S	W 4	620	-9
3	18	4S	W 4	620	-9
11	14	4S	W 4	620	-9
6	8	4S	E 4	620	-9
18	3	4S	W 5	650	-10
8	6	4S	W 5	650	-10

8

♠ 3
♥ 10984
♦ J9854
♣ J98

♠ K86
♥ A53
♦ K32
♣ AQ102

N
W—E
S

♠ QJ4
♥ K6
♦ A1076
♣ K765

♠ A109752
♥ QJ72
♦ Q
♣ 43

Av: NS=-440

N-S	E-W	Contract	N-S	E-W	IMP
2	16	3NT	W 4	430	0
14	11	3NT	W 4	430	0
15	12	3NT	W 4	430	0
7	5	3NT	W 4	430	0
17	1	3NT	W 4	430	0
8	6	3NT	W 4	430	0
4	9	3NT	W 4	430	0
6	8	3NT	W 4	430	0
1	17	3NT	W 4	430	0
12	15	3NT	W 4	430	0
11	14	3NT	W 5	460	-1
9	4	3NT	W 5	460	-1
18	3	3NT	W 5	460	-1
16	2	3NT	W 5	460	-1
5	7	3NT	W 5	460	-1
13	10	3NT	W 5	460	-1
3	18	3NT	W 5	460	-1
10	13	3NT	W 6	490	-2

9

♠ J1075
♥ 8
♦ 1076
♣ J9532

♠ A864
♥ AQ52
♦ AK5
♣ K10

N
W—E
S

♠ KQ2
♥ 76
♦ QJ8432
♣ 74

♠ 93
♥ KJ10943
♦ 9
♣ AQ86

Av: NS=-640

N-S	E-W	Contract	N-S	E-W	IMP
14	11	3H	S-4	200	10
10	13	2NT	W 6	240	9
12	15	5D	E 6	620	1
1	17	3NT	W 5	660	-1
6	8	3NT	W 5	660	-1
18	3	3NT	W 5	660	-1
3	18	3NT	W 5	660	-1
4	9	3NT	W 5	660	-1
7	5	3NT	W 5	660	-1
15	12	3NT	W 5	660	-1
8	6	3NT	W 5	660	-1
11	14	3NT	E 5	660	-1
9	4	3NT	W 6	690	-2
13	10	3NT	W 6	690	-2
2	16	3NT	W 6	690	-2
17	1	3NT	W 6	690	-2
16	2	3NT	W 6	690	-2
5	7	3NT	W 7	720	-2

10

♠ 973
♥ 875
♦ AK832
♣ KQ

♠ A6
♥ KQ
♦ J1097
♣ AJ986

N
W—E
S

♠ K108
♥ J1062
♦ Q5
♣ 10742

♠ QJ542
♥ A943
♦ 64
♣ 53

Av: NS=-120

N-S	E-W	Contract	N-S	E-W	IMP
1	16	2S	S 2	110	6
8	4	2S	S 2	110	6
2	18	1NT	W 1	90	1
6	7	2H	N-1	100	1
13	11	3C	W 3	110	0
18	2	1NT	W 2	120	0
14	12	1NT	W 2	120	0
10	15	1NT	W 2	120	0
17	3	1NT	W 2	120	0
3	17	2NT	W 3	150	-1
7	6	1NT	W 3	150	-1
9	5	1NT	W 3	150	-1
15	10	1NT	W 3	150	-1
4	8	1NT	W 3	150	-1
11	13	1NT	W 3	150	-1
5	9	1NT	W 3	150	-1
16	1	1NT	W 4	180	-2
12	14	2D	N-2	200	-2

11

♠ KJ75
♥ KQ65
♦
♣ 106543

♠ A104
♥ 432
♦ 9864
♣ AQ9

N
W—E
S

♠ Q832
♥ 7
♦ J107
♣ KJ872

♠ 96
♥ AJ1098
♦ AKQ532
♣

Av: NS=+430

N-S	E-W	Contract	N-S	E-W	IMP
8	4	6H	S 6	980	11
4	8	5H	S 6	480	2
5	9	4H	S 6	480	2
10	15	4H	S 6	480	2
11	13	4H	S 6	480	2
14	12	4H	N 6	480	2
7	6	4H	N 6	480	2
12	14	4H	N 6	480	2
3	17	4H	N 6	480	2
17	3	4H	N 6	480	2
6	7	4H	N 6	480	2
13	11	4H	S 5	450	1
15	10	4H	S 5	450	1
18	2	4H	N 5	450	1
9	5	4H	S 4	420	0
2	18	4H	S 4	420	0
16	1	5H	S-1	50	-10
1	16	6Hx	S-1	100	-11

12

♠ J
♥ QJ42
♦ AK64
♣ K1064

♠ K972
♥ A65
♦ 1082
♣ 972

N
W—E
S

♠ A1086
♥ 73
♦ Q53
♣ J853

♠ Q543
♥ K1098
♦ J97
♣ AQ

Av: NS=+550

N-S	E-W	Contract	N-S	E-W	IMP
17	3	5H	S 5	650	3
1	16	4H	S 5	650	3
5	9	4H	S 5	650	3
10	15	4H	S 5	650	3
16	1	4H	S 4	620	2
7	6	4H	S 4	620	2
18	2	4H	S 4	620	2
2	18	4H	S 4	620	2
6	7	4H	S 4	620	2
8	4	4H	S 4	620	2
11	13	4H	S 4	620	2
14	12	4H	S 4	620	2
12	14	4H	S 4	620	2
15	10	4H	S 4	620	2
9	5	4H	S 4	620	2
3	17	1H	N 5	200	-8
4	8	4H	S-1	100	-12
13	11	4H	S-1	100	-12

13

♠42
 ♥Q74
 ♦J865
 ♣8754
 ♠AK93
 ♥A965
 ♦73
 ♣A92
 ♠Q105
 ♥103
 ♦AQ1092
 ♣QJ6
 ♠J876
 ♥KJ82
 ♦K4
 ♣K103

Av: NS=-610

N-S	E-W	Contract	N-S	E-W	IMP
13	11	3NT E 3	600		0
8	4	3NT E 3	600		0
18	2	3NT E 3	600		0
1	16	3NT E 3	600		0
4	8	3NT E 3	600		0
14	12	3NT E 3	600		0
10	15	3NT E 3	600		0
3	17	3NT E 3	600		0
9	5	3NT E 3	600		0
5	9	3NT E 3	600		0
2	18	3NT E 3	600		0
12	14	3NT E 4	630		-1
16	1	3NT E 4	630		-1
7	6	3NT E 4	630		-1
17	3	3NT E 4	630		-1
15	10	3NT E 4	630		-1
11	13	3NT E 4	630		-1
6	7	3NT E 5	660		-2

14

♠10753
 ♥A83
 ♦K73
 ♣1043
 ♠AKJ82
 ♥10
 ♦Q84
 ♣KQJ2
 ♠Q96
 ♥Q9652
 ♦92
 ♣865
 ♠4
 ♥KJ74
 ♦AJ1065
 ♣A97

Av: NS=-80

N-S	E-W	Contract	N-S	E-W	IMP
2	18	3NT W-4	200		7
13	11	1NT N 2	120		5
7	6	3S W-2	100		5
3	17	4S W-1	50		4
8	4	3S W-1	50		4
12	14	3D S-1	50		1
9	15	2S W 2	110		-1
10	15	3S W 3	140		-2
15	10	3S W 3	140		-2
6	7	3S W 3	140		-2
14	12	3S W 3	140		-2
4	8	2S W 3	140		-2
17	3	2S W 3	140		-2
1	16	2S W 3	140		-2
18	2	2S W 3	140		-2
16	1	2S W 3	140		-2
5	9	1S W 3	140		-2
11	13	1NT S-3	150		-2

15

♠Q
 ♥102
 ♦9873
 ♣1065432
 ♠AJ754
 ♥AK43
 ♦J54
 ♣7
 ♠32
 ♥QJ6
 ♦KQ102
 ♣AKQJ
 ♠K10986
 ♥9875
 ♦A6
 ♣98

Av: NS=-550

N-S	E-W	Contract	N-S	E-W	IMP
13	11	6NT E-1	50		12
16	1	6NT E-1	50		12
14	12	3NT E 5	460		3
9	5	3NT E 5	460		3
8	4	5NT W 6	490		2
18	2	4NT W 6	490		2
17	3	4NT E 6	490		2
11	13	4NT E 6	490		2
15	10	4NT E 6	490		2
6	7	4NT E 6	490		2
12	14	4NT E 6	490		2
2	18	3NT E 6	490		2
3	17	3NT E 6	490		2
7	6	3NT E 6	490		2
5	9	6NT E 6	990		-10
4	8	6NT E 6	990		-10
10	15	6NT E 6	990		-10
1	16	6NT E 6	990		-10

16

♠Q107
 ♥J
 ♦QJ9643
 ♣A103
 ♠AKJ5
 ♥Q854
 ♦K8
 ♣QJ7
 ♠832
 ♥K1097
 ♦1072
 ♣862
 ♠964
 ♥A632
 ♦A5
 ♣K954

Av: NS=+170

N-S	E-W	Contract	N-S	E-W	IMP
7	6	3Hx E-2	500		8
1	16	3Dx N 3	470		7
11	13	1NT W-3	300		4
2	18	1NT W-3	300		4
6	7	3H E-2	200		1
14	12	1NT W-2	200		1
15	10	2D S 4	130		-1
17	3	2D N 4	130		-1
12	14	3D N 3	110		-2
18	2	2D S 3	110		-2
10	15	2D S 3	110		-2
4	8	2D S 3	110		-2
8	4	2D N 3	110		-2
9	5	2D N 3	110		-2
3	17	1NT W-1	100		-2
5	9	1NT W-1	100		-2
13	11	2D S 2	90		-2
16	1	1NT W 2	120		-7

17

♠K107
 ♥J6
 ♦93
 ♣AQ10432
 ♠J
 ♥A97432
 ♦J52
 ♣J97
 ♠Q98
 ♥5
 ♦AQ8764
 ♣865
 ♠A65432
 ♥KQ108
 ♦K10
 ♣K

Av: NS=+420

N-S	E-W	Contract	N-S	E-W	IMP
1	16	4S S 5	450		1
2	18	4S S 5	450		1
10	15	4S S 5	450		1
7	6	4S S 4	420		0
18	2	4S S 4	420		0
3	17	4S S 4	420		0
6	7	4S S 4	420		0
5	9	4S S 4	420		0
17	3	4S S 4	420		0
15	10	4S S 4	420		0
13	11	4S S 4	420		0
8	4	4S S 4	420		0
4	8	4S S 4	420		0
11	13	4S S 4	420		0
14	12	4S S 4	420		0
12	14	4S S 4	420		0
9	5	4S S 4	420		0
16	1	4S S 4	420		0

18

♠985
 ♥1098
 ♦2
 ♣A98732
 ♠J32
 ♥76
 ♦KQJ1098
 ♣Q6
 ♠AK1064
 ♥KQJ43
 ♦53
 ♣10
 ♠Q7
 ♥A52
 ♦A764
 ♣KJ54

Av: NS=-90

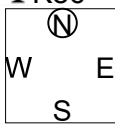
N-S	E-W	Contract	N-S	E-W	IMP
6	7	5S E-2	100		5
7	6	4S E-1	50		4
12	14	4S E-1	50		4
11	13	4S E-1	50		4
10	15	4S E-1	50		4
9	5	4S E-1	50		4
5	9	4S E-1	50		4
2	18	4S E-1	50		4
1	16	4S E-1	50		4
3	17	3S E 3	140		-2
14	12	2S E 3	140		-2
15	10	2S E 3	140		-2
8	4	2S E 4	170		-2
17	3	2S E 4	170		-2
4	8	2S E 5	200		-3
13	11	4S E 4	420		-8
18	2	4S E 4	420		-8
16	1	4S E 4	420		-8

兵庫県知事杯 OPEN TEAMS Session 3 Flight C 2017年10月8日(日)

1

♠A4
♥108653
♦A54
♣K86

♠Q987
♥KQ9
♦KQJ97
♣A



♠632
♥J74
♦106
♣QJ743

♠KJ105
♥A2
♦832
♣10952

Av: NS=-40

N-S	E-W	Contract	N-S	E-W	IMP
15	4	4S	W-2	100	4
2	8	3D	W-2	100	4
1	7	2D	W-2	100	4
17	12	3D	W-1	50	3
13	5	2D	W-1	50	3
14	6	1D	W-1	50	3
16	11	2H	N-1	50	0
8	2	1NT	W 1	90	-2
9	3	1NT	W 1	90	-2
3	9	1NT	W 1	90	-2
5	13	1NT	W 1	90	-2
11	16	1NT	W 1	90	-2
4	15	1NT	W 1	90	-2
7	1	1D	W 2	90	-2
10	18	2H	N-2	100	-2
12	17	2H	N-2	100	-2
18	10	1NT	W 2	120	-2
6	14	2H	N-3	150	-3

2

♠754
♥982
♦109765
♣83

♠KQJ3
♥J64
♦Q
♣AK654



♠A6
♥K107
♦AJ8
♣QJ1092

♠10982
♥AQ53
♦K432
♣7

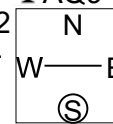
Av: NS=-360

N-S	E-W	Contract	N-S	E-W	IMP
18	10	6NT	E-1	50	9
14	6	6NT	E-1	50	9
12	17	6NT	E-1	50	9
2	8	6NT	E-1	50	9
3	9	6NT	E-1	50	9
7	1	4NT	E 4	430	-2
13	5	4NT	E 5	460	-3
5	13	4NT	E 5	460	-3
11	16	4NT	E 5	460	-3
1	7	4NT	E 5	460	-3
4	15	4NT	E 5	460	-3
15	4	4NT	E 5	460	-3
9	3	3NT	E 5	460	-3
16	11	3NT	E 5	460	-3
17	12	4NT	E 6	490	-4
10	18	3NT	E 6	490	-4
6	14	6C	W 6	920	-11
8	2	6NT	E 6	990	-12

3

♠A76
♥AQ1093
♦Q2
♣AQ9

♠Q832
♥J654
♦965
♣87



♠94
♥K8
♦J73
♣K106532

♠KJ105
♥72
♦AK1084
♣J4

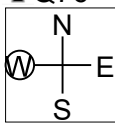
Av: NS=+400

N-S	E-W	Contract	N-S	E-W	IMP
11	16	6NT	N 6	990	11
1	7	6NT	N 6	990	11
7	1	6NT	N 6	990	11
12	17	6H	N 6	980	11
3	9	4NT	N 6	490	3
5	13	4NT	N 6	490	3
8	2	3NT	N 6	490	3
6	14	4NT	N 5	460	2
13	5	4NT	N 5	460	2
18	10	3NT	S 5	460	2
14	6	3NT	N 5	460	2
2	8	4NT	N 4	430	1
10	18	6NT	S-1	50	-10
17	12	6NT	N-1	50	-10
15	4	6NT	N-1	50	-10
16	11	6NT	S-2	100	-11
9	3	6NT	N-2	100	-11
4	15	6NT	N-2	100	-11

4

♠A542
♥Q32
♦A82
♣Q76

♠K7
♥AJ109
♦QJ765
♣42



♠10986
♥76
♦K104
♣KJ93

♠QJ3
♥K854
♦93
♣A1085

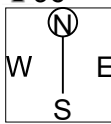
Av: NS=-80

N-S	E-W	Contract	N-S	E-W	IMP
6	14	1NT	S 2	120	5
1	7	1NT	W-1	100	5
4	15	1NT	N 1	90	5
5	13	Passout			2
9	3	Passout			2
3	9	Passout			2
17	12	1NT	W 1	90	0
18	10	3C	N-1	100	-1
2	8	3C	N-1	100	-1
10	18	2S	N-1	100	-1
13	5	1NT	S-1	100	-1
16	11	1NT	S-1	100	-1
15	4	2D	W 3	110	-1
7	1	3NT	N-2	200	-3
14	6	3NT	N-2	200	-3
8	2	3C	N-2	200	-3
11	16	1NT	S-2	200	-3
12	17	1NT	N-2	200	-3

5

♠A74
♥AK54
♦8763
♣96

♠J
♥Q87
♦KJ2
♣K108743



♠KQ10965
♥102
♦AQ4
♣J5

♠832
♥J963
♦1095
♣AQ2

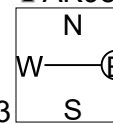
Av: NS=-120

N-S	E-W	Contract	N-S	E-W	IMP
14	6	3C	W-2	100	6
3	9	3S	E-1	50	5
8	2	3NT	W-1	50	5
12	17	3C	W-1	50	5
7	1	2NT	W 2	120	0
15	4	3S	E 3	140	-1
16	11	3S	E 3	140	-1
17	12	2S	E 3	140	-1
5	13	2S	E 3	140	-1
6	14	2S	E 3	140	-1
2	8	2S	E 3	140	-1
4	15	2S	E 3	140	-1
11	16	2S	E 3	140	-1
18	10	2S	E 3	140	-1
1	7	2NT	W 3	150	-1
10	18	3H	S-3	300	-5
9	3	3H	N-3	300	-5
13	5	4S	E 4	420	-7

6

♠Q93
♥102
♦A73
♣AK984

♠J
♥97
♦Q1092
♣QJ10653



♠76542
♥KQ864
♦854
♣

♠AK108
♥AJ53
♦KJ6
♣72

Av: NS=+440

N-S	E-W	Contract	N-S	E-W	IMP
14	6	3NT	S 5	460	1
7	1	3NT	S 5	460	1
5	13	3NT	S 5	460	1
2	8	3NT	S 5	460	1
12	17	3NT	S 5	460	1
4	15	3NT	S 4	430	0
11	16	3NT	S 4	430	0
6	14	3NT	S 4	430	0
13	5	3NT	S 4	430	0
15	4	3NT	S 4	430	0
9	3	3NT	S 4	430	0
3	9	3NT	S 4	430	0
8	2	3NT	S 4	430	0
16	11	3NT	S 4	430	0
1	7	3NT	S 4	430	0
17	12	3NT	S 4	430	0
10	18	3NT	S 3	400	-1
18	10	3NT	S 3	400	-1

7

♠A7
♥K7432
♦QJ73
♣84

♠1062
♥AQ96
♦642
♣K73

N
W—E
S

♠9
♥1085
♦K985
♣QJ652

♠KQJ8543
♥J
♦A10
♣A109

Av: NS=+640

N-S	E-W	Contract	N-S	E-W	IMP
18	10	4S	S 6	680	1
4	15	4S	S 5	650	0
8	2	4S	S 5	650	0
9	3	4S	S 5	650	0
2	8	4S	S 5	650	0
5	13	4S	S 5	650	0
3	9	4S	S 5	650	0
13	5	4S	S 5	650	0
14	6	4S	S 5	650	0
6	14	4S	S 5	650	0
1	7	4S	S 5	650	0
11	16	4S	S 5	650	0
12	17	4S	S 5	650	0
15	4	4S	N 5	650	0
10	18	4S	S 4	620	-1
17	12	4S	S 4	620	-1
7	1	4S	S 4	620	-1
16	11	6S	S-1	100	-12

8

♠Q972
♥Q7
♦KQ54
♣1082

♠8643
♥J10853
♦1062
♣Q

N
W—E
S

♠AJ105
♥64
♦A9873
♣J7

♠K
♥AK92
♦J
♣AK96543

Av: NS=+390

N-S	E-W	Contract	N-S	E-W	IMP
7	1	5NT	N 6	490	3
6	14	3NT	N 6	490	3
13	5	3NT	N 6	490	3
18	10	3NT	S 5	460	2
14	6	3NT	S 5	460	2
2	8	3NT	N 5	460	2
16	11	3NT	N 5	460	2
11	16	3NT	N 5	460	2
3	9	3NT	N 5	460	2
4	15	3NT	N 5	460	2
10	18	5C	S 7	440	2
8	2	5C	S 6	420	1
1	7	5C	S 6	420	1
15	4	5C	S 6	420	1
17	12	2C	S 6	170	-6
9	3	2C	S 6	170	-6
12	17	6C	S-1	50	-10
5	13	6NT	N-2	100	-10

9

♠98
♥QJ63
♦98
♣AJ1032

♠AQJ654
♥A85
♦J3
♣85

N
W—E
S

♠K73
♥972
♦KQ107542
♣

♠102
♥K104
♦A6
♣KQ9764

Av: NS=-380

N-S	E-W	Contract	N-S	E-W	IMP
17	12	5S	W-1	100	10
10	18	5C	S-1	50	8
2	8	5C	S-1	50	8
14	6	4C	S-1	50	8
18	10	5C	S-2	100	7
4	15	3S	W 4	170	5
6	14	3S	E 6	170	5
11	16	3D	E 6	170	5
9	3	3S	W 6	230	4
13	5	5Cx	S-2	300	2
15	4	6Cx	S-3	500	-3
12	17	5D	E 6	620	-6
1	7	5D	E 6	620	-6
7	1	4S	W 4	620	-6
3	9	4S	W 4	620	-6
8	2	5S	W 6	680	-7
5	13	5Sx	W 6	1050	-12
16	11	5Sx	W 6	1050	-12

10

♠QJ1098
♥J653
♦Q3
♣102

♠Q109842
♥75
♦AJ653
♣AJ653

N
W—E
S

♠7532
♥K
♦KJ82
♣KQ84

♠AK64
♥A7
♦A10964
♣97

Av: NS=+20

N-S	E-W	Contract	N-S	E-W	IMP
17	10	4S	S 4	620	12
11	18	1NTxS	2	380	8
18	11	3S	N 3	140	3
14	5	3S	N 3	140	3
6	15	3S	N 3	140	3
5	14	2S	S 3	140	3
1	9	2S	S 3	140	3
8	3	2S	S 3	140	3
4	13	2S	N 3	140	3
3	8	3S	N-1	100	-3
12	16	3D	S-1	100	-3
13	4	2H	W 2	110	-4
7	2	3C	W 4	130	-4
16	12	2C	E 4	130	-4
2	7	2H	W 3	140	-4
9	1	2H	W 3	140	-4
10	17	5S	N-2	200	-6
15	6	4S	N-2	200	-6

11

♠A965
♥KJ965
♦Q
♣AJ3

♠Q82
♥Q8
♦K10952
♣K105

N
W—E
S

♠1043
♥103
♦AJ87
♣9862

♠KJ7
♥A742
♦643
♣Q74

Av: NS=+440

N-S	E-W	Contract	N-S	E-W	IMP
5	14	4H	N 6	480	1
2	7	4H	N 5	450	0
3	8	4H	N 5	450	0
17	10	4H	N 5	450	0
11	18	4H	N 5	450	0
12	16	4H	N 5	450	0
9	1	4H	N 5	450	0
7	2	4H	N 5	450	0
14	5	4H	N 5	450	0
15	6	4H	N 5	450	0
13	4	4H	N 5	450	0
8	3	4H	N 5	450	0
6	15	4H	N 5	450	0
10	17	4H	N 5	450	0
16	12	4H	N 4	420	-1
18	11	4H	N 4	420	-1
1	9	4H	N 4	420	-1
4	13	4D	E-3	150	-7

12

♠A7
♥95
♦AK83
♣KQJ105

♠J1093
♥QJ1086
♦10
♣984

N
W—E
S

♠Q86542
♥K2
♦75
♣A63

♠K
♥A743
♦QJ9642
♣72

Av: NS=+650

N-S	E-W	Contract	N-S	E-W	IMP
18	11	3NT	N 6	690	1
15	6	3NT	N 6	690	1
4	13	3NT	N 6	690	1
11	18	3NT	N 6	690	1
10	17	3NT	N 6	690	1
17	10	3NT	N 6	690	1
6	15	3NT	N 6	690	1
12	16	3NT	N 6	690	1
7	2	3NT	N 6	690	1
16	12	3NT	N 6	690	1
1	9	5D	S 6	620	-1
3	8	5D	N 6	620	-1
5	14	5D	N 6	620	-1
14	5	5D	N 6	620	-1
2	7	5C	N 6	620	-1
9	1	5C	N 6	620	-1
13	4	4Sx	E-3	500	-4
8	3	4H	S-4	400	-14

13

♠ J9
♥ J10532
♦ Q85
♣ J82

♠ 106 ♠ Q8542
♥ 864 ♥ AK97
♦ KJ76 ♦ A103
♣ KQ53 ♣ 10

W — E
N — S

♠ AK73
♥ Q
♦ 942
♣ A9764

Av: NS=-50

N-S	E-W	Contract	N-S	E-W	IMP
15	6	3S E-2	200		6
9	1	2Cx S 2	180		6
18	11	2S E-1	100		4
12	16	2NT W-1	100		4
10	17	2C S 2	90		4
8	3	2C S 2	90		4
16	12	3C S-1	100		-2
2	7	2S E 2	110		-2
6	15	2S E 2	110		-2
14	5	2S E 2	110		-2
1	9	2S E 2	110		-2
17	10	2S E 2	110		-2
7	2	2S E 2	110		-2
5	14	2NT W 2	120		-2
11	18	1NT W 2	120		-2
3	8	2S E 3	140		-3
4	13	3C S-2	200		-4
13	4	2Cx S-2	500		-10

14

♠ A7632
♥ Q82
♦ A32
♣ K10

♠ K94 ♠ QJ10
♥ A54 ♥ 963
♦ J75 ♦ Q86
♣ J874 ♣ Q953

W — E
N — S

♠ 85
♥ KJ107
♦ K1094
♣ A62

Av: NS=+180

N-S	E-W	Contract	N-S	E-W	IMP
17	10	3NT S 4	430		6
6	15	3NT S 3	400		6
14	5	3NT N 3	400		6
16	12	2NT S 4	180		0
12	16	2NT S 4	180		0
4	13	1NT S 4	180		0
5	14	1NT S 4	180		0
3	8	2NT S 3	150		-1
1	9	2NT S 3	150		-1
7	2	1NT S 3	150		-1
18	11	2NT S 2	120		-2
15	6	2NT S 2	120		-2
2	7	2NT S 2	120		-2
11	18	1NT S 2	120		-2
8	3	1NT S 2	120		-2
10	17	1NT S 2	120		-2
13	4	1NT S 2	120		-2
9	1	1NT S 2	120		-2

15

♠ J972
♥ AQ963
♣ QJ63

♠ AQ8 ♠ 10743
♥ Q8654 ♥ A
♦ 742 ♦ KJ8
♣ 92 ♣ A10854

W — E
N — S

♠ KJ9652
♥ K103
♦ 105
♣ K7

Av: NS=-130

N-S	E-W	Contract	N-S	E-W	IMP
1	9	2H W-3	150		7
12	16	3H W-2	100		6
14	5	3C E-2	100		6
5	14	2NT W-1	50		5
4	13	2H W-1	50		5
9	1	1NT W-1	50		5
3	8	3H S-1	100		1
18	11	2S S-1	100		1
8	3	2S S-2	200		-2
15	6	2S S-2	200		-2
6	15	2S S-2	200		-2
16	12	2S S-2	200		-2
7	2	3S S-3	300		-5
2	7	3D N-3	300		-5
10	17	2S S-3	300		-5
11	18	2S S-3	300		-5
13	4	1NT N-3	300		-5
17	10	3NT N-5	500		-9

16

♠ 974
♥ Q8762
♦ A73
♣ A8

♠ K10 ♠ AQJ62
♥ 10543 ♥ KJ
♦ 1092 ♦ 865
♣ KQ74 ♣ 1053

W — E
N — S

♠ 853
♥ A9
♦ KQJ4
♣ J962

Av: NS=0

N-S	E-W	Contract	N-S	E-W	IMP
4	13	3S E-2	200		5
7	2	2H N 2	110		3
10	17	2H N 2	110		3
13	4	2S E-1	100		3
3	8	1NT W-1	100		3
9	1	1NT W-1	100		3
14	5	1NT W-1	100		3
6	15	Passout			0
15	6	Passout			0
12	16	Passout			0
16	12	2H N-1	50		-2
17	10	1S E 1	80		-2
5	14	1NT W 1	90		-3
8	3	1NT W 1	90		-3
11	18	1NT W 1	90		-3
18	11	1NT W 1	90		-3
1	9	3D N-2	100		-3
2	7	1NT W 4	180		-5

17

♠ 985
♥ KJ2
♦ QJ75
♣ K95

♠ A10432 ♠ KJ
♥ Q10983 ♥ A5
♦ ♦ K1032
♣ 763 ♣ AQJ108

W — E
N — S

♠ Q76
♥ 764
♦ A9864
♣ 42

Av: NS=-60

N-S	E-W	Contract	N-S	E-W	IMP
9	1	3NT E-3	150		5
10	17	3NT E-3	150		5
1	9	3NT E-3	150		5
15	6	4S W-2	100		4
8	3	4S W-1	50		3
11	18	4S W-1	50		3
5	14	3NT E-1	50		3
2	7	3NT E-1	50		3
12	16	3NT E-1	50		3
16	12	3NT E-1	50		3
17	10	3NT E-1	50		3
14	5	2NT E 2	120		-2
7	2	3C E 5	150		-3
6	15	3C E 6	170		-3
13	4	5C E 5	400		-8
4	13	3NT E 3	400		-8
3	8	3NT E 4	430		-9
18	11	3NT E 4	430		-9

18

♠ 543
♥ 1063
♦ AQ86
♣ 974

♠ J10862 ♠ K
♥ AKQ952 ♥ J74
♦ 32 ♦ 10754
♣ ♣ KQJ65

W — E
N — S

♠ AQ97
♥ 8
♦ KJ9
♣ A10832

Av: NS=-290

N-S	E-W	Contract	N-S	E-W	IMP
18	11	4H W-1	50		8
6	15	4H W-1	50		8
7	2	4H W-1	50		8
8	3	3H E 4	170		3
12	16	3H E 4	170		3
17	10	2H E 4	170		3
1	9	2H E 4	170		3
16	12	2H E 6	230		2
2	7	4H W 4	420		-4
5	14	4H W 4	420		-4
10	17	4H E 4	420		-4
9	1	4H E 4	420		-4
15	6	4H E 4	420		-4
14	5	4H E 4	420		-4
11	18	4H W 5	450		-4
4	13	4H E 5	450		-4
3	8	4H E 5	450		-4
13	4	4H E 5	450		-4

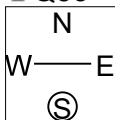
19

♠KQJ10984

♥A75

♦Q53

♣A7642



♠3
♥AJ9754
♦KJ83
♣J10

Av: NS=0

N-S	E-W	Contract	N-S	E-W	IMP
11	17	2S	N 4	170	5
10	16	3S	N 3	140	4
13	6	2S	N 3	140	4
8	1	2S	N 3	140	4
9	2	2S	N 3	140	4
17	11	4S	N-1	50	-2
16	10	4S	N-1	50	-2
7	3	4S	N-1	50	-2
5	15	4S	N-1	50	-2
4	14	4S	N-1	50	-2
3	7	4S	N-1	50	-2
1	8	4S	N-1	50	-2
6	13	4S	N-1	50	-2
18	12	4S	N-1	50	-2
2	9	4S	N-1	50	-2
15	5	4S	N-1	50	-2
14	4	4S	N-1	50	-2
12	18	4S	N-2	100	-3

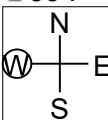
20

♠QJ109

♥K9

♦Q743

♣J94



♠763
♥A10752
♦K95
♣Q5

Av: NS=-90

N-S	E-W	Contract	N-S	E-W	IMP
6	13	1NT	E-2	200	7
14	4	2NT	W-1	100	5
3	7	Passout			3
17	11	1NT	W 1	90	0
11	17	1NT	W 1	90	0
12	18	1NT	W 1	90	0
7	3	1NT	E 1	90	0
5	15	1NT	E 1	90	0
10	16	1NT	E 1	90	0
1	8	1NT	E 1	90	0
4	14	1NT	E 1	90	0
16	10	2D	S-1	100	0
18	12	1H	S-1	100	0
15	5	1NT	W 2	120	-1
13	6	1NT	W 3	150	-2
9	2	1NTx	E 1	180	-3
8	1	1NT	W 4	180	-3
2	9	1NT	W 4	180	-3

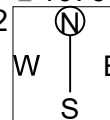
21

♠A874

♥543

♦KJ8

♣1076



♠5
♥Q107
♦AQ7643
♣Q92

Av: NS=+70

N-S	E-W	Contract	N-S	E-W	IMP
8	1	2D	S 2	90	1
12	18	2D	S 2	90	1
5	15	2D	N 2	90	1
16	10	2D	N 2	90	1
15	5	2D	N 2	90	1
13	6	2D	N 2	90	1
18	12	2D	N 2	90	1
11	17	1NT	E-1	50	-1
2	9	1NT	E-1	50	-1
10	16	1NT	E-1	50	-1
7	3	1NT	E-1	50	-1
1	8	1NT	E-1	50	-1
4	14	1NT	E-1	50	-1
6	13	1NT	E-1	50	-1
14	4	1NT	E-1	50	-1
3	7	1NT	E-1	50	-1
17	11	1NT	E-1	50	-1
9	2	1NT	E-1	50	-1

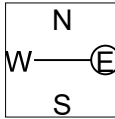
22

♠AQ108

♥QJ54

♦J76

♣AQ



♠93
♥1092
♦K9
♣J108752

Av: NS=+120

N-S	E-W	Contract	N-S	E-W	IMP
14	4	1NTxN	3	380	6
8	1	1NT	E-3	300	5
3	7	1NT	E-3	300	5
6	13	2S	W-2	200	2
11	17	1S	W-2	200	2
13	6	1NTxN	1	180	2
15	5	2NT	N 3	150	1
10	16	1NT	N 3	150	1
5	15	1NT	N 2	120	0
16	10	1NT	N 2	120	0
2	9	1NT	N 2	120	0
17	11	3C	N 3	110	0
4	14	2C	S 2	90	-1
1	8	1NT	N 1	90	-1
7	3	3C	N-1	50	-5
12	18	1NT	N-1	50	-5
18	12	1NT	E 1	90	-5
9	2	4C	S-2	100	-6

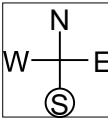
23

♠A

♥1043

♦Q8653

♣A765



♠Q876
♥852
♦K107
♣Q32

Av: NS=+60

N-S	E-W	Contract	N-S	E-W	IMP
16	10	1NT	E-2	200	4
14	4	1NT	E-2	200	4
7	3	3S	W-1	100	1
12	18	2NT	E-1	100	1
5	15	1NT	E-1	100	1
2	9	1NT	E-1	100	1
6	13	1NT	E-1	100	1
8	1	1NT	E-1	100	1
10	16	1NT	E-1	100	1
9	2	1NT	E-1	100	1
13	6	1NT	E-1	100	1
17	11	2D	N 2	90	1
15	5	2D	N 2	90	1
11	17	1NT	E 1	90	-4
18	12	1NT	E 1	90	-4
1	8	2D	N-1	100	-4
3	7	1NT	E 2	120	-5
4	14	1NT	E 2	120	-5

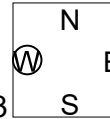
24

♠AJ98

♥AKJ4

♦AK98

♣4



♠1062
♥973
♦Q7632
♣J9

Av: NS=-10

N-S	E-W	Contract	N-S	E-W	IMP
11	17	5D	N 5	400	9
18	12	4D	S 4	130	4
10	16	4D	S 4	130	4
6	13	4D	S 4	130	4
15	5	4D	N 4	130	4
17	11	3D	N 4	130	4
4	14	1D	N 4	130	4
9	2	3D	S 3	110	3
8	1	5D	S-1	50	-1
14	4	5D	S-1	50	-1
2	9	5D	S-1	50	-1
1	8	5D	N-1	50	-1
16	10	3NT	N-1	50	-1
13	6	5D	N-2	100	-3
7	3	4H	N-2	100	-3
12	18	4H	N-3	150	-4
3	7	4Cx	W 4	510	-11
5	15	4Cx	W 4	510	-11

25

♠983
♥A5
♦J752
♣Q653

♠QJ102
♥109742
♦A63
♣2

♠A764
♥KQ3
♦K10
♣AJ104

♠K5
♥J86
♦Q984
♣K987

(N) W — E
S

Av: NS=-260

N-S	E-W	Contract	N-S	E-W	IMP
12	18	4S E-1	100		8
9	2	2H W 3		140	3
6	13	3H E 4		170	3
7	3	3H E 4		170	3
8	1	2H W 4		170	3
4	14	2H E 4		170	3
5	15	2H E 4		170	3
2	9	2H E 4		170	3
3	7	2H E 4		170	3
15	5	2H E 4		170	3
13	6	2H E 4		170	3
16	10	2H E 4		170	3
10	16	2H E 5		200	2
1	8	2H E 5		200	2
14	4	4S E 4		620	-8
11	17	4S E 4		620	-8
17	11	4H E 4		620	-8
18	12	4S E 5		650	-9

26

♠AJ652
♥A103
♦974
♣104

♠KQ4
♥98642
♦2
♣A865

♠8
♥75
♦AKQ863
♣KJ73

(N) W — E
S

♠10973
♥KQJ
♦J105
♣Q92

Av: NS=-130

N-S	E-W	Contract	N-S	E-W	IMP
13	6	4C E-1	100		6
18	12	4C E-1	100		6
15	5	4C E-1	100		6
8	1	4C E-1	100		6
1	8	4C E-1	100		6
14	4	4C E-1	100		6
2	9	2S N-1		100	1
6	13	3C E 3		110	1
9	2	3C E 4		130	0
16	10	3C E 4		130	0
3	7	3C E 4		130	0
4	14	2D E 4		130	0
5	15	2C E 5		150	-1
7	3	2S N-2		200	-2
11	17	4S N-3		300	-5
17	11	3NT W 3		600	-10
10	16	3NT W 3		600	-10
12	18	5C W 6		620	-10

27

♠107
♥AQ
♦987
♣AQ10932

♠AQ863
♥K107
♦QJ643
♣

♠9542
♥53
♦1052
♣J764

(N) W — E
S

♠KJ
♥J98642
♦AK
♣K85

Av: NS=+210

N-S	E-W	Contract	N-S	E-W	IMP
15	5	5H S 5	450		6
5	15	4H S 5	450		6
2	9	4H S 5	450		6
17	11	4H S 5	450		6
7	3	3NT S 4	430		6
10	16	4H S 4	420		5
16	10	4H S 4	420		5
6	13	4Sx W-2	300		3
1	8	3H S 4	170		-1
12	18	5S E-3	150		-2
14	4	5S E-3	150		-2
3	7	4C N 4	130		-2
11	17	3S E-1	50		-4
8	1	5C N-1		50	-6
13	6	5C N-1		50	-6
18	12	5C N-1		50	-6
4	14	4H S-1		50	-6
9	2	5C N-2		100	-7

28

♠AQ
♥AKQ643
♦Q64
♣93

♠9654
♥9
♦AJ108
♣AJ62

♠10
♥J1087
♦K7532
♣KQ4

(N) W — E
S

♠KJ8732
♥52
♦9
♣10875

Av: NS=-70

N-S	E-W	Contract	N-S	E-W	IMP
13	12	3H N 4	170		6
8	5	3H N 3	140		5
4	7	3H N 3	140		5
1	18	2S S 3	140		5
11	15	2H N 3	140		5
3	16	2H N 2	110		5
16	3	1H N 2	110		5
6	9	3H N-1		100	-1
9	6	2H N-1		100	-1
7	4	4D E 4		130	-2
2	17	4H N-2		200	-4
14	10	3S S-2		200	-4
18	1	3H N-2		200	-4
15	11	3H N-2		200	-4
17	2	3H N-2		200	-4
10	14	3H N-2		200	-4
5	8	4H N-3		300	-6
12	13	3NT N-4		400	-8

29

♠Q985
♥105
♦K42
♣Q1093

♠72
♥AJ3
♦AQ63
♣J852

♠K
♥KQ8764
♦1085
♣A64

(N) W — E
S

♠AJ10643
♥92
♦J97
♣K7

Av: NS=-270

N-S	E-W	Contract	N-S	E-W	IMP
16	3	3Sx S 3	730		14
10	14	4H E-1	100		9
9	6	4H E-1	100		9
6	9	4H E-1	100		9
3	16	4H E-1	100		9
2	17	4S S-1		100	5
17	2	4Sx S-1		200	2
14	10	4Sx S-1		200	2
7	4	4Sx S-1		200	2
5	8	4Sx S-1		200	2
15	11	4S S-2		200	2
1	18	4Sx S-2		500	-6
18	1	4H E 4		620	-8
8	5	4H E 4		620	-8
13	12	4H E 4		620	-8
12	13	4H E 4		620	-8
4	7	4H E 4		620	-8
11	15	4H E 4		620	-8

30

♠10
♥KQJ92
♦QJ7
♣AQJ2

♠AJ8543
♥853
♦A
♣975

♠762
♥A6
♦K86432
♣106

(N) W — E
S

♠KQ9
♥1074
♦1095
♣K843

Av: NS=+60

N-S	E-W	Contract	N-S	E-W	IMP
17	2	3NT S 4	430		9
18	1	3NT S 4	430		9
16	3	4H N 4	420		8
1	18	3NT S 3	400		8
10	14	3H N 4	170		3
9	6	2H N 3	140		2
7	4	3Sx W-1	100		1
14	10	4H N-1		50	-3
2	17	4H N-1		50	-3
3	16	4H N-1		50	-3
4	7	4H N-1		50	-3
11	15	3H N-1		50	-3
8	5	3C N-1		50	-3
12	13	3C N-1		50	-3
13	12	4H S-2		100	-4
6	9	4H N-2		100	-4
5	8	4H N-2		100	-4
15	11	5H N-3		150	-5

31

♠K983
♥A
♦K87
♣A9875

♠A6
♥KQJ10
♦J104
♣QJ43

♠Q1054
♥965
♦Q6532
♣6

♠J72
♥87432
♦A9
♣K102

W N E S

Av: NS=+90

N-S	E-W	Contract	N-S	E-W	IMP
13	12	1NT W-4	200		3
7	4	1C W-4	200		3
16	3	2NT N 4	180		3
11	15	2S E-3	150		2
4	7	2H W-3	150		2
1	18	1C W-3	150		2
3	16	1C W-3	150		2
9	6	1NT W-2	100		0
10	14	1NT W-2	100		0
17	2	1NT W-2	100		0
14	10	1NT W-2	100		0
5	8	1C W-2	100		0
6	9	1NT W-1	50		-1
8	5	1NT W-1	50		-1
2	17	1NT W-1	50		-1
15	11	1NT W 1		90	-5
12	13	1NT W 1		90	-5
18	1	1NT W 3		150	-6

32

♠54
♥J2
♦KQ85
♣Q10853

♠K963
♥K9
♦732
♣KJ96

♠AJ8
♥AQ853
♦1094
♣A2

♠Q1072
♥10764
♦AJ6
♣74

W N E S

Av: NS=+10

N-S	E-W	Contract	N-S	E-W	IMP
2	17	4H E-2	200		5
5	8	3NT E-2	200		5
3	16	3NT E-2	200		5
4	7	3NT E-2	200		5
12	13	3NT E-2	200		5
18	1	4S E-1	100		3
16	3	3NT E-1	100		3
8	5	3NT E-1	100		3
1	18	3NT E-1	100		3
15	11	3NT E-1	100		3
7	4	3NT E-1	100		3
11	15	1NT E 1		90	-3
14	10	2S W 2		110	-3
6	9	1NT W 2		120	-4
17	2	1NT E 2		120	-4
10	14	1NT E 3		150	-4
13	12	3NT E 3		600	-12
9	6	3NT E 4		630	-12

33

♠AQ1074
♥1086
♦42
♣KQ5

♠K6
♥Q943
♦A983
♣J74

♠9832
♥AJ5
♦QJ7
♣986

♠J5
♥K72
♦K1065
♣A1032

W N E S

Av: NS=+100

N-S	E-W	Contract	N-S	E-W	IMP
17	2	3NT S 4	430		8
14	10	2NT S 4	180		2
16	3	2NT S 4	180		2
8	5	2NT S 3	150		2
6	9	2NT S 3	150		2
15	11	2NT S 3	150		2
1	18	1NT S 3	150		2
4	7	2S N 3	140		1
7	4	2S N 3	140		1
10	14	2NT S 2	120		1
12	13	3C S 3	110		0
11	15	3C N 3	110		0
13	12	Passout			-3
2	17	Passout			-3
3	16	Passout			-3
5	8	Passout			-3
18	1	Passout			-3
9	6	3S N-2		100	-5

34

♠A107
♥K652
♦106
♣K1054

♠98642
♥AQJ
♦KJ3
♣A3

♠KJ
♥10973
♦Q75
♣Q976

♠Q53
♥84
♦A9842
♣J82

W N E S

Av: NS=0

N-S	E-W	Contract	N-S	E-W	IMP
15	11	2NT E-4	200		5
14	10	2NT W-2	100		3
6	9	1NT W-2	100		3
11	15	2S W-1	50		2
4	7	2S W-1	50		2
16	3	2NT W-1	50		2
13	12	2NT W-1	50		2
5	8	2NT W-1	50		2
12	13	2NT W-1	50		2
18	1	2NT W-1	50		2
17	2	1NT W-1	50		2
1	18	1NT W 1		90	-3
10	14	1NT E 1		90	-3
9	6	2S W 2		110	-3
3	16	2S W 2		110	-3
2	17	2NT W 2		120	-3
7	4	2NT W 2		120	-3
8	5	1NT E 3		150	-4

35

♠Q96
♥KJ97
♦94
♣J1073

♠104
♥2
♦KQ8753
♣AKQ9

♠J
♥A86543
♦A2
♣8542

♠AK87532
♥Q10
♦J106
♣6

W N E S

Av: NS=-30

N-S	E-W	Contract	N-S	E-W	IMP
11	15	3S S 4	170		5
2	17	3S S 3	140		5
17	2	3S S 3	140		5
16	3	3S S 3	140		5
1	18	3S S 3	140		5
10	14	2S S 3	140		5
8	5	2S S 2	110		4
12	13	5C E-1	100		4
13	12	4H E-1	100		4
3	16	4S S-1		50	-1
6	9	3S S-1		50	-1
18	1	3S S-1		50	-1
15	11	4S S-2		100	-2
9	6	4D W 5		150	-3
14	10	4D W 5		150	-3
7	4	4Sx S-2		300	-7
5	8	5D W 5		600	-11
4	7	5C W 5		600	-11

36

♠KJ6
♥K10543
♦AJ105
♣6

♠AQ83
♥AQ2
♦Q974
♣J4

♠752
♥97
♦632
♣A10952

♠1094
♥J86
♦K8
♣KQ873

W N E S

Av: NS=+190

N-S	E-W	Contract	N-S	E-W	IMP
14	10	1NT W-3	300		3
4	7	1NT W-3	300		3
18	1	1NT W-2	200		0
16	3	1NT W-2	200		0
8	5	1NT W-2	200		0
3	16	1NT W-2	200		0
13	12	1NT W-2	200		0
9	6	1NT W-2	200		0
1	18	1NT W-2	200		0
10	14	1NT W-2	200		0
7	4	3H N 4	170		-1
15	11	2H N 4	170		-1
2	17	2H N 4	170		-1
5	8	2H N 4	170		-1
11	15	2H N 4	170		-1
6	9	2H N 3	140		-2
17	2	2H N 2	110		-2
12	13	1NT W-1	100		-3

兵庫県知事杯 OPEN TEAMS Session 4 Flight C 2017年10月9日(月)

1

♠3
♥10432
♦1043
♣K10972

♠AKJ982
♥Q765
♦95
♣6

(N)

W E
S

♠Q765
♥AKJ8
♦J72
♣43

♠104
♥9
♦AKQ86
♣AQJ85

Av: NS=+280

N-S	E-W	Contract	N-S	E-W	IMP
1	10	5Cx S 5	550		7
3	12	5Cx S 5	550		7
8	14	5Cx S 5	550		7
16	5	5Cx S 5	550		7
2	11	5C S 6	420		4
5	16	5C S 5	400		3
7	13	5C S 5	400		3
17	4	5C S 5	400		3
6	18	5C S 5	400		3
12	3	5C S 5	400		3
13	7	5C S 5	400		3
11	2	4C S 5	150		-4
18	6	5S W-1	50		-6
15	9	5S W-1	50		-6
9	15	5S W-1	50		-6
4	17	5H E-1	50		-6
14	8	4S W 4		420	-12
10	1	4S W 4		420	-12

2

♠K962
♥Q8732
♦KJ
♣106

♠A87
♥AKJ1096
♦A
♣J53

(N)

W E
S

♠Q10
♥5
♦9865432
♣AQ2

♠J543
♥4
♦Q107
♣K9874

Av: NS=-190

N-S	E-W	Contract	N-S	E-W	IMP
16	5	4Hx W-2	300		10
17	4	4H W-2	100		7
3	12	5D E-1	50		6
11	2	4H W-1	50		6
1	10	3H W 3		140	2
9	15	3H W 3		140	2
7	13	3H W 3		140	2
5	16	3H W 3		140	2
4	17	3H W 3		140	2
15	9	3H W 3		140	2
13	7	3H W 4		170	1
12	3	3H W 4		170	1
8	14	3NT E 3	400		-5
6	18	3NT E 3	400		-5
10	1	4H W 4	420		-6
18	6	4H W 4	420		-6
2	11	4H W 4	420		-6
14	8	4H E 4	420		-6

3

♠93
♥J1083
♦Q10983
♣32

♠QJ4
♥A4
♦K642
♣AJ86

(N)

W E
S

♠10876
♥K9
♦AJ75
♣Q109

♠AK52
♥Q7652
♦
♣K754

Av: NS=-160

N-S	E-W	Contract	N-S	E-W	IMP
15	9	2H S 2	110		7
11	2	2H S 2	110		7
9	15	4S E-1	100		6
3	12	4S E-1	100		6
6	18	4S E-1	100		6
16	5	4S E-1	100		6
4	17	2S E-1	100		6
7	13	4H S-2		100	2
5	16	4H S-2		100	2
18	6	3H S-2		100	2
10	1	3S E 4		170	0
8	14	4Hx S-2		300	-4
2	11	4Hx S-2		300	-4
14	8	5Hx S-3		500	-8
1	10	4Hx S-3		500	-8
17	4	4Hx S-3		500	-8
12	3	3NT W 3		600	-10
13	7	4S E 4		620	-10

4

♠AJ10962
♥A108
♦109
♣A4

♠Q7
♥6
♦K85432
♣KQ85

(N)

W E
S

♠K8
♥J9532
♦AJ7
♣J32

♠543
♥KQ74
♦Q6
♣10976

Av: NS=+160

N-S	E-W	Contract	N-S	E-W	IMP
7	13	4S N 4	620		10
6	18	4S N 4	620		10
14	8	2S N 5	200		1
5	16	3S N 4	170		0
15	9	3S N 4	170		0
4	17	3S N 4	170		0
10	1	3S N 4	170		0
12	3	2S N 4	170		0
16	5	2S N 4	170		0
3	12	2S N 4	170		0
9	15	2S N 4	170		0
11	2	3S N 3	140		-1
2	11	2S N 3	140		-1
13	7	2S N 3	140		-1
17	4	2S N 2	110		-2
1	10	4S N-1		100	-6
18	6	3S N-1		100	-6
8	14	3S N-1		100	-6

5

♠Q4
♥AKQ
♦AQJ52
♣J96

♠J109762
♥J10
♦K104
♣54

(N)

W E
S

♠K853
♥876
♦76
♣A1083

♠A
♥95432
♦983
♣KQ72

Av: NS=+650

N-S	E-W	Contract	N-S	E-W	IMP
1	10	6D N 6	1370		12
16	5	4Sx W-4	800		4
4	17	3NT N 6	690		1
13	7	5H S 6	680		1
6	18	4H S 6	680		1
5	16	4H S 6	680		1
17	4	4H S 6	680		1
10	1	4H S 6	680		1
12	3	4H S 6	680		1
3	12	4H S 6	680		1
14	8	3NT N 5	660		0
9	15	3NT N 5	660		0
8	14	4H S 5	650		0
7	13	4H S 5	650		0
15	9	4Sx W-3	500		-4
2	11	4Sx W-3	500		-4
18	6	4Sx W-3	500		-4
11	2	3H S 4	170		-10

6

♠9873
♥92
♦10874
♣AK9

♠A54
♥A87543
♦A53
♣J

(N)

W E
S

♠62
♥KJ10
♦J92
♣Q10864

♠KQJ10
♥Q6
♦KQ6
♣7532

Av: NS=-120

N-S	E-W	Contract	N-S	E-W	IMP
9	15	3S N 3	140		6
13	7	2S S 2	110		6
5	16	3H W-1	100		6
7	13	3S S-1		50	2
10	1	3S S-1		50	2
4	17	2S S-1		50	2
3	12	3S S-2		100	1
11	2	3S S-2		100	1
17	4	3S S-2		100	1
6	18	3H W 3		140	-1
16	5	3H W 3		140	-1
18	6	3H W 3		140	-1
1	10	3H W 3		140	-1
12	3	3H W 4		170	-2
8	14	3H W 4		170	-2
15	9	3H W 4		170	-2
2	11	4H W 4		620	-11
14	8	4Hx W 4		790	-12

7

♠K105
♥J86
♦K863
♣654

♠Q63
♥Q32
♦J542
♣QJ10

♠J942
♥A975
♦A107
♣97

♠A87
♥K104
♦Q9
♣AK832

N
W—E
S

Av: NS=+120

N-S	E-W	Contract	N-S	E-W	IMP
7	13	3NT S 3	600		10
2	11	1NT S 3	150		1
1	10	1NT S 3	150		1
11	2	1NT S 3	150		1
5	16	1NT S 3	150		1
12	3	2NT S 2	120		0
10	1	1NT S 2	120		0
17	4	1NT S 2	120		0
15	9	1NT S 2	120		0
4	17	1NT S 2	120		0
3	12	1NT S 2	120		0
16	5	1NT S 2	120		0
13	7	1NT S 2	120		0
14	8	1NT S 2	120		0
8	14	2C S 2	90		-1
18	6	1NT S 1	90		-1
6	18	1NT S 1	90		-1
9	15	1NT S 1	90		-1

8

♠1095
♥K85432
♦K5
♣KQ

♠AQ6
♥QJ10
♦A1043
♣A52

♠743
♥A97
♦Q986
♣874

♠KJ82
♥6
♦J72
♣J10963

N
W—E
S

Av: NS=-110

N-S	E-W	Contract	N-S	E-W	IMP
2	11	2H N-1	50		2
15	9	2H N-1	50		2
7	13	2H S-2	100		0
5	16	2H N-2	100		0
1	10	2H N-2	100		0
9	15	2H N-2	100		0
17	4	2H N-2	100		0
12	3	2H N-2	100		0
16	5	2H N-2	100		0
18	6	2H N-2	100		0
8	14	2H N-2	100		0
4	17	2H N-2	100		0
14	8	1NT W 3	150		-1
13	7	1NT W 3	150		-1
10	1	1NT W 3	150		-1
11	2	1NT W 3	150		-1
3	12	1NT W 3	150		-1
6	18	3NT W 3	400		-7

9

♠10
♥KJ853
♦KQ103
♣1094

♠Q842
♥10974
♦J86
♣K5

♠KJ65
♥A
♦742
♣QJ763

♠A973
♥Q62
♦A95
♣A82

N
W—E
S

Av: NS=+180

N-S	E-W	Contract	N-S	E-W	IMP
6	18	4H S 4	420		6
10	1	4H N 4	420		6
18	6	4H N 4	420		6
11	2	4H N 4	420		6
12	3	3NT S 3	400		6
16	5	1NT N 4	180		0
13	7	1NT N 4	180		0
4	17	3H N 4	170		0
3	12	2D N 5	150		-1
17	4	3H N 3	140		-1
14	8	2H S 3	140		-1
9	15	2H N 3	140		-1
15	9	2H N 3	140		-1
2	11	1NT E-1	100		-2
7	13	4H N-1	50		-6
1	10	4H N-1	50		-6
5	16	4H N-1	50		-6
8	14	2S E 2	110		-7

10

♠Q976
♥K5
♦K942
♣J75

♠J
♥AQ8
♦AQJ1075
♣K108

♠A105432
♥763
♦8
♣932

♠K8
♥J10942
♦63
♣AQ64

N
W—E
S

Av: NS=+110

N-S	E-W	Contract	N-S	E-W	IMP
4	18	4S E-4	400		7
14	9	4S E-4	400		7
18	4	4S E-3	300		5
3	10	4S E-3	300		5
16	6	4S E-3	300		5
1	11	3NT W-2	200		3
17	5	3D W-2	200		3
2	12	3D W-1	100		0
8	13	3D W-1	100		0
12	2	3D W-1	100		0
7	15	3D W-1	100		0
15	7	3D W-1	100		0
9	14	2S E-1	100		0
10	3	3D W 3	110		-6
5	17	3D W 3	110		-6
11	1	2S E 2	110		-6
6	16	2NT W 3	150		-6
13	8	3NT W 4	630		-12

11

♠K752
♥743
♦A4
♣AKQ10

♠J106
♥10965
♦J103
♣J74

♠43
♥AJ82
♦KQ9876
♣8

♠AQ98
♥KQ
♦52
♣96532

N
W—E
S

Av: NS=+470

N-S	E-W	Contract	N-S	E-W	IMP
7	15	4S N 6	480		0
13	8	4S N 6	480		0
16	6	4S N 6	480		0
4	18	4S N 6	480		0
12	2	4S N 6	480		0
6	16	4S N 6	480		0
8	13	4S N 6	480		0
9	14	4S N 6	480		0
10	3	4S N 6	480		0
5	17	4S N 6	480		0
1	11	3NT N 5	460		0
15	7	3NT N 5	460		0
14	9	4S S 5	450		-1
11	1	4S N 5	450		-1
18	4	4S N 5	450		-1
17	5	4S N 5	450		-1
2	12	4S N 5	450		-1
3	10	4S N 5	450		-1

12

♠Q7
♥A107
♦A982
♣10875

♠A986
♥J8
♦KQ4
♣AK94

♠KJ432
♥Q542
♦106
♣J2

♠105
♥K963
♦J753
♣Q63

N
W—E
S

Av: NS=-360

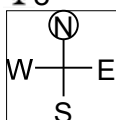
N-S	E-W	Contract	N-S	E-W	IMP
16	6	1NT W 2	120		6
15	7	1NT W 3	150		5
6	16	3S W 4	170		5
18	4	2S W 4	170		5
17	5	2S W 4	170		5
1	11	4S W 4	420		-2
14	9	4S W 4	420		-2
5	17	4S W 4	420		-2
11	1	4S W 4	420		-2
9	14	4S W 4	420		-2
2	12	4S W 4	420		-2
10	3	4S W 4	420		-2
12	2	4S W 4	420		-2
3	10	4S W 4	420		-2
13	8	4S W 4	420		-2
7	15	4S E 4	420		-2
4	18	4S E 4	420		-2
8	13	4S E 4	420		-2

13

♠A10954
♥AK2
♦10873
♣8

♠K73
♥Q74
♦AQ964
♣A10

♠Q86
♥J10986
♦
♣Q9653



Av: NS=-120

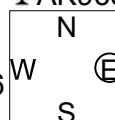
N-S	E-W	Contract	N-S	E-W	IMP
4	18	4S	N 4	620	12
1	11	5Dx	E-2	500	12
5	17	4D	E-2	200	8
2	12	5D	E-1	100	6
15	7	4D	E-1	100	6
16	6	3C	W-1	100	6
7	15	3S	N-1	100	1
13	8	2NT	E 2	120	0
6	16	2NT	E 2	120	0
11	1	4D	E 4	130	0
10	3	3D	E 4	130	0
18	4	3D	E 4	130	0
8	13	2NT	E 3	150	-1
9	14	4S	N-2	200	-2
17	5	3NT	E 3	600	-10
3	10	3NT	E 3	600	-10
14	9	3NT	E 4	630	-11
12	2	3NT	E 4	630	-11

14

♠A
♥10
♦AJ8432
♣AK965

♠K87632
♥AQ
♦5
♣Q1074

♠J104
♥J98542
♦109
♣83



Av: NS=-100

N-S	E-W	Contract	N-S	E-W	IMP
15	7	4Dx	N 4	510	12
2	12	5S	E-3	150	6
3	10	4Sx	E-1	100	5
13	8	4S	E-2	100	5
9	14	4S	E-2	100	5
5	17	5C	N-1	50	2
8	13	4D	N-1	50	2
1	11	5D	N-2	100	0
12	2	5D	N-2	100	0
10	3	5D	N-2	100	0
7	15	5C	S-2	100	0
6	16	5D	N-3	150	-2
14	9	3NT	N-4	200	-3
4	18	6Dx	N-2	300	-5
11	1	5Dx	N-2	300	-5
16	6	5Dx	N-2	300	-5
18	4	5Dx	N-2	300	-5
17	5	7Dx	S-3	500	-9

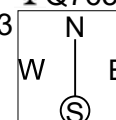
15

♠QJ65
♥63
♦92
♣Q7653

♠10943
♥J842
♦104
♣J82

♠2
♥AK10975
♦AQJ3
♣A10

♠AK87
♥Q
♦K8765
♣K94



Av: NS=-410

N-S	E-W	Contract	N-S	E-W	IMP
8	13	4S	N 4	620	14
7	15	3H	E 5	200	5
5	17	3H	E 5	200	5
6	16	4H	W 4	420	0
3	10	4H	E 4	420	0
14	9	4H	E 4	420	0
18	4	5H	E 5	450	-1
2	12	5H	E 5	450	-1
17	5	5H	E 5	450	-1
15	7	4H	W 5	450	-1
12	2	4H	W 5	450	-1
11	1	4H	E 5	450	-1
9	14	4H	E 5	450	-1
13	8	4H	E 5	450	-1
4	18	4H	E 5	450	-1
10	3	4H	E 5	450	-1
16	6	4H	E 5	450	-1
1	11	4H	E 5	450	-1

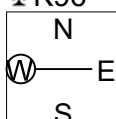
16

♠A53
♥K10642
♦Q4
♣K96

♠KQ974
♥J953
♦87
♣84

♠J10862
♥
♦AKJ10653
♣Q

♠AQ87
♥92
♣AJ107532



Av: NS=+180

N-S	E-W	Contract	N-S	E-W	IMP
3	10	5Hx	N 5	650	10
12	2	5H	N 5	450	7
10	3	5H	N 5	450	7
6	16	4H	N 5	450	7
16	6	4H	N 5	450	7
13	8	4H	N 5	450	7
17	5	4H	N 5	450	7
15	7	4H	N 5	450	7
14	9	4H	N 5	450	7
7	15	5C	S 5	400	6
18	4	6S	E-1	100	-2
4	18	6H	N-1	50	-6
11	1	6H	N-1	50	-6
9	14	6Hx	N-1	100	-7
2	12	6Hx	N-1	100	-7
8	13	6H	N-2	100	-7
5	17	5Sx	W 5	850	-14
1	11	5Sx	E 5	850	-14

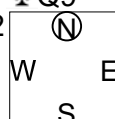
17

♠AQ8
♥AK9842
♦103
♣Q9

♠J95432
♥QJ6
♦AK6
♣K

♠7
♥103
♦8742
♣AJ8542

♠K106
♥75
♦QJ95
♣10763



Av: NS=+50

N-S	E-W	Contract	N-S	E-W	IMP
18	4	3H	N 3	140	3
6	16	3H	N 3	140	3
16	6	3H	N 3	140	3
3	10	3H	N 3	140	3
9	14	3H	N 3	140	3
11	1	3H	N 3	140	3
14	9	3H	N 3	140	3
15	7	3H	N 3	140	3
5	17	3S	W-2	100	2
8	13	2S	E-1	50	0
4	18	4H	N-1	50	-3
17	5	4H	N-1	50	-3
12	2	4H	N-1	50	-3
1	11	3NT	S-1	50	-3
2	12	3H	N-1	50	-3
13	8	3H	N-1	50	-3
10	3	3H	N-1	50	-3
7	15	3H	N-1	50	-3

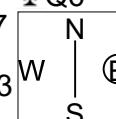
18

♠AQ1053
♥J109875
♦
♣Q6

♠J987
♥AQ
♦A953
♣J95

♠K
♥K2
♦108762
♣AK432

♠642
♥643
♦KQJ4
♣1087



Av: NS=+130

N-S	E-W	Contract	N-S	E-W	IMP
12	2	5Dx	E-2	300	5
2	12	3NT	W-6	300	5
1	11	3NT	W-4	200	2
3	10	3NT	E-4	200	2
5	17	3NT	W-3	150	1
16	6	3NT	W-3	150	1
7	15	3NT	E-3	150	1
14	9	3NTx	W-1	100	-1
10	3	3NT	W-2	100	-1
4	18	3NT	W-2	100	-1
6	16	3NT	W-2	100	-1
11	1	3NT	W-2	100	-1
15	7	3NT	W-2	100	-1
8	13	3NT	E-2	100	-1
13	8	3NT	E-1	50	-2
18	4	2NT	W-1	50	-2
9	14	2NT	W-1	50	-2
17	5	4Hx	N-2	500	-12

1

♠QJ5
♥AJ
♦AKQ95
♣A76

♠K82
♥6
♦10762
♣KQ843

W N E S

♠10964
♥K109853
♦43
♣J

♠A73
♥Q742
♦J8
♣10952

Av: NS=+430

N-S	E-W	Contract	N-S	E-W	IMP
10	5	3NT N 5	460		1
15	3	3NT N 5	460		1
8	18	3NT N 4	430		0
18	8	3NT N 4	430		0
2	14	3NT N 4	430		0
1	13	3NT N 4	430		0
13	1	3NT N 4	430		0
3	15	3NT N 4	430		0
9	16	3NT N 4	430		0
17	7	3NT N 4	430		0
7	17	3NT N 4	430		0
16	9	3NT N 4	430		0
4	12	3NT N 4	430		0
5	10	3NT N 4	430		0
6	11	3NT N 4	430		0
14	2	3NT N 4	430		0
11	6	3NT N 4	430		0
12	4	3NT N 4	430		0

2

♠KQ6542
♥A875
♦A
♣65

♠A987
♥KQ10
♦J972
♣42

W N E S

♠10
♥62
♦KQ10654
♣AKQ3

♠J3
♥J943
♦83
♣J10987

Av: NS=-350

N-S	E-W	Contract	N-S	E-W	IMP
6	11	2S N-1	100		6
10	5	4D E 5	150		5
3	15	4D E 5	150		5
5	10	3D E 5	150		5
4	12	2D E 5	150		5
7	17	5D E 5	400		-2
15	3	5D E 5	400		-2
16	9	5D E 5	400		-2
14	2	5D E 5	400		-2
2	14	5D E 5	400		-2
9	16	3NT W 4	430		-2
11	6	3NT W 4	430		-2
13	1	3NT W 4	430		-2
1	13	3NT W 4	430		-2
18	8	3NT W 4	430		-2
8	18	3NT W 5	460		-3
12	4	3NT W 5	460		-3
17	7	3NT E 5	460		-3

3

♠KJ7
♥52
♦KQ643
♣632

♠Q84
♥K
♦J98
♣J108754

W N E S

♠1096
♥A109763
♦A2
♣Q9

♠A532
♥QJ84
♦1075
♣AK

Av: NS=+50

N-S	E-W	Contract	N-S	E-W	IMP
2	14	3NT S 3	400		8
4	12	3H E-4	400		8
15	3	3D S 4	130		2
10	5	3D S 4	130		2
14	2	1NT N 2	120		2
1	13	3D S 3	110		2
9	16	3D S 3	110		2
11	6	3D S 3	110		2
5	10	3D S 3	110		2
8	18	1NT N 1	90		1
16	9	3D S-1		50	-3
17	7	2H S-1		50	-3
18	8	1NT S-1		50	-3
13	1	1NT N-1		50	-3
12	4	2NT S-2		100	-4
3	15	1NT N-2		100	-4
7	17	3NT S-3		150	-5
6	11	3NT N-3		150	-5

4

♠QJ832
♥J1054
♦10
♣KQ8

♠AK7
♥K93
♦AKQ43
♣64

W N E S

♠94
♥A762
♦765
♣7532

♠1065
♥Q8
♦J982
♣AJ109

Av: NS=-100

N-S	E-W	Contract	N-S	E-W	IMP
18	8	2S N 2	110		5
1	13	2S N 2	110		5
3	15	2S N 2	110		5
4	12	1NT W 1		90	0
9	16	3D W 3		110	0
16	9	3D W 3		110	0
6	11	1D W 3		110	0
5	10	1D W 3		110	0
12	4	2NT W 2		120	-1
14	2	2NT W 2		120	-1
15	3	1D W 4		130	-1
2	14	1D W 4		130	-1
8	18	1D W 4		130	-1
7	17	2NT W 3		150	-2
11	6	2NT W 4		180	-2
10	5	3S N-2		200	-3
17	7	1NT S-2		200	-3
13	1	1NT S-2		200	-3

5

♠AQ76
♥J8543
♦J
♣Q95

♠103
♥KQ62
♦AKQ83
♣106

W N E S

♠542
♥A7
♦7654
♣AK82

♠KJ98
♥109
♦1092
♣J743

Av: NS=-240

N-S	E-W	Contract	N-S	E-W	IMP
8	18	3C E-3	150		9
15	3	4D W 4		130	3
1	13	3D W 5		150	3
12	4	3D W 5		150	3
3	15	3D W 5		150	3
13	1	3D W 5		150	3
5	10	3D W 5		150	3
14	2	3D W 5		150	3
7	17	3D W 5		150	3
9	16	2NT E 4		180	2
11	6	2NT E 5		210	1
6	11	1NT E 5		210	1
16	9	3NT W 3		400	-4
17	7	3NT E 3		400	-4
4	12	3NT E 3		400	-4
18	8	3NT E 3		400	-4
2	14	3NT E 4		430	-5
10	5	3NT E 4		430	-5

6

♠K10763
♥875
♦A
♣Q1042

♠J9
♥KQJ2
♦K10986
♣A3

W N E S

♠Q842
♥963
♦J72
♣K95

♠A5
♥A104
♦Q543
♣J876

Av: NS=-60

N-S	E-W	Contract	N-S	E-W	IMP
12	4	2S N 2	110		5
7	17	2S N 2	110		5
6	11	2C N 3	110		5
13	1	1NT W-1		100	4
8	18	1NT E-1		100	4
17	7	1S N-1		50	0
10	5	1NT S-1		50	0
4	12	1NT S-1		50	0
9	16	1NT E 1		90	-1
1	13	3S N-2		100	-1
18	8	2NT S-2		100	-1
16	9	2NT S-3		150	-3
15	3	2NT S-3		150	-3
5	10	2NT S-3		150	-3
11	6	1NT S-3		150	-3
3	15	1NT S-3		150	-3
14	2	1NT S-3		150	-3
2	14	1NT E 3		150	-3

7

♠62
♥KQ863
♦8643
♣A8

♠1085
♥A107
♦95
♣KQ652

N
W—E
S

♠J4
♥54
♦AJ72
♣J10974

♠AKQ973
♥J92
♦KQ10
♣3

Av: NS=+650

N-S	E-W	Contract	N-S	E-W	IMP
9	16	4S	S 5	650	0
3	15	4S	S 5	650	0
8	18	4S	S 5	650	0
18	8	4S	S 5	650	0
2	14	4S	S 5	650	0
13	1	4S	S 5	650	0
15	3	4S	S 5	650	0
12	4	4S	S 5	650	0
17	7	4S	S 5	650	0
7	17	4S	S 5	650	0
4	12	4S	S 5	650	0
10	5	4S	S 5	650	0
5	10	4S	S 5	650	0
6	11	4S	S 5	650	0
11	6	4S	S 5	650	0
14	2	4H	N 5	650	0
1	13	4H	N 5	650	0
16	9	2S	S 5	200	-10

8

♠987652
♥Q109
♦A
♣Q93

♠A
♥AKJ75
♦KJ3
♣A1087

N
W—E
S

♠KQJ104
♥3
♦97642
♣K6

♠3
♥8642
♦Q1085
♣J542

Av: NS=-410

N-S	E-W	Contract	N-S	E-W	IMP
1	13	2C	W 3	110	7
6	11	2NT	W 3	150	6
14	2	3NT	W 3	400	0
5	10	3NT	W 3	400	0
15	3	3NT	W 3	400	0
9	16	3NT	W 3	400	0
8	18	3NT	W 3	400	0
10	5	3NT	E 3	400	0
12	4	3NT	W 4	430	-1
3	15	3NT	W 4	430	-1
16	9	3NT	W 4	430	-1
17	7	4H	W 5	450	-1
18	8	3NT	W 5	460	-2
11	6	3NT	E 5	460	-2
7	17	3NT	E 5	460	-2
4	12	3NT	E 5	460	-2
2	14	3NT	E 5	460	-2
13	1	2Sx	N-4	800	-9

9

♠QJ874
♥AJ104
♦J94
♣9

♠K103
♥Q
♦AQ102
♣KJ1086

N
W—E
S

♠96
♥K9876532
♦K7
♣A

♠A52
♥
♦8653
♣Q75432

Av: NS=-200

N-S	E-W	Contract	N-S	E-W	IMP
15	3	5H	E-2	200	9
11	6	5H	E-2	200	9
17	7	5H	E-2	200	9
1	13	4H	W-1	100	7
16	9	4H	E-1	100	7
7	17	4H	E-1	100	7
4	12	4H	E-1	100	7
5	10	4H	E-1	100	7
18	8	4H	E-1	100	7
3	15	4H	E-1	100	7
12	4	4H	E 4	620	-9
14	2	4H	E 4	620	-9
6	11	4H	E 4	620	-9
10	5	4H	E 4	620	-9
9	16	4H	E 4	620	-9
2	14	4H	E 4	620	-9
13	1	4H	E 4	620	-9
8	18	4H	E 5	650	-10

10

♠AJ
♥AQ62
♦AJ632
♣A9

♠K10876
♥J983
♦108
♣K5

N
W—E
S

♠542
♥K104
♦754
♣J1064

♠Q93
♥75
♦KQ9
♣Q8732

Av: NS=+640

N-S	E-W	Contract	N-S	E-W	IMP
1	15	4NT	N 6	690	2
2	13	3NT	N 6	690	2
17	9	3NT	N 6	690	2
8	16	3NT	N 6	690	2
5	11	3NT	N 6	690	2
6	12	3NT	S 5	660	1
10	4	3NT	N 5	660	1
15	1	3NT	N 5	660	1
11	5	3NT	S 4	630	0
9	17	3NT	N 4	630	0
4	10	3NT	N 4	630	0
3	14	3NT	N 4	630	0
13	2	3NT	N 4	630	0
14	3	3NT	S 3	600	-1
7	18	3NT	S 3	600	-1
16	8	3NT	N 3	600	-1
12	6	3NT	N 3	600	-1
18	7	3NT	N 3	600	-1

11

♠Q852
♥764
♦A543
♣J10

♠AK1043
♥53
♦K72
♣AQ5

N
W—E
S

♠7
♥AKQJ
♦98
♣987432

♠J96
♥10982
♦QJ106
♣K6

Av: NS=-450

N-S	E-W	Contract	N-S	E-W	IMP
12	6	3NT	E-1	50	11
13	2	3NT	W 3	400	2
4	10	3NT	E 3	400	2
17	9	3NT	E 3	400	2
11	5	3NT	E 3	400	2
8	16	3NT	E 3	400	2
16	8	3NT	E 3	400	2
9	17	5C	W 6	420	1
5	11	5C	W 6	420	1
1	15	5C	W 6	420	1
15	1	3NT	E 6	490	-1
3	14	3NT	E 6	490	-1
10	4	3NT	W 7	520	-2
2	13	3NT	W 7	520	-2
14	3	3NT	W 7	520	-2
6	12	3NT	W 7	520	-2
7	18	3NT	W 7	520	-2
18	7	3NT	W 7	520	-2

12

♠J10765
♥K109
♦53
♣653

♠AK43
♥AJ8
♦A9762
♣J

N
W—E
S

♠9
♥654
♦K84
♣AQ10842

♠Q82
♥Q732
♦QJ10
♣K97

Av: NS=-340

N-S	E-W	Contract	N-S	E-W	IMP
8	16	3NT	W-1	50	9
18	7	3NT	E-1	50	9
12	6	3C	E 4	130	5
17	9	1D	W 5	150	5
11	5	1NT	E 4	180	4
7	18	3NT	W 3	400	-2
3	14	3NT	E 3	400	-2
14	3	3NT	E 3	400	-2
4	10	3NT	E 3	400	-2
1	15	3NT	E 3	400	-2
5	11	3NT	E 3	400	-2
2	13	2S	N-4	400	-2
16	8	3NT	W 4	430	-3
6	12	3NT	E 4	430	-3
15	1	3NT	E 4	430	-3
13	2	3NT	E 4	430	-3
10	4	3NT	E 5	460	-3
9	17	3NT	E 5	460	-3

13

♠KQJ1073
 ♠85 ♠62
 ♡8754 ♡AQ102
 ♢K92 ♢AQJ74
 ♣KQ43 ♣A5

W N E S

♠A94
 ♡KJ963
 ♢65
 ♣J98

Av: NS=+240

N-S	E-W	Contract	N-S	E-W	IMP
6	12	4Hx W-3	800		11
16	8	4Hx E-2	500		6
10	4	4H W-4	400		4
15	1	4H W-3	300		2
4	10	4H W-3	300		2
1	15	4H W-3	300		2
9	17	4H W-3	300		2
17	9	4H W-3	300		2
2	13	4H W-3	300		2
13	2	5D E-2	200		-1
3	14	4H E-2	200		-1
5	11	3NT W-2	200		-1
11	5	3S N 3	140		-3
7	18	2S N 2	110		-4
8	16	5D E-1	100		-4
18	7	3H W-1	100		-4
12	6	3H E-1	100		-4
14	3	4Sx N-2	500		-12

14

♠K10953
 ♠7 ♠AQ84
 ♡3 ♡9875
 ♢J42 ♢K5
 ♣J1085 ♣KQ4

W N E S

♠J62
 ♡A642
 ♢A83
 ♣962

Av: NS=-360

N-S	E-W	Contract	N-S	E-W	IMP
6	12	4H W-1	50		9
5	11	4H W-1	50		9
14	3	4H W-1	50		9
12	6	3H W 5	200		4
10	4	4H W 4	420		-2
4	10	4H W 4	420		-2
9	17	4H W 4	420		-2
8	16	4H W 4	420		-2
17	9	3NT E 4	430		-2
16	8	4H W 5	450		-3
13	2	4H W 5	450		-3
2	13	4H W 5	450		-3
11	5	4H W 5	450		-3
15	1	4H W 5	450		-3
1	15	4H W 5	450		-3
18	7	4H W 5	450		-3
3	14	3NT E 5	460		-3
7	18	4Hx W 4	590		-6

15

♠843
 ♠K5 ♠AJ106
 ♡2 ♡QJ84
 ♢QJ1086 ♢QJ84
 ♣Q1075 ♣94

W N E S

♠Q972
 ♡A9
 ♢K52
 ♣A942

Av: NS=-340

N-S	E-W	Contract	N-S	E-W	IMP
4	10	4H W-1	50		9
8	16	4C S-1	100		6
1	15	3H W 4	170		5
13	2	3H W 4	170		5
2	13	2H W 4	170		5
15	1	3H W 5	200		4
18	7	4H W 4	420		-2
14	3	4H W 4	420		-2
6	12	4H W 4	420		-2
11	5	4H W 4	420		-2
5	11	4H W 4	420		-2
9	17	4H W 4	420		-2
3	14	4H W 4	420		-2
7	18	4H W 4	420		-2
17	9	4H W 4	420		-2
10	4	4H W 4	420		-2
12	6	4H W 5	450		-3
16	8	4H W 5	450		-3

16

♠52
 ♠107 ♠AKQ86
 ♡984 ♡K106532
 ♢987642 ♢K10
 ♣A8 ♣J932

W N E S

♠J943
 ♡A
 ♢KQ3
 ♣Q7654

Av: NS=-540

N-S	E-W	Contract	N-S	E-W	IMP
10	4	6H E-1	100		12
13	2	6H E-1	100		12
6	12	3H E 4	170		9
16	8	2S E 4	170		9
2	13	4S E 4	620		-2
17	9	4H E 4	620		-2
4	10	4H E 4	620		-2
12	6	4H E 4	620		-2
9	17	4H E 4	620		-2
7	18	5H W 5	650		-3
3	14	5H E 5	650		-3
11	5	4H E 5	650		-3
5	11	4H E 5	650		-3
14	3	4H E 5	650		-3
15	1	4H E 5	650		-3
18	7	4H E 5	650		-3
8	16	5Dx N-4	800		-6
1	15	5Dx N-5	1100		-11

17

♠A52
 ♠7 ♠KJ1094
 ♡AK85 ♡43
 ♢Q43 ♢KJ7
 ♣942 ♣AQJ

W N E S

♠Q863
 ♡102
 ♢A62
 ♣K853

Av: NS=+40

N-S	E-W	Contract	N-S	E-W	IMP
8	16	1NT S 3	150		3
7	18	1NT S 2	120		2
10	4	3D W-2	100		2
12	6	2S E-2	100		2
16	8	2D W-2	100		2
4	10	1NT S 1	90		2
15	1	1NT S 1	90		2
13	2	1NT S 1	90		2
2	13	1NT S 1	90		2
14	3	2S E-1	50		0
18	7	2H E-1	50		0
3	14	1S E-1	50		0
6	12	3C N-1	50		-3
1	15	1NT S-1	50		-3
11	5	1NT S-1	50		-3
9	17	3C N-2	100		-4
5	11	1NT S-2	100		-4
17	9	3NT S-3	150		-5

18

♠KQ984
 ♠J1052 ♠7
 ♡52 ♡K10873
 ♢75 ♢QJ632
 ♣K765 ♣J2

W N E S

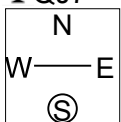
♠A63
 ♡AQJ6
 ♢K984
 ♣Q3

Av: NS=-120

N-S	E-W	Contract	N-S	E-W	IMP
11	5	4S S 4	620		12
10	4	3S S 3	140		6
1	15	4S S-1	100		1
2	13	4S S-1	100		1
5	11	4S S-1	100		1
15	1	4S S-1	100		1
3	14	4S S-1	100		1
9	17	4S S-1	100		1
7	18	4S S-1	100		1
8	16	4S S-1	100		1
16	8	3S S-1	100		1
18	7	4S S-2	200		-2
6	12	4S S-2	200		-2
14	3	4S S-2	200		-2
4	10	4S S-2	200		-2
13	2	4S S-2	200		-2
17	9	4S N-2	200		-2
12	6	3NT S-2	200		-2

19

♠ A9642
♥ K63
♦ 76
♣ QJ7



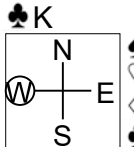
♠ 3
♥ A109842
♦ QJ54
♣ 53
♠ KQJ10875
♥ QJ
♦ A92
♣ K

Av: NS=+450

N-S	E-W	Contract	N-S	E-W	IMP
6	10	5S	S 5	450	0
3	13	5S	S 5	450	0
13	3	5S	S 5	450	0
17	8	5S	S 5	450	0
9	18	5S	S 5	450	0
11	4	5S	S 5	450	0
1	14	4S	S 5	450	0
5	12	4S	S 5	450	0
12	5	4S	S 5	450	0
16	7	4S	S 5	450	0
8	17	4S	S 5	450	0
10	6	4S	S 5	450	0
4	11	4S	S 5	450	0
15	2	4S	S 5	450	0
14	1	4S	S 5	450	0
2	15	4S	S 5	450	0
7	16	4S	S 5	450	0
18	9	5S	S-1	50	-11

20

♠ Q43
♥ 108654
♦ A874
♣ K



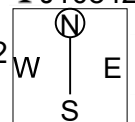
♠ AJ7
♥ AJ7
♦ Q10952
♣ A5
♠ K852
♥ KQ3
♦ KJ63
♣ 106
♠ 1096
♥ 92
♦
♣ QJ987432

Av: NS=-570

N-S	E-W	Contract	N-S	E-W	IMP
15	2	3Cx	S 3	670	15
18	9	4C	S-1	100	10
1	14	3Cx	S-1	200	9
4	11	5Cx	S-2	500	2
5	12	3NT	W 4	630	-2
17	8	3NT	W 4	630	-2
8	17	3NT	W 4	630	-2
6	10	3NT	W 4	630	-2
14	1	3NT	W 4	630	-2
13	3	3NT	W 4	630	-2
3	13	3NT	W 4	630	-2
11	4	3NT	W 4	630	-2
9	18	3NT	W 5	660	-3
16	7	3NT	W 5	660	-3
2	15	3NT	W 5	660	-3
12	5	3NT	W 5	660	-3
10	6	3NT	W 6	690	-3
7	16	3NT	W 6	690	-3

21

♠ 974
♥ A
♦ KJ93
♣ J10842



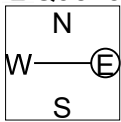
♠ AK3
♥ QJ10732
♦ Q2
♣ 65
♠ Q5
♥ 865
♦ 108654
♣ K93
♠ J10862
♥ K94
♦ A7
♣ AQ7

Av: NS=+520

N-S	E-W	Contract	N-S	E-W	IMP
18	9	5Hx	W-4	800	7
17	8	4S	S 5	650	4
8	17	4S	S 5	650	4
4	11	4S	S 5	650	4
1	14	4S	S 5	650	4
7	16	3NT	S 4	630	3
11	4	4S	S 4	620	3
16	7	4S	S 4	620	3
15	2	4S	S 4	620	3
2	15	4S	S 4	620	3
13	3	4S	S 4	620	3
6	10	4S	S 4	620	3
14	1	4S	N 4	620	3
10	6	3S	S 4	170	-8
12	5	3S	S 4	170	-8
5	12	3S	S 4	170	-8
3	13	3S	S 4	170	-8
9	18	3S	S 3	140	-9

22

♠ 4
♥ AK103
♦ AJ7
♣ Q9843



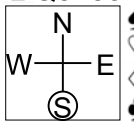
♠ AQ10
♥ 85
♦ KQ93
♣ J1052
♠ KJ9632
♥ 64
♦ 64
♣ AK6

Av: NS=+120

N-S	E-W	Contract	N-S	E-W	IMP
10	6	4S	S 5	450	8
9	18	3NT	N 4	430	7
12	5	3NT	N 3	400	7
8	17	3NT	N 3	400	7
1	14	3NT	N 3	400	7
4	11	3NT	N 3	400	7
16	7	2NT	N 4	180	2
13	3	2NT	N 4	180	2
18	9	4S	S-1	50	-5
6	10	4S	S-1	50	-5
3	13	4S	S-1	50	-5
17	8	4NT	N-1	50	-5
2	15	3NT	N-1	50	-5
7	16	3NT	N-1	50	-5
11	4	3NT	N-1	50	-5
5	12	3NT	N-1	50	-5
14	1	3NT	N-1	50	-5
15	2	3NT	N-1	50	-5

23

♠ 9
♥ A63
♦ KJ42
♣ Q8753



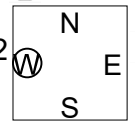
♠ AK75
♥ K8
♦ AQ965
♣ A10
♠ QJ864
♥ J1094
♦ 8
♣ K96
♠ 1032
♥ Q752
♦ 1073
♣ J42

Av: NS=-650

N-S	E-W	Contract	N-S	E-W	IMP
6	10	4S	W 4	620	1
13	3	4S	W 4	620	1
2	15	4S	W 4	620	1
11	4	4S	W 4	620	1
15	2	4S	W 4	620	1
7	16	4S	W 5	650	0
17	8	4S	W 5	650	0
5	12	4S	W 5	650	0
12	5	4S	W 5	650	0
14	1	4S	W 5	650	0
4	11	4S	W 5	650	0
9	18	4S	E 5	650	0
8	17	3NT	W 5	660	0
18	9	4S	W 6	680	-1
16	7	4S	W 6	680	-1
10	6	4S	W 6	680	-1
1	14	4S	E 6	680	-1
3	13	4S	E 6	680	-1

24

♠ KJ62
♥ AK8
♦ KQ1052
♣ K



♠ Q94
♥ QJ9742
♦ 7
♣ A105
♠ A10853
♥ 53
♦ 8
♣ J8642
♠ 7
♥ 106
♦ AJ9643
♣ Q973

Av: NS=+410

N-S	E-W	Contract	N-S	E-W	IMP
9	18	5Sx	E-8	2000	17
13	3	3NT	N 6	490	2
10	6	3NT	N 5	460	2
5	12	3NT	S 4	430	1
2	15	3NT	S 4	430	1
4	11	3NT	N 4	430	1
11	4	3NT	N 4	430	1
12	5	3NT	N 4	430	1
3	13	3NT	N 4	430	1
7	16	5D	N 6	420	0
6	10	5D	N 6	420	0
18	9	5D	N 6	420	0
8	17	5D	N 6	420	0
14	1	5D	S 5	400	0
15	2	5D	N 5	400	0
1	14	3NT	N 3	400	0
16	7	4Hx	W-1	100	-7
17	8	6D	S-1	50	-10

25

♠ KQ842
♥ K97
♦ A4
♣ A53

♠ J107653
♥ 3
♦ 83
♣ K986

♠ A9
♥ 8642
♦ KJ107
♣ J102

W — E
N — S

Av: NS=+100

N-S	E-W	Contract	N-S	E-W	IMP
7	16	2Hx	W-3	800	12
4	11	3NT	S 4	430	8
18	9	3NT	N 3	400	7
12	5	3D	W-3	300	5
2	15	2H	W-2	200	3
14	1	2H	W-2	200	3
1	14	2H	W-2	200	3
11	4	2S	N 3	140	1
10	6	2S	N 2	110	0
17	8	2S	N 2	110	0
15	2	3D	W-1	100	0
6	10	3NT	S-2	100	-5
8	17	3NT	N-2	100	-5
5	12	3NT	N-2	100	-5
9	18	3NT	N-2	100	-5
13	3	2NT	S-2	100	-5
16	7	3D	W 3	110	-5
3	13	3D	S-4	200	-7

26

♠ 109
♥ A5
♦ K954
♣ AJ876

♠ 54
♥ Q842
♦ 1076
♣ 10943

♠ AKQ8632
♥ 73
♦ A83
♣ Q

♠ J7
♥ KJ1096
♦ QJ2
♣ K52

W — E
N — S

Av: NS=+10

N-S	E-W	Contract	N-S	E-W	IMP
1	14	4S	W-3	300	7
16	7	4S	W-3	300	7
6	10	3S	W-2	200	5
4	11	3C	N 3	110	3
2	15	3C	N 3	110	3
12	5	3S	W-1	100	3
17	8	3S	W-1	100	3
9	18	3S	W-1	100	3
7	16	3S	W-1	100	3
5	12	1S	W 1	80	-3
10	6	4H	S-1	100	-3
18	9	4C	S-1	100	-3
11	4	4C	N-1	100	-3
3	13	3C	N-1	100	-3
13	3	2S	W 2	110	-3
15	2	5C	S-2	200	-5
14	1	5C	S-2	200	-5
8	17	4C	N-3	300	-7

27

♠ 64
♥ AQJ65
♦ 732
♣ Q76

♠ J1093
♥ 107
♦ KQ6
♣ K953

♠ AQ8
♥ K982
♦ AJ84
♣ A2

♠ K752
♥ 43
♦ 1095
♣ J1084

W — E
N — S

Av: NS=-440

N-S	E-W	Contract	N-S	E-W	IMP
5	12	3NT	W 3	400	1
14	1	3NT	W 3	400	1
4	11	3NT	W 3	400	1
1	14	3NT	W 4	430	0
8	17	3NT	W 4	430	0
11	4	3NT	W 4	430	0
15	2	3NT	W 4	430	0
13	3	3NT	W 4	430	0
3	13	3NT	W 4	430	0
6	10	3NT	W 4	430	0
10	6	3NT	W 4	430	0
16	7	3NT	W 5	460	-1
9	18	3NT	W 5	460	-1
18	9	3NT	W 5	460	-1
17	8	3NT	W 5	460	-1
2	15	3NT	W 5	460	-1
12	5	3NT	W 5	460	-1
7	16	3NT	E 5	460	-1

28

♠ AJ103
♥ Q42
♦ KQ852
♣ 5

♠ Q82
♥ A87
♦ 9
♣ 1087632

♠ 65
♥ KJ96
♦ A10743
♣ K4

♠ K974
♥ 1053
♦ J6
♣ AQJ9

W — E
N — S

Av: NS=+130

N-S	E-W	Contract	N-S	E-W	IMP
18	5	4S	S 5	650	11
10	2	4S	S 5	650	11
15	8	4S	S 4	620	10
13	9	1NT	E-5	250	3
7	14	2S	S 5	200	2
9	13	2S	S 4	170	1
12	1	2S	N 4	170	1
1	12	2S	N 3	140	0
14	7	2S	S 2	110	-1
11	3	1NT	E-2	100	-1
2	10	1NT	E-2	100	-1
17	6	3C	E-1	50	-2
8	15	4S	S-1	100	-6
5	18	4S	S-1	100	-6
4	16	4S	S-1	100	-6
16	4	4S	S-1	100	-6
6	17	4S	S-1	100	-6
3	11	4S	S-2	200	-8

29

♠ 9654
♥ 1096
♦ QJ842
♣ 10

♠ Q
♥ J85
♦ A10963
♣ AQ42

♠ K72
♥ 732
♦ K75
♣ J863

♠ AJ1083
♥ AKQ4
♦
♣ K975

W — E
N — S

Av: NS=+440

N-S	E-W	Contract	N-S	E-W	IMP
18	5	4S	S 6	680	6
12	1	4S	N 5	650	5
4	16	4S	N 5	650	5
3	11	4S	S 4	620	5
11	3	4S	S 4	620	5
13	9	4S	S 4	620	5
9	13	4S	N 4	620	5
6	17	4S	N 4	620	5
16	4	4S	N 4	620	5
1	12	4S	N 4	620	5
14	7	4S	N 4	620	5
5	18	2S	N 5	200	-6
17	6	10x	E-1	200	-6
7	14	3S	N 4	170	-7
10	2	2S	S 4	170	-7
15	8	2S	S 4	170	-7
2	10	4S	S-1	100	-11
8	15	4S	N-1	100	-11

30

♠ 832
♥ 10965
♦ 2
♣ AK985

♠ AKQ10974
♥ A2
♦ 83
♣ J7

♠ 6
♥ QJ3
♦ KJ10754
♣ 1042

♠ J5
♥ K874
♦ AQ96
♣ Q63

W — E
N — S

Av: NS=-240

N-S	E-W	Contract	N-S	E-W	IMP
5	18	4S	E-2	100	8
12	1	4S	E-2	100	8
14	7	4S	E-2	100	8
8	15	3S	E-1	50	7
18	5	3H	N-2	100	4
6	17	5H	N-3	150	3
15	8	3S	E 4	170	2
3	11	3S	E 4	170	2
2	10	2S	E 4	170	2
10	2	3S	E 5	200	1
11	3	4S	E 4	420	-5
7	14	4S	E 4	420	-5
16	4	4S	E 4	420	-5
9	13	4S	E 4	420	-5
17	6	4S	E 4	420	-5
4	16	4S	E 4	420	-5
13	9	4Sx	E 4	590	-8
1	12	4Sx	E 4	590	-8

31

♠ Q1063
♥ AK
♦ A84
♣ KQ98

♠ A87
♥ J6543
♦ 1096
♣ 62

♠ 954
♥ Q1098
♦ KQJ7
♣ A4

W N E S

♠ KJ2
♥ 72
♦ 532
♣ J10753

Av: NS=+70

N-S	E-W	Contract	N-S	E-W	IMP
8	15	3NT N 3	600		11
13	9	4Hx W-3	500		10
2	10	2NT N 3	150		2
3	11	2NT N 2	120		2
6	17	1NT N 2	120		2
18	5	1NT N 2	120		2
9	13	1NT N 2	120		2
11	3	3C N 3	110		1
5	18	3C N 3	110		1
16	4	3H W-2	100		1
17	6	1NT N 1	90		1
12	1	2H W-1	50		-1
14	7	3NT N-1	100		-5
7	14	3NT N-1	100		-5
1	12	3NT N-1	100		-5
4	16	3NT N-1	100		-5
10	2	2NT N-1	100		-5
15	8	3NTxN-1	200		-7

32

♠ KJ6
♥ J107
♦ A873
♣ 853

♠ 5
♥ A83
♦ KJ106
♣ AQJ96

♠ A3
♥ K96542
♦ Q4
♣ K104

W N E S

♠ Q1098742
♥ Q
♦ 952
♣ 72

Av: NS=-500

N-S	E-W	Contract	N-S	E-W	IMP
5	18	3NT E-1	100		12
10	2	3NT E-1	100		12
4	16	4Sx S-2	300		5
12	1	4Sx S-2	300		5
3	11	4Sx S-2	300		5
18	5	4Sx S-2	300		5
13	9	4Sx S-2	300		5
8	15	5H W 5	650		-4
17	6	5H E 5	650		-4
2	10	5H E 5	650		-4
11	3	4H E 5	650		-4
14	7	4H E 5	650		-4
1	12	4H E 5	650		-4
15	8	4H E 5	650		-4
6	17	4H E 5	650		-4
9	13	5H E 6	680		-5
7	14	5H E 6	680		-5
16	4	5H E 6	680		-5

33

♠ K1064
♥ 10
♦ A5
♣ AQJ864

♠ 98
♥ 943
♦ K742
♣ K1052

♠ J752
♥ AQJ8
♦ 1063
♣ 97

W N E S

♠ AQ3
♥ K7652
♦ QJ98
♣ 3

Av: NS=+380

N-S	E-W	Contract	N-S	E-W	IMP
3	11	3NT N 5	460		2
4	16	3NT S 4	430		2
15	8	3NT S 4	430		2
2	10	3NT S 4	430		2
10	2	3NT S 4	430		2
7	14	3NT S 4	430		2
1	12	3NT N 4	430		2
12	1	4S N 4	420		1
14	7	3NT S 3	400		1
5	18	3NT S 3	400		1
9	13	3NT S 3	400		1
16	4	3NT S 3	400		1
13	9	3NT S 3	400		1
8	15	3NT N 3	400		1
18	5	3NT N 3	400		1
11	3	3NT N 3	400		1
6	17	5C N-1	50		-10
17	6	6C N-3	150		-11

34

♠ K10
♥ 4
♦ Q10876
♣ AKJ107

♠ 742
♥ A96
♦ AJ542
♣ 96

♠ AQ953
♥ K1073
♦ K9
♣ 53

W N E S

♠ J86
♥ QJ852
♦ 3
♣ Q842

Av: NS=-20

N-S	E-W	Contract	N-S	E-W	IMP
6	17	4C N 4	130		4
14	7	4S E-2	100		3
3	11	3S E-2	100		3
10	2	4S E-1	50		2
8	15	3S W-1	50		2
11	3	3S E-1	50		2
13	9	3S E-1	50		2
16	4	3S E-1	50		2
2	10	3S E-1	50		2
4	16	3S E-1	50		2
1	12	5C N-1	100		-2
15	8	4C N-1	100		-2
18	5	4C N-1	100		-2
5	18	2S E 2	110		-3
12	1	3S E 3	140		-3
7	14	3S E 3	140		-3
9	13	4C N-2	200		-5
17	6	3C N-2	200		-5

35

♠ KQ2
♥ Q72
♦ 10874
♣ K53

♠ 4
♥ KJ98
♦ KQ93
♣ A962

♠ A97653
♥ 643
♦ J6
♣ Q4

W N E S

♠ J108
♥ A105
♦ A52
♣ J1087

Av: NS=-80

N-S	E-W	Contract	N-S	E-W	IMP
6	17	2NT W-3	300		9
12	1	2S E-1	100		5
4	16	2S E-1	100		5
3	11	1NT N-1	50		1
8	15	2S W 2	110		-1
9	13	2S E 2	110		-1
5	18	2S E 2	110		-1
15	8	2S E 2	110		-1
2	10	2S E 2	110		-1
17	6	2S E 2	110		-1
14	7	2S E 2	110		-1
10	2	2S E 2	110		-1
13	9	2S E 2	110		-1
11	3	2S E 2	110		-1
16	4	2S E 2	110		-1
1	12	2S E 3	140		-2
7	14	2S E 3	140		-2
18	5	2S E 3	140		-2

36

♠ J
♥ AKJ542
♦ AQJ65
♣ 8

♠ AK632
♥ 7
♦ 1032
♣ A543

♠ Q109875
♥ 10863
♦ K
♣ 97

W N E S

♠ 4
♥ Q9
♦ 9874
♣ KQJ1062

Av: NS=+180

N-S	E-W	Contract	N-S	E-W	IMP
17	6	5H N 6	680		11
4	16	5H N 5	650		10
15	8	5H N 5	650		10
10	2	5H N 5	650		10
6	17	4H N 5	650		10
12	1	5D N 5	600		9
9	13	5D N 5	600		9
18	5	3H N 5	200		1
11	3	5S W-1	100		-2
14	7	5S E-1	100		-2
5	18	5D N-1	100		-7
13	9	5D N-1	100		-7
1	12	6D N-2	200		-9
7	14	5D N-2	200		-9
16	4	5D N-2	200		-9
8	15	5D N-2	200		-9
2	10	5H N-4	400		-11
3	11	4S W 4	620		-13