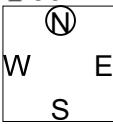


第1回山口知也杯 Session 1 Section D 2016年6月18日(土)

1

♠AQ8754
♥A106
♦105
♣53

♠K10932
♥975
♦K86
♣Q8



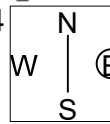
♠6
♥KQ
♦9742
♣KJ10764

♠J
♥J8432
♦AQJ3
♣A92

2

♠Q109853
♥QJ963
♦Q5
♣

♠AKJ4
♥104
♦KJ62
♣Q96



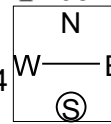
♠A75
♥9843
♦AKJ854

♠762
♥K82
♦A107
♣10732

3

♠84
♥105
♦Q93
♣1087432

♠102
♥KQJ
♦J8764
♣AKJ



♠AK63
♥A8763
♦A2
♣65

♠QJ975
♥942
♦K105
♣Q9

Board (1) Av: NS=+120

N-S	E-W	Contract	N-S	E-W	IMP
16	15	4H S 4	420		7
5	8	4H S 4	420		7
6	2	4H S 4	420		7
20	13	2S N 3	140		1
3	9	2S N 3	140		1
19	12	4H S-1		50	-5
18	14	4H S-1		50	-5
4	7	4H S-1		50	-5
1	10	4H S-1		50	-5
17	11	4H S-2		100	-6

Board (2) Av: NS=-410

N-S	E-W	Contract	N-S	E-W	IMP
4	7	5C E-2	100		11
16	15	5C E 5	400		0
3	9	5C E 5	400		0
18	14	3NT W 3	400		0
19	12	3NT E 3	400		0
1	10	3NT E 3	400		0
6	2	3NT E 3	400		0
5	8	3NT W 4	430		-1
17	11	3NT W 4	430		-1
20	13	3NT E 4	430		-1

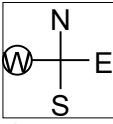
Board (3) Av: NS=-760

N-S	E-W	Contract	N-S	E-W	IMP
17	11	6NT W-1	100		13
3	9	6NT W-1	100		13
18	14	4H E 5		650	3
20	13	3NT W 5	660		3
1	10	3NT E 5	660		3
16	15	4H E 6		680	2
19	12	4H E 6		680	2
5	8	6H W 6	1430		-12
6	2	6H W 6	1430		-12
4	7	6H E 6	1430		-12

4

♠AJ75
♥AK64
♦A74
♣94

♠Q9
♥52
♦QJ10985
♣KQ2



♠K10862
♥J93
♦32
♣AJ6

♠43
♥Q1087
♦K6
♣108753

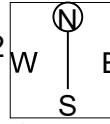
Board (4) Av: NS=+30

N-S	E-W	Contract	N-S	E-W	IMP
1	10	1NT N 2	120		3
6	2	1NT N 2	120		3
20	13	1NT N 2	120		3
4	7	1NT N 1	90		2
16	15	1NT N 1	90		2
17	11	1NT N 1	90		2
18	14	2D E 2		90	-3
5	8	2D E 2		90	-3
3	9	3H S-1		100	-4
19	12	1NT N-1		100	-4

5

♠KQ108
♥KQJ4
♦AJ1052
♣

♠1085
♥A9732
♦1052
♣43



♠AKJ7
♥J6
♦983
♣KQ97

♠Q96432
♥54
♦A76
♣86

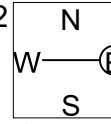
Board (5) Av: NS=-60

N-S	E-W	Contract	N-S	E-W	IMP
6	2	2NT N 2	120		5
20	13	3C N 3	110		5
5	8	2S E-2	100		4
19	12	4C N-1		100	-1
4	7	3NT N-1		100	-1
16	15	3NT N-1		100	-1
18	14	2S S-1		100	-1
3	9	2NT N-1		100	-1
1	10	5C N-2		200	-4
17	11	3NT S-2		200	-4

6

♠765
♥Q972
♦Q4
♣KQ54

♠A10432
♥AJ3
♦A83
♣J3



♠Q9
♥K108654
♦92
♣A109

♠KJ8
♥
♦KJ10765
♣8762

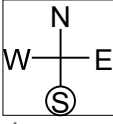
Board (6) Av: NS=-160

N-S	E-W	Contract	N-S	E-W	IMP
19	12	4H E-1	100		6
18	14	3H E-1	100		6
6	2	2S W 3		140	1
17	11	2H E 3		140	1
3	9	2H E 3		140	1
16	15	2H E 3		140	1
1	10	1NT E 3		150	0
5	8	1NT E 3		150	0
20	13	5Dx S-3		500	-8
4	7	4H E 4		620	-10

7

♠K103
♥1097
♦Q7652
♣K6

♠J9842
♥KQ5
♦AK8
♣32



♠Q75
♥AJ864
♦93
♣A108

♠A6
♥32
♦J104
♣QJ9754

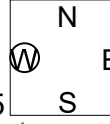
Board (7) Av: NS=-340

N-S	E-W	Contract	N-S	E-W	IMP
12	13	4H E-1	100		10
16	14	3S W 3	140		5
2	10	3S W 4	170		5
15	17	3S W 4	170		5
5	4	3S W 4	170		5
3	6	3S W 5	200		4
18	11	4S W 4	620		-7
1	9	4S W 4	620		-7
7	8	4S W 4	620		-7
19	20	4S W 5	650		-7

8

♠J1073
♥QJ76
♦A9642
♣

♠AKQ6
♥105
♦K85
♣KQ105



♠98542
♥432
♦J10
♣432

♠AK98
♥Q73
♣AJ9876

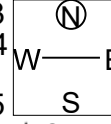
Board (8) Av: NS=+60

N-S	E-W	Contract	N-S	E-W	IMP
7	8	4Hx N 4	590		11
16	14	3C S 3	110		2
18	11	4S W-2	100		1
2	10	3S W-2	100		1
3	6	3S W-1	50		0
5	4	3S W-1	50		0
1	9	3S E-1	50		0
19	20	1NT W-1	50		0
15	17	4H S-1		50	-3
12	13	4C S-2		100	-4

9

♠A
♥A82
♦J105
♣AQJ832

♠K643
♥Q754
♦8
♣K965



♠1098752
♥K106
♦K76
♣4

♠QJ
♥J93
♦AQ9432
♣107

Board (9) Av: NS=+430

N-S	E-W	Contract	N-S	E-W	IMP
18	11	6C N 6	920		10
7	8	3NT N 7	520		3
15	17	3NT N 7	520		3
19	20	3NT S 6	490		2
5	4	3NT N 5	460		1
12	13	5D S 7	440		0
1	9	3NT S 4	430		0
2	10	3NT N 4	430		0
16	14	3D S 5	150		-7
3	6	4D N 4	130		-7

10

♠ KJ632
♥ 10874
♦ Q43
♣ 10

♠ A Q1097
♥ 93 AQ2
♦ KJ96 A875
♣ AJ9753 ♣ Q6

♠ 854
♥ KJ65
♦ 102
♣ K842

Board (10) Av: NS=-650

N-S	E-W	Contract	N-S	E-W	IMP
15	17	3NT E-3	300		14
1	9	3NT E 3	600		2
3	6	3NT E 4	630		1
18	11	3NT E 4	630		1
5	4	3NT E 4	630		1
16	14	3NT E 5	660		0
19	20	3NT E 6	690		-1
2	10	3NT E 6	690		-1
7	8	3NT E 6	690		-1
12	13	6D E 6	1370		-12

11

♠ AK75
♥ A742
♦ K8
♣ 1053

♠ QJ10963
♥ 83
♦ A109
♣ AJ

♠ 842
♥ KQ65
♦ J52
♣ Q76

Board (11) Av: NS=-100

N-S	E-W	Contract	N-S	E-W	IMP
7	8	2S E-1	50		4
15	17	3H N-1	50		2
18	11	3H N-1	50		2
3	6	3H N-2	100		0
5	4	2H N-2	100		0
19	20	2H N-2	100		0
16	14	2S E 2	110		0
2	10	2S E 2	110		0
1	9	3H N-3	150		-2
12	13	3H N-4	200		-3

12

♠ 842
♥ K94
♦ AK93
♣ J87

♠ J76 AQ103
♥ Q1062 ♥ 3
♦ 765 ♦ Q102
♣ 943 ♣ KQ1062

♠ K95
♥ AJ875
♦ J84
♣ A5

Board (12) Av: NS=-210

N-S	E-W	Contract	N-S	E-W	IMP
1	9	2H S 2	110		8
3	6	3H S-1	100		3
2	10	2H S-1	100		3
15	17	2H S-1	100		3
16	14	4H S-2	200		0
18	11	4H S-3	300		-3
19	20	4H S-3	300		-3
12	13	4H S-3	300		-3
5	4	4H S-3	300		-3
7	8	4H S-3	300		-3

13

♠ J107
♥ J107
♦ A762
♣ AKQ1087

♠ J1053 A74
♥ 64 ♥ 9852
♦ 54 ♦ KQJ98
♣ J6432 ♣ 9

♠ KQ9862
♥ AKQ3
♦ 103
♣ 5

Board (13) Av: NS=-160

N-S	E-W	Contract	N-S	E-W	IMP
1	8	4S S-1	100		2
17	18	4S S-1	100		2
15	14	3NT N-1	100		2
20	12	3NT N-1	100		2
3	2	3NT N-1	100		2
10	9	3NT N-1	100		2
7	5	4S S-2	200		-1
6	4	4H S-2	200		-1
13	16	6NT N-4	400		-6
11	19	6C S-4	400		-6

14

♠ J95
♥ Q1097
♦ KQ72
♣ 94

♠ K10764 Q3
♥ J3 ♥ A62
♦ 1054 ♦ J983
♣ AQ6 ♣ J1052

♠ A82
♥ K854
♦ A6
♣ K873

Board (14) Av: NS=+80

N-S	E-W	Contract	N-S	E-W	IMP
3	2	2H S 3	140		2
6	4	2H S 3	140		2
11	19	2H S 3	140		2
15	14	2H N 3	140		2
13	16	2H N 3	140		2
7	5	2H S 2	110		1
1	8	2S W-1	50		-1
17	18	4H S-1	50		-4
10	9	3H S-1	50		-4
20	12	3H S-1	50		-4

15

♠ Q102
♥ 42
♦ QJ876
♣ AK6

♠ 5 AKJ9843
♥ AQ83 ♥ 105
♦ AK54 ♦ 103
♣ 9742 ♣ Q10

♠ 76
♥ KJ976
♦ 92
♣ J853

Board (15) Av: NS=-410

N-S	E-W	Contract	N-S	E-W	IMP
1	8	3S E 5	200		5
3	2	2S E 5	200		5
17	18	4S E 4	420		0
7	5	4S E 4	420		0
13	16	4S E 5	450		-1
20	12	4S E 5	450		-1
6	4	4S E 5	450		-1
15	14	4S E 5	450		-1
10	9	4S E 5	450		-1
11	19	4S E 5	450		-1

16

♠ AKQ985
♥ 6
♦ Q654
♣ 104

♠ 10742 3
♥ AQ ♥ K10972
♦ A1073 ♦ KJ9
♣ KQ6 ♣ J753

♠ J6
♥ J8543
♦ 82
♣ A982

Board (16) Av: NS=-30

N-S	E-W	Contract	N-S	E-W	IMP
7	5	4H E-2	200		6
3	2	2S N 3	140		5
13	16	2S N 2	110		4
6	4	2S N 2	110		4
17	18	2S N-1	50		-1
11	19	3H W 3	140		-3
15	14	3H W 3	140		-3
20	12	3H E 3	140		-3
1	8	3H E 3	140		-3
10	9	3NT W 3	600		-11

17

♠ 642
♥ J742
♦ A1063
♣ 95

♠ KJ97 Q10853
♥ A1086 ♥ K3
♦ J54 ♦ KQ72
♣ 107 ♣ K4

♠ A
♥ Q95
♦ 98
♣ AQJ8632

Board (17) Av: NS=-230

N-S	E-W	Contract	N-S	E-W	IMP
6	4	3S E 3	140		3
15	14	3S E 3	140		3
13	16	3S E 3	140		3
1	8	3S E 4	170		2
17	18	3S E 4	170		2
7	5	3S E 4	170		2
3	2	3S E 4	170		2
10	9	4S E 4	420		-5
20	12	4S E 4	420		-5
11	19	4S E 4	420		-5

18

♠ K96
♥ 854
♦ 6432
♣ A87

♠ A10873 5
♥ J3 ♥ AQ107
♦ QJ ♦ AK10987
♣ KQ52 ♣ 104

♠ QJ42
♥ K962
♦ 5
♣ J963

Board (18) Av: NS=-450

N-S	E-W	Contract	N-S	E-W	IMP
11	19	3NT W 4	430		1
13	16	3NT E 4	430		1
1	8	3NT E 4	430		1
15	14	3NT E 4	430		1
3	2	3NT E 4	430		1
6	4	3NT E 5	460		0
7	5	3NT E 5	460		0
20	12	3NT E 5	460		0
17	18	3NT E 5	460		0
10	9	3NT E 5	460		0

19

♠ 87
♥ 109532
♦ J1076
♣ J3

♠ J5
♥ KQ
♦ Q42
♣ Q98762

♠ 10632
♥ J87
♦ 953
♣ AK4

♠ AKQ94
♥ A64
♦ AK8
♣ 105

N
W — E
S

20

♠ 10
♥ 8
♦ KJ762
♣ QJ9532

♠ AK4
♥ AQ105
♦ 1095
♣ A108

♠ QJ65
♥ 93
♦ AQ84
♣ 764

♠ 98732
♥ KJ7642
♦ 3
♣ K

N
W — E
S

21

♠ QJ962
♥ 1097
♦ A7
♣ A96

♠ 4
♥ QJ43
♦ J95
♣ J8752

♠ AK10853
♥ A86
♦ Q106
♣ 10

♠ 7
♥ K52
♦ K8432
♣ KQ43

N
W — E
S

Board (19) Av: NS=+110

N-S	E-W	Contract	N-S	E-W	IMP
6	5	3H	S 3	140	1
14	17	3H	S 3	140	1
3	10	3H	S 3	140	1
1	7	3H	S 3	140	1
15	18	1S	S 2	110	0
13	19	1S	S 2	110	0
20	11	1S	S 1	80	-1
8	4	1S	S 1	80	-1
16	12	1S	S 1	80	-1
2	9	3H	S-1	50	-4

Board (20) Av: NS=-630

N-S	E-W	Contract	N-S	E-W	IMP
14	17	4S	E-1	100	12
1	7	3H	S-5	500	4
13	19	3NT	W 4	630	0
3	10	3NT	W 4	630	0
15	18	3NT	W 4	630	0
20	11	3NT	W 4	630	0
2	9	3NT	W 5	660	-1
16	12	3NT	W 6	690	-2
6	5	3NT	W 6	690	-2
8	4	3NT	W 6	690	-2

Board (21) Av: NS=+50

N-S	E-W	Contract	N-S	E-W	IMP
8	4	2NT	S 2	120	2
13	19	1NT	S 2	120	2
6	5	2S	E-2	100	2
20	11	2S	E-2	100	2
2	9	2S	E-2	100	2
1	7	1S	E-2	100	2
14	17	1S	E-2	100	2
3	10	3C	N-1	100	-4
15	18	2NT	N-1	100	-4
16	12	1S	E 2	110	-4

22

♠ J1097
♥ A1032
♦ Q3
♣ Q93

♠ K52
♥ Q975
♦ J97
♣ KJ6

♠ Q86
♥ KJ6
♦ A10642
♣ 107

♠ A43
♥ 84
♦ K85
♣ A8542

N
W — E
S

23

♠ Q72
♥ 5
♦ Q52
♣ KQ6542

♠ J4
♥ Q986432
♦ A7
♣ 107

♠ K10863
♥ A7
♦ 943
♣ A93

♠ A95
♥ KJ10
♦ KJ1086
♣ J8

N
W — E
S

24

♠ KQ865
♥ J96
♦ K6
♣ J65

♠ A73
♥ 873
♦ QJ95
♣ A97

♠ 109
♥ A52
♦ A10872
♣ K82

♠ J42
♥ KQ104
♦ 43
♣ Q1043

N
W — E
S

Board (22) Av: NS=+30

N-S	E-W	Contract	N-S	E-W	IMP
15	18	1NT	S 3	150	3
13	19	1NT	N 3	150	3
8	4	1NT	S 2	120	3
2	9	Passout			-1
3	10	Passout			-1
1	7	Passout			-1
14	17	Passout			-1
20	11	Passout			-1
16	12	Passout			-1
6	5	Passout			-1

Board (23) Av: NS=-100

N-S	E-W	Contract	N-S	E-W	IMP
13	19	2C	N 4	130	6
6	5	3C	N 3	110	5
16	12	4H	W-1	100	5
20	11	1NT	N 1	90	5
15	18	3D	S-1	100	0
2	9	2H	W 3	140	-1
3	10	2H	W 3	140	-1
1	7	3NT	S-3	300	-5
8	4	3NT	S-4	400	-7
14	17	2NT	S-5	500	-9

Board (24) Av: NS=-50

N-S	E-W	Contract	N-S	E-W	IMP
8	4	2S	N 2	110	4
1	7	2C	W-2	100	4
13	19	4D	E-1	50	3
14	17	Passout			2
20	11	Passout			2
2	9	3Sx	N-1	100	-2
6	5	3S	N-2	100	-2
3	10	1NT	W 3	150	-3
15	18	2NT	W 4	180	-4
16	12	2NT	W 4	180	-4

第1回山口知也杯 Session 2 Section D 2016年6月18日(土)

1

♠A6
♥Q85
♦AQ103
♣Q1084

♠QJ1073
♥K92
♦75
♣A76

♠K2
♥J743
♦K862
♣KJ9

W N E S

♠9854
♥A106
♦J94
♣532

Board (1) Av: NS=-90

N-S	E-W	Contract	N-S	E-W	IMP
18	16	2NT E-1	50		4
1	2	1NT N-1		50	1
10	4	1NT N-1		50	1
5	3	1NT N-1		50	1
19	17	1NT E 1		90	0
15	13	2H W 2		110	-1
7	9	2NT E 2		120	-1
14	20	1NT E 2		120	-1
8	6	1NT N-3		150	-2
11	12	1NT N-4		200	-3

2

♠KQ4
♥Q10982
♦KJ
♣963

♠J985
♥KJ5
♦83
♣KJ85

♠A1063
♥764
♦107542
♣A

W N E S

♠72
♥A3
♦AQ96
♣Q10742

Board (2) Av: NS=-50

N-S	E-W	Contract	N-S	E-W	IMP
8	6	2NT N 3	150		5
5	3	2NT N 3	150		5
14	20	2H N 3	140		5
15	13	3S W-1	50		3
18	16	2NT N-1		100	-2
1	2	2NT N-1		100	-2
7	9	2H N-1		100	-2
19	17	2NT N-2		200	-4
10	4	2NT N-2		200	-4
11	12	2NT S-3		300	-6

3

♠KJ974
♥AQ2
♦KJ9
♣Q5

♠102
♥K87
♦AQ6
♣AJ983

♠AQ53
♥9543
♦874
♣107

W N E S

♠86
♥J106
♦10532
♣K642

Board (3) Av: NS=+20

N-S	E-W	Contract	N-S	E-W	IMP
11	12	1NTxW-1	200		5
1	2	2C W-1	100		2
8	6	2C W-1	100		2
18	16	1NT E-1	100		2
19	17	1S N 1	80		2
7	9	1S N 1	80		2
10	4	2C W 2		90	-3
5	3	1NT E 1		90	-3
14	20	1H E 2		110	-4
15	13	2NT S-3		150	-5

4

♠QJ10
♥AK96
♦Q1075
♣75

♠9876
♥Q5
♦983
♣A964

♠K53
♥J1087
♦K6
♣Q832

W N E S

♠A42
♥432
♦AJ42
♣KJ10

Board (4) Av: NS=+600

N-S	E-W	Contract	N-S	E-W	IMP
8	6	3NT S 5	660		2
10	4	3NT S 5	660		2
1	2	3NT S 5	660		2
7	9	3NT N 5	660		2
15	13	3NT N 5	660		2
11	12	3NT N 5	660		2
14	20	3NT S 4	630		1
19	17	3NT N 4	630		1
5	3	2NT S 5	210		-9
18	16	3D N 5	150		-10

5

♠J1064
♥K105
♦10976
♣64

♠75
♥AQJ87
♦Q
♣A10832

♠AQ2
♥2
♦J8532
♣KQ75

W N E S

♠K983
♥9643
♦AK4
♣J9

Board (5) Av: NS=-390

N-S	E-W	Contract	N-S	E-W	IMP
14	20	3NT E-1	50		10
8	6	3C E 6	170		6
1	2	3NT E 3	400		0
7	9	3NT E 3	400		0
10	4	3NT E 3	400		0
15	13	3NT E 3	400		0
5	3	3NT E 4	430		-1
11	12	3NT E 4	430		-1
19	17	3NT E 5	460		-2
18	16	3NT E 5	460		-2

6

♠97
♥QJ106
♦J108743
♣4

♠KQ10653
♥4
♦A9
♣J865

♠J84
♥973
♦65
♣KQ932

W N E S

♠A2
♥AK852
♦KQ2
♣A107

Board (6) Av: NS=+420

N-S	E-W	Contract	N-S	E-W	IMP
5	3	4H S 6	480		2
11	12	4H S 5	450		1
8	6	4H S 5	450		1
1	2	4H S 5	450		1
7	9	4H S 5	450		1
10	4	4H S 5	450		1
14	20	4H S 5	450		1
15	13	3NT S 4	430		0
19	17	4Sx W-1	200		-6
18	16	3H S 5	200		-6

7

♠AQJ
♥A95
♦KJ103
♣J95

♠9853
♥K107
♦84
♣Q643

♠K104
♥QJ83
♦Q9652
♣2

W N E S

♠762
♥642
♦A7
♣AK1087

Board (7) Av: NS=+620

N-S	E-W	Contract	N-S	E-W	IMP
13	14	3NT S 4	630		0
1	5	3NT S 4	630		0
17	20	3NT N 4	630		0
11	15	3NT N 4	630		0
8	2	3NT N 4	630		0
9	6	3NT S 3	600		-1
18	12	3NT N 3	600		-1
19	16	3NT N 3	600		-1
3	4	3NT N 3	600		-1
7	10	3NT N-1	100		-12

8

♠109
♥1098
♦J10743
♣K87

♠7
♥AQ7642
♦A62
♣A96

♠AKQ8
♥J53
♦K9
♣Q1052

W N E S

♠J65432
♥K
♦Q85
♣J43

Board (8) Av: NS=-610

N-S	E-W	Contract	N-S	E-W	IMP
9	6	4H W 6	480		4
17	20	4H W 6	480		4
1	5	4H W 6	480		4
7	10	4H W 6	480		4
18	12	4H W 6	480		4
11	15	4H W 7	510		3
8	2	4H W 7	510		3
19	16	6H W 6	980		-9
13	14	6H W 6	980		-9
3	4	6H W 6	980		-9

9

♠J9
♥Q9652
♦10964
♣KQ

♠53
♥1084
♦AKJ72
♣A85

♠AKQ1076
♥3
♦Q3
♣J962

W N E S

♠842
♥AKJ7
♦85
♣10743

Board (9) Av: NS=-620

N-S	E-W	Contract	N-S	E-W	IMP
13	14	4H N-2	100		11
19	16	2S E 6	230		9
3	4	4S E 6	680		-2
17	20	4S E 6	680		-2
7	10	4S E 6	680		-2
9	6	4S E 6	680		-2
18	12	4S E 6	680		-2
11	15	4S E 6	680		-2
1	5	4S E 6	680		-2
8	2	4S E 6	680		-2

第1回山口知也杯 Session 2 Section D 2016年6月18日(土)

10

♠ Q62
♥ J4
♦ 987
♣ A9872

♠ 985
♥ AQ86
♦ J1043
♣ J4

N
W — E
S

♠ KJ10
♥ K972
♦ A62
♣ K103

♠ A743
♥ 1053
♦ KQ5
♣ Q65

11

♠ K853
♥ AQ7
♦ J742
♣ 84

♠ AQ1064
♥ J9853
♦ A86
♣

N
W — E
S

♠ J92
♥ 642
♦ 3
♣ K109753

♠ 7
♥ K10
♦ KQ1095
♣ AQJ62

12

♠ AKQJ9
♥ K63
♦ 52
♣ A98

♠ 8743
♥ 2
♦ QJ107
♣ KJ76

N
W — E
S

♠ 1062
♥ Q94
♦ K863
♣ Q32

♠ 5
♥ AJ10875
♦ A94
♣ 1054

Board (10) Av: NS=-160

N-S	E-W	Contract	N-S	E-W	IMP
9	6	2H	W 2	110	2
18	12	3H	E 3	140	1
3	4	2H	W 3	140	1
7	10	2H	W 3	140	1
1	5	2H	W 3	140	1
13	14	2H	W 3	140	1
19	16	2H	W 4	170	0
11	15	2H	W 4	170	0
17	20	3C	N-2	200	-1
8	2	2S	N-2	200	-1

Board (11) Av: NS=+210

N-S	E-W	Contract	N-S	E-W	IMP
13	14	3NT	N 4	430	6
7	10	5D	S 5	400	5
3	4	3NT	N 3	400	5
11	15	3NT	N 3	400	5
18	12	4Sx	E-2	300	3
19	16	4S	E-3	150	-2
9	6	4S	E-3	150	-2
1	5	3NT	N-1	50	-6
17	20	3NT	N-1	50	-6
8	2	3NT	N-1	50	-6

Board (12) Av: NS=+660

N-S	E-W	Contract	N-S	E-W	IMP
7	10	6H	S 6	1430	13
13	14	4H	S 7	710	2
3	4	4H	N 7	710	2
8	2	4H	S 6	680	1
1	5	4H	S 6	680	1
9	6	3NT	S 5	660	0
18	12	4H	S 5	650	0
11	15	4H	S 4	620	-1
19	16	3NT	S 3	600	-2
17	20	2NT	N 7	270	-9

13

♠ 9862
♥ 2
♦ KQ752
♣ J83

♠ KJ43
♥ AJ984
♦ J8
♣ K2

N
W — E
S

♠ Q10
♥ Q1075
♦ 64
♣ AQ1076

♠ A75
♥ K63
♦ A1093
♣ 954

14

♠ A642
♥ 875
♦ J104
♣ Q62

♠ Q109875
♥ 1063
♦ AK9
♣ 3

N
W — E
S

♠ J3
♥ A92
♦ Q652
♣ AK97

♠ K
♥ KQJ4
♦ 873
♣ J10854

15

♠ J54
♥ AK86
♦ KQJ54
♣ K

♠ AQ9
♥ 2
♦ A1087
♣ AQ975

N
W — E
S

♠ K763
♥ Q9743
♦ 2
♣ 1063

♠ 1082
♥ J105
♦ 963
♣ J842

Board (13) Av: NS=-410

N-S	E-W	Contract	N-S	E-W	IMP
20	15	3H	W 3	140	7
2	7	3H	W 4	170	6
3	8	3H	E 4	170	6
17	12	2H	W 4	170	6
1	6	4D	S-3	300	3
4	9	4H	W 4	620	-5
10	5	4H	W 4	620	-5
18	13	4H	W 4	620	-5
14	19	4H	W 4	620	-5
16	11	4H	E 6	680	-7

Board (14) Av: NS=-300

N-S	E-W	Contract	N-S	E-W	IMP
14	19	2NT	E 2	120	5
20	15	2S	W 4	170	4
2	7	2S	W 4	170	4
1	6	2S	W 4	170	4
16	11	2S	W 4	170	4
10	5	4S	W 4	420	-3
4	9	4S	W 4	420	-3
3	8	4S	W 4	420	-3
17	12	4S	E 4	420	-3
18	13	4S	E 4	420	-3

Board (15) Av: NS=-140

N-S	E-W	Contract	N-S	E-W	IMP
20	15	3NT	W-2	100	6
18	13	2NT	W-2	100	6
1	6	1NT	W 1	90	2
2	7	1NT	W 1	90	2
3	8	3C	W 4	130	0
17	12	3C	W 4	130	0
4	9	1D	N-2	200	-2
16	11	2Cx	W 3	280	-4
14	19	2H	S-3	300	-4
10	5	2H	S-3	300	-4

16

♠ K109
♥ K1074
♦ 8652
♣ KJ

♠ 72
♥ 852
♦ A73
♣ 109742

N
W — E
S

♠ AQJ653
♥ AQ6
♦ J4
♣ 53

♠ 84
♥ J93
♦ KQ109
♣ AQ86

17

♠ AJ62
♥
♦ 108743
♣ KQ83

♠ 105
♥ AQJ432
♦ 6
♣ J752

N
W — E
S

♠ K8743
♥ 109
♦ KQJ5
♣ 64

♠ Q9
♥ K8765
♦ A92
♣ A109

18

♠ K103
♥ A1076
♦ 64
♣ QJ83

♠ QJ4
♥ QJ4
♦ AJ853
♣ 109

N
W — E
S

♠ 98652
♥ K93
♦ K9
♣ AK7

♠ A7
♥ 852
♦ Q1072
♣ 6542

Board (16) Av: NS=-120

N-S	E-W	Contract	N-S	E-W	IMP
16	11	3H	N 3	140	6
4	9	3D	S-2	100	1
20	15	2S	E 2	110	0
3	8	2S	E 2	110	0
17	12	2S	E 2	110	0
10	5	1S	E 2	110	0
14	19	3S	E 3	140	-1
1	6	1S	E 3	140	-1
18	13	3H	N-3	150	-1
2	7	3C	S-4	200	-2

Board (17) Av: NS=+70

N-S	E-W	Contract	N-S	E-W	IMP
14	19	1NT	N 3	150	2
20	15	1NT	S 2	120	2
1	6	1NT	S 2	120	2
18	13	1NT	S 2	120	2
16	11	1NT	S 1	90	1
2	7	1NT	S 1	90	1
17	12	1NT	S 1	90	1
3	8	2NT	S-1	50	-3
10	5	1NT	S-1	50	-3
4	9	3NT	N-2	100	-5

Board (18) Av: NS=-120

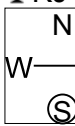
N-S	E-W	Contract	N-S	E-W	IMP
4	9	4S	E-1	50	5
14	19	4S	E-1	50	5
20	15	2NT	W 2	120	0
10	5	3S	E 3	140	-1
1	6	3S	E 3	140	-1
18	13	3S	E 3	140	-1
16	11	3S	E 3	140	-1
2	7	3S	E 4	170	-2
17	12	3S	E 4	170	-2
3	8	4S	E 4	420	-7

第1回山口知也杯 Session 2 Section D 2016年6月18日(土)

19

♠ Q
♥ K1052
♦ 8732
♣ KJ42

♠ 975 ♠ K843
♥ J74 ♥ Q93
♦ K94 ♦ J105
♣ A1087 ♣ 953



♠ AJ1062
♥ A86
♦ AQ6
♣ Q6

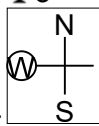
Board (19) Av: NS=+230

N-S	E-W	Contract	N-S	E-W	IMP
6	7	3NT S 3	400		5
13	11	3NT N 3	400		5
5	9	3NT N 3	400		5
19	15	3NT N 3	400		5
16	17	2S S 4	170		-2
1	3	2D S 3	110		-3
10	8	2D S 3	110		-3
14	12	2D S 3	110		-3
2	4	2D S 3	110		-3
18	20	3NT N-1	50		-7

20

♠ AKJ765
♥ Q9
♦ Q1096
♣ 3

♠ Q9 ♠ 843
♥ K1053 ♥ J62
♦ 82 ♦ AK54
♣ QJ874 ♣ 652



♠ 102
♥ A874
♦ J73
♣ AK109

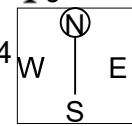
Board (20) Av: NS=+630

N-S	E-W	Contract	N-S	E-W	IMP
18	20	3NT S 5	660		1
16	17	4S N 5	650		1
14	12	3NT S 4	630		0
13	11	3NT S 4	630		0
5	9	4S N 4	620		0
1	3	4S N 4	620		0
10	8	4S N 4	620		0
2	4	4S N 4	620		0
19	15	4S N 4	620		0
6	7	3NT S 3	600		-1

21

♠ AQ9754
♥ 3
♦ K10984
♣ 9

♠ 6 ♠ KJ32
♥ Q108754 ♥ KJ9
♦ Q ♦ 753
♣ AJ1087 ♣ K32



♠ 108
♥ A62
♦ AJ62
♣ Q654

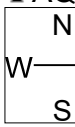
Board (21) Av: NS=-10

N-S	E-W	Contract	N-S	E-W	IMP
19	15	3Sx N 3	730		12
6	7	5Hx W-3	500		11
13	11	2S N 4	170		5
10	8	3NT E-3	150		4
16	17	3S N 3	140		4
18	20	3H W 4	170		-4
2	4	2H W 4	170		-4
5	9	4Sx N-1	200		-5
1	3	3Hx E 3	530		-11
14	12	4Hx W 5	690		-12

22

♠ A10853
♥ J9
♦ J875
♣ AQ

♠ K62 ♠ Q97
♥ 64 ♥ AQ108753
♦ AQ642 ♦ 3
♣ 954 ♣ J6



♠ J4
♥ K2
♦ K109
♣ K108732

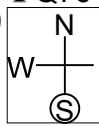
Board (22) Av: NS=-50

N-S	E-W	Contract	N-S	E-W	IMP
5	9	2NT S 2	120		5
19	15	2S N 2	110		4
2	4	2S N 2	110		4
1	3	3S N-1	50		0
18	20	3S N-1	50		0
14	12	2H E 2	110		-2
10	8	3H E 3	140		-3
13	11	3H E 3	140		-3
16	17	4S N-3	150		-3
6	7	3S N-3	150		-3

23

♠ K853
♥ A3
♦ AJ76
♣ Q76

♠ Q109 ♠ A7642
♥ Q52 ♥ 964
♦ 943 ♦ 8
♣ KJ93 ♣ 10542



♠ J
♥ KJ1087
♦ KQ1052
♣ A8

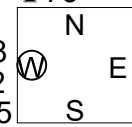
Board (23) Av: NS=+540

N-S	E-W	Contract	N-S	E-W	IMP
14	12	6D N 6	1370		13
10	8	3NT N 6	690		4
1	3	3NT N 5	660		3
16	17	3NT N 5	660		3
5	9	5D S 6	620		2
13	11	3NT S 3	600		2
2	4	3NT N 3	600		2
18	20	3NT N 3	600		2
6	7	3NT N-1	100		-12
19	15	3NT N-1	100		-12

24

♠ AJ764
♥ 632
♦ A65
♣ 73

♠ KQ8 ♠ 52
♥ KJ98 ♥ AQ75
♦ 1072 ♦ 94
♣ Q105 ♣ AJ964



♠ 1093
♥ 104
♦ KQJ83
♣ K82

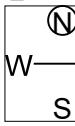
Board (24) Av: NS=-120

N-S	E-W	Contract	N-S	E-W	IMP
10	8	3S N 4	170		7
19	15	4H W-1	50		5
1	3	Passout			3
5	9	Passout			3
6	7	3H W 3	140		-1
14	12	2H W 3	140		-1
16	17	4D S-3	150		-1
13	11	3H W 4	170		-2
2	4	4H W 4	420		-7
18	20	4H W 4	420		-7

25

♠ AQ105
♥ Q862
♦ J
♣ AKJ7

♠ J8 ♠ K9742
♥ KJ75 ♥ A3
♦ 10864 ♦ AK532
♣ 865 ♣ 9



♠ 63
♥ 1094
♦ Q97
♣ Q10432

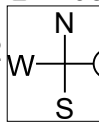
Board (25) Av: NS=0

N-S	E-W	Contract	N-S	E-W	IMP
13	17	3C N 3	110		3
3	7	3C N 3	110		3
5	2	3C N 3	110		3
12	15	4D E-1	100		3
1	4	4C N-1	50		-2
8	9	3NT N-1	50		-2
14	11	3C N-1	50		-2
10	6	1S E 1	80		-2
20	16	3D E 3	110		-3
18	19	1S E 2	110		-3

26

♠ A4
♥ AJ86
♦ 865
♣ K1082

♠ Q72 ♠ K98
♥ K732 ♥ 10
♦ A9 ♦ KJ742
♣ J953 ♣ AQ76



♠ J10653
♥ Q954
♦ Q103
♣ 4

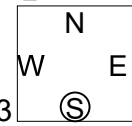
Board (26) Av: NS=-160

N-S	E-W	Contract	N-S	E-W	IMP
8	9	3NT E-1	100		6
1	4	2NT W-1	100		6
10	6	3C E 3	110		2
3	7	1NT E 2	120		1
5	2	1NT E 2	120		1
13	17	1NT E 3	150		0
14	11	1NT E 3	150		0
20	16	1NT E 3	150		0
18	19	3NT E 3	600		-10
12	15	3NT E 3	600		-10

27

♠ 8753
♥ A8762
♦ Q95
♣ 2

♠ QJ4 ♠ AK1096
♥ J10 ♥ Q9
♦ AJ2 ♦ K1076
♣ Q8753 ♣ AK



♠ 2
♥ K543
♦ 843
♣ J10964

Board (27) Av: NS=-330

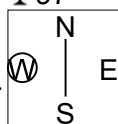
N-S	E-W	Contract	N-S	E-W	IMP
18	19	6S E-2	100		10
14	11	6S E-1	50		9
1	4	3NT W-1	50		9
8	9	4S E 4	420		-3
3	7	4S E 4	420		-3
10	6	4S E 6	480		-4
5	2	4S E 6	480		-4
12	15	4S E 6	480		-4
13	17	4S E 6	480		-4
20	16	6S E 6	980		-12

第1回山口知也杯 Session 2 Section D 2016年6月18日(土)

28

♠AQ105
♥AK53
♦1092
♣97

♠J76
♥86
♦AKQ74
♣1064



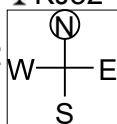
♠432
♥J972
♦J63
♣AK5

♠K98
♥Q104
♦85
♣QJ832

29

♠Q94
♥Q94
♦AQ9764
♣KJ32

♠1072
♥A8762
♦1085
♣Q9



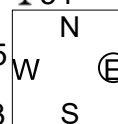
♠KQ93
♥J
♦KJ2
♣108754

♠AJ8654
♥K1053
♦3
♣A6

30

♠53
♥Q8632
♦KJ107
♣54

♠KQJ
♥AJ105
♦Q3
♣10963



♠872
♥K97
♦A9864
♣K8

♠A10964
♥4
♦52
♣AQJ72

Board (28) Av: NS=+50

N-S	E-W	Contract	N-S	E-W	IMP
18	19	1NT S 2	120		2
13	17	1NT S 2	120		2
8	9	1NT S 2	120		2
14	11	1NT N 2	120		2
20	16	3D W-2	100		2
1	4	1NT S 1	90		1
3	7	1NT E-1	50		0
5	2	1NT S-1		100	-4
10	6	1NT S-1		100	-4
12	15	1NT S-1		100	-4

Board (29) Av: NS=+280

N-S	E-W	Contract	N-S	E-W	IMP
20	16	3NT S 4	630		8
5	2	3NT S 4	630		8
13	17	3NT N 4	630		8
10	6	3NT N 3	600		8
1	4	3NT N 3	600		8
3	7	2H S 2	110		-5
14	11	4S S-1		100	-9
12	15	4H S-1		100	-9
8	9	3NT N-1		100	-9
18	19	3NT N-1		100	-9

Board (30) Av: NS=+70

N-S	E-W	Contract	N-S	E-W	IMP
8	9	3D E-3	150		2
3	7	2S S 3	140		2
1	4	2S S 2	110		1
10	6	3D E-2	100		1
20	16	2D E-2	100		1
14	11	2D E-1	50		-1
5	2	2D E-1	50		-1
13	17	2D E-1	50		-1
18	19	2S S-1		50	-3
12	15	2S S-2		100	-5

第1回山口知也杯 Session 3 Section D 2016年6月19日(日)

1

♠ A106
♥ K532
♦ Q106
♣ K95

♠ 74
♥ AJ87
♦ 843
♣ QJ102

♠ KQ9532
♥ Q4
♦ 72
♣ 873

♠ J8
♥ 1096
♦ AKJ95
♣ A64

W N E S

2

♠ Q4
♥ AK9753
♦ 1095
♣ A2

♠ AJ107
♥
♦ QJ732
♣ K764

♠ QJ10642
♥
♦ A864
♣ 1098

♠ K986532
♥ 8
♦ K
♣ QJ53

W N E S

3

♠ AK4
♥ 10952
♦ Q54
♣ J108

♠ 652
♥ AKJ63
♦ A86
♣ K6

♠ J1087
♥ 87
♦ 72
♣ Q9754

♠ Q93
♥ Q4
♦ KJ1093
♣ A32

W N E S

Board (1) Av: NS=+410

N-S	E-W	Contract	N-S	E-W	IMP
16	6	3NT N 5	460		2
5	14	3NT N 4	430		1
9	17	3NT N 4	430		1
3	15	3NT N 4	430		1
10	19	3NT N 3	400		0
12	4	3NT N 3	400		0
2	13	3NT N 3	400		0
1	11	3NT N 3	400		0
8	20	3NT N 3	400		0
7	18	3H N 3	140		-7

Board (2) Av: NS=+70

N-S	E-W	Contract	N-S	E-W	IMP
3	15	4H W-4	200		4
5	14	3H N 3	140		2
12	4	5Dx E-1	100		1
9	17	5D E-2	100		1
1	11	5D E-2	100		1
16	6	4D E-2	100		1
10	19	4D E-2	100		1
2	13	4D E-1	50		-1
7	18	3S S-1	100		-5
8	20	4Sx S-2	500		-11

Board (3) Av: NS=+130

N-S	E-W	Contract	N-S	E-W	IMP
2	13	1NT S 3	150		1
9	17	1NT S 3	150		1
16	6	1NT S 3	150		1
3	15	1NT S 3	150		1
10	19	1NT S 2	120		0
12	4	1NT S 2	120		0
5	14	1NT S 2	120		0
1	11	1NT S 2	120		0
8	20	3D S 3	110		-1
7	18	3D S-1	50		-5

4

♠ A1072
♥ 74
♦ Q83
♣ AK53

♠ Q653
♥ AKQ952
♦ 105
♣ 4

♠ 984
♥ J108
♦ 74
♣ 109872

♠ KJ
♥ 63
♦ AKJ962
♣ QJ6

W N E S

Board (4) Av: NS=+530

N-S	E-W	Contract	N-S	E-W	IMP
5	14	5D S 5	600		2
12	4	5D S 5	600		2
10	19	5D S 5	600		2
2	13	5D S 5	600		2
1	11	5D S 5	600		2
8	20	5D S 5	600		2
7	18	5D S 5	600		2
16	6	4Hx E-2	500		-1
3	15	4D S 5	150		-9
9	17	5C N-1	100		-12

5

♠ J83
♥ 53
♦ 853
♣ AQ853

♠ KQ109
♥ 874
♦ AK964
♣ 9

♠ A4
♥ AQJ96
♦ 107
♣ J1064

♠ 7652
♥ K102
♦ QJ2
♣ K72

W N E S

Board (5) Av: NS=-450

N-S	E-W	Contract	N-S	E-W	IMP
9	17	2NT W 2	120		8
2	13	3NT W 4	430		1
10	19	3NT E 4	430		1
3	15	4H W 5	450		0
5	14	4H W 5	450		0
8	20	4H W 5	450		0
7	18	4H W 5	450		0
12	4	3NT W 5	460		0
16	6	4H W 6	480		-1
1	11	4H W 6	480		-1

6

♠ 72
♥ 98
♦ 10985
♣ K8732

♠ J85
♥ J1054
♦ J42
♣ Q64

♠ 1093
♥ A632
♦ Q763
♣ J9

♠ AKQ64
♥ KQ7
♦ AK
♣ A105

W N E S

Board (6) Av: NS=+430

N-S	E-W	Contract	N-S	E-W	IMP
9	17	3NT S 6	490		2
5	14	3NT S 5	460		1
12	4	3NT S 4	430		0
16	6	3NT S 4	430		0
10	19	3NT S 4	430		0
3	15	3NT S 4	430		0
2	13	3NT S 4	430		0
1	11	3NT S 4	430		0
8	20	3NT S 4	430		0
7	18	3NT S 4	430		0

7

♠ QJ74
♥ 103
♦ A987
♣ A74

♠ 5
♥ J9742
♦ J3
♣ Q8632

♠ AK3
♥ AQ85
♦ K64
♣ K95

♠ 109862
♥ K6
♦ Q1052
♣ J10

W N E S

Board (7) Av: NS=-480

N-S	E-W	Contract	N-S	E-W	IMP
9	16	1C W 5	150		8
18	10	3Sx S-1	200		7
12	2	3H W 5	200		7
3	14	3H E 5	200		7
6	20	4H W 5	650		-5
1	15	4H E 5	650		-5
17	7	4H E 5	650		-5
8	19	4H E 5	650		-5
4	11	4H E 5	650		-5
13	5	4H E 5	650		-5

8

♠ 1096
♥ 964
♦ A103
♣ QJ52

♠ J53
♥ KQ1087
♦ 542
♣ 97

♠ AKQ4
♥ J
♦ QJ96
♣ AK43

♠ 872
♥ A532
♦ K87
♣ 1086

W N E S

Board (8) Av: NS=-370

N-S	E-W	Contract	N-S	E-W	IMP
13	5	3NT E-1	50		9
12	2	3NT E-1	50		9
18	10	3NT W 4	430		-2
6	20	3NT W 4	430		-2
1	15	3NT W 4	430		-2
9	16	3NT W 4	430		-2
8	19	3NT W 4	430		-2
3	14	3NT W 4	430		-2
4	11	3NT W 4	430		-2
17	7	3NT E 4	430		-2

9

♠ Q98763
♥ J
♦ AK872
♣ 6

♠ A10
♥ K432
♦ 965
♣ AQ98

♠ 542
♥ AQ1076
♦ Q3
♣ 1043

♠ KJ
♥ 985
♦ J104
♣ KJ752

W N E S

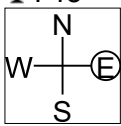
Board (9) Av: NS=+290

N-S	E-W	Contract	N-S	E-W	IMP
3	14	4Sx N 4	590		7
13	5	4Sx N 4	590		7
1	15	4S N 4	420		4
17	7	4S N 4	420		4
18	10	3S N 4	170		-3
12	2	3S N 4	170		-3
4	11	3S N 4	170		-3
9	16	2S S 4	170		-3
8	19	2S N 4	170		-3
6	20	3S N 3	140		-4

10

♠65
♥Q863
♦10986
♣743

♠J1082
♥K7542
♦732
♣9



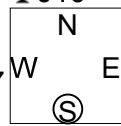
♠KQ93
♥A9
♦54
♣AKQ108

♠A74
♥J10
♦AKQJ
♣J652

11

♠J86
♥A654
♦K1043
♣J10

♠7432
♥3
♦AQ87
♣A954



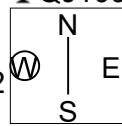
♠K5
♥QJ1087
♦9652
♣63

♠AQ109
♥K92
♦J
♣KQ872

12

♠Q85
♥J95
♦J85
♣QJ109

♠1042
♥AQ2
♦AQ42
♣K53



♠KJ7
♥7643
♦K76
♣876

♠A963
♥K108
♦1093
♣A42

Board (10) Av: NS=-130

N-S	E-W	Contract	N-S	E-W	IMP
3	14	1NTxS 1	180		7
12	2	1NT S 2	120		6
18	10	1NT S 1	90		6
4	11	1NT S-1		100	1
17	7	1NT S-1		100	1
13	5	2S E 3		140	0
9	16	2S E 3		140	0
8	19	3S E 4		170	-1
1	15	4S E 4		620	-10
6	20	4S E 4		620	-10

Board (11) Av: NS=+190

N-S	E-W	Contract	N-S	E-W	IMP
12	2	3NT N 4	430		6
13	5	3NT N 3	400		5
17	7	1NT N 5	210		1
18	10	1NT N 4	180		0
1	15	1NT N 4	180		0
6	20	2C S 5	150		-1
4	11	1NT N 3	150		-1
3	14	2C S 4	130		-2
8	19	2H N 2	110		-2
9	16	2H N 2	110		-2

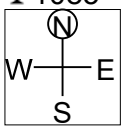
Board (12) Av: NS=-140

N-S	E-W	Contract	N-S	E-W	IMP
8	19	1NT W 1		90	2
4	11	1NT W 2		120	1
18	10	1NT W 2		120	1
6	20	1NT W 3		150	0
13	5	1NT W 3		150	0
12	2	1NT W 3		150	0
9	16	1NT W 3		150	0
1	15	1NT W 3		150	0
3	14	1NT W 3		150	0
17	7	1NT W 4		180	-1

13

♠AK2
♥J
♦AQ10754
♣1085

♠10976
♥AQ98
♦K8
♣J93



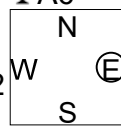
♠QJ4
♥K10652
♦
♣AKQ62

♠853
♥743
♦J9632
♣74

14

♠83
♥A752
♦A10974
♣A6

♠104
♥KJ83
♦Q832
♣K95



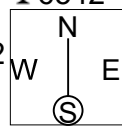
♠AK95
♥10
♦K5
♣QJ10743

♠QJ762
♥Q964
♦J6
♣82

15

♠KQJ74
♥9
♦KQ9
♣6542

♠52
♥J1042
♦A765
♣J98



♠106
♥63
♦J108432
♣AK10

♠A983
♥AKQ875
♦
♣Q73

Board (13) Av: NS=-650

N-S	E-W	Contract	N-S	E-W	IMP
4	15	6H E-1	100		13
1	14	5H E 5		650	0
7	16	4H W 5		650	0
17	10	4H W 5		650	0
5	12	4H E 5		650	0
8	18	4H E 5		650	0
2	11	4H E 5		650	0
20	9	4H E 5		650	0
13	3	4H E 5		650	0
19	6	5Hx W 5		850	-5

Board (14) Av: NS=-130

N-S	E-W	Contract	N-S	E-W	IMP
5	12	2D N-2		100	1
20	9	3C E 3		110	1
13	3	3C E 3		110	1
19	6	3C E 4		130	0
1	14	3C E 4		130	0
4	15	3C E 4		130	0
8	18	3H N-3		150	-1
2	11	1NT W 3		150	-1
17	10	1NT W 3		150	-1
7	16	3NT W 4		430	-7

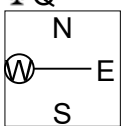
Board (15) Av: NS=+560

N-S	E-W	Contract	N-S	E-W	IMP
4	15	5Dx E-5	1100		11
1	14	4S N 6	680		3
19	6	5S N 5	650		3
17	10	5S N 5	650		3
2	11	4S N 5	650		3
13	3	4S N 5	650		3
20	9	4S N 5	650		3
7	16	4S N 5	650		3
5	12	6S N-1		100	-12
8	18	6S N-1		100	-12

16

♠AQ943
♥K94
♦A853
♣Q

♠108
♥Q65
♦KJ102
♣K932



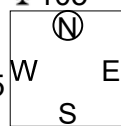
♠52
♥J107
♦764
♣AJ1087

♠KJ76
♥A832
♦Q9
♣654

17

♠KQ75
♥AJ1043
♦84
♣105

♠J8
♥Q876
♦AQ1065
♣Q8



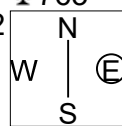
♠A104
♥K95
♦K73
♣K963

♠9632
♥2
♦J92
♣AJ742

18

♠J7
♥8654
♦AK106
♣763

♠K1032
♥K102
♦J4
♣KQ95



♠AQ
♥AJ9
♦Q72
♣AJ1084

♠98654
♥Q73
♦9853
♣2

Board (16) Av: NS=+420

N-S	E-W	Contract	N-S	E-W	IMP
1	14	4S N 4	420		0
5	12	4S N 4	420		0
19	6	4S N 4	420		0
2	11	4S N 4	420		0
7	16	4S N 4	420		0
13	3	4S N 4	420		0
8	18	4S N 4	420		0
4	15	4S N 4	420		0
17	10	4S N 4	420		0
20	9	4S N 4	420		0

Board (17) Av: NS=-150

N-S	E-W	Contract	N-S	E-W	IMP
8	18	2S S 2	110		6
20	9	2S N 2	110		6
13	3	3S S-2		100	2
7	16	2NT E 2		120	1
19	6	2NT E 3		150	0
17	10	2NT E 3		150	0
2	11	2NT E 4		180	-1
1	14	1NT E 4		180	-1
4	15	3NT W 3		400	-6
5	12	3NT E 3		400	-6

Board (18) Av: NS=-400

N-S	E-W	Contract	N-S	E-W	IMP
5	12	6NT E-1		50	10
19	6	6NT E-1		50	10
2	11	3NT E 5		460	-2
1	14	3NT E 5		460	-2
7	16	3NT E 5		460	-2
4	15	3NT E 5		460	-2
8	18	3NT E 5		460	-2
17	10	3NT E 5		460	-2
20	9	3NT E 6		490	-3
13	3	3NT E 6		490	-3

19

♠ 32
♥ 863
♦ J1084
♣ Q974

♠ A5
♥ Q107
♦ AKQ
♣ J10863

N
W — E
S

♠ KJ76
♥ AKJ95
♦ 962
♣ 5

♠ Q10984
♥ 42
♦ 753
♣ AK2

20

♠ AKJ
♥ QJ954
♦ Q98
♣ J10

♠ Q108
♥ K107
♦ A52
♣ KQ72

N
W — E
S

♠ 5
♥ A863
♦ K10743
♣ A53

♠ 976432
♥ 2
♦ J6
♣ 9864

21

♠ 753
♥ A96
♦ 6
♣ KQ6432

♠ 92
♥ KJ873
♦ J7
♣ J1095

N
W — E
S

♠ AKQ8
♥ Q1042
♦ AK8
♣ A8

♠ J1064
♥ 5
♦ Q1095432
♣ 7

Board (19) Av: NS=-750

N-S	E-W	Contract	N-S	E-W	IMP	
20	7	4H	W	4	620	4
8	17	4H	W	4	620	4
18	6	3NT	W	4	630	3
12	3	3NT	E	4	630	3
10	16	4H	E	5	650	3
2	15	4H	E	5	650	3
11	5	4H	W	6	680	2
1	13	4H	W	6	680	2
4	14	6H	W	6	1430	-12
9	19	6H	W	6	1430	-12

Board (20) Av: NS=-430

N-S	E-W	Contract	N-S	E-W	IMP	
20	7	5D	E	-2	200	12
12	3	1NT	E	1	90	8
4	14	2D	E	3	110	8
8	17	2NT	W	4	180	6
9	19	3NT	W	3	600	-5
11	5	3NT	W	3	600	-5
10	16	3NT	E	3	600	-5
18	6	3NT	E	3	600	-5
2	15	3NT	W	4	630	-5
1	13	3NT	E	4	630	-5

Board (21) Av: NS=-460

N-S	E-W	Contract	N-S	E-W	IMP	
11	5	4H	E	5	450	0
1	13	4H	E	5	450	0
18	6	4H	E	5	450	0
4	14	4H	E	5	450	0
9	19	4H	E	5	450	0
10	16	4H	E	5	450	0
8	17	3NT	E	5	460	0
20	7	4H	E	6	480	-1
2	15	3NT	E	6	490	-1
12	3	3NT	E	6	490	-1

22

♠ Q1097
♥ Q10972
♦ Q9
♣ J9

♠ AJ865432
♥ K
♦ 2
♣ 1073

N
W — E
S

♠ AJ864
♥ 10843
♦ AK42
♣ K

♠ K
♥ 53
♦ AKJ765
♣ Q865

23

♠ 53
♥ A
♦ K642
♣ 1097642

♠ K10942
♥ Q84
♦ A98
♣ A3

N
W — E
S

♠ AQ7
♥ KJ6532
♦ J73
♣ J

♠ J86
♥ 1097
♦ Q105
♣ KQ85

24

♠ A83
♥ QJ10
♦ QJ3
♣ A975

♠ Q972
♥ 4
♦ A852
♣ QJ63

N
W — E
S

♠ J1054
♥ K753
♦ K9
♣ K42

♠ K6
♥ A9862
♦ 10764
♣ 108

Board (22) Av: NS=+110

N-S	E-W	Contract	N-S	E-W	IMP	
11	5	4S	W	-2	200	3
8	17	4S	W	-2	200	3
2	15	4S	W	-1	100	0
12	3	4S	W	-1	100	0
18	6	4S	W	-1	100	0
4	14	4S	W	-1	100	0
10	16	4S	W	-1	100	0
9	19	4S	W	-1	100	0
20	7	3S	W	-1	100	0
1	13	3S	W	3	140	-6

Board (23) Av: NS=-670

N-S	E-W	Contract	N-S	E-W	IMP	
2	15	4S	W	4	620	2
18	6	4S	W	4	620	2
8	17	4S	W	6	680	0
12	3	4H	E	6	680	0
20	7	4H	E	6	680	0
1	13	4H	E	6	680	0
11	5	4H	E	6	680	0
4	14	4H	E	6	680	0
9	19	4H	E	6	680	0
10	16	4H	E	6	680	0

Board (24) Av: NS=+10

N-S	E-W	Contract	N-S	E-W	IMP	
10	16	1NT	N	3	150	4
4	14	1NT	N	3	150	4
12	3	2H	N	3	140	4
8	17	1NT	N	2	120	3
9	19	1NT	N	2	120	3
11	5	Passout				0
1	13	2S	W	3	140	-4
18	6	2S	E	3	140	-4
2	15	2S	E	3	140	-4
20	7	2S	E	4	170	-5

25

♠ J972
♥ KJ4
♦ 93
♣ 10965

♠ 1084
♥ 973
♦ AKQ52
♣ KQ

N
W — E
S

♠ AKQ53
♥ 62
♦ J8764
♣ 3

♠ 6
♥ AQ1085
♦ 10
♣ AJ8742

26

♠ 5432
♥ Q109
♦ K962
♣ 72

♠ QJ10
♥ K862
♦ Q8
♣ KQ94

N
W — E
S

♠ K986
♥ A543
♦ 5
♣ AJ85

♠ A7
♥ J7
♦ AJ10743
♣ 1063

27

♠ 7652
♥ 5
♦ AJ872
♣ Q85

♠ K109
♥ 10864
♦ K104
♣ K76

N
W — E
S

♠ J843
♥ AQ973
♦ 9
♣ 1094

♠ AQ
♥ KJ2
♦ Q653
♣ AJ32

Board (25) Av: NS=-110

N-S	E-W	Contract	N-S	E-W	IMP	
9	18	5Dx	W	-1	200	7
16	8	5S	E	-1	100	5
10	20	5S	E	-1	100	5
13	4	5D	W	-1	100	5
19	7	4S	E	-1	100	5
14	2	4S	E	-1	100	5
11	3	5Cx	N	-1	100	0
15	5	4S	W	4	620	-11
1	12	4S	E	4	620	-11
17	6	4S	E	4	620	-11

Board (26) Av: NS=-620

N-S	E-W	Contract	N-S	E-W	IMP	
14	2	4H	W	4	620	0
9	18	4H	W	4	620	0
16	8	4H	W	4	620	0
17	6	4H	W	4	620	0
1	12	4H	W	4	620	0
13	4	4H	W	4	620	0
19	7	4H	W	4	620	0
10	20	4H	E	4	620	0
15	5	4H	E	4	620	0
11	3	4H	E	4	620	0

Board (27) Av: NS=+100

N-S	E-W	Contract	N-S	E-W	IMP	
11	3	3NT	S	5	460	8
9	18	1NT	S	3	150	2
13	4	1NT	S	3	150	2
19	7	3D	S	4	130	1
1	12	1NT	S	2	120	1
17	6	1NT	S	2	120	1
10	20	1NT	S	2	120	1
15	5	4H	E	-2	100	0
16	8	5D	S	-2	100	-5
14	2	3NT	S	-2	100	-5

28

♠ 87643
♥ 3
♦ 43
♣ K10987

♠ 2
♥ J6
♦ QJ765
♣ AQJ62

♠ AQ105
♥ 10987542
♦ 8
♣ 3

♠ KJ9
♥ AKQ
♦ AK1092
♣ 54

N E
W S

29

♠ 76
♥ J85
♦ Q106
♣ QJ1082

♠ KQJ42
♥
♦ KJ754
♣ A73

♠ 1053
♥ 7632
♦ A3
♣ K654

♠ A98
♥ AKQ1094
♦ 982
♣ 9

N
W E
S

30

♠ Q10
♥ K1032
♦ A1085
♣ K86

♠ K4
♥ AQJ4
♦ 762
♣ J1054

♠ J8653
♥ 96
♦ 9
♣ AQ973

♠ A972
♥ 875
♦ KQJ43
♣ 2

N E
W S

Board (28) Av: NS=+140

N-S	E-W	Contract	N-S	E-W	IMP
10	20	4Dx W-5	1100		14
11	3	5Hx E-3	500		8
16	8	4Hx E-3	500		8
1	12	3Hx E-2	300		4
9	18	4Hx E-1	100		-1
14	2	3Hx E-1	100		-1
19	7	4S S-1	100		-6
15	5	4S N-1	100		-6
17	6	4S N-2	200		-8
13	4	3S S-3	300		-10

Board (29) Av: NS=-530

N-S	E-W	Contract	N-S	E-W	IMP
10	20	3S W 3	140		9
14	2	3S W 4	170		8
11	3	3S W 5	200		8
17	6	4S W 4	620		-3
15	5	4S W 5	650		-3
9	18	4S W 5	650		-3
19	7	4S W 5	650		-3
16	8	4S W 5	650		-3
13	4	4S E 5	650		-3
1	12	4S E 5	650		-3

Board (30) Av: NS=+40

N-S	E-W	Contract	N-S	E-W	IMP
10	20	3S E-3	150		3
1	12	3D S 3	110		2
16	8	3D S 3	110		2
14	2	3D N 3	110		2
19	7	3D N 3	110		2
17	6	2D N 3	110		2
15	5	4D N-1	50		-3
13	4	3D S-1	50		-3
9	18	3NT N-2	100		-4
11	3	2S E 2	110		-4

1

♠ J872
♥ Q87
♦ 953
♣ A83

♠ KQ1065
♥ AK9
♦ A7
♣ J64

♠ A943
♥ J6
♦ 62
♣ K9752

W N E S

♠ 105432
♥ KQJ1084
♦ Q10

Board (1) Av: NS=-280

N-S	E-W	Contract	N-S	E-W	IMP
10	14	4S W-1	50		8
1	16	4S W-1	50		8
6	11	4S E-1	50		8
4	17	2S W 4		170	3
19	5	4S W 4	420		-4
15	8	4S W 4	420		-4
12	9	4S W 4	420		-4
18	2	4S W 5	450		-5
13	7	4S W 5	450		-5
3	20	4S W 6	480		-5

2

♠ K1042
♥ J875
♦ Q7
♣ Q73

♠ AQ3
♥ Q10
♦ AJ98
♣ K1064

♠ J876
♥ A96
♦ 10532
♣ 85

W N E S

♠ 95
♥ K432
♦ K64
♣ AJ92

Board (2) Av: NS=-40

N-S	E-W	Contract	N-S	E-W	IMP
13	7	2H S 2	110		4
6	11	1NT W-1	50		3
10	14	1NT W-1	50		3
15	8	1NT W-1	50		3
18	2	1NT W 1		90	-2
1	16	1NT W 1		90	-2
12	9	1NT W 1		90	-2
19	5	1NT W 1		90	-2
4	17	1NT W 1		90	-2
3	20	1NT W 3		150	-3

3

♠ K
♥ AK108
♦ Q82
♣ Q10974

♠ 75
♥ J532
♦ 654
♣ A632

♠ QJ10983
♥ Q74
♦ A109
♣ K

W N E S

♠ A642
♥ 96
♦ KJ73
♣ J85

Board (3) Av: NS=-10

N-S	E-W	Contract	N-S	E-W	IMP
12	9	3D S 3	110		3
15	8	3C N 3	110		3
18	2	2S E-1	100		3
4	17	3C N-1		50	-1
3	20	1NT S-1		50	-1
13	7	1NT S-1		50	-1
1	16	1NT S-1		50	-1
10	14	1NT S-1		50	-1
6	11	1NT S-1		50	-1
19	5	2NT S-2		100	-3

4

♠ 1085
♥ Q87
♦ K1042
♣ J92

♠ KJ96
♥ 9
♦ A63
♣ KQ873

♠ A4
♥ AJ1063
♦ Q985
♣ 106

W N E S

♠ Q732
♥ K542
♦ J7
♣ A54

Board (4) Av: NS=-400

N-S	E-W	Contract	N-S	E-W	IMP
4	17	2NT W-1	100		11
15	8	2C W 3		110	7
18	2	1NT E 3		150	6
1	16	2NT W 4		180	6
10	14	2NT E 5		210	5
12	9	3NT W 4		630	-6
3	20	3NT W 4		630	-6
13	7	3NT W 4		630	-6
19	5	3NT E 4		630	-6
6	11	3NT E 4		630	-6

5

♠ 93
♥ 9432
♦ J82
♣ J543

♠ 8
♥ AQJ1075
♦ A103
♣ 1092

♠ A105
♥ K6
♦ 9754
♣ Q876

W N E S

♠ KQJ7642
♥ 8
♦ KQ6
♣ AK

Board (5) Av: NS=+510

N-S	E-W	Contract	N-S	E-W	IMP
10	14	4Sx S 4	790		7
6	11	4S S 4	620		3
1	16	4S S 4	620		3
18	2	4S S 4	620		3
15	8	4S S 4	620		3
3	20	4S S 4	620		3
12	9	4S S 4	620		3
4	17	3S S 4	170		-8
13	7	3S S 4	170		-8
19	5	3S S 4	170		-8

6

♠ J965
♥ 5
♦ Q932
♣ AQ73

♠ AK1083
♥ 8
♦ A6
♣ J9865

♠ 4
♥ AJ96
♦ K875
♣ K1042

W N E S

♠ Q72
♥ KQ107432
♦ J104
♣

Board (6) Av: NS=-130

N-S	E-W	Contract	N-S	E-W	IMP
1	16	5C W-3	300		10
15	8	4NT E-2	200		8
4	17	3NT E-1	100		6
3	20	4C E 4		130	0
19	5	3C W 4		130	0
10	14	3C W 4		130	0
6	11	3H S-3		150	-1
13	7	3H S-4		200	-2
18	2	3NT E 3		600	-10
12	9	3NT E 3		600	-10

7

♠ AJ3
♥ Q83
♦ KQJ92
♣ AQ

♠ K85
♥ AJ92
♦ A4
♣ 9842

♠ 1064
♥ 754
♦ 1087653
♣ K

W N E S

♠ Q972
♥ K106
♦ J107653
♣

Board (7) Av: NS=+120

N-S	E-W	Contract	N-S	E-W	IMP
8	14	3NT N 6	690		11
12	7	3NT S 3	600		10
10	13	3NT N 3	600		10
17	2	1NT N 2	120		0
5	18	1NT N 2	120		0
16	4	3NT N-1		100	-6
6	15	3NT N-1		100	-6
19	3	2D N-1		100	-6
1	20	3NT N-2		200	-8
11	9	3NT N-3		300	-9

8

♠ QJ
♥ Q432
♦ J10864
♣ K6

♠ 983
♥ A9865
♦ 3
♣ J1032

♠ AK10754
♥ J
♦ 975
♣ Q54

W N E S

♠ 62
♥ K107
♦ AKQ2
♣ A987

Board (8) Av: NS=-200

N-S	E-W	Contract	N-S	E-W	IMP
12	7	3D N 4	130		8
17	2	3H N-1		50	4
6	15	3H N-1		50	4
8	14	4H N-2		100	3
5	18	4H N-2		100	3
10	13	4H N-2		100	3
19	3	2S E 4		170	1
1	20	4S E 4		420	-6
11	9	4Sx E 4		590	-9
16	4	4Hx N-4		800	-12

9

♠ KJ2
♥ 62
♦ A4
♣ 987653

♠ AQ3
♥ AK10
♦ J108765
♣ 4

♠ 104
♥ QJ874
♦ 92
♣ KQJ2

W N E S

♠ 98765
♥ 953
♦ KQ3
♣ A10

Board (9) Av: NS=-70

N-S	E-W	Contract	N-S	E-W	IMP
16	4	4H E-1	100		5
19	3	3H E-1	100		5
8	14	2D W-1	100		5
1	20	2D W 3		110	-1
12	7	1NT W 2		120	-2
17	2	3H E 3		140	-2
10	13	3H E 3		140	-2
5	18	3H E 3		140	-2
11	9	2H E 3		140	-2
6	15	3Cx N-2		300	-6

10

♠QJ
♥AQJ1093
♦63
♣K73

♠A107
♥2
♦KQ109
♣J8652

N
W — E
S

♠98532
♥K75
♦J842
♣Q

♠K64
♥864
♦A75
♣A1094

11

♠J75
♥8632
♦1086
♣J43

♠98643
♥A9
♦AJ
♣Q975

N
W — E
S

♠A10
♥Q105
♦Q9753
♣1086

♠KQ2
♥KJ74
♦K42
♣AK2

12

♠K106
♥
♦KJ106
♣AQ9852

♠8
♥AJ76
♦9753
♣KJ103

N
W — E
S

♠Q95432
♥Q1052
♦Q8
♣4

♠AJ7
♥K9843
♦A42
♣76

Board (10) Av: NS=+290

N-S	E-W	Contract	N-S	E-W	IMP
17	2	4H N 5	650		8
12	7	4H N 4	620		8
5	18	4H N 4	620		8
16	4	4H N 4	620		8
6	15	4H N 4	620		8
11	9	3H N 4	170		-3
8	14	4H N-1	100		-9
10	13	4H N-1	100		-9
19	3	4H N-1	100		-9
1	20	4H N-1	100		-9

Board (11) Av: NS=-70

N-S	E-W	Contract	N-S	E-W	IMP
16	4	1NT S 1	90		4
5	18	2S W-1	50		3
12	7	1NT S-1	50		1
6	15	1C S-1	50		1
19	3	1NT E 1	90		-1
1	20	3H N-2	100		-1
10	13	3H N-2	100		-1
8	14	3H N-2	100		-1
11	9	2NT S-2	100		-1
17	2	1C S-2	100		-1

Board (12) Av: NS=+230

N-S	E-W	Contract	N-S	E-W	IMP
5	18	3NT S 5	660		10
10	13	3NT S 4	630		9
1	20	3NT S 4	630		9
17	2	3NT S 3	600		9
12	7	3NT S 3	600		9
8	14	5D S-1	100		-8
11	9	3NT S-1	100		-8
6	15	3NT S-1	100		-8
19	3	5C N-3	300		-11
16	4	5D S-4	400		-12

13

♠Q
♥KQ6
♦A10743
♣AQ85

♠KJ65
♥J954
♦KQ98
♣K

N
W — E
S

♠732
♥82
♦65
♣J76432

♠A10984
♥A1073
♦J2
♣109

14

♠A72
♥
♦AJ108764
♣1073

♠KJ3
♥A863
♦K52
♣QJ5

N
W — E
S

♠854
♥J9742
♦Q
♣AK42

♠Q1096
♥KQ105
♦93
♣986

15

♠J943
♥KQ7
♦876
♣K84

♠K6
♥AJ5432
♦AQ95
♣9

N
W — E
S

♠A852
♥986
♦43
♣A1062

♠Q107
♥10
♦KJ102
♣QJ753

Board (13) Av: NS=+320

N-S	E-W	Contract	N-S	E-W	IMP
7	11	3NT N 5	660		8
1	19	3NT N 5	660		8
9	15	3NT N 4	630		7
16	2	3NT N 4	630		7
5	17	3NT N 3	600		7
10	12	2NT N 3	150		-5
6	14	1NT N 2	120		-5
18	3	3S S-1	100		-9
13	8	3NT S-1	100		-9
20	4	3NT N-1	100		-9

Board (14) Av: NS=+70

N-S	E-W	Contract	N-S	E-W	IMP
10	12	4H W-2	100		1
13	8	4H E-2	100		1
9	15	4C W-2	100		1
18	3	3H E-2	100		1
6	14	2D N 2	90		1
7	11	4H E-1	50		-1
16	2	4C W-1	50		-1
1	19	3H E-1	50		-1
5	17	3H E-1	50		-1
20	4	3D N-1	50		-3

Board (15) Av: NS=-430

N-S	E-W	Contract	N-S	E-W	IMP
9	15	2H W 5	200		6
16	2	4H W 4	420		0
7	11	4H W 4	420		0
20	4	4H W 4	420		0
10	12	4H W 4	420		0
1	19	4H W 4	420		0
6	14	4H W 4	420		0
18	3	4H W 5	450		-1
5	17	4H W 5	450		-1
13	8	4H E 5	450		-1

16

♠Q102
♥AQ3
♦965
♣8732

♠J74
♥J986
♦A102
♣A65

N
W — E
S

♠A853
♥1072
♦J43
♣K109

♠K96
♥K54
♦KQ87
♣QJ4

17

♠J876
♥K9753
♦A987
♣

♠K104
♥Q
♦1063
♣J108762

N
W — E
S

♠Q952
♥J842
♦Q2
♣AK5

♠A3
♥A106
♦KJ54
♣Q943

18

♠AQ982
♥875
♦J95
♣J6

♠64
♥KJ3
♦A86
♣AQ872

N
W — E
S

♠K10
♥AQ1062
♦Q3
♣K1053

♠J753
♥94
♦K10742
♣94

Board (16) Av: NS=+90

N-S	E-W	Contract	N-S	E-W	IMP
5	17	1NT N 2	120		1
13	8	1NT S 1	90		0
9	15	1NT N 1	90		0
10	12	1NT N 1	90		0
16	2	1NT N 1	90		0
20	4	1NT N 1	90		0
6	14	1NT N 1	90		0
1	19	1NT N 1	90		0
18	3	1NT N 1	90		0
7	11	1NT N 1	90		0

Board (17) Av: NS=+170

N-S	E-W	Contract	N-S	E-W	IMP
1	19	4Cx E-4	800		12
10	12	3Cx E-2	300		4
7	11	3NT E-5	250		2
20	4	1NT W-3	150		-1
6	14	3H S 3	140		-1
9	15	3H N 3	140		-1
16	2	3D S 4	130		-1
13	8	3D S 4	130		-1
18	3	3C E-2	100		-2
5	17	4H N-1	50		-6

Board (18) Av: NS=-480

N-S	E-W	Contract	N-S	E-W	IMP
13	8	4H E 6	480		0
18	3	4H E 6	480		0
20	4	4H E 6	480		0
9	15	4H E 6	480		0
10	12	4H E 6	480		0
5	17	4H E 6	480		0
1	19	4H E 6	480		0
6	14	4H E 6	480		0
7	11	4H E 6	480		0
16	2	4H E 6	480		0

19

♠ QJ2
♥ K95
♦ AJ864
♣ J6

♠ A843 ♠ K109
♥ J843 ♥ A7
♦ Q2 ♦ K103
♣ Q107 ♣ A8542

♠ 765
♥ Q1062
♦ 975
♣ K93

Board (19) Av: NS=-100

N-S	E-W	Contract	N-S	E-W	IMP
16	5	3C E-1	100		5
11	10	3C E-1	100		5
19	4	1NT N-1		50	2
14	9	3C E 3		110	0
1	18	3C E 3		110	0
13	6	2C E 4		130	-1
3	17	2C E 4		130	-1
8	12	2NT E 3		150	-2
20	2	1NT E 4		180	-2
7	15	3NT E 3		600	-11

20

♠ J1063
♥ AKJ62
♦

♠ A84 ♠ Q7
♥ 74 ♥ Q985
♦ 864 ♦ KJ1052
♣ K9873 ♣ A6

♠ K952
♥ 103
♦ AQ973
♣ Q5

Board (20) Av: NS=+140

N-S	E-W	Contract	N-S	E-W	IMP
11	10	1NTxW-3	800		12
20	2	4S S 4	620		10
14	9	2NT S 4	180		1
16	5	3S S 3	140		0
8	12	3H N 3	140		0
3	17	2H N 2	110		-1
7	15	2H N 2	110		-1
1	18	4S S-1		100	-6
13	6	4H N-1		100	-6
19	4	2H N-1		100	-6

21

♠ Q63
♥ Q98764
♦ A6
♣ 92

♠ 10972 ♠ KJ85
♥ 3 ♥ K102
♦ Q98532 ♦ K107
♣ KJ ♣ Q105

♠ A4
♥ AJ5
♦ J4
♣ A87643

Board (21) Av: NS=+30

N-S	E-W	Contract	N-S	E-W	IMP
1	18	4Hx N 4	790		13
7	15	3H N 6	230		5
3	17	2H N 4	170		4
20	2	2H N 4	170		4
13	6	3S W-1	50		1
14	9	2S W-1	50		1
16	5	4H S-1		100	-4
19	4	2S W 3		140	-5
11	10	2S W 4		170	-5
8	12	4H S-2		200	-6

22

♠ K3
♥ AJ7
♦ 1095
♣ J10973

♠ J ♠ 108542
♥ Q1032 ♥ 84
♦ Q876 ♦ J4
♣ A642 ♣ KQ85

♠ AQ976
♥ K965
♦ AK32
♣

Board (22) Av: NS=+180

N-S	E-W	Contract	N-S	E-W	IMP
3	17	3NT N 4	430		6
13	6	3NT N 3	400		6
7	15	3NT N 3	400		6
11	10	2S S 4	170		0
8	12	3H S 3	140		-1
19	4	2S S 3	140		-1
14	9	2S S 3	140		-1
1	18	2S S 2	110		-2
20	2	4S S-1		50	-6
16	5	4S S-2		100	-7

23

♠ Q75
♥ QJ75
♦ AJ65
♣ 96

♠ J864 ♠ 1093
♥ 3 ♥ A10986
♦ 2 ♦ KQ74
♣ AQJ8753 ♣ 10

♠ AK2
♥ K42
♦ 10983
♣ K42

Board (23) Av: NS=-150

N-S	E-W	Contract	N-S	E-W	IMP
3	17	1NT S 1	90		6
16	5	3S S-1		100	2
13	6	3NT S-1		100	2
8	12	3D S-1		100	2
7	15	2H N-1		100	2
11	10	2D S-1		100	2
1	18	3NT S-2		200	-2
20	2	3D S-2		200	-2
19	4	3H N-3		300	-4
14	9	3D S-3		300	-4

24

♠ 954
♥ J9
♦ Q986
♣ K1095

♠ 762 ♠ AJ8
♥ AK7654 ♥ Q
♦ 43 ♦ AKJ10752
♣ 83 ♣ Q6

♠ KQ103
♥ 10832
♦
♣ AJ742

Board (24) Av: NS=+70

N-S	E-W	Contract	N-S	E-W	IMP
11	10	3NT E-4	200		4
19	4	4H W-3	150		2
1	18	3H W-3	150		2
14	9	4H W-2	100		1
3	17	4H W-2	100		1
13	6	4Dx E-1	100		1
7	15	4H W-1	50		-1
16	5	3H W-1	50		-1
8	12	3D W 3		110	-5
20	2	3D E 3		110	-5

25

♠ A
♥ AKJ
♦ AQ9832
♣ 432

♠ J10763 ♠ Q9542
♥ 965 ♥ Q87
♦ K104 ♦ 76
♣ A7 ♣ QJ5

♠ K8
♥ 10432
♦ J5
♣ K10986

Board (25) Av: NS=+220

N-S	E-W	Contract	N-S	E-W	IMP
19	2	3NT S 5	460		6
8	11	3NT N 4	430		5
6	12	3NT S 3	400		5
7	14	3NT S 3	400		5
20	5	3NT S 3	400		5
1	17	3D N 3	110		-3
15	10	3D N 3	110		-3
16	3	4H S-1		50	-7
9	13	4H N-1		50	-7
4	18	5D N-2		100	-8

26

♠ 109852
♥ AJ10
♦ 95
♣ AK9

♠ A4 ♠ QJ73
♥ K865 ♥ 942
♦ AQJ84 ♦ 7632
♣ 76 ♣ 83

♠ K6
♥ Q73
♦ K10
♣ QJ10542

Board (26) Av: NS=+230

N-S	E-W	Contract	N-S	E-W	IMP
4	18	3NT S 4	630		9
8	11	3NT S 4	630		9
20	5	3NT S 3	600		9
6	12	1NT S 3	150		-2
19	2	1NT S 3	150		-2
7	14	1NT S 3	150		-2
16	3	3C S 4	130		-3
15	10	3D W-1	100		-4
1	17	5C S-1		100	-8
9	13	3S N-1		100	-8

27

♠ J108
♥
♦ Q9874
♣ AQ964

♠ 4 ♠ AQ97
♥ K98742 ♥ A653
♦ AK ♦ J105
♣ 8753 ♣ J2

♠ K6532
♥ QJ10
♦ 632
♣ K10

Board (27) Av: NS=-310

N-S	E-W	Contract	N-S	E-W	IMP
1	17	4H W-1	50		8
4	18	2H W 3		140	5
16	3	4S S-3		150	4
7	14	3H W 4		170	4
9	13	2H W 4		170	4
19	2	4H W 4		420	-3
6	12	4H W 4		420	-3
20	5	4H W 4		420	-3
8	11	4Hx W 4		590	-7
15	10	4Hx W 4		590	-7

第1回山口知也杯 Session 4 Section D 2016年6月19日(日)

28

♠ 1074
♥ A72
♦ Q82
♣ AK98

♠ AKQJ85
♥ 9653
♦ A97
♣

♠ 32
♥ Q1084
♦ 643
♣ QJ42

♠ 96
♥ KJ
♦ KJ105
♣ 107653

N
W E
S

29

♠ K75
♥ A
♦ J108
♣ AQ6543

♠ J62
♥ 654
♦ 654
♣ KJ109

♠ AQ109
♥ KJ82
♦ K93
♣ 82

♠ 843
♥ Q10973
♦ AQ72
♣ 7

N
W E
S

30

♠ AK95
♥ QJ83
♦ A8
♣ K62

♠ 102
♥ K1054
♦ K762
♣ J93

♠ QJ8643
♥ A6
♦ 54
♣ AQ10

♠ 7
♥ 972
♦ QJ1093
♣ 8754

N
W E
S

Board (28) Av: NS=0

N-S	E-W	Contract	N-S	E-W	IMP
20	5	4H E-3	150		4
19	2	3C N 3	110		3
8	11	3C N 3	110		3
1	17	4H W-2	100		3
9	13	4S E-1	50		2
16	3	3S E-1	50		2
6	12	2S E 3	140		-4
7	14	2S E 3	140		-4
15	10	3S E 4	170		-5
4	18	3H E 4	170		-5

Board (29) Av: NS=+80

N-S	E-W	Contract	N-S	E-W	IMP
9	13	2S W-3	300		6
7	14	1NT N 2	120		1
1	17	2C N 3	110		1
6	12	2C N 3	110		1
20	5	2D S 2	90		0
15	10	2C N 2	90		0
4	18	2C N 2	90		0
8	11	2C N 2	90		0
16	3	3NT N-1	100		-5
19	2	2C N-1	100		-5

Board (30) Av: NS=-60

N-S	E-W	Contract	N-S	E-W	IMP
19	2	1NT S 1	90		4
16	3	1NT N 1	90		4
6	12	1NT N 1	90		4
4	18	1NT N-2	100		-1
20	5	2S W 2	110		-2
1	17	2S W 2	110		-2
7	14	2S W 2	110		-2
15	10	2S W 2	110		-2
8	11	2S W 3	140		-2
9	13	2S W 3	140		-2