

第1回山口知也杯 Session 1 Section C 2016年6月18日(土)

1

♠AQ8754
♥A106
♦105
♣53

♠K10932
♥975
♦K86
♣Q8

♠6
♥KQ
♦9742
♣KJ10764

♠J
♥J8432
♦AQJ3
♣A92

Board (1) Av: NS=+140

N-S	E-W	Contract	N-S	E-W	IMP
4	7	4H S 4	420		7
5	8	4H S 4	420		7
16	15	3H S 4	170		1
3	9	2S N 4	170		1
20	13	3H S 3	140		0
1	10	3H S 3	140		0
18	14	3H S 3	140		0
6	2	4H S-1		50	-5
17	11	4H S-1		50	-5
19	12	4H S-1		50	-5

2

♠Q109853
♥QJ963
♦Q5
♣

♠AKJ4
♥104
♦KJ62
♣Q96

♠A75
♥9843
♦AKJ854

♠762
♥K82
♦A107
♣10732

Board (2) Av: NS=-410

N-S	E-W	Contract	N-S	E-W	IMP
19	12	5C E 5	400		0
1	10	3NT W 3	400		0
3	9	3NT W 3	400		0
4	7	3NT E 3	400		0
17	11	3NT E 3	400		0
18	14	3NT E 3	400		0
20	13	3NT E 3	400		0
16	15	3NT W 4	430		-1
5	8	3NT W 4	430		-1
6	2	3NT W 5	460		-2

3

♠84
♥105
♦Q93
♣1087432

♠102
♥KQJ
♦J8764
♣AKJ

♠AK63
♥A8763
♦A2
♣65

♠QJ975
♥942
♦K105
♣Q9

Board (3) Av: NS=-470

N-S	E-W	Contract	N-S	E-W	IMP
4	7	6H W-1	100		11
16	15	6H W-1	100		11
19	12	6H W-1	100		11
1	10	4H W 5		650	-5
5	8	4H W 5		650	-5
3	9	4H E 5		650	-5
17	11	4H E 5		650	-5
20	13	3NT W 5		660	-5
6	2	3NT W 5		660	-5
18	14	6H E 6	1430		-14

4

♠AJ75
♥AK64
♦A74
♣94

♠Q9
♥52
♦QJ10985
♣KQ2

♠K10862
♥J93
♦32
♣AJ6

♠43
♥Q1087
♦K6
♣108753

Board (4) Av: NS=+60

N-S	E-W	Contract	N-S	E-W	IMP
17	11	1NT N 3	150		3
6	2	1NT N 2	120		2
16	15	1NT N 2	120		2
1	10	1NT N 2	120		2
18	14	1NT N 2	120		2
20	13	1NT N 1	90		1
3	9	1NT N 1	90		1
5	8	2D E 2		90	-4
19	12	2D E 2		90	-4
4	7	2NT N-1		100	-4

5

♠KQ108
♥KQJ4
♦AJ1052
♣

♠1085
♥A9732
♦1052
♣43

♠AKJ7
♥J6
♦983
♣KQ97

♠Q96432
♥54
♦A76
♣86

Board (5) Av: NS=-20

N-S	E-W	Contract	N-S	E-W	IMP
17	11	2Sx E-3	500		11
16	15	3Sx E-2	300		8
19	12	2NT N 2	120		4
18	14	3C N 3	110		4
4	7	3NT N-1		100	-2
6	2	3NT N-1		100	-2
20	13	2S S-1		100	-2
1	10	3NT N-2		200	-5
3	9	3NT N-2		200	-5
5	8	3NT N-2		200	-5

6

♠765
♥Q972
♦Q4
♣KQ54

♠A10432
♥AJ3
♦A83
♣J3

♠Q9
♥K108654
♦92
♣A109

♠KJ8
♥
♦KJ10765
♣8762

Board (6) Av: NS=-160

N-S	E-W	Contract	N-S	E-W	IMP
5	8	2S W 3	140		1
16	15	2S W 3	140		1
4	7	1NT E 3	150		0
20	13	3H E 4	170		0
1	10	2S W 4	170		0
17	11	2H E 4	170		0
19	12	2H E 4	170		0
6	2	2H E 4	170		0
3	9	2H E 4	170		0
18	14	2S W 6	230		-2

7

♠K103
♥1097
♦Q7652
♣K6

♠J9842
♥KQ5
♦AK8
♣32

♠Q75
♥AJ864
♦93
♣A108

♠A6
♥32
♦J104
♣QJ9754

Board (7) Av: NS=-310

N-S	E-W	Contract	N-S	E-W	IMP
7	8	4S W-2	200		11
15	17	4S W-1	100		9
2	10	3S W 3		140	5
16	14	3S W 4		170	4
18	11	3S W 4		170	4
19	20	3S W 5		200	3
1	9	4S W 4		620	-7
12	13	4S W 4		620	-7
5	4	4S W 4		620	-7
3	6	4S W 4		620	-7

8

♠J1073
♥QJ76
♦A9642
♣

♠AKQ6
♥105
♦K85
♣KQ105

♠98542
♥432
♦J10
♣432

♠AK98
♥Q73
♣AJ9876

Board (8) Av: NS=+70

N-S	E-W	Contract	N-S	E-W	IMP
2	10	3Sx W-3	500		10
1	9	3H S 3	140		2
15	17	4S W-2	100		1
18	11	3S W-2	100		1
3	6	3S W-1	50		-1
16	14	3S W-1	50		-1
12	13	3S W-1	50		-1
5	4	3S W-1	50		-1
7	8	3S W-1	50		-1
19	20	4Hx N-1		100	-5

9

♠A
♥A82
♦J105
♣AQJ832

♠K643
♥Q754
♦8
♣K965

♠1098752
♥K106
♦K76
♣4

♠QJ
♥J93
♦AQ9432
♣107

Board (9) Av: NS=+470

N-S	E-W	Contract	N-S	E-W	IMP
5	4	3NT S 7	520		2
16	14	3NT N 7	520		2
15	17	3NT N 7	520		2
12	13	3NT N 7	520		2
19	20	3NT N 6	490		1
18	11	3NT N 4	430		-1
2	10	5D S 6	420		-2
7	8	5C N 6	420		-2
1	9	3NT S 3	400		-2
3	6	5D S-2		100	-11

10

♠ KJ632
♥ 10874
♦ Q43
♣ 10

♠ A Q1097
♥ 93 AQ2
♦ KJ96 A875
♣ AJ9753 ♣ Q6

♠ 854
♥ KJ65
♦ 102
♣ K842

Board (10) Av: NS=-630

N-S	E-W	Contract	N-S	E-W	IMP
2	10	5D E-1	100		12
3	6	3NT E 3	600		1
16	14	3NT E 4	630		0
15	17	3NT E 4	630		0
7	8	3NT E 4	630		0
19	20	3NT E 4	630		0
12	13	3NT E 4	630		0
18	11	3NT E 5	660		-1
1	9	3NT E 5	660		-1
5	4	3NT E 6	690		-2

11

♠ AK75
♥ A742
♦ K8
♣ 1053

♠ QJ10963
♥ 83
♦ A109
♣ AJ

♠ 842
♥ KQ65
♦ J52
♣ Q76

Board (11) Av: NS=-130

N-S	E-W	Contract	N-S	E-W	IMP
3	6	2H N 3	140		7
12	13	2S E-2	100		6
16	14	3H N-1	50		2
18	11	3H N-3	150		-1
7	8	3H N-3	150		-1
15	17	3H N-3	150		-1
19	20	4H N-4	200		-2
1	9	4H N-4	200		-2
5	4	4H N-4	200		-2
2	10	3H N-4	200		-2

12

♠ 842
♥ K94
♦ AK93
♣ J87

♠ J76 AQ103
♥ Q1062 ♥ 3
♦ 765 ♦ Q102
♣ 943 ♣ KQ1062

♠ K95
♥ AJ875
♦ J84
♣ A5

Board (12) Av: NS=-130

N-S	E-W	Contract	N-S	E-W	IMP
5	4	3H S-1	100		1
18	11	2H S-1	100		1
2	10	2H S-1	100		1
1	9	2H S-1	100		1
19	20	2H S-1	100		1
12	13	2H S-1	100		1
16	14	2H S-1	100		1
15	17	4H S-2	200		-2
3	6	4H S-2	200		-2
7	8	3H S-2	200		-2

13

♠ J107
♥ A762
♦ AKQ1087

♠ J1053 A74
♥ 64 ♥ 9852
♦ 54 ♦ KQJ98
♣ J6432 ♣ 9

♠ KQ9862
♥ AKQ3
♦ 103
♣ 5

Board (13) Av: NS=-100

N-S	E-W	Contract	N-S	E-W	IMP
20	12	2H S 3	140		6
1	8	4S S-1	100		0
11	19	4S S-1	100		0
7	5	4S S-1	100		0
3	2	4S S-1	100		0
15	14	4S S-1	100		0
17	18	4H S-1	100		0
10	9	3NT N-1	100		0
13	16	3NT N-1	100		0
6	4	3NT N-2	200		-3

14

♠ J95
♥ Q1097
♦ KQ72
♣ 94

♠ K10764 Q3
♥ J3 ♥ A62
♦ 1054 ♦ J983
♣ AQ6 ♣ J1052

♠ A82
♥ K854
♦ A6
♣ K873

Board (14) Av: NS=+80

N-S	E-W	Contract	N-S	E-W	IMP
15	14	3H S 3	140		2
11	19	2H S 3	140		2
13	16	2H S 3	140		2
1	8	2H S 2	110		1
20	12	2H S 2	110		1
3	2	2H S 2	110		1
17	18	2H N 2	110		1
10	9	3H S-1	50		-4
7	5	3H S-1	50		-4
6	4	3H S-1	50		-4

15

♠ Q102
♥ 42
♦ QJ876
♣ AK6

♠ 5 AKJ9843
♥ AQ83 ♥ 105
♦ AK54 ♦ 103
♣ 9742 ♣ Q10

♠ 76
♥ KJ976
♦ 92
♣ J853

Board (15) Av: NS=-380

N-S	E-W	Contract	N-S	E-W	IMP
6	4	3S E 4	170		5
20	12	3S E 5	200		5
10	9	3S E 5	200		5
17	18	4S E 4	420		-1
13	16	4S E 5	450		-2
1	8	4S E 5	450		-2
7	5	4S E 5	450		-2
3	2	4S E 5	450		-2
15	14	4S E 5	450		-2
11	19	4S E 5	450		-2

16

♠ AKQ985
♥ 6
♦ Q654
♣ 104

♠ 10742 3
♥ AQ ♥ K10972
♦ A1073 ♦ KJ9
♣ KQ6 ♣ J753

♠ J6
♥ J8543
♦ 82
♣ A982

Board (16) Av: NS=+10

N-S	E-W	Contract	N-S	E-W	IMP
7	5	4Hx E-1	200		5
17	18	3H W-2	200		5
13	16	2S N 2	110		3
11	19	4H E-1	100		3
1	8	3NT W-1	100		3
10	9	2S N-1	50		-2
20	12	2Sx N-1	100		-3
15	14	2NT W 2	120		-4
3	2	3H W 3	140		-4
6	4	2H E 4	170		-5

17

♠ 642
♥ J742
♦ A1063
♣ 95

♠ KJ97 Q10853
♥ A1086 ♥ K3
♦ J54 ♦ KQ72
♣ 107 ♣ K4

♠ A
♥ Q95
♦ 98
♣ AQJ8632

Board (17) Av: NS=-170

N-S	E-W	Contract	N-S	E-W	IMP
17	18	3S E 3	140		1
1	8	3S E 3	140		1
7	5	3S E 3	140		1
13	16	3S E 4	170		0
11	19	3S E 4	170		0
15	14	3S E 4	170		0
3	2	3S E 4	170		0
10	9	3S E 4	170		0
20	12	3S E 5	200		-1
6	4	4S E 4	420		-6

18

♠ K96
♥ 854
♦ 6432
♣ A87

♠ A10873 5
♥ J3 ♥ AQ107
♦ QJ ♦ AK10987
♣ KQ52 ♣ 104

♠ QJ42
♥ K962
♦ 5
♣ J963

Board (18) Av: NS=-450

N-S	E-W	Contract	N-S	E-W	IMP
15	14	3NT E 4	430		1
6	4	3NT E 4	430		1
17	18	3NT E 4	430		1
3	2	3NT E 4	430		1
13	16	3NT E 5	460		0
7	5	3NT E 5	460		0
1	8	3NT E 5	460		0
10	9	3NT E 5	460		0
20	12	3NT E 5	460		0
11	19	3NT E 6	490		-1

19

♠ 87
♥ 109532
♦ J1076
♣ J3

♠ J5 ♠ 10632
♥ KQ ♥ J87
♦ Q42 ♦ 953
♣ Q98762 ♣ AK4

W — E

♠ AKQ94
♥ A64
♦ AK8
♣ 105

20

♠ 10
♥ 8
♦ KJ762
♣ QJ9532

♠ AK4 ♠ QJ65
♥ AQ105 ♥ 93
♦ 1095 ♦ AQ84
♣ A108 ♣ 764

W — E

♠ 98732
♥ KJ7642
♦ 3
♣ K

21

♠ QJ962
♥ 1097
♦ A7
♣ A96

♠ 4 ♠ AK10853
♥ QJ43 ♥ A86
♦ J95 ♦ Q106
♣ J8752 ♣ 10

W — E

♠ 7
♥ K52
♦ K8432
♣ KQ43

Board (19) Av: NS=+110

N-S	E-W	Contract	N-S	E-W	IMP
6	5	3H	S 3	140	1
14	17	3H	S 3	140	1
15	18	3H	S 3	140	1
8	4	3H	S 3	140	1
1	7	3H	S 3	140	1
16	12	3H	S 3	140	1
13	19	1S	S 2	110	0
3	10	1S	S 1	80	-1
20	11	4H	S-1	50	-4
2	9	2NT	S-2	100	-5

Board (20) Av: NS=-580

N-S	E-W	Contract	N-S	E-W	IMP
1	7	3C	S-2	200	9
14	17	2NT	W 6	240	8
3	10	3C	N-4	400	5
2	9	3NT	W 5	660	-2
15	18	3NT	W 5	660	-2
8	4	3NT	W 5	660	-2
6	5	3NT	W 5	660	-2
16	12	3NT	W 5	660	-2
13	19	3NT	W 5	660	-2
20	11	3NT	W 5	660	-2

Board (21) Av: NS=+70

N-S	E-W	Contract	N-S	E-W	IMP
2	9	2NT	N 3	150	2
15	18	2NT	N 3	150	2
14	17	2S	E-2	100	1
20	11	2S	E-2	100	1
8	4	2S	E-2	100	1
1	7	2S	E-2	100	1
6	5	1S	E-1	50	-1
3	10	1S	E-1	50	-1
16	12	2S	E 2	110	-5
13	19	2NT	S-3	300	-9

22

♠ J1097
♥ A1032
♦ Q3
♣ Q93

♠ K52 ♠ Q86
♥ Q975 ♥ KJ6
♦ J97 ♦ A10642
♣ KJ6 ♣ 107

W — E

♠ A43
♥ 84
♦ K85
♣ A8542

23

♠ Q72
♥ 5
♦ Q52
♣ KQ6542

♠ J4 ♠ K10863
♥ Q986432 ♥ A7
♦ A7 ♦ 943
♣ 107 ♣ A93

W — E

♠ A95
♥ KJ10
♦ KJ1086
♣ J8

Board (22) Av: NS=+30

N-S	E-W	Contract	N-S	E-W	IMP
14	17	1NT	S 3	150	3
6	5	1NT	S 2	120	3
16	12	2C	S 3	110	2
3	10	Passout			-1
1	7	Passout			-1
15	18	Passout			-1
2	9	Passout			-1
8	4	Passout			-1
20	11	Passout			-1
13	19	Passout			-1

Board (23) Av: NS=-210

N-S	E-W	Contract	N-S	E-W	IMP
6	5	3D	S 4	130	8
13	19	2H	W 3	140	2
16	12	2H	W 3	140	2
3	10	3H	W 4	170	1
2	9	2H	W 4	170	1
8	4	2H	W 4	170	1
14	17	3NT	S-3	300	-3
15	18	3NT	S-3	300	-3
20	11	2NT	S-3	300	-3
1	7	3NT	S-4	400	-5

24

♠ KQ865
♥ J96
♦ K6
♣ J65

♠ A73 ♠ 109
♥ 873 ♥ A52
♦ QJ95 ♦ A10872
♣ A97 ♣ K82

W — E

♠ J42
♥ KQ104
♦ 43
♣ Q1043

Board (24) Av: NS=-40

N-S	E-W	Contract	N-S	E-W	IMP
6	5	4D	E-1	50	3
15	18	3D	W-1	50	3
8	4	Passout			1
2	9	Passout			1
16	12	Passout			1
1	7	Passout			1
3	10	3D	E 3	110	-2
14	17	3D	E 3	110	-2
20	11	2NT	W 3	150	-3
13	19	2NT	W 3	150	-3

第1回山口知也杯 Session 2 Section C 2016年6月18日(土)

1

♠A6
♥Q85
♦AQ103
♣Q1084

♠K2
♥J743
♦K862
♣KJ9

♠QJ1073
♥K92
♦75
♣A76

W N E S

♠9854
♥A106
♦J94
♣532

Board (1) Av: NS=-110

N-S	E-W	Contract	N-S	E-W	IMP
14	20	1NT N-1	50		2
19	17	1NT N-1	50		2
11	12	1NTxN-1	100		0
18	16	1NT N-2	100		0
10	4	1NT N-2	100		0
1	2	2H W 2	110		0
5	3	1NT E 2	120		0
7	9	2S W 3	140		-1
8	6	3D N-3	150		-1
15	13	2NT E 3	150		-1

2

♠KQ4
♥Q10982
♦KJ
♣963

♠A1063
♥764
♦107542
♣A

♠J985
♥KJ5
♦83
♣KJ85

W N E S

♠72
♥A3
♦AQ96
♣Q10742

Board (2) Av: NS=-80

N-S	E-W	Contract	N-S	E-W	IMP
18	16	2NT S 2	120		5
15	13	2D N 2	90		5
19	17	3C S-1	100		-1
14	20	3C S-1	100		-1
10	4	2NT S-1	100		-1
11	12	2NT S-1	100		-1
5	3	2NT N-1	100		-1
7	9	2NT N-1	100		-1
8	6	2NT N-1	100		-1
1	2	2NT S-2	200		-3

3

♠KJ974
♥AQ2
♦KJ9
♣Q5

♠AQ53
♥9543
♦874
♣107

♠102
♥K87
♦AQ6
♣AJ983

W N E S

♠86
♥J106
♦10532
♣K642

Board (3) Av: NS=-10

N-S	E-W	Contract	N-S	E-W	IMP
15	13	2C W-2	200		5
8	6	1S N 2	110		3
19	17	3C W-1	100		3
11	12	1NT E-1	100		3
18	16	2S N-1	50		-1
14	20	2D S-1	50		-1
7	9	2C W 2	90		-2
5	3	2H E 2	110		-3
10	4	2H E 2	110		-3
1	2	2D S-3	150		-4

4

♠QJ10
♥AK96
♦Q1075
♣75

♠K53
♥J1087
♦K6
♣Q832

♠9876
♥Q5
♦983
♣A964

W N E S

♠A42
♥432
♦AJ42
♣KJ10

Board (4) Av: NS=+650

N-S	E-W	Contract	N-S	E-W	IMP
7	9	3NT S 5	660		0
15	13	3NT S 5	660		0
8	6	3NT S 5	660		0
5	3	3NT S 5	660		0
10	4	3NT S 5	660		0
19	17	3NT S 5	660		0
14	20	3NT S 4	630		-1
1	2	3NT S 4	630		-1
18	16	3NT N 4	630		-1
11	12	3NT S 3	600		-2

5

♠J1064
♥K105
♦10976
♣64

♠AQ2
♥2
♦J8532
♣KQ75

♠75
♥AQJ87
♦Q
♣A10832

W N E S

♠K983
♥9643
♦AK4
♣J9

Board (5) Av: NS=-400

N-S	E-W	Contract	N-S	E-W	IMP
5	3	6C W-2	100		11
11	12	5C E 5	400		0
1	2	3NT E 3	400		0
8	6	3NT E 3	400		0
18	16	3NT E 3	400		0
15	13	3NT E 3	400		0
14	20	3NT E 3	400		0
7	9	3NT E 3	400		0
19	17	3NT E 3	400		0
10	4	3NT E 3	400		0

6

♠97
♥QJ106
♦J108743
♣4

♠J84
♥973
♦65
♣KQ932

♠KQ10653
♥4
♦A9
♣J865

W N E S

♠A2
♥AK852
♦KQ2
♣A107

Board (6) Av: NS=+250

N-S	E-W	Contract	N-S	E-W	IMP
19	17	4H S 6	480		6
5	3	4H S 6	480		6
8	6	4H S 5	450		5
15	13	4H S 5	450		5
10	4	4H S 5	450		5
1	2	2NT S 5	210		-1
11	12	4S W-1	100		-4
18	16	6H S-1	50		-7
14	20	3NT S-2	100		-8
7	9	3S W 3	140		-9

7

♠AQJ
♥A95
♦KJ103
♣J95

♠K104
♥QJ83
♦Q9652
♣2

♠9853
♥K107
♦84
♣Q643

W N E S

♠762
♥642
♦A7
♣AK1087

Board (7) Av: NS=+630

N-S	E-W	Contract	N-S	E-W	IMP
1	5	3NT N 5	660		1
19	16	3NT S 4	630		0
3	4	3NT N 4	630		0
7	10	3NT N 4	630		0
17	20	3NT N 4	630		0
9	6	3NT N 4	630		0
11	15	3NT N 4	630		0
18	12	3NT N 4	630		0
13	14	3NT N 3	600		-1
8	2	6NT N-2	200		-13

8

♠109
♥1098
♦J10743
♣K87

♠AKQ8
♥J53
♦K9
♣Q1052

♠7
♥AQ7642
♦A62
♣A96

W N E S

♠J65432
♥K
♦Q85
♣J43

Board (8) Av: NS=-610

N-S	E-W	Contract	N-S	E-W	IMP
3	4	4H W 5	450		4
19	16	4H W 6	480		4
17	20	4H W 6	480		4
7	10	4H W 6	480		4
18	12	4H W 6	480		4
8	2	4H W 6	480		4
11	15	4H W 6	480		4
13	14	6H W 6	980		-9
1	5	6H W 6	980		-9
9	6	6H W 7	1010		-9

9

♠J9
♥Q9652
♦10964
♣KQ

♠AKQ1076
♥3
♦Q3
♣J962

♠53
♥1084
♦AKJ72
♣A85

W N E S

♠842
♥AKJ7
♦85
♣10743

Board (9) Av: NS=-490

N-S	E-W	Contract	N-S	E-W	IMP
7	10	7S E-1	100		11
13	14	3NT W-1	100		11
9	6	3NT W-1	100		11
17	20	4S E 6	680		-5
3	4	4S E 6	680		-5
19	16	4S E 6	680		-5
11	15	4S E 6	680		-5
1	5	4S E 6	680		-5
8	2	4S E 6	680		-5
18	12	4S E 6	680		-5

第1回山口知也杯 Session 2 Section C 2016年6月18日(土)

10

♠ Q62
♥ J4
♦ 987
♣ A9872

♠ 985
♥ AQ86
♦ J1043
♣ J4

N
W — E
S

♠ KJ10
♥ K972
♦ A62
♣ K103

♠ A743
♥ 1053
♦ KQ5
♣ Q65

11

♠ K853
♥ AQ7
♦ J742
♣ 84

♠ AQ1064
♥ J9853
♦ A86
♣

N
W — E
S

♠ J92
♥ 642
♦ 3
♣ K109753

♠ 7
♥ K10
♦ KQ1095
♣ AQJ62

12

♠ AKQJ9
♥ K63
♦ 52
♣ A98

♠ 8743
♥ 2
♦ QJ107
♣ KJ76

N
W — E
S

♠ 1062
♥ Q94
♦ K863
♣ Q32

♠ 5
♥ AJ10875
♦ A94
♣ 1054

Board (10) Av: NS=-120

N-S	E-W	Contract	N-S	E-W	IMP
9	6	3NT E-1	100		6
3	4	Passout			3
18	12	2H W 2	110		0
1	5	2H W 2	110		0
19	16	2H W 3	140		-1
17	20	2H W 3	140		-1
7	10	2H W 3	140		-1
8	2	2H W 3	140		-1
13	14	2H W 3	140		-1
11	15	2H W 4	170		-2

Board (11) Av: NS=+210

N-S	E-W	Contract	N-S	E-W	IMP
7	10	3NT N 4	430		6
11	15	3NT N 4	430		6
8	2	5D S 5	400		5
17	20	5D S 5	400		5
3	4	3NT N 3	400		5
13	14	3D S 4	130		-2
18	12	3S W-1	50		-4
1	5	5D S-1		50	-6
19	16	5D S-1		50	-6
9	6	3NT N-1		50	-6

Board (12) Av: NS=+670

N-S	E-W	Contract	N-S	E-W	IMP
18	12	4H S 7	710		1
7	10	4H S 7	710		1
13	14	4H S 6	680		0
8	2	4H S 6	680		0
1	5	4H S 6	680		0
9	6	4H N 6	680		0
11	15	4H N 6	680		0
3	4	4H S 5	650		-1
17	20	4H S 4	620		-2
19	16	2H S 5	200		-10

13

♠ 9862
♥ 2
♦ KQ752
♣ J83

♠ KJ43
♥ AJ984
♦ J8
♣ K2

N
W — E
S

♠ Q10
♥ Q1075
♦ 64
♣ AQ1076

♠ A75
♥ K63
♦ A1093
♣ 954

14

♠ A642
♥ 875
♦ J104
♣ Q62

♠ Q109875
♥ 1063
♦ AK9
♣ 3

N
W — E
S

♠ J3
♥ A92
♦ Q652
♣ AK97

♠ K
♥ KQJ4
♦ 873
♣ J10854

15

♠ J54
♥ AK86
♦ KQJ54
♣ K

♠ AQ9
♥ 2
♦ A1087
♣ AQ975

N
W — E
S

♠ K763
♥ Q9743
♦ 2
♣ 1063

♠ 1082
♥ J105
♦ 963
♣ J842

Board (13) Av: NS=-280

N-S	E-W	Contract	N-S	E-W	IMP
1	6	3H W 4	170		3
14	19	3H W 4	170		3
10	5	3H W 4	170		3
3	8	3H W 4	170		3
2	7	3H W 4	170		3
16	11	3H W 4	170		3
17	12	2H W 4	170		3
18	13	4H W 4	620		-8
20	15	4H W 4	620		-8
4	9	4H W 4	620		-8

Board (14) Av: NS=-330

N-S	E-W	Contract	N-S	E-W	IMP
2	7	3S W 4	170		4
14	19	2S W 4	170		4
18	13	2S W 4	170		4
16	11	2S W 4	170		4
4	9	4S W 4	420		-3
17	12	4S W 4	420		-3
10	5	4S W 4	420		-3
20	15	4S W 4	420		-3
3	8	4S W 4	420		-3
1	6	4S E 4	420		-3

Board (15) Av: NS=-80

N-S	E-W	Contract	N-S	E-W	IMP
17	12	3NT W-2	100		5
3	8	3NT W-2	100		5
4	9	1NT W-1	50		4
10	5	2H E 2		110	-1
18	13	1S W 2		110	-1
14	19	2NT W 2		120	-1
16	11	3C W 4		130	-2
1	6	3C W 5		150	-2
20	15	1NT N-2		200	-3
2	7	4H S-6		600	-11

16

♠ K109
♥ K1074
♦ 8652
♣ KJ

♠ 72
♥ 852
♦ A73
♣ 109742

N
W — E
S

♠ AQJ653
♥ AQ6
♦ J4
♣ 53

♠ 84
♥ J93
♦ KQ109
♣ AQ86

17

♠ AJ62
♥
♦ 108743
♣ KQ83

♠ 105
♥ AQJ432
♦ 6
♣ J752

N
W — E
S

♠ K8743
♥ 109
♦ KQJ5
♣ 64

♠ Q9
♥ K8765
♦ A92
♣ A109

18

♠ K103
♥ A1076
♦ 64
♣ QJ83

♠ QJ4
♥ QJ4
♦ AJ853
♣ 109

N
W — E
S

♠ 98652
♥ K93
♦ K9
♣ AK7

♠ A7
♥ 852
♦ Q1072
♣ 6542

Board (16) Av: NS=-90

N-S	E-W	Contract	N-S	E-W	IMP
2	7	3D N 3	110		5
3	8	3H N-1		50	1
4	9	3H N-1		50	1
17	12	3D S-1		50	1
1	6	3H N-2		100	0
10	5	3C S-2		100	0
20	15	2S E 2		110	-1
16	11	2S E 2		110	-1
18	13	2S E 3		140	-2
14	19	2NT N-3		150	-2

Board (17) Av: NS=+80

N-S	E-W	Contract	N-S	E-W	IMP
1	6	1NT S 2	120		1
3	8	1NT S 2	120		1
10	5	1NT S 1	90		0
14	19	1NT S 1	90		0
20	15	1NT S 1	90		0
2	7	1NT S 1	90		0
16	11	1NT S 1	90		0
18	13	1NT S 1	90		0
17	12	3NT N-1		50	-4
4	9	3D S-1		50	-4

Board (18) Av: NS=-170

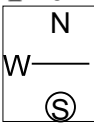
N-S	E-W	Contract	N-S	E-W	IMP
20	15	4S E-1	50		6
16	11	4S E-1	50		6
17	12	4S E-1	50		6
14	19	3S E 3		140	1
1	6	3S E 3		140	1
3	8	3S E 3		140	1
2	7	3S E 4		170	0
18	13	4S E 4		420	-6
10	5	4S E 4		420	-6
4	9	4S E 4		420	-6

第1回山口知也杯 Session 2 Section C 2016年6月18日(土)

19

♠ Q
♥ K1052
♦ 8732
♣ KJ42

♠ 975 ♠ K843
♥ J74 ♥ Q93
♦ K94 ♦ J105
♣ A1087 ♣ 953



♠ AJ1062
♥ A86
♦ AQ6
♣ Q6

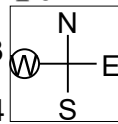
Board (19) Av: NS=+290

N-S	E-W	Contract	N-S	E-W	IMP
10	8	3NT S 3	400		3
5	9	3NT S 3	400		3
14	12	3NT N 3	400		3
6	7	3NT N 3	400		3
18	20	3NT N 3	400		3
13	11	3NT N 3	400		3
19	15	2D S 4	130		-4
2	4	2D S 3	110		-5
1	3	2D S 2	90		-5
16	17	3NT N-2	100		-9

20

♠ AKJ765
♥ Q9
♦ Q1096
♣ 3

♠ Q9 ♠ 843
♥ K1053 ♥ J62
♦ 82 ♦ AK54
♣ QJ874 ♣ 652



♠ 102
♥ A874
♦ J73
♣ AK109

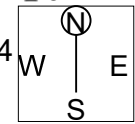
Board (20) Av: NS=+620

N-S	E-W	Contract	N-S	E-W	IMP
1	3	4S N 5	650		1
19	15	3NT S 4	630		0
6	7	3NT S 4	630		0
16	17	4S N 4	620		0
10	8	4S N 4	620		0
14	12	4S N 4	620		0
5	9	4S N 4	620		0
13	11	4S N 4	620		0
2	4	4S N 4	620		0
18	20	3NT S 3	600		-1

21

♠ AQ9754
♥ 3
♦ K10984
♣ 9

♠ 6 ♠ KJ32
♥ Q108754 ♥ KJ9
♦ Q ♦ 753
♣ AJ1087 ♣ K32



♠ 108
♥ A62
♦ AJ62
♣ Q654

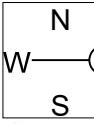
Board (21) Av: NS=-10

N-S	E-W	Contract	N-S	E-W	IMP
1	3	5Dx N 5	750		13
5	9	4S N 4	620		12
13	11	2S N 4	170		5
19	15	3S N 3	140		4
2	4	3S N 3	140		4
18	20	Passout			0
16	17	3H W 4	170		-4
14	12	4H E 4	420		-9
10	8	4Hx W 4	590		-11
6	7	3Hx W 4	630		-12

22

♠ A10853
♥ J9
♦ J875
♣ AQ

♠ K62 ♠ Q97
♥ 64 ♥ AQ108753
♦ AQ642 ♦ 3
♣ 954 ♣ J6



♠ J4
♥ K2
♦ K109
♣ K108732

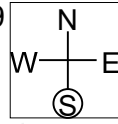
Board (22) Av: NS=-30

N-S	E-W	Contract	N-S	E-W	IMP
2	4	3C S 4	130		4
16	17	2NT S 2	120		4
5	9	4H E-1	100		4
10	8	3H E-1	100		4
1	3	2S N-1	50		-1
18	20	3S N-2	100		-2
14	12	3H E 3	140		-3
6	7	2H E 3	140		-3
13	11	4S N-3	150		-3
19	15	4S N-3	150		-3

23

♠ K853
♥ A3
♦ AJ76
♣ Q76

♠ Q109 ♠ A7642
♥ Q52 ♥ 964
♦ 943 ♦ 8
♣ KJ93 ♣ 10542



♠ J
♥ KJ1087
♦ KQ1052
♣ A8

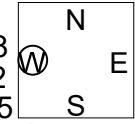
Board (23) Av: NS=+650

N-S	E-W	Contract	N-S	E-W	IMP
10	8	6D S 6	1370		12
2	4	3NT N 6	690		1
13	11	3NT S 5	660		0
6	7	3NT S 5	660		0
1	3	3NT N 5	660		0
19	15	3NT N 5	660		0
5	9	4H S 5	650		0
16	17	5D S 5	600		-2
14	12	5D S 5	600		-2
18	20	3NT N-1	100		-13

24

♠ AJ764
♥ 632
♦ A65
♣ 73

♠ KQ8 ♠ 52
♥ KJ98 ♥ AQ75
♦ 1072 ♦ 94
♣ Q105 ♣ AJ964



♠ 1093
♥ 104
♦ KQJ83
♣ K82

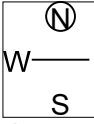
Board (24) Av: NS=-10

N-S	E-W	Contract	N-S	E-W	IMP
5	9	3Sx N 4	630		12
13	11	2NT W-3	150		4
16	17	3S N 3	140		4
1	3	3S N 3	140		4
6	7	Passout			0
10	8	4S N-1	50		-1
2	4	3H W 3	140		-4
14	12	3H W 3	140		-4
19	15	3H W 3	140		-4
18	20	3H W 3	140		-4

25

♠ AQ105
♥ Q862
♦ J
♣ AKJ7

♠ J8 ♠ K9742
♥ KJ75 ♥ A3
♦ 10864 ♦ AK532
♣ 865 ♣ 9



♠ 63
♥ 1094
♦ Q97
♣ Q10432

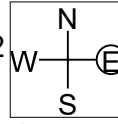
Board (25) Av: NS=+40

N-S	E-W	Contract	N-S	E-W	IMP
20	16	3S E-3	300		6
5	2	2NT N 2	120		2
14	11	3C N 3	110		2
1	4	3C N 3	110		2
18	19	2H N 2	110		2
13	17	1S E-1	100		2
10	6	4C N-1	50		-3
12	15	2NT N-1	50		-3
3	7	3NT N-2	100		-4
8	9	3D E 4	130		-5

26

♠ A4
♥ AJ86
♦ 865
♣ K1082

♠ Q72 ♠ K98
♥ K732 ♥ 10
♦ A9 ♦ KJ742
♣ J953 ♣ AQ76



♠ J10653
♥ Q954
♦ Q103
♣ 4

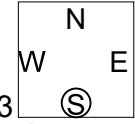
Board (26) Av: NS=+20

N-S	E-W	Contract	N-S	E-W	IMP
3	7	3NT E-4	400		9
8	9	3NT W-2	200		5
12	15	3NT W-2	200		5
5	2	3C E-1	100		2
1	4	3C E-1	100		2
20	16	1NT E 1	90		-3
13	17	3C E 3	110		-4
18	19	2NT W 2	120		-4
10	6	1NT E 3	150		-5
14	11	1NT E 3	150		-5

27

♠ 8753
♥ A8762
♦ Q95
♣ 2

♠ QJ4 ♠ AK1096
♥ J10 ♥ Q9
♦ AJ2 ♦ K1076
♣ Q8753 ♣ AK



♠ 2
♥ K543
♦ 843
♣ J10964

Board (27) Av: NS=-460

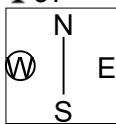
N-S	E-W	Contract	N-S	E-W	IMP
1	4	6S E-1	50		11
18	19	4S E 4	420		1
13	17	4S E 4	420		1
5	2	4S E 5	450		0
12	15	4S E 6	480		-1
14	11	4S E 6	480		-1
20	16	4S E 6	480		-1
10	6	4S E 6	480		-1
3	7	4S E 6	480		-1
8	9	4S E 6	480		-1

第1回山口知也杯 Session 2 Section C 2016年6月18日(土)

28

♠AQ105
♥AK53
♦1092
♣97

♠J76
♥86
♦AKQ74
♣1064



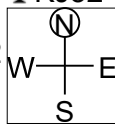
♠432
♥J972
♦J63
♣AK5

♠K98
♥Q104
♦85
♣QJ832

29

♠Q94
♥Q94
♦AQ9764
♣KJ32

♠1072
♥A8762
♦1085
♣Q9



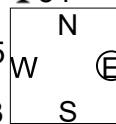
♠KQ93
♥J
♦KJ2
♣108754

♠AJ8654
♥K1053
♦3
♣A6

30

♠53
♥Q8632
♦KJ107
♣54

♠KQJ
♥AJ105
♦Q3
♣10963



♠872
♥K97
♦A9864
♣K8

♠A10964
♥4
♦52
♣AQJ72

Board (28) Av: NS=0

N-S	E-W	Contract	N-S	E-W	IMP
1	4	1NT S 2	120		3
5	2	1NT S 2	120		3
13	17	1NT N 2	120		3
8	9	2S W-2	100		3
14	11	1NT S 1	90		3
18	19	1NT S-1		100	-3
10	6	1NT S-1		100	-3
12	15	1NT S-1		100	-3
20	16	1NT S-1		100	-3
3	7	1NT S-1		100	-3

Board (29) Av: NS=+170

N-S	E-W	Contract	N-S	E-W	IMP
14	11	3NT N 4	630		10
5	2	3NT N 4	630		10
3	7	3NT N 3	600		10
20	16	3NT N 3	600		10
10	6	3NT S-1		100	-7
1	4	3NT N-1		100	-7
8	9	3NT N-1		100	-7
13	17	3NT N-1		100	-7
12	15	3NT N-1		100	-7
18	19	4S S-3		300	-10

Board (30) Av: NS=+20

N-S	E-W	Contract	N-S	E-W	IMP
5	2	3S S 3	140		3
8	9	2S S 2	110		3
14	11	2S S 2	110		3
20	16	2S S 2	110		3
12	15	3NT W-2	100		2
13	17	2D E-1	50		1
10	6	2D E 2		90	-3
1	4	3NT N-2		100	-3
3	7	2S S-2		100	-3
18	19	2S S-2		100	-3

第1回山口知也杯 Session 3 Section C 2016年6月19日(日)

1

♠ A106
♥ K532
♦ Q106
♣ K95

♠ 74
♥ AJ87
♦ 843
♣ QJ102

♠ KQ9532
♥ Q4
♦ 72
♣ 873

♠ J8
♥ 1096
♦ AKJ95
♣ A64

W N E S

Board (1) Av: NS=+420

N-S	E-W	Contract	N-S	E-W	IMP
12	4	3NT N 5	460		1
10	19	3NT N 4	430		0
5	14	3NT N 4	430		0
2	13	3NT N 4	430		0
1	11	3NT N 4	430		0
7	18	3NT N 4	430		0
3	15	3NT N 3	400		-1
8	20	3NT N 3	400		-1
9	17	3NT N 3	400		-1
16	6	3D S 3	110		-7

2

♠ Q4
♥ AK9753
♦ 1095
♣ A2

♠ AJ107
♥
♦ QJ732
♣ K764

♠ QJ10642
♥ A864
♦ 1098
♣

♠ K986532
♥ 8
♦ K
♣ QJ53

W N E S

Board (2) Av: NS=+120

N-S	E-W	Contract	N-S	E-W	IMP
3	15	5Hx W-5	1100		14
9	17	4Hx W-5	1100		14
1	11	4Hx W-3	500		9
10	19	2S S 2	110		0
8	20	3H W-2	100		-1
5	14	4D E-1	50		-2
16	6	4Sx S-1	200		-8
12	4	4S S-2	200		-8
2	13	4Sx S-2	500		-12
7	18	4Hx N-3	800		-14

3

♠ AK4
♥ 10952
♦ Q54
♣ J108

♠ 652
♥ AKJ63
♦ A86
♣ K6

♠ J1087
♥ 87
♦ 72
♣ Q9754

♠ Q93
♥ Q4
♦ KJ1093
♣ A32

W N E S

Board (3) Av: NS=+140

N-S	E-W	Contract	N-S	E-W	IMP
1	11	1NTx E-1	200		2
10	19	1NT S 3	150		0
9	17	1NT S 3	150		0
5	14	1NT S 3	150		0
7	18	1NT S 3	150		0
2	13	1NT S 3	150		0
8	20	2NT N 2	120		-1
3	15	1NT S 2	120		-1
16	6	1NT S 2	120		-1
12	4	1NT S 2	120		-1

4

♠ A1072
♥ 74
♦ Q83
♣ AK53

♠ Q653
♥ AKQ952
♦ 105
♣ 4

♠ 984
♥ J108
♦ 74
♣ 109872

♠ KJ
♥ 63
♦ AKJ962
♣ QJ6

W N E S

Board (4) Av: NS=+490

N-S	E-W	Contract	N-S	E-W	IMP
16	6	5D S 7	640		4
10	19	5D S 6	620		4
3	15	5D S 5	600		3
12	4	5D S 5	600		3
5	14	5D S 5	600		3
1	11	5D S 5	600		3
7	18	5D S 5	600		3
8	20	4D S 5	150		-8
9	17	3D S 5	150		-8
2	13	5C N-2	200		-12

5

♠ J83
♥ 53
♦ 853
♣ AQ853

♠ KQ109
♥ 874
♦ AK964
♣ 9

♠ A4
♥ AQJ96
♦ 107
♣ J1064

♠ 7652
♥ K102
♦ QJ2
♣ K72

W N E S

Board (5) Av: NS=-460

N-S	E-W	Contract	N-S	E-W	IMP
3	15	3NT W 3	400		2
10	19	3NT W 4	430		1
9	17	4H W 5	450		0
12	4	4H W 5	450		0
8	20	4H W 5	450		0
16	6	4H W 5	450		0
7	18	4H W 5	450		0
1	11	4H W 6	480		-1
2	13	4H W 6	480		-1
5	14	4H W 7	510		-2

6

♠ 72
♥ 98
♦ 10985
♣ K8732

♠ J85
♥ J1054
♦ J42
♣ Q64

♠ 1093
♥ A632
♦ Q763
♣ J9

♠ AKQ64
♥ KQ7
♦ AK
♣ A105

W N E S

Board (6) Av: NS=+460

N-S	E-W	Contract	N-S	E-W	IMP
1	11	3NT S 6	490		1
9	17	3NT S 6	490		1
16	6	3NT S 5	460		0
3	15	3NT S 5	460		0
7	18	3NT S 5	460		0
10	19	3NT S 5	460		0
12	4	3NT N 5	460		0
5	14	3NT S 4	430		-1
2	13	3NT S 4	430		-1
8	20	3NT S 4	430		-1

7

♠ QJ74
♥ 103
♦ A987
♣ A74

♠ 5
♥ J9742
♦ J3
♣ Q8632

♠ AK3
♥ AQ85
♦ K64
♣ K95

♠ 109862
♥ K6
♦ Q1052
♣ J10

W N E S

Board (7) Av: NS=-430

N-S	E-W	Contract	N-S	E-W	IMP
4	11	1S S 2	110		11
6	20	3NT W-1	100		11
13	5	1C W 5	150		7
12	2	3H E 5	200		6
9	16	3NT W 3	600		-5
3	14	4H E 4	620		-5
1	15	4H E 5	650		-6
8	19	4H E 5	650		-6
18	10	4H E 5	650		-6
17	7	4H E 5	650		-6

8

♠ 1096
♥ 964
♦ A103
♣ QJ52

♠ J53
♥ KQ1087
♦ 542
♣ 97

♠ AKQ4
♥ J
♦ QJ96
♣ AK43

♠ 872
♥ A532
♦ K87
♣ 1086

W N E S

Board (8) Av: NS=-430

N-S	E-W	Contract	N-S	E-W	IMP
6	20	3NT W 3	400		1
12	2	3NT W 4	430		0
18	10	3NT W 4	430		0
13	5	3NT W 4	430		0
9	16	3NT W 4	430		0
17	7	3NT W 4	430		0
4	11	3NT W 4	430		0
8	19	3NT E 4	430		0
3	14	3NT W 5	460		-1
1	15	3NT W 5	460		-1

9

♠ Q98763
♥ J
♦ AK872
♣ 6

♠ A10
♥ K432
♦ 965
♣ AQ98

♠ 542
♥ AQ1076
♦ Q3
♣ 1043

♠ KJ
♥ 985
♦ J104
♣ KJ752

W N E S

Board (9) Av: NS=+260

N-S	E-W	Contract	N-S	E-W	IMP
8	19	4S N 4	420		4
3	14	4S N 4	420		4
6	20	4S N 4	420		4
18	10	4S N 4	420		4
4	11	2S N 5	200		-2
1	15	3S N 4	170		-3
9	16	3S N 4	170		-3
13	5	3S N 4	170		-3
12	2	3S N 3	140		-3
17	7	2H W 2	110		-9

10

♠65
♥Q863
♦10986
♣743

♠J1082
♥K7542
♦732
♣9

N
W — E
S

♠KQ93
♥A9
♦54
♣AKQ108

♠A74
♥J10
♦AKQJ
♣J652

11

♠J86
♥A654
♦K1043
♣J10

♠7432
♥3
♦AQ87
♣A954

N
W — E
S

♠K5
♥QJ1087
♦9652
♣63

♠AQ109
♥K92
♦J
♣KQ872

12

♠Q85
♥J95
♦J85
♣QJ109

♠1042
♥AQ2
♦AQ42
♣K53

N
W — E
S

♠KJ7
♥7643
♦K76
♣876

♠A963
♥K108
♦1093
♣A42

Board (10) Av: NS=-140

N-S	E-W	Contract	N-S	E-W	IMP
4	11	1NT S-1	100		1
8	19	1NT S-1	100		1
9	16	1NT S-1	100		1
18	10	1NT S-1	100		1
3	14	3S E 3	140		0
17	7	2S E 3	140		0
1	15	2S E 4	170		-1
12	2	2S E 4	170		-1
6	20	1S E 4	170		-1
13	5	1NT S-2	200		-2

Board (11) Av: NS=+250

N-S	E-W	Contract	N-S	E-W	IMP
1	15	3NT N 5	460		5
6	20	3NT N 5	460		5
3	14	3NT N 4	430		5
13	5	2NT S 5	210		-1
17	7	1NT N 4	180		-2
4	11	1NT N 4	180		-2
8	19	1NT N 4	180		-2
12	2	1NT N 4	180		-2
9	16	1NT N 4	180		-2
18	10	1NT N 3	150		-3

Board (12) Av: NS=-120

N-S	E-W	Contract	N-S	E-W	IMP
6	20	1NT W 1	90		1
4	11	1NT W 2	120		0
13	5	1NT W 2	120		0
18	10	1NT W 2	120		0
1	15	1NT W 2	120		0
12	2	1NT W 2	120		0
9	16	1NT W 2	120		0
8	19	1NT W 2	120		0
3	14	1NT W 2	120		0
17	7	1NT W 3	150		-1

13

♠AK2
♥J
♦AQ10754
♣1085

♠10976
♥AQ98
♦K8
♣J93

N
W — E
S

♠QJ4
♥K10652
♦
♣AKQ62

♠853
♥743
♦J9632
♣74

14

♠83
♥A752
♦A10974
♣A6

♠104
♥KJ83
♦Q832
♣K95

N
W — E
S

♠AK95
♥10
♦K5
♣QJ10743

♠QJ762
♥Q964
♦J6
♣82

15

♠KQJ74
♥9
♦KQ9
♣6542

♠52
♥J1042
♦A765
♣J98

N
W — E
S

♠106
♥63
♦J108432
♣AK10

♠A983
♥AKQ875
♦
♣Q73

Board (13) Av: NS=-590

N-S	E-W	Contract	N-S	E-W	IMP
4	15	3D N-1	100		10
7	16	3H W 5	200		9
19	6	5H E 5	650		-2
5	12	4H W 5	650		-2
13	3	4H W 5	650		-2
8	18	4H E 5	650		-2
20	9	4H E 5	650		-2
2	11	4H E 5	650		-2
17	10	4H E 5	650		-2
1	14	4H E 5	650		-2

Board (14) Av: NS=-130

N-S	E-W	Contract	N-S	E-W	IMP
20	9	5Cx E-2	300		10
5	12	2D N 2	90		6
13	3	3NT W-1	50		5
8	18	3NT W-1	50		5
4	15	3C E 3	110		1
7	16	3C E 4	130		0
19	6	1NT E 4	180		-2
17	10	3NT W 3	400		-7
2	11	3NT E 3	400		-7
1	14	3NT W 4	430		-7

Board (15) Av: NS=+560

N-S	E-W	Contract	N-S	E-W	IMP
1	14	5Dx E-5	1100		11
13	3	5S N 5	650		3
17	10	4S N 5	650		3
7	16	4S N 5	650		3
2	11	4S N 5	650		3
4	15	4S N 5	650		3
20	9	4S N 5	650		3
5	12	4S N 5	650		3
8	18	6S N-1	100		-12
19	6	6S N-1	100		-12

16

♠AQ943
♥K94
♦A853
♣Q

♠108
♥Q65
♦KJ102
♣K932

N
W — E
S

♠52
♥J107
♦764
♣AJ1087

♠KJ76
♥A832
♦Q9
♣654

17

♠KQ75
♥AJ1043
♦84
♣105

♠J8
♥Q876
♦AQ1065
♣Q8

N
W — E
S

♠A104
♥K95
♦K73
♣K963

♠9632
♥2
♦J92
♣AJ742

18

♠J7
♥8654
♦AK106
♣763

♠K1032
♥K102
♦J4
♣KQ95

N
W — E
S

♠AQ
♥AJ9
♦Q72
♣AJ1084

♠98654
♥Q73
♦9853
♣2

Board (16) Av: NS=+420

N-S	E-W	Contract	N-S	E-W	IMP
5	12	4S N 5	450		1
4	15	4S N 5	450		1
1	14	4S N 4	420		0
2	11	4S N 4	420		0
7	16	4S N 4	420		0
19	6	4S N 4	420		0
13	3	4S N 4	420		0
8	18	4S N 4	420		0
17	10	4S N 4	420		0
20	9	4S N 4	420		0

Board (17) Av: NS=-190

N-S	E-W	Contract	N-S	E-W	IMP
8	18	2S S-2	100		3
5	12	3D W 4	130		2
17	10	2NT E 3	150		1
4	15	2NT E 3	150		1
13	3	2NT E 3	150		1
19	6	2NT E 4	180		0
7	16	2NT E 4	180		0
1	14	2NT E 4	180		0
2	11	3NT E 3	400		-5
20	9	3NT E 3	400		-5

Board (18) Av: NS=-460

N-S	E-W	Contract	N-S	E-W	IMP
7	16	4NT E 5	460		0
17	10	4NT E 5	460		0
1	14	3NT E 5	460		0
19	6	3NT E 5	460		0
2	11	3NT E 5	460		0
5	12	3NT E 5	460		0
13	3	3NT E 5	460		0
20	9	3NT E 5	460		0
8	18	3NT E 5	460		0
4	15	6NT E 6	990		-11

19

♠ 32
♥ 863
♦ J1084
♣ Q974

♠ A5
♥ Q107
♦ AKQ
♣ J10863

N
W — E
S

♠ KJ76
♥ AKJ95
♦ 962
♣ 5

♠ Q10984
♥ 42
♦ 753
♣ AK2

Board (19) Av: NS=-750

N-S	E-W	Contract	N-S	E-W	IMP
2	15	3H E 6	230		11
11	5	4H W 4	620		4
9	19	3NT W 4	630		3
8	17	4H W 5	650		3
12	3	4H W 5	650		3
10	16	4H W 5	650		3
20	7	4H W 6	680		2
18	6	4H E 6	680		2
4	14	6H W 6	1430		-12
1	13	6H W 6	1430		-12

20

♠ AKJ
♥ QJ954
♦ Q98
♣ J10

♠ Q108
♥ K107
♦ A52
♣ KQ72

N
W — E
S

♠ 5
♥ A863
♦ K10743
♣ A53

♠ 976432
♥ 2
♦ J6
♣ 9864

Board (20) Av: NS=-380

N-S	E-W	Contract	N-S	E-W	IMP
2	15	3NT W-1	100		10
18	6	3C W 4	130		6
8	17	2NT W 3	150		6
10	16	2NT W 3	150		6
20	7	1NT E 4	180		5
4	14	3NT W 3	600		-6
11	5	3NT W 3	600		-6
1	13	3NT W 3	600		-6
12	3	3NT E 3	600		-6
9	19	3NT E 3	600		-6

21

♠ 753
♥ A96
♦ 6
♣ KQ6432

♠ 92
♥ KJ873
♦ J7
♣ J1095

N
W — E
S

♠ AKQ8
♥ Q1042
♦ AK8
♣ A8

♠ J1064
♥ 5
♦ Q1095432
♣ 7

Board (21) Av: NS=-390

N-S	E-W	Contract	N-S	E-W	IMP
9	19	6NT E-1	50		10
8	17	6H E-1	50		10
2	15	4H E 5	450		-2
20	7	4H E 5	450		-2
4	14	4H E 5	450		-2
12	3	4H E 5	450		-2
10	16	4H E 5	450		-2
1	13	4H E 5	450		-2
18	6	4H E 5	450		-2
11	5	4H E 6	480		-3

22

♠ Q1097
♥ Q10972
♦ Q9
♣ J9

♠ AJ865432
♥ K
♦ 2
♣ 1073

N
W — E
S

♠ AJ864
♥ 10843
♦ AK42
♣ K

♠ K
♥ 53
♦ AKJ765
♣ Q865

Board (22) Av: NS=+100

N-S	E-W	Contract	N-S	E-W	IMP
18	6	4Sx W-2	500		9
20	7	4S W-1	100		0
1	13	4S W-1	100		0
12	3	4S W-1	100		0
8	17	4S W-1	100		0
11	5	4S W-1	100		0
4	14	4S W-1	100		0
10	16	4S W-1	100		0
9	19	4S W-1	100		0
2	15	5Dx S-3	500		-12

23

♠ 53
♥ A
♦ K642
♣ 1097642

♠ K10942
♥ Q84
♦ A98
♣ A3

N
W — E
S

♠ AQ7
♥ KJ6532
♦ J73
♣ J

♠ J86
♥ 1097
♦ Q105
♣ KQ85

Board (23) Av: NS=-680

N-S	E-W	Contract	N-S	E-W	IMP
10	16	4S W 4	620		2
18	6	4S W 6	680		0
2	15	4H E 6	680		0
12	3	4H E 6	680		0
8	17	4H E 6	680		0
1	13	4H E 6	680		0
11	5	4H E 6	680		0
4	14	4H E 6	680		0
9	19	4H E 6	680		0
20	7	6H E 6	1430		-13

24

♠ A83
♥ QJ10
♦ QJ3
♣ A975

♠ Q972
♥ 4
♦ A852
♣ QJ63

N
W — E
S

♠ J1054
♥ K753
♦ K9
♣ K42

♠ K6
♥ A9862
♦ 10764
♣ 108

Board (24) Av: NS=+100

N-S	E-W	Contract	N-S	E-W	IMP
12	3	3H S 5	200		3
9	19	1NT N 4	180		2
11	5	1NT N 4	180		2
10	16	1NT N 3	150		2
8	17	1NT N 2	120		1
1	13	1NT N 2	120		1
4	14	1NT N 2	120		1
18	6	3S W-1	50		-2
2	15	2S W 2	110		-5
20	7	2S E 3	140		-6

25

♠ J972
♥ KJ4
♦ 93
♣ 10965

♠ 1084
♥ 973
♦ AKQ52
♣ KQ

N
W — E
S

♠ AKQ53
♥ 62
♦ J8764
♣ 3

♠ 6
♥ AQ1085
♦ 10
♣ AJ8742

Board (25) Av: NS=+20

N-S	E-W	Contract	N-S	E-W	IMP
19	7	4H S 4	420		9
17	6	5S E-2	200		5
16	8	5S E-2	200		5
9	18	5Dx W-1	200		5
10	20	5D W-1	100		2
1	12	4S E-1	100		2
11	3	4S E-1	100		2
15	5	5Hx N-1	100		-3
14	2	4S E 4	620		-12
13	4	4S E 4	620		-12

26

♠ 5432
♥ Q109
♦ K962
♣ 72

♠ QJ10
♥ K862
♦ Q8
♣ KQ94

N
W — E
S

♠ K986
♥ A543
♦ 5
♣ AJ85

♠ A7
♥ J7
♦ AJ10743
♣ 1063

Board (26) Av: NS=-620

N-S	E-W	Contract	N-S	E-W	IMP
9	18	4H W 4	620		0
16	8	4H W 4	620		0
19	7	4H W 4	620		0
13	4	4H W 4	620		0
1	12	4H W 4	620		0
10	20	4H W 4	620		0
15	5	4H W 4	620		0
17	6	4H W 4	620		0
14	2	4H W 4	620		0
11	3	4H E 4	620		0

27

♠ 7652
♥ 5
♦ AJ872
♣ Q85

♠ K109
♥ 10864
♦ K104
♣ K76

N
W — E
S

♠ J843
♥ AQ973
♦ 9
♣ 1094

♠ AQ
♥ KJ2
♦ Q653
♣ AJ32

Board (27) Av: NS=+150

N-S	E-W	Contract	N-S	E-W	IMP
16	8	1NT S 4	180		1
10	20	1NT S 4	180		1
14	2	1NT S 4	180		1
9	18	1NT S 3	150		0
13	4	1NT S 3	150		0
1	12	1NT S 3	150		0
15	5	1NT S 3	150		0
19	7	1NT S 2	120		-1
17	6	2S W-2	100		-2
11	3	3NT S-1	50		-5

第1回山口知也杯 Session 3 Section C 2016年6月19日(日)

28

♠ 87643
♥ 3
♦ 43
♣ K10987

♠ 2
♥ J6
♦ QJ765
♣ AQJ62

♠ AQ105
♥ 10987542
♦ 8
♣ 3

♠ KJ9
♥ AKQ
♦ AK1092
♣ 54

N
W E
S

29

♠ 76
♥ J85
♦ Q106
♣ QJ1082

♠ KQJ42
♥
♦ KJ754
♣ A73

♠ 1053
♥ 7632
♦ A3
♣ K654

♠ A98
♥ AKQ1094
♦ 982
♣ 9

N
W E
S

30

♠ Q10
♥ K1032
♦ A1085
♣ K86

♠ K4
♥ AQJ4
♦ 762
♣ J1054

♠ J8653
♥ 96
♦ 9
♣ AQ973

♠ A972
♥ 875
♦ KQJ43
♣ 2

N
W E
S

Board (28) Av: NS=+100

N-S	E-W	Contract	N-S	E-W	IMP
1	12	5Hx E-4	800		12
13	4	4S S 4	620		11
16	8	5Hx E-2	300		5
17	6	3NT W-4	200		3
15	5	3H E-2	100		0
19	7	2H E-1	50		-2
10	20	3NT S-1	100		-5
11	3	3H E 4	170		-7
9	18	4S N-2	200		-7
14	2	3S S-3	300		-9

Board (29) Av: NS=-220

N-S	E-W	Contract	N-S	E-W	IMP
10	20	4H S 4	620		13
14	2	3H S 4	170		9
9	18	3H S 3	140		8
17	6	4S W-1	100		8
1	12	4H S-1	100		3
19	7	3S W 3	140		2
15	5	4S W 5	650		-10
13	4	4S W 5	650		-10
16	8	4S E 5	650		-10
11	3	4S E 5	650		-10

Board (30) Av: NS=+50

N-S	E-W	Contract	N-S	E-W	IMP
9	18	2NT N 2	120		2
16	8	3D S 3	110		2
1	12	3D N 3	110		2
15	5	2D S 3	110		2
17	6	2D N 3	110		2
11	3	5C W-2	100		2
13	4	Passout			-2
19	7	3NT N-1	50		-3
10	20	4C W 4	130		-5
14	2	4C E 4	130		-5

1

♠ J872
♥ Q87
♦ 953
♣ A83

♠ KQ1065
♥ AK9
♦ A7
♣ J64

♠ A943
♥ J6
♦ 62
♣ K9752

W N E S

♠ 105432
♥ KQJ1084
♦ Q10

Board (1) Av: NS=-170

N-S	E-W	Contract	N-S	E-W	IMP
15	8	3NT W-2	100		7
6	11	4S W-1	50		6
19	5	4S W-1	50		6
4	17	5Dx S-1		100	2
12	9	3S W 3		140	1
13	7	1NT W 4		180	0
1	16	3S W 5		200	-1
3	20	4S W 4		420	-6
10	14	4S W 4		420	-6
18	2	4S W 6		480	-7

2

♠ K1042
♥ J875
♦ Q7
♣ Q73

♠ AQ3
♥ Q10
♦ AJ98
♣ K1064

♠ J876
♥ A96
♦ 10532
♣ 85

W N E S

♠ 95
♥ K432
♦ K64
♣ AJ92

Board (2) Av: NS=-110

N-S	E-W	Contract	N-S	E-W	IMP
13	7	1NT W-1	50		4
4	17	1NT W 1		90	1
19	5	1NT W 1		90	1
18	2	1NT W 1		90	1
6	11	1NT W 2		120	0
10	14	1NT W 2		120	0
1	16	1NT W 2		120	0
12	9	1NT W 2		120	0
15	8	1NT W 2		120	0
3	20	1NT W 3		150	-1

3

♠ K
♥ AK108
♦ Q82
♣ Q10974

♠ 75
♥ J532
♦ 654
♣ A632

♠ QJ10983
♥ Q74
♦ A109
♣ K

W N E S

♠ A642
♥ 96
♦ KJ73
♣ J85

Board (3) Av: NS=-20

N-S	E-W	Contract	N-S	E-W	IMP
3	20	2S E-2	200		6
19	5	2S W-1	100		3
12	9	1NT S 1	90		3
18	2	3C N-1		50	-1
1	16	1NT S-1		50	-1
13	7	1NT S-1		50	-1
4	17	1NT S-1		50	-1
6	11	1NT S-1		50	-1
10	14	2S E 2		110	-3
15	8	3NT S-4		200	-5

4

♠ 1085
♥ Q87
♦ K1042
♣ J92

♠ KJ96
♥ 9
♦ A63
♣ KQ873

♠ A4
♥ AJ1063
♦ Q985
♣ 106

W N E S

♠ Q732
♥ K542
♦ J7
♣ A54

Board (4) Av: NS=-140

N-S	E-W	Contract	N-S	E-W	IMP
15	8	3NT W-2	200		8
12	9	3NT E-2	200		8
13	7	3NT E-1	100		6
18	2	1NT E 2		120	1
4	17	2NT W 3		150	0
3	20	2NT E 3		150	0
1	16	2NT W 5		210	-2
19	5	2NT E 5		210	-2
10	14	3NT W 3		600	-10
6	11	3NT E 3		600	-10

5

♠ 93
♥ 9432
♦ J82
♣ J543

♠ 8
♥ AQJ1075
♦ A103
♣ 1092

♠ A105
♥ K6
♦ 9754
♣ Q876

W N E S

♠ KQJ7642
♥ 8
♦ KQ6
♣ AK

Board (5) Av: NS=+380

N-S	E-W	Contract	N-S	E-W	IMP
4	17	3Sx S 4	930		11
1	16	4S S 4	620		6
6	11	4S S 4	620		6
19	5	4S S 4	620		6
3	20	4S S 4	620		6
13	7	3S S 4	170		-5
15	8	3S S 4	170		-5
10	14	3S S 4	170		-5
18	2	4H W-1	50		-8
12	9	5S S-1		100	-10

6

♠ J965
♥ 5
♦ Q932
♣ AQ73

♠ AK1083
♥ 8
♦ A6
♣ J9865

♠ 4
♥ AJ96
♦ K875
♣ K1042

W N E S

♠ Q72
♥ KQ107432
♦ J104
♣

Board (6) Av: NS=+40

N-S	E-W	Contract	N-S	E-W	IMP
3	20	5Cx W-2	500		10
13	7	2Hx S 2	470		10
15	8	5Cx W-1	200		4
1	16	3NT E-2	200		4
6	11	3NT E-2	200		4
18	2	3NT E-1	100		2
10	14	3H S-2		100	-4
4	17	2NT E 4		180	-6
12	9	3NT E 3		600	-12
19	5	3Hx S-4		800	-13

7

♠ AJ3
♥ Q83
♦ KQJ92
♣ AQ

♠ K85
♥ AJ92
♦ A4
♣ 9842

♠ 1064
♥ 754
♦ 1087653
♣ K

W N E S

♠ Q972
♥ K106
♦ J107653
♣

Board (7) Av: NS=-60

N-S	E-W	Contract	N-S	E-W	IMP
12	7	5C S 5	600		12
5	18	2D E-2	200		6
8	14	3NT N-1		100	-1
17	2	3NT N-1		100	-1
16	4	3NT N-1		100	-1
11	9	3NT N-1		100	-1
10	13	3NT N-1		100	-1
6	15	3NT N-1		100	-1
1	20	3NT N-1		100	-1
19	3	2S S-1		100	-1

8

♠ QJ
♥ Q432
♦ J10864
♣ K6

♠ 983
♥ A9865
♦ 3
♣ J1032

♠ AK10754
♥ J
♦ 975
♣ Q54

W N E S

♠ 62
♥ K107
♦ AKQ2
♣ A987

Board (8) Av: NS=-70

N-S	E-W	Contract	N-S	E-W	IMP
6	15	4D N 4	130		5
5	18	3D N 4	130		5
11	9	2H N 2	110		5
19	3	4Sx E-1	100		5
1	20	4H N-2		100	-1
17	2	3S E 4		170	-3
10	13	3S E 4		170	-3
12	7	2S E 4		170	-3
8	14	4Hx N-2		300	-6
16	4	4Hx N-2		300	-6

9

♠ KJ2
♥ 62
♦ A4
♣ 987653

♠ AQ3
♥ AK10
♦ J108765
♣ 4

♠ 104
♥ QJ874
♦ 92
♣ KQJ2

W N E S

♠ 98765
♥ 953
♦ KQ3
♣ A10

Board (9) Av: NS=-70

N-S	E-W	Contract	N-S	E-W	IMP
5	18	2S S 2	110		5
8	14	2S S 2	110		5
10	13	4H E-1	100		5
17	2	2D W 2		90	-1
16	4	3D W 3		110	-1
1	20	2D W 3		110	-1
19	3	3H E 3		140	-2
6	15	3H E 3		140	-2
12	7	3H E 3		140	-2
11	9	4H E 4		620	-11

第1回山口知也杯 Session 4 Section C 2016年6月19日(日)

10

♠ QJ
♥ AQJ1093
♦ 63
♣ K73

♠ A107
♥ 2
♦ KQ109
♣ J8652

N
W — E
S

♠ 98532
♥ K75
♦ J842
♣ Q

♠ K64
♥ 864
♦ A75
♣ A1094

11

♠ J75
♥ 8632
♦ 1086
♣ J43

♠ 98643
♥ A9
♦ AJ
♣ Q975

N
W — E
S

♠ A10
♥ Q105
♦ Q9753
♣ 1086

♠ KQ2
♥ KJ74
♦ K42
♣ AK2

12

♠ K106
♥
♦ KJ106
♣ AQ9852

♠ 8
♥ AJ76
♦ 9753
♣ KJ103

N
W — E
S

♠ Q95432
♥ Q1052
♦ Q8
♣ 4

♠ AJ7
♥ K9843
♦ A42
♣ 76

Board (10) Av: NS=+510

N-S	E-W	Contract	N-S	E-W	IMP
6	15	4H N 5	650		4
12	7	4H N 4	620		3
17	2	4H N 4	620		3
19	3	4H N 4	620		3
11	9	4H N 4	620		3
5	18	4H N 4	620		3
10	13	4H N 4	620		3
16	4	3H N 4	170		-8
1	20	2H N 4	170		-8
8	14	4H N-1	100		-12

Board (11) Av: NS=-80

N-S	E-W	Contract	N-S	E-W	IMP
19	3	1NT E-2	100		5
6	15	1C S 1	70		4
17	2	1NT S-1	50		1
11	9	1C S-1	50		1
8	14	1NT S-2	100		-1
16	4	1C S-2	100		-1
1	20	1S W 2	110		-1
12	7	2NT S-3	150		-2
5	18	1C S-3	150		-2
10	13	1C S-3	150		-2

Board (12) Av: NS=+440

N-S	E-W	Contract	N-S	E-W	IMP
8	14	3NT N 6	690		6
10	13	3NT S 5	660		6
16	4	3NT S 4	630		5
11	9	3NT N 4	630		5
12	7	3NT S 3	600		4
19	3	3NT S 3	600		4
6	15	3NT S 3	600		4
5	18	3NT S-1	100		-11
17	2	3NT S-1	100		-11
1	20	3NT S-1	100		-11

13

♠ Q
♥ KQ6
♦ A10743
♣ AQ85

♠ KJ65
♥ J954
♦ KQ98
♣ K

N
W — E
S

♠ 732
♥ 82
♦ 65
♣ J76432

♠ A10984
♥ A1073
♦ J2
♣ 109

14

♠ A72
♥
♦ AJ108764
♣ 1073

♠ KJ3
♥ A863
♦ K52
♣ QJ5

N
W — E
S

♠ 854
♥ J9742
♦ Q
♣ AK42

♠ Q1096
♥ KQ105
♦ 93
♣ 986

15

♠ J943
♥ KQ7
♦ 876
♣ K84

♠ K6
♥ AJ5432
♦ AQ95
♣ 9

N
W — E
S

♠ A852
♥ 986
♦ 43
♣ A1062

♠ Q107
♥ 10
♦ KJ102
♣ QJ753

Board (13) Av: NS=+490

N-S	E-W	Contract	N-S	E-W	IMP
1	19	3NT S 4	630		4
5	17	3NT N 4	630		4
9	15	3NT N 4	630		4
13	8	3NT N 4	630		4
10	12	3NT S 3	600		3
18	3	3NT N 3	600		3
6	14	3NT N 3	600		3
7	11	2S S 3	140		-8
20	4	2NT N 2	120		-9
16	2	3NT N-1	100		-11

Board (14) Av: NS=+110

N-S	E-W	Contract	N-S	E-W	IMP
13	8	4Hx E-2	300		5
7	11	4H E-3	150		1
9	15	4H E-3	150		1
18	3	4H W-2	100		0
20	4	4H E-2	100		0
6	14	4H E-2	100		0
1	19	4H E-2	100		0
16	2	3H E-2	100		0
10	12	3H E-1	50		-2
5	17	3H E-1	50		-2

Board (15) Av: NS=-410

N-S	E-W	Contract	N-S	E-W	IMP
5	17	3H W 5	200		5
6	14	3H W 5	200		5
7	11	4H W 4	420		0
18	3	4H W 4	420		0
20	4	4H W 5	450		-1
10	12	4H W 5	450		-1
9	15	4H W 5	450		-1
1	19	4H W 5	450		-1
16	2	4H W 5	450		-1
13	8	4H W 5	450		-1

16

♠ Q102
♥ AQ3
♦ 965
♣ 8732

♠ J74
♥ J986
♦ A102
♣ A65

N
W — E
S

♠ A853
♥ 1072
♦ J43
♣ K109

♠ K96
♥ K54
♦ KQ87
♣ QJ4

17

♠ J876
♥ K9753
♦ A987
♣

♠ K104
♥ Q
♦ 1063
♣ J108762

N
W — E
S

♠ Q952
♥ J842
♦ Q2
♣ AK5

♠ A3
♥ A106
♦ KJ54
♣ Q943

18

♠ AQ982
♥ 875
♦ J95
♣ J6

♠ 64
♥ KJ3
♦ A86
♣ AQ872

N
W — E
S

♠ K10
♥ AQ1062
♦ Q3
♣ K1053

♠ J753
♥ 94
♦ K10742
♣ 94

Board (16) Av: NS=+90

N-S	E-W	Contract	N-S	E-W	IMP
18	3	2S E-1	100		0
20	4	1NT N 1	90		0
13	8	1NT N 1	90		0
9	15	1NT N 1	90		0
10	12	1NT N 1	90		0
5	17	1NT N 1	90		0
1	19	1NT N 1	90		0
7	11	1NT N 1	90		0
16	2	1NT N 1	90		0
6	14	1NT S-1	50		-4

Board (17) Av: NS=+130

N-S	E-W	Contract	N-S	E-W	IMP
9	15	3Cx E-2	300		5
16	2	3C E-3	150		1
1	19	3C E-3	150		1
18	3	3D S 4	130		0
10	12	3D S 4	130		0
13	8	3D S 4	130		0
7	11	3D S 3	110		-1
20	4	3C E-2	100		-1
6	14	3C E-2	100		-1
5	17	3C E-1	50		-2

Board (18) Av: NS=-480

N-S	E-W	Contract	N-S	E-W	IMP
20	4	5H E 6	480		0
13	8	4H E 6	480		0
18	3	4H E 6	480		0
9	15	4H E 6	480		0
10	12	4H E 6	480		0
5	17	4H E 6	480		0
1	19	4H E 6	480		0
6	14	4H E 6	480		0
16	2	4H E 6	480		0
7	11	4NT E 6	490		0

19

♠ QJ2
♥ K95
♦ AJ864
♣ J6

♠ A843 ♠ K109
♥ J843 ♥ A7
♦ Q2 ♠ K103
♣ Q107 ♣ A8542

♠ 765
♥ Q1062
♦ 975
♣ K93

Board (19) Av: NS=-90

N-S	E-W	Contract	N-S	E-W	IMP
13	6	3NT E-1	100		5
19	4	3C E-1	100		5
1	18	2C E 2		90	0
20	2	2D N-2	100		0
14	9	1NT N-2	100		0
11	10	3C E 3	110		-1
3	17	3C E 3	110		-1
8	12	2NT E 3	150		-2
7	15	2D N-3	150		-2
16	5	1NT N-4	200		-3

20

♠ J1063
♥ AKJ62
♦

♠ A84 ♠ Q7
♥ 74 ♥ Q985
♦ 864 ♠ KJ1052
♣ K9873 ♣ A6

♠ K952
♥ 103
♦ AQ973
♣ Q5

Board (20) Av: NS=+140

N-S	E-W	Contract	N-S	E-W	IMP
14	9	3Dx E-2	500		8
3	17	2D E-3	300		4
7	15	1NT W-2	200		2
13	6	2NT S 3	150		0
19	4	2S S 3	140		0
1	18	2H N 3	140		0
16	5	2H N 3	140		0
8	12	2NT S 2	120		-1
11	10	4S N-1		100	-6
20	2	2Dx E 2		180	-8

21

♠ Q63
♥ Q98764
♦ A6
♣ 92

♠ 10972 ♠ KJ85
♥ 3 ♥ K102
♦ Q98532 ♠ K107
♣ KJ ♣ Q105

♠ A4
♥ AJ5
♦ J4
♣ A87643

Board (21) Av: NS=-30

N-S	E-W	Contract	N-S	E-W	IMP
1	18	4H N 5	650		12
3	17	5Sx W-3	500		11
13	6	4S W-1	50		2
16	5	2S W 2		110	-2
19	4	2S W 2		110	-2
7	15	2S W 2		110	-2
14	9	2S W 3		140	-3
20	2	2S E 3		140	-3
11	10	2S W 4		170	-4
8	12	4S W 4		420	-9

22

♠ K3
♥ AJ7
♦ 1095
♣ J10973

♠ J ♠ 108542
♥ Q1032 ♥ 84
♦ Q876 ♠ J4
♣ A642 ♣ KQ85

♠ AQ976
♥ K965
♦ AK32
♣

Board (22) Av: NS=+280

N-S	E-W	Contract	N-S	E-W	IMP
16	5	3NT N 4	430		4
3	17	3NT N 4	430		4
1	18	3NT N 4	430		4
20	2	4S S 4	420		4
8	12	3NT N 3	400		3
13	6	2S S 4	170		-3
11	10	2S S 3	140		-4
7	15	2S S 3	140		-4
14	9	2S S 3	140		-4
19	4	2S S 2	110		-5

23

♠ Q75
♥ QJ75
♦ AJ65
♣ 96

♠ J864 ♠ 1093
♥ 3 ♥ A10986
♦ 2 ♠ KQ74
♣ AQJ8753 ♣ 10

♠ AK2
♥ K42
♦ 10983
♣ K42

Board (23) Av: NS=-60

N-S	E-W	Contract	N-S	E-W	IMP
7	15	3Cx W-1	200		6
19	4	1NT S 3	150		5
3	17	1NT S 2	120		5
20	2	1NT S 1	90		4
13	6	3NT S-1		100	-1
8	12	3NT S-1		100	-1
14	9	3D S-2		200	-4
16	5	3D S-2		200	-4
11	10	2D S-2		200	-4
1	18	3H N-4		400	-8

24

♠ 954
♥ J9
♦ Q986
♣ K1095

♠ 762 ♠ AJ8
♥ AK7654 ♥ Q
♦ 43 ♠ AKJ10752
♣ 83 ♣ Q6

♠ KQ103
♥ 10832
♦
♣ AJ742

Board (24) Av: NS=+90

N-S	E-W	Contract	N-S	E-W	IMP
1	18	4H W-4	200		3
8	12	4H W-4	200		3
7	15	3NT E-3	150		2
16	5	4H W-2	100		0
20	2	4H W-2	100		0
13	6	4H W-2	100		0
3	17	4D E-1	50		-1
19	4	4D E-1	50		-1
11	10	5C N-1		50	-4
14	9	3D E 3		110	-5

25

♠ A
♥ AKJ
♦ AQ9832
♣ 432

♠ J10763 ♠ Q9542
♥ 965 ♥ Q87
♦ K104 ♠ 76
♣ A7 ♣ QJ5

♠ K8
♥ 10432
♦ J5
♣ K10986

Board (25) Av: NS=+250

N-S	E-W	Contract	N-S	E-W	IMP
7	14	3NT S 5	460		5
6	12	3NT S 3	400		4
19	2	3NT S 3	400		4
9	13	3NT S 3	400		4
15	10	3NT N 3	400		4
16	3	3Sx W-1	200		-2
4	18	3D N 4	130		-3
8	11	3D N 4	130		-3
1	17	4D N-1		50	-7
20	5	3NT N-2		100	-8

26

♠ 109852
♥ AJ10
♦ 95
♣ AK9

♠ A4 ♠ QJ73
♥ K865 ♥ 942
♦ AQJ84 ♠ 7632
♣ 76 ♣ 83

♠ K6
♥ Q73
♦ K10
♣ QJ10542

Board (26) Av: NS=+40

N-S	E-W	Contract	N-S	E-W	IMP
8	11	3NT S 4	630		11
6	12	1NT S 4	180		4
9	13	1NT S 3	150		3
20	5	1NT S 2	120		2
4	18	2S N 2	110		2
15	10	1S N 1	80		1
16	3	1NT W 1		90	-4
1	17	4C S-1		100	-4
7	14	2S N-1		100	-4
19	2	4S N-3		300	-8

27

♠ J108
♥
♦ Q9874
♣ AQ964

♠ 4 ♠ AQ97
♥ K98742 ♥ A653
♦ AK ♠ J105
♣ 8753 ♣ J2

♠ K6532
♥ QJ10
♦ 632
♣ K10

Board (27) Av: NS=-390

N-S	E-W	Contract	N-S	E-W	IMP
16	3	5Hx W-1	100		10
8	11	3H W 4		170	6
15	10	4H W 4		420	-1
19	2	4H W 4		420	-1
1	17	4H W 4		420	-1
20	5	4H W 4		420	-1
7	14	4H W 4		420	-1
4	18	4H W 4		420	-1
9	13	4H W 4		420	-1
6	12	4Hx W 4		590	-5

28

♠ 1074
♥ A72
♦ Q82
♣ AK98

♠ 32	N	♠ AKQJ85
♥ Q1084		♥ 9653
♦ 643	W	♦ A97
♣ QJ42	S	♣

♠ 96
♥ KJ
♦ KJ105
♣ 107653

29

♠ K75
♥ A
♦ J108
♣ AQ6543

♠ J62	N	♠ AQ109
♥ 654		♥ KJ82
♦ 654	W	♦ K93
♣ KJ109	S	♣ 82

♠ 843
♥ Q10973
♦ AQ72
♣ 7

30

♠ AK95
♥ QJ83
♦ A8
♣ K62

♠ QJ8643	N	♠ 102
♥ A6		♥ K1054
♦ 54	W	♦ K762
♣ AQ10	S	♣ J93

♠ 7
♥ 972
♦ QJ1093
♣ 8754

Board (28) Av: NS=-40

N-S	E-W	Contract	N-S	E-W	IMP
15	10	4H E-2	100		4
8	11	4S E-1	50		3
19	2	4S E-1	50		3
6	12	4S E-1	50		3
9	13	3S E-1	50		3
20	5	1NT N-1		100	-2
4	18	2S E 2		110	-2
16	3	3H W 3		140	-3
7	14	2S E 3		140	-3
1	17	3H E 4		170	-4

Board (29) Av: NS=+80

N-S	E-W	Contract	N-S	E-W	IMP
1	17	2S W-3	300		6
4	18	2D W-3	300		6
9	13	2NT N 2	120		1
16	3	2NT N 2	120		1
7	14	2C N 3	110		1
8	11	2C N 3	110		1
15	10	2C N 3	110		1
19	2	2C N-1		100	-5
6	12	2C N-1		100	-5
20	5	2NT N-2		200	-7

Board (30) Av: NS=-70

N-S	E-W	Contract	N-S	E-W	IMP
4	18	1NT N 2	120		5
9	13	1NT N 1	90		4
20	5	3D S-1		50	1
8	11	1NT N-1		50	1
6	12	3Dx S-1		100	-1
15	10	2S W 2		110	-1
1	17	2S W 2		110	-1
19	2	2S W 2		110	-1
16	3	2S W 3		140	-2
7	14	2Sx W 2		470	-9