

第1回山口知也杯 Session 1 Section B 2016年6月18日(土)

1

♠AQ8754
♥A106
♦105
♣53

♠K10932
♥975
♦K86
♣Q8

W N E S

♠6
♥KQ
♦9742
♣KJ10764

♠J
♥J8432
♦AQJ3
♣A92

Board (1) Av: NS=+110

| N-S | E-W | Contract | N-S | E-W | IMP |
|-----|-----|----------|-----|-----|-----|
| 5 | 8 | 4H S 4 | 420 | | 7 |
| 20 | 13 | 4H S 4 | 420 | | 7 |
| 19 | 12 | 3H S 3 | 140 | | 1 |
| 18 | 14 | 3H S 3 | 140 | | 1 |
| 6 | 2 | 3H S 3 | 140 | | 1 |
| 4 | 7 | 2S N 3 | 140 | | 1 |
| 3 | 9 | Passout | | | -3 |
| 1 | 10 | 4H S-1 | | 50 | -4 |
| 17 | 11 | 2S N-1 | | 50 | -4 |
| 16 | 15 | 3NT S-3 | | 150 | -6 |

2

♠Q109853
♥QJ963
♦Q5
♣

♠AKJ4
♥104
♦KJ62
♣Q96

W N E S

♥A75
♦9843
♣AKJ854

♠762
♥K82
♦A107
♣10732

Board (2) Av: NS=-410

| N-S | E-W | Contract | N-S | E-W | IMP |
|-----|-----|----------|-----|-----|-----|
| 1 | 10 | 6D W-3 | 150 | | 11 |
| 18 | 14 | 5D W 5 | 400 | | 0 |
| 5 | 8 | 3NT W 3 | 400 | | 0 |
| 20 | 13 | 3NT W 3 | 400 | | 0 |
| 19 | 12 | 3NT E 3 | 400 | | 0 |
| 4 | 7 | 3NT E 3 | 400 | | 0 |
| 16 | 15 | 3NT E 3 | 400 | | 0 |
| 3 | 9 | 3NT W 4 | 430 | | -1 |
| 17 | 11 | 3NT W 4 | 430 | | -1 |
| 6 | 2 | 3NT W 4 | 430 | | -1 |

3

♠84
♥105
♦Q93
♣1087432

♠102
♥KQJ
♦J8764
♣AKJ

W N E S

♠AK63
♥A8763
♦A2
♣65

♠QJ975
♥942
♦K105
♣Q9

Board (3) Av: NS=-660

| N-S | E-W | Contract | N-S | E-W | IMP |
|-----|-----|----------|------|-----|-----|
| 17 | 11 | 4H W 5 | 650 | | 0 |
| 20 | 13 | 4H W 5 | 650 | | 0 |
| 4 | 7 | 4H W 5 | 650 | | 0 |
| 6 | 2 | 4H E 5 | 650 | | 0 |
| 19 | 12 | 4NT W 5 | 660 | | 0 |
| 3 | 9 | 3NT W 5 | 660 | | 0 |
| 16 | 15 | 3NT W 5 | 660 | | 0 |
| 1 | 10 | 4H W 6 | 680 | | -1 |
| 18 | 14 | 4H W 6 | 680 | | -1 |
| 5 | 8 | 3NTxW 5 | 1150 | | -10 |

4

♠AJ75
♥AK64
♦A74
♣94

♠Q9
♥52
♦QJ10985
♣KQ2

W N E S

♠K10862
♥J93
♦32
♣AJ6

♠43
♥Q1087
♦K6
♣108753

Board (4) Av: NS=+30

| N-S | E-W | Contract | N-S | E-W | IMP |
|-----|-----|----------|-----|-----|-----|
| 1 | 10 | 3H S 4 | 170 | | 4 |
| 20 | 13 | 1NT N 2 | 120 | | 3 |
| 4 | 7 | 1NT N 2 | 120 | | 3 |
| 19 | 12 | 1NT N 1 | 90 | | 2 |
| 6 | 2 | 1NT N 1 | 90 | | 2 |
| 16 | 15 | 1NT N 1 | 90 | | 2 |
| 5 | 8 | 2D E 2 | | 90 | -3 |
| 18 | 14 | 2D E 2 | | 90 | -3 |
| 17 | 11 | 2D E 2 | | 90 | -3 |
| 3 | 9 | 1NT N-1 | | 100 | -4 |

5

♠KQ108
♥KQJ4
♦AJ1052
♣

♠1085
♥A9732
♦1052
♣43

W N E S

♠AKJ7
♥J6
♦983
♣KQ97

♠Q96432
♥54
♦A76
♣86

Board (5) Av: NS=+10

| N-S | E-W | Contract | N-S | E-W | IMP |
|-----|-----|----------|-----|-----|-----|
| 19 | 12 | 2Sx E-3 | 500 | | 10 |
| 18 | 14 | 2Sx E-3 | 500 | | 10 |
| 1 | 10 | 3H W-6 | 300 | | 7 |
| 17 | 11 | 2Sx E-1 | 100 | | 3 |
| 16 | 15 | 3D N-1 | | 100 | -3 |
| 20 | 13 | 2S S-1 | | 100 | -3 |
| 3 | 9 | 1Sx E 1 | | 160 | -5 |
| 4 | 7 | 2S S-2 | | 200 | -5 |
| 6 | 2 | 3S S-3 | | 300 | -7 |
| 5 | 8 | 2S S-3 | | 300 | -7 |

6

♠765
♥Q972
♦Q4
♣KQ54

♠A10432
♥AJ3
♦A83
♣J3

W N E S

♠Q9
♥K108654
♦92
♣A109

♠KJ8
♥
♦KJ10765
♣8762

Board (6) Av: NS=-470

| N-S | E-W | Contract | N-S | E-W | IMP |
|-----|-----|----------|-----|-----|-----|
| 3 | 9 | 4H E-1 | 100 | | 11 |
| 4 | 7 | 4H E-1 | 100 | | 11 |
| 17 | 11 | 2H E 4 | | 170 | 7 |
| 20 | 13 | 4H E 4 | | 620 | -4 |
| 19 | 12 | 4H E 4 | | 620 | -4 |
| 16 | 15 | 4H E 4 | | 620 | -4 |
| 18 | 14 | 4H E 4 | | 620 | -4 |
| 5 | 8 | 4H E 4 | | 620 | -4 |
| 1 | 10 | 4H E 4 | | 620 | -4 |
| 6 | 2 | 4H E 4 | | 620 | -4 |

7

♠K103
♥1097
♦Q7652
♣K6

♠J9842
♥KQ5
♦AK8
♣32

W N E S

♠Q75
♥AJ864
♦93
♣A108

♠A6
♥32
♦J104
♣QJ9754

Board (7) Av: NS=-260

| N-S | E-W | Contract | N-S | E-W | IMP |
|-----|-----|----------|-----|-----|-----|
| 5 | 4 | 4S W-1 | 100 | | 8 |
| 2 | 10 | 4S W-1 | 100 | | 8 |
| 7 | 8 | 4S W-1 | 100 | | 8 |
| 18 | 11 | 4S W-1 | 100 | | 8 |
| 12 | 13 | 4H E-1 | 100 | | 8 |
| 15 | 17 | 4S W 4 | | 620 | -8 |
| 19 | 20 | 4S W 4 | | 620 | -8 |
| 16 | 14 | 4H E 4 | | 620 | -8 |
| 3 | 6 | 4H E 4 | | 620 | -8 |
| 1 | 9 | 4S W 5 | | 650 | -9 |

8

♠J1073
♥QJ76
♦A9642
♣

♠AKQ6
♥105
♦K85
♣KQ105

W N E S

♠98542
♥432
♦J10
♣432

♠AK98
♥Q73
♣AJ9876

Board (8) Av: NS=+60

| N-S | E-W | Contract | N-S | E-W | IMP |
|-----|-----|----------|-----|-----|-----|
| 19 | 20 | 4S E-3 | 150 | | 3 |
| 3 | 6 | 1C W-3 | 150 | | 3 |
| 15 | 17 | 3D N 4 | 130 | | 2 |
| 1 | 9 | 2D S 4 | 130 | | 2 |
| 16 | 14 | 3S W-1 | 50 | | 0 |
| 2 | 10 | 3S W-1 | 50 | | 0 |
| 5 | 4 | 3S W-1 | 50 | | 0 |
| 12 | 13 | 4H S-1 | | 50 | -3 |
| 7 | 8 | 4H S-1 | | 50 | -3 |
| 18 | 11 | 4H N-1 | | 50 | -3 |

9

♠A
♥A82
♦J105
♣AQJ832

♠K643
♥Q754
♦8
♣K965

W N E S

♠1098752
♥K106
♦K76
♣4

♠QJ
♥J93
♦AQ9432
♣107

Board (9) Av: NS=+490

| N-S | E-W | Contract | N-S | E-W | IMP |
|-----|-----|----------|-----|-----|-----|
| 5 | 4 | 6D S 6 | 920 | | 10 |
| 1 | 9 | 3NT S 7 | 520 | | 1 |
| 12 | 13 | 3NT N 7 | 520 | | 1 |
| 2 | 10 | 3NT S 6 | 490 | | 0 |
| 18 | 11 | 3NT S 6 | 490 | | 0 |
| 15 | 17 | 3NT N 6 | 490 | | 0 |
| 16 | 14 | 3NT N 6 | 490 | | 0 |
| 7 | 8 | 3NT N 6 | 490 | | 0 |
| 3 | 6 | 5D S 5 | 400 | | -3 |
| 19 | 20 | 3NT S 3 | 400 | | -3 |

第1回山口知也杯 Session 1 Section B 2016年6月18日(土)

10

♠ KJ632
♥ 10874
♦ Q43
♣ 10

♠ A Q1097
♥ 93 AQ2
♦ KJ96 A875
♣ AJ9753 ♣ Q6

♠ 854
♥ KJ65
♦ 102
♣ K842

Board (10) Av: NS=-430

| N-S | E-W | Contract | N-S | E-W | IMP |
|-----|-----|----------|-----|-----|-----|
| 3 | 6 | 6D E-3 | 300 | | 12 |
| 1 | 9 | 5D E-2 | 200 | | 12 |
| 7 | 8 | 5D E-2 | 200 | | 12 |
| 2 | 10 | 3NT E 4 | | 630 | -5 |
| 15 | 17 | 3NT E 4 | | 630 | -5 |
| 16 | 14 | 3NT E 4 | | 630 | -5 |
| 12 | 13 | 3NT E 4 | | 630 | -5 |
| 19 | 20 | 3NT E 4 | | 630 | -5 |
| 5 | 4 | 3NT E 5 | | 660 | -6 |
| 18 | 11 | 3NT E 5 | | 660 | -6 |

11

♠ AK75
♥ A742
♦ K8
♣ 1053

♠ QJ10963
♥ 83
♦ A109
♣ AJ

♠ 842
♥ KQ65
♦ J52
♣ Q76

Board (11) Av: NS=-120

| N-S | E-W | Contract | N-S | E-W | IMP |
|-----|-----|----------|-----|-----|-----|
| 5 | 4 | 3H N-2 | 100 | | 1 |
| 3 | 6 | 2S E 2 | 110 | | 0 |
| 2 | 10 | 2S E 2 | 110 | | 0 |
| 16 | 14 | 2S E 2 | 110 | | 0 |
| 1 | 9 | 2S E 2 | 110 | | 0 |
| 15 | 17 | 2S E 2 | 110 | | 0 |
| 12 | 13 | 2S E 2 | 110 | | 0 |
| 7 | 8 | 2S E 2 | 110 | | 0 |
| 18 | 11 | 3H N-3 | 150 | | -1 |
| 19 | 20 | 3H N-3 | 150 | | -1 |

12

♠ 842
♥ K94
♦ AK93
♣ J87

♠ J76 AQ103
♥ Q1062 ♥ 3
♦ 765 ♦ Q102
♣ 943 ♣ KQ1062

♠ K95
♥ AJ875
♦ J84
♣ A5

Board (12) Av: NS=-150

| N-S | E-W | Contract | N-S | E-W | IMP |
|-----|-----|----------|-----|-----|-----|
| 2 | 10 | 2H S 2 | 110 | | 6 |
| 18 | 11 | 2H S 2 | 110 | | 6 |
| 16 | 14 | 2H S 2 | 110 | | 6 |
| 7 | 8 | 2H S-1 | | 100 | 2 |
| 3 | 6 | 4H S-2 | | 200 | -2 |
| 12 | 13 | 2H S-2 | | 200 | -2 |
| 1 | 9 | 4H S-3 | | 300 | -4 |
| 19 | 20 | 4H S-3 | | 300 | -4 |
| 15 | 17 | 4H S-3 | | 300 | -4 |
| 5 | 4 | 4H S-3 | | 300 | -4 |

13

♠ J107
♥ A762
♦ AKQ1087

♠ J1053 A74
♥ 64 ♥ 9852
♦ 54 ♦ KQJ98
♣ J6432 ♣ 9

♠ KQ9862
♥ AKQ3
♦ 103
♣ 5

Board (13) Av: NS=-10

| N-S | E-W | Contract | N-S | E-W | IMP |
|-----|-----|----------|-----|-----|-----|
| 15 | 14 | 3NT N 5 | 660 | | 12 |
| 10 | 9 | 4H S 4 | 620 | | 12 |
| 20 | 12 | 4S S-1 | | 100 | -3 |
| 3 | 2 | 4S S-1 | | 100 | -3 |
| 7 | 5 | 4S S-1 | | 100 | -3 |
| 17 | 18 | 4H S-1 | | 100 | -3 |
| 6 | 4 | 4H S-1 | | 100 | -3 |
| 13 | 16 | 3NT N-1 | | 100 | -3 |
| 11 | 19 | 3NT N-1 | | 100 | -3 |
| 1 | 8 | 4H N-2 | | 200 | -5 |

14

♠ J95
♥ Q1097
♦ KQ72
♣ 94

♠ K10764 Q3
♥ J3 ♥ A62
♦ 1054 ♦ J983
♣ AQ6 ♣ J1052

♠ A82
♥ K854
♦ A6
♣ K873

Board (14) Av: NS=+10

| N-S | E-W | Contract | N-S | E-W | IMP |
|-----|-----|----------|-----|-----|-----|
| 3 | 2 | 3H S 3 | 140 | | 4 |
| 17 | 18 | 2H S 2 | 110 | | 3 |
| 10 | 9 | 2H S 2 | 110 | | 3 |
| 1 | 8 | 2S E-2 | 100 | | 3 |
| 7 | 5 | 2S W-1 | 50 | | 1 |
| 6 | 4 | 4H S-1 | | 50 | -2 |
| 13 | 16 | 3H S-1 | | 50 | -2 |
| 15 | 14 | 2H S-1 | | 50 | -2 |
| 20 | 12 | 2S W 2 | 110 | | -3 |
| 11 | 19 | 2S W 3 | 140 | | -4 |

15

♠ Q102
♥ 42
♦ QJ876
♣ AK6

♠ 5 AKJ9843
♥ AQ83 ♥ 105
♦ AK54 ♦ 103
♣ 9742 ♣ Q10

♠ 76
♥ KJ976
♦ 92
♣ J853

Board (15) Av: NS=-350

| N-S | E-W | Contract | N-S | E-W | IMP |
|-----|-----|----------|-----|-----|-----|
| 11 | 19 | 3S E 5 | | 200 | 4 |
| 1 | 8 | 3S E 5 | | 200 | 4 |
| 20 | 12 | 2S E 5 | | 200 | 4 |
| 7 | 5 | 2S E 5 | | 200 | 4 |
| 10 | 9 | 4S E 4 | | 420 | -2 |
| 6 | 4 | 4S E 5 | | 450 | -3 |
| 3 | 2 | 4S E 5 | | 450 | -3 |
| 13 | 16 | 4S E 5 | | 450 | -3 |
| 17 | 18 | 4S E 5 | | 450 | -3 |
| 15 | 14 | 4S E 5 | | 450 | -3 |

16

♠ AKQ985
♥ 6
♦ Q654
♣ 104

♠ 10742 3
♥ AQ ♥ K10972
♦ A1073 ♦ KJ9
♣ KQ6 ♣ J753

♠ J6
♥ J8543
♦ 82
♣ A982

Board (16) Av: NS=+100

| N-S | E-W | Contract | N-S | E-W | IMP |
|-----|-----|----------|-----|-----|-----|
| 20 | 12 | 4Hx W-3 | 800 | | 12 |
| 1 | 8 | 2Sx N 2 | 470 | | 9 |
| 17 | 18 | 2S N 3 | 140 | | 1 |
| 15 | 14 | 4H E-1 | 100 | | 0 |
| 7 | 5 | 3NT W-1 | 100 | | 0 |
| 13 | 16 | 3H W-1 | 100 | | 0 |
| 11 | 19 | 3H E-1 | 100 | | 0 |
| 3 | 2 | 3S N-2 | | 100 | -5 |
| 10 | 9 | 2NT W 2 | | 120 | -6 |
| 6 | 4 | 1NT W 2 | | 120 | -6 |

17

♠ 642
♥ J742
♦ A1063
♣ 95

♠ KJ97 Q10853
♥ A1086 ♥ K3
♦ J54 ♦ KQ72
♣ 107 ♣ K4

♠ A
♥ Q95
♦ 98
♣ AQJ8632

Board (17) Av: NS=-210

| N-S | E-W | Contract | N-S | E-W | IMP |
|-----|-----|----------|-----|-----|-----|
| 11 | 19 | 4S E-1 | 50 | | 6 |
| 10 | 9 | 4C S-1 | | 50 | 4 |
| 7 | 5 | 4Cx S-1 | | 100 | 3 |
| 15 | 14 | 2S E 3 | | 140 | 2 |
| 20 | 12 | 3S E 4 | | 170 | 1 |
| 3 | 2 | 3S E 4 | | 170 | 1 |
| 17 | 18 | 3S E 4 | | 170 | 1 |
| 6 | 4 | 4S E 4 | | 420 | -5 |
| 1 | 8 | 4S E 4 | | 420 | -5 |
| 13 | 16 | 4S E 4 | | 420 | -5 |

18

♠ K96
♥ 854
♦ 6432
♣ A87

♠ A10873 5
♥ J3 ♥ AQ107
♦ QJ ♦ AK10987
♣ KQ52 ♣ 104

♠ QJ42
♥ K962
♦ 5
♣ J963

Board (18) Av: NS=-450

| N-S | E-W | Contract | N-S | E-W | IMP |
|-----|-----|----------|-----|-----|-----|
| 13 | 16 | 6D E-1 | 50 | | 11 |
| 7 | 5 | 3NT W 4 | | 430 | 1 |
| 15 | 14 | 3NT E 4 | | 430 | 1 |
| 3 | 2 | 3NT W 5 | | 460 | 0 |
| 11 | 19 | 3NT E 5 | | 460 | 0 |
| 20 | 12 | 3NT E 5 | | 460 | 0 |
| 17 | 18 | 3NT E 5 | | 460 | 0 |
| 10 | 9 | 3NT E 5 | | 460 | 0 |
| 6 | 4 | 3NT E 5 | | 460 | 0 |
| 1 | 8 | 3NT E 5 | | 460 | 0 |

19

♠ 87
♥ 109532
♦ J1076
♣ J3

♠ J5 ♠ 10632
♥ KQ ♥ J87
♦ Q42 ♦ 953
♣ Q98762 ♣ AK4

W — E

♠ AKQ94
♥ A64
♦ AK8
♣ 105

20

♠ 10
♥ 8
♦ KJ762
♣ QJ9532

♠ AK4 ♠ QJ65
♥ AQ105 ♥ 93
♦ 1095 ♦ AQ84
♣ A108 ♣ 764

W — E

♠ 98732
♥ KJ7642
♦ 3
♣ K

21

♠ QJ962
♥ 1097
♦ A7
♣ A96

♠ 4 ♠ AK10853
♥ QJ43 ♥ A86
♦ J95 ♦ Q106
♣ J8752 ♣ 10

W — E

♠ 7
♥ K52
♦ K8432
♣ KQ43

Board (19) Av: NS=+80

| N-S | E-W | Contract | N-S | E-W | IMP |
|-----|-----|----------|-----|-----|-----|
| 3 | 10 | 3H S 5 | 200 | | 3 |
| 14 | 17 | 3H S 3 | 140 | | 2 |
| 6 | 5 | 3H S 3 | 140 | | 2 |
| 16 | 12 | 1S S 2 | 110 | | 1 |
| 8 | 4 | 1S S 1 | 80 | | 0 |
| 2 | 9 | 1S S 1 | 80 | | 0 |
| 13 | 19 | 1S S 1 | 80 | | 0 |
| 15 | 18 | 1S S 1 | 80 | | 0 |
| 1 | 7 | 4H S-1 | | 50 | -4 |
| 20 | 11 | 3NT S-2 | | 100 | -5 |

Board (20) Av: NS=-640

| N-S | E-W | Contract | N-S | E-W | IMP |
|-----|-----|----------|------|-----|-----|
| 3 | 10 | 3Cx N-1 | 200 | | 10 |
| 1 | 7 | 3NT W 3 | 600 | | 1 |
| 6 | 5 | 3NT E 3 | 600 | | 1 |
| 16 | 12 | 3NT W 4 | 630 | | 0 |
| 20 | 11 | 3NT W 4 | 630 | | 0 |
| 8 | 4 | 3NT W 4 | 630 | | 0 |
| 14 | 17 | 3NT W 5 | 660 | | -1 |
| 2 | 9 | 3NT W 6 | 690 | | -2 |
| 13 | 19 | 3NT W 6 | 690 | | -2 |
| 15 | 18 | 3Cx N-4 | 1100 | | -10 |

Board (21) Av: NS=+130

| N-S | E-W | Contract | N-S | E-W | IMP |
|-----|-----|----------|-----|-----|-----|
| 8 | 4 | 3NT N 3 | 600 | | 10 |
| 14 | 17 | 3Sx E-3 | 500 | | 9 |
| 1 | 7 | 2NT S 3 | 150 | | 1 |
| 13 | 19 | 2NT S 2 | 120 | | 0 |
| 2 | 9 | 2NT S 2 | 120 | | 0 |
| 16 | 12 | 2S E-2 | 100 | | -1 |
| 20 | 11 | 2NT N 1 | 90 | | -1 |
| 3 | 10 | 2S E-1 | 50 | | -2 |
| 6 | 5 | 1S E 1 | | 80 | -5 |
| 15 | 18 | 3C N-3 | | 300 | -10 |

22

♠ J1097
♥ A1032
♦ Q3
♣ Q93

♠ K52 ♠ Q86
♥ Q975 ♥ KJ6
♦ J97 ♦ A10642
♣ KJ6 ♣ 107

W — E

♠ A43
♥ 84
♦ K85
♣ A8542

23

♠ Q72
♥ 5
♦ Q52
♣ KQ6542

♠ J4 ♠ K10863
♥ Q986432 ♥ A7
♦ A7 ♦ 943
♣ 107 ♣ A93

W — E

♠ A95
♥ KJ10
♦ KJ1086
♣ J8

24

♠ KQ865
♥ J96
♦ K6
♣ J65

♠ A73 ♠ 109
♥ 873 ♥ A52
♦ QJ95 ♦ A10872
♣ A97 ♣ K82

W — E

♠ J42
♥ KQ104
♦ 43
♣ Q1043

Board (22) Av: NS=-10

| N-S | E-W | Contract | N-S | E-W | IMP |
|-----|-----|----------|-----|-----|-----|
| 2 | 9 | 2C S 3 | 110 | | 3 |
| 15 | 18 | 1NT S 1 | 90 | | 3 |
| 20 | 11 | Passout | | | 0 |
| 3 | 10 | Passout | | | 0 |
| 13 | 19 | Passout | | | 0 |
| 1 | 7 | Passout | | | 0 |
| 16 | 12 | Passout | | | 0 |
| 14 | 17 | 1NT S-1 | | 50 | -1 |
| 6 | 5 | 1NT E 1 | | 90 | -2 |
| 8 | 4 | 2D E 3 | | 110 | -3 |

Board (23) Av: NS=-140

| N-S | E-W | Contract | N-S | E-W | IMP |
|-----|-----|----------|-----|-----|-----|
| 2 | 9 | 3C S 4 | 130 | | 7 |
| 14 | 17 | 3C N 3 | 110 | | 6 |
| 3 | 10 | 3D S-1 | | 100 | 1 |
| 16 | 12 | 2S E 2 | 110 | | 1 |
| 8 | 4 | 3H W 3 | 140 | | 0 |
| 15 | 18 | 2H W 3 | 140 | | 0 |
| 20 | 11 | 2H W 3 | 140 | | 0 |
| 13 | 19 | 2S E 5 | 200 | | -2 |
| 6 | 5 | 3NT S-4 | 400 | | -6 |
| 1 | 7 | 3NT S-4 | 400 | | -6 |

Board (24) Av: NS=-50

| N-S | E-W | Contract | N-S | E-W | IMP |
|-----|-----|----------|-----|-----|-----|
| 6 | 5 | 2S N 2 | 110 | | 4 |
| 13 | 19 | Passout | | | 2 |
| 20 | 11 | Passout | | | 2 |
| 16 | 12 | Passout | | | 2 |
| 2 | 9 | 3S N-1 | | 50 | 0 |
| 15 | 18 | 3S N-1 | | 50 | 0 |
| 3 | 10 | 3D W 3 | | 110 | -2 |
| 14 | 17 | 3D E 3 | | 110 | -2 |
| 1 | 7 | 2D E 3 | | 110 | -2 |
| 8 | 4 | 1NT W 3 | | 150 | -3 |

第1回山口知也杯 Session 2 Section B 2016年6月18日(土)

1

♠A6
♥Q85
♦AQ103
♣Q1084

♠QJ1073
♥K92
♦75
♣A76

♠K2
♥J743
♦K862
♣KJ9

♠9854
♥A106
♦J94
♣532

W N E S

2

♠KQ4
♥Q10982
♦KJ
♣963

♠J985
♥KJ5
♦83
♣KJ85

♠A1063
♥764
♦107542
♣A

♠72
♥A3
♦AQ96
♣Q10742

W N E S

3

♠KJ974
♥AQ2
♦KJ9
♣Q5

♠102
♥K87
♦AQ6
♣AJ983

♠AQ53
♥9543
♦874
♣107

♠86
♥J106
♦10532
♣K642

W N E S

Board (1) Av: NS=-100

| N-S | E-W | Contract | N-S | E-W | IMP |
|-----|-----|----------|-----|-----|-----|
| 1 | 2 | 1NT N-1 | | 50 | 2 |
| 11 | 12 | 1NT N-1 | | 50 | 2 |
| 5 | 3 | 1NT N-1 | | 50 | 2 |
| 19 | 17 | 1NTxN-1 | | 100 | 0 |
| 18 | 16 | 1NT N-2 | | 100 | 0 |
| 14 | 20 | 1NT N-2 | | 100 | 0 |
| 7 | 9 | 1NT E 2 | | 120 | -1 |
| 10 | 4 | 2H W 3 | | 140 | -1 |
| 8 | 6 | 2NT E 3 | | 150 | -2 |
| 15 | 13 | 1NT N-3 | | 150 | -2 |

Board (2) Av: NS=+30

| N-S | E-W | Contract | N-S | E-W | IMP |
|-----|-----|----------|-----|-----|-----|
| 1 | 2 | 3NT N 3 | 600 | | 11 |
| 18 | 16 | 2NT N 3 | 150 | | 3 |
| 7 | 9 | 2H N 3 | 140 | | 3 |
| 14 | 20 | 2NT S 2 | 120 | | 3 |
| 10 | 4 | 2NT S 2 | 120 | | 3 |
| 5 | 3 | 2NT N 2 | 120 | | 3 |
| 11 | 12 | 3H N-1 | | 100 | -4 |
| 19 | 17 | 2H N-1 | | 100 | -4 |
| 15 | 13 | 2NT S-2 | | 200 | -6 |
| 8 | 6 | 2NT N-3 | | 300 | -8 |

Board (3) Av: NS=+140

| N-S | E-W | Contract | N-S | E-W | IMP |
|-----|-----|----------|-----|-----|-----|
| 19 | 17 | 2H E-2 | 200 | | 2 |
| 8 | 6 | 2C W-2 | 200 | | 2 |
| 11 | 12 | 2C W-2 | 200 | | 2 |
| 10 | 4 | 2C W-2 | 200 | | 2 |
| 18 | 16 | 2C W-2 | 200 | | 2 |
| 7 | 9 | 1NT W-2 | 200 | | 2 |
| 1 | 2 | 2S N 2 | 110 | | -1 |
| 15 | 13 | 1S N 2 | 110 | | -1 |
| 14 | 20 | 2S N-2 | | 100 | -6 |
| 5 | 3 | 2D S-2 | | 100 | -6 |

4

♠QJ10
♥AK96
♦Q1075
♣75

♠9876
♥Q5
♦983
♣A964

♠K53
♥J1087
♦K6
♣Q832

♠A42
♥432
♦AJ42
♣KJ10

W N E S

Board (4) Av: NS=+650

| N-S | E-W | Contract | N-S | E-W | IMP |
|-----|-----|----------|-----|-----|-----|
| 15 | 13 | 3NT S 6 | 690 | | 1 |
| 18 | 16 | 3NT S 5 | 660 | | 0 |
| 19 | 17 | 3NT S 5 | 660 | | 0 |
| 11 | 12 | 3NT N 5 | 660 | | 0 |
| 10 | 4 | 3NT N 5 | 660 | | 0 |
| 1 | 2 | 3NT N 5 | 660 | | 0 |
| 14 | 20 | 3NT S 4 | 630 | | -1 |
| 7 | 9 | 3NT N 4 | 630 | | -1 |
| 5 | 3 | 3NT N 4 | 630 | | -1 |
| 8 | 6 | 3NT N 4 | 630 | | -1 |

5

♠J1064
♥K105
♦10976
♣64

♠75
♥AQJ87
♦Q
♣A10832

♠AQ2
♥2
♦J8532
♣KQ75

♠K983
♥9643
♦AK4
♣J9

W N E S

Board (5) Av: NS=-280

| N-S | E-W | Contract | N-S | E-W | IMP |
|-----|-----|----------|-----|-----|-----|
| 11 | 12 | 6C E-1 | 50 | | 8 |
| 18 | 16 | 3NT E-1 | 50 | | 8 |
| 7 | 9 | 2S W 3 | | 140 | 4 |
| 15 | 13 | 2NT E 3 | 150 | | 4 |
| 14 | 20 | 5C E 5 | 400 | | -3 |
| 5 | 3 | 3NT E 3 | 400 | | -3 |
| 8 | 6 | 3NT E 3 | 400 | | -3 |
| 1 | 2 | 3NT E 3 | 400 | | -3 |
| 19 | 17 | 3NT E 3 | 400 | | -3 |
| 10 | 4 | 3NT E 3 | 400 | | -3 |

6

♠97
♥QJ106
♦J108743
♣4

♠KQ10653
♥4
♦A9
♣J865

♠J84
♥973
♦65
♣KQ932

♠A2
♥AK852
♦KQ2
♣A107

W N E S

Board (6) Av: NS=+450

| N-S | E-W | Contract | N-S | E-W | IMP |
|-----|-----|----------|-----|-----|-----|
| 11 | 12 | 4H S 6 | 480 | | 1 |
| 10 | 4 | 4H S 6 | 480 | | 1 |
| 15 | 13 | 5H S 5 | 450 | | 0 |
| 7 | 9 | 4H S 5 | 450 | | 0 |
| 8 | 6 | 4H S 5 | 450 | | 0 |
| 5 | 3 | 4H S 5 | 450 | | 0 |
| 19 | 17 | 4H S 5 | 450 | | 0 |
| 1 | 2 | 4H S 5 | 450 | | 0 |
| 14 | 20 | 4H S 5 | 450 | | 0 |
| 18 | 16 | 2S W 3 | | 140 | -11 |

7

♠AQJ
♥A95
♦KJ103
♣J95

♠9853
♥K107
♦84
♣Q643

♠K104
♥QJ83
♦Q9652
♣2

♠762
♥642
♦A7
♣AK1087

W N E S

Board (7) Av: NS=+620

| N-S | E-W | Contract | N-S | E-W | IMP |
|-----|-----|----------|-----|-----|-----|
| 7 | 10 | 3NT N 5 | 660 | | 1 |
| 18 | 12 | 3NT S 4 | 630 | | 0 |
| 13 | 14 | 3NT N 4 | 630 | | 0 |
| 8 | 2 | 3NT N 4 | 630 | | 0 |
| 19 | 16 | 3NT N 4 | 630 | | 0 |
| 1 | 5 | 3NT N 4 | 630 | | 0 |
| 3 | 4 | 3NT N 4 | 630 | | 0 |
| 9 | 6 | 3NT S 3 | 600 | | -1 |
| 17 | 20 | 3NT N 3 | 600 | | -1 |
| 11 | 15 | 3NT N 3 | 600 | | -1 |

8

♠109
♥1098
♦J10743
♣K87

♠7
♥AQ7642
♦A62
♣A96

♠AKQ8
♥J53
♦K9
♣Q1052

♠J65432
♥K
♦Q85
♣J43

W N E S

Board (8) Av: NS=-550

| N-S | E-W | Contract | N-S | E-W | IMP |
|-----|-----|----------|------|-----|-----|
| 7 | 10 | 3NT W 5 | 460 | | 3 |
| 13 | 14 | 4H W 6 | 480 | | 2 |
| 8 | 2 | 4H W 6 | 480 | | 2 |
| 3 | 4 | 4H W 6 | 480 | | 2 |
| 19 | 16 | 4H W 6 | 480 | | 2 |
| 1 | 5 | 4H W 6 | 480 | | 2 |
| 9 | 6 | 4H W 7 | 510 | | 1 |
| 17 | 20 | 4H W 7 | 510 | | 1 |
| 11 | 15 | 6H W 6 | 980 | | -10 |
| 18 | 12 | 6H W 7 | 1010 | | -10 |

9

♠J9
♥Q9652
♦10964
♣KQ

♠53
♥1084
♦AKJ72
♣A85

♠AKQ1076
♥3
♦Q3
♣J962

♠842
♥AKJ7
♦85
♣10743

W N E S

Board (9) Av: NS=-680

| N-S | E-W | Contract | N-S | E-W | IMP |
|-----|-----|----------|-----|-----|-----|
| 8 | 2 | 3NT W-1 | 100 | | 13 |
| 17 | 20 | 4S E 6 | | 680 | 0 |
| 3 | 4 | 4S E 6 | | 680 | 0 |
| 7 | 10 | 4S E 6 | | 680 | 0 |
| 9 | 6 | 4S E 6 | | 680 | 0 |
| 13 | 14 | 4S E 6 | | 680 | 0 |
| 19 | 16 | 4S E 6 | | 680 | 0 |
| 1 | 5 | 4S E 6 | | 680 | 0 |
| 11 | 15 | 4S E 6 | | 680 | 0 |
| 1 | 5 | 4S E 6 | | 680 | 0 |
| 18 | 12 | 4S E 6 | | 680 | 0 |

第1回山口知也杯 Session 2 Section B 2016年6月18日(土)

10

♠ Q62
♥ J4
♦ 987
♣ A9872

♠ 985
♥ AQ86
♦ J1043
♣ J4

N
W — E
S

♠ KJ10
♥ K972
♦ A62
♣ K103

♠ A743
♥ 1053
♦ KQ5
♣ Q65

11

♠ K853
♥ AQ7
♦ J742
♣ 84

♠ AQ1064
♥ J9853
♦ A86
♣

N
W — E
S

♠ J92
♥ 642
♦ 3
♣ K109753

♠ 7
♥ K10
♦ KQ1095
♣ AQJ62

12

♠ AKQJ9
♥ K63
♦ 52
♣ A98

♠ 8743
♥ 2
♦ QJ107
♣ KJ76

N
W — E
S

♠ 1062
♥ Q94
♦ K863
♣ Q32

♠ 5
♥ AJ10875
♦ A94
♣ 1054

Board (10) Av: NS=-140

| N-S | E-W | Contract | N-S | E-W | IMP |
|-----|-----|----------|-----|-----|-----|
| 17 | 20 | 2H W 2 | 110 | | 1 |
| 1 | 5 | 1NT E 2 | 120 | | 1 |
| 19 | 16 | 2H W 3 | 140 | | 0 |
| 3 | 4 | 2H W 3 | 140 | | 0 |
| 7 | 10 | 2H W 3 | 140 | | 0 |
| 18 | 12 | 2H W 3 | 140 | | 0 |
| 9 | 6 | 2H W 3 | 140 | | 0 |
| 8 | 2 | 2H W 3 | 140 | | 0 |
| 13 | 14 | 2H W 4 | 170 | | -1 |
| 11 | 15 | 2H E 4 | 170 | | -1 |

Board (11) Av: NS=+140

| N-S | E-W | Contract | N-S | E-W | IMP |
|-----|-----|----------|-----|-----|-----|
| 9 | 6 | 4Sx W-4 | 800 | | 12 |
| 19 | 16 | 3NT N 5 | 460 | | 8 |
| 17 | 20 | 5D S 5 | 400 | | 6 |
| 8 | 2 | 3Sx W-2 | 300 | | 4 |
| 11 | 15 | 3D S 5 | 150 | | 0 |
| 7 | 10 | 3NT N-1 | | 50 | -5 |
| 3 | 4 | 3NT N-1 | | 50 | -5 |
| 13 | 14 | 3NT N-1 | | 50 | -5 |
| 1 | 5 | 3NT N-1 | | 50 | -5 |
| 18 | 12 | 4NT N-2 | | 100 | -6 |

Board (12) Av: NS=+670

| N-S | E-W | Contract | N-S | E-W | IMP |
|-----|-----|----------|-----|-----|-----|
| 8 | 2 | 4H N 7 | 710 | | 1 |
| 18 | 12 | 4H N 7 | 710 | | 1 |
| 19 | 16 | 4H S 6 | 680 | | 0 |
| 11 | 15 | 4H S 6 | 680 | | 0 |
| 7 | 10 | 4H N 6 | 680 | | 0 |
| 9 | 6 | 3NT S 5 | 660 | | 0 |
| 1 | 5 | 4H S 5 | 650 | | -1 |
| 17 | 20 | 4H S 5 | 650 | | -1 |
| 3 | 4 | 4H S 5 | 650 | | -1 |
| 13 | 14 | 4H S 5 | 650 | | -1 |

13

♠ 9862
♥ 2
♦ KQ752
♣ J83

♠ KJ43
♥ AJ984
♦ J8
♣ K2

N
W — E
S

♠ Q10
♥ Q1075
♦ 64
♣ AQ1076

♠ A75
♥ K63
♦ A1093
♣ 954

14

♠ A642
♥ 875
♦ J104
♣ Q62

♠ Q109875
♥ 1063
♦ AK9
♣ 3

N
W — E
S

♠ J3
♥ A92
♦ Q652
♣ AK97

♠ K
♥ KQJ4
♦ 873
♣ J10854

15

♠ J54
♥ AK86
♦ KQJ54
♣ K

♠ AQ9
♥ 2
♦ A1087
♣ AQ975

N
W — E
S

♠ K763
♥ Q9743
♦ 2
♣ 1063

♠ 1082
♥ J105
♦ 963
♣ J842

Board (13) Av: NS=-230

| N-S | E-W | Contract | N-S | E-W | IMP |
|-----|-----|----------|-----|-----|-----|
| 4 | 9 | 3H W 3 | 140 | | 3 |
| 16 | 11 | 3H W 4 | 170 | | 2 |
| 18 | 13 | 3H W 4 | 170 | | 2 |
| 1 | 6 | 3H W 4 | 170 | | 2 |
| 20 | 15 | 3H E 4 | 170 | | 2 |
| 14 | 19 | 2H W 4 | 170 | | 2 |
| 2 | 7 | 3H E 5 | 200 | | 1 |
| 3 | 8 | 2H E 5 | 200 | | 1 |
| 17 | 12 | 4H W 4 | 620 | | -9 |
| 10 | 5 | 4H W 5 | 650 | | -9 |

Board (14) Av: NS=-300

| N-S | E-W | Contract | N-S | E-W | IMP |
|-----|-----|----------|-----|-----|-----|
| 18 | 13 | 2S W 4 | 170 | | 4 |
| 2 | 7 | 2S W 4 | 170 | | 4 |
| 1 | 6 | 2S W 4 | 170 | | 4 |
| 17 | 12 | 2S W 4 | 170 | | 4 |
| 16 | 11 | 2S W 4 | 170 | | 4 |
| 4 | 9 | 4S W 4 | 420 | | -3 |
| 14 | 19 | 4S W 4 | 420 | | -3 |
| 3 | 8 | 4S W 4 | 420 | | -3 |
| 20 | 15 | 4S E 4 | 420 | | -3 |
| 10 | 5 | 4S E 4 | 420 | | -3 |

Board (15) Av: NS=-100

| N-S | E-W | Contract | N-S | E-W | IMP |
|-----|-----|----------|-----|-----|-----|
| 1 | 6 | 3NT W-3 | 150 | | 6 |
| 2 | 7 | 2NT W-2 | 100 | | 5 |
| 16 | 11 | 2NT W-2 | 100 | | 5 |
| 10 | 5 | 2H S-1 | | 100 | 0 |
| 17 | 12 | 1D N-1 | | 100 | 0 |
| 20 | 15 | 2H E 2 | 110 | | 0 |
| 18 | 13 | 3C W 5 | 150 | | -2 |
| 4 | 9 | 2D N-2 | 200 | | -3 |
| 3 | 8 | 2H S-3 | 300 | | -5 |
| 14 | 19 | 2D S-3 | 300 | | -5 |

16

♠ K109
♥ K1074
♦ 8652
♣ KJ

♠ 72
♥ 852
♦ A73
♣ 109742

N
W — E
S

♠ AQJ653
♥ AQ6
♦ J4
♣ 53

♠ 84
♥ J93
♦ KQ109
♣ AQ86

17

♠ AJ62
♥
♦ 108743
♣ KQ83

♠ 105
♥ AQJ432
♦ 6
♣ J752

N
W — E
S

♠ K8743
♥ 109
♦ KQJ5
♣ 64

♠ Q9
♥ K8765
♦ A92
♣ A109

18

♠ K103
♥ A1076
♦ 64
♣ QJ83

♠ QJ4
♥ QJ4
♦ AJ853
♣ 109

N
W — E
S

♠ 98652
♥ K93
♦ K9
♣ AK7

♠ A7
♥ 852
♦ Q1072
♣ 6542

Board (16) Av: NS=-50

| N-S | E-W | Contract | N-S | E-W | IMP |
|-----|-----|----------|-----|-----|-----|
| 3 | 8 | 2H N 2 | 110 | | 4 |
| 4 | 9 | 2H N 2 | 110 | | 4 |
| 10 | 5 | 3H N-1 | | 50 | 0 |
| 14 | 19 | 3D N-1 | | 50 | 0 |
| 1 | 6 | 2H N-1 | | 50 | 0 |
| 2 | 7 | 1NT N-1 | | 50 | 0 |
| 18 | 13 | 3H N-2 | | 100 | -2 |
| 20 | 15 | 1S E 2 | 110 | | -2 |
| 16 | 11 | 1S E 2 | 110 | | -2 |
| 17 | 12 | 3H N-3 | 150 | | -3 |

Board (17) Av: NS=+20

| N-S | E-W | Contract | N-S | E-W | IMP |
|-----|-----|----------|-----|-----|-----|
| 3 | 8 | 1NT S 2 | 120 | | 3 |
| 4 | 9 | 1NT S 2 | 120 | | 3 |
| 2 | 7 | 2D N 2 | 90 | | 2 |
| 16 | 11 | 1NT S 1 | 90 | | 2 |
| 18 | 13 | 1NT S 1 | 90 | | 2 |
| 14 | 19 | 3NT N-1 | | 50 | -2 |
| 1 | 6 | 2NT S-1 | | 50 | -2 |
| 20 | 15 | 1NT S-1 | | 50 | -2 |
| 17 | 12 | 3NT N-2 | | 100 | -3 |
| 10 | 5 | 1NT S-3 | | 150 | -5 |

Board (18) Av: NS=-290

| N-S | E-W | Contract | N-S | E-W | IMP |
|-----|-----|----------|-----|-----|-----|
| 10 | 5 | 4S E-2 | 100 | | 9 |
| 17 | 12 | 4S E-1 | 50 | | 8 |
| 18 | 13 | 3S E 3 | | 140 | 4 |
| 16 | 11 | 3S E 3 | | 140 | 4 |
| 4 | 9 | 3NT W 3 | 400 | | -3 |
| 20 | 15 | 4S E 4 | 420 | | -4 |
| 2 | 7 | 4S E 4 | 420 | | -4 |
| 14 | 19 | 4S E 4 | 420 | | -4 |
| 1 | 6 | 4S E 4 | 420 | | -4 |
| 3 | 8 | 4S E 4 | 420 | | -4 |

第1回山口知也杯 Session 2 Section B 2016年6月18日(土)

19

♠Q
♥K1052
♦8732
♣KJ42

♠975 ♠K843
♥J74 ♥Q93
♦K94 ♦J105
♣A1087 ♣953

N
W—E
S
⑤

♠AJ1062
♥A86
♦AQ6
♣Q6

Board (19) Av: NS=+280

| N-S | E-W | Contract | N-S | E-W | IMP |
|-----|-----|----------|-----|-----|-----|
| 6 | 7 | 3NT N 4 | 430 | | 4 |
| 18 | 20 | 3NT N 4 | 430 | | 4 |
| 19 | 15 | 3NT S 3 | 400 | | 3 |
| 13 | 11 | 3NT N 3 | 400 | | 3 |
| 10 | 8 | 3NT N 3 | 400 | | 3 |
| 1 | 3 | 3NT N 3 | 400 | | 3 |
| 16 | 17 | 2D S 4 | 130 | | -4 |
| 2 | 4 | 2D S 3 | 110 | | -5 |
| 5 | 9 | 3NT N-1 | | 50 | -8 |
| 14 | 12 | 3NT N-1 | | 50 | -8 |

20

♠AKJ765
♥Q9
♦Q1096
♣3

♠Q9 ♠843
♥K1053 ♥J62
♦82 ♦AK54
♣QJ874 ♣652

N
W—E
S
⑤

♠102
♥A874
♦J73
♣AK109

Board (20) Av: NS=+630

| N-S | E-W | Contract | N-S | E-W | IMP |
|-----|-----|----------|-----|-----|-----|
| 10 | 8 | 4S N 5 | 650 | | 1 |
| 19 | 15 | 4S N 5 | 650 | | 1 |
| 5 | 9 | 3NT S 4 | 630 | | 0 |
| 2 | 4 | 3NT S 4 | 630 | | 0 |
| 1 | 3 | 3NT N 4 | 630 | | 0 |
| 14 | 12 | 4S N 4 | 620 | | 0 |
| 6 | 7 | 4S N 4 | 620 | | 0 |
| 18 | 20 | 4S N 4 | 620 | | 0 |
| 13 | 11 | 4S N 4 | 620 | | 0 |
| 16 | 17 | 4S N 4 | 620 | | 0 |

21

♠AQ9754
♥3
♦K10984
♣9

♠6 ♠KJ32
♥Q108754 ♥KJ9
♦Q ♦753
♣AJ1087 ♣K32

N
W—E
S
⑤

♠108
♥A62
♦AJ62
♣Q654

Board (21) Av: NS=+40

| N-S | E-W | Contract | N-S | E-W | IMP |
|-----|-----|----------|-----|-----|-----|
| 14 | 12 | 4Sx N 4 | 790 | | 13 |
| 5 | 9 | 4S N 4 | 620 | | 11 |
| 6 | 7 | 4S N 4 | 620 | | 11 |
| 2 | 4 | 2S W-3 | 150 | | 3 |
| 10 | 8 | 5H W-2 | 100 | | 2 |
| 18 | 20 | 4S N-1 | | 100 | -4 |
| 1 | 3 | 3H W 4 | | 170 | -5 |
| 19 | 15 | 4H W 4 | | 420 | -10 |
| 13 | 11 | 4H W 5 | | 450 | -10 |
| 16 | 17 | 4Hx W 4 | | 590 | -12 |

22

♠A10853
♥J9
♦J875
♣AQ

♠K62 ♠Q97
♥64 ♥AQ108753
♦AQ642 ♦3
♣954 ♣J6

N
W—E
S
⑤

♠J4
♥K2
♦K109
♣K108732

Board (22) Av: NS=-30

| N-S | E-W | Contract | N-S | E-W | IMP |
|-----|-----|----------|-----|-----|-----|
| 10 | 8 | 3C S 3 | 110 | | 4 |
| 5 | 9 | 4H E-1 | 100 | | 4 |
| 18 | 20 | 3H E-1 | 100 | | 4 |
| 1 | 3 | 3H E-1 | 100 | | 4 |
| 19 | 15 | 4C S-1 | | 50 | -1 |
| 13 | 11 | 2S N-1 | | 50 | -1 |
| 6 | 7 | 4S N-2 | | 100 | -2 |
| 14 | 12 | 4S N-3 | | 150 | -3 |
| 2 | 4 | 4S N-3 | | 150 | -3 |
| 16 | 17 | 4S N-3 | | 150 | -3 |

23

♠K853
♥A3
♦AJ76
♣Q76

♠Q109 ♠A7642
♥Q52 ♥964
♦943 ♦8
♣KJ93 ♣10542

N
W—E
S
⑤

♠J
♥KJ1087
♦KQ1052
♣A8

Board (23) Av: NS=+630

| N-S | E-W | Contract | N-S | E-W | IMP |
|-----|-----|----------|------|-----|-----|
| 2 | 4 | 6D N 6 | 1370 | | 12 |
| 5 | 9 | 3NT S 5 | 660 | | 1 |
| 18 | 20 | 3NT N 5 | 660 | | 1 |
| 10 | 8 | 3NT N 5 | 660 | | 1 |
| 19 | 15 | 3NT N 4 | 630 | | 0 |
| 1 | 3 | 5D S 6 | 620 | | 0 |
| 6 | 7 | 5D S 5 | 600 | | -1 |
| 14 | 12 | 5D S 5 | 600 | | -1 |
| 13 | 11 | 3NT N 3 | 600 | | -1 |
| 16 | 17 | 3NT N 3 | 600 | | -1 |

24

♠AJ764
♥632
♦A65
♣73

♠KQ8 ♠52
♥KJ98 ♥AQ75
♦1072 ♦94
♣Q105 ♣AJ964

N
W—E
S
⑤

♠1093
♥104
♦KQJ83
♣K82

Board (24) Av: NS=+20

| N-S | E-W | Contract | N-S | E-W | IMP |
|-----|-----|----------|-----|-----|-----|
| 6 | 7 | 3S N 4 | 170 | | 4 |
| 19 | 15 | 3S N 4 | 170 | | 4 |
| 14 | 12 | 3S N 3 | 140 | | 3 |
| 13 | 11 | 4H W-1 | | 50 | 1 |
| 2 | 4 | 4H E-1 | | 50 | 1 |
| 1 | 3 | Passout | | | -1 |
| 16 | 17 | Passout | | | -1 |
| 10 | 8 | 3H W 3 | | 140 | -4 |
| 5 | 9 | 3H E 3 | | 140 | -4 |
| 18 | 20 | 3H W 4 | | 170 | -5 |

25

♠AQ105
♥Q862
♦J
♣AKJ7

♠J8 ♠K9742
♥KJ75 ♥A3
♦10864 ♦AK532
♣865 ♣9

N
W—E
S
⑤

♠63
♥1094
♦Q97
♣Q10432

Board (25) Av: NS=-80

| N-S | E-W | Contract | N-S | E-W | IMP |
|-----|-----|----------|-----|-----|-----|
| 14 | 11 | 3C N 4 | 130 | | 5 |
| 3 | 7 | 4C N-1 | | 50 | 1 |
| 12 | 15 | 4C N-1 | | 50 | 1 |
| 8 | 9 | 3NT N-1 | | 50 | 1 |
| 10 | 6 | 2NT N-1 | | 50 | 1 |
| 20 | 16 | 4C N-2 | | 100 | -1 |
| 18 | 19 | 3D E 3 | | 110 | -1 |
| 5 | 2 | 3D W 4 | | 130 | -2 |
| 13 | 17 | 3D E 4 | | 130 | -2 |
| 1 | 4 | 3D E 4 | | 130 | -2 |

26

♠A4
♥AJ86
♦865
♣K1082

♠Q72 ♠K98
♥K732 ♥10
♦A9 ♦KJ742
♣J953 ♣AQ76

N
W—E
S
⑤

♠J10653
♥Q954
♦Q103
♣4

Board (26) Av: NS=+10

| N-S | E-W | Contract | N-S | E-W | IMP |
|-----|-----|----------|-----|-----|-----|
| 3 | 7 | 3NT E-3 | 300 | | 7 |
| 1 | 4 | 3NT E-1 | 100 | | 3 |
| 12 | 15 | 3C E-1 | 100 | | 3 |
| 5 | 2 | 3C E-1 | 100 | | 3 |
| 10 | 6 | 3C E-1 | 100 | | 3 |
| 20 | 16 | 3C E-1 | 100 | | 3 |
| 8 | 9 | 3C E 3 | | 110 | -3 |
| 14 | 11 | 1NT E 2 | | 120 | -4 |
| 18 | 19 | 1NT E 4 | | 180 | -5 |
| 13 | 17 | 3NT E 3 | | 600 | -12 |

27

♠8753
♥A8762
♦Q95
♣2

♠QJ4 ♠AK1096
♥J10 ♥Q9
♦AJ2 ♦K1076
♣Q8753 ♣AK

N
W—E
S
⑤

♠2
♥K543
♦843
♣J10964

Board (27) Av: NS=-470

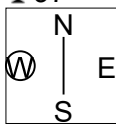
| N-S | E-W | Contract | N-S | E-W | IMP |
|-----|-----|----------|-----|-----|-----|
| 14 | 11 | 4S E 4 | | 420 | 2 |
| 18 | 19 | 4S E 4 | | 420 | 2 |
| 8 | 9 | 4S E 5 | | 450 | 1 |
| 12 | 15 | 4S E 6 | | 480 | 0 |
| 5 | 2 | 4S E 6 | | 480 | 0 |
| 1 | 4 | 4S E 6 | | 480 | 0 |
| 20 | 16 | 4S E 6 | | 480 | 0 |
| 13 | 17 | 4S E 6 | | 480 | 0 |
| 10 | 6 | 4S E 6 | | 480 | 0 |
| 3 | 7 | 4S E 6 | | 480 | 0 |

第1回山口知也杯 Session 2 Section B 2016年6月18日(土)

28

♠AQ105
♥AK53
♦1092
♣97

♠J76
♥86
♦AKQ74
♣1064



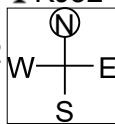
♠432
♥J972
♦J63
♣AK5

♠K98
♥Q104
♦85
♣QJ832

29

♠Q94
♥Q94
♦AQ9764
♣KJ32

♠1072
♥A8762
♦1085
♣Q9



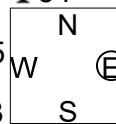
♠KQ93
♥J
♦KJ2
♣108754

♠AJ8654
♥K1053
♦3
♣A6

30

♠53
♥Q8632
♦KJ107
♣54

♠KQJ
♥AJ105
♦Q3
♣10963



♠872
♥K97
♦A9864
♣K8

♠A10964
♥4
♦52
♣AQJ72

Board (28) Av: NS=+60

Board (29) Av: NS=-140

Board (30) Av: NS=+70

| N-S | E-W | Contract | N-S | E-W | IMP |
|-----|-----|----------|-----|-----|-----|
| 10 | 6 | 1NT S 2 | 120 | | 2 |
| 13 | 17 | 1NT S 2 | 120 | | 2 |
| 14 | 11 | 1NT S 2 | 120 | | 2 |
| 12 | 15 | 1NT S 2 | 120 | | 2 |
| 5 | 2 | 1NT N 2 | 120 | | 2 |
| 3 | 7 | 1NT S 1 | 90 | | 1 |
| 20 | 16 | 1NT S 1 | 90 | | 1 |
| 1 | 4 | 1NT S-1 | | 100 | -4 |
| 8 | 9 | 1NT S-1 | | 100 | -4 |
| 18 | 19 | 1NT S-1 | | 100 | -4 |

| N-S | E-W | Contract | N-S | E-W | IMP |
|-----|-----|----------|-----|-----|-----|
| 8 | 9 | 3NT N 5 | 660 | | 13 |
| 20 | 16 | 3NT S-1 | | 100 | 1 |
| 5 | 2 | 3NT N-1 | | 100 | 1 |
| 14 | 11 | 3NT N-1 | | 100 | 1 |
| 12 | 15 | 3NT N-1 | | 100 | 1 |
| 3 | 7 | 3NT N-1 | | 100 | 1 |
| 10 | 6 | 3NT N-2 | | 200 | -2 |
| 1 | 4 | 3NT N-2 | | 200 | -2 |
| 18 | 19 | 3NT N-2 | | 200 | -2 |
| 13 | 17 | 4S S-3 | | 300 | -4 |

| N-S | E-W | Contract | N-S | E-W | IMP |
|-----|-----|----------|-----|-----|-----|
| 18 | 19 | 3Dx E-3 | 500 | | 10 |
| 10 | 6 | 3D E-4 | 200 | | 4 |
| 14 | 11 | 2S S 2 | 110 | | 1 |
| 13 | 17 | 2S S 2 | 110 | | 1 |
| 3 | 7 | 2NT W-2 | 100 | | 1 |
| 8 | 9 | 2D E-2 | 100 | | 1 |
| 12 | 15 | 2D E-2 | 100 | | 1 |
| 1 | 4 | 1S S-1 | | 50 | -3 |
| 5 | 2 | 3S S-2 | | 100 | -5 |
| 20 | 16 | 2S S-2 | | 100 | -5 |

第1回山口知也杯 Session 3 Section B 2016年6月19日(日)

1

♠ A106
♥ K532
♦ Q106
♣ K95

♠ 74
♥ AJ87
♦ 843
♣ QJ102

♠ KQ9532
♥ Q4
♦ 72
♣ 873

♠ J8
♥ 1096
♦ AKJ95
♣ A64

W N E S

2

♠ Q4
♥ AK9753
♦ 1095
♣ A2

♠ AJ107
♥
♦ QJ732
♣ K764

♠ QJ10642
♥
♦ A864
♣ 1098

♠ K986532
♥ 8
♦ K
♣ QJ53

W N E S

3

♠ AK4
♥ 10952
♦ Q54
♣ J108

♠ 652
♥ AKJ63
♦ A86
♣ K6

♠ J1087
♥ 87
♦ 72
♣ Q9754

♠ Q93
♥ Q4
♦ KJ1093
♣ A32

W N E S

Board (1) Av: NS=+420

| N-S | E-W | Contract | N-S | E-W | IMP |
|-----|-----|----------|-----|-----|-----|
| 8 | 20 | 3NT N 4 | 430 | | 0 |
| 3 | 15 | 3NT N 4 | 430 | | 0 |
| 12 | 4 | 3NT N 4 | 430 | | 0 |
| 9 | 17 | 3NT N 4 | 430 | | 0 |
| 16 | 6 | 3NT N 4 | 430 | | 0 |
| 1 | 11 | 3NT N 4 | 430 | | 0 |
| 2 | 13 | 3NT N 4 | 430 | | 0 |
| 10 | 19 | 3NT N 3 | 400 | | -1 |
| 5 | 14 | 3NT N 3 | 400 | | -1 |
| 7 | 18 | 3NT N 3 | 400 | | -1 |

Board (2) Av: NS=-40

| N-S | E-W | Contract | N-S | E-W | IMP |
|-----|-----|----------|-----|-----|-----|
| 10 | 19 | 5Dx E-2 | 300 | | 8 |
| 16 | 6 | 3NT E-3 | 150 | | 5 |
| 2 | 13 | 3NT E-2 | 100 | | 4 |
| 9 | 17 | 4D E-1 | 50 | | 3 |
| 12 | 4 | 3D E-1 | 50 | | 3 |
| 7 | 18 | 3S S-1 | 100 | | -2 |
| 8 | 20 | 4S S-2 | 200 | | -4 |
| 5 | 14 | 3Sx S-1 | 200 | | -4 |
| 3 | 15 | 3Sx S-1 | 200 | | -4 |
| 1 | 11 | 4Sx S-2 | 500 | | -10 |

Board (3) Av: NS=+130

| N-S | E-W | Contract | N-S | E-W | IMP |
|-----|-----|----------|-----|-----|-----|
| 1 | 11 | 1NTxE-1 | 200 | | 2 |
| 3 | 15 | 1NT E-2 | 200 | | 2 |
| 10 | 19 | 1NT S 4 | 180 | | 2 |
| 7 | 18 | 1NT S 3 | 150 | | 1 |
| 12 | 4 | 1NT S 3 | 150 | | 1 |
| 2 | 13 | 1NT S 3 | 150 | | 1 |
| 16 | 6 | 1NT S 3 | 150 | | 1 |
| 8 | 20 | 1NT S 2 | 120 | | 0 |
| 9 | 17 | 3NT N-1 | 50 | | -5 |
| 5 | 14 | 5D S-3 | 150 | | -7 |

4

♠ A1072
♥ 74
♦ Q83
♣ AK53

♠ Q653
♥ AKQ952
♦ 105
♣ 4

♠ 984
♥ J108
♦ 74
♣ 109872

♠ KJ
♥ 63
♦ AKJ962
♣ QJ6

W N E S

5

♠ J83
♥ 53
♦ 853
♣ AQ853

♠ KQ109
♥ 874
♦ AK964
♣ 9

♠ A4
♥ AQJ96
♦ 107
♣ J1064

♠ 7652
♥ K102
♦ QJ2
♣ K72

W N E S

6

♠ 72
♥ 98
♦ 10985
♣ K8732

♠ J85
♥ J1054
♦ J42
♣ Q64

♠ 1093
♥ A632
♦ Q763
♣ J9

♠ AKQ64
♥ KQ7
♦ AK
♣ A105

W N E S

Board (4) Av: NS=+490

| N-S | E-W | Contract | N-S | E-W | IMP |
|-----|-----|----------|-----|-----|-----|
| 8 | 20 | 5D S 5 | 600 | | 3 |
| 3 | 15 | 5D S 5 | 600 | | 3 |
| 10 | 19 | 5D S 5 | 600 | | 3 |
| 16 | 6 | 5D S 5 | 600 | | 3 |
| 1 | 11 | 5D S 5 | 600 | | 3 |
| 2 | 13 | 5D S 5 | 600 | | 3 |
| 5 | 14 | 5D N 5 | 600 | | 3 |
| 9 | 17 | 4D S 5 | 150 | | -8 |
| 7 | 18 | 3C N 4 | 130 | | -8 |
| 12 | 4 | 4C N-1 | 100 | | -11 |

Board (5) Av: NS=-470

| N-S | E-W | Contract | N-S | E-W | IMP |
|-----|-----|----------|-----|-----|-----|
| 9 | 17 | 4H W-1 | 50 | | 11 |
| 5 | 14 | 4H W 5 | 450 | | 1 |
| 2 | 13 | 4H W 5 | 450 | | 1 |
| 16 | 6 | 4H W 5 | 450 | | 1 |
| 7 | 18 | 3NT W 5 | 460 | | 0 |
| 10 | 19 | 4H W 6 | 480 | | 0 |
| 12 | 4 | 4H W 6 | 480 | | 0 |
| 3 | 15 | 4H W 6 | 480 | | 0 |
| 1 | 11 | 4H W 6 | 480 | | 0 |
| 8 | 20 | 4H W 7 | 510 | | -1 |

Board (6) Av: NS=+440

| N-S | E-W | Contract | N-S | E-W | IMP |
|-----|-----|----------|-----|-----|-----|
| 9 | 17 | 3NT S 6 | 490 | | 2 |
| 5 | 14 | 3NT S 6 | 490 | | 2 |
| 10 | 19 | 3NT S 5 | 460 | | 1 |
| 8 | 20 | 4S S 5 | 450 | | 0 |
| 2 | 13 | 3NT S 4 | 430 | | 0 |
| 1 | 11 | 3NT S 4 | 430 | | 0 |
| 12 | 4 | 3NT S 4 | 430 | | 0 |
| 7 | 18 | 3NT S 4 | 430 | | 0 |
| 3 | 15 | 3NT S 4 | 430 | | 0 |
| 16 | 6 | 5C N 6 | 420 | | -1 |

7

♠ QJ74
♥ 103
♦ A987
♣ A74

♠ 5
♥ J9742
♦ J3
♣ Q8632

♠ AK3
♥ AQ85
♦ K64
♣ K95

♠ 109862
♥ K6
♦ Q1052
♣ J10

W N E S

8

♠ 1096
♥ 964
♦ A103
♣ QJ52

♠ J53
♥ KQ1087
♦ 542
♣ 97

♠ AKQ4
♥ J
♦ QJ96
♣ AK43

♠ 872
♥ A532
♦ K87
♣ 1086

W N E S

9

♠ Q98763
♥ J
♦ AK872
♣ 6

♠ A10
♥ K432
♦ 965
♣ AQ98

♠ 542
♥ AQ1076
♦ Q3
♣ 1043

♠ KJ
♥ 985
♦ J104
♣ KJ752

W N E S

Board (7) Av: NS=-510

| N-S | E-W | Contract | N-S | E-W | IMP |
|-----|-----|----------|-----|-----|-----|
| 6 | 20 | 2NT W 2 | 120 | | 9 |
| 18 | 10 | 3C W 5 | 150 | | 8 |
| 12 | 2 | 2NT W 3 | 150 | | 8 |
| 3 | 14 | 3NT W 3 | 600 | | -3 |
| 13 | 5 | 4H W 4 | 620 | | -3 |
| 17 | 7 | 4H E 4 | 620 | | -3 |
| 1 | 15 | 4H E 5 | 650 | | -4 |
| 4 | 11 | 4H E 5 | 650 | | -4 |
| 9 | 16 | 4H E 5 | 650 | | -4 |
| 8 | 19 | 4H E 5 | 650 | | -4 |

Board (8) Av: NS=-390

| N-S | E-W | Contract | N-S | E-W | IMP |
|-----|-----|----------|-----|-----|-----|
| 9 | 16 | 2NT W 3 | 150 | | 6 |
| 1 | 15 | 1S W 4 | 170 | | 6 |
| 17 | 7 | 3NT W 3 | 400 | | 0 |
| 4 | 11 | 3NT E 3 | 400 | | 0 |
| 12 | 2 | 3NT W 4 | 430 | | -1 |
| 6 | 20 | 3NT W 4 | 430 | | -1 |
| 3 | 14 | 3NT W 4 | 430 | | -1 |
| 8 | 19 | 3NT W 4 | 430 | | -1 |
| 18 | 10 | 3NT E 4 | 430 | | -1 |
| 13 | 5 | 4S W 5 | 450 | | -2 |

Board (9) Av: NS=+170

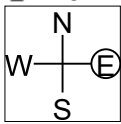
| N-S | E-W | Contract | N-S | E-W | IMP |
|-----|-----|----------|-----|-----|-----|
| 8 | 19 | 4S N 4 | 420 | | 6 |
| 13 | 5 | 4H E-2 | 200 | | 1 |
| 4 | 11 | 3S N 5 | 200 | | 1 |
| 18 | 10 | 3S N 4 | 170 | | 0 |
| 12 | 2 | 3S N 4 | 170 | | 0 |
| 3 | 14 | 3S N 4 | 170 | | 0 |
| 6 | 20 | 2S N 4 | 170 | | 0 |
| 17 | 7 | 2S N 4 | 170 | | 0 |
| 1 | 15 | 3S N 3 | 140 | | -1 |
| 9 | 16 | 3H W-1 | 100 | | -2 |

第1回山口知也杯 Session 3 Section B 2016年6月19日(日)

10

♠65
♥Q863
♦10986
♣743

♠J1082
♥K7542
♦732
♣9



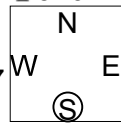
♠KQ93
♥A9
♦54
♣AKQ108

♠A74
♥J10
♦AKQJ
♣J652

11

♠J86
♥A654
♦K1043
♣J10

♠7432
♥3
♦AQ87
♣A954



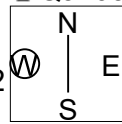
♠K5
♥QJ1087
♦9652
♣63

♠AQ109
♥K92
♦J
♣KQ872

12

♠Q85
♥J95
♦J85
♣QJ109

♠1042
♥AQ2
♦AQ42
♣K53



♠KJ7
♥7643
♦K76
♣876

♠A963
♥K108
♦1093
♣A42

Board (10) Av: NS=-150

| N-S | E-W | Contract | N-S | E-W | IMP |
|-----|-----|----------|-----|-----|-----|
| 18 | 10 | 2C E-1 | 100 | | 6 |
| 3 | 14 | 1NT S-1 | | 100 | 2 |
| 6 | 20 | 1NT S-1 | | 100 | 2 |
| 1 | 15 | 2H W 2 | | 110 | 1 |
| 4 | 11 | 3S E 4 | | 170 | -1 |
| 8 | 19 | 2S E 4 | | 170 | -1 |
| 12 | 2 | 2S E 4 | | 170 | -1 |
| 17 | 7 | 2S E 4 | | 170 | -1 |
| 9 | 16 | 1NT S-2 | | 200 | -2 |
| 13 | 5 | 4S E 4 | | 620 | -10 |

Board (11) Av: NS=+230

| N-S | E-W | Contract | N-S | E-W | IMP |
|-----|-----|----------|-----|-----|-----|
| 12 | 2 | 3NT N 5 | 460 | | 6 |
| 4 | 11 | 3NT N 4 | 430 | | 5 |
| 8 | 19 | 3NT N 3 | 400 | | 5 |
| 1 | 15 | 1NT N 5 | 210 | | -1 |
| 17 | 7 | 1NT N 5 | 210 | | -1 |
| 6 | 20 | 1NT N 4 | 180 | | -2 |
| 9 | 16 | 1NT N 4 | 180 | | -2 |
| 3 | 14 | 1NT N 3 | 150 | | -2 |
| 13 | 5 | 2H N 2 | 110 | | -3 |
| 18 | 10 | 2H N-2 | | 100 | -8 |

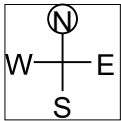
Board (12) Av: NS=-120

| N-S | E-W | Contract | N-S | E-W | IMP |
|-----|-----|----------|-----|-----|-----|
| 13 | 5 | 1NT W 2 | | 120 | 0 |
| 4 | 11 | 1NT W 2 | | 120 | 0 |
| 6 | 20 | 1NT W 2 | | 120 | 0 |
| 18 | 10 | 1NT W 2 | | 120 | 0 |
| 1 | 15 | 1NT W 2 | | 120 | 0 |
| 17 | 7 | 1NT W 2 | | 120 | 0 |
| 3 | 14 | 1NT W 2 | | 120 | 0 |
| 8 | 19 | 1NT W 2 | | 120 | 0 |
| 9 | 16 | 1NT W 3 | | 150 | -1 |
| 12 | 2 | 1NT E 3 | | 150 | -1 |

13

♠AK2
♥J
♦AQ10754
♣1085

♠10976
♥AQ98
♦K8
♣J93



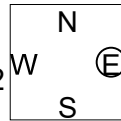
♠QJ4
♥K10652
♦
♣AKQ62

♠853
♥743
♦J9632
♣74

14

♠83
♥A752
♦A10974
♣A6

♠104
♥KJ83
♦Q832
♣K95



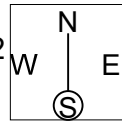
♠AK95
♥10
♦K5
♣QJ10743

♠QJ762
♥Q964
♦J6
♣82

15

♠KQJ74
♥9
♦KQ9
♣6542

♠52
♥J1042
♦A765
♣J98



♠106
♥63
♦J108432
♣AK10

♠A983
♥AKQ875
♦
♣Q73

Board (13) Av: NS=-650

| N-S | E-W | Contract | N-S | E-W | IMP |
|-----|-----|----------|-----|-----|-----|
| 17 | 10 | 4H W 5 | | 650 | 0 |
| 19 | 6 | 4H E 5 | | 650 | 0 |
| 7 | 16 | 4H E 5 | | 650 | 0 |
| 2 | 11 | 4H E 5 | | 650 | 0 |
| 5 | 12 | 4H E 5 | | 650 | 0 |
| 13 | 3 | 4H E 5 | | 650 | 0 |
| 8 | 18 | 4H E 5 | | 650 | 0 |
| 20 | 9 | 4H E 5 | | 650 | 0 |
| 4 | 15 | 4H E 5 | | 650 | 0 |
| 1 | 14 | 4H E 5 | | 650 | 0 |

Board (14) Av: NS=-110

| N-S | E-W | Contract | N-S | E-W | IMP |
|-----|-----|----------|-----|-----|-----|
| 17 | 10 | 3NT E-1 | | 50 | 4 |
| 1 | 14 | 2D N-1 | | 50 | 2 |
| 8 | 18 | 2D N-1 | | 50 | 2 |
| 19 | 6 | 2D N-2 | | 100 | 0 |
| 4 | 15 | 4C E 4 | | 130 | -1 |
| 7 | 16 | 3C E 4 | | 130 | -1 |
| 13 | 3 | 3C E 4 | | 130 | -1 |
| 5 | 12 | 3C E 5 | | 150 | -1 |
| 2 | 11 | 2D N-3 | | 150 | -1 |
| 20 | 9 | 1NT W 3 | | 150 | -1 |

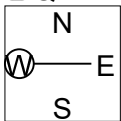
Board (15) Av: NS=+460

| N-S | E-W | Contract | N-S | E-W | IMP |
|-----|-----|----------|-----|------|-----|
| 4 | 15 | 5Dx E-5 | | 1100 | 12 |
| 20 | 9 | 5S N 5 | | 650 | 5 |
| 17 | 10 | 5S N 5 | | 650 | 5 |
| 1 | 14 | 4S N 5 | | 650 | 5 |
| 7 | 16 | 4S N 5 | | 650 | 5 |
| 5 | 12 | 4S N 5 | | 650 | 5 |
| 8 | 18 | 4S N 5 | | 650 | 5 |
| 2 | 11 | 6S N-1 | | 100 | -11 |
| 13 | 3 | 6S N-1 | | 100 | -11 |
| 19 | 6 | 6Sx N-1 | | 200 | -12 |

16

♠AQ943
♥K94
♦A853
♣Q

♠108
♥Q65
♦KJ102
♣K932



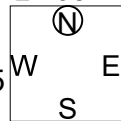
♠52
♥J107
♦764
♣AJ1087

♠KJ76
♥A832
♦Q9
♣654

17

♠KQ75
♥AJ1043
♦84
♣105

♠J8
♥Q876
♦AQ1065
♣Q8



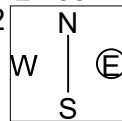
♠A104
♥K95
♦K73
♣K963

♠9632
♥2
♦J92
♣AJ742

18

♠J7
♥8654
♦AK106
♣763

♠K1032
♥K102
♦J4
♣KQ95



♠AQ
♥AJ9
♦Q72
♣AJ1084

♠98654
♥Q73
♦9853
♣2

Board (16) Av: NS=+420

| N-S | E-W | Contract | N-S | E-W | IMP |
|-----|-----|----------|-----|-----|-----|
| 13 | 3 | 4S N 5 | | 450 | 1 |
| 19 | 6 | 4S N 4 | | 420 | 0 |
| 1 | 14 | 4S N 4 | | 420 | 0 |
| 2 | 11 | 4S N 4 | | 420 | 0 |
| 7 | 16 | 4S N 4 | | 420 | 0 |
| 5 | 12 | 4S N 4 | | 420 | 0 |
| 4 | 15 | 4S N 4 | | 420 | 0 |
| 8 | 18 | 4S N 4 | | 420 | 0 |
| 17 | 10 | 4S N 4 | | 420 | 0 |
| 20 | 9 | 4S N 4 | | 420 | 0 |

Board (17) Av: NS=-130

| N-S | E-W | Contract | N-S | E-W | IMP |
|-----|-----|----------|-----|-----|-----|
| 5 | 12 | 2S S 2 | | 110 | 6 |
| 2 | 11 | 2S S-1 | | 50 | 2 |
| 4 | 15 | 2S S-1 | | 50 | 2 |
| 1 | 14 | 3D W 3 | | 110 | 1 |
| 7 | 16 | 2NT E 3 | | 150 | -1 |
| 20 | 9 | 1NT E 3 | | 150 | -1 |
| 8 | 18 | 1NT E 3 | | 150 | -1 |
| 17 | 10 | 2NT E 4 | | 180 | -2 |
| 19 | 6 | 2NT E 4 | | 180 | -2 |
| 13 | 3 | 3NT E 3 | | 400 | -7 |

Board (18) Av: NS=-470

| N-S | E-W | Contract | N-S | E-W | IMP |
|-----|-----|----------|-----|-----|-----|
| 20 | 9 | 5C E 5 | | 400 | 2 |
| 7 | 16 | 4NT E 5 | | 460 | 0 |
| 19 | 6 | 3NT E 5 | | 460 | 0 |
| 5 | 12 | 3NT E 5 | | 460 | 0 |
| 2 | 11 | 3NT E 5 | | 460 | 0 |
| 17 | 10 | 3NT E 5 | | 460 | 0 |
| 13 | 3 | 3NT E 5 | | 460 | 0 |
| 8 | 18 | 3NT E 6 | | 490 | -1 |
| 1 | 14 | 3NT E 6 | | 490 | -1 |
| 4 | 15 | 3NT E 6 | | 490 | -1 |

19

♠ 32
♥ 863
♦ J1084
♣ Q974

♠ A5
♥ Q107
♦ AKQ
♣ J10863

N
W — E
S

♠ KJ76
♥ AKJ95
♦ 962
♣ 5

♠ Q10984
♥ 42
♦ 753
♣ AK2

20

♠ AKJ
♥ QJ954
♦ Q98
♣ J10

♠ Q108
♥ K107
♦ A52
♣ KQ72

N
W — E
S

♠ 5
♥ A863
♦ K10743
♣ A53

♠ 976432
♥ 2
♦ J6
♣ 9864

21

♠ 753
♥ A96
♦ 6
♣ KQ6432

♠ 92
♥ KJ873
♦ J7
♣ J1095

N
W — E
S

♠ AKQ8
♥ Q1042
♦ AK8
♣ A8

♠ J1064
♥ 5
♦ Q1095432
♣ 7

Board (19) Av: NS=-670

| N-S | E-W | Contract | N-S | E-W | IMP | |
|-----|-----|----------|-----|-----|-----|---|
| 20 | 7 | 4H | W | 4 | 620 | 2 |
| 12 | 3 | 3NT | W | 4 | 630 | 1 |
| 1 | 13 | 5H | W | 5 | 650 | 1 |
| 8 | 17 | 4H | W | 5 | 650 | 1 |
| 18 | 6 | 4H | W | 6 | 680 | 0 |
| 4 | 14 | 4H | W | 6 | 680 | 0 |
| 9 | 19 | 4H | W | 6 | 680 | 0 |
| 11 | 5 | 4H | W | 6 | 680 | 0 |
| 10 | 16 | 4H | W | 6 | 680 | 0 |
| 2 | 15 | 4H | E | 6 | 680 | 0 |

Board (20) Av: NS=-430

| N-S | E-W | Contract | N-S | E-W | IMP | |
|-----|-----|----------|-----|-----|-----|----|
| 10 | 16 | 3NT | E | -1 | 100 | 11 |
| 8 | 17 | 1NT | E | 1 | 90 | 8 |
| 2 | 15 | 3D | E | 4 | 130 | 7 |
| 1 | 13 | 1NT | E | 3 | 150 | 7 |
| 18 | 6 | 3NT | W | 3 | 600 | -5 |
| 4 | 14 | 3NT | W | 3 | 600 | -5 |
| 11 | 5 | 3NT | W | 3 | 600 | -5 |
| 9 | 19 | 3NT | E | 3 | 600 | -5 |
| 12 | 3 | 3NT | W | 4 | 630 | -5 |
| 20 | 7 | 3NT | W | 4 | 630 | -5 |

Board (21) Av: NS=-450

| N-S | E-W | Contract | N-S | E-W | IMP | |
|-----|-----|----------|-----|-----|-----|----|
| 9 | 19 | 4H | W | 5 | 450 | 0 |
| 18 | 6 | 4H | E | 5 | 450 | 0 |
| 2 | 15 | 4H | E | 5 | 450 | 0 |
| 8 | 17 | 4H | E | 5 | 450 | 0 |
| 1 | 13 | 4H | E | 5 | 450 | 0 |
| 4 | 14 | 4H | E | 5 | 450 | 0 |
| 10 | 16 | 4H | E | 5 | 450 | 0 |
| 11 | 5 | 4H | E | 5 | 450 | 0 |
| 20 | 7 | 4H | E | 6 | 480 | -1 |
| 12 | 3 | 4H | E | 6 | 480 | -1 |

22

♠ Q1097
♥ Q10972
♦ Q9
♣ J9

♠ AJ865432
♥ K
♦ 2
♣ 1073

N
W — E
S

♠ AJ864
♥ 10843
♦ AK42
♣ K

♠ K
♥ 53
♦ AKJ765
♣ Q865

23

♠ 53
♥ A
♦ K642
♣ 1097642

♠ K10942
♥ Q84
♦ A98
♣ A3

N
W — E
S

♠ AQ7
♥ KJ6532
♦ J73
♣ J

♠ J86
♥ 1097
♦ Q105
♣ KQ85

24

♠ A83
♥ QJ10
♦ QJ3
♣ A975

♠ Q972
♥ 4
♦ A852
♣ QJ63

N
W — E
S

♠ J1054
♥ K753
♦ K9
♣ K42

♠ K6
♥ A9862
♦ 10764
♣ 108

Board (22) Av: NS=+90

| N-S | E-W | Contract | N-S | E-W | IMP | |
|-----|-----|----------|-----|-----|-----|----|
| 9 | 19 | 4Sx | W | -2 | 500 | 9 |
| 20 | 7 | 4S | W | -2 | 200 | 3 |
| 1 | 13 | 2Dx | S | 2 | 180 | 3 |
| 8 | 17 | 4S | W | -1 | 100 | 0 |
| 2 | 15 | 4S | W | -1 | 100 | 0 |
| 11 | 5 | 4S | W | -1 | 100 | 0 |
| 10 | 16 | 4S | W | -1 | 100 | 0 |
| 18 | 6 | 4S | W | -1 | 100 | 0 |
| 12 | 3 | 3S | W | 3 | 140 | -6 |
| 4 | 14 | 3S | W | 3 | 140 | -6 |

Board (23) Av: NS=-770

| N-S | E-W | Contract | N-S | E-W | IMP | |
|-----|-----|----------|-----|-----|------|-----|
| 9 | 19 | 4H | E | 4 | 620 | 4 |
| 20 | 7 | 4H | E | 5 | 650 | 3 |
| 1 | 13 | 4H | E | 6 | 680 | 3 |
| 12 | 3 | 4H | E | 6 | 680 | 3 |
| 8 | 17 | 4H | E | 6 | 680 | 3 |
| 10 | 16 | 4H | E | 6 | 680 | 3 |
| 11 | 5 | 4H | E | 6 | 680 | 3 |
| 18 | 6 | 4H | E | 6 | 680 | 3 |
| 4 | 14 | 6H | E | 6 | 1430 | -12 |
| 2 | 15 | 6H | E | 6 | 1430 | -12 |

Board (24) Av: NS=+140

| N-S | E-W | Contract | N-S | E-W | IMP | |
|-----|-----|----------|-----|-----|-----|----|
| 10 | 16 | 1NT | N | 4 | 180 | 1 |
| 8 | 17 | 2H | S | 4 | 170 | 1 |
| 9 | 19 | 1NT | N | 3 | 150 | 0 |
| 12 | 3 | 1NT | N | 3 | 150 | 0 |
| 11 | 5 | 3H | S | 3 | 140 | 0 |
| 20 | 7 | 2H | S | 3 | 140 | 0 |
| 1 | 13 | 2H | S | 3 | 140 | 0 |
| 18 | 6 | 1NT | N | 2 | 120 | -1 |
| 2 | 15 | 1NT | N | 2 | 120 | -1 |
| 4 | 14 | 2S | E | 3 | 140 | -7 |

25

♠ J972
♥ KJ4
♦ 93
♣ 10965

♠ 1084
♥ 973
♦ AKQ52
♣ KQ

N
W — E
S

♠ AKQ53
♥ 62
♦ J8764
♣ 3

♠ 6
♥ AQ1085
♦ 10
♣ AJ8742

26

♠ 5432
♥ Q109
♦ K962
♣ 72

♠ QJ10
♥ K862
♦ Q8
♣ KQ94

N
W — E
S

♠ K986
♥ A543
♦ 5
♣ AJ85

♠ A7
♥ J7
♦ AJ10743
♣ 1063

27

♠ 7652
♥ 5
♦ AJ872
♣ Q85

♠ K109
♥ 10864
♦ K104
♣ K76

N
W — E
S

♠ J843
♥ AQ973
♦ 9
♣ 1094

♠ AQ
♥ KJ2
♦ Q653
♣ AJ32

Board (25) Av: NS=-120

| N-S | E-W | Contract | N-S | E-W | IMP | |
|-----|-----|----------|-----|-----|-----|-----|
| 1 | 12 | 5S | E | -2 | 200 | 8 |
| 9 | 18 | 5D | W | -1 | 100 | 6 |
| 11 | 3 | 5D | W | -1 | 100 | 6 |
| 14 | 2 | 4S | E | -1 | 100 | 6 |
| 10 | 20 | 5Hx | S | -1 | 100 | 1 |
| 16 | 8 | 5Hx | S | -1 | 100 | 1 |
| 17 | 6 | 5Cx | S | -1 | 100 | 1 |
| 19 | 7 | 6Cx | S | -2 | 300 | -5 |
| 15 | 5 | 4S | E | 4 | 620 | -11 |
| 13 | 4 | 4S | E | 4 | 620 | -11 |

Board (26) Av: NS=-620

| N-S | E-W | Contract | N-S | E-W | IMP | |
|-----|-----|----------|-----|-----|-----|---|
| 15 | 5 | 4H | W | 4 | 620 | 0 |
| 1 | 12 | 4H | W | 4 | 620 | 0 |
| 11 | 3 | 4H | W | 4 | 620 | 0 |
| 16 | 8 | 4H | W | 4 | 620 | 0 |
| 19 | 7 | 4H | W | 4 | 620 | 0 |
| 17 | 6 | 4H | W | 4 | 620 | 0 |
| 10 | 20 | 4H | W | 4 | 620 | 0 |
| 14 | 2 | 4H | W | 4 | 620 | 0 |
| 9 | 18 | 4H | E | 4 | 620 | 0 |
| 13 | 4 | 4H | E | 4 | 620 | 0 |

Board (27) Av: NS=+90

| N-S | E-W | Contract | N-S | E-W | IMP | |
|-----|-----|----------|-----|-----|-----|----|
| 17 | 6 | 1NT | S | 4 | 180 | 3 |
| 1 | 12 | 1NT | S | 4 | 180 | 3 |
| 15 | 5 | 2D | S | 4 | 130 | 1 |
| 16 | 8 | 1NT | S | 2 | 120 | 1 |
| 11 | 3 | 1NT | S | 2 | 120 | 1 |
| 19 | 7 | 3D | N | 3 | 110 | 1 |
| 13 | 4 | 3H | E | -1 | 50 | -1 |
| 14 | 2 | 2H | E | -1 | 50 | -1 |
| 9 | 18 | 3NT | S | -1 | 50 | -4 |
| 10 | 20 | 3NT | S | -1 | 50 | -4 |

第1回山口知也杯 Session 3 Section B 2016年6月19日(日)

28

♠ 87643
♥ 3
♦ 43
♣ K10987

♠ 2
♥ J6
♦ QJ765
♣ AQJ62

♠ AQ105
♥ 10987542
♦ 8
♣ 3

♠ KJ9
♥ AKQ
♦ AK1092
♣ 54

N
W E
S

29

♠ 76
♥ J85
♦ Q106
♣ QJ1082

♠ KQJ42
♥
♦ KJ754
♣ A73

♠ 1053
♥ 7632
♦ A3
♣ K654

♠ A98
♥ AKQ1094
♦ 982
♣ 9

N
W E
S

30

♠ Q10
♥ K1032
♦ A1085
♣ K86

♠ K4
♥ AQJ4
♦ 762
♣ J1054

♠ J8653
♥ 96
♦ 9
♣ AQ973

♠ A972
♥ 875
♦ KQJ43
♣ 2

N
W E
S

Board (28) Av: NS=-110

| N-S | E-W | Contract | N-S | E-W | IMP |
|-----|-----|----------|------|-----|-----|
| 11 | 3 | 6Cx W-6 | 1400 | | 17 |
| 9 | 18 | 4Hx E-2 | 300 | | 9 |
| 17 | 6 | 4S S-1 | | 100 | 0 |
| 10 | 20 | 4S N-1 | | 100 | 0 |
| 13 | 4 | 3NT S-1 | | 100 | 0 |
| 14 | 2 | 4S S-2 | | 200 | -3 |
| 16 | 8 | 4S S-2 | | 200 | -3 |
| 15 | 5 | 4S N-2 | | 200 | -3 |
| 1 | 12 | 3NT S-3 | | 300 | -5 |
| 19 | 7 | 3H S-5 | | 500 | -9 |

Board (29) Av: NS=-340

| N-S | E-W | Contract | N-S | E-W | IMP |
|-----|-----|----------|-----|-----|-----|
| 10 | 20 | 4S W-1 | 100 | | 10 |
| 15 | 5 | 3H S-1 | | 100 | 6 |
| 16 | 8 | 3S W 5 | | 200 | 4 |
| 11 | 3 | 3S E 5 | | 200 | 4 |
| 9 | 18 | 2S E 5 | | 200 | 4 |
| 14 | 2 | 3S E 6 | | 230 | 3 |
| 17 | 6 | 4Hx S-2 | | 500 | -4 |
| 1 | 12 | 4S E 5 | | 650 | -7 |
| 13 | 4 | 4S E 5 | | 650 | -7 |
| 19 | 7 | 4S E 6 | | 680 | -8 |

Board (30) Av: NS=+60

| N-S | E-W | Contract | N-S | E-W | IMP |
|-----|-----|----------|-----|-----|-----|
| 16 | 8 | 4D S 5 | 150 | | 3 |
| 13 | 4 | 2NT N 3 | 150 | | 3 |
| 11 | 3 | 3D S 4 | 130 | | 2 |
| 17 | 6 | 3D S 3 | 110 | | 2 |
| 19 | 7 | 3D N 3 | 110 | | 2 |
| 9 | 18 | 4C W-1 | 50 | | 0 |
| 1 | 12 | 4C W-1 | 50 | | 0 |
| 14 | 2 | Passout | | | -2 |
| 10 | 20 | 5D N-2 | | 100 | -4 |
| 15 | 5 | 2C E 3 | | 110 | -5 |

第1回山口知也杯 Session 4 Section B 2016年6月19日(日)

1

♠ J872
♥ Q87
♦ 953
♣ A83

♠ KQ1065
♥ AK9
♦ A7
♣ J64

♠ A943
♥ J6
♦ 62
♣ K9752

♠
♥ 105432
♦ KQJ1084
♣ Q10

Board (1) Av: NS=-350

| N-S | E-W | Contract | N-S | E-W | IMP |
|-----|-----|----------|-----|-----|-----|
| 1 | 16 | 4S W-2 | 100 | | 10 |
| 19 | 5 | 4S W-1 | 50 | | 9 |
| 18 | 2 | 5Dx S-2 | 300 | | 2 |
| 10 | 14 | 4S W 4 | 420 | | -2 |
| 3 | 20 | 4S W 4 | 420 | | -2 |
| 12 | 9 | 4S W 4 | 420 | | -2 |
| 4 | 17 | 4S W 4 | 420 | | -2 |
| 15 | 8 | 4S W 5 | 450 | | -3 |
| 13 | 7 | 4S W 5 | 450 | | -3 |
| 6 | 11 | 4S W 5 | 450 | | -3 |

2

♠ K1042
♥ J875
♦ Q7
♣ Q73

♠ AQ3
♥ Q10
♦ AJ98
♣ K1064

♠ J876
♥ A96
♦ 10532
♣ 85

♠ N
♥ |
♦ W | E
♣ S

♠ 95
♥ K432
♦ K64
♣ AJ92

Board (2) Av: NS=-40

| N-S | E-W | Contract | N-S | E-W | IMP |
|-----|-----|----------|-----|-----|-----|
| 10 | 14 | 1NT W-1 | 50 | | 3 |
| 1 | 16 | 1NT W-1 | 50 | | 3 |
| 3 | 20 | 1NT W-1 | 50 | | 3 |
| 4 | 17 | 1NT W-1 | 50 | | 3 |
| 13 | 7 | 1NT W 1 | 90 | | -2 |
| 12 | 9 | 1NT W 1 | 90 | | -2 |
| 6 | 11 | 1NT W 1 | 90 | | -2 |
| 19 | 5 | 1NT W 1 | 90 | | -2 |
| 18 | 2 | 1NT W 2 | 120 | | -2 |
| 15 | 8 | 1NT W 2 | 120 | | -2 |

3

♠ K
♥ AK108
♦ Q82
♣ Q10974

♠ 75
♥ J532
♦ 654
♣ A632

♠ QJ10983
♥ Q74
♦ A109
♣ K

♠ N
♥ |
♦ W | E
♣ S

♠ A642
♥ 96
♦ KJ73
♣ J85

Board (3) Av: NS=-30

| N-S | E-W | Contract | N-S | E-W | IMP |
|-----|-----|----------|-----|-----|-----|
| 6 | 11 | 1NT S 2 | 120 | | 4 |
| 4 | 17 | 3C N 3 | 110 | | 4 |
| 19 | 5 | 1NT S 1 | 90 | | 3 |
| 13 | 7 | 1NT S-1 | 50 | | -1 |
| 18 | 2 | 1NT S-1 | 50 | | -1 |
| 12 | 9 | 1NT S-1 | 50 | | -1 |
| 10 | 14 | 1NT S-1 | 50 | | -1 |
| 1 | 16 | 2NT S-2 | 100 | | -2 |
| 15 | 8 | 3NT N-3 | 150 | | -3 |
| 3 | 20 | 2Sx E 2 | 670 | | -12 |

4

♠ 1085
♥ Q87
♦ K1042
♣ J92

♠ KJ96
♥ 9
♦ A63
♣ KQ873

♠ A4
♥ AJ1063
♦ Q985
♣ 106

♠ N
♥ |
♦ W | E
♣ S

♠ Q732
♥ K542
♦ J7
♣ A54

Board (4) Av: NS=-610

| N-S | E-W | Contract | N-S | E-W | IMP |
|-----|-----|----------|-----|-----|-----|
| 12 | 9 | 3NT E-1 | 100 | | 12 |
| 13 | 7 | 3NT W 3 | 600 | | 0 |
| 15 | 8 | 3NT E 3 | 600 | | 0 |
| 1 | 16 | 3NT E 3 | 600 | | 0 |
| 19 | 5 | 3NT E 3 | 600 | | 0 |
| 3 | 20 | 3NT E 3 | 600 | | 0 |
| 4 | 17 | 3NT E 3 | 600 | | 0 |
| 18 | 2 | 3NT E 4 | 630 | | -1 |
| 10 | 14 | 3NT E 4 | 630 | | -1 |
| 6 | 11 | 3NT E 4 | 630 | | -1 |

5

♠ 93
♥ 9432
♦ J82
♣ J543

♠ 8
♥ AQJ1075
♦ A103
♣ 1092

♠ A105
♥ K6
♦ 9754
♣ Q876

♠ N
♥ |
♦ W | E
♣ S

♠ KQJ7642
♥ 8
♦ KQ6
♣ AK

Board (5) Av: NS=+510

| N-S | E-W | Contract | N-S | E-W | IMP |
|-----|-----|----------|-----|-----|-----|
| 10 | 14 | 4Sx S 4 | 790 | | 7 |
| 19 | 5 | 4S S 4 | 620 | | 3 |
| 6 | 11 | 4S S 4 | 620 | | 3 |
| 13 | 7 | 4S S 4 | 620 | | 3 |
| 3 | 20 | 4S S 4 | 620 | | 3 |
| 4 | 17 | 4S S 4 | 620 | | 3 |
| 12 | 9 | 4S S 4 | 620 | | 3 |
| 18 | 2 | 3S S 4 | 170 | | -8 |
| 1 | 16 | 3S S 4 | 170 | | -8 |
| 15 | 8 | 4H W-2 | 100 | | -9 |

6

♠ J965
♥ 5
♦ Q932
♣ AQ73

♠ AK1083
♥ 8
♦ A6
♣ J9865

♠ 4
♥ AJ96
♦ K875
♣ K1042

♠ N
♥ |
♦ W | E
♣ S

♠ Q72
♥ KQ107432
♦ J104
♣

Board (6) Av: NS=-310

| N-S | E-W | Contract | N-S | E-W | IMP |
|-----|-----|----------|-----|-----|-----|
| 4 | 17 | 3NT E-1 | 100 | | 9 |
| 15 | 8 | 3NT E-1 | 100 | | 9 |
| 13 | 7 | 3NT E-1 | 100 | | 9 |
| 19 | 5 | 3NT E-1 | 100 | | 9 |
| 3 | 20 | 4H S-3 | 150 | | 4 |
| 6 | 11 | 5C E 5 | 600 | | -7 |
| 1 | 16 | 3NT E 3 | 600 | | -7 |
| 18 | 2 | 3NT E 3 | 600 | | -7 |
| 10 | 14 | 3Hx S-4 | 800 | | -10 |
| 12 | 9 | 4Cx E 5 | 910 | | -12 |

7

♠ AJ3
♥ Q83
♦ KQJ92
♣ AQ

♠ K85
♥ AJ92
♦ A4
♣ 9842

♠ 1064
♥ 754
♦ 1087653
♣ K

♠ N
♥ |
♦ W | E
♣ S

♠ Q972
♥ K106
♦
♣ J107653

Board (7) Av: NS=+460

| N-S | E-W | Contract | N-S | E-W | IMP |
|-----|-----|----------|------|-----|-----|
| 17 | 2 | 3Dx E-4 | 1100 | | 12 |
| 1 | 20 | 3NT N 4 | 630 | | 5 |
| 8 | 14 | 3NT N 4 | 630 | | 5 |
| 19 | 3 | 3NT N 4 | 630 | | 5 |
| 11 | 9 | 3NT N 4 | 630 | | 5 |
| 10 | 13 | 3NT N 3 | 600 | | 4 |
| 16 | 4 | 1NT N 5 | 210 | | -6 |
| 12 | 7 | 1NT N 4 | 180 | | -7 |
| 5 | 18 | 1NT N 3 | 150 | | -7 |
| 6 | 15 | 3NT N-2 | 200 | | -12 |

8

♠ QJ
♥ Q432
♦ J10864
♣ K6

♠ 983
♥ A9865
♦ 3
♣ J1032

♠ AK10754
♥ J
♦ 975
♣ Q54

♠ N
♥ |
♦ W | E
♣ S

♠ 62
♥ K107
♦ AKQ2
♣ A987

Board (8) Av: NS=-160

| N-S | E-W | Contract | N-S | E-W | IMP |
|-----|-----|----------|-----|-----|-----|
| 19 | 3 | 4H N-2 | 100 | | 2 |
| 10 | 13 | 4H N-2 | 100 | | 2 |
| 8 | 14 | 4H N-2 | 100 | | 2 |
| 12 | 7 | 3H N-2 | 100 | | 2 |
| 17 | 2 | 3S W 4 | 170 | | 0 |
| 1 | 20 | 3S E 4 | 170 | | 0 |
| 11 | 9 | 3S E 4 | 170 | | 0 |
| 16 | 4 | 2S E 4 | 170 | | 0 |
| 6 | 15 | 4Hx N-2 | 300 | | -4 |
| 5 | 18 | 4Hx N-3 | 500 | | -8 |

9

♠ KJ2
♥ 62
♦ A4
♣ 987653

♠ AQ3
♥ AK10
♦ J108765
♣ 4

♠ 104
♥ QJ874
♦ 92
♣ KQJ2

♠ N
♥ |
♦ W | E
♣ S

♠ 98765
♥ 953
♦ KQ3
♣ A10

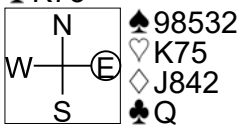
Board (9) Av: NS=-140

| N-S | E-W | Contract | N-S | E-W | IMP |
|-----|-----|----------|-----|-----|-----|
| 1 | 20 | 2S S 2 | 110 | | 6 |
| 8 | 14 | 2D W 2 | 90 | | 2 |
| 19 | 3 | 3C N-2 | 100 | | 1 |
| 16 | 4 | 2Sx S-1 | 100 | | 1 |
| 6 | 15 | 3D W 3 | 110 | | 1 |
| 17 | 2 | 2D W 3 | 110 | | 1 |
| 10 | 13 | 3H E 3 | 140 | | 0 |
| 12 | 7 | 2H E 3 | 140 | | 0 |
| 5 | 18 | 4Sx S-2 | 300 | | -4 |
| 11 | 9 | 3NT W 4 | 630 | | -10 |

10

♠QJ
♥AQJ1093
♦63
♣K73

♠A107
♥2
♦KQ109
♣J8652



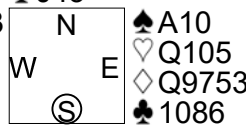
♠98532
♥K75
♦J842
♣Q

♠K64
♥864
♦A75
♣A1094

11

♠J75
♥8632
♦1086
♣J43

♠98643
♥A9
♦AJ
♣Q975



♠A10
♥Q105
♦Q9753
♣1086

♠KQ2
♥KJ74
♦K42
♣AK2

12

♠K106
♥
♦KJ106
♣AQ9852

♠8
♥AJ76
♦9753
♣KJ103



♠Q95432
♥Q1052
♦Q8
♣4

♠AJ7
♥K9843
♦A42
♣76

Board (10) Av: NS=+360

Table with 6 columns: N-S, E-W, Contract, N-S, E-W, IMP. Lists results for boards 11-17.

Board (11) Av: NS=-20

Table with 6 columns: N-S, E-W, Contract, N-S, E-W, IMP. Lists results for boards 19-16.

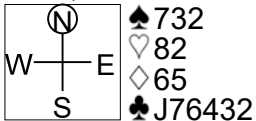
Board (12) Av: NS=+640

Table with 6 columns: N-S, E-W, Contract, N-S, E-W, IMP. Lists results for boards 11-1.

13

♠Q
♥KQ6
♦A10743
♣AQ85

♠KJ65
♥J954
♦KQ98
♣K



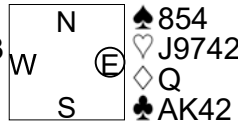
♠732
♥82
♦65
♣J76432

♠A10984
♥A1073
♦J2
♣109

14

♠A72
♥
♦AJ108764
♣1073

♠KJ3
♥A863
♦K52
♣QJ5



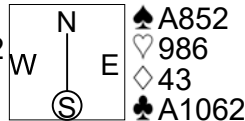
♠854
♥J9742
♦Q
♣AK42

♠Q1096
♥KQ105
♦93
♣986

15

♠J943
♥KQ7
♦876
♣K84

♠K6
♥AJ5432
♦AQ95
♣9



♠A852
♥986
♦43
♣A1062

♠Q107
♥10
♦KJ102
♣QJ753

Board (13) Av: NS=+380

Table with 6 columns: N-S, E-W, Contract, N-S, E-W, IMP. Lists results for boards 5-7.

Board (14) Av: NS=+60

Table with 6 columns: N-S, E-W, Contract, N-S, E-W, IMP. Lists results for boards 13-6.

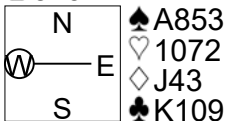
Board (15) Av: NS=-420

Table with 6 columns: N-S, E-W, Contract, N-S, E-W, IMP. Lists results for boards 1-7.

16

♠Q102
♥AQ3
♦965
♣8732

♠J74
♥J986
♦A102
♣A65



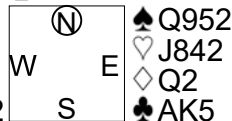
♠A853
♥1072
♦J43
♣K109

♠K96
♥K54
♦KQ87
♣QJ4

17

♠J876
♥K9753
♦A987
♣

♠K104
♥Q
♦1063
♣J108762



♠Q952
♥J842
♦Q2
♣AK5

♠A3
♥A106
♦KJ54
♣Q943

18

♠AQ982
♥875
♦J95
♣J6

♠64
♥KJ3
♦A86
♣AQ872



♠K10
♥AQ1062
♦Q3
♣K1053

♠J753
♥94
♦K10742
♣94

Board (16) Av: NS=+90

Table with 6 columns: N-S, E-W, Contract, N-S, E-W, IMP. Lists results for boards 20-9.

Board (17) Av: NS=+190

Table with 6 columns: N-S, E-W, Contract, N-S, E-W, IMP. Lists results for boards 6-7.

Board (18) Av: NS=-480

Table with 6 columns: N-S, E-W, Contract, N-S, E-W, IMP. Lists results for boards 18-6.

19

♠ QJ2
♥ K95
♦ AJ864
♣ J6

♠ A843 ♠ K109
♥ J843 ♥ A7
♦ Q2 ♦ K103
♣ Q107 ♣ A8542

♠ 765
♥ Q1062
♦ 975
♣ K93

Board (19) Av: NS=-100

| N-S | E-W | Contract | N-S | E-W | IMP |
|-----|--------|----------|-----|-----|-----|
| 20 | 2 3C | E-1 | 100 | | 5 |
| 13 | 6 1D | N 1 | 70 | | 5 |
| 1 | 18 3C | E 3 | 110 | | 0 |
| 16 | 5 2C | E 3 | 110 | | 0 |
| 3 | 17 2C | E 3 | 110 | | 0 |
| 19 | 4 2NT | E 2 | 120 | | -1 |
| 11 | 10 2NT | E 2 | 120 | | -1 |
| 8 | 12 3C | E 5 | 150 | | -2 |
| 7 | 15 2NT | E 3 | 150 | | -2 |
| 14 | 9 3NT | E 4 | 630 | | -11 |

20

♠ J1063
♥ AKJ62
♦

♠ A84 ♠ Q7
♥ 74 ♥ Q985
♦ 864 ♦ KJ1052
♣ K9873 ♣ A6

♠ K952
♥ 103
♦ AQ973
♣ Q5

Board (20) Av: NS=-10

| N-S | E-W | Contract | N-S | E-W | IMP |
|-----|--------|----------|------|-----|-----|
| 8 | 12 3D | E-2 | 200 | | 5 |
| 3 | 17 1NT | W-2 | 200 | | 5 |
| 11 | 10 2S | S 4 | 170 | | 5 |
| 7 | 15 3S | S 3 | 140 | | 4 |
| 19 | 4 2H | N 2 | 110 | | 3 |
| 14 | 9 4S | S-1 | 100 | | -3 |
| 20 | 2 4S | N-2 | 200 | | -5 |
| 1 | 18 4S | N-2 | 200 | | -5 |
| 13 | 6 2NT | S-2 | 200 | | -5 |
| 16 | 5 5Dx | S-5 | 1400 | | -16 |

21

♠ Q63
♥ Q98764
♦ A6
♣ 92

♠ 10972 ♠ KJ85
♥ 3 ♥ K102
♦ Q98532 ♦ K107
♣ KJ ♣ Q105

♠ A4
♥ AJ5
♦ J4
♣ A87643

Board (21) Av: NS=+120

| N-S | E-W | Contract | N-S | E-W | IMP |
|-----|-------|----------|-----|-----|-----|
| 16 | 5 4H | N 6 | 680 | | 11 |
| 8 | 12 4H | S 4 | 620 | | 11 |
| 3 | 17 4H | N 4 | 620 | | 11 |
| 19 | 4 4S | W-2 | 100 | | -1 |
| 13 | 6 3S | W-1 | 50 | | -2 |
| 20 | 2 3C | S-1 | 100 | | -6 |
| 7 | 15 3D | W 3 | 110 | | -6 |
| 14 | 9 2D | W 3 | 110 | | -6 |
| 1 | 18 2S | W 3 | 140 | | -6 |
| 11 | 10 2S | W 3 | 140 | | -6 |

22

♠ K3
♥ AJ7
♦ 1095
♣ J10973

♠ J ♠ 108542
♥ Q1032 ♥ 84
♦ Q876 ♦ J4
♣ A642 ♣ KQ85

♠ AQ976
♥ K965
♦ AK32
♣

Board (22) Av: NS=+320

| N-S | E-W | Contract | N-S | E-W | IMP |
|-----|--------|----------|-----|-----|-----|
| 20 | 2 3Cx | W-3 | 800 | | 10 |
| 16 | 5 3NT | N 4 | 430 | | 3 |
| 7 | 15 3NT | N 4 | 430 | | 3 |
| 11 | 10 3NT | N 4 | 430 | | 3 |
| 1 | 18 3NT | N 4 | 430 | | 3 |
| 14 | 9 3NT | N 3 | 400 | | 2 |
| 13 | 6 2S | S 4 | 170 | | -4 |
| 8 | 12 3H | S 3 | 140 | | -5 |
| 19 | 4 2S | S 3 | 140 | | -5 |
| 3 | 17 4S | S-1 | 50 | | -9 |

23

♠ Q75
♥ QJ75
♦ AJ65
♣ 96

♠ J864 ♠ 1093
♥ 3 ♥ A10986
♦ 2 ♦ KQ74
♣ AQJ8753 ♣ 10

♠ AK2
♥ K42
♦ 10983
♣ K42

Board (23) Av: NS=-70

| N-S | E-W | Contract | N-S | E-W | IMP |
|-----|--------|----------|-----|-----|-----|
| 1 | 18 3S | E-2 | 200 | | 7 |
| 3 | 17 3Cx | W-1 | 200 | | 7 |
| 7 | 15 1NT | S 2 | 120 | | 5 |
| 14 | 9 2D | S 2 | 90 | | 4 |
| 13 | 6 3D | S-1 | 100 | | -1 |
| 16 | 5 3NT | S-2 | 200 | | -4 |
| 20 | 2 3D | S-2 | 200 | | -4 |
| 19 | 4 3D | S-2 | 200 | | -4 |
| 8 | 12 3NT | S-3 | 300 | | -6 |
| 11 | 10 3Dx | N-2 | 500 | | -10 |

24

♠ 954
♥ J9
♦ Q986
♣ K1095

♠ 762 ♠ AJ8
♥ AK7654 ♥ Q
♦ 43 ♦ AKJ10752
♣ 83 ♣ Q6

♠ KQ103
♥ 10832
♦
♣ AJ742

Board (24) Av: NS=+140

| N-S | E-W | Contract | N-S | E-W | IMP |
|-----|--------|----------|-----|-----|-----|
| 3 | 17 4H | W-4 | 200 | | 2 |
| 11 | 10 4H | W-4 | 200 | | 2 |
| 14 | 9 3NT | E-4 | 200 | | 2 |
| 16 | 5 3NT | E-3 | 150 | | 0 |
| 19 | 4 3NT | E-3 | 150 | | 0 |
| 8 | 12 3NT | E-3 | 150 | | 0 |
| 7 | 15 3NT | E-3 | 150 | | 0 |
| 20 | 2 4H | W-2 | 100 | | -1 |
| 13 | 6 3NT | E-1 | 50 | | -3 |
| 1 | 18 3D | E 4 | 130 | | -7 |

25

♠ A
♥ AKJ
♦ AQ9832
♣ 432

♠ J10763 ♠ Q9542
♥ 965 ♥ Q87
♦ K104 ♦ 76
♣ A7 ♣ QJ5

♠ K8
♥ 10432
♦ J5
♣ K10986

Board (25) Av: NS=+350

| N-S | E-W | Contract | N-S | E-W | IMP |
|-----|--------|----------|-----|-----|-----|
| 19 | 2 4Sx | W-2 | 500 | | 4 |
| 9 | 13 4H | S 5 | 450 | | 3 |
| 16 | 3 3NT | N 4 | 430 | | 2 |
| 7 | 14 3NT | S 3 | 400 | | 2 |
| 6 | 12 3NT | S 3 | 400 | | 2 |
| 4 | 18 3NT | S 3 | 400 | | 2 |
| 15 | 10 3NT | N 3 | 400 | | 2 |
| 1 | 17 3D | N 5 | 150 | | -5 |
| 8 | 11 3D | N 4 | 130 | | -6 |
| 20 | 5 3S | W-1 | 100 | | -6 |

26

♠ 109852
♥ AJ10
♦ 95
♣ AK9

♠ A4 ♠ QJ73
♥ K865 ♥ 942
♦ AQJ84 ♦ 7632
♣ 76 ♣ 83

♠ K6
♥ Q73
♦ K10
♣ QJ10542

Board (26) Av: NS=+70

| N-S | E-W | Contract | N-S | E-W | IMP |
|-----|--------|----------|-----|-----|-----|
| 20 | 5 3NT | S 4 | 630 | | 11 |
| 1 | 17 2C | S 5 | 150 | | 2 |
| 15 | 10 1NT | S 3 | 150 | | 2 |
| 9 | 13 4C | S 4 | 130 | | 2 |
| 6 | 12 3C | S 4 | 130 | | 2 |
| 8 | 11 3C | S 3 | 110 | | 1 |
| 7 | 14 2S | N 2 | 110 | | 1 |
| 4 | 18 1NT | W 1 | 90 | | -4 |
| 19 | 2 3S | N-1 | 100 | | -5 |
| 16 | 3 1NT | W 2 | 120 | | -5 |

27

♠ J108
♥
♦ Q9874
♣ AQ964

♠ 4 ♠ AQ97
♥ K98742 ♥ A653
♦ AK ♦ J105
♣ 8753 ♣ J2

♠ K6532
♥ QJ10
♦ 632
♣ K10

Board (27) Av: NS=-290

| N-S | E-W | Contract | N-S | E-W | IMP |
|-----|--------|----------|-----|-----|-----|
| 6 | 12 4Hx | W-1 | 100 | | 9 |
| 15 | 10 4H | W-1 | 50 | | 8 |
| 9 | 13 4H | W-1 | 50 | | 8 |
| 1 | 17 4Sx | S-2 | 300 | | 0 |
| 19 | 2 4H | W 4 | 420 | | -4 |
| 7 | 14 4H | W 4 | 420 | | -4 |
| 8 | 11 4H | W 4 | 420 | | -4 |
| 16 | 3 4H | W 4 | 420 | | -4 |
| 4 | 18 4H | W 4 | 420 | | -4 |
| 20 | 5 4H | W 4 | 420 | | -4 |

28

♠ 1074
♥ A72
♦ Q82
♣ AK98

| | | |
|---------|---|----------|
| ♠ 32 | N | ♠ AKQJ85 |
| ♥ Q1084 | | ♥ 9653 |
| ♦ 643 | W | ♦ A97 |
| ♣ QJ42 | S | ♣ |

♠ 96
♥ KJ
♦ KJ105
♣ 107653

29

♠ K75
♥ A
♦ J108
♣ AQ6543

| | | |
|---------|---|---------|
| ♠ J62 | N | ♠ AQ109 |
| ♥ 654 | | ♥ KJ82 |
| ♦ 654 | W | ♦ K93 |
| ♣ KJ109 | S | ♣ 82 |

♠ 843
♥ Q10973
♦ AQ72
♣ 7

30

♠ AK95
♥ QJ83
♦ A8
♣ K62

| | | |
|----------|---|---------|
| ♠ QJ8643 | N | ♠ 102 |
| ♥ A6 | | ♥ K1054 |
| ♦ 54 | W | ♦ K762 |
| ♣ AQ10 | S | ♣ J93 |

♠ 7
♥ 972
♦ QJ1093
♣ 8754

Board (28) Av: NS=-150

| N-S | E-W | Contract | N-S | E-W | IMP |
|-----|-----|----------|-----|-----|-----|
| 15 | 10 | 3C | N 3 | 110 | 6 |
| 1 | 17 | 4S | E-1 | 50 | 5 |
| 7 | 14 | 3S | E 3 | 140 | 0 |
| 6 | 12 | 3S | E 3 | 140 | 0 |
| 9 | 13 | 3S | E 3 | 140 | 0 |
| 4 | 18 | 3S | E 3 | 140 | 0 |
| 16 | 3 | 3H | E 3 | 140 | 0 |
| 19 | 2 | 2S | E 3 | 140 | 0 |
| 20 | 5 | 4H | W 4 | 420 | -7 |
| 8 | 11 | 4H | E 4 | 420 | -7 |

Board (29) Av: NS=+100

| N-S | E-W | Contract | N-S | E-W | IMP |
|-----|-----|----------|-----|-----|-----|
| 9 | 13 | 2C | N 3 | 110 | 0 |
| 7 | 14 | 2C | N 3 | 110 | 0 |
| 15 | 10 | 2C | N 3 | 110 | 0 |
| 19 | 2 | 2C | N 3 | 110 | 0 |
| 8 | 11 | 2C | N 3 | 110 | 0 |
| 1 | 17 | 2C | N 2 | 90 | 0 |
| 6 | 12 | 2C | N 2 | 90 | 0 |
| 20 | 5 | 2C | N 2 | 90 | 0 |
| 4 | 18 | 2C | N 2 | 90 | 0 |
| 16 | 3 | 2C | N-1 | 100 | -5 |

Board (30) Av: NS=-60

| N-S | E-W | Contract | N-S | E-W | IMP |
|-----|-----|----------|-----|-----|-----|
| 6 | 12 | 1NT | N 1 | 90 | 4 |
| 1 | 17 | 1NT | N 1 | 90 | 4 |
| 20 | 5 | 3D | S-1 | 50 | 0 |
| 15 | 10 | 1NT | N-1 | 50 | 0 |
| 7 | 14 | 1NT | N-1 | 50 | 0 |
| 9 | 13 | 1NT | N-1 | 50 | 0 |
| 8 | 11 | 2S | W 2 | 110 | -2 |
| 4 | 18 | 2S | W 2 | 110 | -2 |
| 16 | 3 | 2S | W 3 | 140 | -2 |
| 19 | 2 | 2NT | N-3 | 150 | -3 |