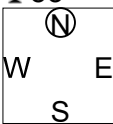


第1回山口知也杯 Session 1 Section A 2016年6月18日(土)

1

♠AQ8754  
♥A106  
♦105  
♣53

♠K10932  
♥975  
♦K86  
♣Q8



♠6  
♥KQ  
♦9742  
♣KJ10764

♠J  
♥J8432  
♦AQJ3  
♣A92

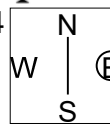
Board (1) Av: NS=+210

N-S	E-W	Contract	N-S	E-W	IMP
1	10	4H S 5	450		6
19	12	4H S 4	420		5
4	7	4H S 4	420		5
3	9	4H S 4	420		5
17	11	4H S 4	420		5
5	8	2S N 3	140		-2
20	13	4H S-1		50	-6
16	15	4H S-1		50	-6
18	14	4H S-1		50	-6
6	2	4H S-1		50	-6

2

♠Q109853  
♥QJ963  
♦Q5  
♣

♠AKJ4  
♥104  
♦KJ62  
♣Q96



♠A75  
♥9843  
♣AKJ854

♠762  
♥K82  
♦A107  
♣10732

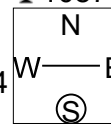
Board (2) Av: NS=-400

N-S	E-W	Contract	N-S	E-W	IMP
20	13	2NT W 3		150	6
3	9	5C E 5		400	0
5	8	5C E 5		400	0
1	10	5C E 5		400	0
19	12	5C E 5		400	0
18	14	3NT E 3		400	0
17	11	3NT E 3		400	0
4	7	3NT E 3		400	0
16	15	3NT E 3		400	0
6	2	3NT E 4		430	-1

3

♠84  
♥105  
♦Q93  
♣1087432

♠102  
♥KQJ  
♦J8764  
♣AKJ



♠AK63  
♥A8763  
♦A2  
♣65

♠QJ975  
♥942  
♦K105  
♣Q9

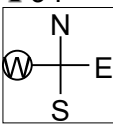
Board (3) Av: NS=-870

N-S	E-W	Contract	N-S	E-W	IMP
1	10	3NT W 5		660	5
17	11	5H W 6		680	5
19	12	4H W 6		680	5
20	13	4H W 6		680	5
16	15	4H W 6		680	5
4	7	4H W 6		680	5
6	2	4H E 6		680	5
3	9	6H W 6	1430		-11
18	14	6H W 6	1430		-11
5	8	6H W 6	1430		-11

4

♠AJ75  
♥AK64  
♦A74  
♣94

♠Q9  
♥52  
♦QJ10985  
♣KQ2



♠K10862  
♥J93  
♦32  
♣AJ6

♠43  
♥Q1087  
♦K6  
♣108753

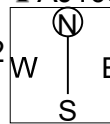
Board (4) Av: NS=-10

N-S	E-W	Contract	N-S	E-W	IMP
16	15	2S E-2	200		5
5	8	3H N 4	170		5
4	7	2H S 4	170		5
18	14	1NT N 1	90		3
20	13	2D W 2		90	-2
1	10	2D W 2		90	-2
17	11	2D W 2		90	-2
19	12	2NT N-1	100		-3
3	9	1NT N-1	100		-3
6	2	2Dx W 2		180	-5

5

♠KQ108  
♥KQJ4  
♦AJ1052  
♣

♠1085  
♥A9732  
♦1052  
♣43



♠AKJ7  
♥J6  
♦983  
♣KQ97

♠Q96432  
♥54  
♦A76  
♣86

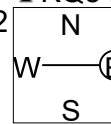
Board (5) Av: NS=+60

N-S	E-W	Contract	N-S	E-W	IMP
1	10	2Sx E-2	300		6
4	7	2NT N 2	120		2
16	15	2NT N 2	120		2
19	12	2Sx E-1	100		1
6	2	2Sx E-1	100		1
20	13	2Sx E-1	100		1
5	8	1Sx E-1	100		1
18	14	2NT N-1		100	-4
3	9	2NT N-1		100	-4
17	11	2S S-2		200	-6

6

♠765  
♥Q972  
♦Q4  
♣KQ54

♠A10432  
♥AJ3  
♦A83  
♣J3



♠Q9  
♥K108654  
♦92  
♣A109

♠KJ8  
♥  
♦KJ10765  
♣8762

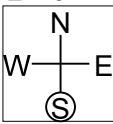
Board (6) Av: NS=-370

N-S	E-W	Contract	N-S	E-W	IMP
4	7	4H W-2	200		11
5	8	4H E-1	100		10
17	11	3H W 4		170	5
1	10	3H E 4		170	5
16	15	2H E 4		170	5
18	14	4H W 4		620	-6
19	12	4H E 4		620	-6
20	13	4H E 4		620	-6
3	9	4H E 5		650	-7
6	2	3NT W 6		690	-8

7

♠K103  
♥1097  
♦Q7652  
♣K6

♠J9842  
♥KQ5  
♦AK8  
♣32



♠Q75  
♥AJ864  
♦93  
♣A108

♠A6  
♥32  
♦J104  
♣QJ9754

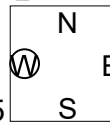
Board (7) Av: NS=-300

N-S	E-W	Contract	N-S	E-W	IMP
16	14	4H E-1	100		9
3	6	4H E-1	100		9
19	20	1NT E 2		120	5
1	9	3S W 3		140	4
15	17	3S W 4		170	4
18	11	3S W 5		200	3
12	13	4S W 4		620	-8
7	8	4S W 4		620	-8
5	4	4H E 4		620	-8
2	10	4S W 5		650	-8

8

♠J1073  
♥QJ76  
♦A9642  
♣

♠AKQ6  
♥105  
♦K85  
♣KQ105



♠98542  
♥432  
♦J10  
♣432

♠AK98  
♥Q73  
♣AJ9876

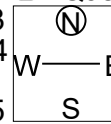
Board (8) Av: NS=+310

N-S	E-W	Contract	N-S	E-W	IMP
5	4	4Sx W-3	500		5
12	13	4Sx W-3	500		5
1	9	4H N 5	450		4
3	6	4H S 4	420		3
7	8	4H N 4	420		3
15	17	3Sx W-2	300		0
2	10	1C W-3	150		-4
16	14	3H S 3	140		-5
19	20	3C S 3	110		-5
18	11	5Hx N-1		100	-9

9

♠A  
♥A82  
♦J105  
♣AQJ832

♠K643  
♥Q754  
♦8  
♣K965



♠1098752  
♥K106  
♦K76  
♣4

♠QJ  
♥J93  
♦AQ9432  
♣107

Board (9) Av: NS=+440

N-S	E-W	Contract	N-S	E-W	IMP
3	6	6D S 7	940		11
12	13	3NT N 7	520		2
2	10	3NT S 6	490		2
1	9	5D S 7	440		0
7	8	5D S 7	440		0
15	17	3NT S 4	430		0
16	14	5C N 6	420		-1
18	11	5C N 5	400		-1
19	20	3NT S 3	400		-1
5	4	3NT S 3	400		-1

第1回山口知也杯 Session 1 Section A 2016年6月18日(土)

10

♠ KJ632  
♥ 10874  
♦ Q43  
♣ 10

♠ A Q1097  
♥ 93 AQ2  
♦ KJ96 A875  
♣ AJ9753 ♣ Q6

♠ 854  
♥ KJ65  
♦ 102  
♣ K842

Board (10) Av: NS=-630

N-S	E-W	Contract	N-S	E-W	IMP
3	6	3NT W 4	630		0
16	14	3NT E 4	630		0
15	17	3NT E 4	630		0
2	10	3NT E 4	630		0
1	9	3NT E 4	630		0
7	8	3NT E 4	630		0
18	11	3NT E 4	630		0
19	20	3NT E 4	630		0
12	13	3NT E 4	630		0
5	4	3NT E 5	660		-1

11

♠ AK75  
♥ A742  
♦ K8  
♣ 1053

♠ QJ10963  
♥ 83  
♦ A109  
♣ AJ

♠ 842  
♥ KQ65  
♦ J52  
♣ Q76

Board (11) Av: NS=-110

N-S	E-W	Contract	N-S	E-W	IMP
3	6	2NT N-1	50		2
18	11	4H N-2	100		0
16	14	2H N-2	100		0
2	10	2H N-2	100		0
5	4	2S E 2	110		0
19	20	2S E 2	110		0
7	8	2S E 2	110		0
1	9	2S E 2	110		0
15	17	2S E 3	140		-1
12	13	3H N-3	150		-1

12

♠ 842  
♥ K94  
♦ AK93  
♣ J87

♠ J76 AQ103  
♥ Q1062 ♥ 3  
♦ 765 ♦ Q102  
♣ 943 ♣ KQ1062

♠ K95  
♥ AJ875  
♦ J84  
♣ A5

Board (12) Av: NS=-140

N-S	E-W	Contract	N-S	E-W	IMP
1	9	2H S 2	110		6
15	17	3C E-2	100		6
7	8	2S W-1	50		5
12	13	2H S-1	100		1
3	6	4H S-2	200		-2
18	11	4H S-2	200		-2
19	20	4H S-2	200		-2
16	14	4H S-3	300		-4
2	10	4H S-3	300		-4
5	4	3NT S-3	300		-4

13

♠ J107  
♥ J107  
♦ A762  
♣ AKQ1087

♠ J1053 A74  
♥ 64 ♥ 9852  
♦ 54 ♦ KQJ98  
♣ J6432 ♣ 9

♠ KQ9862  
♥ AKQ3  
♦ 103  
♣ 5

Board (13) Av: NS=+80

N-S	E-W	Contract	N-S	E-W	IMP
11	19	3NT N 4	630		11
3	2	3NT N 3	600		11
1	8	3NT N 3	600		11
17	18	4S S-1	100		-5
10	9	4H S-1	100		-5
7	5	3NT N-1	100		-5
6	4	3NT N-1	100		-5
15	14	3NT N-1	100		-5
13	16	3NT N-1	100		-5
20	12	4S S-2	200		-7

14

♠ J95  
♥ Q1097  
♦ KQ72  
♣ 94

♠ K10764 Q3  
♥ J3 ♥ A62  
♦ 1054 ♦ J983  
♣ AQ6 ♣ J1052

♠ A82  
♥ K854  
♦ A6  
♣ K873

Board (14) Av: NS=+100

N-S	E-W	Contract	N-S	E-W	IMP
20	12	2H S 3	140		1
17	18	2H S 3	140		1
1	8	2H S 3	140		1
3	2	2H N 3	140		1
7	5	1NT S 2	120		1
10	9	2H S 2	110		0
15	14	2H S 2	110		0
6	4	2S W-1	50		-2
13	16	3H S-1	50		-4
11	19	2H S-1	50		-4

15

♠ Q102  
♥ 42  
♦ QJ876  
♣ AK6

♠ 5 AKJ9843  
♥ AQ83 ♥ 105  
♦ AK54 ♦ 103  
♣ 9742 ♣ Q10

♠ 76  
♥ KJ976  
♦ 92  
♣ J853

Board (15) Av: NS=-410

N-S	E-W	Contract	N-S	E-W	IMP
1	8	3S E 4	170		6
13	16	3S E 5	200		5
3	2	4S E 4	420		0
6	4	4S E 4	420		0
10	9	4S E 4	420		0
11	19	4S E 5	450		-1
7	5	4S E 5	450		-1
20	12	4S E 5	450		-1
15	14	4S E 5	450		-1
17	18	4S E 5	450		-1

16

♠ AKQ985  
♥ 6  
♦ Q654  
♣ 104

♠ 10742 3  
♥ AQ ♥ K10972  
♦ A1073 ♦ KJ9  
♣ KQ6 ♣ J753

♠ J6  
♥ J8543  
♦ 82  
♣ A982

Board (16) Av: NS=-110

N-S	E-W	Contract	N-S	E-W	IMP
1	8	3NT W-3	300		9
7	5	2NT W-2	200		7
11	19	4H E-1	100		5
3	2	2NT W-1	100		5
10	9	2S S-1	50		2
15	14	2S N-1	50		2
6	4	3Sx N-1	100		0
20	12	4Sx N-3	500		-9
13	16	3NT W 3	600		-10
17	18	4H E 4	620		-11

17

♠ 642  
♥ J742  
♦ A1063  
♣ 95

♠ KJ97 Q10853  
♥ A1086 ♥ K3  
♦ J54 ♦ KQ72  
♣ 107 ♣ K4

♠ A  
♥ Q95  
♦ 98  
♣ AQJ8632

Board (17) Av: NS=-210

N-S	E-W	Contract	N-S	E-W	IMP
1	8	4S E-1	50		6
11	19	4C S-1	50		4
20	12	3S E 3	140		2
10	9	3S E 3	140		2
6	4	3S E 4	170		1
15	14	3S E 4	170		1
3	2	3S E 4	170		1
7	5	4S E 4	420		-5
13	16	4S E 4	420		-5
17	18	4S E 4	420		-5

18

♠ K96  
♥ 854  
♦ 6432  
♣ A87

♠ A10873 5  
♥ J3 ♥ AQ107  
♦ QJ ♦ AK10987  
♣ KQ52 ♣ 104

♠ QJ42  
♥ K962  
♦ 5  
♣ J963

Board (18) Av: NS=-450

N-S	E-W	Contract	N-S	E-W	IMP
17	18	3NT E 4	430		1
13	16	3NT E 4	430		1
6	4	3NT E 4	430		1
1	8	3NT E 4	430		1
10	9	3NT W 5	460		0
7	5	3NT E 5	460		0
3	2	3NT E 5	460		0
20	12	3NT E 5	460		0
15	14	3NT E 5	460		0
11	19	3NT E 5	460		0

19

♠ 87  
♥ 109532  
♦ J1076  
♣ J3

♠ J5  
♥ KQ  
♦ Q42  
♣ Q98762

♠ 10632  
♥ J87  
♦ 953  
♣ AK4

♠ AKQ94  
♥ A64  
♦ AK8  
♣ 105

N  
W — E  
S

20

♠ 10  
♥ 8  
♦ KJ762  
♣ QJ9532

♠ AK4  
♥ AQ105  
♦ 1095  
♣ A108

♠ QJ65  
♥ 93  
♦ AQ84  
♣ 764

♠ 98732  
♥ KJ7642  
♦ 3  
♣ K

N  
W — E  
S

21

♠ QJ962  
♥ 1097  
♦ A7  
♣ A96

♠ 4  
♥ QJ43  
♦ J95  
♣ J8752

♠ AK10853  
♥ A86  
♦ Q106  
♣ 10

♠ 7  
♥ K52  
♦ K8432  
♣ KQ43

N  
W — E  
S

Board (19) Av: NS=+120

N-S	E-W	Contract	N-S	E-W	IMP
14	17	3H S 4	170		2
20	11	3H S 4	170		2
2	9	3H S 4	170		2
3	10	3H S 4	170		2
1	7	3H S 4	170		2
6	5	3H S 3	140		1
13	19	1S S 2	110		0
15	18	1S S 2	110		0
16	12	3H S-2	100		-6
8	4	3NT N-3	150		-7

Board (20) Av: NS=-740

N-S	E-W	Contract	N-S	E-W	IMP
8	4	3NT W 4	630		3
15	18	4NT W 5	660		2
6	5	3NT W 6	690		2
2	9	3NT W 6	690		2
14	17	3NT W 6	690		2
1	7	3NT W 6	690		2
20	11	3NT W 6	690		2
13	19	3NT W 6	690		2
3	10	3Cx N-4	1100		-8
16	12	3Cx N-4	1100		-8

Board (21) Av: NS=+80

N-S	E-W	Contract	N-S	E-W	IMP
13	19	2S E-3	150		2
15	18	2NT N 3	150		2
2	9	2NT S 2	120		1
8	4	2NT S 2	120		1
16	12	2NT S 2	120		1
3	10	1NT S 2	120		1
14	17	2S E-1	50		-1
20	11	1S E-1	50		-1
6	5	3NT S-1	100		-5
1	7	2NT S-2	200		-7

22

♠ J1097  
♥ A1032  
♦ Q3  
♣ Q93

♠ K52  
♥ Q975  
♦ J97  
♣ KJ6

♠ Q86  
♥ KJ6  
♦ A10642  
♣ 107

♠ A43  
♥ 84  
♦ K85  
♣ A8542

N  
W — E  
S

23

♠ Q72  
♥ 5  
♦ Q52  
♣ KQ6542

♠ J4  
♥ Q986432  
♦ A7  
♣ 107

♠ K10863  
♥ A7  
♦ 943  
♣ A93

♠ A95  
♥ KJ10  
♦ KJ1086  
♣ J8

N  
W — E  
S

24

♠ KQ865  
♥ J96  
♦ K6  
♣ J65

♠ A73  
♥ 873  
♦ QJ95  
♣ A97

♠ 109  
♥ A52  
♦ A10872  
♣ K82

♠ J42  
♥ KQ104  
♦ 43  
♣ Q1043

N  
W — E  
S

Board (22) Av: NS=+30

N-S	E-W	Contract	N-S	E-W	IMP
20	11	1NT S 2	120		3
3	10	1NT S 2	120		3
8	4	2C N 2	90		2
2	9	1NT S 1	90		2
16	12	Passout			-1
6	5	Passout			-1
13	19	Passout			-1
15	18	Passout			-1
1	7	1NT S-1	50		-2
14	17	1NT S-1	50		-2

Board (23) Av: NS=-70

N-S	E-W	Contract	N-S	E-W	IMP
2	9	3C S 4	130		5
14	17	3C N 3	110		5
3	10	3C N 3	110		5
6	5	3C N 3	110		5
20	11	4H W-1	100		5
13	19	3H W 3	140		-2
15	18	2H W 4	170		-3
16	12	2NT S-3	300		-6
8	4	3NT S-4	400		-8
1	7	3NT S-5	500		-10

Board (24) Av: NS=-80

N-S	E-W	Contract	N-S	E-W	IMP
2	9	4D W-1	50		4
6	5	4D E-1	50		4
3	10	Passout			2
20	11	Passout			2
16	12	3D E 3	110		-1
14	17	2D E 3	110		-1
8	4	2NT W 3	150		-2
15	18	2NT W 3	150		-2
13	19	2NT W 3	150		-2
1	7	3NT W 3	400		-8

第1回山口知也杯 Session 2 Section A 2016年6月18日(土)

1

♠A6  
♥Q85  
♦AQ103  
♣Q1084

♠QJ1073  
♥K92  
♦75  
♣A76

♠K2  
♥J743  
♦K862  
♣KJ9

♠9854  
♥A106  
♦J94  
♣532

W N E S

Board (1) Av: NS=-100

N-S	E-W	Contract	N-S	E-W	IMP
1	2	1NT N-1	50		2
11	12	1NT N-1	50		2
19	17	1NT N-1	50		2
8	6	1NT N-1	50		2
18	16	1NT N-2	100		0
5	3	2S W 3	140		-1
7	9	2S E 3	140		-1
15	13	1NT N-3	150		-2
10	4	1NT N-3	150		-2
14	20	1NT N-5	250		-4

2

♠KQ4  
♥Q10982  
♦KJ  
♣963

♠J985  
♥KJ5  
♦83  
♣KJ85

♠A1063  
♥764  
♦107542  
♣A

♠72  
♥A3  
♦AQ96  
♣Q10742

W N E S

Board (2) Av: NS=-60

N-S	E-W	Contract	N-S	E-W	IMP
19	17	2NT S 3	150		5
1	2	2H N 3	140		5
14	20	2H N 3	140		5
7	9	1NT S 1	90		4
10	4	2NT N-1	100		-1
15	13	2S W 2	110		-2
11	12	3C S-2	200		-4
18	16	2NT N-2	200		-4
8	6	2NT N-2	200		-4
5	3	2NT N-2	200		-4

3

♠KJ974  
♥AQ2  
♦KJ9  
♣Q5

♠102  
♥K87  
♦AQ6  
♣AJ983

♠AQ53  
♥9543  
♦874  
♣107

♠86  
♥J106  
♦10532  
♣K642

W N E S

Board (3) Av: NS=+40

N-S	E-W	Contract	N-S	E-W	IMP
1	2	1NT W-3	300		6
18	16	1NT N 3	150		3
14	20	2H W-1	100		2
19	17	2C W-1	100		2
11	12	2C W-1	100		2
10	4	2C W-1	100		2
8	6	2C S-1	50		-3
5	3	1NT W 1	90		-4
7	9	1NT W 1	90		-4
15	13	2D S-2	100		-4

4

♠QJ10  
♥AK96  
♦Q1075  
♣75

♠9876  
♥Q5  
♦983  
♣A964

♠K53  
♥J1087  
♦K6  
♣Q832

♠A42  
♥432  
♦AJ42  
♣KJ10

W N E S

Board (4) Av: NS=+660

N-S	E-W	Contract	N-S	E-W	IMP
10	4	3NT S 5	660		0
11	12	3NT S 5	660		0
15	13	3NT N 5	660		0
8	6	3NT N 5	660		0
1	2	3NT N 5	660		0
7	9	3NT N 5	660		0
5	3	3NT N 5	660		0
18	16	3NT N 5	660		0
14	20	3NT N 5	660		0
19	17	3NT S 4	630		-1

5

♠J1064  
♥K105  
♦10976  
♣64

♠75  
♥AQJ87  
♦Q  
♣A10832

♠AQ2  
♥2  
♦J8532  
♣KQ75

♠K983  
♥9643  
♦AK4  
♣J9

W N E S

Board (5) Av: NS=-340

N-S	E-W	Contract	N-S	E-W	IMP
7	9	3NT E-1	50		9
1	2	3NT E-1	50		9
11	12	3NT E 3	400		-2
8	6	3NT E 3	400		-2
18	16	3NT E 3	400		-2
15	13	3NT E 3	400		-2
19	17	3NT E 3	400		-2
10	4	3NT E 3	400		-2
5	3	3NT E 3	400		-2
14	20	3NT E 3	400		-2

6

♠97  
♥QJ106  
♦J108743  
♣4

♠KQ10653  
♥4  
♦A9  
♣J865

♠J84  
♥973  
♦65  
♣KQ932

♠A2  
♥AK852  
♦KQ2  
♣A107

W N E S

Board (6) Av: NS=+450

N-S	E-W	Contract	N-S	E-W	IMP
8	6	4H S 6	480		1
11	12	4H S 5	450		0
1	2	4H S 5	450		0
15	13	4H S 5	450		0
10	4	4H S 5	450		0
7	9	4H S 5	450		0
5	3	4H S 5	450		0
14	20	4H S 5	450		0
18	16	4H S 4	420		-1
19	17	2NT S 2	120		-8

7

♠AQJ  
♥A95  
♦KJ103  
♣J95

♠9853  
♥K107  
♦84  
♣Q643

♠K104  
♥QJ83  
♦Q9652  
♣2

♠762  
♥642  
♦A7  
♣AK1087

W N E S

Board (7) Av: NS=+620

N-S	E-W	Contract	N-S	E-W	IMP
13	14	3NT N 5	660		1
19	16	3NT S 4	630		0
7	10	3NT S 4	630		0
3	4	3NT S 4	630		0
11	15	3NT N 4	630		0
1	5	3NT N 4	630		0
18	12	3NT N 4	630		0
17	20	3NT S 3	600		-1
9	6	3NT S 3	600		-1
8	2	3NT N-1	100		-12

8

♠109  
♥1098  
♦J10743  
♣K87

♠7  
♥AQ7642  
♦A62  
♣A96

♠AKQ8  
♥J53  
♦K9  
♣Q1052

♠J65432  
♥K  
♦Q85  
♣J43

W N E S

Board (8) Av: NS=-690

N-S	E-W	Contract	N-S	E-W	IMP
19	16	4H W 6	480		5
18	12	4H W 6	480		5
1	5	4H W 6	480		5
17	20	4H W 7	510		5
13	14	4H W 7	510		5
8	2	4H W 7	510		5
9	6	6H W 6	980		-7
11	15	6H W 7	1010		-8
7	10	6H W 7	1010		-8
3	4	6H E 7	1010		-8

9

♠J9  
♥Q9652  
♦10964  
♣KQ

♠53  
♥1084  
♦AKJ72  
♣A85

♠AKQ1076  
♥3  
♦Q3  
♣J962

♠842  
♥AKJ7  
♦85  
♣10743

W N E S

Board (9) Av: NS=-680

N-S	E-W	Contract	N-S	E-W	IMP
7	10	4S E 5	650		1
3	4	4S E 6	680		0
13	14	4S E 6	680		0
17	20	4S E 6	680		0
9	6	4S E 6	680		0
19	16	4S E 6	680		0
1	5	4S E 6	680		0
11	15	4S E 6	680		0
8	2	4S E 6	680		0
18	12	4S E 6	680		0

第1回山口知也杯 Session 2 Section A 2016年6月18日(土)

10

♠ Q62  
♥ J4  
♦ 987  
♣ A9872

♠ 985  
♥ AQ86  
♦ J1043  
♣ J4

N  
W — E  
S

♠ KJ10  
♥ K972  
♦ A62  
♣ K103

♠ A743  
♥ 1053  
♦ KQ5  
♣ Q65

11

♠ K853  
♥ AQ7  
♦ J742  
♣ 84

♠ AQ1064  
♥ J9853  
♦ A86  
♣

N  
W — E  
S

♠ J92  
♥ 642  
♦ 3  
♣ K109753

♠ 7  
♥ K10  
♦ KQ1095  
♣ AQJ62

12

♠ AKQJ9  
♥ K63  
♦ 52  
♣ A98

♠ 8743  
♥ 2  
♦ QJ107  
♣ KJ76

N  
W — E  
S

♠ 1062  
♥ Q94  
♦ K863  
♣ Q32

♠ 5  
♥ AJ10875  
♦ A94  
♣ 1054

Board (10) Av: NS=-140

N-S	E-W	Contract	N-S	E-W	IMP
13	14	2H W 2	110	110	1
1	5	2H W 2	110	110	1
3	4	3H E 3	140	140	0
17	20	3H E 3	140	140	0
7	10	2H W 3	140	140	0
19	16	2H W 3	140	140	0
11	15	2H W 3	140	140	0
9	6	2H W 3	140	140	0
18	12	3H E 4	170	170	-1
8	2	1NT E 4	180	180	-1

Board (11) Av: NS=+240

N-S	E-W	Contract	N-S	E-W	IMP
19	16	4Sx E-3	500	500	6
3	4	3NT N 5	460	460	6
8	2	5D S 5	400	400	4
7	10	5D S 5	400	400	4
9	6	5D S 5	400	400	4
1	5	5D S 5	400	400	4
17	20	3NT N-1	50	50	-7
11	15	3NT N-1	50	50	-7
18	12	3NT N-1	50	50	-7
13	14	3NT N-1	50	50	-7

Board (12) Av: NS=+780

N-S	E-W	Contract	N-S	E-W	IMP
19	16	6H S 6	1430	1430	12
7	10	6H S 6	1430	1430	12
3	4	4H S 7	710	710	-2
17	20	4H S 7	710	710	-2
13	14	4H S 6	680	680	-3
8	2	4H S 6	680	680	-3
9	6	4H S 6	680	680	-3
11	15	4H N 6	680	680	-3
18	12	4H S 5	650	650	-4
1	5	4H S 5	650	650	-4

13

♠ 9862  
♥ 2  
♦ KQ752  
♣ J83

♠ KJ43  
♥ AJ984  
♦ J8  
♣ K2

N  
W — E  
S

♠ Q10  
♥ Q1075  
♦ 64  
♣ AQ1076

♠ A75  
♥ K63  
♦ A1093  
♣ 954

14

♠ A642  
♥ 875  
♦ J104  
♣ Q62

♠ Q109875  
♥ 1063  
♦ AK9  
♣ 3

N  
W — E  
S

♠ J3  
♥ A92  
♦ Q652  
♣ AK97

♠ K  
♥ KQJ4  
♦ 873  
♣ J10854

15

♠ J54  
♥ AK86  
♦ KQJ54  
♣ K

♠ AQ9  
♥ 2  
♦ A1087  
♣ AQ975

N  
W — E  
S

♠ K763  
♥ Q9743  
♦ 2  
♣ 1063

♠ 1082  
♥ J105  
♦ 963  
♣ J842

Board (13) Av: NS=-400

N-S	E-W	Contract	N-S	E-W	IMP
10	5	3H W 4	170	170	6
17	12	3H W 4	170	170	6
1	6	3H W 4	170	170	6
20	15	2H W 4	170	170	6
18	13	2H E 6	230	230	5
4	9	4H W 4	620	620	-6
2	7	4H W 4	620	620	-6
14	19	4H W 4	620	620	-6
16	11	4H W 4	620	620	-6
3	8	4H W 4	620	620	-6

Board (14) Av: NS=-330

N-S	E-W	Contract	N-S	E-W	IMP
14	19	3NT E-1	50	50	9
4	9	3S W 4	170	170	4
20	15	2S W 4	170	170	4
10	5	2S W 4	170	170	4
16	11	4S W 4	420	420	-3
1	6	4S W 4	420	420	-3
3	8	4S W 4	420	420	-3
18	13	4S E 4	420	420	-3
2	7	4S E 4	420	420	-3
17	12	4S E 4	420	420	-3

Board (15) Av: NS=-110

N-S	E-W	Contract	N-S	E-W	IMP
16	11	3S W-2	100	100	5
18	13	2NT W-1	50	50	4
3	8	3C W 3	110	110	0
4	9	2S W 2	110	110	0
2	7	3C W 4	130	130	-1
1	6	3C W 4	130	130	-1
10	5	3C W 5	150	150	-1
17	12	2NT W 3	150	150	-1
20	15	2NT W 3	150	150	-1
14	19	1NT W 4	180	180	-2

16

♠ K109  
♥ K1074  
♦ 8652  
♣ KJ

♠ 72  
♥ 852  
♦ A73  
♣ 109742

N  
W — E  
S

♠ AQJ653  
♥ AQ6  
♦ J4  
♣ 53

♠ 84  
♥ J93  
♦ KQ109  
♣ AQ86

17

♠ AJ62  
♥  
♦ 108743  
♣ KQ83

♠ 105  
♥ AQJ432  
♦ 6  
♣ J752

N  
W — E  
S

♠ K8743  
♥ 109  
♦ KQJ5  
♣ 64

♠ Q9  
♥ K8765  
♦ A92  
♣ A109

18

♠ K103  
♥ A1076  
♦ 64  
♣ QJ83

♠ QJ4  
♥ QJ4  
♦ AJ853  
♣ 109

N  
W — E  
S

♠ 98652  
♥ K93  
♦ K9  
♣ AK7

♠ A7  
♥ 852  
♦ Q1072  
♣ 6542

Board (16) Av: NS=0

N-S	E-W	Contract	N-S	E-W	IMP
4	9	3S E-2	200	200	5
1	6	3H N 3	140	140	4
3	8	3H N 3	140	140	4
17	12	3S E-1	100	100	3
14	19	3H N-1	50	50	-2
18	13	3D N-1	50	50	-2
2	7	1NT N-1	50	50	-2
16	11	3H N-2	100	100	-3
10	5	1S E 2	110	110	-3
20	15	3H N-3	150	150	-4

Board (17) Av: NS=+40

N-S	E-W	Contract	N-S	E-W	IMP
18	13	2D E-3	150	150	3
20	15	1NT S 2	120	120	2
2	7	3D N 3	110	110	2
10	5	1NT S 1	90	90	2
1	6	1NT S 1	90	90	2
14	19	1NT S 1	90	90	2
3	8	3NT S-1	50	50	-3
17	12	3C S-1	50	50	-3
4	9	3NT S-2	100	100	-4
16	11	3NTxN-2	300	300	-8

Board (18) Av: NS=-150

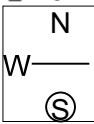
N-S	E-W	Contract	N-S	E-W	IMP
1	6	4S E-1	50	50	5
16	11	3S E 3	140	140	0
4	9	3S E 3	140	140	0
14	19	3S E 3	140	140	0
18	13	3S E 3	140	140	0
2	7	3S E 3	140	140	0
20	15	3S E 4	170	170	-1
10	5	3S E 4	170	170	-1
3	8	3S E 4	170	170	-1
17	12	4S E 4	420	420	-7

第1回山口知也杯 Session 2 Section A 2016年6月18日(土)

19

♠Q  
♥K1052  
♦8732  
♣KJ42

♠975 ♠K843  
♥J74 ♥Q93  
♦K94 ♦J105  
♣A1087 ♣953



♠AJ1062  
♥A86  
♦AQ6  
♣Q6

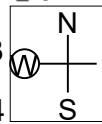
Board (19) Av: NS=+300

N-S	E-W	Contract	N-S	E-W	IMP
16	17	3NT N 4	430		4
10	8	3NT N 3	400		3
1	3	3NT N 3	400		3
14	12	3NT N 3	400		3
19	15	3NT N 3	400		3
18	20	3NT N 3	400		3
2	4	2D S 4	130		-5
6	7	2D S 4	130		-5
5	9	2D S 4	130		-5
13	11	3NT N-1		50	-8

20

♠AKJ765  
♥Q9  
♦Q1096  
♣3

♠Q9 ♠843  
♥K1053 ♥J62  
♦82 ♦AK54  
♣QJ874 ♣652



♠102  
♥A874  
♦J73  
♣AK109

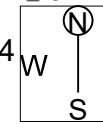
Board (20) Av: NS=+630

N-S	E-W	Contract	N-S	E-W	IMP
6	7	4S N 5	650		1
16	17	4S N 5	650		1
2	4	4S N 5	650		1
10	8	3NT S 4	630		0
18	20	3NT S 4	630		0
14	12	4S N 4	620		0
5	9	4S N 4	620		0
1	3	4S N 4	620		0
13	11	4S N 4	620		0
19	15	4S N 4	620		0

21

♠AQ9754  
♥3  
♦K10984  
♣9

♠6 ♠KJ32  
♥Q108754 ♥KJ9  
♦Q ♦753  
♣AJ1087 ♣K32



♠108  
♥A62  
♦AJ62  
♣Q654

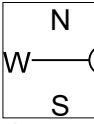
Board (21) Av: NS=+260

N-S	E-W	Contract	N-S	E-W	IMP
6	7	4Sx N 4	790		11
1	3	4Sx N 4	790		11
18	20	4S N 4	620		8
14	12	4S N 4	620		8
5	9	3NT W-2	100		-4
2	4	3NT E-2	100		-4
19	15	Passout			-6
16	17	Passout			-6
10	8	3H E 3		140	-9
13	11	3Hx W 4		630	-13

22

♠A10853  
♥J9  
♦J875  
♣AQ

♠K62 ♠Q97  
♥64 ♥AQ108753  
♦AQ642 ♦3  
♣954 ♣J6



♠J4  
♥K2  
♦K109  
♣K108732

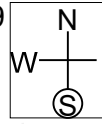
Board (22) Av: NS=+30

N-S	E-W	Contract	N-S	E-W	IMP
13	11	4H E-2	200		5
18	20	3C S 4	130		3
5	9	3C S 3	110		2
14	12	3C S 3	110		2
2	4	3H E-1	100		2
6	7	3S N-1		50	-2
16	17	3S N-1		50	-2
1	3	3NT S-1		50	-2
19	15	4S N-2		100	-4
10	8	3H E 3		140	-5

23

♠K853  
♥A3  
♦AJ76  
♣Q76

♠Q109 ♠A7642  
♥Q52 ♥964  
♦943 ♦8  
♣KJ93 ♣10542



♠J  
♥KJ1087  
♦KQ1052  
♣A8

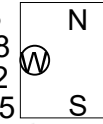
Board (23) Av: NS=+640

N-S	E-W	Contract	N-S	E-W	IMP
16	17	3NT N 6	690		2
19	15	3NT N 6	690		2
1	3	3NT N 6	690		2
2	4	3NT N 6	690		2
5	9	3NT N 4	630		0
14	12	5D S 6	620		-1
13	11	5D S 6	620		-1
10	8	3NT N 3	600		-1
6	7	3NT N 3	600		-1
18	20	3NT N 3	600		-1

24

♠AJ764  
♥632  
♦A65  
♣73

♠KQ8 ♠52  
♥KJ98 ♥AQ75  
♦1072 ♦94  
♣Q105 ♣AJ964



♠1093  
♥104  
♦KQJ83  
♣K82

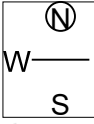
Board (24) Av: NS=+150

N-S	E-W	Contract	N-S	E-W	IMP
10	8	4Sx N 4	590		10
18	20	3Sx N 3	530		9
5	9	3S N 4	170		1
6	7	3S N 3	140		0
13	11	3S N 3	140		0
16	17	3S N 3	140		0
19	15	3S N 3	140		0
1	3	4H E-1		50	-3
2	4	3H E 3		140	-7
14	12	2H E 3		140	-7

25

♠AQ105  
♥Q862  
♦J  
♣AKJ7

♠J8 ♠K9742  
♥KJ75 ♥A3  
♦10864 ♦AK532  
♣865 ♣9



♠63  
♥1094  
♦Q97  
♣Q10432

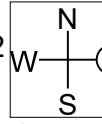
Board (25) Av: NS=-60

N-S	E-W	Contract	N-S	E-W	IMP
12	15	4C N 4	130		5
1	4	3C N 3	110		5
14	11	3C N 3	110		5
5	2	4C N-1		50	0
13	17	5C N-2		100	-1
18	19	3D W 4	130		-2
10	6	3D E 4	130		-2
8	9	3D E 4	130		-2
20	16	3D E 4	130		-2
3	7	3NT N-3		150	-3

26

♠A4  
♥AJ86  
♦865  
♣K1082

♠Q72 ♠K98  
♥K732 ♥10  
♦A9 ♦KJ742  
♣J953 ♣AQ76



♠J10653  
♥Q954  
♦Q103  
♣4

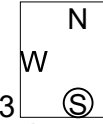
Board (26) Av: NS=-30

N-S	E-W	Contract	N-S	E-W	IMP
10	6	3NT E-2	200		6
12	15	3C E-2	200		6
14	11	3C E-1	100		4
3	7	2D W-1	100		4
5	2	3C E 3		110	-2
1	4	3C E 3		110	-2
20	16	3C E 3		110	-2
8	9	2D E 4	130		-3
13	17	2NT E 3	150		-3
18	19	3NT W 3		600	-11

27

♠8753  
♥A8762  
♦Q95  
♣2

♠QJ4 ♠AK1096  
♥J10 ♥Q9  
♦AJ2 ♦K1076  
♣Q8753 ♣AK



♠2  
♥K543  
♦843  
♣J10964

Board (27) Av: NS=-380

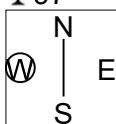
N-S	E-W	Contract	N-S	E-W	IMP
3	7	5S W-1	50		10
12	15	4C W-1	50		10
10	6	4S E 4		420	-1
20	16	4S E 4		420	-1
14	11	4S E 4		420	-1
13	17	4S E 5		450	-2
5	2	4S E 5		450	-2
1	4	4S E 5		450	-2
18	19	4S E 6		480	-3
8	9	4S E 6		480	-3

第1回山口知也杯 Session 2 Section A 2016年6月18日(土)

28

♠AQ105  
♥AK53  
♦1092  
♣97

♠J76  
♥86  
♦AKQ74  
♣1064



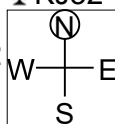
♠432  
♥J972  
♦J63  
♣AK5

♠K98  
♥Q104  
♦85  
♣QJ832

29

♠Q94  
♥Q94  
♦AQ9764  
♣KJ32

♠1072  
♥A8762  
♦1085  
♣Q9



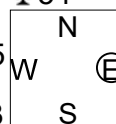
♠KQ93  
♥J  
♦KJ2  
♣108754

♠AJ8654  
♥K1053  
♦3  
♣A6

30

♠53  
♥Q8632  
♦KJ107  
♣54

♠KQJ  
♥AJ105  
♦Q3  
♣10963



♠872  
♥K97  
♦A9864  
♣K8

♠A10964  
♥4  
♦52  
♣AQJ72

Board (28) Av: NS=+50

N-S	E-W	Contract	N-S	E-W	IMP
18	19	1NT S 2	120		2
10	6	1NT S 2	120		2
1	4	1NT S 2	120		2
12	15	1NT S 2	120		2
14	11	1NT S 1	90		1
5	2	1NT S 1	90		1
3	7	1NT N 1	90		1
8	9	1NT S-1		100	-4
13	17	1NT S-1		100	-4
20	16	1NT S-1		100	-4

Board (29) Av: NS=+250

N-S	E-W	Contract	N-S	E-W	IMP
14	11	3NT S 4	630		9
3	7	3NT S 4	630		9
12	15	3NT S 3	600		8
18	19	3NT S 3	600		8
8	9	3NT N 3	600		8
5	2	3NT N-1		100	-8
1	4	3NT N-1		100	-8
20	16	3NT N-1		100	-8
13	17	3NT N-1		100	-8
10	6	4S S-3		300	-11

Board (30) Av: NS=-20

N-S	E-W	Contract	N-S	E-W	IMP
10	6	2S S 3	140		4
20	16	2S S 3	140		4
12	15	2S S 2	110		4
14	11	2S S-1		50	-1
5	2	2S S-1		50	-1
1	4	2S S-1		50	-1
3	7	2S S-1		50	-1
18	19	2S S-2		100	-2
8	9	2H N-2		100	-2
13	17	2S S-3		150	-4

第1回山口知也杯 Session 3 Section A 2016年6月19日(日)

1

♠ A106  
♥ K532  
♦ Q106  
♣ K95

♠ 74  
♥ AJ87  
♦ 843  
♣ QJ102

♠ KQ9532  
♥ Q4  
♦ 72  
♣ 873

♠ J8  
♥ 1096  
♦ AKJ95  
♣ A64

W N E S

2

♠ Q4  
♥ AK9753  
♦ 1095  
♣ A2

♠ AJ107  
♥  
♦ QJ732  
♣ K764

♠ QJ10642  
♥  
♦ A864  
♣ 1098

♠ K986532  
♥ 8  
♦ K  
♣ QJ53

W N E S

3

♠ AK4  
♥ 10952  
♦ Q54  
♣ J108

♠ 652  
♥ AKJ63  
♦ A86  
♣ K6

♠ J1087  
♥ 87  
♦ 72  
♣ Q9754

♠ Q93  
♥ Q4  
♦ KJ1093  
♣ A32

W N E S

Board (1) Av: NS=+430

N-S	E-W	Contract	N-S	E-W	IMP
3	15	3NT N 5	460		1
12	4	3NT N 4	430		0
9	17	3NT N 4	430		0
10	19	3NT N 4	430		0
5	14	3NT N 4	430		0
8	20	3NT N 4	430		0
7	18	3NT N 4	430		0
16	6	3NT N 4	430		0
1	11	3NT N 4	430		0
2	13	3NT N 4	430		0

Board (2) Av: NS=+30

N-S	E-W	Contract	N-S	E-W	IMP
5	14	4Hx W-3	500		10
7	18	4Hx W-3	500		10
12	4	5Dx E-2	300		7
8	20	5Dx E-2	300		7
3	15	3Hx W-2	300		7
16	6	4D E-1	50		1
1	11	3D E-1	50		1
2	13	4Sx S-2	500		-11
10	19	5Sx S-3	800		-13
9	17	5Sx S-3	800		-13

Board (3) Av: NS=+150

N-S	E-W	Contract	N-S	E-W	IMP
7	18	1H E-2	200		2
5	14	1NT S 4	180		1
3	15	1NT S 4	180		1
9	17	1NT S 3	150		0
12	4	1NT S 3	150		0
10	19	1NT S 3	150		0
1	11	1NT S 3	150		0
8	20	1NT S 3	150		0
16	6	1NT S 2	120		-1
2	13	2H E-1	100		-2

4

♠ A1072  
♥ 74  
♦ Q83  
♣ AK53

♠ Q653  
♥ AKQ952  
♦ 105  
♣ 4

♠ 984  
♥ J108  
♦ 74  
♣ 109872

♠ KJ  
♥ 63  
♦ AKJ962  
♣ QJ6

W N E S

Board (4) Av: NS=+600

N-S	E-W	Contract	N-S	E-W	IMP
1	11	5D S 6	620		1
9	17	5D S 5	600		0
12	4	5D S 5	600		0
5	14	5D S 5	600		0
10	19	5D S 5	600		0
3	15	5D S 5	600		0
2	13	5D S 5	600		0
16	6	5D S 5	600		0
8	20	5D S 5	600		0
7	18	6C N-2	200		-13

5

♠ J83  
♥ 53  
♦ 853  
♣ AQ853

♠ KQ109  
♥ 874  
♦ AK964  
♣ 9

♠ A4  
♥ AQJ96  
♦ 107  
♣ J1064

♠ 7652  
♥ K102  
♦ QJ2  
♣ K72

W N E S

Board (5) Av: NS=-450

N-S	E-W	Contract	N-S	E-W	IMP
2	13	4H W 4	420		1
12	4	4H W 5	450		0
3	15	4H W 5	450		0
9	17	4H W 5	450		0
10	19	4H W 5	450		0
1	11	4H W 5	450		0
16	6	4H W 5	450		0
5	14	4H W 5	450		0
7	18	4H W 5	450		0
8	20	4H W 7	510		-2

6

♠ 72  
♥ 98  
♦ 10985  
♣ K8732

♠ J85  
♥ J1054  
♦ J42  
♣ Q64

♠ 1093  
♥ A632  
♦ Q763  
♣ J9

♠ AKQ64  
♥ KQ7  
♦ AK  
♣ A105

W N E S

Board (6) Av: NS=+460

N-S	E-W	Contract	N-S	E-W	IMP
3	15	3NT S 6	490		1
8	20	3NT S 6	490		1
10	19	3NT S 5	460		0
9	17	3NT S 5	460		0
16	6	3NT S 5	460		0
2	13	3NT S 5	460		0
1	11	3NT S 5	460		0
7	18	3NT S 5	460		0
12	4	3NT S 4	430		-1
5	14	6C S-1	50		-11

7

♠ QJ74  
♥ 103  
♦ A987  
♣ A74

♠ 5  
♥ J9742  
♦ J3  
♣ Q8632

♠ AK3  
♥ AQ85  
♦ K64  
♣ K95

♠ 109862  
♥ K6  
♦ Q1052  
♣ J10

W N E S

Board (7) Av: NS=-520

N-S	E-W	Contract	N-S	E-W	IMP
6	20	4H E-1	100		12
4	11	2NT W 3	150		9
8	19	1C W 5	150		9
18	10	4H W 4	620		-3
17	7	4H W 5	650		-4
13	5	4H E 5	650		-4
12	2	4H E 5	650		-4
3	14	4H E 5	650		-4
9	16	4H E 5	650		-4
1	15	4H E 5	650		-4

8

♠ 1096  
♥ 964  
♦ A103  
♣ QJ52

♠ J53  
♥ KQ1087  
♦ 542  
♣ 97

♠ AKQ4  
♥ J  
♦ QJ96  
♣ AK43

♠ 872  
♥ A532  
♦ K87  
♣ 1086

W N E S

Board (8) Av: NS=-400

N-S	E-W	Contract	N-S	E-W	IMP
8	19	1S W 4	170		6
12	2	1S W 4	170		6
18	10	4H W 4	420		-1
6	20	3NT W 4	430		-1
13	5	3NT W 4	430		-1
1	15	3NT W 4	430		-1
3	14	3NT W 4	430		-1
17	7	3NT W 4	430		-1
9	16	3NT W 4	430		-1
4	11	3NT W 4	430		-1

9

♠ Q98763  
♥ J  
♦ AK872  
♣ 6

♠ A10  
♥ K432  
♦ 965  
♣ AQ98

♠ 542  
♥ AQ1076  
♦ Q3  
♣ 1043

♠ KJ  
♥ 985  
♦ J104  
♣ KJ752

W N E S

Board (9) Av: NS=+150

N-S	E-W	Contract	N-S	E-W	IMP
13	5	4S N 4	420		7
17	7	4H W-2	200		2
6	20	2S N 5	200		2
12	2	3S N 4	170		1
1	15	2S N 4	170		1
8	19	3S N 3	140		0
18	10	3H W-1	100		-2
4	11	3H W-1	100		-2
9	16	3H E-1	100		-2
3	14	4S N-1	50		-5



10

♠65  
♥Q863  
♦10986  
♣743

♠J1082  
♥K7542  
♦732  
♣9

N  
W — E  
S

♠KQ93  
♥A9  
♦54  
♣AKQ108

♠A74  
♥J10  
♦AKQJ  
♣J652

11

♠J86  
♥A654  
♦K1043  
♣J10

♠7432  
♥3  
♦AQ87  
♣A954

N  
W — E  
S

♠K5  
♥QJ1087  
♦9652  
♣63

♠AQ109  
♥K92  
♦J  
♣KQ872

12

♠Q85  
♥J95  
♦J85  
♣QJ109

♠1042  
♥AQ2  
♦AQ42  
♣K53

N  
W — E  
S

♠KJ7  
♥7643  
♦K76  
♣876

♠A963  
♥K108  
♦1093  
♣A42

Board (10) Av: NS=-130

N-S	E-W	Contract	N-S	E-W	IMP
18	10	1NTxS 1	180		7
9	16	1NT S-1	100		1
1	15	1NT S-1	100		1
17	7	2H W 2	110		1
13	5	2H W 2	110		1
8	19	2C W 3	110		1
6	20	2H W 3	140		0
4	11	3S E 4	170		-1
3	14	1NT S-2	200		-2
12	2	4S E 4	620		-10

Board (11) Av: NS=+230

N-S	E-W	Contract	N-S	E-W	IMP
6	20	3NT N 5	460		6
12	2	3NT N 5	460		6
1	15	3NT N 5	460		6
18	10	1NT N 5	210		-1
17	7	1NT N 5	210		-1
4	11	2C S 5	150		-2
3	14	2H N 2	110		-3
9	16	2H N 2	110		-3
8	19	2H N 2	110		-3
13	5	2C S 3	110		-3

Board (12) Av: NS=-120

N-S	E-W	Contract	N-S	E-W	IMP
13	5	1NT W 1	90		1
4	11	1NT W 1	90		1
1	15	1NT W 2	120		0
6	20	1NT W 2	120		0
18	10	1NT W 2	120		0
17	7	1NT W 2	120		0
9	16	1NT W 2	120		0
3	14	1NT W 3	150		-1
12	2	1NT W 3	150		-1
8	19	1NT W 3	150		-1

13

♠AK2  
♥J  
♦AQ10754  
♣1085

♠10976  
♥AQ98  
♦K8  
♣J93

N  
W — E  
S

♠QJ4  
♥K10652  
♦  
♣AKQ62

♠853  
♥743  
♦J9632  
♣74

14

♠83  
♥A752  
♦A10974  
♣A6

♠104  
♥KJ83  
♦Q832  
♣K95

N  
W — E  
S

♠AK95  
♥10  
♦K5  
♣QJ10743

♠QJ762  
♥Q964  
♦J6  
♣82

15

♠KQJ74  
♥9  
♦KQ9  
♣6542

♠52  
♥J1042  
♦A765  
♣J98

N  
W — E  
S

♠106  
♥63  
♦J108432  
♣AK10

♠A983  
♥AKQ875  
♦  
♣Q73

Board (13) Av: NS=-650

N-S	E-W	Contract	N-S	E-W	IMP
8	18	5H E 5	650		0
17	10	4H W 5	650		0
7	16	4H W 5	650		0
2	11	4H W 5	650		0
19	6	4H E 5	650		0
13	3	4H E 5	650		0
20	9	4H E 5	650		0
4	15	4H E 5	650		0
1	14	4H E 6	680		-1
5	12	5Dx N-3	800		-4

Board (14) Av: NS=-110

N-S	E-W	Contract	N-S	E-W	IMP
17	10	3C E-1	50		4
8	18	2D W-1	50		4
1	14	2D N-2	100		0
2	11	3C E 3	110		0
7	16	3C E 4	130		-1
13	3	3C E 4	130		-1
20	9	3C E 5	150		-1
19	6	3C E 5	150		-1
5	12	2D N-3	150		-1
4	15	3NT W 3	400		-7

Board (15) Av: NS=+650

N-S	E-W	Contract	N-S	E-W	IMP
19	6	5Dx E-4	800		4
7	16	5S N 5	650		0
17	10	4S N 5	650		0
13	3	4S N 5	650		0
2	11	4S N 5	650		0
8	18	4S N 5	650		0
20	9	4S N 5	650		0
5	12	4S N 5	650		0
4	15	4S N 5	650		0
1	14	6S N-1	100		-13

16

♠AQ943  
♥K94  
♦A853  
♣Q

♠108  
♥Q65  
♦KJ102  
♣K932

N  
W — E  
S

♠52  
♥J107  
♦764  
♣AJ1087

♠KJ76  
♥A832  
♦Q9  
♣654

17

♠KQ75  
♥AJ1043  
♦84  
♣105

♠J8  
♥Q876  
♦AQ1065  
♣Q8

N  
W — E  
S

♠A104  
♥K95  
♦K73  
♣K963

♠9632  
♥2  
♦J92  
♣AJ742

18

♠J7  
♥8654  
♦AK106  
♣763

♠K1032  
♥K102  
♦J4  
♣KQ95

N  
W — E  
S

♠AQ  
♥AJ9  
♦Q72  
♣AJ1084

♠98654  
♥Q73  
♦9853  
♣2

Board (16) Av: NS=+420

N-S	E-W	Contract	N-S	E-W	IMP
1	14	4S N 5	450		1
7	16	4S N 5	450		1
5	12	4S N 4	420		0
2	11	4S N 4	420		0
19	6	4S N 4	420		0
13	3	4S N 4	420		0
8	18	4S N 4	420		0
4	15	4S N 4	420		0
17	10	4S N 4	420		0
20	9	4S N 4	420		0

Board (17) Av: NS=-190

N-S	E-W	Contract	N-S	E-W	IMP
5	12	3NT E-1	50		6
4	15	3S N-1	50		4
1	14	2NT E 2	120		2
17	10	2NT E 2	120		2
2	11	3D W 4	130		2
7	16	2NT E 3	150		1
20	9	2NT E 3	150		1
13	3	3NT E 3	400		-5
19	6	3NT E 4	430		-6
8	18	3NTx E 3	550		-8

Board (18) Av: NS=-450

N-S	E-W	Contract	N-S	E-W	IMP
20	9	6C E-1	50		11
2	11	5C E 5	400		2
17	10	4S W 4	420		1
19	6	3NT E 5	460		0
7	16	3NT E 5	460		0
8	18	3NT E 5	460		0
1	14	3NT E 5	460		0
4	15	3NT E 5	460		0
13	3	3NT E 5	460		0
5	12	3NT E 5	460		0

19

♠ 32  
♥ 863  
♦ J1084  
♣ Q974

♠ A5  
♥ Q107  
♦ AKQ  
♣ J10863

N  
W — E  
S

♠ KJ76  
♥ AKJ95  
♦ 962  
♣ 5

♠ Q10984  
♥ 42  
♦ 753  
♣ AK2

20

♠ AKJ  
♥ QJ954  
♦ Q98  
♣ J10

♠ Q108  
♥ K107  
♦ A52  
♣ KQ72

N  
W — E  
S

♠ 5  
♥ A863  
♦ K10743  
♣ A53

♠ 976432  
♥ 2  
♦ J6  
♣ 9864

21

♠ 753  
♥ A96  
♦ 6  
♣ KQ6432

♠ 92  
♥ KJ873  
♦ J7  
♣ J1095

N  
W — E  
S

♠ AKQ8  
♥ Q1042  
♦ AK8  
♣ A8

♠ J1064  
♥ 5  
♦ Q1095432  
♣ 7

Board (19) Av: NS=-760

N-S	E-W	Contract	N-S	E-W	IMP
10	16	4H W 4	620		4
8	17	3NT W 4	630		4
1	13	4H W 5	650		3
12	3	4H E 5	650		3
9	19	3NT W 5	660		3
4	14	4H W 6	680		2
11	5	4H W 6	680		2
18	6	4H W 6	680		2
20	7	6H W 6	1430		-12
2	15	6H W 6	1430		-12

Board (20) Av: NS=-440

N-S	E-W	Contract	N-S	E-W	IMP
8	17	3NT W-1	100		11
1	13	2NT W 2	120		8
10	16	3D E 4	130		7
11	5	2NT W 4	180		6
2	15	3NT W 3	600		-4
4	14	3NT W 4	630		-5
12	3	3NT W 4	630		-5
9	19	3NT W 4	630		-5
18	6	3NT W 4	630		-5
20	7	3NT W 4	630		-5

Board (21) Av: NS=-450

N-S	E-W	Contract	N-S	E-W	IMP
11	5	6H W-1	50		11
1	13	5H E 5	450		0
2	15	4H W 5	450		0
8	17	4H W 5	450		0
20	7	4H E 5	450		0
4	14	4H E 5	450		0
10	16	4H E 5	450		0
12	3	4H E 5	450		0
9	19	4H E 6	480		-1
18	6	6H E 6	980		-11

22

♠ Q1097  
♥ Q10972  
♦ Q9  
♣ J9

♠ AJ865432  
♥ K  
♦ 2  
♣ 1073

N  
W — E  
S

♠ AJ864  
♥ 10843  
♦ AK42  
♣ K

♠ K  
♥ 53  
♦ AKJ765  
♣ Q865

23

♠ 53  
♥ A  
♦ K642  
♣ 1097642

♠ K10942  
♥ Q84  
♦ A98  
♣ A3

N  
W — E  
S

♠ AQ7  
♥ KJ6532  
♦ J73  
♣ J

♠ J86  
♥ 1097  
♦ Q105  
♣ KQ85

24

♠ A83  
♥ QJ10  
♦ QJ3  
♣ A975

♠ Q972  
♥ 4  
♦ A852  
♣ QJ63

N  
W — E  
S

♠ J1054  
♥ K753  
♦ K9  
♣ K42

♠ K6  
♥ A9862  
♦ 10764  
♣ 108

Board (22) Av: NS=+130

N-S	E-W	Contract	N-S	E-W	IMP
8	17	4Sx W-1	200		2
4	14	4Sx W-1	200		2
18	6	4Sx W-1	200		2
11	5	4S W-1	100		-1
9	19	4S W-1	100		-1
1	13	4S W-1	100		-1
2	15	4S W-1	100		-1
10	16	4S W-1	100		-1
12	3	4S E-1	100		-1
20	7	5Dx S-3	500		-12

Board (23) Av: NS=-680

N-S	E-W	Contract	N-S	E-W	IMP
1	13	4H E 4	620		2
20	7	4S W 6	680		0
9	19	4S W 6	680		0
8	17	4H E 6	680		0
2	15	4H E 6	680		0
12	3	4H E 6	680		0
4	14	4H E 6	680		0
10	16	4H E 6	680		0
18	6	4H E 6	680		0
11	5	6H E 6	1430		-13

Board (24) Av: NS=+90

N-S	E-W	Contract	N-S	E-W	IMP
2	15	2H S 4	170		2
4	14	2H N 4	170		2
1	13	2H N 4	170		2
8	17	1NT N 3	150		2
11	5	1NT N 3	150		2
9	19	2H S 3	140		2
10	16	1NT N 2	120		1
20	7	2S E 2	110		-5
18	6	2S E 2	110		-5
12	3	2S W 3	140		-6

25

♠ J972  
♥ KJ4  
♦ 93  
♣ 10965

♠ 1084  
♥ 973  
♦ AKQ52  
♣ KQ

N  
W — E  
S

♠ AKQ53  
♥ 62  
♦ J8764  
♣ 3

♠ 6  
♥ AQ1085  
♦ 10  
♣ AJ8742

26

♠ 5432  
♥ Q109  
♦ K962  
♣ 72

♠ QJ10  
♥ K862  
♦ Q8  
♣ KQ94

N  
W — E  
S

♠ K986  
♥ A543  
♦ 5  
♣ AJ85

♠ A7  
♥ J7  
♦ AJ10743  
♣ 1063

27

♠ 7652  
♥ 5  
♦ AJ872  
♣ Q85

♠ K109  
♥ 10864  
♦ K104  
♣ K76

N  
W — E  
S

♠ J843  
♥ AQ973  
♦ 9  
♣ 1094

♠ AQ  
♥ KJ2  
♦ Q653  
♣ AJ32

Board (25) Av: NS=-150

N-S	E-W	Contract	N-S	E-W	IMP
10	20	5Sx E-2	500		12
15	5	4S E-1	100		6
17	6	6C S-2	100		2
16	8	5Hx N-1	100		2
19	7	5Cx S-1	100		2
1	12	5Cx S-1	100		2
13	4	6Cx S-2	300		-4
9	18	6Cx S-2	300		-4
14	2	6Cx S-2	300		-4
11	3	4S E 4	620		-10

Board (26) Av: NS=-560

N-S	E-W	Contract	N-S	E-W	IMP
13	4	5C E-1	100		12
10	20	3H W 4	170		9
9	18	4H W 4	620		-2
16	8	4H W 4	620		-2
11	3	4H W 4	620		-2
14	2	4H W 4	620		-2
15	5	4H W 4	620		-2
17	6	4H W 4	620		-2
1	12	4H W 4	620		-2
19	7	4H E 4	620		-2

Board (27) Av: NS=+70

N-S	E-W	Contract	N-S	E-W	IMP
10	20	1NT S 4	180		3
16	8	2D S 5	150		2
1	12	2D S 4	130		2
17	6	3C S 3	110		1
11	3	2D S 3	110		1
15	5	3H W-2	100		1
13	4	2H W-1	50		-1
9	18	3NT S-1	50		-3
19	7	3NT S-1	50		-3
14	2	3NTxS-2	300		-9

28

♠ 87643  
♥ 3  
♦ 43  
♣ K10987

♠ AQ105  
♥ 10987542  
♦ 8  
♣ 3

♠ 2  
♥ J6  
♦ QJ765  
♣ AQJ62

♠ KJ9  
♥ AKQ  
♦ AK1092  
♣ 54

N  
W E  
S

29

♠ 76  
♥ J85  
♦ Q106  
♣ QJ1082

♠ 1053  
♥ 7632  
♦ A3  
♣ K654

♠ KQJ42  
♥  
♦ KJ754  
♣ A73

♠ A98  
♥ AKQ1094  
♦ 982  
♣ 9

N  
W E  
S

30

♠ Q10  
♥ K1032  
♦ A1085  
♣ K86

♠ J8653  
♥ 96  
♦ 9  
♣ AQ973

♠ K4  
♥ AQJ4  
♦ 762  
♣ J1054

♠ A972  
♥ 875  
♦ KQJ43  
♣ 2

N  
W E  
S

Board (28) Av: NS=-50

N-S	E-W	Contract	N-S	E-W	IMP
10	20	4Hx E-3	500		11
13	4	4Hx E-2	300		8
11	3	4Hx E-2	300		8
9	18	4Hx E-2	300		8
19	7	2H E 2		110	-2
17	6	4Sx N-1	200		-4
1	12	4Sx N-1	200		-4
14	2	3NT S-3	300		-6
16	8	4Sx N-2	500		-10
15	5	4Sx N-2	500		-10

Board (29) Av: NS=-570

N-S	E-W	Contract	N-S	E-W	IMP
10	20	4S W-1	100		12
1	12	4H S-2		200	9
9	18	5Hx S-2	500		2
13	4	4S E 4	620		-2
16	8	4S W 5	650		-2
11	3	4S E 5	650		-2
17	6	4S E 5	650		-2
15	5	4S E 5	650		-2
19	7	4S E 5	650		-2
14	2	4Sx E 4	790		-6

Board (30) Av: NS=+30

N-S	E-W	Contract	N-S	E-W	IMP
10	20	3D S 4	130		3
1	12	2NT N 2	120		3
13	4	3D S 3	110		2
9	18	3D S 3	110		2
17	6	3D N 3	110		2
16	8	3D N 3	110		2
14	2	5D S-2		100	-4
19	7	4C W 4		130	-4
15	5	4C W 4		130	-4
11	3	3NT S-3		150	-5

第1回山口知也杯 Session 4 Section A 2016年6月19日(日)

**1**

♠ J872  
♥ Q87  
♦ 953  
♣ A83

♠ KQ1065  
♥ AK9  
♦ A7  
♣ J64

♠ A943  
♥ J6  
♦ 62  
♣ K9752

W N E S

♠ 105432  
♥ KQJ1084  
♦ Q10

Board (1) Av: NS=-430

N-S	E-W	Contract	N-S	E-W	IMP
3	20	4S W 4	420		0
12	9	4S W 4	420		0
6	11	4S W 4	420		0
18	2	4S W 4	420		0
19	5	4S E 4	420		0
10	14	4S E 4	420		0
15	8	4S W 5	450		-1
13	7	4S W 5	450		-1
1	16	4S W 5	450		-1
4	17	4S W 5	450		-1

**2**

♠ K1042  
♥ J875  
♦ Q7  
♣ Q73

♠ AQ3  
♥ Q10  
♦ AJ98  
♣ K1064

♠ J876  
♥ A96  
♦ 10532  
♣ 85

W N E S

♠ 95  
♥ K432  
♦ K64  
♣ AJ92

Board (2) Av: NS=-60

N-S	E-W	Contract	N-S	E-W	IMP
3	20	2H S 2	110		5
10	14	1NT W-2	100		4
4	17	1NT W-1	50		3
13	7	1NT W 1		90	-1
6	11	1NT W 1		90	-1
1	16	1NT W 1		90	-1
12	9	1NT W 1		90	-1
18	2	1NT W 2		120	-2
19	5	1NT W 2		120	-2
15	8	1NT W 2		120	-2

**3**

♠ K  
♥ AK108  
♦ Q82  
♣ Q10974

♠ 75  
♥ J532  
♦ 654  
♣ A632

♠ QJ10983  
♥ Q74  
♦ A109  
♣ K

W N E S

♠ A642  
♥ 96  
♦ KJ73  
♣ J85

Board (3) Av: NS=0

N-S	E-W	Contract	N-S	E-W	IMP
19	5	2S E-2	200		5
4	17	2NT N 2	120		3
3	20	3C N 3	110		3
10	14	1NT S 1	90		3
12	9	3NT N-1		50	-2
15	8	1NT S-1		50	-2
1	16	1NT S-1		50	-2
13	7	1NT S-1		50	-2
6	11	3NT N-2		100	-3
18	2	3NT N-3		150	-4

**4**

♠ 1085  
♥ Q87  
♦ K1042  
♣ J92

♠ KJ96  
♥ 9  
♦ A63  
♣ KQ873

♠ A4  
♥ AJ1063  
♦ Q985  
♣ 106

W N E S

♠ Q732  
♥ K542  
♦ J7  
♣ A54

Board (4) Av: NS=-520

N-S	E-W	Contract	N-S	E-W	IMP
6	11	3NT E-2	200		12
12	9	3NT E-2	200		12
19	5	3NT E 3		600	-2
18	2	3NT E 3		600	-2
3	20	3NT E 3		600	-2
10	14	3NT E 3		600	-2
15	8	3NT E 4		630	-3
1	16	3NT E 4		630	-3
13	7	3NT W 5		660	-4
4	17	3NT E 5		660	-4

**5**

♠ 93  
♥ 9432  
♦ J82  
♣ J543

♠ 8  
♥ AQJ1075  
♦ A103  
♣ 1092

♠ A105  
♥ K6  
♦ 9754  
♣ Q876

W N E S

♠ KQJ7642  
♥ 8  
♦ KQ6  
♣ AK

Board (5) Av: NS=+440

N-S	E-W	Contract	N-S	E-W	IMP
19	5	4S S 4	620		5
1	16	4S S 4	620		5
18	2	4S S 4	620		5
4	17	4S S 4	620		5
12	9	4S S 4	620		5
3	20	4S S 4	620		5
6	11	3S S 4	170		-7
10	14	3S S 4	170		-7
15	8	3NT E-1	50		-9
13	7	5Sx S-1		200	-12

**6**

♠ J965  
♥ 5  
♦ Q932  
♣ AQ73

♠ AK1083  
♥ 8  
♦ A6  
♣ J9865

♠ 4  
♥ AJ96  
♦ K875  
♣ K1042

W N E S

♠ Q72  
♥ KQ107432  
♦ J104  
♣

Board (6) Av: NS=-380

N-S	E-W	Contract	N-S	E-W	IMP
1	16	5Cx W-3	800		15
3	20	4Sx W-1	200		11
19	5	4S W-1	100		10
6	11	3NT E-1	100		10
13	7	3NT E 3		600	-6
18	2	3NT E 4		630	-6
4	17	3NT E 4		630	-6
12	9	5Cx W 5		750	-9
10	14	4Hx S-4		800	-9
15	8	4Hx S-5		1100	-12

**7**

♠ AJ3  
♥ Q83  
♦ KQJ92  
♣ AQ

♠ K85  
♥ AJ92  
♦ A4  
♣ 9842

♠ 1064  
♥ 754  
♦ 1087653  
♣ K

W N E S

♠ Q972  
♥ K106  
♦ J107653  
♣

Board (7) Av: NS=+510

N-S	E-W	Contract	N-S	E-W	IMP
1	20	3NT N 4	630		3
16	4	3NT N 4	630		3
19	3	3NT N 4	630		3
5	18	3NT N 4	630		3
10	13	3NT N 4	630		3
6	15	3NT N 4	630		3
17	2	3NT N 3	600		3
8	14	1NT N 4	180		-8
11	9	3C S 5	150		-8
12	7	3NT N-1		100	-12

**8**

♠ QJ  
♥ Q432  
♦ J10864  
♣ K6

♠ 983  
♥ A9865  
♦ 3  
♣ J1032

♠ AK10754  
♥ J  
♦ 975  
♣ Q54

W N E S

♠ 62  
♥ K107  
♦ AKQ2  
♣ A987

Board (8) Av: NS=-120

N-S	E-W	Contract	N-S	E-W	IMP
10	13	4D N-1		50	2
1	20	4H N-2		100	1
8	14	4H N-2		100	1
6	15	4H N-2		100	1
5	18	4H N-2		100	1
11	9	4H N-2		100	1
19	3	3S E 3		140	-1
17	2	3S E 4		170	-2
12	7	3S E 4		170	-2
16	4	4H N-5		250	-4

**9**

♠ KJ2  
♥ 62  
♦ A4  
♣ 987653

♠ AQ3  
♥ AK10  
♦ J108765  
♣ 4

♠ 104  
♥ QJ874  
♦ 92  
♣ KQJ2

W N E S

♠ 98765  
♥ 953  
♦ KQ3  
♣ A10

Board (9) Av: NS=-110

N-S	E-W	Contract	N-S	E-W	IMP
12	7	4H E-1		100	5
10	13	3S S-1		50	2
17	2	2D W 2		90	1
19	3	2D W 2		90	1
11	9	3Cx N-1		100	0
6	15	3D W 3		110	0
8	14	2D E 3		110	0
5	18	3H E 3		140	-1
16	4	2H E 4		170	-2
1	20	3NT E 3		600	-10

10

♠ QJ  
♥ AQJ1093  
♦ 63  
♣ K73

♠ A107  
♥ 2  
♦ KQ109  
♣ J8652

N  
W — E  
S

♠ 98532  
♥ K75  
♦ J842  
♣ Q

♠ K64  
♥ 864  
♦ A75  
♣ A1094

Board (10) Av: NS=+420

N-S	E-W	Contract	N-S	E-W	IMP
8	14	4H N 4	620		5
11	9	4H N 4	620		5
17	2	4H N 4	620		5
1	20	4H N 4	620		5
5	18	4H N 4	620		5
6	15	4H N 4	620		5
10	13	2H N 5	200		-6
19	3	3H N 3	140		-7
16	4	4H N-1	100		-11
12	7	4H N-1	100		-11

11

♠ J75  
♥ 8632  
♦ 1086  
♣ J43

♠ 98643  
♥ A9  
♦ AJ  
♣ Q975

N  
W — E  
S

♠ A10  
♥ Q105  
♦ Q9753  
♣ 1086

♠ KQ2  
♥ KJ74  
♦ K42  
♣ AK2

Board (11) Av: NS=-110

N-S	E-W	Contract	N-S	E-W	IMP
6	15	1C S-1	50		2
8	14	1S W 1	80		1
11	9	3NT S-2	100		0
12	7	1NT S-2	100		0
17	2	1C S-2	100		0
10	13	1C S-2	100		0
19	3	2D E 3	110		0
1	20	2NT S-3	150		-1
5	18	1C S-3	150		-1
16	4	1C S-4	200		-3

12

♠ K106  
♥  
♦ KJ106  
♣ AQ9852

♠ 8  
♥ AJ76  
♦ 9753  
♣ KJ103

N  
W — E  
S

♠ Q95432  
♥ Q1052  
♦ Q8  
♣ 4

♠ AJ7  
♥ K9843  
♦ A42  
♣ 76

Board (12) Av: NS=+560

N-S	E-W	Contract	N-S	E-W	IMP
19	3	3NT S 6	690		4
10	13	3NT S 6	690		4
6	15	3NT N 6	690		4
1	20	3NT N 6	690		4
16	4	3NT S 5	660		3
5	18	3NT N 5	660		3
11	9	3NT S 3	600		1
8	14	3NT S 3	600		1
12	7	3NT S-1	100		-12
17	2	3NTxN-1	200		-13

13

♠ Q  
♥ KQ6  
♦ A10743  
♣ AQ85

♠ KJ65  
♥ J954  
♦ KQ98  
♣ K

N  
W — E  
S

♠ 732  
♥ 82  
♦ 65  
♣ J76432

♠ A10984  
♥ A1073  
♦ J2  
♣ 109

Board (13) Av: NS=+620

N-S	E-W	Contract	N-S	E-W	IMP
9	15	3NT N 5	660		1
13	8	3NT N 5	660		1
10	12	3NT N 5	660		1
7	11	3NT N 4	630		0
1	19	3NT N 4	630		0
20	4	3NT S 3	600		-1
5	17	3NT S 3	600		-1
6	14	3NT N 3	600		-1
16	2	3NT N 3	600		-1
18	3	3NT S-1	100		-12

14

♠ A72  
♥  
♦ AJ108764  
♣ 1073

♠ KJ3  
♥ A863  
♦ K52  
♣ QJ5

N  
W — E  
S

♠ 854  
♥ J9742  
♦ Q  
♣ AK42

♠ Q1096  
♥ KQ105  
♦ 93  
♣ 986

Board (14) Av: NS=+100

N-S	E-W	Contract	N-S	E-W	IMP
10	12	4Hx E-2	300		5
9	15	4H W-3	150		2
7	11	4H W-2	100		0
18	3	4H E-2	100		0
16	2	4H E-2	100		0
20	4	3H E-2	100		0
6	14	3H E-2	100		0
5	17	3H E-2	100		0
13	8	3NT W-1	50		-2
1	19	3H E-1	50		-2

15

♠ J943  
♥ KQ7  
♦ 876  
♣ K84

♠ K6  
♥ AJ5432  
♦ AQ95  
♣ 9

N  
W — E  
S

♠ A852  
♥ 986  
♦ 43  
♣ A1062

♠ Q107  
♥ 10  
♦ KJ102  
♣ QJ753

Board (15) Av: NS=-450

N-S	E-W	Contract	N-S	E-W	IMP
18	3	4H W 5	450		0
13	8	4H W 5	450		0
9	15	4H W 5	450		0
20	4	4H W 5	450		0
5	17	4H W 5	450		0
10	12	4H W 5	450		0
6	14	4H W 5	450		0
1	19	4H W 5	450		0
16	2	4H W 5	450		0
7	11	4H W 5	450		0

16

♠ Q102  
♥ AQ3  
♦ 965  
♣ 8732

♠ J74  
♥ J986  
♦ A102  
♣ A65

N  
W — E  
S

♠ A853  
♥ 1072  
♦ J43  
♣ K109

♠ K96  
♥ K54  
♦ KQ87  
♣ QJ4

Board (16) Av: NS=+60

N-S	E-W	Contract	N-S	E-W	IMP
20	4	2S E-1	100		1
7	11	1NT S 1	90		1
16	2	1NT N 1	90		1
13	8	1NT N 1	90		1
5	17	1NT N 1	90		1
6	14	1NT N 1	90		1
1	19	1NT N 1	90		1
9	15	1NT N-1	50		-3
10	12	1NT N-1	50		-3
18	3	1NT N-2	100		-4

17

♠ J876  
♥ K9753  
♦ A987  
♣

♠ K104  
♥ Q  
♦ 1063  
♣ J108762

N  
W — E  
S

♠ Q952  
♥ J842  
♦ Q2  
♣ AK5

♠ A3  
♥ A106  
♦ KJ54  
♣ Q943

Board (17) Av: NS=+150

N-S	E-W	Contract	N-S	E-W	IMP
9	15	4H S 5	450		7
6	14	3H N 4	170		1
13	8	3H N 4	170		1
5	17	3H N 4	170		1
10	12	3D S 5	150		0
1	19	3D S 5	150		0
7	11	2H N 3	140		0
18	3	3D S 4	130		-1
16	2	3D S 4	130		-1
20	4	3C E-2	100		-2

18

♠ AQ982  
♥ 875  
♦ J95  
♣ J6

♠ 64  
♥ KJ3  
♦ A86  
♣ AQ872

N  
W — E  
S

♠ K10  
♥ AQ1062  
♦ Q3  
♣ K1053

♠ J753  
♥ 94  
♦ K10742  
♣ 94

Board (18) Av: NS=-540

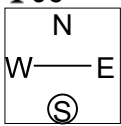
N-S	E-W	Contract	N-S	E-W	IMP
20	4	3NT E 5	460		2
9	15	5H E 6	480		2
16	2	4H E 6	480		2
13	8	4H E 6	480		2
7	11	4H E 6	480		2
5	17	4H E 6	480		2
6	14	4H E 6	480		2
10	12	3NT W 6	490		2
1	19	6H E 6	980		-10
18	3	6H E 6	980		-10

19

♠ QJ2  
♥ K95  
♦ AJ864  
♣ J6

♠ A843    ♠ K109  
♥ J843    ♥ A7  
♦ Q2    ♦ K103  
♣ Q107    ♣ A8542

♠ 765  
♥ Q1062  
♦ 975  
♣ K93

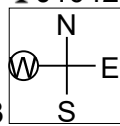


20

♠ J1063  
♥ AKJ62  
♦

♠ A84    ♠ Q7  
♥ 74    ♥ Q985  
♦ 864    ♦ KJ1052  
♣ K9873    ♣ A6

♠ K952  
♥ 103  
♦ AQ973  
♣ Q5

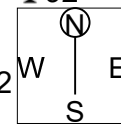


21

♠ Q63  
♥ Q98764  
♦ A6  
♣ 92

♠ 10972    ♠ KJ85  
♥ 3    ♥ K102  
♦ Q98532    ♦ K107  
♣ KJ    ♣ Q105

♠ A4  
♥ AJ5  
♦ J4  
♣ A87643



Board (19) Av: NS=-140

N-S	E-W	Contract	N-S	E-W	IMP
7	15	1D	N-1	50	3
14	9	2C	E 2	90	2
1	18	1NT	N-2	100	1
19	4	2NT	E 2	120	1
16	5	3C	E 4	130	0
3	17	1NT	N-3	150	0
11	10	1S	W 4	170	-1
20	2	2NT	E 4	180	-1
8	12	1NT	N-4	200	-2
13	6	3NT	E 3	600	-10

Board (20) Av: NS=+120

N-S	E-W	Contract	N-S	E-W	IMP
1	18	2Dx	E-2	500	9
19	4	2Dx	E-1	200	2
20	2	1NT	W-2	200	2
11	10	2S	S 4	170	2
7	15	2S	S 3	140	1
3	17	2H	N 3	140	1
14	9	2H	N 2	110	0
16	5	2H	N 2	110	0
8	12	4S	S-1	100	-6
13	6	4S	S-2	200	-8

Board (21) Av: NS=-10

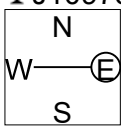
N-S	E-W	Contract	N-S	E-W	IMP
7	15	4H	S 4	620	12
1	18	3H	N 6	230	6
3	17	3H	S 4	170	5
16	5	3S	W-1	50	2
19	4	1NT	E 1	90	-2
11	10	4H	N-1	100	-3
20	2	3D	W 3	110	-3
8	12	2S	W 2	110	-3
14	9	2S	W 2	110	-3
13	6	2S	W 3	140	-4

22

♠ K3  
♥ AJ7  
♦ 1095  
♣ J10973

♠ J    ♠ 108542  
♥ Q1032    ♥ 84  
♦ Q876    ♦ J4  
♣ A642    ♣ KQ85

♠ AQ976  
♥ K965  
♦ AK32  
♣



Board (22) Av: NS=+420

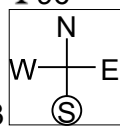
N-S	E-W	Contract	N-S	E-W	IMP
3	17	3NT	N 4	430	0
11	10	3NT	N 4	430	0
16	5	3NT	N 4	430	0
20	2	4S	S 4	420	0
8	12	4S	S 4	420	0
14	9	4S	S 4	420	0
1	18	3NT	N 3	400	-1
13	6	3NT	N 3	400	-1
19	4	3NT	N 3	400	-1
7	15	2S	S 2	110	-7

23

♠ Q75  
♥ QJ75  
♦ AJ65  
♣ 96

♠ J864    ♠ 1093  
♥ 3    ♥ A10986  
♦ 2    ♦ KQ74  
♣ AQJ8753    ♣ 10

♠ AK2  
♥ K42  
♦ 10983  
♣ K42



Board (23) Av: NS=-130

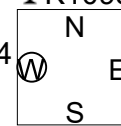
N-S	E-W	Contract	N-S	E-W	IMP
19	4	2D	S 2	90	6
13	6	1NT	S 1	90	6
14	9	3NT	S-1	100	1
3	17	3D	S-1	100	1
1	18	3D	S-1	100	1
20	2	3NT	S-2	200	-2
11	10	3NT	S-2	200	-2
8	12	3D	S-2	200	-2
7	15	2H	S-2	200	-2
16	5	3NT	S-3	300	-5

24

♠ 954  
♥ J9  
♦ Q986  
♣ K1095

♠ 762    ♠ AJ8  
♥ AK7654    ♥ Q  
♦ 43    ♦ AKJ10752  
♣ 83    ♣ Q6

♠ KQ103  
♥ 10832  
♦  
♣ AJ742



Board (24) Av: NS=+80

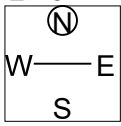
N-S	E-W	Contract	N-S	E-W	IMP
11	10	3NT	E-4	200	3
14	9	4H	W-3	150	2
16	5	3H	E-3	150	2
19	4	3NT	E-3	150	2
20	2	3NT	E-3	150	2
1	18	3NT	E-2	100	1
8	12	3NT	E-1	50	-1
7	15	2H	W-1	50	-1
3	17	3H	W 3	140	-6
13	6	3H	W 4	170	-6

25

♠ A  
♥ AKJ  
♦ AQ9832  
♣ 432

♠ J10763    ♠ Q9542  
♥ 965    ♥ Q87  
♦ K104    ♦ 76  
♣ A7    ♣ QJ5

♠ K8  
♥ 10432  
♦ J5  
♣ K10986



Board (25) Av: NS=+330

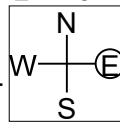
N-S	E-W	Contract	N-S	E-W	IMP
7	14	3NT	S 4	430	3
1	17	5C	N 5	400	2
15	10	3NT	S 3	400	2
9	13	3NT	S 3	400	2
4	18	3NT	S 3	400	2
16	3	3NT	S 3	400	2
19	2	3NT	N 3	400	2
6	12	3D	N 4	130	-5
8	11	3D	N 3	110	-6
20	5	3D	N 3	110	-6

26

♠ 109852  
♥ AJ10  
♦ 95  
♣ AK9

♠ A4    ♠ QJ73  
♥ K865    ♥ 942  
♦ AQJ84    ♦ 7632  
♣ 76    ♣ 83

♠ K6  
♥ Q73  
♦ K10  
♣ QJ10542



Board (26) Av: NS=+280

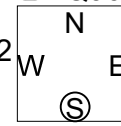
N-S	E-W	Contract	N-S	E-W	IMP
19	2	3NT	S 4	630	8
1	17	3NT	S 4	630	8
6	12	3NT	S 4	630	8
9	13	1NT	W-4	400	3
7	14	4C	S 4	130	-4
20	5	2C	S 4	130	-4
8	11	2C	S 4	130	-4
4	18	2NT	S 2	120	-4
15	10	1NT	W-1	100	-5
16	3	2H	W 2	110	-9

27

♠ J108  
♥  
♦ Q9874  
♣ AQ964

♠ 4    ♠ AQ97  
♥ K98742    ♥ A653  
♦ AK    ♦ J105  
♣ 8753    ♣ J2

♠ K6532  
♥ QJ10  
♦ 632  
♣ K10



Board (27) Av: NS=-380

N-S	E-W	Contract	N-S	E-W	IMP
1	17	4H	W-1	50	10
6	12	3S	S-2	100	7
15	10	4H	W 4	420	-1
8	11	4H	W 4	420	-1
7	14	4H	W 4	420	-1
19	2	4H	W 4	420	-1
16	3	4H	W 4	420	-1
4	18	4H	W 4	420	-1
20	5	4H	W 4	420	-1
9	13	4H	E 4	420	-1

28

♠ 1074  
♥ A72  
♦ Q82  
♣ AK98

♠ 32	N	♠ AKQJ85
♥ Q1084		♥ 9653
♦ 643	W	♦ A97
♣ QJ42	S	♣

♠ 96  
♥ KJ  
♦ KJ105  
♣ 107653

29

♠ K75  
♥ A  
♦ J108  
♣ AQ6543

♠ J62	N	♠ AQ109
♥ 654		♥ KJ82
♦ 654	W	♦ K93
♣ KJ109	S	♣ 82

♠ 843  
♥ Q10973  
♦ AQ72  
♣ 7

30

♠ AK95  
♥ QJ83  
♦ A8  
♣ K62

♠ QJ8643	N	♠ 102
♥ A6		♥ K1054
♦ 54	W	♦ K762
♣ AQ10	S	♣ J93

♠ 7  
♥ 972  
♦ QJ1093  
♣ 8754

Board (28) Av: NS=-70

N-S	E-W	Contract	N-S	E-W	IMP
7	14	3C	N 3	110	5
1	17	3C	N 3	110	5
19	2	4S	E-2	100	5
9	13	4S	E-1	50	3
20	5	3H	E-1	50	3
8	11	3H	W 3	140	-2
16	3	3H	W 3	140	-2
15	10	2S	E 3	140	-2
6	12	4S	E 4	420	-8
4	18	4H	W 4	420	-8

Board (29) Av: NS=+50

N-S	E-W	Contract	N-S	E-W	IMP
16	3	2C	N 3	110	2
15	10	2C	N 3	110	2
6	12	2C	N 3	110	2
9	13	2C	N 3	110	2
20	5	2C	N 2	90	1
19	2	2C	N 2	90	1
1	17	2C	N 2	90	1
7	14	3NT	N-1	100	-4
8	11	2H	S-1	100	-4
4	18	3NT	N-2	200	-6

Board (30) Av: NS=-90

N-S	E-W	Contract	N-S	E-W	IMP
1	17	2H	N-1	50	1
19	2	1NT	N-1	50	1
6	12	1NT	N-1	50	1
9	13	3D	S-2	100	0
7	14	3C	N-2	100	0
15	10	1NT	N-2	100	0
16	3	2S	W 2	110	-1
8	11	2S	W 2	110	-1
20	5	2S	W 2	110	-1
4	18	2S	W 2	110	-1