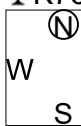


大阪府知事杯 OPEN TEAMS Session 1 Flight D 2016年8月28日(日)

1

♠AK108
♥AK106
♦32
♣K76

♠3 ♠QJ94
♥QJ543 ♥87
♦AJ976 ♦K1084
♣Q4 ♣A53



♠7652
♥92
♦Q5
♣J10982

Board (1) Av: NS=-20

N-S	E-W	Contract	N-S	E-W	IMP
9	8	2H W-2	100		3
4	5	2H W-2	100		3
1	7	1NT N 1	90		3
3	6	1NT N 1	90		3
5	4	3D W 4		130	-3
6	3	3D E 4		130	-3
7	1	2H E 3		140	-3
8	9	3NT N-5		250	-6

2

♠AQ983
♥72
♦J6
♣Q1082

♠106 ♠42
♥AKJ ♥Q109653
♦A109743 ♦Q
♣75 ♣K643



♠KJ75
♥84
♦K852
♣AJ9

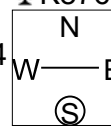
Board (2) Av: NS=+70

N-S	E-W	Contract	N-S	E-W	IMP
1	7	3S N 4	170		3
5	4	3S N 3	140		2
4	5	3S N 3	140		2
8	9	2S N 3	140		2
9	8	4H E-1	50		-1
7	1	4H E-1	50		-1
6	3	4S N-1		100	-5
3	6	3S N-1		100	-5

3

♠A10532
♥75
♦QJ
♣K876

♠J8 ♠76
♥AKJ104 ♥83
♦753 ♦AK10942
♣954 ♣Q32



♠KQ94
♥Q962
♦86
♣AJ10

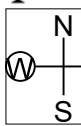
Board (3) Av: NS=+100

N-S	E-W	Contract	N-S	E-W	IMP
5	4	3S N 3	140		1
1	7	3S N 3	140		1
9	8	3S N 3	140		1
4	5	3S N 3	140		1
6	3	2S N 3	140		1
8	9	2S N 2	110		0
3	6	3S N-1		50	-4
7	1	4S N-2		100	-5

4

♠AK9753
♥KJ976
♦75
♣

♠J10 ♠Q64
♥AQ10 ♥854
♦AQ1094 ♦863
♣Q92 ♣J865



♠82
♥32
♦KJ2
♣AK10743

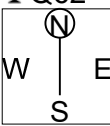
Board (4) Av: NS=+220

N-S	E-W	Contract	N-S	E-W	IMP
8	9	4S S 4	620		9
7	1	4H S 4	620		9
5	4	3D W-3	300		2
3	6	2S N 5	200		-1
6	3	3S N 4	170		-2
9	8	2H S 3	140		-2
1	7	4S S-1		100	-8
4	5	4H S-1		100	-8

5

♠864
♥K763
♦1063
♣Q62

♠J73 ♠Q109
♥1095 ♥AQJ
♦Q42 ♦K975
♣A874 ♣KJ3



♠AK52
♥842
♦AJ8
♣1095

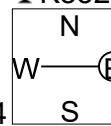
Board (5) Av: NS=-90

N-S	E-W	Contract	N-S	E-W	IMP
7	1	1NT S 2	120		5
3	6	1NT E-1	50		4
1	7	1NT E 2		120	-1
5	4	1NT E 2		120	-1
9	8	1NT E 2		120	-1
4	5	1NT E 2		120	-1
6	3	1NT E 2		120	-1
8	9	1NT E 3		150	-2

6

♠J
♥KJ1043
♦984
♣K852

♠A94 ♠10852
♥AQ2 ♥986
♦AJ5 ♦K102
♣AJ104 ♣963



♠KQ763
♥75
♦Q763
♣Q7

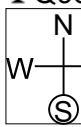
Board (6) Av: NS=+60

N-S	E-W	Contract	N-S	E-W	IMP
7	1	3NT W-2	200		4
5	4	2NT W-1	100		1
9	8	2NT W-1	100		1
1	7	2NT W-1	100		1
3	6	2NT W-1	100		1
8	9	2NT W-1	100		1
4	5	2NT W 2		120	-5
6	3	3NT W 3		600	-12

7

♠973
♥10984
♦KQ9
♣Q98

♠J105 ♠Q864
♥762 ♥KJ5
♦76 ♦A10542
♣AJ764 ♣2



♠AK2
♥AQ3
♦J83
♣K1053

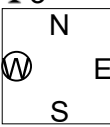
Board (7) Av: NS=+160

N-S	E-W	Contract	N-S	E-W	IMP
7	4	2D W-2	200		1
5	6	1NT S 4	180		1
6	5	1NT S 4	180		1
2	8	1NT S 3	150		0
1	9	1NT S 3	150		0
4	7	1NT S 3	150		0
9	1	1NT S 3	150		0
8	2	1NT S 2	120		-1

8

♠AQ73
♥Q742
♦10832
♣3

♠KJ964 ♠2
♥A108 ♥J95
♦AKJ5 ♦Q94
♣10 ♣AJ9742



♠1085
♥K63
♦76
♣KQ865

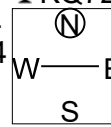
Board (8) Av: NS=+10

N-S	E-W	Contract	N-S	E-W	IMP
1	9	3NT E-2	100		3
9	1	3C E-2	100		3
4	7	3NT W-1	50		1
6	5	2D W-1	50		1
8	2	2D W-1	50		1
5	6	2D W 3		110	-3
7	4	2D W 3		110	-3
2	8	2D W 3		110	-3

9

♠52
♥96
♦A8652
♣KQ72

♠KQ84 ♠96
♥J1054 ♥AKQ832
♦K9 ♦Q73
♣1095 ♣A6



♠AJ1073
♥7
♦J104
♣J843

Board (9) Av: NS=-480

N-S	E-W	Contract	N-S	E-W	IMP
8	2	6H E-2	200		12
1	9	5D N-3		150	8
6	5	2H E 4		170	7
9	1	4H E 4		620	-4
5	6	4H E 4		620	-4
4	7	5H E 5		650	-5
7	4	4H E 5		650	-5
2	8	4H E 5		650	-5

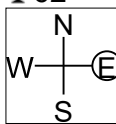
10

♠ A97
♥ AJ765
♦ J85
♣ 62

♠ KQ10
♥ 108
♦ Q107
♣ KQJ43

♠ J642
♥ 9
♦ 632
♣ A9875

♠ 853
♥ KQ432
♦ AK94
♣ 10



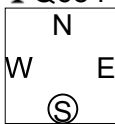
11

♠ AKQ104
♥ 84
♦ AQ
♣ Q654

♠ 3
♥ KQJ
♦ J865
♣ K10987

♠ 962
♥ 109762
♦ 1072
♣ A3

♠ J875
♥ A53
♦ K943
♣ J2



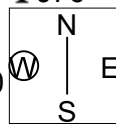
12

♠ 654
♥ A93
♦ 7432
♣ J76

♠ J983
♥ J864
♦ QJ10
♣ 95

♠ K7
♥ Q10
♦ AK965
♣ A843

♠ AQ102
♥ K752
♦ 8
♣ KQ102



Board (10) Av: NS=+470

N-S	E-W	Contract	N-S	E-W	IMP	
7	4	4H	S	4	620	4
2	8	4H	S	4	620	4
1	9	4H	S	4	620	4
6	5	4H	S	4	620	4
4	7	4H	S	4	620	4
9	1	3H	S	4	170	-7
8	2	3H	S	4	170	-7
5	6	5H	S-1	100	-11	

Board (11) Av: NS=+430

N-S	E-W	Contract	N-S	E-W	IMP	
7	4	4S	N	5	450	1
1	9	4S	N	5	450	1
6	5	4S	N	4	420	0
5	6	4S	N	4	420	0
4	7	4S	N	4	420	0
9	1	4S	N	4	420	0
8	2	4S	N	4	420	0
2	8	2S	S	3	140	-7

Board (12) Av: NS=0

N-S	E-W	Contract	N-S	E-W	IMP	
8	2	1NT	E-3	150	4	
6	5	3D	E-1	50	2	
1	9	1NT	E-1	50	2	
4	7	1NT	E-1	50	2	
9	1	1NT	E-1	50	2	
7	4	2D	E	2	90	-3
2	8	1NT	E	1	90	-3
5	6	1NT	E	1	90	-3

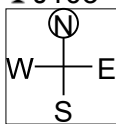
13

♠ AJ9
♥ J762
♦ KJ7
♣ J103

♠ K10
♥ AKQ98
♦ AQ3
♣ Q84

♠ Q6543
♥ 104
♦ 10984
♣ 62

♠ 872
♥ 53
♦ 652
♣ AK975



Board (13) Av: NS=0

N-S	E-W	Contract	N-S	E-W	IMP	
1	2	3NT	W-3	300	7	
8	5	3S	W-1	100	3	
7	6	3S	W-1	100	3	
6	7	3S	W-1	100	3	
2	1	1H	W	1	80	-2
3	9	1H	W	2	110	-3
5	8	1H	W	2	110	-3
9	3	1H	W	2	110	-3

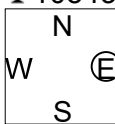
14

♠ 94
♥ AQ82
♦ 96
♣ 105432

♠ Q62
♥ 76
♦ 743
♣ KQJ86

♠ AKJ83
♥ J105
♦ Q108
♣ 97

♠ 1075
♥ K943
♦ AKJ52
♣ A



Board (14) Av: NS=+150

N-S	E-W	Contract	N-S	E-W	IMP	
8	5	4H	N	5	450	7
2	1	3H	N	5	200	2
5	8	3H	N	4	170	1
7	6	3S	E-3	150	0	
1	2	3S	E-3	150	0	
6	7	1NT	S	2	120	-1
3	9	3S	E-2	100	-2	
9	3	5H	N-1	50	-5	

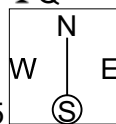
15

♠ AK8
♥ A1083
♦ A10754
♣ Q

♠ Q96
♥ J92
♦ KJ2
♣ K1075

♠ J
♥ Q4
♦ Q9863
♣ J9432

♠ 1075432
♥ K765
♦
♣ A86



Board (15) Av: NS=+650

N-S	E-W	Contract	N-S	E-W	IMP	
8	5	4S	S	5	650	0
3	9	4H	N	5	650	0
7	6	4H	N	5	650	0
2	1	4H	N	5	650	0
6	7	4H	N	5	650	0
5	8	4H	N	5	650	0
1	2	4H	N	4	620	-1
9	3	2D	N-1	100	-13	

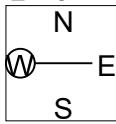
16

♠ AQJ9
♥ Q63
♦ K975
♣ A5

♠ 7432
♥ K742
♦ A
♣ K976

♠ 1085
♥ J1098
♦ Q4
♣ Q1032

♠ K6
♥ A5
♦ J108632
♣ J84



Board (16) Av: NS=+450

N-S	E-W	Contract	N-S	E-W	IMP	
7	6	3NT	N	6	490	1
2	1	3NT	N	5	460	0
5	8	3NT	N	5	460	0
9	3	3NT	N	5	460	0
6	7	3NT	N	5	460	0
1	2	3NT	N	5	460	0
3	9	3NT	N	3	400	-2
8	5	3D	S	5	150	-7

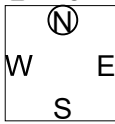
17

♠ 75
♥ J84
♦ K9876
♣ 743

♠ Q62
♥ 9765
♦ Q104
♣ 1085

♠ AKJ943
♥ AKQ10
♦ A3
♣ 2

♠ 108
♥ 32
♦ J52
♣ AKQJ96



Board (17) Av: NS=-450

N-S	E-W	Contract	N-S	E-W	IMP	
9	3	6S	E-1	50	11	
8	5	4S	E	5	450	0
7	6	4S	E	5	450	0
2	1	4S	E	5	450	0
3	9	4S	E	5	450	0
6	7	4S	E	5	450	0
1	2	4S	E	5	450	0
5	8	4S	E	5	450	0

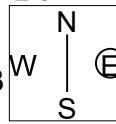
18

♠ J72
♥ KJ104
♦ J1072
♣ 92

♠ Q83
♥ 863
♦ A543
♣ 653

♠ K1054
♥ 752
♦ 86
♣ QJ74

♠ A96
♥ AQ9
♦ KQ9
♣ AK108



Board (18) Av: NS=+650

N-S	E-W	Contract	N-S	E-W	IMP	
5	8	3NT	S	6	690	1
3	9	3NT	S	5	660	0
2	1	3NT	S	5	660	0
1	2	3NT	S	5	660	0
6	7	3NT	S	4	630	-1
7	6	3NT	S	4	630	-1
8	5	3NT	S	4	630	-1
9	3	3NT	S	3	600	-2

19

♠ QJ
♥ AJ6
♦ J1094
♣ A972

♠ K8742
♥ K1053
♦ 6
♣ J64

♠ A963
♥ Q9742
♦ 3
♣ 1083

W — E
N — S
S

♠ 105
♥ 8
♦ AKQ8752
♣ KQ5

20

♠ 8654
♥ 54
♦ J43
♣ 10853

♠ 32
♥ K876
♦ K987
♣ Q94

♠ AQ9
♥ QJ1092
♦ 52
♣ 762

W — E
N — S
S

♠ KJ107
♥ A3
♦ AQ106
♣ AKJ

21

♠ Q64
♥ A4
♦ A104
♣ AKQ98

♠ 3
♥ 10763
♦ 962
♣ J10654

♠ J872
♥ KQJ9
♦ QJ5
♣ 32

W — E
N — S
S

♠ AK1095
♥ 852
♦ K873
♣ 7

Board (19) Av: NS=+100

N-S	E-W	Contract	N-S	E-W	IMP
9	6	5D	W-3	300	5
8	7	3NT	W-3	300	5
3	2	3NT	W-1	100	0
2	3	3NT	W-1	100	0
1	4	3D	W-1	100	0
6	9	3D	W-1	100	0
4	1	2D	W 2	90	-5
7	8	2D	W 3	110	-5

Board (20) Av: NS=-670

N-S	E-W	Contract	N-S	E-W	IMP
4	1	3NT	W 4	630	1
3	2	3NT	W 4	630	1
8	7	3NT	W 4	630	1
6	9	3NT	W 5	660	0
2	3	3NT	W 6	690	-1
9	6	3NT	W 6	690	-1
7	8	3NT	W 6	690	-1
1	4	6NT	W 6	1440	-13

Board (21) Av: NS=+660

N-S	E-W	Contract	N-S	E-W	IMP
8	7	3NT	S 5	660	0
9	6	3NT	N 5	660	0
4	1	3NT	N 5	660	0
1	4	3NT	N 5	660	0
2	3	3NT	N 5	660	0
7	8	3NT	N 5	660	0
6	9	3NT	N 4	630	-1
3	2	3NT	N 4	630	-1

22

♠ J42
♥ A10852
♦ K53
♣ A8

♠ AK75
♥ Q4
♦ J86
♣ 9742

♠ Q1098
♥ KJ9
♦ AQ
♣ Q1053

W — E
N — S
S

♠ 63
♥ 763
♦ 109742
♣ KJ6

23

♠ 987654
♥ 943
♦ J10
♣ A5

♠ A102
♥ 8652
♦ Q876
♣ 103

♠ AKJ3
♥ K107
♦ A
♣ Q7642

W — E
N — S
S

♠ A102
♥ 8652
♦ Q876
♣ 103

24

♠ Q74
♥ AQJ73
♦ K983
♣ 6

♠ J10853
♥ 942
♦ 107
♣ J54

♠ AK2
♥ K10
♦ QJ
♣ K109872

W — E
N — S
S

♠ 96
♥ 865
♦ A6542
♣ AQ3

Board (22) Av: NS=+420

N-S	E-W	Contract	N-S	E-W	IMP
6	9	3NT	S 4	430	0
4	1	4H	N 4	420	0
3	2	4H	N 4	420	0
8	7	4H	N 4	420	0
1	4	4H	N 4	420	0
7	8	4H	N 4	420	0
2	3	4H	N 4	420	0
9	6	4H	N-2	100	-11

Board (23) Av: NS=+80

N-S	E-W	Contract	N-S	E-W	IMP
3	2	4S	N 4	620	11
9	6	3S	S 4	170	3
8	7	3S	N 4	170	3
4	1	3S	N 4	170	3
2	3	3S	N 3	140	2
7	8	4S	S-1	100	-5
1	4	4S	N-1	100	-5
6	9	4S	N-1	100	-5

Board (24) Av: NS=+450

N-S	E-W	Contract	N-S	E-W	IMP
7	8	3NT	S 5	460	0
3	2	3NT	S 5	460	0
2	3	3NT	S 5	460	0
4	1	3NT	N 5	460	0
8	7	4H	N 5	450	0
9	6	3NT	S 4	430	-1
1	4	3NT	S 4	430	-1
6	9	3NT	S 4	430	-1

25

♠ J86
♥ 9
♦ Q8754
♣ AJ83

♠ A9753
♥ AQ865
♦
♣ K106

♠ K4
♥ J1072
♦ K10962
♣ 42

W — E
N — S
S

♠ Q102
♥ K43
♦ AJ3
♣ Q975

26

♠ KJ5
♥ 106432
♦ 63
♣ J97

♠ A863
♥ KJ
♦ Q8
♣ A6542

♠ 42
♥ A75
♦ 1097542
♣ K8

W — E
N — S
S

♠ Q1097
♥ Q98
♦ AKJ
♣ Q103

27

♠ 76
♥ J7532
♦ Q1073
♣ 86

♠ AKJ1054
♥ 1094
♦ J5
♣ 97

♠ Q8
♥ K
♦ K984
♣ AKQJ43

W — E
N — S
S

♠ 932
♥ AQ86
♦ A62
♣ 1052

Board (25) Av: NS=-620

N-S	E-W	Contract	N-S	E-W	IMP
5	2	6S	E-1	100	12
4	3	4S	E 4	620	0
3	4	4S	E 4	620	0
2	5	4S	E 4	620	0

Board (26) Av: NS=+100

N-S	E-W	Contract	N-S	E-W	IMP
5	2	4S	W-1	100	0
4	3	4S	W-1	100	0
3	4	4S	W-1	100	0
2	5	4S	W-1	100	0

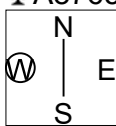
Board (27) Av: NS=-100

N-S	E-W	Contract	N-S	E-W	IMP
4	3	3S	E-1	50	4
5	2	4C	S-1	50	2
2	5	3S	E 3	140	-1
3	4	3S	E 4	170	-2

28

♠ 7
♥ K98
♦ 963
♣ A87653

♠ QJ1082
♥ 103
♦ AK42
♣ 104



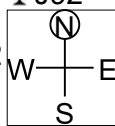
♠ A3
♥ AQJ654
♦ 1087
♣ Q9

♠ K9654
♥ 72
♦ QJ5
♣ KJ2

29

♠ AQ742
♥ AQ
♦ 1096
♣ J92

♠ K653
♥ KJ95432
♦ J
♣ K



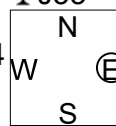
♠ J109
♥ 76
♦ K82
♣ A8754

♠ 8
♥ 108
♦ AQ7543
♣ Q1063

30

♠ J106
♥ AQ83
♦ 1094
♣ J53

♠ 8
♥ K10754
♦ AK762
♣ 42



♠ AQ974
♥ J92
♦ Q
♣ 10976

♠ K532
♥ 6
♦ J853
♣ AKQ8

Board (28) Av: NS=-170

N-S	E-W	Contract	N-S	E-W	IMP
4	3	3NT W-4	200		9
5	2	3H E 4		170	0
2	5	3H E 4		170	0
3	4	2H E 5		200	-1

Board (29) Av: NS=+180

N-S	E-W	Contract	N-S	E-W	IMP
4	3	3H W-2	200		1
3	4	3H W-2	200		1
5	2	3D S 5	150		-1
2	5	3D S 5	150		-1

Board (30) Av: NS=+110

N-S	E-W	Contract	N-S	E-W	IMP
5	2	1NT N 2	120		0
3	4	1NT N 2	120		0
2	5	1NT S 1	90		-1
4	3	2H W-1	50		-2

大阪府知事杯 OPEN TEAMS Session 2 Flight 2 2016年8月28日(日)

1

♠ 87
♥ A974
♦ AK762
♣ AJ

♠ KQ2
♥ 5
♦ 853
♣ K87642

♠ A96
♥ J2
♦ Q1094
♣ Q1053

♠ J10543
♥ KQ10863
♦ J
♣ 9

Board (1) Av: NS=+360

N-S	E-W	Contract	N-S	E-W	IMP
1	8	4H S 5	450		3
4	6	4H S 5	450		3
8	1	4H N 5	450		3
6	4	4H N 5	450		3
3	7	4H N 5	450		3
9	5	4H S 4	420		2
7	3	6H S-1		50	-9
5	9	6H N-1		50	-9

2

♠ KQ73
♥ QJ9843
♦ 74
♣ 6

♠ A9864
♥ A6
♦ AQ963
♣ 4

♠ J102
♥ K75
♦ J82
♣ AKQ9

♠ 5
♥ 102
♦ K105
♣ J1087532

Board (2) Av: NS=-30

N-S	E-W	Contract	N-S	E-W	IMP
4	6	5S W-2	100		4
9	5	5D W-1	50		2
3	7	4S W-1	50		2
1	8	4S W-1	50		2
6	4	4S W-1	50		2
8	1	4S W-1	50		2
7	3	4S W 4		420	-9
5	9	4S W 5		450	-9

3

♠ K8
♥ KQJ109843
♦ 4
♣ J6

♠ J9754
♥ 52
♦ Q92
♣ K82

♠ Q1032
♥ A7
♦ J1073
♣ Q107

♠ A6
♥ 6
♦ AK865
♣ A9543

Board (3) Av: NS=+480

N-S	E-W	Contract	N-S	E-W	IMP
6	4	6H N 6	980		11
3	7	4H N 6	480		0
7	3	4H N 6	480		0
9	5	4H N 6	480		0
5	9	4H N 6	480		0
1	8	4H N 6	480		0
4	6	4H N 6	480		0
8	1	4H N 6	480		0

4

♠ 65
♥ K985
♦ J74
♣ Q1085

♠ A9842
♥ 10
♦ A1095
♣ K76

♠ QJ103
♥ QJ74
♦ Q32
♣ 43

♠ K7
♥ A632
♦ K86
♣ AJ92

Board (4) Av: NS=-210

N-S	E-W	Contract	N-S	E-W	IMP
5	9	1NT S 2	120		8
1	8	1NT S 1	90		7
8	1	3S W 3		140	2
6	4	2S W 4		170	1
9	5	2S W 5		200	0
4	6	1NT S-2		200	0
3	7	4S W 4		620	-9
7	3	4Hx N-4		1100	-13

5

♠ K97
♥ 10964
♦ AJ74
♣ Q8

♠ AQ6543
♥ 73
♦ 853
♣ 109

♠ 8
♥ AJ82
♦ K102
♣ AJ732

♠ J102
♥ KQ5
♦ Q96
♣ K654

Board (5) Av: NS=-30

N-S	E-W	Contract	N-S	E-W	IMP
4	6	2S W-1	50		2
5	9	2S W-1	50		2
7	3	2S W-1	50		2
6	4	2S W-1	50		2
8	1	2S W 2		110	-2
3	7	2S W 2		110	-2
1	8	2NT E 2		120	-3
9	5	2S W 3		140	-3

6

♠ Q102
♥ AK87
♦ 3
♣ J10832

♠ A9
♥ QJ64
♦ AJ2
♣ AK64

♠ KJ87
♥ 1032
♦ 9875
♣ 97

♠ 6543
♥ 95
♦ KQ1064
♣ Q5

Board (6) Av: NS=-40

N-S	E-W	Contract	N-S	E-W	IMP
7	3	3NT W-1	100		4
1	8	2S E-1	100		4
8	1	1C W-1	100		4
9	5	1C W 1		70	-1
5	9	2NT W 2		120	-2
4	6	2NT W 2		120	-2
6	4	2NT W 3		150	-3
3	7	2NT W 4		180	-4

7

♠ K8
♥ AQ52
♦ Q9854
♣ 87

♠ 63
♥ KJ103
♦ KJ6
♣ KJ105

♠ AQ9
♥ 964
♦ A732
♣ Q43

♠ J107542
♥ 87
♦ 10
♣ A962

Board (7) Av: NS=-150

N-S	E-W	Contract	N-S	E-W	IMP
7	5	2NT E-2	200		8
4	8	3NT E-1	100		6
6	1	2H W 2		110	1
5	7	2NT E 2		120	1
2	9	2NT E 2		120	1
9	2	2NT E 3		150	0
1	6	4Sx S-2		500	-8
8	4	3NT E 3		600	-10

8

♠ K754
♥ J72
♦ J1072
♣ 53

♠ QJ92
♥ 105
♦ 96
♣ KQ742

♠ A1086
♥ A98
♦ AK5
♣ AJ6

♠ 3
♥ KQ643
♦ Q843
♣ 1098

Board (8) Av: NS=-500

N-S	E-W	Contract	N-S	E-W	IMP
5	7	3NT E 5	460		1
2	9	4S E 6	480		1
8	4	4S E 6	480		1
4	8	4S E 7	510		0
1	6	4S E 7	510		0
7	5	4S E 7	510		0
9	2	4S E 7	510		0
6	1	4S E 7	510		0

9

♠ J1097
♥ KQ10
♦ K1043
♣ 95

♠ 54
♥ J986
♦ A875
♣ J84

♠ 8632
♥ A74
♦ Q6
♣ A762

♠ AKQ
♥ 532
♦ J92
♣ KQ103

Board (9) Av: NS=+160

N-S	E-W	Contract	N-S	E-W	IMP
1	6	3NT S 4	430		7
9	2	3NT S 3	400		6
6	1	2NT S 4	180		1
8	4	2NT S 3	150		0
2	9	2NT S 3	150		0
5	7	2NT S 2	120		-1
4	8	3NT S-1		50	-5
7	5	3NT S-1		50	-5

10

♠ 1052
♥ A103
♦ 1074
♣ AJ54

♠ Q7
♥ 62
♦ J932
♣ K10876

N
W — E
S

♠ KJ963
♥ Q975
♦ AK
♣ Q3

♠ A84
♥ KJ84
♦ Q865
♣ 92

11

♠ AQ109
♥ J93
♦ J4
♣ QJ74

♠ 8642
♥ AQ865
♦ Q53
♣ 8

N
W — E
S

♠ K73
♥ K2
♦ AK109
♣ 9632

♠ J5
♥ 1074
♦ 8762
♣ AK105

12

♠ A86
♥
♦ AK8765
♣ 9752

♠ QJ102
♥ 95
♦ 1032
♣ KQJ8

N
W — E
S

♠ 94
♥ A10872
♦ Q94
♣ 1063

♠ K753
♥ KQJ643
♦ J
♣ A4

Board (10) Av: NS=+100

N-S	E-W	Contract	N-S	E-W	IMP
4	8	2S	E-1	100	0
6	1	2S	E-1	100	0
1	6	2S	E-1	100	0
8	4	2S	E-1	100	0
7	5	2S	E-1	100	0
2	9	2S	E-1	100	0
9	2	2S	E-1	100	0
5	7	1NT	W 3	150	-6

Board (11) Av: NS=-70

N-S	E-W	Contract	N-S	E-W	IMP
9	2	1NT	S 1	90	4
4	8	2D	E-1	50	3
7	5	2C	N-1	50	1
1	6	1NT	S-1	50	1
6	1	1NT	E 2	120	-2
2	9	1NT	E 2	120	-2
8	4	1NT	E 2	120	-2
5	7	2H	W 4	170	-3

Board (12) Av: NS=-70

N-S	E-W	Contract	N-S	E-W	IMP
7	5	3NT	N 4	630	12
9	2	2S	S 4	170	6
5	7	4H	S-1	100	-1
2	9	4H	S-1	100	-1
6	1	3NT	S-1	100	-1
4	8	3NT	N-1	100	-1
8	4	3NT	S-2	200	-4
1	6	3NT	S-2	200	-4

13

♠ 1097
♥ KJ9643
♦ 982
♣ 5

♠ KJ8542
♥ 2
♦ AK
♣ AKQ6

N
W — E
S

♠ AQ6
♥ 108
♦ 107653
♣ J42

♠ 3
♥ AQ75
♦ QJ4
♣ 109873

14

♠ AKJ2
♥ AQ982
♦ A
♣ AQ7

♠ 10654
♥ J103
♦ QJ2
♣ 1098

N
W — E
S

♠ Q983
♥ K76
♦ 64
♣ KJ64

♠ 7
♥ 54
♦ K1098753
♣ 532

15

♠ 764
♥ AKQ82
♦ Q10
♣ AJ7

♠ A10832
♥ 65
♦ K43
♣ 1094

N
W — E
S

♠ QJ
♥ J1073
♦ AJ852
♣ KQ

♠ K95
♥ 94
♦ 976
♣ 86532

Board (13) Av: NS=-810

N-S	E-W	Contract	N-S	E-W	IMP
4	9	4S	W 6	680	4
9	4	4S	W 6	680	4
7	2	4S	W 6	680	4
3	1	4S	W 6	680	4
8	6	4S	W 6	680	4
6	8	4S	W 6	680	4
1	3	6S	W 6	1430	-12
2	7	6S	W 6	1430	-12

Board (14) Av: NS=+180

N-S	E-W	Contract	N-S	E-W	IMP
6	8	4H	N 5	450	7
4	9	3NT	N 4	430	6
8	6	4H	N 4	420	6
3	1	3NT	N 3	400	6
7	2	3NT	N-1	50	-6
9	4	3NT	N-1	50	-6
1	3	6H	N-2	100	-7
2	7	6D	S-2	100	-7

Board (15) Av: NS=-130

N-S	E-W	Contract	N-S	E-W	IMP
6	8	3D	E-1	50	5
4	9	1H	N-1	100	1
1	3	1H	N-1	100	1
2	7	2D	E 3	110	1
9	4	2D	E 4	130	0
7	2	4D	E 5	150	-1
8	6	2H	N-2	200	-2
3	1	1NT	N-3	300	-5

16

♠ AJ9732
♥ 973
♦ 62
♣ KQ

♠ K4
♥ Q542
♦ KQ74
♣ 1084

N
W — E
S

♠ 105
♥ AKJ10
♦ J3
♣ A7652

♠ Q86
♥ 86
♦ A10985
♣ J93

17

♠ KJ532
♥ AJ7
♦ 98
♣ Q42

♠ 1098
♥ 85
♦ AK754
♣ J86

N
W — E
S

♠ AQ64
♥ K964
♦ J10
♣ 753

♠ 7
♥ Q1032
♦ Q632
♣ AK109

18

♠ Q108
♥ 63
♦ A974
♣ 9654

♠ K3
♥ Q84
♦ J52
♣ 108732

N
W — E
S

♠ A542
♥ 109
♦ Q1063
♣ AKJ

♠ J976
♥ AKJ752
♦ K8
♣ Q

Board (16) Av: NS=+160

N-S	E-W	Contract	N-S	E-W	IMP
3	1	4S	N 4	420	6
8	6	3H	W-2	200	1
9	4	3S	N 4	170	0
4	9	3S	N 4	170	0
6	8	3S	N 4	170	0
1	3	3S	N 3	140	-1
2	7	2NT	W-1	100	-2
7	2	4S	N-1	50	-5

Board (17) Av: NS=-30

N-S	E-W	Contract	N-S	E-W	IMP
4	9	2NT	S 3	150	5
2	7	2NT	S 2	120	4
7	2	Passout			1
6	8	Passout			1
3	1	2NT	S-1	50	-1
8	6	3NT	S-2	100	-2
1	3	3NT	S-3	150	-3
9	4	2S	N-3	150	-3

Board (18) Av: NS=+140

N-S	E-W	Contract	N-S	E-W	IMP
9	4	2H	S 3	140	0
7	2	2H	S 3	140	0
2	7	2H	S 3	140	0
4	9	2H	S 3	140	0
3	1	2H	S 3	140	0
8	6	2H	S 3	140	0
6	8	2H	S 3	140	0
1	3	1H	S 3	140	0

19

♠ 652
♥ 82
♦ 5432
♣ K965

♠ AKQ107
♥ K97
♦ AK10
♣ 104

N
W — E
S

♠ 843
♥ QJ104
♦ 976
♣ J73

♠ J9
♥ A653
♦ QJ8
♣ AQ82

20

♠ 52
♥ 732
♦ KJ64
♣ KQJ2

♠ Q764
♥ A
♦ A1073
♣ 9654

N
W — E
S

♠ AKJ10
♥ K854
♦ Q5
♣ A73

♠ 983
♥ QJ1096
♦ 982
♣ 108

21

♠ 952
♥ KQ7
♦ Q1063
♣ 1096

♠ 843
♥ AJ105
♦ J
♣ J8532

N
W — E
S

♠ AKJ7
♥ 83
♦ AK8752
♣ Q

♠ Q106
♥ 9642
♦ 94
♣ AK74

Board (19) Av: NS=-330

N-S	E-W	Contract	N-S	E-W	IMP
3	8	1S W 4		170	4
4	2	1S W 4		170	4
8	3	1S W 4		170	4
5	1	3H E 5		200	4
1	5	1S W 5		200	4
9	7	4S W 4		620	-7
2	4	4S W 4		620	-7
7	9	4S W 5		650	-8

Board (20) Av: NS=-620

N-S	E-W	Contract	N-S	E-W	IMP
3	8	3NT E-2	200		13
2	4	3NT E 3	600		1
8	3	4S W 4	620		0
4	2	4S E 4	620		0
1	5	4S E 4	620		0
7	9	4S E 4	620		0
5	1	4S E 5	650		-1
9	7	4S E 5	650		-1

Board (21) Av: NS=-120

N-S	E-W	Contract	N-S	E-W	IMP
4	2	3NT W-3	150		7
9	7	4S E-1	50		5
1	5	3D E-1	50		5
2	4	2D E 3	110		0
7	9	2NT E 2	120		0
8	3	1S E 4	170		-2
5	1	3NT W 3	400		-7
3	8	3NT E 3	400		-7

22

♠ 72
♥ AQ10
♦ 1094
♣ AQ942

♠ Q109
♥ K8764
♦ Q32
♣ K10

N
W — E
S

♠ J543
♥ 9
♦ A65
♣ J8765

♠ AK86
♥ J532
♦ KJ87
♣ 3

23

♠ A1072
♥ 9732
♦ AQ1053
♣

♠ KQ4
♥ QJ854
♦ 92
♣ J75

N
W — E
S

♠ 8653
♥ A106
♦ 87
♣ AQ96

♠ J9
♥ K
♦ KJ64
♣ K108432

24

♠ KJ10732
♥ KJ7
♦ A742
♣

♠ Q
♥ 98542
♦ J85
♣ Q1087

N
W — E
S

♠ A4
♥ 106
♦ K1093
♣ K9532

♠ 9865
♥ AQ3
♦ Q6
♣ AJ64

Board (22) Av: NS=+410

N-S	E-W	Contract	N-S	E-W	IMP
1	5	3NT S 4	430		1
7	9	3NT N 4	430		1
5	1	3NT S 3	400		0
3	8	3NT S 3	400		0
2	4	3NT S 3	400		0
9	7	3NT S 3	400		0
4	2	3NT N 3	400		0
8	3	3NT S-2	100		-11

Board (23) Av: NS=+80

N-S	E-W	Contract	N-S	E-W	IMP
2	4	3D N 5	150		2
1	5	3D N 4	130		2
3	8	3D N 4	130		2
4	2	3D N 3	110		1
8	3	2C S 3	110		1
5	1	Passout			-2
9	7	Passout			-2
7	9	2NT S-1	100		-5

Board (24) Av: NS=+470

N-S	E-W	Contract	N-S	E-W	IMP
3	8	4S N 6	480		0
1	5	4S N 6	480		0
2	4	4S N 6	480		0
7	9	4S N 6	480		0
5	1	5S N 5	450		-1
9	7	4S N 5	450		-1
8	3	4S N 5	450		-1
4	2	6S N-1	50		-11

25

♠ A94
♥ AK1052
♦ Q82
♣ 52

♠ 103
♥ Q987
♦ K
♣ AJ9864

N
W — E
S

♠ Q62
♥
♦ AJ9653
♣ KQ107

♠ KJ875
♥ J643
♦ 1074
♣ 3

26

♠ 5
♥ K762
♦ 1095432
♣ A3

♠ J76
♥ A1054
♦ Q
♣ J7652

N
W — E
S

♠ KQ3
♥ Q98
♦ AK8
♣ KQ108

♠ A109842
♥ J3
♦ J76
♣ 94

27

♠ AKQ72
♥ 7
♦ QJ2
♣ J1087

♠ 1054
♥ 643
♦ 1074
♣ AK54

N
W — E
S

♠ 863
♥ J10852
♦ A
♣ Q632

♠ J9
♥ AKQ9
♦ K98653
♣ 9

Board (25) Av: NS=-80

N-S	E-W	Contract	N-S	E-W	IMP
3	5	2H N 4	170		6
5	3	2H N-1	50		1
2	6	3D E 3	110		-1
6	2	5C W 7	640		-11

Board (26) Av: NS=-630

N-S	E-W	Contract	N-S	E-W	IMP
3	5	2NT E 4	180		10
2	6	3NT E 4	630		0
5	3	3NT E 4	630		0
6	2	3NT E 5	660		-1

Board (27) Av: NS=+420

N-S	E-W	Contract	N-S	E-W	IMP
2	6	3NT S 5	460		1
6	2	3NT S 4	430		0
5	3	5D S 5	400		-1
3	5	3NT S 3	400		-1

28

♠ K6
♥ Q1053
♦ 10632
♣ K104

♠ 1092
♥ 97642
♦ J4
♣ J92

N		E
W		S

♠ AQJ8743
♥ KJ
♦ AK
♣ AQ

♠ 5
♥ A8
♦ Q9875
♣ 87653

29

♠ K
♥ 8743
♦ 1072
♣ KQJ106

♠ QJ985
♥ QJ109
♦ 963
♣ 8

N		E
W		S

♠ 7632
♥ K5
♦ AK8
♣ A432

♠ A104
♥ A62
♦ QJ54
♣ 975

30

♠ A4
♥ 9743
♦ KQ987
♣ J5

♠ J875
♥ QJ86
♦ A5
♣ K76

N		E
W		S

♠ 1092
♥ 1052
♦ 632
♣ A1092

♠ KQ63
♥ AK
♦ J104
♣ Q843

Board (28) Av: NS=-450

N-S	E-W	Contract	N-S	E-W	IMP
2	6	5S E 5			450 0
6	2	5S E 5			450 0
5	3	4S E 5			450 0
3	5	4S E 5			450 0

Board (29) Av: NS=-170

N-S	E-W	Contract	N-S	E-W	IMP
6	2	2S W 3			140 1
2	6	2S W 4			170 0
3	5	2S W 4			170 0
5	3	4S W 4			620 -10

Board (30) Av: NS=+430

N-S	E-W	Contract	N-S	E-W	IMP
2	6	3NT S 4			430 0
6	2	3NT S 4			430 0
5	3	3NT S 4			430 0
3	5	3NT S 3			400 -1