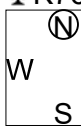


大阪府知事杯 OPEN TEAMS Session 1 Flight B 2016年8月28日(日)

1

♠AK108
♥AK106
♦32
♣K76

♠3 ♠QJ94
♥QJ543 ♥87
♦AJ976 ♦K1084
♣Q4 ♣A53



♠7652
♥92
♦Q5
♣J10982

Board (1) Av: NS=-110

N-S	E-W	Contract	N-S	E-W	IMP
10	9	2H	W-2	100	5
3	1	2S	N-2	100	0
9	10	3D	W 3	110	0
1	3	2H	W 2	110	0
8	6	2H	W 2	110	0
6	8	2H	W 2	110	0
5	4	2H	W 2	110	0
4	5	3D	W 4	130	-1

2

♠AQ983
♥72
♦J6
♣Q1082

♠106 ♠42
♥AKJ ♥Q109653
♦A109743 ♦Q
♣75 ♣K643



♠KJ75
♥84
♦K852
♣AJ9

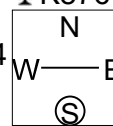
Board (2) Av: NS=+210

N-S	E-W	Contract	N-S	E-W	IMP
6	8	4S	N 4	620	9
5	4	4S	N 4	620	9
1	3	5Hx	E-2	300	3
9	10	2S	N 4	170	-1
8	6	3S	N 3	140	-2
3	1	3S	N 3	140	-2
10	9	4S	N-1	100	-7
4	5	3H	E 3	140	-8

3

♠A10532
♥75
♦QJ
♣K876

♠J8 ♠76
♥AKJ104 ♥83
♦753 ♦AK10942
♣954 ♣Q32



♠KQ94
♥Q962
♦86
♣AJ10

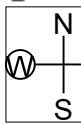
Board (3) Av: NS=+90

N-S	E-W	Contract	N-S	E-W	IMP
10	9	4D	E-2	200	3
8	6	3S	N 3	140	2
4	5	2S	N 3	140	2
3	1	2S	N 2	110	1
1	3	2S	N 2	110	1
6	8	4D	E-1	100	0
5	4	4S	N-1	50	-4
9	10	4S	N-1	50	-4

4

♠AK9753
♥KJ976
♦75
♣

♠J10 ♠Q64
♥AQ10 ♥854
♦AQ1094 ♦863
♣Q92 ♣J865



♠82
♥32
♦KJ2
♣AK10743

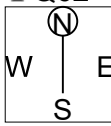
Board (4) Av: NS=+170

N-S	E-W	Contract	N-S	E-W	IMP
6	8	4S	N 5	650	10
10	9	4H	S 4	620	10
9	10	2H	S 4	170	0
3	1	2H	S 4	170	0
5	4	2H	S 4	170	0
4	5	2C	N 2	90	-2
8	6	3S	N-2	200	-9
1	3	3S	N-2	200	-9

5

♠864
♥K763
♦1063
♣Q62

♠J73 ♠Q109
♥1095 ♥AQJ
♦Q42 ♦K975
♣A874 ♣KJ3



♠AK52
♥842
♦AJ8
♣1095

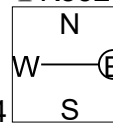
Board (5) Av: NS=-130

N-S	E-W	Contract	N-S	E-W	IMP
3	1	1NT	E 1	90	1
9	10	1NT	E 2	120	0
4	5	1NT	E 2	120	0
8	6	1NT	E 2	120	0
6	8	1NT	E 2	120	0
10	9	1NT	E 2	120	0
5	4	1NT	E 3	150	-1
1	3	1NT	E 3	150	-1

6

♠J
♥KJ1043
♦984
♣K852

♠A94 ♠10852
♥AQ2 ♥986
♦AJ5 ♦K102
♣AJ104 ♣963



♠KQ763
♥75
♦Q763
♣Q7

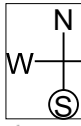
Board (6) Av: NS=-50

N-S	E-W	Contract	N-S	E-W	IMP
10	9	3NT	W-2	200	6
5	4	2NT	W-1	100	4
1	3	2NT	W-1	100	4
3	1	2NT	W 2	120	-2
8	6	2NT	W 2	120	-2
4	5	2NT	W 2	120	-2
6	8	2NT	W 2	120	-2
9	10	2NT	W 2	120	-2

7

♠973
♥10984
♦KQ9
♣Q98

♠J105 ♠Q864
♥762 ♥KJ5
♦76 ♦A10542
♣AJ764 ♣2



♠AK2
♥AQ3
♦J83
♣K1053

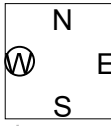
Board (7) Av: NS=+150

N-S	E-W	Contract	N-S	E-W	IMP
4	2	1NT	S 5	210	2
10	6	1NT	S 3	150	0
9	7	1NT	S 3	150	0
2	4	1NT	S 3	150	0
5	1	1NT	S 3	150	0
7	9	1NT	S 3	150	0
6	10	1NT	S 3	150	0
1	5	1NT	S 3	150	0

8

♠AQ73
♥Q742
♦10832
♣3

♠KJ964 ♠2
♥A108 ♥J95
♦AKJ5 ♦Q94
♣10 ♣AJ9742



♠1085
♥K63
♦76
♣KQ865

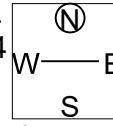
Board (8) Av: NS=+10

N-S	E-W	Contract	N-S	E-W	IMP
6	10	3NT	E-3	150	4
1	5	3NT	E-2	100	3
5	1	3NT	E-1	50	1
9	7	3NT	E-1	50	1
2	4	2D	W-1	50	1
4	2	2D	W 2	90	-3
7	9	2D	W 2	90	-3
10	6	2D	W 2	90	-3

9

♠52
♥96
♦A8652
♣KQ72

♠KQ84 ♠96
♥J1054 ♥AKQ832
♦K9 ♦Q73
♣1095 ♣A6



♠AJ1073
♥7
♦J104
♣J843

Board (9) Av: NS=-650

N-S	E-W	Contract	N-S	E-W	IMP
6	10	4H	E 4	620	1
4	2	4H	E 4	620	1
10	6	5H	E 5	650	0
2	4	4H	E 5	650	0
9	7	4H	E 5	650	0
7	9	4H	E 5	650	0
1	5	4H	E 5	650	0
5	1	4H	E 5	650	0

10

♠ A97
♥ AJ765
♦ J85
♣ 62

♠ KQ10
♥ 108
♦ Q107
♣ KQJ43

N
W — | — E
S

♠ J642
♥ 9
♦ 632
♣ A9875

♠ 853
♥ KQ432
♦ AK94
♣ 10

11

♠ AKQ104
♥ 84
♦ AQ
♣ Q654

♠ 3
♥ KQJ
♦ J865
♣ K10987

N
W — | — E
S

♠ 962
♥ 109762
♦ 1072
♣ A3

♠ J875
♥ A53
♦ K943
♣ J2

12

♠ 654
♥ A93
♦ 7432
♣ J76

♠ J983
♥ J864
♦ QJ10
♣ 95

N
W — | — E
S

♠ K7
♥ Q10
♦ AK965
♣ A843

♠ AQ102
♥ K752
♦ 8
♣ KQ102

Board (10) Av: NS=+600

N-S	E-W	Contract	N-S	E-W	IMP
6	10	4H S 5	650		2
10	6	4H S 4	620		1
5	1	4H S 4	620		1
9	7	4H S 4	620		1
1	5	4H S 4	620		1
7	9	4H S 4	620		1
2	4	5Cx W-2	500		-3
4	2	5Cx W-2	500		-3

Board (11) Av: NS=+450

N-S	E-W	Contract	N-S	E-W	IMP
10	6	4S N 5	450		0
5	1	4S N 5	450		0
9	7	4S N 5	450		0
6	10	4S N 5	450		0
7	9	4S N 5	450		0
2	4	4S N 5	450		0
1	5	4S N 5	450		0
4	2	4S N 4	420		-1

Board (12) Av: NS=0

N-S	E-W	Contract	N-S	E-W	IMP
10	6	2H N 3	140		4
9	7	2H N 2	110		3
2	4	3D E-2	100		3
7	9	1NT E-1	50		2
4	2	1NT E 1		90	-3
5	1	1NT E 1		90	-3
1	5	3H N-1		100	-3
6	10	2H N-1		100	-3

13

♠ AJ9
♥ J762
♦ KJ7
♣ J103

♠ K10
♥ AKQ98
♦ AQ3
♣ Q84

N
W — | — E
S

♠ Q6543
♥ 104
♦ 10984
♣ 62

♠ 872
♥ 53
♦ 652
♣ AK975

14

♠ 94
♥ AQ82
♦ 96
♣ 105432

♠ Q62
♥ 76
♦ 743
♣ KQJ86

N
W — | — E
S

♠ AKJ83
♥ J105
♦ Q108
♣ 97

♠ 1075
♥ K943
♦ AKJ52
♣ A

15

♠ AK8
♥ A1083
♦ A10754
♣ Q

♠ Q96
♥ J92
♦ KJ2
♣ K1075

N
W — | — E
S

♠ J
♥ Q4
♦ Q9863
♣ J9432

♠ 1075432
♥ K765
♦
♣ A86

Board (13) Av: NS=+180

N-S	E-W	Contract	N-S	E-W	IMP
1	2	3S W-3	300		3
8	10	3S W-3	300		3
3	5	3S W-3	300		3
10	8	3S W-2	200		1
6	7	4S W-1	100		-2
7	6	3S W-1	100		-2
5	3	3S W-1	100		-2
2	1	1H W 3		140	-8

Board (14) Av: NS=+310

N-S	E-W	Contract	N-S	E-W	IMP
2	1	4H S 5	450		4
10	8	4H N 5	450		4
1	2	4H N 5	450		4
6	7	4H S 4	420		3
3	5	3H N 5	200		-3
8	10	3H N 4	170		-4
5	3	3H N 4	170		-4
7	6	1NT S 1	90		-6

Board (15) Av: NS=+650

N-S	E-W	Contract	N-S	E-W	IMP
5	3	4S S 6	680		1
2	1	4S S 6	680		1
10	8	4H N 5	650		0
1	2	4H N 5	650		0
8	10	4H N 5	650		0
7	6	4H N 5	650		0
3	5	4H N 4	620		-1
6	7	6H N-1		100	-13

16

♠ AQJ9
♥ Q63
♦ K975
♣ A5

♠ 7432
♥ K742
♦ A
♣ K976

N
W — | — E
S

♠ 1085
♥ J1098
♦ Q4
♣ Q1032

♠ K6
♥ A5
♦ J108632
♣ J84

17

♠ 75
♥ J84
♦ K9876
♣ 743

♠ Q62
♥ 9765
♦ Q104
♣ 1085

N
W — | — E
S

♠ AKJ943
♥ AKQ10
♦ A3
♣ 2

♠ 108
♥ 32
♦ J52
♣ AKQJ96

18

♠ J72
♥ KJ104
♦ J1072
♣ 92

♠ Q83
♥ 863
♦ A543
♣ 653

N
W — | — E
S

♠ K1054
♥ 752
♦ 86
♣ QJ74

♠ A96
♥ AQ9
♦ KQ9
♣ AK108

Board (16) Av: NS=+470

N-S	E-W	Contract	N-S	E-W	IMP
6	7	3NT N 6	490		1
7	6	3NT N 6	490		1
5	3	3NT N 5	460		0
1	2	3NT N 5	460		0
10	8	3NT N 5	460		0
3	5	3NT N 5	460		0
2	1	3NT N 5	460		0
8	10	3NT N 5	460		0

Board (17) Av: NS=-450

N-S	E-W	Contract	N-S	E-W	IMP
7	6	5S E 5	450		0
1	2	4S E 5	450		0
5	3	4S E 5	450		0
10	8	4S E 5	450		0
2	1	4S E 5	450		0
3	5	4S E 5	450		0
8	10	4S E 5	450		0
6	7	5Cx S-4		800	-8

Board (18) Av: NS=+660

N-S	E-W	Contract	N-S	E-W	IMP
10	8	3NT S 6	690		1
5	3	3NT S 6	690		1
8	10	3NT S 6	690		1
7	6	3NT S 5	660		0
2	1	3NT S 5	660		0
1	2	3NT S 4	630		-1
3	5	3NT S 4	630		-1
6	7	3NT S-2		200	-13

19

♠ QJ
♥ AJ6
♦ J1094
♣ A972

♠ K8742
♥ K1053
♦ 6
♣ J64

♠ A963
♥ Q9742
♦ 3
♣ 1083

W — E
N — S
♠ 105
♥ 8
♦ AKQ8752
♣ KQ5

20

♠ 8654
♥ 54
♦ J43
♣ 10853

♠ 32
♥ K876
♦ K987
♣ Q94

♠ AQ9
♥ QJ1092
♦ 52
♣ 762

W — E
N — S
♠ KJ107
♥ A3
♦ AQ106
♣ AKJ

21

♠ Q64
♥ A4
♦ A104
♣ AKQ98

♠ 3
♥ 10763
♦ 962
♣ J10654

♠ J872
♥ KQJ9
♦ QJ5
♣ 32

W — E
N — S
♠ AK1095
♥ 852
♦ K873
♣ 7

Board (19) Av: NS=+80

N-S	E-W	Contract	N-S	E-W	IMP
9	6	2C	W-3	300	6
2	3	3NT	W-2	200	3
3	2	3NT	W-1	100	1
7	8	3D	W-1	100	1
8	7	3D	W-1	100	1
4	1	3D	W-1	100	1
1	4	2D	W 3	110	-5
6	9	2NT	W 2	120	-5

Board (20) Av: NS=-680

N-S	E-W	Contract	N-S	E-W	IMP
8	7	3NT	W 4	630	2
2	3	3NT	W 5	660	1
4	1	3NT	W 5	660	1
9	6	4S	W 6	680	0
6	9	3NT	W 6	690	0
1	4	3NT	W 6	690	0
3	2	3NT	W 6	690	0
7	8	3NT	W 6	690	0

Board (21) Av: NS=+650

N-S	E-W	Contract	N-S	E-W	IMP
6	9	3NT	N 5	660	0
7	8	3NT	N 5	660	0
8	7	3NT	N 5	660	0
3	2	3NT	N 5	660	0
9	6	3NT	N 5	660	0
1	4	3NT	N 4	630	-1
4	1	3NT	N 4	630	-1
2	3	3NT	N 4	630	-1

22

♠ J42
♥ A10852
♦ K53
♣ A8

♠ AK75
♥ Q4
♦ J86
♣ 9742

♠ Q1098
♥ KJ9
♦ AQ
♣ Q1053

W — E
N — S
♠ 63
♥ 763
♦ 109742
♣ KJ6

23

♠ 987654
♥ 943
♦ J10
♣ A5

♠ AQJ
♥ K95432
♦ KJ98
♣ KJ98

♠ KQJ3
♥ K107
♦ A
♣ Q7642

W — E
N — S
♠ A102
♥ 8652
♦ Q876
♣ 103

24

♠ Q74
♥ AQJ73
♦ K983
♣ 6

♠ J10853
♥ 942
♦ 107
♣ J54

♠ AK2
♥ K10
♦ QJ
♣ K109872

W — E
N — S
♠ 96
♥ 865
♦ A6542
♣ AQ3

Board (22) Av: NS=+430

N-S	E-W	Contract	N-S	E-W	IMP
3	2	3NT	N 5	460	1
2	3	4H	N 5	450	1
1	4	4H	S 4	420	0
7	8	4H	N 4	420	0
6	9	4H	N 4	420	0
4	1	4H	N 4	420	0
8	7	4H	N 4	420	0
9	6	3NT	N 3	400	-1

Board (23) Av: NS=+470

N-S	E-W	Contract	N-S	E-W	IMP
2	3	4S	N 5	650	5
1	4	4S	N 5	650	5
7	8	4S	N 4	620	4
6	9	4S	N 4	620	4
3	2	4S	N 4	620	4
4	1	3S	S 3	140	-8
8	7	3S	N 3	140	-8
9	6	4S	N-1	100	-11

Board (24) Av: NS=+460

N-S	E-W	Contract	N-S	E-W	IMP
7	8	3NT	S 5	460	0
2	3	3NT	S 5	460	0
1	4	3NT	S 5	460	0
6	9	3NT	N 5	460	0
9	6	3NT	N 5	460	0
4	1	3NT	N 5	460	0
3	2	3NT	N 5	460	0
8	7	3NT	N 4	430	-1

25

♠ J86
♥ 9
♦ Q8754
♣ AJ83

♠ A9753
♥ AQ865
♦
♣ K106

♠ K4
♥ J1072
♦ K10962
♣ 42

W — E
N — S
♠ Q102
♥ K43
♦ AJ3
♣ Q975

26

♠ KJ5
♥ 106432
♦ 63
♣ J97

♠ A863
♥ KJ
♦ Q8
♣ A6542

♠ 42
♥ A75
♦ 1097542
♣ K8

W — E
N — S
♠ Q1097
♥ Q98
♦ AKJ
♣ Q103

27

♠ 76
♥ J7532
♦ Q1073
♣ 86

♠ AKJ1054
♥ 1094
♦ J5
♣ 97

♠ Q8
♥ K
♦ K984
♣ AKQJ43

W — E
N — S
♠ 932
♥ AQ86
♦ A62
♣ 1052

Board (25) Av: NS=+10

N-S	E-W	Contract	N-S	E-W	IMP
5	2	6H	E-2	200	5
2	5	5S	E-2	200	5
10	7	5S	E-2	200	5
8	9	5S	E-1	100	3
3	4	4S	E-1	100	3
9	8	4S	E-1	100	3
4	3	4S	E 4	620	-12
7	10	4S	E 5	650	-12

Board (26) Av: NS=-140

N-S	E-W	Contract	N-S	E-W	IMP
4	3	4S	W-2	200	8
8	9	4S	W-1	100	6
2	5	4S	W-1	100	6
5	2	4S	W-1	100	6
9	8	4S	W-1	100	6
10	7	4S	W 4	620	-10
7	10	4S	W 4	620	-10
3	4	4S	W 4	620	-10

Board (27) Av: NS=-140

N-S	E-W	Contract	N-S	E-W	IMP
7	10	4D	N 4	130	7
10	7	5D	S-2	100	1
4	3	4D	S-2	100	1
2	5	3S	E 3	140	0
8	9	3S	W 4	170	-1
3	4	3S	E 4	170	-1
9	8	2S	E 4	170	-1
5	2	4S	E 4	420	-7

大阪府知事杯 OPEN TEAMS Session 1 Flight B 2016年8月28日(日)

28

♠ 7
♥ K98
♦ 963
♣ A87653

♠ QJ1082
♥ 103
♦ AK42
♣ 104

N		E
W		
S		

♠ A3
♥ AQJ654
♦ 1087
♣ Q9

♠ K9654
♥ 72
♦ QJ5
♣ KJ2

29

♠ AQ742
♥ AQ
♦ 1096
♣ J92

♠ K653
♥ KJ95432
♦ J
♣ K

N		E
W		
S		

♠ J109
♥ 76
♦ K82
♣ A8754

♠ 8
♥ 108
♦ AQ7543
♣ Q1063

30

♠ J106
♥ AQ83
♦ 1094
♣ J53

♠ 8
♥ K10754
♦ AK762
♣ 42

N		E
W		
S		

♠ AQ974
♥ J92
♦ Q
♣ 10976

♠ K532
♥ 6
♦ J853
♣ AKQ8

Board (28) Av: NS=-220

N-S	E-W	Contract	N-S	E-W	IMP
7	10	4H E-1	50		7
3	4	3C N-1		100	3
8	9	3H E 4		170	2
9	8	3H E 4		170	2
4	3	3H E 4		170	2
5	2	1NT N-3		300	-2
10	7	4H E 4		420	-5
2	5	4H E 4		420	-5

Board (29) Av: NS=+120

N-S	E-W	Contract	N-S	E-W	IMP
8	9	3H W-2	200		2
7	10	3D S 5	150		1
10	7	3D S 5	150		1
9	8	3D S 3	110		0
2	5	2H W-1	100		-1
4	3	2H W-1	100		-1
5	2	2H W-1	100		-1
3	4	2H W 2		110	-6

Board (30) Av: NS=-30

N-S	E-W	Contract	N-S	E-W	IMP
10	7	2NT N 2	120		4
2	5	2H W-2	100		4
9	8	3H E-1	50		2
5	2	3H E-1	50		2
4	3	2H W 2		110	-2
8	9	3H E 3		140	-3
7	10	2H W 3		140	-3
3	4	2H W 3		140	-3

大阪府知事杯 OPEN TEAMS Session 2 Flight B 2016年8月28日(日)

1

♠87
♥A974
♦AK762
♣AJ

♠KQ2
♥5
♦853
♣K87642

♠A96
♥J2
♦Q1094
♣Q1053

♠J10543
♥KQ10863
♦J
♣9

Board (1) Av: NS=+450

N-S	E-W	Contract	N-S	E-W	IMP
8	4	4H N 5	450		0
9	3	4H N 5	450		0
3	9	4H N 5	450		0
7	5	4H N 5	450		0
2	10	4H N 5	450		0
1	6	4H N 5	450		0
6	1	4H N 5	450		0
4	8	4H N 5	450		0
5	7	4H N 5	450		0
10	2	6H N-1	50		-11

2

♠KQ73
♥QJ9843
♦74
♣6

♠A9864
♥A6
♦AQ963
♣4

♠J102
♥K75
♦J82
♣AKQ9

♠5
♥102
♦K105
♣J1087532

Board (2) Av: NS=-270

N-S	E-W	Contract	N-S	E-W	IMP
7	5	4S W-1	50		8
9	3	4S W-1	50		8
1	6	4S W-1	50		8
6	1	2D W 4	130		4
8	4	4S W 4	420		-4
4	8	4S W 4	420		-4
2	10	4S W 4	420		-4
5	7	4S W 4	420		-4
10	2	4S E 4	420		-4
3	9	4S W 5	450		-5

3

♠K8
♥KQJ109843
♦4
♣J6

♠J9754
♥52
♦Q92
♣K82

♠Q1032
♥A7
♦J1073
♣Q107

♠A6
♥6
♦AK865
♣A9543

Board (3) Av: NS=+480

N-S	E-W	Contract	N-S	E-W	IMP
8	4	4H N 6	480		0
9	3	4H N 6	480		0
3	9	4H N 6	480		0
7	5	4H N 6	480		0
2	10	4H N 6	480		0
6	1	4H N 6	480		0
1	6	4H N 6	480		0
10	2	4H N 6	480		0
4	8	4H N 6	480		0
5	7	4H N 5	450		-1

4

♠65
♥K985
♦J74
♣Q1085

♠A9842
♥10
♦A1095
♣K76

♠QJ103
♥QJ74
♦Q32
♣43

♠K7
♥A632
♦K86
♣AJ92

Board (4) Av: NS=-280

N-S	E-W	Contract	N-S	E-W	IMP
3	9	3S W-1	100		9
2	10	3S W 3	140		4
6	1	2S W 3	140		4
4	8	3S W 4	170		3
8	4	3S W 4	170		3
7	5	3S E 4	170		3
5	7	2S W 4	170		3
1	6	4S W 4	620		-8
9	3	4S W 4	620		-8
10	2	4Hx N-4	1100		-13

5

♠K97
♥10964
♦AJ74
♣Q8

♠AQ6543
♥73
♦853
♣109

♠8
♥AJ82
♦K102
♣AJ732

♠J102
♥KQ5
♦Q96
♣K654

Board (5) Av: NS=-90

N-S	E-W	Contract	N-S	E-W	IMP
7	5	2S W-1	50		4
9	3	2S W-1	50		4
3	9	2S W 2	110		-1
8	4	2S W 2	110		-1
2	10	2S W 2	110		-1
4	8	2S W 2	110		-1
5	7	2S W 2	110		-1
1	6	2S W 2	110		-1
6	1	2S W 2	110		-1
10	2	2S W 3	140		-2

6

♠Q102
♥AK87
♦3
♣J10832

♠A9
♥QJ64
♦AJ2
♣AK64

♠KJ87
♥1032
♦9875
♣97

♠6543
♥95
♦KQ1064
♣Q5

Board (6) Av: NS=0

N-S	E-W	Contract	N-S	E-W	IMP
2	10	1C W-2	200		5
9	3	2NT W-1	100		3
6	1	2NT W-1	100		3
5	7	1C W-1	100		3
4	8	1C W-1	100		3
3	9	1C W 1	70		-2
7	5	1NT W 1	90		-3
1	6	1C W 2	90		-3
8	4	2NT W 2	120		-3
10	2	2NT W 4	180		-5

7

♠K8
♥AQ52
♦Q9854
♣87

♠63
♥KJ103
♦KJ6
♣KJ105

♠AQ9
♥964
♦A732
♣Q43

♠J107542
♥87
♦10
♣A962

Board (7) Av: NS=-280

N-S	E-W	Contract	N-S	E-W	IMP
9	5	3NT W-2	200		10
3	6	3NT E-1	100		9
4	10	3NT E-1	100		9
2	7	3NT E-1	100		9
6	3	1NT E 2	120		4
1	8	3NT W 3	600		-8
5	9	3NT W 3	600		-8
7	2	3NT E 3	600		-8
8	1	3NT W 4	630		-8
10	4	3NT W 4	630		-8

8

♠K754
♥J72
♦J1072
♣53

♠QJ92
♥105
♦96
♣KQ742

♠A1086
♥A98
♦AK5
♣AJ6

♠3
♥KQ643
♦Q843
♣1098

Board (8) Av: NS=-470

N-S	E-W	Contract	N-S	E-W	IMP
1	8	4S E 4	420		2
3	6	4S E 4	420		2
10	4	4S E 5	450		1
9	5	4S E 5	450		1
8	1	4S E 5	450		1
4	10	4S E 5	450		1
2	7	4S E 6	480		0
5	9	4S E 7	510		-1
7	2	4S E 7	510		-1
6	3	4S E 7	510		-1

9

♠J1097
♥KQ10
♦K1043
♣95

♠54
♥J986
♦A875
♣J84

♠8632
♥A74
♦Q6
♣A762

♠AKQ
♥532
♦J92
♣KQ103

Board (9) Av: NS=+90

N-S	E-W	Contract	N-S	E-W	IMP
8	1	2NT S 3	150		2
9	5	2NT S 3	150		2
4	10	2NT S 3	150		2
2	7	2NT S 3	150		2
3	6	2NT S 2	120		1
1	8	2NT S 2	120		1
6	3	2NT S 2	120		1
10	4	3NT S-1	50		-4
5	9	2NT S-1	50		-4
7	2	2NT S-1	50		-4

大阪府知事杯 OPEN TEAMS Session 2 Flight B 2016年8月28日(日)

10

♠ 1052
♥ A103
♦ 1074
♣ AJ54

♠ Q7
♥ 62
♦ J932
♣ K10876

N
W — E
S

♠ KJ963
♥ Q975
♦ AK
♣ Q3

♠ A84
♥ KJ84
♦ Q865
♣ 92

Board (10) Av: NS=+80

N-S	E-W	Contract	N-S	E-W	IMP
9	5	2S E-1	100		1
4	10	2S E-1	100		1
3	6	2S E-1	100		1
8	1	2S E-1	100		1
10	4	2S E-1	100		1
7	2	2S E-1	100		1
6	3	2S E-1	100		1
1	8	2S E-1	100		1
2	7	1NT E 1		90	-5
5	9	2S E 2		110	-5

11

♠ AQ109
♥ J93
♦ J4
♣ QJ74

♠ 8642
♥ AQ865
♦ Q53
♣ 8

N
W — E
S

♠ K73
♥ K2
♦ AK109
♣ 9632

♠ J5
♥ 1074
♦ 8762
♣ AK105

Board (11) Av: NS=-120

N-S	E-W	Contract	N-S	E-W	IMP
2	7	2C S 3	110		6
9	5	2C N-1		50	2
3	6	3C N-2		100	1
5	9	1NT S-2		100	1
7	2	1NT S-2		100	1
4	10	1NT N-2		100	1
10	4	2H W 4		170	-2
8	1	1NT E 4		180	-2
1	8	1NT E 4		180	-2
6	3	2H W 5		200	-2

12

♠ A86
♥
♦ AK8765
♣ 9752

♠ QJ102
♥ 95
♦ 1032
♣ KQJ8

N
W — E
S

♠ 94
♥ A10872
♦ Q94
♣ 1063

♠ K753
♥ KQJ643
♦ J
♣ A4

Board (12) Av: NS=+80

N-S	E-W	Contract	N-S	E-W	IMP
1	8	4S S 4	620		11
4	10	4H S 4	620		11
10	4	3NT S 3	600		11
9	5	2H S 3	140		2
3	6	4H S-1		100	-5
7	2	4H S-1		100	-5
6	3	3H S-1		100	-5
2	7	3NT S-2		200	-7
5	9	3NT N-2		200	-7
8	1	4S S-3		300	-9

13

♠ 1097
♥ KJ9643
♦ 982
♣ 5

♠ KJ8542
♥ 2
♦ AK
♣ AKQ6

N
W — E
S

♠ AQ6
♥ 108
♦ 107653
♣ J42

♠ 3
♥ AQ75
♦ QJ4
♣ 109873

Board (13) Av: NS=-870

N-S	E-W	Contract	N-S	E-W	IMP
6	5	4S W 6	680		5
9	2	4S W 6	680		5
4	7	4S W 6	680		5
10	1	4S W 6	680		5
1	10	4S W 6	680		5
2	9	4S W 6	680		5
5	6	4S W 7	710		4
3	8	6S W 6	1430		-11
7	4	6S W 6	1430		-11
8	3	6S W 6	1430		-11

14

♠ AKJ2
♥ AQ982
♦ A
♣ AQ7

♠ 10654
♥ J103
♦ QJ2
♣ 1098

N
W — E
S

♠ Q983
♥ K76
♦ 64
♣ KJ64

♠ 7
♥ 54
♦ K1098753
♣ 532

Board (14) Av: NS=+260

N-S	E-W	Contract	N-S	E-W	IMP
1	10	6D S 6	920		12
10	1	4H N 5	450		5
9	2	4H S 4	420		4
8	3	4H N 4	420		4
6	5	4H N 4	420		4
7	4	3NT N 3	400		4
5	6	1H N 4	170		-3
4	7	6H N-2		100	-8
3	8	6D S-2		100	-8
2	9	6D S-2		100	-8

15

♠ 764
♥ AKQ82
♦ Q10
♣ AJ7

♠ A10832
♥ 65
♦ K43
♣ 1094

N
W — E
S

♠ QJ
♥ J1073
♦ AJ852
♣ KQ

♠ K95
♥ 94
♦ 976
♣ 86532

Board (15) Av: NS=-160

N-S	E-W	Contract	N-S	E-W	IMP
1	10	2H N-1		100	2
3	8	3D E 3		110	2
6	5	3D E 3		110	2
10	1	2NT E 2		120	1
8	3	2D E 4		130	1
5	6	2S W 3		140	1
9	2	2H N-2		200	-1
4	7	1NT N-2		200	-1
2	9	1NT N-3		300	-4
7	4	1NT N-3		300	-4

16

♠ AJ9732
♥ 973
♦ 62
♣ KQ

♠ K4
♥ Q542
♦ KQ74
♣ 1084

N
W — E
S

♠ 105
♥ AKJ10
♦ J3
♣ A7652

♠ Q86
♥ 86
♦ A10985
♣ J93

Board (16) Av: NS=+140

N-S	E-W	Contract	N-S	E-W	IMP
4	7	5C E-3	300		4
6	5	4H W-2	200		2
1	10	4H W-2	200		2
9	2	2S N 4	170		1
7	4	2S N 3	140		0
10	1	4H W-1	100		-1
5	6	4H W-1	100		-1
2	9	4C E-1	100		-1
3	8	3H E-1	100		-1
8	3	3H W 4		170	-7

17

♠ KJ532
♥ AJ7
♦ 98
♣ Q42

♠ 1098
♥ 85
♦ AK754
♣ J86

N
W — E
S

♠ AQ64
♥ K964
♦ J10
♣ 753

♠ 7
♥ Q1032
♦ Q632
♣ AK109

Board (17) Av: NS=-10

N-S	E-W	Contract	N-S	E-W	IMP
2	9	2NT S 3	150		4
1	10	2NT S 2	120		4
8	3	2NT S 2	120		4
4	7	2C S 2	90		3
5	6	Passout			0
7	4	Passout			0
6	5	2NT S-2		100	-3
3	8	3C N-3		150	-4
9	2	2S N-3		150	-4
10	1	2NT S-3		150	-4

18

♠ Q108
♥ 63
♦ A974
♣ 9654

♠ K3
♥ Q84
♦ J52
♣ 108732

N
W — E
S

♠ A542
♥ 109
♦ Q1063
♣ AKJ

♠ J976
♥ AKJ752
♦ K8
♣ Q

Board (18) Av: NS=+110

N-S	E-W	Contract	N-S	E-W	IMP
1	10	2H S 3	140		1
6	5	2H S 3	140		1
10	1	2H S 3	140		1
5	6	2H S 3	140		1
8	3	2H S 3	140		1
7	4	2H S 3	140		1
9	2	1H S 3	140		1
3	8	2H S 2	110		0
4	7	2D E 2		90	-5
2	9	2C W 2		90	-5

大阪府知事杯 OPEN TEAMS Session 2 Flight B 2016年8月28日(日)

19

♠652
♥82
♦5432
♣K965

♠AKQ107
♥K97
♦AK10
♣104

N
W—E
S

♠843
♥QJ104
♦976
♣J73

♠J9
♥A653
♦QJ8
♣AQ82

Board (19) Av: NS=-420

N-S	E-W	Contract	N-S	E-W	IMP
3	10	3S	W 4	170	6
7	1	2S	W 4	170	6
5	8	1S	W 4	170	6
1	7	1S	W 4	170	6
8	5	1S	W 4	170	6
9	4	4S	W 4	620	-5
4	9	4S	W 4	620	-5
2	6	4S	W 4	620	-5
10	3	4Sx	W 4	790	-9
6	2	5Cx	S-5	1100	-12

20

♠52
♥732
♦KJ64
♣KQJ2

♠Q764
♥A
♦A1073
♣9654

N
W—E
S

♠AKJ10
♥K854
♦Q5
♣A73

♠983
♥QJ1096
♦982
♣108

Board (20) Av: NS=-620

N-S	E-W	Contract	N-S	E-W	IMP
3	10	4S	E-1	100	12
10	3	4S	E 4	620	0
6	2	4S	E 4	620	0
1	7	4S	E 4	620	0
2	6	4S	E 4	620	0
4	9	4S	E 4	620	0
8	5	4S	E 4	620	0
9	4	4S	E 4	620	0
7	1	4S	E 5	650	-1
5	8	4S	E 5	650	-1

21

♠952
♥KQ7
♦Q1063
♣1096

♠843
♥AJ105
♦J
♣J8532

N
W—E
S

♠AKJ7
♥83
♦AK8752
♣Q

♠Q106
♥9642
♦94
♣AK74

Board (21) Av: NS=-60

N-S	E-W	Contract	N-S	E-W	IMP
1	7	3NT	W-3	150	5
9	4	3NT	W-3	150	5
4	9	3NT	W-3	150	5
8	5	3NT	W-1	50	3
5	8	3D	E-1	50	3
2	6	3D	E-1	50	3
10	3	3D	E 3	110	-2
7	1	3NT	W 3	400	-8
3	10	3NT	W 3	400	-8
6	2	3NT	W 3	400	-8

22

♠72
♥AQ10
♦1094
♣AQ942

♠Q109
♥K8764
♦Q32
♣K10

N
W—E
S

♠J543
♥9
♦A65
♣J8765

♠AK86
♥J532
♦KJ87
♣3

Board (22) Av: NS=+400

N-S	E-W	Contract	N-S	E-W	IMP
9	4	3NT	S 3	400	0
7	1	3NT	S 3	400	0
8	5	3NT	S 3	400	0
3	10	3NT	S 3	400	0
6	2	3NT	S 3	400	0
2	6	3NT	N 3	400	0
4	9	3NT	N 3	400	0
5	8	3NT	N 3	400	0
1	7	3NT	N 3	400	0
10	3	2NT	N 2	120	-7

23

♠A1072
♥9732
♦AQ1053
♣

♠KQ4
♥QJ854
♦92
♣J75

N
W—E
S

♠8653
♥A106
♦87
♣AQ96

♠J9
♥K
♦KJ64
♣K108432

Board (23) Av: NS=+110

N-S	E-W	Contract	N-S	E-W	IMP
4	9	5D	N 5	600	10
7	1	3D	N 5	150	1
3	10	3D	N 5	150	1
6	2	2D	N 5	150	1
1	7	3D	N 4	130	1
10	3	3D	N 3	110	0
9	4	3D	N 3	110	0
8	5	2D	N 3	110	0
5	8	Passout			-3
2	6	2NT	N-1	100	-5

24

♠KJ10732
♥KJ7
♦A742
♣

♠Q
♥98542
♦J85
♣Q1087

N
W—E
S

♠A4
♥106
♦K1093
♣K9532

♠9865
♥AQ3
♦Q6
♣AJ64

Board (24) Av: NS=+130

N-S	E-W	Contract	N-S	E-W	IMP
4	9	5S	N 5	450	8
6	2	5S	N 5	450	8
3	10	4S	N 5	450	8
5	8	4S	N 4	420	7
9	4	6S	N-1	50	-5
10	3	6S	N-1	50	-5
1	7	6S	N-1	50	-5
7	1	6S	N-1	50	-5
2	6	6S	N-1	50	-5
8	5	6S	N-2	100	-6

25

♠A94
♥AK1052
♦Q82
♣52

♠103
♥Q987
♦K
♣AJ9864

N
W—E
S

♠Q62
♥
♦AJ9653
♣KQ107

♠KJ875
♥J643
♦1074
♣3

Board (25) Av: NS=-500

N-S	E-W	Contract	N-S	E-W	IMP
2	8	3Hx	N 3	530	14
4	6	5Hx	N-1	100	9
7	3	5Hx	N-1	100	9
8	2	3NT	W 3	600	-3
3	7	5D	E 7	640	-4
6	4	5C	W 7	640	-4
9	1	5C	W 7	640	-4
5	10	5C	E 7	640	-4
1	9	5C	E 7	640	-4
10	5	5Cx	W 6	950	-10

26

♠5
♥K762
♦1095432
♣A3

♠J76
♥A1054
♦Q
♣J7652

N
W—E
S

♠KQ3
♥Q98
♦AK8
♣KQ108

♠A109842
♥J3
♦J76
♣94

Board (26) Av: NS=-630

N-S	E-W	Contract	N-S	E-W	IMP
7	3	3NT	E 4	630	0
8	2	3NT	E 4	630	0
2	8	3NT	E 4	630	0
6	4	3NT	E 4	630	0
1	9	3NT	E 4	630	0
10	5	3NT	E 4	630	0
5	10	3NT	E 4	630	0
9	1	3NT	E 4	630	0
3	7	3NT	E 4	630	0
4	6	3NT	E 4	630	0

27

♠AKQ72
♥7
♦QJ2
♣J1087

♠1054
♥643
♦1074
♣AK54

N
W—E
S

♠863
♥J10852
♦A
♣Q632

♠J9
♥AKQ9
♦K98653
♣9

Board (27) Av: NS=+370

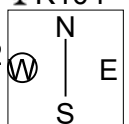
N-S	E-W	Contract	N-S	E-W	IMP
10	5	3NT	S 6	490	3
1	9	5D	S 5	400	1
9	1	5D	S 5	400	1
5	10	5D	S 5	400	1
2	8	3NT	S 3	400	1
8	2	3NT	S 3	400	1
4	6	3NT	S 3	400	1
6	4	3NT	S 3	400	1
7	3	3D	S 6	170	-5
3	7	6D	S-1	50	-9

大阪府知事杯 OPEN TEAMS Session 2 Flight B 2016年8月28日(日)

28

♠K6
♥Q1053
♦10632
♣K104

♠1092 ♠AQJ8743
♥97642 ♥KJ
♦J4 ♠AK
♣J92 ♠AQ

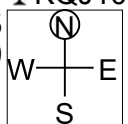


♠5
♥A8
♦Q9875
♣87653

29

♠K
♥8743
♦1072
♣KQJ106

♠QJ985 ♠7632
♥QJ109 ♥K5
♦963 ♠AK8
♣8 ♠A432

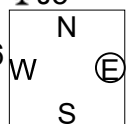


♠A104
♥A62
♦QJ54
♣975

30

♠A4
♥9743
♦KQ987
♣J5

♠J875 ♠1092
♥QJ86 ♥1052
♦A5 ♠632
♣K76 ♠A1092



♠KQ63
♥AK
♦J104
♣Q843

Board (28) Av: NS=-420

N-S	E-W	Contract	N-S	E-W	IMP
8	2	2S	E 5	200	6
10	5	2S	E 5	200	6
2	8	4S	E 5	450	-1
7	3	4S	E 5	450	-1
1	9	4S	E 5	450	-1
6	4	4S	E 5	450	-1
4	6	4S	E 5	450	-1
5	10	4S	E 5	450	-1
3	7	4S	E 5	450	-1
9	1	4S	E 5	450	-1

Board (29) Av: NS=-170

N-S	E-W	Contract	N-S	E-W	IMP
10	5	2S	W 3	140	1
7	3	2S	W 4	170	0
3	7	2S	W 4	170	0
1	9	2S	W 4	170	0
6	4	2S	W 4	170	0
4	6	2S	W 4	170	0
5	10	2S	W 4	170	0
9	1	2S	W 4	170	0
8	2	2S	W 4	170	0
2	8	4S	W 4	620	-10

Board (30) Av: NS=+410

N-S	E-W	Contract	N-S	E-W	IMP
3	7	3NT	S 4	430	1
6	4	3NT	S 4	430	1
4	6	3NT	S 4	430	1
1	9	3NT	S 3	400	0
2	8	3NT	S 3	400	0
7	3	3NT	S 3	400	0
5	10	3NT	S 3	400	0
10	5	3NT	S 3	400	0
8	2	3NT	S 3	400	0
9	1	3NT	S 3	400	0