

任天堂杯 OPEN PAIRS Session 3 Section AB 2016年12月4日(日)

1

♠A972
♥K9
♦984
♣A732

♠J85
♥AJ65
♦AQ73
♣65

♠Q104
♥73
♦K106
♣KQ984

♠K63
♥Q10842
♦J52
♣J10

N-S	E-W	Contract	N-S	E-W	MP
A09	A25	1S N 1	80		24.5
A01	A21	1S N 1	80		24.5
B04	B24	Passout			23
A14	A13	1NT S-1		50	21
A23	A05	1NT S-1		50	21
A16	A04	1NT S-1		50	21
B26	B08	2C E 2		90	18.5
B16	B01	2C E 2		90	18.5
B17	B03	2S N-2		100	15.5
B18	B05	2S N-2		100	15.5
A15	A02	1NT S-2		100	15.5
A24	A07	1NT N-2		100	15.5
A10	A19	3C E 3		110	12.5
A06	A17	2C E 3		110	12.5
A18	A08	1NT E 2		120	8
B14	B10	1NT E 2		120	8
B06	B25	1NT E 2		120	8
B21	B11	1NT E 2		120	8
B19	B07	1NT E 2		120	8
A03	A22	1NT E 2		120	8
A26	A11	1NT E 2		120	8
B02	B23	1NT S-3		150	3.5
B13	B22	1NT N-3		150	3.5
B09	B20	2NT E 4		180	1.5
A12	A20	1NT E 4		180	1.5
B12	B15	2Sx N-3		500	0

2

♠K9872
♥KQ10
♦95432
♣

♠AJ82
♥Q107
♣QJ10942

♠J64
♥97654
♦J86
♣A8

♠AQ1053
♥3
♦AK
♣K7653

N-S	E-W	Contract	N-S	E-W	MP
B19	B07	6S S 7	1460		25
B17	B03	6S S 6	1430		22
B13	B22	6S S 6	1430		22
A01	A21	6S S 6	1430		22
B04	B24	6S S 6	1430		22
B16	B01	6S S 6	1430		22
B12	B15	5Cx W-5	1100		18.5
A06	A17	5Cx W-5	1100		18.5
A26	A11	4S S 7	710		16.5
A03	A22	4S S 7	710		16.5
A14	A13	5S S 6	680		10
A16	A04	5S S 6	680		10
A15	A02	5S S 6	680		10
B14	B10	4S S 6	680		10
B06	B25	4S S 6	680		10
A12	A20	4S S 6	680		10
B02	B23	4S S 6	680		10
B21	B11	4S S 6	680		10
B09	B20	4S S 6	680		10
A24	A07	4S S 6	680		10
B18	B05	4S S 6	680		10
A10	A19	5S S 5	650		3.5
A23	A05	4S S 5	650		3.5
B26	B08	4S S 4	620		2
A09	A25	5Hx E-2	300		1
A18	A08	7S S-2		200	0

3

♠9764
♥Q92
♦J97
♣964

♠A103
♥J4
♦K6542
♣Q105

♠KJ2
♥10873
♦Q8
♣AJ82

♠Q85
♥AK65
♦A103
♣K73

N-S	E-W	Contract	N-S	E-W	MP
B13	B16	1NT S 1	90		24
B15	B11	1NT S 1	90		24
B17	B02	1NT S 1	90		24
A16	A03	1NT S-1		50	14
B20	B08	1NT S-1		50	14
B10	B21	1NT S-1		50	14
B01	B23	1NT S-1		50	14
B03	B24	1NT S-1		50	14
B07	B26	1NT S-1		50	14
B14	B09	1NT S-1		50	14
A11	A20	1NT S-1		50	14
A17	A05	1NT S-1		50	14
A02	A22	1NT S-1		50	14
A04	A23	1NT S-1		50	14
A24	A06	1NT S-1		50	14
A25	A08	1NT S-1		50	14
A10	A26	1NT S-1		50	14
A14	A12	1NT S-1		50	14
A07	A18	1NT S-1		50	14
A19	A09	1NT S-1		50	14
B19	B06	1NT S-2		100	2.5
B18	B04	1NT S-2		100	2.5
A13	A21	1NT S-2		100	2.5
B05	B25	1NT S-2		100	2.5
B22	B12	1NT S-2		100	2.5
A15	A01	1NT S-2		100	2.5

4

♠A75
♥K62
♦K1085
♣A108

♠10432
♥Q1087
♦A7
♣976

♠KJ
♥9543
♦J9632
♣J4

♠Q986
♥AJ
♦Q4
♣KQ532

N-S	E-W	Contract	N-S	E-W	MP
A19	A09	3NT N 5	660		24
B20	B08	3NT N 5	660		24
B01	B23	3NT N 5	660		24
A07	A18	3NT N 4	630		14.5
A25	A08	3NT N 4	630		14.5
A24	A06	3NT N 4	630		14.5
A04	A23	3NT N 4	630		14.5
B18	B04	3NT N 4	630		14.5
A13	A21	3NT N 4	630		14.5
B03	B24	3NT N 4	630		14.5
B10	B21	3NT N 4	630		14.5
A17	A05	3NT N 4	630		14.5
B15	B11	3NT N 4	630		14.5
B14	B09	3NT N 4	630		14.5
B22	B12	3NT N 4	630		14.5
B05	B25	3NT N 4	630		14.5
A10	A26	3NT N 4	630		14.5
B13	B16	3NT N 4	630		14.5
B17	B02	3NT N 4	630		14.5
A15	A01	5C S 5	600		3
A11	A20	5C S 5	600		3
A14	A12	3NT N 3	600		3
B07	B26	3NT N 3	600		3
A02	A22	3NT N 3	600		3
B19	B06	3NT N 3	600		3
A16	A03	3NT N 3	600		3

5

♠10873
♥J4
♦A7642
♣Q3

♠92
♥Q6
♦KQJ109
♣10862

♠KJ4
♥A109872
♦8
♣KJ4

♠AQ65
♥K53
♦53
♣A975

N-S	E-W	Contract	N-S	E-W	MP
B01	B17	3H E-3	150		24.5
B08	B14	3H E-3	150		24.5
A01	A22	2S S 3	140		22
B16	B12	2S S 3	140		22
A16	A02	2S N 3	140		22
B23	B13	4H E-2	100		18
B02	B24	4H E-2	100		18
A26	A09	3H E-2	100		18
A11	A14	3H E-2	100		18
A17	A04	3H E-2	100		18
B18	B03	3H E-1	50		12.5
A03	A23	3H E-1	50		12.5
B04	B25	3H E-1	50		12.5
B21	B09	3H E-1	50		12.5
A20	A10	3H E-1	50		12.5
B15	B10	2H E-1	50		12.5
B06	B26	2C E 2		90	9
A18	A06	2H E 2		110	6
A12	A21	2H E 2		110	6
A25	A07	2H E 2		110	6
B11	B22	2H E 2		110	6
B19	B05	2H E 2		110	6
A15	A13	3H E 3		140	2
A05	A24	3H E 3		140	2
B20	B07	3H E 3		140	2
A08	A19	3S S-2		200	0

6

♠KJ5
♥Q8762
♦643
♣K9

♠63
♥K104
♦AJ9752
♣QJ

♠AQ
♥AJ953
♦Q10
♣8432

♠1098742
♥
♦K8
♣A10765

N-S	E-W	Contract	N-S	E-W	MP
B08	B14	5Hx E-1	200		25
B02	B24	4H E-1	100		22.5
A18	A06	4H E-1	100		22.5
B18	B03	4H E-1	100		22.5
A05	A24	3H E-1	100		22.5
B01	B17	4S S-1		50	18.5
B23	B13	4S S-1		50	18.5
B15	B10	4S S-1		50	18.5
B16	B12	4S N-1		50	18.5
B19	B05	4Sx S-1		100	15
B04	B25	4Sx S-1		100	15
A15	A13	4S S-2		100	15
B11	B22	3H E 3		140	12
A12	A21	3H E 3		140	12
B21	B09	3H E 3		140	12
B06	B26	3H E 4		170	9
A17	A04	3H E 4		170	9
A25	A07	3H E 4		170	9
A26	A09	4Sx S-2		300	6.5
A16	A02	4Sx S-2		300	6.5
A01	A22	4H E 4		620	4
A03	A23	4H E 4		620	4
B20	B07	4H E 4		620	4
A11	A14	4H E 5		650	2
A20	A10	4Hx E 4		790	0.5
A08	A19	4Hx E 4		790	0.5

任天堂杯 OPEN PAIRS Session 3 Section AB 2016年12月4日(日)

7

♠K10
♥10654
♦A105
♣A1076

♠Q76
♥7
♦KJ432
♣K982

♠8542
♥KJ9832
♦9
♣Q4

♠AJ93
♥AQ
♦Q876
♣J53

N-S	E-W	Contract	N-S	E-W	MP
A17	A03	3NT	N 5	660	23
B20	B06	3NT	N 5	660	23
A14	A10	3NT	N 5	660	23
A04	A24	3NT	N 5	660	23
A13	A22	3NT	N 5	660	23
A21	A11	3NT	S 4	630	16.5
A19	A07	3NT	S 4	630	16.5
B22	B10	3NT	N 4	630	16.5
B17	B13	3NT	N 4	630	16.5
B03	B25	3NT	N 4	630	16.5
A09	A20	3NT	N 4	630	16.5
B07	B14	3NT	N 4	630	16.5
B19	B04	3NT	N 4	630	16.5
B16	B11	3NT	S 3	600	8.5
A16	A01	3NT	N 3	600	8.5
A12	A15	3NT	N 3	600	8.5
A06	A25	3NT	N 3	600	8.5
A02	A23	3NT	N 3	600	8.5
B09	B15	3NT	N 3	600	8.5
B12	B23	3NT	N 3	600	8.5
B02	B18	3NT	N 3	600	8.5
B24	B01	1NT	N 3	150	4
A18	A05	1NT	S 1	90	3
B05	B26	3NT	N-1	100	1
A26	A08	3NT	N-1	100	1
B21	B08	3NT	N-1	100	1

8

♠J8
♥KQ87532
♦Q87
♣10

♠AK932
♥J106
♦J62
♣43

♠Q105
♥9
♦A1043
♣KQ965

♠764
♥A4
♦K95
♣AJ872

N-S	E-W	Contract	N-S	E-W	MP
B02	B18	3H	N 4	170	19.5
B20	B06	3H	N 4	170	19.5
B03	B25	3H	N 4	170	19.5
A14	A10	3H	N 4	170	19.5
B05	B26	3H	N 4	170	19.5
A06	A25	3H	N 4	170	19.5
A04	A24	3H	N 4	170	19.5
A02	A23	3H	N 4	170	19.5
B16	B11	3H	N 4	170	19.5
A21	A11	3H	N 4	170	19.5
A09	A20	3H	N 4	170	19.5
A18	A05	2H	N 4	170	19.5
B24	B01	3H	N 3	140	10
B07	B14	3H	N 3	140	10
A12	A15	3H	N 3	140	10
A19	A07	3H	N 3	140	10
B22	B10	3H	N 3	140	10
A16	A01	3H	N 3	140	10
B17	B13	3H	N 3	140	10
B19	B04	4S	W-2	100	5.5
A13	A22	4S	W-2	100	5.5
B09	B15	4S	W-1	50	3.5
B21	B08	4S	W-1	50	3.5
A26	A08	4H	N-1	50	2
B12	B23	1S	W 1	80	1
A17	A03	3S	W 3	140	0

9

♠K106532
♥742
♦72
♣J5

♠A9
♥QJ6
♦AJ643
♣943

♠Q87
♥103
♦Q10985
♣A108

♠J4
♥AK985
♦K
♣KQ762

N-S	E-W	Contract	N-S	E-W	MP
B20	B05	3S	N 3	140	20
B21	B07	3H	S 3	140	20
B23	B11	3H	S 3	140	20
B13	B24	3H	S 3	140	20
A10	A21	3H	S 3	140	20
B17	B12	3H	S 3	140	20
A15	A11	2H	S 3	140	20
A07	A26	2H	S 3	140	20
B04	B26	2H	S 3	140	20
A05	A25	1H	S 3	140	20
A03	A24	1H	S 3	140	20
B10	B16	4S	S-1	50	8.5
A19	A06	4S	N-1	50	8.5
A22	A12	4H	S-1	50	8.5
A20	A08	4H	S-1	50	8.5
B06	B14	3S	N-1	50	8.5
B03	B19	3S	N-1	50	8.5
A01	A23	3S	N-1	50	8.5
A14	A09	3S	N-1	50	8.5
A17	A02	3S	N-1	50	8.5
B25	B02	3H	S-1	50	8.5
A13	A16	3H	S-1	50	8.5
B08	B15	3H	S-1	50	8.5
B22	B09	4H	S-2	100	1
B18	B01	4H	S-2	100	1
A18	A04	4H	S-2	100	1

10

♥1063
♦J653
♣AQJ1092

♠10987543
♥K
♦AKQJ62
♣74

♠K
♥AKQJ62
♦74
♣8754

♠AQJ987542
♥
♦AQ82
♣

N-S	E-W	Contract	N-S	E-W	MP
B03	B19	6Sx	S 6	1660	23
A17	A02	6Sx	S 6	1660	23
A03	A24	6Sx	S 6	1660	23
B08	B15	6Sx	S 6	1660	23
B10	B16	6Sx	S 6	1660	23
B18	B01	6S	S 6	1430	14.5
B22	B09	6S	S 6	1430	14.5
B13	B24	6S	S 6	1430	14.5
B25	B02	6S	S 6	1430	14.5
B06	B14	6S	S 6	1430	14.5
B04	B26	6S	S 6	1430	14.5
A18	A04	6S	S 6	1430	14.5
A01	A23	6S	S 6	1430	14.5
A14	A09	6S	S 6	1430	14.5
A15	A11	6S	S 6	1430	14.5
A20	A08	6S	S 6	1430	14.5
A10	A21	6S	S 6	1430	14.5
B17	B12	5S	S 6	680	4.5
A22	A12	5S	S 6	680	4.5
A05	A25	5S	S 6	680	4.5
A07	A26	5S	S 6	680	4.5
B23	B11	5S	S 6	680	4.5
A13	A16	5S	S 6	680	4.5
B21	B07	5S	S 6	680	4.5
B20	B05	4S	S 6	680	4.5
A19	A06	7S	S-1	100	0

11

♠A9
♥976
♦10943
♣K932

♠KQ42
♥J53
♦A65
♣754

♠J87653
♥Q842
♦Q2
♣6

♠10
♥AK10
♦KJ87
♣AQJ108

N-S	E-W	Contract	N-S	E-W	MP
A19	A05	6D	N 6	920	22.5
B23	B10	6D	N 6	920	22.5
B18	B13	6D	N 6	920	22.5
B19	B02	6D	N 6	920	22.5
A04	A25	6D	N 6	920	22.5
B04	B20	6D	N 6	920	22.5
B22	B08	3NT	N 4	430	19
B21	B06	5D	N 6	420	14.5
B11	B17	5D	N 6	420	14.5
A11	A22	5D	N 6	420	14.5
A23	A13	5D	N 6	420	14.5
A16	A12	5D	N 6	420	14.5
A18	A03	5D	N 6	420	14.5
B24	B12	5D	N 6	420	14.5
B09	B16	5D	N 6	420	14.5
A02	A24	5D	N 5	400	8.5
B26	B03	5D	N 5	400	8.5
A15	A10	5C	S 5	400	8.5
A08	A14	5C	S 5	400	8.5
A21	A09	3D	N 6	170	6
B01	B25	4C	S 5	150	4.5
A01	A17	3D	N 5	150	4.5
A20	A07	6C	S-1	50	2
B05	B14	6C	S-1	50	2
A06	A26	3NT	S-1	50	2
B07	B15	7Dx	N-1	100	0

12

♥86
♠A82
♦K8642
♣Q95

♠742
♥10764
♦73
♣J1076

♠Q53
♥J95
♦J1095
♣432

♠AKJ109
♥KQ3
♦AQ
♣AK8

N-S	E-W	Contract	N-S	E-W	MP
A15	A10	7NT	S 7	2220	24.5
B11	B17	7NT	S 7	2220	24.5
B21	B06	6NT	S 7	1470	14.5
A19	A05	6NT	S 7	1470	14.5
B23	B10	6NT	S 7	1470	14.5
B19	B02	6NT	S 7	1470	14.5
A23	A13	6NT	S 7	1470	14.5
A20	A07	6NT	S 7	1470	14.5
B07	B15	6NT	S 7	1470	14.5
A04	A25	6NT	S 7	1470	14.5
A16	A12	6NT	S 7	1470	14.5
A01	A17	6NT	S 7	1470	14.5
A18	A03	6NT	S 7	1470	14.5
A11	A22	6NT	S 7	1470	14.5
B04	B20	6NT	S 7	1470	14.5
A02	A24	6NT	S 7	1470	14.5
B22	B08	6NT	N 7	1470	14.5
B01	B25	6NT	N 7	1470	14.5
B26	B03	6NT	N 7	1470	14.5
A21	A09	6NT	N 7	1470	14.5
B05	B14	6S	S 7	1460	5
B09	B16	6NT	S 6	1440	4
A08	A14	6H	N 6	1430	3
B18	B13	3NT	N 7	720	1
A06	A26	3NT	N 7	720	1
B24	B12	3NT	N 7	720	1

13

♠AJ
 ♥AJ42
 ♦J9632
 ♣A2
 ♠K87642
 ♥Q107
 ♦K985
 ♠1093
 ♥K10653
 ♦K
 ♣Q764
 ♠Q5
 ♥Q987
 ♦A854
 ♣J103

N-S	E-W	Contract	N-S	E-W	MP
B14	B04	4H N 4	620		25
A21	A08	2H E-4	400		24
A03	A25	2D N 5	150		23
B23	B09	3H S 3	140		19
B08	B16	3H N 3	140		19
A22	A10	3H N 3	140		19
A12	A23	3H N 3	140		19
A20	A06	3H N 3	140		19
A19	A04	3H N 3	140		19
A07	A14	3H N 3	140		19
B10	B17	4H N-1	100		11
A05	A26	4H N-1	100		11
B02	B26	4H N-1	100		11
B12	B18	4H N-1	100		11
A09	A15	4H N-1	100		11
B20	B03	4H N-1	100		11
B05	B21	4H N-1	100		11
A16	A11	4H N-1	100		11
A24	A01	3H N-1	100		11
B19	B01	4Hx N-1	200		4
A17	A13	4Hx N-1	200		4
A02	A18	4H N-2	200		4
B06	B15	4H N-2	200		4
B24	B11	4H N-2	200		4
B22	B07	4H N-4	400		1
B25	B13	3NTxN-3	800		0

14

♠Q952
 ♥J10653
 ♦Q
 ♣K106
 ♠KJ
 ♥Q
 ♦KJ1053
 ♣AJ972
 ♠A10
 ♥87
 ♦7642
 ♣Q8543
 ♠87643
 ♥AK942
 ♦A98
 ♣

N-S	E-W	Contract	N-S	E-W	MP
A22	A10	5Sx S 5	650		25
A03	A25	5S S 5	450		22
B10	B17	5S S 5	450		22
B24	B11	5H S 5	450		22
A24	A01	5H S 5	450		22
A09	A15	4H S 5	450		22
A16	A11	4S S 4	420		19
A17	A13	5Dx W-2	300		16
A07	A14	5Cx W-2	300		16
A20	A06	5Cx E-2	300		16
A19	A04	5Cx E-2	300		16
B20	B03	5Cx E-2	300		16
B02	B26	3S S 5	200		13
B23	B09	5Cx E-1	100		9
B05	B21	5Cx E-1	100		9
B19	B01	5Cx E-1	100		9
B22	B07	5C E-2	100		9
B06	B15	5C E-2	100		9
A12	A23	5C E-2	100		9
A21	A08	5C E-2	100		9
B25	B13	5C E-1	50		4.5
A02	A18	4D W-1	50		4.5
B08	B16	5H S-1	50		3
B14	B04	4C W 4	130		1.5
B12	B18	4C E 4	130		1.5
A05	A26	2C S-3	150		0

15

♠64
 ♥J43
 ♦AQ2
 ♣Q7653
 ♠QJ853
 ♥10
 ♦J7543
 ♣J8
 ♠K1097
 ♥Q87
 ♦86
 ♣K1042
 ♠A2
 ♥AK9652
 ♦K109
 ♣A9

N-S	E-W	Contract	N-S	E-W	MP
A10	A16	6Sx E-4	800		25
A03	A19	5H S 5	650		24
A22	A09	4H S 4	620		14.5
A21	A07	4H S 4	620		14.5
B25	B12	4H S 4	620		14.5
B26	B01	4H S 4	620		14.5
B03	B14	4H S 4	620		14.5
B15	B05	4H S 4	620		14.5
B13	B19	4H S 4	620		14.5
A23	A11	4H S 4	620		14.5
B23	B08	4H S 4	620		14.5
A25	A02	4H S 4	620		14.5
A06	A14	4H S 4	620		14.5
A08	A15	4H S 4	620		14.5
A17	A12	4H S 4	620		14.5
A18	A01	4H S 4	620		14.5
A20	A05	4H S 4	620		14.5
A13	A24	4H S 4	620		14.5
B06	B22	4H S 4	620		14.5
A04	A26	4H S 4	620		14.5
B20	B02	4Sx W-2	300		4.5
B07	B16	4Sx W-2	300		4.5
B11	B18	4S E-2	100		3
B21	B04	5H S-1	100		1
B09	B17	5H S-1	100		1
B24	B10	5H S-1	100		1

16

♠2
 ♥Q863
 ♦10764
 ♣Q943
 ♠Q105
 ♥A975
 ♦32
 ♣A762
 ♠AK83
 ♥102
 ♦AKJ95
 ♣K5
 ♠J9764
 ♥KJ4
 ♦Q8
 ♣J108

N-S	E-W	Contract	N-S	E-W	MP
B21	B04	3NT E-1	100		25
A03	A19	2NT W 3	150		24
B07	B16	3NT W 3	600		21
A04	A26	3NT W 3	600		21
A13	A24	3NT W 3	600		21
B13	B19	3NT E 3	600		21
A23	A11	3NT E 3	600		21
A22	A09	3NT W 4	630		16
B09	B17	3NT W 4	630		16
B03	B14	3NT E 4	630		16
B06	B22	3NT E 4	630		16
A17	A12	3NT E 4	630		16
B23	B08	3NT W 5	660		7
A20	A05	3NT W 5	660		7
A08	A15	3NT W 5	660		7
B25	B12	3NT E 5	660		7
A25	A02	3NT E 5	660		7
A21	A07	3NT E 5	660		7
B24	B10	3NT E 5	660		7
B20	B02	3NT E 5	660		7
B26	B01	3NT E 5	660		7
B15	B05	3NT E 5	660		7
A18	A01	3NT E 5	660		7
A10	A16	3NT E 5	660		7
B11	B18	3NT E 5	660		7
A06	A14	3NT E 6	690		0

17

♠K10
 ♥KQJ7
 ♦7543
 ♣Q74
 ♠QJ542
 ♥10432
 ♦Q10
 ♣K3
 ♠A3
 ♥A985
 ♦A982
 ♣AJ5
 ♠9876
 ♥6
 ♦KJ6
 ♣109862

N-S	E-W	Contract	N-S	E-W	MP
B25	B11	3NT E-2	100		24.5
B22	B05	3NT E-2	100		24.5
B07	B23	4H E-1	50		20
B08	B17	4H E-1	50		20
A07	A15	4H E-1	50		20
A26	A03	4H E-1	50		20
A18	A13	4H E-1	50		20
A19	A02	4H E-1	50		20
A09	A16	3NT E-1	50		20
B14	B02	2H E 4	170		15.5
A11	A17	2H E 4	170		15.5
B12	B19	3NT E 3	400		14
A24	A12	4H E 4	420		10.5
A01	A25	4H E 4	420		10.5
A05	A14	4H E 4	420		10.5
B10	B18	4H E 4	420		10.5
A04	A20	4H E 4	420		10.5
B24	B09	4H E 4	420		10.5
B26	B13	3NT E 4	430		7
A21	A06	4H E 5	450		3
B16	B06	4H E 5	450		3
B04	B15	4H E 5	450		3
A23	A10	4H E 5	450		3
B01	B20	4H E 5	450		3
B21	B03	4H E 5	450		3
A22	A08	4H E 5	450		3

18

♠J10652
 ♥10962
 ♦A83
 ♣J
 ♠KQ97
 ♥QJ743
 ♦KJ95
 ♣
 ♠A4
 ♥K
 ♦Q104
 ♣10765432
 ♠83
 ♥A85
 ♦762
 ♣AKQ98

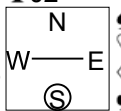
N-S	E-W	Contract	N-S	E-W	MP
A22	A08	3C E-3	150		25
B16	B06	2S N 2	110		24
B12	B19	3C E-2	100		23
A18	A13	1NT S 1	90		22
A11	A17	3NT E-1	50		19.5
B01	B20	2NT E-1	50		19.5
B22	B05	2H W-1	50		19.5
B24	B09	2C E-1	50		19.5
A19	A02	1NT E 1	90		16
A09	A16	1NT E 1	90		16
B08	B17	1NT E 1	90		16
A05	A14	2C S-1	100		13.5
A26	A03	1NT S-1	100		13.5
A21	A06	3D W 3	110		12
B25	B11	1NT E 2	120		10.5
B10	B18	1NT E 2	120		10.5
B07	B23	2S N-2	200		6.5
A07	A15	2S N-2	200		6.5
A04	A20	2S N-2	200		6.5
A24	A12	2H N-2	200		6.5
A01	A25	2H N-2	200		6.5
B21	B02	2H N-2	200		6.5
B14	B02	2S N-3	300		2
A23	A10	2S N-3	300		2
B26	B13	1NT S-3	300		2
B04	B15	2H N-4	400		0

任天堂杯 OPEN PAIRS Session 3 Section AB 2016年12月4日(日)

19

♠85
♥Q1042
♦J10862
♣J2

♠K64
♥7
♦AKQ973
♣K53



♠AJ7
♥AKJ
♦4
♣AQ10976

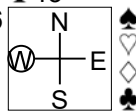
♠Q10932
♥98653
♦5
♣84

N-S	E-W	Contract	N-S	E-W	MP
A14	A04	5D W 5	600	25	
B02	B21	6C E 7	1390	23.5	
A10	A17	6C E 7	1390	23.5	
B17	B07	6NT W 7	1470	15.5	
A08	A16	6NT W 7	1470	15.5	
B05	B16	6NT E 7	1470	15.5	
B08	B24	6NT E 7	1470	15.5	
B11	B19	6NT E 7	1470	15.5	
B14	B01	6NT E 7	1470	15.5	
B25	B10	6NT E 7	1470	15.5	
B23	B06	6NT E 7	1470	15.5	
A05	A21	6NT E 7	1470	15.5	
A02	A26	6NT E 7	1470	15.5	
A12	A18	6NT E 7	1470	15.5	
B26	B12	6NT E 7	1470	15.5	
B15	B03	6NT E 7	1470	15.5	
A25	A13	6NT E 7	1470	15.5	
A19	A01	7C E 7	2140	6	
B22	B04	7C E 7	2140	6	
A20	A03	7C E 7	2140	6	
A22	A07	7C E 7	2140	6	
B09	B18	7C E 7	2140	6	
A06	A15	7NT W 7	2220	1.5	
A24	A11	7NT W 7	2220	1.5	
A23	A09	7NT E 7	2220	1.5	
B13	B20	7NT E 7	2220	1.5	

20

♠K
♥943
♦AJ87643
♣43

♠AQ86
♥K765
♦KQ2
♣97



♠J10952
♥QJ8
♦5
♣AJ86

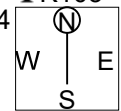
♠743
♥A102
♦109
♣KQ1052

N-S	E-W	Contract	N-S	E-W	MP
B09	B18	4S E-2	200	24.5	
A14	A04	3NT E-2	200	24.5	
A23	A09	4S E-1	100	16.5	
B14	B01	4S E-1	100	16.5	
B17	B07	4S E-1	100	16.5	
B11	B19	4S E-1	100	16.5	
B02	B21	4S E-1	100	16.5	
B25	B10	4S E-1	100	16.5	
A02	A26	4S E-1	100	16.5	
A24	A11	4S E-1	100	16.5	
A08	A16	4S E-1	100	16.5	
A10	A17	4S E-1	100	16.5	
A12	A18	4S E-1	100	16.5	
A19	A01	4S E-1	100	16.5	
A06	A15	4S E-1	100	16.5	
B08	B24	4S E-1	100	16.5	
A25	A13	3S W 3	140	5.5	
B15	B03	3S E 3	140	5.5	
B23	B06	2S E 3	140	5.5	
A20	A03	2S E 3	140	5.5	
A05	A21	2S E 3	140	5.5	
B05	B16	2S E 3	140	5.5	
A22	A07	2S E 3	140	5.5	
B26	B12	2H E 3	140	5.5	
B13	B20	2S E 4	170	1	
B22	B04	4S E 4	620	0	

21

♠9732
♥32
♦KQ95
♣K103

♠AKJ54
♥J4
♦J32
♣J87



♠108
♥AK976
♦A8
♣Q942

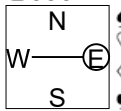
♠Q6
♥Q1085
♦10764
♣A65

N-S	E-W	Contract	N-S	E-W	MP
A21	A04	3NT W-2	100	22	
A07	A16	3NT W-2	100	22	
B14	B13	3NT E-2	100	22	
A26	A01	3NT E-2	100	22	
A13	A19	3NT E-2	100	22	
B24	B07	2NT W-2	100	22	
A11	A18	2NT E-2	100	22	
A09	A17	4S W-1	50	14.5	
B16	B04	4H E-1	50	14.5	
A23	A08	4C W-1	50	14.5	
A20	A02	3NT E-1	50	14.5	
B06	B17	2NT W-1	50	14.5	
B15	B02	2NT E-1	50	14.5	
B01	B21	2H E-1	50	14.5	
A15	A05	1NT E-1	50	14.5	
B26	B11	3C E 3	110	9.5	
B10	B19	2S W 2	110	9.5	
A25	A12	2NT W 2	120	6	
A06	A22	2NT E 2	120	6	
B23	B05	2NT E 2	120	6	
B03	B22	2NT E 2	120	6	
B18	B08	2NT E 2	120	6	
B12	B20	2H E 3	140	2	
A24	A10	2H E 3	140	2	
A03	A14	2H E 3	140	2	
B09	B25	2NT W 4	180	0	

22

♠A10965
♥74
♦732
♣J53

♠Q72
♥109
♦A6
♣1087642



♠KJ4
♥AQJ53
♦Q1094
♣A

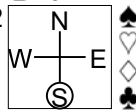
♠83
♥K862
♦KJ85
♣KQ9

N-S	E-W	Contract	N-S	E-W	MP
B03	B22	3Hx W-1	200	24.5	
B12	B20	2NT W-2	200	24.5	
A06	A22	2NT W-1	100	23	
B18	B08	2S N-2	100	22	
B09	B25	2H E 2	110	19.5	
A09	A17	2H E 2	110	19.5	
A15	A05	2H E 2	110	19.5	
B24	B07	2H E 2	110	19.5	
B23	B05	2NT W 2	120	13.5	
B10	B19	2NT W 2	120	13.5	
A25	A12	2NT W 2	120	13.5	
B01	B21	2NT W 2	120	13.5	
A11	A18	2NT W 2	120	13.5	
A24	A10	2NT W 2	120	13.5	
B26	B11	2NT W 2	120	13.5	
B14	B13	1NT E 2	120	13.5	
B16	B04	3H E 3	140	8	
A23	A08	2H E 3	140	8	
B15	B02	2H E 3	140	8	
A07	A16	2NT W 3	150	4.5	
A21	A04	2NT W 3	150	4.5	
B06	B17	2NT W 3	150	4.5	
A26	A01	1NT E 3	150	4.5	
A13	A19	1H E 4	170	2	
A03	A14	2NT W 4	180	1	
A20	A02	2Sx N-3	500	0	

23

♠AK
♥AJ987
♦Q532
♣107

♠QJ75432
♥102
♦K
♣K42



♠10
♥Q654
♦A109
♣AQJ93

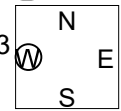
♠986
♥K3
♦J8764
♣865

N-S	E-W	Contract	N-S	E-W	MP
B04	B23	3NT E-1	100	25	
A10	A18	4H N-1	100	24	
B11	B20	3C E 3	110	23	
A07	A23	3C E 4	130	22	
B25	B08	3S W 3	140	20.5	
B10	B26	2S W 3	140	20.5	
A14	A02	3S W 4	170	17	
A26	A13	3S W 4	170	17	
A25	A11	3S W 4	170	17	
A16	A06	2S W 4	170	17	
A01	A20	2S W 4	170	17	
B19	B09	3S W 5	200	10.5	
B07	B18	3H N-2	200	10.5	
B17	B05	3H N-2	200	10.5	
B15	B01	3H N-2	200	10.5	
A04	A15	3H N-2	200	10.5	
B02	B22	3H N-2	200	10.5	
A12	A19	3H N-2	200	10.5	
A24	A09	2NT S-2	200	10.5	
A21	A03	4H N-3	300	5.5	
B16	B03	3H N-3	300	5.5	
B14	B12	4S W 4	620	3.5	
A22	A05	4S W 4	620	3.5	
B13	B21	4Sx W 4	790	2	
A08	A17	5Dx N-3	800	0.5	
B24	B06	4Hx N-3	800	0.5	

24

♠109
♥A974
♦Q10986
♣A7

♠K75
♥KQ10853
♦J4
♣104



♠Q6432
♥J
♦752
♣QJ32

♠AJ8
♥62
♦AK3
♣K9865

N-S	E-W	Contract	N-S	E-W	MP
B25	B08	3Hx W-3	500	24	
B19	B09	2Hx W-3	500	24	
B02	B22	2Hx W-3	500	24	
A26	A13	3NT S 5	460	22	
A14	A02	3NT S 4	430	16.5	
B24	B06	3NT S 4	430	16.5	
B13	B21	3NT S 4	430	16.5	
B11	B20	3NT S 4	430	16.5	
A25	A11	3NT S 4	430	16.5	
B16	B03	3NT S 4	430	16.5	
A22	A05	3NT N 4	430	16.5	
A12	A19	3NT N 4	430	16.5	
A08	A17	3NT N 4	430	16.5	
A10	A18	3NT N 4	430	16.5	
B10	B26	3NT S 3	400	8.5	
B14	B12	3NT S 3	400	8.5	
B17	B05	3NT S 3	400	8.5	
B04	B23	3NT S 3	400	8.5	
A16	A06	3NT N 3	400	8.5	
A04	A15	3NT N 3	400	8.5	
A01	A20	2Hx W-2	300	5	
A07	A23	3H W-3	150	3.5	
B15	B01	3D N 5	150	3.5	
B07	B18	3D N 4	130	1.5	
A24	A09	3D N 4	130	1.5	
A21	A03	4NT S-1	50	0	

任天堂杯 OPEN PAIRS Session 3 Section AB 2016年12月4日(日)

25

♠AQ74
♥AQ9742
♦A
♣Q3

♠K2
♥J10865
♦K42
♣A82

♠J109863
♥K3
♦1085
♣54

♠5
♥
♦QJ9763
♣KJ10976

N-S	E-W	Contract	N-S	E-W	MP
A09	A18	3NT S 5	460		25
B03	B23	3NT S 4	430		24
A08	A24	5C S 6	420		23
A26	A12	5C S 5	400		21
B17	B04	5C S 5	400		21
A25	A10	3NT S 3	400		21
B01	B22	3H N 4	170		19
B12	B21	1H N 2	110		18
A05	A16	1H N 1	80		17
B15	B13	6C S-1	50	13.5	
B18	B06	5C S-1	50	13.5	
B11	B14	3NT S-1	50	13.5	
A23	A06	3NT S-1	50	13.5	
A11	A19	3H N-1	50	13.5	
A02	A21	3H N-1	50	13.5	
B16	B02	6D S-2	100	7.5	
B05	B24	3NT S-2	100	7.5	
B08	B19	3NT S-2	100	7.5	
B20	B10	3H S-2	100	7.5	
A13	A20	3H N-2	100	7.5	
A14	A01	3H N-2	100	7.5	
B26	B09	4S N-3	150	2.5	
B25	B07	4H N-3	150	2.5	
A17	A07	3NT S-3	150	2.5	
A15	A03	3NT S-3	150	2.5	
A22	A04	5Hx N-4	800	0	

26

♠KJ82
♥764
♦KQ8
♣A63

♠10763
♥AK92
♦10754
♣2

♠A54
♥J83
♦A96
♣J1084

♠Q9
♥Q105
♦J32
♣KQ975

N-S	E-W	Contract	N-S	E-W	MP
A25	A10	2NT N 3	150		23.5
B08	B19	2NT N 3	150		23.5
A15	A03	1NT S 3	150		23.5
B25	B07	1NT N 3	150		23.5
B16	B02	2NT S 2	120		18
B18	B06	2NT N 2	120		18
A02	A21	2NT N 2	120		18
A13	A20	2NT N 2	120		18
A17	A07	2NT N 2	120		18
B15	B13	2NT N 2	120		18
B11	B14	1NT S 2	120		18
B05	B24	2C N 3	110	13.5	
A11	A19	2C N 3	110	13.5	
B01	B22	2C N 2	90	10.5	
B12	B21	1NT S 1	90	10.5	
A08	A24	1NT S 1	90	10.5	
A09	A18	1NT S 1	90	10.5	
B20	B10	2C N-1	100	7	
A14	A01	2C N-1	100	7	
A22	A04	2C N-1	100	7	
A23	A06	3NT N-2	200	2.5	
B03	B23	3C N-2	200	2.5	
A26	A12	3C N-2	200	2.5	
A05	A16	3C N-2	200	2.5	
B17	B04	3C N-2	200	2.5	
B26	B09	2NT N-2	200	2.5	

<p>1 N/-</p> <p>♠ A972 ♥ K9 ♦ 984 ♣ A732</p> <p>♠ J85 ♥ AJ65 ♦ AQ73 ♣ 65</p> <p>♠ QT4 ♥ 73 ♦ KT6 ♣ KQ984</p> <p>♠ K63 ♥ QT842 ♦ J52 ♣ JT</p> <p>11 12 10 7</p> <p>N S N 4 4 ♠ 5 5 ♥ 6 6 ♦ 4 4 ♣ 4 4</p> <p>Opt res: W 3N;-400</p> <p>E W N 8 9 ♠ 8 8 ♥ 7 7 ♦ 9 9 ♣ 9 9</p>	<p>2 E/NS</p> <p>♠ K9872 ♥ KQT ♦ 95432 ♣ -</p> <p>♠ - ♥ AJ82 ♦ QT7 ♣ QJT942</p> <p>♠ J64 ♥ 97654 ♦ J86 ♣ A8</p> <p>♠ AQT53 ♥ 3 ♦ AK ♣ K7653</p> <p>8 10 6 16</p> <p>N S N 8 8 ♠ 12 12 ♥ 5 5 ♦ 10 11 ♣ 7 7</p> <p>Opt res: EW 7HX;1400</p> <p>E W N 3 3 ♠ 1 1 ♥ 7 7 ♦ 2 2 ♣ 6 6</p>	<p>3 S/EW</p> <p>♠ 9764 ♥ Q92 ♦ J97 ♣ 964</p> <p>♠ AT3 ♥ J4 ♦ K6542 ♣ QT5</p> <p>♠ KJ2 ♥ T873 ♦ Q8 ♣ AJ82</p> <p>♠ Q85 ♥ AK65 ♦ AT3 ♣ K73</p> <p>3 10 11 16</p> <p>N S N 6 6 ♠ 6 6 ♥ 6 6 ♦ 5 5 ♣ 4 4</p> <p>Opt res: EW 2C;-110</p> <p>E W N 7 7 ♠ 7 7 ♥ 7 7 ♦ 7 7 ♣ 9 9</p>
<p>4 W/All</p> <p>♠ A75 ♥ K62 ♦ KT85 ♣ AT8</p> <p>♠ T432 ♥ QT87 ♦ A7 ♣ 976</p> <p>♠ KJ ♥ 9543 ♦ J9632 ♣ J4</p> <p>♠ Q986 ♥ AJ ♦ Q4 ♣ KQ532</p> <p>14 6 6 14</p> <p>N S N 10 11 ♠ 10 10 ♥ 8 8 ♦ 8 8 ♣ 11 11</p> <p>Opt res: S 3N;660</p> <p>E W N 2 2 ♠ 3 3 ♥ 5 5 ♦ 5 5 ♣ 2 2</p>	<p>5 N/NS</p> <p>♠ T873 ♥ J4 ♦ A7642 ♣ Q3</p> <p>♠ 92 ♥ Q6 ♦ KQJT9 ♣ T862</p> <p>♠ KJ4 ♥ AT9872 ♦ 8 ♣ KJ4</p> <p>♠ AQ65 ♥ K53 ♦ 53 ♣ A975</p> <p>7 8 12 13</p> <p>N S N 6 6 ♠ 8 8 ♥ 5 5 ♦ 7 7 ♣ 6 5</p> <p>Opt res: EW 3HX;100</p> <p>E W N 7 7 ♠ 4 4 ♥ 8 8 ♦ 6 6 ♣ 7 7</p>	<p>6 E/EW</p> <p>♠ KJ5 ♥ Q8762 ♦ 643 ♣ K9</p> <p>♠ 63 ♥ KT4 ♦ AJ9752 ♣ QJ</p> <p>♠ AQ ♥ AJ953 ♦ QT ♣ 8432</p> <p>♠ T98742 ♥ - ♦ K8 ♣ AT765</p> <p>9 11 13 7</p> <p>N S N 1 1 ♠ 9 9 ♥ 3 3 ♦ 1 1 ♣ 6 6</p> <p>Opt res: NS 5SX;-300</p> <p>E W N 10 10 ♠ 4 4 ♥ 10 10 ♦ 10 9 ♣ 7 7</p>
<p>7 S/All</p> <p>♠ KT ♥ T654 ♦ AT5 ♣ AT76</p> <p>♠ Q76 ♥ 7 ♦ KJ432 ♣ K982</p> <p>♠ 8542 ♥ KJ9832 ♦ 9 ♣ Q4</p> <p>♠ AJ93 ♥ AQ ♦ Q876 ♣ J53</p> <p>11 9 6 14</p> <p>N S N 10 10 ♠ 9 9 ♥ 8 8 ♦ 9 9 ♣ 10 10</p> <p>Opt res: NS 3N;630</p> <p>E W N 2 3 ♠ 2 3 ♥ 5 5 ♦ 3 3 ♣ 3 3</p>	<p>8 W/-</p> <p>♠ J8 ♥ KQ87532 ♦ Q87 ♣ T</p> <p>♠ AK932 ♥ JT6 ♦ J62 ♣ 43</p> <p>♠ QT5 ♥ 9 ♦ AT43 ♣ KQ965</p> <p>♠ 764 ♥ A4 ♦ K95 ♣ AJ872</p> <p>8 9 11 12</p> <p>N S N 7 7 ♠ 4 4 ♥ 9 9 ♦ 5 5 ♣ 5 5</p> <p>Opt res: EW 3SX;100</p> <p>E W N 5 5 ♠ 8 8 ♥ 4 4 ♦ 8 8 ♣ 8 8</p>	<p>9 N/EW</p> <p>♠ KT6532 ♥ 742 ♦ 72 ♣ J5</p> <p>♠ A9 ♥ QJ6 ♦ AJ643 ♣ 943</p> <p>♠ Q87 ♥ T3 ♦ QT985 ♣ AT8</p> <p>♠ J4 ♥ AK985 ♦ K ♣ KQ762</p> <p>4 12 8 16</p> <p>N S N 5 5 ♠ 8 8 ♥ 9 9 ♦ 4 4 ♣ 8 8</p> <p>Opt res: NS 2H;140</p> <p>E W N 7 7 ♠ 5 5 ♥ 4 4 ♦ 8 8 ♣ 5 5</p>
<p>10 E/All</p> <p>♠ T63 ♥ - ♦ J653 ♣ AQJT92</p> <p>♠ - ♥ T987543 ♦ KT9 ♣ K63</p> <p>♠ K ♥ AKQJ62 ♦ 74 ♣ 8754</p> <p>♠ AQJ987542 ♥ - ♦ AQ82 ♣ -</p> <p>8 6 13 13</p> <p>N S N 6 6 ♠ 12 12 ♥ 3 3 ♦ 11 12 ♣ 9 10</p> <p>Opt res: EW 7HX;800</p> <p>E W N 2 2 ♠ 1 - ♥ 10 10 ♦ 1 1 ♣ 3 1</p>	<p>11 S/-</p> <p>♠ A9 ♥ 976 ♦ T943 ♣ K932</p> <p>♠ KQ42 ♥ J53 ♦ A65 ♣ 754</p> <p>♠ J87653 ♥ Q842 ♦ Q2 ♣ 6</p> <p>♠ T ♥ AKT ♦ KJ87 ♣ AQJT8</p> <p>7 10 5 18</p> <p>N S N 8 8 ♠ 5 5 ♥ 8 8 ♦ 11 11 ♣ 11 11</p> <p>Opt res: NS 5D/5C;400</p> <p>E W N 2 2 ♠ 8 8 ♥ 5 5 ♦ 1 1 ♣ 2 2</p>	<p>12 W/NS</p> <p>♠ 86 ♥ A82 ♦ K8642 ♣ Q95</p> <p>♠ 742 ♥ T764 ♦ 73 ♣ JT76</p> <p>♠ Q53 ♥ J95 ♦ JT95 ♣ 432</p> <p>♠ AKJT9 ♥ KQ3 ♦ AQ ♣ AK8</p> <p>9 1 4 26</p> <p>N S N 13 13 ♠ 13 13 ♥ 12 12 ♦ 12 12 ♣ 12 12</p> <p>Opt res: NS 7N;2220</p> <p>E W N - - ♠ - - ♥ 1 1 ♦ 1 1 ♣ 1 1</p>
<p>13 N/All</p> <p>♠ AJ ♥ AJ42 ♦ J9632 ♣ A2</p> <p>♠ K87642 ♥ - ♦ QT7 ♣ K985</p> <p>♠ T93 ♥ KT653 ♦ K ♣ Q764</p> <p>♠ Q5 ♥ Q987 ♦ A854 ♣ JT3</p> <p>15 8 8 9</p> <p>N S N 8 8 ♠ 4 4 ♥ 8 8 ♦ 9 9 ♣ 5 6</p> <p>Opt res: EW 3S;-140</p> <p>E W N 3 3 ♠ 9 9 ♥ 4 4 ♦ 3 3 ♣ 7 7</p>	<p>14 E/-</p> <p>♠ Q952 ♥ JT653 ♦ Q ♣ KT6</p> <p>♠ KJ ♥ Q ♦ KJT53 ♣ AJ972</p> <p>♠ AT ♥ 87 ♦ 7642 ♣ Q8543</p> <p>♠ 87643 ♥ AK942 ♦ A98 ♣ -</p> <p>8 15 6 11</p> <p>N S N 6 6 ♠ 11 11 ♥ 11 11 ♦ 3 3 ♣ 4 4</p> <p>Opt res: E 6DX;300</p> <p>E W N 7 7 ♠ 2 2 ♥ 2 2 ♦ 10 9 ♣ 9 9</p>	<p>15 S/NS</p> <p>♠ 64 ♥ J43 ♦ AQ2 ♣ Q7653</p> <p>♠ QJ853 ♥ T ♦ J7543 ♣ J8</p> <p>♠ KT97 ♥ Q87 ♦ 86 ♣ KT42</p> <p>♠ A2 ♥ AK9652 ♦ KT9 ♣ A9</p> <p>9 5 8 18</p> <p>N S N 11 11 ♠ 5 5 ♥ 11 11 ♦ 8 8 ♣ 9 9</p> <p>Opt res: NS 5N;660</p> <p>E W N 2 2 ♠ 8 7 ♥ 1 1 ♦ 4 4 ♣ 3 3</p>

<p>16 ♠ 2 ♥ Q863 ♦ T764 ♣ Q943</p> <p>♠ QT5 ♥ A975 ♦ 32 ♣ A762</p> <p>♠ AK83 ♥ T2 ♦ AKJ95 ♣ K5</p> <p>♠ J9764 ♥ KJ4 ♦ Q8 ♣ JT8</p> <p>4 10 18 8</p>	<table border="1"> <thead> <tr><th>N</th><th>S</th></tr> </thead> <tbody> <tr><td>2</td><td>2</td></tr> <tr><td>2</td><td>2</td></tr> <tr><td>4</td><td>4</td></tr> <tr><td>2</td><td>2</td></tr> <tr><td>4</td><td>4</td></tr> </tbody> </table> <p>Opt res: EW 3N;-660</p> <table border="1"> <thead> <tr><th>E</th><th>W</th></tr> </thead> <tbody> <tr><td>11</td><td>11</td></tr> <tr><td>11</td><td>11</td></tr> <tr><td>9</td><td>9</td></tr> <tr><td>11</td><td>11</td></tr> <tr><td>9</td><td>9</td></tr> </tbody> </table>	N	S	2	2	2	2	4	4	2	2	4	4	E	W	11	11	11	11	9	9	11	11	9	9	<p>17 ♠ KT ♥ KQJ7 ♦ 7543 ♣ Q74</p> <p>N/-</p> <p>♠ QJ542 ♥ T432 ♦ QT ♣ K3</p> <p>♠ A3 ♥ A985 ♦ A982 ♣ AJ5</p> <p>♠ 9876 ♥ 6 ♦ KJ6 ♣ T9862</p> <p>11 8 17 4</p>	<table border="1"> <thead> <tr><th>N</th><th>S</th></tr> </thead> <tbody> <tr><td>2</td><td>2</td></tr> <tr><td>2</td><td>2</td></tr> <tr><td>2</td><td>2</td></tr> <tr><td>3</td><td>3</td></tr> <tr><td>4</td><td>4</td></tr> </tbody> </table> <p>Opt res: EW 4H;-450</p> <table border="1"> <thead> <tr><th>E</th><th>W</th></tr> </thead> <tbody> <tr><td>10</td><td>10</td></tr> <tr><td>10</td><td>10</td></tr> <tr><td>11</td><td>11</td></tr> <tr><td>10</td><td>10</td></tr> <tr><td>8</td><td>8</td></tr> </tbody> </table>	N	S	2	2	2	2	2	2	3	3	4	4	E	W	10	10	10	10	11	11	10	10	8	8	<p>18 ♠ JT652 ♥ T962 ♦ A83 ♣ J</p> <p>E/NS</p> <p>♠ KQ97 ♥ QJ743 ♦ KJ95 ♣ -</p> <p>♠ A4 ♥ K ♦ QT4 ♣ T765432</p> <p>♠ 83 ♥ A85 ♦ 762 ♣ AKQ98</p> <p>6 12 9 13</p>	<table border="1"> <thead> <tr><th>N</th><th>S</th></tr> </thead> <tbody> <tr><td>6</td><td>6</td></tr> <tr><td>4</td><td>4</td></tr> <tr><td>4</td><td>4</td></tr> <tr><td>3</td><td>3</td></tr> <tr><td>6</td><td>6</td></tr> </tbody> </table> <p>Opt res: EW 1H;-140</p> <table border="1"> <thead> <tr><th>E</th><th>W</th></tr> </thead> <tbody> <tr><td>7</td><td>7</td></tr> <tr><td>8</td><td>8</td></tr> <tr><td>9</td><td>9</td></tr> <tr><td>9</td><td>9</td></tr> <tr><td>6</td><td>6</td></tr> </tbody> </table>	N	S	6	6	4	4	4	4	3	3	6	6	E	W	7	7	8	8	9	9	9	9	6	6
N	S																																																																												
2	2																																																																												
2	2																																																																												
4	4																																																																												
2	2																																																																												
4	4																																																																												
E	W																																																																												
11	11																																																																												
11	11																																																																												
9	9																																																																												
11	11																																																																												
9	9																																																																												
N	S																																																																												
2	2																																																																												
2	2																																																																												
2	2																																																																												
3	3																																																																												
4	4																																																																												
E	W																																																																												
10	10																																																																												
10	10																																																																												
11	11																																																																												
10	10																																																																												
8	8																																																																												
N	S																																																																												
6	6																																																																												
4	4																																																																												
4	4																																																																												
3	3																																																																												
6	6																																																																												
E	W																																																																												
7	7																																																																												
8	8																																																																												
9	9																																																																												
9	9																																																																												
6	6																																																																												
<p>19 ♠ 85 ♥ QT42 ♦ JT862 ♣ J2</p> <p>♠ K64 ♥ 7 ♦ AKQ973 ♣ K53</p> <p>♠ AJ7 ♥ AKJ ♦ 4 ♣ AQT976</p> <p>♠ QT932 ♥ 98653 ♦ 5 ♣ 84</p> <p>4 15 19 2</p>	<table border="1"> <thead> <tr><th>N</th><th>S</th></tr> </thead> <tbody> <tr><td>-</td><td>-</td></tr> <tr><td>3</td><td>3</td></tr> <tr><td>3</td><td>3</td></tr> <tr><td>2</td><td>2</td></tr> <tr><td>-</td><td>-</td></tr> </tbody> </table> <p>Opt res: EW 7N;-2220</p> <table border="1"> <thead> <tr><th>E</th><th>W</th></tr> </thead> <tbody> <tr><td>13</td><td>13</td></tr> <tr><td>10</td><td>10</td></tr> <tr><td>9</td><td>9</td></tr> <tr><td>11</td><td>11</td></tr> <tr><td>13</td><td>13</td></tr> </tbody> </table>	N	S	-	-	3	3	3	3	2	2	-	-	E	W	13	13	10	10	9	9	11	11	13	13	<p>20 ♠ K ♥ 943 ♦ AJ87643 ♣ 43</p> <p>W/All</p> <p>♠ AQ86 ♥ K765 ♦ KQ2 ♣ 97</p> <p>♠ JT952 ♥ QJ8 ♦ 5 ♣ AJ86</p> <p>♠ 743 ♥ AT2 ♦ T9 ♣ KQT52</p> <p>8 14 9 9</p>	<table border="1"> <thead> <tr><th>N</th><th>S</th></tr> </thead> <tbody> <tr><td>3</td><td>3</td></tr> <tr><td>3</td><td>3</td></tr> <tr><td>3</td><td>3</td></tr> <tr><td>8</td><td>8</td></tr> <tr><td>5</td><td>5</td></tr> </tbody> </table> <p>Opt res: EW 4S;-620</p> <table border="1"> <thead> <tr><th>E</th><th>W</th></tr> </thead> <tbody> <tr><td>8</td><td>8</td></tr> <tr><td>10</td><td>10</td></tr> <tr><td>9</td><td>9</td></tr> <tr><td>5</td><td>5</td></tr> <tr><td>7</td><td>7</td></tr> </tbody> </table>	N	S	3	3	3	3	3	3	8	8	5	5	E	W	8	8	10	10	9	9	5	5	7	7	<p>21 ♠ 9732 ♥ 32 ♦ KQ95 ♣ KT3</p> <p>N/NS</p> <p>♠ AKJ54 ♥ J4 ♦ J32 ♣ J87</p> <p>♠ T8 ♥ AK976 ♦ A8 ♣ Q942</p> <p>♠ Q6 ♥ QT85 ♦ T764 ♣ A65</p> <p>8 11 13 8</p>	<table border="1"> <thead> <tr><th>N</th><th>S</th></tr> </thead> <tbody> <tr><td>5</td><td>5</td></tr> <tr><td>4</td><td>4</td></tr> <tr><td>4</td><td>4</td></tr> <tr><td>7</td><td>7</td></tr> <tr><td>5</td><td>4</td></tr> </tbody> </table> <p>Opt res: EW 1S;-140</p> <table border="1"> <thead> <tr><th>E</th><th>W</th></tr> </thead> <tbody> <tr><td>8</td><td>8</td></tr> <tr><td>9</td><td>9</td></tr> <tr><td>8</td><td>8</td></tr> <tr><td>6</td><td>6</td></tr> <tr><td>8</td><td>8</td></tr> </tbody> </table>	N	S	5	5	4	4	4	4	7	7	5	4	E	W	8	8	9	9	8	8	6	6	8	8
N	S																																																																												
-	-																																																																												
3	3																																																																												
3	3																																																																												
2	2																																																																												
-	-																																																																												
E	W																																																																												
13	13																																																																												
10	10																																																																												
9	9																																																																												
11	11																																																																												
13	13																																																																												
N	S																																																																												
3	3																																																																												
3	3																																																																												
3	3																																																																												
8	8																																																																												
5	5																																																																												
E	W																																																																												
8	8																																																																												
10	10																																																																												
9	9																																																																												
5	5																																																																												
7	7																																																																												
N	S																																																																												
5	5																																																																												
4	4																																																																												
4	4																																																																												
7	7																																																																												
5	4																																																																												
E	W																																																																												
8	8																																																																												
9	9																																																																												
8	8																																																																												
6	6																																																																												
8	8																																																																												
<p>22 ♠ AT965 ♥ 74 ♦ 732 ♣ J53</p> <p>♠ Q72 ♥ T9 ♦ A6 ♣ T87642</p> <p>♠ KJ4 ♥ AQJ53 ♦ QT94 ♣ A</p> <p>♠ 83 ♥ K862 ♦ KJ85 ♣ KQ9</p> <p>5 6 17 12</p>	<table border="1"> <thead> <tr><th>N</th><th>S</th></tr> </thead> <tbody> <tr><td>5</td><td>5</td></tr> <tr><td>6</td><td>6</td></tr> <tr><td>4</td><td>4</td></tr> <tr><td>5</td><td>5</td></tr> <tr><td>5</td><td>5</td></tr> </tbody> </table> <p>Opt res: EW 2H;-140</p> <table border="1"> <thead> <tr><th>E</th><th>W</th></tr> </thead> <tbody> <tr><td>8</td><td>8</td></tr> <tr><td>7</td><td>7</td></tr> <tr><td>9</td><td>9</td></tr> <tr><td>8</td><td>7</td></tr> <tr><td>8</td><td>8</td></tr> </tbody> </table>	N	S	5	5	6	6	4	4	5	5	5	5	E	W	8	8	7	7	9	9	8	7	8	8	<p>23 ♠ AK ♥ AJ987 ♦ Q532 ♣ T7</p> <p>S/All</p> <p>♠ QJ75432 ♥ T2 ♦ K ♣ K42</p> <p>♠ T ♥ Q654 ♦ AT9 ♣ AQJ93</p> <p>♠ 986 ♥ K3 ♦ J8764 ♣ 865</p> <p>14 9 13 4</p>	<table border="1"> <thead> <tr><th>N</th><th>S</th></tr> </thead> <tbody> <tr><td>5</td><td>5</td></tr> <tr><td>3</td><td>3</td></tr> <tr><td>6</td><td>6</td></tr> <tr><td>8</td><td>8</td></tr> <tr><td>3</td><td>3</td></tr> </tbody> </table> <p>Opt res: EW 2S;-140</p> <table border="1"> <thead> <tr><th>E</th><th>W</th></tr> </thead> <tbody> <tr><td>7</td><td>7</td></tr> <tr><td>9</td><td>9</td></tr> <tr><td>6</td><td>6</td></tr> <tr><td>5</td><td>5</td></tr> <tr><td>9</td><td>9</td></tr> </tbody> </table>	N	S	5	5	3	3	6	6	8	8	3	3	E	W	7	7	9	9	6	6	5	5	9	9	<p>24 ♠ T9 ♥ A974 ♦ QT986 ♣ A7</p> <p>W/-</p> <p>♠ K75 ♥ KQT853 ♦ J4 ♣ T4</p> <p>♠ Q6432 ♥ J ♦ 752 ♣ QJ32</p> <p>♠ AJ8 ♥ 62 ♦ AK3 ♣ K9865</p> <p>10 9 6 15</p>	<table border="1"> <thead> <tr><th>N</th><th>S</th></tr> </thead> <tbody> <tr><td>10</td><td>10</td></tr> <tr><td>8</td><td>8</td></tr> <tr><td>8</td><td>8</td></tr> <tr><td>11</td><td>11</td></tr> <tr><td>9</td><td>9</td></tr> </tbody> </table> <p>Opt res: NS 3N;430</p> <table border="1"> <thead> <tr><th>E</th><th>W</th></tr> </thead> <tbody> <tr><td>3</td><td>3</td></tr> <tr><td>4</td><td>4</td></tr> <tr><td>5</td><td>5</td></tr> <tr><td>2</td><td>2</td></tr> <tr><td>3</td><td>3</td></tr> </tbody> </table>	N	S	10	10	8	8	8	8	11	11	9	9	E	W	3	3	4	4	5	5	2	2	3	3
N	S																																																																												
5	5																																																																												
6	6																																																																												
4	4																																																																												
5	5																																																																												
5	5																																																																												
E	W																																																																												
8	8																																																																												
7	7																																																																												
9	9																																																																												
8	7																																																																												
8	8																																																																												
N	S																																																																												
5	5																																																																												
3	3																																																																												
6	6																																																																												
8	8																																																																												
3	3																																																																												
E	W																																																																												
7	7																																																																												
9	9																																																																												
6	6																																																																												
5	5																																																																												
9	9																																																																												
N	S																																																																												
10	10																																																																												
8	8																																																																												
8	8																																																																												
11	11																																																																												
9	9																																																																												
E	W																																																																												
3	3																																																																												
4	4																																																																												
5	5																																																																												
2	2																																																																												
3	3																																																																												
<p>25 ♠ AQ74 ♥ AQ9742 ♦ A ♣ Q3</p> <p>♠ K2 ♥ JT865 ♦ K42 ♣ A82</p> <p>♠ JT9863 ♥ K3 ♦ T85 ♣ 54</p> <p>♠ 5 ♥ - ♦ QJ9763 ♣ KJT976</p> <p>18 11 4 7</p>	<table border="1"> <thead> <tr><th>N</th><th>S</th></tr> </thead> <tbody> <tr><td>8</td><td>8</td></tr> <tr><td>7</td><td>7</td></tr> <tr><td>8</td><td>8</td></tr> <tr><td>10</td><td>10</td></tr> <tr><td>11</td><td>11</td></tr> </tbody> </table> <p>Opt res: NS 5C;400</p> <table border="1"> <thead> <tr><th>E</th><th>W</th></tr> </thead> <tbody> <tr><td>5</td><td>5</td></tr> <tr><td>5</td><td>5</td></tr> <tr><td>4</td><td>5</td></tr> <tr><td>2</td><td>2</td></tr> <tr><td>1</td><td>1</td></tr> </tbody> </table>	N	S	8	8	7	7	8	8	10	10	11	11	E	W	5	5	5	5	4	5	2	2	1	1	<p>26 ♠ KJ82 ♥ 764 ♦ KQ8 ♣ A63</p> <p>E/All</p> <p>♠ T763 ♥ AK92 ♦ T754 ♣ 2</p> <p>♠ A54 ♥ J83 ♦ A96 ♣ JT84</p> <p>♠ Q9 ♥ QT5 ♦ J32 ♣ KQ975</p> <p>13 7 10 10</p>	<table border="1"> <thead> <tr><th>N</th><th>S</th></tr> </thead> <tbody> <tr><td>7</td><td>7</td></tr> <tr><td>6</td><td>7</td></tr> <tr><td>6</td><td>6</td></tr> <tr><td>6</td><td>6</td></tr> <tr><td>8</td><td>8</td></tr> </tbody> </table> <p>Opt res: NS 1N/2C;90</p> <table border="1"> <thead> <tr><th>E</th><th>W</th></tr> </thead> <tbody> <tr><td>6</td><td>6</td></tr> <tr><td>6</td><td>6</td></tr> <tr><td>6</td><td>6</td></tr> <tr><td>7</td><td>7</td></tr> <tr><td>5</td><td>5</td></tr> </tbody> </table>	N	S	7	7	6	7	6	6	6	6	8	8	E	W	6	6	6	6	6	6	7	7	5	5																										
N	S																																																																												
8	8																																																																												
7	7																																																																												
8	8																																																																												
10	10																																																																												
11	11																																																																												
E	W																																																																												
5	5																																																																												
5	5																																																																												
4	5																																																																												
2	2																																																																												
1	1																																																																												
N	S																																																																												
7	7																																																																												
6	7																																																																												
6	6																																																																												
6	6																																																																												
8	8																																																																												
E	W																																																																												
6	6																																																																												
6	6																																																																												
6	6																																																																												
7	7																																																																												
5	5																																																																												