

**1**

♠ KJ10765  
♥  
♦ A1053  
♣ 1042

♠ A32  
♥ 63  
♦ J2  
♣ AK9653

♠ 94  
♥ KQ852  
♦ Q98  
♣ QJ8

W N E S

♠ Q8  
♥ AJ10974  
♦ K764  
♣ 7

Board (1) Av: NS=+100

N-S	E-W	Contract	N-S	E-W	IMP
7	4	4S	N 4	420	8
8	2	5Cx	W-2	300	5
1	10	3S	N 4	170	2
9	6	3S	N 4	170	2
6	9	3S	N 3	140	1
2	8	3NT	W-2	100	0
4	7	3C	W-1	50	-2
5	3	4S	N-1	50	-4
10	1	3C	W 3	110	-5
3	5	3NT	E 3	400	-11

**2**

♠ 876  
♥ K932  
♦ A1095  
♣ KQ

♠ KQJ4  
♥ 10  
♦ 87642  
♣ J75

♠ A103  
♥ AJ5  
♦ KJ3  
♣ 10942

W N E S

♠ 952  
♥ Q8764  
♦ Q  
♣ A863

Board (2) Av: NS=+60

N-S	E-W	Contract	N-S	E-W	IMP
5	3	2H	S 2	110	2
8	2	2H	S 2	110	2
3	5	2H	S 2	110	2
6	9	2H	S 2	110	2
7	4	1NT	E-2	100	1
9	6	2S	W-1	50	0
1	10	1NT	E-1	50	0
10	1	1NT	E-1	50	0
2	8	1NT	E 1	90	-4
4	7	2H	S-1	100	-4

**3**

♠ J4  
♥ A864  
♦ KQ10  
♣ Q875

♠ A952  
♥ 975  
♦ 97  
♣ K943

♠ K63  
♥ J103  
♦ AJ62  
♣ J106

W N E S

♠ Q1087  
♥ KQ2  
♦ 8543  
♣ A2

Board (3) Av: NS=+150

N-S	E-W	Contract	N-S	E-W	IMP
6	9	3NT	N 3	400	6
2	8	2NT	N 3	150	0
7	4	2NT	N 3	150	0
9	6	2NT	N 3	150	0
10	1	2NT	N 3	150	0
1	10	2NT	N 3	150	0
3	5	2NT	N 3	150	0
4	7	1NT	N 3	150	0
5	3	2NT	N 2	120	-1
8	2	Passout			-4

**4**

♠ A95  
♥ J1073  
♦ 94  
♣ KQ94

♠ 102  
♥ K64  
♦ K763  
♣ A1087

♠ KQJ87  
♥ 5  
♦ Q52  
♣ J653

W N E S

♠ 643  
♥ AQ982  
♦ AJ108  
♣ 2

Board (4) Av: NS=+40

N-S	E-W	Contract	N-S	E-W	IMP
9	6	4H	S 4	620	11
1	10	3S	E-3	300	6
4	7	2H	S 4	170	4
3	5	2H	S 2	110	2
5	3	2H	S 2	110	2
8	2	3H	S-1	100	-4
2	8	3H	S-1	100	-4
10	1	3H	S-1	100	-4
7	4	3H	S-1	100	-4
6	9	3H	S-1	100	-4

**5**

♠ Q9872  
♥ 76  
♦ 983  
♣ 985

♠ K104  
♥ 104  
♦ AQJ7  
♣ J1062

♠ 63  
♥ 9853  
♦ 6542  
♣ AKQ

W N E S

♠ AJ5  
♥ AKQJ2  
♦ K10  
♣ 743

Board (5) Av: NS=-20

N-S	E-W	Contract	N-S	E-W	IMP
1	10	1H	S 3	140	4
3	5	2H	S 2	110	4
9	6	1H	N 2	110	4
8	2	1H	S 1	80	3
6	9	1H	S 1	80	3
10	1	1H	S-1	100	-2
5	3	1H	S-1	100	-2
4	7	1H	S-1	100	-2
2	8	1H	S-2	200	-5
7	4	1H	S-2	200	-5

**6**

♠ A10965  
♥ KJ103  
♦ 95  
♣ 109

♠ J432  
♥ 9854  
♦ 7632  
♣ K

♠ KQ87  
♥ Q2  
♦ KQ  
♣ AJ432

W N E S

♠ A76  
♥ AJ1084  
♣ Q8765

Board (6) Av: NS=+160

N-S	E-W	Contract	N-S	E-W	IMP
3	5	4S	E-4	400	6
1	10	3S	E-3	300	4
5	3	2S	E-2	200	1
4	7	1NT	S 4	180	1
10	1	1NT	S 3	150	0
9	6	3C	N 3	110	-2
7	4	2D	S 3	110	-2
6	9	2D	S 3	110	-2
2	8	2D	S 2	90	-2
8	2	3D	N-1	50	-5

**7**

♠ AQ  
♥ K85  
♦ Q85  
♣ J10752

♠ K943  
♥ A  
♦ K32  
♣ AKQ96

♠ 10852  
♥ 1032  
♦ A10974  
♣ 3

W N E S

♠ J76  
♥ QJ9764  
♦ J6  
♣ 84

Board (7) Av: NS=+120

N-S	E-W	Contract	N-S	E-W	IMP
6	9	4H	W-4	400	7
4	7	4S	E-2	200	2
5	3	2NT	W-2	200	2
2	8	2NT	W-2	200	2
8	2	2H	S 2	110	0
3	5	4S	W-1	100	-1
7	4	4S	E-1	100	-1
9	6	4S	E-1	100	-1
10	1	1C	W 2	90	-5
1	10	1S	W 5	200	-8

**8**

♠ AJ10643  
♥ 754  
♦ KJ  
♣ K7

♠ Q972  
♥ QJ6  
♦ Q765  
♣ 62

♠ K8  
♥ AK1082  
♦ 10  
♣ AJ983

W N E S

♠ 5  
♥ 93  
♦ A98432  
♣ Q1054

Board (8) Av: NS=+60

N-S	E-W	Contract	N-S	E-W	IMP
6	9	4H	W-3	150	3
8	2	4H	W-2	100	1
10	1	4H	E-2	100	1
3	5	4H	E-2	100	1
2	8	3H	E-2	100	1
1	10	3H	E-1	50	0
9	6	3H	E-1	50	0
4	7	3H	E-1	50	0
7	4	2H	E 2	110	-5
5	3	3H	E 3	140	-5

**9**

♠ 82  
♥ A6  
♦ A8432  
♣ A1052

♠ AKQJ4  
♥ KJ9  
♦ 9  
♣ 9764

♠ 93  
♥ Q108754  
♦ K7  
♣ KQ8

W N E S

♠ 10765  
♥ 32  
♦ QJ1065  
♣ J3

Board (9) Av: NS=-40

N-S	E-W	Contract	N-S	E-W	IMP
1	10	5H	E-2	200	6
2	8	4H	E-1	100	4
3	5	4H	E-1	100	4
6	9	4H	E-1	100	4
5	3	4H	E-1	100	4
4	7	4H	E-1	100	4
8	2	3H	E 4	170	-4
10	1	3H	E 4	170	-4
7	4	5Dx	N-3	500	-10
9	6	5Dx	N-3	500	-10

10

♠ 9742  
♥ J72  
♦ 85  
♣ AK43

♠ AJ  
♥ 984  
♦ Q93  
♣ QJ1096

N  
W — E  
S

♠ 10865  
♥ Q1053  
♦ K104  
♣ 85

♠ KQ3  
♥ AK6  
♦ AJ762  
♣ 72

Board (10) Av: NS=-150

N-S	E-W	Contract	N-S	E-W	IMP
7	4	1NT N 6	240		9
2	8	1NT S 1	90		6
4	7	3NT S-1		100	2
9	6	3NT S-2		200	-2
6	9	3NT S-2		200	-2
5	3	3NT S-2		200	-2
1	10	3NT S-2		200	-2
3	5	3NT S-2		200	-2
10	1	3NT S-2		200	-2
8	2	3NT S-3		300	-4

11

♠ K82  
♥ AQJ96  
♦ Q2  
♣ J102

♠ A765  
♥ K8752  
♦ 10  
♣ A97

N  
W — E  
S

♠ 943  
♥ 103  
♦ K65  
♣ KQ864

♠ QJ10  
♥ 4  
♦ AJ98743  
♣ 53

Board (11) Av: NS=+140

N-S	E-W	Contract	N-S	E-W	IMP
7	4	3Dx S 4	570		10
5	3	4C E-4	200		2
3	5	4C E-3	150		0
8	2	1NT N 3	150		0
6	9	3D S 4	130		0
1	10	3D S 4	130		0
4	7	2D S 4	130		0
2	8	3D S 3	110		-1
10	1	2D S 3	110		-1
9	6	3NT N-2		100	-6

12

♠ J92  
♥ A84  
♦ AK6  
♣ A1032

♠ 53  
♥ 53  
♦ Q753  
♣ Q7654

N  
W — E  
S

♠ AKQ1084  
♥ Q  
♦ J1082  
♣ 98

♠ 76  
♥ KJ109762  
♦ 94  
♣ KJ

Board (12) Av: NS=+560

N-S	E-W	Contract	N-S	E-W	IMP
9	6	5Cx W-6	1400		13
10	1	4H S 5	650		3
2	8	4H N 5	650		3
6	9	4H N 5	650		3
8	2	4H N 5	650		3
7	4	4H N 5	650		3
3	5	4H N 5	650		3
4	7	4Sx E-2	300		-6
5	3	4Sx E-2	300		-6
1	10	4Sx E-2	300		-6

13

♠ KJ5  
♥ AKJ4  
♦ 6532  
♣ 107

♠ A1072  
♥ 2  
♦ A74  
♣ A8654

N  
W — E  
S

♠ 3  
♥ Q98765  
♦ Q1098  
♣ K3

♠ Q9864  
♥ 103  
♦ KJ  
♣ QJ92

Board (13) Av: NS=+20

N-S	E-W	Contract	N-S	E-W	IMP
6	4	2S S 2	110		3
9	1	2S S 2	110		3
7	2	2S S 2	110		3
4	6	2S S 2	110		3
3	8	2S S 2	110		3
5	10	1NT N 1	90		2
10	5	3S S-1		100	-3
1	9	1NT N-1		100	-3
8	3	2S S-2		200	-6
2	7	2S S-2		200	-6

14

♠ KQ1073  
♥ J10  
♦ 9543  
♣ 84

♠ A64  
♥ 842  
♦ Q102  
♣ AQ72

N  
W — E  
S

♠ J9  
♥ AK653  
♦ AJ6  
♣ 1093

♠ 852  
♥ Q97  
♦ K87  
♣ KJ65

Board (14) Av: NS=-150

N-S	E-W	Contract	N-S	E-W	IMP
9	1	4H E-1	50		5
7	2	4H E-1	50		5
8	3	4H E-1	50		5
3	8	4H E-1	50		5
4	6	4H E-1	50		5
5	10	3H E 3		140	0
6	4	4H E 4		420	-7
10	5	4H E 4		420	-7
1	9	4H E 4		420	-7
2	7	4H E 4		420	-7

15

♠ KQJ92  
♥ 1087  
♦ 9  
♣ AJ104

♠ 85  
♥ QJ53  
♦ QJ1064  
♣ Q6

N  
W — E  
S

♠ A6  
♥ 642  
♦ A832  
♣ K983

♠ 10743  
♥ AK9  
♦ K75  
♣ 752

Board (15) Av: NS=+150

N-S	E-W	Contract	N-S	E-W	IMP
4	6	4S N 4	620		10
6	4	3S N 4	170		1
7	2	3S N 4	170		1
1	9	3S N 4	170		1
8	3	2S N 4	170		1
3	8	3S N 3	140		0
2	7	2S N 3	140		0
9	1	2S N 3	140		0
5	10	2NT S 2	120		-1
10	5	Passout			-4

16

♠ KJ82  
♥ J54  
♦ QJ2  
♣ Q98

♠ 65  
♥ K107  
♦ AK43  
♣ J1062

N  
W — E  
S

♠ Q743  
♥ AQ32  
♦ 9875  
♣ K

♠ A109  
♥ 986  
♦ 106  
♣ A7543

Board (16) Av: NS=0

N-S	E-W	Contract	N-S	E-W	IMP
9	1	3D E-1	100		3
3	8	2NT W-1	100		3
4	6	2NT W-1	100		3
7	2	1NT W-1	100		3
10	5	Passout			0
5	10	Passout			0
6	4	1S N-1		50	-2
1	9	3D E 3		110	-3
2	7	2D E 3		110	-3
8	3	3D E 4		130	-4

17

♠ KJ  
♥ J9832  
♦ 62  
♣ A1094

♠ Q976  
♥ A76  
♦ 75  
♣ KQ53

N  
W — E  
S

♠ A108542  
♥ Q4  
♦ 104  
♣ 862

♠ 3  
♥ K105  
♦ AKQJ983  
♣ J7

Board (17) Av: NS=+210

N-S	E-W	Contract	N-S	E-W	IMP
6	4	4Hx N 4	590		9
9	1	3NT S 6	490		7
4	6	4H N 5	450		6
1	9	3NT N 4	430		6
2	7	3D S 5	150		-2
8	3	3S E-2	100		-3
10	5	3S E-2	100		-3
5	10	3S E-1	50		-4
7	2	5Dx S-1		100	-7
3	8	3S E 3		140	-8

18

♠ 53  
♥ 10753  
♦ 9  
♣ AJ10986

♠ 9742  
♥ AK  
♦ KJ73  
♣ 752

N  
W — E  
S

♠ QJ108  
♥ 84  
♦ A654  
♣ Q43

♠ AK6  
♥ QJ962  
♦ Q1082  
♣ K

Board (18) Av: NS=+290

N-S	E-W	Contract	N-S	E-W	IMP
1	9	4H S 5	650		8
5	10	4H S 4	620		8
10	5	4H N 4	620		8
7	2	4Sx E-2	300		0
9	1	3H S 5	200		-3
6	4	3H S 4	170		-3
4	6	3H S 3	140		-4
2	7	3H S 3	140		-4
8	3	3S E-2	100		-5
3	8	3S E-1	50		-6

19

♠ Q3  
♥ AJ632  
♦ 4  
♣ AQJ84

♠ A J107652  
♥ K975 Q10  
♦ K1052 QJ7  
♣ 10765 93

♠ K984  
♥ 84  
♦ A9863  
♣ K2

Board (19) Av: NS=+10

N-S	E-W	Contract	N-S	E-W	IMP
5	10	3NT S 3	400		9
6	4	2H N 3	140		4
3	8	2H N 2	110		3
4	6	2H N 2	110		3
9	1	4H N-1	50		-2
10	5	4H N-1	50		-2
8	3	3NT S-1	50		-2
1	9	3NT S-1	50		-2
7	2	3NT S-1	50		-2
2	7	3NT S-2	100		-3

20

♠ KQJ32  
♥ K1052  
♦ 4  
♣ J76

♠ A96 108754  
♥ 6 AQ3  
♦ QJ10732 K98  
♣ Q82 109

♠ J9874  
♥ A65  
♣ AK543

Board (20) Av: NS=+260

N-S	E-W	Contract	N-S	E-W	IMP
8	3	4H S 4	620		8
10	5	4H S 4	620		8
7	2	4H S 4	620		8
9	1	4H S 4	620		8
4	6	4H N 4	620		8
5	10	4H S-1	100		-8
1	9	4H S-1	100		-8
2	7	4H S-1	100		-8
6	4	4H S-1	100		-8
3	8	4H S-1	100		-8

21

♠ QJ92  
♥ QJ1042  
♦ J84  
♣ K

♠ 873 AK4  
♥ K975 863  
♦ Q9 653  
♣ A1042 QJ98

♠ 1065  
♥ A  
♦ AK1072  
♣ 7653

Board (21) Av: NS=0

N-S	E-W	Contract	N-S	E-W	IMP
6	4	2H N 3	140		4
7	2	2D S 4	130		4
1	9	2NT N 2	120		3
4	6	2NT W-1	50		2
9	1	Passout			0
3	8	Passout			0
2	7	2D S-1	100		-3
5	10	1NT S-1	100		-3
10	5	1NT S-1	100		-3
8	3	2NT N-3	300		-7

22

♠ A763  
♥ J1074  
♦ Q97  
♣ 53

♠ KQ9 J852  
♥ A82 KQ65  
♦ 5 AJ  
♣ K109764 A82

♠ 104  
♥ 93  
♦ K1086432  
♣ QJ

Board (22) Av: NS=-670

N-S	E-W	Contract	N-S	E-W	IMP
5	10	6C E-1	100		13
9	1	5C E 6	620		2
1	9	4H E 4	620		2
10	5	3NT E 4	630		1
3	8	3NT E 5	660		0
8	3	3NT E 5	660		0
4	6	3NT E 5	660		0
6	4	3NT E 6	690		-1
7	2	5Dx S-4	800		-4
2	7	6C E 6	1370		-12

23

♠ 10  
♥ 76542  
♦ A7  
♣ K9832

♠ J1093 KJ98654  
♥ KQ862 A8  
♦ QJ54 953  
♣ QJ54 6

♠ AQ732  
♥ KQ  
♦ J104  
♣ A107

Board (23) Av: NS=+20

N-S	E-W	Contract	N-S	E-W	IMP
1	9	3Sx E-2	500		10
8	3	2H S 3	140		3
7	2	2H S 2	110		3
5	10	2C S 3	110		3
3	8	1NT E-1	100		2
2	7	2C S 2	90		2
4	6	3NT N-1	100		-3
10	5	2C N-1	100		-3
6	4	3NT N-2	200		-6
9	1	3NT N-3	300		-8

24

♠ Q9532  
♥ AJ107  
♦ Q7  
♣ 94

♠ AJ1076 8  
♥ 63 K9854  
♦ J54 632  
♣ K53 AQJ8

♠ K4  
♥ Q2  
♦ AK1098  
♣ 10762

Board (24) Av: NS=0

N-S	E-W	Contract	N-S	E-W	IMP
4	6	2S W-3	150		4
1	9	1NT S 3	150		4
5	10	2NT N 2	120		3
3	8	2D S 2	90		3
8	3	1NT N 1	90		3
2	7	2D S-2	100		-3
6	4	2H E 2	110		-3
10	5	2H E 2	110		-3
9	1	2H E 2	110		-3
7	2	2D S-3	150		-4

25

♠ AQ75  
♥ AJ653  
♦ A42  
♣ 8

♠ KJ93 10842  
♥ Q10874 K9  
♦ Q5 J83  
♣ 72 10954

♠ 6  
♥ 2  
♦ K10976  
♣ AKQJ63

Board (25) Av: NS=+550

N-S	E-W	Contract	N-S	E-W	IMP
7	5	6NT S 6	990		10
6	3	6D N 6	920		9
1	8	4NT N 7	520		-1
2	10	3NT N 7	520		-1
4	9	3NT N 6	490		-2
9	4	3NT N 6	490		-2
5	7	3NT N 6	490		-2
8	1	3NT N 6	490		-2
3	6	3NT S 5	460		-3
10	2	5C S 6	420		-4

26

♠ 9852  
♥ 98654  
♦ 4  
♣ K82

♠ AKQ103 764  
♥ K9532 KQJ2  
♦ J75 A876  
♣ J75 A6

♠ J  
♥ A1073  
♦ QJ10  
♣ Q10943

Board (26) Av: NS=-550

N-S	E-W	Contract	N-S	E-W	IMP
2	10	6S W-1	100		12
9	4	4S W-1	100		12
3	6	4S W 4	620		-2
8	1	4S W 4	620		-2
1	8	4S W 4	620		-2
5	7	4S W 4	620		-2
6	3	4S W 5	650		-3
7	5	4S W 5	650		-3
10	2	4S W 6	680		-4
4	9	4S W 6	680		-4

27

♠ AK10  
♥ KQ9  
♦ K103  
♣ AKJ3

♠ 98 6543  
♥ AJ7542 K98  
♦ AJ6 86  
♣ 52 9852

♠ QJ72  
♥ 103  
♦ Q74  
♣ 10876

Board (27) Av: NS=+400

N-S	E-W	Contract	N-S	E-W	IMP
8	1	3NT N 4	430		1
9	4	3NT N 4	430		1
4	9	3NT N 4	430		1
3	6	3NT N 4	430		1
7	5	3NT N 4	430		1
6	3	3NT N 4	430		1
2	10	3NT N 4	430		1
10	2	3NT N 3	400		0
1	8	2NT N 4	180		-6
5	7	5S S-2	100		-11

28

♠ K654  
♥ A872  
♦ K65  
♣ 82

♠ A1072  
♥ Q9  
♦ 10  
♣ QJ10763

♠ KJ10543  
♥ AQJ982  
♣ 9

♠ QJ983  
♥ 6  
♦ 743  
♣ AK54

N  
W E  
S

29

♠ 10764  
♥ A963  
♦ 65  
♣ K53

♠ AK8  
♥ 72  
♦ AJ10  
♣ AQ942

♠ Q3  
♥ KJ105  
♦ Q9832  
♣ J7

♠ J952  
♥ Q84  
♦ K74  
♣ 1086

N  
W E  
S

30

♠ J96532  
♥ 5  
♦  
♣ 987432

♠ AK74  
♥ 96  
♦ AK1062  
♣ QJ

♠ 10  
♥ QJ10842  
♦ QJ73  
♣ A10

♠ Q8  
♥ AK73  
♦ 9854  
♣ K65

N  
W E  
S

Board (28) Av: NS=-160

N-S	E-W	Contract	N-S	E-W	IMP
9	4	5Hx E-3	500		12
6	3	5Hx E-2	300		10
2	10	3S S-1	100		2
7	5	3S S-1	100		2
5	7	3H E 3	140		1
10	2	3H E 3	140		1
1	8	3H E 5	200		-1
3	6	4H E 4	420		-6
8	1	4H E 5	450		-7
4	9	4H E 5	450		-7

Board (29) Av: NS=-630

N-S	E-W	Contract	N-S	E-W	IMP
4	9	3NT W 3	600		1
1	8	3NT W 3	600		1
8	1	3NT W 4	630		0
3	6	3NT W 4	630		0
9	4	3NT W 4	630		0
7	5	3NT W 4	630		0
5	7	3NT W 4	630		0
2	10	3NT W 5	660		-1
10	2	3NT W 5	660		-1
6	3	3NT W 5	660		-1

Board (30) Av: NS=-450

N-S	E-W	Contract	N-S	E-W	IMP
1	8	4S N 4	420		13
7	5	4H E 4	420		1
10	2	4H W 5	450		0
2	10	4H W 5	450		0
4	9	4H W 5	450		0
3	6	4H W 5	450		0
9	4	4H E 5	450		0
6	3	4H E 5	450		0
8	1	4H E 5	450		0
5	7	3NT W 5	460		0

31

♠ QJ763  
♥ 3  
♦ 953  
♣ 8632

♠ A  
♥ QJ  
♦ KQ107  
♣ AQJ974

♠ K1084  
♥ A865  
♦ A864  
♣ 10

♠ 952  
♥ K109742  
♦ J2  
♣ K5

N  
W E  
S

32

♠ A7653  
♥ A9  
♦ 10752  
♣ Q10

♠ 108  
♥ KJ108  
♦ 84  
♣ AJ876

♠ QJ4  
♥ 7643  
♦ A6  
♣ 5432

♠ K92  
♥ Q52  
♦ KQJ93  
♣ K9

N  
W E  
S

33

♠ 82  
♥ AQ5  
♦ 952  
♣ KJ874

♠ AK54  
♥ J9743  
♦ A4  
♣ A9

♠ QJ9  
♥ K1062  
♦ Q86  
♣ Q105

♠ 10763  
♥ 8  
♦ KJ1073  
♣ 632

N  
W E  
S

Board (31) Av: NS=-610

N-S	E-W	Contract	N-S	E-W	IMP
2	10	5D W 7	440		5
3	6	4NT W 6	490		3
5	7	4NT E 6	490		3
10	2	3NT E 6	490		3
7	5	4NT E 7	520		3
1	8	3NT E 7	520		3
4	9	3NT E 7	520		3
8	1	6D W 7	940		-8
9	4	6C W 7	940		-8
6	3	6NT E 6	990		-9

Board (32) Av: NS=+120

N-S	E-W	Contract	N-S	E-W	IMP
10	2	2S N 4	170		2
2	10	2S N 4	170		2
5	7	1NT S 3	150		1
8	1	2S N 3	140		1
6	3	3D S 4	130		0
3	6	2D S 4	130		0
4	9	2D S 4	130		0
1	8	1NT S 2	120		0
7	5	4S N-1	50		-5
9	4	3NT N-1	50		-5

Board (33) Av: NS=-330

N-S	E-W	Contract	N-S	E-W	IMP
1	8	4H W-1	50		9
9	4	4H W-1	50		9
8	1	2H W 3	140		5
3	6	4H W 4	420		-3
6	3	4H W 4	420		-3
4	9	4H W 4	420		-3
5	7	4H W 4	420		-3
10	2	4H W 5	450		-3
2	10	4H W 5	450		-3
7	5	4H E 5	450		-3

34

♠ 10532  
♥ Q93  
♦ K6  
♣ K963

♠ AJ862  
♥ Q108743  
♦ J8

♠ KQ864  
♥ K54  
♦ 5  
♣ AQ102

♠ AJ97  
♥ 107  
♦ AJ92  
♣ 754

N  
W E  
S

35

♠ AK1094  
♥ K873  
♦ A92  
♣ A

♠ J873  
♥ 94  
♦ Q1073  
♣ J65

♠ Q52  
♥ Q2  
♦ J865  
♣ Q1074

♠ 6  
♥ AJ1065  
♦ K4  
♣ K9832

N  
W E  
S

36

♠ KJ106  
♥ 3  
♦ Q832  
♣ J842

♠ A753  
♥ Q109864  
♦ K5  
♣ A

♠ 4  
♥ AK75  
♦ AJ109  
♣ K1076

♠ Q982  
♥ J2  
♦ 764  
♣ Q953

N  
W E  
S

Board (34) Av: NS=-100

N-S	E-W	Contract	N-S	E-W	IMP
5	7	4H W-2	100		5
9	4	2NT W-1	50		4
8	1	2D W 2	90		0
7	5	2D W 2	90		0
4	9	2D W 3	110		0
1	8	2D W 3	110		0
6	3	2D W 3	110		0
2	10	2NT W 3	150		-2
10	2	3H W 4	170		-2
3	6	3NT W 4	430		-8

Board (35) Av: NS=+1010

N-S	E-W	Contract	N-S	E-W	IMP
9	4	6H S 7	1010		0
4	9	6H S 7	1010		0
3	6	6H S 7	1010		0
6	3	6H S 7	1010		0
8	1	6H S 7	1010		0
7	5	6H S 7	1010		0
5	7	6H S 7	1010		0
2	10	6H S 7	1010		0
10	2	6H S 7	1010		0
1	8	6H S-1	50		-14

Board (36) Av: NS=-1180

N-S	E-W	Contract	N-S	E-W	IMP
4	9	5H W 7	710		10
6	3	4H W 7	710		10
2	10	4H W 7	710		10
5	7	4H W 7	710		10
1	8	6H W 7	1460		-7
3	6	6H W 7	1460		-7
9	4	6H W 7	1460		-7
10	2	6H W 7	1460		-7
8	1	6H W 7	1460		-7
7	5	6H E 7	1460		-7

37

♠ 107  
♥ KQ10  
♦ AK53  
♣ Q963

♠ 952  
♥ AJ87  
♦ QJ82  
♣ KJ

♠ AQ63  
♥ 632  
♦ 94  
♣ A875

♠ KJ84  
♥ 954  
♦ 1076  
♣ 1042

W N E S

38

♠ A5  
♥ 982  
♦ Q53  
♣ J10743

♠ Q97  
♥ Q74  
♦ 7  
♣ AK9865

♠ 1062  
♥ AJ10653  
♦ AK4  
♣ Q

♠ KJ843  
♥ K  
♦ J109862  
♣ 2

W N E S

39

♠ J8643  
♥ 865  
♦ 532  
♣ 97

♠ A52  
♥ AQ  
♦ 4  
♣ AQJ6432

♠ KQ7  
♥ 109432  
♦ KQJ8  
♣ 8

♠ 109  
♥ KJ7  
♦ A10976  
♣ K105

W N E S

Board (37) Av: NS=+90

N-S	E-W	Contract	N-S	E-W	IMP
8	6	2S	E-2	100	0
4	5	2S	E-2	100	0
2	9	2NT	W-2	100	0
10	3	2NT	W-2	100	0
6	8	2C	E-2	100	0
9	2	1NT	N 1	90	0
1	7	1D	N 2	90	0
3	10	1D	N 1	70	-1
7	1	2H	W-1	50	-1
5	4	1S	E-1	50	-1

Board (38) Av: NS=-640

N-S	E-W	Contract	N-S	E-W	IMP
8	6	4H	E 4	620	1
1	7	4H	E 4	620	1
2	9	4H	E 4	620	1
9	2	4H	E 4	620	1
5	4	4H	E 5	650	0
7	1	4H	E 5	650	0
10	3	4H	E 5	650	0
6	8	4H	E 5	650	0
4	5	4H	E 5	650	0
3	10	4H	E 5	650	0

Board (39) Av: NS=-660

N-S	E-W	Contract	N-S	E-W	IMP
7	1	3NT	E 3	600	2
6	8	4H	E 5	650	0
10	3	3NT	E 5	660	0
1	7	3NT	E 5	660	0
5	4	3NT	E 5	660	0
3	10	3NT	E 5	660	0
9	2	3NT	E 5	660	0
8	6	3NT	E 5	660	0
2	9	3NT	E 5	660	0
4	5	3NT	E 6	690	-1

40

♠ K1042  
♥ J7  
♦ J105  
♣ Q964

♠ A973  
♥ K  
♦ Q97432  
♣ 103

♠ QJ865  
♥ A42  
♦ A6  
♣ J72

♠ Q1098653  
♥ K8  
♣ AK85

W N E S

41

♠ QJ  
♥ AK7  
♦ A76543  
♣ 76

♠ A954  
♥ Q82  
♦ K98  
♣ Q103

♠ K1083  
♥ J654  
♦ J2  
♣ 985

♠ 762  
♥ 1093  
♦ Q10  
♣ AKJ42

W N E S

42

♠ J1062  
♥ 8  
♦ AJ4  
♣ Q8632

♠ 8  
♥ J1075  
♦ 8752  
♣ AK109

♠ 975  
♥ K42  
♦ KQ63  
♣ J75

♠ AKQ43  
♥ AQ963  
♦ 109  
♣ 4

W N E S

Board (40) Av: NS=+60

N-S	E-W	Contract	N-S	E-W	IMP
10	3	4H	S 5	450	9
3	10	4S	E-3	150	3
4	5	4S	E-2	100	1
7	1	4S	E-2	100	1
2	9	4S	E-1	50	0
9	2	4S	E-1	50	0
1	7	3S	E-1	50	0
8	6	3S	E-1	50	0
6	8	5Hx	S-1	100	-4
5	4	3S	E 3	140	-5

Board (41) Av: NS=+80

N-S	E-W	Contract	N-S	E-W	IMP
7	1	2D	N 4	130	2
3	10	2D	N 3	110	1
8	6	2D	N 3	110	1
6	8	2H	E-1	100	1
1	7	2D	N 2	90	0
4	5	2D	N 2	90	0
2	9	2D	N 2	90	0
5	4	1NT	S 1	90	0
10	3	3D	N-1	50	-4
9	2	2NT	S-3	150	-6

Board (42) Av: NS=+640

N-S	E-W	Contract	N-S	E-W	IMP
1	7	4S	E 4	620	
7	1	4S	W 4	620	
2	9	5S	S 5	650	0
10	3	4S	S 5	650	0
8	6	4S	S 5	650	0
9	2	4S	S 5	650	0
5	4	4S	S 4	620	-1
3	10	4S	S 4	620	-1
4	5	4S	S 4	620	-1
6	8	5S	S-1	100	-12

43

♠ AK1064  
♥ 103  
♦ Q96  
♣ J73

♠ J95  
♥ K85  
♦ AK105  
♣ AQ6

♠ Q  
♥ A742  
♦ 874  
♣ K10942

♠ 8732  
♥ QJ96  
♦ J32  
♣ 85

W N E S

44

♠ AK2  
♥ 6  
♦ QJ76542  
♣ 95

♠ J975  
♥ AQJ108  
♦ A10  
♣ J3

♠ 104  
♥ 97543  
♦ K9  
♣ AK82

♠ Q863  
♥ K2  
♦ 83  
♣ Q10764

W N E S

45

♠ 7  
♥ AKJ87  
♦ 986  
♣ AK76

♠ K632  
♥ Q10543  
♦ A5  
♣ 95

♠ 1094  
♥ 62  
♦ KQJ3  
♣ J842

♠ AQJ85  
♥ 9  
♦ 10742  
♣ Q103

W N E S

Board (43) Av: NS=-440

N-S	E-W	Contract	N-S	E-W	IMP
6	8	3NT	W 3	400	1
5	4	3NT	W 4	430	0
3	10	3NT	W 4	430	0
4	5	3NT	W 4	430	0
7	1	3NT	W 4	430	0
1	7	3NT	W 4	430	0
2	9	3NT	W 4	430	0
8	6	3NT	W 4	430	0
9	2	3NT	W 6	490	-2
10	3	3NT	W 6	490	-2

Board (44) Av: NS=-440

N-S	E-W	Contract	N-S	E-W	IMP
8	6	4H	W 4	420	1
7	1	4H	W 4	420	1
6	8	4H	W 4	420	1
4	5	4H	W 5	450	0
3	10	4H	W 5	450	0
1	7	4H	W 5	450	0
2	9	4H	W 5	450	0
9	2	4H	W 5	450	0
5	4	4H	W 5	450	0
10	3	4H	W 5	450	0

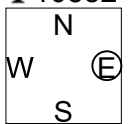
Board (45) Av: NS=+40

N-S	E-W	Contract	N-S	E-W	IMP
6	8	2NT	N 5	210	5
4	5	2S	S 3	140	3
2	9	2S	S 3	140	3
8	6	2NT	N 2	120	2
5	4	2S	S 2	110	2
3	10	2C	N 3	110	2
1	7	3NT	S-1	100	-4
9	2	3NT	N-1	100	-4
7	1	3NT	N-1	100	-4
10	3	2S	S-1	100	-4

46

♠K  
♥AQ964  
♦AJ10  
♣10532

♠A10543 ♠J972  
♥3 ♥J752  
♦KQ52 ♠AK  
♣J84

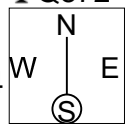


♠Q86  
♥K108  
♦974  
♣Q976

47

♠A8  
♥KJ1052  
♦73  
♣872

♠Q53 ♠10976  
♥9 ♥A76  
♦KQ1084 ♠AKJ9  
♣A1064

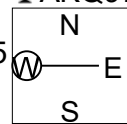


♠KJ42  
♥Q843  
♦J62  
♣53

48

♠K543  
♥92  
♦J4  
♣AKQ97

♠A10 ♠J86  
♥QJ875 ♥K63  
♦A76 ♠AKQ9  
♣J108 ♣6532



♠Q972  
♥A104  
♦108532  
♣4

Board (46) Av: NS=-30

N-S	E-W	Contract	N-S	E-W	IMP
1	7	2H	N 2	110	4
3	10	2H	N 2	110	4
6	8	4S	W-1	50	2
9	2	3S	W-1	50	2
2	9	3S	W-1	50	2
7	1	4H	N-2	100	-2
4	5	3S	W 3	140	-3
5	4	3S	W 3	140	-3
10	3	2S	W 3	140	-3
8	6	4S	W 4	420	-9

Board (47) Av: NS=-100

N-S	E-W	Contract	N-S	E-W	IMP
1	7	2H	N 2	110	5
2	9	3NT	E-2	100	5
3	10	3H	N-1	100	0
4	5	3H	N-1	100	0
8	6	2NT	E 2	120	-1
7	1	4C	E 4	130	-1
5	4	3D	W 4	130	-1
9	2	3D	W 4	130	-1
10	3	3H	N-2	200	-3
6	8	2NT	E 5	210	-3

Board (48) Av: NS=-90

N-S	E-W	Contract	N-S	E-W	IMP
3	10	2S	N 3	140	6
8	6	3S	S-1	50	1
4	5	3S	S-1	50	1
5	4	3C	N-1	50	1
9	2	3D	S-2	100	0
7	1	2H	W 2	110	-1
1	7	2H	W 2	110	-1
2	9	2H	W 2	110	-1
10	3	2H	W 2	110	-1
6	8	2H	W 2	110	-1

木村六郎杯 OPEN TEAMS Session 2 Flight D 2016年2月28日(日)

1

♠ 7642  
♥ QJ952  
♦ J82  
♣ 4

♠ KJ ♠ Q105  
♥ 107 ♥ A43  
♦ A73 ♦ 1094  
♣ J109852 ♣ AQ63

W N E S

♠ A983  
♥ K86  
♦ KQ65  
♣ K7

Board (1) Av: NS=+50

N-S	E-W	Contract	N-S	E-W	IMP
5	2	3H	S 3	140	3
8	9	3H	S 3	140	3
1	6	3H	N 3	140	3
3	7	3H	N 3	140	3
10	4	2H	S 3	140	3
6	1	2H	S 2	110	2
4	10	2C	E 2	90	-4
7	3	3C	E 3	110	-4
9	8	2C	W 3	110	-4
2	5	3NT	E 3	400	-10

2

♠ AJ94  
♥ J  
♦ AQ10854  
♣ 105

♠ 10 ♠ 652  
♥ AK943 ♥ 108752  
♦ 972 ♦ K6  
♣ AKQ7 ♣ 432

W N E S

♠ KQ873  
♥ Q6  
♦ J3  
♣ J986

Board (2) Av: NS=-250

N-S	E-W	Contract	N-S	E-W	IMP
10	4	3S	N 3	140	9
7	3	2S	S 3	140	9
3	7	4S	S-1	100	4
9	8	4S	N-1	100	4
6	1	3H	W 5	200	2
2	5	3H	W 5	200	2
4	10	5H	E 5	450	-5
5	2	4H	W 5	450	-5
1	6	5Hx	W 5	650	-9
8	9	4Hx	W 5	690	-10

3

♠ K109743  
♥ J6  
♦ K10  
♣ AQ10

♠ Q ♠ 862  
♥ KQ108743 ♥ A9  
♦ J73 ♦ 9642  
♣ 94 ♣ K765

W N E S

♠ AJ5  
♥ 52  
♦ AQ85  
♣ J832

Board (3) Av: NS=+420

N-S	E-W	Contract	N-S	E-W	IMP
2	5	4S	N 5	450	1
8	9	4S	N 4	420	0
10	4	4S	N 4	420	0
7	3	4S	N 4	420	0
9	8	4S	N 4	420	0
3	7	4S	N 4	420	0
5	2	4S	N 4	420	0
1	6	4S	N 4	420	0
4	10	4S	N 4	420	0
6	1	4S	N 4	420	0

4

♠ QJ  
♥ AKQ54  
♦ K9  
♣ A653

♠ K2 ♠ A63  
♥ 10982 ♥ J6  
♦ Q10543 ♦ AJ876  
♣ 82 ♣ Q107

W N E S

♠ 1098754  
♥ 73  
♦ 2  
♣ KJ94

Board (4) Av: NS=+100

N-S	E-W	Contract	N-S	E-W	IMP
1	6	4S	N 4	620	11
8	9	4H	N 4	620	11
5	2	2H	N 4	170	2
6	1	3S	S 3	140	1
3	7	1H	N 2	110	0
10	4	3D	E-1	100	0
2	5	5C	N-1	100	-5
7	3	2NT	N-1	100	-5
9	8	3D	E 3	110	-5
4	10	3Dx	E 3	670	-13

5

♠ 72  
♥ 97653  
♦ AQ10  
♣ A32

♠ J10654 ♠ A98  
♥ Q108 ♥ KJ  
♦ J5 ♦ K76432  
♣ K87 ♣ 96

W N E S

♠ KQ3  
♥ A42  
♦ 98  
♣ QJ1054

Board (5) Av: NS=+160

N-S	E-W	Contract	N-S	E-W	IMP
2	5	2NT	N 4	180	1
8	9	3H	N 4	170	0
10	4	2H	N 4	170	0
4	10	2H	N 4	170	0
9	8	2H	N 4	170	0
5	2	2H	N 4	170	0
1	6	3S	E-3	150	0
3	7	3H	N 3	140	-1
7	3	2H	N 3	140	-1
6	1	2H	N 3	140	-1

6

♠ A985  
♥ J1075  
♦ J8  
♣ 653

♠ J63 ♠ 104  
♥ AKQ63 ♥ 9842  
♦ 5 ♦ A107643  
♣ K1082 ♣ 4

W N E S

♠ KQ72  
♥  
♦ KQ92  
♣ AQJ97

Board (6) Av: NS=+200

N-S	E-W	Contract	N-S	E-W	IMP
3	7	4S	S 4	420	6
6	1	4S	S 4	420	6
1	6	4S	S 4	420	6
10	4	4S	N 4	420	6
5	2	3S	S 4	170	-1
7	3	3S	S 4	170	-1
8	9	3S	S 4	170	-1
9	8	4S	N-1	50	-6
2	5	4S	S-2	100	-7
4	10	4S	N-2	100	-7

7

♠ AKQ109865  
♥ 62  
♦ J82  
♣

♠ A42 ♠ KQ1095  
♥ Q873 ♥ 3  
♦ AKQ764 ♦ AJ954  
♣ AKQ764 ♣ 53

W N E S

♠ J8763  
♥ J742  
♦ K10  
♣ 109

Board (7) Av: NS=-240

N-S	E-W	Contract	N-S	E-W	IMP
7	3	6Sx	E-2	500	12
1	6	4S	E-2	200	10
2	5	4S	E-2	200	10
9	8	4S	E-1	100	8
4	10	4S	E-1	100	8
5	2	5C	W 6	620	-9
6	1	4S	E 4	620	-9
10	4	4S	E 4	620	-9
8	9	5S	E 5	650	-9
3	7	4Sx	E 4	790	-11

8

♠ 8  
♥ Q653  
♦ A1042  
♣ AKJ9

♠ AJ2 ♠ 9653  
♥ K10 ♥ 9872  
♦ J9873 ♦ K5  
♣ Q64 ♣ 1032

W N E S

♠ KQ1074  
♥ AJ4  
♦ Q6  
♣ 875

Board (8) Av: NS=+350

N-S	E-W	Contract	N-S	E-W	IMP
2	5	3NT	N 4	430	2
5	2	3NT	N 4	430	2
4	10	3NT	N 4	430	2
7	3	3NT	N 3	400	2
9	8	3NT	N 3	400	2
8	9	3NT	N 3	400	2
10	4	3NT	N 3	400	2
1	6	3NT	N 3	400	2
6	1	3NT	N-1	50	-9
3	7	3NT	N-1	50	-9

9

♠ 2  
♥ KQ6  
♦ 653  
♣ KQJ964

♠ 7653 ♠ QJ109  
♥ J7 ♥ A842  
♦ KJ9 ♦ Q8  
♣ A852 ♣ 1073

W N E S

♠ AK84  
♥ 10953  
♦ A10742  
♣

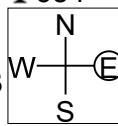
Board (9) Av: NS=+80

N-S	E-W	Contract	N-S	E-W	IMP
9	8	3S	W-3	300	6
3	7	2S	W-3	300	6
4	10	3C	N 5	150	2
8	9	1NT	N 3	150	2
2	5	1D	S 3	110	1
5	2	2D	S 2	90	0
10	4	3H	S-1	50	-4
6	1	2NT	S-1	50	-4
7	3	2NT	S-1	50	-4
1	6	3NT	S-2	100	-5

10

♠752  
♥A965  
♦K107  
♣654

♠963  
♥Q74  
♦A8643  
♣73



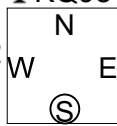
♠AQ8  
♥KJ102  
♦J  
♣KQJ102

♠KJ104  
♥83  
♦Q952  
♣A98

11

♠983  
♥K8  
♦87  
♣KQ9843

♠62  
♥Q10762  
♦Q953  
♣52



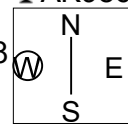
♠KQ107  
♥A54  
♦AJ4  
♣J107

♠AJ54  
♥J93  
♦K1062  
♣A6

12

♠K7  
♥64  
♦A1098  
♣AK986

♠J42  
♥KQ108  
♦KJ62  
♣J4



♠Q1083  
♥753  
♦Q543  
♣Q5

♠A965  
♥AJ92  
♦7  
♣10732

Board (10) Av: NS=-210

Table with 7 columns: N-S, E-W, Contract, N-S, E-W, IMP. Rows show various deals and their results.

Board (11) Av: NS=+100

Table with 7 columns: N-S, E-W, Contract, N-S, E-W, IMP. Rows show various deals and their results.

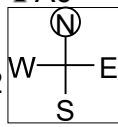
Board (12) Av: NS=+180

Table with 7 columns: N-S, E-W, Contract, N-S, E-W, IMP. Rows show various deals and their results.

13

♠Q984  
♥1074  
♦KJ65  
♣A6

♠K72  
♥J93  
♦Q1082  
♣Q97



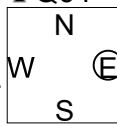
♠A106  
♥852  
♦A4  
♣108542

♠J53  
♥AKQ6  
♦973  
♣KJ3

14

♠K2  
♥QJ108  
♦AJ72  
♣Q64

♠A4  
♥6532  
♦K864  
♣1098



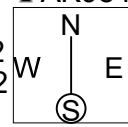
♠J10975  
♥K  
♦Q1093  
♣K53

♠Q863  
♥A974  
♦5  
♣AJ72

15

♠AK86  
♥KQ9  
♦A  
♣AK984

♠105  
♥A8732  
♦Q7542  
♣Q



♠J732  
♥J106  
♦KJ6  
♣753

♠Q94  
♥54  
♦10983  
♣J1062

Board (13) Av: NS=+130

Table with 7 columns: N-S, E-W, Contract, N-S, E-W, IMP. Rows show various deals and their results.

Board (14) Av: NS=+380

Table with 7 columns: N-S, E-W, Contract, N-S, E-W, IMP. Rows show various deals and their results.

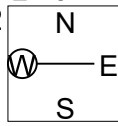
Board (15) Av: NS=+670

Table with 7 columns: N-S, E-W, Contract, N-S, E-W, IMP. Rows show various deals and their results.

16

♠10873  
♥KQJ2  
♦1065  
♣76

♠KQ942  
♥73  
♦K987  
♣Q5



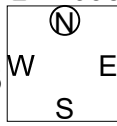
♠1098654  
♥QJ42  
♣K94

♠AJ65  
♥A  
♦A3  
♣AJ10832

17

♠Q42  
♥3  
♦102  
♣K1095432

♠K103  
♥9876  
♦AKJ5  
♣87



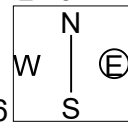
♠AJ9765  
♥Q4  
♦Q864  
♣A

♠8  
♥AKJ1052  
♦973  
♣QJ6

18

♠A643  
♥A4  
♦AQJ109  
♣43

♠2  
♥8762  
♦K52  
♣AJ976



♠J97  
♥105  
♦87643  
♣K105

♠KQ1085  
♥KQJ93  
♦  
♣Q82

Board (16) Av: NS=+40

Table with 7 columns: N-S, E-W, Contract, N-S, E-W, IMP. Rows show various deals and their results.

Board (17) Av: NS=-380

Table with 7 columns: N-S, E-W, Contract, N-S, E-W, IMP. Rows show various deals and their results.

Board (18) Av: NS=+290

Table with 7 columns: N-S, E-W, Contract, N-S, E-W, IMP. Rows show various deals and their results.



19

♠AKQ108  
♥A94  
♦J85  
♣K6

♠742  
♥83  
♦94  
♣Q108432

N  
W—E  
S

♠J953  
♥K65  
♦Q763  
♣A5

♠6  
♥QJ1072  
♦AK102  
♣J97

20

♠K109  
♥75  
♦QJ752  
♣952

♠J64  
♥J964  
♦A43  
♣Q107

N  
W—E  
S

♠AQ87532  
♥K102  
♦K9  
♣6

♠AQ83  
♥1086  
♣AKJ843

21

♠96  
♥A1084  
♦K7  
♣K10864

♠K53  
♥93  
♦J432  
♣QJ92

N  
W—E  
S

♠A74  
♥KQJ6  
♦A1095  
♣A5

♠QJ1082  
♥752  
♦Q86  
♣73

Board (19) Av: NS=+300

N-S	E-W	Contract	N-S	E-W	IMP
8	4	5H	S 5	450	4
3	9	4H	S 5	450	4
9	3	4H	N 5	450	4
1	5	4H	S 4	420	3
2	6	4H	S 4	420	3
7	10	4H	S 4	420	3
6	2	4H	S 4	420	3
5	1	5H	S-1	50	-8
4	8	6NT	S-2	100	-9
10	7	3NT	S-2	100	-9

Board (20) Av: NS=-100

N-S	E-W	Contract	N-S	E-W	IMP
2	6	4C	S 4	130	6
6	2	4S	E-1	100	5
5	1	4S	E-1	100	5
4	8	4S	E-1	100	5
7	10	5C	S-1	100	0
1	5	5C	S-1	100	0
9	3	4D	N-1	100	0
10	7	3S	E 3	140	-1
8	4	4S	E 4	620	-11
3	9	4S	E 4	620	-11

Board (21) Av: NS=-280

N-S	E-W	Contract	N-S	E-W	IMP
9	3	3NT	E-2	100	9
4	8	3NT	W-1	50	8
6	2	2NT	W 2	120	4
1	5	2NT	W 3	150	4
3	9	3NT	W 3	400	-3
7	10	3NT	W 3	400	-3
5	1	3NT	E 3	400	-3
2	6	3NT	E 3	400	-3
8	4	3NT	W 4	430	-4
10	7	3NT	W 4	430	-4

22

♠Q10  
♥K10  
♦AKQJ1062  
♣53

♠KJ843  
♥Q752  
♦73  
♣104

N  
W—E  
S

♠9762  
♥A864  
♦85  
♣J87

♠A5  
♥J93  
♦94  
♣AKQ962

23

♠765  
♥AK965  
♦75  
♣QJ9

♠AJ1082  
♥7  
♦Q843  
♣1073

N  
W—E  
S

♠Q943  
♥J32  
♦K102  
♣K54

♠K  
♥Q1084  
♦AJ96  
♣A862

24

♠KQ4  
♥9  
♦A108542  
♣Q93

♠J963  
♥KJ  
♦3  
♣AK10762

N  
W—E  
S

♠1075  
♥10632  
♦KQ76  
♣J8

♠A82  
♥AQ8754  
♦J9  
♣54

Board (22) Av: NS=+560

N-S	E-W	Contract	N-S	E-W	IMP
8	4	6D	N 6	920	8
3	9	6D	N 6	920	8
6	2	3NT	S 7	520	-1
5	1	3NT	N 7	520	-1
7	10	3NT	N 7	520	-1
1	5	3NT	N 7	520	-1
4	8	3NT	N 7	520	-1
10	7	3NT	N 7	520	-1
2	6	5D	N 7	440	-3
9	3	5D	N 6	420	-4

Board (23) Av: NS=+580

N-S	E-W	Contract	N-S	E-W	IMP
4	8	4H	N 5	650	2
5	1	4H	N 5	650	2
8	4	4H	N 5	650	2
1	5	4H	S 4	620	1
6	2	4H	N 4	620	1
7	10	4H	N 4	620	1
10	7	4H	N 4	620	1
3	9	4H	N 4	620	1
2	6	3H	N 5	200	-9
9	3	4H	N-1	100	-12

Board (24) Av: NS=+90

N-S	E-W	Contract	N-S	E-W	IMP
10	7	3D	N 3	110	1
1	5	3D	N 3	110	1
4	8	3D	N 3	110	1
7	10	3D	N 3	110	1
5	1	2D	N 3	110	1
2	6	2D	N 3	110	1
9	3	2D	N 3	110	1
3	9	2C	W-2	100	0
8	4	3D	N-1	50	-4
6	2	4H	S-2	100	-5

1

♠984  
♥J984  
♦Q64  
♣J108

♠K72  
♥2  
♦KJ872  
♣K432

♠QJ53  
♥K103  
♦A1093  
♣Q9

♠A106  
♥AQ765  
♦5  
♣A765

Board (1) Av: NS=-10

N-S	E-W	Contract	N-S	E-W	IMP
9	10	1H S 2	110		3
1	4	1H S 2	110		3
5	6	4D E-1	50		2
8	7	4D E-1	50		2
7	8	3H S-1		50	-1
2	3	3H S-1		50	-1
4	1	3H S-1		50	-1
3	2	3H S-1		50	-1
10	9	2H S-1		50	-1
6	5	4H S-2		100	-3

2

♠6  
♥AQ9842  
♦KJ974  
♣7

♠AJ1042  
♥10  
♦832  
♣KQ102

♠K73  
♥J765  
♦Q  
♣J6543

♠Q985  
♥K3  
♦A1065  
♣A98

Board (2) Av: NS=+410

N-S	E-W	Contract	N-S	E-W	IMP
4	1	4H N 5	650		6
6	5	4H N 5	650		6
9	10	4H N 5	650		6
7	8	5D S 6	620		5
3	2	5D S 6	620		5
1	4	3H N 5	200		-5
8	7	3H N 5	200		-5
10	9	2H N 5	200		-5
5	6	3D S 6	170		-6
2	3	4D S 4	130		-7

3

♠K75  
♥AQ85  
♦J92  
♣K63

♠Q1093  
♥J943  
♦Q  
♣8542

♠AJ62  
♥762  
♦A1064  
♣Q9

♠84  
♥K10  
♦K8753  
♣AJ107

Board (3) Av: NS=+100

N-S	E-W	Contract	N-S	E-W	IMP
7	8	3NT N 3	400		7
9	10	2NT S 4	180		2
8	7	2NT S 3	150		2
1	4	2NT S 2	120		1
5	6	2NT N 2	120		1
6	5	2NT N 2	120		1
2	3	2C N 2	90		0
4	1	1NT N 1	90		0
10	9	3NT N-2		100	-5
3	2	3NT N-2		100	-5

4

♠AK874  
♥75  
♦K5  
♣K643

♠32  
♥K92  
♦AQ10  
♣AQ972

♠965  
♥J108  
♦J9643  
♣85

♠QJ10  
♥AQ643  
♦872  
♣J10

Board (4) Av: NS=+50

N-S	E-W	Contract	N-S	E-W	IMP
4	1	2S N 4	170		3
3	2	2S N 4	170		3
8	7	3S N 3	140		3
9	10	2S N 3	140		3
5	6	2S N 2	110		2
6	5	2S N 2	110		2
1	4	4S N-1		100	-4
10	9	4S N-1		100	-4
7	8	4S N-1		100	-4
2	3	3S N-1		100	-4

5

♠KQ  
♥Q106  
♦KQJ6  
♣AK102

♠1085  
♥3  
♦10975  
♣Q9853

♠A43  
♥K985  
♦82  
♣J764

♠J9762  
♥AJ742  
♦A43  
♣

Board (5) Av: NS=+460

N-S	E-W	Contract	N-S	E-W	IMP
10	9	3NT N 5	660		5
5	6	3NT N 5	660		5
3	2	5H N 5	650		5
9	10	4S S 5	650		5
4	1	4S N 5	650		5
1	4	3NT N 4	630		5
2	3	3NT N 4	630		5
7	8	6H S-1		100	-11
6	5	6H N-1		100	-11
8	7	6H N-2		200	-12

6

♠752  
♥A1086  
♦10532  
♣104

♠A98  
♥KJ97  
♦QJ8  
♣965

♠QJ3  
♥43  
♦A964  
♣KQ72

♠K1064  
♥Q52  
♦K7  
♣AJ83

Board (6) Av: NS=-70

N-S	E-W	Contract	N-S	E-W	IMP
10	9	2D W-1	100		5
1	4	1NT E-1	100		5
7	8	1NT S-1		50	1
3	2	1NT W 1		90	-1
8	7	1NT W 1		90	-1
4	1	1NT N-2		100	-1
6	5	1NT N-2		100	-1
2	3	1NT W 2		120	-2
5	6	1NT W 2		120	-2
9	10	1NT W 2		120	-2

7

♠4  
♥92  
♦986542  
♣A976

♠J65  
♥A73  
♦AKQJ103  
♣3

♠AQ873  
♥1084  
♦7  
♣K1054

♠K1092  
♥KQJ65  
♦  
♣QJ82

Board (7) Av: NS=+240

N-S	E-W	Contract	N-S	E-W	IMP
3	2	4Sx W-2	500		6
7	8	4S W-4	400		4
10	9	4S W-3	300		2
6	5	4S W-2	200		-1
5	6	4S W-2	200		-1
1	4	4S W-2	200		-1
8	7	4S W-2	200		-1
9	10	4S W-2	200		-1
2	3	4S W-2	200		-1
4	1	2D E 2		90	-8

8

♠KJ1062  
♥3  
♦QJ9  
♣KJ86

♠43  
♥KQ9  
♦8754  
♣AQ104

♠AQ8  
♥J64  
♦K1062  
♣732

♠975  
♥A108752  
♦A3  
♣95

Board (8) Av: NS=0

N-S	E-W	Contract	N-S	E-W	IMP
6	5	2S N 3	140		4
2	3	2S N 2	110		3
10	9	2S N 2	110		3
1	4	2H S 2	110		3
5	6	Passout			0
8	7	2S N-1		50	-2
9	10	2S N-1		50	-2
3	2	2H S-2		100	-3
7	8	2NT E 2		120	-3
4	1	3D W 4		130	-4

9

♠A1065  
♥87  
♦842  
♣K762

♠QJ942  
♥2  
♦73  
♣AJ985

♠6543  
♥KQ965  
♣Q1043

♠K873  
♥AKQJ109  
♦AJ10  
♣

Board (9) Av: NS=+30

N-S	E-W	Contract	N-S	E-W	IMP
5	6	4H S 5	450		9
3	2	4H S 4	420		9
7	8	4H S 4	420		9
6	5	4S N-1		50	-2
10	9	4H S-1		50	-2
1	4	6H S-2		100	-4
4	1	4Sx N-1		100	-4
2	3	5S N-3		150	-5
8	7	5S N-3		150	-5
9	10	6S N-4		200	-6

10

♠ A6  
♥ KQ10  
♦ K9763  
♣ K102

♠ KJ10842  
♥ A6  
♦ AJ5  
♣ 54

N  
W — E  
S

♠ Q97  
♥ J9543  
♦ Q108  
♣ Q8

♠ 53  
♥ 872  
♦ 42  
♣ AJ9763

11

♠ QJ653  
♥ 85  
♦ 9653  
♣ 63

♠ A72  
♥ KJ7  
♦ 72  
♣ QJ1098

N  
W — E  
S

♠ 94  
♥ A10962  
♦ AK1084  
♣ 7

♠ K108  
♥ Q43  
♦ QJ  
♣ AK542

12

♠ K95  
♥ AK7  
♦ K7  
♣ AK832

♠ Q10  
♥ 986  
♦ AQ9432  
♣ 107

N  
W — E  
S

♠ A4  
♥ Q105432  
♦ J65  
♣ QJ

♠ J87632  
♥ J  
♦ 108  
♣ 9654

Board (10) Av: NS=-70

N-S	E-W	Contract	N-S	E-W	IMP
3	2	3S	W-1	100	5
6	5	1NT	N 1	90	4
9	10	1NT	N 1	90	4
5	6	2S	W 2	110	-1
10	9	2S	W 2	110	-1
4	1	2S	W 2	110	-1
7	8	2S	W 2	110	-1
2	3	2S	W 3	140	-2
8	7	2S	W 4	170	-3
1	4	2S	W 5	200	-4

Board (11) Av: NS=-110

N-S	E-W	Contract	N-S	E-W	IMP
1	4	2S	S 2	110	6
4	1	2S	S 2	110	6
9	10	2S	S 2	110	6
6	5	2S	S-1	50	2
10	9	3S	S-2	100	0
2	3	2S	S-2	100	0
5	6	3H	E 5	200	-3
7	8	3H	E 6	230	-3
3	2	3NT	W 4	430	-8
8	7	4H	W 6	480	-9

Board (12) Av: NS=+460

N-S	E-W	Contract	N-S	E-W	IMP
7	8	4S	S 5	650	5
10	9	4S	N 5	650	5
3	2	4S	S 4	620	4
5	6	4S	N 4	620	4
6	5	4S	N 4	620	4
9	10	4S	N 4	620	4
8	7	3S	N 5	200	-6
1	4	3S	N 5	200	-6
4	1	3S	N 4	170	-7
2	3	4S	N-1	100	-11

13

♠ Q94  
♥ 1098752  
♦ K76  
♣ J

♠ 1087652  
♥ QJ3  
♦ 53  
♣ Q4

N  
W — E  
S

♠ KJ  
♥ AK4  
♦ A2  
♣ 987653

♠ A3  
♥ 6  
♦ QJ10984  
♣ AK102

14

♠ 107  
♥ 10  
♦ AQJ1043  
♣ K842

♠ 65432  
♥ J4  
♦ 2  
♣ J10753

N  
W — E  
S

♠ AKJ  
♥ AKQ96  
♦ 9876  
♣ 6

♠ Q98  
♥ 87532  
♦ K5  
♣ AQ9

15

♠ KJ986  
♥ KJ74  
♦ 10932  
♣

♠ 7  
♥ Q10853  
♦ 64  
♣ KQ753

N  
W — E  
S

♠ 43  
♥ A62  
♦ KQ85  
♣ AJ64

♠ AQ1052  
♥ 9  
♦ AJ7  
♣ 10982

Board (13) Av: NS=+120

N-S	E-W	Contract	N-S	E-W	IMP
8	5	4Dx	S 4	710	11
1	3	3S	E-2	200	2
6	10	2S	E-2	200	2
2	4	3D	S 5	150	1
3	1	2D	S 5	150	1
5	8	3D	S 4	130	0
9	7	3S	W-1	100	-1
10	6	2S	E-1	100	-1
4	2	2S	W 2	110	-6
7	9	2S	W 2	110	-6

Board (14) Av: NS=+80

N-S	E-W	Contract	N-S	E-W	IMP
4	2	2D	N 4	130	2
6	10	3D	N 3	110	1
3	1	3D	N 3	110	1
1	3	2D	N 3	110	1
9	7	2D	N 3	110	1
7	9	2D	N 3	110	1
10	6	2D	N 3	110	1
8	5	3H	E-1	50	-1
5	8	2H	E 2	110	-5
2	4	1H	E 3	140	-6

Board (15) Av: NS=+540

N-S	E-W	Contract	N-S	E-W	IMP
5	8	4S	S 6	680	4
8	5	4S	S 5	650	3
6	10	4S	S 5	650	3
3	1	4S	S 5	650	3
9	7	4S	N 5	650	3
4	2	4S	S 4	620	2
2	4	4S	S 4	620	2
7	9	5Hx	E-2	300	-6
10	6	4H	W-4	200	-8
1	3	3S	S 5	200	-8

16

♠ K32  
♥ 85  
♦ KJ9542  
♣ 108

♠ AQJ1087  
♥ Q4  
♦ 8  
♣ QJ92

N  
W — E  
S

♠ 964  
♥ AKJ6  
♦ AQ106  
♣ 54

♠ 5  
♥ 109732  
♦ 73  
♣ AK763

17

♠ 982  
♥ J4  
♦ Q984  
♣ A1062

♠ AJ5  
♥ 865  
♦ A107632  
♣ 3

N  
W — E  
S

♠ 74  
♥ K9732  
♦ KJ  
♣ K975

♠ KQ1063  
♥ AQ10  
♦ 5  
♣ QJ84

18

♠ Q93  
♥ 875  
♦ AQ2  
♣ Q742

♠ AJ10875  
♥ 9643  
♦ 8  
♣ A8

N  
W — E  
S

♠ K64  
♥ 10  
♦ 1076543  
♣ 1096

♠ 2  
♥ AKQJ2  
♦ KJ9  
♣ KJ53

Board (16) Av: NS=-680

N-S	E-W	Contract	N-S	E-W	IMP
2	4	4S	W 4	620	2
1	3	4S	W 4	620	2
4	2	4S	W 4	620	2
7	9	4S	W 4	620	2
10	6	4S	W 4	620	2
6	10	4S	W 4	620	2
5	8	4S	W 4	620	2
3	1	4S	W 5	650	1
9	7	5Cx	N-5	1100	-9
8	5	5Hx	S-7	1700	-14

Board (17) Av: NS=+120

N-S	E-W	Contract	N-S	E-W	IMP
5	8	3S	S 3	140	1
7	9	3S	S 3	140	1
10	6	3S	S 3	140	1
4	2	3S	S 3	140	1
8	5	2S	S 3	140	1
3	1	2S	S 3	140	1
6	10	2S	S 3	140	1
9	7	2S	N 3	140	1
1	3	4S	S-1	50	-5
2	4	4S	S-1	50	-5

Board (18) Av: NS=+470

N-S	E-W	Contract	N-S	E-W	IMP
1	3	5H	S 5	650	5
7	9	4H	S 5	650	5
8	5	4H	S 5	650	5
3	1	4H	S 5	650	5
6	10	4H	S 5	650	5
5	8	4H	S 5	650	5
10	6	3NT	N 3	600	4
9	7	4Sx	W-2	300	-5
4	2	4S	W 4	420	-13
2	4	3Sx	W 3	530	-14

19

♠ QJ743  
♥ J94  
♦ 83  
♣ A93

♠ AK852  
♥ KQ63  
♦ Q4  
♣ K2

♠ 10  
♥ 10  
♦ K10975  
♣ Q108654

♠ 96  
♥ A8752  
♦ AJ62  
♣ J7

N  
W—E  
S

Board (19) Av: NS=-170

N-S	E-W	Contract	N-S	E-W	IMP
9	7	1S	W-1	100	7
4	2	1S	W-1	100	7
3	1	2H	S-1	50	3
1	3	3H	N-2	100	2
6	10	2H	S-2	100	2
10	6	2NT	E 2	120	2
8	5	2NT	E 2	120	2
7	9	2HX	S-2	300	-4
2	4	3NT	E 4	630	-10
5	8	3NT	E 5	660	-10

20

♠ K1084  
♥ 1094  
♦ K7  
♣ K852

♠ J32  
♥ K765  
♦ 10954  
♣ J9

♠ 9  
♥ AQ832  
♦ QJ8  
♣ A743

♠ AQ765  
♥ J  
♦ A632  
♣ Q106

N  
W—E  
S

Board (20) Av: NS=+230

N-S	E-W	Contract	N-S	E-W	IMP
8	5	4S	S 5	650	9
7	9	4S	S 4	620	9
2	4	3S	S 5	200	-1
9	7	3S	S 5	200	-1
4	2	3S	S 4	170	-2
3	1	3S	S 4	170	-2
5	8	3S	S 4	170	-2
1	3	2S	S 4	170	-2
6	10	2S	S 4	170	-2
10	6	3H	E-1	100	-4

21

♠ KQ8  
♥ K109  
♦ 852  
♣ Q962

♠ 109652  
♥ 8  
♦ KQJ  
♣ K1043

♠ AJ73  
♥ J63  
♦ A1074  
♣ J5

♠ 4  
♥ AQ7542  
♦ 963  
♣ A87

N  
W—E  
S

Board (21) Av: NS=0

N-S	E-W	Contract	N-S	E-W	IMP
1	3	2NT	N 4	180	5
6	10	2H	S 2	110	3
3	1	2H	S 2	110	3
2	4	2H	S 2	110	3
9	7	2H	S 2	110	3
10	6	Passout			0
7	9	3H	S-1	100	-3
5	8	3S	W 3	140	-4
4	2	3H	S-2	200	-5
8	5	5H	S-3	300	-7

22

♠ Q64  
♥ KJ10962  
♦ 8  
♣ A82

♠ AJ873  
♥ Q43  
♦ 1052  
♣ 73

♠ 952  
♥ A7  
♦ AK9  
♣ QJ964

♠ K10  
♥ 85  
♦ QJ7643  
♣ K105

N  
W—E  
S

Board (22) Av: NS=+130

N-S	E-W	Contract	N-S	E-W	IMP
9	7	3H	N 3	140	0
3	1	3H	N 3	140	0
4	2	3H	N 3	140	0
1	3	3H	N 3	140	0
10	6	3H	N 3	140	0
6	10	2H	N 3	140	0
7	9	4S	W-1	100	-1
5	8	3S	W-1	100	-1
2	4	2S	W-1	100	-1
8	5	3S	W 4	170	-7

23

♠ KQ1096  
♥ KQJ104  
♦  
♣ A85

♠ 32  
♥ 982  
♦ 1073  
♣ Q10762

♠ AJ4  
♥ 53  
♦ K986542  
♣ 3

♠ 875  
♥ A76  
♦ AQJ  
♣ KJ94

N  
W—E  
S

Board (23) Av: NS=+180

N-S	E-W	Contract	N-S	E-W	IMP
6	10	6H	N 6	1430	15
10	6	4NT	S 5	660	10
3	1	5H	S 5	650	10
4	2	4H	S 5	650	10
5	8	6S	S-1	100	-7
9	7	6S	S-1	100	-7
7	9	6S	S-1	100	-7
1	3	6H	S-1	100	-7
8	5	6H	S-1	100	-7
2	4	6H	S-1	100	-7

24

♠ 87652  
♥ Q1093  
♦ 93  
♣ J9

♠ K4  
♥ K42  
♦ K1062  
♣ 10654

♠ QJ1093  
♥ 75  
♦ J85  
♣ A72

♠ A  
♥ AJ86  
♦ AQ74  
♣ KQ83

N  
W—E  
S

Board (24) Av: NS=+60

N-S	E-W	Contract	N-S	E-W	IMP
5	8	2H	N 4	170	3
3	1	2H	N 4	170	3
7	9	2H	S 3	140	2
10	6	2NT	S 2	120	2
2	4	1C	S 3	110	2
9	7	1D	S 2	90	1
1	3	1D	S 1	70	0
6	10	4H	N-2	100	-4
4	2	3S	S-2	100	-4
8	5	3S	S-3	150	-5

25

♠ Q7  
♥ KQ763  
♦ J109  
♣ 876

♠ J63  
♥ 2  
♦ K8543  
♣ A952

♠ AK98  
♥ 1084  
♦ Q7  
♣ KJ43

♠ 10542  
♥ AJ95  
♦ A62  
♣ Q10

N  
W—E  
S

Board (25) Av: NS=+70

N-S	E-W	Contract	N-S	E-W	IMP
3	4	2H	N 2	110	1
1	2	2H	N 2	110	1
4	3	2H	N 2	110	1
2	1	2H	N 2	110	1
9	5	2H	N 2	110	1
5	9	2H	N 2	110	1
6	7	2H	N 2	110	1
8	10	3H	N-1	50	-3
7	6	3H	N-1	50	-3
10	8	1NT	E 2	120	-5

26

♠ 865  
♥ 108  
♦ Q10742  
♣ Q107

♠ A104  
♥ AJ7  
♦ J93  
♣ KJ94

♠ KQJ72  
♥ 54  
♦ A865  
♣ 85

♠ 93  
♥ KQ9632  
♦ K  
♣ A632

N  
W—E  
S

Board (26) Av: NS=-150

N-S	E-W	Contract	N-S	E-W	IMP
4	3	4S	E-2	200	8
1	2	2NT	W 2	120	1
6	7	3S	E 3	140	0
10	8	3S	E 3	140	0
5	9	3S	E 3	140	0
7	6	2S	W 3	140	0
2	1	3S	E 4	170	-1
3	4	2S	E 4	170	-1
8	10	2S	E 4	170	-1
9	5	3D	N-3	300	-4

27

♠ QJ109  
♥ A42  
♦ J65  
♣ AJ4

♠ 8764  
♥ 98653  
♦ 107  
♣ Q10

♠ K5  
♥ KJ7  
♦ 984  
♣ K7653

♠ A32  
♥ Q10  
♦ AKQ32  
♣ 982

N  
W—E  
S

Board (27) Av: NS=+480

N-S	E-W	Contract	N-S	E-W	IMP
7	6	3NT	S 6	490	0
4	3	3NT	S 6	490	0
1	2	3NT	S 6	490	0
6	7	3NT	S 6	490	0
5	9	3NT	S 6	490	0
8	10	3NT	S 6	490	0
10	8	3NT	S 5	460	-1
9	5	3NT	S 5	460	-1
3	4	3NT	N 5	460	-1
2	1	3NT	S 4	430	-2

### 28

♠ KQ10  
♥ A65  
♦ 952  
♣ 9832

♠ A3 J8642  
♥ KJ72 84  
♦ KJ103 A64  
♣ J105 K74

♠ 975  
♥ Q1093  
♦ Q87  
♣ AQ6

Board (28) Av: NS=-90

N-S	E-W	Contract	N-S	E-W	IMP
9	5	1NT W-1	50		4
1	2	2D W 2	90		0
2	1	1NT W 1	90		0
4	3	1NT W 1	90		0
3	4	1NT W 1	90		0
6	7	1NT W 1	90		0
10	8	1NT W 1	90		0
5	9	1NT W 1	90		0
7	6	1NT W 1	90		0
8	10	1NT W 1	90		0

### 29

♠ K3  
♥ J9842  
♦ 92  
♣ A1094

♠ Q109752 A86  
♥ K6 A1073  
♦ 84 AKQ5  
♣ Q85 J2

♠ J4  
♥ Q5  
♦ J10763  
♣ K763

Board (29) Av: NS=-620

N-S	E-W	Contract	N-S	E-W	IMP
7	6	3S W 4	170		10
4	3	4S W 4	620		0
9	5	4S W 4	620		0
2	1	4S W 4	620		0
1	2	4S W 4	620		0
5	9	4S W 4	620		0
6	7	4S W 4	620		0
10	8	4S W 4	620		0
8	10	4S W 4	620		0
3	4	4S E 4	620		0

### 30

♠ AQ52  
♥ Q63  
♦ J10  
♣ A985

♠ KJ1086 9743  
♥ 52 A1087  
♦ 94 K8732  
♣ K1076

♠ KJ94  
♥ AQ65  
♦ QJ432  
♣

Board (30) Av: NS=+380

N-S	E-W	Contract	N-S	E-W	IMP
10	8	2NTxW-5	1100		12
5	9	3NT S 5	460		2
3	4	3NT S 4	430		2
2	1	3NT S 4	430		2
8	10	3NT N 4	430		2
9	5	3NT N 4	430		2
6	7	3NT S 3	400		1
4	3	4Sx W-2	300		-2
7	6	3C S 5	150		-6
1	2	3NT S-2	100		-10

### 31

♠ Q82  
♥ 864  
♦ 10  
♣ AKQJ109

♠ K9653 107  
♥ A72 Q93  
♦ A987 KQ5  
♣ 7 86532

♠ AJ4  
♥ KJ105  
♦ J6432  
♣ 4

Board (31) Av: NS=+80

N-S	E-W	Contract	N-S	E-W	IMP
10	8	2Cx N 4	580		11
6	7	3C N 3	110		1
8	10	3C N 3	110		1
2	1	3C N 3	110		1
4	3	2C N 3	110		1
7	6	2C N 3	110		1
9	5	2C N 3	110		1
1	2	2C N 3	110		1
3	4	3NT S-1	100		-5
5	9	3NT S-1	100		-5

### 32

♠ 542  
♥ J962  
♦ KJ6  
♣ K109

♠ QJ8 K10963  
♥ KQ108 73  
♦ 109542 Q8  
♣ J A872

♠ A7  
♥ A54  
♦ A73  
♣ Q6543

Board (32) Av: NS=+40

N-S	E-W	Contract	N-S	E-W	IMP
8	10	1NT S 3	150		3
9	5	1NT S 3	150		3
1	2	1NT S 2	120		2
6	7	1NT S 2	120		2
10	8	2S E-1	100		2
3	4	Passout			-1
7	6	2H N-1	50		-3
4	3	1NT S-1	50		-3
5	9	2S E 2	110		-4
2	1	2S E 2	110		-4

### 33

♠ A76  
♥ K52  
♦ 3  
♣ KJ10987

♠ 42 KJ10  
♥ Q10763 J984  
♦ K102 AQ964  
♣ 542 3

♠ Q9853  
♥ A  
♦ J875  
♣ AQ6

Board (33) Av: NS=+440

N-S	E-W	Contract	N-S	E-W	IMP
4	3	4S S 5	450		0
1	2	4S S 5	450		0
8	10	4S S 5	450		0
9	5	4S S 5	450		0
7	6	4S S 5	450		0
10	8	4S S 5	450		0
3	4	4S S 4	420		-1
6	7	4S S 4	420		-1
5	9	4S S 4	420		-1
2	1	2S S 5	200		-6

### 34

♠ J109532  
♥ K8  
♦ AJ64  
♣ Q

♠ KQ8 64  
♥ AJ952 63  
♦ 1073 K982  
♣ KJ A7653

♠ A7  
♥ Q1074  
♦ Q5  
♣ 109842

Board (34) Av: NS=+100

N-S	E-W	Contract	N-S	E-W	IMP
3	4	1S N 3	140		1
2	1	2S N 2	110		0
8	10	2S N 2	110		0
4	3	2S N 2	110		0
9	5	2S N 2	110		0
5	9	1S N 2	110		0
10	8	1S N 2	110		0
1	2	1S N 2	110		0
6	7	1NT W-1	50		-2
7	6	1NT W 1	90		-5

### 35

♠ J3  
♥ J754  
♦ J83  
♣ KQ105

♠ A74 K105  
♥ K103 Q86  
♦ K765 A1092  
♣ 764 J92

♠ Q9862  
♥ A92  
♦ Q4  
♣ A83

Board (35) Av: NS=+100

N-S	E-W	Contract	N-S	E-W	IMP
5	9	2S S 3	140		1
2	1	2S S 3	140		1
4	3	2S S 3	140		1
3	4	2S S 2	110		0
6	7	2S S 2	110		0
8	10	2S S 2	110		0
10	8	2S S 2	110		0
9	5	2C S 3	110		0
1	2	Passout			-3
7	6	Passout			-3

### 36

♠ QJ42  
♥ J1073  
♦ AQ102  
♣ 4

♠ K85 103  
♥ K94 A852  
♦ 843 KJ9  
♣ J762 AKQ10

♠ A976  
♥ Q6  
♦ 765  
♣ 9853

Board (36) Av: NS=-120

N-S	E-W	Contract	N-S	E-W	IMP
5	9	2NT W-1	100		6
10	8	1NT E 1	90		1
9	5	1NT E 1	90		1
2	1	1NT E 2	120		0
3	4	1NT E 2	120		0
6	7	1NT E 2	120		0
1	2	1NT E 2	120		0
8	10	1NT E 3	150		-1
7	6	1NT E 3	150		-1
4	3	1NT E 4	180		-2