

木村六郎杯 OPEN TEAMS Session 1 Flight C 2016年2月27日(土)

1

♠ KJ10765
♥
♦ A1053
♣ 1042

♠ 94
♥ KQ852
♦ Q98
♣ QJ8

♠ Q8
♥ AJ10974
♦ K764
♣ 7

Board (1) Av: NS=+190

N-S	E-W	Contract	N-S	E-W	IMP
3	5	4S N 4	420		6
5	3	3H E-6	300		3
10	1	4H E-5	250		2
9	6	3H E-4	200		0
7	4	3H E-4	200		0
1	10	3H E-4	200		0
2	8	5C W-3	150		-1
4	7	3S N 3	140		-2
6	9	4C W-1	50		-4
8	2	4C W-1	50		-4

2

♠ 876
♥ K932
♦ A1095
♣ KQ

♠ A103
♥ AJ5
♦ KJ3
♣ 10942

♠ 952
♥ Q8764
♦ Q
♣ A863

Board (2) Av: NS=+110

N-S	E-W	Contract	N-S	E-W	IMP
3	5	1NT E-4	200		3
8	2	2H S 3	140		1
5	3	2H S 3	140		1
9	6	2H S 2	110		0
6	9	2H S 2	110		0
4	7	2H S 2	110		0
10	1	2H S 2	110		0
2	8	2H S 2	110		0
7	4	1NT E-1	50		-2
1	10	3H S-1		100	-5

3

♠ J4
♥ A864
♦ KQ10
♣ Q875

♠ K63
♥ J103
♦ AJ62
♣ J106

♠ Q1087
♥ KQ2
♦ 8543
♣ A2

Board (3) Av: NS=+130

N-S	E-W	Contract	N-S	E-W	IMP
8	2	1NT N 4	180		2
2	8	2NT N 3	150		1
9	6	2NT N 3	150		1
1	10	2NT N 3	150		1
7	4	2NT N 2	120		0
4	7	2NT N 2	120		0
5	3	2NT N 2	120		0
6	9	1NT N 2	120		0
10	1	1NT N 2	120		0
3	5	3NT N-1		50	-5

4

♠ A95
♥ J1073
♦ 94
♣ KQ94

♠ KQJ87
♥ 5
♦ Q52
♣ J653

♠ 643
♥ AQ982
♦ AJ108
♣ 2

Board (4) Av: NS=-70

N-S	E-W	Contract	N-S	E-W	IMP
1	10	3H S 3	140		5
8	2	Passout			2
10	1	Passout			2
9	6	2C E 2		90	-1
6	9	3H S-1		100	-1
5	3	3H S-1		100	-1
7	4	3H S-1		100	-1
4	7	3H S-1		100	-1
3	5	3H S-1		100	-1
2	8	3H S-1		100	-1

5

♠ Q9872
♥ 76
♦ 983
♣ 985

♠ K104
♥ 104
♦ AQJ7
♣ J1062

♠ 63
♥ 9853
♦ 6542
♣ AKQ

♠ AJ5
♥ AKQJ2
♦ K10
♣ 743

Board (5) Av: NS=-80

N-S	E-W	Contract	N-S	E-W	IMP
3	5	2H S 2	110		5
4	7	1H S 1	80		4
2	8	3H S-1		100	-1
6	9	1H S-1		100	-1
9	6	1H S-1		100	-1
8	2	1H S-1		100	-1
5	3	1H S-1		100	-1
7	4	1H S-1		100	-1
10	1	3D W 4		130	-2
1	10	2NT S-3		300	-6

6

♠ A10965
♥ KJ103
♦ 95
♣ 109

♠ J432
♥ 9854
♦ 7632
♣ K

♠ KQ87
♥ Q2
♦ KQ
♣ AJ432

♠ A76
♥ AJ1084
♣ Q8765

Board (6) Av: NS=-10

N-S	E-W	Contract	N-S	E-W	IMP
6	9	1NT E-3	300		7
8	2	2H N 3	140		4
4	7	2H S 2	120		4
9	6	1NT E-1	100		3
3	5	3C N-1		50	-1
2	8	3C N-2		100	-3
10	1	3C N-2		100	-3
1	10	3C N-2		100	-3
5	3	3C N-2		100	-3
7	4	3C N-3		150	-4

7

♠ AQ
♥ K85
♦ Q85
♣ J10752

♠ K943
♥ A
♦ K32
♣ AKQ96

♠ 10852
♥ 1032
♦ A10974
♣ 3

♠ J76
♥ QJ9764
♦ J6
♣ 84

Board (7) Av: NS=-90

N-S	E-W	Contract	N-S	E-W	IMP
1	10	2NT W-3	300		9
3	5	4S E-2	200		7
5	3	4S E-1	100		5
2	8	4S E-1	100		5
10	1	4S E-1	100		5
7	4	4S E-1	100		5
4	7	1C W 3		110	-1
6	9	4S E 4		620	-11
8	2	4S E 4		620	-11
9	6	4S E 4		620	-11

8

♠ AJ10643
♥ 754
♦ KJ
♣ K7

♠ Q972
♥ QJ6
♦ Q765
♣ 62

♠ K8
♥ AK1082
♦ 10
♣ AJ983

♠ 5
♥ 93
♦ A98432
♣ Q1054

Board (8) Av: NS=+90

N-S	E-W	Contract	N-S	E-W	IMP
7	4	4H W-2	100		0
2	8	4H E-2	100		0
9	6	4H E-2	100		0
4	7	4H E-2	100		0
8	2	4H E-2	100		0
1	10	4H E-2	100		0
3	5	3H W-2	100		0
5	3	4H W-1	50		-1
10	1	3H W-1	50		-1
6	9	3H W-1	50		-1

9

♠ 82
♥ A6
♦ A8432
♣ A1052

♠ AKQJ4
♥ KJ9
♦ 9
♣ 9764

♠ 93
♥ Q108754
♦ K7
♣ KQ8

♠ 10765
♥ 32
♦ QJ1065
♣ J3

Board (9) Av: NS=+10

N-S	E-W	Contract	N-S	E-W	IMP
10	1	5Hx E-2	500		10
4	7	5H E-2	200		5
8	2	4H E-1	100		3
9	6	4H E-1	100		3
3	5	4H E-1	100		3
1	10	4H E-1	100		3
5	3	3S W 4		170	-5
6	9	3H E 4		170	-5
2	8	3H E 4		170	-5
7	4	5Dx N-3		500	-11

10

♠ 9742
♥ J72
♦ 85
♣ AK43

♠ 10865
♥ Q1053
♦ K104
♣ 85

♠ AJ
♥ 984
♦ Q93
♣ QJ1096

♠ KQ3
♥ AK6
♦ AJ762
♣ 72

N
W — E
S

Board (10) Av: NS=-200

N-S	E-W	Contract	N-S	E-W	IMP
9	6	3NT S-2	200		0
4	7	3NT S-2	200		0
2	8	3NT S-2	200		0
6	9	3NT S-2	200		0
8	2	3NT S-2	200		0
7	4	3NT S-2	200		0
5	3	3NT S-2	200		0
1	10	3NT S-2	200		0
10	1	Av-			-3
3	5	3NT S-3	300		-3

11

♠ K82
♥ AQJ96
♦ Q2
♣ J102

♠ 943
♥ 103
♦ K65
♣ KQ864

♠ A765
♥ K8752
♦ 10
♣ A97

♠ QJ10
♥ 4
♦ AJ98743
♣ 53

N
W — E
S

Board (11) Av: NS=+50

N-S	E-W	Contract	N-S	E-W	IMP
2	8	3D S 5	150		3
4	7	3D S 5	150		3
7	4	3D S 4	130		2
8	2	2NT N 2	120		2
9	6	3D S 3	110		2
6	9	3D S 3	110		2
1	10	2H N-1		50	-3
5	3	2C W 2		90	-4
10	1	2C W 2		90	-4
3	5	3NT N-2	100		-4

12

♠ J92
♥ A84
♦ AK6
♣ A1032

♠ AKQ1084
♥ Q
♦ J1082
♣ 98

♠ 53
♥ 53
♦ Q753
♣ Q7654

♠ 76
♥ KJ109762
♦ 94
♣ KJ

N
W — E
S

Board (12) Av: NS=+540

N-S	E-W	Contract	N-S	E-W	IMP
8	2	5H N 5	650		3
7	4	4H S 5	650		3
9	6	4H S 5	650		3
2	8	4H N 5	650		3
10	1	4H N 5	650		3
4	7	4H N 5	650		3
3	5	4H N 5	650		3
6	9	4Sx E-2	300		-6
5	3	4S E-3	150		-9
1	10	5H N-1		100	-12

13

♠ KJ5
♥ AKJ4
♦ 6532
♣ 107

♠ 3
♥ Q98765
♦ Q1098
♣ K3

♠ A1072
♥ 2
♦ A74
♣ A8654

♠ Q9864
♥ 103
♦ KJ
♣ QJ92

N
W — E
S

Board (13) Av: NS=0

N-S	E-W	Contract	N-S	E-W	IMP
2	7	2S S 2	110		3
3	8	2S S 2	110		3
5	10	2S S 2	110		3
7	2	2S S 2	110		3
9	1	1NT N 1	90		3
10	5	2C W 2		90	-3
4	6	3S S-1	100		-3
1	9	1NT N-1	100		-3
8	3	2NT W 2	120		-3
6	4	2Hx E 2	670		-12

14

♠ KQ1073
♥ J10
♦ 9543
♣ 84

♠ J9
♥ AK653
♦ AJ6
♣ 1093

♠ A64
♥ 842
♦ Q102
♣ AQ72

♠ 852
♥ Q97
♦ K87
♣ KJ65

N
W — E
S

Board (14) Av: NS=-310

N-S	E-W	Contract	N-S	E-W	IMP
1	9	4H E-1	50		8
7	2	4H E-1	50		8
4	6	4H E-1	50		8
5	10	4H E 4		420	-3
10	5	4H E 4		420	-3
3	8	4H E 4		420	-3
8	3	4H E 4		420	-3
6	4	4H E 4		420	-3
9	1	4H E 5		450	-4
2	7	4H E 5		450	-4

15

♠ KQJ92
♥ 1087
♦ 9
♣ AJ104

♠ A6
♥ 642
♦ A832
♣ K983

♠ 85
♥ QJ53
♦ QJ1064
♣ Q6

♠ 10743
♥ AK9
♦ K75
♣ 752

N
W — E
S

Board (15) Av: NS=+150

N-S	E-W	Contract	N-S	E-W	IMP
5	10	4S N 4	620		10
4	6	4S N 4	620		10
2	7	2S N 4	170		1
7	2	2S N 4	170		1
1	9	2S N 4	170		1
10	5	2S N 3	140		0
9	1	2S N 3	140		0
6	4	4S N-1		100	-6
8	3	4S N-1		100	-6
3	8	4S N-1		100	-6

16

♠ KJ82
♥ J54
♦ QJ2
♣ Q98

♠ Q743
♥ AQ32
♦ 9875
♣ K

♠ 65
♥ K107
♦ AK43
♣ J1062

♠ A109
♥ 986
♦ 106
♣ A7543

N
W — E
S

Board (16) Av: NS=-110

N-S	E-W	Contract	N-S	E-W	IMP
9	1	Passout			3
1	9	Passout			3
5	10	2D E 3	110		0
8	3	2D E 3	110		0
6	4	2D E 3	110		0
2	7	2NT E 2	120		0
4	6	3D E 4	130		-1
7	2	2D E 4	130		-1
10	5	2D E 4	130		-1
3	8	3C S-3	150		-1

17

♠ KJ
♥ J9832
♦ 62
♣ A1094

♠ A108542
♥ Q4
♦ 104
♣ 862

♠ Q976
♥ A76
♦ 75
♣ KQ53

♠ 3
♥ K105
♦ AKQJ983
♣ J7

N
W — E
S

Board (17) Av: NS=+260

N-S	E-W	Contract	N-S	E-W	IMP
8	3	3NT N 5	460		5
2	7	5H N 5	450		5
4	6	4H N 5	450		5
10	5	4H N 4	420		4
7	2	4H N 4	420		4
6	4	4D S 4	130		-4
1	9	3S E-2	100		-4
5	10	3S E-1	50		-5
3	8	3S E-1	50		-5
9	1	3S E 3		140	-9

18

♠ 53
♥ 10753
♦ 9
♣ AJ10986

♠ QJ108
♥ 84
♦ A654
♣ Q43

♠ 9742
♥ AK
♦ KJ73
♣ 752

♠ AK6
♥ QJ962
♦ Q1082
♣ K

N
W — E
S

Board (18) Av: NS=+280

N-S	E-W	Contract	N-S	E-W	IMP
10	5	4H S 4	620		8
4	6	4H S 4	620		8
3	8	4H S 4	620		8
7	2	3H S 4	170		-3
5	10	3H S 4	170		-3
9	1	3H S 4	170		-3
8	3	3H S 4	170		-3
1	9	3H S 4	170		-3
2	7	2H S 4	170		-3
6	4	5H S-1		100	-9

19

♠ Q3
♥ AJ632
♦ 4
♣ AQJ84

♠ A N ♠ J107652
♥ K975 W—E ♥ Q10
♦ K1052 ♠ QJ7
♣ 10765 ♣ 93

♠ K984
♥ 84
♦ A9863
♣ K2

20

♠ KQJ32
♥ K1052
♦ 4
♣ J76

♠ A96 N ♠ 108754
♥ 6 W—E ♥ AQ3
♦ QJ10732 ♠ K98
♣ Q82 ♣ 109

♠ J9874
♥ A65
♣ AK543

21

♠ QJ92
♥ QJ1042
♦ J84
♣ K

♠ 873 N ♠ AK4
♥ K975 W—E ♥ 863
♦ Q9 ♠ 653
♣ A1042 ♣ QJ98

♠ 1065
♥ A
♦ AK1072
♣ 7653

Board (19) Av: NS=+70

N-S	E-W	Contract	N-S	E-W	IMP
7	2	3NT S 3	400		8
5	10	1NT S 3	150		2
2	7	3H N 3	140		2
10	5	2H S 3	140		2
8	3	2H N 3	140		2
6	4	2H N 3	140		2
9	1	3NT S-1		50	-3
3	8	3NT S-1		50	-3
4	6	3H N-1		50	-3
1	9	3NT S-2		100	-5

Board (20) Av: NS=+530

N-S	E-W	Contract	N-S	E-W	IMP
8	3	3Sx E-4	1100		11
9	1	4H S 4	620		3
2	7	4H S 4	620		3
5	10	4H S 4	620		3
1	9	4H S 4	620		3
6	4	4H S 4	620		3
4	6	4H S 4	620		3
10	5	4H N 4	620		3
3	8	4H S-1		100	-12
7	2	4H S-2		200	-12

Board (21) Av: NS=-30

N-S	E-W	Contract	N-S	E-W	IMP
1	9	3D S 3	110		4
10	5	2D S 3	110		4
6	4	2D S 2	90		3
5	10	2D S 2	90		3
8	3	Passout			1
2	7	2NT N-1		100	-2
3	8	2NT N-1		100	-2
4	6	2NT N-1		100	-2
9	1	2NT N-2		200	-5
7	2	2NT N-2		200	-5

22

♠ A763
♥ J1074
♦ Q97
♣ 53

♠ KQ9 N ♠ J852
♥ A82 W—E ♥ KQ65
♦ 5 ♠ AJ
♣ K109764 ♣ A82

♠ 104
♥ 93
♦ K1086432
♣ QJ

23

♠ 10
♥ 76542
♦ A7
♣ K9832

♠ J1093 N ♠ KJ98654
♥ KQ862 W—E ♥ A8
♦ QJ54 ♠ 953
♣ QJ54 ♣ 6

♠ AQ732
♥ KQ
♦ J104
♣ A107

24

♠ Q9532
♥ AJ107
♦ Q7
♣ 94

♠ AJ1076 N ♠ 8
♥ 63 W—E ♥ K9854
♦ J54 ♠ 632
♣ K53 ♣ AQJ8

♠ K4
♥ Q2
♦ AK1098
♣ 10762

Board (22) Av: NS=-750

N-S	E-W	Contract	N-S	E-W	IMP
1	9	3NT E-4	400		15
3	8	5C W 6	620		4
2	7	5C W 6	620		4
10	5	3NT E 5	660		3
9	1	3NT E 5	660		3
6	4	3NT E 5	660		3
5	10	3NT E 6	690		2
4	6	3NT E 6	690		2
8	3	6C E 6	1370		-12
7	2	6C E 6	1370		-12

Board (23) Av: NS=+80

N-S	E-W	Contract	N-S	E-W	IMP
8	3	3NT S 3	600		11
5	10	2Sx E-2	500		9
7	2	3H W-4	400		8
2	7	2C S 3	110		1
1	9	2S E-1	100		1
6	4	2C S 2	90		0
10	5	2S S-1		100	-5
4	6	3NT N-2		200	-7
9	1	3NT N-3		300	-9
3	8	3D N-3		300	-9

Board (24) Av: NS=-30

N-S	E-W	Contract	N-S	E-W	IMP
4	6	2S W-3	150		5
7	2	3H E-1	50		2
6	4	3H E-1	50		2
5	10	1NT E-1	50		2
10	5	2S N-1		50	-1
3	8	2NT N-1		50	-1
9	1	2H N-1		50	-1
2	7	2D S-2		100	-2
1	9	2H E 2		110	-2
8	3	2H E 2		110	-2

25

♠ AQ75
♥ AJ653
♦ A42
♣ 8

♠ KJ93 N ♠ 10842
♥ Q10874 W—E ♥ K9
♦ Q5 ♠ J83
♣ 72 ♣ 10954

♠ 6
♥ 2
♦ K10976
♣ AKQJ63

26

♠ 9852
♥ 98654
♦ 4
♣ K82

♠ AKQ103 N ♠ 764
♥ K9532 W—E ♥ KQJ2
♦ J75 ♠ A876
♣ J75 ♣ A6

♠ J
♥ A1073
♦ QJ10
♣ Q10943

27

♠ AK10
♥ KQ9
♦ K103
♣ AKJ3

♠ 98 N ♠ 6543
♥ AJ7542 W—E ♥ 86
♦ AJ6 ♠ 9852
♣ 52 ♣ Q94

♠ QJ72
♥ 103
♦ Q74
♣ 10876

Board (25) Av: NS=+560

N-S	E-W	Contract	N-S	E-W	IMP
5	7	6D S 6	920		8
7	5	6C S 6	920		8
4	9	3NT S 7	520		-1
8	1	3NT N 7	520		-1
1	8	3NT N 7	520		-1
3	6	5NT N 6	490		-2
6	3	3NT S 6	490		-2
9	4	3NT N 6	490		-2
2	10	3NT N 6	490		-2
10	2	3NT N 5	460		-3

Board (26) Av: NS=-630

N-S	E-W	Contract	N-S	E-W	IMP
10	2	4S W-1	100		12
4	9	4S W 4	620		0
8	1	4S W 4	620		0
3	6	4S W 4	620		0
9	4	4S W 4	620		0
6	3	3NT E 4	630		0
5	7	3NT E 4	630		0
2	10	4S W 5	650		-1
1	8	4S W 6	680		-2
7	5	6S W 6	1430		-13

Board (27) Av: NS=+420

N-S	E-W	Contract	N-S	E-W	IMP
7	5	3NT N 4	430		0
1	8	3NT N 4	430		0
8	1	3NT N 4	430		0
2	10	3NT N 4	430		0
10	2	3NT N 4	430		0
9	4	4S S 4	420		0
6	3	3NT N 3	400		-1
5	7	3NT N 3	400		-1
4	9	3NT N 3	400		-1
3	6	3NT N 3	400		-1

28

♠ K654
♥ A872
♦ K65
♣ 82

♠ A1072
♥ Q9
♦ 10
♣ QJ10763

♠ KJ10543
♥ AQJ982
♣ 9

♠ QJ983
♥ 6
♦ 743
♣ AK54

Board (28) Av: NS=-300

N-S	E-W	Contract	N-S	E-W	IMP
6	3	4Hx E-2	300		12
2	10	5H E-3	150		10
10	2	5H E-1	50		8
1	8	3H E 4		170	4
8	1	4H E 4		420	-3
7	5	4H E 4		420	-3
4	9	3NT W 4		430	-4
5	7	4Hx E 4		590	-7
3	6	4Hx E 4		590	-7
9	4	4Hx E 4		590	-7

29

♠ 10764
♥ A963
♦ 65
♣ K53

♠ AK8
♥ 72
♦ AJ10
♣ AQ942

♠ Q3
♥ KJ105
♦ Q9832
♣ J7

♠ J952
♥ Q84
♦ K74
♣ 1086

Board (29) Av: NS=-640

N-S	E-W	Contract	N-S	E-W	IMP
1	8	3NT W-1	100		12
2	10	3NT W 3		600	1
4	9	3NT W 4		630	0
7	5	3NT W 4		630	0
9	4	3NT W 4		630	0
6	3	3NT W 5		660	-1
3	6	3NT W 5		660	-1
10	2	3NT W 5		660	-1
5	7	3NT W 5		660	-1
8	1	3NT W 6		690	-2

30

♠ J96532
♥ 5
♦
♣ 987432

♠ AK74
♥ 96
♦ AK1062
♣ QJ

♠ 10
♥ QJ10842
♦ QJ73
♣ A10

♠ Q8
♥ AK73
♦ 9854
♣ K65

Board (30) Av: NS=-420

N-S	E-W	Contract	N-S	E-W	IMP
4	9	3NT W-1	50		10
10	2	5D W 5		400	1
6	3	5D W 5		400	1
9	4	4H E 4		420	0
3	6	4H E 4		420	0
8	1	4H E 4		420	0
1	8	4H E 4		420	0
5	7	4H E 5		450	-1
2	10	4H E 5		450	-1
7	5	3NT E 5		460	-1

31

♠ QJ763
♥ 3
♦ 953
♣ 8632

♠ A
♥ QJ
♦ KQ107
♣ AQJ974

♠ K1084
♥ A865
♦ A864
♣ 10

♠ 952
♥ K109742
♦ J2
♣ K5

Board (31) Av: NS=-660

N-S	E-W	Contract	N-S	E-W	IMP
4	9	6H E-5	250		14
2	10	3NT W 6		490	5
7	5	3NT W 6		490	5
3	6	3NT E 6		490	5
1	8	3NT E 6		490	5
5	7	3NT E 7		520	4
10	2	6D W 6		920	-6
9	4	6D W 7		940	-7
6	3	6D W 7		940	-7
8	1	6NT E 6		990	-8

32

♠ A7653
♥ A9
♦ 10752
♣ Q10

♠ 108
♥ KJ108
♦ 84
♣ AJ876

♠ QJ4
♥ 7643
♦ A6
♣ 5432

♠ K92
♥ Q52
♦ KQJ93
♣ K9

Board (32) Av: NS=+90

N-S	E-W	Contract	N-S	E-W	IMP
3	6	4S S 4		420	8
2	10	3S N 3		140	2
1	8	2S N 3		140	2
4	9	2S N 3		140	2
5	7	2S N 3		140	2
6	3	1NT S 2		120	1
8	1	1NT S 2		120	1
10	2	4S N-1		50	-4
9	4	4S N-1		50	-4
7	5	3NT S-1		50	-4

33

♠ 82
♥ AQ5
♦ 952
♣ KJ874

♠ AK54
♥ J9743
♦ A4
♣ A9

♠ QJ9
♥ K1062
♦ Q86
♣ Q105

♠ 10763
♥ 8
♦ KJ1073
♣ 632

Board (33) Av: NS=-190

N-S	E-W	Contract	N-S	E-W	IMP
8	1	4NT W-2	100		7
3	6	4H W-1		50	6
6	3	4H W-1		50	6
4	9	4H W-1		50	6
5	7	4H W-1		50	6
9	4	4H W 4		420	-6
7	5	4H W 4		420	-6
1	8	4H W 4		420	-6
2	10	4H W 4		420	-6
10	2	4H W 5		450	-6

34

♠ 10532
♥ Q93
♦ K6
♣ K963

♠ AJ862
♥ Q108743
♦ J8
♣

♠ KQ864
♥ K54
♦ 5
♣ AQ102

♠ AJ97
♥ 107
♦ AJ92
♣ 754

Board (34) Av: NS=-110

N-S	E-W	Contract	N-S	E-W	IMP
8	1	2C E-2	100		5
7	5	2D W 2		90	1
1	8	2D W 3		110	0
6	3	2D W 3		110	0
4	9	2D W 3		110	0
2	10	2D W 3		110	0
5	7	1NT W 2		120	0
10	2	2D W 4		130	-1
3	6	2D W 4		130	-1
9	4	3H W 5		200	-3

35

♠ AK1094
♥ K873
♦ A92
♣ A

♠ J873
♥ 94
♦ Q1073
♣ J65

♠ Q52
♥ Q2
♦ J865
♣ Q1074

♠ 6
♥ AJ1065
♦ K4
♣ K9832

Board (35) Av: NS=+1070

N-S	E-W	Contract	N-S	E-W	IMP
9	4	7H S 7		1510	10
7	5	7H S 7		1510	10
3	6	6H S 7		1010	-2
6	3	6H S 7		1010	-2
4	9	6H S 7		1010	-2
1	8	6H S 7		1010	-2
2	10	6H S 7		1010	-2
5	7	6H S 7		1010	-2
8	1	6H S 7		1010	-2
10	2	6H S 7		1010	-2

36

♠ KJ106
♥ 3
♦ Q832
♣ J842

♠ A753
♥ Q109864
♦ K5
♣ A

♠ 4
♥ AK75
♦ AJ109
♣ K1076

♠ Q982
♥ J2
♦ 764
♣ Q953

Board (36) Av: NS=-1650

N-S	E-W	Contract	N-S	E-W	IMP
4	9	6H W 7		1460	5
3	6	6H W 7		1460	5
6	3	6H W 7		1460	5
10	2	6H W 7		1460	5
5	7	6H W 7		1460	5
7	5	6H W 7		1460	5
2	10	6H W 7		1460	5
8	1	7H W 7		2210	-11
9	4	7H W 7		2210	-11
1	8	7H W 7		2210	-11

37

♠ 107
♥ KQ10
♦ AK53
♣ Q963

♠ 952
♥ AJ87
♦ QJ82
♣ KJ

♠ AQ63
♥ 632
♦ 94
♣ A875

♠ KJ84
♥ 954
♦ 1076
♣ 1042

W N E S

38

♠ A5
♥ 982
♦ Q53
♣ J10743

♠ Q97
♥ Q74
♦ 7
♣ AK9865

♠ 1062
♥ AJ10653
♦ AK4
♣ Q

♠ KJ843
♥ K
♦ J109862
♣ 2

W N E S

39

♠ J8643
♥ 865
♦ 532
♣ 97

♠ A52
♥ AQ
♦ 4
♣ AQJ6432

♠ KQ7
♥ 109432
♦ KQJ8
♣ 8

♠ 109
♥ KJ7
♦ A10976
♣ K105

W N E S

Board (37) Av: NS=+80

N-S	E-W	Contract	N-S	E-W	IMP
6	8	2NT W-3	150		2
7	1	3NT W-2	100		1
10	3	2NT W-2	100		1
3	10	1NT W-2	100		1
2	9	1NT N 1	90		0
9	2	1D N 1	70		0
5	4	2S E-1	50		-1
4	5	2NT W-1	50		-1
8	6	2NT W-1	50		-1
1	7	2H W-1	50		-1

Board (38) Av: NS=-640

N-S	E-W	Contract	N-S	E-W	IMP
3	10	4H E-1	100		12
6	8	4H E 4	620		1
10	3	4H E 4	620		1
2	9	4H E 4	620		1
9	2	4H E 4	620		1
1	7	4H E 4	620		1
8	6	4H E 5	650		0
7	1	4H E 5	650		0
4	5	5H E 6	680		-1
5	4	4H E 6	680		-1

Board (39) Av: NS=-660

N-S	E-W	Contract	N-S	E-W	IMP
10	3	6C W-1	100		13
3	10	3NT E 4	630		1
9	2	5H E 5	650		0
5	4	3NT W 5	660		0
7	1	3NT E 5	660		0
8	6	3NT E 5	660		0
6	8	3NT E 5	660		0
4	5	3NT E 5	660		0
2	9	3NT E 6	690		-1
1	7	3NT E 6	690		-1

40

♠ K1042
♥ J7
♦ J105
♣ Q964

♠ A973
♥ K
♦ Q97432
♣ 103

♠ QJ865
♥ A42
♦ A6
♣ J72

♠ Q1098653
♥ K8
♣ AK85

W N E S

41

♠ QJ
♥ AK7
♦ A76543
♣ 76

♠ A954
♥ Q82
♦ K98
♣ Q103

♠ K1083
♥ J654
♦ J2
♣ 985

♠ 762
♥ 1093
♦ Q10
♣ AKJ42

W N E S

42

♠ J1062
♥ 8
♦ AJ4
♣ Q8632

♠ 8
♥ J1075
♦ 8752
♣ AK109

♠ 975
♥ K42
♦ KQ63
♣ J75

♠ AKQ43
♥ AQ963
♦ 109
♣ 4

W N E S

Board (40) Av: NS=+100

N-S	E-W	Contract	N-S	E-W	IMP
7	1	4H S 4	420		8
3	10	4Sx E-2	300		5
10	3	3H W-6	300		5
4	5	4S E-1	50		-2
8	6	4S E-1	50		-2
1	7	3S E-1	50		-2
5	4	3S E-1	50		-2
9	2	3S E-1	50		-2
6	8	5H S-1	50		-4
2	9	5Hx S-1	100		-5

Board (41) Av: NS=+50

N-S	E-W	Contract	N-S	E-W	IMP
5	4	1NT S 2	120		2
3	10	1NT S 2	120		2
4	5	2D N 3	110		2
10	3	2D N 3	110		2
6	8	2D N 2	90		1
9	2	2D N 2	90		1
1	7	3NT S-1	50		-3
7	1	3NT S-1	50		-3
2	9	1NT S-1	50		-3
8	6	1NT S-2	100		-4

Board (42) Av: NS=+440

N-S	E-W	Contract	N-S	E-W	IMP
10	3	4S S 6	680		6
1	7	5S S 5	650		5
4	5	4S S 5	650		5
2	9	4S S 5	650		5
9	2	4H S 5	650		5
6	8	4S S 4	620		5
8	6	4S N 4	620		5
5	4	6S S-1	100		-11
7	1	6S S-2	200		-12
3	10	6S S-2	200		-12

43

♠ AK1064
♥ 103
♦ Q96
♣ J73

♠ J95
♥ K85
♦ AK105
♣ AQ6

♠ Q
♥ A742
♦ 874
♣ K10942

♠ 8732
♥ QJ96
♦ J32
♣ 85

W N E S

44

♠ AK2
♥ 6
♦ QJ76542
♣ 95

♠ J975
♥ AQJ108
♦ A10
♣ J3

♠ 104
♥ 97543
♦ K9
♣ AK82

♠ Q863
♥ K2
♦ 83
♣ Q10764

W N E S

45

♠ 7
♥ AKJ87
♦ 986
♣ AK76

♠ K632
♥ Q10543
♦ A5
♣ 95

♠ 1094
♥ 62
♦ KQJ3
♣ J842

♠ AQJ85
♥ 9
♦ 10742
♣ Q103

W N E S

Board (43) Av: NS=-430

N-S	E-W	Contract	N-S	E-W	IMP
4	5	5C W-1	50		10
3	10	3NT W 4	430		0
5	4	3NT W 4	430		0
1	7	3NT W 4	430		0
7	1	3NT W 4	430		0
2	9	3NT W 4	430		0
9	2	3NT W 4	430		0
8	6	3NT W 4	430		0
10	3	3NT W 4	430		0
6	8	3NT W 4	430		0

Board (44) Av: NS=-450

N-S	E-W	Contract	N-S	E-W	IMP
1	7	4H W 4	420		1
5	4	4H W 5	450		0
4	5	4H W 5	450		0
9	2	4H W 5	450		0
7	1	4H W 5	450		0
3	10	4H W 5	450		0
6	8	4H W 5	450		0
8	6	4H W 5	450		0
10	3	4H W 5	450		0
2	9	4Dx N-2	500		-2

Board (45) Av: NS=+120

N-S	E-W	Contract	N-S	E-W	IMP
2	9	3NT S 4	630		11
5	4	2S S 3	140		1
4	5	2S S 3	140		1
8	6	2H N 3	140		1
10	3	2C N 4	130		0
9	2	2S S 2	110		0
3	10	2S S 2	110		0
1	7	2C N 3	110		0
6	8	2C N 3	110		0
7	1	3C N-1	100		-6

46

♠K
♥AQ964
♦AJ10
♣10532

♠A10543 ♠J972
♥3 ♥J752
♦KQ52 W E ♦863
♣J84 ♣AK

♠Q86
♥K108
♦974
♣Q976

47

♠A8
♥KJ1052
♦73
♣Q872

♠Q53 ♠10976
♥9 ♥A76
♦KQ1084 W E ♦A95
♣A1064 ♣KJ9

♠KJ42
♥Q843
♦J62
♣53

48

♠K543
♥92
♦J4
♣AKQ97

♠A10 ♠J86
♥QJ875 W E ♥K63
♦A76 ♣AKQ9
♣J108 ♣6532

♠Q972
♥A104
♦108532
♣4

Board (46) Av: NS=-50

N-S	E-W	Contract	N-S	E-W	IMP
1	7	2H	N 2	110	4
9	2	3S	W-1	50	3
4	5	3S	W-1	50	3
7	1	3S	W-1	50	3
5	4	3H	N-1	50	0
10	3	4H	N-2	100	-2
2	9	3S	W 3	140	-3
8	6	3S	W 3	140	-3
3	10	3S	W 3	140	-3
6	8	3S	W 3	140	-3

Board (47) Av: NS=-130

N-S	E-W	Contract	N-S	E-W	IMP
6	8	3H	N-1	100	1
1	7	3H	N-1	100	1
8	6	2NT	E 2	120	0
10	3	2NT	E 2	120	0
7	1	2NT	E 2	120	0
9	2	4D	W 4	130	0
5	4	3D	W 4	130	0
4	5	4C	W 5	150	-1
3	10	2NT	E 3	150	-1
2	9	3NT	E 4	430	-7

Board (48) Av: NS=+20

N-S	E-W	Contract	N-S	E-W	IMP
2	9	3S	N 4	170	4
4	5	2S	S 4	170	4
3	10	3S	S 3	140	3
9	2	2S	N 2	110	3
1	7	3H	W-1	100	2
7	1	3S	N-1	50	-2
8	6	3C	N-2	100	-3
5	4	2H	W 2	110	-4
10	3	2H	W 2	110	-4
6	8	2H	W 2	110	-4

1

♠7642
♥QJ952
♦J82
♣4

♠KJ ♠Q105
♥107 ♥A43
♦A73 ♦1094
♣J109852 ♣AQ63

W N E S

♠A983
♥K86
♦KQ65
♣K7

Board (1) Av: NS=-30

N-S	E-W	Contract	N-S	E-W	IMP
10	4	3H	S 3	140	5
2	5	3H	S 3	140	5
4	10	4C	E-1	50	2
3	7	4H	N-1	50	-1
6	1	3H	S-1	50	-1
8	9	3H	N-1	50	-1
1	6	2C	E 2	90	-2
7	3	3C	E 3	110	-2
9	8	3C	E 3	110	-2
5	2	3C	E 3	110	-2

2

♠AJ94
♥J
♦AQ10854
♣105

♠10 ♠652
♥AK943 ♥108752
♦972 ♦K6
♣AKQ7 ♣432

W N E S

♠KQ873
♥Q6
♦J3
♣J986

Board (2) Av: NS=-180

N-S	E-W	Contract	N-S	E-W	IMP
4	10	2S	S 2	110	7
3	7	4S	S-1	100	2
2	5	4S	S-1	100	2
9	8	3H	W 5	200	-1
8	9	3H	W 5	200	-1
10	4	3H	W 5	200	-1
6	1	3H	W 5	200	-1
5	2	3H	W 5	200	-1
1	6	3H	W 5	200	-1
7	3	5Hx	W 5	650	-10

3

♠K109743
♥J6
♦K10
♣AQ10

♠Q ♠862
♥KQ108743 ♥A9
♦J73 ♦9642
♣94 ♣K765

W N E S

♠AJ5
♥52
♦AQ85
♣J832

Board (3) Av: NS=+420

N-S	E-W	Contract	N-S	E-W	IMP
9	8	4S	N 5	450	1
10	4	4S	N 4	420	0
8	9	4S	N 4	420	0
1	6	4S	N 4	420	0
7	3	4S	N 4	420	0
3	7	4S	N 4	420	0
6	1	4S	N 4	420	0
2	5	4S	N 4	420	0
4	10	4S	N 4	420	0
5	2	4S	N 4	420	0

4

♠QJ
♥AKQ54
♦K9
♣A653

♠K2 ♠A63
♥10982 ♥J6
♦Q10543 ♦AJ876
♣82 ♣Q107

W N E S

♠1098754
♥73
♦2
♣KJ94

Board (4) Av: NS=+190

N-S	E-W	Contract	N-S	E-W	IMP
7	3	4S	N 5	650	10
6	1	4S	S 4	620	10
1	6	4S	S 4	620	10
3	7	3H	N 3	140	-2
9	8	3H	N 3	140	-2
10	4	4C	N 4	130	-2
8	9	1H	N 1	80	-3
2	5	4H	N-1	100	-7
5	2	3NT	N-1	100	-7
4	10	3NT	N-1	100	-7

5

♠72
♥97653
♦AQ10
♣A32

♠J10654 ♠A98
♥Q108 ♥KJ
♦J5 ♦K76432
♣K87 ♣96

W N E S

♠KQ3
♥A42
♦98
♣QJ1054

Board (5) Av: NS=+140

N-S	E-W	Contract	N-S	E-W	IMP
9	8	4H	N 4	620	10
6	1	2NT	N 4	180	1
3	7	3H	N 4	170	1
5	2	3H	N 4	170	1
8	9	2H	N 4	170	1
4	10	2H	N 3	140	0
7	3	3D	E-2	100	-1
1	6	3D	E-2	100	-1
2	5	2D	E-2	100	-1
10	4	4C	S-2	200	-8

6

♠A985
♥J1075
♦J8
♣653

♠J63 ♠104
♥AKQ63 ♥9842
♦5 ♦A107643
♣K1082 ♣4

W N E S

♠KQ72
♥
♦KQ92
♣AQJ97

Board (6) Av: NS=+210

N-S	E-W	Contract	N-S	E-W	IMP
8	9	5Hx	W-2	500	7
6	1	4S	S 4	420	5
3	7	4S	S 4	420	5
9	8	4S	S 4	420	5
4	10	4S	S 4	420	5
2	5	3S	S 4	170	-1
5	2	5S	S-1	50	-6
1	6	4S	S-1	50	-6
10	4	3S	S-1	50	-6
7	3	4S	S-2	100	-7

7

♠AKQ109865
♥62
♦J82
♣

♠A42 ♠KQ1095
♥♥3
♦Q873 ♦AJ954
♣AKQ764 ♣53

W N E S

♠J8763
♥J742
♦K10
♣109

Board (7) Av: NS=-140

N-S	E-W	Contract	N-S	E-W	IMP
3	7	6S	E-4	400	11
5	2	4S	E-2	200	8
4	10	4S	E-1	100	6
2	5	4S	E-1	100	6
10	4	4S	E-1	100	6
7	3	5Hx	N-1	200	-2
6	1	5Hx	N-1	200	-2
1	6	4S	E 4	620	-10
8	9	4S	E 4	620	-10
9	8	5S	E 5	650	-11

8

♠8
♥Q653
♦A1042
♣AKJ9

♠AJ2 ♠9653
♥K10 ♥9872
♦J9873 ♦K5
♣Q64 ♣1032

W N E S

♠KQ1074
♥AJ4
♦Q6
♣875

Board (8) Av: NS=+420

N-S	E-W	Contract	N-S	E-W	IMP
10	4	3NT	N 4	430	0
9	8	3NT	N 4	430	0
8	9	3NT	N 4	430	0
1	6	3NT	N 4	430	0
6	1	3NT	N 4	430	0
3	7	3NT	N 3	400	-1
2	5	3NT	N 3	400	-1
4	10	3NT	N 3	400	-1
7	3	3NT	N 3	400	-1
5	2	3NT	N 3	400	-1

9

♠2
♥KQ6
♦653
♣KQJ964

♠7653 ♠QJ109
♥J7 ♥A842
♦KJ9 ♦Q8
♣A852 ♣1073

W N E S

♠AK84
♥10953
♦A10742
♣

Board (9) Av: NS=+80

N-S	E-W	Contract	N-S	E-W	IMP
4	10	2H	N 5	200	3
6	1	3C	N 5	150	2
9	8	3H	S 3	140	2
2	5	2H	S 3	140	2
1	6	3D	S 3	110	1
8	9	3C	N 3	110	1
10	4	3C	N 3	110	1
7	3	3NT	N-1	50	-4
5	2	3C	N-2	100	-5
3	7	3NT	S-3	150	-6

10

♠ 752
♥ A965
♦ K107
♣ 654

♠ 963
♥ Q74
♦ A8643
♣ 73

N
W — E
S

♠ AQ8
♥ KJ102
♦ J
♣ KQJ102

♠ KJ104
♥ 83
♦ Q952
♣ A98

11

♠ 983
♥ K8
♦ 87
♣ KQ9843

♠ 62
♥ Q10762
♦ Q953
♣ 52

N
W — E
S

♠ KQ107
♥ A54
♦ AJ4
♣ J107

♠ AJ54
♥ J93
♦ K1062
♣ A6

12

♠ K7
♥ 64
♦ A1098
♣ AK986

♠ J42
♥ KQ108
♦ KJ62
♣ J4

N
W — E
S

♠ Q1083
♥ 753
♦ Q543
♣ Q5

♠ A965
♥ AJ92
♦ 7
♣ 10732

Board (10) Av: NS=-20

N-S	E-W	Contract	N-S	E-W	IMP
1	6	3NT W-4	400		9
6	1	2NT W-3	300		8
5	2	2NT W-2	200		6
2	5	3NT W-1	100		3
10	4	2NT W-1	100		3
8	9	2NT W-1	100		3
4	10	2NT E 3		150	-4
3	7	1NT E 4		180	-4
9	8	3NT E 3		600	-11
7	3	4H E 4		620	-12

Board (11) Av: NS=+120

N-S	E-W	Contract	N-S	E-W	IMP
3	7	1NT N 4	180		2
1	6	2S E-3	150		1
9	8	1NT N 3	150		1
6	1	1NT N 3	150		1
10	4	1NT N 3	150		1
4	10	3C N 4	130		0
8	9	1NT N 2	120		0
5	2	2H W-1	50		-2
2	5	2H W-1	50		-2
7	3	3C N-1		50	-5

Board (12) Av: NS=+160

N-S	E-W	Contract	N-S	E-W	IMP
1	6	3NT N 4	630		10
10	4	1NT N 5	210		2
2	5	1NT N 4	180		1
8	9	3C N 6	170		0
6	1	1NT W-3	150		0
9	8	1NT S 3	150		0
3	7	1NT N 3	150		0
7	3	1NT N 3	150		0
4	10	1NT N 3	150		0
5	2	1NT N 3	150		0

13

♠ Q984
♥ 1074
♦ KJ65
♣ A6

♠ K72
♥ J93
♦ Q1082
♣ Q97

N
W — E
S

♠ A106
♥ 852
♦ A4
♣ 108542

♠ J53
♥ AKQ6
♦ 973
♣ KJ3

14

♠ K2
♥ QJ108
♦ AJ72
♣ Q64

♠ A4
♥ 6532
♦ K864
♣ 1098

N
W — E
S

♠ J10975
♥ K
♦ Q1093
♣ K53

♠ Q863
♥ A974
♦ 5
♣ AJ72

15

♠ AK86
♥ KQ9
♦ A
♣ AK984

♠ 105
♥ A8732
♦ Q7542
♣ Q

N
W — E
S

♠ J732
♥ J106
♦ KJ6
♣ 753

♠ Q94
♥ 54
♦ 10983
♣ J1062

Board (13) Av: NS=+140

N-S	E-W	Contract	N-S	E-W	IMP
4	8	1NT S 3	150		0
5	1	1NT S 3	150		0
10	7	1NT S 3	150		0
6	2	1NT S 3	150		0
3	9	1NT S 3	150		0
8	4	1NT S 2	120		-1
1	5	1NT S 2	120		-1
7	10	1NT S 2	120		-1
9	3	1NT S 2	120		-1
2	6	Passout			-4

Board (14) Av: NS=+370

N-S	E-W	Contract	N-S	E-W	IMP
9	3	4H N 5	450		2
1	5	4H N 5	450		2
2	6	4H N 5	450		2
7	10	4H N 5	450		2
3	9	4H S 4	420		2
8	4	4H N 4	420		2
4	8	4H N 4	420		2
10	7	1NT S 4	180		-5
5	1	2H N 4	170		-5
6	2	2H N 4	170		-5

Board (15) Av: NS=+660

N-S	E-W	Contract	N-S	E-W	IMP
6	2	3NT N 6	690		1
10	7	3NT N 6	690		1
3	9	3NT N 6	690		1
9	3	3NT N 6	690		1
7	10	3NT N 5	660		0
5	1	3NT N 5	660		0
8	4	4S N 5	650		0
4	8	5C N 6	620		-1
1	5	5C N 6	620		-1
2	6	5C N 6	620		-1

16

♠ 10873
♥ KQJ2
♦ 1065
♣ 76

♠ KQ942
♥ 73
♦ K987
♣ Q5

N
W — E
S

♠ 1098654
♥ QJ42
♦ K94
♣ K94

♠ AJ65
♥ A
♦ A3
♣ AJ10832

17

♠ Q42
♥ 3
♦ 102
♣ K1095432

♠ K103
♥ 9876
♦ AKJ5
♣ 87

N
W — E
S

♠ AJ9765
♥ Q4
♦ Q864
♣ A

♠ 8
♥ AKJ1052
♦ 973
♣ QJ6

18

♠ A643
♥ A4
♦ AQJ109
♣ 43

♠ 2
♥ 8762
♦ K52
♣ AJ976

N
W — E
S

♠ J97
♥ 105
♦ 87643
♣ K105

♠ KQ1085
♥ KQJ93
♦
♣ Q82

Board (16) Av: NS=+200

N-S	E-W	Contract	N-S	E-W	IMP
9	3	3NT S 5	460		6
5	1	3NT S 3	400		5
1	5	3NT S 3	400		5
3	9	3NT S 3	400		5
4	8	3NT S 3	400		5
6	2	3C S 3	110		-3
10	7	3NT S-1		50	-6
2	6	3NT S-1		50	-6
7	10	3NT S-1		50	-6
8	4	3NT N-2		100	-7

Board (17) Av: NS=-410

N-S	E-W	Contract	N-S	E-W	IMP
9	3	5S E-2	100		11
3	9	5Cx N-2		300	3
5	1	4S E 4		420	0
1	5	4S E 4		420	0
4	8	4S E 4		420	0
8	4	4S E 4		420	0
7	10	4S E 4		420	0
10	7	5S E 5		450	-1
6	2	5S E 5		450	-1
2	6	4S E 5		450	-1

Board (18) Av: NS=+560

N-S	E-W	Contract	N-S	E-W	IMP
7	10	6S S 6	1430		13
3	9	6S S 6	1430		13
2	6	4S S 6	680		3
6	2	5S S 5	650		3
1	5	4S S 5	650		3
4	8	4S S 5	650		3
5	1	4S S 5	650		3
10	7	6S S-1		100	-12
9	3	6S S-1		100	-12
8	4	6S S-1		100	-12

19

♠AKQ108
♥A94
♦J85
♣K6

♠742
♥83
♦94
♣Q108432

N
W—E
S

♠J953
♥K65
♦Q763
♣A5

♠6
♥QJ1072
♦AK102
♣J97

20

♠K109
♥75
♦QJ752
♣952

♠J64
♥J964
♦A43
♣Q107

N
W—E
S

♠AQ87532
♥K102
♦K9
♣6

♠AQ83
♥1086
♣AKJ843

21

♠96
♥A1084
♦K7
♣K10864

♠K53
♥93
♦J432
♣QJ92

N
W—E
S

♠A74
♥KQJ6
♦A1095
♣A5

♠QJ1082
♥752
♦Q86
♣73

Board (19) Av: NS=+420

N-S	E-W	Contract	N-S	E-W	IMP
6	2	3NT N 6	490		2
1	5	4NT N 5	460		1
3	9	5H S 5	450		1
9	3	5H S 5	450		1
4	8	5H N 5	450		1
2	6	4H S 5	450		1
7	10	4H N 5	450		1
10	7	4NT S 4	430		0
8	4	1NT S 4	180		-6
5	1	5H S-1		50	-10

Board (20) Av: NS=0

N-S	E-W	Contract	N-S	E-W	IMP
9	3	4S E-2	200		5
6	2	4C S 4	130		4
2	6	4S E-1	100		3
8	4	4S E-1	100		3
3	9	4S E-1	100		3
5	1	3S E-1	100		3
1	5	5C S-1		100	-3
4	8	5Cx S-1		200	-5
10	7	5C S-2		200	-5
7	10	5C S-3		300	-7

Board (21) Av: NS=-290

N-S	E-W	Contract	N-S	E-W	IMP
3	9	3NT E-2	100		9
4	8	3NT W-1	50		8
9	3	3NT W-1	50		8
6	2	3NT W 3		400	-3
1	5	3NT W 3		400	-3
5	1	3NT W 3		400	-3
2	6	3NT W 3		400	-3
7	10	3NT W 3		400	-3
10	7	3NT E 3		400	-3
8	4	3NT W 4		430	-4

22

♠Q10
♥K10
♦AKQJ1062
♣53

♠KJ843
♥Q752
♦73
♣104

N
W—E
S

♠9762
♥A864
♦85
♣J87

♠A5
♥J93
♦94
♣AKQ962

23

♠765
♥AK965
♦75
♣QJ9

♠AJ1082
♥7
♦Q843
♣1073

N
W—E
S

♠Q943
♥J32
♦K102
♣K54

♠K
♥Q1084
♦AJ96
♣A862

24

♠KQ4
♥9
♦A108542
♣Q93

♠J963
♥KJ
♦3
♣AK10762

N
W—E
S

♠1075
♥10632
♦KQ76
♣J8

♠A82
♥AQ8754
♦J9
♣54

Board (22) Av: NS=+620

N-S	E-W	Contract	N-S	E-W	IMP
6	2	6D N 7	940		8
9	3	6D N 6	920		7
3	9	6D N 6	920		7
5	1	3NT S 7	520		-3
10	7	3NT S 7	520		-3
8	4	3NT N 7	520		-3
4	8	3NT N 7	520		-3
7	10	3NT N 7	520		-3
1	5	3NT N 7	520		-3
2	6	3NT N 6	490		-4

Board (23) Av: NS=+540

N-S	E-W	Contract	N-S	E-W	IMP
9	3	4H S 5	650		3
6	2	4H N 5	650		3
10	7	4H N 5	650		3
3	9	4H N 4	620		2
1	5	4H N 4	620		2
7	10	4H N 4	620		2
8	4	4H N 4	620		2
5	1	4S W-3	300		-6
4	8	3H N 6	230		-7
2	6	2H N 5	200		-8

Board (24) Av: NS=+70

N-S	E-W	Contract	N-S	E-W	IMP
3	9	2H S 3	140		2
2	6	2H S 3	140		2
10	7	3D N 3	110		1
4	8	3D N 3	110		1
8	4	2H S 2	110		1
9	3	2D N 3	110		1
7	10	2D N 3	110		1
6	2	3NT N-1		50	-3
5	1	3H S-1		50	-3
1	5	3C S-3		150	-6

木村六郎杯 OPEN TEAMS Session 3 Flight C 2016年2月28日(日)

1

♠ 984
♥ J984
♦ Q64
♣ J108

♠ QJ53
♥ K103
♦ A1093
♣ Q9

♠ K72
♥ 2
♦ KJ872
♣ K432

♠ A106
♥ AQ765
♦ 5
♣ A765

Board (1) Av: NS=-30

N-S	E-W	Contract	N-S	E-W	IMP
2	3	3H S 3	140		5
9	10	3H S 3	140		5
4	1	1H S 2	110		4
8	7	3H S-1		50	-1
7	8	3H S-1		50	-1
3	2	3H S-1		50	-1
6	5	4H S-2		100	-2
1	4	3H S-2		100	-2
5	6	3H S-3		150	-3
10	9	3S W 4		170	-4

2

♠ 6
♥ AQ9842
♦ KJ974
♣ 7

♠ K73
♥ J765
♦ Q
♣ J6543

♠ AJ1042
♥ 10
♦ 832
♣ KQ102

♠ Q985
♥ K3
♦ A1065
♣ A98

Board (2) Av: NS=+560

N-S	E-W	Contract	N-S	E-W	IMP
6	5	6D S 6	1370		13
8	7	4Sx E-4	800		6
9	10	5H N 5	650		3
1	4	4H S 5	650		3
7	8	4H N 5	650		3
3	2	4H N 5	650		3
5	6	3NT S 4	630		2
4	1	3H N 6	230		-8
2	3	3H N 5	200		-8
10	9	2H N 5	200		-8

3

♠ K75
♥ AQ85
♦ J92
♣ K63

♠ AJ62
♥ 762
♦ A1064
♣ Q9

♠ Q1093
♥ J943
♦ Q
♣ 8542

♠ 84
♥ K10
♦ K8753
♣ AJ107

Board (3) Av: NS=+20

N-S	E-W	Contract	N-S	E-W	IMP
1	4	3NT N 3	400		9
10	9	1NT S 2	120		3
8	7	1NT N 2	120		3
6	5	3C N 3	110		3
9	10	2C N 2	90		2
4	1	3NT N-1		50	-2
7	8	3NT N-1		50	-2
5	6	2NT N-1		50	-2
2	3	3NT N-2		100	-3
3	2	2NT N-2		100	-3

4

♠ AK874
♥ 75
♦ K5
♣ K643

♠ 965
♥ J108
♦ J9643
♣ 85

♠ 32
♥ K92
♦ AQ10
♣ AQ972

♠ QJ10
♥ AQ643
♦ 872
♣ J10

Board (4) Av: NS=+150

N-S	E-W	Contract	N-S	E-W	IMP
8	7	2Cx E-3	800		12
3	2	4S N 4	620		10
6	5	2S N 5	200		2
1	4	3S N 4	170		1
9	10	3S N 4	170		1
7	8	2S N 3	140		0
2	3	2S N 2	110		-1
4	1	4S N-1		100	-6
5	6	3S N-1		100	-6
10	9	4S N-2		200	-8

5

♠ KQ
♥ Q106
♦ KQJ6
♣ AK102

♠ A43
♥ K985
♦ 82
♣ J764

♠ 1085
♥ 3
♦ 10975
♣ Q9853

♠ J9762
♥ AJ742
♦ A43
♣

Board (5) Av: NS=+460

N-S	E-W	Contract	N-S	E-W	IMP
8	7	3NT N 5	660		5
6	5	3NT N 5	660		5
7	8	5H N 5	650		5
5	6	5H N 5	650		5
2	3	4H S 5	650		5
1	4	4H S 5	650		5
4	1	4H N 5	650		5
9	10	6H S-1		100	-11
10	9	6H N-1		100	-11
3	2	6H N-1		100	-11

6

♠ 752
♥ A1086
♦ 10532
♣ 104

♠ QJ3
♥ 43
♦ A964
♣ KQ72

♠ A98
♥ KJ97
♦ QJ8
♣ 965

♠ K1064
♥ Q52
♦ K7
♣ AJ83

Board (6) Av: NS=-70

N-S	E-W	Contract	N-S	E-W	IMP
5	6	2S S-1		50	1
2	3	1S S-1		50	1
8	7	1S S-1		50	1
4	1	1NT S-1		50	1
9	10	1C S-1		50	1
7	8	1NT W 1		90	-1
10	9	2H N-2		100	-1
1	4	1S S-2		100	-1
6	5	1S S-2		100	-1
3	2	1NT N-3		150	-2

7

♠ 4
♥ 92
♦ 986542
♣ A976

♠ AQ873
♥ 1084
♦ 7
♣ K1054

♠ J65
♥ A73
♦ AKQJ103
♣ 3

♠ K1092
♥ KQJ65
♦
♣ QJ82

Board (7) Av: NS=+240

N-S	E-W	Contract	N-S	E-W	IMP
10	9	6Sx W-5	1400		15
6	5	4S W-4	400		4
3	2	4S W-3	300		2
4	1	5S W-2	200		-1
7	8	4S W-2	200		-1
5	6	4S W-2	200		-1
9	10	4S W-2	200		-1
2	3	4S W-2	200		-1
1	4	4S W-2	200		-1
8	7	3NT E 3		600	-13

8

♠ KJ1062
♥ 3
♦ QJ9
♣ KJ86

♠ AQ8
♥ J64
♦ K1062
♣ 732

♠ 43
♥ KQ9
♦ 8754
♣ AQ104

♠ 975
♥ A108752
♦ A3
♣ 95

Board (8) Av: NS=+90

N-S	E-W	Contract	N-S	E-W	IMP
5	6	3S N 3	140		2
9	10	3S N 3	140		2
6	5	2S N 3	140		2
1	4	2S N 3	140		2
10	9	2S N 2	110		1
2	3	2S N 2	110		1
7	8	1S N 2	110		1
4	1	Passout			-3
8	7	Passout			-3
3	2	3S N-1		50	-4

9

♠ A1065
♥ 87
♦ 842
♣ K762

♠ 6543
♥ KQ965
♦ Q1043
♣

♠ QJ942
♥ 2
♦ 73
♣ AJ985

♠ K873
♥ AKQJ109
♦ AJ10
♣

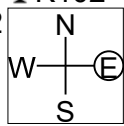
Board (9) Av: NS=+50

N-S	E-W	Contract	N-S	E-W	IMP
8	7	4H S 5	450		9
10	9	4H N 5	450		9
5	6	4H S 4	420		9
9	10	6H S-1		50	-3
3	2	6H S-1		50	-3
1	4	4S N-1		50	-3
4	1	4S N-2		100	-4
7	8	4S N-2		100	-4
2	3	4S N-2		100	-4
6	5	6Sx N-3		500	-11

10

♠A6
♥KQ10
♦K9763
♣K102

♠KJ10842
♥A6
♦AJ5
♣54



♠Q97
♥J9543
♦Q108
♣Q8

♠53
♥872
♦42
♣AJ9763

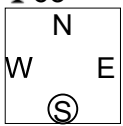
Board (10) Av: NS=-70

N-S	E-W	Contract	N-S	E-W	IMP
9	10	3S	W-2	200	7
10	9	3C	N 4	130	5
4	1	3S	W-1	100	5
7	8	2S	W 2	110	-1
3	2	2S	W 2	110	-1
1	4	3S	W 3	140	-2
8	7	2S	W 3	140	-2
6	5	2S	W 3	140	-2
5	6	2S	W 4	170	-3
2	3	4S	W 5	650	-11

11

♠QJ653
♥85
♦9653
♣63

♠A72
♥KJ7
♦72
♣QJ1098



♠94
♥A10962
♦AK1084
♣7

♠K108
♥Q43
♦QJ
♣AK542

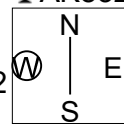
Board (11) Av: NS=-80

N-S	E-W	Contract	N-S	E-W	IMP
7	8	2S	S 2	110	5
5	6	3NT	W-1	50	4
9	10	2S	S-1	50	1
6	5	2S	S-1	50	1
8	7	3S	S-2	100	-1
1	4	3S	S-2	100	-1
4	1	2S	S-2	100	-1
10	9	3S	S-3	150	-2
2	3	3S	S-3	150	-2
3	2	3H	W 4	170	-3

12

♠K95
♥AK7
♦K7
♣AK832

♠Q10
♥986
♦AQ9432
♣107



♠A4
♥Q105432
♦J65
♣QJ

♠J87632
♥J
♦108
♣9654

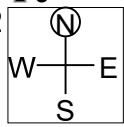
Board (12) Av: NS=+410

N-S	E-W	Contract	N-S	E-W	IMP
5	6	5Hx	E-4	800	9
4	1	4S	S 5	650	6
7	8	4S	N 5	650	6
10	9	4S	S 4	620	5
2	3	4S	N 4	620	5
3	2	3S	N 5	200	-5
9	10	3S	N 5	200	-5
8	7	3S	S 4	170	-6
6	5	3S	N 4	170	-6
1	4	3S	N 4	170	-6

13

♠Q94
♥1098752
♦K76
♣J

♠1087652
♥QJ3
♦53
♣Q4



♠KJ
♥AK4
♦A2
♣987653

♠A3
♥6
♦QJ10984
♣AK102

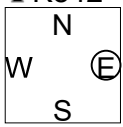
Board (13) Av: NS=+60

N-S	E-W	Contract	N-S	E-W	IMP
4	2	4C	E-2	200	4
9	7	3D	S 4	130	2
6	10	3D	S 4	130	2
1	3	3D	S 3	110	2
3	1	3S	W-1	100	1
10	6	3S	E-1	100	1
8	5	2S	E-1	100	1
7	9	2S	E 2	110	-5
2	4	2S	E 2	110	-5
5	8	5Dx	S-1	200	-6

14

♠107
♥10
♦AQJ1043
♣K842

♠65432
♥J4
♦2
♣J10753



♠AKJ
♥AKQ96
♦9876
♣6

♠Q98
♥87532
♦K5
♣AQ9

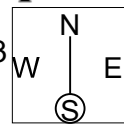
Board (14) Av: NS=+120

N-S	E-W	Contract	N-S	E-W	IMP
10	6	4Dx	N 4	510	9
6	10	4D	N 4	130	0
1	3	3D	N 4	130	0
5	8	3D	N 3	110	0
4	2	3D	N 3	110	0
8	5	2D	N 3	110	0
2	4	2D	N 3	110	0
3	1	2D	N 3	110	0
9	7	2D	N 3	110	0
7	9	3Hx	E-1	100	-1

15

♠KJ986
♥KJ74
♦10932
♣

♠7
♥Q10853
♦64
♣KQ753



♠43
♥A62
♦KQ85
♣AJ64

♠AQ1052
♥9
♦AJ7
♣10982

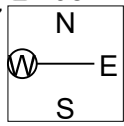
Board (15) Av: NS=+640

N-S	E-W	Contract	N-S	E-W	IMP
3	1	5Sx	S 5	850	5
9	7	5S	S 5	650	0
4	2	5S	S 5	650	0
6	10	5S	N 5	650	0
8	5	4S	S 5	650	0
10	6	4S	S 5	650	0
1	3	4S	S 5	650	0
5	8	4S	S 4	620	-1
2	4	4S	S 4	620	-1
7	9	3H	E-1	50	-11

16

♠K32
♥85
♦KJ9542
♣108

♠AQJ1087
♥Q4
♦8
♣QJ92



♠964
♥AKJ6
♦AQ106
♣54

♠5
♥109732
♦73
♣AK763

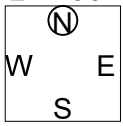
Board (16) Av: NS=-550

N-S	E-W	Contract	N-S	E-W	IMP
9	7	5S	W-1	100	12
8	5	4S	W-1	100	12
6	10	4S	W 4	620	-2
7	9	4S	W 4	620	-2
10	6	4S	W 4	620	-2
5	8	4S	W 4	620	-2
2	4	4S	W 4	620	-2
1	3	4S	W 4	620	-2
3	1	5Dx	N-4	800	-6
4	2	5Cx	N-5	1100	-11

17

♠982
♥J4
♦Q984
♣A1062

♠AJ5
♥865
♦A107632
♣3



♠74
♥K9732
♦KJ
♣K975

♠KQ1063
♥AQ10
♦5
♣QJ84

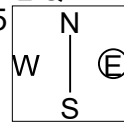
Board (17) Av: NS=+140

N-S	E-W	Contract	N-S	E-W	IMP
5	8	3S	S 3	140	0
6	10	3S	S 3	140	0
8	5	3S	S 3	140	0
10	6	3S	S 3	140	0
9	7	3S	S 3	140	0
4	2	3S	S 3	140	0
1	3	3S	S 3	140	0
3	1	3S	S 3	140	0
2	4	2S	S 3	140	0
7	9	3H	E-1	50	-3

18

♠Q93
♥875
♦AQ2
♣Q742

♠AJ10875
♥9643
♦8
♣A8



♠K64
♥10
♦1076543
♣1096

♠2
♥AKQJ2
♦KJ9
♣KJ53

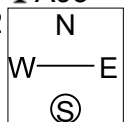
Board (18) Av: NS=+370

N-S	E-W	Contract	N-S	E-W	IMP
10	6	5H	S 5	650	7
3	1	4H	S 5	650	7
4	2	4H	S 5	650	7
1	3	4H	S 5	650	7
6	10	3NT	N 3	600	6
5	8	4Sx	W-2	300	-2
8	5	4Sx	W-2	300	-2
9	7	6H	S-1	100	-10
7	9	4H	S-1	100	-10
2	4	4H	S-1	100	-10

19

♠ QJ743
♥ J94
♦ 83
♣ A93

♠ AK852
♥ KQ63
♦ Q4
♣ K2



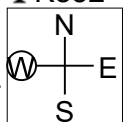
♠ 10
♥ 10
♦ K10975
♣ Q108654

♠ 96
♥ A8752
♦ AJ62
♣ J7

20

♠ K1084
♥ 1094
♦ K7
♣ K852

♠ J32
♥ K765
♦ 10954
♣ J9



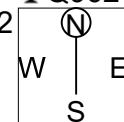
♠ 9
♥ AQ832
♦ QJ8
♣ A743

♠ AQ765
♥ J
♦ A632
♣ Q106

21

♠ KQ8
♥ K109
♦ 852
♣ Q962

♠ 109652
♥ 8
♦ KQJ
♣ K1043



♠ AJ73
♥ J63
♦ A1074
♣ J5

♠ 4
♥ AQ7542
♦ 963
♣ A87

Board (19) Av: NS=-150

N-S	E-W	Contract	N-S	E-W	IMP
1	3	2NT E-2	200		8
4	2	2H S 2	110		6
10	6	1S W 1		80	2
5	8	1S W 1		80	2
2	4	2NT E 2	120		1
9	7	3C E 4	130		1
7	9	2NT E 3	150		0
8	5	2NT E 4	180		-1
6	10	3NT E 3	600		-10
3	1	3NT E 4	630		-10

Board (20) Av: NS=+190

N-S	E-W	Contract	N-S	E-W	IMP
9	7	4S S 4	620		10
6	10	3S S 5	200		0
10	6	3S S 5	200		0
5	8	3S S 5	200		0
4	2	3S S 5	200		0
1	3	2S S 5	200		0
7	9	3S S 4	170		-1
3	1	3S S 4	170		-1
2	4	3S S 4	170		-1
8	5	3S S 4	170		-1

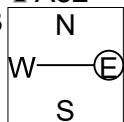
Board (21) Av: NS=-80

N-S	E-W	Contract	N-S	E-W	IMP
1	3	2H S 3	140		6
6	10	3S E-1	50		4
2	4	Passout			2
9	7	4H S-1		100	-1
7	9	3H S-1		100	-1
4	2	3H S-1		100	-1
3	1	3H S-1		100	-1
10	6	2H S-1		100	-1
5	8	3S E 4	170		-3
8	5	3Sx E 4	630		-11

22

♠ Q64
♥ KJ10962
♦ 8
♣ A82

♠ AJ873
♥ Q43
♦ 1052
♣ 73



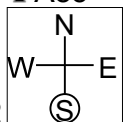
♠ 952
♥ A7
♦ AK9
♣ QJ964

♠ K10
♥ 85
♦ QJ7643
♣ K105

23

♠ KQ1096
♥ KQJ104
♦
♣ A85

♠ 32
♥ 982
♦ 1073
♣ Q10762



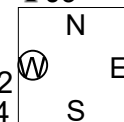
♠ AJ4
♥ 53
♦ K986542
♣ 3

♠ 875
♥ A76
♦ AQJ
♣ KJ94

24

♠ 87652
♥ Q1093
♦ 93
♣ J9

♠ K4
♥ K42
♦ K1062
♣ 10654



♠ QJ1093
♥ 75
♦ J85
♣ A72

♠ A
♥ AJ86
♦ AQ74
♣ KQ83

Board (22) Av: NS=-20

N-S	E-W	Contract	N-S	E-W	IMP
5	8	4S W-1	100		3
4	2	2S W-1	100		3
3	1	2NT E-1	100		3
6	10	4H N-1		50	-1
8	5	3H N-1		50	-1
1	3	3H N-1		50	-1
2	4	3H N-1		50	-1
7	9	2H N-1		50	-1
9	7	2S E 2	110		-3
10	6	2S W 3	140		-3

Board (23) Av: NS=-10

N-S	E-W	Contract	N-S	E-W	IMP
3	1	5H N 5	650		12
5	8	4H S 5	650		12
7	9	6S S-1		100	-3
9	7	6S S-1		100	-3
1	3	6S S-1		100	-3
4	2	6S S-1		100	-3
10	6	6S N-1		100	-3
2	4	6H S-1		100	-3
6	10	6H S-1		100	-3
8	5	6H S-1		100	-3

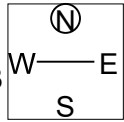
Board (24) Av: NS=+210

N-S	E-W	Contract	N-S	E-W	IMP
2	4	3Sx E-3	500		7
1	3	4H S 4	420		5
10	6	4H S 4	420		5
3	1	4H S 4	420		5
8	5	4H S 4	420		5
6	10	3H S 4	170		-1
7	9	4H N-1		50	-6
4	2	3S S-1		50	-6
5	8	3S S-2		100	-7
9	7	1NT W 2	120		-8

25

♠ Q7
♥ KQ763
♦ J109
♣ 876

♠ J63
♥ 2
♦ K8543
♣ A952



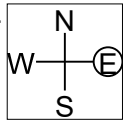
♠ AK98
♥ 1084
♦ Q7
♣ KJ43

♠ 10542
♥ AJ95
♦ A62
♣ Q10

26

♠ 865
♥ 108
♦ Q10742
♣ Q107

♠ A104
♥ AJ7
♦ J93
♣ KJ94



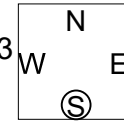
♠ KQJ72
♥ 54
♦ A865
♣ 85

♠ 93
♥ KQ9632
♦ K
♣ A632

27

♠ QJ109
♥ A42
♦ J65
♣ AJ4

♠ 8764
♥ 98653
♦ 107
♣ Q10



♠ K5
♥ KJ7
♦ 984
♣ K7653

♠ A32
♥ Q10
♦ AKQ32
♣ 982

Board (25) Av: NS=+50

N-S	E-W	Contract	N-S	E-W	IMP
10	8	2H N 2	110		2
9	5	2H N 2	110		2
3	4	2H N 2	110		2
1	2	2H N 2	110		2
6	7	2H N 2	110		2
7	6	2H N 2	110		2
4	3	3H N-1		50	-3
2	1	3H N-1		50	-3
8	10	3H N-1		50	-3
5	9	3H N-1		50	-3

Board (26) Av: NS=-200

N-S	E-W	Contract	N-S	E-W	IMP
7	6	3S E 3	140		2
3	4	3S E 3	140		2
10	8	2S E 3	140		2
1	2	2S E 3	140		2
9	5	2S E 3	140		2
8	10	2S E 3	140		2
4	3	1S E 3	140		2
6	7	2S E 4	170		1
2	1	4S W 4	620		-9
5	9	4S E 4	620		-9

Board (27) Av: NS=+480

N-S	E-W	Contract	N-S	E-W	IMP
9	5	3NT S 7	520		1
4	3	3NT S 6	490		0
10	8	3NT S 6	490		0
3	4	3NT S 6	490		0
5	9	3NT S 6	490		0
8	10	3NT S 6	490		0
2	1	3NT S 5	460		-1
1	2	3NT S 5	460		-1
6	7	3NT S 5	460		-1
7	6	3NT N 4	430		-2

28

♠ KQ10
♥ A65
♦ 952
♣ 9832

♠ A3 J8642
♥ KJ72 84
♦ KJ103 A64
♣ J105 K74

N E
W S

♠ 975
♥ Q1093
♦ Q87
♣ AQ6

29

♠ K3
♥ J9842
♦ 92
♣ A1094

♠ Q109752 A86
♥ K6 A1073
♦ 84 AKQ5
♣ Q85 J2

N E
W S

♠ J4
♥ Q5
♦ J10763
♣ K763

30

♠ AQ52
♥ Q63
♦ J10
♣ A985

♠ KJ1086 9743
♥ 52 A1087
♦ 94 K8732
♣ K1076

N E
W S

♠ KJ94
♥ AQ65
♦ QJ432

Board (28) Av: NS=-80

N-S	E-W	Contract	N-S	E-W	IMP
6	7	1NT W-2	100		5
2	1	1NT W-1	50		4
9	5	1NT W 1	90		0
4	3	1NT W 1	90		0
1	2	1NT W 1	90		0
5	9	1NT W 1	90		0
8	10	1NT W 1	90		0
10	8	1NT W 1	90		0
3	4	2S E 2	110		-1
7	6	1NT W 2	120		-1

Board (29) Av: NS=-620

N-S	E-W	Contract	N-S	E-W	IMP
6	7	3NT E 3	600		1
4	3	4S W 4	620		0
9	5	4S W 4	620		0
1	2	4S W 4	620		0
2	1	4S W 4	620		0
5	9	4S W 4	620		0
10	8	4S W 4	620		0
7	6	4S W 4	620		0
8	10	4S W 4	620		0
3	4	4S E 5	650		-1

Board (30) Av: NS=+440

N-S	E-W	Contract	N-S	E-W	IMP
4	3	4Sx W-4	800		8
1	2	4Sx W-3	500		2
5	9	4Sx W-3	500		2
3	4	3NT S 5	460		1
7	6	3NT S 5	460		1
2	1	3NT N 5	460		1
8	10	3NT S 4	430		0
9	5	3NT N 3	400		-1
10	8	4Sx W-2	300		-4
6	7	6NT S-4	200		-12

31

♠ Q82
♥ 864
♦ 10
♣ AKQJ109

♠ K9653 107
♥ A72 Q93
♦ A987 KQ5
♣ 7

N E
W S

♠ AJ4
♥ KJ105
♦ J6432
♣ 4

32

♠ 542
♥ J962
♦ KJ6
♣ K109

♠ QJ8 K10963
♥ KQ108 73
♦ 109542 Q8
♣ J

N E
W S

♠ A7
♥ A54
♦ A73
♣ Q6543

33

♠ A76
♥ K52
♦ 3
♣ KJ10987

♠ 42 KJ10
♥ Q10763 J984
♦ K102 AQ964
♣ 542

N E
W S

♠ Q9853
♥ A
♦ J875
♣ AQ6

Board (31) Av: NS=-20

N-S	E-W	Contract	N-S	E-W	IMP
8	10	3C N 4	130		4
1	2	2NT S 2	120		4
10	8	1NT S 2	120		4
3	4	1NT S 1	90		3
9	5	2S W-1	50		2
4	3	3NT S-1	100		-2
6	7	3NT S-1	100		-2
2	1	3NT N-1	100		-2
5	9	3NT S-2	200		-5
7	6	3NT S-2	200		-5

Board (32) Av: NS=-10

N-S	E-W	Contract	N-S	E-W	IMP
4	3	1NT N 3	150		4
2	1	1NT S 2	120		4
10	8	1NT S 2	120		4
6	7	1NT S 2	120		4
8	10	4C S-1	50		-1
9	5	3C S-1	50		-1
7	6	3H N-2	100		-3
3	4	3C S-2	100		-3
5	9	2S E 3	140		-4
1	2	2S E 3	140		-4

Board (33) Av: NS=+300

N-S	E-W	Contract	N-S	E-W	IMP
2	1	4S S 4	420		3
8	10	4S S 4	420		3
3	4	4S S 4	420		3
9	5	4S S 4	420		3
6	7	3NT S 3	400		3
4	3	3S S 5	200		-3
7	6	3S S 4	170		-4
1	2	2S S 4	170		-4
10	8	2S S 4	170		-4
5	9	4S S-1	50		-8

34

♠ J109532
♥ K8
♦ AJ64
♣ Q

♠ KQ8 64
♥ AJ952 63
♦ 1073 K982
♣ KJ

N E
W S

♠ A7
♥ Q1074
♦ Q5
♣ 109842

35

♠ J3
♥ J754
♦ J83
♣ KQ105

♠ A74 K105
♥ K103 Q86
♦ K765 A1092
♣ 764 J92

N E
W S

♠ Q9862
♥ A92
♦ Q4
♣ A83

36

♠ QJ42
♥ J1073
♦ AQ102
♣ 4

♠ K85 103
♥ K94 A852
♦ 843 KJ9
♣ J762 AKQ10

N E
W S

♠ A976
♥ Q6
♦ 765
♣ 9853

Board (34) Av: NS=+80

N-S	E-W	Contract	N-S	E-W	IMP
6	7	2S N 3	140		2
1	2	2S N 2	110		1
3	4	2S N 2	110		1
10	8	2S N 2	110		1
5	9	2S N 2	110		1
8	10	2S N 2	110		1
9	5	1S N 2	110		1
7	6	2NT W-2	100		1
4	3	2S N-1	100		-5
2	1	2NT W 2	120		-5

Board (35) Av: NS=+40

N-S	E-W	Contract	N-S	E-W	IMP
6	7	2S S 4	170		4
5	9	2S S 2	110		2
4	3	2S S 2	110		2
8	10	2S S 2	110		2
9	5	2S S 2	110		2
3	4	Passout			-1
1	2	2S S-1	50		-3
2	1	2S S-1	50		-3
10	8	2S S-1	50		-3
7	6	1NT N-1	50		-3

Board (36) Av: NS=-140

N-S	E-W	Contract	N-S	E-W	IMP
10	8	1S S 1	80		6
2	1	1NT E 2	120		1
1	2	1NT E 2	120		1
8	10	1NT E 2	120		1
5	9	1NT E 3	150		0
4	3	1NT E 3	150		0
3	4	1NT E 3	150		0
7	6	1NT E 3	150		0
6	7	1NT E 3	150		0
9	5	1NT E 4	180		-1