

木村六郎杯 OPEN TEAMS Session 1 Flight B 2016年2月27日(土)

**1**

♠ KJ10765  
♥  
♦ A1053  
♣ 1042

♠ A32  
♥ 63  
♦ J2  
♣ AK9653

♠ 94  
♥ KQ852  
♦ Q98  
♣ QJ8

W N E S

♠ Q8  
♥ AJ10974  
♦ K764  
♣ 7

Board (1) Av: NS=+110

N-S	E-W	Contract	N-S	E-W	IMP
1	10	4Sx	N 4	590	10
7	4	4S	N 4	420	7
2	8	6NT	E-3	150	1
5	3	3S	N 3	140	1
6	9	2H	S 2	110	0
8	2	5C	W-2	100	0
3	5	3NT	E-1	50	-2
10	1	4S	N-1	50	-4
4	7	3H	S-1	50	-4
9	6	3H	S-2	100	-5

**2**

♠ 876  
♥ K932  
♦ A1095  
♣ KQ

♠ KQJ4  
♥ 10  
♦ 87642  
♣ J75

♠ A103  
♥ AJ5  
♦ KJ3  
♣ 10942

W N E S

♠ 952  
♥ Q8764  
♦ Q  
♣ A863

Board (2) Av: NS=+50

N-S	E-W	Contract	N-S	E-W	IMP
5	3	2H	S 2	110	2
6	9	2H	S 2	110	2
1	10	2H	S 2	110	2
4	7	3S	W-2	100	2
9	6	2S	W-2	100	2
3	5	1NT	E-2	100	2
2	8	1NT	E-1	50	0
8	2	3H	S-1	100	-4
7	4	3H	S-1	100	-4
10	1	4H	S-2	200	-6

**3**

♠ J4  
♥ A864  
♦ KQ10  
♣ Q875

♠ A952  
♥ 975  
♦ 97  
♣ K943

♠ K63  
♥ J103  
♦ AJ62  
♣ J106

W N E S

♠ Q1087  
♥ KQ2  
♦ 8543  
♣ A2

Board (3) Av: NS=+140

N-S	E-W	Contract	N-S	E-W	IMP
6	9	2NT	N 3	150	0
2	8	2NT	N 3	150	0
8	2	2NT	N 3	150	0
9	6	2NT	N 3	150	0
4	7	2NT	N 3	150	0
3	5	2NT	N 3	150	0
1	10	1NT	N 3	150	0
5	3	2NT	N 2	120	-1
7	4	2NT	N 2	120	-1
10	1	2NT	N 2	120	-1

**4**

♠ A95  
♥ J1073  
♦ 94  
♣ KQ94

♠ 102  
♥ K64  
♦ K763  
♣ A1087

♠ KQJ87  
♥ 5  
♦ Q52  
♣ J653

W N E S

♠ 643  
♥ AQ982  
♦ AJ108  
♣ 2

Board (4) Av: NS=-30

N-S	E-W	Contract	N-S	E-W	IMP
6	9	4H	S 4	620	12
2	8	3H	S 3	140	5
3	5	2S	E-1	100	4
7	4	2S	E-1	100	4
1	10	3H	S-1	100	-2
9	6	3H	S-1	100	-2
5	3	3H	S-1	100	-2
4	7	2S	E 2	110	-2
10	1	4H	S-2	200	-5
8	2	4H	S-2	200	-5

**5**

♠ Q9872  
♥ 76  
♦ 983  
♣ 985

♠ K104  
♥ 104  
♦ AQJ7  
♣ J1062

♠ 63  
♥ 9853  
♦ 6542  
♣ AKQ

W N E S

♠ AJ5  
♥ AKQJ2  
♦ K10  
♣ 743

Board (5) Av: NS=-40

N-S	E-W	Contract	N-S	E-W	IMP
7	4	1H	S 1	80	3
6	9	1H	S 1	80	3
1	10	1H	S 1	80	3
8	2	1H	S 1	80	3
3	5	1NT	E 1	90	-2
4	7	1H	S-1	100	-2
2	8	3D	E 3	110	-2
9	6	3D	E 3	110	-2
5	3	3D	E 3	110	-2
10	1	2H	S-2	200	-4

**6**

♠ A10965  
♥ KJ103  
♦ 95  
♣ 109

♠ J432  
♥ 9854  
♦ 7632  
♣ K

♠ KQ87  
♥ Q2  
♦ KQ  
♣ AJ432

W N E S

♠ A76  
♥ AJ1084  
♣ Q8765

Board (6) Av: NS=+130

N-S	E-W	Contract	N-S	E-W	IMP
5	3	3S	E-3	300	5
7	4	2S	E-2	200	2
9	6	2S	E-2	200	2
3	5	1NT	E-2	200	2
6	9	1NT	S 3	150	1
8	2	2H	N 3	140	0
10	1	2NT	S 2	120	0
1	10	2D	S 2	90	-1
2	8	3C	N-2	100	-6
4	7	3C	N-2	100	-6

**7**

♠ AQ  
♥ K85  
♦ Q85  
♣ J10752

♠ K943  
♥ A  
♦ K32  
♣ AKQ96

♠ 10852  
♥ 1032  
♦ A10974  
♣ 3

W N E S

♠ J76  
♥ QJ9764  
♦ J6  
♣ 84

Board (7) Av: NS=+20

N-S	E-W	Contract	N-S	E-W	IMP
4	7	6S	W-3	300	7
7	4	6S	E-3	300	7
10	1	4C	W-2	200	5
3	5	4S	W-1	100	2
2	8	4S	E-1	100	2
6	9	4S	E-1	100	2
5	3	4S	E-1	100	2
9	6	3S	W 3	140	-4
8	2	4S	E 4	620	-12
1	10	4S	E 4	620	-12

**8**

♠ AJ10643  
♥ 754  
♦ KJ  
♣ K7

♠ Q972  
♥ QJ6  
♦ Q765  
♣ 62

♠ K8  
♥ AK1082  
♦ 10  
♣ AJ983

W N E S

♠ 5  
♥ 93  
♦ A98432  
♣ Q1054

Board (8) Av: NS=+60

N-S	E-W	Contract	N-S	E-W	IMP
2	8	4H	W-2	100	1
10	1	4H	E-2	100	1
9	6	4H	E-2	100	1
4	7	3H	E-2	100	1
3	5	4H	W-1	50	0
7	4	4H	W-1	50	0
6	9	3H	W-1	50	0
1	10	3H	W-1	50	0
8	2	3D	S-1	50	-3
5	3	3H	E 3	140	-5

**9**

♠ 82  
♥ A6  
♦ A8432  
♣ A1052

♠ AKQJ4  
♥ KJ9  
♦ 9  
♣ 9764

♠ 93  
♥ Q108754  
♦ K7  
♣ KQ8

W N E S

♠ 10765  
♥ 32  
♦ QJ1065  
♣ J3

Board (9) Av: NS=-80

N-S	E-W	Contract	N-S	E-W	IMP
5	3	5H	E-2	200	7
3	5	4H	E-1	100	5
9	6	4H	E-1	100	5
8	2	4H	E-1	100	5
10	1	4H	E-1	100	5
2	8	2S	W 4	170	-3
6	9	2S	W 4	170	-3
4	7	2S	W 5	200	-3
7	4	5Dx	N-3	500	-9
1	10	4H	E 4	620	-11

木村六郎杯 OPEN TEAMS Session 1 Flight B 2016年2月27日(土)

10

♠ 9742  
♥ J72  
♦ 85  
♣ AK43

♠ AJ  
♥ 984  
♦ Q93  
♣ QJ1096

N  
W — E  
S

♠ 10865  
♥ Q1053  
♦ K104  
♣ 85

♠ KQ3  
♥ AK6  
♦ AJ762  
♣ 72

Board (10) Av: NS=-180

N-S	E-W	Contract	N-S	E-W	IMP
1	10	1NT S 1	90		7
3	5	1NT S 1	90		7
9	6	3NT S-2		200	-1
2	8	3NT S-2		200	-1
8	2	3NT S-2		200	-1
4	7	3NT S-2		200	-1
7	4	3NT S-2		200	-1
10	1	3NT S-2		200	-1
5	3	3NT S-3		300	-3
6	9	3NT S-3		300	-3

11

♠ K82  
♥ AQJ96  
♦ Q2  
♣ J102

♠ A765  
♥ K8752  
♦ 10  
♣ A97

N  
W — E  
S

♠ 943  
♥ 103  
♦ K65  
♣ KQ864

♠ QJ10  
♥ 4  
♦ AJ98743  
♣ 53

Board (11) Av: NS=+130

N-S	E-W	Contract	N-S	E-W	IMP
4	7	3D S 5	150		1
7	4	3D S 5	150		1
5	3	3D S 4	130		0
10	1	3D S 4	130		0
1	10	3D S 4	130		0
2	8	2D S 4	130		0
8	2	2D S 4	130		0
3	5	2D S 4	130		0
9	6	2D S 4	130		0
6	9	3NT N-2		100	-6

12

♠ J92  
♥ A84  
♦ AK6  
♣ A1032

♠ 53  
♥ 53  
♦ Q753  
♣ Q7654

N  
W — E  
S

♠ AKQ1084  
♥ Q  
♦ J1082  
♣ 98

♠ 76  
♥ KJ109762  
♦ 94  
♣ KJ

Board (12) Av: NS=+470

N-S	E-W	Contract	N-S	E-W	IMP
8	2	4H N 5	650		5
6	9	4H N 5	650		5
7	4	4H N 5	650		5
2	8	5Sx E-3	500		1
5	3	4Sx E-3	500		1
3	5	4Sx E-3	500		1
1	10	4Sx E-3	500		1
4	7	4Sx E-2	300		-5
9	6	5S E-3	150		-8
10	1	3NT N-2		200	-12

13

♠ KJ5  
♥ AKJ4  
♦ 6532  
♣ 107

♠ A1072  
♥ 2  
♦ A74  
♣ A8654

N  
W — E  
S

♠ 3  
♥ Q98765  
♦ Q1098  
♣ K3

♠ Q9864  
♥ 103  
♦ KJ  
♣ QJ92

Board (13) Av: NS=+70

N-S	E-W	Contract	N-S	E-W	IMP
6	4	3C W-3	300		6
8	3	3C W-2	200		4
7	2	1NT N 3	150		2
3	8	1NT N 2	120		2
10	5	2S S 2	110		1
2	7	2C W-1	100		1
1	9	1NT N 1	90		1
5	10	2S S-1		100	-5
9	1	1NT N-1		100	-5
4	6	2H E 3		140	-5

14

♠ KQ1073  
♥ J10  
♦ 9543  
♣ 84

♠ A64  
♥ 842  
♦ Q102  
♣ AQ72

N  
W — E  
S

♠ J9  
♥ AK653  
♦ AJ6  
♣ 1093

♠ 852  
♥ Q97  
♦ K87  
♣ KJ65

Board (14) Av: NS=-210

N-S	E-W	Contract	N-S	E-W	IMP
2	7	4H E-1	50		6
1	9	4H E-1	50		6
4	6	4H E-1	50		6
3	8	4H E-1	50		6
5	10	3H E 4		170	1
9	1	4H E 4		420	-5
10	5	4H E 4		420	-5
7	2	4H E 4		420	-5
8	3	4H E 4		420	-5
6	4	4H E 5		450	-6

15

♠ KQJ92  
♥ 1087  
♦ 9  
♣ AJ104

♠ 85  
♥ QJ53  
♦ QJ1064  
♣ Q6

N  
W — E  
S

♠ A6  
♥ 642  
♦ A832  
♣ K983

♠ 10743  
♥ AK9  
♦ K75  
♣ 752

Board (15) Av: NS=+250

N-S	E-W	Contract	N-S	E-W	IMP
5	10	4S N 4	620		9
1	9	4S N 4	620		9
9	1	4S N 4	620		9
4	6	3S N 4	170		-2
10	5	3S N 4	170		-2
3	8	3S N 4	170		-2
7	2	2S N 3	140		-3
6	4	4D W-2	100		-4
2	7	Passout			-6
8	3	4S N-1		100	-8

16

♠ KJ82  
♥ J54  
♦ QJ2  
♣ Q98

♠ 65  
♥ K107  
♦ AK43  
♣ J1062

N  
W — E  
S

♠ Q743  
♥ AQ32  
♦ 9875  
♣ K

♠ A109  
♥ 986  
♦ 106  
♣ A7543

Board (16) Av: NS=+40

N-S	E-W	Contract	N-S	E-W	IMP
6	4	5D W-2	200		4
4	6	3C W-2	200		4
2	7	2NT W-2	200		4
5	10	2NT W-1	100		2
7	2	Passout			-1
1	9	Passout			-1
3	8	Passout			-1
10	5	1NT W 1		90	-4
8	3	2D E 3		110	-4
9	1	2D E 3		110	-4

17

♠ KJ  
♥ J9832  
♦ 62  
♣ A1094

♠ Q976  
♥ A76  
♦ 75  
♣ KQ53

N  
W — E  
S

♠ A108542  
♥ Q4  
♦ 104  
♣ 862

♠ 3  
♥ K105  
♦ AKQJ983  
♣ J7

Board (17) Av: NS=+270

N-S	E-W	Contract	N-S	E-W	IMP
1	9	4H N 4	420		4
2	7	5D S 5	400		4
9	1	3NT N 3	400		4
10	5	3NT N 3	400		4
6	4	4Sx E-2	300		1
5	10	3H N 5	200		-2
8	3	3H N 4	170		-3
4	6	4S E-3	150		-3
3	8	4S E-2	100		-5
7	2	4NT N-1		50	-8

18

♠ 53  
♥ 10753  
♦ 9  
♣ AJ10986

♠ 9742  
♥ AK  
♦ KJ73  
♣ 752

N  
W — E  
S

♠ QJ108  
♥ 84  
♦ A654  
♣ Q43

♠ AK6  
♥ QJ962  
♦ Q1082  
♣ K

Board (18) Av: NS=+300

N-S	E-W	Contract	N-S	E-W	IMP
8	3	4Hx S 4	790		10
1	9	4H S 5	650		8
9	1	4H S 4	620		8
5	10	4Sx E-2	300		0
6	4	3H S 4	170		-4
4	6	3H S 4	170		-4
3	8	2H S 4	170		-4
10	5	4S E-3	150		-4
7	2	2H S 3	140		-4
2	7	3S W-1	50		-6

19

♠ Q3  
♥ AJ632  
♦ 4  
♣ AQJ84

♠ A N ♠ J107652  
♥ K975 W—E ♥ Q10  
♦ K1052 ♠ QJ7  
♣ 10765 ♠ 93

♠ K984  
♥ 84  
♦ A9863  
♣ K2

20

♠ KQJ32  
♥ K1052  
♦ 4  
♣ J76

♠ A96 N ♠ 108754  
♥ 6 W—E ♥ AQ3  
♦ QJ10732 ♠ K98  
♣ Q82 ♣ 109

♠ J9874  
♥ A65  
♣ AK543

21

♠ QJ92  
♥ QJ1042  
♦ J84  
♣ K

♠ 873 N ♠ AK4  
♥ K975 W—E ♥ 863  
♦ Q9 ♠ 653  
♣ A1042 ♣ QJ98

♠ 1065  
♥ A  
♦ AK1072  
♣ 7653

Board (19) Av: NS=+70

N-S	E-W	Contract	N-S	E-W	IMP
5	10	3NT S 3	400		8
9	1	3NT S 3	400		8
2	7	2H N 3	140		2
10	5	2H N 3	140		2
7	2	2H N 2	110		1
4	6	4H N-1		50	-3
1	9	3NT S-1		50	-3
3	8	3H N-1		50	-3
6	4	2D S-2		100	-5
8	3	3NT S-3		150	-6

Board (20) Av: NS=+440

N-S	E-W	Contract	N-S	E-W	IMP
9	1	4H S 4	620		5
7	2	4H S 4	620		5
5	10	4H S 4	620		5
3	8	4H S 4	620		5
6	4	4H S 4	620		5
10	5	4H S 4	620		5
4	6	4H S 4	620		5
8	3	4H S-1		100	-11
1	9	4H S-1		100	-11
2	7	4H S-2		200	-12

Board (21) Av: NS=-60

N-S	E-W	Contract	N-S	E-W	IMP
6	4	2S W-3	150		5
10	5	Passout			2
7	2	Passout			2
2	7	Passout			2
1	9	Passout			2
4	6	Passout			2
3	8	2D S-1		100	-1
8	3	5D N-2		200	-4
9	1	2NT S-2		200	-4
5	10	2NT N-2		200	-4

22

♠ A763  
♥ J1074  
♦ Q97  
♣ 53

♠ KQ9 N ♠ J852  
♥ A82 W—E ♥ KQ65  
♦ 5 ♠ AJ  
♣ K109764 ♣ A82

♠ 104  
♥ 93  
♦ K1086432  
♣ QJ

23

♠ 10  
♥ 76542  
♦ A7  
♣ K9832

♠ J1093 N ♠ KJ98654  
♥ KQ862 W—E ♥ A8  
♦ QJ54 ♠ 953  
♣ QJ54 ♣ 6

♠ AQ732  
♥ KQ  
♦ J104  
♣ A107

24

♠ Q9532  
♥ AJ107  
♦ Q7  
♣ 94

♠ AJ1076 N ♠ 8  
♥ 63 W—E ♥ K9854  
♦ J54 ♠ 632  
♣ K53 ♣ AQJ8

♠ K4  
♥ Q2  
♦ AK1098  
♣ 10762

Board (22) Av: NS=-400

N-S	E-W	Contract	N-S	E-W	IMP
10	5	3NT E-4	400		13
5	10	6C W-1	100		11
8	3	6C W-1	100		11
3	8	3C W 6		170	6
4	6	5C W 6		620	-6
6	4	3NT E 4		630	-6
1	9	3NT E 4		630	-6
9	1	3NT E 4		630	-6
7	2	3NT E 6		690	-7
2	7	6C E 6		1370	-14

Board (23) Av: NS=+70

N-S	E-W	Contract	N-S	E-W	IMP
10	5	3NT N 3	600		11
6	4	3S E-3	300		6
4	6	2S E-2	200		4
3	8	1Sx S 1	160		3
2	7	2C S 3	110		1
9	1	2C S 3	110		1
1	9	2C S 3	110		1
7	2	3NT N-2		200	-7
5	10	2H N-2		200	-7
8	3	2S S-3		300	-9

Board (24) Av: NS=+40

N-S	E-W	Contract	N-S	E-W	IMP
10	5	2NT N 3	150		3
7	2	1NT N 2	120		2
9	1	2S N 2	110		2
1	9	2H E-2	100		2
3	8	1S W-2	100		2
4	6	Passout			-1
8	3	Passout			-1
6	4	2NT N-1		50	-3
5	10	2D S-2		100	-4
2	7	2H E 2		110	-4

25

♠ AQ75  
♥ AJ653  
♦ A42  
♣ 8

♠ KJ93 N ♠ 10842  
♥ Q10874 W—E ♥ K9  
♦ Q5 ♠ J83  
♣ 72 ♣ 10954

♠ 6  
♥ 2  
♦ K10976  
♣ AKQJ63

26

♠ 9852  
♥ 98654  
♦ 4  
♣ K82

♠ AKQ103 N ♠ 764  
♥ K9532 W—E ♥ KQJ2  
♦ J75 ♠ A876  
♣ J75 ♣ A6

♠ J  
♥ A1073  
♦ QJ10  
♣ Q10943

27

♠ AK10  
♥ KQ9  
♦ K103  
♣ AKJ3

♠ 98 N ♠ 6543  
♥ AJ7542 W—E ♥ 86  
♦ AJ6 ♠ 9852  
♣ 52 ♣ Q94

♠ QJ72  
♥ 103  
♦ Q74  
♣ 10876

Board (25) Av: NS=+660

N-S	E-W	Contract	N-S	E-W	IMP
7	5	6NT N 6	990		8
8	1	6D S 6	920		6
4	9	6D S 6	920		6
5	7	6D S 6	920		6
6	3	3NT N 7	520		-4
2	10	3NT N 7	520		-4
9	4	3NT S 6	490		-5
3	6	3NT S 6	490		-5
1	8	3NT N 6	490		-5
10	2	3NT N 6	490		-5

Board (26) Av: NS=-550

N-S	E-W	Contract	N-S	E-W	IMP
1	8	6S W-2	200		13
7	5	6S W-1	100		12
8	1	4S W 4		620	-2
2	10	4S W 4		620	-2
4	9	4S W 4		620	-2
3	6	4S W 5		650	-3
5	7	4S W 5		650	-3
10	2	3NT E 5		660	-3
9	4	4S W 6		680	-4
6	3	6D E 6		1370	-13

Board (27) Av: NS=+430

N-S	E-W	Contract	N-S	E-W	IMP
4	9	3NT N 4	430		0
8	1	3NT N 4	430		0
6	3	3NT N 4	430		0
9	4	3NT N 4	430		0
1	8	3NT N 4	430		0
7	5	3NT N 4	430		0
5	7	3NT N 4	430		0
10	2	3NT N 4	430		0
2	10	3NT N 4	430		0
3	6	3NT N 3	400		-1

28

♠ K654  
♥ A872  
♦ K65  
♣ 82

♠ A1072  
♥ Q9  
♦ 10  
♣ QJ10763

♠ KJ10543  
♥ AQJ982  
♣ 9

♠ QJ983  
♥ 6  
♦ 743  
♣ AK54

N  
W E  
S

29

♠ 10764  
♥ A963  
♦ 65  
♣ K53

♠ AK8  
♥ 72  
♦ AJ10  
♣ AQ942

♠ Q3  
♥ KJ105  
♦ Q9832  
♣ J7

♠ J952  
♥ Q84  
♦ K74  
♣ 1086

N  
W E  
S

30

♠ J96532  
♥ 5  
♦  
♣ 987432

♠ AK74  
♥ 96  
♦ AK1062  
♣ QJ

♠ 10  
♥ QJ10842  
♦ QJ73  
♣ A10

♠ Q8  
♥ AK73  
♦ 9854  
♣ K65

N  
W E  
S

Board (28) Av: NS=-250

N-S	E-W	Contract	N-S	E-W	IMP
1	8	5Hx E-1	100		8
3	6	3NT W-2	100		8
8	1	5D E-1	50		7
10	2	4H E-1	50		7
4	9	2H E 3		140	3
6	3	4H E 4		420	-5
7	5	4H E 4		420	-5
9	4	4Hx E 4		590	-8
5	7	4Hx E 4		590	-8
2	10	5Hx E 5		650	-9

Board (29) Av: NS=-630

N-S	E-W	Contract	N-S	E-W	IMP
3	6	3NT W 3	600		1
7	5	3NT W 3	600		1
1	8	3NT W 3	600		1
6	3	3NT W 4	630		0
4	9	3NT W 4	630		0
5	7	3NT W 4	630		0
10	2	3NT W 5	660		-1
9	4	3NT W 5	660		-1
8	1	3NT W 5	660		-1
2	10	3NT W 6	690		-2

Board (30) Av: NS=-330

N-S	E-W	Contract	N-S	E-W	IMP
6	3	6D W-1	50		9
4	9	4NT W-1	50		9
9	4	3NT W-1	50		9
5	7	5D W 6		420	-3
1	8	4H W 4		420	-3
8	1	4H E 4		420	-3
2	10	4H E 5		450	-3
10	2	5Cx N-3		500	-5
7	5	4Sx N-3		500	-5
3	6	4Hx E 5		690	-8

31

♠ QJ763  
♥ 3  
♦ 953  
♣ 8632

♠ A  
♥ QJ  
♦ KQ107  
♣ AQJ974

♠ K1084  
♥ A865  
♦ A864  
♣ 10

♠ 952  
♥ K109742  
♦ J2  
♣ K5

N  
W E  
S

Board (31) Av: NS=-620

N-S	E-W	Contract	N-S	E-W	IMP
10	2	3NT E 6	490		4
5	7	3NT E 6	490		4
4	9	3NT W 7	520		3
1	8	3NT W 7	520		3
7	5	3NT E 7	520		3
3	6	3NT E 7	520		3
2	10	3NT E 7	520		3
8	1	6D W 6	920		-7
9	4	6D W 7	940		-8
6	3	6D W 7	940		-8

32

♠ A7653  
♥ A9  
♦ 10752  
♣ Q10

♠ 108  
♥ KJ108  
♦ 84  
♣ AJ876

♠ QJ4  
♥ 7643  
♦ A6  
♣ 5432

♠ K92  
♥ Q52  
♦ KQJ93  
♣ K9

N  
W E  
S

Board (32) Av: NS=+80

N-S	E-W	Contract	N-S	E-W	IMP
5	7	4S S 4	420		8
9	4	3S N 4	170		3
6	3	3S N 4	170		3
10	2	2S N 4	170		3
4	9	2D S 5	150		2
7	5	2S N 3	140		2
8	1	4S N-1		50	-4
2	10	4S N-1		50	-4
1	8	3NT S-1		50	-4
3	6	3NT S-1		50	-4

33

♠ 82  
♥ AQ5  
♦ 952  
♣ KJ874

♠ AK54  
♥ J9743  
♦ A4  
♣ A9

♠ QJ9  
♥ K1062  
♦ Q86  
♣ Q105

♠ 10763  
♥ 8  
♦ KJ1073  
♣ 632

N  
W E  
S

Board (33) Av: NS=-310

N-S	E-W	Contract	N-S	E-W	IMP
4	9	4H W-1	50		8
1	8	4H W-1	50		8
8	1	4H W-1	50		8
6	3	4H W 4		420	-3
9	4	4H W 4		420	-3
5	7	4H W 4		420	-3
3	6	4H W 4		420	-3
10	2	4H E 4		420	-3
7	5	4H W 5		450	-4
2	10	4H W 5		450	-4

34

♠ 10532  
♥ Q93  
♦ K6  
♣ K963

♠ AJ862  
♥ Q108743  
♦ J8  
♣

♠ KQ864  
♥ K54  
♦ 5  
♣ AQ102

♠ AJ97  
♥ 107  
♦ AJ92  
♣ 754

N  
W E  
S

Board (34) Av: NS=-110

N-S	E-W	Contract	N-S	E-W	IMP
6	3	2D W 2	90		1
3	6	2D W 3	110		0
4	9	2D W 3	110		0
9	4	2D W 3	110		0
5	7	2D W 3	110		0
7	5	2D W 3	110		0
2	10	2D W 3	110		0
10	2	2D W 3	110		0
8	1	2D W 4	130		-1
1	8	3NT W 3	400		-7

35

♠ AK1094  
♥ K873  
♦ A92  
♣ A

♠ J873  
♥ 94  
♦ Q1073  
♣ J65

♠ Q52  
♥ Q2  
♦ J865  
♣ Q1074

♠ 6  
♥ AJ1065  
♦ K4  
♣ K9832

N  
W E  
S

Board (35) Av: NS=+1010

N-S	E-W	Contract	N-S	E-W	IMP
4	9	6H S 7	1010		0
1	8	6H S 7	1010		0
3	6	6H S 7	1010		0
9	4	6H S 7	1010		0
8	1	6H S 7	1010		0
7	5	6H S 7	1010		0
2	10	6H S 7	1010		0
5	7	6H S 7	1010		0
10	2	6H S 6	980		-1
6	3	3NT S 5	460		-11

36

♠ KJ106  
♥ 3  
♦ Q832  
♣ J842

♠ A753  
♥ Q109864  
♦ K5  
♣ A

♠ 4  
♥ AK75  
♦ AJ109  
♣ K1076

♠ Q982  
♥ J2  
♦ 764  
♣ Q953

N  
W E  
S

Board (36) Av: NS=-1550

N-S	E-W	Contract	N-S	E-W	IMP
2	10	4H E 7		710	13
9	4	6H W 7		1460	3
1	8	6H W 7		1460	3
6	3	6H W 7		1460	3
3	6	6H W 7		1460	3
10	2	6H W 7		1460	3
7	5	6H W 7		1460	3
8	1	6H W 7		1460	3
4	9	7H W 7		2210	-12
5	7	7H W 7		2210	-12

37

♠ 107  
♥ KQ10  
♦ AK53  
♣ Q963

♠ 952  
♥ AJ87  
♦ QJ82  
♣ KJ

♠ AQ63  
♥ 632  
♦ 94  
♣ A875

♠ KJ84  
♥ 954  
♦ 1076  
♣ 1042

38

♠ A5  
♥ 982  
♦ Q53  
♣ J10743

♠ Q97  
♥ Q74  
♦ 7  
♣ AK9865

♠ 1062  
♥ AJ10653  
♦ AK4  
♣ Q

♠ KJ843  
♥ K  
♦ J109862  
♣ 2

39

♠ J8643  
♥ 865  
♦ 532  
♣ 97

♠ A52  
♥ AQ  
♦ 4  
♣ AQJ6432

♠ KQ7  
♥ 109432  
♦ KQJ8  
♣ 8

♠ 109  
♥ KJ7  
♦ A10976  
♣ K105

Board (37) Av: NS=+30

N-S	E-W	Contract	N-S	E-W	IMP
2	9	2S	E-3	150	3
3	10	2S	E-2	100	2
4	5	2NT	W-2	100	2
8	6	1NT	N 1	90	2
1	7	2S	E-1	50	1
10	3	2H	W-1	50	1
6	8	2H	W-1	50	1
7	1	1NT	W 1	90	-3
5	4	1C	N-1	100	-4
9	2	1NT	W 3	150	-5

Board (38) Av: NS=-640

N-S	E-W	Contract	N-S	E-W	IMP
5	4	5Dx	N-2	300	8
6	8	4H	W 4	620	1
10	3	4H	E 4	620	1
3	10	4H	E 4	620	1
9	2	4H	E 4	620	1
2	9	4H	E 4	620	1
1	7	4H	E 5	650	0
4	5	4H	E 5	650	0
8	6	4H	E 6	680	-1
7	1	4H	E 6	680	-1

Board (39) Av: NS=-680

N-S	E-W	Contract	N-S	E-W	IMP
5	4	5C	W 5	600	2
9	2	3NT	E 4	630	2
2	9	3NT	W 5	660	1
10	3	3NT	E 5	660	1
4	5	4NT	E 6	690	0
7	1	3NT	E 6	690	0
1	7	3NT	E 6	690	0
8	6	3NT	E 6	690	0
3	10	3NT	E 6	690	0
6	8	3NT	E 6	690	0

40

♠ K1042  
♥ J7  
♦ J105  
♣ Q964

♠ A973  
♥ K  
♦ Q97432  
♣ 103

♠ QJ865  
♥ A42  
♦ A6  
♣ J72

♠ Q1098653  
♥ K8  
♣ AK85

Board (40) Av: NS=+100

N-S	E-W	Contract	N-S	E-W	IMP
1	7	4Hx	S 4	590	10
3	10	4H	S 4	420	8
6	8	4H	S 4	420	8
7	1	4S	E-1	50	-2
5	4	4S	E-1	50	-2
2	9	3S	E-1	50	-2
10	3	3S	E-1	50	-2
9	2	3S	E 3	140	-6
4	5	3S	E 3	140	-6
8	6	3S	E 4	170	-7

41

♠ QJ  
♥ AK7  
♦ A76543  
♣ 76

♠ A954  
♥ Q82  
♦ K98  
♣ Q103

♠ K1083  
♥ J654  
♦ J2  
♣ 985

♠ 762  
♥ 1093  
♦ Q10  
♣ AKJ42

Board (41) Av: NS=-30

N-S	E-W	Contract	N-S	E-W	IMP
6	8	2D	N 3	110	4
7	1	2D	N 3	110	4
3	10	2D	N 2	90	3
2	9	4D	N-1	50	-1
5	4	3NT	N-1	50	-1
8	6	3D	N-1	50	-1
1	7	3NT	S-2	100	-2
10	3	3NT	N-2	100	-2
4	5	3D	N-2	100	-2
9	2	3NT	S-3	150	-3

42

♠ J1062  
♥ 8  
♦ AJ4  
♣ Q8632

♠ 8  
♥ J1075  
♦ 8752  
♣ AK109

♠ 975  
♥ K42  
♦ KQ63  
♣ J75

♠ AKQ43  
♥ AQ963  
♦ 109  
♣ 4

Board (42) Av: NS=+650

N-S	E-W	Contract	N-S	E-W	IMP
3	10	4S	S 5	650	0
4	5	4S	S 5	650	0
10	3	4S	S 5	650	0
1	7	4S	S 5	650	0
7	1	4S	S 5	650	0
9	2	4S	S 5	650	0
2	9	4S	S 5	650	0
5	4	4S	S 5	650	0
6	8	4S	S 4	620	-1
8	6	6S	S-1	100	-13

43

♠ AK1064  
♥ 103  
♦ Q96  
♣ J73

♠ J95  
♥ K85  
♦ AK105  
♣ AQ6

♠ Q  
♥ A742  
♦ 874  
♣ K10942

♠ 8732  
♥ QJ96  
♦ J32  
♣ 85

Board (43) Av: NS=-440

N-S	E-W	Contract	N-S	E-W	IMP
5	4	3NT	W 4	430	0
10	3	3NT	W 4	430	0
7	1	3NT	W 4	430	0
1	7	3NT	W 4	430	0
9	2	3NT	W 4	430	0
2	9	3NT	W 4	430	0
8	6	3NT	W 4	430	0
6	8	3NT	W 4	430	0
3	10	3NT	W 6	490	-2
4	5	3Sx	N-3	500	-2

44

♠ AK2  
♥ 6  
♦ QJ76542  
♣ 95

♠ J975  
♥ AQJ108  
♦ A10  
♣ J3

♠ 104  
♥ 97543  
♦ K9  
♣ AK82

♠ Q863  
♥ K2  
♦ 83  
♣ Q10764

Board (44) Av: NS=-440

N-S	E-W	Contract	N-S	E-W	IMP
6	8	4H	W 4	420	1
1	7	4H	W 4	420	1
9	2	4H	W 4	420	1
8	6	4H	W 4	420	1
3	10	4H	E 4	420	1
7	1	4H	W 5	450	0
4	5	4H	W 5	450	0
2	9	4H	W 5	450	0
10	3	4H	W 5	450	0
5	4	4H	W 5	450	0

45

♠ 7  
♥ AKJ87  
♦ 986  
♣ AK76

♠ K632  
♥ Q10543  
♦ A5  
♣ 95

♠ 1094  
♥ 62  
♦ KQJ3  
♣ J842

♠ AQJ85  
♥ 9  
♦ 10742  
♣ Q103

Board (45) Av: NS=+150

N-S	E-W	Contract	N-S	E-W	IMP
6	8	3NT	N 3	600	10
8	6	3NT	N 3	600	10
4	5	2S	S 3	140	0
3	10	2S	S 3	140	0
2	9	2S	S 2	110	-1
5	4	2C	N 3	110	-1
9	2	2C	N 2	90	-2
1	7	2C	N 2	90	-2
10	3	5C	N-1	100	-6
7	1	5C	N-2	200	-8

46

♠K  
♥AQ964  
♦AJ10  
♣10532

♠A10543  
♥3  
♦KQ52  
♣J84

♠J972  
♥J752  
♦863  
♣AK

♠Q86  
♥K108  
♦974  
♣Q976

N  
W E  
S

47

♠A8  
♥KJ1052  
♦73  
♣Q872

♠Q53  
♥9  
♦KQ1084  
♣A1064

♠10976  
♥A76  
♦A95  
♣KJ9

♠KJ42  
♥Q843  
♦J62  
♣53

N  
W E  
S

48

♠K543  
♥92  
♦J4  
♣AKQ97

♠A10  
♥QJ875  
♦A76  
♣J108

♠J86  
♥K63  
♦KQ9  
♣6532

♠Q972  
♥A104  
♦108532  
♣4

N  
W E  
S

Board (46) Av: NS=-90

N-S	E-W	Contract	N-S	E-W	IMP
6	8	3S	W-1	50	4
8	6	3S	W-1	50	4
10	3	3S	W-1	50	4
5	4	3S	W 3	140	-2
2	9	3S	W 3	140	-2
4	5	3S	W 3	140	-2
9	2	3S	W 3	140	-2
3	10	3S	E 3	140	-2
7	1	3S	E 3	140	-2
1	7	2S	W 3	140	-2

Board (47) Av: NS=-190

N-S	E-W	Contract	N-S	E-W	IMP
1	7	3C	E-3	150	8
10	3	2C	E-1	50	6
3	10	3D	W 3	110	2
2	9	2C	E 3	110	2
8	6	3D	W 4	130	2
6	8	3H	N-2	200	0
9	2	3H	N-2	200	0
7	1	3NT	E 3	400	-5
5	4	4S	W 4	420	-6
4	5	3NT	E 4	430	-6

Board (48) Av: NS=0

N-S	E-W	Contract	N-S	E-W	IMP
7	1	4S	N 4	420	9
2	9	3S	N 4	170	5
10	3	3S	N 3	140	4
3	10	2S	S 3	140	4
8	6	3S	S-1	50	-2
6	8	3S	N-1	50	-2
9	2	2H	W 2	110	-3
4	5	2H	W 2	110	-3
5	4	2H	W 2	110	-3
1	7	2H	W 3	140	-4

**1**

♠ 7642  
♥ QJ952  
♦ J82  
♣ 4

♠ KJ  
♥ 107  
♦ A73  
♣ J109852

♠ Q105  
♥ A43  
♦ 1094  
♣ AQ63

♠ A983  
♥ K86  
♦ KQ65  
♣ K7

Board (1) Av: NS=-50

N-S	E-W	Contract	N-S	E-W	IMP
4	10	2H N 3	140		5
6	1	2H S 2	110		4
1	6	3C E-1	50		3
10	4	4H N-1		50	0
9	8	2C E 2		90	-1
8	9	2C E 2		90	-1
5	2	3C E 3		110	-2
7	3	3C E 3		110	-2
3	7	2C E 3		110	-2
2	5	1NTx E 3		380	-8

**2**

♠ AJ94  
♥ J  
♦ AQ10854  
♣ 105

♠ 10  
♥ AK943  
♦ 972  
♣ AKQ7

♠ 652  
♥ 108752  
♦ K6  
♣ 432

♠ KQ873  
♥ Q6  
♦ J3  
♣ J986

Board (2) Av: NS=-410

N-S	E-W	Contract	N-S	E-W	IMP
8	9	4S S-1	100		7
5	2	4S S-1	100		7
7	3	5H W 5	450		-1
2	5	4H W 5	450		-1
6	1	4H W 5	450		-1
4	10	4H W 5	450		-1
1	6	4H W 5	450		-1
10	4	4H W 5	450		-1
9	8	4H W 5	450		-1
3	7	5Hx W 5	650		-6

**3**

♠ K109743  
♥ J6  
♦ K10  
♣ AQ10

♠ Q  
♥ KQ108743  
♦ J73  
♣ 94

♠ 862  
♥ A9  
♦ 9642  
♣ K765

♠ AJ5  
♥ 52  
♦ AQ85  
♣ J832

Board (3) Av: NS=+420

N-S	E-W	Contract	N-S	E-W	IMP
7	3	4S N 5	450		1
4	10	4S N 5	450		1
5	2	4S N 4	420		0
1	6	4S N 4	420		0
6	1	4S N 4	420		0
9	8	4S N 4	420		0
8	9	4S N 4	420		0
3	7	4S N 4	420		0
10	4	4S N 4	420		0
2	5	4D S 4	130		-7

**4**

♠ QJ  
♥ AKQ54  
♦ K9  
♣ A653

♠ K2  
♥ 10982  
♦ Q10543  
♣ 82

♠ A63  
♥ J6  
♦ AJ876  
♣ Q107

♠ 1098754  
♥ 73  
♦ 2  
♣ KJ94

Board (4) Av: NS=+30

N-S	E-W	Contract	N-S	E-W	IMP
7	3	4S S 4	620		11
4	10	3C N 4	130		3
6	1	1H N 2	110		2
1	6	4D E-1	100		2
10	4	4D E-1	100		2
9	8	4D E-1	100		2
3	7	4H N-1		100	-4
8	9	3D E 3		110	-4
2	5	3D E 3		110	-4
5	2	3D E 3		110	-4

**5**

♠ 72  
♥ 97653  
♦ AQ10  
♣ A32

♠ J10654  
♥ Q108  
♦ J5  
♣ K87

♠ A98  
♥ KJ  
♦ K76432  
♣ 96

♠ KQ3  
♥ A42  
♦ 98  
♣ QJ1054

Board (5) Av: NS=+190

N-S	E-W	Contract	N-S	E-W	IMP
2	5	3NT N 4	630		10
8	9	4H N 4	620		10
7	3	2NT N 4	180		0
1	6	2H N 4	170		-1
9	8	2H N 4	170		-1
5	2	3C S 3	110		-2
3	7	3S W-2	100		-3
6	1	2D E-2	100		-3
10	4	2S W-1	50		-4
4	10	2D E-1	50		-4

**6**

♠ A985  
♥ J1075  
♦ J8  
♣ 653

♠ J63  
♥ AKQ63  
♦ 5  
♣ K1082

♠ 104  
♥ 9842  
♦ A107643  
♣ 4

♠ KQ72  
♥  
♦ KQ92  
♣ AQJ97

Board (6) Av: NS=+60

N-S	E-W	Contract	N-S	E-W	IMP
5	2	4S S 4	420		8
9	8	4S S 4	420		8
8	9	4S S 4	420		8
2	5	4S S-1		50	-3
6	1	4S S-1		50	-3
1	6	4S S-1		50	-3
3	7	4S N-1		50	-3
10	4	4S S-2		100	-4
7	3	4S S-2		100	-4
4	10	4S N-2		100	-4

**7**

♠ AKQ109865  
♥ 62  
♦ J82  
♣

♠ A42  
♥  
♦ Q873  
♣ AKQ764

♠ KQ1095  
♥ 3  
♦ AJ954  
♣ 53

♠ J8763  
♥ J742  
♦ K10  
♣ 109

Board (7) Av: NS=-30

N-S	E-W	Contract	N-S	E-W	IMP
1	6	4Hx N 4	790		13
8	9	4Hx N 4	790		13
5	2	4NT W-5	500		11
6	1	6S E-2	200		6
2	5	7C W-1	100		4
3	7	5S E-1	100		4
9	8	4S E 4		620	-11
4	10	4S E 4		620	-11
7	3	4S E 5		650	-12
10	4	6S E 6		1430	-16

**8**

♠ 8  
♥ Q653  
♦ A1042  
♣ AKJ9

♠ AJ2  
♥ K10  
♦ J9873  
♣ Q64

♠ 9653  
♥ 9872  
♦ K5  
♣ 1032

♠ KQ1074  
♥ AJ4  
♦ Q6  
♣ 875

Board (8) Av: NS=+380

N-S	E-W	Contract	N-S	E-W	IMP
5	2	3NT N 4	430		2
1	6	3NT N 4	430		2
6	1	3NT N 4	430		2
8	9	3NT N 4	430		2
7	3	3NT N 4	430		2
4	10	3NT N 3	400		1
9	8	3NT N 3	400		1
3	7	3NT N 3	400		1
10	4	2NT N 2	120		-6
2	5	3C S 3	110		-7

**9**

♠ 2  
♥ KQ6  
♦ 653  
♣ KQJ964

♠ 7653  
♥ J7  
♦ KJ9  
♣ A852

♠ QJ109  
♥ A842  
♦ Q8  
♣ 1073

♠ AK84  
♥ 10953  
♦ A10742  
♣

Board (9) Av: NS=+80

N-S	E-W	Contract	N-S	E-W	IMP
2	5	2NT S 3	150		2
8	9	2C N 5	150		2
1	6	2C N 4	130		2
4	10	2NT S 2	120		1
5	2	3D S 3	110		1
6	1	3C N 3	110		1
7	3	2D S 2	90		0
9	8	4H S-1		50	-4
3	7	4H N-1		50	-4
10	4	3NT S-1		50	-4

10

♠ 752  
♥ A965  
♦ K107  
♣ 654

♠ 963  
♥ Q74  
♦ A8643  
♣ 73

N  
W — E  
S

♠ AQ8  
♥ KJ102  
♦ J  
♣ KQJ102

♠ KJ104  
♥ 83  
♦ Q952  
♣ A98

11

♠ 983  
♥ K8  
♦ 87  
♣ KQ9843

♠ 62  
♥ Q10762  
♦ Q953  
♣ 52

N  
W — E  
S

♠ KQ107  
♥ A54  
♦ AJ4  
♣ J107

♠ AJ54  
♥ J93  
♦ K1062  
♣ A6

12

♠ K7  
♥ 64  
♦ A1098  
♣ AK986

♠ J42  
♥ KQ108  
♦ KJ62  
♣ J4

N  
W — E  
S

♠ Q1083  
♥ 753  
♦ Q543  
♣ Q5

♠ A965  
♥ AJ92  
♦ 7  
♣ 10732

Board (10) Av: NS=-40

N-S	E-W	Contract	N-S	E-W	IMP
4	10	3NT W-2	200		6
8	9	2NT W-2	200		6
10	4	2NT W-2	200		6
6	1	2NT E-2	200		6
3	7	2NT W-1	100		4
5	2	1H E 2		110	-2
2	5	2H E 3		140	-3
7	3	1H E 3		140	-3
9	8	3NT E 3		600	-11
1	6	3NT E 4		630	-11

Board (11) Av: NS=+150

N-S	E-W	Contract	N-S	E-W	IMP
10	4	1NTxN 3	380		6
9	8	1NT N 4	180		1
3	7	1NT N 4	180		1
6	1	1NT N 3	150		0
2	5	1NT N 3	150		0
5	2	1NT N 3	150		0
8	9	1NT N 3	150		0
4	10	3C N 4	130		-1
1	6	3H W-2	100		-2
7	3	3H W-1	50		-3

Board (12) Av: NS=+210

N-S	E-W	Contract	N-S	E-W	IMP
4	10	3NT N 3	600		9
5	2	3NT N 3	600		9
6	1	1NT N 4	180		-1
8	9	1NT N 4	180		-1
10	4	4C N 5	150		-2
3	7	3C N 5	150		-2
9	8	3C N 5	150		-2
1	6	2NT N 3	150		-2
7	3	2C N 5	150		-2
2	5	1NT N 3	150		-2

13

♠ Q984  
♥ 1074  
♦ KJ65  
♣ A6

♠ K72  
♥ J93  
♦ Q1082  
♣ Q97

N  
W — E  
S

♠ A106  
♥ 852  
♦ A4  
♣ 108542

♠ J53  
♥ AKQ6  
♦ 973  
♣ KJ3

14

♠ K2  
♥ QJ108  
♦ AJ72  
♣ Q64

♠ A4  
♥ 6532  
♦ K864  
♣ 1098

N  
W — E  
S

♠ J10975  
♥ K  
♦ Q1093  
♣ K53

♠ Q863  
♥ A974  
♦ 5  
♣ AJ72

15

♠ AK86  
♥ KQ9  
♦ A  
♣ AK984

♠ 105  
♥ A8732  
♦ Q7542  
♣ Q

N  
W — E  
S

♠ J732  
♥ J106  
♦ KJ6  
♣ 753

♠ Q94  
♥ 54  
♦ 10983  
♣ J1062

Board (13) Av: NS=+150

N-S	E-W	Contract	N-S	E-W	IMP
10	7	3NT S 4	630		10
3	9	1NT S 3	150		0
7	10	1NT S 3	150		0
9	3	1NT S 3	150		0
4	8	1NT S 3	150		0
5	1	1NT S 3	150		0
6	2	1NT S 3	150		0
8	4	1NT S 3	150		0
1	5	1NT S 2	120		-1
2	6	1NT S 2	120		-1

Board (14) Av: NS=+400

N-S	E-W	Contract	N-S	E-W	IMP
5	1	4H S 5	450		2
4	8	4H N 5	450		2
3	9	4H N 5	450		2
8	4	4H N 5	450		2
2	6	4H S 4	420		1
7	10	4H N 4	420		1
10	7	4H N 4	420		1
1	5	4H N 4	420		1
6	2	3H N 5	200		-5
9	3	3H S 4	170		-6

Board (15) Av: NS=+670

N-S	E-W	Contract	N-S	E-W	IMP
10	7	6C N 6	1370		12
1	5	3NT N 6	690		1
4	8	3NT N 6	690		1
2	6	3NT N 6	690		1
5	1	3NT N 6	690		1
6	2	3NT N 5	660		0
7	10	3NT N 5	660		0
8	4	3NT N 4	630		-1
3	9	5C N 6	620		-2
9	3	5C N 6	620		-2

16

♠ 10873  
♥ KQJ2  
♦ 1065  
♣ 76

♠ KQ942  
♥ 73  
♦ K987  
♣ Q5

N  
W — E  
S

♠ 1098654  
♥ QJ42  
♦ K94  
♣ K94

♠ AJ65  
♥ A  
♦ A3  
♣ AJ10832

17

♠ Q42  
♥ 3  
♦ 102  
♣ K1095432

♠ K103  
♥ 9876  
♦ AKJ5  
♣ 87

N  
W — E  
S

♠ AJ9765  
♥ Q4  
♦ Q864  
♣ A

♠ 8  
♥ AKJ1052  
♦ 973  
♣ QJ6

18

♠ A643  
♥ A4  
♦ AQJ109  
♣ 43

♠ 2  
♥ 8762  
♦ K52  
♣ AJ976

N  
W — E  
S

♠ J97  
♥ 105  
♦ 87643  
♣ K105

♠ KQ1085  
♥ KQJ93  
♦  
♣ Q82

Board (16) Av: NS=-50

N-S	E-W	Contract	N-S	E-W	IMP
4	8	2Hx E-1	200		6
2	6	1NT S 3	150		5
5	1	3C S 4	130		5
1	5	4Sx N-1		100	-2
10	7	3NT S-2	100		-2
9	3	3NT S-2	100		-2
3	9	3NT N-2	100		-2
8	4	3NT N-2	100		-2
7	10	4S S-4	200		-4
6	2	4Sx N-4	800		-13

Board (17) Av: NS=-390

N-S	E-W	Contract	N-S	E-W	IMP
9	3	5C N-2	100		7
4	8	5Cx N-2	300		3
1	5	5Cx N-2	300		3
8	4	4S E 4	420		-1
3	9	4S E 4	420		-1
7	10	4S E 4	420		-1
2	6	4S E 4	420		-1
5	1	4S E 4	420		-1
6	2	4S E 4	420		-1
10	7	4S E 5	450		-2

Board (18) Av: NS=+470

N-S	E-W	Contract	N-S	E-W	IMP
10	7	5S S 6	680		5
1	5	4S S 6	680		5
7	10	4S S 6	680		5
8	4	5S S 5	650		5
3	9	5S S 5	650		5
4	8	4S S 5	650		5
2	6	4S S 5	650		5
6	2	6S S-1		100	-11
5	1	6S S-1		100	-11
9	3	6S S-1		100	-11



19

♠AKQ108  
♥A94  
♦J85  
♣K6

♠742  
♥83  
♦94  
♣Q108432

N  
W—E  
S

♠J953  
♥K65  
♦Q763  
♣A5

♠6  
♥QJ1072  
♦AK102  
♣J97

Board (19) Av: NS=+380

N-S	E-W	Contract	N-S	E-W	IMP
10	7	5H	S 5	450	2
3	9	4H	S 5	450	2
4	8	4H	S 5	450	2
5	1	4H	S 5	450	2
2	6	4H	S 5	450	2
6	2	4H	N 5	450	2
1	5	4S	N 4	420	1
9	3	4H	S 4	420	1
8	4	5S	S-1	50	-10
7	10	5H	S-1	50	-10

20

♠K109  
♥75  
♦QJ752  
♣952

♠J64  
♥J964  
♦A43  
♣Q107

N  
W—E  
S

♠AQ87532  
♥K102  
♦K9  
♣6

♠AQ83  
♥1086  
♣AKJ843

Board (20) Av: NS=+50

N-S	E-W	Contract	N-S	E-W	IMP
1	5	4Sx	E-1	200	4
10	7	4Sx	E-1	200	4
9	3	4S	E-1	100	2
7	10	4S	E-1	100	2
8	4	4S	E-1	100	2
3	9	4S	E-1	100	2
2	6	4S	E-1	100	2
4	8	5C	S-1	100	-4
6	2	5Cx	S-1	200	-6
5	1	5C	S-2	200	-6

21

♠96  
♥A1084  
♦K7  
♣K10864

♠K53  
♥93  
♦J432  
♣QJ92

N  
W—E  
S

♠A74  
♥KQJ6  
♦A1095  
♣A5

♠QJ1082  
♥752  
♦Q86  
♣73

Board (21) Av: NS=-130

N-S	E-W	Contract	N-S	E-W	IMP
2	6	3NT	E-3	150	7
4	8	3NT	W-2	100	6
3	9	3NT	W-1	50	5
5	1	3NT	W-1	50	5
8	4	2NT	W 2	120	0
9	3	2NT	W 2	120	0
6	2	2NT	W 4	180	-2
10	7	3NT	W 3	400	-7
1	5	3NT	E 3	400	-7
7	10	3NT	W 4	430	-7

22

♠Q10  
♥K10  
♦AKQJ1062  
♣53

♠KJ843  
♥Q752  
♦73  
♣104

N  
W—E  
S

♠9762  
♥A864  
♦85  
♣J87

♠A5  
♥J93  
♦94  
♣AKQ962

Board (22) Av: NS=+580

N-S	E-W	Contract	N-S	E-W	IMP
4	8	6NT	S 6	990	9
10	7	6NT	S 6	990	9
8	4	3NT	S 7	520	-2
9	3	3NT	N 7	520	-2
3	9	3NT	N 7	520	-2
7	10	3NT	N 7	520	-2
2	6	3NT	N 7	520	-2
6	2	3NT	N 7	520	-2
1	5	3NT	N 6	490	-3
5	1	3NT	N 6	490	-3

23

♠765  
♥AK965  
♦75  
♣QJ9

♠AJ1082  
♥7  
♦Q843  
♣1073

N  
W—E  
S

♠Q943  
♥J32  
♦K102  
♣K54

♠K  
♥Q1084  
♦AJ96  
♣A862

Board (23) Av: NS=+510

N-S	E-W	Contract	N-S	E-W	IMP
7	10	4H	N 5	650	4
3	9	4H	N 5	650	4
5	1	4H	N 5	650	4
2	6	4H	N 5	650	4
4	8	4H	N 4	620	3
8	4	4H	N 4	620	3
1	5	4H	N 4	620	3
6	2	2H	N 4	170	-8
10	7	2S	W-1	100	-9
9	3	4H	N-1	100	-12

24

♠KQ4  
♥9  
♦A108542  
♣Q93

♠J963  
♥KJ  
♦3  
♣AK10762

N  
W—E  
S

♠1075  
♥10632  
♦KQ76  
♣J8

♠A82  
♥AQ8754  
♦J9  
♣54

Board (24) Av: NS=+60

N-S	E-W	Contract	N-S	E-W	IMP
9	3	3D	N 3	110	2
8	4	2H	S 2	110	2
3	9	2D	N 3	110	2
2	6	2D	N 3	110	2
7	10	2D	N 3	110	2
5	1	2D	N 3	110	2
6	2	2D	N 3	110	2
1	5	3H	S-1	50	-3
4	8	4D	N-2	100	-4
10	7	3NT	N-2	100	-4

### 1

♠984  
♥J984  
♦Q64  
♣J108

♠K72  
♥2  
♦KJ872  
♣K432

♠QJ53  
♥K103  
♦A1093  
♣Q9

W N E S

♠A106  
♥AQ765  
♦5  
♣A765

Board (1) Av: NS=+10

N-S	E-W	Contract	N-S	E-W	IMP
7	8	3NT W-3	150		4
4	1	2H S 2	110		3
10	9	2H S 2	110		3
3	2	2NT W-2	100		3
5	6	4D E-1	50		1
8	7	3H S-1		50	-2
2	3	3H S-1		50	-2
9	10	3H S-2		100	-3
1	4	3D W 3		110	-3
6	5	2S W 5		200	-5

### 2

♠6  
♥AQ9842  
♦KJ974  
♣7

♠AJ1042  
♥10  
♦832  
♣KQ102

♠K73  
♥J765  
♦Q  
♣J6543

W N E S

♠Q985  
♥K3  
♦A1065  
♣A98

Board (2) Av: NS=+630

N-S	E-W	Contract	N-S	E-W	IMP
9	10	5H N 5	650		1
8	7	4H N 5	650		1
7	8	4H N 5	650		1
5	6	4H N 5	650		1
4	1	4H N 5	650		1
6	5	5D S 6	620		0
1	4	5D S 6	620		0
10	9	3NT S 3	600		-1
3	2	3NT S 3	600		-1
2	3	3H N 5	200		-10

### 3

♠K75  
♥AQ85  
♦J92  
♣K63

♠Q1093  
♥J943  
♦Q  
♣8542

♠AJ62  
♥762  
♦A1064  
♣Q9

W N E S

♠84  
♥K10  
♦K8753  
♣AJ107

Board (3) Av: NS=+70

N-S	E-W	Contract	N-S	E-W	IMP
4	1	3NT N 4	430		8
8	7	3NT N 3	400		8
1	4	3NT N 3	400		8
2	3	2NT N 2	120		2
6	5	3NT S-1		50	-3
10	9	3NT N-1		50	-3
5	6	3NT N-1		50	-3
3	2	3NT S-2		100	-5
9	10	2C N-2		100	-5
7	8	3NT N-3		150	-6

### 4

♠AK874  
♥75  
♦K5  
♣K643

♠32  
♥K92  
♦AQ10  
♣AQ972

♠965  
♥J108  
♦J9643  
♣85

W N E S

♠QJ10  
♥AQ643  
♦872  
♣J10

Board (4) Av: NS=+50

N-S	E-W	Contract	N-S	E-W	IMP
7	8	2S N 4	170		3
3	2	2S N 4	170		3
4	1	2S N 4	170		3
6	5	3S N 3	140		3
8	7	2S N 2	110		2
1	4	3D W-1	100		2
2	3	4S N-1		100	-4
9	10	3S N-1		100	-4
5	6	3S N-1		100	-4
10	9	4S N-2		200	-6

### 5

♠KQ  
♥Q106  
♦KQJ6  
♣AK102

♠1085  
♥3  
♦10975  
♣Q9853

♠A43  
♥K985  
♦82  
♣J764

W N E S

♠J9762  
♥AJ742  
♦A43  
♣

Board (5) Av: NS=+170

N-S	E-W	Contract	N-S	E-W	IMP
8	7	3NT N 6	690		11
7	8	4NT N 5	660		10
2	3	4H S 5	650		10
9	10	4H S 4	620		10
5	6	6NT N-1		100	-7
3	2	6H S-1		100	-7
1	4	6H N-1		100	-7
6	5	6H N-1		100	-7
10	9	4NT N-2		200	-9
4	1	6S N-3		300	-10

### 6

♠752  
♥A1086  
♦10532  
♣104

♠A98  
♥KJ97  
♦QJ8  
♣965

♠QJ3  
♥43  
♦A964  
♣KQ72

W N E S

♠K1064  
♥Q52  
♦K7  
♣AJ83

Board (6) Av: NS=-30

N-S	E-W	Contract	N-S	E-W	IMP
9	10	2NT W-1	100		4
5	6	2NT E-1	100		4
1	4	1C S 1	70		3
8	7	1S S-1		50	-1
4	1	1S S-1		50	-1
10	9	1NT N-1		50	-1
7	8	1NT N-1		50	-1
6	5	1NT W 1		90	-2
3	2	1NT W 1		90	-2
2	3	1NT N-2		100	-2

### 7

♠4  
♥92  
♦986542  
♣A976

♠J65  
♥A73  
♦AKQJ103  
♣3

♠AQ873  
♥1084  
♦7  
♣K1054

W N E S

♠K1092  
♥KQJ65  
♦  
♣QJ82

Board (7) Av: NS=+200

N-S	E-W	Contract	N-S	E-W	IMP
10	9	4S W-2	200		0
6	5	4S W-2	200		0
5	6	4S W-2	200		0
7	8	4S W-2	200		0
9	10	4S W-2	200		0
3	2	4S W-2	200		0
8	7	4S W-2	200		0
2	3	4S W-2	200		0
1	4	4S W-2	200		0
4	1	2D E 2		90	-7

### 8

♠KJ1062  
♥3  
♦QJ9  
♣KJ86

♠43  
♥KQ9  
♦8754  
♣AQ104

♠AQ8  
♥J64  
♦K1062  
♣732

W N E S

♠975  
♥A108752  
♦A3  
♣95

Board (8) Av: NS=+10

N-S	E-W	Contract	N-S	E-W	IMP
10	9	2S N 3	140		4
9	10	2S N 3	140		4
7	8	2S N 2	110		3
2	3	Passout			0
5	6	Passout			0
3	2	Passout			0
6	5	3S N-1		50	-2
4	1	2S N-1		50	-2
1	4	3D W 3		110	-3
8	7	3D E 3		110	-3

### 9

♠A1065  
♥87  
♦842  
♣K762

♠QJ942  
♥2  
♦73  
♣AJ985

♠6543  
♥KQ965  
♦Q1043  
♣

W N E S

♠K873  
♥AKQJ109  
♦AJ10  
♣

Board (9) Av: NS=+50

N-S	E-W	Contract	N-S	E-W	IMP
5	6	4H S 4	420		9
1	4	4H S 4	420		9
6	5	4H N 4	420		9
7	8	4S S-1		50	-3
4	1	4S N-1		50	-3
10	9	4S N-1		50	-3
2	3	4S N-1		50	-3
9	10	4Sx N-1		100	-4
3	2	6S N-3		150	-5
8	7	4Sx S-3		500	-11

10

♠ A6  
♥ KQ10  
♦ K9763  
♣ K102

♠ Q97  
♥ J9543  
♦ Q108  
♣ Q8

♠ KJ10842  
♥ A6  
♦ AJ5  
♣ 54

W N E S

♠ 53  
♥ 872  
♦ 42  
♣ AJ9763

11

♠ QJ653  
♥ 85  
♦ 9653  
♣ 63

♠ 94  
♥ A10962  
♦ AK1084  
♣ 7

♠ A72  
♥ KJ7  
♦ 72  
♣ QJ1098

W N E S

♠ K108  
♥ Q43  
♦ QJ  
♣ AK542

12

♠ K95  
♥ AK7  
♦ K7  
♣ AK832

♠ A4  
♥ Q105432  
♦ J65  
♣ QJ

♠ Q10  
♥ 986  
♦ AQ9432  
♣ 107

W N E S

♠ J87632  
♥ J  
♦ 108  
♣ 9654

Board (10) Av: NS=0

N-S	E-W	Contract	N-S	E-W	IMP
6	5	4C	S 4	130	4
1	4	3C	N 4	130	4
9	10	3C	N 4	130	4
10	9	3S	W-1	100	3
5	6	3S	W-1	100	3
4	1	2NT	N-1	100	-3
7	8	2S	W 2	110	-3
8	7	3S	W 3	140	-4
2	3	2S	W 3	140	-4
3	2	3S	W 4	170	-5

Board (11) Av: NS=-220

N-S	E-W	Contract	N-S	E-W	IMP
7	8	2S	N-2	100	3
8	7	3D	E 4	130	3
2	3	3D	E 4	130	3
6	5	3S	S-3	150	2
9	10	3S	S-3	150	2
4	1	3D	E 5	150	2
3	2	3H	W 5	200	1
5	6	4H	E 4	420	-5
10	9	4H	E 4	420	-5
1	4	4H	W 5	450	-6

Board (12) Av: NS=+440

N-S	E-W	Contract	N-S	E-W	IMP
3	2	4S	N 5	650	5
5	6	4S	N 5	650	5
10	9	4S	S 4	620	5
2	3	4S	S 4	620	5
4	1	4S	N 4	620	5
6	5	5Dx	W-3	500	2
7	8	3S	N 5	200	-6
9	10	3S	N 4	170	-7
1	4	3S	N 4	170	-7
8	7	5S	S-1	100	-11

13

♠ Q94  
♥ 1098752  
♦ K76  
♣ J

♠ KJ  
♥ AK4  
♦ A2  
♣ 987653

♠ 1087652  
♥ QJ3  
♦ 53  
♣ Q4

W N E S

♠ A3  
♥ 6  
♦ QJ10984  
♣ AK102

14

♠ 107  
♥ 10  
♦ AQJ1043  
♣ K842

♠ AKJ  
♥ AKQ96  
♦ 9876  
♣ 6

♠ 65432  
♥ J4  
♦ 2  
♣ J10753

W N E S

♠ Q98  
♥ 87532  
♦ K5  
♣ AQ9

15

♠ KJ986  
♥ KJ74  
♦ 10932  
♣

♠ 43  
♥ A62  
♦ KQ85  
♣ AJ64

♠ 7  
♥ Q10853  
♦ 64  
♣ KQ753

W N E S

♠ AQ1052  
♥ 9  
♦ AJ7  
♣ 10982

Board (13) Av: NS=+100

N-S	E-W	Contract	N-S	E-W	IMP
3	1	3S	E-3	300	5
8	5	4S	W-2	200	3
1	3	3D	S 4	130	1
2	4	3D	S 4	130	1
6	10	3D	S 4	130	1
5	8	3D	S 4	130	1
4	2	2S	E-1	100	0
10	6	2S	E-1	100	0
9	7	2S	E 2	110	-5
7	9	2S	E 2	110	-5

Board (14) Av: NS=+30

N-S	E-W	Contract	N-S	E-W	IMP
2	4	3D	N 4	130	3
7	9	3D	N 4	130	3
4	2	2D	N 4	130	3
3	1	2D	N 3	110	2
10	6	2D	N 3	110	2
9	7	2H	E-1	50	1
5	8	3NT	S-2	100	-4
8	5	3NT	S-2	100	-4
1	3	2H	E 2	110	-4
6	10	2Hx	E 3	570	-12

Board (15) Av: NS=+560

N-S	E-W	Contract	N-S	E-W	IMP
1	3	4S	S 6	680	3
2	4	5S	S 5	650	3
9	7	4S	S 5	650	3
3	1	4S	S 5	650	3
10	6	4S	S 5	650	3
7	9	4S	S 5	650	3
5	8	4S	S 5	650	3
4	2	4S	N 5	650	3
8	5	2H	E 2	110	-12
6	10	6Sx	S-1	200	-13

16

♠ K32  
♥ 85  
♦ KJ9542  
♣ 108

♠ 964  
♥ AKJ6  
♦ AQ106  
♣ 54

♠ AQJ1087  
♥ Q4  
♦ 8  
♣ QJ92

W N E S

♠ 5  
♥ 109732  
♦ 73  
♣ AK763

17

♠ 982  
♥ J4  
♦ Q984  
♣ A1062

♠ 74  
♥ K9732  
♦ KJ  
♣ K975

♠ AJ5  
♥ 865  
♦ A107632  
♣ 3

W N E S

♠ KQ1063  
♥ AQ10  
♦ 5  
♣ QJ84

18

♠ Q93  
♥ 875  
♦ AQ2  
♣ Q742

♠ K64  
♥ 10  
♦ 1076543  
♣ 1096

♠ AJ10875  
♥ 9643  
♦ 8  
♣ A8

W N E S

♠ 2  
♥ AKQJ2  
♦ KJ9  
♣ KJ53

Board (16) Av: NS=-620

N-S	E-W	Contract	N-S	E-W	IMP
2	4	4S	W-1	100	12
4	2	4S	W 4	620	0
3	1	4S	W 4	620	0
1	3	4S	W 4	620	0
6	10	4S	W 4	620	0
9	7	4S	W 4	620	0
8	5	4S	W 4	620	0
10	6	4S	W 4	620	0
7	9	4S	E 4	620	0
5	8	5Cx	S-4	800	-5

Board (17) Av: NS=+60

N-S	E-W	Contract	N-S	E-W	IMP
5	8	3S	S 3	140	2
8	5	3S	S 3	140	2
1	3	3S	S 3	140	2
7	9	2S	S 3	140	2
6	10	2S	S 3	140	2
2	4	3H	W-1	50	0
4	2	3D	W-1	50	0
10	6	4S	S-1	50	-3
3	1	4S	S-2	100	-4
9	7	3S	S-3	150	-5

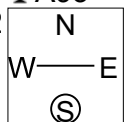
Board (18) Av: NS=+420

N-S	E-W	Contract	N-S	E-W	IMP
5	8	5H	S 5	650	6
6	10	5H	S 5	650	6
10	6	4H	S 5	650	6
3	1	4H	S 5	650	6
9	7	4H	S 5	650	6
8	5	5Sx	W-2	300	-3
4	2	4Sx	W-2	300	-3
1	3	4Sx	W-1	100	-8
2	4	4S	W-1	50	-9
7	9	3NT	N-3	300	-12

19

♠ QJ743  
♥ J94  
♦ 83  
♣ A93

♠ AK852  
♥ KQ63  
♦ Q4  
♣ K2



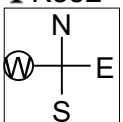
♠ 10  
♥ 10  
♦ K10975  
♣ Q108654

♠ 96  
♥ A8752  
♦ AJ62  
♣ J7

20

♠ K1084  
♥ 1094  
♦ K7  
♣ K852

♠ J32  
♥ K765  
♦ 10954  
♣ J9



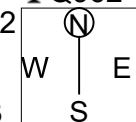
♠ 9  
♥ AQ832  
♦ QJ8  
♣ A743

♠ AQ765  
♥ J  
♦ A632  
♣ Q106

21

♠ KQ8  
♥ K109  
♦ 852  
♣ Q962

♠ 109652  
♥ 8  
♦ KQJ  
♣ K1043



♠ AJ73  
♥ J63  
♦ A1074  
♣ J5

♠ 4  
♥ AQ7542  
♦ 963  
♣ A87

Board (19) Av: NS=-70

N-S	E-W	Contract	N-S	E-W	IMP
3	1	3NT E-3	300		9
4	2	3NT E-1	100		5
2	4	3NT E-1	100		5
6	10	1NT N-2		100	-1
1	3	3C E 3		110	-1
9	7	2NT E 2		120	-2
7	9	3D W 4		130	-2
8	5	3C W 4		130	-2
10	6	3C E 4		130	-2
5	8	2NT E 3		150	-2

Board (20) Av: NS=+240

N-S	E-W	Contract	N-S	E-W	IMP
1	3	4S S 4	620		9
2	4	4S S 4	620		9
5	8	3S S 5	200		-1
10	6	3S S 5	200		-1
6	10	3S S 5	200		-1
4	2	3S S 4	170		-2
9	7	3S S 4	170		-2
7	9	3S S 4	170		-2
3	1	3S S 4	170		-2
8	5	4S S-1		100	-8

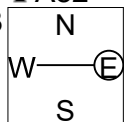
Board (21) Av: NS=-140

N-S	E-W	Contract	N-S	E-W	IMP
3	1	2H S 3	140		7
10	6	3S W-1	50		5
4	2	Passout			4
8	5	3H S-1		100	1
6	10	3S W 3		140	0
1	3	3S E 3		140	0
9	7	3S E 4		170	-1
2	4	2S W 4		170	-1
7	9	4S W 4		420	-7
5	8	4Sx W 4		590	-10

22

♠ Q64  
♥ KJ10962  
♦ 8  
♣ A82

♠ AJ873  
♥ Q43  
♦ 1052  
♣ 73



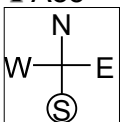
♠ 952  
♥ A7  
♦ AK9  
♣ QJ964

♠ K10  
♥ 85  
♦ QJ7643  
♣ K105

23

♠ KQ1096  
♥ KQJ104  
♦  
♣ A85

♠ 32  
♥ 982  
♦ 1073  
♣ Q10762



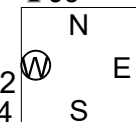
♠ AJ4  
♥ 53  
♦ K986542  
♣ 3

♠ 875  
♥ A76  
♦ AQJ  
♣ KJ94

24

♠ 87652  
♥ Q1093  
♦ 93  
♣ J9

♠ K4  
♥ K42  
♦ K1062  
♣ 10654



♠ QJ1093  
♥ 75  
♦ J85  
♣ A72

♠ A  
♥ AJ86  
♦ AQ74  
♣ KQ83

Board (22) Av: NS=+30

N-S	E-W	Contract	N-S	E-W	IMP
7	9	2NT E-3	300		7
10	6	1NT N 2	120		3
8	5	3S E-1	100		2
3	1	2S W-1	100		2
2	4	2S W-1	100		2
4	2	2D S 2	90		2
5	8	3D S-1		50	-2
1	3	3D S-2		100	-4
6	10	2D S-2		100	-4
9	7	2S W 3		140	-5

Board (23) Av: NS=-100

N-S	E-W	Contract	N-S	E-W	IMP
3	1	5S N 5	650		13
2	4	6S S-1		100	0
5	8	6S S-1		100	0
9	7	6S S-1		100	0
7	9	6S S-1		100	0
8	5	6S S-1		100	0
4	2	6S N-1		100	0
6	10	6H S-1		100	0
10	6	6H S-1		100	0
1	3	6H N-1		100	0

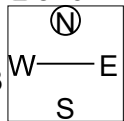
Board (24) Av: NS=+170

N-S	E-W	Contract	N-S	E-W	IMP
4	2	4H S 4	420		6
10	6	4H N 4	420		6
9	7	4H N 4	420		6
2	4	4H N 4	420		6
7	9	2H N 4	170		0
3	1	2H N 2	110		-2
1	3	4H S-1		50	-6
6	10	4H S-1		50	-6
8	5	4H N-1		50	-6
5	8	3S S-2		100	-7

25

♠ Q7  
♥ KQ763  
♦ J109  
♣ 876

♠ J63  
♥ 2  
♦ K8543  
♣ A952



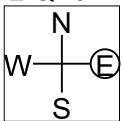
♠ AK98  
♥ 1084  
♦ Q7  
♣ KJ43

♠ 10542  
♥ AJ95  
♦ A62  
♣ Q10

26

♠ 865  
♥ 108  
♦ Q10742  
♣ Q107

♠ A104  
♥ AJ7  
♦ J93  
♣ KJ94



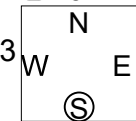
♠ KQJ72  
♥ 54  
♦ A865  
♣ 85

♠ 93  
♥ KQ9632  
♦ K  
♣ A632

27

♠ QJ109  
♥ A42  
♦ J65  
♣ AJ4

♠ 8764  
♥ 98653  
♦ 107  
♣ Q10



♠ K5  
♥ KJ7  
♦ 984  
♣ K7653

♠ A32  
♥ Q10  
♦ AKQ32  
♣ 982

Board (25) Av: NS=0

N-S	E-W	Contract	N-S	E-W	IMP
2	1	2H N 2	110		3
10	8	2H N 2	110		3
5	9	2H N 2	110		3
7	6	2H N 2	110		3
1	2	3C E-1	100		3
3	4	3H N-1		50	-2
6	7	4C E 4		130	-4
8	10	2S E 3		140	-4
9	5	2S E 3		140	-4
4	3	3C E 5		150	-4

Board (26) Av: NS=-170

N-S	E-W	Contract	N-S	E-W	IMP
6	7	3NT W-1	100		7
3	4	3NT W-1	100		7
2	1	2S E 2		110	2
4	3	2NT W 2		120	2
5	9	2S E 3		140	1
7	6	2S E 3		140	1
9	5	2S E 3		140	1
1	2	2S E 4		170	0
10	8	3NT W 3		600	-10
8	10	4S E 4		620	-10

Board (27) Av: NS=+490

N-S	E-W	Contract	N-S	E-W	IMP
3	4	3NT S 6	490		0
10	8	3NT S 6	490		0
4	3	3NT S 6	490		0
2	1	3NT S 6	490		0
9	5	3NT S 6	490		0
6	7	3NT S 6	490		0
5	9	3NT S 6	490		0
8	10	3NT S 6	490		0
7	6	3NT S 6	490		0
1	2	3NT S 5	460		-1

28

♠ KQ10  
♥ A65  
♦ 952  
♣ 9832

♠ A3  
♥ KJ72  
♦ KJ103  
♣ J105

N E  
W S

♠ J8642  
♥ 84  
♦ A64  
♣ K74

♠ 975  
♥ Q1093  
♦ Q87  
♣ AQ6

29

♠ K3  
♥ J9842  
♦ 92  
♣ A1094

♠ Q109752  
♥ K6  
♦ 84  
♣ Q85

N E  
W S

♠ A86  
♥ A1073  
♦ AKQ5  
♣ J2

♠ J4  
♥ Q5  
♦ J10763  
♣ K763

30

♠ AQ52  
♥ Q63  
♦ J10  
♣ A985

♠ KJ1086  
♥ 52  
♦ 94  
♣ K1076

N E  
W S

♠ 9743  
♥ A1087  
♦ K8732  
♣

♠  
♥ KJ94  
♦ AQ65  
♣ QJ432

Board (28) Av: NS=-80

N-S	E-W	Contract	N-S	E-W	IMP
8	10	1NT W-1	50		4
7	6	1NT W-1	50		4
2	1	1NT W 1		90	0
1	2	1NT W 1		90	0
10	8	1NT W 1		90	0
5	9	1NT W 1		90	0
6	7	1NT W 1		90	0
3	4	1NT W 2		120	-1
4	3	1NT W 2		120	-1
9	5	2S W 3		140	-2

Board (29) Av: NS=-620

N-S	E-W	Contract	N-S	E-W	IMP
1	2	2S E 4		170	10
2	1	4S W 4		620	0
5	9	4S W 4		620	0
3	4	4S W 4		620	0
4	3	4S W 4		620	0
10	8	4S W 4		620	0
6	7	4S W 4		620	0
7	6	4S W 4		620	0
8	10	4S W 4		620	0
9	5	4S E 4		620	0

Board (30) Av: NS=+320

N-S	E-W	Contract	N-S	E-W	IMP
3	4	4Sx W-3	500		5
4	3	4Sx W-3	500		5
10	8	4Sx W-3	500		5
6	7	2Dx E-3	500		5
2	1	3NT S 4	430		3
8	10	3NT N 4	430		3
9	5	4Sx W-2	300		-1
1	2	5C S-1		50	-9
5	9	3NT N-1		50	-9
7	6	6C S-2		100	-9

31

♠ Q82  
♥ 864  
♦ 10  
♣ AKQJ109

♠ K9653  
♥ A72  
♦ A987  
♣ 7

N E  
W S

♠ 107  
♥ Q93  
♦ KQ5  
♣ 86532

♠ AJ4  
♥ KJ105  
♦ J6432  
♣ 4

32

♠ 542  
♥ J962  
♦ KJ6  
♣ K109

♠ QJ8  
♥ KQ108  
♦ 109542  
♣ J

N E  
W S

♠ K10963  
♥ 73  
♦ Q8  
♣ A872

♠ A7  
♥ A54  
♦ A73  
♣ Q6543

33

♠ A76  
♥ K52  
♦ 3  
♣ KJ10987

♠ 42  
♥ Q10763  
♦ K102  
♣ 542

N E  
W S

♠ KJ10  
♥ J984  
♦ AQ964  
♣ 3

♠ Q9853  
♥ A  
♦ J875  
♣ AQ6

Board (31) Av: NS=+180

N-S	E-W	Contract	N-S	E-W	IMP
2	1	3NT S 3	600		9
9	5	3NT S 3	600		9
5	9	3NT S 3	600		9
7	6	2C N 4	130		-2
4	3	3C N 3	110		-2
10	8	2C S 3	110		-2
6	7	2D W-2	100		-2
3	4	3NT S-1		100	-7
1	2	3NT S-1		100	-7
8	10	3NT S-1		100	-7

Board (32) Av: NS=+20

N-S	E-W	Contract	N-S	E-W	IMP
4	3	3S E-2	200		5
3	4	1NT N 3	150		4
10	8	1NT S 2	120		3
6	7	1NT S 2	120		3
1	2	1NT S 2	120		3
5	9	Passout			-1
2	1	2S E 2		110	-4
8	10	3S E 3		140	-4
9	5	2S E 3		140	-4
7	6	2S E 3		140	-4

Board (33) Av: NS=+430

N-S	E-W	Contract	N-S	E-W	IMP
5	9	4S S 6	480		2
2	1	4S S 6	480		2
8	10	4S S 5	450		1
6	7	4S S 5	450		1
3	4	4S S 4	420		0
10	8	4S S 4	420		0
7	6	4S S 4	420		0
9	5	3NT S 3	400		-1
1	2	3NT S 3	400		-1
4	3	3NT S 3	400		-1

34

♠ J109532  
♥ K8  
♦ AJ64  
♣ Q

♠ KQ8  
♥ AJ952  
♦ 1073  
♣ KJ

N E  
W S

♠ 64  
♥ 63  
♦ K982  
♣ A7653

♠ A7  
♥ Q1074  
♦ Q5  
♣ 109842

35

♠ J3  
♥ J754  
♦ J83  
♣ KQ105

♠ A74  
♥ K103  
♦ K765  
♣ 764

N E  
W S

♠ K105  
♥ Q86  
♦ A1092  
♣ J92

♠ Q9862  
♥ A92  
♦ Q4  
♣ A83

36

♠ QJ42  
♥ J1073  
♦ AQ102  
♣ 4

♠ K85  
♥ K94  
♦ 843  
♣ J762

N E  
W S

♠ 103  
♥ A852  
♦ KJ9  
♣ AKQ10

♠ A976  
♥ Q6  
♦ 765  
♣ 9853

Board (34) Av: NS=+20

N-S	E-W	Contract	N-S	E-W	IMP
3	4	2S N 2	110		3
2	1	2S N 2	110		3
5	9	2S N 2	110		3
7	6	2S N 2	110		3
10	8	1S N 2	110		3
4	3	1NT E-1	50		1
1	2	1NT W 1		90	-3
8	10	2S N-1		100	-3
9	5	1NT W 2		120	-4
6	7	3Sx N-1		200	-6

Board (35) Av: NS=+110

N-S	E-W	Contract	N-S	E-W	IMP
5	9	2S S 3	140		1
1	2	2S S 2	110		0
3	4	2S S 2	110		0
2	1	2S S 2	110		0
6	7	2S S 2	110		0
9	5	2S S 2	110		0
8	10	2S S 2	110		0
4	3	1NT N 1	90		-1
10	8	1NT N 1	90		-1
7	6	1NT N-1		50	-4

Board (36) Av: NS=-100

N-S	E-W	Contract	N-S	E-W	IMP
10	8	2S S 2	110		5
9	5	3NT E-1	100		5
4	3	1NT E 1		90	0
1	2	2S S-1		100	0
3	4	1NT E 2		120	-1
7	6	1NT E 2		120	-1
2	1	1NT E 3		150	-2
6	7	1NT E 3		150	-2
5	9	1NT E 3		150	-2
8	10	1NT E 4		180	-2