

木村六郎杯 OPEN TEAMS Session 1 Flight A 2016年2月27日(土)

**1**

♠ KJ10765  
♥  
♦ A1053  
♣ 1042

♠ A32  
♥ 63  
♦ J2  
♣ AK9653

♠ 94  
♥ KQ852  
♦ Q98  
♣ QJ8

W N E S

♠ Q8  
♥ AJ10974  
♦ K764  
♣ 7

Board (1) Av: NS=+150

N-S	E-W	Contract	N-S	E-W	IMP
4	7	5Cx	W-3	500	8
8	2	4S	N 4	420	7
9	6	3H	E-4	200	2
1	10	3S	N 4	170	1
7	4	2S	N 4	170	1
2	8	3S	N 3	140	0
5	3	3NT	W-2	100	-2
6	9	3NT	E-1	50	-3
3	5	4S	N-1	50	-5
10	1	4S	N-1	50	-5

**2**

♠ 876  
♥ K932  
♦ A1095  
♣ KQ

♠ KQJ4  
♥ 10  
♦ 87642  
♣ J75

♠ A103  
♥ AJ5  
♦ KJ3  
♣ 10942

W N E S

♠ 952  
♥ Q8764  
♦ Q  
♣ A863

Board (2) Av: NS=+90

N-S	E-W	Contract	N-S	E-W	IMP
5	3	3H	S 3	140	2
2	8	2H	S 3	140	2
4	7	2H	S 3	140	2
1	10	2H	S 2	110	1
3	5	2H	S 2	110	1
9	6	1NT	E-1	50	-1
8	2	1NT	E-1	50	-1
10	1	1NT	E-1	50	-1
7	4	1NT	E-1	50	-1
6	9	1NT	E 1	90	-5

**3**

♠ J4  
♥ A864  
♦ KQ10  
♣ Q875

♠ A952  
♥ 975  
♦ 97  
♣ K943

♠ K63  
♥ J103  
♦ AJ62  
♣ J106

W N E S

♠ Q1087  
♥ KQ2  
♦ 8543  
♣ A2

Board (3) Av: NS=+110

N-S	E-W	Contract	N-S	E-W	IMP
4	7	2NT	N 3	150	1
5	3	2NT	N 3	150	1
6	9	2NT	N 3	150	1
2	8	2NT	N 2	120	0
7	4	2NT	N 2	120	0
1	10	2NT	N 2	120	0
10	1	2NT	N 2	120	0
3	5	2NT	N 2	120	0
8	2	Passout			-3
9	6	2NT	N-1	50	-4

**4**

♠ A95  
♥ J1073  
♦ 94  
♣ KQ94

♠ 102  
♥ K64  
♦ K763  
♣ A1087

♠ KQJ87  
♥ 5  
♦ Q52  
♣ J653

W N E S

♠ 643  
♥ AQ982  
♦ AJ108  
♣ 2

Board (4) Av: NS=+60

N-S	E-W	Contract	N-S	E-W	IMP
3	5	4H	S 4	620	11
4	7	3H	S 4	170	3
2	8	3H	S 4	170	3
5	3	3H	S 3	140	2
6	9	3C	E-1	100	1
10	1	2S	E-1	100	1
7	4	Passout			-2
1	10	3H	S-1	100	-4
9	6	3H	S-1	100	-4
8	2	4H	S-2	200	-6

**5**

♠ Q9872  
♥ 76  
♦ 983  
♣ 985

♠ K104  
♥ 104  
♦ AQJ7  
♣ J1062

♠ 63  
♥ 9853  
♦ 6542  
♣ AKQ

W N E S

♠ AJ5  
♥ AKQJ2  
♦ K10  
♣ 743

Board (5) Av: NS=-50

N-S	E-W	Contract	N-S	E-W	IMP
5	3	1H	S 2	110	4
3	5	1H	S 1	80	4
8	2	1H	N 1	80	4
2	8	2D	E 2	90	-1
4	7	1NT	E 1	90	-1
10	1	2H	S-1	100	-2
1	10	1H	S-1	100	-2
9	6	1H	S-1	100	-2
7	4	1H	S-1	100	-2
6	9	1H	S-1	100	-2

**6**

♠ A10965  
♥ KJ103  
♦ 95  
♣ 109

♠ J432  
♥ 9854  
♦ 7632  
♣ K

♠ KQ87  
♥ Q2  
♦ KQ  
♣ AJ432

W N E S

♠ A76  
♥ AJ1084  
♣ Q8765

Board (6) Av: NS=+40

N-S	E-W	Contract	N-S	E-W	IMP
4	7	3H	W-5	500	10
5	3	2S	E-2	200	4
6	9	2H	S 2	110	2
7	4	2D	S 3	110	2
1	10	2D	S 3	110	2
8	2	3C	N-1	50	-3
3	5	2NT	S-1	50	-3
9	6	1NT	S-1	50	-3
2	8	3C	N-2	100	-4
10	1	2NT	S-2	100	-4

**7**

♠ AQ  
♥ K85  
♦ Q85  
♣ J10752

♠ K943  
♥ A  
♦ K32  
♣ AKQ96

♠ 10852  
♥ 1032  
♦ A10974  
♣ 3

W N E S

♠ J76  
♥ QJ9764  
♦ J6  
♣ 84

Board (7) Av: NS=-230

N-S	E-W	Contract	N-S	E-W	IMP
7	4	4S	W-2	200	10
4	7	4S	E-1	100	8
5	3	4S	E-1	100	8
10	1	4S	E-1	100	8
1	10	3S	E 3	140	3
8	2	1S	W 4	170	2
2	8	4S	E 4	620	-9
3	5	4S	E 4	620	-9
9	6	4S	E 4	620	-9
6	9	4S	E 4	620	-9

**8**

♠ AJ10643  
♥ 754  
♦ KJ  
♣ K7

♠ Q972  
♥ QJ6  
♦ Q765  
♣ 62

♠ K8  
♥ AK1082  
♦ 10  
♣ AJ983

W N E S

♠ 5  
♥ 93  
♦ A98432  
♣ Q1054

Board (8) Av: NS=-10

N-S	E-W	Contract	N-S	E-W	IMP
1	10	4H	W-2	100	3
10	1	3NT	E-2	100	3
6	9	3H	E-2	100	3
3	5	4H	W-1	50	2
5	3	4H	E-1	50	2
9	6	3H	W-1	50	2
4	7	2H	E 2	110	-3
8	2	3H	W 3	140	-4
7	4	3H	W 3	140	-4
2	8	4H	W 4	420	-9

**9**

♠ 82  
♥ A6  
♦ A8432  
♣ A1052

♠ AKQJ4  
♥ KJ9  
♦ 9  
♣ 9764

♠ 93  
♥ Q108754  
♦ K7  
♣ KQ8

W N E S

♠ 10765  
♥ 32  
♦ QJ1065  
♣ J3

Board (9) Av: NS=-110

N-S	E-W	Contract	N-S	E-W	IMP
4	7	4H	E-1	100	5
5	3	4H	E-1	100	5
2	8	4H	E-1	100	5
8	2	4H	E-1	100	5
1	10	4H	E-1	100	5
10	1	5D	N-3	150	-1
7	4	5Dx	N-2	300	-5
9	6	5Dx	N-2	300	-5
3	5	5Dx	N-3	500	-9
6	9	4H	E 4	620	-11

10

♠ 9742  
♥ J72  
♦ 85  
♣ AK43

♠ 10865  
♥ Q1053  
♦ K104  
♣ 85

♠ AJ  
♥ 984  
♦ Q93  
♣ QJ1096

♠ KQ3  
♥ AK6  
♦ AJ762  
♣ 72

N  
W — E  
S

11

♠ K82  
♥ AQJ96  
♦ Q2  
♣ J102

♠ 943  
♥ 103  
♦ K65  
♣ KQ864

♠ A765  
♥ K8752  
♦ 10  
♣ A97

♠ QJ10  
♥ 4  
♦ AJ98743  
♣ 53

N  
W — E  
S

12

♠ J92  
♥ A84  
♦ AK6  
♣ A1032

♠ AKQ1084  
♥ Q  
♦ J1082  
♣ 98

♠ 53  
♥ 53  
♦ Q753  
♣ Q7654

♠ 76  
♥ KJ109762  
♦ 94  
♣ KJ

N  
W — E  
S

Board (10) Av: NS=-150

N-S	E-W	Contract	N-S	E-W	IMP
5	3	1NT S 1	90		6
8	2	1NT S 1	90		6
9	6	1NT S-1		100	2
10	1	3NT S-2	200		-2
6	9	3NT S-2	200		-2
2	8	3NT S-2	200		-2
7	4	3NT S-2	200		-2
1	10	3NT S-2	200		-2
3	5	3NT S-2	200		-2
4	7	3NT S-2	200		-2

Board (11) Av: NS=+160

N-S	E-W	Contract	N-S	E-W	IMP
2	8	2Hx W-3	500		8
4	7	3NT N 3	400		6
8	2	3NT E-5	250		3
9	6	3NT E-5	250		3
1	10	4C E-3	150		0
10	1	3D S 5	150		0
5	3	3NT E-2	100		-2
6	9	3C W-1		50	-3
7	4	3NT N-1			-5
3	5	3NTxN-2		300	-10

Board (12) Av: NS=+400

N-S	E-W	Contract	N-S	E-W	IMP
8	2	5H N 5	650		6
9	6	5H N 5	650		6
4	7	5H N 5	650		6
1	10	5H N 5	650		6
7	4	4H N 5	650		6
6	9	4Sx E-3	500		3
3	5	4Sx E-2	300		-3
10	1	5H S-1		100	-11
5	3	5H N-1		100	-11
2	8	5H N-1		100	-11

13

♠ KJ5  
♥ AKJ4  
♦ 6532  
♣ 107

♠ 3  
♥ Q98765  
♦ Q1098  
♣ K3

♠ A1072  
♥ 2  
♦ A74  
♣ A8654

♠ Q9864  
♥ 103  
♦ KJ  
♣ QJ92

N  
W — E  
S

14

♠ KQ1073  
♥ J10  
♦ 9543  
♣ 84

♠ J9  
♥ AK653  
♦ AJ6  
♣ 1093

♠ A64  
♥ 842  
♦ Q102  
♣ AQ72

♠ 852  
♥ Q97  
♦ K87  
♣ KJ65

N  
W — E  
S

15

♠ KQJ92  
♥ 1087  
♦ 9  
♣ AJ104

♠ A6  
♥ 642  
♦ A832  
♣ K983

♠ 85  
♥ QJ53  
♦ QJ1064  
♣ Q6

♠ 10743  
♥ AK9  
♦ K75  
♣ 752

N  
W — E  
S

Board (13) Av: NS=-70

N-S	E-W	Contract	N-S	E-W	IMP
10	5	2NT W-3	300		9
1	9	2C W-2	200		7
5	10	2C W-2	200		7
4	6	3D E-1	100		5
6	4	1NT N 1	90		4
7	2	2S S-1		100	-1
3	8	2S S-1		100	-1
9	1	2NT N-3	300		-6
2	7	2Hx E 2	670		-12
8	3	1Hx N-3	800		-12

Board (14) Av: NS=-420

N-S	E-W	Contract	N-S	E-W	IMP
5	10	4H E-1		50	10
2	7	3NT W 3		400	1
9	1	3NT E 3		400	1
4	6	4H E 4		420	0
7	2	4H E 4		420	0
10	5	4H E 4		420	0
3	8	4H E 4		420	0
8	3	4H E 4		420	0
1	9	4H E 4		420	0
6	4	4H E 4		420	0

Board (15) Av: NS=+270

N-S	E-W	Contract	N-S	E-W	IMP
2	7	4S S 4	620		8
1	9	4S N 4	620		8
6	4	4S N 4	620		8
7	2	3S N 4	170		-3
10	5	3S N 4	170		-3
3	8	2S N 4	170		-3
4	6	3S N 3	140		-4
8	3	2S N 3	140		-4
9	1	2S N 3	140		-4
5	10	4S N-1		100	-9

16

♠ KJ82  
♥ J54  
♦ QJ2  
♣ Q98

♠ Q743  
♥ AQ32  
♦ 9875  
♣ K

♠ 65  
♥ K107  
♦ AK43  
♣ J1062

♠ A109  
♥ 986  
♦ 106  
♣ A7543

N  
W — E  
S

17

♠ KJ  
♥ J9832  
♦ 62  
♣ A1094

♠ A108542  
♥ Q4  
♦ 104  
♣ 862

♠ Q976  
♥ A76  
♦ 75  
♣ KQ53

♠ 3  
♥ K105  
♦ AKQJ983  
♣ J7

N  
W — E  
S

18

♠ 53  
♥ 10753  
♦ 9  
♣ AJ10986

♠ QJ108  
♥ 84  
♦ A654  
♣ Q43

♠ 9742  
♥ AK  
♦ KJ73  
♣ 752

♠ AK6  
♥ QJ962  
♦ Q1082  
♣ K

N  
W — E  
S

Board (16) Av: NS=-70

N-S	E-W	Contract	N-S	E-W	IMP
4	6	2NT W-2	200		7
1	9	1NT W-2	200		7
8	3	Passout			2
9	1	3D W 3		110	-1
3	8	2H E 2		110	-1
7	2	2D W 4		130	-2
10	5	2D E 4		130	-2
6	4	2D E 4		130	-2
2	7	2D E 4		130	-2
5	10	2D E 4		130	-2

Board (17) Av: NS=+230

N-S	E-W	Contract	N-S	E-W	IMP
8	3	5H N 5	450		6
1	9	4H N 5	450		6
5	10	5D S 5	400		5
2	7	4Sx E-2	300		2
3	8	4S E-3	150		-2
7	2	4D S 5	150		-2
6	4	3D S 5	150		-2
4	6	2D S 4	130		-3
9	1	4S E-2	100		-4
10	5	4S E-2	100		-4

Board (18) Av: NS=+230

N-S	E-W	Contract	N-S	E-W	IMP
7	2	4Hx S 5	990		13
2	7	4H S 4	620		9
1	9	4H S 4	620		9
10	5	3H S 4	170		-2
6	4	4S E-3	150		-2
3	8	4S E-2	100		-4
4	6	4S E-2	100		-4
8	3	3S W-1	50		-5
9	1	3S E-1	50		-5
5	10	1NT S-2		200	-10

19

♠ Q3  
♥ AJ632  
♦ 4  
♣ AQJ84

♠ A  
♥ K975  
♦ K1052  
♣ 10765

N  
W — E  
S

♠ J107652  
♥ Q10  
♦ QJ7  
♣ 93

♠ K984  
♥ 84  
♦ A9863  
♣ K2

20

♠ KQJ32  
♥ K1052  
♦ 4  
♣ J76

♠ A96  
♥ 6  
♦ QJ10732  
♣ Q82

N  
W — E  
S

♠ 108754  
♥ AQ3  
♦ K98  
♣ 109

♠ J9874  
♥ A65  
♣ AK543

21

♠ QJ92  
♥ QJ1042  
♦ J84  
♣ K

♠ 873  
♥ K975  
♦ Q9  
♣ A1042

N  
W — E  
S

♠ AK4  
♥ 863  
♦ 653  
♣ QJ98

♠ 1065  
♥ A  
♦ AK1072  
♣ 7653

Board (19) Av: NS=+130

N-S	E-W	Contract	N-S	E-W	IMP
4	6	3NT S 4	430		7
5	10	3NT S 3	400		7
7	2	3NT N 3	400		7
10	5	2H N 2	110		-1
9	1	2H N 2	110		-1
3	8	2H N 2	110		-1
6	4	2H N 2	110		-1
1	9	3NT S-2	100	100	-6
8	3	3C N-2	100	100	-6
2	7	4H N-3	150	150	-7

Board (20) Av: NS=+270

N-S	E-W	Contract	N-S	E-W	IMP
2	7	4H S 4	620		8
9	1	4H S 4	620		8
7	2	4H S 4	620		8
6	4	4H S 4	620		8
4	6	4H S 4	620		8
3	8	3D W-1	100		-5
1	9	4H S-1	100	100	-9
5	10	4H S-1	100	100	-9
10	5	5H N-2	200	200	-10
8	3	6H S-3	300	300	-11

Board (21) Av: NS=-90

N-S	E-W	Contract	N-S	E-W	IMP
3	8	2H N 2	110		5
4	6	2H N 2	110		5
10	5	Passout			3
7	2	3D S-1	100		0
8	3	2NT S-1	100		0
9	1	2NT N-1	100		0
2	7	2NT N-1	100		0
1	9	2NT N-1	100		0
6	4	2NT N-3	300	300	-5
5	10	2NT N-3	300	300	-5

22

♠ A763  
♥ J1074  
♦ Q97  
♣ 53

♠ KQ9  
♥ A82  
♦ 5  
♣ K109764

N  
W — E  
S

♠ J852  
♥ KQ65  
♦ AJ  
♣ A82

♠ 104  
♥ 93  
♦ K1086432  
♣ QJ

23

♠ 10  
♥ 76542  
♦ A7  
♣ K9832

♠ J1093  
♥ KQ862  
♦ QJ54  
♣ QJ54

N  
W — E  
S

♠ KJ98654  
♥ A8  
♦ 953  
♣ 6

♠ AQ732  
♥ KQ  
♦ J104  
♣ A107

24

♠ Q9532  
♥ AJ107  
♦ Q7  
♣ 94

♠ AJ1076  
♥ 63  
♦ J54  
♣ K53

N  
W — E  
S

♠ 8  
♥ K9854  
♦ 632  
♣ AQJ8

♠ K4  
♥ Q2  
♦ AK1098  
♣ 10762

Board (22) Av: NS=-510

N-S	E-W	Contract	N-S	E-W	IMP
7	2	3NT E-4	400		14
10	5	3NT E-4	400		14
9	1	3D W-3	300		13
5	10	4H E 4	620		-3
1	9	3NT E 4	630		-3
2	7	3NT E 5	660		-4
6	4	3NT E 6	690		-5
3	8	5Dx S-4	800		-7
4	6	6C E 6	1370	1370	-13
8	3	6C E 6	1370	1370	-13

Board (23) Av: NS=+50

N-S	E-W	Contract	N-S	E-W	IMP
1	9	3Sx E-3	800		13
5	10	2Sx E-1	200		4
9	1	2S E-2	200		4
8	3	2C S 4	130		2
6	4	2C S 3	110		2
3	8	2C S 2	90		1
4	6	3NT S-1	100	100	-4
2	7	3NT N-1	100	100	-4
10	5	3C S-1	100	100	-4
7	2	3NT N-3	300	300	-8

Board (24) Av: NS=-20

N-S	E-W	Contract	N-S	E-W	IMP
9	1	2S W-3	150		5
10	5	2S W-2	100		3
3	8	3H E-1	50		2
7	2	1S W-1	50		2
4	6	Passout			1
1	9	3NT S-1	50		-1
8	3	2D S-1	50		-1
6	4	2H E 2	110		-3
5	10	2H E 2	110		-3
2	7	2H E 2	110		-3

25

♠ AQ75  
♥ AJ653  
♦ A42  
♣ 8

♠ KJ93  
♥ Q10874  
♦ Q5  
♣ 72

N  
W — E  
S

♠ 10842  
♥ K9  
♦ J83  
♣ 10954

♠ 6  
♥ 2  
♦ K10976  
♣ AKQJ63

26

♠ 9852  
♥ 98654  
♦ 4  
♣ K82

♠ AKQ103  
♥  
♦ K9532  
♣ J75

N  
W — E  
S

♠ 764  
♥ KQJ2  
♦ A876  
♣ A6

♠ J  
♥ A1073  
♦ QJ10  
♣ Q10943

27

♠ AK10  
♥ KQ9  
♦ K103  
♣ AKJ3

♠ 98  
♥ AJ7542  
♦ AJ6  
♣ 52

N  
W — E  
S

♠ 6543  
♥ 86  
♦ 9852  
♣ Q94

♠ QJ72  
♥ 103  
♦ Q74  
♣ 10876

Board (25) Av: NS=+590

N-S	E-W	Contract	N-S	E-W	IMP
7	5	6NT N 6	990		9
6	3	6C S 6	920		8
5	7	6C N 6	920		8
2	10	3NT N 7	520		-2
3	6	3NT N 6	490		-3
10	2	3NT N 6	490		-3
4	9	3NT S 5	460		-4
8	1	3NT S 5	460		-4
1	8	3NT S 5	460		-4
9	4	5H N-2	100	100	-12

Board (26) Av: NS=-750

N-S	E-W	Contract	N-S	E-W	IMP
9	4	4S W 4	620		4
1	8	4S W 4	620		4
7	5	4S E 4	620		4
3	6	4S W 5	650		3
2	10	4S W 5	650		3
4	9	4S W 6	680		2
6	3	4S W 6	680		2
8	1	5S W 7	710		1
10	2	6D E 6	1370	1370	-12
5	7	6S W 6	1430	1430	-12

Board (27) Av: NS=+420

N-S	E-W	Contract	N-S	E-W	IMP
3	6	3NT N 5	460		1
4	9	3NT N 4	430		0
8	1	3NT N 4	430		0
9	4	3NT N 4	430		0
7	5	3NT N 4	430		0
5	7	3NT N 4	430		0
2	10	3NT N 4	430		0
6	3	3NT N 3	400		-1
10	2	3NT N 3	400		-1
1	8	3NT N 3	400		-1

28

♠ K654  
♥ A872  
♦ K65  
♣ 82

♠ A1072  
♥ Q9  
♦ 10  
♣ QJ10763

♠ KJ10543  
♥ AQJ982  
♣ 9

♠ QJ983  
♥ 6  
♦ 743  
♣ AK54

N  
W E  
S

29

♠ 10764  
♥ A963  
♦ 65  
♣ K53

♠ AK8  
♥ 72  
♦ AJ10  
♣ AQ942

♠ Q3  
♥ KJ105  
♦ Q9832  
♣ J7

♠ J952  
♥ Q84  
♦ K74  
♣ 1086

N  
W E  
S

30

♠ J96532  
♥ 5  
♦  
♣ 987432

♠ AK74  
♥ 96  
♦ AK1062  
♣ QJ

♠ 10  
♥ QJ10842  
♦ QJ73  
♣ A10

♠ Q8  
♥ AK73  
♦ 9854  
♣ K65

N  
W E  
S

Board (28) Av: NS=-380

N-S	E-W	Contract	N-S	E-W	IMP
2	10	5Hx E-2	300		12
6	3	5Hx E-1	100		10
8	1	4H E 4	420		-1
4	9	4H E 4	420		-1
7	5	4H E 4	420		-1
9	4	5H E 5	450		-2
1	8	4H E 5	450		-2
3	6	4H E 5	450		-2
10	2	4Sx S-2	500		-3
5	7	4Hx E 4	590		-5

Board (29) Av: NS=-620

N-S	E-W	Contract	N-S	E-W	IMP
8	1	3NT W 3	600		1
3	6	3NT W 3	600		1
9	4	3NT W 3	600		1
6	3	3NT W 3	600		1
5	7	3NT W 3	600		1
7	5	3NT W 3	600		1
4	9	3NT W 4	630		0
1	8	3NT W 4	630		0
2	10	3NT W 5	660		-1
10	2	3NT W 5	660		-1

Board (30) Av: NS=-400

N-S	E-W	Contract	N-S	E-W	IMP
9	4	6D W-1	50		10
4	9	5H E-1	50		10
8	1	5D W 5	400		0
3	6	3NT E 3	400		0
6	3	4H E 4	420		-1
5	7	4H W 5	450		-2
1	8	4H E 5	450		-2
10	2	4H E 5	450		-2
2	10	5Hx E 5	650		-6
7	5	4Sx N-4	800		-9

31

♠ QJ763  
♥ 3  
♦ 953  
♣ 8632

♠ A  
♥ QJ  
♦ KQ107  
♣ AQJ974

♠ K1084  
♥ A865  
♦ A864  
♣ 10

♠ 952  
♥ K109742  
♦ J2  
♣ K5

N  
W E  
S

Board (31) Av: NS=-600

N-S	E-W	Contract	N-S	E-W	IMP
3	6	5D E 6	420		5
4	9	3NT E 6	490		3
1	8	3NT E 6	490		3
6	3	3NT E 6	490		3
7	5	3NT E 6	490		3
10	2	3NT E 6	490		3
9	4	3NT E 7	520		2
8	1	6C W 6	920		-8
2	10	6D W 7	940		-8
5	7	6NT E 6	990		-9

32

♠ A7653  
♥ A9  
♦ 10752  
♣ Q10

♠ 108  
♥ KJ108  
♦ 84  
♣ AJ876

♠ QJ4  
♥ 7643  
♦ A6  
♣ 5432

♠ K92  
♥ Q52  
♦ KQJ93  
♣ K9

N  
W E  
S

Board (32) Av: NS=+260

N-S	E-W	Contract	N-S	E-W	IMP
10	2	4S S 4	420		4
1	8	4S S 4	420		4
6	3	4S S 4	420		4
8	1	4S S 4	420		4
5	7	4S S 4	420		4
7	5	3S N 4	170		-3
3	6	2S N 3	140		-3
2	10	2D S 3	110		-4
4	9	4S N-1	50		-7
9	4	4S N-1	50		-7

33

♠ 82  
♥ AQ5  
♦ 952  
♣ KJ874

♠ AK54  
♥ J9743  
♦ A4  
♣ A9

♠ QJ9  
♥ K1062  
♦ Q86  
♣ Q105

♠ 10763  
♥ 8  
♦ KJ1073  
♣ 632

N  
W E  
S

Board (33) Av: NS=-430

N-S	E-W	Contract	N-S	E-W	IMP
3	6	4H W 4	420		0
1	8	4H W 4	420		0
4	9	4H W 4	420		0
6	3	4H W 4	420		0
9	4	4H W 4	420		0
7	5	4H W 4	420		0
2	10	4H W 4	420		0
5	7	3NT W 4	430		0
10	2	3NT W 5	460		-1
8	1	5Cx N-4	800		-9

34

♠ 10532  
♥ Q93  
♦ K6  
♣ K963

♠ AJ862  
♥ Q108743  
♦ J8

♠ KQ864  
♥ K54  
♦ 5  
♣ AQ102

♠ AJ97  
♥ 107  
♦ AJ92  
♣ 754

N  
W E  
S

Board (34) Av: NS=-160

N-S	E-W	Contract	N-S	E-W	IMP
5	7	2D W 2	90		2
9	4	2D W 2	90		2
3	6	2D W 3	110		2
4	9	2D W 3	110		2
1	8	2D W 3	110		2
8	1	2D W 3	110		2
10	2	2D W 3	110		2
2	10	2H W 4	170		0
7	5	4H W 5	450		-7
6	3	4H E 5	450		-7

35

♠ AK1094  
♥ K873  
♦ A92  
♣ A

♠ J873  
♥ 94  
♦ Q1073  
♣ J65

♠ Q52  
♥ Q2  
♦ J865  
♣ Q1074

♠ 6  
♥ AJ1065  
♦ K4  
♣ K9832

N  
W E  
S

Board (35) Av: NS=+1070

N-S	E-W	Contract	N-S	E-W	IMP
6	3	7H S 7	1510		10
7	5	7H S 7	1510		10
4	9	6H S 7	1010		-2
3	6	6H S 7	1010		-2
9	4	6H S 7	1010		-2
1	8	6H S 7	1010		-2
2	10	6H S 7	1010		-2
5	7	6H S 7	1010		-2
8	1	6H S 7	1010		-2
10	2	6H S 7	1010		-2

36

♠ KJ106  
♥ 3  
♦ Q832  
♣ J842

♠ A753  
♥ Q109864  
♦ K5  
♣ A

♠ 4  
♥ AK75  
♦ AJ109  
♣ K1076

♠ Q982  
♥ J2  
♦ 764  
♣ Q953

N  
W E  
S

Board (36) Av: NS=-1650

N-S	E-W	Contract	N-S	E-W	IMP
4	9	4H W 7	710		14
8	1	4H W 7	710		14
1	8	6H W 7	1460		5
6	3	6H W 7	1460		5
7	5	6H W 7	1460		5
5	7	6H W 7	1460		5
9	4	7H W 7	2210		-11
3	6	7H W 7	2210		-11
10	2	7H W 7	2210		-11
2	10	7H W 7	2210		-11

37

♠ 107  
♥ KQ10  
♦ AK53  
♣ Q963

♠ 952  
♥ AJ87  
♦ QJ82  
♣ KJ

♠ AQ63  
♥ 632  
♦ 94  
♣ A875

♠ KJ84  
♥ 954  
♦ 1076  
♣ 1042

W N E S

38

♠ A5  
♥ 982  
♦ Q53  
♣ J10743

♠ Q97  
♥ Q74  
♦ 7  
♣ AK9865

♠ 1062  
♥ AJ10653  
♦ AK4  
♣ Q

♠ KJ843  
♥ K  
♦ J109862  
♣ 2

W N E S

39

♠ J8643  
♥ 865  
♦ 532  
♣ 97

♠ A52  
♥ AQ  
♦ 4  
♣ AQJ6432

♠ KQ7  
♥ 109432  
♦ KQJ8  
♣ 8

♠ 109  
♥ KJ7  
♦ A10976  
♣ K105

W N E S

Board (37) Av: NS=+50

N-S	E-W	Contract	N-S	E-W	IMP
8	6	2S	E-3	150	3
1	7	1NT	N 2	120	2
2	9	1NT	N 2	120	2
3	10	2S	E-2	100	2
6	8	2S	E-2	100	2
7	1	2S	E-1	50	0
5	4	2H	W-1	50	0
9	2	1NT	W 1	90	-4
10	3	1NT	W 1	90	-4
4	5	1NT	N-2	200	-6

Board (38) Av: NS=-670

N-S	E-W	Contract	N-S	E-W	IMP
5	4	4H	E 4	620	2
7	1	5H	E 5	650	1
3	10	4H	E 5	650	1
6	8	4H	E 5	650	1
9	2	4H	E 5	650	1
1	7	4H	E 6	680	0
2	9	4H	E 6	680	0
8	6	4H	E 6	680	0
4	5	4H	E 6	680	0
10	3	4H	E 6	680	0

Board (39) Av: NS=-660

N-S	E-W	Contract	N-S	E-W	IMP
1	7	5C	W 5	600	2
7	1	5C	W 5	600	2
4	5	4H	E 5	650	0
10	3	3NT	W 5	660	0
2	9	3NT	E 5	660	0
9	2	3NT	E 5	660	0
8	6	3NT	E 5	660	0
6	8	3NT	E 5	660	0
5	4	3NT	E 6	690	-1
3	10	3NT	E 6	690	-1

40

♠ K1042  
♥ J7  
♦ J105  
♣ Q964

♠ A973  
♥ K  
♦ Q97432  
♣ 103

♠ QJ865  
♥ A42  
♦ A6  
♣ J72

♠ Q1098653  
♥ K8  
♣ AK85

W N E S

41

♠ QJ  
♥ AK7  
♦ A76543  
♣ 76

♠ A954  
♥ Q82  
♦ K98  
♣ Q103

♠ K1083  
♥ J654  
♦ J2  
♣ 985

♠ 762  
♥ 1093  
♦ Q10  
♣ AKJ42

W N E S

42

♠ J1062  
♥ 8  
♦ AJ4  
♣ Q8632

♠ 8  
♥ J1075  
♦ 8752  
♣ AK109

♠ 975  
♥ K42  
♦ KQ63  
♣ J75

♠ AKQ43  
♥ AQ963  
♦ 109  
♣ 4

W N E S

Board (40) Av: NS=+130

N-S	E-W	Contract	N-S	E-W	IMP
5	4	4H	S 4	420	7
8	6	4H	S 4	420	7
2	9	4Sx	E-2	300	5
4	5	4S	E-1	50	-2
1	7	4S	E-1	50	-2
9	2	4S	E-1	50	-2
6	8	4S	E-1	50	-2
7	1	4S	E-1	50	-2
3	10	3S	E-1	50	-2
10	3	4S	E 4	420	-11

Board (41) Av: NS=+30

N-S	E-W	Contract	N-S	E-W	IMP
1	7	2D	N 4	130	3
8	6	3D	N 3	110	2
10	3	2D	N 3	110	2
3	10	2D	N 3	110	2
4	5	2D	N 2	90	2
9	2	1NT	S 1	90	2
5	4	4D	N-1	50	-2
6	8	1NT	S-1	50	-2
7	1	3NT	S-3	150	-5
2	9	3NT	N-4	200	-6

Board (42) Av: NS=+650

N-S	E-W	Contract	N-S	E-W	IMP
5	4	4S	S 5	650	0
4	5	4S	S 5	650	0
1	7	4S	S 5	650	0
10	3	4S	S 5	650	0
7	1	4S	S 5	650	0
9	2	4S	S 5	650	0
2	9	4S	S 5	650	0
6	8	4S	S 5	650	0
8	6	4S	S 5	650	0
3	10	4S	S 4	620	-1

43

♠ AK1064  
♥ 103  
♦ Q96  
♣ J73

♠ J95  
♥ K85  
♦ AK105  
♣ AQ6

♠ Q  
♥ A742  
♦ 874  
♣ K10942

♠ 8732  
♥ QJ96  
♦ J32  
♣ 85

W N E S

44

♠ AK2  
♥ 6  
♦ QJ76542  
♣ 95

♠ J975  
♥ AQJ108  
♦ A10  
♣ J3

♠ 104  
♥ 97543  
♦ K9  
♣ AK82

♠ Q863  
♥ K2  
♦ 83  
♣ Q10764

W N E S

45

♠ 7  
♥ AKJ87  
♦ 986  
♣ AK76

♠ K632  
♥ Q10543  
♦ A5  
♣ 95

♠ 1094  
♥ 62  
♦ KQJ3  
♣ J842

♠ AQJ85  
♥ 9  
♦ 10742  
♣ Q103

W N E S

Board (43) Av: NS=-430

N-S	E-W	Contract	N-S	E-W	IMP
10	3	5C	W 5	400	1
5	4	3NT	W 4	430	0
4	5	3NT	W 4	430	0
1	7	3NT	W 4	430	0
7	1	3NT	W 4	430	0
3	10	3NT	W 4	430	0
6	8	3NT	W 4	430	0
2	9	3NT	W 4	430	0
9	2	3NT	W 4	430	0
8	6	3NT	W 6	490	-2

Board (44) Av: NS=-440

N-S	E-W	Contract	N-S	E-W	IMP
4	5	4H	W 4	420	1
5	4	4H	W 4	420	1
3	10	4H	W 4	420	1
8	6	4H	W 4	420	1
2	9	4H	W 4	420	1
1	7	4H	W 5	450	0
7	1	4H	W 5	450	0
9	2	4H	W 5	450	0
6	8	4H	W 5	450	0
10	3	4H	W 5	450	0

Board (45) Av: NS=+80

N-S	E-W	Contract	N-S	E-W	IMP
5	4	2S	S 2	110	1
3	10	2S	S 2	110	1
1	7	2C	N 3	110	1
8	6	2C	N 3	110	1
2	9	2C	N 3	110	1
6	8	2C	N 3	110	1
9	2	2C	N 2	90	0
4	5	1NT	N 1	90	0
10	3	2S	S-1	100	-5
7	1	3NT	S-2	200	-7

木村六郎杯 OPEN TEAMS Session 1 Flight A 2016年2月27日(土)

46

♠K  
♥AQ964  
♦AJ10  
♣10532

♠A10543 ♠J972  
♥3 ♥J752  
♦KQ52 W E ♦863  
♣J84 ♣AK

♠Q86  
♥K108  
♦974  
♣Q976

47

♠A8  
♥KJ1052  
♦73  
♣Q872

♠Q53 ♠10976  
♥9 ♥A76  
♦KQ1084 W E ♦A95  
♣A1064 ♣KJ9

♠KJ42  
♥Q843  
♦J62  
♣53

48

♠K543  
♥92  
♦J4  
♣AKQ97

♠A10 ♠J86  
♥QJ875 W E ♥K63  
♦A76 ♣KQ9  
♣J108 ♣6532

♠Q972  
♥A104  
♦108532  
♣4

Board (46) Av: NS=-140

N-S	E-W	Contract	N-S	E-W	IMP
5	4	3S W-1	50		5
10	3	3S W 3	140		0
3	10	3S W 3	140		0
4	5	3S W 3	140		0
1	7	3S W 3	140		0
6	8	3S W 3	140		0
2	9	3S W 3	140		0
8	6	2S W 3	140		0
9	2	2S W 3	140		0
7	1	2S E 3	140		0

Board (47) Av: NS=-110

N-S	E-W	Contract	N-S	E-W	IMP
8	6	3NT E-2	100		5
9	2	5D W-1	50		4
1	7	4D W-1	50		4
3	10	3H N-1	100		0
2	9	3C E 3	110		0
10	3	2NT W 2	120		0
7	1	3D W 4	130		-1
4	5	2S W 3	140		-1
5	4	3NT E 3	400		-7
6	8	3NT E 4	430		-8

Board (48) Av: NS=+30

N-S	E-W	Contract	N-S	E-W	IMP
1	7	4S N 4	420		9
3	10	2S N 4	170		4
2	9	3S S 3	140		3
8	6	3S N 3	140		3
5	4	3S N 3	140		3
10	3	3S S-1	50		-2
6	8	3D S-2	100		-4
9	2	2H W 2	110		-4
7	1	2H W 2	110		-4
4	5	2H W 2	110		-4

木村六郎杯 OPEN TEAMS Session 2 Flight A 2016年2月28日(日)

1

♠7642  
♥QJ952  
♦J82  
♣4

♠KJ ♠Q105  
♥107 ♥A43  
♦A73 ♦1094  
♣J109852 ♣AQ63

W N E S

♠A983  
♥K86  
♦KQ65  
♣K7

Board (1) Av: NS=+10

N-S	E-W	Contract	N-S	E-W	IMP
4	10	3H	S 3	140	4
10	4	3H	S 3	140	4
3	7	3H	N 3	140	4
2	5	3H	N 3	140	4
6	1	4H	N-1	50	-2
8	9	3S	S-1	50	-2
9	8	3S	S-1	50	-2
1	6	1NT	W 1	90	-3
5	2	3C	E 3	110	-3
7	3	3C	E 3	110	-3

2

♠AJ94  
♥J  
♦AQ10854  
♣105

♠10 ♠652  
♥AK943 ♥108752  
♦972 ♦K6  
♣AKQ7 ♣432

W N E S

♠KQ873  
♥Q6  
♦J3  
♣J986

Board (2) Av: NS=-450

N-S	E-W	Contract	N-S	E-W	IMP
4	10	5Sx	N-1	200	6
10	4	3H	W 5	200	6
9	8	4H	W 5	450	0
1	6	4H	W 5	450	0
6	1	4H	W 5	450	0
8	9	4H	W 5	450	0
5	2	4H	W 5	450	0
2	5	5Sx	S-2	500	-2
3	7	5Hx	W 5	650	-5
7	3	5Hx	W 5	650	-5

3

♠K109743  
♥J6  
♦K10  
♣AQ10

♠Q ♠862  
♥KQ108743 ♥A9  
♦J73 ♦9642  
♣94 ♣K765

W N E S

♠AJ5  
♥52  
♦AQ85  
♣J832

Board (3) Av: NS=+390

N-S	E-W	Contract	N-S	E-W	IMP
8	9	4S	N 5	450	2
2	5	4S	N 5	450	2
9	8	4S	N 4	420	1
1	6	4S	N 4	420	1
5	2	4S	N 4	420	1
10	4	4S	N 4	420	1
4	10	4S	N 4	420	1
7	3	4S	N 4	420	1
3	7	3S	N 4	170	-6
6	1	4S	N-1	50	-10

4

♠QJ  
♥AKQ54  
♦K9  
♣A653

♠K2 ♠A63  
♥10982 ♥J6  
♦Q10543 ♦AJ876  
♣82 ♣Q107

W N E S

♠1098754  
♥73  
♦2  
♣KJ94

Board (4) Av: NS=+380

N-S	E-W	Contract	N-S	E-W	IMP
4	10	4S	S 4	620	6
6	1	4S	S 4	620	6
5	2	4S	S 4	620	6
1	6	4S	S 4	620	6
8	9	4S	N 4	620	6
2	5	4S	N 4	620	6
3	7	3H	N 3	140	-6
7	3	5C	N-1	100	-10
10	4	3NT	N-1	100	-10
9	8	3D	E 3	110	-10

5

♠72  
♥97653  
♦AQ10  
♣A32

♠J10654 ♠A98  
♥Q108 ♥KJ  
♦J5 ♦K76432  
♣K87 ♣96

W N E S

♠KQ3  
♥A42  
♦98  
♣QJ1054

Board (5) Av: NS=+120

N-S	E-W	Contract	N-S	E-W	IMP
3	7	4H	N 4	620	11
2	5	3H	N 4	170	2
1	6	2NT	N 3	150	1
9	8	3H	N 3	140	1
5	2	3C	S 4	130	0
7	3	3C	S 4	130	0
6	1	3C	S 3	110	0
8	9	2S	W-1	50	-2
4	10	2D	E-1	50	-2
10	4	2NT	N-1	100	-6

6

♠A985  
♥J1075  
♦J8  
♣653

♠J63 ♠104  
♥AKQ63 ♥9842  
♦5 ♦A107643  
♣K1082 ♣4

W N E S

♠KQ72  
♥  
♦KQ92  
♣AQJ97

Board (6) Av: NS=+170

N-S	E-W	Contract	N-S	E-W	IMP
1	6	5Hx	W-2	500	8
4	10	4Hx	W-2	500	8
10	4	4S	S 4	420	6
9	8	4S	S 4	420	6
2	5	4S	N 4	420	6
6	1	4S	S-2	100	-7
7	3	4S	S-2	100	-7
3	7	4S	S-2	100	-7
8	9	4S	N-2	100	-7
5	2	5S	N-3	150	-8

7

♠AKQ109865  
♥62  
♦J82  
♣

♠A42 ♠KQ1095  
♥ ♥3  
♦Q873 ♦AJ954  
♣AKQ764 ♣53

W N E S

♠J8763  
♥J742  
♦K10  
♣109

Board (7) Av: NS=-360

N-S	E-W	Contract	N-S	E-W	IMP
5	2	7S	E-3	300	12
9	8	6S	E-2	200	11
1	6	6S	E-2	200	11
10	4	6S	E-2	200	11
4	10	5C	W 6	620	-6
6	1	4S	E 4	620	-6
3	7	4S	E 5	650	-7
7	3	4Sx	E 4	790	-10
2	5	7Hx	N-3	800	-10
8	9	6Sx	E 6	1660	-16

8

♠8  
♥Q653  
♦A1042  
♣AKJ9

♠AJ2 ♠9653  
♥K10 ♥9872  
♦J9873 ♦K5  
♣Q64 ♣1032

W N E S

♠KQ1074  
♥AJ4  
♦Q6  
♣875

Board (8) Av: NS=+380

N-S	E-W	Contract	N-S	E-W	IMP
3	7	3NT	N 4	430	2
2	5	3NT	N 4	430	2
8	9	3NT	N 4	430	2
10	4	3NT	N 4	430	2
5	2	3NT	N 4	430	2
9	8	3NT	S 3	400	1
1	6	3NT	N 3	400	1
4	10	3NT	N 3	400	1
7	3	2NT	N 3	150	-6
6	1	3NT	N-1	50	-10

9

♠2  
♥KQ6  
♦653  
♣KQJ964

♠7653 ♠QJ109  
♥J7 ♥A842  
♦KJ9 ♦Q8  
♣A852 ♣1073

W N E S

♠AK84  
♥10953  
♦A10742  
♣

Board (9) Av: NS=+60

N-S	E-W	Contract	N-S	E-W	IMP
1	6	3C	N 5	150	3
4	10	2C	N 5	150	3
2	5	3H	S 3	140	2
9	8	3C	N 4	130	2
10	4	3D	S 3	110	2
7	3	3D	S 3	110	2
3	7	4H	S-1	50	-3
6	1	3NT	S-1	50	-3
5	2	3NT	S-2	100	-4
8	9	3NT	S-3	150	-5

10

♠ 752  
♥ A965  
♦ K107  
♣ 654

♠ 963  
♥ Q74  
♦ A8643  
♣ 73

N  
W — E  
S

♠ AQ8  
♥ KJ102  
♦ J  
♣ KQJ102

♠ KJ104  
♥ 83  
♦ Q952  
♣ A98

11

♠ 983  
♥ K8  
♦ 87  
♣ KQ9843

♠ 62  
♥ Q10762  
♦ Q953  
♣ 52

N  
W — E  
S

♠ KQ107  
♥ A54  
♦ AJ4  
♣ J107

♠ AJ54  
♥ J93  
♦ K1062  
♣ A6

12

♠ K7  
♥ 64  
♦ A1098  
♣ AK986

♠ J42  
♥ KQ108  
♦ KJ62  
♣ J4

N  
W — E  
S

♠ Q1083  
♥ 753  
♦ Q543  
♣ Q5

♠ A965  
♥ AJ92  
♦ 7  
♣ 10732

Board (10) Av: NS=-30

N-S	E-W	Contract	N-S	E-W	IMP
8	9	3NT W-3	300		8
4	10	2NT W-2	200		6
3	7	2NT W-2	200		6
10	4	2NT W-1	100		4
1	6	1H E 3		140	-3
5	2	1H E 3		140	-3
7	3	2NT E 3		150	-3
9	8	1H E 4		170	-4
6	1	1H E 4		170	-4
2	5	3NT E 3		600	-11

Board (11) Av: NS=+120

N-S	E-W	Contract	N-S	E-W	IMP
1	6	1NT N 4	180		2
10	4	1NT N 4	180		2
3	7	1NT N 3	150		1
6	1	1NT N 3	150		1
9	8	1NT N 3	150		1
7	3	1NT N 3	150		1
2	5	3C N 4	130		0
8	9	1NT N 2	120		0
4	10	2H W 2		110	-6
5	2	2H W 2		110	-6

Board (12) Av: NS=+270

N-S	E-W	Contract	N-S	E-W	IMP
5	2	5C N 6	620		8
3	7	3NT N 3	600		8
2	5	3NT N 3	600		8
7	3	3C N 6	170		-3
1	6	2NT N 3	150		-3
8	9	2NT N 3	150		-3
10	4	1NT N 3	150		-3
4	10	1NT N 3	150		-3
6	1	1NT N 3	150		-3
9	8	1NT N 3	150		-3

13

♠ Q984  
♥ 1074  
♦ KJ65  
♣ A6

♠ K72  
♥ J93  
♦ Q1082  
♣ Q97

N  
W — E  
S

♠ A106  
♥ 852  
♦ A4  
♣ 108542

♠ J53  
♥ AKQ6  
♦ 973  
♣ KJ3

14

♠ K2  
♥ QJ108  
♦ AJ72  
♣ Q64

♠ A4  
♥ 6532  
♦ K864  
♣ 1098

N  
W — E  
S

♠ J10975  
♥ K  
♦ Q1093  
♣ K53

♠ Q863  
♥ A974  
♦ 5  
♣ AJ72

15

♠ AK86  
♥ KQ9  
♦ A  
♣ AK984

♠ 105  
♥ A8732  
♦ Q7542  
♣ Q

N  
W — E  
S

♠ J732  
♥ J106  
♦ KJ6  
♣ 753

♠ Q94  
♥ 54  
♦ 10983  
♣ J1062

Board (13) Av: NS=+130

N-S	E-W	Contract	N-S	E-W	IMP
8	4	1NT S 3	150		1
6	2	1NT S 3	150		1
4	8	1NT S 3	150		1
7	10	1NT S 3	150		1
2	6	1S N 3	140		0
3	9	1NT S 2	120		0
9	3	1NT S 2	120		0
5	1	1NT S 2	120		0
10	7	1NT S 1	90		-1
1	5	1NT S 1	90		-1

Board (14) Av: NS=+430

N-S	E-W	Contract	N-S	E-W	IMP
10	7	4H N 5	450		1
4	8	4H N 5	450		1
2	6	4H N 5	450		1
1	5	4H N 5	450		1
8	4	4H N 4	420		0
9	3	4H N 4	420		0
7	10	4H N 4	420		0
5	1	4H N 4	420		0
6	2	4H N 4	420		0
3	9	4H N 4	420		0

Board (15) Av: NS=+660

N-S	E-W	Contract	N-S	E-W	IMP
3	9	3NT N 6	690		1
9	3	3NT N 6	690		1
10	7	3NT N 6	690		1
5	1	3NT N 6	690		1
1	5	3NT N 6	690		1
8	4	3NT N 5	660		0
7	10	4S N 5	650		0
2	6	5C N 6	620		-1
6	2	3NT N 3	600		-2
4	8	1NT S 5	210		-10

16

♠ 10873  
♥ KQJ2  
♦ 1065  
♣ 76

♠ KQ942  
♥ 73  
♦ K987  
♣ Q5

N  
W — E  
S

♠ 1098654  
♥ QJ42  
♦ K94  
♣ K94

♠ AJ65  
♥ A  
♦ A3  
♣ AJ10832

17

♠ Q42  
♥ 3  
♦ 102  
♣ K1095432

♠ K103  
♥ 9876  
♦ AKJ5  
♣ 87

N  
W — E  
S

♠ AJ9765  
♥ Q4  
♦ Q864  
♣ A

♠ 8  
♥ AKJ1052  
♦ 973  
♣ QJ6

18

♠ A643  
♥ A4  
♦ AQJ109  
♣ 43

♠ 2  
♥ 8762  
♦ K52  
♣ AJ976

N  
W — E  
S

♠ J97  
♥ 105  
♦ 87643  
♣ K105

♠ KQ1085  
♥ KQJ93  
♦  
♣ Q82

Board (16) Av: NS=+120

N-S	E-W	Contract	N-S	E-W	IMP
4	8	4Sx N 4	590		10
2	6	3NT S 4	430		7
10	7	3NT S 3	400		7
8	4	2NT S 3	150		1
7	10	1NT S 3	150		1
3	9	3C S 3	110		0
1	5	4S N-1		50	-5
5	1	3NT S-1		50	-5
6	2	3NT S-3		150	-7
9	3	4S S-5		250	-9

Board (17) Av: NS=-410

N-S	E-W	Contract	N-S	E-W	IMP
10	7	5S E-1	50		10
2	6	5Cx N-2		300	3
4	8	5Cx N-2		300	3
3	9	4S E 4		420	0
8	4	4S E 4		420	0
1	5	5S E 5		450	-1
9	3	4S E 5		450	-1
7	10	4S E 5		450	-1
5	1	4S E 5		450	-1
6	2	4S E 5		450	-1

Board (18) Av: NS=+660

N-S	E-W	Contract	N-S	E-W	IMP
9	3	6S S 6	1430		13
10	7	4S S 6	680		1
3	9	4S S 6	680		1
5	1	4S S 6	680		1
1	5	5S S 5	650		0
4	8	4S S 5	650		0
6	2	4S S 5	650		0
2	6	4S S 5	650		0
8	4	4S S 5	650		0
7	10	6S S-1		100	-13



19

♠AKQ108  
♥A94  
♦J85  
♣K6

♠742  
♥83  
♦94  
♣Q108432

N  
W—E  
S

♠J953  
♥K65  
♦Q763  
♣A5

♠6  
♥QJ1072  
♦AK102  
♣J97

20

♠K109  
♥75  
♦QJ752  
♣952

♠J64  
♥J964  
♦A43  
♣Q107

N  
W—E  
S

♠AQ87532  
♥K102  
♦K9  
♣6

♠AQ83  
♥1086  
♣AKJ843

21

♠96  
♥A1084  
♦K7  
♣K10864

♠K53  
♥93  
♦J432  
♣QJ92

N  
W—E  
S

♠A74  
♥KQJ6  
♦A1095  
♣A5

♠QJ1082  
♥752  
♦Q86  
♣73

Board (19) Av: NS=+450

N-S	E-W	Contract	N-S	E-W	IMP
7	10	4NT N 5	460		0
4	8	3NT N 5	460		0
9	3	5H S 5	450		0
10	7	4H S 5	450		0
6	2	4H S 5	450		0
3	9	4H S 5	450		0
8	4	4H S 5	450		0
2	6	4H S 5	450		0
5	1	4H S 4	420		-1
1	5	4H S 4	420		-1

Board (20) Av: NS=-90

N-S	E-W	Contract	N-S	E-W	IMP
6	2	5Cx S 5	750		13
3	9	4S E-2	200		7
8	4	4S E-1	100		5
1	5	4S E-1	100		5
5	1	5D N-1	100		0
4	8	3S E 3	140		-2
2	6	5Cx S-1	200		-3
7	10	5Cx S-1	200		-3
10	7	5Dx N-2	500		-9
9	3	5Cx S-2	500		-9

Board (21) Av: NS=-340

N-S	E-W	Contract	N-S	E-W	IMP
6	2	3NT E-1	50		9
10	7	2NT W 3	150		5
8	4	2NT W 3	150		5
7	10	3NT W 3	400		-2
2	6	3NT W 3	400		-2
3	9	3NT W 3	400		-2
5	1	3NT W 3	400		-2
9	3	3NT E 3	400		-2
1	5	3NT E 3	400		-2
4	8	3NT W 4	430		-3

22

♠Q10  
♥K10  
♦AKQJ1062  
♣53

♠KJ843  
♥Q752  
♦73  
♣104

N  
W—E  
S

♠9762  
♥A864  
♦85  
♣J87

♠A5  
♥J93  
♦94  
♣AKQ962

23

♠765  
♥AK965  
♦75  
♣QJ9

♠AJ1082  
♥7  
♦Q843  
♣1073

N  
W—E  
S

♠Q943  
♥J32  
♦K102  
♣K54

♠K  
♥Q1084  
♦AJ96  
♣A862

24

♠KQ4  
♥9  
♦A108542  
♣Q93

♠J963  
♥KJ  
♦3  
♣AK10762

N  
W—E  
S

♠1075  
♥10632  
♦KQ76  
♣J8

♠A82  
♥AQ8754  
♦J9  
♣54

Board (22) Av: NS=+740

N-S	E-W	Contract	N-S	E-W	IMP
8	4	6NT S 7	1020		7
7	10	6NT S 7	1020		7
5	1	6D S 7	940		5
2	6	6D N 6	920		5
1	5	6D N 6	920		5
9	3	3NT S 7	520		-6
3	9	3NT S 7	520		-6
10	7	3NT S 7	520		-6
4	8	3NT N 7	520		-6
6	2	3NT N 7	520		-6

Board (23) Av: NS=+360

N-S	E-W	Contract	N-S	E-W	IMP
4	8	4H N 5	650		7
2	6	4H N 5	650		7
6	2	4H N 4	620		6
1	5	4H N 4	620		6
8	4	2H N 6	230		-4
9	3	3H N 5	200		-4
7	10	2H N 5	200		-4
10	7	3H N 4	170		-5
5	1	2H N 4	170		-5
3	9	3S W-1	100		-6

Board (24) Av: NS=+120

N-S	E-W	Contract	N-S	E-W	IMP
5	1	2H S 3	140		1
8	4	2H S 3	140		1
9	3	2D N 4	130		0
2	6	3D N 3	110		0
6	2	2H S 2	110		0
3	9	2H S 2	110		0
10	7	2D N 3	110		0
1	5	2D N 3	110		0
7	10	3C W-2	100		-1
4	8	3H S-1	50		-5

**1**

♠984  
♥J984  
♦Q64  
♣J108

♠K72  
♥2  
♦KJ872  
♣K432

♠QJ53  
♥K103  
♦A1093  
♣Q9

W N E S

♠A106  
♥AQ765  
♦5  
♣A765

Board (1) Av: NS=-100

N-S	E-W	Contract	N-S	E-W	IMP
4	1	4S	W-1	50	4
8	7	4D	E-1	50	4
5	6	3H	S-1	50	2
10	9	3H	S-2	100	0
2	3	2S	W 2	110	0
1	4	4D	E 4	130	-1
7	8	4D	E 4	130	-1
3	2	2S	W 3	140	-1
6	5	3D	E 5	150	-2
9	10	3S	W 4	170	-2

**2**

♠6  
♥AQ9842  
♦KJ974  
♣7

♠AJ1042  
♥10  
♦832  
♣KQ102

♠K73  
♥J765  
♦Q  
♣J6543

W N E S

♠Q985  
♥K3  
♦A1065  
♣A98

Board (2) Av: NS=+640

N-S	E-W	Contract	N-S	E-W	IMP
2	3	6D	S 6	1370	12
5	6	4H	N 6	680	1
8	7	4H	N 5	650	0
9	10	4H	N 5	650	0
1	4	4H	N 5	650	0
3	2	4H	N 5	650	0
10	9	5D	S 6	620	-1
6	5	5D	N 6	620	-1
7	8	3NT	S 3	600	-1
4	1	3NT	S 3	600	-1

**3**

♠K75  
♥AQ85  
♦J92  
♣K63

♠Q1093  
♥J943  
♦Q  
♣8542

♠AJ62  
♥762  
♦A1064  
♣Q9

W N E S

♠84  
♥K10  
♦K8753  
♣AJ107

Board (3) Av: NS=+20

N-S	E-W	Contract	N-S	E-W	IMP
5	6	3NT	N 3	400	9
10	9	2NT	N 3	150	4
1	4	2NT	N 2	120	3
3	2	2NT	N 2	120	3
4	1	3NT	S-1	50	-2
8	7	3NT	N-1	50	-2
6	5	3NT	N-1	50	-2
9	10	3NT	N-1	50	-2
7	8	3NT	N-1	50	-2
2	3	5D	S-2	100	-3

**4**

♠AK874  
♥75  
♦K5  
♣K643

♠32  
♥K92  
♦AQ10  
♣AQ972

♠965  
♥J108  
♦J9643  
♣85

W N E S

♠QJ10  
♥AQ643  
♦872  
♣J10

Board (4) Av: NS=+160

N-S	E-W	Contract	N-S	E-W	IMP
8	7	4S	N 4	620	10
3	2	4S	N 4	620	10
1	4	2S	N 5	200	1
10	9	3S	N 4	170	0
4	1	3S	N 4	170	0
5	6	2S	N 4	170	0
6	5	2S	N 2	110	-2
7	8	3S	N-1	100	-6
9	10	3S	N-1	100	-6
2	3	2H	S-2	200	-8

**5**

♠KQ  
♥Q106  
♦KQJ6  
♣AK102

♠1085  
♥3  
♦10975  
♣Q9853

♠A43  
♥K985  
♦82  
♣J764

W N E S

♠J9762  
♥AJ742  
♦A43  
♣

Board (5) Av: NS=+370

N-S	E-W	Contract	N-S	E-W	IMP
8	7	3NT	N 5	660	7
9	10	5H	N 5	650	7
6	5	5H	N 5	650	7
2	3	5H	N 5	650	7
4	1	4H	N 5	650	7
10	9	3NT	N 4	630	6
3	2	6H	S-1	100	-10
1	4	6H	N-1	100	-10
7	8	5S	N-1	100	-10
5	6	6H	S-2	200	-11

**6**

♠752  
♥A1086  
♦10532  
♣104

♠A98  
♥KJ97  
♦QJ8  
♣965

♠QJ3  
♥43  
♦A964  
♣KQ72

W N E S

♠K1064  
♥Q52  
♦K7  
♣AJ83

Board (6) Av: NS=-50

N-S	E-W	Contract	N-S	E-W	IMP
9	10	1NT	W-1	100	4
1	4	1NT	S 1	90	4
8	7	1S	S 1	80	4
5	6	1S	S-1	50	0
4	1	1S	S-1	50	0
10	9	1S	S-2	100	-2
7	8	1NT	N-2	100	-2
6	5	1NT	E 2	120	-2
2	3	1NT	E 2	120	-2
3	2	1NTx	E 3	580	-11

**7**

♠4  
♥92  
♦986542  
♣A976

♠J65  
♥A73  
♦AKQJ103  
♣3

♠AQ873  
♥1084  
♦7  
♣K1054

W N E S

♠K1092  
♥KQJ65  
♦  
♣QJ82

Board (7) Av: NS=+160

N-S	E-W	Contract	N-S	E-W	IMP
5	6	5Sx	W-3	800	12
10	9	4S	W-3	300	4
6	5	4S	W-2	200	1
8	7	4S	W-2	200	1
2	3	4S	W-2	200	1
3	2	2Dx	E-1	200	1
7	8	2Dx	E-1	200	1
4	1	3NT	E-1	100	-2
9	10	2D	W 2	90	-6
1	4	2D	S-4	400	-11

**8**

♠KJ1062  
♥3  
♦QJ9  
♣KJ86

♠43  
♥KQ9  
♦8754  
♣AQ104

♠AQ8  
♥J64  
♦K1062  
♣732

W N E S

♠975  
♥A108752  
♦A3  
♣95

Board (8) Av: NS=+30

N-S	E-W	Contract	N-S	E-W	IMP
5	6	3S	N 3	140	3
4	1	2S	N 2	110	2
6	5	2S	N 2	110	2
8	7	2NT	E-2	100	2
2	3	3D	W-1	50	1
9	10	Passout			-1
7	8	3S	N-1	50	-2
1	4	3S	N-1	50	-2
3	2	3S	N-1	50	-2
10	9	3S	N-1	50	-2

**9**

♠A1065  
♥87  
♦842  
♣K762

♠QJ942  
♥2  
♦73  
♣AJ985

♠6543  
♥KQ965  
♦Q1043  
♣

W N E S

♠K873  
♥AKQJ109  
♦AJ10  
♣

Board (9) Av: NS=+30

N-S	E-W	Contract	N-S	E-W	IMP
5	6	4Sxx	N 4	880	13
3	2	4H	S 5	450	9
9	10	4H	S 4	420	9
4	1	4S	S-1	50	-2
1	4	4S	S-1	50	-2
6	5	6NT	S-2	100	-4
10	9	5S	N-2	100	-4
2	3	4S	N-2	100	-4
7	8	4S	N-5	250	-7
8	7	5Sx	N-2	300	-8

木村六郎杯 OPEN TEAMS Session 3 Flight A 2016年2月28日(日)

10

♠ A6  
♥ KQ10  
♦ K9763  
♣ K102

♠ KJ10842  
♥ A6  
♦ AJ5  
♣ 54

N  
W — E  
S

♠ Q97  
♥ J9543  
♦ Q108  
♣ Q8

♠ 53  
♥ 872  
♦ 42  
♣ AJ9763

11

♠ QJ653  
♥ 85  
♦ 9653  
♣ 63

♠ A72  
♥ KJ7  
♦ 72  
♣ QJ1098

N  
W — E  
S

♠ 94  
♥ A10962  
♦ AK1084  
♣ 7

♠ K108  
♥ Q43  
♦ QJ  
♣ AK542

12

♠ K95  
♥ AK7  
♦ K7  
♣ AK832

♠ Q10  
♥ 986  
♦ AQ9432  
♣ 107

N  
W — E  
S

♠ A4  
♥ Q105432  
♦ J65  
♣ QJ

♠ J87632  
♥ J  
♦ 108  
♣ 9654

Board (10) Av: NS=-30

N-S	E-W	Contract	N-S	E-W	IMP
4	1	3S	W-2	200	6
9	10	3S	W-2	200	6
3	2	3C	S 4	130	4
1	4	3S	W-1	100	4
10	9	2S	W 3	140	-3
5	6	2S	W 3	140	-3
6	5	2S	W 3	140	-3
2	3	2S	W 3	140	-3
8	7	2S	W 3	140	-3
7	8	2S	W 5	200	-5

Board (11) Av: NS=-160

N-S	E-W	Contract	N-S	E-W	IMP
5	6	3H	W-1	50	5
1	4	2S	S-1	50	3
6	5	3D	E 4	130	1
4	1	3D	E 4	130	1
10	9	3H	W 4	170	0
8	7	3H	W 4	170	0
9	10	3H	W 4	170	0
3	2	3H	W 5	200	-1
2	3	3H	W 6	230	-2
7	8	4H	W 4	420	-6

Board (12) Av: NS=+570

N-S	E-W	Contract	N-S	E-W	IMP
2	3	4S	S 5	650	2
9	10	4S	N 5	650	2
7	8	4S	S 4	620	2
4	1	4S	S 4	620	2
10	9	4S	N 4	620	2
8	7	4S	N 4	620	2
3	2	4S	N 4	620	2
5	6	4S	N 4	620	2
1	4	3S	N 4	170	-9
6	5	3NT	N-3	300	-13

13

♠ Q94  
♥ 1098752  
♦ K76  
♣ J

♠ 1087652  
♥ QJ3  
♦ 53  
♣ Q4

N  
W — E  
S

♠ KJ  
♥ AK4  
♦ A2  
♣ 987653

♠ A3  
♥ 6  
♦ QJ10984  
♣ AK102

14

♠ 107  
♥ 10  
♦ AQJ1043  
♣ K842

♠ 65432  
♥ J4  
♦ 2  
♣ J10753

N  
W — E  
S

♠ AKJ  
♥ AKQ96  
♦ 9876  
♣ 6

♠ Q98  
♥ 87532  
♦ K5  
♣ AQ9

15

♠ KJ986  
♥ KJ74  
♦ 10932  
♣

♠ 7  
♥ Q10853  
♦ 64  
♣ KQ753

N  
W — E  
S

♠ 43  
♥ A62  
♦ KQ85  
♣ AJ64

♠ AQ1052  
♥ 9  
♦ AJ7  
♣ 10982

Board (13) Av: NS=+70

N-S	E-W	Contract	N-S	E-W	IMP
10	6	3S	E-2	200	4
8	5	3D	S 4	130	2
6	10	3D	S 4	130	2
7	9	3D	S 4	130	2
5	8	3D	S 4	130	2
4	2	3D	S 4	130	2
3	1	2S	E-1	100	1
2	4	3H	N-1	100	-5
1	3	2S	E 2	110	-5
9	7	2S	E 3	140	-5

Board (14) Av: NS=+160

N-S	E-W	Contract	N-S	E-W	IMP
6	10	3NT	S 4	430	7
9	7	3NT	S 3	400	6
5	8	3D	N 4	130	-1
10	6	3D	N 4	130	-1
3	1	3D	N 4	130	-1
2	4	2D	N 4	130	-1
1	3	2D	N 4	130	-1
8	5	3D	N 3	110	-2
7	9	3D	N 3	110	-2
4	2	4Sx	W-1	100	-2

Board (15) Av: NS=+590

N-S	E-W	Contract	N-S	E-W	IMP
2	4	4S	S 6	680	3
6	10	4S	S 6	680	3
4	2	4S	S 5	650	2
8	5	4S	S 5	650	2
1	3	4S	S 5	650	2
10	6	4S	N 5	650	2
7	9	4S	S 4	620	1
5	8	5Cx	W-3	500	-3
3	1	5Cx	E-2	300	-7
9	7	5S	S-1	100	-12

16

♠ K32  
♥ 85  
♦ KJ9542  
♣ 108

♠ AQJ1087  
♥ Q4  
♦ 8  
♣ QJ92

N  
W — E  
S

♠ 964  
♥ AKJ6  
♦ AQ106  
♣ 54

♠ 5  
♥ 109732  
♦ 73  
♣ AK763

17

♠ 982  
♥ J4  
♦ Q984  
♣ A1062

♠ AJ5  
♥ 865  
♦ A107632  
♣ 3

N  
W — E  
S

♠ 74  
♥ K9732  
♦ KJ  
♣ K975

♠ KQ1063  
♥ AQ10  
♦ 5  
♣ QJ84

18

♠ Q93  
♥ 875  
♦ AQ2  
♣ Q742

♠ AJ10875  
♥ 9643  
♦ 8  
♣ A8

N  
W — E  
S

♠ K64  
♥ 10  
♦ 1076543  
♣ 1096

♠ 2  
♥ AKQJ2  
♦ KJ9  
♣ KJ53

Board (16) Av: NS=-620

N-S	E-W	Contract	N-S	E-W	IMP
10	6	4S	W 4	620	0
6	10	4S	W 4	620	0
7	9	4S	W 4	620	0
8	5	4S	W 4	620	0
2	4	4S	W 4	620	0
5	8	4S	W 4	620	0
1	3	4S	W 4	620	0
4	2	4S	W 4	620	0
9	7	4S	W 4	620	0
3	1	4S	E 4	620	0

Board (17) Av: NS=+80

N-S	E-W	Contract	N-S	E-W	IMP
6	10	3S	S 3	140	2
10	6	3S	S 3	140	2
4	2	3S	S 3	140	2
1	3	3S	S 3	140	2
2	4	2S	S 3	140	2
3	1	3Dx	W-1	100	1
9	7	3H	E-1	50	-1
7	9	4S	S-1	50	-4
5	8	4S	S-1	50	-4
8	5	3S	S-1	50	-4

Board (18) Av: NS=+330

N-S	E-W	Contract	N-S	E-W	IMP
7	9	4H	S 5	650	8
3	1	3NT	N 4	630	7
8	5	4H	S 4	620	7
4	2	4H	S 4	620	7
6	10	4Sx	W-2	300	-1
5	8	4Sx	W-2	300	-1
2	4	4Sx	W-2	300	-1
9	7	4Sx	W-1	100	-6
1	3	5H	S-2	200	-11
10	6	5H	S-4	400	-12

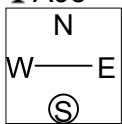
19

♠ QJ743  
♥ J94  
♦ 83  
♣ A93

♠ AK852  
♥ KQ63  
♦ Q4  
♣ K2

♠ 10  
♥ 10  
♦ K10975  
♣ Q108654

♠ 96  
♥ A8752  
♦ AJ62  
♣ J7



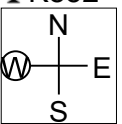
20

♠ K1084  
♥ 1094  
♦ K7  
♣ K852

♠ J32  
♥ K765  
♦ 10954  
♣ J9

♠ 9  
♥ AQ832  
♦ QJ8  
♣ A743

♠ AQ765  
♥ J  
♦ A632  
♣ Q106



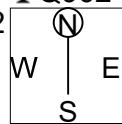
21

♠ KQ8  
♥ K109  
♦ 852  
♣ Q962

♠ 109652  
♥ 8  
♦ KQJ  
♣ K1043

♠ AJ73  
♥ J63  
♦ A1074  
♣ J5

♠ 4  
♥ AQ7542  
♦ 963  
♣ A87



Board (19) Av: NS=+20

N-S	E-W	Contract	N-S	E-W	IMP
10	6	2NT E-3	300		7
1	3	4C E-2	200		5
3	1	3NT E-2	200		5
8	5	2NT E-2	200		5
5	8	2H S-1		50	-2
7	9	2H S-1		50	-2
6	10	2H S-2		100	-3
9	7	3D W 3		110	-4
4	2	3C W 3		110	-4
2	4	3C E 3		110	-4

Board (20) Av: NS=+280

N-S	E-W	Contract	N-S	E-W	IMP
4	2	4S S 5	650		9
3	1	4S S 5	650		9
10	6	4S S 4	620		8
5	8	4S S 4	620		8
9	7	3S S 5	200		-2
1	3	3S S 4	170		-3
7	9	2S S 3	140		-4
2	4	4S S-1		100	-9
6	10	4S S-1		100	-9
8	5	4S S-1		100	-9

Board (21) Av: NS=-260

N-S	E-W	Contract	N-S	E-W	IMP
5	8	4S E-1	50		7
2	4	3H S-1		100	4
7	9	3H S-1		100	4
10	6	3S W 3		140	3
8	5	3S W 4		170	3
4	2	3S W 4		170	3
6	10	4S W 4		420	-4
9	7	4S W 4		420	-4
3	1	4Sx E 4		590	-8
1	3	4Sx E 4		590	-8

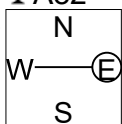
22

♠ Q64  
♥ KJ10962  
♦ 8  
♣ A82

♠ AJ873  
♥ Q43  
♦ 1052  
♣ 73

♠ 952  
♥ A7  
♦ AK9  
♣ QJ964

♠ K10  
♥ 85  
♦ QJ7643  
♣ K105



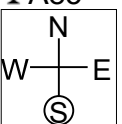
23

♠ KQ1096  
♥ KQJ104  
♦  
♣ A85

♠ 32  
♥ 982  
♦ 1073  
♣ Q10762

♠ AJ4  
♥ 53  
♦ K986542  
♣ 3

♠ 875  
♥ A76  
♦ AQJ  
♣ KJ94



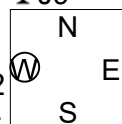
24

♠ 87652  
♥ Q1093  
♦ 93  
♣ J9

♠ K4  
♥ K42  
♦ K1062  
♣ 10654

♠ QJ1093  
♥ 75  
♦ J85  
♣ A72

♠ A  
♥ AJ86  
♦ AQ74  
♣ KQ83



Board (22) Av: NS=+60

N-S	E-W	Contract	N-S	E-W	IMP
2	4	3H N 4	170		3
10	6	3H N 3	140		2
3	1	3H N 3	140		2
6	10	2H N 2	110		2
8	5	3S E-1	100		1
5	8	2S W-1	100		1
1	3	2S E-1	100		1
4	2	3D S-1		50	-3
9	7	2S W 3		140	-5
7	9	4D S-3		150	-5

Board (23) Av: NS=+90

N-S	E-W	Contract	N-S	E-W	IMP
4	2	3NT S 5	660		11
9	7	4S N 5	650		11
10	6	4H N 5	650		11
5	8	6S S-1		100	-5
3	1	6S S-1		100	-5
1	3	6S S-1		100	-5
6	10	6H S-1		100	-5
2	4	6H S-1		100	-5
7	9	6H S-1		100	-5
8	5	6H S-1		100	-5

Board (24) Av: NS=+170

N-S	E-W	Contract	N-S	E-W	IMP
2	4	4H S 4	420		6
4	2	4H N 4	420		6
5	8	4H N 4	420		6
10	6	4H N 4	420		6
8	5	3H S 4	170		0
6	10	2H S 3	140		-1
1	3	4H S-1		50	-6
3	1	3NT N-1		50	-6
9	7	4H S-2		100	-7
7	9	3S S-3		150	-8

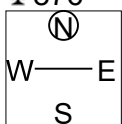
25

♠ Q7  
♥ KQ763  
♦ J109  
♣ 876

♠ J63  
♥ 2  
♦ K8543  
♣ A952

♠ AK98  
♥ 1084  
♦ Q7  
♣ KJ43

♠ 10542  
♥ AJ95  
♦ A62  
♣ Q10



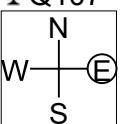
26

♠ 865  
♥ 108  
♦ Q10742  
♣ Q107

♠ A104  
♥ AJ7  
♦ J93  
♣ KJ94

♠ KQJ72  
♥ 54  
♦ A865  
♣ 85

♠ 93  
♥ KQ9632  
♦ K  
♣ A632



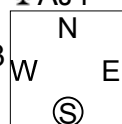
27

♠ QJ109  
♥ A42  
♦ J65  
♣ AJ4

♠ 8764  
♥ 98653  
♦ 107  
♣ Q10

♠ K5  
♥ KJ7  
♦ 984  
♣ K7653

♠ A32  
♥ Q10  
♦ AKQ32  
♣ 982



Board (25) Av: NS=-40

N-S	E-W	Contract	N-S	E-W	IMP
7	6	2H N 2	110		4
8	10	4C E-1	100		4
1	2	3H N-1		50	0
3	4	3H N-1		50	0
2	1	3H N-1		50	0
5	9	3H N-1		50	0
4	3	3H N-1		50	0
6	7	3H N-1		50	0
9	5	1NT E 1		90	-2
10	8	4C E 5		150	-3

Board (26) Av: NS=-290

N-S	E-W	Contract	N-S	E-W	IMP
8	10	4S E-2	200		10
2	1	4S E-1	100		9
3	4	2S E 2		110	5
9	5	2S E 3		140	4
6	7	2NT W 3		150	4
7	6	2H S-2		200	3
1	2	3NT W 3		600	-7
5	9	4S E 4		620	-8
10	8	4S E 4		620	-8
4	3	3Hx S-3		800	-11

Board (27) Av: NS=+480

N-S	E-W	Contract	N-S	E-W	IMP
7	6	3NT S 6	490		0
10	8	3NT S 6	490		0
3	4	3NT S 6	490		0
9	5	3NT S 6	490		0
5	9	3NT S 6	490		0
6	7	3NT S 6	490		0
8	10	3NT S 6	490		0
4	3	3NT S 5	460		-1
2	1	3NT S 4	430		-2
1	2	3C N 4	130		-8

28

♠ KQ10  
♥ A65  
♦ 952  
♣ 9832

♠ A3  
♥ KJ72  
♦ KJ103  
♣ J105

N E  
W S

♠ J8642  
♥ 84  
♦ A64  
♣ K74

♠ 975  
♥ Q1093  
♦ Q87  
♣ AQ6

29

♠ K3  
♥ J9842  
♦ 92  
♣ A1094

♠ Q109752  
♥ K6  
♦ 84  
♣ Q85

N E  
W S

♠ A86  
♥ A1073  
♦ AKQ5  
♣ J2

♠ J4  
♥ Q5  
♦ J10763  
♣ K763

30

♠ AQ52  
♥ Q63  
♦ J10  
♣ A985

♠ KJ1086  
♥ 52  
♦ 94  
♣ K1076

N E  
W S

♠ 9743  
♥ A1087  
♦ K8732  
♣

♠  
♥ KJ94  
♦ AQ65  
♣ QJ432

Board (28) Av: NS=-60

N-S	E-W	Contract	N-S	E-W	IMP
4	3	1NT W-1	50		3
5	9	1NT W-1	50		3
9	5	1NT W-1	50		3
2	1	1NT W 1		90	-1
3	4	1NT W 1		90	-1
7	6	1NT W 1		90	-1
8	10	1NT W 1		90	-1
6	7	1NT W 1		90	-1
10	8	1NT W 1		90	-1
1	2	1NT W 2		120	-2

Board (29) Av: NS=-620

N-S	E-W	Contract	N-S	E-W	IMP
9	5	4S W 4	620		0
7	6	4S W 4	620		0
3	4	4S W 4	620		0
1	2	4S W 4	620		0
10	8	4S W 4	620		0
5	9	4S W 4	620		0
8	10	4S W 4	620		0
6	7	4S W 4	620		0
2	1	4S W 5	650		-1
4	3	4S E 5	650		-1

Board (30) Av: NS=+360

N-S	E-W	Contract	N-S	E-W	IMP
2	1	2Dx E-3	500		4
7	6	3NT S 4	430		2
8	10	3NT S 4	430		2
3	4	3NT S 4	430		2
5	9	3NT N 4	430		2
10	8	3NT N 3	400		1
4	3	3NT N 3	400		1
9	5	3NT N 3	400		1
1	2	5C S-1		50	-9
6	7	5C S-1		50	-9

31

♠ Q82  
♥ 864  
♦ 10  
♣ AKQJ109

♠ K9653  
♥ A72  
♦ A987  
♣ 7

N E  
W S

♠ 107  
♥ Q93  
♦ KQ5  
♣ 86532

♠ AJ4  
♥ KJ105  
♦ J6432  
♣ 4

32

♠ 542  
♥ J962  
♦ KJ6  
♣ K109

♠ QJ8  
♥ KQ108  
♦ 109542  
♣ J

N E  
W S

♠ K10963  
♥ 73  
♦ Q8  
♣ A872

♠ A7  
♥ A54  
♦ A73  
♣ Q6543

33

♠ A76  
♥ K52  
♦ 3  
♣ KJ10987

♠ 42  
♥ Q10763  
♦ K102  
♣ 542

N E  
W S

♠ KJ10  
♥ J984  
♦ AQ964  
♣ 3

♠ Q9853  
♥ A  
♦ J875  
♣ AQ6

Board (31) Av: NS=+170

N-S	E-W	Contract	N-S	E-W	IMP
5	9	2NTxS 3	890		12
7	6	3NT S 6	690		11
10	8	2S W-3	150		-1
2	1	3C N 4	130		-1
8	10	3C N 4	130		-1
9	5	2C N 4	130		-1
3	4	2C N 4	130		-1
1	2	2S W-2	100		-2
6	7	3NT S-1		100	-7
4	3	3NT S-1		100	-7

Board (32) Av: NS=0

N-S	E-W	Contract	N-S	E-W	IMP
5	9	2NT S 3	150		4
6	7	1NT S 3	150		4
3	4	1NT S 2	120		3
8	10	2S E-1	100		3
7	6	4C S-1		50	-2
4	3	3C S-1		50	-2
1	2	3C S-1		50	-2
10	8	3C S-2	100		-3
2	1	3C S-2	100		-3
9	5	2S E 3	140		-4

Board (33) Av: NS=+430

N-S	E-W	Contract	N-S	E-W	IMP
10	8	4S S 6	480		2
2	1	4S S 5	450		1
7	6	4S S 5	450		1
1	2	4S S 5	450		1
8	10	4S S 4	420		0
5	9	4S S 4	420		0
3	4	4S S 4	420		0
6	7	5C N 5	400		-1
4	3	3NT S 3	400		-1
9	5	2S S 4	170		-6

34

♠ J109532  
♥ K8  
♦ AJ64  
♣ Q

♠ KQ8  
♥ AJ952  
♦ 1073  
♣ KJ

N E  
W S

♠ 64  
♥ 63  
♦ K982  
♣ A7653

♠ A7  
♥ Q1074  
♦ Q5  
♣ 109842

35

♠ J3  
♥ J754  
♦ J83  
♣ KQ105

♠ A74  
♥ K103  
♦ K765  
♣ 764

N E  
W S

♠ K105  
♥ Q86  
♦ A1092  
♣ J92

♠ Q9862  
♥ A92  
♦ Q4  
♣ A83

36

♠ QJ42  
♥ J1073  
♦ AQ102  
♣ 4

♠ K85  
♥ K94  
♦ 843  
♣ J762

N E  
W S

♠ 103  
♥ A852  
♦ KJ9  
♣ AKQ10

♠ A976  
♥ Q6  
♦ 765  
♣ 9853

Board (34) Av: NS=+100

N-S	E-W	Contract	N-S	E-W	IMP
4	3	2S N 2	110		0
10	8	2S N 2	110		0
3	4	2S N 2	110		0
1	2	2S N 2	110		0
5	9	2S N 2	110		0
8	10	2S N 2	110		0
2	1	3C E-2	100		0
7	6	3C E-2	100		0
9	5	2D W-1	50		-2
6	7	1NT W 1		90	-5

Board (35) Av: NS=+30

N-S	E-W	Contract	N-S	E-W	IMP
2	1	2S S 3	140		3
4	3	2S S 3	140		3
10	8	2S S 2	110		2
3	4	2S S 2	110		2
7	6	1NT N 1	90		2
8	10	2S S-1		50	-2
1	2	2S S-1		50	-2
9	5	2S S-1		50	-2
5	9	1NT N-1		50	-2
6	7	1NT N-1		50	-2

Board (36) Av: NS=-100

N-S	E-W	Contract	N-S	E-W	IMP
2	1	Cancel			
4	3	2S S 2	110		5
8	10	3C W-1	100		5
3	4	2S S-1		100	0
5	9	1NT E 2		120	-1
7	6	1NT E 3		150	-2
1	2	1NT E 3		150	-2
9	5	1NT E 3		150	-2
6	7	1NT E 3		150	-2
10	8	1NT E 3		150	-2