

第5回大阪大学橋本杯 OPEN/△1500/△500MP PAIRS Session 1 Section ABC 2016年8月27日(土)

1

♠ 109
♥ A54
♦ A93
♣ KQ1062

♠ J765432
♥ 86
♦ K10
♣ J8

♠ AKQ8
♥ J
♦ 87652
♣ 975

♠ KQ109732
♥ QJ4
♦ A43

2

♠ K6
♥ AKJ865
♦ J63
♣ A10

♠ AJ954
♥ Q4
♦ A42
♣ KJ4

♠ 10832
♥ 1073
♦ Q8
♣ Q862

♠ Q7
♥ 92
♦ K10975
♣ 9753

3

♠ 98
♥ K943
♦ KQ
♣ Q9765

♠ 742
♥ Q5
♦ 109852
♣ J82

♠ AJ10653
♥ 106
♦ 643
♣ A4

♠ KQ
♥ AJ872
♦ AJ7
♣ K103

4

♠ 2
♥ 10876
♦ KQ1076
♣ J52

♠ 109873
♥ AK32
♦ 9
♣ Q108

♠ AKQJ
♥ Q95
♦ AJ3
♣ K73

♠ 654
♥ J4
♦ 8542
♣ A964

5

♠ J6
♥ AQ5432
♦ A98
♣ A10

♠ AQ102
♥ 876
♦ J4
♣ 9643

♠ 84
♥ K10
♦ 1062
♣ KQJ875

♠ K9753
♥ J9
♦ KQ753
♣ 2

Board (1)

N-S	E-W	Contract	N-S	E-W	MP
B16	B04	6H S 7	1010		37.5
A05	A22	6H S 7	1010		37.5
B18	B08	5H S 7	510		22.5
B26	B11	5H S 7	510		22.5
B01	B21	5H S 7	510		22.5
B03	B22	5H S 7	510		22.5
B23	B05	5H S 7	510		22.5
C11	C14	5H S 7	510		22.5
C18	C06	5H S 7	510		22.5
C16	C02	5H S 7	510		22.5
C15	C13	5H S 7	510		22.5
C25	C07	5H S 7	510		22.5
C12	C21	5H S 7	510		22.5
C08	C19	5H S 7	510		22.5
A16	A09	5H S 7	510		22.5
A24	A08	5H S 7	510		22.5
A11	A26	5H S 7	510		22.5
A01	A15	5H S 7	510		22.5
C03	C23	4H S 7	510		22.5
C05	C24	4H S 7	510		22.5
A06	A27	4H S 7	510		22.5
C01	C22	4H S 7	510		22.5
C17	C04	4H S 7	510		22.5
B14	B13	4H S 7	510		22.5
A18	A12	4H S 7	510		22.5
A02	A20	4H S 7	510		22.5
A21	A10	4H S 7	510		22.5
B10	B19	4H S 7	510		22.5
A17	A04	4H S 7	510		22.5
B12	B20	4H S 7	510		22.5
B24	B07	6Sx E-3	500		7.5
B15	B02	5Sx E-3	500		7.5
C20	C10	5H S 6	480		5.5
A13	A23	4H S 6	480		5.5
B09	B25	4Sx W-2	300		3.5
A19	A07	4Sx E-2	300		3.5
A03	A25	4S W-2	100		1.5
C26	C09	4S E-2	100		1.5
B06	B17	4Sx E 4	590		0

Board (2)

N-S	E-W	Contract	N-S	E-W	MP
B26	B11	4H N 5	650		38
A06	A27	4H N 4	620		36
B06	B17	4H N 4	620		36
A16	A09	4H N 4	620		36
C20	C10	1NT W-5	250		34
C17	C04	2H N 6	230		33
C18	C06	3H N 5	200		31
B14	B13	3H N 5	200		31
C03	C23	2H N 5	200		31
C05	C24	3H N 4	170		25.5
B24	B07	3H N 4	170		25.5
A03	A25	3H N 4	170		25.5
C12	C21	2H N 4	170		25.5
B15	B02	2H N 4	170		25.5
C08	C19	2H N 4	170		25.5
A24	A08	2H N 4	170		25.5
B01	B21	2H N 4	170		25.5
A13	A23	3H N 3	140		21
A19	A07	3D S 3	110		20
A21	A10	4S W-2	100		18
C01	C22	4S W-2	100		18
B03	B22	3S W-2	100		18
C16	C02	3S W-1	50		10.5
C25	C07	3S W-1	50		10.5
C26	C09	3S W-1	50		10.5
A17	A04	3S W-1	50		10.5
B23	B05	3S W-1	50		10.5
A18	A12	3S W-1	50		10.5
A11	A26	3S W-1	50		10.5
A05	A22	3S W-1	50		10.5
A01	A15	3S W-1	50		10.5
B10	B19	3S W-1	50		10.5
B16	B04	3S W-1	50		10.5
B18	B08	3S W-1	50		10.5
C11	C14	2S W 2	110		2.5
A02	A20	2S W 2	110		2.5
B09	B25	2S W 2	110		2.5
B12	B20	2S W 2	110		2.5
C15	C13	3S W 3	140		0

Board (3)

N-S	E-W	Contract	N-S	E-W	MP
B16	B03	4Sx W-5	1400		38
A19	A13	5H S 6	480		37
C06	C25	5H S 5	450		23.5
A27	A01	5H S 5	450		23.5
C12	C15	5H S 5	450		23.5
B11	B20	4H S 5	450		23.5
C14	C10	4H S 5	450		23.5
C26	C08	4H S 5	450		23.5
C21	C11	4H S 5	450		23.5
B02	B22	4H S 5	450		23.5
C19	C07	4H S 5	450		23.5
C18	C05	4H S 5	450		23.5
C13	C22	4H S 5	450		23.5
C09	C20	4H S 5	450		23.5
C16	C01	4H S 5	450		23.5
A17	A10	4H S 5	450		23.5
B24	B06	4H S 5	450		23.5
A02	A16	4H S 5	450		23.5
A20	A08	4H S 5	450		23.5
A18	A05	4H S 5	450		23.5
A14	A24	4H S 5	450		23.5
B15	B01	4H S 5	450		23.5
A03	A21	4H S 5	450		23.5
B25	B08	4H S 5	450		23.5
A06	A23	4H S 5	450		23.5
A22	A11	4H S 5	450		23.5
A04	A26	4H N 5	450		23.5
B13	B21	4H N 5	450		23.5
B10	B26	4H S 4	420		5.5
B04	B23	4H S 4	420		5.5
C17	C03	4H S 4	420		5.5
A25	A09	4H S 4	420		5.5
A07	A15	4H S 4	420		5.5
B19	B09	4H S 4	420		5.5
B07	B18	4H S 4	420		5.5
B17	B05	4H S 4	420		5.5
C02	C23	4H S 4	420		5.5
C04	C24	4H S 4	420		5.5
B14	B12	3NT S 3	400		0

Board (4)

N-S	E-W	Contract	N-S	E-W	MP
C26	C08	6S E-1	100		35
C14	C10	6S E-1	100		35
B02	B22	6S E-1	100		35
C18	C05	6S E-1	100		35
C19	C07	6S E-1	100		35
C09	C20	6S E-1	100		35
A02	A16	6S E-1	100		35
A25	A09	4S E 4	620		31
B24	B06	4NT W 4	630		29.5
B15	B01	4NT E 4	630		29.5
A06	A23	4S W 5	650		23
C12	C15	4S E 5	650		23
C06	C25	4S E 5	650		23
B13	B21	4S E 5	650		23
A03	A21	4S E 5	650		23
B17	B05	4S E 5	650		23
B14	B12	4S E 5	650		23
C17	C03	4S E 5	650		23
A17	A10	4S E 5	650		23
B11	B20	4S E 5	650		23
A07	A15	4S E 5	650		23
A04	A26	5S E 6	680		14.5
A27	A01	5S E 6	680		14.5
A20	A08	5S E 6	680		14.5
C02	C23	4S E 6	680		14.5
B04	B23	4S E 6	680		14.5
B19	B09	4S E 6	680		14.5
C21	C11	6S E 6	1430		5.5
A18	A05	6S E 6	1430		5.5
B10	B26	6S E 6	1430		5.5
C16	C01	6S E 6	1430		5.5
A14	A24	6S E 6	1430		5.5
A22	A11	6S E 6	1430		5.5
A19	A13	6S E 6	1430		5.5
B07	B18	6S E 6	1430		5.5
B16	B03	6S E 6	1430		5.5
C13	C22	6S E 6	1430		5.5
B25	B08	6S E 6	1430		5.5
C04	C24	6S E 6	1430		5.5

Board (5)

N-S	E-W	Contract	N-S	E-W	MP
A05	A27	6H N 6	1430		38
B15	B13	4H N 6	680		30
B11	B14	4H N 6	680		30
C05	C25	4H N 6	680		30
A21	A09	4H N 6	680		30
B01	B22	4H N 6	680		30
B20	B10	4H N 6	680		30
B18	B06	4H N 6	680		30
C14	C09	4H N 6	680		30
B17	B04	4H N 6	680		30
C18	C04	4H N 6	680		30
C17	C02	4H N 6	680		30
A13	A15	4H N 6	680		30
A26	A01	4H N 6	680		30
C22	C12	4H N 6	680		30
A02	A25	4H N 6	680		30
A19	A06	4H N 5	650		20.5
A08	A16	4H N 5	650		20.5
C07	C26	4H N 5	650		20.5
C15	C11	4H N 5	650		20.5
C20	C08	5Cx E-2	300		14.5
C19	C06	5Cx E-2	300		14.5
A04	A22	5Cx E-2	300		14.5
B26	B09	5Cx E-2	300		14.5
B16	B02	5Cx E-2	300		14.5
B12	B21	5Cx E-2	300		14.5
A07	A24	5Cx E-2	300		14.5
A03	A17	5Cx E-2	300		14.5
C03	C24	3H N 6	230		9
A23	A12	2H N 6	230		9
B08	B19	2H N 6	230		9
B05	B24	3H N 5	200		6
B03	B23	3H N 5	200		6
A20	A14	2H N 5	200		6
C13	C16	3H N 3	140		4
C10	C21	5C E-2	100		3
B25	B07	4H N-1	100		1
C01	C23	4H N-1	100		1
A18	A11	4H N-1	100		1

第5回大阪大学橋本杯 OPEN/△1500/△500MP PAIRS Session 1 Section ABC 2016年8月27日(土)

6

♠K72
♥A42
♦A53
♣A543

♠AQ65
♥K103
♦J8764
♣8

♠J3
♥QJ96
♦KQ2
♣K1092

♠10984
♥875
♦109
♣QJ76

Board (6)

N-S	E-W	Contract	N-S	E-W	MP
C22	C12	1NTxN 1	180		37.5
C03	C24	1NTxN 1	180		37.5
B18	B06	2NT W-1	100		34.5
C17	C02	2NT E-1	100		34.5
B15	B13	2NT E-1	100		34.5
A08	A16	1NT E-1	100		34.5
C18	C04	1NT N 1	90		31.5
A04	A22	1NT N 1	90		31.5
B08	B19	1NT N-1		50	28.5
B17	B04	1NT N-1		50	28.5
C13	C16	1NT N-1		50	28.5
A02	A25	1NT N-1		50	28.5
A03	A17	1NT E 1		90	25
B03	B23	1NT E 1		90	25
B20	B10	1NT E 1		90	25
B25	B07	1NTxN-1		100	21
A05	A27	1NTxN-1		100	21
B11	B14	1NTxN-1		100	21
A23	A12	1NT S-2		100	21
A20	A14	1NT N-2		100	21
C07	C26	3D E 3		110	17.5
C15	C11	2S W 2		110	17.5
A07	A24	1NT E 2		120	13.5
C10	C21	1NT E 2		120	13.5
C01	C23	1NT E 2		120	13.5
A18	A11	1NT E 2		120	13.5
B12	B21	1NT E 2		120	13.5
B05	B24	1NT E 2		120	13.5
A13	A15	2D W 4		130	10
C05	C25	2NT E 3		150	7
B16	B02	1NT N-3		150	7
C19	C06	1NT E 3		150	7
A26	A01	1NT E 3		150	7
B01	B22	1NT E 3		150	7
C20	C08	3Cx N-2		300	3.5
B26	B09	1NTxN-2		300	3.5
A19	A06	3NT E 3		600	2
C14	C09	2Sx S-4		800	0.5
A21	A09	1NTxN-4		800	0.5

7

♠8
♥A953
♦AK107
♣Q875

♠K63
♥QJ872
♦864
♣J4

♠AQJ974
♥K104
♦2
♣1093

♠1052
♥6
♦QJ953
♣AK62

Board (7)

N-S	E-W	Contract	N-S	E-W	MP
B09	B20	4Sx E-3	800		38
B14	B10	5D S 6	620		35
A14	A16	5D S 6	620		35
A05	A23	5D S 6	620		35
B17	B03	5D N 6	620		35
B26	B08	5D N 6	620		35
C18	C03	5C N 5	600		32
C16	C12	5Sx E-2	500		30
C20	C07	4Sx E-2	500		30
A22	A10	4Sx E-2	500		30
A09	A17	4D S 6	170		21.5
A19	A12	4D S 6	170		21.5
C01	C17	4D N 6	170		21.5
B02	B23	4D N 6	170		21.5
B13	B22	4D N 6	170		21.5
A20	A07	4D N 6	170		21.5
C21	C09	4D N 6	170		21.5
A01	A25	4D N 6	170		21.5
B16	B01	4D N 6	170		21.5
C04	C25	4D N 6	170		21.5
B18	B05	4D N 6	170		21.5
C23	C13	4C N 6	170		21.5
C02	C24	3D N 6	170		21.5
C15	C10	3D N 6	170		21.5
A04	A18	4D N 5	150		11.5
C11	C22	4D N 5	150		11.5
B04	B24	4D N 5	150		11.5
B12	B15	4C N 5	150		11.5
C08	C14	3C N 5	150		11.5
B21	B11	3C N 5	150		11.5
B19	B07	4D N 4	130		7.5
A24	A13	3D N 4	130		7.5
A06	A15	3S E-1	100		5.5
C06	C26	3S E-1	100		5.5
A27	A11	3S E 3		140	3.5
B06	B25	3H E 3		140	3.5
A03	A26	3S E 4		170	1.5
A21	A02	3S E 4		170	1.5
C19	C05	5C N-2		200	0

8

♠AKQ85
♥AJ87
♦2
♣K97

♠732
♥2
♦K97654
♣1054

♠J1094
♥963
♦Q1083
♣86

♠6
♥KQ1054
♦AJ
♣AQJ32

Board (8)

N-S	E-W	Contract	N-S	E-W	MP
B14	B10	7H S 7	1510		29
B06	B25	7H S 7	1510		29
B12	B15	7H S 7	1510		29
A20	A07	7H S 7	1510		29
B17	B03	7H S 7	1510		29
C02	C24	7H S 7	1510		29
B18	B05	7H S 7	1510		29
C08	C14	7H S 7	1510		29
B09	B20	7H S 7	1510		29
B02	B23	7H S 7	1510		29
B21	B11	7H S 7	1510		29
A22	A10	7H S 7	1510		29
C21	C09	7H S 7	1510		29
A19	A12	7H S 7	1510		29
A05	A23	7H S 7	1510		29
A06	A15	7H S 7	1510		29
A03	A26	7H S 7	1510		29
A01	A25	7H S 7	1510		29
C18	C03	7H S 7	1510		29
C16	C12	6H S 7	1010		11
B13	B22	6H S 7	1010		11
C15	C10	6H S 7	1010		11
A04	A18	6H S 7	1010		11
C19	C05	6H S 7	1010		11
C23	C13	6H S 7	1010		11
C11	C22	6H S 7	1010		11
C06	C26	6H S 7	1010		11
C20	C07	6H S 7	1010		11
A24	A13	6H S 7	1010		11
B16	B01	6H S 7	1010		11
A14	A16	6H S 7	1010		11
A27	A11	6H S 7	1010		11
B04	B24	6H S 7	1010		11
C01	C17	6H S 7	1010		11
B26	B08	6H N 7	1010		11
B19	B07	6H N 7	1010		11
A09	A17	6S N 6	980		2
C04	C25	5H S 7	510		0.5
A21	A02	4H S 7	510		0.5

9

♠10874
♥A8763
♦6
♣642

♠AKJ6
♥KQJ92
♦A752
♣

♠92
♥4
♦KJ10984
♣KJ73

♠Q53
♥105
♦Q3
♣AQ10985

Board (9)

N-S	E-W	Contract	N-S	E-W	MP
C09	C15	3NT E-3	300		38
C05	C26	4D E 6		170	36
C19	C04	3D W 6		170	36
C17	C13	3D E 6		170	36
B18	B04	3NT E 3		600	34
A21	A08	5D W 6		620	27
B10	B21	5D W 6		620	27
C03	C25	5D W 6		620	27
C16	C11	5D E 6		620	27
B17	B02	5D E 6		620	27
C07	C14	5D E 6		620	27
B20	B08	5D E 6		620	27
B01	B23	5D E 6		620	27
C12	C23	5D E 6		620	27
C22	C10	5D E 6		620	27
A09	A26	5D E 6		620	27
B22	B12	5D E 6		620	27
C21	C08	5D E 6		620	27
C20	C06	3NT E 4		630	15
B19	B06	3NT E 4		630	15
A24	A01	3NT E 4		630	15
A20	A13	3NT E 4		630	15
B13	B16	3NT E 4		630	15
A04	A27	3NT E 4		630	15
A23	A11	3NT E 4		630	15
C24	C01	3NT E 4		630	15
B03	B24	3NT E 4		630	15
A10	A18	3NT E 4		630	15
A07	A16	3NT E 4		630	15
A22	A03	3NT E 5		660	8
B05	B25	3NT E 5		660	8
A25	A14	3NT E 5		660	8
A15	A12	5Dx E 6		950	6
A05	A19	6D E 6		1370	2.5
A02	A17	6D E 6		1370	2.5
B07	B26	6D E 6		1370	2.5
C02	C18	6D E 6		1370	2.5
B15	B11	6D E 6		1370	2.5
B14	B09	6D E 6		1370	2.5

10

♠102
♥QJ85
♦Q4
♣J9762

♠AQJ764
♥A92
♦952
♣Q

♠53
♥74
♦AK1073
♣K854

♠K98
♥K1063
♦J86
♣A103

Board (10)

N-S	E-W	Contract	N-S	E-W	MP
C05	C26	4S W-1	100		38
B01	B23	3D E 4		130	37
A10	A18	2S W 3		140	35.5
C19	C04	2S W 3		140	35.5
B22	B12	3S W 4		170	23
B18	B04	3S W 4		170	23
B03	B24	3S W 4		170	23
A05	A19	3S W 4		170	23
C21	C08	3S W 4		170	23
C20	C06	3S W 4		170	23
C16	C11	3S W 4		170	23
B20	B08	3S W 4		170	23
C17	C13	3S W 4		170	23
A04	A27	3S W 4		170	23
C09	C15	2S W 4		170	23
C07	C14	2S W 4		170	23
C02	C18	2S W 4		170	23
B19	B06	2S W 4		170	23
A09	A26	2S W 4		170	23
A15	A12	2S W 4		170	23
B05	B25	2S W 4		170	23
C12	C23	2S W 4		170	23
C03	C25	2S W 4		170	23
C24	C01	2S W 4		170	23
A25	A14	2S W 4		170	23
B14	B09	2S W 4		170	23
A21	A08	2S W 4		170	23
B13	B16	2S W 5		200	10
C22	C10	2S W 5		200	10
A07	A16	2S W 5		200	10
A02	A17	5D E 5		600	7
A22	A03	3NT W 3		600	7
B15	B11	3NT E 3		600	7
B17	B02	4S W 4		620	3.5
A20	A13	4S W 4		620	3.5
B10	B21	4S W 4		620	3.5
B07	B26	4S W 4		620	3.5
A23	A11	4S W 5		650	0.5
A24	A01	4S W 5		650	0.5

第5回大阪大学橋本杯 OPEN/△1500/△500MP PAIRS Session 1 Section ABC 2016年8月27日(土)

11

♠A964
♥AK2
♦10943
♣AJ

♠3
♥10654
♦A52
♣K9876

♠85
♥Q873
♦QJ6
♣Q532

♠KQJ1072
♥J9
♦K87
♣104

N
W E
S

12

♠K64
♥A10
♦A1082
♣QJ63

♠A87
♥987632
♦Q9
♣98

♠1052
♥KQ5
♦K
♣AK10752

♠QJ93
♥J4
♦J76543
♣4

N
W E
S

13

♠5432
♥A62
♦K1053
♣64

♠Q97
♥QJ87
♦764
♣Q108

♠AJ8
♥43
♦A98
♣J9752

♠K106
♥K1095
♦QJ2
♣AK3

N
W E
S

14

♠1073
♥A7642
♦42
♣KJ5

♠Q64
♥J108
♦965
♣AQ108

♠K8
♥KQ5
♦AKJ8
♣9764

♠AJ952
♥93
♦Q1073
♣32

N
W E
S

15

♠J9632
♥A86
♦Q97
♣107

♠QJ109
♥AKJ84
♦A962

♠KQ10874
♥K753
♦6
♣53

♠A5
♥42
♦10532
♣KQJ84

N
W E
S

Board (11)

N-S	E-W	Contract	N-S	E-W	MP
A05	A15	4S S 5	450		31.5
A03	A18	4S S 5	450		31.5
A10	A27	4S S 5	450		31.5
A06	A20	4S S 5	450		31.5
C10	C16	4S S 5	450		31.5
B19	B05	4S S 5	450		31.5
C25	C02	4S N 5	450		31.5
A23	A01	4S N 5	450		31.5
B01	B17	4S N 5	450		31.5
C23	C11	4S N 5	450		31.5
B16	B12	4S N 5	450		31.5
A21	A14	4S N 5	450		31.5
A08	A17	4S N 5	450		31.5
B18	B03	4S N 5	450		31.5
B21	B09	4S S 4	420		14.5
C17	C12	4S S 4	420		14.5
A11	A19	4S S 4	420		14.5
A24	A12	4S S 4	420		14.5
C20	C05	4S S 4	420		14.5
C21	C07	4S S 4	420		14.5
C18	C01	4S S 4	420		14.5
C22	C09	4S S 4	420		14.5
B06	B26	4S S 4	420		14.5
B15	B10	4S S 4	420		14.5
A22	A09	4S S 4	420		14.5
A07	A25	4S S 4	420		14.5
B23	B13	4S S 4	420		14.5
B02	B24	4S S 4	420		14.5
B08	B14	4S S 4	420		14.5
B11	B22	4S S 4	420		14.5
A16	A13	4S N 4	420		14.5
C13	C24	4S N 4	420		14.5
C04	C26	4S N 4	420		14.5
C06	C14	4S N 4	420		14.5
C03	C19	6S S-1	50	4	
B20	B07	6S S-2	100	1.5	
C08	C15	6S S-2	100	1.5	
B04	B25	6S S-2	100	1.5	
A26	A02	6S S-2	100	1.5	

Board (12)

N-S	E-W	Contract	N-S	E-W	MP
A24	A12	2S S 3	140		38
A06	A20	4D N 4	130		36
C10	C16	4D N 4	130		36
C06	C14	2D N 4	130		36
B02	B24	1NT N 2	120		33
C20	C05	1NT N 2	120		33
A07	A25	1NT N 2	120		33
A05	A15	3D S 3	110		29.5
B15	B10	3D N 3	110		29.5
B20	B07	2D N 3	110		29.5
C23	C11	2D N 3	110		29.5
A03	A18	4H W-1	50		25.5
A11	A19	4H W-1	50		25.5
A26	A02	3C E-1	50		25.5
B16	B12	2C E-1	50		25.5
C04	C26	2C E 2		90	23
A21	A14	5D N-1		100	20
B19	B05	5D N-1		100	20
C08	C15	4D S-1		100	20
B11	B22	4D N-1		100	20
C13	C24	1NT N-1		100	20
B23	B13	3C E 3		110	17
A23	A01	2C E 4		130	16
C03	C19	3H W 3		140	13
A22	A09	3H W 3		140	13
B18	B03	3H W 3		140	13
B21	B09	3H E 3		140	13
A16	A13	2H E 3		140	13
C18	C01	3H W 4		170	8
A10	A27	3H W 4		170	8
C21	C07	3H W 4		170	8
B04	B25	3H E 4		170	8
A08	A17	2H E 4		170	8
B06	B26	4S N-2		200	4
B01	B17	2H E 5		200	4
C25	C02	2H E 5		200	4
B08	B14	2NT N-4		400	2
C17	C12	4H W 4		420	0.5
C22	C09	4H W 4		420	0.5

Board (13)

N-S	E-W	Contract	N-S	E-W	MP
A23	A10	1NT S 5	210		37.5
B20	B06	1NT S 5	210		37.5
B09	B15	1NT S 4	180		35
B17	B13	1NT S 4	180		35
A09	A18	1NT S 4	180		35
B24	B01	1NT S 3	150		26.5
B16	B11	1NT S 3	150		26.5
C21	C06	1NT S 3	150		26.5
B19	B04	1NT S 3	150		26.5
B03	B25	1NT S 3	150		26.5
B21	B08	1NT S 3	150		26.5
A11	A15	1NT S 3	150		26.5
A08	A26	1NT S 3	150		26.5
C23	C10	1NT S 3	150		26.5
A17	A14	1NT S 3	150		26.5
A12	A20	1NT S 3	150		26.5
A06	A16	1NT S 3	150		26.5
C18	C13	1NT S 3	150		26.5
C19	C02	1NT S 3	150		26.5
B07	B14	2H S 3	140		19
C09	C16	1NT S 2	120		11
C26	C03	1NT S 2	120		11
A24	A05	1NT S 2	120		11
A07	A21	1NT S 2	120		11
A04	A19	1NT S 2	120		11
C22	C08	1NT S 2	120		11
C01	C25	1NT S 2	120		11
C24	C12	1NT S 2	120		11
B12	B23	1NT S 2	120		11
B22	B10	1NT S 2	120		11
A25	A13	1NT S 2	120		11
B05	B26	1NT S 2	120		11
B02	B18	1NT S 2	120		11
A01	A22	1NT S 2	120		11
A27	A03	1NT S 2	120		11
C07	C15	2H S 2	110		3
C11	C17	1NT S 1	90		1.5
C05	C14	1NT S 1	90		1.5
C04	C20	3NT S-1		100	0

Board (14)

N-S	E-W	Contract	N-S	E-W	MP
A06	A16	3NT E-3	150		35.5
C23	C10	3NT E-3	150		35.5
C04	C20	3NT E-3	150		35.5
C01	C25	3NT E-3	150		35.5
B03	B25	3NT E-3	150		35.5
B05	B26	3NT E-3	150		35.5
B20	B06	3NT E-2	100		25.5
C11	C17	3NT E-2	100		25.5
B17	B13	3NT E-2	100		25.5
B21	B08	3NT E-2	100		25.5
B22	B10	3NT E-2	100		25.5
C19	C02	3NT E-2	100		25.5
A23	A10	3NT E-2	100		25.5
A11	A15	3NT E-2	100		25.5
C26	C03	3NT E-2	100		25.5
C21	C06	3NT E-2	100		25.5
A04	A19	3NT E-2	100		25.5
C05	C14	3NT E-2	100		25.5
A27	A03	3NT E-2	100		25.5
A25	A13	3NT E-2	100		25.5
C07	C15	3NT E-1	50		11.5
C18	C13	3NT E-1	50		11.5
C22	C08	3NT E-1	50		11.5
B12	B23	3NT E-1	50		11.5
A08	A26	3NT E-1	50		11.5
A24	A05	3NT E-1	50		11.5
A01	A22	3NT E-1	50		11.5
B16	B11	3NT E-1	50		11.5
A07	A21	3NT E-1	50		11.5
A09	A18	3NT E-1	50		11.5
B09	B15	2NT E-1	50		11.5
A12	A20	2NT E-1	50		11.5
C24	C12	2NT E-1	50		11.5
C09	C16	2NT E-1	50		11.5
B07	B14	1NT W 1		90	4
A17	A14	2NT E 2		120	2
B24	B01	2NT E 2		120	2
B02	B18	2NT E 2		120	2
B19	B04	3NT E 3		400	0

Board (15)

N-S	E-W	Contract	N-S	E-W	MP
A09	A27	3NT W-3	150		37.5
C19	C01	3NT W-3	150		37.5
C25	C13	4S E-2	100		34
C24	C11	4S E-2	100		34
C20	C03	4S E-2	100		34
A26	A14	3NT W-2	100		34
A18	A02	3NT W-2	100		34
A01	A21	4H W-1	50		28.5
B08	B15	4H W-1	50		28.5
C14	C04	3S E-1	50		28.5
B18	B01	3NT W-1	50		28.5
C08	C16	3NT E-1	50		28.5
C06	C15	2NT W-1	50		28.5
B24	B13	2S E 2		110	23.5
C10	C17	2S E 2		110	23.5
A07	A17	2S E 2		110	23.5
B20	B05	2S E 2		110	23.5
B23	B11	2NT W 2		120	21
C05	C21	2S E 3		140	18.5
B22	B09	2S E 3		140	18.5
C12	C18	2S E 3		140	18.5
C23	C09	2S E 3		140	18.5
A05	A20	3H W 5		200	15.5
A12	A16	3H E 5		200	15.5
A10	A19	2H E 6		230	14
B25	B02	4H W 4		420	9.5
C02	C26	4H W 4		420	9.5
A23	A03	4H W 4		420	9.5
B03	B19	4H E 4		420	9.5
B21	B07	4H E 4		420	9.5
C22	C07	4H E 4		420	9.5
B06	B14	4H E 4		420	9.5
A15	A04	4H E 4		420	9.5
B10	B16	4H W 5		450	3
A25	A06	4H W 5		450	3
A08	A22	4H W 5		450	3
B17	B12	4H W 5		450	3
A24	A11	4H E 5		450	3
B04	B26	4H W 6		480	0

第5回大阪大学橋本杯 OPEN/△1500/△500MP PAIRS Session 1 Section ABC 2016年8月27日(土)

16

♠ Q10852
♥ 2
♦ 6543
♣ 1094

♠ KJ763
♥ K74
♦ K82
♣ 82

N E
W S

♠ 4
♥ Q9653
♦ QJ10
♣ AQ53

♠ A9
♥ AJ108
♦ A97
♣ KJ76

17

♠ A7
♥ J872
♦ AK8754
♣ 8

♠ K1042
♥ KQ54
♦ J6
♣ J54

N E
W S

♠ QJ93
♥ 10
♦ Q103
♣ K9732

♠ 865
♥ A963
♦ 92
♣ AQ106

18

♠ 109754
♥ Q54
♦ KQ75
♣ 2

♠ AJ86
♥ 10963
♦ J4
♣ AK9

N E
W S

♠ K
♥ K872
♦ 10862
♣ J1075

♠ Q32
♥ AJ
♦ A93
♣ Q8643

19

♠ AK
♥ Q10653
♦ J93
♣ K65

♠ QJ984
♥ A94
♦ Q8
♣ AQ4

N E
W S

♠ 3
♥ J872
♦ A107542
♣ J8

♠ 107652
♥ K
♦ K6
♣ 109732

20

♠ A1086
♥ J
♦ KQJ42
♣ 1043

♠ 9752
♥ 853
♦ 1073
♣ QJ6

N E
W S

♠ KJ3
♥ KQ1096
♦ 86
♣ 872

♠ Q4
♥ A742
♦ A95
♣ AK95

Board (16)

N-S	E-W	Contract	N-S	E-W	MP
C05	C21	2Sx S 2	470		37.5
B23	B11	2Sx S 2	470		37.5
B24	B13	3H E-2	200		34
C24	C11	3H E-2	200		34
C08	C16	3H E-2	200		34
B21	B07	3H E-2	200		34
B04	B26	2S W-2	200		34
B03	B19	2S S 3	140		31
A15	A04	2NT S 2	120		29.5
A25	A06	2NT S 2	120		29.5
C02	C26	2S S 2	110		26.5
B17	B12	2S S 2	110		26.5
B10	B16	2S S 2	110		26.5
A05	A20	2S N 2	110		26.5
A01	A21	3H E-1	100		22.5
A23	A03	3H E-1	100		22.5
C19	C01	2S E-1	100		22.5
C20	C03	2H E-1	100		22.5
B18	B01	3NT S-1		50	16.5
C14	C04	2S S-1		50	16.5
A09	A27	2S S-1		50	16.5
A08	A22	2S S-1		50	16.5
B25	B02	2S S-1		50	16.5
C10	C17	2S S-1		50	16.5
A24	A11	2S S-1		50	16.5
C06	C15	2D N-1		50	16.5
C12	C18	2Sx S-1		100	8
C23	C09	2Sx S-1		100	8
A26	A14	2Sx S-1		100	8
B22	B09	2Sx S-1		100	8
A12	A16	2Sx S-1		100	8
A07	A17	2Sx S-1		100	8
B08	B15	2Sx S-1		100	8
B06	B14	2Sx N-1		100	8
B20	B05	2S N-2		100	8
C25	C13	2H E 2		110	3
A10	A19	3Sx N-2		300	1
C22	C07	2Sx S-2		300	1
A18	A02	2Sx S-2		300	1

Board (17)

N-S	E-W	Contract	N-S	E-W	MP
B09	B16	4H S 4	420		34.5
B22	B08	4H S 4	420		34.5
A20	A01	4H S 4	420		34.5
C20	C02	4H S 4	420		34.5
C21	C04	4H S 4	420		34.5
B26	B03	4H S 4	420		34.5
A06	A21	4H S 4	420		34.5
A09	A23	4H S 4	420		34.5
B19	B02	4S E-4	200		30
B05	B14	3H S 4	170		26
C26	C01	3H S 4	170		26
B04	B20	2H S 4	170		26
B07	B15	2H S 4	170		26
A14	A22	2H S 4	170		26
A19	A03	2H S 4	170		26
A25	A12	2H S 4	170		26
C23	C08	3S W-3	150		22
A10	A15	3H S 3	140		21
B24	B12	2H S 2	110		19.5
C15	C05	2H S 2	110		19.5
B23	B10	4H S-1		50	14
C06	C22	4H S-1		50	14
C25	C12	4H S-1		50	14
C24	C10	4H S-1		50	14
C09	C17	4H S-1		50	14
B21	B06	4H S-1		50	14
B11	B17	4H S-1		50	14
B01	B25	4H S-1		50	14
A16	A05	3H S-1		50	14
A27	A02	4Hx S-1		100	5.5
A24	A04	4H S-2		100	5.5
C03	C14	4H S-2		100	5.5
B18	B13	4H S-2		100	5.5
A08	A18	4H S-2		100	5.5
C13	C19	4H S-2		100	5.5
A13	A17	4H S-2		100	5.5
C11	C18	4H S-2		100	5.5
A26	A07	4H S-3		150	1
C07	C16	4H S-4		200	0

Board (18)

N-S	E-W	Contract	N-S	E-W	MP
B23	B10	2S N 4	170		38
B21	B06	2S N 3	140		36.5
A09	A23	2S N 3	140		36.5
B18	B13	2S N 2	110		33.5
C24	C10	2S N 2	110		33.5
A19	A03	2S N 2	110		33.5
C25	C12	2S N 2	110		33.5
A16	A05	3H E-2	100		29.5
B01	B25	3H E-2	100		29.5
A08	A18	3H E-2	100		29.5
C07	C16	3H E-2	100		29.5
B04	B20	1NT S 1	90		25.5
A25	A12	1NT S 1	90		25.5
B07	B15	1NT S 1	90		25.5
C13	C19	1NT S 1	90		25.5
B19	B02	3H E-1	50		20.5
B22	B08	3H E-1	50		20.5
C09	C17	3H E-1	50		20.5
B24	B12	2H E-1	50		20.5
C23	C08	2H E-1	50		20.5
A20	A01	1NT E-1	50		20.5
C06	C22	3S N-1		100	10.5
C20	C02	3S N-1		100	10.5
A10	A15	2S N-1		100	10.5
A26	A07	2S N-1		100	10.5
A06	A21	2S N-1		100	10.5
B11	B17	2S N-1		100	10.5
A27	A02	2S N-1		100	10.5
A13	A17	2S N-1		100	10.5
C26	C01	1NT S-1		100	10.5
C03	C14	1NT S-1		100	10.5
C15	C05	1NT S-1		100	10.5
B26	B03	1NT S-1		100	10.5
B09	B16	1NT S-1		100	10.5
A14	A22	1NT S-1		100	10.5
B05	B14	2H E 3		140	3
A24	A04	3S N-2		200	1
C11	C18	1NT S-2		200	1
C21	C04	1NT S-2		200	1

Board (19)

N-S	E-W	Contract	N-S	E-W	MP
A20	A04	2NT E-3	300		37.5
A17	A06	2NT E-3	300		37.5
A19	A01	3S W-2	200		34
A14	A18	3D E-2	200		34
C16	C06	2S W-2	200		34
B25	B13	2S W-2	200		34
B02	B26	2NT E-2	200		34
A11	A16	2H N 3	140		31
C25	C11	2H N 2	110		29
B14	B04	2H N 2	110		29
B08	B16	2H N 2	110		29
B23	B09	3D E-1	100		26.5
B10	B17	3D E-1	100		26.5
A02	A23	2H N-1		50	21.5
C21	C03	2H N-1		50	21.5
A15	A03	2H N-1		50	21.5
C26	C13	2H N-1		50	21.5
B19	B01	2H N-1		50	21.5
A26	A13	2H N-1		50	21.5
C08	C17	2H N-1		50	21.5
A12	A21	2H N-1		50	21.5
C01	C20	1NT W 1		90	17
A25	A05	2H N-2		100	15.5
C14	C02	2H N-2		100	15.5
B20	B03	3D E 3		110	13
B12	B18	3D E 3		110	13
C24	C09	3D E 3		110	13
A07	A22	1NT W 2		120	10.5
B24	B11	1NT E 2		120	10.5
B05	B21	3D E 4		130	8.5
C10	C18	3D E 4		130	8.5
A10	A24	2H N-3		150	4
B22	B07	2H N-3		150	4
C12	C19	2H N-3		150	4
C22	C05	2H N-3		150	4
B06	B15	2H N-3		150	4
A27	A08	1NT W 3		150	4
C04	C15	1NT W 3		150	4
C07	C23	3Sx S-3		500	0

Board (20)

N-S	E-W	Contract	N-S	E-W	MP
C07	C23	6D N 6	1370		37.5
B23	B09	6C S 6	1370		37.5
C25	C11	3NT S 7	720		36
A19	A01	3NT S 5	660		30
A15	A03	3NT S 5	660		30
C01	C20	3NT S 5	660		30
C12	C19	3NT S 5	660		30
C10	C18	3NT S 5	660		30
B14	B04	3NT S 5	660		30
B10	B17	3NT S 5	660		30
A27	A08	3NT S 5	660		30
A11	A16	3NT S 5	660		30
A12	A21	3NT S 5	660		30
A02	A23	3NT S 5	660		30
C04	C15	3NT S 4	630		20
B06	B15	3NT S 4	630		20
C22	C05	3NT S 4	630		20
B22	B07	3NT S 4	630		20
B05	B21	3NT S 4	630		20
A17	A06	3NT S 4	630		20
A26	A13	3NT S 4	630		20
B20	B03	3NT S 4	630		20
B19	B01	3NT S 4	630		20
C14	C02	5D N 6	620		15
C26	C13	5C S 5	600		8
C08	C17	3NT S 3	600		8
C16	C06	3NT S 3	600		8
C24	C09	3NT S 3	600		8
A25	A05	3NT S 3	600		8
A10	A24	3NT S 3	600		8
C21	C03	3NT S 3	600		8
A14	A18	3NT S 3	600		8
B24	B11	3NT S 3	600		8
A20	A04	3NT S 3	600		8
B25	B13	3NT S 3	600		8
B08	B16	3NT S 3	600		8
B02	B26	3NT N 3	600		8
B12	B18	3C N 3	110		1
A07	A22	6D N-1		100	0

第5回大阪大学橋本杯 OPEN/△1500/△500MP PAIRS Session 1 Section ABC 2016年8月27日(土)

21

♠K832
♥9
♦KQ6
♣AK873

♠Q6
♥J108753
♦103
♣Q42

♠J54
♥K
♦AJ97542
♣J5

♠A1097
♥AQ642
♦8
♣1096

22

♠1095
♥76
♦KJ9854
♣96

♠AQ73
♥982
♦107
♣KQ83

♠6
♥AK1053
♦AQ632
♣75

♠KJ842
♥QJ4
♦
♣AJ1042

23

♠52
♥AJ96432
♦Q76
♣5

♠106
♥75
♦AKJ852
♣AQ10

♠KQ7
♥K108
♦10943
♣J92

♠AJ9843
♥Q
♦
♣K87643

24

♠QJ98764
♥J4
♦Q63
♣8

♠K5
♥K1098
♦107
♣AJ1053

♠A1032
♥A32
♦J8
♣K962

♠
♥Q765
♦AK9542
♣Q74

25

♠965
♥632
♦53
♣109762

♠KQJ43
♥984
♦AK94
♣J

♠A105
♥QJ10862
♦AQ83
♣AQ83

♠A10872
♥KQJ7
♦7
♣K54

Board (21)

N-S	E-W	Contract	N-S	E-W	MP
C23	C06	3NT N 6	690		38
C02	C21	3NT N 5	660		35.5
B03	B14	3NT N 5	660		35.5
C08	C24	3NT N 5	660		35.5
C25	C10	3NT N 5	660		35.5
A02	A19	5S N 5	650		23.5
A08	A23	5S N 5	650		23.5
A11	A25	4S N 5	650		23.5
B09	B17	4S N 5	650		23.5
B07	B16	4S N 5	650		23.5
B15	B05	4S N 5	650		23.5
C09	C18	4S N 5	650		23.5
C17	C07	4S N 5	650		23.5
C14	C01	4S N 5	650		23.5
C26	C12	4S N 5	650		23.5
C22	C04	4S N 5	650		23.5
C11	C19	4S N 5	650		23.5
B20	B02	4S N 5	650		23.5
A15	A09	4S N 5	650		23.5
A27	A14	4S N 5	650		23.5
A01	A18	4S N 5	650		23.5
A16	A04	4S N 5	650		23.5
B24	B10	4S N 5	650		23.5
B21	B04	4S N 5	650		23.5
A12	A17	4S N 5	650		23.5
B13	B19	3NT N 4	630		12
A26	A06	3NT N 4	630		12
A13	A22	3NT N 4	630		12
B23	B08	4S N 4	620		9.5
B26	B01	4S N 4	620		9.5
A03	A24	3NT N 3	600		8
C13	C20	4Dx E-3	500		7
C15	C03	2NT N 5	210		6
A21	A05	3S N 5	200		4.5
A10	A20	3S N 5	200		4.5
B25	B12	2NT N 4	180		3
C05	C16	3NT N-1	100		2
B11	B18	4H S-2	200		1
B06	B22	3NT N-3	300		0

Board (22)

N-S	E-W	Contract	N-S	E-W	MP
C17	C07	5H E-3	300		38
A16	A04	4H E-2	200		37
B21	B04	4H E-1	100		33
C14	C01	4H E-1	100		33
B07	B16	4H E-1	100		33
C25	C10	4H E-1	100		33
A11	A25	4H E-1	100		33
A12	A17	4H E-1	100		33
A26	A06	3NT W-1	100		33
C22	C04	4Sx S-2	300		27.5
C23	C06	4Sx S-2	300		27.5
A13	A22	4Sx S-2	300		27.5
A02	A19	2Sx S-2	300		27.5
C05	C16	5Sx S-3	500		22.5
C13	C20	4Sx S-3	500		22.5
B15	B05	4Sx S-3	500		22.5
B25	B12	4Sx S-3	500		22.5
B13	B19	4Sx N-3	500		22.5
B20	B02	4Sx N-3	500		22.5
A08	A23	4H E 4	620		15
A01	A18	4H E 4	620		15
C08	C24	4H E 4	620		15
C11	C19	4H E 4	620		15
C09	C18	4H E 4	620		15
A03	A24	4H E 4	620		15
B11	B18	4H E 4	620		15
B03	B14	4H E 4	620		15
B23	B08	4H E 4	620		15
C15	C03	4H E 5	650		6.5
C26	C12	4H E 5	650		6.5
B24	B10	4H E 5	650		6.5
B09	B17	4H E 5	650		6.5
C02	C21	4H E 5	650		6.5
B06	B22	4H E 5	650		6.5
A27	A14	4H E 5	650		6.5
A21	A05	4H E 6	680		2
A10	A20	5Sx S-4	800		0.5
A15	A09	4Sx S-4	800		0.5

Board (23)

N-S	E-W	Contract	N-S	E-W	MP
C10	C19	4Sx S 4	790		38
C24	C07	6Dx W-2	500		36.5
B12	B19	5Dx W-2	500		36.5
C15	C02	4NT E-2	200		35
A27	A07	2S S 2	110		34
B01	B20	4S S-1	100		30
A19	A08	4S S-1	100		30
C23	C05	3S S-1	100		30
C16	C04	3H N-1	100		30
B21	B03	3H N-1	100		30
C26	C11	3H N-1	100		30
A09	A24	3H N-1	100		30
A04	A25	4D W 4	130		25
A11	A21	3D W 4	130		25
A03	A20	3D W 4	130		25
A13	A18	4S S-2	200		20
A14	A23	4S S-2	200		20
B16	B06	4H N-2	200		20
C03	C22	4H N-2	200		20
C14	C13	4H N-2	200		20
C09	C25	3Hx N-1	200		20
B26	B13	3H N-2	200		20
C06	C17	4S S-3	300		12
B08	B17	4S S-3	300		12
B04	B15	4S S-3	300		12
C01	C21	4H N-3	300		12
A15	A02	4H N-3	300		12
B22	B05	4H N-3	300		12
A12	A26	4H N-3	300		12
A22	A06	4H N-3	300		12
C12	C20	5S S-4	400		6.5
B14	B02	4S S-4	400		6.5
B24	B09	4Sx S-2	500		5
A16	A10	3NT E 4	630		3.5
B25	B11	3NT E 4	630		3.5
B10	B18	4Sx S-3	800		1.5
A01	A17	4Hx N-3	800		1.5
C18	C08	5Cx S-5	1400		0

Board (24)

N-S	E-W	Contract	N-S	E-W	MP
B01	B20	3NT E-3	150		34.5
A15	A02	3NT E-3	150		34.5
B25	B11	3NT E-3	150		34.5
B21	B03	3NT E-3	150		34.5
A13	A18	3NT E-3	150		34.5
A12	A26	3NT E-3	150		34.5
B26	B13	3NT E-3	150		34.5
C01	C21	3NT E-3	150		34.5
B24	B09	3NT E-2	100		25.5
B10	B18	3NT E-2	100		25.5
B08	B17	3NT E-2	100		25.5
C24	C07	3NT E-2	100		25.5
B07	B23	3NT E-2	100		25.5
A22	A06	3NT E-2	100		25.5
A03	A20	3NT E-2	100		25.5
A01	A17	3NT E-2	100		25.5
A09	A24	3NT E-2	100		25.5
C06	C17	2NT E-2	100		25.5
B16	B06	5C W-1	50		17
C12	C20	5C W-1	50		17
B04	B15	4C E-1	50		17
A16	A10	3H W-1	50		17
C14	C13	3H W-1	50		17
C23	C05	3C W-1	50		17
C03	C22	2NT E-1	50		17
B14	B02	3S N-1	50		12
C18	C08	2S N-1	50		12
B22	B05	2NT S-1	50		12
C10	C19	3S N-2	100		6
C16	C04	3S N-2	100		6
A11	A21	3S N-2	100		6
A14	A23	3S N-2	100		6
A27	A07	3S N-2	100		6
C09	C25	3S N-2	100		6
B12	B19	3S N-2	100		6
A04	A25	2Sx N-1	100		6
A19	A08	2S N-2	100		6
C15	C02	3S N-4	200		1
C26	C11	3NTxE 3	550		0

Board (25)

N-S	E-W	Contract	N-S	E-W	MP
B09	B18	6D E-2	200		35.5
B17	B07	6D E-2	200		35.5
B02	B21	6D E-2	200		35.5
A20	A09	6D E-2	200		35.5
C04	C23	6D E-2	200		35.5
A01	A16	3S W-2	200		35.5
C13	C21	6D E-1	100		30.5
B25	B10	6D E-1	100		30.5
A04	A21	6D E-1	100		30.5
C16	C03	5D E-1	100		30.5
C11	C20	2H W 2	110		28
C10	C26	5D E 5	600		22
B08	B24	5D E 5	600		22
C25	C08	5D E 5	600		22
B05	B16	5D E 5	600		22
A15	A08	5D E 5	600		22
A12	A22	5D E 5	600		22
C17	C05	5D E 5	600		22
C19	C09	5D E 5	600		22
B26	B12	5D E 5	600		22
C14	C12	5D E 5	600		22
A18	A06	5D E 5	600		22
B14	B01	5D E 6	620		15
A23	A07	5D E 6	620		15
B23	B06	5D E 6	620		15
C02	C22	3NT W 4	630		12
A17	A11	3NT W 4	630		12
B13	B20	3NT E 4	630		12
C15	C01	3NT W 5	660		6
B11	B19	3NT W 5	660		6
C07	C18	3NT W 5	660		6
A10	A25	3NT W 5	660		6
A02	A24	3NT W 5	660		6
C24	C06	3NT W 5	660		6
A13	A27	3NT W 5	660		6
B22	B04	3NT W 5	660		6
A05	A26	3NT E 5	660		6
B15	B03	3NT W 6	690		0.5
A14	A19	3NT W 6	690		0.5

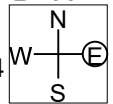
第5回大阪大学橋本杯 OPEN/△1500/△500MP PAIRS Session 1 Section ABC 2016年8月27日(土)

26

♠ J654
 ♥ Q7
 ♦ AK2
 ♣ K984

♠ Q98 ♠ AK732
 ♥ K93 ♥ A82
 ♦ 9754 ♦ Q8
 ♣ J53 ♣ Q62

♠ 10
 ♥ J10654
 ♦ J1063
 ♣ A107



Board (26)

N-S	E-W	Contract	N-S	E-W	MP
B14	B01	3S	E-3	300	38
C02	C22	3S	E-2	200	35
C16	C03	3S	E-2	200	35
C14	C12	3S	E-2	200	35
C11	C20	2S	E-2	200	35
B23	B06	2S	E-2	200	35
C17	C05	3S	E-1	100	26.5
B22	B04	2S	E-1	100	26.5
A13	A27	2S	E-1	100	26.5
B25	B10	2S	E-1	100	26.5
C19	C09	2S	E-1	100	26.5
C07	C18	2S	E-1	100	26.5
C10	C26	2S	E-1	100	26.5
C04	C23	2S	E-1	100	26.5
A18	A06	2S	E-1	100	26.5
A15	A08	2S	E-1	100	26.5
B13	B20	1NT	E-1	100	26.5
C25	C08	1NT	E-1	100	26.5
B26	B12	1NT	E	90	17
C13	C21	1NT	E	90	17
A23	A07	1NT	E	90	17
A04	A21	1NT	E	90	17
A17	A11	1NT	E	90	17
B08	B24	1NT	E	90	17
B09	B18	1NT	E	90	17
A05	A26	3C	N-1	100	13
C24	C06	2S	E	2	110 9.5
A01	A16	2S	E	2	110 9.5
B15	B03	2S	E	2	110 9.5
A12	A22	2S	E	2	110 9.5
B05	B16	2S	E	2	110 9.5
B17	B07	2S	E	2	110 9.5
C15	C01	1NT	E	2	120 4
A14	A19	1NT	E	2	120 4
A02	A24	1NT	E	2	120 4
A20	A09	1NT	E	2	120 4
B02	B21	1NT	E	2	120 4
A10	A25	3C	N-2	200	1
B11	B19	2Sx	E	2	670 0

<p>1 N/-</p> <p>♠ T9 ♥ A54 ♦ A93 ♣ KQT62</p> <p>♠ J765432 ♥ 86 ♦ KT ♣ J8</p> <p>♠ AKQ8 ♥ J ♦ 87652 ♣ 975</p> <p>13 5 10 12</p> <p>♠ - ♥ KQT9732 ♦ QJ4 ♣ A43</p> <p>N S N 6 6 ♠ 5 5 ♥ 13 13 ♦ 8 8 ♣ 13 13</p> <p>Opt res: EW 7SX;1100</p> <p>E W N - - ♠ 8 8 ♥ - - ♦ 4 4 ♣ - -</p>	<p>2 E/NS</p> <p>♠ K6 ♥ AKJ865 ♦ J63 ♣ AT</p> <p>♠ AJ954 ♥ Q4 ♦ A42 ♣ KJ4</p> <p>♠ T832 ♥ T73 ♦ Q8 ♣ Q862</p> <p>♠ Q7 ♥ 92 ♦ KT975 ♣ 9753</p> <p>16 15 4 5</p> <p>N S N 8 8 ♠ 5 5 ♥ 10 10 ♦ 10 10 ♣ 7 7</p> <p>Opt res: EW 4SX;300</p> <p>E W N 3 3 ♠ 8 8 ♥ 3 3 ♦ 2 2 ♣ 6 6</p>	<p>3 S/EW</p> <p>♠ 98 ♥ K943 ♦ KQ ♣ Q9765</p> <p>♠ 742 ♥ Q5 ♦ T9852 ♣ J82</p> <p>♠ AJT653 ♥ T6 ♦ 643 ♣ A4</p> <p>♠ KQ ♥ AJ872 ♦ AJ7 ♣ KT3</p> <p>10 3 9 18</p> <p>N S N 9 9 ♠ 7 7 ♥ 11 11 ♦ 8 8 ♣ 11 11</p> <p>Opt res: NS 4H;450</p> <p>E W N 2 2 ♠ 6 6 ♥ 2 2 ♦ 5 5 ♣ 2 2</p>
<p>4 W/All</p> <p>♠ 2 ♥ T876 ♦ KQT76 ♣ J52</p> <p>♠ T9873 ♥ AK32 ♦ 9 ♣ QT8</p> <p>♠ AKQJ ♥ Q95 ♦ AJ3 ♣ K73</p> <p>♠ 654 ♥ J4 ♦ 8542 ♣ A964</p> <p>6 9 20 5</p> <p>N S N 2 1 ♠ 1 1 ♥ 2 2 ♦ 6 6 ♣ 3 3</p> <p>Opt res: EW 6S;1430</p> <p>E W N 11 11 ♠ 12 12 ♥ 10 10 ♦ 7 7 ♣ 9 9</p>	<p>5 N/NS</p> <p>♠ J6 ♥ AQ5432 ♦ A98 ♣ AT</p> <p>♠ AQT2 ♥ 876 ♦ J4 ♣ 9643</p> <p>♠ 84 ♥ KT ♦ T62 ♣ KQJ875</p> <p>♠ K9753 ♥ J9 ♦ KQ753 ♣ 2</p> <p>15 7 9 9</p> <p>N S N 7 7 ♠ 8 8 ♥ 10 10 ♦ 9 10 ♣ 4 4</p> <p>Opt res: EW 5CX;300</p> <p>E W N 3 3 ♠ 4 4 ♥ 3 3 ♦ 3 3 ♣ 9 9</p>	<p>6 E/EW</p> <p>♠ K72 ♥ A42 ♦ A53 ♣ A543</p> <p>♠ AQ65 ♥ KT3 ♦ J8764 ♣ 8</p> <p>♠ J3 ♥ QJ96 ♦ KQ2 ♣ KT92</p> <p>♠ T984 ♥ 875 ♦ T9 ♣ QJ76</p> <p>15 10 12 3</p> <p>N S N 5 5 ♠ 5 5 ♥ 4 4 ♦ 4 4 ♣ 6 6</p> <p>Opt res: W 1S/EW 1H;-110</p> <p>E W N 7 7 ♠ 7 8 ♥ 8 8 ♦ 9 9 ♣ 6 6</p>
<p>7 S/All</p> <p>♠ 8 ♥ A953 ♦ AKT7 ♣ Q875</p> <p>♠ K63 ♥ QJ872 ♦ 864 ♣ J4</p> <p>♠ AQJ974 ♥ KT4 ♦ 2 ♣ T93</p> <p>♠ T52 ♥ 6 ♦ QJ953 ♣ AK62</p> <p>13 7 10 10</p> <p>N S N 7 7 ♠ 5 5 ♥ 6 6 ♦ 12 12 ♣ 11 11</p> <p>Opt res: NS 6D;1370</p> <p>E W N 3 3 ♠ 7 7 ♥ 7 7 ♦ 1 1 ♣ 1 1</p>	<p>8 W/-</p> <p>♠ AKQ85 ♥ AJ87 ♦ 2 ♣ K97</p> <p>♠ 732 ♥ 2 ♦ K97654 ♣ T54</p> <p>♠ JT94 ♥ 963 ♦ QT83 ♣ 86</p> <p>♠ 6 ♥ KQT54 ♦ AJ ♣ AQJ32</p> <p>17 3 3 17</p> <p>N S N 13 13 ♠ 12 12 ♥ 13 13 ♦ 7 7 ♣ 13 13</p> <p>Opt res: NS 7N;1520</p> <p>E W N - - ♠ 1 1 ♥ - - ♦ 6 6 ♣ - -</p>	<p>9 N/EW</p> <p>♠ T874 ♥ A8763 ♦ 6 ♣ 642</p> <p>♠ AKJ6 ♥ KQJ92 ♦ A752 ♣ -</p> <p>♠ 92 ♥ 4 ♦ KJT984 ♣ KJ73</p> <p>♠ Q53 ♥ T5 ♦ Q3 ♣ AQT985</p> <p>4 18 8 10</p> <p>N S N 3 3 ♠ 3 3 ♥ 3 3 ♦ - - ♣ 6 7</p> <p>Opt res: EW 6D;-1370</p> <p>E W N 10 9 ♠ 10 9 ♥ 10 9 ♦ 12 12 ♣ 6 6</p>
<p>10 E/All</p> <p>♠ T2 ♥ QJ85 ♦ Q4 ♣ J9762</p> <p>♠ AQJ764 ♥ A92 ♦ 952 ♣ Q</p> <p>♠ 53 ♥ 74 ♦ AKT73 ♣ K854</p> <p>♠ K98 ♥ KT63 ♦ J86 ♣ AT3</p> <p>6 13 10 11</p> <p>N S N 2 2 ♠ 2 3 ♥ 6 6 ♦ 2 2 ♣ 6 6</p> <p>Opt res: EW 4S;-620</p> <p>E W N 9 9 ♠ 10 10 ♥ 6 6 ♦ 11 11 ♣ 7 7</p>	<p>11 S/-</p> <p>♠ A964 ♥ AK2 ♦ T943 ♣ AJ</p> <p>♠ 3 ♥ T654 ♦ A52 ♣ K9876</p> <p>♠ 85 ♥ Q873 ♦ QJ6 ♣ Q532</p> <p>♠ KQJT72 ♥ J9 ♦ K87 ♣ T4</p> <p>16 7 7 10</p> <p>N S N 9 9 ♠ 10 10 ♥ 5 5 ♦ 9 9 ♣ 6 6</p> <p>Opt res: NS 4S;420</p> <p>E W N 4 4 ♠ 3 3 ♥ 8 8 ♦ 3 3 ♣ 7 7</p>	<p>12 W/NS</p> <p>♠ K64 ♥ AT ♦ AT82 ♣ QJ63</p> <p>♠ A87 ♥ 987632 ♦ Q9 ♣ 98</p> <p>♠ T52 ♥ KQ5 ♦ K ♣ AKT752</p> <p>♠ QJ93 ♥ J4 ♦ J76543 ♣ 4</p> <p>14 6 15 5</p> <p>N S N 3 3 ♠ 7 7 ♥ 3 3 ♦ 9 9 ♣ 4 4</p> <p>Opt res: EW 3H;-140</p> <p>E W N 7 7 ♠ 4 4 ♥ 9 9 ♦ 4 4 ♣ 8 8</p>
<p>13 N/All</p> <p>♠ 5432 ♥ A62 ♦ KT53 ♣ 64</p> <p>♠ Q97 ♥ QJ87 ♦ 764 ♣ QT8</p> <p>♠ AJ8 ♥ 43 ♦ A98 ♣ J9752</p> <p>♠ KT6 ♥ KT95 ♦ QJ2 ♣ AK3</p> <p>7 7 10 16</p> <p>N S N 8 8 ♠ 9 9 ♥ 9 9 ♦ 9 9 ♣ 7 7</p> <p>Opt res: NS 1S/1H;140</p> <p>E W N 5 5 ♠ 4 4 ♥ 4 4 ♦ 4 4 ♣ 6 6</p>	<p>14 E/-</p> <p>♠ T73 ♥ A7642 ♦ 42 ♣ KJ5</p> <p>♠ Q64 ♥ JT8 ♦ 965 ♣ AQT8</p> <p>♠ K8 ♥ KQ5 ♦ AKJ8 ♣ 9764</p> <p>♠ AJ952 ♥ 93 ♦ QT73 ♣ 32</p> <p>8 9 16 7</p> <p>N S N 6 6 ♠ 8 8 ♥ 6 6 ♦ 6 6 ♣ 5 5</p> <p>Opt res: EW 3CX;100</p> <p>E W N 6 6 ♠ 5 5 ♥ 6 6 ♦ 7 7 ♣ 8 8</p>	<p>15 S/NS</p> <p>♠ J9632 ♥ A86 ♦ Q97 ♣ T7</p> <p>♠ - ♥ QJT9 ♦ AKJ84 ♣ A962</p> <p>♠ KQT874 ♥ K753 ♦ 6 ♣ 53</p> <p>♠ A5 ♥ 42 ♦ T532 ♣ KQJ84</p> <p>7 15 8 10</p> <p>N S N 4 7 ♠ 4 4 ♥ 2 2 ♦ 4 5 ♣ 5 5</p> <p>Opt res: EW 4H;-450</p> <p>E W N 6 6 ♠ 9 9 ♥ 11 11 ♦ 8 8 ♣ 8 8</p>

16 ♠ QT852
♥ 2
♦ 6543
♣ T94

W/E/W

♠ KJ763
♥ K74
♦ K82
♣ 82

♠ 4
♥ Q9653
♦ QJT
♣ AQ53

♠ A9
♥ AJT8
♦ A97
♣ KJ76

N	S
6	6
7	7
6	6
7	7
7	7

Opt res:
E 1N;-90

E	W
7	6
6	6
7	7
6	5
5	5

2
10 11
17

17 ♠ A7
♥ J872
♦ AK8754
♣ 8

N/-

♠ KT42
♥ KQ54
♦ J6
♣ J54

♠ QJ93
♥ T
♦ QT3
♣ K9732

♠ 865
♥ A963
♦ 92
♣ AQT6

N	S
9	9
7	7
10	10
10	10
7	7

Opt res:
NS 4H;420

E	W
4	4
6	6
3	3
3	3
6	6

12
10 8
10

18 ♠ T9754
♥ Q54
♦ KQ75
♣ 2

E/NS

♠ AJ86
♥ T963
♦ J4
♣ AK9

♠ K
♥ K872
♦ T862
♣ JT75

♠ Q32
♥ AJ
♦ A93
♣ Q8643

N	S
6	6
8	8
5	5
8	8
7	7

Opt res:
EW 2NX;100

E	W
7	7
4	4
7	7
5	5
6	6

7
13 7
13

19 ♠ AK
♥ QT653
♦ J93
♣ K65

S/E/W

♠ QJ984
♥ A94
♦ Q8
♣ AQ4

♠ 3
♥ J872
♦ AT7542
♣ J8

♠ T7652
♥ K
♦ K6
♣ T9732

N	S
5	5
6	6
5	5
4	4
7	7

Opt res:
EW 2N;-120

E	W
8	8
7	7
7	7
8	8
5	5

13
15 6
6

20 ♠ AT86
♥ J
♦ KQJ42
♣ T43

W/All

♠ 9752
♥ 853
♦ T73
♣ QJ6

♠ KJ3
♥ KQT96
♦ 86
♣ 872

♠ Q4
♥ A742
♦ A95
♣ AK95

N	S
10	10
10	10
7	7
12	12
11	11

Opt res:
NS 6D;1370

E	W
2	2
3	2
6	5
1	1
1	1

11
3 9
17

21 ♠ K832
♥ 9
♦ KQ6
♣ AK873

N/NS

♠ Q6
♥ JT8753
♦ T3
♣ Q42

♠ J54
♥ K
♦ AJ97542
♣ J5

♠ AT97
♥ AQ642
♦ 8
♣ T96

N	S
10	10
11	11
8	8
7	7
10	10

Opt res:
NS 4S;650

E	W
3	3
2	2
5	5
6	6
3	3

15
5 10
10

22 ♠ T95
♥ 76
♦ KJ9854
♣ 96

E/E/W

♠ AQ73
♥ 982
♦ T7
♣ KQ83

♠ 6
♥ AKT53
♦ AQ632
♣ 75

♠ KJ842
♥ QJ4
♦ -
♣ AJT42

N	S
3	3
6	6
2	2
4	4
5	5

Opt res:
EW 4H;-650

E	W
9	9
7	7
11	11
9	9
8	7

4
11 13
12

23 ♠ 52
♥ AJ96432
♦ Q76
♣ 5

S/All

♠ T6
♥ 75
♦ AKJ852
♣ AQT

♠ KQ7
♥ KT8
♦ T943
♣ J92

♠ AJ9843
♥ Q
♦ -
♣ K87643

N	S
4	4
8	8
7	7
3	3
7	7

Opt res:
NS 4SX;-500

E	W
9	8
3	3
6	6
10	10
5	5

7
14 9
10

24 ♠ QJ98764
♥ J4
♦ Q63
♣ 8

W/-

♠ K5
♥ KT98
♦ T7
♣ AJT53

♠ AT32
♥ A32
♦ J8
♣ K962

♠ -
♥ Q765
♦ AK9542
♣ Q74

N	S
4	4
6	6
4	4
7	7
3	3

Opt res:
EW 2H;-140

E	W
7	7
6	6
9	9
5	5
9	8

6
11 12
11

25 ♠ 965
♥ 632
♦ 53
♣ T9762

N/E/W

♠ KQJ43
♥ 984
♦ AK94
♣ J

♠ -
♥ AT5
♦ QJT862
♣ AQ83

♠ AT872
♥ KQJ7
♦ 7
♣ K54

N	S
2	2
5	5
4	4
1	1
5	5

Opt res:
EW 6D;-1370

E	W
9	9
7	7
8	8
12	12
7	7

0
14 13
13

26 ♠ J654
♥ Q7
♦ AK2
♣ K984

E/All

♠ Q98
♥ K93
♦ 9754
♣ J53

♠ AK732
♥ A82
♦ Q8
♣ Q62

♠ T
♥ JT654
♦ JT63
♣ AT7

N	S
6	6
5	5
8	8
8	8
8	8

Opt res:
EW 2S;-110

E	W
7	7
8	8
4	4
5	5
5	5

13
6 15
6