

第20回NRM杯 Session1 Section D 2015年6月27日(土)

1

♠ QJ109843
♥ K98
♦ 92
♣ 8

♠ AK2
♥ 62
♦ AK73
♣ AQ107

♠ 6
♥ AQJ1073
♦ 54
♣ 9652

Board (1) Av: NS=-230

N-S	E-W	Contract	N-S	E-W	IMP
18	14	3NT E-2	100		8
5	8	3NT E-2	100		8
17	11	3NT E-2	100		8
1	10	3NT E-2	100		8
20	13	5D W 5	400		-5
6	2	5D W 5	400		-5
19	12	3NT E 4	430		-5
16	15	3NT E 5	460		-6
4	7	3NT E 5	460		-6
3	9	3NT E 5	460		-6

2

♠ J1072
♥ 7
♦ J3
♣ KJ10864

♠ AK3
♥ AKQ
♦ 7654
♣ AQ5

♠ 8654
♥ 96542
♦ 109
♣ 93

Board (2) Av: NS=-1020

N-S	E-W	Contract	N-S	E-W	IMP
4	7	6NT E 7	1020		0
5	8	6NT E 7	1020		0
19	12	6NT E 7	1020		0
20	13	6NT E 7	1020		0
18	14	6NT E 7	1020		0
17	11	6NT E 7	1020		0
16	15	6NT E 7	1020		0
6	2	6NT E 7	1020		0
1	10	6NT E 7	1020		0
3	9	6NT E 7	1020		0

3

♠ J73
♥ 32
♦ 10653
♣ A1082

♠ 65
♥ K1096
♦ KQ84
♣ KQ7

♠ K98
♥ AQJ84
♦ J
♣ J543

Board (3) Av: NS=-150

N-S	E-W	Contract	N-S	E-W	IMP
4	7	3NT E-1	100		6
20	13	3NT E-1	100		6
5	8	2C S-1	50		3
17	11	2D W 2	90		2
3	9	2H S-2	100		2
19	12	2NT E 3	150		0
1	10	2NT E 3	150		0
6	2	1NT E 3	150		0
18	14	3NT E 4	630		-10
16	15	3NT E 4	630		-10

4

♠ 972
♥ 7
♦ 1065
♣ AK6543

♠ KQJ10
♥ A863
♦ AK98
♣ 9

♠ A8653
♥ K54
♦ QJ
♣ J87

Board (4) Av: NS=-410

N-S	E-W	Contract	N-S	E-W	IMP
16	15	3D E-1	100		11
17	11	3D E 3	110		7
1	10	3H W 3	140		7
5	8	2S S-2	200		5
20	13	2S N-3	300		3
3	9	4H W 4	620		-5
19	12	4H W 4	620		-5
18	14	4H W 4	620		-5
4	7	4H E 5	650		-6
6	2	4Sx S-4	1100		-12

5

♠ Q75
♥ 10962
♦ 8532
♣ K9

♠ KJ10942
♥ AK
♦ QJ
♣ Q42

♠ 63
♥ Q873
♦ AK1096
♣ 73

Board (5) Av: NS=-360

N-S	E-W	Contract	N-S	E-W	IMP
16	15	4S E-1	50		9
17	11	3S E 3	140		6
1	10	3S E 4	170		5
19	12	4S E 4	420		-2
6	2	4S E 4	420		-2
20	13	4S E 4	420		-2
3	9	4S E 4	420		-2
18	14	4S E 4	420		-2
4	7	3NT E 4	430		-2
5	8	4S E 5	450		-3

6

♠ K10
♥ K7642
♦ J1082
♣ QJ

♠ J32
♥ 83
♦ AK643
♣ 1054

♠ A754
♥ QJ109
♦ 7
♣ K963

Board (6) Av: NS=+170

N-S	E-W	Contract	N-S	E-W	IMP
17	11	4H N 4	420		6
16	15	1NT W-2	200		1
4	7	3H N 4	170		0
1	10	3H N 4	170		0
20	13	2H N 4	170		0
5	8	2H N 4	170		0
6	2	2H N 4	170		0
3	9	2H N 4	170		0
19	12	1NT W-1	100		-2
18	14	1NT E-1	100		-2

7

♠ J53
♥ K652
♦ K1052
♣ Q2

♠ Q1086
♥ AJ8
♦ AQ73
♣ K5

♠ 97
♥ 103
♦ J84
♣ A109743

Board (7) Av: NS=-650

N-S	E-W	Contract	N-S	E-W	IMP
5	4	4S E 4	620		1
18	11	4S E 4	620		1
1	9	3NT E 4	630		1
15	17	4S E 5	650		0
2	10	4S E 5	650		0
3	6	4S E 5	650		0
19	20	4S E 5	650		0
7	8	4S E 5	650		0
12	13	4S E 6	680		-1
16	14	4S E 6	680		-1

8

♠ J9
♥ A6
♦ AQJ85
♣ K843

♠ 104
♥ 843
♦ 94
♣ AQ10652

♠ AKQ752
♥ J972
♦ K6
♣ 7

Board (8) Av: NS=+610

N-S	E-W	Contract	N-S	E-W	IMP
7	8	6S N 6	980		9
3	6	6S N 6	980		9
12	13	6S N 6	980		9
18	11	3NT N 6	490		-3
2	10	5S N 6	480		-4
1	9	4S S 6	480		-4
16	14	4S S 6	480		-4
5	4	4S S 6	480		-4
19	20	4S S 6	480		-4
15	17	4H S-1	50		-12

9

♠ KQ74
♥ 6
♦ J52
♣ QJ864

♠ A105
♥ QJ83
♦ 873
♣ K52

♠ J
♥ AK972
♦ A6
♣ A10973

Board (9) Av: NS=+180

N-S	E-W	Contract	N-S	E-W	IMP
19	20	3NT S 4	430		6
1	9	5C S 5	400		6
15	17	3NT S 3	400		6
7	8	3NT S 3	400		6
2	10	3S E-3	300		3
18	11	4C S 5	150		-1
5	4	5C S-1	50		-6
12	13	3NT S-1	50		-6
3	6	3NT S-2	100		-7
16	14	3NT N-2	100		-7

10

♠ K97
♥ 1054
♦ KQ4
♣ 10862

♠ 1086
♥ AKJ93
♦ J832
♣ 9

N
W — E
S

♠ J532
♥ Q72
♦ 5
♣ KQJ53

♠ AQ4
♥ 86
♦ A10976
♣ A74

11

♠ 987
♥ 5
♦ KJ1043
♣ Q873

♠ K654
♥ 98432
♦ Q86
♣ 2

N
W — E
S

♠ QJ10
♥ KJ76
♦ 95
♣ K1095

♠ A32
♥ AQ10
♦ A72
♣ AJ64

12

♠ 52
♥ QJ9765
♦ A1087
♣ 7

♠ K983
♥ 843
♦ 54
♣ J652

N
W — E
S

♠ AJ76
♥ A10
♦ K92
♣ AK94

♠ Q104
♥ K2
♦ QJ63
♣ Q1083

Board (10) Av: NS=+10

N-S	E-W	Contract	N-S	E-W	IMP
7	8	2NT S 2	120		3
16	14	1NT N 2	120		3
3	6	3D S 3	110		3
5	4	3H W-1	100		3
12	13	1NT N 1	90		2
1	9	Passout			0
15	17	2H W 2	110		-3
19	20	2H W 2	110		-3
18	11	2H W 3	140		-4
2	10	2H W 3	140		-4

Board (11) Av: NS=+390

N-S	E-W	Contract	N-S	E-W	IMP
7	8	3NT S 6	490		3
19	20	3NT S 6	490		3
5	4	3NT S 6	490		3
1	9	3NT S 5	460		2
16	14	3NT S 5	460		2
15	17	3NT S 5	460		2
2	10	3NT S 5	460		2
12	13	2NT S 3	150		-6
18	11	2NT S 2	120		-7
3	6	3NT S-1		50	-10

Board (12) Av: NS=-50

N-S	E-W	Contract	N-S	E-W	IMP
1	9	4S W-2	100		4
7	8	4S E-2	100		4
2	10	4S W-1	50		3
3	6	1NT E-1	50		3
12	13	3H N-1		100	-2
15	17	2S W 2		110	-2
5	4	3S W 3		140	-3
19	20	3S W 3		140	-3
16	14	3S W 3		140	-3
18	11	3S E 3		140	-3

13

♠ K852
♥ 964
♦ 105
♣ 10865

♠ 1096
♥ 105
♦ AQ9763
♣ K3

N
W — E
S

♠ Q7
♥ J82
♦ KJ82
♣ A972

♠ AJ43
♥ AKQ73
♦ 4
♣ QJ4

14

♠ 632
♥ J94
♦ AQJ1098
♣ 10

♠ AK75
♥ Q106
♦ 42
♣ AK84

N
W — E
S

♠ Q984
♥ 8532
♦ 753
♣ J7

♠ J10
♥ AK7
♦ K6
♣ Q96532

15

♠ 87
♥ A1095
♦ 654
♣ Q972

♠ AKJ54
♥ Q3
♦ AQ2
♣ KJ6

N
W — E
S

♠ Q10
♥ KJ864
♦ KJ973
♣ 8

♠ 9632
♥ 72
♦ 108
♣ A10543

Board (13) Av: NS=+120

N-S	E-W	Contract	N-S	E-W	IMP
7	5	4H S 4	620		11
13	16	3H S 4	170		2
15	14	3H S 4	170		2
11	19	1H S 4	170		2
6	4	1H S 4	170		2
17	18	1H S 4	170		2
3	2	4D W-1	100		-1
1	8	1C S 2	90		-1
10	9	3D W 3		110	-6
20	12	3D W 3		110	-6

Board (14) Av: NS=+110

N-S	E-W	Contract	N-S	E-W	IMP
13	16	1NTxW-3	500		9
11	19	1NTxW-2	300		5
10	9	2D S 3	110		0
1	8	2D N 3	110		0
20	12	2D N 3	110		0
6	4	2D N 2	90		-1
17	18	2S W-1	50		-2
7	5	2H E-1	50		-2
15	14	1NT W-1	50		-2
3	2	3D N-1		50	-4

Board (15) Av: NS=-400

N-S	E-W	Contract	N-S	E-W	IMP
20	12	6S W-1	50		10
3	2	6H W-1	50		10
10	9	3NT W 5		460	-2
1	8	3NT W 5		460	-2
11	19	3NT E 5		460	-2
15	14	3NT E 5		460	-2
6	4	3NT E 5		460	-2
7	5	3NT E 6		490	-3
17	18	3NT E 6		490	-3
13	16	3NT E 6		490	-3

16

♠ KQ3
♥ KJ52
♦ 1043
♣ KQ2

♠ 82
♥ 6
♦ KJ652
♣ 109763

N
W — E
S

♠ A9764
♥ A987
♦ A97
♣ A

♠ J105
♥ Q1043
♦ Q8
♣ J854

17

♠ A852
♥ Q3
♦ 9653
♣ J87

♠ KQJ1064
♥ K65
♦ AQ64
♣

N
W — E
S

♠ 97
♥ J9872
♦ Q108
♣ K105

♠ 3
♥ A104
♦ AKJ742
♣ 932

18

♠ QJ843
♥ 853
♦ A5
♣ AJ6

♠ K962
♥ KJ10
♦ J9
♣ 8743

N
W — E
S

♠ 7
♥ Q762
♦ KQ8732
♣ K2

♠ A105
♥ A94
♦ 1064
♣ Q1095

Board (16) Av: NS=-100

N-S	E-W	Contract	N-S	E-W	IMP
11	19	3H S-1		50	2
20	12	2H S-1		50	2
15	14	2H N-1		50	2
6	4	2H N-1		50	2
3	2	3H N-2		100	0
7	5	3H N-2		100	0
10	9	3D W 4		130	-1
17	18	2S W 3		140	-1
1	8	2C N-3		150	-2
13	16	2S E 4		170	-2

Board (17) Av: NS=-10

N-S	E-W	Contract	N-S	E-W	IMP
1	8	3D S 4	130		4
13	16	3D S 4	130		4
11	19	2D S 3	110		3
10	9	4H E-2	100		3
15	14	4S W-1	50		2
20	12	5D S-1		50	-1
6	4	3S W 3		140	-4
3	2	3H E 3		140	-4
17	18	2H E 3		140	-4
7	5	4S W 5		450	-10

Board (18) Av: NS=+60

N-S	E-W	Contract	N-S	E-W	IMP
20	12	3S N 3	140		2
6	4	3S N 3	140		2
10	9	2S N 3	140		2
1	8	2S N 3	140		2
11	19	2S N 2	110		2
17	18	2S N 2	110		2
15	14	1NT E-1	50		0
3	2	3C S-1		100	-4
7	5	3D E 3		110	-5
13	16	2D E 3		110	-5

19

♠AKJ432
♥Q532
♦J7
♣10

♠10
♥J106
♦A10964
♣J876

♠95
♥A
♦KQ8532
♣AK93

W — E
N — S
S

♠Q876
♥K9874
♦
♣Q542

20

♠73
♥108542
♦AJ73
♣73

♠KJ1098
♥AJ9
♦KQ2
♣95

♠62
♥763
♦105
♣KJ10842

W — E
N — S
S

♠AQ54
♥KQ
♦9864
♣AQ6

21

♠A2
♥AQJ93
♦Q93
♣J87

♠QJ43
♥
♦J865
♣AKQ104

♠1085
♥K854
♦K102
♣532

W — E
N — S
S

♠K976
♥10762
♦A74
♣96

Board (19) Av: NS=+170

N-S	E-W	Contract	N-S	E-W	IMP
16	12	3NT N 5	460		7
6	5	4S N 5	450		7
13	19	3NT S 4	430		6
1	7	3NT S 4	430		6
2	9	4S N 4	420		6
14	17	5S N-1	50		-6
20	11	4S N-1	50		-6
15	18	6S N-2	100		-7
8	4	6S N-3	150		-8
3	10	4H N-4	200		-9

Board (20) Av: NS=-1060

N-S	E-W	Contract	N-S	E-W	IMP
16	12	6S W-1	100		15
13	19	5S W 6	680		9
1	7	4S W 6	680		9
8	4	4S W 6	680		9
20	11	4S W 6	680		9
2	9	6S W 6	1430		-9
6	5	6S W 6	1430		-9
3	10	6S W 6	1430		-9
15	18	6S W 6	1430		-9
14	17	6S W 6	1430		-9

Board (21) Av: NS=-240

N-S	E-W	Contract	N-S	E-W	IMP
20	11	4S E-2	100		8
15	18	4S W-1	50		7
6	5	3S W 3	140		3
2	9	3S W 4	170		2
8	4	3S W 4	170		2
13	19	3H N-2	200		1
14	17	4S W 4	420		-5
1	7	4S W 4	420		-5
3	10	4S E 4	420		-5
16	12	4Sx W 4	590		-8

22

♠106
♥AJ97
♦QJ8542
♣10

♠J42
♥Q83
♦AK93
♣QJ8

♠AQ753
♥K52
♦
♣K9752

W — E
N — S
S

♠K98
♥1064
♦1076
♣A643

23

♠A42
♥J1054
♦53
♣10954

♠K1053
♥6
♦Q102
♣Q7632

♠Q9
♥Q983
♦KJ8764
♣J

W — E
N — S
S

♠J876
♥AK72
♦A9
♣AK8

24

♠A64
♥Q86
♦Q1042
♣A97

♠10753
♥3
♦AKJ953
♣K4

♠J82
♥AK10974
♦8
♣J86

W — E
N — S
S

♠KQ9
♥J52
♦76
♣Q10532

Board (22) Av: NS=+100

N-S	E-W	Contract	N-S	E-W	IMP
6	5	2S S 3	140		1
3	10	2S S 3	140		1
20	11	1S S 3	140		1
16	12	1S S 3	140		1
2	9	2S S 2	110		0
1	7	2S S 2	110		0
14	17	2S S 2	110		0
8	4	1S S 1	80		-1
15	18	2S S-1	50		-4
13	19	2S S-1	50		-4

Board (23) Av: NS=-640

N-S	E-W	Contract	N-S	E-W	IMP
20	11	4S E 4	620		1
13	19	4S E 4	620		1
3	10	4S E 4	620		1
2	9	4S E 4	620		1
6	5	4S E 4	620		1
15	18	4S W 5	650		0
16	12	4S E 5	650		0
8	4	4S E 5	650		0
1	7	4S E 5	650		0
14	17	4S E 5	650		0

Board (24) Av: NS=+50

N-S	E-W	Contract	N-S	E-W	IMP
16	12	3H S 3	140		3
1	7	3H S 3	140		3
3	10	2H S 2	110		2
2	9	2H S 2	110		2
8	4	2H S 2	110		2
13	19	2H S 2	110		2
15	18	4H S-1	50		-3
14	17	3H S-1	50		-3
20	11	2H S-1	50		-3
6	5	4H S-2	100		-4

第20回NRM杯 Session 2 Section D 2015年6月27日(土)

1

♠ 97
♥ J64
♦ 984
♣ AQ653

♠ KQ854
♥ K98
♦ AQ52
♣ K

♠ 2
♥ Q107532
♦ J106
♣ 982

♠ AJ1063
♥ A
♦ K73
♣ J1074

W N E S

Board (1) Av: NS=-60

N-S	E-W	Contract	N-S	E-W	IMP
7	9	2S	S 2	110	5
11	12	2C	S 3	110	5
18	16	2C	S 2	90	4
19	17	2D	W-1	50	3
1	2	2S	S-2	100	-1
8	6	2H	W 3	140	-2
15	13	2S	S-3	150	-3
5	3	3H	E 4	170	-3
10	4	3H	E 4	170	-3
14	20	4H	E 4	420	-8

2

♠ J843
♥ KQ982
♦ Q5
♣ J2

♠ 952
♥ J10
♦ J9432
♣ Q103

♠ A1076
♥ A3
♦ 86
♣ A9875

♠ KQ
♥ 7654
♦ AK107
♣ K64

W N E S

Board (2) Av: NS=+220

N-S	E-W	Contract	N-S	E-W	IMP
5	3	4H	S 4	620	9
7	9	4H	S 4	620	9
15	13	3H	S 5	200	-1
8	6	3H	N 5	200	-1
14	20	3H	S 4	170	-2
11	12	3H	S 4	170	-2
10	4	3H	S 4	170	-2
19	17	2H	S 4	170	-2
1	2	2S	W-1	50	-5
18	16	2NT	S-1	100	-8

3

♠ AQ108
♥ J94
♦ 875
♣ 1087

♠ K5
♥ 1087
♦ AQ96
♣ AJ95

♠ 642
♥ A653
♦ K102
♣ Q63

♠ J973
♥ KQ2
♦ J43
♣ K42

W N E S

Board (3) Av: NS=-110

N-S	E-W	Contract	N-S	E-W	IMP
14	20	2S	S-1	50	2
15	13	2S	S-1	50	2
5	3	2S	N-1	50	2
11	12	1NT	W 1	90	1
7	9	1NT	W 2	120	0
1	2	1NT	W 2	120	0
19	17	2NT	W 3	150	-1
18	16	1NT	W 3	150	-1
10	4	1NT	W 3	150	-1
8	6	1NT	W 4	180	-2

4

♠ 7
♥ AQJ7643
♦ 65
♣ QJ5

♠ Q84
♥ 2
♦ AJ1098
♣ 10732

♠ J10652
♥ K105
♦ 42
♣ A98

♠ AK93
♥ 98
♦ KQ73
♣ K64

W N E S

Board (4) Av: NS=+610

N-S	E-W	Contract	N-S	E-W	IMP
5	3	4H	S 4	620	0
8	6	4H	N 4	620	0
11	12	4H	N 4	620	0
18	16	4H	N 4	620	0
15	13	4H	N 4	620	0
7	9	4H	N 4	620	0
19	17	4H	N 4	620	0
10	4	4H	N 4	620	0
14	20	4Sx	E-2	500	-3
1	2	3H	N 4	170	-10

5

♠ J10632
♥ 10652
♦ QJ5
♣ 9

♠ Q5
♥ AJ3
♦ A1043
♣ AQJ3

♠ 987
♥ KQ984
♦ K6
♣ K87

♠ AK4
♥ 7
♦ 9872
♣ 106542

W N E S

Board (5) Av: NS=-200

N-S	E-W	Contract	N-S	E-W	IMP
1	2	4NT	W-2	100	7
18	16	5H	E-1	50	6
11	12	3NT	W-1	50	6
15	13	3NT	W-1	50	6
19	17	3NT	W-1	50	6
10	4	4H	E 4	420	-6
14	20	4H	W 5	450	-6
7	9	4H	E 5	450	-6
5	3	4H	E 5	450	-6
8	6	4H	E 5	450	-6

6

♠ AKJ83
♥ J
♦ 10962
♣ KQ6

♠ 765
♥ 9874
♦ AQ
♣ 10543

♠ 92
♥ Q1062
♦ 743
♣ AJ98

♠ Q104
♥ AK53
♦ KJ85
♣ 72

W N E S

Board (6) Av: NS=+130

N-S	E-W	Contract	N-S	E-W	IMP
18	16	4S	N 4	420	7
1	2	4S	N 4	420	7
5	3	4S	N 4	420	7
19	17	4S	N 4	420	7
7	9	5S	N-1	50	-5
14	20	5S	N-1	50	-5
8	6	4S	N-1	50	-5
15	13	4S	N-1	50	-5
10	4	4S	N-1	50	-5
11	12	4S	N-1	50	-5

7

♠ 1083
♥ A72
♦ AJ104
♣ KJ3

♠ KJ6
♥ QJ86
♦ 87
♣ 10852

♠ A9752
♥ 543
♦ K3
♣ Q76

♠ Q4
♥ K109
♦ Q9652
♣ A94

W N E S

Board (7) Av: NS=+80

N-S	E-W	Contract	N-S	E-W	IMP
9	6	3NT	N 3	600	11
3	4	3D	N 4	130	2
13	14	2NT	S 2	120	1
1	5	3D	N 3	110	1
17	20	3D	N 3	110	1
18	12	2D	N 3	110	1
11	15	2D	N 2	90	0
19	16	2D	N 2	90	0
7	10	2NT	N-1	100	-5
8	2	5D	N-2	200	-7

8

♠ Q65
♥ 8432
♦ KQJ94
♣ J

♠ K
♥ Q65
♦ A106
♣ AKQ932

♠ J108
♥ AKJ107
♦ 52
♣ 1054

♠ A97432
♥ 9
♦ 873
♣ 876

W N E S

Board (8) Av: NS=-350

N-S	E-W	Contract	N-S	E-W	IMP
7	10	3S	S 3	140	10
3	4	4S	S-2	100	6
19	16	3C	W 5	150	5
17	20	3C	W 6	170	5
8	2	4H	E 6	480	-4
9	6	4H	E 6	480	-4
1	5	4H	E 6	480	-4
18	12	4H	E 6	480	-4
11	15	3NT	E 6	490	-4
13	14	6H	E 6	980	-12

9

♠ 7
♥ AKQJ10
♦ J8763
♣ 84

♠ 86542
♥ 92
♦ A109
♣ J102

♠ AKQ10
♥ 75
♦ 542
♣ KQ65

♠ J93
♥ 8643
♦ KQ
♣ A973

W N E S

Board (9) Av: NS=+400

N-S	E-W	Contract	N-S	E-W	IMP
1	5	5Hx	N 5	650	6
13	14	4H	N 5	450	2
3	4	4H	N 5	450	2
18	12	4H	N 5	450	2
8	2	4H	N 5	450	2
19	16	4H	N 4	420	1
7	10	4H	N 4	420	1
9	6	4H	N 4	420	1
11	15	3H	N 4	170	-6
17	20	4S	W-1	100	-7

10

♠ K1062
♥ J5
♦ 1085
♣ KJ52

♠ A75
♥ Q8742
♦ K93
♣ A6

♠ QJ3
♥ K106
♦ 764
♣ Q984

N
W — E
S

♠ 984
♥ A93
♦ AQJ2
♣ 1073

♠ 984
♥ A93
♦ AQJ2
♣ 1073

11

♠ QJ953
♥ J10
♦ AJ97
♣ 97

♠ 86
♥ Q862
♦ 852
♣ K1086

♠ AK104
♥ A975
♦
♣ AQJ54

N
W — E
S

♠ 72
♥ K43
♦ KQ10643
♣ 32

♠ 72
♥ K43
♦ KQ10643
♣ 32

12

♠ K
♥ K765
♦ Q106
♣ QJ432

♠ Q9862
♥ 94
♦ K9874
♣ A

♠ A10543
♥ 102
♦ AJ2
♣ 986

N
W — E
S

♠ J7
♥ AQJ83
♦ 53
♣ K1075

♠ J7
♥ AQJ83
♦ 53
♣ K1075

Board (10) Av: NS=-80

N-S	E-W	Contract	N-S	E-W	IMP
17	20	4H E-2	200		7
3	4	4H E-1	100		5
18	12	4H E-1	100		5
19	16	4H E-1	100		5
7	10	3H E-1	100		5
13	14	3H E 3	140		-2
8	2	3H E 3	140		-2
11	15	3H E 3	140		-2
9	6	4H E 4	620		-11
1	5	4H E 4	620		-11

Board (11) Av: NS=+520

N-S	E-W	Contract	N-S	E-W	IMP
7	10	6S N 6	980		10
9	6	4Dx W-4	800		7
17	20	4S N 7	510		0
13	14	4S N 6	480		-1
3	4	4S N 6	480		-1
11	15	4S N 6	480		-1
19	16	4S N 6	480		-1
1	5	4S N 5	450		-2
18	12	4S N 5	450		-2
8	2	4S N 5	450		-2

Board (12) Av: NS=-10

N-S	E-W	Contract	N-S	E-W	IMP
17	20	2NT W-4	200		5
3	4	2H W-1	50		2
13	14	2H W-1	50		2
9	6	2H W-1	50		2
19	16	Passout			0
7	10	Passout			0
18	12	Passout			0
1	5	1NT W 1	90		-2
11	15	2H W 2	110		-3
8	2	2H W 2	110		-3

13

♠ AQJ
♥ AK10
♦ AJ8
♣ 10763

♠ K1064
♥ Q64
♦ 1043
♣ QJ4

♠ 752
♥ 985
♦ K762
♣ AK2

N
W — E
S

♠ 983
♥ J732
♦ Q95
♣ 985

♠ 983
♥ J732
♦ Q95
♣ 985

14

♠ AQ3
♥ A43
♦ K854
♣ 983

♠ K9742
♥ J1096
♦ Q73
♣ 10

♠ 85
♥ KQ85
♦ A9
♣ AK764

N
W — E
S

♠ J106
♥ 72
♦ J1062
♣ QJ52

♠ J106
♥ 72
♦ J1062
♣ QJ52

15

♠ 954
♥ Q842
♦ KQ94
♣ A5

♠ 873
♥ A1075
♦ 76
♣ J942

♠ KQJ10
♥ J9
♦ AJ10
♣ Q876

N
W — E
S

♠ A62
♥ K63
♦ 8532
♣ K103

♠ A62
♥ K63
♦ 8532
♣ K103

Board (13) Av: NS=+650

N-S	E-W	Contract	N-S	E-W	IMP
16	11	3NT N 6	690		1
1	6	3NT N 5	660		0
14	19	3NT N 5	660		0
3	8	3NT N 5	660		0
18	13	3NT N 5	660		0
17	12	3NT N 5	660		0
2	7	3NT S 4	630		-1
4	9	3NT S 4	630		-1
10	5	3NT N 4	630		-1
20	15	3NT N 3	600		-2

Board (14) Av: NS=+300

N-S	E-W	Contract	N-S	E-W	IMP
4	9	3NT S 5	460		4
14	19	3NT S 5	460		4
17	12	3NT N 4	430		4
1	6	3NT S 3	400		3
2	7	3NT S 3	400		3
10	5	3NT S 3	400		3
16	11	3NT N 3	400		3
3	8	3NT S-1	50		-8
18	13	3NT S-1	50		-8
20	15	3NT S-1	50		-8

Board (15) Av: NS=+520

N-S	E-W	Contract	N-S	E-W	IMP
18	13	3NT S 4	630		3
16	11	3NT N 4	630		3
2	7	3NT S 3	600		2
17	12	3NT S 3	600		2
4	9	3NT N 3	600		2
3	8	3NT N 3	600		2
1	6	3NT N 3	600		2
20	15	3NT N 3	600		2
14	19	3NT S-1	100		-12
10	5	3NT N-3	300		-13

16

♠ A1052
♥ Q
♦ 632
♣ KJ1093

♠ KJ
♥ K108632
♦ A8
♣ 542

♠ Q94
♥ 9754
♦ J954
♣ Q8

N
W — E
S

♠ 8763
♥ AJ
♦ KQ107
♣ A76

♠ 8763
♥ AJ
♦ KQ107
♣ A76

17

♠ 9853
♥ K
♦ 862
♣ AQ874

♠ KJ62
♥ QJ932
♦ 7
♣ J53

♠ 7
♥ A106
♦ AJ1093
♣ K962

N
W — E
S

♠ AQ104
♥ 8754
♦ KQ54
♣ 10

♠ AQ104
♥ 8754
♦ KQ54
♣ 10

18

♠ J62
♥ 65
♦ 9852
♣ K1052

♠ 9
♥ Q974
♦ AQ74
♣ QJ83

♠ 743
♥ A32
♦ KJ63
♣ 976

N
W — E
S

♠ AKQ1085
♥ KJ108
♦ 10
♣ A4

♠ AKQ1085
♥ KJ108
♦ 10
♣ A4

Board (16) Av: NS=-550

N-S	E-W	Contract	N-S	E-W	IMP
2	7	5H E-2	200		13
10	5	4H E-1	100		12
17	12	4H E 4	620		-2
1	6	4H E 4	620		-2
20	15	4H E 5	650		-3
14	19	4H E 5	650		-3
16	11	4H E 5	650		-3
18	13	4H E 5	650		-3
4	9	4H E 6	680		-4
3	8	4H E 6	680		-4

Board (17) Av: NS=+40

N-S	E-W	Contract	N-S	E-W	IMP
14	19	3C S 5	150		3
17	12	3C S 5	150		3
16	11	3C S 4	130		3
2	7	3C N 4	130		3
3	8	1NT S 2	120		2
1	6	3C S 3	110		2
18	13	3D S-2	100		-4
4	9	2H E 2	110		-4
10	5	3H E 3	140		-5
20	15	3H E 4	170		-5

Board (18) Av: NS=-530

N-S	E-W	Contract	N-S	E-W	IMP
3	8	4NT E 4	430		3
18	13	3NT E 4	430		3
20	15	3NT E 5	460		2
10	5	3NT E 5	460		2
16	11	3NT E 5	460		2
17	12	4H W 6	480		2
1	6	4NT E 6	490		1
14	19	3NT E 6	490		1
2	7	6S W 6	980		-10
4	9	6H W 6	980		-10

19

Hand 19: N ♠A6, ♥J43, ♦A976, ♣A953. E ♠J1075, ♥108, ♦KJ10842, ♣2. Contract: 3NT. Score: 420.

20

Hand 20: N ♠AQJ7532, ♥AK5, ♦A53, ♣KQJ62. E ♠K104, ♥QJ843, ♦KQ6, ♣87. Contract: 5S. Score: 710.

21

Hand 21: N ♠8653, ♥752, ♦AK3, ♣942. E ♠K742, ♥AQ, ♦QJ4, ♣AK85. Contract: 3NT. Score: 430.

Board (19) Av: NS=+240. Table with columns N-S, E-W, Contract, N-S, E-W, IMP. Rows 16-6.

Board (20) Av: NS=-1180. Table with columns N-S, E-W, Contract, N-S, E-W, IMP. Rows 5-10.

Board (21) Av: NS=-380. Table with columns N-S, E-W, Contract, N-S, E-W, IMP. Rows 10-19.

22

Hand 22: N ♠A, ♥A82, ♦A10986, ♣AJ94. E ♠1087632, ♥94, ♦Q42, ♣108. Contract: 3NT. Score: 490.

23

Hand 23: N ♠Q10864, ♥K, ♦9863, ♣K98. E ♠975, ♥A9865, ♦5, ♣AJ52. Contract: 2D. Score: 110.

24

Hand 24: N ♠75, ♥K94, ♦AK7, ♣KJ852. E ♠K96, ♥AQ102, ♦QJ6, ♣963. Contract: 1NT. Score: 150.

Board (22) Av: NS=+360. Table with columns N-S, E-W, Contract, N-S, E-W, IMP. Rows 10-16.

Board (23) Av: NS=-110. Table with columns N-S, E-W, Contract, N-S, E-W, IMP. Rows 6-16.

Board (24) Av: NS=+50. Table with columns N-S, E-W, Contract, N-S, E-W, IMP. Rows 14-18.

25

Hand 25: N ♠KJ53, ♥86542, ♦A2, ♣Q5. E ♠742, ♥107, ♦KJ65, ♣AJ43. Contract: 3NT. Score: 150.

26

Hand 26: N ♠6, ♥QJ72, ♦A9543, ♣874. E ♠KJ32, ♥A54, ♦2, ♣K10652. Contract: 3H. Score: 200.

27

Hand 27: N ♠53, ♥K8654, ♦102, ♣10952. E ♠K1097, ♥AJ109, ♦976, ♣K3. Contract: 2NT. Score: 120.

Board (25) Av: NS=-80. Table with columns N-S, E-W, Contract, N-S, E-W, IMP. Rows 1, 14, 18, 5, 10, 20, 12, 8, 3, 13.

Board (26) Av: NS=+110. Table with columns N-S, E-W, Contract, N-S, E-W, IMP. Rows 3, 5, 12, 18, 1, 8, 13, 20, 10, 14.

Board (27) Av: NS=+10. Table with columns N-S, E-W, Contract, N-S, E-W, IMP. Rows 3, 14, 10, 5, 18, 13, 8, 20, 1, 12.

第20回NRM杯 Session 2 Section D 2015年6月27日(土)

28

♠ KQJ1086
♥ Q2
♦ K3
♣ A97

♠ 943 ♥ 1076 ♦ QJ82 ♣ Q63	<table border="1" style="border-collapse: collapse; width: 40px; height: 40px; margin: auto;"> <tr><td style="text-align: center;">N</td></tr> <tr><td style="text-align: center;"> </td></tr> <tr><td style="text-align: center;">E</td></tr> <tr><td style="text-align: center;"> </td></tr> <tr><td style="text-align: center;">S</td></tr> </table>	N		E		S	♠ AKJ83 ♥ 1074 ♣ KJ542
N							
E							
S							
♠ A752 ♥ 954 ♦ A965 ♣ 108							

29

♠ J9
♥ Q65
♦ A
♣ AKQ10982

♠ Q7632 ♥ 984 ♦ 94 ♣ J64	<table border="1" style="border-collapse: collapse; width: 40px; height: 40px; margin: auto;"> <tr><td style="text-align: center;">N</td></tr> <tr><td style="text-align: center;"> </td></tr> <tr><td style="text-align: center;">E</td></tr> <tr><td style="text-align: center;"> </td></tr> <tr><td style="text-align: center;">S</td></tr> </table>	N		E		S	♠ K854 ♥ J72 ♦ KJ875 ♣ 7
N							
E							
S							
♠ A10 ♥ AK103 ♦ Q10632 ♣ 53							

30

♠ K973
♥ K86
♦ A2
♣ K532

♠ QJ ♥ J943 ♦ KQJ74 ♣ Q10	<table border="1" style="border-collapse: collapse; width: 40px; height: 40px; margin: auto;"> <tr><td style="text-align: center;">N</td></tr> <tr><td style="text-align: center;"> </td></tr> <tr><td style="text-align: center;">E</td></tr> <tr><td style="text-align: center;"> </td></tr> <tr><td style="text-align: center;">S</td></tr> </table>	N		E		S	♠ A10864 ♥ 52 ♦ 8 ♣ AJ974
N							
E							
S							
♠ 52 ♥ AQ107 ♦ 109653 ♣ 86							

Board (28) Av: NS=+330

N-S	E-W	Contract	N-S	E-W	IMP
20	16	4S	N 4	620	7
18	19	4S	N 4	620	7
13	17	4S	N 4	620	7
10	6	4S	N 4	620	7
14	11	4S	N 4	620	7
1	4	2S	N 4	170	-4
8	9	5H	E-1	50	-7
12	15	4C	E-1	50	-7
5	2	5S	N-1	100	-10
3	7	5S	N-1	100	-10

Board (29) Av: NS=+800

N-S	E-W	Contract	N-S	E-W	IMP
20	16	6NT	S 7	1470	12
13	17	6C	N 7	1390	11
5	2	3NT	S 7	720	-2
14	11	3NT	S 7	720	-2
1	4	3NT	S 7	720	-2
18	19	3NT	S 7	720	-2
10	6	3NT	S 7	720	-2
3	7	3NT	N 7	720	-2
8	9	3NT	N 7	720	-2
12	15	5C	N 7	640	-4

Board (30) Av: NS=-100

N-S	E-W	Contract	N-S	E-W	IMP
8	9	3NT	W-2	100	5
20	16	3S	E-1	50	4
1	4	2D	W-1	50	4
14	11	1NT	W 1	90	0
3	7	3S	E 3	140	-1
10	6	2S	E 3	140	-1
18	19	1NT	S-3	150	-2
13	17	3S	E 4	170	-2
5	2	2S	E 4	170	-2
12	15	2S	E 5	200	-3

1

♠ K9852
♥ 875
♦ A10983
♣ A10983

♠ Q10732
♥ A
♦ AK2
♣ K764

♠ AK65
♥ 7
♦ QJ10643
♣ 52

W N E S

♠ J984
♥ QJ10643
♦ 9
♣ QJ

Board (1) Av: NS=-540

N-S	E-W	Contract	N-S	E-W	IMP
5	14	5S	W-1	50	11
8	20	4S	W 4	420	3
9	17	4S	W 6	480	2
12	4	4S	W 6	480	2
1	11	4S	W 6	480	2
10	19	4S	W 6	480	2
16	6	4S	E 6	480	2
2	13	4S	W 7	510	1
3	15	6S	W 6	980	-10
7	18	6S	W 6	980	-10

2

♠ KQ
♥ Q985
♦ A107
♣ A943

♠ AJ632
♥ 104
♦ J8642
♣ 10

♠ 8754
♥ AJ76
♦ Q93
♣ Q8

W N E S

♠ 109
♥ K32
♦ K5
♣ KJ7652

Board (2) Av: NS=+620

N-S	E-W	Contract	N-S	E-W	IMP
7	18	3NT	N 5	660	1
1	11	3NT	N 5	660	1
8	20	3NT	N 4	630	0
12	4	3NT	N 4	630	0
16	6	3NT	N 4	630	0
2	13	3NT	N 4	630	0
5	14	3NT	N 3	600	-1
3	15	3NT	N 3	600	-1
9	17	3NT	N 3	600	-1
10	19	3C	N 5	150	-10

3

♠ KJ6
♥ AK852
♦ AK5
♣ 86

♠ Q10954
♥ 6
♦ Q97
♣ AQJ4

♠ 832
♥ Q104
♦ 10432
♣ 932

W N E S

♠ A7
♥ J973
♦ J86
♣ K1075

Board (3) Av: NS=+420

N-S	E-W	Contract	N-S	E-W	IMP
1	11	4H	N 5	450	1
12	4	4H	N 4	420	0
9	17	4H	N 4	420	0
10	19	4H	N 4	420	0
5	14	4H	N 4	420	0
8	20	4H	N 4	420	0
7	18	4H	N 4	420	0
16	6	4H	N 4	420	0
3	15	4H	N 4	420	0
2	13	4H	N-1	50	-10

4

♠ KQJ842
♥
♦ AJ8763
♣ 10

♠ 6
♥ 1093
♦ 1094
♣ A86432

♠ A1095
♥ A86
♦ K52
♣ Q95

W N E S

♠ 73
♥ KQJ7542
♦ Q
♣ KJ7

Board (4) Av: NS=+400

N-S	E-W	Contract	N-S	E-W	IMP
7	18	4Sx	N 4	790	9
3	15	4S	N 4	620	6
5	14	4S	N 4	620	6
8	20	4S	N 4	620	6
1	11	4S	N 4	620	6
10	19	4H	S 4	620	6
2	13	4H	S 4	620	6
16	6	4S	N-2	200	-12
12	4	5H	S-3	300	-12
9	17	5D	N-4	400	-13

5

♠ J64
♥
♦ KJ9752
♣ A972

♠ KQ105
♥ AJ53
♦ 4
♣ 8654

♠ A973
♥ 104
♦ A863
♣ J103

W N E S

♠ 82
♥ KQ98762
♦ Q10
♣ KQ

Board (5) Av: NS=-30

N-S	E-W	Contract	N-S	E-W	IMP
3	15	3D	N 4	130	4
8	20	2H	S 2	110	4
10	19	2H	S 2	110	4
9	17	3S	W-1	50	2
7	18	4D	N-1	100	-2
1	11	3H	S-1	100	-2
12	4	2H	S-1	100	-2
2	13	2H	S-1	100	-2
5	14	2H	S-1	100	-2
16	6	2S	E 3	140	-3

6

♠ 53
♥ A87653
♦ 10
♣ 10932

♠ Q1062
♥ J2
♦ 763
♣ AK64

♠ K9874
♥ 94
♦ AJ82
♣ QJ

W N E S

♠ AJ
♥ KQ10
♦ KQ954
♣ 875

Board (6) Av: NS=+70

N-S	E-W	Contract	N-S	E-W	IMP
5	14	2H	S 4	170	3
16	6	2H	S 4	170	3
3	15	2H	S 3	140	2
12	4	2H	S 3	140	2
1	11	2H	S 2	110	1
7	18	2H	S 2	110	1
8	20	Passout			-2
9	17	4H	S-1	50	-3
10	19	4H	S-1	50	-3
2	13	4H	S-1	50	-3

7

♠ K854
♥ 94
♦ A75
♣ Q1082

♠ AQ1032
♥ 83
♦ Q108
♣ K96

♠ J9
♥ J65
♦ K942
♣ J754

W N E S

♠ 76
♥ AKQ1072
♦ J63
♣ A3

Board (7) Av: NS=+170

N-S	E-W	Contract	N-S	E-W	IMP
4	11	3NT	N 4	630	10
6	20	2H	S 4	170	0
13	5	2H	S 4	170	0
18	10	2H	S 4	170	0
1	15	2H	S 4	170	0
17	7	2H	S 4	170	0
9	16	2H	S 4	170	0
3	14	2H	S 4	170	0
8	19	2H	S 4	170	0
12	2	2H	S 3	140	-1

8

♠ AK
♥ 86
♦ K92
♣ Q107432

♠ 1052
♥ 1073
♦ J108754
♣ 8

♠ 863
♥ KJ52
♦ AQ3
♣ A65

W N E S

♠ QJ974
♥ AQ94
♦ 6
♣ KJ9

Board (8) Av: NS=+370

N-S	E-W	Contract	N-S	E-W	IMP
3	14	5Cx	N 5	550	5
4	11	3NT	N 6	490	3
9	16	3NT	N 6	490	3
13	5	3NT	N 4	430	2
1	15	5C	N 5	400	1
17	7	5C	N 5	400	1
6	20	3NT	N 3	400	1
8	19	3NT	N 3	400	1
12	2	3NT	N-1	50	-9
18	10	4S	S-2	100	-10

9

♠ J87643
♥
♦ KQ94
♣ KQ3

♠ 9
♥ AK82
♦ 1083
♣ AJ1082

♠ A1052
♥ Q1075
♦ AJ7
♣ 96

W N E S

♠ KQ
♥ J9643
♦ 652
♣ 754

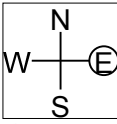
Board (9) Av: NS=-70

N-S	E-W	Contract	N-S	E-W	IMP
17	7	2S	N 3	140	5
9	16	2S	N 2	110	5
8	19	2S	N 2	110	5
4	11	3C	W-1	100	5
3	14	3S	N-1	50	1
12	2	2S	N-1	50	1
18	10	3H	E 3	140	-2
6	20	2H	E 3	140	-2
1	15	4Sx	N-3	500	-10
13	5	4Sx	N-3	500	-10

10

♠AK7
♥AQ10
♦98743
♣104

♠Q32
♥J97
♦AJ6
♣J653



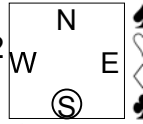
♠8654
♥K4
♦52
♣AKQ92

♠J109
♥86532
♦KQ10
♣87

11

♠A105
♥A753
♦K10853
♣Q

♠9
♥KJ842
♦A74
♣A865



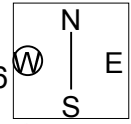
♠QJ7432
♥109
♦QJ6
♣KJ

♠K86
♥Q6
♦92
♣1097432

12

♠A1064
♥AQJ6
♦A5
♣Q87

♠QJ73
♥108
♦K1076
♣432



♠95
♥92
♦J9842
♣AJ106

♠K82
♥K7543
♦Q3
♣K95

Board (10) Av: NS=-80

Table with 5 columns: N-S, E-W, Contract, N-S, E-W, IMP. Rows show various contract results and scores for Board 10.

Board (11) Av: NS=+90

Table with 5 columns: N-S, E-W, Contract, N-S, E-W, IMP. Rows show various contract results and scores for Board 11.

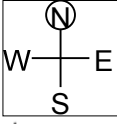
Board (12) Av: NS=+540

Table with 5 columns: N-S, E-W, Contract, N-S, E-W, IMP. Rows show various contract results and scores for Board 12.

13

♠J7542
♥10876
♦A5
♣K6

♠Q9
♥K53
♦109873
♣J53



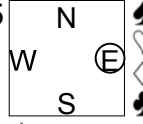
♠AK863
♥J4
♦K42
♣1092

♠10
♥AQ92
♦QJ6
♣AQ874

14

♠AQ63
♥10
♦Q52
♣J10873

♠K9875
♥654
♦KJ93
♣5



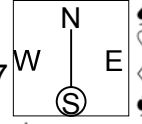
♠J1042
♥QJ973
♦A108
♣Q

♠AK82
♥764
♣AK9642

15

♠J98432
♥J9
♦632
♣65

♠K7
♥732
♦AQJ107
♣AQJ



♠Q106
♥AQ10
♦K954
♣K74

♠A5
♥K8654
♦8
♣109832

Board (13) Av: NS=+360

Table with 5 columns: N-S, E-W, Contract, N-S, E-W, IMP. Rows show various contract results and scores for Board 13.

Board (14) Av: NS=+240

Table with 5 columns: N-S, E-W, Contract, N-S, E-W, IMP. Rows show various contract results and scores for Board 14.

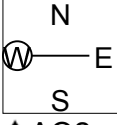
Board (15) Av: NS=-460

Table with 5 columns: N-S, E-W, Contract, N-S, E-W, IMP. Rows show various contract results and scores for Board 15.

16

♠KJ9875
♥K85
♦6
♣873

♠6
♥A10962
♦K105
♣K1094



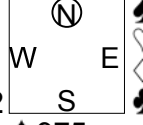
♠1043
♥43
♦AQJ7
♣A652

♠AQ2
♥QJ7
♦98432
♣QJ

17

♠K62
♥AJ1032
♦1085
♣K5

♠1083
♥97
♦Q942
♣10862



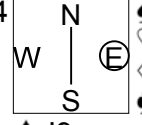
♠AQJ4
♥K854
♦A7
♣J97

♠975
♥Q6
♦KJ63
♣AQ43

18

♠72
♥10643
♦KQ103
♣1052

♠AQ84
♥Q52
♦A962
♣74



♠K10653
♥AJ7
♦754
♣K3

♠J9
♥K98
♦J8
♣AQJ986

Board (16) Av: NS=+150

Table with 5 columns: N-S, E-W, Contract, N-S, E-W, IMP. Rows show various contract results and scores for Board 16.

Board (17) Av: NS=+20

Table with 5 columns: N-S, E-W, Contract, N-S, E-W, IMP. Rows show various contract results and scores for Board 17.

Board (18) Av: NS=-70

Table with 5 columns: N-S, E-W, Contract, N-S, E-W, IMP. Rows show various contract results and scores for Board 18.

19

♠873
♥AJ86
♦102
♣AK103

♠Q102
♥KQ10
♦J8763
♣76

N
W—E
S

♠KJ65
♥75432
♦K5
♣42

♠A94
♥9
♦AQ94
♣QJ985

Board (19) Av: NS=+360

N-S	E-W	Contract	N-S	E-W	IMP
11	5	3NT S 4	430		2
12	3	3NT S 4	430		2
10	16	3NT S 4	430		2
1	13	3NT S 4	430		2
9	19	3NT S 4	430		2
8	17	3NT S 3	400		1
18	6	3NT S 3	400		1
4	14	2NT S 4	180		-5
2	15	2NT S 4	180		-5
20	7	2NT S 3	150		-5

20

♠Q10
♥Q932
♦Q754
♣A43

♠J65
♥AJ85
♦103
♣K1076

N
W—E
S

♠AK9843
♥10
♦AKJ2
♣J9

♠72
♥K764
♦986
♣Q852

Board (20) Av: NS=-670

N-S	E-W	Contract	N-S	E-W	IMP
1	13	5S E 5	650		1
2	15	4S E 5	650		1
9	19	4S E 5	650		1
20	7	4S E 6	680		0
12	3	4S E 6	680		0
8	17	4S E 6	680		0
11	5	4S E 6	680		0
10	16	4S E 6	680		0
18	6	4S E 6	680		0
4	14	4S E 6	680		0

21

♠764
♥4
♦KQJ865
♣742

♠A109
♥763
♦972
♣A1095

N
W—E
S

♠K852
♥AK109852
♦
♣J3

♠QJ3
♥QJ
♦A1043
♣KQ86

Board (21) Av: NS=-470

N-S	E-W	Contract	N-S	E-W	IMP
11	5	3Dx N-1	200		7
8	17	4H E 5	450		1
9	19	4H E 5	450		1
1	13	5H E 6	480		0
20	7	4H E 6	480		0
2	15	4H E 6	480		0
10	16	4H E 6	480		0
4	14	4H E 6	480		0
18	6	4H E 6	480		0
12	3	4Hx E 6	790		-8

22

♠95
♥Q87
♦AKQ852
♣98

♠AQ108643
♥653
♦
♣K102

N
W—E
S

♠K2
♥KJ102
♦J974
♣Q43

♠J7
♥A94
♦1063
♣AJ765

Board (22) Av: NS=-150

N-S	E-W	Contract	N-S	E-W	IMP
18	6	3NT E-1	100		6
8	17	5D N-1	50		3
2	15	4D N-1	50		3
9	19	3S W 4	170		-1
11	5	3S W 4	170		-1
1	13	2S W 4	170		-1
12	3	3S W 5	200		-2
10	16	3S W 5	200		-2
20	7	2S W 5	200		-2
4	14	4S W 4	620		-10

23

♠K95
♥54
♦432
♣AQJ84

♠Q74
♥QJ107
♦QJ98
♣106

N
W—E
S

♠A1082
♥K63
♦A76
♣K95

♠J63
♥A982
♦K105
♣732

Board (23) Av: NS=-110

N-S	E-W	Contract	N-S	E-W	IMP
1	13	1NT W 1	90		1
12	3	1NT W 1	90		1
11	5	1NT W 1	90		1
10	16	1NT W 1	90		1
2	15	1NT W 1	90		1
20	7	1NT W 2	120		0
4	14	1NT W 2	120		0
9	19	1NT E 2	120		0
18	6	1NT E 3	150		-1
8	17	3S E 4	170		-2

24

♠J972
♥QJ87
♦A75
♣96

♠K64
♥952
♦J32
♣8743

N
W—E
S

♠A105
♥AK6
♦KQ109
♣AKJ

♠Q83
♥1043
♦864
♣Q1052

Board (24) Av: NS=-430

N-S	E-W	Contract	N-S	E-W	IMP
2	15	3NT E 3	400		1
12	3	3NT E 3	400		1
1	13	3NT E 4	430		0
8	17	3NT E 4	430		0
20	7	3NT E 4	430		0
4	14	3NT E 4	430		0
9	19	3NT E 4	430		0
11	5	3NT E 4	430		0
18	6	3NT E 4	430		0
10	16	3NT E 4	430		0

25

♠J75
♥4
♦Q765
♣AQ532

♠A93
♥AJ108
♦AK982
♣8

N
W—E
S

♠KQ8642
♥65
♦4
♣K976

♠10
♥KQ9732
♦J103
♣J104

Board (25) Av: NS=-660

N-S	E-W	Contract	N-S	E-W	IMP
10	20	4S E 4	620		1
14	2	4S E 4	620		1
19	7	4S E 5	650		0
11	3	4S E 5	650		0
17	6	4S E 5	650		0
15	5	4S W 6	680		-1
16	8	4S E 6	680		-1
1	12	4S E 6	680		-1
13	4	4S E 6	680		-1
9	18	5Hx S-6	1400		-12

26

♠AKQ10986
♥
♦Q106
♣AKJ

♠J
♥J97643
♦J
♣109872

N
W—E
S

♠72
♥AQ
♦K98752
♣543

♠543
♥K10852
♦A43
♣Q6

Board (26) Av: NS=+1160

N-S	E-W	Contract	N-S	E-W	IMP
13	4	6S N 7	1460		7
14	2	6S N 6	1430		7
9	18	6S N 6	1430		7
19	7	6S N 6	1430		7
1	12	6S N 6	1430		7
15	5	6S N 6	1430		7
11	3	4S N 7	710		-10
17	6	4S N 7	710		-10
10	20	5S N 6	680		-10
16	8	4S N 6	680		-10

27

♠A9832
♥AJ10
♦A8
♣A95

♠4
♥975
♦J7652
♣Q864

N
W—E
S

♠K1075
♥K863
♦Q
♣J732

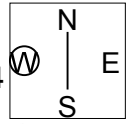
♠QJ6
♥Q42
♦K10943
♣K10

Board (27) Av: NS=+420

N-S	E-W	Contract	N-S	E-W	IMP
17	6	3NT N 4	430		0
16	8	4S N 4	420		0
19	7	4S N 4	420		0
13	4	4S N 4	420		0
11	3	4S N 4	420		0
14	2	4S N 4	420		0
10	20	4S N 4	420		0
9	18	4S N 4	420		0
1	12	4S N 4	420		0
15	5	4S N-1	50		-10

28

♠ A64
 ♥ J4
 ♦ A83
 ♣ J10542
 ♠ K83
 ♥ K752
 ♦ QJ1094
 ♣ 8
 ♠ Q10952
 ♥ 96
 ♦ 762
 ♣ Q76
 ♠ J7
 ♥ AQ1083
 ♦ K5
 ♣ AK93

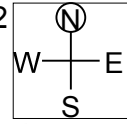


Board (28) Av: NS=+380

N-S	E-W	Contract	N-S	E-W	IMP
17	6	4H S 6	680		7
9	18	3NT N 5	660		7
15	5	5C S 6	620		6
14	2	3NT N 3	600		6
19	7	3NT N 3	600		6
10	20	3NT N 3	600		6
11	3	2C S 4	130		-6
16	8	3NT S-1		100	-10
1	12	3NT N-1		100	-10
13	4	3NT N-1		100	-10

29

♠ J8
 ♥ J10943
 ♦ AK7
 ♣ K93
 ♠ Q105432
 ♥ 10642
 ♣ Q42
 ♠ 9
 ♥ A876
 ♦ Q93
 ♣ AJ765
 ♠ AK76
 ♥ KQ52
 ♦ J85
 ♣ 108

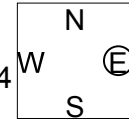


Board (29) Av: NS=+200

N-S	E-W	Contract	N-S	E-W	IMP
15	5	4H N 5	650		10
1	12	4H N 5	650		10
17	6	4H N 4	620		9
9	18	4H N 4	620		9
16	8	3H N 4	170		-1
14	2	4H N-1		100	-7
10	20	4H N-1		100	-7
19	7	4H N-1		100	-7
11	3	4H S-2		200	-9
13	4	4H N-2		200	-9

30

♠ 652
 ♥ K10652
 ♦ AK3
 ♣ 102
 ♠ 943
 ♥ Q3
 ♦ 108754
 ♣ A65
 ♠ AKQ1087
 ♥ A74
 ♦ Q9
 ♣ 98
 ♠ J
 ♥ J98
 ♦ J62
 ♣ KQJ743



Board (30) Av: NS=-90

N-S	E-W	Contract	N-S	E-W	IMP
1	12	4S E-2	100		5
14	2	3S E-1	50		4
10	20	3S E-1	50		4
11	3	3S E 3		140	-2
16	8	3S E 3		140	-2
15	5	3S E 3		140	-2
9	18	3S E 3		140	-2
13	4	2S E 3		140	-2
19	7	1NT E 3		150	-2
17	6	4S E 4		420	-8

第20回NRM杯 Session 4 Section D 2015年6月28日(日)

1

♠ 109
♥ J843
♦ 973
♣ AQ32

♠ Q2
♥ AKQ75
♦ Q8
♣ K1095

♠ KJ6543
♥ 96
♦ J1054
♣ 4

♠ A87
♥ 102
♦ AK62
♣ J876

Board (1) Av: NS=0

N-S	E-W	Contract	N-S	E-W	IMP
6	11	2H W-2	100		3
13	7	4S E-1	50		2
12	9	4S E-1	50		2
3	20	4H W-1	50		2
19	5	2H W-1	50		2
18	2	2H W-1	50		2
10	14	2D S-1		50	-2
1	16	2D S-1		50	-2
4	17	2S E 3		140	-4
15	8	2S E 4		170	-5

2

♠ K1072
♥ 5
♦ J654
♣ K1096

♠ QJ6
♥ J8762
♦ A872
♣ A

♠ A94
♥ A1043
♦ KQ10
♣ 852

♠ 853
♥ KQ9
♦ 93
♣ QJ743

Board (2) Av: NS=-440

N-S	E-W	Contract	N-S	E-W	IMP
3	20	4H W 4	420		1
19	5	4H W 4	420		1
13	7	4H W 4	420		1
6	11	4H W 4	420		1
1	16	4H W 4	420		1
10	14	4H W 5	450		0
18	2	4H W 5	450		0
4	17	4H W 5	450		0
15	8	4H W 5	450		0
12	9	4H W 5	450		0

3

♠ K93
♥ A96
♦ AK643
♣ 64

♠ 1082
♥ KQ8
♦ Q109
♣ Q1093

♠ QJ75
♥ 4
♦ J52
♣ KJ875

♠ A64
♥ J107532
♦ 87
♣ A2

Board (3) Av: NS=+260

N-S	E-W	Contract	N-S	E-W	IMP
4	17	4H S 6	480		6
10	14	4H S 5	450		5
6	11	4H S 5	450		5
3	20	2H S 6	230		-1
13	7	2H S 6	230		-1
19	5	2H S 5	200		-2
15	8	3H S 4	170		-3
12	9	2H S 4	170		-3
18	2	2H S 3	140		-3
1	16	2NT N 2	120		-4

4

♠ A10
♥ KQ6
♦ 108653
♣ 754

♠ K8743
♥ A1097
♦ KJ
♣ KJ

♠ J52
♥ J542
♦ A94
♣ A86

♠ Q96
♥ 83
♦ Q72
♣ Q10932

Board (4) Av: NS=-40

N-S	E-W	Contract	N-S	E-W	IMP
12	9	4S W-2	200		6
4	17	4S W-2	200		6
3	20	4S W-2	200		6
6	11	4H W-2	200		6
18	2	4S W-1	100		4
1	16	4S W-1	100		4
15	8	4H W-1	100		4
19	5	4S W 4		620	-11
10	14	4S W 4		620	-11
13	7	3NT W 4		630	-11

5

♠ A10
♥ AJ32
♦ A843
♣ Q32

♠ 9862
♥ 765
♦ KQ
♣ A1084

♠ KJ53
♥ 984
♦ J1075
♣ J6

♠ Q74
♥ KQ10
♦ 962
♣ K975

Board (5) Av: NS=-100

N-S	E-W	Contract	N-S	E-W	IMP
12	9	3NT N-1	100		0
3	20	3NT N-1	100		0
10	14	3NT N-1	100		0
19	5	3NT N-1	100		0
15	8	3NT N-1	100		0
1	16	3NT N-1	100		0
6	11	3NT N-1	100		0
18	2	3NT N-1	100		0
13	7	3NT N-1	100		0
4	17	3NT N-2	200		-3

6

♠ 96
♥ AKJ
♦ KJ94
♣ KQ85

♠ A873
♥ 95432
♦ A76
♣ 2

♠ KQ2
♥ 10876
♦ 53
♣ A1043

♠ J1054
♥ Q
♦ Q1082
♣ J976

Board (6) Av: NS=+140

N-S	E-W	Contract	N-S	E-W	IMP
13	7	1NT N 3	150		0
19	5	1NT N 3	150		0
3	20	1NT N 3	150		0
10	14	1NT N 3	150		0
18	2	1NT N 3	150		0
12	9	1NT N 2	120		-1
6	11	1NT N 2	120		-1
1	16	1NT N 2	120		-1
15	8	1NT N 2	120		-1
4	17	1NT N 2	120		-1

7

♠ 105
♥ AKQJ8
♦ A952
♣ 73

♠ A9
♥ 9762
♦ 103
♣ Q10864

♠ KQJ7
♥ 10
♦ KQ874
♣ AJ5

♠ 86432
♥ 543
♦ J6
♣ K92

Board (7) Av: NS=-120

N-S	E-W	Contract	N-S	E-W	IMP
5	18	2Hx N 2	670		13
12	7	2H N-1	100		1
11	9	3C W 3	110		0
16	4	3C W 3	110		0
17	2	2S E 2	110		0
19	3	4C W 4	130		0
8	14	3C W 4	130		0
10	13	3C W 4	130		0
1	20	3C W 4	130		0
6	15	2S N-2	200		-2

8

♠ QJ876
♥ AQ2
♦ 6
♣ Q965

♠ K92
♥ J765
♦ AK75
♣ A8

♠ 54
♥ 10984
♦ 10984
♣ K32

♠ A103
♥ K3
♦ QJ32
♣ J1074

Board (8) Av: NS=+90

N-S	E-W	Contract	N-S	E-W	IMP
8	14	3S N 4	170		2
6	15	2S N 3	140		2
11	9	1NT W-2	100		0
5	18	1NT W-2	100		0
1	20	1NT W-2	100		0
17	2	1NT W-2	100		0
12	7	1NT W-1	50		-1
16	4	1NT W-1	50		-1
19	3	1NT W-1	50		-1
10	13	1NT W 1		90	-5

9

♠ J53
♥ A1085
♦ 64
♣ AQ85

♠ KQ1087
♥ J2
♦ 5
♣ KJ1063

♠ 642
♥ Q976
♦ AJ1093
♣ 7

♠ A9
♥ K43
♦ KQ872
♣ 942

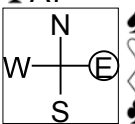
Board (9) Av: NS=-20

N-S	E-W	Contract	N-S	E-W	IMP
10	13	3S W-2	200		6
5	18	3S W-1	100		3
1	20	3S W-1	100		3
6	15	3NT S-1		50	-1
19	3	3H N-1		50	-1
17	2	3D S-1		50	-1
16	4	3D S-1		50	-1
8	14	2D S-1		50	-1
12	7	3D S-2		100	-2
11	9	3D S-2		100	-2

10

♠103
♥QJ105
♦K10752
♣A7

♠65
♥K9843
♦Q9
♣K983



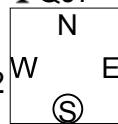
♠KQ87
♥A7
♦84
♣QJ1042

♠AJ942
♥62
♦AJ63
♣65

11

♠AK964
♥K7
♦A94
♣QJ7

♠J8732
♥
♦KJ1062
♣952



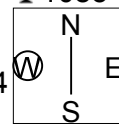
♠10
♥AQJ1052
♦873
♣K83

♠Q5
♥98643
♦Q5
♣A1064

12

♠J109
♥J982
♦932
♣1085

♠Q75
♥64
♦AKJ84
♣KQJ



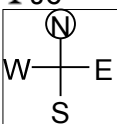
♠A42
♥AQ
♦Q1075
♣A642

♠K863
♥K10753
♦6
♣973

13

♠J10
♥J9753
♦AQ85
♣J6

♠A932
♥AKQ62
♦K
♣1075



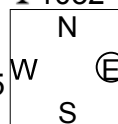
♠Q754
♥8
♦1097642
♣K9

♠K86
♥104
♦J3
♣AQ8432

14

♠QJ98
♥742
♦Q42
♣1032

♠654
♥J85
♦AK95
♣KQ6



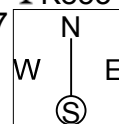
♠A2
♥K10963
♦8763
♣A5

♠K1073
♥AQ
♦J10
♣J9874

15

♠AJ
♥J763
♦J84
♣K853

♠KQ97
♥9542
♦92
♣974



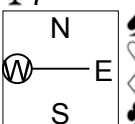
♠8654
♥A108
♦A3
♣AQJ6

♠1032
♥KQ
♦KQ10765
♣102

16

♠A72
♥J76432
♦Q43
♣7

♠KQ8643
♥AK5
♦
♣A1083



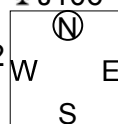
♠J1095
♥Q9
♦K75
♣KQ64

♠
♥108
♦AJ109862
♣J952

17

♠1065
♥J43
♦AK93
♣J106

♠A982
♥KQ52
♦Q4
♣Q52



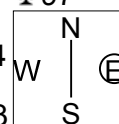
♠KJ3
♥A1098
♦865
♣743

♠Q74
♥76
♦J1072
♣AK98

18

♠J1072
♥3
♦AJ7532
♣97

♠85
♥J1054
♦K96
♣10543



♠6
♥Q98762
♦Q10
♣KQ82

♠AKQ943
♥AK
♦84
♣AJ6

Board (10) Av: NS=+30

N-S	E-W	Contract	N-S	E-W	IMP
8	14	1NT E-2	200		5
5	18	3D S 4	130		3
6	15	3D N 4	130		3
11	9	1NT E-1	100		2
12	7	1NT E-1	100		2
10	13	1NT N 1	90		2
16	4	1NT W 1		90	-3
17	2	1NT E 1		90	-3
1	20	2C E 3		110	-4
19	3	2C E 3		110	-4

Board (11) Av: NS=+140

N-S	E-W	Contract	N-S	E-W	IMP
11	9	3H E-4	200		2
12	7	2S N 4	170		1
19	3	2S N 4	170		1
5	18	3S N 3	140		0
1	20	2S N 3	140		0
16	4	2S N 3	140		0
17	2	2S N 3	140		0
6	15	3C S 3	110		-1
10	13	2S N 2	110		-1
8	14	2H N-3		150	-7

Board (12) Av: NS=-400

N-S	E-W	Contract	N-S	E-W	IMP
16	4	7NT W-2	100		11
1	20	6NT W-1	50		10
5	18	6NT W-1	50		10
19	3	6NT W-1	50		10
11	9	6NT W-1	50		10
17	2	5NT W 6		490	-3
8	14	6NT W 6		920	-11
10	13	6NT W 6		990	-11
12	7	6NT W 6		990	-11
6	15	6NT W 6		990	-11

Board (13) Av: NS=+150

N-S	E-W	Contract	N-S	E-W	IMP
9	15	3S E-2	200		2
10	12	3S E-2	200		2
13	8	3S E-2	200		2
1	19	1NT N 3	150		0
7	11	1NT N 3	150		0
18	3	1NT N 3	150		0
6	14	2C S 4	130		-1
16	2	2C S 3	110		-1
20	4	4S E-1	100		-2
5	17	2S E-1	100		-2

Board (14) Av: NS=-230

N-S	E-W	Contract	N-S	E-W	IMP
10	12	4H E-1	50		7
13	8	4H E-1	50		7
7	11	4H E-1	50		7
5	17	3D W 3		110	3
9	15	3H E 3		140	3
16	2	4H E 4		420	-5
18	3	4H E 4		420	-5
1	19	4H E 4		420	-5
20	4	4H E 4		420	-5
6	14	4H E 4		420	-5

Board (15) Av: NS=+40

N-S	E-W	Contract	N-S	E-W	IMP
9	15	2Dx N 2	180		4
10	12	2D N 3	110		2
1	19	1NT E-2	100		2
6	14	1NT E-2	100		2
13	8	1NT E-2	100		2
20	4	2D N 2	90		2
5	17	1NT E-1	50		0
7	11	2D S-1		100	-4
18	3	2S E 2		110	-4
16	2	2S W 3		140	-5

Board (16) Av: NS=-870

N-S	E-W	Contract	N-S	E-W	IMP
1	19	5S W 6	680		5
9	15	5S W 6	680		5
7	11	5S W 6	680		5
18	3	5S W 6	680		5
16	2	4S W 6	680		5
10	12	4S W 6	680		5
20	4	4S W 6	680		5
13	8	6S W 6	1430		-11
5	17	6S W 6	1430		-11
6	14	6S W 6	1430		-11

Board (17) Av: NS=-120

N-S	E-W	Contract	N-S	E-W	IMP
7	11	1NT N-2	100		1
5	17	2H E 2		110	0
1	19	2H E 2		110	0
6	14	2H E 2		110	0
16	2	2H E 2		110	0
10	12	2H E 2		110	0
18	3	2H E 2		110	0
13	8	2H E 3		140	-1
20	4	2H E 3		140	-1
9	15	2H E 3		140	-1

Board (18) Av: NS=+1240

N-S	E-W	Contract	N-S	E-W	IMP
10	12	6S S 6	1430		5
9	15	6S S 6	1430		5
7	11	6S S 6	1430		5
1	19	6S S 6	1430		5
18	3	6S S 6	1430		5
20	4	6S N 6	1430		5
6	14	6S N 6	1430		5
5	17	4S S 6	680		-11
16	2	4S S 6	680		-11
13	8	4S N 6	680		-11

19

♠ 764
♥ 103
♦ J109742
♣ 52

♠ 98532
♥ 974
♦ Q
♣ KJ93

N
W—E
S
A10
♥ AJ862
♦ A6
♣ AQ107

♠ KQJ
♥ KQ5
♦ K853
♣ 864

20

♠ AQJ75
♥ A84
♦ J65
♣ 63

♠ K984
♥ KQ1075
♦ 1097
♣ 5

N
W—E
S
103
♥ J93
♦ AQ3
♣ AQ742

♠ 62
♥ 62
♦ K842
♣ KJ1098

21

♠ 3
♥ K1073
♦ AJ87
♣ 10986

♠ KQJ
♥ J
♦ Q32
♣ AKQJ72

N
W—E
S
876542
♥ 4
♦ K1064
♣ 54

♠ A109
♥ AQ98652
♦ 95
♣ 3

Board (19) Av: NS=-310

N-S	E-W	Contract	N-S	E-W	IMP
1	18	5Hx E-1	200		11
19	4	4S W-1	100		9
20	2	3NT E-1	100		9
14	9	3H E 4	170		4
8	12	2H E 4	170		4
7	15	5Dx S-3	500		-5
3	17	4H E 4	620		-7
16	5	4H E 4	620		-7
13	6	4H E 4	620		-7
11	10	4H E 5	650		-8

Board (20) Av: NS=+30

N-S	E-W	Contract	N-S	E-W	IMP
13	6	2C E-4	400		9
7	15	2C E-3	300		7
1	18	2C E-3	300		7
3	17	2C E-3	300		7
20	2	2H W 2	110		-4
8	12	2H W 2	110		-4
19	4	3H W 3	140		-5
14	9	2H E 3	140		-5
16	5	3H W 4	170		-5
11	10	2S N-2	200		-6

Board (21) Av: NS=+230

N-S	E-W	Contract	N-S	E-W	IMP
20	2	5H S 5	650		9
13	6	5H S 5	650		9
19	4	4H S 5	650		9
11	10	3H S 5	200		-1
3	17	5S E-2	100		-4
7	15	5S W-1	50		-5
8	12	5S W-1	50		-5
14	9	4S E-1	50		-5
1	18	4S E-1	50		-5
16	5	4S E 4	420		-12

22

♠ QJ103
♥ Q7532
♦ K
♣ 973

♠ A862
♥ AJ
♦ 872
♣ J542

N
W—E
S
54
♥ 1098
♦ AJ1095
♣ AKQ

♠ K97
♥ K64
♦ Q643
♣ 1086

23

♠ J108
♥ AQ985
♦ A7
♣ Q107

♠ 72
♥ K102
♦ Q1083
♣ K652

N
W—E
S
A65
♥ J643
♦ K52
♣ 983

♠ KQ943
♥ 7
♦ J964
♣ AJ4

24

♠ J
♥ J762
♦ KJ9742
♣ 106

♠ 2
♥ AKQ1095
♦ A108
♣ J53

N
W—E
S
K10864
♥ 4
♦ 53
♣ KQ974

♠ AQ9753
♥ 83
♦ Q6
♣ A82

Board (22) Av: NS=-290

N-S	E-W	Contract	N-S	E-W	IMP
1	18	1NT E 2	120		5
20	2	1NT E 3	150		4
16	5	1NT E 3	150		4
3	17	1NT E 3	150		4
7	15	1NT E 4	180		3
19	4	1NT E 4	180		3
11	10	1NT E 5	210		2
13	6	3NT E 4	630		-8
14	9	3NT W 5	660		-9
8	12	3NT E 5	660		-9

Board (23) Av: NS=+230

N-S	E-W	Contract	N-S	E-W	IMP
3	17	4S S 4	620		9
7	15	4S S 4	620		9
13	6	4S S 4	620		9
20	2	3NT N 3	600		9
19	4	3S S 3	140		-3
8	12	1NT N 2	120		-3
14	9	4S S-1	100		-8
16	5	4S S-1	100		-8
11	10	4S S-1	100		-8
1	18	4S S-1	100		-8

Board (24) Av: NS=-140

N-S	E-W	Contract	N-S	E-W	IMP
19	4	3H W-1	50		5
7	15	2S S-2	100		1
20	2	2H W 2	110		1
13	6	2H W 2	110		1
14	9	2H W 3	140		0
8	12	2H W 3	140		0
3	17	2S S-3	150		0
1	18	2H W 4	170		-1
11	10	2H W 4	170		-1
16	5	2H W 4	170		-1

25

♠ 3
♥ AQJ
♦ AQJ8
♣ KQ762

♠ Q104
♥ 764
♦ K1065
♣ 1093

N
W—E
S
KJ97652
♥ 53
♦ 942
♣ J

♠ A8
♥ K10982
♦ 73
♣ A854

26

♠ 109
♥ QJ64
♦ A104
♣ A1085

♠ 632
♥ K1083
♦ KQ72
♣ J2

N
W—E
S
AKQ7
♥ A97
♦ J653
♣ K9

♠ J854
♥ 52
♦ 98
♣ Q7643

27

♠ 1098753
♥ 53
♦ J
♣ AJ106

♠ A2
♥ AKJ74
♦ A952
♣ Q7

N
W—E
S
Q
♥ 9862
♦ 10843
♣ 8542

♠ KJ64
♥ Q10
♦ KQ76
♣ K93

Board (25) Av: NS=+490

N-S	E-W	Contract	N-S	E-W	IMP
15	10	6H S 7	1010		11
8	11	4H S 7	510		1
19	2	4H S 7	510		1
16	3	3NT S 6	490		0
4	18	3NT S 6	490		0
20	5	3NT N 6	490		0
1	17	4H S 6	480		0
6	12	4H S 6	480		0
9	13	4H S 6	480		0
7	14	5C N 7	440		-2

Board (26) Av: NS=+200

N-S	E-W	Contract	N-S	E-W	IMP
4	18	3NT E-3	300		3
15	10	3NT E-3	300		3
9	13	3NT E-3	300		3
20	5	3NT E-2	200		0
19	2	3NT E-2	200		0
1	17	3NT E-2	200		0
6	12	3NT E-2	200		0
7	14	3NT E-1	100		-3
8	11	3NT E-1	100		-3
16	3	3NT E-1	100		-3

Board (27) Av: NS=+60

N-S	E-W	Contract	N-S	E-W	IMP
9	13	2S N 4	170		3
19	2	3S N 3	140		2
8	11	3S N 3	140		2
4	18	3S N 3	140		2
1	17	3S N 3	140		2
20	5	5Hx E-1	100		1
6	12	4S N-1	50		-3
16	3	4S N-1	50		-3
7	14	4S N-1	50		-3
15	10	4Sx N-1	100		-4

28

♠ 7642
♥ KJ108
♦ Q2
♣ Q73

♠ KQ
♥ 53
♦ 7543
♣ AK1096

N		E
W		S

♠ A95
♥ 4
♦ AJ10986
♣ J52

♠ J1083
♥ AQ9762
♦ K
♣ 84

29

♠ 4
♥ 8632
♦ Q10763
♣ K62

♠ 975
♥ AK9
♦ AKJ92
♣ 105

N		E
W		S

♠ AKJ1086
♥ 754
♦ 4
♣ J93

♠ Q32
♥ QJ10
♦ 85
♣ AQ874

30

♠ Q1072
♥ Q54
♦ AQ9
♣ 742

♠ AJ98
♥ K7
♦ K1082
♣ 1053

N		E
W		S

♠ 643
♥ 982
♦ 73
♣ AKQ96

♠ K5
♥ AJ1063
♦ J654
♣ J8

Board (28) Av: NS=-140

N-S	E-W	Contract	N-S	E-W	IMP
16	3	4D	E 4	130	0
4	18	4D	E 4	130	0
9	13	4D	E 4	130	0
8	11	4D	E 4	130	0
15	10	4D	E 4	130	0
6	12	4D	E 4	130	0
1	17	3D	E 4	130	0
19	2	3C	W 4	130	0
20	5	3H	S-2	200	-2
7	14	5D	E 5	400	-6

Board (29) Av: NS=-200

N-S	E-W	Contract	N-S	E-W	IMP
16	3	4S	E-1	100	7
19	2	4S	E-1	100	7
1	17	4S	E-1	100	7
4	18	4S	E-1	100	7
9	13	4S	E-1	100	7
8	11	3S	W 4	170	1
20	5	4S	W 4	620	-9
15	10	4S	W 4	620	-9
7	14	4S	E 4	620	-9
6	12	4S	E 4	620	-9

Board (30) Av: NS=0

N-S	E-W	Contract	N-S	E-W	IMP
9	13	2H S 2	110		3
19	2	2H N 2	110		3
1	17	1NT E-1	50		2
8	11	Passout			0
7	14	Passout			0
15	10	Passout			0
6	12	Passout			0
16	3	2H S-1		50	-2
4	18	2C E 2		90	-3
20	5	1NT E 1		90	-3