

第20回NRM杯 Session1 Section C 2015年6月27日(土)

1

♠ QJ109843
♥ K98
♦ 92
♣ 8

♠ 75
♥ 54
♦ QJ1086
♣ KJ43

W N E S

♠ AK2
♥ 62
♦ AK73
♣ AQ107

♠ 6
♥ AQJ1073
♦ 54
♣ 9652

Board (1) Av: NS=-150

N-S	E-W	Contract	N-S	E-W	IMP
4	7	3NT E-2	100		6
19	12	3NT E-2	100		6
17	11	3NT E-2	100		6
20	13	3NT E-2	100		6
6	2	3NT E-2	100		6
3	9	4Sx N-2	300		-4
1	10	5D W 5	400		-6
18	14	3NT E 4	430		-7
5	8	3NT E 5	460		-7
16	15	3NT E 5	460		-7

2

♠ J1072
♥ 7
♦ J3
♣ KJ10864

♠ Q9
♥ J1083
♦ AKQ82
♣ 72

W N E S

♠ AK3
♥ AKQ
♦ 7654
♣ AQ5

♠ 8654
♥ 96542
♦ 109
♣ 93

Board (2) Av: NS=-1020

N-S	E-W	Contract	N-S	E-W	IMP
3	9	6D E 7	940		2
5	8	6NT E 7	1020		0
4	7	6NT E 7	1020		0
20	13	6NT E 7	1020		0
18	14	6NT E 7	1020		0
16	15	6NT E 7	1020		0
17	11	6NT E 7	1020		0
1	10	6NT E 7	1020		0
6	2	6NT E 7	1020		0
19	12	6Dx E 7	1190		-5

3

♠ J73
♥ 32
♦ 10653
♣ A1082

♠ AQ1042
♥ 75
♦ A972
♣ 96

W N E S

♠ 65
♥ K1096
♦ KQ84
♣ KQ7

♠ K98
♥ AQJ84
♦ J
♣ J543

Board (3) Av: NS=-310

N-S	E-W	Contract	N-S	E-W	IMP
5	8	3NT E-2	200		11
1	10	1S W 2	110		5
16	15	2NT E 2	120		5
20	13	2NT E 2	120		5
6	2	2NT E 3	150		4
19	12	2NT E 3	150		4
3	9	3NT E 3	600		-7
4	7	3NT E 3	600		-7
18	14	3NT E 4	630		-8
17	11	3NT E 4	630		-8

4

♠ 972
♥ 7
♦ 1065
♣ AK6543

♠ 4
♥ QJ1092
♦ 7432
♣ Q102

W N E S

♠ KQJ10
♥ A863
♦ AK98
♣ 9

♠ A8653
♥ K54
♦ QJ
♣ J87

Board (4) Av: NS=-470

N-S	E-W	Contract	N-S	E-W	IMP
16	15	5D E-2	200		12
3	9	2S S-1	100		9
1	10	2D E 3	110		8
5	8	3S S-3	300		5
19	12	4H W 4	620		-4
4	7	4H E 4	620		-4
6	2	4H E 4	620		-4
18	14	4H E 4	620		-4
20	13	3Sx S-3	800		-8
17	11	3Sx S-3	800		-8

5

♠ Q75
♥ 10962
♦ 8532
♣ K9

♠ A8
♥ J54
♦ 74
♣ AJ10865

W N E S

♠ KJ10942
♥ AK
♦ QJ
♣ Q42

♠ 63
♥ Q873
♦ AK1096
♣ 73

Board (5) Av: NS=-270

N-S	E-W	Contract	N-S	E-W	IMP
16	15	4S W-1	50		8
19	12	4S E-1	50		8
3	9	4S E-1	50		8
1	10	2S E 4	170		3
20	13	4S E 4	420		-4
17	11	4S E 4	420		-4
18	14	4S E 4	420		-4
4	7	4S E 4	420		-4
6	2	4S E 4	420		-4
5	8	4S E 4	420		-4

6

♠ K10
♥ K7642
♦ J1082
♣ QJ

♠ Q986
♥ A5
♦ Q95
♣ A872

W N E S

♠ J32
♥ 83
♦ AK643
♣ 1054

♠ A754
♥ QJ109
♦ 7
♣ K963

Board (6) Av: NS=+170

N-S	E-W	Contract	N-S	E-W	IMP
4	7	3H N 4	170		0
5	8	3H N 4	170		0
20	13	3H N 4	170		0
19	12	3H N 4	170		0
6	2	3H N 4	170		0
3	9	3H N 4	170		0
17	11	2H N 4	170		0
16	15	2H N 4	170		0
1	10	2H N 4	170		0
18	14	3H N 3	140		-1

7

♠ J53
♥ K652
♦ K1052
♣ Q2

♠ AK42
♥ Q974
♦ 96
♣ J86

W N E S

♠ Q1086
♥ AJ8
♦ AQ73
♣ K5

♠ 97
♥ 103
♦ J84
♣ A109743

Board (7) Av: NS=-550

N-S	E-W	Contract	N-S	E-W	IMP
2	10	4S E-1	100		12
3	6	4S E-1	100		12
1	9	4S E 4	620		-2
7	8	4S E 4	620		-2
16	14	4S E 5	650		-3
15	17	4S E 5	650		-3
19	20	4S E 5	650		-3
5	4	4S E 5	650		-3
18	11	4S E 6	680		-4
12	13	4H E 6	680		-4

8

♠ J9
♥ A6
♦ AQJ85
♣ K843

♠ 863
♥ KQ105
♦ 10732
♣ J9

W N E S

♠ 104
♥ 843
♦ 94
♣ AQ10652

♠ AKQ752
♥ J972
♦ K6
♣ 7

Board (8) Av: NS=+670

N-S	E-W	Contract	N-S	E-W	IMP
1	9	6NT N 6	990		8
12	13	6S N 6	980		7
19	20	6S N 6	980		7
7	8	6S N 6	980		7
3	6	3NT N 7	520		-4
15	17	5S N 6	480		-5
2	10	4S S 6	480		-5
16	14	4S N 6	480		-5
18	11	4S N 6	480		-5
5	4	4S N 6	480		-5

9

♠ KQ74
♥ 6
♦ J52
♣ QJ864

♠ 98632
♥ 1054
♦ KQ1094
♣

W N E S

♠ A105
♥ QJ83
♦ 873
♣ K52

♠ J
♥ AK972
♦ A6
♣ A10973

Board (9) Av: NS=+190

N-S	E-W	Contract	N-S	E-W	IMP
2	10	5C S 5	400		5
15	17	5C S 5	400		5
7	8	5C S 5	400		5
3	6	3NT S 3	400		5
1	9	4C S 5	150		-1
5	4	2C S 5	150		-1
18	11	2C S 5	150		-1
19	20	6C S-1	50		-6
16	14	3NT N-2	100		-7
12	13	3NT N-3	150		-8

10

♠ K97
♥ 1054
♦ KQ4
♣ 10862

♠ 1086
♥ AKJ93
♦ J832
♣ 9

N
W — E
S

♠ J532
♥ Q72
♦ 5
♣ KQJ53

♠ AQ4
♥ 86
♦ A10976
♣ A74

11

♠ 987
♥ 5
♦ KJ1043
♣ Q873

♠ K654
♥ 98432
♦ Q86
♣ 2

N
W — E
S

♠ QJ10
♥ KJ76
♦ 95
♣ K1095

♠ A32
♥ AQ10
♦ A72
♣ AJ64

12

♠ 52
♥ QJ9765
♦ A1087
♣ 7

♠ K983
♥ 843
♦ 54
♣ J652

N
W — E
S

♠ AJ76
♥ A10
♦ K92
♣ AK94

♠ Q104
♥ K2
♦ QJ63
♣ Q1083

Board (10) Av: NS=-50

N-S	E-W	Contract	N-S	E-W	IMP
16	14	3H W-1	100		4
5	4	3H W-1	100		4
1	9	2H W-1	100		4
2	10	3D S-1		100	-2
18	11	3D S-1		100	-2
19	20	2S N-1		100	-2
3	6	2H W 2		110	-2
15	17	2H W 2		110	-2
7	8	2H W 2		110	-2
12	13	2H W 2		110	-2

Board (11) Av: NS=+460

N-S	E-W	Contract	N-S	E-W	IMP
1	9	3NT S 7	520		2
7	8	3NT S 6	490		1
5	4	3NT S 6	490		1
16	14	3NT S 5	460		0
18	11	3NT S 5	460		0
2	10	3NT S 5	460		0
15	17	3NT S 5	460		0
3	6	3NT S 5	460		0
19	20	3NT S 4	430		-1
12	13	3NT N 3	400		-2

Board (12) Av: NS=+10

N-S	E-W	Contract	N-S	E-W	IMP
5	4	2NT E-2	100		3
3	6	4S W-1	50		1
1	9	4S W-1	50		1
16	14	4S W-1	50		1
18	11	4S W-1	50		1
15	17	4S W-1	50		1
19	20	1NT E-1	50		1
2	10	3C E 3		110	-3
12	13	2S W 3		140	-4
7	8	2S W 3		140	-4

13

♠ K852
♥ 964
♦ 105
♣ 10865

♠ 1096
♥ 105
♦ AQ9763
♣ K3

N
W — E
S

♠ Q7
♥ J82
♦ KJ82
♣ A972

♠ AJ43
♥ AKQ73
♦ 4
♣ QJ4

14

♠ 632
♥ J94
♦ AQJ1098
♣ 10

♠ AK75
♥ Q106
♦ 42
♣ AK84

N
W — E
S

♠ Q984
♥ 8532
♦ 753
♣ J7

♠ J10
♥ AK7
♦ K6
♣ Q96532

15

♠ 87
♥ A1095
♦ 654
♣ Q972

♠ AKJ54
♥ Q3
♦ AQ2
♣ KJ6

N
W — E
S

♠ Q10
♥ KJ864
♦ KJ973
♣ 8

♠ 9632
♥ 72
♦ 108
♣ A10543

Board (13) Av: NS=+180

N-S	E-W	Contract	N-S	E-W	IMP
20	12	4H S 4	620		10
7	5	1NT E-3	300		3
11	19	3S S 4	170		0
3	2	3S S 4	170		0
15	14	3H S 4	170		0
1	8	1H S 4	170		0
10	9	1H S 4	170		0
13	16	1H S 4	170		0
17	18	3H S 3	140		-1
6	4	4H S-1		100	-7

Board (14) Av: NS=+10

N-S	E-W	Contract	N-S	E-W	IMP
1	8	3D N 4	130		3
11	19	2D N 4	130		3
15	14	3D N 3	110		3
7	5	2D S 3	110		3
6	4	2H E-1	50		1
10	9	3D N-1		50	-2
20	12	2C S-1		50	-2
13	16	1NT W 1		90	-3
3	2	2S W 2		110	-3
17	18	2S E 3		140	-4

Board (15) Av: NS=-400

N-S	E-W	Contract	N-S	E-W	IMP
3	2	6NT W-1	50		10
20	12	6H W-1	50		10
17	18	3NT W 5		460	-2
6	4	3NT W 5		460	-2
13	16	3NT E 5		460	-2
11	19	3NT E 5		460	-2
10	9	3NT E 5		460	-2
7	5	3NT E 5		460	-2
1	8	4S W 6		480	-2
15	14	3NT E 6		490	-3

16

♠ KQ3
♥ KJ52
♦ 1043
♣ KQ2

♠ 82
♥ 6
♦ KJ652
♣ 109763

N
W — E
S

♠ A9764
♥ A987
♦ A97
♣ A

♠ J105
♥ Q1043
♦ Q8
♣ J854

17

♠ A852
♥ Q3
♦ 9653
♣ J87

♠ KQJ1064
♥ K65
♦ AQ64
♣

N
W — E
S

♠ 97
♥ J9872
♦ Q108
♣ K105

♠ 3
♥ A104
♦ AKJ742
♣ 932

18

♠ QJ843
♥ 853
♦ A5
♣ AJ6

♠ K962
♥ KJ10
♦ J9
♣ 8743

N
W — E
S

♠ 7
♥ Q762
♦ KQ8732
♣ K2

♠ A105
♥ A94
♦ 1064
♣ Q1095

Board (16) Av: NS=-80

N-S	E-W	Contract	N-S	E-W	IMP
11	19	3H S-1		50	1
20	12	2H N-1		50	1
6	4	2H N-1		50	1
10	9	2H N-1		50	1
7	5	2H N-1		50	1
17	18	2H N-1		50	1
13	16	2S E 3		140	-2
3	2	1S E 3		140	-2
1	8	1S E 3		140	-2
15	14	2S E 4		170	-3

Board (17) Av: NS=-190

N-S	E-W	Contract	N-S	E-W	IMP
13	16	3D S 3	110		7
1	8	4S W-1	50		6
7	5	3H E-1	50		6
11	19	5Dx S-1		100	3
17	18	2S W 2		110	2
6	4	3H E 3		140	2
10	9	4S W 4		420	-6
3	2	4S W 4		420	-6
20	12	4S W 4		420	-6
15	14	4S W 5		450	-6

Board (18) Av: NS=+50

N-S	E-W	Contract	N-S	E-W	IMP
6	4	3S N 3	140		3
13	16	3S N 3	140		3
7	5	3S N 3	140		3
1	8	3S N 3	140		3
17	18	3S N 3	140		3
3	2	2S N 3	140		3
10	9	3S N-1		100	-4
11	19	3S N-1		100	-4
15	14	2D E 3		110	-4
20	12	2D E 3		110	-4

19

♠AKJ432
♥Q532
♦J7
♣10

♠10
♥J106
♦A10964
♣J876

♠95
♥A
♦KQ8532
♣AK93

W — E
N — S
S

Board (19) Av: NS=+70

N-S	E-W	Contract	N-S	E-W	IMP
1	7	4S	N 5	450	9
15	18	4S	N 4	420	8
6	5	3NT	N 3	400	8
2	9	4S	N-1	50	-3
20	11	4S	N-1	50	-3
8	4	4S	N-1	50	-3
13	9	4S	N-1	50	-3
16	12	4S	N-1	50	-3
3	10	3NT	S-1	50	-3
14	17	5D	S-2	100	-5

20

♠73
♥108542
♦AJ73
♣73

♠KJ1098
♥AJ9
♦KQ2
♣95

♠62
♥763
♦105
♣KJ10842

W — E
N — S
S

Board (20) Av: NS=-960

N-S	E-W	Contract	N-S	E-W	IMP
14	17	4S	W 6	680	7
15	18	4S	W 6	680	7
2	9	4S	W 6	680	7
3	10	4S	W 6	680	7
1	7	4S	W 6	680	7
6	5	4S	W 6	680	7
8	4	6S	W 6	1430	-10
16	12	6S	W 6	1430	-10
13	19	6S	W 6	1430	-10
20	11	6S	W 6	1430	-10

21

♠A2
♥AQJ93
♦Q93
♣J87

♠K976
♥10762
♦A74
♣96

♠QJ43
♥
♦J865
♣AKQ104

♠1085
♥K854
♦K102
♣532

W — E
N — S
S

Board (21) Av: NS=-320

N-S	E-W	Contract	N-S	E-W	IMP
20	11	4S	W-1	50	9
14	17	3S	W 3	140	5
3	10	3S	W 4	170	4
8	4	2S	W 4	170	4
13	19	4S	W 4	420	-3
6	5	4S	W 4	420	-3
1	7	4S	W 4	420	-3
15	18	4S	E 4	420	-3
16	12	4S	E 4	420	-3
2	9	4S	W 5	450	-4

22

♠106
♥AJ97
♦QJ8542
♣10

♠K98
♥1064
♦1076
♣A643

♠J42
♥Q83
♦AK93
♣QJ8

♠AQ753
♥K52
♦
♣K9752

W — E
N — S
S

Board (22) Av: NS=+20

N-S	E-W	Contract	N-S	E-W	IMP
14	17	2S	S 3	140	3
2	9	2S	S 3	140	3
20	11	1S	S 3	140	3
16	12	2S	S 2	110	3
13	19	2S	S 2	110	3
6	5	2S	S-1	50	-2
1	7	2NT	N-1	50	-2
8	4	3S	S-2	100	-3
3	10	4S	S-3	150	-5
15	18	3C	S-3	150	-5

23

♠A42
♥J1054
♦53
♣10954

♠K1053
♥6
♦Q102
♣Q7632

♠J876
♥AK72
♦A9
♣AK8

♠Q9
♥Q983
♦KJ8764
♣J

W — E
N — S
S

Board (23) Av: NS=-650

N-S	E-W	Contract	N-S	E-W	IMP
3	10	4S	E 4	620	1
2	9	4S	E 4	620	1
6	5	5S	E 5	650	0
15	18	4S	E 5	650	0
14	17	4S	E 5	650	0
8	4	4S	E 5	650	0
1	7	4S	E 5	650	0
16	12	4S	E 5	650	0
13	19	4S	E 5	650	0
20	11	4S	E 5	650	0

24

♠A64
♥Q86
♦Q1042
♣A97

♠KQ9
♥J52
♦76
♣Q10532

♠10753
♥3
♦AKJ953
♣K4

♠J82
♥AK10974
♦8
♣J86

W — E
N — S
S

Board (24) Av: NS=+50

N-S	E-W	Contract	N-S	E-W	IMP
14	17	3H	S 3	140	3
1	7	3H	S 3	140	3
16	12	2H	S 3	140	3
3	10	2H	S 2	110	2
15	18	2H	S 2	110	2
20	11	2H	S 2	110	2
2	9	4H	S-1	50	-3
6	5	3H	S-1	50	-3
8	4	4H	S-2	100	-4
13	19	3S	E 3	140	-5

第20回NRM杯 Session 2 Section C 2015年6月27日(土)

1

♠ 97
♥ J64
♦ 984
♣ AQ653

♠ KQ854
♥ K98
♦ AQ52
♣ K

♠ 2
♥ Q107532
♦ J106
♣ 982

♠ AJ1063
♥ A
♦ K73
♣ J1074

Board (1) Av: NS=-150

N-S	E-W	Contract	N-S	E-W	IMP
15	13	1NT N 1	90		6
10	4	3C S-1	50		3
11	12	3H E 3	140		0
5	3	2H W 3	140		0
14	20	3H E 4	170		-1
7	9	2H W 4	170		-1
19	17	2H W 4	170		-1
1	2	2H W 4	170		-1
18	16	2H W 4	170		-1
8	6	4Hx W 4	590		-10

2

♠ J843
♥ KQ982
♦ Q5
♣ J2

♠ 952
♥ J10
♦ J9432
♣ Q103

♠ A1076
♥ A3
♦ 86
♣ A9875

♠ KQ
♥ 7654
♦ AK107
♣ K64

Board (2) Av: NS=+400

N-S	E-W	Contract	N-S	E-W	IMP
8	6	4H S 5	650		6
7	9	4H S 4	620		6
19	17	4H S 4	620		6
1	2	4H S 4	620		6
14	20	4H N 4	620		6
18	16	3H S 4	170		-6
5	3	3H S 4	170		-6
15	13	3H S 4	170		-6
10	4	3H N 4	170		-6
11	12	1NT W-1	50		-8

3

♠ AQ108
♥ J94
♦ 875
♣ 1087

♠ K5
♥ 1087
♦ AQ96
♣ AJ95

♠ 642
♥ A653
♦ K102
♣ Q63

♠ J973
♥ KQ2
♦ J43
♣ K42

Board (3) Av: NS=-130

N-S	E-W	Contract	N-S	E-W	IMP
18	16	1S N 1	80		5
19	17	1NT W 1	90		1
15	13	2S N-2	100		1
8	6	1NT W 2	120		0
14	20	1NT W 2	120		0
10	4	1NT W 2	120		0
11	12	2NT W 3	150		-1
7	9	1NT W 3	150		-1
5	3	1NT W 4	180		-2
1	2	1NT W 4	180		-2

4

♠ 7
♥ AQJ7643
♦ 65
♣ QJ5

♠ Q84
♥ 2
♦ AJ1098
♣ 10732

♠ J10652
♥ K105
♦ 42
♣ A98

♠ AK93
♥ 98
♦ KQ73
♣ K64

Board (4) Av: NS=+560

N-S	E-W	Contract	N-S	E-W	IMP
11	12	4H N 4	620		2
1	2	4H N 4	620		2
8	6	4H N 4	620		2
18	16	4H N 4	620		2
14	20	4H N 4	620		2
5	3	4H N 4	620		2
7	9	4H N 4	620		2
19	17	4H N 4	620		2
10	4	3H N 4	170		-9
15	13	6H S-2	200		-13

5

♠ J10632
♥ 10652
♦ QJ5
♣ 9

♠ Q5
♥ AJ3
♦ A1043
♣ AQJ3

♠ 987
♥ KQ984
♦ K6
♣ K87

♠ AK4
♥ 7
♦ 9872
♣ 106542

Board (5) Av: NS=-340

N-S	E-W	Contract	N-S	E-W	IMP
15	13	3NT W-1	50		9
10	4	3NT W-1	50		9
8	6	3C W 3	110		6
1	2	4H E 4	420		-2
5	3	5H E 5	450		-3
11	12	5H E 5	450		-3
18	16	4H W 5	450		-3
19	17	4H E 5	450		-3
7	9	4H E 5	450		-3
14	20	4H E 5	450		-3

6

♠ AKJ83
♥ J
♦ 10962
♣ KQ6

♠ 765
♥ 9874
♦ AQ
♣ 10543

♠ 92
♥ Q1062
♦ 743
♣ AJ98

♠ Q104
♥ AK53
♦ KJ85
♣ 72

Board (6) Av: NS=+420

N-S	E-W	Contract	N-S	E-W	IMP
11	12	4S N 4	420		0
1	2	4S N 4	420		0
8	6	4S N 4	420		0
18	16	4S N 4	420		0
15	13	4S N 4	420		0
5	3	4S N 4	420		0
7	9	4S N 4	420		0
19	17	4S N 4	420		0
14	20	4S N 4	420		0
10	4	4S N 4	420		0

7

♠ 1083
♥ A72
♦ AJ104
♣ KJ3

♠ KJ6
♥ QJ86
♦ 87
♣ 10852

♠ A9752
♥ 543
♦ K3
♣ Q76

♠ Q4
♥ K109
♦ Q9652
♣ A94

Board (7) Av: NS=+20

N-S	E-W	Contract	N-S	E-W	IMP
1	5	3S E-3	300		7
17	20	1NT S 3	150		4
18	12	2NT S 2	120		3
8	2	3D N 3	110		3
3	4	3S E-1	100		2
11	15	3S E-1	100		2
7	10	3D N-1	100		-3
13	14	3D N-1	100		-3
19	16	3NT S-2	200		-6
9	6	3NT N-2	200		-6

8

♠ Q65
♥ 8432
♦ KQJ94
♣ J

♠ K
♥ Q65
♦ A106
♣ AKQ932

♠ J108
♥ AKJ107
♦ 52
♣ 1054

♠ A97432
♥ 9
♦ 873
♣ 876

Board (8) Av: NS=-440

N-S	E-W	Contract	N-S	E-W	IMP
17	20	4C W 6	170		7
9	6	3H E 6	230		5
7	10	5C W 6	420		1
19	16	4H E 5	450		0
8	2	4H E 5	450		0
13	14	4H E 6	480		-1
11	15	4H E 6	480		-1
1	5	4H E 6	480		-1
18	12	3NT W 6	490		-2
3	4	4Hx E 6	790		-8

9

♠ 7
♥ AKQJ10
♦ J8763
♣ 84

♠ 86542
♥ 92
♦ A109
♣ J102

♠ AKQ10
♥ 75
♦ 542
♣ KQ65

♠ J93
♥ 8643
♦ KQ
♣ A973

Board (9) Av: NS=+440

N-S	E-W	Contract	N-S	E-W	IMP
1	5	5H N 5	450		0
3	4	4H N 5	450		0
13	14	4H N 5	450		0
11	15	4H N 5	450		0
8	2	4H N 5	450		0
7	10	4H N 4	420		-1
18	12	4H N 4	420		-1
19	16	4H N 4	420		-1
17	20	4H N 4	420		-1
9	6	5S W-3	300		-4

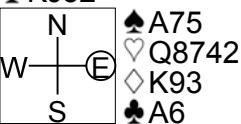
10

♠K1062
♥J5
♦1085
♣KJ52

♠A75
♥Q8742
♦K93
♣A6

♠984
♥A93
♦AQJ2
♣1073

♠QJ3
♥K106
♦764
♣Q984



Board (10) Av: NS=-50

N-S	E-W	Contract	N-S	E-W	IMP
8	2	4H	E-1	100	4
18	12	4H	E-1	100	4
9	6	4H	E-1	100	4
1	5	4H	E-1	100	4
3	4	3H	E 3	140	-3
13	14	3H	E 3	140	-3
17	20	3H	E 3	140	-3
7	10	3H	E 3	140	-3
11	15	3H	E 4	170	-3
19	16	4H	E 4	620	-11

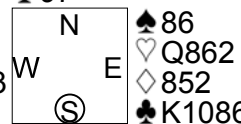
11

♠QJ953
♥J10
♦AJ97
♣97

♠86
♥Q862
♦852
♣K1086

♠72
♥K43
♦KQ10643
♣32

♠AK104
♥A975
♦
♣AQJ54



Board (11) Av: NS=+600

N-S	E-W	Contract	N-S	E-W	IMP
8	2	5Dx	W-6	1400	13
1	5	6S	N 6	980	9
9	6	6S	N 6	980	9
3	4	4S	N 7	510	-3
13	14	3Dx	W-3	500	-3
17	20	4S	N 6	480	-3
7	10	4S	N 5	450	-4
11	15	4S	N 5	450	-4
18	12	4S	N 5	450	-4
19	16	6S	N-1	50	-12

12

♠K
♥K765
♦Q106
♣QJ432

♠Q9862
♥94
♦K9874
♣A

♠J7
♥AQJ83
♦53
♣K1075

♠A10543
♥102
♦AJ2
♣986



Board (12) Av: NS=0

N-S	E-W	Contract	N-S	E-W	IMP
19	16	2NTxW-1	100		3
9	6	2H	E-2	100	3
7	10	2H	W-1	50	2
17	20	2H	W-1	50	2
8	2	2H	W-1	50	2
1	5	Passout			0
11	15	Passout			0
3	4	2H	W 2	110	-3
18	12	2H	W 3	140	-4
13	14	2H	W 3	140	-4

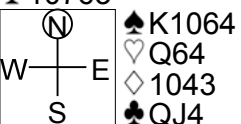
13

♠AQJ
♥AK10
♦AJ8
♣10763

♠K1064
♥Q64
♦1043
♣QJ4

♠983
♥J732
♦Q95
♣985

♠752
♥985
♦K762
♣AK2



Board (13) Av: NS=+660

N-S	E-W	Contract	N-S	E-W	IMP
10	5	3NT	N 6	690	1
14	19	3NT	N 6	690	1
4	9	3NT	N 5	660	0
20	15	3NT	N 5	660	0
2	7	3NT	N 5	660	0
17	12	3NT	N 5	660	0
3	8	3NT	N 5	660	0
16	11	3NT	N 5	660	0
18	13	3NT	N 4	630	-1
1	6	3NT	S 3	600	-2

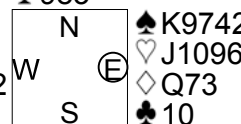
14

♠AQ3
♥A43
♦K854
♣983

♠K9742
♥J1096
♦Q73
♣10

♠J106
♥72
♦J1062
♣QJ52

♠85
♥KQ85
♦A9
♣AK764



Board (14) Av: NS=+350

N-S	E-W	Contract	N-S	E-W	IMP
20	15	3NT	S 4	430	2
18	13	3NT	S 4	430	2
4	9	3NT	S 3	400	2
10	5	3NT	S 3	400	2
16	11	3NT	S 3	400	2
17	12	3NT	S 3	400	2
1	6	3NT	S 3	400	2
3	8	3NT	S 3	400	2
14	19	3NT	N-1	50	-9
2	7	4NT	N-2	100	-10

15

♠954
♥Q842
♦KQ94
♣A5

♠873
♥A1075
♦76
♣J942

♠A62
♥K63
♦8532
♣K103

♠KQJ10
♥J9
♦AJ10
♣Q876



Board (15) Av: NS=+400

N-S	E-W	Contract	N-S	E-W	IMP
1	6	3NT	N 4	630	6
20	15	3NT	N 3	600	5
10	5	3NT	N 3	600	5
4	9	3NT	N 3	600	5
16	11	3NT	N 3	600	5
3	8	3NT	N 3	600	5
18	13	1NT	N 4	180	-6
17	12	1NT	N 3	150	-6
14	19	3NT	N-1	100	-11
2	7	3NT	N-1	100	-11

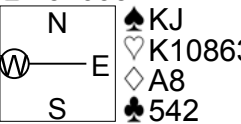
16

♠A1052
♥Q
♦632
♣KJ1093

♠KJ
♥K108632
♦A8
♣542

♠8763
♥AJ
♦KQ107
♣A76

♠Q94
♥9754
♦J954
♣Q8



Board (16) Av: NS=-590

N-S	E-W	Contract	N-S	E-W	IMP
4	9	4H	E-1	100	12
14	19	2H	E 6	230	8
10	5	4H	E 4	620	-1
2	7	4H	E 4	620	-1
16	11	4H	E 4	620	-1
17	12	4H	E 5	650	-2
3	8	4H	E 5	650	-2
20	15	4H	E 5	650	-2
18	13	4H	E 5	650	-2
1	6	4H	E 5	650	-2

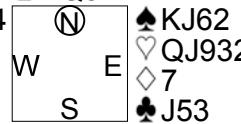
17

♠9853
♥K
♦862
♣AQ874

♠KJ62
♥QJ932
♦7
♣J53

♠AQ104
♥8754
♦KQ54
♣10

♠7
♥A106
♦AJ1093
♣K962



Board (17) Av: NS=+60

N-S	E-W	Contract	N-S	E-W	IMP
17	12	3C	S 4	130	2
2	7	3C	S 4	130	2
4	9	1NT	S 2	120	2
3	8	1NT	S 2	120	2
18	13	3C	S 3	110	2
10	5	3C	S 3	110	2
20	15	3H	E-1	50	0
16	11	4C	S-1	50	-3
1	6	3H	E 3	140	-5
14	19	2H	E 3	140	-5

18

♠J62
♥65
♦9852
♣K1052

♠9
♥Q974
♦AQ74
♣QJ83

♠AKQ1085
♥KJ108
♦10
♣A4

♠743
♥A32
♦KJ63
♣976



Board (18) Av: NS=-390

N-S	E-W	Contract	N-S	E-W	IMP
14	19	6S	W-1	50	10
2	7	6H	W-1	50	10
4	9	5S	W 5	450	-2
20	15	4S	W 5	450	-2
1	6	4S	W 5	450	-2
16	11	4S	W 5	450	-2
18	13	4S	W 5	450	-2
17	12	4H	W 5	450	-2
10	5	3NT	E 5	460	-2
3	8	6H	W 6	980	-11

19

Hand 19: ♠A6, ♥J43, ♦A976, ♣A953. Opponent: ♠J1075, ♥108, ♦KJ10842, ♣2. Contract: N 500-520. Result: 1100.

20

Hand 20: ♠86, ♥1072, ♦J73, ♣KQJ62. Opponent: ♠K104, ♥QJ843, ♦KQ6, ♣87. Contract: N 700-720. Result: 710.

21

Hand 21: ♠8653, ♥752, ♦AK3, ♣942. Opponent: ♠K742, ♥AQ, ♦QJ4, ♣AK85. Contract: N 300-320. Result: 400.

Board (19) Av: NS=+300. Table with columns: N-S, E-W, Contract, N-S, E-W, IMP. Rows: 2, 10, 1, 5, 6, 19, 18, 13, 16, 14.

Board (20) Av: NS=-1270. Table with columns: N-S, E-W, Contract, N-S, E-W, IMP. Rows: 6, 14, 18, 16, 10, 13, 2, 19, 1, 5.

Board (21) Av: NS=-410. Table with columns: N-S, E-W, Contract, N-S, E-W, IMP. Rows: 6, 16, 1, 19, 5, 14, 18, 10, 13, 2.

22

Hand 22: ♠A, ♥A82, ♦A10986, ♣AJ94. Opponent: ♠1087632, ♥94, ♦Q42, ♣108. Contract: N 500-520. Result: 460.

23

Hand 23: ♠Q10864, ♥K, ♦9863, ♣K98. Opponent: ♠K3, ♥Q732, ♦A1072, ♣Q104. Contract: N 200-220. Result: 110.

24

Hand 24: ♠75, ♥K94, ♦AK7, ♣KJ852. Opponent: ♠K96, ♥AQ102, ♦QJ6, ♣963. Contract: N 100-120. Result: 150.

Board (22) Av: NS=+360. Table with columns: N-S, E-W, Contract, N-S, E-W, IMP. Rows: 19, 2, 18, 13, 16, 6, 5, 10, 1, 14.

Board (23) Av: NS=-120. Table with columns: N-S, E-W, Contract, N-S, E-W, IMP. Rows: 14, 2, 13, 5, 1, 6, 10, 16, 19, 18.

Board (24) Av: NS=+60. Table with columns: N-S, E-W, Contract, N-S, E-W, IMP. Rows: 1, 19, 16, 2, 18, 6, 10, 14, 5, 13.

25

Hand 25: ♠KJ53, ♥86542, ♦A2, ♣Q5. Opponent: ♠742, ♥107, ♦KJ65, ♣AJ43. Contract: N 300-320. Result: 140.

26

Hand 26: ♠6, ♥QJ72, ♦A9543, ♣874. Opponent: ♠KJ32, ♥A54, ♦2, ♣K10652. Contract: N 400-420. Result: 300.

27

Hand 27: ♠53, ♥K8654, ♦102, ♣10952. Opponent: ♠K1097, ♥AJ109, ♦976, ♣K3. Contract: N 300-320. Result: 140.

Board (25) Av: NS=+10. Table with columns: N-S, E-W, Contract, N-S, E-W, IMP. Rows: 14, 18, 3, 5, 10, 1, 8, 12, 20, 13.

Board (26) Av: NS=+110. Table with columns: N-S, E-W, Contract, N-S, E-W, IMP. Rows: 5, 8, 1, 20, 13, 12, 10, 18, 3, 14.

Board (27) Av: NS=+20. Table with columns: N-S, E-W, Contract, N-S, E-W, IMP. Rows: 12, 8, 20, 13, 18, 1, 3, 14, 5, 10.

第20回NRM杯 Session 2 Section C 2015年6月27日(土)

28

♠ KQJ1086
♥ Q2
♦ K3
♣ A97

♠ 943	N	♠
♥ 1076		♥ AKJ83
♦ QJ82	W	♦ 1074
♣ Q63	S	♣ KJ542

♠ A752
♥ 954
♦ A965
♣ 108

29

♠ J9
♥ Q65
♦ A
♣ AKQ10982

♠ Q7632	N	♠ K854
♥ 984		♥ J72
♦ 94	W	♦ KJ875
♣ J64	S	♣ 7

♠ A10
♥ AK103
♦ Q10632
♣ 53

30

♠ K973
♥ K86
♦ A2
♣ K532

♠ QJ	N	♠ A10864
♥ J943		♥ 52
♦ KQJ74	W	♦ 8
♣ Q10	S	♣ AJ974

♠ 52
♥ AQ107
♦ 109653
♣ 86

Board (28) Av: NS=+320

N-S	E-W	Contract	N-S	E-W	IMP
18	19	4S	N 4	620	7
13	17	4S	N 4	620	7
3	7	4S	N 4	620	7
10	6	5Dx	W-3	500	5
12	15	5Hx	E-2	300	-1
5	2	3S	N 4	170	-4
20	16	3S	N 4	170	-4
1	4	5H	W-2	100	-6
14	11	4H	W-1	50	-7
8	9	5S	N-1	100	-9

Board (29) Av: NS=+710

N-S	E-W	Contract	N-S	E-W	IMP
20	16	6C	N 7	1390	12
13	17	3NT	S 7	720	0
5	2	3NT	S 7	720	0
14	11	3NT	S 7	720	0
1	4	3NT	N 7	720	0
8	9	3NT	N 7	720	0
12	15	4H	N 7	710	0
18	19	3NT	S 6	690	-1
3	7	3NT	S 6	690	-1
10	6	5C	N 7	640	-2

Board (30) Av: NS=-130

N-S	E-W	Contract	N-S	E-W	IMP
3	7	4S	E-1	50	5
1	4	1NT	W-1	50	5
13	17	1NT	W 1	90	1
12	15	1NT	W 2	120	0
20	16	3S	E 4	170	-1
5	2	3S	E 4	170	-1
10	6	3S	E 4	170	-1
14	11	2S	E 4	170	-1
8	9	2Dx	W 2	180	-2
18	19	4S	E 4	420	-7

第20回NRM杯 Session 3 Section C 2015年6月28日(日)

1

♠K9852
♥875
♦A10983
♣A10983

♠Q10732 (N) ♠AK65
♥A ♥7
♦AK2 W E ♦QJ10643
♣K764 S ♣52

♠J984
♥QJ10643
♦9
♣QJ

2

♠KQ
♥Q985
♦A107
♣A943

♠AJ632 (N) ♠8754
♥104 ♥AJ76
♦J8642 W E ♦Q93
♣10 S ♣Q8

♠109
♥K32
♦K5
♣KJ7652

3

♠KJ6
♥AK852
♦AK5
♣86

♠Q10954 (N) ♠832
♥6 ♥Q104
♦Q97 W E ♦10432
♣AQJ4 S ♣932

♠A7
♥J973
♦J86
♣K1075

Board (1) Av: NS=-260

N-S	E-W	Contract	N-S	E-W	IMP
12	4	4Hx N 6	790		14
9	17	5Hx S 5	650		14
3	15	5Hx S 5	650		14
8	20	5S W 6	480		-6
16	6	5S W 6	480		-6
7	18	5S E 6	480		-6
10	19	4S E 6	480		-6
1	11	4S E 6	480		-6
2	13	6S W 6	980		-12
5	14	6S W 6	980		-12

Board (2) Av: NS=+630

N-S	E-W	Contract	N-S	E-W	IMP
7	18	3NT N 5	660		1
12	4	3NT N 5	660		1
2	13	3NT N 5	660		1
8	20	3NT N 4	630		0
9	17	3NT N 4	630		0
16	6	3NT N 4	630		0
3	15	3NT N 4	630		0
5	14	3NT N 3	600		-1
1	11	3NT N 3	600		-1
10	19	3S W-2	100		-11

Board (3) Av: NS=+360

N-S	E-W	Contract	N-S	E-W	IMP
9	17	3NT N 4	430		2
1	11	4H S 4	420		2
8	20	4H S 4	420		2
12	4	4H S 4	420		2
7	18	4H S 4	420		2
16	6	4H S 4	420		2
5	14	4H N 4	420		2
10	19	4H N 4	420		2
3	15	4H N-1		50	-9
2	13	4H N-1		50	-9

4

♠KQJ842
♥
♦AJ8763
♣10

♠6 (N) ♠A1095
♥1093 ♥A86
♦1094 W E ♦K52
♣A86432 S ♣Q95

♠73
♥KQJ7542
♦Q
♣KJ7

5

♠J64
♥
♦KJ9752
♣A972

♠KQ105 (N) ♠A973
♥AJ53 ♥104
♦4 W E ♦A863
♣8654 S ♣J103

♠82
♥KQ98762
♦Q10
♣KQ

6

♠53
♥A87653
♦10
♣10932

♠Q1062 (N) ♠K9874
♥J2 ♥94
♦763 W E ♦AJ82
♣AK64 S ♣QJ

♠AJ
♥KQ10
♦KQ954
♣875

Board (4) Av: NS=-40

N-S	E-W	Contract	N-S	E-W	IMP
7	18	4S N 4	620		12
1	11	4H S 4	620		12
12	4	4S N-1	100		-2
5	14	4S N-1	100		-2
16	6	4S N-1	100		-2
2	13	4S N-1	100		-2
9	17	4H S-1	100		-2
3	15	5S N-2	200		-4
8	20	5D N-2	200		-4
10	19	4S N-2	200		-4

Board (5) Av: NS=-70

N-S	E-W	Contract	N-S	E-W	IMP
8	20	3D N 4	130		5
5	14	2H S 2	110		5
12	4	2H S 2	110		5
7	18	3S W-1	50		3
1	11	3H S-1		100	-1
2	13	2H S-1		100	-1
10	19	3H S-2		200	-4
16	6	3H S-2		200	-4
9	17	3H S-2		200	-4
3	15	3Dx N-1		200	-4

Board (6) Av: NS=+70

N-S	E-W	Contract	N-S	E-W	IMP
10	19	4S E-2	200		4
3	15	2H S 4	170		3
2	13	3H N 3	140		2
12	4	2H S 3	140		2
5	14	2H S 3	140		2
7	18	2H S 3	140		2
9	17	4H S-1		50	-3
16	6	4H S-1		50	-3
8	20	4H S-2		100	-5
1	11	2S E 2		110	-5

7

♠K854
♥94
♦A75
♣Q1082

♠AQ1032 (N) ♠J9
♥83 ♥J65
♦Q108 W E ♦K942
♣K96 S ♣J754

♠76
♥AKQ1072
♦J63
♣A3

8

♠AK
♥86
♦K92
♣Q107432

♠1052 (N) ♠863
♥1073 ♥KJ52
♦J108754 W E ♦AQ3
♣8 S ♣A65

♠QJ974
♥AQ94
♦6
♣KJ9

9

♠J87643
♥
♦KQ94
♣KQ3

♠9 (N) ♠A1052
♥AK82 ♥Q1075
♦1083 W E ♦AJ7
♣AJ1082 S ♣96

♠KQ
♥J9643
♦652
♣754

Board (7) Av: NS=+220

N-S	E-W	Contract	N-S	E-W	IMP
8	19	4H S 4	620		9
9	16	3NT N 3	600		9
1	15	2H S 4	170		-2
18	10	2H S 4	170		-2
13	5	2H S 4	170		-2
17	7	2H S 4	170		-2
12	2	2H S 4	170		-2
6	20	2H S 4	170		-2
3	14	2H S 4	170		-2
4	11	4H S-1		100	-8

Board (8) Av: NS=+410

N-S	E-W	Contract	N-S	E-W	IMP
8	19	3NT N 5	460		2
13	5	3NT N 5	460		2
9	16	4S S 5	450		1
1	15	4S S 5	450		1
4	11	5C N 5	400		0
17	7	5C N 5	400		0
3	14	5C N 5	400		0
18	10	3NT N 3	400		0
12	2	1Hx E-2	300		-3
6	20	4S S-1		50	-10

Board (9) Av: NS=-60

N-S	E-W	Contract	N-S	E-W	IMP
8	19	2S N 2	110		5
4	11	2S N 2	110		5
12	2	2S N 2	110		5
6	20	2NT E-1	100		4
18	10	3H E 3		140	-2
13	5	3H E 3		140	-2
1	15	3H E 3		140	-2
17	7	3H E 4		170	-3
9	16	2NT E 4		180	-3
3	14	4Sx N-2		300	-6

10

♠AK7
♥AQ10
♦98743
♣104

♠Q32
♥J97
♦AJ6
♣J653

N
W—|—E
S

♠8654
♥K4
♦52
♣AKQ92

♠J109
♥86532
♦KQ10
♣87

11

♠A105
♥A753
♦K10853
♣Q

♠9
♥KJ842
♦A74
♣A865

N
W—|—E
S

♠QJ7432
♥109
♦QJ6
♣KJ

♠K86
♥Q6
♦92
♣1097432

12

♠A1064
♥AQJ6
♦A5
♣Q87

♠QJ73
♥108
♦K1076
♣432

N
W—|—E
S

♠95
♥92
♦J9842
♣AJ106

♠K82
♥K7543
♦Q3
♣K95

Board (10) Av: NS=-40

N-S	E-W	Contract	N-S	E-W	IMP
8	19	3NT W-2	200		6
12	2	2H S 2	110		4
9	16	3C E-1	100		4
17	7	2D N 2	90		4
3	14	1NT W 1		90	-2
18	10	2C E 3		110	-2
1	15	1NT W 2		120	-2
6	20	1NT W 2		120	-2
13	5	1NT W 3		150	-3
4	11	1NT W 3		150	-3

Board (11) Av: NS=-170

N-S	E-W	Contract	N-S	E-W	IMP
6	20	3S E-2	100		7
1	15	4H W-1	50		6
12	2	3S E-1	50		6
9	16	2S E-1	50		6
17	7	2NT W 2		120	2
18	10	2H W 4		170	0
4	11	3NT W 3		400	-6
8	19	3NT W 3		400	-6
13	5	3NT E 3		400	-6
3	14	4H W 4		420	-6

Board (12) Av: NS=+630

N-S	E-W	Contract	N-S	E-W	IMP
4	11	4H N 5	650		1
13	5	4H N 5	650		1
9	16	4H N 5	650		1
6	20	4H N 4	620		0
1	15	4H N 4	620		0
18	10	4H N 4	620		0
3	14	4H N 4	620		0
12	2	4H N 4	620		0
17	7	4H N 4	620		0
8	19	4H N-1		100	-12

13

♠J7542
♥10876
♦A5
♣K6

♠Q9
♥K53
♦109873
♣J53

N
W—|—E
S

♠AK863
♥J4
♦K42
♣1092

♠10
♥AQ92
♦QJ6
♣AQ874

14

♠AQ63
♥10
♦Q52
♣J10873

♠K9875
♥654
♦KJ93
♣5

N
W—|—E
S

♠J1042
♥QJ973
♦A108
♣Q

♠AK82
♥764
♣AK9642

15

♠J98432
♥J9
♦632
♣65

♠K7
♥732
♦AQJ107
♣AQJ

N
W—|—E
S

♠Q106
♥AQ10
♦K954
♣K74

♠A5
♥K8654
♦8
♣109832

Board (13) Av: NS=+450

N-S	E-W	Contract	N-S	E-W	IMP
5	12	4H N 6	680		6
8	18	3NT N 4	630		5
7	16	4H N 4	620		5
19	6	4H N 4	620		5
4	15	4H N 4	620		5
2	11	4H N 4	620		5
1	14	1NT S 4	180		-7
13	3	3H N 4	170		-7
20	9	3H N 4	170		-7
17	10	2H N 2	110		-8

Board (14) Av: NS=+410

N-S	E-W	Contract	N-S	E-W	IMP
1	14	5Sx W-4	800		9
5	12	4Sx W-3	500		3
8	18	4Sx E-3	500		3
17	10	5C S 5	400		0
20	9	5C S 5	400		0
19	6	5C S 5	400		0
2	11	3NT S 3	400		0
7	16	3NT S 3	400		0
4	15	4Sx W-2	300		-3
13	3	3C S 5	150		-6

Board (15) Av: NS=-460

N-S	E-W	Contract	N-S	E-W	IMP
5	12	6NT E-1	50		11
1	14	3NT W 5		460	0
19	6	3NT W 5		460	0
7	16	3NT W 5		460	0
2	11	3NT W 5		460	0
17	10	3NT W 5		460	0
20	9	3NT W 5		460	0
8	18	3NT W 5		460	0
13	3	3NT W 5		460	0
4	15	3NT W 5		460	0

16

♠KJ9875
♥K85
♦6
♣873

♠6
♥A10962
♦K105
♣K1094

N
W—|—E
S

♠1043
♥43
♦AQJ7
♣A652

♠AQ2
♥QJ7
♦98432
♣QJ

17

♠K62
♥AJ1032
♦1085
♣K5

♠1083
♥97
♦Q942
♣10862

N
W—|—E
S

♠AQJ4
♥K854
♦A7
♣J97

♠975
♥Q6
♦KJ63
♣AQ43

18

♠72
♥10643
♦KQ103
♣1052

♠AQ84
♥Q52
♦A962
♣74

N
W—|—E
S

♠K10653
♥AJ7
♦754
♣K3

♠J9
♥K98
♦J8
♣AQJ986

Board (16) Av: NS=+90

N-S	E-W	Contract	N-S	E-W	IMP
13	3	3D E-2	200		3
2	11	3S N 3	140		2
7	16	2S N 3	140		2
4	15	2S N 3	140		2
17	10	2S N 2	110		1
20	9	2S N 2	110		1
8	18	1S N 2	110		1
19	6	Passout			-3
1	14	3S N-1		50	-4
5	12	3C W 5		150	-6

Board (17) Av: NS=-50

N-S	E-W	Contract	N-S	E-W	IMP
17	10	2NT S 3	150		5
19	6	2H N 2	110		4
7	16	1NT E-1	50		3
5	12	1NT E 1		90	-1
1	14	1NT E 1		90	-1
4	15	1NT E 1		90	-1
20	9	1NT E 1		90	-1
2	11	1NT E 1		90	-1
8	18	1NT E 2		120	-2
13	3	1NT E 2		120	-2

Board (18) Av: NS=-40

N-S	E-W	Contract	N-S	E-W	IMP
1	14	4S E-2	100		4
5	12	4S E-1	50		3
7	16	4S E-1	50		3
8	18	4S E-1	50		3
13	3	4S E-1	50		3
19	6	2S E 2		110	-2
2	11	2S E 2		110	-2
17	10	2S E 3		140	-3
4	15	2S E 3		140	-3
20	9	2S E 3		140	-3

19

♠873
♥AJ86
♦102
♣AK103

♠Q102
♥KQ10
♦J8763
♣76

N
W—E
S

♠KJ65
♥75432
♦K5
♣42

♠A94
♥9
♦AQ94
♣QJ985

Board (19) Av: NS=+420

N-S	E-W	Contract	N-S	E-W	IMP
1	13	3NT S 4	430		0
20	7	3NT S 4	430		0
2	15	3NT S 4	430		0
4	14	3NT S 4	430		0
8	17	3NT N 4	430		0
18	6	3NT S 3	400		-1
11	5	3NT S 3	400		-1
9	19	3NT N 3	400		-1
12	3	3NT N 3	400		-1
10	16	2NT N 3	150		-7

20

♠Q10
♥Q932
♦Q754
♣A43

♠J65
♥AJ85
♦103
♣K1076

N
W—E
S

♠AK9843
♥10
♦AKJ2
♣J9

♠72
♥K764
♦986
♣Q852

Board (20) Av: NS=-680

N-S	E-W	Contract	N-S	E-W	IMP
9	19	4S E 5	650		1
2	15	4S E 6	680		0
20	7	4S E 6	680		0
8	17	4S E 6	680		0
12	3	4S E 6	680		0
18	6	4S E 6	680		0
10	16	4S E 6	680		0
4	14	4S E 6	680		0
1	13	4S E 6	680		0
11	5	4S E 6	680		0

21

♠764
♥4
♦KQJ865
♣742

♠A109
♥763
♦972
♣A1095

N
W—E
S

♠K852
♥AK109852
♦
♣J3

♠QJ3
♥QJ
♦A1043
♣KQ86

Board (21) Av: NS=-450

N-S	E-W	Contract	N-S	E-W	IMP
18	6	3H E 5	200		6
12	3	3H E 7	260		5
1	13	4H E 5	450		0
8	17	4H E 6	480		-1
20	7	4H E 6	480		-1
2	15	4H E 6	480		-1
10	16	4H E 6	480		-1
9	19	4H E 6	480		-1
4	14	4H E 6	480		-1
11	5	4H E 6	480		-1

22

♠95
♥Q87
♦AKQ852
♣98

♠AQ108643
♥653
♦
♣K102

N
W—E
S

♠K2
♥KJ102
♦J974
♣Q43

♠J7
♥A94
♦1063
♣AJ765

Board (22) Av: NS=-240

N-S	E-W	Contract	N-S	E-W	IMP
12	3	5Dx N-1	100		4
18	6	5D N-2	100		4
1	13	4D N-2	100		4
4	14	5D N-3	150		3
8	17	5D N-4	200		1
2	15	3S W 5	200		1
10	16	3S W 5	200		1
11	5	5Dx N-2	300		-2
20	7	4S W 5	650		-9
9	19	4S E 5	650		-9

23

♠K95
♥54
♦432
♣AQJ84

♠Q74
♥QJ107
♦QJ98
♣106

N
W—E
S

♠A1082
♥K63
♦A76
♣K95

♠J63
♥A982
♦K105
♣732

Board (23) Av: NS=-70

N-S	E-W	Contract	N-S	E-W	IMP
9	19	3NT E-2	200		7
4	14	1NT W-2	200		7
8	17	1NT N 1	90		4
10	16	1NT W 1	90		-1
18	6	1NT W 2	120		-2
1	13	1NT E 2	120		-2
11	5	1NT W 3	150		-2
20	7	1NT W 3	150		-2
12	3	1H S-2	200		-4
2	15	1NT N-3	300		-6

24

♠J972
♥QJ87
♦A75
♣96

♠K64
♥952
♦J32
♣8743

N
W—E
S

♠A105
♥AK6
♦KQ109
♣AKJ

♠Q83
♥1043
♦864
♣Q1052

Board (24) Av: NS=-420

N-S	E-W	Contract	N-S	E-W	IMP
11	5	3NT E 3	400		1
1	13	3NT E 3	400		1
9	19	3NT E 3	400		1
8	17	3NT E 3	400		1
20	7	3NT E 4	430		0
2	15	3NT E 4	430		0
10	16	3NT E 4	430		0
18	6	3NT E 4	430		0
12	3	3NT E 5	460		-1
4	14	3NT E 5	460		-1

25

♠J75
♥4
♦Q765
♣AQ532

♠A93
♥AJ108
♦AK982
♣8

N
W—E
S

♠KQ8642
♥65
♦4
♣K976

♠10
♥KQ9732
♦J103
♣J104

Board (25) Av: NS=-660

N-S	E-W	Contract	N-S	E-W	IMP
14	2	4S W 4	620		1
15	5	4S E 4	620		1
1	12	4S W 5	650		0
16	8	4S E 5	650		0
10	20	4S E 5	650		0
9	18	4S E 5	650		0
13	4	4S E 6	680		-1
17	6	4S E 6	680		-1
19	7	4S E 6	680		-1
11	3	4S E 6	680		-1

26

♠AKQ10986
♥
♦Q106
♣AKJ

♠J
♥J97643
♦J
♣109872

N
W—E
S

♠72
♥AQ
♦K98752
♣543

♠543
♥K10852
♦A43
♣Q6

Board (26) Av: NS=+1150

N-S	E-W	Contract	N-S	E-W	IMP
14	2	6S N 7	1460		7
19	7	6S N 6	1430		7
9	18	6S N 6	1430		7
16	8	6S N 6	1430		7
15	5	6S N 6	1430		7
10	20	6S N 6	1430		7
13	4	4S N 6	680		-10
1	12	4S N 6	680		-10
17	6	4S N 6	680		-10
11	3	4S N 6	680		-10

27

♠A9832
♥AJ10
♦A8
♣A95

♠4
♥975
♦J7652
♣Q864

N
W—E
S

♠K1075
♥K863
♦Q
♣J732

♠QJ6
♥Q42
♦K10943
♣K10

Board (27) Av: NS=+420

N-S	E-W	Contract	N-S	E-W	IMP
19	7	4S N 5	450		1
10	20	3NT N 4	430		0
11	3	3NT N 4	430		0
14	2	4S N 4	420		0
15	5	4S N 4	420		0
16	8	4S N 4	420		0
17	6	4S N 4	420		0
1	12	4S N 4	420		0
13	4	4S N 4	420		0
9	18	3NT S 3	400		-1

第20回NRM杯 Session 3 Section C 2015年6月28日(日)

28

♠ A64
♥ J4
♦ A83
♣ J10542

♠ K83
♥ K752
♦ QJ1094
♣ 8

♠ Q10952
♥ 96
♦ 762
♣ Q76

N		E
W		S

♠ J7
♥ AQ1083
♦ K5
♣ AK93

29

♠ J8
♥ J10943
♦ AK7
♣ K93

♠ Q105432
♥
♦ 10642
♣ Q42

♠ 9
♥ A876
♦ Q93
♣ AJ765

N		E
W		S

♠ AK76
♥ KQ52
♦ J85
♣ 108

30

♠ 652
♥ K10652
♦ AK3
♣ 102

♠ 943
♥ Q3
♦ 108754
♣ A65

♠ AKQ1087
♥ A74
♦ Q9
♣ 98

N		E
W		S

♠ J
♥ J98
♦ J62
♣ KQJ743

Board (28) Av: NS=+230

N-S	E-W	Contract	N-S	E-W	IMP
16	8	3NT N 4	630		9
14	2	3NT N 3	600		9
19	7	3NT N 3	600		9
15	5	3NT N 3	600		9
1	12	2H S 5	200		-1
17	6	3H S 4	170		-2
10	20	3NT S-1		100	-8
9	18	3NT N-1		100	-8
11	3	3NT N-1		100	-8
13	4	3NT N-1		100	-8

Board (29) Av: NS=+350

N-S	E-W	Contract	N-S	E-W	IMP
19	7	4H N 5	650		7
13	4	4H N 4	620		7
9	18	4H N 4	620		7
16	8	4H N 4	620		7
14	2	4H N 4	620		7
1	12	4H N 4	620		7
10	20	4H N-1		100	-10
15	5	4H N-1		100	-10
17	6	4H N-1		100	-10
11	3	4H N-1		100	-10

Board (30) Av: NS=-70

N-S	E-W	Contract	N-S	E-W	IMP
19	7	4Sx E-2	300		9
11	3	4S E-1	50		3
9	18	4S E-1	50		3
13	4	3S E-1	50		3
16	8	3S E 3		140	-2
15	5	3S E 3		140	-2
10	20	3S E 3		140	-2
17	6	3S E 3		140	-2
14	2	3S E 3		140	-2
1	12	4S E 4		420	-8

第20回NRM杯 Session 4 Section C 2015年6月28日(日)

1

♠ 109
♥ J843
♦ 973
♣ AQ32

♠ Q2
♥ AKQ75
♦ Q8
♣ K1095

♠ KJ6543
♥ 96
♦ J1054
♣ 4

♠ A87
♥ 102
♦ AK62
♣ J876

Board (1) Av: NS=+30

N-S	E-W	Contract	N-S	E-W	IMP
18	2	4S	E-1	50	1
3	20	4S	E-1	50	1
13	7	4S	E-1	50	1
1	16	4S	E-1	50	1
6	11	4S	E-1	50	1
10	14	4H	W-1	50	1
19	5	2H	W-1	50	1
4	17	2H	W-1	50	1
12	9	3S	E 3	140	-5
15	8	2S	E 3	140	-5

2

♠ K1072
♥ 5
♦ J654
♣ K1096

♠ QJ6
♥ J8762
♦ A872
♣ A

♠ A94
♥ A1043
♦ KQ10
♣ 852

♠ 853
♥ KQ9
♦ 93
♣ QJ743

Board (2) Av: NS=-440

N-S	E-W	Contract	N-S	E-W	IMP
18	2	4H	W 4	420	1
10	14	4H	W 4	420	1
12	9	4H	W 4	420	1
1	16	4H	W 4	420	1
13	7	4H	W 4	420	1
19	5	4H	W 5	450	0
3	20	4H	W 5	450	0
4	17	4H	W 5	450	0
15	8	4H	W 5	450	0
6	11	4H	W 5	450	0

3

♠ K93
♥ A96
♦ AK643
♣ 64

♠ 1082
♥ KQ8
♦ Q109
♣ Q1093

♠ QJ75
♥ 4
♦ J52
♣ KJ875

♠ A64
♥ J107532
♦ 87
♣ A2

Board (3) Av: NS=+320

N-S	E-W	Contract	N-S	E-W	IMP
19	5	4H	S 6	480	4
18	2	4H	S 5	450	4
15	8	4H	S 5	450	4
12	9	4H	N 5	450	4
6	11	4H	S 4	420	3
4	17	2H	S 6	230	-3
1	16	2H	S 6	230	-3
10	14	2H	S 5	200	-3
3	20	1NT	N 2	120	-5
13	7	4H	S-1	50	-9

4

♠ A10
♥ KQ6
♦ 108653
♣ 754

♠ K8743
♥ A1097
♦ KJ
♣ KJ

♠ J52
♥ J542
♦ A94
♣ A86

♠ Q96
♥ 83
♦ Q72
♣ Q10932

Board (4) Av: NS=+40

N-S	E-W	Contract	N-S	E-W	IMP
12	9	4S	W-1	100	2
10	14	4H	W-1	100	2
3	20	4H	W-1	100	2
15	8	4H	W-1	100	2
1	16	4H	W-1	100	2
18	2	4H	W-1	100	2
13	7	4H	W-1	100	2
6	11	2S	W 2	110	-4
4	17	2S	W 4	170	-5
19	5	3NT	W 4	630	-12

5

♠ A10
♥ AJ32
♦ A843
♣ Q32

♠ 9862
♥ 765
♦ KQ
♣ A1084

♠ KJ53
♥ 984
♦ J1075
♣ J6

♠ Q74
♥ KQ10
♦ 962
♣ K975

Board (5) Av: NS=+80

N-S	E-W	Contract	N-S	E-W	IMP
3	20	3NT	N 3	600	11
13	7	3NT	N 3	600	11
6	11	3NT	N 3	600	11
10	14	3NT	N-1	100	-5
4	17	3NT	N-1	100	-5
19	5	3NT	N-1	100	-5
18	2	3NT	N-1	100	-5
1	16	3NT	N-1	100	-5
15	8	3NT	N-1	100	-5
12	9	3NT	N-2	200	-7

6

♠ 96
♥ AKJ
♦ KJ94
♣ KQ85

♠ A873
♥ 95432
♦ A76
♣ 2

♠ KQ2
♥ 10876
♦ 53
♣ A1043

♠ J1054
♥ Q
♦ Q1082
♣ J976

Board (6) Av: NS=+100

N-S	E-W	Contract	N-S	E-W	IMP
19	5	3NT	N 3	400	7
6	11	1NT	N 3	150	2
3	20	1NT	N 3	150	2
12	9	1NT	N 3	150	2
4	17	1NT	N 2	120	1
1	16	1NT	N 2	120	1
13	7	1NT	N 2	120	1
18	2	1NT	N 2	120	1
15	8	3Cx	N-1	100	-5
10	14	2H	W 3	140	-6

7

♠ 105
♥ AKQJ8
♦ A952
♣ 73

♠ A9
♥ 9762
♦ 103
♣ Q10864

♠ KQJ7
♥ 10
♦ KQ874
♣ AJ5

♠ 86432
♥ 543
♦ J6
♣ K92

Board (7) Av: NS=-30

N-S	E-W	Contract	N-S	E-W	IMP
17	2	2H	N 2	110	4
16	4	3D	E-1	100	4
12	7	2S	E-1	100	4
19	3	2D	E-1	100	4
5	18	2H	N-1	100	-2
10	13	3D	E 3	110	-2
6	15	3C	W 3	110	-2
1	20	3C	W 3	110	-2
11	9	4C	W 4	130	-3
8	14	3H	N-2	200	-5

8

♠ QJ876
♥ AQ2
♦ 6
♣ Q965

♠ K92
♥ J765
♦ AK75
♣ A8

♠ 54
♥ 10984
♦ 10984
♣ K32

♠ A103
♥ K3
♦ QJ32
♣ J1074

Board (8) Av: NS=+120

N-S	E-W	Contract	N-S	E-W	IMP
10	13	1NT	W-3	150	1
12	7	3S	N 3	140	1
11	9	3S	N 3	140	1
5	18	3S	N 3	140	1
16	4	2S	N 3	140	1
8	14	2S	N 3	140	1
19	3	1NT	W-2	100	-1
6	15	1NT	W-2	100	-1
17	2	1NT	W-1	50	-2
1	20	1NT	W-1	50	-2

9

♠ J53
♥ A1085
♦ 64
♣ AQ85

♠ KQ1087
♥ J2
♦ 5
♣ KJ1063

♠ 642
♥ Q976
♦ AJ1093
♣ 7

♠ A9
♥ K43
♦ KQ872
♣ 942

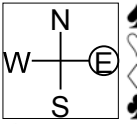
Board (9) Av: NS=-30

N-S	E-W	Contract	N-S	E-W	IMP
6	15	3Sx	W-2	500	11
5	18	2S	W-1	100	4
1	20	2S	W-1	100	4
10	13	3D	S-1	50	-1
17	2	2NT	S-1	50	-1
16	4	2NT	N-1	50	-1
12	7	3NT	N-2	100	-2
11	9	3H	S-2	100	-2
8	14	3H	S-2	100	-2
19	3	3D	S-2	100	-2

10

♠103
♥QJ105
♦K10752
♣A7

♠65
♥K9843
♦Q9
♣K983



♠KQ87
♥A7
♦84
♣QJ1042

♠AJ942
♥62
♦AJ63
♣65

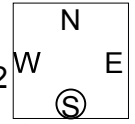
Board (10) Av: NS=+30

N-S	E-W	Contract	N-S	E-W	IMP
16	4	1NT E-2	200		5
11	9	1NTxN 1	180		4
5	18	3D N 4	130		3
8	14	3D S 3	110		2
1	20	1NT N 1	90		2
12	7	1NT N 1	90		2
17	2	1NT E 1		90	-3
10	13	1NT E 1		90	-3
6	15	5D S-2		200	-6
19	3	3NT N-2		200	-6

11

♠AK964
♥K7
♦A94
♣QJ7

♠J8732
♥
♦KJ1062
♣952



♠10
♥AQJ1052
♦873
♣K83

♠Q5
♥98643
♦Q5
♣A1064

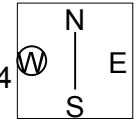
Board (11) Av: NS=+250

N-S	E-W	Contract	N-S	E-W	IMP
6	15	2Hx E-3	500		6
17	2	2Hx E-3	500		6
8	14	3NT N 4	430		5
12	7	3NT N 4	430		5
16	4	3H E-4	200		-2
5	18	2S N 4	170		-2
1	20	2H E-3	150		-3
10	13	2S N 3	140		-3
19	3	2S N-1		50	-7
11	9	4Sx N-2		300	-11

12

♠J109
♥J982
♦932
♣1085

♠Q75
♥64
♦AKJ84
♣KQJ



♠A42
♥AQ
♦Q1075
♣A642

♠K863
♥K10753
♦6
♣973

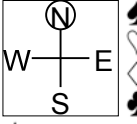
Board (12) Av: NS=-790

N-S	E-W	Contract	N-S	E-W	IMP
8	14	6D W-1	50		13
17	2	5NT W 5		460	8
5	18	4NT W 5		460	8
11	9	3NT E 7		520	7
12	7	6D W 6		920	-4
6	15	6NT W 6		990	-5
1	20	6NT W 6		990	-5
10	13	6NT W 6		990	-5
16	4	6NT W 6		990	-5
19	3	6NT W 6		990	-5

13

♠J10
♥J9753
♦AQ85
♣J6

♠A932
♥AKQ62
♦K
♣1075



♠Q754
♥8
♦1097642
♣K9

♠K86
♥104
♦J3
♣AQ8432

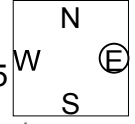
Board (13) Av: NS=+160

N-S	E-W	Contract	N-S	E-W	IMP
1	19	3H W-4	400		6
9	15	4S E-3	300		4
6	14	4S E-2	200		1
7	11	3S E-2	200		1
18	3	2H W-2	200		1
16	2	3S E-1	100		-2
20	4	3S E-1	100		-2
5	17	2H W-1	100		-2
10	12	2D E-1	100		-2
13	8	3S E 3		140	-7

14

♠QJ98
♥742
♦Q42
♣1032

♠654
♥J85
♦AK95
♣KQ6



♠A2
♥K10963
♦8763
♣A5

♠K1073
♥AQ
♦J10
♣J9874

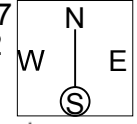
Board (14) Av: NS=-420

N-S	E-W	Contract	N-S	E-W	IMP
5	17	2H E 3	140		7
1	19	4H E 4	420		0
6	14	4H E 4	420		0
7	11	4H E 4	420		0
16	2	4H E 4	420		0
10	12	4H E 4	420		0
9	15	4H E 4	420		0
13	8	4H E 4	420		0
18	3	4H E 4	420		0
20	4	3NT E 4	430		0

15

♠AJ
♥J763
♦J84
♣K853

♠KQ97
♥9542
♦92
♣974



♠8654
♥A108
♦A3
♣AQJ6

♠1032
♥KQ
♦KQ10765
♣102

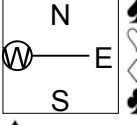
Board (15) Av: NS=-10

N-S	E-W	Contract	N-S	E-W	IMP
5	17	1NT E-3	150		4
16	2	1NT E-2	100		3
1	19	3S W-1	50		2
10	12	1NT E-1	50		2
18	3	1NT E-1	50		2
9	15	1NT E 1		90	-2
13	8	1NT E 1		90	-2
20	4	1NT E 1		90	-2
6	14	1NT E 1		90	-2
7	11	3S E 3		140	-4

16

♠A72
♥J76432
♦Q43
♣7

♠KQ8643
♥AK5
♦
♣A1083



♠J1095
♥Q9
♦K75
♣KQ64

♠
♥108
♦AJ109862
♣J952

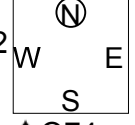
Board (16) Av: NS=-910

N-S	E-W	Contract	N-S	E-W	IMP
18	3	5Dx S-1	100		13
9	15	6Dx S-2	300		12
6	14	5S W 6	680		6
20	4	5S W 6	680		6
16	2	4S W 6	680		6
5	17	4S W 6	680		6
13	8	6S W 6	1430		-11
1	19	6S W 6	1430		-11
10	12	6S W 6	1430		-11
7	11	6S E 6	1430		-11

17

♠1065
♥J43
♦AK93
♣J106

♠A982
♥KQ52
♦Q4
♣Q52



♠KJ3
♥A1098
♦865
♣743

♠Q74
♥76
♦J1072
♣AK98

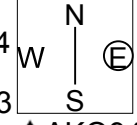
Board (17) Av: NS=-110

N-S	E-W	Contract	N-S	E-W	IMP
1	19	2H W 2	110		0
5	17	2H E 2	110		0
10	12	2H E 2	110		0
16	2	2H E 2	110		0
7	11	2H E 2	110		0
9	15	2H E 2	110		0
18	3	2H E 2	110		0
13	8	2H E 2	110		0
20	4	2H E 2	110		0
6	14	2H E 3	140		-1

18

♠J1072
♥3
♦AJ7532
♣97

♠85
♥J1054
♦K96
♣10543



♠6
♥Q98762
♦Q10
♣KQ82

♠AKQ943
♥AK
♦84
♣AJ6

Board (18) Av: NS=+1150

N-S	E-W	Contract	N-S	E-W	IMP
13	8	6S S 6	1430		7
10	12	6S S 6	1430		7
6	14	6S S 6	1430		7
16	2	6S S 6	1430		7
9	15	6S S 6	1430		7
7	11	6S N 6	1430		7
18	3	5S N 6	680		-10
20	4	4S S 6	680		-10
1	19	4S S 6	680		-10
5	17	4S N 6	680		-10

19

♠ 764
♥ 103
♦ J109742
♣ 52

♠ 98532 N ♠ A10
♥ 974 W—E ♥ AJ862
♦ Q (S) ♦ A6
♣ KJ93 ♣ AQ107

♠ KQJ
♥ KQ5
♦ K853
♣ 864

20

♠ AQJ75
♥ A84
♦ J65
♣ 63

♠ K984 N ♠ 103
♥ KQ1075 W—E ♥ J93
♦ 1097 (V) ♦ AQ3
♣ 5 S ♣ AQ742

♠ 62
♥ 62
♦ K842
♣ KJ1098

21

♠ 3
♥ K1073
♦ AJ87
♣ 10986

♠ KQJ N ♠ 876542
♥ J W—E ♥ 4
♦ Q32 (N) ♦ K1064
♣ AKQJ72 S ♣ 54

♠ A109
♥ AQ98652
♦ 95
♣ 3

Board (19) Av: NS=-380

N-S	E-W	Contract	N-S	E-W	IMP
16	5	6Hx E-2	500		13
1	18	3H E 3	140		6
20	2	3H E 4	170		5
13	6	2H E 4	170		5
3	17	2H E 4	170		5
14	9	5Dx S-3	500		-3
8	12	4H E 4	620		-6
11	10	4H E 4	620		-6
19	4	4H E 4	620		-6
7	15	4H E 4	620		-6

Board (20) Av: NS=+90

N-S	E-W	Contract	N-S	E-W	IMP
1	18	2C E-4	400		7
3	17	2C E-3	300		5
16	5	4H W-1	100		0
20	2	4H W-1	100		0
7	15	3H W-1	100		0
19	4	3H W-1	100		0
11	10	3H W-1	100		0
14	9	2D N 2	90		0
13	6	2H W 3	140		-6
8	12	2S N-2	200		-7

Board (21) Av: NS=+230

N-S	E-W	Contract	N-S	E-W	IMP
11	10	5H S 5	650		9
3	17	4H S 5	650		9
7	15	5Sx E-3	500		7
1	18	5Cx W-2	300		2
13	6	5Cx W-1	100		-4
16	5	5Cx W-1	100		-4
20	2	5C W-1	50		-5
14	9	5C W-1	50		-5
8	12	4S E-1	50		-5
19	4	4C W 4	130		-8

22

♠ QJ103
♥ Q7532
♦ K
♣ 973

♠ A862 N ♠ 54
♥ AJ W—E ♥ 1098
♦ 872 (E) ♦ AJ1095
♣ J542 S ♣ AKQ

♠ K97
♥ K64
♦ Q643
♣ 1086

23

♠ J108
♥ AQ985
♦ A7
♣ Q107

♠ 72 N ♠ A65
♥ K102 W—E ♥ J643
♦ Q1083 (S) ♦ K52
♣ K652 S ♣ 983

♠ KQ943
♥ 7
♦ J964
♣ AJ4

24

♠ J
♥ J762
♦ KJ9742
♣ 106

♠ 2 N ♠ K10864
♥ AKQ1095 W—E ♥ 4
♦ A108 (W) ♦ 53
♣ J53 S ♣ KQ974

♠ AQ9753
♥ 83
♦ Q6
♣ A82

Board (22) Av: NS=-180

N-S	E-W	Contract	N-S	E-W	IMP
16	5	1NT E 1	90		3
1	18	1NT E 1	90		3
8	12	1NT E 1	90		3
3	17	2H N-2	100		2
7	15	2NT E 2	120		2
19	4	2NT E 2	120		2
20	2	1NT E 2	120		2
13	6	1NT E 4	180		0
11	10	3NT E 3	600		-9
14	9	3NT E 4	630		-10

Board (23) Av: NS=+290

N-S	E-W	Contract	N-S	E-W	IMP
7	15	4S S 5	650		8
11	10	4S S 4	620		8
13	6	4S S 4	620		8
16	5	4S S 4	620		8
14	9	4S S 4	620		8
3	17	1S S 4	170		-3
8	12	4S S-1	100		-9
20	2	4S S-1	100		-9
1	18	4S S-1	100		-9
19	4	4S S-1	100		-9

Board (24) Av: NS=-60

N-S	E-W	Contract	N-S	E-W	IMP
1	18	3NT E-5	250		7
19	4	4H W-2	100		4
8	12	4H W-1	50		3
7	15	3H W-1	50		3
13	6	2H W 2	110		-2
16	5	2H W 2	110		-2
11	10	2H W 3	140		-2
3	17	3S S-3	150		-3
14	9	3H W 4	170		-3
20	2	3H W 4	170		-3

25

♠ 3
♥ AQJ
♦ AQJ8
♣ KQ762

♠ Q104 N ♠ KJ97652
♥ 764 W—E ♥ 53
♦ K1065 (N) ♦ 942
♣ 1093 S ♣ J

♠ A8
♥ K10982
♦ 73
♣ A854

26

♠ 109
♥ QJ64
♦ A104
♣ A1085

♠ 632 N ♠ AKQ7
♥ K1083 W—E ♥ A97
♦ KQ72 (E) ♦ J653
♣ J2 S ♣ K9

♠ J854
♥ 52
♦ 98
♣ Q7643

27

♠ 1098753
♥ 53
♦ J
♣ AJ106

♠ A2 N ♠ Q
♥ AKJ74 W—E ♥ 9862
♦ A952 (S) ♦ 10843
♣ Q7 S ♣ 8542

♠ KJ64
♥ Q10
♦ KQ76
♣ K93

Board (25) Av: NS=+620

N-S	E-W	Contract	N-S	E-W	IMP
15	10	6H S 7	1010		9
4	18	6H N 7	1010		9
19	2	6H S 6	980		8
16	3	4H S 7	510		-3
7	14	4H S 7	510		-3
1	17	4H S 7	510		-3
9	13	4H S 6	480		-4
20	5	4H S 6	480		-4
8	11	4H N 6	480		-4
6	12	5C N 7	440		-5

Board (26) Av: NS=-240

N-S	E-W	Contract	N-S	E-W	IMP
8	11	3NT E-3	300		11
19	2	3NT E-2	200		10
4	18	3NT E-1	100		8
1	17	3NT E-1	100		8
6	12	3NT E-1	100		8
9	13	3NT E 3	600		-8
16	3	3NT E 3	600		-8
15	10	3NT E 3	600		-8
20	5	3NT E 3	600		-8
7	14	3NT E 3	600		-8

Board (27) Av: NS=+80

N-S	E-W	Contract	N-S	E-W	IMP
1	17	5Hx E-2	300		6
19	2	3S N 4	170		3
7	14	3S N 4	170		3
4	18	3S N 4	170		3
15	10	2S N 4	170		3
8	11	3S N 3	140		2
16	3	2NT W-1	50		-1
6	12	4Sx N-1	100		-5
20	5	4Sx N-1	100		-5
9	13	3H E 3	140		-6

第20回NRM杯 Session 4 Section C 2015年6月28日(日)

28

♠ 7642
♥ KJ108
♦ Q2
♣ Q73

♠ KQ
♥ 53
♦ 7543
♣ AK1096

N		E
W		S

♠ A95
♥ 4
♦ AJ10986
♣ J52

♠ J1083
♥ AQ9762
♦ K
♣ 84

29

♠ 4
♥ 8632
♦ Q10763
♣ K62

♠ 975
♥ AK9
♦ AKJ92
♣ 105

N		E
W		S

♠ AKJ1086
♥ 754
♦ 4
♣ J93

♠ Q32
♥ QJ10
♦ 85
♣ AQ874

30

♠ Q1072
♥ Q54
♦ AQ9
♣ 742

♠ AJ98
♥ K7
♦ K1082
♣ 1053

N		E
W		S

♠ 643
♥ 982
♦ 73
♣ AKQ96

♠ K5
♥ AJ1063
♦ J654
♣ J8

Board (28) Av: NS=-120

N-S	E-W	Contract	N-S	E-W	IMP
8	11	5D E-1	50		5
9	13	5D E-1	50		5
20	5	5C W-1	50		5
4	18	4D E 4		130	0
1	17	4D E 4		130	0
15	10	4D E 4		130	0
6	12	4D W 5		150	-1
16	3	4C W 5		150	-1
7	14	5D E 5		400	-7
19	2	5Dx E 5		550	-10

Board (29) Av: NS=-500

N-S	E-W	Contract	N-S	E-W	IMP
4	18	4S W-1	100		12
15	10	3S E 3		140	8
1	17	3S E 4		170	8
8	11	4S E 4		620	-3
9	13	4S E 4		620	-3
7	14	4S E 4		620	-3
16	3	4S E 4		620	-3
6	12	4S E 4		620	-3
20	5	4S E 4		620	-3
19	2	4S E 4		620	-3

Board (30) Av: NS=0

N-S	E-W	Contract	N-S	E-W	IMP
8	11	3H S 3	140		4
19	2	2H S 2	110		3
9	13	2H S 2	110		3
4	18	Passout			0
15	10	Passout			0
7	14	3H S-1		50	-2
6	12	3H S-1		50	-2
1	17	3H S-1		50	-2
16	3	1NT E 1		90	-3
20	5	1NT E 1		90	-3