

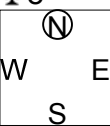
第20回NRM杯 Session1 Section B 2015年6月27日(土)

1

♠QJ109843
♥K98
♦92
♣8

♠AK2
♥62
♦AK73
♣AQ107

♠6
♥AQJ1073
♦54
♣9652



Board (1) Av: NS=-170

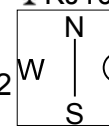
| N-S | E-W | Contract | N-S | E-W | IMP |
|-----|-----|----------|-----|-----|-----|
| 20 | 13 | 3NT E-2 | 100 | | 7 |
| 4 | 7 | 3NT E-2 | 100 | | 7 |
| 3 | 9 | 3NT E-2 | 100 | | 7 |
| 1 | 10 | 3NT E-2 | 100 | | 7 |
| 16 | 15 | 3NT E-2 | 100 | | 7 |
| 6 | 2 | 5D W 5 | | 400 | -6 |
| 18 | 14 | 3NT E 4 | | 430 | -6 |
| 19 | 12 | 3NT E 5 | | 460 | -7 |
| 5 | 8 | 3NT E 5 | | 460 | -7 |
| 17 | 11 | 3NT E 5 | | 460 | -7 |

2

♠J1072
♥7
♦J3
♣KJ10864

♠AK3
♥AKQ
♦7654
♣AQ5

♠8654
♥96542
♦109
♣93



Board (2) Av: NS=-1010

| N-S | E-W | Contract | N-S | E-W | IMP |
|-----|-----|----------|-----|------|-----|
| 20 | 13 | 3NT E 7 | | 520 | 10 |
| 6 | 2 | 6D W 7 | | 940 | 2 |
| 3 | 9 | 6NT W 7 | | 1020 | 0 |
| 5 | 8 | 6NT E 7 | | 1020 | 0 |
| 19 | 12 | 6NT E 7 | | 1020 | 0 |
| 4 | 7 | 6NT E 7 | | 1020 | 0 |
| 18 | 14 | 6NT E 7 | | 1020 | 0 |
| 16 | 15 | 6NT E 7 | | 1020 | 0 |
| 1 | 10 | 6NT E 7 | | 1020 | 0 |
| 17 | 11 | 7D W 7 | | 1440 | -10 |

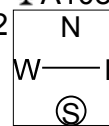
3

♠J73
♥32
♦10653
♣A1082

♠AQ1042
♥75
♦A972
♣96

♠65
♥K1096
♦KQ84
♣KQ7

♠K98
♥AQJ84
♦J
♣J543



Board (3) Av: NS=-70

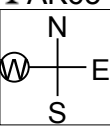
| N-S | E-W | Contract | N-S | E-W | IMP |
|-----|-----|----------|-----|-----|-----|
| 6 | 2 | 3S W-3 | | 300 | 9 |
| 17 | 11 | 3NT E-1 | | 100 | 5 |
| 16 | 15 | 3NT E-1 | | 100 | 5 |
| 4 | 7 | 2S W-1 | | 100 | 5 |
| 1 | 10 | 2NT E 3 | | 150 | -2 |
| 20 | 13 | 2NT E 3 | | 150 | -2 |
| 18 | 14 | 2NT E 4 | | 180 | -3 |
| 3 | 9 | 2NT E 4 | | 180 | -3 |
| 19 | 12 | 1NT E 4 | | 180 | -3 |
| 5 | 8 | 3NT E 4 | | 630 | -11 |

4

♠972
♥7
♦1065
♣AK6543

♠KQJ10
♥A863
♦AK98
♣9

♠A8653
♥K54
♦QJ
♣J87



Board (4) Av: NS=-560

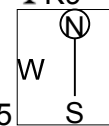
| N-S | E-W | Contract | N-S | E-W | IMP |
|-----|-----|----------|-----|------|-----|
| 4 | 7 | 2S S-1 | | 100 | 10 |
| 17 | 11 | 4D E 4 | | 130 | 10 |
| 1 | 10 | 3NT E 3 | | 600 | -1 |
| 5 | 8 | 4H W 4 | | 620 | -2 |
| 16 | 15 | 4H W 4 | | 620 | -2 |
| 19 | 12 | 4H E 4 | | 620 | -2 |
| 3 | 9 | 4H E 4 | | 620 | -2 |
| 18 | 14 | 4H E 4 | | 620 | -2 |
| 20 | 13 | 4H E 4 | | 620 | -2 |
| 6 | 2 | 4Sx S-4 | | 1100 | -11 |

5

♠Q75
♥10962
♦8532
♣K9

♠KJ10942
♥AK
♦QJ
♣Q42

♠63
♥Q873
♦AK1096
♣73



Board (5) Av: NS=-390

| N-S | E-W | Contract | N-S | E-W | IMP |
|-----|-----|----------|-----|-----|-----|
| 1 | 10 | 4S E-1 | | 50 | 10 |
| 5 | 8 | 2S E 3 | | 140 | 6 |
| 6 | 2 | 5C W 6 | | 420 | -1 |
| 17 | 11 | 4S E 4 | | 420 | -1 |
| 19 | 12 | 4S E 4 | | 420 | -1 |
| 20 | 13 | 4S E 4 | | 420 | -1 |
| 3 | 9 | 4S E 4 | | 420 | -1 |
| 4 | 7 | 4S E 4 | | 420 | -1 |
| 16 | 15 | 4S E 4 | | 420 | -1 |
| 18 | 14 | 4S E 5 | | 450 | -2 |

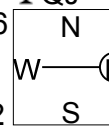
6

♠K10
♥K7642
♦J1082
♣QJ

♠Q986
♥A5
♦Q95
♣A872

♠J32
♥83
♦AK643
♣1054

♠A754
♥QJ109
♦7
♣K963



Board (6) Av: NS=+170

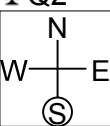
| N-S | E-W | Contract | N-S | E-W | IMP |
|-----|-----|----------|-----|-----|-----|
| 20 | 13 | 3H N 4 | | 170 | 0 |
| 5 | 8 | 3H N 4 | | 170 | 0 |
| 6 | 2 | 3H N 4 | | 170 | 0 |
| 16 | 15 | 3H N 4 | | 170 | 0 |
| 18 | 14 | 3H N 4 | | 170 | 0 |
| 4 | 7 | 2H N 4 | | 170 | 0 |
| 19 | 12 | 2H N 4 | | 170 | 0 |
| 3 | 9 | 2H N 4 | | 170 | 0 |
| 1 | 10 | 2H N 4 | | 170 | 0 |
| 17 | 11 | 1H N 4 | | 170 | 0 |

7

♠J53
♥K652
♦K1052
♣Q2

♠Q1086
♥AJ8
♦AQ73
♣K5

♠97
♥103
♦J84
♣A109743



Board (7) Av: NS=-640

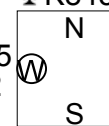
| N-S | E-W | Contract | N-S | E-W | IMP |
|-----|-----|----------|-----|-----|-----|
| 18 | 11 | 2Cx S-2 | | 500 | 4 |
| 16 | 14 | 4S E 4 | | 620 | 1 |
| 7 | 8 | 4S E 4 | | 620 | 1 |
| 2 | 10 | 4S E 5 | | 650 | 0 |
| 15 | 17 | 4S E 5 | | 650 | 0 |
| 1 | 9 | 4S E 5 | | 650 | 0 |
| 3 | 6 | 4S E 5 | | 650 | 0 |
| 12 | 13 | 4S E 5 | | 650 | 0 |
| 19 | 20 | 4S E 5 | | 650 | 0 |
| 5 | 4 | 4S E 5 | | 650 | 0 |

8

♠J9
♥A6
♦AQJ85
♣K843

♠104
♥843
♦94
♣AQ10652

♠AKQ752
♥J972
♦K6
♣7



Board (8) Av: NS=+740

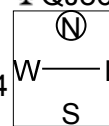
| N-S | E-W | Contract | N-S | E-W | IMP |
|-----|-----|----------|-----|-----|-----|
| 18 | 11 | 6S N 6 | | 980 | 6 |
| 1 | 9 | 6S N 6 | | 980 | 6 |
| 19 | 20 | 6S N 6 | | 980 | 6 |
| 5 | 4 | 6S N 6 | | 980 | 6 |
| 15 | 17 | 6S N 6 | | 980 | 6 |
| 16 | 14 | 3NT N 7 | | 520 | -6 |
| 7 | 8 | 3NT N 6 | | 490 | -6 |
| 2 | 10 | 4S S 6 | | 480 | -6 |
| 3 | 6 | 4S N 6 | | 480 | -6 |
| 12 | 13 | 4S N 6 | | 480 | -6 |

9

♠KQ74
♥6
♦J52
♣QJ864

♠A105
♥QJ83
♦873
♣K52

♠J
♥AK972
♦A6
♣A10973



Board (9) Av: NS=+310

| N-S | E-W | Contract | N-S | E-W | IMP |
|-----|-----|----------|-----|-----|-----|
| 16 | 14 | 5C S 6 | | 420 | 3 |
| 1 | 9 | 5C S 5 | | 400 | 3 |
| 19 | 20 | 5C S 5 | | 400 | 3 |
| 15 | 17 | 5C S 5 | | 400 | 3 |
| 18 | 11 | 3NT S 3 | | 400 | 3 |
| 3 | 6 | 3NT S 3 | | 400 | 3 |
| 7 | 8 | 3NT S 3 | | 400 | 3 |
| 2 | 10 | 3C S 4 | | 130 | -5 |
| 5 | 4 | 5C S-1 | | 50 | -8 |
| 12 | 13 | 3NT N-2 | | 100 | -9 |

10

♠ K97
♥ 1054
♦ KQ4
♣ 10862

♠ 1086
♥ AKJ93
♦ J832
♣ 9

N
W — E
S

♠ J532
♥ Q72
♦ 5
♣ KQJ53

♠ AQ4
♥ 86
♦ A10976
♣ A74

11

♠ 987
♥ 5
♦ KJ1043
♣ Q873

♠ K654
♥ 98432
♦ Q86
♣ 2

N
W — E
S

♠ QJ10
♥ KJ76
♦ 95
♣ K1095

♠ A32
♥ AQ10
♦ A72
♣ AJ64

12

♠ 52
♥ QJ9765
♦ A1087
♣ 7

♠ K983
♥ 843
♦ 54
♣ J652

N
W — E
S

♠ AJ76
♥ A10
♦ K92
♣ AK94

♠ Q104
♥ K2
♦ QJ63
♣ Q1083

Board (10) Av: NS=-110

| N-S | E-W | Contract | N-S | E-W | IMP |
|-----|-----|----------|-----|-----|-----|
| 18 | 11 | 3H | W-2 | 200 | 7 |
| 2 | 10 | 4D | S-1 | 100 | 0 |
| 1 | 9 | 3D | S-1 | 100 | 0 |
| 7 | 8 | 3D | S-1 | 100 | 0 |
| 19 | 20 | 2H | W 2 | 110 | 0 |
| 12 | 13 | 2H | W 2 | 110 | 0 |
| 5 | 4 | 2H | W 2 | 110 | 0 |
| 15 | 17 | 2H | W 3 | 140 | -1 |
| 3 | 6 | 2H | W 3 | 140 | -1 |
| 16 | 14 | 2H | W 4 | 170 | -2 |

Board (11) Av: NS=+440

| N-S | E-W | Contract | N-S | E-W | IMP |
|-----|-----|----------|-----|-----|-----|
| 12 | 13 | 3NT | S 6 | 490 | 2 |
| 1 | 9 | 3NT | S 6 | 490 | 2 |
| 2 | 10 | 3NT | S 5 | 460 | 1 |
| 19 | 20 | 3NT | S 5 | 460 | 1 |
| 7 | 8 | 3NT | S 5 | 460 | 1 |
| 16 | 14 | 3NT | S 4 | 430 | 0 |
| 3 | 6 | 3NT | S 4 | 430 | 0 |
| 15 | 17 | 3NT | S 3 | 400 | -1 |
| 5 | 4 | 3NT | S 3 | 400 | -1 |
| 18 | 11 | 2NT | S 6 | 240 | -5 |

Board (12) Av: NS=-50

| N-S | E-W | Contract | N-S | E-W | IMP |
|-----|-----|----------|-----|-----|-----|
| 7 | 8 | 4S | W-1 | 50 | 3 |
| 12 | 13 | 4S | W-1 | 50 | 3 |
| 19 | 20 | 4S | W-1 | 50 | 3 |
| 18 | 11 | 4S | W-1 | 50 | 3 |
| 15 | 17 | 3S | W-1 | 50 | 3 |
| 2 | 10 | 3S | W 3 | 140 | -3 |
| 16 | 14 | 3S | W 3 | 140 | -3 |
| 1 | 9 | 3S | E 3 | 140 | -3 |
| 5 | 4 | 2S | W 3 | 140 | -3 |
| 3 | 6 | 2S | W 3 | 140 | -3 |

13

♠ K852
♥ 964
♦ 105
♣ 10865

♠ 1096
♥ 105
♦ AQ9763
♣ K3

N
W — E
S

♠ Q7
♥ J82
♦ KJ82
♣ A972

♠ AJ43
♥ AKQ73
♦ 4
♣ QJ4

14

♠ 632
♥ J94
♦ AQJ1098
♣ 10

♠ AK75
♥ Q106
♦ 42
♣ AK84

N
W — E
S

♠ Q984
♥ 8532
♦ 753
♣ J7

♠ J10
♥ AK7
♦ K6
♣ Q96532

15

♠ 87
♥ A1095
♦ 654
♣ Q972

♠ AKJ54
♥ Q3
♦ AQ2
♣ KJ6

N
W — E
S

♠ Q10
♥ KJ864
♦ KJ973
♣ 8

♠ 9632
♥ 72
♦ 108
♣ A10543

Board (13) Av: NS=+140

| N-S | E-W | Contract | N-S | E-W | IMP |
|-----|-----|----------|-----|-----|-----|
| 1 | 8 | 3S | S 5 | 200 | 2 |
| 15 | 14 | 3H | S 5 | 200 | 2 |
| 6 | 4 | 2NT | E-2 | 200 | 2 |
| 11 | 19 | 3S | S 4 | 170 | 1 |
| 17 | 18 | 3H | S 4 | 170 | 1 |
| 13 | 16 | 1H | S 4 | 170 | 1 |
| 20 | 12 | 1H | S 4 | 170 | 1 |
| 10 | 9 | 1H | S 4 | 170 | 1 |
| 3 | 2 | 3D | W 3 | 110 | -6 |
| 7 | 5 | 2NT | E 3 | 150 | -7 |

Board (14) Av: NS=+80

| N-S | E-W | Contract | N-S | E-W | IMP |
|-----|-----|----------|-----|-----|-----|
| 10 | 9 | 3D | S 4 | 130 | 2 |
| 20 | 12 | 2D | S 4 | 130 | 2 |
| 6 | 4 | 2D | N 4 | 130 | 2 |
| 13 | 16 | 3D | N 3 | 110 | 1 |
| 15 | 14 | 3D | N 3 | 110 | 1 |
| 17 | 18 | 2D | S 3 | 110 | 1 |
| 11 | 19 | 1NT | W-2 | 100 | 1 |
| 1 | 8 | 2C | S 2 | 90 | 0 |
| 7 | 5 | 2S | W 2 | 110 | -5 |
| 3 | 2 | 2S | W 3 | 140 | -6 |

Board (15) Av: NS=-390

| N-S | E-W | Contract | N-S | E-W | IMP |
|-----|-----|----------|-----|-----|-----|
| 3 | 2 | 6D | E-1 | 50 | 10 |
| 11 | 19 | 6D | E-1 | 50 | 10 |
| 10 | 9 | 5D | E 5 | 400 | 0 |
| 13 | 16 | 4S | W 5 | 450 | -2 |
| 1 | 8 | 3NT | E 5 | 460 | -2 |
| 15 | 14 | 3NT | E 5 | 460 | -2 |
| 20 | 12 | 3NT | E 5 | 460 | -2 |
| 17 | 18 | 3NT | E 5 | 460 | -2 |
| 6 | 4 | 3NT | E 5 | 460 | -2 |
| 7 | 5 | 6D | E 6 | 920 | -11 |

16

♠ KQ3
♥ KJ52
♦ 1043
♣ KQ2

♠ 82
♥ 6
♦ KJ652
♣ 109763

N
W — E
S

♠ A9764
♥ A987
♦ A97
♣ A

♠ J105
♥ Q1043
♦ Q8
♣ J854

17

♠ A852
♥ Q3
♦ 9653
♣ J87

♠ KQJ1064
♥ K65
♦ AQ64
♣ AQ64

N
W — E
S

♠ 97
♥ J9872
♦ Q108
♣ K105

♠ 3
♥ A104
♦ AKJ742
♣ 932

18

♠ QJ843
♥ 853
♦ A5
♣ AJ6

♠ K962
♥ KJ10
♦ J9
♣ 8743

N
W — E
S

♠ 7
♥ Q762
♦ KQ8732
♣ K2

♠ A105
♥ A94
♦ 1064
♣ Q1095

Board (16) Av: NS=-110

| N-S | E-W | Contract | N-S | E-W | IMP |
|-----|-----|----------|-----|-----|-----|
| 20 | 12 | 2H | N-1 | 50 | 2 |
| 17 | 18 | 2H | N-1 | 50 | 2 |
| 7 | 5 | 2H | N-1 | 50 | 2 |
| 10 | 9 | 2H | N-2 | 100 | 0 |
| 11 | 19 | 2S | E 2 | 110 | 0 |
| 6 | 4 | 3S | W 3 | 140 | -1 |
| 13 | 16 | 2S | E 3 | 140 | -1 |
| 3 | 2 | 2S | E 3 | 140 | -1 |
| 1 | 8 | 3D | W 5 | 150 | -1 |
| 15 | 14 | 2S | E 4 | 170 | -2 |

Board (17) Av: NS=-60

| N-S | E-W | Contract | N-S | E-W | IMP |
|-----|-----|----------|-----|-----|-----|
| 1 | 8 | 4D | S 4 | 130 | 5 |
| 7 | 5 | 3D | S 4 | 130 | 5 |
| 11 | 19 | 3D | S 4 | 130 | 5 |
| 20 | 12 | 4H | E-2 | 100 | 4 |
| 17 | 18 | 4H | E-2 | 100 | 4 |
| 6 | 4 | 3S | W 4 | 170 | -3 |
| 3 | 2 | 3H | E 4 | 170 | -3 |
| 10 | 9 | 2S | W 4 | 170 | -3 |
| 13 | 16 | 4H | E 4 | 420 | -8 |
| 15 | 14 | 3NT | N-3 | 500 | -10 |

Board (18) Av: NS=+80

| N-S | E-W | Contract | N-S | E-W | IMP |
|-----|-----|----------|-----|-----|-----|
| 15 | 14 | 3S | N 3 | 140 | 2 |
| 13 | 16 | 3S | N 3 | 140 | 2 |
| 17 | 18 | 3S | N 3 | 140 | 2 |
| 3 | 2 | 3S | N 3 | 140 | 2 |
| 1 | 8 | 3S | N 3 | 140 | 2 |
| 10 | 9 | 2S | N 3 | 140 | 2 |
| 11 | 19 | 2S | N 3 | 140 | 2 |
| 20 | 12 | 2D | E 2 | 90 | -5 |
| 7 | 5 | 2D | E 3 | 110 | -5 |
| 6 | 4 | 2D | E 4 | 130 | -5 |

19

♠ AKJ432
♥ Q532
♦ J7
♣ 10

♠ Q876
♥ K9874
♦
♣ Q542

N
W — E
S

♠ 10
♥ J106
♦ A10964
♣ J876

♠ 95
♥ A
♦ KQ8532
♣ AK93

20

♠ 73
♥ 108542
♦ AJ73
♣ 73

♠ AQ54
♥ KQ
♦ 9864
♣ AQ6

N
W — E
S

♠ KJ1098
♥ AJ9
♦ KQ2
♣ 95

♠ 62
♥ 763
♦ 105
♣ KJ10842

21

♠ A2
♥ AQJ93
♦ Q93
♣ J87

♠ K976
♥ 10762
♦ A74
♣ 96

N
W — E
S

♠ QJ43
♥
♦ J865
♣ AKQ104

♠ 1085
♥ K854
♦ K102
♣ 532

Board (19) Av: NS=+160

| N-S | E-W | Contract | N-S | E-W | IMP |
|-----|-----|----------|-----|-----|-----|
| 3 | 10 | 4S | S 5 | 450 | 7 |
| 16 | 12 | 4S | N 5 | 450 | 7 |
| 6 | 5 | 4S | N 4 | 420 | 6 |
| 8 | 4 | 3NT | N 3 | 400 | 6 |
| 20 | 11 | 3NT | N 3 | 400 | 6 |
| 14 | 17 | 3NT | S-1 | 50 | -5 |
| 15 | 18 | 6D | S-2 | 100 | -6 |
| 13 | 19 | 3NT | S-2 | 100 | -6 |
| 1 | 7 | 6S | N-3 | 150 | -7 |
| 2 | 9 | 6D | S-3 | 150 | -7 |

Board (20) Av: NS=-960

| N-S | E-W | Contract | N-S | E-W | IMP |
|-----|-----|----------|-----|------|-----|
| 20 | 11 | 4S | W 5 | 650 | 7 |
| 8 | 4 | 5S | W 6 | 680 | 7 |
| 3 | 10 | 4S | W 6 | 680 | 7 |
| 14 | 17 | 4S | W 6 | 680 | 7 |
| 13 | 19 | 4S | W 6 | 680 | 7 |
| 16 | 12 | 4S | W 6 | 680 | 7 |
| 2 | 9 | 6S | W 6 | 1430 | -10 |
| 6 | 5 | 6S | W 6 | 1430 | -10 |
| 1 | 7 | 6S | W 6 | 1430 | -10 |
| 15 | 18 | 6S | E 6 | 1430 | -10 |

Board (21) Av: NS=-330

| N-S | E-W | Contract | N-S | E-W | IMP |
|-----|-----|----------|-----|-----|-----|
| 13 | 19 | 4S | W-1 | 50 | 9 |
| 3 | 10 | 3S | W 4 | 170 | 4 |
| 16 | 12 | 3S | E 4 | 170 | 4 |
| 20 | 11 | 3S | E 5 | 200 | 4 |
| 2 | 9 | 4S | W 4 | 420 | -3 |
| 8 | 4 | 4S | W 4 | 420 | -3 |
| 6 | 5 | 4S | W 4 | 420 | -3 |
| 14 | 17 | 4S | W 4 | 420 | -3 |
| 1 | 7 | 4S | W 5 | 450 | -3 |
| 15 | 18 | 4S | W 5 | 450 | -3 |

22

♠ 106
♥ AJ97
♦ QJ8542
♣ 10

♠ K98
♥ 1064
♦ 1076
♣ A643

N
W — E
S

♠ J42
♥ Q83
♦ AK93
♣ QJ8

♠ AQ753
♥ K52
♦
♣ K9752

23

♠ A42
♥ J1054
♦ 53
♣ 10954

♠ J876
♥ AK72
♦ A9
♣ AK8

N
W — E
S

♠ K1053
♥ 6
♦ Q102
♣ Q7632

♠ Q9
♥ Q983
♦ KJ8764
♣ J

24

♠ A64
♥ Q86
♦ Q1042
♣ A97

♠ KQ9
♥ J52
♦ 76
♣ Q10532

N
W — E
S

♠ 10753
♥ 3
♦ AKJ953
♣ K4

♠ J82
♥ AK10974
♦ 8
♣ J86

Board (22) Av: NS=+110

| N-S | E-W | Contract | N-S | E-W | IMP |
|-----|-----|----------|-----|-----|-----|
| 3 | 10 | 2S | S 3 | 140 | 1 |
| 14 | 17 | 2S | S 3 | 140 | 1 |
| 20 | 11 | 2S | S 3 | 140 | 1 |
| 15 | 18 | 2S | S 2 | 110 | 0 |
| 16 | 12 | 2S | S 2 | 110 | 0 |
| 8 | 4 | 2S | S 2 | 110 | 0 |
| 6 | 5 | 2S | S 2 | 110 | 0 |
| 13 | 19 | 2S | S 2 | 110 | 0 |
| 1 | 7 | 1S | S 1 | 80 | -1 |
| 2 | 9 | 4S | S-1 | 50 | -4 |

Board (23) Av: NS=-550

| N-S | E-W | Contract | N-S | E-W | IMP |
|-----|-----|----------|-----|-----|-----|
| 20 | 11 | 4S | W-1 | 100 | 12 |
| 13 | 19 | 4S | E-1 | 100 | 12 |
| 1 | 7 | 4S | E 4 | 620 | -2 |
| 6 | 5 | 4S | E 4 | 620 | -2 |
| 2 | 9 | 4S | E 5 | 650 | -3 |
| 3 | 10 | 4S | E 5 | 650 | -3 |
| 8 | 4 | 4S | E 5 | 650 | -3 |
| 16 | 12 | 4S | E 5 | 650 | -3 |
| 14 | 17 | 4S | E 5 | 650 | -3 |
| 15 | 18 | 4S | E 5 | 650 | -3 |

Board (24) Av: NS=+10

| N-S | E-W | Contract | N-S | E-W | IMP |
|-----|-----|----------|-----|-----|-----|
| 8 | 4 | 3H | S 3 | 140 | 4 |
| 14 | 17 | 2H | S 2 | 110 | 3 |
| 20 | 11 | 2H | S 2 | 110 | 3 |
| 16 | 12 | 2H | S 2 | 110 | 3 |
| 15 | 18 | 2H | S 2 | 110 | 3 |
| 2 | 9 | 3H | S-1 | 50 | -2 |
| 1 | 7 | 4H | S-2 | 100 | -3 |
| 13 | 19 | 4H | S-2 | 100 | -3 |
| 3 | 10 | 3D | E 3 | 110 | -3 |
| 6 | 5 | 2NT | N-3 | 150 | -4 |

第20回NRM杯 Session 2 Section B 2015年6月27日(土)

1

♠ 97
♥ J64
♦ 984
♣ AQ653

♠ KQ854
♥ K98
♦ AQ52
♣ K

♠ 2
♥ Q107532
♦ J106
♣ 982

♠ AJ1063
♥ A
♦ K73
♣ J1074

W N E S

Board (1) Av: NS=-60

| N-S | E-W | Contract | N-S | E-W | IMP |
|-----|-----|----------|-----|-----|-----|
| 7 | 9 | 2Sx S 2 | 470 | | 11 |
| 19 | 17 | 2S S 2 | 110 | | 5 |
| 18 | 16 | 2C S 3 | 110 | | 5 |
| 10 | 4 | 2C S 3 | 110 | | 5 |
| 11 | 12 | 2H W 3 | | 140 | -2 |
| 14 | 20 | 3H E 4 | | 170 | -3 |
| 5 | 3 | 3H E 4 | | 170 | -3 |
| 15 | 13 | 3H E 4 | | 170 | -3 |
| 8 | 6 | 2H W 4 | | 170 | -3 |
| 1 | 2 | 3Dx W 3 | | 470 | -9 |

2

♠ J843
♥ KQ982
♦ Q5
♣ J2

♠ 952
♥ J10
♦ J9432
♣ Q103

♠ A1076
♥ A3
♦ 86
♣ A9875

♠ KQ
♥ 7654
♦ AK107
♣ K64

W N E S

Board (2) Av: NS=+620

| N-S | E-W | Contract | N-S | E-W | IMP |
|-----|-----|----------|-----|-----|-----|
| 18 | 16 | 4H S 5 | 650 | | 1 |
| 11 | 12 | 4H S 4 | 620 | | 0 |
| 19 | 17 | 4H S 4 | 620 | | 0 |
| 5 | 3 | 4H S 4 | 620 | | 0 |
| 8 | 6 | 4H S 4 | 620 | | 0 |
| 10 | 4 | 4H S 4 | 620 | | 0 |
| 14 | 20 | 4H S 4 | 620 | | 0 |
| 7 | 9 | 4H S 4 | 620 | | 0 |
| 15 | 13 | 4H N 4 | 620 | | 0 |
| 1 | 2 | 4H N 4 | 620 | | 0 |

3

♠ AQ108
♥ J94
♦ 875
♣ 1087

♠ K5
♥ 1087
♦ AQ96
♣ AJ95

♠ 642
♥ A653
♦ K102
♣ Q63

♠ J973
♥ KQ2
♦ J43
♣ K42

W N E S

Board (3) Av: NS=-90

| N-S | E-W | Contract | N-S | E-W | IMP |
|-----|-----|----------|-----|-----|-----|
| 8 | 6 | 2NT W-2 | 200 | | 7 |
| 14 | 20 | 2S S-1 | | 50 | 1 |
| 19 | 17 | 2S S-1 | | 50 | 1 |
| 18 | 16 | 2S N-1 | | 50 | 1 |
| 10 | 4 | 1NT W 1 | | 90 | 0 |
| 11 | 12 | 1NT W 1 | | 90 | 0 |
| 15 | 13 | 1NT W 2 | | 120 | -1 |
| 1 | 2 | 2NT W 3 | | 150 | -2 |
| 7 | 9 | 1NT W 3 | | 150 | -2 |
| 5 | 3 | 1NT W 4 | | 180 | -3 |

4

♠ 7
♥ AQJ7643
♦ 65
♣ QJ5

♠ Q84
♥ 2
♦ AJ1098
♣ 10732

♠ J10652
♥ K105
♦ 42
♣ A98

♠ AK93
♥ 98
♦ KQ73
♣ K64

W N E S

Board (4) Av: NS=+620

| N-S | E-W | Contract | N-S | E-W | IMP |
|-----|-----|----------|-----|-----|-----|
| 5 | 3 | 3NT S 4 | 630 | | 0 |
| 19 | 17 | 4H S 4 | 620 | | 0 |
| 8 | 6 | 4H N 4 | 620 | | 0 |
| 18 | 16 | 4H N 4 | 620 | | 0 |
| 7 | 9 | 4H N 4 | 620 | | 0 |
| 1 | 2 | 4H N 4 | 620 | | 0 |
| 10 | 4 | 4H N 4 | 620 | | 0 |
| 15 | 13 | 4H N 4 | 620 | | 0 |
| 11 | 12 | 4H N 4 | 620 | | 0 |
| 14 | 20 | 4H N 4 | 620 | | 0 |

5

♠ J10632
♥ 10652
♦ QJ5
♣ 9

♠ Q5
♥ AJ3
♦ A1043
♣ AQJ3

♠ 987
♥ KQ984
♦ K6
♣ K87

♠ AK4
♥ 7
♦ 9872
♣ 106542

W N E S

Board (5) Av: NS=-380

| N-S | E-W | Contract | N-S | E-W | IMP |
|-----|-----|----------|-----|-----|-----|
| 10 | 4 | 6H E-1 | 50 | | 10 |
| 7 | 9 | 6H E-1 | 50 | | 10 |
| 1 | 2 | 4H W 4 | | 420 | -1 |
| 18 | 16 | 4H E 4 | | 420 | -1 |
| 11 | 12 | 5H E 5 | | 450 | -2 |
| 19 | 17 | 4H E 5 | | 450 | -2 |
| 5 | 3 | 4H E 5 | | 450 | -2 |
| 14 | 20 | 4H E 5 | | 450 | -2 |
| 15 | 13 | 4H E 5 | | 450 | -2 |
| 8 | 6 | 4H E 6 | | 480 | -3 |

6

♠ AKJ83
♥ J
♦ 10962
♣ KQ6

♠ 765
♥ 9874
♦ AQ
♣ 10543

♠ 92
♥ Q1062
♦ 743
♣ AJ98

♠ Q104
♥ AK53
♦ KJ85
♣ 72

W N E S

Board (6) Av: NS=+300

| N-S | E-W | Contract | N-S | E-W | IMP |
|-----|-----|----------|-----|-----|-----|
| 15 | 13 | 4S N 4 | 420 | | 3 |
| 18 | 16 | 4S N 4 | 420 | | 3 |
| 11 | 12 | 4S N 4 | 420 | | 3 |
| 14 | 20 | 4S N 4 | 420 | | 3 |
| 19 | 17 | 4S N 4 | 420 | | 3 |
| 7 | 9 | 4S N 4 | 420 | | 3 |
| 10 | 4 | 4S N 4 | 420 | | 3 |
| 8 | 6 | 4S N-1 | | 50 | -8 |
| 1 | 2 | 4S N-1 | | 50 | -8 |
| 5 | 3 | 4S N-1 | | 50 | -8 |

7

♠ 1083
♥ A72
♦ AJ104
♣ KJ3

♠ KJ6
♥ QJ86
♦ 87
♣ 10852

♠ A9752
♥ 543
♦ K3
♣ Q76

♠ Q4
♥ K109
♦ Q9652
♣ A94

W N E S

Board (7) Av: NS=+70

| N-S | E-W | Contract | N-S | E-W | IMP |
|-----|-----|----------|-----|-----|-----|
| 18 | 12 | 3NT S 3 | 600 | | 11 |
| 9 | 6 | 3S E-2 | 200 | | 4 |
| 3 | 4 | 3D N 3 | 110 | | 1 |
| 17 | 20 | 2D N 3 | 110 | | 1 |
| 19 | 16 | 3S E-1 | 100 | | 1 |
| 11 | 15 | 3S E-1 | 100 | | 1 |
| 13 | 14 | 2S E-1 | 100 | | 1 |
| 8 | 2 | 4D N-1 | | 100 | -5 |
| 7 | 10 | 3D N-1 | | 100 | -5 |
| 1 | 5 | 3D N-1 | | 100 | -5 |

8

♠ Q65
♥ 8432
♦ KQJ94
♣ J

♠ K
♥ Q65
♦ A106
♣ AKQ932

♠ J108
♥ AKJ107
♦ 52
♣ 1054

♠ A97432
♥ 9
♦ 873
♣ 876

W N E S

Board (8) Av: NS=-440

| N-S | E-W | Contract | N-S | E-W | IMP |
|-----|-----|----------|-----|-----|-----|
| 13 | 14 | 3C W 6 | 170 | | 7 |
| 11 | 15 | 3C W 6 | 170 | | 7 |
| 8 | 2 | 4H E 5 | | 450 | 0 |
| 3 | 4 | 4H E 6 | | 480 | -1 |
| 9 | 6 | 4H E 6 | | 480 | -1 |
| 7 | 10 | 4H E 6 | | 480 | -1 |
| 19 | 16 | 4H E 6 | | 480 | -1 |
| 1 | 5 | 4H E 6 | | 480 | -1 |
| 17 | 20 | 4H E 6 | | 480 | -1 |
| 18 | 12 | 4Sx S-3 | | 500 | -2 |

9

♠ 7
♥ AKQJ10
♦ J8763
♣ 84

♠ 86542
♥ 92
♦ A109
♣ J102

♠ AKQ10
♥ 75
♦ 542
♣ KQ65

♠ J93
♥ 8643
♦ KQ
♣ A973

W N E S

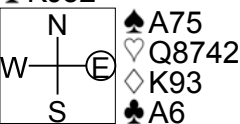
Board (9) Av: NS=+400

| N-S | E-W | Contract | N-S | E-W | IMP |
|-----|-----|----------|-----|-----|-----|
| 18 | 12 | 5Hx N 5 | 650 | | 6 |
| 8 | 2 | 5H N 5 | 450 | | 2 |
| 7 | 10 | 5H N 5 | 450 | | 2 |
| 17 | 20 | 4H N 5 | 450 | | 2 |
| 9 | 6 | 4H N 4 | 420 | | 1 |
| 13 | 14 | 4H N 4 | 420 | | 1 |
| 3 | 4 | 4H N 4 | 420 | | 1 |
| 19 | 16 | 4H N 4 | 420 | | 1 |
| 11 | 15 | 4Sx W-1 | 200 | | -5 |
| 1 | 5 | 5H N-1 | | 50 | -10 |

10

♠K1062
♥J5
♦1085
♣KJ52

♠984
♥A93
♦AQJ2
♣1073



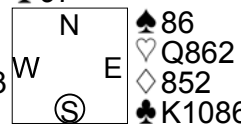
♠A75
♥Q8742
♦K93
♣A6

♠QJ3
♥K106
♦764
♣Q984

11

♠QJ953
♥J10
♦AJ97
♣97

♠72
♥K43
♦KQ10643
♣32



♠86
♥Q862
♦852
♣K1086

♠AK104
♥A975
♦
♣AQJ54

12

♠K
♥K765
♦Q106
♣QJ432

♠J7
♥AQJ83
♦53
♣K1075



♠Q9862
♥94
♦K9874
♣A

♠A10543
♥102
♦AJ2
♣986

Board (10) Av: NS=+10

Table with 6 columns: N-S, E-W, Contract, N-S, E-W, IMP. Rows show scores for various contracts like 3NT, 4H, 4S, 3H, 4S, 3H, 4S, 4H, 3H, 4S, 4H.

Board (11) Av: NS=+680

Table with 6 columns: N-S, E-W, Contract, N-S, E-W, IMP. Rows show scores for various contracts like 6S, 6S, 6S, 4S, 4S, 4S, 4S, 4S, 4S, 4S, 4S.

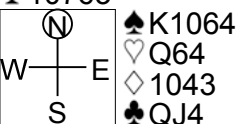
Board (12) Av: NS=+40

Table with 6 columns: N-S, E-W, Contract, N-S, E-W, IMP. Rows show scores for various contracts like 3H, 2H, 2H, 2H, 2H, 2H, 2H, 2H, 4C, 2H.

13

♠AQJ
♥AK10
♦AJ8
♣10763

♠983
♥J732
♦Q95
♣985



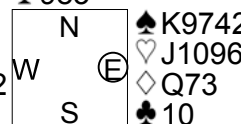
♠K1064
♥Q64
♦1043
♣QJ4

♠752
♥985
♦K762
♣AK2

14

♠AQ3
♥A43
♦K854
♣983

♠J106
♥72
♦J1062
♣QJ52



♠K9742
♥J1096
♦Q73
♣10

♠85
♥KQ85
♦A9
♣AK764

15

♠954
♥Q842
♦KQ94
♣A5

♠A62
♥K63
♦8532
♣K103



♠873
♥A1075
♦76
♣J942

♠KQJ10
♥J9
♦AJ10
♣Q876

Board (13) Av: NS=+660

Table with 6 columns: N-S, E-W, Contract, N-S, E-W, IMP. Rows show scores for various contracts like 3NT, 3NT, 3NT, 3NT, 3NT, 3NT, 3NT, 3NT, 3NT, 3NT, 3NT.

Board (14) Av: NS=+290

Table with 6 columns: N-S, E-W, Contract, N-S, E-W, IMP. Rows show scores for various contracts like 3NT, 3NT, 3NT, 3NT, 3NT, 3NT, 3NT, 3NT, 3NT, 3NT, 3NT.

Board (15) Av: NS=+510

Table with 6 columns: N-S, E-W, Contract, N-S, E-W, IMP. Rows show scores for various contracts like 3NT, 3NT, 3NT, 3NT, 3NT, 3NT, 3NT, 3NT, 3NT, 3NT, 3NT.

16

♠A1052
♥Q
♦632
♣KJ1093

♠8763
♥AJ
♦KQ107
♣A76



♠KJ
♥K108632
♦A8
♣542

♠Q94
♥9754
♦J954
♣Q8

17

♠9853
♥K
♦862
♣AQ874

♠AQ104
♥8754
♦KQ54
♣10



♠KJ62
♥QJ932
♦7
♣J53

♠7
♥A106
♦AJ1093
♣K962

18

♠J62
♥65
♦9852
♣K1052

♠AKQ1085
♥KJ108
♦10
♣A4



♠9
♥Q974
♦AQ74
♣QJ83

♠743
♥A32
♦KJ63
♣976

Board (16) Av: NS=-640

Table with 6 columns: N-S, E-W, Contract, N-S, E-W, IMP. Rows show scores for various contracts like 4H, 4H, 4H, 3NT, 4H, 4H, 4H, 4H, 4H, 4H, 4H.

Board (17) Av: NS=+130

Table with 6 columns: N-S, E-W, Contract, N-S, E-W, IMP. Rows show scores for various contracts like 4Dx, 5C, 4C, 3C, 3C, 4H, 3S, 3H, 3NT, 3NT, 3NT.

Board (18) Av: NS=-430

Table with 6 columns: N-S, E-W, Contract, N-S, E-W, IMP. Rows show scores for various contracts like 6S, 2H, 4S, 4S, 4S, 4H, 4H, 4H, 4H, 6H.

19

♠ A6
♥ J43
♦ A976
♣ A953

♠ 932
♥ K52
♦ Q5
♣ KQJ104

N
W — E
S

♠ J1075
♥ 108
♦ KJ10842
♣ 2

♠ KQ84
♥ AQ976
♦ 3
♣ 876

20

♠ 86
♥ 1072
♦ J73
♣ KQJ62

♠ AQJ7532
♥ AK5
♦
♣ A53

N
W — E
S

♠ K104
♥ QJ843
♦ KQ6
♣ 87

♠ 9
♥ 96
♦ A1098542
♣ 1094

21

♠ 8653
♥ 752
♦ AK3
♣ 942

♠ QJ
♥ KJ1096
♦ 9652
♣ 63

N
W — E
S

♠ K742
♥ AQ
♦ QJ4
♣ AK85

♠ A109
♥ 843
♦ 1087
♣ QJ107

Board (19) Av: NS=+420

| N-S | E-W | Contract | N-S | E-W | IMP |
|-----|-----|----------|-----|-----|-----|
| 13 | 11 | 4H S 4 | 420 | | 0 |
| 17 | 16 | 4H S 4 | 420 | | 0 |
| 6 | 7 | 4H S 4 | 420 | | 0 |
| 5 | 9 | 4H S 4 | 420 | | 0 |
| 10 | 8 | 4H S 4 | 420 | | 0 |
| 1 | 3 | 4H S 4 | 420 | | 0 |
| 19 | 15 | 4H S 4 | 420 | | 0 |
| 18 | 20 | 4H N 4 | 420 | | 0 |
| 2 | 4 | 4H N 4 | 420 | | 0 |
| 14 | 12 | 4H S-1 | 50 | -10 | |

Board (20) Av: NS=-1180

| N-S | E-W | Contract | N-S | E-W | IMP |
|-----|-----|----------|------|-----|-----|
| 5 | 9 | 5S W 7 | 710 | | 10 |
| 19 | 15 | 4S W 7 | 710 | | 10 |
| 13 | 11 | 4S W 7 | 710 | | 10 |
| 1 | 3 | 4S W 7 | 710 | | 10 |
| 17 | 16 | 6S W 7 | 1460 | | -7 |
| 10 | 8 | 6S W 7 | 1460 | | -7 |
| 2 | 4 | 6S W 7 | 1460 | | -7 |
| 18 | 20 | 6S W 7 | 1460 | | -7 |
| 14 | 12 | 6H E 7 | 1460 | | -7 |
| 6 | 7 | 7S W 7 | 2210 | | -14 |

Board (21) Av: NS=-400

| N-S | E-W | Contract | N-S | E-W | IMP |
|-----|-----|----------|-----|-----|-----|
| 17 | 16 | 3NT E 3 | 400 | | 0 |
| 6 | 7 | 3NT E 3 | 400 | | 0 |
| 13 | 11 | 3NT E 3 | 400 | | 0 |
| 1 | 3 | 3NT E 3 | 400 | | 0 |
| 10 | 8 | 3NT E 3 | 400 | | 0 |
| 18 | 20 | 3NT E 3 | 400 | | 0 |
| 14 | 12 | 3NT E 3 | 400 | | 0 |
| 5 | 9 | 3NT E 3 | 400 | | 0 |
| 19 | 15 | 3NT E 3 | 400 | | 0 |
| 2 | 4 | 3NT E 4 | 430 | | -1 |

22

♠ A
♥ A82
♦ A10986
♣ AJ94

♠ J954
♥ KQ753
♦ K
♣ Q72

N
W — E
S

♠ 1087632
♥ 94
♦ Q42
♣ 108

♠ KQ
♥ J106
♦ J753
♣ K653

23

♠ Q10864
♥ K
♦ 9863
♣ K98

♠ K3
♥ Q732
♦ A1072
♣ Q104

N
W — E
S

♠ 975
♥ A9865
♦ 5
♣ AJ52

♠ AJ2
♥ J104
♦ KQJ4
♣ 763

24

♠ 75
♥ K94
♦ AK7
♣ KJ852

♠ Q1032
♥ 8763
♦ 953
♣ A10

N
W — E
S

♠ K96
♥ AQ102
♦ QJ6
♣ 963

♠ AJ84
♥ J5
♦ 10842
♣ Q74

Board (22) Av: NS=+330

| N-S | E-W | Contract | N-S | E-W | IMP |
|-----|-----|----------|-----|-----|-----|
| 1 | 3 | 3NT S 6 | 490 | | 4 |
| 18 | 20 | 3NT N 5 | 460 | | 4 |
| 6 | 7 | 3NT N 5 | 460 | | 4 |
| 17 | 16 | 3NT N 4 | 430 | | 3 |
| 5 | 9 | 3NT N 4 | 430 | | 3 |
| 14 | 12 | 5D N 5 | 400 | | 2 |
| 13 | 11 | 3NT N 3 | 400 | | 2 |
| 10 | 8 | 4D N 4 | 130 | | -5 |
| 19 | 15 | 5D N-1 | 50 | -9 | |
| 2 | 4 | 5D N-2 | 100 | -10 | |

Board (23) Av: NS=-160

| N-S | E-W | Contract | N-S | E-W | IMP |
|-----|-----|----------|-----|-----|-----|
| 17 | 16 | 2S N 2 | 110 | | 7 |
| 6 | 7 | 2D S 3 | 110 | | 7 |
| 19 | 15 | 2D S 2 | 90 | | 6 |
| 13 | 11 | Passout | | | 4 |
| 5 | 9 | 3H E 4 | 170 | | 0 |
| 10 | 8 | 2D S-2 | 200 | | -1 |
| 18 | 20 | 2D S-2 | 200 | | -1 |
| 14 | 12 | 3H E 6 | 230 | | -2 |
| 1 | 3 | 4H W 5 | 650 | | -10 |
| 2 | 4 | 4H E 5 | 650 | | -10 |

Board (24) Av: NS=+60

| N-S | E-W | Contract | N-S | E-W | IMP |
|-----|-----|----------|-----|-----|-----|
| 18 | 20 | 2NT N 3 | 150 | | 3 |
| 5 | 9 | 2NT N 2 | 120 | | 2 |
| 1 | 3 | 1NT N 2 | 120 | | 2 |
| 13 | 11 | 1NT N 2 | 120 | | 2 |
| 6 | 7 | 1NT N 2 | 120 | | 2 |
| 2 | 4 | 1NT N 2 | 120 | | 2 |
| 17 | 16 | 1NT N 1 | 90 | | 1 |
| 10 | 8 | 2H W 2 | 110 | | -5 |
| 19 | 15 | 2H W 2 | 110 | | -5 |
| 14 | 12 | 1NT E 2 | 120 | | -5 |

25

♠ KJ53
♥ 86542
♦ A2
♣ Q5

♠ 109
♥ AQJ3
♦ 87
♣ K10762

N
W — E
S

♠ 742
♥ 107
♦ KJ65
♣ AJ43

♠ AQ86
♥ K9
♦ Q10943
♣ 98

26

♠ 6
♥ QJ72
♦ A9543
♣ 874

♠ Q85
♥ K10863
♦ Q108
♣ Q9

N
W — E
S

♠ KJ32
♥ A54
♦ 2
♣ K10652

♠ A10974
♥ 9
♦ KJ76
♣ AJ3

27

♠ 53
♥ K8654
♦ 102
♣ 10952

♠ K1097
♥ AJ109
♦ 976
♣ K3

N
W — E
S

♠ QJ42
♥ 2
♦ A8543
♣ 874

♠ A86
♥ Q73
♦ KQJ
♣ AQJ6

Board (25) Av: NS=+60

| N-S | E-W | Contract | N-S | E-W | IMP |
|-----|-----|----------|-----|-----|-----|
| 1 | 4 | 3S S 3 | 140 | | 2 |
| 14 | 11 | 3S S 3 | 140 | | 2 |
| 10 | 6 | 2S S 3 | 140 | | 2 |
| 18 | 19 | 2S S 2 | 110 | | 2 |
| 13 | 17 | 2S S 2 | 110 | | 2 |
| 20 | 16 | 2S S 2 | 110 | | 2 |
| 3 | 7 | Passout | | | -2 |
| 5 | 2 | 3S S-1 | 50 | -3 | |
| 12 | 15 | 3S S-1 | 50 | -3 | |
| 8 | 9 | 3S S-1 | 50 | -3 | |

Board (26) Av: NS=+80

| N-S | E-W | Contract | N-S | E-W | IMP |
|-----|-----|----------|-----|-----|-----|
| 14 | 11 | 4D S 4 | 130 | | 2 |
| 8 | 9 | 3D N 4 | 130 | | 2 |
| 5 | 2 | 2D S 3 | 110 | | 1 |
| 10 | 6 | 3H W-1 | 100 | | 1 |
| 18 | 19 | 3H W-1 | 100 | | 1 |
| 13 | 17 | 1NT E-1 | 100 | | 1 |
| 20 | 16 | 1NT E-1 | 100 | | 1 |
| 3 | 7 | 2D S 2 | 90 | | 0 |
| 12 | 15 | 3D S-1 | 100 | | -5 |
| 1 | 4 | 2HxxE 2 | 840 | | -14 |

Board (27) Av: NS=0

| N-S | E-W | Contract | N-S | E-W | IMP |
|-----|-----|----------|-----|-----|-----|
| 18 | 19 | 3NT S 3 | 400 | | 9 |
| 20 | 16 | 1C S 3 | 110 | | 3 |
| 13 | 17 | 1C S 3 | 110 | | 3 |
| 1 | 4 | 1C S 2 | 90 | | 3 |
| 5 | 2 | 1C S 2 | 90 | | 3 |
| 8 | 9 | 3NT S-1 | 50 | | -2 |
| 3 | 7 | 3NT S-2 | 100 | | -3 |
| 12 | 15 | 2H N-2 | 100 | | -3 |
| 10 | 6 | 2S E 3 | 140 | | -4 |
| 14 | 11 | 4H N-4 | 200 | | -5 |

第20回NRM杯 Session 2 Section B 2015年6月27日(土)

28

♠ KQJ1086
♥ Q2
♦ K3
♣ A97

| | | |
|--------|---|---------|
| ♠ 943 | N | ♠ |
| ♥ 1076 | | ♥ AKJ83 |
| ♦ QJ82 | W | ♦ 1074 |
| ♣ Q63 | S | ♣ KJ542 |

♠ A752
♥ 954
♦ A965
♣ 108

29

♠ J9
♥ Q65
♦ A
♣ AKQ10982

| | | |
|---------|---|---------|
| ♠ Q7632 | N | ♠ K854 |
| ♥ 984 | | ♥ J72 |
| ♦ 94 | W | ♦ KJ875 |
| ♣ J64 | S | ♣ 7 |

♠ A10
♥ AK103
♦ Q10632
♣ 53

30

♠ K973
♥ K86
♦ A2
♣ K532

| | | |
|---------|---|----------|
| ♠ QJ | N | ♠ A10864 |
| ♥ J943 | | ♥ 52 |
| ♦ KQJ74 | W | ♦ 8 |
| ♣ Q10 | S | ♣ AJ974 |

♠ 52
♥ AQ107
♦ 109653
♣ 86

Board (28) Av: NS=+360

| N-S | E-W | Contract | N-S | E-W | IMP |
|-----|-----|----------|-----|-----|-----|
| 5 | 2 | 4S | N 4 | 620 | 6 |
| 18 | 19 | 4S | N 4 | 620 | 6 |
| 3 | 7 | 4S | N 4 | 620 | 6 |
| 20 | 16 | 4S | N 4 | 620 | 6 |
| 8 | 9 | 5Hx | E-2 | 300 | -2 |
| 12 | 15 | 5Hx | E-2 | 300 | -2 |
| 10 | 6 | 3S | N 4 | 170 | -5 |
| 13 | 17 | 2S | N 4 | 170 | -5 |
| 14 | 11 | 5H | E-2 | 100 | -6 |
| 1 | 4 | 5S | N-1 | 100 | -10 |

Board (29) Av: NS=+1160

| N-S | E-W | Contract | N-S | E-W | IMP |
|-----|-----|----------|-----|------|-----|
| 3 | 7 | 7NT | N 7 | 2220 | 14 |
| 8 | 9 | 6NT | N 7 | 1470 | 7 |
| 1 | 4 | 6NT | N 7 | 1470 | 7 |
| 12 | 15 | 6C | N 7 | 1390 | 6 |
| 18 | 19 | 6C | N 7 | 1390 | 6 |
| 10 | 6 | 6C | N 7 | 1390 | 6 |
| 13 | 17 | 3NT | S 7 | 720 | -10 |
| 5 | 2 | 3NT | S 7 | 720 | -10 |
| 20 | 16 | 3NT | S 7 | 720 | -10 |
| 14 | 11 | 3NT | N 7 | 720 | -10 |

Board (30) Av: NS=-60

| N-S | E-W | Contract | N-S | E-W | IMP |
|-----|-----|----------|-----|-----|-----|
| 1 | 4 | 4S | E-2 | 100 | 4 |
| 18 | 19 | 3D | W-2 | 100 | 4 |
| 12 | 15 | 3C | E-2 | 100 | 4 |
| 13 | 17 | 1NT | N-1 | 50 | 0 |
| 20 | 16 | 2H | S-2 | 100 | -1 |
| 14 | 11 | 1NT | W 2 | 120 | -2 |
| 8 | 9 | 2S | E 3 | 140 | -2 |
| 10 | 6 | 1S | E 3 | 140 | -2 |
| 3 | 7 | 2H | S-3 | 150 | -3 |
| 5 | 2 | 3NT | W 3 | 400 | -8 |

第20回NRM杯 Session 3 Section B 2015年6月28日(日)

1

♠K9852
♥875
♦A10983
♣A10983

♠Q10732 (N) ♠AK65
♥A ♥7
♦AK2 W E ♦QJ10643
♣K764 S ♣52

♠J984
♥QJ10643
♦9
♣QJ

Board (1) Av: NS=-560

| N-S | E-W | Contract | N-S | E-W | IMP |
|-----|-----|----------|-----|-----|-----|
| 12 | 4 | 5Hx N 5 | 650 | | 15 |
| 5 | 14 | 7Hx S-2 | 300 | | 6 |
| 8 | 20 | 7Hx S-2 | 300 | | 6 |
| 2 | 13 | 5S W 6 | 480 | | 2 |
| 16 | 6 | 4S W 6 | 480 | | 2 |
| 1 | 11 | 4S W 6 | 480 | | 2 |
| 10 | 19 | 4S W 6 | 480 | | 2 |
| 7 | 18 | 6S W 6 | 980 | | -9 |
| 9 | 17 | 6S W 6 | 980 | | -9 |
| 3 | 15 | 6S W 6 | 980 | | -9 |

2

♠KQ
♥Q985
♦A107
♣A943

♠AJ632 (N) ♠8754
♥104 ♥AJ76
♦J8642 W E ♦Q93
♣10 S ♣Q8

♠109
♥K32
♦K5
♣KJ7652

Board (2) Av: NS=+440

| N-S | E-W | Contract | N-S | E-W | IMP |
|-----|-----|----------|-----|-----|-----|
| 1 | 11 | 3NT N 5 | 660 | | 6 |
| 3 | 15 | 3NT N 5 | 660 | | 6 |
| 9 | 17 | 3NT N 4 | 630 | | 5 |
| 2 | 13 | 3NT N 3 | 600 | | 4 |
| 12 | 4 | 3NT N 3 | 600 | | 4 |
| 8 | 20 | 3NT N 3 | 600 | | 4 |
| 10 | 19 | 4C S 4 | 130 | | -7 |
| 5 | 14 | 4C S 4 | 130 | | -7 |
| 7 | 18 | 3C S 4 | 130 | | -7 |
| 16 | 6 | 5C S-1 | 100 | | -11 |

3

♠KJ6
♥AK852
♦AK5
♣86

♠Q10954 (N) ♠832
♥6 ♥Q104
♦Q97 W E ♦10432
♣AQJ4 S ♣932

♠A7
♥J973
♦J86
♣K1075

Board (3) Av: NS=+370

| N-S | E-W | Contract | N-S | E-W | IMP |
|-----|-----|----------|-----|-----|-----|
| 16 | 6 | 4H S 5 | 450 | | 2 |
| 3 | 15 | 4H S 5 | 450 | | 2 |
| 5 | 14 | 4H N 4 | 420 | | 2 |
| 7 | 18 | 4H N 4 | 420 | | 2 |
| 12 | 4 | 4H N 4 | 420 | | 2 |
| 2 | 13 | 4H N 4 | 420 | | 2 |
| 1 | 11 | 4H N 4 | 420 | | 2 |
| 8 | 20 | 4H N 4 | 420 | | 2 |
| 10 | 19 | 5H N-1 | 50 | | -9 |
| 9 | 17 | 6H S-2 | 100 | | -10 |

4

♠KQJ842
♥
♦AJ8763
♣10

♠6 (N) ♠A1095
♥1093 ♥A86
♦1094 W E ♦K52
♣A86432 S ♣Q95

♠73
♥KQJ7542
♦Q
♣KJ7

Board (4) Av: NS=+350

| N-S | E-W | Contract | N-S | E-W | IMP |
|-----|-----|----------|-----|-----|-----|
| 8 | 20 | 4S N 5 | 650 | | 7 |
| 16 | 6 | 4S N 4 | 620 | | 7 |
| 7 | 18 | 4S N 4 | 620 | | 7 |
| 10 | 19 | 4S N 4 | 620 | | 7 |
| 3 | 15 | 4S N 4 | 620 | | 7 |
| 5 | 14 | 4S N 4 | 620 | | 7 |
| 9 | 17 | 4S N-1 | 100 | | -10 |
| 1 | 11 | 4S N-1 | 100 | | -10 |
| 2 | 13 | 4H S-1 | 100 | | -10 |
| 12 | 4 | 4H S-2 | 200 | | -11 |

5

♠J64
♥
♦KJ9752
♣A972

♠KQ105 (N) ♠A973
♥AJ53 ♥104
♦4 W E ♦A863
♣8654 S ♣J103

♠82
♥KQ98762
♦Q10
♣KQ

Board (5) Av: NS=+20

| N-S | E-W | Contract | N-S | E-W | IMP |
|-----|-----|----------|-----|-----|-----|
| 8 | 20 | 3D N 3 | 110 | | 3 |
| 3 | 15 | 3D N 3 | 110 | | 3 |
| 1 | 11 | 2H S 2 | 110 | | 3 |
| 9 | 17 | 2H S 2 | 110 | | 3 |
| 2 | 13 | 3S E-2 | 100 | | 2 |
| 7 | 18 | 3S W-1 | 50 | | 1 |
| 10 | 19 | 2S W 2 | 110 | | -4 |
| 16 | 6 | 2S E 2 | 110 | | -4 |
| 12 | 4 | 2S E 2 | 110 | | -4 |
| 5 | 14 | 3H S-2 | 200 | | -6 |

6

♠53
♥A87653
♦10
♣10932

♠Q1062 (N) ♠K9874
♥J2 ♥94
♦763 W E ♦AJ82
♣AK64 S ♣QJ

♠AJ
♥KQ10
♦KQ954
♣875

Board (6) Av: NS=+50

| N-S | E-W | Contract | N-S | E-W | IMP |
|-----|-----|----------|-----|-----|-----|
| 2 | 13 | 4S E-3 | 300 | | 6 |
| 7 | 18 | 3S E-2 | 200 | | 4 |
| 1 | 11 | 2H S 3 | 140 | | 3 |
| 3 | 15 | 2H S 3 | 140 | | 3 |
| 10 | 19 | 2H S 3 | 140 | | 3 |
| 9 | 17 | 2H S 2 | 110 | | 2 |
| 12 | 4 | 4H S-1 | 50 | | -3 |
| 16 | 6 | 4Hx S-1 | 100 | | -4 |
| 8 | 20 | 3S E 5 | 200 | | -6 |
| 5 | 14 | 4Hx N-2 | 300 | | -8 |

7

♠K854
♥94
♦A75
♣Q1082

♠AQ1032 (N) ♠J9
♥83 ♥J65
♦Q108 W E ♦K942
♣K96 S ♣J754

♠76
♥AKQ1072
♦J63
♣A3

Board (7) Av: NS=+230

| N-S | E-W | Contract | N-S | E-W | IMP |
|-----|-----|----------|-----|-----|-----|
| 1 | 15 | 4H S 4 | 620 | | 9 |
| 18 | 10 | 4H S 4 | 620 | | 9 |
| 8 | 19 | 2H S 5 | 200 | | -1 |
| 6 | 20 | 1NT N 4 | 180 | | -2 |
| 13 | 5 | 2H S 4 | 170 | | -2 |
| 17 | 7 | 2H S 4 | 170 | | -2 |
| 9 | 16 | 2H S 4 | 170 | | -2 |
| 4 | 11 | 2H S 4 | 170 | | -2 |
| 3 | 14 | 2H S 3 | 140 | | -3 |
| 12 | 2 | 4H S-1 | 100 | | -8 |

8

♠AK
♥86
♦K92
♣Q107432

♠1052 (N) ♠863
♥1073 ♥KJ52
♦J108754 W E ♦AQ3
♣8 S ♣A65

♠QJ974
♥AQ94
♦6
♣KJ9

Board (8) Av: NS=+350

| N-S | E-W | Contract | N-S | E-W | IMP |
|-----|-----|----------|-----|-----|-----|
| 3 | 14 | 3NT N 5 | 460 | | 3 |
| 13 | 5 | 4S S 5 | 450 | | 3 |
| 9 | 16 | 3NT N 4 | 430 | | 2 |
| 12 | 2 | 5C N 5 | 400 | | 2 |
| 1 | 15 | 3NT N 3 | 400 | | 2 |
| 17 | 7 | 3NT N 3 | 400 | | 2 |
| 18 | 10 | 3NT N 3 | 400 | | 2 |
| 8 | 19 | 3NT N 3 | 400 | | 2 |
| 6 | 20 | 4S S-1 | 50 | | -9 |
| 4 | 11 | 4S S-3 | 150 | | -11 |

9

♠J87643
♥
♦KQ94
♣KQ3

♠9 (N) ♠A1052
♥AK82 ♥Q1075
♦1083 W E ♦AJ7
♣AJ1082 S ♣96

♠KQ
♥J9643
♦652
♣754

Board (9) Av: NS=-20

| N-S | E-W | Contract | N-S | E-W | IMP |
|-----|-----|----------|-----|-----|-----|
| 3 | 14 | 2S N 2 | 110 | | 4 |
| 18 | 10 | 2S N 2 | 110 | | 4 |
| 17 | 7 | 3H E-1 | 100 | | 3 |
| 1 | 15 | 2NT E-1 | 100 | | 3 |
| 12 | 2 | 2S N-1 | 50 | | -1 |
| 4 | 11 | 2S N-1 | 50 | | -1 |
| 9 | 16 | 2S N-2 | 100 | | -2 |
| 13 | 5 | 3H E 3 | 140 | | -3 |
| 6 | 20 | 3H E 3 | 140 | | -3 |
| 8 | 19 | 2H E 3 | 140 | | -3 |

10

♠AK7
♥AQ10
♦98743
♣104

♠Q32
♥J97
♦AJ6
♣J653

♠8654
♥K4
♦52
♣AKQ92

♠J109
♥86532
♦KQ10
♣87

N
W — E
S

11

♠A105
♥A753
♦K10853
♣Q

♠9
♥KJ842
♦A74
♣A865

♠QJ7432
♥109
♦QJ6
♣KJ

♠K86
♥Q6
♦92
♣1097432

N
W — E
S

12

♠A1064
♥AQJ6
♦A5
♣Q87

♠QJ73
♥108
♦K1076
♣432

♠95
♥92
♦J9842
♣AJ106

♠K82
♥K7543
♦Q3
♣K95

N
W — E
S

Board (10) Av: NS=-80

| N-S | E-W | Contract | N-S | E-W | IMP |
|-----|-----|----------|-----|-----|-----|
| 18 | 10 | 3C E-1 | 100 | | 5 |
| 6 | 20 | 3C E-1 | 100 | | 5 |
| 9 | 16 | 1NT W 1 | | 90 | 0 |
| 8 | 19 | 1NT W 1 | | 90 | 0 |
| 4 | 11 | 1NT W 1 | | 90 | 0 |
| 17 | 7 | 3D N-1 | | 100 | -1 |
| 13 | 5 | 1NT W 2 | | 120 | -1 |
| 3 | 14 | 1NT W 2 | | 120 | -1 |
| 12 | 2 | 1NT W 2 | | 120 | -1 |
| 1 | 15 | 1NT W 2 | | 120 | -1 |

Board (11) Av: NS=-50

| N-S | E-W | Contract | N-S | E-W | IMP |
|-----|-----|----------|-----|-----|-----|
| 18 | 10 | 2NT W-3 | 150 | | 5 |
| 3 | 14 | 3NT W-2 | 100 | | 4 |
| 13 | 5 | 4H W-1 | 50 | | 3 |
| 17 | 7 | 3NT W-1 | 50 | | 3 |
| 12 | 2 | 2S E-1 | 50 | | 3 |
| 6 | 20 | 2S E-1 | 50 | | 3 |
| 9 | 16 | 2NT W 3 | | 150 | -3 |
| 1 | 15 | 2NT E 3 | | 150 | -3 |
| 8 | 19 | 3NT W 3 | | 400 | -8 |
| 4 | 11 | 3NT W 3 | | 400 | -8 |

Board (12) Av: NS=+630

| N-S | E-W | Contract | N-S | E-W | IMP |
|-----|-----|----------|-----|-----|-----|
| 6 | 20 | 4H S 5 | 650 | | 1 |
| 8 | 19 | 4H N 5 | 650 | | 1 |
| 12 | 2 | 4H N 5 | 650 | | 1 |
| 3 | 14 | 4H N 4 | 620 | | 0 |
| 17 | 7 | 4H N 4 | 620 | | 0 |
| 9 | 16 | 4H N 4 | 620 | | 0 |
| 18 | 10 | 4H N 4 | 620 | | 0 |
| 1 | 15 | 4H N 4 | 620 | | 0 |
| 4 | 11 | 4H N 4 | 620 | | 0 |
| 13 | 5 | 4H S-1 | | 100 | -12 |

13

♠J7542
♥10876
♦A5
♣K6

♠Q9
♥K53
♦109873
♣J53

♠AK863
♥J4
♦K42
♣1092

♠10
♥AQ92
♦QJ6
♣AQ874

N
W — E
S

14

♠AQ63
♥10
♦Q52
♣J10873

♠K9875
♥654
♦KJ93
♣5

♠J1042
♥QJ973
♦A108
♣Q

♠AK82
♥764
♣AK9642

N
W — E
S

15

♠J98432
♥J9
♦632
♣65

♠K7
♥732
♦AQJ107
♣AQJ

♠Q106
♥AQ10
♦K954
♣K74

♠A5
♥K8654
♦8
♣109832

N
W — E
S

Board (13) Av: NS=+170

| N-S | E-W | Contract | N-S | E-W | IMP |
|-----|-----|----------|-----|-----|-----|
| 17 | 10 | 4H N 4 | 620 | | 10 |
| 13 | 3 | 2H N 5 | 200 | | 1 |
| 20 | 9 | 3H N 4 | 170 | | 0 |
| 5 | 12 | 3H N 4 | 170 | | 0 |
| 7 | 16 | 3H N 4 | 170 | | 0 |
| 2 | 11 | 3H N 4 | 170 | | 0 |
| 1 | 14 | 3H N 4 | 170 | | 0 |
| 8 | 18 | 2H N 4 | 170 | | 0 |
| 4 | 15 | 1NT S 3 | 150 | | -1 |
| 19 | 6 | 2C S 4 | 130 | | -1 |

Board (14) Av: NS=+350

| N-S | E-W | Contract | N-S | E-W | IMP |
|-----|-----|----------|-----|-----|-----|
| 8 | 18 | 5Cx S 6 | 650 | | 7 |
| 19 | 6 | 3NT N 4 | 430 | | 2 |
| 7 | 16 | 3NT N 4 | 430 | | 2 |
| 2 | 11 | 5C S 5 | 400 | | 2 |
| 4 | 15 | 5C S 5 | 400 | | 2 |
| 17 | 10 | 5C S 5 | 400 | | 2 |
| 5 | 12 | 5C S 5 | 400 | | 2 |
| 20 | 9 | 4C S 5 | 150 | | -5 |
| 1 | 14 | 3C S 5 | 150 | | -5 |
| 13 | 3 | 5C S-1 | | 50 | -9 |

Board (15) Av: NS=-460

| N-S | E-W | Contract | N-S | E-W | IMP |
|-----|-----|----------|-----|-----|-----|
| 8 | 18 | 6D W-1 | | 50 | 11 |
| 2 | 11 | 3NT W 4 | | 430 | 1 |
| 13 | 3 | 3NT W 5 | | 460 | 0 |
| 4 | 15 | 3NT W 5 | | 460 | 0 |
| 5 | 12 | 3NT W 5 | | 460 | 0 |
| 20 | 9 | 3NT W 5 | | 460 | 0 |
| 17 | 10 | 3NT W 5 | | 460 | 0 |
| 1 | 14 | 3NT W 5 | | 460 | 0 |
| 7 | 16 | 3NT W 5 | | 460 | 0 |
| 19 | 6 | 3NT W 6 | | 490 | -1 |

16

♠KJ9875
♥K85
♦6
♣873

♠6
♥A10962
♦K105
♣K1094

♠1043
♥43
♦AQJ7
♣A652

♠AQ2
♥QJ7
♦98432
♣QJ

N
W — E
S

17

♠K62
♥AJ1032
♦1085
♣K5

♠1083
♥97
♦Q942
♣10862

♠AQJ4
♥K854
♦A7
♣J97

♠975
♥Q6
♦KJ63
♣AQ43

N
W — E
S

18

♠72
♥10643
♦KQ103
♣1052

♠AQ84
♥Q52
♦A962
♣74

♠K10653
♥AJ7
♦754
♣K3

♠J9
♥K98
♦J8
♣AQJ986

N
W — E
S

Board (16) Av: NS=+70

| N-S | E-W | Contract | N-S | E-W | IMP |
|-----|-----|----------|-----|-----|-----|
| 7 | 16 | 3S N 3 | 140 | | 2 |
| 5 | 12 | 3S N 3 | 140 | | 2 |
| 17 | 10 | 2S N 2 | 110 | | 1 |
| 20 | 9 | 2S N 2 | 110 | | 1 |
| 2 | 11 | 2S N 2 | 110 | | 1 |
| 1 | 14 | 2S N 2 | 110 | | 1 |
| 13 | 3 | 5C W-1 | 100 | | 1 |
| 4 | 15 | 3S N-1 | | 50 | -3 |
| 8 | 18 | 3S N-1 | | 50 | -3 |
| 19 | 6 | 4H W 4 | | 620 | -12 |

Board (17) Av: NS=-40

| N-S | E-W | Contract | N-S | E-W | IMP |
|-----|-----|----------|-----|-----|-----|
| 8 | 18 | 2Sx E-2 | 300 | | 8 |
| 2 | 11 | 1NT E-1 | 50 | | 3 |
| 1 | 14 | 1NT E-1 | 50 | | 3 |
| 17 | 10 | 1NT E-1 | 50 | | 3 |
| 4 | 15 | 2C E 2 | | 90 | -2 |
| 7 | 16 | 1NT E 1 | | 90 | -2 |
| 20 | 9 | 1NT E 1 | | 90 | -2 |
| 5 | 12 | 2S E 2 | | 110 | -2 |
| 19 | 6 | 1NT E 2 | | 120 | -2 |
| 13 | 3 | 1NT E 2 | | 120 | -2 |

Board (18) Av: NS=+20

| N-S | E-W | Contract | N-S | E-W | IMP |
|-----|-----|----------|-----|-----|-----|
| 8 | 18 | 4S E-2 | 100 | | 2 |
| 5 | 12 | 4S E-2 | 100 | | 2 |
| 1 | 14 | 4S E-2 | 100 | | 2 |
| 20 | 9 | 4S E-1 | 50 | | 1 |
| 2 | 11 | 3S E-1 | 50 | | 1 |
| 4 | 15 | 3S E-1 | 50 | | 1 |
| 7 | 16 | 3S E-1 | 50 | | 1 |
| 13 | 3 | 2S E 2 | | 110 | -4 |
| 17 | 10 | 2S E 2 | | 110 | -4 |
| 19 | 6 | 2S E 3 | | 140 | -4 |

19

♠873
♥AJ86
♦102
♣AK103

♠Q102 N ♠KJ65
♥KQ10 W— E ♥75432
♦J8763 S (S) ♦K5
♣76 ♣42

♠A94
♥9
♦AQ94
♣QJ985

Board (19) Av: NS=+420

| N-S | E-W | Contract | N-S | E-W | IMP |
|-----|-----|----------|-----|-----|-----|
| 10 | 16 | 3NT S 6 | 490 | | 2 |
| 8 | 17 | 3NT S 4 | 430 | | 0 |
| 1 | 13 | 3NT S 4 | 430 | | 0 |
| 11 | 5 | 3NT S 4 | 430 | | 0 |
| 18 | 6 | 3NT S 4 | 430 | | 0 |
| 12 | 3 | 3NT S 4 | 430 | | 0 |
| 20 | 7 | 3NT S 4 | 430 | | 0 |
| 2 | 15 | 5C S 5 | 400 | | -1 |
| 4 | 14 | 3NT S 3 | 400 | | -1 |
| 9 | 19 | 2NT S 5 | 210 | | -5 |

20

♠Q10
♥Q932
♦Q754
♣A43

♠J65 N ♠AK9843
♥AJ85 W— E ♥10
♦103 S (S) ♦AKJ2
♣K1076 ♣J9

♠72
♥K764
♦986
♣Q852

Board (20) Av: NS=-670

| N-S | E-W | Contract | N-S | E-W | IMP |
|-----|-----|----------|-----|-----|-----|
| 10 | 16 | 4S E 5 | 650 | | 1 |
| 11 | 5 | 4S E 5 | 650 | | 1 |
| 18 | 6 | 4S E 5 | 650 | | 1 |
| 4 | 14 | 4S E 6 | 680 | | 0 |
| 9 | 19 | 4S E 6 | 680 | | 0 |
| 1 | 13 | 4S E 6 | 680 | | 0 |
| 20 | 7 | 4S E 6 | 680 | | 0 |
| 8 | 17 | 4S E 6 | 680 | | 0 |
| 2 | 15 | 4S E 6 | 680 | | 0 |
| 12 | 3 | 4S E 6 | 680 | | 0 |

21

♠764
♥4
♦KQJ865
♣742

♠A109 N ♠K852
♥763 W— E ♥AK109852
♦972 S (N) ♦
♣A1095 ♣J3

♠QJ3
♥QJ
♦A1043
♣KQ86

Board (21) Av: NS=-510

| N-S | E-W | Contract | N-S | E-W | IMP |
|-----|-----|----------|------|-----|-----|
| 1 | 13 | 4H E 5 | 450 | | 2 |
| 9 | 19 | 4H E 5 | 450 | | 2 |
| 12 | 3 | 4H E 5 | 450 | | 2 |
| 10 | 16 | 4H E 6 | 480 | | 1 |
| 4 | 14 | 4H E 6 | 480 | | 1 |
| 18 | 6 | 4H E 6 | 480 | | 1 |
| 20 | 7 | 4H E 6 | 480 | | 1 |
| 8 | 17 | 4H E 6 | 480 | | 1 |
| 2 | 15 | 5Dx N-3 | 800 | | -7 |
| 11 | 5 | 6Hx E 6 | 1210 | | -12 |

22

♠95
♥Q87
♦AKQ852
♣98

♠AQ108643 N ♠K2
♥653 W— E ♥KJ102
♦ K102 S (E) ♦J974
♣K102 ♣Q43

♠J7
♥A94
♦1063
♣AJ765

Board (22) Av: NS=-440

| N-S | E-W | Contract | N-S | E-W | IMP |
|-----|-----|----------|-----|-----|-----|
| 12 | 3 | 3D N-1 | 50 | | 9 |
| 1 | 13 | 4C S-3 | 150 | | 7 |
| 11 | 5 | 3S W 5 | 200 | | 6 |
| 8 | 17 | 3S W 5 | 200 | | 6 |
| 18 | 6 | 3S W 5 | 200 | | 6 |
| 10 | 16 | 5Dx N-3 | 500 | | -2 |
| 20 | 7 | 4S W 5 | 650 | | -5 |
| 2 | 15 | 5Dx N-4 | 800 | | -8 |
| 4 | 14 | 5Dx N-4 | 800 | | -8 |
| 9 | 19 | 4Sx W 5 | 990 | | -11 |

23

♠K95
♥54
♦432
♣AQJ84

♠Q74 N ♠A1082
♥QJ107 W— E ♥K63
♦QJ98 S (S) ♦A76
♣106 ♣K95

♠J63
♥A982
♦K105
♣732

Board (23) Av: NS=-110

| N-S | E-W | Contract | N-S | E-W | IMP |
|-----|-----|----------|-----|-----|-----|
| 2 | 15 | 2NT E-4 | 400 | | 11 |
| 10 | 16 | 1NT W 1 | 90 | | 1 |
| 1 | 13 | 1NT W 1 | 90 | | 1 |
| 9 | 19 | 1NT E 1 | 90 | | 1 |
| 12 | 3 | 3C N-1 | 100 | | 0 |
| 11 | 5 | 2C N-1 | 100 | | 0 |
| 4 | 14 | 1H W 2 | 110 | | 0 |
| 20 | 7 | 1NT W 2 | 120 | | 0 |
| 8 | 17 | 2H W 3 | 140 | | -1 |
| 18 | 6 | 2C N-2 | 200 | | -3 |

24

♠J972
♥QJ87
♦A75
♣96

♠K64 N ♠A105
♥952 W— E ♥AK6
♦J32 S (W) ♦KQ109
♣8743 ♣AKJ

♠Q83
♥1043
♦864
♣Q1052

Board (24) Av: NS=-410

| N-S | E-W | Contract | N-S | E-W | IMP |
|-----|-----|----------|-----|-----|-----|
| 2 | 15 | 2NT E 3 | 150 | | 6 |
| 18 | 6 | 3NT E 3 | 400 | | 0 |
| 4 | 14 | 3NT E 3 | 400 | | 0 |
| 20 | 7 | 3NT E 3 | 400 | | 0 |
| 12 | 3 | 3NT E 3 | 400 | | 0 |
| 1 | 13 | 3NT E 3 | 400 | | 0 |
| 10 | 16 | 3NT E 4 | 430 | | -1 |
| 11 | 5 | 3NT E 4 | 430 | | -1 |
| 9 | 19 | 3NT E 4 | 430 | | -1 |
| 8 | 17 | 3NT E 5 | 460 | | -2 |

25

♠J75
♥4
♦Q765
♣AQ532

♠A93 N ♠KQ8642
♥AJ108 W— E ♥65
♦AK982 S (N) ♦4
♣8 ♣K976

♠10
♥KQ9732
♦J103
♣J104

Board (25) Av: NS=-760

| N-S | E-W | Contract | N-S | E-W | IMP |
|-----|-----|----------|------|-----|-----|
| 14 | 2 | 4S E 5 | 650 | | 3 |
| 10 | 20 | 4S E 5 | 650 | | 3 |
| 17 | 6 | 4S E 5 | 650 | | 3 |
| 19 | 7 | 4S E 5 | 650 | | 3 |
| 9 | 18 | 5S E 6 | 680 | | 2 |
| 11 | 3 | 4S E 6 | 680 | | 2 |
| 16 | 8 | 4S E 6 | 680 | | 2 |
| 13 | 4 | 4S E 6 | 680 | | 2 |
| 1 | 12 | 6S E 6 | 1430 | | -12 |
| 15 | 5 | 6S E 6 | 1430 | | -12 |

26

♠AKQ10986
♥
♦Q106
♣AKJ

♠J N ♠72
♥J97643 W— E ♥AQ
♦J S (E) ♦K98752
♣109872 ♣543

♠543
♥K10852
♦A43
♣Q6

Board (26) Av: NS=+1450

| N-S | E-W | Contract | N-S | E-W | IMP |
|-----|-----|----------|------|-----|-----|
| 9 | 18 | 6Sx S 7 | 1860 | | 9 |
| 17 | 6 | 6S S 7 | 1460 | | 0 |
| 13 | 4 | 6S N 7 | 1460 | | 0 |
| 10 | 20 | 6S N 7 | 1460 | | 0 |
| 11 | 3 | 6S N 7 | 1460 | | 0 |
| 14 | 2 | 6S N 6 | 1430 | | -1 |
| 19 | 7 | 6S N 6 | 1430 | | -1 |
| 16 | 8 | 6S N 6 | 1430 | | -1 |
| 1 | 12 | 6S N 6 | 1430 | | -1 |
| 15 | 5 | 5S N 6 | 680 | | -13 |

27

♠A9832
♥AJ10
♦A8
♣A95

♠4 N ♠K1075
♥975 W— E ♥K863
♦J7652 S (N) ♦Q
♣Q864 ♣J732

♠QJ6
♥Q42
♦K10943
♣K10

Board (27) Av: NS=+360

| N-S | E-W | Contract | N-S | E-W | IMP |
|-----|-----|----------|-----|-----|-----|
| 11 | 3 | 3NT N 5 | 460 | | 3 |
| 14 | 2 | 3NT S 4 | 430 | | 2 |
| 15 | 5 | 4S N 4 | 420 | | 2 |
| 17 | 6 | 4S N 4 | 420 | | 2 |
| 10 | 20 | 4S N 4 | 420 | | 2 |
| 9 | 18 | 4S N 4 | 420 | | 2 |
| 16 | 8 | 4S N 4 | 420 | | 2 |
| 1 | 12 | 4S N 4 | 420 | | 2 |
| 19 | 7 | 5S N-1 | 50 | | -9 |
| 13 | 4 | 4S N-1 | 50 | | -9 |

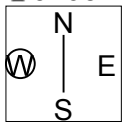
28

♠ A64
♥ J4
♦ A83
♣ J10542

♠ K83
♥ K752
♦ QJ1094
♣ 8

♠ Q10952
♥ 96
♦ 762
♣ Q76

♠ J7
♥ AQ1083
♦ K5
♣ AK93



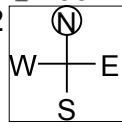
29

♠ J8
♥ J10943
♦ AK7
♣ K93

♠ Q105432
♥
♦ 10642
♣ Q42

♠ 9
♥ A876
♦ Q93
♣ AJ765

♠ AK76
♥ KQ52
♦ J85
♣ 108



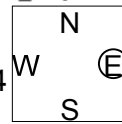
30

♠ 652
♥ K10652
♦ AK3
♣ 102

♠ 943
♥ Q3
♦ 108754
♣ A65

♠ AKQ1087
♥ A74
♦ Q9
♣ 98

♠ J
♥ J98
♦ J62
♣ KQJ743



Board (28) Av: NS=+550

| N-S | E-W | Contract | N-S | E-W | IMP |
|-----|-----|----------|-----|-----|-----|
| 13 | 4 | 4H S 6 | 680 | | 4 |
| 9 | 18 | 3NT N 5 | 660 | | 3 |
| 14 | 2 | 3NT N 4 | 630 | | 2 |
| 19 | 7 | 3NT N 4 | 630 | | 2 |
| 10 | 20 | 5C S 5 | 600 | | 2 |
| 11 | 3 | 3NT S 3 | 600 | | 2 |
| 15 | 5 | 3NT N 3 | 600 | | 2 |
| 16 | 8 | 3NT N 3 | 600 | | 2 |
| 17 | 6 | 2Dx W-1 | 100 | | -10 |
| 1 | 12 | 3NT N-1 | 100 | | -12 |

Board (29) Av: NS=+330

| N-S | E-W | Contract | N-S | E-W | IMP |
|-----|-----|----------|-----|-----|-----|
| 19 | 7 | 5Cx E-3 | 800 | | 10 |
| 15 | 5 | 4H N 5 | 650 | | 8 |
| 1 | 12 | 4H N 4 | 620 | | 7 |
| 17 | 6 | 4H N 4 | 620 | | 7 |
| 14 | 2 | 4H N 4 | 620 | | 7 |
| 9 | 18 | 5Cx E-2 | 500 | | 5 |
| 10 | 20 | 4H N-1 | 100 | | -10 |
| 13 | 4 | 4H N-1 | 100 | | -10 |
| 11 | 3 | 4H N-2 | 200 | | -11 |
| 16 | 8 | 4H N-2 | 200 | | -11 |

Board (30) Av: NS=-40

| N-S | E-W | Contract | N-S | E-W | IMP |
|-----|-----|----------|-----|-----|-----|
| 14 | 2 | 4S E-2 | 100 | | 4 |
| 15 | 5 | 4S E-2 | 100 | | 4 |
| 10 | 20 | 4S E-1 | 50 | | 3 |
| 17 | 6 | 4S E-1 | 50 | | 3 |
| 13 | 4 | 4S E-1 | 50 | | 3 |
| 11 | 3 | 3S E 3 | | 140 | -3 |
| 19 | 7 | 3S E 3 | | 140 | -3 |
| 9 | 18 | 3S E 3 | | 140 | -3 |
| 16 | 8 | 2S E 3 | | 140 | -3 |
| 1 | 12 | 4S E 4 | | 420 | -9 |

第20回NRM杯 Session 4 Section B 2015年6月28日(日)

1

♠ 109
♥ J843
♦ 973
♣ AQ32

♠ Q2
♥ AKQ75
♦ Q8
♣ K1095

♠ KJ6543
♥ 96
♦ J1054
♣ 4

♠ A87
♥ 102
♦ AK62
♣ J876

Board (1) Av: NS=-70

| N-S | E-W | Contract | N-S | E-W | IMP |
|-----|-----|----------|-----|-----|-----|
| 10 | 14 | 4H W-3 | 150 | | 6 |
| 1 | 16 | 4S E-1 | 50 | | 3 |
| 15 | 8 | 4S E-1 | 50 | | 3 |
| 19 | 5 | 4S E-1 | 50 | | 3 |
| 12 | 9 | 3S E 3 | | 140 | -2 |
| 3 | 20 | 3S E 3 | | 140 | -2 |
| 18 | 2 | 3S E 3 | | 140 | -2 |
| 13 | 7 | 3S E 3 | | 140 | -2 |
| 4 | 17 | 2S E 3 | | 140 | -2 |
| 6 | 11 | 2S E 3 | | 140 | -2 |

2

♠ K1072
♥ 5
♦ J654
♣ K1096

♠ QJ6
♥ J8762
♦ A872
♣ A

♠ A94
♥ A1043
♦ KQ10
♣ 852

♠ 853
♥ KQ9
♦ 93
♣ QJ743

Board (2) Av: NS=-440

| N-S | E-W | Contract | N-S | E-W | IMP |
|-----|-----|----------|-----|-----|-----|
| 18 | 2 | 2H W 4 | 170 | | 7 |
| 4 | 17 | 4H W 4 | 420 | | 1 |
| 1 | 16 | 4H W 4 | 420 | | 1 |
| 6 | 11 | 4H W 4 | 420 | | 1 |
| 10 | 14 | 4H W 5 | 450 | | 0 |
| 19 | 5 | 4H W 5 | 450 | | 0 |
| 12 | 9 | 4H W 5 | 450 | | 0 |
| 13 | 7 | 4H W 5 | 450 | | 0 |
| 3 | 20 | 4H W 5 | 450 | | 0 |
| 15 | 8 | 4H W 5 | 450 | | 0 |

3

♠ K93
♥ A96
♦ AK643
♣ 64

♠ 1082
♥ KQ8
♦ Q109
♣ Q1093

♠ QJ75
♥ 4
♦ J52
♣ KJ875

♠ A64
♥ J107532
♦ 87
♣ A2

Board (3) Av: NS=+420

| N-S | E-W | Contract | N-S | E-W | IMP |
|-----|-----|----------|-----|-----|-----|
| 4 | 17 | 4H S 6 | 480 | | 2 |
| 6 | 11 | 4H N 6 | 480 | | 2 |
| 18 | 2 | 4H N 6 | 480 | | 2 |
| 1 | 16 | 4H N 6 | 480 | | 2 |
| 15 | 8 | 4H S 5 | 450 | | 1 |
| 10 | 14 | 4H S 5 | 450 | | 1 |
| 19 | 5 | 4H S 4 | 420 | | 0 |
| 3 | 20 | 4H S 4 | 420 | | 0 |
| 13 | 7 | 2H S 4 | 170 | | -6 |
| 12 | 9 | 4H N-1 | | 50 | -10 |

4

♠ A10
♥ KQ6
♦ 108653
♣ 754

♠ K8743
♥ A1097
♦ KJ
♣ KJ

♠ J52
♥ J542
♦ A94
♣ A86

♠ Q96
♥ 83
♦ Q72
♣ Q10932

Board (4) Av: NS=+140

| N-S | E-W | Contract | N-S | E-W | IMP |
|-----|-----|----------|-----|-----|-----|
| 1 | 16 | 4S W-2 | 200 | | 2 |
| 12 | 9 | 4H W-2 | 200 | | 2 |
| 15 | 8 | 4H W-2 | 200 | | 2 |
| 6 | 11 | 3NT W-2 | 200 | | 2 |
| 10 | 14 | 4S W-1 | 100 | | -1 |
| 13 | 7 | 4S W-1 | 100 | | -1 |
| 19 | 5 | 4H W-1 | 100 | | -1 |
| 3 | 20 | 4H W-1 | 100 | | -1 |
| 4 | 17 | 4H W-1 | 100 | | -1 |
| 18 | 2 | 2S W 3 | | 140 | -7 |

5

♠ A10
♥ AJ32
♦ A843
♣ Q32

♠ 9862
♥ 765
♦ KQ
♣ A1084

♠ KJ53
♥ 984
♦ J1075
♣ J6

♠ Q74
♥ KQ10
♦ 962
♣ K975

Board (5) Av: NS=-100

| N-S | E-W | Contract | N-S | E-W | IMP |
|-----|-----|----------|-----|-----|-----|
| 4 | 17 | 3NT N-1 | 100 | | 0 |
| 3 | 20 | 3NT N-1 | 100 | | 0 |
| 10 | 14 | 3NT N-1 | 100 | | 0 |
| 12 | 9 | 3NT N-1 | 100 | | 0 |
| 15 | 8 | 3NT N-1 | 100 | | 0 |
| 1 | 16 | 3NT N-1 | 100 | | 0 |
| 6 | 11 | 3NT N-1 | 100 | | 0 |
| 13 | 7 | 3NT N-1 | 100 | | 0 |
| 18 | 2 | 3NT N-1 | 100 | | 0 |
| 19 | 5 | 3NT N-2 | 200 | | -3 |

6

♠ 96
♥ AKJ
♦ KJ94
♣ KQ85

♠ A873
♥ 95432
♦ A76
♣ 2

♠ KQ2
♥ 10876
♦ 53
♣ A1043

♠ J1054
♥ Q
♦ Q1082
♣ J976

Board (6) Av: NS=+120

| N-S | E-W | Contract | N-S | E-W | IMP |
|-----|-----|----------|-----|-----|-----|
| 1 | 16 | 1NT N 3 | 150 | | 1 |
| 19 | 5 | 1NT N 3 | 150 | | 1 |
| 12 | 9 | 1NT N 2 | 120 | | 0 |
| 4 | 17 | 1NT N 2 | 120 | | 0 |
| 6 | 11 | 1NT N 2 | 120 | | 0 |
| 10 | 14 | 1NT N 2 | 120 | | 0 |
| 13 | 7 | 1NT N 2 | 120 | | 0 |
| 15 | 8 | 1NT N 2 | 120 | | 0 |
| 3 | 20 | 1NT N 2 | 120 | | 0 |
| 18 | 2 | 2H W 3 | | 140 | -6 |

7

♠ 105
♥ AKQJ8
♦ A952
♣ 73

♠ A9
♥ 9762
♦ 103
♣ Q10864

♠ KQJ7
♥ 10
♦ KQ874
♣ AJ5

♠ 86432
♥ 543
♦ J6
♣ K92

Board (7) Av: NS=-30

| N-S | E-W | Contract | N-S | E-W | IMP |
|-----|-----|----------|-----|-----|-----|
| 10 | 13 | 2Hx N 2 | 670 | | 12 |
| 5 | 18 | 5C W-1 | 100 | | 4 |
| 12 | 7 | 4C W-1 | 100 | | 4 |
| 1 | 20 | 3C W-1 | 100 | | 4 |
| 6 | 15 | 2H N-1 | | 100 | -2 |
| 8 | 14 | 2H N-1 | | 100 | -2 |
| 16 | 4 | 3C W 3 | 110 | | -2 |
| 17 | 2 | 4C W 4 | 130 | | -3 |
| 11 | 9 | 3C W 4 | 130 | | -3 |
| 19 | 3 | 3H N-2 | | 200 | -5 |

8

♠ QJ876
♥ AQ2
♦ 6
♣ Q965

♠ K92
♥ J765
♦ AK75
♣ A8

♠ 54
♥ 10984
♦ 10984
♣ K32

♠ A103
♥ K3
♦ QJ32
♣ J1074

Board (8) Av: NS=+90

| N-S | E-W | Contract | N-S | E-W | IMP |
|-----|-----|----------|-----|-----|-----|
| 12 | 7 | 3S N 3 | 140 | | 2 |
| 16 | 4 | 3S N 3 | 140 | | 2 |
| 17 | 2 | 2S N 3 | 140 | | 2 |
| 6 | 15 | 2S S 2 | 110 | | 1 |
| 5 | 18 | 2S N 2 | 110 | | 1 |
| 1 | 20 | 1NT W-2 | 100 | | 0 |
| 10 | 13 | 1NT W-1 | 50 | | -1 |
| 8 | 14 | 1NT W-1 | 50 | | -1 |
| 11 | 9 | 1NT W-1 | 50 | | -1 |
| 19 | 3 | 3S N-1 | | 50 | -4 |

9

♠ J53
♥ A1085
♦ 64
♣ AQ85

♠ KQ1087
♥ J2
♦ 5
♣ KJ1063

♠ 642
♥ Q976
♦ AJ1093
♣ 7

♠ A9
♥ K43
♦ KQ872
♣ 942

Board (9) Av: NS=-40

| N-S | E-W | Contract | N-S | E-W | IMP |
|-----|-----|----------|-----|-----|-----|
| 16 | 4 | 3S W-3 | 300 | | 8 |
| 19 | 3 | 3S W-1 | 100 | | 4 |
| 11 | 9 | 3S W-1 | 100 | | 4 |
| 6 | 15 | 3NT N-1 | | 50 | 0 |
| 10 | 13 | 2NT N-1 | | 50 | 0 |
| 12 | 7 | 3NT S-2 | | 100 | -2 |
| 17 | 2 | 3D S-2 | | 100 | -2 |
| 1 | 20 | 2S W 2 | | 110 | -2 |
| 5 | 18 | 3S E 3 | | 140 | -3 |
| 8 | 14 | 4Hx S-2 | | 300 | -6 |

10

Hand 10: N=103, QJ105, K10752, A7; S=KQ87, A7, 84, QJ1042; W=65, K9843, Q9, K983; E=AJ942, 62, AJ63, 65

11

Hand 11: N=AK964, K7, A94, QJ7; S=10, AQJ1052, 873, K83; W=J8732, KJ1062, 952; E=Q5, 98643, Q5, A1064

12

Hand 12: N=J109, J982, 932, 1085; S=A42, AQ, Q1075, A642; W=Q75, 64, AKJ84, KQJ; E=K863, K10753, 6, 973

Board (10) Av: NS=+120. Table with columns: N-S, E-W, Contract, N-S, E-W, IMP. Rows 10-11.

Board (11) Av: NS=+150. Table with columns: N-S, E-W, Contract, N-S, E-W, IMP. Rows 19-8.

Board (12) Av: NS=-880. Table with columns: N-S, E-W, Contract, N-S, E-W, IMP. Rows 5-16.

13

Hand 13: N=J10, J9753, AQ85, J6; S=Q754, 8, 1097642, K9; W=A932, AKQ62, K, 1075; E=K86, 104, J3, AQ8432

14

Hand 14: N=QJ98, 742, Q42, 1032; S=A2, K10963, 8763, A5; W=654, J85, AK95, KQ6; E=K1073, AQ, J10, J9874

15

Hand 15: N=AJ, J763, J84, K853; S=8654, A108, A3, AQJ6; W=KQ97, 9542, 92, 974; E=1032, KQ, KQ10765, 102

Board (13) Av: NS=+140. Table with columns: N-S, E-W, Contract, N-S, E-W, IMP. Rows 1-10.

Board (14) Av: NS=-370. Table with columns: N-S, E-W, Contract, N-S, E-W, IMP. Rows 20-5.

Board (15) Av: NS=+50. Table with columns: N-S, E-W, Contract, N-S, E-W, IMP. Rows 20-1.

16

Hand 16: N=A72, J76432, Q43, 7; S=J1095, Q9, K75, KQ64; W=KQ8643, AK5; E=108, AJ109862, J952

17

Hand 17: N=1065, J43, AK93, J106; S=KJ3, A1098, 865, 743; W=A982, KQ52, Q4, Q52; E=Q74, 76, J1072, AK98

18

Hand 18: N=J1072, 3, AJ7532, 97; S=6, Q98762, Q10, KQ82; W=85, J1054, K96, 10543; E=AKQ943, AK, 84, AJ6

Board (16) Av: NS=-1150. Table with columns: N-S, E-W, Contract, N-S, E-W, IMP. Rows 18-10.

Board (17) Av: NS=-100. Table with columns: N-S, E-W, Contract, N-S, E-W, IMP. Rows 9-10.

Board (18) Av: NS=+1240. Table with columns: N-S, E-W, Contract, N-S, E-W, IMP. Rows 9-10.

19

♠ 764
♥ 103
♦ J109742
♣ 52

♠ 98532 N ♠ A10
♥ 974 W—E ♥ AJ862
♦ Q (S) ♦ A6
♣ KJ93 ♣ AQ107

♠ KQJ
♥ KQ5
♦ K853
♣ 864

20

♠ AQJ75
♥ A84
♦ J65
♣ 63

♠ K984 N ♠ 103
♥ KQ1075 W—E ♥ J93
♦ 1097 (V) ♦ AQ3
♣ 5 S ♣ AQ742

♠ 62
♥ 62
♦ K842
♣ KJ1098

21

♠ 3
♥ K1073
♦ AJ87
♣ 10986

♠ KQJ N ♠ 876542
♥ J W—E ♥ 4
♦ Q32 (N) ♦ K1064
♣ AKQJ72 S ♣ 54

♠ A109
♥ AQ98652
♦ 95
♣ 3

Board (19) Av: NS=-550

| N-S | E-W | Contract | N-S | E-W | IMP |
|-----|-------|----------|-----|-----|-----|
| 13 | 6 4S | W-2 | 200 | | 13 |
| 1 | 18 2H | E 4 | 170 | | 9 |
| 14 | 9 5Dx | N-3 | 500 | | 2 |
| 16 | 5 4H | W 4 | 620 | | -2 |
| 7 | 15 4H | E 4 | 620 | | -2 |
| 3 | 17 4H | E 4 | 620 | | -2 |
| 8 | 12 4H | E 4 | 620 | | -2 |
| 11 | 10 4H | E 4 | 620 | | -2 |
| 19 | 4 4H | E 4 | 620 | | -2 |
| 20 | 2 5Dx | N-4 | 800 | | -6 |

Board (20) Av: NS=-60

| N-S | E-W | Contract | N-S | E-W | IMP |
|-----|-------|----------|-----|-----|-----|
| 3 | 17 3H | W-1 | 100 | | 4 |
| 19 | 4 3H | W-1 | 100 | | 4 |
| 11 | 10 2H | W-1 | 100 | | 4 |
| 8 | 12 2S | N-1 | 100 | | -1 |
| 7 | 15 2H | W 2 | 110 | | -2 |
| 13 | 6 2H | W 2 | 110 | | -2 |
| 1 | 18 2H | W 2 | 110 | | -2 |
| 14 | 9 3H | W 3 | 140 | | -2 |
| 16 | 5 2H | W 3 | 140 | | -2 |
| 20 | 2 2H | W 3 | 140 | | -2 |

Board (21) Av: NS=+270

| N-S | E-W | Contract | N-S | E-W | IMP |
|-----|--------|----------|-----|-----|-----|
| 13 | 6 5Hx | S 5 | 850 | | 11 |
| 8 | 12 4H | S 5 | 650 | | 9 |
| 11 | 10 4H | S 5 | 650 | | 9 |
| 14 | 9 5Sx | E-2 | 300 | | 1 |
| 20 | 2 5Sx | E-2 | 300 | | 1 |
| 7 | 15 5Sx | E-1 | 100 | | -5 |
| 1 | 18 5S | E-1 | 50 | | -6 |
| 16 | 5 4S | W-1 | 50 | | -6 |
| 19 | 4 4S | E-1 | 50 | | -6 |
| 3 | 17 4S | E-1 | 50 | | -6 |

22

♠ QJ103
♥ Q7532
♦ K
♣ 973

♠ A862 N ♠ 54
♥ AJ W—E ♥ 1098
♦ 872 (E) ♦ AJ1095
♣ J542 S ♣ AKQ

♠ K97
♥ K64
♦ Q643
♣ 1086

23

♠ J108
♥ AQ985
♦ A7
♣ Q107

♠ 72 N ♠ A65
♥ K102 W—E ♥ J643
♦ Q1083 (S) ♦ K52
♣ K652 S ♣ 983

♠ KQ943
♥ 7
♦ J964
♣ AJ4

24

♠ J
♥ J762
♦ KJ9742
♣ 106

♠ 2 N ♠ K10864
♥ AKQ1095 W—E ♥ 4
♦ A108 (V) ♦ 53
♣ J53 S ♣ KQ974

♠ AQ9753
♥ 83
♦ Q6
♣ A82

Board (22) Av: NS=-300

| N-S | E-W | Contract | N-S | E-W | IMP |
|-----|--------|----------|-----|-----|-----|
| 16 | 5 1NT | E 1 | 90 | | 5 |
| 14 | 9 1NT | E 1 | 90 | | 5 |
| 20 | 2 1NT | E 1 | 90 | | 5 |
| 7 | 15 1NT | E 2 | 120 | | 5 |
| 11 | 10 1NT | E 2 | 120 | | 5 |
| 19 | 4 1NT | E 4 | 180 | | 3 |
| 8 | 12 3NT | E 3 | 600 | | -7 |
| 13 | 6 3NT | E 3 | 600 | | -7 |
| 3 | 17 3NT | E 4 | 630 | | -8 |
| 1 | 18 3NT | E 4 | 630 | | -8 |

Board (23) Av: NS=+170

| N-S | E-W | Contract | N-S | E-W | IMP |
|-----|--------|----------|-----|-----|-----|
| 8 | 12 4S | S 4 | 620 | | 10 |
| 7 | 15 4S | S 4 | 620 | | 10 |
| 13 | 6 4S | S 4 | 620 | | 10 |
| 11 | 10 3NT | N 3 | 600 | | 10 |
| 20 | 2 4S | S-1 | 100 | | -7 |
| 3 | 17 4S | S-1 | 100 | | -7 |
| 16 | 5 4S | S-1 | 100 | | -7 |
| 19 | 4 4S | S-1 | 100 | | -7 |
| 14 | 9 4S | S-1 | 100 | | -7 |
| 1 | 18 3NT | N-1 | 100 | | -7 |

Board (24) Av: NS=-80

| N-S | E-W | Contract | N-S | E-W | IMP |
|-----|--------|----------|-----|-----|-----|
| 16 | 5 4H | W-2 | 100 | | 5 |
| 20 | 2 3NT | W-1 | 50 | | 4 |
| 13 | 6 3H | W-1 | 50 | | 4 |
| 14 | 9 3H | W-1 | 50 | | 4 |
| 7 | 15 3H | W 3 | 140 | | -2 |
| 3 | 17 2H | W 3 | 140 | | -2 |
| 19 | 4 2S | S-3 | 150 | | -2 |
| 11 | 10 2H | W 4 | 170 | | -3 |
| 8 | 12 2H | W 4 | 170 | | -3 |
| 1 | 18 3NT | E 3 | 400 | | -8 |

25

♠ 3
♥ AQJ
♦ AQJ8
♣ KQ762

♠ Q104 N ♠ KJ97652
♥ 764 W—E ♥ 53
♦ K1065 (N) ♦ 942
♣ 1093 S ♣ J

♠ A8
♥ K10982
♦ 73
♣ A854

26

♠ 109
♥ QJ64
♦ A104
♣ A1085

♠ 632 N ♠ AKQ7
♥ K1083 W—E ♥ A97
♦ KQ72 (E) ♦ J653
♣ J2 S ♣ K9

♠ J854
♥ 52
♦ 98
♣ Q7643

27

♠ 1098753
♥ 53
♦ J
♣ AJ106

♠ A2 N ♠ Q
♥ AKJ74 W—E ♥ 9862
♦ A952 (S) ♦ 10843
♣ Q7 S ♣ 8542

♠ KJ64
♥ Q10
♦ KQ76
♣ K93

Board (25) Av: NS=+890

| N-S | E-W | Contract | N-S | E-W | IMP |
|-----|--------|----------|------|-----|-----|
| 4 | 18 7H | S 7 | 1510 | | 12 |
| 6 | 12 7H | N 7 | 1510 | | 12 |
| 9 | 13 6H | S 7 | 1010 | | 3 |
| 7 | 14 6H | S 7 | 1010 | | 3 |
| 15 | 10 6H | S 7 | 1010 | | 3 |
| 19 | 2 6H | S 7 | 1010 | | 3 |
| 8 | 11 3NT | S 7 | 520 | | -9 |
| 1 | 17 4H | S 7 | 510 | | -9 |
| 20 | 5 4H | S 7 | 510 | | -9 |
| 16 | 3 4H | S 6 | 480 | | -9 |

Board (26) Av: NS=+140

| N-S | E-W | Contract | N-S | E-W | IMP |
|-----|--------|----------|-----|-----|-----|
| 15 | 10 3NT | E-3 | 300 | | 4 |
| 1 | 17 3NT | E-2 | 200 | | 2 |
| 7 | 14 3NT | E-2 | 200 | | 2 |
| 19 | 2 3NT | E-2 | 200 | | 2 |
| 16 | 3 3NT | E-1 | 100 | | -1 |
| 9 | 13 3NT | E-1 | 100 | | -1 |
| 4 | 18 3NT | E-1 | 100 | | -1 |
| 6 | 12 3NT | E-1 | 100 | | -1 |
| 20 | 5 3NT | E-1 | 100 | | -1 |
| 8 | 11 3NT | E 3 | 600 | | -12 |

Board (27) Av: NS=+130

| N-S | E-W | Contract | N-S | E-W | IMP |
|-----|-------|----------|-----|-----|-----|
| 1 | 17 4S | N 4 | 420 | | 7 |
| 20 | 5 5Hx | E-2 | 300 | | 5 |
| 16 | 3 3S | N 4 | 170 | | 1 |
| 8 | 11 3S | N 4 | 170 | | 1 |
| 9 | 13 3S | N 3 | 140 | | 0 |
| 15 | 10 3S | N 3 | 140 | | 0 |
| 4 | 18 5H | W-2 | 100 | | -1 |
| 7 | 14 5H | W-2 | 100 | | -1 |
| 19 | 2 4S | N-1 | 50 | | -5 |
| 6 | 12 4S | N-1 | 50 | | -5 |

28

♠ 7642
♥ KJ108
♦ Q2
♣ Q73

♠ KQ
♥ 53
♦ 7543
♣ AK1096

| | | |
|---|--|---|
| N | | E |
| W | | S |

♠ A95
♥ 4
♦ AJ10986
♣ J52

♠ J1083
♥ AQ9762
♦ K
♣ 84

29

♠ 4
♥ 8632
♦ Q10763
♣ K62

♠ 975
♥ AK9
♦ AKJ92
♣ 105

| | | |
|---|--|---|
| N | | E |
| W | | S |

♠ AKJ1086
♥ 754
♦ 4
♣ J93

♠ Q32
♥ QJ10
♦ 85
♣ AQ874

30

♠ Q1072
♥ Q54
♦ AQ9
♣ 742

♠ AJ98
♥ K7
♦ K1082
♣ 1053

| | | |
|---|--|---|
| N | | E |
| W | | S |

♠ 643
♥ 982
♦ 73
♣ AKQ96

♠ K5
♥ AJ1063
♦ J654
♣ J8

Board (28) Av: NS=-110

| N-S | E-W | Contract | N-S | E-W | IMP |
|-----|-----|----------|-----|-----|-----|
| 16 | 3 | 3NT W-3 | 150 | | 6 |
| 19 | 2 | 5D E-1 | 50 | | 4 |
| 9 | 13 | 5D E-1 | 50 | | 4 |
| 7 | 14 | 5D E-1 | 50 | | 4 |
| 20 | 5 | 5D E-1 | 50 | | 4 |
| 8 | 11 | 4D E 4 | | 130 | -1 |
| 15 | 10 | 4D E 4 | | 130 | -1 |
| 4 | 18 | 5D E 5 | | 400 | -7 |
| 1 | 17 | 5D E 5 | | 400 | -7 |
| 6 | 12 | 5D E 5 | | 400 | -7 |

Board (29) Av: NS=-350

| N-S | E-W | Contract | N-S | E-W | IMP |
|-----|-----|----------|-----|-----|-----|
| 8 | 11 | 4S E-2 | 200 | | 11 |
| 16 | 3 | 4S W-1 | 100 | | 10 |
| 20 | 5 | 4S E-1 | 100 | | 10 |
| 19 | 2 | 4S E-1 | 100 | | 10 |
| 7 | 14 | 4S W 4 | | 620 | -7 |
| 1 | 17 | 4S E 4 | | 620 | -7 |
| 15 | 10 | 4S E 4 | | 620 | -7 |
| 4 | 18 | 4S E 4 | | 620 | -7 |
| 6 | 12 | 4S E 4 | | 620 | -7 |
| 9 | 13 | 4S E 4 | | 620 | -7 |

Board (30) Av: NS=-30

| N-S | E-W | Contract | N-S | E-W | IMP |
|-----|-----|----------|-----|-----|-----|
| 4 | 18 | 3S W-3 | 150 | | 5 |
| 20 | 5 | 2S W-2 | 100 | | 4 |
| 7 | 14 | 2S W-1 | 50 | | 2 |
| 1 | 17 | Passout | | | 1 |
| 6 | 12 | Passout | | | 1 |
| 9 | 13 | 1NT E 1 | | 90 | -2 |
| 15 | 10 | 1NT E 1 | | 90 | -2 |
| 8 | 11 | 1NT E 1 | | 90 | -2 |
| 19 | 2 | 1NT E 1 | | 90 | -2 |
| 16 | 3 | 1NT E 1 | | 90 | -2 |