

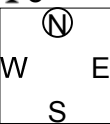
第20回NRM杯 Session1 Section A 2015年6月27日(土)

1

♠QJ109843
♥K98
♦92
♣8

♠AK2
♥62
♦AK73
♣AQ107

♠6
♥AQJ1073
♦54
♣9652



Board (1) Av: NS=-120

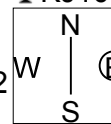
N-S	E-W	Contract	N-S	E-W	IMP
17	11	3NT E-2	100		6
1	10	3NT E-2	100		6
19	12	3NT E-2	100		6
3	9	3NT E-2	100		6
18	14	3NT E-2	100		6
16	15	6D W-1	50		5
6	2	3NT E 5		460	-8
20	13	3NT E 5		460	-8
5	8	3NT E 5		460	-8
4	7	3NT E 7		520	-9

2

♠J1072
♥7
♦J3
♣KJ10864

♠AK3
♥AKQ
♦7654
♣AQ5

♠8654
♥96542
♦109
♣93



Board (2) Av: NS=-1020

N-S	E-W	Contract	N-S	E-W	IMP
4	7	6D E 7		940	2
19	12	6NT E 7		1020	0
16	15	6NT E 7		1020	0
17	11	6NT E 7		1020	0
20	13	6NT E 7		1020	0
18	14	6NT E 7		1020	0
3	9	6NT E 7		1020	0
1	10	6NT E 7		1020	0
6	2	6NT E 7		1020	0
5	8	7NT E 7		1520	-11

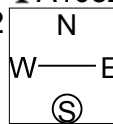
3

♠J73
♥32
♦10653
♣A1082

♠AQ1042
♥75
♦A972
♣96

♠65
♥K1096
♦KQ84
♣KQ7

♠K98
♥AQJ84
♦J
♣J543



Board (3) Av: NS=-300

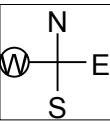
N-S	E-W	Contract	N-S	E-W	IMP
16	15	2D W-1	100		9
3	9	2C S 2		90	9
1	10	2NT E 2		120	5
18	14	2NT E 3		150	4
20	13	2NT E 4		180	3
17	11	1NT E 4		180	3
19	12	3NT E 3		600	-7
4	7	3NT E 3		600	-7
5	8	3NT E 4		630	-8
6	2	3NT E 4		630	-8

4

♠972
♥7
♦1065
♣AK6543

♠KQJ10
♥A863
♦AK98
♣9

♠A8653
♥K54
♦QJ
♣J87



Board (4) Av: NS=-620

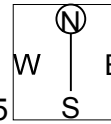
N-S	E-W	Contract	N-S	E-W	IMP
3	9	3H W 4		170	10
6	2	4H W 4		620	0
4	7	4H W 4		620	0
1	10	4H W 4		620	0
20	13	4H E 4		620	0
17	11	4H E 4		620	0
18	14	4H E 4		620	0
5	8	4H E 4		620	0
19	12	4H E 4		620	0
16	15	4Sx S-3		800	-5

5

♠Q75
♥10962
♦8532
♣K9

♠KJ10942
♥AK
♦QJ
♣Q42

♠63
♥Q873
♦AK1096
♣73



Board (5) Av: NS=-300

N-S	E-W	Contract	N-S	E-W	IMP
17	11	4S E-1		50	8
19	12	4S E-1		50	8
6	2	3S E 3		140	4
4	7	3S E 4		170	4
5	8	4S E 4		420	-3
18	14	4S E 4		420	-3
16	15	4S E 4		420	-3
3	9	4S E 4		420	-3
1	10	4S E 4		420	-3
20	13	4S E 4		420	-3

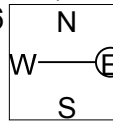
6

♠K10
♥K7642
♦J1082
♣QJ

♠Q986
♥A5
♦Q95
♣A872

♠J32
♥83
♦AK643
♣1054

♠A754
♥QJ109
♦7
♣K963



Board (6) Av: NS=+180

N-S	E-W	Contract	N-S	E-W	IMP
4	7	4H N 4		420	6
6	2	3H N 5		200	1
1	10	2H N 5		200	1
19	12	3H N 4		170	0
20	13	3H N 4		170	0
5	8	3H N 4		170	0
18	14	2H N 4		170	0
16	15	2H N 4		170	0
3	9	2H N 4		170	0
17	11	1NT W-1		100	-2

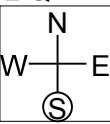
7

♠J53
♥K652
♦K1052
♣Q2

♠AK42
♥Q974
♦96
♣J86

♠Q1086
♥AJ8
♦AQ73
♣K5

♠97
♥103
♦J84
♣A109743



Board (7) Av: NS=-640

N-S	E-W	Contract	N-S	E-W	IMP
16	14	4S E-1		100	12
12	13	4S E 4		620	1
18	11	4S E 4		620	1
1	9	4S E 4		620	1
15	17	4S E 4		620	1
3	6	4S E 5		650	0
19	20	4S E 5		650	0
2	10	4S E 5		650	0
5	4	4S E 5		650	0
7	8	4S E 5		650	0

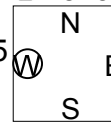
8

♠J9
♥A6
♦AQJ85
♣K843

♠863
♥KQ105
♦10732
♣J9

♠104
♥843
♦94
♣AQ10652

♠AKQ752
♥J972
♦K6
♣7



Board (8) Av: NS=+480

N-S	E-W	Contract	N-S	E-W	IMP
19	20	6S N 6		980	11
1	9	5S N 6		480	0
5	4	4S S 6		480	0
12	13	4S S 6		480	0
2	10	4S N 6		480	0
3	6	4S N 6		480	0
15	17	4S N 6		480	0
7	8	4S N 6		480	0
16	14	4S N 6		480	0
18	11	5H S-3		150	-12

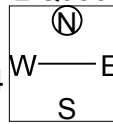
9

♠KQ74
♥6
♦J52
♣QJ864

♠98632
♥1054
♦KQ1094
♣

♠A105
♥QJ83
♦873
♣K52

♠J
♥AK972
♦A6
♣A10973



Board (9) Av: NS=+260

N-S	E-W	Contract	N-S	E-W	IMP
5	4	5C S 6		420	4
18	11	5C S 6		420	4
3	6	5C S 5		400	4
1	9	5C S 5		400	4
7	8	5C S 5		400	4
19	20	3NT S 3		400	4
15	17	3C S 5		150	-3
16	14	5C S-1		50	-7
2	10	5C S-1		50	-7
12	13	3NT N-2		100	-8

第20回NRM杯 Session1 Section A 2015年6月27日(土)

10

♠ K97
♥ 1054
♦ KQ4
♣ 10862

♠ 1086
♥ AKJ93
♦ J832
♣ 9

N
W — E
S

♠ J532
♥ Q72
♦ 5
♣ KQJ53

♠ AQ4
♥ 86
♦ A10976
♣ A74

11

♠ 987
♥ 5
♦ KJ1043
♣ Q873

♠ K654
♥ 98432
♦ Q86
♣ 2

N
W — E
S

♠ QJ10
♥ KJ76
♦ 95
♣ K1095

♠ A32
♥ AQ10
♦ A72
♣ AJ64

12

♠ 52
♥ QJ9765
♦ A1087
♣ 7

♠ K983
♥ 843
♦ 54
♣ J652

N
W — E
S

♠ AJ76
♥ A10
♦ K92
♣ AK94

♠ Q104
♥ K2
♦ QJ63
♣ Q1083

Board (10) Av: NS=0

N-S	E-W	Contract	N-S	E-W	IMP
5	4	3C	E-3	300	7
15	17	1NT	S 3	150	4
1	9	3H	W-1	100	3
19	20	3H	W-1	100	3
7	8	2H	W-1	100	3
3	6	3D	S-1	100	-3
12	13	2H	W 2	110	-3
16	14	2H	W 2	110	-3
18	11	2H	W 2	110	-3
2	10	4D	S-2	200	-5

Board (11) Av: NS=+400

N-S	E-W	Contract	N-S	E-W	IMP
5	4	4Hx	E-4	800	9
12	13	3NT	S 6	490	3
2	10	3NT	S 6	490	3
16	14	3NT	S 5	460	2
1	9	3NT	S 5	460	2
15	17	3NT	S 5	460	2
18	11	3NT	S 4	430	1
3	6	3NT	S 4	430	1
7	8	3NT	S-1	50	-10
19	20	3NT	S-1	50	-10

Board (12) Av: NS=-40

N-S	E-W	Contract	N-S	E-W	IMP
16	14	4S	W-1	50	3
3	6	4S	W-1	50	3
19	20	4S	E-1	50	3
18	11	4S	E-1	50	3
1	9	3C	E-1	50	3
15	17	1C	E 2	90	-2
5	4	2NT	E 2	120	-2
12	13	3S	W 3	140	-3
7	8	3S	W 3	140	-3
2	10	3S	W 3	140	-3

13

♠ K852
♥ 964
♦ 105
♣ 10865

♠ 1096
♥ 105
♦ AQ9763
♣ K3

N
W — E
S

♠ Q7
♥ J82
♦ KJ82
♣ A972

♠ AJ43
♥ AKQ73
♦ 4
♣ QJ4

14

♠ 632
♥ J94
♦ AQJ1098
♣ 10

♠ AK75
♥ Q106
♦ 42
♣ AK84

N
W — E
S

♠ Q984
♥ 8532
♦ 753
♣ J7

♠ J10
♥ AK7
♦ K6
♣ Q96532

15

♠ 87
♥ A1095
♦ 654
♣ Q972

♠ AKJ54
♥ Q3
♦ AQ2
♣ KJ6

N
W — E
S

♠ Q10
♥ KJ864
♦ KJ973
♣ 8

♠ 9632
♥ 72
♦ 108
♣ A10543

Board (13) Av: NS=+210

N-S	E-W	Contract	N-S	E-W	IMP
7	5	4S	S 5	650	10
3	2	3NT	E-5	500	7
6	4	3H	S 4	170	-1
1	8	2H	S 4	170	-1
20	12	1H	S 4	170	-1
11	19	1H	S 4	170	-1
10	9	1H	S 4	170	-1
13	16	1H	S 4	170	-1
15	14	3H	S 3	140	-2
17	18	1H	S 3	140	-2

Board (14) Av: NS=+90

N-S	E-W	Contract	N-S	E-W	IMP
20	12	1NT	W-3	150	2
11	19	3D	N 4	130	1
6	4	3D	N 4	130	1
3	2	3D	N 3	110	1
13	16	1NT	W-2	100	0
17	18	2D	N 2	90	0
15	14	2D	N 2	90	0
10	9	1NT	W-1	50	-1
7	5	1NT	W-1	50	-1
1	8	2H	E 2	110	-5

Board (15) Av: NS=-310

N-S	E-W	Contract	N-S	E-W	IMP
1	8	4NT	W-2	100	9
17	18	6D	E-1	50	8
3	2	6D	E-1	50	8
20	12	5D	E 5	400	-3
6	4	5D	E 5	400	-3
11	19	5D	E 6	420	-3
7	5	4NT	W 5	460	-4
13	16	3NT	W 5	460	-4
15	14	3NT	E 5	460	-4
10	9	3NT	E 5	460	-4

16

♠ KQ3
♥ KJ52
♦ 1043
♣ KQ2

♠ 82
♥ 6
♦ KJ652
♣ 109763

N
W — E
S

♠ A9764
♥ A987
♦ A97
♣ A

♠ J105
♥ Q1043
♦ Q8
♣ J854

17

♠ A852
♥ Q3
♦ 9653
♣ J87

♠ KQJ1064
♥ K65
♦ AQ64
♣ AQ64

N
W — E
S

♠ 97
♥ J9872
♦ Q108
♣ K105

♠ 3
♥ A104
♦ AKJ742
♣ 932

18

♠ QJ843
♥ 853
♦ A5
♣ AJ6

♠ K962
♥ KJ10
♦ J9
♣ 8743

N
W — E
S

♠ 7
♥ Q762
♦ KQ8732
♣ K2

♠ A105
♥ A94
♦ 1064
♣ Q1095

Board (16) Av: NS=-130

N-S	E-W	Contract	N-S	E-W	IMP
17	18	2H	S-1	50	2
15	14	2H	N-1	50	2
20	12	3D	W 3	110	1
11	19	2S	W 2	110	1
10	9	4D	W 4	130	0
3	2	3S	W 3	140	0
7	5	2S	E 3	140	0
6	4	3S	W 4	170	-1
13	16	2S	E 4	170	-1
1	8	2S	E 4	170	-1

Board (17) Av: NS=-160

N-S	E-W	Contract	N-S	E-W	IMP
13	16	3D	S 4	130	7
7	5	4S	W-1	50	5
17	18	4S	W-1	50	5
3	2	4H	E-1	50	5
20	12	4D	S-1	50	3
1	8	5Dx	S-1	100	2
10	9	3NT	N-5	250	-3
15	14	4S	W 4	420	-6
11	19	4Sx	W 4	590	-10
6	4	4Sx	W 4	590	-10

Board (18) Av: NS=+70

N-S	E-W	Contract	N-S	E-W	IMP
1	8	3S	N 3	140	2
20	12	3S	N 3	140	2
11	19	3S	N 3	140	2
7	5	3S	N 3	140	2
13	16	2S	N 3	140	2
17	18	2S	N 2	110	1
10	9	2S	N 2	110	1
15	14	3S	N-1	100	-5
6	4	2D	E 3	110	-5
3	2	2D	E 4	130	-5

19

♠AKJ432
♥Q532
♦J7
♣10

♠Q876
♥K9874
♦Q542
♣95

♠10
♥J106
♦A10964
♣J876

♠95
♥A
♦KQ8532
♣AK93

20

♠73
♥108542
♦AJ73
♣73

♠AQ54
♥KQ
♦9864
♣AQ6

♠KJ1098
♥AJ9
♦KQ2
♣95

♠62
♥763
♦105
♣KJ10842

21

♠A2
♥AQJ93
♦Q93
♣J87

♠K976
♥10762
♦A74
♣96

♠QJ43
♥
♦J865
♣AKQ104

♠1085
♥K854
♦K102
♣532

Board (19) Av: NS=+330

N-S	E-W	Contract	N-S	E-W	IMP
14	17	3Hx	W-5	1400	14
2	9	4S	N 5	450	3
3	10	4S	N 5	450	3
15	18	4S	S 4	420	3
13	19	4S	N 4	420	3
16	12	4S	N 4	420	3
1	7	4S	N 4	420	3
6	5	4D	S 4	130	-5
8	4	4S	N-1	50	-9
20	11	6NTxS-3		500	-13

Board (20) Av: NS=-1240

N-S	E-W	Contract	N-S	E-W	IMP
6	5	5S	W 6	680	11
15	18	4S	W 6	680	11
14	17	4S	W 6	680	11
2	9	6S	W 6	1430	-5
3	10	6S	W 6	1430	-5
8	4	6S	W 6	1430	-5
1	7	6S	W 6	1430	-5
16	12	6S	W 6	1430	-5
20	11	6S	W 6	1430	-5
13	19	6S	W 6	1430	-5

Board (21) Av: NS=-320

N-S	E-W	Contract	N-S	E-W	IMP
3	10	1NT	N-1	100	6
14	17	3S	W 4	170	4
15	18	2S	E 4	170	4
16	12	3H	N-2	200	3
2	9	1NT	N-3	300	1
6	5	4S	W 4	420	-3
13	19	4S	W 4	420	-3
1	7	4S	W 4	420	-3
8	4	4S	E 4	420	-3
20	11	4S	W 5	450	-4

22

♠106
♥AJ97
♦QJ8542
♣10

♠K98
♥1064
♦1076
♣A643

♠J42
♥Q83
♦AK93
♣QJ8

♠AQ753
♥K52
♦
♣K9752

23

♠A42
♥J1054
♦53
♣10954

♠J876
♥AK72
♦A9
♣AK8

♠K1053
♥6
♦Q102
♣Q7632

♠Q9
♥Q983
♦KJ8764
♣J

24

♠A64
♥Q86
♦Q1042
♣A97

♠KQ9
♥J52
♦76
♣Q10532

♠10753
♥3
♦AKJ953
♣K4

♠J82
♥AK10974
♦8
♣J86

Board (22) Av: NS=+90

N-S	E-W	Contract	N-S	E-W	IMP
1	7	2S	S 3	140	2
13	19	2S	S 3	140	2
16	12	1S	S 3	140	2
14	17	2S	S 2	110	1
2	9	2S	S 2	110	1
8	4	2S	S 2	110	1
15	18	2S	S 2	110	1
6	5	2S	S 2	110	1
3	10	2S	S-2	100	-5
20	11	3NT	N-4	200	-7

Board (23) Av: NS=-630

N-S	E-W	Contract	N-S	E-W	IMP
15	18	4S	E-1	100	12
6	5	4S	W 4	620	0
3	10	4S	E 4	620	0
13	19	4S	E 4	620	0
2	9	4S	E 4	620	0
8	4	4S	E 4	620	0
20	11	4S	W 5	650	-1
1	7	4S	W 5	650	-1
16	12	4S	E 5	650	-1
14	17	4S	E 5	650	-1

Board (24) Av: NS=+10

N-S	E-W	Contract	N-S	E-W	IMP
3	10	2H	S 3	140	4
6	5	2H	S 2	110	3
13	19	2H	S 2	110	3
1	7	2H	S 2	110	3
16	12	2H	S 2	110	3
8	4	2H	S 2	110	3
14	17	4H	S-2	100	-3
2	9	3NT	N-2	100	-3
20	11	4Hx	S-2	300	-7
15	18	3Dx	E 3	470	-10

第20回NRM杯 Session 2 Section A 2015年6月27日(土)

1

♠ 97
♥ J64
♦ 984
♣ AQ653

♠ KQ854 (N)
♥ K98
♦ AQ52
♣ K

♠ 2
♥ Q107532
♦ J106
♣ 982

W E
S

♠ AJ1063
♥ A
♦ K73
♣ J1074

Board (1) Av: NS=-170

N-S	E-W	Contract	N-S	E-W	IMP
11	12	1NT N 1	90		6
1	2	4H E-1	50		6
15	13	2H W 3		140	1
8	6	2H W 3		140	1
7	9	3H E 4		170	0
10	4	2H W 4		170	0
18	16	2H W 4		170	0
19	17	2H W 4		170	0
5	3	4H E 4		420	-6
14	20	4H E 4		420	-6

2

♠ J843
♥ KQ982
♦ Q5
♣ J2

♠ 952 (N)
♥ J10
♦ J9432
♣ Q103

♠ A1076
♥ A3
♦ 86
♣ A9875

W E
S

♠ KQ
♥ 7654
♦ AK107
♣ K64

Board (2) Av: NS=+620

N-S	E-W	Contract	N-S	E-W	IMP
15	13	4H S 4	620		0
5	3	4H S 4	620		0
8	6	4H S 4	620		0
18	16	4H S 4	620		0
7	9	4H S 4	620		0
10	4	4H S 4	620		0
1	2	4H S 4	620		0
19	17	4H S 4	620		0
14	20	4H N 4	620		0
11	12	2H N 4	170		-10

3

♠ AQ108
♥ J94
♦ 875
♣ 1087

♠ K5 (N)
♥ 1087
♦ AQ96
♣ AJ95

♠ 642
♥ A653
♦ K102
♣ Q63

W E
S

♠ J973
♥ KQ2
♦ J43
♣ K42

Board (3) Av: NS=-110

N-S	E-W	Contract	N-S	E-W	IMP
5	3	2NT W-1	100		5
7	9	2S N-1		50	2
8	6	1NT S-1		50	2
1	2	3S N-2		100	0
14	20	1NT W 2		120	0
11	12	1NT W 2		120	0
10	4	1NT W 2		120	0
19	17	1NT W 3		150	-1
15	13	1NT W 3		150	-1
18	16	1NT W 3		150	-1

4

♠ 7
♥ AQJ7643
♦ 65
♣ QJ5

♠ Q84 (N)
♥ 2
♦ AJ1098
♣ 10732

♠ J10652
♥ K105
♦ 42
♣ A98

W E
S

♠ AK93
♥ 98
♦ KQ73
♣ K64

Board (4) Av: NS=+520

N-S	E-W	Contract	N-S	E-W	IMP
5	3	3NT S 4	630		3
1	2	4H N 4	620		3
11	12	4H N 4	620		3
8	6	4H N 4	620		3
7	9	4H N 4	620		3
10	4	4H N 4	620		3
18	16	4H N 4	620		3
14	20	4H N 4	620		3
15	13	6H N-2		200	-12
19	17	3NT S-3		300	-13

5

♠ J10632
♥ 10652
♦ QJ5
♣ 9

♠ Q5 (N)
♥ AJ3
♦ A1043
♣ AQJ3

♠ 987
♥ KQ984
♦ K6
♣ K87

W E
S

♠ AK4
♥ 7
♦ 9872
♣ 106542

Board (5) Av: NS=-390

N-S	E-W	Contract	N-S	E-W	IMP
11	12	3NT W-1	50		10
7	9	3NT W-1	50		10
8	6	5H E 5		450	-2
19	17	4H W 5		450	-2
1	2	4H E 5		450	-2
15	13	4H E 5		450	-2
14	20	4H E 5		450	-2
10	4	4H E 5		450	-2
5	3	4H E 5		450	-2
18	16	4H E 5		450	-2

6

♠ AKJ83
♥ J
♦ 10962
♣ KQ6

♠ 765 (N)
♥ 9874
♦ AQ
♣ 10543

♠ 92
♥ Q1062
♦ 743
♣ AJ98

W E
S

♠ Q104
♥ AK53
♦ KJ85
♣ 72

Board (6) Av: NS=+300

N-S	E-W	Contract	N-S	E-W	IMP
11	12	4S S 4	420		3
15	13	4S N 4	420		3
1	2	4S N 4	420		3
18	16	4S N 4	420		3
10	4	4S N 4	420		3
7	9	4S N 4	420		3
14	20	4S N 4	420		3
19	17	4S N-1		50	-8
5	3	4S N-1		50	-8
8	6	3NT S-1		50	-8

7

♠ 1083
♥ A72
♦ AJ104
♣ KJ3

♠ KJ6 (N)
♥ QJ86
♦ 87
♣ 10852

♠ A9752
♥ 543
♦ K3
♣ Q76

W E
S

♠ Q4
♥ K109
♦ Q9652
♣ A94

Board (7) Av: NS=+40

N-S	E-W	Contract	N-S	E-W	IMP
8	2	3NT S 4	630		11
7	10	3D N 3	110		2
3	4	3D N 3	110		2
1	5	3D N 3	110		2
9	6	2D N 3	110		2
18	12	2D N 3	110		2
17	20	3S E-1	100		2
19	16	4D N-1		100	-4
11	15	4D S-2		200	-6
13	14	3NT S-2		200	-6

8

♠ Q65
♥ 8432
♦ KQJ94
♣ J

♠ K (N)
♥ Q65
♦ A106
♣ AKQ932

♠ J108
♥ AKJ107
♦ 52
♣ 1054

W E
S

♠ A97432
♥ 9
♦ 873
♣ 876

Board (8) Av: NS=-490

N-S	E-W	Contract	N-S	E-W	IMP
19	16	3C W 6	170		8
18	12	4H E 6		480	0
1	5	4H E 6		480	0
9	6	4H E 6		480	0
11	15	4H E 6		480	0
8	2	4H E 6		480	0
7	10	3NT E 6		490	0
3	4	5Dx N-3		500	0
17	20	4H E 7		510	-1
13	14	4H E 7		510	-1

9

♠ 7
♥ AKQJ10
♦ J8763
♣ 84

♠ 86542 (N)
♥ 92
♦ A109
♣ J102

♠ AKQ10
♥ 75
♦ 542
♣ KQ65

W E
S

♠ J93
♥ 8643
♦ KQ
♣ A973

Board (9) Av: NS=+400

N-S	E-W	Contract	N-S	E-W	IMP
9	6	4H N 5	450		2
7	10	4H N 5	450		2
3	4	4H N 5	450		2
8	2	4H N 5	450		2
1	5	4H N 5	450		2
11	15	4H N 5	450		2
18	12	4H N 5	450		2
17	20	5S W-3	300		-3
19	16	3H N 4	170		-6
13	14	3S W 3		140	-11

19

♠ A6
♥ J43
♦ A976
♣ A953

♠ 932
♥ K52
♦ Q5
♣ KQJ104

N
W—E
S

♠ J1075
♥ 108
♦ KJ10842
♣ 2

♠ KQ84
♥ AQ976
♦ 3
♣ 876

20

♠ 86
♥ 1072
♦ J73
♣ KQJ62

♠ AQJ7532
♥ AK5
♦
♣ A53

N
W—E
S

♠ K104
♥ QJ843
♦ KQ6
♣ 87

♠ 9
♥ 96
♦ A1098542
♣ 1094

21

♠ 8653
♥ 752
♦ AK3
♣ 942

♠ QJ
♥ KJ1096
♦ 9652
♣ 63

N
W—E
S

♠ K742
♥ AQ
♦ QJ4
♣ AK85

♠ A109
♥ 843
♦ 1087
♣ QJ107

Board (19) Av: NS=+360

N-S	E-W	Contract	N-S	E-W	IMP
1	3	4H S 4	420		2
16	17	4H S 4	420		2
6	7	4H S 4	420		2
5	9	4H S 4	420		2
10	8	4H S 4	420		2
18	20	4H S 4	420		2
14	12	4H S 4	420		2
2	4	4H N 4	420		2
13	11	4H S-1	50	50	-9
19	15	4H S-1	50	50	-9

Board (20) Av: NS=-1180

N-S	E-W	Contract	N-S	E-W	IMP
19	15	4S W 7	710		10
16	17	4S W 7	710		10
5	9	4S W 7	710		10
14	12	4S W 7	710		10
2	4	6S W 7	1460		-7
18	20	6S W 7	1460		-7
6	7	6S W 7	1460		-7
1	3	6S W 7	1460		-7
13	11	6S E 7	1460		-7
10	8	6NT E 7	1470		-7

Board (21) Av: NS=-400

N-S	E-W	Contract	N-S	E-W	IMP
6	7	3NT E 3	400		0
10	8	3NT E 3	400		0
16	17	3NT E 3	400		0
13	11	3NT E 3	400		0
18	20	3NT E 3	400		0
14	12	3NT E 3	400		0
2	4	3NT E 3	400		0
5	9	3NT E 3	400		0
19	15	3NT E 4	430		-1
1	3	4H W 5	450		-2

22

♠ A
♥ A82
♦ A10986
♣ AJ94

♠ J954
♥ KQ753
♦ K
♣ Q72

N
W—E
S

♠ 1087632
♥ 94
♦ Q42
♣ 108

♠ KQ
♥ J106
♦ J753
♣ K653

23

♠ Q10864
♥ K
♦ 9863
♣ K98

♠ K3
♥ Q732
♦ A1072
♣ Q104

N
W—E
S

♠ 975
♥ A9865
♦ 5
♣ AJ52

♠ AJ2
♥ J104
♦ KQJ4
♣ 763

24

♠ 75
♥ K94
♦ AK7
♣ KJ852

♠ Q1032
♥ 8763
♦ 953
♣ A10

N
W—E
S

♠ K96
♥ AQ102
♦ QJ6
♣ 963

♠ AJ84
♥ J5
♦ 10842
♣ Q74

Board (22) Av: NS=+430

N-S	E-W	Contract	N-S	E-W	IMP
13	11	3Sx E-2	500		2
5	9	3NT N 5	460		1
10	8	3NT N 5	460		1
19	15	3NT N 5	460		1
14	12	3NT S 4	430		0
1	3	3NT N 4	430		0
18	20	5D N 5	400		-1
16	17	5D N 5	400		-1
2	4	3NT S 3	400		-1
6	7	3NT N 3	400		-1

Board (23) Av: NS=-160

N-S	E-W	Contract	N-S	E-W	IMP
18	20	2S N 2	110		7
10	8	Passout			4
16	17	Passout			4
13	11	2D S-1	100		2
6	7	3S N-2	200		-1
1	3	3H W 5	200		-1
5	9	3H E 5	200		-1
14	12	2D S-2	200		-1
2	4	3S N-4	400		-6
19	15	4H W 5	650		-10

Board (24) Av: NS=+100

N-S	E-W	Contract	N-S	E-W	IMP
14	12	1NT N 3	150		2
16	17	2NT N 2	120		1
6	7	2NT N 2	120		1
1	3	1NT N 2	120		1
18	20	1NT N 2	120		1
2	4	1NT N 2	120		1
13	11	1NT N 1	90		0
10	8	1NT N 1	90		0
5	9	2H W-1	50		-2
19	15	4C N-2	100		-5

25

♠ KJ53
♥ 86542
♦ A2
♣ Q5

♠ 109
♥ AQJ3
♦ 87
♣ K10762

N
W—E
S

♠ 742
♥ 107
♦ KJ65
♣ AJ43

♠ AQ86
♥ K9
♦ Q10943
♣ 98

26

♠ 6
♥ QJ72
♦ A9543
♣ 874

♠ Q85
♥ K10863
♦ Q108
♣ Q9

N
W—E
S

♠ KJ32
♥ A54
♦ 2
♣ K10652

♠ A10974
♥ 9
♦ KJ76
♣ AJ3

27

♠ 53
♥ K8654
♦ 102
♣ 10952

♠ K1097
♥ AJ109
♦ 976
♣ K3

N
W—E
S

♠ QJ42
♥ 2
♦ A8543
♣ 874

♠ A86
♥ Q73
♦ KQJ
♣ AQJ6

Board (25) Av: NS=-40

N-S	E-W	Contract	N-S	E-W	IMP
3	7	2S S 2	110		4
12	15	Passout			1
14	11	Passout			1
18	19	3S S-1	50	50	0
5	2	3S S-1	50	50	0
1	4	3S S-1	50	50	0
13	17	3S S-1	50	50	0
10	6	3S S-1	50	50	0
20	16	3S S-1	50	50	0
8	9	3S S-2	100		-2

Board (26) Av: NS=+80

N-S	E-W	Contract	N-S	E-W	IMP
20	16	1NT W-2	200		3
13	17	2D S 4	130		2
8	9	3H W-1	100		1
12	15	1NT E-1	100		1
5	2	1NT E-1	100		1
18	19	1NT E-1	100		1
3	7	1NT E-1	100		1
1	4	1NT E-1	100		1
10	6	1NT E 1	90		-5
14	11	1NT E 3	150		-6

Board (27) Av: NS=-100

N-S	E-W	Contract	N-S	E-W	IMP
12	15	1C S 2	90		5
5	2	1C S 2	90		5
13	17	3D E-1	50		4
1	4	2NT S-1	50		2
20	16	2NT S-1	50		2
8	9	4H N-2	100		0
10	6	2D E 3	110		0
18	19	2S E 3	140		-1
14	11	4Hx N-3	500		-9
3	7	4Hx N-3	500		-9

第20回NRM杯 Session 2 Section A 2015年6月27日(土)

28

♠ KQJ1086
♥ Q2
♦ K3
♣ A97

♠ 943
♥ 1076
♦ QJ82
♣ Q63

N			
W		E	
S			

♠ AKJ83
♥ 1074
♣ KJ542

♠ A752
♥ 954
♦ A965
♣ 108

29

♠ J9
♥ Q65
♦ A
♣ AKQ10982

♠ Q7632
♥ 984
♦ 94
♣ J64

N			
W		E	
S			

♠ K854
♥ J72
♦ KJ875
♣ 7

♠ A10
♥ AK103
♦ Q10632
♣ 53

30

♠ K973
♥ K86
♦ A2
♣ K532

♠ QJ
♥ J943
♦ KQJ74
♣ Q10

N			
W		E	
S			

♠ A10864
♥ 52
♦ 8
♣ AJ974

♠ 52
♥ AQ107
♦ 109653
♣ 86

Board (28) Av: NS=+440

N-S	E-W	Contract	N-S	E-W	IMP
1	4	4S	N 4	620	5
3	7	4S	N 4	620	5
5	2	4S	N 4	620	5
12	15	4S	N 4	620	5
10	6	4S	N 4	620	5
14	11	5Cx	E-3	500	2
13	17	5Hx	E-2	300	-4
18	19	5Hx	W-1	100	-8
8	9	5Hx	E-1	100	-8
20	16	5S	N-2	200	-12

Board (29) Av: NS=+960

N-S	E-W	Contract	N-S	E-W	IMP
20	16	6NT	N 7	1470	11
14	11	6C	N 7	1390	10
5	2	6C	N 7	1390	10
12	1	4 6C	N 7	1390	10
12	15	3NT	S 7	720	-6
18	19	3NT	S 7	720	-6
10	6	3NT	S 7	720	-6
13	17	3NT	S 7	720	-6
3	7	5C	N 7	640	-8
8	9	5C	N 7	640	-8

Board (30) Av: NS=-170

N-S	E-W	Contract	N-S	E-W	IMP
1	4	3D	W-3	150	8
3	7	3C	E 3	110	2
18	19	3S	E 3	140	1
12	15	2S	E 3	140	1
8	9	2S	E 3	140	1
14	11	2S	E 3	140	1
10	6	2H	S-3	150	1
13	17	2S	E 4	170	0
20	16	3NT	E 3	400	-6
5	2	4S	E 4	420	-6

第20回NRM杯 Session 3 Section A 2015年6月28日(日)

1

♠K9852
♥875
♦A10983
♣A10983

♠Q10732 ♠AK65
♥A ♥7
♦AK2 W E ♦QJ10643
♣K764 S ♣52
♠J984
♥QJ10643
♦9
♣QJ

2

♠KQ
♥Q985
♦A107
♣A943

♠AJ632 ♠8754
♥104 ♥AJ76
♦J8642 W E ♦Q93
♣10 S ♣Q8
♠109
♥K32
♦K5
♣KJ7652

3

♠KJ6
♥AK852
♦AK5
♣86

♠Q10954 ♠832
♥6 ♥Q104
♦Q97 W E ♦10432
♣AQJ4 S ♣932
♠A7
♥J973
♦J86
♣K1075

Board (1) Av: NS=-480

N-S	E-W	Contract	N-S	E-W	IMP
7	18	7Hx S-2	300		5
3	15	7Hx S-2	300		5
12	4	5S W 6	480		0
5	14	5S W 6	480		0
10	19	5S W 6	480		0
2	13	5S W 6	480		0
16	6	4S W 6	480		0
9	17	4S W 6	480		0
1	11	5Dx E 6	650		-5
8	20	6S W 6	980		-11

Board (2) Av: NS=+410

N-S	E-W	Contract	N-S	E-W	IMP
8	20	3NT N 6	690		7
3	15	3NT N 5	660		6
10	19	3NT N 4	630		6
7	18	3NT N 3	600		5
5	14	3NT N 3	600		5
16	6	3NT N 3	600		5
1	11	4C S 5	150		-6
9	17	4C S 4	130		-7
12	4	5C S-1		100	-11
2	13	5C S-1		100	-11

Board (3) Av: NS=+430

N-S	E-W	Contract	N-S	E-W	IMP
10	19	4H S 5	450		1
12	4	4H S 5	450		1
1	11	4H S 5	450		1
9	17	4H S 4	420		0
8	20	4H S 4	420		0
5	14	4H N 4	420		0
7	18	4H N 4	420		0
16	6	4H N 4	420		0
3	15	4H N 4	420		0
2	13	3NT N 3	400		-1

4

♠KQJ842
♥
♦AJ8763
♣10

♠6 ♠A1095
♥1093 ♥A86
♦1094 W E ♦K52
♣A86432 S ♣Q95
♠73
♥KQJ7542
♦Q
♣KJ7

5

♠J64
♥
♦KJ9752
♣A972

♠KQ105 ♠A973
♥AJ53 ♥104
♦4 W E ♦A863
♣8654 S ♣J103
♠82
♥KQ98762
♦Q10
♣KQ

6

♠53
♥A87653
♦10
♣10932

♠Q1062 ♠K9874
♥J2 ♥94
♦763 W E ♦AJ82
♣AK64 S ♣QJ
♠AJ
♥KQ10
♦KQ954
♣875

Board (4) Av: NS=-20

N-S	E-W	Contract	N-S	E-W	IMP
5	14	4S N 4	620		12
2	13	4H S 4	620		12
10	19	4H S 4	620		12
3	15	4S N-1	100		-2
7	18	4NT S-2	200		-5
9	17	4H S-2	200		-5
1	11	4H S-2	200		-5
12	4	5H S-3	300		-7
8	20	6H S-4	400		-9
16	6	6Sx N-3	800		-13

Board (5) Av: NS=+30

N-S	E-W	Contract	N-S	E-W	IMP
3	15	4Sx E-3	500		10
7	18	3D N 4	130		3
8	20	3D N 3	110		2
16	6	3D N 3	110		2
5	14	2H S 2	110		2
9	17	2H S 2	110		2
12	4	4D N-1		100	-4
1	11	2H S-1		100	-4
10	19	2S E 3		140	-5
2	13	4H S-3		300	-8

Board (6) Av: NS=+40

N-S	E-W	Contract	N-S	E-W	IMP
3	15	4H S 4	420		9
7	18	2H S 4	170		4
5	14	2H S 2	110		2
1	11	2H S 2	110		2
2	13	3S E-1	100		2
12	4	3S E-1	100		2
10	19	4Hx N-1		100	-4
9	17	4H S-2		100	-4
16	6	4H S-2		100	-4
8	20	3S E 3		140	-5

7

♠K854
♥94
♦A75
♣Q1082

♠AQ1032 ♠J9
♥83 ♥J65
♦Q108 W E ♦K942
♣K96 S ♣J754
♠76
♥AKQ1072
♦J63
♣A3

8

♠AK
♥86
♦K92
♣Q107432

♠1052 ♠863
♥1073 ♥KJ52
♦J108754 W E ♦AQ3
♣8 S ♣A65
♠QJ974
♥AQ94
♦6
♣KJ9

9

♠J87643
♥
♦KQ94
♣KQ3

♠9 ♠A1052
♥AK82 ♥Q1075
♦1083 W E ♦AJ7
♣AJ1082 S ♣96
♠KQ
♥J9643
♦652
♣754

Board (7) Av: NS=+340

N-S	E-W	Contract	N-S	E-W	IMP
8	19	3NT N 5	660		8
3	14	3NT N 4	630		7
1	15	3NT N 4	630		7
4	11	3NT N 4	630		7
6	20	2H S 4	170		-5
17	7	2H S 4	170		-5
12	2	2H S 4	170		-5
18	10	2H S 3	140		-5
13	5	2H S 3	140		-5
9	16	2H S 3	140		-5

Board (8) Av: NS=+290

N-S	E-W	Contract	N-S	E-W	IMP
18	10	4S S 6	480		5
9	16	4S S 5	450		4
12	2	4S S 4	420		4
1	15	3NT N 3	400		3
6	20	3NT N 3	400		3
8	19	3NT N 3	400		3
4	11	3NT N 3	400		3
13	5	4S S-1		50	-8
17	7	4S S-2		100	-9
3	14	3NT N-5		250	-11

Board (9) Av: NS=+90

N-S	E-W	Contract	N-S	E-W	IMP
17	7	4Hx E-2	500		9
13	5	4Hx E-1	200		3
4	11	4H E-2	200		3
9	16	2S N 2	110		1
6	20	2S N 2	110		1
8	19	4H E-1	100		0
18	10	3NT E-1	100		0
1	15	2S N-1		50	-4
3	14	2S N-1		50	-4
12	2	4H E 4		620	-12

10

♠AK7
♥AQ10
♦98743
♣104

♠8654
♥K4
♦52
♣AKQ92

♠Q32
♥J97
♦AJ6
♣J653

♠J109
♥86532
♦KQ10
♣87

N
W—E
S

11

♠A105
♥A753
♦K10853
♣Q

♠9
♥KJ842
♦A74
♣A865

♠QJ7432
♥109
♦QJ6
♣KJ

♠K86
♥Q6
♦92
♣1097432

N
W—E
S

12

♠A1064
♥AQJ6
♦A5
♣Q87

♠QJ73
♥108
♦K1076
♣432

♠95
♥92
♦J9842
♣AJ106

♠K82
♥K7543
♦Q3
♣K95

N
W—E
S

Board (10) Av: NS=-50

N-S	E-W	Contract	N-S	E-W	IMP
13	5	3C	E-1	100	4
6	20	3C	E-1	100	4
1	15	3C	E-1	100	4
3	14	1NT	W 1	90	-1
18	10	1NT	W 1	90	-1
8	19	1NT	W 1	90	-1
9	16	1NT	W 1	90	-1
4	11	1NT	E 1	90	-1
17	7	3C	E 3	110	-2
12	2	1NT	E 2	120	-2

Board (11) Av: NS=-70

N-S	E-W	Contract	N-S	E-W	IMP
9	16	3S	E-2	100	5
4	11	2S	E-2	100	5
6	20	3S	E-1	50	3
13	5	2S	E-1	50	3
17	7	2S	E-1	50	3
8	19	2S	E 2	110	-1
1	15	2NT	E 2	120	-2
3	14	2NT	W 4	180	-3
12	2	3NT	W 3	400	-8
18	10	3NT	E 3	400	-8

Board (12) Av: NS=+530

N-S	E-W	Contract	N-S	E-W	IMP
17	7	4H	N 5	650	3
13	5	4H	S 4	620	3
9	16	4H	N 4	620	3
1	15	4H	N 4	620	3
6	20	4H	N 4	620	3
12	2	4H	N 4	620	3
8	19	4H	N 4	620	3
18	10	4H	N 4	620	3
3	14	5H	N-1	100	-12
4	11	6H	S-3	300	-13

13

♠J7542
♥10876
♦A5
♣K6

♠AK863
♥J4
♦K42
♣1092

♠Q9
♥K53
♦109873
♣J53

♠10
♥AQ92
♦QJ6
♣AQ874

N
W—E
S

14

♠AQ63
♥10
♦Q52
♣J10873

♠K9875
♥654
♦KJ93
♣5

♠J1042
♥QJ973
♦A108
♣Q

♠AK82
♥764
♣AK9642

N
W—E
S

15

♠J98432
♥J9
♦632
♣65

♠K7
♥732
♦AQJ107
♣AQJ

♠Q106
♥AQ10
♦K954
♣K74

♠A5
♥K8654
♦8
♣109832

N
W—E
S

Board (13) Av: NS=+520

N-S	E-W	Contract	N-S	E-W	IMP
5	12	4H	N 5	650	4
7	16	4H	N 5	650	4
8	18	4H	N 5	650	4
13	3	4H	N 5	650	4
19	6	4H	N 4	620	3
1	14	4H	N 4	620	3
4	15	4H	N 4	620	3
17	10	3H	N 5	200	-8
20	9	3H	N 4	170	-8
2	11	2H	N 4	170	-8

Board (14) Av: NS=+380

N-S	E-W	Contract	N-S	E-W	IMP
2	11	5Cx	S 5	550	5
19	6	3NT	S 5	460	2
17	10	5C	S 6	420	1
13	3	5C	S 6	420	1
5	12	5C	S 5	400	1
7	16	5C	S 5	400	1
4	15	5C	S 5	400	1
20	9	3NT	S 3	400	1
8	18	4C	S 6	170	-5
1	14	5C	S-1	50	-10

Board (15) Av: NS=-460

N-S	E-W	Contract	N-S	E-W	IMP
2	11	5NT	E 5	460	0
19	6	3NT	W 5	460	0
17	10	3NT	W 5	460	0
7	16	3NT	W 5	460	0
1	14	3NT	W 5	460	0
20	9	3NT	W 5	460	0
8	18	3NT	W 5	460	0
5	12	3NT	W 5	460	0
4	15	3NT	W 5	460	0
13	3	3NT	E 5	460	0

16

♠KJ9875
♥K85
♦6
♣873

♠6
♥A10962
♦K105
♣K1094

♠1043
♥43
♦AQJ7
♣A652

♠AQ2
♥QJ7
♦98432
♣QJ

N
W—E
S

17

♠K62
♥AJ1032
♦1085
♣K5

♠1083
♥97
♦Q942
♣10862

♠AQJ4
♥K854
♦A7
♣J97

♠975
♥Q6
♦KJ63
♣AQ43

N
W—E
S

18

♠72
♥10643
♦KQ103
♣1052

♠AQ84
♥Q52
♦A962
♣74

♠K10653
♥AJ7
♦754
♣K3

♠J9
♥K98
♦J8
♣AQJ986

N
W—E
S

Board (16) Av: NS=+60

N-S	E-W	Contract	N-S	E-W	IMP
1	14	3S	N 3	140	2
7	16	3S	N 3	140	2
8	18	3S	N 3	140	2
20	9	2S	N 3	140	2
19	6	2S	N 2	110	2
17	10	2S	N 2	110	2
4	15	3S	N-1	50	-3
5	12	3S	N-1	50	-3
13	3	3Sx	N-1	100	-4
2	11	4Sx	N-2	300	-8

Board (17) Av: NS=+160

N-S	E-W	Contract	N-S	E-W	IMP
1	14	3NT	N 3	400	6
5	12	1NTx	E-2	300	4
4	15	1NTx	E-2	300	4
8	18	1NTx	E-2	300	4
2	11	2Cx	W-1	100	-2
13	3	1NTx	E-1	100	-2
20	9	1NTx	E-1	100	-2
17	10	1NT	E-2	100	-2
19	6	2H	N-1	50	-5
7	16	1NTx	E 1	180	-8

Board (18) Av: NS=0

N-S	E-W	Contract	N-S	E-W	IMP
8	18	2C	E-4	200	5
17	10	4S	E-2	100	3
13	3	4S	E-2	100	3
4	15	4S	E-1	50	2
19	6	4S	E-1	50	2
2	11	3S	E-1	50	2
5	12	2S	E 2	110	-3
20	9	2S	E 2	110	-3
1	14	3S	E 3	140	-4
7	16	3S	E 3	140	-4

19

Hand 19: N-S and E-W cards, board diagram, and key cards (A94, 9, AQ94, QJ985).

20

Hand 20: N-S and E-W cards, board diagram, and key cards (72, K764, 986, Q852).

21

Hand 21: N-S and E-W cards, board diagram, and key cards (QJ3, QJ, A1043, KQ86).

Board (19) Av: NS=+380. Table with columns: N-S, E-W, Contract, N-S, E-W, IMP. Rows 10-11.

Board (20) Av: NS=-670. Table with columns: N-S, E-W, Contract, N-S, E-W, IMP. Rows 9-20.

Board (21) Av: NS=-450. Table with columns: N-S, E-W, Contract, N-S, E-W, IMP. Rows 1-20.

22

Hand 22: N-S and E-W cards, board diagram, and key cards (J7, A94, 1063, AJ765).

23

Hand 23: N-S and E-W cards, board diagram, and key cards (J63, A982, K105, 732).

24

Hand 24: N-S and E-W cards, board diagram, and key cards (Q83, 1043, 864, Q1052).

Board (22) Av: NS=-310. Table with columns: N-S, E-W, Contract, N-S, E-W, IMP. Rows 4-1.

Board (23) Av: NS=-70. Table with columns: N-S, E-W, Contract, N-S, E-W, IMP. Rows 2-11.

Board (24) Av: NS=-380. Table with columns: N-S, E-W, Contract, N-S, E-W, IMP. Rows 2-1.

25

Hand 25: N-S and E-W cards, board diagram, and key cards (10, KQ9732, J103, J104).

26

Hand 26: N-S and E-W cards, board diagram, and key cards (543, K10852, A43, Q6).

27

Hand 27: N-S and E-W cards, board diagram, and key cards (QJ6, Q42, K10943, K10).

Board (25) Av: NS=-670. Table with columns: N-S, E-W, Contract, N-S, E-W, IMP. Rows 13-19.

Board (26) Av: NS=+1430. Table with columns: N-S, E-W, Contract, N-S, E-W, IMP. Rows 1-11.

Board (27) Av: NS=+420. Table with columns: N-S, E-W, Contract, N-S, E-W, IMP. Rows 11-15.

第20回NRM杯 Session 3 Section A 2015年6月28日(日)

28

♠ A64
♥ J4
♦ A83
♣ J10542

♠ K83
♥ K752
♦ QJ1094
♣ 8

♠ Q10952
♥ 96
♦ 762
♣ Q76

♠ J7
♥ AQ1083
♦ K5
♣ AK93

29

♠ J8
♥ J10943
♦ AK7
♣ K93

♠ Q105432
♥
♦ 10642
♣ Q42

♠ 9
♥ A876
♦ Q93
♣ AJ765

♠ AK76
♥ KQ52
♦ J85
♣ 108

30

♠ 652
♥ K10652
♦ AK3
♣ 102

♠ 943
♥ Q3
♦ 108754
♣ A65

♠ AKQ1087
♥ A74
♦ Q9
♣ 98

♠ J
♥ J98
♦ J62
♣ KQJ743

Board (28) Av: NS=+440

N-S	E-W	Contract	N-S	E-W	IMP
11	3	3NT S 3	600		4
13	4	3NT S 3	600		4
17	6	3NT N 3	600		4
1	12	3NT N 3	600		4
9	18	3NT N 3	600		4
15	5	3NT N 3	600		4
10	20	3H S 5	200		-6
19	7	3C S 5	150		-7
16	8	3C S 5	150		-7
14	2	5C S-1	100		-11

Board (29) Av: NS=+80

N-S	E-W	Contract	N-S	E-W	IMP
16	8	4H N 4	620		11
14	2	4H N 4	620		11
13	4	4H N 4	620		11
9	18	4H N-1	100		-5
11	3	4H N-1	100		-5
1	12	4H N-1	100		-5
15	5	4H N-1	100		-5
19	7	4H N-1	100		-5
17	6	4H N-1	100		-5
10	20	4H N-2	200		-7

Board (30) Av: NS=-10

N-S	E-W	Contract	N-S	E-W	IMP
1	12	4Sx E-1	100		3
14	2	4Sx E-1	100		3
17	6	4S E-2	100		3
9	18	4S E-1	50		2
15	5	4S E-1	50		2
19	7	4S E-1	50		2
16	8	3S E 3	140		-4
13	4	3S E 3	140		-4
11	3	3S E 3	140		-4
10	20	4S E 4	420		-9

第20回NRM杯 Session 4 Section A 2015年6月28日(日)

1

♠ 109
♥ J843
♦ 973
♣ AQ32

♠ Q2
♥ AKQ75
♦ Q8
♣ K1095

♠ KJ6543
♥ 96
♦ J1054
♣ 4

♠ A87
♥ 102
♦ AK62
♣ J876

Board (1) Av: NS=-20

N-S	E-W	Contract	N-S	E-W	IMP
3	20	3H W-3	150		5
6	11	4S W-1	50		2
4	17	4S E-1	50		2
15	8	4S E-1	50		2
13	7	4S E-1	50		2
12	9	4S E-1	50		2
10	14	3S E 3	140		-3
18	2	3S E 3	140		-3
1	16	3S E 3	140		-3
19	5	2S E 3	140		-3

2

♠ K1072
♥ 5
♦ J654
♣ K1096

♠ QJ6
♥ J8762
♦ A872
♣ A

♠ A94
♥ A1043
♦ KQ10
♣ 852

♠ 853
♥ KQ9
♦ 93
♣ QJ743

Board (2) Av: NS=-410

N-S	E-W	Contract	N-S	E-W	IMP
3	20	6H W-2	100		11
15	8	2H W 4	170		6
1	16	4H W 4	420		0
12	9	4H W 5	450		-1
19	5	4H W 5	450		-1
13	7	4H W 5	450		-1
10	14	4H W 5	450		-1
4	17	4H W 5	450		-1
6	11	4H E 5	450		-1
18	2	4H E 5	450		-1

3

♠ K93
♥ A96
♦ AK643
♣ 64

♠ 1082
♥ KQ8
♦ Q109
♣ Q1093

♠ QJ75
♥ 4
♦ J52
♣ KJ875

♠ A64
♥ J107532
♦ 87
♣ A2

Board (3) Av: NS=+350

N-S	E-W	Contract	N-S	E-W	IMP
4	17	4H S 6	480		4
3	20	4H S 6	480		4
6	11	4H S 6	480		4
1	16	4H N 6	480		4
10	14	4H S 4	420		2
12	9	4H N 4	420		2
15	8	3H S 6	230		-3
19	5	3H S 4	170		-5
13	7	2H S 3	140		-5
18	2	4H S-1	50		-9

4

♠ A10
♥ KQ6
♦ 108653
♣ 754

♠ K8743
♥ A1097
♦ KJ
♣ KJ

♠ J52
♥ J542
♦ A94
♣ A86

♠ Q96
♥ 83
♦ Q72
♣ Q10932

Board (4) Av: NS=+70

N-S	E-W	Contract	N-S	E-W	IMP
18	2	4H W-2	200		4
4	17	4H W-2	200		4
13	7	4H W-2	200		4
1	16	4H W-2	200		4
12	9	4S W-1	100		1
10	14	4H W-1	100		1
3	20	2S W-1	100		1
15	8	2S W 3	140		-5
6	11	2S W 4	170		-6
19	5	3NT W 3	600		-12

5

♠ A10
♥ AJ32
♦ A843
♣ Q32

♠ 9862
♥ 765
♦ KQ
♣ A1084

♠ KJ53
♥ 984
♦ J1075
♣ J6

♠ Q74
♥ KQ10
♦ 962
♣ K975

Board (5) Av: NS=-100

N-S	E-W	Contract	N-S	E-W	IMP
1	16	3NT N 3	600		12
4	17	3NT N-1	100		0
3	20	3NT N-1	100		0
10	14	3NT N-1	100		0
12	9	3NT N-1	100		0
18	2	3NT N-1	100		0
6	11	3NT N-1	100		0
15	8	3NT N-1	100		0
13	7	3NT N-1	100		0
19	5	3NT N-2	200		-3

6

♠ 96
♥ AKJ
♦ KJ94
♣ KQ85

♠ A873
♥ 95432
♦ A76
♣ 2

♠ KQ2
♥ 10876
♦ 53
♣ A1043

♠ J1054
♥ Q
♦ Q1082
♣ J976

Board (6) Av: NS=+50

N-S	E-W	Contract	N-S	E-W	IMP
3	20	1NT N 3	150		3
4	17	1NT N 3	150		3
19	5	1NT N 3	150		3
1	16	1NT N 3	150		3
10	14	1NT N 2	120		2
15	8	1NT N 2	120		2
13	7	3C S-1	50		-3
12	9	2H E 2	110		-4
6	11	3H W 3	140		-5
18	2	3H E 3	140		-5

7

♠ 105
♥ AKQJ8
♦ A952
♣ 73

♠ A9
♥ 9762
♦ 103
♣ Q10864

♠ KQJ7
♥ 10
♦ KQ874
♣ AJ5

♠ 86432
♥ 543
♦ J6
♣ K92

Board (7) Av: NS=-130

N-S	E-W	Contract	N-S	E-W	IMP
1	20	3D E-2	200		8
17	2	2D E 2	90		1
5	18	2H N-1	100		1
12	7	3C W 3	110		1
11	9	3C W 3	110		1
19	3	4C W 4	130		0
6	15	4C W 4	130		0
8	14	3C W 4	130		0
10	13	3H N-2	200		-2
16	4	3Hx N-2	500		-9

8

♠ QJ876
♥ AQ2
♦ 6
♣ Q965

♠ K92
♥ J765
♦ AK75
♣ A8

♠ 54
♥ 10984
♦ 10984
♣ K32

♠ A103
♥ K3
♦ QJ32
♣ J1074

Board (8) Av: NS=+80

N-S	E-W	Contract	N-S	E-W	IMP
19	3	3S N 3	140		2
8	14	3S N 3	140		2
11	9	3C N 3	110		1
17	2	1NT W-2	100		1
10	13	1NT W-2	100		1
5	18	1NT W-2	100		1
12	7	1NT W-1	50		-1
6	15	1NT W-1	50		-1
1	20	3S N-1	50		-4
16	4	1NT W 1	90		-5

9

♠ J53
♥ A1085
♦ 64
♣ AQ85

♠ KQ1087
♥ J2
♦ 5
♣ KJ1063

♠ 642
♥ Q976
♦ AJ1093
♣ 7

♠ A9
♥ K43
♦ KQ872
♣ 942

Board (9) Av: NS=+40

N-S	E-W	Contract	N-S	E-W	IMP
19	3	4S W-2	200		4
16	4	3Sx W-1	200		4
10	13	3S W-2	200		4
1	20	2NT S 2	120		2
11	9	2NT N 2	120		2
5	18	3D S-1	50		-3
17	2	3D S-1	50		-3
8	14	3NT N-2	100		-4
12	7	2S W 2	110		-4
6	15	4Cx N-3	500		-11

10

♠103
♥QJ105
♦K10752
♣A7

♠65	N	♠KQ87
♥K9843	W	♥A7
♦Q9		♦84
♣K983	S	♣QJ1042

♠AJ942
♥62
♦AJ63
♣65

11

♠AK964
♥K7
♦A94
♣QJ7

♠J8732	N	♠10
♥	W	♥AQJ1052
♦KJ1062		♦873
♣952	S	♣K83

♠Q5
♥98643
♦Q5
♣A1064

12

♠J109
♥J982
♦932
♣1085

♠Q75	N	♠A42
♥64	W	♥AQ
♦AKJ84		♦Q1075
♣KQJ	S	♣A642

♠K863
♥K10753
♦6
♣973

Board (10) Av: NS=+80

N-S	E-W	Contract	N-S	E-W	IMP
10	13	2H W-3	300		6
12	7	2H W-3	300		6
11	9	1NT E-2	200		3
5	18	1NT E-2	200		3
8	14	3D S 4	130		2
17	2	3D N 3	110		1
16	4	1NT E 1		90	-5
1	20	1NT N-1		100	-5
19	3	1NT N-1		100	-5
6	15	1NT E 2		120	-5

Board (11) Av: NS=+260

N-S	E-W	Contract	N-S	E-W	IMP
17	2	3Hx E-3	500		6
6	15	3Dx W-3	500		6
10	13	3NT N 4	430		5
1	20	3NT N 3	400		4
5	18	2S N 4	170		-3
19	3	2S N 4	170		-3
12	7	2S N 3	140		-3
8	14	2S N 3	140		-3
16	4	2S N 2	110		-4
11	9	2S N-1		50	-7

Board (12) Av: NS=-930

N-S	E-W	Contract	N-S	E-W	IMP
8	14	3NT E 7		520	9
16	4	6D W 6		920	0
5	18	6D W 6		920	0
1	20	6D W 6		920	0
10	13	6D W 6		920	0
17	2	6D W 6		920	0
12	7	6D W 6		920	0
11	9	6D W 6		920	0
19	3	6NT W 6		990	-2
6	15	6NT W 6		990	-2

13

♠J10
♥J9753
♦AQ85
♣J6

♠A932	N	♠Q754
♥AKQ62	W	♥8
♦K		♦1097642
♣1075	S	♣K9

♠K86
♥104
♦J3
♣AQ8432

14

♠QJ98
♥742
♦Q42
♣1032

♠654	N	♠A2
♥J85	W	♥K10963
♦AK95		♦8763
♣KQ6	S	♣A5

♠K1073
♥AQ
♦J10
♣J9874

15

♠AJ
♥J763
♦J84
♣K853

♠KQ97	N	♠8654
♥9542	W	♥A108
♦92		♦A3
♣974	S	♣AQJ6

♠1032
♥KQ
♦KQ10765
♣102

Board (13) Av: NS=+140

N-S	E-W	Contract	N-S	E-W	IMP
5	17	4S E-3	300		4
6	14	3S E-3	300		4
10	12	1H W-2	200		2
9	15	1NT N 2	120		-1
18	3	3S W-1	100		-1
1	19	3S E-1	100		-1
7	11	3S E-1	100		-1
20	4	2D E-1	100		-1
13	8	2D E-1	100		-1
16	2	2D E-1	100		-1

Board (14) Av: NS=-340

N-S	E-W	Contract	N-S	E-W	IMP
18	3	4H E-1		50	9
5	17	3S N-2		100	6
10	12	3D W 4		130	5
1	19	4H E 4		420	-2
16	2	4H E 4		420	-2
7	11	4H E 4		420	-2
6	14	4H E 4		420	-2
20	4	4H E 4		420	-2
13	8	4H E 4		420	-2
9	15	4H E 4		420	-2

Board (15) Av: NS=-10

N-S	E-W	Contract	N-S	E-W	IMP
10	12	3S W-2	100		3
5	17	1NT E-2	100		3
1	19	1NT E-2	100		3
16	2	1NT E-2	100		3
20	4	1NT E-1		50	2
9	15	1NT E 1		90	-2
7	11	1NT E 1		90	-2
13	8	2S W 2		110	-3
18	3	2S E 2		110	-3
6	14	1NT E 2		120	-3

16

♠A72
♥J76432
♦Q43
♣7

♠KQ8643	N	♠J1095
♥AK5	W	♥Q9
♦		♦K75
♣A1083	S	♣KQ64

♠
♥108
♦AJ109862
♣J952

17

♠1065
♥J43
♦AK93
♣J106

♠A982	N	♠KJ3
♥KQ52	W	♥A1098
♦Q4		♦865
♣Q52	S	♣743

♠Q74
♥76
♦J1072
♣AK98

18

♠J1072
♥3
♦AJ7532
♣97

♠85	N	♠6
♥J1054	W	♥Q98762
♦K96		♦Q10
♣10543	S	♣KQ82

♠AKQ943
♥AK
♦84
♣AJ6

Board (16) Av: NS=-1030

N-S	E-W	Contract	N-S	E-W	IMP
5	17	6Dx S-2	300		12
13	8	6Dx S-3	500		11
9	15	5S W 6	680		8
1	19	5S W 6	680		8
16	2	4S W 6	680		8
7	11	6S W 6	1430		-9
10	12	6S W 6	1430		-9
6	14	6S W 6	1430		-9
20	4	6S W 6	1430		-9
18	3	6S W 6	1430		-9

Board (17) Av: NS=-90

N-S	E-W	Contract	N-S	E-W	IMP
7	11	3H E-1		50	4
1	19	3H E-1		50	4
5	17	3D N-1		50	1
16	2	2H E 2		110	-1
18	3	2H E 2		110	-1
9	15	2H E 2		110	-1
13	8	1H E 2		110	-1
10	12	1H E 2		110	-1
20	4	2H E 3		140	-2
6	14	2H E 3		140	-2

Board (18) Av: NS=+1240

N-S	E-W	Contract	N-S	E-W	IMP
6	14	6S S 6	1430		5
16	2	6S N 6	1430		5
5	17	6S N 6	1430		5
1	19	6S N 6	1430		5
20	4	6S N 6	1430		5
13	8	6S N 6	1430		5
18	3	6S N 6	1430		5
10	12	5S N 6	680		-11
7	11	4S S 6	680		-11
9	15	4S N 6	680		-11

19

♠ 764
♥ 103
♦ J109742
♣ 52

♠ 98532
♥ 974
♦ Q
♣ KJ93

N
W—E
S

♠ A10
♥ AJ862
♦ A6
♣ AQ107

♠ KQJ
♥ KQ5
♦ K853
♣ 864

20

♠ AQJ75
♥ A84
♦ J65
♣ 63

♠ K984
♥ KQ1075
♦ 1097
♣ 5

N
W—E
S

♠ 103
♥ J93
♦ AQ3
♣ AQ742

♠ 62
♥ 62
♦ K842
♣ KJ1098

21

♠ 3
♥ K1073
♦ AJ87
♣ 10986

♠ KQJ
♥ J
♦ Q32
♣ AKQJ72

N
W—E
S

♠ 876542
♥ 4
♦ K1064
♣ 54

♠ A109
♥ AQ98652
♦ 95
♣ 3

Board (19) Av: NS=-490

N-S	E-W	Contract	N-S	E-W	IMP
8	12	1NT N 1	90		11
3	17	3NT S-3	150		8
13	6	2H E 4	170		8
20	2	5Dx S-3	500		0
19	4	4H E 4	620		-4
7	15	4H E 4	620		-4
14	9	4H E 4	620		-4
16	5	4H E 4	620		-4
1	18	4H E 4	620		-4
11	10	3Hx E 4	930		-10

Board (20) Av: NS=-10

N-S	E-W	Contract	N-S	E-W	IMP
11	10	2S N 2	110		3
16	5	2H W-1	100		3
7	15	2H W-1	100		3
14	9	2H W-1	100		3
13	6	1NT S 1	90		3
20	2	2S N-1	100		-3
1	18	2S N-1	100		-3
3	17	2S N-1	100		-3
8	12	3H W 3	140		-4
19	4	3H W 3	140		-4

Board (21) Av: NS=+440

N-S	E-W	Contract	N-S	E-W	IMP
11	10	5Hx S 5	850		9
16	5	5Hx S 5	850		9
8	12	5Hx S 5	850		9
14	9	5Hx S 5	850		9
1	18	5H S 5	650		5
7	15	5S E-3	150		-7
13	6	5S E-2	100		-8
3	17	4S E-1	50		-9
19	4	4S E-1	50		-9
20	2	4S E 4	420		-13

22

♠ QJ103
♥ Q7532
♦ K
♣ 973

♠ A862
♥ AJ
♦ 872
♣ J542

N
W—E
S

♠ 54
♥ 1098
♦ AJ1095
♣ AKQ

♠ K97
♥ K64
♦ Q643
♣ 1086

23

♠ J108
♥ AQ985
♦ A7
♣ Q107

♠ 72
♥ K102
♦ Q1083
♣ K652

N
W—E
S

♠ A65
♥ J643
♦ K52
♣ 983

♠ KQ943
♥ 7
♦ J964
♣ AJ4

24

♠ J
♥ J762
♦ KJ9742
♣ 106

♠ 2
♥ AKQ1095
♦ A108
♣ J53

N
W—E
S

♠ K10864
♥ 4
♦ 53
♣ KQ974

♠ AQ9753
♥ 83
♦ Q6
♣ A82

Board (22) Av: NS=-320

N-S	E-W	Contract	N-S	E-W	IMP
1	18	2H N-1	50		7
16	5	2H N-1	50		7
3	17	1NT E 2	120		5
8	12	1NT E 2	120		5
7	15	1NT E 4	180		4
14	9	1NT E 4	180		4
19	4	3NT E 4	630		-7
13	6	3NT E 4	630		-7
20	2	3NT E 4	630		-7
11	10	3NT E 5	660		-8

Board (23) Av: NS=+440

N-S	E-W	Contract	N-S	E-W	IMP
20	2	4S S 4	620		5
1	18	4S S 4	620		5
8	12	4S S 4	620		5
7	15	4S S 4	620		5
3	17	4S S 4	620		5
13	6	4S S 4	620		5
11	10	4S S 4	620		5
19	4	4S S-1	100		-11
16	5	4S S-1	100		-11
14	9	3NT S-2	200		-12

Board (24) Av: NS=+30

N-S	E-W	Contract	N-S	E-W	IMP
7	15	5C E-3	150		3
1	18	4H W-2	100		2
3	17	4H W-2	100		2
11	10	3H W-2	100		2
8	12	4H W-1	50		1
19	4	3NT W-1	50		1
13	6	3H W-1	50		1
16	5	2H W 2	110		-4
14	9	2H W 2	110		-4
20	2	3NT E 3	400		-10

25

♠ 3
♥ AQJ
♦ AQJ8
♣ KQ762

♠ Q104
♥ 764
♦ K1065
♣ 1093

N
W—E
S

♠ KJ97652
♥ 53
♦ 942
♣ J

♠ A8
♥ K10982
♦ 73
♣ A854

26

♠ 109
♥ QJ64
♦ A104
♣ A1085

♠ 632
♥ K1083
♦ KQ72
♣ J2

N
W—E
S

♠ AKQ7
♥ A97
♦ J653
♣ K9

♠ J854
♥ 52
♦ 98
♣ Q7643

27

♠ 1098753
♥ 53
♦ J
♣ AJ106

♠ A2
♥ AKJ74
♦ A952
♣ Q7

N
W—E
S

♠ Q
♥ 9862
♦ 10843
♣ 8542

♠ KJ64
♥ Q10
♦ KQ76
♣ K93

Board (25) Av: NS=+930

N-S	E-W	Contract	N-S	E-W	IMP
6	12	7H S 7	1510		11
4	18	6H S 7	1010		2
8	11	6H S 7	1010		2
1	17	6H S 7	1010		2
15	10	6H S 7	1010		2
20	5	6H S 6	980		2
9	13	6C N 7	940		0
7	14	6C N 7	940		0
19	2	4H N 7	510		-9
16	3	5C N 7	440		-10

Board (26) Av: NS=-170

N-S	E-W	Contract	N-S	E-W	IMP
8	11	3NT E-1	100		7
16	3	3NT E-1	100		7
7	14	3NT E-1	100		7
1	17	3NT E-1	100		7
15	10	3NT E-1	100		7
4	18	3NT E-1	100		7
20	5	3NT E 3	600		-10
9	13	3NT E 4	630		-10
6	12	3NT E 4	630		-10
19	2	3NT E 4	630		-10

Board (27) Av: NS=-20

N-S	E-W	Contract	N-S	E-W	IMP
9	13	3S S 3	140		4
15	10	2S S 3	140		4
19	2	5H W-2	100		3
20	5	4S N-1	50		-1
16	3	4S N-1	50		-1
6	12	4S N-1	50		-1
1	17	4S N-1	50		-1
8	11	4Sx N-1	100		-2
7	14	4Sx N-1	100		-2
4	18	5Sx N-2	300		-7

28

♠ 7642
♥ KJ108
♦ Q2
♣ Q73

♠ KQ
♥ 53
♦ 7543
♣ AK1096

N		E
W		S

♠ A95
♥ 4
♦ AJ10986
♣ J52

♠ J1083
♥ AQ9762
♦ K
♣ 84

29

♠ 4
♥ 8632
♦ Q10763
♣ K62

♠ 975
♥ AK9
♦ AKJ92
♣ 105

N		E
W		S

♠ AKJ1086
♥ 754
♦ 4
♣ J93

♠ Q32
♥ QJ10
♦ 85
♣ AQ874

30

♠ Q1072
♥ Q54
♦ AQ9
♣ 742

♠ AJ98
♥ K7
♦ K1082
♣ 1053

N		E
W		S

♠ 643
♥ 982
♦ 73
♣ AKQ96

♠ K5
♥ AJ1063
♦ J654
♣ J8

Board (28) Av: NS=-140

N-S	E-W	Contract	N-S	E-W	IMP
6	12	5Cx W-1	100		6
7	14	5D E-1	50		5
20	5	5D E-1	50		5
15	10	5D E-1	50		5
8	11	3H S-1		100	1
19	2	4D E 5		150	0
16	3	3H S-2		200	-2
4	18	5D E 5		400	-6
9	13	5D E 5		400	-6
1	17	5D E 5		400	-6

Board (29) Av: NS=-560

N-S	E-W	Contract	N-S	E-W	IMP
1	17	4S E-1	100		12
16	3	3S E 3		140	9
9	13	4S W 4		620	-2
8	11	4S E 4		620	-2
19	2	4S E 4		620	-2
20	5	4S E 4		620	-2
15	10	4S E 4		620	-2
7	14	4S E 4		620	-2
6	12	4S E 4		620	-2
4	18	4S E 4		620	-2

Board (30) Av: NS=+40

N-S	E-W	Contract	N-S	E-W	IMP
1	17	2H S 3	140		3
15	10	2H S 3	140		3
4	18	2H S 2	110		2
19	2	2H S 2	110		2
8	11	2S W-1	50		0
6	12	2S E-1	50		0
20	5	Passout			-1
7	14	1NT E 1		90	-4
9	13	1NT E 1		90	-4
16	3	1NT E 1		90	-4