

兵庫県知事杯 OPEN TEAMS Session 4 Flight B 2015年10月11日(日)

1

♠ J986
♥ 6
♦ Q7653
♣ 872

♠ Q
♥ QJ1084
♦ 942
♣ A953

♠ AK543
♥ AK92
♦ K
♣ 1064

W N E S

♠ 1072
♥ 753
♦ AJ108
♣ KQJ

2

♠ KQ93
♥ AK4
♦ AQ106
♣ 106

♠ A8654
♥ 97
♦ 97
♣ AKQ7

♠ 7
♥ QJ108652
♦ J83
♣ 85

W N E S

♠ J102
♥ 3
♦ K542
♣ J9432

3

♠ KJ9654
♥ 8
♦ K752
♣ A2

♠ Q2
♥ 762
♦ A43
♣ 109876

♠ 1073
♥ AQJ103
♦ Q109
♣ J5

W N E S

♠ A8
♥ K954
♦ J86
♣ KQ43

Board (1) Av: NS=+120

N-S	E-W	Contract	N-S	E-W	IMP
3	10	2S	S 4	170	2
2	6	3S	S 3	140	1
5	4	3S	S 3	140	1
1	8	3S	S 3	140	1
9	7	3S	S 3	140	1
6	2	3S	S 3	140	1
7	9	3S	S 3	140	1
4	5	2S	S 3	140	1
8	1	4S	S-1	50	-5
10	3	4S	S-1	50	-5

Board (2) Av: NS=+500

N-S	E-W	Contract	N-S	E-W	IMP
10	3	4H	S 4	620	3
8	1	4H	S 4	620	3
9	7	4H	S 4	620	3
1	8	4H	S 4	620	3
6	2	4H	S 4	620	3
3	10	4H	N 4	620	3
2	6	5Cx	E-3	500	0
7	9	4Sx	E-2	300	-5
4	5	2S	E-2	100	-9
5	4	2S	E 2	110	-12

Board (3) Av: NS=+190

N-S	E-W	Contract	N-S	E-W	IMP
8	1	4S	N 4	420	6
10	3	4S	N 4	420	6
6	2	4S	N 4	420	6
1	8	3S	N 4	170	-1
9	7	2S	N 4	170	-1
5	4	2S	N 4	170	-1
3	10	3S	N 3	140	-2
4	5	2S	N 2	110	-2
2	6	4S	N-1	50	-6
7	9	3S	N-2	100	-7

4

♠ 985
♥ Q109874
♦ 104
♣ 65

♠ J764
♥
♦ AK98653
♣ 84

♠ A1032
♥ KJ63
♦ J2
♣ 973

W N E S

♠ KQ
♥ A52
♦ Q7
♣ AKQJ102

Board (4) Av: NS=-1220

N-S	E-W	Contract	N-S	E-W	IMP
4	5	5D	E 6	620	12
8	1	5D	W 7	640	11
5	4	3NT	W 7	720	11
3	10	6D	W 7	1390	-5
7	9	6D	W 7	1390	-5
1	8	6D	W 7	1390	-5
10	3	6D	W 7	1390	-5
2	6	6D	E 7	1390	-5
9	7	6NT	W 7	1470	-6
6	2	6NT	W 7	1470	-6

5

♠ AK54
♥ 3
♦ J87
♣ AK832

♠ 3
♥ Q987
♦ Q1093
♣ QJ64

♠ Q972
♥ AJ6
♦ K42
♣ 1097

W N E S

♠ J1086
♥ K10542
♦ A65
♣ 5

Board (5) Av: NS=-210

N-S	E-W	Contract	N-S	E-W	IMP
3	10	4S	S-1	100	3
8	1	4S	N-1	100	3
2	6	4S	S-2	200	0
5	4	4S	S-2	200	0
10	3	4S	S-2	200	0
9	7	4S	S-2	200	0
6	2	4S	S-2	200	0
7	9	4S	S-3	300	-3
1	8	4S	S-3	300	-3
4	5	4S	S-5	500	-7

6

♠ 964
♥ A652
♦ AK105
♣ J10

♠ 732
♥ QJ987
♦ Q98
♣ 64

♠ AKJ
♥ 104
♦ 6432
♣ KQ53

W N E S

♠ Q1085
♥ K3
♦ J7
♣ A9872

Board (6) Av: NS=+320

N-S	E-W	Contract	N-S	E-W	IMP
5	4	3NT	S 4	430	3
9	7	3NT	S 4	430	3
4	5	3NT	S 4	430	3
8	1	3NT	S 4	430	3
6	2	3NT	S 4	430	3
2	6	3NT	S 3	400	2
7	9	2NT	S 3	150	-5
1	8	2NT	S 3	150	-5
10	3	3D	N 4	130	-5
3	10	3D	N-1	50	-9

7

♠ QJ7
♥ AK87
♦ AQ7
♣ 1092

♠ 10953
♥ Q5
♦ J108
♣ AQ76

♠ A2
♥ 104
♦ K6543
♣ K543

W N E S

♠ K864
♥ J9632
♦ 92
♣ J8

Board (7) Av: NS=+620

N-S	E-W	Contract	N-S	E-W	IMP
8	1	3NT	N 4	630	0
9	7	3NT	N 4	630	0
4	5	3NT	N 4	630	0
3	10	3NT	N 4	630	0
6	2	3NT	N 4	630	0
7	9	3NT	N 4	630	0
1	8	3NT	N 3	600	-1
2	6	3NT	N 3	600	-1
10	3	3NT	N 3	600	-1
5	4	3NT	N 3	600	-1

8

♠ 65
♥ QJ964
♦ 102
♣ Q632

♠ AKQ92
♥ 1082
♦ 7
♣ A1085

♠ J1073
♥ 75
♦ Q8643
♣ K4

W N E S

♠ 84
♥ AK3
♦ AKJ95
♣ J97

Board (8) Av: NS=-430

N-S	E-W	Contract	N-S	E-W	IMP
2	6	3NT	W 3	400	1
1	8	3NT	W 3	400	1
9	7	3NT	W 3	400	1
3	10	3NT	W 3	400	1
8	1	3NT	W 4	430	0
5	4	3NT	W 4	430	0
6	2	3NT	W 4	430	0
4	5	4S	W 5	450	-1
7	9	3NT	W 5	460	-1
10	3	3NT	W 5	460	-1

9

♠ Q1032
♥ A874
♦ K963
♣ 5

♠ AK986
♥ 3
♦ QJ75
♣ K82

♠ 4
♥ Q105
♦ 84
♣ AQJ9743

W N E S

♠ J75
♥ KJ962
♦ A102
♣ 106

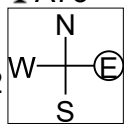
Board (9) Av: NS=+130

N-S	E-W	Contract	N-S	E-W	IMP
2	6	4S	E-3	300	5
1	8	4S	E-2	200	2
4	5	4S	E-2	200	2
8	1	3S	E-2	200	2
9	7	3S	E-2	200	2
10	3	4S	E-1	100	-1
7	9	4S	E-1	100	-1
6	2	3S	E-1	100	-1
5	4	3Cx	S-1	100	-6
3	10	3NT	N-3	150	-7

10

♠K872
♥A109
♦876
♣A73

♠1095
♥K653
♦QJ952
♣10



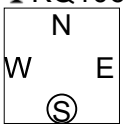
♠QJ
♥QJ42
♦10
♣QJ9642

♠A643
♥87
♦AK43
♣K85

11

♠K8753
♥J4
♦QJ
♣KQ106

♠QJ2
♥KQ9632
♦9
♣A73



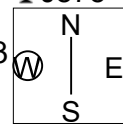
♠A4
♥A107
♦K1032
♣J952

♠1096
♥85
♦A87654
♣84

12

♠J8643
♥Q5
♦KQ
♣J875

♠Q10
♥KJ109763
♦J6
♣Q3



♠9
♥A82
♦A10532
♣AK96

♠AK752
♥4
♦9874
♣1042

Board (10) Av: NS=+10

N-S	E-W	Contract	N-S	E-W	IMP
9	7	4S	N 4	620	12
5	4	4S	N 4	620	12
6	2	2S	N 3	140	4
1	8	4S	N-1	100	-3
10	3	4S	N-1	100	-3
2	6	4S	N-1	100	-3
7	9	4S	N-1	100	-3
3	10	4S	N-1	100	-3
4	5	4S	N-2	200	-5
8	1	4S	S-3	300	-7

Board (11) Av: NS=-440

N-S	E-W	Contract	N-S	E-W	IMP
9	7	4H	W 4	420	1
5	4	4H	W 4	420	1
4	5	4H	W 4	420	1
7	9	4H	W 5	450	0
1	8	4H	W 5	450	0
10	3	4H	W 5	450	0
3	10	4H	W 5	450	0
6	2	4H	W 5	450	0
8	1	4H	W 5	450	0
2	6	3NT	E 5	460	-1

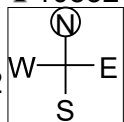
Board (12) Av: NS=-540

N-S	E-W	Contract	N-S	E-W	IMP
8	1	4Sx	S-1	200	8
1	8	4H	W 5	450	3
4	5	4H	W 5	450	3
10	3	4H	W 6	480	2
5	4	4H	W 6	480	2
9	7	4H	W 6	480	2
7	9	4H	W 6	480	2
6	2	4H	W 6	480	2
3	10	6H	W 6	980	-10
2	6	6H	W 6	980	-10

13

♠K854
♥K5
♦J87
♣10532

♠92
♥9642
♦AK106542
♣



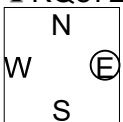
♠A106
♥AJ107
♦93
♣KQ74

♠QJ73
♥Q83
♦Q
♣AJ986

14

♠863
♥K5
♦A94
♣KQ872

♠Q105
♥J876
♦763
♣J63



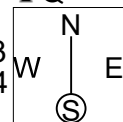
♠AJ72
♥AQ942
♦J85
♣A

♠K94
♥103
♦KQ102
♣10954

15

♠J532
♥AKQJ9
♦873
♣Q

♠AK6
♥1053
♦KJ94
♣J96



♠Q74
♥8642
♦65
♣A732

♠1098
♥7
♦AQ102
♣K10854

Board (13) Av: NS=-270

N-S	E-W	Contract	N-S	E-W	IMP
9	7	2H	W 2	110	4
6	2	2H	W 2	110	4
2	6	3D	W 4	130	4
3	10	2H	E 3	140	4
8	1	2D	W 5	150	3
7	9	2D	W 5	150	3
10	3	2H	W 5	200	2
4	5	4H	E 4	620	-8
5	4	4H	W 5	650	-9
1	8	4H	W 6	680	-9

Board (14) Av: NS=+30

N-S	E-W	Contract	N-S	E-W	IMP
6	2	4C	N 4	130	3
10	3	4H	E-2	100	2
3	10	4H	E-1	50	1
8	1	4H	E-1	50	1
7	9	4H	E-1	50	1
2	6	4H	E-1	50	1
4	5	3H	E-1	50	1
5	4	3H	E-1	50	1
9	7	3H	E 3	140	-5
1	8	4D	S-4	200	-6

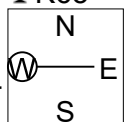
Board (15) Av: NS=+120

N-S	E-W	Contract	N-S	E-W	IMP
4	5	1NT	S 3	150	1
6	2	1NT	S 2	120	0
5	4	1NT	S 2	120	0
3	10	1NT	S 2	120	0
2	6	1NT	S 2	120	0
7	9	1NT	S 2	120	0
1	8	1H	N 2	110	0
10	3	1H	N 2	110	0
8	1	1H	N 2	110	0
9	7	1H	N-1	100	-6

16

♠J82
♥A109
♦Q1072
♣K65

♠107
♥8542
♦AK94
♣432



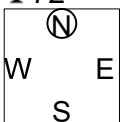
♠KQ9643
♥K76
♦
♣Q1087

♠A5
♥QJ3
♦J8653
♣AJ9

17

♠A6
♥10752
♦AK932
♣72

♠QJ1052
♥KQ6
♦105
♣1086



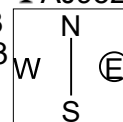
♠93
♥AJ43
♦J864
♣J93

♠K874
♥98
♦Q7
♣AKQ54

18

♠Q76
♥5
♦K652
♣AJ952

♠A9853
♥AQJ93
♦8
♣106



♠K1042
♥K10762
♦Q3
♣K4

♠J
♥84
♦AJ10974
♣Q873

Board (16) Av: NS=+120

N-S	E-W	Contract	N-S	E-W	IMP
5	4	2DxxS	2	560	10
3	10	3S	E-3	300	5
4	5	2S	E-2	200	2
6	2	3D	N 3	110	0
8	1	3D	N 3	110	0
9	7	2S	E-1	100	-1
10	3	2S	E-1	100	-1
1	8	2S	E-1	100	-1
7	9	4D	S-2	100	-6
2	6	2S	E 2	110	-6

Board (17) Av: NS=+430

N-S	E-W	Contract	N-S	E-W	IMP
5	4	3NT	N 6	490	2
8	1	3NT	S 4	430	0
6	2	3NT	N 4	430	0
3	10	3NT	N 4	430	0
7	9	3NT	N 4	430	0
10	3	3NT	N 4	430	0
9	7	3NT	N 4	430	0
2	6	3NT	N 4	430	0
1	8	3NT	N 3	400	-1
4	5	3NT	N 3	400	-1

Board (18) Av: NS=-340

N-S	E-W	Contract	N-S	E-W	IMP
8	1	6H	E-3	150	10
5	4	5H	E-1	50	9
9	7	2S	W 4	170	5
6	2	4S	W 4	420	-2
7	9	4S	W 4	420	-2
10	3	4S	W 4	420	-2
2	6	4H	E 4	420	-2
1	8	5H	E 5	450	-3
4	5	4H	E 5	450	-3
3	10	4H	E 5	450	-3

19

♠ QJ10942

♥

♦ AQ82

♣ Q72

♠ K7 ♠ 83
♥ J862 ♥ 9543
♦ J9 ♦ K10765
♣ AKJ96 ♣ 108

W — E

♠ A65
♥ AKQ107
♦ 43
♣ 543

20

♠ 876

♥ AK4

♦ K10

♣ AJ1052

♠ J3 ♠ KQ52
♥ 1085 ♥ 97
♦ Q86543 ♦ J
♣ 84 ♣ KQ9763

W — E

♠ A1094
♥ QJ632
♦ A972
♣

21

♠ A865

♥ 973

♦ J9

♣ KJ86

♠ J973 ♠ Q4
♥ AKQJ8 ♥ 105
♦ ♦ KQ87653
♣ Q1093 ♣ A2

W — E

♠ K102
♥ 642
♦ A1042
♣ 754

Board (19) Av: NS=-50

N-S	E-W	Contract	N-S	E-W	IMP
2	7	4S	N-1	50	0
9	3	4S	N-1	50	0
7	2	4S	N-1	50	0
10	6	4S	N-1	50	0
3	9	4S	N-1	50	0
6	10	4S	N-1	50	0
8	4	4S	N-1	50	0
1	5	4S	N-1	50	0
4	8	4S	N-1	50	0
5	1	4S	N-2	100	-2

Board (20) Av: NS=+610

N-S	E-W	Contract	N-S	E-W	IMP
3	9	5Sx	E-6	1700	14
10	6	3NT	N 4	630	1
8	4	3NT	N 4	630	1
7	2	4H	S 4	620	0
2	7	4H	N 4	620	0
6	10	4H	N 4	620	0
5	1	4H	N 4	620	0
1	5	4H	N 4	620	0
4	8	2Cx	E-2	500	-3
9	3	4H	N-1	100	-12

Board (21) Av: NS=-160

N-S	E-W	Contract	N-S	E-W	IMP
3	9	3NT	W-1	50	5
1	5	3NT	W-1	50	5
8	4	3NT	W-1	50	5
10	6	3D	E-1	50	5
5	1	2D	E 2	90	2
7	2	2H	W 2	110	2
2	7	3NT	W 3	400	-6
9	3	3NT	W 3	400	-6
6	10	3NT	E 3	400	-6
4	8	3NT	W 4	430	-7

22

♠ A1097

♥ Q72

♦ K85

♣ 542

♠ KJ52 ♠ 3
♥ A ♥ KJ983
♦ A76 ♦ Q10932
♣ KQJ96 ♣ A8

W — E

♠ Q864
♥ 10654
♦ J4
♣ 1073

23

♠ J86

♥ 87

♦ 654

♣ K9542

♠ A109 ♠ K73
♥ AK10 ♥ QJ4
♦ J9 ♦ K10832
♣ AJ1063 ♣ Q8

W — E

♠ Q542
♥ 96532
♦ AQ7
♣ 7

24

♠ Q3

♥ AK8753

♦ 1065

♣ 96

♠ 842 ♠ AKJ9765
♥ J ♥ 102
♦ AQJ8 ♦ 943
♣ QJ1052 ♣ 8

W — E

♠ 10
♥ Q964
♦ K72
♣ AK743

Board (22) Av: NS=-620

N-S	E-W	Contract	N-S	E-W	IMP
6	10	4D	E 5	150	10
1	5	5D	E 5	600	1
5	1	5D	E 5	600	1
7	2	5D	E 5	600	1
2	7	5D	E 6	620	0
9	3	3NT	W 4	630	0
4	8	3NT	W 4	630	0
8	4	3NT	W 4	630	0
3	9	3NT	E 5	660	-1
10	6	3NT	W 6	690	-2

Board (23) Av: NS=-540

N-S	E-W	Contract	N-S	E-W	IMP
9	3	3NT	W-1	100	12
2	7	3NT	W-1	100	12
1	5	3NT	W 3	600	-2
6	10	3NT	W 4	630	-3
3	9	3NT	W 4	630	-3
7	2	3NT	W 4	630	-3
10	6	3NT	W 4	630	-3
5	1	3NT	W 4	630	-3
8	4	3NT	W 4	630	-3
4	8	3NT	W 4	630	-3

Board (24) Av: NS=-380

N-S	E-W	Contract	N-S	E-W	IMP
5	1	4H	N-1	50	8
3	9	5H	N-3	150	6
4	8	5Hx	N-2	300	2
8	4	5Hx	N-2	300	2
10	6	5S	E 5	450	-2
7	2	4S	E 5	450	-2
9	3	4S	E 5	450	-2
2	7	4S	E 5	450	-2
6	10	4S	E 5	450	-2
1	5	4S	E 6	480	-3

25

♠ AQ874

♥ K92

♦ 42

♣ 1095

♠ 632 ♠ K95
♥ J874 ♥ AQ63
♦ A ♦ 109765
♣ AK742 ♣ J

W — E

♠ J10
♥ 105
♦ KQJ83
♣ Q863

26

♠ KQ

♥ K102

♦ K10865

♣ 742

♠ 7 ♠ AJ9853
♥ 9863 ♥ A5
♦ AJ3 ♦ Q74
♣ KQ1053 ♣ AJ

W — E

♠ 10642
♥ QJ74
♦ 92
♣ 986

27

♠ 10

♥ KQ9832

♦ AJ107

♣ Q7

♠ J62 ♠ Q983
♥ 106 ♥ AJ754
♦ 52 ♦ K83
♣ AJ9842 ♣ 6

W — E

♠ AK754
♥
♦ Q964
♣ K1053

Board (25) Av: NS=+30

N-S	E-W	Contract	N-S	E-W	IMP
1	5	4H	W-2	200	5
6	10	4H	W-2	200	5
4	8	4H	W-2	200	5
9	3	3H	W-1	100	2
2	7	3H	E-1	100	2
7	2	Passout			-1
8	4	2S	N-1	50	-2
10	6	1NT	E 2	120	-4
3	9	3H	W 4	170	-5
5	1	2H	W 4	170	-5

Board (26) Av: NS=-560

N-S	E-W	Contract	N-S	E-W	IMP
2	7	4S	E-1	100	12
7	2	2S	E 4	170	9
6	10	3NT	W 3	600	-1
8	4	3NT	W 3	600	-1
4	8	3NT	W 3	600	-1
3	9	4S	E 4	620	-2
10	6	4S	E 4	620	-2
1	5	4S	E 4	620	-2
9	3	4S	E 4	620	-2
5	1	3NT	W 4	630	-2

Board (27) Av: NS=-60

N-S	E-W	Contract	N-S	E-W	IMP
8	4	3NT	S 3	400	10
2	7	3NT	S-1	50	0
3	9	3NT	S-1	50	0
6	10	3NT	S-1	50	0
1	5	3NT	S-1	50	0
4	8	3NT	S-1	50	0
5	1	3NT	S-1	50	0
10	6	3NT	N-1	50	0
9	3	5D	N-2	100	-1
7	2	3NT	N-2	100	-1

28

♠ KJ9865
♥ 653
♦ 8
♣ 942

♠ 3 AQ10742
♥ 10872 KJ
♦ J10753 AQ962
♣ K108



♠ AQ94
♥ K4
♦ AQJ7653

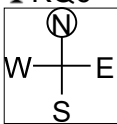
Board (28) Av: NS=-100

N-S	E-W	Contract	N-S	E-W	IMP
10	6	5Dx E-2	300		9
5	1	4S E-3	150		6
9	3	5D E-2	100		5
2	7	3S E-2	100		5
4	8	4D E 4	130		-1
7	2	1Sx E 1	160		-2
1	5	1Sx E 1	160		-2
8	4	1Sx E 2	260		-4
6	10	5D E 5	400		-7
3	9	5Dx E 5	550		-10

29

♠ K653
♥ 42
♦ 9754
♣ KQ6

♠ Q974 A108
♥ AQ 109765
♦ AJ2 1086
♣ 9842 103



♠ J2
♥ KJ83
♦ KQ3
♣ AJ75

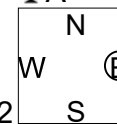
Board (29) Av: NS=-90

N-S	E-W	Contract	N-S	E-W	IMP
3	9	2NT S 2	120		5
8	4	1NT S 1	90		5
6	10	2NT S-1	100		0
2	7	2NT S-1	100		0
9	3	2NT S-1	100		0
10	6	2NT S-1	100		0
1	5	2NT S-1	100		0
5	1	2NT S-1	100		0
4	8	2NT S-2	200		-3
7	2	2NT S-3	300		-5

30

♠ J86
♥ K985
♦ KJ854
♣ A

♠ A109 K542
♥ J2 74
♦ 1032 AQ76
♣ 75432 K86



♠ Q73
♥ AQ1063
♦ 9
♣ QJ109

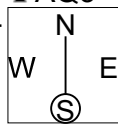
Board (30) Av: NS=+200

N-S	E-W	Contract	N-S	E-W	IMP
1	5	4H S 5	450		6
9	3	4H S 4	420		6
8	4	4H S 4	420		6
10	6	4H S 4	420		6
6	10	3H S 4	170		-1
4	8	2H S 3	140		-2
3	9	1NT W-2	100		-3
2	7	4H S-1	50		-6
5	1	4H S-1	50		-6
7	2	4H S-1	50		-6

31

♠ A973
♥ 10874
♦ 53
♣ AQ3

♠ KQ1084 52
♥ Q3 62
♦ J92 K10874
♣ 1098 K754



♠ J6
♥ AKJ95
♦ AQ6
♣ J62

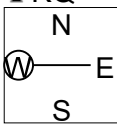
Board (31) Av: NS=+650

N-S	E-W	Contract	N-S	E-W	IMP
3	9	5Dx E-5	1100		10
9	3	5H S 5	650		0
10	6	4H S 5	650		0
7	2	4H S 5	650		0
6	10	4H S 5	650		0
2	7	4H S 5	650		0
8	4	4H S 5	650		0
1	5	4H S 5	650		0
4	8	4H S 5	650		0
5	1	4H S 5	650		0

32

♠ 109
♥ A1096
♦ K9754
♣ KQ

♠ KQ853 7
♥ 5432 KJ7
♦ J10 AQ8
♣ 95 A108764



♠ AJ642
♥ Q8
♦ 632
♣ J32

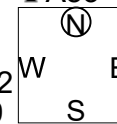
Board (32) Av: NS=-70

N-S	E-W	Contract	N-S	E-W	IMP
5	1	2S W-3	300		9
6	10	2S E-1	100		5
1	5	3D N-1	50		1
8	4	2D N-1	50		1
9	3	3D N-2	100		-1
2	7	2C E 3	110		-1
4	8	2C E 3	110		-1
3	9	3C E 4	130		-2
10	6	3C E 4	130		-2
7	2	2NT N-5	250		-5

33

♠ 96
♥ AK864
♦ 1084
♣ A83

♠ Q103 A8542
♥ 2 Q53
♦ AKQJ2 973
♣ KJ109 64



♠ KJ7
♥ J1097
♦ 65
♣ Q752

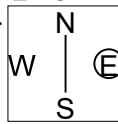
Board (33) Av: NS=-140

N-S	E-W	Contract	N-S	E-W	IMP
3	9	4S E-2	100		6
10	6	4D W-1	50		5
1	5	3H N-1	50		3
8	4	4D W 4	130		0
2	7	3S E 3	140		0
9	3	3S E 3	140		0
5	1	2S E 3	140		0
7	2	3S E 4	170		-1
4	8	4S E 4	420		-7
6	10	4S E 4	420		-7

34

♠ 2
♥ A9
♦ AKQJ10962
♣ 75

♠ 109754 Q63
♥ 10532 K864
♦ KQJ10 54
♣ AKJ8 A643



♠ AKJ8
♥ QJ7
♦ 873
♣ 982

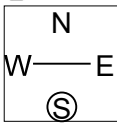
Board (34) Av: NS=+620

N-S	E-W	Contract	N-S	E-W	IMP
10	6	5Dx N 6	950		8
6	10	3NT N 7	720		3
7	2	5D N 6	620		0
8	4	5D S 5	600		-1
3	9	3NT S 3	600		-1
9	3	3NT S 3	600		-1
5	1	3NT N 3	600		-1
4	8	3NT N 3	600		-1
2	7	3NT N 3	600		-1
1	5	6D N-1	100		-12

35

♠ KQJ752
♥ KJ
♦ J1084
♣ 7

♠ 4 A1086
♥ 6 Q1075
♦ A96532 7
♣ AJ953 K842



♠ 93
♥ A98432
♦ KQ
♣ Q106

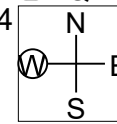
Board (35) Av: NS=-110

N-S	E-W	Contract	N-S	E-W	IMP
10	6	4S E-6	600		12
9	3	5C E-1	100		5
6	10	4S N-1	50		2
7	2	3H S-1	50		2
4	8	4S N-2	100		0
5	1	5S N-3	150		-1
2	7	4H S-3	150		-1
8	4	4H S-3	150		-1
3	9	5Sx N-2	300		-5
1	5	4Sx N-2	300		-5

36

♠ KJ109
♥ Q87643
♦ AQ2
♣ A

♠ AKJ854 3
♥ 2 A64
♦ K102 A95
♣ J87 1096543



♠ Q109762
♥ Q8753
♦ J
♣ K

Board (36) Av: NS=+180

N-S	E-W	Contract	N-S	E-W	IMP
4	8	4H S 5	650		10
5	1	4H S 4	620		10
2	7	2S W-2	200		1
1	5	1Sx W-1	200		1
9	3	3H S 4	170		0
7	2	3H S 3	140		-1
3	9	4C E-1	100		-2
6	10	2S W-1	100		-2
8	4	2S W 2	110		-7
10	6	4Hx S-1	200		-9