

兵庫県知事杯 OPEN TEAMS Session 1 Flight B 2015年10月10日(土)

1

♠ QJ987  
♥ 87  
♦ A7  
♣ Q1095

♠ A10532  
♥ 10965  
♦ Q9  
♣ 43

♠ K6  
♥ AJ32  
♦ J8652  
♣ J8

♠ 4  
♥ KQ4  
♦ K1043  
♣ AK762

Board (1) Av: NS=+200

N-S	E-W	Contract	N-S	E-W	IMP
3	6	2Sx W-3	500		7
4	7	3NT S 3	400		5
7	4	2NT S 5	210		0
9	5	1NT S 5	210		0
1	10	3C S 5	150		-2
10	1	2C S 5	150		-2
8	2	2C S 5	150		-2
5	9	1NT S 3	150		-2
2	8	1NT S 3	150		-2
6	3	1NT S 3	150		-2

2

♠ K76  
♥ K10432  
♦ Q52  
♣ K9

♠ AQ82  
♥ Q87  
♦ A1086  
♣ Q6

♠ J10943  
♥ J5  
♦ 74  
♣ 10872

♠ 5  
♥ A96  
♦ KJ93  
♣ AJ543

Board (2) Av: NS=+510

N-S	E-W	Contract	N-S	E-W	IMP
10	1	4H N 5	650		4
1	10	4H N 5	650		4
8	2	4H N 4	620		3
2	8	4H N 4	620		3
3	6	4H N 4	620		3
4	7	4H N 4	620		3
7	4	4H N 4	620		3
6	3	3H N 4	170		-8
5	9	2NT N 2	120		-9
9	5	2NT N 2	120		-9

3

♠ 97  
♥ K85  
♦ A763  
♣ J962

♠ 83  
♥ AQJ4  
♦ Q98  
♣ K753

♠ KQ106542  
♥ 2  
♦ 54  
♣ Q108

♠ AJ  
♥ 109763  
♦ KJ102  
♣ A4

Board (3) Av: NS=-80

N-S	E-W	Contract	N-S	E-W	IMP
2	8	4S E-1	100		5
3	6	4S E-1	100		5
8	2	3S E-1	100		5
1	10	3H S-1	50		1
4	7	2S E 2	110		-1
5	9	3S E 3	140		-2
6	3	3S E 4	170		-3
10	1	3S E 4	170		-3
9	5	2S E 4	170		-3
7	4	3NT W 4	630		-11

4

♠ K1043  
♥ AKQ2  
♦ J106  
♣ 43

♠ AJ865  
♥ 108  
♦ K4  
♣ Q952

♠ Q2  
♥ J7653  
♦ A982  
♣ J6

♠ 97  
♥ 94  
♦ Q753  
♣ AK1087

Board (4) Av: NS=+10

N-S	E-W	Contract	N-S	E-W	IMP
7	4	3NT N 3	600		11
10	1	2S W-2	200		5
8	2	1NT S 3	150		4
2	8	1NT S 3	150		4
9	5	1NT S 1	90		2
4	7	3D N-1	100		-3
6	3	1NT S-1	100		-3
5	9	1NT S-1	100		-3
1	10	3D N-2	200		-5
3	6	3D N-2	200		-5

5

♠ 952  
♥ J2  
♦ J10843  
♣ K42

♠ AK1084  
♥ 5  
♦ 95  
♣ AJ876

♠ QJ76  
♥ K973  
♦ AKQ  
♣ 105

♠ 3  
♥ AQ10864  
♦ 762  
♣ Q93

Board (5) Av: NS=-460

N-S	E-W	Contract	N-S	E-W	IMP
2	8	6S E-1	50		11
3	6	5C W 5	400		2
9	5	4S E 5	450		0
4	7	4S E 5	450		0
1	10	4S E 6	480		-1
6	3	4S E 6	480		-1
8	2	4S E 6	480		-1
10	1	4S E 6	480		-1
7	4	4S E 6	480		-1
5	9	4S E 6	480		-1

6

♠ KJ8654  
♥ A2  
♦ 8  
♣ KQJ6

♠ A  
♥ K74  
♦ J10754  
♣ 10853

♠ Q73  
♥ J8  
♦ Q962  
♣ A742

♠ 1092  
♥ Q109653  
♦ AK3  
♣ 9

Board (6) Av: NS=+420

N-S	E-W	Contract	N-S	E-W	IMP
7	4	4S N 5	450		1
9	5	4S N 4	420		0
3	6	4S N 4	420		0
2	8	4S N 4	420		0
6	3	4S N 4	420		0
4	7	4S N 4	420		0
1	10	4S N 4	420		0
10	1	4S N 4	420		0
5	9	4S N 4	420		0
8	2	4H S 4	420		0

7

♠ 543  
♥ 65  
♦ AQJ9  
♣ KQ75

♠ 10  
♥ AQ9743  
♦ 86  
♣ A1043

♠ KQJ9  
♥ K  
♦ K107  
♣ J9862

♠ A8762  
♥ J1082  
♦ 5432  
♣

Board (7) Av: NS=-90

N-S	E-W	Contract	N-S	E-W	IMP
10	1	5C E-2	200		7
2	8	3NT E-2	200		7
3	6	4H W-1	100		5
4	7	4H W-1	100		5
5	9	3NT E-1	100		5
1	10	2H W 4	170		-2
8	2	2Sx S-1	200		-3
6	3	2S S-2	200		-3
9	5	4H W 4	620		-11
7	4	3Dx S-3	800		-12

8

♠ 10853  
♥ AK109832  
♦  
♣ 64

♠ 7  
♥ QJ5  
♦ K986432  
♣ K10

♠ Q642  
♥ 6  
♦ A75  
♣ Q8753

♠ AKJ9  
♥ 74  
♦ QJ10  
♣ AJ92

Board (8) Av: NS=+230

N-S	E-W	Contract	N-S	E-W	IMP
4	7	4H N 6	480		6
5	9	4H S 5	450		6
1	10	4H S 5	450		6
2	8	4H N 5	450		6
8	2	4H N 5	450		6
10	1	4H N 5	450		6
3	6	5S S-2	100		-8
6	3	4S S-2	100		-8
7	4	5S S-4	200		-10
9	5	6Sx N-3	500		-12

9

♠ 107654  
♥ 975  
♦ 9  
♣ QJ42

♠ AKQ  
♥ K8  
♦ 108763  
♣ 1073

♠ 8  
♥ J106432  
♦ KQJ4  
♣ 86

♠ J932  
♥ AQ  
♦ A52  
♣ AK95

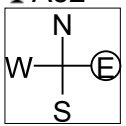
Board (9) Av: NS=-40

N-S	E-W	Contract	N-S	E-W	IMP
3	6	2S S 4	170		5
6	3	1C S 3	110		4
8	2	4S S-1	50		0
4	7	4S S-1	50		0
9	5	4S N-1	50		0
2	8	4S N-1	50		0
1	10	4S N-1	50		0
7	4	4S N-1	50		0
5	9	3D W 3	110		-2
10	1	3H E 3	140		-3

10

♠AK854  
♥932  
♦105  
♣A52

♠J73 ♠Q109  
♥K854 ♥AQ7  
♦AJ864 ♦K3  
♣Q ♣KJ983

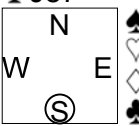


♠62  
♥J106  
♦Q972  
♣10764

11

♠K10875  
♥AK93  
♦3  
♣J87

♠J ♠AQ9  
♥QJ1076 ♥2  
♦A876 ♦KQ54  
♣Q109 ♣K6532

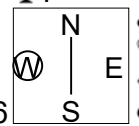


♠6432  
♥854  
♦J1092  
♣A4

12

♠AQ3  
♥AQ87  
♦KJ1087  
♣7

♠J5 ♠7642  
♥KJ943 ♥10652  
♦96 ♦2  
♣KQ106 ♣J543



♠K1098  
♥  
♦AQ543  
♣A982

Board (10) Av: NS=-100

Table with 5 columns: N-S, E-W, Contract, N-S, E-W, IMP. Rows show various board results for Board 10.

Board (11) Av: NS=-110

Table with 5 columns: N-S, E-W, Contract, N-S, E-W, IMP. Rows show various board results for Board 11.

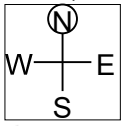
Board (12) Av: NS=+1480

Table with 5 columns: N-S, E-W, Contract, N-S, E-W, IMP. Rows show various board results for Board 12.

13

♠A109  
♥A2  
♦A54  
♣AQ532

♠KJ6542 ♠Q3  
♥Q9 ♥K874  
♦KJ ♦Q9762  
♣J87 ♣96

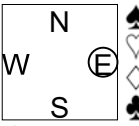


♠87  
♥J10653  
♦1083  
♣K104

14

♠J1083  
♥J9853  
♦AJ  
♣42

♠AQ95 ♠K764  
♥AK ♥72  
♦K7 ♦Q10652  
♣AJ763 ♣95

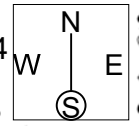


♠2  
♥Q1064  
♦9843  
♣KQ108

15

♠J6  
♥AJ92  
♦974  
♣A962

♠K107 ♠A9843  
♥KQ104 ♥65  
♦2 ♦QJ108  
♣K7543 ♣Q10



♠Q52  
♥873  
♦AK653  
♣J8

Board (13) Av: NS=+120

Table with 5 columns: N-S, E-W, Contract, N-S, E-W, IMP. Rows show various board results for Board 13.

Board (14) Av: NS=-300

Table with 5 columns: N-S, E-W, Contract, N-S, E-W, IMP. Rows show various board results for Board 14.

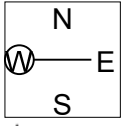
Board (15) Av: NS=-50

Table with 5 columns: N-S, E-W, Contract, N-S, E-W, IMP. Rows show various board results for Board 15.

16

♠AK763  
♥5  
♦A3  
♣QJ1032

♠J94 ♠Q2  
♥AQ9876 ♥J3  
♦6 ♦KQJ82  
♣K65 ♣A874

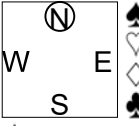


♠1085  
♥K1042  
♦109754  
♣9

17

♠A4  
♥109653  
♦Q86  
♣742

♠KJ53 ♠Q10  
♥Q874 ♥  
♦KJ107 ♦A9432  
♣5 ♣AKQ1083

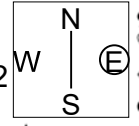


♠98762  
♥AKJ2  
♦5  
♣J96

18

♠K832  
♥Q  
♦A1084  
♣AKQ8

♠Q96 ♠AJ1054  
♥1085 ♥K432  
♦K9652 ♦73  
♣75 ♣102



♠7  
♥AJ976  
♦QJ  
♣J9643

Board (16) Av: NS=+110

Table with 5 columns: N-S, E-W, Contract, N-S, E-W, IMP. Rows show various board results for Board 16.

Board (17) Av: NS=-490

Table with 5 columns: N-S, E-W, Contract, N-S, E-W, IMP. Rows show various board results for Board 17.

Board (18) Av: NS=+630

Table with 5 columns: N-S, E-W, Contract, N-S, E-W, IMP. Rows show various board results for Board 18.

19

♠ A543  
♥ J84  
♦ 1087  
♣ A95

♠ J82  
♥ K97  
♦ Q962  
♣ 872

♠ K7  
♥ A10652  
♦ A43  
♣ 1064

♠ Q1096  
♥ Q3  
♦ KJ5  
♣ KQJ3

N  
W—E  
S

20

♠ J652  
♥ 6  
♦ AK1073  
♣ J103

♠ K987  
♥ 9854  
♦ J9  
♣ K42

♠ AQ4  
♥ K3  
♦ 854  
♣ Q9865

♠ 103  
♥ AQJ1072  
♦ Q62  
♣ A7

N  
W—E  
S

21

♠ J  
♥ AQ10543  
♦ K65  
♣ Q92

♠ A97  
♥ 9  
♦ J109872  
♣ J65

♠ KQ65  
♥ J862  
♦ 43  
♣ AK10

♠ 108432  
♥ K7  
♦ AQ  
♣ 8743

N  
W—E  
S

Board (19) Av: NS=+140

N-S	E-W	Contract	N-S	E-W	IMP
3	5	2S	S 4	170	1
10	4	3S	S 3	140	0
2	9	2S	S 3	140	0
5	3	2S	S 3	140	0
6	8	2S	S 3	140	0
7	1	2S	S 3	140	0
9	2	2S	S 3	140	0
1	7	2S	N 3	140	0
4	10	2S	N 3	140	0
8	6	2NT	S-1	50	-5

Board (20) Av: NS=+220

N-S	E-W	Contract	N-S	E-W	IMP
5	3	2H	S 6	230	0
4	10	2H	S 6	230	0
7	1	2H	S 6	230	0
10	4	2H	S 6	230	0
9	2	2H	S 6	230	0
3	5	2H	S 6	230	0
1	7	2H	N 6	230	0
2	9	2H	S 5	200	-1
6	8	2H	S 4	170	-2
8	6	3C	E-1	100	-3

Board (21) Av: NS=+40

N-S	E-W	Contract	N-S	E-W	IMP
10	4	3H	N 4	170	4
9	2	2H	N 4	170	4
6	8	2H	N 3	140	3
2	9	2H	N 2	110	2
5	3	2H	N 2	110	2
1	7	2H	N 2	110	2
3	5	3H	N-1	100	-4
8	6	3D	W 3	110	-4
4	10	2S	E 2	110	-4
7	1	2S	E 2	110	-4

22

♠ Q1072  
♥ 8  
♦ AK84  
♣ 10986

♠ 94  
♥ AJ53  
♦ 632  
♣ J754

♠ K5  
♥ 1074  
♦ Q10975  
♣ AQ2

♠ AJ863  
♥ KQ962  
♦ J  
♣ K3

N  
W—E  
S

23

♠ K102  
♥ Q1082  
♦ J7  
♣ KQ54

♠ J76  
♥ J9654  
♦ 985  
♣ 103

♠ AQ984  
♥ 73  
♦ 63  
♣ 9876

♠ 53  
♥ AK  
♦ AKQ1042  
♣ AJ2

N  
W—E  
S

24

♠ A3  
♥ KJ10  
♦ J1094  
♣ J752

♠ J96  
♥ 76532  
♦ 65  
♣ K108

♠ 2  
♥ Q84  
♦ A872  
♣ Q9643

♠ KQ108754  
♥ A9  
♦ KQ3  
♣ A

N  
W—E  
S

Board (22) Av: NS=+450

N-S	E-W	Contract	N-S	E-W	IMP
4	10	4S	S 5	450	0
8	6	4S	S 5	450	0
3	5	4S	S 5	450	0
7	1	4S	S 5	450	0
9	2	4S	S 5	450	0
2	9	4S	S 5	450	0
5	3	4S	S 5	450	0
1	7	4S	N 5	450	0
6	8	4S	N 5	450	0
10	4	3S	S 5	200	-6

Board (23) Av: NS=+1430

N-S	E-W	Contract	N-S	E-W	IMP
4	10	6NT	S 7	1470	1
1	7	6NT	S 7	1470	1
5	3	6NT	N 7	1470	1
2	9	6NT	N 7	1470	1
7	1	6NT	N 7	1470	1
8	6	6NT	N 6	1440	0
10	4	6D	S 7	1390	-1
3	5	6D	S 7	1390	-1
6	8	6D	S 6	1370	-2
9	2	6D	S-1	100	-17

Board (24) Av: NS=+540

N-S	E-W	Contract	N-S	E-W	IMP
10	4	6S	S 6	980	10
2	9	6D	S 6	920	9
1	7	4S	S 6	480	-2
4	10	4S	S 6	480	-2
7	1	4S	S 6	480	-2
9	2	4S	S 6	480	-2
6	8	4S	S 6	480	-2
5	3	4S	S 6	480	-2
8	6	4S	S 6	480	-2
3	5	4S	N 6	480	-2

25

♠ 87  
♥ J754  
♦ 63  
♣ 108653

♠ AQ1094  
♥ 10986  
♦ 1054  
♣ 7

♠ K652  
♥ A3  
♦ AQJ7  
♣ A92

♠ J3  
♥ KQ2  
♦ K982  
♣ KQJ4

N  
W—E  
S

26

♠ J5  
♥ J7432  
♦ J85  
♣ Q76

♠ AK9  
♥ K10986  
♦ K6  
♣ J82

♠ Q432  
♥ A  
♦ AQ107  
♣ A1095

♠ 10876  
♥ Q5  
♦ 9432  
♣ K43

N  
W—E  
S

27

♠ 6  
♥ AJ9854  
♦ A6  
♣ K632

♠ AK  
♥ KQ2  
♦ KJ82  
♣ A975

♠ J87432  
♥ 6  
♦ Q1075  
♣ J4

♠ Q1095  
♥ 1073  
♦ 943  
♣ Q108

N  
W—E  
S

Board (25) Av: NS=-330

N-S	E-W	Contract	N-S	E-W	IMP
3	5	2Cx	N 2	180	11
5	3	1NT	S 3	150	10
10	4	2S	W 5	200	4
4	10	2S	W 5	200	4
7	1	2S	E 5	200	4
2	9	1NT	S-4	200	4
9	2	4S	W 5	650	-8
1	7	4S	W 5	650	-8
6	8	4S	W 5	650	-8
8	6	4S	E 5	650	-8

Board (26) Av: NS=-680

N-S	E-W	Contract	N-S	E-W	IMP
6	8	3NT	E 4	630	2
7	1	3NT	W 5	660	1
3	5	3NT	W 5	660	1
10	4	3NT	W 6	690	0
4	10	3NT	E 6	690	0
9	2	3NT	E 6	690	0
2	9	3NT	E 6	690	0
5	3	3NT	E 6	690	0
8	6	3NT	E 6	690	0
1	7	3NT	E 6	690	0

Board (27) Av: NS=+50

N-S	E-W	Contract	N-S	E-W	IMP
10	4	4S	W-1	50	0
7	1	4S	W-1	50	0
4	10	4S	W-1	50	0
1	7	4S	W-1	50	0
5	3	4S	W-1	50	0
9	2	4S	W-1	50	0
2	9	4S	W-1	50	0
3	5	4S	W-1	50	0
8	6	4S	W-1	50	0
6	8	4S	E-1	50	0

28

♠8  
♥Q93  
♦AKJ1042  
♣654

♠Q10963  
♥J10  
♦Q95  
♣QJ3

N  
W | E  
S

♠AJ75  
♥8764  
♦87  
♣1092

♠K42  
♥AK52  
♦63  
♣AK87

Board (28) Av: NS=+470

N-S	E-W	Contract	N-S	E-W	IMP
4	10	3NT S 5	660		5
3	5	3NT S 5	660		5
8	6	3NT S 5	660		5
7	1	3NT S 5	660		5
2	9	3NT S 5	660		5
1	7	3NT N 5	660		5
10	4	3NT N 5	660		5
5	3	3NT S-1		100	-11
9	2	3NT S-1		100	-11
6	8	3NT S-1		100	-11

29

♠975  
♥AK7542  
♦8  
♣KQ9

♠KQJ2  
♥Q86  
♦762  
♣A72

N  
W | E  
S

♠A84  
♥103  
♦109543  
♣J43

♠1063  
♥J9  
♦AKQJ  
♣10865

Board (29) Av: NS=+620

N-S	E-W	Contract	N-S	E-W	IMP
4	10	4H N 4	620		0
8	6	4H N 4	620		0
10	4	4H N 4	620		0
7	1	4H N 4	620		0
5	3	4H N 4	620		0
9	2	4H N 4	620		0
3	5	4H N 4	620		0
6	8	4H N 4	620		0
2	9	4H N 4	620		0
1	7	3NT S-2		200	-13

30

♠Q98754  
♥762  
♦QJ7  
♣Q

♠A106  
♥543  
♦A85432  
♣9

N  
W | E  
S

♠K2  
♥J10  
♦106  
♣AKJ8762

♠J3  
♥AKQ98  
♦K9  
♣10543

Board (30) Av: NS=-50

N-S	E-W	Contract	N-S	E-W	IMP
10	4	3S N 3	140		5
4	10	2H S 2	110		4
2	9	4C E-1	50		3
7	1	3H S-1		50	0
5	3	3H S-1		50	0
6	8	3Hx S-1		100	-2
3	5	3C E 3		110	-2
9	2	3C E 3		110	-2
1	7	3C E 3		110	-2
8	6	3C E 3		110	-2

31

♠K1053  
♥Q102  
♦104  
♣A972

♠Q4  
♥J8753  
♦AKQ5  
♣K10

N  
W | E  
S

♠A82  
♥K964  
♦J973  
♣64

♠J976  
♥A  
♦862  
♣QJ853

Board (31) Av: NS=+60

N-S	E-W	Contract	N-S	E-W	IMP
6	8	4H W-2	100		1
4	10	4H W-2	100		1
7	1	4H W-1	50		0
10	4	4H W-1	50		0
2	9	4H W-1	50		0
9	2	4H W-1	50		0
3	5	4H W-1	50		0
8	6	3H W-1	50		0
1	7	3H W-1	50		0
5	3	2H W 2		110	-5

32

♠Q8  
♥KQ8543  
♦J4  
♣K84

♠106  
♥10  
♦A1083  
♣AQ9762

N  
W | E  
S

♠AKJ975  
♥J6  
♦975  
♣53

♠432  
♥A972  
♦KQ62  
♣J10

Board (32) Av: NS=+30

N-S	E-W	Contract	N-S	E-W	IMP
1	7	3H N 4	170		4
2	9	3H N 3	140		3
10	4	3H N 3	140		3
3	5	3H N 3	140		3
8	6	3H N 3	140		3
7	1	4H N-1		50	-2
6	8	4H N-1		50	-2
5	3	4H N-1		50	-2
4	10	3S E 4		170	-5
9	2	4S E 4		620	-12

33

♠Q43  
♥AKJ94  
♦AK106  
♣8

♠9  
♥Q865  
♦Q942  
♣7652

N  
W | E  
S

♠AKJ10  
♥53  
♦AKQJ1094

♠87652  
♥10732  
♦J87  
♣3

Board (33) Av: NS=-350

N-S	E-W	Contract	N-S	E-W	IMP
8	6	2H N 2	110		10
5	3	6C W-1	50		9
4	10	6C W-1	50		9
7	1	5C E 5		400	-2
9	2	5C E 5		400	-2
10	4	3NT W 4		430	-2
2	9	5Cx E 5		550	-5
1	7	5Cx E 5		550	-5
3	5	5Cx E 5		550	-5
6	8	5Cx E 5		550	-5

34

♠9762  
♥J52  
♦A9  
♣Q632

♠53  
♥A84  
♦Q8532  
♣A54

N  
W | E  
S

♠K104  
♥KQ76  
♦K76  
♣J98

♠AQJ8  
♥1093  
♦J104  
♣K107

Board (34) Av: NS=-110

N-S	E-W	Contract	N-S	E-W	IMP
3	5	2S N 2	110		6
10	4	2S N 2	110		6
7	1	Passout			3
2	9	1NT E 1		90	1
5	3	1NT E 1		90	1
1	7	1NT E 2		120	0
9	2	1NT E 2		120	0
6	8	2NT E 3		150	-1
8	6	3NT E 3		400	-7
4	10	3NT E 3		400	-7

35

♠J3  
♥KQ1064  
♦Q87  
♣964

♠K982  
♥A532  
♦K1062  
♣5

N  
W | E  
S

♠A74  
♥7  
♦AJ95  
♣AQJ83

♠Q1065  
♥J98  
♦43  
♣K1072

Board (35) Av: NS=-480

N-S	E-W	Contract	N-S	E-W	IMP
9	2	3NT W-1	100		11
2	9	1NT E 1		90	9
5	3	1NT E 5		210	7
3	5	2Hx N-3		500	-1
8	6	3NT W 3		600	-3
6	8	3NT W 3		600	-3
4	10	3NT W 3		600	-3
7	1	3NT E 3		600	-3
1	7	3NT E 3		600	-3
10	4	4S W 4		620	-4

36

♠K7  
♥A732  
♦AJ743  
♣54

♠1086  
♥KJ654  
♦Q  
♣K1092

N  
W | E  
S

♠J54  
♥Q9  
♦10986  
♣Q863

♠AQ932  
♥108  
♦K52  
♣AJ7

Board (36) Av: NS=+630

N-S	E-W	Contract	N-S	E-W	IMP
4	10	3NT S 5	660		1
8	6	3NT N 5	660		1
10	4	3NT N 5	660		1
1	7	3NT N 4	630		0
7	1	3NT N 4	630		0
6	8	3NT N 4	630		0
3	5	3NT N 4	630		0
9	2	3NT N 4	630		0
5	3	3NT N 3	600		-1
2	9	3NT N 3	600		-1