

大阪府知事杯 OPEN TEAMS Session 1 Flight C 2014年8月31日(日)

1

♠7  
♥AK83  
♦QJ103  
♣K642

♠10943  
♥QJ10742  
♦A94  
♣

♠J8652  
♥6  
♦K752  
♣A109

♠AKQ  
♥95  
♦86  
♣QJ8753

Board (1) Av: NS=+350

N-S	E-W	Contract	N-S	E-W	IMP
9	10	4Sx E-3	500		4
1	3	3NT N 6	490		4
4	5	3NT N 4	430		2
10	9	3NT N 4	430		2
6	8	3NT N 4	430		2
8	6	3NT N 3	400		2
3	1	5C S-2		100	-10
5	4	5Cx N-2		300	-12

2

♠Q9532  
♥8  
♦KQJ93  
♣74

♠AJ764  
♥J  
♦7654  
♣532

♠K10  
♥AKQ10943  
♦8  
♣Q98

♠8  
♥7652  
♦A102  
♣AKJ106

Board (2) Av: NS=-30

N-S	E-W	Contract	N-S	E-W	IMP
10	9	4D N 4	130		4
3	1	3D N 4	130		4
4	5	4H E-1	50		2
1	3	4H E-1	50		2
6	8	3H E 3		140	-3
8	6	3H E 3		140	-3
9	10	3H E 3		140	-3
5	4	3H E 3		140	-3

3

♠J83  
♥KJ876  
♦AQ52  
♣6

♠AQ64  
♥A93  
♦7  
♣AQJ109

♠K10752  
♥Q105  
♦K10  
♣843

♠9  
♥42  
♦J98643  
♣K752

Board (3) Av: NS=-640

N-S	E-W	Contract	N-S	E-W	IMP
4	5	6Dx S-3	500		4
3	1	4S E 4	620		1
8	6	4S E 4	620		1
5	4	4S E 5	650		0
6	8	4S E 5	650		0
1	3	4S E 5	650		0
10	9	4S E 5	650		0
9	10	4S E 5	650		0

4

♠72  
♥10843  
♦K1098432  
♣

♠A10  
♥Q9  
♦65  
♣AKJ8753

♠954  
♥762  
♦AQJ7  
♣642

♠KQJ863  
♥AKJ5  
♦  
♣Q109

Board (4) Av: NS=+290

N-S	E-W	Contract	N-S	E-W	IMP
6	8	4H N 6	680		9
10	9	4S S 5	650		8
8	6	4S S 5	650		8
3	1	4H S 4	620		8
5	4	4Cx W-1	200		-3
4	5	3H S 5	200		-3
9	10	3NT W 3		600	-13
1	3	3NT W 3		600	-13

5

♠10  
♥K10987  
♦QJ865  
♣Q7

♠K754  
♥  
♦A743  
♣A10654

♠AQ2  
♥Q6543  
♦9  
♣KJ82

♠J9863  
♥AJ2  
♦K102  
♣93

Board (5) Av: NS=-250

N-S	E-W	Contract	N-S	E-W	IMP
6	8	4S W-2	100		8
5	4	4S W-1	50		7
4	5	3C E 5		150	3
3	1	3C E 6		170	2
8	6	5C W 5		400	-4
9	10	5C E 5		400	-4
1	3	3NT W 3		400	-4
10	9	5C E 6		420	-5

6

♠109  
♥AQ8  
♦AJ10  
♣Q10952

♠63  
♥KJ976  
♦K76  
♣J86

♠QJ742  
♥104  
♦Q432  
♣K3

♠AK85  
♥532  
♦985  
♣A74

Board (6) Av: NS=+340

N-S	E-W	Contract	N-S	E-W	IMP
6	8	2Hx W-4	1100		13
4	5	3NT N 5	460		3
1	3	3NT N 3	400		2
3	1	3NT N 3	400		2
8	6	3NT N 3	400		2
5	4	2NT N 4	180		-4
9	10	2NT N 4	180		-4
10	9	2NT N 3	150		-5

7

♠Q54  
♥AQ98  
♦J  
♣AK963

♠A1082  
♥5  
♦K10854  
♣842

♠K63  
♥7643  
♦96  
♣Q1075

♠J97  
♥KJ102  
♦AQ732  
♣J

Board (7) Av: NS=+230

N-S	E-W	Contract	N-S	E-W	IMP
2	4	4H N 4	620		9
1	5	4H N 4	620		9
9	7	4H N 4	620		9
10	6	4H N 4	620		9
4	2	4H N-1		100	-8
7	9	6H N-2		200	-10
6	10	5H S-2		200	-10
5	1	6H N-3		300	-11

8

♠Q8754  
♥10  
♦K54  
♣9852

♠3  
♥Q872  
♦862  
♣QJ1073

♠AK6  
♥KJ43  
♦Q109  
♣K64

♠J1092  
♥A965  
♦AJ73  
♣A

Board (8) Av: NS=-40

N-S	E-W	Contract	N-S	E-W	IMP
4	2	3S N 4	170		5
5	1	1NT E-1	50		3
10	6	1NT E-1	50		3
2	4	1NT E 1		90	-2
1	5	1NT E 1		90	-2
9	7	1NT E 1		90	-2
7	9	1NT E 1		90	-2
6	10	1NT E 3		150	-3

9

♠J  
♥K1094  
♦AK76  
♣J985

♠Q10754  
♥65  
♦Q3  
♣10763

♠AK63  
♥72  
♦J942  
♣K42

♠982  
♥AQJ83  
♦1085  
♣AQ

Board (9) Av: NS=+470

N-S	E-W	Contract	N-S	E-W	IMP
4	2	4H S 6	480		0
5	1	4H S 6	480		0
10	6	4H S 6	480		0
7	9	4H S 6	480		0
6	10	4H S 6	480		0
1	5	4H S 5	450		-1
2	4	4H S 5	450		-1
9	7	4H S 5	450		-1

10

♠9752  
♥J842  
♦6  
♣K976

♠K64  
♥K3  
♦J954  
♣QJ83

N  
W—|—E  
S

♠AJ3  
♥AQ5  
♦AK1032  
♣A10

♠Q108  
♥10976  
♦Q87  
♣542

11

♠AKQJ62  
♥9762  
♦A106  
♣

♠985  
♥KJ3  
♦K3  
♣Q10982

N  
W—|—E  
S

♠10  
♥Q108  
♦J82  
♣AK7543

♠743  
♥A54  
♦Q9754  
♣J6

12

♠A763  
♥76  
♦J109  
♣KJ42

♠QJ984  
♥54  
♦AK532  
♣A

N  
W—|—E  
S

♠2  
♥A9832  
♦4  
♣Q97653

♠K105  
♥KQJ10  
♦Q876  
♣108

Board (10) Av: NS=-280

N-S	E-W	Contract	N-S	E-W	IMP
5	1	6NT E-1	100		9
1	5	6NT E-1	100		9
10	6	6NT E-1	100		9
4	2	6NT E-1	100		9
6	10	6NT E-1	100		9
7	9	3NT E 5		660	-9
2	4	6NT E 6		1440	-15
9	7	6NT E 6		1440	-15

Board (11) Av: NS=+340

N-S	E-W	Contract	N-S	E-W	IMP
2	4	4S N 6	480		4
5	1	4S N 5	450		3
6	10	4S N 5	450		3
10	6	4S N 5	450		3
1	5	5Cx E-2	300		-1
9	7	3S N 5	200		-4
4	2	3S N 4	170		-5
7	9	4S N-2		100	-10

Board (12) Av: NS=+20

N-S	E-W	Contract	N-S	E-W	IMP
1	5	3D W-4	200		5
10	6	3S W-2	100		2
2	4	3C E-2	100		2
5	1	3C E-2	100		2
4	2	2H E-1	50		1
9	7	2S W 2		110	-4
7	9	2H E 2		110	-4
6	10	3C N-3		300	-8

13

♠62  
♥A63  
♦QJ1052  
♣654

♠KQJ10  
♥K104  
♦74  
♣J1082

N  
W—|—E  
S

♠974  
♥J72  
♦K963  
♣K73

♠A853  
♥Q985  
♦A8  
♣AQ9

14

♠K9876542  
♥9  
♦J93  
♣3

♠QJ  
♥Q6  
♦AK64  
♣AQJ87

N  
W—|—E  
S

♠10  
♥AJ732  
♦872  
♣K1052

♠A3  
♥K10854  
♦Q105  
♣964

15

♠K1093  
♥J94  
♦87  
♣J653

♠A4  
♥62  
♦1094  
♣AKQ874

N  
W—|—E  
S

♠Q8652  
♥Q87  
♦AQ32  
♣10

♠J7  
♥AK1053  
♦KJ65  
♣92

Board (13) Av: NS=+120

N-S	E-W	Contract	N-S	E-W	IMP
10	8	1NT S 2	120		0
5	3	1NT S 2	120		0
2	1	1NT S 2	120		0
6	7	1NT S 2	120		0
7	6	1NT S 2	120		0
8	10	1NT S 2	120		0
1	2	1NT S 1	90		-1
3	5	3NT S-2		200	-8

Board (14) Av: NS=+30

N-S	E-W	Contract	N-S	E-W	IMP
5	3	4S N 4	420		9
3	5	5C W-1	50		1
7	6	5C W-1	50		1
10	8	5C W-1	50		1
2	1	4H E-1	50		1
1	2	3NT W-1	50		1
8	10	4Sx N-1		100	-4
6	7	4C W 4		130	-4

Board (15) Av: NS=+80

N-S	E-W	Contract	N-S	E-W	IMP
6	7	3NT E-3	150		2
8	10	4C W-2	100		1
1	2	3C W-2	100		1
10	8	3C W-2	100		1
3	5	3C W-1	50		-1
7	6	3C W-1	50		-1
2	1	2S E-1	50		-1
5	3	2C W 2		90	-5

16

♠AJ93  
♥43  
♦KQJ7652  
♣K982

♠K982  
♥108  
♦KQ96  
♣1084

N  
W—|—E  
S

♠A1076  
♥Q2  
♦J1052  
♣A93

♠QJ543  
♥K7654  
♦A87  
♣

17

♠A94  
♥AQ76  
♦975  
♣J106

♠K5  
♥8532  
♦KJ3  
♣KQ84

N  
W—|—E  
S

♠8732  
♥J  
♦Q108642  
♣A2

♠QJ106  
♥K1094  
♦A  
♣9753

18

♠1092  
♥AJ654  
♦AQ  
♣AK5

♠QJ3  
♥1073  
♦K73  
♣8632

N  
W—|—E  
S

♠K4  
♥K98  
♦1042  
♣QJ1094

♠A8765  
♥Q2  
♦J9865  
♣7

Board (16) Av: NS=+470

N-S	E-W	Contract	N-S	E-W	IMP
1	2	4H S 7	510		1
7	6	4H S 7	510		1
10	8	4H S 6	480		0
6	7	4H S 6	480		0
3	5	4H S 5	450		-1
5	3	4H S 5	450		-1
8	10	4H S 5	450		-1
2	1	3C N 5	150		-8

Board (17) Av: NS=+120

N-S	E-W	Contract	N-S	E-W	IMP
3	5	3H N 4	170		2
2	1	3H N 3	140		1
5	3	3H N 3	140		1
6	7	3H N 3	140		1
10	8	1H N 3	140		1
8	10	1H N 3	140		1
1	2	Passout			-3
7	6	3D E 3		110	-6

Board (18) Av: NS=+490

N-S	E-W	Contract	N-S	E-W	IMP
8	10	4S S 4	620		4
2	1	4S S 4	620		4
6	7	4S S 4	620		4
5	3	3NT N 3	600		3
1	2	3NT N 3	600		3
7	6	3NT N 3	600		3
3	5	4S S-1		100	-11
10	8	4S S-2		200	-12

19

♠AKQ3  
♥874  
♦K7  
♣J1094

♠10986 ♠752  
♥Q106532 ♥J  
♦82 ♦J109654  
♣5 ♣AK8

N  
W—E  
S

♠J4  
♥AK9  
♦AQ3  
♣Q7632

20

♠AQ74  
♥J  
♦Q62  
♣KQ1092

♠109 ♠KJ8532  
♥AQ10862 ♥53  
♦54 ♦K973  
♣J73 ♣5

N  
W—E  
S

♠6  
♥K974  
♦AJ108  
♣A864

21

♠87  
♥Q1073  
♦763  
♣KQ53

♠AKQ2 ♠9543  
♥J84 ♥A92  
♦Q2 ♦K105  
♣A1097 ♣J42

N  
W—E  
S

♠J106  
♥K65  
♦AJ984  
♣86

Board (19) Av: NS=+460

N-S	E-W	Contract	N-S	E-W	IMP
3	2	3NT S 5	460		0
4	1	3NT S 5	460		0
2	3	3NT S 5	460		0
8	7	3NT S 5	460		0
6	9	3NT S 5	460		0
9	6	3NT S 5	460		0
7	8	3NT S 5	460		0
1	4	3NT S 4	430		-1

Board (20) Av: NS=+630

N-S	E-W	Contract	N-S	E-W	IMP
7	8	3NT S 5	660		1
6	9	3NT S 5	660		1
1	4	3NT S 4	630		0
9	6	3NT S 4	630		0
2	3	3NT N 4	630		0
4	1	3NT N 4	630		0
3	2	3NT S 3	600		-1
8	7	3NT S 3	600		-1

Board (21) Av: NS=-10

N-S	E-W	Contract	N-S	E-W	IMP
3	2	4S W-2	100		3
4	1	4S W-2	100		3
2	3	4S W-1	50		2
7	8	4S W-1	50		2
6	9	4S W-1	50		2
1	4	1NT W 2	120		-3
8	7	2S W 4	170		-4
9	6	4S W 4	420		-9

22

♠KQJ9843  
♥Q2  
♦A6  
♣42

♠1072 ♠  
♥9 ♥KJ876543  
♦85 ♦Q1042  
♣AKQ9873 ♣J

N  
W—E  
S

♠A65  
♥A10  
♦KJ973  
♣1065

23

♠987  
♥A98652  
♦  
♣K862

♠106542 ♠K3  
♥J ♥KQ73  
♦Q9763 ♦AJ42  
♣J7 ♣Q94

N  
W—E  
S

♠AQJ  
♥104  
♦K1085  
♣A1053

24

♠J82  
♥Q1053  
♦Q542  
♣K7

♠10 ♠A95  
♥K62 ♥A84  
♦AKJ107 ♦983  
♣J1083 ♣AQ65

N  
W—E  
S

♠KQ7643  
♥J97  
♦6  
♣942

Board (22) Av: NS=+460

N-S	E-W	Contract	N-S	E-W	IMP
3	2	6S N 6	980		11
7	8	5Hx E-2	500		1
9	6	5S N 5	450		0
2	3	4S N 5	450		0
1	4	4S N 5	450		0
4	1	4S N 5	450		0
8	7	4S N 5	450		0
6	9	4S N 5	450		0

Board (23) Av: NS=+160

N-S	E-W	Contract	N-S	E-W	IMP
2	3	2S E-4	400		6
8	7	3H N 4	170		0
4	1	2H N 4	170		0
3	2	2H N 4	170		0
7	8	2H N 4	170		0
9	6	2H N 3	140		-1
6	9	2H N 3	140		-1
1	4	2H N 3	140		-1

Board (24) Av: NS=-420

N-S	E-W	Contract	N-S	E-W	IMP
4	1	3NT E-2	100		11
1	4	3NT E 3	400		1
8	7	3NT E 3	400		1
3	2	3NT E 3	400		1
6	9	3NT E 4	430		0
9	6	3NT E 4	430		0
7	8	3NT E 4	430		0
2	3	3NT E 5	460		-1

25

♠J6  
♥A53  
♦KQJ7  
♣Q1095

♠AKQ4 ♠9832  
♥K92 ♥J8  
♦A85 ♦10963  
♣AJ8 ♣743

N  
W—E  
S

♠1075  
♥Q10764  
♦42  
♣K62

26

♠KQ  
♥KQ54  
♦J10  
♣KQ982

♠86 ♠J10952  
♥A7 ♥J32  
♦9876 ♦Q542  
♣J10643 ♣A

N  
W—E  
S

♠A743  
♥10986  
♦AK3  
♣75

27

♠J2  
♥Q1098632  
♦J105  
♣7

♠KQ65 ♠743  
♥5 ♥AK74  
♦Q87 ♦9642  
♣AQ1054 ♣KJ

N  
W—E  
S

♠A1098  
♥J  
♦AK3  
♣98632

Board (25) Av: NS=+40

N-S	E-W	Contract	N-S	E-W	IMP
3	4	3S E-2	200		4
4	3	2H S 2	110		2
8	9	3S E-1	100		2
5	2	2S E-1	100		2
10	7	2NT W-1	100		2
7	10	1NT W 1	90		-4
9	8	2S E 2	110		-4
2	5	2NT W 2	120		-4

Board (26) Av: NS=+500

N-S	E-W	Contract	N-S	E-W	IMP
2	5	4H N 4	620		3
5	2	4H N 4	620		3
3	4	4H N 4	620		3
9	8	4H N 4	620		3
7	10	4H N 4	620		3
10	7	4H N 4	620		3
8	9	4H N-1	100		-12
4	3	4H N-1	100		-12

Board (27) Av: NS=-60

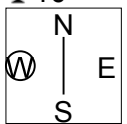
N-S	E-W	Contract	N-S	E-W	IMP
9	8	2H N 2	110		5
5	2	2H N 2	110		5
7	10	2H N 2	110		5
4	3	2H N-1	50		0
3	4	2H N-1	50		0
2	5	2H N-1	50		0
10	7	3NT E 3	400		-8
8	9	3NT W 4	430		-9

大阪府知事杯 OPEN TEAMS Session 1 Flight C 2014年8月31日(日)

28

♠ Q6432  
♥ Q2  
♦ AKJ84  
♣ 10

♠ KJ  
♥ AKJ103  
♦ 3  
♣ K9543



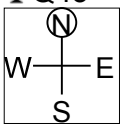
♠ 109  
♥ 654  
♦ Q92  
♣ AQ872

♠ A875  
♥ 987  
♦ 10765  
♣ J6

29

♠ K72  
♥ J83  
♦ J742  
♣ Q43

♠ J853  
♥ K976  
♦ 965  
♣ 108



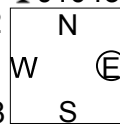
♠ A964  
♥ AQ542  
♦ Q  
♣ A96

♠ Q10  
♥ 10  
♦ AK1083  
♣ KJ752

30

♠ AJ53  
♥ AK3  
♦ 92  
♣ J1043

♠ Q862  
♥ J107  
♦ J4  
♣ KQ98



♠ K1094  
♥ Q86  
♦ 10873  
♣ A2

♠ 7  
♥ 9542  
♦ AKQ65  
♣ 765

Board (28) Av: NS=-230

N-S	E-W	Contract	N-S	E-W	IMP
3	4	5H W-1	50		7
8	9	5H W-1	50		7
10	7	5H W-1	50		7
2	5	3S N-1		100	4
4	3	4H W 5		450	-6
7	10	4H W 5		450	-6
9	8	4H W 5		450	-6
5	2	4H W 5		450	-6

Board (29) Av: NS=-40

N-S	E-W	Contract	N-S	E-W	IMP
10	7	5H E-2	200		6
2	5	4H E-2	200		6
4	3	3H E-1	100		4
9	8	5D N-1		100	-2
7	10	4D S-1		100	-2
8	9	3H E 3		140	-3
5	2	5Dx N-1		200	-4
3	4	5Dx N-1		200	-4

Board (30) Av: NS=+90

N-S	E-W	Contract	N-S	E-W	IMP
10	7	3Sx E-2	300		5
2	5	1NT S 1	90		0
3	4	1NT S 1	90		0
9	8	1NT S 1	90		0
7	10	1NT S 1	90		0
8	9	1NT S 1	90		0
5	2	1NT N 1	90		0
4	3	3D S-1		50	-4

大阪府知事杯 OPEN TEAMS Session 2 Flight C 2014年8月31日(日)

1

♠AQ4  
♥KQ2  
♦AJ4  
♣AJ105

♠K73  
♥J106  
♦753  
♣Q987

♠J1096  
♥754  
♦Q9862  
♣2

♠852  
♥A983  
♦K10  
♣K643

W N E S

Board (1) Av: NS=+490

N-S	E-W	Contract	N-S	E-W	IMP
5	7	3NT N 7	520		1
6	1	3NT N 6	490		0
10	2	3NT N 6	490		0
2	10	3NT N 6	490		0
1	6	3NT N 6	490		0
3	9	3NT N 6	490		0
9	3	3NT N 6	490		0
7	5	3NT N 6	490		0
8	4	3NT N 5	460		-1
4	8	3NT N 5	460		-1

2

♠KQ4  
♥AQJ9872  
♦  
♣J74

♠J7653  
♥653  
♦A95  
♣85

♠109  
♥K10  
♦876432  
♣AQ10

♠A82  
♥4  
♦KQJ10  
♣K9632

W N E S

Board (2) Av: NS=+640

N-S	E-W	Contract	N-S	E-W	IMP
2	10	3NT S 5	660		1
5	7	4H N 5	650		0
3	9	4H N 5	650		0
10	2	4H N 5	650		0
9	3	4H N 5	650		0
8	4	4H N 5	650		0
4	8	4H N 5	650		0
1	6	4H N 4	620		-1
6	1	4H N 4	620		-1
7	5	4H N 4	620		-1

3

♠KJ86  
♥J974  
♦J  
♣A943

♠Q104  
♥10  
♦Q987532  
♣QJ

♠A973  
♥AK53  
♦AK  
♣K102

♠52  
♥Q862  
♦1064  
♣8765

W N E S

Board (3) Av: NS=-660

N-S	E-W	Contract	N-S	E-W	IMP
6	1	3NT E-1	100		13
3	9	3NT E 3	600		2
4	8	3NT E 3	600		2
5	7	3NT E 5	660		0
2	10	3NT E 6	690		-1
1	6	3NT E 6	690		-1
10	2	3NT E 6	690		-1
7	5	3NT E 6	690		-1
9	3	3NT E 6	690		-1
8	4	6D E 6	1370		-12

4

♠J1075  
♥J9  
♦KJ9  
♣KJ108

♠A942  
♥742  
♦A3  
♣7632

♠K63  
♥AK863  
♦102  
♣Q94

♠Q8  
♥Q105  
♦Q87654  
♣A5

W N E S

Board (4) Av: NS=+70

N-S	E-W	Contract	N-S	E-W	IMP
10	2	4Hx E-2	500		10
1	6	3H E-2	200		4
2	10	3H E-2	200		4
8	4	3H E-2	200		4
3	9	3H E-2	200		4
4	8	2H E-1	100		1
5	7	4D S-1	100		-5
6	1	3D S-1	100		-5
9	3	2H E 2	110		-5
7	5	2H E 2	110		-5

5

♠AQ109543  
♥A63  
♦AJ9  
♣

♠2  
♥Q1092  
♦108765  
♣K43

♠K76  
♥K754  
♦K43  
♣1072

♠J8  
♥J8  
♦Q2  
♣AQJ9865

W N E S

Board (5) Av: NS=+640

N-S	E-W	Contract	N-S	E-W	IMP
10	2	4S N 5	650		0
1	6	4S N 5	650		0
2	10	4S N 5	650		0
3	9	4S N 5	650		0
4	8	4S N 5	650		0
8	4	4S N 5	650		0
7	5	4S N 4	620		-1
9	3	4S N 4	620		-1
5	7	4S N 4	620		-1
6	1	5S N-1	100		-12

6

♠Q53  
♥5  
♦A654  
♣QJ1074

♠K1042  
♥KQ94  
♦7  
♣A632

♠J87  
♥A763  
♦KJ1082  
♣8

♠A96  
♥J1082  
♦Q93  
♣K95

W N E S

Board (6) Av: NS=-90

N-S	E-W	Contract	N-S	E-W	IMP
1	6	4H E-2	200		7
8	4	4H E-2	200		7
3	9	2S S-2	100		0
10	2	2H E 2	110		-1
2	10	2H E 3	140		-2
9	3	2H E 3	140		-2
4	8	2H E 3	140		-2
6	1	2H E 3	140		-2
7	5	2H E 3	140		-2
5	7	2H E 4	170		-2

7

♠2  
♥KQJ654  
♦98743  
♣2

♠AKQ1098  
♥9  
♦1065  
♣AKJ

♠J6  
♥108732  
♦Q2  
♣Q983

♠7543  
♥A  
♦AKJ  
♣107654

W N E S

Board (7) Av: NS=-70

N-S	E-W	Contract	N-S	E-W	IMP
10	4	3Hx N 3	730		13
1	8	2H N 4	170		6
6	3	4S W-1	100		5
8	1	3H N-1	100		-1
3	6	3S W 3	140		-2
4	10	3S W 3	140		-2
9	5	3S W 3	140		-2
2	7	2S W 3	140		-2
5	9	2S W 3	140		-2
7	2	3NT E 3	600		-11

8

♠Q10642  
♥1054  
♦Q2  
♣Q74

♠AJ97  
♥AJ63  
♦J9543  
♣

♠K53  
♥KQ87  
♦A  
♣KJ832

♠8  
♥92  
♦K10876  
♣A10965

W N E S

Board (8) Av: NS=-160

N-S	E-W	Contract	N-S	E-W	IMP
9	5	6H E-3	150		7
5	9	6H W-2	100		6
7	2	6H E-2	100		6
2	7	6H W-1	50		5
8	1	2NT W 2	120		1
1	8	2NT W 2	120		1
6	3	4H E 4	420		-6
10	4	4H E 4	420		-6
3	6	4H W 5	450		-7
4	10	3Cx N-4	800		-12

9

♠8743  
♥1042  
♦K86  
♣AJ8

♠AJ62  
♥Q85  
♦Q975  
♣72

♠Q95  
♥6  
♦AJ1043  
♣Q543

♠K10  
♥AKJ973  
♦2  
♣K1096

W N E S

Board (9) Av: NS=+40

N-S	E-W	Contract	N-S	E-W	IMP
1	8	4H S 4	420		9
6	3	4H S 4	420		9
4	10	2H S 2	110		2
9	5	2H S 2	110		2
8	1	4H S-1	50		-3
2	7	4H S-1	50		-3
7	2	3H S-1	50		-3
10	4	3H S-1	50		-3
5	9	4H S-2	100		-4
3	6	4H S-2	100		-4

10

♠92  
♥A86  
♦QJ105  
♣KQ64

♠Q10  
♥Q5  
♦A872  
♣AJ1093

N  
W—|—E  
S

♠KJ74  
♥K972  
♦43  
♣875

♠A8653  
♥J1043  
♦K96  
♣2

11

♠A98762  
♥J93  
♦105  
♣J4

♠KJ54  
♥Q10  
♦Q98  
♣Q975

N  
W—|—E  
S

♠103  
♥K764  
♦763  
♣AK86

♠Q  
♥A852  
♦AKJ42  
♣1032

12

♠104  
♥Q104  
♦1054  
♣A10962

♠KJ65  
♥85  
♦KJ  
♣KQ873

N  
W—|—E  
S

♠AQ873  
♥KJ32  
♦Q73  
♣4

♠92  
♥A976  
♦A9862  
♣J5

Board (10) Av: NS=+20

N-S	E-W	Contract	N-S	E-W	IMP
1	8	2D	W-2	200	5
10	4	3C	W-1	100	2
7	2	1NT	W-1	100	2
4	10	1NT	W-1	100	2
8	1	2D	S 2	90	2
6	3	1NT	N 1	90	2
9	5	1NT	W 1	90	-3
2	7	2S	S-1	100	-3
5	9	2NT	N-1	100	-3
3	6	2S	S-2	200	-6

Board (11) Av: NS=+10

N-S	E-W	Contract	N-S	E-W	IMP
9	5	2S	N 3	140	4
8	1	2S	N 2	110	3
3	6	2S	N 2	110	3
5	9	2NT	W-2	100	3
7	2	3D	S-1	50	-2
2	7	2S	N-1	50	-2
1	8	2S	N-1	50	-2
10	4	2S	N-1	50	-2
4	10	2S	N-1	50	-2
6	3	3D	S-3	150	-4

Board (12) Av: NS=-420

N-S	E-W	Contract	N-S	E-W	IMP
1	8	4S	E 4	420	0
8	1	4S	E 4	420	0
2	7	4S	E 4	420	0
7	2	4S	E 4	420	0
3	6	4S	E 4	420	0
6	3	4S	E 4	420	0
4	10	4S	E 4	420	0
10	4	4S	E 4	420	0
5	9	4S	E 4	420	0
9	5	4S	E 4	420	0

13

♠83  
♥J7654  
♦1087  
♣1062

♠Q105  
♥Q103  
♦AQJ92  
♣87

N  
W—|—E  
S

♠A62  
♥AK98  
♦K3  
♣AJ93

♠KJ974  
♥2  
♦654  
♣KQ54

14

♠9742  
♥Q82  
♦A  
♣J9652

♠K108  
♥J75  
♦7432  
♣KQ8

N  
W—|—E  
S

♠QJ65  
♥A1064  
♦KQ  
♣A43

♠A3  
♥K93  
♦J109865  
♣107

15

♠J72  
♥AQ4  
♦KJ32  
♣Q102

♠KQ106  
♥J10  
♦10984  
♣A63

N  
W—|—E  
S

♠A9843  
♥9873  
♦Q7  
♣KJ

♠5  
♥K652  
♦A65  
♣98754

Board (13) Av: NS=-710

N-S	E-W	Contract	N-S	E-W	IMP
7	4	6C	E-4	400	15
1	10	2NT	E 4	180	11
2	9	4NT	W 5	660	2
5	6	3NT	E 5	660	2
10	1	3NT	E 6	690	1
6	5	3NT	E 6	690	1
4	7	3NT	E 6	690	1
8	3	3NT	E 6	690	1
9	2	6NT	E 6	1440	-12
3	8	6NT	E 6	1440	-12

Board (14) Av: NS=+80

N-S	E-W	Contract	N-S	E-W	IMP
7	4	3NT	E-3	150	2
10	1	3NT	E-3	150	2
1	10	3NT	E-2	100	1
9	2	3NT	E-2	100	1
2	9	3NT	E-1	50	-1
3	8	3NT	E-1	50	-1
4	7	3NT	E-1	50	-1
6	5	3NT	E-1	50	-1
5	6	3NT	E-1	50	-1
8	3	2NT	E 2	120	-5

Board (15) Av: NS=-150

N-S	E-W	Contract	N-S	E-W	IMP
10	1	3S	E-1	50	5
9	2	2S	W 3	140	0
1	10	2S	E 3	140	0
3	8	2S	E 3	140	0
7	4	2S	E 3	140	0
4	7	2S	E 3	140	0
5	6	2S	E 3	140	0
2	9	2S	E 4	170	-1
8	3	2S	E 4	170	-1
6	5	2S	E 4	170	-1

16

♠Q82  
♥852  
♦AJ962  
♣85

♠43  
♥K964  
♦83  
♣J10943

N  
W—|—E  
S

♠AK6  
♥QJ7  
♦KQ1074  
♣62

♠J10975  
♥A103  
♦5  
♣AKQ7

17

♠J9742  
♥Q7  
♦764  
♣1083

♠AK3  
♥K1042  
♦10532  
♣AQ

N  
W—|—E  
S

♠Q865  
♥J9865  
♦AJ  
♣95

♠10  
♥A3  
♦KQ98  
♣KJ7642

18

♠A4  
♥A953  
♦A865  
♣862

♠9853  
♥QJ  
♦J9  
♣AKJ103

N  
W—|—E  
S

♠KQ106  
♥104  
♦KQ732  
♣74

♠J72  
♥K8762  
♦104  
♣Q95

Board (16) Av: NS=+160

N-S	E-W	Contract	N-S	E-W	IMP
4	7	2NT	E-3	300	4
7	4	1NT	E-2	200	1
1	10	1NT	E-2	200	1
6	5	1NT	E-2	200	1
8	3	1NT	E-2	200	1
2	9	2S	S 3	140	-1
3	8	2S	S 2	110	-2
10	1	2S	S 2	110	-2
5	6	2S	S 2	110	-2
9	2	1NT	E-1	100	-2

Board (17) Av: NS=-440

N-S	E-W	Contract	N-S	E-W	IMP
3	8	4H	W 4	420	1
5	6	4H	W 4	420	1
8	3	4H	W 4	420	1
9	2	4H	W 4	420	1
7	4	4H	W 4	420	1
2	9	4H	W 5	450	0
1	10	4H	W 5	450	0
10	1	4H	W 5	450	0
6	5	4H	W 5	450	0
4	7	4H	W 5	450	0

Board (18) Av: NS=-90

N-S	E-W	Contract	N-S	E-W	IMP
5	6	4S	E-1	50	4
4	7	3S	W-1	50	4
3	8	3S	E-1	50	4
8	3	3H	S-1	100	0
1	10	3S	E 3	140	-2
9	2	3S	E 3	140	-2
2	9	3S	E 3	140	-2
6	5	3S	E 3	140	-2
10	1	3S	E 3	140	-2
7	4	2S	E 3	140	-2

19

♠5  
♥A872  
♦QJ7632  
♣72

♠AK9632  
♥Q103  
♦10963  
♣10963

N  
W—E  
S

♠J108  
♥5  
♦10984  
♣AK854

♠Q74  
♥KJ964  
♦AK5  
♣QJ

20

♠6  
♥AK83  
♦J1076  
♣10975

♠A432  
♥9742  
♦A2  
♣AJ4

N  
W—E  
S

♠KJ10  
♥QJ  
♦K84  
♣K8632

♠Q9875  
♥1065  
♦Q953  
♣Q

21

♠8762  
♥AJ93  
♦J93  
♣62

♠Q10  
♥KQ4  
♦AK875  
♣1073

N  
W—E  
S

♠J93  
♥1065  
♦106  
♣AQJ85

♠AK54  
♥872  
♦Q42  
♣K94

Board (19) Av: NS=-450

N-S	E-W	Contract	N-S	E-W	IMP
1	7	3H S 3	140		11
5	8	4H S-1	50		9
6	2	5H S-2	100		8
3	10	3S W 5	200		6
4	9	5Hx S-2	300		4
10	3	4S W 5	650		-5
7	1	4S W 5	650		-5
9	4	4S W 5	650		-5
8	5	4Sx W 5	990		-11
2	6	4Sx W 6	1190		-12

Board (20) Av: NS=-320

N-S	E-W	Contract	N-S	E-W	IMP
3	10	3NT W-2	200		11
10	3	3NT W-2	200		11
9	4	3NT E-2	200		11
4	9	4C W-1	100		9
7	1	3NT W 3	600		-7
6	2	3NT W 3	600		-7
8	5	3NT E 3	600		-7
5	8	3NT E 3	600		-7
2	6	3NT E 4	630		-7
1	7	3NT E 4	630		-7

Board (21) Av: NS=-10

N-S	E-W	Contract	N-S	E-W	IMP
8	5	2S S 2	110		3
2	6	2S S 2	110		3
4	9	1S S 2	110		3
3	10	1S S 1	80		3
6	2	3D W-1	50		2
10	3	2S S-1	100		-3
7	1	2S S-1	100		-3
1	7	2S S-1	100		-3
9	4	1NT E 2	120		-3
5	8	1NT S-2	200		-5

22

♠62  
♥KJ986  
♦KQ54  
♣K4

♠KQ953  
♥73  
♦1083  
♣QJ6

N  
W—E  
S

♠AJ874  
♥102  
♦7  
♣A9532

♠10  
♥AQ54  
♦AJ962  
♣1087

23

♠108  
♥Q6  
♦K97  
♣KJ10864

♠QJ42  
♥10987  
♦A  
♣Q973

N  
W—E  
S

♠97  
♥AK43  
♦J108653  
♣5

♠AK653  
♥J52  
♦Q42  
♣A2

24

♠QJ  
♥1096542  
♦KQ7  
♣A6

♠9532  
♥QJ3  
♦J942  
♣84

N  
W—E  
S

♠AK764  
♥K  
♦A10853  
♣Q5

♠108  
♥A87  
♦6  
♣KJ109732

Board (22) Av: NS=+310

N-S	E-W	Contract	N-S	E-W	IMP
9	4	5Hx N 5	650		8
8	5	5H N 5	450		4
10	3	5H N 5	450		4
3	10	4H S 5	450		4
6	2	4H N 5	450		4
7	1	4H N 5	450		4
4	9	4Sx W-1	200		-3
1	7	4S W-1	100		-5
5	8	4H N-1	50		-8
2	6	3S S-6	300		-12

Board (23) Av: NS=+30

N-S	E-W	Contract	N-S	E-W	IMP
2	6	3C N 3	110		2
7	1	2S S 2	110		2
1	7	2S S 2	110		2
6	2	2S S 2	110		2
9	4	2S S 2	110		2
10	3	2S S 2	110		2
8	5	3NT N-1	100		-4
4	9	2S S-1	100		-4
5	8	2S S-1	100		-4
3	10	2S S-1	100		-4

Board (24) Av: NS=-140

N-S	E-W	Contract	N-S	E-W	IMP
1	7	4S W-2	100		6
6	2	4S W-1	50		5
7	1	4H N-1	50		3
5	8	4H N-2	100		1
4	9	4H N-2	100		1
10	3	3S E 3	140		0
2	6	5H N-3	150		0
3	10	3S W 5	200		-2
9	4	4S E 5	450		-7
8	5	4S E 5	450		-7

25

♠53  
♥Q10863  
♦A10853  
♣Q

♠AQ109864  
♥K  
♦64  
♣932

N  
W—E  
S

♠J72  
♥A2  
♦KJ2  
♣AJ1084

♠K  
♥J9754  
♦Q97  
♣K765

26

♠976  
♥Q104  
♦KQ83  
♣843

♠K42  
♥KJ3  
♦A7542  
♣72

N  
W—E  
S

♠AQ10  
♥A986  
♦J109  
♣A95

♠J853  
♥752  
♦6  
♣KQJ106

27

♠KQ974  
♥AK  
♦Q98  
♣1064

♠8652  
♥7  
♦K1043  
♣KQ97

N  
W—E  
S

♠J  
♥J8642  
♦AJ652  
♣J8

♠A103  
♥Q10953  
♦7  
♣A532

Board (25) Av: NS=-660

N-S	E-W	Contract	N-S	E-W	IMP
2	8	3H S-1	50		12
6	4	5S W 5	650		0
9	1	4S W 5	650		0
8	2	4S W 5	650		0
5	10	4S W 5	650		0
4	6	4S W 5	650		0
7	3	4S W 5	650		0
10	5	4S W 6	680		-1
3	7	4S W 6	680		-1
1	9	5Hx S-4	800		-4

Board (26) Av: NS=-510

N-S	E-W	Contract	N-S	E-W	IMP
1	9	3NT E-1	100		12
6	4	3NT E-1	100		12
9	1	3NT E 3	600		-3
2	8	3NT E 3	600		-3
8	2	3NT E 3	600		-3
3	7	3NT E 3	600		-3
10	5	3NT E 3	600		-3
4	6	3NT E 3	600		-3
7	3	3NT E 3	600		-3
5	10	3NT E 3	600		-3

Board (27) Av: NS=-40

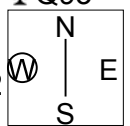
N-S	E-W	Contract	N-S	E-W	IMP
4	6	3S N 3	140		5
3	7	5D E-2	100		4
9	1	4S N-1	50		0
8	2	4S N-1	50		0
5	10	4S N-1	50		0
7	3	4S N-1	50		0
6	4	4S N-1	50		0
1	9	4S N-2	100		-2
10	5	4S N-2	100		-2
2	8	3S N-2	100		-2

大阪府知事杯 OPEN TEAMS Session 2 Flight C 2014年8月31日(日)

28

♠K863  
♥AQ984  
♦8  
♣Q93

♠J97      ♠A104  
♥102      ♥J653  
♦AKJ642      ♦95  
♣AJ      ♣K1054

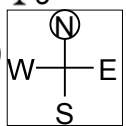


♠Q52  
♥K7  
♦Q1073  
♣8762

29

♠KJ108  
♥32  
♦AQ9863  
♣9

♠763      ♠Q94  
♥AKQJ9      ♥10854  
♦75      ♦K10  
♣AQ4      ♣10876

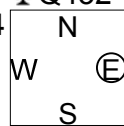


♠A52  
♥76  
♦J42  
♣KJ532

30

♠A2  
♥Q52  
♦10985  
♣Q432

♠J10964      ♠KQ53  
♥106      ♥98743  
♦63      ♦J72  
♣A1085      ♣9



♠87  
♥AKJ  
♦AKQ4  
♣KJ76

Board (28) Av: NS=-110

Board (29) Av: NS=-120

Board (30) Av: NS=+120

N-S	E-W	Contract	N-S	E-W	IMP
7	3	2D W 2		90	1
9	1	2D W 2		90	1
2	8	2D W 2		90	1
1	9	1NT E 1		90	1
5	10	1NT E 1		90	1
6	4	2D W 3		110	0
4	6	2D W 3		110	0
3	7	1NT E 3		150	-1
8	2	2NT W 4		180	-2
10	5	2H N-2		200	-3

N-S	E-W	Contract	N-S	E-W	IMP
1	9	3D S 3	110		6
2	8	3H W-1	100		6
8	2	4D N-1		100	1
4	6	2H W 2	110		0
9	1	3H W 4	170		-2
3	7	3H W 4	170		-2
6	4	3H W 4	170		-2
10	5	2H W 4	170		-2
7	3	4D N-2	200		-2
5	10	3Hx W 3	730		-12

N-S	E-W	Contract	N-S	E-W	IMP
2	8	3NT S 3	400		7
9	1	3NT S 3	400		7
7	3	3NT S 3	400		7
5	10	3NT N 3	400		7
1	9	3NT S-1		50	-5
8	2	3NT S-1		50	-5
3	7	3NT S-1		50	-5
10	5	3NT S-1		50	-5
6	4	3NT S-1		50	-5
4	6	3NT S-1		50	-5