

第19回NRM杯 Session1 Section C 2014年6月21日(土)

1

♠AK10
♥AQ754
♦Q2
♣Q72

♠J86
♥K82
♦10987
♣A65

♠9743
♥106
♦A653
♣843

♠Q52
♥J93
♦KJ4
♣KJ109

Board (1) Av: NS=+440

N-S	E-W	Contract	N-S	E-W	IMP
1	10	4H N 4	420		-1
3	9	3NT N 4	430		0
4	7	3NT N 5	460		1
5	8	4H N 5	450		0
6	2	4H N 5	450		0
16	15	4H N 5	450		0
17	11	4H N 5	450		0
18	14	4H N 4	420		-1
19	12	4H N 4	420		-1
20	13	3NT N 4	430		0

2

♠AJ9
♥J76
♦J108763
♣10

♠K8763
♥A54
♦542
♣52

♠102
♥Q109832
♦A
♣KJ76

♠Q54
♥K
♦KQ9
♣AQ9843

Board (2) Av: NS=+80

N-S	E-W	Contract	N-S	E-W	IMP
1	10	3C S 3	110		1
3	9	3H E-1	50		-1
4	7	3H E-1	50		-1
5	8	3D N 5	150		2
6	2	2H E 2	110		-5
16	15	3C S 4	130		2
17	11	3H E-1	50		-1
18	14	2H E-1	50		-1
19	12	3H E-1	50		-1
20	13	4D N 5	150		2

3

♠975
♥K63
♦A854
♣AKQ

♠6432
♥9742
♦J
♣9752

♠K10
♥Q105
♦Q1032
♣10863

♠AQJ8
♥AJ8
♦K976
♣J4

Board (3) Av: NS=+740

N-S	E-W	Contract	N-S	E-W	IMP
1	10	6NT S 6	990		6
3	9	6NT S 6	990		6
4	7	6NT S 6	990		6
5	8	6NT S 6	990		6
6	2	5NT S 6	490		-6
16	15	3NT S 6	490		-6
17	11	4NT S 6	490		-6
18	14	6NT S 6	990		6
19	12	4NT S 6	490		-6
20	13	6NT S-1	50		-13

4

♠863
♥K632
♦974
♣A93

♠J54
♥QJ
♦Q2
♣J108764

♠AKQ972
♥85
♦10853
♣5

♠10
♥A10974
♦AKJ6
♣KQ2

Board (4) Av: NS=+640

N-S	E-W	Contract	N-S	E-W	IMP
1	10	4H S 5	650		0
3	9	4H S 4	620		-1
4	7	3H S 5	200		-10
5	8	4H S 5	650		0
6	2	5H S 5	650		0
16	15	4H N 5	650		0
17	11	4H N 5	650		0
18	14	4H N 4	620		-1
19	12	4H S 4	620		-1
20	13	4H N 5	650		0

5

♠J4
♥Q106
♦A86
♣98654

♠876
♥AJ
♦Q1042
♣QJ103

♠A52
♥743
♦KJ97
♣K72

♠KQ1093
♥K9852
♦53
♣A

Board (5) Av: NS=+250

N-S	E-W	Contract	N-S	E-W	IMP
1	10	2S S 4	170		-2
3	9	4H S 4	620		9
4	7	2S S 4	170		-2
5	8	2S S 2	110		-4
6	2	3D E-1	50		-5
16	15	4H S 4	620		9
17	11	2S S 3	140		-3
18	14	2S S 3	140		-3
19	12	2S S-1	100		-8
20	13	4H S 4	620		9

6

♠3
♥7643
♦KQ62
♣10986

♠94
♥A9
♦1098
♣KQJ754

♠K1075
♥K1082
♦A74
♣A2

♠AQJ862
♥QJ5
♦J53
♣3

Board (6) Av: NS=-570

N-S	E-W	Contract	N-S	E-W	IMP
1	10	3Sx S-1	100		10
3	9	3NT E 3	600		-1
4	7	3NT E 3	600		-1
5	8	3NT E 4	630		-2
6	2	3NT E 4	630		-2
16	15	2NT E 4	180		9
17	11	3NT E 4	630		-2
18	14	3NT E 5	660		-3
19	12	3NT E 5	660		-3
20	13	3NT E 4	630		-2

7

♠Q3
♥K8543
♦J107
♣A52

♠J109865
♥AJ10
♦5
♣KJ8

♠A7
♥Q96
♦K862
♣9764

♠K42
♥72
♦AQ943
♣Q103

Board (7) Av: NS=-50

N-S	E-W	Contract	N-S	E-W	IMP
1	9	Passout			2
2	10	2S W-2	200		6
3	6	2D S 2	90		4
5	4	2S W 3	140		-3
7	8	2S W 2	110		-2
12	13	2NT S-1	100		-2
15	17	Passout			2
16	14	Passout			2
18	11	2S W 3	140		-3
19	20	3D S-1	100		-2

8

♠73
♥A96
♦K82
♣QJ963

♠A82
♥QJ1032
♦109654
♣

♠J65
♥K8
♦QJ
♣K108742

♠KQ1094
♥754
♦A73
♣A5

Board (8) Av: NS=+60

N-S	E-W	Contract	N-S	E-W	IMP
1	9	2C E-3	150		3
2	10	2NT S 2	120		2
3	6	1NT N 2	120		2
5	4	3H E-1	50		0
7	8	1NT N 3	150		3
12	13	2H W-3	150		3
15	17	2NT N-2	100		-4
16	14	3D W-1	50		0
18	11	3NT N-2	100		-4
19	20	2NT N-3	150		-5

9

♠J
♥A108
♦KQ104
♣KQ843

♠KQ97653
♥K62
♦A8
♣J

♠1042
♥Q9743
♦J76
♣A2

♠A8
♥J5
♦9532
♣109765

Board (9) Av: NS=-10

N-S	E-W	Contract	N-S	E-W	IMP
1	9	4S W-1	100		3
2	10	4S W-1	100		3
3	6	3S W 3	140		-4
5	4	4C N 4	130		4
7	8	4S W-1	100		3
12	13	5C N-1	50		-1
15	17	5Cx N-1	100		-3
16	14	4S W 4	620		-12
18	11	3S W 4	170		-4
19	20	4S W-1	100		3

第19回NRM杯 Session1 Section C 2014年6月21日(土)

10

♠ J65
♥ J10
♦ AK98
♣ K943

♠ K32
♥ K984
♦ 743
♣ 1087

N
W — E
S

♠ AQ1097
♥ 653
♦ Q
♣ AQJ6

♠ 84
♥ AQ72
♦ J10652
♣ 52

11

♠ 92
♥ KQ73
♦ KQJ10
♣ A85

♠ 1064
♥ J108
♦ 654
♣ K762

N
W — E
S

♠ J73
♥ A654
♦ 87
♣ QJ109

♠ AKQ85
♥ 92
♦ A932
♣ 43

12

♠ KJ7
♥ J954
♦ AJ
♣ 10983

♠ A95
♥ K62
♦ Q87
♣ QJ64

N
W — E
S

♠ Q108
♥ 3
♦ 9632
♣ AK752

♠ 6432
♥ AQ1087
♦ K1054
♣

Board (10) Av: NS=-150

N-S	E-W	Contract	N-S	E-W	IMP
1	9	3S	E 3	140	0
2	10	3S	E 3	140	0
3	6	3S	E 3	140	0
5	4	3S	E 3	140	0
7	8	3S	E 4	170	-1
12	13	2S	E 4	170	-1
15	17	3S	E 3	140	0
16	14	2S	E 4	170	-1
18	11	3S	E 3	140	0
19	20	3S	E 4	170	-1

Board (11) Av: NS=+490

N-S	E-W	Contract	N-S	E-W	IMP
1	9	3NT	N 4	430	-2
2	10	6D	N 6	920	10
3	6	6D	N 6	920	10
5	4	3NT	N 4	430	-2
7	8	3NT	N 4	430	-2
12	13	6NT	N-1	50	-11
15	17	3NT	N 4	430	-2
16	14	3NT	N 3	400	-3
18	11	3NT	N 4	430	-2
19	20	3NT	N 4	430	-2

Board (12) Av: NS=+80

N-S	E-W	Contract	N-S	E-W	IMP
1	9	3Hx	S 3	730	12
2	10	3H	S 4	170	3
3	6	3H	S 4	170	3
5	4	1NT	W 1	90	-5
7	8	3C	W-1	50	-1
12	13	3H	S 4	170	3
15	17	2NT	W 2	120	-5
16	14	1NT	W 2	120	-5
18	11	3NT	W-2	100	1
19	20	3H	S 4	170	3

13

♠ AQ103
♥ 854
♦ 1076
♣ K62

♠ 6
♥ AKQ3
♦ KQJ9
♣ A1043

N
W — E
S

♠ KJ975
♥ J1076
♦ A8
♣ 75

♠ 842
♥ 92
♦ 5432
♣ QJ98

14

♠ KJ104
♥ 1096432
♦ J4
♣ 8

♠ A73
♥ J87
♦ A95
♣ KQ96

N
W — E
S

♠ 96
♥ K5
♦ KQ1062
♣ A1072

♠ Q852
♥ AQ
♦ 873
♣ J543

15

♠ Q5
♥ 1076
♦ K952
♣ A943

♠ 764
♥ 432
♦ 10
♣ KQJ752

N
W — E
S

♠ K98
♥ AKQJ
♦ AJ763
♣ 8

♠ AJ1032
♥ 985
♦ Q84
♣ 106

Board (13) Av: NS=-650

N-S	E-W	Contract	N-S	E-W	IMP
1	8	4H	E 5	650	0
3	2	4H	E 6	680	-1
6	4	6H	E 6	1430	-13
7	5	3NT	W 4	630	1
10	9	4H	E 5	650	0
11	19	4H	E 5	650	0
13	16	4H	E 5	650	0
15	14	3NT	W 4	630	1
17	18	4H	E 5	650	0
20	12	3NT	W 4	630	1

Board (14) Av: NS=-430

N-S	E-W	Contract	N-S	E-W	IMP
1	8	3NT	W 4	430	0
3	2	3NT	W 4	430	0
6	4	3NT	W 4	430	0
7	5	3NT	W 4	430	0
10	9	3NT	W 4	430	0
11	19	3NT	E 6	490	-2
13	16	3NT	E 4	430	0
15	14	3NT	W 5	460	-1
17	18	3NT	W 4	430	0
20	12	3NT	W 4	430	0

Board (15) Av: NS=+110

N-S	E-W	Contract	N-S	E-W	IMP
1	8	2NT	W-1	50	-2
3	2	3NT	E-3	150	1
6	4	3NT	W-1	50	-2
7	5	3NT	E-4	200	3
10	9	3NT	W-4	200	3
11	19	4H	E-2	100	0
13	16	3NT	W-1	50	-2
15	14	3NT	W-4	200	3
17	18	3NT	E-2	100	0
20	12	2H	E 2	110	-6

16

♠ 1087
♥ AJ1083
♦ Q96
♣ J2

♠ 643
♥ K752
♦ J73
♣ Q73

N
W — E
S

♠ AQJ
♥ 964
♦ A4
♣ AK854

♠ K952
♥ Q
♦ K10852
♣ 1096

17

♠ QJ
♥ A10763
♦ QJ
♣ 9754

♠ K52
♥ J5
♦ K9875
♣ KQJ

N
W — E
S

♠ 108743
♥ Q92
♦ 43
♣ 1086

♠ A96
♥ K84
♦ A1062
♣ A32

18

♠ QJ109854
♥ 8
♦ 943
♣ AQ

♠ A72
♥ J643
♦ KQJ87
♣ K

N
W — E
S

♠ K6
♥ 52
♦ 652
♣ J98643

♠ 3
♥ AKQ1097
♦ A10
♣ 10752

Board (16) Av: NS=+20

N-S	E-W	Contract	N-S	E-W	IMP
1	8	2NT	E-1	100	2
3	2	3NT	E-4	400	9
6	4	2NT	E 3	150	-5
7	5	3NT	E 3	600	-12
10	9	2NT	E-3	300	7
11	19	2D	S-2	100	-3
13	16	3NT	E-2	200	5
15	14	3NT	E-2	200	5
17	18	5Dx	S-4	800	-13
20	12	3NT	E-2	200	5

Board (17) Av: NS=-50

N-S	E-W	Contract	N-S	E-W	IMP
1	8	4H	S-1	50	0
3	2	4H	S-1	50	0
6	4	4H	S-2	100	-2
7	5	4H	S-1	50	0
10	9	4H	S-1	50	0
11	19	4H	S-1	50	0
13	16	4H	S-1	50	0
15	14	4H	S-1	50	0
17	18	4H	S-1	50	0
20	12	3NT	S 3	400	10

Board (18) Av: NS=+50

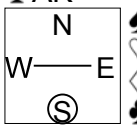
N-S	E-W	Contract	N-S	E-W	IMP
1	8	4H	S-2	200	-6
3	2	4S	N 4	620	11
6	4	2S	N 5	200	4
7	5	3NT	S-3	300	-8
10	9	3NT	S-3	300	-8
11	19	4H	S-1	100	-4
13	16	3H	S 3	140	3
15	14	3S	N 3	140	3
17	18	4S	N-1	100	-4
20	12	4S	N 4	620	11

第19回NRM杯 Session1 Section C 2014年6月21日(土)

19

♠A1094
♥AJ1052
♦Q3
♣AK

♠K8732 ♠Q65
♥Q93 ♥864
♦K92 ♦764
♣42 ♣9876

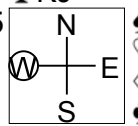


♠J
♥K7
♦AJ1085
♣QJ1053

20

♠A1087
♥K10872
♦62
♣KJ

♠KQJ5 ♠64
♥AQ6 ♥9
♦543 ♦AKQJ108
♣1054 ♣9632

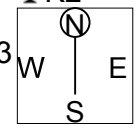


♠932
♥J543
♦97
♣AQ87

21

♠KJ6
♥QJ2
♦AKJ87
♣K2

♠Q52 ♠A984
♥A1098653 ♥74
♦3 ♦Q95
♣A8 ♣QJ74



♠1073
♥K
♦10642
♣109653

Board (19) Av: NS=+770

N-S	E-W	Contract	N-S	E-W	IMP
1	7	6D S 6	920		4
2	9	5D S 6	420		-8
3	10	3NT N 5	460		-7
6	5	6NT N 6	990		6
8	4	6D S 6	920		4
13	19	3NT N 6	490		-7
14	17	6NT N 6	990		6
15	18	6D S 6	920		4
16	12	6H N 6	980		5
20	11	3NT N 5	460		-7

Board (20) Av: NS=-380

N-S	E-W	Contract	N-S	E-W	IMP
1	7	4D E 4	130		6
2	9	5D E-3	300		12
3	10	3H N-1	100		7
6	5	3NT W 5	660		-7
8	4	3NT W 3	600		-6
13	19	3NT W 5	660		-7
14	17	2NT W 4	180		5
15	18	3NT W 3	600		-6
16	12	2D E 3	110		7
20	11	3NT W 5	660		-7

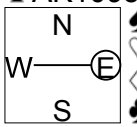
Board (21) Av: NS=-70

N-S	E-W	Contract	N-S	E-W	IMP
1	7	3H W-1	50		3
2	9	2H W 2	110		-1
3	10	3H W 4	170		-3
6	5	3H W 3	140		-2
8	4	2H W 2	110		-1
13	19	2H W 2	110		-1
14	17	3Dx N 3	670		12
15	18	3D N 3	110		5
16	12	2H W 3	140		-2
20	11	1H W 3	140		-2

22

♠Q10
♥K963
♦Q9
♣AK1095

♠A987652 ♠J3
♥75 ♥AQ10842
♦1064 ♦875
♣3 ♣J8

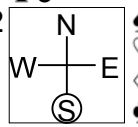


♠K4
♥J
♦AKJ32
♣Q7642

23

♠J8754
♥974
♦KQ82
♣5

♠AKQ962 ♠KQJ82
♥1063 ♥KQJ82
♦J64 ♦A7
♣7 ♣KQJ1032

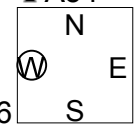


♠103
♥A5
♦10953
♣A9864

24

♠K982
♥Q854
♦K7
♣A54

♠3 ♠A10764
♥1063 ♥KJ
♦AQ9 ♦65432
♣KQ9876 ♣2



♠QJ5
♥A972
♦J108
♣J103

Board (22) Av: NS=+440

N-S	E-W	Contract	N-S	E-W	IMP
1	7	3NT S 5	460		1
2	9	3NT N 5	460		1
3	10	3NT S 5	460		1
6	5	5C S 5	400		-1
8	4	3NT N 5	460		1
13	19	3NT N 4	430		0
14	17	3NT N 5	460		1
15	18	5C S 5	400		-1
16	12	2H E-2	200		-6
20	11	3NT N 5	460		1

Board (23) Av: NS=-330

N-S	E-W	Contract	N-S	E-W	IMP
1	7	5H E-3	300		12
2	9	4H E 4	620		-7
3	10	4H E 4	620		-7
6	5	5H E-2	200		11
8	4	4H E 4	620		-7
13	19	4H E 4	620		-7
14	17	4H E 4	620		-7
15	18	4H E 4	620		-7
16	12	4S W-2	200		11
20	11	5H E-1	100		10

Board (24) Av: NS=+90

N-S	E-W	Contract	N-S	E-W	IMP
1	7	2H S 2	110		1
2	9	3D E-2	100		0
3	10	2H S 2	110		1
6	5	3H N-1	50		-4
8	4	2D E 3	110		-5
13	19	2H S 2	110		1
14	17	2H S 3	140		2
15	18	2H S 2	110		1
16	12	2H N 2	110		1
20	11	2H N 2	110		1

第19回NRM杯 Session 2 Section C 2014年6月21日(土)

1

♠ K10942
♥ AQ965
♦ A
♣ 53

♠ 7
♥ KJ4
♦ KQ1072
♣ J874

♠ 6
♥ 3
♦ J8653
♣ AK10962

W N E S

♠ AQJ853
♥ 10872
♦ 94
♣ Q

Board (1) Av: NS=+490

N-S	E-W	Contract	N-S	E-W	IMP
14	20	6S	N 7	1010	11
5	3	7Dx	W-4	800	7
19	17	5Hx	N 5	650	4
11	12	5S	N 6	480	0
18	16	5S	N 6	480	0
10	4	5S	S 5	450	-1
1	2	5S	N 5	450	-1
15	13	6Dx	W-2	300	-5
8	6	5Dx	W-2	300	-5
7	9	5S	N-1	50	-11

2

♠ J93
♥ K43
♦ Q8643
♣ A5

♠ K1052
♥ J5
♦ 97
♣ Q10632

♠ A7
♥ AQ109
♦ J1052
♣ J97

W N E S

♠ Q864
♥ 8762
♦ AK
♣ K84

Board (2) Av: NS=-140

N-S	E-W	Contract	N-S	E-W	IMP
1	2	1NT	N 1	90	6
14	20	2NT	N-1	100	1
11	12	1NT	N-1	100	1
5	3	1NT	N-1	100	1
15	13	1NT	E 3	150	0
7	9	1NT	E 3	150	0
8	6	1NT	E 3	150	0
18	16	1NT	E 3	150	0
19	17	1NT	N-2	200	-2
10	4	1NT	E 6	240	-3

3

♠ KJ10642
♥ 65
♦ 765
♣ 75

♠ A
♥ AK83
♦ Q92
♣ KJ863

♠ Q985
♥ Q742
♦ AKJ4
♣ 4

W N E S

♠ 73
♥ J109
♦ 1083
♣ AQ1092

Board (3) Av: NS=-270

N-S	E-W	Contract	N-S	E-W	IMP
8	6	6H	W-1	100	9
1	2	6H	E-1	100	9
11	12	6H	E-1	100	9
7	9	6H	E-1	100	9
18	16	5H	E-1	100	9
14	20	4H	W 4	620	-8
15	13	5H	E 5	650	-9
19	17	5H	E 5	650	-9
10	4	4H	W 5	650	-9
5	3	4H	W 6	680	-9

4

♠ QJ4
♥ J105
♦ AJ654
♣ Q6

♠ 985
♥ KQ964
♦ Q93
♣ 73

♠ K102
♥ 832
♦ K1082
♣ J84

W N E S

♠ A763
♥ A7
♦ 7
♣ AK10952

Board (4) Av: NS=+530

N-S	E-W	Contract	N-S	E-W	IMP
15	13	3NT	N 6	690	4
11	12	3NT	S 5	660	4
18	16	3NT	S 5	660	4
8	6	3NT	S 5	660	4
5	3	3NT	S 5	660	4
1	2	3NT	N 4	630	3
7	9	3NT	N 4	630	3
19	17	3C	S 5	150	-9
10	4	3C	S 5	150	-9
14	20	3C	S 5	150	-9

5

♠ AQ73
♥ 9873
♦ A873
♣ K

♠ 9
♥ AJ6542
♦ J4
♣ A972

♠ 106542
♥ 10
♦ KQ9
♣ J1053

W N E S

♠ KJ8
♥ KQ
♦ 10652
♣ Q864

Board (5) Av: NS=-40

N-S	E-W	Contract	N-S	E-W	IMP
5	3	4Hx	W-2	300	8
7	9	2NT	S 2	120	4
1	2	3D	N 3	110	4
14	20	3H	W-1	50	3
8	6	3NT	S-1	100	-2
15	13	3NT	N-1	100	-2
10	4	3D	N-1	100	-2
18	16	2NT	S-1	100	-2
11	12	4D	N-2	200	-4
19	17	3D	N-2	200	-4

6

♠ AQJ5
♥ Q84
♦ KQ75
♣ 53

♠ 93
♥ A9
♦ J109632
♣ Q87

♠ 7642
♥ 10532
♦ 8
♣ J1042

W N E S

♠ K108
♥ KJ76
♦ A4
♣ AK96

Board (6) Av: NS=+860

N-S	E-W	Contract	N-S	E-W	IMP
11	12	6NT	S 6	990	4
19	17	6NT	S 6	990	4
18	16	6NT	S 6	990	4
15	13	6NT	S 6	990	4
10	4	6NT	S 6	990	4
7	9	6NT	S 6	990	4
8	6	6NT	S 6	990	4
14	20	4NT	S 6	490	-9
1	2	3NT	S 5	460	-9
5	3	6NT	S-2	100	-14

7

♠ AQ10
♥ KQ862
♦ J9
♣ K74

♠ J752
♥ AJ
♦ Q106
♣ A1065

♠ 864
♥ 975
♦ AK87
♣ Q93

W N E S

♠ K93
♥ 1043
♦ 5432
♣ J82

Board (7) Av: NS=+60

N-S	E-W	Contract	N-S	E-W	IMP
7	10	2H	N 2	110	2
18	12	2H	N 2	110	2
19	16	2H	N 2	110	2
11	15	1H	N 2	110	2
13	14	1H	N 2	110	2
17	20	2S	E-1	100	1
8	2	1S	W-1	100	1
1	5	2D	E 2	90	-4
3	4	3H	N-1	100	-4
9	6	2S	W 2	110	-5

8

♠ K95
♥ A753
♦ KQJ
♣ 654

♠ QJ6
♥ 1094
♦ A1053
♣ 987

♠ A10832
♥ Q6
♦ 64
♣ KJ103

W N E S

♠ 74
♥ KJ82
♦ 9872
♣ AQ2

Board (8) Av: NS=+140

N-S	E-W	Contract	N-S	E-W	IMP
8	2	4H	N 4	420	7
18	12	3H	N 4	170	1
19	16	3H	N 4	170	1
1	5	3H	N 4	170	1
3	4	3H	N 4	170	1
7	10	3H	N 4	170	1
13	14	3H	N 3	140	0
9	6	3S	E-1	50	-3
11	15	3S	E-1	50	-3
17	20	3S	E-1	50	-3

9

♠ K98
♥ AK532
♦ J73
♣ 108

♠ 5
♥ J64
♦ AKQ854
♣ K97

♠ J7632
♥ 9
♦ 1062
♣ AQJ3

W N E S

♠ AQ104
♥ Q1087
♦ 9
♣ 6542

Board (9) Av: NS=-100

N-S	E-W	Contract	N-S	E-W	IMP
7	10	3H	N 4	170	7
8	2	3H	N 4	170	7
9	6	3H	N 4	170	7
19	16	2H	N 4	170	7
3	4	2H	N 4	170	7
17	20	4D	W 5	150	-2
11	15	4D	W 5	150	-2
1	5	5D	W 5	600	-11
13	14	5D	W 5	600	-11
18	12	5Dx	W 5	750	-12

10

♠ J
♥ J86432
♦ 1085
♣ 1085

♠ AKQ86
♥ Q
♦ KQ7
♣ QJ62

N
W — E
S

♠ 95432
♥ 10
♦ A943
♣ 743

♠ 107
♥ AK975
♦ J62
♣ AK9

11

♠ KQ87
♥ J109
♦ K
♣ Q10632

♠ 954
♥ Q65
♦ 106543
♣ J5

N
W — E
S

♠ J62
♥ AK82
♦ 98
♣ 9874

♠ A103
♥ 743
♦ AQJ72
♣ AK

12

♠ 972
♥ A985
♦ Q4
♣ AK98

♠ AK85
♥ 4
♦ AJ87
♣ 7654

N
W — E
S

♠ J103
♥ KJ632
♦ 9652
♣ J

♠ Q64
♥ Q107
♦ K103
♣ Q1032

Board (10) Av: NS=-610

N-S	E-W	Contract	N-S	E-W	IMP
11	15	3S W 4	170	170	10
17	20	2S W 4	170	170	10
13	14	4S W 4	620	620	0
19	16	4S E 4	620	620	0
9	6	4S E 4	620	620	0
7	10	4S E 4	620	620	0
8	2	4S E 4	620	620	0
18	12	4Sx W 4	790	790	-5
1	5	5Hx S-3	800	800	-5
3	4	5Hx S-3	800	800	-5

Board (11) Av: NS=+490

N-S	E-W	Contract	N-S	E-W	IMP
8	2	3NT S 7	520	520	1
17	20	3NT S 7	520	520	1
13	14	3NT S 7	520	520	1
19	16	3NT S 7	520	520	1
18	12	3NT S 7	520	520	1
3	4	3NT S 6	490	490	0
9	6	3NT N 6	490	490	0
1	5	3NT S 4	430	430	-2
11	15	3NT S 4	430	430	-2
7	10	3D S 3	110	110	-9

Board (12) Av: NS=-20

N-S	E-W	Contract	N-S	E-W	IMP
9	6	2H E-2	100	100	3
1	5	2H E-2	100	100	3
13	14	2H E-1	50	50	2
18	12	1NT E-1	50	50	2
19	16	1NT E-1	50	50	2
7	10	3C S-1	100	100	-2
17	20	2S W 2	110	110	-3
3	4	2D W 3	110	110	-3
11	15	2D W 3	110	110	-3
8	2	2D W 4	130	130	-3

13

♠ 8
♥ 852
♦ 865
♣ K107652

♠ AKJ3
♥ A73
♦ Q
♣ QJ983

N
W — E
S

♠ 7652
♥ KQJ6
♦ K974
♣ 4

♠ Q1094
♥ 1094
♦ AJ1032
♣ A

14

♠ K3
♥ J107
♦ J532
♣ QJ104

♠ AJ954
♥
♦ KQ1084
♣ 875

N
W — E
S

♠ Q1087
♥ AKQ
♦ A97
♣ A92

♠ 62
♥ 9865432
♦ 6
♣ K63

15

♠ 8
♥ AK5
♦ 9754
♣ J9864

♠ Q109542
♥ J
♦ 108
♣ AK103

N
W — E
S

♠ AK763
♥ Q10963
♦ AQ
♣ Q

♠ J
♥ 8742
♦ KJ632
♣ 752

Board (13) Av: NS=-180

N-S	E-W	Contract	N-S	E-W	IMP
18	13	4H E-4	400	400	11
16	11	3H E-2	200	200	9
10	5	4H E-1	100	100	7
20	15	1H E 1	80	80	3
1	6	2H E 2	110	110	2
2	7	2H E 3	140	140	1
17	12	2S W 5	200	200	-1
4	9	3NT E 3	600	600	-9
3	8	4H E 4	620	620	-10
14	19	4H E 4	620	620	-10

Board (14) Av: NS=-610

N-S	E-W	Contract	N-S	E-W	IMP
16	11	4S W 6	480	480	4
14	19	4S W 6	480	480	4
18	13	4S W 6	480	480	4
17	12	4S W 6	480	480	4
20	15	4S W 6	480	480	4
10	5	4S W 6	480	480	4
4	9	4S W 6	480	480	4
1	6	6S W 6	980	980	-9
3	8	6S W 6	980	980	-9
2	7	6S W 6	980	980	-9

Board (15) Av: NS=-610

N-S	E-W	Contract	N-S	E-W	IMP
17	12	5S W 6	480	480	4
20	15	5S W 6	480	480	4
2	7	4S W 6	480	480	4
16	11	4S E 6	480	480	4
1	6	4S E 6	480	480	4
14	19	4S E 6	480	480	4
10	5	4S E 6	480	480	4
3	8	6S W 6	980	980	-9
18	13	6S W 6	980	980	-9
4	9	6S W 6	980	980	-9

16

♠ AK43
♥ Q6
♦ J10542
♣ J9

♠ Q76
♥ A82
♦ 87
♣ AKQ76

N
W — E
S

♠ 1095
♥ KJ93
♦ AQ
♣ 8542

♠ J82
♥ 10754
♦ K963
♣ 103

17

♠ KJ2
♥ KJ932
♦ K108
♣ 83

♠ 10985
♥ A4
♦ J75
♣ KJ104

N
W — E
S

♠ 76
♥ 106
♦ AQ9
♣ AQ9652

♠ AQ43
♥ Q875
♦ 6432
♣ 7

18

♠ J
♥ 942
♦ J10542
♣ J983

♠ K84
♥ K8753
♦ K63
♣ 104

N
W — E
S

♠ 10965
♥ Q10
♦ 97
♣ KQ765

♠ AQ732
♥ AJ6
♦ AQ8
♣ A2

Board (16) Av: NS=-620

N-S	E-W	Contract	N-S	E-W	IMP
20	15	3NT W 3	600	600	1
16	11	3NT W 3	600	600	1
17	12	3NT W 3	600	600	1
1	6	3NT W 3	600	600	1
3	8	3NT W 3	600	600	1
10	5	3NT W 4	630	630	0
2	7	3NT W 4	630	630	0
4	9	3NT W 4	630	630	0
14	19	3NT W 4	630	630	0
18	13	3NT W 5	660	660	-1

Board (17) Av: NS=+70

N-S	E-W	Contract	N-S	E-W	IMP
1	6	3H N 4	170	170	3
10	5	3H N 3	140	140	2
17	12	3H N 3	140	140	2
3	8	3H N 3	140	140	2
14	19	5C E-2	100	100	1
20	15	5C E-1	50	50	-1
2	7	4C E-1	50	50	-1
18	13	5H N-1	50	50	-3
16	11	4H N-1	50	50	-3
4	9	4C E 4	130	130	-5

Board (18) Av: NS=+70

N-S	E-W	Contract	N-S	E-W	IMP
4	9	2NT S 3	150	150	2
18	13	2NT S 3	150	150	2
10	5	1S S 3	140	140	2
1	6	1S S 3	140	140	2
17	12	2NT S 2	120	120	2
14	19	2NT S 2	120	120	2
16	11	2NT S 2	120	120	2
20	15	2NT S-1	100	100	-5
3	8	2NT S-1	100	100	-5
2	7	2NT S-2	200	200	-7

19

♠K
♥6
♦KQ1063
♣A98763

♠1092
♥Q53
♦J982
♣1042

N
W—E
S

♠AJ54
♥AJ108
♦4
♣KQJ5

♠Q8763
♥K9742
♦A75
♣

Board (19) Av: NS=+30

N-S	E-W	Contract	N-S	E-W	IMP
5	9	3D N 4	130		3
1	3	3D N 4	130		3
13	11	2D N 4	130		3
2	4	2NT N 2	120		3
18	20	2D N 3	110		2
14	12	4D N-1		50	-2
6	7	3D N-1		50	-2
19	15	2NT N-1		50	-2
16	17	1C E 1		70	-3
10	8	3NT S-2		100	-4

20

♠K6542
♥J10
♦J84
♣873

♠J87
♥AQ8654
♦J1062
♣

N
W—E
S

♠AQ103
♥973
♦Q1063
♣K4

♠9
♥K2
♦AK9752
♣AQ95

Board (20) Av: NS=-190

N-S	E-W	Contract	N-S	E-W	IMP
6	7	3D S 3	110		7
19	15	3D S-1		100	3
5	9	3D S-1		100	3
10	8	3D S-1		100	3
1	3	4D S-2		200	0
2	4	4D S-2		200	0
18	20	2H W 5		200	0
16	17	2H W 5		200	0
14	12	3NT S-4		400	-5
13	11	4Dx S-3		800	-12

21

♠10652
♥K982
♦A95
♣J10

♠4
♥A10653
♦J83
♣A732

N
W—E
S

♠A73
♥J4
♦KQ42
♣KQ85

♠KQJ98
♥Q7
♦1076
♣964

Board (21) Av: NS=-190

N-S	E-W	Contract	N-S	E-W	IMP
13	11	3NT E-1		50	6
14	12	3NT E-1		50	6
1	3	3NT E-1		50	6
10	8	2NT E 2		120	2
6	7	2NT E 2		120	2
5	9	2NT E 3		150	1
19	15	3NT E 3		400	-5
16	17	3NT E 3		400	-5
2	4	3NT E 3		400	-5
18	20	3NT E 4		430	-6

22

♠1098
♥8
♦1087542
♣872

♠A743
♥J43
♦J6
♣KQ94

N
W—E
S

♠J652
♥Q9765
♦Q3
♣J10

♠KQ
♥AK102
♦AK9
♣A653

Board (22) Av: NS=+200

N-S	E-W	Contract	N-S	E-W	IMP
18	20	3NT N 4	430		6
5	9	5D N 5	400		5
16	17	2NT S 5	210		0
19	15	2NT S 4	180		-1
13	11	2NT S 4	180		-1
2	4	2NT S 4	180		-1
6	7	2NT S 4	180		-1
10	8	2NT S 3	150		-2
14	12	2NT S 3	150		-2
1	3	5D S-1		50	-6

23

♠QJ954
♥108
♦A872
♣K4

♠AK
♥7653
♦J94
♣J976

N
W—E
S

♠1082
♥AKQJ94
♦Q6
♣A3

♠763
♥2
♦K1053
♣Q10852

Board (23) Av: NS=-510

N-S	E-W	Contract	N-S	E-W	IMP
13	11	3H W 4		170	8
16	17	3H E 4		170	8
14	12	3H E 5		200	7
2	4	4H W 4		620	-3
19	15	4H E 4		620	-3
5	9	4H E 4		620	-3
1	3	4H E 4		620	-3
10	8	4H E 4		620	-3
6	7	4H E 4		620	-3
18	20	4H E 5		650	-4

24

♠KQJ9
♥A5
♦1064
♣A964

♠105432
♥72
♦KQ8
♣K103

N
W—E
S

♠6
♥J109864
♦952
♣Q85

♠A87
♥KQ3
♦AJ73
♣J72

Board (24) Av: NS=+430

N-S	E-W	Contract	N-S	E-W	IMP
18	20	3NT S 5	460		1
13	11	3NT S 4	430		0
1	3	3NT S 4	430		0
16	17	3NT N 4	430		0
14	12	3NT N 4	430		0
5	9	3NT N 4	430		0
2	4	3NT N 4	430		0
19	15	3NT N 4	430		0
6	7	3NT N 4	430		0
10	8	3NT N 3	400		-1

25

♠K75
♥AK5
♦AJ3
♣KJ109

♠842
♥1082
♦Q952
♣A43

N
W—E
S

♠A1096
♥QJ743
♦87
♣86

♠QJ3
♥96
♦K1064
♣Q752

Board (25) Av: NS=+40

N-S	E-W	Contract	N-S	E-W	IMP
10	6	3NT S 5	460		9
20	16	3NT S 3	400		8
18	19	3NT N 3	400		8
14	11	3NT N-1		50	-3
5	2	3NT N-1		50	-3
1	4	3NT N-2		100	-4
13	17	3NT N-2		100	-4
8	9	3NT N-2		100	-4
3	7	3NT N-2		100	-4
12	15	3NT N-2		100	-4

26

♠KQ1073
♥J62
♦J
♣AQ94

♠A94
♥AQ107
♦865
♣KJ6

N
W—E
S

♠85
♥854
♦AQ102
♣8732

♠J62
♥K93
♦K9743
♣105

Board (26) Av: NS=+130

N-S	E-W	Contract	N-S	E-W	IMP
8	9	2S N 3	140		0
18	19	2S N 3	140		0
13	17	2S N 3	140		0
3	7	2S N 3	140		0
10	6	2S N 3	140		0
5	2	2S N 3	140		0
20	16	2S N 2	110		-1
1	4	2S N 2	110		-1
12	15	2S N 2	110		-1
14	11	3C W-1		100	-1

27

♠3
♥AQ52
♦10972
♣K765

♠J9542
♥93
♦AKQJ6
♣3

N
W—E
S

♠AQ10
♥KJ764
♦
♣AQJ104

♠K876
♥108
♦8543
♣982

Board (27) Av: NS=-270

N-S	E-W	Contract	N-S	E-W	IMP
1	4	6S W-2		100	9
5	2	6S W-1		50	8
8	9	5S W-1		50	8
12	15	2H E 3		140	4
18	19	4S W 4		420	-4
14	11	4S W 4		420	-4
10	6	4S W 4		420	-4
13	17	4H E 4		420	-4
3	7	5S W 5		450	-5
20	16	3NT W 5		460	-5

第19回NRM杯 Session 2 Section C 2014年6月21日(土)

28

♠ A643
♥ AK965
♦ K8
♣ K5

♠ KJ97	N	♠ Q2
♥ 1042		♥ QJ73
♦ J73	W	♦ Q2
♣ 963	S	♣ J10842

♠ 1085
♥ 8
♦ A109654
♣ AQ7

29

♠ KQ
♥ J963
♦ K1065
♣ 1086

♠ 1073	N	♠ AJ8
♥ 72		♥ AKQ104
♦ A843	W	♦ J7
♣ J432	S	♣ AQ5

♠ 96542
♥ 85
♦ Q92
♣ K97

30

♠ 76
♥ 862
♦ KJ86
♣ 9432

♠ AKJ1094	N	♠ 832
♥ Q7		♥ AK4
♦ A107	W	♦ Q93
♣ AJ	S	♣ KQ86

♠ Q5
♥ J10953
♦ 542
♣ 1075

Board (28) Av: NS=+620

N-S	E-W	Contract	N-S	E-W	IMP
18	19	4NT S 5	660		1
14	11	3NT S 5	660		1
20	16	3NT S 4	630		0
3	7	3NT S 4	630		0
10	6	3NT S 4	630		0
1	4	3NT S 3	600		-1
13	17	3NT S 3	600		-1
8	9	3NT S 3	600		-1
5	2	3NT S 3	600		-1
12	15	3NT S 3	600		-1

Board (29) Av: NS=-470

N-S	E-W	Contract	N-S	E-W	IMP
13	17	3NT W-2	200		12
10	6	3NT W-1	100		11
5	2	1H E 3		140	8
3	7	3NT E 3	600		-4
20	16	3NT E 4	630		-4
14	11	3NT E 4	630		-4
18	19	3NT E 4	630		-4
8	9	3NT E 4	630		-4
1	4	3NT E 4	630		-4
12	15	3NT E 4	630		-4

Board (30) Av: NS=-1070

N-S	E-W	Contract	N-S	E-W	IMP
8	9	3NT E 7	520		11
20	16	6S W 7	1010		2
13	17	6S W 7	1010		2
14	11	6S W 7	1010		2
10	6	6S W 7	1010		2
5	2	6S W 7	1010		2
1	4	6S W 7	1010		2
18	19	6NT E 7	1020		2
12	15	7S W 7	1510		-10
3	7	7S W 7	1510		-10

第19回NRM杯 Session 3 Section C 2014年6月22日(日)

1

♠ K108 ♠ AJ7642
♥ 8 ♥ K765
♦ 9754 ♠ Q953
♣ J8652 ♠ Q953
♥ AJ92
♦ A63
♣ 74

W N E S

2

♠ 643 ♠ QJ1052
♥ 1074 ♥ 52
♦ A8 ♠ QJ1052
♣ Q10763 ♠ QJ1052
♥ 52
♦ J107
♣ A95

W N E S

♠ K8 ♠ A97
♥ KQJ8 ♥ A963
♦ K6543 ♠ Q92
♣ K4 ♠ J82

3

♠ KQ876 ♠ AJ3
♥ A3 ♥ J1042
♦ 74 ♠ Q10985
♣ 10754 ♠ AJ3
♥ J1042
♦ Q10985
♣ 3

W N E S

♠ 1095 ♠ 42
♥ Q85 ♥ K976
♦ KJ6 ♠ A32
♣ AKJ6 ♠ Q982

Board (1) Av: NS=+450

N-S	E-W	Contract	N-S	E-W	IMP
9	17	6H N 7	1010		11
10	19	4H N 7	510		2
2	13	4H N 6	480		1
5	14	4H N 6	480		1
8	20	4H N 6	480		1
12	4	4H N 5	450		0
1	11	4H N 5	450		0
16	6	4H N 4	420		-1
3	15	4Sx E-2	300		-4
7	18	6H S-1		50	-11

Board (2) Av: NS=-90

N-S	E-W	Contract	N-S	E-W	IMP
7	18	3NT W-2	100		5
8	20	3NT W-2	100		5
5	14	2NT W-2	100		5
2	13	2NT W 2		120	-1
16	6	2NT E 2		120	-1
9	17	2S W 3		140	-2
1	11	2S E 4		170	-2
10	19	2NT W 4		180	-3
3	15	2NT W 4		180	-3
12	4	3NT W 3		400	-7

Board (3) Av: NS=-90

N-S	E-W	Contract	N-S	E-W	IMP
9	17	2H E-1	100		5
1	11	1NT S-1		50	1
2	13	1NT S-1		50	1
16	6	1NT S-1		50	1
5	14	2D E 2		90	0
12	4	1NT S-2		100	0
7	18	2H W 2		110	-1
8	20	2H W 2		110	-1
10	19	1NT W 2		120	-1
3	15	1NT S-3		150	-2

4

♠ Q975 ♠ K102
♥ 754 ♥ QJ1086
♦ 974 ♠ K102
♣ Q96 ♠ QJ1086
♥ QJ1086
♦ KQ6
♣ K3

W N E S

♠ J63 ♠ A84
♥ 93 ♥ AK2
♦ 53 ♠ AJ1082
♣ A107542 ♠ J8

Board (4) Av: NS=-50

N-S	E-W	Contract	N-S	E-W	IMP
2	13	1NT S 2	120		5
1	11	1NT S 1	90		4
5	14	1NT S 1	90		4
7	18	1NT E 1		90	-1
3	15	1NT S-1		100	-2
8	20	1NT S-1		100	-2
16	6	1NT S-1		100	-2
10	19	1NT S-1		100	-2
12	4	1NT S-1		100	-2
9	17	2H E 2		110	-2

5

♠ 109632 ♠ A8
♥ 4 ♥ 10985
♦ K1065 ♠ A8
♣ 1098 ♠ 10985
♥ 10985
♦ 32
♣ K7432

W N E S

♠ KJ5 ♠ Q74
♥ Q32 ♥ AKJ76
♦ AQ84 ♠ J97
♣ QJ6 ♠ A5

Board (5) Av: NS=-120

N-S	E-W	Contract	N-S	E-W	IMP
2	13	2S S 2	110		6
16	6	2C E 2		90	1
1	11	1NT W 1		90	1
12	4	2S S-1		100	1
8	20	2S S-1		100	1
5	14	1NT W 2		120	0
10	19	1NT W 2		120	0
7	18	1NT W 3		150	-1
9	17	1NT E 3		150	-1
3	15	3NT W 3		400	-7

6

♠ J98 ♠ AK
♥ K10 ♥ A2
♦ AQJ76 ♠ 9853
♣ KQJ ♠ 9853
♥ 9853
♦ 87432

W N E S

♠ Q7642 ♠ 1053
♥ 65 ♥ QJ98743
♦ 42 ♠ K10
♣ A965 ♠ 10

Board (6) Av: NS=-90

N-S	E-W	Contract	N-S	E-W	IMP
9	17	4H S 4	420		11
3	15	4H S-1		50	1
7	18	4H S-2		100	0
16	6	4H S-2		100	0
5	14	4H S-2		100	0
2	13	4H S-2		100	0
8	20	4H S-2		100	0
10	19	4H S-2		100	0
12	4	4H S-2		100	0
1	11	4H N-2		100	0

7

♠ AK643 ♠ Q
♥ AK109 ♥ 872
♦ J53 ♠ Q
♣ 2 ♠ AQ1094
♥ AQ1094
♦ AQ76
♣ AQ76

W N E S

♠ 987 ♠ J1052
♥ Q63 ♥ J54
♦ 862 ♠ K7
♣ KJ43 ♠ 10985

Board (7) Av: NS=+250

N-S	E-W	Contract	N-S	E-W	IMP
17	7	4S N 5	650		9
3	14	4S N 4	620		9
8	19	3S N 5	200		-2
4	11	3S N 5	200		-2
18	10	3S N 5	200		-2
9	16	3S N 5	200		-2
12	2	3S N 5	200		-2
13	5	2S N 5	200		-2
6	20	2S N 5	200		-2
1	15	2S N 5	200		-2

8

♠ AQ543 ♠ J72
♥ 762 ♥ 43
♦ QJ ♠ K9863
♣ AQ10 ♠ J76

W N E S

♠ 1096 ♠ K8
♥ AKQ98 ♥ J105
♦ A105 ♠ 742
♣ 98 ♠ K5432

Board (8) Av: NS=+110

N-S	E-W	Contract	N-S	E-W	IMP
6	20	2S N 3	140		1
9	16	1S N 3	140		1
12	2	2S N 2	110		0
4	11	1S N 2	110		0
8	19	1S N 2	110		0
1	15	1S N 2	110		0
17	7	1S N 2	110		0
13	5	1S N 2	110		0
3	14	2H W-1	50		-2
18	10	2H W 5		200	-7

9

♠ K985 ♠ 1032
♥ A ♥ K742
♦ J9865 ♠ AQ107
♣ J87 ♠ Q9

W N E S

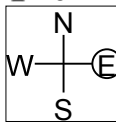
♠ A64 ♠ QJ7
♥ QJ9 ♥ 108653
♦ K432 ♠ 108653
♣ K32 ♠ A10654

Board (9) Av: NS=-120

N-S	E-W	Contract	N-S	E-W	IMP
1	15	3D W-1	100		6
18	10	2H S-1		50	2
6	20	2NT W 2		120	0
4	11	2NT W 2		120	0
8	19	2NT W 2		120	0
9	16	2NT W 2		120	0
12	2	2NT W 2		120	0
13	5	2NT W 3		150	-1
17	7	2NT W 3		150	-1
3	14	3NT W 3		600	-10

10

♠ J842
♥ Q94
♦ Q84
♣ AJ2



♠ A1075
♥ J3
♦ KJ
♣ 98743

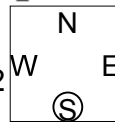
♠ KQ96
♥ K8652
♦
♣ K1065

Board (10) Av: NS=-70

Table with 6 columns: N-S, E-W, Contract, N-S, E-W, IMP. Rows show match results for Board 10.

11

♠ K104
♥ AQ964
♦ 863
♣ 42



♠ Q872
♥ 82
♦ K107
♣ KJ105

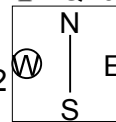
♠ AJ963
♥ 1053
♦ A5
♣ AQ8

Board (11) Av: NS=+420

Table with 6 columns: N-S, E-W, Contract, N-S, E-W, IMP. Rows show match results for Board 11.

12

♠ K654
♥ 98
♦ KJ7
♣ KQ108



♠ Q1092
♥ QJ10
♦ 8
♣ AJ743

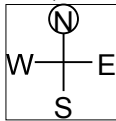
♠ 73
♥ AK6542
♦ 6543
♣ 2

Board (12) Av: NS=+70

Table with 6 columns: N-S, E-W, Contract, N-S, E-W, IMP. Rows show match results for Board 12.

13

♠ K73
♥ Q
♦ QJ1074
♣ QJ74



♠ 862
♥ KJ43
♦ 863
♣ A103

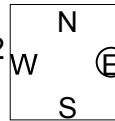
♠ J1054
♥ 862
♦ AK52
♣ 52

Board (13) Av: NS=-170

Table with 6 columns: N-S, E-W, Contract, N-S, E-W, IMP. Rows show match results for Board 13.

14

♠ 1098
♥ J65
♦ KJ762
♣ J10



♠ A7643
♥ A
♦ A1093
♣ K42

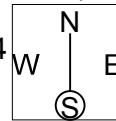
♠ KQJ
♥ KQ43
♦ 84
♣ A986

Board (14) Av: NS=+10

Table with 6 columns: N-S, E-W, Contract, N-S, E-W, IMP. Rows show match results for Board 14.

15

♠ KQ9
♥ 62
♦ K6
♣ KQ9875



♠ J86543
♥ J1093
♦
♣ 1063

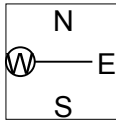
♠ 1072
♥ 85
♦ QJ98754
♣ A

Board (15) Av: NS=-240

Table with 6 columns: N-S, E-W, Contract, N-S, E-W, IMP. Rows show match results for Board 15.

16

♠ 42
♥ 874
♦ 8
♣ J1097653



♠ J10765
♥ AKQJ9
♦ 72
♣ A

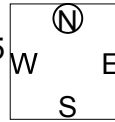
♠ A9
♥ 632
♦ AQJ654
♣ 82

Board (16) Av: NS=-170

Table with 6 columns: N-S, E-W, Contract, N-S, E-W, IMP. Rows show match results for Board 16.

17

♠ 985
♥ J
♦ AQ76
♣ A8754



♠ 72
♥ K9743
♦ J98
♣ KQ2

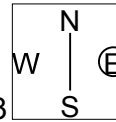
♠ AQ643
♥ A82
♦ 542
♣ J10

Board (17) Av: NS=+130

Table with 6 columns: N-S, E-W, Contract, N-S, E-W, IMP. Rows show match results for Board 17.

18

♠ 10974
♥ K987
♦ Q105
♣ 54



♠ Q8
♥ Q1053
♦ 82
♣ KJ862

♠ AK652
♥ A
♦ AK643
♣ A7

Board (18) Av: NS=+1090

Table with 6 columns: N-S, E-W, Contract, N-S, E-W, IMP. Rows show match results for Board 18.

19

♠ A63
♥ KQ9
♦ 5
♣ AK10876

♠ KQ5
♥ 52
♦ J7632
♣ J43

N
W — E
S

♠ J94
♥ AJ874
♦ KQ109
♣ 2

♠ 10872
♥ 1063
♦ A84
♣ Q95

Board (19) Av: NS=+70

N-S	E-W	Contract	N-S	E-W	IMP
8	17	2NT N 3	150		2
1	13	3C N 4	130		2
9	19	2NT N 2	120		2
11	5	3C N 3	110		1
2	15	3C N 3	110		1
18	6	3C N 3	110		1
10	16	2C N 3	110		1
20	7	4S S-1		50	-3
12	3	3NT N-1		50	-3
4	14	4S S-2		100	-5

20

♠ AJ1072
♥ KJ5
♦ 8632
♣ 9

♠ K53
♥ 10976
♦ 4
♣ AKQJ4

N
W — E
S

♠ Q98
♥ Q84
♦ J1075
♣ 1085

♠ 64
♥ A32
♦ AKQ9
♣ 7632

Board (20) Av: NS=-90

N-S	E-W	Contract	N-S	E-W	IMP
4	14	1S N 4	170		6
2	15	1S N 4	170		6
9	19	1S N 1	80		5
18	6	1C W 2		90	0
1	13	2NT S-1		100	0
11	5	2NT S-1		100	0
12	3	3NT S-2		200	-3
20	7	3NT S-2		200	-3
10	16	3NT S-3		300	-5
8	17	1NT xS-2		500	-9

21

♠ A873
♥ J6
♦ Q84
♣ 10742

♠ KJ5
♥ K109875
♦ J63
♣ 5

N
W — E
S

♠ 9
♥ A43
♦ A972
♣ KJ986

♠ Q10642
♥ Q2
♦ K105
♣ AQ3

Board (21) Av: NS=-320

N-S	E-W	Contract	N-S	E-W	IMP
1	13	3S S-1	100		6
18	6	3S S-1	100		6
20	7	3H W 3	140		5
2	15	3S S-2	200		3
4	14	4H W 4	420		-3
10	16	4H W 4	420		-3
11	5	4H W 4	420		-3
9	19	4H W 4	420		-3
12	3	4H W 4	420		-3
8	17	4H W 5	450		-4

22

♠ QJ103
♥ AJ94
♦ 874
♣ 72

♠ 84
♥ Q7652
♦ AQJ3
♣ 65

N
W — E
S

♠ A765
♥ K8
♦ K1065
♣ 1043

♠ K92
♥ 103
♦ 92
♣ AKQJ98

Board (22) Av: NS=+100

N-S	E-W	Contract	N-S	E-W	IMP
4	14	3NT N 3	400		7
8	17	3C S 4	130		1
11	5	3C S 4	130		1
1	13	2C S 4	130		1
10	16	2C S 4	130		1
2	15	1NT S 2	120		1
20	7	3C S 3	110		0
9	19	1NT N 1	90		0
18	6	3NT S-1		50	-4
12	3	2D W 2		90	-5

23

♠ 853
♥ AK642
♦ 87
♣ J83

♠ KQ96
♥ Q87
♦ AJ652
♣ 5

N
W — E
S

♠ A74
♥ 10953
♦ 109
♣ AQ94

♠ J102
♥ J
♦ KQ43
♣ K10762

Board (23) Av: NS=-130

N-S	E-W	Contract	N-S	E-W	IMP
4	14	1NT E-1	100		6
2	15	1NT E-1	100		6
18	6	1NT E 1		90	1
9	19	1NT E 3		150	-1
12	3	1NT E 3		150	-1
1	13	1NT E 4		180	-2
8	17	1NT E 4		180	-2
10	16	1NT E 4		180	-2
11	5	1NT S-2		200	-2
20	7	1NT S-2		200	-2

24

♠ AKQ109
♥ Q95
♦ KJ1074
♣ KJ1074

♠ KQ7653
♥ 8
♦ K4
♣ Q982

N
W — E
S

♠ J1042
♥ J764
♦ 10762
♣ 5

♠ A98
♥ 532
♦ AJ83
♣ A63

Board (24) Av: NS=+230

N-S	E-W	Contract	N-S	E-W	IMP
18	6	4Sx W-3	500		7
4	14	5H S 5	450		6
10	16	5H S 5	450		6
12	3	5H S 5	450		6
20	7	4H N 5	450		6
8	17	2NT N 3	150		-2
9	19	6H N-1		50	-7
11	5	5H S-1		50	-7
1	13	5H S-1		50	-7
2	15	5H S-2		100	-8

25

♠ J74
♥ K10752
♦ A52
♣ 96

♠ KQ1092
♥ J
♦ KJ7
♣ KQ104

N
W — E
S

♠ 8653
♥ A93
♦ Q106
♣ A53

♠ A
♥ Q864
♦ 9843
♣ J872

Board (25) Av: NS=-650

N-S	E-W	Contract	N-S	E-W	IMP
1	12	4S W 4	620		1
9	18	4S W 4	620		1
10	20	4S W 5	650		0
11	3	4S W 5	650		0
13	4	4S W 5	650		0
14	2	4S W 5	650		0
15	5	4S W 5	650		0
16	8	4S W 5	650		0
17	6	4S W 5	650		0
19	7	4S W 5	650		0

26

♠ K543
♥
♦ AK1095
♣ KQ53

♠ AJ102
♥ AQ4
♦ J87
♣ 986

N
W — E
S

♠ K109753
♥ Q643
♣ A42

♠ Q9876
♥ J862
♦ 2
♣ J107

Board (26) Av: NS=-40

N-S	E-W	Contract	N-S	E-W	IMP
15	5	5H E-2	200		6
17	6	2S S 3	140		5
10	20	4H E-1	100		4
13	4	4H E-1	100		4
11	3	4S S-1		100	-2
16	8	4S S-1		100	-2
9	18	3H E 3		140	-3
1	12	2H E 3		140	-3
19	7	2H E 3		140	-3
14	2	3Hx E 3		730	-12

27

♠ Q10
♥ AQ103
♦ J1053
♣ KQ7

♠ A92
♥ KJ9654
♦ 7
♣ J86

N
W — E
S

♠ K86
♥ 72
♦ AK9842
♣ A10

♠ J7543
♥ 8
♦ Q6
♣ 95432

Board (27) Av: NS=-90

N-S	E-W	Contract	N-S	E-W	IMP
13	4	4Hx W-1	100		5
11	3	4H W-1	50		4
1	12	3H W-1	50		4
19	7	2H W 2		110	-1
17	6	3H W 3		140	-2
9	18	2H W 3		140	-2
14	2	2H W 3		140	-2
16	8	2H W 3		140	-2
15	5	2H W 3		140	-2
10	20	2H W 4		170	-2

第19回NRM杯 Session 3 Section C 2014年6月22日(日)

28

♠ K5
♥ AQ96
♦ K97
♣ K865

♠ J32
♥ 1032
♦ J86542
♣ 9

N		E
W		S

♠ AQ10976
♥ J84
♦ A3
♣ 103

♠ 84
♥ K75
♦ Q10
♣ AQJ742

29

♠ AQJ3
♥ 10643
♦ KJ74
♣ 9

♠ 109542
♥ AK95
♦ 109
♣ AJ

N		E
W		S

♠ K76
♥ J7
♦ Q8
♣ Q87653

♠ 8
♥ Q82
♦ A6532
♣ K1042

30

♠ 98753
♥ A1072
♦ KJ
♣ 32

♠ A1064
♥ 65
♦ 109
♣ Q8765

N		E
W		S

♠ KQ
♥ 843
♦ AQ8765
♣ A4

♠ J2
♥ KQJ9
♦ 432
♣ KJ109

Board (28) Av: NS=+510

N-S	E-W	Contract	N-S	E-W	IMP
9	18	3NT N 5	660		4
10	20	3NT N 5	660		4
1	12	3NT N 5	660		4
13	4	3NT N 5	660		4
16	8	3NT N 5	660		4
19	7	3NT N 5	660		4
15	5	5C N 5	600		3
11	3	4Sx E-2	300		-5
17	6	5C S-1		100	-12
14	2	5C S-1		100	-12

Board (29) Av: NS=-20

N-S	E-W	Contract	N-S	E-W	IMP
15	5	3D N 4	130		4
13	4	1NT S 2	120		4
17	6	3D N 3	110		4
9	18	3D N 3	110		4
1	12	2S W-1	100		3
16	8	2S W 2		110	-3
10	20	2S W 2		110	-3
11	3	2S W 3		140	-3
14	2	5Dx N-1		200	-5
19	7	3D N-3		300	-7

Board (30) Av: NS=-120

N-S	E-W	Contract	N-S	E-W	IMP
13	4	1NT E-1	50		5
1	12	1NT E 1		90	1
10	20	2D E 3		110	0
9	18	1NT E 2		120	0
15	5	1NT E 2		120	0
16	8	1NT E 2		120	0
19	7	3D E 4		130	0
17	6	3D E 4		130	0
11	3	1NT E 3		150	-1
14	2	1NT E 3		150	-1

第19回NRM杯 Session 4 Section C 2014年6月22日(日)

1

♠ A83
♥ 32
♦ A6
♣ 1098763

♠ J964 (N) ♠ Q75
♥ QJ9 W E ♥ 865
♦ K74 S ♦ 109853
♣ AQ2 ♣ 54

♠ K102
♥ AK1074
♦ QJ2
♣ KJ

Board (1) Av: NS=+310

N-S	E-W	Contract	N-S	E-W	IMP
15	8	3NT S 4	430		3
19	5	3NT N 4	430		3
13	7	3NT N 4	430		3
4	17	3NT S 3	400		3
12	9	3NT S 3	400		3
6	11	3NT N 3	400		3
3	20	2H S 4	170		-4
1	16	1NT N 3	150		-4
10	14	2NT N 2	120		-5
18	2	3NT S-2		100	-9

2

♠ K62
♥ 82
♦ 1095
♣ KJ532

♠ A103 (N) ♠ Q75
♥ J765 W E ♥ 104
♦ AQ32 S ♦ KJ76
♣ 106 ♣ A974

♠ J984
♥ AKQ93
♦ 84
♣ Q8

Board (2) Av: NS=-140

N-S	E-W	Contract	N-S	E-W	IMP
12	9	2H S 2	110		6
4	17	2H S-1		100	1
13	7	2H S-1		100	1
6	11	2H S-1		100	1
3	20	2C S-1		100	1
19	5	2C S-1		100	1
10	14	2H S-2		200	-2
15	8	2C S-2		200	-2
18	2	2C S-2		200	-2
1	16	1NT N-2		200	-2

3

♠ AKJ9654
♥ KJ863
♦ 7
♣

♠ 832 (N) ♠ Q7
♥ Q9 W E ♥ 1074
♦ AJ2 S ♦ Q98
♣ AQ942 ♣ J10865

♠ 10
♥ A52
♦ K106543
♣ K73

Board (3) Av: NS=+490

N-S	E-W	Contract	N-S	E-W	IMP
3	20	6H S 7	1010		11
4	17	4H S 7	510		1
13	7	4H S 7	510		1
1	16	4S N 6	480		0
10	14	4S N 6	480		0
12	9	4S N 6	480		0
19	5	4S N 6	480		0
18	2	4S N 6	480		0
15	8	4H S 6	480		0
6	11	3S N 6	230		-6

4

♠ A107
♥ J
♦ KJ8
♣ AQJ872

♠ Q94 (N) ♠ J2
♥ Q9542 W E ♥ K6
♦ AQ102 S ♦ 7654
♣ 4 ♣ K9653

♠ K8653
♥ A10873
♦ 93
♣ 10

Board (4) Av: NS=+340

N-S	E-W	Contract	N-S	E-W	IMP
10	14	4S S 5	650		7
12	9	4S S 5	650		7
4	17	4S S 4	620		7
15	8	4S S 4	620		7
1	16	4S S 4	620		7
18	2	3NT S 3	600		6
6	11	4S S-1		100	-10
3	20	4S S-1		100	-10
13	7	4S S-2		200	-11
19	5	4S S-2		200	-11

5

♠ K105
♥ J103
♦ Q106
♣ A872

♠ Q9764 (N) ♠ AJ3
♥ Q9542 W E ♥ AQ42
♦ A9732 S ♦ K5
♣ 965 ♣ KQJ3

♠ 82
♥ K98765
♦ J84
♣ 104

Board (5) Av: NS=-390

N-S	E-W	Contract	N-S	E-W	IMP
1	16	6S E-1		50	10
12	9	4S E-1		50	10
15	8	4S W 5		450	-2
3	20	4S E 5		450	-2
10	14	4S E 5		450	-2
6	11	4S E 5		450	-2
4	17	4S E 5		450	-2
18	2	4S E 5		450	-2
13	7	4S E 5		450	-2
19	5	4S E 5		450	-2

6

♠ J82
♥ 10
♦ AK1032
♣ K753

♠ Q7 (N) ♠ 1065
♥ AKQ7 W E ♥ 96432
♦ Q64 S ♦ J85
♣ AQ102 ♣ 64

♠ AK943
♥ J85
♦ 97
♣ J98

Board (6) Av: NS=+170

N-S	E-W	Contract	N-S	E-W	IMP
19	5	4H E-3		300	4
12	9	3H W-2		200	1
4	17	3H E-2		200	1
13	7	3S S 4		170	0
10	14	2S S 4		170	0
15	8	2S S 4		170	0
18	2	3S S 3		140	-1
3	20	2S S 3		140	-1
1	16	2S S 3		140	-1
6	11	1S S 3		140	-1

7

♠ KQ103
♥ A3
♦ KQJ642
♣ 3

♠ A875 (N) ♠ J94
♥ 964 W E ♥ Q108752
♦ 5 S ♦ A
♣ Q10942 ♣ KJ7

♠ 62
♥ KJ
♦ 109873
♣ A865

Board (7) Av: NS=+110

N-S	E-W	Contract	N-S	E-W	IMP
1	20	5D N 5	600		10
8	14	4D N 5	150		1
6	15	4D N 5	150		1
10	13	4D N 5	150		1
17	2	4D N 5	150		1
11	9	3D N 5	150		1
16	4	3D N 5	150		1
12	7	2D N 5	150		1
5	18	3NT S-2		200	-7
19	3	3NT S-2		200	-7

8

♠ 963
♥ A942
♦ KJ5
♣ J97

♠ A75 (N) ♠ J10842
♥ J65 W E ♥ K3
♦ A874 S ♦ 10962
♣ Q105 ♣ 84

♠ KQ
♥ Q1087
♦ Q3
♣ AK632

Board (8) Av: NS=+30

N-S	E-W	Contract	N-S	E-W	IMP
19	3	4H S 4		420	9
5	18	4H S 4		420	9
1	20	3H N 3		140	3
12	7	4H S-1		50	-2
8	14	4H S-1		50	-2
6	15	4H S-1		50	-2
16	4	4H S-1		50	-2
17	2	4H S-1		50	-2
10	13	4H S-1		50	-2
11	9	4H N-1		50	-2

9

♠ KJ974
♥
♦ KQ32
♣ 10532

♠ A (N) ♠ Q1086
♥ 7543 W E ♥ 1082
♦ J1087 S ♦ A954
♣ A864 ♣ Q7

♠ 532
♥ AKQJ96
♦ 6
♣ KJ9

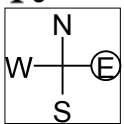
Board (9) Av: NS=+50

N-S	E-W	Contract	N-S	E-W	IMP
8	14	3NT N 5		460	9
11	9	2H S 4		170	3
1	20	2H S 4		170	3
16	4	2H S 4		170	3
10	13	2H S 4		170	3
17	2	4S N-1		50	-3
12	7	3NT N-1		50	-3
19	3	3NT N-1		50	-3
5	18	4S N-2		100	-4
6	15	4S N-2		100	-4

10

♠ QJ953
♥ 9875
♦ 743
♣ J

♠ K106
♥ A
♦ 9852
♣ 107642



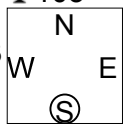
♠ 742
♥ Q1062
♦ AKQ10
♣ A9

♠ A8
♥ KJ43
♦ J6
♣ KQ853

11

♠ AK
♥ K92
♦ AKJ643
♣ 103

♠ Q87
♥ AQJ1073
♦ Q7
♣ 42



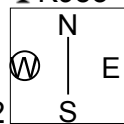
♠ 10953
♥ 4
♦ 1052
♣ A9765

♠ J642
♥ 865
♦ 98
♣ KQJ8

12

♠ K53
♥ 9752
♦ 73
♣ K953

♠ 72
♥ 1043
♦ KQ95
♣ A1062



♠ AJ1094
♥ AK
♦ 1042
♣ Q84

♠ Q86
♥ QJ86
♦ AJ86
♣ J7

Board (10) Av: NS=-90

N-S	E-W	Contract	N-S	E-W	IMP
16	4	1NT E-1	100		5
12	7	1NT E-1	100		5
6	15	1NT E 1		90	0
5	18	1NT E 1		90	0
11	9	1NT E 1		90	0
10	13	1NT E 2		120	-1
1	20	1NT E 2		120	-1
19	3	3D E 4		130	-1
17	2	1NT E 3		150	-2
8	14	1NT E 3		150	-2

Board (11) Av: NS=+240

N-S	E-W	Contract	N-S	E-W	IMP
6	15	3NT N 5	460		6
5	18	3NT N 4	430		5
16	4	3NT N 4	430		5
8	14	3NT N 4	430		5
1	20	3D N 4	130		-3
11	9	3D N 4	130		-3
17	2	2D N 4	130		-3
12	7	2D N 4	130		-3
10	13	3D N 3	110		-4
19	3	3D N 3	110		-4

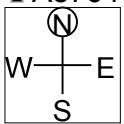
Board (12) Av: NS=-110

N-S	E-W	Contract	N-S	E-W	IMP
5	18	3NT W-1	50		4
12	7	1NT W-1	50		4
19	3	1NT W 1		90	1
10	13	2C E 3		110	0
16	4	1NT W 2		120	0
17	2	1NT W 2		120	0
11	9	2S E 4		170	-2
6	15	2S E 4		170	-2
8	14	1NT W 4		180	-2
1	20	3NT W 4		430	-8

13

♠ K
♥ QJ63
♦ QJ6
♣ A8764

♠ A873
♥ 752
♦ 1054
♣ K53



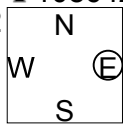
♠ Q964
♥ K9
♦ K873
♣ QJ2

♠ J1052
♥ A1084
♦ A92
♣ 109

14

♠ A3
♥ K4
♦ 7643
♣ 108642

♠ J10752
♥ Q8
♦ J52
♣ J97



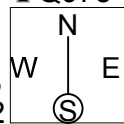
♠ KQ986
♥ A9652
♦ AK10
♣

♠ 4
♥ J1073
♦ Q98
♣ AKQ53

15

♠ K1086
♥ 85
♦ A94
♣ Q975

♠ AKQJ
♥ J1053
♦ KJ632
♣



♠ QJ954
♥ 9764
♦ K72
♣ 4

♠ A732
♥ 1032
♦ Q86
♣ A108

Board (13) Av: NS=+170

N-S	E-W	Contract	N-S	E-W	IMP
7	11	4H S 5	650		10
18	3	3H S 6	230		2
5	17	3H S 4	170		0
20	4	3H S 4	170		0
1	19	2H S 4	170		0
16	2	2H S 4	170		0
9	15	3H S 3	140		-1
13	8	2H S 3	140		-1
6	14	2H S 3	140		-1
10	12	2H S 2	110		-2

Board (14) Av: NS=-450

N-S	E-W	Contract	N-S	E-W	IMP
20	4	4S E 4	420		1
7	11	4S E 4	420		1
9	15	5S E 5	450		0
13	8	4S E 5	450		0
5	17	4S E 5	450		0
10	12	4S E 5	450		0
16	2	4S E 5	450		0
18	3	4S E 5	450		0
6	14	4S E 6	480		-1
1	19	4S E 6	480		-1

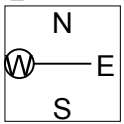
Board (15) Av: NS=+60

N-S	E-W	Contract	N-S	E-W	IMP
13	8	4H W-3	150		3
7	11	4H E-3	150		3
9	15	4H W-2	100		1
20	4	4H W-2	100		1
6	14	4H E-2	100		1
1	19	1NT W-2	100		1
16	2	4H W-1	50		0
18	3	4H W-1	50		0
5	17	3H E 3		140	-5
10	12	4H E 4		420	-10

16

♠ J6
♥ QJ3
♦ AK873
♣ AK2

♠ A82
♥ K1086
♦ Q52
♣ 1095



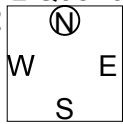
♠ Q54
♥ 74
♦ 64
♣ QJ8764

♠ K10973
♥ A952
♦ J109
♣ 3

17

♠ A76
♥ 108
♦ 104
♣ Q98765

♠ Q5432
♥ AQ75
♦ K65
♣ 3



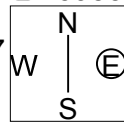
♠ J8
♥ KJ92
♦ J732
♣ KJ2

♠ K109
♥ 643
♦ AQ98
♣ A104

18

♠ 974
♥ 54
♦ Q52
♣ AJ953

♠ AQJ63
♥ KQ1097
♦ A6
♣ 8



♠ 1082
♥ 82
♦ 10987
♣ K1074

♠ K5
♥ AJ63
♦ KJ43
♣ Q62

Board (16) Av: NS=+290

N-S	E-W	Contract	N-S	E-W	IMP
16	2	3NT N 4	430		4
1	19	3NT N 3	400		3
5	17	3NT N 3	400		3
7	11	3NT N 3	400		3
9	15	3NT N 3	400		3
20	4	3NT N 3	400		3
18	3	3NT N 3	400		3
10	12	4H S-1		50	-8
6	14	3NT N-1		50	-8
13	8	3NT N-1		50	-8

Board (17) Av: NS=+10

N-S	E-W	Contract	N-S	E-W	IMP
18	3	2S W-2	100		3
20	4	1NT N 1	90		2
5	17	1NT N 1	90		2
1	19	3H W-1	50		1
10	12	3H W-1	50		1
16	2	3H E-1	50		1
13	8	1S W 1		80	-3
7	11	3C N-2		100	-3
9	15	1S W 2		110	-3
6	14	2H W 3		140	-4

Board (18) Av: NS=-160

N-S	E-W	Contract	N-S	E-W	IMP
7	11	5S E-2	100		6
18	3	4S E-1	50		5
5	17	3S E 3		140	1
20	4	3S E 3		140	1
16	2	3S E 3		140	1
6	14	3S E 4		170	0
9	15	2S W 4		170	0
13	8	2S W 4		170	0
1	19	4S E 4		420	-6
10	12	4S E 5		450	-7

19

♠ Q72
♥ A753
♦ KJ64
♣ 95

♠ 10
♥ K64
♦ 10873
♣ KQ1042

N
W — E
S

♠ K985
♥ J109
♦ AQ92
♣ J8

♠ AJ643
♥ Q82
♦ 5
♣ A763

Board (19) Av: NS=-110

N-S	E-W	Contract	N-S	E-W	IMP
7	15	1S	S 1	80	5
1	18	2S	S-1	50	2
8	12	3S	S-2	100	0
11	10	3S	S-2	100	0
20	2	3S	S-2	100	0
14	9	3S	S-2	100	0
19	4	3S	S-2	100	0
3	17	4S	S-3	150	-1
16	5	3S	S-3	150	-1
13	6	3S	S-3	150	-1

20

♠ A92
♥ Q107
♦ KJ965
♣ QJ

♠ K73
♥ 5
♦ 10843
♣ AK1074

N
W — E
S

♠ J5
♥ AK986
♦ A7
♣ 9863

♠ Q10864
♥ J432
♦ Q2
♣ 52

Board (20) Av: NS=-140

N-S	E-W	Contract	N-S	E-W	IMP
11	10	2S	S-1	100	1
20	2	2S	S-1	100	1
16	5	1NT	W 2	120	1
3	17	3C	W 4	130	0
1	18	3C	W 5	150	0
14	9	3C	W 5	150	0
7	15	1NT	W 3	150	0
13	6	1NT	W 3	150	0
8	12	1NT	W 4	180	-1
19	4	2D	N-2	200	-2

21

♠ 10632
♥ KQ764
♦ 10942
♣

♠ J75
♥ A2
♦ AQ3
♣ AJ643

N
W — E
S

♠ AQ8
♥ J105
♦ K87
♣ KQ108

♠ K94
♥ 983
♦ J65
♣ 9752

Board (21) Av: NS=-260

N-S	E-W	Contract	N-S	E-W	IMP
8	12	6NT	E-2	100	8
7	15	6NT	E-1	50	7
16	5	6NT	E-1	50	7
1	18	6NT	E-1	50	7
19	4	4NT	E 4	430	-5
14	9	4NT	E 4	430	-5
11	10	4NT	E 5	460	-5
13	6	4NT	E 5	460	-5
20	2	4NT	E 5	460	-5
3	17	4NT	E 5	460	-5

22

♠ K3
♥ A876
♦ AQ
♣ QJ1074

♠ Q6
♥ KQJ94
♦ 1065
♣ A98

N
W — E
S

♠ A542
♥ 105
♦ J843
♣ 652

♠ J10987
♥ 32
♦ K972
♣ K3

Board (22) Av: NS=+140

N-S	E-W	Contract	N-S	E-W	IMP
19	4	2S	N 4	170	1
3	17	2S	N 3	140	0
1	18	2S	N 3	140	0
7	15	2S	N 3	140	0
8	12	2S	N 3	140	0
14	9	2S	N 3	140	0
13	6	2S	N 3	140	0
11	10	2S	N 3	140	0
20	2	2S	N 3	140	0
16	5	2S	N-1	50	-5

23

♠ QJ1084
♥ Q108
♦ Q10965
♣ Q10965

♠ Q98653
♥ 3
♦ J95
♣ A42

N
W — E
S

♠ J1042
♥ 52
♦ AK742
♣ KJ

♠ AK7
♥ AK976
♦ 63
♣ 873

Board (23) Av: NS=+310

N-S	E-W	Contract	N-S	E-W	IMP
3	17	4Hx	S 4	790	10
16	5	4H	S 4	620	7
19	4	4H	S 4	620	7
13	6	4H	S 4	620	7
8	12	4Sx	W-1	200	-3
7	15	4Sx	W-1	200	-3
11	10	4Sx	W-1	200	-3
20	2	4S	W-1	100	-5
14	9	4H	S-1	100	-9
1	18	4H	S-1	100	-9

24

♠ J10543
♥ 3
♦ 5
♣ Q108643

♠ A986
♥ 9842
♦ KJ43
♣ 2

N
W — E
S

♠ K2
♥ AKJ6
♦ Q9
♣ AKJ95

♠ Q7
♥ Q1075
♦ A108762
♣ 7

Board (24) Av: NS=-70

N-S	E-W	Contract	N-S	E-W	IMP
16	5	6H	E-2	100	5
1	18	4H	W-1	50	3
14	9	4H	W-1	50	3
8	12	4H	W-1	50	3
7	15	4H	E-1	50	3
11	10	4H	E-1	50	3
19	4	4H	E-1	50	3
13	6	4H	W 4	420	-8
3	17	4H	E 4	420	-8
20	2	4H	E 4	420	-8

25

♠ AQ
♥ KJ985
♦ 8
♣ KQ942

♠ 107653
♥ 763
♦ K107
♣ A6

N
W — E
S

♠ K84
♥ 42
♦ A94
♣ J10853

♠ J92
♥ AQ10
♦ QJ6532
♣ 7

Board (25) Av: NS=0

N-S	E-W	Contract	N-S	E-W	IMP
4	18	4H	N 5	450	10
6	12	4H	N 4	420	9
9	13	4H	N-1	50	-2
1	17	4H	N-1	50	-2
8	11	4H	N-1	50	-2
15	10	4H	N-1	50	-2
16	3	4H	N-1	50	-2
20	5	4H	N-1	50	-2
19	2	4H	N-2	100	-3
7	14	4H	N-2	100	-3

26

♠ 8
♥ J1052
♦ 86542
♣ J104

♠ 976
♥ A
♦ KJ1097
♣ K632

N
W — E
S

♠ QJ1032
♥ Q9843
♦
♣ A98

♠ AK54
♥ K76
♦ AQ3
♣ Q75

Board (26) Av: NS=-40

N-S	E-W	Contract	N-S	E-W	IMP
7	14	2H	E-2	200	6
19	2	4S	E-1	100	4
6	12	2S	W-1	100	4
15	10	2S	E-1	100	4
1	17	2S	E 2	110	-2
8	11	2S	E 2	110	-2
4	18	1S	E 2	110	-2
9	13	2S	E 3	140	-3
16	3	1S	E 3	140	-3
20	5	1C	S-2	200	-4

27

♠ A10975
♥ K109
♦
♣ J9854

♠ 8
♥ AQ76
♦ K10873
♣ Q106

N
W — E
S

♠ QJ6
♥ J542
♦ J92
♣ K72

♠ K432
♥ 83
♦ AQ654
♣ A3

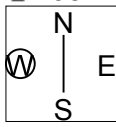
Board (27) Av: NS=+260

N-S	E-W	Contract	N-S	E-W	IMP
4	18	4S	N 4	420	4
1	17	4S	N 4	420	4
20	5	4S	N 4	420	4
8	11	4S	N 4	420	4
9	13	4S	N 4	420	4
16	3	3S	N 4	170	-3
6	12	2S	N 4	170	-3
7	14	3S	N 3	140	-3
15	10	4S	N-1	50	-7
19	2	4S	N-2	100	-8

28

♠A765
♥Q10
♦K10987
♣105

♠KJ2 ♠Q1094
♥64 ♥K852
♦A62 ♦J
♣Q7643 ♣AK82

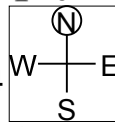


♠83
♥AJ973
♦Q543
♣J9

29

♠73
♥A986543
♦108
♣76

♠A54 ♠J982
♥KQ7 ♥J
♦AKQ4 ♦973
♣K103 ♣QJ542

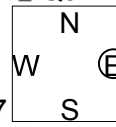


♠KQ106
♥102
♦J652
♣A98

30

♠Q9
♥AQ95
♦J963
♣QJ2

♠1084 ♠KJ7632
♥J43 ♥876
♦A74 ♦K10
♣A1097 ♣64



♠A5
♥K102
♦Q852
♣K853

Board (28) Av: NS=-50

N-S	E-W	Contract	N-S	E-W	IMP
9	13	3D N 3	110		4
15	10	2NT W-2	100		4
19	2	2NT E-2	100		4
1	17	2NT E-1	50		3
7	14	1NT E 2		120	-2
6	12	4C E 4		130	-2
8	11	3C E 4		130	-2
16	3	3C E 4		130	-2
20	5	3C E 4		130	-2
4	18	3C E 5		150	-3

Board (29) Av: NS=+30

N-S	E-W	Contract	N-S	E-W	IMP
4	18	4S E-2	200		5
6	12	3NT W-2	200		5
1	17	3NT W-1	100		2
20	5	3NT W-1	100		2
7	14	3NT W-1	100		2
15	10	3NT W-1	100		2
16	3	3NT W-1	100		2
19	2	3NT W-1	100		2
8	11	3NT W 3		600	-12
9	13	3NT W 4		630	-12

Board (30) Av: NS=+30

N-S	E-W	Contract	N-S	E-W	IMP
9	13	4H N 4	420		9
4	18	4H N 4	420		9
1	17	4S E-1	50		1
16	3	3S E-1	50		1
8	11	4H N-1		50	-2
19	2	4H N-1		50	-2
20	5	4H N-1		50	-2
6	12	3NT S-1		50	-2
15	10	3NT S-2		100	-4
7	14	3NT S-4		200	-6