

第19回NRM杯 Session1 Section B 2014年6月21日(土)

**1**

♠AK10  
♥AQ754  
♦Q2  
♣Q72

♠J86  
♥K82  
♦10987  
♣A65

♠9743  
♥106  
♦A653  
♣843

♠Q52  
♥J93  
♦KJ4  
♣KJ109

**2**

♠AJ9  
♥J76  
♦J108763  
♣10

♠K8763  
♥A54  
♦542  
♣52

♠102  
♥Q109832  
♦A  
♣KJ76

♠Q54  
♥K  
♦KQ9  
♣AQ9843

**3**

♠975  
♥K63  
♦A854  
♣AKQ

♠6432  
♥9742  
♦J  
♣9752

♠K10  
♥Q105  
♦Q1032  
♣10863

♠AQJ8  
♥AJ8  
♦K976  
♣J4

Board (1) Av: NS=+430

N-S	E-W	Contract	N-S	E-W	IMP
17	11	3NT S 5	460		1
16	15	3NT N 5	460		1
18	14	4H N 5	450		1
20	13	3NT N 4	430		0
19	12	4H N 4	420		0
1	10	4H N 4	420		0
4	7	4H N 4	420		0
3	9	4H N 4	420		0
6	2	4H N 4	420		0
5	8	4H N 4	420		0

Board (2) Av: NS=+160

N-S	E-W	Contract	N-S	E-W	IMP
4	7	5D N 5	600		10
6	2	5D N 5	600		10
19	12	4H E-4	200		1
17	11	4H E-3	150		0
18	14	4H E-2	100		-2
16	15	3H E-1	50		-3
3	9	3H E-1	50		-3
5	8	3H E-1	50		-3
20	13	3H E-1	50		-3
1	10	3C S-3	300		-10

Board (3) Av: NS=+810

N-S	E-W	Contract	N-S	E-W	IMP
4	7	6NT S 7	1020		5
17	11	6NT S 6	990		5
6	2	6NT S 6	990		5
5	8	6NT S 6	990		5
1	10	6NT S 6	990		5
3	9	6NT S 6	990		5
18	14	5NT S 7	520		-7
19	12	4NT S 7	520		-7
20	13	4NT S 6	490		-8
16	15	4NT S 6	490		-8

**4**

♠863  
♥K632  
♦974  
♣A93

♠J54  
♥QJ  
♦Q2  
♣J108764

♠AKQ972  
♥85  
♦10853  
♣5

♠10  
♥A10974  
♦AKJ6  
♣KQ2

**5**

♠J4  
♥Q106  
♦A86  
♣98654

♠876  
♥AJ  
♦Q1042  
♣QJ103

♠A52  
♥743  
♦KJ97  
♣K72

♠KQ1093  
♥K9852  
♦53  
♣A

**6**

♠3  
♥7643  
♦KQ62  
♣10986

♠94  
♥A9  
♦1098  
♣KQJ754

♠K1075  
♥K1082  
♦A74  
♣A2

♠AQJ862  
♥QJ5  
♦J53  
♣3

Board (4) Av: NS=+500

N-S	E-W	Contract	N-S	E-W	IMP
4	7	5H S 5	650		4
16	15	4H S 5	650		4
1	10	4H S 5	650		4
17	11	4H N 5	650		4
20	13	4H N 5	650		4
19	12	4Sx E-2	500		0
6	2	4Sx E-2	500		0
5	8	3H S 5	200		-7
18	14	3H S 5	200		-7
3	9	3NT N-2	200		-12

Board (5) Av: NS=+170

N-S	E-W	Contract	N-S	E-W	IMP
5	8	4H S 4	620		10
16	15	3H S 4	170		0
18	14	3H S 4	170		0
20	13	2S S 4	170		0
6	2	2S S 4	170		0
3	9	2S S 4	170		0
1	10	2S S 4	170		0
4	7	2S S 4	170		0
19	12	2H S 4	170		0
17	11	3D E-1	50		-3

Board (6) Av: NS=-590

N-S	E-W	Contract	N-S	E-W	IMP
16	15	2NT E 5	210		9
6	2	2NT E 5	210		9
18	14	3NT E 4	630		-1
17	11	3NT E 4	630		-1
19	12	3NT E 4	630		-1
3	9	3NT E 4	630		-1
1	10	3NT E 4	630		-1
4	7	3NT E 5	660		-2
20	13	3NT E 6	690		-3
5	8	3NT E 6	690		-3

**7**

♠Q3  
♥K8543  
♦J107  
♣A52

♠J109865  
♥AJ10  
♦5  
♣KJ8

♠A7  
♥Q96  
♦K862  
♣9764

♠K42  
♥72  
♦AQ943  
♣Q103

**8**

♠73  
♥A96  
♦K82  
♣QJ963

♠A82  
♥QJ1032  
♦109654  
♣

♠J65  
♥K8  
♦QJ  
♣K108742

♠KQ1094  
♥754  
♦A73  
♣A5

**9**

♠J  
♥A108  
♦KQ104  
♣KQ843

♠KQ97653  
♥K62  
♦A8  
♣J

♠1042  
♥Q9743  
♦J76  
♣A2

♠A8  
♥J5  
♦9532  
♣109765

Board (7) Av: NS=-10

N-S	E-W	Contract	N-S	E-W	IMP
16	14	2S W-2	200		5
7	8	2S W-1	100		3
15	17	Passout			0
19	20	Passout			0
18	11	Passout			0
12	13	Passout			0
1	9	Passout			0
2	10	3D S-1	100		-3
3	6	2S W 2	110		-3
5	4	3H N-4	400		-9

Board (8) Av: NS=+80

N-S	E-W	Contract	N-S	E-W	IMP
7	8	3C W-4	200		3
19	20	3C E-4	200		3
15	17	3C E-4	200		3
12	13	2C E-3	150		2
3	6	1NT N 2	120		1
5	4	2S S 2	110		1
16	14	3H E-1	50		-1
18	11	1NT N-1	50		-4
2	10	2H W 2	110		-5
1	9	3H E 3	140		-6

Board (9) Av: NS=-50

N-S	E-W	Contract	N-S	E-W	IMP
16	14	5Sx W-1	200		6
19	20	4C N 4	130		5
1	9	5S W-1	100		4
2	10	5C N-1	50		0
18	11	5Cx N-1	100		-2
15	17	5Cx N-1	100		-2
3	6	5Cx N-1	100		-2
12	13	3S W 3	140		-3
7	8	3NT S-3	150		-3
5	4	4S W 4	620		-11

10

♠ J65  
♥ J10  
♦ AK98  
♣ K943

♠ K32    ♠ AQ1097  
♥ K984   ♥ 653  
♦ 743    ♦ Q  
♣ 1087   ♣ AQJ6

W — E  
N — S

♠ 84  
♥ AQ72  
♦ J10652  
♣ 52

11

♠ 92  
♥ KQ73  
♦ KQJ10  
♣ A85

♠ 1064    ♠ J73  
♥ J108    ♥ A654  
♦ 654    ♦ 87  
♣ K762   ♣ QJ109

W — E  
N — S

♠ AKQ85  
♥ 92  
♦ A932  
♣ 43

12

♠ KJ7  
♥ J954  
♦ AJ  
♣ 10983

♠ A95    ♠ Q108  
♥ K62    ♥ 3  
♦ Q87    ♦ 9632  
♣ QJ64   ♣ AK752

W — E  
N — S

♠ 6432  
♥ AQ1087  
♦ K1054  
♣

Board (10) Av: NS=-160

N-S	E-W	Contract	N-S	E-W	IMP
19	20	3S	E 3	140	1
7	8	3S	E 3	140	1
18	11	2S	E 3	140	1
15	17	3S	E 4	170	0
5	4	3S	E 4	170	0
3	6	3S	E 4	170	0
1	9	2S	E 4	170	0
16	14	2S	E 4	170	0
2	10	2S	E 4	170	0
12	13	2S	E 4	170	0

Board (11) Av: NS=+430

N-S	E-W	Contract	N-S	E-W	IMP
2	10	6D	N 6	920	10
19	20	4S	N 5	450	1
5	4	3NT	S 4	430	0
15	17	3NT	N 4	430	0
16	14	3NT	N 4	430	0
12	13	3NT	N 4	430	0
3	6	3NT	N 4	430	0
18	11	3NT	N 4	430	0
1	9	3NT	N 3	400	-1
7	8	3NT	N 3	400	-1

Board (12) Av: NS=+160

N-S	E-W	Contract	N-S	E-W	IMP
1	9	4Hx	S 4	790	12
3	6	5Cx	W-3	500	8
12	13	3H	S 4	170	0
19	20	3H	N 4	170	0
18	11	3H	S 3	140	-1
15	17	3H	S 3	140	-1
16	14	3C	W-1	50	-3
7	8	3C	W-1	50	-3
2	10	3C	E-1	50	-3
5	4	4Hx	S-1	200	-8

13

♠ AQ103  
♥ 854  
♦ 1076  
♣ K62

♠ 6    ♠ KJ975  
♥ AKQ3   ♥ J1076  
♦ KQJ9   ♦ A8  
♣ A1043   ♣ 75

W — E  
N — S

♠ 842  
♥ 92  
♦ 5432  
♣ QJ98

14

♠ KJ104  
♥ 1096432  
♦ J4  
♣ 8

♠ A73    ♠ 96  
♥ J87    ♥ K5  
♦ A95    ♦ KQ1062  
♣ KQ96   ♣ A1072

W — E  
N — S

♠ Q852  
♥ AQ  
♦ 873  
♣ J543

15

♠ Q5  
♥ 1076  
♦ K952  
♣ A943

♠ 764    ♠ K98  
♥ 432    ♥ AKQJ  
♦ 10    ♦ AJ763  
♣ KQJ752   ♣ 8

W — E  
N — S

♠ AJ1032  
♥ 985  
♦ Q84  
♣ 106

Board (13) Av: NS=-650

N-S	E-W	Contract	N-S	E-W	IMP
1	8	6H	W-1	100	13
13	16	3NT	W 4	630	1
17	18	3NT	W 4	630	1
15	14	4H	W 5	650	0
20	12	4H	W 5	650	0
3	2	4H	E 5	650	0
7	5	4H	E 5	650	0
11	19	4H	E 5	650	0
10	9	4H	E 6	680	-1
6	4	4H	E 6	680	-1

Board (14) Av: NS=-450

N-S	E-W	Contract	N-S	E-W	IMP
13	16	3NT	W 4	430	1
3	2	3NT	W 4	430	1
17	18	3NT	W 4	430	1
15	14	3NT	E 4	430	1
20	12	3NT	W 5	460	0
11	19	3NT	W 5	460	0
6	4	3NT	W 5	460	0
1	8	3NT	W 5	460	0
10	9	3NT	W 5	460	0
7	5	3NT	W 5	460	0

Board (15) Av: NS=+90

N-S	E-W	Contract	N-S	E-W	IMP
3	2	3NT	W-4	200	3
10	9	3NT	W-4	200	3
11	19	3NT	W-3	150	2
20	12	4H	E-2	100	0
15	14	3NT	W-2	100	0
13	16	3NT	W-2	100	0
6	4	3NT	E-2	100	0
17	18	2D	E-2	100	0
1	8	3C	E 4	130	-6
7	5	3NT	W 3	400	-10

16

♠ 1087  
♥ AJ1083  
♦ Q96  
♣ J2

♠ 643    ♠ AQJ  
♥ K752   ♥ 964  
♦ J73    ♦ A4  
♣ Q73   ♣ AK854

W — E  
N — S

♠ K952  
♥ Q  
♦ K10852  
♣ 1096

17

♠ QJ  
♥ A10763  
♦ QJ  
♣ 9754

♠ K52    ♠ 108743  
♥ J5    ♥ Q92  
♦ K9875   ♦ 43  
♣ KQJ   ♣ 1086

W — E  
N — S

♠ A96  
♥ K84  
♦ A1062  
♣ A32

18

♠ QJ109854  
♥ 8  
♦ 943  
♣ AQ

♠ A72    ♠ K6  
♥ J643   ♥ 52  
♦ KQJ87   ♦ 652  
♣ K   ♣ J98643

W — E  
N — S

♠ 3  
♥ AKQ1097  
♦ A10  
♣ 10752

Board (16) Av: NS=+60

N-S	E-W	Contract	N-S	E-W	IMP
3	2	3NT	E-4	400	8
17	18	3NT	E-2	200	4
13	16	3NT	E-2	200	4
11	19	3NT	E-2	200	4
1	8	2NT	E-2	200	4
20	12	2NT	E-1	100	1
7	5	2NT	E-1	100	1
10	9	2NT	E-1	100	1
6	4	3NT	E 3	600	-12
15	14	3NT	E 3	600	-12

Board (17) Av: NS=+40

N-S	E-W	Contract	N-S	E-W	IMP
3	2	3NT	S 3	400	8
17	18	3NT	S 3	400	8
6	4	1NT	S 2	120	2
10	9	1NT	S 2	120	2
15	14	4H	S-1	50	-3
20	12	4H	S-1	50	-3
13	16	4H	S-1	50	-3
1	8	4H	S-1	50	-3
7	5	4H	S-2	100	-4
11	19	4H	S-2	100	-4

Board (18) Av: NS=+210

N-S	E-W	Contract	N-S	E-W	IMP
6	4	4S	N 4	620	9
17	18	4S	N 4	620	9
1	8	4S	N 4	620	9
13	16	3S	N 4	170	-1
10	9	3S	N 4	170	-1
15	14	2S	N 3	140	-2
11	19	2S	N 3	140	-2
3	2	4S	N-1	100	-7
7	5	4S	N-1	100	-7
20	12	4H	S-1	100	-7

第19回NRM杯 Session1 Section B 2014年6月21日(土)

19

♠A1094  
♥AJ1052  
♦Q3  
♣AK

♠K8732 ♠Q65  
♥Q93 ♥864  
♦K92 ♦764  
♣42 ♣9876

♠J  
♥K7  
♦AJ1085  
♣QJ1053

Board (19) Av: NS=+780

N-S	E-W	Contract	N-S	E-W	IMP
13	19	6NT N 6	990		5
15	18	6NT N 6	990		5
14	17	6H N 6	980		5
6	5	6H N 6	980		5
8	4	6D S 6	920		4
2	9	6C S 6	920		4
1	7	4NT N 6	490		-7
20	11	3NT N 5	460		-8
3	10	3NT N 5	460		-8
16	12	6NT N-1		50	-13

20

♠A1087  
♥K10872  
♦62  
♣KJ

♠KQJ5 ♠64  
♥AQ6 ♥9  
♦543 ♦AKQJ108  
♣1054 ♣9632

♠932  
♥J543  
♦97  
♣AQ87

Board (20) Av: NS=-560

N-S	E-W	Contract	N-S	E-W	IMP
14	17	5D E-2	200		13
6	5	2D E 3		110	10
1	7	3NT W 3		600	-1
16	12	3NT W 3		600	-1
15	18	3NT W 3		600	-1
13	19	3NT W 4		630	-2
2	9	3NT W 4		630	-2
8	4	3NT W 4		630	-2
20	11	3NT W 5		660	-3
3	10	3NT W 5		660	-3

21

♠KJ6  
♥QJ2  
♦AKJ87  
♣K2

♠Q52 ♠A984  
♥A1098653 ♥74  
♦3 ♦Q95  
♣A8 ♣QJ74

♠1073  
♥K  
♦10642  
♣109653

Board (21) Av: NS=-100

N-S	E-W	Contract	N-S	E-W	IMP
20	11	2NT N 3	150		6
14	17	3NT E-2	100		5
8	4	4H W-1	50		4
13	19	3H W 3		140	-1
2	9	2H W 3		140	-1
6	5	1H W 3		140	-1
15	18	3H W 4		170	-2
1	7	2H W 4		170	-2
16	12	2H W 4		170	-2
3	10	2H W 4		170	-2

22

♠Q10  
♥K963  
♦Q9  
♣AK1095

♠A987652 ♠J3  
♥75 ♥AQ10842  
♦1064 ♦875  
♣3 ♣J8

♠K4  
♥J  
♦AKJ32  
♣Q7642

Board (22) Av: NS=+410

N-S	E-W	Contract	N-S	E-W	IMP
15	18	3NT S 5	460		2
20	11	3NT N 5	460		2
13	19	3NT N 5	460		2
2	9	3NT N 5	460		2
1	7	3NT N 5	460		2
6	5	5C N 6	420		0
8	4	5C S 5	400		0
3	10	5C N 5	400		0
16	12	2H E-2	200		-5
14	17	5S N-7		350	-13

23

♠J8754  
♥974  
♦KQ82  
♣5

♠AKQ962 ♠KQJ82  
♥1063 ♥AQJ  
♦J64 ♦A7  
♣7 ♣KQJ1032

♠103  
♥A5  
♦10953  
♣A9864

Board (23) Av: NS=+140

N-S	E-W	Contract	N-S	E-W	IMP
3	10	4S W-3	300		4
2	9	4S W-2	200		2
20	11	4H E-2	200		2
8	4	4H E-2	200		2
16	12	5C E-1	100		-1
1	7	4H E-1	100		-1
14	17	4H E-1	100		-1
15	18	3S W-1	100		-1
13	19	3NT E-1	100		-1
6	5	4H E 4		620	-13

24

♠K982  
♥Q854  
♦K7  
♣A54

♠3 ♠A10764  
♥1063 ♥KJ  
♦AQ9 ♦65432  
♣KQ9876 ♣2

♠QJ5  
♥A972  
♦J108  
♣J103

Board (24) Av: NS=+100

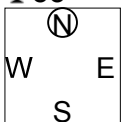
N-S	E-W	Contract	N-S	E-W	IMP
16	12	3H N 3	140		1
14	17	2H N 3	140		1
1	7	2H N 3	140		1
8	4	2H S 2	110		0
6	5	2H S 2	110		0
20	11	2H N 2	110		0
13	19	3C W-1	50		-2
15	18	2S E-1	50		-2
3	10	2C W-1	50		-2
2	9	3H S-2		100	-5

第19回NRM杯 Session 2 Section B 2014年6月21日(土)

1

♠K10942  
♥AQ965  
♦A  
♣53

♠7  
♥KJ4  
♦KQ1072  
♣J874



♠6  
♥3  
♦J8653  
♣AK10962

♠AQJ853  
♥10872  
♦94  
♣Q

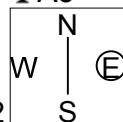
Board (1) Av: NS=+420

N-S	E-W	Contract	N-S	E-W	IMP
14	20	6S	N 6	980	11
15	13	5S	N 6	480	2
7	9	5S	N 6	480	2
8	6	5S	N 5	450	1
1	2	5S	N 5	450	1
11	12	5S	N 5	450	1
5	3	4S	N 5	450	1
10	4	6Dx	W-2	300	-3
18	16	6Dx	W-2	300	-3
19	17	6Dx	W-2	300	-3

2

♠J93  
♥K43  
♦Q8643  
♣A5

♠K1052  
♥J5  
♦97  
♣Q10632



♠A7  
♥AQ109  
♦J1052  
♣J97

♠Q864  
♥8762  
♦AK  
♣K84

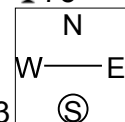
Board (2) Av: NS=-80

N-S	E-W	Contract	N-S	E-W	IMP
10	4	1NT	N 1	90	5
19	17	1NT	N 1	90	5
8	6	1NT	N 1	90	5
14	20	2D	N-1	100	-1
11	12	1NT	N-1	100	-1
5	3	1NT	E 3	150	-2
1	2	1NT	E 3	150	-2
18	16	1NT	E 3	150	-2
15	13	1NT	E 3	150	-2
7	9	1NT	E 6	240	-4

3

♠KJ10642  
♥65  
♦765  
♣75

♠A  
♥AK83  
♦Q92  
♣KJ863



♠Q985  
♥Q742  
♦AKJ4  
♣4

♠73  
♥J109  
♦1083  
♣AQ1092

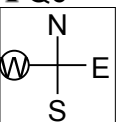
Board (3) Av: NS=-750

N-S	E-W	Contract	N-S	E-W	IMP
18	16	6H	E-1	100	13
11	12	4NT	E 4	630	3
14	20	4NT	E 4	630	3
7	9	4H	W 5	650	3
5	3	4H	W 5	650	3
15	13	4H	W 6	680	2
19	17	4H	W 6	680	2
1	2	4H	E 6	680	2
10	4	6H	W 6	1430	-12
8	6	6H	E 6	1430	-12

4

♠QJ4  
♥J105  
♦AJ654  
♣Q6

♠985  
♥KQ964  
♦Q93  
♣73



♠K102  
♥832  
♦K1082  
♣J84

♠A763  
♥A7  
♦7  
♣AK10952

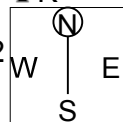
Board (4) Av: NS=+650

N-S	E-W	Contract	N-S	E-W	IMP
1	2	3NT	N 6	690	1
18	16	3NT	N 6	690	1
7	9	3NT	N 6	690	1
11	12	3NT	S 5	660	0
14	20	3NT	N 5	660	0
8	6	3NT	N 4	630	-1
10	4	3NT	N 4	630	-1
15	13	3NT	N 4	630	-1
5	3	3NT	N 4	630	-1
19	17	2C	S 5	150	-11

5

♠AQ73  
♥9873  
♦A873  
♣K

♠9  
♥AJ6542  
♦J4  
♣A972



♠106542  
♥10  
♦KQ9  
♣J1053

♠KJ8  
♥KQ  
♦10652  
♣Q864

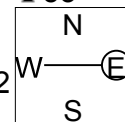
Board (5) Av: NS=-50

N-S	E-W	Contract	N-S	E-W	IMP
11	12	2NT	S 2	120	5
15	13	2NT	S 2	120	5
1	2	3H	W-1	50	3
8	6	3H	W-1	50	3
19	17	3NT	S-1	100	-2
14	20	3NT	S-1	100	-2
18	16	3D	N-1	100	-2
5	3	2NT	S-1	100	-2
10	4	3NT	S-2	200	-4
7	9	2NT	S-4	400	-8

6

♠AQJ5  
♥Q84  
♦KQ75  
♣53

♠93  
♥A9  
♦J109632  
♣Q87



♠7642  
♥10532  
♦8  
♣J1042

♠K108  
♥KJ76  
♦A4  
♣AK96

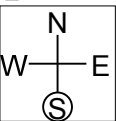
Board (6) Av: NS=+410

N-S	E-W	Contract	N-S	E-W	IMP
1	2	6NT	S 6	990	11
8	6	6NT	S 6	990	11
7	9	3NT	N 6	490	2
11	12	3NT	N 6	490	2
19	17	4NT	S 5	460	2
15	13	4NT	S 5	460	2
18	16	4NT	S 5	460	2
10	4	6NT	S-1	50	-10
5	3	6NT	S-1	50	-10
14	20	6NT	N-1	50	-10

7

♠AQ10  
♥KQ862  
♦J9  
♣K74

♠J752  
♥AJ  
♦Q106  
♣A1065



♠864  
♥975  
♦AK87  
♣Q93

♠K93  
♥1043  
♦5432  
♣J82

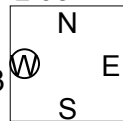
Board (7) Av: NS=+80

N-S	E-W	Contract	N-S	E-W	IMP
18	12	3C	W-2	200	3
19	16	2H	N 2	110	1
3	4	2H	N 2	110	1
7	10	1H	N 2	110	1
1	5	1H	N 2	110	1
17	20	1H	N 2	110	1
9	6	1NT	E-1	100	1
13	14	1H	N 1	80	0
8	2	1S	W 1	80	-4
11	15	2C	W 3	110	-5

8

♠K95  
♥A753  
♦KQJ  
♣654

♠QJ6  
♥1094  
♦A1053  
♣987



♠A10832  
♥Q6  
♦64  
♣KJ103

♠74  
♥KJ82  
♦9872  
♣AQ2

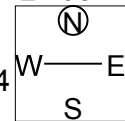
Board (8) Av: NS=+180

N-S	E-W	Contract	N-S	E-W	IMP
1	5	4H	N 4	420	6
3	4	4H	N 4	420	6
11	15	4H	N 4	420	6
9	6	4Sx	E-2	300	3
8	2	3H	N 4	170	0
13	14	3H	N 3	140	-1
18	12	3S	E-1	50	-4
17	20	4H	N-1	50	-6
7	10	4H	N-1	50	-6
19	16	4H	N-1	50	-6

9

♠K98  
♥AK532  
♦J73  
♣108

♠5  
♥J64  
♦AKQ854  
♣K97



♠J7632  
♥9  
♦1062  
♣AQJ3

♠AQ104  
♥Q1087  
♦9  
♣6542

Board (9) Av: NS=+90

N-S	E-W	Contract	N-S	E-W	IMP
19	16	4Hx	N 4	590	11
7	10	4H	N 5	450	8
18	12	3H	N 4	170	2
1	5	3H	N 4	170	2
3	4	2H	N 4	170	2
8	2	5D	W-1	100	0
17	20	4H	N-1	50	-4
13	14	4D	W 5	150	-6
11	15	4D	W 5	150	-6
9	6	5D	W 5	600	-12

10

♠ J  
♥ J86432  
♦ 1085  
♣ 1085

♠ AKQ86  
♥ Q  
♦ KQ7  
♣ QJ62

N  
W — E  
S

♠ 95432  
♥ 10  
♦ A943  
♣ 743

♠ 107  
♥ AK975  
♦ J62  
♣ AK9

11

♠ KQ87  
♥ J109  
♦ K  
♣ Q10632

♠ 954  
♥ Q65  
♦ 106543  
♣ J5

N  
W — E  
S

♠ J62  
♥ AK82  
♦ 98  
♣ 9874

♠ A103  
♥ 743  
♦ AQJ72  
♣ AK

12

♠ 972  
♥ A985  
♦ Q4  
♣ AK98

♠ AK85  
♥ 4  
♦ AJ87  
♣ 7654

N  
W — E  
S

♠ J103  
♥ KJ632  
♦ 9652  
♣ J

♠ Q64  
♥ Q107  
♦ K103  
♣ Q1032

Board (10) Av: NS=-620

N-S	E-W	Contract	N-S	E-W	IMP
11	15	5S E-1	100		
3	4	4S W 4	620		0
1	5	4S W 4	620		0
8	2	4S W 4	620		0
9	6	4S W 4	620		0
19	16	4S W 4	620		0
13	14	4S W 4	620		0
17	20	4S W 4	620		0
7	10	4S W 5	650		-1
18	12	5Hx S-3	800		-5

Board (11) Av: NS=+510

N-S	E-W	Contract	N-S	E-W	IMP
1	5	3NT S 7	520		0
3	4	3NT S 7	520		0
18	12	3NT S 7	520		0
8	2	3NT S 7	520		0
17	20	3NT S 7	520		0
11	15	3NT S 7	520		0
13	14	3NT S 7	520		0
19	16	3NT S 6	490		-1
9	6	3NT S 4	430		-2
7	10	3NT S 3	400		-3

Board (12) Av: NS=-80

N-S	E-W	Contract	N-S	E-W	IMP
9	6	1NT S 2	120		5
7	10	2H E-2	100		5
8	2	1NT E 1	90		0
3	4	2D W 3	110		-1
19	16	2D W 3	110		-1
11	15	2D W 3	110		-1
13	14	2D W 3	110		-1
17	20	2D W 3	110		-1
18	12	2D W 3	110		-1
1	5	1S E 4	170		-3

13

♠ 8  
♥ 852  
♦ 865  
♣ K107652

♠ AKJ3  
♥ A73  
♦ Q  
♣ QJ983

N  
W — E  
S

♠ 7652  
♥ KQJ6  
♦ K974  
♣ 4

♠ Q1094  
♥ 1094  
♦ AJ1032  
♣ A

14

♠ K3  
♥ J107  
♦ J532  
♣ QJ104

♠ AJ954  
♥  
♦ KQ1084  
♣ 875

N  
W — E  
S

♠ Q1087  
♥ AKQ  
♦ A97  
♣ A92

♠ 62  
♥ 9865432  
♦ 6  
♣ K63

15

♠ 8  
♥ AK5  
♦ 9754  
♣ J9864

♠ Q109542  
♥ J  
♦ 108  
♣ AK103

N  
W — E  
S

♠ AK763  
♥ Q10963  
♦ AQ  
♣ Q

♠ J  
♥ 8742  
♦ KJ632  
♣ 752

Board (13) Av: NS=-140

N-S	E-W	Contract	N-S	E-W	IMP
17	12	4S E-2	200		8
16	11	4S W-1	100		6
18	13	4H E-1	100		6
10	5	2C W-1	100		6
1	6	2S W 3	140		0
20	15	2S W 3	140		0
14	19	1H E 4	170		-1
4	9	2C N-4	400		-6
2	7	3NT E 3	600		-10
3	8	4S W 4	620		-10

Board (14) Av: NS=-790

N-S	E-W	Contract	N-S	E-W	IMP
1	6	5S W 6	480		7
20	15	5S W 6	480		7
2	7	4S W 6	480		7
18	13	4S W 6	480		7
3	8	6S W 6	980		-5
14	19	6S W 6	980		-5
4	9	6S W 6	980		-5
17	12	6S W 6	980		-5
10	5	6S W 6	980		-5
16	11	6S E 6	980		-5

Board (15) Av: NS=-920

N-S	E-W	Contract	N-S	E-W	IMP
3	8	4S W 6	480		10
4	9	4S E 6	480		10
2	7	6S W 6	980		-2
1	6	6S W 6	980		-2
17	12	6S W 6	980		-2
18	13	6S W 6	980		-2
16	11	6S W 6	980		-2
10	5	6S E 6	980		-2
20	15	6S E 6	980		-2
14	19	6H W 6	980		-2

16

♠ AK43  
♥ Q6  
♦ J10542  
♣ J9

♠ Q76  
♥ A82  
♦ 87  
♣ AKQ76

N  
W — E  
S

♠ 1095  
♥ KJ93  
♦ AQ  
♣ 8542

♠ J82  
♥ 10754  
♦ K963  
♣ 103

17

♠ KJ2  
♥ KJ932  
♦ K108  
♣ 83

♠ 10985  
♥ A4  
♦ J75  
♣ KJ104

N  
W — E  
S

♠ 76  
♥ 106  
♦ AQ9  
♣ AQ9652

♠ AQ43  
♥ Q875  
♦ 6432  
♣ 7

18

♠ J  
♥ 942  
♦ J10542  
♣ J983

♠ K84  
♥ K8753  
♦ K63  
♣ 104

N  
W — E  
S

♠ 10965  
♥ Q10  
♦ 97  
♣ KQ765

♠ AQ732  
♥ AJ6  
♦ AQ8  
♣ A2

Board (16) Av: NS=-600

N-S	E-W	Contract	N-S	E-W	IMP
1	6	3NT W 3	600		0
2	7	3NT W 3	600		0
3	8	3NT W 3	600		0
4	9	3NT W 3	600		0
10	5	3NT W 3	600		0
14	19	3NT W 3	600		0
16	11	3NT W 3	600		0
17	12	3NT W 3	600		0
20	15	3NT W 3	600		0
18	13	3NT W 4	630		-1

Board (17) Av: NS=-80

N-S	E-W	Contract	N-S	E-W	IMP
10	5	3H S 3	140		6
17	12	3H N 3	140		6
16	11	4H N-1	50		1
20	15	3C E 3	110		-1
18	13	3C E 3	110		-1
3	8	4C E 4	130		-2
1	6	3C E 4	130		-2
2	7	3C E 4	130		-2
14	19	4C E 5	150		-2
4	9	2C E 5	150		-2

Board (18) Av: NS=+30

N-S	E-W	Contract	N-S	E-W	IMP
18	13	2NT S 3	150		3
3	8	2NT S 2	120		3
1	6	2NT S 2	120		3
2	7	2NT S 2	120		3
10	5	2NT S 2	120		3
14	19	2NT S 2	120		3
16	11	3NT S-1	100		-4
20	15	3NT S-1	100		-4
17	12	3NT S-2	200		-6
4	9	2NT S-2	200		-6

19

♠K  
♥6  
♦KQ1063  
♣A98763

♠1092 N ♠AJ54  
♥Q53 W—E ♥AJ108  
♦J982 W—E ♦4  
♣1042 W—E ♣KQJ5

♠Q8763  
♥K9742  
♦A75  
♣

20

♠K6542  
♥J10  
♦J84  
♣873

♠J87 N ♠AQ103  
♥AQ8654 W—E ♥973  
♦ J1062 W—E ♦Q1063  
♣J1062 W—E ♣K4

♠9  
♥K2  
♦AK9752  
♣AQ95

21

♠10652  
♥K982  
♦A95  
♣J10

♠4 N ♠A73  
♥A10653 W—E ♥J4  
♦J83 W—E ♦KQ42  
♣A732 W—E ♣KQ85

♠KQJ98  
♥Q7  
♦1076  
♣964

Board (19) Av: NS=+180

N-S	E-W	Contract	N-S	E-W	IMP
19	15	2Hx E-3	800		12
16	17	3Dx N 3	470		7
13	11	1NTxE-1	200		1
10	8	3D N 4	130		-2
1	3	3D N 4	130		-2
18	20	3D N 4	130		-2
14	12	2NT N 2	120		-2
6	7	3D N 3	110		-2
2	4	3D N 3	110		-2
5	9	3NT N-1	50		-6

Board (20) Av: NS=-230

N-S	E-W	Contract	N-S	E-W	IMP
18	20	4D S-2	200		1
13	11	3H W 5	200		1
1	3	3D S-2	200		1
6	7	3D S-2	200		1
19	15	3D S-2	200		1
16	17	3D S-2	200		1
10	8	2H W 5	200		1
2	4	4D S-3	300		-2
14	12	4D S-3	300		-2
5	9	2NT S-3	300		-2

Board (21) Av: NS=-70

N-S	E-W	Contract	N-S	E-W	IMP
10	8	3NT E-2	100		5
6	7	5C W-1	50		3
19	15	3NT E-1	50		3
18	20	3NT E-1	50		3
1	3	2NT E 2	120		-2
2	4	2NT E 2	120		-2
14	12	2NT E 3	150		-2
13	11	2NT E 3	150		-2
5	9	2NT E 3	150		-2
16	17	3NT E 3	400		-8

22

♠1098  
♥8  
♦1087542  
♣872

♠A743 N ♠J652  
♥J43 W—E ♥Q9765  
♦J6 W—E ♦Q3  
♣KQ94 W—E ♣J10

♠KQ  
♥AK102  
♦AK9  
♣A653

23

♠QJ954  
♥108  
♦A872  
♣K4

♠AK N ♠1082  
♥7653 W—E ♥AKQJ94  
♦J94 W—E ♦Q6  
♣J976 W—E ♣A3

♠763  
♥2  
♦K1053  
♣Q10852

24

♠KQJ9  
♥A5  
♦1064  
♣A964

♠105432 N ♠6  
♥72 W—E ♥J109864  
♦KQ8 W—E ♦952  
♣K103 W—E ♣Q85

♠A87  
♥KQ3  
♦AJ73  
♣J72

Board (22) Av: NS=+180

N-S	E-W	Contract	N-S	E-W	IMP
16	17	3NT S 3	400		6
1	3	2NT S 5	210		1
14	12	2NT S 5	210		1
19	15	2NT S 5	210		1
5	9	2NT S 4	180		0
13	11	2NT S 4	180		0
18	20	2NT S 4	180		0
2	4	2NT S 3	150		-1
6	7	2NT S 3	150		-1
10	8	2NT S 3	150		-1

Board (23) Av: NS=-630

N-S	E-W	Contract	N-S	E-W	IMP
2	4	4H E 4	620		0
19	15	4H E 4	620		0
5	9	4H E 4	620		0
6	7	4H E 4	620		0
13	11	4H E 4	620		0
14	12	4H E 4	620		0
16	17	4H E 4	620		0
10	8	4H E 5	650		-1
18	20	4H E 5	650		-1
1	3	4H E 5	650		-1

Board (24) Av: NS=+430

N-S	E-W	Contract	N-S	E-W	IMP
18	20	3NT S 4	430		0
14	12	3NT S 4	430		0
5	9	3NT N 4	430		0
1	3	3NT N 4	430		0
6	7	3NT N 4	430		0
10	8	3NT N 4	430		0
19	15	3NT N 4	430		0
13	11	3NT N 4	430		0
2	4	3NT N 4	430		0
16	17	3NT N 4	430		0

25

♠K75  
♥AK5  
♦AJ3  
♣KJ109

♠842 N ♠A1096  
♥1082 W—E ♥QJ743  
♦Q952 W—E ♦87  
♣A43 W—E ♣86

♠QJ3  
♥96  
♦K1064  
♣Q752

26

♠KQ1073  
♥J62  
♦J  
♣AQ94

♠A94 N ♠85  
♥AQ107 W—E ♥854  
♦865 W—E ♦AQ102  
♣KJ6 W—E ♣8732

♠J62  
♥K93  
♦K9743  
♣105

27

♠3  
♥AQ52  
♦10972  
♣K765

♠J9542 N ♠AQ10  
♥93 W—E ♥KJ764  
♦AKQJ6 W—E ♦  
♣3 W—E ♣AQJ104

♠K876  
♥108  
♦8543  
♣982

Board (25) Av: NS=-70

N-S	E-W	Contract	N-S	E-W	IMP
5	2	3NT S 4	430		11
1	4	3NT N-1	50		1
8	9	3NT N-1	50		1
12	15	3NT N-1	50		1
10	6	3NT N-1	50		1
14	11	3NT N-1	50		1
18	19	3NT S-2	100		-1
13	17	3NT N-2	100		-1
3	7	3NT N-2	100		-1
20	16	3NT N-2	100		-1

Board (26) Av: NS=+140

N-S	E-W	Contract	N-S	E-W	IMP
5	2	3H W-3	300		4
1	4	2S N 3	140		0
3	7	2S N 3	140		0
10	6	2S N 3	140		0
20	16	2S N 3	140		0
14	11	2S N 3	140		0
12	15	2S N 3	140		0
18	19	2S N 3	140		0
13	17	2S N 2	110		-1
8	9	3S N-1	100		-6

Board (27) Av: NS=-120

N-S	E-W	Contract	N-S	E-W	IMP
3	7	5H E-3	150		7
8	9	6S W-2	100		6
14	11	6S W-2	100		6
13	17	5S W-2	100		6
12	15	6S W-1	50		5
1	4	5S W-1	50		5
18	19	4S W 4	420		-7
10	6	5S W 5	450		-8
20	16	5S W 5	450		-8
5	2	4S W 5	450		-8

第19回NRM杯 Session 2 Section B 2014年6月21日(土)

28

♠ A643  
♥ AK965  
♦ K8  
♣ K5

♠ KJ97	N	♠ Q2
♥ 1042		♥ QJ73
♦ J73	W	♦ Q2
♣ 963	S	♣ J10842

♠ 1085  
♥ 8  
♦ A109654  
♣ AQ7

29

♠ KQ  
♥ J963  
♦ K1065  
♣ 1086

♠ 1073	N	♠ AJ8
♥ 72		♥ AKQ104
♦ A843	W	♦ J7
♣ J432	S	♣ AQ5

♠ 96542  
♥ 85  
♦ Q92  
♣ K97

30

♠ 76  
♥ 862  
♦ KJ86  
♣ 9432

♠ AKJ1094	N	♠ 832
♥ Q7		♥ AK4
♦ A107	W	♦ Q93
♣ AJ	S	♣ KQ86

♠ Q5  
♥ J10953  
♦ 542  
♣ 1075

Board (28) Av: NS=+410

N-S	E-W	Contract	N-S	E-W	IMP
14	11	3NT S 4	630		6
12	15	3NT S 4	630		6
5	2	3NT S 4	630		6
8	9	3NT S 4	630		6
3	7	3NT S 3	600		5
1	4	3NT S 3	600		5
10	6	3NT S 3	600		5
13	17	6D S-1	100		-11
18	19	3NT S-3	300		-12
20	16	3NT S-3	300		-12

Board (29) Av: NS=-470

N-S	E-W	Contract	N-S	E-W	IMP
14	11	3NT W-1	100		11
1	4	3NT E-1	100		11
8	9	1H E 4	170		7
3	7	3NT E 3	600		-4
20	16	3NT E 3	600		-4
13	17	3NT E 3	600		-4
18	19	3NT E 3	600		-4
12	15	3NT E 4	630		-4
5	2	3NT E 5	660		-5
10	6	3NT E 5	660		-5

Board (30) Av: NS=-890

N-S	E-W	Contract	N-S	E-W	IMP
1	4	5S W 7	510		9
13	17	5S W 7	510		9
5	2	4S W 7	510		9
18	19	6S W 7	1010		-3
10	6	6S W 7	1010		-3
20	16	6S W 7	1010		-3
14	11	6S W 7	1010		-3
12	15	6NT E 7	1020		-4
8	9	6NT E 7	1020		-4
3	7	6NT E 7	1020		-4

第19回NRM杯 Session 3 Section B 2014年6月22日(日)

1

♠ K108 ♠ AJ7642  
♥ 8 ♥ K765  
♦ 9754 ♠ Q953  
♣ J8652 ♠ Q953  
♣ 3 ♠ AJ92  
♣ 3 ♠ A63  
♣ 3 ♠ 74

Board (1) Av: NS=+530

N-S	E-W	Contract	N-S	E-W	IMP
9	17	4Sx	E-4	800	7
3	15	4Sx	E-4	800	7
12	4	5H	N 7	510	-1
7	18	4H	N 7	510	-1
16	6	4H	N 7	510	-1
1	11	5H	S 6	480	-2
10	19	4H	S 6	480	-2
2	13	4H	N 6	480	-2
5	14	4H	N 6	480	-2
8	20	4H	N 5	450	-2

2

♠ 643 ♠ QJ1052  
♥ 1074 ♥ 52  
♦ A8 ♠ QJ107  
♣ Q10763 ♠ A95  
♣ K4 ♠ A97  
♣ K4 ♠ A963  
♣ K4 ♠ Q92  
♣ K4 ♠ J82

Board (2) Av: NS=-10

N-S	E-W	Contract	N-S	E-W	IMP
7	18	2NT	W-2	100	3
16	6	2NT	W-2	100	3
8	20	2NT	W-1	50	2
3	15	2NT	W-1	50	2
12	4	2NT	W-1	50	2
1	11	2NT	W-1	50	2
9	17	2NT	W 2	120	-3
10	19	2NT	W 2	120	-3
5	14	2NT	W 3	150	-4
2	13	1NT	W 3	150	-4

3

♠ KQ876 ♠ AJ3  
♥ A3 ♥ J1042  
♦ 74 ♠ J1042  
♣ 10754 ♠ Q10985  
♣ 3 ♠ 42  
♣ 3 ♠ K976  
♣ 3 ♠ A32  
♣ 3 ♠ Q982

Board (3) Av: NS=-70

N-S	E-W	Contract	N-S	E-W	IMP
16	6	2C	W-2	200	7
12	4	3H	W-1	100	5
1	11	2D	E-1	100	5
10	19	2S	N-2	100	-1
3	15	1NT	S-2	100	-1
9	17	3H	W 3	140	-2
8	20	1NT	W 3	150	-2
2	13	1NT	W 3	150	-2
5	14	1NT	S-3	150	-2
7	18	1NT	S-3	150	-2

4

♠ Q975 ♠ K102  
♥ 754 ♥ QJ1086  
♦ 974 ♠ QJ1086  
♣ Q96 ♠ KQ6  
♣ Q96 ♠ K3

Board (4) Av: NS=-100

N-S	E-W	Contract	N-S	E-W	IMP
12	4	3C	E-1	100	5
9	17	2D	S-1	100	0
3	15	1NT	S-1	100	0
1	11	1NT	S-1	100	0
5	14	1NT	S-1	100	0
7	18	1NT	S-1	100	0
16	6	1NT	S-1	100	0
8	20	1NT	S-1	100	0
2	13	1NT	S-1	100	0
10	19	1NT	S-1	100	0

5

♠ 109632 ♠ A8  
♥ 4 ♥ 10985  
♦ K1065 ♠ 32  
♣ 1098 ♠ K7432  
♣ 1098 ♠ A8  
♣ 1098 ♠ 10985  
♣ 1098 ♠ 32  
♣ 1098 ♠ K7432

Board (5) Av: NS=-110

N-S	E-W	Contract	N-S	E-W	IMP
3	15	1H	S 1	80	5
2	13	2C	E 2	90	1
5	14	2C	E 2	90	1
16	6	2S	S-1	100	0
9	17	1H	S-1	100	0
7	18	2C	E 3	110	0
1	11	2C	E 3	110	0
10	19	1NT	W 2	120	0
8	20	1NT	W 2	120	0
12	4	1NT	W 4	180	-2

6

♠ J98 ♠ AK  
♥ K10 ♥ A2  
♦ AQJ76 ♠ 9853  
♣ KQJ ♠ 87432  
♣ KQJ ♠ 87432

Board (6) Av: NS=-100

N-S	E-W	Contract	N-S	E-W	IMP
7	18	4H	S-1	50	2
1	11	4H	S-2	100	0
2	13	4H	S-2	100	0
12	4	4H	S-2	100	0
8	20	4H	S-2	100	0
10	19	4H	S-2	100	0
9	17	4H	N-2	100	0
5	14	4H	N-2	100	0
3	15	4H	N-2	100	0
16	6	3NT	N-3	150	-2

7

♠ AK643 ♠ Q  
♥ AK109 ♥ 872  
♦ J53 ♠ AQ1094  
♣ 2 ♠ AQ76  
♣ 2 ♠ AQ76

Board (7) Av: NS=+200

N-S	E-W	Contract	N-S	E-W	IMP
17	7	4S	N 5	650	10
4	11	3S	N 5	200	0
1	15	3S	N 5	200	0
6	20	3S	N 5	200	0
8	19	3S	N 5	200	0
12	2	3S	N 5	200	0
13	5	3S	N 5	200	0
3	14	2S	N 5	200	0
9	16	2S	N 5	200	0
18	10	2S	N 5	200	0

8

♠ AQ543 ♠ J72  
♥ 762 ♥ 43  
♦ QJ ♠ K9863  
♣ AQ10 ♠ J76  
♣ AQ10 ♠ J76

Board (8) Av: NS=+40

N-S	E-W	Contract	N-S	E-W	IMP
8	19	2S	N 2	110	2
3	14	2S	N 2	110	2
9	16	2S	N 2	110	2
1	15	1S	S 2	110	2
6	20	1S	N 2	110	2
18	10	1S	N 2	110	2
13	5	3S	N-1	50	-3
17	7	3S	N-1	50	-3
4	11	2NT	S-3	150	-5
12	2	2H	W 4	170	-5

9

♠ K985 ♠ 1032  
♥ A ♥ K742  
♦ J9865 ♠ AQ107  
♣ J87 ♠ Q9  
♣ J87 ♠ Q9

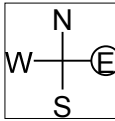
Board (9) Av: NS=+30

N-S	E-W	Contract	N-S	E-W	IMP
12	2	3H	W-2	200	5
6	20	3D	W-2	200	5
18	10	3D	W-1	100	2
17	7	3D	W-1	100	2
9	16	3D	W-1	100	2
1	15	1H	E-1	100	2
3	14	2D	W 2	90	-3
13	5	2NT	W 2	120	-4
4	11	2NT	W 2	120	-4
8	19	2NT	W 2	120	-4



10

♠ J842  
♥ Q94  
♦ Q84  
♣ AJ2



♠ A1075  
♥ J3  
♦ KJ  
♣ 98743

♠ KQ96  
♥ K8652  
♦  
♣ K1065

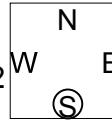
♠ 3  
♥ A107  
♦ A10976532  
♣ Q

Board (10) Av: NS=+80

N-S	E-W	Contract	N-S	E-W	IMP
18	10	4H S 4	620		11
12	2	5Dx W-1	200		3
6	20	5Dx W-1	200		3
8	19	3H S 4	170		3
17	7	3H S 4	170		3
13	5	3H S 4	170		3
9	16	4S N-1	100	100	-5
3	14	3S S-1	100	100	-5
1	15	3S N-1	100	100	-5
4	11	3NT W 4	630		-12

11

♠ K104  
♥ AQ964  
♦ 863  
♣ 42



♠ Q872  
♥ 82  
♦ K107  
♣ KJ105

♠ AJ963  
♥ 1053  
♦ A5  
♣ AQ8

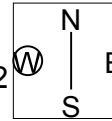
♠ 5  
♥ KJ7  
♦ QJ942  
♣ 9763

Board (11) Av: NS=+290

N-S	E-W	Contract	N-S	E-W	IMP
17	7	4S S 7	510		6
12	2	4S S 6	480		5
8	19	4S S 5	450		4
6	20	4S S 5	450		4
3	14	4S S 4	420		4
4	11	3S S 5	200		-3
1	15	2S S 5	200		-3
18	10	2S S 4	170		-3
13	5	4S S-1		50	-8
9	16	3S S-1		50	-8

12

♠ K654  
♥ 98  
♦ KJ7  
♣ KQ108



♠ Q1092  
♥ QJ10  
♦ 8  
♣ AJ743

♠ 73  
♥ AK6542  
♦ 6543  
♣ 2

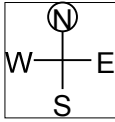
♠ AJ8  
♥ 73  
♦ AQ1092  
♣ 965

Board (12) Av: NS=+50

N-S	E-W	Contract	N-S	E-W	IMP
17	7	2H S 3	140		3
4	11	2H S 2	110		2
9	16	2H S 2	110		2
13	5	2H S 2	110		2
6	20	2NT W-2	100		2
8	19	2NT W-2	100		2
1	15	2NT E-2	100		2
12	2	3H S-1		100	-4
3	14	2S E 2		110	-4
18	10	2S E 2		110	-4

13

♠ K73  
♥ Q  
♦ QJ1074  
♣ QJ74



♠ 862  
♥ KJ43  
♦ 863  
♣ A103

♠ J1054  
♥ 862  
♦ AK52  
♣ 52

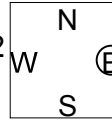
♠ AQ9  
♥ A10975  
♦ 9  
♣ K986

Board (13) Av: NS=-170

N-S	E-W	Contract	N-S	E-W	IMP
13	3	3S S-1	100		2
2	11	3H W 4	170		0
4	15	3H W 4	170		0
8	18	3H W 4	170		0
7	16	3H E 4	170		0
20	9	3H E 4	170		0
5	12	2H W 4	170		0
17	10	2H W 4	170		0
19	6	2H W 4	170		0
1	14	2H W 4	170		0

14

♠ 1098  
♥ J65  
♦ KJ762  
♣ J10



♠ A7643  
♥ A  
♦ A1093  
♣ K42

♠ KQJ  
♥ KQ43  
♦ 84  
♣ A986

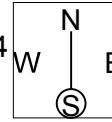
♠ 52  
♥ 109872  
♦ Q5  
♣ Q753

Board (14) Av: NS=-20

N-S	E-W	Contract	N-S	E-W	IMP
5	12	1NT S 2	120		4
17	10	2H W-2	100		3
1	14	1NT S 1	90		3
20	9	1NT S 1	90		3
4	15	2D N-1		50	-1
7	16	1S E 1		80	-2
8	18	2D N-2		100	-2
19	6	1NT S-2		100	-2
13	3	2S E 2		110	-3
2	11	1S E 2		110	-3

15

♠ KQ9  
♥ 62  
♦ K6  
♣ KQ9875



♠ J86543  
♥ J1093  
♦  
♣ 1063

♠ 1072  
♥ 85  
♦ QJ98754  
♣ A

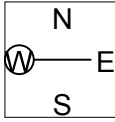
♠ A  
♥ AKQ74  
♦ A1032  
♣ J42

Board (15) Av: NS=-390

N-S	E-W	Contract	N-S	E-W	IMP
7	16	5H E-1		50	10
13	3	3H W 3		140	6
4	15	4H W 4		420	-1
5	12	4H W 4		420	-1
2	11	4H W 4		420	-1
20	9	4H W 4		420	-1
8	18	4H W 4		420	-1
17	10	4H W 5		450	-2
19	6	4H W 5		450	-2
1	14	4H W 5		450	-2

16

♠ 42  
♥ 874  
♦ 8  
♣ J1097653



♠ J10765  
♥ AKQJ9  
♦ 72  
♣ A

♠ A9  
♥ 632  
♦ AQJ654  
♣ 82

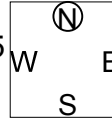
♠ KQ83  
♥ 105  
♦ K1093  
♣ KQ4

Board (16) Av: NS=-460

N-S	E-W	Contract	N-S	E-W	IMP
8	18	6S E-2	200		12
4	15	5S W-1	100		11
20	9	5S W-1	100		11
2	11	4S E 4		620	-4
19	6	5S E 5		650	-5
7	16	5S E 5		650	-5
17	10	5S E 5		650	-5
1	14	5S E 5		650	-5
5	12	5S E 6		680	-6
13	3	4S E 6		680	-6

17

♠ 985  
♥ J  
♦ AQ76  
♣ A8754



♠ 72  
♥ K9743  
♦ J98  
♣ KQ2

♠ AQ643  
♥ A82  
♦ 542  
♣ J10

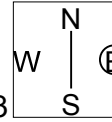
♠ KJ10  
♥ Q1065  
♦ K103  
♣ 963

Board (17) Av: NS=+100

N-S	E-W	Contract	N-S	E-W	IMP
5	12	4S S 4	420		8
13	3	4S S 4	420		8
4	15	2S S 4	170		2
17	10	3S S 3	140		1
19	6	3S S 3	140		1
2	11	2S S 2	110		0
1	14	4S S-1		50	-4
8	18	2NT S-1		50	-4
20	9	4S S-2		100	-5
7	16	3S S-2		100	-5

18

♠ 10974  
♥ K987  
♦ Q105  
♣ 54



♠ Q8  
♥ Q1053  
♦ 82  
♣ KJ862

♠ AK652  
♥ A  
♦ AK643  
♣ A7

♠ J3  
♥ J642  
♦ J97  
♣ Q1093

Board (18) Av: NS=+1180

N-S	E-W	Contract	N-S	E-W	IMP
5	12	6S S 7	1460		7
7	16	6S S 7	1460		7
4	15	6S S 7	1460		7
20	9	6S S 7	1460		7
13	3	6S S 7	1460		7
17	10	6S S 7	1460		7
8	18	5S S 7	710		-10
2	11	4S S 7	710		-10
19	6	4S S 7	710		-10
1	14	4S S 7	710		-10

19

♠A63  
♥KQ9  
♦5  
♣AK10876

♠KQ5  
♥52  
♦J7632  
♣J43

N  
W—E  
S

♠J94  
♥AJ874  
♦KQ109  
♣2

♠10872  
♥1063  
♦A84  
♣Q95

Board (19) Av: NS=+120

N-S	E-W	Contract	N-S	E-W	IMP
4	14	3NT N 4	430		7
12	3	3C N 4	130		0
2	15	2C N 4	130		0
8	17	2NT N 2	120		0
9	19	2NT N 2	120		0
1	13	3C N 3	110		0
10	16	3C N 3	110		0
20	7	3C N 3	110		0
18	6	3C N 3	110		0
11	5	5C N-2	100		-6

20

♠AJ1072  
♥KJ5  
♦8632  
♣9

♠K53  
♥10976  
♦4  
♣AKQJ4

N  
W—E  
S

♠Q98  
♥Q84  
♦J1075  
♣1085

♠64  
♥A32  
♦AKQ9  
♣7632

Board (20) Av: NS=0

N-S	E-W	Contract	N-S	E-W	IMP
9	19	4S N 5	650		12
12	3	3S N 4	170		5
10	16	2S S 3	140		4
4	14	2S N 2	110		3
2	15	2D S 2	90		3
11	5	3NT S-1	100		-3
1	13	2NT S-1	100		-3
20	7	2NT S-1	100		-3
8	17	5D N-2	200		-5
18	6	5D N-3	300		-7

21

♠A873  
♥J6  
♦Q84  
♣10742

♠KJ5  
♥K109875  
♦J63  
♣5

N  
W—E  
S

♠9  
♥A43  
♦A972  
♣KJ986

♠Q10642  
♥Q2  
♦K105  
♣AQ3

Board (21) Av: NS=-380

N-S	E-W	Contract	N-S	E-W	IMP
8	17	3Sx S-1	200		5
2	15	3S S-2	200		5
18	6	3S S-2	200		5
12	3	4H W 4	420		-1
10	16	4H W 4	420		-1
4	14	4H W 5	450		-2
9	19	4H W 5	450		-2
11	5	4H W 5	450		-2
1	13	4H W 5	450		-2
20	7	4Sx S-3	800		-9

22

♠QJ103  
♥AJ94  
♦874  
♣72

♠84  
♥Q7652  
♦AQJ3  
♣65

N  
W—E  
S

♠A765  
♥K8  
♦K1065  
♣1043

♠K92  
♥103  
♦92  
♣AKQJ98

Board (22) Av: NS=+120

N-S	E-W	Contract	N-S	E-W	IMP
20	7	3NT N 4	430		7
8	17	3C S 4	130		0
1	13	3C S 4	130		0
9	19	3C S 4	130		0
4	14	2C S 4	130		0
18	6	2C S 4	130		0
11	5	2C S 4	130		0
2	15	2C S 3	110		0
10	16	2H W-1	100		-1
12	3	2D W 2	90		-5

23

♠853  
♥AK642  
♦87  
♣J83

♠KQ96  
♥Q87  
♦AJ652  
♣5

N  
W—E  
S

♠A74  
♥10953  
♦109  
♣AQ94

♠J102  
♥J  
♦KQ43  
♣K10762

Board (23) Av: NS=-170

N-S	E-W	Contract	N-S	E-W	IMP
8	17	3NT E-1	100		7
9	19	1NT E 2	120		2
1	13	1NT E 3	150		1
18	6	1NT E 3	150		1
20	7	1NT E 4	180		0
2	15	1NT E 4	180		0
10	16	2Cx S-1	200		-1
4	14	1NT S-2	200		-1
12	3	1NT E 5	210		-1
11	5	3NT E 4	630		-10

24

♠AKQ109  
♥Q95  
♦KJ1074  
♣KJ1074

♠KQ7653  
♥8  
♦K4  
♣Q982

N  
W—E  
S

♠J1042  
♥J764  
♦10762  
♣5

♠A98  
♥532  
♦AJ83  
♣A63

Board (24) Av: NS=+250

N-S	E-W	Contract	N-S	E-W	IMP
10	16	5H N 5	450		5
8	17	5H N 5	450		5
12	3	4H N 5	450		5
18	6	4H N 5	450		5
1	13	4H N 5	450		5
9	19	3NT S 4	430		5
11	5	6H S-1	50		-7
2	15	5D S-1	50		-7
4	14	6H S-2	100		-8
20	7	5C N-2	100		-8

25

♠J74  
♥K10752  
♦A52  
♣96

♠KQ1092  
♥J  
♦KJ7  
♣KQ104

N  
W—E  
S

♠8653  
♥A93  
♦Q106  
♣A53

♠A  
♥Q864  
♦9843  
♣J872

Board (25) Av: NS=-640

N-S	E-W	Contract	N-S	E-W	IMP
17	6	2S W 5	200		10
19	7	4S W 4	620		1
14	2	4S W 4	620		1
9	18	4S W 5	650		0
13	4	4S W 5	650		0
11	3	4S W 5	650		0
10	20	4S W 5	650		0
1	12	4S W 5	650		0
15	5	4S W 5	650		0
16	8	4S W 5	650		0

26

♠K543  
♥  
♦AK1095  
♣KQ53

♠AJ102  
♥AQ4  
♦J87  
♣986

N  
W—E  
S

♠K109753  
♥Q643  
♣A42

♠Q9876  
♥J862  
♦2  
♣J107

Board (26) Av: NS=-20

N-S	E-W	Contract	N-S	E-W	IMP
17	6	4Hx E-1	200		6
9	18	2S N 3	140		4
15	5	2S N 3	140		4
10	20	4H E-1	100		3
11	3	4S S-1	100		-2
1	12	4S S-1	100		-2
13	4	4S S-1	100		-2
16	8	4S N-1	100		-2
14	2	3H E 3	140		-3
19	7	2Hx E 3	870		-13

27

♠Q10  
♥AQ103  
♦J1053  
♣KQ7

♠A92  
♥KJ9654  
♦7  
♣J86

N  
W—E  
S

♠K86  
♥72  
♦AK9842  
♣A10

♠J7543  
♥8  
♦Q6  
♣95432

Board (27) Av: NS=-10

N-S	E-W	Contract	N-S	E-W	IMP
16	8	4Hx W-1	100		3
17	6	3NT E-2	100		3
14	2	4H W-1	50		2
19	7	4H W-1	50		2
15	5	4H W-1	50		2
10	20	2D E-1	50		2
1	12	2H W 2	110		-3
11	3	2NT E 2	120		-3
13	4	1H W 3	140		-4
9	18	3H W 4	170		-4

第19回NRM杯 Session 3 Section B 2014年6月22日(日)

28

♠ K5  
♥ AQ96  
♦ K97  
♣ K865

♠ J32  
♥ 1032  
♦ J86542  
♣ 9

♠ AQ10976  
♥ J84  
♦ A3  
♣ 103

♠ 84  
♥ K75  
♦ Q10  
♣ AQJ742

N  
W E  
S

29

♠ AQJ3  
♥ 10643  
♦ KJ74  
♣ 9

♠ 109542  
♥ AK95  
♦ 109  
♣ AJ

♠ K76  
♥ J7  
♦ Q8  
♣ Q87653

♠ 8  
♥ Q82  
♦ A6532  
♣ K1042

N  
W E  
S

30

♠ 98753  
♥ A1072  
♦ KJ  
♣ 32

♠ A1064  
♥ 65  
♦ 109  
♣ Q8765

♠ KQ  
♥ 843  
♦ AQ8765  
♣ A4

♠ J2  
♥ KQJ9  
♦ 432  
♣ KJ109

N  
W E  
S

Board (28) Av: NS=+660

N-S	E-W	Contract	N-S	E-W	IMP
11	3	3NT S 5	660		0
1	12	3NT N 5	660		0
9	18	3NT N 5	660		0
10	20	3NT N 5	660		0
13	4	3NT N 5	660		0
15	5	3NT N 5	660		0
14	2	3NT N 5	660		0
16	8	3NT N 5	660		0
19	7	3NT N 5	660		0
17	6	4Sx E-2	300		-8

Board (29) Av: NS=+80

N-S	E-W	Contract	N-S	E-W	IMP
11	3	3D N 3	110		1
9	18	3D N 3	110		1
10	20	3D N 3	110		1
17	6	3D N 3	110		1
1	12	2S W-1	100		1
14	2	2S W-1	100		1
15	5	2S W-1	100		1
16	8	2S W-1	100		1
19	7	3D N-1		100	-5
13	4	2S W 2		110	-5

Board (30) Av: NS=-100

N-S	E-W	Contract	N-S	E-W	IMP
15	5	2H N 2	110		5
9	18	3H S-1		50	2
19	7	3H N-1		50	2
11	3	3H N-2		100	0
16	8	3H N-2		100	0
14	2	1NT E 2		120	-1
17	6	4D E 4		130	-1
10	20	3D E 4		130	-1
1	12	2D E 4		130	-1
13	4	1NT E 3		150	-2

第19回NRM杯 Session 4 Section B 2014年6月22日(日)

**1**

♠A83  
♥32  
♦A6  
♣1098763

♠J964 (N) ♠Q75  
♥QJ9 W E ♥865  
♦K74 S ♦109853  
♣AQ2 ♣54

♠K102  
♥AK1074  
♦QJ2  
♣KJ

**2**

♠K62  
♥82  
♦1095  
♣KJ532

♠A103 (N) ♠Q75  
♥J765 W E ♥104  
♦AQ32 S ♦KJ76  
♣106 ♣A974

♠J984  
♥AKQ93  
♦84  
♣Q8

**3**

♠AKJ9654  
♥KJ863  
♦7  
♣

♠832 (N) ♠Q7  
♥Q9 W E ♥1074  
♦AJ2 S ♦Q98  
♣AQ942 ♣J10865

♠10  
♥A52  
♦K106543  
♣K73

Board (1) Av: NS=+360

N-S	E-W	Contract	N-S	E-W	IMP
10	14	3NT S 5	460		3
3	20	3NT S 5	460		3
19	5	3NT S 5	460		3
1	16	3NT S 4	430		2
6	11	3NT N 4	430		2
4	17	3NT S 3	400		1
13	7	3NT S 3	400		1
18	2	1NT S 4	180		-5
12	9	3C N 5	150		-5
15	8	3NT N-1		50	-9

Board (2) Av: NS=-90

N-S	E-W	Contract	N-S	E-W	IMP
13	7	2H S 2	110		5
12	9	2C N 2	90		5
6	11	2D W 2		90	0
19	5	2H S-1		100	0
18	2	2H S-1		100	0
1	16	2C S-1		100	0
4	17	2C S-1		100	0
15	8	2C S-1		100	0
10	14	2C S-2		200	-3
3	20	2C S-3		300	-5

Board (3) Av: NS=+350

N-S	E-W	Contract	N-S	E-W	IMP
4	17	4S N 6	480		4
1	16	4H S 6	480		4
3	20	4H N 6	480		4
6	11	4H N 6	480		4
13	7	4H N 6	480		4
18	2	3H S 6	230		-3
12	9	3H N 6	230		-3
15	8	2H N 6	230		-3
19	5	3S N 5	200		-4
10	14	2H N 5	200		-4

**4**

♠A107  
♥J  
♦KJ8  
♣AQJ872

♠Q94 (N) ♠J2  
♥Q9542 W E ♥K6  
♦AQ102 S ♦7654  
♣4 ♣K9653

♠K8653  
♥A10873  
♦93  
♣10

**5**

♠K105  
♥J103  
♦Q106  
♣A872

♠Q9764 (N) ♠AJ3  
♥Q9764 W E ♥AQ42  
♦A9732 S ♦K5  
♣965 ♣KQJ3

♠82  
♥K98765  
♦J84  
♣104

**6**

♠J82  
♥10  
♦AK1032  
♣K753

♠Q7 (N) ♠1065  
♥AKQ7 W E ♥96432  
♦Q64 S ♦J85  
♣AQ102 ♣64

♠AK943  
♥J85  
♦97  
♣J98

Board (4) Av: NS=+430

N-S	E-W	Contract	N-S	E-W	IMP
3	20	4S S 4	620		5
4	17	4S S 4	620		5
10	14	4S S 4	620		5
19	5	4S S 4	620		5
12	9	4S S 4	620		5
13	7	4S S 4	620		5
18	2	2S S 3	140		-7
1	16	3C N 3	110		-8
15	8	2C N 3	110		-8
6	11	4S S-2		200	-12

Board (5) Av: NS=-320

N-S	E-W	Contract	N-S	E-W	IMP
1	16	6S E-1		50	9
13	7	6S E-1		50	9
12	9	4NT E-1		50	9
6	11	4S E 4		420	-3
15	8	4S E 4		420	-3
19	5	5S E 5		450	-4
4	17	4S E 5		450	-4
3	20	4S E 5		450	-4
18	2	4S E 5		450	-4
10	14	4S E 5		450	-4

Board (6) Av: NS=+150

N-S	E-W	Contract	N-S	E-W	IMP
3	20	4Sx S 4	590		10
18	2	4H W-3		300	4
12	9	3H W-2		200	2
10	14	2S S 4	170		1
13	7	2S S 4	170		1
15	8	3S S 3	140		0
4	17	3S S 3	140		0
1	16	2S S 3	140		0
19	5	3S S-1		50	-5
6	11	1NT W 1		90	-6

**7**

♠KQ103  
♥A3  
♦KQJ642  
♣3

♠A875 (N) ♠J94  
♥964 W E ♥Q108752  
♦5 S ♦A  
♣Q10942 ♣KJ7

♠62  
♥KJ  
♦109873  
♣A865

**8**

♠963  
♥A942  
♦KJ5  
♣J97

♠A75 (N) ♠J10842  
♥J65 W E ♥K3  
♦A874 S ♦10962  
♣Q105 ♣84

♠KQ  
♥Q1087  
♦Q3  
♣AK632

**9**

♠KJ974  
♥  
♦KQ32  
♣10532

♠A (N) ♠Q1086  
♥7543 W E ♥1082  
♦J1087 S ♦A954  
♣A864 ♣Q7

♠532  
♥AKQJ96  
♦KJ  
♣KJ9

Board (7) Av: NS=+340

N-S	E-W	Contract	N-S	E-W	IMP
12	7	5D S 5	600		6
8	14	5D N 5	600		6
6	15	5D N 5	600		6
11	9	5D N 5	600		6
10	13	5D N 5	600		6
17	2	4Hx E-1		200	-4
16	4	4D N 5	150		-5
19	3	4H E-1		100	-6
1	20	3H E 3		140	-10
5	18	3NT S-2		200	-11

Board (8) Av: NS=-50

N-S	E-W	Contract	N-S	E-W	IMP
11	9	4Sx E-3		500	11
10	13	4H S-1		50	0
5	18	4H S-1		50	0
6	15	4H S-1		50	0
19	3	4H S-1		50	0
12	7	4H S-1		50	0
8	14	4H S-1		50	0
16	4	4H N-1		50	0
1	20	4H N-1		50	0
17	2	3NT S-3		150	-3

Board (9) Av: NS=+20

N-S	E-W	Contract	N-S	E-W	IMP
10	13	2H S 4	170		4
8	14	2H S 4	170		4
16	4	2H S 4	170		4
17	2	2H N 4	170		4
5	18	4S N-1		50	-2
19	3	4S N-1		50	-2
6	15	3NT S-1		50	-2
11	9	4S N-2		100	-3
1	20	4S N-2		100	-3
12	7	3NT N-2		100	-3

第19回NRM杯 Session4 Section B 2014年6月22日(日)

10

♠ QJ953  
♥ 9875  
♦ 743  
♣ J

♠ K106  
♥ A  
♦ 9852  
♣ 107642

N  
W — E  
S

♠ 742  
♥ Q1062  
♦ AKQ10  
♣ A9

♠ A8  
♥ KJ43  
♦ J6  
♣ KQ853

11

♠ AK  
♥ K92  
♦ AKJ643  
♣ 103

♠ Q87  
♥ AQJ1073  
♦ Q7  
♣ 42

N  
W — E  
S

♠ 10953  
♥ 4  
♦ 1052  
♣ A9765

♠ J642  
♥ 865  
♦ 98  
♣ KQJ8

12

♠ K53  
♥ 9752  
♦ 73  
♣ K953

♠ 72  
♥ 1043  
♦ KQ95  
♣ A1062

N  
W — E  
S

♠ AJ1094  
♥ AK  
♦ 1042  
♣ Q84

♠ Q86  
♥ QJ86  
♦ AJ86  
♣ J7

Board (10) Av: NS=-110

N-S	E-W	Contract	N-S	E-W	IMP
11	9	1NT E-1	100		5
1	20	1NT E 1	90		1
17	2	1NT E 1	90		1
5	18	1NT E 1	90		1
8	14	1NT E 1	90		1
12	7	1NT E 1	90		1
19	3	1NT E 2	120		0
16	4	1NT E 2	120		0
6	15	1NT E 3	150		-1
10	13	1NT E 3	150		-1

Board (11) Av: NS=+340

N-S	E-W	Contract	N-S	E-W	IMP
12	7	3NT N 5	460		3
16	4	3NT N 4	430		3
11	9	3NT N 4	430		3
8	14	3NT N 4	430		3
19	3	3NT N 3	400		2
1	20	3NT N 3	400		2
17	2	3NT N 3	400		2
5	18	3D N 4	130		-5
10	13	3D N 4	130		-5
6	15	2D N 3	110		-6

Board (12) Av: NS=-60

N-S	E-W	Contract	N-S	E-W	IMP
16	4	3NT W-1	50		3
5	18	3C E-1	50		3
12	7	3C E-1	50		3
11	9	3C E-1	50		3
10	13	1NT W 1	90		-1
19	3	1NT W 1	90		-1
6	15	1NT W 2	120		-2
17	2	2S E 3	140		-2
1	20	2S E 4	170		-3
8	14	3H N-3	300		-6

13

♠ K  
♥ QJ63  
♦ QJ6  
♣ A8764

♠ A873  
♥ 752  
♦ 1054  
♣ K53

N  
W — E  
S

♠ Q964  
♥ K9  
♦ K873  
♣ QJ2

♠ J1052  
♥ A1084  
♦ A92  
♣ 109

14

♠ A3  
♥ K4  
♦ 7643  
♣ 108642

♠ J10752  
♥ Q8  
♦ J52  
♣ J97

N  
W — E  
S

♠ KQ986  
♥ A9652  
♦ AK10  
♣

♠ 4  
♥ J1073  
♦ Q98  
♣ AKQ53

15

♠ K1086  
♥ 85  
♦ A94  
♣ Q975

♠ AKQJ  
♥ J1053  
♦ KJ632  
♣

N  
W — E  
S

♠ QJ954  
♥ 9764  
♦ K72  
♣ 4

♠ A732  
♥ 1032  
♦ Q86  
♣ A108

Board (13) Av: NS=+170

N-S	E-W	Contract	N-S	E-W	IMP
13	8	2S W-2	200		1
6	14	2H S 5	200		1
1	19	2H S 5	200		1
7	11	3H S 4	170		0
16	2	3H S 4	170		0
9	15	2H S 4	170		0
18	3	2H S 4	170		0
20	4	2H S 4	170		0
5	17	3H S 3	140		-1
10	12	2S W-1	100		-2

Board (14) Av: NS=-400

N-S	E-W	Contract	N-S	E-W	IMP
9	15	5Cx N-1	100		7
20	4	5Cx N-1	100		7
18	3	4S E 4	420		-1
7	11	5S E 5	450		-2
13	8	5S E 5	450		-2
6	14	4S E 5	450		-2
10	12	4S E 5	450		-2
16	2	4S E 5	450		-2
5	17	4S E 5	450		-2
1	19	4S E 6	480		-2

Board (15) Av: NS=+80

N-S	E-W	Contract	N-S	E-W	IMP
9	15	4H W-2	100		1
16	2	4H W-2	100		1
6	14	4H W-2	100		1
7	11	4H W-2	100		1
20	4	4H E-2	100		1
13	8	4H E-2	100		1
1	19	4H W-1	50		-1
10	12	4H E-1	50		-1
5	17	2NT W-1	50		-1
18	3	2H E 2	110		-5

16

♠ J6  
♥ QJ3  
♦ AK873  
♣ AK2

♠ A82  
♥ K1086  
♦ Q52  
♣ 1095

N  
W — E  
S

♠ Q54  
♥ 74  
♦ 64  
♣ QJ8764

♠ K10973  
♥ A952  
♦ J109  
♣ 3

17

♠ A76  
♥ 108  
♦ 104  
♣ Q98765

♠ Q5432  
♥ AQ75  
♦ K65  
♣ 3

N  
W — E  
S

♠ J8  
♥ KJ92  
♦ J732  
♣ KJ2

♠ K109  
♥ 643  
♦ AQ98  
♣ A104

18

♠ 974  
♥ 54  
♦ Q52  
♣ AJ953

♠ AQJ63  
♥ KQ1097  
♦ A6  
♣ 8

N  
W — E  
S

♠ 1082  
♥ 82  
♦ 10987  
♣ K1074

♠ K5  
♥ AJ63  
♦ KJ43  
♣ Q62

Board (16) Av: NS=+400

N-S	E-W	Contract	N-S	E-W	IMP
6	14	3NT N 5	460		2
20	4	3NT N 4	430		1
7	11	3NT N 3	400		0
9	15	3NT N 3	400		0
10	12	3NT N 3	400		0
18	3	3NT N 3	400		0
16	2	3NT N 3	400		0
13	8	3NT N 3	400		0
1	19	3NT N 3	400		0
5	17	3NT N-1	50		-10

Board (17) Av: NS=-70

N-S	E-W	Contract	N-S	E-W	IMP
10	12	2C N 2	90		4
20	4	3H W-1	50		3
7	11	2D W-1	50		3
16	2	3C N-1	50		1
5	17	2H E 2	110		-1
9	15	1S W 2	110		-1
1	19	3H W 3	140		-2
13	8	2H W 3	140		-2
6	14	2H E 3	140		-2
18	3	1NT N-3	150		-2

Board (18) Av: NS=-180

N-S	E-W	Contract	N-S	E-W	IMP
16	2	4S W-1	50		6
10	12	4S E-1	50		6
7	11	3S E-1	50		6
1	19	1H W 2	110		2
13	8	3S W 4	170		0
20	4	3S W 5	200		-1
18	3	1S W 5	200		-1
5	17	4S E 4	420		-6
9	15	4S E 4	420		-6
6	14	4S E 5	450		-7

19

♠ Q72  
♥ A753  
♦ KJ64  
♣ 95

♠ 10  
♥ K64  
♦ 10873  
♣ KQ1042

N  
W — E  
S

♠ K985  
♥ J109  
♦ AQ92  
♣ J8

♠ AJ643  
♥ Q82  
♦ 5  
♣ A763

20

♠ A92  
♥ Q107  
♦ KJ965  
♣ QJ

♠ K73  
♥ 5  
♦ 10843  
♣ AK1074

N  
W — E  
S

♠ J5  
♥ AK986  
♦ A7  
♣ 9863

♠ Q10864  
♥ J432  
♦ Q2  
♣ 52

21

♠ 10632  
♥ KQ764  
♦ 10942  
♣

♠ J75  
♥ A2  
♦ AQ3  
♣ AJ643

N  
W — E  
S

♠ AQ8  
♥ J105  
♦ K87  
♣ KQ108

♠ K94  
♥ 983  
♦ J65  
♣ 9752

Board (19) Av: NS=-30

N-S	E-W	Contract	N-S	E-W	IMP
1	18	2S	S 2	110	4
7	15	2S	S 2	110	4
16	5	1S	S 1	80	3
20	2	Passout			1
13	6	3S	S-1	50	-1
14	9	2S	S-1	50	-1
19	4	3S	S-2	100	-2
3	17	3S	S-2	100	-2
8	12	3S	S-3	150	-3
11	10	3S	S-3	150	-3

Board (20) Av: NS=-140

N-S	E-W	Contract	N-S	E-W	IMP
1	18	2S	S-1	100	1
3	17	1NT	W 2	120	1
7	15	1NT	W 2	120	1
8	12	3C	W 4	130	0
11	10	3C	W 4	130	0
13	6	3C	W 5	150	0
14	9	3C	W 5	150	0
16	5	3C	W 5	150	0
20	2	3C	W 5	150	0
19	4	2C	W 5	150	0

Board (21) Av: NS=-180

N-S	E-W	Contract	N-S	E-W	IMP
19	4	6NT	E-3	150	8
1	18	6NT	E-2	100	7
7	15	6C	E-1	50	6
8	12	6C	E-1	50	6
16	5	6C	E-1	50	6
3	17	4NT	E 4	430	-6
13	6	4NT	E 4	430	-6
20	2	4NT	E 4	430	-6
11	10	4NT	E 4	430	-6
14	9	4NT	E 6	490	-7

22

♠ K3  
♥ A876  
♦ AQ  
♣ QJ1074

♠ Q6  
♥ KQJ94  
♦ 1065  
♣ A98

N  
W — E  
S

♠ A542  
♥ 105  
♦ J843  
♣ 652

♠ J10987  
♥ 32  
♦ K972  
♣ K3

23

♠  
♥ QJ1084  
♦ Q108  
♣ Q10965

♠ Q98653  
♥ 3  
♦ J95  
♣ A42

N  
W — E  
S

♠ J1042  
♥ 52  
♦ AK742  
♣ KJ

♠ AK7  
♥ AK976  
♦ 63  
♣ 873

24

♠ J10543  
♥ 3  
♦ 5  
♣ Q108643

♠ A986  
♥ 9842  
♦ KJ43  
♣ 2

N  
W — E  
S

♠ K2  
♥ AKJ6  
♦ Q9  
♣ AKJ95

♠ Q7  
♥ Q1075  
♦ A108762  
♣ 7

Board (22) Av: NS=+120

N-S	E-W	Contract	N-S	E-W	IMP
20	2	3H	W-2	200	2
3	17	2S	N 5	200	2
1	18	2S	S 4	170	2
8	12	2S	N 4	170	2
19	4	2S	N 3	140	1
13	6	2S	N 2	110	0
7	15	2S	N 2	110	0
11	10	2S	N 2	110	0
14	9	2NT	N-1	50	-5
16	5	3NT	N-3	150	-7

Board (23) Av: NS=-40

N-S	E-W	Contract	N-S	E-W	IMP
13	6	4H	S 4	620	12
16	5	4H	S 4	620	12
14	9	4Sx	W-1	200	6
7	15	5H	S-1	100	-2
1	18	5H	S-1	100	-2
11	10	4H	S-1	100	-2
8	12	4H	S-1	100	-2
19	4	5Hx	S-1	200	-4
20	2	5Hx	S-2	500	-10
3	17	4Sx	W 4	790	-13

Board (24) Av: NS=-180

N-S	E-W	Contract	N-S	E-W	IMP
16	5	6Hx	E-3	500	12
20	2	4H	W-1	50	6
3	17	4H	E-1	50	6
13	6	4H	E-1	50	6
1	18	4H	E-1	50	6
7	15	3NT	W 3	400	-6
8	12	4H	E 4	420	-6
14	9	4H	E 4	420	-6
11	10	4H	E 4	420	-6
19	4	4H	E 4	420	-6

25

♠ AQ  
♥ KJ985  
♦ 8  
♣ KQ942

♠ 107653  
♥ 763  
♦ K107  
♣ A6

N  
W — E  
S

♠ K84  
♥ 42  
♦ A94  
♣ J10853

♠ J92  
♥ AQ10  
♦ QJ6532  
♣ 7

26

♠ 8  
♥ J1052  
♦ 86542  
♣ J104

♠ 976  
♥ A  
♦ KJ1097  
♣ K632

N  
W — E  
S

♠ QJ1032  
♥ Q9843  
♦  
♣ A98

♠ AK54  
♥ K76  
♦ AQ3  
♣ Q75

27

♠ A10975  
♥ K109  
♦  
♣ J9854

♠ 8  
♥ AQ76  
♦ K10873  
♣ Q106

N  
W — E  
S

♠ QJ6  
♥ J542  
♦ J92  
♣ K72

♠ K432  
♥ 83  
♦ AQ654  
♣ A3

Board (25) Av: NS=+190

N-S	E-W	Contract	N-S	E-W	IMP
8	11	5H	N 5	450	6
4	18	4H	N 5	450	6
1	17	4H	N 4	420	6
20	5	4H	N 4	420	6
16	3	4H	N 4	420	6
9	13	4H	N-1	50	-6
15	10	4H	N-1	50	-6
7	14	4H	N-1	50	-6
6	12	4H	N-1	50	-6
19	2	4H	N-2	100	-7

Board (26) Av: NS=-100

N-S	E-W	Contract	N-S	E-W	IMP
8	11	4S	E-2	200	7
7	14	4S	E-2	200	7
1	17	3S	E 3	140	-1
16	3	3S	E 3	140	-1
19	2	3S	E 3	140	-1
9	13	2S	E 3	140	-1
15	10	2S	E 3	140	-1
4	18	2S	E 3	140	-1
6	12	2S	E 4	170	-2
20	5	2NT	S-3	300	-5

Board (27) Av: NS=+300

N-S	E-W	Contract	N-S	E-W	IMP
7	14	4S	N 4	420	3
1	17	4S	N 4	420	3
4	18	4S	N 4	420	3
8	11	4S	N 4	420	3
9	13	4S	N 4	420	3
19	2	4S	N 4	420	3
6	12	2S	N 4	170	-4
16	3	2S	N 4	170	-4
20	5	4S	N-1	50	-8
15	10	4S	N-2	100	-9

第19回NRM杯 Session 4 Section B 2014年6月22日(日)

28

♠A765  
♥Q10  
♦K10987  
♣105

♠KJ2 ♠Q1094  
♥64 ♥K852  
♦A62 ♦J  
♣Q7643 ♣AK82

♠83  
♥AJ973  
♦Q543  
♣J9

29

♠73  
♥A986543  
♦108  
♣76

♠A54 ♠J982  
♥KQ7 ♥J  
♦AKQ4 ♦973  
♣K103 ♣QJ542

♠KQ106  
♥102  
♦J652  
♣A98

30

♠Q9  
♥AQ95  
♦J963  
♣QJ2

♠1084 ♠KJ7632  
♥J43 ♥876  
♦A74 ♦K10  
♣A1097 ♣64

♠A5  
♥K102  
♦Q852  
♣K853

Board (28) Av: NS=-110

N-S	E-W	Contract	N-S	E-W	IMP
20	5	1NT W-1	50		4
4	18	1NT W-1	50		4
19	2	4C E 4	130		-1
6	12	3C E 4	130		-1
8	11	3C E 4	130		-1
9	13	3C E 4	130		-1
15	10	3C E 4	130		-1
16	3	3C E 4	130		-1
1	17	3C E 4	130		-1
7	14	3C E 5	150		-1

Board (29) Av: NS=+90

N-S	E-W	Contract	N-S	E-W	IMP
4	18	4S E-2	200		3
19	2	3NT W-2	200		3
6	12	3NT W-1	100		0
1	17	3NT W-1	100		0
20	5	3NT W-1	100		0
9	13	3NT W-1	100		0
15	10	3NT W-1	100		0
16	3	3NT W-1	100		0
8	11	1D W 2	90		-5
7	14	3NT W 3	600		-12

Board (30) Av: NS=-50

N-S	E-W	Contract	N-S	E-W	IMP
8	11	4H N 4	420		10
6	12	4H N 4	420		10
9	13	4H N-1	50		0
15	10	4H N-2	100		-2
20	5	3NT S-2	100		-2
16	3	3NT S-2	100		-2
4	18	3NT S-3	150		-3
1	17	3NT S-3	150		-3
19	2	3NT S-4	200		-4
7	14	3NT N-4	200		-4