

第19回NRM杯 Session1 Section A 2014年6月21日(土)

1

♠AK10
♥AQ754
♦Q2
♣Q72

♠J86
♥K82
♦10987
♣A65

♠9743
♥106
♦A653
♣843

♠Q52
♥J93
♦KJ4
♣KJ109

2

♠AJ9
♥J76
♦J108763
♣10

♠K8763
♥A54
♦542
♣52

♠102
♥Q109832
♦A
♣KJ76

♠Q54
♥K
♦KQ9
♣AQ9843

3

♠975
♥K63
♦A854
♣AKQ

♠6432
♥9742
♦J
♣9752

♠K10
♥Q105
♦Q1032
♣10863

♠AQJ8
♥AJ8
♦K976
♣J4

Board (1) Av: NS=+440

N-S	E-W	Contract	N-S	E-W	IMP
3	9	3NT N 6	490		2
5	8	3NT N 5	460		1
17	11	3NT N 5	460		1
1	10	3NT N 5	460		1
19	12	3NT N 5	460		1
20	13	3NT N 4	430		0
4	7	4H N 4	420		-1
6	2	4H N 4	420		-1
16	15	4H N 4	420		-1
18	14	4H N 4	420		-1

Board (2) Av: NS=+70

N-S	E-W	Contract	N-S	E-W	IMP
4	7	4Hx E-2	300		6
17	11	4H E-3	150		2
20	13	4D N 4	130		2
1	10	3H E-2	100		1
6	2	3H E-2	100		1
3	9	3H E-2	100		1
5	8	3H E-1	50		-1
19	12	2H E-1	50		-1
18	14	5D N-1	100		-5
16	15	3C S-3	300		-9

Board (3) Av: NS=+670

N-S	E-W	Contract	N-S	E-W	IMP
16	15	6NT S 7	1020		8
19	12	6NT S 7	1020		8
3	9	6NT S 6	990		8
17	11	6NT S 6	990		8
6	2	6D S 6	920		6
18	14	4NT S 7	520		-4
4	7	5NT S 6	490		-5
5	8	4NT S 6	490		-5
20	13	6D S-1	50		-12
1	10	6D S-1	50		-12

4

♠863
♥K632
♦974
♣A93

♠J54
♥QJ
♦Q2
♣J108764

♠AKQ972
♥85
♦10853
♣5

♠10
♥A10974
♦AKJ6
♣KQ2

5

♠J4
♥Q106
♦A86
♣98654

♠876
♥AJ
♦Q1042
♣QJ103

♠A52
♥743
♦KJ97
♣K72

♠KQ1093
♥K9852
♦53
♣A

6

♠3
♥7643
♦KQ62
♣10986

♠94
♥A9
♦1098
♣KQJ754

♠K1075
♥K1082
♦A74
♣A2

♠AQJ862
♥QJ5
♦J53
♣3

Board (4) Av: NS=+640

N-S	E-W	Contract	N-S	E-W	IMP
5	8	4H S 6	680		1
1	10	4H S 6	680		1
18	14	4H N 6	680		1
16	15	4H S 5	650		0
19	12	4H S 5	650		0
6	2	4H S 5	650		0
20	13	4H N 5	650		0
4	7	4H N 5	650		0
17	11	4Sx E-2	500		-4
3	9	4Sx E-2	500		-4

Board (5) Av: NS=+170

N-S	E-W	Contract	N-S	E-W	IMP
17	11	3H S 4	170		0
4	7	3H N 4	170		0
16	15	2S S 4	170		0
19	12	2S S 4	170		0
20	13	2S S 4	170		0
6	2	2S S 4	170		0
3	9	2S S 4	170		0
18	14	2H S 4	170		0
5	8	2S S 3	140		-1
1	10	3D E-1	50		-3

Board (6) Av: NS=-630

N-S	E-W	Contract	N-S	E-W	IMP
16	15	3NT E 4	630		0
6	2	3NT E 4	630		0
19	12	3NT E 4	630		0
17	11	3NT E 4	630		0
3	9	3NT E 4	630		0
1	10	3NT E 4	630		0
5	8	3NT E 4	630		0
4	7	3NT E 4	630		0
18	14	3NT E 5	660		-1
20	13	3NT E 6	690		-2

7

♠Q3
♥K8543
♦J107
♣A52

♠J109865
♥AJ10
♦5
♣KJ8

♠A7
♥Q96
♦K862
♣9764

♠K42
♥72
♦AQ943
♣Q103

8

♠73
♥A96
♦K82
♣QJ963

♠A82
♥QJ1032
♦109654
♣

♠J65
♥K8
♦QJ
♣K108742

♠KQ1094
♥754
♦A73
♣A5

9

♠J
♥A108
♦KQ104
♣KQ843

♠KQ97653
♥K62
♦A8
♣J

♠1042
♥Q9743
♦J76
♣A2

♠A8
♥J5
♦9532
♣109765

Board (7) Av: NS=-40

N-S	E-W	Contract	N-S	E-W	IMP
3	6	3S W-2	200		6
2	10	2S W-1	100		4
7	8	Passout			1
12	13	Passout			1
1	9	Passout			1
5	4	2NT S-1	100		-2
19	20	2S W 2	110		-2
16	14	2S W 2	110		-2
15	17	2S W 2	110		-2
18	11	2S W 3	140		-3

Board (8) Av: NS=+20

N-S	E-W	Contract	N-S	E-W	IMP
1	9	3NT N 4	430		9
7	8	3C E-4	200		5
16	14	1NT N 3	150		4
18	11	3H W-1	50		1
15	17	3D W-1	50		1
3	6	3NT N-1	50		-2
2	10	2S S-1	50		-2
12	13	2D W 2	90		-3
19	20	2H W 2	110		-4
5	4	2H W 2	110		-4

Board (9) Av: NS=-80

N-S	E-W	Contract	N-S	E-W	IMP
3	6	5S W-2	200		7
2	10	5S W-1	100		5
12	13	4S W-1	100		5
19	20	5Cx N-1	100		-1
7	8	5Cx N-1	100		-1
1	9	5Cx N-1	100		-1
16	14	3S W 3	140		-2
5	4	2S W 4	170		-3
15	17	3NT S-4	200		-3
18	11	4S W 4	620		-11

第19回NRM杯 Session1 Section A 2014年6月21日(土)

10

♠ J65
♥ J10
♦ AK98
♣ K943

♠ K32 ♠ AQ1097
♥ K984 ♥ 653
♦ 743 ♦ Q
♣ 1087 ♣ AQJ6

W — E
N — S

♠ 84
♥ AQ72
♦ J10652
♣ 52

11

♠ 92
♥ KQ73
♦ KQJ10
♣ A85

♠ 1064 ♠ J73
♥ J108 ♥ A654
♦ 654 ♦ 87
♣ K762 ♣ QJ109

W — E
N — S

♠ AKQ85
♥ 92
♦ A932
♣ 43

12

♠ KJ7
♥ J954
♦ AJ
♣ 10983

♠ A95 ♠ Q108
♥ K62 ♥ 3
♦ Q87 ♦ 9632
♣ QJ64 ♣ AK752

W — E
N — S

♠ 6432
♥ AQ1087
♦ K1054
♣

Board (10) Av: NS=-130

N-S	E-W	Contract	N-S	E-W	IMP
15	17	3H E-4	400		11
1	9	4S E-1	100		6
12	13	3S E 3		140	0
7	8	2S W 3		140	0
16	14	2S E 3		140	0
18	11	3S E 4		170	-1
5	4	3S E 4		170	-1
19	20	2S E 4		170	-1
3	6	2S E 4		170	-1
2	10	2S E 4		170	-1

Board (11) Av: NS=+430

N-S	E-W	Contract	N-S	E-W	IMP
12	13	6D N 6	920		10
15	17	3NT N 5	460		1
1	9	3NT N 5	460		1
16	14	3NT N 4	430		0
18	11	3NT N 4	430		0
5	4	3NT N 4	430		0
19	20	3NT N 4	430		0
7	8	3NT N 3	400		-1
2	10	3NT N 3	400		-1
3	6	3NT N 3	400		-1

Board (12) Av: NS=+120

N-S	E-W	Contract	N-S	E-W	IMP
2	10	4H N 4	620		11
18	11	3H S 5	200		2
15	17	3H N 4	170		2
5	4	3H N 4	170		2
7	8	3H N 4	170		2
1	9	3NT W-2	100		-1
12	13	3NT W-1	50		-2
3	6	3C W-1	50		-2
19	20	3C W-1	50		-2
16	14	Passout			-3

13

♠ AQ103
♥ 854
♦ 1076
♣ K62

♠ 6 ♠ KJ975
♥ AKQ3 ♥ J1076
♦ KQJ9 ♦ A8
♣ A1043 ♣ 75

W — E
N — S

♠ 842
♥ 92
♦ 5432
♣ QJ98

14

♠ KJ104
♥ 1096432
♦ J4
♣ 8

♠ A73 ♠ 96
♥ J87 ♥ K5
♦ A95 ♦ KQ1062
♣ KQ96 ♣ A1072

W — E
N — S

♠ Q852
♥ AQ
♦ 873
♣ J543

15

♠ Q5
♥ 1076
♦ K952
♣ A943

♠ 764 ♠ K98
♥ 432 ♥ AKQJ
♦ 10 ♦ AJ763
♣ KQJ752 ♣ 8

W — E
N — S

♠ AJ1032
♥ 985
♦ Q84
♣ 106

Board (13) Av: NS=-650

N-S	E-W	Contract	N-S	E-W	IMP
1	8	4H W 4	620		1
7	5	3NT W 4	630		1
10	9	3NT W 4	630		1
6	4	3NT W 4	630		1
13	16	4H W 5	650		0
3	2	4H W 5	650		0
20	12	4H E 5	650		0
11	19	4H E 6	680		-1
15	14	4H E 6	680		-1
17	18	2Sx N-5	1400		-13

Board (14) Av: NS=-310

N-S	E-W	Contract	N-S	E-W	IMP
7	5	5D E-1	50		8
3	2	5D E-1	50		8
20	12	5C W-1	50		8
13	16	3NT W 3		400	-3
17	18	3NT W 4		430	-3
1	8	3NT W 4		430	-3
15	14	3NT E 4		430	-3
10	9	3NT W 5		460	-4
6	4	3NT W 5		460	-4
11	19	3NT W 5		460	-4

Board (15) Av: NS=+90

N-S	E-W	Contract	N-S	E-W	IMP
13	16	3NT E-5	250		4
15	14	3NT W-4	200		3
20	12	3NT E-3	150		2
11	19	3NT W-2	100		0
17	18	3NT E-2	100		0
6	4	3C W-1	50		-1
1	8	3C W-1	50		-1
3	2	2H E-1	50		-1
7	5	2H E-1	50		-1
10	9	2H E 2		110	-5

16

♠ 1087
♥ AJ1083
♦ Q96
♣ J2

♠ 643 ♠ AQJ
♥ K752 ♥ 964
♦ J73 ♦ A4
♣ Q73 ♣ AK854

W — E
N — S

♠ K952
♥ Q
♦ K10852
♣ 1096

17

♠ QJ
♥ A10763
♦ QJ
♣ 9754

♠ K52 ♠ 108743
♥ J5 ♥ Q92
♦ K9875 ♦ 43
♣ KQJ ♣ 1086

W — E
N — S

♠ A96
♥ K84
♦ A1062
♣ A32

18

♠ QJ109854
♥ 8
♦ 943
♣ AQ

♠ A72 ♠ K6
♥ J643 ♥ 52
♦ KQJ87 ♦ 652
♣ K ♣ J98643

W — E
N — S

♠ 3
♥ AKQ1097
♦ A10
♣ 10752

Board (16) Av: NS=+140

N-S	E-W	Contract	N-S	E-W	IMP
13	16	2NT E-5	500		8
10	9	2NT E-3	300		4
17	18	3NT E-2	200		2
15	14	3NT E-2	200		2
1	8	3NT E-2	200		2
6	4	2NT E-1	100		-1
7	5	2NT E-1	100		-1
11	19	2NT E-1	100		-1
3	2	2D S-1		50	-5
20	12	2S W 2		110	-6

Board (17) Av: NS=-30

N-S	E-W	Contract	N-S	E-W	IMP
17	18	3NT S 3	400		10
15	14	3H S 3	140		5
20	12	4H S-1		50	-1
13	16	4H S-1		50	-1
3	2	4H S-1		50	-1
10	9	4H S-1		50	-1
6	4	4H S-1		50	-1
7	5	4H S-1		50	-1
1	8	4H S-2		100	-2
11	19	4H S-2		100	-2

Board (18) Av: NS=+450

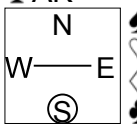
N-S	E-W	Contract	N-S	E-W	IMP
11	19	4S N 4	620		5
20	12	4S N 4	620		5
17	18	4S N 4	620		5
15	14	4S N 4	620		5
3	2	4S N 4	620		5
1	8	4S N 4	620		5
10	9	3S N 4	170		-7
7	5	2S N 4	170		-7
13	16	3S N 3	140		-7
6	4	4H S-2		200	-12

第19回NRM杯 Session1 Section A 2014年6月21日(土)

19

♠A1094
♥AJ1052
♦Q3
♣AK

♠K8732 ♠Q65
♥Q93 ♥864
♦K92 ♦764
♣42 ♣9876

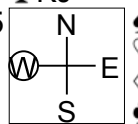


♠J
♥K7
♦AJ1085
♣QJ1053

20

♠A1087
♥K10872
♦62
♣KJ

♠KQJ5 ♠64
♥AQ6 ♥9
♦543 ♦AKQJ108
♣1054 ♣9632

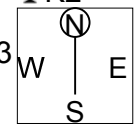


♠932
♥J543
♦97
♣AQ87

21

♠KJ6
♥QJ2
♦AKJ87
♣K2

♠Q52 ♠A984
♥A1098653 ♥74
♦3 ♦Q95
♣A8 ♣QJ74



♠1073
♥K
♦10642
♣109653

Board (19) Av: NS=+750

N-S	E-W	Contract	N-S	E-W	IMP
3	10	6NT N 6	990		6
16	12	6D S 6	920		5
13	19	6D S 6	920		5
14	17	6D S 6	920		5
2	9	6D S 6	920		5
1	7	6D S 6	920		5
15	18	4NT N 6	490		-6
6	5	4H N 6	480		-7
8	4	5D S 6	420		-8
20	11	6NT N-1	50		-13

Board (20) Av: NS=-370

N-S	E-W	Contract	N-S	E-W	IMP
2	9	5D E-2	200		11
15	18	2H N 2	110		10
16	12	4D E-1	100		10
8	4	4D E 4	130		6
14	17	3NT W 3	600		-6
20	11	3NT W 3	600		-6
1	7	3NT W 3	600		-6
3	10	3NT W 4	630		-6
6	5	3NT W 4	630		-6
13	19	3NT W 4	630		-6

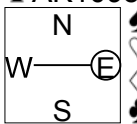
Board (21) Av: NS=-70

N-S	E-W	Contract	N-S	E-W	IMP
16	12	3D N 3	110		5
15	18	4H W-1	50		3
2	9	3H W-1	50		3
13	19	2S E-1	50		3
20	11	2H W 2	110		-1
8	4	2H W 2	110		-1
6	5	2H W 2	110		-1
14	17	1H W 3	140		-2
1	7	4D N-2	200		-4
3	10	4H W 4	420		-8

22

♠Q10
♥K963
♦Q9
♣AK1095

♠A987652 ♠J3
♥75 ♥AQ10842
♦1064 ♦875
♣3 ♣J8

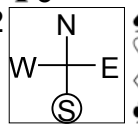


♠K4
♥J
♦AKJ32
♣Q7642

23

♠J8754
♥974
♦KQ82
♣5

♠AKQ962 ♠KQJ82
♥1063 ♥AQ7
♦J64 ♦AKQJ1032
♣7 ♣KQJ1032

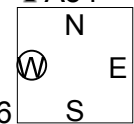


♠103
♥A5
♦10953
♣A9864

24

♠K982
♥Q854
♦K7
♣A54

♠3 ♠A10764
♥1063 ♥KJ
♦AQ9 ♦65432
♣KQ9876 ♣2



♠QJ5
♥A972
♦J108
♣J103

Board (22) Av: NS=+460

N-S	E-W	Contract	N-S	E-W	IMP
1	7	3NT S 5	460		0
13	19	3NT N 5	460		0
15	18	3NT N 5	460		0
16	12	3NT N 5	460		0
20	11	3NT N 5	460		0
3	10	3NT N 5	460		0
2	9	3NT N 5	460		0
6	5	3NT N 5	460		0
8	4	3NT N 4	430		-1
14	17	3NT N 4	430		-1

Board (23) Av: NS=-120

N-S	E-W	Contract	N-S	E-W	IMP
3	10	6H E-3	300		9
13	19	6NTxE-1	200		8
20	11	6H E-2	200		8
15	18	4S W-2	200		8
6	5	3NT E-2	200		8
2	9	4H E-1	100		6
16	12	4H E 4	620		-11
8	4	4H E 4	620		-11
14	17	4H E 4	620		-11
1	7	4H E 5	650		-11

Board (24) Av: NS=+80

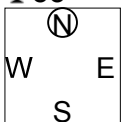
N-S	E-W	Contract	N-S	E-W	IMP
1	7	2H S 3	140		2
2	9	2H N 3	140		2
13	19	2H S 2	110		1
3	10	2H S 2	110		1
16	12	2H N 2	110		1
8	4	2H N 2	110		1
20	11	3D E-2	100		1
15	18	2S E-1	50		-1
6	5	2C W 2	90		-5
14	17	3C W 3	110		-5

第19回NRM杯 Session 2 Section A 2014年6月21日(土)

1

♠K10942
♥AQ965
♦A
♣53

♠7
♥KJ4
♦KQ1072
♣J874



♠6
♥3
♦J8653
♣AK10962

♠AQJ853
♥10872
♦94
♣Q

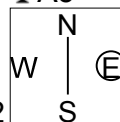
Board (1) Av: NS=+300

N-S	E-W	Contract	N-S	E-W	IMP
18	16	5Sx N 6	750		10
8	6	5S N 6	480		5
14	20	5S N 6	480		5
19	17	5S N 5	450		4
15	13	5S N 5	450		4
11	12	6Cx W-2	300		0
1	2	5Dx W-2	300		0
10	4	6S N-1		50	-8
7	9	6S N-1		50	-8
5	3	5S N-1		50	-8

2

♠J93
♥K43
♦Q8643
♣A5

♠K1052
♥J5
♦97
♣Q10632



♠A7
♥AQ109
♦J1052
♣J97

♠Q864
♥8762
♦AK
♣K84

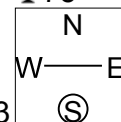
Board (2) Av: NS=-130

N-S	E-W	Contract	N-S	E-W	IMP
8	6	1NT N 1	90		6
10	4	1NT N 1	90		6
19	17	2NT N-1		100	1
5	3	1NT W 3	150		-1
14	20	1NT E 3	150		-1
18	16	1NT E 3	150		-1
7	9	1NT E 3	150		-1
15	13	2H S-2		200	-2
11	12	1NT E 6	240		-3
1	2	1NTx E 3	380		-6

3

♠KJ10642
♥65
♦765
♣75

♠A
♥AK83
♦Q92
♣KJ863



♠Q985
♥Q742
♦AKJ4
♣4

♠73
♥J109
♦1083
♣AQ1092

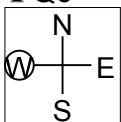
Board (3) Av: NS=-660

N-S	E-W	Contract	N-S	E-W	IMP
11	12	6H W-1	100		13
8	6	4H W 5	650		0
15	13	4H W 5	650		0
18	16	4H W 5	650		0
7	9	4H W 5	650		0
10	4	4H E 5	650		0
19	17	3NT E 5	660		0
5	3	4H W 6	680		-1
1	2	4H W 6	680		-1
14	20	4H E 6	680		-1

4

♠QJ4
♥J105
♦AJ654
♣Q6

♠985
♥KQ964
♦Q93
♣73



♠K102
♥832
♦K1082
♣J84

♠A763
♥A7
♦7
♣AK10952

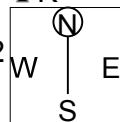
Board (4) Av: NS=+420

N-S	E-W	Contract	N-S	E-W	IMP
11	12	3NT N 6	690		7
14	20	5C S 5	600		5
1	2	5C S 5	600		5
15	13	3NT N 3	600		5
18	16	3NT N 3	600		5
19	17	3NT N 3	600		5
10	4	3C S 5	150		-7
8	6	3C S 5	150		-7
5	3	2D N 2	90		-8
7	9	6C S-1		100	-11

5

♠AQ73
♥9873
♦A873
♣K

♠9
♥AJ6542
♦J4
♣A972



♠106542
♥10
♦KQ9
♣J1053

♠KJ8
♥KQ
♦10652
♣Q864

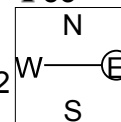
Board (5) Av: NS=-20

N-S	E-W	Contract	N-S	E-W	IMP
11	12	2NT S 2	120		4
18	16	2NT S 2	120		4
10	4	3D N 3	110		4
8	6	3D N 3	110		4
1	2	3D N 3	110		4
19	17	3NT S-1		100	-2
14	20	3H W 3	140		-3
5	3	3H W 3	140		-3
15	13	4Dx N-1		200	-5
7	9	3NT S-2		200	-5

6

♠AQJ5
♥Q84
♦KQ75
♣53

♠93
♥A9
♦J109632
♣Q87



♠7642
♥10532
♦8
♣J1042

♠K108
♥KJ76
♦A4
♣AK96

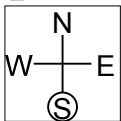
Board (6) Av: NS=+540

N-S	E-W	Contract	N-S	E-W	IMP
8	6	6NT S 6	990		10
5	3	6NT S 6	990		10
1	2	6NT S 6	990		10
15	13	4NT S 6	490		-2
7	9	4NT S 6	490		-2
18	16	3NT S 6	490		-2
19	17	3NT S 6	490		-2
11	12	4NT S 5	460		-2
10	4	6S N-1		50	-11
14	20	6NT S-1		50	-11

7

♠AQ10
♥KQ862
♦J9
♣K74

♠J752
♥AJ
♦Q106
♣A1065



♠864
♥975
♦AK87
♣Q93

♠K93
♥1043
♦5432
♣J82

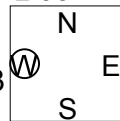
Board (7) Av: NS=+60

N-S	E-W	Contract	N-S	E-W	IMP
18	12	2H N 2	110		2
8	2	1H N 2	110		2
11	15	1H N 2	110		2
19	16	1H N 2	110		2
13	14	2S W-1	100		1
3	4	1NT E-1	100		1
1	5	1NT E-1	100		1
9	6	1NT W 1		90	-4
17	20	1NT E 1		90	-4
7	10	1NT E 1		90	-4

8

♠K95
♥A753
♦KQJ
♣654

♠QJ6
♥1094
♦A1053
♣987



♠A10832
♥Q6
♦64
♣KJ103

♠74
♥KJ82
♦9872
♣AQ2

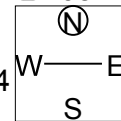
Board (8) Av: NS=+160

N-S	E-W	Contract	N-S	E-W	IMP
8	2	4H N 4	420		6
9	6	4H N 4	420		6
1	5	3H N 4	170		0
13	14	3H N 3	140		-1
18	12	3H N 3	140		-1
11	15	3H N 3	140		-1
7	10	3H N 3	140		-1
3	4	3H N 3	140		-1
17	20	4H N-1		50	-5
19	16	3S E 3		140	-7

9

♠K98
♥AK532
♦J73
♣108

♠5
♥J64
♦AKQ854
♣K97



♠J7632
♥9
♦1062
♣AQJ3

♠AQ104
♥Q1087
♦9
♣6542

Board (9) Av: NS=+110

N-S	E-W	Contract	N-S	E-W	IMP
9	6	4H N 4	420		7
18	12	4H N 4	420		7
1	5	4H N 4	420		7
19	16	3H N 4	170		2
3	4	3H N 4	170		2
11	15	3H N 4	170		2
17	20	4D W 5		150	-6
8	2	4D W 5		150	-6
13	14	4D W 5		150	-6
7	10	5D W 5		600	-12

第19回NRM杯 Session 2 Section A 2014年6月21日(土)

10

♠ J
♥ J86432
♦ 1085
♣ 1085

♠ AKQ86
♥ Q
♦ KQ7
♣ QJ62

N
W — E
S

♠ 95432
♥ 10
♦ A943
♣ 743

♠ 107
♥ AK975
♦ J62
♣ AK9

11

♠ KQ87
♥ J109
♦ K
♣ Q10632

♠ 954
♥ Q65
♦ 106543
♣ J5

N
W — E
S

♠ J62
♥ AK82
♦ 98
♣ 9874

♠ A103
♥ 743
♦ AQJ72
♣ AK

12

♠ 972
♥ A985
♦ Q4
♣ AK98

♠ AK85
♥ 4
♦ AJ87
♣ 7654

N
W — E
S

♠ J103
♥ KJ632
♦ 9652
♣ J

♠ Q64
♥ Q107
♦ K103
♣ Q1032

Board (10) Av: NS=-490

N-S	E-W	Contract	N-S	E-W	IMP
3	4	5Sx E-1	200		12
13	14	5S E-1	100		11
18	12	5H S-3	300		5
8	2	4S W 4	620		-4
11	15	4S W 4	620		-4
17	20	4S E 4	620		-4
1	5	4S E 4	620		-4
7	10	4S E 4	620		-4
19	16	4S E 4	620		-4
9	6	5Hx S-3	800		-7

Board (11) Av: NS=+470

N-S	E-W	Contract	N-S	E-W	IMP
11	15	3NT S 7	520		2
19	16	3NT S 7	520		2
18	12	3NT S 7	520		2
17	20	3NT S 7	520		2
1	5	3NT S 7	520		2
3	4	3NT S 4	430		-1
9	6	3NT S 4	430		-1
13	14	3NT S 4	430		-1
7	10	3NT S 3	400		-2
8	2	5D S-2	100		-11

Board (12) Av: NS=-90

N-S	E-W	Contract	N-S	E-W	IMP
13	14	1NT E-2	100		5
18	12	1NT E-1	50		4
11	15	2D W 2	90		0
8	2	2D W 2	90		0
17	20	2H E 2	110		-1
9	6	2D W 3	110		-1
19	16	2D W 3	110		-1
7	10	2S W 3	140		-2
1	5	2D W 5	150		-2
3	4	2D E 5	150		-2

13

♠ 8
♥ 852
♦ 865
♣ K107652

♠ AKJ3
♥ A73
♦ Q
♣ QJ983

N
W — E
S

♠ 7652
♥ KQJ6
♦ K974
♣ 4

♠ Q1094
♥ 1094
♦ AJ1032
♣ A

14

♠ K3
♥ J107
♦ J532
♣ QJ104

♠ AJ954
♥
♦ KQ1084
♣ 875

N
W — E
S

♠ Q1087
♥ AKQ
♦ A97
♣ A92

♠ 62
♥ 9865432
♦ 6
♣ K63

15

♠ 8
♥ AK5
♦ 9754
♣ J9864

♠ Q109542
♥ J
♦ 108
♣ AK103

N
W — E
S

♠ AK763
♥ Q10963
♦ AQ
♣ Q

♠ J
♥ 8742
♦ KJ632
♣ 752

Board (13) Av: NS=-140

N-S	E-W	Contract	N-S	E-W	IMP
20	15	4H E-2	200		8
1	6	4H E-2	200		8
16	11	4H E-1	100		6
17	12	1H E 2	110		1
14	19	2H E 4	170		-1
2	7	2H E 4	170		-1
4	9	1H E 4	170		-1
10	5	2Dx S-1	200		-2
3	8	3NT E 3	600		-10
18	13	3NT E 3	600		-10

Board (14) Av: NS=-980

N-S	E-W	Contract	N-S	E-W	IMP
2	7	6H E-6	300		15
14	19	6S W 6	980		0
18	13	6S W 6	980		0
17	12	6S W 6	980		0
3	8	6S W 6	980		0
1	6	6S W 6	980		0
4	9	6S W 6	980		0
20	15	6S E 6	980		0
10	5	6S E 6	980		0
16	11	6S E 6	980		0

Board (15) Av: NS=-610

N-S	E-W	Contract	N-S	E-W	IMP
20	15	5S W 6	480		4
4	9	4S W 6	480		4
1	6	4S W 6	480		4
2	7	4S W 6	480		4
3	8	4S W 6	480		4
17	12	4S E 6	480		4
14	19	4S E 6	480		4
18	13	6S W 6	980		-9
16	11	6S W 6	980		-9
10	5	6S E 6	980		-9

16

♠ AK43
♥ Q6
♦ J10542
♣ J9

♠ Q76
♥ A82
♦ 87
♣ AKQ76

N
W — E
S

♠ 1095
♥ KJ93
♦ AQ
♣ 8542

♠ J82
♥ 10754
♦ K963
♣ 103

17

♠ KJ2
♥ KJ932
♦ K108
♣ 83

♠ 10985
♥ A4
♦ J75
♣ KJ104

N
W — E
S

♠ 76
♥ 106
♦ AQ9
♣ AQ9652

♠ AQ43
♥ Q875
♦ 6432
♣ 7

18

♠ J
♥ 942
♦ J10542
♣ J983

♠ K84
♥ K8753
♦ K63
♣ 104

N
W — E
S

♠ 10965
♥ Q10
♦ 97
♣ KQ765

♠ AQ732
♥ AJ6
♦ AQ8
♣ A2

Board (16) Av: NS=-600

N-S	E-W	Contract	N-S	E-W	IMP
16	11	3NT W 3	600		0
14	19	3NT W 3	600		0
20	15	3NT W 3	600		0
17	12	3NT W 3	600		0
10	5	3NT W 3	600		0
1	6	3NT W 3	600		0
3	8	3NT W 3	600		0
4	9	3NT W 3	600		0
2	7	3NT W 4	630		-1
18	13	3NT W 5	660		-2

Board (17) Av: NS=0

N-S	E-W	Contract	N-S	E-W	IMP
14	19	3H N 3	140		4
16	11	3H N 3	140		4
10	5	3H N 3	140		4
1	6	5Cx E-1	100		3
18	13	4H N-1	50		-2
3	8	4H N-1	50		-2
20	15	5H N-2	100		-3
4	9	4H N-2	100		-3
17	12	3C E 3	110		-3
2	7	3C E 4	130		-4

Board (18) Av: NS=+60

N-S	E-W	Contract	N-S	E-W	IMP
14	19	3NT S 3	600		11
10	5	3D N 4	130		2
20	15	2NT S 2	120		2
17	12	2NT S 2	120		2
18	13	1S S 2	110		2
4	9	1S S 2	110		2
2	7	1S S 1	80		1
3	8	3S S-1	100		-4
1	6	3NT S-1	100		-4
16	11	4S S-2	200		-6

19

♠K
♥6
♦KQ1063
♣A98763

♠1092
♥Q53
♦J982
♣1042

N
W—E
S

♠AJ54
♥AJ108
♦4
♣KQJ5

♠Q8763
♥K9742
♦A75
♣

20

♠K6542
♥J10
♦J84
♣873

♠J87
♥AQ8654
♦
♣J1062

N
W—E
S

♠AQ103
♥973
♦Q1063
♣K4

♠9
♥K2
♦AK9752
♣AQ95

21

♠10652
♥K982
♦A95
♣J10

♠4
♥A10653
♦J83
♣A732

N
W—E
S

♠A73
♥J4
♦KQ42
♣KQ85

♠KQJ98
♥Q7
♦1076
♣964

Board (19) Av: NS=+80

N-S	E-W	Contract	N-S	E-W	IMP
6	7	3NT E-3	300		6
13	11	3NT E-2	200		3
2	4	2D N 4	130		2
16	17	3D N 3	110		1
10	8	3D N 3	110		1
1	3	3D N 3	110		1
14	12	2D N 3	110		1
18	20	5D N-1		50	-4
19	15	2S S-1		50	-4
5	9	4NT N-4		200	-7

Board (20) Av: NS=-200

N-S	E-W	Contract	N-S	E-W	IMP
13	11	2D S-1	100		3
10	8	2H W 4	170		1
16	17	4D S-2	200		0
14	12	4D S-2	200		0
19	15	4D S-2	200		0
2	4	4D S-2	200		0
6	7	4D S-2	200		0
18	20	3D S-2	200		0
1	3	3D S-2	200		0
5	9	2H W 5	200		0

Board (21) Av: NS=-140

N-S	E-W	Contract	N-S	E-W	IMP
16	17	3NT E-1	50		5
1	3	3NT E-1	50		5
14	12	2NT E 2		120	1
18	20	2NT E 2		120	1
19	15	2NT E 2		120	1
5	9	2NT E 2		120	1
2	4	2NT E 3		150	0
6	7	2NT E 3		150	0
10	8	3NT E 3		400	-6
13	11	3NT E 3		400	-6

22

♠1098
♥8
♦1087542
♣872

♠A743
♥J43
♦J6
♣KQ94

N
W—E
S

♠J652
♥Q9765
♦Q3
♣J10

♠KQ
♥AK102
♦AK9
♣A653

23

♠QJ954
♥108
♦A872
♣K4

♠AK
♥7653
♦J94
♣J976

N
W—E
S

♠1082
♥AKQJ94
♦Q6
♣A3

♠763
♥2
♦K1053
♣Q10852

24

♠KQJ9
♥A5
♦1064
♣A964

♠105432
♥72
♦KQ8
♣K103

N
W—E
S

♠6
♥J109864
♦952
♣Q85

♠A87
♥KQ3
♦AJ73
♣J72

Board (22) Av: NS=+190

N-S	E-W	Contract	N-S	E-W	IMP
16	17	3NT S 4	430		6
2	4	3NT S 3	400		5
5	9	2NT S 5	210		1
19	15	2NT S 4	180		0
14	12	2NT S 3	150		-1
13	11	2NT S 3	150		-1
6	7	2NT S 3	150		-1
10	8	4D N 4	130		-2
1	3	2NT S 2	120		-2
18	20	6D N-1		50	-6

Board (23) Av: NS=-630

N-S	E-W	Contract	N-S	E-W	IMP
14	12	3H E 4	170		10
13	11	3NT W 3	600		1
16	17	4H E 4	620		0
2	4	4H E 4	620		0
6	7	4H E 4	620		0
5	9	4H E 4	620		0
19	15	4H E 5	650		-1
18	20	4H E 5	650		-1
1	3	4H E 5	650		-1
10	8	4H E 5	650		-1

Board (24) Av: NS=+430

N-S	E-W	Contract	N-S	E-W	IMP
6	7	3NT S 4	430		0
18	20	3NT S 4	430		0
16	17	3NT S 4	430		0
2	4	3NT S 4	430		0
19	15	3NT S 4	430		0
5	9	3NT S 4	430		0
1	3	3NT N 4	430		0
10	8	3NT N 4	430		0
13	11	3NT N 4	430		0
14	12	3NT N 3	400		-1

25

♠K75
♥AK5
♦AJ3
♣KJ109

♠842
♥1082
♦Q952
♣A43

N
W—E
S

♠A1096
♥QJ743
♦87
♣86

♠QJ3
♥96
♦K1064
♣Q752

26

♠KQ1073
♥J62
♦J
♣AQ94

♠A94
♥AQ107
♦865
♣KJ6

N
W—E
S

♠85
♥854
♦AQ102
♣8732

♠J62
♥K93
♦K9743
♣105

27

♠3
♥AQ52
♦10972
♣K765

♠J9542
♥93
♦AKQJ6
♣3

N
W—E
S

♠AQ10
♥KJ764
♦
♣AQJ104

♠K876
♥108
♦8543
♣982

Board (25) Av: NS=+60

N-S	E-W	Contract	N-S	E-W	IMP
18	19	3NT S 5	460		9
1	4	3NT S 5	460		9
10	6	3NT S 3	400		8
20	16	3NT S-1		50	-3
13	17	3NT S-1		50	-3
14	11	3NT N-1		50	-3
8	9	3NT N-1		50	-3
5	2	3NT N-1		50	-3
12	15	3NT N-2		100	-4
3	7	3NT N-2		100	-4

Board (26) Av: NS=+140

N-S	E-W	Contract	N-S	E-W	IMP
8	9	3S N 3	140		0
12	15	2S N 3	140		0
14	11	2S N 3	140		0
20	16	2S N 3	140		0
18	19	2S N 3	140		0
3	7	2S N 3	140		0
1	4	2S N 3	140		0
5	2	2S N 3	140		0
10	6	2S N 3	140		0
13	17	2S N 2	110		-1

Board (27) Av: NS=-130

N-S	E-W	Contract	N-S	E-W	IMP
18	19	6S W-2	100		6
1	4	6S W-2	100		6
12	15	6S W-1	50		5
14	11	6S W-1	50		5
10	6	6S W-1	50		5
3	7	6S W-1	50		5
5	2	5S W 5		450	-8
13	17	5S W 5		450	-8
20	16	4S W 5		450	-8
8	9	4S W 5		450	-8

第19回NRM杯 Session 2 Section A 2014年6月21日(土)

28

♠ A643
♥ AK965
♦ K8
♣ K5

♠ KJ97	N	♠ Q2
♥ 1042		♥ QJ73
♦ J73	W	♦ Q2
♣ 963	S	♣ J10842

♠ 1085
♥ 8
♦ A109654
♣ AQ7

29

♠ KQ
♥ J963
♦ K1065
♣ 1086

♠ 1073	N	♠ AJ8
♥ 72		♥ AKQ104
♦ A843	W	♦ J7
♣ J432	S	♣ AQ5

♠ 96542
♥ 85
♦ Q92
♣ K97

30

♠ 76
♥ 862
♦ KJ86
♣ 9432

♠ AKJ1094	N	♠ 832
♥ Q7		♥ AK4
♦ A107	W	♦ Q93
♣ AJ	S	♣ KQ86

♠ Q5
♥ J10953
♦ 542
♣ 1075

Board (28) Av: NS=+600

N-S	E-W	Contract	N-S	E-W	IMP
10	6	3NT S 5	660		2
14	11	5D S 6	620		1
13	17	3NT S 3	600		0
20	16	3NT S 3	600		0
18	19	3NT S 3	600		0
3	7	3NT S 3	600		0
5	2	3NT S 3	600		0
8	9	3NT S 3	600		0
1	4	3NT S 3	600		0
12	15	2C N 3	110		-10

Board (29) Av: NS=-560

N-S	E-W	Contract	N-S	E-W	IMP
1	4	3NT E-2	200		13
20	16	1H E 3	140		9
5	2	3NT W 3	600		-1
3	7	3NT E 3	600		-1
18	19	3NT E 4	630		-2
10	6	3NT E 4	630		-2
13	17	3NT E 4	630		-2
8	9	3NT E 4	630		-2
12	15	3NT E 4	630		-2
14	11	3NT E 5	660		-3

Board (30) Av: NS=-1010

N-S	E-W	Contract	N-S	E-W	IMP
8	9	6S W 7	1010		0
12	15	6S W 7	1010		0
13	17	6S W 7	1010		0
3	7	6S W 7	1010		0
10	6	6S W 7	1010		0
5	2	6S W 7	1010		0
14	11	6NT W 7	1020		0
20	16	6NT E 7	1020		0
18	19	6NT E 7	1020		0
1	4	6NT E 7	1020		0

第19回NRM杯 Session 3 Section A 2014年6月22日(日)

1

♠ Q1043
♥ KQ108
♦ AKQ109
♣ AKQ109

♠ K108
♥ 8
♦ 9754
♣ J8652

♠ AJ7642
♥ K765
♦ J2
♣ 3

♠ Q953
♥ AJ92
♦ A63
♣ 74

Board (1) Av: NS=+490

N-S	E-W	Contract	N-S	E-W	IMP
2	13	4Sx	E-4	800	7
12	4	4H	N 7	510	1
3	15	4H	N 7	510	1
9	17	4H	N 7	510	1
5	14	4Sx	E-3	500	0
8	20	4H	N 6	480	0
1	11	4H	N 6	480	0
10	19	4H	N 6	480	0
7	18	4H	N 5	450	-1
16	6	4H	N 5	450	-1

2

♠ 643
♥ 1074
♦ A8
♣ Q10763

♠ K8
♥ KQJ8
♦ K6543
♣ K4

♠ QJ1052
♥ 52
♦ J107
♣ A95

♠ A97
♥ A963
♦ Q92
♣ J82

Board (2) Av: NS=+10

N-S	E-W	Contract	N-S	E-W	IMP
7	18	3NT	W-2	100	3
16	6	3NT	W-2	100	3
10	19	2NT	W-2	100	3
1	11	2NT	W-2	100	3
2	13	2NT	W-1	50	1
9	17	1NT	W-1	50	1
3	15	3D	W 3	110	-3
5	14	2NT	W 2	120	-4
12	4	2NT	W 2	120	-4
8	20	4S	E 4	420	-10

3

♠ KQ876
♥ A3
♦ 74
♣ 10754

♠ 1095
♥ Q85
♦ KJ6
♣ AKJ6

♠ AJ3
♥ J1042
♦ Q10985
♣ 3

♠ 42
♥ K976
♦ A32
♣ Q982

Board (3) Av: NS=-140

N-S	E-W	Contract	N-S	E-W	IMP
8	20	2D	E-1	100	6
2	13	1NT	S-2	100	1
1	11	1NT	S-2	100	1
7	18	2H	E 2	110	1
12	4	2H	E 2	110	1
5	14	2D	E 3	110	1
3	15	1NT	W 2	120	1
16	6	1NT	S-3	150	0
9	17	1NTxS-2		300	-4
10	19	3NT	E 3	600	-10

4

♠ Q975
♥ 754
♦ 974
♣ Q96

♠ J63
♥ 93
♦ 53
♣ A107542

♠ K102
♥ QJ1086
♦ KQ6
♣ K3

♠ A84
♥ AK2
♦ AJ1082
♣ J8

Board (4) Av: NS=-20

N-S	E-W	Contract	N-S	E-W	IMP
1	11	3NTxS-2		500	11
10	19	1NT	S 2	120	4
8	20	3C	E-1	100	3
9	17	1NT	S 1	90	3
2	13	1NT	S-1	100	-2
7	18	1NT	S-1	100	-2
5	14	1NT	S-1	100	-2
12	4	1NT	S-1	100	-2
16	6	1NT	S-1	100	-2
3	15	1NT	S-1	100	-2

5

♠ 109632
♥ 4
♦ K1065
♣ 1098

♠ KJ5
♥ Q32
♦ AQ84
♣ QJ6

♠ A8
♥ 10985
♦ 32
♣ K7432

♠ Q74
♥ AKJ76
♦ J97
♣ A5

Board (5) Av: NS=-80

N-S	E-W	Contract	N-S	E-W	IMP
1	11	2S	S 2	110	5
10	19	2S	S 2	110	5
2	13	2C	E 2	90	0
3	15	1H	S-1	100	-1
7	18	3C	E 3	110	-1
16	6	3C	E 3	110	-1
9	17	1NT	W 2	120	-1
5	14	1NT	W 2	120	-1
12	4	1NT	W 2	120	-1
8	20	1NT	W 3	150	-2

6

♠ J98
♥ K10
♦ AQJ76
♣ KQJ

♠ Q7642
♥ 65
♦ 42
♣ A965

♠ AK
♥ A2
♦ 9853
♣ 87432

♠ 1053
♥ QJ98743
♦ K10
♣ 10

Board (6) Av: NS=-30

N-S	E-W	Contract	N-S	E-W	IMP
3	15	4H	S 4	420	10
8	20	3H	S 3	140	5
10	19	3H	S 3	140	5
12	4	4H	S-1	50	-1
2	13	4H	S-1	50	-1
5	14	4H	S-2	100	-2
7	18	4H	S-2	100	-2
1	11	4H	S-2	100	-2
16	6	4H	S-2	100	-2
9	17	4H	S-2	100	-2

7

♠ AK643
♥ AK109
♦ J53
♣ 2

♠ 987
♥ Q63
♦ 862
♣ KJ43

♠ Q
♥ 872
♦ AQ1094
♣ AQ76

♠ J1052
♥ J54
♦ K7
♣ 10985

Board (7) Av: NS=+370

N-S	E-W	Contract	N-S	E-W	IMP
17	7	4S	N 5	650	7
3	14	4S	N 5	650	7
12	2	4S	N 5	650	7
6	20	4S	N 5	650	7
18	10	3S	N 5	200	-5
4	11	3S	N 5	200	-5
13	5	3S	N 5	200	-5
1	15	3S	N 5	200	-5
9	16	2S	N 5	200	-5
8	19	2S	N 5	200	-5

8

♠ AQ543
♥ 762
♦ QJ
♣ AQ10

♠ 1096
♥ AKQ98
♦ A105
♣ 98

♠ J72
♥ 43
♦ K9863
♣ J76

♠ K8
♥ J105
♦ 742
♣ K5432

Board (8) Av: NS=+100

N-S	E-W	Contract	N-S	E-W	IMP
1	15	1S	N 2	110	0
8	19	1S	N 2	110	0
3	14	1S	N 2	110	0
4	11	1S	N 2	110	0
9	16	1S	N 2	110	0
12	2	1S	N 2	110	0
13	5	1S	N 2	110	0
18	10	1S	N 2	110	0
17	7	2D	E-1	50	-2
6	20	3C	S-1	50	-4

9

♠ K985
♥ A
♦ J9865
♣ J87

♠ A64
♥ QJ9
♦ K432
♣ K32

♠ 1032
♥ K742
♦ AQ107
♣ Q9

♠ QJ7
♥ 108653
♦
♣ A10654

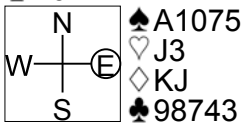
Board (9) Av: NS=-160

N-S	E-W	Contract	N-S	E-W	IMP
1	15	3NT	W-1	100	6
17	7	2D	W-1	100	6
12	2	1H	E 1	80	2
3	14	2NT	W 2	120	1
8	19	2NT	W 2	120	1
9	16	2NT	W 2	120	1
13	5	2NT	W 2	120	1
4	11	2NT	W 3	150	0
6	20	3NT	E 4	630	-10
18	10	3NT	E 4	630	-10

第19回NRM杯 Session 3 Section A 2014年6月22日(日)

10

♠ J842
♥ Q94
♦ Q84
♣ AJ2



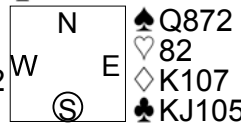
♠ KQ96
♥ K8652
♦
♣ K1065

Board (10) Av: NS=+70

N-S	E-W	Contract	N-S	E-W	IMP
18	10	5Dx	W-1	200	4
12	2	5Dx	W-1	200	4
6	20	5Dx	W-1	200	4
9	16	3S	N 4	170	3
8	19	3H	S 4	170	3
3	14	3S	N 3	140	2
4	11	4S	N-1	100	-5
13	5	4D	W 4	130	-5
1	15	4D	W 4	130	-5
17	7	4Dx	W 4	710	-13

11

♠ K104
♥ AQ964
♦ 863
♣ 42



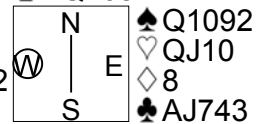
♠ AJ963
♥ 1053
♦ A5
♣ AQ8

Board (11) Av: NS=+460

N-S	E-W	Contract	N-S	E-W	IMP
18	10	4S	S 7	510	2
12	2	4S	S 6	480	1
17	7	4H	S 6	480	1
1	15	4H	S 6	480	1
4	11	4S	S 5	450	0
9	16	4S	S 5	450	0
8	19	4S	S 5	450	0
13	5	4S	S 5	450	0
3	14	4S	S 4	420	-1
6	20	3D	N-2	100	-11

12

♠ K654
♥ 98
♦ KJ7
♣ KQ108



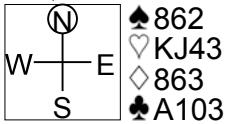
♠ 73
♥ AK6542
♦ 6543
♣ 2

Board (12) Av: NS=+50

N-S	E-W	Contract	N-S	E-W	IMP
1	15	2H	S 3	140	3
9	16	2H	S 3	140	3
4	11	2H	S 3	140	3
3	14	2H	S 2	110	2
8	19	2NT	E-2	100	2
6	20	2NT	E-2	100	2
18	10	2NT	E-2	100	2
13	5	2H	S-1	100	-4
17	7	4H	S-2	200	-6
12	2	3Hx	S-1	200	-6

13

♠ K73
♥ Q
♦ QJ1074
♣ QJ74



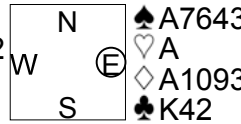
♠ J1054
♥ 862
♦ AK52
♣ 52

Board (13) Av: NS=-230

N-S	E-W	Contract	N-S	E-W	IMP
2	11	4H	W-1	100	8
20	9	3H	W 4	170	2
7	16	2H	W 4	170	2
5	12	2H	W 4	170	2
8	18	2H	W 4	170	2
1	14	2H	W 4	170	2
4	15	3S	S-2	200	1
19	6	2H	W 5	200	1
13	3	4H	W 4	620	-9
17	10	4H	W 4	620	-9

14

♠ 1098
♥ J65
♦ KJ762
♣ J10



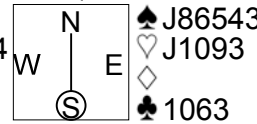
♠ KQJ
♥ KQ43
♦ 84
♣ A986

Board (14) Av: NS=+20

N-S	E-W	Contract	N-S	E-W	IMP
8	18	1NT	S 3	150	4
19	6	1NT	S 2	120	3
2	11	2S	E-2	100	2
4	15	1NT	S 1	90	2
1	14	1NT	S 1	90	2
20	9	2S	E-1	50	1
17	10	1S	E 1	80	-3
5	12	1S	E 1	80	-3
7	16	3NT	S-2	100	-3
13	3	2D	N-2	100	-3

15

♠ KQ9
♥ 62
♦ K6
♣ KQ9875



♠ 1072
♥ 85
♦ QJ98754
♣ A

Board (15) Av: NS=-370

N-S	E-W	Contract	N-S	E-W	IMP
17	10	4S	E-1	50	9
4	15	3H	W 4	170	5
20	9	3H	W 5	200	5
2	11	4H	W 4	420	-2
7	16	4H	W 4	420	-2
13	3	4H	W 4	420	-2
19	6	4H	W 4	420	-2
5	12	4H	W 5	450	-2
8	18	4H	W 5	450	-2
1	14	4H	W 5	450	-2

16

♠ 42
♥ 874
♦ 8
♣ J1097653



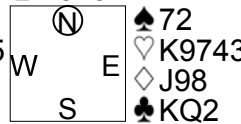
♠ A9
♥ 632
♦ AQJ654
♣ 82

Board (16) Av: NS=-360

N-S	E-W	Contract	N-S	E-W	IMP
13	3	6S	E-2	200	11
1	14	5S	W-1	100	10
8	18	5S	E-1	100	10
7	16	5S	E-1	100	10
5	12	4S	W 4	620	-6
4	15	4S	E 4	620	-6
2	11	4S	E 4	620	-6
20	9	4S	E 5	650	-7
19	6	4S	E 5	650	-7
17	10	4H	E 6	680	-8

17

♠ 985
♥ J
♦ AQ76
♣ A8754



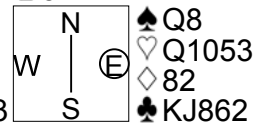
♠ AQ643
♥ A82
♦ 542
♣ J10

Board (17) Av: NS=+120

N-S	E-W	Contract	N-S	E-W	IMP
20	9	4S	S 4	420	7
13	3	3S	S 4	170	2
17	10	2S	S 4	170	2
7	16	2S	S 4	170	2
5	12	2S	S 3	140	1
2	11	2S	S 3	140	1
4	15	2S	S 3	140	1
1	14	2S	S 2	110	0
19	6	4S	S-1	50	-5
8	18	4S	S-2	100	-6

18

♠ 10974
♥ K987
♦ Q105
♣ 54



♠ AK652
♥ A
♦ AK643
♣ A7

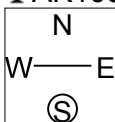
Board (18) Av: NS=+1180

N-S	E-W	Contract	N-S	E-W	IMP
2	11	6S	S 7	1460	7
4	15	6S	S 7	1460	7
7	16	6S	S 7	1460	7
20	9	6S	S 7	1460	7
8	18	6S	S 7	1460	7
13	3	6S	S 7	1460	7
5	12	4S	S 7	710	-10
17	10	4S	S 7	710	-10
19	6	4S	S 7	710	-10
1	14	4S	S 7	710	-10

19

♠A63
♥KQ9
♦5
♣AK10876

♠KQ5
♥52
♦J7632
♣J43



♠J94
♥AJ874
♦KQ109
♣2

♠10872
♥1063
♦A84
♣Q95

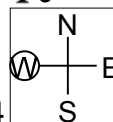
Board (19) Av: NS=+50

N-S	E-W	Contract	N-S	E-W	IMP
8	17	3NT N 4	430		9
1	13	3C N 4	130		2
2	15	3C N 3	110		2
4	14	3C N 3	110		2
18	6	3C N 3	110		2
20	7	3C N 3	110		2
11	5	4S N-1	50		-3
12	3	3NT N-1	50		-3
9	19	3NT N-1	50		-3
10	16	4S N-2	100		-4

20

♠AJ1072
♥KJ5
♦8632
♣9

♠K53
♥10976
♦4
♣AKQJ4



♠Q98
♥Q84
♦J1075
♣1085

♠64
♥A32
♦AKQ9
♣7632

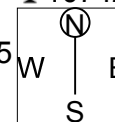
Board (20) Av: NS=+140

N-S	E-W	Contract	N-S	E-W	IMP
2	15	4S N 4	620		10
1	13	5D S 5	600		10
4	14	2S N 4	170		1
10	16	2S N 4	170		1
9	19	2S N 3	140		0
18	6	3D N 4	130		0
11	5	2NT S 2	120		-1
12	3	1NT W 1	90		-6
20	7	2S N-1	100		-6
8	17	1NT S-2	200		-8

21

♠A873
♥J6
♦Q84
♣10742

♠KJ5
♥K109875
♦J63
♣5



♠9
♥A43
♦A972
♣KJ986

♠Q10642
♥Q2
♦K105
♣AQ3

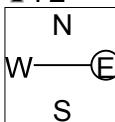
Board (21) Av: NS=-370

N-S	E-W	Contract	N-S	E-W	IMP
11	5	2S S-1	100		7
20	7	3H W 4	170		5
12	3	3H W 4	170		5
9	19	4H W 4	420		-2
1	13	4H W 4	420		-2
10	16	4H W 4	420		-2
8	17	4H W 5	450		-2
4	14	4H W 5	450		-2
18	6	4H W 5	450		-2
2	15	4H W 5	450		-2

22

♠QJ103
♥AJ94
♦874
♣72

♠84
♥Q7652
♦AQJ3
♣65



♠A765
♥K8
♦K1065
♣1043

♠K92
♥103
♦92
♣AKQJ98

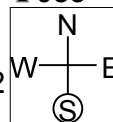
Board (22) Av: NS=+110

N-S	E-W	Contract	N-S	E-W	IMP
8	17	3D W-2	200		3
20	7	1NTxN 1	180		2
4	14	3C S 4	130		1
10	16	3C S 4	130		1
9	19	2C S 4	130		1
2	15	2C S 4	130		1
12	3	2C S 4	130		1
1	13	2NT S 2	120		0
11	5	2D W 2	90		-5
18	6	2D W 3	110		-6

23

♠853
♥AK642
♦87
♣J83

♠KQ96
♥Q87
♦AJ652
♣5



♠A74
♥10953
♦109
♣AQ94

♠J102
♥J
♦KQ43
♣K10762

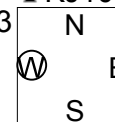
Board (23) Av: NS=-180

N-S	E-W	Contract	N-S	E-W	IMP
4	14	1NT E 2	120		2
18	6	2NT E 3	150		1
20	7	1NT E 3	150		1
10	16	2NT E 4	180		0
8	17	1NT E 4	180		0
9	19	1NT E 4	180		0
12	3	1NT E 4	180		0
11	5	1NT E 4	180		0
2	15	1NT S-2	200		-1
1	13	3C S-3	300		-3

24

♠AKQ109
♥Q95
♣KJ1074

♠KQ7653
♥8
♦K4
♣Q982



♠J1042
♥J764
♦10762
♣5

♠A98
♥532
♦AJ83
♣A63

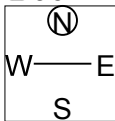
Board (24) Av: NS=+250

N-S	E-W	Contract	N-S	E-W	IMP
12	3	5H N 5	450		5
4	14	5H N 5	450		5
20	7	4H S 5	450		5
2	15	4H N 5	450		5
1	13	4H N 5	450		5
9	19	4H N 4	420		5
11	5	6H N-1	50		-7
18	6	5H S-1	50		-7
10	16	7H N-2	100		-8
8	17	5H N-2	100		-8

25

♠J74
♥K10752
♦A52
♣96

♠KQ1092
♥J
♦KJ7
♣KQ104



♠8653
♥A93
♦Q106
♣A53

♠A
♥Q864
♦9843
♣J872

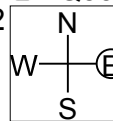
Board (25) Av: NS=-650

N-S	E-W	Contract	N-S	E-W	IMP
19	7	2S W 4	170		10
1	12	4S W 4	620		1
10	20	4S W 5	650		0
11	3	4S W 5	650		0
9	18	4S W 5	650		0
14	2	4S W 5	650		0
15	5	4S W 5	650		0
16	8	4S W 5	650		0
17	6	4S W 5	650		0
13	4	4S W 5	650		0

26

♠K543
♥
♦AK1095
♣KQ53

♠AJ102
♥AQ4
♦J87
♣986



♠K109753
♥Q643
♦A42
♣A42

♠Q9876
♥J862
♦2
♣J107

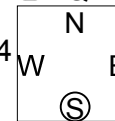
Board (26) Av: NS=-210

N-S	E-W	Contract	N-S	E-W	IMP
13	4	3S S 3	140		8
10	20	4S S-1	100		3
19	7	4S S-1	100		3
1	12	2H E 3	140		2
16	8	5S N-2	200		0
9	18	5C S-2	200		0
11	3	4Sx S-1	200		0
15	5	4S S-2	200		0
17	6	5Cx S-2	500		-7
14	2	4Sx N-2	500		-7

27

♠Q10
♥AQ103
♦J1053
♣KQ7

♠A92
♥KJ9654
♦7
♣J86



♠K86
♥72
♦AK9842
♣A10

♠J7543
♥8
♦Q6
♣95432

Board (27) Av: NS=-110

N-S	E-W	Contract	N-S	E-W	IMP
9	18	3D E-2	100		5
14	2	4H E-1	50		4
11	3	3D E-1	50		4
1	12	3H W 3	140		-1
19	7	3H W 3	140		-1
15	5	3H E 3	140		-1
16	8	2H E 3	140		-1
13	4	2NT N-3	150		-1
17	6	4C N-5	250		-4
10	20	4Sx S-5	1100		-14

第19回NRM杯 Session 3 Section A 2014年6月22日(日)

28

♠ K5
♥ AQ96
♦ K97
♣ K865

♠ J32
♥ 1032
♦ J86542
♣ 9

N		E
W		S

♠ AQ10976
♥ J84
♦ A3
♣ 103

♠ 84
♥ K75
♦ Q10
♣ AQJ742

29

♠ AQJ3
♥ 10643
♦ KJ74
♣ 9

♠ 109542
♥ AK95
♦ 109
♣ AJ

N		E
W		S

♠ K76
♥ J7
♦ Q8
♣ Q87653

♠ 8
♥ Q82
♦ A6532
♣ K1042

30

♠ 98753
♥ A1072
♦ KJ
♣ 32

♠ A1064
♥ 65
♦ 109
♣ Q8765

N		E
W		S

♠ KQ
♥ 843
♦ AQ8765
♣ A4

♠ J2
♥ KQJ9
♦ 432
♣ KJ109

Board (28) Av: NS=+570

N-S	E-W	Contract	N-S	E-W	IMP
1	12	3NT S 5	660		3
9	18	3NT N 5	660		3
10	20	3NT N 5	660		3
11	3	3NT N 5	660		3
13	4	3NT N 5	660		3
16	8	3NT N 5	660		3
17	6	3NT N 5	660		3
19	7	3NT N 5	660		3
15	5	5C S-1	100		-12
14	2	5C S-1	100		-12

Board (29) Av: NS=+50

N-S	E-W	Contract	N-S	E-W	IMP
13	4	3D N 5	150		3
19	7	3D N 3	110		2
9	18	3D N 3	110		2
1	12	3D N 3	110		2
15	5	3D N 3	110		2
16	8	2S W-1	100		2
17	6	2S W-1	100		2
10	20	2S W 2	110		-4
14	2	2S W 2	110		-4
11	3	2S W 2	110		-4

Board (30) Av: NS=-50

N-S	E-W	Contract	N-S	E-W	IMP
1	12	2H S 2	110		4
17	6	2H N 2	110		4
9	18	3C E-1	50		3
15	5	3H N-1		50	0
10	20	2H N-1		50	0
13	4	1NT E 1		90	-1
14	2	3D E 3		110	-2
19	7	2D E 4		130	-2
11	3	1NT E 3		150	-3
16	8	1NT E 3		150	-3

第19回NRM杯 Session 4 Section A 2014年6月22日(日)

1

♠A83
♥32
♦A6
♣1098763

♠J964 (N) ♠Q75
♥QJ9 W E ♥865
♦K74 S ♦109853
♣AQ2 ♣54

♠K102
♥AK1074
♦QJ2
♣KJ

Board (1) Av: NS=+290

N-S	E-W	Contract	N-S	E-W	IMP
6	11	3NT S 5	460		5
13	7	3NT S 3	400		3
1	16	3NT S 3	400		3
4	17	3NT N 3	400		3
19	5	3NT N 3	400		3
10	14	2NT S 4	180		-3
15	8	1NT N 4	180		-3
3	20	1NT N 4	180		-3
12	9	2D E-3	150		-4
18	2	1NT N 3	150		-4

2

♠K62
♥82
♦1095
♣KJ532

♠A103 (N) ♠Q75
♥J765 W E ♥104
♦AQ32 S ♦KJ76
♣106 ♣A974

♠J984
♥AKQ93
♦84
♣Q8

Board (2) Av: NS=-80

N-S	E-W	Contract	N-S	E-W	IMP
4	17	3C E-2	100		5
12	9	2C S 2	90		5
1	16	1NT N 1	90		5
18	2	2S N-1	100		-1
3	20	2H N-1	100		-1
19	5	1NT N-1	100		-1
13	7	1NT N-1	100		-1
10	14	3C S-2	200		-3
6	11	1NT N-2	200		-3
15	8	3C S-3	300		-6

3

♠AKJ9654
♥KJ863
♦7
♣

♠832 (N) ♠Q7
♥Q9 W E ♥1074
♦AJ2 S ♦Q98
♣AQ942 ♣J10865

♠10
♥A52
♦K106543
♣K73

Board (3) Av: NS=+480

N-S	E-W	Contract	N-S	E-W	IMP
4	17	6H S 7	1010		11
19	5	4H S 7	510		1
3	20	4S N 6	480		0
6	11	4S N 6	480		0
18	2	4S N 6	480		0
12	9	4S N 6	480		0
13	7	4S N 6	480		0
15	8	4S N 6	480		0
10	14	4H N 6	480		0
1	16	4S N 5	450		-1

4

♠A107
♥J
♦KJ8
♣AQJ872

♠Q94 (N) ♠J2
♥Q9542 W E ♥K6
♦AQ102 S ♦7654
♣4 ♣K9653

♠K8653
♥A10873
♦93
♣10

Board (4) Av: NS=+380

N-S	E-W	Contract	N-S	E-W	IMP
6	11	4S S 4	620		6
10	14	4S S 4	620		6
3	20	4S S 4	620		6
19	5	4S S 4	620		6
12	9	4S S 4	620		6
15	8	4S S 4	620		6
18	2	2S S 2	110		-7
13	7	4S S-1	100		-10
4	17	4S S-1	100		-10
1	16	4S S-1	100		-10

5

♠K105
♥J103
♦Q106
♣A872

♠Q9764 (N) ♠AJ3
♥ Q W E ♥AQ42
♦A9732 S ♦K5
♣965 ♣KQJ3

♠82
♥K98765
♦J84
♣104

Board (5) Av: NS=-450

N-S	E-W	Contract	N-S	E-W	IMP
6	11	6S E-1	50		11
19	5	4S E 4	420		1
15	8	5S E 5	450		0
13	7	4S W 5	450		0
3	20	4S E 5	450		0
12	9	4S E 5	450		0
10	14	4S E 5	450		0
18	2	4S E 5	450		0
1	16	4S E 5	450		0
4	17	4S E 5	450		0

6

♠J82
♥10
♦AK1032
♣K753

♠Q7 (N) ♠1065
♥AKQ7 W E ♥96432
♦Q64 S ♦J85
♣AQ102 ♣64

♠AK943
♥J85
♦97
♣J98

Board (6) Av: NS=+230

N-S	E-W	Contract	N-S	E-W	IMP
13	7	4Sx S 4	590		8
3	20	4Sx S 4	590		8
6	11	4H E-2	200		-1
12	9	3H E-2	200		-1
18	2	2S S 5	200		-1
1	16	2S S 5	200		-1
19	5	3S S 4	170		-2
4	17	2S S 4	170		-2
15	8	3S S 3	140		-3
10	14	2S S 3	140		-3

7

♠KQ103
♥A3
♦KQJ642
♣3

♠A875 (N) ♠J94
♥964 W E ♥Q108752
♦5 S ♦A
♣Q10942 ♣KJ7

♠62
♥KJ
♦109873
♣A865

Board (7) Av: NS=+320

N-S	E-W	Contract	N-S	E-W	IMP
6	15	5D N 5	600		7
1	20	5D N 5	600		7
17	2	5D N 5	600		7
11	9	5D N 5	600		7
8	14	4D N 5	150		-5
10	13	4D N 5	150		-5
12	7	4D N 5	150		-5
19	3	4D N 5	150		-5
16	4	4D N 5	150		-5
5	18	3H E 3	140		-10

8

♠963
♥A942
♦KJ5
♣J97

♠A75 (N) ♠J10842
♥J65 W E ♥K3
♦A874 S ♦10962
♣Q105 ♣84

♠KQ
♥Q1087
♦Q3
♣AK632

Board (8) Av: NS=-50

N-S	E-W	Contract	N-S	E-W	IMP
19	3	4H S 5	450		11
17	2	4H S-1	50		0
16	4	4H S-1	50		0
10	13	4H S-1	50		0
12	7	4H N-1	50		0
11	9	4H N-1	50		0
5	18	4H N-1	50		0
6	15	4H N-1	50		0
8	14	3NT S-1	50		0
1	20	3NT S-2	100		-2

9

♠KJ974
♥
♦KQ32
♣10532

♠A (N) ♠Q1086
♥7543 W E ♥1082
♦J1087 S ♦A954
♣A864 ♣Q7

♠532
♥AKQJ96
♦6
♣KJ9

Board (9) Av: NS=+140

N-S	E-W	Contract	N-S	E-W	IMP
10	13	4H S 4	420		7
17	2	4H S 4	420		7
19	3	2H S 4	170		1
8	14	2H S 4	170		1
11	9	2H S 4	170		1
12	7	2H S 4	170		1
5	18	3H S 3	140		0
6	15	4H S-1	50		-5
16	4	4S N-2	100		-6
1	20	4S N-2	100		-6

10

♠ QJ953
♥ 9875
♦ 743
♣ J

♠ K106
♥ A
♦ 9852
♣ 107642

N
W—|—E
S

♠ 742
♥ Q1062
♦ AKQ10
♣ A9

♠ A8
♥ KJ43
♦ J6
♣ KQ853

11

♠ AK
♥ K92
♦ AKJ643
♣ 103

♠ Q87
♥ AQJ1073
♦ Q7
♣ 42

N
W—|—E
S

♠ 10953
♥ 4
♦ 1052
♣ A9765

♠ J642
♥ 865
♦ 98
♣ KQJ8

12

♠ K53
♥ 9752
♦ 73
♣ K953

♠ 72
♥ 1043
♦ KQ95
♣ A1062

N
W—|—E
S

♠ AJ1094
♥ AK
♦ 1042
♣ Q84

♠ Q86
♥ QJ86
♦ AJ86
♣ J7

Board (10) Av: NS=-110

N-S	E-W	Contract	N-S	E-W	IMP
17	2	1NT E 1		90	1
16	4	1NT E 1		90	1
11	9	1NT E 1		90	1
8	14	1NT E 1		90	1
12	7	1NT E 1		90	1
5	18	2H S-1		100	0
19	3	1NT E 2		120	0
1	20	1NT E 2		120	0
6	15	2C S-2		200	-3
10	13	2Hx N-2		500	-9

Board (11) Av: NS=+280

N-S	E-W	Contract	N-S	E-W	IMP
19	3	3NT N 4	430		4
5	18	3NT N 4	430		4
6	15	3NT N 4	430		4
17	2	3NT N 4	430		4
16	4	3NT N 3	400		3
10	13	1NT N 4	180		-3
11	9	3D N 4	130		-4
8	14	3D N 4	130		-4
1	20	3D N 3	110		-5
12	7	5D N-1		50	-8

Board (12) Av: NS=-190

N-S	E-W	Contract	N-S	E-W	IMP
19	3	2C E 2		90	3
16	4	2C E 3		110	2
11	9	2S E 3		140	2
1	20	2NT E 3		150	1
10	13	2S E 4		170	1
6	15	2S E 4		170	1
17	2	2S E 4		170	1
5	18	1NT W 4		180	0
12	7	3NT W 3		400	-5
8	14	3NT W 3		400	-5

13

♠ K
♥ QJ63
♦ QJ6
♣ A8764

♠ A873
♥ 752
♦ 1054
♣ K53

N
W—|—E
S

♠ Q964
♥ K9
♦ K873
♣ QJ2

♠ J1052
♥ A1084
♦ A92
♣ 109

14

♠ A3
♥ K4
♦ 7643
♣ 108642

♠ J10752
♥ Q8
♦ J52
♣ J97

N
W—|—E
S

♠ KQ986
♥ A9652
♦ AK10
♣

♠ 4
♥ J1073
♦ Q98
♣ AKQ53

15

♠ K1086
♥ 85
♦ A94
♣ Q975

♠ AKQJ
♥ J1053
♦ KJ632
♣

N
W—|—E
S

♠ QJ954
♥ 9764
♦ K72
♣ 4

♠ A732
♥ 1032
♦ Q86
♣ A108

Board (13) Av: NS=+170

N-S	E-W	Contract	N-S	E-W	IMP
5	17	2H S 5	200		1
1	19	2H S 5	200		1
9	15	2H S 5	200		1
13	8	2H S 5	200		1
6	14	2H S 4	170		0
10	12	2H S 4	170		0
16	2	2H S 3	140		-1
20	4	2H S 3	140		-1
18	3	2S W-1	100		-2
7	11	5H S-1		100	-7

Board (14) Av: NS=-420

N-S	E-W	Contract	N-S	E-W	IMP
7	11	5Cx N-1		100	8
13	8	6Cx S-2		300	3
5	17	4S E 4	420		0
6	14	4S E 4	420		0
10	12	4S E 4	420		0
9	15	4S E 4	420		0
18	3	5S E 5	450		-1
1	19	4S E 5	450		-1
20	4	4S E 5	450		-1
16	2	4S E 6	480		-2

Board (15) Av: NS=+60

N-S	E-W	Contract	N-S	E-W	IMP
18	3	4H W-2		100	1
9	15	4H E-2		100	1
5	17	4H E-2		100	1
13	8	4H E-2		100	1
10	12	4H E-2		100	1
7	11	4H E-1		50	0
1	19	2C W-1		50	0
20	4	2C W-1		50	0
16	2	2C W 2		90	-4
6	14	3H E 3		140	-5

16

♠ J6
♥ QJ3
♦ AK873
♣ AK2

♠ A82
♥ K1086
♦ Q52
♣ 1095

N
W—|—E
S

♠ Q54
♥ 74
♦ 64
♣ QJ8764

♠ K10973
♥ A952
♦ J109
♣ 3

17

♠ A76
♥ 108
♦ 104
♣ Q98765

♠ Q5432
♥ AQ75
♦ K65
♣ 3

N
W—|—E
S

♠ J8
♥ KJ92
♦ J732
♣ KJ2

♠ K109
♥ 643
♦ AQ98
♣ A104

18

♠ 974
♥ 54
♦ Q52
♣ AJ953

♠ AQJ63
♥ KQ1097
♦ A6
♣ 8

N
W—|—E
S

♠ 1082
♥ 82
♦ 10987
♣ K1074

♠ K5
♥ AJ63
♦ KJ43
♣ Q62

Board (16) Av: NS=+410

N-S	E-W	Contract	N-S	E-W	IMP
6	14	3NT N 5	460		2
5	17	3NT N 5	460		2
18	3	3NT N 4	430		1
1	19	3NT N 3	400		0
10	12	3NT N 3	400		0
9	15	3NT N 3	400		0
7	11	3NT N 3	400		0
13	8	3NT N 3	400		0
16	2	3NT N 3	400		0
20	4	3NT N 3	400		0

Board (17) Av: NS=-50

N-S	E-W	Contract	N-S	E-W	IMP
1	19	2C N 2		90	4
13	8	3H W-1		50	3
10	12	3H W-1		50	3
6	14	1NT E-1		50	3
20	4	1NT N-1		50	0
9	15	1NT N-2		100	-2
18	3	2H W 2		110	-2
5	17	1NT E 2		120	-2
7	11	3H E 3		140	-3
16	2	2H W 3		140	-3

Board (18) Av: NS=-250

N-S	E-W	Contract	N-S	E-W	IMP
1	19	3S W-1		50	7
5	17	2S W 2		110	4
7	11	3S W 3		140	3
10	12	3S E 3		140	3
6	14	2S E 3		140	3
20	4	3S E 4		170	2
13	8	4S E 4		420	-5
16	2	4S E 4		420	-5
18	3	4S E 4		420	-5
9	15	4S E 4		420	-5

19

♠ Q72
♥ A753
♦ KJ64
♣ 95

♠ 10
♥ K64
♦ 10873
♣ KQ1042

N
W — E
S

♠ K985
♥ J109
♦ AQ92
♣ J8

♠ AJ643
♥ Q82
♦ 5
♣ A763

20

♠ A92
♥ Q107
♦ KJ965
♣ QJ

♠ K73
♥ 5
♦ 10843
♣ AK1074

N
W — E
S

♠ J5
♥ AK986
♦ A7
♣ 9863

♠ Q10864
♥ J432
♦ Q2
♣ 52

21

♠ 10632
♥ KQ764
♦ 10942
♣

♠ J75
♥ A2
♦ AQ3
♣ AJ643

N
W — E
S

♠ AQ8
♥ J105
♦ K87
♣ KQ108

♠ K94
♥ 983
♦ J65
♣ 9752

Board (19) Av: NS=-100

N-S	E-W	Contract	N-S	E-W	IMP
8	12	Passout			3
1	18	3S	S-1	50	2
20	2	3S	S-1	50	2
13	6	3S	S-2	100	0
3	17	3S	S-2	100	0
19	4	3S	S-2	100	0
11	10	3S	S-2	100	0
7	15	4S	S-3	150	-2
16	5	3S	S-3	150	-2
14	9	3S	S-4	200	-3

Board (20) Av: NS=-190

N-S	E-W	Contract	N-S	E-W	IMP
13	6	3NT	W-2	200	9
11	10	3C	W 4	130	2
14	9	3C	W 5	150	1
7	15	2S	S-2	200	0
8	12	2S	S-2	200	0
3	17	2S	S-2	200	0
16	5	2S	S-2	200	0
19	4	2S	S-2	200	0
1	18	1NT	N-2	200	0
20	2	1NT	N-2	200	0

Board (21) Av: NS=-320

N-S	E-W	Contract	N-S	E-W	IMP
13	6	6C	W-1	50	9
16	5	6C	E-1	50	9
11	10	6C	E-1	50	9
8	12	4NT	E 4	430	-3
20	2	4NT	E 4	430	-3
14	9	4NT	E 4	430	-3
7	15	4NT	E 5	460	-4
3	17	4NT	E 5	460	-4
19	4	4NT	E 5	460	-4
1	18	4NT	E 5	460	-4

22

♠ K3
♥ A876
♦ AQ
♣ QJ1074

♠ Q6
♥ KQJ94
♦ 1065
♣ A98

N
W — E
S

♠ A542
♥ 105
♦ J843
♣ 652

♠ J10987
♥ 32
♦ K972
♣ K3

23

♠
♥ QJ1084
♦ Q108
♣ Q10965

♠ Q98653
♥ 3
♦ J95
♣ A42

N
W — E
S

♠ J1042
♥ 52
♦ AK742
♣ KJ

♠ AK7
♥ AK976
♦ 63
♣ 873

24

♠ J10543
♥ 3
♦ 5
♣ Q108643

♠ A986
♥ 9842
♦ KJ43
♣ 2

N
W — E
S

♠ K2
♥ AKJ6
♦ Q9
♣ AKJ95

♠ Q7
♥ Q1075
♦ A108762
♣ 7

Board (22) Av: NS=+70

N-S	E-W	Contract	N-S	E-W	IMP
1	18	2S	S 3	140	2
16	5	2S	N 3	140	2
20	2	2S	N 3	140	2
11	10	2S	N 2	110	1
8	12	2S	N 2	110	1
14	9	2S	N 2	110	1
19	4	2S	N 2	110	1
13	6	2C	N-1	50	-3
7	15	2NT	N-2	100	-5
3	17	2NT	N-2	100	-5

Board (23) Av: NS=+40

N-S	E-W	Contract	N-S	E-W	IMP
8	12	4H	S 4	620	11
14	9	4Sx	W-1	200	4
1	18	4Sx	W-1	200	4
19	4	4Sx	W-1	200	4
11	10	4Sx	W-1	200	4
3	17	4H	S-1	100	-4
20	2	4H	S-1	100	-4
7	15	4H	N-1	100	-4
16	5	5Hx	S-1	200	-6
13	6	5H	S-2	200	-6

Board (24) Av: NS=-360

N-S	E-W	Contract	N-S	E-W	IMP
20	2	4H	W-1	50	9
3	17	4H	E-1	50	9
7	15	4H	E 4	420	-2
8	12	4H	E 4	420	-2
11	10	4H	E 4	420	-2
13	6	4H	E 4	420	-2
14	9	4H	E 4	420	-2
16	5	4H	E 4	420	-2
19	4	4H	E 4	420	-2
1	18	4H	E 4	420	-2

25

♠ AQ
♥ KJ985
♦ 8
♣ KQ942

♠ 107653
♥ 763
♦ K107
♣ A6

N
W — E
S

♠ K84
♥ 42
♦ A94
♣ J10853

♠ J92
♥ AQ10
♦ QJ6532
♣ 7

26

♠ 8
♥ J1052
♦ 86542
♣ J104

♠ 976
♥ A
♦ KJ1097
♣ K632

N
W — E
S

♠ QJ1032
♥ Q9843
♦
♣ A98

♠ AK54
♥ K76
♦ AQ3
♣ Q75

27

♠ A10975
♥ K109
♦
♣ J9854

♠ 8
♥ AQ76
♦ K10873
♣ Q106

N
W — E
S

♠ QJ6
♥ J542
♦ J92
♣ K72

♠ K432
♥ 83
♦ AQ654
♣ A3

Board (25) Av: NS=+100

N-S	E-W	Contract	N-S	E-W	IMP
6	12	4H	N 4	420	8
1	17	4H	N 4	420	8
7	14	4H	N 4	420	8
9	13	4H	N 4	420	8
4	18	4H	N-1	50	-4
15	10	4H	N-1	50	-4
8	11	4H	N-2	100	-5
19	2	4H	N-2	100	-5
16	3	5H	N-3	150	-6
20	5	5H	N-3	150	-6

Board (26) Av: NS=-160

N-S	E-W	Contract	N-S	E-W	IMP
6	12	4Sx	W-1	200	8
1	17	2S	E 2	110	2
7	14	2S	E 2	110	2
20	5	2S	W 3	140	1
8	11	2S	E 3	140	1
16	3	1S	E 3	140	1
19	2	2S	E 4	170	0
9	13	1NT	S-2	200	-1
4	18	3C	S-3	300	-4
15	10	1NTxS-2		500	-8

Board (27) Av: NS=+420

N-S	E-W	Contract	N-S	E-W	IMP
1	17	4S	N 4	420	0
4	18	4S	N 4	420	0
6	12	4S	N 4	420	0
7	14	4S	N 4	420	0
20	5	4S	N 4	420	0
9	13	4S	N 4	420	0
15	10	4S	N 4	420	0
16	3	4S	N 4	420	0
19	2	4S	N 4	420	0
8	11	2S	N 5	200	-6

第19回NRM杯 Session 4 Section A 2014年6月22日(日)

28

♠A765
♥Q10
♦K10987
♣105

♠KJ2 ♠Q1094
♥64 ♥K852
♦A62 ♦J
♣Q7643 ♣AK82



♠83
♥AJ973
♦Q543
♣J9

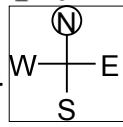
Board (28) Av: NS=-110

N-S	E-W	Contract	N-S	E-W	IMP
4	18	3D S 3	110		6
20	5	1NT W-1	50		4
6	12	3C E 3	110		0
15	10	2S W 2	110		0
8	11	4C E 4	130		-1
16	3	3C E 4	130		-1
7	14	3C E 4	130		-1
1	17	3C E 4	130		-1
19	2	2C E 5	150		-1
9	13	2C E 5	150		-1

29

♠73
♥A986543
♦108
♣76

♠A54 ♠J982
♥KQ7 ♥J
♦AKQ4 ♦973
♣K103 ♣QJ542



♠KQ106
♥102
♦J652
♣A98

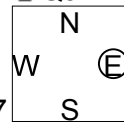
Board (29) Av: NS=-80

N-S	E-W	Contract	N-S	E-W	IMP
1	17	3NTxW-1	200		7
19	2	3NT W-1	100		5
6	12	3NT W-1	100		5
8	11	3NT W-1	100		5
16	3	3NT W-1	100		5
9	13	3NT W-1	100		5
20	5	3NT W-1	100		5
7	14	3NT W 3	600		-11
4	18	3NT W 3	600		-11
15	10	3NT W 5	660		-11

30

♠Q9
♥AQ95
♦J963
♣QJ2

♠1084 ♠KJ7632
♥J43 ♥876
♦A74 ♦K10
♣A1097 ♣64



♠A5
♥K102
♦Q852
♣K853

Board (30) Av: NS=-60

N-S	E-W	Contract	N-S	E-W	IMP
19	2	3Sx E-1	100		4
4	18	3S E-1	50		3
9	13	3S E-1	50		3
20	5	4H N-1	50		0
7	14	2S E 2	110		-2
1	17	2S E 2	110		-2
6	12	2S E 2	110		-2
16	3	2S E 2	110		-2
15	10	2S E 2	110		-2
8	11	3NT S-4	200		-4