

木村六郎杯 OPEN TEAMS Session 1 Flight D 2014年2月22日(土)

1

♠ A3
♥ Q65
♦ J8652
♣ Q93

♠ KQ7
♥ A98
♦ K943
♣ A86

♠ J854
♥ KJ1032
♦ AQ7
♣ 7

W N E S

♠ 10962
♥ 74
♦ 10
♣ KJ10542

2

♠ Q3
♥ 9632
♦ KQ43
♣ K52

♠ AJ862
♥ Q54
♦ 102
♣ J87

♠ K1054
♥ K107
♦ 765
♣ 963

W N E S

♠ 97
♥ AJ8
♦ AJ98
♣ AQ104

3

♠ AJ92
♥ K93
♦ A4
♣ Q854

♠ 1085
♥ J76
♦ K10873
♣ 62

♠ 63
♥ AQ10542
♦ Q96
♣ A10

W N E S

♠ KQ74
♥ 8
♦ J52
♣ KJ973

Board (1) Av: NS=-460

N-S	E-W	Contract	N-S	E-W	IMP
9	6	4H	W 4	420	1
10	1	4H	W 5	450	0
8	2	4H	W 5	450	0
5	3	4H	E 5	450	0
1	10	4H	E 5	450	0
4	7	4H	E 5	450	0
6	9	4H	E 5	450	0
7	4	3NT	W 5	460	0
3	5	4H	E 6	480	-1
2	8	6H	E 6	980	-11

Board (2) Av: NS=-100

N-S	E-W	Contract	N-S	E-W	IMP
1	10	3NT	S 3	600	12
10	1	3NT	S-1	100	0
2	8	3NT	S-1	100	0
8	2	3NT	S-1	100	0
3	5	3NT	S-1	100	0
5	3	3NT	S-1	100	0
4	7	3NT	S-1	100	0
7	4	3NT	S-1	100	0
6	9	3NT	S-1	100	0
9	6	3NT	S-1	100	0

Board (3) Av: NS=+350

N-S	E-W	Contract	N-S	E-W	IMP
6	9	4S	N 5	450	3
7	4	4S	N 5	450	3
8	2	4S	N 5	450	3
1	10	4S	N 4	420	2
9	6	4S	N 4	420	2
5	3	4S	N 4	420	2
10	1	4H	E-2	200	-4
2	8	3S	N 5	200	-4
3	5	3S	N 5	200	-4
4	7	3NT	N-1	50	-9

4

♠ 97653
♥ AQ83
♦ 5
♣ K92

♠ K108
♥ KJ
♦ AJ1064
♣ AJ5

♠ A4
♥ 1075
♦ KQ9873
♣ 107

W N E S

♠ QJ2
♥ 9642
♦ 2
♣ Q8643

5

♠ K4
♥ KJ7
♦ 986532
♣ Q6

♠ 10
♥ Q853
♦ AJ7
♣ A10932

♠ AQJ9872
♥ 96
♦ 4
♣ KJ7

W N E S

♠ 653
♥ A1042
♦ KQ10
♣ 854

6

♠ A975
♥ 1094
♦ A96
♣ A84

♠ QJ108
♥ 52
♦ 842
♣ KQ107

♠ 632
♥ AKQ87
♦ KJ53
♣ J

W N E S

♠ K4
♥ J63
♦ Q107
♣ 96532

Board (4) Av: NS=-630

N-S	E-W	Contract	N-S	E-W	IMP
3	5	3NT	W 3	600	1
6	9	3NT	W 3	600	1
2	8	3NT	W 4	630	0
8	2	3NT	W 4	630	0
9	6	3NT	W 4	630	0
5	3	3NT	W 4	630	0
4	7	3NT	W 4	630	0
7	4	3NT	W 4	630	0
10	1	3NT	W 5	660	-1
1	10	3NT	W 5	660	-1

Board (5) Av: NS=-450

N-S	E-W	Contract	N-S	E-W	IMP
8	2	2S	E 5	200	6
6	9	3NT	W 3	400	2
9	6	4S	E 4	420	1
2	8	4S	E 4	420	1
3	5	4S	E 5	450	0
10	1	4S	E 5	450	0
5	3	4S	E 5	450	0
4	7	3NT	W 5	460	0
7	4	4S	E 7	510	-2
1	10	3NT	W 7	520	-2

Board (6) Av: NS=-70

N-S	E-W	Contract	N-S	E-W	IMP
6	9	4H	E-2	200	7
2	8	3H	E-1	100	5
9	6	3H	E-1	100	5
10	1	2H	E 2	110	-1
8	2	2H	E 2	110	-1
4	7	2H	E 2	110	-1
5	3	2H	E 2	110	-1
7	4	3C	S-3	150	-2
1	10	3H	E 4	170	-3
3	5	2H	E 4	170	-3

7

♠ 1093
♥ J742
♦ A8643
♣ 9

♠ 865
♥ K1096
♦ K7
♣ 10876

♠ A72
♥ 5
♦ J1092
♣ AQJ32

W N E S

♠ KQJ4
♥ AQ83
♦ Q5
♣ K54

8

♠ KQJ102
♥ 9832
♦ 7
♣ Q103

♠ 7643
♥
♦ QJ
♣ KJ86542

♠ A9
♥ Q10765
♦ K985
♣ A9

W N E S

♠ 85
♥ AKJ4
♦ A106432
♣ 7

9

♠ AKJ10
♥ Q52
♦ J1083
♣ AQ

♠ 32
♥ 987
♦ K9765
♣ 1052

♠ 9
♥ J10643
♦ AQ4
♣ K963

W N E S

♠ Q87654
♥ AK
♦ 2
♣ J874

Board (7) Av: NS=+70

N-S	E-W	Contract	N-S	E-W	IMP
5	3	1NT	S 2	120	2
8	2	1NT	S 2	120	2
7	4	2H	S 2	110	1
2	8	1NT	S 1	90	1
3	5	1NT	S 1	90	1
1	10	1NT	S 1	90	1
6	9	1NT	S 1	90	1
4	7	1NT	S 1	90	1
10	1	1NT	S-1	100	-5
9	6	1NT	S-4	400	-10

Board (8) Av: NS=-10

N-S	E-W	Contract	N-S	E-W	IMP
9	6	3NT	E-3	150	4
3	5	2S	N 3	140	4
2	8	4C	W-1	50	2
10	1	2D	E-1	50	2
5	3	3S	N-1	50	-1
7	4	2S	N-1	50	-1
6	9	2D	S-1	50	-1
8	2	3D	S-2	100	-3
1	10	2D	S-2	100	-3
4	7	3C	W 3	110	-3

Board (9) Av: NS=+480

N-S	E-W	Contract	N-S	E-W	IMP
7	4	6S	N 6	980	11
1	10	4S	N 7	510	1
9	6	5S	N 6	480	0
2	8	4S	N 6	480	0
8	2	4S	N 6	480	0
5	3	4S	N 6	480	0
4	7	4S	N 6	480	0
6	9	4S	N 6	480	0
3	5	4S	N 6	480	0
10	1	4S	N 5	450	-1

木村六郎杯 OPEN TEAMS Session 1 Flight D 2014年2月22日(土)

10

♠ 105
♥ 84
♦ J1063
♣ AJ1032

♠ Q82
♥ J952
♦ KQ954
♣ 6

N
W — E
S

♠ AKJ93
♥ 1063
♦ A72
♣ K5

♠ 764
♥ AKQ7
♦ 8
♣ Q9874

Board (10) Av: NS=-10

N-S	E-W	Contract	N-S	E-W	IMP
2	8	4S	E-1	100	3
10	1	4S	E-1	100	3
6	9	4S	E-1	100	3
8	2	4S	E-1	100	3
9	6	3S	E-1	100	3
1	10	4C	N-1	100	-3
3	5	2S	E 2	110	-3
7	4	3S	E 3	140	-4
4	7	2S	E 3	140	-4
5	3	4S	E 4	620	-12

11

♠ J962
♥ 74
♦ 9765
♣ QJ8

♠ K8754
♥ 9
♦ QJ832
♣ 95

N
W — E
S

♠ A10
♥ AQJ108
♦ A
♣ K7432

♠ Q3
♥ K6532
♦ K104
♣ A106

Board (11) Av: NS=-80

N-S	E-W	Contract	N-S	E-W	IMP
7	4	4S	W-3	150	6
2	8	3NT	E-2	100	5
1	10	3NT	E-1	50	4
3	5	1H	S-2	100	-1
8	2	2NT	E 2	120	-1
9	6	2S	E 3	140	-2
5	3	2S	E 3	150	-2
6	9	1NT	E 3	150	-2
10	1	1H	S-3	150	-2
4	7	3NT	E 3	400	-8

12

♠ 54
♥ 109762
♦ QJ753
♣ Q

♠ AK1086
♥ 43
♦ 964
♣ K94

N
W — E
S

♠ 972
♥ J5
♦ K108
♣ J7532

♠ QJ3
♥ AKQ8
♦ A2
♣ A1086

Board (12) Av: NS=+510

N-S	E-W	Contract	N-S	E-W	IMP
1	10	4H	S 5	650	4
6	9	4H	S 5	650	4
7	4	4H	S 5	650	4
10	1	4H	S 4	620	3
8	2	4H	S 4	620	3
5	3	4H	S 4	620	3
3	5	4H	S 4	620	3
4	7	3H	S 5	200	-7
9	6	2NT	S 2	120	-9
2	8	5D	S-3	300	-13

13

♠ 653
♥ AQ10
♦ 7653
♣ 642

♠ K82
♥ KJ
♦ Q10842
♣ J53

N
W — E
S

♠ AJ97
♥ 97542
♦ AK
♣ 87

♠ Q104
♥ 863
♦ J9
♣ AKQ109

Board (13) Av: NS=+200

N-S	E-W	Contract	N-S	E-W	IMP
4	6	4S	W-3	300	3
6	4	3S	E-3	300	3
9	1	3H	E-3	300	3
8	3	4H	E-2	200	0
10	5	3H	E-2	200	0
2	7	2S	E-2	200	0
5	10	2H	E-2	200	0
1	9	3H	E-1	100	-3
3	8	2H	E-1	100	-3
7	2	2D	W 2	90	-7

14

♠ K106542
♥ J52
♦ Q
♣ J75

♠ 93
♥ A103
♦ A987
♣ KQ108

N
W — E
S

♠ AQJ8
♥ 4
♦ J1062
♣ 9643

♠ 7
♥ KQ9876
♦ K543
♣ A2

Board (14) Av: NS=-40

N-S	E-W	Contract	N-S	E-W	IMP
1	9	3H	S 4	170	5
2	7	2H	S 2	110	4
3	8	2H	S 2	110	4
4	6	3H	S-1	50	0
10	5	2H	S-1	50	0
8	3	4H	S-2	100	-2
9	1	4H	S-2	100	-2
6	4	3H	S-2	100	-2
7	2	3H	S-2	100	-2
5	10	2S	N-2	100	-2

15

♠ J106
♥ AK1092
♦ 10654
♣ 3

♠ A975
♥ 8765
♦ AK72
♣ K

N
W — E
S

♠ 32
♥ J43
♦ Q983
♣ A875

♠ KQ84
♥ Q
♦ J
♣ QJ109642

Board (15) Av: NS=+30

N-S	E-W	Contract	N-S	E-W	IMP
9	1	3Cx	S 3	670	12
1	9	3C	S 3	110	2
7	2	3C	S 3	110	2
2	7	2C	S 3	110	2
3	8	3D	W-2	100	2
5	10	2D	E-1	50	1
4	6	2D	E 2	90	-3
8	3	1NT	E 1	90	-3
10	5	1NT	E 1	90	-3
6	4	4C	S-1	100	-4

16

♠ AJ102
♥ 1065
♦ 763
♣ K106

♠ 96
♥ AK973
♦ A2
♣ A954

N
W — E
S

♠ 7543
♥ Q842
♦ QJ5
♣ Q8

♠ KQ8
♥ J
♦ K10984
♣ J732

Board (16) Av: NS=-400

N-S	E-W	Contract	N-S	E-W	IMP
9	1	2H	W 3	140	6
10	5	3H	W 4	170	6
4	6	3H	W 4	170	6
2	7	2H	W 4	170	6
8	3	2H	W 5	200	5
7	2	4H	W 4	620	-6
3	8	4H	W 4	620	-6
6	4	4H	W 4	620	-6
1	9	4H	W 4	620	-6
5	10	4H	W 4	620	-6

17

♠ 4
♥ 5
♦ K109653
♣ 109863

♠ KJ953
♥ AQ10962
♦ J
♣ A

N
W — E
S

♠ A87
♥ K4
♦ Q874
♣ KJ72

♠ Q1062
♥ J873
♦ A2
♣ Q54

Board (17) Av: NS=-430

N-S	E-W	Contract	N-S	E-W	IMP
3	8	4H	W-1	50	10
1	9	3NT	E 3	400	1
8	3	4H	W 4	420	0
7	2	4H	W 4	420	0
4	6	3NT	E 4	430	0
6	4	3NT	E 4	430	0
5	10	5S	W 5	450	-1
10	5	3NT	E 5	460	-1
9	1	3NT	E 5	460	-1
2	7	4H	W 6	480	-2

18

♠ J84
♥ 864
♦ 7532
♣ K53

♠ Q9632
♥ Q952
♦ 4
♣ J86

N
W — E
S

♠ K7
♥ AK73
♦ J1098
♣ A74

♠ A105
♥ J10
♦ AKQ6
♣ Q1092

Board (18) Av: NS=-110

N-S	E-W	Contract	N-S	E-W	IMP
1	9	2S	E 2	110	0
3	8	2S	E 2	110	0
7	2	2S	E 2	110	0
2	7	2S	E 2	110	0
8	3	2S	E 2	110	0
4	6	2S	E 2	110	0
5	10	2S	E 2	110	0
10	5	2S	E 2	110	0
9	1	2S	E 3	140	-1
6	4	2S	E 3	140	-1

19

♠ Q653
♥ A4
♦ J753
♣ Q52

♠ K109874
♥ K765
♦ Q
♣ K10

N
W—E
S

♠ A
♥ QJ1093
♦ K1098
♣ 973

♠ J2
♥ 82
♦ A642
♣ AJ864

Board (19) Av: NS=-290

N-S	E-W	Contract	N-S	E-W	IMP
9	1	3S W-1	100		9
10	5	Passout			7
5	10	Passout			7
2	7	2S W 2	110		5
3	8	2H W 3	140		4
7	2	2S W 4	170		3
4	6	4H W 4	620		-8
6	4	4H W 4	620		-8
8	3	4H E 4	620		-8
1	9	4H E 4	620		-8

20

♠ AQJ4
♥ K94
♦ 72
♣ 10964

♠ 97652
♥ Q107
♦ A8
♣ Q87

N
W—E
S

♠ K83
♥ AJ85
♦ K654
♣ 32

♠ 10
♥ 632
♦ QJ1093
♣ AKJ5

Board (20) Av: NS=-60

N-S	E-W	Contract	N-S	E-W	IMP
3	8	2NT N 2	120		5
6	4	2NT N 2	120		5
4	6	Passout			2
7	2	1S W 1	80		-1
9	1	1S W 1	80		-1
1	9	1S W 1	80		-1
5	10	2NT N-1	100		-1
10	5	1S W 2	110		-2
8	3	1S W 2	110		-2
2	7	3C S-2	200		-4

21

♠ 754
♥ AJ4
♦ A63
♣ K852

♠ K8
♥ Q75
♦ KJ98
♣ AJ43

N
W—E
S

♠ Q9632
♥ 1098
♦ Q52
♣ Q10

♠ AJ10
♥ K632
♦ 1074
♣ 976

Board (21) Av: NS=+100

N-S	E-W	Contract	N-S	E-W	IMP
1	9	1NT N 3	150		2
10	5	1NT N 2	120		1
2	7	1NT N 2	120		1
3	8	1NT N 2	120		1
8	3	1NT N 2	120		1
9	1	1NT W-2	100		0
4	6	1NT N 1	90		0
7	2	1NT N 1	90		0
6	4	2S E-1	50		-2
5	10	1NT W 2	120		-6

22

♠ AK97
♥ J94
♦ 97
♣ 10862

♠ J82
♥ AK652
♦ AJ
♣ 543

N
W—E
S

♠ 43
♥ Q108
♦ K10542
♣ AQJ

♠ Q1065
♥ 73
♦ Q863
♣ K97

Board (22) Av: NS=-450

N-S	E-W	Contract	N-S	E-W	IMP
2	7	4H W-1	100		11
3	8	3NT W-1	100		11
9	1	3H W 4	170		7
1	9	4Sx S-3	500		-2
10	5	3NT W 3	600		-4
6	4	3NT W 3	600		-4
8	3	4H W 4	620		-5
4	6	4H W 4	620		-5
7	2	4H W 4	620		-5
5	10	4H W 4	620		-5

23

♠ 943
♥ A975
♦ 4
♣ AQJ86

♠ KQ8
♥ Q106
♦ K7632
♣ 107

N
W—E
S

♠ AJ10765
♥
♦ QJ98
♣ K53

♠ 2
♥ KJ8432
♦ A105
♣ 942

Board (23) Av: NS=-320

N-S	E-W	Contract	N-S	E-W	IMP
9	1	4H S 4	620		14
5	10	4H S 4	620		14
3	8	3H S 4	170		10
10	5	2S E 4	170		4
4	6	4S E 4	620		-7
8	3	4S E 4	620		-7
2	7	4S E 4	620		-7
6	4	4S E 5	650		-8
7	2	4S E 5	650		-8
1	9	4S E 5	650		-8

24

♠ J987
♥ 986
♦ J94
♣ QJ5

♠ A632
♥ J
♦ 1082
♣ AK873

N
W—E
S

♠ KQ4
♥ A53
♦ AK75
♣ 1096

♠ 105
♥ KQ10742
♦ Q63
♣ 42

Board (24) Av: NS=-240

N-S	E-W	Contract	N-S	E-W	IMP
8	3	5NT E-3	150		9
7	2	3NT E-2	100		8
2	7	3NT E-1	50		7
6	4	3NT E-1	50		7
3	8	3NT E 3	400		-4
5	10	3NT E 3	400		-4
4	6	3NT E 3	400		-4
1	9	3NT E 4	430		-5
9	1	3NT E 5	460		-6
10	5	3NT E 5	460		-6

25

♠ K63
♥ A108
♦ K10952
♣ KJ

♠ A8
♥ Q5
♦ J63
♣ A107653

N
W—E
S

♠ 10974
♥ KJ7643
♦ Q7
♣ 8

♠ QJ52
♥ 92
♦ A84
♣ Q942

Board (25) Av: NS=+20

N-S	E-W	Contract	N-S	E-W	IMP
7	5	2S S 3	140		3
3	6	3D S 4	130		3
2	10	2S S 2	110		3
6	3	2D N 3	110		3
8	1	1NT N 1	90		2
9	4	2S S-1	50		-2
1	8	1NT N-1	50		-2
10	2	2S S-2	100		-3
5	7	2H E 2	110		-4
4	9	2H E 2	110		-4

26

♠ K964
♥ A43
♦ AK62
♣ 42

♠ 732
♥ KKQ6
♦ QJ9
♣ 10653

N
W—E
S

♠ AQ1085
♥ 752
♦ 873
♣ AK

♠ J
♥ J1098
♦ 1054
♣ QJ987

Board (26) Av: NS=-40

N-S	E-W	Contract	N-S	E-W	IMP
6	3	2S E-2	200		6
7	5	2S E-1	100		4
4	9	2S E-1	100		4
10	2	2S E-1	100		4
2	10	2S E 2	110		-2
3	6	2S E 2	110		-2
9	4	2S E 2	110		-2
5	7	2S E 2	110		-2
8	1	2S E 3	140		-3
1	8	3D N-2	200		-4

27

♠ 1054
♥ AKQ98
♦ Q62
♣ 105

♠ AQ86
♥ 7
♦ AKJ93
♣ QJ7

N
W—E
S

♠ J972
♥ J10432
♦ 8
♣ K43

♠ K3
♥ 65
♦ 10754
♣ A9862

Board (27) Av: NS=-260

N-S	E-W	Contract	N-S	E-W	IMP
2	10	4S E-2	100		8
9	4	2S E 2	110		4
8	1	2NT E 2	120		4
4	9	2NT E 3	150		3
1	8	2S W 4	170		3
3	6	1S E 5	200		2
7	5	4S W 4	420		-4
5	7	4S W 4	420		-4
10	2	4S W 5	450		-5
6	3	4S W 5	450		-5

28

♠ KQJ1097
♥ 5
♦ AK986
♣ J

♠ 43
♥ AQ63
♦ 10532
♣ 1086

N E
W S

♠ 62
♥ 8742
♦ J
♣ KQ7543

♠ A85
♥ KJ109
♦ Q74
♣ A92

29

♠ AJ106
♥ Q9875
♦ J42
♣ 3

♠ 97
♥ 3
♦ AKQ10975
♣ A102

N E
W S

♠ 543
♥ AK64
♦ 83
♣ 9876

♠ KQ82
♥ J102
♦ 6
♣ KQJ54

30

♠ AKQJ103
♥ K976
♦ 95
♣ A

♠ AJ10
♥ J832
♦ 1097542
♣ 1097542

N E
W S

♠ 8764
♥ 54
♦ 1076
♣ J863

♠ 952
♥ Q832
♦ AKQ4
♣ KQ

Board (28) Av: NS=+960

N-S	E-W	Contract	N-S	E-W	IMP
2	10	6S	N 6	1430	10
5	7	6S	N 6	1430	10
6	3	6S	N 6	1430	10
9	4	6S	N 6	1430	10
1	8	4S	N 6	680	-7
3	6	4S	N 6	680	-7
8	1	4S	N 6	680	-7
7	5	4S	N 6	680	-7
4	9	4S	N 6	680	-7
10	2	6S	N-1	100	-14

Board (29) Av: NS=-60

N-S	E-W	Contract	N-S	E-W	IMP
9	4	4S	S 4	620	12
1	8	3H	N 3	140	5
8	1	2S	S 3	140	5
3	6	4S	S-1	100	-1
5	7	3S	S-1	100	-1
6	3	4D	W 4	130	-2
2	10	4D	W 4	130	-2
7	5	3D	W 4	130	-2
10	2	3D	W 4	130	-2
4	9	4S	S-2	200	-4

Board (30) Av: NS=+410

N-S	E-W	Contract	N-S	E-W	IMP
2	10	6NT	S 6	990	11
4	9	6S	S 6	980	11
8	1	6H	S 6	980	11
3	6	4NT	S 6	490	2
10	2	5S	S 6	480	2
5	7	4S	S 6	480	2
1	8	6H	S-1	50	-10
6	3	6H	S-1	50	-10
7	5	6H	S-1	50	-10
9	4	6H	S-1	50	-10

31

♠ Q1075
♥ AKQJ
♦ AK
♣ K42

♠ J6
♥ 953
♦ J98
♣ A10985

N E
W S

♠ AK3
♥ 1087
♦ Q764
♣ J73

♠ 9842
♥ 642
♦ 10532
♣ Q6

Board (31) Av: NS=+70

N-S	E-W	Contract	N-S	E-W	IMP
2	10	4S	N 4	620	11
8	1	2NT	N 3	150	2
5	7	2NT	N 3	150	2
4	9	2NT	N 3	150	2
3	6	2NT	N 2	120	2
7	5	2NT	N 2	120	2
10	2	1C	N 1	70	0
6	3	4H	N-1	100	-5
1	8	4H	N-1	100	-5
9	4	2NT	N-1	100	-5

32

♠ 1052
♥ J9873
♦ A3
♣ 832

♠ AKJ976
♥ KQ
♦ 104
♣ A65

N E
W S

♠ Q4
♥ A104
♦ 765
♣ KJ1094

♠ 83
♥ 652
♦ KQJ982
♣ Q7

Board (32) Av: NS=-670

N-S	E-W	Contract	N-S	E-W	IMP
10	2	4S	W 4	620	2
2	10	4S	W 4	620	2
1	8	4S	W 5	650	1
8	1	4S	W 5	650	1
4	9	4S	W 5	650	1
7	5	4S	W 5	650	1
6	3	4S	W 7	710	-1
3	6	4S	W 7	710	-1
5	7	4S	W 7	710	-1
9	4	5Dx	S-4	800	-4

33

♠ KJ94
♥ 1084
♦ AJ3
♣ 643

♠ KQ76
♥ KQ1085
♦ AJ75
♣ AJ75

N E
W S

♠ AQ10862
♥ 92
♦ 62
♣ KQ2

♠ 753
♥ AJ53
♦ 974
♣ 1098

Board (33) Av: NS=-240

N-S	E-W	Contract	N-S	E-W	IMP
1	8	6D	W-2	100	8
7	5	3NT	W-1	50	7
6	3	3NT	W-1	50	7
3	6	3NT	W-1	50	7
10	2	3NT	W 3	400	-4
9	4	3NT	W 3	400	-4
5	7	3NT	E 3	400	-4
4	9	3NT	W 4	430	-5
2	10	3NT	W 4	430	-5
8	1	3NT	W 4	430	-5

34

♠ J3
♥ J105
♦ 1054
♣ KQJ42

♠ A9764
♥ A74
♦ K7
♣ 1065

N E
W S

♠ Q10
♥ K9832
♦ QJ82
♣ 93

♠ K852
♥ Q6
♦ A963
♣ A87

Board (34) Av: NS=-10

N-S	E-W	Contract	N-S	E-W	IMP
6	3	2NT	S 3	150	4
3	6	1NT	N 2	120	4
5	7	1NT	E-2	100	3
2	10	1NT	E-2	100	3
4	9	1NT	E-1	50	2
9	4	1NT	E 1	90	-2
1	8	1S	W 2	110	-3
8	1	1S	W 2	110	-3
7	5	2H	E 4	170	-4
10	2	3NT	S-2	200	-5

35

♠ Q982
♥ A
♦ A8654
♣ 942

♠ K7
♥ J8643
♦ 3
♣ A8653

N E
W S

♠ 10653
♥ KQ972
♦ J92
♣ Q

♠ AJ4
♥ 105
♦ KQ107
♣ KJ107

Board (35) Av: NS=+100

N-S	E-W	Contract	N-S	E-W	IMP
6	3	3NT	S 4	430	8
8	1	1NT	S 4	180	2
9	4	4D	S 4	130	1
10	2	3D	S 4	130	1
7	5	1NT	S 2	120	1
2	10	1NT	S 1	90	0
4	9	1NT	S 1	90	0
5	7	1NT	S 1	90	0
1	8	2S	N-1	50	-4
3	6	5D	S-2	100	-5

36

♠ Q6
♥ Q1075
♦ KJ1096
♣ 109

♠ A10972
♥ KJ9
♦ 8753
♣ 2

N E
W S

♠ 84
♥ A82
♦ A4
♣ QJ8763

♠ KJ53
♥ 643
♦ Q2
♣ AK54

Board (36) Av: NS=+140

N-S	E-W	Contract	N-S	E-W	IMP
9	4	2NT	W-4	400	6
7	5	3C	E-2	200	2
8	1	2S	W-2	200	2
3	6	2Dx	N 2	180	1
2	10	1NT	N 3	150	0
1	8	2D	N 3	110	-1
10	2	2S	W-1	100	-1
6	3	2S	W-1	100	-1
5	7	2S	W-1	100	-1
4	9	2D	N-2	200	-8

37

♠ KQ2
♥ A105
♦ 752
♣ Q832

♠ A7543
♥ K32
♦ 94
♣ 1065

♠ J1098
♥ Q96
♦ AJ8
♣ AK4

♠ 6
♥ J874
♦ KQ1063
♣ J97

♠ N
♥ E
♦ S
♣ W

38

♠ Q6542
♥ KJ7
♦ KJ8
♣ QJ

♠ KJ1098
♥ 10
♦ 1054
♣ 8763

♠ A
♥ AQ9852
♦ AQ2
♣ 942

♠ 73
♥ 643
♦ 9763
♣ AK105

♠ N
♥ E
♦ S
♣ W

39

♠ A6
♥ KJ109754
♦ A109
♣ 9

♠ KJ943
♥ A2
♦ KJ3
♣ AQ7

♠ 1075
♥ 63
♦ Q52
♣ J8432

♠ Q82
♥ Q8
♦ 8764
♣ K1065

♠ N
♥ E
♦ S
♣ W

Board (37) Av: NS=+560

N-S	E-W	Contract	N-S	E-W	IMP
1	7	3NT S 4	630		2
6	8	3NT S 4	630		2
5	4	3NT S 4	630		2
3	10	3NT N 4	630		2
8	6	3NT S 3	600		1
9	2	3NT S 3	600		1
2	9	3NT S 3	600		1
7	1	3NT S 3	600		1
4	5	2NT S 4	180		-9
10	3	3NT S-1	100		-12

Board (38) Av: NS=+450

N-S	E-W	Contract	N-S	E-W	IMP
2	9	5H S 5	450		0
1	7	4H S 5	450		0
7	1	4H S 5	450		0
9	2	4H S 5	450		0
3	10	4H S 5	450		0
5	4	4H S 5	450		0
8	6	4H S 5	450		0
6	8	4H S 5	450		0
10	3	4H S 4	420		-1
4	5	6H S-1	50		-11

Board (39) Av: NS=-360

N-S	E-W	Contract	N-S	E-W	IMP
3	10	4S E-1	100		10
9	2	4S E-1	100		10
5	4	3S W 3	140		6
7	1	2S E 4	170		5
6	8	4H N-2	200		4
1	7	4S E 4	620		-6
10	3	4S E 4	620		-6
2	9	4S E 4	620		-6
8	6	4S E 4	620		-6
4	5	4S E 4	620		-6

40

♠ Q105
♥ J63
♦ Q2
♣ AQ1096

♠ J84
♥ Q754
♦ K96
♣ J52

♠ A962
♥ K1082
♦ A7
♣ 843

♠ K73
♥ A9
♦ J108543
♣ K7

♠ N
♥ E
♦ S
♣ W

41

♠ A109
♥ 109
♦ AQ
♣ KJ6432

♠ J8
♥ 743
♦ K983
♣ A1075

♠ K652
♥ AKJ5
♦ 10754
♣ 9

♠ Q743
♥ Q862
♦ J62
♣ Q8

♠ N
♥ E
♦ S
♣ W

42

♠ K9632
♥ 8
♦ QJ974
♣ A10

♠ Q
♥ J653
♦ A32
♣ KJ543

♠ A874
♥ AK10742
♦ 5
♣ 82

♠ J105
♥ Q9
♦ K1086
♣ Q976

♠ N
♥ E
♦ S
♣ W

Board (40) Av: NS=+20

N-S	E-W	Contract	N-S	E-W	IMP
3	10	3C N 5	150		4
8	6	3C S 3	110		3
1	7	3C S 3	110		3
5	4	1NT W-1	50		1
9	2	Passout			-1
10	3	Passout			-1
4	5	Passout			-1
7	1	2NT N-1	50		-2
2	9	3S S-2	100		-3
6	8	3NT S-3	150		-5

Board (41) Av: NS=+70

N-S	E-W	Contract	N-S	E-W	IMP
9	2	3NT N 4	430		8
3	10	3NT N 3	400		8
4	5	3NT N 3	400		8
2	9	1NT N 1	90		1
6	8	3NT S-1	50		-3
1	7	3NT N-1	50		-3
7	1	3NT N-1	50		-3
5	4	3NT N-1	50		-3
8	6	3NT S-2	100		-5
10	3	3NT S-4	200		-7

Board (42) Av: NS=+520

N-S	E-W	Contract	N-S	E-W	IMP
1	7	4S N 5	650		4
9	2	4S N 5	650		4
6	8	4S N 4	620		3
3	10	4S N 4	620		3
8	6	4S N 4	620		3
4	5	4S N 4	620		3
5	4	4S N 4	620		3
10	3	3S N 5	200		-8
2	9	3S N 4	170		-8
7	1	3S N 3	140		-9

43

♠ AKQ975
♥ 109542
♦ A
♣ 2

♠ J4
♥ AQ7
♦ KJ32
♣ AQ107

♠ 86
♥ J863
♦ 1095
♣ K854

♠ 1032
♥ K
♦ Q8764
♣ J963

♠ N
♥ E
♦ S
♣ W

44

♠ 10852
♥ J3
♦ Q10952
♣ AQ

♠ KQ9
♥ 9865
♦ K86
♣ 1073

♠ A3
♥ KQ107
♦ A73
♣ KJ86

♠ J764
♥ A42
♦ J4
♣ 9542

♠ N
♥ E
♦ S
♣ W

45

♠ Q9752
♥ K72
♦ J107
♣ A4

♠ K4
♥ A863
♦ AQ6
♣ K1032

♠ AJ83
♥ Q4
♦ K943
♣ 976

♠ 106
♥ J1095
♦ 852
♣ QJ85

♠ N
♥ E
♦ S
♣ W

Board (43) Av: NS=+60

N-S	E-W	Contract	N-S	E-W	IMP
8	6	4S N 4	420		8
4	5	3S N 4	170		3
10	3	3H N 4	170		3
5	4	3H N 4	170		3
2	9	5D W-2	100		1
7	1	4D W-1	50		0
1	7	4H N-1	50		-3
9	2	4H N-1	50		-3
6	8	4Hx N-1	100		-4
3	10	4Hx N-1	100		-4

Board (44) Av: NS=+630

N-S	E-W	Contract	N-S	E-W	IMP
3	10	3NT S 5	660		1
8	6	3NT S 5	660		1
9	2	3NT S 5	660		1
10	3	3NT S 4	630		0
4	5	3NT S 4	630		0
6	8	3NT S 4	630		0
2	9	3NT S 3	600		-1
7	1	3NT S 3	600		-1
1	7	3NT S 3	600		-1
5	4	2NT S 3	150		-10

Board (45) Av: NS=+30

N-S	E-W	Contract	N-S	E-W	IMP
3	10	1NT E-1	100		2
5	4	1NT E-1	100		2
2	9	1NT E-1	100		2
9	2	1NT E-1	100		2
4	5	1NT E-1	100		2
10	3	1NT E-1	100		2
1	7	1NT E 1	90		-3
7	1	1NT E 1	90		-3
6	8	1NT E 2	120		-4
8	6	1NT E 3	150		-5

46

♠ Q
♥ QJ1094
♦ 82
♣ KJ873

♠ J10542
♥
♦ AKJ107
♣ 654

N
W E
S

♠ K73
♥ AK6
♦ Q954
♣ Q92

♠ A986
♥ 87532
♦ 63
♣ A10

47

♠ 6
♥ AQJ10
♦ J85
♣ 109843

♠ AK2
♥ 543
♦ KQ7
♣ AK76

N
W E
S

♠ J1074
♥ K
♦ 109432
♣ J52

♠ Q9853
♥ 98762
♦ A6
♣ Q

48

♠ A82
♥ 865
♦ A73
♣ AK102

♠ QJ976
♥ 743
♦ KQ62
♣ 8

N
W E
S

♠ 10
♥ AQJ10
♦ 10985
♣ Q954

♠ K543
♥ K92
♦ J4
♣ J763

Board (46) Av: NS=+60

N-S	E-W	Contract	N-S	E-W	IMP
9	2	4Sx E-2	300		6
3	10	4S W-3	150		3
8	6	4S W-3	150		3
7	1	4Sx W-1	100		1
5	4	5D E-1	50		0
1	7	4S W-1	50		0
6	8	4D E-1	50		0
2	9	3NT E-1	50		0
4	5	2S W 3	140		-5
10	3	2S W 3	140		-5

Board (47) Av: NS=-10

N-S	E-W	Contract	N-S	E-W	IMP
2	9	3NT W-2	100		3
5	4	2NT W-2	100		3
1	7	2NT W-2	100		3
9	2	2NT W-1	50		2
4	5	2NT W-1	50		2
8	6	1S E-1	50		2
3	10	2NT W 2	120		-3
6	8	2NT W 3	150		-4
7	1	1NT W 3	150		-4
10	3	2NT W 5	210		-5

Board (48) Av: NS=-30

N-S	E-W	Contract	N-S	E-W	IMP
3	10	2NT N 2	120		4
7	1	2NT N 2	120		4
2	9	2NT N 2	120		4
6	8	2NT S-1	50		-1
1	7	2NT N-1	50		-1
10	3	2NT N-1	50		-1
4	5	2NT N-1	50		-1
5	4	2NT N-2	100		-2
9	2	2NT N-3	150		-3
8	6	2NT N-3	150		-3

1

♠6432
♥4
♦K1074
♣KQ85

♠AKJ
♥A9865
♦QJ2
♣A3

♠Q10875
♥Q3
♦865
♣942

♠9
♥KJ1072
♦A93
♣J1076

Board (1) Av: NS=+60

N-S	E-W	Contract	N-S	E-W	IMP
10	4	2H	W-3	150	3
6	1	1H	W-3	150	3
1	6	2H	W-2	100	1
5	2	2H	W-2	100	1
4	10	1H	W-2	100	1
7	3	2S	E-1	50	0
3	7	1H	W-1	50	0
9	8	1H	W-1	50	0
8	9	2NT	W 2	120	-5
2	5	3NT	W 4	430	-10

2

♠873
♥QJ7
♦J763
♣AQJ

♠AQ952
♥K52
♦102
♣1063

♠J4
♥64
♦AQ985
♣9875

♠K106
♥A10983
♦K4
♣K42

Board (2) Av: NS=-30

N-S	E-W	Contract	N-S	E-W	IMP
4	10	3H	S 4	170	5
3	7	3H	S 3	140	5
9	8	3H	S 3	140	5
6	1	2H	S 2	110	4
10	4	4H	S-1	100	-2
8	9	3H	S-1	100	-2
5	2	3H	S-1	100	-2
1	6	3H	S-1	100	-2
2	5	4H	S-2	200	-5
7	3	3NT	S-2	200	-5

3

♠96
♥Q852
♦K652
♣QJ8

♠AJ74
♥AK9
♦A1094
♣92

♠Q108
♥J103
♦J7
♣AK753

♠K532
♥764
♦Q83
♣1064

Board (3) Av: NS=-630

N-S	E-W	Contract	N-S	E-W	IMP
5	2	3NT	W 3	600	1
8	9	3NT	W 3	600	1
4	10	3NT	W 3	600	1
6	1	3NT	W 4	630	0
3	7	3NT	W 4	630	0
10	4	3NT	W 4	630	0
2	5	3NT	W 4	630	0
7	3	3NT	W 5	660	-1
1	6	3NT	W 5	660	-1
9	8	3NT	W 5	660	-1

4

♠AQ86
♥K875
♦72
♣QJ3

♠9
♥AJ943
♦Q864
♣K104

♠10753
♥Q102
♦KJ
♣A976

♠KJ42
♥6
♦A10953
♣852

Board (4) Av: NS=+60

N-S	E-W	Contract	N-S	E-W	IMP
9	8	2S	S 3	140	2
7	3	2S	S 3	140	2
2	5	2S	S 2	110	2
3	7	2S	S 2	110	2
8	9	2S	S 2	110	2
10	4	2S	S 2	110	2
4	10	2S	S 2	110	2
5	2	2S	S-1	100	-4
1	6	2S	S-1	100	-4
6	1	3S	S-2	200	-6

5

♠KQ4
♥J54
♦J10872
♣104

♠108652
♥73
♦A63
♣KQ2

♠J9
♥AQ109862
♦9
♣765

♠A73
♥K
♦KQ54
♣AJ983

Board (5) Av: NS=-10

N-S	E-W	Contract	N-S	E-W	IMP
3	7	4D	N 4	130	4
4	10	4D	N 4	130	4
5	2	4D	N 4	130	4
10	4	4H	E-2	100	3
7	3	3H	E-1	50	2
6	1	5D	N-1	100	-3
2	5	5D	N-1	100	-3
9	8	3D	N-1	100	-3
1	6	3H	E 4	170	-4
8	9	4C	S-2	200	-5

6

♠AK108
♥A76
♦A986
♣K7

♠J93
♥854
♦J73
♣6543

♠76542
♥Q
♦10542
♣QJ2

♠Q
♥KJ10932
♦KQ
♣A1098

Board (6) Av: NS=+940

N-S	E-W	Contract	N-S	E-W	IMP
3	7	6H	S 7	1010	2
2	5	6H	S 7	1010	2
1	6	6H	S 7	1010	2
8	9	6H	S 7	1010	2
4	10	6H	S 7	1010	2
7	3	6H	S 7	1010	2
9	8	6H	S 7	1010	2
10	4	6H	S 6	980	1
6	1	5H	S 7	510	-10
5	2	5H	S 7	510	-10

7

♠Q97
♥8762
♦972
♣KJ7

♠843
♥A53
♦J86
♣A1082

♠KJ
♥KJ109
♦AK103
♣Q96

♠A10652
♥Q4
♦Q54
♣543

Board (7) Av: NS=-310

N-S	E-W	Contract	N-S	E-W	IMP
5	2	3NT	E-2	200	11
7	3	3NT	E-2	200	11
2	5	3NT	E-2	200	11
4	10	3NT	E-1	100	9
1	6	3NT	E 3	600	-7
6	1	3NT	E 3	600	-7
3	7	3NT	E 3	600	-7
9	8	3NT	E 3	600	-7
8	9	3NT	E 3	600	-7
10	4	3NT	E 3	600	-7

8

♠AK954
♥Q4
♦QJ10763
♣QJ10763

♠K
♥10632
♦KJ1076
♣954

♠AQJ106
♥Q8
♦985
♣AK2

♠9875432
♥J7
♦A32
♣8

Board (8) Av: NS=+80

N-S	E-W	Contract	N-S	E-W	IMP
2	5	2H	N 5	200	3
1	6	3H	N 3	140	2
5	2	2H	N 2	110	1
3	7	2H	N 2	110	1
9	8	3Sx	E-1	100	1
7	3	2S	E-2	100	1
10	4	2S	E-2	100	1
4	10	3NT	W-1	50	-1
6	1	3C	N-1	50	-4
8	9	3H	N-2	100	-5

9

♠103
♥AQ543
♦AKQ4
♣J10

♠Q75
♥K
♦98752
♣Q984

♠K642
♥J97
♦103
♣7532

♠AJ98
♥10862
♦J6
♣AK6

Board (9) Av: NS=+260

N-S	E-W	Contract	N-S	E-W	IMP
5	2	4H	N 6	480	6
1	6	4H	N 5	450	5
6	1	4H	N 5	450	5
7	3	4H	N 5	450	5
10	4	4H	N 5	450	5
9	8	4H	N 5	450	5
2	5	6H	N-1	50	-7
4	10	6H	N-1	50	-7
3	7	6H	N-1	50	-7
8	9	6H	N-1	50	-7

10

♠ J1084
♥ J2
♦ 8752
♣ Q83

♠ A92
♥ 1063
♦ KJ93
♣ J64

N
W — E
S

♠ K63
♥ AKQ75
♦ Q4
♣ A72

♠ Q75
♥ 984
♦ A106
♣ K1095

11

♠ 105
♥ J109752
♦ 10875
♣ 2

♠ J9832
♥ Q
♦ AQ63
♣ A94

N
W — E
S

♠ Q
♥ K4
♦ KJ942
♣ KQJ63

♠ AK764
♥ A863
♦
♣ 10875

12

♠ 876
♥ KQ7
♦ K95
♣ J1083

♠ AK1054
♥ J862
♦ 2
♣ AQ4

N
W — E
S

♠ Q9
♥ 109
♦ AQ1083
♣ K762

♠ J32
♥ A543
♦ J764
♣ 95

Board (10) Av: NS=-650

N-S	E-W	Contract	N-S	E-W	IMP
10	4	4H	E 4	620	1
3	7	4H	E 5	650	0
6	1	4H	E 5	650	0
2	5	4H	E 5	650	0
5	2	4H	E 5	650	0
4	10	4H	E 5	650	0
7	3	4H	E 5	650	0
9	8	4H	E 5	650	0
8	9	4H	E 5	650	0
1	6	4H	E 6	680	-1

Board (11) Av: NS=-280

N-S	E-W	Contract	N-S	E-W	IMP
9	8	4H	S 4	420	12
7	3	4D	W 5	150	4
2	5	3D	W 5	150	4
1	6	3D	W 5	150	4
4	10	2D	W 5	150	4
8	9	5D	W 5	400	-3
6	1	5D	E 5	400	-3
5	2	5D	E 5	400	-3
10	4	3NT	E 5	460	-5
3	7	3NT	E 5	460	-5

Board (12) Av: NS=-440

N-S	E-W	Contract	N-S	E-W	IMP
7	3	4S	W-1	50	10
1	6	3NT	E 4	430	0
2	1	3NT	E 4	430	0
6	5	3NT	E 4	430	0
3	7	3NT	E 4	430	0
9	8	3NT	E 4	430	0
5	2	3NT	E 4	430	0
4	10	3NT	E 5	460	-1
8	9	3NT	E 5	460	-1
10	4	3NT	E 6	490	-2

13

♠ Q10
♥ Q
♦ Q107
♣ KQ108642

♠ AJ7643
♥ 7643
♦ K98
♣

N
W — E
S

♠ 9852
♥ K1095
♦ J52
♣ 95

♠ K
♥ AJ82
♦ A643
♣ AJ73

14

♠ A96
♥ J
♦ 10843
♣ AKQ82

♠ KJ10542
♥ 96543
♦ J
♣ 6

N
W — E
S

♠ 83
♥ A72
♦ AK652
♣ J73

♠ Q7
♥ KQ108
♦ Q97
♣ 10954

15

♠ Q9
♥ A9875
♦ 1075
♣ 543

♠ 7
♥ QJ62
♦ AQ32
♣ 9876

N
W — E
S

♠ A10643
♥ K3
♦ K9
♣ AQJ2

♠ KJ852
♥ 104
♦ J864
♣ K10

Board (13) Av: NS=+600

N-S	E-W	Contract	N-S	E-W	IMP
7	10	3NT	S 4	630	1
2	6	5C	S 5	600	0
4	8	5C	S 5	600	0
1	5	5C	N 5	600	0
3	9	5C	N 5	600	0
6	2	5C	N 5	600	0
5	1	5C	N 5	600	0
10	7	5C	N 5	600	0
8	4	5C	N 5	600	0
9	3	5C	N 5	600	0

Board (14) Av: NS=+50

N-S	E-W	Contract	N-S	E-W	IMP
10	7	3NT	N 3	400	8
1	5	3C	N 3	110	2
6	2	3C	N 3	110	2
3	9	3C	N 3	110	2
7	10	3C	N 3	110	2
9	3	3S	W-1	50	0
5	1	3S	W-1	50	0
8	4	2C	N-1	50	-3
2	6	3C	N-2	100	-4
4	8	2S	W 2	110	-4

Board (15) Av: NS=-220

N-S	E-W	Contract	N-S	E-W	IMP
10	7	3NT	W-1	50	7
7	10	3NT	W-1	50	7
8	4	2C	E 4	130	3
6	2	2C	E 5	150	2
2	6	2C	E 5	150	2
4	8	2C	E 5	150	2
9	3	3NT	W 3	400	-5
3	9	3NT	W 3	400	-5
5	1	3NT	E 3	400	-5
1	5	3NT	W 4	430	-5

16

♠ J10
♥ K952
♦ Q102
♣ J843

♠ K62
♥ J43
♦ AK3
♣ AQ95

N
W — E
S

♠ Q8754
♥ A8
♦ J9874
♣ 7

♠ A93
♥ Q1076
♦ 65
♣ K1062

17

♠ 1043
♥ AK8
♦ J842
♣ 643

♠ K9
♥ J1095
♦ A1075
♣ AQ5

N
W — E
S

♠ AJ8752
♥ 42
♦ 63
♣ 982

♠ Q6
♥ Q763
♦ KQ9
♣ KJ107

18

♠ 8763
♥ 107
♦ 93
♣ AQJ85

♠ 4
♥ AK2
♦ AKQ76
♣ K963

N
W — E
S

♠ KQJ5
♥ J63
♦ 1042
♣ 1074

♠ A1092
♥ Q9854
♦ J85
♣ 2

Board (16) Av: NS=-210

N-S	E-W	Contract	N-S	E-W	IMP
3	9	4S	W-1	100	7
8	4	4S	W-1	100	7
2	6	4S	W-1	100	7
6	2	2S	W 3	140	2
1	5	2S	W 3	140	2
10	7	2S	W 3	140	2
5	1	2S	W 5	200	0
9	3	4S	W 4	620	-9
7	10	4S	W 5	650	-10
4	8	4S	W 5	650	-10

Board (17) Av: NS=-120

N-S	E-W	Contract	N-S	E-W	IMP
7	10	1NT	N-1	50	2
3	9	3D	N-2	100	1
5	1	3D	N-2	100	1
1	5	1NT	S-2	100	1
6	2	1NT	N-2	100	1
8	4	1S	E 2	110	0
10	7	2S	E 3	140	-1
2	6	2S	E 3	140	-1
9	3	1NT	N-3	150	-1
4	8	2S	W 4	170	-2

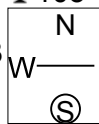
Board (18) Av: NS=-300

N-S	E-W	Contract	N-S	E-W	IMP
3	9	3NT	W-1	50	8
5	1	3NT	W-1	50	8
10	7	3NT	W-1	50	8
6	2	3NT	W 3	400	-3
2	6	3NT	W 3	400	-3
9	3	3NT	W 3	400	-3
4	8	3NT	W 4	430	-4
8	4	3NT	W 4	430	-4
7	10	3NT	W 4	430	-4
1	5	3NT	W 4	430	-4

19

♠98
♥Q107
♦QJ10632
♣103

♠K65 ♠AQ742
♥AJ543 ♥K96
♦A ♠K8
♣AK85 ♣964

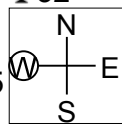


♠J103
♥82
♦9754
♣QJ72

20

♠J1086
♥J96
♦10964
♣32

♠Q72 ♠A93
♥Q87 ♥103
♦AKQ5 ♠J873
♣AJ8 ♣K1065

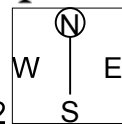


♠K54
♥AK542
♦2
♣Q974

21

♠Q10962
♥Q7632
♦A64
♣

♠ ♠A53
♥K ♥
♦10953 ♠KQJ872
♣AQ1087532 ♣KJ94



♠KJ874
♥AJ109854
♦
♣6

Board (19) Av: NS=-1060

N-S	E-W	Contract	N-S	E-W	IMP
3	9	4H W 6	680		9
4	8	4H W 6	680		9
2	6	4H W 6	680		9
6	2	4H W 6	680		9
9	3	4H W 6	680		9
10	7	6S E 6	1430		-9
5	1	6H W 6	1430		-9
8	4	6H W 6	1430		-9
7	10	6H W 6	1430		-9
1	5	6NT E 6	1440		-9

Board (20) Av: NS=+70

N-S	E-W	Contract	N-S	E-W	IMP
7	10	3NT W-3	300		6
6	2	3NT W-1	100		1
5	1	3NT E-1	100		1
1	5	3NT E-1	100		1
2	6	3NT E-1	100		1
8	4	3NT E-1	100		1
9	3	3NT E-1	100		1
10	7	3NT E-1	100		1
3	9	3D W 3	110		-5
4	8	3NT W 3	600		-12

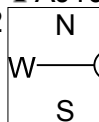
Board (21) Av: NS=+330

N-S	E-W	Contract	N-S	E-W	IMP
1	5	6Sx N 6	1660		16
2	6	6Hx N 6	1660		16
4	8	6H S 6	1430		15
8	4	5H S 6	680		8
6	2	7Cx W-1	100		-6
3	9	6C W-1	50		-7
9	3	6C W-1	50		-7
10	7	5C E 6	420		-13
5	1	6C W 6	920		-15
7	10	6Dx E 6	1090		-16

22

♠Q75
♥K9654
♦9
♣AJ106

♠KJ10832 ♠A64
♥1073 ♥J2
♦65 ♠AKJ732
♣98 ♣K5

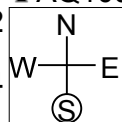


♠9
♥AQ8
♦Q1084
♣Q7432

23

♠6
♥AK985
♦AK
♣AQ1094

♠QJ1032 ♠K98
♥J6 ♥42
♦QJ1094 ♠J87653
♣K ♣

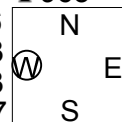


♠A754
♥Q1073
♦8765
♣2

24

♠43
♥AKJ
♦KQ1084
♣963

♠J106 ♠AKQ9872
♥1053 ♥62
♦9753 ♠
♣A107 ♣Q542



♠5
♥Q9874
♦AJ62
♣KJ8

Board (22) Av: NS=+20

N-S	E-W	Contract	N-S	E-W	IMP
1	5	4S W-2	200		5
9	3	3S W-2	200		5
7	10	2H N 4	170		4
8	4	4S E-1	100		2
10	7	3D E-1	100		2
2	6	4H N-1	50		-2
6	2	5Hx N-1	100		-3
3	9	3S E 3	140		-4
5	1	2S E 3	140		-4
4	8	2S E 4	170		-5

Board (23) Av: NS=+1170

N-S	E-W	Contract	N-S	E-W	IMP
2	6	6H S 7	1460		7
3	9	6H N 7	1460		7
9	3	6H N 7	1460		7
6	2	6H N 7	1460		7
1	5	6H N 6	1430		6
10	7	6H N 6	1430		6
4	8	4H N 7	710		-10
8	4	4H N 7	710		-10
7	10	4H N 7	710		-10
5	1	4H N 7	710		-10

Board (24) Av: NS=-340

N-S	E-W	Contract	N-S	E-W	IMP
2	6	5D N 5	400		12
6	2	4Sx E-1	100		10
8	4	5S E-1	50		9
10	7	4S E-1	50		9
5	1	4Sx E 4	590		-6
3	9	4Sx E 4	590		-6
9	3	4Sx E 4	590		-6
1	5	4Sx E 4	590		-6
7	10	4Sx E 4	590		-6
4	8	4Sx E 4	590		-6

1

♠4
♥A984
♦AQ742
♣1083

♠AQJ106
♥K7632
♦8
♣J9

♠52
♥Q
♦10953
♣KQ7654

♠K9873
♥J105
♦KJ6
♣A2

W N E S

2

♠Q874
♥Q1082
♦72
♣1092

♠J103
♥KJ97
♦Q98
♣AK7

♠A9
♥A65
♦A6
♣QJ8543

♠K652
♥43
♦KJ10543
♣6

W N E S

3

♠852
♥K1063
♦A74
♣K86

♠AK109643
♥Q4
♦Q9
♣75

♠J7
♥AJ9
♦KJ10632
♣J4

♠Q
♥8752
♦85
♣AQ10932

W N E S

Board (1) Av: NS=+80

N-S	E-W	Contract	N-S	E-W	IMP
1	4	1NT N 3	150		2
4	1	1NT N 3	150		2
8	7	3D N 4	130		2
6	5	2NT S 2	120		1
3	2	1NT N 2	120		1
5	6	2H W-1	50		-1
2	3	2H W-1	50		-1
7	8	2H E-1	50		-1
9	10	3S S-1		50	-4
10	9	2D N-1		50	-4

Board (2) Av: NS=-460

N-S	E-W	Contract	N-S	E-W	IMP
2	3	3NT E 4	430		1
7	8	3NT W 5	460		0
4	1	3NT E 5	460		0
5	6	3NT E 5	460		0
3	2	3NT E 5	460		0
1	4	3NT E 5	460		0
6	5	3NT E 5	460		0
9	10	3NT E 5	460		0
10	9	3NT E 5	460		0
8	7	3NT E 6	490		-1

Board (3) Av: NS=-570

N-S	E-W	Contract	N-S	E-W	IMP
8	7	3S W 4	170		9
3	2	3S W 5	200		9
2	3	4S W 4	620		-2
4	1	4S W 4	620		-2
9	10	4S W 4	620		-2
6	5	4S W 4	620		-2
1	4	4S W 4	620		-2
7	8	4S E 4	620		-2
10	9	4S W 5	650		-2
5	6	4S W 6	680		-3

4

♠9
♥K6532
♦QJ4
♣QJ94

♠8764
♥1084
♦10872
♣107

♠A3
♥QJ7
♦A953
♣K862

♠KQJ1052
♥A9
♦K6
♣A53

W N E S

5

♠Q9863
♥85
♦Q92
♣AK7

♠A72
♥KJ64
♦K65
♣863

♠1032
♥AJ743
♦Q9542
♣Q9542

♠KJ1054
♥AQ97
♦108
♣J10

W N E S

6

♠Q752
♥Q1073
♦Q2
♣J53

♠J108
♥862
♦1093
♣K1042

♠AK
♥AKJ4
♦AK765
♣Q6

♠9643
♥95
♦J84
♣A987

W N E S

Board (4) Av: NS=+530

N-S	E-W	Contract	N-S	E-W	IMP
5	6	3NT N 5	660		4
3	2	3NT N 5	660		4
7	8	4S S 5	650		3
4	1	4S S 5	650		3
9	10	4S S 5	650		3
8	7	4S S 4	620		3
2	3	4H N 4	620		3
6	5	2S S 5	200		-8
1	4	2S S 5	200		-8
10	9	2S S 5	200		-8

Board (5) Av: NS=0

N-S	E-W	Contract	N-S	E-W	IMP
8	7	4S S 4	620		12
10	9	5D W-3	150		4
2	3	3S S 3	140		4
6	5	3S S 3	140		4
7	8	Passout			0
9	10	4S S-1		100	-3
4	1	4S S-1		100	-3
5	6	4S N-1		100	-3
3	2	4S N-1		100	-3
1	4	4S N-1		100	-3

Board (6) Av: NS=-540

N-S	E-W	Contract	N-S	E-W	IMP
10	9	6D E-1	100		12
2	3	4H W-1	100		12
6	5	3NT W 3		600	-2
4	1	3NT E 3		600	-2
8	7	3NT E 3		600	-2
7	8	4H E 4		620	-2
1	4	3NT E 5		660	-3
3	2	3NT E 5		660	-3
9	10	3NT E 5		660	-3
5	6	3NT E 6		690	-4

7

♠J9754
♥942
♦
♣KJ982

♠K
♥J7
♦KJ973
♣AQ653

♠Q632
♥KQ63
♦654
♣107

♠A108
♥A1085
♦AQ1082
♣4

W N E S

8

♠K1043
♥J96
♦AJ6
♣762

♠852
♥Q1084
♦K32
♣J84

♠QJ96
♥532
♦104
♣AQ53

♠A7
♥AK7
♦Q9875
♣K109

W N E S

9

♠AK7
♥Q10874
♦4
♣A974

♠J94
♥K653
♦AK1052
♣K

♠Q1086
♥2
♦J987
♣10863

♠532
♥AJ9
♦Q63
♣QJ52

W N E S

Board (7) Av: NS=+160

N-S	E-W	Contract	N-S	E-W	IMP
9	10	2Cx W-2	500		8
7	8	2Cx W-2	500		8
5	6	3C W-3	300		4
1	4	2Cx W-1	200		1
8	7	2C W-2	200		1
4	1	2S N 3	140		-1
3	2	2S N 2	110		-2
6	5	3S N-1		100	-6
2	3	2D S-1		100	-6
10	9	4S N-2		200	-8

Board (8) Av: NS=+370

N-S	E-W	Contract	N-S	E-W	IMP
2	3	3NT S 5	460		3
8	7	3NT S 5	460		3
6	5	3NT S 5	460		3
9	10	3NT S 4	430		2
7	8	3NT S 4	430		2
1	4	3NT S 4	430		2
5	6	3NT S 3	400		1
4	1	3NT S 3	400		1
3	2	3NT S-1		50	-9
10	9	3NT S-2		100	-10

Board (9) Av: NS=+100

N-S	E-W	Contract	N-S	E-W	IMP
6	5	4H N 5	450		8
8	7	4H S 4	420		8
9	10	4H N 4	420		8
2	3	2H N 4	170		2
3	2	2H N 4	170		2
1	4	2H N-1		50	-4
5	6	4H N-2		100	-5
4	1	4H N-2		100	-5
7	8	4H N-3		150	-6
10	9	4H N-3		150	-6

10

♠ 732
♥ 10964
♦ QJ2
♣ J106

♠ 965
♥ J83
♦ 104
♣ AQ543

N
W — E
S

♠ AQJ10
♥ AQ75
♦ K85
♣ K8

♠ K84
♥ K2
♦ A9763
♣ 972

11

♠ QJ1097
♥ 7654
♦ K10
♣ 76

♠ A6532
♥ 9
♦ QJ42
♣ J93

N
W — E
S

♠ K84
♥ J10
♦ 9853
♣ K854

♠ AKQ832
♥ A76
♦ AQ102
♣

12

♠ Q62
♥ K87
♦ J4
♣ 98643

♠ AJ97
♥ 1064
♦ AK7
♣ AQ10

N
W — E
S

♠ 103
♥ J93
♦ 10532
♣ K752

♠ K854
♥ AQ52
♦ Q986
♣ J

Board (10) Av: NS=-570

N-S	E-W	Contract	N-S	E-W	IMP
7	8	4S E-2	200		13
9	10	2NT W 2	120		10
6	5	3NT W 3	600		-1
4	1	3NT W 4	630		-2
2	3	3NT W 4	630		-2
8	7	3NT W 4	630		-2
3	2	3NT W 5	660		-3
5	6	3NT W 5	660		-3
10	9	3NT W 5	660		-3
1	4	3NT W 5	660		-3

Board (11) Av: NS=+620

N-S	E-W	Contract	N-S	E-W	IMP
9	10	6H S 7	1010		9
6	5	6H S 7	1010		9
7	8	6H S 7	1010		9
2	3	4S S 7	510		-3
1	4	5H S 6	480		-4
3	2	4H S 6	480		-4
5	6	4H S 6	480		-4
8	7	4H S 6	480		-4
10	9	4H S 6	480		-4
4	1	4H S 5	450		-5

Board (12) Av: NS=-20

N-S	E-W	Contract	N-S	E-W	IMP
1	4	2S N 2	110		4
5	6	3NT E-2	100		3
10	9	2NT W-1	50		2
9	10	1NT W-1	50		2
7	8	1NT W-1	50		2
2	3	1NT W 1		90	-2
3	2	1NT W 1		90	-2
8	7	1NT W 1		90	-2
6	5	1H N-1		100	-2
4	1	1NT W 2		120	-3

13

♠ A1086
♥ K6
♦ J75
♣ KJ32

♠ 53
♥ AQ108
♦ AKQ
♣ AQ76

N
W — E
S

♠ K72
♥ J974
♦ 964
♣ 1098

♠ QJ94
♥ 532
♦ 10832
♣ 54

14

♠ AJ873
♥ A83
♦ K3
♣ 1075

♠ 1054
♥ K52
♦ 85
♣ KQJ43

N
W — E
S

♠ KQ96
♥ 9
♦ QJ1094
♣ A82

♠ 2
♥ QJ10764
♦ A762
♣ 96

15

♠ A1093
♥ KQ75
♦ AK4
♣ K9

♠ QJ75
♥ J10943
♦ Q7
♣ Q5

N
W — E
S

♠ 862
♥ 6
♦ J952
♣ A7642

♠ K4
♥ A82
♦ 10863
♣ J1083

Board (13) Av: NS=+80

N-S	E-W	Contract	N-S	E-W	IMP
9	7	4H W-2	200		3
6	10	4H E-2	200		3
5	8	4H W-1	100		1
3	1	4H E-1	100		1
8	5	4H E-1	100		1
7	9	4H E-1	100		1
1	3	4H E-1	100		1
10	6	4H E-1	100		1
2	4	3H E 3	140		-6
4	2	2H E 3	140		-6

Board (14) Av: NS=+130

N-S	E-W	Contract	N-S	E-W	IMP
1	3	3H S 4	170		1
3	1	3H S 4	170		1
6	10	2H S 4	170		1
8	5	4C W-3	150		1
2	4	3NT W-3	150		1
7	9	3H S 3	140		0
9	7	2H S 3	140		0
5	8	3D E-2	100		-1
4	2	4C W-1	50		-2
10	6	1NT W 2		120	-6

Board (15) Av: NS=+570

N-S	E-W	Contract	N-S	E-W	IMP
5	8	3NT S 5	660		3
3	1	3NT S 5	660		3
6	10	3NT S 4	630		2
4	2	3NT S 4	630		2
1	3	3NT S 3	600		1
8	5	3NT S 3	600		1
7	9	3NT S 3	600		1
9	7	3NT N 3	600		1
2	4	1NT N 5	210		-8
10	6	2NT S 2	120		-10

16

♠ KJ32
♥ KQ9
♦ K1062
♣ J8

♠ 7
♥ 10753
♦ J53
♣ AQ1093

N
W — E
S

♠ AQ109
♥ J862
♦ A
♣ 7654

♠ 8654
♥ A4
♦ Q9874
♣ K2

17

♠ A96
♥ 106
♦ Q32
♣ KJ1084

♠ 10742
♥ J985
♦ 7
♣ 7653

N
W — E
S

♠ KJ83
♥ K72
♦ AKJ86
♣ 9

♠ Q5
♥ AQ43
♦ 10954
♣ AQ2

18

♠ K93
♥ AQ75
♦ 32
♣ A1064

♠ J1064
♥ J8
♦ 984
♣ Q973

N
W — E
S

♠ 872
♥ 10964
♦ KQ6
♣ K52

♠ AQ5
♥ K32
♦ AJ1075
♣ J8

Board (16) Av: NS=-90

N-S	E-W	Contract	N-S	E-W	IMP
5	8	2S S 2	110		5
6	10	2S S-1	50		1
1	3	2S S-1	50		1
4	2	2S N-1	50		1
7	9	3D N-2	100		0
3	1	3D N-2	100		0
8	5	2S S-2	100		0
2	4	2S S-2	100		0
9	7	3H W 3	140		-2
10	6	3H E 3	140		-2

Board (17) Av: NS=-10

N-S	E-W	Contract	N-S	E-W	IMP
6	10	3NT N 3	400		9
9	7	3C N 3	110		3
5	8	3S E-2	100		3
2	4	2D E-2	100		3
4	2	3C N-1		50	-1
7	9	1D E 1		70	-2
10	6	1D E 1		70	-2
1	3	1D E 2		90	-2
8	5	1D E 2		90	-2
3	1	3C N-2		100	-3

Board (18) Av: NS=+660

N-S	E-W	Contract	N-S	E-W	IMP
8	5	3NT S 6	690		1
2	4	3NT S 6	690		1
1	3	3NT S 5	660		0
4	2	3NT S 5	660		0
3	1	3NT S 5	660		0
7	9	3NT S 5	660		0
6	10	3NT S 5	660		0
5	8	3NT S 4	630		-1
9	7	3NT S 4	630		-1
10	6	3NT S 3	600		-2

19

♠8
♥974
♦KQ53
♣K8532

♠KJ10753
♥Q105
♦J6
♣J6

N
W—E
S

♠Q964
♥AJ62
♦A874
♣4

♠A2
♥K83
♦1092
♣AQ1097

Board (19) Av: NS=-40

N-S	E-W	Contract	N-S	E-W	IMP
5	8	1NT S	5	210	6
7	9	5S W-2		200	6
6	10	3C S	3	110	4
3	1	5C S-1		50	0
1	3	5C S-1		50	0
4	2	5Cx S-1		100	-2
2	4	3S W	3	140	-3
10	6	2S W	3	140	-3
9	7	3S W	4	170	-4
8	5	6Cx S-2		300	-6

20

♠AQJ832
♥7
♦K2
♣7432

♠K
♥AK962
♦J1074
♣KJ9

N
W—E
S

♠1096
♥Q43
♦Q8653
♣105

♠754
♥J1085
♦A9
♣AQ86

Board (20) Av: NS=+340

N-S	E-W	Contract	N-S	E-W	IMP
6	10	4S N	4	620	7
5	8	4S N	4	620	7
4	2	4S N	4	620	7
8	5	4S N	4	620	7
2	4	3S N	5	200	-4
3	1	3S N	4	170	-5
10	6	3S N	4	170	-5
9	7	2S N	4	170	-5
7	9	2S N	4	170	-5
1	3	2H W	2	110	-10

21

♠QJ42
♥92
♦AJ1032
♣A8

♠97
♥AK8743
♦65
♣J54

N
W—E
S

♠K10863
♥J
♦KQ74
♣763

♠A5
♥Q1065
♦98
♣KQ1092

Board (21) Av: NS=+120

N-S	E-W	Contract	N-S	E-W	IMP
9	7	3NT S	4	630	11
1	3	2NT S	3	150	1
2	4	1NT S	3	150	1
10	6	1NT S	3	150	1
4	2	2NT S	2	120	0
5	8	2NT S	2	120	0
3	1	1NT S	2	120	0
7	9	2H W-2		100	-1
8	5	2S E-1		50	-2
6	10	3NT S-1		100	-6

22

♠10843
♥Q92
♦A63
♣A62

♠AKJ543
♥AK9652
♦95
♣KQJ43

N
W—E
S

♠AK9652
♥10876
♦Q8
♣8

♠QJ7
♥
♦KJ10742
♣10975

Board (22) Av: NS=-50

N-S	E-W	Contract	N-S	E-W	IMP
10	6	6H W-3		300	8
1	3	5H W-2		200	6
6	10	5H W-2		200	6
7	9	5H E-2		200	6
5	8	4H W-1		100	4
2	4	4H W-1		100	4
9	7	4H W-1		100	4
4	2	4H W	5	650	-12
8	5	4H W	5	650	-12
3	1	4H W	5	650	-12

23

♠AJ107643
♥82
♦J10
♣K10

♠Q2
♥K653
♦AQ9
♣9432

N
W—E
S

♠8
♥AQ1094
♦86532
♣76

♠K95
♥J7
♦K74
♣AQJ85

Board (23) Av: NS=+80

N-S	E-W	Contract	N-S	E-W	IMP
6	10	4S N	6	680	12
3	1	4S N	4	620	11
10	6	3S N	3	140	2
1	3	2S N	3	140	2
7	9	2S N	3	140	2
8	5	4S N-1		100	-5
5	8	4S N-1		100	-5
2	4	4S N-1		100	-5
9	7	4S N-1		100	-5
4	2	4S N-1		100	-5

24

♠AJ10
♥J
♦J102
♣AKQJ52

♠943
♥1043
♦K965
♣1097

N
W—E
S

♠Q7
♥KQ985
♦A83
♣843

♠K8652
♥A762
♦Q74
♣6

Board (24) Av: NS=+450

N-S	E-W	Contract	N-S	E-W	IMP
9	7	4S S	7	510	2
7	9	4S S	6	480	1
2	4	4S S	6	480	1
4	2	4S S	6	480	1
10	6	4S S	5	450	0
5	8	3NT S	4	430	-1
3	1	3NT S	4	430	-1
8	5	4S S	4	420	-1
6	10	4S S	4	420	-1
1	3	4S S	4	420	-1

25

♠10982
♥KQ7
♦K32
♣543

♠QJ5
♥62
♦Q10954
♣A96

N
W—E
S

♠K74
♥J10953
♦J76
♣J8

♠A63
♥A84
♦A8
♣KQ1072

Board (25) Av: NS=+400

N-S	E-W	Contract	N-S	E-W	IMP
5	9	3NT S	5	460	2
2	1	3NT S	4	430	1
4	3	3NT S	4	430	1
1	2	3NT S	4	430	1
7	6	3NT S	4	430	1
6	7	3NT S	4	430	1
9	5	3NT S	4	430	1
10	8	3NT S	4	430	1
8	10	2NT S	4	180	-6
3	4	1NT S	4	180	-6

26

♠K95
♥A2
♦AJ1042
♣J32

♠A
♥Q73
♦9876
♣K10976

N
W—E
S

♠874
♥KJ95
♦KQ
♣Q854

♠QJ10632
♥10864
♦53
♣A

Board (26) Av: NS=+160

N-S	E-W	Contract	N-S	E-W	IMP
8	10	2S S	5	200	1
7	6	3S S	4	170	0
1	2	2S S	4	170	0
3	4	2S S	4	170	0
2	1	2S S	4	170	0
5	9	2S S	4	170	0
6	7	2S S	4	170	0
4	3	2S S	3	140	-1
9	5	2S S	3	140	-1
10	8	1NT N	2	120	-1

27

♠KJ102
♥8
♦K853
♣A986

♠65
♥KQ92
♦Q764
♣752

N
W—E
S

♠AQ87
♥J1064
♦A10
♣QJ3

♠943
♥A753
♦J92
♣K104

Board (27) Av: NS=-90

N-S	E-W	Contract	N-S	E-W	IMP
9	5	1NT S	1	90	5
2	1	1NT S-1		50	1
3	4	1NT S-1		50	1
5	9	1NT S-1		50	1
7	6	1NT W	1	90	0
4	3	1NT S-2		100	0
8	10	2H W	2	110	-1
6	7	2H W	3	140	-2
10	8	1NT S-3		150	-2
1	2	2H W	4	170	-2

28

♠96
♥J742
♦KQJ108
♣QJ

♠AJ54 ♥K1082
♥1095 ♥K3
♦A75 ♦42
♣AK4 ♣109832

♠Q73
♥AQ86
♦963
♣765

29

♠AJ5
♥A93
♦AKQ10974
♣

♠Q98643 ♥72
♥J2 ♥108764
♦3 ♦2
♣KJ92 ♣AQ1054

♠K10
♥KQ5
♦J865
♣8763

30

♠Q4
♥J103
♦AJ74
♣A1093

♠K10732 ♥AJ95
♥6 ♥K9852
♦K10 ♦Q862
♣KQ754 ♣

♠86
♥AQ74
♦953
♣J862

Board (28) Av: NS=-130

N-S	E-W	Contract	N-S	E-W	IMP
8	10	2S E-1	50		5
2	1	1NT W 2	120		0
1	2	1NT W 2	120		0
4	3	1NT W 2	120		0
5	9	1NT W 2	120		0
7	6	1NT W 2	120		0
9	5	1NT W 3	150		-1
3	4	1NT W 3	150		-1
6	7	1NT W 3	150		-1
10	8	1NT W 4	180		-2

Board (29) Av: NS=+960

N-S	E-W	Contract	N-S	E-W	IMP
1	2	6D N 7	1390		10
2	1	6D N 7	1390		10
6	7	6D N 7	1390		10
4	3	6D N 7	1390		10
5	9	3NT S 7	720		-6
9	5	3NT S 7	720		-6
8	10	3NT S 7	720		-6
7	6	3NT S 7	720		-6
10	8	5D S 7	640		-8
3	4	5D N 7	640		-8

Board (30) Av: NS=-440

N-S	E-W	Contract	N-S	E-W	IMP
3	4	4S W-2	100		11
5	9	4S W 4	420		1
2	1	4S W 4	420		1
4	3	4S W 4	420		1
4	3	4S W 4	420		1
1	2	4S W 5	450		0
6	7	4S W 5	450		0
7	6	4S W 5	450		0
8	10	4S W 5	450		0
10	8	4S W 5	450		0

31

♠K972
♥AKQ1086
♦AJ6
♣

♠J10852 ♥Q7
♥AJ43 ♥65
♦J ♦9543
♣1094 ♣KQ872

♠AK9643
♥Q108
♦72
♣53

32

♠K53
♥6
♦AJ10962
♣1032

♠62 ♥J7
♥Q109852 ♥K73
♦Q3 ♦8754
♣K98 ♣J754

♠AQ10984
♥AJ4
♦K
♣AQ6

33

♠KJ4
♥AK3
♦Q1074
♣AK10

♠A9 ♥Q10863
♥Q65 ♥J82
♦KJ5 ♦A8
♣J9743 ♣852

♠752
♥10974
♦9632
♣Q6

Board (31) Av: NS=+320

N-S	E-W	Contract	N-S	E-W	IMP
10	8	3NT N 5	660		8
8	10	3NT N 5	660		8
3	4	3NT N 5	660		8
2	1	3NT N 4	630		7
6	7	3NT N 4	630		7
4	3	5D N 5	600		7
9	5	4S S-2	200		-11
5	9	4S S-2	200		-11
7	6	3S S-2	200		-11
1	2	4H S-3	300		-12

Board (32) Av: NS=+490

N-S	E-W	Contract	N-S	E-W	IMP
4	3	6S S 6	980		10
2	1	5S S 7	510		1
5	9	4S S 7	510		1
3	4	4S S 7	510		1
7	6	4S S 7	510		1
8	10	4S S 7	510		1
1	2	4S S 6	480		0
6	7	3NT S 5	460		-1
10	8	4S S 5	450		-1
9	5	3NT S 4	430		-2

Board (33) Av: NS=-100

N-S	E-W	Contract	N-S	E-W	IMP
8	10	2NT N-1	50		2
1	2	2NT N-2	100		0
2	1	2NT N-2	100		0
4	3	2NT N-2	100		0
3	4	2NT N-2	100		0
7	6	2NT N-2	100		0
9	5	2NT N-2	100		0
5	9	2NT N-2	100		0
10	8	2NT N-2	100		0
6	7	3NT N-3	150		-2

34

♠83
♥J654
♦95
♣Q6543

♠962 ♥KQ1075
♥97 ♥AK102
♦AJ72 ♦Q3
♣AK107 ♣82

♠AJ4
♥Q83
♦K10864
♣J9

35

♠QJ
♥1086532
♦
♣107632

♠A9653 ♥7
♥J4 ♥Q7
♦KQ ♦AJ6543
♣A954 ♣KQJ8

♠K10842
♥AK9
♦109872
♣

36

♠10653
♥AQ85
♦AQ32
♣Q

♠AJ4 ♥97
♥10 ♥J962
♦J874 ♦K965
♣J10976 ♣542

♠KQ82
♥K743
♦10
♣AK83

Board (34) Av: NS=-440

N-S	E-W	Contract	N-S	E-W	IMP
2	1	4S E 4	420		1
5	9	4S E 4	420		1
6	7	4S E 4	420		1
8	10	4S E 4	420		1
9	5	4S E 4	420		1
4	3	4S E 5	450		0
1	2	4S E 5	450		0
3	4	4S E 5	450		0
10	8	4S E 5	450		0
7	6	4S E 5	450		0

Board (35) Av: NS=+80

N-S	E-W	Contract	N-S	E-W	IMP
8	10	5C W-4	400		8
2	1	4S W-3	300		6
4	3	3NT E-3	300		6
9	5	5Dx E-1	200		3
3	4	5D E-1	100		1
10	8	5D E-1	100		1
5	9	5H N-2	100		-5
6	7	3Hx N-1	100		-5
1	2	3D E 4	130		-5
7	6	3NT E 3	600		-12

Board (36) Av: NS=+440

N-S	E-W	Contract	N-S	E-W	IMP
5	9	4H S 5	650		5
3	4	4H S 5	650		5
10	8	4H S 4	620		5
2	1	4H S 4	620		5
6	7	4H S 4	620		5
7	6	4H S 4	620		5
1	2	3NT S 3	600		4
9	5	6H S-1	100		-11
4	3	4H S-1	100		-11
8	10	6H S-2	200		-12