

木村六郎杯 OPEN TEAMS Session 1 Flight C 2014年2月22日(土)

**1**

♠ A3  
♥ Q65  
♦ J8652  
♣ Q93

♠ KQ7  
♥ A98  
♦ K943  
♣ A86

W N E S

♠ J854  
♥ KJ1032  
♦ AQ7  
♣ 7

♠ 10962  
♥ 74  
♦ 10  
♣ KJ10542

**2**

♠ Q3  
♥ 9632  
♦ KQ43  
♣ K52

♠ AJ862  
♥ Q54  
♦ 102  
♣ J87

W N E S

♠ K1054  
♥ K107  
♦ 765  
♣ 963

♠ 97  
♥ AJ8  
♦ AJ98  
♣ AQ104

**3**

♠ AJ92  
♥ K93  
♦ A4  
♣ Q854

♠ 1085  
♥ J76  
♦ K10873  
♣ 62

W N E S

♠ 63  
♥ AQ10542  
♦ Q96  
♣ A10

♠ KQ74  
♥ 8  
♦ J52  
♣ KJ973

Board (1) Av: NS=-450

N-S	E-W	Contract	N-S	E-W	IMP
6	9	4H W 4	420		1
2	8	5H E 5	450		0
10	1	5H E 5	450		0
9	6	4H W 5	450		0
1	10	4H W 5	450		0
7	4	4H E 5	450		0
3	5	4H E 5	450		0
4	7	4H E 5	450		0
8	2	4H E 6	480		-1
5	3	4H E 6	480		-1

Board (2) Av: NS=-100

N-S	E-W	Contract	N-S	E-W	IMP
1	10	3NT S 3	600		12
7	4	3NT S-1	100		0
4	7	3NT S-1	100		0
9	6	3NT S-1	100		0
6	9	3NT S-1	100		0
5	3	3NT S-1	100		0
2	8	3NT S-1	100		0
10	1	3NT S-1	100		0
3	5	3NT S-1	100		0
8	2	3NT S-1	100		0

Board (3) Av: NS=+440

N-S	E-W	Contract	N-S	E-W	IMP
6	9	4S N 5	450		0
7	4	4S N 5	450		0
5	3	4S N 5	450		0
9	6	4S N 5	450		0
10	1	4S N 5	450		0
1	10	4S N 4	420		-1
4	7	4S N 4	420		-1
2	8	4S N 4	420		-1
3	5	4S N 4	420		-1
8	2	2H W 2	110		-11

**4**

♠ 97653  
♥ AQ83  
♦ 5  
♣ K92

♠ K108  
♥ KJ  
♦ AJ1064  
♣ AJ5

W N E S

♠ A4  
♥ 1075  
♦ KQ9873  
♣ 107

♠ QJ2  
♥ 9642  
♦ 2  
♣ Q8643

**5**

♠ K4  
♥ KJ7  
♦ 986532  
♣ Q6

♠ 10  
♥ Q853  
♦ AJ7  
♣ A10932

W N E S

♠ AQJ9872  
♥ 96  
♦ 4  
♣ KJ7

♠ 653  
♥ A1042  
♦ KQ10  
♣ 854

**6**

♠ A975  
♥ 1094  
♦ A96  
♣ A84

♠ QJ108  
♥ 52  
♦ 842  
♣ KQ107

W N E S

♠ 632  
♥ AKQ87  
♦ KJ53  
♣ J

♠ K4  
♥ J63  
♦ Q107  
♣ 96532

Board (4) Av: NS=-560

N-S	E-W	Contract	N-S	E-W	IMP
3	5	5D W-1	100		12
2	8	3D W 4	130		10
1	10	3NT W 3	600		-1
7	4	3NT W 3	600		-1
10	1	3NT W 4	630		-2
9	6	3NT W 4	630		-2
4	7	3NT W 4	630		-2
8	2	3NT W 4	630		-2
5	3	3NT W 4	630		-2
6	9	3NT W 5	660		-3

Board (5) Av: NS=-470

N-S	E-W	Contract	N-S	E-W	IMP
7	4	3S E 5	200		7
8	2	4S E 4	420		2
9	6	4S E 4	420		2
3	5	4S E 5	450		1
10	1	4S E 6	480		0
6	9	4S E 6	480		0
1	10	4S E 6	480		0
4	7	4S E 6	480		0
2	8	4S E 7	510		-1
5	3	4S E 7	510		-1

Board (6) Av: NS=-120

N-S	E-W	Contract	N-S	E-W	IMP
3	5	2S W 2	110		0
9	6	2H E 2	110		0
6	9	2H E 2	110		0
8	2	2H E 2	110		0
10	1	2H E 2	110		0
2	8	2H E 2	110		0
7	4	2H E 3	140		-1
5	3	2H E 3	140		-1
1	10	2H E 3	140		-1
4	7	3C N-3	150		-1

**7**

♠ 1093  
♥ J742  
♦ A8643  
♣ 9

♠ 865  
♥ K1096  
♦ K7  
♣ 10876

W N E S

♠ A72  
♥ 5  
♦ J1092  
♣ AQJ32

♠ KQJ4  
♥ AQ83  
♦ Q5  
♣ K54

**8**

♠ KQJ102  
♥ 9832  
♦ 7  
♣ Q103

♠ 7643  
♥ QJ  
♦ KJ86542  
♣ KJ86542

W N E S

♠ A9  
♥ Q10765  
♦ K985  
♣ A9

♠ 85  
♥ AKJ4  
♦ A106432  
♣ 7

**9**

♠ AKJ10  
♥ Q52  
♦ J1083  
♣ AQ

♠ 32  
♥ 987  
♦ K9765  
♣ 1052

W N E S

♠ 9  
♥ J10643  
♦ AQ4  
♣ K963

♠ Q87654  
♥ AK  
♦ 2  
♣ J874

Board (7) Av: NS=+20

N-S	E-W	Contract	N-S	E-W	IMP
5	3	2H N 3	140		3
3	5	1NT S 1	90		2
6	9	1NT S 1	90		2
7	4	1NT S 1	90		2
1	10	1NT S 1	90		2
2	8	1NT S 1	90		2
4	7	2H S-1	100		-3
9	6	2D N-1	100		-3
10	1	1NT S-1	100		-3
8	2	4H S-2	200		-6

Board (8) Av: NS=-40

N-S	E-W	Contract	N-S	E-W	IMP
1	10	3S W-4	200		6
10	1	2NT E-3	150		5
2	8	1NT E-2	100		4
7	4	3D S-1	50		0
5	3	4H S-2	100		-2
4	7	3D S-2	100		-2
9	6	3D S-2	100		-2
3	5	2Dx S-1	100		-2
8	2	3C W 3	110		-2
6	9	3C W 3	110		-2

Board (9) Av: NS=+480

N-S	E-W	Contract	N-S	E-W	IMP
7	4	6S N 6	980		11
8	2	4S N 7	510		1
4	7	4S N 6	480		0
6	9	4S N 6	480		0
9	6	4S N 6	480		0
5	3	4S N 6	480		0
10	1	4S N 6	480		0
1	10	4S N 6	480		0
3	5	4S N 6	480		0
2	8	4H S-4	200		-12

木村六郎杯 OPEN TEAMS Session 1 Flight C 2014年2月22日(土)

10

♠ 105  
♥ 84  
♦ J1063  
♣ AJ1032

♠ Q82  
♥ J952  
♦ KQ954  
♣ 6

N  
W — E  
S

♠ AKJ93  
♥ 1063  
♦ A72  
♣ K5

♠ 764  
♥ AKQ7  
♦ 8  
♣ Q9874

Board (10) Av: NS=0

N-S	E-W	Contract	N-S	E-W	IMP
3	5	4S E-1	100		3
5	3	4S E-1	100		3
7	4	4S E-1	100		3
1	10	4S E-1	100		3
2	8	4S E-1	100		3
10	1	Passout			0
6	9	2S E 2	110		-3
4	7	2S E 3	140		-4
9	6	2S E 3	140		-4
8	2	5C N-2	200		-5

11

♠ J962  
♥ 74  
♦ 9765  
♣ QJ8

♠ K8754  
♥ 9  
♦ QJ832  
♣ 95

N  
W — E  
S

♠ A10  
♥ AQJ108  
♦ A  
♣ K7432

♠ Q3  
♥ K6532  
♦ K104  
♣ A106

Board (11) Av: NS=0

N-S	E-W	Contract	N-S	E-W	IMP
5	3	3NT E-3	150		4
8	2	3NT W-2	100		3
10	1	3NT E-2	100		3
7	4	4S W-1	50		2
3	5	3NT E-1	50		2
1	10	3NT E-1	50		2
9	6	2C E 2	90		-3
2	8	2NT E 2	120		-3
6	9	1NT E 3	150		-4
4	7	3NTx E 3	550		-11

12

♠ 54  
♥ 109762  
♦ QJ753  
♣ Q

♠ AK1086  
♥ 43  
♦ 964  
♣ K94

N  
W — E  
S

♠ 972  
♥ J5  
♦ K108  
♣ J7532

♠ QJ3  
♥ AKQ8  
♦ A2  
♣ A1086

Board (12) Av: NS=+650

N-S	E-W	Contract	N-S	E-W	IMP
10	1	4H S 6	680		1
8	2	4H N 6	680		1
5	3	4H S 5	650		0
6	9	4H S 5	650		0
7	4	4H S 5	650		0
2	8	4H S 5	650		0
1	10	4H S 5	650		0
9	6	4H S 5	650		0
3	5	4H S 4	620		-1
4	7	4H S 4	620		-1

13

♠ 653  
♥ AQ10  
♦ 7653  
♣ 642

♠ K82  
♥ KJ  
♦ Q10842  
♣ J53

N  
W — E  
S

♠ AJ97  
♥ 97542  
♦ AK  
♣ 87

♠ Q104  
♥ 863  
♦ J9  
♣ AKQ109

Board (13) Av: NS=+130

N-S	E-W	Contract	N-S	E-W	IMP
8	3	3D W-3	300		5
6	4	3S E-2	200		2
9	1	3D W-2	200		2
7	2	2H E-2	200		2
1	9	2H E-2	200		2
4	6	2NT N 2	120		0
2	7	3D W-1	100		-1
3	8	2H W-1	100		-1
10	5	3D W 3	110		-6
5	10	2H E 2	110		-6

14

♠ K106542  
♥ J52  
♦ Q  
♣ J75

♠ 93  
♥ A103  
♦ A987  
♣ KQ108

N  
W — E  
S

♠ AQJ8  
♥ 4  
♦ J1062  
♣ 9643

♠ 7  
♥ KQ9876  
♦ K543  
♣ A2

Board (14) Av: NS=-30

N-S	E-W	Contract	N-S	E-W	IMP
9	1	3H S 3	140		5
2	7	3H S 3	140		5
6	4	2H S 2	110		4
4	6	3H S-1	50		-1
1	9	3H S-1	50		-1
10	5	2H S-1	50		-1
5	10	4H S-2	100		-2
3	8	4H S-2	100		-2
8	3	4H S-2	100		-2
7	2	4H S-2	100		-2

15

♠ J106  
♥ AK1092  
♦ 10654  
♣ 3

♠ A975  
♥ 8765  
♦ AK72  
♣ K

N  
W — E  
S

♠ 32  
♥ J43  
♦ Q983  
♣ A875

♠ KQ84  
♥ Q  
♦ J  
♣ QJ109642

Board (15) Av: NS=+60

N-S	E-W	Contract	N-S	E-W	IMP
4	6	3C S 3	110		2
1	9	3C S 3	110		2
5	10	2C S 3	110		2
9	1	3D W-2	100		1
7	2	3D E-2	100		1
3	8	3D E-1	50		0
10	5	2NT W-1	50		0
2	7	2D E-1	50		0
8	3	3NT N-1	100		-4
6	4	3C S-1	100		-4

16

♠ AJ102  
♥ 1065  
♦ 763  
♣ K106

♠ 96  
♥ AK973  
♦ A2  
♣ A954

N  
W — E  
S

♠ 7543  
♥ Q842  
♦ QJ5  
♣ Q8

♠ KQ8  
♥ J  
♦ K10984  
♣ J732

Board (16) Av: NS=-260

N-S	E-W	Contract	N-S	E-W	IMP
6	4	4H W-1	100		8
9	1	4Dx S-1	100		4
4	6	4D S-2	100		4
10	5	3S N-3	150		3
5	10	3H W 4	170		3
1	9	3H W 4	170		3
3	8	2H W 4	170		3
8	3	4H W 4	620		-8
2	7	4H W 4	620		-8
7	2	4H W 4	620		-8

17

♠ 4  
♥ 5  
♦ K109653  
♣ 109863

♠ KJ953  
♥ AQ10962  
♦ J  
♣ A

N  
W — E  
S

♠ A87  
♥ K4  
♦ Q874  
♣ KJ72

♠ Q1062  
♥ J873  
♦ A2  
♣ Q54

Board (17) Av: NS=-490

N-S	E-W	Contract	N-S	E-W	IMP
9	1	4S W-1	50		11
5	10	3S W 4	170		8
1	9	3NT E 4	430		2
7	2	5S W 5	450		1
10	5	4S W 5	450		1
4	6	4H W 5	450		1
6	4	4H W 6	480		0
8	3	4H W 6	480		0
3	8	6H W 6	980		-10
2	7	6H W 6	980		-10

18

♠ J84  
♥ 864  
♦ 7532  
♣ K53

♠ Q9632  
♥ Q952  
♦ 4  
♣ J86

N  
W — E  
S

♠ K7  
♥ AK73  
♦ J1098  
♣ A74

♠ A105  
♥ J10  
♦ AKQ6  
♣ Q1092

Board (18) Av: NS=-70

N-S	E-W	Contract	N-S	E-W	IMP
5	10	2S E-1	50		3
9	1	2S E-1	50		3
10	5	2S E-1	50		3
4	6	2S E 2	110		-1
6	4	2S E 2	110		-1
1	9	2S E 2	110		-1
7	2	2S E 2	110		-1
2	7	2S E 2	110		-1
3	8	2S E 2	110		-1
8	3	2S E 3	140		-2

19

♠ Q653  
♥ A4  
♦ J753  
♣ Q52

♠ K109874  
♥ K765  
♦ Q  
♣ K10

N  
W—E  
S

♠ A  
♥ QJ1093  
♦ K1098  
♣ 973

♠ J2  
♥ 82  
♦ A642  
♣ AJ864

20

♠ AQJ4  
♥ K94  
♦ 72  
♣ 10964

♠ 97652  
♥ Q107  
♦ A8  
♣ Q87

N  
W—E  
S

♠ K83  
♥ AJ85  
♦ K654  
♣ 32

♠ 10  
♥ 632  
♦ QJ1093  
♣ AKJ5

21

♠ 754  
♥ AJ4  
♦ A63  
♣ K852

♠ K8  
♥ Q75  
♦ KJ98  
♣ AJ43

N  
W—E  
S

♠ Q9632  
♥ 1098  
♦ Q52  
♣ Q10

♠ AJ10  
♥ K632  
♦ 1074  
♣ 976

Board (19) Av: NS=-300

N-S	E-W	Contract	N-S	E-W	IMP
7	2	Passout			7
6	4	Passout			7
2	7	Passout			7
1	9	2S W 3		140	4
8	3	3H E 5		200	3
4	6	2S W 5		200	3
9	1	4H W 4		620	-8
10	5	4H W 4		620	-8
3	8	4H W 5		650	-8
5	10	4H W 5		650	-8

Board (20) Av: NS=-50

N-S	E-W	Contract	N-S	E-W	IMP
8	3	2NT S 3		150	5
4	6	2S W-1		100	4
6	4	Passout			2
2	7	Passout			2
1	9	1S W 1		80	-1
5	10	2S W 2		110	-2
3	8	2H E 2		110	-2
9	1	1S W 2		110	-2
10	5	1NT E 2		120	-2
7	2	3C S-2		200	-4

Board (21) Av: NS=+90

N-S	E-W	Contract	N-S	E-W	IMP
7	2	1NT W-3		150	2
5	10	1NT N 3		150	2
8	3	1NT N 2		120	1
10	5	1NT N 2		120	1
9	1	1NT N 2		120	1
2	7	1NT N 2		120	1
6	4	1NT N 1		90	0
4	6	1NT N 1		90	0
3	8	1NT W 1		90	-5
1	9	2H S-2		200	-7

22

♠ AK97  
♥ J94  
♦ 97  
♣ 10862

♠ J82  
♥ AK652  
♦ AJ  
♣ 543

N  
W—E  
S

♠ 43  
♥ Q108  
♦ K10542  
♣ AQJ

♠ Q1065  
♥ 73  
♦ Q863  
♣ K97

23

♠ 943  
♥ A975  
♦ 4  
♣ AQJ86

♠ KQ8  
♥ Q106  
♦ K7632  
♣ 107

N  
W—E  
S

♠ AJ10765  
♥  
♦ QJ98  
♣ K53

♠ 2  
♥ KJ8432  
♦ A105  
♣ 942

24

♠ J987  
♥ 986  
♦ J94  
♣ QJ5

♠ A632  
♥ J  
♦ 1082  
♣ AK873

N  
W—E  
S

♠ KQ4  
♥ A53  
♦ AK75  
♣ 1096

♠ 105  
♥ KQ10742  
♦ Q63  
♣ 42

Board (22) Av: NS=-620

N-S	E-W	Contract	N-S	E-W	IMP
9	1	3NT W 3		600	1
6	4	4H W 4		620	0
4	6	4H W 4		620	0
10	5	4H W 4		620	0
5	10	4H W 4		620	0
8	3	4H W 4		620	0
2	7	4H W 4		620	0
1	9	4H W 4		620	0
3	8	4H W 4		620	0
7	2	4H W 4		620	0

Board (23) Av: NS=-330

N-S	E-W	Contract	N-S	E-W	IMP
5	10	4H S 4		620	14
8	3	5S E-1		100	10
2	7	4S E-1		100	10
1	9	3S E 4		170	4
7	2	5Hx S-1		200	4
6	4	4S E 4		620	-7
4	6	4S E 4		620	-7
9	1	4S E 4		620	-7
3	8	4S E 4		620	-7
10	5	4S E 5		650	-8

Board (24) Av: NS=-420

N-S	E-W	Contract	N-S	E-W	IMP
10	5	3NT E-1		50	10
7	2	5C W 5		400	1
3	8	3NT E 3		400	1
9	1	3NT E 3		400	1
6	4	3NT E 4		430	0
5	10	3NT E 4		430	0
4	6	3NT E 4		430	0
2	7	3NT E 4		430	0
1	9	3NT E 5		460	-1
8	3	3NT E 5		460	-1

25

♠ K63  
♥ A108  
♦ K10952  
♣ KJ

♠ A8  
♥ Q5  
♦ J63  
♣ A107653

N  
W—E  
S

♠ 10974  
♥ KJ7643  
♦ Q7  
♣ 8

♠ QJ52  
♥ 92  
♦ A84  
♣ Q942

26

♠ K964  
♥ A43  
♦ AK62  
♣ 42

♠ 732  
♥ KKQ6  
♦ QJ9  
♣ 10653

N  
W—E  
S

♠ AQ1085  
♥ 752  
♦ 873  
♣ AK

♠ J  
♥ J1098  
♦ 1054  
♣ QJ987

27

♠ 1054  
♥ AKQ98  
♦ Q62  
♣ 105

♠ AQ86  
♥ 7  
♦ AKJ93  
♣ QJ7

N  
W—E  
S

♠ J972  
♥ J10432  
♦ 8  
♣ K43

♠ K3  
♥ 65  
♦ 10754  
♣ A9862

Board (25) Av: NS=-10

N-S	E-W	Contract	N-S	E-W	IMP
3	6	3NT N 3		400	9
9	4	1NT N 3		150	4
1	8	2NT N 2		120	4
10	2	1NT N 2		120	4
7	5	3D N-1		50	-1
6	3	2S S-1		50	-1
5	7	2H E 2		110	-3
8	1	2H E 2		110	-3
2	10	2H E 3		140	-4
4	9	2NT N-3		150	-4

Board (26) Av: NS=+60

N-S	E-W	Contract	N-S	E-W	IMP
4	9	2S E-2		200	4
3	6	2S E-2		200	4
6	3	2S E-1		100	1
9	4	2S E-1		100	1
1	8	2S E-1		100	1
8	1	2S E-1		100	1
10	2	2S E-1		100	1
7	5	2S E 2		110	-5
2	10	2S E 2		110	-5
5	7	3D N-3		300	-8

Board (27) Av: NS=-180

N-S	E-W	Contract	N-S	E-W	IMP
10	2	2H N-2		100	2
9	4	1Hx N-1		100	2
4	9	3S W 3		140	1
2	10	2S W 3		140	1
7	5	2S E 3		140	1
8	1	1S E 3		140	1
3	6	1S W 4		170	0
5	7	3S W 5		200	-1
1	8	4S W 4		420	-6
6	3	4S W 5		450	-7

28

♠ KQJ1097  
♥ 5  
♦ AK986  
♣ J

♠ 43  
♥ AQ63  
♦ 10532  
♣ 1086

N  
W | E  
S

♠ 62  
♥ 8742  
♦ J  
♣ KQ7543

♠ A85  
♥ KJ109  
♦ Q74  
♣ A92

29

♠ AJ106  
♥ Q9875  
♦ J42  
♣ 3

♠ 97  
♥ 3  
♦ AKQ10975  
♣ A102

N  
W | E  
S

♠ 543  
♥ AK64  
♦ 83  
♣ 9876

♠ KQ82  
♥ J102  
♦ 6  
♣ KQJ54

30

♠ AKQJ103  
♥ K976  
♦ 95  
♣ A

♠ AJ10  
♥ J832  
♦ 1097542  
♣ 1097542

N  
W | E  
S

♠ 8764  
♥ 54  
♦ 1076  
♣ J863

♠ 952  
♥ Q832  
♦ AKQ4  
♣ KQ

Board (28) Av: NS=+1240

N-S	E-W	Contract	N-S	E-W	IMP
4	9	6S	N 6	1430	5
7	5	6S	N 6	1430	5
5	7	6S	N 6	1430	5
9	4	6S	N 6	1430	5
3	6	6S	N 6	1430	5
8	1	6S	N 6	1430	5
2	10	6S	N 6	1430	5
1	8	4S	N 6	680	-11
6	3	4S	N 6	680	-11
10	2	4S	N 6	680	-11

Board (29) Av: NS=-120

N-S	E-W	Contract	N-S	E-W	IMP
5	7	3S	S 3	140	6
1	8	3S	S 3	140	6
7	5	4S	S-1	100	1
2	10	4S	S-1	100	1
6	3	3D	W 4	130	0
4	9	3D	W 4	130	0
9	4	4S	S-2	200	-2
8	1	4S	S-2	200	-2
3	6	4H	S-2	200	-2
10	2	3NT	W 4	630	-11

Board (30) Av: NS=+790

N-S	E-W	Contract	N-S	E-W	IMP
4	9	6NT	S 6	990	5
6	3	6S	S 6	980	5
5	7	6S	S 6	980	5
9	4	6S	S 6	980	5
7	5	6S	S 6	980	5
1	8	6S	S 6	980	5
2	10	6S	S 6	980	5
3	6	5H	S 5	450	-8
10	2	6H	S-1	50	-13
8	1	7H	S-2	100	-13

31

♠ Q1075  
♥ AKQJ  
♦ AK  
♣ K42

♠ J6  
♥ 953  
♦ J98  
♣ A10985

N  
W | E  
S

♠ AK3  
♥ 1087  
♦ Q764  
♣ J73

♠ 9842  
♥ 642  
♦ 10532  
♣ Q6

32

♠ 1052  
♥ J9873  
♦ A3  
♣ 832

♠ AKJ976  
♥ KQ  
♦ 104  
♣ A65

N  
W | E  
S

♠ Q4  
♥ A104  
♦ 765  
♣ KJ1094

♠ 83  
♥ 652  
♦ KQJ982  
♣ Q7

33

♠ KJ94  
♥ 1084  
♦ AJ3  
♣ 643

♠ KQ76  
♥ KQ1085  
♣ AJ75

N  
W | E  
S

♠ AQ10862  
♥ 92  
♦ 62  
♣ KQ2

♠ 753  
♥ AJ53  
♦ 974  
♣ 1098

Board (31) Av: NS=+50

N-S	E-W	Contract	N-S	E-W	IMP
10	2	4S	N 4	620	11
5	7	4S	N 4	620	11
8	1	2NT	N 3	150	3
3	6	2NT	N 2	120	2
9	4	4S	N-1	100	-4
1	8	4S	N-1	100	-4
7	5	4H	S-1	100	-4
6	3	2NT	N-1	100	-4
2	10	2NT	N-1	100	-4
4	9	2NT	N-1	100	-4

Board (32) Av: NS=-660

N-S	E-W	Contract	N-S	E-W	IMP
8	1	3NT	E-2	200	13
4	9	4S	W 4	620	1
7	5	4S	W 5	650	0
5	7	4S	W 5	650	0
2	10	4S	W 5	650	0
3	6	4S	W 5	650	0
10	2	4S	W 5	650	0
1	8	4S	W 7	710	-2
6	3	4S	W 7	710	-2
9	4	4S	W 7	710	-2

Board (33) Av: NS=-360

N-S	E-W	Contract	N-S	E-W	IMP
10	2	3NT	W-1	50	9
2	10	3NT	E-1	50	9
4	9	3NT	W 3	400	-1
3	6	3NT	W 3	400	-1
1	8	3NT	W 3	400	-1
5	7	3NT	W 4	430	-2
7	5	3NT	W 4	430	-2
9	4	3NT	W 4	430	-2
6	3	3NT	W 4	430	-2
8	1	3NT	W 4	430	-2

34

♠ J3  
♥ J105  
♦ 1054  
♣ KQJ42

♠ A9764  
♥ A74  
♦ K7  
♣ 1065

N  
W | E  
S

♠ Q10  
♥ K9832  
♦ QJ82  
♣ 93

♠ K852  
♥ Q6  
♦ A963  
♣ A87

35

♠ Q982  
♥ A  
♦ A8654  
♣ 942

♠ K7  
♥ J8643  
♦ 3  
♣ A8653

N  
W | E  
S

♠ 10653  
♥ KQ972  
♦ J92  
♣ Q

♠ AJ4  
♥ 105  
♦ KQ107  
♣ KJ107

36

♠ Q6  
♥ Q1075  
♦ KJ1096  
♣ 109

♠ A10972  
♥ KJ9  
♦ 8753  
♣ 2

N  
W | E  
S

♠ 84  
♥ A82  
♦ A4  
♣ QJ8763

♠ KJ53  
♥ 643  
♦ Q2  
♣ AK54

Board (34) Av: NS=-40

N-S	E-W	Contract	N-S	E-W	IMP
2	10	2C	N 2	90	4
5	7	2C	N 2	90	4
10	2	2C	N 2	90	4
8	1	1NT	N 1	90	4
7	5	1NT	E 1	90	-2
4	9	1S	W 2	110	-2
9	4	1S	W 2	110	-2
3	6	1NT	E 2	120	-2
6	3	1NT	E 2	120	-2
1	8	2H	E 3	140	-3

Board (35) Av: NS=-30

N-S	E-W	Contract	N-S	E-W	IMP
3	6	1NT	S 2	120	4
7	5	1NT	S 1	90	3
6	3	1NT	S 1	90	3
4	9	1NT	S 1	90	3
5	7	3NT	S-2	100	-2
9	4	3NT	S-2	100	-2
8	1	3NT	S-2	100	-2
2	10	3NT	S-2	100	-2
10	2	3NT	N-2	100	-2
1	8	3H	E 3	140	-3

Board (36) Av: NS=+10

N-S	E-W	Contract	N-S	E-W	IMP
6	3	1NT	E-2	200	5
10	2	1NT	S 3	150	4
3	6	2C	E-1	100	3
2	10	2C	E-1	100	3
7	5	2D	N 2	90	2
1	8	2C	E 2	90	-3
8	1	2C	E 2	90	-3
9	4	2NT	S-1	100	-3
4	9	2H	N-1	100	-3
5	7	1NT	S-2	200	-5

37

♠ KQ2  
♥ A105  
♦ 752  
♣ Q832

♠ A7543  
♥ K32  
♦ 94  
♣ 1065

♠ J1098  
♥ Q96  
♦ AJ8  
♣ AK4

W N E S

♠ 6  
♥ J874  
♦ KQ1063  
♣ J97

Board (37) Av: NS=+620

N-S	E-W	Contract	N-S	E-W	IMP
9	2	3NT S 4	630		0
5	4	3NT S 4	630		0
2	9	3NT S 4	630		0
1	7	3NT S 4	630		0
6	8	3NT S 4	630		0
4	5	3NT S 3	600		-1
7	1	3NT S 3	600		-1
3	10	3NT S 3	600		-1
10	3	3NT S 3	600		-1
8	6	3NT N 3	600		-1

38

♠ Q6542  
♥ KJ7  
♦ KJ8  
♣ QJ

♠ KJ1098  
♥ 10  
♦ 1054  
♣ 8763

♠ A  
♥ AQ9852  
♦ AQ2  
♣ 942

W N E S

♠ 73  
♥ 643  
♦ 9763  
♣ AK105

Board (38) Av: NS=+200

N-S	E-W	Contract	N-S	E-W	IMP
2	9	4H S 5	450		6
3	10	4H S 5	450		6
1	7	4H S 5	450		6
7	1	4H S 5	450		6
8	6	4H N 5	450		6
6	8	6H S-1		50	-6
10	3	6H S-1		50	-6
5	4	6H S-1		50	-6
9	2	6H S-1		50	-6
4	5	6H S-1		50	-6

39

♠ A6  
♥ KJ109754  
♦ A109  
♣ 9

♠ KJ943  
♥ A2  
♦ KJ3  
♣ AQ7

♠ 1075  
♥ 63  
♦ Q52  
♣ J8432

W N E S

♠ Q82  
♥ Q8  
♦ 8764  
♣ K1065

Board (39) Av: NS=-350

N-S	E-W	Contract	N-S	E-W	IMP
8	6	4S E-2	200		11
5	4	4S E-1	100		10
10	3	4S E-1	100		10
2	9	4S E-1	100		10
1	7	4S E 4		620	-7
6	8	4S E 4		620	-7
4	5	4S E 4		620	-7
7	1	4S E 4		620	-7
9	2	4S E 4		620	-7
3	10	4S E 4		620	-7

40

♠ Q105  
♥ J63  
♦ Q2  
♣ AQ1096

♠ J84  
♥ Q754  
♦ K96  
♣ J52

♠ A962  
♥ K1082  
♦ A7  
♣ 843

W N E S

♠ K73  
♥ A9  
♦ J108543  
♣ K7

Board (40) Av: NS=+10

N-S	E-W	Contract	N-S	E-W	IMP
1	7	3C S 3	110		3
9	2	3C N 3	110		3
10	3	3D W-1	50		1
7	1	3D W-1	50		1
4	5	3D W-1	50		1
3	10	2D W-1	50		1
6	8	4C N-1		50	-2
5	4	3H S-1		50	-2
8	6	3D W 3		110	-3
2	9	3D W 3		110	-3

41

♠ A109  
♥ 109  
♦ AQ  
♣ KJ6432

♠ J8  
♥ 743  
♦ K983  
♣ A1075

♠ K652  
♥ AKJ5  
♦ 10754  
♣ 9

W N E S

♠ Q743  
♥ Q862  
♦ J62  
♣ Q8

Board (41) Av: NS=+80

N-S	E-W	Contract	N-S	E-W	IMP
2	9	3NT S 3	400		8
10	3	3NT N 3	400		8
8	6	3NT N 3	400		8
1	7	2NT S 2	120		1
5	4	3NT S-1		50	-4
7	1	3NT S-1		50	-4
9	2	3NT S-1		50	-4
3	10	3NT N-1		50	-4
4	5	3NT N-1		50	-4
6	8	3NT S-2		100	-5

42

♠ K9632  
♥ 8  
♦ QJ974  
♣ A10

♠ Q  
♥ J653  
♦ A32  
♣ KJ543

♠ A874  
♥ AK10742  
♦ 5  
♣ 82

W N E S

♠ J105  
♥ Q9  
♦ K1086  
♣ Q976

Board (42) Av: NS=+540

N-S	E-W	Contract	N-S	E-W	IMP
2	9	4S N 5	650		3
9	2	4S N 5	650		3
8	6	4S N 5	650		3
7	1	4S N 5	650		3
6	8	4S N 4	620		2
1	7	4S N 4	620		2
4	5	4S N 4	620		2
3	10	4S N 4	620		2
5	4	6S N-1		100	-12
10	3	4S N-1		100	-12

43

♠ AKQ975  
♥ 109542  
♦ A  
♣ 2

♠ J4  
♥ AQ7  
♦ KJ32  
♣ AQ107

♠ 86  
♥ J863  
♦ 1095  
♣ K854

W N E S

♠ 1032  
♥ K  
♦ Q8764  
♣ J963

Board (43) Av: NS=+110

N-S	E-W	Contract	N-S	E-W	IMP
5	4	5Dx W-3	500		9
8	6	4H N 5	450		8
3	10	5Dx W-2	300		5
4	5	2H N 3	140		1
9	2	5D W-2	100		0
1	7	3D W-1	50		-2
10	3	5H N-1		50	-4
2	9	4H N-1		50	-4
7	1	4Hx N-1		100	-5
6	8	3D W 3		110	-6

44

♠ 10852  
♥ J3  
♦ Q10952  
♣ AQ

♠ KQ9  
♥ 9865  
♦ K86  
♣ 1073

♠ A3  
♥ KQ107  
♦ A73  
♣ KJ86

W N E S

♠ J764  
♥ A42  
♦ J4  
♣ 9542

Board (44) Av: NS=+620

N-S	E-W	Contract	N-S	E-W	IMP
1	7	3NT S 6	690		2
3	10	3NT S 4	630		0
5	4	3NT S 4	630		0
6	8	3NT S 4	630		0
7	1	3NT S 4	630		0
9	2	3NT S 4	630		0
8	6	3NT S 3	600		-1
10	3	3NT S 3	600		-1
4	5	3NT S 3	600		-1
2	9	3NT N 3	600		-1

45

♠ Q9752  
♥ K72  
♦ J107  
♣ A4

♠ K4  
♥ A863  
♦ AQ6  
♣ K1032

♠ AJ83  
♥ Q4  
♦ K943  
♣ 976

W N E S

♠ 106  
♥ J1095  
♦ 852  
♣ QJ85

Board (45) Av: NS=+30

N-S	E-W	Contract	N-S	E-W	IMP
5	4	1NT E-2	200		5
3	10	1NT E-1	100		2
8	6	1NT E-1	100		2
9	2	1NT E-1	100		2
1	7	1NT E-1	100		2
2	9	1NT E-1	100		2
7	1	1NT E 1		90	-3
10	3	1NT E 1		90	-3
6	8	1NT E 2		120	-4
4	5	3NT S-2		200	-6

46

♠ Q  
♥ QJ1094  
♦ 82  
♣ KJ873

♠ J10542    ♠ K73  
♥            ♥ AK6  
♦ AKJ107    ♦ Q954  
♣ 654        ♣ Q92

♠ A986  
♥ 87532  
♦ 63  
♣ A10

47

♠ 6  
♥ AQJ10  
♦ J85  
♣ 109843

♠ AK2        ♠ J1074  
♥ 543        ♥ K  
♦ KQ7        ♦ 109432  
♣ AK76       ♣ J52

♠ Q9853  
♥ 98762  
♦ A6  
♣ Q

48

♠ A82  
♥ 865  
♦ A73  
♣ AK102

♠ QJ976    ♠ 10  
♥ 743        ♥ AQJ10  
♦ KQ62      ♦ 10985  
♣ 8           ♣ Q954

♠ K543  
♥ K92  
♦ J4  
♣ J763

Board (46) Av: NS=-40 EW=-10

Board (47) Av: NS=+120

Board (48) Av: NS=-60

Board (46)			Board (47)			Board (48)		
N-S	E-W	IMP	N-S	E-W	IMP	N-S	E-W	IMP
4	5	11	5	4	11	7	1	5
1	7	5	6	8	2	4	5	0
9	2	4	9	2	1	10	3	0
3	10	3	7	1	1	8	6	0
8	6	3	3	10	1	6	8	0
2	9	-2	10	3	-1	1	7	0
10	3	-2	2	9	-1	3	10	0
6	8	-3	8	6	-1	5	4	0
7	1	-6	4	5	-2	9	2	-1
5	4	-9	1	7	-6	2	9	-1

木村六郎杯 OPEN TEAMS Session 2 Flight C 2014年2月23日(日)

1

♠6432  
♥4  
♦K1074  
♣KQ85

♠AKJ  
♥A9865  
♦QJ2  
♣A3

♠Q10875  
♥Q3  
♦865  
♣942

♠9  
♥KJ1072  
♦A93  
♣J1076

Board (1) Av: NS=+30

N-S	E-W	Contract	N-S	E-W	IMP
7	3	2C	S 3	110	2
6	1	1H	W-2	100	2
10	4	1H	W-2	100	2
4	10	1NT	S 1	90	2
5	2	3NT	W-1	50	1
3	7	1H	W-1	50	1
1	6	3C	S-1	50	-2
2	5	3C	S-1	50	-2
8	9	1NT	W 1	90	-3
9	8	2S	W 3	140	-5

2

♠873  
♥QJ7  
♦J763  
♣AQJ

♠AQ952  
♥K52  
♦102  
♣1063

♠J4  
♥64  
♦AQ985  
♣9875

♠K106  
♥A10983  
♦K4  
♣K42

Board (2) Av: NS=-80

N-S	E-W	Contract	N-S	E-W	IMP
8	9	3H	S 3	140	6
4	10	2H	S 3	140	6
1	6	3H	S-1	100	-1
2	5	3H	S-1	100	-1
6	1	3H	S-1	100	-1
7	3	3H	S-1	100	-1
10	4	3H	S-1	100	-1
9	8	3H	S-1	100	-1
3	7	4H	S-2	200	-3
5	2	3NT	S-2	200	-3

3

♠96  
♥Q852  
♦K652  
♣QJ8

♠AJ74  
♥AK9  
♦A1094  
♣92

♠Q108  
♥J103  
♦J7  
♣AK753

♠K532  
♥764  
♦Q83  
♣1064

Board (3) Av: NS=-660

N-S	E-W	Contract	N-S	E-W	IMP
8	9	3NT	W 4	630	1
10	4	3NT	W 4	630	1
4	10	3NT	W 4	630	1
1	6	3NT	W 5	660	0
5	2	3NT	W 5	660	0
9	8	3NT	W 5	660	0
2	5	3NT	W 5	660	0
6	1	3NT	W 6	690	-1
7	3	3NT	W 6	690	-1
3	7	3NT	W 6	690	-1

4

♠AQ86  
♥K875  
♦72  
♣QJ3

♠9  
♥AJ943  
♦Q864  
♣K104

♠10753  
♥Q102  
♦KJ  
♣A976

♠KJ42  
♥6  
♦A10953  
♣852

Board (4) Av: NS=+50

N-S	E-W	Contract	N-S	E-W	IMP
4	10	3H	W-2	200	4
7	3	3H	W-2	200	4
8	9	3S	N 3	140	3
6	1	2S	S 2	110	2
5	2	2S	S 2	110	2
10	4	2S	S 2	110	2
2	5	3S	S-1	100	-4
3	7	3S	S-1	100	-4
9	8	2S	S-1	100	-4
1	6	3S	S-2	200	-6

5

♠KQ4  
♥J54  
♦J10872  
♣104

♠108652  
♥73  
♦A63  
♣KQ2

♠J9  
♥AQ109862  
♦9  
♣765

♠A73  
♥K  
♦KQ54  
♣AJ983

Board (5) Av: NS=-110

N-S	E-W	Contract	N-S	E-W	IMP
2	5	4D	N 4	130	6
10	4	4D	N 4	130	6
8	9	5D	N-1	100	0
6	1	5D	N-1	100	0
7	3	5D	N-1	100	0
9	8	4D	N-1	100	0
3	7	4D	N-1	100	0
1	6	3S	N-2	200	-3
5	2	4S	N-3	300	-5
4	10	3S	N-4	400	-7

6

♠AK108  
♥A76  
♦A986  
♣K7

♠J93  
♥854  
♦J73  
♣6543

♠76542  
♥Q  
♦10542  
♣QJ2

♠Q  
♥KJ10932  
♦KQ  
♣A1098

Board (6) Av: NS=+950

N-S	E-W	Contract	N-S	E-W	IMP
1	6	6H	S 7	1010	2
8	9	6H	S 7	1010	2
3	7	6H	S 7	1010	2
5	2	6H	S 7	1010	2
7	3	6H	S 7	1010	2
4	10	6H	S 7	1010	2
9	8	6H	S 7	1010	2
10	4	6H	S 7	1010	2
6	1	4H	S 7	510	-10
2	5	4H	S 7	510	-10

7

♠Q97  
♥8762  
♦972  
♣KJ7

♠843  
♥A53  
♦J86  
♣A1082

♠KJ  
♥KJ109  
♦AK103  
♣Q96

♠A10652  
♥Q4  
♦Q54  
♣543

Board (7) Av: NS=-340

N-S	E-W	Contract	N-S	E-W	IMP
1	6	3NT	E-2	200	11
8	9	3NT	E-2	200	11
5	2	3NT	E-2	200	11
2	5	1NT	E 1	90	6
6	1	3NT	E 3	600	-6
7	3	3NT	E 3	600	-6
3	7	3NT	E 3	600	-6
10	4	3NT	E 3	600	-6
9	8	3NT	E 3	600	-6
4	10	3NT	W 4	630	-7

8

♠AK954  
♥Q4  
♦QJ10763  
♣QJ10763

♠K  
♥10632  
♦KJ1076  
♣954

♠AQJ106  
♥Q8  
♦985  
♣AK2

♠9875432  
♥J7  
♦A32  
♣8

Board (8) Av: NS=+90

N-S	E-W	Contract	N-S	E-W	IMP
4	10	4Sx	E-3	500	9
7	3	4H	N 4	420	8
2	5	3H	N 3	140	2
5	2	2H	N 3	140	2
3	7	2H	N 3	140	2
1	6	2H	N 2	110	1
8	9	2H	N 2	110	1
9	8	4C	N-2	100	-5
10	4	1Sx	E 2	260	-8
6	1	2Sx	E 2	470	-11

9

♠103  
♥AQ543  
♦AKQ4  
♣J10

♠Q75  
♥K  
♦98752  
♣Q984

♠K642  
♥J97  
♦103  
♣7532

♠AJ98  
♥10862  
♦J6  
♣AK6

Board (9) Av: NS=+200

N-S	E-W	Contract	N-S	E-W	IMP
10	4	6H	N 6	980	13
9	8	5H	N 5	450	6
6	1	4H	S 5	450	6
1	6	4H	N 5	450	6
4	10	4H	N 5	450	6
7	3	6H	N-1	50	-6
5	2	6H	N-1	50	-6
2	5	6H	N-1	50	-6
8	9	6H	N-1	50	-6
3	7	6H	N-1	50	-6

10

♠ J1084  
♥ J2  
♦ 8752  
♣ Q83

♠ A92  
♥ 1063  
♦ KJ93  
♣ J64

N  
W — E  
S

♠ K63  
♥ AKQ75  
♦ Q4  
♣ A72

♠ Q75  
♥ 984  
♦ A106  
♣ K1095

11

♠ 105  
♥ J109752  
♦ 10875  
♣ 2

♠ J9832  
♥ Q  
♦ AQ63  
♣ A94

N  
W — E  
S

♠ Q  
♥ K4  
♦ KJ942  
♣ KQJ63

♠ AK764  
♥ A863  
♦  
♣ 10875

12

♠ 876  
♥ KQ7  
♦ K95  
♣ J1083

♠ AK1054  
♥ J862  
♦ 2  
♣ AQ4

N  
W — E  
S

♠ Q9  
♥ 109  
♦ AQ1083  
♣ K762

♠ J32  
♥ A543  
♦ J764  
♣ 95

Board (10) Av: NS=-650

N-S	E-W	Contract	N-S	E-W	IMP
1	6	4H	E 5	650	0
6	1	4H	E 5	650	0
2	5	4H	E 5	650	0
5	2	4H	E 5	650	0
3	7	4H	E 5	650	0
7	3	4H	E 5	650	0
4	10	4H	E 5	650	0
10	4	4H	E 5	650	0
8	9	4H	E 5	650	0
9	8	4H	E 5	650	0

Board (11) Av: NS=-370

N-S	E-W	Contract	N-S	E-W	IMP
7	3	5H	S-1	50	8
3	7	5H	N-1	50	8
6	1	5D	W 5	400	-1
9	8	5D	E 5	400	-1
4	10	5D	E 5	400	-1
1	6	5C	E 5	400	-1
2	5	5D	E 6	420	-2
10	4	5C	E 6	420	-2
5	2	3NT	W 5	460	-3
8	9	3NT	E 5	460	-3

Board (12) Av: NS=-430

N-S	E-W	Contract	N-S	E-W	IMP
2	5	3NT	W 4	430	0
3	7	3NT	E 4	430	0
6	1	3NT	E 4	430	0
5	2	3NT	E 4	430	0
9	8	3NT	E 4	430	0
7	3	3NT	E 4	430	0
4	10	3NT	E 4	430	0
8	9	3NT	E 4	430	0
10	4	3NT	E 4	430	0
1	6	3NT	E 5	460	-1

13

♠ Q10  
♥ Q  
♦ Q107  
♣ KQ108642

♠ AJ7643  
♥ 7643  
♦ K98  
♣

N  
W — E  
S

♠ 9852  
♥ K1095  
♦ J52  
♣ 95

♠ K  
♥ AJ82  
♦ A643  
♣ AJ73

14

♠ A96  
♥ J  
♦ 10843  
♣ AKQ82

♠ KJ10542  
♥ 96543  
♦ J  
♣ 6

N  
W — E  
S

♠ 83  
♥ A72  
♦ AK652  
♣ J73

♠ Q7  
♥ KQ108  
♦ Q97  
♣ 10954

15

♠ Q9  
♥ A9875  
♦ 1075  
♣ 543

♠ 7  
♥ QJ62  
♦ AQ32  
♣ 9876

N  
W — E  
S

♠ A10643  
♥ K3  
♦ K9  
♣ AQJ2

♠ KJ852  
♥ 104  
♦ J864  
♣ K10

Board (13) Av: NS=+600

N-S	E-W	Contract	N-S	E-W	IMP
10	7	3NT	N 4	630	1
9	3	5C	N 6	620	1
6	2	5C	S 5	600	0
5	1	5C	N 5	600	0
2	6	5C	N 5	600	0
1	5	5C	N 5	600	0
8	4	5C	N 5	600	0
4	8	5C	N 5	600	0
7	10	5C	N 5	600	0
3	9	5C	S-1	100	-12

Board (14) Av: NS=+80

N-S	E-W	Contract	N-S	E-W	IMP
5	1	2NT	S 4	180	3
7	10	3H	W-3	150	2
9	3	3C	N 3	110	1
2	6	3C	N 3	110	1
6	2	3C	N 3	110	1
1	5	4S	W-2	100	1
3	9	2S	W-1	50	-1
10	7	2D	E-1	50	-1
4	8	2NT	N-1	50	-4
8	4	5C	N-2	100	-5

Board (15) Av: NS=-410

N-S	E-W	Contract	N-S	E-W	IMP
5	1	2C	E 5	150	6
1	5	3NT	W 3	400	0
2	6	3NT	W 3	400	0
6	2	3NT	W 3	400	0
10	7	3NT	W 3	400	0
4	8	3NT	E 3	400	0
3	9	3NT	E 3	400	0
8	4	3NT	W 4	430	-1
7	10	3NT	W 4	430	-1
9	3	3NT	W 4	430	-1

16

♠ J10  
♥ K952  
♦ Q102  
♣ J843

♠ K62  
♥ J43  
♦ AK3  
♣ AQ95

N  
W — E  
S

♠ Q8754  
♥ A8  
♦ J9874  
♣ 7

♠ A93  
♥ Q1076  
♦ 65  
♣ K1062

17

♠ 1043  
♥ AK8  
♦ J842  
♣ 643

♠ K9  
♥ J1095  
♦ A1075  
♣ AQ5

N  
W — E  
S

♠ AJ8752  
♥ 42  
♦ 63  
♣ 982

♠ Q6  
♥ Q763  
♦ KQ9  
♣ KJ107

18

♠ 8763  
♥ 107  
♦ 93  
♣ AQJ85

♠ 4  
♥ AK2  
♦ AKQ76  
♣ K963

N  
W — E  
S

♠ KQJ5  
♥ J63  
♦ 1042  
♣ 1074

♠ A1092  
♥ Q9854  
♦ J85  
♣ 2

Board (16) Av: NS=-150

N-S	E-W	Contract	N-S	E-W	IMP
1	5	4S	W-1	100	6
2	6	2S	W 3	140	0
5	1	2S	W 3	140	0
7	10	2S	W 3	140	0
3	9	2S	W 3	140	0
8	4	2S	W 3	140	0
9	3	2S	W 4	170	-1
6	2	2S	W 4	170	-1
10	7	2S	W 4	170	-1
4	8	4S	W 4	620	-10

Board (17) Av: NS=-40

N-S	E-W	Contract	N-S	E-W	IMP
3	9	1NT	N 1	90	4
7	10	3S	E-1	50	3
2	6	3S	E-1	50	3
10	7	3S	E-1	50	3
9	3	3S	E-1	50	3
6	2	2S	W 2	110	-2
5	1	2S	E 2	110	-2
8	4	2S	E 3	140	-3
4	8	3D	S-3	150	-3
1	5	3Dx	N-3	500	-10

Board (18) Av: NS=-400

N-S	E-W	Contract	N-S	E-W	IMP
5	1	3NT	W-1	50	10
2	6	3NT	W 3	400	0
1	5	3NT	W 3	400	0
8	4	3NT	W 3	400	0
7	10	3NT	W 3	400	0
9	3	3NT	W 3	400	0
6	2	3NT	E 3	400	0
4	8	3NT	E 3	400	0
3	9	3NT	W 4	430	-1
10	7	3NT	W 4	430	-1



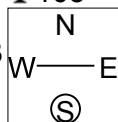
19

♠ 98  
♥ Q107  
♦ QJ10632  
♣ 103

♠ K65  
♥ AJ543  
♦ A  
♣ AK85

♠ AQ742  
♥ K96  
♦ K8  
♣ 964

♠ J103  
♥ 82  
♦ 9754  
♣ QJ72



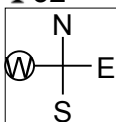
20

♠ J1086  
♥ J96  
♦ 10964  
♣ 32

♠ Q72  
♥ Q87  
♦ AKQ5  
♣ AJ8

♠ A93  
♥ 103  
♦ J873  
♣ K1065

♠ K54  
♥ AK542  
♦ 2  
♣ Q974



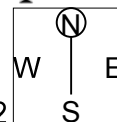
21

♠ Q10962  
♥ Q7632  
♦ A64  
♣

♠ K  
♥ 10953  
♣ AQ1087532

♠ A53  
♥  
♦ KQJ872  
♣ KJ94

♠ KJ874  
♥ AJ109854  
♦  
♣ 6



Board (19) Av: NS=-1060

N-S	E-W	Contract	N-S	E-W	IMP
4	8	5H	W 6	680	9
7	10	5H	W 6	680	9
8	4	5H	W 6	680	9
2	6	4H	W 6	680	9
3	9	4H	W 6	680	9
10	7	6S	E 6	1430	-9
9	3	6S	E 6	1430	-9
6	2	6H	W 6	1430	-9
5	1	6H	W 6	1430	-9
1	5	6H	W 6	1430	-9

Board (20) Av: NS=-100

N-S	E-W	Contract	N-S	E-W	IMP
3	9	3NT	E-2	200	7
5	1	3NT	E-2	200	7
10	7	3NT	E-1	100	5
2	6	3NT	E-1	100	5
9	3	3NT	E-1	100	5
7	10	3NT	E-1	100	5
1	5	1NT	W 3	150	-2
4	8	3NT	W 3	600	-11
8	4	3NT	E 4	630	-11
6	2	3NT	E 4	630	-11

Board (21) Av: NS=+630

N-S	E-W	Contract	N-S	E-W	IMP
3	9	6Sx	N 6	1660	14
5	1	6Hx	S 6	1660	14
6	2	6Hx	N 6	1660	14
2	6	6H	S 6	1430	13
7	10	5H	S 6	680	2
1	5	7Cx	W-2	300	-8
8	4	7Cx	W-2	300	-8
10	7	7Dx	E-1	100	-11
9	3	6Dx	E 6	1090	-17
4	8	6Dx	E 6	1090	-17

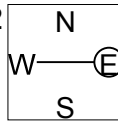
22

♠ Q75  
♥ K9654  
♦ 9  
♣ AJ106

♠ KJ10832  
♥ 1073  
♦ 65  
♣ 98

♠ A64  
♥ J2  
♦ AKJ732  
♣ K5

♠ 9  
♥ AQ8  
♦ Q1084  
♣ Q7432



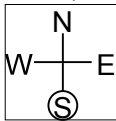
23

♠ 6  
♥ AK985  
♦ AK  
♣ AQ1094

♠ QJ1032  
♥ J6  
♦ QJ1094  
♣ K

♠ K98  
♥ 42  
♦ 32  
♣ J87653

♠ A754  
♥ Q1073  
♦ 8765  
♣ 2



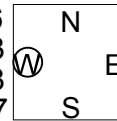
24

♠ 43  
♥ AKJ  
♦ KQ1084  
♣ 963

♠ J106  
♥ 1053  
♦ 9753  
♣ A107

♠ AKQ9872  
♥ 62  
♦  
♣ Q542

♠ 5  
♥ Q9874  
♦ AJ62  
♣ KJ8



Board (22) Av: NS=+90

N-S	E-W	Contract	N-S	E-W	IMP
1	5	3D	E-2	200	3
9	3	3D	E-2	200	3
2	6	3D	E-2	200	3
10	7	3H	S 3	140	2
3	9	3H	N 3	140	2
8	4	3C	S 4	130	1
7	10	3D	E-1	100	0
5	1	4H	N-1	50	-4
6	2	3S	W 3	140	-6
4	8	2S	E 3	140	-6

Board (23) Av: NS=+980

N-S	E-W	Contract	N-S	E-W	IMP
2	6	6H	N 7	1460	10
5	1	6H	N 7	1460	10
8	4	6H	S 6	1430	10
9	3	6H	N 6	1430	10
1	5	4H	N 7	710	-7
3	9	4H	N 7	710	-7
4	8	4H	N 7	710	-7
10	7	4H	N 7	710	-7
7	10	4H	N 7	710	-7
6	2	3H	S 7	260	-12

Board (24) Av: NS=-10

N-S	E-W	Contract	N-S	E-W	IMP
9	3	5H	S 5	450	10
5	1	5Sx	E-2	300	7
1	5	5Sx	E-1	100	3
10	7	4Sx	E-1	100	3
6	2	4S	E-1	50	2
8	4	4S	E-1	50	2
3	9	4S	E-1	50	2
7	10	6Hx	S-2	300	-7
2	6	4S	E 4	420	-9
4	8	4Sx	E 4	590	-11

木村六郎杯 OPEN TEAMS Session 3 Flight C 2014年2月23日(日)

**1**

♠4  
♥A984  
♦AQ742  
♣1083

♠AQJ106  
♥K7632  
♦8  
♣J9

♠52  
♥Q  
♦10953  
♣KQ7654

W N E S

♠K9873  
♥J105  
♦KJ6  
♣A2

Board (1) Av: NS=+60

N-S	E-W	Contract	N-S	E-W	IMP
1	4	2NT N 3	150		3
2	3	1NT N 3	150		3
9	10	1NT N 3	150		3
5	6	1NT N 3	150		3
8	7	2NT N 2	120		2
4	1	3C E-1	50		0
7	8	3D S-1		50	-3
6	5	3D N-1		50	-3
10	9	2H S-1		50	-3
3	2	3C E 3		110	-5

**2**

♠Q874  
♥Q1082  
♦72  
♣1092

♠J103  
♥KJ97  
♦Q98  
♣AK7

♠A9  
♥A65  
♦A6  
♣QJ8543

W N E S

♠K652  
♥43  
♦KJ10543  
♣6

Board (2) Av: NS=-380

N-S	E-W	Contract	N-S	E-W	IMP
1	4	6C E-2	100		10
5	6	4H W-1	50		10
3	2	5C E 5		400	-1
7	8	5C E 5		400	-1
10	9	3NT W 4		430	-2
6	5	3NT E 4		430	-2
4	1	3NT E 5		460	-2
9	10	3NT E 5		460	-2
8	7	3NT E 6		490	-3
2	3	3NT E 6		490	-3

**3**

♠852  
♥K1063  
♦A74  
♣K86

♠AK109643  
♥Q4  
♦Q9  
♣75

♠J7  
♥AJ9  
♦KJ10632  
♣J4

W N E S

♠Q  
♥8752  
♦85  
♣AQ10932

Board (3) Av: NS=-510

N-S	E-W	Contract	N-S	E-W	IMP
2	3	3D E 4		130	9
5	6	5C S-3		150	8
4	1	3S W 4		170	8
3	2	4S W 4		620	-3
1	4	4S W 4		620	-3
6	5	4S W 4		620	-3
7	8	4S W 4		620	-3
8	7	4S W 4		620	-3
9	10	4S W 4		620	-3
10	9	4S W 4		620	-3

**4**

♠9  
♥K6532  
♦QJ4  
♣QJ94

♠8764  
♥1084  
♦10872  
♣107

♠A3  
♥QJ7  
♦A953  
♣K862

W N E S

♠KQJ1052  
♥A9  
♦K6  
♣A53

Board (4) Av: NS=+590

N-S	E-W	Contract	N-S	E-W	IMP
6	5	3NT N 5	660		2
10	9	3NT N 5	660		2
3	2	3NT N 5	660		2
9	10	3NT N 5	660		2
4	1	4S S 5		650	2
2	3	3NT N 4		630	1
8	7	3NT N 4		630	1
7	8	4S S 4		620	1
1	4	3S S 5		200	-9
5	6	1S S 5		200	-9

**5**

♠Q9863  
♥85  
♦Q92  
♣AK7

♠A72  
♥KJ64  
♦K65  
♣863

♠1032  
♥AJ743  
♦Q9542  
♣Q9542

W N E S

♠KJ1054  
♥AQ97  
♦108  
♣J10

Board (5) Av: NS=+100

N-S	E-W	Contract	N-S	E-W	IMP
3	2	4S N 4		620	11
6	5	5Cx W-2		300	5
9	10	2S S 4		170	2
2	3	5D W-3		150	2
1	4	2S S 3		140	1
4	1	2S S 3		140	1
8	7	5Cx W-1		100	0
7	8	4S S-1		100	-5
5	6	4S S-1		100	-5
10	9	4S S-2		200	-7

**6**

♠Q752  
♥Q1073  
♦Q2  
♣J53

♠J108  
♥862  
♦1093  
♣K1042

♠AK  
♥AKJ4  
♦AK765  
♣Q6

W N E S

♠9643  
♥95  
♦J84  
♣A987

Board (6) Av: NS=-650

N-S	E-W	Contract	N-S	E-W	IMP
8	7	3NT E 3		600	2
9	10	3NT E 4		630	1
7	8	3NT E 4		630	1
3	2	3NT E 4		630	1
1	4	3NT E 5		660	0
5	6	3NT E 5		660	0
4	1	3NT E 5		660	0
10	9	3NT E 5		660	0
6	5	3NT E 5		660	0
2	3	3NT E 6		690	-1

**7**

♠J9754  
♥942  
♦  
♣KJ982

♠K  
♥J7  
♦KJ973  
♣AQ653

♠Q632  
♥KQ63  
♦654  
♣107

W N E S

♠A108  
♥A1085  
♦AQ1082  
♣4

Board (7) Av: NS=+210

N-S	E-W	Contract	N-S	E-W	IMP
1	4	2Cx W-2		500	7
8	7	2Cx W-2		500	7
10	9	2Cx W-2		500	7
6	5	2C W-4		400	5
7	8	2S N 3		140	-2
4	1	2S N 2		110	-3
9	10	1NT S 1		90	-3
5	6	1D S 1		70	-4
2	3	3S N-1		100	-7
3	2	2D S-3		300	-11

**8**

♠K1043  
♥J96  
♦AJ6  
♣762

♠852  
♥Q1084  
♦K32  
♣J84

♠QJ96  
♥532  
♦104  
♣AQ53

W N E S

♠A7  
♥AK7  
♦Q9875  
♣K109

Board (8) Av: NS=+430

N-S	E-W	Contract	N-S	E-W	IMP
10	9	3NT S 5		460	1
8	7	3NT S 5		460	1
3	2	3NT S 5		460	1
4	1	3NT S 4		430	0
2	3	3NT S 4		430	0
6	5	3NT S 4		430	0
5	6	3NT S 3		400	-1
7	8	3NT S 3		400	-1
1	4	3NT S 3		400	-1
9	10	3NT S 3		400	-1

**9**

♠AK7  
♥Q10874  
♦4  
♣A974

♠J94  
♥K653  
♦AK1052  
♣K

♠Q1086  
♥2  
♦J987  
♣10863

W N E S

♠532  
♥AJ9  
♦Q63  
♣QJ52

Board (9) Av: NS=+20

N-S	E-W	Contract	N-S	E-W	IMP
5	6	2H N 5		200	5
2	3	2H N 3		140	3
10	9	2H N 3		140	3
3	2	2H N 2		110	3
4	1	3D W-1		100	2
7	8	4H N-1		50	-2
6	5	4H N-2		100	-3
8	7	4H N-2		100	-3
9	10	4H N-2		100	-3
1	4	4H N-2		100	-3

10

♠ 732  
♥ 10964  
♦ QJ2  
♣ J106

♠ 965  
♥ J83  
♦ 104  
♣ AQ543

N  
W—|—E  
S

♠ AQJ10  
♥ AQ75  
♦ K85  
♣ K8

♠ K84  
♥ K2  
♦ A9763  
♣ 972

11

♠ QJ1097  
♥ 7654  
♦ K10  
♣ 76

♠ A6532  
♥ 9  
♦ QJ42  
♣ J93

N  
W—|—E  
S

♠ K84  
♥ J10  
♦ 9853  
♣ K854

♠ AKQ832  
♥ A76  
♦ AQ102

12

♠ Q62  
♥ K87  
♦ J4  
♣ 98643

♠ AJ97  
♥ 1064  
♦ AK7  
♣ AQ10

N  
W—|—E  
S

♠ 103  
♥ J93  
♦ 10532  
♣ K752

♠ K854  
♥ AQ52  
♦ Q986  
♣ J

Board (10) Av: NS=-620

N-S	E-W	Contract	N-S	E-W	IMP
4	1	3NT W-2	200		13
10	9	3NT W 3	600		1
6	5	3NT E 3	600		1
3	2	3NT E 3	600		1
2	3	3NT W 4	630		0
5	6	3NT W 4	630		0
7	8	3NT W 4	630		0
1	4	3NT W 4	630		0
9	10	3NT W 4	630		0
8	7	3NT W 5	660		-1

Board (11) Av: NS=+570

N-S	E-W	Contract	N-S	E-W	IMP
1	4	6H S 7	1010		10
10	9	6H S 7	1010		10
6	5	4H S 7	510		-2
2	3	4H S 7	510		-2
3	2	4H S 7	510		-2
8	7	4H S 7	510		-2
5	6	4H S 7	510		-2
7	8	4H S 7	510		-2
9	10	4H S 6	480		-3
4	1	4H S 6	480		-3

Board (12) Av: NS=-30

N-S	E-W	Contract	N-S	E-W	IMP
3	2	1NT S 2	120		4
7	8	2Cx W-1	100		4
5	6	1NT S 1	90		3
9	10	2C W-1	50		2
6	5	2C W 2		90	-2
10	9	1NT W 1		90	-2
2	3	1NT W 1		90	-2
1	4	1H N-1		100	-2
8	7	2NT W 2		120	-3
4	1	1NT W 2		120	-3

13

♠ A1086  
♥ K6  
♦ J75  
♣ KJ32

♠ 53  
♥ AQ108  
♦ AKQ  
♣ AQ76

N  
W—|—E  
S

♠ K72  
♥ J974  
♦ 964  
♣ 1098

♠ QJ94  
♥ 532  
♦ 10832  
♣ 54

14

♠ AJ873  
♥ A83  
♦ K3  
♣ 1075

♠ 1054  
♥ K52  
♦ 85  
♣ KQJ43

N  
W—|—E  
S

♠ KQ96  
♥ 9  
♦ QJ1094  
♣ A82

♠ 2  
♥ QJ10764  
♦ A762  
♣ 96

15

♠ A1093  
♥ KQ75  
♦ AK4  
♣ K9

♠ QJ75  
♥ J10943  
♦ Q7  
♣ Q5

N  
W—|—E  
S

♠ 862  
♥ 6  
♦ J952  
♣ A7642

♠ K4  
♥ A82  
♦ 10863  
♣ J1083

Board (13) Av: NS=-140

N-S	E-W	Contract	N-S	E-W	IMP
8	5	4H W-1	100		6
1	3	4H E-1	100		6
7	9	4H E-1	100		6
4	2	2NT W 2	120		1
10	6	2NT W 2	120		1
2	4	3H E 3	140		0
6	10	2H E 3	140		0
3	1	3H E 4	170		-1
5	8	4H E 4	620		-10
9	7	4H E 4	620		-10

Board (14) Av: NS=+100

N-S	E-W	Contract	N-S	E-W	IMP
10	6	3H S 5	200		3
5	8	2H S 5	200		3
2	4	3H S 4	170		2
7	9	3H S 3	140		1
1	3	2H S 3	140		1
6	10	2S N 2	110		0
3	1	4C W-2	100		0
8	5	3D E-2	100		0
9	7	3C W 4		130	-6
4	2	3NT N-4		200	-7

Board (15) Av: NS=+650

N-S	E-W	Contract	N-S	E-W	IMP
8	5	3NT N 6	690		1
1	3	3NT S 5	660		0
3	1	3NT S 5	660		0
4	2	3NT S 5	660		0
5	8	3NT S 5	660		0
10	6	3NT S 5	660		0
6	10	3NT N 5	660		0
9	7	3NT S 4	630		-1
7	9	3NT S 4	630		-1
2	4	3NT N 4	630		-1

16

♠ KJ32  
♥ KQ9  
♦ K1062  
♣ J8

♠ 7  
♥ 10753  
♦ J53  
♣ AQ1093

N  
W—|—E  
S

♠ AQ109  
♥ J862  
♦ A  
♣ 7654

♠ 8654  
♥ A4  
♦ Q9874  
♣ K2

17

♠ A96  
♥ 106  
♦ Q32  
♣ KJ1084

♠ 10742  
♥ J985  
♦ 7  
♣ 7653

N  
W—|—E  
S

♠ KJ83  
♥ K72  
♦ AKJ86  
♣ 9

♠ Q5  
♥ AQ43  
♦ 10954  
♣ AQ2

18

♠ K93  
♥ AQ75  
♦ 32  
♣ A1064

♠ J1064  
♥ J8  
♦ 984  
♣ Q973

N  
W—|—E  
S

♠ 872  
♥ 10964  
♦ KQ6  
♣ K52

♠ AQ5  
♥ K32  
♦ AJ1075  
♣ J8

Board (16) Av: NS=-90

N-S	E-W	Contract	N-S	E-W	IMP
4	2	3D N-1	50		1
5	8	2S S-1	50		1
10	6	2S S-1	50		1
3	1	3S S-2	100		0
7	9	3NT N-2	100		0
1	3	2S S-2	100		0
6	10	2S S-2	100		0
9	7	2S S-2	100		0
8	5	2S N-2	100		0
2	4	4S S-4	200		-3

Board (17) Av: NS=+50

N-S	E-W	Contract	N-S	E-W	IMP
3	1	3NT N 3	400		8
5	8	1NT N 4	180		4
10	6	2NT S 3	150		3
9	7	2H W-3	150		3
7	9	1D E-2	100		2
1	3	1D E-1	50		0
2	4	3C N-1		50	-3
4	2	1D E 1		70	-3
8	5	1D E 2		90	-4
6	10	1D E 2		90	-4

Board (18) Av: NS=+660

N-S	E-W	Contract	N-S	E-W	IMP
9	7	3NT S 6	690		1
3	1	3NT S 5	660		0
2	4	3NT S 5	660		0
5	8	3NT S 5	660		0
4	2	3NT S 5	660		0
8	5	3NT S 5	660		0
10	6	3NT S 5	660		0
7	9	3NT S 5	660		0
1	3	3NT S 5	660		0
6	10	3NT N 4	630		-1

19

♠8  
♥974  
♦KQ53  
♣K8532

♠Q964  
♥AJ62  
♦A874  
♣4

♠A2  
♥K83  
♦1092  
♣AQ1097

N  
W—E  
S

♠KJ10753  
♥Q105  
♦J6  
♣J6

20

♠AQJ832  
♥7  
♦K2  
♣7432

♠1096  
♥Q43  
♦Q8653  
♣105

♠754  
♥J1085  
♦A9  
♣AQ86

N  
W—E  
S

♠K  
♥AK962  
♦J1074  
♣KJ9

21

♠QJ42  
♥92  
♦AJ1032  
♣A8

♠K10863  
♥J  
♦KQ74  
♣763

♠A5  
♥Q1065  
♦98  
♣KQ1092

N  
W—E  
S

♠97  
♥AK8743  
♦65  
♣J54

Board (19) Av: NS=-30

N-S	E-W	Contract	N-S	E-W	IMP
3	1	5S	W-2	200	6
7	9	4C	S 5	150	5
4	2	3C	S 4	130	4
5	8	3C	N 3	110	4
8	5	5Cx	S-1	100	-2
9	7	5Cx	N-1	100	-2
6	10	3S	W 3	140	-3
10	6	3S	W 3	140	-3
2	4	3S	W 3	140	-3
1	3	4S	W 4	620	-11

Board (20) Av: NS=+460

N-S	E-W	Contract	N-S	E-W	IMP
9	7	4S	N 5	650	5
7	9	4S	N 4	620	4
5	8	4S	N 4	620	4
1	3	4S	N 4	620	4
10	6	4S	N 4	620	4
6	10	4S	N 4	620	4
3	1	3S	N 5	200	-6
4	2	3S	N 4	170	-7
2	4	3S	N 4	170	-7
8	5	3S	N 4	170	-7

Board (21) Av: NS=+130

N-S	E-W	Contract	N-S	E-W	IMP
6	10	2NT	S 3	150	1
7	9	2NT	S 3	150	1
3	1	2NT	N 3	150	1
1	3	2NT	N 3	150	1
2	4	2NT	S 2	120	0
9	7	2NT	N 2	120	0
10	6	2NT	N 2	120	0
4	2	3D	N 3	110	-1
8	5	2NT	E-2	100	-1
5	8	3NT	N-1	100	-6

22

♠10843  
♥Q92  
♦A63  
♣A62

♠AK9652  
♥10876  
♦Q8  
♣8

♠QJ7  
♥  
♦KJ10742  
♣10975

N  
W—E  
S

♠AKJ543  
♥95  
♦KQJ43  
♣

23

♠AJ107643  
♥82  
♦J10  
♣K10

♠Q2  
♥K653  
♦AQ9  
♣9432

♠8  
♥AQ1094  
♦86532  
♣76

♠K95  
♥J7  
♦K74  
♣AQJ85

N  
W—E  
S

♠Q2  
♥K653  
♦AQ9  
♣9432

24

♠AJ10  
♥J  
♦J102  
♣AKQJ52

♠Q7  
♥KQ985  
♦A83  
♣843

♠K8652  
♥A762  
♦Q74  
♣6

N  
W—E  
S

♠943  
♥1043  
♦K965  
♣1097

Board (22) Av: NS=-270

N-S	E-W	Contract	N-S	E-W	IMP
7	9	5H	W-2	200	10
4	2	4H	W-1	100	9
1	3	4H	W-1	100	9
5	8	4H	W-1	100	9
9	7	4H	W-1	100	9
3	1	4H	W 4	620	-8
8	5	4H	W 5	650	-9
6	10	4H	W 5	650	-9
2	4	4H	W 5	650	-9
10	6	4H	W 5	650	-9

Board (23) Av: NS=+280

N-S	E-W	Contract	N-S	E-W	IMP
2	4	4S	S 6	680	9
4	2	4S	N 6	680	9
3	1	4S	N 5	650	9
6	10	4S	N 5	650	9
8	5	4S	N 5	650	9
5	8	4S	S-1	100	-9
1	3	4S	N-1	100	-9
10	6	4S	N-1	100	-9
7	9	4S	N-1	100	-9
9	7	4S	N-1	100	-9

Board (24) Av: NS=+460

N-S	E-W	Contract	N-S	E-W	IMP
4	2	6S	S 6	980	11
9	7	4S	S 6	480	1
1	3	4S	S 6	480	1
10	6	4S	S 6	480	1
7	9	4S	S 6	480	1
6	10	4S	S 6	480	1
8	5	4S	S 5	450	0
2	4	3NT	S 4	430	-1
3	1	4S	S 4	420	-1
5	8	4S	S 4	420	-1

25

♠10982  
♥KQ7  
♦K32  
♣543

♠K74  
♥J10953  
♦J76  
♣J8

♠A63  
♥A84  
♦A8  
♣KQ1072

N  
W—E  
S

♠QJ5  
♥62  
♦Q10954  
♣A96

26

♠K95  
♥A2  
♦AJ1042  
♣J32

♠874  
♥KJ95  
♦KQ  
♣Q854

♠QJ10632  
♥10864  
♦53  
♣A

N  
W—E  
S

♠A  
♥Q73  
♦9876  
♣K10976

27

♠KJ102  
♥8  
♦K853  
♣A986

♠AQ87  
♥J1064  
♦A10  
♣QJ3

♠943  
♥A753  
♦J92  
♣K104

N  
W—E  
S

♠65  
♥KQ92  
♦Q764  
♣752

Board (25) Av: NS=+430

N-S	E-W	Contract	N-S	E-W	IMP
1	2	3NT	S 4	430	0
2	1	3NT	S 4	430	0
4	3	3NT	S 4	430	0
3	4	3NT	S 4	430	0
5	9	3NT	S 4	430	0
9	5	3NT	S 4	430	0
7	6	3NT	S 4	430	0
8	10	3NT	S 4	430	0
10	8	3NT	S 4	430	0
6	7	3NT	S 3	400	-1

Board (26) Av: NS=+210

N-S	E-W	Contract	N-S	E-W	IMP
5	9	4S	S 4	620	9
7	6	4S	S 4	620	9
3	4	3S	S 4	170	-1
1	2	3S	S 4	170	-1
4	3	2S	S 4	170	-1
2	1	2S	S 4	170	-1
9	5	2S	S 3	140	-2
6	7	2S	S 3	140	-2
10	8	2S	S 2	110	-3
8	10	4S	S-2	200	-9

Board (27) Av: NS=+30

N-S	E-W	Contract	N-S	E-W	IMP
5	9	3Hx	W-3	500	10
10	8	1NT	N 2	120	3
8	10	2S	N 2	110	2
7	6	1S	N 2	110	2
2	1	1NT	W-1	50	1
4	3	1NT	E-1	50	1
3	4	1NT	S-1	50	-2
6	7	1NT	W 1	90	-3
1	2	1NT	E 1	90	-3
9	5	1NT	E 2	120	-4

28

♠96  
♥J742  
♦KQJ108  
♣QJ

♠AJ54    N    ♠K1082  
♥1095    |    ♥K3  
♦A75    W    |    ♦42  
♣AK4    S    ♣109832

♠Q73  
♥AQ86  
♦963  
♣765

Board (28) Av: NS=-120

N-S	E-W	Contract	N-S	E-W	IMP
8	10	1NT W-3	150		7
4	3	2D N 2	90		5
10	8	1NT W 2		120	0
3	4	1NT W 2		120	0
2	1	1NT W 3		150	-1
5	9	1NT W 3		150	-1
6	7	1NT W 3		150	-1
7	6	1NT W 3		150	-1
9	5	1NT W 4		180	-2
1	2	1NT W 4		180	-2

29

♠AJ5  
♥A93  
♦AKQ10974  
♣

♠Q98643    N    ♠72  
♥J2    |    ♥108764  
♦3    W    |    ♦2  
♣KJ92    S    ♣AQ1054

♠K10  
♥KQ5  
♦J865  
♣8763

Board (29) Av: NS=+1060

N-S	E-W	Contract	N-S	E-W	IMP
4	3	6NT S 7	1470		9
8	10	6D S 7	1390		8
2	1	6D N 7	1390		8
6	7	6D N 7	1390		8
9	5	6D N 7	1390		8
3	4	3NT S 7	720		-8
5	9	3NT S 7	720		-8
1	2	3NT S 7	720		-8
10	8	3NT S 7	720		-8
7	6	3NT S 7	720		-8

30

♠Q4  
♥J103  
♦AJ74  
♣A1093

♠K10732    N    ♠AJ95  
♥6    |    ♥K9852  
♦K10    W    |    ♦Q862  
♣KQ754    S    ♣

♠86  
♥AQ74  
♦953  
♣J862

Board (30) Av: NS=-280

N-S	E-W	Contract	N-S	E-W	IMP
6	7	4S W-2	100		9
4	3	5S E-1	50		8
2	1	4S W-1	50		8
7	6	3S W 4		170	3
5	9	4S W 4		420	-4
10	8	4S W 4		420	-4
8	10	4S W 4		420	-4
9	5	4S W 4		420	-4
3	4	4S W 5		450	-5
1	2	4S W 5		450	-5

31

♠K972  
♥AKQ1086  
♣AJ6

♠J10852    N    ♠Q7  
♥AJ43    |    ♥65  
♦J    W    |    ♦9543  
♣1094    S    ♣KQ872

♠AK9643  
♥Q108  
♦72  
♣53

Board (31) Av: NS=+540

N-S	E-W	Contract	N-S	E-W	IMP
5	9	3NT N 6	690		4
3	4	3NT N 6	690		4
8	10	3NT N 5	660		3
1	2	3NT N 5	660		3
10	8	3NT N 4	630		3
9	5	3NT N 4	630		3
7	6	3NT N 4	630		3
6	7	4H N 4	620		2
4	3	4S N-2		200	-12
2	1	4S S-3		300	-13

32

♠K53  
♥6  
♦AJ10962  
♣1032

♠62    N    ♠J7  
♥Q109852    |    ♥K73  
♦Q3    W    |    ♦8754  
♣K98    S    ♣J754

♠AQ10984  
♥AJ4  
♦K  
♣AQ6

Board (32) Av: NS=+610

N-S	E-W	Contract	N-S	E-W	IMP
10	8	6S S 7	1010		9
7	6	6S S 6	980		9
3	4	6S S 6	980		9
5	9	4S S 7	510		-3
6	7	4S S 7	510		-3
1	2	4S S 6	480		-4
8	10	4S S 6	480		-4
2	1	4S S 5	450		-4
9	5	4S S 5	450		-4
4	3	1S S 5	200		-9

33

♠KJ4  
♥AK3  
♦Q1074  
♣AK10

♠A9    N    ♠Q10863  
♥Q65    |    ♥J82  
♦KJ5    W    |    ♦A8  
♣J9743    S    ♣852

♠752  
♥10974  
♦9632  
♣Q6

Board (33) Av: NS=-100

N-S	E-W	Contract	N-S	E-W	IMP
5	9	3D N-1	50		2
1	2	2NT N-1	50		2
3	4	2NT N-2	100		0
2	1	2NT N-2	100		0
8	10	2NT N-2	100		0
9	5	2NT N-2	100		0
6	7	2NT N-2	100		0
4	3	1NT W 2		120	-1
7	6	3NT N-3		150	-2
10	8	2NT N-3		150	-2

34

♠83  
♥J654  
♦95  
♣Q6543

♠962    N    ♠KQ1075  
♥97    |    ♥AK102  
♦AJ72    W    |    ♦Q3  
♣AK107    S    ♣82

♠AJ4  
♥Q83  
♦K10864  
♣J9

Board (34) Av: NS=-440

N-S	E-W	Contract	N-S	E-W	IMP
5	9	4S E 4	420		1
2	1	4S E 4	420		1
3	4	4S E 4	420		1
8	10	4S E 4	420		1
9	5	4S E 4	420		1
1	2	4S E 5	450		0
6	7	4S E 5	450		0
4	3	4S E 5	450		0
7	6	4S E 5	450		0
10	8	4S E 5	450		0

35

♠QJ  
♥1086532  
♦  
♣107632

♠A9653    N    ♠7  
♥J4    |    ♥Q7  
♦KQ    W    |    ♦AJ6543  
♣A954    S    ♣KQJ8

♠K10842  
♥AK9  
♦109872  
♣

Board (35) Av: NS=-20

N-S	E-W	Contract	N-S	E-W	IMP
3	4	5C E-4	400		9
9	5	5C E-3	300		8
4	3	5C E-3	300		8
10	8	5Dx E-1	200		6
5	9	5C E-2	200		6
6	7	5H N-2		100	-2
7	6	2NT W 3		150	-4
8	10	5Hx N-2		300	-7
2	1	3NT W 3		600	-11
1	2	3NT E 3		600	-11

36

♠10653  
♥AQ85  
♦AQ32  
♣Q

♠AJ4    N    ♠97  
♥10    |    ♥J962  
♦J874    W    |    ♦K965  
♣J10976    S    ♣542

♠KQ82  
♥K743  
♦10  
♣AK83

Board (36) Av: NS=+240

N-S	E-W	Contract	N-S	E-W	IMP
2	1	4H S 5	650		9
7	6	4H S 5	650		9
1	2	4H S 4	620		9
8	10	4H S 4	620		9
10	8	4H S 4	620		9
9	5	4H S-1		100	-8
6	7	4H S-1		100	-8
5	9	6H S-2		200	-10
3	4	6H S-2		200	-10
4	3	6H N-2		200	-10