

1

♠ AKQ987
♥ A87532
♦
♣ K

♠ 54
♥ KQ9
♦ Q973
♣ 9876

♠ J1064
♥ J10632
♦ K1084
♣ QJ542

♠ J10632
♥
♦ AJ652
♣ A103

Board (1) Av: NS=+1200

N-S	E-W	Contract	N-S	E-W	IMP
2	8	7S	N 7	1510	7
10	1	7S	N 7	1510	7
4	7	7S	N 7	1510	7
5	9	7S	N 7	1510	7
3	6	6S	N 7	1010	-5
6	3	6S	N 7	1010	-5
1	10	6S	N 7	1010	-5
9	5	6S	N 7	1010	-5
7	4	6S	N 7	1010	-5
8	2	4S	N 7	510	-12

2

♠ 108
♥ Q5
♦ QJ743
♣ K1093

♠ J964
♥ AK104
♦ 6
♣ QJ75

♠ Q5
♥ J97632
♦ K102
♣ 62

♠ AK732
♥ 8
♦ A985
♣ A84

Board (2) Av: NS=+40

N-S	E-W	Contract	N-S	E-W	IMP
6	3	3NT	N 4	630	11
7	4	4H	W-3	150	3
10	1	1S	S 3	140	3
9	5	3H	W-2	100	2
2	8	3H	E-2	100	2
1	10	3H	E-2	100	2
4	7	5D	S-1	100	-4
5	9	5D	S-1	100	-4
8	2	3NT	N-1	100	-4
3	6	5D	S-2	200	-6

3

♠ J32
♥ Q987643
♦ J4
♣ 7

♠ Q987
♥ 5
♦ AKQ6
♣ A983

♠ K4
♥ AK
♦ 10752
♣ Q10642

♠ A1065
♥ J102
♦ 983
♣ KJ5

Board (3) Av: NS=-430

N-S	E-W	Contract	N-S	E-W	IMP
1	10	3NT	W-3	300	12
7	4	6C	W-2	200	12
10	1	6C	W-1	100	11
5	9	5C	W 5	600	-5
6	3	5C	W 5	600	-5
9	5	3NT	W 4	630	-5
2	8	3NT	W 4	630	-5
8	2	3NT	W 4	630	-5
4	7	3NT	W 5	660	-6
3	6	3NT	W 5	660	-6

4

♠ Q983
♥ Q109864
♦ 65
♣ 2

♠ AK1054
♥ AJ3
♦ K3
♣ K109

♠ 762
♥
♦ Q1082
♣ AQJ543

♠ J
♥ K752
♦ AJ974
♣ 876

Board (4) Av: NS=-270

N-S	E-W	Contract	N-S	E-W	IMP
4	7	6S	E-1	100	9
7	4	6S	E-1	100	9
2	8	4S	E-1	100	9
8	2	4S	E-1	100	9
9	5	4S	E-1	100	9
10	1	4S	E 4	620	-8
5	9	3NT	E 4	630	-8
6	3	5S	E 5	650	-9
3	6	4S	E 5	650	-9
1	10	4S	E 5	650	-9

5

♠ 8532
♥ K1075
♦ 42
♣ 1032

♠ K76
♥ Q93
♦ J9865
♣ 87

♠ QJ
♥ 8642
♦ Q107
♣ A965

♠ A1094
♥ AJ
♦ AK3
♣ KQJ4

Board (5) Av: NS=+350

N-S	E-W	Contract	N-S	E-W	IMP
8	2	4S	S 4	620	7
1	10	4S	S 4	620	7
10	1	4S	S 4	620	7
9	5	4S	S 4	620	7
6	3	4S	S 4	620	7
7	4	4S	S 4	620	7
4	7	4S	S-1	100	-10
2	8	4S	S-1	100	-10
5	9	4S	S-1	100	-10
3	6	3NT	S-1	100	-10

6

♠ J8642
♥
♦ KQ32
♣ K962

♠ Q7
♥ A973
♦ J85
♣ QJ43

♠ 1053
♥ KQJ8542
♦ A
♣ A5

♠ AK9
♥ 106
♦ 109764
♣ 1087

Board (6) Av: NS=-550

N-S	E-W	Contract	N-S	E-W	IMP
7	4	5H	W-1	100	12
2	8	4S	N-1	50	11
10	1	4H	W 4	620	-2
8	2	4H	W 4	620	-2
5	9	4H	W 4	620	-2
6	3	4H	W 4	620	-2
4	7	4H	W 4	620	-2
3	6	4H	W 4	620	-2
1	10	4H	W 5	650	-3
9	5	4H	W 6	680	-4

7

♠ Q7632
♥ 862
♦ 982
♣ A2

♠ K54
♥ 4
♦ KQ5
♣ K98643

♠ A8
♥ AQJ3
♦ A764
♣ J107

♠ J109
♥ K10975
♦ J103
♣ Q5

Board (7) Av: NS=-350

N-S	E-W	Contract	N-S	E-W	IMP
6	3	6C	W-1	100	10
2	8	3NT	W-1	100	10
5	9	3NT	W-1	100	10
4	7	3NT	W-1	100	10
10	1	5C	E 5	600	-6
8	2	3NT	W 4	630	-7
9	5	3NT	W 4	630	-7
7	4	3NT	W 4	630	-7
3	6	3NT	W 4	630	-7
1	10	3NT	W 5	660	-7

8

♠ 765
♥ J1043
♦ A742
♣ 107

♠ 83
♥ Q72
♦ K1093
♣ J954

♠ J1094
♥ AK65
♦ QJ8
♣ A3

♠ AKQ2
♥ 98
♦ 65
♣ KQ862

Board (8) Av: NS=-110

N-S	E-W	Contract	N-S	E-W	IMP
7	4	2C	S 2	90	5
9	5	1NT	W 1	90	1
6	3	1NT	W 1	90	1
3	6	2S	S-2	100	0
8	2	1NT	W 2	120	0
2	8	1NT	W 2	120	0
4	7	1NT	W 2	120	0
10	1	1NT	W 2	120	0
5	9	1NT	W 2	120	0
1	10	1NT	W 2	120	0

9

♠ 6
♥ AQ10842
♦ J93
♣ 1052

♠ AKQ97543
♥ 63
♦ 104
♣ 6

♠ J108
♥ KJ
♦ AQ62
♣ AK73

♠ 2
♥ 975
♦ K875
♣ QJ984

Board (9) Av: NS=-560

N-S	E-W	Contract	N-S	E-W	IMP
1	10	6S	E-1	100	12
7	4	6S	E-1	100	12
2	8	5S	E 5	650	-3
5	9	5S	E 5	650	-3
10	1	4S	E 5	650	-3
6	3	4S	E 5	650	-3
3	6	4S	E 5	650	-3
4	7	4S	E 5	650	-3
9	5	4S	E 5	650	-3
8	2	4S	E 5	650	-3

10

♠ Q
♥ Q73
♦ AQ1098
♣ K1074

♠ 954
♥ A1062
♦ 65
♣ AJ98

♠ K102
♥ K84
♦ KJ72
♣ 632

N
W — E
S

Board (10) Av: NS=-130

N-S	E-W	Contract	N-S	E-W	IMP
5	9	3NT S 3	600		12
7	4	3S W-1	100		6
8	2	4D N-1	100		1
2	8	3NT S-1	100		1
9	5	2S W 3	140		0
4	7	4D N-2	200		-2
1	10	3NT S-2	200		-2
10	1	3NT S-2	200		-2
6	3	2NT S-2	200		-2
3	6	5Dx N-3	800		-12

11

♠ AKQJ5
♥ 4
♦ 1096
♣ AQ105

♠ 84
♥ KJ62
♦ AJ4
♣ KJ93

♠ 10963
♥ A9753
♦ Q
♣ 876

♠ 72
♥ Q108
♦ K87532
♣ 42

N
W — E
S

Board (11) Av: NS=0

N-S	E-W	Contract	N-S	E-W	IMP
5	9	4D S 4	130		4
8	2	3H W-2	100		3
2	8	3H W-1	50		2
3	6	3H W-1	50		2
4	7	3H W-1	50		2
7	4	3H E-1	50		2
10	1	5D S-2	100		-3
1	10	3S N-2	100		-3
6	3	2H W 2	110		-3
9	5	2H W 2	110		-3

12

♠ K76
♥ J10986
♦ 62
♣ K104

♠ AQ95
♥ Q32
♦ Q94
♣ 832

♠ J842
♥ AK54
♦ K875
♣ 9

♠ 103
♥ 7
♦ AJ103
♣ AQJ765

N
W — E
S

Board (12) Av: NS=+50

N-S	E-W	Contract	N-S	E-W	IMP
6	3	3Cx S 3	670		12
2	8	4C S 4	130		2
3	6	3C S 4	130		2
9	5	3C S 3	110		2
7	4	4S W-2	100		2
1	10	3H E-2	100		2
4	7	3H E-1	50		0
10	1	2D E 2	90		-4
8	2	2H N-1	100		-4
5	9	2H E 2	110		-4

13

♠ A107
♥ 9875
♦ J83
♣ 954

♠ 862
♥ AQ6
♦ AKQ6
♣ Q102

♠ 9
♥ KJ1043
♦ 10952
♣ J63

N
W — E
S

Board (13) Av: NS=-1430

N-S	E-W	Contract	N-S	E-W	IMP
4	7	5S E 6	680		13
10	1	6S W 6	1430		0
2	8	6S E 6	1430		0
3	6	6S E 6	1430		0
8	2	6S E 6	1430		0
1	10	6S E 6	1430		0
6	3	6S E 6	1430		0
9	5	6S E 6	1430		0
5	9	6S E 6	1430		0
7	4	6NT E 6	1440		0

14

♠ A962
♥ Q10
♦ KQJ97
♣ J8

♠ 8
♥ 8652
♦ 106432
♣ A92

♠ KQ75
♥ K743
♦ 5
♣ 10654

♠ J1043
♥ AJ9
♦ A8
♣ KQ73

N
W — E
S

Board (14) Av: NS=+60

N-S	E-W	Contract	N-S	E-W	IMP
2	8	3NT S 6	490		10
5	9	4S S 4	420		8
6	3	4S S 4	420		8
1	10	4S S-1	50		-3
8	2	4S S-1	50		-3
10	1	4S S-1	50		-3
7	4	4S S-1	50		-3
9	5	4S S-1	50		-3
4	7	4S S-2	100		-4
3	6	4S S-2	100		-4

15

♠ K875
♥ Q1042
♦ 7
♣ 10973

♠ Q32
♥ KJ653
♦ J104
♣ QJ

♠ A964
♥ 7
♦ AK953
♣ 652

♠ J10
♥ A98
♦ Q862
♣ AK84

N
W — E
S

Board (15) Av: NS=+100

N-S	E-W	Contract	N-S	E-W	IMP
6	3	4D E-3	150		2
1	10	1NT S 3	150		2
5	9	2H N 2	110		0
4	7	4D E-2	100		0
3	6	3S W-2	100		0
7	4	2S E-2	100		0
8	2	1H W-2	100		0
10	1	3D E-1	50		-2
2	8	1NT E-1	50		-2
9	5	2D E 2	90		-5

16

♠ AQ8
♥ J53
♦ 83
♣ J9743

♠ 1094
♥ 106
♦ A974
♣ Q1082

♠ 52
♥ AK8742
♦ KJ52
♣ A

N
W — E
S

Board (16) Av: NS=+450

N-S	E-W	Contract	N-S	E-W	IMP
1	10	4H S 6	480		1
5	9	4H S 6	480		1
7	4	4H S 6	480		1
6	3	4H S 6	480		1
3	6	4H S 5	450		0
8	2	4H S 5	450		0
4	7	4H S 5	450		0
9	5	4H S 4	420		-1
10	1	4H S 4	420		-1
2	8	3H S 5	200		-6

17

♠ 1065
♥ Q764
♦ 4
♣ Q10964

♠ A974
♥ KJ9
♦ J976
♣ A7

♠ QJ32
♥ A852
♦ AQ3
♣ 52

♠ K8
♥ 103
♦ K10852
♣ KJ83

N
W — E
S

Board (17) Av: NS=-190

N-S	E-W	Contract	N-S	E-W	IMP
3	6	4S W-1	50		6
10	1	4S W-1	50		6
2	8	4S W-1	50		6
4	7	4S W-1	50		6
6	3	4S W-1	50		6
8	2	4S W 4	420		-6
1	10	4S W 4	420		-6
5	9	4S W 4	420		-6
7	4	4S W 4	420		-6
9	5	4S W 5	450		-6

18

♠ K742
♥ 973
♦ AJ98
♣ 76

♠ QJ93
♥ 65
♦ KQ643
♣ 104

♠ 10865
♥ K42
♦ 752
♣ KJ3

♠ A
♥ AQJ108
♦ 10
♣ AQ9852

N
W — E
S

Board (18) Av: NS=+680

N-S	E-W	Contract	N-S	E-W	IMP
1	10	4H S 7	710		1
5	9	4H S 7	710		1
2	8	4H S 7	710		1
10	1	4H S 6	680		0
9	5	4H S 6	680		0
6	3	4H S 6	680		0
7	4	4H S 6	680		0
8	2	3NT S 5	660		-1
3	6	3NT N 4	630		-2
4	7	3NT N 3	600		-2

19

Hand information for Board 19, including cards and player names like AQ654, 53, A652, A4, K972, J10, 10943, J105, J83, 9876, K, KQ962.

Board (19) Av: NS=+60

Table with columns: N-S, E-W, Contract, N-S, E-W, IMP. Rows show various contracts and scores for Board 19.

20

Hand information for Board 20, including cards and player names like Q1053, J6, QJ108754, K94, AQ, K9, Q98752, A872, 98742, AJ103.

Board (20) Av: NS=+80

Table with columns: N-S, E-W, Contract, N-S, E-W, IMP. Rows show various contracts and scores for Board 20.

21

Hand information for Board 21, including cards and player names like 96, K2, Q1095, KQJ43, K74, AQ109743, J, 82, AQJ10, J86, K, 109765.

Board (21) Av: NS=-10

Table with columns: N-S, E-W, Contract, N-S, E-W, IMP. Rows show various contracts and scores for Board 21.

22

Hand information for Board 22, including cards and player names like J10875, 3, 1042, J975, K432, A107, J983, K8, A9, J65, Q765, 6432.

Board (22) Av: NS=-960

Table with columns: N-S, E-W, Contract, N-S, E-W, IMP. Rows show various contracts and scores for Board 22.

23

Hand information for Board 23, including cards and player names like J82, QJ8, 83, 108764, K107, 6542, A62, AKJ, AQ6, K109, J1095, Q53, 9543, A73, KQ74, 92.

Board (23) Av: NS=-530

Table with columns: N-S, E-W, Contract, N-S, E-W, IMP. Rows show various contracts and scores for Board 23.

24

Hand information for Board 24, including cards and player names like A96, A9, KJ5, QJ972, K2, 108, Q1098643, 105, J1043, K543, A7, K43.

Board (24) Av: NS=+440

Table with columns: N-S, E-W, Contract, N-S, E-W, IMP. Rows show various contracts and scores for Board 24.

25

Hand information for Board 25, including cards and player names like 743, 765, QJ94, Q52, AKJ5, 1098, J83, AK, K10643, Q62, AKQ92, 1032, A8.

Board (25) Av: NS=+70

Table with columns: N-S, E-W, Contract, N-S, E-W, IMP. Rows show various contracts and scores for Board 25.

26

Hand information for Board 26, including cards and player names like 762, K643, 42, 10983, A, A97, A10653, KQ76, 9843, Q108, QJ98, 54, KQJ105, J52, K7, AJ2.

Board (26) Av: NS=-110

Table with columns: N-S, E-W, Contract, N-S, E-W, IMP. Rows show various contracts and scores for Board 26.

27

Hand information for Board 27, including cards and player names like Q, 10963, AK1086, Q108, J843, KQJ54, J5, AK, A10952, A2, Q42, J43, K76, 87, 973, 97652.

Board (27) Av: NS=-420

Table with columns: N-S, E-W, Contract, N-S, E-W, IMP. Rows show various contracts and scores for Board 27.

28

♠ J2
♥ KJ963
♦ A87543
♣ A87543

♠ AQ8 ♠ K954
♥ KQ62 ♥ J1098743
♦ A852 ♠ 7
♣ 62 ♣ 9

♠ 10763
♥ A5
♦ Q104
♣ KQJ10

Board (28) Av: NS=-260

N-S	E-W	Contract	N-S	E-W	IMP
8	6	5C S 5	600		13
2	9	5C S 5	600		13
5	3	6Cx S-1	200		2
1	7	6Cx S-1	200		2
6	8	5H W 5	450		-5
3	5	5H E 5	450		-5
4	10	4H W 5	450		-5
7	1	4H W 5	450		-5
9	2	4H W 5	450		-5
10	4	6Cx S-3	800		-11

29

♠ K96
♥ 876
♦ AJ6
♣ KQ43

♠ QJ103 ♠ 752
♥ AJ103 ♥ Q94
♦ 3 ♦ Q10987
♣ A985 ♣ 72

♠ A84
♥ K52
♦ K542
♣ J106

Board (29) Av: NS=+60

N-S	E-W	Contract	N-S	E-W	IMP
2	9	3NT S 6	690		12
10	4	1NT N 3	150		3
8	6	2NT S 2	120		2
4	10	2NT N 2	120		2
3	5	1NT S 1	90		1
9	2	1NT S 1	90		1
5	3	1NT S 1	90		1
6	8	3NT N-1	100		-4
1	7	2NT S-1	100		-4
7	1	3NT S-2	200		-6

30

♠ A5
♥ A1085
♦ AKJ4
♣ K42

♠ KQ96 ♠ 1073
♥ 42 ♥ 973
♦ 10973 ♦ Q652
♣ Q53 ♣ J76

♠ J842
♥ KQJ6
♦ 8
♣ A1098

Board (30) Av: NS=+390

N-S	E-W	Contract	N-S	E-W	IMP
8	6	6H S 6	980		11
5	3	6H N 6	980		11
7	1	3NT N 5	460		2
1	7	5H S 5	450		2
9	2	4H S 5	450		2
6	8	4H S 5	450		2
3	5	4H S 5	450		2
2	9	6H N-1	50		-10
4	10	6H N-1	50		-10
10	4	6H N-2	100		-10

31

♠ KQ752
♥ 98
♦ 1096
♣ Q72

♠ AJ93 ♠ 84
♥ AK102 ♥ J7654
♦ 8 ♦ J753
♣ J643 ♣ AK

♠ 106
♥ Q3
♦ AKQ42
♣ 10985

Board (31) Av: NS=-400

N-S	E-W	Contract	N-S	E-W	IMP
10	4	4H E-1	50		10
3	5	2H E 4	170		6
2	9	4H E 4	420		-1
7	1	4H E 4	420		-1
4	10	4H E 4	420		-1
5	3	4H E 4	420		-1
9	2	4H E 5	450		-2
1	7	4H E 5	450		-2
8	6	4H E 5	450		-2
6	8	4H E 5	450		-2

32

♠ K108
♥ AQJ4
♦ 8
♣ AK983

♠ 954 ♠ AQJ2
♥ 975 ♥ 1063
♦ KQJ1075 ♦ A
♣ 5 ♣ QJ642

♠ 763
♥ K82
♦ 96432
♣ 107

Board (32) Av: NS=+30

N-S	E-W	Contract	N-S	E-W	IMP
1	7	2S E-1	100		2
5	3	2S E-1	100		2
4	10	1C N 2	90		2
2	9	1C N 1	70		1
6	8	1C N 1	70		1
7	1	1C N 1	70		1
9	2	3H S-1	50		-2
8	6	1H N-1	50		-2
10	4	2C N-2	100		-4
3	5	4H S-5	250		-7

33

♠ 96
♥ K109
♦ 853
♣ 108652

♠ KQ2 ♠ 84
♥ A54 ♥ QJ8
♦ KJ102 ♦ Q9764
♣ AJ9 ♣ Q43

♠ AJ10753
♥ 7632
♦ A
♣ K7

Board (33) Av: NS=-220

N-S	E-W	Contract	N-S	E-W	IMP
2	9	2S S 3	140		8
5	3	2S S-1	50		5
10	4	3S E 4	130		3
9	2	1NT W 3	150		2
8	6	1NT W 3	150		2
6	8	1NT W 5	210		0
7	1	1NT W 5	210		0
4	10	3NT W 3	400		-5
3	5	3NT W 4	430		-5
1	7	3NT W 4	430		-5

34

♠ AK7
♥ AQ9653
♦ Q984
♣ Q984

♠ AQ87 ♠ KJ963
♥ QJ9532 ♥ 86
♦ 8 ♦ K42
♣ J5 ♣ A72

♠ 10542
♥ 104
♦ J107
♣ K1063

Board (34) Av: NS=-140

N-S	E-W	Contract	N-S	E-W	IMP
6	8	4S E-3	150		7
5	3	4S E-2	100		6
9	2	4S E-2	100		6
2	9	4S E-1	50		5
7	1	4S E-1	50		5
1	7	3S E 4	170		-1
3	5	4S W 4	420		-7
10	4	4S E 4	420		-7
4	10	4S E 4	420		-7
8	6	4S E 4	420		-7

35

♠ 75
♥ A6
♦ J10973
♣ QJ62

♠ 10643 ♠ QJ98
♥ KJ93 ♥ Q1074
♦ Q65 ♦ 42
♣ 73 ♣ A85

♠ AK2
♥ 852
♦ AK8
♣ K1094

Board (35) Av: NS=+170

N-S	E-W	Contract	N-S	E-W	IMP
7	1	3NT S 4	430		6
2	9	3NT S 3	400		6
6	8	3NT S 3	400		6
10	4	3NT S 3	400		6
4	10	1NT S 5	210		1
8	6	1NT S 2	120		-2
3	5	3NT S-1	50		-6
5	3	3NT S-1	50		-6
1	7	3NT S-1	50		-6
9	2	3NT S-1	50		-6

36

♠ KQ
♥ J109832
♦ J
♣ Q985

♠ J843 ♠ 102
♥ 4 ♥ K5
♦ A32 ♦ KQ98765
♣ J10743 ♣ A2

♠ A9765
♥ AQ76
♦ 104
♣ K6

Board (36) Av: NS=+630

N-S	E-W	Contract	N-S	E-W	IMP
9	2	5H N 5	650		1
1	7	4H N 5	650		1
7	1	4H N 5	650		1
2	9	4H N 5	650		1
3	5	4H N 5	650		1
6	8	4H N 5	650		1
5	3	4H N 5	650		1
4	10	4H N 5	650		1
10	4	5Dx E-2	500		-4
8	6	3H N 4	170		-10

1

♠K8642
♥A7643
♦QJ
♣9

♠J1053
♥K
♦A108765
♣AQ

♠97
♥J109
♦9
♣KJ86432

♠AQ
♥Q852
♦K432
♣1075

Board (1) Av: NS=+150

N-S	E-W	Contract	N-S	E-W	IMP
9	1	4H N 4	420		7
3	7	4H N 4	420		7
4	6	5Cx E-2	300		4
2	5	3H S 5	200		2
10	8	3H N 3	140		0
7	3	5Cx E-1	100		-2
8	10	4D W-2	100		-2
1	9	4H S-1		50	-5
5	2	4H S-1		50	-5
6	4	3C E 3		110	-6

2

♠AQ43
♥J963
♦8
♣Q752

♠K108
♥KQ85
♦Q74
♣K63

♠9652
♥102
♦K932
♣A84

♠J7
♥A74
♦AJ1065
♣J109

Board (2) Av: NS=-40

N-S	E-W	Contract	N-S	E-W	IMP
3	7	2S E-3	150		5
4	6	2S E-1	50		3
1	9	1NT W-1	50		3
10	8	1NT W-1	50		3
9	1	1NT W 1		90	-2
8	10	1NT W 1		90	-2
2	5	1NT W 1		90	-2
5	2	2D S-1		100	-2
6	4	1NT W 2		120	-2
7	3	2D S-2		200	-4

3

♠85
♥J642
♦874
♣KQ54

♠A1092
♥K95
♦Q
♣109863

♠QJ76
♥A8
♦AK652
♣A2

♠K43
♥Q1073
♦J1093
♣J7

Board (3) Av: NS=-680

N-S	E-W	Contract	N-S	E-W	IMP
3	7	4S W 5	650		1
6	4	4S W 6	680		0
4	6	4S W 6	680		0
10	8	4S W 6	680		0
8	10	4S W 6	680		0
7	3	4S W 6	680		0
9	1	4S W 6	680		0
5	2	4S W 6	680		0
1	9	4S W 6	680		0
2	5	6S W 6	1430		-13

4

♠AJ8
♥J10
♦A10965
♣AKJ

♠Q94
♥6
♦J32
♣Q96542

♠10652
♥7532
♦87
♣1083

♠K73
♥AKQ984
♦KQ4
♣7

Board (4) Av: NS=+2020

N-S	E-W	Contract	N-S	E-W	IMP
10	8	7NT N 7	2220		5
4	6	7NT N 7	2220		5
6	4	7NT N 7	2220		5
1	9	7NT N 7	2220		5
2	5	7NT N 7	2220		5
8	10	7H S 7	2210		5
5	2	7D N 7	2140		3
7	3	6NT N 7	1470		-11
9	1	6NT N 7	1470		-11
3	7	6H S 7	1460		-11

5

♠5
♥KQ98
♦Q87
♣KQ965

♠102
♥J1065432
♦10932
♣

♠QJ643
♥7
♦64
♣AJ732

♠AK987
♥A
♦AKJ5
♣1084

Board (5) Av: NS=+270

N-S	E-W	Contract	N-S	E-W	IMP
8	10	3NT S 6	690		9
2	5	4NT N 5	660		9
10	8	3NT S 5	660		9
9	1	3NT S 4	630		8
3	7	5D S 5	600		8
6	4	6NT S-1		100	-9
1	9	6NT N-1		100	-9
7	3	6NT N-1		100	-9
4	6	6NT N-1		100	-9
5	2	6C N-2		200	-10

6

♠AK9753
♥J5
♦K8
♣Q64

♠J4
♥K10732
♦A10
♣J1032

♠Q862
♥AQ986
♦75
♣A5

♠10
♥4
♦QJ96432
♣K987

Board (6) Av: NS=-220

N-S	E-W	Contract	N-S	E-W	IMP
4	6	5H E-1	100		8
7	3	4H E-1	100		8
1	9	5Dx S-1		100	3
8	10	4S N-2		100	3
10	8	4S N-2		100	3
9	1	3H E 3		140	2
5	2	4S N-3		150	2
3	7	4H E 4		620	-9
2	5	4H E 4		620	-9
6	4	4H E 4		620	-9

7

♠A754
♥854
♦KJ9
♣AJ7

♠92
♥J103
♦Q643
♣Q962

♠KJ863
♥Q2
♦A105
♣K83

♠Q10
♥AK976
♦872
♣1054

Board (7) Av: NS=+130

N-S	E-W	Contract	N-S	E-W	IMP
10	8	1NT N 3	150		1
3	7	1NT N 3	150		1
4	6	3H S 3	140		0
9	1	3H S 3	140		0
5	2	2H S 3	140		0
1	9	1NT N 2	120		0
6	4	1NT N 2	120		0
7	3	1NT N 2	120		0
2	5	1NT N 1	90		-1
8	10	1NT N 1	90		-1

8

♠A96
♥43
♦KQ6
♣K10975

♠K74
♥10
♦A7542
♣AQ32

♠J83
♥AJ8
♦J10983
♣J8

♠Q1052
♥KQ97652
♦
♣64

Board (8) Av: NS=+200

N-S	E-W	Contract	N-S	E-W	IMP
4	6	4H S 4	420		6
9	1	4H S 4	420		6
10	8	4H S 4	420		6
7	3	4Dx W-2	300		3
3	7	3H S 4	170		-1
1	9	3H S 3	140		-2
6	4	4Dx W-1	100		-3
2	5	4D W-2	100		-3
5	2	4H S-1		50	-6
8	10	3H S-1		50	-6

9

♠KQ10
♥KJ53
♦76
♣AKJ10

♠J7653
♥10974
♦A54
♣5

♠942
♥8
♦KQ1093
♣8643

♠A8
♥AQ62
♦J82
♣Q972

Board (9) Av: NS=+450

N-S	E-W	Contract	N-S	E-W	IMP
7	3	4NT N 5	460		0
10	8	5H N 5	450		0
8	10	4H N 5	450		0
4	6	4H N 5	450		0
1	9	4H N 5	450		0
9	1	4H N 5	450		0
2	5	4H N 5	450		0
3	7	4H N 5	450		0
5	2	4H N 5	450		0
6	4	4H N 4	420		-1

10

♠ QJ86 ♡ J953 ♢ J64 ♣ J7
N W E S
♠ 972 ♡ Q ♢ AKQ8 ♣ Q9642
♠ AK1053 ♡ 9532 ♣ K1053

Board (10) Av: NS=-650
N-S E-W Contract N-S E-W IMP
6 4 4H W 4 620 1
1 9 5H W 5 650 0
4 6 4H W 5 650 0
10 8 4H W 5 650 0
8 10 4H W 5 650 0
7 3 4H W 5 650 0
2 5 4H W 5 650 0
9 1 4H W 5 650 0
3 7 4H W 5 650 0
5 2 4H W 5 650 0

11

♠ J952 ♡ Q32 ♢ KQ98 ♣ K8
N W E S
♠ AQ ♡ AK97 ♢ 1076 ♣ AQ62
♠ K863 ♡ 104 ♢ A432 ♣ 1073
♠ 1074 ♡ J865 ♢ J5 ♣ J954

Board (11) Av: NS=-80
N-S E-W Contract N-S E-W IMP
3 7 3NT W-2 100 5
1 9 3NT W-1 50 4
8 10 3NT W-1 50 4
10 8 3NT W-1 50 4
9 1 3NT W-1 50 4
7 3 3NT E-1 50 4
6 4 1NT W 1 90 0
5 2 3NT W 3 400 -8
2 5 3NT W 3 400 -8
4 6 3NT W 3 400 -8

12

♠ J10 ♡ 9642 ♢ J2 ♣ AJ984
N W E S
♠ 972 ♡ J5 ♢ AQ986 ♣ 762
♠ K43 ♡ AK3 ♢ 107543 ♣ 53
♠ AQ865 ♡ Q1087 ♢ K ♣ KQ10

Board (12) Av: NS=+40
N-S E-W Contract N-S E-W IMP
5 2 4H S 4 620 11
9 1 3H S 3 140 3
10 8 2H S 3 140 3
3 7 2H S 3 140 3
2 5 2H S 2 110 2
7 3 3Dx E-1 100 2
1 9 4H S-1 100 -4
4 6 4H S-1 100 -4
6 4 3D E 3 110 -4
8 10 4H S-2 200 -6

13

♠ 432 ♡ KQJ864 ♢ Q108 ♣ 6
N W E S
♠ Q10 ♡ 53 ♢ KJ542 ♣ 10954
♠ A85 ♡ 107 ♢ A976 ♣ KQJ2
♠ KJ976 ♡ A92 ♢ 3 ♣ A873

Board (13) Av: NS=+300
N-S E-W Contract N-S E-W IMP
5 2 4H N 4 620 8
4 6 4H N 4 620 8
7 3 4H N 4 620 8
10 8 5D W-3 300 0
6 4 3H N 4 170 -4
8 10 3H N 4 170 -4
9 1 3H N 4 170 -4
1 9 3H N 4 170 -4
2 5 3H N 3 140 -4
3 7 3S S-1 100 -9

14

♠ K86 ♡ KJ95 ♢ A102 ♣ 853
N W E S
♠ QJ43 ♡ 743 ♢ J8543 ♣ 9
♠ 2 ♡ AQ1062 ♢ K976 ♣ AJ10
♠ A10975 ♡ 8 ♢ Q ♣ KQ7642

Board (14) Av: NS=+170
N-S E-W Contract N-S E-W IMP
3 7 2Sx N 4 670 11
7 3 3NT N 5 460 7
1 9 4S N 4 420 6
10 8 4S N 4 420 6
9 1 3S S 3 140 -1
6 4 2S N 2 110 -2
4 6 4S S-1 50 -6
5 2 4S N-1 50 -6
2 5 4S N-2 100 -7
8 10 4S N-3 150 -8

15

♠ 754 ♡ 10 ♢ A76432 ♣ AQ2
N W E S
♠ KJ96 ♡ K2 ♢ 9 ♣ J97543
♠ A102 ♡ J8643 ♢ KQ105 ♣ 10
♠ Q83 ♡ AQ975 ♢ J8 ♣ K86

Board (15) Av: NS=-200
N-S E-W Contract N-S E-W IMP
3 7 2S E-1 50 6
10 8 2D N-1 100 3
4 6 2D N-1 100 3
8 10 2D N-1 100 3
5 2 2D N-1 100 3
2 5 2D N-2 200 0
6 4 3D N-3 300 -3
1 9 3C S-3 300 -3
9 1 3NT S-4 400 -5
7 3 2Sx W 2 470 -7

16

♠ 1098543 ♡ K ♢ AJ ♣ A1097
N W E S
♠ Q7 ♡ J98653 ♢ 8532 ♣ 8
♠ AK2 ♡ Q104 ♢ Q94 ♣ KJ42
♠ J6 ♡ A72 ♢ K1076 ♣ Q653

Board (16) Av: NS=+150
N-S E-W Contract N-S E-W IMP
6 4 2Hx E-1 200 2
3 7 3S N 4 170 1
7 3 2S N 4 170 1
5 2 2S N 4 170 1
2 5 2S N 4 170 1
4 6 2S N 3 140 0
10 8 2S N 3 140 0
1 9 3C N 4 130 -1
8 10 2H W-1 100 -2
9 1 2H E 2 110 -6

17

♠ K98732 ♡ A105 ♢ Q ♣ K103
N W E S
♠ Q65 ♡ 842 ♢ K654 ♣ Q98
♠ AJ ♡ J763 ♢ AJ97 ♣ A54
♠ 104 ♡ KQ9 ♢ 10832 ♣ J762

Board (17) Av: NS=+30
N-S E-W Contract N-S E-W IMP
8 10 3NT W-3 150 3
5 2 2S N 2 110 2
10 8 2S N 2 110 2
3 7 2S N 2 110 2
4 6 3D W-2 100 2
1 9 2D W-1 50 1
2 5 2D W 2 90 -3
7 3 2D W 2 90 -3
9 1 1NT W 1 90 -3
6 4 1NT E 1 90 -3

18

♠ 10 ♡ K7632 ♢ K83 ♣ J732
N W E S
♠ K832 ♡ A105 ♢ A5 ♣ AK105
♠ 765 ♡ QJ98 ♢ QJ4 ♣ Q64
♠ AQJ94 ♡ 4 ♢ 109762 ♣ 98

Board (18) Av: NS=-170
N-S E-W Contract N-S E-W IMP
6 4 3NT W-2 100 7
9 1 3NT E-2 100 7
3 7 2D N 2 90 6
8 10 3NT W-1 50 6
5 2 3H E-1 50 6
4 6 3NT W 3 400 -6
1 9 3NT W 3 400 -6
7 3 3NT E 3 400 -6
10 8 3NT W 4 430 -6
2 5 3NT W 4 430 -6

兵庫県知事杯 OPEN TEAMS Session 3 Flight B 2014年10月12日(日)

1

♠AQ
♥AQ842
♦84
♣AJ96

♠9542
♥K953
♦62
♣Q72

♠KJ63
♥106
♦QJ95
♣854

♠1087
♥J7
♦AK1073
♣K103

2

♠Q10986
♥A975
♦A5
♣85

♠J
♥KQJ63
♦J983
♣Q94

♠A72
♥842
♦1064
♣A1062

♠K543
♥10
♦KQ72
♣KJ73

3

♠QJ986
♥A85
♦9542
♣6

♠543
♥Q92
♦AKJ8
♣1042

♠10
♥10743
♦1063
♣KQJ83

♠AK72
♥KJ6
♦Q7
♣A975

Board (1) Av: NS=+310

N-S	E-W	Contract	N-S	E-W	IMP
7	9	3NT S 5	460		4
1	8	3NT S 4	430		3
9	7	3NT S 3	400		3
8	1	3NT S 3	400		3
10	3	3NT S 3	400		3
5	4	3NT S 3	400		3
3	10	3NT N 3	400		3
2	6	3D S 3	110		-5
6	2	3NT S-1		50	-8
4	5	3NT S-2		100	-9

Board (2) Av: NS=+470

N-S	E-W	Contract	N-S	E-W	IMP
5	4	4S S 5	650		5
1	8	4S N 5	650		5
3	10	4S N 5	650		5
6	2	4S N 5	650		5
2	6	4S N 4	620		4
10	3	4S N 4	620		4
4	5	2S N 5	200		-7
9	7	2S N 5	200		-7
8	1	3S N 4	170		-7
7	9	2S N 4	170		-7

Board (3) Av: NS=+420

N-S	E-W	Contract	N-S	E-W	IMP
8	1	4S S 4	420		0
1	8	4S S 4	420		0
6	2	4S S 4	420		0
3	10	4S S 4	420		0
7	9	4S S 4	420		0
10	3	4S S 4	420		0
4	5	4S S 4	420		0
9	7	4S S 4	420		0
5	4	4S S 4	420		0
2	6	2S S 4	170		-6

4

♠J974
♥A752
♦J85
♣J10

♠KQ102
♥
♦A9432
♣K962

♠A3
♥109864
♦K6
♣8754

♠865
♥KQJ3
♦Q107
♣AQ3

5

♠9653
♥72
♦AJ2
♣QJ75

♠A7
♥J
♦1087654
♣A943

♠108
♥KQ109865
♦KQ3
♣6

♠KQJ42
♥A43
♦9
♣K1082

6

♠872
♥A8
♦Q952
♣QJ86

♠J64
♥KQ3
♦AKJ874
♣10

♠AK3
♥J9652
♦10
♣A932

♠Q1095
♥1074
♦63
♣K754

Board (4) Av: NS=-100

N-S	E-W	Contract	N-S	E-W	IMP
6	2	2NT E-2	200		7
3	10	1NT N 3	150		6
4	5	2H E-1	100		5
1	8	1NT E-1	100		5
2	6	1NT E 1		90	0
9	7	2D W 3		110	0
8	1	4C W 5		150	-2
10	3	1NT E 3		150	-2
7	9	3Cx W 3		670	-11
5	4	1Sx W 4		760	-12

Board (5) Av: NS=+160

N-S	E-W	Contract	N-S	E-W	IMP
1	8	4Sx S 4	790		12
10	3	4Sx S 4	790		12
9	7	4S S 4	620		10
8	1	3S S 4	170		0
7	9	2S S 3	140		-1
6	2	4H E-1		50	-3
5	4	4H E-1		50	-3
3	10	3H E 3		140	-7
2	6	4H E 4		420	-11
4	5	4H E 4		420	-11

Board (6) Av: NS=-350

N-S	E-W	Contract	N-S	E-W	IMP
5	4	6H E-3	300		12
7	9	6H E-2	200		11
2	6	4H E-1	100		10
3	10	4H E-1	100		10
10	3	4H E 4		620	-7
6	2	4H E 4		620	-7
8	1	4H E 4		620	-7
4	5	4H E 5		650	-7
1	8	4H E 5		650	-7
9	7	4H E 5		650	-7

7

♠QJ10873
♥J
♦1062
♣J95

♠96542
♥K8543
♦
♣1074

♠AK
♥AQ1097
♦Q98
♣KQ2

♠62
♥
♦AKJ7543
♣A863

8

♠9
♥1092
♦AKJ10543
♣KQ

♠KQJ
♥54
♦Q2
♣J98754

♠A10653
♥AQJ76
♦97
♣10

♠8742
♥K83
♦86
♣A632

9

♠KQJ1042
♥K107
♦432
♣A

♠6
♥654
♦AKJ5
♣J9542

♠983
♥AJ9832
♦Q76
♣7

♠A75
♥Q
♦1098
♣KQ10863

Board (7) Av: NS=-370

N-S	E-W	Contract	N-S	E-W	IMP
1	8	3NT E-3	300		12
10	3	3NT E-1	100		10
9	7	5D S-1		100	7
6	2	5Dx S-1		200	5
3	10	5Dx S-1		200	5
2	6	4H W 4		620	-6
7	9	4H W 4		620	-6
5	4	5H W 5		650	-7
4	5	4H W 5		650	-7
8	1	4H E 5		650	-7

Board (8) Av: NS=+60

N-S	E-W	Contract	N-S	E-W	IMP
8	1	5Dx N 5	550		10
6	2	3D N 4	130		2
5	4	5S W-2	100		1
3	10	4S W-2	100		1
4	5	4S W-2	100		1
9	7	4S E-1		50	0
10	3	3S E-1		50	0
1	8	3S E-1		50	0
2	6	3S W 3		140	-5
7	9	3S E 3		140	-5

Board (9) Av: NS=+240

N-S	E-W	Contract	N-S	E-W	IMP
7	9	4S S 5	450		5
8	1	4S N 4	420		5
2	6	4S N 4	420		5
3	10	4S N 4	420		5
9	7	4S N 4	420		5
5	4	4S N 4	420		5
10	3	4S N-1		50	-7
4	5	4S N-1		50	-7
1	8	4S N-1		50	-7
6	2	4S N-1		50	-7

10

♠A10943
♥Q
♦AK1075
♣K4

♠J85 ♠6
♥A985 ♥KJ74
♦Q2 W—E ♦J963
♣AQ85 S ♣7632

♠KQ72
♥10632
♦84
♣J109

11

♠108654
♥K83
♦QJ6
♣K2

♠J9 ♠K72
♥AJ742 ♥Q105
♦K1042 W—E ♦97
♣Q4 S ♣AJ853

♠AQ3
♥96
♦A853
♣10976

12

♠97
♥K5
♦KQ1043
♣KQ53

♠KQ1052 ♠J4
♥Q84 ♥AJ1097
♦52 W—E ♦J87
♣1062 S ♣J94

♠A863
♥632
♦A96
♣A87

Board (10) Av: NS=+510

N-S	E-W	Contract	N-S	E-W	IMP
1	8	4S	N 5	650	4
3	10	4S	N 4	620	3
2	6	4S	N 4	620	3
6	2	4S	N 4	620	3
10	3	4S	N 4	620	3
4	5	4S	N 4	620	3
7	9	4S	N 4	620	3
8	1	3S	N 4	170	-8
5	4	2S	N 4	170	-8
9	7	2S	N 4	170	-8

Board (11) Av: NS=+30

N-S	E-W	Contract	N-S	E-W	IMP
4	5	4H	W-2	100	2
8	1	3H	W-1	50	1
9	7	3H	W-1	50	1
7	9	3H	W-1	50	1
5	4	3H	W-1	50	1
3	10	Passout			-1
10	3	Passout			-1
1	8	Passout			-1
2	6	Passout			-1
6	2	3Sx	N-1	100	-4

Board (12) Av: NS=+580

N-S	E-W	Contract	N-S	E-W	IMP
7	9	4NT	N 5	660	2
8	1	3NT	N 5	660	2
2	6	3NT	N 5	660	2
3	10	3NT	N 5	660	2
4	5	3NT	N 5	660	2
5	4	3NT	N 5	660	2
9	7	3NT	N 4	630	2
1	8	5D	N 5	600	1
6	2	3D	N 4	130	-10
10	3	3D	N 4	130	-10

13

♠3
♥Q106
♦Q943
♣Q7542

♠9874 ♠KQ652
♥9752 ♥A4
♦K1075 W—E ♦J8
♣3 S ♣KJ108

♠AJ10
♥KJ83
♦A62
♣A96

14

♠J
♥QJ85
♦AK93
♣10732

♠AK9764 ♠3
♥42 ♥K10973
♦ QJ854 W—E ♦QJ10764
♣QJ854 S ♣K

♠Q10852
♥A6
♦852
♣A96

15

♠A97
♥9653
♦KJ
♣J953

♠KJ854 ♠32
♥K872 ♥AJ10
♦42 W—E ♦108763
♣K6 S ♣1042

♠Q106
♥Q4
♦AQ95
♣AQ87

Board (13) Av: NS=-30

N-S	E-W	Contract	N-S	E-W	IMP
1	8	2S	E-2	200	6
3	10	1NT	S 2	120	4
8	1	3S	E-1	100	4
6	2	2S	E-1	100	4
9	7	2S	E-1	100	4
7	9	3C	S-1	100	-2
10	3	2S	E 2	110	-2
5	4	2S	E 2	110	-2
4	5	4H	S-3	300	-7
2	6	3NTxS-2		500	-10

Board (14) Av: NS=+120

N-S	E-W	Contract	N-S	E-W	IMP
4	5	2Sx	W-2	300	5
10	3	3C	W-3	150	1
2	6	2NT	W-3	150	1
1	8	2NT	W-3	150	1
9	7	3D	E-2	100	-1
5	4	2S	W-2	100	-1
6	2	2S	W-2	100	-1
7	9	2S	W-2	100	-1
3	10	2S	W-2	100	-1
8	1	2S	W 2	110	-6

Board (15) Av: NS=+590

N-S	E-W	Contract	N-S	E-W	IMP
10	3	3NT	S 4	630	1
1	8	3NT	S 3	600	0
2	6	3NT	S 3	600	0
8	1	3NT	S 3	600	0
3	10	3NT	S 3	600	0
9	7	3NT	S 3	600	0
4	5	3NT	S 3	600	0
5	4	3NT	S 3	600	0
7	9	2Sx	W-3	500	-3
6	2	3NT	S-1	100	-12

16

♠109
♥A1084
♦J103
♣QJ97

♠AKQJ73 ♠865
♥QJ96 ♥32
♦9 W—E ♦AQ85
♣A4 S ♣K1082

♠42
♥K75
♦K7642
♣653

17

♠J832
♥A987642
♦103
♣103

♠KQ10962 ♠A873
♥A9 ♥KQ5
♦ AQ852 W—E ♦J5
♣AQ852 S ♣KJ94

♠J54
♥10764
♦KQ103
♣76

18

♠K2
♥K1054
♦A97
♣AQJ8

♠6 ♠AQ107
♥J86 ♥AQ9732
♦K10653 W—E ♦2
♣5432 S ♣107

♠J98543
♥
♦QJ84
♣K96

Board (16) Av: NS=-650

N-S	E-W	Contract	N-S	E-W	IMP
7	9	5S	W-1	100	13
2	6	4S	W 5	650	0
1	8	4S	W 5	650	0
6	2	4S	W 5	650	0
3	10	4S	W 5	650	0
8	1	4S	W 5	650	0
10	3	4S	W 5	650	0
4	5	4S	W 5	650	0
5	4	4S	W 5	650	0
9	7	4S	W 5	650	0

Board (17) Av: NS=-1190

N-S	E-W	Contract	N-S	E-W	IMP
3	10	7Dx	N-4	800	9
5	4	6S	W 6	980	5
8	1	6S	W 7	1010	5
6	2	6S	W 7	1010	5
1	8	6S	W 7	1010	5
7	9	6S	W 7	1010	5
10	3	7S	W 7	1510	-8
4	5	7S	W 7	1510	-8
9	7	7S	W 7	1510	-8
2	6	7S	W 7	1510	-8

Board (18) Av: NS=+100

N-S	E-W	Contract	N-S	E-W	IMP
5	4	4S	S 4	620	11
3	10	3NT	N 3	600	11
1	8	5Hx	E-3	500	9
8	1	4H	E-1	50	-2
4	5	3H	E-1	50	-2
10	3	4S	S-1	100	-5
6	2	4S	S-1	100	-5
7	9	3NT	N-1	100	-5
2	6	3H	E 3	140	-6
9	7	3NT	N-2	200	-7

19

♠ Q92
♥ A94
♦ AJ1095
♣ J2

♠ AKJ6
♥ K63
♦ K
♣ 107653

N
W—E
S

♠ 104
♥ QJ
♦ Q64
♣ AKQ984

♠ 8753
♥ 108752
♦ 8732
♣

Board (19) Av: NS=-620

N-S	E-W	Contract	N-S	E-W	IMP
1	5	5C	W	5	600
3	9	5C	W	5	600
7	2	5C	W	5	600
8	4	3NT	E	3	600
6	10	3NT	E	3	600
4	8	3NT	E	3	600
9	3	3NT	W	4	630
5	1	3NT	W	5	660
2	7	3NT	E	5	660
10	6	3NT	E	5	660

20

♠ K1073
♥ AJ
♦ AK94
♣ A85

♠ QJ64
♥ 8
♦ 10653
♣ J1076

N
W—E
S

♠ 952
♥ 653
♦ J72
♣ 9432

♠ A8
♥ KQ109742
♦ Q8
♣ KQ

Board (20) Av: NS=+1840

N-S	E-W	Contract	N-S	E-W	IMP
3	9	7NT	N	7	2220
4	8	7NT	N	7	2220
9	3	7NT	N	7	2220
1	5	7H	S	7	2210
7	2	7H	N	7	2210
6	10	6NT	N	7	1470
2	7	6H	S	7	1460
5	1	6H	S	7	1460
10	6	6H	S	7	1460
8	4	6H	S	7	1460

21

♠ 1085
♥ AKQ965
♦ A62
♣ A

♠ A732
♥ J4
♦ J10983
♣ 54

N
W—E
S

♠ KJ96
♥ 10832
♦ 7
♣ K832

♠ Q4
♥ 7
♦ KQ54
♣ QJ10976

Board (21) Av: NS=+30

N-S	E-W	Contract	N-S	E-W	IMP
3	9	3NT	S	4	630
4	8	4H	N	4	620
2	7	4H	N	4	620
7	2	5D	N-1		100
6	10	4H	N-1		100
9	3	4H	N-1		100
8	4	4H	N-2		200
5	1	3NT	S-2		200
10	6	6H	N-3		300
1	5	5Dx	N-4		1100

22

♠ K1076
♥ A4
♦ 87
♣ AQ942

♠ 52
♥ 10987
♦ K9542
♣ 106

N
W—E
S

♠ J943
♥ QJ2
♦ AQJ6
♣ 75

♠ AQ8
♥ K653
♦ 103
♣ KJ83

Board (22) Av: NS=+250

N-S	E-W	Contract	N-S	E-W	IMP
10	6	3NT	S	5	460
4	8	3NT	S	5	460
8	4	3NT	S	4	430
9	3	3NT	S	4	430
5	1	4S	N	4	420
3	9	5C	S	5	400
7	2	3NT	S-1		50
2	7	3NT	S-1		50
6	10	3NT	S-1		50
1	5	3NT	S-1		50

23

♠ AJ9876
♥ 3
♦ 9732
♣ K4

♠ K4
♥ Q986
♦ KJ8
♣ Q1072

N
W—E
S

♠ Q3
♥ AJ742
♦ 64
♣ AJ83

♠ 1052
♥ K105
♦ AQ105
♣ 965

Board (23) Av: NS=-190

N-S	E-W	Contract	N-S	E-W	IMP
10	6	2S	N	2	110
6	10	2S	N	2	110
3	9	5H	E-1		100
7	2	3S	N-1		100
2	7	2S	N-1		100
1	5	2S	N-1		100
9	3	3H	E	4	170
8	4	4H	W	4	620
5	1	4H	E	4	620
4	8	4H	E	4	620

24

♠ AKJ632
♥ 105
♦ QJ2
♣ A8

♠ 5
♥ KJ8764
♦ A8
♣ J1065

N
W—E
S

♠ Q109
♥ Q92
♦ 10653
♣ K74

♠ 874
♥ A3
♦ K974
♣ Q932

Board (24) Av: NS=+240

N-S	E-W	Contract	N-S	E-W	IMP
2	7	5Hx	W-3		500
5	1	4S	N	4	420
10	6	4S	N	4	420
7	2	4S	N	4	420
8	4	4S	N	4	420
4	8	4S	N	4	420
3	9	4S	N-1		50
9	3	4S	N-1		50
1	5	4S	N-1		50
6	10	4S	N-1		50

25

♠ KJ95
♥ K10983
♦ 7
♣ K84

♠ 76
♥ 2
♦ Q109432
♣ AQJ6

N
W—E
S

♠ AQ10843
♥ AJ74
♦ J85
♣

♠ 2
♥ Q65
♦ AK6
♣ 1097532

Board (25) Av: NS=-20

N-S	E-W	Contract	N-S	E-W	IMP
3	9	4S	E-3		300
2	7	4Sx	E-1		200
8	4	4S	E-2		200
6	10	4S	E-1		100
7	2	4H	N-2		100
4	8	2S	E	2	110
10	6	3S	E	3	140
9	3	2S	E	3	140
5	1	4C	S-3		150
1	5	2S	E	4	170

26

♠ AJ82
♥ 6
♦ AQ753
♣ K54

♠ 763
♥ 10
♦ K1096
♣ 109832

N
W—E
S

♠ 954
♥ KQ954
♦ 8
♣ AQ76

♠ KQ10
♥ AJ8732
♦ J42
♣ J

Board (26) Av: NS=+260

N-S	E-W	Contract	N-S	E-W	IMP
4	8	1Hx	E-4		1100
6	10	1Hx	E-3		800
3	9	3NT	N	3	600
1	5	1Hx	E-2		500
9	3	2S	S	3	140
8	4	2C	W-1		100
2	7	2C	E-1		100
7	2	5D	N-1		100
5	1	3NT	S-1		100
10	6	3NT	N-2		200

27

♠ KJ9
♥ KQJ54
♦ A9
♣ A43

♠ A1073
♥ KJ10752
♣ 862

N
W—E
S

♠ Q75
♥ 862
♦ Q863
♣ 1097

♠ A1086432
♥ 9
♦ 4
♣ KQJ5

Board (27) Av: NS=+540

N-S	E-W	Contract	N-S	E-W	IMP
6	10	6S	S	6	980
5	1	6S	S	6	980
4	8	6S	S	6	980
9	3	5S	S	7	510
2	7	4S	S	7	510
8	4	5S	S	6	480
1	5	5H	S	6	480
7	2	5S	S	5	450
3	9	6S	S-1		50
10	6	6S	S-1		50

28

♠76
♥952
♦108
♣AQ10762

♠Q84
♥AKJ643
♦J632
♣

N E
W S

♠A1092
♥Q10
♦AQ97
♣J85

♠KJ53
♥87
♦K54
♣K943

Board (28) Av: NS=-450

N-S	E-W	Contract	N-S	E-W	IMP
2	7	4H W 4	420		1
1	5	4S W 5	450		0
5	1	4H W 5	450		0
7	2	4H W 5	450		0
10	6	4H W 5	450		0
9	3	4H W 5	450		0
4	8	4H W 5	450		0
8	4	4H W 5	450		0
6	10	4H W 5	450		0
3	9	3NT E 5	460		0

29

♠AQJ6
♥J4
♦Q
♣A98742

♠K1094
♥AQ108
♦10763
♣K

N E
W S

♠32
♥K73
♦AK9
♣QJ1053

♠875
♥9652
♦J8542
♣6

Board (29) Av: NS=-490

N-S	E-W	Contract	N-S	E-W	IMP
7	2	3NT W-3	300		13
1	5	2NT E 3	150		8
9	3	2NT E 4	180		7
3	9	2Cx N-2	500		0
5	1	3NT W 3	600		-3
6	10	3NT W 3	600		-3
2	7	3NT E 3	600		-3
10	6	3NT E 4	630		-4
8	4	3NT E 4	630		-4
4	8	2Cx N-3	800		-7

30

♠QJ4
♥Q106
♦KQ543
♣J2

♠AK865
♥A95
♦AJ2
♣A10

N E
W S

♠7
♥J84
♦1087
♣KQ7643

♠10932
♥K732
♦96
♣985

Board (30) Av: NS=-460

N-S	E-W	Contract	N-S	E-W	IMP
2	7	3NT W 4	430		1
7	2	3NT E 4	430		1
10	6	3NT W 5	460		0
5	1	3NT W 5	460		0
6	10	3NT W 5	460		0
3	9	3NT E 5	460		0
9	3	3NT E 5	460		0
1	5	3NT E 5	460		0
4	8	3NT E 5	460		0
8	4	3NT W 6	490		-1

31

♠Q3
♥7542
♦962
♣8743

♠AJ96542
♥K
♦J3
♣Q52

N E
W S

♠K87
♥J8
♦AKQ74
♣A109

♠10
♥AQ10963
♦1085
♣KJ6

Board (31) Av: NS=-480

N-S	E-W	Contract	N-S	E-W	IMP
4	8	5S W 6	480		0
8	4	5S W 6	480		0
6	10	5S E 6	480		0
5	1	4S W 6	480		0
2	7	4S W 6	480		0
1	5	4S W 6	480		0
10	6	4S W 6	480		0
3	9	4S W 6	480		0
7	2	4S W 7	510		-1
9	3	6S W 7	1010		-11

32

♠Q10743
♥72
♦Q8
♣KQ52

♠62
♥AJ10864
♦1075
♣A4

N E
W S

♠KJ985
♥K
♦632
♣J1086

♠A
♥Q953
♦AKJ94
♣973

Board (32) Av: NS=+120

N-S	E-W	Contract	N-S	E-W	IMP
2	7	2C E-3	300		5
10	6	2H W-2	200		2
6	10	2H W-2	200		2
7	2	1NT S 3	150		1
9	3	1NT S 3	150		1
3	9	1NT S 2	120		0
1	5	1NT S 2	120		0
4	8	2H W-1	100		-1
5	1	3NT S-1	50		-5
8	4	2S N-2	100		-6

33

♠Q1032
♥KJ3
♦853
♣K84

♠A74
♥A95
♦AQ1092
♣75

N E
W S

♠K985
♥Q8
♦KJ4
♣J1063

♠J6
♥107642
♦76
♣AQ92

Board (33) Av: NS=-140

N-S	E-W	Contract	N-S	E-W	IMP
7	2	1NT W 1	90		2
5	1	2D W 3	110		1
3	9	1NT W 2	120		1
9	3	1NT W 2	120		1
4	8	2S E 3	140		0
2	7	1NT W 3	150		0
1	5	1NT W 3	150		0
8	4	1NT W 3	150		0
10	6	1NT W 3	150		0
6	10	3NT W 3	400		-6

34

♠83
♥109864
♦A43
♣AJ7

♠AJ754
♥7
♦K62
♣10652

N E
W S

♠Q10962
♥3
♦10875
♣KQ3

♠K
♥AKQJ52
♦QJ9
♣984

Board (34) Av: NS=+440

N-S	E-W	Contract	N-S	E-W	IMP
8	4	5H S 5	650		5
2	7	4H S 5	650		5
3	9	4H S 4	620		5
7	2	4H S 4	620		5
6	10	4H S 4	620		5
9	3	5Sx W-3	500		2
5	1	4Sx W-2	300		-4
4	8	4Sx W-2	300		-4
1	5	5H S-1	100		-11
10	6	5H S-1	100		-11

35

♠9
♥3
♦Q87642
♣A9742

♠A1084
♥KJ105
♦AK105
♣5

N E
W S

♠K3
♥AQ842
♦3
♣J10863

♠QJ7652
♥976
♦J9
♣KQ

Board (35) Av: NS=-660

N-S	E-W	Contract	N-S	E-W	IMP
5	1	4H E 4	620		1
7	2	4H E 4	620		1
1	5	4H W 5	650		0
10	6	4H E 5	650		0
6	10	4H E 5	650		0
9	3	4H E 5	650		0
8	4	4H W 6	680		-1
4	8	4H E 6	680		-1
2	7	4H E 6	680		-1
3	9	4H E 6	680		-1

36

♠K6
♥1062
♦A9762
♣A94

♠74
♥754
♦J43
♣QJ753

N E
W S

♠Q10953
♥98
♦KQ5
♣1086

♠AJ82
♥AKQJ3
♦108
♣K2

Board (36) Av: NS=+960

N-S	E-W	Contract	N-S	E-W	IMP
6	10	6H S 6	1430		10
1	5	6H S 6	1430		10
3	9	6H S 6	1430		10
8	4	6H S 6	1430		10
4	8	4H S 6	680		-7
2	7	4H S 6	680		-7
5	1	4H S 6	680		-7
9	3	4H S 6	680		-7
10	6	3NT S 5	660		-7
7	2	7H S-1	100		-14

兵庫県知事杯 OPEN TEAMS Session 4 Flight B 2014年10月12日(日)

1

♠ K72
♥ 643
♦ K2
♣ K9853

♠ AJ986
♥ K975
♦ 97
♣ 74

♠ Q
♥ Q1082
♦ QJ10854
♣ 106

♠ 10543
♥ AJ
♦ A63
♣ AQJ2

Board (1) Av: NS=+150

N-S	E-W	Contract	N-S	E-W	IMP
7	5	3NT S 3	400		6
6	1	3NT S 3	400		6
1	6	3NT S 3	400		6
5	7	4Hx E-2	300		4
2	10	2NT S 2	120		-1
8	3	2H E-2	100		-2
9	4	5C S-1		50	-5
3	8	3NT S-1		50	-5
10	2	3NT S-1		50	-5
4	9	3NT S-1		50	-5

2

♠ K86432
♥ KQ9
♦ K2
♣ 109

♠ A109
♥ 107
♦ AQ75
♣ A853

♠ QJ5
♥ 8643
♦ 643
♣ KJ7

♠ 7
♥ AJ52
♦ J1098
♣ Q642

Board (2) Av: NS=+20

N-S	E-W	Contract	N-S	E-W	IMP
1	6	3C W-4	200		5
4	9	1NT W-3	150		4
10	2	2S N 2	110		3
9	4	1NT S 1	90		2
2	10	2D E-1	50		1
8	3	1NT W-1	50		1
7	5	1NT W 1		90	-3
3	8	2S N-1		100	-3
5	7	1NT W 2		120	-4
6	1	2S N-2		200	-6

3

♠ KQ5
♥ 932
♦ A95
♣ K874

♠ 1083
♥ KJ75
♦ J6
♣ AQJ2

♠ AJ742
♥ 1064
♦ KQ72
♣ 9

♠ 96
♥ AQ8
♦ 10843
♣ 10653

Board (3) Av: NS=-160

N-S	E-W	Contract	N-S	E-W	IMP
8	3	4S E-1	100		6
6	1	2S E 2		110	2
3	8	3S E 3		140	1
7	5	1NT W 3		150	0
4	9	2S E 4		170	0
9	4	2S E 4		170	0
10	2	2S E 4		170	0
2	10	2S E 4		170	0
1	6	1S E 4		170	0
5	7	4S E 4		620	-10

4

♠ K6
♥ 109
♦ 74
♣ AKQ7543

♠ 432
♥ 7532
♦ Q1096
♣ J6

♠ Q85
♥ AK6
♦ AJ852
♣ 109

♠ AJ1097
♥ QJ84
♦ K3
♣ 82

Board (4) Av: NS=+520

N-S	E-W	Contract	N-S	E-W	IMP
7	5	3NT N 7	720		5
1	6	3NT S 5	660		4
5	7	3NT S 5	660		4
10	2	3NT S 5	660		4
4	9	4NT S 4	630		3
3	8	4S S 4	620		3
2	10	4S S 4	620		3
8	3	3C N 5	150		-9
9	4	3C N 4	130		-9
6	1	5C N-1		100	-12

5

♠ QJ10963
♥ AK65
♦ Q
♣ Q7

♠ A
♥ QJ8743
♦ J82
♣ A92

♠ K4
♥ 1092
♦ K4
♣ K108543

♠ 8752
♥
♦ A1097653
♣ J6

Board (5) Av: NS=+280

N-S	E-W	Contract	N-S	E-W	IMP
10	2	4S N 6	680		9
4	9	4S N 5	650		9
8	3	4S N 4	620		8
2	10	4S N 4	620		8
7	5	5Cx E-3	500		6
9	4	5H W-2	100		-5
3	8	5C E-1	50		-6
5	7	4S N-1		100	-9
1	6	5S N-2		200	-10
6	1	5S N-2		200	-10

6

♠ K108
♥ A8
♦ AQJ632
♣ 105

♠ J954
♥ J974
♦ 105
♣ 972

♠ A73
♥ K532
♦ K87
♣ Q84

♠ Q62
♥ Q106
♦ 94
♣ AKJ63

Board (6) Av: NS=+430

N-S	E-W	Contract	N-S	E-W	IMP
4	9	1Cx E-4	1100		12
9	4	3NT S 5	460		1
2	10	3NT S 5	460		1
6	1	3NT S 5	460		1
3	8	3NT S 4	430		0
8	3	3NT S 4	430		0
10	2	3NT S 4	430		0
5	7	3NT S 3	400		-1
7	5	3NT N 3	400		-1
1	6	2D N 4	130		-7

7

♠ 543
♥ J6
♦ 984
♣ Q8432

♠ Q76
♥ 842
♦ KQ763
♣ 95

♠ KJ9
♥ KQ5
♦ AJ105
♣ A107

♠ A1082
♥ A10973
♦ 2
♣ KJ6

Board (7) Av: NS=-500

N-S	E-W	Contract	N-S	E-W	IMP
7	5	5D W-2	200		12
1	6	2NT E 3		150	8
3	8	1NT E 3		150	8
2	10	3NT E 3		600	-3
6	1	3NT E 3		600	-3
5	7	3NT E 4		630	-4
8	3	3NT E 4		630	-4
9	4	3NT E 4		630	-4
10	2	3NT E 4		630	-4
4	9	3NT E 4		630	-4

8

♠ Q2
♥ Q82
♦ J104
♣ A8762

♠ A53
♥ 10943
♦ 987
♣ KQ4

♠ KJ10864
♥ K
♦ Q653
♣ J9

♠ 97
♥ AJ765
♦ AK2
♣ 1053

Board (8) Av: NS=-30

N-S	E-W	Contract	N-S	E-W	IMP
2	10	4S E-2	100		4
9	4	4S E-1	50		2
1	6	4S E-1	50		2
4	9	3S E-1	50		2
10	2	3S E-1	50		2
6	1	4H S-2		100	-2
5	7	4H S-2		100	-2
3	8	2S E 2		110	-2
8	3	3S E 3		140	-3
7	5	2S E 3		140	-3

9

♠ J32
♥ KJ108763
♦ 98
♣ 6

♠ A97
♥ Q2
♦ Q1032
♣ QJ85

♠ 84
♥ 5
♦ KJ754
♣ AK1032

♠ KQ1065
♥ A94
♦ A6
♣ 974

Board (9) Av: NS=+420

N-S	E-W	Contract	N-S	E-W	IMP
8	3	4S S 5	450		1
7	5	4H N 5	450		1
5	7	4H N 5	450		1
9	4	4H N 5	450		1
6	1	4H N 5	450		1
3	8	4H N 5	450		1
10	2	4H N 5	450		1
4	9	4H S 4	420		0
2	10	5Cx W-1	200		-6
1	6	5Cx E-1	200		-6

10

♠K84
♥1093
♦J98
♣A987

♠975
♥K862
♦43
♣KQ53

♠AQ632
♥AQ4
♦AK76
♣J

♠J10
♥J75
♦Q1052
♣10642

♠AKQ87
♥K95
♦Q8754
♣Q8754

♠K32
♥J1065
♦QJ83
♣102

♠AQ1098754
♥42
♦62
♣9

W N E S

11

♠J6
♥93
♦A1074
♣AKJ63

♠K32
♥J1065
♦QJ83
♣102

♠AQ1098754
♥42
♦62
♣9

♠AKQ87
♥K95
♦Q8754
♣Q8754

♠K32
♥J1065
♦QJ83
♣102

♠AQ1098754
♥42
♦62
♣9

W N E S

12

♠K764
♥A73
♦AQ4
♣A95

♠AQ1053
♥KQJ105
♦8
♣KQ

♠92
♥2
♦K975
♣J108432

♠J8
♥9864
♦J10632
♣76

♠AQ1053
♥KQJ105
♦8
♣KQ

♠92
♥2
♦K975
♣J108432

W N E S

Board (10) Av: NS=+550

N-S	E-W	Contract	N-S	E-W	IMP
1	6	4S	S 7	710	4
3	8	4S	S 5	650	3
9	4	4S	S 5	650	3
5	7	4S	S 5	650	3
6	1	4S	S 5	650	3
2	10	4S	S 4	620	2
7	5	4S	S 4	620	2
8	3	4S	S 4	620	2
10	2	6S	S-1	100	-12
4	9	6S	S-2	200	-13

Board (11) Av: NS=+320

N-S	E-W	Contract	N-S	E-W	IMP
6	1	4Sx	S 4	590	7
3	8	4Sx	S 4	590	7
4	9	4S	S 5	450	4
10	2	4S	S 4	420	3
5	7	6Hx	W-2	300	-1
1	6	6Hx	W-2	300	-1
9	4	6Hx	E-2	300	-1
7	5	5Hx	W-1	100	-6
8	3	5Hx	W-1	100	-6
2	10	5H	W-1	50	-7

Board (12) Av: NS=-160

N-S	E-W	Contract	N-S	E-W	IMP
7	5	3S	E-3	150	7
8	3	3C	N 4	130	7
10	2	2C	N 3	110	7
2	10	4H	W-1	50	5
6	1	2H	W 3	140	1
3	8	3H	E 4	170	0
5	7	4H	W 4	420	-6
1	6	4H	W 4	420	-6
9	4	4H	W 4	420	-6
4	9	3NTxN-2		500	-8

13

♠K9
♥106
♦KQ10653
♣653

♠AQJ1053
♥A
♦7
♣AJ984

♠8764
♥54
♦AJ842
♣Q10

♠2
♥KQJ98732
♦9
♣K72

♠AQJ1053
♥A
♦7
♣AJ984

♠8764
♥54
♦AJ842
♣Q10

W N E S

14

♠54
♥Q852
♦KJ10
♣QJ76

♠A63
♥K97
♦852
♣A843

♠QJ1097
♥J1043
♦643
♣K

♠K82
♥A6
♦AQ97
♣10952

♠A63
♥K97
♦852
♣A843

♠QJ1097
♥J1043
♦643
♣K

W N E S

15

♠1098
♥95
♦A962
♣A874

♠AJ
♥AJ4
♦QJ10543
♣Q5

♠KQ742
♥KQ7
♦K
♣J1032

♠653
♥108632
♦87
♣K96

♠AJ
♥AJ4
♦QJ10543
♣Q5

♠KQ742
♥KQ7
♦K
♣J1032

W N E S

Board (13) Av: NS=-680

N-S	E-W	Contract	N-S	E-W	IMP
3	8	4S	E 5	650	1
4	9	4H	W 5	650	1
7	5	5H	W 6	680	0
6	1	5H	W 6	680	0
8	3	4S	E 6	680	0
9	4	4H	W 6	680	0
1	6	4H	W 6	680	0
2	10	4H	W 6	680	0
10	2	4H	W 6	680	0
5	7	4S	E 7	710	-1

Board (14) Av: NS=-20

N-S	E-W	Contract	N-S	E-W	IMP
6	1	3NT	W-2	100	3
7	5	2NT	E-2	100	3
3	8	3NT	W-1	50	2
5	7	2NT	E-1	50	2
10	2	2NT	E-1	50	2
4	9	1NT	E 1	90	-2
8	3	1NT	E 1	90	-2
1	6	2NT	E 2	120	-3
2	10	2NT	E 2	120	-3
9	4	2NT	E 2	120	-3

Board (15) Av: NS=+140

N-S	E-W	Contract	N-S	E-W	IMP
9	4	3Dx	E-2	300	4
8	3	3S	S 4	170	1
6	1	4H	W-3	150	0
5	7	3D	E-3	150	0
4	9	3S	S 3	140	0
2	10	3S	S 3	140	0
10	2	3S	S 3	140	0
7	5	3D	E-2	100	-1
1	6	3D	E-2	100	-1
3	8	3D	E-2	100	-1

16

♠QJ872
♥AQ6
♦103
♣732

♠963
♥109842
♦AQJ9
♣4

♠KJ73
♥K874
♣AJ985

♠AK1054
♥5
♦652
♣KQ106

♠963
♥109842
♦AQJ9
♣4

♠KJ73
♥K874
♣AJ985

W N E S

17

♠QJ4
♥42
♦J9863
♣A42

♠K986
♥A8653
♦104
♣105

♠107532
♥KQJ
♦K7
♣QJ8

♠A
♥1097
♦AQ52
♣K9763

♠K986
♥A8653
♦104
♣105

♠107532
♥KQJ
♦K7
♣QJ8

W N E S

18

♠72
♥A874
♦AJ74
♣932

♠AQ654
♥KQ65
♦K92
♣6

♠K98
♥J103
♦65
♣AK874

♠J103
♥92
♦Q1083
♣QJ105

♠AQ654
♥KQ65
♦K92
♣6

♠K98
♥J103
♦65
♣AK874

W N E S

Board (16) Av: NS=+120

N-S	E-W	Contract	N-S	E-W	IMP
8	3	4Sx	W-3	800	12
9	4	3Sx	W-2	500	9
3	8	3Sx	W-2	500	9
10	2	2Sx	W-1	200	2
4	9	2Sx	W-1	200	2
5	7	2S	W-1	100	-1
2	10	2NT	N-1	50	-5
6	1	3S	W 3	140	-6
7	5	1Sx	W 2	360	-10
1	6	2Sx	W 2	670	-13

Board (17) Av: NS=+10

N-S	E-W	Contract	N-S	E-W	IMP
4	9	2S	S 2	110	3
6	1	2S	S 2	110	3
8	3	3H	E-1	50	1
1	6	3H	E-1	50	1
5	7	3H	E-1	50	1
2	10	3S	S-1	50	-2
10	2	3S	S-1	50	-2
3	8	3S	S-1	50	-2
7	5	2S	S-1	50	-2
9	4	3H	E 3	140	-4

Board (18) Av: NS=-30

N-S	E-W	Contract	N-S	E-W	IMP
1	6	4S	E-2	100	4
10	2	3S	E-1	50	2
8	3	3S	E-1	50	2
5	7	3S	E-1	50	2
9	4	3S	E-1	50	2
2	10	2S	E 2	110	-2
6	1	2S	E 2	110	-2
3	8	2S	E 2	110	-2
4	9	2S	E 3	140	-3
7	5	3Cx	S-2	500	-10

兵庫県知事杯 OPEN TEAMS Session 5 Flight B 2014年10月12日(日)

1

♠AJ842
♥QJ7
♦1073
♣104

♠7
♥K543
♦Q85
♣K9732

♠Q105
♥98
♦AKJ9642
♣A

W N E S

♠K963
♥A1062
♦
♣QJ865

Board (1) Av: NS=+80

N-S	E-W	Contract	N-S	E-W	IMP
10	7	5Dx W-2	300		6
7	10	5Dx W-2	300		6
2	3	3NT W-4	200		3
5	8	5D W-2	100		1
3	2	5D W-1	50		-1
8	5	5D W-1	50		-1
4	1	5D W-1	50		-1
6	9	4D W-1	50		-1
9	6	4D W 4	130		-5
1	4	5Sx N-2	300		-9

2

♠J53
♥8765
♦854
♣Q96

♠AQ9
♥J1094
♦A1096
♣87

♠1074
♥Q3
♦
♣AKJ105432

W N E S

♠K862
♥AK2
♦KQJ732
♣

Board (2) Av: NS=+20

N-S	E-W	Contract	N-S	E-W	IMP
1	4	5Cx W-2	300		7
10	7	1DxxE-1	200		5
2	3	5Cx W-1	100		2
3	2	5Cx W-1	100		2
4	1	1NT S 1	90		2
7	10	3NT E-1	50		1
9	6	1NT W 2	120		-4
5	8	4C W 4	130		-4
6	9	3C W 4	130		-4
8	5	4D S-3	300		-8

3

♠42
♥AK754
♦AQ74
♣107

♠Q8763
♥102
♦J108
♣Q53

♠AKJ10
♥J986
♦965
♣K6

W N E S

♠95
♥Q3
♦K32
♣AJ9842

Board (3) Av: NS=+50

N-S	E-W	Contract	N-S	E-W	IMP
5	8	3S E-2	200		4
6	9	2H N 3	140		3
2	3	1NT S 2	120		2
10	7	1NT S 2	120		2
8	5	2S E-1	100		2
9	6	2S E-1	100		2
4	1	4H N-1	50		-3
1	4	3NT N-1	50		-3
7	10	3NT N-1	50		-3
3	2	2S E 2	110		-4

4

♠QJ92
♥KJ
♦J73
♣AJ109

♠8653
♥AQ852
♦54
♣32

♠A104
♥10763
♦K10
♣Q765

W N E S

♠K7
♥94
♦AQ9862
♣K84

Board (4) Av: NS=-200

N-S	E-W	Contract	N-S	E-W	IMP
10	7	3NT N-1	100		3
7	10	5D S-2	200		0
9	6	5D S-2	200		0
4	1	3NT N-2	200		0
5	8	3NT N-2	200		0
3	2	3NT N-2	200		0
2	3	3NT N-2	200		0
6	9	3NT N-2	200		0
1	4	3NT N-2	200		0
8	5	3NT N-2	200		0

5

♠97653
♥10632
♦43
♣K3

♠QJ1082
♥AK
♦KQ752
♣J

♠K
♥Q98754
♦109
♣6542

W N E S

♠A4
♥J
♦AJ86
♣AQ10987

Board (5) Av: NS=-60

N-S	E-W	Contract	N-S	E-W	IMP
6	9	3C S 4	130		5
9	6	3D E-2	100		4
4	1	3D E-1	50		3
1	4	3D E-1	50		3
2	3	2H W 2	110		-2
8	5	2H W 2	110		-2
7	10	2H W 2	110		-2
5	8	3H W 4	170		-3
3	2	2H W 4	170		-3
10	7	3Cx S-2	500		-10

6

♠Q10
♥AJ8643
♦743
♣A6

♠A93
♥Q972
♦Q2
♣KJ108

♠K85
♥105
♦AK96
♣Q743

W N E S

♠J7642
♥K
♦J1085
♣952

Board (6) Av: NS=-600

N-S	E-W	Contract	N-S	E-W	IMP
2	3	2NT E 4	180		9
1	4	3NT E 3	600		0
4	1	3NT E 3	600		0
3	2	3NT E 3	600		0
5	8	3NT E 3	600		0
8	5	3NT E 3	600		0
6	9	3NT E 3	600		0
9	6	3NT E 3	600		0
10	7	3NT E 3	600		0
7	10	3NT E 3	600		0

7

♠J732
♥Q865
♦K42
♣53

♠98654
♥104
♦Q8
♣QJ87

♠K9732
♥AJ753
♦A96
♣

W N E S

♠AKQ10
♥AJ
♦1096
♣K1042

Board (7) Av: NS=-60

N-S	E-W	Contract	N-S	E-W	IMP
6	9	3D W-2	200		6
1	4	1NT S 2	120		5
3	2	2H W-1	100		4
7	10	2S S-1	100		-1
2	3	2H W 2	110		-2
8	5	2H W 2	110		-2
4	1	2H W 2	110		-2
9	6	2H W 2	110		-2
5	8	2H W 3	140		-2
10	7	2H W 3	140		-2

8

♠K8
♥QJ10
♦J976
♣9872

♠AJ976
♥42
♦A10
♣KQ54

♠Q543
♥A9876
♦432
♣A

W N E S

♠102
♥K53
♦KQ85
♣J1063

Board (8) Av: NS=-470

N-S	E-W	Contract	N-S	E-W	IMP
9	6	4S E 5	450		1
4	1	4S E 5	450		1
8	5	4S E 5	450		1
6	9	4S E 5	450		1
5	8	4S E 6	480		0
3	2	4S E 6	480		0
1	4	4S E 6	480		0
7	10	4S E 6	480		0
2	3	4S E 6	480		0
10	7	6S E 6	980		-11

9

♠A95
♥763
♦7
♣KQ10862

♠K6
♥A942
♦KQ42
♣J53

♠J83
♥K105
♦J109853
♣7

W N E S

♠Q10742
♥QJ8
♦A6
♣A94

Board (9) Av: NS=+230

N-S	E-W	Contract	N-S	E-W	IMP
5	8	4S S 5	450		6
10	7	4S S 5	450		6
7	10	4S S 4	420		5
3	2	4S S 4	420		5
8	5	3S S 5	200		-1
9	6	3S S 4	170		-2
4	1	3S S 3	140		-3
6	9	4D E-1	100		-4
2	3	4S S-1	50		-7
1	4	4S S-1	50		-7

10

♠ Q63
♥ AQJ
♦ AQ873
♣ A7

♠ AJ92 ♠ K1084
♥ 106 ♥ 982
♦ 62 ♦ KJ104
♣ Q5432 ♣ J8

♠ 75
♥ K7543
♦ 95
♣ K1096

Board (10) Av: NS=-110

N-S	E-W	Contract	N-S	E-W	IMP
2	3	2H N 4	170		7
5	8	4H S-1	100		0
1	4	4H S-1	100		0
3	2	4H S-1	100		0
8	5	4H S-1	100		0
9	6	4H S-1	100		0
6	9	4H S-1	100		0
7	10	4H N-1	100		0
4	1	4H S-2	200		-3
10	7	4H S-2	200		-3

11

♠ Q84
♥ A1083
♦ QJ76
♣ 53

♠ 76 ♠ J9
♥ 954 ♥ KJ762
♦ 109853 ♦ 2
♣ KJ10 ♣ 97642

♠ AK10532
♥ Q
♦ AK4
♣ AQ8

Board (11) Av: NS=+920

N-S	E-W	Contract	N-S	E-W	IMP
5	8	6S S 6	980		2
4	1	6S S 6	980		2
2	3	6S S 6	980		2
3	2	6S S 6	980		2
10	7	6S S 6	980		2
8	5	6S S 6	980		2
6	9	6S S 6	980		2
9	6	6S S 6	980		2
7	10	5S S 6	480		-10
1	4	4S S 6	480		-10

12

♠ A64
♥ 53
♦ Q8432
♣ 1087

♠ 1053 ♠ KJ82
♥ 10872 ♥ AJ6
♦ A10 ♦ K765
♣ QJ42 ♣ AK

♠ Q97
♥ KQ94
♦ J9
♣ 9653

Board (12) Av: NS=-300

N-S	E-W	Contract	N-S	E-W	IMP
7	10	3NT W-2	100		9
1	4	3NT W-1	50		8
9	6	3NT W-1	50		8
8	5	3NT W 3	400		-3
3	2	3NT E 3	400		-3
2	3	3NT E 3	400		-3
10	7	3NT E 3	400		-3
6	9	3NT E 4	430		-4
4	1	3NT E 4	430		-4
5	8	3NT E 4	430		-4

13

♠ AJ42
♥ 1054
♦ A9742
♣ Q

♠ KQ3 ♠ 1096
♥ 2 ♥ Q863
♦ 8653 ♦ KJ
♣ AJ985 ♣ K742

♠ 875
♥ AKJ97
♦ Q10
♣ 1063

Board (13) Av: NS=+50

N-S	E-W	Contract	N-S	E-W	IMP
10	7	4C W-2	200		4
2	3	2H S 3	140		3
9	6	2H S 3	140		3
7	10	2H S 2	110		2
6	9	1NT W-1	100		2
1	4	Passout			-2
3	2	Passout			-2
8	5	Passout			-2
4	1	4H S-1	100		-4
5	8	4H S-1	100		-4

14

♠ 1065
♥ J8
♦ KQ73
♣ A1084

♠ KQJ7 ♠ 8432
♥ 63 ♥ A74
♦ 10854 ♦ J2
♣ KJ5 ♣ 9763

♠ A9
♥ KQ10952
♦ A96
♣ Q2

Board (14) Av: NS=+430

N-S	E-W	Contract	N-S	E-W	IMP
5	8	4H S 5	450		1
9	6	4H S 5	450		1
7	10	4H S 5	450		1
4	1	4H S 4	420		0
1	4	4H S 4	420		0
3	2	4H S 4	420		0
2	3	4H S 4	420		0
6	9	4H S 4	420		0
10	7	4H S 4	420		0
8	5	4H S 4	420		0

15

♠ Q6
♥ 109874
♦ KJ10976
♣ KJ10976

♠ 98742 ♠ AQJ103
♥ 43 ♥ KJ1072
♦ A2 ♦ KQ
♣ A853 ♣ Q

♠ K65
♥ A985
♦ J653
♣ 42

Board (15) Av: NS=-450

N-S	E-W	Contract	N-S	E-W	IMP
10	7	6S E-1	50		11
7	10	5S E 5	450		0
9	6	5S E 5	450		0
5	8	5S E 5	450		0
3	2	4S E 5	450		0
8	5	4S E 5	450		0
6	9	4S E 5	450		0
2	3	4S E 5	450		0
4	1	4S E 5	450		0
1	4	4S E 5	450		0

16

♠ AJ1043
♥ AJ1043
♦ A964
♣ AJ82

♠ AK10652 ♠ J943
♥ Q9 ♥ K6
♦ Q72 ♦ K53
♣ 95 ♣ KQ63

♠ Q87
♥ 8752
♦ J108
♣ 1074

Board (16) Av: NS=-540

N-S	E-W	Contract	N-S	E-W	IMP
4	1	5H S-1	50		10
10	7	5Hx S-2	300		6
5	8	5Hx N-2	300		6
3	2	4S W 4	620		-2
2	3	4S W 4	620		-2
8	5	4S W 4	620		-2
6	9	4S W 4	620		-2
9	6	4S W 4	620		-2
7	10	4S W 4	620		-2
1	4	4S W 4	620		-2

17

♠ AK108
♥ AKJ54
♦ 92
♣ J7

♠ J63 ♠ Q542
♥ 87 ♥ Q63
♦ J75 ♦ 643
♣ A8654 ♣ K102

♠ 97
♥ 1092
♦ AKQ108
♣ Q93

Board (17) Av: NS=+450

N-S	E-W	Contract	N-S	E-W	IMP
5	8	4H N 6	480		1
9	6	4H N 6	480		1
10	7	4H N 6	480		1
1	4	4H N 5	450		0
8	5	4H N 5	450		0
6	9	4H N 5	450		0
7	10	4H N 5	450		0
3	2	4H N 4	420		-1
4	1	4H N 4	420		-1
2	3	4H N 4	420		-1

18

♠ AQJ5
♥ AKQ754
♦ 10
♣ 109

♠ K10983 ♠ 62
♥ 108 ♥ QJ862
♦ 7543 ♦ AKQJ53
♣ 82 ♣ AKQJ53

♠ 7642
♥ J93
♦ AK9
♣ 764

Board (18) Av: NS=+330

N-S	E-W	Contract	N-S	E-W	IMP
6	9	5Dx E-4	800		10
7	10	4H N 5	650		8
3	2	4H N 5	650		8
9	6	5Cx E-3	500		5
10	7	5Cx E-3	500		5
8	5	5D E-3	150		-5
2	3	5C E-3	150		-5
5	8	5Dx E-1	100		-6
4	1	4S S-1	100		-10
1	4	5Sx S-2	500		-13

1

♠AJ873
♥J954
♦1064
♣Q

♠Q5
♥AKQ873
♦952
♣107

♠K10942
♥102
♦Q8
♣6542

W N E S

♠6
♥6
♦AKJ73
♣AKJ983

Board (1) Av: NS=+490

N-S	E-W	Contract	N-S	E-W	IMP
1	3	6D S 6	920		10
5	6	6D S 6	920		10
8	7	3NT N 4	430		-2
4	2	3NT N 4	430		-2
6	5	3NT N 4	430		-2
2	4	5D S 6	420		-2
10	9	5D S 6	420		-2
3	1	5C S 6	420		-2
9	10	5C S 6	420		-2
7	8	2Hx W-2	300		-5

2

♠876
♥J83
♦KJ953
♣A4

♠A52
♥10
♦Q764
♣QJ732

♠J
♥AKQ9652
♦
♣109865

W N E S

♠KQ10943
♥74
♦A1082
♣K

Board (2) Av: NS=-300

N-S	E-W	Contract	N-S	E-W	IMP
7	8	5Sx S 5	850		15
4	2	4Sx S 4	790		14
6	5	4C E 5	150		4
9	10	5H E 5	450		-4
8	7	5H E 5	450		-4
2	4	4H E 5	450		-4
10	9	5Cx E 5	550		-6
3	1	5Cx E 5	550		-6
5	6	5Cx E 5	550		-6
1	3	5Cx E 6	650		-8

3

♠A9
♥543
♦QJ95
♣AKJ10

♠Q854
♥AJ106
♦AK
♣876

♠KJ103
♥K2
♦8762
♣953

W N E S

♠762
♥Q987
♦1043
♣Q42

Board (3) Av: NS=-110

N-S	E-W	Contract	N-S	E-W	IMP
8	7	1NT N 1	90		5
9	10	1NT N-1	50		2
3	1	1NT N-2	100		0
2	4	1NT N-2	100		0
4	2	1NT N-2	100		0
5	6	1NT N-2	100		0
7	8	2S E 2	110		0
10	9	2S E 3	140		-1
1	3	2S E 4	170		-2
6	5	3NT N-4	200		-3

4

♠7632
♥108
♦KQ107
♣J92

♠J9
♥K642
♦953
♣10754

♠AKQ5
♥AJ75
♦AJ4
♣K8

W N E S

♠1084
♥Q93
♦862
♣AQ63

Board (4) Av: NS=-190

N-S	E-W	Contract	N-S	E-W	IMP
4	2	4H E-1	100		7
5	6	4H E-1	100		7
9	10	4H E-1	100		7
10	9	4H E-1	100		7
8	7	4H E-1	100		7
3	1	2NT E 3	150		1
6	5	3NT E 3	600		-9
2	4	3NT E 3	600		-9
7	8	3NT E 3	600		-9
1	3	4H E 4	620		-10

5

♠5
♥KQ32
♦J873
♣8542

♠KQ9863
♥984
♦
♣AQ97

♠AJ2
♥J65
♦K9642
♣K3

W N E S

♠1074
♥A107
♦AQ105
♣J106

Board (5) Av: NS=-420

N-S	E-W	Contract	N-S	E-W	IMP
10	9	3S W 4	170		6
3	1	4S W 4	420		0
2	4	4S W 4	420		0
4	2	4S W 4	420		0
5	6	4S W 4	420		0
6	5	4S W 4	420		0
7	8	4S W 4	420		0
8	7	4S W 4	420		0
9	10	4S E 4	420		0
1	3	4S E 4	420		0

6

♠65
♥Q102
♦92
♣KQ10963

♠42
♥75
♦A86
♣AJ8754

♠KJ1087
♥K6
♦Q10753
♣2

W N E S

♠AQ93
♥AJ9843
♦KJ4
♣

Board (6) Av: NS=+430

N-S	E-W	Contract	N-S	E-W	IMP
10	9	4H S 5	450		1
9	10	4H S 5	450		1
6	5	4H S 5	450		1
7	8	4H S 5	450		1
5	6	4H S 4	420		0
4	2	4H S 4	420		0
3	1	4H S 4	420		0
8	7	4H S 4	420		0
2	4	4H S 4	420		0
1	3	3H S 5	200		-6

7

♠4
♥J10
♦A10
♣KQ1097653

♠7532
♥AQ6
♦J753
♣J8

♠AQJ
♥8753
♦KQ8642
♣

W N E S

♠K10986
♥K942
♦9
♣A42

Board (7) Av: NS=+160

N-S	E-W	Contract	N-S	E-W	IMP
10	9	4Sx W-4	1100		14
2	4	5C N 5	600		10
7	8	3NT N 3	600		10
4	2	4C N 5	150		0
5	6	4C N 5	150		0
9	10	5D E-1	100		-2
3	1	5C N-1	100		-6
1	3	5C N-1	100		-6
8	7	4D E 4	130		-7
6	5	5Cx N-1	200		-8

8

♠J10
♥Q1092
♦KQ2
♣10763

♠932
♥J865
♦93
♣KQ82

♠KQ54
♥A3
♦AJ1084
♣54

W N E S

♠A876
♥K74
♦765
♣AJ9

Board (8) Av: NS=-130

N-S	E-W	Contract	N-S	E-W	IMP
10	9	2H N-1	50		2
5	6	1NT N-2	100		1
3	1	1S E 2	110		1
9	10	1NT W 2	120		0
8	7	1NT W 2	120		0
7	8	1NT E 2	120		0
1	3	1NT W 3	150		-1
4	2	1NT W 3	150		-1
2	4	1NT W 3	150		-1
6	5	1NT W 4	180		-2

9

♠AQ1072
♥AK96
♦QJ
♣105

♠J98654
♥Q
♦763
♣862

♠3
♥J8752
♦A95
♣AQ93

W N E S

♠K
♥1043
♦K10842
♣KJ74

Board (9) Av: NS=+450

N-S	E-W	Contract	N-S	E-W	IMP
7	8	2Hx E-4	1100		12
1	3	2Hx E-3	800		8
4	2	2Cx W-2	500		2
9	10	3NT N 5	460		0
5	6	3NT S 4	430		-1
8	7	3NT S 4	430		-1
2	4	3NT S 3	400		-2
3	1	3NT N 3	400		-2
10	9	2NT N 4	180		-7
6	5	2C W-1	100		-8

兵庫県知事杯 OPEN TEAMS Session 6 Flight B 2014年10月13日(月)

10

♠ A752
♥ KQ10
♦ AJ105
♣ 94

♠ Q83
♥ 6432
♦ Q4
♣ 10865

♠ K96
♥ AJ87
♦ 63
♣ KQJ3

N
W — E
S

♠ J104
♥ 95
♦ K9872
♣ A72

11

♠ 8754
♥ AK3
♦ Q64
♣ 854

♠ A102
♥ J108
♦ A108
♣ A762

♠ J6
♥ Q9654
♦ J73
♣ QJ10

N
W — E
S

♠ KQ93
♥ 72
♦ K952
♣ K93

12

♠ AQJ9
♥ J63
♦ KQ1093
♣ 2

♠ 83
♥ K4
♦ A76
♣ AKJ943

♠ 765
♥ 9875
♦ J85
♣ Q86

N
W — E
S

♠ K1042
♥ AQ102
♦ 42
♣ 1075

Board (10) Av: NS=+90

N-S	E-W	Contract	N-S	E-W	IMP
7	8	1NT E-2	200		3
2	4	1D S 5	150		2
9	10	1D S 4	130		1
4	2	1D S 4	130		1
1	3	1D S 3	110		1
5	6	1D S 3	110		1
6	5	2H E-1	100		0
8	7	1NT E-1	100		0
10	9	3NT S-1	100	100	-5
3	1	3NT S-2	200		-7

Board (11) Av: NS=-80

N-S	E-W	Contract	N-S	E-W	IMP
9	10	1NT W-1	50		4
3	1	2S N-1	50		1
10	9	2S N-1	50		1
4	2	2S N-1	50		1
1	3	1NT S-1	50		1
6	5	1NT W 1	90		0
7	8	1NT W 1	90		0
8	7	2S N-2	100		-1
2	4	3H E 4	170		-3
5	6	3H E 4	170		-3

Board (12) Av: NS=-40

N-S	E-W	Contract	N-S	E-W	IMP
3	1	3S N 4	170		5
6	5	2S S 4	170		5
1	3	5C W-3	150		5
8	7	3H S-1	100		-2
2	4	3H S-1	100		-2
9	10	3D N-1	100		-2
7	8	3C W 3	110		-2
4	2	3C W 3	110		-2
5	6	1NT W 2	120		-2
10	9	1NT W 2	120		-2

13

♠ 8764
♥ Q542
♦ J9
♣ AK7

♠ A3
♥ 109763
♦ A875
♣ Q2

♠ K10
♥ AJ
♦ 63
♣ 10986543

N
W — E
S

♠ QJ952
♥ K8
♦ KQ1042
♣ J

14

♠ 7
♥ A10873
♦ K8732
♣ K3

♠ J10852
♥ KJ92
♦ Q1082
♣ Q1082

♠ K643
♥ Q654
♦ 9
♣ A974

N
W — E
S

♠ AQ9
♥
♦ AQJ10654
♣ J65

15

♠ A92
♥ 86532
♦ J75
♣ 76

♠ Q654
♥ KQ
♦ KQ42
♣ Q109

♠ J1087
♥ AJ109
♦ 1086
♣ K5

N
W — E
S

♠ K3
♥ 74
♦ A93
♣ AJ8432

Board (13) Av: NS=+200

N-S	E-W	Contract	N-S	E-W	IMP
9	10	4S S 4	620		9
5	6	4S S 4	620		9
4	2	4S S 4	620		9
6	5	4S S 4	620		9
8	7	3S S 3	140		-2
3	1	4S S-1	100		-7
1	3	4S S-1	100		-7
10	9	4S S-1	100		-7
2	4	4S S-1	100		-7
7	8	3C E 3	110		-7

Board (14) Av: NS=+430

N-S	E-W	Contract	N-S	E-W	IMP
3	1	6D S 6	920		10
4	2	6D S 6	920		10
1	3	3NT S 4	430		0
5	6	3NT N 4	430		0
2	4	5D S 6	420		0
6	5	5D S 6	420		0
9	10	5D S 6	420		0
7	8	5Sx W-2	300		-4
8	7	4S W-2	100		-8
10	9	7D S-1	50		-10

Board (15) Av: NS=-140

N-S	E-W	Contract	N-S	E-W	IMP
3	1	2C S-1	100		1
8	7	2C S-1	100		1
5	6	3S W 3	140		0
2	4	2S E 3	140		0
4	2	2S E 3	140		0
1	3	2S E 3	140		0
7	8	2S E 3	140		0
9	10	2S E 3	140		0
6	5	2S E 3	140		0
10	9	4S W 4	420		-7

16

♠ K52
♥ AK
♦ KJ87
♣ A1063

♠ AJ764
♥ 10763
♦ A
♣ K94

♠ 98
♥ J5
♦ 10963
♣ QJ752

N
W — E
S

♠ Q103
♥ Q9842
♦ Q542
♣ 8

17

♠ K10
♥ J10962
♦ A108
♣ A87

♠ QJ754
♥ K
♦ J9632
♣ J4

♠ 986
♥ 8754
♦ KQ7
♣ 953

N
W — E
S

♠ A32
♥ AQ3
♦ 54
♣ KQ1062

18

♠ QJ642
♥ Q8
♦ K832
♣ Q6

♠ 95
♥ K543
♦ Q975
♣ 432

♠ K7
♥ 962
♦ 104
♣ AKJ975

N
W — E
S

♠ A1083
♥ AJ107
♦ AJ6
♣ 108

Board (16) Av: NS=+140

N-S	E-W	Contract	N-S	E-W	IMP
6	5	4H S 4	420		7
2	4	3NT N 3	400		6
3	1	2H N 4	170		1
1	3	2H N 4	170		1
10	9	2H N 4	170		1
7	8	2H N 3	140		0
5	6	2H N 3	140		0
8	7	4H S-1	50		-5
9	10	4H S-1	50		-5
4	2	3NT N-1	50		-5

Board (17) Av: NS=+320

N-S	E-W	Contract	N-S	E-W	IMP
6	5	4H N 6	480		4
2	4	4H N 5	450		4
1	3	4H N 5	450		4
3	1	4H N 5	450		4
5	6	4H N 5	450		4
10	9	4H N 5	450		4
8	7	4H N 4	420		3
4	2	6H N-1	50		-9
9	10	6H N-1	50		-9
7	8	3NT S-1	50		-9

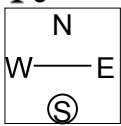
Board (18) Av: NS=+430

N-S	E-W	Contract	N-S	E-W	IMP
7	8	4S N 4	620		5
1	3	4S N 4	620		5
10	9	4S N 4	620		5
6	5	4S N 4	620		5
2	4	5Cx E-3	500		2
8	7	5Cx E-3	500		2
5	6	2S N 5	200		-6
3	1	3S N 4	170		-6
9	10	3S N 4	170		-6
4	2	3S N 4	170		-6

19

♠8543
♥865
♦KQ762
♣9

♠Q
♥KQ92
♦A3
♣1075432



♠AKJ1062
♥A3
♦9
♣AK86

♠97
♥J1074
♦J10854
♣QJ

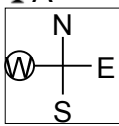
Board (19) Av: NS=-1250

N-S	E-W	Contract	N-S	E-W	IMP
4	3	5C	E 7	640	12
1	2	4S	E 7	710	11
3	4	4S	E 7	710	11
7	6	4S	E 7	710	11
9	8	6C	E 7	1390	-4
8	9	6C	E 7	1390	-4
5	10	6NT	W 7	1470	-6
2	1	6NT	W 7	1470	-6
6	7	7C	W 7	2140	-13
10	5	7C	E 7	2140	-13

20

♠Q9742
♥72
♦A7432
♣A

♠J105
♥AK93
♦8
♣KQJ95



♠K8
♥J8
♦KQJ95
♣7432

♠A63
♥Q10654
♦106
♣1086

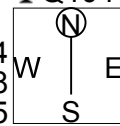
Board (20) Av: NS=+60

N-S	E-W	Contract	N-S	E-W	IMP
5	10	5C	W-2	200	4
4	3	3NT	W-2	200	4
9	8	3NT	E-2	200	4
2	1	3D	E-2	200	4
10	5	5C	W-1	100	1
8	9	3NT	E-1	100	1
3	4	1NT	W 1	90	-4
6	7	3C	W 4	130	-5
1	2	3C	W 4	130	-5
7	6	2S	N-2	200	-6

21

♠10752
♥65
♦A972
♣Q104

♠Q84
♥K104
♦K108
♣A765



♠A96
♥AJ93
♦QJ6
♣K82

♠KJ3
♥Q872
♦543
♣J93

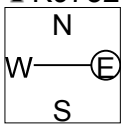
Board (21) Av: NS=-420

N-S	E-W	Contract	N-S	E-W	IMP
8	9	3NT	E 3	400	1
5	10	3NT	E 3	400	1
4	3	3NT	E 3	400	1
7	6	3NT	E 3	400	1
2	1	3NT	E 4	430	0
1	2	3NT	E 4	430	0
3	4	3NT	E 4	430	0
6	7	3NT	E 4	430	0
9	8	3NT	E 4	430	0
10	5	3NT	E 5	460	-1

22

♠83
♥K72
♦A76
♣K9732

♠A1092
♥Q3
♦K32
♣Q1085



♠KQJ54
♥A85
♦J954
♣J

♠76
♥J10964
♦Q108
♣A64

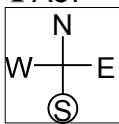
Board (22) Av: NS=+50

N-S	E-W	Contract	N-S	E-W	IMP
5	10	4S	E-2	200	4
7	6	4S	E-2	200	4
3	4	4S	E-2	200	4
6	7	4S	E-2	200	4
2	1	4S	E-1	100	2
9	8	4S	E-1	100	2
10	5	3S	E 3	140	-5
1	2	3S	E 3	140	-5
8	9	3S	E 3	140	-5
4	3	4S	W 4	620	-12

23

♠A3
♥A863
♦KQ53
♣A87

♠9542
♥KQ97
♦A1074
♣4



♠KJ7
♥42
♦982
♣Q10952

♠Q1086
♥J105
♦J6
♣KJ63

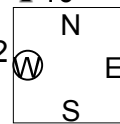
Board (23) Av: NS=+350

N-S	E-W	Contract	N-S	E-W	IMP
3	4	3NT	N 5	660	7
8	9	3NT	N 4	630	7
1	2	3NT	N 4	630	7
6	7	3NT	N 4	630	7
2	1	3NT	N 3	600	6
5	10	3NT	N 3	600	6
4	3	3NT	S-1	100	-10
10	5	3NT	N-1	100	-10
7	6	3NT	N-1	100	-10
9	8	3NT	N-2	200	-11

24

♠J43
♥A93
♦1075432
♣10

♠AQ65
♥KQ1062
♦
♣AJ94



♠K82
♥J875
♦J8
♣K763

♠1097
♥4
♦AKQ96
♣Q852

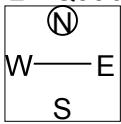
Board (24) Av: NS=-480

N-S	E-W	Contract	N-S	E-W	IMP
4	3	5Dx	S-2	300	5
7	6	5H	W 6	480	0
3	4	5H	W 6	480	0
6	7	5H	W 6	480	0
2	1	4H	W 6	480	0
5	10	4H	W 6	480	0
1	2	4H	W 6	480	0
9	8	4H	W 6	480	0
10	5	4H	W 6	480	0
8	9	6H	W 6	980	-11

25

♠AQ
♥J983
♦4
♣AQJ962

♠J82
♥K75
♦A983
♣743



♠K764
♥A64
♦KJ765
♣10

♠10953
♥Q102
♦Q102
♣K85

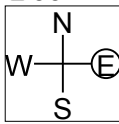
Board (25) Av: NS=-40

N-S	E-W	Contract	N-S	E-W	IMP
8	9	3C	N 3	110	4
5	10	2C	N 3	110	4
4	3	2C	N 2	90	4
2	1	4C	N-1	50	0
6	7	2D	E 2	90	-2
3	4	5C	N-2	100	-2
1	2	3NT	S-2	100	-2
7	6	3NT	S-2	100	-2
10	5	3D	W 3	110	-2
9	8	3D	W 3	110	-2

26

♠QJ102
♥KQ3
♦108
♣J942

♠7
♥J109
♦J97632
♣1087



♠K95
♥A87542
♦Q4
♣KQ

♠A8643
♥6
♦AK5
♣A653

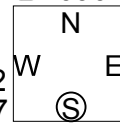
Board (26) Av: NS=+630

N-S	E-W	Contract	N-S	E-W	IMP
1	2	4S	S 5	650	1
4	3	4S	S 5	650	1
10	5	4S	S 5	650	1
3	4	4S	S 4	620	0
9	8	4S	S 4	620	0
2	1	4S	S 4	620	0
6	7	4S	S 4	620	0
8	9	4S	S 4	620	0
7	6	3NT	N 3	600	-1
5	10	4S	S-1	100	-12

27

♠872
♥82
♦A985
♣10964

♠A9
♥1064
♦Q642
♣KQJ7



♠Q1065
♥KQJ3
♦KJ7
♣A8

♠KJ43
♥A975
♦103
♣532

Board (27) Av: NS=-440

N-S	E-W	Contract	N-S	E-W	IMP
4	3	3NT	W 4	430	0
5	10	3NT	W 4	430	0
8	9	3NT	W 4	430	0
9	8	3NT	W 4	430	0
7	6	3NT	W 4	430	0
3	4	3NT	E 4	430	0
10	5	3NT	W 5	460	-1
6	7	3NT	W 5	460	-1
1	2	3NT	W 5	460	-1
2	1	3NT	W 5	460	-1

28

♠ 9542
♥ J1053
♦ 94
♣ K54

♠ AJ63
♥ AQ86
♦ J63
♣ 72

N
W | E
S

♠ KQ10
♥ K72
♦ AQ52
♣ J93

♠ 87
♥ 94
♦ K1087
♣ AQ1086

Board (28) Av: NS=-50

N-S	E-W	Contract	N-S	E-W	IMP
5	10	5D	W-2	100	4
10	5	3NT	W-2	100	4
4	3	3NT	W-2	100	4
8	9	3NT	W-1	50	3
9	8	3NT	E-1	50	3
3	4	3NT	E-1	50	3
7	6	3NT	E-1	50	3
6	7	3NT	W 3	400	-8
1	2	3NT	W 3	400	-8
2	1	3NT	W 4	430	-9

29

♠ Q
♥ QJ10963
♦ AJ752
♣ 5

♠ J942
♥ A84
♦ 93
♣ Q983

N
W | E
S

♠ A763
♥ 2
♦ 86
♣ AKJ1074

♠ K1085
♥ K75
♦ KQ104
♣ 62

Board (29) Av: NS=+220

N-S	E-W	Contract	N-S	E-W	IMP
1	2	4H	N 4	620	9
10	5	4H	N 4	620	9
3	4	4H	N 4	620	9
5	10	4Sx	W-2	500	7
6	7	5Cx	E-1	200	-1
8	9	4S	W-1	100	-3
4	3	5H	N-1	100	-8
2	1	5H	N-1	100	-8
9	8	5H	N-1	100	-8
7	6	5Hx	N-1	200	-9

30

♠ 9
♥ AQ10932
♦ A63
♣ 1083

♠ A6
♥ 8
♦ KJ10942
♣ QJ95

N
W | E
S

♠ 10432
♥ J65
♦ Q5
♣ A742

♠ KQJ875
♥ K74
♦ 87
♣ K6

Board (30) Av: NS=+330

N-S	E-W	Contract	N-S	E-W	IMP
2	1	4H	N 5	450	3
1	2	4H	N 4	420	3
3	4	4H	N 4	420	3
4	3	4H	N 4	420	3
8	9	4H	N 4	420	3
7	6	4H	N 4	420	3
6	7	4H	N 4	420	3
5	10	2S	S 3	140	-5
9	8	5H	N-1	50	-9
10	5	4H	N-1	50	-9

31

♠ 109762
♥ 52
♦ 10
♣ Q10876

♠ J854
♥ KQ73
♦ 9
♣ J543

N
W | E
S

♠ AKQ3
♥ AJ10984
♦ J
♣ A9

♠ 6
♥
♦ AKQ8765432
♣ K2

Board (31) Av: NS=+210

N-S	E-W	Contract	N-S	E-W	IMP
9	8	5Dx	S 5	750	11
2	1	5Dx	S 5	750	11
7	6	5Dx	S 5	750	11
4	3	5Dx	S 5	750	11
6	7	5Dx	S 5	750	11
1	2	6Dx	S-1	200	-9
10	5	6Dx	S-1	200	-9
5	10	5H	E 5	450	-12
8	9	5H	W 6	480	-12
3	4	5Hx	E 6	750	-14

32

♠ Q642
♥ 108643
♦ J9
♣ 83

♠ A
♥ AQ2
♦ 1072
♣ AKQJ105

N
W | E
S

♠ KJ10953
♥ K7
♦ KQ86
♣ 2

♠ 87
♥ J95
♦ A543
♣ 9764

Board (32) Av: NS=-1150

N-S	E-W	Contract	N-S	E-W	IMP
5	10	6S	W-1	100	15
4	3	5S	E 5	650	11
1	2	3NT	W 6	690	10
8	9	3NT	W 6	690	10
3	4	6NT	W 6	1440	-7
10	5	6NT	W 6	1440	-7
6	7	6NT	W 6	1440	-7
7	6	6NT	W 6	1440	-7
9	8	6NT	W 6	1440	-7
2	1	6NT	E 6	1440	-7

33

♠ A106542
♥ J853
♦ 9
♣ K10

♠ 9
♥ Q2
♦ KQJ75
♣ 98543

N
W | E
S

♠ Q83
♥ A1074
♦ A1043
♣ J2

♠ KJ7
♥ K96
♦ 862
♣ AQ76

Board (33) Av: NS=+130

N-S	E-W	Contract	N-S	E-W	IMP
10	5	4S	N 4	420	7
6	7	3S	N 5	200	2
3	4	2S	N 5	200	2
8	9	3S	N 3	140	0
4	3	3S	N 3	140	0
7	6	2S	N 3	140	0
5	10	2S	N 3	140	0
1	2	4D	E-1	50	-2
2	1	4D	E-1	50	-2
9	8	5S	N-2	100	-6

34

♠ 875
♥ KQ108
♦ K8
♣ K1053

♠ 64
♥ A92
♦ AJ642
♣ J64

N
W | E
S

♠ A1032
♥ J7543
♦ 95
♣ Q9

♠ KQJ9
♥ 6
♦ Q1073
♣ A872

Board (34) Av: NS=+200

N-S	E-W	Contract	N-S	E-W	IMP
6	7	3NT	S 3	600	9
7	6	3NT	N 3	600	9
9	8	2NT	N 4	180	-1
4	3	2NT	S 3	150	-2
8	9	2NT	N 3	150	-2
2	1	2NT	N 3	150	-2
5	10	3C	S 4	130	-2
1	2	3C	S 4	130	-2
10	5	2NT	N 2	120	-2
3	4	2NT	N 2	120	-2

35

♠ 7
♥ K43
♦ KQJ932
♣ 1098

♠ A6542
♥ J1052
♦ 6
♣ AQ5

N
W | E
S

♠ Q3
♥ A987
♦ 10874
♣ 743

♠ KJ1098
♥ Q6
♦ A5
♣ KJ62

Board (35) Av: NS=+50

N-S	E-W	Contract	N-S	E-W	IMP
1	2	2D	N 4	130	2
2	1	2D	N 4	130	2
4	3	2D	N 4	130	2
3	4	2D	N 3	110	2
7	6	2D	N 3	110	2
10	5	2D	N 3	110	2
9	8	3D	N-1	50	-3
6	7	2D	N-1	50	-3
5	10	3C	S-2	100	-4
8	9	2H	W 2	110	-4

36

♠ A754
♥ AJ2
♦ 3
♣ 108532

♠ 93
♥ 875
♦ AQJ752
♣ KQ

N
W | E
S

♠ 62
♥ KQ63
♦ 1086
♣ AJ74

♠ KQJ108
♥ 1094
♦ K94
♣ 96

Board (36) Av: NS=-80

N-S	E-W	Contract	N-S	E-W	IMP
4	3	3Sx	S 3	730	13
8	9	2S	S 2	110	5
3	4	2S	S 2	110	5
5	10	3S	S-1	100	-1
9	8	3S	S-1	100	-1
6	7	3S	S-1	100	-1
2	1	3D	W 5	150	-2
7	6	4S	S-2	200	-3
10	5	4S	S-2	200	-3
1	2	4S	S-2	200	-3