

第18回NRM杯 Session1 Section D 2013年6月29日(土)

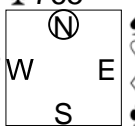
1

♠ 97
♥ J62
♦ J10976
♣ 765

♠ J632
♥ A98543
♦ 8
♣ J3

♠ K105
♥ Q107
♦ KQ32
♣ Q84

♠ AQ84
♥ K
♦ A54
♣ AK1092



Board (1) Av: NS=+10

N-S	E-W	Contract	N-S	E-W	IMP
18	14	2C N 4	130		3
5	8	3D N 3	110		3
17	11	2C N 3	110		3
6	2	1C S 2	90		2
3	9	2H W-1	50		1
4	7	5C S-1		50	-2
1	10	3C S-1		50	-2
20	13	2H W 2		110	-3
16	15	2H W 2		110	-3
19	12	2H W 3		140	-4

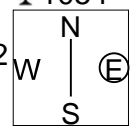
2

♠ Q108
♥ A954
♦ 1063
♣ 1054

♠ 64
♥ J1082
♦ 842
♣ A987

♠ J732
♥ KQ
♦ AQ
♣ QJ632

♠ AK95
♥ 763
♦ KJ975
♣ K



Board (2) Av: NS=-80

N-S	E-W	Contract	N-S	E-W	IMP
18	14	1NT E-3	150		6
16	15	2D N 3	110		5
20	13	1NT E 1		90	0
3	9	1NT E 1		90	0
19	12	2H W 2		110	-1
1	10	1NT E 2		120	-1
4	7	1NT E 2		120	-1
6	2	1NT E 2		120	-1
17	11	2C E 4		130	-2
5	8	1NT E 3		150	-2

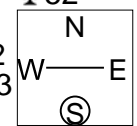
3

♠ Q864
♥ J103
♦ AQJ10
♣ 52

♠ KQ42
♥ 87543
♦ J743

♠ KJ107532
♥ 975
♦ K6
♣ 10

♠ A9
♥ A86
♦ 92
♣ AKQ986



Board (3) Av: NS=+340

N-S	E-W	Contract	N-S	E-W	IMP
3	9	3NT S 5	460		3
18	14	3NT N 5	460		3
19	12	3NT N 5	460		3
5	8	3NT N 5	460		3
4	7	3NT N 5	460		3
1	10	3NT S 3	400		2
17	11	3NT N 3	400		2
20	13	3C N 3	110		-6
16	15	3NT S-1		50	-9
6	2	3NT N-1		50	-9

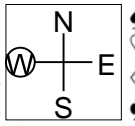
4

♠ J10
♥ QJ64
♦ A752
♣ J97

♠ A962
♥ 32
♦ Q104
♣ Q653

♠ Q8753
♥ 9
♦ J986
♣ AK10

♠ K4
♥ AK10875
♦ K3
♣ 842



Board (4) Av: NS=+10

N-S	E-W	Contract	N-S	E-W	IMP
1	10	4Sx E-1	200		5
3	9	3H S 3	140		4
17	11	2H S 3	140		4
19	12	2H S 3	140		4
20	13	2H S 2	110		3
5	8	4H S-1		100	-3
16	15	4H S-1		100	-3
18	14	3H S-1		100	-3
6	2	3S E 3		140	-4
4	7	3S E 3		140	-4

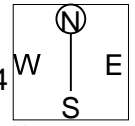
5

♠ 5
♥ J1054
♦ Q1082
♣ 9862

♠ 107
♥ 87
♦ KJ9754
♣ AJ10

♠ KQJ63
♥ K962
♦ 6
♣ KQ5

♠ A9842
♥ AQ3
♦ A3
♣ 743



Board (5) Av: NS=-40

N-S	E-W	Contract	N-S	E-W	IMP
6	2	3NT E-2	100		4
4	7	2S E-2	100		4
1	10	2S E-1	50		3
16	15	2S E-1	50		3
18	14	2S E 2		110	-2
19	12	2S E 2		110	-2
20	13	2S E 2		110	-2
5	8	2S E 2		110	-2
3	9	2S E 2		110	-2
17	11	2NT W 4		180	-4

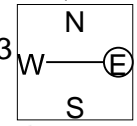
6

♠ J832
♥ AJ4
♦ 106
♣ Q654

♠ A95
♥ Q9653
♦ 98
♣ A98

♠ Q106
♥ K82
♦ KQ75
♣ J32

♠ K74
♥ 107
♦ AJ432
♣ K107



Board (6) Av: NS=-20

N-S	E-W	Contract	N-S	E-W	IMP
17	11	Passout			1
16	15	Passout			1
19	12	Passout			1
18	14	Passout			1
20	13	Passout			1
1	10	Passout			1
4	7	Passout			1
3	9	3D S-1		50	-1
5	8	2H W 2		110	-3
6	2	2H E 2		110	-3

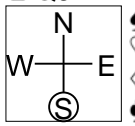
7

♠ 9864
♥ KQ95
♦ 109
♣ QJ7

♠ Q
♥ 643
♦ A87
♣ AK9532

♠ KJ32
♥ 872
♦ KQJ4
♣ 84

♠ A1075
♥ AJ10
♦ 6532
♣ 106



Board (7) Av: NS=-90

N-S	E-W	Contract	N-S	E-W	IMP
5	4	Passout			3
3	6	Passout			3
18	11	2C W 2		90	0
2	10	2C W 2		90	0
1	9	2C W 2		90	0
19	20	2C W 3		110	-1
7	8	2C W 3		110	-1
15	17	2NT E 2		120	-1
12	13	2NT E 2		120	-1
16	14	2NT E 2		120	-1

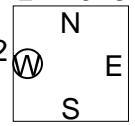
8

♠ A943
♥ K98
♦ 72
♣ K1075

♠ KQ
♥ Q106532
♦ 1085
♣ Q4

♠ J87652
♥ A
♦ K4
♣ A963

♠ 10
♥ J74
♦ AQJ963
♣ J82



Board (8) Av: NS=+50

N-S	E-W	Contract	N-S	E-W	IMP
5	4	3Sx E-2	300		6
16	14	4S E-3	150		3
1	9	3D S 4	130		2
19	20	2H W-2	100		2
7	8	2H W-2	100		2
2	10	3S E-1	50		0
3	6	3S E-1	50		0
12	13	2S E 2		110	-4
18	11	2S E 2		110	-4
15	17	2S E 2		110	-4

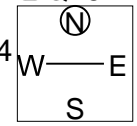
9

♠ 9
♥ K1076
♦ A1065
♣ Q764

♠ K83
♥ AQ84
♦ J84
♣ K83

♠ QJ1054
♥ J93
♦ K7
♣ 1095

♠ A762
♥ 52
♦ Q932
♣ AJ2



Board (9) Av: NS=-20

N-S	E-W	Contract	N-S	E-W	IMP
2	10	1NT S 2	120		4
1	9	3D S 3	110		4
7	8	2D S 3	110		4
12	13	1NT S 1	90		3
5	4	3D S-1		50	-1
19	20	2D S-1		50	-1
16	14	1NT N-2		100	-2
3	6	2S E 2		110	-3
15	17	1NT W 2		120	-3
18	11	1NT W 3		150	-4

10

♠ J107
♥ 9
♦ K974
♣ QJ1084

♠ AK432
♥ AJ65
♦ J3
♣ 32

♠ 865
♥ Q874
♦ Q862
♣ A7

♠ Q9
♥ K1032
♦ A105
♣ K965

N
W — E
S

11

♠ KQJ954
♥ AQJ
♦ 94
♣ K5

♠ 108
♥ 643
♦ AQ105
♣ Q1096

♠ 76
♥ 1098752
♦ 873
♣ A7

♠ A32
♥ K
♦ KJ62
♣ J8432

N
W — E
S

12

♠ 9
♥ 10543
♦ Q85
♣ AKJ73

♠ A6
♥ AQJ76
♦ A109
♣ Q108

♠ K10854
♥
♦ K7642
♣ 652

♠ QJ732
♥ K982
♦ J3
♣ 94

N
W — E
S

Board (10) Av: NS=-30

N-S	E-W	Contract	N-S	E-W	IMP
16	14	3S	W-2	200	6
7	8	3C	S 3	110	4
15	17	3S	W-1	100	4
19	20	2S	W-1	100	4
2	10	2S	W 2	110	-2
18	11	2S	W 2	110	-2
3	6	2S	W 2	110	-2
5	4	2S	W 2	110	-2
1	9	3S	W 3	140	-3
12	13	2S	W 3	140	-3

Board (11) Av: NS=-60

N-S	E-W	Contract	N-S	E-W	IMP
18	11	4S	N 4	420	10
15	17	5S	N-1	50	0
16	14	5S	N-1	50	0
19	20	5S	N-1	50	0
2	10	5S	N-1	50	0
3	6	5S	N-1	50	0
7	8	4S	N-1	50	0
12	13	4S	N-1	50	0
1	9	5S	N-2	100	-1
5	4	5S	N-2	100	-1

Board (12) Av: NS=-90

N-S	E-W	Contract	N-S	E-W	IMP
1	9	4S	W-3	150	6
16	14	4S	W-2	100	5
3	6	2D	W 2	90	0
18	11	2S	W 2	110	-1
5	4	2S	W 2	110	-1
19	20	2W	W 3	110	-1
15	17	2W	W 2	120	-1
12	13	1NT	W 2	120	-1
2	10	2NT	W 3	150	-2
7	8	2Cx	N-1	200	-3

13

♠ A3
♥ KQ1053
♦ A105
♣ 962

♠ 75
♥ J97
♦ K72
♣ AK1074

♠ KQ98
♥ A6
♦ QJ94
♣ QJ8

♠ J10642
♥ 842
♦ 863
♣ 53

N
W — E
S

14

♠ 1076
♥ QJ53
♦ AJ43
♣ J6

♠ AQ9
♥ 10964
♦
♣ AK10873

♠ KJ852
♥ 72
♦ KQ1086
♣ 4

♠ 43
♥ AK8
♦ 9752
♣ Q952

N
W — E
S

15

♠ 10642
♥ AJ743
♦ A10
♣ 43

♠ 7
♥ Q1095
♦ KQJ74
♣ KQJ

♠ KJ95
♥ 862
♦ 985
♣ 982

♠ AQ83
♥ K
♦ 632
♣ A10765

N
W — E
S

Board (13) Av: NS=+60

N-S	E-W	Contract	N-S	E-W	IMP
6	4	4S	E-3	300	6
11	19	3NT	E-2	200	4
13	16	3NT	E-2	200	4
10	9	3NT	E-2	200	4
3	2	3NT	E-2	200	4
7	5	5C	W-1	100	1
15	14	2C	W 4	130	-5
20	12	2C	W 4	130	-5
17	18	3H	N-2	200	-6
1	8	3NT	W 4	630	-12

Board (14) Av: NS=-220

N-S	E-W	Contract	N-S	E-W	IMP
17	18	4S	E-1	50	7
7	5	2C	W-1	50	7
15	14	1C	W 1	70	4
20	12	2S	E 3	140	2
1	8	3S	E 4	170	2
10	9	2S	E 4	170	2
3	2	4S	E 4	420	-5
11	19	4S	E 4	420	-5
13	16	4S	E 4	420	-5
6	4	4S	E 4	420	-5

Board (15) Av: NS=+70

N-S	E-W	Contract	N-S	E-W	IMP
11	19	3S	S 3	140	2
13	16	3S	S 3	140	2
20	12	3S	N 3	140	2
7	5	2S	S 3	140	2
6	4	2S	S 3	140	2
17	18	2S	S 2	110	1
15	14	3D	W-2	100	1
3	2	4S	S-1	100	-5
1	8	4S	S-1	100	-5
10	9	2H	N-1	100	-5

16

♠ K985
♥ K7
♦ 74
♣ A10976

♠ QJ107643
♥ A85
♦ J3
♣ 2

♠ QJ9643
♥ 1092
♦ QJ84
♣

♠ A2
♥ 102
♦ AKQ865
♣ K53

N
W — E
S

17

♠ 432
♥ KQ4
♦ Q2
♣ AKQ65

♠ Q965
♥ A875
♦ AJ96
♣ 9

♠ 10
♥ 1092
♦ K108743
♣ 872

♠ AKJ87
♥ J63
♦ 5
♣ J1043

N
W — E
S

18

♠ Q87
♥ 864
♦ J8
♣ J10954

♠ KJ1032
♥ 97
♦ Q
♣ K8763

♠ A965
♥ J5
♦ A9765
♣ Q2

♠ 4
♥ AKQ1032
♦ K10432
♣ A

N
W — E
S

Board (16) Av: NS=+230

N-S	E-W	Contract	N-S	E-W	IMP
10	9	3Sx	W-5	1400	15
1	8	3NT	N 6	490	6
3	2	3NT	N 5	460	6
15	14	5D	S 5	400	5
20	12	4D	S 5	150	-2
6	4	4D	S 5	150	-2
17	18	3D	S 4	130	-3
11	19	3D	S 4	130	-3
7	5	5D	S-1	50	-7
13	16	5D	S-1	50	-7

Board (17) Av: NS=-50

N-S	E-W	Contract	N-S	E-W	IMP
17	18	4S	S-1	50	0
11	19	4S	N-1	50	0
13	16	4S	N-1	50	0
15	14	4S	N-1	50	0
10	9	4S	N-1	50	0
3	2	4S	N-1	50	0
1	8	4S	N-1	50	0
7	5	4S	N-1	50	0
6	4	4S	N-1	50	0
20	12	1NT	N-1	50	0

Board (18) Av: NS=+10

N-S	E-W	Contract	N-S	E-W	IMP
11	19	4H	S 5	650	12
7	5	4H	S 4	620	12
1	8	5Sx	W-1	100	3
3	2	4S	W-1	50	1
15	14	5H	S-1	100	-3
20	12	4H	S-1	100	-3
10	9	3S	W 3	140	-4
17	18	3S	E 3	140	-4
13	16	5Hx	S-1	200	-5
6	4	4S	W 4	420	-10

19

♠AJ1042
♥A
♦J1098
♣K52

♠976
♥J875
♦KQ2
♣1063

N
W—E
♠KQ3
♥Q1063
♦A653
♣AJ

♠85
♥K942
♦74
♣Q9874

20

♠K6
♥1064
♦862
♣AKJ32

♠982
♥AQJ32
♦AJ74
♣6

N
W—E
♠Q104
♥K5
♦KQ95
♣Q975

♠AJ753
♥987
♦103
♣1084

21

♠A2
♥A98542
♦765
♣J5

♠1075
♥7
♦AQ43
♣K10942

N
W—E
♠QJ9643
♥J103
♦K
♣A76

♠K8
♥KQ6
♦J10982
♣Q83

Board (19) Av: NS=-10

N-S	E-W	Contract	N-S	E-W	IMP
15	18	2S N 3	140		4
6	5	2S N 2	110		3
8	4	2S N 2	110		3
13	19	2NT E-1	100		3
14	17	2S N-1		50	-1
2	9	2S N-1		50	-1
3	10	1NT E 1		90	-2
20	11	2H W 2		110	-3
1	7	1NT E 2		120	-3
16	12	1NT E 2		120	-3

Board (20) Av: NS=+70

N-S	E-W	Contract	N-S	E-W	IMP
6	5	3NT E-3	300		6
20	11	3NT E-3	300		6
1	7	3NT E-3	300		6
3	10	3NT E-2	200		4
8	4	4H W-1		100	1
2	9	4H W-1		100	1
15	18	2NT E 2		120	-5
16	12	3D W 4		130	-5
14	17	2NT E 4		180	-6
13	19	4H W 4		620	-12

Board (21) Av: NS=-240

N-S	E-W	Contract	N-S	E-W	IMP
13	19	Passout			6
20	11	Passout			6
1	7	3S E 4		170	2
6	5	3S E 4		170	2
2	9	3S E 4		170	2
3	10	3S E 4		170	2
16	12	4S E 4		420	-5
15	18	4S E 4		420	-5
14	17	4S E 4		420	-5
8	4	4Sx E 4		590	-8

22

♠10854
♥AKJ
♦K43
♣Q92

♠J63
♥108
♦J1087
♣K763

N
W—E
♠A92
♥Q97653
♦52
♣J5

♠KQ7
♥42
♦AQ96
♣A1084

23

♠J10
♥J542
♦K10
♣109852

♠AK875
♥KQ3
♦Q87
♣AQ

N
W—E
♠Q963
♥A107
♦A65
♣J76

♠42
♥986
♦J9432
♣K43

24

♠K74
♥J2
♦843
♣QJ743

♠A95
♥K96
♦Q1076
♣1092

N
W—E
♠Q102
♥1073
♦AKJ95
♣A5

♠J863
♥AQ854
♦2
♣K86

Board (22) Av: NS=+430

N-S	E-W	Contract	N-S	E-W	IMP
16	12	3NT S 4	430		0
14	17	3NT S 4	430		0
15	18	3NT S 4	430		0
6	5	3NT S 4	430		0
2	9	3NT S 4	430		0
8	4	3NT S 4	430		0
3	10	3NT S 4	430		0
20	11	3NT N 4	430		0
1	7	3NT N 4	430		0
13	19	3NT S 3	400		-1

Board (23) Av: NS=-660

N-S	E-W	Contract	N-S	E-W	IMP
6	5	6S W-1	100		13
13	19	6S W-1	100		13
15	18	6S W-1	100		13
8	4	6S W-1	100		13
3	10	4S W 5		650	0
2	9	4S W 5		650	0
20	11	6S W 6		1430	-13
16	12	6S W 6		1430	-13
1	7	6S W 6		1430	-13
14	17	6S W 6		1430	-13

Board (24) Av: NS=-120

N-S	E-W	Contract	N-S	E-W	IMP
8	4	1NT W 1		90	1
1	7	3D E 3		110	0
16	12	3D E 3		110	0
20	11	3D E 3		110	0
6	5	3D E 3		110	0
13	19	2D E 3		110	0
3	10	1NT W 2		120	0
14	17	1NT W 2		120	0
15	18	2D E 4		130	0
2	9	2NT E 3		150	-1

第18回NRM杯 Session 2 Section D 2014年6月29日(土)

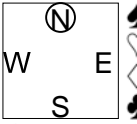
1

♠KQ762
♥J4
♦732
♣954

♠AJ109
♥A8
♦AK6
♣KJ32

♠K10753
♥J1098
♦10876

♠8543
♥Q962
♦Q54
♣AQ



Board (1) Av: NS=-300

N-S	E-W	Contract	N-S	E-W	IMP
7	9	4H	W-1	50	8
15	13	4H	W-1	50	8
14	20	3H	W 4	170	4
8	6	2H	W 4	170	4
11	12	3NT	W 3	400	-3
19	17	4H	W 4	420	-3
18	16	3NT	W 4	430	-4
1	2	3NT	W 4	430	-4
5	3	3NT	W 4	430	-4
10	4	3NT	W 4	430	-4

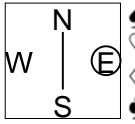
2

♠K
♥
♦9632
♣AKQJ10842

♠7
♥J9532
♦Q874
♣953

♠J10842
♥AK76
♦K5
♣76

♠AQ9653
♥Q1084
♦AJ10
♣



Board (2) Av: NS=+370

N-S	E-W	Contract	N-S	E-W	IMP
14	20	6C	N 6	1370	14
11	12	3NT	S 7	720	8
7	9	3NT	N 4	630	6
19	17	5C	N 6	620	6
10	4	5C	N 6	620	6
15	13	4C	N 6	170	-5
5	3	3C	N 6	170	-5
1	2	3H	E-2	100	-7
18	16	4S	S-1	100	-10
8	6	5D	S-3	300	-12

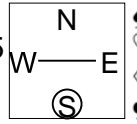
3

♠J105
♥Q92
♦K10
♣KJ653

♠KQ4
♥A1075
♦AQ86
♣A9

♠A7632
♥K63
♦J53
♣Q2

♠98
♥J84
♦9742
♣10874



Board (3) Av: NS=-660

N-S	E-W	Contract	N-S	E-W	IMP
14	20	4S	E 4	620	1
10	4	4S	E 5	650	0
15	13	4S	E 5	650	0
8	6	4S	E 5	650	0
1	2	4S	E 5	650	0
5	3	4S	E 5	650	0
11	12	3NT	W 5	660	0
18	16	4S	E 6	680	-1
19	17	3NT	W 6	690	-1
7	9	3NT	W 6	690	-1

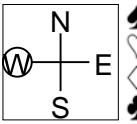
4

♠K10
♥A1083
♦954
♣J952

♠Q75
♥K52
♦AKQ2
♣A83

♠J3
♥Q764
♦8763
♣1074

♠A98642
♥J9
♦J10
♣KQ6



Board (4) Av: NS=+40

N-S	E-W	Contract	N-S	E-W	IMP
7	9	2S	S 3	140	3
8	6	2S	S 3	140	3
10	4	2S	S 3	140	3
1	2	1S	S 3	140	3
15	13	2S	S 2	110	2
11	12	1NT	W-1	100	2
14	20	1NT	W 1	90	-4
18	16	1NT	W 1	90	-4
19	17	3D	W 3	110	-4
5	3	1NT	W 3	150	-5

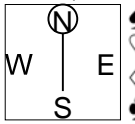
5

♠A7
♥3
♦AK10962
♣KQ106

♠Q1093
♥754
♦QJ3
♣A87

♠K8
♥Q106
♦8754
♣9532

♠J6542
♥AKJ982
♦
♣J4



Board (5) Av: NS=+400

N-S	E-W	Contract	N-S	E-W	IMP
1	2	3NT	S 6	690	7
10	4	3NT	N 5	660	6
5	3	3NT	N 5	660	6
11	12	4H	S 5	650	6
14	20	4H	S 4	620	6
18	16	3NT	N 3	600	5
19	17	2NT	N 5	210	-5
8	6	4S	S-1	100	-11
15	13	3NT	N-1	100	-11
7	9	6NT	N-2	200	-12

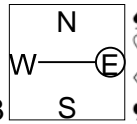
6

♠K109875
♥63
♦Q9
♣1042

♠2
♥95
♦A842
♣AKQ873

♠QJ63
♥QJ72
♦653
♣96

♠A4
♥AK1084
♦KJ107
♣J5



Board (6) Av: NS=+60

N-S	E-W	Contract	N-S	E-W	IMP
15	13	3S	S 3	140	2
7	9	2H	S 3	140	2
19	17	2H	S 2	110	2
18	16	2H	S 2	110	2
10	4	2H	S 2	110	2
1	2	2H	S 2	110	2
8	6	2H	S 2	110	2
5	3	4H	S-2	100	-4
11	12	3H	S-2	100	-4
14	20	3H	S-2	100	-4

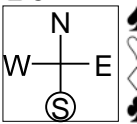
7

♠J8
♥KQ1094
♦9862
♣52

♠97432
♥76
♦1073
♣863

♠A10
♥A5
♦AK54
♣AKQJ7

♠KQ65
♥J832
♦QJ
♣1094



Board (7) Av: NS=-470

N-S	E-W	Contract	N-S	E-W	IMP
3	4	4S	E-2	200	12
7	10	4S	E-1	100	11
9	6	3S	E 3	140	8
11	15	3NT	E 3	600	-4
13	14	3NT	E 3	600	-4
1	5	3NT	E 3	600	-4
18	12	3NT	E 4	630	-4
19	16	3NT	E 4	630	-4
8	2	3NT	E 4	630	-4
17	20	3NT	W 5	660	-5

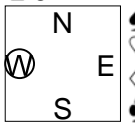
8

♠QJ1082
♥K
♦J653
♣942

♠K964
♥Q52
♦872
♣QJ5

♠A3
♥1043
♦AQ109
♣AK63

♠75
♥AJ9876
♦K4
♣1087



Board (8) Av: NS=-270

N-S	E-W	Contract	N-S	E-W	IMP
17	20	1NT	E 1	90	5
18	12	1NT	E 1	90	5
7	10	2H	S-2	100	5
8	2	2NT	E 3	150	3
9	6	2Hx	S-2	300	-1
1	5	2Hx	S-2	300	-1
19	16	3NT	E 3	400	-4
11	15	3NT	E 3	400	-4
13	14	3NT	E 3	400	-4
3	4	3NT	E 4	430	-4

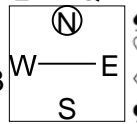
9

♠K74
♥KJ9732
♦K
♣AKQ

♠103
♥654
♦QJ963
♣983

♠AQ
♥AQ8
♦8742
♣J762

♠J98652
♥10
♦A105
♣1054



Board (9) Av: NS=+160

N-S	E-W	Contract	N-S	E-W	IMP
17	20	4S	S 4	420	6
18	12	4S	S 4	420	6
8	2	1H	N 4	170	0
7	10	3S	N 3	140	-1
13	14	3H	N 3	140	-1
1	5	3H	N 3	140	-1
9	6	3H	N 3	140	-1
3	4	3H	N 3	140	-1
19	16	4H	N-1	50	-5
11	15	5C	N-4	200	-8

第18回NRM杯 Session 2 Section D 2014年6月29日(土)

10

♠ QJ965
♥ A83
♦ KJ1082
♣ AK973

♠ J1087642
♥ A1042
♦ 4
♣ 4

♠ K95
♥ 8
♦ QJ109762
♣ 65

11

♠ A84
♥ J4
♦ KJ76
♣ K854

♠ 972
♥ A1075
♦ Q54
♣ Q107

♠ KQ653
♥ 862
♦ 98
♣ J62

♠ J10
♥ KQ93
♦ A1032
♣ A93

12

♠ J95
♥ Q75
♦ J865
♣ AK3

♠ AQ104
♥
♦ AK102
♣ Q10972

♠ K8
♥ J32
♦ 973
♣ J8654

♠ 7632
♥ AK109864
♦ Q4
♣

Board (10) Av: NS=-70

N-S	E-W	Contract	N-S	E-W	IMP
7	10	3NT W-4	400		10
3	4	3NT E-3	300		9
17	20	4S E-2	200		7
9	6	4S E-2	200		7
13	14	5S E-1	100		5
19	16	4S E-1	100		5
1	5	5Dx S-1	200		-4
18	12	4S E 4	620		-11
8	2	4S E 4	620		-11
11	15	4S E 5	650		-11

Board (11) Av: NS=+420

N-S	E-W	Contract	N-S	E-W	IMP
17	20	3NT N 5	460		1
11	15	3NT S 4	430		0
13	14	3NT N 4	430		0
19	16	3NT N 4	430		0
3	4	3NT N 4	430		0
7	10	3NT N 4	430		0
18	12	3NT N 3	400		-1
8	2	3NT N 3	400		-1
1	5	3NT N 3	400		-1
9	6	3NT N-1		50	-10

Board (12) Av: NS=-380

N-S	E-W	Contract	N-S	E-W	IMP
17	20	4H S 4	620		14
1	5	5Cx W-1	100		10
7	10	4H S-1		100	7
18	12	4C W 5	150		6
3	4	5C W 5	400		-1
11	15	5Cx W 5	550		-5
8	2	5Cx W 5	550		-5
19	16	5Cx W 5	550		-5
9	6	5Hx S-3	800		-9
13	14	5Hx S-3	800		-9

13

♠ 643
♥ J32
♦ J765
♣ QJ10

♠ J952
♥ K1095
♦ 4
♣ AK95

♠ Q108
♥ 8
♦ AKQ932
♣ 863

♠ AK7
♥ AQ764
♦ 108
♣ 742

14

♠ Q7652
♥ 7
♦ 865
♣ 10532

♠ K104
♥ AKQ95
♦ A2
♣ AJ9

♠ J8
♥ J106432
♦ QJ1094
♣

♠ A93
♥ 8
♦ K73
♣ KQ8764

15

♠ AJ762
♥ A53
♦ A86
♣ J2

♠ 543
♥ 962
♦ 543
♣ K964

♠ KQ98
♥ K10
♦ KJ10
♣ Q1085

♠ 10
♥ QJ874
♦ Q972
♣ A73

Board (13) Av: NS=-90

N-S	E-W	Contract	N-S	E-W	IMP
18	13	3NT W-2	200		7
10	5	3NT W-2	200		7
4	9	3NT W-1	100		5
2	7	2NT W-1	100		5
20	15	2H S-1		100	0
1	6	3D E 3		110	-1
17	12	3D E 3		110	-1
16	11	2H S-2		200	-3
14	19	3NT W 3		600	-11
3	8	3NT W 3		600	-11

Board (14) Av: NS=-680

N-S	E-W	Contract	N-S	E-W	IMP
3	8	4H E 6		480	5
2	7	4H E 6		480	5
20	15	4H E 6		480	5
14	19	4H E 7		510	5
16	11	4H E 7		510	5
17	12	4H E 7		510	5
1	6	6H E 6		980	-7
18	13	6H E 6		980	-7
4	9	6H E 6		980	-7
10	5	6H E 6		980	-7

Board (15) Av: NS=+60

N-S	E-W	Contract	N-S	E-W	IMP
3	8	3NT S 3	600		11
17	12	2D N 5	150		3
14	19	1NT S 2	120		2
10	5	3C W-2	100		1
16	11	2D N 2	90		1
2	7	1NT S 1	90		1
1	6	1NT S 1	90		1
18	13	1NT E 1		90	-4
4	9	3NT S-1		100	-4
20	15	2S N-1		100	-4

16

♠ K1054
♥ 7
♦ AK103
♣ 7543

♠ A32
♥ 1054
♦ 872
♣ Q962

♠ Q987
♥ AJ963
♦ 96
♣ J8

♠ J6
♥ KQ82
♦ QJ54
♣ AK10

17

♠ Q53
♥ KQ9853
♦ KQ106
♣

♠ A
♥ 7642
♦ 8743
♣ A974

♠ K82
♥ 10
♦ AJ
♣ KQJ10852

♠ J109764
♥ AJ
♦ 952
♣ 63

18

♠ J1043
♥ 1093
♦ A76
♣ 432

♠ KQ76
♥ QJ4
♦ Q4
♣ AKQ5

♠ A92
♥ K8752
♦ KJ532
♣

♠ 85
♥ A6
♦ 1098
♣ J109876

Board (16) Av: NS=+30

N-S	E-W	Contract	N-S	E-W	IMP
18	13	3NT S 3	400		9
14	19	3NT S 3	400		9
3	8	1NT S 3	150		3
20	15	3NT S-1		50	-2
16	11	3NT S-1		50	-2
17	12	3NT S-1		50	-2
2	7	3NT S-1		50	-2
1	6	3NT S-1		50	-2
10	5	3NT S-1		50	-2
4	9	3NT S-1		50	-2

Board (17) Av: NS=-260

N-S	E-W	Contract	N-S	E-W	IMP
17	12	5H N-1		50	5
4	9	5Sx S-1		100	4
14	19	5H N-2		100	4
2	7	5H N-3		150	3
1	6	4C E 5		150	3
20	15	5C E 5		400	-4
18	13	5C E 5		400	-4
3	8	5C E 5		400	-4
10	5	5C E 5		400	-4
16	11	5C E 5		400	-4

Board (18) Av: NS=-140

N-S	E-W	Contract	N-S	E-W	IMP
1	6	6NT W-4	200		8
17	12	6H E-1	50		5
14	19	6H E-1	50		5
20	15	6H E-1	50		5
18	13	6H E-1	50		5
10	5	6H E-1	50		5
3	8	5H E 5		450	-7
2	7	5H E 5		450	-7
16	11	5H E 5		450	-7
4	9	5H E 5		450	-7

19

♠AJ103
♥K64
♦976
♣973

♠9854
♥7
♦AJ4
♣AQJ86

♠KQ76
♥109852
♦Q85
♣5

♠2
♥AQJ3
♦K1032
♣K1042

N
W—E
S

♠9854
♥7
♦AJ4
♣AQJ86

20

♠A8542
♥KJ962
♦8
♣J9

♠10
♥A10875
♦Q10
♣AK872

♠Q93
♥4
♦AJ762
♣10543

♠KJ76
♥Q3
♦K9543
♣Q6

N
W—E
S

♠10
♥A10875
♦Q10
♣AK872

21

♠K63
♥K32
♦Q972
♣A52

♠A87
♥10976
♦J65
♣K107

♠104
♥QJ85
♦K8
♣Q8643

♠QJ952
♥A4
♦A1043
♣J9

N
W—E
S

♠A87
♥10976
♦J65
♣K107

Board (19) Av: NS=-440

N-S	E-W	Contract	N-S	E-W	IMP
16	17	3NT W-2	200		12
19	15	2NT W 2	120		8
18	20	1NT W 2	120		8
13	11	2NT W 3	150		7
6	7	3NT W 3	600		-4
1	3	3NT W 4	630		-5
2	4	3NT W 4	630		-5
10	8	3NT W 4	630		-5
14	12	3NT W 5	660		-6
5	9	3NT W 5	660		-6

Board (20) Av: NS=+50

N-S	E-W	Contract	N-S	E-W	IMP
2	4	4H W-3	300		6
18	20	3C E-3	300		6
1	3	3NT W-2	200		4
14	12	3NT W-1	100		2
10	8	3NT W-1	100		2
6	7	3NT W-1	100		2
13	11	2NT W 2	120		-5
16	17	3H E 3	140		-5
19	15	2NT W 4	180		-6
5	9	3NT W 3	600		-12

Board (21) Av: NS=-130

N-S	E-W	Contract	N-S	E-W	IMP
6	7	2S W 2	110		1
13	11	2S W 2	110		1
16	17	2S W 2	110		1
10	8	2S W 2	110		1
14	12	3S W 3	140		0
18	20	2S W 3	140		0
2	4	2S W 3	140		0
5	9	2S W 3	140		0
19	15	2S W 3	140		0
1	3	2S W 4	170		-1

22

♠K9
♥AK105
♦9632
♣A96

♠AJ1065
♥J92
♦J754
♣J

♠Q72
♥876
♦Q
♣Q108743

♠843
♥Q43
♦AK108
♣K52

N
W—E
S

♠AJ1065
♥J92
♦J754
♣J

Board (22) Av: NS=-60

N-S	E-W	Contract	N-S	E-W	IMP
13	11	1NT S 3	150		5
5	9	3S E-1	100		4
1	3	2D W-1	100		4
10	8	2D W 2	90		-1
6	7	2D W 2	90		-1
14	12	2NT N-2	100		-1
18	20	2S E 2	110		-2
16	17	2S E 2	110		-2
2	4	3S E 3	140		-2
19	15	2S E 4	170		-3

23

♠J73
♥Q983
♦K1063
♣A4

♠AQ10
♥A7
♦AJ97
♣J732

♠864
♥652
♦Q
♣KQ10986

♠K952
♥KJ104
♦8542
♣5

N
W—E
S

♠AQ10
♥A7
♦AJ97
♣J732

Board (23) Av: NS=-110

N-S	E-W	Contract	N-S	E-W	IMP
10	8	3NT E-2	200		7
2	4	2D E 2	90		1
13	11	2D E 3	110		0
14	12	2D E 3	110		0
19	15	2D E 3	110		0
5	9	2D E 3	110		0
18	20	1NT E 2	120		0
1	3	2D E 4	130		-1
6	7	2D E 4	130		-1
16	17	2D E 4	130		-1

24

♠J76
♥A7654
♦K96
♣Q6

♠K84
♥KQJ109
♦AJ10
♣102

♠A1032
♥8
♦8542
♣AKJ4

♠Q95
♥32
♦Q73
♣98753

N
W—E
S

♠K84
♥KQJ109
♦AJ10
♣102

Board (24) Av: NS=-90

N-S	E-W	Contract	N-S	E-W	IMP
10	8	1NT N 2	120		5
1	3	1NT N-1	50		1
16	17	1NT N-1	50		1
18	20	1NT N-1	50		1
5	9	2NT N-2	100		0
2	4	2NT N-2	100		0
14	12	2NT N-2	100		0
6	7	1NT N-2	100		0
19	15	1H E 3	140		-2
13	11	1Hx E 2	260		-5

25

♠K862
♥KJ97
♦Q9
♣AJ7

♠J103
♥843
♦875
♣10942

♠5
♥Q1065
♦J643
♣K863

♠AQ974
♥A2
♦AK102
♣Q5

N
W—E
S

♠J103
♥843
♦875
♣10942

Board (25) Av: NS=+90

N-S	E-W	Contract	N-S	E-W	IMP
5	2	3H S 3	140		2
18	19	3H S 3	140		2
10	6	3H S 3	140		2
12	15	3H N 3	140		2
1	4	3S W-1	100		0
13	17	3S E-1	100		0
3	7	2S W-1	100		0
14	11	1NT N 1	90		0
20	16	2S W 2	110		-5
8	9	2S W 2	110		-5

26

♠J985
♥K653
♦A3
♣A103

♠Q43
♥Q9874
♦Q7
♣987

♠A7
♥A10
♦J10642
♣KJ64

♠K1062
♥J2
♦K985
♣Q52

N
W—E
S

♠Q43
♥Q9874
♦Q7
♣987

Board (26) Av: NS=+320

N-S	E-W	Contract	N-S	E-W	IMP
8	9	3NT N 4	630		7
12	15	3NT S 3	600		7
14	11	3NT S 3	600		7
5	2	3NT N 3	600		7
10	6	2NT S 3	150		-5
18	19	2NT N 3	150		-5
3	7	2NT N 3	150		-5
1	4	2NT N 3	150		-5
20	16	2NT S 2	120		-5
13	17	2NT S 2	120		-5

27

♠QJ7
♥AKQJ1073
♦5
♣Q8

♠A53
♥82
♦AKQ103
♣KJ3

♠98
♥95
♦J862
♣A9654

♠K10642
♥64
♦974
♣1072

N
W—E
S

♠A53
♥82
♦AKQ103
♣KJ3

Board (27) Av: NS=+50

N-S	E-W	Contract	N-S	E-W	IMP
10	6	3H N 3	140		3
20	16	3H N 3	140		3
1	4	3H N 3	140		3
18	19	2H N 3	140		3
8	9	2H N 3	140		3
14	11	4H N-1	50		-3
5	2	4H N-1	50		-3
3	7	4H N-1	50		-3
12	15	4H N-1	50		-3
13	17	4H N-2	100		-4

第18回NRM杯 Session 2 Section D 2013年6月29日(土)

28

♠A6542
♥KQJ97

◇

♣973

♠J8
♥632
◇AJ75
♣A542



♠107
♥108
◇K108643
♣J106

♠KQ93
♥A54
◇Q92
♣KQ8

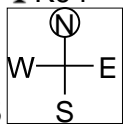
29

♠K94
♥A10

◇Q8754

♣K94

♠J76
♥J432
◇K10
♣QJ75



♠10853
♥Q86
◇J2
♣A863

♠AQ2
♥K975
◇A963
♣102

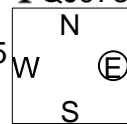
30

♠AJ8
♥KJ2

◇52

♣QJ973

♠K63
♥A1075
◇QJ76
♣64



♠Q5
♥Q43
◇K9843
♣AK10

♠109742
♥986
◇A10
♣852

Board (28) Av: NS=+680

N-S	E-W	Contract	N-S	E-W	IMP
5	2	6S	N 6	1430	13
14	11	5S	N 6	680	0
10	6	5S	N 6	680	0
13	17	4S	N 6	680	0
20	16	4S	N 6	680	0
18	19	4S	N 6	680	0
8	9	4S	N 6	680	0
3	7	4S	N 6	680	0
12	15	4S	N 6	680	0
1	4	4S	N 6	680	0

Board (29) Av: NS=+620

N-S	E-W	Contract	N-S	E-W	IMP
12	15	3NT	N 4	630	0
10	6	3NT	N 4	630	0
18	19	3NT	N 4	630	0
13	17	3NT	N 4	630	0
3	7	3NT	N 4	630	0
1	4	3NT	N 4	630	0
8	9	3NT	N 4	630	0
20	16	3NT	S 3	600	-1
5	2	3NT	N 3	600	-1
14	11	3NT	N 3	600	-1

Board (30) Av: NS=-170

N-S	E-W	Contract	N-S	E-W	IMP
12	15	4H	W-2	100	7
8	9	1NT	E 2	120	2
3	7	1NT	E 2	120	2
1	4	1NT	E 2	120	2
14	11	2D	E 4	130	1
18	19	2D	E 4	130	1
20	16	1NT	E 3	150	1
10	6	1NT	E 3	150	1
5	2	3NT	E 3	400	-6
13	17	3NT	E 3	400	-6

第18回NRM杯 Session 3 Section D 2014年6月30日(日)

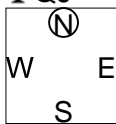
1

♠ QJ10972
♥ A3
♦ K95
♣ QJ

♠ A84
♥ J987
♦ QJ72
♣ K6

♠ K3
♥ KQ542
♦ A83
♣ 952

♠ 65
♥ 106
♦ 1064
♣ A108743



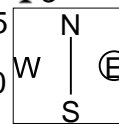
2

♠ KQ83
♥ 1087654
♦ Q9
♣ 3

♠ J1042
♥ K2
♦ 4
♣ Q109762

♠ 9
♥ QJ
♦ K876532
♣ 854

♠ A765
♥ A93
♦ AJ10
♣ AKJ



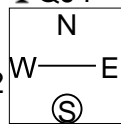
3

♠ K104
♥ K632
♦ K96
♣ QJ4

♠ AJ63
♥ 74
♦ 87
♣ AK1085

♠ Q9752
♥ AQ1095
♦ QJ3
♣

♠ 8
♥ J8
♦ A10542
♣ 97632



Board (1) Av: NS=+210

N-S	E-W	Contract	N-S	E-W	IMP
8	20	4S	N 6	480	7
7	18	4S	N 4	420	5
16	6	4S	N 4	420	5
2	13	4S	N 4	420	5
3	15	4S	N 4	420	5
1	11	4S	N 4	420	5
12	4	3NT	S-3	150	-8
10	19	3NT	S-3	150	-8
5	14	3NT	S-3	150	-8
9	17	2NT	S-3	150	-8

Board (2) Av: NS=-320

N-S	E-W	Contract	N-S	E-W	IMP
3	15	6S	W-2	100	9
8	20	4S	W-1	50	9
16	6	4S	W-1	50	9
10	19	4S	W 4	420	-3
9	17	4S	W 4	420	-3
1	11	3NT	W 4	430	-3
7	18	4S	W 5	450	-4
2	13	4S	W 5	450	-4
5	14	4S	W 5	450	-4
12	4	3NT	W 6	490	-5

Board (3) Av: NS=+370

N-S	E-W	Contract	N-S	E-W	IMP
16	6	5H	S 5	450	2
1	11	4S	S 5	450	2
8	20	4H	S 5	450	2
12	4	4S	S 4	420	2
10	19	4H	S 4	420	2
7	18	4H	S 4	420	2
2	13	4H	S 4	420	2
3	15	4H	S 4	420	2
5	14	6H	S-1	50	-9
9	17	4S	S-1	50	-9

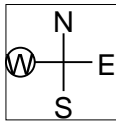
4

♠ Q873
♥ 1095
♦ 52
♣ J643

♠ J6
♥ K643
♦ 10
♣ AK8752

♠ A10952
♥ AJ8
♦ AK76
♣ 9

♠ K4
♥ Q72
♦ QJ9843
♣ Q10



Board (4) Av: NS=+80

N-S	E-W	Contract	N-S	E-W	IMP
12	4	4S	S 4	620	11
8	20	4S	S 4	620	11
10	19	3S	S 4	170	3
1	11	3S	S 3	140	2
3	15	3C	E-1	100	1
5	14	2D	W 2	90	-5
9	17	3S	S-1	100	-5
2	13	3S	S-1	100	-5
7	18	3S	S-1	100	-5
16	6	3C	E 4	130	-5

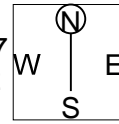
5

♠ J95
♥ 10
♦ 875
♣ K98753

♠ AQ10742
♥ 8543
♦ K
♣ A10

♠ 863
♥ J962
♦ AJ1096
♣ 2

♠ K
♥ AKQ7
♦ Q432
♣ QJ64



Board (5) Av: NS=-260

N-S	E-W	Contract	N-S	E-W	IMP
8	20	6H	E-2	100	8
5	14	6NT	W-1	50	7
2	13	6H	E-1	50	7
10	19	6H	E-1	50	7
16	6	4H	W 5	450	-5
12	4	4H	E 5	450	-5
9	17	4H	E 5	450	-5
1	11	4H	E 5	450	-5
3	15	3NT	W 5	460	-5
7	18	4H	E 6	480	-6

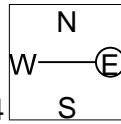
6

♠ J106
♥ Q96
♦ 52
♣ AK962

♠ Q942
♥ KJ10
♦ K94
♣ 753

♠ AK83
♥ A32
♦ QJ873
♣ J

♠ 75
♥ 8754
♦ A106
♣ Q1084



Board (6) Av: NS=+200

N-S	E-W	Contract	N-S	E-W	IMP
2	13	3NT	N 4	430	6
9	17	3NT	N 4	430	6
8	20	3NT	N 3	400	5
1	11	3NT	N 3	400	5
12	4	2NT	S 2	120	-2
3	15	1NT	N 2	120	-2
7	18	1NT	N 2	120	-2
10	19	1NT	N 1	90	-3
5	14	3NT	N-1	50	-6
16	6	3NT	N-2	100	-7

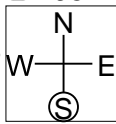
7

♠ K762
♥ QJ52
♦ 85
♣ AJ5

♠ J95
♥ K8
♦ KJ9742
♣ 108

♠ Q108
♥ 106
♦ AQ63
♣ Q962

♠ A43
♥ A9743
♦ 10
♣ K743



Board (7) Av: NS=+140

N-S	E-W	Contract	N-S	E-W	IMP
17	7	3Dx	E-2	500	8
8	19	2H	W-2	200	2
1	15	2H	W-2	200	2
13	5	2D	W-2	200	2
3	14	1NT	S 3	150	0
12	2	2H	W-1	100	-1
9	16	2H	W-1	100	-1
18	10	2H	W-1	100	-1
6	20	2D	E-1	100	-1
4	11	1NT	S 1	90	-2

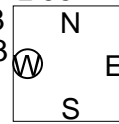
8

♠ 1086
♥ KJ62
♦ AJ73
♣ 95

♠ 972
♥ 109
♦ Q10842
♣ A83

♠ QJ5
♥ 875
♦ K5
♣ QJ1074

♠ AK43
♥ AQ43
♦ 96
♣ K62



Board (8) Av: NS=-80

N-S	E-W	Contract	N-S	E-W	IMP
6	20	1NT	W-1	50	4
8	19	1NT	W-1	50	4
1	15	1NT	W-1	50	4
12	2	1NT	W 1	90	0
18	10	1NT	W 1	90	0
13	5	1NT	W 2	120	-1
17	7	1NT	W 2	120	-1
4	11	1NT	W 3	150	-2
3	14	1NT	W 3	150	-2
9	16	1NT	W 3	150	-2

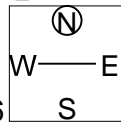
9

♠ 10753
♥ A1073
♦ Q76
♣ K2

♠ A9642
♥ KJ
♦ 1085
♣ J83

♠ Q8
♥ Q864
♦ J93
♣ 10754

♠ KJ
♥ 952
♦ AK42
♣ AQ96



Board (9) Av: NS=+140

N-S	E-W	Contract	N-S	E-W	IMP
8	19	3NT	W-3	300	4
18	10	3NT	W-2	200	2
9	16	3NT	W-2	200	2
17	7	3NT	W-2	200	2
3	14	3NT	W-2	200	2
4	11	3NT	W-2	200	2
13	5	3NT	W-1	100	-1
1	15	3NT	W-1	100	-1
6	20	2S	W 2	110	-6
12	2	3NT	W 3	600	-12

10

♠ K94
♥ 84
♦ A10743
♣ KQ6

♠ A1085
♥ 3
♦ 8652
♣ AJ98

N
W — E
S

♠ Q32
♥ K97652
♦ 9
♣ 754

♠ J76
♥ AQJ10
♦ KQJ
♣ 1032

11

♠ Q108
♥ Q643
♦ 98
♣ AJ82

♠ AK92
♥ K1075
♦ AJ
♣ 1076

N
W — E
S

♠ J5
♥ J98
♦ K7642
♣ K93

♠ 7643
♥ A2
♦ Q1053
♣ Q54

12

♠ A76
♥ 73
♦ 1063
♣ A10875

♠ K1052
♥ A109
♦ Q75
♣ KJ3

N
W — E
S

♠ Q98
♥ KJ62
♦ KJ9
♣ Q42

♠ J43
♥ Q854
♦ A842
♣ 96

Board (10) Av: NS=+620

N-S	E-W	Contract	N-S	E-W	IMP
3	14	2Hx E-3	800		5
9	16	3NT S 5	660		1
4	11	3NT S 4	630		0
6	20	3NT N 4	630		0
17	7	3NT N 4	630		0
13	5	3NT S 3	600		-1
8	19	3NT S 3	600		-1
18	10	3NT N 3	600		-1
12	2	3NT N 3	600		-1
1	15	3NT S-1		100	-12

Board (11) Av: NS=-20

N-S	E-W	Contract	N-S	E-W	IMP
9	16	3NT W-2	100		3
12	2	3NT W-2	100		3
13	5	3NT E-2	100		3
17	7	2NT W-1	50		2
3	14	2NT W-1	50		2
6	20	1NT W 1		90	-2
18	10	2NT W 2		120	-3
1	15	2NT W 2		120	-3
8	19	2NT W 2		120	-3
4	11	1NT W 2		120	-3

Board (12) Av: NS=-140

N-S	E-W	Contract	N-S	E-W	IMP
9	16	3NT E-2	100		6
6	20	2NT E-2	100		6
18	10	3NT E-1	50		5
12	2	3NT E-1	50		5
1	15	2NT E 3		150	0
4	11	2NT W 4		180	-1
13	5	2NT E 4		180	-1
8	19	3NT E 3		400	-6
17	7	3NT E 3		400	-6
3	14	3NT E 4		430	-7

13

♠ J
♥ 94
♦ QJ109742
♣ K98

♠ A865
♥
♦ A863
♣ A6542

N
W — E
S

♠ 742
♥ AKQ1082
♦ K
♣ Q107

♠ KQ1093
♥ J7653
♦ 5
♣ J3

14

♠ 1064
♥ A73
♦ K4
♣ KQJ107

♠ KJ85
♥ 65
♦ Q86532
♣ 3

N
W — E
S

♠ 97
♥ K1094
♦ A9
♣ 96542

♠ AQ32
♥ QJ82
♦ J107
♣ A8

15

♠ 10754
♥ A63
♦ 104
♣ 9532

♠ J982
♥ 94
♦ K872
♣ 1064

N
W — E
S

♠ AK6
♥ KQ8752
♦ QJ3
♣ 8

♠ Q3
♥ J10
♦ A965
♣ AKQJ7

Board (13) Av: NS=-290

N-S	E-W	Contract	N-S	E-W	IMP
2	11	3NT W-2	200		10
20	9	3NT W-1	100		9
8	18	3H E 3		140	4
17	10	3H E 3		140	4
7	16	3H E 3		140	4
5	12	3H E 3		140	4
1	14	4H E 4		620	-8
4	15	3NT W 4		630	-8
19	6	3NT W 4		630	-8
13	3	3NT W 5		660	-9

Board (14) Av: NS=+390

N-S	E-W	Contract	N-S	E-W	IMP
17	10	3NT S 5	460		2
13	3	3NT S 5	460		2
19	6	3NT S 4	430		1
2	11	3NT S 4	430		1
4	15	3NT S 4	430		1
1	14	3NT S 3	400		0
7	16	3NT S 3	400		0
5	12	3NT N 3	400		0
20	9	1NT N 3	150		-6
8	18	4NT S-1		50	-10

Board (15) Av: NS=-130

N-S	E-W	Contract	N-S	E-W	IMP
8	18	3C S 3	110		6
5	12	4H E-1	50		5
7	16	3H E 3		140	0
17	10	3H E 3		140	0
4	15	3H E 3		140	0
20	9	2H E 3		140	0
1	14	3H E 4		170	-1
2	11	2H E 4		170	-1
13	3	2H E 4		170	-1
19	6	3NT N-4		400	-7

16

♠ A872
♥ Q87
♦ 10865
♣ 98

♠ KJ53
♥ J109
♦ K94
♣ 1063

N
W — E
S

♠ 96
♥ 654
♦ J3
♣ AKQ742

♠ Q104
♥ AK32
♦ AQ72
♣ J5

17

♠ 852
♥ QJ654
♦ 65
♣ AK4

♠ KQ64
♥ A92
♦ A943
♣ 83

N
W — E
S

♠ 1073
♥ K1073
♦ QJ8
♣ Q97

♠ AJ9
♥ 8
♦ K1072
♣ J10652

18

♠ K3
♥ 10982
♦ J5
♣ K10763

♠ AJ1084
♥ AQJ5
♦ A2
♣ 84

N
W — E
S

♠ Q97
♥ 7643
♦ 10743
♣ 92

♠ 652
♥ K
♦ KQ986
♣ AQJ5

Board (16) Av: NS=+50

N-S	E-W	Contract	N-S	E-W	IMP
7	16	1NT S 3	150		3
1	14	2D N 4	130		2
13	3	1NT S 2	120		2
4	15	1NT S 2	120		2
8	18	2D N 3	110		2
19	6	2D S 2	90		1
17	10	1NT S-1		50	-3
5	12	1NT S-1		50	-3
20	9	2C E 2		90	-4
2	11	1NT S-2		100	-4

Board (17) Av: NS=-50

N-S	E-W	Contract	N-S	E-W	IMP
1	14	2C S 2	90		4
20	9	1NT E-1	50		3
4	15	1NT E-1	50		3
8	18	1NT S-1		50	0
19	6	1NT E 1		90	-1
17	10	1NT E 1		90	-1
13	3	1NT E 1		90	-1
5	12	1NT E 1		90	-1
7	16	1NT E 2		120	-2
2	11	2D N-3		150	-3

Board (18) Av: NS=+110

N-S	E-W	Contract	N-S	E-W	IMP
17	10	3H W-3	150		1
1	14	3C S 5	150		1
8	18	4C S 4	130		1
4	15	3C S 4	130		1
19	6	3C S 4	130		1
2	11	3C S 4	130		1
5	12	3C S 3	110		0
20	9	3S W-1	50		-2
7	16	3S W-1	50		-2
13	3	2H W-1	50		-2

19

♠KQ1086
♥Q3
♦94
♣K742

♠73
♥J109865
♦1062
♣J6

N
W—E
S

♠AJ942
♥742
♦AK
♣A85

♠5
♥AK
♦QJ8753
♣Q1093

Board (19) Av: NS=-110

N-S	E-W	Contract	N-S	E-W	IMP
2	15	3C	S 3	110	6
18	6	3C	S 3	110	6
9	19	2D	S 3	110	6
11	5	4C	S-2	100	0
8	17	3H	W 3	140	-1
20	7	2S	N-3	150	-1
10	16	3NT	S-4	200	-3
1	13	3NT	S-5	250	-4
12	3	3NT	S-5	250	-4
4	14	4Dx	S-2	300	-5

20

♠6
♥KQ10875
♦KJ842
♣K

♠AKJ93
♥43
♦53
♣AQ32

N
W—E
S

♠Q10
♥AJ92
♦106
♣107654

♠87542
♥6
♦AQ97
♣J98

Board (20) Av: NS=+20

N-S	E-W	Contract	N-S	E-W	IMP
8	17	2H	N 3	140	3
18	6	3D	N 4	130	3
12	3	3D	S 3	110	3
11	5	2H	N 2	110	3
2	15	2H	N 2	110	3
9	19	2H	N 2	110	3
20	7	2S	W 2	110	-4
1	13	2S	W 3	140	-4
10	16	4C	W 5	150	-5
4	14	5D	S-2	200	-6

21

♠K985
♥10
♦AQ
♣AQ10653

♠AQ2
♥K63
♦J432
♣K87

N
W—E
S

♠74
♥AQJ92
♦K976
♣42

♠J1063
♥8754
♦1085
♣J9

Board (21) Av: NS=-50

N-S	E-W	Contract	N-S	E-W	IMP
11	5	4H	E-3	150	5
18	6	4H	E-3	150	5
2	15	2H	E-2	100	4
4	14	2H	E-1	50	3
8	17	3S	N-1	100	-2
10	16	3H	E 3	140	-3
9	19	3H	E 3	140	-3
20	7	3H	E 3	140	-3
1	13	2H	E 3	140	-3
12	3	2H	E 3	140	-3

22

♠865
♥1054
♦A7
♣QJ1042

♠K4
♥QJ2
♦J108
♣AK965

N
W—E
S

♠A103
♥K9873
♦K32
♣87

♠QJ972
♥A6
♦Q9654
♣3

Board (22) Av: NS=-140

N-S	E-W	Contract	N-S	E-W	IMP
9	19	2S	S 2	110	6
8	17	4H	E-1	100	6
10	16	4H	E-1	100	6
2	15	3S	S-1	50	3
12	3	3H	E 3	140	0
20	7	3H	E 4	170	-1
18	6	2H	E 4	170	-1
4	14	2H	E 4	170	-1
1	13	4H	E 4	620	-10
11	5	4H	E 4	620	-10

23

♠AQ82
♥974
♦J75
♣753

♠K3
♥10852
♦9842
♣864

N
W—E
S

♠J754
♥J3
♦A63
♣KQJ9

♠1096
♥AKQ6
♦KQ10
♣A102

Board (23) Av: NS=+190

N-S	E-W	Contract	N-S	E-W	IMP
18	6	3NT	S 3	600	9
12	3	3NT	S 3	600	9
10	16	3NT	S 3	600	9
4	14	3NT	S 3	600	9
20	7	1NT	S 2	120	-2
1	13	3NT	S-1	100	-7
11	5	3NT	S-1	100	-7
8	17	3NT	S-1	100	-7
9	19	3NT	S-1	100	-7
2	15	3NT	S-2	200	-9

24

♠10872
♥76
♦K643
♣J103

♠K
♥AQ954
♦A87
♣Q987

N
W—E
S

♠AQ9643
♥J1083
♦
♣542

♠J5
♥K2
♦QJ10952
♣AK6

Board (24) Av: NS=-440

N-S	E-W	Contract	N-S	E-W	IMP
4	14	3NT	S 3	400	13
12	3	4H	W 4	420	1
20	7	4H	W 4	420	1
11	5	4H	W 5	450	0
18	6	4H	W 5	450	0
10	16	4H	W 5	450	0
2	15	4H	W 5	450	0
8	17	4H	W 5	450	0
9	19	4H	W 5	450	0
1	13	6Hx	W 7	1310	-13

25

♠J108
♥J92
♦86
♣J10642

♠K54
♥Q643
♦Q109
♣987

N
W—E
S

♠Q6
♥K108
♦AK743
♣K53

♠A9732
♥A75
♦J52
♣AQ

Board (25) Av: NS=-70

N-S	E-W	Contract	N-S	E-W	IMP
13	4	2S	S 2	110	5
14	2	2S	S 2	110	5
1	12	2S	S 2	110	5
11	3	1NT	E 1	90	-1
17	6	1NT	E 2	120	-2
10	20	1NT	E 2	120	-2
9	18	1NT	E 3	150	-2
19	7	1NT	E 3	150	-2
15	5	1NT	E 3	150	-2
16	8	1NT	E 4	180	-3

26

♠AJ542
♥KQ953
♦J7
♣2

♠1063
♥A8
♦10543
♣10643

N
W—E
S

♠98
♥64
♦AKQ9
♣AQJ87

♠KQ7
♥J1072
♦862
♣K95

Board (26) Av: NS=+20

N-S	E-W	Contract	N-S	E-W	IMP
9	18	3S	N 3	140	3
15	5	3H	S 3	140	3
14	2	3H	S 3	140	3
16	8	2S	N 3	140	3
1	12	2H	S 3	140	3
19	7	4H	S-1	100	-3
10	20	4H	S-1	100	-3
11	3	4H	S-1	100	-3
13	4	4H	S-1	100	-3
17	6	4H	N-1	100	-3

27

♠K3
♥6542
♦53
♣AQ765

♠109
♥AQJ7
♦QJ942
♣83

N
W—E
S

♠AQ874
♥K108
♦K6
♣K104

♠J652
♥93
♦A1087
♣J92

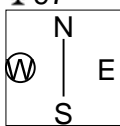
Board (27) Av: NS=-310

N-S	E-W	Contract	N-S	E-W	IMP
11	3	3NT	W-1	50	8
17	6	2Cx	N-1	100	5
10	20	2S	E 3	140	5
9	18	2S	E 4	170	4
14	2	3NT	W 3	400	-3
15	5	3NT	W 3	400	-3
13	4	3NT	E 3	400	-3
19	7	3NT	W 4	430	-3
1	12	3NT	W 4	430	-3
16	8	3NT	E 4	430	-3

第18回NRM杯 Session 3 Section D 2013年6月30日(日)

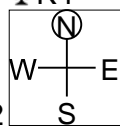
28

♠ AQJ65
 ♠ KJ52
 ♠ Q974 ♠ KJ52
 ♠ 109732 ♠ 10983
 ♠ A ♠ QJ1043
 ♠ AK2 ♠ QJ1043
 ♠ A10863
 ♠ K84
 ♠ KJ
 ♠ 865



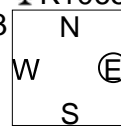
29

♠ A84
 ♠ 104
 ♠ QJ8643
 ♠ K4
 ♠ J65 ♠ Q1092
 ♠ KQ95 ♠ AJ76
 ♠ K ♠ 1075
 ♠ J10982 ♠ A5
 ♠ K73
 ♠ 832
 ♠ A92
 ♠ Q763



30

♠ 8753
 ♠ AK8
 ♠ K106542
 ♠ AJ953 ♠ K106
 ♠ QJ ♠ K10962
 ♠ 7632 ♠ QJ109
 ♠ A8 ♠ J
 ♠ Q8742
 ♠ A4
 ♠ 54
 ♠ Q973



Board (28) Av: NS=-300

N-S	E-W	Contract	N-S	E-W	IMP
19	7	2S	E 3	140	4
9	18	2S	E 3	140	4
13	4	2S	E 3	140	4
10	20	2S	E 4	170	4
11	3	2S	E 5	200	3
14	2	4S	W 4	420	-3
1	12	4S	E 4	420	-3
15	5	4S	E 5	450	-4
16	8	4S	E 6	480	-5
17	6	4Sx	E 4	590	-7

Board (29) Av: NS=-20

N-S	E-W	Contract	N-S	E-W	IMP
15	5	Passout			1
14	2	Passout			1
19	7	Passout			1
17	6	Passout			1
13	4	Passout			1
1	12	Passout			1
10	20	Passout			1
11	3	Passout			1
9	18	2H	W 4	170	-4
16	8	4H	W 4	620	-12

Board (30) Av: NS=+40

N-S	E-W	Contract	N-S	E-W	IMP
1	12	4Cx	N 4	510	10
11	3	4S	W-3	150	3
16	8	4C	N 4	130	3
17	6	4Sx	W-1	100	2
15	5	4S	E-1	50	0
19	7	3S	W-1	50	0
10	20	2S	W-1	50	0
13	4	2S	W 2	110	-4
9	18	2S	W 2	110	-4
14	2	2S	W 2	110	-4

第18回NRM杯 Session 4 Section D 2014年6月30日(日)

1

♠ QJ76
♥ Q9643
♦ Q
♣ 653

♠ AK82 ♠ 93
♥ KJ7 ♥ A108
♦ KJ6 ♦ 98743
♣ AQ4 ♣ J98

♠ 1054
♥ 52
♦ A1052
♣ K1072

Board (1) Av: NS=-170

N-S	E-W	Contract	N-S	E-W	IMP
3	20	3NT W-2	100		7
13	7	3NT W-2	100		7
15	8	3NT W-1	50		6
6	11	3NT W-1	50		6
19	5	3NT W-1	50		6
1	16	3NT W 3		400	-6
4	17	3NT W 3		400	-6
10	14	3NT W 3		400	-6
12	9	3NT W 3		400	-6
18	2	3NT W 4		430	-6

2

♠ 863
♥ KQ9873
♦ K
♣ Q52

♠ J109 ♠ 54
♥ A6 ♥ 10542
♦ QJ86 ♦ A9
♣ AJ43 ♣ K10986

♠ AKQ72
♥ J
♦ 1075432
♣ 7

Board (2) Av: NS=+10

N-S	E-W	Contract	N-S	E-W	IMP
4	17	3S S 3	140		4
15	8	3S S 3	140		4
3	20	3S S 3	140		4
10	14	2S S 2	110		3
18	2	1H N 1	80		2
12	9	4S S-1		100	-3
13	7	2S S-1		100	-3
19	5	3C E 3		110	-3
6	11	2C W 3		110	-3
1	16	4S S-2		200	-5

3

♠ KJ1032
♥ AK3
♦ 2
♣ AKQ2

♠ 8654 ♠ Q
♥ Q7 ♥ J10652
♦ Q4 ♦ J87653
♣ 98643 ♣ 5

♠ A97
♥ 984
♦ AK109
♣ J107

Board (3) Av: NS=+1010

N-S	E-W	Contract	N-S	E-W	IMP
19	5	6NT S 7	1020		0
13	7	6S N 7	1010		0
12	9	6S N 7	1010		0
18	2	6S N 7	1010		0
15	8	6S N 7	1010		0
4	17	6S N 7	1010		0
3	20	6S N 7	1010		0
1	16	6S N 7	1010		0
6	11	6S N 7	1010		0
10	14	4NT S 7	520		-10

4

♠ 1062
♥ KJ10942
♦ 4
♣ 1032

♠ Q93 ♠ 84
♥ 53 ♥ A76
♦ KQ96 ♦ AJ10853
♣ 9854 ♣ K7

♠ AKJ75
♥ Q8
♦ 72
♣ AQJ6

Board (4) Av: NS=+90

N-S	E-W	Contract	N-S	E-W	IMP
1	16	4S S 4	620		11
3	20	3S S 5	200		3
15	8	3S S 4	170		2
4	17	3S S 4	170		2
18	2	2S S 4	170		2
12	9	3S S 3	140		2
10	14	3D E-1	100		0
13	7	4S S-1		100	-5
6	11	3S S-1		100	-5
19	5	3D E 3		110	-5

5

♠ K1054
♥ 106
♦ AK5
♣ AKJ3

♠ AJ62 ♠ 73
♥ AJ543 ♥ KQ98
♦ J8 ♦ 10643
♣ 54 ♣ 1097

♠ Q98
♥ 72
♦ Q972
♣ Q862

Board (5) Av: NS=-20

N-S	E-W	Contract	N-S	E-W	IMP
1	16	4C N 4	130		4
18	2	3D S 4	130		4
10	14	3H W-1	50		2
3	20	3H W-1	50		2
12	9	3H E-1	50		2
13	7	5C N-1		100	-2
19	5	4D S-1		100	-2
4	17	4C N-1		100	-2
15	8	2NT N-1		100	-2
6	11	3NT N-2		200	-5

6

♠ J5
♥ Q953
♦ A9
♣ K10542

♠ A84 ♠ KQ62
♥ AJ1064 ♥ K8
♦ Q6 ♦ J843
♣ Q87 ♣ A63

♠ 10973
♥ 72
♦ K10752
♣ J9

Board (6) Av: NS=-510

N-S	E-W	Contract	N-S	E-W	IMP
3	20	3NT E-3	300		13
13	7	3NT E-3	300		13
12	9	3NT E 3		600	-3
4	17	3NT E 3		600	-3
19	5	3NT E 4		630	-3
18	2	3NT E 4		630	-3
15	8	3NT E 4		630	-3
1	16	3NT E 4		630	-3
6	11	3NT E 4		630	-3
10	14	3NT E 4		630	-3

7

♠ AJ8732
♥ 102
♦ A6
♣ Q103

♠ 9 ♠ KQ1064
♥ KQ9743 ♥ J5
♦ Q98 ♦ J43
♣ AJ7 ♣ K64

♠ 5
♥ A86
♦ K10752
♣ 9852

Board (7) Av: NS=-80

N-S	E-W	Contract	N-S	E-W	IMP
19	3	4H W-2	200		7
6	15	3H W-1	100		5
1	20	2H W-1	100		5
10	13	2S N-1		100	-1
11	9	2H W 2		110	-1
5	18	2H W 2		110	-1
8	14	2NT E 2		120	-1
17	2	3H W 4		170	-3
12	7	2S N-2		200	-3
16	4	1S N-2		200	-3

8

♠ 4
♥ 742
♦ Q96542
♣ K98

♠ AKJ2 ♠ 10973
♥ J3 ♥ AQ1096
♦ AKJ8 ♦ 3
♣ A74 ♣ Q62

♠ Q865
♥ K85
♦ 107
♣ J1053

Board (8) Av: NS=-330

N-S	E-W	Contract	N-S	E-W	IMP
10	13	6S W-2	100		10
8	14	4S W-1	50		9
12	7	4S W-1	50		9
17	2	4S W 4		420	-3
11	9	4NT W 4		430	-3
5	18	4S E 5		450	-3
1	20	4H W 5		450	-3
6	15	4S W 6		480	-4
16	4	4S W 6		480	-4
19	3	3NT W 6		490	-4

9

♠ 86
♥ AKQ6
♦ A76
♣ AQ32

♠ K42 ♠ AQJ73
♥ 10832 ♥ J954
♦ J85 ♦ 2
♣ 765 ♣ K108

♠ 1095
♥ 7
♦ KQ10943
♣ J94

Board (9) Av: NS=+90

N-S	E-W	Contract	N-S	E-W	IMP
12	7	5D S 5	400		7
19	3	2S E-3	300		5
5	18	4D S 5	150		2
17	2	3D S 5	150		2
1	20	3D S 5	150		2
10	13	3D S 4	130		1
16	4	5D S-1		50	-4
8	14	3NT N-1		50	-4
11	9	3C N-1		50	-4
6	15	4C N-2		100	-5

第18回NRM杯 Session 4 Section D 2014年6月30日(日)

10

♠ KJ108732
♥ 72
♦ J43
♣ 5

♠ 964 N ♠ 5
♥ A103 W ♥ J964
♦ AK52 E ♦ Q76
♣ 1096 S ♣ KQ832

♠ AQ
♥ KQ85
♦ 1098
♣ AJ74

11

♠ Q832
♥ 2
♦ Q7652
♣ 1065

♠ J1075 N ♠ A6
♥ Q654 W ♥ AK109
♦ A103 E ♦ K94
♣ A7 S ♣ J932

♠ K94
♥ J873
♦ J8
♣ KQ84

12

♠ 109
♥ K962
♦ QJ3
♣ A842

♠ J86 N ♠ AKQ54
♥ 5 W ♥ 87
♦ AK1042 E ♦ 875
♣ Q976 S ♣ KJ3

♠ 732
♥ AQJ1043
♦ 96
♣ 105

Board (10) Av: NS=-70

N-S	E-W	Contract	N-S	E-W	IMP
11	9	2S	S 3	140	5
19	3	2S	S 3	140	5
12	7	4S	S-1	100	-1
17	2	4S	S-1	100	-1
1	20	4S	S-1	100	-1
16	4	4S	S-1	100	-1
6	15	4S	S-1	100	-1
5	18	4S	S-1	100	-1
10	13	4S	S-1	100	-1
8	14	4S	S-1	100	-1

Board (11) Av: NS=-240

N-S	E-W	Contract	N-S	E-W	IMP
19	3	4H	E-1	50	7
12	7	4H	E-1	50	7
6	15	4H	E-1	50	7
10	13	4H	E-1	50	7
17	2	4H	E 4	420	-5
1	20	4H	E 4	420	-5
8	14	4H	E 4	420	-5
5	18	4H	E 4	420	-5
11	9	4H	E 4	420	-5
16	4	4H	E 5	450	-5

Board (12) Av: NS=-370

N-S	E-W	Contract	N-S	E-W	IMP
1	20	3D	W 3	110	6
12	7	3S	E 4	170	5
16	4	3S	E 4	170	5
8	14	4S	E 4	420	-2
17	2	4S	E 4	420	-2
6	15	4S	E 4	420	-2
19	3	4S	E 5	450	-2
5	18	4S	E 5	450	-2
10	13	4S	E 5	450	-2
11	9	4S	E 5	450	-2

13

♠ K10987
♥ 752
♦ 73
♣ A105

♠ AJ2 N ♠ Q65
♥ AQJ8 W ♥ 106
♦ 984 E ♦ AKJ65
♣ J92 S ♣ Q63

♠ 43
♥ K943
♦ Q102
♣ K874

14

♠ Q1082
♥ Q5
♦ AK107
♣ 953

♠ AK9 N ♠ 74
♥ K743 W ♥ A9862
♦ 965 E ♦ Q4
♣ K87 S ♣ AJ62

♠ J653
♥ J10
♦ J832
♣ Q104

15

♠ A53
♥ 764
♦ J9832
♣ A6

♠ K87 N ♠ J92
♥ 3 W ♥ AQ1092
♦ Q105 E ♦ AK6
♣ KQJ852 S ♣ 43

♠ Q1064
♥ KJ85
♦ 74
♣ 1097

Board (13) Av: NS=-60

N-S	E-W	Contract	N-S	E-W	IMP
16	2	3NT	E-2	200	6
9	15	3NT	E-2	200	6
10	12	3NT	E-1	100	4
18	3	3NT	E-1	100	4
20	4	3NT	E-1	100	4
5	17	3NT	E-1	100	4
6	14	3NT	E-1	100	4
1	19	3NT	W 3	600	-11
7	11	3NT	E 3	600	-11
13	8	3NT	E 3	600	-11

Board (14) Av: NS=-300

N-S	E-W	Contract	N-S	E-W	IMP
1	19	3NT	W-1	50	8
7	11	3H	E 4	170	4
9	15	3H	E 4	170	4
5	17	3H	E 4	170	4
6	14	2H	E 4	170	4
18	3	4H	E 4	420	-3
20	4	4H	E 4	420	-3
16	2	4H	E 4	420	-3
10	12	4H	E 4	420	-3
13	8	4H	E 4	420	-3

Board (15) Av: NS=-220

N-S	E-W	Contract	N-S	E-W	IMP
6	14	5C	W-3	150	9
18	3	5C	W-2	100	8
7	11	5C	W-1	50	7
5	17	3C	W 4	130	3
9	15	1NT	W 3	150	2
20	4	3NT	W 3	400	-5
16	2	3NT	E 3	400	-5
13	8	3NT	W 4	430	-5
1	19	3NT	E 4	430	-5
10	12	3NT	W 5	460	-6

16

♠ Q62
♥ 3
♦ K105
♣ QJ10872

♠ K1054 N ♠ 987
♥ 874 W ♥ J2
♦ A872 E ♦ QJ963
♣ 65 S ♣ AK3

♠ AJ3
♥ AKQ10965
♦ 4
♣ 94

17

♠ QJ107
♥ 987
♦ AQ6
♣ J63

♠ AK62 N ♠ 853
♥ 103 W ♥ J2
♦ K87 E ♦ J1095
♣ Q1084 S ♣ AK75

♠ 94
♥ AKQ654
♦ 432
♣ 92

18

♠ QJ2
♥ AKJ94
♦ 63
♣ 1072

♠ AK6 N ♠ 1074
♥ 862 W ♥ Q5
♦ K98 E ♦ AQJ7
♣ 9654 S ♣ AQJ8

♠ 9853
♥ 1073
♦ 10542
♣ K3

Board (16) Av: NS=+210

N-S	E-W	Contract	N-S	E-W	IMP
9	15	4H	S 5	450	6
13	8	4H	S 4	420	5
10	12	4H	S 4	420	5
18	3	4H	S 4	420	5
16	2	4H	S 4	420	5
20	4	3H	S 3	140	-2
5	17	4H	S-1	50	-6
1	19	4H	S-1	50	-6
6	14	4H	S-1	50	-6
7	11	4H	N-1	50	-6

Board (17) Av: NS=+120

N-S	E-W	Contract	N-S	E-W	IMP
7	11	3H	S 3	140	1
20	4	3H	S 3	140	1
13	8	3H	S 3	140	1
9	15	3H	S 3	140	1
1	19	2H	S 3	140	1
18	3	2H	S 3	140	1
5	17	2H	S 3	140	1
16	2	4C	E-2	100	-1
6	14	3C	E-1	50	-2
10	12	3C	E 3	110	-6

Board (18) Av: NS=-220

N-S	E-W	Contract	N-S	E-W	IMP
10	12	3NT	W-2	100	8
7	11	3NT	E-2	100	8
5	17	3NT	E-2	100	8
6	14	3NT	E-1	50	7
16	2	3NT	E 3	400	-5
20	4	3NT	E 3	400	-5
18	3	3NT	E 3	400	-5
1	19	3NT	E 3	400	-5
9	15	3NT	E 3	400	-5
13	8	3NT	E 3	400	-5

19

♠A75
♥4
♦QJ102
♣AK1094

♠K9862
♥86
♦54
♣Q752

N
W—E
S

♠J1043
♥K9753
♦A93
♣8

♠Q
♥AQJ102
♦K876
♣J63

Board (19) Av: NS=+80

N-S	E-W	Contract	N-S	E-W	IMP
16	5	3NT S 5	460		9
14	9	3NT N 3	400		8
3	17	3NT N 3	400		8
19	4	2C N 4	130		2
13	6	6D S-1	50		-4
8	12	5D S-1	50		-4
11	10	3NT N-1	50		-4
7	15	3NT N-1	50		-4
20	2	5D S-2	100		-5
1	18	3NT N-2	100		-5

20

♠Q2
♥104
♦853
♣AQ6542

♠J975
♥
♦J10742
♣K983

N
W—E
S

♠8643
♥AQ93
♦AQ
♣J107

♠AK10
♥KJ87652
♦K96
♣

Board (20) Av: NS=+420

N-S	E-W	Contract	N-S	E-W	IMP
13	6	4Hx S 4	790		9
8	12	3NT N 4	630		5
20	2	4H S 4	620		5
14	9	4H S 4	620		5
19	4	4H S 4	620		5
16	5	4H S 4	620		5
11	10	3H S 4	170		-6
7	15	2H S 4	170		-6
1	18	4H S-1	100		-11
3	17	3S E 3	140		-11

21

♠AQ32
♥AJ3
♦Q974
♣53

♠KJ954
♥K109
♦AJ
♣K76

N
W—E
S

♠108
♥8642
♦3
♣AQ10842

♠76
♥Q75
♦K108652
♣J9

Board (21) Av: NS=+100

N-S	E-W	Contract	N-S	E-W	IMP
16	5	3H E-5	250		4
11	10	1NT S 4	180		2
3	17	4S W-3	150		2
19	4	3D N 3	110		0
1	18	3D N 3	110		0
13	6	5C E-2	100		0
7	15	3S W-1	50		-2
20	2	3S W-1	50		-2
8	12	3S W-1	50		-2
14	9	2S W-1	50		-2

22

♠Q63
♥10753
♦Q743
♣Q5

♠K
♥K82
♦A1096
♣A10432

N
W—E
S

♠A108754
♥AQ6
♦J2
♣J7

♠J92
♥J94
♦K85
♣K986

Board (22) Av: NS=-650

N-S	E-W	Contract	N-S	E-W	IMP
16	5	3NT E-1	100		13
19	4	4S E 4	620		1
7	15	4S E 4	620		1
3	17	4S E 5	650		0
13	6	4S E 5	650		0
20	2	3NT W 5	660		0
14	9	3NT W 5	660		0
1	18	3NT W 5	660		0
8	12	3NT W 5	660		0
11	10	3NT W 5	660		0

23

♠10952
♥94
♦AK9754
♣3

♠KJ76
♥10753
♦102
♣A82

N
W—E
S

♠AKQJ82
♥86
♦KJ1064

♠AQ843
♥6
♦QJ3
♣Q975

Board (23) Av: NS=-560

N-S	E-W	Contract	N-S	E-W	IMP
3	17	5H E-1	100		12
14	9	4S S-2	200		8
11	10	4Sx S-2	500		2
1	18	4Sx S-2	500		2
13	6	5H E 5	650		-3
16	5	4H E 5	650		-3
19	4	4H E 5	650		-3
7	15	4H E 5	650		-3
20	2	4H E 5	650		-3
8	12	4Sx S-4	1100		-11

24

♠2
♥J54
♦Q1065
♣K10642

♠J96
♥K1076
♦J84
♣853

N
W—E
S

♠KQ1043
♥Q983
♦K32
♣J

♠A875
♥A2
♦A97
♣AQ97

Board (24) Av: NS=+190

N-S	E-W	Contract	N-S	E-W	IMP
3	17	3Hx W-3	500		7
8	12	3NT S 4	430		6
7	15	3NT N 3	400		5
20	2	3C S 5	150		-1
16	5	3C N 5	150		-1
14	9	1NT S 2	120		-2
11	10	2S E-2	100		-3
13	6	2S E-2	100		-3
1	18	2S E-1	50		-4
19	4	2H E 3	140		-8

25

♠85
♥KQ105
♦AJ742
♣85

♠AK32
♥97
♦10986
♣AQ2

N
W—E
S

♠1094
♥863
♦K53
♣J643

♠QJ76
♥AJ42
♦Q
♣K1097

Board (25) Av: NS=+60

N-S	E-W	Contract	N-S	E-W	IMP
15	10	4H N 4	420		8
6	12	3H N 3	140		2
4	18	3H N 3	140		2
9	13	2H N 2	110		2
16	3	2H N 2	110		2
1	17	2H N 2	110		2
19	2	4H S-1	50		-3
20	5	3H S-1	50		-3
7	14	2S N-1	50		-3
8	11	4H S-2	100		-4

26

♠743
♥A7
♦AKJ4
♣Q987

♠AQJ82
♥K10
♦10
♣AK643

N
W—E
S

♠1095
♥832
♦Q632
♣J52

♠K6
♥QJ9654
♦9875
♣10

Board (26) Av: NS=-40

N-S	E-W	Contract	N-S	E-W	IMP
16	3	4S W-2	200		6
4	18	3H S 3	140		5
1	17	3H S 3	140		5
15	10	1S W 1	80		-1
8	11	1S W 1	80		-1
7	14	1S W 1	80		-1
20	5	1S W 2	110		-2
9	13	1S W 3	140		-3
6	12	1S W 3	140		-3
19	2	4S W 4	620		-11

27

♠Q864
♥854
♦2
♣A10876

♠5
♥K63
♦J109764
♣Q94

N
W—E
S

♠AJ9
♥AJ107
♦K83
♣KJ3

♠K10732
♥Q92
♦AQ5
♣52

Board (27) Av: NS=-40

N-S	E-W	Contract	N-S	E-W	IMP
6	12	2S S 2	110		4
7	14	3NT E-2	100		4
8	11	3NT E-1	50		3
9	13	1NT E-1	50		3
19	2	1NT E 1	90		-2
1	17	3S S-2	100		-2
20	5	3D W 3	110		-2
4	18	3D E 3	110		-2
16	3	4D W 4	130		-3
15	10	3D W 4	130		-3

第18回NRM杯 Session 4 Section D 2013年6月30日(日)

28

♠ KQJ85
♥ A64
♦ 52
♣ K107

♠ 1062	N	♠ 43
♥ J92		♥ 85
♦ K974	W	♦ 10863
♣ J43	S	♣ A9865

♠ A97
♥ KQ1073
♦ AQJ
♣ Q2

29

♠ J8752
♥ 107
♦ 10
♣ KQJ93

♠ K64	N	♠ AQ93
♥ A92		♥ KQ64
♦ AKQ2	W	♦ J65
♣ 764	S	♣ A5

♠ 10
♥ J853
♦ 98743
♣ 1082

30

♠ 9753
♥ AK105
♦ K
♣ 9642

♠ AQ4	N	♠ 106
♥ Q973		♥ J864
♦ AQ83	W	♦ 1092
♣ K3	S	♣ AQJ7

♠ KJ82
♥ 2
♦ J7654
♣ 1085

Board (28) Av: NS=+1060

N-S	E-W	Contract	N-S	E-W	IMP
9	13	6S	N 6	1430	9
19	2	6S	N 6	1430	9
8	11	6S	N 6	1430	9
15	10	6H	S 6	1430	9
7	14	6H	S 6	1430	9
16	3	5S	N 6	680	-9
20	5	5S	N 6	680	-9
4	18	5H	S 6	680	-9
1	17	5H	S 6	680	-9
6	12	4S	N 6	680	-9

Board (29) Av: NS=-1260

N-S	E-W	Contract	N-S	E-W	IMP
6	12	6NT	E-1	100	16
4	18	4NT	E 6	690	11
9	13	3NT	E 7	720	11
19	2	6NT	E 6	1440	-5
15	10	6NT	E 6	1440	-5
16	3	6NT	E 6	1440	-5
8	11	6NT	E 6	1440	-5
7	14	6NT	E 6	1440	-5
20	5	6NT	E 6	1440	-5
1	17	6NT	E 7	1470	-5

Board (30) Av: NS=+10

N-S	E-W	Contract	N-S	E-W	IMP
4	18	4H	W-3	150	4
15	10	4H	W-2	100	3
20	5	4H	W-2	100	3
9	13	4H	W-1	50	1
16	3	4H	W-1	50	1
6	12	4H	W-1	50	1
1	17	4H	W-1	50	1
8	11	1NT	W 2	120	-4
7	14	1NT	W 4	180	-5
19	2	4H	W 4	420	-10