

第18回NRM杯 Session1 Section B 2013年6月29日(土)

1

♠ 97
♥ J62
♦ J10976
♣ 765

♠ J632
♥ A98543
♦ 8
♣ J3

♠ K105
♥ Q107
♦ KQ32
♣ Q84

♠ AQ84
♥ K
♦ A54
♣ AK1092

Board (1) Av: NS=-40

N-S	E-W	Contract	N-S	E-W	IMP
16	15	3D N 3	110		4
1	10	3C S 3	110		4
5	8	2H W-2	100		4
18	14	3C S-1		50	0
19	12	3C N-1		50	0
20	13	2NT S-1		50	0
3	9	3NT S-2		100	-2
17	11	3NT N-2		100	-2
4	7	3H W 3		140	-3
6	2	2Hx W 2		470	-10

2

♠ Q108
♥ A954
♦ 1063
♣ 1054

♠ 64
♥ J1082
♦ 842
♣ A987

♠ J732
♥ KQ
♦ AQ
♣ QJ632

♠ AK95
♥ 763
♦ KJ975
♣ K

Board (2) Av: NS=-20

N-S	E-W	Contract	N-S	E-W	IMP
20	13	3D S 3	110		4
6	2	1NT E-2		100	3
4	7	1NT E-2		100	3
5	8	2D S 2		90	3
18	14	1NT E 1		90	-2
19	12	1NT E 1		90	-2
1	10	1NT E 1		90	-2
3	9	1NT E 1		90	-2
16	15	1NT E 1		90	-2
17	11	3C E 4		130	-3

3

♠ Q864
♥ J103
♦ AQJ10
♣ 52

♠ KQ42
♥ 87543
♦ J743

♠ KJ107532
♥ 975
♦ K6
♣ 10

♠ A9
♥ A86
♦ 92
♣ AKQ986

Board (3) Av: NS=+240

N-S	E-W	Contract	N-S	E-W	IMP
4	7	3NT S 4	430		5
3	9	3NT S 4	430		5
1	10	3NT S 4	430		5
6	2	3NT N 4	430		5
16	15	3NT S 3	400		4
5	8	3NT N 3	400		4
19	12	3NT N-1		50	-7
20	13	3NT N-1		50	-7
17	11	3NT N-1		50	-7
18	14	3NT N-1		50	-7

4

♠ J10
♥ QJ64
♦ A752
♣ J97

♠ A962
♥ 32
♦ Q104
♣ Q653

♠ Q8753
♥ 9
♦ J986
♣ AK10

♠ K4
♥ AK10875
♦ K3
♣ 842

Board (4) Av: NS=-100

N-S	E-W	Contract	N-S	E-W	IMP
5	8	4Sx E-1	200		7
3	9	4Sx E-1	200		7
17	11	4H S-1		100	0
6	2	3H S-1		100	0
20	13	3S E 3		140	-1
18	14	3S E 3		140	-1
1	10	3S E 3		140	-1
16	15	3S E 3		140	-1
4	7	4H S-2		200	-3
19	12	4H S-2		200	-3

5

♠ 5
♥ J1054
♦ Q1082
♣ 9862

♠ 107
♥ 87
♦ KJ9754
♣ AJ10

♠ KQJ63
♥ K962
♦ 6
♣ KQ5

♠ A9842
♥ AQ3
♦ A3
♣ 743

Board (5) Av: NS=-30

N-S	E-W	Contract	N-S	E-W	IMP
5	8	3NT W-1	50		2
20	13	2S E-1	50		2
6	2	2S E-1	50		2
18	14	2S E-1	50		2
1	10	2S E-1	50		2
19	12	2S E 2		110	-2
4	7	2S E 2		110	-2
3	9	2S E 2		110	-2
16	15	2S E 2		110	-2
17	11	2S E 2		110	-2

6

♠ J832
♥ AJ4
♦ 106
♣ Q654

♠ A95
♥ Q9653
♦ 98
♣ A98

♠ Q106
♥ K82
♦ KQ75
♣ J32

♠ K74
♥ 107
♦ AJ432
♣ K107

Board (6) Av: NS=0

N-S	E-W	Contract	N-S	E-W	IMP
16	15	3Dx S 3	470		10
19	12	Passout			0
17	11	Passout			0
18	14	Passout			0
20	13	Passout			0
3	9	Passout			0
1	10	Passout			0
5	8	Passout			0
4	7	Passout			0
6	2	3C N-1		50	-2

7

♠ 9864
♥ KQ95
♦ 109
♣ QJ7

♠ Q
♥ 643
♦ A87
♣ AK9532

♠ KJ32
♥ 872
♦ KQJ4
♣ 84

♠ A1075
♥ AJ10
♦ 6532
♣ 106

Board (7) Av: NS=-40

N-S	E-W	Contract	N-S	E-W	IMP
15	17	3C W-1	100		4
18	11	3C W-1	100		4
2	10	2S E-1	100		4
19	20	Passout			1
16	14	2C W 2		90	-2
7	8	2C W 2		90	-2
5	4	2C W 2		90	-2
3	6	2C W 3		110	-2
12	13	2C W 3		110	-2
1	9	3NT E 3		600	-11

8

♠ A943
♥ K98
♦ 72
♣ K1075

♠ KQ
♥ Q106532
♦ 1085
♣ Q4

♠ J87652
♥ A
♦ K4
♣ A963

♠ 10
♥ J74
♦ AQJ963
♣ J82

Board (8) Av: NS=+10

N-S	E-W	Contract	N-S	E-W	IMP
3	6	2NT N 3	150		4
19	20	3D S 4	130		3
1	9	3D S 4	130		3
18	11	3S E-1	50		1
16	14	2S E-1	50		1
7	8	2S E-1	50		1
15	17	2S E 2		110	-3
5	4	2S E 2		110	-3
2	10	2S E 2		110	-3
12	13	2H W 2		110	-3

9

♠ 9
♥ K1076
♦ A1065
♣ Q764

♠ K83
♥ AQ84
♦ J84
♣ K83

♠ QJ1054
♥ J93
♦ K7
♣ 1095

♠ A762
♥ 52
♦ Q932
♣ AJ2

Board (9) Av: NS=-10

N-S	E-W	Contract	N-S	E-W	IMP
3	6	3D S 3	110		3
16	14	2D S 3	110		3
18	11	2S E-1	100		3
1	9	1NT W-1	100		3
15	17	1NT N-1		50	-1
7	8	1NT N-1		50	-1
5	4	1NT N-1		50	-1
2	10	2S E 2		110	-3
19	20	1NT W 2		120	-3
12	13	3S E 3		140	-4

10

♠ J107
♥ 9
♦ K974
♣ QJ1084

♠ AK432
♥ AJ65
♦ J3
♣ 32

♠ 865
♥ Q874
♦ Q862
♣ A7

♠ Q9
♥ K1032
♦ A105
♣ K965

N
W — E
S

11

♠ KQJ954
♥ AQJ
♦ 94
♣ K5

♠ 108
♥ 643
♦ AQ105
♣ Q1096

♠ 76
♥ 1098752
♦ 873
♣ A7

♠ A32
♥ K
♦ KJ62
♣ J8432

N
W — E
S

12

♠ 9
♥ 10543
♦ Q85
♣ AKJ73

♠ A6
♥ AQJ76
♦ A109
♣ Q108

♠ K10854
♥
♦ K7642
♣ 652

♠ QJ732
♥ K982
♦ J3
♣ 94

N
W — E
S

Board (10) Av: NS=+120

N-S	E-W	Contract	N-S	E-W	IMP
12	13	3S	W-2	200	2
7	8	3H	W-2	200	2
1	9	3C	S 3	110	0
18	11	3C	S 3	110	0
2	10	3C	S 3	110	0
5	4	3C	S 3	110	0
15	17	3S	W-1	100	-1
3	6	3S	W-1	100	-1
19	20	3H	W-1	100	-1
16	14	2S	W 2	110	-6

Board (11) Av: NS=+110

N-S	E-W	Contract	N-S	E-W	IMP
5	4	4S	N 4	420	7
19	20	4S	N 4	420	7
12	13	4S	N 4	420	7
7	8	4S	N 4	420	7
16	14	4S	N-1	50	-4
3	6	4S	N-1	50	-4
2	10	4S	N-1	50	-4
1	9	5S	N-2	100	-5
18	11	5S	N-2	100	-5
15	17	5S	N-2	100	-5

Board (12) Av: NS=+60

N-S	E-W	Contract	N-S	E-W	IMP
12	13	3NT	W-3	150	3
1	9	3NT	W-3	150	3
5	4	2C	W-3	150	3
2	10	2C	W-2	100	1
15	17	3S	E-1	50	0
16	14	3NT	W-1	50	0
7	8	2S	W-1	50	0
19	20	2C	W-1	50	0
3	6	2S	W 2	110	-5
18	11	3NT	W 3	400	-10

13

♠ A3
♥ KQ1053
♦ A105
♣ 962

♠ 75
♥ J97
♦ K72
♣ AK1074

♠ KQ98
♥ A6
♦ QJ94
♣ QJ8

♠ J10642
♥ 842
♦ 863
♣ 53

N
W — E
S

14

♠ 1076
♥ QJ53
♦ AJ43
♣ J6

♠ AQ9
♥ 10964
♦
♣ AK10873

♠ KJ852
♥ 72
♦ KQ1086
♣ 4

♠ 43
♥ AK8
♦ 9752
♣ Q952

N
W — E
S

15

♠ 10642
♥ AJ743
♦ A10
♣ 43

♠ 7
♥ Q1095
♦ KQJ74
♣ KQJ

♠ KJ95
♥ 862
♦ 985
♣ 982

♠ AQ83
♥ K
♦ 632
♣ A10765

N
W — E
S

Board (13) Av: NS=-210

N-S	E-W	Contract	N-S	E-W	IMP
7	5	3NT	E-2	200	9
3	2	3NT	E-2	200	9
20	12	4C	W 4	130	2
10	9	3C	W 4	130	2
6	4	3C	W 4	130	2
15	14	2C	W 4	130	2
17	18	2C	W 4	130	2
1	8	3NT	W 4	630	-9
11	19	3NT	E 4	630	-9
13	16	3NT	E 5	660	-10

Board (14) Av: NS=-320

N-S	E-W	Contract	N-S	E-W	IMP
15	14	4S	E-3	150	10
10	9	2C	W-1	50	9
1	8	2S	E 4	170	4
17	18	2S	E 4	170	4
20	12	2S	E 5	200	3
7	5	4S	E 4	420	-3
13	16	4S	E 4	420	-3
11	19	4S	E 4	420	-3
3	2	3Dx	S-4	800	-10
6	4	3Dx	N-4	800	-10

Board (15) Av: NS=+130

N-S	E-W	Contract	N-S	E-W	IMP
20	12	3S	S 3	140	0
15	14	3S	S 3	140	0
6	4	3S	S 3	140	0
3	2	3S	S 3	140	0
10	9	3S	S 3	140	0
17	18	2S	S 3	140	0
11	19	2S	N 3	140	0
1	8	2S	S 2	110	-1
13	16	2D	W-2	100	-1
7	5	2H	N-1	100	-6

16

♠ K985
♥ K7
♦ 74
♣ A10976

♠ QJ107643
♥ A85
♦ J3
♣ 2

♠ QJ9643
♥ 1092
♦ QJ84
♣

♠ A2
♥ 102
♦ AKQ865
♣ K53

N
W — E
S

17

♠ 432
♥ KQ4
♦ Q2
♣ AKQ65

♠ Q965
♥ A875
♦ AJ96
♣ 9

♠ 10
♥ 1092
♦ K108743
♣ 872

♠ AKJ87
♥ J63
♦ 5
♣ J1043

N
W — E
S

18

♠ Q87
♥ 864
♦ J8
♣ J10954

♠ KJ1032
♥ 97
♦ Q
♣ K8763

♠ A965
♥ J5
♦ A9765
♣ Q2

♠ 4
♥ AKQ1032
♦ K10432
♣ A

N
W — E
S

Board (16) Av: NS=+480

N-S	E-W	Contract	N-S	E-W	IMP
10	9	4Hx	E-3	800	8
11	19	3NT	N 7	520	1
7	5	3Hx	E-2	500	1
15	14	3NT	S 6	490	0
20	12	3NT	N 6	490	0
1	8	3NT	S 5	460	-1
17	18	3NT	S 5	460	-1
3	2	3NT	S 5	460	-1
6	4	3NT	N 5	460	-1
13	16	5D	S-1	50	-11

Board (17) Av: NS=-50

N-S	E-W	Contract	N-S	E-W	IMP
13	16	4S	N-1	50	0
11	19	4S	N-1	50	0
15	14	4S	N-1	50	0
20	12	4S	N-1	50	0
17	18	4S	N-1	50	0
3	2	4S	N-1	50	0
1	8	4S	N-1	50	0
6	4	4S	N-1	50	0
10	9	4S	N-1	50	0
7	5	4S	N-1	50	0

Board (18) Av: NS=0

N-S	E-W	Contract	N-S	E-W	IMP
11	19	4H	S 4	620	12
10	9	4H	S 4	620	12
7	5	4S	W-2	100	3
20	12	4S	W-1	50	2
1	8	4S	E-1	50	2
3	2	5H	S-1	100	-3
15	14	4H	S-1	100	-3
17	18	5Hx	S-1	200	-5
13	16	4S	W 4	420	-9
6	4	4Sx	W 4	590	-11

19

♠AJ1042
♥A
♦J1098
♣K52

♠KQ3
♥Q1063
♦A653
♣AJ

♠976
♥J875
♦KQ2
♣1063

♠85
♥K942
♦74
♣Q9874

20

♠K6
♥1064
♦862
♣AKJ32

♠Q104
♥K5
♦KQ95
♣Q975

♠982
♥AQJ32
♦AJ74
♣6

♠AJ753
♥987
♦103
♣1084

21

♠A2
♥A98542
♦765
♣J5

♠QJ9643
♥J103
♦K
♣A76

♠1075
♥7
♦AQ43
♣K10942

♠K8
♥KQ6
♦J10982
♣Q83

Board (19) Av: NS=-100

N-S	E-W	Contract	N-S	E-W	IMP
14	17	2S N-1		50	2
6	5	1NT E 1		90	0
1	7	1NT E 1		90	0
16	12	1NT E 1		90	0
20	11	2S N-2		100	0
2	9	2S N-2		100	0
8	4	1NT E 2		120	-1
15	18	1NT E 2		120	-1
3	10	1NT E 2		120	-1
13	19	1NT E 4		180	-2

Board (20) Av: NS=+140

N-S	E-W	Contract	N-S	E-W	IMP
2	9	3NT E-6	600		10
14	17	3NT E-3	300		4
16	12	3NT E-3	300		4
8	4	3NT E-3	300		4
15	18	2NT E-2	200		2
3	10	2NT E-2	200		2
20	11	2NT E-2	200		2
6	5	2NT E-2	200		2
13	19	3NT W 3	600		-12
1	7	3NT E 4	630		-13

Board (21) Av: NS=-210

N-S	E-W	Contract	N-S	E-W	IMP
1	7	3H N 3	140		8
15	18	Passout			5
2	9	Passout			5
13	19	3S E 4	170		1
6	5	3S E 4	170		1
20	11	2S E 4	170		1
8	4	5H N-3	300		-3
3	10	4S E 4	420		-5
16	12	4S E 4	420		-5
14	17	4S E 4	420		-5

22

♠10854
♥AKJ
♦K43
♣Q92

♠A92
♥Q97653
♦52
♣J5

♠J63
♥108
♦J1087
♣K763

♠KQ7
♥42
♦AQ96
♣A1084

23

♠J10
♥J542
♦K10
♣109852

♠Q963
♥A107
♦A65
♣J76

♠AK875
♥KQ3
♦Q87
♣AQ

♠42
♥986
♦J9432
♣K43

24

♠K74
♥J2
♦843
♣QJ743

♠Q102
♥1073
♦AKJ95
♣A5

♠A95
♥K96
♦Q1076
♣1092

♠J863
♥AQ854
♦2
♣K86

Board (22) Av: NS=+430

N-S	E-W	Contract	N-S	E-W	IMP
14	17	3NT S 5	460		1
2	9	3NT S 5	460		1
20	11	3NT S 4	430		0
16	12	3NT S 4	430		0
8	4	3NT S 4	430		0
6	5	3NT S 4	430		0
1	7	3NT S 4	430		0
3	10	3NT S 3	400		-1
15	18	3NT S 3	400		-1
13	19	2H E-2	200		-6

Board (23) Av: NS=-760

N-S	E-W	Contract	N-S	E-W	IMP
8	4	6S W-1	100		13
1	7	6S W-1	100		13
15	18	6NT W-1	100		13
14	17	5NT W 5	660		3
6	5	3NT W 5	660		3
13	19	3NT W 6	690		2
16	12	6S W 6	1430		-12
20	11	6S W 6	1430		-12
3	10	6S W 6	1430		-12
2	9	6S W 6	1430		-12

Board (24) Av: NS=-140

N-S	E-W	Contract	N-S	E-W	IMP
13	19	3NT W-1	50		5
2	9	2H S-1	50		3
20	11	3D E 3	110		1
14	17	3D E 3	110		1
15	18	3D E 3	110		1
1	7	2D E 3	110		1
3	10	2NT E 2	120		1
16	12	1NT W 2	120		1
8	4	3NT E 3	400		-6
6	5	3NT E 3	400		-6

第18回NRM杯 Session 2 Section B 2014年6月29日(土)

1

♠ KQ762
♥ J4
♦ 732
♣ 954

♠ AJ109
♥ A8
♦ AK6
♣ KJ32

♠ K10753
♥ J1098
♦ 10876

♠ 8543
♥ Q962
♦ Q54
♣ AQ

Board (1) Av: NS=-350

N-S	E-W	Contract	N-S	E-W	IMP
18	16	5D E-3	150		11
1	2	3NT W-2	100		10
11	12	3NT W 3		400	-2
15	13	3NT W 3		400	-2
10	4	3NT W 3		400	-2
5	3	3NT W 3		400	-2
7	9	3NT W 3		400	-2
19	17	3NT W 4		430	-2
14	20	3NT W 4		430	-2
8	6	3NT W 4		430	-2

2

♠ K
♥
♦ 9632
♣ AKQJ10842

♠ 7
♥ J9532
♦ Q874
♣ 953

♠ J10842
♥ AK76
♦ K5
♣ 76

♠ AQ9653
♥ Q1084
♦ AJ10
♣

Board (2) Av: NS=+660

N-S	E-W	Contract	N-S	E-W	IMP
11	12	3NT S 6	690		1
18	16	3NT S 5	660		0
1	2	3NT S 5	660		0
5	3	3NT S 5	660		0
7	9	3NT S 5	660		0
15	13	3NT N 5	660		0
19	17	3NT N 5	660		0
10	4	3NT N 5	660		0
14	20	3NT S 4	630		-1
8	6	4C N 6	170		-10

3

♠ J105
♥ Q92
♦ K10
♣ KJ653

♠ KQ4
♥ A1075
♦ AQ86
♣ A9

♠ A7632
♥ K63
♦ J53
♣ Q2

♠ 98
♥ J84
♦ 9742
♣ 10874

Board (3) Av: NS=-660

N-S	E-W	Contract	N-S	E-W	IMP
14	20	4S W 5	650		0
19	17	4S W 5	650		0
10	4	4S E 5	650		0
11	12	4S E 5	650		0
7	9	4S E 5	650		0
8	6	4S E 5	650		0
1	2	3NT W 5	660		0
18	16	4S E 6	680		-1
5	3	3NT W 6	690		-1
15	13	3NT W 6	690		-1

4

♠ K10
♥ A1083
♦ 954
♣ J952

♠ Q75
♥ K52
♦ AKQ2
♣ A83

♠ J3
♥ Q764
♦ 8763
♣ 1074

♠ A98642
♥ J9
♦ J10
♣ KQ6

Board (4) Av: NS=+10

N-S	E-W	Contract	N-S	E-W	IMP
18	16	2S S 3	140		4
15	13	2S S 3	140		4
1	2	2S S 3	140		4
7	9	3D W-1	100		3
5	3	2D W-1	100		3
14	20	1NT W 1		90	-3
19	17	1NT W 1		90	-3
11	12	1D W 2		90	-3
8	6	3S S-1		100	-3
10	4	1NT W 2		120	-4

5

♠ A7
♥ 3
♦ AK10962
♣ KQ106

♠ Q1093
♥ 754
♦ QJ3
♣ A87

♠ K8
♥ Q106
♦ 8754
♣ 9532

♠ J6542
♥ AKJ982
♦
♣ J4

Board (5) Av: NS=+640

N-S	E-W	Contract	N-S	E-W	IMP
14	20	4H S 6	680		1
1	2	4H S 6	680		1
10	4	4NT N 5	660		1
11	12	3NT N 5	660		1
15	13	3NT N 5	660		1
19	17	4H S 4	620		-1
5	3	4H S 4	620		-1
8	6	4H S 4	620		-1
7	9	4H S 4	620		-1
18	16	4H S-1		100	-12

6

♠ K109875
♥ 63
♦ Q9
♣ 1042

♠ 2
♥ 95
♦ A842
♣ AKQ873

♠ QJ63
♥ QJ72
♦ 653
♣ 96

♠ A4
♥ AK1084
♦ KJ107
♣ J5

Board (6) Av: NS=+100

N-S	E-W	Contract	N-S	E-W	IMP
11	12	3C W-2	200		3
5	3	2S N 3	140		1
8	6	2H S 3	140		1
1	2	2S N 2	110		0
15	13	2H S 2	110		0
14	20	2H S 2	110		0
7	9	2H S 2	110		0
19	17	2H S 2	110		0
18	16	3S N-1		50	-4
10	4	3H S-1		50	-4

7

♠ J8
♥ KQ1094
♦ 9862
♣ 52

♠ 97432
♥ 76
♦ 1073
♣ 863

♠ A10
♥ A5
♦ AK54
♣ AKQJ7

♠ KQ65
♥ J832
♦ QJ
♣ 1094

Board (7) Av: NS=-580

N-S	E-W	Contract	N-S	E-W	IMP
13	14	3C E 4	130		10
17	20	3S E 4	170		9
8	2	3NT E 3	600		-1
19	16	3NT E 4	630		-2
1	5	3NT E 4	630		-2
7	10	3NT E 4	630		-2
9	6	3NT E 5	660		-2
18	12	3NT E 5	660		-2
11	15	3NT E 5	660		-2
3	4	3NT E 5	660		-2

8

♠ QJ1082
♥ K
♦ J653
♣ 942

♠ K964
♥ Q52
♦ 872
♣ QJ5

♠ A3
♥ 1043
♦ AQ109
♣ AK63

♠ 75
♥ AJ9876
♦ K4
♣ 1087

Board (8) Av: NS=-250

N-S	E-W	Contract	N-S	E-W	IMP
18	12	3NT E-3	150		9
17	20	2H S-2		100	4
13	14	2H S-2		100	4
1	5	1NT E 2		120	4
8	2	1NT E 4		180	2
3	4	2Hx S-2		300	-2
9	6	3NT E 3		400	-4
11	15	3NT E 3		400	-4
19	16	3NT E 4		430	-5
7	10	3NT E 4		430	-5

9

♠ K74
♥ KJ9732
♦ K
♣ AKQ

♠ 103
♥ 654
♦ QJ963
♣ 983

♠ AQ
♥ AQ8
♦ 8742
♣ J762

♠ J98652
♥ 10
♦ A105
♣ 1054

Board (9) Av: NS=+390

N-S	E-W	Contract	N-S	E-W	IMP
11	15	4S S 4	420		1
9	6	4S S 4	420		1
19	16	4S S 4	420		1
17	20	4S S 4	420		1
1	5	4S S 4	420		1
3	4	4S S 4	420		1
8	2	4S S 4	420		1
7	10	4S S 4	420		1
18	12	2H N 4	170		-6
13	14	4S S-1		50	-10

第18回NRM杯 Session 2 Section B 2014年6月29日(土)

10

♠ QJ965
♥ A83
♦ KJ1082
♣ AK973

♠ AQ3
♥ K73
♦ K5

♠ J1087642
♥ A1042
♦ 4
♣ 4

♠ K95
♥ 8
♦ QJ109762
♣ 65

Board (10) Av: NS=-450

N-S	E-W	Contract	N-S	E-W	IMP
1	5	6S	E-2	200	12
3	4	5S	E-1	100	11
18	12	4S	E-1	100	11
17	20	4S	E 4	620	-5
19	16	4S	E 4	620	-5
8	2	4S	E 4	620	-5
11	15	5S	E 5	650	-5
9	6	4S	E 5	650	-5
13	14	4S	E 5	650	-5
7	10	4Sx	E 4	790	-8

11

♠ A84
♥ J4
♦ KJ76
♣ K854

♠ 972
♥ A1075
♦ Q54
♣ Q107

♠ KQ653
♥ 862
♦ 98
♣ J62

♠ J10
♥ KQ93
♦ A1032
♣ A93

Board (11) Av: NS=+310

N-S	E-W	Contract	N-S	E-W	IMP
8	2	3NT	N 5	460	4
7	10	3NT	N 4	430	3
11	15	3NT	S 3	400	3
17	20	3NT	S 3	400	3
1	5	3NT	S 3	400	3
3	4	3NT	N 3	400	3
9	6	3NT	N 3	400	3
19	16	3D	S 3	110	-5
13	14	3NT	N-1	50	-8
18	12	3NT	N-1	50	-8

12

♠ J95
♥ Q75
♦ J865
♣ AK3

♠ AQ104
♥ AK102
♦ Q10972
♣ Q10972

♠ K8
♥ J32
♦ 973
♣ J8654

♠ 7632
♥ AK109864
♦ Q4
♣

Board (12) Av: NS=-510

N-S	E-W	Contract	N-S	E-W	IMP
11	15	2H	S 3	140	12
18	12	5C	W 5	400	3
3	4	5C	W 5	400	3
7	10	5Hx	S-2	500	0
19	16	5Cx	W 5	550	-1
17	20	5Cx	W 5	550	-1
13	14	5Cx	W 5	550	-1
1	5	5Cx	W 5	550	-1
8	2	5Cx	W 5	550	-1
9	6	5Cx	W 5	550	-1

13

♠ 643
♥ J32
♦ J765
♣ QJ10

♠ J952
♥ K1095
♦ 4
♣ AK95

♠ Q108
♥ 8
♦ AKQ932
♣ 863

♠ AK7
♥ AQ764
♦ 108
♣ 742

Board (13) Av: NS=-30

N-S	E-W	Contract	N-S	E-W	IMP
16	11	3NT	W-3	300	8
20	15	4S	E-2	200	6
17	12	3NT	W-2	200	6
4	9	3NT	W-2	200	6
3	8	3NT	W-1	100	4
2	7	2NT	W-1	100	4
10	5	2H	S-2	200	-5
14	19	2H	S-2	200	-5
18	13	3NT	W 3	600	-11
1	6	3Hx	S-3	800	-13

14

♠ Q7652
♥ 7
♦ 865
♣ 10532

♠ K104
♥ AKQ95
♦ A2
♣ AJ9

♠ J8
♥ J106432
♦ QJ1094
♣

♠ A93
♥ 8
♦ K73
♣ KQ8764

Board (14) Av: NS=-560

N-S	E-W	Contract	N-S	E-W	IMP
18	13	5H	W-1	50	12
17	12	4H	E 6	480	2
1	6	4H	E 6	480	2
14	19	5H	E 7	510	2
16	11	4H	E 7	510	2
2	7	4H	E 7	510	2
4	9	4H	E 7	510	2
20	15	4H	E 7	510	2
10	5	6H	E 6	980	-9
3	8	6H	E 6	980	-9

15

♠ AJ762
♥ A53
♦ A86
♣ J2

♠ 543
♥ 962
♦ 543
♣ K964

♠ KQ98
♥ K10
♦ KJ10
♣ Q1085

♠ 10
♥ QJ874
♦ Q972
♣ A73

Board (15) Av: NS=+80

N-S	E-W	Contract	N-S	E-W	IMP
10	5	1NTx	E-4	800	12
14	19	2D	N 4	130	2
18	13	1NT	S 2	120	1
17	12	1NT	S 2	120	1
20	15	1NT	S 2	120	1
3	8	2D	N 3	110	1
4	9	1NT	E-2	100	1
16	11	1NT	E-1	50	-1
1	6	2C	E 2	90	-5
2	7	3NT	S-2	200	-7

16

♠ K1054
♥ 7
♦ AK103
♣ 7543

♠ A32
♥ 1054
♦ 872
♣ Q962

♠ Q987
♥ AJ963
♦ 96
♣ J8

♠ J6
♥ KQ82
♦ QJ54
♣ AK10

Board (16) Av: NS=+120

N-S	E-W	Contract	N-S	E-W	IMP
18	13	3NT	S 4	430	7
16	11	3NT	S 4	430	7
4	9	3NT	S 3	400	7
14	19	3NT	S 3	400	7
20	15	3NT	S-1	50	-5
17	12	3NT	S-1	50	-5
2	7	3NT	S-1	50	-5
1	6	3NT	S-1	50	-5
10	5	3NT	S-1	50	-5
3	8	3NT	S-1	50	-5

17

♠ Q53
♥ KQ9853
♦ KQ106
♣

♠ A
♥ 7642
♦ 8743
♣ A974

♠ K82
♥ 10
♦ AJ
♣ KQJ10852

♠ J109764
♥ AJ
♦ 952
♣ 63

Board (17) Av: NS=-260

N-S	E-W	Contract	N-S	E-W	IMP
14	19	5S	S-1	50	5
18	13	4C	E 5	150	3
16	11	4C	E 5	150	3
2	7	4C	E 5	150	3
4	9	3C	E 5	150	3
20	15	5Hx	N-2	300	-1
1	6	5C	E 5	400	-4
17	12	5C	E 5	400	-4
3	8	5C	E 5	400	-4
10	5	5C	E 5	400	-4

18

♠ J1043
♥ 1093
♦ A76
♣ 432

♠ KQ76
♥ QJ4
♦ Q4
♣ AKQ5

♠ A92
♥ K8752
♦ KJ532
♣

♠ 85
♥ A6
♦ 1098
♣ J109876

Board (18) Av: NS=-10

N-S	E-W	Contract	N-S	E-W	IMP
3	8	6S	E-2	100	3
1	6	6H	E-2	100	3
17	12	6NT	W-1	50	2
2	7	6NT	W-1	50	2
16	11	6H	E-1	50	2
18	13	6H	E-1	50	2
20	15	6H	E-1	50	2
14	19	6H	E-1	50	2
10	5	5H	E 5	450	-10
4	9	5H	E 5	450	-10

19

♠AJ103
♥K64
♦976
♣973

♠2 ♠9854
♥AQJ3 ♥7
♦K1032 ♦AJ4
♣K1042 ♣AQJ86

N
W—E
S

♠KQ76
♥109852
♦Q85
♣5

20

♠A8542
♥KJ962
♦8
♣J9

♠KJ76 ♠10
♥Q3 ♥A10875
♦K9543 ♦Q10
♣Q6 ♣AK872

N
W—E
S

♠Q93
♥4
♦AJ762
♣10543

21

♠K63
♥K32
♦Q972
♣A52

♠QJ952 ♠A87
♥A4 ♥10976
♦A1043 ♦J65
♣J9 ♣K107

N
W—E
S

♠104
♥QJ85
♦K8
♣Q8643

Board (19) Av: NS=-480

N-S	E-W	Contract	N-S	E-W	IMP
2	4	3NT W-1	100		11
1	3	3NT W-1	100		11
5	9	2D E 4		130	8
10	8	3NT W 3	600		-3
6	7	3NT W 3	600		-3
19	15	3NT W 4	630		-4
14	12	3NT W 4	630		-4
16	17	3NT W 5	660		-5
13	11	3NT W 6	690		-5
18	20	6C E 6	1370		-13

Board (20) Av: NS=-80

N-S	E-W	Contract	N-S	E-W	IMP
2	4	3NT W-3	300		9
14	12	3H E-3	300		9
16	17	3NT W-2	200		7
5	9	3NT W-2	200		7
13	11	2H E-1	100		5
18	20	2NT W 2		120	-1
6	7	2NT W 2		120	-1
1	3	3NT W 3	600		-11
10	8	3NT W 3	600		-11
19	15	3NT E 3	600		-11

Board (21) Av: NS=-110

N-S	E-W	Contract	N-S	E-W	IMP
6	7	2S W-1	50		4
5	9	2S W-1	50		4
13	11	2S W 2		110	0
16	17	2S W 2		110	0
10	8	2S W 2		110	0
19	15	3S W 3		140	-1
18	20	2S W 3		140	-1
2	4	2S W 3		140	-1
14	12	2S W 3		140	-1
1	3	1NT N-2		200	-3

22

♠K9
♥AK105
♦9632
♣A96

♠843 ♠AJ1065
♥Q43 ♥J92
♦AK108 ♦J754
♣K52 ♣J

N
W—E
S

♠Q72
♥876
♦Q
♣Q108743

23

♠J73
♥Q983
♦K1063
♣A4

♠K952 ♠AQ10
♥KJ104 ♥A7
♦8542 ♦AJ97
♣5 ♣J732

N
W—E
S

♠864
♥652
♦Q
♣KQ10986

24

♠J76
♥A7654
♦K96
♣Q6

♠Q95 ♠K84
♥32 ♥KQJ109
♦Q73 ♦AJ10
♣98753 ♣102

N
W—E
S

♠A1032
♥8
♦8542
♣AKJ4

Board (22) Av: NS=-60

N-S	E-W	Contract	N-S	E-W	IMP
1	3	3C S 4	130		5
14	12	3C S 3	110		5
13	11	3S E-1	100		4
10	8	2D W 2		90	-1
5	9	2S E 2		110	-2
2	4	2D W 3		110	-2
6	7	2D E 3		110	-2
19	15	2S E 3		140	-2
18	20	2S E 3		140	-2
16	17	2S E 3		140	-2

Board (23) Av: NS=-120

N-S	E-W	Contract	N-S	E-W	IMP
16	17	3NT E-2	200		8
10	8	2D E 3		110	0
18	20	2D E 3		110	0
6	7	2D E 3		110	0
1	3	2D E 3		110	0
19	15	1NT E 2		120	0
5	9	1NT E 2		120	0
2	4	2D E 4		130	0
13	11	1NT E 3		150	-1
14	12	2C S-2		200	-2

Board (24) Av: NS=+10

N-S	E-W	Contract	N-S	E-W	IMP
6	7	1NT N 1	90		2
18	20	1NT N 1	90		2
13	11	1NT N 1	90		2
2	4	1NT N 1	90		2
1	3	1NT N 1	90		2
5	9	1S N-1		50	-2
16	17	1NT N-1		50	-2
14	12	1NT N-1		50	-2
10	8	1NT N-2		100	-3
19	15	1H E 2		110	-3

25

♠K862
♥KJ97
♦Q9
♣AJ7

♠AQ974 ♠J103
♥A2 ♥843
♦AK102 ♦875
♣Q5 ♣10942

N
W—E
S

♠5
♥Q1065
♦J643
♣K863

26

♠J985
♥K653
♦A3
♣A103

♠K1062 ♠Q43
♥J2 ♥Q9874
♦K985 ♦Q7
♣Q52 ♣987

N
W—E
S

♠A7
♥A10
♦J10642
♣KJ64

27

♠QJ7
♥AKQJ1073
♦5
♣Q8

♠K10642 ♠A53
♥64 ♥82
♦974 ♦AKQ103
♣1072 ♣KJ3

N
W—E
S

♠98
♥95
♦J862
♣A9654

Board (25) Av: NS=+40

N-S	E-W	Contract	N-S	E-W	IMP
20	16	3H S 3	140		3
18	19	3H S 3	140		3
1	4	3H S 3	140		3
3	7	3S W-1	100		2
12	15	3S W-1	100		2
14	11	2S W-1	100		2
13	17	3H S-1		50	-3
10	6	2S W 2		110	-4
5	2	2S W 2		110	-4
8	9	5Hx S-2		300	-8

Board (26) Av: NS=+390

N-S	E-W	Contract	N-S	E-W	IMP
8	9	3NT S 4	630		6
3	7	3NT S 4	630		6
20	16	3NT S 4	630		6
1	4	3NT N 4	630		6
5	2	3NT N 4	630		6
14	11	3NT N 3	600		5
18	19	2NT N 4	180		-5
12	15	3NT S-1		100	-10
13	17	3NT S-1		100	-10
10	6	3NT N-2		200	-11

Board (27) Av: NS=+70

N-S	E-W	Contract	N-S	E-W	IMP
20	16	5Dx E-3	500		10
10	6	3H N 4	170		3
8	9	3H N 3	140		2
1	4	3H N 3	140		2
13	17	3S W-2	100		1
5	2	4S W-1		50	-1
3	7	4S W-1		50	-1
12	15	4H N-1		50	-3
14	11	4H N-1		50	-3
18	19	3S W 3		140	-5

第18回NRM杯 Session 2 Section B 2013年6月29日(土)

28

♠ A6542
♥ KQJ97

◇

♣ 973

♠ J8
♥ 632
◇ AJ75
♣ A542



♠ 107
♥ 108
◇ K108643
♣ J106

♠ KQ93
♥ A54
◇ Q92
♣ KQ8

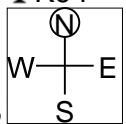
29

♠ K94
♥ A10

◇ Q8754

♣ K94

♠ J76
♥ J432
◇ K10
♣ QJ75



♠ 10853
♥ Q86
◇ J2
♣ A863

♠ AQ2
♥ K975
◇ A963
♣ 102

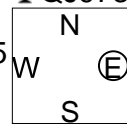
30

♠ AJ8
♥ KJ2

◇ 52

♣ QJ973

♠ K63
♥ A1075
◇ QJ76
♣ 64



♠ Q5
♥ Q43
◇ K9843
♣ AK10

♠ 109742
♥ 986
◇ A10
♣ 852

Board (28) Av: NS=+960

N-S	E-W	Contract	N-S	E-W	IMP
10	6	6S	N 7	1460	11
8	9	6S	N 6	1430	10
14	11	6S	N 6	1430	10
3	7	6S	N 6	1430	10
12	15	4S	S 6	680	-7
20	16	4S	S 6	680	-7
18	19	4S	N 6	680	-7
5	2	4S	N 6	680	-7
13	17	4S	N 6	680	-7
1	4	4H	N 5	650	-7

Board (29) Av: NS=+620

N-S	E-W	Contract	N-S	E-W	IMP
8	9	3NT	N 4	630	0
12	15	3NT	N 4	630	0
14	11	3NT	N 4	630	0
10	6	3NT	N 4	630	0
5	2	3NT	N 4	630	0
18	19	3NT	N 3	600	-1
20	16	3NT	N 3	600	-1
3	7	3NT	N 3	600	-1
1	4	3NT	N 3	600	-1
13	17	3NT	N 3	600	-1

Board (30) Av: NS=-180

N-S	E-W	Contract	N-S	E-W	IMP
14	11	3S	S-2	100	2
20	16	2D	E 3	110	2
12	15	3D	E 4	130	2
18	19	3D	E 4	130	2
3	7	2D	E 4	130	2
1	4	2H	W 3	140	1
13	17	1NT	W 4	180	0
8	9	1NT	E 4	180	0
10	6	3NT	E 5	460	-7
5	2	3NT	E 5	460	-7

第18回NRM杯 Session 3 Section B 2014年6月30日(日)

1

♠QJ10972
♥A3
♦K95
♣QJ

♠A84
♥J987
♦QJ72
♣K6

♠K3
♥KQ542
♦A83
♣952

♠65
♥106
♦1064
♣A108743

2

♠KQ83
♥1087654
♦Q9
♣3

♠A765
♥A93
♦AJ10
♣AKJ

♠J1042
♥K2
♦4
♣Q109762

♠9
♥QJ
♦K876532
♣854

♠A765
♥A93
♦AJ10
♣AKJ

3

♠K104
♥K632
♦K96
♣QJ4

♠AJ63
♥74
♦87
♣AK1085

♠Q9752
♥AQ1095
♦QJ3
♣

♠8
♥J8
♦A10542
♣97632

Board (1) Av: NS=+430

N-S	E-W	Contract	N-S	E-W	IMP
16	6	4S	N 6	480	2
10	19	4S	N 5	450	1
3	15	4S	N 5	450	1
2	13	4S	N 5	450	1
1	11	4S	N 4	420	0
12	4	4S	N 4	420	0
9	17	4S	N 4	420	0
5	14	4S	N 4	420	0
7	18	4S	N 4	420	0
8	20	4S	N 4	420	0

Board (2) Av: NS=-320

N-S	E-W	Contract	N-S	E-W	IMP
10	19	4S	W-2	100	9
7	18	5S	W-1	50	9
2	13	4S	W-1	50	9
1	11	4S	W 4	420	-3
5	14	4S	W 4	420	-3
12	4	4S	W 5	450	-4
16	6	4S	W 5	450	-4
8	20	4S	W 5	450	-4
9	17	4S	W 5	450	-4
3	15	4Dx	S-4	1100	-13

Board (3) Av: NS=+360

N-S	E-W	Contract	N-S	E-W	IMP
16	6	4H	S 5	450	3
8	20	4H	S 4	420	2
10	19	4H	S 4	420	2
1	11	4H	S 4	420	2
7	18	4H	S 4	420	2
3	15	4H	S 4	420	2
2	13	4H	S 4	420	2
5	14	4H	S 4	420	2
12	4	4S	S-1	50	-9
9	17	4H	S-1	50	-9

4

♠Q873
♥1095
♦52
♣J643

♠J6
♥K643
♦10
♣AK8752

♠A10952
♥AJ8
♦AK76
♣9

♠K4
♥Q72
♦QJ9843
♣Q10

5

♠J95
♥10
♦875
♣K98753

♠K
♥AKQ7
♦Q432
♣QJ64

♠AQ10742
♥8543
♦K
♣A10

♠863
♥J962
♦AJ1096
♣2

♠K
♥AKQ7
♦Q432
♣QJ64

6

♠J106
♥Q96
♦52
♣AK962

♠Q942
♥KJ10
♦K94
♣753

♠AK83
♥A32
♦QJ873
♣J

♠75
♥8754
♦A106
♣Q1084

Board (4) Av: NS=+170

N-S	E-W	Contract	N-S	E-W	IMP
10	19	4S	N 4	620	10
5	14	3S	S 4	170	0
9	17	3S	S 4	170	0
7	18	3S	S 4	170	0
2	13	3S	S 4	170	0
3	15	3S	S 4	170	0
8	20	3S	N 4	170	0
16	6	2S	S 4	170	0
1	11	3S	S 3	140	-1
12	4	2D	W-1	100	-2

Board (5) Av: NS=-450

N-S	E-W	Contract	N-S	E-W	IMP
10	19	3NT	W-1	50	11
16	6	4H	E 4	420	1
5	14	5H	E 5	450	0
3	15	5H	E 5	450	0
7	18	4H	W 5	450	0
12	4	4H	E 5	450	0
1	11	4H	E 5	450	0
2	13	4H	E 5	450	0
8	20	4H	E 5	450	0
9	17	3NT	W 5	460	0

Board (6) Av: NS=+270

N-S	E-W	Contract	N-S	E-W	IMP
8	20	3NT	S 4	430	4
5	14	3NT	N 4	430	4
16	6	3NT	N 3	400	4
10	19	3NT	N 3	400	4
9	17	3NT	N 3	400	4
1	11	1NT	N 3	150	-3
12	4	1NT	N 2	120	-4
3	15	1NT	N 2	120	-4
7	18	2D	S 3	110	-4
2	13	3NT	N-3	150	-9

7

♠K762
♥QJ52
♦85
♣AJ5

♠A43
♥A9743
♦10
♣K743

♠J95
♥K8
♦KJ9742
♣108

♠Q108
♥106
♦AQ63
♣Q962

♠A43
♥A9743
♦10
♣K743

8

♠1086
♥KJ62
♦AJ73
♣95

♠AK43
♥AQ43
♦96
♣K62

♠972
♥109
♦Q10842
♣A83

♠QJ5
♥875
♦K5
♣QJ1074

♠AK43
♥AQ43
♦96
♣K62

9

♠10753
♥A1073
♦Q76
♣K2

♠A9642
♥KJ
♦1085
♣J83

♠Q8
♥Q864
♦J93
♣10754

♠KJ
♥952
♦AK42
♣AQ96

Board (7) Av: NS=+120

N-S	E-W	Contract	N-S	E-W	IMP
6	20	2H	W-3	300	5
12	2	2H	W-2	200	2
1	15	2H	W-2	200	2
3	14	2H	W-2	200	2
4	11	2S	N 3	140	1
8	19	2S	N 2	110	0
18	10	2D	E-1	100	-1
13	5	2D	E-1	100	-1
9	16	3C	N-1	100	-6
17	7	3C	N-1	100	-6

Board (8) Av: NS=-90

N-S	E-W	Contract	N-S	E-W	IMP
13	5	1NT	W 1	90	0
12	2	1NT	W 1	90	0
18	10	1NT	W 1	90	0
17	7	1NT	W 1	90	0
8	19	1NT	W 1	90	0
1	15	1NT	W 1	90	0
3	14	1NT	W 1	90	0
4	11	1NT	W 1	90	0
9	16	1NT	W 2	120	-1
6	20	1NT	W 3	150	-2

Board (9) Av: NS=+160

N-S	E-W	Contract	N-S	E-W	IMP
13	5	3NT	W-3	300	4
9	16	4S	W-2	200	1
18	10	3NT	W-2	200	1
12	2	3NT	W-2	200	1
4	11	3NT	W-2	200	1
6	20	3NT	W-2	200	1
1	15	3NT	W-1	100	-2
17	7	3NT	W-1	100	-2
3	14	3NT	W-1	100	-2
8	19	3NT	W-1	100	-2

10

♠ K94
♥ 84
♦ A10743
♣ KQ6

♠ A1085
♥ 3
♦ 8652
♣ AJ98

N
W — E
S

♠ Q32
♥ K97652
♦ 9
♣ 754

♠ J76
♥ AQJ10
♦ KQJ
♣ 1032

11

♠ Q108
♥ Q643
♦ 98
♣ AJ82

♠ AK92
♥ K1075
♦ AJ
♣ 1076

N
W — E
S

♠ J5
♥ J98
♦ K7642
♣ K93

♠ 7643
♥ A2
♦ Q1053
♣ Q54

12

♠ A76
♥ 73
♦ 1063
♣ A10875

♠ K1052
♥ A109
♦ Q75
♣ KJ3

N
W — E
S

♠ Q98
♥ KJ62
♦ KJ9
♣ Q42

♠ J43
♥ Q854
♦ A842
♣ 96

Board (10) Av: NS=+620

N-S	E-W	Contract	N-S	E-W	IMP
8	19	3NT S 4	630		0
18	10	3NT S 4	630		0
1	15	3NT S 4	630		0
4	11	3NT N 4	630		0
6	20	3NT N 4	630		0
17	7	3NT S 3	600		-1
9	16	3NT S 3	600		-1
13	5	3NT S 3	600		-1
3	14	3NT S 3	600		-1
12	2	3NT S 3	600		-1

Board (11) Av: NS=-80

N-S	E-W	Contract	N-S	E-W	IMP
18	10	3NT W-1	50		4
6	20	2NT W-1	50		4
9	16	2NT W-1	50		4
13	5	2NT W 2		120	-1
12	2	2NT W 2		120	-1
17	7	2NT W 2		120	-1
4	11	2NT W 2		120	-1
8	19	2NT W 2		120	-1
1	15	1NT W 2		120	-1
3	14	2NT W 3		150	-2

Board (12) Av: NS=-190

N-S	E-W	Contract	N-S	E-W	IMP
12	2	3NT E-1	50		6
1	15	3NT E-1	50		6
17	7	2NT E-1	50		6
4	11	2NT E 2		120	2
13	5	2NT E 2		120	2
18	10	2NT W 3		150	1
3	14	3NT E 3		400	-5
6	20	3NT E 3		400	-5
9	16	3NT E 3		400	-5
8	19	3NT W 4		430	-6

13

♠ J
♥ 94
♦ QJ109742
♣ K98

♠ A865
♥
♦ A863
♣ A6542

N
W — E
S

♠ 742
♥ AKQ1082
♦ K
♣ Q107

♠ KQ1093
♥ J7653
♦ 5
♣ J3

14

♠ 1064
♥ A73
♦ K4
♣ KQJ107

♠ KJ85
♥ 65
♦ Q86532
♣ 3

N
W — E
S

♠ 97
♥ K1094
♦ A9
♣ 96542

♠ AQ32
♥ QJ82
♦ J107
♣ A8

15

♠ 10754
♥ A63
♦ 104
♣ 9532

♠ J982
♥ 94
♦ K872
♣ 1064

N
W — E
S

♠ AK6
♥ KQ8752
♦ QJ3
♣ 8

♠ Q3
♥ J10
♦ A965
♣ AKQJ7

Board (13) Av: NS=-330

N-S	E-W	Contract	N-S	E-W	IMP
7	16	5H E-3	300		12
13	3	6C W-2	200		11
8	18	3NT W-2	200		11
4	15	3NT W-1	100		10
2	11	3NT W 3		600	-7
19	6	3NT W 4		630	-7
17	10	3NT W 4		630	-7
1	14	3NT W 4		630	-7
5	12	3NT W 5		660	-8
20	9	4Dx N-5		1400	-14

Board (14) Av: NS=+430

N-S	E-W	Contract	N-S	E-W	IMP
4	15	3NT S 5	460		1
20	9	3NT S 5	460		1
8	18	3NT S 4	430		0
17	10	3NT S 4	430		0
1	14	3NT S 4	430		0
5	12	3NT S 4	430		0
7	16	3NT S 4	430		0
13	3	3NT S 3	400		-1
2	11	3NT N 3	400		-1
19	6	3NT S-1		50	-10

Board (15) Av: NS=-100

N-S	E-W	Contract	N-S	E-W	IMP
20	9	3C S 3	110		5
13	3	4H E-1	50		4
8	18	3H E-1	50		4
7	16	4C S-1		100	0
19	6	2H E 3		140	-1
4	15	2H E 3		140	-1
2	11	2H E 3		140	-1
17	10	3H E 4		170	-2
5	12	3H E 4		170	-2
1	14	2H E 4		170	-2

16

♠ A872
♥ Q87
♦ 10865
♣ 98

♠ KJ53
♥ J109
♦ K94
♣ 1063

N
W — E
S

♠ 96
♥ 654
♦ J3
♣ AKQ742

♠ Q104
♥ AK32
♦ AQ72
♣ J5

17

♠ 852
♥ QJ654
♦ 65
♣ AK4

♠ KQ64
♥ A92
♦ A943
♣ 83

N
W — E
S

♠ 1073
♥ K1073
♦ QJ8
♣ Q97

♠ AJ9
♥ 8
♦ K1072
♣ J10652

18

♠ K3
♥ 10982
♦ J5
♣ K10763

♠ AJ1084
♥ AQJ5
♦ A2
♣ 84

N
W — E
S

♠ Q97
♥ 7643
♦ 10743
♣ 92

♠ 652
♥ K
♦ KQ986
♣ AQJ5

Board (16) Av: NS=+10

N-S	E-W	Contract	N-S	E-W	IMP
20	9	2S N 2	110		3
13	3	2D N 3	110		3
7	16	3C E-1	100		3
19	6	2D N 2	90		2
5	12	1NT S 1	90		2
2	11	4D N-1		50	-2
1	14	2S N-1		50	-2
17	10	1NT S-1		50	-2
8	18	4S N-3		150	-4
4	15	3NT N-5		250	-6

Board (17) Av: NS=-50

N-S	E-W	Contract	N-S	E-W	IMP
20	9	1NT E-2	100		4
8	18	2C S 2	90		4
1	14	1NT S 1	90		4
7	16	1NT E 1		90	-1
17	10	1NT E 1		90	-1
2	11	1NT E 1		90	-1
5	12	1NT E 1		90	-1
4	15	1NT E 1		90	-1
13	3	2H E 2		110	-2
19	6	1NT E 2		120	-2

Board (18) Av: NS=0

N-S	E-W	Contract	N-S	E-W	IMP
8	18	4C S 4	130		4
5	12	3S W-1	50		2
20	9	3S W-1	50		2
17	10	3S W-1	50		2
4	15	3S W-1	50		2
1	14	3H W-1	50		2
19	6	3H E-1	50		2
2	11	5C S-1		100	-3
7	16	5Cx S-1		200	-5
13	3	5Cx S-1		200	-5

19

♠KQ1086
♥Q3
♦94
♣K742

♠73 ♠AJ942
♥J109865 ♥742
♦1062 ♦AK
♣J6 ♣A85

N
W—E
S

♠5
♥AK
♦QJ8753
♣Q1093

20

♠6
♥KQ10875
♦KJ842
♣K

♠AKJ93 ♠Q10
♥43 ♥AJ92
♦53 ♦106
♣AQ32 ♣107654

N
W—E
S

♠87542
♥6
♦AQ97
♣J98

21

♠K985
♥10
♦AQ
♣AQ10653

♠AQ2 ♠74
♥K63 ♥AQJ92
♦J432 ♦K976
♣K87 ♣42

N
W—E
S

♠J1063
♥8754
♦1085
♣J9

Board (19) Av: NS=+20

N-S	E-W	Contract	N-S	E-W	IMP	
11	5	3D	S	3	110	3
20	7	3C	S	3	110	3
4	14	3C	S	3	110	3
2	15	3C	S	3	110	3
9	19	3C	S	3	110	3
18	6	3C	S-1	50	-2	
1	13	3C	S-1	50	-2	
8	17	5C	S-2	100	-3	
10	16	3C	S-2	100	-3	
12	3	2H	E	3	140	-4

Board (20) Av: NS=+120

N-S	E-W	Contract	N-S	E-W	IMP	
10	16	3D	N	4	130	0
8	17	3D	N	4	130	0
18	6	3D	N	4	130	0
4	14	3D	N	3	110	0
12	3	2H	N	2	110	0
11	5	2H	N	2	110	0
1	13	2H	N	2	110	0
2	15	2H	N	2	110	0
20	7	2H	N	2	110	0
9	19	3D	N-1	100	-6	

Board (21) Av: NS=-70

N-S	E-W	Contract	N-S	E-W	IMP	
12	3	4H	E-1	50	3	
18	6	4H	E-1	50	3	
4	14	3NT	W-1	50	3	
20	7	3H	E-1	50	3	
10	16	2H	E	2	110	-1
2	15	3H	E	3	140	-2
11	5	2H	W	3	140	-2
1	13	2H	E	3	140	-2
9	19	3H	E	4	170	-3
8	17	4S	S-3	300	-6	

22

♠865
♥1054
♦A7
♣QJ1042

♠K4 ♠A103
♥QJ2 ♥K9873
♦J108 ♦K32
♣AK965 ♣87

N
W—E
S

♠QJ972
♥A6
♦Q9654
♣3

23

♠AQ82
♥974
♦J75
♣753

♠K3 ♠J754
♥10852 ♥J3
♦9842 ♦A63
♣864 ♣KQJ9

N
W—E
S

♠1096
♥AKQ6
♦KQ10
♣A102

24

♠10872
♥76
♦K643
♣J103

♠K ♠AQ9643
♥AQ954 ♥J1083
♦A87 ♦
♣Q987 ♣542

N
W—E
S

♠J5
♥K2
♦QJ10952
♣AK6

Board (22) Av: NS=-220

N-S	E-W	Contract	N-S	E-W	IMP	
18	6	5H	E-2	200	9	
1	13	4Sx	N-1	100	3	
10	16	3S	S-2	100	3	
12	3	2C	N-3	150	2	
4	14	1NT	W	3	150	2
2	15	3H	E	4	170	2
20	7	3H	E	4	170	2
9	19	4Sx	S-2	300	-2	
8	17	4H	E	4	620	-9
11	5	4H	E	4	620	-9

Board (23) Av: NS=+230

N-S	E-W	Contract	N-S	E-W	IMP	
18	6	3NT	S	3	600	9
12	3	3NT	S	3	600	9
4	14	3NT	S	3	600	9
2	15	3NT	S	3	600	9
9	19	1NT	E-2	200	-1	
11	5	1NT	S	2	120	-3
20	7	3NT	S-1	100	-8	
8	17	3NT	S-1	100	-8	
1	13	3NT	S-1	100	-8	
10	16	3NT	S-1	100	-8	

Board (24) Av: NS=-450

N-S	E-W	Contract	N-S	E-W	IMP	
9	19	5H	W-1	50	11	
1	13	4H	W	4	420	1
20	7	4H	W	5	450	0
11	5	4H	W	5	450	0
18	6	4H	W	5	450	0
10	16	4H	W	5	450	0
8	17	4H	W	5	450	0
2	15	4H	W	5	450	0
4	14	4H	W	7	510	-2
12	3	6H	W	7	1010	-11

25

♠J108
♥J92
♦86
♣J10642

♠K54 ♠Q6
♥Q643 ♥K108
♦Q109 ♦AK743
♣987 ♣K53

N
W—E
S

♠A9732
♥A75
♦J52
♣AQ

26

♠AJ542
♥KQ953
♦J7
♣2

♠1063 ♠98
♥A8 ♥64
♦10543 ♦AKQ9
♣10643 ♣AQJ87

N
W—E
S

♠KQ7
♥J1072
♦862
♣K95

27

♠K3
♥6542
♦53
♣AQ765

♠109 ♠AQ874
♥AQJ7 ♥K108
♦QJ942 ♦K6
♣83 ♣K104

N
W—E
S

♠J652
♥93
♦A1087
♣J92

Board (25) Av: NS=-140

N-S	E-W	Contract	N-S	E-W	IMP	
11	3	1NT	E	2	120	1
13	4	1NT	E	2	120	1
9	18	1NT	E	2	120	1
1	12	1NT	E	2	120	1
15	5	1NT	E	3	150	0
16	8	1NT	E	3	150	0
10	20	1NT	E	3	150	0
17	6	1NT	E	3	150	0
14	2	1NT	E	4	180	-1
19	7	3NT	E	4	630	-10

Board (26) Av: NS=+90

N-S	E-W	Contract	N-S	E-W	IMP	
11	3	5C	E-2	200	3	
14	2	5C	E-2	200	3	
13	4	3H	N	3	140	2
1	12	3H	N	3	140	2
9	18	3H	N	3	140	2
15	5	2S	N	3	140	2
10	20	2H	S	3	140	2
19	7	4S	N-1	100	-5	
16	8	3D	W	3	110	-5
17	6	3D	W	3	110	-5

Board (27) Av: NS=-300

N-S	E-W	Contract	N-S	E-W	IMP	
15	5	3NT	W-1	50	8	
11	3	3NT	E-1	50	8	
17	6	1NT	W	2	120	5
9	18	2S	E	4	170	4
1	12	3NT	E	3	400	-3
19	7	3NT	E	4	430	-4
16	8	3NT	E	4	430	-4
10	20	3NT	E	4	430	-4
13	4	3NT	E	4	430	-4
14	2	3NT	E	4	430	-4

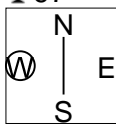
第18回NRM杯 Session 3 Section B 2013年6月30日(日)

28

♠ AQJ65
♥ Q76542
♦ 97

♠ Q974 ♠ KJ52
♥ 109732 ♠ KJ52
♦ A ♠ 10983
♣ AK2 ♣ QJ1043

♠ A10863
♥ K84
♦ KJ
♣ 865

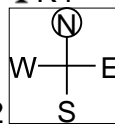


29

♠ A84
♥ 104
♦ QJ8643
♣ K4

♠ J65 ♠ Q1092
♥ KQ95 ♥ AJ76
♦ K ♦ 1075
♣ J10982 ♣ A5

♠ K73
♥ 832
♦ A92
♣ Q763

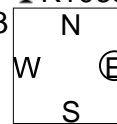


30

♠ 8753
♥ AK8
♣ K106542

♠ AJ953 ♠ K106
♥ QJ ♥ K10962
♦ 7632 ♠ QJ109
♣ A8 ♣ J

♠ Q8742
♥ A4
♦ 54
♣ Q973



Board (28) Av: NS=-210

N-S	E-W	Contract	N-S	E-W	IMP
11	3	2S W 2	110	110	3
14	2	2S E 4	170	170	1
10	20	2S E 4	170	170	1
19	7	2S E 4	170	170	1
17	6	2S E 4	170	170	1
15	5	2S E 5	200	200	0
9	18	2S E 5	200	200	0
1	12	2S E 5	200	200	0
16	8	4S E 4	420	420	-5
13	4	4Sx W 4	590	590	-9

Board (29) Av: NS=-40

N-S	E-W	Contract	N-S	E-W	IMP
14	2	Passout			1
19	7	Passout			1
16	8	Passout			1
15	5	Passout			1
13	4	Passout			1
10	20	Passout			1
9	18	Passout			1
1	12	3H W 3	140	140	-3
11	3	3H W 3	140	140	-3
17	6	2H W 4	170	170	-4

Board (30) Av: NS=-20

N-S	E-W	Contract	N-S	E-W	IMP
16	8	4Cx N 4	510	510	11
9	18	4Sx W-2	300	300	8
17	6	4Sx W-1	100	100	3
11	3	4S W-1	50	50	2
13	4	5Cx N-1		100	-2
10	20	5Cx N-1		100	-2
15	5	3S W 3	140	140	-3
1	12	3S W 3	140	140	-3
14	2	1S S-3	150	150	-4
19	7	1NT E 3	150	150	-4

第18回NRM杯 Session4 Section B 2014年6月30日(日)

1

♠ QJ76
♥ Q9643
♦ Q
♣ 653

♠ AK82 ♠ 93
♥ KJ7 ♥ A108
♦ KJ6 ♦ 98743
♣ AQ4 ♣ J98

♠ 1054
♥ 52
♦ A1052
♣ K1072

Board (1) Av: NS=-180

N-S	E-W	Contract	N-S	E-W	IMP
6	11	3NT W-2	100		7
12	9	3NT W-1	50		6
13	7	3NT W-1	50		6
10	14	3NT W-1	50		6
18	2	3NT W-1	50		6
19	5	3NT W 3		400	-6
4	17	3NT W 3		400	-6
1	16	3NT W 3		400	-6
3	20	3NT W 4		430	-6
15	8	3NT W 4		430	-6

2

♠ 863
♥ KQ9873
♦ K
♣ Q52

♠ J109 ♠ 54
♥ A6 ♥ 10542
♦ QJ86 ♦ A9
♣ AJ43 ♣ K10986

♠ AKQ72
♥ J
♦ 1075432
♣ 7

Board (2) Av: NS=-70

N-S	E-W	Contract	N-S	E-W	IMP
15	8	3S S 3	140		5
19	5	3S S 3	140		5
3	20	4S S-1		100	-1
13	7	3S S-1		100	-1
1	16	3S S-1		100	-1
6	11	3S S-1		100	-1
4	17	3C W 3		110	-1
12	9	3C W 3		110	-1
18	2	3C E 3		110	-1
10	14	4S S-3		300	-6

3

♠ KJ1032
♥ AK3
♦ 2
♣ AKQ2

♠ 8654 ♠ Q
♥ Q7 ♥ J10652
♦ Q4 ♦ J87653
♣ 98643 ♣ 5

♠ A97
♥ 984
♦ AK109
♣ J107

Board (3) Av: NS=+1010

N-S	E-W	Contract	N-S	E-W	IMP
10	14	7S N 7	1510		11
15	8	6S N 7	1010		0
13	7	6S N 7	1010		0
19	5	6S N 7	1010		0
18	2	6S N 7	1010		0
12	9	6S N 7	1010		0
4	17	6S N 7	1010		0
3	20	6S N 7	1010		0
1	16	6S N 7	1010		0
6	11	6S N 7	1010		0

4

♠ 1062
♥ KJ10942
♦ 4
♣ 1032

♠ Q93 ♠ 84
♥ 53 ♥ A76
♦ KQ96 ♦ AJ10853
♣ 9854 ♣ K7

♠ AKJ75
♥ Q8
♦ 72
♣ AQJ6

Board (4) Av: NS=+400

N-S	E-W	Contract	N-S	E-W	IMP
10	14	4H N 5	650		6
6	11	4S S 4	620		6
15	8	4S S 4	620		6
3	20	4S S 4	620		6
4	17	4S S 4	620		6
19	5	3S S 5	200		-5
1	16	3S S 5	200		-5
13	7	3S S 4	170		-6
12	9	3S S 3	140		-6
18	2	4D E-1	100		-7

5

♠ K1054
♥ 106
♦ AK5
♣ AKJ3

♠ AJ62 ♠ 73
♥ AJ543 ♥ KQ98
♦ J8 ♦ 10643
♣ 54 ♣ 1097

♠ Q98
♥ 72
♦ Q972
♣ Q862

Board (5) Av: NS=+20

N-S	E-W	Contract	N-S	E-W	IMP
6	11	4Hx W-2	300		7
4	17	3S N 4	170		4
19	5	3C N 4	130		3
3	20	3Hx W-1	100		2
15	8	3H W-1	50		1
1	16	3H W-1	50		1
12	9	5C N-1		100	-3
18	2	2NT S-1		100	-3
13	7	2H E 2		110	-4
10	14	3NT N-2		200	-6

6

♠ J5
♥ Q953
♦ A9
♣ K10542

♠ A84 ♠ KQ62
♥ AJ1064 ♥ K8
♦ Q6 ♦ J843
♣ Q87 ♣ A63

♠ 10973
♥ 72
♦ K10752
♣ J9

Board (6) Av: NS=-130

N-S	E-W	Contract	N-S	E-W	IMP
4	17	3NT E-3	300		10
1	16	3NT E-3	300		10
3	20	2E E-2	200		8
6	11	4H W-1	100		6
15	8	3NT W-1	100		6
12	9	3NT E-1	100		6
10	14	3NT W 3		600	-10
18	2	3NT E 3		600	-10
19	5	3NT E 3		600	-10
13	7	3NT E 4		630	-11

7

♠ AJ8732
♥ 102
♦ A6
♣ Q103

♠ 9 ♠ KQ1064
♥ KQ9743 ♥ J5
♦ Q98 ♦ J43
♣ AJ7 ♣ K64

♠ 5
♥ A86
♦ K10752
♣ 9852

Board (7) Av: NS=-170

N-S	E-W	Contract	N-S	E-W	IMP
6	15	3NT E-2	200		9
16	4	2NT E-1	100		7
19	3	1S N-1		100	2
11	9	2H W 2		110	2
10	13	2H W 4		170	0
8	14	2H W 4		170	0
5	18	2Sx N-1		200	-1
17	2	2S N-2		200	-1
12	7	2Sx N-2		500	-8
1	20	4H W 4		620	-10

8

♠ 4
♥ 742
♦ Q96542
♣ K98

♠ AKJ2 ♠ 10973
♥ J3 ♥ AQ1096
♦ AKJ8 ♦ 3
♣ A74 ♣ Q62

♠ Q865
♥ K85
♦ 107
♣ J1053

Board (8) Av: NS=-380

N-S	E-W	Contract	N-S	E-W	IMP
16	4	6S W-2	100		10
1	20	4S E-1	50		10
12	7	4S W 4		420	-1
17	2	4S W 4		420	-1
10	13	4S W 4		420	-1
6	15	4S W 4		420	-1
5	18	3NT W 5		460	-2
11	9	5S W 6		480	-3
8	14	4S W 6		480	-3
19	3	6S W 6		980	-12

9

♠ 86
♥ AKQ6
♦ A76
♣ AQ32

♠ K42 ♠ AQJ73
♥ 10832 ♥ J954
♦ J85 ♦ 2
♣ 765 ♣ K108

♠ 1095
♥ 7
♦ KQ10943
♣ J94

Board (9) Av: NS=+110

N-S	E-W	Contract	N-S	E-W	IMP
11	9	5D S 5	400		7
1	20	2S E-3	300		5
12	7	3D S 5	150		1
17	2	3D S 5	150		1
19	3	3D S 4	130		1
16	4	3D S 4	130		1
10	13	3D S 4	130		1
8	14	6D S-1		50	-4
6	15	5C N-1		50	-4
5	18	3NT N-1		50	-4

第18回NRM杯 Session 4 Section B 2014年6月30日(日)

10

♠ KJ108732
♥ 72
♦ J43
♣ 5

♠ 964 ♥ A103 ♦ AK52 ♣ 1096

N		♠ 5
W	—	♥ J964
E	—	♦ Q76
S		♣ KQ832

♠ AQ ♥ KQ85 ♦ 1098 ♣ AJ74

11

♠ Q832
♥ 2
♦ Q7652
♣ 1065

♠ J1075 ♥ Q654 ♦ A103 ♣ A7

N		♠ A6
W	—	♥ AK109
E	—	♦ K94
S		♣ J932

♠ K94 ♥ J873 ♦ J8 ♣ KQ84

12

♠ 109
♥ K962
♦ QJ3
♣ A842

♠ J86 ♥ 5 ♦ AK1042 ♣ Q976

N		♠ AKQ54
W	—	♥ 87
E	—	♦ 875
S		♣ KJ3

♠ 732 ♥ AQJ1043 ♦ 96 ♣ 105

Board (10) Av: NS=-100

N-S	E-W	Contract	N-S	E-W	IMP
12	7	4S	S-1	100	0
11	9	4S	S-1	100	0
16	4	4S	S-1	100	0
19	3	4S	S-1	100	0
17	2	4S	S-1	100	0
5	18	4S	S-1	100	0
1	20	4S	S-1	100	0
6	15	4S	S-1	100	0
10	13	4S	S-1	100	0
8	14	4S	S-1	100	0

Board (11) Av: NS=-360

N-S	E-W	Contract	N-S	E-W	IMP
8	14	4H	W-1	50	9
1	20	4H	E-1	50	9
12	7	4H	E 4	420	-2
16	4	4H	E 4	420	-2
19	3	4H	E 4	420	-2
17	2	4H	E 4	420	-2
6	15	4H	E 4	420	-2
5	18	4H	E 4	420	-2
11	9	4H	E 4	420	-2
10	13	4H	E 4	420	-2

Board (12) Av: NS=-390

N-S	E-W	Contract	N-S	E-W	IMP
6	15	4S	E-1	50	10
5	18	2S	E 3	140	6
11	9	4S	E 4	420	-1
12	7	4S	E 4	420	-1
19	3	4S	E 4	420	-1
1	20	4S	E 4	420	-1
8	14	4S	E 4	420	-1
10	13	4S	E 5	450	-2
17	2	4S	E 5	450	-2
16	4	4S	E 5	450	-2

13

♠ K10987
♥ 752
♦ 73
♣ A105

♠ AJ2 ♥ AQJ8 ♦ 984 ♣ J92

N		♠ Q65
W	—	♥ 106
E	—	♦ AKJ65
S		♣ Q63

♠ 43 ♥ K943 ♦ Q102 ♣ K874

14

♠ Q1082
♥ Q5
♦ AK107
♣ 953

♠ AK9 ♥ K743 ♦ 965 ♣ K87

N		♠ 74
W	—	♥ A9862
E	—	♦ Q4
S		♣ AJ62

♠ J653 ♥ J10 ♦ J832 ♣ Q104

15

♠ A53
♥ 764
♦ J9832
♣ A6

♠ K87 ♥ 3 ♦ Q105 ♣ KQJ852

N		♠ J92
W	—	♥ AQ1092
E	—	♦ AK6
S		♣ 43

♠ Q1064 ♥ KJ85 ♦ 74 ♣ 1097

Board (13) Av: NS=-600

N-S	E-W	Contract	N-S	E-W	IMP
16	2	3NT	E-1	100	12
20	4	3NT	W 3	600	0
5	17	3NT	W 3	600	0
1	19	3NT	W 3	600	0
18	3	3NT	E 3	600	0
9	15	3NT	E 3	600	0
10	12	3NT	E 3	600	0
7	11	3NT	E 3	600	0
6	14	3NT	W 4	630	-1
13	8	3NT	E 4	630	-1

Board (14) Av: NS=-420

N-S	E-W	Contract	N-S	E-W	IMP
5	17	3H	E 4	170	6
16	2	4H	E 4	420	0
13	8	4H	E 4	420	0
20	4	4H	E 4	420	0
18	3	4H	E 4	420	0
10	12	4H	E 4	420	0
6	14	4H	E 4	420	0
1	19	4H	E 4	420	0
9	15	4H	E 4	420	0
7	11	4H	E 4	420	0

Board (15) Av: NS=-310

N-S	E-W	Contract	N-S	E-W	IMP
10	12	4H	E-3	150	10
1	19	4H	E-2	100	9
6	14	2H	E 3	150	4
20	4	3NT	W 3	400	-3
16	2	3NT	W 3	400	-3
7	11	3NT	W 3	400	-3
5	17	3NT	W 3	400	-3
9	15	3NT	W 3	400	-3
18	3	3NT	E 3	400	-3
13	8	3NT	W 4	430	-3

16

♠ Q62
♥ 3
♦ K105
♣ QJ10872

♠ K1054 ♥ 874 ♦ A872 ♣ 65

N		♠ 987
W	—	♥ J2
E	—	♦ QJ963
S		♣ AK3

♠ AJ3 ♥ AKQ10965 ♦ 4 ♣ 94

17

♠ QJ107
♥ 987
♦ AQ6
♣ J63

♠ AK62 ♥ 103 ♦ K87 ♣ Q1084

N		♠ 853
W	—	♥ J2
E	—	♦ J1095
S		♣ AK75

♠ 94 ♥ AKQ654 ♦ 432 ♣ 92

18

♠ QJ2
♥ AKJ94
♦ 63
♣ 1072

♠ AK6 ♥ 862 ♦ K98 ♣ 9654

N		♠ 1074
W	—	♥ Q5
E	—	♦ AQJ7
S		♣ AQJ8

♠ 9853 ♥ 1073 ♦ 10542 ♣ K3

Board (16) Av: NS=+360

N-S	E-W	Contract	N-S	E-W	IMP
20	4	4H	S 4	420	2
10	12	4H	S 4	420	2
13	8	4H	S 4	420	2
7	11	4H	S 4	420	2
9	15	4H	S 4	420	2
5	17	4H	S 4	420	2
6	14	4H	S 4	420	2
16	2	3NT	N 3	400	1
1	19	4H	S-1	50	-9
18	3	4Hx	S-1	100	-10

Board (17) Av: NS=+110

N-S	E-W	Contract	N-S	E-W	IMP
5	17	4S	W-5	250	4
9	15	3H	S 3	140	1
16	2	3H	S 3	140	1
18	3	3H	S 3	140	1
1	19	3H	S 3	140	1
20	4	2H	S 3	140	1
7	11	3S	W-2	100	0
10	12	3S	W-2	100	0
6	14	4H	S-1	50	-4
13	8	3H	S-2	100	-5

Board (18) Av: NS=-400

N-S	E-W	Contract	N-S	E-W	IMP
10	12	3NT	E-2	100	11
13	8	3NT	E 3	400	0
20	4	3NT	E 3	400	0
18	3	3NT	E 3	400	0
16	2	3NT	E 3	400	0
6	14	3NT	E 3	400	0
1	19	3NT	E 3	400	0
9	15	3NT	E 3	400	0
7	11	3NT	E 3	400	0
5	17	3NT	E 4	430	-1

19

♠ A75
♥ 4
♦ QJ102
♣ AK1094

♠ K9862
♥ 86
♦ 54
♣ Q752

N
W — E
S

♠ J1043
♥ K9753
♦ A93
♣ 8

♠ Q
♥ AQJ102
♦ K876
♣ J63

20

♠ Q2
♥ 104
♦ 853
♣ AQ6542

♠ J975
♥
♦ J10742
♣ K983

N
W — E
S

♠ 8643
♥ AQ93
♦ AQ
♣ J107

♠ AK10
♥ KJ87652
♦ K96
♣

21

♠ AQ32
♥ AJ3
♦ Q974
♣ 53

♠ KJ954
♥ K109
♦ AJ
♣ K76

N
W — E
S

♠ 108
♥ 8642
♦ 3
♣ AQ10842

♠ 76
♥ Q75
♦ K108652
♣ J9

Board (19) Av: NS=-60

N-S	E-W	Contract	N-S	E-W	IMP
11	10	5D S 6	420		10
20	2	5C N-1	50		0
3	17	5C N-1	50		0
13	6	3NT S-1	50		0
16	5	3NT N-1	50		0
19	4	3NT N-1	50		0
14	9	3NT N-1	50		0
1	18	3NT N-1	50		0
8	12	6D S-2	100		-1
7	15	5D S-2	100		-1

Board (20) Av: NS=+190

N-S	E-W	Contract	N-S	E-W	IMP
14	9	4H S 4	620		10
19	4	4H S 4	620		10
11	10	4S E-3	300		3
8	12	3H S 4	170		-1
20	2	2H S 4	170		-1
1	18	3H S 3	140		-2
3	17	3S E-1	100		-3
7	15	3S E-1	100		-3
13	6	4H S-1	100		-7
16	5	2S W 2	110		-7

Board (21) Av: NS=+10

N-S	E-W	Contract	N-S	E-W	IMP
19	4	3Dx N 3	670		12
7	15	3H E-3	150		4
14	9	4S W-2	100		3
11	10	4S W-2	100		3
16	5	4C E-1	50		1
13	6	3S W-1	50		1
3	17	4C E 4	130		-4
20	2	4C E 4	130		-4
1	18	2S W 3	140		-4
8	12	4S W 5	450		-10

22

♠ Q63
♥ 10753
♦ Q743
♣ Q5

♠ K
♥ K82
♦ A1096
♣ A10432

N
W — E
S

♠ A108754
♥ AQ6
♦ J2
♣ J7

♠ J92
♥ J94
♦ K85
♣ K986

23

♠ 10952
♥ 94
♦ AK9754
♣ 3

♠ KJ76
♥ 10753
♦ 102
♣ A82

N
W — E
S

♠ AKQJ82
♥ 86
♦ KJ1064

♠ AQ843
♥ 6
♦ QJ3
♣ Q975

24

♠ 2
♥ J54
♦ Q1065
♣ K10642

♠ J96
♥ K1076
♦ J84
♣ 853

N
W — E
S

♠ KQ1043
♥ Q983
♦ K32
♣ J

♠ A875
♥ A2
♦ A97
♣ AQ97

Board (22) Av: NS=-620

N-S	E-W	Contract	N-S	E-W	IMP
19	4	3NT W 3	600		1
13	6	3NT W 3	600		1
8	12	3NT E 3	600		1
7	15	3NT E 3	600		1
1	18	4S E 4	620		0
14	9	4S E 4	620		0
11	10	3NT W 4	630		0
3	17	4S E 5	650		-1
20	2	3NT W 5	660		-1
16	5	3NT W 5	660		-1

Board (23) Av: NS=-580

N-S	E-W	Contract	N-S	E-W	IMP
16	5	5H E-1	100		12
20	2	3S S-1	100		10
13	6	4S S-2	200		9
14	9	5H E 5	650		-2
11	10	5H E 5	650		-2
19	4	4H E 5	650		-2
7	15	4H E 5	650		-2
1	18	5H E 6	680		-3
3	17	5Hx E 6	1050		-10
8	12	6Hx E 6	1660		-14

Board (24) Av: NS=+90

N-S	E-W	Contract	N-S	E-W	IMP
13	6	3NT S 3	400		7
16	5	1NT S 4	180		3
20	2	3C S 5	150		2
1	18	2S E-3	150		2
8	12	1NT S 3	150		2
19	4	1NT S 2	120		1
3	17	2S E-2	100		0
11	10	3NT S-1	50		-4
14	9	2S E 2	110		-5
7	15	2S E 2	110		-5

25

♠ 85
♥ KQ105
♦ AJ742
♣ 85

♠ AK32
♥ 97
♦ 10986
♣ AQ2

N
W — E
S

♠ 1094
♥ 863
♦ K53
♣ J643

♠ QJ76
♥ AJ42
♦ Q
♣ K1097

26

♠ 743
♥ A7
♦ AKJ4
♣ Q987

♠ AQJ82
♥ K10
♦ 10
♣ AK643

N
W — E
S

♠ 1095
♥ 832
♦ Q632
♣ J52

♠ K6
♥ QJ9654
♦ 9875
♣ 10

27

♠ Q864
♥ 854
♦ 2
♣ A10876

♠ 5
♥ K63
♦ J109764
♣ Q94

N
W — E
S

♠ AJ9
♥ AJ107
♦ K83
♣ KJ3

♠ K10732
♥ Q92
♦ AQ5
♣ 52

Board (25) Av: NS=+130

N-S	E-W	Contract	N-S	E-W	IMP
7	14	4H N 4	420		7
8	11	3H N 4	170		1
19	2	3H N 4	170		1
6	12	3H N 4	170		1
4	18	3H S 3	140		0
16	3	3H N 3	140		0
20	5	3H N 3	140		0
1	17	3H N 3	140		0
15	10	3H N-1	50		-5
9	13	4H N-2	100		-6

Board (26) Av: NS=+30

N-S	E-W	Contract	N-S	E-W	IMP
7	14	4S W-3	300		7
20	5	4S W-2	200		5
6	12	4S W-2	200		5
19	2	4S W-2	200		5
8	11	4S W-1	100		2
1	17	1S W 1	80		-3
16	3	1S W 2	110		-4
15	10	1S W 2	110		-4
4	18	1S W 3	140		-5
9	13	5D N-3	300		-8

Board (27) Av: NS=+10

N-S	E-W	Contract	N-S	E-W	IMP
20	5	3NT E-4	200		5
16	3	3NT E-3	150		4
7	14	2S S 2	110		3
15	10	1NT E-2	100		3
9	13	1NT E-1	50		1
6	12	3S S-1	50		-2
1	17	3S S-2	100		-3
8	11	3D W 3	110		-3
4	18	3D W 3	110		-3
19	2	3D E 4	130		-4

第18回NRM杯 Session 4 Section B 2013年6月30日(日)

28

♠ KQJ85
♥ A64
♦ 52
♣ K107

♠ 1062	N	♠ 43
♥ J92		♥ 85
♦ K974	W	♦ 10863
♣ J43	S	♣ A9865

♠ A97
♥ KQ1073
♦ AQJ
♣ Q2

29

♠ J8752
♥ 107
♦ 10
♣ KQJ93

♠ K64	N	♠ AQ93
♥ A92		♥ KQ64
♦ AKQ2	W	♦ J65
♣ 764	S	♣ A5

♠ 10
♥ J853
♦ 98743
♣ 1082

30

♠ 9753
♥ AK105
♦ K
♣ 9642

♠ AQ4	N	♠ 106
♥ Q973		♥ J864
♦ AQ83	W	♦ 1092
♣ K3	S	♣ AQJ7

♠ KJ82
♥ 2
♦ J7654
♣ 1085

Board (28) Av: NS=+1060

N-S	E-W	Contract	N-S	E-W	IMP
16	3	6S	N 6	1430	9
1	17	6H	S 6	1430	9
9	13	6H	S 6	1430	9
4	18	6H	S 6	1430	9
6	12	6H	S 6	1430	9
19	2	5H	S 7	710	-8
7	14	5H	S 6	680	-9
15	10	5H	S 6	680	-9
20	5	4H	S 6	680	-9
8	11	5S	N 5	650	-9

Board (29) Av: NS=-1260

N-S	E-W	Contract	N-S	E-W	IMP
4	18	4NT	E 6	690	11
15	10	3NT	E 6	690	11
7	14	4NT	E 7	720	11
20	5	6NT	E 6	1440	-5
16	3	6NT	E 6	1440	-5
19	2	6NT	E 6	1440	-5
6	12	6NT	E 6	1440	-5
1	17	6NT	E 6	1440	-5
9	13	6NT	E 6	1440	-5
8	11	6NT	E 6	1440	-5

Board (30) Av: NS=+10

N-S	E-W	Contract	N-S	E-W	IMP
1	17	4H	W-3	150	4
15	10	4H	W-2	100	3
9	13	4H	W-2	100	3
4	18	4H	W-2	100	3
20	5	4H	W-1	50	1
16	3	4H	W-1	50	1
7	14	4H	W-1	50	1
8	11	4H	W-1	50	1
6	12	4H	W 4	420	-10
19	2	4H	W 5	450	-10