

第18回NRM杯 Session1 Section A 2013年6月29日(土)

1

♠ 97
♥ J62
♦ J10976
♣ 765

♠ J632
♥ A98543
♦ 8
♣ J3

♠ K105
♥ Q107
♦ KQ32
♣ Q84

♠ AQ84
♥ K
♦ A54
♣ AK1092

Board (1) Av: NS=+50

N-S	E-W	Contract	N-S	E-W	IMP
3	9	3D N 3	110		2
5	8	3C S 3	110		2
20	13	3C S 3	110		2
1	10	3C S 3	110		2
16	15	2Hx W-1	100		2
4	7	2Hx W-1	100		2
18	14	3NT N-1		50	-3
6	2	3C S-1		50	-3
17	11	2NT S-1		50	-3
19	12	2H W 2		110	-4

2

♠ Q108
♥ A954
♦ 1063
♣ 1054

♠ 64
♥ J1082
♦ 842
♣ A987

♠ J732
♥ KQ
♦ AQ
♣ QJ632

♠ AK95
♥ 763
♦ KJ975
♣ K

Board (2) Av: NS=-10

N-S	E-W	Contract	N-S	E-W	IMP
17	11	1NT E-3	150		4
16	15	1NT E-2	100		3
20	13	1NT E-2	100		3
18	14	2D S 2	90		3
4	7	1NT E-1	50		2
3	9	1NT E 1		90	-2
5	8	1NT E 1		90	-2
19	12	1NT E 2		120	-3
1	10	1NT E 2		120	-3
6	2	1NT E 3		150	-4

3

♠ Q864
♥ J103
♦ AQJ10
♣ 52

♠ KQ42
♥ 87543
♦ J743

♠ KJ107532
♥ 975
♦ K6
♣ 10

♠ A9
♥ A86
♦ 92
♣ AKQ986

Board (3) Av: NS=+270

N-S	E-W	Contract	N-S	E-W	IMP
3	9	3NT N 6	490		6
1	10	3NT N 5	460		5
17	11	3NT S 4	430		4
5	8	3NT S 4	430		4
16	15	3NT S 4	430		4
4	7	3NT N 3	400		4
6	2	3C S 4	130		-4
19	12	3NT S-1		50	-8
20	13	3NT N-1		50	-8
18	14	3NT N-1		50	-8

4

♠ J10
♥ QJ64
♦ A752
♣ J97

♠ A962
♥ 32
♦ Q104
♣ Q653

♠ Q8753
♥ 9
♦ J986
♣ AK10

♠ K4
♥ AK10875
♦ K3
♣ 842

Board (4) Av: NS=-40

N-S	E-W	Contract	N-S	E-W	IMP
5	8	4H S 4	620		12
20	13	4Sx E-1	200		6
16	15	4S E-1	100		4
18	14	4H S-1		100	-2
17	11	4H S-1		100	-2
19	12	4H S-1		100	-2
4	7	4H S-1		100	-2
6	2	4H S-1		100	-2
1	10	3S E 3		140	-3
3	9	4H S-2		200	-4

5

♠ 5
♥ J1054
♦ Q1082
♣ 9862

♠ 107
♥ 87
♦ KJ9754
♣ AJ10

♠ KQJ63
♥ K962
♦ 6
♣ KQ5

♠ A9842
♥ AQ3
♦ A3
♣ 743

Board (5) Av: NS=-70

N-S	E-W	Contract	N-S	E-W	IMP
19	12	2S E-1	50		3
3	9	2S E-1	50		3
1	10	2S E-1	50		3
17	11	2S E 2		110	-1
18	14	2S E 2		110	-1
16	15	2S E 2		110	-1
4	7	2S E 2		110	-1
5	8	2S E 2		110	-1
6	2	2S E 2		110	-1
20	13	3NT W 3		400	-8

6

♠ J832
♥ AJ4
♦ 106
♣ Q654

♠ A95
♥ Q9653
♦ 98
♣ A98

♠ Q106
♥ K82
♦ KQ75
♣ J32

♠ K74
♥ 107
♦ AJ432
♣ K107

Board (6) Av: NS=-20

N-S	E-W	Contract	N-S	E-W	IMP
16	15	2H W-1	100		3
20	13	2H W-1	100		3
19	12	Passout			1
17	11	Passout			1
6	2	Passout			1
5	8	2S S-1		50	-1
3	9	2S N-1		50	-1
1	10	1NT S-1		50	-1
4	7	1NT S-2		100	-2
18	14	2H W 2		110	-3

7

♠ 9864
♥ KQ95
♦ 109
♣ QJ7

♠ Q
♥ 643
♦ A87
♣ AK9532

♠ KJ32
♥ 872
♦ KQJ4
♣ 84

♠ A1075
♥ AJ10
♦ 6532
♣ 106

Board (7) Av: NS=-30

N-S	E-W	Contract	N-S	E-W	IMP
16	14	3NT E-1	100		4
7	8	3NT E-1	100		4
5	4	2C W-1	100		4
2	10	2C W-1	100		4
18	11	2C W 2		90	-2
1	9	2C W 2		90	-2
19	20	2C W 3		110	-2
12	13	2C W 3		110	-2
15	17	2C W 3		110	-2
3	6	2H N-2		200	-5

8

♠ A943
♥ K98
♦ 72
♣ K1075

♠ KQ
♥ Q106532
♦ 1085
♣ Q4

♠ J87652
♥ A
♦ K4
♣ A963

♠ 10
♥ J74
♦ AQJ963
♣ J82

Board (8) Av: NS=+120

N-S	E-W	Contract	N-S	E-W	IMP
7	8	3NT N 3	400		7
2	10	4S E-3	150		1
12	13	2NT N 3	150		1
15	17	2H W-3	150		1
1	9	2H E-3	150		1
19	20	3D S 3	110		0
18	11	3S E-2	100		-1
16	14	2H E-2	100		-1
5	4	2S E-1	50		-2
3	6	2S E-1	50		-2

9

♠ 9
♥ K1076
♦ A1065
♣ Q764

♠ K83
♥ AQ84
♦ J84
♣ K83

♠ QJ1054
♥ J93
♦ K7
♣ 1095

♠ A762
♥ 52
♦ Q932
♣ AJ2

Board (9) Av: NS=-10

N-S	E-W	Contract	N-S	E-W	IMP
5	4	3D S 4	130		4
19	20	3D S 3	110		3
7	8	3D S 3	110		3
1	9	2D S 3	110		3
3	6	3D S-1		50	-1
12	13	1NT S-1		50	-1
16	14	1NT S-1		50	-1
2	10	2S E 2		110	-3
18	11	1S E 2		110	-3
15	17	2S E 3		140	-4

10

♠ J107
♥ 9
♦ K974
♣ QJ1084

♠ AK432
♥ AJ65
♦ J3
♣ 32

♠ 865
♥ Q874
♦ Q862
♣ A7

♠ Q9
♥ K1032
♦ A105
♣ K965

N
W — E
S

11

♠ KQJ954
♥ AQJ
♦ 94
♣ K5

♠ 108
♥ 643
♦ AQ105
♣ Q1096

♠ 76
♥ 1098752
♦ 873
♣ A7

♠ A32
♥ K
♦ KJ62
♣ J8432

N
W — E
S

12

♠ 9
♥ 10543
♦ Q85
♣ AKJ73

♠ A6
♥ AQJ76
♦ A109
♣ Q108

♠ K10854
♥
♦ K7642
♣ 652

♠ QJ732
♥ K982
♦ J3
♣ 94

N
W — E
S

Board (10) Av: NS=+120

N-S	E-W	Contract	N-S	E-W	IMP
15	17	4H W-4	400		7
19	20	4H W-2	200		2
5	4	4H E-2	200		2
2	10	3S W-2	200		2
18	11	3C S 3	110		0
12	13	3C S 3	110		0
3	6	3C S 3	110		0
1	9	3C S 3	110		0
16	14	4C S-1	100		-6
7	8	3S W 3	140		-6

Board (11) Av: NS=+240

N-S	E-W	Contract	N-S	E-W	IMP
7	8	4S N 4	420		5
18	11	4S N 4	420		5
19	20	4S N 4	420		5
5	4	4S N 4	420		5
1	9	4S N 4	420		5
3	6	4S N 4	420		5
2	10	4S N-1	50		-7
15	17	4S N-1	50		-7
12	13	4S N-1	50		-7
16	14	4S N-1	50		-7

Board (12) Av: NS=+60

N-S	E-W	Contract	N-S	E-W	IMP
19	20	4S W-3	150		3
5	4	4S E-3	150		3
3	6	3NT W-2	100		1
1	9	2C W-2	100		1
16	14	3NT W-1	50		0
7	8	2S E-1	50		0
2	10	2NT W-1	50		0
15	17	2C W-1	50		0
12	13	2S W 2	110		-5
18	11	3S E 3	140		-5

13

♠ A3
♥ KQ1053
♦ A105
♣ 962

♠ 75
♥ J97
♦ K72
♣ AK1074

♠ KQ98
♥ A6
♦ QJ94
♣ QJ8

♠ J10642
♥ 842
♦ 863
♣ 53

N
W — E
S

14

♠ 1076
♥ QJ53
♦ AJ43
♣ J6

♠ AQ9
♥ 10964
♦
♣ AK10873

♠ KJ852
♥ 72
♦ KQ1086
♣ 4

♠ 43
♥ AK8
♦ 9752
♣ Q952

N
W — E
S

15

♠ 10642
♥ AJ743
♦ A10
♣ 43

♠ 7
♥ Q1095
♦ KQJ74
♣ KQJ

♠ KJ95
♥ 862
♦ 985
♣ 982

♠ AQ83
♥ K
♦ 632
♣ A10765

N
W — E
S

Board (13) Av: NS=-10

N-S	E-W	Contract	N-S	E-W	IMP
6	4	3NT E-2	200		5
17	18	3NT E-2	200		5
1	8	3NT E-2	200		5
3	2	3NT E-2	200		5
15	14	4C W 4	130		-3
20	12	4C W 4	130		-3
13	16	4C W 4	130		-3
10	9	4C W 4	130		-3
11	19	2C W 4	130		-3
7	5	3NT W 4	630		-12

Board (14) Av: NS=-260

N-S	E-W	Contract	N-S	E-W	IMP
11	19	4S E-2	100		8
7	5	3NT E-1	50		7
1	8	2C W 2	90		5
20	12	3S E 4	170		3
6	4	2S E 4	170		3
17	18	4S E 4	420		-4
10	9	4S E 4	420		-4
15	14	4S E 4	420		-4
3	2	4S E 4	420		-4
13	16	4S E 4	420		-4

Board (15) Av: NS=+80

N-S	E-W	Contract	N-S	E-W	IMP
6	4	4Sx S 4	790		12
7	5	2S S 4	170		3
3	2	3S W-3	150		2
10	9	3S N 3	140		2
17	18	2S S 3	140		2
13	16	3C S 3	110		1
15	14	1S S 2	110		1
20	12	4S S-1	100		-5
1	8	4S S-1	100		-5
11	19	4S S-1	100		-5

16

♠ K985
♥ K7
♦ 74
♣ A10976

♠ QJ107643
♥ A85
♦ J3
♣ 2

♠ QJ9643
♥ 1092
♦ QJ84
♣

♠ A2
♥ 102
♦ AKQ865
♣ K53

N
W — E
S

17

♠ 432
♥ KQ4
♦ Q2
♣ AKQ65

♠ Q965
♥ A875
♦ AJ96
♣ 9

♠ 10
♥ 1092
♦ K108743
♣ 872

♠ AKJ87
♥ J63
♦ 5
♣ J1043

N
W — E
S

18

♠ Q87
♥ 864
♦ J8
♣ J10954

♠ KJ1032
♥ 97
♦ Q
♣ K8763

♠ A965
♥ J5
♦ A9765
♣ Q2

♠ 4
♥ AKQ1032
♦ K10432
♣ A

N
W — E
S

Board (16) Av: NS=+450

N-S	E-W	Contract	N-S	E-W	IMP
7	5	3NT S 5	460		0
10	9	3NT S 5	460		0
15	14	3NT S 5	460		0
1	8	3NT S 5	460		0
6	4	3NT S 5	460		0
11	19	3NT N 5	460		0
17	18	3NT S 4	430		-1
3	2	3NT S 4	430		-1
20	12	3NT S 4	430		-1
13	16	4S N-4	200		-12

Board (17) Av: NS=-50

N-S	E-W	Contract	N-S	E-W	IMP
13	16	4S N-1	50		0
11	19	4S N-1	50		0
15	14	4S N-1	50		0
20	12	4S N-1	50		0
17	18	4S N-1	50		0
3	2	4S N-1	50		0
1	8	4S N-1	50		0
6	4	4S N-1	50		0
10	9	4S N-1	50		0
7	5	4S N-1	50		0

Board (18) Av: NS=+90

N-S	E-W	Contract	N-S	E-W	IMP
7	5	4Hx S 4	790		12
17	18	4Hx S 4	790		12
6	4	4Sx W-2	300		5
13	16	4Sx W-1	100		0
1	8	4S E-1	50		-1
10	9	5H S-1	100		-5
3	2	3S W 3	140		-6
11	19	3S W 3	140		-6
20	12	3S E 4	170		-6
15	14	5Hx S-3	800		-13

第18回NRM杯 Session1 Section A 2014年6月29日(土)

19

♠AJ1042
♥A
♦J1098
♣K52

♠KQ3
♥Q1063
♦A653
♣AJ

♠976
♥J875
♦KQ2
♣1063

♠85
♥K942
♦74
♣Q9874

20

♠K6
♥1064
♦862
♣AKJ32

♠Q104
♥K5
♦KQ95
♣Q975

♠982
♥AQJ32
♦AJ74
♣6

♠AJ753
♥987
♦103
♣1084

21

♠A2
♥A98542
♦765
♣J5

♠QJ9643
♥J103
♦K
♣A76

♠1075
♥7
♦AQ43
♣K10942

♠K8
♥KQ6
♦J10982
♣Q83

Board (19) Av: NS=-90

N-S	E-W	Contract	N-S	E-W	IMP
1	7	2S N 2	110		5
16	12	1NT E-1	100		5
8	4	1NT E 1	90		0
2	9	1NT E 1	90		0
15	18	2S N-2	100		0
20	11	1NT E 2	120		-1
14	17	1NT E 2	120		-1
3	10	1NT E 2	120		-1
13	19	1NT E 3	150		-2
6	5	1NT E 4	180		-3

Board (20) Av: NS=-50

N-S	E-W	Contract	N-S	E-W	IMP
8	4	3NT E-3	300		8
16	12	3NT E-3	300		8
1	7	3NT E-3	300		8
13	19	5D W-1	100		4
3	10	4H W-1	100		4
6	5	4H W-1	100		4
15	18	3D W 4	130		-2
20	11	3Cx N-2	500		-10
2	9	3NT W 4	630		-11
14	17	3NT E 4	630		-11

Board (21) Av: NS=-340

N-S	E-W	Contract	N-S	E-W	IMP
8	4	3S E 4	170		5
1	7	3S E 4	170		5
16	12	2S E 4	170		5
6	5	5D S-3	300		1
15	18	4S E 4	420		-2
20	11	4S E 4	420		-2
3	10	4S E 4	420		-2
2	9	4S E 4	420		-2
13	19	4S E 4	420		-2
14	17	4Sx E 4	590		-6

22

♠10854
♥AKJ
♦K43
♣Q92

♠A92
♥Q97653
♦52
♣J5

♠J63
♥108
♦J1087
♣K763

♠KQ7
♥42
♦AQ96
♣A1084

23

♠J10
♥J542
♦K10
♣109852

♠Q963
♥A107
♦A65
♣J76

♠AK875
♥KQ3
♦Q87
♣AQ

♠42
♥986
♦J9432
♣K43

24

♠K74
♥J2
♦843
♣QJ743

♠Q102
♥1073
♦AKJ95
♣A5

♠A95
♥K96
♦Q1076
♣1092

♠J863
♥AQ854
♦2
♣K86

Board (22) Av: NS=+440

N-S	E-W	Contract	N-S	E-W	IMP
2	9	3NT S 5	460		1
15	18	3NT S 5	460		1
16	12	3NT N 5	460		1
20	11	3NT N 5	460		1
14	17	3NT S 4	430		0
6	5	3NT S 4	430		0
3	10	3NT N 4	430		0
13	19	4S S 4	420		-1
8	4	3NT S 3	400		-1
1	7	3NT N 3	400		-1

Board (23) Av: NS=-950

N-S	E-W	Contract	N-S	E-W	IMP
13	19	6S W-1	100		14
8	4	3NT W 5	660		7
2	9	3NT W 5	660		7
1	7	3NT W 5	660		7
16	12	4S W 6	680		7
6	5	4S W 6	680		7
20	11	6S W 6	1430		-10
15	18	6S W 6	1430		-10
3	10	6S W 6	1430		-10
14	17	6S W 6	1430		-10

Board (24) Av: NS=-160

N-S	E-W	Contract	N-S	E-W	IMP
3	10	3NT W-1	50		5
1	7	3NT E-1	50		5
20	11	2S N-1	50		3
13	19	2D E 3	110		2
2	9	2D E 3	110		2
8	4	2NT E 3	150		0
6	5	1NT W 3	150		0
14	17	1NTxE 3	380		-6
15	18	3NT E 3	400		-6
16	12	3NT E 3	400		-6

第18回NRM杯 Session 2 Section A 2014年6月29日(土)

1

♠ KQ762
♥ J4
♦ 732
♣ 954

♠ AJ109
♥ A8
♦ AK6
♣ KJ32

♠ K10753
♥ J1098
♦ 10876

♠ 8543
♥ Q962
♦ Q54
♣ AQ

Board (1) Av: NS=-310

N-S	E-W	Contract	N-S	E-W	IMP
14	20	4H E-2	100		9
1	2	4H W-1	50		8
5	3	3NT W-1	50		8
8	6	3NT W 3		400	-3
10	4	4H W 4	420		-3
15	13	3NT W 4	430		-3
19	17	3NT W 4	430		-3
11	12	3NT W 4	430		-3
7	9	3NT W 4	430		-3
18	16	3NT W 5	460		-4

2

♠ K
♥
♦ 9632
♣ AKQJ10842

♠ 7
♥ J9532
♦ Q874
♣ 953

♠ J10842
♥ AK76
♦ K5
♣ 76

♠ AQ9653
♥ Q1084
♦ AJ10
♣

Board (2) Av: NS=+490

N-S	E-W	Contract	N-S	E-W	IMP
7	9	6C N 6	1370		13
15	13	3NT S 7	720		6
11	12	3NT S 6	690		5
10	4	3NT N 6	690		5
14	20	3NT S 4	630		4
5	3	5C N 6	620		4
1	2	4C N 7	190		-7
18	16	4C N 6	170		-8
8	6	3C N 6	170		-8
19	17	6D S-2		200	-12

3

♠ J105
♥ Q92
♦ K10
♣ KJ653

♠ KQ4
♥ A1075
♦ AQ86
♣ A9

♠ A7632
♥ K63
♦ J53
♣ Q2

♠ 98
♥ J84
♦ 9742
♣ 10874

Board (3) Av: NS=-660

N-S	E-W	Contract	N-S	E-W	IMP
10	4	6S E-1	100		13
14	20	4S W 5		650	0
15	13	4S W 5		650	0
5	3	4S W 5		650	0
11	12	4S E 5		650	0
1	2	4S E 5		650	0
8	6	3NT W 5		660	0
19	17	3NT W 6		690	-1
18	16	3NT W 6		690	-1
7	9	3NT W 6		690	-1

4

♠ K10
♥ A1083
♦ 954
♣ J952

♠ Q75
♥ K52
♦ AKQ2
♣ A83

♠ J3
♥ Q764
♦ 8763
♣ 1074

♠ A98642
♥ J9
♦ J10
♣ KQ6

Board (4) Av: NS=+90

N-S	E-W	Contract	N-S	E-W	IMP
10	4	2S S 3	140		2
19	17	2S S 3	140		2
1	2	2S S 3	140		2
14	20	1S S 3	140		2
8	6	2D W-1	100		0
7	9	1NT W-1	100		0
18	16	1NT W-1	100		0
11	12	1NT W-1	100		0
5	3	2D W 2		90	-5
15	13	1NT W 1		90	-5

5

♠ A7
♥ 3
♦ AK10962
♣ KQ106

♠ Q1093
♥ 754
♦ QJ3
♣ A87

♠ K8
♥ Q106
♦ 8754
♣ 9532

♠ J6542
♥ AKJ982
♦
♣ J4

Board (5) Av: NS=+580

N-S	E-W	Contract	N-S	E-W	IMP
7	9	3NT N 6	690		3
5	3	3NT N 6	690		3
8	6	3NT N 6	690		3
10	4	3NT N 4	630		2
14	20	4H S 4	620		1
18	16	5D N 5	600		1
11	12	3NT S 3	600		1
1	2	3NT N 3	600		1
15	13	3H S 4	170		-9
19	17	4S S-1		100	-12

6

♠ K109875
♥ 63
♦ Q9
♣ 1042

♠ 2
♥ 95
♦ A842
♣ AKQ873

♠ QJ63
♥ QJ72
♦ 653
♣ 96

♠ A4
♥ AK1084
♦ KJ107
♣ J5

Board (6) Av: NS=+50

N-S	E-W	Contract	N-S	E-W	IMP
19	17	3C W-2	200		4
8	6	2H S 3	140		3
14	20	2S N 2	110		2
11	12	2S N 2	110		2
1	2	2S N 2	110		2
18	16	2H S 2	110		2
10	4	3S N-1		50	-3
15	13	3S N-1		50	-3
7	9	3H S-1		50	-3
5	3	4D S-3		150	-5

7

♠ J8
♥ KQ1094
♦ 9862
♣ 52

♠ 97432
♥ 76
♦ 1073
♣ 863

♠ A10
♥ A5
♦ AK54
♣ AKQJ7

♠ KQ65
♥ J832
♦ QJ
♣ 1094

Board (7) Av: NS=-650

N-S	E-W	Contract	N-S	E-W	IMP
13	14	3NT E 3	600		2
1	5	3NT E 3	600		2
19	16	3NT E 4	630		1
18	12	3NT E 4	630		1
17	20	3NT E 5	660		0
3	4	3NT E 5	660		0
9	6	3NT E 5	660		0
8	2	3NT E 5	660		0
11	15	3NT E 5	660		0
7	10	3NT E 5	660		0

8

♠ QJ1082
♥ K
♦ J653
♣ 942

♠ K964
♥ Q52
♦ 872
♣ QJ5

♠ A3
♥ 1043
♦ AQ109
♣ AK63

♠ 75
♥ AJ9876
♦ K4
♣ 1087

Board (8) Av: NS=-240

N-S	E-W	Contract	N-S	E-W	IMP
7	10	3NT E-3	150		9
19	16	2H S-2		100	4
8	2	3D W 3		110	4
13	14	1NT E 2		120	3
9	6	2NT E 4		180	2
17	20	1NT E 4		180	2
3	4	3NT W 3		400	-4
18	12	3NT W 4		430	-5
1	5	3NT E 4		430	-5
11	15	3NT E 4		430	-5

9

♠ K74
♥ KJ9732
♦ K
♣ AKQ

♠ 103
♥ 654
♦ QJ963
♣ 983

♠ AQ
♥ AQ8
♦ 8742
♣ J762

♠ J98652
♥ 10
♦ A105
♣ 1054

Board (9) Av: NS=+430

N-S	E-W	Contract	N-S	E-W	IMP
18	12	4S S 5	450		1
3	4	4S S 5	450		1
1	5	4S S 5	450		1
13	14	4S S 4	420		0
17	20	4S S 4	420		0
11	15	4S S 4	420		0
7	10	4S S 4	420		0
8	2	4S S 4	420		0
19	16	4S S 4	420		0
9	6	4S N 4	420		0

第18回NRM杯 Session 2 Section A 2014年6月29日(土)

10

♠ QJ965
♥ A83
♦ KJ1082
♣ AK973

♠ AQ3
♥ K73
♦ K5
♣ AQ973

N
W — E
S

♠ J1087642
♥ A1042
♦ 4
♣ 4

♠ K95
♥ 8
♦ QJ109762
♣ 65

11

♠ A84
♥ J4
♦ KJ76
♣ K854

♠ 972
♥ A1075
♦ Q54
♣ Q107

N
W — E
S

♠ KQ653
♥ 862
♦ 98
♣ J62

♠ J10
♥ KQ93
♦ A1032
♣ A93

12

♠ J95
♥ Q75
♦ J865
♣ AK3

♠ AQ104
♥
♦ AK102
♣ Q10972

N
W — E
S

♠ K8
♥ J32
♦ 973
♣ J8654

♠ 7632
♥ AK109864
♦ Q4
♣

Board (10) Av: NS=-450

N-S	E-W	Contract	N-S	E-W	IMP
19	16	2Dx S 3	380		13
18	12	5S E-1	100		11
1	5	5Dx S-1		200	6
13	14	5Dx S-1		200	6
17	20	4S E 4	620		-5
11	15	4S E 4	620		-5
8	2	4S E 5	650		-5
3	4	4S E 5	650		-5
9	6	3NTxW 3	750		-7
7	10	6Dx S-3	800		-8

Board (11) Av: NS=+300

N-S	E-W	Contract	N-S	E-W	IMP
13	14	3NT S 4	430		4
17	20	3NT N 4	430		4
7	10	3NT N 4	430		4
9	6	3NT S 3	400		3
18	12	3NT S 3	400		3
8	2	3NT S 3	400		3
19	16	3NT N 3	400		3
1	5	3NT S-1		50	-8
11	15	3NT N-1		50	-8
3	4	3NT N-1		50	-8

Board (12) Av: NS=-280

N-S	E-W	Contract	N-S	E-W	IMP
11	15	5Cx W-2	300		11
3	4	3H S 3	140		9
13	14	6Cx W-1	100		9
7	10	4H S-1		100	5
8	2	5C W 5	400		-3
17	20	5C W 5	400		-3
19	16	5Hx S-2	500		-6
1	5	5Cx W 5	550		-7
18	12	5Cx W 5	550		-7
9	6	5Cx W 5	550		-7

13

♠ 643
♥ J32
♦ J765
♣ QJ10

♠ J952
♥ K1095
♦ 4
♣ AK95

N
W — E
S

♠ Q108
♥ 8
♦ AKQ932
♣ 863

♠ AK7
♥ AQ764
♦ 108
♣ 742

14

♠ Q7652
♥ 7
♦ 865
♣ 10532

♠ K104
♥ AKQ95
♦ A2
♣ AJ9

N
W — E
S

♠ J8
♥ J106432
♦ QJ1094
♣

♠ A93
♥ 8
♦ K73
♣ KQ8764

15

♠ AJ762
♥ A53
♦ A86
♣ J2

♠ 543
♥ 962
♦ 543
♣ K964

N
W — E
S

♠ KQ98
♥ K10
♦ KJ10
♣ Q1085

♠ 10
♥ QJ874
♦ Q972
♣ A73

Board (13) Av: NS=+120

N-S	E-W	Contract	N-S	E-W	IMP
18	13	3NT W-3	300		5
17	12	3NT W-3	300		5
1	6	3NT W-3	300		5
2	7	3NT W-3	300		5
14	19	3NT W-1	100		-1
10	5	3NT W-1	100		-1
20	15	2NT W-1	100		-1
4	9	3D E 3		110	-6
3	8	3D E 3		110	-6
16	11	2D E 3		110	-6

Board (14) Av: NS=-620

N-S	E-W	Contract	N-S	E-W	IMP
3	8	5H E 6	480		4
4	9	4H W 6	480		4
20	15	4H E 6	480		4
2	7	4H E 6	480		4
16	11	5H E 7	510		3
17	12	5H E 7	510		3
1	6	4H E 7	510		3
14	19	6H E 6	980		-8
10	5	6H E 7	1010		-9
18	13	6H E 7	1010		-9

Board (15) Av: NS=+280

N-S	E-W	Contract	N-S	E-W	IMP
2	7	1NTxE-4	800		11
3	8	4H N 4	620		8
4	9	4H N 4	620		8
16	11	1NTxE-2	300		1
14	19	1NT S 3	150		-4
20	15	1NT E-3	150		-4
17	12	1NT E-3	150		-4
1	6	3D N 3	110		-5
10	5	2D N 3	110		-5
18	13	1NT E-1	50		-6

16

♠ K1054
♥ 7
♦ AK103
♣ 7543

♠ A32
♥ 1054
♦ 872
♣ Q962

N
W — E
S

♠ Q987
♥ AJ963
♦ 96
♣ J8

♠ J6
♥ KQ82
♦ QJ54
♣ AK10

17

♠ Q53
♥ KQ9853
♦ KQ106
♣

♠ A
♥ 7642
♦ 8743
♣ A974

N
W — E
S

♠ K82
♥ 10
♦ AJ
♣ KQJ10852

♠ J109764
♥ AJ
♦ 952
♣ 63

18

♠ J1043
♥ 1093
♦ A76
♣ 432

♠ KQ76
♥ QJ4
♦ Q4
♣ AKQ5

N
W — E
S

♠ A92
♥ K8752
♦ KJ532
♣

♠ 85
♥ A6
♦ 1098
♣ J109876

Board (16) Av: NS=+230

N-S	E-W	Contract	N-S	E-W	IMP
4	9	5D N 5	400		5
14	19	3NT S 3	400		5
16	11	3NT S 3	400		5
20	15	3NT S 3	400		5
2	7	3NT S 3	400		5
3	8	3NT S 3	400		5
18	13	3NT S-1		50	-7
1	6	3NT S-1		50	-7
10	5	3NT S-1		50	-7
17	12	3NT S-1		50	-7

Board (17) Av: NS=-300

N-S	E-W	Contract	N-S	E-W	IMP
16	11	6C E-1	50		8
10	5	6C E-1	50		8
3	8	4H N-1		50	6
20	15	5C E 5	400		-3
17	12	5C E 5	400		-3
18	13	5C E 5	400		-3
4	9	5C E 5	400		-3
2	7	5C E 5	400		-3
14	19	5C E 5	400		-3
1	6	5C E 5	400		-3

Board (18) Av: NS=-200

N-S	E-W	Contract	N-S	E-W	IMP
20	15	6NT E-2	100		7
1	6	6H E-1	50		6
3	8	6H E-1	50		6
2	7	6H E-1	50		6
18	13	5S W-1	50		6
17	12	5H E 5		450	-6
4	9	5H E 5		450	-6
14	19	5H E 5		450	-6
10	5	4H E 5		450	-6
16	11	4H E 5		450	-6

第18回NRM杯 Session 2 Section A 2013年6月29日(土)

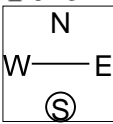
19

♠AJ103
♥K64
♦976
♣973

♠9854
♥7
♦AJ4
♣AQJ86

♠KQ76
♥109852
♦Q85
♣5

♠2
♥AQJ3
♦K1032
♣K1042



♠9854
♥7
♦AJ4
♣AQJ86

Board (19) Av: NS=-610

N-S	E-W	Contract	N-S	E-W	IMP
1	3	3NT E-1	100		12
5	9	5C W 5	600		0
10	8	5C E 5	600		0
2	4	5C E 5	600		0
6	7	3NT W 3	600		0
14	12	5C W 6	620		0
18	20	3NT W 4	630		-1
19	15	3NT W 4	630		-1
13	11	3NT W 4	630		-1
16	17	3NT W 4	630		-1

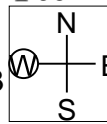
20

♠A8542
♥KJ962
♦8
♣J9

♠10
♥A10875
♦Q10
♣AK872

♠Q93
♥4
♦AJ762
♣10543

♠KJ76
♥Q3
♦K9543
♣Q6



♠10
♥A10875
♦Q10
♣AK872

Board (20) Av: NS=-20

N-S	E-W	Contract	N-S	E-W	IMP
18	20	3NT W-2	200		6
10	8	3NT W-1	100		3
13	11	3NT W-1	100		3
16	17	3NT W-1	100		3
2	4	3NT W-1	100		3
1	3	3NT W-1	100		3
6	7	3H E-1	100		3
19	15	3H E 3	140		-3
5	9	3NT W 3	600		-11
14	12	3NTxW 3	750		-12

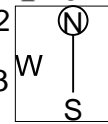
21

♠K63
♥K32
♦Q972
♣A52

♠A87
♥10976
♦J65
♣K107

♠104
♥QJ85
♦K8
♣Q8643

♠QJ952
♥A4
♦A1043
♣J9



♠A87
♥10976
♦J65
♣K107

Board (21) Av: NS=-110

N-S	E-W	Contract	N-S	E-W	IMP
18	20	2D E-2	100		5
16	17	2S W-1	50		4
14	12	2S W-1	50		4
10	8	2S W 2	110		0
2	4	2S W 2	110		0
6	7	2S W 2	110		0
5	9	2S W 3	140		-1
1	3	2S W 3	140		-1
19	15	3NT N-4	400		-7
13	11	3H S-4	400		-7

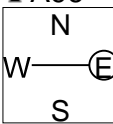
22

♠K9
♥AK105
♦9632
♣A96

♠AJ1065
♥J92
♦J754
♣J

♠Q72
♥876
♦Q
♣Q108743

♠843
♥Q43
♦AK108
♣K52



♠AJ1065
♥J92
♦J754
♣J

Board (22) Av: NS=-100

N-S	E-W	Contract	N-S	E-W	IMP
19	15	3S E-2	200		7
13	11	3D W-1	100		5
14	12	2S E 2	110		0
18	20	2S E 2	110		0
6	7	3S E 3	140		-1
16	17	3S E 3	140		-1
1	3	2S E 3	140		-1
5	9	2S E 3	140		-1
10	8	2S E 3	140		-1
2	4	4Hx N-2	300		-5

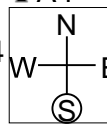
23

♠J73
♥Q983
♦K1063
♣A4

♠AQ10
♥A7
♦AJ97
♣J732

♠864
♥652
♦Q
♣KQ10986

♠K952
♥KJ104
♦8542
♣5



♠AQ10
♥A7
♦AJ97
♣J732

Board (23) Av: NS=-200

N-S	E-W	Contract	N-S	E-W	IMP
14	12	3NT E-1	100		7
6	7	2D E 3	110		3
19	15	2D E 3	110		3
1	3	2D E 3	110		3
18	20	1NT E 2	120		2
10	8	2D E 4	130		2
13	11	1NT E 3	150		2
2	4	3C N-3	300		-3
5	9	3NT E 3	600		-9
16	17	3NTxE 3	750		-11

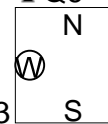
24

♠J76
♥A7654
♦K96
♣Q6

♠K84
♥KQJ109
♦AJ10
♣102

♠A1032
♥8
♦8542
♣AKJ4

♠Q95
♥32
♦Q73
♣98753



♠K84
♥KQJ109
♦AJ10
♣102

Board (24) Av: NS=-60

N-S	E-W	Contract	N-S	E-W	IMP
2	4	1NT N 1	90		4
14	12	1NT N 1	90		4
1	3	1NT N-1	50		0
6	7	1NT N-1	50		0
16	17	1NT N-1	50		0
10	8	2NT N-2	100		-1
5	9	2H N-2	100		-1
19	15	1H E 2	110		-2
18	20	1NT E 2	120		-2
13	11	1NT E 3	150		-3

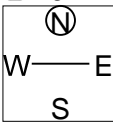
25

♠K862
♥KJ97
♦Q9
♣AJ7

♠J103
♥843
♦875
♣10942

♠5
♥Q1065
♦J643
♣K863

♠AQ974
♥A2
♦AK102
♣Q5



♠J103
♥843
♦875
♣10942

Board (25) Av: NS=-20

N-S	E-W	Contract	N-S	E-W	IMP
3	7	3H S 3	140		4
20	16	3H S 3	140		4
13	17	3S W-1	100		3
8	9	2NT W-1	100		3
12	15	3H S-1	50		-1
1	4	2S W 2	110		-3
18	19	2S W 2	110		-3
14	11	2S W 2	110		-3
5	2	2S W 2	110		-3
10	6	2S W 2	110		-3

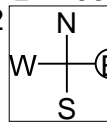
26

♠J985
♥K653
♦A3
♣A103

♠Q43
♥Q9874
♦Q7
♣987

♠A7
♥A10
♦J10642
♣KJ64

♠K1062
♥J2
♦K985
♣Q52



♠Q43
♥Q9874
♦Q7
♣987

Board (26) Av: NS=+340

N-S	E-W	Contract	N-S	E-W	IMP
1	4	3NT S 5	660		8
12	15	3NT N 4	630		7
14	11	3NT S 3	600		6
5	2	3NT N 3	600		6
13	17	3NT N 3	600		6
18	19	3NT N 3	600		6
10	6	3NT S-1	100		-10
3	7	3NT N-1	100		-10
8	9	3NT N-1	100		-10
20	16	3NT N-2	200		-11

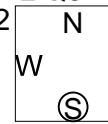
27

♠QJ7
♥AKQJ1073
♦5
♣Q8

♠A53
♥82
♦AKQ103
♣KJ3

♠98
♥95
♦J862
♣A9654

♠K10642
♥64
♦974
♣1072



♠A53
♥82
♦AKQ103
♣KJ3

Board (27) Av: NS=+90

N-S	E-W	Contract	N-S	E-W	IMP
20	16	4Hx N 4	590		11
3	7	4H N 4	420		8
12	15	5D E-2	100		0
1	4	4D E-2	100		0
18	19	4S W-1	50		-1
14	11	4S W-1	50		-1
10	6	4S W-1	50		-1
5	2	4S W-1	50		-1
8	9	3S W 3	140		-6
13	17	2S W 4	170		-6

第18回NRM杯 Session 2 Section A 2013年6月29日(土)

28

♠ A6542
♥ KQJ97
♦
♣ 973

♠ J8 ♠ 107
♥ 632 ♥ 108
♦ AJ75 ♠ 108643
♣ A542 ♠ J106

♠ KQ93
♥ A54
♦ Q92
♣ KQ8

29

♠ K94
♥ A10
♦ Q8754
♣ K94

♠ J76 ♠ 10853
♥ J432 ♥ Q86
♦ K10 ♠ J2
♣ QJ75 ♠ A863

♠ AQ2
♥ K975
♦ A963
♣ 102

30

♠ AJ8
♥ KJ2
♦ 52
♣ QJ973

♠ K63 ♠ Q5
♥ A1075 ♥ Q43
♦ QJ76 ♠ K9843
♣ 64 ♠ AK10

♠ 109742
♥ 986
♦ A10
♣ 852

Board (28) Av: NS=+1150

N-S	E-W	Contract	N-S	E-W	IMP
18	19	6Sx	N 6	1660	11
13	17	6S	S 6	1430	7
14	11	6S	N 6	1430	7
3	7	6S	N 6	1430	7
8	9	6S	N 6	1430	7
5	2	6S	N 6	1430	7
1	4	4S	S 6	680	-10
20	16	4S	N 6	680	-10
10	6	4S	N 6	680	-10
12	15	4S	N 6	680	-10

Board (29) Av: NS=+610

N-S	E-W	Contract	N-S	E-W	IMP
12	15	3NT	N 4	630	1
14	11	3NT	N 4	630	1
5	2	3NT	N 4	630	1
3	7	3NT	N 4	630	1
20	16	3NT	N 3	600	0
13	17	3NT	N 3	600	0
1	4	3NT	N 3	600	0
8	9	3NT	N 3	600	0
10	6	3NT	N 3	600	0
18	19	5D	N-1	100	-12

Board (30) Av: NS=-280

N-S	E-W	Contract	N-S	E-W	IMP
10	6	3D	E 4	130	4
1	4	2D	E 4	130	4
12	15	2D	E 4	130	4
13	17	1NT	E 3	150	4
8	9	2NT	E 5	210	2
18	19	3NT	E 3	400	-3
5	2	3NT	E 3	400	-3
14	11	3NT	E 3	400	-3
3	7	3NT	E 4	430	-4
20	16	3NT	E 5	460	-5

第18回NRM杯 Session 3 Section A 2014年6月30日(日)

1

♠ QJ10972
♥ A3
♦ K95
♣ QJ

♠ A84
♥ J987
♦ QJ72
♣ K6

♠ K3
♥ KQ542
♦ A83
♣ 952

Board (1) Av: NS=+420

N-S	E-W	Contract	N-S	E-W	IMP
9	17	4S N 4	420		0
8	20	4S N 4	420		0
10	19	4S N 4	420		0
16	6	4S N 4	420		0
12	4	4S N 4	420		0
1	11	4S N 4	420		0
2	13	4S N 4	420		0
7	18	4S N 4	420		0
5	14	4S N 4	420		0
3	15	3NT S-3	150		-11

2

♠ KQ83
♥ 1087654
♦ Q9
♣ 3

♠ A765
♥ A93
♦ AJ10
♣ AKJ

♠ 9
♥ QJ
♦ K876532
♣ 854

Board (2) Av: NS=-440

N-S	E-W	Contract	N-S	E-W	IMP
2	13	4NT E-1	50		10
5	14	4S W 4	420		1
9	17	4S W 4	420		1
7	18	4S W 4	420		1
3	15	4S W 4	420		1
12	4	4S W 5	450		0
10	19	4S W 5	450		0
16	6	4S W 5	450		0
8	20	3NT W 5	460		-1
1	11	3NT W 6	490		-2

3

♠ K104
♥ K632
♦ K96
♣ QJ4

♠ AJ63
♥ 74
♦ 87
♣ AK1085

♠ Q9752
♥ AQ1095
♦ QJ3
♣

Board (3) Av: NS=+340

N-S	E-W	Contract	N-S	E-W	IMP
2	13	4S S 5	450		3
12	4	4S S 5	450		3
8	20	4H S 5	450		3
3	15	4H S 5	450		3
10	19	4S S 4	420		2
9	17	4S S 4	420		2
7	18	4H S 4	420		2
5	14	5Cx E-1	200		-4
16	6	6H S-2	100		-10
1	11	4S S-3	150		-10

4

♠ Q873
♥ 1095
♦ 52
♣ J643

♠ K4
♥ Q72
♦ QJ9843
♣ Q10

♠ J6
♥ K643
♦ 10
♣ AK8752

♠ A10952
♥ AJ8
♦ AK76
♣ 9

Board (4) Av: NS=+300

N-S	E-W	Contract	N-S	E-W	IMP
2	13	3NTxW-4	1100		13
16	6	3NTxW-4	1100		13
9	17	4S S 4	620		8
5	14	3S S 4	170		-4
12	4	3S S 4	170		-4
8	20	3S N 4	170		-4
10	19	3S S 3	140		-4
1	11	3S S 3	140		-4
3	15	4S S-1	100		-9
7	18	3D W 3	110		-9

5

♠ J95
♥ 10
♦ 875
♣ K98753

♠ K
♥ AKQ7
♦ Q432
♣ QJ64

♠ AQ10742
♥ 8543
♦ K
♣ A10

♠ 863
♥ J962
♦ AJ1096
♣ 2

Board (5) Av: NS=-450

N-S	E-W	Contract	N-S	E-W	IMP
16	6	7H E-2	100		11
1	11	4H E 5	450		0
8	20	4H E 5	450		0
12	4	4H E 5	450		0
2	13	4H E 5	450		0
3	15	4H E 5	450		0
5	14	4NT W 5	460		0
10	19	3NT W 5	460		0
9	17	3NT W 5	460		0
7	18	4S E 6	480		-1

6

♠ J106
♥ Q96
♦ 52
♣ AK962

♠ 75
♥ 8754
♦ A106
♣ Q1084

♠ Q942
♥ KJ10
♦ K94
♣ 753

♠ AK83
♥ A32
♦ QJ873
♣ J

Board (6) Av: NS=+250

N-S	E-W	Contract	N-S	E-W	IMP
5	14	3NT N 4	430		5
3	15	3NT N 4	430		5
2	13	3NT S 3	400		4
7	18	3NT N 3	400		4
9	17	1NT N 4	180		-2
8	20	1NT N 4	180		-2
16	6	1NT N 4	180		-2
1	11	1NT N 2	120		-4
10	19	1NT N 2	120		-4
12	4	3NT N-1	50		-7

7

♠ K762
♥ QJ52
♦ 85
♣ AJ5

♠ A43
♥ A9743
♦ 10
♣ K743

♠ J95
♥ K8
♦ KJ9742
♣ 108

♠ Q108
♥ 106
♦ AQ63
♣ Q962

Board (7) Av: NS=+200

N-S	E-W	Contract	N-S	E-W	IMP
9	16	2H W-4	400		5
6	20	2H W-4	400		5
8	19	2H W-3	300		3
3	14	2H W-2	200		0
12	2	2D E-2	200		0
17	7	2D E-2	200		0
13	5	2D E-1	100		-3
4	11	2D E-1	100		-3
18	10	2D E-1	100		-3
1	15	3C N-1	100		-7

8

♠ 1086
♥ KJ62
♦ AJ73
♣ 95

♠ AK43
♥ AQ43
♦ 96
♣ K62

♠ 972
♥ 109
♦ Q10842
♣ A83

♠ QJ5
♥ 875
♦ K5
♣ QJ1074

Board (8) Av: NS=-80

N-S	E-W	Contract	N-S	E-W	IMP
18	10	1NT W-1	50		4
1	15	1NT W-1	50		4
12	2	1NT W 1	90		0
8	19	1NT W 1	90		0
9	16	1NT W 1	90		0
4	11	1NT W 1	90		0
6	20	1NT W 1	90		0
17	7	1NT W 2	120		-1
3	14	1NT W 2	120		-1
13	5	1NT W 3	150		-2

9

♠ 10753
♥ A1073
♦ Q76
♣ K2

♠ KJ
♥ 952
♦ AK42
♣ AQ96

♠ A9642
♥ KJ
♦ 1085
♣ J83

♠ Q8
♥ Q864
♦ J93
♣ 10754

Board (9) Av: NS=+90

N-S	E-W	Contract	N-S	E-W	IMP
12	2	3NT W-3	300		5
13	5	3NT W-3	300		5
17	7	3NT W-3	300		5
18	10	3NT W-2	200		3
1	15	3NT W-2	200		3
3	14	3NT W-1	100		0
4	11	3NT W-1	100		0
9	16	3NT W-1	100		0
8	19	3NT W 3	600		-12
6	20	3NT W 3	600		-12

10

♠ K94
♥ 84
♦ A10743
♣ KQ6

♠ A1085
♥ 3
♦ 8652
♣ AJ98

N
W — E
S

♠ Q32
♥ K97652
♦ 9
♣ 754

♠ J76
♥ AQJ10
♦ KQJ
♣ 1032

11

♠ Q108
♥ Q643
♦ 98
♣ AJ82

♠ AK92
♥ K1075
♦ AJ
♣ 1076

N
W — E
S

♠ J5
♥ J98
♦ K7642
♣ K93

♠ 7643
♥ A2
♦ Q1053
♣ Q54

12

♠ A76
♥ 73
♦ 1063
♣ A10875

♠ K1052
♥ A109
♦ Q75
♣ KJ3

N
W — E
S

♠ Q98
♥ KJ62
♦ KJ9
♣ Q42

♠ J43
♥ Q854
♦ A842
♣ 96

Board (10) Av: NS=+620

N-S	E-W	Contract	N-S	E-W	IMP
18	10	2Hx E-3	800		5
6	20	3NT S 5	660		1
12	2	3NT S 4	630		0
1	15	3NT S 4	630		0
13	5	3NT S 4	630		0
8	19	3NT S 4	630		0
17	7	3NT S 3	600		-1
3	14	3NT S 3	600		-1
9	16	3NT S 3	600		-1
4	11	3NT S 3	600		-1

Board (11) Av: NS=-80

N-S	E-W	Contract	N-S	E-W	IMP
9	16	4S W-3	150		6
8	19	4H W-1	50		4
6	20	2NT W-1	50		4
4	11	1NT W 1		90	0
13	5	2NT W 2		120	-1
3	14	2NT W 2		120	-1
1	15	2NT W 2		120	-1
12	2	1NT W 2		120	-1
18	10	2NT W 3		150	-2
17	7	1NT E 3		150	-2

Board (12) Av: NS=-290

N-S	E-W	Contract	N-S	E-W	IMP
8	19	3NT W-2	100		9
6	20	2NT W-2	100		9
1	15	3NT E-1	50		8
13	5	3NT E 3		400	-3
17	7	3NT E 3		400	-3
9	16	3NT E 3		400	-3
12	2	3NT E 3		400	-3
3	14	3NT E 3		400	-3
18	10	3NT E 4		430	-4
4	11	3NT E 4		430	-4

13

♠ J
♥ 94
♦ QJ109742
♣ K98

♠ A865
♥
♦ A863
♣ A6542

N
W — E
S

♠ 742
♥ AKQ1082
♦ K
♣ Q107

♠ KQ1093
♥ J7653
♦ 5
♣ J3

14

♠ 1064
♥ A73
♦ K4
♣ KQJ107

♠ KJ85
♥ 65
♦ Q86532
♣ 3

N
W — E
S

♠ 97
♥ K1094
♦ A9
♣ 96542

♠ AQ32
♥ QJ82
♦ J107
♣ A8

15

♠ 10754
♥ A63
♦ 104
♣ 9532

♠ J982
♥ 94
♦ K872
♣ 1064

N
W — E
S

♠ AK6
♥ KQ8752
♦ QJ3
♣ 8

♠ Q3
♥ J10
♦ A965
♣ AKQJ7

Board (13) Av: NS=-420

N-S	E-W	Contract	N-S	E-W	IMP
8	18	5C W-3	300		12
2	11	3NT W-2	200		12
7	16	3NT W-2	200		12
20	9	3NT W 3		600	-5
4	15	3NT W 3		600	-5
17	10	3NT W 4		630	-5
19	6	3NT W 4		630	-5
13	3	3NT W 4		630	-5
1	14	3NT W 4		630	-5
5	12	3NT E 4		630	-5

Board (14) Av: NS=+430

N-S	E-W	Contract	N-S	E-W	IMP
1	14	3NT S 5	460		1
17	10	3NT S 4	430		0
13	3	3NT S 4	430		0
20	9	3NT S 4	430		0
19	6	3NT S 4	430		0
8	18	3NT S 4	430		0
4	15	3NT S 4	430		0
5	12	3NT S 4	430		0
7	16	3NT S 4	430		0
2	11	3NT S 3	400		-1

Board (15) Av: NS=-90

N-S	E-W	Contract	N-S	E-W	IMP
19	6	3C S 3	110		5
2	11	3C S 3	110		5
1	14	3C S 3	110		5
5	12	4C S-1		100	0
20	9	2H E 3		140	-2
4	15	2H E 3		140	-2
17	10	3H E 4		170	-2
13	3	3H E 4		170	-2
7	16	4C S-2		200	-3
8	18	4C S-2		200	-3

16

♠ A872
♥ Q87
♦ 10865
♣ 98

♠ KJ53
♥ J109
♦ K94
♣ 1063

N
W — E
S

♠ 96
♥ 654
♦ J3
♣ AKQ742

♠ Q104
♥ AK32
♦ AQ72
♣ J5

17

♠ 852
♥ QJ654
♦ 65
♣ AK4

♠ KQ64
♥ A92
♦ A943
♣ 83

N
W — E
S

♠ 1073
♥ K1073
♦ QJ8
♣ Q97

♠ AJ9
♥ 8
♦ K1072
♣ J10652

18

♠ K3
♥ 10982
♦ J5
♣ K10763

♠ AJ1084
♥ AQJ5
♦ A2
♣ 84

N
W — E
S

♠ Q97
♥ 7643
♦ 10743
♣ 92

♠ 652
♥ K
♦ KQ986
♣ AQJ5

Board (16) Av: NS=-10

N-S	E-W	Contract	N-S	E-W	IMP
2	11	1NT S 5	210		6
5	12	1NT S 3	150		4
4	15	2C W-1	100		3
20	9	3S N-1		50	-1
7	16	3S N-1		50	-1
1	14	3D N-1		50	-1
13	3	3D N-1		50	-1
8	18	1NT S-1		50	-1
19	6	2C E 2		90	-2
17	10	5D N-3		150	-4

Board (17) Av: NS=-70

N-S	E-W	Contract	N-S	E-W	IMP
17	10	1NT E-2	100		5
4	15	1NT E-1	50		3
2	11	3C S-1		50	1
20	9	1NT W 1		90	-1
1	14	1NT E 1		90	-1
19	6	1NT E 1		90	-1
13	3	1NT E 1		90	-1
5	12	1NT E 1		90	-1
7	16	1NT E 1		90	-1
8	18	1NT E 1		90	-1

Board (18) Av: NS=+110

N-S	E-W	Contract	N-S	E-W	IMP
1	14	3C S 5	150		1
5	12	4C S 4	130		1
7	16	4C S 4	130		1
13	3	3C S 4	130		1
19	6	3C S 4	130		1
4	15	3C S 4	130		1
8	18	3H W-2	100		0
20	9	3S W-1	50		-2
17	10	3S W-1	50		-2
2	11	2H E-1	50		-2

19

♠KQ1086
♥Q3
♦94
♣K742

♠73 ♠AJ942
♥J109865 ♥742
♦1062 ♦AK
♣J6 ♣A85

N
W—E
S

♠5
♥AK
♦QJ8753
♣Q1093

20

♠6
♥KQ10875
♦KJ842
♣K

♠AKJ93 ♠Q10
♥43 ♥AJ92
♦53 ♦106
♣AQ32 ♣107654

N
W—E
S

♠87542
♥6
♦AQ97
♣J98

21

♠K985
♥10
♦AQ
♣AQ10653

♠AQ2 ♠74
♥K63 ♥AQJ92
♦J432 ♦K976
♣K87 ♣42

N
W—E
S

♠J1063
♥8754
♦1085
♣J9

Board (19) Av: NS=0

N-S	E-W	Contract	N-S	E-W	IMP
9	19	4Hx W-2	500		11
1	13	3C S 3	110		3
18	6	3C S 3	110		3
2	15	2D S 3	110		3
12	3	3C S-1	50		-2
20	7	3C S-1	50		-2
11	5	2NT N-1	50		-2
8	17	3NT N-2	100		-3
10	16	3C S-2	100		-3
4	14	3NT S-4	200		-5

Board (20) Av: NS=+20

N-S	E-W	Contract	N-S	E-W	IMP
9	19	4D N 4	130		3
18	6	3D S 4	130		3
1	13	3D N 4	130		3
8	17	3D N 4	130		3
4	14	3D N 4	130		3
2	15	2H N 2	110		3
11	5	4D N-1	100		-3
10	16	3S W 4	170		-5
12	3	2Hx N-1	200		-6
20	7	5Dx N-2	500		-11

Board (21) Av: NS=-90

N-S	E-W	Contract	N-S	E-W	IMP
12	3	2S N 2	110		5
9	19	4H E-2	100		5
10	16	3NT W-2	100		5
20	7	4H E-1	50		4
8	17	4H E-1	50		4
18	6	3H E 3	140		-2
2	15	3S S-2	200		-3
1	13	2NT W 5	210		-3
11	5	4NT W 4	430		-8
4	14	4Sx N-3	800		-12

22

♠865
♥1054
♦A7
♣QJ1042

♠K4 ♠A103
♥QJ2 ♥K9873
♦J108 ♦K32
♣AK965 ♣87

N
W—E
S

♠QJ972
♥A6
♦Q9654
♣3

23

♠AQ82
♥974
♦J75
♣753

♠K3 ♠J754
♥10852 ♥J3
♦9842 ♦A63
♣864 ♣KQJ9

N
W—E
S

♠1096
♥AKQ6
♦KQ10
♣A102

24

♠10872
♥76
♦K643
♣J103

♠K ♠AQ9643
♥AQ954 ♥J1083
♦A87 ♦
♣Q987 ♣542

N
W—E
S

♠J5
♥K2
♦QJ10952
♣AK6

Board (22) Av: NS=-230

N-S	E-W	Contract	N-S	E-W	IMP
20	7	4H E-2	200		10
1	13	4H W-1	100		8
10	16	3Sx N-1	100		4
9	19	3S S-2	100		4
18	6	3H E 4	170		2
4	14	2H E 4	170		2
2	15	2H E 4	170		2
11	5	4H W 4	620		-9
8	17	4H W 4	620		-9
12	3	4H W 4	620		-9

Board (23) Av: NS=+50

N-S	E-W	Contract	N-S	E-W	IMP
10	16	3NT S 3	600		11
12	3	3NT S 3	600		11
1	13	1NT S 3	150		3
20	7	1NT S 2	120		2
2	15	3NT S-1	100		-4
18	6	3NT S-1	100		-4
9	19	3NT S-1	100		-4
8	17	3NT S-1	100		-4
4	14	3NT S-1	100		-4
11	5	3NT S-1	100		-4

Board (24) Av: NS=-440

N-S	E-W	Contract	N-S	E-W	IMP
20	7	4H W 4	420		1
12	3	4H W 4	420		1
4	14	4H W 4	420		1
9	19	4H W 4	420		1
1	13	5H W 5	450		0
8	17	5H W 5	450		0
18	6	4H W 5	450		0
11	5	4H W 5	450		0
2	15	4H W 5	450		0
10	16	4H W 5	450		0

25

♠J108
♥J92
♦86
♣J10642

♠K54 ♠Q6
♥Q643 ♥K108
♦Q109 ♦AK743
♣987 ♣K53

N
W—E
S

♠A9732
♥A75
♦J52
♣AQ

26

♠AJ542
♥KQ953
♦J7
♣2

♠1063 ♠98
♥A8 ♥64
♦10543 ♦AKQ9
♣10643 ♣AQJ87

N
W—E
S

♠KQ7
♥J1072
♦862
♣K95

27

♠K3
♥6542
♦53
♣AQ765

♠109 ♠AQ874
♥AQJ7 ♥K108
♦QJ942 ♦K6
♣83 ♣K104

N
W—E
S

♠J652
♥93
♦A1087
♣J92

Board (25) Av: NS=-90

N-S	E-W	Contract	N-S	E-W	IMP
14	2	2S S 4	170		6
19	7	2S S 2	110		5
10	20	3S S-1	50		1
1	12	1NT E 2	120		-1
16	8	1NT E 2	120		-1
11	3	1NT E 2	120		-1
13	4	1NT E 2	120		-1
15	5	2S S-3	150		-2
9	18	1NT E 3	150		-2
17	6	1NT E 3	150		-2

Board (26) Av: NS=+100

N-S	E-W	Contract	N-S	E-W	IMP
9	18	5Cx E-2	500		9
13	4	5Cx E-2	500		9
17	6	3H S 4	170		2
19	7	3H S 3	140		1
10	20	3H S 3	140		1
11	3	3H S 3	140		1
14	2	4H S-1	100		-5
16	8	4H N-1	100		-5
15	5	3D W 3	110		-5
1	12	3C E 3	110		-5

Board (27) Av: NS=-270

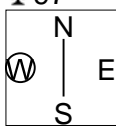
N-S	E-W	Contract	N-S	E-W	IMP
14	2	3NT W-2	100		9
1	12	3NT W-1	50		8
19	7	2Cx N-1	100		5
15	5	2S E 3	140		4
16	8	2S E 4	170		3
11	3	4H W 4	420		-4
10	20	3NT E 4	430		-4
17	6	3NT E 5	460		-5
13	4	3NT E 5	460		-5
9	18	2Hx N-6	1400		-15

第18回NRM杯 Session 3 Section A 2013年6月30日(日)

28

♠ AQJ65
 ♥ Q76542
 ♦ 97

♠ Q974
 ♥ 109732
 ♦ A
 ♣ AK2



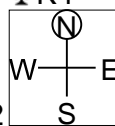
♠ KJ52
 ♥ 10983
 ♣ QJ1043

♠ A10863
 ♥ K84
 ♦ KJ
 ♣ 865

29

♠ A84
 ♥ 104
 ♦ QJ8643
 ♣ K4

♠ J65
 ♥ KQ95
 ♦ K
 ♣ J10982



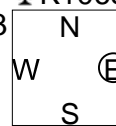
♠ Q1092
 ♥ AJ76
 ♦ 1075
 ♣ A5

♠ K73
 ♥ 832
 ♦ A92
 ♣ Q763

30

♠ 8753
 ♥ AK8
 ♣ K106542

♠ AJ953
 ♥ QJ
 ♦ 7632
 ♣ A8



♠ K106
 ♥ K10962
 ♦ QJ109
 ♣ J

♠ Q8742
 ♥ A4
 ♦ 54
 ♣ Q973

Board (28) Av: NS=-140

N-S	E-W	Contract	N-S	E-W	IMP
10	20	3D N 3	110		6
19	7	4Sx W-1	100		6
13	4	3S W 3	140		0
9	18	3S E 3	140		0
15	5	2S E 3	140		0
11	3	3S W 4	170		-1
17	6	2S E 5	200		-2
1	12	2S E 5	200		-2
16	8	2S E 5	200		-2
14	2	4S E 4	420		-7

Board (29) Av: NS=-80

N-S	E-W	Contract	N-S	E-W	IMP
13	4	Passout			2
16	8	Passout			2
19	7	Passout			2
1	12	Passout			2
11	3	3D N-1	100		-1
9	18	3D N-1	100		-1
15	5	3H W 3	140		-2
14	2	2H W 3	140		-2
10	20	2H W 3	140		-2
17	6	2H W 4	170		-3

Board (30) Av: NS=+20

N-S	E-W	Contract	N-S	E-W	IMP
16	8	4Sx W-2	300		7
9	18	3C N 5	150		4
11	3	4C N 4	130		3
13	4	4Sx W-1	100		2
1	12	4S W-2	100		2
19	7	4S W-1	50		1
17	6	2S W 2	110		-4
15	5	3S W 3	140		-4
14	2	1S S-3	150		-5
10	20	3NTxS-4	800		-13

第18回NRM杯 Session4 Section A 2014年6月30日(日)

1

♠ QJ76
♥ Q9643
♦ Q
♣ 653

♠ AK82 ♠ 93
♥ KJ7 ♥ A108
♦ KJ6 ♦ 98743
♣ AQ4 ♣ J98

♠ 1054
♥ 52
♦ A1052
♣ K1072

Board (1) Av: NS=-300

N-S	E-W	Contract	N-S	E-W	IMP
1	16	3NT W-2	100		9
6	11	3NT W-1	50		8
10	14	3NT W-1	50		8
12	9	3NT W 3		400	-3
18	2	3NT W 3		400	-3
13	7	3NT W 3		400	-3
3	20	3NT W 3		400	-3
19	5	3NT W 4		430	-4
4	17	3NT W 4		430	-4
15	8	3NT W 4		430	-4

2

♠ 863
♥ KQ9873
♦ K
♣ Q52

♠ J109 ♠ 54
♥ A6 ♥ 10542
♦ QJ86 ♦ A9
♣ AJ43 ♣ K10986

♠ AKQ72
♥ J
♦ 1075432
♣ 7

Board (2) Av: NS=-160

N-S	E-W	Contract	N-S	E-W	IMP
15	8	2S S 2	110		7
18	2	3S S-1		100	2
10	14	2H N-1		100	2
4	17	3C W 3		110	2
1	16	3C E 4		130	1
13	7	4S S-2		200	-1
19	5	4S S-2		200	-1
6	11	3S S-2		200	-1
3	20	3H N-2		200	-1
12	9	3D S-2		200	-1

3

♠ KJ1032
♥ AK3
♦ 2
♣ AKQ2

♠ 8654 ♠ Q
♥ Q7 ♥ J10652
♦ Q4 ♦ J87653
♣ 98643 ♣ 5

♠ A97
♥ 984
♦ AK109
♣ J107

Board (3) Av: NS=+1010

N-S	E-W	Contract	N-S	E-W	IMP
13	7	7S N 7	1510		11
12	9	6S N 7	1010		0
15	8	6S N 7	1010		0
19	5	6S N 7	1010		0
18	2	6S N 7	1010		0
1	16	6S N 7	1010		0
3	20	6S N 7	1010		0
10	14	6S N 7	1010		0
6	11	6S N 7	1010		0
4	17	6C N 7	940		-2

4

♠ 1062
♥ KJ10942
♦ 4
♣ 1032

♠ Q93 ♠ 84
♥ 53 ♥ A76
♦ KQ96 ♦ AJ10853
♣ 9854 ♣ K7

♠ AKJ75
♥ Q8
♦ 72
♣ AQJ6

Board (4) Av: NS=+520

N-S	E-W	Contract	N-S	E-W	IMP
4	17	5Dx E-3	800		7
1	16	5Dx E-3	800		7
19	5	4S S 4	620		3
18	2	4S S 4	620		3
3	20	4H N 4	620		3
10	14	4H N 4	620		3
12	9	5Dx E-2	500		-1
6	11	3S S 4	170		-8
15	8	3H N 4	170		-8
13	7	2NT E 2		120	-12

5

♠ K1054
♥ 106
♦ AK5
♣ AKJ3

♠ AJ62 ♠ 73
♥ AJ543 ♥ KQ98
♦ J8 ♦ 10643
♣ 54 ♣ 1097

♠ Q98
♥ 72
♦ Q972
♣ Q862

Board (5) Av: NS=+100

N-S	E-W	Contract	N-S	E-W	IMP
6	11	3C N 5	150		2
4	17	2S N 3	140		1
12	9	4C N 4	130		1
10	14	3C N 4	130		1
3	20	3C N 4	130		1
1	16	4H E-2		100	0
19	5	3H W-1		50	-2
18	2	3H E-1		50	-2
13	7	3H E-1		50	-2
15	8	3NT N-2		200	-7

6

♠ J5
♥ Q953
♦ A9
♣ K10542

♠ A84 ♠ KQ62
♥ AJ1064 ♥ K8
♦ Q6 ♦ J843
♣ Q87 ♣ A63

♠ 10973
♥ 72
♦ K10752
♣ J9

Board (6) Av: NS=-520

N-S	E-W	Contract	N-S	E-W	IMP
4	17	3NT E-1	100		12
13	7	3NT E-1	100		12
19	5	3NT W 3		600	-2
6	11	3NT W 3		600	-2
10	14	3NT W 3		600	-2
18	2	3NT E 3		600	-2
1	16	3NT E 3		600	-2
12	9	3NT E 3		600	-2
3	20	3NT E 4		630	-3
15	8	3NT E 4		630	-3

7

♠ AJ8732
♥ 102
♦ A6
♣ Q103

♠ 9 ♠ KQ1064
♥ KQ9743 ♥ J5
♦ Q98 ♦ J43
♣ AJ7 ♣ K64

♠ 5
♥ A86
♦ K10752
♣ 9852

Board (7) Av: NS=-260

N-S	E-W	Contract	N-S	E-W	IMP
8	14	1Sx N 1	160		9
12	7	3NT E-1	100		8
10	13	2H W 2		110	4
6	15	2H W 2		110	4
16	4	2NT E 2		120	4
17	2	1Sx N-1		200	2
1	20	2Sx N-2		500	-6
11	9	2Sx N-2		500	-6
19	3	3NT E 3		600	-8
5	18	3Dx S-4		1100	-13

8

♠ 4
♥ 742
♦ Q96542
♣ K98

♠ AKJ2 ♠ 10973
♥ J3 ♥ AQ1096
♦ AKJ8 ♦ 3
♣ A74 ♣ Q62

♠ Q865
♥ K85
♦ 107
♣ J1053

Board (8) Av: NS=-440

N-S	E-W	Contract	N-S	E-W	IMP
1	20	6S W-3	150		11
6	15	3NT W 3		400	1
5	18	4S E 4		420	1
17	2	4H W 4		420	1
12	7	3NT W 4		430	0
8	14	4S W 5		450	0
11	9	3NT W 5		460	-1
19	3	4S W 6		480	-1
10	13	4S W 6		480	-1
16	4	3NT W 6		490	-2

9

♠ 86
♥ AKQ6
♦ A76
♣ AQ32

♠ K42 ♠ AQJ73
♥ 10832 ♥ J954
♦ J85 ♦ 2
♣ 765 ♣ K108

♠ 1095
♥ 7
♦ KQ10943
♣ J94

Board (9) Av: NS=+220

N-S	E-W	Contract	N-S	E-W	IMP
11	9	3NT N 4	430		5
6	15	3NT N 4	430		5
1	20	5D S 5	400		5
8	14	4D S 5	150		-2
16	4	3D S 5	150		-2
12	7	3D S 5	150		-2
10	13	3D S 5	150		-2
5	18	3D N 5	150		-2
19	3	3C N 5	150		-2
17	2	2D S 5	150		-2

第18回NRM杯 Session 4 Section A 2014年6月30日(日)

10

♠ KJ108732
♥ 72
♦ J43
♣ 5

♠ 964
♥ A103
♦ AK52
♣ 1096

N
W — E
S

♠ 5
♥ J964
♦ Q76
♣ KQ832

♠ AQ
♥ KQ85
♦ 1098
♣ AJ74

11

♠ Q832
♥ 2
♦ Q7652
♣ 1065

♠ J1075
♥ Q654
♦ A103
♣ A7

N
W — E
S

♠ A6
♥ AK109
♦ K94
♣ J932

♠ K94
♥ J873
♦ J8
♣ KQ84

12

♠ 109
♥ K962
♦ QJ3
♣ A842

♠ J86
♥ 5
♦ AK1042
♣ Q976

N
W — E
S

♠ AKQ54
♥ 87
♦ 875
♣ KJ3

♠ 732
♥ AQJ1043
♦ 96
♣ 105

Board (10) Av: NS=-100

N-S	E-W	Contract	N-S	E-W	IMP
12	7 4S	S-1	100		0
11	9 4S	S-1	100		0
16	4 4S	S-1	100		0
19	3 4S	S-1	100		0
17	2 4S	S-1	100		0
5	18 4S	S-1	100		0
1	20 4S	S-1	100		0
6	15 4S	S-1	100		0
10	13 4S	S-1	100		0
8	14 4S	S-1	100		0

Board (11) Av: NS=-420

N-S	E-W	Contract	N-S	E-W	IMP
11	9 4H	W 4	420		0
12	7 4H	E 4	420		0
19	3 4H	E 4	420		0
17	2 4H	E 4	420		0
16	4 4H	E 4	420		0
5	18 4H	E 4	420		0
1	20 4H	E 4	420		0
6	15 4H	E 4	420		0
10	13 4H	E 4	420		0
8	14 4H	E 4	420		0

Board (12) Av: NS=-310

N-S	E-W	Contract	N-S	E-W	IMP
11	9 3NT	E-2	100		9
6	15 4S	E-1	50		8
1	20 3D	W 4		130	5
12	7 2S	E 5		200	3
8	14 4S	E 4		420	-3
16	4 4S	E 5		450	-4
19	3 4S	E 5		450	-4
5	18 4S	E 5		450	-4
10	13 4S	E 5		450	-4
17	2 4Sx	E 5		690	-9

13

♠ K10987
♥ 752
♦ 73
♣ A105

♠ AJ2
♥ AQJ8
♦ 984
♣ J92

N
W — E
S

♠ Q65
♥ 106
♦ AKJ65
♣ Q63

♠ 43
♥ K943
♦ Q102
♣ K874

14

♠ Q1082
♥ Q5
♦ AK107
♣ 953

♠ AK9
♥ K743
♦ 965
♣ K87

N
W — E
S

♠ 74
♥ A9862
♦ Q4
♣ AJ62

♠ J653
♥ J10
♦ J832
♣ Q104

15

♠ A53
♥ 764
♦ J9832
♣ A6

♠ K87
♥ 3
♦ Q105
♣ KQJ852

N
W — E
S

♠ J92
♥ AQ1092
♦ AK6
♣ 43

♠ Q1064
♥ KJ85
♦ 74
♣ 1097

Board (13) Av: NS=-600

N-S	E-W	Contract	N-S	E-W	IMP
5	17 3NT	W 3	600		0
1	19 3NT	W 3	600		0
16	2 3NT	E 3	600		0
13	8 3NT	E 3	600		0
20	4 3NT	E 3	600		0
18	3 3NT	E 3	600		0
7	11 3NT	E 3	600		0
6	14 3NT	E 3	600		0
10	12 3NT	E 3	600		0
9	15 3NT	E 3	600		0

Board (14) Av: NS=-420

N-S	E-W	Contract	N-S	E-W	IMP
9	15 3H	E 4	170		6
16	2 4H	E 4	420		0
13	8 4H	E 4	420		0
20	4 4H	E 4	420		0
18	3 4H	E 4	420		0
10	12 4H	E 4	420		0
6	14 4H	E 4	420		0
7	11 4H	E 4	420		0
1	19 4H	E 4	420		0
5	17 4H	E 5	450		-1

Board (15) Av: NS=-320

N-S	E-W	Contract	N-S	E-W	IMP
20	4 3NT	W-1	50		9
7	11 2D	E-1	50		9
10	12 3C	W 4		130	5
16	2 5C	W 5		400	-2
9	15 3NT	W 3		400	-2
5	17 3NT	W 3		400	-2
6	14 3NT	W 3		400	-2
1	19 3NT	E 4		430	-3
13	8 3NT	E 4		430	-3
18	3 3NT	W 5		460	-4

16

♠ Q62
♥ 3
♦ K105
♣ QJ10872

♠ K1054
♥ 874
♦ A872
♣ 65

N
W — E
S

♠ 987
♥ J2
♦ QJ963
♣ AK3

♠ AJ3
♥ AKQ10965
♦ 4
♣ 94

17

♠ QJ107
♥ 987
♦ AQ6
♣ J63

♠ AK62
♥ 103
♦ K87
♣ Q1084

N
W — E
S

♠ 853
♥ J2
♦ J1095
♣ AK75

♠ 94
♥ AKQ654
♦ 432
♣ 92

18

♠ QJ2
♥ AKJ94
♦ 63
♣ 1072

♠ AK6
♥ 862
♦ K98
♣ 9654

N
W — E
S

♠ 1074
♥ Q5
♦ AQJ7
♣ AQJ8

♠ 9853
♥ 1073
♦ 10542
♣ K3

Board (16) Av: NS=+190

N-S	E-W	Contract	N-S	E-W	IMP
13	8 4H	S 4	420		6
10	12 4H	S 4	420		6
6	14 4H	S 4	420		6
20	4 4H	S 4	420		6
5	17 4H	S 4	420		6
1	19 4H	S-1		50	-6
18	3 4H	S-1		50	-6
16	2 4H	S-1		50	-6
7	11 4H	S-1		50	-6
9	15 4H	S-1		50	-6

Board (17) Av: NS=+160

N-S	E-W	Contract	N-S	E-W	IMP
5	17 3Hx	S 3	530		9
1	19 3S	W-6	300		4
10	12 3H	S 3	140		-1
13	8 3H	S 3	140		-1
16	2 3H	S 3	140		-1
6	14 3H	S 3	140		-1
7	11 3H	S 3	140		-1
18	3 3H	S 3	140		-1
20	4 4D	E-2	100		-2
9	15 4H	S-1		50	-5

Board (18) Av: NS=-120

N-S	E-W	Contract	N-S	E-W	IMP
9	15 3NTx	E-1	100		6
1	19 3NT	E-2	100		6
10	12 3NT	E-2	100		6
6	14 3NT	E-2	100		6
18	3 3NT	E-1	50		5
20	4 1NT	W 2		120	0
7	11 3NT	E 3		400	-7
16	2 3NT	E 3		400	-7
5	17 3NT	E 3		400	-7
13	8 3NT	E 3		400	-7

19

♠A75
♥4
♦QJ102
♣AK1094

♠K9862
♥86
♦54
♣Q752

N
W—E
S

♠J1043
♥K9753
♦A93
♣8

♠Q
♥AQJ102
♦K876
♣J63

Board (19) Av: NS=+170

N-S	E-W	Contract	N-S	E-W	IMP
3	17	6D S 6	920		13
14	9	5D S 5	400		6
20	2	5D N 5	400		6
7	15	5C N 5	400		6
16	5	5C N 5	400		6
19	4	6D S-1	50		-6
11	10	6D S-1	50		-6
13	6	6D S-1	50		-6
1	18	6D S-2	100		-7
8	12	6D S-3	150		-8

20

♠Q2
♥104
♦853
♣AQ6542

♠J975
♥
♦J10742
♣K983

N
W—E
S

♠8643
♥AQ93
♦AQ
♣J107

♠AK10
♥KJ87652
♦K96
♣

Board (20) Av: NS=+170

N-S	E-W	Contract	N-S	E-W	IMP
14	9	4H S 4	620		10
16	5	4Sx E-2	500		8
11	10	3S E-3	300		4
13	6	3H S 4	170		0
3	17	3H S 4	170		0
8	12	3H S 3	140		-1
7	15	3H S 3	140		-1
20	2	2S W-1	100		-2
1	18	4Hx S-1	200		-9
19	4	4Hx S-2	500		-12

21

♠AQ32
♥AJ3
♦Q974
♣53

♠KJ954
♥K109
♦AJ
♣K76

N
W—E
S

♠108
♥8642
♦3
♣AQ10842

♠76
♥Q75
♦K108652
♣J9

Board (21) Av: NS=+20

N-S	E-W	Contract	N-S	E-W	IMP
3	17	4Sx W-2	300		7
7	15	3D N 4	130		3
8	12	4S W-2	100		2
19	4	4S W-1	50		1
1	18	4C E-1	50		1
13	6	3S W-1	50		1
16	5	3NT W-1	50		1
20	2	4C E 4	130		-4
11	10	3S W 3	140		-4
14	9	3NT W 4	430		-10

22

♠Q63
♥10753
♦Q743
♣Q5

♠K
♥K82
♦A1096
♣A10432

N
W—E
S

♠A108754
♥AQ6
♦J2
♣J7

♠J92
♥J94
♦K85
♣K986

Board (22) Av: NS=-640

N-S	E-W	Contract	N-S	E-W	IMP
3	17	3NT W 3	600		1
11	10	3NT W 3	600		1
1	18	3NT W 4	630		0
13	6	3NT W 4	630		0
19	4	3NT E 4	630		0
7	15	4S E 5	650		0
20	2	3NT W 5	660		-1
16	5	3NT W 5	660		-1
8	12	3NT W 5	660		-1
14	9	3NT W 5	660		-1

23

♠10952
♥94
♦AK9754
♣3

♠KJ76
♥10753
♦102
♣A82

N
W—E
S

♠AKQJ82
♥86
♦KJ1064

♠AQ843
♥6
♦QJ3
♣Q975

Board (23) Av: NS=-620

N-S	E-W	Contract	N-S	E-W	IMP
7	15	5S S-3	300		8
8	12	5Sx S-2	500		3
13	6	5Sx S-2	500		3
1	18	5H E 5	650		-1
14	9	5H E 5	650		-1
16	5	5H E 5	650		-1
11	10	4H E 5	650		-1
19	4	5H E 6	680		-2
3	17	5H E 6	680		-2
20	2	5Hx W 5	850		-6

24

♠2
♥J54
♦Q1065
♣K10642

♠J96
♥K1076
♦J84
♣853

N
W—E
S

♠KQ1043
♥Q983
♦K32
♣J

♠A875
♥A2
♦A97
♣AQ97

Board (24) Av: NS=+140

N-S	E-W	Contract	N-S	E-W	IMP
11	10	3NT S 3	400		6
13	6	1NT S 4	180		1
7	15	3C S 6	170		1
14	9	3C N 5	150		0
16	5	2S E-3	150		0
20	2	1NT S 3	150		0
1	18	1NT S 3	150		0
3	17	1NT S 2	120		-1
19	4	3S E-1	50		-3
8	12	2S E-1	50		-3

25

♠85
♥KQ105
♦AJ742
♣85

♠AK32
♥97
♦10986
♣AQ2

N
W—E
S

♠1094
♥863
♦K53
♣J643

♠QJ76
♥AJ42
♦Q
♣K1097

Board (25) Av: NS=+60

N-S	E-W	Contract	N-S	E-W	IMP
4	18	4H N 4	420		8
19	2	3H N 4	170		3
8	11	3H N 4	170		3
20	5	2H S 4	170		3
15	10	3H N 3	140		2
16	3	4H S-1	50		-3
6	12	4H S-1	50		-3
7	14	4H S-1	50		-3
1	17	4H N-1	50		-3
9	13	3H S-1	50		-3

26

♠743
♥A7
♦AKJ4
♣Q987

♠AQJ82
♥K10
♦10
♣AK643

N
W—E
S

♠1095
♥832
♦Q632
♣J52

♠K6
♥QJ9654
♦9875
♣10

Board (26) Av: NS=+120

N-S	E-W	Contract	N-S	E-W	IMP
20	5	4Sx E-3	800		12
1	17	4Sx W-2	500		9
19	2	4S E-3	300		5
9	13	4Sx W-1	200		2
7	14	4C W-2	200		2
8	11	3H S 4	170		2
4	18	1S W 2	110		-6
16	3	3S W 3	140		-6
6	12	1S W 3	140		-6
15	10	1S W 4	170		-7

27

♠Q864
♥854
♦2
♣A10876

♠5
♥K63
♦J109764
♣Q94

N
W—E
S

♠AJ9
♥AJ107
♦K83
♣KJ3

♠K10732
♥Q92
♦AQ5
♣52

Board (27) Av: NS=-10

N-S	E-W	Contract	N-S	E-W	IMP
19	2	4H E-2	100		3
7	14	3NT E-2	100		3
16	3	5D W-1	50		2
20	5	4D W-1	50		2
8	11	1NT E-1	50		2
4	18	3S S-1	50		-1
9	13	3S S-1	50		-1
15	10	3D W 3	110		-3
1	17	3D W 4	130		-3
6	12	3D W 4	130		-3

第18回NRM杯 Session 4 Section A 2013年6月30日(日)

28

♠ KQJ85
♥ A64
♦ 52
♣ K107

♠ 1062	N	♠ 43
♥ J92		♥ 85
♦ K974	W	♦ 10863
♣ J43	S	♣ A9865

♠ A97
♥ KQ1073
♦ AQJ
♣ Q2

29

♠ J8752
♥ 107
♦ 10
♣ KQJ93

♠ K64	N	♠ AQ93
♥ A92		♥ KQ64
♦ AKQ2	W	♦ J65
♣ 764	S	♣ A5

♠ 10
♥ J853
♦ 98743
♣ 1082

30

♠ 9753
♥ AK105
♦ K
♣ 9642

♠ AQ4	N	♠ 106
♥ Q973		♥ J864
♦ AQ83	W	♦ 1092
♣ K3	S	♣ AQJ7

♠ KJ82
♥ 2
♦ J7654
♣ 1085

Board (28) Av: NS=+1340

N-S	E-W	Contract	N-S	E-W	IMP
15	10	6S	N 6	1430	3
8	11	6S	N 6	1430	3
20	5	6S	N 6	1430	3
19	2	6S	N 6	1430	3
4	18	6S	N 6	1430	3
1	17	6S	N 6	1430	3
16	3	6H	S 6	1430	3
9	13	6H	N 6	1430	3
6	12	4H	S 6	680	-12
7	14	7NTxN-1		200	-17

Board (29) Av: NS=-970

N-S	E-W	Contract	N-S	E-W	IMP
7	14	4NT	E 5	660	7
19	2	4NT	E 6	690	7
9	13	4NT	E 6	690	7
4	18	4NT	E 6	690	7
20	5	3NT	E 6	690	7
8	11	3NT	E 6	690	7
1	17	6NT	E 6	1440	-10
16	3	6NT	E 6	1440	-10
6	12	6NT	E 6	1440	-10
15	10	6NT	E 6	1440	-10

Board (30) Av: NS=-150

N-S	E-W	Contract	N-S	E-W	IMP
4	18	4Hx	W-1	100	6
8	11	4H	W-1	50	5
9	13	4H	W-1	50	5
7	14	4H	W-1	50	5
1	17	4H	W-1	50	5
19	2	1NT	W 2	120	1
16	3	4H	W 4	420	-7
6	12	4H	W 4	420	-7
20	5	3NT	W 4	430	-7
15	10	3NT	W 4	430	-7