

兵庫県知事杯 OPEN TEAMS Session 1 Flight B 2013年10月12日(土)

1

♠KJ4
♥64
♦KQJ9753
♣2

♠Q97 ♠A865
♥K10753 ♥QJ2
♦1062 ♦A8
♣75 ♣AQJ3

♠1032
♥A98
♦4
♣K109864

Board (1) Av: NS=-60

N-S	E-W	Contract	N-S	E-W	IMP
3	6	3NT E-5	250		7
8	2	4H W-2	100		4
9	5	4H E-2	100		4
2	8	4H E-2	100		4
1	10	3H E-2	100		4
5	9	3H E 3	140		-2
4	7	3H E 3	140		-2
10	1	3C S-3	150		-3
6	3	4H W 4	420		-8
7	4	4H W 4	420		-8

2

♠K102
♥105
♦A653
♣KQ53

♠984 ♠AQJ5
♥K7632 ♥AJ94
♦72 ♦KJ109
♣AJ10 ♣4

♠763
♥Q8
♦Q84
♣98762

Board (2) Av: NS=-460

N-S	E-W	Contract	N-S	E-W	IMP
9	5	2H E 6	230		6
4	7	4H W 4	420		1
7	4	4H W 5	450		0
8	2	4H W 5	450		0
10	1	4H W 5	450		0
5	9	4H W 6	480		-1
2	8	4H W 6	480		-1
3	6	4H W 6	480		-1
6	3	4H W 6	480		-1
1	10	4H W 7	510		-2

3

♠J872
♥Q73
♦AQ3
♣1053

♠K964 ♠AQ3
♥982 ♥K5
♦4 ♦K972
♣QJ982 ♣AK74

♠105
♥AJ1064
♦J10865
♣6

Board (3) Av: NS=-360

N-S	E-W	Contract	N-S	E-W	IMP
4	7	4S E-2	200		11
8	2	3S E-2	200		11
1	10	3H N 3	140		11
7	4	3C E 4	130		6
5	9	3NT E 3	600		-6
3	6	3NT E 3	600		-6
10	1	3NT E 4	630		-7
9	5	3NT E 4	630		-7
6	3	3NT E 4	630		-7
2	8	3NT E 4	630		-7

4

♠A1043
♥J10
♦Q106
♣Q965

♠652 ♠K9
♥42 ♥K9865
♦K32 ♦A9874
♣A10742 ♣K

♠QJ87
♥AQ73
♦J5
♣J83

Board (4) Av: NS=+20

N-S	E-W	Contract	N-S	E-W	IMP
7	4	2S S 2	110		3
3	6	2H E-1	100		2
6	3	2H E-1	100		2
4	7	2H E-1	100		2
1	10	2H E-1	100		2
2	8	2H E-1	100		2
9	5	2H W 2	110		-4
5	9	2H E 2	110		-4
8	2	2H E 2	110		-4
10	1	2D E 3	110		-4

5

♠AJ762
♥K32
♦J109
♣92

♠53 ♠8
♥J10876 ♥A954
♦KQ73 ♦A8542
♣75 ♣QJ6

♠KQ1094
♥Q
♦6
♣AK10843

Board (5) Av: NS=+680

N-S	E-W	Contract	N-S	E-W	IMP
7	4	4S S 7	710		1
2	8	4S S 7	710		1
8	2	5S S 6	680		0
6	3	4S S 6	680		0
10	1	4S S 6	680		0
9	5	4S S 6	680		0
3	6	4S N 6	680		0
1	10	5S S 5	650		-1
4	7	5S N 5	650		-1
5	9	4S N 5	650		-1

6

♠Q8742
♥K654
♦32
♣K5

♠KJ5 ♠103
♥J ♥AQ1087
♦J1094 ♦Q7
♣Q7642 ♣J983

♠A96
♥932
♦AK865
♣A10

Board (6) Av: NS=+80

N-S	E-W	Contract	N-S	E-W	IMP
1	10	3NT S 3	400		8
10	1	3S S 3	140		2
7	4	2S S 3	140		2
5	9	2S S 2	110		1
9	5	2S S 2	110		1
2	8	2S S 2	110		1
8	2	2S S 2	110		1
6	3	4S S-1	50		-4
4	7	4S N-1	50		-4
3	6	3S S-1	50		-4

7

♠10643
♥AK92
♦K9532

♠A75 ♠J982
♥64 ♥1087
♦J1062 ♦AKQ43
♣10864 ♣Q

♠KQ
♥QJ53
♦9875
♣AJ7

Board (7) Av: NS=+450

N-S	E-W	Contract	N-S	E-W	IMP
4	7	4H S 6	680		6
2	8	4H N 6	680		6
5	9	4H N 5	650		5
6	3	4H N 5	650		5
3	6	4H N 5	650		5
8	2	4H N 5	650		5
10	1	3H N 6	230		-6
7	4	3H N 4	170		-7
9	5	4H N-1	100		-11
1	10	4H N-1	100		-11

8

♠K10873
♥1084
♦AK98
♣7

♠J5 ♠AQ62
♥6 ♥AK753
♦Q7654 ♦J2
♣AJ942 ♣106

♠94
♥QJ92
♦103
♣KQ853

Board (8) Av: NS=-10

N-S	E-W	Contract	N-S	E-W	IMP
8	2	3NT W-3	150		4
3	6	3NT W-3	150		4
10	1	3C W-2	100		3
6	3	3C E-2	100		3
4	7	2S N-1	50		-1
1	10	2S N-1	50		-1
5	9	2Sx N-1	100		-3
2	8	2Sx N-1	100		-3
7	4	2S N-2	100		-3
9	5	3C E 4	130		-3

9

♠Q9632
♥962
♦QJ83
♣5

♠K85 ♠A107
♥K8743 ♥AQ5
♦104 ♦52
♣876 ♣Q10932

♠J4
♥J10
♦AK976
♣AKJ4

Board (9) Av: NS=+100

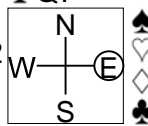
N-S	E-W	Contract	N-S	E-W	IMP
3	6	2S S 4	170		2
7	4	2S S 3	140		1
8	2	2S S 3	140		1
10	1	4D S 4	130		1
1	10	2D S 3	110		0
9	5	3H W-1	100		0
4	7	3H E-1	100		0
5	9	2H W-1	100		0
6	3	2S S-1	50		-4
2	8	2S S-1	50		-4

兵庫県知事杯 OPEN TEAMS Session 1 Flight B 2013年10月12日(土)

10

♠ Q953
♥ Q8
♦ AQ1074
♣ Q7

♠ J62 ♠ K874
♥ J9432 ♥ K
♦ J63 ♠ K852
♣ J2 ♣ K963



♠ A10
♥ A10765
♦ 9
♣ A10854

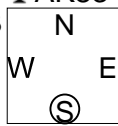
Board (10) Av: NS=-70

N-S	E-W	Contract	N-S	E-W	IMP
4	7	2NT S 3	150		6
2	8	2NT N 3	150		6
7	4	3C N 3	110		5
3	6	4H S-1	100		-1
10	1	4H S-1	100		-1
9	5	3NT S-1	100		-1
5	9	3NT N-1	100		-1
1	10	4H S-2	200		-4
6	3	3NT S-2	200		-4
8	2	3NT N-2	200		-4

11

♠ 5
♥ 10943
♦ AJ107
♣ AK83

♠ AQ643 ♠ 10972
♥ J86 ♥ AQ752
♦ Q542 ♠ K8
♣ 7 ♣ J10



♠ KJ8
♥ K
♦ 963
♣ Q96542

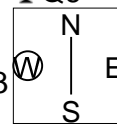
Board (11) Av: NS=+90

N-S	E-W	Contract	N-S	E-W	IMP
10	1	4C S 4	130		1
3	6	4C S 4	130		1
8	2	4C N 4	130		1
4	7	3C N 4	130		1
1	10	3H E-2	100		0
7	4	3H E-1	50		-1
5	9	3H E-1	50		-1
6	3	3H E-1	50		-1
9	5	2H E-1	50		-1
2	8	3H E 3	140		-6

12

♠ 853
♥ J764
♦ AK42
♣ Q6

♠ K64 ♠ AQ109
♥ A53 ♥ Q1098
♦ Q763 ♠ K8
♣ K83 ♣ 107



♠ J72
♥ K2
♦ J8
♣ AJ9542

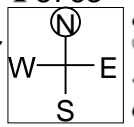
Board (12) Av: NS=-90

N-S	E-W	Contract	N-S	E-W	IMP
10	1	2C S 2	90		5
9	5	2D W-1	50		4
4	7	2D W 2	90		0
6	3	1NT W 1	90		0
5	9	1NT W 1	90		0
7	4	2NT N-1	100		0
2	8	2D W 3	110		-1
8	2	2H E 3	140		-2
1	10	2H E 3	140		-2
3	6	1NT W 3	150		-2

13

♠ J
♥ J10982
♦ 1076
♣ 8763

♠ AQ65 ♠ 1098
♥ AKQ7 ♥ 63
♦ J ♠ AQ32
♣ KJ92 ♣ Q1054



♠ K7432
♥ 54
♦ K9854
♣ A

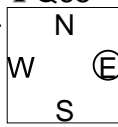
Board (13) Av: NS=-640

N-S	E-W	Contract	N-S	E-W	IMP
7	4	5C E 5	600		1
4	7	3NT W 3	600		1
3	6	3NT W 4	630		0
9	5	3NT W 4	630		0
1	10	3NT W 4	630		0
2	8	3NT W 4	630		0
5	9	3NT W 5	660		-1
8	2	3NT W 5	660		-1
6	3	3NT W 5	660		-1
10	1	3NT W 5	660		-1

14

♠ 3
♥ K109876
♦ Q106
♣ Q65

♠ 108764 ♠ AK5
♥ 543 ♥ AJ2
♦ AJ ♠ K973
♣ 1093 ♣ K84



♠ QJ92
♥ Q
♦ 8542
♣ AJ72

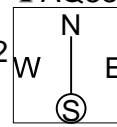
Board (14) Av: NS=+110

N-S	E-W	Contract	N-S	E-W	IMP
9	5	4S W-3	150		1
3	6	4S W-3	150		1
8	2	3S W-3	150		1
10	1	4S W-2	100		0
7	4	2NT E-2	100		0
5	9	2NT E-2	100		0
4	7	2NT E-2	100		0
2	8	2NT E-2	100		0
1	10	2NT E-2	100		0
6	3	2NT E-1	50		-2

15

♠ KJ10
♥
♦ KJ8653
♣ AQ83

♠ 954 ♠ Q76
♥ AQJ632 ♥ K8754
♦ 9 ♠ Q1042
♣ J92 ♣ 7



♠ A832
♥ 109
♦ A7
♣ K10654

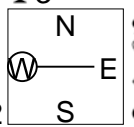
Board (15) Av: NS=+750

N-S	E-W	Contract	N-S	E-W	IMP
2	8	6C S 6	1370		12
6	3	6C S 6	1370		12
9	5	6C S 6	1370		12
4	7	5S S 7	710		-1
7	4	4S S 5	650		-3
1	10	5C N 7	640		-3
8	2	5C S 6	620		-4
10	1	5Hx W-3	500		-6
5	9	5H W-2	100		-12
3	6	3NT S-2	200		-14

16

♠ 982
♥ AJ87432
♦ A7
♣ 3

♠ Q ♠ AKJ105
♥ KQ106 ♥ 95
♦ 53 ♠ QJ10
♣ KQ9762 ♣ J84



♠ 7643
♥
♦ K98642
♣ A105

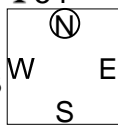
Board (16) Av: NS=-290

N-S	E-W	Contract	N-S	E-W	IMP
10	1	5Cx W-3	800		14
8	2	4S E-3	300		11
5	9	4S E-1	100		9
3	6	3H N-2	100		5
7	4	3C W 4	130		4
1	10	3NT W 3	600		-7
2	8	3NT W 4	630		-8
6	3	3NT W 4	630		-8
4	7	3NT W 4	630		-8
9	5	3NT W 5	660		-9

17

♠ J43
♥ AK98743
♦ 9
♣ 54

♠ 62 ♠ 975
♥ QJ2 ♥ 106
♦ Q1053 ♠ K642
♣ KQ92 ♣ AJ108



♠ AKQ108
♥ 5
♦ AJ87
♣ 763

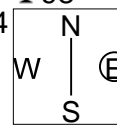
Board (17) Av: NS=+340

N-S	E-W	Contract	N-S	E-W	IMP
8	2	4S S 5	450		3
2	8	4S S 4	420		2
6	3	4S S 4	420		2
4	7	4H N 4	420		2
10	1	4H N 4	420		2
1	10	4H N 4	420		2
5	9	3H N 6	230		-3
3	6	3H N 6	230		-3
9	5	3H S 4	170		-5
7	4	3S S 3	140		-5

18

♠ 7
♥ 10852
♦ AQJ963
♣ 98

♠ KQ104 ♠ 53
♥ K4 ♥ J96
♦ K872 ♠ 54
♣ 754 ♣ KQJ1032



♠ AJ9862
♥ AQ73
♦ 10
♣ A6

Board (18) Av: NS=+180

N-S	E-W	Contract	N-S	E-W	IMP
2	8	5Cx E-4	800		12
1	10	4H S 5	650		10
5	9	4H S 4	620		10
8	2	4H S 4	620		10
10	1	2H S 3	140		-1
6	3	4H S-1	100		-7
4	7	4H N-1	100		-7
9	5	5H S-2	200		-9
3	6	4H S-2	200		-9
7	4	4H S-2	200		-9

19

♠ J10965
♥ Q
♦ KJ95
♣ 852

♠ A4
♥ K732
♦ A632
♣ Q73

N
W — E
S

♠ 732
♥ J94
♦ 108
♣ AK1064

♠ KQ8
♥ A10865
♦ Q74
♣ J9

Board (19) Av: NS=+50

N-S	E-W	Contract	N-S	E-W	IMP
3	5	4C E-2	200		4
7	1	3S N 3	140		3
1	7	2S N 3	140		3
2	9	2S N 2	110		2
4	10	2S N 2	110		2
10	4	1NT S 1	90		1
6	8	1NT S-1		50	-3
9	2	1NT S-1		50	-3
8	6	1NT S-2		100	-4
5	3	1NT S-2		100	-4

20

♠ AJ
♥ K5
♦ A10972
♣ KQ87

♠ Q10
♥ Q8432
♦ 8654
♣ 32

N
W — E
S

♠ K9732
♥ A109
♦ K
♣ AJ95

♠ 8654
♥ J76
♦ QJ3
♣ 1064

Board (20) Av: NS=+80

N-S	E-W	Contract	N-S	E-W	IMP
6	8	2S E-2	200		3
8	6	1NT N 3	150		2
4	10	2D N 3	110		1
2	9	2D N 3	110		1
5	3	2S E-1	100		1
1	7	2D N 2	90		0
10	4	1NT N 1	90		0
9	2	1NT N 1	90		0
3	5	1NT N-1		100	-5
7	1	2H W 3		140	-6

21

♠ 8764
♥ AQ8763
♦ 75
♣ 3

♠ AK
♥ J10
♦ KJ10932
♣ KJ9

N
W — E
S

♠ Q1053
♥ K95
♦ A4
♣ A1064

♠ J92
♥ 42
♦ Q86
♣ Q8752

Board (21) Av: NS=-480

N-S	E-W	Contract	N-S	E-W	IMP
2	9	6D W-1	50		11
4	10	4NT E 5		460	1
8	6	4NT E 5		460	1
6	8	3NT E 5		460	1
1	7	3NT E 5		460	1
7	1	3NT E 6		490	0
9	2	3NT E 6		490	0
5	3	3NT E 6		490	0
3	5	3NT E 7		520	-1
10	4	3NT E 7		520	-1

22

♠ KJ64
♥ K83
♦ 1093
♣ Q83

♠ AQ103
♥ 105
♦ 75
♣ AJ762

N
W — E
S

♠ AJ762
♥ AJ762
♦ AJ864
♣ K95

♠ 98752
♥ Q94
♦ KQ2
♣ 104

Board (22) Av: NS=-160

N-S	E-W	Contract	N-S	E-W	IMP
2	9	3NT W-2	200		8
5	3	3NT W-2	200		8
3	5	3NT W-1	100		6
1	7	3NT W-1	100		6
4	10	2NT W 2		120	1
8	6	2NT W 3		150	0
6	8	3H E 5		200	-1
10	4	3NT W 3		600	-10
7	1	3NT W 3		600	-10
9	2	4H E 4		620	-10

23

♠ Q43
♥ 1094
♦ Q964
♣ AJ9

♠ AJ8
♥ 532
♦ 1087
♣ K1082

N
W — E
S

♠ K10965
♥ AKQ86
♦ J2
♣ 5

♠ 72
♥ J7
♦ AK53
♣ Q7643

Board (23) Av: NS=-330

N-S	E-W	Contract	N-S	E-W	IMP
4	10	3S E 3		140	5
6	8	3S E 3		140	5
3	5	2S E 3		140	5
7	1	3S E 4		170	4
5	3	2S E 4		170	4
1	7	2S E 4		170	4
2	9	4S E 4		620	-7
8	6	4S E 4		620	-7
9	2	4S E 4		620	-7
10	4	4S E 4		620	-7

24

♠ KQJ5
♥ J97
♦ 1098762
♣

♠ 10842
♥ KQ10
♦ Q
♣ AKJ75

N
W — E
S

♠ A6
♥ 8632
♦ A53
♣ Q1083

♠ 973
♥ A54
♦ KJ4
♣ 9642

Board (24) Av: NS=-310

N-S	E-W	Contract	N-S	E-W	IMP
4	10	3D N 3	110		9
10	4	4C W 4		130	5
8	6	3C W 4		130	5
6	8	1NT E 3		150	4
3	5	3NT E 3		400	-3
9	2	3NT E 3		400	-3
7	1	3NT E 3		400	-3
2	9	3NT E 4		430	-3
5	3	3NT E 4		430	-3
1	7	3NT E 5		460	-4

25

♠ K654
♥ AJ102
♦ 864
♣ Q7

♠ Q82
♥ 54
♦ AKJ53
♣ 1032

N
W — E
S

♠ 10973
♥ 873
♦ Q7
♣ AJ64

♠ AJ
♥ KQ96
♦ 1092
♣ K985

Board (25) Av: NS=+140

N-S	E-W	Contract	N-S	E-W	IMP
2	9	3H S 3	140		0
7	1	3H S 3	140		0
4	10	3H S 3	140		0
5	3	2H S 3	140		0
6	8	2H S 3	140		0
3	5	2H S 3	140		0
8	6	2H N 3	140		0
9	2	2H N 3	140		0
1	7	2H N 3	140		0
10	4	2H S 2	110		-1

26

♠ 104
♥ A53
♦ KJ
♣ Q109843

♠ AJ96
♥ J94
♦ 963
♣ K52

N
W — E
S

♠ 32
♥ 8762
♦ 10752
♣ AJ6

♠ KQ875
♥ KQ10
♦ AQ84
♣ 7

Board (26) Av: NS=+340

N-S	E-W	Contract	N-S	E-W	IMP
9	2	3NT N 3	600		6
3	5	3NT N 3	600		6
10	4	3NT N 3	600		6
1	7	3NT N 3	600		6
7	1	3NT N 3	600		6
2	9	3NT N 3	600		6
4	10	4S S-1		100	-10
6	8	3NT N-1		100	-10
5	3	3NT N-1		100	-10
8	6	3NT N-2		200	-11

27

♠ 2
♥ 9
♦ KQ43
♣ AKJ10953

♠ K8765
♥ A7654
♦ A8
♣ 7

N
W — E
S

♠ AQ103
♥ KJ2
♦ J9765
♣ Q

♠ J94
♥ Q1083
♦ 102
♣ 8642

Board (27) Av: NS=-60

N-S	E-W	Contract	N-S	E-W	IMP
1	7	5Cx N 5	550		12
6	8	5S W-2	100		4
10	4	5S W-1	50		3
4	10	5S W-1	50		3
7	1	5S W-1	50		3
9	2	5S E-1	50		3
5	3	5C N-1		50	0
3	5	6Cx N-2		300	-6
2	9	4S W 5		450	-9
8	6	7Cx N-3		500	-10

28

♠ K53
♥ Q3
♦ J753
♣ J854

♠ QJ10984
♥ K7
♦ 1082
♣ K6

♠ A762
♥ 852
♦ K4
♣ 10973

29

♠ Q54
♥ K874
♦ AQ109
♣ K5

♠ 2
♥ Q1092
♦ K83
♣ AJ872

♠ KJ1083
♥ 5
♦ J7654
♣ Q4

30

♠ 4
♥ J1093
♦ Q1096
♣ QJ96

♠ AKJ7
♥ Q742
♦ 53
♣ 832

♠ 9852
♥ K5
♦ AKJ872
♣ 4

Board (28) Av: NS=-450

N-S	E-W	Contract	N-S	E-W	IMP
10	4	3H	W 5	200	6
5	3	4H	W 4	420	1
8	6	4H	W 5	450	0
4	10	4H	W 5	450	0
3	5	4H	W 5	450	0
7	1	4H	W 5	450	0
1	7	4H	W 5	450	0
9	2	4H	W 5	450	0
6	8	4H	E 5	450	0
2	9	4H	W 6	480	-1

Board (29) Av: NS=+40

N-S	E-W	Contract	N-S	E-W	IMP
7	1	3S	S 3	140	3
6	8	3S	S 3	140	3
10	4	2S	S 3	140	3
4	10	2S	S 3	140	3
1	7	2D	N 3	110	2
3	5	2D	N 2	90	2
2	9	3D	N-1	100	-4
8	6	3D	N-1	100	-4
9	2	3D	N-1	100	-4
5	3	3C	E 3	110	-4

Board (30) Av: NS=0

N-S	E-W	Contract	N-S	E-W	IMP
7	1	4S	W-2	100	3
10	4	4S	E-2	100	3
5	3	4S	W-1	50	2
3	5	4S	E-1	50	2
9	2	3S	W-1	50	2
1	7	3S	E-1	50	2
6	8	4D	S-1	50	-2
4	10	5Dx	S-1	100	-3
8	6	3S	E 3	140	-4
2	9	4S	E 4	420	-9

31

♠ 92
♥ 53
♦ 1087542
♣ AQJ

♠ J
♥ Q1082
♦ KJ93
♣ 10952

♠ KQ1083
♥ J97
♦ Q6
♣ K74

♠ A7654
♥ AK64
♦ A
♣ 863

32

♠ AK9632
♥ 98
♦ 106
♣ AJ2

♠ 7
♥ Q106
♦ AJ9874
♣ Q63

♠ 8
♥ K754
♦ Q53
♣ K9854

♠ QJ1054
♥ AJ32
♦ K2
♣ 107

33

♠ 53
♥ 10975
♦ 87
♣ J8542

♠ AK10942
♥ KJ2
♦ AK43
♣

♠ 87
♥ A83
♦ J1065
♣ Q1063

♠ QJ6
♥ Q64
♦ Q92
♣ AK97

Board (31) Av: NS=+110

N-S	E-W	Contract	N-S	E-W	IMP
7	1	3C	E-4	200	3
8	6	2S	S 3	140	1
10	4	2S	S 2	110	0
4	10	2S	S 2	110	0
1	7	2S	S 2	110	0
6	8	2S	S 2	110	0
9	2	2S	S 2	110	0
2	9	2S	S 2	110	0
3	5	2S	S 2	110	0
5	3	2S	S-3	300	-9

Board (32) Av: NS=+130

N-S	E-W	Contract	N-S	E-W	IMP
9	2	4S	N 4	420	7
4	10	4S	N 4	420	7
10	4	4S	N 4	420	7
8	6	4S	N 4	420	7
6	8	4S	N-1	50	-5
5	3	4S	N-1	50	-5
7	1	4S	N-1	50	-5
2	9	4S	N-1	50	-5
3	5	4S	N-1	50	-5
1	7	4H	S-5	250	-9

Board (33) Av: NS=-460

N-S	E-W	Contract	N-S	E-W	IMP
8	6	6S	W-1	50	11
4	10	5D	W 6	420	1
7	1	3NT	E 4	430	1
3	5	5S	W 5	450	0
1	7	4S	W 5	450	0
6	8	4S	W 6	480	-1
9	2	4S	W 6	480	-1
5	3	4S	W 6	480	-1
2	9	3NT	E 6	490	-1
10	4	6D	E 6	920	-10

34

♠ 9
♥ Q87632
♦ 93
♣ AKJ4

♠ AKJ72
♥ J5
♦ K105
♣ Q53

♠ 1053
♥ A104
♦ AJ762
♣ 109

♠ Q864
♥ K9
♦ Q84
♣ 8762

35

♠ 1054
♥ A743
♦ 753
♣ KJ10

♠ QJ96
♥ KQ10
♦ 6
♣ 98642

♠ A2
♥ J95
♦ QJ10842
♣ A3

♠ K873
♥ 862
♦ AK9
♣ Q75

36

♠ A
♥ 765
♦ AKQ5
♣ AJ985

♠ 109876
♥ AJ
♦ 9643
♣ 32

♠ KQ4
♥ 9843
♦ 72
♣ K1074

♠ J532
♥ KQ102
♦ J108
♣ Q6

Board (34) Av: NS=-30

N-S	E-W	Contract	N-S	E-W	IMP
4	10	4S	W-3	150	5
9	2	4S	W-2	100	4
3	5	4S	W-2	100	4
1	7	4S	W-2	100	4
10	4	2S	W-1	50	2
2	9	2S	W 2	110	-2
8	6	3S	W 3	140	-3
7	1	3S	W 3	140	-3
6	8	3S	E 4	170	-4
5	3	2S	W 4	170	-4

Board (35) Av: NS=-90

N-S	E-W	Contract	N-S	E-W	IMP
6	8	2D	E-1	100	5
10	4	2H	N-1	50	1
5	3	1NT	N-1	50	1
4	10	2D	E 2	90	0
8	6	2H	N-2	100	0
7	1	2H	N-2	100	0
1	7	2H	N-2	100	0
2	9	2H	N-2	100	0
3	5	2H	N-2	100	0
9	2	2H	N-2	100	0

Board (36) Av: NS=+230

N-S	E-W	Contract	N-S	E-W	IMP
8	6	3NT	S 3	600	9
10	4	3NT	S 3	600	9
6	8	3NT	S 3	600	9
9	2	3NT	S 3	600	9
1	7	3NT	S 3	600	9
5	3	3NT	S-1	100	-8
2	9	3NT	S-1	100	-8
7	1	5C	N-2	200	-10
3	5	4H	S-2	200	-10
4	10	3NT	S-2	200	-10

兵庫県知事杯 OPEN TEAMS Session 2 Flight B 2013年10月12日(土)

1

♠ Q92
♥ K6
♦ J1053
♣ A864

♠ 108
♥ 983
♦ Q96
♣ J9752

W N E S

♠ AJ753
♥ AQJ10
♦ 72
♣ K10

♠ K64
♥ 7542
♦ AK84
♣ Q3

Board (1) Av: NS=-60

N-S	E-W	Contract	N-S	E-W	IMP
10	8	3D N 3	110		5
7	3	1NT N 1	90		4
4	6	2S E-1	50		3
5	2	2NT N-1		50	0
2	5	2H S-2		100	-1
8	10	1S E 2		110	-2
3	7	1S E 2		110	-2
1	9	2H E 3		140	-2
6	4	2H E 3		140	-2
9	1	2C S-3		150	-3

2

♠ 32
♥ K532
♦ J10863
♣ A8

♠ 9654
♥ QJ108
♦ A
♣ Q1075

W N E S

♠ AQJ87
♥ 964
♦ K
♣ J964

♠ K10
♥ A7
♦ Q97542
♣ K32

Board (2) Av: NS=+140

N-S	E-W	Contract	N-S	E-W	IMP
3	7	5D S 5	600		10
7	3	4S W-4	200		2
9	1	4S E-4	200		2
10	8	4D S 5	150		0
6	4	4D S 5	150		0
1	9	4D S 5	150		0
5	2	3S E-3	150		0
4	6	4S E-2	100		-1
2	5	3S E-1	50		-3
8	10	3NT S-1		100	-6

3

♠ J10754
♥ K
♦ 53
♣ Q10952

♠ A8
♥ QJ87543
♦ 1072
♣ J

W N E S

♠ K963
♥ 2
♦ AQJ6
♣ A763

♠ Q2
♥ A1096
♦ K984
♣ K84

Board (3) Av: NS=-90

N-S	E-W	Contract	N-S	E-W	IMP
2	5	4H W-2	200		7
3	7	2S N 2	110		5
1	9	2NT S-1		50	1
8	10	3NT S-2		100	0
4	6	2S N-2		100	0
10	8	3H W 3		140	-2
7	3	2H W 3		140	-2
5	2	3NT S-3		150	-2
6	4	2H W 4		170	-2
9	1	2H W 4		170	-2

4

♠ KQ8
♥ KQ97642
♦
♣ A52

♠ J5
♥ A85
♦ A10653
♣ 1076

W N E S

♠ A1097632
♥
♦ KQJ972
♣

♠ 4
♥ J103
♦ 84
♣ KQJ9843

Board (4) Av: NS=-40

N-S	E-W	Contract	N-S	E-W	IMP
7	3	5Hx N 5	850		13
5	2	5H N 5	650		12
4	6	7Dx E-1	200		6
3	7	6Sx E-1	200		6
2	5	7D E-1	100		4
6	4	6Hx N-1		200	-4
8	10	6Hx N-1		200	-4
1	9	6Hx N-1		200	-4
9	1	5Sx E 5		850	-13
10	8	6Dx W 6		1540	-17

5

♠ A765
♥ AJ1072
♦ K86
♣ 7

♠ Q
♥ K8543
♦ QJ95
♣ Q92

W N E S

♠ J2
♥
♦ A10732
♣ K86543

♠ K109843
♥ Q96
♦ 4
♣ AJ10

Board (5) Av: NS=+480

N-S	E-W	Contract	N-S	E-W	IMP
10	8	5Hx N 5	850		9
1	9	5S S 7	710		6
4	6	4S S 6	680		5
9	1	4H N 6	680		5
8	10	4H N 6	680		5
2	5	5H N 5	650		5
5	2	4H N 5	650		5
6	4	6Dx W-2	300		-5
3	7	5Dx W 5		550	-14
7	3	5Dx W 5		550	-14

6

♠ K9432
♥ A5
♦ K92
♣ K96

♠ AJ875
♥ J3
♦ Q107
♣ Q82

W N E S

♠ 10
♥ 862
♦ J865
♣ A10754

♠ Q6
♥ KQ10974
♦ A43
♣ J3

Board (6) Av: NS=+320

N-S	E-W	Contract	N-S	E-W	IMP
9	1	3NT N 5	460		4
4	6	3NT N 4	430		3
10	8	3NT N 4	430		3
8	10	4H S 4	420		3
6	4	4H S 4	420		3
2	5	4H S 4	420		3
1	9	4H S 4	420		3
3	7	1S W-1	100		-6
5	2	4H S-1		50	-9
7	3	4S N-2		100	-9

7

♠ 8
♥ J8652
♦ Q10764
♣ Q2

♠ 752
♥ A1094
♦ 53
♣ K1043

W N E S

♠ AQJ64
♥ K3
♦ AJ9
♣ 875

♠ K1093
♥ Q7
♦ K82
♣ AJ96

Board (7) Av: NS=-120

N-S	E-W	Contract	N-S	E-W	IMP
6	4	2D S-1		100	1
3	7	2S E 2		110	0
4	6	2S E 2		110	0
8	10	2S E 2		110	0
9	1	2S E 2		110	0
1	9	2S E 2		110	0
2	5	2S E 2		110	0
7	3	2S E 3		140	-1
5	2	2S E 3		140	-1
10	8	1NT S-2		200	-2

8

♠ AK742
♥ 1043
♦ 104
♣ A95

♠ 10
♥ J82
♦ KJ98763
♣ 106

W N E S

♠ Q985
♥ Q976
♦ 5
♣ KJ83

♠ J63
♥ AK5
♦ AQ2
♣ Q742

Board (8) Av: NS=-20

N-S	E-W	Contract	N-S	E-W	IMP
1	9	3NT S 4	430		10
8	10	4S N 4	420		10
3	7	4S S-1		50	-1
2	5	4S N-1		50	-1
7	3	4S N-1		50	-1
10	8	5S N-2		100	-2
9	1	4S N-2		100	-2
5	2	4S N-2		100	-2
4	6	4S N-2		100	-2
6	4	4S N-3		150	-4

9

♠ 10
♥ 9763
♦ K95
♣ 108743

♠ AK4
♥ Q85
♦ Q10862
♣ A5

W N E S

♠ QJ8763
♥ AK10
♦ 3
♣ J96

♠ 952
♥ J42
♦ AJ74
♣ KQ2

Board (9) Av: NS=-650

N-S	E-W	Contract	N-S	E-W	IMP
5	2	4S E 4		620	1
4	6	4S W 5		650	0
10	8	4S E 5		650	0
8	10	4S E 5		650	0
6	4	4S E 5		650	0
7	3	4S E 5		650	0
9	1	4S E 5		650	0
1	9	4S E 5		650	0
3	7	4S E 5		650	0
2	5	4S E 5		650	0

10

♠ J1065
♥ Q10
♦ QJ2
♣ 9876

♠ 4
♥ AK62
♦ 109843
♣ KQ3

N
W — E
S

♠ AKQ8732
♥ 973
♦ A6
♣ 2

♠ 9
♥ J854
♦ K75
♣ AJ1054

11

♠ AJ754
♥ K87
♦ Q6
♣ 842

♠ K109
♥ QJ
♦ 52
♣ KQJ1065

N
W — E
S

♠ Q83
♥ A952
♦ J10983
♣ 9

♠ 62
♥ 10643
♦ AK74
♣ A73

12

♠ J105
♥ J10973
♦ KJ3
♣ Q7

♠ AQ6
♥ K6
♦ A107
♣ A6532

N
W — E
S

♠ 8743
♥ Q5
♦ Q98
♣ 10984

♠ K92
♥ A842
♦ 6542
♣ KJ

Board (10) Av: NS=-640

N-S	E-W	Contract	N-S	E-W	IMP
5	2	6S E-1	100		12
4	6	4S E 4	620		1
6	4	4S E 4	620		1
3	7	4S E 4	620		1
2	5	4S E 5	650		0
9	1	4S E 5	650		0
8	10	4S E 5	650		0
10	8	3NT W 5	660		-1
1	9	3NT W 5	660		-1
7	3	3NT W 5	660		-1

Board (11) Av: NS=-60

N-S	E-W	Contract	N-S	E-W	IMP
3	7	2NT S 2	120		5
8	10	2S N 2	110		5
10	8	2NT W-1	50		3
4	6	2S N-2	100		-1
9	1	2NT S-2	100		-1
6	4	2C W 3	110		-2
1	9	2C W 3	110		-2
2	5	2C W 3	110		-2
7	3	2C W 3	110		-2
5	2	2C W 3	110		-2

Board (12) Av: NS=-110

N-S	E-W	Contract	N-S	E-W	IMP
4	6	1NT W 1	90		1
7	3	1NT W 1	90		1
2	5	1NT W 1	90		1
1	9	1NT W 1	90		1
8	10	1NT W 2	120		0
10	8	1NT W 2	120		0
6	4	1NT W 2	120		0
5	2	1NT W 2	120		0
3	7	1NT W 2	120		0
9	1	1NT E 2	120		0

13

♠ K732
♥ 65
♦ KJ843
♣ A3

♠ 1084
♥ 72
♦ 752
♣ KQ1065

N
W — E
S

♠ 65
♥ AKQJ1043
♦ 1096
♣ 7

♠ AQJ9
♥ 98
♦ AQ
♣ J9842

14

♠ KJ654
♥ A76432
♦ 75
♣ 75

♠ AQ1043
♥ A7
♦ AKQJ103
♣ AKQJ103

N
W — E
S

♠ 75
♥ Q1032
♦ KQJ95
♣ 84

♠ KJ9862
♥ 98
♦ 108
♣ 962

15

♠ K4
♥ J107532
♦ KQ108
♣ 3

♠ AQJ872
♥ K8
♦ 65
♣ Q42

N
W — E
S

♠ 963
♥ Q94
♦ 94
♣ AJ1065

♠ 105
♥ A6
♦ AJ732
♣ K987

Board (13) Av: NS=+620

N-S	E-W	Contract	N-S	E-W	IMP
9	1	4S N 5	650		1
4	6	4S S 4	620		0
10	8	4S N 4	620		0
6	4	4S N 4	620		0
8	10	4S N 4	620		0
7	3	4S N 4	620		0
2	5	4S N 4	620		0
1	9	4S N 4	620		0
3	7	4S N 4	620		0
5	2	4S N 4	620		0

Board (14) Av: NS=-110

N-S	E-W	Contract	N-S	E-W	IMP
5	2	5S W-3	150		6
10	8	6S W-2	100		5
2	5	6C W-2	100		5
6	4	5C W-2	100		5
3	7	5C W-2	100		5
4	6	4S W-1	50		4
1	9	3NT W 4	430		-8
8	10	3NT W 5	460		-8
7	3	3NT E 5	460		-8
9	1	6C E 6	920		-13

Board (15) Av: NS=+30

N-S	E-W	Contract	N-S	E-W	IMP
6	4	4H N 5	650		12
5	2	4D S 4	130		3
10	8	4D S 4	130		3
8	10	4D S 4	130		3
1	9	3S W-2	100		2
3	7	3S W-1	50		1
2	5	5D S-1	100		-4
4	6	5D S-1	100		-4
9	1	4D S-1	100		-4
7	3	3S W 3	140		-5

16

♠ K
♥ J106
♦ 106
♣ A876542

♠ 7
♥ AQ9743
♦ KQ2
♣ KQ3

N
W — E
S

♠ Q10532
♥ K852
♦ A74
♣ J

♠ AJ9864
♥
♦ J9853
♣ 109

17

♠ K865
♥ A64
♦ 87
♣ K542

♠ 73
♥ J85
♦ QJ96
♣ QJ87

N
W — E
S

♠ A102
♥ KQ1073
♦ AK52
♣ 6

♠ QJ94
♥ 92
♦ 1043
♣ A1093

18

♠ J82
♥ Q1075
♦ AQ92
♣ A9

♠ 109763
♥ A982
♦ 107
♣ 64

N
W — E
S

♠ A4
♥ K64
♦ K65
♣ KQ1052

♠ KQ5
♥ J3
♦ J843
♣ J873

Board (16) Av: NS=-590

N-S	E-W	Contract	N-S	E-W	IMP
4	6	5Cx N-2	300		7
5	2	5Cx N-2	300		7
6	4	6Cx N-3	500		3
8	10	5H W 5	650		-2
10	8	5H W 5	650		-2
2	5	5H W 5	650		-2
3	7	5H W 5	650		-2
1	9	4H W 5	650		-2
7	3	4H W 5	650		-2
9	1	5S W 6	680		-3

Board (17) Av: NS=-230

N-S	E-W	Contract	N-S	E-W	IMP
8	10	3H W 4	170		2
7	3	3H E 4	170		2
4	6	3H E 4	170		2
10	8	3H E 4	170		2
3	7	3H E 4	170		2
1	9	3H E 4	170		2
5	2	3H E 4	170		2
6	4	4H E 4	420		-5
9	1	4H E 4	420		-5
2	5	4H E 4	420		-5

Board (18) Av: NS=-50

N-S	E-W	Contract	N-S	E-W	IMP
5	2	2S E-1	50		3
10	8	2S E-1	50		3
8	10	2S E-1	50		3
1	9	2S E-1	50		3
4	6	2S E 2	110		-2
3	7	2S E 2	110		-2
2	5	2S E 2	110		-2
9	1	2H W 2	110		-2
7	3	2S E 3	140		-3
6	4	2S E 3	140		-3

兵庫県知事杯 OPEN TEAMS Session 3 Flight B 2013年10月13日(日)

1

♠ 10962
♥ J74
♦ K762
♣ J2

♠ KJ54
♥ Q103
♦ AJ98
♣ 73

♠ AQ87
♥ A86
♦ Q
♣ AK1096

♠ 3
♥ K952
♦ 10543
♣ Q854

Board (1) Av: NS=-200

N-S	E-W	Contract	N-S	E-W	IMP
4	9	6S E-2	100		7
7	5	6S W-1	50		6
9	4	6S E-1	50		6
6	1	6NT W-1	50		6
5	7	4S W-1	50		6
2	10	4S W 4	420		-6
8	3	5S W 5	450		-6
3	8	4S W 5	450		-6
10	2	4S W 5	450		-6
1	6	4S W 5	450		-6

2

♠ KQ1076
♥ 10
♦ J85
♣ A1084

♠ AJ5
♥ 75
♦ K74
♣ QJ762

♠ 982
♥ 86432
♦ 1062
♣ 53

♠ 43
♥ AKQJ9
♦ AQ93
♣ K9

Board (2) Av: NS=+680

N-S	E-W	Contract	N-S	E-W	IMP
6	1	4NT S 6	690		0
5	7	3NT S 6	690		0
2	10	3NT S 6	690		0
9	4	3NT S 6	690		0
4	9	3NT S 6	690		0
1	6	3NT N 6	690		0
7	5	3NT N 6	690		0
8	3	3NT S 5	660		-1
10	2	3NT S 5	660		-1
3	8	6NT N-1	100		-13

3

♠ Q10
♥ Q2
♦ AK106
♣ KJ952

♠ K864
♥ J10863
♦ 7
♣ 874

♠ A72
♥ A75
♦ QJ43
♣ A103

♠ J953
♥ K94
♦ 9852
♣ Q6

Board (3) Av: NS=+100

N-S	E-W	Contract	N-S	E-W	IMP
7	5	1NT N 3	150		2
5	7	1NT N 3	150		2
8	3	1NT N 3	150		2
10	2	1NT N 3	150		2
6	1	1NT N 2	120		1
3	8	1NT N 2	120		1
9	4	1NT N 2	120		1
2	10	1NT N 2	120		1
4	9	2H E 2	110		-5
1	6	2H E 2	110		-5

4

♠ K64
♥ J1032
♦ 4
♣ QJ875

♠ A3
♥ Q9874
♦ AJ86
♣ A3

♠ J10987
♥ 6
♦ KQ10973
♣ 10

♠ Q52
♥ AK5
♦ 52
♣ K9642

Board (4) Av: NS=-490

N-S	E-W	Contract	N-S	E-W	IMP
3	8	3NT W-1	100		11
9	4	3D W 5	150		8
10	2	3D W 5	150		8
2	10	5D W 5	600		-3
1	6	5D W 5	600		-3
5	7	5D W 5	600		-3
7	5	5D W 5	600		-3
4	9	5D E 5	600		-3
8	3	5D E 5	600		-3
6	1	3NT W 3	600		-3

5

♠ Q
♥ J72
♦ A9875
♣ Q432

♠ 98
♥ KQ643
♦ J6
♣ 9865

♠ KJ1076543
♥ 10
♦ 3
♣ K107

♠ A2
♥ A985
♦ KQ1042
♣ AJ

Board (5) Av: NS=+500

N-S	E-W	Contract	N-S	E-W	IMP
8	3	5D N 5	600		3
10	2	5D N 5	600		3
4	9	5D N 5	600		3
5	7	5D N 5	600		3
2	10	3NT S 3	600		3
3	8	4Sx E-3	500		0
9	4	4Sx E-3	500		0
1	6	4Sx E-2	300		-5
7	5	4Sx E-2	300		-5
6	1	6D N-1	100		-12

6

♠ QJ9
♥ 8
♦ KJ654
♣ AKQ6

♠ 842
♥ J109752
♦ A
♣ 942

♠ K65
♥ KQ643
♦ 108
♣ 1087

♠ A1073
♥ A
♦ Q9732
♣ J53

Board (6) Av: NS=+580

N-S	E-W	Contract	N-S	E-W	IMP
2	10	6D S 6	920		8
4	9	6D N 6	920		8
1	6	4Hx E-3	800		6
3	8	3Hx E-3	800		6
9	4	3NT S 4	430		-4
6	1	5D S 6	420		-4
8	3	5D N 6	420		-4
10	2	5D N 6	420		-4
7	5	5D N 6	420		-4
5	7	5D N 6	420		-4

7

♠ Q93
♥ AK10742
♦ K86
♣ J

♠ 742
♥ J8
♦ Q109752
♣ Q2

♠ J5
♥ 63
♦ AJ4
♣ A107643

♠ AK1086
♥ Q95
♦ 3
♣ K985

Board (7) Av: NS=+670

N-S	E-W	Contract	N-S	E-W	IMP
1	6	5H N 6	680		0
10	2	4H N 6	680		0
2	10	4H N 6	680		0
7	5	4H N 6	680		0
4	9	4H N 6	680		0
8	3	5S S 5	650		-1
6	1	5H N 5	650		-1
9	4	5H N 5	650		-1
3	8	5H N 5	650		-1
5	7	4H S 5	650		-1

8

♠ A1087
♥ 32
♦ 6
♣ AKJ643

♠ AKJ94
♥ AKJ543
♣ 102

♠ KQ
♥ Q10876
♦ Q1087
♣ Q5

♠ J965432
♥ 5
♦ 92
♣ 987

Board (8) Av: NS=-350

N-S	E-W	Contract	N-S	E-W	IMP
8	3	7H W-2	100		10
6	1	5Sx N-1	100		6
5	7	3H E 5	200		4
1	6	6Sx N-2	300		2
2	10	5Sx S-2	300		2
10	2	5H E 5	450		-3
3	8	4H W 5	450		-3
7	5	4H E 5	450		-3
9	4	4H E 7	510		-4
4	9	7Hx E 7	1770		-16

9

♠ 1063
♥ AJ104
♦ 95
♣ AKQ10

♠ KQ54
♥ 75
♦ 87
♣ 75432

♠ 87
♥ Q98
♦ KJ1062
♣ J86

♠ AJ92
♥ K632
♦ AQ43
♣ 9

Board (9) Av: NS=+380

N-S	E-W	Contract	N-S	E-W	IMP
7	5	4H S 6	480		3
8	3	4H S 6	480		3
9	4	4H N 6	480		3
3	8	4H S 5	450		2
4	9	4H S 5	450		2
10	2	4H S 4	420		1
2	10	4H S 4	420		1
6	1	4H S 4	420		1
1	6	6H N-1	50		-10
5	7	5H S-1	50		-10

10

♠ K10
♥ 87
♦ AKQ102
♣ 10954

♠ 63 ♠ AQ5
♥ A654 ♥ KQJ10932
♦ 83 ♦ 54
♣ J8762 ♣ K

W — E
N — S

♠ J98742
♥
♦ J976
♣ AQ3

Board (10) Av: NS=-110

N-S	E-W	Contract	N-S	E-W	IMP
7	5	5Dx N 5	750		13
9	4	4S S 5	650		13
6	1	5Hx E-1	200		7
8	3	5H W-2	200		7
4	9	5H E-1	100		5
10	2	3H E 4	170		-2
3	8	4H E 4	620		-11
2	10	4H E 4	620		-11
5	7	4H E 4	620		-11
1	6	4Hx E 4	790		-12

11

♠ Q754
♥ AQJ6
♦ AQJ62
♣ AQJ62

♠ K10943 ♠ 8752
♥ J9 ♥ K83
♦ K1074 ♦ 9
♣ 74 ♣ K9853

W — E
N — S

♠ AQJ6
♥ A1062
♦ 8532
♣ 10

Board (11) Av: NS=+60

N-S	E-W	Contract	N-S	E-W	IMP
2	10	5H N 5	450		9
1	6	4H S 4	420		8
10	2	4H S 4	420		8
3	8	6H N-1	50		-3
5	7	6H N-1	50		-3
4	9	6D N-1	50		-3
6	1	5H S-1	50		-3
9	4	5D S-1	50		-3
8	3	6H N-2	100		-4
7	5	6H N-3	150		-5

12

♠ AK3
♥ 954
♦ QJ97
♣ J64

♠ QJ876 ♠ 52
♥ Q2 ♥ 1076
♦ A85 ♦ K642
♣ KQ9 ♣ A1085

W — E
N — S

♠ 1094
♥ AKJ83
♦ 103
♣ 732

Board (12) Av: NS=-70

N-S	E-W	Contract	N-S	E-W	IMP
4	9	2H S 2	110		5
1	6	2S W-1	50		3
9	4	1NT E-1	50		3
8	3	3H S-1	100		-1
10	2	2S W 2	110		-1
2	10	2S W 2	110		-1
3	8	2S W 2	110		-1
7	5	2C W 3	110		-1
5	7	2S W 3	140		-2
6	1	2H S-2	200		-4

13

♠ 9753
♥ Q82
♦ 1092
♣ K64

♠ AQJ86 ♠ K104
♥ K973 ♥ A10
♦ AJ3 ♦ K754
♣ 7 ♣ 10832

W — E
N — S

♠ 2
♥ J654
♦ Q86
♣ AQJ95

Board (13) Av: NS=-650

N-S	E-W	Contract	N-S	E-W	IMP
4	9	4S W 4	620		1
10	2	4S W 4	620		1
1	6	4S W 5	650		0
2	10	4S W 5	650		0
3	8	4S W 5	650		0
5	7	4S W 5	650		0
8	3	4S W 5	650		0
9	4	4S W 6	680		-1
6	1	4S W 6	680		-1
7	5	4S W 6	680		-1

14

♠ KQ754
♥ 4
♦ J53
♣ 8432

♠ 963 ♠ 82
♥ A972 ♥ Q1053
♦ 72 ♦ AK98
♣ A1075 ♣ K96

W — E
N — S

♠ AJ10
♥ KJ86
♦ Q1064
♣ QJ

Board (14) Av: NS=-50

N-S	E-W	Contract	N-S	E-W	IMP
6	1	2S N 2	110		4
1	6	3H W-1	50		3
3	8	2S S-1	50		0
4	9	2S S-1	50		0
8	3	2S S-1	50		0
10	2	2S N-1	50		0
2	10	2S N-1	50		0
9	4	3S N-2	100		-2
5	7	3S N-2	100		-2
7	5	3H W 3	140		-3

15

♠ J97643
♥ J10
♦ J3
♣ AQ5

♠ AQ1085 ♠ K2
♥ 4 ♥ AQ832
♦ K9874 ♦
♣ 86 ♣ J97432

W — E
N — S

♠
♥ K9765
♦ AQ10652
♣ K10

Board (15) Av: NS=-230

N-S	E-W	Contract	N-S	E-W	IMP
5	7	2H S 2	110		8
3	8	2S W-2	100		8
9	4	3NT N-1	100		4
8	3	3H S-1	100		4
2	10	2S E 2	110		3
7	5	2S E 2	110		3
6	1	3NT N-2	200		1
1	6	3H S-2	200		1
10	2	4Hx S-4	1100		-13
4	9	5Dx S-5	1400		-15

16

♠ KJ82
♥ Q102
♦ Q63
♣ AJ6

♠ 10963 ♠ AQ5
♥ AK64 ♥ 985
♦ 74 ♦ A85
♣ 1085 ♣ Q732

W — E
N — S

♠ 74
♥ J73
♦ KJ1092
♣ K94

Board (16) Av: NS=+100

N-S	E-W	Contract	N-S	E-W	IMP
7	5	1NT N 4	180		2
6	1	1NT N 2	120		1
2	10	1NT N 2	120		1
9	4	1NT N 2	120		1
1	6	1NT S 1	90		0
4	9	1NT S 1	90		0
8	3	1NT N 1	90		0
10	2	1NT N 1	90		0
5	7	1NT N 1	90		0
3	8	1NT N 1	90		0

17

♠ AK6543
♥ KQJ
♦ K10
♣ KQ

♠ Q10 ♠ J87
♥ A107642 ♥ 95
♦ 9 ♦ QJ87
♣ A1084 ♣ J932

W — E
N — S

♠ 92
♥ 83
♦ A65432
♣ 765

Board (17) Av: NS=+390

N-S	E-W	Contract	N-S	E-W	IMP
7	5	4S N 4	420		1
6	1	4S N 4	420		1
2	10	4S N 4	420		1
10	2	4S N 4	420		1
9	4	4S N 4	420		1
8	3	4S N 4	420		1
4	9	4S N 4	420		1
1	6	3NT N 3	400		0
5	7	3S N 4	170		-6
3	8	3NT N-1	50		-10

18

♠ AKJ7
♥ AK7
♦ J1082
♣ 82

♠ Q10 ♠ 9432
♥ Q106 ♥ J9854
♦ Q76 ♦ 953
♣ KJ1094 ♣ Q

W — E
N — S

♠ 865
♥ 32
♦ AK4
♣ A7653

Board (18) Av: NS=+600

N-S	E-W	Contract	N-S	E-W	IMP
7	5	3NT N 4	630		1
6	1	3NT S 3	600		0
9	4	3NT S 3	600		0
2	10	3NT N 3	600		0
8	3	3NT N 3	600		0
3	8	3NT N 3	600		0
10	2	3NT N 3	600		0
4	9	3NT N 3	600		0
1	6	3NT N 3	600		0
5	7	3NT N 3	600		0

兵庫県知事杯 OPEN TEAMS Session 4 Flight B 2013年10月13日(日)

1

♠ 97
♥ 94
♦ A1043
♣ J10983

♠ 83
♥ K875
♦ KQ987
♣ K2

♠ A105
♥ 1062
♦ J652
♣ AQ5

♠ KQJ642
♥ AQJ3
♦ 764

Board (1) Av: NS=+10

N-S	E-W	Contract	N-S	E-W	IMP
2	6	3S	S 3	140	4
4	5	3S	S 3	140	4
10	3	3S	S 3	140	4
9	7	2NT	E-2	100	3
8	1	3S	S-1	50	-2
1	8	3S	S-1	50	-2
7	9	3S	S-1	50	-2
5	4	3S	S-1	50	-2
6	2	4D	W 4	130	-4
3	10	3C	N-3	150	-4

2

♠ 10962
♥ 102
♦ K932
♣ 954

♠ K73
♥ AJ864
♦ A6
♣ AQ8

♠ Q8
♥ 975
♦ Q8754
♣ K102

♠ AJ54
♥ KQ3
♦ J10
♣ J763

Board (2) Av: NS=-170

N-S	E-W	Contract	N-S	E-W	IMP
9	7	4H	W-1	50	6
7	9	4H	W-1	50	6
2	6	3NT	W-1	50	6
4	5	3NT	W-1	50	6
3	10	2H	W 3	140	1
5	4	2H	W 3	140	1
10	3	4H	W 4	420	-6
6	2	4H	W 4	420	-6
8	1	4H	W 4	420	-6
1	8	4H	W 4	420	-6

3

♠ K9872
♥ AJ93
♦ 743
♣ 8

♠ QJ106
♥ K762
♦ 85
♣ 943

♠ A53
♥ 8
♦ KQ6
♣ AJ10762

♠ 4
♥ Q1054
♦ AJ1092
♣ KQ5

Board (3) Av: NS=+140

N-S	E-W	Contract	N-S	E-W	IMP
1	8	4H	N 4	420	7
8	1	4H	N 4	420	7
4	5	4H	N 4	420	7
7	9	3H	N 4	170	1
9	7	3H	N 3	140	0
5	4	2H	S 3	140	0
2	6	4H	S-1	50	-5
10	3	4H	N-1	50	-5
6	2	3C	E 3	110	-6
3	10	2Cx	E 2	180	-8

4

♠ 9
♥ A983
♦ KQ74
♣ Q875

♠ K1085
♥ Q54
♦ 10952
♣ J9

♠ A6432
♥ 1062
♦ AJ
♣ A42

♠ QJ7
♥ KJ7
♦ 863
♣ K1063

Board (4) Av: NS=-90

N-S	E-W	Contract	N-S	E-W	IMP
1	8	3C	N 3	110	5
2	6	3S	E-1	100	5
4	5	3C	S-1	100	0
3	10	2NT	S-1	100	0
6	2	2S	E 2	110	-1
8	1	2S	E 2	110	-1
10	3	3S	E 3	140	-2
5	4	2S	E 3	140	-2
7	9	2S	E 3	140	-2
9	7	2S	E 3	140	-2

5

♠ 1072
♥ A1052
♦ AK103
♣ J6

♠ KQJ83
♥ K84
♦ Q2
♣ Q75

♠ 654
♥ 76
♦ J95
♣ K9432

♠ A9
♥ QJ93
♦ 8764
♣ A108

Board (5) Av: NS=+450

N-S	E-W	Contract	N-S	E-W	IMP
1	8	4H	S 4	620	5
2	6	4H	S 4	620	5
8	1	4H	S 4	620	5
9	7	4H	S 4	620	5
4	5	4H	S 4	620	5
7	9	4H	S 4	620	5
6	2	3H	S 4	170	-7
10	3	3H	S 4	170	-7
3	10	3H	S 4	170	-7
5	4	2H	S 4	170	-7

6

♠ 854
♥ 1053
♦ Q108
♣ K654

♠ J73
♥ KQ64
♦ 952
♣ J107

♠ AK1092
♥ 972
♦ K763
♣ A

♠ Q6
♥ AJ8
♦ AJ4
♣ Q9832

Board (6) Av: NS=-90

N-S	E-W	Contract	N-S	E-W	IMP
2	6	3S	E-1	100	5
7	9	3S	E-1	100	5
1	8	3C	S-1	50	1
8	1	3C	N-1	50	1
10	3	3C	S-2	100	0
6	2	3S	E 3	140	-2
3	10	2S	E 3	140	-2
5	4	3S	E 4	170	-2
4	5	2S	E 4	170	-2
9	7	3NT	N-5	250	-4

7

♠ AQ965
♥ 7
♦ K9432
♣ K7

♠ AK10652
♥ J7
♦ QJ864
♣ QJ864

♠ KJ1072
♥ 43
♦ AQ5
♣ A52

♠ 843
♥ QJ98
♦ 1086
♣ 1093

Board (7) Av: NS=-610

N-S	E-W	Contract	N-S	E-W	IMP
10	3	6H	W-2	200	13
6	2	2Sx	S-2	500	3
8	1	4H	W 4	620	0
3	10	4H	W 4	620	0
1	8	3NT	E 4	630	-1
2	6	3NT	E 4	630	-1
9	7	3NT	E 4	630	-1
7	9	3NT	E 4	630	-1
5	4	4H	W 5	650	-1
4	5	3NT	E 5	660	-2

8

♠ K6
♥ A65
♦ AJ9654
♣ J10

♠ A9
♥ Q98742
♦ 2
♣ AK92

♠ J87543
♥ K10
♦ K83
♣ 76

♠ Q102
♥ J3
♦ Q107
♣ Q8543

Board (8) Av: NS=-130

N-S	E-W	Contract	N-S	E-W	IMP
3	10	3D	N-1	50	2
7	9	3D	N-1	50	2
10	3	3D	N-1	50	2
9	7	3S	E 3	140	0
1	8	3H	W 3	140	0
2	6	3H	W 3	140	0
4	5	3H	W 4	170	-1
5	4	3H	W 4	170	-1
6	2	3H	W 4	170	-1
8	1	4H	W 4	420	-7

9

♠ K962
♥ AK94
♦ K86
♣ K3

♠ 108
♥ QJ732
♦ J1092
♣ 107

♠ J754
♥ 5
♦ A754
♣ A954

♠ AQ3
♥ 1086
♦ Q3
♣ QJ862

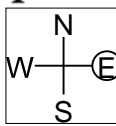
Board (9) Av: NS=+430

N-S	E-W	Contract	N-S	E-W	IMP
5	4	3NT	N 5	460	1
4	5	3NT	N 5	460	1
10	3	3NT	S 4	430	0
1	8	3NT	N 4	430	0
6	2	3NT	N 4	430	0
7	9	3NT	N 4	430	0
9	7	3NT	N 4	430	0
8	1	3NT	N 3	400	-1
2	6	3NT	N 3	400	-1
3	10	3NT	N 3	400	-1

10

♠AJ32
♥Q72
♦Q98762
♣

♠874 ♠KQ106
♥109 ♥AJ85
♦AK ♦105
♣QJ9765 ♣A82



♠95
♥K643
♦J43
♣K1043

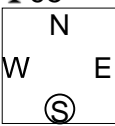
Board (10) Av: NS=-400

N-S	E-W	Contract	N-S	E-W	IMP
5	4	4S W-2	200		12
3	10	3NT W-2	200		12
8	1	3C E 4	130		7
9	7	2NT E 5	210		5
4	5	5C E 5	600		-5
6	2	3NT E 3	600		-5
10	3	3NT E 4	630		-6
2	6	3NT E 4	630		-6
7	9	3NT E 4	630		-6
1	8	3NT E 5	660		-6

11

♠J10643
♥Q2
♦AJ105
♣95

♠A7 ♠K985
♥A8 ♥J1043
♦8742 ♦KQ6
♣KJ1062 ♣74



♠Q2
♥K9765
♦93
♣AQ83

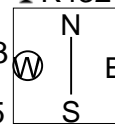
Board (11) Av: NS=-90

N-S	E-W	Contract	N-S	E-W	IMP
4	5	2H S 2	110		5
5	4	2C W-1	50		4
9	7	2C W 2	90		0
10	3	1NT W 1	90		0
6	2	2NT S-2	100		0
8	1	2NT S-2	100		0
3	10	1NT W 2	120		-1
7	9	1NT W 2	120		-1
1	8	1NT W 2	120		-1
2	6	2Cx W 2	180		-3

12

♠A8532
♥J1082
♦
♣K432

♠J10 ♠K974
♥Q753 ♥94
♦943 ♦AQ1052
♣A985 ♣Q10



♠Q6
♥AK6
♦KJ876
♣J76

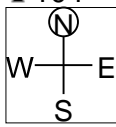
Board (12) Av: NS=-30

N-S	E-W	Contract	N-S	E-W	IMP
2	6	1NT W-2	100		4
10	3	1NT S 1	90		3
5	4	1NT S 1	90		3
7	9	1NT W-1	50		2
9	7	1NT W-1	50		2
3	10	2NT S-1	100		-2
8	1	2NT S-1	100		-2
1	8	2NT S-1	100		-2
4	5	3NT S-2	200		-5
6	2	2NT S-2	200		-5

13

♠AJ94
♥AQJ109
♦97
♣104

♠KQ62 ♠87
♥64 ♥8732
♦K1042 ♦AJ65
♣AJ2 ♣K98



♠1053
♥K5
♦Q83
♣Q7653

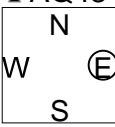
Board (13) Av: NS=-40

N-S	E-W	Contract	N-S	E-W	IMP
6	2	2H N 2	110		4
2	6	2H N 2	110		4
9	7	2S W-1	100		4
4	5	1NT S 1	90		4
3	10	2D E 2	90		-2
10	3	2D E 3	110		-2
1	8	2D E 3	110		-2
5	4	2D E 4	130		-3
8	1	2C N-2	200		-4
7	9	2C N-3	300		-6

14

♠J7632
♥K
♦J83
♣AQ43

♠109 ♠AQ5
♥732 ♥QJ1096
♦Q974 ♦A
♣K1075 ♣J962



♠K84
♥A854
♦K10652
♣8

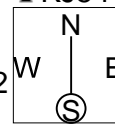
Board (14) Av: NS=+60

N-S	E-W	Contract	N-S	E-W	IMP
2	6	4S N 4	420		8
7	9	3H E-3	150		3
10	3	3S N 3	140		2
1	8	3D S 3	110		2
6	2	3H E-2	100		1
5	4	3H E-2	100		1
4	5	4S N-1	50		-3
8	1	3S N-1	50		-3
9	7	3D S-1	50		-3
3	10	4S N-2	100		-4

15

♠Q107
♥J8
♦AQ83
♣KJ54

♠83 ♠AK542
♥A942 ♥KQ105
♦10962 ♦J74
♣AQ7 ♣2



♠J96
♥763
♦K5
♣109863

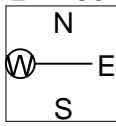
Board (15) Av: NS=-280

N-S	E-W	Contract	N-S	E-W	IMP
1	8	3NT W-3	150		10
8	1	1S E 2	110		5
3	10	3H E 3	140		4
6	2	3H W 4	170		3
9	7	3H E 4	170		3
10	3	4H W 4	420		-4
2	6	4H E 4	420		-4
5	4	4H E 4	420		-4
7	9	4H E 4	420		-4
4	5	4H E 4	420		-4

16

♠AQ4
♥K75
♦76
♣AK654

♠98765 ♠K32
♥J62 ♥10943
♦AK82 ♦J93
♣10 ♣J92



♠J10
♥AQ8
♦Q1054
♣Q873

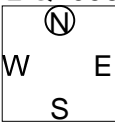
Board (16) Av: NS=+430

N-S	E-W	Contract	N-S	E-W	IMP
9	7	3NT N 4	430		0
8	1	3NT N 4	430		0
2	6	3NT N 4	430		0
6	2	3NT N 4	430		0
7	9	3NT N 4	430		0
10	3	3NT N 4	430		0
4	5	3NT N 4	430		0
5	4	3NT N 4	430		0
1	8	3NT N 3	400		-1
3	10	5C N-1	50		-10

17

♠K10
♥A7
♦QJ754
♣Q1098

♠J982 ♠Q4
♥10543 ♥KQ98
♦986 ♦K1032
♣A5 ♣643



♠A7653
♥J62
♦A
♣KJ72

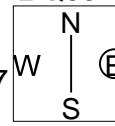
Board (17) Av: NS=+230

N-S	E-W	Contract	N-S	E-W	IMP
1	8	3NT N 4	430		5
8	1	3NT N 3	400		5
2	6	3NT N 3	400		5
6	2	3NT N 3	400		5
3	10	3NT N 3	400		5
4	5	3NT N 3	400		5
10	3	3NT N-1	50		-7
5	4	3NT N-1	50		-7
7	9	3NT N-1	50		-7
9	7	3NT N-1	50		-7

18

♠AQ94
♥J10
♦8653
♣Q53

♠KJ10 ♠76
♥K4 ♥987632
♦KQ1097 ♦J4
♣1087 ♣K42



♠8532
♥AQ5
♦AJ
♣AJ96

Board (18) Av: NS=+300

N-S	E-W	Contract	N-S	E-W	IMP
8	1	4S S 4	620		8
3	10	4S S 4	620		8
9	7	4S S 4	620		8
4	5	4S S 4	620		8
7	9	3S S 4	170		-4
10	3	3S S 4	170		-4
2	6	3S S 3	140		-4
6	2	3S S 3	140		-4
5	4	4S S-1	100		-9
1	8	4S S-1	100		-9

19

♠ J7
♥ Q1093
♦ A10943
♣ K8

♠ KQ92
♥ J75
♦ J76
♣ QJ6

♠ A1063
♥ A82
♦ KQ8
♣ A94

N
W — E
S

♠ 854
♥ K64
♦ 52
♣ 107532

20

♠ J1085
♥ K10
♦ QJ3
♣ 9865

♠ 2
♥ Q863
♦ K942
♣ AQ72

♠ AQ6
♥ AJ942
♦ A85
♣ K3

N
W — E
S

♠ K9743
♥ 75
♦ 1076
♣ J104

21

♠ K862
♥ 8742
♦ J9763

♠ AKJ9
♥ AJ10
♦ AQ10
♣ Q42

♠ Q10532
♥ Q953
♦ 96
♣ AK

N
W — E
S

♠ 8764
♥ 74
♦ KJ53
♣ 1085

Board (19) Av: NS=+430

N-S	E-W	Contract	N-S	E-W	IMP
7	2	3NT S 6	490		2
1	5	3NT S 5	460		1
10	6	3NT S 5	460		1
8	4	3NT S 5	460		1
2	7	3NT S 4	430		0
3	9	3NT S 4	430		0
5	1	3NT S 3	400		-1
9	3	3NT S 3	400		-1
6	10	3NT S 3	400		-1
4	8	3NT S 3	400		-1

Board (20) Av: NS=+40

N-S	E-W	Contract	N-S	E-W	IMP
6	10	3NT N 3	600		11
1	5	3S N 4	170		4
7	2	1NT S 2	120		2
3	9	2H S 2	110		2
4	8	2H S 2	110		2
9	3	1H S 2	110		2
2	7	3NT S-1	100		-4
8	4	3NT S-1	100		-4
10	6	3NT S-1	100		-4
5	1	3NT N-2	200		-6

Board (21) Av: NS=+110

N-S	E-W	Contract	N-S	E-W	IMP
9	3	4Sx E-3	500		9
6	10	4S E-4	200		3
5	1	4S E-3	150		1
2	7	4S E-3	150		1
4	8	4S E-3	150		1
1	5	4S E-3	150		1
10	6	4S E-2	100		0
8	4	4S E-2	100		0
7	2	2NT E 2	120		-6
3	9	2NT E 2	120		-6

22

♠ KJ832
♥ 93
♦ AKQ94
♣ A

♠ AQ97
♥ A2
♦ J52
♣ KJ82

♠ 1054
♥ 65
♦ 10873
♣ Q954

N
W — E
S

♠ 6
♥ KQJ10874
♦ 6
♣ 10763

23

♠ KQ75
♥ AK8
♦ 96
♣ Q1075

♠ 642
♥ 952
♦ K84
♣ AJ62

♠ AJ103
♥ 763
♦ Q1073
♣ K8

N
W — E
S

♠ 98
♥ QJ104
♦ AJ52
♣ 943

24

♠ J82
♥ J632
♦ 865
♣ Q74

♠ A7
♥ Q87
♦ KQJ
♣ K10965

♠ 9654
♥ K954
♦ A43
♣ A3

N
W — E
S

♠ KQ103
♥ A10
♦ 10972
♣ J82

Board (22) Av: NS=-370

N-S	E-W	Contract	N-S	E-W	IMP
10	6	5Hx E-1	200		11
5	1	5H E-1	100		10
1	5	4Sx N-1	100		7
4	8	5D S-3	150		6
2	7	5Dx N-2	300		2
7	2	5Dx S-3	500		-4
8	4	4H W 4	620		-6
6	10	4H E 4	620		-6
9	3	6Sx N-4	800		-10
3	9	5Dx S-4	800		-10

Board (23) Av: NS=+50

N-S	E-W	Contract	N-S	E-W	IMP
5	1	3D E-3	300		6
10	6	2S S 3	140		3
3	9	2S S 3	140		3
6	10	2S S 3	140		3
4	8	2S S 3	140		3
8	4	2S S 3	140		3
7	2	4S S-1	100		-4
1	5	4S S-1	100		-4
2	7	4S N-1	100		-4
9	3	4S N-1	100		-4

Board (24) Av: NS=-420

N-S	E-W	Contract	N-S	E-W	IMP
7	2	3NT E 3	400		1
1	5	3NT E 3	400		1
2	7	3NT E 3	400		1
3	9	3NT E 3	400		1
9	3	3NT E 3	400		1
6	10	3NT E 3	400		1
10	6	3NT E 4	430		0
8	4	3NT E 5	460		-1
5	1	3NT E 5	460		-1
4	8	3NT E 5	460		-1

25

♠ 10752
♥ 94
♦ QJ853
♣ K9

♠ A843
♥ Q1076
♦ K1076
♣ Q

♠ QJ
♥ A853
♦ 94
♣ A10854

N
W — E
S

♠ K96
♥ KJ2
♦ A2
♣ J7632

26

♠ Q43
♥ 642
♦ A85
♣ AKJ2

♠ J10976
♥ J1093
♦ Q42
♣ 3

♠ AK82
♥ AKQ7
♦ KJ7
♣ 108

N
W — E
S

♠ 5
♥ 85
♦ 10963
♣ Q97654

27

♠ AQ76
♥ KQ3
♦ 852
♣ 1063

♠ 982
♥ 1076
♦ KJ106
♣ AQ5

♠ KJ1054
♥ A
♦ 74
♣ J9842

N
W — E
S

♠ 3
♥ J98542
♦ AQ93
♣ K7

Board (25) Av: NS=-80

N-S	E-W	Contract	N-S	E-W	IMP
9	3	3NT W-1	100		5
2	7	3NT E-1	100		5
7	2	2D N-1	50		1
6	10	2D S-2	100		-1
4	8	1NT S-2	100		-1
1	5	2H W 2	110		-1
8	4	2NT W 2	120		-1
10	6	1NT W 2	120		-1
5	1	1NT W 3	150		-2
3	9	1NTxS-2	300		-6

Board (26) Av: NS=+1460

N-S	E-W	Contract	N-S	E-W	IMP
10	6	6NT S 7	1470		0
6	10	6NT S 7	1470		0
4	8	6NT S 7	1470		0
7	2	6NT S 7	1470		0
8	4	6NT S 7	1470		0
9	3	6NT S 6	1440		-1
3	9	6NT S 6	1440		-1
5	1	6NT S 6	1440		-1
1	5	6NT S 6	1440		-1
2	7	6NT S 6	1440		-1

Board (27) Av: NS=+40

N-S	E-W	Contract	N-S	E-W	IMP
8	4	4S S 4	420		9
10	6	3S S 4	170		4
6	10	2S S 4	170		4
9	3	1S S 3	140		3
7	2	Passout			-1
3	9	Passout			-1
4	8	4S S-1	50		-3
1	5	4S N-1	50		-3
2	7	4Sx N-1	100		-4
5	1	2H W 4	170		-5

28

♠ A643
♥ QJ75
♦ K65
♣ K9

♠ QJ9875
♥ K6
♦ J2
♣ A62

♠ K102
♥ A10984
♦ Q9
♣ Q73

♠ 32
♥ A108743
♦ J10854

29

♠ AK109653
♥ K1084
♦ J
♣ A

♠ 74
♥ J9
♦ AQ108754
♣ 102

♠ QJ8
♥ A5
♦ 93
♣ KQJ874

♠ 2
♥ Q7632
♦ K62
♣ 9653

30

♠ Q752
♥ 1043
♦ J107
♣ A109

♠ K94
♥ A8765
♦ 96
♣ QJ2

♠ J86
♥ Q9
♦ A8542
♣ 863

♠ A103
♥ KJ2
♦ KQ3
♣ K754

Board (28) Av: NS=+350

N-S	E-W	Contract	N-S	E-W	IMP
8	4	4H S 4	620		7
1	5	4H S 4	620		7
6	10	4H S 4	620		7
9	3	4H S 4	620		7
10	6	4H S 4	620		7
5	1	4H N 4	620		7
2	7	4H S-1	100		-10
7	2	4H S-1	100		-10
4	8	4H N-1	100		-10
3	9	3NT S-1	100		-10

Board (29) Av: NS=+1430

N-S	E-W	Contract	N-S	E-W	IMP
10	6	6S N 7	1460		1
7	2	6S N 7	1460		1
5	1	6S N 6	1430		0
2	7	6S N 6	1430		0
1	5	6S N 6	1430		0
9	3	6S N 6	1430		0
4	8	6S N 6	1430		0
6	10	6S N 6	1430		0
8	4	6S N 6	1430		0
3	9	4S N 7	710		-12

Board (30) Av: NS=-450

N-S	E-W	Contract	N-S	E-W	IMP
2	7	4H W 4	420		1
10	6	4H W 5	450		0
7	2	4H W 5	450		0
1	5	4H W 5	450		0
4	8	4H W 5	450		0
6	10	4H W 5	450		0
8	4	4H W 5	450		0
9	3	3NT W 5	460		0
3	9	3NT W 5	460		0
5	1	4H W 6	480		-1

31

♠ 954
♥ KJ7
♦ KQ85
♣ Q63

♠ AQ2
♥ 542
♦ 632
♣ K1082

♠ 10876
♥ Q963
♦ 97
♣ J94

♠ KJ3
♥ A108
♦ AJ104
♣ A75

♠ AQ2
♥ 542
♦ 632
♣ K1082

32

♠ 96
♥ Q94
♦ K854
♣ K754

♠ J753
♥ J87
♦ A
♣ J9832

♠ AQ108
♥ AK5
♦ 1092
♣ A106

♠ K42
♥ 10632
♦ QJ763
♣ Q

♠ J753
♥ J87
♦ A
♣ J9832

33

♠ AK
♥ AQ1083
♦ A74
♣ 952

♠ Q43
♥ 4
♦ KQ
♣ AKQJ643

♠ J109875
♥ KJ
♦ 10653
♣ 10

♠ 62
♥ 97652
♦ J982
♣ 87

♠ Q43
♥ 4
♦ KQ
♣ AKQJ643

Board (31) Av: NS=+520

N-S	E-W	Contract	N-S	E-W	IMP
3	9	3NT S 5	660		4
8	4	3NT S 4	630		3
6	10	3NT S 4	630		3
7	2	3NT S 3	600		2
2	7	3NT S 3	600		2
9	3	3NT S 3	600		2
4	8	3NT S 3	600		2
5	1	3NT S 3	600		2
1	5	3NT S-1	100		-12
10	6	3NT S-1	100		-12

Board (32) Av: NS=-100

N-S	E-W	Contract	N-S	E-W	IMP
4	8	2D S 2	90		5
6	10	1NT E 1	90		0
8	4	1NT E 1	90		0
10	6	1NT E 1	90		0
7	2	1NT E 1	90		0
9	3	1NT E 1	90		0
1	5	1NT E 2	120		-1
2	7	1NT E 2	120		-1
5	1	3C W 4	130		-1
3	9	2S E 5	200		-3

Board (33) Av: NS=+110

N-S	E-W	Contract	N-S	E-W	IMP
1	5	5Cx W-2	300		5
6	10	5Cx W-2	300		5
8	4	5Cx W-2	300		5
7	2	5Cx W-2	300		5
2	7	4Sx E-1	100		0
10	6	4S E-1	50		-2
4	8	4H N-1	50		-4
9	3	4H N-1	50		-4
5	1	4H N-1	50		-4
3	9	6H N-3	150		-6

34

♠ AQ4
♥ Q62
♦ K6
♣ 109864

♠ 76
♥ AJ98
♦ J973
♣ AJ2

♠ 1032
♥ K10
♦ A8542
♣ KQ7

♠ KJ985
♥ 7543
♦ Q10
♣ 53

♠ 76
♥ AJ98
♦ J973
♣ AJ2

35

♠ K7
♥ AQ1074
♦ 3
♣ A10652

♠ 1054
♥ K95
♦ AQ654
♣ 84

♠ J8
♥ J6
♦ KJ82
♣ KQJ73

♠ AQ9632
♥ 832
♦ 1097
♣ 9

♠ 1054
♥ K95
♦ AQ654
♣ 84

36

♠ K2
♥ QJ73
♦ K83
♣ K1087

♠ J75
♥ AK109
♦ QJ109
♣ J4

♠ 109863
♥ 865
♦ 74
♣ Q63

♠ AQ4
♥ 42
♦ A652
♣ A952

♠ J75
♥ AK109
♦ QJ109
♣ J4

Board (34) Av: NS=-20

N-S	E-W	Contract	N-S	E-W	IMP
9	3	3NT E-2	100		3
1	5	2NT E-2	100		3
6	10	2NT E-2	100		3
4	8	2NT E-1	50		2
8	4	1NT E-1	50		2
5	1	1NT E 1	90		-2
7	2	3D E 4	130		-3
3	9	3D E 4	130		-3
10	6	3D E 4	130		-3
2	7	3D E 4	130		-3

Board (35) Av: NS=+200

N-S	E-W	Contract	N-S	E-W	IMP
9	3	4H N 5	450		6
5	1	4H N 5	450		6
2	7	4H N 4	420		6
7	2	2H N 5	200		0
3	9	3S S 3	140		-2
4	8	3S S 3	140		-2
6	10	2S S 3	140		-2
10	6	2H N 3	140		-2
1	5	4S S-1	50		-6
8	4	3S S-1	50		-6

Board (36) Av: NS=+260

N-S	E-W	Contract	N-S	E-W	IMP
1	5	3NT S 3	600		8
3	9	3NT S 3	600		8
2	7	3NT S 3	600		8
5	1	3NT N 3	600		8
10	6	1D W-2	200		-2
8	4	2NT S 2	120		-4
6	10	2NT S 2	120		-4
7	2	3NT S-1	100		-8
4	8	3NT S-1	100		-8
9	3	3NT S-1	100		-8

兵庫県知事杯 OPEN TEAMS Session 5 Flight B 2013年10月14日(月)

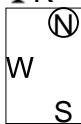
1

♠ J10765
♥ A106
♦ AJ98
♣ K

♠ K92
♥ J542
♦ Q3
♣ J1094

♠ AQ83
♥ K97
♦ 54
♣ AQ53

♠ 4
♥ Q83
♦ K10762
♣ 8762



Board (1) Av: NS=+670

N-S	E-W	Contract	N-S	E-W	IMP
3	2	6S	N 6	980	7
10	7	6S	N 6	980	7
5	8	6S	N 6	980	7
4	1	6S	N 6	980	7
9	6	4S	N 6	480	-5
1	4	4S	N 6	480	-5
6	9	4S	N 6	480	-5
2	3	4S	N 6	480	-5
8	5	4S	N 6	480	-5
7	10	4S	N 5	450	-6

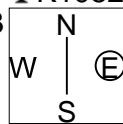
2

♠ 2
♥ AJ85
♦ AKQ2
♣ K1082

♠ A9
♥ 10432
♦ J65
♣ A653

♠ K85
♥ K76
♦ 73
♣ QJ974

♠ QJ107643
♥ Q9
♦ 10984
♣



Board (2) Av: NS=+560

N-S	E-W	Contract	N-S	E-W	IMP
6	9	3NT	S 5	660	3
5	8	3NT	S 4	630	2
7	10	3NT	S 4	630	2
4	1	3NT	S 4	630	2
10	7	5C	S 5	600	1
2	3	5C	S 5	600	1
9	6	3NT	S 3	600	1
8	5	4Sx	W-3	500	-2
1	4	4Sx	W-2	300	-6
3	2	4Sx	W-2	300	-6

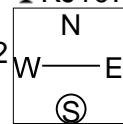
3

♠ 742
♥ 106
♦ J1062
♣ KJ107

♠ A
♥ AKJ9
♦ AQ7543
♣ 53

♠ KQJ1063
♥ 4
♦ 98
♣ Q982

♠ 985
♥ Q87532
♦ K
♣ A64



Board (3) Av: NS=-990

N-S	E-W	Contract	N-S	E-W	IMP
4	1	5H	W 7	710	7
6	9	5H	E 7	710	7
10	7	4H	W 7	710	7
7	10	4H	W 7	710	7
2	3	4H	W 7	710	7
5	8	4H	W 7	710	7
3	2	4H	W 7	710	7
1	4	6H	W 7	1460	-10
8	5	7H	W 7	2210	-15
9	6	7H	W 7	2210	-15

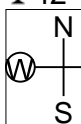
4

♠ QJ762
♥ J52
♦ 952
♣ 42

♠ 98
♥ AQ64
♦ AK1074
♣ 85

♠ K103
♥ K8
♦ Q63
♣ AQ1097

♠ A54
♥ 10973
♦ J8
♣ KJ63



Board (4) Av: NS=-160

N-S	E-W	Contract	N-S	E-W	IMP
10	7	2H	E 2	110	2
8	5	2NT	W 2	120	1
1	4	2H	E 3	140	1
6	9	3H	E 4	170	0
4	1	2H	W 4	170	0
9	6	2H	W 4	170	0
5	8	2H	E 4	170	0
2	3	2H	E 4	170	0
3	2	2C	S-2	200	-1
7	10	4H	E 4	620	-10

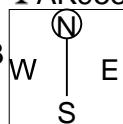
5

♠ 8
♥ Q62
♦ QJ74
♣ AK953

♠ Q109652
♥ 75
♦ 82
♣ Q108

♠ KJ7
♥ A84
♦ AK10965
♣ J

♠ A43
♥ KJ1093
♦ 3
♣ 7642



Board (5) Av: NS=+940

N-S	E-W	Contract	N-S	E-W	IMP
6	9	6D	S 6	1370	10
5	8	6D	S 6	1370	10
7	10	6D	S 6	1370	10
9	6	6D	S 6	1370	10
1	4	6D	S 6	1370	10
4	1	3NT	S 5	660	-7
10	7	5D	S 5	600	-8
8	5	5D	S 5	600	-8
2	3	4D	S 7	190	-13
3	2	6D	S-1	100	-14

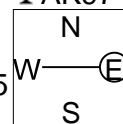
6

♠ Q543
♥ 42
♦ J98
♣ AK97

♠ J10982
♥ Q10
♦ 10642
♣ 43

♠ 76
♥ A87653
♦ 3
♣ QJ86

♠ AK
♥ KJ9
♦ AKQ75
♣ 1052



Board (6) Av: NS=-10

N-S	E-W	Contract	N-S	E-W	IMP
8	5	3S	W-1	100	3
4	1	3S	W-1	100	3
9	6	3S	W-1	100	3
6	9	3NT	W-1	100	3
10	7	3NT	W-1	100	3
1	4	3NT	W-1	100	3
3	2	3S	W 3	140	-4
7	10	3S	W 4	170	-4
5	8	4Hx	S-2	300	-7
2	3	3NT	W 3	600	-11

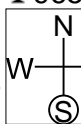
7

♠ 1092
♥ J10753
♦ A7
♣ 965

♠ AQ54
♥ 862
♦ J82
♣ KQ3

♠ KJ6
♥ A9
♦ K965
♣ AJ108

♠ 873
♥ KQ4
♦ Q1043
♣ 742



Board (7) Av: NS=+140

N-S	E-W	Contract	N-S	E-W	IMP
8	5	2H	S 3	140	0
5	8	2H	S 3	140	0
9	6	2H	S 3	140	0
6	9	2H	S 3	140	0
4	1	2H	S 3	140	0
1	4	2H	S 3	140	0
3	2	2H	S 3	140	0
2	3	2H	S 3	140	0
10	7	2H	S 2	110	-1
7	10	2H	S 2	110	-1

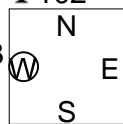
8

♠ AQ10653
♥ Q95
♦ K3
♣ 102

♠ 42
♥ J6
♦ QJ1042
♣ KQJ9

♠ K8
♥ 872
♦ A95
♣ 87653

♠ J97
♥ AK1043
♦ 876
♣ A4



Board (8) Av: NS=+10

N-S	E-W	Contract	N-S	E-W	IMP
8	5	3H	W-3	150	4
9	6	2S	N 2	110	3
10	7	4H	W-2	100	3
5	8	4H	W-2	100	3
2	3	4D	W-1	50	1
3	2	3S	N-1	50	-2
4	1	3S	N-1	50	-2
6	9	3D	W 3	110	-3
7	10	3D	E 3	110	-3
1	4	2H	W 4	170	-5

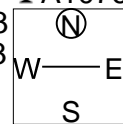
9

♠ 84
♥ Q4
♦ AQ1043
♣ A1076

♠ Q1052
♥ 10875
♦ 52
♣ K92

♠ KJ9
♥ A62
♦ 9876
♣ Q84

♠ A763
♥ KJ93
♦ KJ
♣ J53



Board (9) Av: NS=+130

N-S	E-W	Contract	N-S	E-W	IMP
6	9	3D	N 5	150	1
4	1	3D	N 5	150	1
8	5	3D	N 4	130	0
7	10	3D	N 4	130	0
10	7	3D	N 4	130	0
5	8	3D	N 4	130	0
1	4	2NT	S 2	120	0
9	6	3D	N 3	110	-1
2	3	3D	N 3	110	-1
3	2	4D	N-1	50	-5

10

♠109865
♥A10876
♦10
♣76

♠AK ♠J73
♥QJ932 ♥5
♦9832 ♠Q654
♣Q3 ♠AJ1084

W N E S

♠Q42
♥K4
♦AKJ7
♣K952

Board (10) Av: NS=+70

N-S	E-W	Contract	N-S	E-W	IMP
8	5	2NT E-4	400		8
9	6	3D W-3	300		6
3	2	3D W-2	200		4
10	7	2S S 3	140		2
1	4	2S S 3	140		2
6	9	2H S 2	110		1
7	10	4S S-1	100	100	-5
5	8	4S S-1	100	100	-5
2	3	4S N-1	100	100	-5
4	1	3NT S-1	100	100	-5

11

♠Q108
♥Q53
♦K843
♣1065

♠A6543 ♠9
♥K1096 ♥A2
♦106 ♠AQJ9752
♣Q3 ♣AK2

W N E S

♠KJ72
♥J874
♦
♣J9874

Board (11) Av: NS=-470

N-S	E-W	Contract	N-S	E-W	IMP
2	3	5D W 6	420		2
4	1	5D E 6	420		2
1	4	5D E 6	420		2
8	5	3NT W 6	490		-1
9	6	3NT W 6	490		-1
10	7	3NT E 6	490		-1
7	10	3NT E 6	490		-1
3	2	3NT E 6	490		-1
5	8	3NT E 6	490		-1
6	9	3NT E 6	490		-1

12

♠QJ98
♥8
♦AQ86
♣8652

♠K54 ♠7
♥9653 ♥AKQ107
♦1054 ♠AKJ73
♣Q74 ♣A103

W N E S

♠A10632
♥J42
♦92
♣KJ9

Board (12) Av: NS=-240

N-S	E-W	Contract	N-S	E-W	IMP
9	6	4H E-1	50		7
10	7	4H E-1	50		7
8	5	3H E 3	140		3
2	3	3H E 4	170		2
3	2	3H E 4	170		2
4	1	4S S-2	200		1
5	8	4H E 4	420		-5
1	4	4H E 5	450		-5
7	10	4H E 5	450		-5
6	9	4H E 5	450		-5

13

♠106
♥K983
♦KQ8542
♣4

♠K932 ♠AJ87
♥7654 ♥A10
♦ ♠J763
♣Q10862 ♠AK5

W N E S

♠Q54
♥QJ2
♦A109
♣J973

Board (13) Av: NS=-70

N-S	E-W	Contract	N-S	E-W	IMP
1	4	3NT E-1	100		5
7	10	2D S 2	90		4
8	5	2D N 2	90		4
3	2	2D N-1	100	100	-1
9	6	2S E 2	110		-1
2	3	1NT E 2	120		-2
10	7	1NT E 2	120		-2
4	1	2S E 3	140		-2
5	8	1NT E 3	150		-2
6	9	4S E 5	650		-11

14

♠K
♥AKJ9732
♦54
♣832

♠109853 ♠64
♥64 ♥108
♦Q102 ♠K8763
♣QJ9 ♣K1074

W N E S

♠AQJ72
♥Q5
♦AJ9
♣A65

Board (14) Av: NS=+1010

N-S	E-W	Contract	N-S	E-W	IMP
9	6	7H N 7	1510		11
2	3	7H N 7	1510		11
10	7	6H S 7	1010		0
6	9	6H N 7	1010		0
1	4	6H N 7	1010		0
8	5	6H N 7	1010		0
3	2	6H N 7	1010		0
5	8	6H N 7	1010		0
4	1	4H N 7	510		-11
7	10	4H N 7	510		-11

15

♠A95
♥J932
♦107
♣J976

♠Q1083 ♠K2
♥74 ♥AQ
♦KQ98 ♠AJ32
♣Q53 ♣AK1084

W N E S

♠J764
♥K10865
♦654
♣2

Board (15) Av: NS=-490

N-S	E-W	Contract	N-S	E-W	IMP
6	9	3NT E 6	490		0
8	5	3NT E 6	490		0
9	6	3NT E 6	490		0
10	7	3NT E 6	490		0
7	10	3NT E 6	490		0
4	1	3NT E 6	490		0
1	4	3NT E 6	490		0
2	3	3NT E 6	490		0
5	8	3NT E 6	490		0
3	2	3NT E 6	490		0

16

♠AK843
♥Q9
♦854
♣832

♠J75 ♠Q10
♥10542 ♥K73
♦932 ♠QJ7
♣Q74 ♠KJ1096

W N E S

♠962
♥AJ86
♦AK106
♣A5

Board (16) Av: NS=+370

N-S	E-W	Contract	N-S	E-W	IMP
2	3	4S N 6	480		3
9	6	4S N 5	450		2
1	4	4S N 5	450		2
8	5	4S S 4	420		2
7	10	4S S 4	420		2
3	2	4S S 4	420		2
5	8	4S S 4	420		2
4	1	2S N 5	200		-5
10	7	2S N 5	200		-5
6	9	3NT S-2	100	100	-10

17

♠AK
♥KQ86
♦AJ43
♣542

♠53 ♠876
♥93 ♥AJ10742
♦K10982 ♠KQ93
♣10876 ♣KQ93

W N E S

♠QJ10942
♥5
♦Q765
♣AJ

Board (17) Av: NS=+440

N-S	E-W	Contract	N-S	E-W	IMP
1	4	5S N 5	450		0
6	9	4S N 5	450		0
8	5	4S N 5	450		0
10	7	4S N 5	450		0
7	10	4S N 5	450		0
5	8	4S N 5	450		0
3	2	3NT N 4	430		0
4	1	4S S 4	420		-1
9	6	4S N 4	420		-1
2	3	4S N 4	420		-1

18

♠A42
♥65
♦Q42
♣K9862

♠K10732 ♠QJ963
♥A73 ♥AQ
♦ ♠J965
♣QJ1043 ♣A5

W N E S

♠K10875
♥J984
♦K108
♣7

Board (18) Av: NS=+60

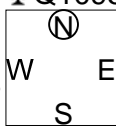
N-S	E-W	Contract	N-S	E-W	IMP
9	6	3NT W-2	100		1
6	9	3NT W-2	100		1
2	3	3NT W-2	100		1
1	4	3NT W-2	100		1
7	10	3NT W-2	100		1
5	8	3NT W-1	50		0
3	2	3NT W-1	50		0
10	7	3NT E-1	50		0
8	5	2H W 2	110		-5
4	1	2H W 3	140		-5

1

♠AQ43
♥Q32
♦J2
♣Q1095

♠K10976
♥7654
♦5
♣874

♠82
♥J10
♦K109874
♣AK3



Board (1) Av: NS=-40

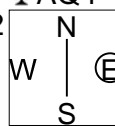
N-S	E-W	Contract	N-S	E-W	IMP
3	1	2Sx	W-1	100	4
9	10	2Sx	E-1	100	4
5	6	2S	W-1	50	3
4	2	3NT	N-1	50	0
1	3	3D	S-1	50	0
7	8	2D	S-1	50	0
10	9	2S	W 2	110	-2
2	4	2S	W 2	110	-2
8	7	2S	E 2	110	-2
6	5	2Hx	E 3	570	-11

2

♠86
♥A107532
♦AQ
♣AQ4

♠A97
♥J984
♦6
♣98763

♠K543
♥K
♦K1087432
♣5



Board (2) Av: NS=+20

N-S	E-W	Contract	N-S	E-W	IMP
3	1	3NT	S 5	660	12
1	3	4H	N 4	620	12
5	6	2H	N 3	140	3
7	8	4H	N-1	100	-3
4	2	4H	N-1	100	-3
2	4	4H	N-1	100	-3
8	7	4H	N-1	100	-3
9	10	4H	N-1	100	-3
10	9	4H	N-1	100	-3
6	5	3H	N-1	100	-3

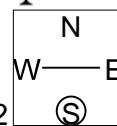
3

♠KQJ109
♥J762
♦AK76
♣

♠6532
♥KQ
♦QJ
♣AK542

♠843
♥108543
♦J10976

♠A874
♥A1095
♦92
♣Q83



Board (3) Av: NS=+340

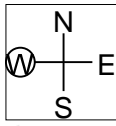
N-S	E-W	Contract	N-S	E-W	IMP
7	8	4S	N 6	480	4
6	5	4S	N 6	480	4
9	10	4S	N 4	420	2
2	4	4S	N 4	420	2
8	7	4S	N 4	420	2
4	2	4S	N 4	420	2
1	3	5Cx	W-1	200	-4
10	9	3S	N 4	170	-5
5	6	2S	S 4	170	-5
3	1	4S	N-1	50	-9

4

♠J63
♥Q10753
♦J6
♣976

♠8
♥K962
♦A10
♣K85432

♠Q974
♥AJ8
♦KQ843
♣J



Board (4) Av: NS=-90

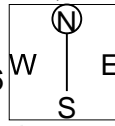
N-S	E-W	Contract	N-S	E-W	IMP
5	6	5C	W-1	100	5
2	4	5C	E-1	100	5
1	3	2S	W-1	100	5
7	8	3C	E 5	150	-2
4	2	3C	E 5	150	-2
3	1	3C	E 5	150	-2
8	7	3C	E 5	150	-2
9	10	3C	E 5	150	-2
10	9	3C	E 5	150	-2
6	5	2NT	E 4	180	-3

5

♠J98543
♥1043
♦10
♣Q109

♠K6
♥KJ975
♦K5432
♣A

♠A107
♥A2
♦J7
♣K87642



Board (5) Av: NS=-440

N-S	E-W	Contract	N-S	E-W	IMP
2	4	6H	E-1	50	10
9	10	4H	E 4	420	1
8	7	4H	E 4	420	1
1	3	4H	E 5	450	0
5	6	4H	E 5	450	0
4	2	4H	E 5	450	0
3	1	4H	E 5	450	0
7	8	4H	E 5	450	0
10	9	4H	E 5	450	0
6	5	4H	E 5	450	0

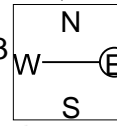
6

♠AQ9
♥
♦Q762
♣Q109762

♠843
♥AK10763
♦KJ
♣K3

♠KJ762
♥952
♦A83
♣54

♠105
♥QJ84
♦10954
♣AJ8



Board (6) Av: NS=-120

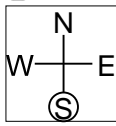
N-S	E-W	Contract	N-S	E-W	IMP
10	9	4H	W-1	100	6
8	7	4H	W-1	100	6
5	6	4C	N-1	50	2
3	1	5C	N-2	100	1
9	10	4C	N-2	100	1
4	2	3H	W 3	140	-1
1	3	3H	W 4	170	-2
6	5	3H	E 4	170	-2
2	4	5Cx	N-2	300	-5
7	8	4H	W 4	620	-11

7

♠QJ763
♥92
♦J984
♣A7

♠42
♥A73
♦K2
♣J108543

♠105
♥KQ84
♦A1075
♣Q96



Board (7) Av: NS=-60

N-S	E-W	Contract	N-S	E-W	IMP
6	5	1NT	E-2	200	6
4	2	2S	N 2	110	5
8	7	2S	N 2	110	5
2	4	2C	E 2	90	-1
7	8	1NT	E 1	90	-1
1	3	1NT	W 2	120	-2
5	6	1NT	E 2	120	-2
3	1	1NT	E 2	120	-2
9	10	1NT	E 2	120	-2
10	9	2S	N-2	200	-4

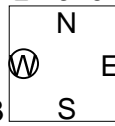
8

♠52
♥AQ10
♦QJ104
♣KJ102

♠Q87
♥4
♦K865
♣A9863

♠A10643
♥K8765
♦2
♣Q5

♠KJ9
♥J932
♦A973
♣74



Board (8) Av: NS=-110

N-S	E-W	Contract	N-S	E-W	IMP
2	4	3D	N 3	110	6
9	10	3D	N-1	50	2
8	7	3D	N-1	50	2
6	5	3D	N-2	100	0
7	8	2NT	S-2	100	0
10	9	2S	W 2	110	0
1	3	2S	W 3	140	-1
4	2	3S	W 4	170	-2
3	1	3S	W 4	170	-2
5	6	3S	W 4	170	-2

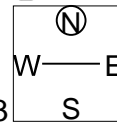
9

♠Q53
♥K1095
♦AQJ43
♣4

♠K876
♥QJ6
♦2
♣AK873

♠J
♥A74
♦109876
♣9652

♠A10942
♥832
♦K5
♣QJ10



Board (9) Av: NS=-30

N-S	E-W	Contract	N-S	E-W	IMP
5	6	3S	S 5	200	6
10	9	3S	S 3	140	5
2	4	2D	N 3	110	4
4	2	3S	S-1	50	-1
8	7	3S	S-1	50	-1
3	1	2S	S-1	50	-1
1	3	4S	S-2	100	-2
7	8	3S	S-2	100	-2
6	5	3S	S-2	100	-2
9	10	4C	W 4	130	-3

10

♠ A86
♥ K3
♦ J975
♣ Q875

♠ Q2
♥ AJ2
♦ K10632
♣ AKJ

N
W — E
S

♠ 1053
♥ Q654
♦ A4
♣ 10942

♠ KJ974
♥ 10987
♦ Q8
♣ 63

11

♠ A8752
♥ KQ4
♦ 973
♣ K4

♠ K
♥ AJ10862
♦ A106
♣ 872

N
W — E
S

♠ J104
♥ 53
♦ J852
♣ AJ53

♠ Q963
♥ 97
♦ KQ4
♣ Q1096

12

♠ AK8
♥ Q107
♦ 72
♣ AJ754

♠ J6
♥ AK2
♦ J106
♣ Q10963

N
W — E
S

♠ 7532
♥ J64
♦ KQ853
♣ 8

♠ Q1094
♥ 9853
♦ A94
♣ K2

Board (10) Av: NS=+230

N-S	E-W	Contract	N-S	E-W	IMP
7	8	3NT W-3	300		2
1	3	3NT W-3	300		2
5	6	3NT W-3	300		2
6	5	3NT W-3	300		2
4	2	3NT W-2	200		-1
2	4	3NT W-2	200		-1
8	7	3NT W-2	200		-1
10	9	3NT W-2	200		-1
9	10	3NT E-1	100		-4
3	1	3D W-1	100		-4

Board (11) Av: NS=+130

N-S	E-W	Contract	N-S	E-W	IMP
1	3	4Hx E-3	500		9
10	9	3S N 3	140		0
4	2	3S N 3	140		0
5	6	3S N 3	140		0
8	7	3S N 3	140		0
7	8	2S N 3	140		0
3	1	2S N 3	140		0
9	10	2S N 2	110		-1
6	5	2S N 2	110		-1
2	4	3S N-1		50	-5

Board (12) Av: NS=+120

N-S	E-W	Contract	N-S	E-W	IMP
2	4	1NT N 4	180		2
3	1	2H S 4	170		2
5	6	1NT N 2	120		0
4	2	1NT N 2	120		0
6	5	1NT N 2	120		0
7	8	1NT N 2	120		0
1	3	1NT N 1	90		-1
10	9	1NT N 1	90		-1
9	10	1NT N 1	90		-1
8	7	1NT N-1		100	-6

13

♠ K
♥ J8763
♦ KQ
♣ 98642

♠ AQ84
♥
♦ 109653
♣ AK75

N
W — E
S

♠ J965
♥ K1054
♦ A8742
♣

♠ 10732
♥ AQ92
♦ J
♣ QJ103

14

♠ 86
♥ Q932
♦ 765
♣ 8643

♠ K72
♥ J86
♦ QJ1032
♣ A7

N
W — E
S

♠ AQJ109
♥ AK4
♦ AK8
♣ K2

♠ 543
♥ 1075
♦ 94
♣ QJ1095

15

♠ AKQ3
♥ J9
♦ QJ53
♣ AQ8

♠ 1098
♥ A1065
♦ A
♣ KJ762

N
W — E
S

♠ 72
♥ K743
♦ 8764
♣ 1094

♠ J654
♥ Q82
♦ K1092
♣ 53

Board (13) Av: NS=-60

N-S	E-W	Contract	N-S	E-W	IMP
10	9	4S W-2	200		6
3	1	4S W-1	100		4
2	4	4S W-1	100		4
9	10	4S W-1	100		4
7	8	3S E-1	100		4
5	6	Passout			2
6	5	3S E 3		140	-2
8	7	3S W 4		170	-3
1	3	5D W 5		600	-11
4	2	4S W 4		620	-11

Board (14) Av: NS=-1330

N-S	E-W	Contract	N-S	E-W	IMP
3	1	6S W 7		1010	8
2	4	6S E 7		1010	8
4	2	6NT E 7		1020	7
7	8	6NT E 7		1020	7
1	3	7S E 7		1510	-5
9	10	7S E 7		1510	-5
5	6	7NT E 7		1520	-5
6	5	7NT E 7		1520	-5
10	9	7NT E 7		1520	-5
8	7	7NT E 7		1520	-5

Board (15) Av: NS=+270

N-S	E-W	Contract	N-S	E-W	IMP	
5	6	4S S 4		620	8	
6	5	4S S 4		620	8	
10	9	4S S 4		620	8	
8	7	4S N 4		620	8	
7	8	2S S 4		170	-3	
4	2	1NT N 3		150	-3	
3	1	1NT N 3		150	-3	
1	3	4S S-1			100	-9
9	10	4S S-1			100	-9
2	4	4S S-2			200	-10

16

♠ 9865
♥ 7
♦ AK4
♣ QJ1065

♠ 10
♥ KJ863
♦ 10986
♣ K94

N
W — E
S

♠ AK2
♥ A105
♦ Q532
♣ A82

♠ QJ743
♥ Q942
♦ J7
♣ 73

17

♠ 974
♥ A1054
♦ AJ10
♣ 963

♠ AKQJ
♥ Q3
♦ 62
♣ K10752

N
W — E
S

♠ 32
♥ KJ9
♦ KQ8754
♣ A4

♠ 10865
♥ 8762
♦ 93
♣ QJ8

18

♠ AJ2
♥ AJ
♦ J1053
♣ J954

♠ K10964
♥ Q732
♦ 62
♣ 73

N
W — E
S

♠ 75
♥ K964
♦ K8
♣ KQ1062

♠ Q83
♥ 1085
♦ AQ974
♣ A8

Board (16) Av: NS=-170

N-S	E-W	Contract	N-S	E-W	IMP
1	3	2S S 2		110	7
8	7	4H E-1		100	7
2	4	3S S-1		50	3
5	6	2H E 3		140	1
9	10	2H E 3		140	1
7	8	2H E 3		140	1
4	2	3H E 4		170	0
6	5	2H E 5		200	-1
3	1	4H E 4		620	-10
10	9	4H E 5		650	-10

Board (17) Av: NS=-460

N-S	E-W	Contract	N-S	E-W	IMP
3	1	3NT W 5		460	0
1	3	3NT E 5		460	0
2	4	3NT E 5		460	0
4	2	3NT E 5		460	0
5	6	3NT E 5		460	0
6	5	3NT E 5		460	0
7	8	3NT E 5		460	0
8	7	3NT E 5		460	0
9	10	3NT E 5		460	0
10	9	3NT E 5		460	0

Board (18) Av: NS=+450

N-S	E-W	Contract	N-S	E-W	IMP
5	6	3NT N 5		660	5
9	10	3NT N 5		660	5
8	7	3NT N 4		630	5
6	5	3NT N 4		630	5
2	4	3NT S 3		600	4
1	3	3NT S 3		600	4
4	2	2NT N 4		180	-7
3	1	1NT N 4		180	-7
7	8	3D S 5		150	-7
10	9	3H E-1		50	-9

19

♠AKQ
♥Q7543
♦AJ8
♣KQ

♠73
♥A
♦10653
♣J109842

N
W—E
S

♠10952
♥J9
♦KQ94
♣A65

♠J864
♥K10862
♦72
♣73

Board (19) Av: NS=+420

N-S	E-W	Contract	N-S	E-W	IMP
1	2	4H	N 4	420	0
2	1	4H	N 4	420	0
3	4	4H	N 4	420	0
4	3	4H	N 4	420	0
5	10	4H	N 4	420	0
10	5	4H	N 4	420	0
6	7	4H	N 4	420	0
7	6	4H	N 4	420	0
9	8	4H	N 4	420	0
8	9	3H	N 4	170	-6

20

♠K3
♥Q10532
♦Q92
♣532

♠J10642
♥K4
♦A765
♣A6

N
W—E
S

♠7
♥A87
♦J1083
♣KJ984

♠AQ985
♥J96
♦K4
♣Q107

Board (20) Av: NS=-100

N-S	E-W	Contract	N-S	E-W	IMP
9	8	3D	W-1	100	5
7	6	2S	W-1	100	5
8	9	3D	W 3	110	0
2	1	3D	W 4	130	-1
5	10	3D	W 4	130	-1
4	3	3D	W 4	130	-1
10	5	3D	W 4	130	-1
1	2	3D	W 4	130	-1
6	7	2D	W 5	150	-2
3	4	1NT	E 4	180	-2

21

♠Q94
♥Q753
♦653
♣AJ10

♠A76
♥J10862
♦Q102
♣73

N
W—E
S

♠5
♥AK9
♦AKJ8
♣96542

♠KJ10832
♥4
♦974
♣KQ8

Board (21) Av: NS=0

N-S	E-W	Contract	N-S	E-W	IMP
3	4	5Cx	E-2	300	7
7	6	3S	S 3	140	4
4	3	2S	S 2	110	3
5	10	4H	W-1	50	2
6	7	4H	W-1	50	2
9	8	4H	E-1	50	2
1	2	3D	E 3	110	-3
10	5	3H	W 3	140	-4
2	1	3H	W 4	170	-5
8	9	4H	E 4	420	-9

22

♠J752
♥9
♦AK98
♣KQ102

♠AQ43
♥Q86
♦Q543
♣J8

N
W—E
S

♠9
♥J754
♦J107
♣A9643

♠K1086
♥AK1032
♦62
♣75

Board (22) Av: NS=+100

N-S	E-W	Contract	N-S	E-W	IMP
1	2	4S	N 4	420	8
6	7	4S	N 4	420	8
9	8	1S	S 4	170	2
5	10	1NT	N 3	150	2
8	9	2S	S 3	140	1
3	4	2S	S 2	110	0
10	5	4S	N-1	50	-4
2	1	4S	N-1	50	-4
7	6	4S	N-2	100	-5
4	3	4S	N-2	100	-5

23

♠A43
♥86
♦86
♣QJ9853

♠82
♥109732
♦AJ53
♣62

N
W—E
S

♠KQ10976
♥AK4
♦742
♣7

♠J5
♥QJ5
♦KQ109
♣AK104

Board (23) Av: NS=-100

N-S	E-W	Contract	N-S	E-W	IMP
7	6	3C	S 3	110	5
8	9	3C	S 3	110	5
3	4	4C	S-1	100	0
6	7	4C	S-1	100	0
5	10	4C	N-1	100	0
4	3	3NT	S-1	100	0
1	2	3S	E 3	140	-1
10	5	2S	E 4	170	-2
2	1	5C	N-2	200	-3
9	8	3Sx	E 4	930	-13

24

♠7532
♥A65
♦J32
♣KJ10

♠Q8
♥8742
♦K1096
♣765

N
W—E
S

♠K1096
♥109
♦AQ84
♣Q92

♠AJ4
♥KQJ3
♦75
♣A843

Board (24) Av: NS=+100

N-S	E-W	Contract	N-S	E-W	IMP
9	8	3NT	S 3	400	7
8	9	2NT	S 3	150	2
5	10	3H	S 3	140	1
7	6	3C	S 4	130	1
6	7	2S	N 2	110	0
3	4	2S	N 2	110	0
1	2	2S	N 2	110	0
2	1	2S	N 2	110	0
4	3	3S	N-1	50	-4
10	5	2S	N-1	50	-4

25

♠3
♥Q10872
♦A83
♣A1095

♠Q9765
♥A96
♦106
♣Q74

N
W—E
S

♠AK108
♥K5
♦Q752
♣J62

♠J42
♥J43
♦KJ94
♣K83

Board (25) Av: NS=-110

N-S	E-W	Contract	N-S	E-W	IMP
6	7	3H	S 3	140	6
2	1	3C	S-1	50	2
1	2	2S	W 2	110	0
3	4	2S	W 2	110	0
5	10	2S	W 2	110	0
4	3	2S	W 2	110	0
9	8	3S	W 3	140	-1
8	9	3S	W 3	140	-1
7	6	2S	W 3	140	-1
10	5	2S	W 3	140	-1

26

♠Q10953
♥K9
♦KJ10
♣Q75

♠AJ7
♥J10743
♦763
♣KJ

N
W—E
S

♠6
♥865
♦AQ8
♣A109632

♠K842
♥AQ2
♦9542
♣84

Board (26) Av: NS=-90

N-S	E-W	Contract	N-S	E-W	IMP
10	5	4H	W-1	100	5
3	4	4H	W-1	100	5
1	2	Passout			3
4	3	Passout			3
5	10	3S	N-1	100	0
2	1	3H	W 3	140	-2
6	7	3S	N-2	200	-3
7	6	3S	N-2	200	-3
8	9	3S	N-2	200	-3
9	8	3S	N-2	200	-3

27

♠AK93
♥AJ95
♦
♣AQ943

♠8
♥KQ84
♦Q9864
♣765

N
W—E
S

♠QJ1064
♥76
♦A52
♣J82

♠752
♥1032
♦KJ1073
♣K10

Board (27) Av: NS=+190

N-S	E-W	Contract	N-S	E-W	IMP
4	3	3NT	S 4	430	6
7	6	3NT	N 4	430	6
9	8	3NT	S 3	400	5
3	4	3NT	N 3	400	5
10	5	3C	N 4	130	-2
5	10	2C	N 4	130	-2
6	7	3C	N 3	110	-2
2	1	6H	N-1	50	-6
1	2	3C	N-1	50	-6
8	9	5C	N-2	100	-7

28

♠62
♥AJ6
♦Q843
♣Q1076

♠954
♥Q1092
♦1052
♣J95

♠873
♥K8753
♦A97
♣A2

♠AKQJ10
♥4
♦KJ6
♣K843

Board (28) Av: NS=+340

N-S	E-W	Contract	N-S	E-W	IMP
9	8	4S	S 5	650	7
4	3	3NT	N 4	630	7
6	7	3NT	N 4	630	7
1	2	3NT	N 4	630	7
7	6	3S	S 5	200	-4
2	1	3H	E-4	200	-4
10	5	4C	S 5	150	-5
3	4	3H	E-3	150	-5
8	9	3D	N 5	150	-5
5	10	3C	S 5	150	-5

29

♠92
♥AJ4
♦AQ3
♣AQ1075

♠J853
♥Q832
♦K1092
♣4

♠107
♥K1097
♦8754
♣J92

♠AKQ64
♥65
♦J6
♣K863

Board (29) Av: NS=+770

N-S	E-W	Contract	N-S	E-W	IMP
3	4	6C	S 7	1390	12
6	7	6C	S 6	1370	12
9	8	3NT	N 7	720	-2
4	3	3NT	N 6	690	-2
5	10	3NT	N 6	690	-2
1	2	3NT	N 6	690	-2
10	5	3NT	N 5	660	-3
7	6	3NT	N 5	660	-3
8	9	3NT	N 5	660	-3
2	1	3NT	N 5	660	-3

30

♠J8
♥A98742
♦32
♣A102

♠AQ9
♥J
♦KJ1087
♣K843

♠72
♥53
♦AQ964
♣QJ96

♠K106543
♥KQ106
♦5
♣75

Board (30) Av: NS=-160

N-S	E-W	Contract	N-S	E-W	IMP
10	5	4Hx	N 4	590	13
1	2	4H	N 4	420	11
5	10	4H	N-1	50	3
6	7	5H	N-2	100	2
8	9	4D	W 5	150	0
4	3	5Hx	N-2	300	-4
9	8	5Hx	N-2	300	-4
7	6	5D	W 5	400	-6
2	1	5D	W 5	400	-6
3	4	5D	W 5	400	-6

31

♠2
♥8432
♦Q104
♣87432

♠J1098
♥Q1075
♦7653
♣5

♠AQ753
♥AJ96
♦9
♣KJ6

♠K64
♥K
♦AKJ82
♣AQ109

Board (31) Av: NS=+20

N-S	E-W	Contract	N-S	E-W	IMP
2	1	5Cx	S 5	750	12
8	9	4C	S 4	130	3
9	8	2NT	S 2	120	3
7	6	2NT	S 2	120	3
4	3	3S	E-1	50	1
1	2	3H	W-1	50	1
10	5	5C	S-1	100	-3
5	10	5C	S-1	100	-3
6	7	3NT	S-1	100	-3
3	4	5Cx	S-1	200	-6

32

♠A975
♥J873
♦105
♣A76

♠Q1084
♥Q109
♦K843
♣KQ

♠KJ632
♥K64
♦J
♣10852

♠A52
♥AQ9762
♣J943

Board (32) Av: NS=-140

N-S	E-W	Contract	N-S	E-W	IMP
5	10	2S	E 2	110	1
8	9	2S	E 2	110	1
4	3	3S	E 3	140	0
9	8	3S	E 3	140	0
3	4	2S	E 3	140	0
10	5	2S	E 3	140	0
6	7	2S	E 3	140	0
7	6	2S	E 3	140	0
2	1	2S	E 3	140	0
1	2	2S	E 3	140	0

33

♠KJ6
♥AQ65
♦105
♣A973

♠Q973
♥K8
♦986
♣KJ84

♠A54
♥104
♦AKQJ732
♣Q

♠1082
♥J9732
♦4
♣10652

Board (33) Av: NS=-290

N-S	E-W	Contract	N-S	E-W	IMP
1	2	3C	E-3	150	10
4	3	5Dx	E-1	100	9
9	8	5D	E-1	50	8
10	5	3NT	W 3	400	-3
3	4	3NT	W 3	400	-3
8	9	3NT	W 3	400	-3
7	6	3NT	W 3	400	-3
6	7	3NT	W 4	430	-4
5	10	3NT	W 4	430	-4
2	1	3NT	W 5	460	-5

34

♠KQ972
♥QJ863
♦
♣K63

♠6
♥AK1075
♦Q752
♣742

♠853
♥92
♦A10964
♣Q85

♠AJ104
♥4
♦KJ83
♣AJ109

Board (34) Av: NS=+550

N-S	E-W	Contract	N-S	E-W	IMP
1	2	4S	N 6	680	4
5	10	4S	N 5	650	3
4	3	4S	N 5	650	3
3	4	4S	N 5	650	3
6	7	4S	N 5	650	3
7	6	4S	N 5	650	3
9	8	4S	N 5	650	3
10	5	4S	N 4	620	2
2	1	5S	N-1	100	-12
8	9	4S	N-1	100	-12

35

♠AQ
♥QJ875
♦AK62
♣63

♠J985
♥A10
♦QJ5
♣Q1098

♠642
♥64
♦108743
♣A72

♠K1073
♥K932
♦9
♣KJ54

Board (35) Av: NS=+450

N-S	E-W	Contract	N-S	E-W	IMP
7	6	4H	N 6	480	1
4	3	4H	N 6	480	1
1	2	4H	N 5	450	0
2	1	4H	N 5	450	0
3	4	4H	N 5	450	0
5	10	4H	N 5	450	0
8	9	4H	N 5	450	0
6	7	4H	N 5	450	0
10	5	4H	N 5	450	0
9	8	4H	N 5	450	0

36

♠KQ94
♥Q652
♦2
♣QJ73

♠765
♥A843
♦876
♣1095

♠A2
♥K
♦KJ1054
♣AK862

♠J1083
♥J1097
♦AQ93
♣4

Board (36) Av: NS=+130

N-S	E-W	Contract	N-S	E-W	IMP
7	6	5D	E-6	600	10
8	9	4C	E-2	200	2
3	4	3D	E-2	200	2
2	1	3D	E-2	200	2
9	8	3D	E-2	200	2
4	3	3S	N 3	140	0
6	7	2S	N 2	110	-1
10	5	3D	E-1	100	-1
1	2	3Hx	S-1	100	-6
5	10	3Hx	S-1	200	-8