

兵庫県知事杯 OPEN TEAMS Session 1 Flight A 2013年10月12日(土)

1

♠KJ4
♥64
♦KQJ9753
♣2

♠Q97 ♠A865
♥K10753 ♥QJ2
♦1062 ♦A8
♣75 ♣AQJ3

♠1032
♥A98
♦4
♣K109864

Board (1) Av: NS=+20

N-S	E-W	Contract	N-S	E-W	IMP
3	6	4H W-3	150		4
6	3	3NT E-3	150		4
1	10	3NT E-3	150		4
4	7	4Hx W-1	100		2
8	2	2S E-2	100		2
7	4	4H W-1	50		1
10	1	3H W 3		140	-4
9	5	3H W 3		140	-4
5	9	3H E 3		140	-4
2	8	5Dx N-2		300	-8

2

♠K102
♥105
♦A653
♣KQ53

♠984 ♠AQJ5
♥K7632 ♥AJ94
♦72 ♦KJ109
♣AJ10 ♣4

♠763
♥Q8
♦Q84
♣98762

Board (2) Av: NS=-470

N-S	E-W	Contract	N-S	E-W	IMP
2	8	4H W 4	420		2
1	10	4H W 5	450		1
4	7	4H W 5	450		1
10	1	5H W 6	480		0
8	2	4H W 6	480		0
3	6	4H W 6	480		0
5	9	4H W 6	480		0
9	5	4H W 6	480		0
7	4	4H W 6	480		0
6	3	4H E 6	480		0

3

♠J872
♥Q73
♦AQ3
♣1053

♠K964 ♠AQ3
♥982 ♥K5
♦4 ♦K972
♣QJ982 ♣AK74

♠105
♥AJ1064
♦J10865
♣6

Board (3) Av: NS=-500

N-S	E-W	Contract	N-S	E-W	IMP
1	10	4S W-2	200		12
2	8	3NT E-2	200		12
9	5	5C E 5		600	-3
8	2	3NT E 3		600	-3
10	1	3NT E 3		600	-3
6	3	3NT E 3		600	-3
4	7	3NT E 3		600	-3
7	4	3NT E 3		600	-3
5	9	3NT E 3		600	-3
3	6	3NT E 3		600	-3

4

♠A1043
♥J10
♦Q106
♣Q965

♠652 ♠K9
♥42 ♥K9865
♦K32 ♦A9874
♣A10742 ♣K

♠QJ87
♥AQ73
♦J5
♣J83

Board (4) Av: NS=+20

N-S	E-W	Contract	N-S	E-W	IMP
5	9	2H W-1	100		2
2	8	2H E-1	100		2
1	10	2H E-1	100		2
9	5	2H E-1	100		2
3	6	2H E-1	100		2
7	4	2H E-1	100		2
6	3	2H E 2		110	-4
4	7	2H E 2		110	-4
8	2	2H E 2		110	-4
10	1	2H E 2		110	-4

5

♠AJ762
♥K32
♦J109
♣92

♠53 ♠8
♥J10876 ♥A954
♦KQ73 ♦A8542
♣75 ♣QJ6

♠KQ1094
♥Q
♦6
♣AK10843

Board (5) Av: NS=+670

N-S	E-W	Contract	N-S	E-W	IMP
3	6	4S S 7	710		1
8	2	4S S 6	680		0
10	1	4S S 6	680		0
9	5	4S S 6	680		0
4	7	4S S 6	680		0
2	8	5S N 5	650		-1
1	10	5S N 5	650		-1
6	3	4S S 5	650		-1
5	9	4S N 5	650		-1
7	4	5D E-3	150		-11

6

♠Q8742
♥K654
♦32
♣K5

♠KJ5 ♠103
♥J ♥AQ1087
♦J1094 ♦Q7
♣Q7642 ♣J983

♠A96
♥932
♦AK865
♣A10

Board (6) Av: NS=-30

N-S	E-W	Contract	N-S	E-W	IMP
3	6	2S S 4	170		5
8	2	2S S 3	140		5
9	5	2S S 2	110		4
7	4	4S N-1		50	-1
5	9	3S N-1		50	-1
6	3	3H N-1		50	-1
10	1	2S S-1		50	-1
2	8	4S S-2		100	-2
1	10	4S N-3		150	-3
4	7	3NT S-5		250	-6

7

♠10643
♥AK92
♦
♣K9532

♠A75 ♠J982
♥64 ♥1087
♦J1062 ♦AKQ43
♣10864 ♣Q

♠KQ
♥QJ53
♦9875
♣AJ7

Board (7) Av: NS=+650

N-S	E-W	Contract	N-S	E-W	IMP
3	6	4H S 5	650		0
2	8	4H N 5	650		0
10	1	4H N 5	650		0
8	2	4H N 5	650		0
1	10	4H N 5	650		0
6	3	4H N 5	650		0
4	7	4H N 5	650		0
5	9	4H N 5	650		0
9	5	4H N 5	650		0
7	4	4H N 4	620		-1

8

♠K10873
♥1084
♦AK98
♣7

♠J5 ♠AQ62
♥6 ♥AK753
♦Q7654 ♦J2
♣AJ942 ♣106

♠94
♥QJ92
♦103
♣KQ853

Board (8) Av: NS=-70

N-S	E-W	Contract	N-S	E-W	IMP
2	8	3Cx E-1	100		5
7	4	2H E-1	50		3
6	3	2S N-1		50	1
1	10	2S N-1		50	1
8	2	2D E 2		90	-1
5	9	1NT W 1		90	-1
4	7	1NT W 1		90	-1
9	5	2S N-2		100	-1
3	6	1NT W 2		120	-2
10	1	2Sx N-2		300	-6

9

♠Q9632
♥962
♦QJ83
♣5

♠K85 ♠A107
♥K8743 ♥AQ5
♦104 ♦52
♣876 ♣Q10932

♠J4
♥J10
♦AK976
♣AKJ4

Board (9) Av: NS=+70

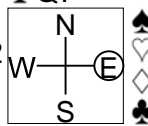
N-S	E-W	Contract	N-S	E-W	IMP
2	8	3D S 4	130		2
10	1	3D S 3	110		1
3	6	3D S 3	110		1
8	2	2S S 2	110		1
1	10	2S S 2	110		1
6	3	2S S 2	110		1
9	5	2S S 2	110		1
4	7	2S S-1		50	-3
7	4	2S S-1		50	-3
5	9	5D S-2		100	-5

兵庫県知事杯 OPEN TEAMS Session 1 Flight A 2013年10月12日(土)

10

♠ Q953
♥ Q8
♦ AQ1074
♣ Q7

♠ J62 ♠ K874
♥ J9432 ♥ K
♦ J63 ♠ K852
♣ J2 ♣ K963



♠ A10
♥ A10765
♦ 9
♣ A10854

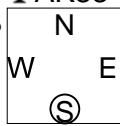
Board (10) Av: NS=+140

N-S	E-W	Contract	N-S	E-W	IMP
6	3	4Hx S 4	790		12
4	7	3NT N 4	630		10
2	8	3NT N 4	630		10
7	4	1NT N 3	150		0
1	10	3C N 3	110		-1
10	1	3C N 3	110		-1
5	9	3NT N-1	100		-6
3	6	3NT N-2	200		-8
8	2	3NT N-2	200		-8
9	5	3NT N-2	200		-8

11

♠ 5
♥ 10943
♦ AJ107
♣ AK83

♠ AQ643 ♠ 10972
♥ J86 ♥ AQ752
♦ Q542 ♠ K8
♣ 7 ♣ J10



♠ KJ8
♥ K
♦ 963
♣ Q96542

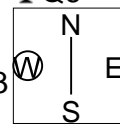
Board (11) Av: NS=+10

N-S	E-W	Contract	N-S	E-W	IMP
3	6	4H E-3	150		4
10	1	4C N 4	130		3
7	4	4C N 4	130		3
6	3	3H E-2	100		3
8	2	2H E-1	50		1
2	8	5C S-1	50		-2
1	10	5C N-1	50		-2
5	9	5C S-2	100		-3
9	5	3S W 3	140		-4
4	7	4D N-4	200		-5

12

♠ 853
♥ J764
♦ AK42
♣ Q6

♠ K64 ♠ AQ109
♥ A53 ♥ Q1098
♦ Q763 ♠ K8
♣ K83 ♣ 107



♠ J72
♥ K2
♦ J8
♣ AJ9542

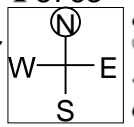
Board (12) Av: NS=-80

N-S	E-W	Contract	N-S	E-W	IMP
10	1	2D W-2	100		5
8	2	1NT W-1	50		4
2	8	Passout			2
6	3	1NT W 1	90		0
5	9	2C S-1	100		-1
9	5	2H E 2	110		-1
1	10	2H E 2	110		-1
7	4	1NT W 2	120		-1
4	7	1NT W 2	120		-1
3	6	1NT W 2	120		-1

13

♠ J
♥ J10982
♦ 1076
♣ 8763

♠ AQ65 ♠ 1098
♥ AKQ7 ♥ 63
♦ J ♠ AQ32
♣ KJ92 ♣ Q1054



♠ K7432
♥ 54
♦ K9854
♣ A

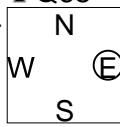
Board (13) Av: NS=-650

N-S	E-W	Contract	N-S	E-W	IMP
1	10	3NT W 4	630		1
6	3	3NT W 4	630		1
8	2	3NT W 4	630		1
2	8	3NT E 4	630		1
10	1	3NT W 5	660		0
3	6	3NT W 5	660		0
4	7	3NT W 5	660		0
7	4	3NT W 5	660		0
9	5	3NT W 5	660		0
5	9	3NT W 5	660		0

14

♠ 3
♥ K109876
♦ Q106
♣ Q65

♠ 108764 ♠ AK5
♥ 543 ♥ AJ2
♦ AJ ♠ K973
♣ 1093 ♣ K84



♠ QJ92
♥ Q
♦ 8542
♣ AJ72

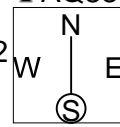
Board (14) Av: NS=+40

N-S	E-W	Contract	N-S	E-W	IMP
9	5	3NT E-3	150		3
8	2	1D E-3	150		3
4	7	4S W-2	100		2
7	4	4S W-2	100		2
3	6	2NT E-2	100		2
6	3	2S E-1	50		0
1	10	2NT E-1	50		0
2	8	2NT E 2	120		-4
5	9	2NT E 2	120		-4
10	1	2NT E 3	150		-5

15

♠ KJ10
♥
♦ KJ8653
♣ AQ83

♠ 954 ♠ Q76
♥ AQJ632 ♥ K8754
♦ 9 ♠ Q1042
♣ J92 ♣ 7



♠ A832
♥ 109
♦ A7
♣ K10654

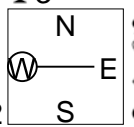
Board (15) Av: NS=+890

N-S	E-W	Contract	N-S	E-W	IMP
2	8	6S S 7	1460		11
8	2	6C S 7	1390		11
3	6	6C S 6	1370		10
4	7	6C S 6	1370		10
5	9	6C S 6	1370		10
1	10	5Hx W-3	500		-9
7	4	5Hx W-3	500		-9
9	5	5Hx W-3	500		-9
6	3	6H W-3	150		-12
10	1	6D N-1	100		-14

16

♠ 982
♥ AJ87432
♦ A7
♣ 3

♠ Q ♠ AKJ105
♥ KQ106 ♥ 95
♦ 53 ♠ QJ10
♣ KQ9762 ♣ J84



♠ 7643
♥
♦ K98642
♣ A105

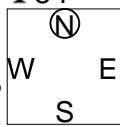
Board (16) Av: NS=-360

N-S	E-W	Contract	N-S	E-W	IMP
6	3	5Cx W-3	800		15
1	10	3NT W-2	200		11
5	9	4S E-1	100		10
4	7	2Hx N-1	100		6
8	2	3NT W 3	600		-6
10	1	3NT W 3	600		-6
3	6	3NT W 3	600		-6
7	4	3NT W 4	630		-7
2	8	3NT W 4	630		-7
9	5	3NT W 4	630		-7

17

♠ J43
♥ AK98743
♦ 9
♣ 54

♠ 62 ♠ 975
♥ QJ2 ♥ 106
♦ Q1053 ♠ K642
♣ KQ92 ♣ AJ108



♠ AKQ108
♥ 5
♦ AJ87
♣ 763

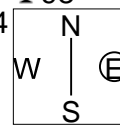
Board (17) Av: NS=+390

N-S	E-W	Contract	N-S	E-W	IMP
7	4	4S S 5	450		2
8	2	4H S 4	420		1
1	10	4H N 4	420		1
2	8	4H N 4	420		1
9	5	4H N 4	420		1
6	3	4H N 4	420		1
5	9	4H N 4	420		1
4	7	4H N 4	420		1
10	1	3H N 4	170		-6
3	6	3H N 4	170		-6

18

♠ 7
♥ 10852
♦ AQJ963
♣ 98

♠ KQ104 ♠ 53
♥ K4 ♥ J96
♦ K872 ♠ 54
♣ 754 ♣ KQJ1032



♠ AJ9862
♥ AQ73
♦ 10
♣ A6

Board (18) Av: NS=-50

N-S	E-W	Contract	N-S	E-W	IMP
2	8	4H S 5	650		12
9	5	4H N 4	620		12
8	2	3NT W-1	50		3
5	9	4H S-1	100		-2
4	7	3S S-1	100		-2
10	1	4S S-2	200		-4
1	10	3S S-2	200		-4
7	4	3S S-2	200		-4
6	3	4S S-3	300		-6
3	6	3S S-3	300		-6

19

♠ J10965
♥ Q
♦ KJ95
♣ 852

♠ A4
♥ K732
♦ A632
♣ Q73

N
W—E
S

♠ 732
♥ J94
♦ 108
♣ AK1064

♠ KQ8
♥ A10865
♦ Q74
♣ J9

Board (19) Av: NS=+80

N-S	E-W	Contract	N-S	E-W	IMP
2	9	1NT S 2	120		1
7	1	2S N 2	110		1
1	7	2S N 2	110		1
10	4	2S N 2	110		1
8	6	2D N 2	90		0
9	2	1NT S 1	90		0
4	10	1NT S 1	90		0
3	5	1NT S 1	90		0
6	8	1NT S-1	50		-4
5	3	1NT S-1	50		-4

20

♠ AJ
♥ K5
♦ A10972
♣ KQ87

♠ Q10
♥ Q8432
♦ 8654
♣ 32

N
W—E
S

♠ K9732
♥ A109
♦ K
♣ AJ95

♠ 8654
♥ J76
♦ QJ3
♣ 1064

Board (20) Av: NS=+20

N-S	E-W	Contract	N-S	E-W	IMP
3	5	2C E-2	200		5
4	10	1NT N 2	120		3
2	9	2D N 3	110		3
6	8	2D N 3	110		3
1	7	2S E-1	100		2
8	6	2D N 2	90		2
5	3	2S E 2	110		-4
7	1	2S E 2	110		-4
9	2	2S E 3	140		-4
10	4	2S E 3	140		-4

21

♠ 8764
♥ AQ8763
♦ 75
♣ 3

♠ AK
♥ J10
♦ KJ10932
♣ KJ9

N
W—E
S

♠ Q1053
♥ K95
♦ A4
♣ A1064

♠ J92
♥ 42
♦ Q86
♣ Q8752

Board (21) Av: NS=-490

N-S	E-W	Contract	N-S	E-W	IMP
4	10	5D W 6	420		2
1	7	3NT E 5	460		1
2	9	3NT E 5	460		1
5	3	3NT E 5	460		1
9	2	3NT E 6	490		0
7	1	3NT E 6	490		0
6	8	3NT E 6	490		0
10	4	3NT E 7	520		-1
3	5	3NT E 7	520		-1
8	6	3NT E 7	520		-1

22

♠ KJ64
♥ K83
♦ 1093
♣ Q83

♠ AQ103
♥ 105
♦ 75
♣ AJ762

N
W—E
S

♠ AJ762
♥ AJ762
♦ AJ864
♣ K95

♠ 98752
♥ Q94
♦ KQ2
♣ 104

Board (22) Av: NS=-320

N-S	E-W	Contract	N-S	E-W	IMP
1	7	3NT W-2	200		11
6	8	3NT W-1	100		9
8	6	3NT W-1	100		9
2	9	3H E 3	140		5
4	10	3H E 4	170		4
5	3	3NT W 3	600		-7
9	2	3NT W 3	600		-7
3	5	3NT W 3	600		-7
7	1	3NT W 4	630		-7
10	4	3NT W 5	660		-8

23

♠ Q43
♥ 1094
♦ Q964
♣ AJ9

♠ AJ8
♥ 532
♦ 1087
♣ K1082

N
W—E
S

♠ K10965
♥ AKQ86
♦ J2
♣ 5

♠ 72
♥ J7
♦ AK53
♣ Q7643

Board (23) Av: NS=-400

N-S	E-W	Contract	N-S	E-W	IMP
4	10	4S E-1	100		11
2	9	3S E 4	170		6
5	3	3S E 4	170		6
1	7	3S E 4	170		6
6	8	2S E 4	170		6
9	2	4S E 4	620		-6
3	5	4S E 4	620		-6
7	1	4S E 4	620		-6
10	4	4S E 4	620		-6
8	6	4S E 4	620		-6

24

♠ KQJ5
♥ J97
♦ 1098762
♣

♠ 10842
♥ KQ10
♦ Q
♣ AKJ75

N
W—E
S

♠ A6
♥ 8632
♦ A53
♣ Q1083

♠ 973
♥ A54
♦ KJ4
♣ 9642

Board (24) Av: NS=-250

N-S	E-W	Contract	N-S	E-W	IMP
10	4	4H W-2	100		8
4	10	5C W-1	50		7
2	9	4C W 4	130		3
8	6	3C W 4	130		3
6	8	3C W 5	150		3
3	5	5C W 5	400		-4
5	3	5C W 5	400		-4
7	1	3NT W 3	400		-4
9	2	3NT E 3	400		-4
1	7	3NT E 3	400		-4

25

♠ K654
♥ AJ102
♦ 864
♣ Q7

♠ Q82
♥ 54
♦ AKJ53
♣ 1032

N
W—E
S

♠ 10973
♥ 873
♦ Q7
♣ AJ64

♠ AJ
♥ KQ96
♦ 1092
♣ K985

Board (25) Av: NS=+140

N-S	E-W	Contract	N-S	E-W	IMP
8	6	3H S 3	140		0
7	1	2H S 3	140		0
2	9	2H S 3	140		0
9	2	2H S 3	140		0
1	7	2H S 3	140		0
4	10	2H S 3	140		0
10	4	2H N 3	140		0
5	3	1H S 3	140		0
6	8	1H S 3	140		0
3	5	4H S-1	50		-5

26

♠ 104
♥ A53
♦ KJ
♣ Q109843

♠ AJ96
♥ J94
♦ 963
♣ K52

N
W—E
S

♠ 32
♥ 8762
♦ 10752
♣ AJ6

♠ KQ875
♥ KQ10
♦ AQ84
♣ 7

Board (26) Av: NS=-70

N-S	E-W	Contract	N-S	E-W	IMP
3	5	3NT N 5	660		12
8	6	3C N 3	110		5
9	2	3NT N-1	100		-1
2	9	3NT N-1	100		-1
5	3	3NT N-1	100		-1
6	8	3NT N-1	100		-1
10	4	3NT N-1	100		-1
4	10	3NT N-1	100		-1
1	7	3NT N-1	100		-1
7	1	3NT N-2	200		-4

27

♠ 2
♥ 9
♦ KQ43
♣ AKJ10953

♠ K8765
♥ A7654
♦ A8
♣ 7

N
W—E
S

♠ AQ103
♥ KJ2
♦ J9765
♣ Q

♠ J94
♥ Q1083
♦ 102
♣ 8642

Board (27) Av: NS=-140

N-S	E-W	Contract	N-S	E-W	IMP
6	8	6S W-3	150		7
7	1	5S W-2	100		6
2	9	5S W-1	50		5
5	3	5S W-1	50		5
1	7	5Cx N-1	100		1
8	6	5Cx N-1	100		1
10	4	6Cx N-2	300		-4
9	2	4S W 4	420		-7
4	10	4S W 4	420		-7
3	5	4S W 4	420		-7

28

♠ K53
♥ Q3
♦ J753
♣ J854

♠ QJ10984
♥ K7
♦ 1082
♣ K6

♠ A762
♥ 852
♦ K4
♣ 10973

N
W | E
S

♠ AJ10964
♥ AQ96
♦ AQ2
♣ AQ2

29

♠ Q54
♥ K874
♦ AQ109
♣ K5

♠ 2
♥ Q1092
♦ K83
♣ AJ872

♠ KJ1083
♥ 5
♦ J7654
♣ Q4

N
W | E
S

♠ A976
♥ AJ63
♦ 2
♣ 10963

30

♠ 4
♥ J1093
♦ Q1096
♣ QJ96

♠ AKJ7
♥ Q742
♦ 53
♣ 832

♠ 9852
♥ K5
♦ AKJ872
♣ 4

N
W | E
S

♠ Q1063
♥ A86
♦ 4
♣ AK1075

Board (28) Av: NS=-450

N-S	E-W	Contract	N-S	E-W	IMP
5	3	2S	E 5	200	6
10	4	3NT	W 3	400	2
3	5	3NT	E 4	430	1
2	9	4H	W 5	450	0
9	2	4H	W 5	450	0
4	10	4H	W 5	450	0
6	8	4H	W 5	450	0
8	6	4S	W 6	480	-1
7	1	4H	W 6	480	-1
1	7	4H	W 6	480	-1

Board (29) Av: NS=-20

N-S	E-W	Contract	N-S	E-W	IMP
2	9	2S	S 3	140	4
3	5	2S	S 2	110	4
7	1	2S	N 2	110	4
8	6	2D	N 3	110	4
4	10	2D	N 2	90	3
9	2	2S	S-1	100	-2
5	3	3H	E 3	140	-3
6	8	3H	E 3	140	-3
10	4	3H	E 4	170	-4
1	7	4S	N-3	300	-7

Board (30) Av: NS=-90

N-S	E-W	Contract	N-S	E-W	IMP
10	4	3D	S 3	110	5
8	6	4S	W-2	100	5
9	2	4S	E-2	100	5
4	10	4S	E-2	100	5
3	5	4S	E-2	100	5
1	7	5Dx	S-1	100	0
2	9	5Dxx	S-1	200	-3
7	1	4S	E 4	420	-8
6	8	4S	E 4	420	-8
5	3	4S	E 4	420	-8

31

♠ 92
♥ 53
♦ 1087542
♣ AQJ

♠ KQ1083
♥ J97
♦ Q6
♣ K74

♠ A7654
♥ AK64
♦ A
♣ 863

N
W | E
S

♠ J
♥ Q1082
♦ KJ93
♣ 10952

32

♠ AK9632
♥ 98
♦ 106
♣ AJ2

♠ 8
♥ K754
♦ Q53
♣ K9854

♠ QJ1054
♥ AJ32
♦ K2
♣ 107

N
W | E
S

♠ 7
♥ Q106
♦ AJ9874
♣ Q63

33

♠ 53
♥ 10975
♦ 87
♣ J8542

♠ 87
♥ A83
♦ J1065
♣ Q1063

♠ QJ6
♥ Q64
♦ Q92
♣ AK97

N
W | E
S

♠ AK10942
♥ KJ2
♦ AK43
♣

Board (31) Av: NS=-20

N-S	E-W	Contract	N-S	E-W	IMP
3	5	2S	S 3	140	4
2	9	2S	S 3	140	4
7	1	2S	S 2	110	4
9	2	2S	S 2	110	4
5	3	2S	S 2	110	4
10	4	2S	S 2	110	4
6	8	2H	S-1	100	-2
1	7	3NT	S-3	300	-7
4	10	2S	S-3	300	-7
8	6	2S	S-3	300	-7

Board (32) Av: NS=-50

N-S	E-W	Contract	N-S	E-W	IMP
1	7	4S	N-1	50	0
7	1	4S	N-1	50	0
2	9	4S	N-1	50	0
9	2	4S	N-1	50	0
3	5	4S	N-1	50	0
5	3	4S	N-1	50	0
4	10	4S	N-1	50	0
10	4	4S	N-1	50	0
6	8	4S	N-1	50	0
8	6	4S	N-1	50	0

Board (33) Av: NS=-460

N-S	E-W	Contract	N-S	E-W	IMP
1	7	2S	W 6	230	6
8	6	3NT	E 4	430	1
9	2	3NT	E 4	430	1
7	1	5D	W 7	440	1
6	8	4S	W 5	450	0
3	5	3NT	E 5	460	0
4	10	4S	W 6	480	-1
5	3	4S	W 6	480	-1
10	4	4S	W 6	480	-1
2	9	4S	W 7	510	-2

34

♠ 9
♥ Q87632
♦ 93
♣ AKJ4

♠ 1053
♥ A104
♦ AJ762
♣ 109

♠ Q864
♥ K9
♦ Q84
♣ 8762

N
W | E
S

♠ AKJ72
♥ J5
♦ K105
♣ Q53

35

♠ 1054
♥ A743
♦ 753
♣ KJ10

♠ A2
♥ J95
♦ QJ10842
♣ A3

♠ K873
♥ 862
♦ AK9
♣ Q75

N
W | E
S

♠ QJ96
♥ KQ10
♦ 6
♣ 98642

36

♠ A
♥ 765
♦ AKQ5
♣ AJ985

♠ KQ4
♥ 9843
♦ 72
♣ K1074

♠ J532
♥ KQ102
♦ J108
♣ Q6

N
W | E
S

♠ 109876
♥ AJ
♦ 9643
♣ 32

Board (34) Av: NS=-120

N-S	E-W	Contract	N-S	E-W	IMP
4	10	3NT	W-3	150	7
7	1	3NT	W-1	50	5
1	7	2S	W-1	50	5
9	2	2S	W 2	110	0
2	9	2S	W 3	140	-1
3	5	2S	W 3	140	-1
6	8	2S	W 3	140	-1
5	3	2S	W 3	140	-1
10	4	4S	W 4	420	-7
8	6	4Hx	N-2	500	-9

Board (35) Av: NS=-100

N-S	E-W	Contract	N-S	E-W	IMP
1	7	2H	N-2	100	0
3	5	2H	N-2	100	0
7	1	2H	N-2	100	0
2	9	2H	N-2	100	0
5	3	2H	N-2	100	0
4	10	2H	N-2	100	0
10	4	2H	N-2	100	0
8	6	2H	N-2	100	0
9	2	3D	E 3	110	0
6	8	2D	E 3	110	0

Board (36) Av: NS=+350

N-S	E-W	Contract	N-S	E-W	IMP
3	5	3NT	S 4	630	7
2	9	3NT	N 4	630	7
1	7	3NT	N 4	630	7
9	2	3NT	S 3	600	6
7	1	3NT	S 3	600	6
5	3	3NT	S 3	600	6
10	4	5C	N-1	100	-10
8	6	4H	S-1	100	-10
6	8	3NT	S-1	100	-10
4	10	3NT	S-1	100	-10

兵庫県知事杯 OPEN TEAMS Session 2 Flight A 2013年10月12日(土)

1

♠ Q92
♥ K6
♦ J1053
♣ A864

♠ 108
♥ 983
♦ Q96
♣ J9752

W N E S

♠ AJ753
♥ AQJ10
♦ 72
♣ K10

♠ K64
♥ 7542
♦ AK84
♣ Q3

Board (1) Av: NS=-30

N-S	E-W	Contract	N-S	E-W	IMP
2	5	1NT N 1	90		3
6	4	1NT N 1	90		3
7	3	1NT N 1	90		3
10	8	1S E-1	50		2
1	9	1S E 1		80	-2
4	6	1S E 1		80	-2
8	10	1S E 1		80	-2
5	2	1S E 2		110	-2
9	1	1S E 2		110	-2
3	7	1S E 2		110	-2

2

♠ 32
♥ K532
♦ J10863
♣ A8

♠ 9654
♥ QJ108
♦ A
♣ Q1075

W N E S

♠ AQJ87
♥ 964
♦ K
♣ J964

♠ K10
♥ A7
♦ Q97542
♣ K32

Board (2) Av: NS=+110

N-S	E-W	Contract	N-S	E-W	IMP
1	9	4S E-4	200		3
9	1	4S E-4	200		3
5	2	3S E-3	150		1
7	3	3S E-3	150		1
3	7	3S E-3	150		1
4	6	4S E-2	100		0
6	4	3S E-1	50		-2
10	8	3S E-1	50		-2
8	10	2H W-1	50		-2
2	5	4H N-2		200	-7

3

♠ J10754
♥ K
♦ 53
♣ Q10952

♠ A8
♥ QJ87543
♦ 1072
♣ J

W N E S

♠ K963
♥ 2
♦ AQJ6
♣ A763

♠ Q2
♥ A1096
♦ K984
♣ K84

Board (3) Av: NS=+40

N-S	E-W	Contract	N-S	E-W	IMP
5	2	4H W-3	300		6
3	7	3NT E-3	300		6
4	6	4H W-2	200		4
9	1	4H W-1	100		2
1	9	3H W-1	100		2
7	3	2NT S-1		50	-3
2	5	2H W 2		110	-4
10	8	2H W 2		110	-4
8	10	3H W 3		140	-5
6	4	2H W 3		140	-5

4

♠ KQ8
♥ KQ97642
♦
♣ A52

♠ J5
♥ A85
♦ A10653
♣ 1076

W N E S

♠ A1097632
♥
♦ KQJ972
♣

♠ 4
♥ J103
♦ 84
♣ KQJ9843

Board (4) Av: NS=-940

N-S	E-W	Contract	N-S	E-W	IMP
5	2	6Sx E-1	200		15
1	9	6Hx S-1		200	12
9	1	5S E 5		650	7
7	3	5S E 6		680	6
4	6	5Sx W 5		850	3
10	8	5Sx E 5		850	3
2	5	6D E 6		1370	-10
6	4	6D E 6		1370	-10
3	7	6Dx E 6		1540	-12
8	10	6Sx E 6		1660	-12

5

♠ A765
♥ AJ1072
♦ K86
♣ 7

♠ Q
♥ K8543
♦ QJ95
♣ Q92

W N E S

♠ J2
♥
♦ A10732
♣ K86543

♠ K109843
♥ Q96
♦ 4
♣ AJ10

Board (5) Av: NS=+360

N-S	E-W	Contract	N-S	E-W	IMP
7	3	4Sx S 6	1190		13
10	8	5Sx S 5	850		10
1	9	4Hx N 4	790		10
2	5	4S N 7	710		8
3	7	4H N 4	620		6
8	10	5Dx W-1	100		-6
5	2	5Dx E-1	100		-6
6	4	5H N-1		100	-10
9	1	5Hx N-1		200	-11
4	6	5Dx W 5		550	-14

6

♠ K9432
♥ A5
♦ K92
♣ K96

♠ AJ875
♥ J3
♦ Q107
♣ Q82

W N E S

♠ 10
♥ 862
♦ J865
♣ A10754

♠ Q6
♥ KQ10974
♦ A43
♣ J3

Board (6) Av: NS=+250

N-S	E-W	Contract	N-S	E-W	IMP
1	9	3NT N 4	430		5
8	10	3NT N 4	430		5
10	8	4H S 4	420		5
3	7	4H S 4	420		5
7	3	3NT S 3	400		4
5	2	3NT N 3	400		4
2	5	1S W-1		100	-4
4	6	4H S-1		50	-7
6	4	4H S-2		100	-8
9	1	4H S-2		100	-8

7

♠ 8
♥ J8652
♦ Q10764
♣ Q2

♠ 752
♥ A1094
♦ 53
♣ K1043

W N E S

♠ AQJ64
♥ K3
♦ AJ9
♣ 875

♠ K1093
♥ Q7
♦ K82
♣ AJ96

Board (7) Av: NS=-110

N-S	E-W	Contract	N-S	E-W	IMP
1	9	2S E 2	110		0
9	1	2S E 2	110		0
2	5	2S E 2	110		0
5	2	2S E 2	110		0
3	7	2S E 2	110		0
7	3	2S E 2	110		0
4	6	2S E 2	110		0
6	4	2S E 2	110		0
10	8	2S E 2	110		0
8	10	2S E 3	140		-1

8

♠ AK742
♥ 1043
♦ 104
♣ A95

♠ 10
♥ J82
♦ KJ98763
♣ 106

W N E S

♠ Q985
♥ Q976
♦ 5
♣ KJ83

♠ J63
♥ AK5
♦ AQ2
♣ Q742

Board (8) Av: NS=+160

N-S	E-W	Contract	N-S	E-W	IMP
5	2	3NT S 5	460		7
6	4	3NT S 3	400		6
1	9	3NT S 3	400		6
8	10	3NT S 3	400		6
10	8	3NT S 3	400		6
7	3	4S N-1		50	-5
9	1	4S N-1		50	-5
4	6	3NT S-1		50	-5
2	5	4S N-3		150	-7
3	7	6S N-4		200	-8

9

♠ 10
♥ 9763
♦ K95
♣ 108743

♠ AK4
♥ Q85
♦ Q10862
♣ A5

W N E S

♠ QJ8763
♥ AK10
♦ 3
♣ J96

♠ 952
♥ J42
♦ AJ74
♣ KQ2

Board (9) Av: NS=-650

N-S	E-W	Contract	N-S	E-W	IMP
7	3	6S E-1	100		13
2	5	4S E 5		650	0
1	9	4S E 5		650	0
5	2	4S E 5		650	0
3	7	4S E 5		650	0
9	1	4S E 5		650	0
10	8	4S E 5		650	0
4	6	4S E 5		650	0
6	4	4S E 5		650	0
8	10	4S E 5		650	0

10

♠ J1065
♥ Q10
♦ QJ2
♣ 9876

♠ 4
♥ AK62
♦ 109843
♣ KQ3

N
W — E
S

♠ AKQ8732
♥ 973
♦ A6
♣ 2

♠ 9
♥ J854
♦ K75
♣ AJ1054

Board (10) Av: NS=-540

N-S	E-W	Contract	N-S	E-W	IMP
7	3	6S W-1	100		12
9	1	6S E-1	100		12
1	9	3NT W 3		600	-2
2	5	4S W 4		620	-2
3	7	4S E 4		620	-2
5	2	4S E 4		620	-2
8	10	4S E 4		620	-2
4	6	4S E 5		650	-3
6	4	4S E 5		650	-3
10	8	3NT W 5		660	-3

11

♠ AJ754
♥ K87
♦ Q6
♣ 842

♠ K109
♥ QJ
♦ 52
♣ KQJ1065

N
W — E
S

♠ Q83
♥ A952
♦ J10983
♣ 9

♠ 62
♥ 10643
♦ AK74
♣ A73

Board (11) Av: NS=-80

N-S	E-W	Contract	N-S	E-W	IMP
2	5	2D W-1	50		4
9	1	2S N-1		50	1
1	9	2S N-1		50	1
7	3	2H S-1		50	1
4	6	2H S-1		50	1
6	4	2C W 2		90	0
3	7	2NT S-2		100	-1
5	2	2C W 3		110	-1
8	10	2C W 3		110	-1
10	8	2S N-3		150	-2

12

♠ J105
♥ J10973
♦ KJ3
♣ Q7

♠ AQ6
♥ K6
♦ A107
♣ A6532

N
W — E
S

♠ 8743
♥ Q5
♦ Q98
♣ 10984

♠ K92
♥ A842
♦ 6542
♣ KJ

Board (12) Av: NS=-100

N-S	E-W	Contract	N-S	E-W	IMP
5	2	2NT W-1	50		4
7	3	1NT W 1		90	0
1	9	1NT W 1		90	0
4	6	1NT W 1		90	0
3	7	1NT W 1		90	0
2	5	2H N-1		100	0
6	4	2NT W 2		120	-1
9	1	1NT W 2		120	-1
8	10	1NT W 2		120	-1
10	8	1NT W 2		120	-1

13

♠ K732
♥ 65
♦ KJ843
♣ A3

♠ 1084
♥ 72
♦ 752
♣ KQ1065

N
W — E
S

♠ 65
♥ AKQJ1043
♦ 1096
♣ 7

♠ AQJ9
♥ 98
♦ AQ
♣ J9842

Board (13) Av: NS=+620

N-S	E-W	Contract	N-S	E-W	IMP
3	7	4S N 5		650	1
4	6	4S N 5		650	1
6	4	4S S 4		620	0
10	8	4S S 4		620	0
5	2	4S N 4		620	0
7	3	4S N 4		620	0
2	5	4S N 4		620	0
9	1	4S N 4		620	0
8	10	4S N 4		620	0
1	9	4S N 4		620	0

14

♠ KJ654
♥ A76432
♦ 75
♣ 75

♠ AQ1043
♥ A7
♦ AKQJ103
♣ AKQJ103

N
W — E
S

♠ 75
♥ Q1032
♦ KQJ95
♣ 84

♠ KJ9862
♥ 98
♦ 108
♣ 962

Board (14) Av: NS=-260

N-S	E-W	Contract	N-S	E-W	IMP
4	6	6C W-2	100		8
1	9	5C W-2	100		8
9	1	6C W-1	50		7
2	5	6C W-1	50		7
8	10	5S W-1	50		7
6	4	3NT W 5		460	-5
3	7	3NT E 5		460	-5
5	2	3NT E 5		460	-5
7	3	6C W 6		920	-12
10	8	6C W 6		920	-12

15

♠ K4
♥ J107532
♦ KQ108
♣ 3

♠ AQJ872
♥ K8
♦ 65
♣ Q42

N
W — E
S

♠ 963
♥ Q94
♦ 94
♣ AJ1065

♠ 105
♥ A6
♦ AJ732
♣ K987

Board (15) Av: NS=+20

N-S	E-W	Contract	N-S	E-W	IMP
5	2	4Sx W-3	500		10
9	1	4D S 4	130		3
6	4	3D S 4	130		3
1	9	3S W-2	100		2
8	10	3S W-1	50		1
7	3	3S W-1	50		1
3	7	4H N-1		100	-3
4	6	4H N-1		100	-3
10	8	4H N-1		100	-3
2	5	4H N-1		100	-3

16

♠ K
♥ J106
♦ 106
♣ A876542

♠ 7
♥ AQ9743
♦ KQ2
♣ KQ3

N
W — E
S

♠ Q10532
♥ K852
♦ A74
♣ J

♠ AJ9864
♥ J
♦ J9853
♣ 109

Board (16) Av: NS=-520

N-S	E-W	Contract	N-S	E-W	IMP
4	6	6H W-2	200		12
9	1	5H W-1	100		12
5	2	5Cx N-2		300	6
8	10	5H W 5		650	-4
6	4	5H W 5		650	-4
1	9	5H W 5		650	-4
10	8	4H W 5		650	-4
2	5	4H W 5		650	-4
7	3	4H W 6		680	-4
3	7	4Sx S-4		800	-7

17

♠ K865
♥ A64
♦ 87
♣ K542

♠ 73
♥ J85
♦ QJ96
♣ QJ87

N
W — E
S

♠ A102
♥ KQ1073
♦ AK52
♣ 6

♠ QJ94
♥ 92
♦ 1043
♣ A1093

Board (17) Av: NS=-190

N-S	E-W	Contract	N-S	E-W	IMP
6	4	2NT W-1	50		6
8	10	3H W 3		140	2
2	5	3H E 3		140	2
1	9	3H E 3		140	2
9	1	3H E 4		170	1
7	3	3H E 4		170	1
4	6	3H E 4		170	1
10	8	3H E 5		200	0
5	2	4H E 4		420	-6
3	7	4H E 4		420	-6

18

♠ J82
♥ Q1075
♦ AQ92
♣ A9

♠ 109763
♥ A982
♦ 107
♣ 64

N
W — E
S

♠ A4
♥ K64
♦ K65
♣ KQ1052

♠ KQ5
♥ J3
♦ J843
♣ J873

Board (18) Av: NS=-40

N-S	E-W	Contract	N-S	E-W	IMP
1	9	2S E-2	100		4
10	8	2H W-2	100		4
2	5	2D N 2	90		4
5	2	2S W-1	50		3
9	1	2S E 2		110	-2
7	3	2S E 2		110	-2
4	6	2S E 2		110	-2
6	4	2S E 2		110	-2
3	7	2S E 2		110	-2
8	10	2H W 2		110	-2

兵庫県知事杯 OPEN TEAMS Session 3 Flight A 2013年10月13日(日)

1

♠ 10962
♥ J74
♦ K762
♣ J2

♠ KJ54
♥ Q103
♦ AJ98
♣ 73

♠ AQ87
♥ A86
♦ Q
♣ AK1096

♠ 3
♥ K952
♦ 10543
♣ Q854

Board (1) Av: NS=+10

N-S	E-W	Contract	N-S	E-W	IMP
10	2	6S	W-3	150	4
9	4	6S	W-2	100	3
2	10	6S	W-2	100	3
6	1	6S	W-2	100	3
7	5	6S	W-1	50	1
1	6	6S	W-1	50	1
5	7	6S	E-1	50	1
8	3	6S	E-1	50	1
3	8	4S	W 5	450	-10
4	9	4S	W 5	450	-10

2

♠ KQ1076
♥ 10
♦ J85
♣ A1084

♠ AJ5
♥ 75
♦ K74
♣ QJ762

♠ 982
♥ 86432
♦ 1062
♣ 53

♠ 43
♥ AKQJ9
♦ AQ93
♣ K9

Board (2) Av: NS=+770

N-S	E-W	Contract	N-S	E-W	IMP
2	10	2Cx	W-6	1400	12
8	3	2Cx	W-6	1400	12
7	5	3NT	S 6	690	-2
9	4	3NT	S 6	690	-2
3	8	3NT	S 6	690	-2
1	6	3NT	S 6	690	-2
6	1	3NT	S 6	690	-2
10	2	3NT	N 6	690	-2
4	9	3NT	N 4	630	-4
5	7	6NT	S-1	100	-13

3

♠ Q10
♥ Q2
♦ AK106
♣ KJ952

♠ K864
♥ J10863
♦ 7
♣ 874

♠ A72
♥ A75
♦ QJ43
♣ A103

♠ J953
♥ K94
♦ 9852
♣ Q6

Board (3) Av: NS=+130

N-S	E-W	Contract	N-S	E-W	IMP
2	10	1NT	N 4	180	2
3	8	1NT	N 3	150	1
1	6	1NT	N 3	150	1
4	9	1NT	N 2	120	0
5	7	1NT	N 2	120	0
9	4	1NT	N 2	120	0
8	3	1NT	N 2	120	0
7	5	1NT	N 2	120	0
6	1	3H	W-1	100	-1
10	2	1NT	N-1	50	-5

4

♠ K64
♥ J1032
♦ 4
♣ QJ875

♠ A3
♥ Q9874
♦ AJ86
♣ A3

♠ J10987
♥ 6
♦ KQ10973
♣ 10

♠ Q52
♥ AK5
♦ 52
♣ K9642

Board (4) Av: NS=-370

N-S	E-W	Contract	N-S	E-W	IMP
8	3	6D	W-1	100	10
3	8	6D	W-1	100	10
6	1	6D	E-1	100	10
9	4	3D	W 5	150	6
7	5	5D	W 5	600	-6
5	7	5D	W 5	600	-6
2	10	5D	W 5	600	-6
1	6	5D	W 5	600	-6
4	9	5D	E 5	600	-6
10	2	5D	E 5	600	-6

5

♠ Q
♥ J72
♦ A9875
♣ Q432

♠ 98
♥ KQ643
♦ J6
♣ 9865

♠ KJ1076543
♥ 10
♦ 3
♣ K107

♠ A2
♥ A985
♦ KQ1042
♣ AJ

Board (5) Av: NS=+430

N-S	E-W	Contract	N-S	E-W	IMP
2	10	5D	S 5	600	5
9	4	5D	S 5	600	5
1	6	5D	S 5	600	5
10	2	5D	N 5	600	5
6	1	5D	N 5	600	5
8	3	4Sx	E-3	500	2
7	5	4Sx	E-2	300	-4
3	8	4Sx	E-2	300	-4
5	7	6D	N-1	100	-11
4	9	4NT	N-1	100	-11

6

♠ QJ9
♥ 8
♦ KJ654
♣ AKQ6

♠ 842
♥ J109752
♦ A
♣ 942

♠ K65
♥ KQ643
♦ 108
♣ 1087

♠ A1073
♥ A
♦ Q9732
♣ J53

Board (6) Av: NS=+860

N-S	E-W	Contract	N-S	E-W	IMP
4	9	4Hx	E-4	1100	6
3	8	6D	S 6	920	2
8	3	6D	S 6	920	2
7	5	6D	S 6	920	2
1	6	6D	S 6	920	2
2	10	6D	S 6	920	2
10	2	6D	S 6	920	2
5	7	6D	N 6	920	2
9	4	5D	S 6	420	-10
6	1	5D	N 6	420	-10

7

♠ Q93
♥ AK10742
♦ K86
♣ J

♠ 742
♥ J8
♦ Q109752
♣ Q2

♠ J5
♥ 63
♦ AJ4
♣ A107643

♠ AK1086
♥ Q95
♦ 3
♣ K985

Board (7) Av: NS=+670

N-S	E-W	Contract	N-S	E-W	IMP
10	2	4H	N 6	680	0
4	9	4H	N 6	680	0
8	3	4H	N 6	680	0
3	8	4H	N 6	680	0
9	4	4H	N 6	680	0
2	10	4H	N 6	680	0
6	1	5H	N 5	650	-1
1	6	5H	N 5	650	-1
5	7	4S	S 5	650	-1
7	5	4H	S 5	650	-1

8

♠ A1087
♥ 32
♦ 6
♣ AKJ643

♠ AKJ94
♥ AKJ543
♣ 102

♠ KQ
♥ Q10876
♦ Q1087
♣ Q5

♠ J965432
♥ 5
♦ 92
♣ 987

Board (8) Av: NS=-460

N-S	E-W	Contract	N-S	E-W	IMP
4	9	5Sx	N-1	100	8
8	3	5H	E 5	450	0
7	5	5H	E 5	450	0
9	4	5H	E 5	450	0
3	8	5H	E 5	450	0
2	10	5H	E 5	450	0
1	6	5H	E 5	450	0
5	7	4H	W 5	450	0
6	1	6Sx	S-3	500	-1
10	2	6D	W 6	920	-10

9

♠ 1063
♥ AJ104
♦ 95
♣ AKQ10

♠ KQ54
♥ 75
♦ 87
♣ 75432

♠ 87
♥ Q98
♦ KJ1062
♣ J86

♠ AJ92
♥ K632
♦ AQ43
♣ 9

Board (9) Av: NS=+450

N-S	E-W	Contract	N-S	E-W	IMP
3	8	4H	S 6	480	1
7	5	3NT	N 5	460	0
4	9	3NT	N 5	460	0
6	1	4H	S 5	450	0
9	4	4H	S 5	450	0
10	2	4H	S 5	450	0
5	7	4H	N 5	450	0
8	3	4H	N 5	450	0
1	6	4NT	N 4	430	-1
2	10	4H	N 4	420	-1

10

♠K10
♥87
♦AKQ102
♣10954

♠63 ♠AQ5
♥A654 ♥KQJ10932
♦83 ♦54
♣J8762 ♣K

W N E S

♠J98742
♥
♦J976
♣AQ3

Board (10) Av: NS=-50

N-S	E-W	Contract	N-S	E-W	IMP
2	10	4S	S 5	650	12
6	1	4S	S 5	650	12
1	6	4S	S 5	650	12
7	5	5H	W-1	100	4
5	7	3H	E 4	170	-3
3	8	3H	E 4	170	-3
4	9	3H	E 5	200	-4
10	2	4H	E 4	620	-11
8	3	4H	E 4	620	-11
9	4	4H	E 4	620	-11

11

♠Q754
♥AQJ6
♦AQJ62
♣AQJ62

♠K10943 ♠8752
♥J9 ♥K83
♦K1074 ♦9
♣74 ♣K9853

W N E S

♠AQJ6
♥A1062
♦8532
♣10

Board (11) Av: NS=+260

N-S	E-W	Contract	N-S	E-W	IMP
9	4	4Sx	W-3	500	6
6	1	4H	N 6	480	6
4	9	4H	S 5	450	5
7	5	4H	N 5	450	5
1	6	4H	N 5	450	5
5	7	4H	N 4	420	5
3	8	6H	N-1	50	-7
8	3	4NT	S-1	50	-7
2	10	6D	S-2	100	-8
10	2	6Dx	S-3	500	-13

12

♠AK3
♥954
♦QJ97
♣J64

♠QJ876 ♠52
♥Q2 ♥1076
♦A85 ♦K642
♣KQ9 ♣A1085

W N E S

♠1094
♥AKJ83
♦103
♣732

Board (12) Av: NS=+60

N-S	E-W	Contract	N-S	E-W	IMP
10	2	2C	W-2	100	1
9	4	1NT	W-2	100	1
5	7	2S	W-1	50	0
8	3	2S	W-1	50	0
7	5	2S	W-1	50	0
3	8	2S	W-1	50	0
2	10	2S	W-1	50	0
1	6	1NT	E-1	50	0
4	9	1NT	E-1	50	0
6	1	2C	W 2	90	-4

13

♠9753
♥Q82
♦1092
♣K64

♠AQJ86 ♠K104
♥K973 ♥A10
♦AJ3 ♦K754
♣7 ♣10832

W N E S

♠2
♥J654
♦Q86
♣AQJ95

Board (13) Av: NS=-650

N-S	E-W	Contract	N-S	E-W	IMP
10	2	3NT	E-1	100	13
9	4	4S	W 4	620	1
5	7	4S	W 5	650	0
7	5	4S	W 5	650	0
3	8	4S	W 5	650	0
2	10	4S	W 5	650	0
6	1	4S	E 5	650	0
8	3	4S	W 6	680	-1
1	6	4S	W 6	680	-1
4	9	4S	W 7	710	-2

14

♠KQ754
♥4
♦J53
♣8432

♠963 ♠82
♥A972 ♥Q1053
♦72 ♦AK98
♣A1075 ♣K96

W N E S

♠AJ10
♥KJ86
♦Q1064
♣QJ

Board (14) Av: NS=-40

N-S	E-W	Contract	N-S	E-W	IMP
5	7	2S	S 2	110	4
7	5	2C	W-1	50	3
1	6	2S	S-1	50	0
4	9	2S	S-1	50	0
9	4	2S	N-1	50	0
6	1	2S	N-1	50	0
2	10	2S	N-1	50	0
10	2	2S	N-1	50	0
3	8	1NT	W 1	90	-2
8	3	1NT	W 1	90	-2

15

♠J97643
♥J10
♦J3
♣AQ5

♠AQ1085 ♠K2
♥4 ♥AQ832
♦K9874 ♦
♣86 ♣J97432

W N E S

♠
♥K9765
♦AQ10652
♣K10

Board (15) Av: NS=-90

N-S	E-W	Contract	N-S	E-W	IMP
6	1	3NT	N 3	600	12
1	6	4S	E-2	100	5
4	9	2H	E-2	100	5
5	7	3C	W-1	50	4
2	10	3H	S-1	100	0
8	3	2S	E 2	110	-1
7	5	3C	E 4	130	-1
3	8	2S	E 3	140	-2
10	2	3Hx	S-2	500	-9
9	4	3NTxN-3		800	-12

16

♠KJ82
♥Q102
♦Q63
♣AJ6

♠10963 ♠AQ5
♥AK64 ♥985
♦74 ♦A85
♣1085 ♣Q732

W N E S

♠74
♥J73
♦KJ1092
♣K94

Board (16) Av: NS=+80

N-S	E-W	Contract	N-S	E-W	IMP
6	1	1NT	N 2	120	1
3	8	1NT	N 2	120	1
8	3	1NT	N 1	90	0
4	9	1NT	N 1	90	0
9	4	1NT	N 1	90	0
2	10	1NT	N 1	90	0
10	2	1NT	N 1	90	0
5	7	1NT	N 1	90	0
7	5	1NT	S-1	50	-4
1	6	1NT	S-1	50	-4

17

♠AK6543
♥KQJ
♦K10
♣KQ

♠Q10 ♠J87
♥A107642 ♥95
♦9 ♦QJ87
♣A1084 ♣J932

W N E S

♠92
♥83
♦A65432
♣765

Board (17) Av: NS=+350

N-S	E-W	Contract	N-S	E-W	IMP
4	9	3NT	N 4	430	2
8	3	3NT	N 4	430	2
5	7	3NT	N 4	430	2
9	4	3NT	S 3	400	2
3	8	3NT	S 3	400	2
1	6	3NT	S 3	400	2
2	10	3NT	N 3	400	2
10	2	2NT	S 4	180	-5
6	1	2NT	N 2	120	-6
7	5	2D	S 3	110	-6

18

♠AKJ7
♥AK7
♦J1082
♣82

♠Q10 ♠9432
♥Q106 ♥J9854
♦Q76 ♦953
♣KJ1094 ♣Q

W N E S

♠865
♥32
♦AK4
♣A7653

Board (18) Av: NS=+510

N-S	E-W	Contract	N-S	E-W	IMP
8	3	3NT	S 3	600	3
10	2	3NT	S 3	600	3
5	7	3NT	N 3	600	3
9	4	3NT	N 3	600	3
3	8	3NT	N 3	600	3
6	1	3NT	N 3	600	3
1	6	3NT	N 3	600	3
2	10	3NT	N 3	600	3
7	5	3NT	S-1	100	-12
4	9	5Cx	S-3	800	-16

兵庫県知事杯 OPEN TEAMS Session 4 Flight A 2013年10月13日(日)

1

♠ 97
♥ 94
♦ A1043
♣ J10983

♠ 83
♥ K875
♦ KQ987
♣ K2

♠ A105
♥ 1062
♦ J652
♣ AQ5

♠ KQJ642
♥ AQJ3
♦ 764

Board (1) Av: NS=0

N-S	E-W	Contract	N-S	E-W	IMP
1	8	3S	S 3	140	4
7	9	2S	S 3	140	4
8	1	2S	S 2	110	3
3	10	2NT	E-2	100	3
4	5	3S	S-1	50	-2
10	3	3S	S-1	50	-2
2	6	3S	S-1	50	-2
6	2	3C	S-2	100	-3
9	7	3D	E 3	110	-3
5	4	4Sx	S-2	300	-7

2

♠ 10962
♥ 102
♦ K932
♣ 954

♠ K73
♥ AJ864
♦ A6
♣ AQ8

♠ Q8
♥ 975
♦ Q8754
♣ K102

♠ AJ54
♥ KQ3
♦ J10
♣ J763

Board (2) Av: NS=-90

N-S	E-W	Contract	N-S	E-W	IMP
7	9	3NT	W-2	100	5
9	7	4H	W-1	50	4
5	4	3NT	W-1	50	4
6	2	3NT	W-1	50	4
10	3	3NT	W-1	50	4
4	5	2NT	W-1	50	4
1	8	3H	W 3	140	-2
2	6	3NT	W 3	400	-7
8	1	4H	W 4	420	-8
3	10	4H	W 4	420	-8

3

♠ K9872
♥ AJ93
♦ 743
♣ 8

♠ QJ106
♥ K762
♦ 85
♣ 943

♠ A53
♥ 8
♦ KQ6
♣ AJ10762

♠ 4
♥ Q1054
♦ AJ1092
♣ KQ5

Board (3) Av: NS=+10

N-S	E-W	Contract	N-S	E-W	IMP
7	9	3H	N 3	140	4
10	3	4D	S 4	130	3
9	7	3D	S 4	130	3
4	5	3D	S 4	130	3
5	4	2H	S 2	110	3
6	2	4C	W-1	100	3
8	1	4H	N-1	50	-2
3	10	3C	E 3	110	-3
1	8	2Cx	E 3	380	-9
2	6	2Cx	E 4	580	-11

4

♠ 9
♥ A983
♦ KQ74
♣ Q875

♠ K1085
♥ Q54
♦ 10952
♣ J9

♠ A6432
♥ 1062
♦ AJ
♣ A42

♠ QJ7
♥ KJ7
♦ 863
♣ K1063

Board (4) Av: NS=-20

N-S	E-W	Contract	N-S	E-W	IMP
1	8	3S	E-2	200	6
4	5	3C	S 3	110	4
10	3	3S	E-1	100	3
7	9	2S	E-1	100	3
2	6	2S	E-1	100	3
9	7	2S	E 2	110	-3
6	2	3S	E 3	140	-3
3	10	3S	E 3	140	-3
8	1	2S	E 3	140	-3
5	4	2S	E 3	140	-3

5

♠ 1072
♥ A1052
♦ AK103
♣ J6

♠ KQJ83
♥ K84
♦ Q2
♣ Q75

♠ 654
♥ 76
♦ J95
♣ K9432

♠ A9
♥ QJ93
♦ 8764
♣ A108

Board (5) Av: NS=+340

N-S	E-W	Contract	N-S	E-W	IMP
2	6	4H	S 4	620	7
1	8	4H	S 4	620	7
9	7	4H	S 4	620	7
7	9	4H	S 4	620	7
6	2	3H	S 4	170	-5
8	1	3H	S 4	170	-5
10	3	3H	S 4	170	-5
5	4	3H	S 4	170	-5
3	10	3H	S 4	170	-5
4	5	3H	S 4	170	-5

6

♠ 854
♥ 1053
♦ Q108
♣ K654

♠ J73
♥ KQ64
♦ 952
♣ J107

♠ AK1092
♥ 972
♦ K763
♣ A

♠ Q6
♥ AJ8
♦ AJ4
♣ Q9832

Board (6) Av: NS=-90

N-S	E-W	Contract	N-S	E-W	IMP
1	8	4S	E-2	200	7
2	6	4S	E-2	200	7
8	1	2S	E 2	110	-1
5	4	2S	E 2	110	-1
10	3	2S	E 2	110	-1
6	2	3S	E 3	140	-2
4	5	3S	E 3	140	-2
9	7	2S	E 3	140	-2
7	9	2S	E 3	140	-2
3	10	2S	E 4	170	-2

7

♠ AQ965
♥ 7
♦ K9432
♣ K7

♠ AK10652
♥ J7
♦ QJ864
♣ QJ864

♠ KJ1072
♥ 43
♦ AQ5
♣ A52

♠ 843
♥ QJ98
♦ 1086
♣ 1093

Board (7) Av: NS=-620

N-S	E-W	Contract	N-S	E-W	IMP
6	2	6NT	E-2	200	13
1	8	3NT	E 3	600	1
2	6	3NT	E 3	600	1
10	3	3NT	E 3	600	1
3	10	3NT	E 3	600	1
8	1	4H	W 4	620	0
7	9	3NT	E 4	630	0
5	4	3NT	E 4	630	0
4	5	3NT	E 5	660	-1
9	7	3NT	E 5	660	-1

8

♠ K6
♥ A65
♦ AJ9654
♣ J10

♠ A9
♥ Q98742
♦ 2
♣ AK92

♠ J87543
♥ K10
♦ K83
♣ 76

♠ Q102
♥ J3
♦ Q107
♣ Q8543

Board (8) Av: NS=-140

N-S	E-W	Contract	N-S	E-W	IMP
2	6	4S	E-1	50	5
5	4	4S	E-1	50	5
4	5	3S	E-1	50	5
8	1	3D	N-1	50	3
9	7	3D	N-1	50	3
1	8	3C	N-2	100	1
6	2	2H	W 3	140	0
3	10	4H	W 4	420	-7
7	9	4H	W 4	420	-7
10	3	5Dx	N-3	500	-8

9

♠ K962
♥ AK94
♦ K86
♣ K3

♠ 108
♥ QJ732
♦ J1092
♣ 107

♠ J754
♥ 5
♦ A754
♣ A954

♠ AQ3
♥ 1086
♦ Q3
♣ QJ862

Board (9) Av: NS=+410

N-S	E-W	Contract	N-S	E-W	IMP
1	8	3NT	N 5	460	2
10	3	3NT	N 4	430	1
9	7	3NT	N 4	430	1
6	2	3NT	N 3	400	0
2	6	3NT	N 3	400	0
8	1	3NT	N 3	400	0
4	5	3NT	N 3	400	0
5	4	3NT	N 3	400	0
7	9	3NT	N 3	400	0
3	10	3NT	N 3	400	0

10

♠AJ32
♥Q72
♦Q98762
♣

♠874
♥109
♦AK
♣QJ9765

N
W—|—E
S

♠KQ106
♥AJ85
♦105
♣A82

♠95
♥K643
♦J43
♣K1043

Board (10) Av: NS=-470

N-S	E-W	Contract	N-S	E-W	IMP
8	1	3NT W-1	100		11
5	4	3NT W-1	100		11
10	3	3C E 4	130		8
4	5	3NT W 3	600		-4
1	8	3NT E 4	630		-4
3	10	3NT E 4	630		-4
2	6	3NT E 4	630		-4
9	7	3NT E 4	630		-4
7	9	3NT E 4	630		-4
6	2	3NT E 5	660		-5

11

♠J10643
♥Q2
♦AJ105
♣95

♠A7
♥A8
♦8742
♣KJ1062

N
W—|—E
S

♠K985
♥J1043
♦KQ6
♣74

♠Q2
♥K9765
♦93
♣AQ83

Board (11) Av: NS=-110

N-S	E-W	Contract	N-S	E-W	IMP
1	8	1NT S 1	90		5
4	5	3D E-1	50		4
5	4	1NT W 1	90		1
6	2	2H S-2	100		0
8	1	2H S-2	100		0
9	7	2H S-2	100		0
3	10	2Cx W 2	180		-2
7	9	2Cx W 2	180		-2
10	3	2H S-4	200		-3
2	6	2Sx N-2	300		-5

12

♠A8532
♥J1082
♦
♣K432

♠J10
♥Q753
♦943
♣A985

N
W—|—E
S

♠K974
♥94
♦AQ1052
♣Q10

♠Q6
♥AK6
♦KJ876
♣J76

Board (12) Av: NS=-40

N-S	E-W	Contract	N-S	E-W	IMP
1	8	2S N 2	110		4
5	4	2S N 2	110		4
6	2	2D E-2	100		4
4	5	2D E-1	50		3
8	1	1NT W-1	50		3
10	3	1NT W 1	90		-2
7	9	2S N-1	100		-2
3	10	3NT S-2	200		-4
2	6	3NT S-2	200		-4
9	7	2NT S-2	200		-4

13

♠AJ94
♥AQJ109
♦97
♣104

♠KQ62
♥64
♦K1042
♣AJ2

N
W—|—E
S

♠87
♥8732
♦AJ65
♣K98

♠1053
♥K5
♦Q83
♣Q7653

Board (13) Av: NS=-100

N-S	E-W	Contract	N-S	E-W	IMP
4	5	3D E-1	100		5
3	10	2D E 2	90		0
10	3	2D E 2	90		0
6	2	2D E 2	90		0
7	9	2H S-1	100		0
2	6	2D E 3	110		0
1	8	2D E 3	110		0
5	4	2D E 3	110		0
8	1	2D E 3	110		0
9	7	1NT S-2	200		-3

14

♠J7632
♥K
♦J83
♣AQ43

♠109
♥732
♦Q974
♣K1075

N
W—|—E
S

♠AQ5
♥QJ1096
♦A
♣J962

♠K84
♥A854
♦K10652
♣8

Board (14) Av: NS=-30

N-S	E-W	Contract	N-S	E-W	IMP
9	7	1NT E-4	200		6
10	3	3S N 3	140		5
6	2	3H E-1	50		2
8	1	2H E-1	50		2
5	4	3D S-1	50		-1
1	8	4S N-2	100		-2
7	9	4S N-2	100		-2
4	5	4D S-2	100		-2
3	10	2H E 2	110		-2
2	6	5Dx S-2	300		-7

15

♠Q107
♥J8
♦AQ83
♣KJ54

♠83
♥A942
♦10962
♣AQ7

N
W—|—E
S

♠AK542
♥KQ105
♦J74
♣2

♠J96
♥763
♦K5
♣109863

Board (15) Av: NS=-390

N-S	E-W	Contract	N-S	E-W	IMP
7	9	3H E 4	170		6
10	3	3H E 4	170		6
1	8	4H E 4	420		-1
8	1	4H E 4	420		-1
2	6	4H E 4	420		-1
9	7	4H E 4	420		-1
5	4	4H E 4	420		-1
3	10	4H E 4	420		-1
4	5	4H W 5	450		-2
6	2	4H W 5	450		-2

16

♠AQ4
♥K75
♦76
♣AK654

♠98765
♥J62
♦AK82
♣10

N
W—|—E
S

♠K32
♥10943
♦J93
♣J92

♠J10
♥AQ8
♦Q1054
♣Q873

Board (16) Av: NS=+430

N-S	E-W	Contract	N-S	E-W	IMP
1	8	3NT N 4	430		0
8	1	3NT N 4	430		0
3	10	3NT N 4	430		0
2	6	3NT N 4	430		0
7	9	3NT N 4	430		0
10	3	3NT N 4	430		0
4	5	3NT N 4	430		0
9	7	3NT N 4	430		0
5	4	3NT N 4	430		0
6	2	3NT N 3	400		-1

17

♠K10
♥A7
♦QJ754
♣Q1098

♠J982
♥10543
♦986
♣A5

N
W—|—E
S

♠Q4
♥KQ98
♦K1032
♣643

♠A7653
♥J62
♦A
♣KJ72

Board (17) Av: NS=+400

N-S	E-W	Contract	N-S	E-W	IMP
1	8	3NT S 3	400		0
8	1	3NT N 3	400		0
2	6	3NT N 3	400		0
6	2	3NT N 3	400		0
3	10	3NT N 3	400		0
10	3	3NT N 3	400		0
4	5	3NT N 3	400		0
5	4	3NT N 3	400		0
7	9	3NT N 3	400		0
9	7	3NT N 3	400		0

18

♠AQ94
♥J10
♦8653
♣Q53

♠KJ10
♥K4
♦KQ1097
♣1087

N
W—|—E
S

♠76
♥987632
♦J4
♣K42

♠8532
♥AQ5
♦A2
♣AJ96

Board (18) Av: NS=+270

N-S	E-W	Contract	N-S	E-W	IMP
1	8	4S S 4	620		8
8	1	4S S 4	620		8
2	6	4S S 4	620		8
3	10	4S S 4	620		8
9	7	3S S 4	170		-3
7	9	3S S 4	170		-3
5	4	3S S 4	170		-3
4	5	4S S-1	100		-9
6	2	4S S-1	100		-9
10	3	3S S-1	100		-9

19

♠ J7
♥ Q1093
♦ A10943
♣ K8

♠ KQ92
♥ J75
♦ J76
♣ QJ6

N
W — E
S

♠ A1063
♥ A82
♦ KQ8
♣ A94

20

♠ J1085
♥ K10
♦ QJ3
♣ 9865

♠ 2
♥ Q863
♦ K942
♣ AQ72

N
W — E
S

♠ AQ6
♥ AJ942
♦ A85
♣ K3

21

♠ K862
♥ 8742
♦ J9763
♣ 8764

♠ AKJ9
♥ AJ10
♦ AQ10
♣ Q42

N
W — E
S

♠ Q10532
♥ Q953
♦ 96
♣ AK

Board (19) Av: NS=+430

N-S	E-W	Contract	N-S	E-W	IMP
2	7	3NT S 5	460		1
6	10	3NT S 5	460		1
4	8	3NT S 5	460		1
8	4	3NT S 5	460		1
5	1	3NT S 4	430		0
9	3	3NT S 4	430		0
7	2	3NT S 3	400		-1
3	9	3NT S 3	400		-1
10	6	3NT S 3	400		-1
1	5	3NT S 3	400		-1

Board (20) Av: NS=+260

N-S	E-W	Contract	N-S	E-W	IMP
1	5	3NT S 3	600		8
5	1	3NT N 3	600		8
9	3	3NT N 3	600		8
4	8	3NT N 3	600		8
8	4	2S W-4	400		4
2	7	1NT S 3	150		-3
3	9	3NT S-1	100		-8
6	10	3NT S-1	100		-8
7	2	3NT N-1	100		-8
10	6	4H S-2	200		-10

Board (21) Av: NS=+190

N-S	E-W	Contract	N-S	E-W	IMP
8	4	4Sx E-3	500		7
2	7	4Sx E-2	300		3
1	5	4NTx E-2	300		3
7	2	4S E-3	150		-1
5	1	4S E-3	150		-1
3	9	4S E-3	150		-1
10	6	4S E-3	150		-1
6	10	4S E-3	150		-1
9	3	4S E-3	150		-1
4	8	2NT E 2	120		-7

22

♠ KJ832
♥ 93
♦ AKQ94
♣ A

♠ AQ97
♥ A2
♦ J52
♣ KJ82

N
W — E
S

♠ 1054
♥ 65
♦ 10873
♣ Q954

23

♠ KQ75
♥ AK8
♦ 96
♣ Q1075

♠ 642
♥ 952
♦ K84
♣ AJ62

N
W — E
S

♠ AJ103
♥ 763
♦ Q1073
♣ K8

24

♠ J82
♥ J632
♦ 865
♣ Q74

♠ A7
♥ Q87
♦ KQJ
♣ K10965

N
W — E
S

♠ 9654
♥ K954
♦ A43
♣ A3

Board (22) Av: NS=-460

N-S	E-W	Contract	N-S	E-W	IMP
4	8	5H W-1	100		11
3	9	4S S-1	100		8
8	4	5D S-4	200		6
5	1	4Sx N-2	300		4
7	2	5Dx S-3	500		-1
9	3	5Dx S-3	500		-1
1	5	5H E 5	650		-5
6	10	5H E 5	650		-5
2	7	5Dx S-4	800		-8
10	6	5Hx E 5	850		-9

Board (23) Av: NS=+160

N-S	E-W	Contract	N-S	E-W	IMP
1	5	4S N 4	620		10
7	2	4S N 4	620		10
3	9	2S S 3	140		-1
4	8	2S S 3	140		-1
8	4	2S S 3	140		-1
9	3	2S S 2	110		-2
2	7	2S S 2	110		-2
5	1	2S S 2	110		-2
6	10	4S S-1	100		-6
10	6	3S S-1	100		-6

Board (24) Av: NS=-420

N-S	E-W	Contract	N-S	E-W	IMP
1	5	3NT E-1	50		10
6	10	3NT E 3	400		1
3	9	3NT E 3	400		1
5	1	3NT E 3	400		1
8	4	3NT E 3	400		1
4	8	3NT E 3	400		1
10	6	3NT E 3	400		1
2	7	3NT E 5	460		-1
7	2	3NT E 6	490		-2
9	3	4Hx N-5	1100		-12

25

♠ 10752
♥ 94
♦ QJ853
♣ K9

♠ A843
♥ Q1076
♦ K1076
♣ Q

N
W — E
S

♠ QJ
♥ A853
♦ 94
♣ A10854

26

♠ Q43
♥ 642
♦ A85
♣ AKJ2

♠ J10976
♥ J1093
♦ Q42
♣ 3

N
W — E
S

♠ AK82
♥ AKQ7
♦ KJ7
♣ 108

27

♠ AQ76
♥ KQ3
♦ 852
♣ 1063

♠ 982
♥ 1076
♦ KJ106
♣ AQ5

N
W — E
S

♠ KJ1054
♥ A
♦ 74
♣ J9842

Board (25) Av: NS=-180

N-S	E-W	Contract	N-S	E-W	IMP
3	9	3NT W-1	100		7
9	3	2D S-1	50		4
8	4	2NT W 2	120		2
7	2	1NT W 2	120		2
4	8	2H E 3	140		1
2	7	2NT W 3	150		1
6	10	2H W 4	170		0
1	5	3C S-4	200		-1
5	1	2Cx S-3	500		-8
10	6	3NT E 3	600		-9

Board (26) Av: NS=+1460

N-S	E-W	Contract	N-S	E-W	IMP
5	1	6NT S 7	1470		0
3	9	6NT S 7	1470		0
2	7	6NT S 7	1470		0
8	4	6NT S 7	1470		0
9	3	6NT S 7	1470		0
4	8	6NT S 7	1470		0
7	2	6NT S 6	1440		-1
1	5	6NT S 6	1440		-1
10	6	6NT S 6	1440		-1
6	10	6NT S 6	1440		-1

Board (27) Av: NS=+60

N-S	E-W	Contract	N-S	E-W	IMP
4	8	4S S 4	420		8
1	5	3S S 4	170		3
6	10	3S S 3	140		2
3	9	5Hx W-1	100		1
8	4	5Dx E-1	100		1
10	6	4H W-1	50		0
2	7	Passout			-2
7	2	4S S-1	50		-3
9	3	4S N-1	50		-3
5	1	4H W 4	420		-10

28

♠ A643
♥ QJ75
♦ K65
♣ K9

♠ QJ9875
♥ K6
♦ J2
♣ A62

♠ K102
♥ A10984
♦ Q9
♣ Q73

N
W E
S

♠ 32
♥ A108743
♦ J10854

29

♠ AK109653
♥ K1084
♦ J
♣ A

♠ 74
♥ J9
♦ AQ108754
♣ 102

♠ QJ8
♥ A5
♦ 93
♣ KQJ874

N
W E
S

♠ 2
♥ Q7632
♦ K62
♣ 9653

30

♠ Q752
♥ 1043
♦ J107
♣ A109

♠ K94
♥ A8765
♦ 96
♣ QJ2

♠ J86
♥ Q9
♦ A8542
♣ 863

N
W E
S

♠ A103
♥ KJ2
♦ KQ3
♣ K754

Board (28) Av: NS=+150

N-S	E-W	Contract	N-S	E-W	IMP
3	9	4H S 4	620		10
6	10	4H S 4	620		10
8	4	4H S 4	620		10
1	5	2NT S 2	120		-1
5	1	3D W-1	50		-3
10	6	3D E-1	50		-3
9	3	4H S-1		100	-6
4	8	4H N-1		100	-6
2	7	4H N-1		100	-6
7	2	4H N-2		200	-8

Board (29) Av: NS=+1340

N-S	E-W	Contract	N-S	E-W	IMP
1	5	6S N 7	1460		3
6	10	6S N 7	1460		3
9	3	6S N 7	1460		3
5	1	6S N 6	1430		3
3	9	6S N 6	1430		3
2	7	6S N 6	1430		3
8	4	6S N 6	1430		3
4	8	6S N 6	1430		3
7	2	5S N 6	680		-12
10	6	4S N 6	680		-12

Board (30) Av: NS=-450

N-S	E-W	Contract	N-S	E-W	IMP
8	4	4H W 4	420		1
3	9	4H W 5	450		0
2	7	4H W 5	450		0
7	2	4H W 5	450		0
10	6	4H W 5	450		0
9	3	4H W 5	450		0
6	10	4H W 5	450		0
4	8	3NT W 5	460		0
1	5	3NT E 5	460		0
5	1	3NT W 6	490		-1

31

♠ 954
♥ KJ7
♦ KQ85
♣ Q63

♠ AQ2
♥ 542
♦ 632
♣ K1082

♠ 10876
♥ Q963
♦ 97
♣ J94

♠ KJ3
♥ A108
♦ AJ104
♣ A75

N
W E
S

♠ AQ2
♥ 542
♦ 632
♣ K1082

32

♠ 96
♥ Q94
♦ K854
♣ K754

♠ J753
♥ J87
♦ A
♣ J9832

♠ AQ108
♥ AK5
♦ 1092
♣ A106

♠ K42
♥ 10632
♦ QJ763
♣ Q

N
W E
S

♠ J753
♥ J87
♦ A
♣ J9832

33

♠ AK
♥ AQ1083
♦ A74
♣ 952

♠ Q43
♥ 4
♦ KQ
♣ AKQJ643

♠ J109875
♥ KJ
♦ 10653
♣ 10

♠ 62
♥ 97652
♦ J982
♣ 87

N
W E
S

♠ Q43
♥ 4
♦ KQ
♣ AKQJ643

Board (31) Av: NS=+520

N-S	E-W	Contract	N-S	E-W	IMP
6	10	3NT S 5	660		4
5	1	3NT S 4	630		3
1	5	3NT S 3	600		2
2	7	3NT S 3	600		2
3	9	3NT S 3	600		2
9	3	3NT S 3	600		2
8	4	3NT S 3	600		2
10	6	3NT S 3	600		2
7	2	3NT S-1		100	-12
4	8	3NT S-2		200	-12

Board (32) Av: NS=-160

N-S	E-W	Contract	N-S	E-W	IMP
5	1	4S W-1	100		6
10	6	4S E-1	100		6
3	9	1NT E 1		90	2
2	7	1NT E 1		90	2
9	3	1NT E 1		90	2
4	8	1NT E 1		90	2
7	2	3S W 4	170		0
1	5	2S E 5	200		-1
8	4	4S W 4	620		-10
6	10	4S E 5	650		-10

Board (33) Av: NS=+120

N-S	E-W	Contract	N-S	E-W	IMP
6	10	5Sx W-2	300		5
5	1	5Sx E-2	300		5
1	5	3H N 3	140		1
7	2	5Cx W-1	100		-1
3	9	4Sx E-1	100		-1
9	3	4Sx E-1	100		-1
8	4	4Sx E-1	100		-1
10	6	4Sx E-1	100		-1
4	8	4S E-1	50		-2
2	7	5H N-2		100	-6

34

♠ AQ4
♥ Q62
♦ K6
♣ 109864

♠ 76
♥ AJ98
♦ J973
♣ AJ2

♠ 1032
♥ K10
♦ A8542
♣ KQ7

♠ KJ985
♥ 7543
♦ Q10
♣ 53

N
W E
S

♠ 76
♥ AJ98
♦ J973
♣ AJ2

35

♠ K7
♥ AQ1074
♦ 3
♣ A10652

♠ 1054
♥ K95
♦ AQ654
♣ 84

♠ J8
♥ J6
♦ KJ82
♣ KQJ73

♠ AQ9632
♥ 832
♦ 1097
♣ 9

N
W E
S

♠ 1054
♥ K95
♦ AQ654
♣ 84

36

♠ K2
♥ QJ73
♦ K83
♣ K1087

♠ J75
♥ AK109
♦ QJ109
♣ J4

♠ 109863
♥ 865
♦ 74
♣ Q63

♠ AQ4
♥ 42
♦ A652
♣ A952

N
W E
S

♠ J75
♥ AK109
♦ QJ109
♣ J4

Board (34) Av: NS=-60

N-S	E-W	Contract	N-S	E-W	IMP
2	7	3NT E-3	150		5
8	4	3NT E-2	100		4
9	3	2NT E-2	100		4
1	5	1NT E 1		90	-1
5	1	2D E 3		110	-2
7	2	1NT E 2		120	-2
4	8	3D E 4		130	-2
3	9	3D E 4		130	-2
6	10	3D E 4		130	-2
10	6	2D E 4		130	-2

Board (35) Av: NS=+150

N-S	E-W	Contract	N-S	E-W	IMP
6	10	4S S 5	450		7
2	7	4S S 5	450		7
1	5	4S S 4	420		7
7	2	4S S 4	420		7
4	8	2H N 3	140		0
8	4	4S S-1		50	-5
5	1	4S S-1		50	-5
3	9	4S N-1		50	-5
9	3	3S N-1		50	-5
10	6	4S S-2		100	-6

Board (36) Av: NS=+300

N-S	E-W	Contract	N-S	E-W	IMP
2	7	3NT S 3	600		7
1	5	3NT S 3	600		7
4	8	3NT S 3	600		7
3	9	3NT S 3	600		7
9	3	3NT S 3	600		7
8	4	2S E-3	300		0
7	2	3NT S-1		100	-9
6	10	3NT S-1		100	-9
10	6	3NT S-1		100	-9
5	1	3NT N-1		100	-9

兵庫県知事杯 OPEN TEAMS Session 5 Flight A 2013年10月14日(月)

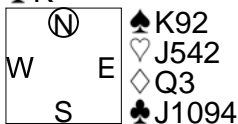
1

♠ J10765
♥ A106
♦ AJ98
♣ K

♠ K92
♥ J542
♦ Q3
♣ J1094

♠ AQ83
♥ K97
♦ 54
♣ AQ53

♠ 4
♥ Q83
♦ K10762
♣ 8762



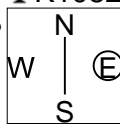
2

♠ 2
♥ AJ85
♦ AKQ2
♣ K1082

♠ A9
♥ 10432
♦ J65
♣ A653

♠ K85
♥ K76
♦ 73
♣ QJ974

♠ QJ107643
♥ Q9
♦ 10984
♣



3

♠ 742
♥ 106
♦ J1062
♣ KJ107

♠ A
♥ AKJ9
♦ AQ7543
♣ 53

♠ KQJ1063
♥ 4
♦ 98
♣ Q982

♠ 985
♥ Q87532
♦ K
♣ A64



Board (1) Av: NS=+540

N-S	E-W	Contract	N-S	E-W	IMP
5	8	6S	N 6	980	10
9	6	6S	N 6	980	10
2	3	5S	N 6	480	-2
4	1	4S	N 6	480	-2
8	5	4S	N 6	480	-2
1	4	4S	N 6	480	-2
3	2	4S	N 6	480	-2
6	9	4S	N 6	480	-2
10	7	4S	N 6	480	-2
7	10	4S	N 6	480	-2

Board (2) Av: NS=+590

N-S	E-W	Contract	N-S	E-W	IMP
5	8	5Cx	S 5	750	4
2	3	3NT	S 5	660	2
1	4	3NT	S 4	630	1
3	2	3NT	S 4	630	1
8	5	3NT	S 4	630	1
6	9	3NT	S 4	630	1
4	1	5C	S 5	600	0
10	7	5C	S 5	600	0
7	10	4Sx	W-2	300	-7
9	6	4Sx	W-2	300	-7

Board (3) Av: NS=-1200

N-S	E-W	Contract	N-S	E-W	IMP
6	9	4Sx	S-2	300	14
10	7	4H	W 7	710	10
2	3	6Sx	S-4	800	9
9	6	5Sx	S-4	800	9
5	8	6H	W 7	1460	-6
8	5	6H	W 7	1460	-6
3	2	6H	W 7	1460	-6
1	4	6H	W 7	1460	-6
7	10	6H	W 7	1460	-6
4	1	7H	W 7	2210	-14

4

♠ QJ762
♥ J52
♦ 952
♣ 42

♠ 98
♥ AQ64
♦ AK1074
♣ 85

♠ K103
♥ K8
♦ Q63
♣ AQ1097

♠ A54
♥ 10973
♦ J8
♣ KJ63



Board (4) Av: NS=-160

N-S	E-W	Contract	N-S	E-W	IMP
1	4	2S	S 2	110	7
9	6	3NT	W-1	100	6
7	10	2S	S-1	100	2
6	9	2S	S-1	100	2
10	7	2C	S-1	100	2
5	8	2H	E 3	140	1
3	2	2H	W 4	170	0
2	3	2C	S-3	300	-4
8	5	2Cx	S-2	500	-8
4	1	4H	W 4	620	-10

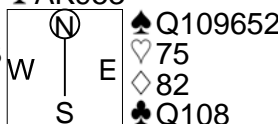
5

♠ 8
♥ Q62
♦ QJ74
♣ AK953

♠ Q109652
♥ 75
♦ 82
♣ Q108

♠ KJ7
♥ A84
♦ AK10965
♣ J

♠ A43
♥ KJ1093
♦ 3
♣ 7642



Board (5) Av: NS=+980

N-S	E-W	Contract	N-S	E-W	IMP
2	3	6D	S 6	1370	9
1	4	6D	S 6	1370	9
3	2	6D	S 6	1370	9
9	6	6D	S 6	1370	9
5	8	6D	N 6	1370	9
7	10	6D	N 6	1370	9
4	1	5D	S 5	600	-9
6	9	4Sx	E-3	500	-10
10	7	6D	S-1	100	-14
8	5	5C	N-2	200	-15

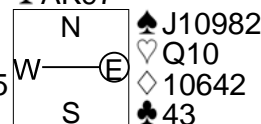
6

♠ Q543
♥ 42
♦ J98
♣ AK97

♠ J10982
♥ Q10
♦ 10642
♣ 43

♠ 76
♥ A87653
♦ 3
♣ QJ86

♠ AK
♥ KJ9
♦ AKQ75
♣ 1052



Board (6) Av: NS=-40

N-S	E-W	Contract	N-S	E-W	IMP
3	2	4S	E-2	200	6
5	8	4S	E-1	100	4
4	1	3NT	W-1	100	4
1	4	3NT	W-1	100	4
7	10	3NT	W-1	100	4
6	9	2NT	W 2	120	-2
10	7	3D	W 4	130	-3
2	3	3S	W 3	140	-3
9	6	4Hx	S-2	300	-6
8	5	3NT	W 3	600	-11

7

♠ 1092
♥ J10753
♦ A7
♣ 965

♠ AQ54
♥ 862
♦ J82
♣ KQ3

♠ KJ6
♥ A9
♦ K965
♣ AJ108

♠ 873
♥ KQ4
♦ Q1043
♣ 742



Board (7) Av: NS=+130

N-S	E-W	Contract	N-S	E-W	IMP
9	6	3D	W-3	300	5
4	1	2H	S 3	140	0
1	4	2H	S 3	140	0
7	10	2H	S 3	140	0
5	8	2H	S 3	140	0
8	5	2H	S 3	140	0
2	3	2H	S 2	110	-1
6	9	2H	S 2	110	-1
10	7	2H	S 2	110	-1
3	2	2H	S 2	110	-1

8

♠ AQ10653
♥ Q95
♦ K3
♣ 102

♠ 42
♥ J6
♦ QJ1042
♣ KQJ9

♠ K8
♥ 872
♦ A95
♣ 87653

♠ J97
♥ AK1043
♦ 876
♣ A4



Board (8) Av: NS=+30

N-S	E-W	Contract	N-S	E-W	IMP
9	6	2NT	W-3	150	3
2	3	1NT	W-3	150	3
1	4	2NT	N 2	120	3
7	10	2S	N 2	110	2
6	9	4D	W-2	100	2
3	2	3D	W-1	50	1
5	8	2D	E 2	90	-3
10	7	3D	W 3	110	-4
4	1	3D	E 3	110	-4
8	5	2D	W 3	110	-4

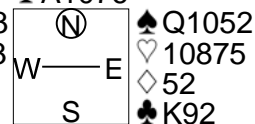
9

♠ 84
♥ Q4
♦ AQ1043
♣ A1076

♠ Q1052
♥ 10875
♦ 52
♣ K92

♠ KJ9
♥ A62
♦ 9876
♣ Q84

♠ A763
♥ KJ93
♦ KJ
♣ J53



Board (9) Av: NS=+140

N-S	E-W	Contract	N-S	E-W	IMP
3	2	3S	E-4	400	6
10	7	2NT	S 4	180	1
7	10	3D	S 4	130	0
2	3	3D	N 4	130	0
4	1	3D	N 4	130	0
5	8	3D	N 4	130	0
6	9	3D	N 4	130	0
9	6	3D	N 4	130	0
1	4	3D	N 4	130	0
8	5	3D	N 3	110	-1

10

♠ 109865
♥ A10876
♦ 10
♣ 76

♠ AK ♠ J73
♥ QJ932 ♥ 5
♦ 9832 ♦ Q654
♣ Q3 ♣ AJ1084

W — E
N — S

♠ Q42
♥ K4
♦ AKJ7
♣ K952

11

♠ Q108
♥ Q53
♦ K843
♣ 1065

♠ A6543 ♠ 9
♥ K1096 ♥ A2
♦ 106 ♦ AQJ9752
♣ Q3 ♣ AK2

W — E
N — S

♠ KJ72
♥ J874
♦
♣ J9874

12

♠ QJ98
♥ 8
♦ AQ86
♣ 8652

♠ K54 ♠ 7
♥ 9653 ♥ AKQ107
♦ 1054 ♦ KJ73
♣ Q74 ♣ A103

W — E
N — S

♠ A10632
♥ J42
♦ 92
♣ KJ9

Board (10) Av: NS=+70

N-S	E-W	Contract	N-S	E-W	IMP
7	10	3D	W-2	200	4
8	5	2S	S 4	170	3
2	3	3S	S 3	140	2
6	9	2S	S 3	140	2
1	4	2S	S 2	110	1
5	8	2S	S 2	110	1
4	1	2H	S 2	110	1
10	7	4S	S-1	100	-5
9	6	2H	S-1	100	-5
3	2	2H	S-1	100	-5

Board (11) Av: NS=-490

N-S	E-W	Contract	N-S	E-W	IMP
1	4	3NT	W 4	430	2
3	2	3NT	W 6	490	0
4	1	3NT	W 6	490	0
8	5	3NT	W 6	490	0
9	6	3NT	W 6	490	0
2	3	3NT	E 6	490	0
5	8	3NT	E 6	490	0
7	10	3NT	E 6	490	0
10	7	3NT	E 6	490	0
6	9	6D	E 6	920	-10

Board (12) Av: NS=-340

N-S	E-W	Contract	N-S	E-W	IMP
9	6	5Hx	E-1	100	10
8	5	4H	E-1	50	9
1	4	4S	S-2	200	4
10	7	4S	S-2	200	4
2	3	4H	E 5	450	-3
5	8	4H	E 5	450	-3
7	10	4H	E 5	450	-3
6	9	4Sx	S-2	500	-4
4	1	4Sx	S-2	500	-4
3	2	4Sx	S-2	500	-4

13

♠ 106
♥ K983
♦ KQ8542
♣ 4

♠ K932 ♠ AJ87
♥ 7654 ♥ A10
♦ ♦ J763
♣ Q10862 ♣ AK5

W — E
N — S

♠ Q54
♥ QJ2
♦ A109
♣ J973

14

♠ K
♥ AKJ9732
♦ 54
♣ 832

♠ 109853 ♠ 64
♥ 64 ♥ 108
♦ Q102 ♦ K8763
♣ QJ9 ♣ K1074

W — E
N — S

♠ AQJ72
♥ Q5
♦ AJ9
♣ A65

15

♠ A95
♥ J932
♦ 107
♣ J976

♠ Q1083 ♠ K2
♥ 74 ♥ AQ
♦ KQ98 ♦ AJ32
♣ Q53 ♣ AK1084

W — E
N — S

♠ J764
♥ K10865
♦ 654
♣ 2

Board (13) Av: NS=-100

N-S	E-W	Contract	N-S	E-W	IMP
1	4	2D	S 3	110	5
9	6	2D	S 3	110	5
10	7	2D	S 2	90	5
3	2	1NT	E 2	120	-1
2	3	1NT	E 2	120	-1
6	9	1NT	E 2	120	-1
4	1	1NT	E 4	180	-2
7	10	2S	E 5	200	-3
8	5	2S	E 6	230	-4
5	8	3Dx	N-2	500	-9

Board (14) Av: NS=+1010

N-S	E-W	Contract	N-S	E-W	IMP
1	4	7H	N 7	1510	11
5	8	7H	N 7	1510	11
8	5	6H	N 7	1010	0
2	3	6H	N 7	1010	0
3	2	6H	N 7	1010	0
9	6	6H	N 7	1010	0
10	7	6H	N 7	1010	0
6	9	6H	N 7	1010	0
4	1	4NT	S 7	520	-10
7	10	3NT	S 7	520	-10

Board (15) Av: NS=-490

N-S	E-W	Contract	N-S	E-W	IMP
4	1	4NT	E 6	490	0
3	2	4NT	E 6	490	0
1	4	3NT	E 6	490	0
2	3	3NT	E 6	490	0
5	8	3NT	E 6	490	0
8	5	3NT	E 6	490	0
9	6	3NT	E 6	490	0
6	9	3NT	E 6	490	0
7	10	3NT	E 6	490	0
10	7	3NT	E 6	490	0

16

♠ AK843
♥ Q9
♦ 854
♣ 832

♠ J75 ♠ Q10
♥ 10542 ♥ K73
♦ 932 ♦ QJ7
♣ Q74 ♣ KJ1096

W — E
N — S

♠ 962
♥ AJ86
♦ AK106
♣ A5

17

♠ AK
♥ KQ86
♦ AJ43
♣ 542

♠ 53 ♠ 876
♥ 93 ♥ AJ10742
♦ K10982 ♦
♣ 10876 ♣ KQ93

W — E
N — S

♠ QJ10942
♥ 5
♦ Q765
♣ AJ

18

♠ A42
♥ 65
♦ Q42
♣ K9862

♠ ♠ QJ963
♥ K10732 ♥ AQ
♦ A73 ♦ J965
♣ QJ1043 ♣ A5

W — E
N — S

♠ K10875
♥ J984
♦ K108
♣ 7

Board (16) Av: NS=+440

N-S	E-W	Contract	N-S	E-W	IMP
7	10	4S	N 6	480	1
9	6	4S	S 5	450	0
2	3	4S	S 5	450	0
5	8	4S	N 5	450	0
10	7	4S	N 5	450	0
6	9	4S	N 5	450	0
8	5	4S	S 4	420	-1
4	1	4S	S 4	420	-1
3	2	4S	N 4	420	-1
1	4	4S	N 4	420	-1

Board (17) Av: NS=+430

N-S	E-W	Contract	N-S	E-W	IMP
3	2	5Cx	E-6	1400	14
2	3	4S	N 5	450	1
5	8	4S	N 5	450	1
6	9	4S	S 4	420	0
1	4	4S	N 4	420	0
8	5	4S	N 4	420	0
7	10	4S	N 4	420	0
10	7	4S	N 4	420	0
9	6	4S	N 4	420	0
4	1	4Sx	S-1	100	-11

Board (18) Av: NS=+10

N-S	E-W	Contract	N-S	E-W	IMP
3	2	3NT	W-3	150	4
1	4	3NT	W-2	100	3
6	9	3NT	W-2	100	3
8	5	3NT	W-2	100	3
2	3	3NT	W-1	50	1
4	1	3NT	W-1	50	1
10	7	2H	W 2	110	-3
7	10	2H	W 2	110	-3
9	6	2H	W 3	140	-4
5	8	2H	W 3	140	-4

兵庫県知事杯 OPEN TEAMS Session 6 Flight A 2013年10月14日(月)

1

♠AQ43
♥Q32
♦J2
♣Q1095

♠K10976
♥7654
♦5
♣874

♠82
♥J10
♦K109874
♣AK3

W N E S

Board (1) Av: NS=-110

N-S	E-W	Contract	N-S	E-W	IMP
7	8	3D S 3	110		6
5	6	3NT W-2	100		5
6	5	2H E-1	50		4
1	3	3NT S-1		50	2
2	4	4D S-2		100	0
4	2	2S W 2		110	0
8	7	3H W 3		140	-1
9	10	2H W 4		170	-2
10	9	2Sx W 2		470	-8
3	1	2Sx E 2		470	-8

2

♠86
♥A107532
♦AQ
♣AQ4

♠A97
♥J984
♦6
♣98763

♠K543
♥K
♦K1087432
♣5

W N E S

Board (2) Av: NS=+80

N-S	E-W	Contract	N-S	E-W	IMP
1	3	4H N 4	620		11
2	4	5D S 5	600		11
4	2	3D S 6	170		3
8	7	3H N 3	140		2
10	9	2H N 3	140		2
6	5	4H N-1		100	-5
7	8	4H N-1		100	-5
3	1	4H N-1		100	-5
9	10	4H N-1		100	-5
5	6	6D S-2		200	-7

3

♠KQJ109
♥J762
♦AK76
♣

♠6532
♥KQ
♦QJ
♣AK542

♠843
♥108543
♦J10976

♠A874
♥A1095
♦92
♣Q83

W N E S

Board (3) Av: NS=+430

N-S	E-W	Contract	N-S	E-W	IMP
6	5	4H S 6	480		2
1	3	4S N 5	450		1
7	8	4S N 5	450		1
4	2	4S S 4	420		0
2	4	4S N 4	420		0
5	6	4S N 4	420		0
8	7	4S N 4	420		0
9	10	4S N 4	420		0
10	9	4S N 4	420		0
3	1	3C W 3		110	-11

4

♠J63
♥Q10753
♦J6
♣976

♠AK1052
♥4
♦9752
♣AQ10

♠8
♥K962
♦A10
♣K85432

♠Q974
♥AJ8
♦KQ843
♣J

W N E S

Board (4) Av: NS=-400

N-S	E-W	Contract	N-S	E-W	IMP
5	6	2S W 3	140		6
8	7	2NT E 3	150		6
4	2	2NT E 3	150		6
1	3	2Dx S-1	200		5
10	9	2NT E 6	240		4
7	8	5C E 5	600		-5
3	1	3NT E 3	600		-5
2	4	3NT E 3	600		-5
9	10	5C E 6	620		-6
6	5	2Dx S-3	800		-9

5

♠J98543
♥1043
♦10
♣Q109

♠Q2
♥Q86
♦AQ986
♣J53

♠K6
♥KJ975
♦K5432
♣A

♠A107
♥A2
♦J7
♣K87642

W N E S

Board (5) Av: NS=-440

N-S	E-W	Contract	N-S	E-W	IMP
9	10	5D W 5	400		1
1	3	5D W 6	420		1
3	1	4H E 4	420		1
10	9	4H E 4	420		1
4	2	4H E 5	450		0
2	4	4H E 5	450		0
6	5	4H E 5	450		0
8	7	4H E 5	450		0
5	6	4H E 5	450		0
7	8	4H E 5	450		0

6

♠AQ9
♥
♦Q762
♣Q109762

♠843
♥AK10763
♦KJ
♣K3

♠KJ762
♥952
♦A83
♣54

♠105
♥QJ84
♦10954
♣AJ8

W N E S

Board (6) Av: NS=-280

N-S	E-W	Contract	N-S	E-W	IMP
7	8	4C N-1	50		6
10	9	5C N-2	100		5
4	2	3H W 3	140		4
1	3	3H W 3	140		4
8	7	2H W 3	140		4
2	4	2H W 4	170		3
9	10	4Cx N-2	300		-1
3	1	4H W 4	620		-8
6	5	4H W 4	620		-8
5	6	4H W 4	620		-8

7

♠QJ763
♥92
♦J984
♣A7

♠AK98
♥J1065
♦Q63
♣K2

♠42
♥A73
♦K2
♣J108543

♠105
♥KQ84
♦A1075
♣Q96

W N E S

Board (7) Av: NS=+60

N-S	E-W	Contract	N-S	E-W	IMP
1	3	3C W-3	300		6
2	4	1NT E-2	200		4
7	8	2D S 3	110		2
8	7	2H E-1	100		1
6	5	2H E-1	100		1
5	6	1NT W-1	100		1
4	2	1NT E-1	100		1
10	9	2S N-1		100	-4
3	1	1NT E 2		120	-5
9	10	2C E 4		130	-5

8

♠52
♥AQ10
♦QJ104
♣KJ102

♠Q87
♥4
♦K865
♣A9863

♠A10643
♥K8765
♦2
♣Q5

♠KJ9
♥J932
♦A973
♣74

W N E S

Board (8) Av: NS=-50

N-S	E-W	Contract	N-S	E-W	IMP
10	9	1NT W-3	150		5
1	3	3D N 3	110		4
4	2	3D N 3	110		4
7	8	3S W-1	50		3
8	7	3D N-2		100	-2
3	1	3S W 3		140	-3
2	4	3S W 3		140	-3
5	6	3S W 3		140	-3
9	10	3S W 4		170	-3
6	5	2S W 4		170	-3

9

♠Q53
♥K1095
♦AQJ43
♣4

♠K876
♥QJ6
♦2
♣AK873

♠J
♥A74
♦109876
♣9652

♠A10942
♥832
♦K5
♣QJ10

W N E S

Board (9) Av: NS=-190

N-S	E-W	Contract	N-S	E-W	IMP
6	5	2NT S 2	120		7
4	2	4S S-1		50	4
2	4	4S S-2		100	3
9	10	4S S-2		100	3
3	1	4S S-3		150	1
10	9	4S S-3		150	1
8	7	4S S-3		150	1
7	8	4S S-3		150	1
5	6	3Cx W 3		670	-10
1	3	3Cx E 3		670	-10

10

♠ A86
♥ K3
♦ J975
♣ Q875

♠ Q2
♥ AJ2
♦ K10632
♣ AKJ

N
W — E
S

♠ 1053
♥ Q654
♦ A4
♣ 10942

♠ KJ974
♥ 10987
♦ Q8
♣ 63

Board (10) Av: NS=+190

N-S	E-W	Contract	N-S	E-W	IMP
2	4	3NT W-4	400		5
4	2	3NT W-3	300		3
3	1	3NT W-2	200		0
5	6	3NT W-2	200		0
10	9	3NT W-2	200		0
8	7	3NT W-2	200		0
7	8	3NT W-2	200		0
6	5	3NT W-1	100		-3
9	10	3NT W-1	100		-3
1	3	2NT W 2	120		-7

11

♠ A8752
♥ KQ4
♦ 973
♣ K4

♠ K
♥ AJ10862
♦ A106
♣ 872

N
W — E
S

♠ J104
♥ 53
♦ J852
♣ AJ53

♠ Q963
♥ 97
♦ KQ4
♣ Q1096

Board (11) Av: NS=+140

N-S	E-W	Contract	N-S	E-W	IMP
1	3	3S N 3	140		0
3	1	3S N 3	140		0
8	7	3S N 3	140		0
4	2	3S N 3	140		0
5	6	2S N 3	140		0
6	5	2S N 3	140		0
10	9	2S N 3	140		0
9	10	2S N 3	140		0
2	4	2S N 2	110		-1
7	8	4S N-1	50		-5

12

♠ AK8
♥ Q107
♦ 72
♣ AJ754

♠ J6
♥ AK2
♦ J106
♣ Q10963

N
W — E
S

♠ 7532
♥ J64
♦ KQ853
♣ 8

♠ Q1094
♥ 9853
♦ A94
♣ K2

Board (12) Av: NS=+50

N-S	E-W	Contract	N-S	E-W	IMP
1	3	3NT N 4	630		11
9	10	2NT N 2	120		2
10	9	2NT N 2	120		2
4	2	2D W-2	100		2
2	4	1NT W-2	100		2
8	7	1NT N 1	90		1
3	1	2D W-1	50		0
6	5	2D W 2	90		-4
7	8	3NT N-1	100		-4
5	6	4H N-2	200		-6

13

♠ K
♥ J8763
♦ KQ
♣ 98642

♠ AQ84
♥
♦ 109653
♣ AK75

N
W — E
S

♠ J965
♥ K1054
♦ A8742
♣

♠ 10732
♥ AQ92
♦ J
♣ QJ103

Board (13) Av: NS=-380

N-S	E-W	Contract	N-S	E-W	IMP
7	8	4S W-2	200		11
10	9	4S W-1	100		10
4	2	4S W-1	100		10
5	6	3S E 3	140		6
3	1	5D W 5	600		-6
1	3	5D E 5	600		-6
6	5	4S W 4	620		-6
8	7	4S E 4	620		-6
9	10	4S W 5	650		-7
2	4	4S E 6	680		-7

14

♠ 86
♥ Q932
♦ 765
♣ 8643

♠ K72
♥ J86
♦ QJ1032
♣ A7

N
W — E
S

♠ AQJ109
♥ AK4
♦ AK8
♣ K2

♠ 543
♥ 1075
♦ 94
♣ QJ1095

Board (14) Av: NS=-1270

N-S	E-W	Contract	N-S	E-W	IMP
5	6	6S E 7	1010		6
4	2	6S E 7	1010		6
3	1	6NT E 7	1020		6
1	3	6NT E 7	1020		6
6	5	6NT E 7	1020		6
7	8	7S E 7	1510		-6
10	9	7S E 7	1510		-6
2	4	7NT W 7	1520		-6
9	10	7NT W 7	1520		-6
8	7	7NT E 7	1520		-6

15

♠ AKQ3
♥ J9
♦ QJ53
♣ AQ8

♠ 1098
♥ A1065
♦ A
♣ KJ762

N
W — E
S

♠ 72
♥ K743
♦ 8764
♣ 1094

♠ J654
♥ Q82
♦ K1092
♣ 53

Board (15) Av: NS=+170

N-S	E-W	Contract	N-S	E-W	IMP
10	9	4S S 4	620		10
6	5	4S S 4	620		10
9	10	4S S 4	620		10
7	8	4S N 4	620		10
3	1	4S S-1	100		-7
5	6	4S S-1	100		-7
4	2	4S S-1	100		-7
1	3	4S S-1	100		-7
8	7	4S S-1	100		-7
2	4	4S S-1	100		-7

16

♠ 9865
♥ 7
♦ AK4
♣ QJ1065

♠ 10
♥ KJ863
♦ 10986
♣ K94

N
W — E
S

♠ AK2
♥ A105
♦ Q532
♣ A82

♠ QJ743
♥ Q942
♦ J7
♣ 73

Board (16) Av: NS=-280

N-S	E-W	Contract	N-S	E-W	IMP
2	4	4H E-2	200		10
1	3	2S S 2	110		9
8	7	4H E-1	100		9
10	9	3H E 3	140		4
3	1	3S N-3	150		4
9	10	4Sx N-2	300		-1
7	8	3NT E 3	600		-8
5	6	4H E 4	620		-8
6	5	4H E 4	620		-8
4	2	3NT E 5	660		-9

17

♠ 974
♥ A1054
♦ AJ10
♣ 963

♠ AKQJ
♥ Q3
♦ 62
♣ K10752

N
W — E
S

♠ 32
♥ KJ9
♦ KQ8754
♣ A4

♠ 10865
♥ 8762
♦ 93
♣ QJ8

Board (17) Av: NS=-450

N-S	E-W	Contract	N-S	E-W	IMP
6	5	6NTx E-1	100		11
2	4	3NT E 3	400		2
7	8	3NT E 4	430		1
1	3	3NT E 5	460		0
5	6	3NT E 5	460		0
3	1	3NT E 5	460		0
9	10	3NT E 5	460		0
8	7	3NT E 5	460		0
4	2	3NT W 6	490		-1
10	9	3NT W 6	490		-1

18

♠ AJ2
♥ AJ
♦ J1053
♣ J954

♠ K10964
♥ Q732
♦ 62
♣ 73

N
W — E
S

♠ 75
♥ K964
♦ K8
♣ KQ1062

♠ Q83
♥ 1085
♦ AQ974
♣ A8

Board (18) Av: NS=+560

N-S	E-W	Contract	N-S	E-W	IMP
8	7	3NT N 4	630		2
5	6	3NT N 4	630		2
9	10	3NT N 4	630		2
6	5	3NT N 4	630		2
10	9	3NT N 4	630		2
2	4	3NT N 3	600		1
7	8	3NT N 3	600		1
3	1	3NT N 3	600		1
1	3	3D S 5	150		-9
4	2	2S W-2	100		-10

19

♠AKQ
♥Q7543
♦AJ8
♣KQ

♠73
♥A
♦10653
♣J109842

N
W—E
S

♠10952
♥J9
♦KQ94
♣A65

♠J864
♥K10862
♦72
♣73

Board (19) Av: NS=+420

N-S	E-W	Contract	N-S	E-W	IMP
1	2	4H	N 4	420	0
2	1	4H	N 4	420	0
3	4	4H	N 4	420	0
4	3	4H	N 4	420	0
5	10	4H	N 4	420	0
10	5	4H	N 4	420	0
6	7	4H	N 4	420	0
7	6	4H	N 4	420	0
8	9	4H	N 4	420	0
9	8	4H	N 4	420	0

20

♠K3
♥Q10532
♦Q92
♣532

♠J10642
♥K4
♦A765
♣A6

N
W—E
S

♠7
♥A87
♦J1083
♣KJ984

♠AQ985
♥J96
♦K4
♣Q107

Board (20) Av: NS=-130

N-S	E-W	Contract	N-S	E-W	IMP
6	7	2NT	E-1	100	6
5	10	3D	W 3	110	1
4	3	3D	W 4	130	0
8	9	3D	W 4	130	0
9	8	3D	W 4	130	0
10	5	2D	W 4	130	0
3	4	2D	W 4	130	0
1	2	2D	W 4	130	0
7	6	3D	W 5	150	-1
2	1	2D	W 5	150	-1

21

♠Q94
♥Q753
♦653
♣AJ10

♠A76
♥J10862
♦Q102
♣73

N
W—E
S

♠5
♥AK9
♦AKJ8
♣96542

♠KJ10832
♥4
♦974
♣KQ8

Board (21) Av: NS=-30

N-S	E-W	Contract	N-S	E-W	IMP
1	2	4H	W-1	50	2
2	1	4H	W-1	50	2
4	3	4H	W-1	50	2
3	4	4H	E-1	50	2
8	9	4H	E-1	50	2
6	7	4H	E-1	50	2
7	6	4H	E-1	50	2
10	5	3S	S-1	100	-2
5	10	4H	E 4	420	-9
9	8	4Hx	W 4	590	-11

22

♠J752
♥9
♦AK98
♣KQ102

♠AQ43
♥Q86
♦Q543
♣J8

N
W—E
S

♠9
♥J754
♦J107
♣A9643

♠K1086
♥AK1032
♦62
♣75

Board (22) Av: NS=+160

N-S	E-W	Contract	N-S	E-W	IMP
8	9	4S	N 4	420	6
5	10	4S	N 4	420	6
9	8	4S	N 4	420	6
10	5	4S	N 4	420	6
3	4	2S	S 2	110	-2
1	2	2H	S 2	110	-2
6	7	4S	N-1	50	-5
7	6	3NT	N-1	50	-5
2	1	4S	N-2	100	-6
4	3	4S	N-2	100	-6

23

♠A43
♥86
♦86
♣QJ9853

♠82
♥109732
♦AJ53
♣62

N
W—E
S

♠KQ10976
♥AK4
♦742
♣7

♠J5
♥QJ5
♦KQ109
♣AK104

Board (23) Av: NS=-160

N-S	E-W	Contract	N-S	E-W	IMP
1	2	3S	E-1	100	6
9	8	4C	S-1	100	2
2	1	4C	N-1	100	2
10	5	3NT	S-1	100	2
8	9	3NT	S-1	100	2
4	3	3S	E 4	170	0
3	4	3NT	S-2	200	-1
7	6	3NT	S-2	200	-1
6	7	3NT	S-3	300	-4
5	10	4S	E 4	620	-10

24

♠7532
♥A65
♦J32
♣KJ10

♠Q8
♥8742
♦K1096
♣765

N
W—E
S

♠K1096
♥109
♦AQ84
♣Q92

♠AJ4
♥KQJ3
♦75
♣A843

Board (24) Av: NS=+110

N-S	E-W	Contract	N-S	E-W	IMP
2	1	3NT	S 3	400	7
5	10	2NT	S 3	150	1
7	6	2S	N 3	140	1
9	8	2S	N 2	110	0
8	9	2S	N 2	110	0
6	7	2S	N 2	110	0
4	3	3D	E-2	100	0
1	2	2Dx	E-1	100	0
10	5	1NT	E-1	50	-2
3	4	3S	N-1	50	-4

25

♠3
♥Q10872
♦A83
♣A1095

♠Q9765
♥A96
♦106
♣Q74

N
W—E
S

♠AK108
♥K5
♦Q752
♣J62

♠J42
♥J43
♦KJ94
♣K83

Board (25) Av: NS=-50

N-S	E-W	Contract	N-S	E-W	IMP
5	10	4S	W-2	200	6
8	9	3S	W-1	100	4
4	3	3S	W-1	100	4
10	5	4H	N-1	50	0
3	4	2S	W 2	110	-2
1	2	2S	W 2	110	-2
9	8	2S	W 2	110	-2
6	7	2S	W 2	110	-2
7	6	3S	W 3	140	-3
2	1	2S	W 3	140	-3

26

♠Q10953
♥K9
♦KJ10
♣Q75

♠AJ7
♥J10743
♦763
♣KJ

N
W—E
S

♠6
♥865
♦AQ8
♣A109632

♠K842
♥AQ2
♦9542
♣84

Board (26) Av: NS=-170

N-S	E-W	Contract	N-S	E-W	IMP
3	4	2S	N 2	110	7
8	9	Passout			5
10	5	Passout			5
5	10	3S	N-1	100	2
4	3	3C	E 3	110	2
1	2	3H	W 3	140	1
6	7	3S	N-2	200	-1
9	8	3S	N-2	200	-1
7	6	4H	W 4	620	-10
2	1	4H	E 4	620	-10

27

♠AK93
♥AJ95
♦
♣AQ943

♠8
♥KQ84
♦Q9864
♣765

N
W—E
S

♠QJ1064
♥76
♦A52
♣J82

♠752
♥1032
♦KJ1073
♣K10

Board (27) Av: NS=+260

N-S	E-W	Contract	N-S	E-W	IMP
9	8	3NT	S 4	430	5
6	7	3NT	S 4	430	5
8	9	3NT	N 4	430	5
1	2	3NT	S 3	400	4
4	3	1S	E-4	200	-2
2	1	1S	E-4	200	-2
3	4	1H	N 4	170	-3
5	10	3C	N 3	110	-4
10	5	2S	N 2	110	-4
7	6	3NT	N-1	50	-7

28

♠62
♥AJ6
♦Q843
♣Q1076

♠954
♥Q1092
♦1052
♣J95

♠873
♥K8753
♦A97
♣A2

♠AKQJ10
♥4
♦KJ6
♣K843

Board (28) Av: NS=+620

N-S	E-W	Contract	N-S	E-W	IMP
5	10	3NT N	5	660	1
1	2	4S S	5	650	1
9	8	3NT N	4	630	0
8	9	3NT N	4	630	0
2	1	3NT N	4	630	0
4	3	5C S	5	600	-1
7	6	5C S	5	600	-1
6	7	3NT N	3	600	-1
3	4	3NT N	3	600	-1
10	5	4C N	5	150	-10

29

♠92
♥AJ4
♦AQ3
♣AQ1075

♠J853
♥Q832
♦K1092
♣4

♠107
♥K1097
♦8754
♣J92

♠AKQ64
♥65
♦J6
♣K863

Board (29) Av: NS=+1030

N-S	E-W	Contract	N-S	E-W	IMP
8	9	7C N	7	2140	15
5	10	6NT N	6	1440	9
2	1	6C N	6	1370	8
4	3	6C N	6	1370	8
1	2	6C N	6	1370	8
6	7	5NT N	6	690	-8
3	4	3NT N	6	690	-8
7	6	3NT N	5	660	-9
9	8	3NT N	5	660	-9
10	5	7C S	-1	100	-15

30

♠J8
♥A98742
♦32
♣A102

♠AQ9
♥J
♦KJ1087
♣K843

♠72
♥53
♦AQ964
♣QJ96

♠K106543
♥KQ106
♦5
♣75

Board (30) Av: NS=-140

N-S	E-W	Contract	N-S	E-W	IMP
9	8	3H N	3	140	7
6	7	3NT W	-2	100	6
1	2	5H N	-1	50	3
8	9	4H N	-1	50	3
10	5	4H N	-1	50	3
4	3	5H N	-2	100	1
2	1	5Hx N	-2	300	-4
7	6	5Hx N	-2	300	-4
5	10	5D W	5	400	-6
3	4	5Dx W	5	550	-9

31

♠2
♥8432
♦Q104
♣87432

♠J1098
♥Q1075
♦7653
♣5

♠AQ753
♥AJ96
♦9
♣KJ6

♠K64
♥K
♦AKJ82
♣AQ109

Board (31) Av: NS=+30

N-S	E-W	Contract	N-S	E-W	IMP
6	7	5Cx S	5	750	12
7	6	4S E	-4	200	5
9	8	2NT S	4	180	4
1	2	2NT S	2	120	3
3	4	3C S	3	110	2
4	3	5C S	-1	100	-4
8	9	5C S	-1	100	-4
10	5	2NT S	-1	100	-4
5	10	2NT S	-1	100	-4
2	1	5Cx S	-1	200	-6

32

♠A975
♥J873
♦105
♣A76

♠Q1084
♥Q109
♦K843
♣KQ

♠KJ632
♥K64
♦J
♣10852

♠A52
♥AQ9762
♣J943

Board (32) Av: NS=-40

N-S	E-W	Contract	N-S	E-W	IMP
2	1	4S W	-2	200	6
1	2	3S E	-2	200	6
5	10	3S E	-1	100	4
4	3	4C N	-1	50	0
3	4	2S E	2	110	-2
10	5	2S E	2	110	-2
6	7	2S E	2	110	-2
7	6	2S E	2	110	-2
8	9	2S E	2	110	-2
9	8	2S E	2	110	-2

33

♠KJ6
♥AQ65
♦105
♣A973

♠Q973
♥K8
♦986
♣KJ84

♠A54
♥104
♦AKQJ732
♣Q

♠1082
♥J9732
♦4
♣10652

Board (33) Av: NS=-230

N-S	E-W	Contract	N-S	E-W	IMP
5	10	2H N	3	140	9
6	7	3NT E	-2	100	8
10	5	5D E	-1	50	7
1	2	3S W	-1	50	7
4	3	3NT W	3	400	-5
3	4	3NT W	3	400	-5
7	6	3NT W	3	400	-5
8	9	3NT W	4	430	-5
2	1	3NT E	4	430	-5
9	8	3NT W	5	460	-6

34

♠KQ972
♥QJ863
♦
♣K63

♠6
♥AK1075
♦Q752
♣742

♠853
♥92
♦A10964
♣Q85

♠AJ104
♥4
♦KJ83
♣AJ109

Board (34) Av: NS=+650

N-S	E-W	Contract	N-S	E-W	IMP
3	4	6S N	6	1430	13
6	7	4S N	6	680	1
7	6	5S N	5	650	0
4	3	5S N	5	650	0
1	2	4S N	5	650	0
5	10	4S N	5	650	0
9	8	4S N	5	650	0
2	1	4S N	4	620	-1
8	9	4S N	4	620	-1
10	5	4S N	4	620	-1

35

♠AQ
♥QJ875
♦AK62
♣63

♠J985
♥A10
♦QJ5
♣Q1098

♠642
♥64
♦108743
♣A72

♠K1073
♥K932
♦9
♣KJ54

Board (35) Av: NS=+460

N-S	E-W	Contract	N-S	E-W	IMP
5	10	4H N	6	480	1
6	7	4H N	6	480	1
3	4	4H N	6	480	1
2	1	4H N	5	450	0
10	5	4H N	5	450	0
1	2	4H N	5	450	0
4	3	4H N	5	450	0
9	8	4H N	5	450	0
7	6	4H N	5	450	0
8	9	4H N	5	450	0

36

♠KQ94
♥Q652
♦2
♣QJ73

♠765
♥A843
♦876
♣1095

♠A2
♥K
♦KJ1054
♣AK862

♠J1083
♥J1097
♦AQ93
♣4

Board (36) Av: NS=+120

N-S	E-W	Contract	N-S	E-W	IMP
9	8	4D E	-3	300	5
10	5	4D E	-3	300	5
6	7	3NT E	-2	200	2
3	4	3D E	-2	200	2
1	2	3D E	-2	200	2
5	10	2S S	3	140	1
2	1	2H N	3	140	1
8	9	2D E	2	90	-5
4	3	3S N	-1	100	-6
7	6	4H N	-2	200	-8