

第17回NRM杯 Session1 Flight D 2012年6月30日(土)

1

♠5432
♥AQ654
♦6
♣K85

♠KQ76
♥108
♦J10985
♣Q7

♠J98
♥93
♦KQ3
♣AJ963

♠A10
♥KJ72
♦A742
♣1042

2

♠52
♥53
♦AJ10432
♣K63

♠A864
♥A87
♦KQ6
♣J52

♠K10
♥QJ9642
♦5
♣A1074

♠QJ973
♥K10
♦987
♣Q98

3

♠10753
♥765
♦2
♣109853

♠AK4
♥K1098
♦J10
♣KQJ2

♠QJ8
♥QJ43
♦AQ754
♣6

♠962
♥A2
♦K9863
♣A74

Board (1) Av: NS=+60

N-S	E-W	Contract	N-S	E-W	IMP
6	12	3H N 4	170		3
16	2	3H N 4	170		3
1	17	2H N 3	140		2
4	8	2H N 3	140		2
5	7	2H N 3	140		2
18	3	4H N-1		50	-3
10	14	4H N-1		50	-3
11	13	4H N-1		50	-3
15	9	1NT E 2		120	-5

Board (2) Av: NS=-430

N-S	E-W	Contract	N-S	E-W	IMP
6	12	3H E 5		200	6
11	13	4H E 4		420	0
18	3	4H E 4		420	0
10	14	4H E 4		420	0
4	8	4H E 4		420	0
5	7	4H E 4		420	0
1	17	4H E 5		450	-1
16	2	4H E 5		450	-1
15	9	4H E 5		450	-1

Board (3) Av: NS=-210

N-S	E-W	Contract	N-S	E-W	IMP
4	8	4H W-2		200	9
16	2	5H W-1		100	7
15	9	4H W-1		100	7
10	14	4H W-1		100	7
5	7	4H W-1		100	7
18	3	4H W 4		620	-9
1	17	4H W 4		620	-9
11	13	4H W 4		620	-9
6	12	3NT E 4		630	-9

4

♠AJ963
♥A963
♦82
♣105

♠KQ852
♥8542
♦KQ7
♣8

♠4
♥Q10
♦A10654
♣KJ973

♠107
♥KJ7
♦J93
♣AQ642

5

♠A8
♥KQ65
♦Q6
♣AQ876

♠96543
♥AJ3
♦AJ9
♣K5

♠KJ72
♥982
♦8732
♣J10

♠Q10
♥1074
♦K1054
♣9432

6

♠AJ10752
♥Q
♦A
♣AKQ87

♠Q94
♥J103
♦9432
♣964

♠86
♥K864
♦KQ765
♣32

♠K3
♥A9752
♦J108
♣J105

Board (4) Av: NS=+80

N-S	E-W	Contract	N-S	E-W	IMP
5	7	4D E-3		300	6
6	12	4D E-3		300	6
16	2	3D E-2		200	3
15	9	2Cx S 2		180	3
18	3	Passout			-2
11	13	Passout			-2
4	8	Passout			-2
1	17	3H N-1		100	-5
10	14	2D E 4		130	-5

Board (5) Av: NS=+50

N-S	E-W	Contract	N-S	E-W	IMP
1	17	1NT N 5		210	4
5	7	3S W-3		150	3
10	14	1NT N 3		150	3
6	12	1NT N 3		150	3
16	2	2S W-1		50	0
18	3	2S W-1		50	0
15	9	1NT N-1		100	-4
4	8	2S W 2		110	-4
11	13	2S W 2		110	-4

Board (6) Av: NS=+980

N-S	E-W	Contract	N-S	E-W	IMP
5	7	6NT S 7		1020	1
11	13	6S N 7		1010	1
10	14	6S N 7		1010	1
6	12	6S N 7		1010	1
1	17	6S N 7		1010	1
18	3	6C N 7		940	-1
15	9	6C N 7		940	-1
4	8	6C N 7		940	-1
16	2	4S N 7		510	-10

7

♠42
♥A1093
♦1063
♣K654

♠A963
♥
♦AK8754
♣AQ9

♠K1085
♥KJ642
♦QJ9
♣2

♠QJ7
♥Q875
♦2
♣J10873

8

♠A62
♥862
♦9876
♣Q85

♠KQ10
♥753
♦QJ43
♣962

♠J987
♥AKQ10
♦K2
♣AK3

♠543
♥J94
♦A105
♣J1074

9

♠104
♥KQ854
♦J73
♣A106

♠7632
♥A2
♦K1096
♣J93

♠KJ5
♥976
♦82
♣87542

♠AQ98
♥J103
♦AQ54
♣AKQ

Board (7) Av: NS=-560

N-S	E-W	Contract	N-S	E-W	IMP
15	9	6S W-1		100	12
10	14	4S W-1		100	12
16	2	5S W 5		650	-3
11	13	4S W 5		650	-3
4	8	5S W 6		680	-3
18	3	4S W 6		680	-3
6	12	4S W 6		680	-3
1	17	4S W 6		680	-3
5	7	6S W 6		1430	-13

Board (8) Av: NS=-430

N-S	E-W	Contract	N-S	E-W	IMP
8	1	3NT E 3		400	1
15	12	3NT E 3		400	1
4	17	3NT E 3		400	1
13	2	3NT E 4		430	0
9	3	3NT E 4		430	0
6	18	3NT E 4		430	0
11	16	3NT E 5		460	-1
14	7	3NT E 5		460	-1
5	10	3NT E 5		460	-1

Board (9) Av: NS=+450

N-S	E-W	Contract	N-S	E-W	IMP
15	12	3NT S 5		460	0
8	1	3NT N 5		460	0
11	16	3NT N 5		460	0
6	18	3NT N 5		460	0
5	10	4H N 5		450	0
14	7	4H N 5		450	0
13	2	3NT S 4		430	-1
4	17	3NT N 4		430	-1
9	3	6H N-1		50	-11

10

♠K4
♥J753
♦J962
♣K64

♠Q93
♥Q1062
♦104
♣8753

N
W—E
S

♠87652
♥K
♦K73
♣AQ109

♠AJ10
♥A984
♦AQ85
♣J2

11

♠87
♥Q983
♦QJ753
♣97

♠Q109
♥K107
♦94
♣J10843

N
W—E
S

♠AK6542
♥J6
♦AK1062
♣

♠J3
♥A542
♦8
♣AKQ652

12

♠J1083
♥A73
♦954
♣985

♠542
♥Q109
♦AJ2
♣KQ103

N
W—E
S

♠Q76
♥K2
♦Q10876
♣764

♠AK9
♥J8654
♦K3
♣AJ2

Board (10) Av: NS=-100

N-S	E-W	Contract	N-S	E-W	IMP
5	10	2NT S 2	120		6
15	12	2NT S 2	120		6
4	17	4H N-1		100	0
9	3	3H S-1		100	0
14	7	3C N-1		100	0
13	2	2NT S-1		100	0
8	1	4H S-2		200	-3
11	16	4H S-2		200	-3
6	18	4H S-3		300	-5

Board (11) Av: NS=-350

N-S	E-W	Contract	N-S	E-W	IMP
11	16	5Sx E-1	100		10
14	7	4H N-2		100	6
15	12	5C S-4		200	4
4	17	4S E 4		420	-2
9	3	4S E 4		420	-2
6	18	4S E 4		420	-2
8	1	4S E 4		420	-2
5	10	4S E 5		450	-3
13	2	4S E 5		450	-3

Board (12) Av: NS=+10

N-S	E-W	Contract	N-S	E-W	IMP
6	18	1NT S 2	120		3
8	1	1H S 2	110		3
9	3	4D E-2		100	3
15	12	1NT W-2		100	3
14	7	1NT W-1		50	1
4	17	2D E 2		90	-3
5	10	1NT E 1		90	-3
13	2	1NT S-1		100	-3
11	16	1NT S-1		100	-3

13

♠106
♥9653
♦KQ109
♣K43

♠87
♥AJ104
♦A54
♣Q985

N
W—E
S

♠AQ932
♥Q82
♦87
♣1062

♠KJ54
♥K7
♦J632
♣AJ7

14

♠J9853
♥5
♦A9
♣J9632

♠Q4
♥A1092
♦Q65
♣AK74

N
W—E
S

♠AK106
♥KQ73
♦K1073
♣8

♠72
♥J864
♦J842
♣Q105

15

♠Q853
♥5
♦J98652
♣K6

♠A72
♥KJ1097
♦AKQ
♣84

N
W—E
S

♠K96
♥A632
♦1074
♣1032

♠J104
♥Q84
♦3
♣AQJ975

Board (13) Av: NS=+80

N-S	E-W	Contract	N-S	E-W	IMP
8	1	1NT S 3	150		2
14	7	1NT S 2	120		1
6	18	1NT S 2	120		1
5	10	1NT S 2	120		1
15	12	2D S 2	90		0
4	17	2D S 2	90		0
11	16	1NT S 1	90		0
13	2	1NT S-1		100	-5
9	3	2S E 2		110	-5

Board (14) Av: NS=-320

N-S	E-W	Contract	N-S	E-W	IMP
8	1	6H W-1		50	9
14	7	6H W-1		50	9
6	18	6H W-1		50	9
15	12	5H W 5		450	-4
13	2	4H W 5		450	-4
4	17	4H W 5		450	-4
9	3	4H W 6		480	-4
5	10	4H W 6		480	-4
11	16	4H W 6		480	-4

Board (15) Av: NS=-180

N-S	E-W	Contract	N-S	E-W	IMP
5	16	4H W-1		50	6
14	1	4H W-1		50	6
18	12	3H W 3		140	1
10	17	3H W 4		170	0
8	13	3H W 4		170	0
15	3	3H W 4		170	0
4	11	1NT W 5		210	-1
2	7	4H W 4		420	-6
9	6	4H E 4		420	-6

16

♠A984
♥A987
♦Q10
♣K108

♠QJ10632
♥4
♦7642
♣97

N
W—E
S

♠K
♥632
♦J985
♣QJ543

♠75
♥KQJ105
♦AK3
♣A62

17

♠KQ5
♥J1052
♦K97
♣J73

♠10643
♥KQ6
♦Q85
♣K54

N
W—E
S

♠A982
♥A98
♦A1063
♣Q8

♠J7
♥743
♦J42
♣A10962

18

♠AK952
♥J732
♦Q5
♣53

♠J
♥
♦AJ9876
♣AQJ862

N
W—E
S

♠Q87
♥AK104
♦K43
♣974

♠10643
♥Q9865
♦102
♣K10

Board (16) Av: NS=+760

N-S	E-W	Contract	N-S	E-W	IMP
9	6	6H S 6	980		6
10	17	6H S 6	980		6
18	12	6H S 6	980		6
8	13	6H S 6	980		6
4	11	6H S 6	980		6
2	7	6H S 6	980		6
15	3	4H S 6	480		-7
14	1	7H S-1		50	-13
5	16	6H S-1		50	-13

Board (17) Av: NS=-30

N-S	E-W	Contract	N-S	E-W	IMP
15	3	3NT W-3		150	5
10	17	4S W-2		100	4
2	7	4S W-2		100	4
9	6	4S W-1		50	2
5	16	2S W 2		110	-2
14	1	2S W 2		110	-2
4	11	1NT W 2		120	-3
18	12	2S W 3		140	-3
8	13	2S W 3		140	-3

Board (18) Av: NS=-410

N-S	E-W	Contract	N-S	E-W	IMP
2	7	4H W-3		150	11
10	17	5D W-1		50	10
5	16	4C E 4		130	7
8	13	3C E 5		150	6
9	6	5C E 5		400	0
18	12	5C E 6		420	0
14	1	6C W 6		920	-11
4	11	6C E 6		920	-11
15	3	6C E 6		920	-11

19

♠AK6
♥AKQ
♦J1074
♣J107

♠Q92
♥98752
♦K8
♣865

N
W—E
S

♠J75
♥10643
♦53
♣Q932

♠10843
♥J
♦AQ962
♣AK4

20

♠Q9
♥A84
♦KJ1082
♣Q42

♠10854
♥Q
♦7643
♣7653

N
W—E
S

♠AJ3
♥KJ9652
♦Q
♣AJ8

♠K762
♥1073
♦A95
♣K109

21

♠8543
♥8642
♦87
♣K107

♠KQ62
♥53
♦AKJ5
♣QJ6

N
W—E
S

♠J1097
♥Q
♦Q94
♣A9842

♠A
♥AKJ1097
♦10632
♣53

Board (19) Av: NS=+970

N-S	E-W	Contract	N-S	E-W	IMP
18	12	6NT N 6	990		1
14	1	6NT N 6	990		1
15	3	6NT N 6	990		1
4	11	6NT N 6	990		1
5	16	6NT N 6	990		1
2	7	6NT N 6	990		1
8	13	6D S 6	920		-2
9	6	6D S 6	920		-2
10	17	4D S 6	170		-13

Board (20) Av: NS=+90

N-S	E-W	Contract	N-S	E-W	IMP
8	13	3H E-2	200		3
9	6	2NT N 3	150		2
14	1	3D N 4	130		1
10	17	1NT N 2	120		1
2	7	1NT N 2	120		1
15	3	3D N 3	110		1
4	11	2D N 3	110		1
18	12	2H E 2		110	-5
5	16	2H E 2		110	-5

Board (21) Av: NS=-200

N-S	E-W	Contract	N-S	E-W	IMP
14	1	3Hx S 4	930		15
8	13	3S E 3		140	2
15	3	3S E 3		140	2
10	17	3S E 4		170	1
18	12	3S E 4		170	1
9	6	3S E 4		170	1
5	16	3S E 4		170	1
2	7	4S E 4		420	-6
4	11	4S E 4		420	-6

22

♠J
♥QJ1097
♦AKJ1085
♣7

♠A1075
♥K4
♦43
♣98532

N
W—E
S

♠K63
♥A53
♦62
♣AKJ106

♠Q9842
♥862
♦Q97
♣Q4

23

♠5
♥AK74
♦108
♣986432

♠984
♥J10953
♦Q52
♣105

N
W—E
S

♠AKJ102
♥8
♦A9764
♣KJ

♠Q763
♥Q62
♦KJ3
♣AQ7

24

♠73
♥Q1095
♦KJ62
♣J86

♠AJ
♥72
♦A8543
♣KQ105

N
W—E
S

♠K9854
♥AJ86
♦109
♣A9

♠Q1062
♥K43
♦Q7
♣7432

Board (22) Av: NS=+130

N-S	E-W	Contract	N-S	E-W	IMP
4	14	2Hx N 3	570		10
12	3	3H N 3	140		0
13	5	2H N 3	140		0
1	11	2H N 3	140		0
15	6	2D N 4	130		0
10	2	2H N 2	110		-1
16	8	2D N 3	110		-1
9	18	2D N 3	110		-1
7	17	4C W 5		150	-7

Board (23) Av: NS=0

N-S	E-W	Contract	N-S	E-W	IMP
1	11	4S W-2	200		5
4	14	3S E-2	200		5
16	8	3C S 5	150		4
15	6	3C S 5	150		4
10	2	5C S-1		100	-3
7	17	3H N-1		100	-3
9	18	3S E 3		140	-4
12	3	3S E 3		140	-4
13	5	3NT S-3		300	-7

Board (24) Av: NS=-280

N-S	E-W	Contract	N-S	E-W	IMP
9	18	3NT E-2	100		9
7	17	3NT E-1	50		8
12	3	3NT E-1	50		8
15	6	3NT W 3		400	-3
10	2	3NT W 3		400	-3
1	11	3NT W 3		400	-3
13	5	3NT E 3		400	-3
16	8	3NT E 4		430	-4
4	14	3NT E 4		430	-4

25

♠95432
♥1082
♦K84
♣73

♠AJ8
♥KQ4
♦J5
♣Q10965

N
W—E
S

♠Q76
♥AJ76
♦AQ97
♣J4

♠K10
♥953
♦10632
♣AK82

26

♠10764
♥1062
♦10983
♣Q7

♠KQ9
♥Q
♦762
♣K86542

N
W—E
S

♠A52
♥K854
♦KJ4
♣A103

♠J83
♥AJ973
♦AQ5
♣J9

27

♠52
♥104
♦AKJ1096
♣AJ7

♠Q8764
♥A53
♦82
♣K53

N
W—E
S

♠AJ3
♥KQJ8
♦Q53
♣Q102

♠K109
♥9762
♦74
♣9864

Board (25) Av: NS=-650

N-S	E-W	Contract	N-S	E-W	IMP
15	6	3NT W 4	630		1
9	18	3NT E 4	630		1
4	14	3NT E 4	630		1
12	3	3NT W 5	660		0
16	8	3NT W 5	660		0
1	11	3NT W 5	660		0
10	2	3NT E 5	660		0
7	17	3NT E 5	660		0
13	5	3NT E 5	660		0

Board (26) Av: NS=-630

N-S	E-W	Contract	N-S	E-W	IMP
15	6	3NT W 4	630		0
16	8	3NT E 4	630		0
12	3	3NT E 4	630		0
13	5	3NT E 4	630		0
1	11	3NT E 4	630		0
7	17	3NT E 4	630		0
4	14	3NT E 4	630		0
10	2	3NT E 5	660		-1
9	18	3NT E 5	660		-1

Board (27) Av: NS=-20

N-S	E-W	Contract	N-S	E-W	IMP
15	6	3NT E-3	150		5
1	11	4S W-1	50		2
13	5	4S E-1	50		2
12	3	4S E-1	50		2
9	18	4S E-1	50		2
7	17	2S W 2		110	-3
4	14	2H W 2		110	-3
10	2	3S E 3		140	-3
16	8	2NT E 4		180	-4

28

♠ AKQJ843

♥ 4

♦ K108

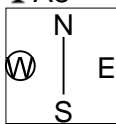
♣ A8

♠ 965

♥ A653

♦ AJ5

♣ QJ6



♠ 7

♥ J102

♦ Q972

♣ 107532

♠ 102

♥ KQ987

♦ 643

♣ K94

Board (28) Av: NS=+650

N-S	E-W	Contract	N-S	E-W	IMP
7	17	4S N 6	680		1
4	14	4S N 6	680		1
16	8	4S N 5	650		0
15	6	4S N 5	650		0
10	2	4S N 5	650		0
9	18	4S N 5	650		0
1	11	4S N 4	620		-1
12	3	4S N 4	620		-1
13	5	4S N 4	620		-1

第17回NRM杯 Session 2 Flight D 2012年6月30日(土)

1

♠AKQ972
♥Q87
♦962
♣10

♠1063
♥AJ42
♦85
♣A432

♠8
♥K96
♦AKQJ1073
♣85

Board (1) Av: NS=+440

N-S	E-W	Contract	N-S	E-W	IMP
8	6	4S	N 6	480	1
12	14	4S	N 6	480	1
18	2	4S	N 6	480	1
3	17	4S	N 6	480	1
13	7	5D	S 6	420	-1
11	15	5D	S 6	420	-1
10	4	5D	S 6	420	-1
1	16	5D	S 5	400	-1
9	5	3NT	S-3	150	-11

2

♠105
♥QJ7
♦AK9742
♣K9

♠A976
♥1054
♦Q5
♣QJ86

♠K8
♥A83
♦J108
♣A10752

♠QJ432
♥K962
♦63
♣43

Board (2) Av: NS=+20

N-S	E-W	Contract	N-S	E-W	IMP
3	17	3D	N 3	110	3
1	16	2D	N 3	110	3
9	5	1S	E-2	100	2
10	4	3C	W-1	50	1
8	6	3C	W-1	50	1
11	15	2S	E-1	50	1
13	7	3D	N-1	100	-3
12	14	3C	W 3	110	-4
18	2	1NT	W 2	120	-4

3

♠QJ98
♥K107
♦976
♣AK4

♠A1043
♥Q532
♦Q
♣QJ105

♠75
♥AJ4
♦A1042
♣9873

♠K62
♥986
♦KJ853
♣62

Board (3) Av: NS=+30

N-S	E-W	Contract	N-S	E-W	IMP
8	6	1NT	N 2	120	3
11	15	1NT	N 2	120	3
10	4	2D	S 2	90	2
13	7	1NT	S 1	90	2
18	2	1NT	S 1	90	2
3	17	1NT	S-1	50	-2
1	16	1NT	N-1	50	-2
9	5	1NT	N-1	50	-2
12	14	2H	E 2	110	-4

4

♠A8653
♥KQ7
♦84
♣543

♠KQ
♥A53
♦AKQ5
♣AQ72

♠J972
♥864
♦7632
♣96

♠104
♥J1092
♦J109
♣KJ108

Board (4) Av: NS=-70

N-S	E-W	Contract	N-S	E-W	IMP
9	5	5D	E-2	200	7
12	14	3NT	E-1	100	5
13	7	3NT	E-1	100	5
18	2	3NT	E-1	100	5
3	17	2NT	E-1	100	5
10	4	2NT	E 2	120	-2
1	16	2NT	E 3	150	-2
11	15	3NT	E 3	600	-11
8	6	3NT	E 3	600	-11

5

♠1093
♥KJ1072
♦A952
♣6

♠AK2
♥Q986
♦Q106
♣1094

♠J874
♥A3
♦KJ43
♣J87

♠Q65
♥54
♦87
♣AKQ532

Board (5) Av: NS=+20

N-S	E-W	Contract	N-S	E-W	IMP
8	6	2C	S 4	130	3
3	17	2C	S 3	110	3
10	4	3S	W-2	100	2
13	7	2S	E-1	50	1
9	5	2S	E-1	50	1
1	16	Passout			-1
11	15	3C	S-1	100	-3
12	14	2H	N-1	100	-3
18	2	2S	E 2	110	-4

6

♠Q9
♥AJ7
♦KJ72
♣KJ65

♠874
♥K8
♦Q863
♣A1087

♠AKJ1062
♥Q654
♦4
♣93

♠53
♥10932
♦A1095
♣Q42

Board (6) Av: NS=-160

N-S	E-W	Contract	N-S	E-W	IMP
13	7	3H	S-2	100	2
12	14	3S	W 3	140	1
10	4	2S	W 3	140	1
1	16	2S	W 3	140	1
18	2	2S	W 4	170	0
9	5	2S	W 4	170	0
8	6	2S	W 4	170	0
3	17	3S	W 5	200	-1
11	15	4S	W 4	620	-10

7

♠96
♥J1094
♦KJ95
♣J95

♠53
♥Q83
♦A103
♣108742

♠AK2
♥AK62
♦Q642
♣A6

♠QJ10874
♥75
♦87
♣KQ3

Board (7) Av: NS=-400

N-S	E-W	Contract	N-S	E-W	IMP
11	15	3NT	W-2	200	12
18	2	3NT	W-1	100	11
8	6	3NT	W-1	100	11
1	16	3NT	W 3	600	-5
12	14	3NT	W 3	600	-5
3	17	3NT	W 3	600	-5
10	4	3NT	W 3	600	-5
9	5	4H	W 4	620	-6
13	7	3NT	W 4	630	-6

8

♠7
♥762
♦QJ1087
♣10983

♠J52
♥AKQ53
♦5
♣A742

♠KQ943
♥98
♦AK96
♣65

♠A1086
♥J104
♦432
♣KQJ

Board (8) Av: NS=-380

N-S	E-W	Contract	N-S	E-W	IMP
4	16	6S	W-2	100	10
6	11	6S	W-2	100	10
13	10	4S	W 4	420	-1
17	12	4S	W 4	420	-1
9	2	4S	W 5	450	-2
8	15	4S	W 6	480	-3
7	1	4S	W 6	480	-3
18	5	4S	W 6	480	-3
3	14	6S	W 6	980	-12

9

♠J107
♥AKJ9
♦K9532
♣3

♠AQ854
♥Q5
♦1076
♣AQ7

♠32
♥10872
♦AJ8
♣10942

♠K96
♥643
♦Q4
♣KJ865

Board (9) Av: NS=+30

N-S	E-W	Contract	N-S	E-W	IMP
17	12	1NT	S 3	150	3
8	15	1NT	S 2	120	3
3	14	1NT	S 1	90	2
7	1	1NT	S 1	90	2
6	11	1NT	S 1	90	2
4	16	1NT	S-1	50	-2
18	5	1NT	S-1	50	-2
9	2	2NT	N-2	100	-4
13	10	2D	N-2	100	-4

10

♠ K732
♥ K7
♦ 10764
♣ 1054

♠ AJ65
♥ A5
♦ J92
♣ J873

N
W — E
S

♠ Q9
♥ QJ63
♦ AQ3
♣ KQ96

♠ 1084
♥ 109842
♦ K85
♣ A2

11

♠ 9
♥ A83
♦ 9643
♣ AQ1082

♠ Q842
♥ 7
♦ KQ875
♣ 973

N
W — E
S

♠ J65
♥ QJ9654
♦ A2
♣ J4

♠ AK1073
♥ K102
♦ J10
♣ K65

12

♠ Q9542
♥ QJ543
♦ 8
♣ J9

♠ K103
♥
♦ AK952
♣ Q8542

N
W — E
S

♠ 87
♥ 9876
♦ QJ76
♣ A63

♠ AJ6
♥ AK102
♦ 1043
♣ K107

Board (10) Av: NS=-540

N-S	E-W	Contract	N-S	E-W	IMP
17	12	3NT E-1	100		12
6	11	1NT E 3	150		9
18	5	3NT E 3	600		-2
13	10	3NT E 3	600		-2
4	16	3NT E 3	600		-2
8	15	3NT E 3	600		-2
7	1	3NT E 3	600		-2
3	14	3NT E 4	630		-3
9	2	3NT E 4	630		-3

Board (11) Av: NS=+320

N-S	E-W	Contract	N-S	E-W	IMP
3	14	3NT N 5	460		4
8	15	3NT N 4	430		3
9	2	3NT N 4	430		3
18	5	3NT N 4	430		3
6	11	3NT N 4	430		3
13	10	2NT S 4	180		-4
17	12	2NT N 4	180		-4
7	1	2H E-3	150		-5
4	16	3C N 4	130		-5

Board (12) Av: NS=-90

N-S	E-W	Contract	N-S	E-W	IMP
3	14	3S S 4	170		6
6	11	3S N 4	170		6
4	16	4S N-1	100		0
17	12	4H S-1	100		0
9	2	2D W 4	130		-1
13	10	2D W 5	150		-2
7	1	2D W 5	150		-2
18	5	2D W 5	150		-2
8	15	2Dx W 5	480		-9

13

♠ Q962
♥ K93
♦ A92
♣ 982

♠ AK5
♥
♦ QJ1086
♣ AQ754

N
W — E
S

♠ 10843
♥ AQJ102
♦ 54
♣ K3

♠ J7
♥ 87654
♦ K73
♣ J106

14

♠ 8
♥ KQ6
♦ J6542
♣ Q987

♠ Q10976
♥ A7432
♦ A
♣ A10

N
W — E
S

♠ AK43
♥ J
♦ Q103
♣ J6432

♠ J52
♥ 10985
♦ K987
♣ K5

15

♠ K54
♥ K1032
♦ AJ54
♣ KQ

♠ A106
♥ J74
♦ 1093
♣ J975

N
W — E
S

♠ Q732
♥ 85
♦ Q876
♣ 862

♠ J98
♥ AQ96
♦ K2
♣ A1043

Board (13) Av: NS=-640

N-S	E-W	Contract	N-S	E-W	IMP
4	16	3NT E-1	100		12
13	10	3NT W 3	600		1
17	12	3NT W 4	630		0
8	15	3NT E 4	630		0
3	14	3NT E 4	630		0
6	11	3NT W 5	660		-1
7	1	3NT E 5	660		-1
9	2	3NT E 5	660		-1
18	5	3NT E 6	690		-2

Board (14) Av: NS=-370

N-S	E-W	Contract	N-S	E-W	IMP
7	1	6S E-2	100		10
13	10	6H W-1	50		9
4	16	4S W 4	420		-2
18	5	4S W 5	450		-2
17	12	4S W 5	450		-2
9	2	4S W 5	450		-2
3	14	4S W 5	450		-2
6	11	4S W 5	450		-2
8	15	4S W 5	450		-2

Board (15) Av: NS=+660

N-S	E-W	Contract	N-S	E-W	IMP
16	10	6H N 6	1430		13
6	17	4H N 6	680		1
12	5	4H N 6	680		1
11	18	3NT S 5	660		0
14	9	4H N 5	650		0
2	15	4H N 5	650		0
13	1	4H N 5	650		0
8	3	4H N 5	650		0
4	7	4H N 5	650		0

16

♠ 1043
♥ K1032
♦ Q86
♣ Q106

♠ AJ8
♥ J98654
♦ 5
♣ 983

N
W — E
S

♠ KQ9
♥ Q
♦ AK107
♣ AK542

♠ 7652
♥ A7
♦ J9432
♣ J7

17

♠ Q108432
♥ 2
♦ Q86
♣ 976

♠ 9
♥ KJ105
♦ J543
♣ QJ83

N
W — E
S

♠ A765
♥ AQ976
♦ A
♣ A102

♠ KJ
♥ 843
♦ K10972
♣ K54

18

♠ AJ2
♥ K73
♦ A52
♣ A852

♠ KQ9874
♥ 9
♦ KJ9
♣ Q76

N
W — E
S

♠ 63
♥ QJ102
♦ Q1076
♣ J103

♠ 105
♥ A8654
♦ 843
♣ K94

Board (16) Av: NS=-610

N-S	E-W	Contract	N-S	E-W	IMP
16	10	6C E-1	100		12
11	18	3NT E 3	600		0
6	17	3NT E 3	600		0
4	7	3NT E 3	600		0
8	3	4H W 4	620		0
13	1	4H E 4	620		0
12	5	4H E 4	620		0
2	15	3NT E 4	630		-1
14	9	3NT W 5	660		-2

Board (17) Av: NS=-610

N-S	E-W	Contract	N-S	E-W	IMP
13	1	4H E 4	420		5
14	9	5H E 5	450		4
6	17	4H E 5	450		4
12	5	4H W 6	480		4
16	10	4H E 6	480		4
8	3	4H E 6	480		4
2	15	6H E 6	980		-9
4	7	6H E 6	980		-9
11	18	6H E 6	980		-9

Board (18) Av: NS=+10

N-S	E-W	Contract	N-S	E-W	IMP
13	1	3H S 3	140		4
11	18	2H N 2	110		3
6	17	2H N 2	110		3
2	15	2H N 2	110		3
12	5	2S W-1	50		1
8	3	4H N-1	100		-3
4	7	3H S-1	100		-3
16	10	3H N-1	100		-3
14	9	3H N-1	100		-3

19

♠AQ10
♥A95
♦J102
♣KQJ2

♠J862
♥K
♦A85
♣109843

N
W—E
S

♠K95
♥QJ762
♦KQ3
♣65

♠743
♥10843
♦9764
♣A7

Board (19) Av: NS=+100

N-S	E-W	Contract	N-S	E-W	IMP
11	18	1NT N 3	150		2
8	3	1NT N 2	120		1
16	10	1NT N 2	120		1
4	7	1NT N 2	120		1
13	1	1NT N 1	90		0
14	9	1NT N 1	90		0
12	5	1NT N 1	90		0
2	15	1NT N 1	90		0
6	17	1NT N-1		50	-4

20

♠AQ2
♥AKQ104
♦
♣AQ983

♠107
♥93
♦KQ975
♣K1072

N
W—E
S

♠86
♥J876
♦AJ42
♣J64

♠KJ9543
♥52
♦10863
♣5

Board (20) Av: NS=+730

N-S	E-W	Contract	N-S	E-W	IMP
8	3	6S S 6	1430		12
6	17	6S S 6	1430		12
2	15	5S S 6	680		-2
12	5	4S S 6	680		-2
16	10	4S S 6	680		-2
4	7	4S S 6	680		-2
11	18	4S S 6	680		-2
14	9	3S S 7	260		-10
13	1	1H N 6	230		-11

21

♠AKJ10865
♥A93
♦3
♣Q8

♠92
♥Q84
♦AKJ86
♣K104

N
W—E
S

♠Q
♥KJ762
♦105
♣AJ932

♠743
♥105
♦Q9742
♣765

Board (21) Av: NS=-350

N-S	E-W	Contract	N-S	E-W	IMP
8	3	3S N 3	140		10
12	5	4S N-1	100		6
2	15	3D W 3	110		6
14	9	5H E 5	450		-3
16	10	4H W 5	450		-3
13	1	4H W 5	450		-3
6	17	4H W 5	450		-3
11	18	4H W 5	450		-3
4	7	4H E 5	450		-3

22

♠AK82
♥1082
♦52
♣K1062

♠5
♥KQ54
♦K109876
♣J8

N
W—E
S

♠J1093
♥A73
♦AQ43
♣43

♠Q764
♥J96
♦J
♣AQ975

Board (22) Av: NS=-50

N-S	E-W	Contract	N-S	E-W	IMP
8	18	1S S 2	110		4
14	6	Passout			2
5	15	Passout			2
10	1	Passout			2
4	13	3S S-1	50		0
16	7	3S S-1	50		0
2	12	3S S-2	100		-2
17	9	2D W 4	130		-2
11	3	3D W 5	150		-3

23

♠AQ972
♥Q1065
♦K5
♣73

♠653
♥932
♦43
♣K10852

N
W—E
S

♠104
♥84
♦J10982
♣J964

♠KJ8
♥AKJ7
♦AQ76
♣AQ

Board (23) Av: NS=+1670

N-S	E-W	Contract	N-S	E-W	IMP
5	15	7S N 7	2210		11
11	3	7S N 7	2210		11
4	13	7H N 7	2210		11
14	6	6S N 7	1460		-5
17	9	6S N 7	1460		-5
8	18	6S N 7	1460		-5
16	7	6H S 7	1460		-5
2	12	6H N 7	1460		-5
10	1	6NT S 6	1440		-6

24

♠K2
♥Q6432
♦1075
♣A43

♠AJ98
♥109
♦AKQ86
♣97

N
W—E
S

♠Q7543
♥J87
♦43
♣KQ6

♠106
♥AK5
♦J92
♣J10852

Board (24) Av: NS=0

N-S	E-W	Contract	N-S	E-W	IMP
17	9	4S E-1	50		2
14	6	4S E-1	50		2
16	7	4S E-1	50		2
4	13	4S E-1	50		2
5	15	4S E-1	50		2
2	12	4S E-1	50		2
10	1	3S E 3	140		-4
8	18	2S E 3	140		-4
11	3	2S E 3	140		-4

25

♠K
♥A1052
♦Q4
♣986532

♠A10765
♥843
♦108
♣AJ7

N
W—E
S

♠QJ32
♥Q7
♦J76532
♣10

♠984
♥KJ96
♦AK9
♣KQ4

Board (25) Av: NS=+100

N-S	E-W	Contract	N-S	E-W	IMP
11	3	4H S 5	450		8
16	7	4H S 4	420		8
4	13	4H S 4	420		8
14	6	3H S 3	140		1
17	9	4H S-1	50		-4
2	12	4H S-1	50		-4
8	18	3NT S-1	50		-4
10	1	4H S-2	100		-5
5	15	4H S-2	100		-5

26

♠K87643
♥QJ65
♦82
♣2

♠95
♥A
♦1097653
♣KJ106

N
W—E
S

♠AQ
♥K842
♦AKJ
♣Q843

♠J102
♥10973
♦Q4
♣A975

Board (26) Av: NS=-690

N-S	E-W	Contract	N-S	E-W	IMP
14	6	3NT E 4	630		2
11	3	3NT E 6	690		0
17	9	3NT E 6	690		0
16	7	3NT E 6	690		0
10	1	3NT E 6	690		0
4	13	3NT E 6	690		0
2	12	3NT E 6	690		0
8	18	3NT E 6	690		0
5	15	3NT E 6	690		0

27

♠84
♥AQ3
♦98643
♣AQ6

♠A962
♥J984
♦72
♣1095

N
W—E
S

♠10753
♥K105
♦QJ10
♣K84

♠KQJ
♥762
♦AK5
♣J732

Board (27) Av: NS=+230

N-S	E-W	Contract	N-S	E-W	IMP
17	9	3NT S 3	400		5
11	3	3NT S 3	400		5
4	13	3NT S 3	400		5
2	12	3NT S 3	400		5
8	18	3NT N 3	400		5
16	7	2NT S 2	120		-3
14	6	3NT S-1	50		-7
10	1	3NT S-1	50		-7
5	15	3NT N-1	50		-7

28

♠AKJ1087

♥5

♦A4

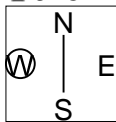
♣J754

♠4

♥J84

♦K92

♣AK9862



♠6

♥A973

♦J10865

♣Q103

♠Q9532

♥KQ1062

♦Q73

♣

Board (28) Av: NS=+600

N-S	E-W	Contract	N-S	E-W	IMP
16	7	5S N 6	680		2
2	12	5S N 6	680		2
5	15	4S N 6	680		2
8	18	4S N 6	680		2
4	13	4S N 6	680		2
10	1	5S N 5	650		2
14	6	5Cx W-3	500		-3
11	3	7Cx W-2	300		-7
17	9	5Cx W 5	550		-15

第17回NRM杯 Session 3 Flight D 2012年7月1日(日)

1

♠ A109
♥ Q752
♦ 53
♣ AJ62

♠ Q63 ♠ K875
♥ AJ94 ♥ K86
♦ Q92 ♦ KJ10
♣ Q83 ♣ K74

W E
N S

♠ J42
♥ 103
♦ A8764
♣ 1095

2

♠ A93
♥ KQJ9874
♦
♣ K85

♠ K2 ♠ 1074
♥ 53 ♥ 106
♦ AKQJ432 ♦ 10865
♣ A2 ♣ QJ74

W E
N S

♠ QJ865
♥ A2
♦ 97
♣ 10963

3

♠ 104
♥ 105
♦ K1097
♣ Q9852

♠ KQ763 ♠ J85
♥ 94 ♥ AJ83
♦ Q65 ♦ J43
♣ KJ7 ♣ A64

W E
N S

♠ A92
♥ KQ762
♦ A82
♣ 103

Board (1) Av: NS=-140

N-S	E-W	Contract	N-S	E-W	IMP
14	8	2NT W-1	50		5
11	5	2NT W-1	50		5
4	9	2NT W 2		120	1
15	10	1NT W 2		120	1
18	1	1NT W 2		120	1
7	6	2NT W 3		150	0
3	16	2NT E 3		150	0
2	17	3NT W 3		400	-6
12	13	3NT E 3		400	-6

Board (2) Av: NS=+270

N-S	E-W	Contract	N-S	E-W	IMP
3	16	5H N 6	680		9
12	13	4H N 6	680		9
11	5	5Dx W-3	500		6
4	9	5Dx W-2	300		1
14	8	5D W-3	150		-3
7	6	5D W-2	100		-5
15	10	5D W-2	100		-5
18	1	5D W-1	50		-6
2	17	5H N-2		200	-10

Board (3) Av: NS=-60

N-S	E-W	Contract	N-S	E-W	IMP
11	5	3S W-2	200		6
4	9	2S W-1	100		4
12	13	2S W-1	100		4
14	8	2S W 2		110	-2
2	17	2S W 2		110	-2
3	16	2S W 2		110	-2
7	6	2S W 2		110	-2
15	10	1NT N-3		150	-3
18	1	1NT E 3		150	-3

4

♠ AQ97
♥ 82
♦ Q5
♣ QJ653

♠ K54 ♠ J1062
♥ 10953 ♥ KJ64
♦ AK2 ♦ 986
♣ 742 ♣ A9

W E
N S

♠ 83
♥ AQ7
♦ J10743
♣ K108

5

♠ 53
♥ AK3
♦ K873
♣ AQ92

♠ QJ2 ♠ A1096
♥ Q2 ♥ J10985
♦ 65 ♦ AJ42
♣ J76543 ♣

W E
N S

♠ K874
♥ 764
♦ Q109
♣ K108

6

♠ J52
♥ 964
♦ 1054
♣ K963

♠ A6 ♠ 974
♥ KQ10753 ♥ A8
♦ AJ7 ♦ Q86
♣ 52 ♣ J10874

W E
N S

♠ KQ1083
♥ J2
♦ K932
♣ AQ

Board (4) Av: NS=+30

N-S	E-W	Contract	N-S	E-W	IMP
12	13	2NT S 2	120		3
7	6	1NT S 2	120		3
15	10	1NT S 2	120		3
18	1	Passout			-1
14	8	Passout			-1
3	16	Passout			-1
2	17	Passout			-1
11	5	Passout			-1
4	9	Passout			-1

Board (5) Av: NS=-20

N-S	E-W	Contract	N-S	E-W	IMP
15	10	3NT S 3	600		12
18	1	2S W-3	150		5
12	13	2NT N 3	150		5
2	17	1NT N 1	90		3
11	5	3NT N-1		100	-2
7	6	3NT N-1		100	-2
14	8	2S W 2		110	-3
3	16	3NT N-2		200	-5
4	9	2Hx E 2		470	-10

Board (6) Av: NS=-70

N-S	E-W	Contract	N-S	E-W	IMP
14	8	3S S 3	140		5
12	13	2S S 2	110		5
15	10	2S S-1		50	1
2	17	3S S-2		100	-1
3	16	3S S-2		100	-1
4	9	3S S-2		100	-1
18	1	3H W 3		140	-2
11	5	2H W 3		140	-2
7	6	2H W 3		140	-2

7

♠ AK954
♥ K98
♦ J4
♣ 1082

♠ J106
♥ 103
♦ A752
♣ Q653

W E
N S

♠ Q8732
♥ AQ76542
♦ Q
♣

8

♠ A1072
♥ KJ94
♦ KQ4
♣ 32

♠ J96 ♠ Q854
♥ Q108 ♥ A765
♦ A1032 ♦ 76
♣ KJ9 ♣ Q74

W E
N S

♠ K3
♥ 32
♦ J985
♣ A10865

9

♠ AKQ765
♥ Q98
♦ 83
♣ 97

♠ 1093 ♠ 8
♥ KJ3 ♥ 10642
♦ 9652 ♦ KQ107
♣ KJ8 ♣ 10642

W E
N S

♠ J42
♥ A75
♦ AJ4
♣ AQ53

Board (7) Av: NS=+260

N-S	E-W	Contract	N-S	E-W	IMP
2	17	6S N 6	1430		15
12	13	5H S 6	680		9
15	10	5H S 6	680		9
3	16	5H N 6	680		9
7	6	4H S 6	680		9
11	5	5H S 5	650		9
4	9	5D E 6		620	-13
18	1	5Cx E 6		950	-15
14	8	5Cx E 6		950	-15

Board (8) Av: NS=+80

N-S	E-W	Contract	N-S	E-W	IMP
10	18	1NT S 4	180		3
17	5	1NT S 3	150		2
4	12	1NT S 3	150		2
16	6	1NT S 2	120		1
14	11	1NT S 2	120		1
1	15	1NT S 1	90		0
8	2	1NT S-1		50	-4
3	7	1NT S-1		50	-4
13	9	1NT S-1		50	-4

Board (9) Av: NS=+360

N-S	E-W	Contract	N-S	E-W	IMP
14	11	4S N 5	450		3
8	2	4S N 5	450		3
17	5	4S N 5	450		3
3	7	4S S 4	420		2
16	6	4S N 4	420		2
4	12	4S N 4	420		2
1	15	4S N 4	420		2
13	9	4S S-1		50	-9
10	18	4S N-1		50	-9

10

♠84
♥A983
♦KQ76
♣Q92

♠KQ5
♥K752
♦J54
♣1083

♠A9632
♥J106
♦93
♣AK4

♠J107
♥Q4
♦A1082
♣J765

11

♠QJ9732
♥108
♦A964
♣8

♠8
♥J942
♦Q87
♣AK953

♠AK
♥765
♦K10
♣QJ10764

♠10654
♥AKQ3
♦J532
♣2

12

♠Q102
♥Q965
♦1076432
♣

♠A98753
♥AK
♦5
♣AQ96

♠J64
♥74
♦AQJ
♣KJ852

♠K
♥J10832
♦K98
♣10743

Board (10) Av: NS=-110

N-S	E-W	Contract	N-S	E-W	IMP
10	18	2S	W 2	110	0
1	15	2S	E 2	110	0
13	9	2S	E 2	110	0
16	6	2S	E 2	110	0
3	7	2S	E 2	110	0
8	2	2S	E 2	110	0
14	11	2H	W 2	110	0
17	5	2S	E 3	140	-1
4	12	3C	S-2	200	-3

Board (11) Av: NS=+50

N-S	E-W	Contract	N-S	E-W	IMP
3	7	5Cx	E-1	100	2
10	18	5C	E-2	100	2
13	9	5C	E-2	100	2
1	15	5C	E-2	100	2
8	2	5C	E-1	50	0
16	6	4C	E-1	50	0
17	5	4C	E-1	50	0
4	12	4S	N-2	100	-4
14	11	5Sx	N-2	300	-8

Board (12) Av: NS=-620

N-S	E-W	Contract	N-S	E-W	IMP
4	12	6S	W-1	50	12
1	15	4S	W 5	450	5
17	5	5S	W 6	480	4
8	2	5S	W 6	480	4
3	7	5S	W 6	480	4
16	6	4S	W 6	480	4
10	18	6S	W 6	980	-8
13	9	6S	W 6	980	-8
14	11	6S	W 6	980	-8

13

♠A52
♥Q62
♦J984
♣KJ2

♠KJ107
♥KJ87
♦Q107
♣105

♠963
♥43
♦32
♣A98743

♠Q84
♥A1095
♦AK65
♣Q6

14

♠KQJ9
♥K5
♦Q106
♣A985

♠2
♥98632
♦A93
♣10732

♠8543
♥A107
♦KJ52
♣Q4

♠A1076
♥QJ4
♦874
♣KJ6

15

♠A2
♥1094
♦J10987543
♣

♠QJ106
♥6532
♦2
♣Q1092

♠8543
♥A7
♦AKQ
♣8643

♠K97
♥KQJ8
♦6
♣AKJ75

Board (13) Av: NS=+100

N-S	E-W	Contract	N-S	E-W	IMP
4	12	3NT	S 3	600	11
8	2	3NT	S 3	600	11
10	18	3NT	S 3	600	11
14	11	3NT	S-1	100	-5
16	6	3NT	S-1	100	-5
17	5	3NT	S-1	100	-5
3	7	3NT	S-1	100	-5
1	15	3NT	S-1	100	-5
13	9	3NT	S-1	100	-5

Board (14) Av: NS=-60

N-S	E-W	Contract	N-S	E-W	IMP
10	18	4S	N 4	420	10
13	9	4S	N-1	50	0
16	6	4S	N-1	50	0
17	5	4S	N-1	50	0
1	15	4S	N-1	50	0
4	12	4S	N-1	50	0
3	7	4S	N-1	50	0
14	11	4S	S-2	100	-1
8	2	4S	N-2	100	-1

Board (15) Av: NS=-40

N-S	E-W	Contract	N-S	E-W	IMP
11	17	4H	S 4	620	12
9	1	3D	N 3	110	4
14	2	3D	N 3	110	4
15	7	3D	N 3	110	4
8	5	5H	S-1	100	-2
4	18	3NT	S-1	100	-2
3	13	5D	N-2	200	-4
10	6	3NT	S-2	200	-4
12	16	3NT	S-2	200	-4

16

♠632
♥KQ
♦K7642
♣J76

♠AK9754
♥A94
♦A
♣1085

♠10
♥J8765
♦J95
♣K943

♠QJ8
♥1032
♦Q1083
♣AQ2

17

♠AKQJ7
♥853
♦3
♣A762

♠10852
♥QJ1097
♦Q4
♣Q4

♠94
♥K64
♦KJ109762
♣K

♠63
♥A2
♦A85
♣J109853

18

♠Q7
♥KQ72
♦97532
♣J2

♠942
♥A4
♦Q1086
♣AK105

♠K863
♥J865
♦A4
♣Q98

♠AJ105
♥1093
♦KJ
♣7643

Board (16) Av: NS=-140

N-S	E-W	Contract	N-S	E-W	IMP
8	5	3D	N-1	50	3
9	1	1NT	S-1	50	3
15	7	3D	N-2	100	1
12	16	3S	W 3	140	0
14	2	3S	W 4	170	-1
3	13	2S	W 4	170	-1
10	6	2S	W 4	170	-1
4	18	1S	W 4	170	-1
11	17	1S	W 4	170	-1

Board (17) Av: NS=+260

N-S	E-W	Contract	N-S	E-W	IMP
11	17	4S	N 6	480	6
10	6	5C	N 7	440	5
4	18	5C	N 6	420	4
14	2	5C	N 6	420	4
15	7	2S	N 6	230	-1
3	13	3S	N 5	200	-2
8	5	3D	E-1	50	-5
12	16	3D	E-1	50	-5
9	1	3D	S-4	200	-10

Board (18) Av: NS=-120

N-S	E-W	Contract	N-S	E-W	IMP
11	17	1NT	W 1	90	1
4	18	1NT	W 1	90	1
14	2	1NT	W 2	120	0
12	16	1NT	W 2	120	0
10	6	1NT	W 2	120	0
3	13	1NT	W 2	120	0
8	5	1NT	W 2	120	0
9	1	1NT	W 2	120	0
15	7	1NT	W 3	150	-1

19

Hand 19: N=109532, J, AK432, 102, AKQ8, K98, 10, KQ976, S=J76, A1052, 5, A8543, 4, Q7643, QJ9876, J

20

Hand 20: N=Q7, K975, A652, AQ2, J432, AQ102, K974, 5, S=1086, 8643, Q8, 10764, AK95, J, J103, KJ983

21

Hand 21: N=87, A9763, A98642, Q106432, QJ92, J10, Q, S=AK8, 1043, KQ85, K105, J975, AK65, 42, J73

Board (19) Av: NS=+20. Table with columns N-S, E-W, Contract, N-S, E-W, IMP. Rows 10-12.

Board (20) Av: NS=+660. Table with columns N-S, E-W, Contract, N-S, E-W, IMP. Rows 14, 3, 11, 12, 15, 4, 9, 10, 8.

Board (21) Av: NS=-30. Table with columns N-S, E-W, Contract, N-S, E-W, IMP. Rows 15, 3, 14, 10, 8, 9, 12, 11, 4.

22

Hand 22: N=KJ4, KJ7643, K104, A, A3, 102, AQ32, J10732, S=1098752, 9, 96, Q984, Q6, AQ85, J875, K65

23

Hand 23: N=J7, KQJ72, AJ, K987, K9642, 1063, 9832, Q, S=1083, 84, K765, 6432, AQ5, A95, Q104, AJ105

24

Hand 24: N=7, Q42, 1098543, 963, AK32, A865, AJ, J85, S=Q10954, 97, KQ6, AK10, J86, KJ103, 72, Q742

Board (22) Av: NS=+450. Table with columns N-S, E-W, Contract, N-S, E-W, IMP. Rows 12, 8, 18, 15, 3, 2, 6, 5, 16.

Board (23) Av: NS=-170. Table with columns N-S, E-W, Contract, N-S, E-W, IMP. Rows 5, 3, 16, 6, 2, 8, 18, 15, 12.

Board (24) Av: NS=-620. Table with columns N-S, E-W, Contract, N-S, E-W, IMP. Rows 2, 16, 6, 5, 3, 18, 15, 8, 12.

25

Hand 25: N=9732, 10964, K10, 965, J865, QJ873, 7, K72, S=A, AK52, AJ642, A84, KQ104, Q9853, QJ103

26

Hand 26: N=Q, 654, AQJ952, AK5, AKJ4, 9872, 3, J1083, S=9872, J10, 10874, 764, 10653, AKQ3, K6, Q92

27

Hand 27: N=A103, K7642, 962, 43, 8654, Q, AJ1087, J109, S=KJ92, 83, 53, A8752, Q7, AJ1095, KQ4, KQ6

Board (25) Av: NS=-630. Table with columns N-S, E-W, Contract, N-S, E-W, IMP. Rows 2, 5, 15, 18, 3, 16, 8, 12, 6.

Board (26) Av: NS=+580. Table with columns N-S, E-W, Contract, N-S, E-W, IMP. Rows 6, 5, 12, 15, 16, 3, 8, 18, 2.

Board (27) Av: NS=+170. Table with columns N-S, E-W, Contract, N-S, E-W, IMP. Rows 12, 3, 6, 2, 5, 15, 16, 18, 8.

28

♠ J6 ♥ KQ1097 ♦ AJ106 ♣ K3	N E S	♠ K1094 ♥ A43 ♦ 93 ♣ A1097	♠ Q75 ♥ J85 ♦ K754 ♣ J64
-------------------------------------	------------------	-------------------------------------	-----------------------------------

♠ A832
♥ 62
♦ Q82
♣ Q852

Board (28) Av: NS=-60

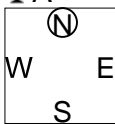
N-S	E-W	Contract	N-S	E-W	IMP
3	10	4H W-1	50		3
2	11	3NT E-1	50		3
16	9	3H W-1	50		3
15	4	3H W-1	50		3
18	7	2H W 3		140	-2
12	1	2H W 3		140	-2
5	14	2H W 3		140	-2
6	13	2H W 3		140	-2
8	17	2H W 3		140	-2

第17回NRM杯 Session 4 Flight D 2012年7月1日(日)

1

♠K1098
♥KQJ
♦A10876
♣A

♠7
♥A8
♦943
♣KQ98653



♠A432
♥1052
♦J5
♣J1074

♠QJ65
♥97643
♦KQ2
♣2

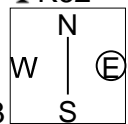
Board (1) Av: NS=+330

N-S	E-W	Contract	N-S	E-W	IMP
14	15	5H S 5	450		3
2	1	4S S 5	450		3
5	4	4S N 5	450		3
13	17	4S N 5	450		3
11	8	4H S 4	420		3
18	16	5Cx W-2	300		-1
10	9	5Cx W-2	300		-1
7	12	6S S-1		50	-9
6	3	5H S-1		50	-9

2

♠QJ62
♥A
♦AK432
♣K62

♠K83
♥J642
♦109
♣A1053



♠54
♥10753
♦Q87
♣J874

♠A1097
♥KQ98
♦J65
♣Q9

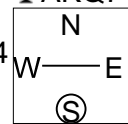
Board (2) Av: NS=+200

N-S	E-W	Contract	N-S	E-W	IMP
13	17	5S N 5	650		10
10	9	5S N 5	650		10
18	16	3NT S 4	630		10
5	4	3NT N 4	630		10
7	12	6S N-1		100	-7
14	15	5S N-1		100	-7
2	1	5S N-1		100	-7
11	8	6D S-2		200	-9
6	3	5S N-2		200	-9

3

♠Q103
♦AJ8764
♣AKQ7

♠8752
♥AK754
♦Q109
♣2



♠AJ1063
♥92
♦52
♣J1094

♠KQ94
♥J86
♦K3
♣8653

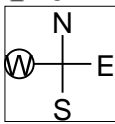
Board (3) Av: NS=+210

N-S	E-W	Contract	N-S	E-W	IMP
18	16	3NT S 5	460		6
5	4	3NT S 4	430		6
7	12	3NT N 4	430		6
13	17	3NT N 4	430		6
2	1	4C N 4	130		-2
6	3	3D N 4	130		-2
14	15	5C N-1		50	-6
10	9	3D N-1		50	-6
11	8	6C N-2		100	-7

4

♠5
♥AK9854
♦32
♣7542

♠J8432
♥63
♦KQJ9
♣103



♠A96
♥Q102
♦A1076
♣A96

♠KQ107
♥J7
♦854
♣KQJ8

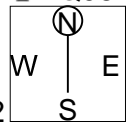
Board (4) Av: NS=+140

N-S	E-W	Contract	N-S	E-W	IMP
10	9	4Sx W-2	500		8
14	15	3S W-2	200		2
7	12	3NT E-2	200		2
5	4	2H N 3	140		0
13	17	2H N 2	110		-1
18	16	2H N 2	110		-1
2	1	2H N 2	110		-1
11	8	2H N 2	110		-1
6	3	2S W 2		110	-6

5

♠A95
♥K75
♦K2
♣AQ987

♠K106
♥96
♦J765
♣K1062



♠J84
♥Q1084
♦Q108
♣543

♠Q732
♥AJ32
♦A943
♣J

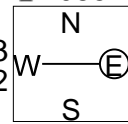
Board (5) Av: NS=+520

N-S	E-W	Contract	N-S	E-W	IMP
18	16	3NT N 4	630		3
11	8	3NT N 4	630		3
14	15	3NT N 4	630		3
7	12	3NT N 4	630		3
2	1	3NT N 4	630		3
6	3	3NT N 3	600		2
5	4	3NT N 3	600		2
10	9	3NT N-1		100	-12
13	17	3NT N-1		100	-12

6

♠AK983
♥1087
♦K9
♣1085

♠J52
♥Q543
♦Q732
♣43



♠Q1064
♥KJ92
♦64
♣762

♠7
♥A6
♦AJ1085
♣AKQJ9

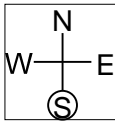
Board (6) Av: NS=+570

N-S	E-W	Contract	N-S	E-W	IMP
11	8	6C S 6	920		8
10	9	6C S 6	920		8
7	12	6C N 6	920		8
6	3	3NT S 4	430		-4
13	17	3NT S 4	430		-4
5	4	3NT S 4	430		-4
2	1	5D S 6	420		-4
18	16	5C S 6	420		-4
14	15	3NT S 3	400		-5

7

♠J6
♥Q9832
♦A54
♣A98

♠Q843
♥7
♦J1076
♣7432



♠1095
♥KJ6
♦Q83
♣KQJ10

♠AK72
♥A1054
♦K92
♣65

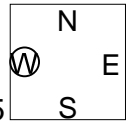
Board (7) Av: NS=+250

N-S	E-W	Contract	N-S	E-W	IMP
6	3	4H N 4	620		9
7	12	4H N 4	620		9
2	1	4H N 4	620		9
5	4	4H N 4	620		9
14	15	2H N 4	170		-2
18	16	4H N-1		100	-8
13	17	4H N-1		100	-8
10	9	4H N-1		100	-8
11	8	4H N-1		100	-8

8

♠J8762
♥A1094
♦7
♣QJ6

♠Q543
♥73
♦Q53
♣10875



♠9
♥KQJ52
♦J109864
♣2

♠AK10
♥86
♦AK2
♣AK943

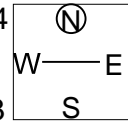
Board (8) Av: NS=+390

N-S	E-W	Contract	N-S	E-W	IMP
9	12	3NT S 6	490		3
15	16	4S S 6	480		3
10	11	4S N 6	480		3
18	13	3NT N 5	460		2
5	6	3NT N 5	460		2
7	8	4S S 5	450		2
17	14	3NT S 4	430		1
1	3	4S S-1		50	-10
4	2	4S S-1		50	-10

9

♠83
♥K72
♦KJ53
♣Q1042

♠Q954
♥J108
♦Q2
♣K853



♠KJ1062
♥543
♦A7
♣A97

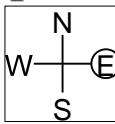
♠A7
♥AQ96
♦109864
♣J6

Board (9) Av: NS=0

N-S	E-W	Contract	N-S	E-W	IMP
7	8	3S E-2	200		5
1	3	3S E-2	200		5
5	6	3S E-1	100		3
10	11	2S E-1	100		3
9	12	4D N-1		50	-2
17	14	2S E 2		110	-3
18	13	2S E 2		110	-3
4	2	2S E 2		110	-3
15	16	2S E 2		110	-3

10

♠AQ9653
♥K10
♦6432
♣4



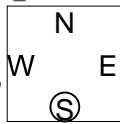
♠J1084
♥Q876
♦K
♣J1053

♠2
♥J4
♦AQJ1085
♣AKQ8

♠K7
♥A9532
♦97
♣9762

11

♠A9
♥97432
♦942
♣K42



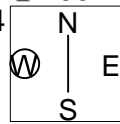
♠Q10
♥K108
♦J63
♣AQ1083

♠65432
♥AQ
♦KQ875
♣6

♠KJ87
♥J65
♦A10
♣J975

12

♠63
♥KQJ96
♦32
♣K932



♠75
♥AKJ109
♦AKJ109
♣J108654

♠AQJ874
♥42
♦Q876
♣Q

♠K10952
♥A1083
♦54
♣A7

Board (10) Av: NS=-160

N-S	E-W	Contract	N-S	E-W	IMP
10	11	5D W-2	200		8
9	12	3NT E-1	100		6
4	2	3C W 3		110	2
1	3	2C W 3		110	2
17	14	3D W 4		130	1
7	8	3C W 4		130	1
15	16	2C W 5		150	0
18	13	3NT E 3		600	-10
5	6	3NT E 3		600	-10

Board (11) Av: NS=-180

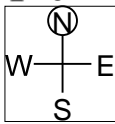
N-S	E-W	Contract	N-S	E-W	IMP
17	14	4S W-3	150		8
9	12	3NT E-1	50		6
18	13	2NT W 2		120	2
4	2	2NT E 2		120	2
1	3	2NT E 2		120	2
15	16	2NT E 3		150	1
10	11	3NT W 3		400	-6
5	6	3NT E 3		400	-6
7	8	3NT E 4		430	-6

Board (12) Av: NS=+50

N-S	E-W	Contract	N-S	E-W	IMP
5	6	4Sx W-3	500		10
18	13	3S W-3	150		3
4	2	5D E-2	100		2
1	3	3S W-2	100		2
15	16	2S W-2	100		2
7	8	2S W-2	100		2
10	11	3H S-1		100	-4
17	14	3D W 3		110	-4
9	12	3C E 3		110	-4

13

♠AQJ
♥AJ63
♦KQ6
♣764



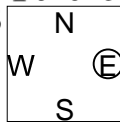
♠K1073
♥Q84
♦954
♣Q92

♠9852
♥7
♦A873
♣10853

♠64
♥K10952
♦J102
♣AKJ

14

♠J4
♥87
♦AK1073
♣J1043



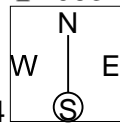
♠10982
♥AJ32
♦964
♣A9

♠KQ75
♥K65
♦J5
♣Q875

♠A63
♥Q1094
♦Q82
♣K62

15

♠63
♥A7
♦KQ8543
♣1063



♠Q98542
♥K985
♦J72
♣

♠AK
♥1042
♦96
♣QJ9854

♠J107
♥QJ63
♦A10
♣AK72

Board (13) Av: NS=+300

N-S	E-W	Contract	N-S	E-W	IMP
9	12	4H N 5	650		8
1	3	4H N 4	620		8
10	11	4H N 4	620		8
15	16	4H N 4	620		8
5	6	4H N 4	620		8
4	2	5H N-1		100	-9
7	8	5H N-1		100	-9
18	13	6H N-2		200	-11
17	14	6H N-2		200	-11

Board (14) Av: NS=-10

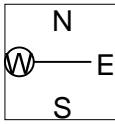
N-S	E-W	Contract	N-S	E-W	IMP
7	8	3S W-2	100		3
17	14	Passout			0
10	11	Passout			0
15	16	Passout			0
18	13	Passout			0
9	12	Passout			0
5	6	Passout			0
4	2	2NT S-2		100	-3
1	3	2H E 2		110	-3

Board (15) Av: NS=+430

N-S	E-W	Contract	N-S	E-W	IMP
12	11	3NT S 4	630		5
8	10	3NT S 4	630		5
15	18	3NT S 3	600		5
14	13	3NT S 3	600		5
5	3	3NT S 3	600		5
2	6	3NT S 3	600		5
4	1	4Sx E-1		100	-8
9	7	5D N-1		100	-11
17	16	4D N-1		100	-11

16

♠A
♥87
♦K108532
♣K764



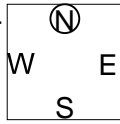
♠QJ1073
♥Q10642
♦
♣953

♠842
♥AKJ9
♦Q974
♣A2

♠K965
♥53
♦AJ6
♣QJ108

17

♠K96
♥Q7543
♦AK
♣KQ6



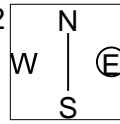
♠A83
♥A
♦Q109432
♣A54

♠QJ10754
♥J8
♦765
♣87

♠2
♥K10962
♦J8
♣J10932

18

♠J97
♥J3
♦Q10862
♣K63



♠KQ
♥AK92
♦9743
♣A105

♠10652
♥1086
♦K5
♣QJ97

♠A843
♥Q754
♦AJ
♣842

Board (16) Av: NS=-170

N-S	E-W	Contract	N-S	E-W	IMP
12	11	3H E 4		170	0
17	16	3H E 4		170	0
15	18	3H E 4		170	0
14	13	3H E 4		170	0
9	7	3H E 4		170	0
5	3	3H E 4		170	0
8	10	3H E 4		170	0
4	1	2H E 4		170	0
2	6	4H E 4		620	-10

Board (17) Av: NS=+420

N-S	E-W	Contract	N-S	E-W	IMP
5	3	4H N 5	450		1
14	13	4H N 4	420		0
12	11	4H N 4	420		0
15	18	4H N 4	420		0
17	16	4H N 4	420		0
4	1	4H N 4	420		0
2	6	4H N 4	420		0
9	7	4H N 4	420		0
8	10	4H N 4	420		0

Board (18) Av: NS=-120

N-S	E-W	Contract	N-S	E-W	IMP
12	11	1NT E 1		90	1
17	16	1NT E 2		120	0
14	13	1NT E 2		120	0
15	18	1NT E 2		120	0
9	7	1NT E 2		120	0
4	1	1NT E 2		120	0
2	6	1NT E 2		120	0
5	3	1NT E 2		120	0
8	10	1NT E 3		150	-1

19

♠ KJ954
♥ K62
♦ 4
♣ AK104

♠ 72
♥ A1073
♦ A1092
♣ QJ6

N
W—E
S

♠ 1063
♥ QJ984
♦ KJ3
♣ 93

♠ AQ8
♥ 5
♦ Q8765
♣ 8752

20

♠ K9
♥ K10985
♦ 73
♣ J1052

♠ Q52
♥ AQ7
♦ A102
♣ Q984

N
W—E
S

♠ A874
♥ 43
♦ J85
♣ A763

♠ J1063
♥ J62
♦ KQ964
♣ K

21

♠ 72
♥ A10863
♦ AQ10
♣ 1074

♠ A109543
♥ 9
♦ J9765
♣ K

N
W—E
S

♠ KJ6
♥ QJ
♦ K84
♣ A9862

♠ Q8
♥ K7542
♦ 32
♣ QJ53

Board (19) Av: NS=+400

N-S	E-W	Contract	N-S	E-W	IMP
14	13	4S	N 5	450	2
12	11	4S	N 5	450	2
17	16	4S	N 5	450	2
15	18	4S	N 5	450	2
9	7	4S	N 4	420	1
4	1	4S	N 4	420	1
8	10	4S	N 4	420	1
2	6	2S	N 4	170	-6
5	3	2S	N 4	170	-6

Board (20) Av: NS=-30

N-S	E-W	Contract	N-S	E-W	IMP
9	7	2S	E-2	200	6
14	13	2H	N 3	140	5
8	10	3C	W-1	100	4
17	16	1NT	W 1	90	-2
2	6	1NT	W 1	90	-2
4	1	1NT	W 1	90	-2
5	3	1NT	W 1	90	-2
12	11	3C	W 3	110	-2
15	18	1NT	W 2	120	-3

Board (21) Av: NS=-270

N-S	E-W	Contract	N-S	E-W	IMP
14	13	3S	W 4	170	3
17	16	2S	W 4	170	3
9	7	2S	W 4	170	3
2	6	3S	W 5	200	2
4	1	2S	W 5	200	2
15	18	4H	S-3	300	-1
8	10	4S	W 4	420	-4
5	3	4S	W 4	420	-4
12	11	4S	W 5	450	-5

22

♠ A7643
♥ A632
♦ 10732
♣

♠ J2
♥ J10
♦ J4
♣ AJ108532

N
W—E
S

♠ Q109
♥ Q54
♦ Q986
♣ 976

♠ K85
♥ K987
♦ AK5
♣ KQ4

23

♠ KJ
♥ AQ85
♦ Q874
♣ K73

♠ Q10864
♥ K7642
♦ A
♣ 54

N
W—E
S

♠ A92
♥
♦ K1096532
♣ A86

♠ 753
♥ J1093
♦ J
♣ QJ1092

24

♠ J63
♥ K93
♦ J1094
♣ Q43

♠ K52
♥ Q10852
♦ KQ75
♣ 8

N
W—E
S

♠ 874
♥ A74
♦ 832
♣ A1052

♠ AQ109
♥ J6
♦ A6
♣ KJ976

Board (22) Av: NS=+220

N-S	E-W	Contract	N-S	E-W	IMP
14	16	4H	N 5	450	6
8	12	4H	N 5	450	6
1	5	4H	S 4	420	5
15	13	4H	N 4	420	5
17	18	4H	N 4	420	5
6	4	6H	N-1	50	-7
3	2	4S	N-1	50	-7
10	7	4S	N-1	50	-7
11	9	4H	N-1	50	-7

Board (23) Av: NS=-80

N-S	E-W	Contract	N-S	E-W	IMP
10	7	2H	W-2	200	7
3	2	3C	N 3	110	5
11	9	4S	W-1	100	5
17	18	2D	W 2	90	0
1	5	2D	W 2	90	0
14	16	2D	E 3	110	-1
15	13	1NT	N-2	200	-3
6	4	3H	N-3	300	-6
8	12	3NT	N-5	500	-9

Board (24) Av: NS=+70

N-S	E-W	Contract	N-S	E-W	IMP
1	5	1NT	S 4	180	3
10	7	3H	W-3	150	2
11	9	1NT	S 1	90	1
14	16	1NT	S 1	90	1
6	4	1NT	S 1	90	1
17	18	1NT	N 1	90	1
8	12	3H	E-1	50	-1
3	2	3C	S-1	50	-3
15	13	1NT	S-2	100	-5

25

♠ 984
♥ KQ542
♦ 872
♣ 84

♠ J
♥ 1087
♦ A643
♣ AQJ93

N
W—E
S

♠ Q7652
♥ J96
♦ KQJ5
♣ 10

♠ AK103
♥ A3
♦ 109
♣ K7652

26

♠ A4
♥ KQ4
♦ AK932
♣ A86

♠ KJ32
♥ J102
♦ 84
♣ K942

N
W—E
S

♠ Q10985
♥ A9
♦ 1075
♣ QJ3

♠ 76
♥ 87653
♦ QJ6
♣ 1075

27

♠ 107
♥ Q5
♦ A876
♣ KQ843

♠ QJ62
♥ K10
♦ J10542
♣ 109

N
W—E
S

♠ AK943
♥ A43
♦ KQ9
♣ J7

♠ 85
♥ J98762
♦ 3
♣ A652

Board (25) Av: NS=+60

N-S	E-W	Contract	N-S	E-W	IMP
8	12	2H	N 2	110	2
17	18	1NT	N 1	90	1
11	9	1NT	N 1	90	1
15	13	1NT	N 1	90	1
10	7	1NT	N 1	90	1
1	5	1NT	N 1	90	1
6	4	1NT	N 1	90	1
3	2	2H	N-2	100	-4
14	16	1NT	N-3	150	-5

Board (26) Av: NS=+60

N-S	E-W	Contract	N-S	E-W	IMP
14	16	3H	N 4	170	3
8	12	3H	N 3	140	2
15	13	3H	N 3	140	2
11	9	2NT	N 2	120	2
17	18	2NT	N 2	120	2
1	5	2NT	N 2	120	2
6	4	4H	N-1	100	-4
10	7	3H	N-1	100	-4
3	2	3H	N-1	100	-4

Board (27) Av: NS=-180

N-S	E-W	Contract	N-S	E-W	IMP
11	9	4S	E-2	100	7
1	5	4S	E-1	50	6
10	7	3S	E-1	50	6
15	13	2S	E 2	110	2
8	12	1NT	E 3	150	1
17	18	3S	W 6	230	-2
6	4	4S	W 4	420	-6
3	2	4S	E 5	450	-7
14	16	4S	E 5	450	-7

28

♠ 105
♥ AQ85
♦ A106
♣ K1082

♠ KQ93
♥ 73
♦ 985
♣ AJ93

N
W | E
S

♠ AJ42
♥ J109
♦ J74
♣ Q65

♠ 876
♥ K642
♦ KQ32
♣ 74

Board (28) Av: NS=+150

N-S	E-W	Contract	N-S	E-W	IMP
14	16	2H S 5	200		2
1	5	3H S 4	170		1
15	13	2H S 4	170		1
3	2	2H S 4	170		1
6	4	2H S 4	170		1
11	9	3H S 3	140		0
17	18	2H N 3	140		0
8	12	3S W-2	100		-2
10	7	2S W 2	110		-6

29

♠ AQJ74
♥ J53
♦ K
♣ 9842

♠ K8
♥ K10
♦ 7652
♣ QJ763

N
W | E
S

♠ 1093
♥ AQ876
♦ 93
♣ AK5

♠ 652
♥ 942
♦ AQJ1084
♣ 10

Board (29) Av: NS=+10

N-S	E-W	Contract	N-S	E-W	IMP
9	8	3S N 5	200		5
14	18	2S N 3	140		4
10	12	2S N 3	140		4
5	2	2S N 3	140		4
6	1	2S N 3	140		4
3	4	3S N-1	100		-3
15	17	2H E 4	170		-5
16	13	1NT W 5	210		-6
7	11	4H E 4	620		-12

30

♠ Q1064
♥ 10854
♦ K4
♣ AQ8

♠ K75
♥ K97
♦ J9862
♣ 32

N
W | E
S

♠ J92
♥ J62
♦ A7
♣ K9654

♠ A83
♥ AQ3
♦ Q1053
♣ J107

Board (30) Av: NS=+20

N-S	E-W	Contract	N-S	E-W	IMP
16	13	2NT S 3	150		4
10	12	2NT S 2	120		3
14	18	2NT S 2	120		3
15	17	2NT S 2	120		3
9	8	2NT S-1	50		-2
5	2	2NT S-1	50		-2
6	1	2NT S-1	50		-2
7	11	3NT S-2	100		-3
3	4	2NT S-2	100		-3

31

♠ 75
♥ AJ7432
♦ K6
♣ 875

♠ 4
♥ Q108
♦ A743
♣ QJ1042

N
W | E
S

♠ KQJ10963
♥ 965
♦ Q9
♣ A

♠ A82
♥ K
♦ J10852
♣ K963

Board (31) Av: NS=-10

N-S	E-W	Contract	N-S	E-W	IMP
6	1	4S E-2	100		3
14	18	4S E-2	100		3
9	8	4S E-2	100		3
7	11	4S E-1	50		2
5	2	3S E-1	50		2
15	17	2S E 2	110		-3
16	13	2S E 2	110		-3
10	12	3S E 3	140		-4
3	4	2S E 3	140		-4

32

♠ QJ52
♥ 6
♦ QJ1084
♣ J92

♠ A973
♥ A42
♦ 9
♣ AKQ73

N
W | E
S

♠ 108
♥ Q983
♦ A632
♣ 1085

♠ K64
♥ KJ1075
♦ K75
♣ 64

Board (32) Av: NS=-50

N-S	E-W	Contract	N-S	E-W	IMP
10	12	3NT E-1	100		4
3	4	3NT E-1	100		4
5	2	3H E-1	100		4
14	18	3D N-1	50		0
7	11	3Dx N-1	100		-2
6	1	2NT E 2	120		-2
15	17	2NT E 3	150		-3
9	8	2NT E 3	150		-3
16	13	3NT E 4	630		-11

33

♠ QJ75
♥ Q
♦ QJ843
♣ Q92

♠ 42
♥ AJ4
♦ 965
♣ AKJ87

N
W | E
S

♠ A1086
♥ 9832
♦ K2
♣ 1064

♠ K93
♥ K10765
♦ A107
♣ 53

Board (33) Av: NS=+30

N-S	E-W	Contract	N-S	E-W	IMP
6	1	3D N 3	110		2
3	4	3D N 3	110		2
7	11	2H W-2	100		2
16	13	2C W-2	100		2
15	17	2C W-1	50		1
5	2	2NT S-1	50		-2
9	8	2H S-1	50		-2
10	12	2H N-1	50		-2
14	18	2C W 2	90		-3

34

♠ Q1043
♥ K2
♦ AQ976
♣ 93

♠ 765
♥ J43
♦ J85
♣ J1085

N
W | E
S

♠ AK82
♥ Q1086
♦ 43
♣ K76

♠ J9
♥ A975
♦ K102
♣ AQ42

Board (34) Av: NS=+360

N-S	E-W	Contract	N-S	E-W	IMP
16	13	3NT S 5	660		7
15	17	3NT S 4	630		7
14	18	3NT S 3	600		6
5	2	3NT S 3	600		6
7	11	1NT S 5	210		-4
10	12	2NT S 4	180		-5
3	4	3D N 5	150		-5
9	8	2D N 5	150		-5
6	1	2C E-3	150		-5

35

♠ 9752
♥ 974
♦ A1095
♣ K2

♠ K
♥ AQ632
♦ KQ84
♣ A109

N
W | E
S

♠ AQ104
♥ KJ85
♦ J2
♣ 865

♠ J863
♥ 10
♦ 763
♣ QJ743

Board (35) Av: NS=-890

N-S	E-W	Contract	N-S	E-W	IMP
16	13	4H W 6	680		5
10	12	4H W 6	680		5
14	18	4H W 6	680		5
3	4	4H W 6	680		5
6	1	4H W 6	680		5
5	2	4H W 6	680		5
15	17	6H W 6	1430		-11
9	8	6H W 6	1430		-11
7	11	6H E 6	1430		-11