

第17回NRM杯 Session1 Flight C 2012年6月30日(土)

1

♠5432
♥AQ654
♦6
♣K85

♠KQ76
♥108
♦J10985
♣Q7

♠J98
♥93
♦KQ3
♣AJ963

♠A10
♥KJ72
♦A742
♣1042

2

♠52
♥53
♦AJ10432
♣K63

♠A864
♥A87
♦KQ6
♣J52

♠K10
♥QJ9642
♦5
♣A1074

♠QJ973
♥K10
♦987
♣Q98

3

♠10753
♥765
♦2
♣109853

♠AK4
♥K1098
♦J10
♣KQJ2

♠QJ8
♥QJ43
♦AQ754
♣6

♠962
♥A2
♦K9863
♣A74

Board (1) Av: NS=+150

N-S	E-W	Contract	N-S	E-W	IMP
6	12	4H N 4	420		7
18	3	3H N 4	170		1
1	17	3H N 4	170		1
5	7	2H N 4	170		1
16	2	3H N 3	140		0
4	8	3H N 3	140		0
10	14	2H N 3	140		0
15	9	3S W-2	100		-2
11	13	3H N-1		50	-5

Board (2) Av: NS=-390

N-S	E-W	Contract	N-S	E-W	IMP
1	17	3NT W-2	100		10
18	3	3H E 4	170		6
10	14	4H E 4	420		-1
15	9	4H E 4	420		-1
16	2	4H E 4	420		-1
11	13	4H E 4	420		-1
6	12	4H E 4	420		-1
5	7	4H E 5	450		-2
4	8	4H E 5	450		-2

Board (3) Av: NS=-410

N-S	E-W	Contract	N-S	E-W	IMP
15	9	5H W-2	200		12
6	12	4H W-1	100		11
18	3	4H W-1	100		11
16	2	4H W 4		620	-5
1	17	4H W 4		620	-5
4	8	4H W 4		620	-5
5	7	4H W 4		620	-5
10	14	4H E 4		620	-5
11	13	4H E 5		650	-6

4

♠AJ963
♥A963
♦82
♣105

♠KQ852
♥8542
♦KQ7
♣8

♠4
♥Q10
♦A10654
♣KJ973

♠107
♥KJ7
♦J93
♣AQ642

5

♠A8
♥KQ65
♦Q6
♣AQ876

♠96543
♥AJ3
♦AJ9
♣K5

♠KJ72
♥982
♦8732
♣J10

♠Q10
♥1074
♦K1054
♣9432

6

♠AJ10752
♥Q
♦A
♣AKQ87

♠Q94
♥J103
♦9432
♣964

♠86
♥K864
♦KQ765
♣32

♠K3
♥A9752
♦J108
♣J105

Board (4) Av: NS=+120

N-S	E-W	Contract	N-S	E-W	IMP
11	13	3S W-4	400		7
1	17	2S W-4	400		7
6	12	2NT W-3	300		5
5	7	2S N 3	140		1
16	2	3D E-1	100		-1
10	14	3D E-1	100		-1
15	9	Passout			-3
18	3	2Cx S-1		200	-8
4	8	2C S-2		200	-8

Board (5) Av: NS=+150

N-S	E-W	Contract	N-S	E-W	IMP
16	2	5C N 5	600		10
6	12	1NT N 5	210		2
10	14	1NT N 5	210		2
1	17	3C N 5	150		0
4	8	1NT N 3	150		0
5	7	1NT N 3	150		0
15	9	1NT N 2	120		-1
11	13	1NT N 1	90		-2
18	3	2S W 2		110	-6

Board (6) Av: NS=+710

N-S	E-W	Contract	N-S	E-W	IMP
4	8	6S N 7	1010		7
10	14	6S N 6	980		7
15	9	6S N 6	980		7
1	17	6S N 6	980		7
16	2	3NT S 7	520		-5
18	3	3NT S 7	520		-5
6	12	4S N 7	510		-5
5	7	4S N 7	510		-5
11	13	4S N 7	510		-5

7

♠42
♥A1093
♦1063
♣K654

♠A963
♥
♦AK8754
♣AQ9

♠K1085
♥KJ642
♦QJ9
♣2

♠QJ7
♥Q875
♦2
♣J10873

8

♠A62
♥862
♦9876
♣Q85

♠KQ10
♥753
♦QJ43
♣962

♠J987
♥AKQ10
♦K2
♣AK3

♠543
♥J94
♦A105
♣J1074

9

♠104
♥KQ854
♦J73
♣A106

♠7632
♥A2
♦K1096
♣J93

♠KJ5
♥976
♦82
♣87542

♠AQ98
♥J103
♦AQ54
♣AKQ

Board (7) Av: NS=-790

N-S	E-W	Contract	N-S	E-W	IMP
11	13	5S W 5	650		4
10	14	5S W 6	680		3
4	8	5S W 6	680		3
16	2	4S W 6	680		3
15	9	4S W 6	680		3
5	7	4S W 6	680		3
6	12	4S W 6	680		3
18	3	6S W 6	1430		-12
1	17	6S W 6	1430		-12

Board (8) Av: NS=-450

N-S	E-W	Contract	N-S	E-W	IMP
6	18	3NT E 3	400		2
13	2	3NT E 4	430		1
9	3	3NT E 4	430		1
5	10	3NT E 4	430		1
15	12	3NT E 5	460		0
14	7	3NT E 5	460		0
8	1	3NT E 5	460		0
4	17	3NT E 5	460		0
11	16	3NT E 5	460		0

Board (9) Av: NS=+440

N-S	E-W	Contract	N-S	E-W	IMP
13	2	4H N 6	480		1
8	1	4H S 5	450		0
14	7	4H N 5	450		0
9	3	4H N 5	450		0
4	17	4H N 5	450		0
5	10	4H N 5	450		0
6	18	4NT N 4	430		0
15	12	4H N 4	420		-1
11	16	6H N-1		50	-10

10

♠K4
♥J753
♦J962
♣K64

♠Q93
♥Q1062
♦104
♣8753

N
W—E
S

♠87652
♥K
♦K73
♣AQ109

♠AJ10
♥A984
♦AQ85
♣J2

11

♠87
♥Q983
♦QJ753
♣97

♠Q109
♥K107
♦94
♣J10843

N
W—E
S

♠AK6542
♥J6
♦AK1062
♣

♠J3
♥A542
♦8
♣AKQ652

12

♠J1083
♥A73
♦954
♣985

♠542
♥Q109
♦AJ2
♣KQ103

N
W—E
S

♠Q76
♥K2
♦Q10876
♣764

♠AK9
♥J8654
♦K3
♣AJ2

Board (10) Av: NS=-100

N-S	E-W	Contract	N-S	E-W	IMP
15	12	4H S 4	620		12
4	17	3H S 3	140		6
14	7	4H S-1		100	0
9	3	4H S-1		100	0
6	18	3H N-1		100	0
5	10	2S E 2		110	0
8	1	4H S-2		200	-3
13	2	4H S-2		200	-3
11	16	3H S-2		200	-3

Board (11) Av: NS=-400

N-S	E-W	Contract	N-S	E-W	IMP
13	2	4S E-1	50		10
9	3	5H N-4		200	5
15	12	4S E 4	420		-1
14	7	4S E 4	420		-1
5	10	4S E 4	420		-1
4	17	4S E 5	450		-2
6	18	4S E 5	450		-2
11	16	4S E 5	450		-2
8	1	5Cx S-4		800	-9

Board (12) Av: NS=-180

N-S	E-W	Contract	N-S	E-W	IMP
15	12	3H S-1	100		2
9	3	2H S-1	100		2
14	7	2H S-1	100		2
6	18	3D E 3	110		2
4	17	1NT W 2	120		2
8	1	1NT S-2		200	-1
11	16	3H S-3		300	-3
13	2	3H S-3		300	-3
5	10	1NT S-4		400	-6

13

♠106
♥9653
♦KQ109
♣K43

♠87
♥AJ104
♦A54
♣Q985

N
W—E
S

♠AQ932
♥Q82
♦87
♣1062

♠KJ54
♥K7
♦J632
♣AJ7

14

♠J9853
♥5
♦A9
♣J9632

♠Q4
♥A1092
♦Q65
♣AK74

N
W—E
S

♠AK106
♥KQ73
♦K1073
♣8

♠72
♥J864
♦J842
♣Q105

15

♠Q853
♥5
♦J98652
♣K6

♠A72
♥KJ1097
♦AKQ
♣84

N
W—E
S

♠K96
♥A632
♦1074
♣1032

♠J104
♥Q84
♦3
♣AQJ975

Board (13) Av: NS=+40

N-S	E-W	Contract	N-S	E-W	IMP
11	16	1NT S 2	120		2
14	7	2D S 3	110		2
5	10	2S E-1		100	2
15	12	2D S 2	90		2
6	18	2D S 2	90		2
13	2	1NT N 1	90		2
8	1	2D S-1		100	-4
4	17	1NT N-1		100	-4
9	3	1NT N-1		100	-4

Board (14) Av: NS=-20

N-S	E-W	Contract	N-S	E-W	IMP
11	16	6H W-1	50		2
9	3	6H W-1	50		2
15	12	6H W-1	50		2
14	7	6H W-1	50		2
4	17	6H W-1	50		2
6	18	6H W-1	50		2
8	1	6H W-1	50		2
5	10	4H W 4	420		-9
13	2	4H W 5	450		-10

Board (15) Av: NS=-90

N-S	E-W	Contract	N-S	E-W	IMP
9	6	4H W-2	100		5
15	3	4H W-1	50		4
8	13	4H E-1	50		4
14	1	3H W 3		140	-2
18	12	3H W 3		140	-2
4	11	3H W 3		140	-2
2	7	3H W 4		170	-2
10	17	3H W 4		170	-2
5	16	4H W 4		420	-8

16

♠A984
♥A987
♦Q10
♣K108

♠QJ10632
♥4
♦7642
♣97

N
W—E
S

♠K
♥632
♦J985
♣QJ543

♠75
♥KQJ105
♦AK3
♣A62

17

♠KQ5
♥J1052
♦K97
♣J73

♠10643
♥KQ6
♦Q85
♣K54

N
W—E
S

♠A982
♥A98
♦A1063
♣Q8

♠J7
♥743
♦J42
♣A10962

18

♠AK952
♥J732
♦Q5
♣53

♠J
♥
♦AJ9876
♣AQJ862

N
W—E
S

♠Q87
♥AK104
♦K43
♣974

♠10643
♥Q9865
♦102
♣K10

Board (16) Av: NS=+840

N-S	E-W	Contract	N-S	E-W	IMP
15	3	6H S 6	980		4
10	17	6H S 6	980		4
14	1	6H S 6	980		4
8	13	6H S 6	980		4
18	12	6H S 6	980		4
4	11	6H S 6	980		4
2	7	4H S 6	480		-8
5	16	4H S 6	480		-8
9	6	4H S 6	480		-8

Board (17) Av: NS=-50

N-S	E-W	Contract	N-S	E-W	IMP
9	6	4S E-2	100		4
8	13	4S W-1	50		3
4	11	3S W-1	50		3
15	3	3NT W-1	50		3
18	12	2S W 2		110	-2
10	17	2S W 2		110	-2
2	7	2S W 2		110	-2
5	16	2S W 3		140	-3
14	1	2S W 3		140	-3

Board (18) Av: NS=-730

N-S	E-W	Contract	N-S	E-W	IMP
9	6	5C E 5	400		8
2	7	5C E 7	440		7
10	17	5C E 7	440		7
18	12	4NT E 7	520		5
4	11	6D E 6	920		-5
15	3	6C E 6	920		-5
8	13	6C E 7	940		-5
5	16	6C E 7	940		-5
14	1	6C E 7	940		-5

19

♠AK6
♥AKQ
♦J1074
♣J107

♠Q92
♥98752
♦K8
♣865

N
W—E
S

♠J75
♥10643
♦53
♣Q932

♠10843
♥J
♦AQ962
♣AK4

20

♠Q9
♥A84
♦KJ1082
♣Q42

♠10854
♥Q
♦7643
♣7653

N
W—E
S

♠AJ3
♥KJ9652
♦Q
♣AJ8

♠K762
♥1073
♦A95
♣K109

21

♠8543
♥8642
♦87
♣K107

♠KQ62
♥53
♦AKJ5
♣QJ6

N
W—E
S

♠J1097
♥Q
♦Q94
♣A9842

♠A
♥AKJ1097
♦10632
♣53

Board (19) Av: NS=+830

N-S	E-W	Contract	N-S	E-W	IMP
18	12	6NT S 6	990		4
10	17	6NT S 6	990		4
9	6	6NT S 6	990		4
5	16	6NT N 6	990		4
15	3	6NT N 6	990		4
4	11	6D S 6	920		3
2	7	3NT N 6	490		-8
8	13	5D S 6	420		-9
14	1	6NT S-1	50		-13

Board (20) Av: NS=+10

N-S	E-W	Contract	N-S	E-W	IMP
5	16	2NT N 2	120		3
8	13	3D N 3	110		3
10	17	3D N 3	110		3
14	1	2H E-1	100		3
4	11	2H E-1	100		3
2	7	2H E 2	110		-3
18	12	2H E 2	110		-3
15	3	1H E 2	110		-3
9	6	2S S-3	300		-7

Board (21) Av: NS=-170

N-S	E-W	Contract	N-S	E-W	IMP
15	3	3Hx S 3	730		14
10	17	4S E-3	150		8
8	13	4S E-1	50		6
4	11	3S E 3	140		1
14	1	3S E 4	170		0
5	16	3S E 4	170		0
2	7	4S E 4	420		-6
18	12	5Hx S-2	500		-8
9	6	5Hx S-2	500		-8

22

♠J
♥QJ1097
♦AKJ1085
♣7

♠A1075
♥K4
♦43
♣98532

N
W—E
S

♠K63
♥A53
♦62
♣AKJ106

♠Q9842
♥862
♦Q97
♣Q4

23

♠5
♥AK74
♦108
♣986432

♠984
♥J10953
♦Q52
♣105

N
W—E
S

♠AKJ102
♥8
♦A9764
♣KJ

♠Q763
♥Q62
♦KJ3
♣AQ7

24

♠73
♥Q1095
♦KJ62
♣J86

♠AJ
♥72
♦A8543
♣KQ105

N
W—E
S

♠K9854
♥AJ86
♦109
♣A9

♠Q1062
♥K43
♦Q7
♣7432

Board (22) Av: NS=+120

N-S	E-W	Contract	N-S	E-W	IMP
9	18	3Hx N 3	530		9
12	3	2H N 4	170		2
15	6	2H N 3	140		1
13	5	2H N 3	140		1
16	8	2H N 3	140		1
10	2	2H N 3	140		1
7	17	2H N 3	140		1
4	14	4H N-1	50		-5
1	11	2S W 2	110		-6

Board (23) Av: NS=+130

N-S	E-W	Contract	N-S	E-W	IMP
12	3	3NT S 4	630		11
15	6	3S E-3	300		5
1	11	3C S 5	150		1
9	18	3C S 5	150		1
7	17	3C S 5	150		1
13	5	2C S 5	150		1
16	8	3C S 4	130		0
4	14	2D E 3	110		-6
10	2	5Cx S-1	200		-8

Board (24) Av: NS=-420

N-S	E-W	Contract	N-S	E-W	IMP
4	14	3NT E-1	50		10
1	11	3NT E 3	400		1
13	5	4S E 4	420		0
15	6	4S E 4	420		0
16	8	4S E 4	420		0
10	2	4S E 4	420		0
9	18	3NT E 4	430		0
7	17	3NT E 4	430		0
12	3	3NT E 5	460		-1

25

♠95432
♥1082
♦K84
♣73

♠AJ8
♥KQ4
♦J5
♣Q10965

N
W—E
S

♠Q76
♥AJ76
♦AQ97
♣J4

♠K10
♥953
♦10632
♣AK82

26

♠10764
♥1062
♦10983
♣Q7

♠KQ9
♥Q
♦762
♣K86542

N
W—E
S

♠A52
♥K854
♦KJ4
♣A103

♠J83
♥AJ973
♦AQ5
♣J9

27

♠52
♥104
♦AKJ1096
♣AJ7

♠Q8764
♥A53
♦82
♣K53

N
W—E
S

♠AJ3
♥KQJ8
♦Q53
♣Q102

♠K109
♥9762
♦74
♣9864

Board (25) Av: NS=-650

N-S	E-W	Contract	N-S	E-W	IMP
10	2	3NT W 4	630		1
1	11	3NT E 4	630		1
13	5	3NT E 4	630		1
7	17	3NT W 5	660		0
16	8	3NT W 5	660		0
15	6	3NT E 5	660		0
9	18	3NT E 5	660		0
12	3	3NT E 5	660		0
4	14	3NT E 5	660		0

Board (26) Av: NS=-630

N-S	E-W	Contract	N-S	E-W	IMP
7	17	3NT E 3	600		1
10	2	3NT E 3	600		1
12	3	3NT E 4	630		0
13	5	3NT E 4	630		0
16	8	3NT E 4	630		0
4	14	3NT E 4	630		0
9	18	3NT E 4	630		0
1	11	3NT E 4	630		0
15	6	3NT E 5	660		-1

Board (27) Av: NS=-100

N-S	E-W	Contract	N-S	E-W	IMP
4	14	4S E-1	50		4
13	5	3S E-1	50		4
7	17	3S E-1	50		4
1	11	2S E-1	50		4
16	8	2S W 3	140		-1
9	18	2S W 3	140		-1
10	2	2S W 3	140		-1
12	3	4S W 4	420		-8
15	6	4S E 4	420		-8

28

♠ AKQJ843

♥ 4

♦ K108

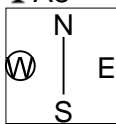
♣ A8

♠ 965

♥ A653

♦ AJ5

♣ QJ6



♠ 7

♥ J102

♦ Q972

♣ 107532

♠ 102

♥ KQ987

♦ 643

♣ K94

Board (28) Av: NS=+660

N-S	E-W	Contract	N-S	E-W	IMP
7	17	4S N 6	680		1
16	8	4S N 6	680		1
1	11	4S N 6	680		1
10	2	4S N 5	650		0
13	5	4S N 5	650		0
12	3	4S N 5	650		0
4	14	4S N 5	650		0
9	18	4S N 5	650		0
15	6	3NT N 4	630		-1

第17回NRM杯 Session 2 Flight C 2012年6月30日(土)

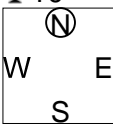
1

♠ AKQ972
♥ Q87
♦ 962
♣ 10

♠ 1063
♥ AJ42
♦ 85
♣ A432

♠ 8
♥ K96
♦ AKQJ1073
♣ 85

♠ J54
♥ 1053
♦ 4
♣ KQJ976



Board (1) Av: NS=+270

N-S	E-W	Contract	N-S	E-W	IMP
12	14	4S	N 7	510	6
11	15	4S	N 6	480	5
13	7	5D	S 6	420	4
18	2	5D	S 5	400	4
3	17	5D	S 5	400	4
9	5	5D	S 5	400	4
8	6	3NT	S-1	50	-8
1	16	3NT	S-3	150	-9
10	4	3NT	S-3	150	-9

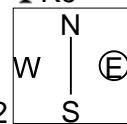
2

♠ 105
♥ QJ7
♦ AK9742
♣ K9

♠ A976
♥ 1054
♦ Q5
♣ QJ86

♠ QJ432
♥ K962
♦ 63
♣ 43

♠ K8
♥ A83
♦ J108
♣ A10752



Board (2) Av: NS=+50

N-S	E-W	Contract	N-S	E-W	IMP
9	5	3D	N 3	110	2
1	16	2D	N 3	110	2
11	15	2D	N 2	90	1
18	2	2D	N 2	90	1
12	14	3C	W-1	50	0
10	4	3C	W-1	50	0
8	6	3C	W-1	50	0
3	17	1NT	W 1	90	-4
13	7	3D	N-1	100	-4

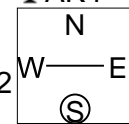
3

♠ QJ98
♥ K107
♦ 976
♣ AK4

♠ A1043
♥ Q532
♦ Q
♣ QJ105

♠ K62
♥ 986
♦ KJ853
♣ 62

♠ 75
♥ AJ4
♦ A1042
♣ 9873



Board (3) Av: NS=+40

N-S	E-W	Contract	N-S	E-W	IMP
11	15	2H	E-2	200	4
3	17	1NT	N 3	150	3
1	16	1NT	N 2	120	2
13	7	1NT	N 1	90	2
10	4	1NT	N 1	90	2
8	6	1NT	S-1	50	-3
18	2	1NT	N-1	50	-3
9	5	1NT	N-1	50	-3
12	14	2H	W 2	110	-4

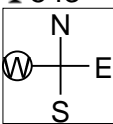
4

♠ A8653
♥ KQ7
♦ 84
♣ 543

♠ KQ
♥ A53
♦ AKQ5
♣ AQ72

♠ 104
♥ J1092
♦ J109
♣ KJ108

♠ J972
♥ 864
♦ 7632
♣ 96



Board (4) Av: NS=-170

N-S	E-W	Contract	N-S	E-W	IMP
12	14	3NT	E-2	200	9
18	2	3NT	E-1	100	7
10	4	3NT	E-1	100	7
3	17	2NT	E-1	100	7
1	16	2NT	E 3	150	1
11	15	2NT	E 3	150	1
8	6	3NT	E 3	600	-10
13	7	3NT	E 3	600	-10
9	5	3NT	E 3	600	-10

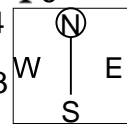
5

♠ 1093
♥ KJ1072
♦ A952
♣ 6

♠ AK2
♥ Q986
♦ Q106
♣ 1094

♠ Q65
♥ 54
♦ 87
♣ AKQ532

♠ J874
♥ A3
♦ KJ43
♣ J87



Board (5) Av: NS=+70

N-S	E-W	Contract	N-S	E-W	IMP
9	5	2H	N 2	110	1
1	16	2H	N 2	110	1
12	14	2C	S 2	90	1
11	15	2C	S 2	90	1
18	2	2C	S 2	90	1
10	4	2S	W-1	50	-1
8	6	2S	E-1	50	-1
13	7	Passout			-2
3	17	3C	S-1	100	-5

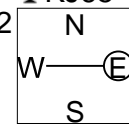
6

♠ Q9
♥ AJ7
♦ KJ72
♣ KJ65

♠ 874
♥ K8
♦ Q863
♣ A1087

♠ 53
♥ 10932
♦ A1095
♣ Q42

♠ AKJ1062
♥ Q654
♦ 4
♣ 93



Board (6) Av: NS=-140

N-S	E-W	Contract	N-S	E-W	IMP
3	17	3D	S-1	50	3
9	5	3H	S-2	100	1
10	4	3H	S-2	100	1
11	15	3S	W 3	140	0
18	2	3S	W 3	140	0
13	7	3S	W 4	170	-1
1	16	3S	W 4	170	-1
8	6	2S	W 4	170	-1
12	14	2S	W 4	170	-1

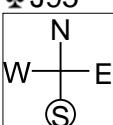
7

♠ 96
♥ J1094
♦ KJ95
♣ J95

♠ 53
♥ Q83
♦ A103
♣ 108742

♠ QJ10874
♥ 75
♦ 87
♣ KQ3

♠ AK2
♥ AK62
♦ Q642
♣ A6



Board (7) Av: NS=-100

N-S	E-W	Contract	N-S	E-W	IMP
12	14	3NT	W-2	200	7
13	7	3NT	W-1	100	5
8	6	3NT	W-1	100	5
3	17	3NT	W-1	100	5
1	16	3NT	E-1	100	5
10	4	2NT	W-1	100	5
9	5	3NT	W 3	600	-11
11	15	3NT	E 3	600	-11
18	2	3NT	E 4	630	-11

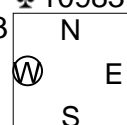
8

♠ 7
♥ 762
♦ QJ1087
♣ 10983

♠ J52
♥ AKQ53
♦ 5
♣ A742

♠ A1086
♥ J104
♦ 432
♣ KQJ

♠ KQ943
♥ 98
♦ AK96
♣ 65



Board (8) Av: NS=-360

N-S	E-W	Contract	N-S	E-W	IMP
9	2	6S	W-2	100	10
17	12	6S	W-2	100	10
18	5	4S	W 4	420	-2
3	14	4S	W 4	420	-2
6	11	4S	W 4	420	-2
4	16	5S	W 5	450	-3
8	15	4S	W 5	450	-3
7	1	4S	W 5	450	-3
13	10	4S	W 6	480	-3

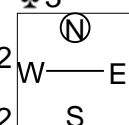
9

♠ J107
♥ AKJ9
♦ K9532
♣ 3

♠ AQ854
♥ Q5
♦ 1076
♣ AQ7

♠ K96
♥ 643
♦ Q4
♣ KJ865

♠ 32
♥ 10872
♦ AJ8
♣ 10942



Board (9) Av: NS=+80

N-S	E-W	Contract	N-S	E-W	IMP
7	1	2S	E-3	300	6
17	12	1NT	S 2	120	1
8	15	1NT	S 2	120	1
9	2	2D	N 3	110	1
18	5	1NT	S 1	90	0
4	16	1NT	S 1	90	0
3	14	1NT	S 1	90	0
13	10	1NT	S-1	50	-4
6	11	1NT	S-1	50	-4

10

♠ K732
♥ K7
♦ 10764
♣ 1054

♠ AJ65
♥ A5
♦ J92
♣ J873

N
W — E
S

♠ Q9
♥ QJ63
♦ AQ3
♣ KQ96

♠ 1084
♥ 109842
♦ K85
♣ A2

11

♠ 9
♥ A83
♦ 9643
♣ AQ1082

♠ Q842
♥ 7
♦ KQ875
♣ 973

N
W — E
S

♠ J65
♥ QJ9654
♦ A2
♣ J4

♠ AK1073
♥ K102
♦ J10
♣ K65

12

♠ Q9542
♥ QJ543
♦ 8
♣ J9

♠ K103
♥
♦ AK952
♣ Q8542

N
W — E
S

♠ 87
♥ 9876
♦ QJ76
♣ A63

♠ AJ6
♥ AK102
♦ 1043
♣ K107

Board (10) Av: NS=-600

N-S	E-W	Contract	N-S	E-W	IMP
6	11	3NT E-1	100		12
13	10	3NT E 3	600		0
9	2	3NT E 3	600		0
17	12	3NT E 3	600		0
18	5	3NT E 3	600		0
4	16	3NT E 3	600		0
3	14	3NT E 3	600		0
8	15	3NT E 3	600		0
7	1	3NT E 3	600		0

Board (11) Av: NS=+270

N-S	E-W	Contract	N-S	E-W	IMP
6	11	3NT N 4	430		4
9	2	3NT N 4	430		4
18	5	3NT N 4	430		4
4	16	3NT N 4	430		4
7	1	2NT N 4	180		-3
8	15	1NT N 4	180		-3
13	10	3C N 4	130		-4
3	14	2H E-2	100		-5
17	12	3C N-1		50	-8

Board (12) Av: NS=-10

N-S	E-W	Contract	N-S	E-W	IMP
9	2	4H S 4	620		12
6	11	3S N 4	170		5
3	14	3S N 4	170		5
7	1	3S N 3	140		4
18	5	5H S-1		100	-3
4	16	4D W 4		130	-3
8	15	2D W 5		150	-4
17	12	2D W 5		150	-4
13	10	2D W 5		150	-4

13

♠ Q962
♥ K93
♦ A92
♣ 982

♠ AK5
♥
♦ QJ1086
♣ AQ754

N
W — E
S

♠ 10843
♥ AQJ102
♦ 54
♣ K3

♠ J7
♥ 87654
♦ K73
♣ J106

14

♠ 8
♥ KQ6
♦ J6542
♣ Q987

♠ Q10976
♥ A7432
♦ A
♣ A10

N
W — E
S

♠ AK43
♥ J
♦ Q103
♣ J6432

♠ J52
♥ 10985
♦ K987
♣ K5

15

♠ K54
♥ K1032
♦ AJ54
♣ KQ

♠ A106
♥ J74
♦ 1093
♣ J975

N
W — E
S

♠ Q732
♥ 85
♦ Q876
♣ 862

♠ J98
♥ AQ96
♦ K2
♣ A1043

Board (13) Av: NS=-620

N-S	E-W	Contract	N-S	E-W	IMP
17	12	2NT W 4	180		10
13	10	3NT W 3	600		1
18	5	3NT E 3	600		1
8	15	3NT E 3	600		1
4	16	3NT E 4	630		0
3	14	3NT E 4	630		0
7	1	3NT E 4	630		0
6	11	3NT E 4	630		0
9	2	3NT E 4	630		0

Board (14) Av: NS=-450

N-S	E-W	Contract	N-S	E-W	IMP
13	10	7S W-2	100		11
18	5	4S W 4	420		1
9	2	4S W 5	450		0
3	14	4S W 5	450		0
17	12	4S W 5	450		0
6	11	4S W 5	450		0
4	16	4S W 5	450		0
8	15	4S W 5	450		0
7	1	4S W 6	480		-1

Board (15) Av: NS=+650

N-S	E-W	Contract	N-S	E-W	IMP
13	1	4H N 6	680		1
2	15	4H N 6	680		1
12	5	4H N 5	650		0
16	10	4H N 5	650		0
14	9	4H N 5	650		0
8	3	4H N 5	650		0
11	18	4H N 5	650		0
4	7	4H N 4	620		-1
6	17	6H N-1		100	-13

16

♠ 1043
♥ K1032
♦ Q86
♣ Q106

♠ AJ8
♥ J98654
♦ 5
♣ 983

N
W — E
S

♠ KQ9
♥ Q
♦ AK107
♣ AK542

♠ 7652
♥ A7
♦ J9432
♣ J7

17

♠ Q108432
♥ 2
♦ Q86
♣ 976

♠ 9
♥ KJ105
♦ J543
♣ QJ83

N
W — E
S

♠ A765
♥ AQ976
♦ A
♣ A102

♠ KJ
♥ 843
♦ K10972
♣ K54

18

♠ AJ2
♥ K73
♦ A52
♣ A852

♠ KQ9874
♥ 9
♦ KJ9
♣ Q76

N
W — E
S

♠ 63
♥ QJ102
♦ Q1076
♣ J103

♠ 105
♥ A8654
♦ 843
♣ K94

Board (16) Av: NS=-610

N-S	E-W	Contract	N-S	E-W	IMP
2	15	4H E-1	100		12
12	5	3NT E 3	600		0
13	1	3NT E 3	600		0
8	3	3NT E 3	600		0
4	7	3NT E 3	600		0
6	17	3NT E 3	600		0
16	10	4H W 4	620		0
11	18	4H W 4	620		0
14	9	3NT W 4	630		-1

Board (17) Av: NS=-470

N-S	E-W	Contract	N-S	E-W	IMP
14	9	3NT E 3	400		2
6	17	4H W 5	450		1
13	1	4H E 5	450		1
2	15	5H E 6	480		0
16	10	4H E 6	480		0
12	5	4H E 6	480		0
4	7	4H E 6	480		0
11	18	4H E 6	480		0
8	3	6H E 6	980		-11

Board (18) Av: NS=+50

N-S	E-W	Contract	N-S	E-W	IMP
14	9	3H N 3	140		3
11	18	3H N 3	140		3
16	10	2H N 2	110		2
8	3	2H N 2	110		2
4	7	2H N 2	110		2
2	15	2S W-1	50		0
6	17	3H N-1		100	-4
12	5	3H N-1		100	-4
13	1	3H N-1		100	-4

第17回NRM杯 Session 2 Flight C 2012年6月30日(土)

19

♠AQ10
♥A95
♦J102
♣KQJ2

♠J862
♥K
♦A85
♣109843

N
W—E
S

♠K95
♥QJ762
♦KQ3
♣65

♠743
♥10843
♦9764
♣A7

Board (19) Av: NS=+100

N-S	E-W	Contract	N-S	E-W	IMP
6	17	1NT N 3	150		2
12	5	1NT N 2	120		1
14	9	1NT N 2	120		1
16	10	1NT N 1	90		0
13	1	1NT N 1	90		0
4	7	1NT N 1	90		0
2	15	1NT N 1	90		0
11	18	1NT N 1	90		0
8	3	1NT N 1	90		0

20

♠AQ2
♥AKQ104
♦
♣AQ983

♠107
♥93
♦KQ975
♣K1072

N
W—E
S

♠86
♥J876
♦AJ42
♣J64

♠KJ9543
♥52
♦10863
♣5

Board (20) Av: NS=+460

N-S	E-W	Contract	N-S	E-W	IMP
8	3	6S S 6	1430		14
12	5	6S S 6	1430		14
13	1	5S S 7	710		6
2	15	5S S 6	680		6
14	9	4S S 6	680		6
4	7	3H N 3	140		-8
16	10	6S N-1	100		-11
6	17	6H N-3	300		-13
11	18	5H N-3	300		-13

21

♠AKJ10865
♥A93
♦3
♣Q8

♠92
♥Q84
♦AKJ86
♣K104

N
W—E
S

♠Q
♥KJ762
♦105
♣AJ932

♠743
♥105
♦Q9742
♣765

Board (21) Av: NS=-340

N-S	E-W	Contract	N-S	E-W	IMP
4	7	3Sx N 3	730		14
11	18	4Sx N-1	200		4
16	10	4Sx N-1	200		4
2	15	4Sx N-1	200		4
6	17	5H W 5	450		-3
14	9	4H W 5	450		-3
8	3	4H W 5	450		-3
12	5	4H W 5	450		-3
13	1	4H W 5	450		-3

22

♠AK82
♥1082
♦52
♣K1062

♠5
♥KQ54
♦K109876
♣J8

N
W—E
S

♠J1093
♥A73
♦AQ43
♣43

♠Q764
♥J96
♦J
♣AQ975

Board (22) Av: NS=-40

N-S	E-W	Contract	N-S	E-W	IMP
14	6	2S S 2	110		4
10	1	Passout			1
17	9	Passout			1
16	7	Passout			1
4	13	Passout			1
2	12	Passout			1
5	15	4D E 4	130		-3
8	18	3D E 4	130		-3
11	3	3D W 5	150		-3

23

♠AQ972
♥Q1065
♦K5
♣73

♠653
♥932
♦43
♣K10852

N
W—E
S

♠104
♥84
♦J10982
♣J964

♠KJ8
♥AKJ7
♦AQ76
♣AQ

Board (23) Av: NS=+1460

N-S	E-W	Contract	N-S	E-W	IMP
8	18	6NT S 7	1470		0
10	1	6NT S 7	1470		0
16	7	6NT S 7	1470		0
2	12	6NT S 7	1470		0
11	3	6S N 7	1460		0
4	13	6S N 7	1460		0
17	9	6H S 7	1460		0
5	15	6H N 7	1460		0
14	6	6H N 7	1460		0

24

♠K2
♥Q6432
♦1075
♣A43

♠AJ98
♥109
♦AKQ86
♣97

N
W—E
S

♠Q7543
♥J87
♦43
♣KQ6

♠106
♥AK5
♦J92
♣J10852

Board (24) Av: NS=-110

N-S	E-W	Contract	N-S	E-W	IMP
8	18	4S E-1	50		4
2	12	4S E-1	50		4
14	6	3S E 3	140		-1
11	3	2S W 3	140		-1
16	7	2S E 3	140		-1
17	9	2S E 3	140		-1
4	13	2S E 3	140		-1
5	15	2S E 3	140		-1
10	1	2S E 3	140		-1

25

♠K
♥A1052
♦Q4
♣986532

♠A10765
♥843
♦108
♣AJ7

N
W—E
S

♠QJ32
♥Q7
♦J76532
♣10

♠984
♥KJ96
♦AK9
♣KQ4

Board (25) Av: NS=+50

N-S	E-W	Contract	N-S	E-W	IMP
4	13	4H S 5	450		9
2	12	4H S 5	450		9
8	18	3H S 4	170		3
14	6	4H S-1	50		-3
16	7	4H S-1	50		-3
17	9	4H S-1	50		-3
5	15	4H S-1	50		-3
10	1	4H S-1	50		-3
11	3	4H S-1	50		-3

26

♠K87643
♥QJ65
♦82
♣2

♠95
♥A
♦1097653
♣KJ106

N
W—E
S

♠AQ
♥K842
♦AKJ
♣Q843

♠J102
♥10973
♦Q4
♣A975

Board (26) Av: NS=-690

N-S	E-W	Contract	N-S	E-W	IMP
11	3	5D W 6	620		2
17	9	3NT E 6	690		0
14	6	3NT E 6	690		0
16	7	3NT E 6	690		0
10	1	3NT E 6	690		0
4	13	3NT E 6	690		0
2	12	3NT E 6	690		0
8	18	3NT E 6	690		0
5	15	3NT E 6	690		0

27

♠84
♥AQ3
♦98643
♣AQ6

♠A962
♥J984
♦72
♣1095

N
W—E
S

♠10753
♥K105
♦QJ10
♣K84

♠KQJ
♥762
♦AK5
♣J732

Board (27) Av: NS=+210

N-S	E-W	Contract	N-S	E-W	IMP
10	1	3NT S 3	400		5
11	3	3NT S 3	400		5
16	7	3NT S 3	400		5
2	12	3NT S 3	400		5
8	18	3NT N 3	400		5
17	9	3NT S-1	50		-6
14	6	3NT S-1	50		-6
5	15	3NT S-1	50		-6
4	13	3NT S-1	50		-6

28

♠ AKJ1087

♥ 5

♦ A4

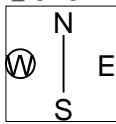
♣ J754

♠ 4

♥ J84

♦ K92

♣ AK9862



♠ 6

♥ A973

♦ J10865

♣ Q103

♠ Q9532

♥ KQ1062

♦ Q73

♣

Board (28) Av: NS=+660

N-S	E-W	Contract	N-S	E-W	IMP
10	1	6S	N 6	1430	13
8	18	4S	N 6	680	1
2	12	4S	N 6	680	1
4	13	4S	N 6	680	1
14	6	4S	N 5	650	0
16	7	4S	N 5	650	0
5	15	4S	N 5	650	0
11	3	4S	N 5	650	0
17	9	5Cx	W-3	500	-4

第17回NRM杯 Session 3 Flight C 2012年7月1日(日)

1

♠ A109
♥ Q752
♦ 53
♣ AJ62

♠ Q63
♥ AJ94
♦ Q92
♣ Q83

♠ K875
♥ K86
♦ KJ10
♣ K74

♠ J42
♥ 103
♦ A8764
♣ 1095

2

♠ A93
♥ KQJ9874
♦
♣ K85

♠ K2
♥ 53
♦ AKQJ432
♣ A2

♠ 1074
♥ 106
♦ 10865
♣ QJ74

♠ QJ865
♥ A2
♦ 97
♣ 10963

3

♠ 104
♥ 105
♦ K1097
♣ Q9852

♠ KQ763
♥ 94
♦ Q65
♣ KJ7

♠ J85
♥ AJ83
♦ J43
♣ A64

♠ A92
♥ KQ762
♦ A82
♣ 103

Board (1) Av: NS=-70

N-S	E-W	Contract	N-S	E-W	IMP
2	17	2NT W-2	100		5
14	8	3NT W-1	50		3
18	1	2NT W-1	50		3
12	13	1NT W 1		90	-1
15	10	1H W 2		110	-1
11	5	2NT W 2		120	-2
7	6	1NT W 2		120	-2
3	16	1NT W 2		120	-2
4	9	2NT W 3		150	-2

Board (2) Av: NS=+350

N-S	E-W	Contract	N-S	E-W	IMP
7	6	5H N 6	680		8
2	17	5H N 6	680		8
15	10	5H N 5	650		7
12	13	4H N 5	650		7
18	1	5D W-3	150		-5
3	16	5D W-2	100		-6
14	8	5D W-2	100		-6
4	9	5D W-2	100		-6
11	5	4D W-1	50		-7

Board (3) Av: NS=-90

N-S	E-W	Contract	N-S	E-W	IMP
3	16	2S W-1	100		5
4	9	1H S 1	80		5
15	10	2S W 2		110	-1
12	13	2S W 2		110	-1
2	17	2S W 2		110	-1
7	6	2NT E 2		120	-1
14	8	2S W 3		140	-2
18	1	2S W 3		140	-2
11	5	1NT E 3		150	-2

4

♠ AQ97
♥ 82
♦ Q5
♣ QJ653

♠ K54
♥ 10953
♦ AK2
♣ 742

♠ J1062
♥ KJ64
♦ 986
♣ A9

♠ 83
♥ AQ7
♦ J10743
♣ K108

5

♠ 53
♥ AK3
♦ K873
♣ AQ92

♠ QJ2
♥ Q2
♦ 65
♣ J76543

♠ A1096
♥ J10985
♦ AJ42
♣

♠ K874
♥ 764
♦ Q109
♣ K108

6

♠ J52
♥ 964
♦ 1054
♣ K963

♠ A6
♥ KQ10753
♦ AJ7
♣ 52

♠ 974
♥ A8
♦ Q86
♣ J10874

♠ KQ1083
♥ J2
♦ K932
♣ AQ

Board (4) Av: NS=+30

N-S	E-W	Contract	N-S	E-W	IMP
7	6	1NT S 2	120		3
15	10	3C N 3	110		2
14	8	1NT S 1	90		2
12	13	Passout			-1
18	1	Passout			-1
3	16	Passout			-1
2	17	Passout			-1
11	5	Passout			-1
4	9	Passout			-1

Board (5) Av: NS=+80

N-S	E-W	Contract	N-S	E-W	IMP
4	9	4S W-3	150		2
14	8	2NT N 3	150		2
11	5	2NT N 3	150		2
15	10	2NT N 2	120		1
3	16	2Sx W-1	100		1
18	1	2S W-2	100		1
7	6	2H E-1	50		-1
2	17	3NT N-1		100	-5
12	13	3NT N-2		200	-7

Board (6) Av: NS=-30

N-S	E-W	Contract	N-S	E-W	IMP
7	6	2S S 2	110		4
12	13	2S S 2	110		4
3	16	4H W-1	100		4
18	1	3S S-1		50	-1
15	10	2S S-1		50	-1
11	5	2S S-1		50	-1
4	9	3S S-2		100	-2
2	17	3H W 3		140	-3
14	8	3S S-3		150	-3

7

♠ AK954
♥ K98
♦ J4
♣ 1082

♠ J
♥ J
♦ K109863
♣ AKJ974

♠ J106
♥ 103
♦ A752
♣ Q653

♠ Q8732
♥ AQ76542
♦ Q
♣

8

♠ A1072
♥ KJ94
♦ KQ4
♣ 32

♠ J96
♥ Q108
♦ A1032
♣ KJ9

♠ Q854
♥ A765
♦ 76
♣ Q74

♠ K3
♥ 32
♦ J985
♣ A10865

9

♠ AKQ765
♥ Q98
♦ 83
♣ 97

♠ 1093
♥ KJ3
♦ 9652
♣ KJ8

♠ 8
♥ 10642
♦ KQ107
♣ 10642

♠ J42
♥ A75
♦ AJ4
♣ AQ53

Board (7) Av: NS=-780

N-S	E-W	Contract	N-S	E-W	IMP
12	13	5H S 6	680		16
14	8	4H S 6	680		16
2	17	5C W 6		620	4
7	6	5D W 7		640	4
11	5	5D E 7		640	4
18	1	5Dx E 7		1150	-9
15	10	6Cx E 6		1540	-13
4	9	6Cx E 6		1540	-13
3	16	7Dx W 7		2330	-17

Board (8) Av: NS=+100

N-S	E-W	Contract	N-S	E-W	IMP
16	6	1NT S 3	150		2
4	12	3D N 3	110		0
3	7	2D N 3	110		0
8	2	2H W-2	100		0
1	15	2H E-2	100		0
17	5	2D N 2	90		0
10	18	1NT S 1	90		0
14	11	1NT S 1	90		0
13	9	1NT S-1		50	-4

Board (9) Av: NS=+370

N-S	E-W	Contract	N-S	E-W	IMP
8	2	4S N 5	450		2
10	18	4S N 5	450		2
16	6	4S N 5	450		2
1	15	4S N 5	450		2
3	7	4S N 5	450		2
4	12	4S N 5	450		2
17	5	4S N 4	420		2
14	11	6S N-1		50	-9
13	9	6S N-2		100	-10

10

♠ 84
♥ A983
♦ KQ76
♣ Q92

♠ KQ5
♥ K752
♦ J54
♣ 1083

N
W — E
S

♠ A9632
♥ J106
♦ 93
♣ AK4

♠ J107
♥ Q4
♦ A1082
♣ J765

11

♠ QJ9732
♥ 108
♦ A964
♣ 8

♠ 8
♥ J942
♦ Q87
♣ AK953

N
W — E
S

♠ AK
♥ 765
♦ K10
♣ QJ10764

♠ 10654
♥ AKQ3
♦ J532
♣ 2

12

♠ Q102
♥ Q965
♦ 1076432
♣

♠ A98753
♥ AK
♦ 5
♣ AQ96

N
W — E
S

♠ J64
♥ 74
♦ AQJ
♣ KJ852

♠ K
♥ J10832
♦ K98
♣ 10743

Board (10) Av: NS=-110

N-S	E-W	Contract	N-S	E-W	IMP
17	5	3S	E-2	200	7
13	9	2S	E 2	110	0
14	11	2S	E 2	110	0
16	6	2S	E 2	110	0
10	18	2S	E 2	110	0
3	7	2S	E 2	110	0
4	12	2S	E 2	110	0
8	2	2S	E 2	110	0
1	15	2S	E 3	140	-1

Board (11) Av: NS=+80

N-S	E-W	Contract	N-S	E-W	IMP
10	18	5Cx	E-2	300	6
8	2	5C	E-2	100	1
13	9	5C	E-2	100	1
16	6	5C	E-2	100	1
4	12	5C	E-2	100	1
14	11	4C	E-1	50	-1
3	7	4C	E-1	50	-1
17	5	4C	E-1	50	-1
1	15	4Sx	N-1	100	-5

Board (12) Av: NS=-620

N-S	E-W	Contract	N-S	E-W	IMP
8	2	5S	W 5	450	5
17	5	4S	W 5	450	5
13	9	5S	W 6	480	4
16	6	5S	W 6	480	4
14	11	5S	W 6	480	4
1	15	5S	W 6	480	4
10	18	6S	W 6	980	-8
3	7	6S	W 6	980	-8
4	12	6S	W 6	980	-8

13

♠ A52
♥ Q62
♦ J984
♣ KJ2

♠ KJ107
♥ KJ87
♦ Q107
♣ 105

N
W — E
S

♠ 963
♥ 43
♦ 32
♣ A98743

♠ Q84
♥ A1095
♦ AK65
♣ Q6

14

♠ KQJ9
♥ K5
♦ Q106
♣ A985

♠ 2
♥ 98632
♦ A93
♣ 10732

N
W — E
S

♠ 8543
♥ A107
♦ KJ52
♣ Q4

♠ A1076
♥ QJ4
♦ 874
♣ KJ6

15

♠ A2
♥ 1094
♦ J10987543
♣

♠ QJ106
♥ 6532
♦ 2
♣ Q1092

N
W — E
S

♠ 8543
♥ A7
♦ AKQ
♣ 8643

♠ K97
♥ KQJ8
♦ 6
♣ AKJ75

Board (13) Av: NS=+390

N-S	E-W	Contract	N-S	E-W	IMP
16	6	3NT	S 4	630	6
14	11	3NT	S 3	600	5
13	9	3NT	S 3	600	5
8	2	3NT	S 3	600	5
17	5	3NT	S 3	600	5
4	12	3NT	S 3	600	5
1	15	3NT	S-1	100	-10
10	18	3NT	S-2	200	-11
3	7	3NT	S-2	200	-11

Board (14) Av: NS=+10

N-S	E-W	Contract	N-S	E-W	IMP
8	2	4S	N 4	420	9
3	7	3NT	N 3	400	9
14	11	4S	N-1	50	-2
13	9	4S	N-1	50	-2
17	5	4S	N-1	50	-2
1	15	4S	N-1	50	-2
4	12	4S	N-1	50	-2
10	18	3NT	N-1	50	-2
16	6	3NT	N-1	50	-2

Board (15) Av: NS=-230

N-S	E-W	Contract	N-S	E-W	IMP
12	16	3D	N 3	110	8
10	6	3D	N 3	110	8
8	5	4D	N-1	100	4
4	18	4Dx	N-1	200	1
9	1	3NT	S-2	200	1
14	2	3NT	S-2	200	1
15	7	5Dx	N-2	500	-7
3	13	5Dx	N-2	500	-7
11	17	5C	S-5	500	-7

16

♠ 632
♥ KQ
♦ K7642
♣ J76

♠ AK9754
♥ A94
♦ A
♣ 1085

N
W — E
S

♠ 10
♥ J8765
♦ J95
♣ K943

♠ QJ8
♥ 1032
♦ Q1083
♣ AQ2

17

♠ AKQJ7
♥ 853
♦ 3
♣ A762

♠ 10852
♥ QJ1097
♦ Q4
♣ Q4

N
W — E
S

♠ 94
♥ K64
♦ KJ109762
♣ K

♠ 63
♥ A2
♦ A85
♣ J109853

18

♠ Q7
♥ KQ72
♦ 97532
♣ J2

♠ 942
♥ A4
♦ Q1086
♣ AK105

N
W — E
S

♠ K863
♥ J865
♦ A4
♣ Q98

♠ AJ105
♥ 1093
♦ KJ
♣ 7643

Board (16) Av: NS=-150

N-S	E-W	Contract	N-S	E-W	IMP
3	13	3S	W-1	100	6
10	6	2S	W 2	110	1
8	5	1S	W 2	110	1
11	17	2S	W 4	170	-1
12	16	2S	W 4	170	-1
9	1	2S	W 4	170	-1
15	7	1S	W 4	170	-1
14	2	1S	W 4	170	-1
4	18	1S	W 4	170	-1

Board (17) Av: NS=+230

N-S	E-W	Contract	N-S	E-W	IMP
15	7	3NT	S 6	490	6
4	18	4S	N 6	480	6
9	1	5C	N 6	420	5
8	5	2S	N 6	230	0
11	17	3C	N 6	170	-2
3	13	3C	N 6	170	-2
12	16	4D	E-2	100	-4
10	6	3D	E-1	50	-5
14	2	3D	E-1	50	-5

Board (18) Av: NS=-120

N-S	E-W	Contract	N-S	E-W	IMP
4	18	Passout			3
11	17	1NT	W 1	90	1
10	6	2NT	E 2	120	0
14	2	1NT	W 2	120	0
12	16	1NT	W 2	120	0
9	1	1NT	W 2	120	0
3	13	1NT	W 2	120	0
8	5	2NT	E 3	150	-1
15	7	1NT	W 3	150	-1

19

Hand 19: ♠109532, ♥J, ♦AK432, ♣102. Opponent: ♠AKQ8, ♥K98, ♦10, ♣KQ976. Contract: N. Result: 4.

20

Hand 20: ♠Q7, ♥K975, ♦A652, ♣AQ2. Opponent: ♠J432, ♥AQ102, ♦K974, ♣5. Contract: N. Result: 5.

21

Hand 21: ♠87, ♥A9763, ♣A98642. Opponent: ♠Q106432, ♥QJ92, ♦J10, ♣Q. Contract: N. Result: 4.

Board (19) Av: NS=-180. Table with columns: N-S, E-W, Contract, N-S, E-W, IMP. Rows: 8, 3, 12, 15, 10, 9, 11, 14, 4.

Board (20) Av: NS=+660. Table with columns: N-S, E-W, Contract, N-S, E-W, IMP. Rows: 12, 15, 11, 14, 4, 10, 9, 8, 3.

Board (21) Av: NS=+20. Table with columns: N-S, E-W, Contract, N-S, E-W, IMP. Rows: 11, 10, 14, 12, 3, 8, 4, 15, 9.

22

Hand 22: ♠KJ4, ♥KJ7643, ♦K104, ♣A. Opponent: ♠A3, ♥102, ♦AQ32, ♣J10732. Contract: N. Result: 6.

23

Hand 23: ♠J7, ♥KQJ72, ♦AJ, ♣K987. Opponent: ♠K9642, ♥1063, ♦9832, ♣Q. Contract: N. Result: 3.

24

Hand 24: ♠7, ♥Q42, ♦1098543, ♣963. Opponent: ♠AK32, ♥A865, ♦AJ, ♣J85. Contract: N. Result: 8.

Board (22) Av: NS=+450. Table with columns: N-S, E-W, Contract, N-S, E-W, IMP. Rows: 5, 18, 15, 16, 2, 6, 3, 8, 12.

Board (23) Av: NS=-70. Table with columns: N-S, E-W, Contract, N-S, E-W, IMP. Rows: 6, 18, 3, 15, 2, 16, 8, 12, 5.

Board (24) Av: NS=-770. Table with columns: N-S, E-W, Contract, N-S, E-W, IMP. Rows: 8, 2, 12, 15, 18, 16, 6, 5, 3.

25

Hand 25: ♠9732, ♥10964, ♦K10, ♣965. Opponent: ♠J865, ♥QJ873, ♦7, ♣K72. Contract: N. Result: 7.

26

Hand 26: ♠Q, ♥654, ♦AQJ952, ♣AK5. Opponent: ♠AKJ4, ♥9872, ♦3, ♣J1083. Contract: N. Result: 3.

27

Hand 27: ♠A103, ♥K7642, ♦962, ♣43. Opponent: ♠8654, ♥Q, ♦AJ1087, ♣J109. Contract: N. Result: 7.

Board (25) Av: NS=-540. Table with columns: N-S, E-W, Contract, N-S, E-W, IMP. Rows: 16, 2, 3, 15, 12, 18, 5, 6, 8.

Board (26) Av: NS=+840. Table with columns: N-S, E-W, Contract, N-S, E-W, IMP. Rows: 12, 8, 2, 18, 16, 5, 15, 3, 6.

Board (27) Av: NS=+430. Table with columns: N-S, E-W, Contract, N-S, E-W, IMP. Rows: 18, 16, 8, 15, 2, 12, 5, 6, 3.

28

♠ J6 ♥ KQ1097 ♦ AJ106 ♣ K3	N E S	♠ K1094 ♥ A43 ♦ 93 ♣ A1097	♠ Q75 ♥ J85 ♦ K754 ♣ J64
-------------------------------------	------------------	-------------------------------------	-----------------------------------

♠ A832
♥ 62
♦ Q82
♣ Q852

Board (28) Av: NS=-110

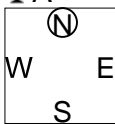
N-S	E-W	Contract	N-S	E-W	IMP
6	13	2S	S 2	110	6
16	9	3H	W-1	50	4
3	10	2H	W 2	110	0
12	1	3H	W 3	140	-1
15	4	3H	W 3	140	-1
8	17	2H	W 3	140	-1
5	14	2H	W 3	140	-1
18	7	2H	W 3	140	-1
2	11	2H	W 4	170	-2

第17回NRM杯 Session4 Flight C 2012年7月1日(日)

1

♠ K1098
♥ KQJ
♦ A10876
♣ A

♠ 7
♥ A8
♦ 943
♣ KQ98653



♠ A432
♥ 1052
♦ J5
♣ J1074

♠ QJ65
♥ 97643
♦ KQ2
♣ 2

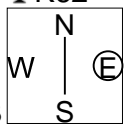
Board (1) Av: NS=+420

N-S	E-W	Contract	N-S	E-W	IMP
6	3	4S	N 5	450	1
18	16	4H	S 5	450	1
10	9	4S	N 4	420	0
13	17	4S	N 4	420	0
5	4	4S	N 4	420	0
7	12	4S	N 4	420	0
14	15	4H	S 4	420	0
11	8	4H	S 4	420	0
2	1	6S	S-1	50	-10

2

♠ QJ62
♥ A
♦ AK432
♣ K62

♠ K83
♥ J642
♦ 109
♣ A1053



♠ 54
♥ 10753
♦ Q87
♣ J874

♠ A1097
♥ KQ98
♦ J65
♣ Q9

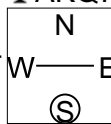
Board (2) Av: NS=+330

N-S	E-W	Contract	N-S	E-W	IMP
14	15	5S	N 5	650	8
13	17	5S	N 5	650	8
6	3	5S	N 5	650	8
18	16	5S	N 5	650	8
5	4	5S	N 5	650	8
11	8	5S	N-1	100	-10
7	12	5S	N-1	100	-10
2	1	5S	N-1	100	-10
10	9	6D	S-2	200	-11

3

♠ Q103
♦ AJ8764
♣ AKQ7

♠ 8752
♥ AK754
♦ Q109
♣ 2



♠ AJ1063
♥ 92
♦ 52
♣ J1094

♠ KQ94
♥ J86
♦ K3
♣ 8653

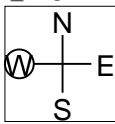
Board (3) Av: NS=-20

N-S	E-W	Contract	N-S	E-W	IMP
11	8	3NT	S 5	460	10
10	9	3S	E-2	200	6
6	3	2C	N 4	130	4
5	4	3D	N-1	50	-1
18	16	5C	S-2	100	-2
14	15	5C	N-2	100	-2
2	1	5C	N-2	100	-2
7	12	5C	N-2	100	-2
13	17	5C	N-2	100	-2

4

♠ 5
♥ AK9854
♦ 32
♣ 7542

♠ J8432
♥ 63
♦ KQJ9
♣ 103



♠ A96
♥ Q102
♦ A1076
♣ A96

♠ KQ107
♥ J7
♦ 854
♣ KQJ8

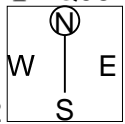
Board (4) Av: NS=+20

N-S	E-W	Contract	N-S	E-W	IMP
7	12	2H	N 2	110	3
10	9	2H	N 2	110	3
11	8	2H	N 2	110	3
5	4	2H	N 2	110	3
2	1	2H	N 2	110	3
6	3	3H	N-1	100	-3
14	15	2S	W 2	110	-4
13	17	2S	W 2	110	-4
18	16	2S	W 3	140	-4

5

♠ A95
♥ K75
♦ K2
♣ AQ987

♠ K106
♥ 96
♦ J765
♣ K1062



♠ J84
♥ Q1084
♦ Q108
♣ 543

♠ Q732
♥ AJ32
♦ A943
♣ J

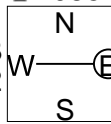
Board (5) Av: NS=+610

N-S	E-W	Contract	N-S	E-W	IMP
13	17	3NT	N 5	660	2
7	12	3NT	N 4	630	1
11	8	3NT	N 4	630	1
18	16	3NT	N 4	630	1
14	15	3NT	N 3	600	0
2	1	3NT	N 3	600	0
5	4	3NT	N 3	600	0
10	9	3NT	N 3	600	0
6	3	3NT	N-1	100	-12

6

♠ AK983
♥ 1087
♦ K9
♣ 1085

♠ J52
♥ Q543
♦ Q732
♣ 43



♠ Q1064
♥ KJ92
♦ 64
♣ 762

♠ 7
♥ A6
♦ AJ1085
♣ AKQJ9

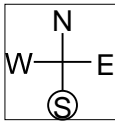
Board (6) Av: NS=+500

N-S	E-W	Contract	N-S	E-W	IMP
7	12	6C	S 7	940	10
18	16	6C	S 6	920	9
2	1	3NT	S 4	430	-2
14	15	3NT	S 4	430	-2
10	9	3NT	S 4	430	-2
6	3	3NT	S 4	430	-2
5	4	3NT	S 4	430	-2
13	17	5C	S 6	420	-2
11	8	4S	N-1	50	-11

7

♠ J6
♥ Q9832
♦ A54
♣ A98

♠ Q843
♥ 7
♦ J1076
♣ 7432



♠ 1095
♥ KJ6
♦ Q83
♣ KQJ10

♠ AK72
♥ A1054
♦ K92
♣ 65

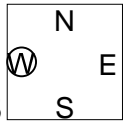
Board (7) Av: NS=+450

N-S	E-W	Contract	N-S	E-W	IMP
11	8	4H	N 4	620	5
10	9	4H	N 4	620	5
14	15	4H	N 4	620	5
13	17	4H	N 4	620	5
2	1	4H	N 4	620	5
7	12	4H	N 4	620	5
5	4	2H	N 3	140	-7
18	16	4H	N-1	100	-11
6	3	4H	N-1	100	-11

8

♠ J8762
♥ A1094
♦ 7
♣ QJ6

♠ Q543
♥ 73
♦ Q53
♣ 10875



♠ 9
♥ KQJ52
♦ J109864
♣ 2

♠ AK10
♥ 86
♦ AK2
♣ AK943

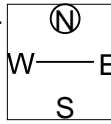
Board (8) Av: NS=+460

N-S	E-W	Contract	N-S	E-W	IMP
7	8	3NT	S 6	490	1
1	3	4S	S 6	480	1
15	16	4S	N 6	480	1
5	6	4S	N 6	480	1
4	2	3NT	S 5	460	0
17	14	4S	N 5	450	0
9	12	4S	N 5	450	0
18	13	4S	S 4	420	-1
10	11	4S	S-1	50	-11

9

♠ 83
♥ K72
♦ KJ53
♣ Q1042

♠ Q954
♥ J108
♦ Q2
♣ K853



♠ KJ1062
♥ 543
♦ A7
♣ A97

♠ A7
♥ AQ96
♦ 109864
♣ J6

Board (9) Av: NS=+40

N-S	E-W	Contract	N-S	E-W	IMP
18	13	3S	E-2	200	4
4	2	3D	S 3	110	2
15	16	2S	E-1	100	2
17	14	2S	E-1	100	2
1	3	2S	E-1	100	2
10	11	4H	N-1	50	-3
5	6	4D	S-1	50	-3
9	12	3D	N-1	50	-3
7	8	2S	E 2	110	-4

10

♠AQ9653
♥K10
♦6432
♣4

♠J1084
♥Q876
♦K
♣J1053

♠K7
♥A9532
♦97
♣9762

N
W—E
S

Board (10) Av: NS=-130

N-S	E-W	Contract	N-S	E-W	IMP
10	11	3NT E-2	200		8
15	16	5D W-1	100		6
4	2	3NT E-1	100		6
5	6	2C W 3		110	1
7	8	3D W 4		130	0
18	13	3C W 4		130	0
17	14	3C W 4		130	0
1	3	5C W 5		600	-10
9	12	3NT E 3		600	-10

11

♠A9
♥97432
♦942
♣K42

♠Q10
♥K108
♦J63
♣AQ1083

♠KJ87
♥J65
♦A10
♣J975

N
W—E
S

Board (11) Av: NS=-200

N-S	E-W	Contract	N-S	E-W	IMP
5	6	3NT E-1	50		6
15	16	3NT E-1	50		6
1	3	Passout			5
10	11	2NT E 2		120	2
7	8	2NT E 2		120	2
18	13	3NT E 3		400	-5
17	14	3NT E 3		400	-5
4	2	3NT E 3		400	-5
9	12	3NT E 3		400	-5

12

♠63
♥KQJ96
♦32
♣K932

♠AQJ874
♥42
♦Q876
♣Q

♠K10952
♥A1083
♦54
♣A7

N
W—E
S

Board (12) Av: NS=-70

N-S	E-W	Contract	N-S	E-W	IMP
9	12	2S W-2	100		5
1	3	2S W-2	100		5
17	14	2S W-1	50		3
4	2	3D W 3		110	-1
5	6	3D W 3		110	-1
18	13	4D W 4		130	-2
7	8	4D W 4		130	-2
10	11	4D E 4		130	-2
15	16	3C E 4		130	-2

13

♠AQJ
♥AJ63
♦KQ6
♣764

♠K1073
♥Q84
♦954
♣Q92

♠64
♥K10952
♦J102
♣AKJ

N
W—E
S

Board (13) Av: NS=+530

N-S	E-W	Contract	N-S	E-W	IMP
9	12	4H S 5	650		3
10	11	4H N 5	650		3
5	6	4H N 5	650		3
17	14	4H N 4	620		3
15	16	4H N 4	620		3
7	8	4H N 4	620		3
1	3	4H N 4	620		3
18	13	5H N-1		100	-12
4	2	6H N-2		200	-12

14

♠J4
♥87
♦AK1073
♣J1043

♠KQ75
♥K65
♦J5
♣Q875

♠10982
♥AJ32
♦964
♣A9

♠A63
♥Q1094
♦Q82
♣K62

N
W—E
S

Board (14) Av: NS=+30

N-S	E-W	Contract	N-S	E-W	IMP
15	16	2D N 3	110		2
1	3	3S W-2	100		2
17	14	2D N 2	90		2
10	11	Passout			-1
18	13	Passout			-1
5	6	Passout			-1
4	2	Passout			-1
9	12	Passout			-1
7	8	Passout			-1

15

♠63
♥A7
♦KQ8543
♣1063

♠AK
♥1042
♦96
♣QJ9854

♠Q98542
♥K985
♦J72
♣

♠J107
♥QJ63
♦A10
♣AK72

N
W—E
S

Board (15) Av: NS=+600

N-S	E-W	Contract	N-S	E-W	IMP
17	16	3NT S 4	630		1
9	7	3NT S 4	630		1
14	13	3NT S 3	600		0
15	18	3NT S 3	600		0
2	6	3NT S 3	600		0
12	11	3NT S 3	600		0
5	3	3NT S 3	600		0
8	10	3NT S 3	600		0
4	1	3NT S 3	600		0

16

♠A
♥87
♦K108532
♣K764

♠QJ1073
♥Q10642
♦
♣953

♠K965
♥53
♦AJ6
♣QJ108

N
W—E
S

Board (16) Av: NS=-300

N-S	E-W	Contract	N-S	E-W	IMP
8	10	1NT W 1		90	5
15	18	3H E 4		170	4
2	6	3H E 4		170	4
4	1	3H E 4		170	4
14	13	2H E 4		170	4
17	16	2H E 4		170	4
9	7	4H E 4		620	-8
12	11	4H E 4		620	-8
5	3	4H E 5		650	-8

17

♠K96
♥Q7543
♦AK
♣KQ6

♠QJ10754
♥J8
♦765
♣87

♠A83
♥A
♦Q109432
♣A54

♠2
♥K10962
♦J8
♣J10932

N
W—E
S

Board (17) Av: NS=+300

N-S	E-W	Contract	N-S	E-W	IMP
17	16	4H N 4	420		3
12	11	4H N 4	420		3
15	18	4H N 4	420		3
9	7	4H N 4	420		3
4	1	4H N 4	420		3
8	10	3H N 4	170		-4
5	3	3H N 4	170		-4
2	6	5Dx E-1	100		-5
14	13	3S W 4		170	-10

18

♠J97
♥J3
♦Q10862
♣K63

♠10652
♥1086
♦K5
♣QJ97

♠KQ
♥AK92
♦9743
♣A105

♠A843
♥Q754
♦AJ
♣842

N
W—E
S

Board (18) Av: NS=-120

N-S	E-W	Contract	N-S	E-W	IMP
5	3	1NT E 1		90	1
15	18	1NT E 1		90	1
9	7	1NT E 2		120	0
17	16	1NT E 2		120	0
2	6	1NT E 2		120	0
4	1	1NT E 2		120	0
8	10	1NT E 2		120	0
14	13	1NT E 3		150	-1
12	11	1NT E 3		150	-1

19

♠ KJ954
♥ K62
♦ 4
♣ AK104

♠ 72
♥ A1073
♦ A1092
♣ QJ6

N
W — E
S

♠ 1063
♥ QJ984
♦ KJ3
♣ 93

♠ AQ8
♥ 5
♦ Q8765
♣ 8752

Board (19) Av: NS=+330

N-S	E-W	Contract	N-S	E-W	IMP
8	10	4S	N 5	450	3
12	11	4S	N 4	420	3
17	16	4S	N 4	420	3
4	1	4S	N 4	420	3
9	7	4S	N 4	420	3
15	18	2S	N 5	200	-4
14	13	2S	N 5	200	-4
2	6	2S	N 5	200	-4
5	3	3S	N 4	170	-4

20

♠ K9
♥ K10985
♦ 73
♣ J1052

♠ Q52
♥ AQ7
♦ A102
♣ Q984

N
W — E
S

♠ A874
♥ 43
♦ J85
♣ A763

♠ J1063
♥ J62
♦ KQ964
♣ K

Board (20) Av: NS=-60

N-S	E-W	Contract	N-S	E-W	IMP
12	11	1NT	N 2	120	5
17	16	1NT	W-1	100	4
15	18	1NT	W 1	90	-1
14	13	1NT	W 1	90	-1
2	6	1NT	W 1	90	-1
4	1	1NT	W 1	90	-1
5	3	1NT	W 1	90	-1
8	10	1NT	W 1	90	-1
9	7	3C	W 3	110	-2

21

♠ 72
♥ A10863
♦ AQ10
♣ 1074

♠ A109543
♥ 9
♦ J9765
♣ K

N
W — E
S

♠ KJ6
♥ QJ
♦ K84
♣ A9862

♠ Q8
♥ K7542
♦ 32
♣ QJ53

Board (21) Av: NS=-250

N-S	E-W	Contract	N-S	E-W	IMP
17	16	4S	W-1	50	7
2	6	2D	W 3	110	4
9	7	3S	W 4	170	2
4	1	2S	W 4	170	2
14	13	3S	W 5	200	2
12	11	2S	W 5	200	2
5	3	4S	W 4	420	-5
8	10	4S	W 5	450	-5
15	18	4S	W 5	450	-5

22

♠ A7643
♥ A632
♦ 10732
♣

♠ J2
♥ J10
♦ J4
♣ AJ108532

N
W — E
S

♠ Q109
♥ Q54
♦ Q986
♣ 976

♠ K85
♥ K987
♦ AK5
♣ KQ4

Board (22) Av: NS=+440

N-S	E-W	Contract	N-S	E-W	IMP
8	12	4H	N 5	450	0
14	16	4H	N 5	450	0
15	13	4H	N 5	450	0
1	5	4H	N 5	450	0
3	2	4H	N 5	450	0
6	4	4S	N 4	420	-1
10	7	4S	N 4	420	-1
17	18	4H	N 4	420	-1
11	9	4S	N-1	50	-10

23

♠ KJ
♥ AQ85
♦ Q874
♣ K73

♠ Q10864
♥ K7642
♦ A
♣ 54

N
W — E
S

♠ A92
♥
♦ K1096532
♣ A86

♠ 753
♥ J1093
♦ J
♣ QJ1092

Board (23) Av: NS=-110

N-S	E-W	Contract	N-S	E-W	IMP
15	13	3D	W-1	100	5
8	12	2D	W 2	90	1
11	9	2D	W 2	90	1
10	7	3H	N-1	100	0
6	4	2NT	N-1	100	0
14	16	3D	E 3	110	0
3	2	3D	E 3	110	0
17	18	2D	W 5	150	-1
1	5	3C	S-2	200	-3

24

♠ J63
♥ K93
♦ J1094
♣ Q43

♠ K52
♥ Q10852
♦ KQ75
♣ 8

N
W — E
S

♠ 874
♥ A74
♦ 832
♣ A1052

♠ AQ109
♥ J6
♦ A6
♣ KJ976

Board (24) Av: NS=+40

N-S	E-W	Contract	N-S	E-W	IMP
15	13	1NT	S 2	120	2
17	18	1NT	S 2	120	2
10	7	1NT	S 1	90	2
14	16	1NT	S 1	90	2
1	5	3H	W-1	50	0
8	12	2H	W-1	50	0
11	9	3C	S-1	50	-3
3	2	1NT	N-1	50	-3
6	4	3NT	N-2	100	-4

25

♠ 984
♥ KQ542
♦ 872
♣ 84

♠ J
♥ 1087
♦ A643
♣ AQJ93

N
W — E
S

♠ Q7652
♥ J96
♦ KQJ5
♣ 10

♠ AK103
♥ A3
♦ 109
♣ K7652

Board (25) Av: NS=+90

N-S	E-W	Contract	N-S	E-W	IMP
10	7	1NT	S 4	180	3
3	2	1NT	S 3	150	2
17	18	1NT	S 2	120	1
11	9	1NT	S 2	120	1
14	16	2C	W-1	100	0
1	5	1S	S 1	80	0
8	12	1S	S 1	80	0
6	4	2H	N-1	50	-4
15	13	1S	S-1	50	-4

26

♠ A4
♥ KQ4
♦ AK932
♣ A86

♠ KJ32
♥ J102
♦ 84
♣ K942

N
W — E
S

♠ Q10985
♥ A9
♦ 1075
♣ QJ3

♠ 76
♥ 87653
♦ QJ6
♣ 1075

Board (26) Av: NS=+80

N-S	E-W	Contract	N-S	E-W	IMP
3	2	4H	N 4	620	11
10	7	4H	N 4	620	11
1	5	3H	N 4	170	3
6	4	2NT	N 3	150	2
15	13	4H	N-1	100	-5
14	16	3H	N-1	100	-5
8	12	3H	N-1	100	-5
17	18	3H	N-1	100	-5
11	9	2NT	N-1	100	-5

27

♠ 107
♥ Q5
♦ A876
♣ KQ843

♠ QJ62
♥ K10
♦ J10542
♣ 109

N
W — E
S

♠ AK943
♥ A43
♦ KQ9
♣ J7

♠ 85
♥ J98762
♦ 3
♣ A652

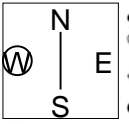
Board (27) Av: NS=-220

N-S	E-W	Contract	N-S	E-W	IMP
3	2	4S	E-2	100	8
15	13	4S	E-1	50	7
6	4	4S	E-1	50	7
10	7	3S	E 3	140	2
14	16	3S	W 6	230	0
11	9	4S	W 4	420	-5
17	18	4S	W 4	420	-5
8	12	4S	E 4	420	-5
1	5	4S	E 6	480	-6

28

♠ 105
♥ AQ85
♦ A106
♣ K1082

♠ KQ93
♥ 73
♦ 985
♣ AJ93



♠ AJ42
♥ J109
♦ J74
♣ Q65

♠ 876
♥ K642
♦ KQ32
♣ 74

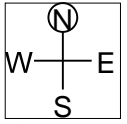
Board (28) Av: NS=+160

N-S	E-W	Contract	N-S	E-W	IMP
1	5	3H S 4	170		0
10	7	2H S 4	170		0
15	13	2H S 4	170		0
8	12	2H S 4	170		0
3	2	2H S 4	170		0
17	18	3H S 3	140		-1
6	4	3H S 3	140		-1
11	9	2H S 3	140		-1
14	16	2S W-1	50		-3

29

♠ AQJ74
♥ J53
♦ K
♣ 9842

♠ K8
♥ K10
♦ 7652
♣ QJ763



♠ 1093
♥ AQ876
♦ 93
♣ AK5

♠ 652
♥ 942
♦ AQJ1084
♣ 10

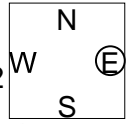
Board (29) Av: NS=+60

N-S	E-W	Contract	N-S	E-W	IMP
16	13	3S N 3	140		2
6	1	2S N 3	140		2
10	12	2S N 3	140		2
9	8	2S N 2	110		2
5	2	2S N 2	110		2
7	11	2S N 2	110		2
3	4	3C E 3	110		-5
14	18	3C E 3	110		-5
15	17	2H E 4	170		-6

30

♠ Q1064
♥ 10854
♦ K4
♣ AQ8

♠ K75
♥ K97
♦ J9862
♣ 32



♠ J92
♥ J62
♦ A7
♣ K9654

♠ A83
♥ AQ3
♦ Q1053
♣ J107

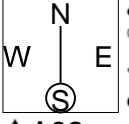
Board (30) Av: NS=-40

N-S	E-W	Contract	N-S	E-W	IMP
15	17	3NT S 3	400		10
7	11	2NT S 3	150		5
10	12	3NT S-1	50		0
14	18	2NT S-1	50		0
5	2	2NT S-1	50		0
3	4	4H N-2	100		-2
16	13	2NT S-2	100		-2
6	1	2NT S-2	100		-2
9	8	2NT S-2	100		-2

31

♠ 75
♥ AJ7432
♦ K6
♣ 875

♠ 4
♥ Q108
♦ A743
♣ QJ1042



♠ KQJ10963
♥ 965
♦ Q9
♣ A

♠ A82
♥ K
♦ J10852
♣ K963

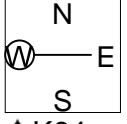
Board (31) Av: NS=+40

N-S	E-W	Contract	N-S	E-W	IMP
9	8	4Sx E-2	300		6
15	17	4S E-3	150		3
7	11	4S E-2	100		2
14	18	4S E-2	100		2
16	13	3S E-2	100		2
6	1	4S E-1	50		0
3	4	2S E 2	110		-4
10	12	2S E 2	110		-4
5	2	2S E 3	140		-5

32

♠ QJ52
♥ 6
♦ QJ1084
♣ J92

♠ A973
♥ A42
♦ 9
♣ AKQ73



♠ 108
♥ Q983
♦ A632
♣ 1085

♠ K64
♥ KJ1075
♦ K75
♣ 64

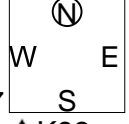
Board (32) Av: NS=-210

N-S	E-W	Contract	N-S	E-W	IMP
15	17	2H E 2	110		3
7	11	2NT E 2	120		3
3	4	2NT E 2	120		3
5	2	2NT E 2	120		3
10	12	2NT E 3	150		2
9	8	2NT E 3	150		2
16	13	2NT E 4	180		1
14	18	3NT E 3	600		-9
6	1	3NT E 3	600		-9

33

♠ QJ75
♥ Q
♦ QJ843
♣ Q92

♠ 42
♥ AJ4
♦ 965
♣ AKJ87



♠ A1086
♥ 9832
♦ K2
♣ 1064

♠ K93
♥ K10765
♦ A107
♣ 53

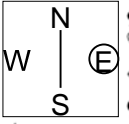
Board (33) Av: NS=+90

N-S	E-W	Contract	N-S	E-W	IMP
15	17	3H E-4	200		3
10	12	1NT W-3	150		2
6	1	1NT W-3	150		2
7	11	3D N 4	130		1
5	2	2D N 4	130		1
14	18	3C W-1	50		-1
3	4	3C W-1	50		-1
9	8	2H S-1	50		-4
16	13	1NT E 1	90		-5

34

♠ Q1043
♥ K2
♦ AQ976
♣ 93

♠ 765
♥ J43
♦ J85
♣ J1085



♠ AK82
♥ Q1086
♦ 43
♣ K76

♠ J9
♥ A975
♦ K102
♣ AQ42

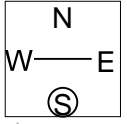
Board (34) Av: NS=+350

N-S	E-W	Contract	N-S	E-W	IMP
14	18	3NT S 3	600		6
10	12	3NT S 3	600		6
3	4	3NT S 3	600		6
15	17	3NT S 3	600		6
7	11	2NT S 5	210		-4
16	13	4D N 5	150		-5
9	8	2D N 5	150		-5
6	1	1NT S 3	150		-5
5	2	1S N 2	110		-6

35

♠ 9752
♥ 974
♦ A1095
♣ K2

♠ K
♥ AQ632
♦ KQ84
♣ A109



♠ AQ104
♥ KJ85
♦ J2
♣ 865

♠ J863
♥ 10
♦ 763
♣ QJ743

Board (35) Av: NS=-1220

N-S	E-W	Contract	N-S	E-W	IMP
15	17	4H W 6	680		11
5	2	4H W 6	680		11
3	4	4H W 6	680		11
14	18	6H W 6	1430		-5
16	13	6H W 6	1430		-5
10	12	6H W 6	1430		-5
6	1	6H W 6	1430		-5
7	11	6H W 6	1430		-5
9	8	6H W 6	1430		-5