

第17回NRM杯 Session1 Flight B 2012年6月30日(土)

1

♠5432
♥AQ654
♦6
♣K85

♠KQ76
♥108
♦J10985
♣Q7

♠J98
♥93
♦KQ3
♣AJ963

♠A10
♥KJ72
♦A742
♣1042

2

♠52
♥53
♦AJ10432
♣K63

♠A864
♥A87
♦KQ6
♣J52

♠K10
♥QJ9642
♦5
♣A1074

♠QJ973
♥K10
♦987
♣Q98

3

♠10753
♥765
♦2
♣109853

♠AK4
♥K1098
♦J10
♣KQJ2

♠QJ8
♥QJ43
♦AQ754
♣6

♠962
♥A2
♦K9863
♣A74

Board (1) Av: NS=+130

N-S	E-W	Contract	N-S	E-W	IMP
4	8	3H N 4	170		1
15	9	3H N 4	170		1
5	7	2H N 4	170		1
1	17	2H N 4	170		1
11	13	2H N 3	140		0
10	14	2H N 3	140		0
16	2	1H N 3	140		0
18	3	4H N-1	50		-5
6	12	4H N-1	50		-5

Board (2) Av: NS=-420

N-S	E-W	Contract	N-S	E-W	IMP
16	2	2H E 4	170		6
4	8	4H W 4	420		0
11	13	4H E 4	420		0
15	9	4H E 4	420		0
18	3	4H E 4	420		0
1	17	4H E 4	420		0
10	14	4H E 4	420		0
6	12	4H E 5	450		-1
5	7	4H E 5	450		-1

Board (3) Av: NS=-410

N-S	E-W	Contract	N-S	E-W	IMP
15	9	5H W-2	200		12
6	12	4H W-1	100		11
5	7	4H W-1	100		11
11	13	4H W 4	620		-5
16	2	4H W 4	620		-5
10	14	4H W 4	620		-5
18	3	4H W 4	620		-5
4	8	4H E 4	620		-5
1	17	4H E 5	650		-6

4

♠AJ963
♥A963
♦82
♣105

♠KQ852
♥8542
♦KQ7
♣8

♠4
♥Q10
♦A10654
♣KJ973

♠107
♥KJ7
♦J93
♣AQ642

5

♠A8
♥KQ65
♦Q6
♣AQ876

♠96543
♥AJ3
♦AJ9
♣K5

♠KJ72
♥982
♦8732
♣J10

♠Q10
♥1074
♦K1054
♣9432

6

♠AJ10752
♥Q
♦A
♣AKQ87

♠Q94
♥J103
♦9432
♣964

♠86
♥K864
♦KQ765
♣32

♠K3
♥A9752
♦J108
♣J105

Board (4) Av: NS=-10

N-S	E-W	Contract	N-S	E-W	IMP
15	9	3D E-3	300		7
11	13	3D E-1	100		3
18	3	Passout			0
16	2	Passout			0
1	17	Passout			0
5	7	Passout			0
10	14	2D E 2	90		-2
4	8	2C S-1	100		-3
6	12	2C S-2	200		-5

Board (5) Av: NS=+150

N-S	E-W	Contract	N-S	E-W	IMP
6	12	1NT N 5	210		2
15	9	1NT N 4	180		1
5	7	1NT N 4	180		1
18	3	4C N 5	150		0
16	2	1NT N 3	150		0
10	14	1NT N 3	150		0
11	13	3C N 4	130		-1
4	8	1NT N 2	120		-1
1	17	2S W 3	140		-7

Board (6) Av: NS=+930

N-S	E-W	Contract	N-S	E-W	IMP
18	3	6S S 7	1010		2
10	14	6S N 7	1010		2
15	9	6S N 7	1010		2
16	2	6S N 7	1010		2
5	7	6S N 7	1010		2
4	8	6S N 6	980		2
6	12	6S N 6	980		2
1	17	4S N 7	510		-9
11	13	4S N 7	510		-9

7

♠42
♥A1093
♦1063
♣K654

♠A963
♥
♦AK8754
♣AQ9

♠K1085
♥KJ642
♦QJ9
♣2

♠QJ7
♥Q875
♦2
♣J10873

8

♠A62
♥862
♦9876
♣Q85

♠KQ10
♥753
♦QJ43
♣962

♠J987
♥AKQ10
♦K2
♣AK3

♠543
♥J94
♦A105
♣J1074

9

♠104
♥KQ854
♦J73
♣A106

♠7632
♥A2
♦K1096
♣J93

♠KJ5
♥976
♦82
♣87542

♠AQ98
♥J103
♦AQ54
♣AKQ

Board (7) Av: NS=-1000

N-S	E-W	Contract	N-S	E-W	IMP
11	13	6S W-1	100		15
6	12	4S W 5	650		8
10	14	5S W 6	680		8
1	17	5S W 6	680		8
5	7	4S W 6	680		8
16	2	6S W 6	1430		-10
18	3	6S W 6	1430		-10
15	9	6S W 6	1430		-10
4	8	6S E 6	1430		-10

Board (8) Av: NS=-440

N-S	E-W	Contract	N-S	E-W	IMP
6	18	4NT E-1	50		10
8	1	3NT E 3	400		1
13	2	3NT E 4	430		0
15	12	3NT E 4	430		0
4	17	3NT E 4	430		0
14	7	3NT E 5	460		-1
5	10	3NT E 5	460		-1
11	16	3NT E 5	460		-1
9	3	3NT E 6	490		-2

Board (9) Av: NS=+450

N-S	E-W	Contract	N-S	E-W	IMP
15	12	4H S 6	480		1
4	17	4H N 6	480		1
9	3	4H N 5	450		0
13	2	4H N 5	450		0
14	7	4H N 5	450		0
6	18	4H N 5	450		0
8	1	4H N 5	450		0
5	10	4NT N 4	430		-1
11	16	3NT N 4	430		-1

10

♠K4
♥J753
♦J962
♣K64

♠Q93
♥Q1062
♦104
♣8753

N
W—E
S

♠87652
♥K
♦K73
♣AQ109

♠AJ10
♥A984
♦AQ85
♣J2

11

♠87
♥Q983
♦QJ753
♣97

♠Q109
♥K107
♦94
♣J10843

N
W—E
S

♠AK6542
♥J6
♦AK1062
♣

♠J3
♥A542
♦8
♣AKQ652

12

♠J1083
♥A73
♦954
♣985

♠542
♥Q109
♦AJ2
♣KQ103

N
W—E
S

♠Q76
♥K2
♦Q10876
♣764

♠AK9
♥J8654
♦K3
♣AJ2

Board (10) Av: NS=0

N-S	E-W	Contract	N-S	E-W	IMP
6	18	4H S 4	620		12
15	12	3H S 4	170		5
5	10	1NT S 3	150		4
4	17	2H S 2	110		3
11	16	4H S-1	100	100	-3
9	3	4H S-1	100	100	-3
8	1	3H S-1	100	100	-3
13	2	3H N-1	100	100	-3
14	7	4H S-4	400	400	-9

Board (11) Av: NS=-290

N-S	E-W	Contract	N-S	E-W	IMP
14	7	4S E-1	50		8
4	17	4S E-1	50		8
9	3	3S E 4	170		3
5	10	3S E 5	200		3
13	2	4S E 4	420		-4
15	12	4S E 4	420		-4
6	18	4S E 4	420		-4
8	1	5S E 5	450		-4
11	16	5Cx S-4	800	800	-11

Board (12) Av: NS=-100

N-S	E-W	Contract	N-S	E-W	IMP
4	17	3H S 3	140		6
8	1	3H S-1	100	100	0
5	10	3H S-1	100	100	0
11	16	2H S-1	100	100	0
13	2	2H S-1	100	100	0
14	7	2H S-1	100	100	0
15	12	1NT S-1	100	100	0
9	3	1NT S-1	100	100	0
6	18	1NT E 2	120	120	-1

13

♠106
♥9653
♦KQ109
♣K43

♠87
♥AJ104
♦A54
♣Q985

N
W—E
S

♠AQ932
♥Q82
♦87
♣1062

♠KJ54
♥K7
♦J632
♣AJ7

14

♠J9853
♥5
♦A9
♣J9632

♠Q4
♥A1092
♦Q65
♣AK74

N
W—E
S

♠AK106
♥KQ73
♦K1073
♣8

♠72
♥J864
♦J842
♣Q105

15

♠Q853
♥5
♦J98652
♣K6

♠A72
♥KJ1097
♦AKQ
♣84

N
W—E
S

♠K96
♥A632
♦1074
♣1032

♠J104
♥Q84
♦3
♣AQJ975

Board (13) Av: NS=+70

N-S	E-W	Contract	N-S	E-W	IMP
5	10	1NT S 2	120		2
11	16	1NT S 2	120		2
9	3	2D S 3	110		1
6	18	2D S 2	90		1
13	2	2D S 2	90		1
4	17	1NT S 1	90		1
15	12	1NT N 1	90		1
8	1	2D S-1	100	100	-5
14	7	1NT N-3	300	300	-9

Board (14) Av: NS=-240

N-S	E-W	Contract	N-S	E-W	IMP
8	1	6H W-1	50		7
13	2	6H W-1	50		7
6	18	6H W-1	50		7
9	3	6H W-1	50		7
5	10	6H W-1	50		7
14	7	4H W 4	420	420	-5
4	17	4H W 5	450	450	-5
15	12	6H W 6	980	980	-12
11	16	6H W 6	980	980	-12

Board (15) Av: NS=-10

N-S	E-W	Contract	N-S	E-W	IMP
18	12	4H W-1	50		2
15	3	4H W-1	50		2
5	16	4H W-1	50		2
2	7	4H W-1	50		2
4	11	4H W-1	50		2
9	6	1NT W-1	50		2
10	17	3H W 3	140	140	-4
8	13	3H W 4	170	170	-4
14	1	2H W 4	170	170	-4

16

♠A984
♥A987
♦Q10
♣K108

♠QJ10632
♥4
♦7642
♣97

N
W—E
S

♠K
♥632
♦J985
♣QJ543

♠75
♥KQJ105
♦AK3
♣A62

17

♠KQ5
♥J1052
♦K97
♣J73

♠10643
♥KQ6
♦Q85
♣K54

N
W—E
S

♠A982
♥A98
♦A1063
♣Q8

♠J7
♥743
♦J42
♣A10962

18

♠AK952
♥J732
♦Q5
♣53

♠J
♥
♦AJ9876
♣AQJ862

N
W—E
S

♠Q87
♥AK104
♦K43
♣974

♠10643
♥Q9865
♦102
♣K10

Board (16) Av: NS=+620

N-S	E-W	Contract	N-S	E-W	IMP
10	17	6H S 6	980		8
4	11	6H S 6	980		8
2	7	6H S 6	980		8
18	12	5H S 6	480		-4
15	3	4H S 6	480		-4
9	6	4H S 6	480		-4
14	1	4H S 6	480		-4
8	13	4H S 6	480		-4
5	16	4H S 6	480		-4

Board (17) Av: NS=-140

N-S	E-W	Contract	N-S	E-W	IMP
9	6	4S W-2	100		6
2	7	2S W 2	110		1
18	12	2S W 2	110		1
8	13	2S W 2	110		1
5	16	2S W 2	110		1
15	3	2S W 4	170		-1
14	1	2S W 4	170		-1
10	17	2S W 4	170		-1
4	11	3Cx S-3	500	500	-8

Board (18) Av: NS=-720

N-S	E-W	Contract	N-S	E-W	IMP
8	13	6C E-1	50		13
9	6	5C E 5	400	400	8
10	17	5C E 6	420	420	7
18	12	3NT E 7	520	520	5
5	16	6C W 6	920	920	-5
15	3	6C E 6	920	920	-5
14	1	6C E 6	920	920	-5
4	11	6C E 6	920	920	-5
2	7	6C E 7	940	940	-6

19

♠AK6
♥AKQ
♦J1074
♣J107

♠Q92
♥98752
♦K8
♣865

N
W—E
S

♠J75
♥10643
♦53
♣Q932

♠10843
♥J
♦AQ962
♣AK4

Board (19) Av: NS=+910

N-S	E-W	Contract	N-S	E-W	IMP
15	3	6NT S 6	990		2
9	6	6NT S 6	990		2
10	17	6NT N 6	990		2
14	1	6NT N 6	990		2
2	7	6NT N 6	990		2
5	16	6NT N 6	990		2
4	11	6D S 6	920		0
8	13	3NT S 6	490		-9
18	12	6D S-1	50	50	-14

20

♠Q9
♥A84
♦KJ1082
♣Q42

♠10854
♥Q
♦7643
♣7653

N
W—E
S

♠AJ3
♥KJ9652
♦Q
♣AJ8

♠K762
♥1073
♦A95
♣K109

Board (20) Av: NS=+110

N-S	E-W	Contract	N-S	E-W	IMP
8	13	2H E-2	200		3
4	11	1NT N 3	150		1
18	12	2NT N 2	120		0
14	1	3D N 3	110		0
15	3	3D N 3	110		0
5	16	3D N 3	110		0
10	17	3H E-1	100		0
2	7	2H E-1	100		0
9	6	2H E 2	110	110	-6

21

♠8543
♥8642
♦87
♣K107

♠KQ62
♥53
♦AKJ5
♣QJ6

N
W—E
S

♠J1097
♥Q
♦Q94
♣A9842

♠A
♥AKJ1097
♦10632
♣53

Board (21) Av: NS=-350

N-S	E-W	Contract	N-S	E-W	IMP
5	16	3Hx S 3	730		14
4	11	3S E 4	170		5
14	1	2S E 4	170		5
18	12	4S E 4	420		-2
15	3	4S E 4	420		-2
10	17	4S E 4	420		-2
2	7	4S E 4	420		-2
8	13	4S E 4	420		-2
9	6	4S E 4	420		-2

22

♠J
♥QJ1097
♦AKJ1085
♣7

♠A1075
♥K4
♦43
♣98532

N
W—E
S

♠K63
♥A53
♦62
♣AKJ106

♠Q9842
♥862
♦Q97
♣Q4

Board (22) Av: NS=+110

N-S	E-W	Contract	N-S	E-W	IMP
1	11	3H N 3	140		1
10	2	2H N 3	140		1
12	3	2H N 3	140		1
16	8	2H N 3	140		1
4	14	2H N 3	140		1
9	18	2H N 3	140		1
13	5	3D N 3	110		0
15	6	4H N-1	50	50	-4
7	17	4H N-5	250	250	-8

23

♠5
♥AK74
♦108
♣986432

♠984
♥J10953
♦Q52
♣105

N
W—E
S

♠AKJ102
♥8
♦A9764
♣KJ

♠Q763
♥Q62
♦KJ3
♣AQ7

Board (23) Av: NS=+150

N-S	E-W	Contract	N-S	E-W	IMP
16	8	5C S 5	600		10
1	11	5C S 5	600		10
13	5	4C S 5	150		0
10	2	4C S 4	130		-1
15	6	4S E-1	100		-2
4	14	3S E-1	100		-2
9	18	3S E-1	100		-2
7	17	2S E 2	110	110	-6
12	3	3H N-3	300	300	-10

24

♠73
♥Q1095
♦KJ62
♣J86

♠AJ
♥72
♦A8543
♣KQ105

N
W—E
S

♠K9854
♥AJ86
♦109
♣A9

♠Q1062
♥K43
♦Q7
♣7432

Board (24) Av: NS=-410

N-S	E-W	Contract	N-S	E-W	IMP
4	14	3NT E-1	50		10
1	11	3NT W 3	400		0
12	3	3NT E 3	400		0
16	8	3NT E 3	400		0
10	2	3NT E 3	400		0
9	18	3NT E 3	400		0
13	5	3NT W 4	430		-1
7	17	3NT E 4	430		-1
15	6	3NT E 4	430		-1

25

♠95432
♥1082
♦K84
♣73

♠AJ8
♥KQ4
♦J5
♣Q10965

N
W—E
S

♠Q76
♥AJ76
♦AQ97
♣J4

♠K10
♥953
♦10632
♣AK82

Board (25) Av: NS=-660

N-S	E-W	Contract	N-S	E-W	IMP
9	18	3NT W 5	660		0
7	17	3NT W 5	660		0
12	3	3NT E 5	660		0
13	5	3NT E 5	660		0
15	6	3NT E 5	660		0
10	2	3NT E 5	660		0
4	14	3NT E 5	660		0
16	8	3NT E 5	660		0
1	11	3NT E 6	690		-1

26

♠10764
♥1062
♦10983
♣Q7

♠KQ9
♥Q
♦762
♣K86542

N
W—E
S

♠A52
♥K854
♦KJ4
♣A103

♠J83
♥AJ973
♦AQ5
♣J9

Board (26) Av: NS=-610

N-S	E-W	Contract	N-S	E-W	IMP
4	14	3NT E-2	200		13
9	18	3NT E 3	600		0
15	6	3NT E 3	600		0
16	8	3NT E 3	600		0
7	17	3NT E 3	600		0
1	11	3NT E 4	630		-1
13	5	3NT E 4	630		-1
10	2	3NT E 4	630		-1
12	3	3NT E 4	630		-1

27

♠52
♥104
♦AKJ1096
♣AJ7

♠Q8764
♥A53
♦82
♣K53

N
W—E
S

♠AJ3
♥KQJ8
♦Q53
♣Q102

♠K109
♥9762
♦74
♣9864

Board (27) Av: NS=0

N-S	E-W	Contract	N-S	E-W	IMP
7	17	4S E-2	100		3
9	18	4S W-1	50		2
12	3	4S W-1	50		2
10	2	4S E-1	50		2
15	6	4S E-1	50		2
1	11	3H E-1	50		2
13	5	2S W 2	110		-3
16	8	3S E 3	140		-4
4	14	2S W 3	140		-4

28

♠ AKQJ843

♥ 4

♦ K108

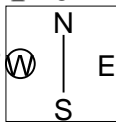
♣ A8

♠ 965

♥ A653

♦ AJ5

♣ QJ6



♠ 7

♥ J102

♦ Q972

♣ 107532

♠ 102

♥ KQ987

♦ 643

♣ K94

Board (28) Av: NS=+650

N-S	E-W	Contract	N-S	E-W	IMP
16	8	5Cx W-4	800		4
7	17	4S N 6	680		1
15	6	4S N 6	680		1
12	3	4S N 5	650		0
4	14	4S N 5	650		0
13	5	4S N 5	650		0
1	11	4S N 4	620		-1
10	2	4S N 4	620		-1
9	18	3S N 5	200		-10

第17回NRM杯 Session 2 Flight B 2012年6月30日(土)

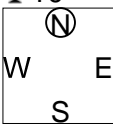
1

♠AKQ972
♥Q87
♦962
♣10

♠1063
♥AJ42
♦85
♣A432

♠8
♥K96
♦AKQJ1073
♣85

♠J54
♥1053
♦4
♣KQJ976



Board (1) Av: NS=+360

N-S	E-W	Contract	N-S	E-W	IMP
3	17	4S	N 7	510	4
13	7	4S	N 6	480	3
1	16	4S	N 6	480	3
12	14	4S	N 5	450	3
10	4	4S	N 5	450	3
8	6	5D	S 5	400	1
18	2	5D	S 5	400	1
11	15	3NT	S-3	150	-11
9	5	3NT	S-3	150	-11

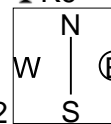
2

♠105
♥QJ7
♦AK9742
♣K9

♠A976
♥1054
♦Q5
♣QJ86

♠QJ432
♥K962
♦63
♣43

♠K8
♥A83
♦J108
♣A10752



Board (2) Av: NS=+60

N-S	E-W	Contract	N-S	E-W	IMP
12	14	4C	W-2	100	1
9	5	4C	W-2	100	1
8	6	4C	W-2	100	1
1	16	4C	W-1	50	0
18	2	3C	W-1	50	0
13	7	3C	W-1	50	0
3	17	3C	W-1	50	0
10	4	3C	W-1	50	0
11	15	3C	W-1	50	0

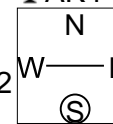
3

♠QJ98
♥K107
♦976
♣AK4

♠A1043
♥Q532
♦Q
♣QJ105

♠K62
♥986
♦KJ853
♣62

♠75
♥AJ4
♦A1042
♣9873



Board (3) Av: NS=+30

N-S	E-W	Contract	N-S	E-W	IMP
12	14	1NT	N 3	150	3
18	2	1NT	N 2	120	3
1	16	1NT	N 1	90	2
9	5	1NT	N 1	90	2
3	17	1NT	N 1	90	2
11	15	1NT	S-1	50	-2
13	7	1NT	N-1	50	-2
8	6	2H	W 2	110	-4
10	4	2H	E 2	110	-4

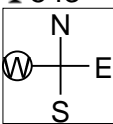
4

♠A8653
♥KQ7
♦84
♣543

♠KQ
♥A53
♦AKQ5
♣AQ72

♠104
♥J1092
♦J109
♣KJ108

♠J972
♥864
♦7632
♣96



Board (4) Av: NS=-400

N-S	E-W	Contract	N-S	E-W	IMP
9	5	3NT	E-2	200	12
10	4	2NT	E 2	120	7
11	15	2NT	E 2	120	7
1	16	2NT	E 3	150	6
12	14	3NT	E 3	600	-5
18	2	3NT	E 3	600	-5
8	6	3NT	E 3	600	-5
3	17	3NT	E 3	600	-5
13	7	3NT	W 4	630	-6

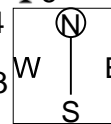
5

♠1093
♥KJ1072
♦A952
♣6

♠AK2
♥Q986
♦Q106
♣1094

♠Q65
♥54
♦87
♣AKQ532

♠J874
♥A3
♦KJ43
♣J87



Board (5) Av: NS=+60

N-S	E-W	Contract	N-S	E-W	IMP
11	15	2H	N 3	140	2
8	6	2C	S 3	110	2
3	17	2C	S 3	110	2
12	14	2C	S 2	90	1
9	5	2C	S 2	90	1
10	4	2S	E-1	50	0
18	2	2S	E-1	50	0
13	7	2H	N-1	100	-4
1	16	2D	S-2	200	-6

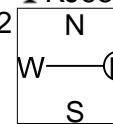
6

♠Q9
♥AJ7
♦KJ72
♣KJ65

♠874
♥K8
♦Q863
♣A1087

♠53
♥10932
♦A1095
♣Q42

♠AKJ1062
♥Q654
♦4
♣93



Board (6) Av: NS=-220

N-S	E-W	Contract	N-S	E-W	IMP
9	5	3H	S-2	100	3
18	2	3H	S-2	100	3
12	14	2S	W 3	140	2
11	15	3S	W 4	170	2
1	16	3S	W 4	170	2
3	17	3S	W 4	170	2
10	4	3S	W 4	170	2
8	6	4S	W 4	620	-9
13	7	3NTxS-4		800	-11

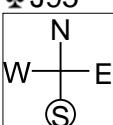
7

♠96
♥J1094
♦KJ95
♣J95

♠53
♥Q83
♦A103
♣108742

♠QJ10874
♥75
♦87
♣KQ3

♠AK2
♥AK62
♦Q642
♣A6



Board (7) Av: NS=-200

N-S	E-W	Contract	N-S	E-W	IMP
11	15	3NT	W-3	300	11
12	14	3NT	W-1	100	7
10	4	3NT	E-1	100	7
1	16	3NT	E-1	100	7
3	17	3NT	E-1	100	7
13	7	3NT	W 3	600	-9
8	6	3NT	W 3	600	-9
9	5	3NT	W 3	600	-9
18	2	3NT	E 3	600	-9

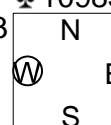
8

♠7
♥762
♦QJ1087
♣10983

♠J52
♥AKQ53
♦5
♣A742

♠A1086
♥J104
♦432
♣KQJ

♠KQ943
♥98
♦AK96
♣65



Board (8) Av: NS=-230

N-S	E-W	Contract	N-S	E-W	IMP
4	16	6S	W-2	100	8
8	15	6S	W-1	50	7
9	2	6S	W-1	50	7
3	14	6S	W-1	50	7
17	12	4S	W 4	420	-5
13	10	4S	W 5	450	-6
6	11	4S	W 5	450	-6
7	1	4S	W 5	450	-6
18	5	6S	W 6	980	-13

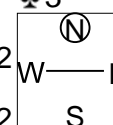
9

♠J107
♥AKJ9
♦K9532
♣3

♠AQ854
♥Q5
♦1076
♣AQ7

♠K96
♥643
♦Q4
♣KJ865

♠32
♥10872
♦AJ8
♣10942



Board (9) Av: NS=+10

N-S	E-W	Contract	N-S	E-W	IMP
7	1	1NT	S 3	150	4
3	14	1NT	S 3	150	4
6	11	2D	N 3	110	3
18	5	2D	N 2	90	2
8	15	1NT	S-1	50	-2
9	2	1NT	S-1	50	-2
4	16	1NT	S-1	50	-2
13	10	1NT	S-2	100	-3
17	12	1NT	S-2	100	-3

10

♠ K732
♥ K7
♦ 10764
♣ 1054

♠ AJ65
♥ A5
♦ J92
♣ J873

N
W — E
S

♠ Q9
♥ QJ63
♦ AQ3
♣ KQ96

♠ 1084
♥ 109842
♦ K85
♣ A2

11

♠ 9
♥ A83
♦ 9643
♣ AQ1082

♠ Q842
♥ 7
♦ KQ875
♣ 973

N
W — E
S

♠ J65
♥ QJ9654
♦ A2
♣ J4

♠ AK1073
♥ K102
♦ J10
♣ K65

12

♠ Q9542
♥ QJ543
♦ 8
♣ J9

♠ K103
♥
♦ AK952
♣ Q8542

N
W — E
S

♠ 87
♥ 9876
♦ QJ76
♣ A63

♠ AJ6
♥ AK102
♦ 1043
♣ K107

Board (10) Av: NS=-610

N-S	E-W	Contract	N-S	E-W	IMP
18	5	3NT E-1	100		12
9	2	3NT E 3	600		0
17	12	3NT E 3	600		0
3	14	3NT E 3	600		0
8	15	3NT E 3	600		0
4	16	3NT W 4	630		-1
7	1	3NT E 4	630		-1
6	11	3NT E 4	630		-1
13	10	3NT E 4	630		-1

Board (11) Av: NS=+220

N-S	E-W	Contract	N-S	E-W	IMP
6	11	3NT N 4	430		5
13	10	3NT N 4	430		5
18	5	3NT N 4	430		5
8	15	3H E-3	150		-2
4	16	3C S 5	150		-2
3	14	3C S 4	130		-3
9	2	3C S 4	130		-3
17	12	2H E-2	100		-3
7	1	2H E-1	50		-5

Board (12) Av: NS=-90

N-S	E-W	Contract	N-S	E-W	IMP
7	1	3S N 3	140		6
6	11	5D W-2	100		5
8	15	4D W-1	50		4
3	14	4D W 4		130	-1
17	12	3D W 5		150	-2
18	5	2D W 5		150	-2
9	2	2D W 5		150	-2
13	10	5H S-2		200	-3
4	16	4Dx W 5		610	-11

13

♠ Q962
♥ K93
♦ A92
♣ 982

♠ AK5
♥
♦ QJ1086
♣ AQ754

N
W — E
S

♠ 10843
♥ AQJ102
♦ 54
♣ K3

♠ J7
♥ 87654
♦ K73
♣ J106

14

♠ 8
♥ KQ6
♦ J6542
♣ Q987

♠ Q10976
♥ A7432
♦ A
♣ A10

N
W — E
S

♠ AK43
♥ J
♦ Q103
♣ J6432

♠ J52
♥ 10985
♦ K987
♣ K5

15

♠ K54
♥ K1032
♦ AJ54
♣ KQ

♠ A106
♥ J74
♦ 1093
♣ J975

N
W — E
S

♠ Q732
♥ 85
♦ Q876
♣ 862

♠ J98
♥ AQ96
♦ K2
♣ A1043

Board (13) Av: NS=-630

N-S	E-W	Contract	N-S	E-W	IMP
8	15	3D W 5	150		10
7	1	3NT W 3	600		1
4	16	3NT E 3	600		1
9	2	3NT E 3	600		1
3	14	3NT E 4	630		0
6	11	3NT E 4	630		0
18	5	3NT W 5	660		-1
13	10	3NT E 5	660		-1
17	12	3NT E 5	660		-1

Board (14) Av: NS=-450

N-S	E-W	Contract	N-S	E-W	IMP
6	11	1S W 5	200		6
18	5	4S W 4	420		1
9	2	4S W 5	450		0
13	10	4S W 5	450		0
3	14	4S W 5	450		0
4	16	4S W 5	450		0
7	1	4S W 5	450		0
8	15	4S W 5	450		0
17	12	4S W 6	480		-1

Board (15) Av: NS=+540

N-S	E-W	Contract	N-S	E-W	IMP
13	1	6H N 6	1430		13
16	10	4H N 5	650		3
12	5	4H N 5	650		3
8	3	4H N 5	650		3
4	7	4H N 5	650		3
11	18	4H N 5	650		3
2	15	3NT N 4	630		3
6	17	6H N-1		100	-12
14	9	6H N-1		100	-12

16

♠ 1043
♥ K1032
♦ Q86
♣ Q106

♠ AJ8
♥ J98654
♦ 5
♣ 983

N
W — E
S

♠ KQ9
♥ Q
♦ AK107
♣ AK542

♠ 7652
♥ A7
♦ J9432
♣ J7

17

♠ Q108432
♥ 2
♦ Q86
♣ 976

♠ 9
♥ KJ105
♦ J543
♣ QJ83

N
W — E
S

♠ A765
♥ AQ976
♦ A
♣ A102

♠ KJ
♥ 843
♦ K10972
♣ K54

18

♠ AJ2
♥ K73
♦ A52
♣ A852

♠ KQ9874
♥ 9
♦ KJ9
♣ Q76

N
W — E
S

♠ 63
♥ QJ102
♦ Q1076
♣ J103

♠ 105
♥ A8654
♦ 843
♣ K94

Board (16) Av: NS=-600

N-S	E-W	Contract	N-S	E-W	IMP
11	18	3NT E 3	600		0
12	5	3NT E 3	600		0
13	1	3NT E 3	600		0
8	3	3NT E 3	600		0
2	15	3NT E 3	600		0
4	7	3NT E 3	600		0
6	17	3NT E 3	600		0
16	10	4H W 4	620		-1
14	9	4H W 4	620		-1

Board (17) Av: NS=-470

N-S	E-W	Contract	N-S	E-W	IMP
6	17	6H W-1	50		11
8	3	6H E-1	50		11
14	9	4H E 5	450		1
12	5	4H E 6	480		0
16	10	4H E 6	480		0
2	15	4H E 6	480		0
11	18	4H E 6	480		0
13	1	6H E 6	980		-11
4	7	6H E 6	980		-11

Board (18) Av: NS=+10

N-S	E-W	Contract	N-S	E-W	IMP
4	7	2H N 3	140		4
2	15	2NT N 2	120		3
8	3	2H N 2	110		3
14	9	2H N 2	110		3
6	17	2S W-1	50		1
11	18	4H N-1		100	-3
16	10	3H N-1		100	-3
13	1	3H N-1		100	-3
12	5	2S W 2		110	-3

19

♠AQ10
♥A95
♦J102
♣KQJ2

♠J862
♥K
♦A85
♣109843

N
W—E
S

♠K95
♥QJ762
♦KQ3
♣65

♠743
♥10843
♦9764
♣A7

Board (19) Av: NS=+30

N-S	E-W	Contract	N-S	E-W	IMP
6	17	2D N 2	90		2
8	3	1NT N 1	90		2
14	9	1NT N 1	90		2
4	7	1NT N 1	90		2
2	15	1NT N 1	90		2
13	1	2D N-1		50	-2
16	10	2D N-1		50	-2
12	5	2D N-1		50	-2
11	18	1NT N-1		50	-2

20

♠AQ2
♥AKQ104
♦
♣AQ983

♠107
♥93
♦KQ975
♣K1072

N
W—E
S

♠86
♥J876
♦AJ42
♣J64

♠KJ9543
♥52
♦10863
♣5

Board (20) Av: NS=+600

N-S	E-W	Contract	N-S	E-W	IMP
13	1	6S S 6	1430		13
2	15	6S S 6	1430		13
11	18	4S S 6	680		2
16	10	4S S 6	680		2
4	7	4S S 6	680		2
8	3	4H N 4	620		1
6	17	1H N 6	230		-9
12	5	6S S-1		100	-12
14	9	4H N-3		300	-14

21

♠AKJ10865
♥A93
♦3
♣Q8

♠92
♥Q84
♦AKJ86
♣K104

N
W—E
S

♠Q
♥KJ762
♦105
♣AJ932

♠743
♥105
♦Q9742
♣765

Board (21) Av: NS=-240

N-S	E-W	Contract	N-S	E-W	IMP
12	5	4S N-1	100		4
13	1	4S N-1	100		4
16	10	4S N-1	100		4
14	9	4Sx N-1	200		1
4	7	4Sx N-1	200		1
8	3	4Sx N-1	200		1
11	18	4H W 4	420		-5
2	15	4H W 5	450		-5
6	17	5Hx W 5	650		-9

22

♠AK82
♥1082
♦52
♣K1062

♠5
♥KQ54
♦K109876
♣J8

N
W—E
S

♠J1093
♥A73
♦AQ43
♣43

♠Q764
♥J96
♦J
♣AQ975

Board (22) Av: NS=0

N-S	E-W	Contract	N-S	E-W	IMP
11	3	Passout			0
10	1	Passout			0
16	7	Passout			0
14	6	Passout			0
4	13	Passout			0
2	12	Passout			0
8	18	Passout			0
5	15	Passout			0
17	9	3S S-1		50	-2

23

♠AQ972
♥Q1065
♦K5
♣73

♠653
♥932
♦43
♣K10852

N
W—E
S

♠104
♥84
♦J10982
♣J964

♠KJ8
♥AKJ7
♦AQ76
♣AQ

Board (23) Av: NS=+1680

N-S	E-W	Contract	N-S	E-W	IMP
14	6	7NT S 7	2220		11
11	3	7S N 7	2210		11
17	9	7H N 7	2210		11
2	12	6NT S 7	1470		-5
4	13	6S N 7	1460		-6
10	1	6H S 7	1460		-6
8	18	6H S 7	1460		-6
5	15	6H S 7	1460		-6
16	7	4NT S 7	720		-14

24

♠K2
♥Q6432
♦1075
♣A43

♠AJ98
♥109
♦AKQ86
♣97

N
W—E
S

♠Q7543
♥J87
♦43
♣KQ6

♠106
♥AK5
♦J92
♣J10852

Board (24) Av: NS=-60

N-S	E-W	Contract	N-S	E-W	IMP
5	15	4S E-1	50		3
11	3	4S E-1	50		3
14	6	4S E-1	50		3
4	13	4S E-1	50		3
10	1	3S W 3		140	-2
17	9	2S E 3		140	-2
16	7	2S E 3		140	-2
8	18	2S E 3		140	-2
2	12	2S E 3		140	-2

25

♠K
♥A1052
♦Q4
♣986532

♠A10765
♥843
♦108
♣AJ7

N
W—E
S

♠QJ32
♥Q7
♦J76532
♣10

♠984
♥KJ96
♦AK9
♣KQ4

Board (25) Av: NS=+150

N-S	E-W	Contract	N-S	E-W	IMP
5	15	4H S 4	420		7
8	18	4H S 4	420		7
17	9	4H S 4	420		7
16	7	3NT S 3	400		6
14	6	4H S-1		50	-5
2	12	4H S-1		50	-5
4	13	4H S-1		50	-5
10	1	4H S-1		50	-5
11	3	4H S-1		50	-5

26

♠K87643
♥QJ65
♦82
♣2

♠95
♥A
♦1097653
♣KJ106

N
W—E
S

♠AQ
♥K842
♦AKJ
♣Q843

♠J102
♥10973
♦Q4
♣A975

Board (26) Av: NS=-690

N-S	E-W	Contract	N-S	E-W	IMP
17	9	3NT E 3	600		3
10	1	3NT E 5	660		1
14	6	3NT E 6	690		0
16	7	3NT E 6	690		0
2	12	3NT E 6	690		0
11	3	3NT E 6	690		0
5	15	3NT E 6	690		0
4	13	3NT E 6	690		0
8	18	6D W 6	1370		-12

27

♠84
♥AQ3
♦98643
♣AQ6

♠A962
♥J984
♦72
♣1095

N
W—E
S

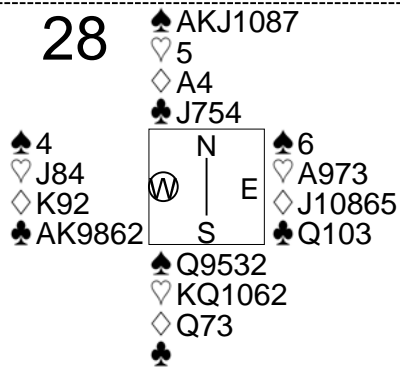
♠10753
♥K105
♦QJ10
♣K84

♠KQJ
♥762
♦AK5
♣J732

Board (27) Av: NS=+80

N-S	E-W	Contract	N-S	E-W	IMP
11	3	3NT S 4	430		8
10	1	3NT S 3	400		8
8	18	3NT N 3	400		8
17	9	3NT S-1		50	-4
2	12	3NT S-1		50	-4
4	13	3NT S-1		50	-4
5	15	3NT S-1		50	-4
16	7	3NT N-1		50	-4
14	6	3NT S-2		100	-5

28



Board (28) Av: NS=+710

N-S	E-W	Contract	N-S	E-W	IMP
14	6	6S	N 6	1430	12
16	7	6Cx	W-4	800	3
10	1	5S	N 7	710	0
2	12	5S	N 7	710	0
17	9	5S	N 6	680	-1
8	18	4S	N 6	680	-1
5	15	4S	N 6	680	-1
11	3	4S	N 6	680	-1
4	13	5C	W-2	100	-12

1

♠ A109
♥ Q752
♦ 53
♣ AJ62

♠ Q63 ♠ K875
♥ AJ94 ♥ K86
♦ Q92 ♦ KJ10
♣ Q83 ♣ K74

W E
S

♠ J42
♥ 103
♦ A8764
♣ 1095

2

♠ A93
♥ KQJ9874
♦
♣ K85

♠ K2 ♠ 1074
♥ 53 ♥ 106
♦ AKQJ432 ♦ 10865
♣ A2 ♣ QJ74

W E
S

♠ QJ865
♥ A2
♦ 97
♣ 10963

3

♠ 104
♥ 105
♦ K1097
♣ Q9852

♠ KQ763 ♠ J85
♥ 94 ♥ AJ83
♦ Q65 ♦ J43
♣ KJ7 ♣ A64

W E
S

♠ A92
♥ KQ762
♦ A82
♣ 103

Board (1) Av: NS=-50

N-S	E-W	Contract	N-S	E-W	IMP
12	13	3NT E-1	50		3
7	6	3NT E-1	50		3
15	10	2NT W-1	50		3
14	8	2H W-1	50		3
18	1	2NT W 2	120		-2
2	17	2NT W 2	120		-2
3	16	2NT W 2	120		-2
11	5	1NT W 2	120		-2
4	9	1NT W 2	120		-2

Board (2) Av: NS=+350

N-S	E-W	Contract	N-S	E-W	IMP
12	13	5Hx N 5	850		11
18	1	5H N 6	680		8
7	6	4H N 6	680		8
2	17	5H N 5	650		7
15	10	5D W-3	150		-5
3	16	5D W-3	150		-5
14	8	5D W-2	100		-6
11	5	4D W-1	50		-7
4	9	4D W-1	50		-7

Board (3) Av: NS=+10

N-S	E-W	Contract	N-S	E-W	IMP
15	10	4S W-2	200		5
7	6	3NT E-1	100		3
11	5	2S W-1	100		3
2	17	2S W-1	100		3
4	9	2S W-1	100		3
18	1	2S W 2	110		-3
14	8	2S W 2	110		-3
3	16	2S W 2	110		-3
12	13	2S W 2	110		-3

4

♠ AQ97
♥ 82
♦ Q5
♣ QJ653

♠ K54 ♠ J1062
♥ 10953 ♥ KJ64
♦ AK2 ♦ 986
♣ 742 ♣ A9

W E
S

♠ 83
♥ AQ7
♦ J10743
♣ K108

5

♠ 53
♥ AK3
♦ K873
♣ AQ92

♠ QJ2 ♠ A1096
♥ Q2 ♥ J10985
♦ 65 ♦ AJ42
♣ J76543 ♣

W E
S

♠ K874
♥ 764
♦ Q109
♣ K108

6

♠ J52
♥ 964
♦ 1054
♣ K963

♠ A6 ♠ 974
♥ KQ10753 ♥ A8
♦ AJ7 ♦ Q86
♣ 52 ♣ J10874

W E
S

♠ KQ1083
♥ J2
♦ K932
♣ AQ

Board (4) Av: NS=+20

N-S	E-W	Contract	N-S	E-W	IMP
14	8	1NT S 3	150		4
2	17	1NT S 3	150		4
12	13	Passout			-1
18	1	Passout			-1
15	10	Passout			-1
4	9	Passout			-1
3	16	Passout			-1
11	5	Passout			-1
7	6	Passout			-1

Board (5) Av: NS=+30

N-S	E-W	Contract	N-S	E-W	IMP
3	16	3NT N 3	600		11
12	13	3S W-3	150		3
14	8	2NT N 2	120		3
18	1	3S W-2	100		2
15	10	2H E-2	100		2
7	6	2H E-1	50		1
11	5	3NT N-1	100		-4
4	9	3NT N-2	200		-6
2	17	3C N-2	200		-6

Board (6) Av: NS=-60

N-S	E-W	Contract	N-S	E-W	IMP
12	13	3S S-1	50		0
15	10	3S S-1	50		0
4	9	3S S-1	50		0
2	17	3S S-1	50		0
14	8	2S S-1	50		0
7	6	2S S-1	50		0
18	1	3S S-2	100		-1
11	5	3S S-2	100		-1
3	16	2H W 3	140		-2

7

♠ AK954
♥ K98
♦ J4
♣ 1082

♠ J106
♥ 103
♦ A752
♣ Q653

W E
S

♠ Q8732
♥ AQ76542
♦ Q
♣

8

♠ A1072
♥ KJ94
♦ KQ4
♣ 32

♠ J96 ♠ Q854
♥ Q108 ♥ A765
♦ A1032 ♦ 76
♣ KJ9 ♣ Q74

W E
S

♠ K3
♥ 32
♦ J985
♣ A10865

9

♠ AKQ765
♥ Q98
♦ 83
♣ 97

♠ 1093 ♠ 8
♥ KJ3 ♥ 10642
♦ 9652 ♦ KQ107
♣ KJ8 ♣ 10642

W E
S

♠ J42
♥ A75
♦ AJ4
♣ AQ53

Board (7) Av: NS=+980

N-S	E-W	Contract	N-S	E-W	IMP
7	6	6Sx N 6	1660		12
4	9	6H S 6	1430		10
2	17	6H S 6	1430		10
12	13	5Sx S 7	1250		7
18	1	5S N 6	680		-7
11	5	5S N 6	680		-7
3	16	5H S 6	680		-7
15	10	5H S 6	680		-7
14	8	5H S 6	680		-7

Board (8) Av: NS=+40

N-S	E-W	Contract	N-S	E-W	IMP
10	18	2H W-4	200		4
3	7	2H W-3	150		3
17	5	1NT S 3	150		3
4	12	1NT S 1	90		2
14	11	1NT S 1	90		2
13	9	1NT S-1	50		-3
8	2	1NT S-1	50		-3
16	6	2Dx N-1	100		-4
1	15	1NT S-2	100		-4

Board (9) Av: NS=+290

N-S	E-W	Contract	N-S	E-W	IMP
13	9	4S N 5	450		4
14	11	4S N 5	450		4
17	5	4S N 5	450		4
3	7	4S N 5	450		4
4	12	4S N 4	420		4
16	6	4S N 4	420		4
10	18	6S N-1	50		-8
1	15	6S N-2	100		-9
8	2	6S N-2	100		-9

10

♠84
♥A983
♦KQ76
♣Q92

♠A9632
♥J106
♦93
♣AK4

♠KQ5
♥K752
♦J54
♣1083

♠J107
♥Q4
♦A1082
♣J765

11

♠QJ9732
♥108
♦A964
♣8

♠AK
♥765
♦K10
♣QJ10764

♠8
♥J942
♦Q87
♣AK953

♠10654
♥AKQ3
♦J532
♣2

12

♠Q102
♥Q965
♦1076432
♣

♠J64
♥74
♦AQJ
♣KJ852

♠A98753
♥AK
♦5
♣AQ96

♠K
♥J10832
♦K98
♣10743

Board (10) Av: NS=-90

N-S	E-W	Contract	N-S	E-W	IMP
16	6	3D S 3	110		5
13	9	3S E-1	100		5
14	11	2S E 2	110		-1
10	18	2S E 2	110		-1
3	7	2S E 2	110		-1
8	2	2S E 2	110		-1
17	5	3S E 3	140		-2
1	15	2S E 3	140		-2
4	12	3C S-2	200		-3

Board (11) Av: NS=+160

N-S	E-W	Contract	N-S	E-W	IMP
4	12	5Cx E-2	300		4
13	9	5Cx E-2	300		4
17	5	5Cx E-2	300		4
14	11	6C E-3	150		0
1	15	5C E-2	100		-2
16	6	5C E-2	100		-2
8	2	5C E-2	100		-2
10	18	5C E-2	100		-2
3	7	4Sx N-1	100		-6

Board (12) Av: NS=-610

N-S	E-W	Contract	N-S	E-W	IMP
14	11	6S W-1	50		12
4	12	6C E-1	50		12
16	6	5S W 5	450		4
3	7	5S W 6	480		4
17	5	4S W 6	480		4
1	15	6S W 6	980		-9
8	2	6S W 6	980		-9
10	18	6S W 6	980		-9
13	9	6S W 6	980		-9

13

♠A52
♥Q62
♦J984
♣KJ2

♠963
♥43
♦32
♣A98743

♠KJ107
♥KJ87
♦Q107
♣105

♠Q84
♥A1095
♦AK65
♣Q6

14

♠KQJ9
♥K5
♦Q106
♣A985

♠8543
♥A107
♦KJ52
♣Q4

♠2
♥98632
♦A93
♣10732

♠A1076
♥QJ4
♦874
♣KJ6

15

♠A2
♥1094
♦J10987543
♣

♠8543
♥A7
♦AKQ
♣8643

♠QJ106
♥6532
♦2
♣Q1092

♠K97
♥KQJ8
♦6
♣AKJ75

Board (13) Av: NS=-100

N-S	E-W	Contract	N-S	E-W	IMP
13	9	3NT S 4	630		12
17	5	3NT S-1	100		0
14	11	3NT S-1	100		0
16	6	3NT S-1	100		0
10	18	3NT S-1	100		0
3	7	3NT S-1	100		0
1	15	3NT S-1	100		0
8	2	3NT S-1	100		0
4	12	3NT S-1	100		0

Board (14) Av: NS=-60

N-S	E-W	Contract	N-S	E-W	IMP
17	5	3NT N 3	400		10
10	18	4S N-1	50		0
14	11	4S N-1	50		0
8	2	4S N-1	50		0
13	9	3NT N-1	50		0
4	12	3NT N-1	50		0
16	6	4S N-2	100		-1
1	15	3NT N-2	100		-1
3	7	3NT N-2	100		-1

Board (15) Av: NS=+20

N-S	E-W	Contract	N-S	E-W	IMP
11	17	2Dx N 3	380		8
10	6	3D N 3	110		3
15	7	3D N 3	110		3
14	2	3D N 3	110		3
4	18	3D N 3	110		3
3	13	3D N 3	110		3
9	1	4NT S-2	200		-6
12	16	4Dx N-1	200		-6
8	5	5Dx N-2	500		-11

16

♠632
♥KQ
♦K7642
♣J76

♠10
♥J8765
♦J95
♣K943

♠AK9754
♥A94
♦A
♣1085

♠QJ8
♥1032
♦Q1083
♣AQ2

17

♠AKQJ7
♥853
♦3
♣A762

♠94
♥K64
♦KJ109762
♣K

♠10852
♥QJ1097
♦Q4
♣Q4

♠63
♥A2
♦A85
♣J109853

18

♠Q7
♥KQ72
♦97532
♣J2

♠K863
♥J865
♦A4
♣Q98

♠942
♥A4
♦Q1086
♣AK105

♠AJ105
♥1093
♦KJ
♣7643

Board (16) Av: NS=-150

N-S	E-W	Contract	N-S	E-W	IMP
12	16	3D N-2	100		2
3	13	2NT S-2	100		2
11	17	2C W 3	110		1
4	18	3S W 4	170		-1
14	2	3S W 4	170		-1
15	7	2S W 4	170		-1
9	1	2S W 4	170		-1
10	6	2S W 4	170		-1
8	5	2S E 4	170		-1

Board (17) Av: NS=+220

N-S	E-W	Contract	N-S	E-W	IMP
12	16	4S N 7	510		7
10	6	4S N 5	450		6
9	1	5C S 6	420		5
4	18	4C S 7	190		-1
15	7	4C S 6	170		-2
8	5	3C N 6	170		-2
11	17	3Dx E-1	100		-3
3	13	3H W-1	50		-5
14	2	4S N-1	50		-7

Board (18) Av: NS=-120

N-S	E-W	Contract	N-S	E-W	IMP
4	18	1NT W-1	50		5
15	7	1NT W 1	90		1
12	16	1NT W 2	120		0
3	13	1NT W 2	120		0
10	6	1NT W 2	120		0
8	5	1NT W 2	120		0
11	17	1NT W 3	150		-1
14	2	1NT W 3	150		-1
9	1	1NT W 3	150		-1

19

Hand 19: ♠109532, ♥J, ♦AK432, ♣102. Opponent: ♠AKQ8, ♥K98, ♦10, ♣KQ976. Contract: N 5H. Score: 1400.

20

Hand 20: ♠Q7, ♥K975, ♦A652, ♣AQ2. Opponent: ♠J432, ♥AQ102, ♦K974, ♣5. Contract: N 3NT. Score: 660.

21

Hand 21: ♠87, ♥A9763, ♣A98642. Opponent: ♠Q106432, ♥QJ92, ♦J10, ♣Q. Contract: N 4S. Score: 100.

Board (19) Av: NS=-30. Table with columns: N-S, E-W, Contract, N-S, E-W, IMP. Rows 8-9.

Board (20) Av: NS=+660. Table with columns: N-S, E-W, Contract, N-S, E-W, IMP. Rows 10-12.

Board (21) Av: NS=+60. Table with columns: N-S, E-W, Contract, N-S, E-W, IMP. Rows 10-9.

22

Hand 22: ♠KJ4, ♥KJ7643, ♦K104, ♣A. Opponent: ♠A3, ♥102, ♦AQ32, ♣J10732. Contract: N 5H. Score: 450.

23

Hand 23: ♠J7, ♥KQJ72, ♦AJ, ♣K987. Opponent: ♠K9642, ♥1063, ♦9832, ♣Q. Contract: N 1NT. Score: 90.

24

Hand 24: ♠7, ♥Q42, ♦1098543, ♣963. Opponent: ♠AK32, ♥A865, ♦AJ, ♣J85. Contract: N 4S. Score: 480.

Board (22) Av: NS=+450. Table with columns: N-S, E-W, Contract, N-S, E-W, IMP. Rows 18-12.

Board (23) Av: NS=-170. Table with columns: N-S, E-W, Contract, N-S, E-W, IMP. Rows 3-8.

Board (24) Av: NS=-910. Table with columns: N-S, E-W, Contract, N-S, E-W, IMP. Rows 15-5.

25

Hand 25: ♠9732, ♥10964, ♦K10, ♣965. Opponent: ♠J865, ♥QJ873, ♦7, ♣K72. Contract: N 6H. Score: 100.

26

Hand 26: ♠Q, ♥654, ♦AQJ952, ♣AK5. Opponent: ♠AKJ4, ♥9872, ♦3, ♣J1083. Contract: N 3NT. Score: 720.

27

Hand 27: ♠A103, ♥K7642, ♦962, ♣43. Opponent: ♠8654, ♥Q, ♦AJ1087, ♣J109. Contract: N 4H. Score: 450.

Board (25) Av: NS=-540. Table with columns: N-S, E-W, Contract, N-S, E-W, IMP. Rows 18-5.

Board (26) Av: NS=+320. Table with columns: N-S, E-W, Contract, N-S, E-W, IMP. Rows 3-15.

Board (27) Av: NS=+430. Table with columns: N-S, E-W, Contract, N-S, E-W, IMP. Rows 15-12.

28

♠ K1094
♥ A43
♦ 93
♣ A1097

	N	
♠ J6		♠ Q75
♥ KQ1097	W	♥ J85
♦ AJ106	E	♦ K754
♣ K3	S	♣ J64

♠ A832
♥ 62
♦ Q82
♣ Q852

Board (28) Av: NS=-110

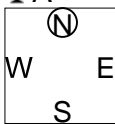
N-S	E-W	Contract	N-S	E-W	IMP
18	7	3S	N 3	140	6
15	4	3S	S-1	100	0
8	17	3S	N-1	100	0
3	10	3S	N-1	100	0
2	11	2H	W 2	110	0
12	1	2H	W 2	110	0
5	14	2H	W 2	110	0
6	13	2H	W 3	140	-1
16	9	2H	W 3	140	-1

第17回NRM杯 Session 4 Flight B 2012年7月1日(日)

1

♠K1098
♥KQJ
♦A10876
♣A

♠7
♥A8
♦943
♣KQ98653



♠A432
♥1052
♦J5
♣J1074

♠QJ65
♥97643
♦KQ2
♣2

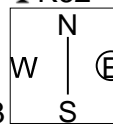
Board (1) Av: NS=+270

N-S	E-W	Contract	N-S	E-W	IMP
14	15	4S	N 5	450	5
6	3	4S	N 5	450	5
5	4	4H	S 5	450	5
7	12	4S	N 4	420	4
11	8	5D	N 5	400	4
10	9	5Cx	W-2	300	1
18	16	5D	N-1	50	-8
13	17	6S	N-2	100	-9
2	1	5S	N-3	150	-9

2

♠QJ62
♥A
♦AK432
♣K62

♠K83
♥J642
♦109
♣A1053



♠54
♥10753
♦Q87
♣J874

♠A1097
♥KQ98
♦J65
♣Q9

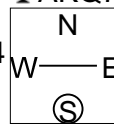
Board (2) Av: NS=+650

N-S	E-W	Contract	N-S	E-W	IMP
11	8	5S	N 5	650	0
10	9	5S	N 5	650	0
18	16	5S	N 5	650	0
14	15	5S	N 5	650	0
2	1	5S	N 5	650	0
6	3	5S	N 5	650	0
7	12	5S	N 5	650	0
5	4	4S	N 5	650	0
13	17	5S	N-1	100	-13

3

♠Q103
♦AJ8764
♣AKQ7

♠8752
♥AK754
♦Q109
♣2



♠AJ1063
♥92
♦52
♣J1094

♠KQ94
♥J86
♦K3
♣8653

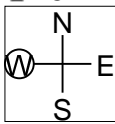
Board (3) Av: NS=+180

N-S	E-W	Contract	N-S	E-W	IMP
14	15	3Sx	E-2	500	8
2	1	3NT	S 4	430	6
5	4	3NT	N 4	430	6
6	3	4C	N 4	130	-2
18	16	3C	N 4	130	-2
7	12	3D	N 3	110	-2
13	17	3D	N 3	110	-2
10	9	5C	N-2	100	-7
11	8	3NT	S-2	100	-7

4

♠5
♥AK9854
♦32
♣7542

♠J8432
♥63
♦KQJ9
♣103



♠A96
♥Q102
♦A1076
♣A96

♠KQ107
♥J7
♦854
♣KQJ8

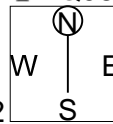
Board (4) Av: NS=+40

N-S	E-W	Contract	N-S	E-W	IMP
11	8	4S	W-2	200	4
10	9	2H	N 3	140	3
2	1	2H	N 2	110	2
7	12	2H	N 2	110	2
13	17	3S	W-1	100	2
6	3	3D	E-1	100	2
18	16	2S	W 2	110	-4
5	4	3S	W 3	140	-5
14	15	3S	E 3	140	-5

5

♠A95
♥K75
♦K2
♣AQ987

♠K106
♥96
♦J765
♣K1062



♠J84
♥Q1084
♦Q108
♣543

♠Q732
♥AJ32
♦A943
♣J

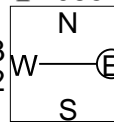
Board (5) Av: NS=+610

N-S	E-W	Contract	N-S	E-W	IMP
7	12	3NT	N 5	660	2
13	17	3NT	N 5	660	2
11	8	3NT	N 4	630	1
18	16	3NT	N 3	600	0
14	15	3NT	N 3	600	0
5	4	3NT	N 3	600	0
2	1	3NT	N 3	600	0
10	9	3NT	N 3	600	0
6	3	3NT	N 3	600	0

6

♠AK983
♥1087
♦K9
♣1085

♠J52
♥Q543
♦Q732
♣43



♠Q1064
♥KJ92
♦64
♣762

♠7
♥A6
♦AJ1085
♣AKQJ9

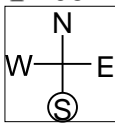
Board (6) Av: NS=+500

N-S	E-W	Contract	N-S	E-W	IMP
11	8	6C	S 7	940	10
18	16	6D	S 6	920	9
2	1	3NT	S 5	460	-1
14	15	3NT	S 4	430	-2
10	9	3NT	S 4	430	-2
5	4	3NT	S 4	430	-2
7	12	3NT	S 4	430	-2
6	3	3NT	S 4	430	-2
13	17	5C	S 6	420	-2

7

♠J6
♥Q9832
♦A54
♣A98

♠Q843
♥7
♦J1076
♣7432



♠1095
♥KJ6
♦Q83
♣KQJ10

♠AK72
♥A1054
♦K92
♣65

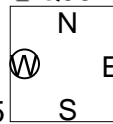
Board (7) Av: NS=0

N-S	E-W	Contract	N-S	E-W	IMP
7	12	4H	N 4	620	12
13	17	4H	N 4	620	12
11	8	4H	N-1	100	-3
14	15	4H	N-1	100	-3
18	16	4H	N-1	100	-3
5	4	4H	N-1	100	-3
2	1	4H	N-1	100	-3
10	9	4H	N-1	100	-3
6	3	4H	N-1	100	-3

8

♠J8762
♥A1094
♦7
♣QJ6

♠Q543
♥73
♦Q53
♣10875



♠9
♥KQJ52
♦J109864
♣2

♠AK10
♥86
♦AK2
♣AK943

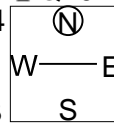
Board (8) Av: NS=+420

N-S	E-W	Contract	N-S	E-W	IMP
18	13	3NT	S 6	490	2
17	14	4S	S 6	480	2
9	12	4S	N 6	480	2
10	11	3NT	S 5	460	1
15	16	4S	S 5	450	1
1	3	4S	N 5	450	1
7	8	4S	N 5	450	1
5	6	3S	N 5	200	-6
4	2	6S	N-3	150	-11

9

♠83
♥K72
♦KJ53
♣Q1042

♠Q954
♥J108
♦Q2
♣K853



♠KJ1062
♥543
♦A7
♣A97

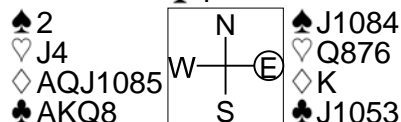
♠A7
♥AQ96
♦109864
♣J6

Board (9) Av: NS=+90

N-S	E-W	Contract	N-S	E-W	IMP
17	14	3S	E-2	200	3
18	13	3S	E-2	200	3
10	11	3S	E-1	100	0
15	16	3S	E-1	100	0
9	12	2S	E-1	100	0
4	2	2S	E-1	100	0
5	6	2S	E-1	100	0
1	3	4D	S-1	50	-4
7	8	4D	S-1	50	-4

10

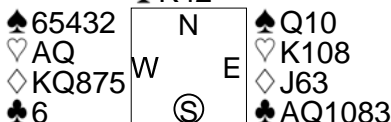
♠AQ9653
♥K10
♦6432
♣4



♠K7
♥A9532
♦97
♣9762

11

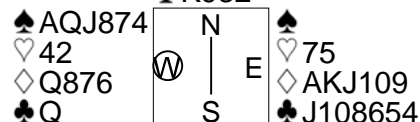
♠A9
♥97432
♦942
♣K42



♠KJ87
♥J65
♦A10
♣J975

12

♠63
♥KQJ96
♦32
♣K932



♠K10952
♥A1083
♦54
♣A7

Board (10) Av: NS=+60

N-S	E-W	Contract	N-S	E-W	IMP
18	13	5D W-2	200		4
1	3	5C W-2	200		4
5	6	5C W-2	200		4
10	11	5C W-1	100		1
15	16	3NT E-1	100		1
9	12	3C W-1	100		1
7	8	2C W 4	130		-5
17	14	4C W 5	150		-5
4	2	3NT E 3	600		-12

Board (11) Av: NS=-150

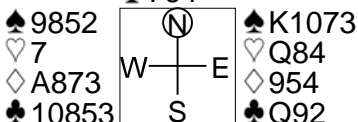
N-S	E-W	Contract	N-S	E-W	IMP
10	11	4S W-2	100		6
18	13	3NT E-1	50		5
17	14	3NT E-1	50		5
4	2	3NT E-1	50		5
1	3	Passout			4
5	6	3NT E 3	400		-6
9	12	3NT E 3	400		-6
7	8	3NT E 3	400		-6
15	16	3NT E 3	400		-6

Board (12) Av: NS=+60

N-S	E-W	Contract	N-S	E-W	IMP
17	14	3H N 3	140		2
7	8	2S W-2	100		1
9	12	2S W-2	100		1
5	6	5D W-1	50		0
15	16	3C E-1	50		0
10	11	2S W-1	50		0
4	2	2S W-1	50		0
1	3	2S W-1	50		0
18	13	3D W 4	130		-5

13

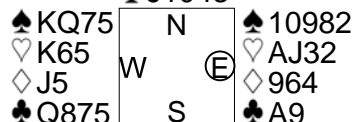
♠AQJ
♥AJ63
♦KQ6
♣764



♠64
♥K10952
♦J102
♣AKJ

14

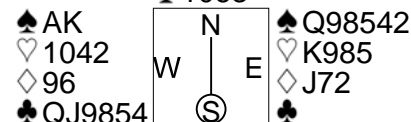
♠J4
♥87
♦AK1073
♣J1043



♠A63
♥Q1094
♦Q82
♣K62

15

♠63
♥A7
♦KQ8543
♣1063



♠J107
♥QJ63
♦A10
♣AK72

Board (13) Av: NS=+430

N-S	E-W	Contract	N-S	E-W	IMP
1	3	4H N 6	680		6
17	14	5H N 5	650		6
9	12	4H N 5	650		6
4	2	4H N 5	650		6
15	16	4H N 4	620		5
7	8	4H N 4	620		5
5	6	6H N-1	100		-11
18	13	5H N-1	100		-11
10	11	5H N-1	100		-11

Board (14) Av: NS=+20

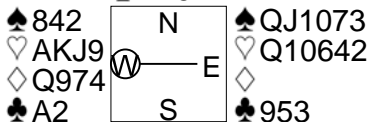
N-S	E-W	Contract	N-S	E-W	IMP
4	2	1NTxS 1	180		4
15	16	3S W-2	100		2
17	14	3S W-2	100		2
10	11	3S W-1	50		1
9	12	Passout			-1
1	3	Passout			-1
5	6	Passout			-1
18	13	2S W 2	110		-4
7	8	2H E 2	110		-4

Board (15) Av: NS=+510

N-S	E-W	Contract	N-S	E-W	IMP
8	10	3NT S 5	660		4
12	11	3NT S 3	600		3
17	16	3NT S 3	600		3
9	7	3NT S 3	600		3
4	1	3NT S 3	600		3
5	3	3NT S 3	600		3
14	13	5Sx E-2	300		-5
2	6	4Sx E-2	300		-5
15	18	5D N-1	100		-12

16

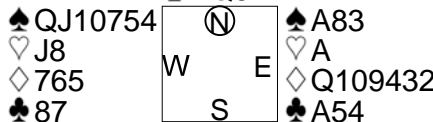
♠A
♥87
♦K108532
♣K764



♠K965
♥53
♦AJ6
♣QJ108

17

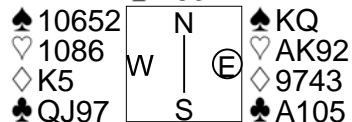
♠K96
♥Q7543
♦AK
♣KQ6



♠2
♥K10962
♦J8
♣J10932

18

♠J97
♥J3
♦Q10862
♣K63



♠A843
♥Q754
♦AJ
♣842

Board (16) Av: NS=-170

N-S	E-W	Contract	N-S	E-W	IMP
5	3	4C N 4	130		7
12	11	2S E 2	110		2
14	13	3H E 4	170		0
8	10	3H E 4	170		0
4	1	3H E 4	170		0
2	6	2H E 4	170		0
17	16	2H E 4	170		0
15	18	3H E 5	200		-1
9	7	4H E 4	620		-10

Board (17) Av: NS=+250

N-S	E-W	Contract	N-S	E-W	IMP
8	10	4H N 4	420		5
17	16	4H N 4	420		5
15	18	4H N 4	420		5
2	6	4H N 4	420		5
12	11	3H N 4	170		-2
5	3	3H N 4	170		-2
9	7	4Sx W-1	100		-4
4	1	4D E-1	50		-5
14	13	5Hx N-2	300		-11

Board (18) Av: NS=-120

N-S	E-W	Contract	N-S	E-W	IMP
8	10	1NT E 1	90		1
2	6	1NT E 1	90		1
15	18	1NT E 2	120		0
14	13	1NT E 2	120		0
9	7	1NT E 2	120		0
4	1	1NT E 2	120		0
5	3	1NT E 2	120		0
17	16	1NT E 3	150		-1
12	11	1NT E 4	180		-2

19

Hand 19: N (AK104), E (QJ984), S (8752), W (AK104). Includes card lists for all suits and a diagram showing a doubleton in North's hand.

20

Hand 20: N (A874), E (A763), S (AK), W (Q984). Includes card lists for all suits and a diagram showing a doubleton in North's hand.

21

Hand 21: N (KJ6), E (A9862), S (QJ53), W (A109543). Includes card lists for all suits and a diagram showing a doubleton in North's hand.

Board (19) Av: NS=+370. Table with columns: N-S, E-W, Contract, N-S, E-W, IMP. Rows show various deals and their results.

Board (20) Av: NS=-40. Table with columns: N-S, E-W, Contract, N-S, E-W, IMP. Rows show various deals and their results.

Board (21) Av: NS=-330. Table with columns: N-S, E-W, Contract, N-S, E-W, IMP. Rows show various deals and their results.

22

Hand 22: N (Q109), E (Q986), S (KQ4), W (AJ108532). Includes card lists for all suits and a diagram showing a doubleton in North's hand.

23

Hand 23: N (A92), E (A86), S (QJ1092), W (Q10864). Includes card lists for all suits and a diagram showing a doubleton in North's hand.

24

Hand 24: N (874), E (A1052), S (KJ976), W (K52). Includes card lists for all suits and a diagram showing a doubleton in North's hand.

Board (22) Av: NS=+450. Table with columns: N-S, E-W, Contract, N-S, E-W, IMP. Rows show various deals and their results.

Board (23) Av: NS=-110. Table with columns: N-S, E-W, Contract, N-S, E-W, IMP. Rows show various deals and their results.

Board (24) Av: NS=-30. Table with columns: N-S, E-W, Contract, N-S, E-W, IMP. Rows show various deals and their results.

25

Hand 25: N (Q7652), E (KQJ5), S (K7652), W (AQJ93). Includes card lists for all suits and a diagram showing a doubleton in North's hand.

26

Hand 26: N (Q10985), E (QJ3), S (QJ6), W (KJ32). Includes card lists for all suits and a diagram showing a doubleton in North's hand.

27

Hand 27: N (AK943), E (KQ9), S (A652), W (QJ62). Includes card lists for all suits and a diagram showing a doubleton in North's hand.

Board (25) Av: NS=-70. Table with columns: N-S, E-W, Contract, N-S, E-W, IMP. Rows show various deals and their results.

Board (26) Av: NS=+40. Table with columns: N-S, E-W, Contract, N-S, E-W, IMP. Rows show various deals and their results.

Board (27) Av: NS=-210. Table with columns: N-S, E-W, Contract, N-S, E-W, IMP. Rows show various deals and their results.

28

♠ 105
♥ AQ85
♦ A106
♣ K1082

♠ KQ93
♥ 73
♦ 985
♣ AJ93

♠ AJ42
♥ J109
♦ J74
♣ Q65

♠ 876
♥ K642
♦ KQ32
♣ 74

N
W | E
S

Board (28) Av: NS=+20

N-S	E-W	Contract	N-S	E-W	IMP
1	5	3H S 4	170		4
10	7	2H S 4	170		4
3	2	2S W-1	50		1
11	9	2S W-1	50		1
15	13	2S E-1	50		1
6	4	2S E-1	50		1
17	18	2S W 2	110		-4
8	12	2S W 2	110		-4
14	16	2S W 2	110		-4

29

♠ AQJ74
♥ J53
♦ K
♣ 9842

♠ K8
♥ K10
♦ 7652
♣ QJ763

♠ 1093
♥ AQ876
♦ 93
♣ AK5

♠ 652
♥ 942
♦ AQJ1084
♣ 10

N
W | E
S

Board (29) Av: NS=+90

N-S	E-W	Contract	N-S	E-W	IMP
9	8	3Dx S 3	670		11
3	4	2S N 3	140		2
10	12	2S N 3	140		2
15	17	2S N 2	110		1
14	18	2S N 2	110		1
5	2	2S N 2	110		1
6	1	2S N 2	110		1
7	11	3C E 3	110		-5
16	13	3Dx S-1	200		-7

30

♠ Q1064
♥ 10854
♦ K4
♣ AQ8

♠ K75
♥ K97
♦ J9862
♣ 32

♠ J92
♥ J62
♦ A7
♣ K9654

♠ A83
♥ AQ3
♦ Q1053
♣ J107

N
W | E
S

Board (30) Av: NS=+20

N-S	E-W	Contract	N-S	E-W	IMP
9	8	2NT S 3	150		4
3	4	2NT S 2	120		3
14	18	2NT S 2	120		3
7	11	2NT S 2	120		3
10	12	3NT S-1	50		-2
5	2	2NT S-1	50		-2
6	1	2NT S-1	50		-2
16	13	2NT S-2	100		-3
15	17	2NT S-2	100		-3

31

♠ 75
♥ AJ7432
♦ K6
♣ 875

♠ 4
♥ Q108
♦ A743
♣ QJ1042

♠ KQJ10963
♥ 965
♦ Q9
♣ A

♠ A82
♥ K
♦ J10852
♣ K963

N
W | E
S

Board (31) Av: NS=-20

N-S	E-W	Contract	N-S	E-W	IMP
10	12	4S E-2	100		3
16	13	4S E-2	100		3
5	2	4S E-1	50		2
3	4	3S E-1	50		2
9	8	3S E-1	50		2
15	17	2S E 2	110		-3
7	11	2S E 2	110		-3
6	1	3S E 3	140		-3
14	18	3NT W 3	400		-9

32

♠ QJ52
♥ 6
♦ QJ1084
♣ J92

♠ A973
♥ A42
♦ 9
♣ AKQ73

♠ 108
♥ Q983
♦ A632
♣ 1085

♠ K64
♥ KJ1075
♦ K75
♣ 64

N
W | E
S

Board (32) Av: NS=-260

N-S	E-W	Contract	N-S	E-W	IMP
10	12	2H E-1	100		8
6	1	3D N-2	100		4
15	17	2Dx N-1	100		4
3	4	2H E 3	140		3
9	8	2NT E 3	150		3
5	2	2NT E 3	150		3
16	13	3NT E 3	600		-8
7	11	3NT E 3	600		-8
14	18	3NT E 3	600		-8

33

♠ QJ75
♥ Q
♦ QJ843
♣ Q92

♠ 42
♥ AJ4
♦ 965
♣ AKJ87

♠ A1086
♥ 9832
♦ K2
♣ 1064

♠ K93
♥ K10765
♦ A107
♣ 53

N
W | E
S

Board (33) Av: NS=+90

N-S	E-W	Contract	N-S	E-W	IMP
5	2	1NT W-4	200		3
16	13	3C W-2	100		0
14	18	3C W-2	100		0
9	8	3C W-2	100		0
10	12	1NTxW-1	100		0
7	11	1Hx E-1	100		0
15	17	3C W-1	50		-1
6	1	3C W-1	50		-1
3	4	3S S-2	100		-5

34

♠ Q1043
♥ K2
♦ AQ976
♣ 93

♠ 765
♥ J43
♦ J85
♣ J1085

♠ AK82
♥ Q1086
♦ 43
♣ K76

♠ J9
♥ A975
♦ K102
♣ AQ42

N
W | E
S

Board (34) Av: NS=+290

N-S	E-W	Contract	N-S	E-W	IMP
7	11	3NT S 3	600		7
9	8	3NT S 3	600		7
3	4	3NT S 3	600		7
15	17	3C E-4	200		-3
16	13	3D N 5	150		-4
5	2	3D N 5	150		-4
14	18	2C E-3	150		-4
6	1	1NT S 3	150		-4
10	12	1NT S 3	150		-4

35

♠ 9752
♥ 974
♦ A1095
♣ K2

♠ K
♥ AQ632
♦ KQ84
♣ A109

♠ AQ104
♥ KJ85
♦ J2
♣ 865

♠ J863
♥ 10
♦ 763
♣ QJ743

N
W | E
S

Board (35) Av: NS=-1000

N-S	E-W	Contract	N-S	E-W	IMP
7	11	4H W 6	680		8
9	8	4H W 6	680		8
15	17	4H W 6	680		8
3	4	4H W 6	680		8
6	1	4H W 6	680		8
16	13	6H W 6	1430		-10
14	18	6H W 6	1430		-10
5	2	6H W 6	1430		-10
10	12	6H W 6	1430		-10