

第17回NRM杯 Session1 Flight A 2012年6月30日(土)

**1**

♠5432  
♥AQ654  
♦6  
♣K85

♠KQ76  
♥108  
♦J10985  
♣Q7

♠J98  
♥93  
♦KQ3  
♣AJ963

♠A10  
♥KJ72  
♦A742  
♣1042

**2**

♠52  
♥53  
♦AJ10432  
♣K63

♠A864  
♥A87  
♦KQ6  
♣J52

♠K10  
♥QJ9642  
♦5  
♣A1074

♠QJ973  
♥K10  
♦987  
♣Q98

**3**

♠10753  
♥765  
♦2  
♣109853

♠AK4  
♥K1098  
♦J10  
♣KQJ2

♠QJ8  
♥QJ43  
♦AQ754  
♣6

♠962  
♥A2  
♦K9863  
♣A74

Board (1) Av: NS=+140

N-S	E-W	Contract	N-S	E-W	IMP
1	17	3H N 4	170		1
11	13	3H N 3	140		0
16	2	3H N 3	140		0
18	3	3H N 3	140		0
10	14	3H N 3	140		0
5	7	3H N 3	140		0
6	12	3H N 3	140		0
15	9	2H N 3	140		0
4	8	4H N-1	50		-5

Board (2) Av: NS=-350

N-S	E-W	Contract	N-S	E-W	IMP
1	17	5H W-1	50		9
4	8	3H E 4	170		5
15	9	3H E 5	200		4
11	13	4H E 4	420		-2
18	3	4H E 4	420		-2
5	7	4H E 4	420		-2
6	12	4H E 4	420		-2
10	14	4H E 4	420		-2
16	2	4H E 5	450		-3

Board (3) Av: NS=-420

N-S	E-W	Contract	N-S	E-W	IMP
18	3	4H W-1	100		11
11	13	4H W-1	100		11
10	14	4H W-1	100		11
15	9	4H W 4	620		-5
5	7	4H E 4	620		-5
4	8	4H E 4	620		-5
16	2	3NT W 4	630		-5
1	17	3NT E 4	630		-5
6	12	4H E 5	650		-6

**4**

♠AJ963  
♥A963  
♦82  
♣105

♠KQ852  
♥8542  
♦KQ7  
♣8

♠4  
♥Q10  
♦A10654  
♣KJ973

♠107  
♥KJ7  
♦J93  
♣AQ642

**5**

♠A8  
♥KQ65  
♦Q6  
♣AQ876

♠96543  
♥AJ3  
♦AJ9  
♣K5

♠KJ72  
♥982  
♦8732  
♣J10

♠Q10  
♥1074  
♦K1054  
♣9432

**6**

♠AJ10752  
♥Q  
♦A  
♣AKQ87

♠Q94  
♥J103  
♦9432  
♣964

♠86  
♥K864  
♦KQ765  
♣32

♠K3  
♥A9752  
♦J108  
♣J105

Board (4) Av: NS=+60

N-S	E-W	Contract	N-S	E-W	IMP
4	8	3D E-3	300		6
11	13	2S W-2	200		4
5	7	2NT E-2	200		4
1	17	2NT E-1	100		1
15	9	Passout			-2
6	12	Passout			-2
10	14	Passout			-2
18	3	2D E 2	90		-4
16	2	3D E 3	110		-5

Board (5) Av: NS=+40

N-S	E-W	Contract	N-S	E-W	IMP
11	13	3C N 5	150		3
1	17	1NT N 3	150		3
6	12	3S W-2	100		2
16	2	1NT N 1	90		2
18	3	1NT N 1	90		2
10	14	3S E-1	50		0
4	8	2S W 2	110		-4
5	7	2S W 2	110		-4
15	9	2S E 2	110		-4

Board (6) Av: NS=+850

N-S	E-W	Contract	N-S	E-W	IMP
4	8	6S S 7	1010		4
18	3	6S N 7	1010		4
10	14	6S N 7	1010		4
5	7	6S N 6	980		4
6	12	6S N 6	980		4
15	9	6C N 7	940		3
16	2	4S N 7	510		-8
1	17	4S N 7	510		-8
11	13	4H S-2	100		-14

**7**

♠42  
♥A1093  
♦1063  
♣K654

♠A963  
♥  
♦AK8754  
♣AQ9

♠K1085  
♥KJ642  
♦QJ9  
♣2

♠QJ7  
♥Q875  
♦2  
♣J10873

**8**

♠A62  
♥862  
♦9876  
♣Q85

♠KQ10  
♥753  
♦QJ43  
♣962

♠J987  
♥AKQ10  
♦K2  
♣AK3

♠543  
♥J94  
♦A105  
♣J1074

**9**

♠104  
♥KQ854  
♦J73  
♣A106

♠7632  
♥A2  
♦K1096  
♣J93

♠KJ5  
♥976  
♦82  
♣87542

♠AQ98  
♥J103  
♦AQ54  
♣AKQ

Board (7) Av: NS=-890

N-S	E-W	Contract	N-S	E-W	IMP
10	14	4S W 5	650		6
1	17	5S W 6	680		5
16	2	5S W 6	680		5
6	12	5S W 6	680		5
11	13	4S W 6	680		5
5	7	4S W 6	680		5
15	9	6D W 6	1370		-10
18	3	6S W 6	1430		-11
4	8	6S W 6	1430		-11

Board (8) Av: NS=-440

N-S	E-W	Contract	N-S	E-W	IMP
11	16	3NT E 3	400		1
13	2	3NT E 3	400		1
9	3	3NT E 4	430		0
8	1	3NT E 4	430		0
14	7	3NT E 4	430		0
6	18	3NT E 5	460		-1
15	12	3NT E 5	460		-1
4	17	3NT E 6	490		-2
5	10	3NT E 6	490		-2

Board (9) Av: NS=+460

N-S	E-W	Contract	N-S	E-W	IMP
14	7	3NT S 6	490		1
15	12	4H N 6	480		1
13	2	3NT N 5	460		0
5	10	3NT N 5	460		0
4	17	4H N 5	450		0
8	1	4H N 5	450		0
6	18	4H N 5	450		0
9	3	4H N 5	450		0
11	16	4H N 4	420		-1

10

♠K4  
♥J753  
♦J962  
♣K64

♠Q93  
♥Q1062  
♦104  
♣8753

N  
W—E  
S

♠87652  
♥K  
♦K73  
♣AQ109

♠AJ10  
♥A984  
♦AQ85  
♣J2

11

♠87  
♥Q983  
♦QJ753  
♣97

♠Q109  
♥K107  
♦94  
♣J10843

N  
W—E  
S

♠AK6542  
♥J6  
♦AK1062  
♣

♠J3  
♥A542  
♦8  
♣AKQ652

12

♠J1083  
♥A73  
♦954  
♣985

♠542  
♥Q109  
♦AJ2  
♣KQ103

N  
W—E  
S

♠Q76  
♥K2  
♦Q10876  
♣764

♠AK9  
♥J8654  
♦K3  
♣AJ2

Board (10) Av: NS=+170

N-S	E-W	Contract	N-S	E-W	IMP
15	12	4H S 5	650		10
9	3	3NT S 3	600		10
11	16	3NT S 3	600		10
6	18	1NT S 4	180		0
14	7	2H S 3	140		-1
4	17	3H S-1		100	-7
5	10	3H S-1		100	-7
13	2	1NT S-1		100	-7
8	1	4H S-2		200	-9

Board (11) Av: NS=-430

N-S	E-W	Contract	N-S	E-W	IMP
5	10	5Hx N-2	300		4
15	12	4S E 4	420		0
14	7	4S E 4	420		0
8	1	4S E 4	420		0
9	3	4S E 4	420		0
4	17	4S W 5	450		-1
6	18	4S E 5	450		-1
13	2	4S E 5	450		-1
11	16	5Cx S-4	800		-9

Board (12) Av: NS=-20

N-S	E-W	Contract	N-S	E-W	IMP
13	2	2S N 2	110		4
15	12	2H S 2	110		4
11	16	1S N 1	80		3
8	1	1NT E-1	50		2
4	17	3H S-1		100	-2
9	3	2H S-1		100	-2
5	10	2H S-1		100	-2
14	7	1NT S-1		100	-2
6	18	2H S-2		200	-5

13

♠106  
♥9653  
♦KQ109  
♣K43

♠87  
♥AJ104  
♦A54  
♣Q985

N  
W—E  
S

♠AQ932  
♥Q82  
♦87  
♣1062

♠KJ54  
♥K7  
♦J632  
♣AJ7

14

♠J9853  
♥5  
♦A9  
♣J9632

♠Q4  
♥A1092  
♦Q65  
♣AK74

N  
W—E  
S

♠AK106  
♥KQ73  
♦K1073  
♣8

♠72  
♥J864  
♦J842  
♣Q105

15

♠Q853  
♥5  
♦J98652  
♣K6

♠A72  
♥KJ1097  
♦AKQ  
♣84

N  
W—E  
S

♠K96  
♥A632  
♦1074  
♣1032

♠J104  
♥Q84  
♦3  
♣AQJ975

Board (13) Av: NS=+100

N-S	E-W	Contract	N-S	E-W	IMP
4	17	3D S 3	110		0
15	12	2D S 3	110		0
6	18	2D S 3	110		0
5	10	2D S 3	110		0
13	2	2D S 2	90		0
8	1	2D S 2	90		0
11	16	1NT S 1	90		0
14	7	1NT N 1	90		0
9	3	3D S-1		100	-5

Board (14) Av: NS=-160

N-S	E-W	Contract	N-S	E-W	IMP
15	12	6H W-1	50		5
11	16	6H W-1	50		5
5	10	6H W-1	50		5
9	3	6H W-1	50		5
13	2	6H E-1	50		5
6	18	4H W 4		420	-6
4	17	4H W 5		450	-7
14	7	4H W 5		450	-7
8	1	6H W 6		980	-13

Board (15) Av: NS=-210

N-S	E-W	Contract	N-S	E-W	IMP
18	12	4H W-1	50		6
4	11	4H W-1	50		6
2	7	4H W-1	50		6
15	3	3H E 3		140	2
9	6	2H W 3		140	2
10	17	4H W 4		420	-5
8	13	4H W 4		420	-5
5	16	4H E 4		420	-5
14	1	4H E 4		420	-5

16

♠A984  
♥A987  
♦Q10  
♣K108

♠QJ10632  
♥4  
♦7642  
♣97

N  
W—E  
S

♠K  
♥632  
♦J985  
♣QJ543

♠75  
♥KQJ105  
♦AK3  
♣A62

17

♠KQ5  
♥J1052  
♦K97  
♣J73

♠10643  
♥KQ6  
♦Q85  
♣K54

N  
W—E  
S

♠A982  
♥A98  
♦A1063  
♣Q8

♠J7  
♥743  
♦J42  
♣A10962

18

♠AK952  
♥J732  
♦Q5  
♣53

♠J  
♥  
♦AJ9876  
♣AQJ862

N  
W—E  
S

♠Q87  
♥AK104  
♦K43  
♣974

♠10643  
♥Q9865  
♦102  
♣K10

Board (16) Av: NS=+770

N-S	E-W	Contract	N-S	E-W	IMP
9	6	6H S 6	980		5
14	1	6H S 6	980		5
18	12	6H S 6	980		5
8	13	6H S 6	980		5
2	7	6H S 6	980		5
15	3	4H S 6	480		-7
5	16	4H S 6	480		-7
4	11	4H S 6	480		-7
10	17	4H N 6	480		-7

Board (17) Av: NS=-30

N-S	E-W	Contract	N-S	E-W	IMP
4	11	4S W-2	100		4
8	13	3NT E-2	100		4
10	17	3NT W-1	50		2
9	6	3NT E-1	50		2
18	12	2S W 2		110	-2
15	3	2S W 2		110	-2
5	16	2S W 2		110	-2
2	7	2S W 2		110	-2
14	1	2S W 3		140	-3

Board (18) Av: NS=-560

N-S	E-W	Contract	N-S	E-W	IMP
15	3	4H W-3	150		12
5	16	4H W-3	150		12
2	7	6C E-1	50		12
10	17	4NT E 4		430	4
14	1	6D W 6		920	-8
4	11	6C E 6		920	-8
8	13	6C E 6		920	-8
9	6	6C E 6		920	-8
18	12	6C E 7		940	-9

19

♠AK6  
♥AKQ  
♦J1074  
♣J107

♠Q92  
♥98752  
♦K8  
♣865

N  
W—E  
S

♠J75  
♥10643  
♦53  
♣Q932

♠10843  
♥J  
♦AQ962  
♣AK4

20

♠Q9  
♥A84  
♦KJ1082  
♣Q42

♠10854  
♥Q  
♦7643  
♣7653

N  
W—E  
S

♠AJ3  
♥KJ9652  
♦Q  
♣AJ8

♠K762  
♥1073  
♦A95  
♣K109

21

♠8543  
♥8642  
♦87  
♣K107

♠KQ62  
♥53  
♦AKJ5  
♣QJ6

N  
W—E  
S

♠J1097  
♥Q  
♦Q94  
♣A9842

♠A  
♥AKJ1097  
♦10632  
♣53

Board (19) Av: NS=+930

N-S	E-W	Contract	N-S	E-W	IMP
8	13	6NT S 6	990		2
2	7	6NT S 6	990		2
14	1	6D S 6	920		0
18	12	6D S 6	920		0
15	3	6D S 6	920		0
10	17	6D S 6	920		0
4	11	6D S 6	920		0
5	16	6D S 6	920		0
9	6	6D S 6	920		0

Board (20) Av: NS=+80

N-S	E-W	Contract	N-S	E-W	IMP
5	16	2NT N 2	120		1
18	12	1NT N 2	120		1
2	7	1NT N 2	120		1
15	3	3D N 3	110		1
14	1	3D N 3	110		1
9	6	3D N 3	110		1
4	11	3D N 3	110		1
10	17	3D N-1	100		-5
8	13	2H E 2	110		-5

Board (21) Av: NS=-350

N-S	E-W	Contract	N-S	E-W	IMP
8	13	3S E 4	170		5
18	12	3S E 4	170		5
4	11	1S E 4	170		5
14	1	4S E 4	420		-2
15	3	4S E 4	420		-2
2	7	4S E 4	420		-2
5	16	4S E 4	420		-2
9	6	4S E 4	420		-2
10	17	4S E 4	420		-2

22

♠J  
♥QJ1097  
♦AKJ1085  
♣7

♠A1075  
♥K4  
♦43  
♣98532

N  
W—E  
S

♠K63  
♥A53  
♦62  
♣AKJ106

♠Q9842  
♥862  
♦Q97  
♣Q4

23

♠5  
♥AK74  
♦108  
♣986432

♠984  
♥J10953  
♦Q52  
♣105

N  
W—E  
S

♠AKJ102  
♥8  
♦A9764  
♣KJ

♠Q763  
♥Q62  
♦KJ3  
♣AQ7

24

♠73  
♥Q1095  
♦KJ62  
♣J86

♠AJ  
♥72  
♦A8543  
♣KQ105

N  
W—E  
S

♠K9854  
♥AJ86  
♦109  
♣A9

♠Q1062  
♥K43  
♦Q7  
♣7432

Board (22) Av: NS=+100

N-S	E-W	Contract	N-S	E-W	IMP
10	2	3H S 3	140		1
4	14	3H N 3	140		1
1	11	2H N 3	140		1
13	5	2H N 3	140		1
7	17	2H N 3	140		1
15	6	3D N 3	110		0
9	18	2D N 3	110		0
12	3	4H N-1	50		-4
16	8	4D N-1	50		-4

Board (23) Av: NS=+50

N-S	E-W	Contract	N-S	E-W	IMP
16	8	3NT N 3	600		11
7	17	4C S 5	150		3
15	6	3C S 5	150		3
1	11	4C S 4	130		2
13	5	3S E-1	100		2
4	14	3D E-1	100		2
10	2	3S E 3	140		-5
12	3	3S E 3	140		-5
9	18	3Sx E 3	730		-13

Board (24) Av: NS=-350

N-S	E-W	Contract	N-S	E-W	IMP
1	11	3NT E-2	100		10
13	5	3NT E-1	50		9
10	2	3NT E 3	400		-2
15	6	3NT E 3	400		-2
7	17	3NT E 3	400		-2
16	8	4S E 4	420		-2
12	3	4S E 4	420		-2
9	18	3NT E 4	430		-2
4	14	3NT E 4	430		-2

25

♠95432  
♥1082  
♦K84  
♣73

♠AJ8  
♥KQ4  
♦J5  
♣Q10965

N  
W—E  
S

♠Q76  
♥AJ76  
♦AQ97  
♣J4

♠K10  
♥953  
♦10632  
♣AK82

26

♠10764  
♥1062  
♦10983  
♣Q7

♠KQ9  
♥Q  
♦762  
♣K86542

N  
W—E  
S

♠A52  
♥K854  
♦KJ4  
♣A103

♠J83  
♥AJ973  
♦AQ5  
♣J9

27

♠52  
♥104  
♦AKJ1096  
♣AJ7

♠Q8764  
♥A53  
♦82  
♣K53

N  
W—E  
S

♠AJ3  
♥KQJ8  
♦Q53  
♣Q102

♠K109  
♥9762  
♦74  
♣9864

Board (25) Av: NS=-650

N-S	E-W	Contract	N-S	E-W	IMP
7	17	3NT W 3	600		2
12	3	3NT W 4	630		1
10	2	3NT W 4	630		1
16	8	3NT W 5	660		0
1	11	3NT W 5	660		0
15	6	3NT E 5	660		0
4	14	3NT E 5	660		0
9	18	3NT E 5	660		0
13	5	3NT E 5	660		0

Board (26) Av: NS=-630

N-S	E-W	Contract	N-S	E-W	IMP
7	17	3NT E 3	600		1
13	5	3NT E 4	630		0
12	3	3NT E 4	630		0
15	6	3NT E 4	630		0
16	8	3NT E 4	630		0
4	14	3NT E 4	630		0
1	11	3NT E 4	630		0
10	2	3NT E 4	630		0
9	18	3NT E 4	630		0

Board (27) Av: NS=+20

N-S	E-W	Contract	N-S	E-W	IMP
10	2	4S W-2	100		2
9	18	4S E-2	100		2
4	14	3NT E-2	100		2
7	17	1NT N 1	90		2
1	11	4S W-1	50		1
16	8	4S E-1	50		1
12	3	3D N-2	100		-3
15	6	3S E 3	140		-4
13	5	3NT E 3	400		-9

28

♠ AKQJ843

♥ 4

♦ K108

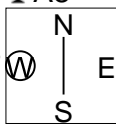
♣ A8

♠ 965

♥ A653

♦ AJ5

♣ QJ6



♠ 7

♥ J102

♦ Q972

♣ 107532

♠ 102

♥ KQ987

♦ 643

♣ K94

Board (28) Av: NS=+570

N-S	E-W	Contract	N-S	E-W	IMP
15	6	4S	N 6	680	3
10	2	4S	N 5	650	2
4	14	4S	N 5	650	2
1	11	4S	N 5	650	2
7	17	3NT	N 4	630	2
16	8	4S	N 4	620	2
13	5	3NT	S 3	600	1
9	18	5C	W-4	200	-9
12	3	1S	N 5	200	-9

第17回NRM杯 Session 2 Flight A 2012年6月30日(土)

**1**

♠ AKQ972  
♥ Q87  
♦ 962  
♣ 10

♠ J54  
♥ 1053  
♦ 4  
♣ KQJ976

♠ 1063  
♥ AJ42  
♦ 85  
♣ A432

♠ 8  
♥ K96  
♦ AKQJ1073  
♣ 85

**2**

♠ 105  
♥ QJ7  
♦ AK9742  
♣ K9

♠ K8  
♥ A83  
♦ J108  
♣ A10752

♠ A976  
♥ 1054  
♦ Q5  
♣ QJ86

♠ QJ432  
♥ K962  
♦ 63  
♣ 43

**3**

♠ QJ98  
♥ K107  
♦ 976  
♣ AK4

♠ 75  
♥ AJ4  
♦ A1042  
♣ 9873

♠ A1043  
♥ Q532  
♦ Q  
♣ QJ105

♠ K62  
♥ 986  
♦ KJ853  
♣ 62

Board (1) Av: NS=+280

N-S	E-W	Contract	N-S	E-W	IMP
11	15	5D S 6	420		4
1	16	5D S 6	420		4
9	5	5D N 6	420		4
12	14	5D S 5	400		3
18	2	5D S 5	400		3
3	17	5D S 5	400		3
10	4	6D S-1		50	-8
13	7	6D S-1		50	-8
8	6	6D S-1		50	-8

Board (2) Av: NS=+10

N-S	E-W	Contract	N-S	E-W	IMP
9	5	2S E-5	250		6
12	14	3C W-1	50		1
18	2	3C W-1	50		1
11	15	3C W-1	50		1
3	17	3C W-1	50		1
1	16	3C W-1	50		1
10	4	1NT W 1		90	-3
13	7	1NT W 1		90	-3
8	6	1NT W 1		90	-3

Board (3) Av: NS=+90

N-S	E-W	Contract	N-S	E-W	IMP
10	4	2D W-3	300		5
9	5	1NT W-2	200		3
11	15	2H W-1	100		0
1	16	2H W-1	100		0
13	7	1NT N 1	90		0
12	14	1NT N 1	90		0
18	2	1S N 1	80		0
3	17	1NT N-1		50	-4
8	6	2H W 2		110	-5

**4**

♠ A8653  
♥ KQ7  
♦ 84  
♣ 543

♠ J972  
♥ 864  
♦ 7632  
♣ 96

♠ KQ  
♥ A53  
♦ AKQ5  
♣ AQ72

♠ 104  
♥ J1092  
♦ J109  
♣ KJ108

**5**

♠ 1093  
♥ KJ1072  
♦ A952  
♣ 6

♠ J874  
♥ A3  
♦ KJ43  
♣ J87

♠ AK2  
♥ Q986  
♦ Q106  
♣ 1094

♠ Q65  
♥ 54  
♦ 87  
♣ AKQ532

**6**

♠ Q9  
♥ AJ7  
♦ KJ72  
♣ KJ65

♠ AKJ1062  
♥ Q654  
♦ 4  
♣ 93

♠ 874  
♥ K8  
♦ Q863  
♣ A1087

♠ 53  
♥ 10932  
♦ A1095  
♣ Q42

Board (4) Av: NS=-210

N-S	E-W	Contract	N-S	E-W	IMP
1	16	3NT E-1	100		7
10	4	2NT E 2		120	3
18	2	2NT E 3		150	2
12	14	2NT E 3		150	2
3	17	2NT E 3		150	2
11	15	2NT E 3		150	2
8	6	2NT E 4		180	1
9	5	3NT E 3		600	-9
13	7	3NT E 3		600	-9

Board (5) Av: NS=+90

N-S	E-W	Contract	N-S	E-W	IMP
18	2	1NTx E-2	300		5
9	5	3C S 4	130		1
3	17	2H N 2	110		1
1	16	2C S 3	110		1
13	7	2C S 2	90		0
8	6	2C S 2	90		0
10	4	2S W-1	50		-1
11	15	2S E-1	50		-1
12	14	2D E-1	50		-1

Board (6) Av: NS=-280

N-S	E-W	Contract	N-S	E-W	IMP
1	16	3H S-2		100	5
9	5	3S W 3		140	4
13	7	3S W 4		170	3
11	15	3S W 4		170	3
10	4	2S W 4		170	3
8	6	2S W 4		170	3
18	2	4Hx S-3		500	-6
3	17	4S W 4		620	-8
12	14	4S W 5		650	-9

**7**

♠ 96  
♥ J1094  
♦ KJ95  
♣ J95

♠ AK2  
♥ AK62  
♦ Q642  
♣ A6

♠ 53  
♥ Q83  
♦ A103  
♣ 108742

♠ QJ10874  
♥ 75  
♦ 87  
♣ KQ3

**8**

♠ 7  
♥ 762  
♦ QJ1087  
♣ 10983

♠ KQ943  
♥ 98  
♦ AK96  
♣ 65

♠ J52  
♥ AKQ53  
♦ 5  
♣ A742

♠ A1086  
♥ J104  
♦ 432  
♣ KQJ

**9**

♠ J107  
♥ AKJ9  
♦ K9532  
♣ 3

♠ 32  
♥ 10872  
♦ AJ8  
♣ 10942

♠ AQ854  
♥ Q5  
♦ 1076  
♣ AQ7

♠ K96  
♥ 643  
♦ Q4  
♣ KJ865

Board (7) Av: NS=+10

N-S	E-W	Contract	N-S	E-W	IMP
13	7	3NT W-2	200		5
10	4	3NT W-2	200		5
11	15	3NT E-2	200		5
8	6	3NT E-2	200		5
3	17	3NT E-1	100		3
12	14	3NT E-1	100		3
1	16	3C W 4		130	-4
18	2	3NT W 3		600	-12
9	5	3NT E 3		600	-12

Board (8) Av: NS=-390

N-S	E-W	Contract	N-S	E-W	IMP
7	1	6S W-1	50		10
4	16	6S W-1	50		10
9	2	4S W 4		420	-1
3	14	4S W 5		450	-2
6	11	4S W 5		450	-2
18	5	4S W 6		480	-3
13	10	4S W 6		480	-3
8	15	4S W 6		480	-3
17	12	6Sx W 6		1210	-13

Board (9) Av: NS=+30

N-S	E-W	Contract	N-S	E-W	IMP
4	16	1NT S 3	150		3
18	5	1NT S 2	120		3
13	10	2D N 3	110		2
17	12	2C S 2	90		2
8	15	1NT S 1	90		2
6	11	1NT S-1		50	-2
3	14	1NT S-1		50	-2
9	2	1NT S-2		100	-4
7	1	2NT N-3		150	-5

10

♠ K732  
♥ K7  
♦ 10764  
♣ 1054

♠ AJ65  
♥ A5  
♦ J92  
♣ J873

N  
W — E  
S

♠ Q9  
♥ QJ63  
♦ AQ3  
♣ KQ96

♠ 1084  
♥ 109842  
♦ K85  
♣ A2

11

♠ 9  
♥ A83  
♦ 9643  
♣ AQ1082

♠ Q842  
♥ 7  
♦ KQ875  
♣ 973

N  
W — E  
S

♠ J65  
♥ QJ9654  
♦ A2  
♣ J4

♠ AK1073  
♥ K102  
♦ J10  
♣ K65

12

♠ Q9542  
♥ QJ543  
♦ 8  
♣ J9

♠ K103  
♥  
♦ AK952  
♣ Q8542

N  
W — E  
S

♠ 87  
♥ 9876  
♦ QJ76  
♣ A63

♠ AJ6  
♥ AK102  
♦ 1043  
♣ K107

Board (10) Av: NS=-600

N-S	E-W	Contract	N-S	E-W	IMP
9	2	3NT E 3	600		0
18	5	3NT E 3	600		0
17	12	3NT E 3	600		0
13	10	3NT E 3	600		0
4	16	3NT E 3	600		0
3	14	3NT E 3	600		0
7	1	3NT E 3	600		0
6	11	3NT E 3	600		0
8	15	3NT E 4	630		-1

Board (11) Av: NS=+280

N-S	E-W	Contract	N-S	E-W	IMP
13	10	3NT N 4	430		4
9	2	3NT N 4	430		4
4	16	5C S 5	400		3
18	5	3NT S 3	400		3
8	15	3NT N 3	400		3
6	11	4C S 4	130		-4
3	14	3C S 3	110		-5
7	1	3C S 3	110		-5
17	12	2H E-2	100		-5

Board (12) Av: NS=-140

N-S	E-W	Contract	N-S	E-W	IMP
18	5	3D W 4	130		0
13	10	3D W 4	130		0
3	14	3D W 4	130		0
6	11	2D W 4	130		0
9	2	3D W 5	150		0
4	16	3D W 5	150		0
8	15	2D W 5	150		0
7	1	2D W 5	150		0
17	12	5Dx W 5	550		-9

13

♠ Q962  
♥ K93  
♦ A92  
♣ 982

♠ AK5  
♥  
♦ QJ1086  
♣ AQ754

N  
W — E  
S

♠ 10843  
♥ AQJ102  
♦ 54  
♣ K3

♠ J7  
♥ 87654  
♦ K73  
♣ J106

14

♠ 8  
♥ KQ6  
♦ J6542  
♣ Q987

♠ Q10976  
♥ A7432  
♦ A  
♣ A10

N  
W — E  
S

♠ AK43  
♥ J  
♦ Q103  
♣ J6432

♠ J52  
♥ 10985  
♦ K987  
♣ K5

15

♠ K54  
♥ K1032  
♦ AJ54  
♣ KQ

♠ A106  
♥ J74  
♦ 1093  
♣ J975

N  
W — E  
S

♠ Q732  
♥ 85  
♦ Q876  
♣ 862

♠ J98  
♥ AQ96  
♦ K2  
♣ A1043

Board (13) Av: NS=-460

N-S	E-W	Contract	N-S	E-W	IMP
3	14	6D W-1	100		11
13	10	3NT W-1	100		11
6	11	3D W 5	150		7
8	15	5D W 5	600		-4
9	2	3NT W 4	630		-5
18	5	3NT E 4	630		-5
4	16	3NT E 4	630		-5
7	1	3NT E 5	660		-5
17	12	3NT E 5	660		-5

Board (14) Av: NS=-450

N-S	E-W	Contract	N-S	E-W	IMP
9	2	6S W-1	50		11
18	5	4S W 5	450		0
17	12	4S W 5	450		0
7	1	4S W 5	450		0
8	15	4S W 5	450		0
6	11	4S W 5	450		0
13	10	4S E 5	450		0
3	14	4S W 6	480		-1
4	16	6S W 6	980		-11

Board (15) Av: NS=+670

N-S	E-W	Contract	N-S	E-W	IMP
16	10	4H N 6	680		0
13	1	4H N 6	680		0
6	17	4H N 6	680		0
4	7	4H N 6	680		0
11	18	4H N 6	680		0
14	9	4H S 5	650		-1
2	15	4H S 5	650		-1
8	3	4H N 5	650		-1
12	5	4H N 5	650		-1

16

♠ 1043  
♥ K1032  
♦ Q86  
♣ Q106

♠ AJ8  
♥ J98654  
♦ 5  
♣ 983

N  
W — E  
S

♠ KQ9  
♥ Q  
♦ AK107  
♣ AK542

♠ 7652  
♥ A7  
♦ J9432  
♣ J7

17

♠ Q108432  
♥ 2  
♦ Q86  
♣ 976

♠ 9  
♥ KJ105  
♦ J543  
♣ QJ83

N  
W — E  
S

♠ A765  
♥ AQ976  
♦ A  
♣ A102

♠ KJ  
♥ 843  
♦ K10972  
♣ K54

18

♠ AJ2  
♥ K73  
♦ A52  
♣ A852

♠ KQ9874  
♥ 9  
♦ KJ9  
♣ Q76

N  
W — E  
S

♠ 63  
♥ QJ102  
♦ Q1076  
♣ J103

♠ 105  
♥ A8654  
♦ 843  
♣ K94

Board (16) Av: NS=-620

N-S	E-W	Contract	N-S	E-W	IMP
4	7	3NT E 3	600		1
11	18	3NT E 3	600		1
2	15	4H W 4	620		0
14	9	4H W 4	620		0
6	17	4H W 4	620		0
8	3	4H W 4	620		0
12	5	4H E 4	620		0
16	10	3NT E 4	630		0
13	1	3NT E 4	630		0

Board (17) Av: NS=-690

N-S	E-W	Contract	N-S	E-W	IMP
12	5	4H W 5	450		6
6	17	4H W 6	480		5
13	1	4H E 6	480		5
14	9	4H E 6	480		5
4	7	4H E 6	480		5
16	10	6H E 6	980		-7
2	15	6H E 6	980		-7
8	3	6H E 6	980		-7
11	18	6H E 6	980		-7

Board (18) Av: NS=-10

N-S	E-W	Contract	N-S	E-W	IMP
6	17	2NT N 3	150		4
14	9	2H N 3	140		4
13	1	2H N 2	110		3
11	18	2S W-1	50		2
12	5	3H N-1	100		-3
4	7	3H N-1	100		-3
8	3	3H N-1	100		-3
2	15	3H N-1	100		-3
16	10	3Hx N-1	200		-5

19

♠AQ10  
♥A95  
♦J102  
♣KQJ2

♠J862  
♥K  
♦A85  
♣109843

N  
W—E  
S

♠K95  
♥QJ762  
♦KQ3  
♣65

♠743  
♥10843  
♦9764  
♣A7

Board (19) Av: NS=+50

N-S	E-W	Contract	N-S	E-W	IMP
16	10	1NT N 2	120		2
4	7	1NT N 2	120		2
2	15	1NT N 2	120		2
11	18	1NT N 1	90		1
12	5	1NT N 1	90		1
6	17	1NT N 1	90		1
8	3	1NT N-1		50	-3
13	1	1NT W 1		90	-4
14	9	2NT N-2		100	-4

20

♠AQ2  
♥AKQ104  
♦  
♣AQ983

♠107  
♥93  
♦KQ975  
♣K1072

N  
W—E  
S

♠86  
♥J876  
♦AJ42  
♣J64

♠KJ9543  
♥52  
♦10863  
♣5

Board (20) Av: NS=+710

N-S	E-W	Contract	N-S	E-W	IMP
4	7	7Sx S 7	2470		18
13	1	6S S 6	1430		12
2	15	6S S 6	1430		12
11	18	4S S 7	710		0
12	5	4S S 6	680		-1
8	3	4S S 6	680		-1
6	17	1H N 6	230		-10
16	10	4H N-2		200	-14
14	9	5D N-5		500	-15

21

♠AKJ10865  
♥A93  
♦3  
♣Q8

♠92  
♥Q84  
♦AKJ86  
♣K104

N  
W—E  
S

♠Q  
♥KJ762  
♦105  
♣AJ932

♠743  
♥105  
♦Q9742  
♣765

Board (21) Av: NS=-290

N-S	E-W	Contract	N-S	E-W	IMP
11	18	3S N 3	140		10
14	9	4S S-1		100	5
12	5	5S N-2		200	3
4	7	5S N-2		200	3
16	10	4Sx N-1		200	3
6	17	4H W 5		450	-4
2	15	4H W 5		450	-4
8	3	4H W 5		450	-4
13	1	4H W 5		450	-4

22

♠AK82  
♥1082  
♦52  
♣K1062

♠5  
♥KQ54  
♦K109876  
♣J8

N  
W—E  
S

♠J1093  
♥A73  
♦AQ43  
♣43

♠Q764  
♥J96  
♦J  
♣AQ975

Board (22) Av: NS=-50

N-S	E-W	Contract	N-S	E-W	IMP
14	6	5D E-1	100		4
10	1	Passout			2
5	15	Passout			2
2	12	Passout			2
4	13	Passout			2
17	9	3S N-1		50	0
11	3	4D W 5		150	-3
16	7	3D W 5		150	-3
8	18	3Sx N-2		300	-6

23

♠AQ972  
♥Q1065  
♦K5  
♣73

♠653  
♥932  
♦43  
♣K10852

N  
W—E  
S

♠104  
♥84  
♦J10982  
♣J964

♠KJ8  
♥AKJ7  
♦AQ76  
♣AQ

Board (23) Av: NS=+1790

N-S	E-W	Contract	N-S	E-W	IMP
14	6	7S N 7	2210		9
11	3	7H S 7	2210		9
4	13	7H S 7	2210		9
16	7	7H N 7	2210		9
17	9	6NT S 7	1470		-8
2	12	6NT S 7	1470		-8
10	1	6NT S 7	1470		-8
8	18	6H S 7	1460		-8
5	15	6H S 7	1460		-8

24

♠K2  
♥Q6432  
♦1075  
♣A43

♠AJ98  
♥109  
♦AKQ86  
♣97

N  
W—E  
S

♠Q7543  
♥J87  
♦43  
♣KQ6

♠106  
♥AK5  
♦J92  
♣J10852

Board (24) Av: NS=+50

N-S	E-W	Contract	N-S	E-W	IMP
11	3	4S W-1	50		0
16	7	4S W-1	50		0
17	9	4S E-1	50		0
14	6	4S E-1	50		0
10	1	4S E-1	50		0
4	13	4S E-1	50		0
2	12	4S E-1	50		0
8	18	4S E-1	50		0
5	15	2S E 3		140	-5

25

♠K  
♥A1052  
♦Q4  
♣986532

♠A10765  
♥843  
♦108  
♣AJ7

N  
W—E  
S

♠QJ32  
♥Q7  
♦J76532  
♣10

♠984  
♥KJ96  
♦AK9  
♣KQ4

Board (25) Av: NS=+110

N-S	E-W	Contract	N-S	E-W	IMP
8	18	4H S 5	450		8
10	1	4H S 5	450		8
17	9	3NT S 3	400		7
4	13	3H S 3	140		1
16	7	4H S-1		50	-4
2	12	4H S-1		50	-4
5	15	4H S-1		50	-4
11	3	4H S-1		50	-4
14	6	4H S-2		100	-5

26

♠K87643  
♥QJ65  
♦82  
♣2

♠95  
♥A  
♦1097653  
♣KJ106

N  
W—E  
S

♠AQ  
♥K842  
♦AKJ  
♣Q843

♠J102  
♥10973  
♦Q4  
♣A975

Board (26) Av: NS=-690

N-S	E-W	Contract	N-S	E-W	IMP
4	13	3NT E 3		600	3
14	6	3NT E 6		690	0
11	3	3NT E 6		690	0
17	9	3NT E 6		690	0
16	7	3NT E 6		690	0
5	15	3NT E 6		690	0
2	12	3NT E 6		690	0
10	1	3NT E 6		690	0
8	18	3NT E 6		690	0

27

♠84  
♥AQ3  
♦98643  
♣AQ6

♠A962  
♥J984  
♦72  
♣1095

N  
W—E  
S

♠10753  
♥K105  
♦QJ10  
♣K84

♠KQJ  
♥762  
♦AK5  
♣J732

Board (27) Av: NS=+10

N-S	E-W	Contract	N-S	E-W	IMP
5	15	3NT S 3	400		9
2	12	3NT S 3	400		9
11	3	3NT S-1		50	-2
14	6	3NT S-1		50	-2
17	9	3NT S-1		50	-2
4	13	3NT S-1		50	-2
8	18	3NT S-1		50	-2
10	1	3NT S-2		100	-3
16	7	3NT S-2		100	-3

28

♠ AKJ1087

♥ 5

♦ A4

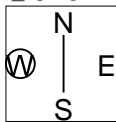
♣ J754

♠ 4

♥ J84

♦ K92

♣ AK9862



♠ 6

♥ A973

♦ J10865

♣ Q103

♠ Q9532

♥ KQ1062

♦ Q73

♣

Board (28) Av: NS=+680

N-S	E-W	Contract	N-S	E-W	IMP
2	12	6S	N 6	1430	13
8	18	5S	N 7	710	1
14	6	4S	N 7	710	1
11	3	5S	N 6	680	0
16	7	5S	N 6	680	0
17	9	4S	N 6	680	0
10	1	4S	N 6	680	0
4	13	4S	N 5	650	-1
5	15	6S	N-1	100	-13



**1**

♠A109  
♥Q752  
♦53  
♣AJ62

♠K875  
♥K86  
♦KJ10  
♣K74

♠Q63  
♥AJ94  
♦Q92  
♣Q83

♠J42  
♥103  
♦A8764  
♣1095

Board (1) Av: NS=-30

N-S	E-W	Contract	N-S	E-W	IMP
12	13	3NT E-3	150		5
11	5	3NT E-2	100		4
2	17	1NT S 1	90		3
7	6	2NT E-1	50		2
15	10	1NT N-2		100	-2
14	8	2H W 2		110	-2
18	1	2NT W 2		120	-3
4	9	2NT E 3		150	-3
3	16	1NT W 3		150	-3

**2**

♠A93  
♥KQJ9874  
♦  
♣K85

♠1074  
♥106  
♦10865  
♣QJ74

♠K2  
♥53  
♦AKQJ432  
♣A2

♠QJ865  
♥A2  
♦97  
♣10963

Board (2) Av: NS=+310

N-S	E-W	Contract	N-S	E-W	IMP
4	9	5H N 7	710		9
15	10	5H N 5	650		8
2	17	5Dx W-3	500		5
14	8	5Dx W-2	300		0
7	6	5Dx W-2	300		0
3	16	5D W-3	150		-4
11	5	5D W-3	150		-4
12	13	5D W-2	100		-5
18	1	5D E-2	100		-5

**3**

♠104  
♥105  
♦K1097  
♣Q9852

♠J85  
♥AJ83  
♦J43  
♣A64

♠KQ763  
♥94  
♦Q65  
♣KJ7

♠A92  
♥KQ762  
♦A82  
♣103

Board (3) Av: NS=-20

N-S	E-W	Contract	N-S	E-W	IMP
14	8	2S W-1	100		3
7	6	2S W-1	100		3
3	16	2S W-1	100		3
18	1	1H S 1	80		3
11	5	3C N-1		50	-1
2	17	3D S-2		100	-2
15	10	2S W 2		110	-3
12	13	2D S-3		150	-4
4	9	1NT E 3		150	-4

**4**

♠AQ97  
♥82  
♦Q5  
♣QJ653

♠J1062  
♥KJ64  
♦986  
♣A9

♠K54  
♥10953  
♦AK2  
♣742

♠83  
♥AQ7  
♦J10743  
♣K108

Board (4) Av: NS=+60

N-S	E-W	Contract	N-S	E-W	IMP
15	10	1NT N 5	210		4
7	6	2NT S 2	120		2
14	8	1NT S 2	120		2
3	16	1NT S 1	90		1
18	1	1NT S 1	90		1
2	17	Passout			-2
4	9	Passout			-2
11	5	Passout			-2
12	13	Passout			-2

**5**

♠53  
♥AK3  
♦K873  
♣AQ92

♠A1096  
♥J10985  
♦AJ42  
♣

♠QJ2  
♥Q2  
♦65  
♣J76543

♠K874  
♥764  
♦Q109  
♣K108

Board (5) Av: NS=-40

N-S	E-W	Contract	N-S	E-W	IMP
2	17	2Sx W-3	500		11
15	10	2NT N 3	150		5
18	1	2Sx W-1	100		4
4	9	2S W-2	100		4
3	16	3NT N-1		100	-2
11	5	3NT N-1		100	-2
14	8	3NT N-2		200	-4
12	13	3NT N-2		200	-4
7	6	3NTx N-2		500	-10

**6**

♠J52  
♥964  
♦1054  
♣K963

♠974  
♥A8  
♦Q86  
♣J10874

♠A6  
♥KQ10753  
♦AJ7  
♣52

♠KQ1083  
♥J2  
♦K932  
♣AQ

Board (6) Av: NS=-30

N-S	E-W	Contract	N-S	E-W	IMP
15	10	2S S 2	110		4
12	13	2S N 2	110		4
7	6	4H W-1	100		4
14	8	2S S-1		50	-1
4	9	2S S-1		50	-1
11	5	3S S-2		100	-2
3	16	3S S-2		100	-2
2	17	3H W 3		140	-3
18	1	2H W 4		170	-4

**7**

♠AK954  
♥K98  
♦J4  
♣1082

♠J106  
♥103  
♦A752  
♣Q653

♠J  
♥  
♦K109863  
♣AKJ974

♠Q8732  
♥AQ76542  
♦Q  
♣

Board (7) Av: NS=+120

N-S	E-W	Contract	N-S	E-W	IMP
4	9	6Hx S 6	1660		17
2	17	6Hx S 6	1660		17
14	8	6H S 6	1430		16
12	13	5H S 6	680		11
18	1	5H S 6	680		11
11	5	7H S-1		100	-6
3	16	6Dx W 7		1740	-18
7	6	6Dx E 7		1740	-18
15	10	6Cx W 7		1740	-18

**8**

♠A1072  
♥KJ94  
♦KQ4  
♣32

♠Q854  
♥A765  
♦76  
♣Q74

♠J96  
♥Q108  
♦A1032  
♣KJ9

♠K3  
♥32  
♦J985  
♣A10865

Board (8) Av: NS=+80

N-S	E-W	Contract	N-S	E-W	IMP
17	5	1NT S 3	150		2
8	2	1NT S 2	120		1
1	15	1NT S 2	120		1
4	12	2D N 3	110		1
10	18	2C N 2	90		0
16	6	1NT S 1	90		0
13	9	1NT S 1	90		0
14	11	1NT S-1		50	-4
3	7	1NT W 1		90	-5

**9**

♠AKQ765  
♥Q98  
♦83  
♣97

♠8  
♥10642  
♦KQ107  
♣10642

♠1093  
♥KJ3  
♦9652  
♣KJ8

♠J42  
♥A75  
♦AJ4  
♣AQ53

Board (9) Av: NS=+430

N-S	E-W	Contract	N-S	E-W	IMP
4	12	4S N 5	450		1
14	11	4S N 5	450		1
1	15	4S N 5	450		1
3	7	4S N 5	450		1
16	6	4S N 4	420		0
8	2	4S N 4	420		0
17	5	4S N 4	420		0
10	18	3NT S 3	400		-1
13	9	6S N-1		50	-10

**10**

♠84  
♥A983  
♦KQ76  
♣Q92

♠KQ5  
♥K752  
♦J54  
♣1083

N  
W—E  
S

♠A9632  
♥J106  
♦93  
♣AK4

♠J107  
♥Q4  
♦A1082  
♣J765

**11**

♠QJ9732  
♥108  
♦A964  
♣8

♠8  
♥J942  
♦Q87  
♣AK953

N  
W—E  
S

♠AK  
♥765  
♦K10  
♣QJ10764

♠10654  
♥AKQ3  
♦J532  
♣2

**12**

♠Q102  
♥Q965  
♦1076432  
♣

♠A98753  
♥AK  
♦5  
♣AQ96

N  
W—E  
S

♠J64  
♥74  
♦AQJ  
♣KJ852

♠K  
♥J10832  
♦K98  
♣10743

Board (10) Av: NS=-80

N-S	E-W	Contract	N-S	E-W	IMP
10	18	3S E-1	100		5
1	15	3S E-1	100		5
3	7	3D N-1		100	-1
14	11	2S E 2	110		-1
16	6	2S E 2	110		-1
13	9	2S E 2	110		-1
8	2	2S E 2	110		-1
4	12	2S E 3	140		-2
17	5	3S E 4	170		-3

Board (11) Av: NS=+130

N-S	E-W	Contract	N-S	E-W	IMP
8	2	4Sx N 4	590		10
10	18	6Cx E-3	500		9
14	11	5C E-2	100		-1
13	9	5C E-2	100		-1
1	15	5C E-2	100		-1
3	7	5C E-2	100		-1
4	12	5C E-1	50		-2
16	6	4S N-1		50	-5
17	5	5Sx N-3		500	-12

Board (12) Av: NS=-840

N-S	E-W	Contract	N-S	E-W	IMP
3	7	6C W-2	100		14
14	11	5S W 6		480	8
8	2	4S W 6		480	8
13	9	6S W 6		980	-4
17	5	6S W 6		980	-4
1	15	6S W 6		980	-4
4	12	6S W 6		980	-4
10	18	6S W 6		980	-4
16	6	6S E 6		980	-4

**13**

♠A52  
♥Q62  
♦J984  
♣KJ2

♠KJ107  
♥KJ87  
♦Q107  
♣105

N  
W—E  
S

♠963  
♥43  
♦32  
♣A98743

♠Q84  
♥A1095  
♦AK65  
♣Q6

**14**

♠KQJ9  
♥K5  
♦Q106  
♣A985

♠2  
♥98632  
♦A93  
♣10732

N  
W—E  
S

♠8543  
♥A107  
♦KJ52  
♣Q4

♠A1076  
♥QJ4  
♦874  
♣KJ6

**15**

♠A2  
♥1094  
♦J10987543  
♣

♠QJ106  
♥6532  
♦2  
♣Q1092

N  
W—E  
S

♠8543  
♥A7  
♦AKQ  
♣8643

♠K97  
♥KQJ8  
♦6  
♣AKJ75

Board (13) Av: NS=-100

N-S	E-W	Contract	N-S	E-W	IMP
13	9	3NT N 3	600		12
17	5	3NT S-1		100	0
14	11	3NT S-1		100	0
16	6	3NT S-1		100	0
10	18	3NT S-1		100	0
3	7	3NT S-1		100	0
1	15	3NT S-1		100	0
4	12	3NT S-1		100	0
8	2	3NT S-2		200	-3

Board (14) Av: NS=-60

N-S	E-W	Contract	N-S	E-W	IMP
16	6	4S N-1		50	0
3	7	4S N-1		50	0
1	15	4S N-1		50	0
13	9	3NT N-1		50	0
14	11	3NT N-1		50	0
4	12	3NT N-1		50	0
17	5	3NT N-1		50	0
8	2	4S N-2		100	-1
10	18	4S N-3		150	-3

Board (15) Av: NS=-290

N-S	E-W	Contract	N-S	E-W	IMP
15	7	2D N 3	110		9
12	16	1H S 2	110		9
14	2	2S W-1	50		8
8	5	6H S-2		200	3
3	13	5Dx N-2		500	-5
11	17	5Dx N-2		500	-5
4	18	5Dx N-2		500	-5
10	6	5Dx N-2		500	-5
9	1	5NTxS-4		1100	-13

**16**

♠632  
♥KQ  
♦K7642  
♣J76

♠AK9754  
♥A94  
♦A  
♣1085

N  
W—E  
S

♠10  
♥J8765  
♦J95  
♣K943

♠QJ8  
♥1032  
♦Q1083  
♣AQ2

**17**

♠AKQJ7  
♥853  
♦3  
♣A762

♠10852  
♥QJ1097  
♦Q4  
♣Q4

N  
W—E  
S

♠94  
♥K64  
♦KJ109762  
♣K

♠63  
♥A2  
♦A85  
♣J109853

**18**

♠Q7  
♥KQ72  
♦97532  
♣J2

♠942  
♥A4  
♦Q1086  
♣AK105

N  
W—E  
S

♠K863  
♥J865  
♦A4  
♣Q98

♠AJ105  
♥1093  
♦KJ  
♣7643

Board (16) Av: NS=-150

N-S	E-W	Contract	N-S	E-W	IMP
3	13	1NT S-1		50	3
15	7	3S W 3		140	0
12	16	3S W 3		140	0
9	1	3S W 3		140	0
8	5	3S W 3		140	0
14	2	3S W 4		170	-1
10	6	3S W 4		170	-1
11	17	3S W 4		170	-1
4	18	3S W 4		170	-1

Board (17) Av: NS=+230

N-S	E-W	Contract	N-S	E-W	IMP
8	5	3NT S 5	460		6
3	13	5C S 7	440		5
12	16	5C N 6	420		5
4	18	3S N 6	230		0
9	1	3S N 6	230		0
15	7	3S N 5	200		-1
14	2	3C S 6	170		-2
10	6	3NT S-1		50	-7
11	17	3Dx E 3		470	-12

Board (18) Av: NS=-130

N-S	E-W	Contract	N-S	E-W	IMP
10	6	2NT E 2		120	0
3	13	1NT W 2		120	0
12	16	1NT W 2		120	0
14	2	1NT W 2		120	0
4	18	1NT W 2		120	0
9	1	2NT E 3		150	-1
11	17	2NT E 3		150	-1
15	7	1NT W 3		150	-1
8	5	3NT E 4		430	-7

19

♠ 109532  
♥ J  
♦ AK432  
♣ 102

♠ AKQ8    ♠ J76  
♥ K98    ♥ A1052  
♦ 10    ♦ 5  
♣ KQ976    ♣ A8543

N  
W — E  
S

♠ 4  
♥ Q7643  
♦ QJ9876  
♣ J

Board (19) Av: NS=-240

N-S	E-W	Contract	N-S	E-W	IMP
11	17	3NT W-2	200		10
3	13	3NT W-2	200		10
8	5	5H E-1	100		8
9	1	5Dx S-1		100	4
4	18	5Dx N-1		100	4
14	2	5Dx N-1		100	4
10	6	6Dx N-2		300	-2
15	7	6C W 6		1370	-15
12	16	6C W 6		1370	-15

20

♠ Q7  
♥ K975  
♦ A652  
♣ AQ2

♠ J432    ♠ 1086  
♥ AQ102    ♥ 8643  
♦ K974    ♦ Q8  
♣ 5    ♣ 10764

N  
W — E  
S

♠ AK95  
♥ J  
♦ J103  
♣ KJ983

Board (20) Av: NS=+660

N-S	E-W	Contract	N-S	E-W	IMP
11	17	3NT N 5	660		0
10	6	3NT N 5	660		0
15	7	3NT N 5	660		0
12	16	3NT N 5	660		0
4	18	3NT N 5	660		0
3	13	3NT N 5	660		0
9	1	3NT N 5	660		0
8	5	3NT N 4	630		-1
14	2	3NT N 4	630		-1

21

♠ 87  
♥ A9763  
♦ A98642  
♣ A98642

♠ Q106432    ♠ AK8  
♥ QJ92    ♥ 1043  
♦ J10    ♦ KQ85  
♣ Q    ♣ K105

N  
W — E  
S

♠ J975  
♥ AK65  
♦ 42  
♣ J73

Board (21) Av: NS=-30

N-S	E-W	Contract	N-S	E-W	IMP
3	13	4Sx W-1	100		4
14	2	4S W-1	50		2
12	16	4S E-1	50		2
15	7	4S E-1	50		2
10	6	4S E-1	50		2
4	18	3S E 3		140	-3
8	5	2S W 3		140	-3
9	1	2S W 3		140	-3
11	17	2S E 3		140	-3

22

♠ KJ4  
♥ KJ7643  
♦ K104  
♣ A

♠ A3    ♠ 1098752  
♥ 102    ♥ 9  
♦ AQ32    ♦ 96  
♣ J10732    ♣ Q984

N  
W — E  
S

♠ Q6  
♥ AQ85  
♦ J875  
♣ K65

Board (22) Av: NS=+450

N-S	E-W	Contract	N-S	E-W	IMP
12	1	5H N 5	450		0
3	10	5H N 5	450		0
16	9	5H N 5	450		0
15	4	4H N 5	450		0
18	7	4H N 5	450		0
2	11	4H N 5	450		0
5	14	4H N 5	450		0
6	13	4H N 5	450		0
8	17	6Hx N-1		100	-11

23

♠ J7  
♥ KQJ72  
♦ AJ  
♣ K987

♠ K9642    ♠ AQ5  
♥ 1063    ♥ A95  
♦ 9832    ♦ Q104  
♣ Q    ♣ AJ105

N  
W — E  
S

♠ 1083  
♥ 84  
♦ K765  
♣ 6432

Board (23) Av: NS=-140

N-S	E-W	Contract	N-S	E-W	IMP
18	7	1NT E 1		90	2
2	11	2S E 2		110	1
3	10	2S E 2		110	1
5	14	1S W 2		110	1
16	9	2S E 3		140	0
6	13	2S E 3		140	0
15	4	2S W 4		170	-1
8	17	2S E 4		170	-1
12	1	2S E 4		170	-1

24

♠ 7  
♥ Q42  
♦ 1098543  
♣ 963

♠ AK32    ♠ Q10954  
♥ A865    ♥ 97  
♦ AJ    ♦ KQ6  
♣ J85    ♣ AK10

N  
W — E  
S

♠ J86  
♥ KJ103  
♦ 72  
♣ Q742

Board (24) Av: NS=-980

N-S	E-W	Contract	N-S	E-W	IMP
5	14	4S W 6		480	11
16	9	6S W 6		980	0
18	7	6S W 6		980	0
6	13	6S W 6		980	0
2	11	6S W 6		980	0
3	10	6S W 6		980	0
8	17	6S E 6		980	0
12	1	6S E 6		980	0
15	4	6S E 6		980	0

25

♠ 9732  
♥ 10964  
♦ K10  
♣ 965

♠ J865    ♠ A  
♥ QJ873    ♥ AK52  
♦ 7    ♦ AJ642  
♣ K72    ♣ A84

N  
W — E  
S

♠ KQ104  
♥  
♦ Q9853  
♣ QJ103

Board (25) Av: NS=-650

N-S	E-W	Contract	N-S	E-W	IMP
5	14	6H W-3	300		14
12	1	4H W 5		650	0
16	9	4H W 5		650	0
15	4	4H W 5		650	0
18	7	4H W 5		650	0
2	11	4H W 5		650	0
8	17	4H E 5		650	0
6	13	4H E 5		650	0
3	10	4H E 5		650	0

26

♠ Q  
♥ 654  
♦ AQJ952  
♣ AK5

♠ AKJ4    ♠ 9872  
♥ 9872    ♥ J10  
♦ 3    ♦ 10874  
♣ J1083    ♣ 764

N  
W — E  
S

♠ 10653  
♥ AKQ3  
♦ K6  
♣ Q92

Board (26) Av: NS=+680

N-S	E-W	Contract	N-S	E-W	IMP
2	11	6D S 6	1370		12
8	17	3NT S 7	720		1
5	14	3NT S 7	720		1
3	10	3NT N 7	720		1
18	7	3NT S 6	690		0
16	9	3NT S 4	630		-2
15	4	3NT S 4	630		-2
12	1	3NT S 4	630		-2
6	13	3D N 6	170		-11

27

♠ A103  
♥ K7642  
♦ 962  
♣ 43

♠ 8654    ♠ KJ92  
♥ Q    ♥ 83  
♦ AJ1087    ♦ 53  
♣ J109    ♣ A8752

N  
W — E  
S

♠ Q7  
♥ AJ1095  
♦ KQ4  
♣ KQ6

Board (27) Av: NS=+350

N-S	E-W	Contract	N-S	E-W	IMP
6	13	4H S 4	420		2
15	4	4H S 4	420		2
12	1	4H S 4	420		2
2	11	4H S 4	420		2
16	9	4H S 4	420		2
5	14	4H S 4	420		2
18	7	2H S 4	170		-5
8	17	4S W-3	150		-5
3	10	1NT S 2	120		-6

28

♠ K1094  
♥ A43  
♦ 93  
♣ A1097

♠ J6	N	♠ Q75
♥ KQ1097		♥ J85
♦ AJ106	W	♦ K754
♣ K3	S	♣ J64

♠ A832  
♥ 62  
♦ Q82  
♣ Q852

Board (28) Av: NS=-40

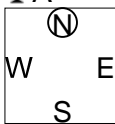
N-S	E-W	Contract	N-S	E-W	IMP
6	13	2S S 3	140		5
2	11	2S S 2	110		4
15	4	3H W-2	100		4
3	10	3H W-1	50		3
16	9	2H W 2		110	-2
5	14	3D W 4		130	-3
8	17	3D W 4		130	-3
18	7	2H W 3		140	-3
12	1	2H W 3		140	-3

第17回NRM杯 Session 4 Flight A 2012年7月1日(日)

1

♠K1098  
♥KQJ  
♦A10876  
♣A

♠7  
♥A8  
♦943  
♣KQ98653



♠A432  
♥1052  
♦J5  
♣J1074

♠QJ65  
♥97643  
♦KQ2  
♣2

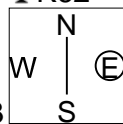
Board (1) Av: NS=+280

N-S	E-W	Contract	N-S	E-W	IMP
13	17	4S	N 5	450	5
18	16	4S	S 4	420	4
14	15	4S	N 4	420	4
2	1	4H	S 4	420	4
5	4	4H	S 4	420	4
6	3	5D	N 5	400	3
11	8	6S	S-1	50	-8
10	9	6H	S-2	100	-9
7	12	3Cx	W 3	470	-13

2

♠QJ62  
♥A  
♦AK432  
♣K62

♠K83  
♥J642  
♦109  
♣A1053



♠54  
♥10753  
♦Q87  
♣J874

♠A1097  
♥KQ98  
♦J65  
♣Q9

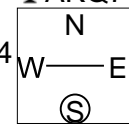
Board (2) Av: NS=+640

N-S	E-W	Contract	N-S	E-W	IMP
18	16	5S	N 5	650	0
14	15	5S	N 5	650	0
10	9	5S	N 5	650	0
5	4	4S	N 5	650	0
6	3	4S	N 5	650	0
2	1	4S	N 4	620	-1
13	17	4S	N 4	620	-1
11	8	4S	N 4	620	-1
7	12	5S	N-1	100	-12

3

♠Q103  
♦AJ8764  
♣AKQ7

♠8752  
♥AK754  
♦Q109  
♣2



♠AJ1063  
♥92  
♦52  
♣J1094

♠KQ94  
♥J86  
♦K3  
♣8653

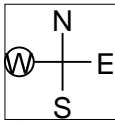
Board (3) Av: NS=+10

N-S	E-W	Contract	N-S	E-W	IMP
13	17	3NT	N 4	430	9
2	1	3C	N 4	130	3
7	12	2C	N 4	130	3
10	9	3C	N 3	110	3
14	15	5C	N-1	50	-2
11	8	5C	N-1	50	-2
6	3	5Cx	N-1	100	-3
18	16	5C	N-2	100	-3
5	4	5C	N-2	100	-3

4

♠5  
♥AK9854  
♦32  
♣7542

♠J8432  
♥63  
♦KQJ9  
♣103



♠A96  
♥Q102  
♦A1076  
♣A96

♠KQ107  
♥J7  
♦854  
♣KQJ8

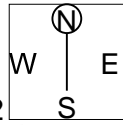
Board (4) Av: NS=+50

N-S	E-W	Contract	N-S	E-W	IMP
14	15	3S	W-2	200	4
18	16	2H	N 2	110	2
13	17	2H	N 2	110	2
7	12	2H	N 2	110	2
2	1	2H	N 2	110	2
6	3	3S	W-1	100	2
10	9	2S	W 2	110	-4
11	8	2S	W 2	110	-4
5	4	4H	N-2	200	-6

5

♠A95  
♥K75  
♦K2  
♣AQ987

♠K106  
♥96  
♦J765  
♣K1062



♠J84  
♥Q1084  
♦Q108  
♣543

♠Q732  
♥AJ32  
♦A943  
♣J

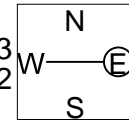
Board (5) Av: NS=+600

N-S	E-W	Contract	N-S	E-W	IMP
14	15	4NT	N 4	630	1
6	3	3NT	N 4	630	1
13	17	3NT	N 3	600	0
18	16	3NT	N 3	600	0
10	9	3NT	N 3	600	0
5	4	3NT	N 3	600	0
2	1	3NT	N 3	600	0
7	12	3NT	N 3	600	0
11	8	3NT	N-1	100	-12

6

♠AK983  
♥1087  
♦K9  
♣1085

♠J52  
♥Q543  
♦Q732  
♣43



♠Q1064  
♥KJ92  
♦64  
♣762

♠7  
♥A6  
♦AJ1085  
♣AKQJ9

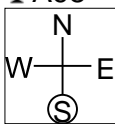
Board (6) Av: NS=+500

N-S	E-W	Contract	N-S	E-W	IMP
18	16	6D	S 6	920	9
14	15	6C	S 6	920	9
7	12	5C	S 7	440	-2
11	8	5C	S 7	440	-2
13	17	3NT	S 4	430	-2
5	4	3NT	S 4	430	-2
6	3	3NT	S 4	430	-2
2	1	3NT	S 4	430	-2
10	9	5D	S 6	420	-2

7

♠J6  
♥Q9832  
♦A54  
♣A98

♠Q843  
♥7  
♦J1076  
♣7432



♠1095  
♥KJ6  
♦Q83  
♣KQJ10

♠AK72  
♥A1054  
♦K92  
♣65

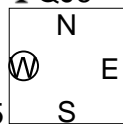
Board (7) Av: NS=+110

N-S	E-W	Contract	N-S	E-W	IMP
18	16	4H	S 4	620	11
2	1	4H	S 4	620	11
13	17	4H	N 4	620	11
14	15	4H	S-1	100	-5
10	9	4H	S-1	100	-5
6	3	4H	N-1	100	-5
5	4	4H	N-1	100	-5
11	8	4H	N-1	100	-5
7	12	4H	N-1	100	-5

8

♠J8762  
♥A1094  
♦7  
♣QJ6

♠Q543  
♥73  
♦Q53  
♣10875



♠9  
♥KQJ52  
♦J109864  
♣2

♠AK10  
♥86  
♦AK2  
♣AK943

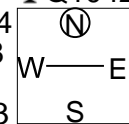
Board (8) Av: NS=+460

N-S	E-W	Contract	N-S	E-W	IMP
18	13	6Dx	E-5	1100	12
9	12	3NT	S 6	490	1
10	11	5S	N 6	480	1
5	6	5S	N 6	480	1
15	16	3NT	S 5	460	0
7	8	4S	S 5	450	0
17	14	4S	N 5	450	0
4	2	4S	N 4	420	-1
1	3	6S	N-2	100	-11

9

♠83  
♥K72  
♦KJ53  
♣Q1042

♠Q954  
♥J108  
♦Q2  
♣K853



♠KJ1062  
♥543  
♦A7  
♣A97

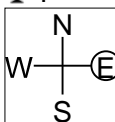
♠A7  
♥AQ96  
♦109864  
♣J6

Board (9) Av: NS=+100

N-S	E-W	Contract	N-S	E-W	IMP
5	6	3S	E-2	200	3
10	11	3S	E-2	200	3
9	12	3S	E-2	200	3
17	14	3S	E-2	200	3
15	16	3S	E-1	100	0
18	13	2S	E-1	100	0
7	8	4D	N-1	50	-4
4	2	3D	S-1	50	-4
1	3	4D	S-2	100	-5

10

♠AQ9653  
♥K10  
♦6432  
♣4



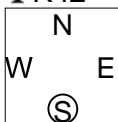
♠J1084  
♥Q876  
♦K  
♣J1053

♠K7  
♥A9532  
♦97  
♣9762

♠2  
♥J4  
♦AQJ1085  
♣AKQ8

11

♠A9  
♥97432  
♦942  
♣K42



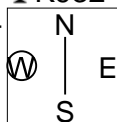
♠Q10  
♥K108  
♦J63  
♣AQ1083

♠KJ87  
♥J65  
♦A10  
♣J975

♠65432  
♥AQ  
♦KQ875  
♣6

12

♠63  
♥KQJ96  
♦32  
♣K932



♠75  
♥AKJ109  
♦AKJ109  
♣J108654

♠K10952  
♥A1083  
♦54  
♣A7

♠AQJ874  
♥42  
♦Q876  
♣Q

Board (10) Av: NS=-30

N-S	E-W	Contract	N-S	E-W	IMP
1	3	5C W-1	100		4
18	13	3NT E-1	100		4
15	16	3NT E-1	100		4
5	6	3NT E-1	100		4
10	11	3C W 3		110	-2
17	14	4D W 4		130	-3
4	2	3D W 4		130	-3
7	8	3D W 4		130	-3
9	12	3NT E 5		660	-12

Board (11) Av: NS=-90

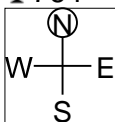
N-S	E-W	Contract	N-S	E-W	IMP
15	16	3NT W-1	50		4
9	12	3NT E-1	50		4
5	6	3NT E-1	50		4
1	3	3NT E-1	50		4
10	11	3D E 3		110	-1
7	8	2S W 2		110	-1
18	13	2NT E 3		150	-2
4	2	3NT E 3		400	-7
17	14	3NT E 3		400	-7

Board (12) Av: NS=+20

N-S	E-W	Contract	N-S	E-W	IMP
7	8	3H N 4	170		4
10	11	2S W-2	100		2
1	3	2S W-2	100		2
17	14	5D W-1	50		1
15	16	5D E-1	50		1
5	6	3C E-1	50		1
18	13	3D W 3		110	-4
4	2	3C E 3		110	-4
9	12	3D W 4		130	-4

13

♠AQJ  
♥AJ63  
♦KQ6  
♣764



♠K1073  
♥Q84  
♦954  
♣Q92

♠64  
♥K10952  
♦J102  
♣AKJ

♠9852  
♥7  
♦A873  
♣10853

14

♠J4  
♥87  
♦AK1073  
♣J1043



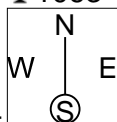
♠10982  
♥AJ32  
♦964  
♣A9

♠A63  
♥Q1094  
♦Q82  
♣K62

♠KQ75  
♥K65  
♦J5  
♣Q875

15

♠63  
♥A7  
♦KQ8543  
♣1063



♠Q98542  
♥K985  
♦J72  
♣

♠J107  
♥QJ63  
♦A10  
♣AK72

♠AK  
♥1042  
♦96  
♣QJ9854

Board (13) Av: NS=+620

N-S	E-W	Contract	N-S	E-W	IMP
17	14	4H S 5	650		1
9	12	4H N 5	650		1
10	11	4H N 4	620		0
15	16	4H N 4	620		0
1	3	4H N 4	620		0
4	2	4H N 4	620		0
5	6	4H N 4	620		0
7	8	4H N 4	620		0
18	13	5H N-1		100	-12

Board (14) Av: NS=+30

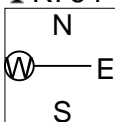
N-S	E-W	Contract	N-S	E-W	IMP
9	12	2NT S 3	150		3
7	8	3S W-2	100		2
15	16	3S W-2	100		2
17	14	3S W-1	50		1
5	6	3S W-1	50		1
10	11	2S W-1	50		1
4	2	Passout			-1
18	13	2S W 2		110	-4
1	3	2S W 2		110	-4

Board (15) Av: NS=+560

N-S	E-W	Contract	N-S	E-W	IMP
2	6	3NT S 4	630		2
12	11	3NT S 3	600		1
14	13	3NT S 3	600		1
15	18	3NT S 3	600		1
9	7	3NT S 3	600		1
4	1	3NT S 3	600		1
5	3	3NT S 3	600		1
8	10	4Sx E-2	300		-6
17	16	4D N 4	130		-10

16

♠A  
♥87  
♦K108532  
♣K764



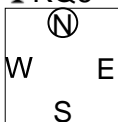
♠QJ1073  
♥Q10642  
♦  
♣953

♠K965  
♥53  
♦AJ6  
♣QJ108

♠842  
♥AKJ9  
♦Q974  
♣A2

17

♠K96  
♥Q7543  
♦AK  
♣KQ6



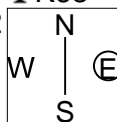
♠A83  
♥A  
♦Q109432  
♣A54

♠2  
♥K10962  
♦J8  
♣J10932

♠QJ10754  
♥J8  
♦765  
♣87

18

♠J97  
♥J3  
♦Q10862  
♣K63



♠KQ  
♥AK92  
♦9743  
♣A105

♠A843  
♥Q754  
♦AJ  
♣842

♠10652  
♥1086  
♦K5  
♣QJ97

Board (16) Av: NS=-190

N-S	E-W	Contract	N-S	E-W	IMP
15	18	3H E 4	170		1
2	6	3H E 4	170		1
9	7	2H E 4	170		1
12	11	2H E 4	170		1
4	1	2H E 4	170		1
5	3	2H E 4	170		1
17	16	2H E 5	200		0
8	10	5Cx S-2	300		-3
14	13	4H E 5	650		-10

Board (17) Av: NS=+40

N-S	E-W	Contract	N-S	E-W	IMP
14	13	4H N 4	420		9
15	18	4H N 4	420		9
17	16	4H N 4	420		9
12	11	5Hx N-1		100	-4
9	7	5Hx N-1		100	-4
5	3	5Hx N-1		100	-4
2	6	3D E 3		110	-4
8	10	3D E 4		130	-5
4	1	3D E 4		130	-5

Board (18) Av: NS=-130

N-S	E-W	Contract	N-S	E-W	IMP
9	7	1NT E 1	90		1
2	6	1NT E 2	120		0
14	13	1NT E 2	120		0
4	1	1NT E 2	120		0
5	3	1NT E 2	120		0
15	18	1NT E 3	150		-1
12	11	1NT E 3	150		-1
17	16	1NT E 3	150		-1
8	10	1NT E 4	180		-2

19

♠ KJ954  
♥ K62  
♦ 4  
♣ AK104

♠ 72  
♥ A1073  
♦ A1092  
♣ QJ6

N  
W — E  
S

♠ 1063  
♥ QJ984  
♦ KJ3  
♣ 93

♠ AQ8  
♥ 5  
♦ Q8765  
♣ 8752

20

♠ K9  
♥ K10985  
♦ 73  
♣ J1052

♠ Q52  
♥ AQ7  
♦ A102  
♣ Q984

N  
W — E  
S

♠ A874  
♥ 43  
♦ J85  
♣ A763

♠ J1063  
♥ J62  
♦ KQ964  
♣ K

21

♠ 72  
♥ A10863  
♦ AQ10  
♣ 1074

♠ A109543  
♥ 9  
♦ J9765  
♣ K

N  
W — E  
S

♠ KJ6  
♥ QJ  
♦ K84  
♣ A9862

♠ Q8  
♥ K7542  
♦ 32  
♣ QJ53

Board (19) Av: NS=+370

N-S	E-W	Contract	N-S	E-W	IMP
14	13	4S	N 5	450	2
12	11	4S	N 5	450	2
9	7	4S	N 5	450	2
15	18	4S	N 4	420	2
2	6	4S	N 4	420	2
5	3	4S	N 4	420	2
17	16	3S	N 5	200	-5
8	10	2S	N 5	200	-5
4	1	3H	E-1	100	-7

Board (20) Av: NS=-30

N-S	E-W	Contract	N-S	E-W	IMP
15	18	3C	W-2	200	6
8	10	2NT	W-2	200	6
12	11	1NT	W-1	100	4
2	6	1NT	W 1	90	-2
4	1	1NT	W 1	90	-2
5	3	1NT	W 1	90	-2
14	13	3H	N-1	100	-2
17	16	3C	W 3	110	-2
9	7	2S	E 2	110	-2

Board (21) Av: NS=-400

N-S	E-W	Contract	N-S	E-W	IMP
2	6	2D	W 2	90	7
12	11	2S	W 5	200	5
9	7	4S	W 4	420	-1
17	16	4S	W 4	420	-1
5	3	4S	W 4	420	-1
14	13	4S	E 4	420	-1
4	1	4S	W 5	450	-2
15	18	4S	W 5	450	-2
8	10	4S	W 5	450	-2

22

♠ A7643  
♥ A632  
♦ 10732  
♣

♠ J2  
♥ J10  
♦ J4  
♣ AJ108532

N  
W — E  
S

♠ Q109  
♥ Q54  
♦ Q986  
♣ 976

♠ K85  
♥ K987  
♦ AK5  
♣ KQ4

Board (22) Av: NS=+430

N-S	E-W	Contract	N-S	E-W	IMP
17	18	4H	S 5	450	1
8	12	4H	N 5	450	1
1	5	4H	N 5	450	1
3	2	4H	N 5	450	1
10	7	4S	S 4	420	0
15	13	4S	N 4	420	0
6	4	4H	N 4	420	0
11	9	4H	N 4	420	0
14	16	4H	N 4	420	0

23

♠ KJ  
♥ AQ85  
♦ Q874  
♣ K73

♠ Q10864  
♥ K7642  
♦ A  
♣ 54

N  
W — E  
S

♠ A92  
♥  
♦ K1096532  
♣ A86

♠ 753  
♥ J1093  
♦ J  
♣ QJ1092

Board (23) Av: NS=-20

N-S	E-W	Contract	N-S	E-W	IMP
6	4	2H	N 2	110	4
10	7	2H	N 2	110	4
17	18	4S	W-1	100	3
11	9	4S	W-1	100	3
1	5	3D	E 3	110	-3
14	16	3D	E 3	110	-3
15	13	2D	E 3	110	-3
3	2	3D	E 4	130	-3
8	12	3H	N-2	200	-5

24

♠ J63  
♥ K93  
♦ J1094  
♣ Q43

♠ K52  
♥ Q10852  
♦ KQ75  
♣ 8

N  
W — E  
S

♠ 874  
♥ A74  
♦ 832  
♣ A1052

♠ AQ109  
♥ J6  
♦ A6  
♣ KJ976

Board (24) Av: NS=-70

N-S	E-W	Contract	N-S	E-W	IMP
11	9	2NT	N 2	120	5
15	13	1NT	S 1	90	4
17	18	1NT	N-1	50	1
6	4	3NT	S-2	100	-1
8	12	2NT	N-2	100	-1
14	16	2NT	N-2	100	-1
1	5	1NT	S-2	100	-1
10	7	2H	W 2	110	-1
3	2	2H	E 2	110	-1

25

♠ 984  
♥ KQ542  
♦ 872  
♣ 84

♠ J  
♥ 1087  
♦ A643  
♣ AQJ93

N  
W — E  
S

♠ Q7652  
♥ J96  
♦ KQJ5  
♣ 10

♠ AK103  
♥ A3  
♦ 109  
♣ K7652

Board (25) Av: NS=+10

N-S	E-W	Contract	N-S	E-W	IMP
11	9	2C	W-3	300	7
3	2	1NT	S 3	150	4
6	4	2H	N 3	140	4
14	16	1S	S 1	80	2
17	18	2H	N-1	50	-2
15	13	2H	N-1	50	-2
10	7	1S	E 1	80	-3
8	12	2D	W 2	90	-3
1	5	2D	W 3	110	-3

26

♠ A4  
♥ KQ4  
♦ AK932  
♣ A86

♠ KJ32  
♥ J102  
♦ 84  
♣ K942

N  
W — E  
S

♠ Q10985  
♥ A9  
♦ 1075  
♣ QJ3

♠ 76  
♥ 87653  
♦ QJ6  
♣ 1075

Board (26) Av: NS=+80

N-S	E-W	Contract	N-S	E-W	IMP
3	2	3H	N 4	170	3
11	9	3H	N 4	170	3
14	16	3H	N 3	140	2
17	18	3H	N 3	140	2
15	13	3H	N 3	140	2
8	12	3H	N 3	140	2
6	4	3H	N-1	100	-5
1	5	3H	N-1	100	-5
10	7	4H	N-2	200	-7

27

♠ 107  
♥ Q5  
♦ A876  
♣ KQ843

♠ QJ62  
♥ K10  
♦ J10542  
♣ 109

N  
W — E  
S

♠ AK943  
♥ A43  
♦ KQ9  
♣ J7

♠ 85  
♥ J98762  
♦ 3  
♣ A652

Board (27) Av: NS=-60

N-S	E-W	Contract	N-S	E-W	IMP
8	12	4S	E-2	100	4
17	18	4S	E-2	100	4
10	7	4S	E-2	100	4
14	16	4S	E-1	50	3
1	5	3S	E-1	50	3
15	13	2S	E 2	110	-2
11	9	3S	W 4	170	-3
6	4	4S	W 4	420	-8
3	2	4S	W 4	420	-8

**28**

♠ 105  
♥ AQ85  
♦ A106  
♣ K1082

♠ KQ93  
♥ 73  
♦ 985  
♣ AJ93

N  
W | E  
S

♠ AJ42  
♥ J109  
♦ J74  
♣ Q65

♠ 876  
♥ K642  
♦ KQ32  
♣ 74

Board (28) Av: NS=+110

N-S	E-W	Contract	N-S	E-W	IMP
6	4	3H S 4	170		2
14	16	2H N 4	170		2
10	7	1NT N 3	150		1
15	13	3H S 3	140		1
3	2	3S W-2	100		0
1	5	1NTxW-1	100		0
17	18	2S W-1	50		-2
8	12	2S W-1	50		-2
11	9	2S W-1	50		-2

**29**

♠ AQJ74  
♥ J53  
♦ K  
♣ 9842

♠ K8  
♥ K10  
♦ 7652  
♣ QJ763

N  
W | E  
S

♠ 1093  
♥ AQ876  
♦ 93  
♣ AK5

♠ 652  
♥ 942  
♦ AQJ1084  
♣ 10

Board (29) Av: NS=+20

N-S	E-W	Contract	N-S	E-W	IMP
16	13	2S N 6	230		5
9	8	3D S 3	110		3
10	12	2S N 2	110		3
15	17	2S N 2	110		3
6	1	2S N 2	110		3
3	4	3S N-1	100		-3
5	2	3S N-1	100		-3
14	18	2S N-1	100		-3
7	11	3H E 4	170		-5

**30**

♠ Q1064  
♥ 10854  
♦ K4  
♣ AQ8

♠ K75  
♥ K97  
♦ J9862  
♣ 32

N  
W | E  
S

♠ J92  
♥ J62  
♦ A7  
♣ K9654

♠ A83  
♥ AQ3  
♦ Q1053  
♣ J107

Board (30) Av: NS=+20

N-S	E-W	Contract	N-S	E-W	IMP
3	4	3NT S 3	400		9
15	17	2NT S 3	150		4
16	13	2NT S 2	120		3
10	12	1NT N 1	90		2
9	8	3NT S-1	50		-2
14	18	2NT S-1	50		-2
6	1	1NT S-1	50		-2
5	2	2S N-2	100		-3
7	11	2NT S-3	150		-5

**31**

♠ 75  
♥ AJ7432  
♦ K6  
♣ 875

♠ 4  
♥ Q108  
♦ A743  
♣ QJ1042

N  
W | E  
S

♠ KQJ10963  
♥ 965  
♦ Q9  
♣ A

♠ A82  
♥ K  
♦ J10852  
♣ K963

Board (31) Av: NS=-30

N-S	E-W	Contract	N-S	E-W	IMP
7	11	4S E-2	100		4
10	12	4S E-2	100		4
9	8	4S E-2	100		4
3	4	3NT W-1	50		2
14	18	2S E 2	110		-2
15	17	2S E 2	110		-2
6	1	2S E 2	110		-2
16	13	2S E 3	140		-3
5	2	2S E 4	170		-4

**32**

♠ QJ52  
♥ 6  
♦ QJ1084  
♣ J92

♠ A973  
♥ A42  
♦ 9  
♣ AKQ73

N  
W | E  
S

♠ 108  
♥ Q983  
♦ A632  
♣ 1085

♠ K64  
♥ KJ1075  
♦ K75  
♣ 64

Board (32) Av: NS=-130

N-S	E-W	Contract	N-S	E-W	IMP
6	1	3H E-1	100		6
5	2	3H E-1	100		6
3	4	3H E-1	100		6
14	18	3D N-1	50		2
10	12	2H E 2	110		1
15	17	3H E 3	140		0
16	13	2NT E 4	180		-2
9	8	3NT E 4	630		-11
7	11	3Hx E 3	730		-12

**33**

♠ QJ75  
♥ Q  
♦ QJ843  
♣ Q92

♠ 42  
♥ AJ4  
♦ 965  
♣ AKJ87

N  
W | E  
S

♠ A1086  
♥ 9832  
♦ K2  
♣ 1064

♠ K93  
♥ K10765  
♦ A107  
♣ 53

Board (33) Av: NS=+70

N-S	E-W	Contract	N-S	E-W	IMP
5	2	2Hx E-3	500		10
14	18	2S N 2	110		1
3	4	2D N 3	110		1
16	13	3C W-2	100		1
9	8	3C W-2	100		1
7	11	2D N 2	90		1
6	1	1NT W-1	50		-1
10	12	3D S-1	50		-3
15	17	3D N-2	100		-5

**34**

♠ Q1043  
♥ K2  
♦ AQ976  
♣ 93

♠ 765  
♥ J43  
♦ J85  
♣ J1085

N  
W | E  
S

♠ AK82  
♥ Q1086  
♦ 43  
♣ K76

♠ J9  
♥ A975  
♦ K102  
♣ AQ42

Board (34) Av: NS=+350

N-S	E-W	Contract	N-S	E-W	IMP
10	12	3NT S 4	630		7
7	11	3NT S 3	600		6
9	8	3NT S 3	600		6
3	4	3NT S 3	600		6
16	13	2NT S 4	180		-5
15	17	2NT S 3	150		-5
5	2	2D N 5	150		-5
6	1	1NT E-3	150		-5
14	18	3C S-1	100		-10

**35**

♠ 9752  
♥ 974  
♦ A1095  
♣ K2

♠ K  
♥ AQ632  
♦ KQ84  
♣ A109

N  
W | E  
S

♠ AQ104  
♥ KJ85  
♦ J2  
♣ 865

♠ J863  
♥ 10  
♦ 763  
♣ QJ743

Board (35) Av: NS=-890

N-S	E-W	Contract	N-S	E-W	IMP
6	1	5H W 6	680		5
9	8	4H W 6	680		5
14	18	4H W 6	680		5
10	12	4H W 6	680		5
5	2	4H W 6	680		5
3	4	4H W 6	680		5
16	13	6H W 6	1430		-11
15	17	6H W 6	1430		-11
7	11	6H W 6	1430		-11