

木村六郎杯 OPEN TEAMS Session 1 Flight A 2012年2月25日(土)

1

♠ K9
♥ KQ108632
♦ QJ10
♣ 6

♠ AJ852
♥ 9
♦ 532
♣ AK107

♠ Q73
♥ J4
♦ 87
♣ QJ9543

Board (1) Av: NS=-170

N-S	E-W	Contract	N-S	E-W	IMP
4	6	4S	E-1	50	6
8	1	4S	E-1	50	6
6	4	4S	E-1	50	6
3	5	4H	N-2	100	2
7	2	3S	E 5	200	-1
2	7	4S	E 4	420	-6
5	3	4S	E 4	420	-6
1	8	4S	E 5	450	-7

2

♠ K1084
♥ 975
♦ K96
♣ Q107

♠ Q963
♥ 10432
♦ AQJ104
♣

♠ A
♥ AQ
♦ 52
♣ KJ985432

Board (2) Av: NS=-140

N-S	E-W	Contract	N-S	E-W	IMP
4	6	5C	S 5	600	12
2	7	4C	S 5	150	7
3	5	5C	S-1	100	1
7	2	5C	S-1	100	1
5	3	3NT	N-1	100	1
6	4	5Cx	S-1	200	-2
8	1	3NT	N-5	500	-8
1	8	3Hx	W 3	530	-9

3

♠ 86
♥ Q4
♦ AQJ65
♣ 9842

♠ J104
♥ J9753
♦ 9
♣ AQ63

♠ AK75
♥ AK1062
♦ 87
♣ J10

Board (3) Av: NS=+60

N-S	E-W	Contract	N-S	E-W	IMP
8	1	3NT	N 3	400	8
4	6	2H	S 3	140	2
1	8	2H	S 3	140	2
5	3	2H	S 2	110	2
7	2	2H	S 2	110	2
3	5	3NT	N-1	50	-3
6	4	4H	S-2	100	-4
2	7	4H	S-3	150	-5

4

♠ AQJ
♥ 103
♦ K
♣ AQ109643

♠ 6
♥ AK754
♦ AJ106532
♣

♠ 875432
♥ Q98
♦ 74
♣ KJ

Board (4) Av: NS=-380

N-S	E-W	Contract	N-S	E-W	IMP
2	7	6D	E-1	100	10
7	2	6D	E-1	100	10
5	3	4D	E 5	150	6
3	5	5S	S-3	300	2
6	4	5D	E 6	620	-6
4	6	4H	W 5	650	-7
8	1	4H	W 5	650	-7
1	8	5Dx	E 5	750	-9

5

♠ A7654
♥ 10543
♦ Q86
♣ J

♠ J9832
♥ K7
♦ 104
♣ 9754

♠ K10
♥ AQJ9862
♦ AK72
♣

Board (5) Av: NS=+600

N-S	E-W	Contract	N-S	E-W	IMP
6	4	6H	S 6	1430	13
2	7	5H	S 7	710	3
3	5	5H	S 6	680	2
8	1	5H	S 6	680	2
4	6	7Cx	W-3	500	-3
1	8	7Cx	W-3	500	-3
7	2	7Cx	E-3	500	-3
5	3	5Cx	W-1	100	-11

6

♠ 32
♥ A10642
♦ AK73
♣ 82

♠ A9
♥ 75
♦ QJ10965
♣ K63

♠ QJ1085
♥ Q8
♦ 8
♣ AJ975

Board (6) Av: NS=-70

N-S	E-W	Contract	N-S	E-W	IMP
3	5	3S	S 3	140	5
8	1	Passout			2
6	4	4H	N-1	50	1
2	7	3NT	N-1	50	1
1	8	2D	E 2	90	-1
7	2	4S	S-2	100	-1
5	3	3NT	N-2	100	-1
4	6	3NT	S-4	200	-4

7

♠ Q84
♥ K8
♦ QJ983
♣ AKQ

♠ 9762
♥ J952
♦ K1076
♣ 3

♠ AKJ10
♥ A764
♦ 4
♣ 10842

Board (7) Av: NS=+620

N-S	E-W	Contract	N-S	E-W	IMP
6	4	3NT	S 4	630	0
5	3	3NT	S 4	630	0
4	6	3NT	S 4	630	0
7	2	3NT	S 4	630	0
1	8	3NT	S 3	600	-1
8	1	3NT	S 3	600	-1
2	7	3NT	S 3	600	-1
3	5	3NT	S 3	600	-1

8

♠ A1093
♥ A9
♦ AQ5
♣ A743

♠ 865
♥ J863
♦ 107
♣ KJ52

♠ K42
♥ Q2
♦ J96432
♣ Q8

Board (8) Av: NS=+440

N-S	E-W	Contract	N-S	E-W	IMP
4	6	3NT	N 6	490	2
3	5	3NT	N 5	460	1
1	8	3NT	N 5	460	1
5	3	3NT	N 4	430	0
8	1	3NT	N 4	430	0
2	7	3NT	N 4	430	0
7	2	3NT	N 4	430	0
6	4	5D	S 6	420	-1

9

♠ Q86
♥ QJ109
♦ AQ106
♣ 75

♠ A5
♥ A76543
♦ 9742
♣ A

♠ K1073
♥ K8
♦ K53
♣ KQ63

Board (9) Av: NS=+420

N-S	E-W	Contract	N-S	E-W	IMP
7	2	3NT	N 4	430	0
3	5	3NT	N 4	430	0
2	7	3NT	N 4	430	0
1	8	3NT	N 4	430	0
4	6	3NT	N 3	400	-1
6	4	3NT	N 3	400	-1
8	1	3NT	N 3	400	-1
5	3	2C	E-1	100	-8

10

♠8
♥108763
♦982
♣Q863

♠10632
♥42
♦A1074
♣J92

♠AK9754
♥A5
♦Q
♣AK104

♠QJ
♥KQJ9
♦KJ653
♣75

11

♠J10874
♥J5
♦Q93
♣K102

♠2
♥6
♦AKJ10872
♣J987

♠AQ5
♥Q9732
♦
♣A6543

♠K963
♥AK1084
♦654
♣Q

12

♠2
♥A54
♦AK8
♣KJ9862

♠AK10
♥J102
♦J9532
♣53

♠J9853
♥63
♦1074
♣AQ4

♠Q764
♥KQ987
♦Q6
♣107

Board (10) Av: NS=-830

N-S	E-W	Contract	N-S	E-W	IMP
6	4	4S	E 6	680	4
1	8	4S	E 6	680	4
7	2	4S	E 7	710	3
5	3	4S	E 7	710	3
3	5	4S	E 7	710	3
8	1	4S	E 7	710	3
2	7	6S	E 6	1430	-12
4	6	6S	E 6	1430	-12

Board (11) Av: NS=+10

N-S	E-W	Contract	N-S	E-W	IMP
2	7	3S	N 4	170	4
1	8	3NT	E-2	100	3
3	5	4D	W-1	50	1
5	3	4D	W-1	50	1
8	1	4D	W-1	50	1
6	4	3S	S-2	100	-3
7	2	3D	W 3	110	-3
4	6	3D	W 3	110	-3

Board (12) Av: NS=+80

N-S	E-W	Contract	N-S	E-W	IMP
4	6	3NT	S 3	600	11
1	8	2H	S 4	170	3
6	4	3C	N 4	130	2
3	5	2C	N 4	130	2
7	2	2H	S 2	110	1
5	3	2S	E-1	50	-1
2	7	4H	S-1	100	-5
8	1	4H	S-1	100	-5

13

♠QJ9
♥A
♦Q109862
♣1098

♠1064
♥QJ109543
♦A
♣65

♠AK8
♥K62
♦7
♣KQJ432

♠7532
♥87
♦KJ543
♣A7

14

♠KQ2
♥94
♦54
♣AQ10876

♠AJ9
♥102
♦AKJ32
♣K94

♠643
♥AK8753
♦Q107
♣3

♠10875
♥QJ6
♦986
♣J52

15

♠96
♥AK98
♦AQJ9
♣A107

♠AK72
♥4
♦765
♣KQJ82

♠85
♥QJ10753
♦2
♣6543

♠QJ1043
♥62
♦K10843
♣9

Board (13) Av: NS=-630

N-S	E-W	Contract	N-S	E-W	IMP
6	4	4Dx	N-1	200	10
3	5	5Dx	S-2	500	4
4	6	5H	W 5	650	-1
1	8	4H	W 5	650	-1
5	3	4H	W 5	650	-1
8	1	4H	W 5	650	-1
2	7	4H	W 5	650	-1
7	2	4H	W 5	650	-1

Board (14) Av: NS=-440

N-S	E-W	Contract	N-S	E-W	IMP
7	2	2H	E 5	200	6
6	4	3NT	W 3	400	1
4	6	4H	E 4	420	1
5	3	4H	W 5	450	0
3	5	4H	W 5	450	0
1	8	4H	E 5	450	0
8	1	4H	E 5	450	0
2	7	4H	E 5	450	0

Board (15) Av: NS=+110

N-S	E-W	Contract	N-S	E-W	IMP
3	5	5D	S 5	600	10
4	6	5D	S 5	600	10
1	8	3D	S 5	150	1
7	2	1NT	N 2	120	0
8	1	2S	S 2	110	0
2	7	5D	S-1	100	-5
6	4	4S	S-2	200	-7
5	3	4S	S-2	200	-7

16

♠AJ10986
♥4
♦K
♣KQJ74

♠32
♥AKQ
♦8654
♣A952

♠KQ4
♥9876
♦AQ10972
♣

♠75
♥J10532
♦J3
♣10863

17

♠K3
♥AQ8764
♦9653
♣9

♠J1072
♥93
♦Q4
♣KQ543

♠A984
♥J5
♦K87
♣AJ86

♠Q65
♥K102
♦AJ102
♣1072

18

♠A7652
♥
♦AQ9
♣A9732

♠K10843
♥J96
♦J1053
♣10

♠9
♥A875
♦K764
♣Q864

♠QJ
♥KQ10432
♦82
♣KJ5

Board (16) Av: NS=-550

N-S	E-W	Contract	N-S	E-W	IMP
1	8	4H	W-1	100	12
2	7	4Sx	N-2	300	6
6	4	4Sx	N-3	500	2
3	5	5D	W 6	620	-2
5	3	5D	E 6	620	-2
8	1	5D	E 6	620	-2
7	2	3NT	W 4	630	-2
4	6	3NT	E 6	690	-4

Board (17) Av: NS=+180

N-S	E-W	Contract	N-S	E-W	IMP
6	3	4H	N 4	420	6
8	2	4H	N 4	420	6
5	4	3H	N 5	200	1
4	5	3H	N 4	170	0
2	8	3H	N 3	140	-1
7	1	4S	W-2	100	-2
3	6	4S	E-1	50	-4
1	7	3S	W 3	140	-8

Board (18) Av: NS=-130

N-S	E-W	Contract	N-S	E-W	IMP
5	4	3NT	N 3	600	12
1	7	3NT	S-1	100	1
8	2	3NT	N-1	100	1
7	1	3NT	N-1	100	1
2	8	3NT	N-1	100	1
4	5	4S	N-2	200	-2
3	6	4S	N-2	200	-2
6	3	3NT	N-2	200	-2

19

♠ A96
♥ 876
♦ K832
♣ K53

♠ 752
♥ A52
♦ Q4
♣ AQJ104

N
W — E
S

♠ Q1083
♥ K
♦ 10965
♣ 9862

♠ KJ4
♥ QJ10943
♦ AJ7
♣ 7

20

♠ A4
♥ 652
♦ AQ1083
♣ J93

♠ 1092
♥ J93
♦ K7
♣ K8652

N
W — E
S

♠ QJ87
♥ Q10874
♦ 642
♣ Q

♠ K653
♥ AK
♦ J95
♣ A1074

21

♠ K3
♥ AKQ1093
♦ AQ965
♣

♠ AJ104
♥ J75
♦ 43
♣ KQJ2

N
W — E
S

♠ Q97652
♥ 6
♦ 87
♣ A954

♠ 8
♥ 842
♦ KJ102
♣ 108763

Board (19) Av: NS=+340

N-S	E-W	Contract	N-S	E-W	IMP
7	1	4H S 5	450		3
3	6	4H S 4	420		2
4	5	4H S 4	420		2
8	2	4H S 4	420		2
1	7	4H S 4	420		2
2	8	3H S 4	170		-5
6	3	2H S 4	170		-5
5	4	4H S-1	50		-9

Board (20) Av: NS=+690

N-S	E-W	Contract	N-S	E-W	IMP
4	5	3NT S 6	690		0
3	6	3NT S 6	690		0
8	2	3NT S 6	690		0
5	4	3NT N 6	690		0
6	3	3NT N 6	690		0
1	7	3NT N 6	690		0
7	1	3NT N 5	660		-1
2	8	3NT S 3	600		-3

Board (21) Av: NS=+1030

N-S	E-W	Contract	N-S	E-W	IMP
5	4	6H N 6	1430		9
4	5	6H N 6	1430		9
2	8	6H N 6	1430		9
1	7	6H N 6	1430		9
8	2	5H N 5	650		-9
7	1	5D N 6	620		-9
6	3	5D N 6	620		-9
3	6	6Sx E-3	500		-11

22

♠ AJ109
♥ Q1072
♦ 74
♣ 1043

♠ K832
♥ 64
♦ K1062
♣ A98

N
W — E
S

♠ 6
♥ K985
♦ AQJ3
♣ J652

♠ Q754
♥ AJ3
♦ 985
♣ KQ7

23

♠ J4
♥ AQ9
♦ K73
♣ QJ1086

♠ Q52
♥ J107432
♦ Q
♣ A74

N
W — E
S

♠ 10763
♥ K
♦ A94
♣ K9532

♠ AK98
♥ 865
♦ J108652
♣

24

♠ 96
♥ Q965
♦ Q103
♣ 10987

♠ Q1074
♥ A103
♦ 7
♣ A6432

N
W — E
S

♠ A5
♥ 874
♦ 9865
♣ KQJ5

♠ KJ832
♥ KJ2
♦ AKJ42
♣

Board (22) Av: NS=+90

N-S	E-W	Contract	N-S	E-W	IMP
5	4	3S S 4	170		2
4	5	2S S 3	140		2
6	3	2S S 2	110		1
2	8	2S S 2	110		1
7	1	3D E-1	100		0
1	7	1NT E-1	100		0
3	6	Passout			-3
8	2	3D E 3	110		-5

Board (23) Av: NS=+250

N-S	E-W	Contract	N-S	E-W	IMP
1	7	3NT N 4	630		9
3	6	3NT N 3	600		8
8	2	3H W-3	300		2
4	5	2H W-2	200		-2
2	8	1NT N 4	180		-2
5	4	3D N 4	130		-3
6	3	3D S 3	110		-4
7	1	3C W-1	100		-4

Board (24) Av: NS=-20

N-S	E-W	Contract	N-S	E-W	IMP
4	5	2D S 3	110		4
2	8	1S S 2	110		4
3	6	4C E-1	50		2
1	7	1S W-1	50		2
8	2	4D S-2	100		-2
7	1	3C W 3	110		-3
6	3	3C W 3	110		-3
5	4	1NT W 2	120		-3

25

♠ 752
♥ AQ10982
♦ A4
♣ 72

♠ 93
♥ J4
♦ KJ85
♣ K10654

N
W — E
S

♠ AK108
♥ K6
♦ Q972
♣ J83

♠ QJ64
♥ 753
♦ 1063
♣ AQ9

26

♠ A652
♥ J97643
♦ 52
♣ 5

♠ 98
♥ A1052
♦ 93
♣ AJ876

N
W — E
S

♠ KQ8
♥ AJ864
♣ Q10432

♠ KQJ10743
♥
♦ KQ107
♣ K9

27

♠ AJ5
♥ J8742
♦ 5
♣ J962

♠ 9863
♥ 103
♦ A10932
♣ Q10

N
W — E
S

♠ K42
♥ Q965
♦ J84
♣ 754

♠ Q107
♥ AK
♦ KQ76
♣ AK83

Board (25) Av: NS=-60

N-S	E-W	Contract	N-S	E-W	IMP
5	4	2H N 2	110		5
3	6	5C W-1	100		4
6	3	3H N-1	50		0
4	5	3H N-2	100		-1
1	7	3H N-2	100		-1
7	1	3H N-2	100		-1
2	8	3H N-2	100		-1
8	2	3H N-2	100		-1

Board (26) Av: NS=+550

N-S	E-W	Contract	N-S	E-W	IMP
3	6	5Sx S 5	850		7
8	2	5Sx S 5	850		7
5	4	4S S 6	680		4
4	5	4S S 5	650		3
7	1	4S S 5	650		3
2	8	4S S 5	650		3
1	7	5Sx S-1	200		-13
6	3	5C E 6	620		-15

Board (27) Av: NS=-70

N-S	E-W	Contract	N-S	E-W	IMP
3	6	3NT S 3	400		10
4	5	3NT S-1	50		1
6	3	3NT S-1	50		1
5	4	3NT S-1	50		1
8	2	3NT S-1	50		1
7	1	3NT S-1	50		1
1	7	3NT S-3	150		-2
2	8	3NT S-3	150		-2

28

♠AQJ4
♥1093
♦1075
♣984

♠10
♥A865
♦K9864
♣A102

N E
W S

♠876532
♥K74
♦2
♣Q65

♠K9
♥QJ2
♦AQJ3
♣KJ73

Board (28) Av: NS=+120

N-S	E-W	Contract	N-S	E-W	IMP
7	1	2Sx	E-2	300	5
1	7	1NT	S 3	150	1
6	3	1NT	S 2	120	0
4	5	1NT	S 2	120	0
2	8	1NT	S 2	120	0
8	2	1NT	S 2	120	0
5	4	2S	E-2	100	-1
3	6	2S	E-1	50	-2

29

♠KJ
♥A74
♦QJ862
♣AQ10

♠743
♥Q985
♦K7
♣J654

N E
W S

♠AQ9
♥1062
♦A1043
♣972

♠108652
♥KJ3
♦95
♣K83

Board (29) Av: NS=+80

N-S	E-W	Contract	N-S	E-W	IMP
4	5	2S	N 3	140	2
3	6	2S	N 2	110	1
6	3	2S	N 2	110	1
8	2	2S	N 2	110	1
1	7	2S	N 2	110	1
2	8	2S	N 2	110	1
7	1	2S	N-1	100	-5
5	4	3NT	N-3	300	-9

30

♠K98
♥J5
♦Q7532
♣K106

♠7432
♥K1082
♦J10
♣A73

N E
W S

♠AJ6
♥AQ6
♦AK8
♣9542

♠Q105
♥9743
♦964
♣QJ8

Board (30) Av: NS=-380

N-S	E-W	Contract	N-S	E-W	IMP
3	6	3NT	E-1	50	10
6	3	1NT	E 3	150	6
4	5	3NT	E 3	400	-1
5	4	3NT	E 4	430	-2
7	1	3NT	E 4	430	-2
1	7	3NT	E 4	430	-2
8	2	3NT	E 4	430	-2
2	8	3NT	E 4	430	-2

31

♠Q42
♥K
♦AJ10632
♣A52

♠J10863
♥J65
♦Q54
♣103

N E
W S

♠A5
♥10987432
♦8
♣KQ9

♠K97
♥AQ
♦K97
♣J8764

Board (31) Av: NS=+190

N-S	E-W	Contract	N-S	E-W	IMP
3	6	3NT	S 6	690	11
4	5	3NT	S 4	630	10
2	8	5D	N 6	620	10
5	4	4Hx	E-2	300	3
1	7	5D	N-1	100	-7
8	2	5D	N-1	100	-7
6	3	6C	S-2	200	-9
7	1	5D	N-2	200	-9

32

♠875
♥Q85
♦A98
♣AK97

♠10632
♥97
♦K6
♣J10532

N E
W S

♠AK9
♥AJ62
♦532
♣Q64

♠QJ4
♥K1043
♦QJ1074
♣8

Board (32) Av: NS=+160

N-S	E-W	Contract	N-S	E-W	IMP
4	5	1NT	N 4	180	1
7	1	1NT	N 4	180	1
1	7	1NT	N 4	180	1
8	2	1NT	N 3	150	0
2	8	1NT	N 3	150	0
3	6	2H	S 3	140	-1
6	3	1H	S 3	140	-1
5	4	2D	N 3	110	-2

33

♠865
♥QJ4
♦10432
♣J53

♠93
♥K1075
♦QJ985
♣A8

N E
W S

♠J1072
♥A632
♦AK
♣KQ6

♠AKQ4
♥98
♦76
♣109742

Board (33) Av: NS=-430

N-S	E-W	Contract	N-S	E-W	IMP
5	2	4H	E 4	420	0
3	8	4H	E 4	420	0
8	3	4H	E 4	420	0
1	6	4H	E 4	420	0
6	1	4H	E 4	420	0
2	5	4H	E 4	420	0
7	4	4H	E 5	450	-1
4	7	4H	E 5	450	-1

34

♠K984
♥J5
♦J1042
♣KJ8

♠A2
♥10972
♦K3
♣109743

N E
W S

♠Q1076
♥AQ3
♦Q986
♣65

♠J53
♥K864
♦A75
♣AQ2

Board (34) Av: NS=+30

N-S	E-W	Contract	N-S	E-W	IMP
7	4	1NT	S 1	90	2
3	8	1NT	S 1	90	2
4	7	1NT	S 1	90	2
1	6	1NT	S 1	90	2
2	5	1NT	S 1	90	2
8	3	1NT	S-1	100	-4
6	1	1NT	S-1	100	-4
5	2	3NT	S-2	200	-6

35

♠KJ4
♥Q10932
♦KJ5
♣109

♠A8732
♥AJ
♦97
♣Q875

N E
W S

♠Q10
♥4
♦Q108643
♣J432

♠965
♥K8765
♦A2
♣AK6

Board (35) Av: NS=+430

N-S	E-W	Contract	N-S	E-W	IMP
2	5	4H	S 5	450	1
7	4	4H	S 5	450	1
8	3	4H	S 4	420	0
4	7	4H	S 4	420	0
1	6	4H	S 4	420	0
6	1	4H	S 4	420	0
5	2	4H	S 4	420	0
3	8	4H	S 4	420	0

36

♠J93
♥Q874
♦862
♣A94

♠64
♥AKJ962
♦A3
♣K52

N E
W S

♠AK72
♥10
♦KQ75
♣Q1063

♠Q1085
♥53
♦J1094
♣J87

Board (36) Av: NS=-650

N-S	E-W	Contract	N-S	E-W	IMP
1	6	6H	W-1	100	13
3	8	3NT	E 3	600	2
5	2	4H	W 5	650	0
4	7	3NT	E 5	660	0
7	4	3NT	E 5	660	0
8	3	3NT	E 5	660	0
2	5	3NT	E 5	660	0
6	1	3NT	E 5	660	0

37

♠ Q86
♥ 82
♦ 10983
♣ KQ109

♠ A1097543
♥ Q93
♦ 76
♣ 2

♠ KJ2
♥ AJ1054
♦ KQJ
♣ A6

W N E S

♠ K76
♥
♦ A542
♣ J87543

Board (37) Av: NS=-430

N-S	E-W	Contract	N-S	E-W	IMP	
5	2	4S	W	4	420	0
1	6	4S	W	4	420	0
7	4	4S	E	4	420	0
6	1	4S	E	4	420	0
4	7	4H	E	4	420	0
8	3	4S	W	5	450	-1
3	8	4H	E	5	450	-1
2	5	4H	E	5	450	-1

38

♠ K92
♥ 4
♦ 10842
♣ AKJ97

♠ A6543
♥ K732
♦ 963
♣ 10

♠ Q7
♥ Q86
♦ AQJ
♣ Q8654

W N E S

♠ J108
♥ AJ1095
♦ K75
♣ 32

Board (38) Av: NS=+120

N-S	E-W	Contract	N-S	E-W	IMP	
6	1	1NT	N	3	150	1
3	8	1NT	N	3	150	1
4	7	1NT	N	2	120	0
1	6	1NT	N	2	120	0
2	5	1NT	N	2	120	0
8	3	2S	W-1	100	-1	
5	2	1NT	E-1	100	-1	
7	4	1NT	N	1	90	-1

39

♠ 654
♥ KQ1075
♦ 87
♣ 654

♠ AJ7
♥ 94
♦ QJ32
♣ AQ73

♠ 83
♥ AJ632
♦ K1094
♣ 108

W N E S

♠ KQ1092
♥ 8
♦ A65
♣ KJ92

Board (39) Av: NS=-190

N-S	E-W	Contract	N-S	E-W	IMP	
2	5	1S	S	2	110	7
8	3	3D	E	4	130	2
3	8	2S	S-2	200	0	
4	7	2S	S-2	200	0	
5	2	2S	S-2	200	0	
6	1	2S	S-2	200	0	
7	4	2S	S-2	200	0	
1	6	3S	S-3	300	-3	

40

♠ K7653
♥ Q643
♦ 843
♣ 8

♠ A8
♥ J10
♦ AK65
♣ KJ652

♠ J10
♥ A872
♦ QJ972
♣ 43

W N E S

♠ Q942
♥ K95
♦ 10
♣ AQ1097

Board (40) Av: NS=-280

N-S	E-W	Contract	N-S	E-W	IMP	
6	1	4D	E-1	50	8	
2	5	4D	E	4	130	4
3	8	2D	W	4	130	4
1	6	3D	E	5	150	4
4	7	3NT	W	3	400	-3
7	4	3NT	W	3	400	-3
8	3	3NT	W	5	460	-5
5	2	2Cxx	E	2	560	-7

41

♠ 65
♥ 109875
♦ AQ10
♣ 1085

♠ Q
♥ J2
♦ 8765
♣ AQJ976

♠ AK10973
♥ Q4
♦ KJ943
♣

W N E S

♠ J842
♥ AK63
♦ 2
♣ K432

Board (41) Av: NS=+140

N-S	E-W	Contract	N-S	E-W	IMP
7	4	5Dxx	E-1	400	6
5	2	5S	E-3	300	4
3	8	4S	E-2	200	2
2	5	4S	E-2	200	2
1	6	5D	E-1	100	-1
8	3	4S	E-1	100	-1
4	7	3H	N-1	50	-5
6	1	3D	N-5	250	-9

42

♠ 1052
♥ J1085
♦ Q1075
♣ KJ

♠ AQ6
♥ KQ6
♦ J962
♣ A43

♠ J98
♥ A7
♦ A83
♣ 107652

W N E S

♠ K743
♥ 9432
♦ K4
♣ Q98

Board (42) Av: NS=-440

N-S	E-W	Contract	N-S	E-W	IMP	
7	4	3NT	W-1	100	11	
5	2	2NT	W	2	120	8
3	8	2C	W	4	130	7
4	7	3NT	W	3	600	-4
1	6	3NT	W	3	600	-4
6	1	3NT	W	3	600	-4
2	5	3NT	W	3	600	-4
8	3	3NT	W	4	630	-5

43

♠ KQ5
♥ J964
♦ Q43
♣ 1065

♠ 72
♥ AK72
♦ J952
♣ Q97

♠ J84
♥ Q53
♦ AK108
♣ A43

W N E S

♠ A10963
♥ 108
♦ 76
♣ KJ82

Board (43) Av: NS=-90

N-S	E-W	Contract	N-S	E-W	IMP	
4	7	3NT	E-1	50	4	
7	4	3NT	E-1	50	4	
2	5	1NT	E	1	90	0
6	1	3D	E	3	110	-1
1	6	3D	E	4	130	-1
8	3	3D	E	4	130	-1
5	2	3D	E	4	130	-1
3	8	3H	E	3	140	-2

44

♠ J9543
♥ 8
♦ 763
♣ Q832

♠ K7
♥ 1054
♦ K9
♣ KJ9765

♠ 106
♥ K7632
♦ AQJ108
♣ 4

W N E S

♠ AQ82
♥ AQJ9
♦ 542
♣ A10

Board (44) Av: NS=+340

N-S	E-W	Contract	N-S	E-W	IMP	
3	8	3Sx	S	3	730	9
2	5	3NT	S	3	600	6
5	2	4Hx	E-3	500	4	
1	6	4Hx	E-3	500	4	
6	1	3S	N	4	170	-5
8	3	3H	E-3	150	-5	
7	4	2S	N	2	110	-6
4	7	4S	N-2	200	-11	

45

♠ J3
♥ J108
♦ 1043
♣ KJ754

♠ AKQ54
♥ K4
♦ 7
♣ AQ983

♠ 1092
♥ Q75
♦ AKQ92
♣ 102

W N E S

♠ 876
♥ A9632
♦ J865
♣ 6

Board (45) Av: NS=-770

N-S	E-W	Contract	N-S	E-W	IMP	
1	6	4S	W-1	100	13	
7	4	4S	W	4	620	4
2	5	4S	W	4	620	4
5	2	4S	W	5	650	3
4	7	4S	W	5	650	3
8	3	4S	W	5	650	3
6	1	6S	W	6	1430	-12
3	8	6S	W	6	1430	-12

46

♠ J107
♥ A98542
♦
♣ 7632

♠ K986	N	♠ Q5432
♥ Q107	W	♥ K63
♦ 8432	⑤	♦ K10
♣ A8	S	♣ KQ4

♠ A
♥ J
♦ AQJ9765
♣ J1095

47

♠ Q2
♥ KJ10765
♦ J8
♣ K63

♠ K109	N	♠ AJ853
♥ 4	W	♥ A82
♦ 10752	⑤	♦ A3
♣ J10852	S	♣ Q74

♠ 764
♥ Q93
♦ KQ964
♣ A9

48

♠ 9
♥ J976
♦ AQ76
♣ 9873

♠ Q542	N	♠ A10876
♥ Q42	W	♥ A105
♦ KJ	⑤	♦ 1052
♣ QJ42	S	♣ 65

♠ KJ3
♥ K83
♦ 9843
♣ AK10

Board (46) Av: NS=-50

N-S	E-W	Contract	N-S	E-W	IMP
7	4	5Sx E-2	300		8
1	6	4S E-1	50		3
5	2	5C S-1		50	0
2	5	4D S-1		50	0
6	1	4D S-1		50	0
4	7	4Dx S-1		100	-2
8	3	4D S-2		100	-2
3	8	5D S-3		150	-3

Board (47) Av: NS=-100

N-S	E-W	Contract	N-S	E-W	IMP
4	7	3H N 3	140		6
5	2	3H N 3	140		6
7	4	4S E-1	50		4
3	8	4H N-1		100	0
8	3	4H N-1		100	0
6	1	3S E 4		170	-2
1	6	4S E 4		420	-8
2	5	5Hx N-2		500	-9

Board (48) Av: NS=+50

N-S	E-W	Contract	N-S	E-W	IMP
4	7	3S E-2	200		4
2	5	1H N 3	140		3
3	8	2S E-1	100		2
6	1	2D S 2	90		1
5	2	1NT S 1	90		1
8	3	3D S-1		50	-3
7	4	3NT S-2		100	-4
1	6	3C S-2		100	-4

1

♠ K93
♥ J9542
♦ AK542
♣

♠ AQJ4
♥ A73
♦ 8
♣ KJ1087

♠ 5
♥ KQ8
♦ QJ10
♣ AQ9643

♠ 108762
♥ 106
♦ 9763
♣ 52

Board (1) Av: NS=-680

N-S	E-W	Contract	N-S	E-W	IMP
8	4	6NT E-1	50		12
1	5	5C E 6	420		6
6	7	3NT E 5	460		6
7	6	3NT E 5	460		6
5	1	6C E 6	920		-6
3	2	6C E 6	920		-6
4	8	6C E 6	920		-6
2	3	6C E 6	920		-6

2

♠ AQ7
♥ 87
♦ AQ1065
♣ J104

♠ 94
♥ J432
♦ 82
♣ A9632

♠ KJ10653
♥ A6
♦ 97
♣ Q75

♠ 82
♥ KQ1095
♦ KJ43
♣ K8

Board (2) Av: NS=+520

N-S	E-W	Contract	N-S	E-W	IMP
4	8	3NT N 4	630		3
6	7	3NT N 4	630		3
2	3	3NT N 4	630		3
5	1	3NT N 4	630		3
8	4	3NT N 3	600		2
3	2	3NT N 3	600		2
7	6	3S E-1	50		-10
1	5	2S E-1	50		-10

3

♠ J
♥ K74
♦ 76
♣ KJ109853

♠ 109873
♥ 95
♦ AK105
♣ A2

♠ AQ4
♥ AQJ86
♦ J84
♣ Q7

♠ K652
♥ 1032
♦ Q932
♣ 64

Board (3) Av: NS=-660

N-S	E-W	Contract	N-S	E-W	IMP
1	5	4S W-1	100		13
8	4	4S W 5	650		0
5	1	4S W 5	650		0
4	8	4S E 5	650		0
6	7	4H E 5	650		0
2	3	4S W 6	680		-1
3	2	4S W 6	680		-1
7	6	4Cx N-4	800		-4

4

♠ A753
♥ KJ82
♦ J6
♣ AK6

♠ 1094
♥ A75
♦ 4
♣ Q109872

♠ KQ6
♥ 9643
♦ A10873
♣ 3

♠ J82
♥ Q10
♦ KQ952
♣ J54

Board (4) Av: NS=+600

N-S	E-W	Contract	N-S	E-W	IMP
3	2	3NT N 4	630		1
4	8	3NT N 3	600		0
8	4	3NT N 3	600		0
7	6	3NT N 3	600		0
5	1	3NT N 3	600		0
2	3	3NT N 3	600		0
1	5	3NT N 3	600		0
6	7	4D S-1	100		-12

5

♠ 1032
♥ K974
♦ KQ63
♣ 74

♠ AK94
♥ QJ6
♦ A954
♣ J3

♠ J765
♥ 853
♦ J10
♣ K965

♠ Q8
♥ A102
♦ 872
♣ AQ1082

Board (5) Av: NS=+50

N-S	E-W	Contract	N-S	E-W	IMP
1	5	1NT S 2	120		2
7	6	2S E-2	100		2
5	1	1NT W-2	100		2
8	4	1NT S 1	90		1
3	2	2S E-1	50		0
6	7	2S E-1	50		0
2	3	2S E 2	110		-4
4	8	1NT W 2	120		-5

6

♠ 1072
♥ KJ4
♦ A10642
♣ 107

♠ KJ
♥ Q10752
♦ K5
♣ 8543

♠ 93
♥ 9
♦ QJ97
♣ AQJ962

♠ AQ8654
♥ A863
♦ 83
♣ K

Board (6) Av: NS=+60

N-S	E-W	Contract	N-S	E-W	IMP
7	6	4S S 4	420		8
8	4	3S S 4	170		3
2	3	2S S 4	170		3
4	8	3S S 3	140		2
1	5	4S S-1	50		-3
6	7	4S S-1	50		-3
5	1	4S S-1	50		-3
3	2	4S S-1	50		-3

7

♠ Q
♥ J10954
♦ 6
♣ J107543

♠ K32
♥ A62
♦ A87
♣ AK82

♠ A87
♥ KQ873
♦ KQ942
♣

♠ J109654
♥
♦ J1053
♣ Q96

Board (7) Av: NS=-140

N-S	E-W	Contract	N-S	E-W	IMP
5	1	7D W-1	100		6
7	6	6NT W-1	100		6
6	7	6H W-1	100		6
4	8	6H E-1	100		6
1	5	6H E-1	100		6
3	2	4H E 4	620		-10
8	4	4H E 4	620		-10
2	3	3NT E 5	660		-11

8

♠ 84
♥ Q87
♦ J985
♣ J754

♠ Q2
♥ KJ5
♦ K1064
♣ A1062

♠ K109763
♥ 1092
♦ 3
♣ Q98

♠ AJ5
♥ A643
♦ AQ72
♣ K3

Board (8) Av: NS=+10

N-S	E-W	Contract	N-S	E-W	IMP
8	4	4S E-2	100		3
6	7	3S E-2	100		3
4	8	2S E-1	50		1
1	5	2S E-1	50		1
5	1	3NT S-1	50		-2
2	3	3D N-1	50		-2
3	2	1NT S-1	50		-2
7	6	2S E 2	110		-3

9

♠ Q
♥ QJ75
♦ K984
♣ 8743

♠ J876542
♥
♦ A76
♣ K105

♠ A109
♥ AK84
♦ Q1053
♣ Q2

♠ K3
♥ 109632
♦ J2
♣ AJ96

Board (9) Av: NS=-650

N-S	E-W	Contract	N-S	E-W	IMP
8	4	4S W 4	620		1
4	8	4S E 4	620		1
7	6	4S E 5	650		0
6	7	4S E 5	650		0
5	1	4S E 5	650		0
1	5	4S E 5	650		0
3	2	4S E 5	650		0
2	3	4S E 5	650		0

10

♠ K973
♥ K72
♦ Q862
♣ 65

♠ J1082
♥ QJ93
♦ K1043
♣ 10

♠ 654
♥ 654
♦ AJ9
♣ A984

♠ AQ
♥ A108
♦ 75
♣ KQJ732

N
W — E
S

11

♠ 1053
♥ 105
♦ 65
♣ QJ8754

♠ KJ74
♥ Q832
♦ AQ8
♣ 106

♠ AQ6
♥ A974
♦ K1094
♣ K2

♠ 982
♥ KJ6
♦ J732
♣ A93

N
W — E
S

12

♠ Q842
♥ J3
♦ 874
♣ A1093

♠ A3
♥ 972
♦ AJ62
♣ Q874

♠ 1095
♥ Q654
♦ 109
♣ KJ62

♠ KJ76
♥ AK108
♦ KQ53
♣ 5

N
W — E
S

Board (10) Av: NS=-170

N-S	E-W	Contract	N-S	E-W	IMP
2	3	3NT S 3	600		13
3	2	3NT S-1	100		2
8	4	3NT N-1	100		2
7	6	3NT N-1	100		2
6	7	3NT S-2	200		-1
1	5	3NT N-2	200		-1
5	1	3NT S-3	300		-4
4	8	3NT N-3	300		-4

Board (11) Av: NS=-450

N-S	E-W	Contract	N-S	E-W	IMP
2	3	5H W-1	50		11
6	7	4H E 4	420		1
4	8	4H E 5	450		0
8	4	4H E 5	450		0
3	2	4H E 5	450		0
5	1	4H E 5	450		0
7	6	4H E 5	450		0
1	5	4H E 6	480		-1

Board (12) Av: NS=+320

N-S	E-W	Contract	N-S	E-W	IMP
2	3	4S N 4	620		7
6	7	4S N 4	620		7
1	5	4S N 4	620		7
5	1	2S S 4	170		-4
7	6	2S N 4	170		-4
3	2	2S N 4	170		-4
4	8	1NT W-3	150		-5
8	4	3S N 3	140		-5

13

♠ 42
♥ 108
♦ 932
♣ K107632

♠ AQ653
♥ AQ
♦ AQ6
♣ AJ8

♠ J1097
♥ K752
♦ K54
♣ 54

♠ K8
♥ J9643
♦ J1087
♣ Q9

N
W — E
S

14

♠ KQJ65
♥ A632
♦ QJ92
♣

♠ 7
♥ QJ975
♦ 10763
♣ A93

♠ A10
♥ 84
♦ K854
♣ KJ1086

♠ 98432
♥ K10
♦ A
♣ Q7542

N
W — E
S

15

♠ AKQ94
♥ 942
♦ K83
♣ Q5

♠ 10
♥ AQ73
♦ QJ954
♣ K108

♠ J75
♥ J106
♦ A1062
♣ A62

♠ 8632
♥ K85
♦ 7
♣ J9743

N
W — E
S

Board (13) Av: NS=-930

N-S	E-W	Contract	N-S	E-W	IMP
4	8	5S W 6	680		6
3	2	4S W 6	680		6
8	4	4S W 6	680		6
5	1	4S W 6	680		6
1	5	4S W 6	680		6
6	7	6S W 6	1430		-11
2	3	6S W 6	1430		-11
7	6	6NT W 6	1440		-11

Board (14) Av: NS=+460

N-S	E-W	Contract	N-S	E-W	IMP
3	2	4S S 6	480		1
1	5	4S N 6	480		1
7	6	5S N 5	450		0
2	3	4S S 5	450		0
5	1	4S S 5	450		0
6	7	4S N 5	450		0
4	8	4S N 5	450		0
8	4	4S N 4	420		-1

Board (15) Av: NS=-220

N-S	E-W	Contract	N-S	E-W	IMP
7	6	4D W 6	170		2
4	8	3D W 6	170		2
6	7	3D W 6	170		2
1	5	3D W 6	170		2
3	2	3S N-2	200		1
5	1	3S N-3	300		-2
8	4	3S N-3	300		-2
2	3	5D W 6	420		-5

16

♠ 1063
♥ A1093
♦ Q9
♣ A1053

♠ AKQJ54
♥ Q5
♦ A42
♣ 82

♠ 87
♥ K742
♦ K10875
♣ 74

♠ 92
♥ J86
♦ J63
♣ KQJ96

N
W — E
S

17

♠ 52
♥ QJ973
♦ 932
♣ 1052

♠ K1093
♥ K108
♦ AJ4
♣ Q97

♠ AQJ6
♥ A64
♦ Q6
♣ J864

♠ 874
♥ 52
♦ K10875
♣ AK3

N
W — E
S

18

♠ A9
♥ Q987
♦ J10752
♣ 84

♠ K8642
♥ 62
♦ K96
♣ K103

♠ Q3
♥ AKJ10543
♦ 8
♣ J52

♠ J1075
♥
♦ AQ43
♣ AQ976

N
W — E
S

Board (16) Av: NS=-140

N-S	E-W	Contract	N-S	E-W	IMP
5	1	3NT E-2	200		8
8	4	4S W-1	100		6
6	7	4S W-1	100		6
4	8	3S W 3	140		0
3	2	3S W 3	140		0
7	6	3S W 3	140		0
1	5	4S W 4	620		-10
2	3	4S W 4	620		-10

Board (17) Av: NS=-260

N-S	E-W	Contract	N-S	E-W	IMP
7	3	4S W-1	50		7
6	2	3NT W-1	50		7
5	8	3NT W-1	50		7
8	5	3NT W 3	400		-4
3	7	4S W 4	420		-4
4	1	3NT W 4	430		-5
2	6	3NT W 4	430		-5
1	4	4S W 5	450		-5

Board (18) Av: NS=-130

N-S	E-W	Contract	N-S	E-W	IMP
8	5	3D N 4	130		6
1	4	5D N-1	100		1
7	3	4D N-1	100		1
5	8	3H E 3	140		0
4	1	3H E 3	140		0
3	7	2H E 3	140		0
6	2	2H E 4	170		-1
2	6	3NT N-3	300		-5

19

♠ AKJ1083
♥ 1074
♦ 86
♣ 86

♠ Q9
♥ Q6
♦ Q10974
♣ J1032

W — E
N — S
♠ 6542
♥ 983
♦ 2
♣ AKQ75

♠ 7
♥ AKJ52
♦ AKJ53
♣ 94

♠ Q9
♥ Q6
♦ Q10974
♣ J1032

20

♠ Q1098654
♥
♦ QJ97
♣ J5

♠ 73
♥ A1042
♦ K104
♣ A982

W — E
N — S
♠ AK
♥ QJ987653
♦ 53
♣ 7

♠ J2
♥ K
♦ A862
♣ KQ10643

♠ 73
♥ A1042
♦ K104
♣ A982

21

♠ K86
♥ 9
♦ Q982
♣ AQJ86

♠ A94
♥ KQ105432
♦ 7
♣ 94

W — E
N — S
♠ J732
♥ 7
♦ AK10543
♣ 102

♠ Q105
♥ AJ86
♦ J6
♣ K753

♠ A94
♥ KQ105432
♦ 7
♣ 94

Board (19) Av: NS=-370

N-S	E-W	Contract	N-S	E-W	IMP
1	4	5D	W-1	100	10
5	8	4D	W	4	130
2	6	Av+			3
3	7	5Sx	N-2	300	2
8	5	4Sx	N-2	300	2
7	3	5Sx	N-3	500	-4
6	2	5D	W	5	600
4	1	5D	W	5	600

Board (20) Av: NS=-170

N-S	E-W	Contract	N-S	E-W	IMP
5	8	5C	W-2	200	9
6	2	4C	W-1	100	7
4	1	4C	W-1	100	7
2	6	4S	N-1	100	2
7	3	3S	N-1	100	2
8	5	4Sx	N-2	500	-8
1	4	4Sx	N-2	500	-8
3	7	4Hx	S-3	800	-12

Board (21) Av: NS=+20

N-S	E-W	Contract	N-S	E-W	IMP
6	2	4H	E-1	50	1
7	3	4H	E-1	50	1
5	8	4H	E-1	50	1
4	1	4H	E-1	50	1
1	4	4H	E-1	50	1
2	6	4H	E-1	50	1
8	5	3H	E	3	140
3	7	4H	E	4	420

22

♠ Q98
♥ K104
♦ AQ8
♣ A1074

♠ K7642
♥ 7
♦ J9743
♣ K6

W — E
N — S
♠ 53
♥ AQ985
♦ K10
♣ QJ95

♠ AJ10
♥ J632
♦ 652
♣ 832

♠ K7642
♥ 7
♦ J9743
♣ K6

23

♠ 1075
♥ K3
♦ 976
♣ Q10972

♠ 83
♥ J1064
♦ KQJ852
♣ A

W — E
N — S
♠ AKJ4
♥ AQ72
♦ 10
♣ K654

♠ Q962
♥ 985
♦ A43
♣ J83

♠ 83
♥ J1064
♦ KQJ852
♣ A

24

♠ J63
♥ AJ74
♦ AJ32
♣ J7

♠ AQ9
♥ 102
♦ 97
♣ Q109643

W — E
N — S
♠ K1052
♥ KQ63
♦ 104
♣ A82

♠ 874
♥ 985
♦ KQ865
♣ K5

♠ AQ9
♥ 102
♦ 97
♣ Q109643

Board (22) Av: NS=+420

N-S	E-W	Contract	N-S	E-W	IMP
5	8	4H	S	4	420
3	7	4H	S	4	420
7	3	4H	S	4	420
1	4	4H	S	4	420
4	1	4H	S	4	420
2	6	4H	S	4	420
6	2	3NT	N	3	400
8	5	4H	S-2	100	-11

Board (23) Av: NS=0

N-S	E-W	Contract	N-S	E-W	IMP
3	7	5C	S	5	600
5	8	3D	E-1	100	3
7	3	3D	E-1	100	3
6	2	3D	E-1	100	3
4	1	3D	E-1	100	3
2	6	4S	N-2	200	-5
8	5	2NT	S-2	200	-5
1	4	2NT	S-2	200	-5

Board (24) Av: NS=+390

N-S	E-W	Contract	N-S	E-W	IMP
2	6	4H	S	5	450
7	3	4H	S	5	450
4	1	4H	S	5	450
8	5	4H	S	4	420
3	7	4H	N	4	420
1	4	4H	N	4	420
5	8	1NT	N	3	150
6	2	4H	S-1	50	-10

25

♠ Q1072
♥ AK42
♦ A5
♣ KJ8

♠ 985
♥ Q
♦ QJ76432
♣ Q10

W — E
N — S
♠ AK643
♥ J3
♦ 9
♣ A7652

♠ J
♥ 1098765
♦ K108
♣ 943

♠ 985
♥ Q
♦ QJ76432
♣ Q10

26

♠ A102
♥ 52
♦ J854
♣ 8653

♠ J64
♥ J10986
♦ AK6
♣ QJ

W — E
N — S
♠ 85
♥ AQ74
♦ 10932
♣ AK7

♠ KQ973
♥ K3
♦ Q7
♣ 10942

♠ J64
♥ J10986
♦ AK6
♣ QJ

27

♠ KQ10964
♥ K3
♦ 10
♣ KJ75

♠ A5
♥ AJ8764
♦ Q754
♣ 6

W — E
N — S
♠ 872
♥ Q10
♦ A2
♣ AQ10832

♠ J3
♥ 952
♦ KJ9863
♣ 94

♠ A5
♥ AJ8764
♦ Q754
♣ 6

Board (25) Av: NS=+990

N-S	E-W	Contract	N-S	E-W	IMP
7	3	6S	N	7	1010
6	2	6S	N	7	1010
3	7	6S	S	6	980
8	5	6S	N	6	980
4	1	6S	N	6	980
2	6	6S	N	6	980
1	4	6S	N	6	980
5	8	7S	S-1	50	-14

Board (26) Av: NS=-130

N-S	E-W	Contract	N-S	E-W	IMP
8	5	4S	W-1	100	6
3	7	1NT	E	2	120
7	3	1NT	E	2	120
2	6	1NT	E	2	120
1	4	2S	W	3	140
5	8	2S	W	3	140
6	2	2S	W	3	140
4	1	1NT	E	3	150

Board (27) Av: NS=+420

N-S	E-W	Contract	N-S	E-W	IMP
3	7	4S	N	6	480
8	5	5S	N	5	450
6	2	5S	N	5	450
2	6	4S	N	5	450
4	1	4S	N	5	450
5	8	5C	S	5	400
1	4	5Dx	W-2	300	-3
7	3	6C	S-1	50	-10

28

♠ Q8754
♥
♦ A9643
♣ KJ6

♠ A6
♥ K
♦ KQ8752
♣ AQ75

N
W | E
S

♠ K32
♥ AQJ8753
♦
♣ 1042

♠ J109
♥ 109642
♦ J10
♣ 983

Board (28) Av: NS=-110

N-S	E-W	Contract	N-S	E-W	IMP
1	4	6H E-2	100		5
6	2	5H E-1	50		4
8	5	5H E-1	50		4
2	6	4H E-1	50		4
5	8	3NT W-1	50		4
4	1	4H E 4		420	-7
3	7	4H E 4		420	-7
7	3	4H E 5		450	-8

29

♠ K987
♥ J872
♦ KQJ
♣ 42

♠ AQ6
♥ Q105
♦ A106
♣ KQ75

N
W | E
S

♠ J43
♥ 63
♦ 532
♣ J10983

♠ 1052
♥ AK94
♦ 9874
♣ A6

Board (29) Av: NS=+40

N-S	E-W	Contract	N-S	E-W	IMP
5	8	2H S 3	140		3
8	5	2H S 2	110		2
1	4	2C W-1	100		2
6	2	2C W-1	100		2
2	6	2C W-1	100		2
4	1	1NT W 1		90	-4
3	7	1NT W 1		90	-4
7	3	3H S-1		100	-4

30

♠ 96
♥ 8
♦ 976
♣ AQJ9832

♠ AK7
♥ AKQJ102
♦ AK5
♣ 7

N
W | E
S

♠ Q10832
♥ 764
♦ Q32
♣ 105

♠ J54
♥ 953
♦ J1084
♣ K64

Board (30) Av: NS=-550

N-S	E-W	Contract	N-S	E-W	IMP
8	5	5H W 6	480		2
1	4	5H W 6	480		2
5	8	5H W 7	510		1
7	3	4H W 7	510		1
3	7	4H W 7	510		1
4	1	4H W 7	510		1
6	2	5Cx N-4	800		-6
2	6	6H W 6	980		-10

31

♠ 10985
♥ J43
♦ Q1086
♣ 102

♠ KJ7
♥ AKQ108
♦ J532
♣ 9

N
W | E
S

♠ Q62
♥ 765
♦ 974
♣ AJ64

♠ A43
♥ 92
♦ AK
♣ KQ8753

Board (31) Av: NS=-10

N-S	E-W	Contract	N-S	E-W	IMP
7	3	4H W-2	100		3
8	5	3H W-1	50		2
3	7	3H W-1	50		2
1	4	3H W-1	50		2
6	2	3H E-1	50		2
2	6	2H W 2		110	-3
5	8	3H W 3		140	-4
4	1	3C S-2		200	-5

32

♠ KQ1032
♥ KJ5
♦ 109
♣ 643

♠ J7
♥ 73
♦ K2
♣ AQJ10952

N
W | E
S

♠ A654
♥ 986
♦ A765
♣ 87

♠ 98
♥ AQ1042
♦ QJ843
♣ K

Board (32) Av: NS=+40

N-S	E-W	Contract	N-S	E-W	IMP
7	3	4H S 4	420		9
6	2	3H S 3	140		3
5	8	3H N 3	140		3
3	7	2H S 3	140		3
8	5	4H S-1		50	-3
1	4	4H S-1		50	-3
4	1	4Hx S-1		100	-4
2	6	4C W 4		130	-5

木村六郎杯 OPEN TEAMS Session 3 Flight A 2012年2月26日(日)

1

♠ 104
♥ J985
♦ 86
♣ A9432

♠ AK72 ♠ QJ985
♥ AK74 ♥ 63
♦ KQ95 ♦ 432
♣ 7 ♣ J106

(N)

W — E
S

♠ 63
♥ Q102
♦ AJ107
♣ KQ85

2

♠ K3
♥ Q32
♦ AKJ64
♣ 642

♠ QJ64 ♠ A9875
♥ J865 ♥ A10
♦ 3 ♦ 82
♣ AKJ5 ♣ Q1087

(N)

W — E
S

♠ 102
♥ K974
♦ Q10975
♣ 93

3

♠ K8653
♥ J5
♦ 8
♣ A10962

♠ A72 ♠ Q109
♥ KQ1062 ♥ 974
♦ K73 ♦ 9642
♣ J5 ♣ Q43

(N)

W — E
S

♠ J4
♥ A83
♦ AQJ105
♣ K87

Board (1) Av: NS=-450

N-S	E-W	Contract	N-S	E-W	IMP
6	5	4S	E 4	420	1
3	1	4S	W 5	450	0
8	7	4S	E 5	450	0
7	8	4S	E 5	450	0
5	6	4S	E 5	450	0
1	3	4S	E 5	450	0
2	4	4S	E 5	450	0
4	2	4S	E 5	450	0

Board (2) Av: NS=-440

N-S	E-W	Contract	N-S	E-W	IMP
2	4	4S	E 4	420	1
6	5	4S	E 4	420	1
1	3	4S	E 4	420	1
8	7	4S	E 5	450	0
7	8	4S	E 5	450	0
3	1	4S	E 5	450	0
4	2	4S	E 5	450	0
5	6	4S	E 5	450	0

Board (3) Av: NS=-90

N-S	E-W	Contract	N-S	E-W	IMP
7	8	4S	N-1	50	1
8	7	2NT	S-1	50	1
6	5	3NT	S-2	100	0
1	3	3NT	S-2	100	0
3	1	3NT	S-2	100	0
2	4	3NT	S-2	100	0
4	2	3NT	S-2	100	0
5	6	3NT	S-3	150	-2

4

♠ AJ985
♥ K9
♦ A9
♣ A1054

♠ K1032 ♠ 76
♥ J75 ♥ AQ1032
♦ Q642 ♦ K5
♣ K2 ♣ Q876

(N)

W — E
S

♠ Q4
♥ 864
♦ J10873
♣ J93

5

♠ K53
♥ 653
♦ AK7
♣ AK84

♠ J108762 ♠ AQ4
♥ 82 ♥ AK4
♦ J1093 ♦ 64
♣ 7 ♣ Q10953

(N)

W — E
S

♠ 9
♥ QJ1097
♦ Q852
♣ J62

6

♠ 32
♥ J1086
♦ KQ984
♣ 109

♠ AQJ9 ♠ K87
♥ A954 ♥ 73
♦ AJ53 ♦ 76
♣ J ♣ AK8763

(N)

W — E
S

♠ 10654
♥ KQ2
♦ 102
♣ Q542

Board (4) Av: NS=+40

N-S	E-W	Contract	N-S	E-W	IMP
5	6	1S	N 2	110	2
8	7	3H	E-1	100	2
1	3	1S	N 1	80	1
7	8	1S	N 1	80	1
2	4	1S	N 1	80	1
4	2	1S	N 1	80	1
6	5	2S	N-2	200	-6
3	1	1S	N-2	200	-6

Board (5) Av: NS=+80

N-S	E-W	Contract	N-S	E-W	IMP
5	6	2H	N 3	140	2
3	1	2H	N 3	140	2
6	5	2H	N 3	140	2
4	2	4Sx	W-1	100	1
2	4	4Sx	W-1	100	1
7	8	4Sx	W-1	100	1
8	7	2S	W 2	110	-5
1	3	3S	W 3	140	-6

Board (6) Av: NS=-350

N-S	E-W	Contract	N-S	E-W	IMP
3	1	4NT	E-1	100	10
5	6	3NT	W-1	100	10
1	3	3NT	W-1	100	10
7	8	3Hx	N-3	500	-4
8	7	3NT	W 3	600	-6
6	5	3NT	W 3	600	-6
4	2	3NT	W 3	600	-6
2	4	3NT	W 4	630	-7

7

♠ Q76542
♥ 94
♦ 2
♣ A965

♠ K98 ♠ K98
♥ 8653 ♥ KJ102
♦ AK1096 ♦ J743
♣ K1073 ♣ QJ

(N)

W — E
S

♠ AJ103
♥ AQ7
♦ Q85
♣ 842

8

♠ 9873
♥ AQ84
♦ AK72
♣ 6

♠ QJ5 ♠ 106
♥ J109732 ♥ K
♦ 8 ♦ J96543
♣ 953 ♣ AQ87

(N)

W — E
S

♠ AK42
♥ 65
♦ Q10
♣ KJ1042

9

♠ AQ985
♥ A7
♦ KQ103
♣ 83

♠ 102 ♠ 6
♥ 9865 ♥ QJ4
♦ AJ974 ♦ 8652
♣ 94 ♣ Q10752

(N)

W — E
S

♠ KJ743
♥ K1032
♦
♣ AKJ6

Board (7) Av: NS=+380

N-S	E-W	Contract	N-S	E-W	IMP
6	5	4Sx	N 4	790	9
4	2	4Sx	N 4	790	9
7	8	4S	N 4	620	6
8	7	4S	N 4	620	6
3	1	3S	N 4	170	-5
1	3	3S	N 4	170	-5
2	4	4S	N-1	100	-10
5	6	4S	N-2	200	-11

Board (8) Av: NS=+160

N-S	E-W	Contract	N-S	E-W	IMP
3	1	4S	S 5	450	7
6	5	4S	S 5	450	7
1	3	3NT	S 4	430	7
2	4	3NT	S 3	400	6
7	8	6S	S-2	100	-6
8	7	4S	S-2	100	-6
5	6	4S	S-2	100	-6
4	2	5C	S-5	250	-9

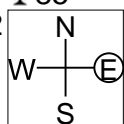
Board (9) Av: NS=+1170

N-S	E-W	Contract	N-S	E-W	IMP
2	4	7S	N 7	1510	8
3	1	7S	N 7	1510	8
1	3	7S	N 7	1510	8
6	5	6S	N 7	1010	-4
7	8	6S	N 7	1010	-4
4	2	6S	S 6	980	-5
5	6	6S	N 6	980	-5
8	7	5S	N 6	480	-12

10

♠ KQ3
♥ J84
♦ K10864
♣ 85

♠ J109542
♥ 107
♦ 92
♣ AK6



♠ 86
♥ 965
♦ A73
♣ Q9732

♠ A7
♥ AKQ32
♦ QJ5
♣ J104

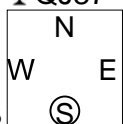
Board (10) Av: NS=+480

N-S	E-W	Contract	N-S	E-W	IMP
5	6	3NT S 4	630		4
8	7	4H S 4	620		4
3	1	4H S 4	620		4
1	3	4H S 4	620		4
2	4	3NT S 3	600		3
4	2	3NT N 3	600		3
6	5	3NT N-2		200	-12
7	8	3NT N-2		200	-12

11

♠ AQ98
♥ AQ832
♦
♣ QJ87

♠ K743
♥ 54
♦ J103
♣ 10543



♠ J10
♥ J76
♦ AK97
♣ AK92

♠ 652
♥ K109
♦ Q86542
♣ 6

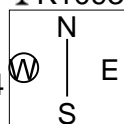
Board (11) Av: NS=+160

N-S	E-W	Contract	N-S	E-W	IMP
7	8	4H N 5	450		7
2	4	2H N 5	200		1
5	6	3H N 4	170		0
6	5	3H N 4	170		0
8	7	3H N 3	140		-1
3	1	3H N 3	140		-1
4	2	2H N 2	110		-2
1	3	4H N-1		50	-5

12

♠ Q103
♥ K653
♦ 73
♣ K1093

♠ 95
♥ AQJ2
♦ AKQ64
♣ AJ



♠ A6
♥ 1084
♦ 10852
♣ Q865

♠ KJ8742
♥ 97
♦ J9
♣ 742

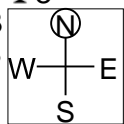
Board (12) Av: NS=-340

N-S	E-W	Contract	N-S	E-W	IMP
3	1	3NT E-2	100		10
5	6	3NT E-2	100		10
2	4	5D W 5		400	-2
1	3	5D W 6		420	-2
6	5	3NT W 4		430	-3
8	7	3NT W 4		430	-3
4	2	3NT W 5		460	-3
7	8	3NT W 5		460	-3

13

♠ A96
♥ J95
♦ K108543
♣ 8

♠ KJ53
♥ 1043
♦ 762
♣ 765



♠ 1042
♥ A87
♦ J9
♣ AK1032

♠ Q87
♥ KQ62
♦ AQ
♣ QJ94

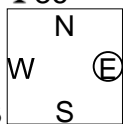
Board (13) Av: NS=+650

N-S	E-W	Contract	N-S	E-W	IMP
6	5	3NT S 6	690		1
4	2	3NT S 5	660		0
8	7	3NT S 5	660		0
1	3	3NT S 5	660		0
3	1	3NT S 5	660		0
7	8	3NT S 4	630		-1
2	4	3NT S 4	630		-1
5	6	3NT S 3	600		-2

14

♠ KJ874
♥ KQ52
♦ J9
♣ 86

♠ Q3
♥ A10
♦ K3
♣ AQJ10743



♠ 1092
♥ J87
♦ A764
♣ K52

♠ A65
♥ 9643
♦ Q10852
♣ 9

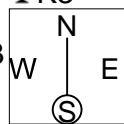
Board (14) Av: NS=-40

N-S	E-W	Contract	N-S	E-W	IMP
6	5	5C W-1	50		3
1	3	5C W-1	50		3
4	2	3NT W-1	50		3
3	1	3NT W-1	50		3
8	7	4C W 4		130	-3
2	4	3C W 4		130	-3
7	8	3C W 4		130	-3
5	6	3C W 4		130	-3

15

♠ J53
♥ Q542
♦ AQ84
♣ K3

♠ 976
♥ AK83
♦ 76
♣ A762



♠ AQ
♥ 1076
♦ KJ95
♣ Q1084

♠ K10842
♥ J9
♦ 1032
♣ J95

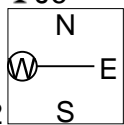
Board (15) Av: NS=-30

N-S	E-W	Contract	N-S	E-W	IMP
1	3	3NT W-2	100		4
5	6	2NT E-1	50		2
3	1	2NT E-1	50		2
6	5	1NT W-1	50		2
2	4	1NT E 1		90	-2
7	8	3C W 3		110	-2
4	2	3C E 3		110	-2
8	7	3NT E 3		400	-9

16

♠ A76
♥ K432
♦ AQ75
♣ J6

♠ J1032
♥ A8
♦ 96
♣ Q8732



♠ 85
♥ 976
♦ 102
♣ AK10954

♠ KQ94
♥ QJ105
♦ KJ843
♣

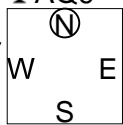
Board (16) Av: NS=+480

N-S	E-W	Contract	N-S	E-W	IMP
4	2	6H S 6	980		11
5	6	5H N 6	480		0
7	8	4H S 6	480		0
1	3	4H S 6	480		0
3	1	4H S 6	480		0
2	4	4H S 6	480		0
6	5	4H N 6	480		0
8	7	4D N 6	170		-7

17

♠ AK973
♥ J
♦ QJ43
♣ AQ9

♠ 65
♥ AK97
♦ K952
♣ J87



♠ Q8
♥ 1086542
♦ A108
♣ K4

♠ J1042
♥ Q3
♦ 76
♣ 106532

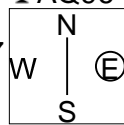
Board (17) Av: NS=+90

N-S	E-W	Contract	N-S	E-W	IMP
3	4	4S N 4	420		8
1	2	4S N 4	420		8
4	3	3S N 4	170		2
8	6	5Hx E-1	100		0
5	7	4S S-1		50	-4
6	8	4S N-1		50	-4
7	5	4S N-1		50	-4
2	1	3H E 4		170	-6

18

♠ AJ2
♥ K542
♦ K5
♣ AQ96

♠ 107
♥ AJ1097
♦ A10
♣ KJ43



♠ 9653
♥ Q83
♦ J862
♣ 108

♠ KQ84
♥ 6
♦ Q9743
♣ 752

Board (18) Av: NS=+40

N-S	E-W	Contract	N-S	E-W	IMP
8	6	2D N 4	130		3
4	3	1NT N 2	120		2
6	8	1NT N 2	120		2
2	1	1NT N 2	120		2
5	7	2H W-1		50	0
1	2	3NT N-1		100	-4
3	4	3NT N-1		100	-4
7	5	3NT N-1		100	-4

19

♠ Q
♥ J8754
♦ J1086
♣ Q82

♠ A1053
♥ Q93
♦ K54
♣ A105

N
W — E
S

♠ J97642
♥ K
♦ 73
♣ KJ74

♠ K8
♥ A1062
♦ AQ92
♣ 963

Board (19) Av: NS=-330

N-S	E-W	Contract	N-S	E-W	IMP
5	7	3H	N-1	50	7
4	3	3S	W 4	170	4
8	6	3S	E 4	170	4
1	2	3S	E 4	170	4
3	4	2S	E 5	200	4
6	8	4S	E 4	620	-7
7	5	4S	E 4	620	-7
2	1	4S	E 5	650	-8

20

♠ QJ109732
♥ A63
♦ Q86
♣

♠ K
♥ 854
♦ 7532
♣ AJ1072

N
W — E
S

♠ A
♥ J102
♦ AKJ94
♣ Q643

♠ 8654
♥ KQ97
♦ 10
♣ K985

Board (20) Av: NS=+650

N-S	E-W	Contract	N-S	E-W	IMP
6	8	5S	N 5	650	0
5	7	4S	N 5	650	0
7	5	4S	N 5	650	0
8	6	4S	N 5	650	0
4	3	4S	N 5	650	0
2	1	4S	N 5	650	0
3	4	4S	N 5	650	0
1	2	4C	W-1	100	-11

21

♠ Q1042
♥
♦ 10843
♣ J10982

♠ J8763
♥ 94
♦ AKQJ6
♣ 6

N
W — E
S

♠ 95
♥ AK108763
♦ 97
♣ 75

♠ AK
♥ QJ52
♦ 52
♣ AKQ43

Board (21) Av: NS=-230

N-S	E-W	Contract	N-S	E-W	IMP
8	6	5Cx	S 5	750	14
5	7	4C	N 5	150	9
6	8	3NT	S-3	300	-2
7	5	3NT	S-3	300	-2
1	2	3NT	S-3	300	-2
2	1	3NT	S-3	300	-2
4	3	3NT	S-3	300	-2
3	4	3NTx	S-3	800	-11

22

♠ 652
♥ AQ5
♦ Q1063
♣ J74

♠ KJ93
♥ 8
♦ K94
♣ A9865

N
W — E
S

♠ AQ7
♥ KJ1097
♦ AJ82
♣ 3

♠ 1084
♥ 6432
♦ 75
♣ KQ102

Board (22) Av: NS=-620

N-S	E-W	Contract	N-S	E-W	IMP
7	5	3NT	W 3	600	1
3	4	3NT	W 3	600	1
4	3	4S	W 4	620	0
2	1	4S	W 4	620	0
8	6	3NT	W 4	630	0
6	8	3NT	W 4	630	0
1	2	3NT	W 4	630	0
5	7	3NT	W 5	660	-1

23

♠ A73
♥ 86
♦ K976
♣ K987

♠ Q864
♥ Q3
♦ J852
♣ A63

N
W — E
S

♠ 5
♥ J10942
♦ Q103
♣ QJ42

♠ KJ1092
♥ AK75
♦ A4
♣ 105

Board (23) Av: NS=+650

N-S	E-W	Contract	N-S	E-W	IMP
6	8	4S	S 5	650	0
5	7	4S	S 5	650	0
7	5	4S	S 5	650	0
8	6	4S	S 5	650	0
2	1	4S	S 5	650	0
3	4	4S	S 5	650	0
1	2	4S	S 4	620	-1
4	3	4S	S 4	620	-1

24

♠ 74
♥ 9732
♦ A8652
♣ A8

♠ J962
♥ QJ864
♦ Q10
♣ 54

N
W — E
S

♠ Q83
♥ A105
♦ K7
♣ KJ963

♠ AK105
♥ K
♦ J943
♣ Q1072

Board (24) Av: NS=+60

N-S	E-W	Contract	N-S	E-W	IMP
4	3	3D	N 4	130	2
5	7	1NT	S 2	120	2
6	8	1NT	N 2	120	2
7	5	1NT	N 1	90	1
2	1	2H	E-1	50	0
8	6	1NT	E-1	50	0
3	4	1S	S-1	50	-3
1	2	1NT	E 1	90	-4

25

♠ AK1032
♥ A6
♦ Q10976
♣ Q

♠ Q4
♥ QJ3
♦ A2
♣ AK8543

N
W — E
S

♠ 9765
♥ K1095
♦ K4
♣ J106

♠ J8
♥ 8742
♦ J853
♣ 972

Board (25) Av: NS=+120

N-S	E-W	Contract	N-S	E-W	IMP
2	1	5C	W-2	200	2
1	2	3NT	E-2	200	2
5	7	3D	N 3	110	0
4	3	3D	N 3	110	0
3	4	3D	N 3	110	0
7	5	5C	W-1	100	-1
8	6	3NT	E-1	100	-1
6	8	3NT	W 3	600	-12

26

♠ K9732
♥ A105
♦ 862
♣ K6

♠ Q32
♥ K10974
♦ QJ983
♣ QJ983

N
W — E
S

♠ QJ104
♥ KJ9874
♦ Q3
♣ 2

♠ A865
♥ 6
♦ AJ5
♣ A10754

Board (26) Av: NS=-130

N-S	E-W	Contract	N-S	E-W	IMP
6	8	4S	N-1	100	1
5	7	4S	N-1	100	1
7	5	4S	N-1	100	1
3	4	4S	N-1	100	1
2	1	4S	N-1	100	1
4	3	4Sx	N-1	200	-2
1	2	4S	N-2	200	-2
8	6	4H	E 4	620	-10

27

♠ 73
♥ AKQ7632
♦ 95
♣ A10

♠ KQ9
♥ J8
♦ KQJ107
♣ J75

N
W — E
S

♠ 1082
♥ 1095
♦ 432
♣ Q632

♠ AJ654
♥ 4
♦ A86
♣ K984

Board (27) Av: NS=+460

N-S	E-W	Contract	N-S	E-W	IMP
4	3	4S	N 6	480	1
1	2	4H	N 6	480	1
8	6	4H	N 6	480	1
5	7	3NT	S 5	460	0
3	4	3NT	S 5	460	0
2	1	4H	N 5	450	0
7	5	4H	N 5	450	0
6	8	6H	N-1	50	-11

28

♠ J8432
♥ A105
♦ QJ
♣ A54

♠ AK5 1096
♥ 872 K94
♦ 1063 K75
♣ Q1062 KJ87

♠ Q7
♥ QJ63
♦ A9842
♣ 93

Board (28) Av: NS=+90

N-S	E-W	Contract	N-S	E-W	IMP
8	6	2S N 2	110		1
5	7	2S N 2	110		1
7	5	2S N 2	110		1
2	1	2S N 2	110		1
4	3	2S N 2	110		1
6	8	1NT S 1	90		0
1	2	Passout			-3
3	4	1NT S-1	100		-5

29

♠ KQ1087
♥ 72
♦ 92
♣ Q865

♠ A62 J94
♥ 1086 AKJ953
♦ AQ85 10
♣ J109 743

♠ 53
♥ Q4
♦ KJ7643
♣ AK2

Board (29) Av: NS=-90

N-S	E-W	Contract	N-S	E-W	IMP
4	3	3H W-1	100		5
1	2	3H E-1	100		5
8	6	3H E-1	100		5
7	5	3H E 3	140		-2
2	1	3H E 3	140		-2
3	4	3H E 3	140		-2
5	7	4D S-3	300		-5
6	8	3S N-3	300		-5

30

♠ A73
♥ AJ8
♦ AK7
♣ KJ93

♠ 94 J852
♥ KQ10764 93
♦ Q103 J854
♣ 87 A62

♠ KQ106
♥ 52
♦ 962
♣ Q1054

Board (30) Av: NS=+450

N-S	E-W	Contract	N-S	E-W	IMP
4	3	3NT N 5	460		0
5	7	3NT N 5	460		0
6	8	3NT N 5	460		0
1	2	3NT N 5	460		0
8	6	3NT N 4	430		-1
7	5	3NT N 4	430		-1
3	4	3NT N 4	430		-1
2	1	3NT N 4	430		-1

31

♠ 98
♥ K4
♦ Q1098754
♣ 92

♠ Q105 AK2
♥ AQ865 J732
♦ AQ763 J2
♣ AQ763 J854

♠ J7643
♥ 109
♦ AK63
♣ K10

Board (31) Av: NS=-440

N-S	E-W	Contract	N-S	E-W	IMP
3	4	3C E 5	150		7
5	7	3H E 6	230		5
7	5	4H W 6	480		-1
6	8	4H W 6	480		-1
1	2	4H W 6	480		-1
2	1	4H W 6	480		-1
8	6	4H E 6	480		-1
4	3	4H E 6	480		-1

32

♠ AQ
♥ QJ3
♦ 10984
♣ AKQJ

♠ KJ86 9753
♥ K862 J975
♦ Q5 A3
♣ 1062 9754

♠ 1042
♥ A104
♦ KJ762
♣ 83

Board (32) Av: NS=+430

N-S	E-W	Contract	N-S	E-W	IMP
5	7	3NT S 5	460		1
3	4	3NT N 5	460		1
1	2	3NT N 5	460		1
8	6	3NT N 4	430		0
6	8	3NT N 3	400		-1
7	5	3NT N 3	400		-1
2	1	3NT N 3	400		-1
4	3	3NT N-1	50		-10