

# 兵庫県知事杯 OPEN TEAMS Session 1 Flight C 2012年10月6日(土)

**1**

♠K652  
♥A643  
♦96  
♣973

♠QJ74 ♠983  
♥Q982 ♥♥J107  
♦J3 W E ♦85  
♣852 ♣KJ1064

♠A10  
♥K5  
♦AKQ10742  
♣AQ

Board (1) Av: NS=+690

N-S	E-W	Contract	N-S	E-W	IMP
9	6	6NT S	7	1020	8
1	12	6D S	7	940	6
5	8	6D S	7	940	6
6	9	6D S	7	940	6
2	10	6D S	7	940	6
8	5	3NT S	7	520	-5
4	7	3NT S	7	520	-5
10	2	3NT S	7	520	-5
12	1	3NT N	7	520	-5
3	11	3NT N	7	520	-5
7	4	3NT N	7	520	-5
11	3	3NT N	6	490	-5

**2**

♠A43  
♥AQ1054  
♦J8  
♣1083

♠62 ♠KQ10987  
♥K982 ♥♥6  
♦K654 W E ♦Q7  
♣AJ7 ♣K942

♠J5  
♥J73  
♦A10932  
♣Q65

Board (2) Av: NS=-120

N-S	E-W	Contract	N-S	E-W	IMP
4	7	3H N	3	140	6
2	10	4S E-1	50	5	5
9	6	4S E-1	50	5	5
1	12	2NT W-1	50	5	5
6	9	3S E	3	140	-1
10	2	3S E	3	140	-1
12	1	3S E	3	140	-1
11	3	2S E	3	140	-1
8	5	3S E	4	170	-2
5	8	3S E	4	170	-2
3	11	4S E	4	420	-7
7	4	3Hx N-2	500	-9	-9

**3**

♠K54  
♥105  
♦A  
♣AKJ9742

♠A86 ♠QJ2  
♥K632 ♥♥QJ9874  
♦KJ654 W E ♦Q87  
♣Q ♣5

♠10973  
♥A  
♦10932  
♣10863

Board (3) Av: NS=+250

N-S	E-W	Contract	N-S	E-W	IMP	
5	8	5C N	5	400	4	
3	11	5C N	5	400	4	
2	10	5C N	5	400	4	
11	3	5C N	5	400	4	
6	9	5H E-2	200	-2	-2	
8	5	5H E-2	200	-2	-2	
9	6	5H E-2	200	-2	-2	
12	1	5H E-2	200	-2	-2	
7	4	4C N	5	150	-3	
4	7	5H E-1	100	-4	-4	
10	2	3H W	4	170	-9	-9

**4**

♠AJ543  
♥KJ83  
♦1095  
♣J

♠Q862 ♠9  
♥A10 ♥♥7542  
♦8764 W E ♦AKQJ2  
♣Q73 ♣K104

♠K107  
♥Q96  
♦3  
♣A98652

Board (4) Av: NS=-10

N-S	E-W	Contract	N-S	E-W	IMP
2	10	4D E-2	200	5	5
7	4	4D E-2	200	5	5
11	3	3S N	3	140	4
10	2	2S N	3	140	4
4	7	4D E-1	100	3	3
5	8	1NT E	1	90	-2
8	5	3D E	3	110	-3
1	12	2D E	3	110	-3
9	6	1NT E	2	120	-3
12	1	1NT E	2	120	-3
3	11	1NT E	2	120	-3
6	9	4S N-2	200	-5	-5

**5**

♠J1095  
♥J7  
♦92  
♣109754

♠84 ♠K32  
♥AK5 ♥♥843  
♦AKJ7 W E ♦Q10854  
♣KJ86 ♣AQ

♠AQ76  
♥Q10962  
♦63  
♣32

Board (5) Av: NS=-430

N-S	E-W	Contract	N-S	E-W	IMP
12	1	2NT W	5	210	6
1	12	5D W	5	400	1
11	3	3NT W	3	400	1
7	4	3NT W	3	400	1
8	5	3NT W	3	400	1
10	2	3NT W	3	400	1
3	11	3NT W	5	460	-1
4	7	3NT W	5	460	-1
6	9	3NT E	5	460	-1
9	6	3NT E	5	460	-1
5	8	3NT E	5	460	-1
2	10	3NT E	5	460	-1

**6**

♠10976  
♥754  
♦QJ52  
♣J9

♠AJ8 ♠53  
♥AKQ3 ♥♥10862  
♦6 W E ♦10974  
♣KQ854 ♣A73

♠KQ42  
♥J9  
♦AK83  
♣1062

Board (6) Av: NS=-610

N-S	E-W	Contract	N-S	E-W	IMP
5	8	2C W	5	150	10
1	12	2H E	5	200	9
9	6	4H E	4	620	0
11	3	5H E	5	650	-1
12	1	4H E	5	650	-1
8	5	4H E	5	650	-1
10	2	4H E	5	650	-1
7	4	4H E	5	650	-1
3	11	4H E	5	650	-1
2	10	4H E	5	650	-1
4	7	4H E	6	680	-2
6	9	5Dx S-4	800	-5	-5

**7**

♠KJ109  
♥5  
♦Q108  
♣A9743

♠7652 ♠Q84  
♥AQJ87 ♥♥1092  
♦K52 W E ♦J9  
♣Q ♣KJ1052

♠A3  
♥K643  
♦A7643  
♣86

Board (7) Av: NS=+60

N-S	E-W	Contract	N-S	E-W	IMP
4	7	3H W-2	200	4	4
1	12	2H W-2	200	4	4
2	10	2NT S	4	180	3
8	5	3D S	4	130	2
5	8	3D S	3	110	2
12	1	3D S	3	110	2
7	4	2H W-1	100	1	1
9	6	Passout		-2	-2
11	3	Passout		-2	-2
3	11	3D S-1	100	-4	-4
6	9	2H W	2	110	-5
10	2	2H W	3	140	-5

**8**

♠AK754  
♥Q7  
♦AK53  
♣K3

♠86 ♠Q2  
♥2 ♥♥A98653  
♦8642 W E ♦Q109  
♣J108752 ♣A6

♠J1093  
♥KJ104  
♦J7  
♣Q94

Board (8) Av: NS=+240

N-S	E-W	Contract	N-S	E-W	IMP
7	4	4S N	5	450	5
6	9	4S N	5	450	5
11	3	4S N	5	450	5
8	5	4S N	4	420	5
5	8	4S N	4	420	5
12	1	4S N	4	420	5
2	10	4S N	4	420	5
9	6	4S N-1	50	-7	-7
3	11	4S N-1	50	-7	-7
10	2	4S N-1	50	-7	-7
4	7	4S N-1	50	-7	-7
1	12	4S N-1	50	-7	-7

**9**

♠QJ107  
♥K43  
♦J32  
♣1062

♠A3 ♠862  
♥Q876 ♥♥9  
♦876 W E ♦AQ54  
♣KJ73 ♣AQ854

♠K954  
♥AJ1052  
♦K109  
♣9

Board (9) Av: NS=-20

N-S	E-W	Contract	N-S	E-W	IMP
2	10	3S N	3	140	4
10	2	3H S	3	140	4
8	5	2S S	3	140	4
7	4	2H S	2	110	4
1	12	2H S	2	110	4
9	6	1NT E	1	90	-2
12	1	3C E	3	110	-3
4	7	2NT W	2	120	-3
3	11	2NT W	2	120	-3
6	9	1NT W	2	120	-3
11	3	1NT W	2	120	-3
5	8	4C E	4	130	-3

**10**

♠AK1073  
♥7  
♦9763  
♣K52

♠J54 ♠Q8  
♥93 ♥♥864  
♦A1084 W E ♦KJ52  
♣10863 ♣AQJ4

♠962  
♥AKQJ1052  
♦Q  
♣97

Board (10) Av: NS=+80

N-S	E-W	Contract	N-S	E-W	IMP
2	10	4H S	5	650	11
1	12	2H S	5	200	3
6	9	1H S	5	200	3
4	7	3H S	4	170	3
9	6	3H S	3	140	2
3	11	3H S	3	140	2
5	8	2H S	3	140	2
12	1	2H S	3	140	2
11	3	4H S-1	100	-5	-5
8	5	4H S-1	100	-5	-5
7	4	4H S-1	100	-5	-5
10	2	4S N-2	200	-7	-7

兵庫県知事杯 OPEN TEAMS Session 1 Flight C 2012年10月6日(土)

**11**

♠ KQJ1032  
♥ Q63  
♦ A987

♠ K7652 ♠ AQ943  
♥ A84 ♥ 9  
♦ A1098 ♦ KJ72  
♣ Q ♣ 543

♠ J108  
♥ 765  
♦ 54  
♣ KJ1062

Board (11) Av: NS=-480

N-S	E-W	Contract	N-S	E-W	IMP
11	3 5C	N-2	100		9
12	1 4S	W 5	450		1
10	2 5S	W 6	480		0
2	10 5S	W 6	480		0
8	5 4S	W 6	480		0
5	8 4S	W 6	480		0
9	6 4S	W 6	480		0
6	9 4S	W 6	480		0
1	12 4S	W 6	480		0
3	11 4S	W 6	480		0
7	4 4S	W 6	480		0
4	7 4S	W 6	480		0

**12**

♠ J752  
♥ AJ1043  
♦ K7  
♣ 109

♠ A43 ♠ 9  
♥ K9 ♥ Q8762  
♦ J86 ♦ Q942  
♣ AK532 ♣ J86

♠ KQ1086  
♥ 5  
♦ A1053  
♣ Q74

Board (12) Av: NS=+80

N-S	E-W	Contract	N-S	E-W	IMP
8	5 3S	S 4	170		3
11	3 2S	S 4	170		3
9	6 2S	W-3	150		2
10	2 3S	S 3	140		2
2	10 2H	W-2	100		1
12	1 2H	W-2	100		1
5	8 2H	W-1	50		-1
7	4 2H	W-1	50		-1
4	7 2H	W-1	50		-1
3	11 1NT	E-1	50		-1
1	12 2H	W 2	110		-5
6	9 2H	N-2	200		-7

**13**

♠ AQJ73  
♥ Q543  
♦ K7  
♣ K9

♠ 10984 ♠ 2  
♥ AJ107 ♥ K962  
♦ 9 ♦ AJ86  
♣ 10653 ♣ J872

♠ K65  
♥ 8  
♦ Q105432  
♣ AQ4

Board (13) Av: NS=+480

N-S	E-W	Contract	N-S	E-W	IMP
1	12 4S	N 5	650		5
7	4 4S	N 4	620		4
4	7 4S	N 4	620		4
9	6 4S	N 4	620		4
8	5 4S	N 4	620		4
11	3 4S	N 4	620		4
12	1 4S	N 4	620		4
2	10 4S	N 4	620		4
3	11 4S	N 4	620		4
5	8 4S	N-1	100		-11
10	2 3NT	N-1	100		-11
6	9 3NT	N-1	100		-11

**14**

♠ K1043  
♥ 853  
♦ 106  
♣ QJ105

♠ 97 ♠ AQ82  
♥ AKQ1074 ♥ 62  
♦ A43 ♦ KQ987  
♣ A2 ♣ 84

♠ J65  
♥ J9  
♦ J52  
♣ K9763

Board (14) Av: NS=-650

N-S	E-W	Contract	N-S	E-W	IMP
7	4 4H	W 6	480		5
6	9 4H	W 6	480		5
4	7 4H	W 7	510		4
8	5 4H	W 7	510		4
5	8 4H	W 7	510		4
9	6 4H	W 7	510		4
11	3 4H	W 7	510		4
3	11 4H	W 7	510		4
10	2 6D	E 6	920		-7
12	1 6H	W 7	1010		-8
2	10 6H	W 7	1010		-8
1	12 7H	W 7	1510		-13

**15**

♠ QJ874  
♥ 109  
♦ 6  
♣ J10542

♠ K10 ♠ A652  
♥ K542 ♥ QJ  
♦ A8542 ♦ J97  
♣ Q9 ♣ K763

♠ 93  
♥ A8763  
♦ KQ103  
♣ A8

Board (15) Av: NS=-40

N-S	E-W	Contract	N-S	E-W	IMP
2	12 2H	S 2	110		4
7	6 3NT	W-2	100		4
1	11 3NT	W-2	100		4
3	10 3NT	W-1	50		3
11	1 2NT	W-1	50		3
10	3 2S	N-1	100		-2
9	5 2H	S-1	100		-2
8	4 2H	S-1	100		-2
12	2 2H	S-1	100		-2
6	7 2D	W 3	110		-2
4	8 2H	S-2	200		-4
5	9 2H	S-2	200		-4

**16**

♠ KJ6  
♥ K763  
♦ KQ8  
♣ 832

♠ AQ7 ♠ 98532  
♥ A984 ♥ J52  
♦ 1092 ♦ AJ3  
♣ KJ4 ♣ A6

♠ 104  
♥ Q10  
♦ 7654  
♣ Q10975

Board (16) Av: NS=-100

N-S	E-W	Contract	N-S	E-W	IMP
2	12 3NT	W-1	100		5
11	1 3NT	E-1	100		5
3	10 2S	E 2	110		0
10	3 2S	E 2	110		0
8	4 1NT	W 2	120		-1
9	5 1NT	W 2	120		-1
7	6 1NT	W 2	120		-1
6	7 1NT	E 2	120		-1
12	2 2S	E 3	140		-1
5	9 2S	E 3	140		-1
1	11 2S	E 3	140		-1
4	8 2S	E 4	170		-2

**17**

♠ 7  
♥ J9654  
♦ AK7642  
♣ A

♠ J10963 ♠ AKQ85  
♥ K73 ♥ 1082  
♦ J ♦ 103  
♣ KQ93 ♣ 762

♠ 42  
♥ AQ  
♦ Q985  
♣ J10854

Board (17) Av: NS=+290

N-S	E-W	Contract	N-S	E-W	IMP
4	8 5H	N 5	450		4
11	1 5H	N 5	450		4
8	4 4H	N 5	450		4
7	6 5H	N 5	400		3
3	10 5D	N 5	400		3
10	3 5D	N 5	400		3
2	12 5D	N 5	400		3
5	9 4D	N 5	150		-4
12	2 5S	E-2	100		-5
1	11 5S	E-1	50		-6
6	7 4S	W-1	50		-6
9	5 3S	W 3	140		-10

**18**

♠ KQJ1032  
♥ K  
♦ Q7  
♣ AQ75

♠ A65 ♠ 98  
♥ 98743 ♥ 102  
♦ 932 ♦ A1085  
♣ 104 ♣ J9862

♠ 74  
♥ AQJ65  
♦ KJ64  
♣ K3

Board (18) Av: NS=+590

N-S	E-W	Contract	N-S	E-W	IMP
9	5 6NT	S 6	1440		13
10	3 4S	N 6	680		3
11	1 4S	N 6	680		3
2	12 4NT	S 5	660		2
5	9 3NT	S 5	660		2
7	6 3NT	S 5	660		2
6	7 3NT	N 5	660		2
12	2 5S	N 5	650		2
1	11 4S	N 5	650		2
3	10 4S	N 5	650		2
4	8 6S	N-1	100		-12
8	4 6NT	S-1	100		-12

**19**

♠ 10985  
♥ AQ4  
♦ Q  
♣ KQJ54

♠ 72 ♠ AQ43  
♥ K973 ♥ 1052  
♦ K876 ♦ A2  
♣ A102 ♣ 9863

♠ KJ6  
♥ J86  
♦ J109543  
♣ 7

Board (19) Av: NS=+100

N-S	E-W	Contract	N-S	E-W	IMP
1	11 1NT	N 3	150		2
8	4 2NT	N 2	120		1
11	1 2NT	N 2	120		1
7	6 1NT	N 2	120		1
6	7 1NT	N 2	120		1
2	12 2D	S 2	90		0
3	10 2D	S 2	90		0
12	2 1NT	S 1	90		0
9	5 1NT	N 1	90		0
4	8 1NT	N 1	90		0
10	3 1NT	N 1	90		0
5	9 2D	S-1	50		-4

**20**

♠ 743  
♥ 106  
♦ J1042  
♣ 9743

♠ J852 ♠ AKQ  
♥ A97 ♥ KJ54  
♦ AKQ ♦ 953  
♣ K65 ♣ Q108

♠ 1096  
♥ Q832  
♦ 876  
♣ AJ2

Board (20) Av: NS=-430

N-S	E-W	Contract	N-S	E-W	IMP
7	6 6S	W-1	100		11
10	3 6NT	W-1	100		11
5	9 6NT	W-1	100		11
2	12 6NT	W-1	100		11
9	5 3NT	W 4	630		-5
8	4 5NT	W 5	660		-6
1	11 3NT	W 5	660		-6
6	7 3NT	W 5	660		-6
11	1 3NT	W 5	660		-6
3	10 3NT	W 5	660		-6
4	8 3NT	W 5	660		-6
12	2 3NT	W 5	660		-6

兵庫県知事杯 OPEN TEAMS Session 1 Flight C 2012年10月6日(土)

**21**

♠AK52  
♥AQJ1043  
♦K9  
♣Q

♠108  
♥♠  
♦Q1075432  
♣10832

♠76  
♥♥987  
♦AJ86  
♣AKJ4

♠QJ943  
♥K652  
♦  
♣9765

W N E S

Board (21) Av: NS=+910

N-S	E-W	Contract	N-S	E-W	IMP
3	10	6Hx	N 6	1660	13
10	3	6S	S 6	1430	11
4	8	6S	S 6	1430	11
1	11	6H	N 6	1430	11
7	6	5H	N 6	680	-6
12	2	4S	S 6	680	-6
9	5	4S	S 6	680	-6
6	7	4H	N 6	680	-6
8	4	4H	N 6	680	-6
2	12	4H	N 6	680	-6
11	1	4H	N 6	680	-6
5	9	4H	N 6	680	-6

**22**

♠J1053  
♥K1064  
♦A6  
♣AK3

♠KQ  
♥A87  
♦QJ104  
♣Q764

♠9642  
♥♥QJ2  
♦952  
♣J85

♠A87  
♥953  
♦K873  
♣1092

W N E S

Board (22) Av: NS=+70

N-S	E-W	Contract	N-S	E-W	IMP
11	1	2NT	N 3	150	2
9	5	1NT	N 2	120	2
8	4	1NT	N 2	120	2
1	11	1NT	N 2	120	2
6	7	1NT	N 2	120	2
3	10	1NT	S 1	90	1
5	9	1NT	N 1	90	1
10	3	1NT	N 1	90	1
4	8	1NT	N 1	90	1
12	2	2NT	N-1	50	-3
7	6	3NT	S-2	100	-5
2	12	1NT	N-2	100	-5

**23**

♠6432  
♥963  
♦J4  
♣Q854

♠KQ10987  
♥K4  
♦1062  
♣KJ

♠A5  
♥J10752  
♦KQ3  
♣763

♠J  
♥AQ8  
♦A9875  
♣A1092

W N E S

Board (23) Av: NS=-150

N-S	E-W	Contract	N-S	E-W	IMP
1	11	2S	W 2	110	1
6	7	3S	W 3	140	0
2	12	3S	W 3	140	0
11	1	3S	W 3	140	0
4	8	2S	W 3	140	0
5	9	2S	W 3	140	0
3	10	2S	W 3	140	0
10	3	3S	W 4	170	-1
12	2	2S	W 4	170	-1
7	6	2S	W 4	170	-1
8	4	2S	W 4	170	-1
9	5	2S	W 4	170	-1

**24**

♠Q43  
♥107543  
♦J752  
♣9

♠A865  
♥J9  
♦A10643  
♣64

♠K107  
♥♥Q62  
♦9  
♣KJ10832

♠J92  
♥AK8  
♦KQ8  
♣AQ75

W N E S

Board (24) Av: NS=+10

N-S	E-W	Contract	N-S	E-W	IMP
4	8	3H	N 3	140	4
5	9	3H	N 3	140	4
10	3	3H	N 3	140	4
3	10	2NT	S 2	120	3
1	11	1NT	E-1	50	1
11	1	4H	N-1	50	-2
9	5	3H	N-1	50	-2
6	7	2NT	S-1	50	-2
12	2	2NT	S-1	50	-2
8	4	2NT	S-1	50	-2
7	6	3NT	S-2	100	-3
2	12	3NT	S-2	100	-3

**25**

♠J1065  
♥J4  
♦K1074  
♣K109

♠Q983  
♥AKQ10975  
♦Q3  
♣

♠A74  
♥♥62  
♦A862  
♣QJ74

♠K2  
♥83  
♦J95  
♣A86532

W N E S

Board (25) Av: NS=-520

N-S	E-W	Contract	N-S	E-W	IMP
4	8	6H	W-1	100	12
10	3	6H	W-1	100	12
2	12	3H	W 4	170	8
7	6	4H	W 4	620	-3
5	9	4H	W 4	620	-3
6	7	4H	W 4	620	-3
1	11	4H	W 4	620	-3
9	5	4H	W 5	650	-4
12	2	4H	W 5	650	-4
8	4	4H	W 5	650	-4
3	10	4H	W 5	650	-4
11	1	3NT	E 5	660	-4

**26**

♠QJ109  
♥A10942  
♦Q8  
♣K10

♠72  
♥KJ  
♦A107432  
♣A64

♠A865  
♥♥653  
♦KJ  
♣QJ95

♠K43  
♥Q87  
♦965  
♣8732

W N E S

Board (26) Av: NS=-90

N-S	E-W	Contract	N-S	E-W	IMP
2	12	2H	N 2	110	5
12	2	2H	N 2	110	5
7	6	2H	N 2	110	5
8	4	2D	W 3	110	-1
6	7	3D	W 4	130	-1
1	11	3D	W 4	130	-1
11	1	3D	W 4	130	-1
4	8	3D	E 4	130	-1
5	9	3D	W 5	150	-2
3	10	3D	W 5	150	-2
9	5	2D	W 5	150	-2
10	3	2D	E 5	150	-2

**27**

♠Q972  
♥J82  
♦J95  
♣KJ4

♠AK1053  
♥AQ7  
♦1084  
♣92

♠86  
♥♥109543  
♦A7  
♣10753

♠J4  
♥K6  
♦KQ632  
♣AQ86

W N E S

Board (27) Av: NS=+40

N-S	E-W	Contract	N-S	E-W	IMP
7	6	2NT	S 3	150	3
12	2	1NT	S 3	150	3
4	8	1NT	N 3	150	3
11	1	1NT	N 3	150	3
10	3	1NT	N 2	120	2
2	12	2D	S 2	90	2
8	4	4D	S-1	50	-3
3	10	3NT	S-1	50	-3
6	7	3NT	N-1	50	-3
1	11	3C	S-1	50	-3
5	9	2D	S-1	50	-3
9	5	2NT	N-2	100	-4

**28**

♠72  
♥64  
♦A83  
♣QJ10732

♠Q10843  
♥QJ109  
♦K10  
♣A5

♠AK9  
♥K8732  
♦J75  
♣K8

♠J65  
♥A5  
♦Q9642  
♣964

W N E S

Board (28) Av: NS=-450

N-S	E-W	Contract	N-S	E-W	IMP
5	9	4S	W 4	420	1
3	10	5H	W 5	450	0
7	6	5H	E 5	450	0
6	7	4S	W 5	450	0
10	3	4S	W 5	450	0
2	12	4S	W 5	450	0
9	5	4H	E 5	450	0
11	1	4H	E 5	450	0
1	11	4H	E 5	450	0
4	8	4H	E 5	450	0
8	4	4H	E 5	450	0
12	2	4H	E 5	450	0

**29**

♠54  
♥AKQJ72  
♦83  
♣A63

♠A87  
♥84  
♦K97652  
♣97

♠Q62  
♥10  
♦AJ4  
♣KJ10842

♠KJ1093  
♥9653  
♦Q10  
♣Q5

W N E S

Board (29) Av: NS=+250

N-S	E-W	Contract	N-S	E-W	IMP
10	1	4S	N 5	650	9
7	5	4H	N 5	650	9
9	4	4H	N 4	620	9
4	9	4H	N 4	620	9
12	3	3H	N 5	200	-2
8	6	2H	N 5	200	-2
2	11	2H	N 5	200	-2
6	8	5C	E-1	100	-4
11	2	4C	E-1	100	-4
1	10	4H	N-1	100	-8
3	12	4H	N-1	100	-8
5	7	4H	N-1	100	-8

**30**

♠QJ7543  
♥107  
♦1084  
♣42

♠K1092  
♥Q98  
♦932  
♣J83

♠86  
♥♥A53  
♦J76  
♣AKQ96

♠A  
♥KJ642  
♦AKQ5  
♣1075

W N E S

Board (30) Av: NS=+40

N-S	E-W	Contract	N-S	E-W	IMP
7	5	3C	E-3	150	3
4	9	2H	S 3	140	3
6	8	2D	S 4	130	3
9	4	2H	S 2	110	2
8	6	3C	E-2	100	2
5	7	2D	S 2	90	2
3	12	3C	E-1	50	0
2	11	4D	S-1	50	-3
10	1	3H	S-1	50	-3
1	10	2H	S-1	50	-3
12	3	1NT	E 1	90	-4
11	2	4S	N-2	100	-4

兵庫県知事杯 OPEN TEAMS Session 1 Flight C 2012年10月6日(土)

**31**

♠9532  
♥A96  
♦86  
♣A985

♠QJ76  
♥J8  
♦AQ942  
♣Q10

N  
W | E  
S

♠A4  
♥KQ53  
♦10753  
♣763

♠K108  
♥10742  
♦KJ  
♣KJ42

Board (31) Av: NS=-90

N-S	E-W	Contract	N-S	E-W	IMP
5	7	1NT E-1	50		4
4	9	1NT E-1	50		4
3	12	1NT E 1		90	0
7	5	1NT E 1		90	0
2	11	1NT E 1		90	0
9	4	2D W 3	110		-1
1	10	2D W 3	110		-1
8	6	2D W 3	110		-1
6	8	1NT E 2	120		-1
12	3	1NT E 2	120		-1
11	2	2D W 4	130		-1
10	1	1NT E 3	150		-2

**32**

♠AQ8  
♥J7  
♦K98752  
♣72

♠J109  
♥A106  
♦AQJ43  
♣54

N  
W | E  
S

♠K63  
♥K932  
♦6  
♣AQ963

♠7542  
♥Q854  
♦10  
♣KJ108

Board (32) Av: NS=+80

N-S	E-W	Contract	N-S	E-W	IMP
9	4	3NT W-4	400		8
3	12	3NT W-2	200		3
12	3	3NT W-2	200		3
8	6	3NT W-2	200		3
2	11	3NT W-2	200		3
1	10	3NT W-2	200		3
5	7	3NT W-1	100		1
7	5	3NT W-1	100		1
4	9	3NT W-1	100		1
11	2	3NT W-1	100		1
6	8	3NT W 3	600		-12
10	1	3NT E 3	600		-12

**33**

♠K1032  
♥A10  
♦AQ2  
♣Q1063

♠A8654  
♥K8764  
♦6  
♣K4

N  
W | E  
S

♠Q9  
♥Q9  
♦K98753  
♣AJ5

♠J7  
♥J532  
♦J104  
♣9872

Board (33) Av: NS=-80

N-S	E-W	Contract	N-S	E-W	IMP
3	12	3D E-2	100		5
2	11	2D W-1	50		4
12	3	2D E-1	50		4
8	6	2D W 2		90	0
10	1	2D W 2		90	0
11	2	2H E 2	110		-1
6	8	2D W 3	110		-1
4	9	2D W 3	110		-1
5	7	2D W 4	130		-2
1	10	2S W 3	140		-2
9	4	2H E 3	140		-2
7	5	2H S-5	250		-5

**34**

♠AJ653  
♥1073  
♦8643  
♣2

♠Q10  
♥AQJ84  
♦A1075  
♣84

N  
W | E  
S

♠72  
♥K5  
♦KQ92  
♣AJ963

♠K984  
♥962  
♦J  
♣KQ1075

Board (34) Av: NS=-280

N-S	E-W	Contract	N-S	E-W	IMP
7	5	5D W-1	50		8
1	10	5D W-1	50		8
12	3	3NT E-1	50		8
8	6	3NT E-1	50		8
10	1	3NT W 3	400		-3
6	8	3NT E 3	400		-3
2	11	4H W 4	420		-4
3	12	4H W 4	420		-4
11	2	4H W 4	420		-4
9	4	4H W 4	420		-4
5	7	3NT E 4	430		-4
4	9	3NT E 4	430		-4

**35**

♠QJ3  
♥AK9863  
♦Q9  
♣73

♠108  
♥Q54  
♦K8532  
♣Q84

N  
W | E  
S

♠A962  
♥10  
♦AJ1074  
♣J62

♠K754  
♥J72  
♦6  
♣AK1095

Board (35) Av: NS=+360

N-S	E-W	Contract	N-S	E-W	IMP
10	1	5Dx E-3	800		10
5	7	5Dx E-2	500		4
4	9	4H N 5	450		3
7	5	4H N 5	450		3
9	4	4H N 4	420		2
2	11	4H N 4	420		-2
6	8	4H N 4	420		2
8	6	4H N 4	420		2
3	12	3H N 5	200		-4
1	10	3H N 4	170		-5
12	3	2H N 4	170		-5
11	2	3NT N-2	100		-10

**36**

♠J10987532  
♥Q4  
♦10  
♣J3

♠A  
♥10876  
♦AKJ543  
♣A6

N  
W | E  
S

♠6  
♥A95  
♦Q92  
♣1098742

♠KQ4  
♥KJ32  
♦876  
♣KQ5

Board (36) Av: NS=+50

N-S	E-W	Contract	N-S	E-W	IMP
6	8	4Sx N 4	790		12
1	10	3Sx N 3	730		12
12	3	3S N 3	140		3
7	5	3S N 3	140		3
2	11	3S N 3	140		3
5	7	4S N-1	100		-4
10	1	4S N-1	100		-4
8	6	4S N-1	100		-4
9	4	4S N-1	100		-4
11	2	4D W 4	130		-5
4	9	4D W 4	130		-5
3	12	5D W 6	620		-12

**37**

♠AKQ65  
♥96  
♦K1095  
♣76

♠J1074  
♥AK104  
♦6  
♣AJ109

N  
W | E  
S

♠932  
♥Q872  
♦QJ843  
♣3

♠8  
♥J53  
♦A72  
♣KQ8542

Board (37) Av: NS=-140

N-S	E-W	Contract	N-S	E-W	IMP
5	7	2NT S 2	120		6
3	12	3C S-1	100		1
7	5	3C S-1	100		1
9	4	3C S-1	100		1
8	6	3C S-1	100		1
2	11	2NT S-1	100		1
6	8	1NT S-1	100		1
10	1	3S N-2	200		-2
12	3	3NT S-2	200		-2
4	9	2NT S-2	200		-2
1	10	2D N-2	200		-2
11	2	3NT S-3	300		-4

**38**

♠K96  
♥J974  
♦A764  
♣K9

♠QJ843  
♥63  
♦10952  
♣64

N  
W | E  
S

♠A107  
♥AQ  
♦KJ3  
♣108532

♠52  
♥K10852  
♦Q8  
♣AQJ7

Board (38) Av: NS=+180

N-S	E-W	Contract	N-S	E-W	IMP
6	8	3NT N 4	430		6
8	6	4H S 4	420		6
7	5	3S W-3	300		3
12	3	3S W-2	200		1
9	4	1NT E-2	200		1
4	9	2H S 4	170		0
5	7	2H S 4	170		0
11	2	2NT N 3	150		-1
3	12	3H S 3	140		-1
1	10	2H S 3	140		-1
2	11	4H S-1	50		-6
10	1	2S E 3	140		-8

**39**

♠AK10  
♥QJ954  
♦104  
♣A32

♠J32  
♥73  
♦KJ9853  
♣J6

N  
W | E  
S

♠Q84  
♥AK2  
♦AQ  
♣KQ875

♠9765  
♥1086  
♦762  
♣1094

Board (39) Av: NS=-580

N-S	E-W	Contract	N-S	E-W	IMP
6	8	2D W 4	130		10
4	9	2NT E 3	150		10
1	10	3NT E 3	600		-1
10	1	3NT E 3	600		-1
5	7	3NT E 4	630		-2
9	4	3NT E 4	630		-2
11	2	3NT E 4	630		-2
2	11	3NT E 4	630		-2
12	3	3NT E 4	630		-2
3	12	3NT E 4	630		-2
7	5	3NT E 5	660		-2
8	6	3NTx E 5	1150		-11

**40**

♠A3  
♥AKQ82  
♦KQJ  
♣QJ8

♠J105  
♥965  
♦9863  
♣752

N  
W | E  
S

♠K974  
♥10743  
♦A107  
♣96

♠Q862  
♥J  
♦542  
♣AK1043

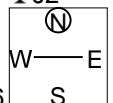
Board (40) Av: NS=+770

N-S	E-W	Contract	N-S	E-W	IMP
6	8	6NT N 7	1020		6
3	12	6NT N 6	990		6
8	6	6NT N 6	990		6
9	4	6NT N 6	990		6
1	10	6NT N 6	990		6
11	2	6C N 6	920		4
2	11	6C N 6	920		4
12	3	4NT N 7	520		-6
7	5	3NT N 6	490		-7
4	9	3NT N 5	460		-7
5	7	3NT N 5	460		-7
10	1	6NT S-1	50		-13

兵庫県知事杯 OPEN TEAMS Session 1 Flight C 2012年10月6日(土)

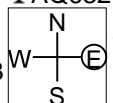
41

♠AKQ4  
 ♠82  
 ♠9753  
 ♠KQ63  
 ♠AKQ96  
 ♠J2  
 ♠J106  
 ♠85  
 ♠J102  
 ♠QJ10953  
 ♠85  
 ♠J106  
 ♠97  
 ♠8762  
 ♠10743



42

♠J6  
 ♠AK1094  
 ♠52  
 ♠Q10  
 ♠J8  
 ♠AK1094  
 ♠98  
 ♠KJ8  
 ♠1097  
 ♠Q873  
 ♠A432  
 ♠74  
 ♠K54



Board (41) Av: NS=+40

N-S	E-W	Contract	N-S	E-W	IMP
2	11	4Cx W-2	500		10
4	9	2NT N 2	120		2
5	7	2NT N 2	120		2
9	4	2NT N 2	120		2
3	12	2NT N 2	120		2
8	6	2NT N 2	120		2
7	5	2NT N-1	50		-3
1	10	2NT N-1	50		-3
6	8	2NT N-1	50		-3
10	1	2NT N-1	50		-3
11	2	2NT N-1	50		-3
12	3	2NT N-1	50		-3

Board (42) Av: NS=+300

N-S	E-W	Contract	N-S	E-W	IMP
7	5	4H N 5	650		8
6	8	4H N 5	650		8
2	11	4H N 5	650		8
8	6	4H N 4	620		8
12	3	3H S 6	230		-2
11	2	3H N 5	200		-3
10	1	3H N 5	200		-3
9	4	3H N 5	200		-3
1	10	3H N 4	170		-4
4	9	3H N 4	170		-4
3	12	3D W 3	110		-9
5	7	3D W 4	130		-10

兵庫県知事杯 OPEN TEAMS Session 3 Flight C 2012年10月7日(日)

**1**

♠AK64  
♥9543  
♦74  
♣QJ7

♠J1098753  
♥A  
♦Q10  
♣A1086

♠AKJ8762  
♥AKJ852  
♣9

♠Q2  
♥Q10  
♦A963  
♣K5432

Board (1) Av: NS=-370

N-S	E-W	Contract	N-S	E-W	IMP
4	10	4S	W-4	200	11
9	1	3D	E-2	100	10
5	12	3H	E 4	170	5
11	6	4H	E 5	450	-2
10	4	4H	E 5	450	-2
6	11	4H	E 5	450	-2
12	5	4H	E 5	450	-2
2	8	4H	E 5	450	-2
1	9	4H	E 5	450	-2
8	2	4H	E 5	450	-2
7	3	4H	E 5	450	-2
3	7	4H	E 5	450	-2

**2**

♠AQ10  
♥J103  
♦5  
♣AJ7643

♠K983  
♥A4  
♦K9632  
♣K5

♠654  
♥KQ762  
♦A1074  
♣2

♠J72  
♥985  
♦QJ8  
♣Q1098

Board (2) Av: NS=-90

N-S	E-W	Contract	N-S	E-W	IMP
7	3	4H	E-2	100	5
1	9	4D	W-1	50	4
11	6	4D	W-1	50	4
10	4	4C	N-1	100	0
4	10	3D	W 3	110	-1
9	1	3D	W 3	110	-1
3	7	3D	E 3	110	-1
8	2	3D	W 4	130	-1
5	12	3D	W 4	130	-1
6	11	3H	E 3	140	-2
2	8	2H	E 3	140	-2
12	5	3H	E 4	170	-2

**3**

♠K83  
♥976  
♦Q743  
♣975

♠J94  
♥K  
♦98652  
♣J632

♠AQ1072  
♥A842  
♦K10  
♣K4

♠65  
♥QJ1053  
♦AJ  
♣AQ108

Board (3) Av: NS=-100

N-S	E-W	Contract	N-S	E-W	IMP
1	9	4S	E-3	300	9
10	4	3S	E-1	100	5
4	10	3H	S-1	50	2
5	12	3H	S-1	50	2
11	6	2NT	N-2	100	0
12	5	2S	E 2	110	0
6	11	2S	E 2	110	0
9	1	2S	E 3	140	-1
7	3	3H	S-3	150	-2
8	2	2S	E 4	170	-2
2	8	3H	S-4	200	-3
3	7	3Hx	S-3	500	-9

**4**

♠4  
♥103  
♦AK10762  
♣K1092

♠KQJ8653  
♥A854  
♦J  
♣5

♠A9  
♥92  
♦Q84  
♣QJ8764

♠1072  
♥KQJ76  
♦953  
♣A3

Board (4) Av: NS=-170

N-S	E-W	Contract	N-S	E-W	IMP
5	12	3D	N 4	130	7
1	9	4S	W-1	100	7
3	7	4S	W-1	100	7
6	11	4S	W-1	100	7
10	4	3S	W 3	140	1
4	10	3S	W 3	140	1
9	1	3S	W 4	170	0
8	2	5Dx	N-1	200	-1
11	6	5Dx	N-1	200	-1
2	8	5Dx	N-2	500	-8
7	3	4S	W 4	620	-10
12	5	4S	W 4	620	-10

**5**

♠A32  
♥AK952  
♦32  
♣J109

♠K7  
♥86  
♦KQ985  
♣8732

♠QJ54  
♥Q73  
♦AJ1064  
♣4

♠10986  
♥J104  
♦7  
♣AKQ65

Board (5) Av: NS=+300

N-S	E-W	Contract	N-S	E-W	IMP
3	7	4H	N 5	650	8
11	6	4H	N 5	650	8
6	11	4H	N 4	620	8
7	3	4H	N 4	620	8
8	2	4H	N 4	620	8
2	8	5Dx	E-2	300	0
1	9	3H	N 5	200	-3
12	5	5Dx	E-1	100	-5
4	10	5D	E-2	100	-5
10	4	4H	N-1	100	-9
9	1	3H	N-1	100	-9
5	12	4D	E 4	130	-10

**6**

♠AQ8  
♥2  
♦K732  
♣AK852

♠7652  
♥1085  
♦A1096  
♣Q3

♠KJ4  
♥J4  
♦QJ54  
♣J764

♠1093  
♥AKQ9763  
♦8  
♣109

Board (6) Av: NS=+440

N-S	E-W	Contract	N-S	E-W	IMP
11	6	4H	S 6	480	1
10	4	4H	S 5	450	0
7	3	4H	S 5	450	0
6	11	4H	S 5	450	0
12	5	4H	S 5	450	0
8	2	4H	S 5	450	0
2	8	4H	S 5	450	0
9	1	4H	S 5	450	0
1	9	4H	S 4	420	-1
3	7	4H	S 4	420	-1
4	10	4H	S 4	420	-1
5	12	4H	S 4	420	-1

**7**

♠K7  
♥52  
♦A10952  
♣A654

♠J1064  
♥6  
♦K86  
♣K8732

♠92  
♥J108743  
♦J73  
♣QJ

♠AQ853  
♥AKQ9  
♦Q4  
♣109

Board (7) Av: NS=+540

N-S	E-W	Contract	N-S	E-W	IMP
12	5	3NT	N 5	660	3
9	1	3NT	N 5	660	3
4	10	3NT	N 5	660	3
5	12	3NT	N 4	630	3
2	8	3NT	N 4	630	3
7	3	3NT	N 4	630	3
11	6	3NT	N 3	600	2
10	4	3NT	N 3	600	2
8	2	3NT	N 3	600	2
1	9	3NT	N 3	600	2
3	7	4S	S-2	200	-12
6	11	6S	S-3	300	-13

**8**

♠9843  
♥AJ75  
♦A86  
♣K5

♠5  
♥103  
♦KJ1075  
♣A7632

♠QJ7  
♥Q986  
♦Q4  
♣QJ108

♠AK1062  
♥K42  
♦932  
♣94

Board (8) Av: NS=+50

N-S	E-W	Contract	N-S	E-W	IMP
5	12	3S	S 3	140	3
10	4	3S	S 3	140	3
4	10	3S	S 3	140	3
9	1	3S	S 3	140	3
1	9	3S	S 3	140	3
12	5	3S	S 3	140	3
3	7	2S	S 2	110	2
8	2	3S	S-1	50	-3
11	6	3S	S-1	50	-3
7	3	4S	S-2	100	-4
2	8	4S	S-2	100	-4
6	11	3H	N-2	100	-4

**9**

♠965  
♥QJ3  
♦J82  
♣AJ107

♠AQ8742  
♥962  
♦3  
♣984

♠J  
♥K54  
♦AQ96  
♣KQ632

♠K103  
♥A1087  
♦K10754  
♣5

Board (9) Av: NS=+180

N-S	E-W	Contract	N-S	E-W	IMP
4	10	3NT	E-5	500	8
6	11	2NT	E-4	400	6
11	6	2NT	E-3	300	3
1	9	3S	W-2	200	1
10	4	2S	W-2	200	1
9	1	2S	W-2	200	1
2	8	2NT	E-2	200	1
8	2	2NT	E-2	200	1
12	5	2S	W-1	100	-2
7	3	2S	W-1	100	-2
3	7	2S	W 2	110	-7
5	12	2S	W 2	110	-7

**10**

♠7  
♥1074  
♦AJ5432  
♣K82

♠KJ85  
♥AJ953  
♦109  
♣103

♠109643  
♥82  
♦87  
♣AJ97

♠AQ2  
♥KQ6  
♦KQ6  
♣Q654

Board (10) Av: NS=+410

N-S	E-W	Contract	N-S	E-W	IMP
11	6	3NT	S 5	660	6
1	9	3NT	S 4	630	6
4	10	3NT	S 4	630	6
10	4	3NT	S 4	630	6
2	8	3NT	S 4	630	6
8	2	3NT	S 4	630	6
5	12	3NT	S 3	600	5
7	3	3NT	S 3	600	5
9	1	1NT	S 3	150	-6
6	11	6D	N-2	200	-12
3	7	5D	S-2	200	-12
12	5	5C	S-2	200	-12

兵庫県知事杯 OPEN TEAMS Session 3 Flight C 2012年10月7日(日)

**11**

♠ QJ987  
♥ K95  
♦ 73  
♣ J65

♠ A104 ♠ K632  
♥ J76 ♥ 2  
♦ A2 ♦ Q84  
♣ AQ983 ♣ K10742

♠ 5  
♥ AQ10843  
♦ KJ10965  
♣

Board (11) Av: NS=+190

N-S	E-W	Contract	N-S	E-W	IMP
7	3	4Hx S 5	690		11
5	12	5Hx S 5	650		10
3	7	5Hx S 5	450		6
1	9	4H S 5	450		6
6	11	4H S 4	420		6
11	6	3H S 4	170		-1
12	5	5C W-2	100		-3
4	10	5H S-1	50	50	-6
2	8	5H S-1	50	50	-6
8	2	5Hx S-1	100	100	-7
9	1	4C W 5	150	150	-8
10	4	2NT W 3	150	150	-8

**12**

♠ A743  
♥ K1076  
♦ J8  
♣ K52

♠ Q102 ♠ K985  
♥ A9432 ♥ 2  
♦ 104 ♦ AKQ72  
♣ 1043 ♣ AJ86

♠ J6  
♥ QJ85  
♦ 9653  
♣ Q97

Board (12) Av: NS=-90

N-S	E-W	Contract	N-S	E-W	IMP
7	3	5D E-3	150		6
4	10	5D E-2	100		5
5	12	2S E-1	50		4
2	8	2NT W-1	50		4
8	2	3D E 3	110	110	-1
6	11	1S E 3	140	140	-2
12	5	2NT W 3	150	150	-2
11	6	2D E 5	150	150	-2
10	4	2NT W 4	180	180	-3
1	9	2Hx S-1	200	200	-3
3	7	2NT E 5	210	210	-3
9	1	3NT W 4	430	430	-8

**13**

♠ Q83  
♥ KJ92  
♦ A84  
♣ J92

♠ AJ9 ♠ 1042  
♥ 8 ♥ 765  
♦ KJ2 ♦ Q963  
♣ AKQ1054 ♣ 873

♠ K765  
♥ AQ1043  
♦ 1075  
♣ 6

Board (13) Av: NS=-50

N-S	E-W	Contract	N-S	E-W	IMP
2	8	3Hx S 3	730		13
4	10	3H S 3	140		5
9	1	2H S 2	110		4
6	11	4C W-1	100		4
1	9	3H S-1	100	100	-2
5	12	3H S-1	100	100	-2
3	7	3H S-1	100	100	-2
7	3	4C W 3	110	110	-2
12	5	3C W 4	130	130	-2
10	4	4C W 4	130	130	-2
11	6	3C W 4	130	130	-2
8	2	3C W 4	130	130	-2

**14**

♠ AKQ7  
♥ 9732  
♦ A5  
♣ A43

♠ 1093 ♠ J865  
♥ 5 ♥ Q8  
♦ J63 ♦ 8742  
♣ K109852 ♣ Q76

♠ 42  
♥ AKJ1064  
♦ KQ109  
♣ J

Board (14) Av: NS=+1010

N-S	E-W	Contract	N-S	E-W	IMP
4	10	7H S 7	1510		11
10	4	6H S 7	1010		0
11	6	6H S 7	1010		0
5	12	6H S 7	1010		0
6	11	6H S 7	1010		0
12	5	6H S 7	1010		0
2	8	6H S 7	1010		0
9	1	6H S 7	1010		0
1	9	6H S 7	1010		0
7	3	6H S 7	1010		0
3	7	6H S 7	1010		0
8	2	6H S 7	1010		0

**15**

♠ 973  
♥ A6432  
♦ A1075  
♣ K

♠ Q854 ♠ AKJ10  
♥ 1095 ♥ K7  
♦ 9643 ♦ J2  
♣ 93 ♣ AQ872

♠ 62  
♥ QJ8  
♦ KQ8  
♣ J10654

Board (15) Av: NS=+60

N-S	E-W	Contract	N-S	E-W	IMP
8	1	4C E-3	150		3
3	9	3H N 3	140		2
4	12	2H N 3	140		2
2	7	2H N 3	140		2
9	3	2H N 2	110		2
12	4	3C E-2	100		1
7	2	3C E-2	100		1
10	6	3S E-1	50	50	0
1	8	3S E-1	50	50	0
5	11	2S W 2	110	110	-5
11	5	2S W 2	110	110	-5
6	10	3S E 3	140	140	-5

**16**

♠ AQJ74  
♥ 963  
♦ A7  
♣ K53

♠ 92 ♠ 865  
♥ AKQ8 ♥ J2  
♦ K98 ♦ Q653  
♣ Q1082 ♣ J964

♠ K103  
♥ 10754  
♦ J1042  
♣ A7

Board (16) Av: NS=+160

N-S	E-W	Contract	N-S	E-W	IMP
11	5	3NT N 3	400		6
10	6	4C W-3	300		4
5	11	3S N 3	140		-1
4	12	2S N 3	140		-1
12	4	2S N 3	140		-1
6	10	2S N 3	140		-1
2	7	2S N 3	140		-1
8	1	2S N 3	140		-1
7	2	2S N 3	140		-1
1	8	2S N 3	140		-1
3	9	2S N 3	140		-1
9	3	2S N 2	110		-2

**17**

♠ AK86  
♥ A7  
♦ J1098642  
♣ 94

♠ 983 ♠ 64  
♥ Q532 ♥ J10974  
♦ K ♦ 7  
♣ AKJ87 ♣ Q10652

♠ AKQJ10752  
♥  
♦ AQ53  
♣ 3

Board (17) Av: NS=+880

N-S	E-W	Contract	N-S	E-W	IMP
4	12	6S S 6	980		3
10	6	6S S 6	980		3
12	4	6S S 6	980		3
6	10	6S S 6	980		3
11	5	6S S 6	980		3
2	7	6S S 6	980		3
8	1	6S S 6	980		3
3	9	6S S 6	980		3
1	8	6S S 6	980		3
9	3	5S S 6	480		-9
5	11	4S S 6	480		-9
7	2	5S S 5	450		-10

**18**

♠ 63  
♥ A7  
♦ KJ984  
♣ K953

♠ 1074 ♠ KQ95  
♥ K1065 ♥ Q9  
♦ A1075 ♦ Q32  
♣ 87 ♣ Q1062

♠ AJ82  
♥ J8432  
♦ 6  
♣ AJ4

Board (18) Av: NS=+10

N-S	E-W	Contract	N-S	E-W	IMP
2	7	2NT N 2	120		3
11	5	1NT N 2	120		3
12	4	Passout			0
4	12	Passout			0
6	10	Passout			0
5	11	Passout			0
8	1	Passout			0
1	8	Passout			0
7	2	Passout			0
9	3	Passout			0
3	9	Passout			0
10	6	3NT S-2	200	200	-5

**19**

♠ Q97  
♥ KQ  
♦ KQJ  
♣ K9753

♠ 8 ♠ AJ64  
♥ 1098732 ♥ J5  
♦ 8542 ♦ A1073  
♣ Q2 ♣ A64

♠ K10532  
♥ A64  
♦ 96  
♣ J108

Board (19) Av: NS=+80

N-S	E-W	Contract	N-S	E-W	IMP
11	5	3NT N 4	430		8
4	12	4S N 4	420		8
5	11	1NT N 4	180		3
8	1	3S N 4	170		3
6	10	3S N 3	140		2
3	9	3S N 3	140		2
12	4	4S N-1	50	50	-4
2	7	4S N-1	50	50	-4
1	8	4S N-1	50	50	-4
10	6	4S N-1	50	50	-4
7	2	4S N-1	50	50	-4
9	3	4S N-2	100	100	-5

**20**

♠ K106  
♥ 2  
♦ K765  
♣ AKQ108

♠ 53 ♠ Q742  
♥ K873 ♥ AJ65  
♦ J982 ♦ A3  
♣ J93 ♣ 742

♠ AJ98  
♥ Q1094  
♦ Q104  
♣ 65

Board (20) Av: NS=+310

N-S	E-W	Contract	N-S	E-W	IMP
11	5	3NT S 5	660		8
5	11	3NT S 4	630		8
3	9	3NT S 4	630		8
8	1	3NT S 3	600		7
12	4	1NT N 4	180		-4
6	10	1NT N 4	180		-4
4	12	1NT N 4	180		-4
1	8	1NT N 4	180		-4
7	2	1NT N 4	180		-4
10	6	1NT N 4	180		-4
2	7	2C N 6	170		-4
9	3	1NT N 3	150		-4

兵庫県知事杯 OPEN TEAMS Session 3 Flight C 2012年10月7日(日)

**21**

♠ Q74  
♥ QJ873  
♦ K1092  
♣ J

♠ AJ985  
♥ 9  
♦ 863  
♣ AK95

♠ K102  
♥ K64  
♦ A5  
♣ Q10762

♠ 63  
♥ A1052  
♦ QJ74  
♣ 843

**22**

♠ 2  
♥ 10532  
♦ 10975  
♣ 8732

♠ J854  
♥ Q87  
♦ K83  
♣ AK9

♠ KQ973  
♥ J  
♦ QJ64  
♣ J106

♠ A106  
♥ AK964  
♦ A2  
♣ Q54

**23**

♠ 98  
♥ 964  
♦ 108  
♣ Q109876

♠ QJ106532  
♥ A  
♦ 4  
♣ A432

♠ A  
♥ Q1053  
♦ J97653  
♣ K5

♠ K74  
♥ KJ872  
♦ AKQ2  
♣ J

**24**

♠ J4  
♥ 108742  
♦ 96  
♣ QJ75

♠ A109  
♥ KQJ93  
♦ K742  
♣ 6

♠ KQ8653  
♥ 6  
♦ AQJ1085  
♣

♠ 72  
♥ A5  
♦ 3  
♣ AK1098432

**25**

♠ KQJ763  
♥ 10  
♦ KJ6  
♣ K83

♠ A  
♥ AKQJ9  
♦ Q75  
♣ AQ62

♠ 1082  
♥ 65  
♦ A832  
♣ J1097

♠ 954  
♥ 87432  
♦ 1094  
♣ 54

Board (21) Av: NS=-420

N-S	E-W	Contract	N-S	E-W	IMP	
12	4	4S	W	4	420	0
4	12	4S	W	4	420	0
5	11	4S	W	4	420	0
6	10	4S	W	4	420	0
11	5	4S	W	4	420	0
9	3	4S	W	4	420	0
1	8	4S	W	4	420	0
8	1	4S	W	4	420	0
2	7	4S	W	4	420	0
7	2	4S	W	4	420	0
10	6	4S	W	5	450	-1
3	9	4S	W	5	450	-1

Board (22) Av: NS=-200

N-S	E-W	Contract	N-S	E-W	IMP	
2	7	3H	S	4	170	9
10	6	3H	S	3	140	8
1	8	4H	S-1		50	4
12	4	3H	S-1		50	4
7	2	4Hx	S-1		100	3
9	3	3S	E	4	170	1
6	10	3S	E	4	170	1
3	9	3S	E	4	170	1
8	1	3S	E	4	170	1
5	11	4S	E	4	620	-9
11	5	4S	E	4	620	-9
4	12	4Sx	E	4	790	-11

Board (23) Av: NS=+10

N-S	E-W	Contract	N-S	E-W	IMP	
10	6	4Sx	W-1		200	5
12	4	4S	W-1		100	3
9	3	4S	W-1		100	3
6	10	4S	W-1		100	3
11	5	4S	W-1		100	3
8	1	4S	W-1		100	3
7	2	4S	W-1		100	3
2	7	3H	S-1		100	-3
1	8	3S	W	3	140	-4
3	9	2S	W	3	140	-4
4	12	2S	W	3	140	-4
5	11	2S	W	3	140	-4

Board (24) Av: NS=-620

N-S	E-W	Contract	N-S	E-W	IMP	
3	9	5D	E	7	440	5
6	10	5S	E	6	480	4
9	3	5S	E	6	480	4
4	12	5S	E	6	480	4
1	8	5S	E	6	480	4
2	7	5S	E	6	480	4
7	2	5S	E	6	480	4
12	4	4S	E	6	480	4
8	1	6D	W	6	920	-7
5	11	6D	W	6	920	-7
10	6	6S	E	6	980	-8
11	5	6S	E	6	980	-8

Board (25) Av: NS=+20

N-S	E-W	Contract	N-S	E-W	IMP	
7	2	4H	W-2		200	5
6	10	4H	W-2		200	5
4	12	4H	W-1		100	2
11	5	4H	W-1		100	2
3	9	4H	W-1		100	2
12	4	3H	W-1		100	2
2	7	3H	W-1		100	2
8	1	3H	W-1		100	2
1	8	3H	W	3	140	-4
9	3	3C	W	5	150	-5
5	11	4Sx	N-2		300	-8
10	6	4Sx	N-3		500	-11

**26**

♠ KJ653  
♥ 64  
♦ Q2  
♣ 8732

♠ Q82  
♥ KQJ92  
♦ J86  
♣ 96

♠ 974  
♥ 107  
♦ 9  
♣ AKQJ1054

♠ A10  
♥ A853  
♦ AK107543  
♣

**27**

♠ A432  
♥ Q  
♦ 4  
♣ KQJ10986

♠ J10  
♥ KJ97543  
♦ Q106  
♣ A

♠ Q8765  
♥ A106  
♦ K3  
♣ 752

♠ K9  
♥ 82  
♦ AJ98752  
♣ 43

**28**

♠ AQ65  
♥ AKJ5  
♦ J2  
♣ J74

♠ K  
♥ Q10987  
♦ KQ6  
♣ AKQ5

♠ 987  
♥ 432  
♦ A98  
♣ 10632

♠ J10432  
♥ 6  
♦ 107543  
♣ 98

Board (26) Av: NS=+170

N-S	E-W	Contract	N-S	E-W	IMP	
11	5	3NTx	E-8		2300	19
1	8	3H	W-4		400	6
12	4	4C	E-2		200	1
8	1	4C	E-2		200	1
4	12	3D	S	6	170	0
5	11	3D	S	6	170	0
3	9	4D	S	4	130	-1
2	7	3D	S	4	130	-1
9	3	3D	S	4	130	-1
10	6	4C	W-1		100	-2
6	10	4C	E-1		100	-2
7	2	5D	S-1		100	-7

Board (27) Av: NS=-20

N-S	E-W	Contract	N-S	E-W	IMP	
6	10	5C	N	5	400	9
3	9	5C	N	5	400	9
8	1	4C	N	5	150	5
2	7	5H	W-2		100	3
4	12	4H	W-1		50	2
9	3	4H	W-1		50	2
1	8	5C	N-1		50	-1
11	5	6Cx	N-1		100	-2
10	6	5Cx	N-1		100	-2
7	2	5Dx	S-2		300	-7
5	11	4H	W	4	420	-9
12	4	4H	W	4	420	-9

Board (28) Av: NS=+30

N-S	E-W	Contract	N-S	E-W	IMP	
11	5	3H	W-5		250	6
2	7	2S	N	5	200	5
4	12	2S	N	4	170	4
9	3	3S	N	3	140	3
5	11	3S	N	3	140	3
1	8	4C	W-2		100	2
8	1	4C	W-1		50	1
10	6	3S	S-1		100	-4
3	9	2H	W	2	110	-4
7	2	3H	W	3	140	-5
12	4	2H	W	3	140	-5
6	10	1H	W	4	170	-5



兵庫県知事杯 OPEN TEAMS Session 4 Flight C 2012年10月7日(日)

**1**

♠ Q9532  
♥ 103  
♦ 84  
♣ 10743

♠ J10 ♠ A84  
♥ K87 ♥ J964  
♦ A1052 ♦ KQJ9  
♣ K952 ♣ Q8

♠ K76  
♥ AQ52  
♦ 763  
♣ AJ6

Board (1) Av: NS=-60

**2**

♠ J1043  
♥ 8  
♦ J43  
♣ Q9743

♠ A5 ♠ KQ96  
♥ AK765 ♥ QJ9  
♦ 102 ♦ Q86  
♣ J652 ♣ AK10

♠ 872  
♥ 10432  
♦ AK975  
♣ 8

Board (2) Av: NS=-460

**3**

♠ 84  
♥ KJ7  
♦ KQ72  
♣ AJ94

♠ KJ106 ♠ AQ93  
♥ AQ103 ♥ 52  
♦ AJ53 ♦ 984  
♣ 3 ♣ Q1087

♠ 752  
♥ 9864  
♦ 106  
♣ K652

Board (3) Av: NS=+30

**4**

♠ 10982  
♥ KJ3  
♦ K94  
♣ 1032

♠ AJ64 ♠ Q  
♥ 974 ♥ A105  
♦ 1085 ♦ QJ72  
♣ AK7 ♣ QJ964

♠ K753  
♥ Q862  
♦ A63  
♣ 85

Board (4) Av: NS=-360

**5**

♠ 10  
♥ AKQ1083  
♦ 852  
♣ Q53

♠ J63 ♠ AKQ9  
♥ 52 ♥ J7  
♦ 10973 ♦ AK4  
♣ J982 ♣ AK64

♠ 87542  
♥ 964  
♦ QJ6  
♣ 107

Board (5) Av: NS=+60

N-S	E-W	Contract	N-S	E-W	IMP
2	9	3NT W-2	100		4
4	11	3NT E-2	100		4
12	6	3H E-1	50		3
10	5	2NT W-1	50		3
3	8	3S N-1	50		0
11	4	3D E 3	110		-2
5	10	3D E 3	110		-2
7	1	2D E 3	110		-2
1	7	2NT E 2	120		-2
8	3	1NT W 2	120		-2
9	2	2NT E 3	150		-3
6	12	3NT W 3	400		-8

N-S	E-W	Contract	N-S	E-W	IMP
12	6	4H E 4	420		1
8	3	4H E 5	450		0
11	4	4H E 5	450		0
1	7	4H E 5	450		0
7	1	4H E 5	450		0
2	9	4H E 5	450		0
6	12	3NT E 5	460		0
5	10	3NT E 5	460		0
4	11	3NT E 5	460		0
3	8	4H E 6	480		-1
9	2	4H E 6	480		-1
10	5	3NT E 6	490		-1

N-S	E-W	Contract	N-S	E-W	IMP
9	2	4S E-2	200		5
6	12	4S E-2	200		5
4	11	4S E-1	100		2
3	8	4S E-1	100		2
8	3	4S E-1	100		2
7	1	4S E-1	100		2
2	9	4S E-1	100		2
10	5	1NT N-1	50		-2
11	4	2D W 2	90		-3
5	10	1NT N-2	100		-4
1	7	1NT N-3	150		-5
12	6	3S E 4	170		-5

N-S	E-W	Contract	N-S	E-W	IMP
2	9	5C W-2	200		11
11	4	2NT E 2	120		6
5	10	2NT E 2	120		6
6	12	2NT E 2	120		6
12	6	2NT E 2	120		6
3	8	4C E 4	130		6
10	5	3NT W 3	600		-6
1	7	3NT W 3	600		-6
7	1	3NT W 3	600		-6
8	3	3NT W 3	600		-6
4	11	3NT E 4	630		-7
9	2	3NT E 5	660		-7

N-S	E-W	Contract	N-S	E-W	IMP
6	12	5Sx W-2	300		6
11	4	5C W-2	100		1
4	11	5C W-2	100		1
12	6	5C W-2	100		1
7	1	5C W-2	100		1
2	9	4S W-2	100		1
10	5	5C W-1	50		0
3	8	5C W-1	50		0
1	7	5C W-1	50		0
5	10	2S E-1	50		0
8	3	3C W 3	110		-5
9	2	4C W 4	130		-5

**6**

♠ 7  
♥ KJ64  
♦ J93  
♣ AK954

♠ K9542 ♠ AQJ63  
♥ A8 ♥ Q95  
♦ A54 ♦ 1087  
♣ J87 ♣ 63

♠ 108  
♥ 10732  
♦ KQ62  
♣ Q102

Board (6) Av: NS=-10

**7**

♠ K852  
♥ J87  
♦ 102  
♣ K1052

♠ AJ ♠ Q9  
♥ 65 ♥ AQ  
♦ AKJ3 ♦ 98765  
♣ Q8763 ♣ AJ94

♠ 107643  
♥ K109432  
♦ Q4  
♣

Board (7) Av: NS=-650

**8**

♠ 9842  
♥ J10632  
♦ J98  
♣ 8

♠ 753 ♠ Q106  
♥ 74 ♥ K8  
♦ K5 ♦ AQ10742  
♣ J107432 ♣ AK

♠ AKJ  
♥ AQ95  
♦ 63  
♣ Q965

Board (8) Av: NS=+140

**9**

♠ KQJ32  
♥ 10  
♦ QJ7  
♣ QJ43

♠ A1098 ♠ 5  
♥ A9843 ♥ Q7  
♦ 1094 ♦ A8532  
♣ 5 ♣ K10982

♠ 764  
♥ KJ652  
♦ K6  
♣ A76

Board (9) Av: NS=-30

**10**

♠ 6  
♥ K72  
♦ K962  
♣ J7543

♠ 1097432 ♠ KJ  
♥ 5 ♥ AJ9643  
♦ 10754 ♦ A83  
♣ AK ♣ 62

♠ AQ85  
♥ Q108  
♦ QJ  
♣ Q1098

Board (10) Av: NS=-30

N-S	E-W	Contract	N-S	E-W	IMP
3	8	4S W-2	200		5
1	7	4S W-2	200		5
4	11	4S W-1	100		3
12	6	4S W-1	100		3
5	10	4S W-1	100		3
6	12	2NT E-1	100		3
7	1	5C N-2	100		-3
10	5	3S W 3	140		-4
2	9	3S W 3	140		-4
11	4	3S W 3	140		-4
8	3	3S E 3	140		-4
9	2	3S W 4	170		-4

N-S	E-W	Contract	N-S	E-W	IMP
11	4	4C W-1	100		13
5	10	5D E 5	600		2
6	12	5D E 6	620		1
8	3	3NT W 4	630		1
1	7	3NT W 4	630		1
2	9	3NT W 4	630		1
3	8	3NT W 5	660		0
9	2	3NT W 5	660		0
10	5	3NT W 6	690		-1
4	11	3NT E 6	690		-1
12	6	3NT W 7	720		-2
7	1	3NT W 7	720		-2

N-S	E-W	Contract	N-S	E-W	IMP
5	10	4H N 5	450		7
4	11	3H N 5	200		2
11	4	3H N 5	200		2
8	3	3H N 4	170		1
3	8	3H N 4	170		1
7	1	3H N 4	170		1
2	9	3H N 4	170		1
1	7	3H N 4	170		1
10	5	4D W-1	50		-3
12	6	4D E-1	50		-3
9	2	3D E-1	50		-3
6	12	1D E 3	110		-6

N-S	E-W	Contract	N-S	E-W	IMP
5	10	3S N 3	140		5
12	6	3S N 3	140		5
4	11	2S N 3	140		5
10	5	4S N-1	50		-1
6	12	4S N-1	50		-1
11	4	3S N-1	50		-1
2	9	3S N-1	50		-1
9	2	3S N-1	50		-1
1	7	4S N-2	100		-2
3	8	4S N-2	100		-2
8	3	4S N-2	100		-2
7	1	4S N-3	150		-3

N-S	E-W	Contract	N-S	E-W	IMP
11	4	3H E-2	200		6
10	5	2H E-1	100		4
4	11	2H E-1	100		4
12	6	2H E-1	100		4
2	9	2H E-1	100		4
1	7	2S W 2	110		-2
9	2	2S W 2	110		-2
8	3	2S W 2	110		-2
3	8	2H E 2	110		-2
6	12	2H E 2	110		-2
5	10	2S W 3	140		-3
7	1	2S W 4	170		-4

兵庫県知事杯 OPEN TEAMS Session 4 Flight C 2012年10月7日(日)

**11**

♠A1092  
♥63  
♦109863  
♣106

♠K6 ♠QJ543  
♥AKQ2 ♥109854  
♦AQ42 ♥J  
♣J95 ♣AK

♠87  
♥J7  
♦K75  
♣Q87432

Board (11) Av: NS=-780

N-S	E-W	Contract	N-S	E-W	IMP
12	6	5H E 6	480		7
8	3	4H E 6	480		7
11	4	4H E 6	480		7
5	10	4H E 6	480		7
2	9	4H E 6	480		7
10	5	6H E 6	980		-5
6	12	6H E 6	980		-5
1	7	6H E 6	980		-5
7	1	6H E 6	980		-5
9	2	6H E 6	980		-5
4	11	6H E 6	980		-5
3	8	6H E 6	980		-5

**12**

♠KQJ  
♥AKQ1053  
♦3  
♣754

♠954 ♠A863  
♥J982 ♥74  
♦872 ♥A94  
♣KQ10 ♣J982

♠1072  
♥6  
♦KQJ1065  
♣A63

Board (12) Av: NS=+30

N-S	E-W	Contract	N-S	E-W	IMP
6	12	3NT S 5	660		12
4	11	3NT N 4	630		12
12	6	2H N 3	140		3
7	1	3D S 4	130		3
9	2	3D S 3	110		2
5	10	4H N-1	100		-4
11	4	4H N-1	100		-4
2	9	4H N-1	100		-4
3	8	4H N-1	100		-4
1	7	4H N-1	100		-4
10	5	4H N-2	200		-6
8	3	3NT S-2	200		-6

**13**

♠982  
♥AQ  
♦J1043  
♣10982

♠75 ♠AJ106  
♥98764 ♥J32  
♦Q96 ♥AK7  
♣AQ4 ♣KJ3

♠KQ43  
♥K105  
♦852  
♣765

Board (13) Av: NS=-60

N-S	E-W	Contract	N-S	E-W	IMP
3	8	4H E-1	100		4
8	3	4H E-1	100		4
12	6	4H E-1	100		4
1	7	4H E-1	100		4
11	4	3NT E-1	100		4
5	10	3NT E-1	100		4
6	12	3NT E-1	100		4
7	1	3NT E-1	100		4
2	9	3H E 3	140		-2
10	5	3NT E 3	600		-11
4	11	3NT E 3	600		-11
9	2	4H E 4	620		-11

**14**

♠KQ642  
♥K10  
♦A5  
♣AKQ4

♠3 ♠J109875  
♥AQJ9 ♥87  
♦K109 ♥Q83  
♣98653 ♣J7

♠A  
♥65432  
♦J7642  
♣102

Board (14) Av: NS=+50

N-S	E-W	Contract	N-S	E-W	IMP
6	12	3NT S 3	400		8
1	7	3NT N 3	400		8
2	9	3NT N 3	400		8
7	1	2D S 2	90		1
3	8	4H N-1	50		-3
10	5	3NT N-1	50		-3
12	6	3NT N-1	50		-3
9	2	3NT N-1	50		-3
8	3	3NT N-1	50		-3
4	11	3NT N-1	50		-3
11	4	4H S-2	100		-4
5	10	3NT S-2	100		-4

**15**

♠A982  
♥9  
♦J98  
♣KJ1086

♠K4 ♠Q1076  
♥K32 ♥AQ10876  
♦KQ732 ♥A  
♣Q42 ♣95

♠J53  
♥J54  
♦10654  
♣A73

Board (15) Av: NS=-410

N-S	E-W	Contract	N-S	E-W	IMP
9	8	5H E-1	50		10
6	1	4H E-1	50		10
12	7	4H E 4	420		0
7	12	4H E 5	450		-1
11	10	4H E 5	450		-1
2	3	4H E 5	450		-1
4	5	4H E 5	450		-1
3	2	4H E 5	450		-1
10	11	4H W 6	480		-2
1	6	4H E 6	480		-2
5	4	4H E 6	480		-2
8	9	4H E 6	480		-2

**16**

♠9642  
♥K10  
♦A109876  
♣Q

♠Q85 ♠KJ107  
♥AJ85 ♥97643  
♦QJ5 ♥K4  
♣1064 ♣98

♠A3  
♥Q2  
♦32  
♣AKJ7532

Board (16) Av: NS=+190

N-S	E-W	Contract	N-S	E-W	IMP
11	10	3NT S 4	430		6
1	6	3NT S 4	430		6
8	9	3NT N 3	400		5
3	2	3C S 5	150		-1
7	12	3C S 4	130		-2
10	11	3C S 4	130		-2
9	8	2C S 4	130		-2
12	7	2C S 4	130		-2
4	5	2C S 4	130		-2
5	4	2C S 4	130		-2
2	3	3H E-1	100		-3
6	1	5D N-2	100		-7

**17**

♠1072  
♥J962  
♦Q62  
♣A84

♠A653 ♠KQ84  
♥K73 ♥Q84  
♦AK103 ♥987  
♣J10 ♣K92

♠J9  
♥A105  
♦J54  
♣Q7653

Board (17) Av: NS=-200

N-S	E-W	Contract	N-S	E-W	IMP
8	9	4S W-2	100		7
4	5	4S W-1	50		6
5	4	4S W-1	50		6
6	1	4S W-1	50		6
12	7	3NT W-1	50		6
1	6	2S E 4	170		1
2	3	3NT W 3	400		-5
10	11	3NT W 3	400		-5
7	12	3NT W 3	400		-5
3	2	3NT W 3	400		-5
11	10	4S W 4	420		-6
9	8	4S W 4	420		-6

**18**

♠K10753  
♥K5  
♦Q10542  
♣7

♠AQ98743 ♠984  
♥96 ♥10  
♦96 ♥KJ8  
♣AK54 ♣Q109632

♠AQJ62  
♥J62  
♦A73  
♣J8

Board (18) Av: NS=-140

N-S	E-W	Contract	N-S	E-W	IMP
9	8	5H W-1	50		5
7	12	4S S-1	100		1
5	4	4S S-1	100		1
11	10	4S S-1	100		1
12	7	4S S-1	100		1
1	6	4S S-1	100		1
3	2	3S S-1	100		1
10	11	5S S-2	200		-2
4	5	4S S-2	200		-2
8	9	4S S-2	200		-2
6	1	4S S-2	200		-2
2	3	5H W 5	450		-7

**19**

♠K9643  
♥AJ754  
♦K8  
♣8

♠Q105 ♠J8  
♥Q32 ♥K8  
♦AJ93 ♥Q754  
♣1074 ♣AQJ52

♠A72  
♥1096  
♦1062  
♣K963

Board (19) Av: NS=+40

N-S	E-W	Contract	N-S	E-W	IMP
3	2	3S N 3	140		3
8	9	3S N 3	140		3
7	12	3S N 3	140		3
10	11	3S N 3	140		3
9	8	3S N 3	140		3
4	5	2S N 3	140		3
6	1	4S N-1	50		-3
12	7	3S N-1	50		-3
1	6	3S N-1	50		-3
11	10	3S N-1	50		-3
5	4	4S N-2	100		-4
2	3	4S N-2	100		-4

**20**

♠42  
♥965  
♦AKJ3  
♣AJ84

♠KQJ5 ♠A1083  
♥QJ8 ♥AK2  
♦7 ♥Q10985  
♣Q9763 ♣2

♠976  
♥10743  
♦642  
♣K105

Board (20) Av: NS=-220

N-S	E-W	Contract	N-S	E-W	IMP
7	12	4S E-1	100		8
4	5	1NT W 1	90		4
11	10	1NT W 1	90		4
6	1	1NT N-1	100		3
8	9	1NT W 2	120		3
12	7	1S E 3	140		2
5	4	1NT W 3	150		2
9	8	3S E 4	170		2
1	6	2S E 4	170		2
2	3	1Dx N-2	500		-7
3	2	4S W 4	620		-9
10	11	4S W 5	650		-10

兵庫県知事杯 OPEN TEAMS Session 4 Flight C 2012年10月7日(日)

**21**

♠9876  
♥1093  
♦2  
♣A7632

♠A2 ♠J103  
♥KQ7 ♥4  
♦A74 ♦KQJ1063  
♣KQ854 ♣J109

♠KQ54  
♥AJ8652  
♦985  
♣

Board (21) Av: NS=-460

N-S	E-W	Contract	N-S	E-W	IMP
5	4	5D E 5	400		2
12	7	3NT W 4	430		1
8	9	3NT W 4	430		1
7	12	3NT W 5	460		0
10	11	3NT W 5	460		0
9	8	3NT W 5	460		0
3	2	3NT W 5	460		0
2	3	3NT W 5	460		0
11	10	3NT W 5	460		0
4	5	3NT W 5	460		0
6	1	3NT E 6	490		-1
1	6	4Hx S-2	500		-1

**22**

♠A976  
♥J43  
♦94  
♣A1084

♠4 ♠Q1053  
♥AKQ6 ♥10  
♦QJ10653 ♦AK82  
♣Q6 ♣J972

♠KJ82  
♥98752  
♦7  
♣K53

Board (22) Av: NS=-230

N-S	E-W	Contract	N-S	E-W	IMP
2	3	5D W-1	100		8
11	10	5D W-1	100		8
4	5	3NT W-1	100		8
6	1	3S N-2	100		4
1	6	3D W 4	130		3
5	4	3D W 4	130		3
3	2	3D W 4	130		3
8	9	1NT W 5	210		1
9	8	5D W 5	600		-9
7	12	3NT E 3	600		-9
12	7	3NT W 4	630		-9
10	11	3NT W 4	630		-9

**23**

♠762  
♥98652  
♦6  
♣AK97

♠AK1098 ♠5  
♥QJ10 ♥A73  
♦K92 ♦A10874  
♣J6 ♣Q843

♠QJ43  
♥K4  
♦QJ53  
♣1052

Board (23) Av: NS=+40

N-S	E-W	Contract	N-S	E-W	IMP
1	6	3NT E-2	200		4
8	9	3D W-2	200		4
4	5	3NT E-1	100		2
12	7	3NT E-1	100		2
9	8	3NT E-1	100		2
3	2	3NT E-1	100		2
7	12	3D W-1	100		2
6	1	3D W-1	100		2
5	4	3D W-1	100		2
11	10	2NT W-1	100		2
10	11	3NT W 3	600		-12
2	3	3NT E 3	600		-12

**24**

♠J6  
♥KQ95  
♦KJ53  
♣KJ4

♠107532 ♠K98  
♥A1087 ♥62  
♦Q62 ♦A10984  
♣5 ♣972

♠AQ4  
♥J43  
♦7  
♣AQ10863

Board (24) Av: NS=+390

N-S	E-W	Contract	N-S	E-W	IMP
12	7	3NT S 5	460		2
1	6	3NT S 5	460		2
7	12	3NT N 5	460		2
2	3	3NT N 5	460		2
9	8	3NT S 4	430		1
10	11	3NT S 4	430		1
8	9	3NT S 4	430		1
3	2	3NT S 4	430		1
5	4	3NT S 4	430		1
11	10	3NT N 3	400		0
4	5	3NT N-1	50		-10
6	1	3NT N-1	50		-10

**25**

♠J53  
♥93  
♦QJ107  
♣J943

♠108 ♠AK974  
♥KJ10 ♥85  
♦9863 ♦K542  
♣10752 ♣A8

♠Q62  
♥AQ7642  
♦A  
♣KQ6

Board (25) Av: NS=-30

N-S	E-W	Contract	N-S	E-W	IMP
2	3	2H S 2	110		4
9	8	2H S 2	110		4
8	9	2H S 2	110		4
12	7	2H S 2	110		4
7	12	3H S-1	50		-1
5	4	3H S-1	50		-1
4	5	2H S-1	50		-1
3	2	2H S-2	100		-2
10	11	2H S-2	100		-2
11	10	3NT N-3	150		-3
1	6	3H S-3	150		-3
6	1	3H S-3	150		-3

**26**

♠QJ  
♥KQ3  
♦9842  
♣A542

♠9643 ♠K872  
♥A10975 ♥4  
♦A ♦KQJ753  
♣Q1096 ♣KJ7

♠A105  
♥J8642  
♦A106  
♣83

Board (26) Av: NS=-30

N-S	E-W	Contract	N-S	E-W	IMP
1	6	4S E-3	300		8
2	3	4S E-2	200		6
10	11	4S E-2	200		6
3	2	4S E-1	100		4
12	7	3H S-1	100		-2
11	10	3H S-1	100		-2
9	8	2S E 2	110		-2
6	1	2S E 2	110		-2
5	4	2S E 2	110		-2
7	12	2S E 2	110		-2
4	5	3S E 3	140		-3
8	9	2S E 3	140		-3

**27**

♠KJ4  
♥J1076  
♦10863  
♣54

♠1097 ♠Q8  
♥Q54 ♥K82  
♦K92 ♦AJ4  
♣9763 ♣AKJ108

♠A6532  
♥A93  
♦Q75  
♣Q2

Board (27) Av: NS=-40

N-S	E-W	Contract	N-S	E-W	IMP
7	12	2S S 2	110		4
6	1	4C E-2	100		4
2	3	3C W-1	50		3
8	9	3C E-1	50		3
5	4	3C E-1	50		3
10	11	3S S-2	100		-2
9	8	3C W 3	110		-2
12	7	3C E 3	110		-2
1	6	3C E 3	110		-2
11	10	3C W 4	130		-3
4	5	3C E 4	130		-3
3	2	3C E 4	130		-3

**28**

♠AQ9  
♥KQJ854  
♦AJ4  
♣7

♠KJ103 ♠652  
♥2 ♥A10973  
♦KQ9 ♦8652  
♣Q10863 ♣K

♠874  
♥6  
♦1073  
♣AJ9542

Board (28) Av: NS=+80

N-S	E-W	Contract	N-S	E-W	IMP
7	12	2Hx N 2	670		11
4	5	2Hx N 2	670		11
12	7	2H N 3	140		2
1	6	2H N 2	110		1
2	3	2H N 2	110		1
3	2	2H N 2	110		1
6	1	2D E-1	50		-1
9	8	3H N-1	100		-5
8	9	3H N-1	100		-5
5	4	3H N-1	100		-5
10	11	2NT S-1	100		-5
11	10	4H N-2	200		-7

兵庫県知事杯 OPEN TEAMS Session 5 Flight C 2012年10月8日(月)

**1**

♠AQJ85  
♥KQ2  
♦Q1065  
♣7

♠10972  
♥54  
♦K732  
♣K62

♠K3  
♥7  
♦AJ8  
♣QJ109843

♠64  
♥AJ109863  
♦94  
♣A5

Board (1) Av: NS=+340

N-S	E-W	Contract	N-S	E-W	IMP
8	12	5H S 5	450		3
5	1	5H S 5	450		3
11	9	5H S 5	450		3
7	10	4H S 5	450		3
3	6	4H S 5	450		3
4	2	4H S 5	450		3
6	3	4H N 5	450		3
9	11	4H S 4	420		2
2	4	4H S 4	420		2
1	5	5H S-1	50		-9
10	7	5H S-1	50		-9
12	8	5H S-1	50		-9

**2**

♠2  
♥AK106  
♦QJ6  
♣J10853

♠A4  
♥J87432  
♦95  
♣KQ9

♠KQJ109865  
♥9  
♦K4  
♣A2

♠73  
♥Q5  
♦A108732  
♣764

Board (2) Av: NS=-460

N-S	E-W	Contract	N-S	E-W	IMP
10	7	4S W 5	450		0
11	9	4S E 5	450		0
12	8	4S E 5	450		0
8	12	4S E 5	450		0
3	6	4S E 5	450		0
5	1	4S E 5	450		0
1	5	4S E 5	450		0
2	4	4S E 5	450		0
4	2	4S E 5	450		0
6	3	4S E 6	480		-1
7	10	4S E 6	480		-1
9	11	6S E 6	980		-11

**3**

♠A108  
♥A9752  
♦J7653  
♣

♠532  
♥KJ10863  
♦10  
♣Q52

♠KQJ974  
♥4  
♦42  
♣J976

♠6  
♥Q  
♦AKQ98  
♣AK10843

Board (3) Av: NS=+640

N-S	E-W	Contract	N-S	E-W	IMP
9	11	6D S 7	940		7
12	8	6D S 7	940		7
7	10	6D S 7	940		7
1	5	6D S 7	940		7
5	1	6D S 7	940		7
11	9	5D S 7	440		-5
10	7	5D S 7	440		-5
4	2	5D S 7	440		-5
2	4	5D S 7	440		-5
3	6	5D S 7	440		-5
6	3	5D S 7	440		-5
8	12	3NT N 3	400		-6

**4**

♠A4  
♥Q98  
♦J8743  
♣Q85

♠KQ72  
♥A106  
♦A109  
♣J73

♠J1085  
♥5432  
♦K65  
♣A2

♠963  
♥KJ7  
♦Q2  
♣K10964

Board (4) Av: NS=-130

N-S	E-W	Contract	N-S	E-W	IMP
7	10	2S W 2	110		1
11	9	2S E 2	110		1
6	3	2S E 2	110		1
12	8	2S W 3	140		0
8	12	2S W 3	140		0
1	5	2S W 3	140		0
9	11	2S W 3	140		0
10	7	2S W 3	140		0
3	6	2S W 3	140		0
4	2	2S W 3	140		0
2	4	2S W 3	140		0
5	1	2S W 3	140		0

**5**

♠J98  
♥J72  
♦K63  
♣A932

♠64  
♥108  
♦AQJ1087  
♣865

♠A105  
♥AKQ  
♦942  
♣KQ74

♠KQ732  
♥96543  
♦5  
♣J10

Board (5) Av: NS=-410

N-S	E-W	Contract	N-S	E-W	IMP
6	3	6Dx W-1	100		11
8	12	3NT E 3	400		0
7	10	3NT E 3	400		0
9	11	3NT E 3	400		0
12	8	3NT E 3	400		0
1	5	3NT E 3	400		0
4	2	3NT E 3	400		0
3	6	3NT E 3	400		0
11	9	3NT E 4	430		-1
2	4	3NT E 4	430		-1
10	7	3NT E 4	430		-1
5	1	3NT E 5	460		-2

**6**

♠J875  
♥K6  
♦K  
♣AQ9543

♠A1063  
♥Q10732  
♦A62  
♣6

♠K92  
♥A8  
♦QJ1085  
♣J108

♠Q4  
♥J954  
♦9743  
♣K72

Board (6) Av: NS=-60

N-S	E-W	Contract	N-S	E-W	IMP
2	4	3C N 3	110		5
3	6	3C N 3	110		5
1	5	3C N 3	110		5
4	2	3C N-1	50		0
9	11	4C N-2	100		-1
11	9	4C N-2	100		-1
6	3	4C N-2	100		-1
12	8	3D E 3	110		-2
5	1	3D E 3	110		-2
10	7	3D E 4	130		-2
7	10	3D E 4	130		-2
8	12	2D E 4	130		-2

**7**

♠7  
♥J108532  
♦Q2  
♣A652

♠J983  
♥KQ  
♦106  
♣KJ1043

♠Q1065  
♥A9  
♦AK9875  
♣9

♠AK42  
♥764  
♦J43  
♣Q87

Board (7) Av: NS=-100

N-S	E-W	Contract	N-S	E-W	IMP
2	4	5D E-3	300		9
11	9	4S W-3	300		9
6	3	4S W-2	200		7
7	10	4S W-2	200		7
9	11	4S W-1	100		5
5	1	4S W-1	100		5
8	12	2S W 3	140		-1
3	6	3H N-2	200		-3
12	8	3H N-3	300		-5
10	7	3NT W 3	600		-11
1	5	4S W 4	620		-11
4	2	4S W 4	620		-11

**8**

♠AJ62  
♥AQ8  
♦1043  
♣Q75

♠KQ753  
♥J762  
♦9765  
♣

♠10984  
♥K105  
♦AKJ  
♣AJ9

♠  
♥943  
♦Q82  
♣K1086432

Board (8) Av: NS=+30

N-S	E-W	Contract	N-S	E-W	IMP
5	1	4Cx N 4	510		10
2	4	3C N 4	130		3
6	3	4Sx E-1	100		2
9	11	4S W-2	100		2
12	8	4S E-2	100		2
11	9	3S E-1	50		1
7	10	3S E-1	50		1
1	5	3S E-1	50		1
3	6	4C N-1	50		-2
4	2	5Cx N-1	100		-4
10	7	5Cx N-1	100		-4
8	12	3Cx N-2	300		-8

**9**

♠76  
♥AK54  
♦A52  
♣A932

♠QJ54  
♥QJ9  
♦KQ86  
♣74

♠AK932  
♥32  
♦1074  
♣865

♠108  
♥10876  
♦J93  
♣KQJ10

Board (9) Av: NS=+100

N-S	E-W	Contract	N-S	E-W	IMP
6	3	2H N 3	140		1
12	8	1NT N 2	120		1
10	7	1NT N 2	120		1
4	2	1NT N 2	120		1
11	9	1NT N 1	90		0
8	12	1NT N 1	90		0
9	11	1NT N 1	90		0
2	4	1NT N 1	90		0
5	1	1NT N 1	90		0
3	6	1NT N 1	90		0
7	10	1NT N 1	90		0
1	5	1NT N 1	90		0

**10**

♠Q1053  
♥972  
♦J1082  
♣109

♠42  
♥Q104  
♦AK9  
♣AKJ73

♠AK97  
♥J83  
♦7654  
♣Q8

♠J86  
♥AK65  
♦Q3  
♣6542

Board (10) Av: NS=-620

N-S	E-W	Contract	N-S	E-W	IMP
4	2	3NT W 3	600		1
9	11	3NT W 3	600		1
8	12	3NT W 3	600		1
6	3	3NT W 3	600		1
2	4	3NT W 3	600		1
11	9	3NT W 4	630		0
12	8	3NT W 4	630		0
5	1	3NT W 4	630		0
7	10	3NT W 4	630		0
1	5	3NT W 4	630		0
10	7	3NT W 5	660		-1
3	6	3NT W 5	660		-1

兵庫県知事杯 OPEN TEAMS Session 5 Flight C 2012年10月8日(月)

**11** ♠10987653  
 ♠A ♠K4  
 ♠AK10 ♠Q842  
 ♠K98643 ♠J  
 ♠K75 ♠A109843

♠QJ2  
 ♠J97653  
 ♠10752

Board (11) Av: NS=+80

N-S	E-W	Contract	N-S	E-W	IMP
4	2	3Sx N 5	730		12
7	10	4Sx N 5	690		12
8	12	4Sx N 4	590		11
11	9	4S N 5	450		9
5	1	3S N 4	170		3
3	6	5H W-2	100		1
6	3	5C E-1	50		-1
9	11	3D W-1	50		-1
12	8	3NT W 4	430	430	-11
2	4	3NT W 4	430	430	-11
1	5	3NT W 5	460	460	-11
10	7	3NT W 5	460	460	-11

**12** ♠KQ4  
 ♠A10732  
 ♠K5  
 ♠Q96

♠107 ♠AJ863  
 ♠Q965 ♠J84  
 ♠862 ♠Q1093  
 ♠J752 ♠♣3

♠952  
 ♠K  
 ♠AJ74  
 ♠AK1084

Board (12) Av: NS=+320

N-S	E-W	Contract	N-S	E-W	IMP
9	11	3NT N 5	660		8
3	6	3NT N 4	630		7
1	5	3NT N 4	630		7
8	12	3NT N 3	600		7
5	1	3NT N 3	600		7
2	4	3NT N 3	600		7
4	2	3NT N 3	600		7
6	3	4NT N-1	100	100	-9
12	8	3NT N-1	100	100	-9
7	10	3NT N-1	100	100	-9
11	9	6C S-2	200	200	-11
10	7	4NT N-2	200	200	-11

**13** ♠AJ6  
 ♠A42  
 ♠103  
 ♠KJ1072

♠Q8753 ♠K94  
 ♠KJ96 ♠85  
 ♠J96 ♠AKQ2  
 ♠5 ♠Q863

♠102  
 ♠Q1073  
 ♠8754  
 ♠A94

Board (13) Av: NS=-60

N-S	E-W	Contract	N-S	E-W	IMP
4	2	1NT N 2	120		5
12	8	1NT N 2	120		5
8	12	1NT N 1	90		4
1	5	1NT N 1	90		4
5	1	2C N-1	100	100	-1
10	7	1NT N-1	100	100	-1
7	10	1NT N-1	100	100	-1
9	11	1NT N-1	100	100	-1
2	4	2S W 2	110	110	-2
11	9	2S E 3	140	140	-2
6	3	2H S-2	200	200	-4
3	6	1NTxN-1	200	200	-4

**14** ♠974  
 ♠J5  
 ♠AK8  
 ♠AKJ62

♠AQ2 ♠KJ1086  
 ♠AQ73 ♠K98  
 ♠Q1092 ♠63  
 ♠93 ♠1084

♠53  
 ♠10642  
 ♠J754  
 ♠Q75

Board (14) Av: NS=-50

N-S	E-W	Contract	N-S	E-W	IMP
8	12	1NT N 1	90		4
12	8	1NT N 1	90		4
1	5	1NT N 1	90		4
7	10	1NT N 1	90		4
10	7	1NT N-1	50	50	0
4	2	3C N-2	100	100	-2
2	4	2S E 2	110	110	-2
5	1	2S E 2	110	110	-2
6	3	1NT E 2	120	120	-2
11	9	3S E 3	140	140	-3
3	6	2S E 3	140	140	-3
9	11	2S E 3	140	140	-3

**15** ♠J5  
 ♠K9532  
 ♠A64  
 ♠A62

♠K1086 ♠9432  
 ♠A76 ♠Q84  
 ♠75 ♠Q1032  
 ♠KJ108 ♠Q9

♠AQ7  
 ♠J10  
 ♠KJ98  
 ♠7543

Board (15) Av: NS=+40

N-S	E-W	Contract	N-S	E-W	IMP
4	1	2NT S 2	120		2
5	3	2NT S 2	120		2
1	4	1NT S 2	120		2
7	11	1NT S 2	120		2
2	6	1NT S 2	120		2
9	12	2S W-2	100	100	-2
8	10	1NT S 1	90	90	2
12	9	1NT S 1	90	90	2
3	5	2NT S-1	100	100	-4
11	7	2NT S-1	100	100	-4
6	2	2NT S-2	200	200	-6
10	8	2NT S-2	200	200	-6

**16** ♠83  
 ♠A832  
 ♠Q9  
 ♠Q10865

♠AJ65 ♠72  
 ♠94 ♠Q1065  
 ♠J43 ♠A872  
 ♠KJ43 ♠A92

♠KQ1094  
 ♠KJ7  
 ♠K1065  
 ♠7

Board (16) Av: NS=+110

N-S	E-W	Contract	N-S	E-W	IMP
5	3	1NT W-2	200		3
1	4	2NT S 3	150		1
12	9	2S S 3	140		1
8	10	2S S 2	110		0
9	12	2S S 2	110		0
2	6	2S S 2	110		0
7	11	2S S 2	110		0
4	1	2S S 2	110		0
6	2	2S S 2	110		0
11	7	1NT N 1	90		-1
10	8	1NT N 1	90		-1
3	5	1NT W 1	90	90	-5

**17** ♠87  
 ♠J74  
 ♠J3  
 ♠AK9762

♠Q10532 ♠AJ9  
 ♠103 ♠986  
 ♠98754 ♠AKQ  
 ♠3 ♠Q1085

♠K64  
 ♠AKQ52  
 ♠1062  
 ♠J4

Board (17) Av: NS=-120

N-S	E-W	Contract	N-S	E-W	IMP
11	7	1NT E-2	100		6
3	5	3C N-1	50	50	2
10	8	2H S-1	50	50	2
2	6	2S E 2	110	110	0
7	11	3S E 3	140	140	-1
12	9	3S E 3	140	140	-1
1	4	3S E 3	140	140	-1
9	12	2S E 3	140	140	-1
5	3	2S E 3	140	140	-1
8	10	2S E 3	140	140	-1
4	1	2S E 3	140	140	-1
6	2	5Cx S-3	500	500	-9

**18** ♠2  
 ♠K632  
 ♠1063  
 ♠98543

♠Q1065 ♠AK4  
 ♠AQ98 ♠10  
 ♠J9 ♠AKQ42  
 ♠A72 ♠KQJ6

♠J9873  
 ♠J754  
 ♠875  
 ♠10

Board (18) Av: NS=-1050

N-S	E-W	Contract	N-S	E-W	IMP
3	5	3NT W 7	520		11
1	4	6D E 7	940		3
2	6	6D E 7	940		3
7	11	6NT W 7	1020	1020	1
8	10	6NT W 7	1020	1020	1
10	8	6NT W 7	1020	1020	1
6	2	6NT W 7	1020	1020	1
11	7	6NT E 7	1020	1020	1
4	1	6NT E 7	1020	1020	1
12	9	6NT E 7	1020	1020	1
5	3	7D E 7	1440	1440	-9
9	12	7NT E 7	1520	1520	-10

**19** ♠AJ843  
 ♠72  
 ♠1074  
 ♠K92

♠Q95 ♠K1072  
 ♠QJ4 ♠A3  
 ♠K93 ♠A82  
 ♠Q1085 ♠AJ73

♠6  
 ♠K109865  
 ♠QJ65  
 ♠64

Board (19) Av: NS=-630

N-S	E-W	Contract	N-S	E-W	IMP
10	8	3NT W 3	600		1
9	12	3NT E 3	600		1
2	6	3NT E 3	600		1
1	4	3NT E 3	600		1
11	7	3NT W 4	630		0
12	9	3NT E 4	630		0
8	10	3NT E 4	630		0
4	1	3NT E 4	630		0
5	3	3NT E 4	630		0
3	5	3NT E 4	630		0
7	11	3NT E 6	690		-2
6	2	3NT E 6	690		-2

**20** ♠6  
 ♠KJ1083  
 ♠9  
 ♠KQ10942

♠J7432 ♠KQ10  
 ♠Q9 ♠A64  
 ♠KJ742 ♠1086  
 ♠6 ♠A853

♠A985  
 ♠752  
 ♠AQ53  
 ♠J7

Board (20) Av: NS=+400

N-S	E-W	Contract	N-S	E-W	IMP
12	9	4Hx N 5	990		11
1	4	4H N 5	650		6
11	7	4H N 5	650		6
10	8	4H N 5	650		6
3	5	4H N 5	650		6
2	6	4H N 5	650		6
8	10	4H N 4	620		6
7	11	3S W-2	200	200	-5
5	3	3H N 5	200	200	-5
9	12	1NT E 2	120	120	-11
6	2	1S W 3	140	140	-11
4	1	2S W 5	200	200	-12

兵庫県知事杯 OPEN TEAMS Session 5 Flight C 2012年10月8日(月)

**21**

♠ AJ5  
♥ Q643  
♦ KJ10986  
♣ K10752

♠ 9643  
♥ K32  
♦ KJ97  
♣ 42

♠ AQJ8  
♥ A1094  
♦ A1082  
♣ 75

♠ K10752  
♥ Q876  
♦ 5  
♣ AQ3

Board (21) Av: NS=+250

N-S	E-W	Contract	N-S	E-W	IMP
4	1	4H S 5	650		9
8	10	3NT N 3	600		8
2	6	3NT N 3	600		8
6	2	3NT N 3	600		8
11	7	3C N 6	170		-2
12	9	3C N 6	170		-2
9	12	2H S 3	140		-3
1	4	3C N 4	130		-3
3	5	2NT N 2	120		-4
5	3	2H S 2	110		-4
10	8	4C N-1	100		-8
7	11	2NT N-2	200		-10

**22**

♠ 64  
♥ J732  
♦ Q98  
♣ K1072

♠ J8  
♥ KQ1095  
♦ J10653  
♣ Q

♠ KQ109532  
♥ A4  
♦ 7  
♣ J94

♠ A7  
♥ 86  
♦ AK42  
♣ A8653

Board (22) Av: NS=-160

N-S	E-W	Contract	N-S	E-W	IMP
8	10	4H E-3	300		10
5	3	1NT S 2	120		7
9	12	4S W-1	100		6
7	11	5C S-1	50		3
11	7	4C S-1	50		3
3	5	4C N-1	50		3
2	6	3S E 3	140		1
10	8	2S E 3	140		1
12	9	2S E 3	140		1
4	1	4S E 4	620		-10
1	4	4S E 4	620		-10
6	2	4Sx E 4	790		-12

**23**

♠ 109  
♥ A10852  
♦ KQ93  
♣ Q3

♠ K72  
♥ 943  
♦ J86  
♣ J1064

♠ AJ8643  
♥ K6  
♦ 105  
♣ A75

♠ Q5  
♥ QJ7  
♦ A742  
♣ K982

Board (23) Av: NS=-10

N-S	E-W	Contract	N-S	E-W	IMP
2	6	4Sx E-1	200		5
1	4	4Sx E-1	200		5
8	10	3H N 3	140		4
6	2	3D S 3	110		3
4	1	3S E-1	100		3
9	12	4H N-1	100		-3
10	8	4H N-1	100		-3
12	9	4H N-1	100		-3
5	3	4H N-1	100		-3
7	11	4H N-1	100		-3
11	7	4H N-1	100		-3
3	5	3S E 3	140		-4

**24**

♠ Q964  
♥ 76  
♦ 9742  
♣ 1032

♠ A72  
♥ 1098  
♦ J53  
♣ J987

♠ J83  
♥ KQ54  
♦ A86  
♣ AQ6

♠ K105  
♥ AJ32  
♦ KQ10  
♣ K54

Board (24) Av: NS=-100

N-S	E-W	Contract	N-S	E-W	IMP
11	7	2S N 2	110		5
10	8	2S N-1	50		2
12	9	1NT E 1	90		0
7	11	1NT E 1	90		0
5	3	1NT E 1	90		0
8	10	1NT E 2	120		-1
1	4	1NT E 2	120		-1
9	12	1NT E 2	120		-1
6	2	1NT E 2	120		-1
3	5	1NT E 2	120		-1
4	1	1NT E 2	120		-1
2	6	1NT E 2	120		-1

**25**

♠ 642  
♥ 1062  
♦ AKJ103  
♣ K2

♠ K1053  
♥ AJ5  
♦ 764  
♣ 1085

♠ 97  
♥ Q9  
♦ 952  
♣ AQJ964

♠ AQJ8  
♥ K8743  
♦ Q8  
♣ 73

Board (25) Av: NS=-110

N-S	E-W	Contract	N-S	E-W	IMP
8	10	1NT N 1	90		5
12	9	2H S-1	50		2
7	11	2H S-1	50		2
9	12	2H S-1	50		2
1	4	2H S-1	50		2
4	1	3H S-2	100		0
3	5	4H S-3	150		-1
6	2	4H S-3	150		-1
2	6	4H S-3	150		-1
5	3	2C N-3	150		-1
10	8	4H S-4	200		-3
11	7	3NT N-4	200		-3

**26**

♠ Q1084  
♥ Q10832  
♦ Q  
♣ J72

♠ 92  
♥ AKJ65  
♦ A104  
♣ Q43

♠ AJ3  
♥ 97  
♦ J9653  
♣ 986

♠ K765  
♥ 4  
♦ K872  
♣ AK105

Board (26) Av: NS=+60

N-S	E-W	Contract	N-S	E-W	IMP
7	11	1Hx W-1	200		4
4	1	1S S 4	170		3
2	6	3S S 3	140		2
12	9	2S S 3	140		2
8	10	2S S 3	140		2
1	4	2S S 3	140		2
9	12	2S S 2	110		2
3	5	1S S 2	110		2
5	3	4S S-1	100		-4
11	7	1NT N-1	100		-4
10	8	3S S-2	200		-6
6	2	2C S-2	200		-6

**27**

♠ AK  
♥ 763  
♦ QJ1062  
♣ J64

♠ 97542  
♥ 102  
♦ K  
♣ KQ852

♠ 6  
♥ Q954  
♦ 843  
♣ A10973

♠ QJ1083  
♥ AKJ8  
♦ A975  
♣

Board (27) Av: NS=+60

N-S	E-W	Contract	N-S	E-W	IMP
2	6	6D S 7	940		13
8	10	3NT N 7	520		10
12	9	5D S 7	440		9
10	8	5D N 5	400		8
6	2	4S S-1	50		-3
9	12	3NT N-1	50		-3
3	5	4S S-2	100		-4
1	4	4S S-3	150		-5
5	3	4S S-3	150		-5
4	1	4S S-3	150		-5
11	7	4S S-3	150		-5
7	11	4S S-3	150		-5

**28**

♠ A6  
♥ AJ8652  
♦ 107  
♣ 1097

♠ QJ84  
♥ 107  
♦ AJ52  
♣ KJ5

♠ K1093  
♥ K  
♦ K843  
♣ Q432

♠ 752  
♥ Q943  
♦ Q96  
♣ A86

Board (28) Av: NS=-240

N-S	E-W	Contract	N-S	E-W	IMP
11	7	3H N-1	100		4
4	1	2S E 3	140		3
7	11	3S W 4	170		2
9	12	3S W 4	170		2
10	8	3S W 4	170		2
12	9	3S W 4	170		2
2	6	3S W 4	170		2
1	4	3S W 4	170		2
5	3	4S W 4	420		-5
3	5	4S W 4	420		-5
6	2	4S W 4	420		-5
8	10	4S W 4	420		-5

# 兵庫県知事杯 OPEN TEAMS Session 6 Flight C 2012年10月8日(月)

**1**

♠9  
♥AKJ6532  
♦J2  
♣AQ2

♠Q10432  
♥Q  
♦108  
♣KJ1053

♠A765  
♥1084  
♦AQ43  
♣86

♠KJ8  
♥97  
♦K9765  
♣974

Board (1) Av: NS=+280

N-S	E-W	Contract	N-S	E-W	IMP
2	5 4H	N 5	450		5
10	9 4H	N 5	450		5
6	4 4H	N 5	450		5
3	1 4H	N 5	450		5
11	12 4H	N 4	420		4
1	3 4H	N 4	420		4
12	11 3H	N 6	230		-2
5	2 3H	N 5	200		-2
8	7 3H	N 5	200		-2
9	10 3S	W-1	50		-6
7	8 5Hx	N-1	100		-9
4	6 3S	W 3	140		-9

**2**

♠A653  
♥K  
♦54  
♣KQ9853

♠1092  
♥J73  
♦K72  
♣J1042

♠J84  
♥9852  
♦AQJ106  
♣7

♠KQ7  
♥AQ1064  
♦983  
♣A6

Board (2) Av: NS=+670

N-S	E-W	Contract	N-S	E-W	IMP
8	7 6C	S 6	1370		12
6	4 3NT	S 7	720		2
10	9 3NT	S 7	720		2
1	3 3NT	S 7	720		2
4	6 3NT	S 6	690		1
3	1 3NT	S 6	690		1
12	11 3NT	S 5	660		0
7	8 3NT	S 5	660		0
2	5 3NT	S 4	630		-1
9	10 3NT	S 4	630		-1
11	12 5C	N 5	600		-2
5	2 3NT	S-2	200		-13

**3**

♠J95  
♥KQ2  
♦AK65  
♣K62

♠Q8  
♥10986543  
♦Q93  
♣8

♠A7643  
♥7  
♦J2  
♣A10953

♠K102  
♥AJ  
♦10874  
♣QJ74

Board (3) Av: NS=+90

N-S	E-W	Contract	N-S	E-W	IMP
10	9 3NT	S 4	430		8
5	2 3NT	N 4	430		8
12	11 3NT	N 3	400		7
2	5 3NT	N 3	400		7
8	7 3NT	N-1	50		-4
9	10 3NT	N-1	50		-4
11	12 3NT	N-1	50		-4
4	6 3NT	N-1	50		-4
3	1 3NT	N-1	50		-4
7	8 3NT	N-1	50		-4
1	3 3NT	N-1	50		-4
6	4 3NT	N-2	100		-5

**4**

♠A852  
♥K983  
♦AJ  
♣K82

♠976  
♥A75  
♦K86432  
♣10

♠Q  
♥Q10  
♦Q10975  
♣A9763

♠KJ1043  
♥J642  
♦  
♣QJ54

Board (4) Av: NS=+250

N-S	E-W	Contract	N-S	E-W	IMP
10	9 4S	S 4	620		9
4	6 4H	N 4	620		9
8	7 4H	N 4	620		9
5	2 4H	N 4	620		9
6	4 4H	N 4	620		9
3	1 2S	N 5	200		-2
12	11 3H	N 4	170		-2
7	8 6S	S-1	100		-8
11	12 4H	N-1	100		-8
2	5 4H	N-1	100		-8
1	3 4H	N-1	100		-8
9	10 3D	W 4	130		-9

**5**

♠Q96  
♥AK43  
♦KJ9  
♣AK5

♠108542  
♥J5  
♦Q10532  
♣4

♠AK3  
♥92  
♦A7  
♣J108732

♠J7  
♥Q10876  
♦864  
♣Q96

Board (5) Av: NS=+490

N-S	E-W	Contract	N-S	E-W	IMP
7	8 4H	N 4	620		4
6	4 4H	N 4	620		4
9	10 4H	N 4	620		4
8	7 4H	N 4	620		4
4	6 4H	N 4	620		4
3	1 4H	N 4	620		4
1	3 4H	N 4	620		4
5	2 4H	N 4	620		4
11	12 1C	N 1	70		-9
12	11 4H	N-1	100		-11
10	9 4H	N-2	200		-12

**6**

♠AK108  
♥J4  
♦A94  
♣J873

♠94  
♥KQ102  
♦Q753  
♣A104

♠QJ753  
♥83  
♦KJ6  
♣Q65

♠62  
♥A9765  
♦1082  
♣K92

Board (6) Av: NS=-80

N-S	E-W	Contract	N-S	E-W	IMP
10	9 2H	S 3	140		6
4	6 1NT	N 1	90		5
2	5 2H	S-1	50		1
8	7 1NT	S-1	50		1
9	10 1NT	S-1	50		1
5	2 1NT	W 1	90		0
7	8 1NT	S-2	100		-1
11	12 1NT	N-2	100		-1
12	11 2S	E 2	110		-1
3	1 1S	N-3	150		-2
1	3 1NT	S-3	150		-2
6	4 3NT	N-5	250		-5

**7**

♠A8  
♥KJ94  
♦109743  
♣KQ

♠1032  
♥85  
♦652  
♣J10542

♠QJ74  
♥1062  
♦AJ8  
♣863

♠K965  
♥AQ73  
♦KQ  
♣A97

Board (7) Av: NS=+890

N-S	E-W	Contract	N-S	E-W	IMP
5	2 6H	N 6	1430		11
4	6 6H	N 6	1430		11
2	5 6H	N 6	1430		11
12	11 6H	N 6	1430		11
6	4 3NT	S 6	690		-5
8	7 4H	S 6	680		-5
1	3 4H	N 6	680		-5
3	1 4H	N 6	680		-5
10	9 4H	N 5	650		-6
7	8 4H	N 5	650		-6
9	10 4H	N 4	620		-7
11	12 6H	S-1	100		-14

**8**

♠J95  
♥9732  
♦A10842  
♣Q763

♠K10943  
♥AJ108  
♦976  
♣A

♠AJ8652  
♥Q  
♦53  
♣K984

♠Q7  
♥K654  
♦KQJ  
♣J1052

Board (8) Av: NS=-470

N-S	E-W	Contract	N-S	E-W	IMP
12	11 4H	E-3	150		12
8	7 4S	W 5	450		1
7	8 4S	W 5	450		1
10	9 4S	W 5	450		1
9	10 4S	W 5	450		1
4	6 4S	W 5	450		1
5	2 4S	W 5	450		1
2	5 4S	W 6	480		0
3	1 5S	W 7	510		-1
1	3 4S	W 7	510		-1
11	12 4S	W 7	510		-1
6	4 4S	W 7	510		-1

**9**

♠Q1082  
♥1094  
♦AJ9  
♣962

♠K763  
♥Q7  
♦K107  
♣KJ43

♠A94  
♥32  
♦8543  
♣AQ75

♠J5  
♥AKJ865  
♦Q62  
♣108

Board (9) Av: NS=+150

N-S	E-W	Contract	N-S	E-W	IMP
2	5 4C	E-3	300		4
12	11 3S	W-3	300		4
11	12 3H	S 4	170		1
1	3 3H	S 3	140		0
10	9 3H	S 3	140		0
6	4 2H	S 3	140		0
3	1 2H	S 3	140		0
4	6 2H	S 3	140		0
5	2 2H	S 2	110		-1
8	7 2H	S 2	110		-1
7	8 2S	W-1	100		-2
9	10 3H	S-1	50		-5

**10**

♠5  
♥K1098  
♦Q107542  
♣92

♠AQ10432  
♥5432  
♦9  
♣AK

♠976  
♥AKJ863  
♦Q843

♠KJ8  
♥AQJ76  
♦  
♣J10765

Board (10) Av: NS=-450

N-S	E-W	Contract	N-S	E-W	IMP
4	6 6S	W-1	100		11
8	7 5S	W-1	100		11
9	10 4S	W-1	100		11
11	12 4H	S-2	200		6
7	8 4S	W 4	620		-5
10	9 4S	W 4	620		-5
3	1 4S	W 5	650		-5
1	3 4S	W 5	650		-5
2	5 4S	W 5	650		-5
12	11 4S	W 5	650		-5
5	2 4S	W 5	650		-5
6	4 4S	E 5	650		-5

兵庫県知事杯 OPEN TEAMS Session 6 Flight C 2012年10月8日(月)

**11**

♠K109754  
♥A96  
♦AJ2  
♣A

♠A  
♥Q102  
♦K643  
♣KQJ75

♠J32  
♥J8743  
♦Q75  
♣106

♠Q86  
♥K5  
♦1098  
♣98432

Board (11) Av: NS=+330

N-S	E-W	Contract	N-S	E-W	IMP
11	12	4Sx N 4	590		6
12	11	4S N 5	450		3
10	9	4S N 5	450		3
6	4	4S N 5	450		3
7	8	4S N 4	420		3
9	10	4S N 4	420		3
1	3	4S N 4	420		3
2	5	4S N 4	420		3
8	7	3S N 5	200		-4
3	1	3S N 3	140		-5
5	2	4S N-1	50		-9
4	6	4S N-1	50		-9

**12**

♠A106  
♥A87542  
♦Q952  
♣

♠Q84  
♥1093  
♦AK10643  
♣Q

♠KJ75  
♥6  
♦8  
♣AJ107532

♠932  
♥KQJ  
♦J7  
♣K9864

Board (12) Av: NS=+10

N-S	E-W	Contract	N-S	E-W	IMP
4	6	5D E-3	150		4
1	3	3H N 3	140		4
2	5	3H N 3	140		4
9	10	5C W-2	100		3
8	7	4S W-2	100		3
12	11	3D E-2	100		3
6	4	4H N-1	100		-3
3	1	4H N-1	100		-3
11	12	3H N-1	100		-3
10	9	3H N-1	100		-3
5	2	3H N-1	100		-3
7	8	3C W 3	110		-3

**13**

♠J3  
♥10765  
♦J109  
♣10864

♠9765  
♥A9832  
♦5  
♣J97

♠K1042  
♥K  
♦AQ63  
♣KQ52

♠AQ8  
♥QJ4  
♦K8742  
♣A3

Board (13) Av: NS=-70

N-S	E-W	Contract	N-S	E-W	IMP
9	10	3H E-2	200		7
8	7	1NT S 2	120		5
12	11	2NT W-1	100		5
1	3	1NT S 1	90		4
7	8	1NT S 1	90		4
3	1	1NT S-1	100		-1
11	12	2H E 2	110		-1
5	2	3S W 4	170		-3
6	4	1NT S-2	200		-4
2	5	1NT S-2	200		-4
4	6	1NT S-3	300		-6
10	9	1NT S-3	300		-6

**14**

♠KJ  
♥KJ107543  
♦K97  
♣7

♠106542  
♥6  
♦A852  
♣AQ3

♠AQ3  
♥Q98  
♦106  
♣K10954

♠987  
♥A2  
♦QJ43  
♣J862

Board (14) Av: NS=-10

N-S	E-W	Contract	N-S	E-W	IMP
11	12	4H N 4	420		10
5	2	3H N 5	200		5
4	6	3H N 3	140		4
8	7	3H N 3	140		4
10	9	4C W-2	100		3
3	1	4H N-1	50		-1
7	8	4H N-1	50		-1
1	3	3S W 3	140		-4
12	11	3S E 3	140		-4
2	5	3S E 3	140		-4
6	4	3S E 3	140		-4
9	10	3S E 3	140		-4

**15**

♠1096  
♥K543  
♦J1062  
♣Q6

♠75  
♥A76  
♦84  
♣AKJ953

♠AJ842  
♥Q9  
♦AKQ9  
♣72

♠KQ3  
♥J1082  
♦753  
♣1084

Board (15) Av: NS=-350

N-S	E-W	Contract	N-S	E-W	IMP
5	6	6NT W-1	50		9
6	5	6NT E-1	50		9
8	11	6NT E-1	50		9
7	9	3NT E 3	400		-2
3	4	3NT E 3	400		-2
11	8	4NT E 5	460		-3
12	10	3NT E 5	460		-3
9	7	3NT E 5	460		-3
2	1	3NT E 5	460		-3
4	3	3NT E 5	460		-3
1	2	3NT E 5	460		-3
10	12	3NT E 6	490		-4

**16**

♠QJ75  
♥87  
♦K732  
♣J63

♠K82  
♥AQJ4  
♦AQ9  
♣Q82

♠10643  
♥532  
♦J104  
♣K104

♠A9  
♥K1096  
♦865  
♣A975

Board (16) Av: NS=+130

N-S	E-W	Contract	N-S	E-W	IMP
12	10	1C E-2	200		2
9	7	1C E-2	200		2
8	11	1C E-2	200		2
1	2	1C E-2	200		2
6	5	2NT E-1	100		-1
5	6	2NT E-1	100		-1
3	4	1NT E-1	100		-1
10	12	1C E-1	100		-1
11	8	1C E-1	100		-1
7	9	1C E-1	100		-1
4	3	1C E-1	100		-1
2	1	1C E 1	70		-5

**17**

♠Q432  
♥1082  
♦Q3  
♣KJ64

♠10  
♥A954  
♦K1042  
♣Q532

♠AKJ9  
♥QJ76  
♦AJ8  
♣A8

♠8765  
♥K3  
♦9765  
♣1097

Board (17) Av: NS=-350

N-S	E-W	Contract	N-S	E-W	IMP
5	6	7H W-2	100		10
12	10	6H W-1	50		9
7	9	6H W-1	50		9
1	2	5H W 5	450		-3
4	3	5H E 5	450		-3
11	8	4H W 5	450		-3
10	12	4H W 5	450		-3
6	5	4H W 5	450		-3
8	11	4H W 5	450		-3
2	1	4H W 5	450		-3
9	7	4H W 5	450		-3
3	4	4H E 5	450		-3

**18**

♠AK  
♥965  
♦AJ9  
♣K10864

♠J10  
♥KJ102  
♦8742  
♣952

♠984  
♥A743  
♦Q103  
♣QJ3

♠Q76532  
♥Q8  
♦K65  
♣A7

Board (18) Av: NS=+680

N-S	E-W	Contract	N-S	E-W	IMP
5	6	4S S 7	710		1
9	7	4S N 7	710		1
2	1	4S N 7	710		1
4	3	4S N 7	710		1
1	2	4S S 6	680		0
10	12	4S S 6	680		0
11	8	3NT N 5	660		-1
8	11	4S S 5	650		-1
3	4	4S S 5	650		-1
12	10	4S S 5	650		-1
6	5	4S N 5	650		-1
7	9	4S N 5	650		-1

**19**

♠865  
♥106  
♦Q72  
♣KQ1042

♠QJ109  
♥J74  
♦K  
♣AJ876

♠K73  
♥AK985  
♦J10654  
♣

♠A42  
♥Q32  
♦A983  
♣953

Board (19) Av: NS=-320

N-S	E-W	Contract	N-S	E-W	IMP
2	1	4S E-2	200		11
8	11	4H W-2	200		11
10	12	4H W-1	100		9
12	10	4H W-1	100		9
11	8	2C N 2	90		9
9	7	4H W 4	620		-7
1	2	4H W 4	620		-7
3	4	4H W 4	620		-7
4	3	4H W 4	620		-7
7	9	4H W 4	620		-7
6	5	4H W 4	620		-7
5	6	4H W 5	650		-8

**20**

♠K1095  
♥874  
♦AJ9  
♣A97

♠82  
♥KQ62  
♦K73  
♣KQJ3

♠A643  
♥1053  
♦Q10654  
♣2

♠QJ7  
♥AJ9  
♦82  
♣108654

Board (20) Av: NS=-20

N-S	E-W	Contract	N-S	E-W	IMP
6	5	1NT S 3	150		5
2	1	1NT S 2	120		4
1	2	1NT S 1	90		3
7	9	1NT S 1	90		3
10	12	1NT S 1	90		3
5	6	1NT S 1	90		3
11	8	1NT S-1	100		-2
9	7	1NT S-1	100		-2
4	3	1NT S-1	100		-2
3	4	1NT E 3	150		-4
12	10	3C N-2	200		-5
8	11	3C N-3	300		-7



兵庫県知事杯 OPEN TEAMS Session 6 Flight C 2012年10月8日(月)

**21**

♠KQ1042  
♥AK75  
♦63  
♣85

♠A8  
♥Q1096  
♦A1097  
♣AQJ

♠J976  
♥84  
♦K84  
♣9763

♠53  
♥J32  
♦QJ52  
♣K1042

Board (21) Av: NS=-50

N-S	E-W	Contract	N-S	E-W	IMP
10	12	1NT E-3	150		5
12	10	2S N 2	110		4
2	1	2C W-2	100		4
11	8	3NT W-1	50		3
4	3	1NT E-1	50		3
1	2	1NT E 1		90	-1
3	4	2S N-1	100		-2
9	7	2S N-1	100		-2
8	11	2S N-1	100		-2
5	6	2S N-2	200		-4
7	9	2S N-2	200		-4
6	5	2H S-2	200		-4

**22**

♠108  
♥Q10974  
♦A9  
♣KJ64

♠A8  
♥Q4  
♦KJ1032  
♣Q972

♠A753  
♥AK32  
♦Q875  
♣A

♠KJ962  
♥65  
♦64  
♣10853

Board (22) Av: NS=-430

N-S	E-W	Contract	N-S	E-W	IMP
11	8	3NT W-1	100		11
5	6	3NT W-1	100		11
12	10	3NT W-1	100		11
7	9	4D W 4		130	7
10	12	3NT W 3		600	-5
1	2	3NT W 3		600	-5
4	3	3NT W 3		600	-5
2	1	3NT W 4		630	-5
6	5	3NT W 4		630	-5
3	4	3NT W 4		630	-5
9	7	3NT W 4		630	-5
8	11	3NT W 4		630	-5

**23**

♠7  
♥J7542  
♦10543  
♣A95

♠AKJ9632  
♥83  
♦72  
♣42

♠854  
♥A6  
♦KQ96  
♣QJ83

♠Q10  
♥KQ109  
♦AJ8  
♣K1076

Board (23) Av: NS=+90

N-S	E-W	Contract	N-S	E-W	IMP
7	9	4H S 4		620	11
3	4	4H S 4		620	11
6	5	4Sx E-1		200	3
11	8	4Sx E-1		200	3
2	1	4Sx E-1		200	3
1	2	3H S 3		140	2
10	12	4S E-1		100	0
4	3	4H S-1		100	-5
5	6	3H S 3		140	-6
12	10	3S E 4		170	-6
9	7	4H S-2		200	-7
8	11	3S E 5		200	-7

**24**

♠K1064  
♥KJ83  
♦A765  
♣J

♠AQ8  
♥1054  
♦K  
♣KQ10653

♠J97  
♥Q9  
♦J109842  
♣84

♠532  
♥A762  
♦Q3  
♣A972

Board (24) Av: NS=-10

N-S	E-W	Contract	N-S	E-W	IMP
3	4	3H N 4		170	5
10	12	3H N 3		140	4
7	9	2H N 3		140	4
4	3	2NT S 2		120	4
8	11	3H S-1		50	-1
12	10	3H N-1		50	-1
1	2	3H N-1		50	-1
5	6	2NT S-1		50	-1
11	8	4H N-2		100	-3
6	5	4H N-2		100	-3
9	7	2NT S-2		100	-3
2	1	2Cx E 2		180	-5

**25**

♠A953  
♥J5  
♦K64  
♣AJ42

♠AQ8  
♥AQ764  
♦Q873  
♣5

♠107  
♥K102  
♦A952  
♣K1086

♠KJ62  
♥983  
♦J10  
♣Q973

Board (25) Av: NS=+20

N-S	E-W	Contract	N-S	E-W	IMP
11	8	2S S 2		110	3
4	3	2S S 2		110	3
10	12	2S S 2		110	3
2	1	2S S 2		110	3
12	10	2S N 2		110	3
9	7	3H E-1		100	2
6	5	Passout			-1
3	4	3S N-1		50	-2
1	2	2S N-1		50	-2
7	9	3H E 3		140	-4
8	11	3H E 3		140	-4
5	6	3H E 3		140	-4

**26**

♠AJ983  
♥QJ64  
♦J75  
♣5

♠K7  
♥AK8  
♦KQ9863  
♣K10

♠10642  
♥5  
♦A2  
♣QJ9743

♠Q5  
♥109732  
♦104  
♣A862

Board (26) Av: NS=-600

N-S	E-W	Contract	N-S	E-W	IMP
5	6	3D E 5		150	10
8	11	3D E 6		170	10
1	2	3NT E 3		600	0
7	9	3NT W 4		630	-1
12	10	3NT E 4		630	-1
3	4	3NT E 4		630	-1
11	8	3NT E 5		660	-2
10	12	3NT E 5		660	-2
6	5	3NT E 5		660	-2
4	3	3NT E 5		660	-2
9	7	3NT E 5		660	-2
2	1	3NT E 5		660	-2

**27**

♠K2  
♥6  
♦AKJ10863  
♣J102

♠J87  
♥Q8753  
♦954  
♣K9

♠Q6543  
♥AJ4  
♦Q  
♣A854

♠A109  
♥K1092  
♦72  
♣Q763

Board (27) Av: NS=+160

N-S	E-W	Contract	N-S	E-W	IMP
4	3	4Sx W-3		500	8
6	5	3NT N 4		430	7
7	9	3D N 5		150	0
2	1	3D N 5		150	0
12	10	4D N 4		130	-1
1	2	4D N 4		130	-1
10	12	3D N 4		130	-1
11	8	3D N 4		130	-1
3	4	3D N 4		130	-1
9	7	3D N 4		130	-1
5	6	3S W-1		50	-3
8	11	3S W-1		50	-3

**28**

♠92  
♥QJ5  
♦KQJ5  
♣AQJ8

♠J10  
♥K6  
♦109863  
♣9732

♠KQ843  
♥A82  
♦A42  
♣K6

♠A765  
♥109743  
♦7  
♣1054

Board (28) Av: NS=-40

N-S	E-W	Contract	N-S	E-W	IMP
10	12	3H S 3		140	5
7	9	2H S 3		140	5
5	6	2H S 2		110	4
9	7	1NT W-1		50	3
12	10	1NT W 1		90	-2
11	8	3H S-1		100	-2
6	5	3C N-1		100	-2
2	1	2H S-1		100	-2
1	2	2H S-1		100	-2
4	3	1NT W 2		120	-2
3	4	1NT W 2		120	-2
8	11	4H S-2		200	-4

<p>N S N 13 13 S 10 10 H 10 10 D 13 13 C 8 8</p> <p>♠ K652 ♥ A643 ♦ 96 ♣ 973</p> <p>♠ QJ74 ♥ Q982 ♦ J3 ♣ 852</p> <p><b>1</b></p> <p>♥ JT7 ♦ 85 ♣ KJT64</p> <p>E W N - - S 2 2 H 2 2 D - - C 4 4</p> <p>♠ AT ♥ K5 ♦ AKQT742 ♣ AQ</p> <p>Opt res: NS 7N;1520</p>	<p>N S N 5 5 S 3 3 H 7 7 D 7 7 C 3 3</p> <p>♠ A43 ♥ AQT54 ♦ J8 ♣ T83</p> <p>♠ 62 ♥ K982 ♦ K654 ♣ AJ7</p> <p><b>2</b></p> <p>♠ KQT987 ♥ 6 ♦ Q7 ♣ K942</p> <p>E W N 7 7 S 10 10 H 6 6 D 6 6 C 8 9</p> <p>♠ J5 ♥ J73 ♦ AT932 ♣ Q65</p> <p>Opt res: EW 4S;-420</p>	<p>N S N 9 9 S 8 8 H 4 4 D 4 4 C 11 11</p> <p>♠ K54 ♥ T5 ♦ A ♣ AKJ9742</p> <p>♠ A86 ♥ K632 ♦ KJ654 ♣ Q</p> <p><b>3</b></p> <p>♠ QJ2 ♥ QJ9874 ♦ Q87 ♣ 5</p> <p>E W N 3 3 S 5 5 H 9 9 D 8 8 C 2 2</p> <p>♠ T973 ♥ A ♦ T932 ♣ T863</p> <p>Opt res: NS 3N/5C;400</p>
<p>N S N 5 5 S 9 9 H 7 7 D 4 4 C 8 8</p> <p>♠ AJ543 ♥ KJ83 ♦ T95 ♣ J</p> <p>♠ Q862 ♥ AT ♦ 8764 ♣ Q73</p> <p><b>4</b></p> <p>♠ 9 ♥ 7542 ♦ AKQJ2 ♣ KT4</p> <p>E W N 6 6 S 3 3 H 5 5 D 8 8 C 4 4</p> <p>♠ KT7 ♥ Q96 ♦ 3 ♣ A98652</p> <p>Opt res: NS 2S;140</p>	<p>N S N 1 1 S 6 6 H 4 4 D 1 1 C 5 5</p> <p>♠ JT95 ♥ J7 ♦ 92 ♣ T9754</p> <p>♠ 84 ♥ AK5 ♦ AKJ7 ♣ KJ86</p> <p><b>5</b></p> <p>♠ K32 ♥ 843 ♦ QT854 ♣ AQ</p> <p>E W N 12 9 S 7 7 H 8 7 D 12 11 C 8 8</p> <p>♠ AQ76 ♥ QT962 ♦ 63 ♣ 32</p> <p>Opt res: E 6N;-990</p>	<p>N S N 3 3 S 7 7 H 2 2 D 6 7 C 2 2</p> <p>♠ T976 ♥ 754 ♦ QJ52 ♣ J9</p> <p>♠ AJ8 ♥ AKQ3 ♦ 6 ♣ KQ854</p> <p><b>6</b></p> <p>♠ 53 ♥ T862 ♦ T974 ♣ A73</p> <p>E W N 9 9 S 6 6 H 11 11 D 6 6 C 11 11</p> <p>♠ KQ42 ♥ J9 ♦ AK83 ♣ T62</p> <p>Opt res: EW 5H;-650</p>
<p>N S N 7 8 S 7 8 H 6 6 D 9 10 C 7 7</p> <p>♠ KJT9 ♥ 5 ♦ QT8 ♣ A9743</p> <p>♠ 7652 ♥ AQJ87 ♦ K52 ♣ Q</p> <p><b>7</b></p> <p>♠ Q84 ♥ T92 ♦ J9 ♣ KJT52</p> <p>E W N 5 5 S 5 5 H 6 6 D 3 3 C 6 6</p> <p>♠ A3 ♥ K643 ♦ A7643 ♣ 86</p> <p>Opt res: S 2D;130</p>	<p>N S N 11 10 S 9 9 H 9 8 D 8 8 C 7 7</p> <p>♠ AK754 ♥ Q7 ♦ AK53 ♣ K3</p> <p>♠ 86 ♥ 2 ♦ 8642 ♣ JT8752</p> <p><b>8</b></p> <p>♠ Q2 ♥ A98653 ♦ QT9 ♣ A6</p> <p>E W N 2 2 S 2 2 H 4 4 D 4 4 C 6 6</p> <p>♠ JT93 ♥ KJT4 ♦ J7 ♣ Q94</p> <p>Opt res: N 3N;460</p>	<p>N S N 6 6 S 8 8 H 9 9 D 5 5 C 4 4</p> <p>♠ QJT7 ♥ K43 ♦ J32 ♣ T62</p> <p>♠ A3 ♥ Q876 ♦ 876 ♣ KJ73</p> <p><b>9</b></p> <p>♠ 862 ♥ 9 ♦ AQ54 ♣ AQ854</p> <p>E W N 7 7 S 4 4 H 4 4 D 8 8 C 9 9</p> <p>♠ K954 ♥ AJT52 ♦ KT9 ♣ 9</p> <p>Opt res: NS 3H;140</p>
<p>N S N 5 5 S 8 8 H 9 9 D 5 5 C 4 4</p> <p>♠ AKT73 ♥ 7 ♦ 9763 ♣ K52</p> <p>♠ J54 ♥ 93 ♦ AT84 ♣ T863</p> <p><b>10</b></p> <p>♠ Q8 ♥ 864 ♦ KJ52 ♣ AQJ4</p> <p>E W N 4 4 S 3 3 H 4 4 D 8 8 C 8 8</p> <p>♠ 962 ♥ AKQJT52 ♦ Q ♣ 97</p> <p>Opt res: NS 2H;140</p>	<p>N S N 3 3 S 1 1 H 8 8 D 2 2 C 8 8</p> <p>♠ - ♥ KQJT32 ♦ Q63 ♣ A987</p> <p>♠ K7652 ♥ A84 ♦ AT98 ♣ Q</p> <p><b>11</b></p> <p>♠ AQ943 ♥ 9 ♦ KJ72 ♣ 543</p> <p>E W N 8 8 S 12 12 H 3 3 D 10 11 C 3 3</p> <p>♠ JT8 ♥ 765 ♦ 54 ♣ KJT62</p> <p>Opt res: EW 6S;-980</p>	<p>N S N 6 7 S 10 10 H 6 6 D 5 5 C 5 5</p> <p>♠ J752 ♥ AJT43 ♦ K7 ♣ T9</p> <p>♠ A43 ♥ K9 ♦ J86 ♣ AK532</p> <p><b>12</b></p> <p>♠ 9 ♥ Q8762 ♦ Q942 ♣ J86</p> <p>E W N 5 5 S 3 3 H 6 6 D 7 7 C 8 8</p> <p>♠ KQT86 ♥ 5 ♦ AT53 ♣ Q74</p> <p>Opt res: EW 5CX;500</p>
<p>N S N 8 8 S 10 10 H 6 6 D 10 10 C 6 6</p> <p>♠ AQJ73 ♥ Q543 ♦ K7 ♣ K9</p> <p>♠ T984 ♥ AJT7 ♦ 9 ♣ T653</p> <p><b>13</b></p> <p>♠ 2 ♥ K962 ♦ AJ86 ♣ J872</p> <p>E W N 5 5 S 3 3 H 7 7 D 3 3 C 7 7</p> <p>♠ K65 ♥ 8 ♦ QT5432 ♣ AQ4</p> <p>Opt res: NS 4S;620</p>	<p>N S N - - S 2 2 H - - D - - C 5 5</p> <p>♠ KT43 ♥ 853 ♦ T6 ♣ QJT5</p> <p>♠ 97 ♥ AKQT74 ♦ A43 ♣ A2</p> <p><b>14</b></p> <p>♠ AQ82 ♥ 62 ♦ KQ987 ♣ 84</p> <p>E W N 13 13 S 10 10 H 13 13 D 13 13 C 8 8</p> <p>♠ J65 ♥ J9 ♦ J52 ♣ K9763</p> <p>Opt res: EW 7N;-1520</p>	

<p>N S ♠ QJ874 Pts Fr % N 5 5 S 6 6 ♥ T9 H 6 6 ♦ 6 D 4 4 ♣ JT542 C 6 6 ♠ KT ♥ K542 15 ♠ A652 ♦ A8542 S/NS ♥ QJ ♣ Q9 ♣ K763 E W ♠ 93 N 8 8 ♥ A8763 S 6 6 ♦ KQT3 H 6 6 ♣ A8 D 9 9 C 6 6 Opt res: EW 1N;-120</p>	<p>N S ♠ KJ6 Pts Fr % N 5 5 S 4 4 ♥ K763 H 5 5 ♦ KQ8 D 5 5 ♣ 832 C 6 6 ♠ AQ7 98532 ♥ A984 16 ♥ J52 ♦ T92 W/EW ♦ AJ3 ♣ KJ4 ♣ A6 E W ♠ T4 N 8 8 ♥ QT S 9 9 ♦ 7654 H 8 8 ♣ QT975 D 7 7 C 7 7 Opt res: EW 1S;-140</p>	<p>N S ♠ 7 Pts Fr % N 8 8 S 3 3 ♥ J9654 H 10 10 ♦ AK7642 D 11 11 ♣ A C 6 6 ♠ JT963 17 ♠ AKQ85 ♥ K73 ♥ T82 ♦ J N/- ♦ T3 ♣ KQ93 ♣ 762 E W ♠ 42 N 5 5 ♥ AQ S 9 9 ♦ Q985 H 2 2 ♣ JT854 D 2 2 C 7 7 Opt res: EW 5SX;300</p>
<p>N S ♠ KQJT32 Pts Fr % N 11 11 S 11 11 ♥ K H 10 10 ♦ Q7 D 10 10 ♣ AQ75 C 9 9 ♠ A65 98 ♥ 98743 18 ♥ T2 ♦ 932 E/NS ♦ AT85 ♣ T4 ♣ J9862 E W ♠ 74 N 2 2 ♥ AQJ65 S 2 2 ♦ KJ64 H 3 3 ♣ K3 D 3 3 C 4 4 Opt res: NS 3N;660</p>	<p>N S ♠ T985 Pts Fr % N 7 7 S 7 7 ♥ AQ4 H 7 7 ♦ Q D 8 8 ♣ KQJ54 C 7 7 ♠ 72 98532 ♥ K973 19 ♥ T52 ♦ K876 S/EW ♦ A2 ♣ AT2 ♣ 9863 E W ♠ KJ6 N 6 6 ♥ J86 S 5 5 ♦ JT9543 H 6 6 ♣ 7 D 5 5 C 6 6 Opt res: NS 1D/1N;90</p>	<p>N S ♠ 743 Pts Fr % N 1 1 S 1 1 ♥ T6 H 2 2 ♦ JT42 D 2 2 ♣ 9743 C 2 2 ♠ J852 20 ♠ AKQ ♥ A97 ♥ KJ54 ♦ AKQ W/AII ♦ 953 ♣ K65 ♣ QT8 E W ♠ T96 N 12 12 ♥ Q832 S 12 12 ♦ 876 H 11 11 ♣ AJ2 D 11 11 C 11 11 Opt res: EW 6N;-1440</p>
<p>N S ♠ AK52 Pts Fr % N 2 2 S 10 11 ♥ AQJT43 H 12 12 ♦ K9 D 2 2 ♣ Q C 2 2 ♠ T8 76 ♥ - 21 ♥ 987 ♦ QT75432 ♦ AJ86 ♣ T832 N/NS ♣ AKJ4 E W ♠ QJ943 N 2 2 ♥ K652 S 1 1 ♦ - H - - ♣ 9765 D 11 11 C 9 9 Opt res: EW 7DX;300</p>	<p>N S ♠ JT53 Pts Fr % N 8 8 S 9 8 ♥ KT64 H 9 9 ♦ A6 D 7 7 ♣ AK3 C 7 7 ♠ KQ 9642 ♥ A87 22 ♥ QJ2 ♦ QJT4 E/EW ♦ 952 ♣ Q764 ♣ J85 E W ♠ A87 N 5 5 ♥ 953 S 4 4 ♦ K873 H 4 4 ♣ T92 D 6 6 C 6 6 Opt res: N 1S/NS 1H;140</p>	<p>N S ♠ 6432 Pts Fr % N 4 4 S 4 4 ♥ 963 H 5 5 ♦ J4 D 7 7 ♣ Q854 C 9 9 ♠ KQT987 23 ♠ A5 ♥ K4 ♥ JT752 ♦ T62 S/AII ♦ KQ3 ♣ KJ ♣ 763 E W ♠ J N 8 8 ♥ AQ8 S 9 9 ♦ A9875 H 7 7 ♣ AT92 D 6 6 C 4 4 Opt res: EW 3S;-140</p>
<p>N S ♠ Q43 Pts Fr % N 7 7 S 6 6 ♥ T7543 H 8 8 ♦ J752 D 8 8 ♣ 9 C 5 5 ♠ A865 86 ♥ J9 24 ♥ Q62 ♦ AT643 W/- ♦ 9 ♣ 64 ♣ KJT832 E W ♠ J92 N 6 6 ♥ AK8 S 7 7 ♦ KQ8 H 4 4 ♣ AQ75 D 5 5 C 8 8 Opt res: EW 3CX;100</p>	<p>N S ♠ JT65 Pts Fr % N 3 3 S 3 3 ♥ J4 H 2 2 ♦ KT74 D 6 6 ♣ KT9 C 8 8 ♠ Q983 N/EW ♠ A74 ♥ AKQT975 ♥ 62 ♦ Q3 25 ♦ A862 ♣ - ♣ QJ74 E W ♠ K2 N 9 9 ♥ 83 S 9 9 ♦ J95 H 10 11 ♣ A86532 D 7 7 C 5 5 Opt res: W 5H;-650</p>	<p>N S ♠ QJT9 Pts Fr % N 3 3 S 6 6 ♥ AT942 H 8 8 ♦ Q8 D 2 2 ♣ KT C 3 3 ♠ 72 26 ♠ A865 ♥ KJ ♥ 653 ♦ AT7432 E/AII ♦ KJ ♣ A64 ♣ QJ95 E W ♠ K43 N 9 9 ♥ Q87 S 7 7 ♦ 965 H 5 5 ♣ 8732 D 10 10 C 10 10 Opt res: NS 4HX;-500</p>
<p>N S ♠ Q972 Pts Fr % N 6 8 S 6 6 ♥ J82 H 5 5 ♦ J95 D 8 8 ♣ KJ4 C 8 8 ♠ AKT53 86 ♥ AQ7 27 ♥ T9543 ♦ T84 S/- ♦ A7 ♣ 92 ♣ T753 E W ♠ J4 N 5 5 ♥ K6 S 6 6 ♦ KQ632 H 7 7 ♣ AQ86 D 5 5 C 5 5 Opt res: S 2N;120</p>	<p>N S ♠ 72 Pts Fr % N 2 2 S 2 2 ♥ 64 H 2 2 ♦ A83 D 6 6 ♣ QJT732 C 7 7 ♠ QT843 28 ♠ AK9 ♥ QJT9 ♥ K8732 ♦ KT W/NS ♦ J75 ♣ A5 ♣ K8 E W ♠ J65 N 8 8 ♥ A5 S 11 11 ♦ Q9642 H 11 11 ♣ 964 D 7 7 C 6 6 Opt res: EW 4S/4H;-450</p>	

<p>N S ♠ 54 Pts Fr %            N 6 6            S 8 8            H 9 9            D 3 2            C 4 4            ♠ A87 ♠ Q62            ♥ 84 ♥ T            ♦ K97652 N/AII ♦ AJ4            ♣ 97 ♣ KJT842            E W ♠ KJT93            N 6 6            S 5 5            H 3 3            D 9 9            C 9 8            ♥ 9653            ♦ QT            ♣ Q5            Opt res: NS 3H;140</p>	<p>N S ♠ QJ7543 Pts Fr %            N 5 5            S 8 8            H 8 8            D 8 8            C 5 5            ♠ KT92 ♠ 86            ♥ Q98 ♥ A53            ♦ 932 E/- ♦ J76            ♣ J83 ♣ AKQ96            E W ♠ A            N 7 7            S 5 5            H 5 5            D 5 4            C 8 8            ♥ KJ642            ♦ AKQ5            ♣ T75            Opt res: EW 3CX;100</p>	<p>N S ♠ 9532 Pts Fr %            N 5 5            S 6 6            H 6 6            D 4 4            C 7 7            ♠ QJ76 ♠ A4            ♥ J8 ♥ KQ53            ♦ AQ942 S/NS ♦ T753            ♣ QT ♣ 763            E W ♠ KT8            N 7 7            S 7 7            H 7 7            D 9 9            C 6 6            ♥ T742            ♦ KJ            ♣ KJ42            Opt res: EW 1D;-110</p>
<p>N S ♠ AQ8 Pts Fr %            N 5 5            S 5 5            H 5 5            D 5 5            C 5 5            ♠ JT9 ♠ K63            ♥ AT6 ♥ K932            ♦ AQJ43 W/EW ♦ 6            ♣ 54 ♣ AQ963            E W ♠ 7542            N 8 8            S 8 7            H 8 8            D 8 8            C 8 8            ♥ Q854            ♦ T            ♣ KJT8            Opt res: EW 1N;-120</p>	<p>N S ♠ KT32 Pts Fr %            N 4 4            S 4 4            H 4 3            D 4 4            C 7 6            ♠ A8654 ♠ Q9            ♥ K8764 ♥ Q9            ♦ 6 N/- ♦ K98753            ♣ K4 ♣ AJ5            E W ♠ J7            N 8 8            S 9 9            H 9 9            D 8 9            C 6 6            ♥ J532            ♦ JT4            ♣ 9872            Opt res: EW 2S/2H;-140</p>	<p>N S ♠ AJ653 Pts Fr %            N 3 3            S 8 8            H 3 3            D 3 3            C 4 4            ♠ QT ♠ 72            ♥ AQJ84 ♥ K5            ♦ AT75 E/NS ♦ KQ92            ♣ 84 ♣ AJ963            E W ♠ K984            N 8 8            S 5 5            H 10 10            D 10 10            C 7 7            ♥ 962            ♦ J            ♣ KQT75            Opt res: EW 4H;-420</p>
<p>N S ♠ QJ3 Pts Fr %            N 7 7            S 9 9            H 10 10            D 4 4            C 10 10            ♠ T8 ♠ A962            ♥ Q54 ♥ T            ♦ K8532 S/EW ♦ AJT74            ♣ Q84 ♣ J62            E W ♠ K754            N 5 5            S 4 4            H 2 2            D 8 8            C 3 3            ♥ J72            ♦ 6            ♣ AKT95            Opt res: NS 4H;420</p>	<p>N S ♠ JT987532 Pts Fr %            N 4 4            S 9 9            H 4 4            D 1 1            C 3 3            ♠ A ♠ 6            ♥ T876 ♥ A95            ♦ AKJ543 W/AII ♦ Q92            ♣ A6 ♣ T98742            E W ♠ KQ4            N 9 9            S 4 4            H 9 9            D 10 10            C 10 10            ♥ KJ32            ♦ 876            ♣ KQ5            Opt res: NS 4SX;-200</p>	<p>N S ♠ AKQ65 Pts Fr %            N 6 6            S 7 7            H 5 5            D 7 7            C 8 8            ♠ JT74 ♠ 932            ♥ AKT4 ♥ Q872            ♦ 6 N/NS ♦ QJ843            ♣ AJT9 ♣ 3            E W ♠ 8            N 6 6            S 6 6            H 8 8            D 5 5            C 4 4            ♥ J53            ♦ A72            ♣ KQ8542            Opt res: EW 2H;-110</p>
<p>N S ♠ K96 Pts Fr %            N 8 8            S 6 5            H 10 9            D 6 6            C 8 7            ♠ QJ843 ♠ AT7            ♥ 63 ♥ AQ            ♦ T952 E/EW ♦ KJ3            ♣ 64 ♣ T8532            E W ♠ 52            N 3 3            S 7 7            H 3 3            D 7 6            C 5 5            ♥ KT852            ♦ Q8            ♣ AQJ7            Opt res: N 4H;420</p>	<p>N S ♠ AKT Pts Fr %            N 3 3            S 5 5            H 6 6            D 3 3            C 3 3            ♠ J32 ♠ Q84            ♥ 73 ♥ AK2            ♦ KJ9853 S/AII ♦ AQ            ♣ J6 ♣ KQ875            E W ♠ 9765            N 10 10            S 8 8            H 7 7            D 10 10            C 9 9            ♥ T86            ♦ 762            ♣ T94            Opt res: EW 3N;-630</p>	<p>N S ♠ A3 Pts Fr %            N 12 11            S 10 10            H 12 12            D 10 10            C 12 12            ♠ JT5 ♠ K974            ♥ 965 ♥ T743            ♦ 9863 W/- ♦ AT7            ♣ 752 ♣ 96            E W ♠ Q862            N 1 1            S 3 3            H 1 1            D 2 2            C - -            ♥ J            ♦ 542            ♣ AKT43            Opt res: N 6N;990</p>
<p>N S ♠ AKQ4 Pts Fr %            N 7 7            S 7 7            H 5 5            D 6 6            C 6 6            ♠ 9753 ♠ 82            ♥ KQ63 ♥ JT2            ♦ - N/EW ♦ QJT953            ♣ AKQ96 ♣ 85            E W ♠ JT6            N 6 6            S 5 5            H 7 7            D 7 7            C 7 7            ♥ 97            ♦ 8762            ♣ T743            Opt res: NS 1N;90</p>	<p>N S ♠ J6 Pts Fr %            N 4 4            S 7 7            H 10 10            D 2 2            C 9 9            ♠ 52 ♠ AKT94            ♥ QT ♥ 98            ♦ AQT9653 ♦ KJ8            ♣ J8 E/AII ♣ T97            E W ♠ Q873            N 3 3            S 6 6            H 2 2            D 9 9            C 3 3            ♥ A432            ♦ 74            ♣ K54            Opt res: EW 5DX;500</p>	

<p>N S ♠ AK64 Pts Fr %            N 7 7 ♥ 9543            S 5 5 ♦ 74            H 2 2 ♣ QJ7            D 3 4            C 7 7            ♠ JT98753            ♥ -            ♦ QT            ♣ AT86            E W ♠ Q2            N 6 6 ♥ QT            S 6 6 ♦ A963            H 11 11 ♣ K5432            D 9 9            C 5 5            Opt res: EW 4H;-450</p>	<p>N S ♠ AQT Pts Fr %            N 5 5 ♥ JT3            S 4 5 ♦ 5            H 4 4 ♣ AJ7643            D 4 4            C 8 8            ♠ K983            ♥ A4            ♦ K9632            ♣ K5            E W ♠ J72            N 4 8 ♥ 985            S 8 8 ♦ QJ8            H 8 9 ♣ QT98            D 8 9            C 4 5            Opt res: W 2H;-140</p>	<p>N S ♠ K83 Pts Fr %            N 5 5 ♥ 976            S 4 4 ♦ Q743            H 7 7 ♣ 975            D 5 5            C 5 5            ♠ J94            ♥ K            ♦ 98652            ♣ J632            E W ♠ 65            N 8 7 ♥ QJT53            S 9 9 ♦ AJ            H 6 6 ♣ AQT8            D 8 8            C 7 6            Opt res: EW 2S;-140</p>
<p>N S ♠ 4 Pts Fr %            N 5 5 ♥ T3            S 4 4 ♦ AKT762            H 8 8 ♣ KT92            D 10 10            C 7 7            ♠ KQJ8653            ♥ A854            ♦ J            ♣ 5            E W ♠ T72            N 8 8 ♥ KQJ76            S 8 8 ♦ 953            H 5 5 ♣ A3            D 3 3            C 6 6            Opt res: NS 3D;130</p>	<p>N S ♠ A32 Pts Fr %            N 8 8 ♥ AK952            S 8 8 ♦ 32            H 9 9 ♣ JT9            D 4 4            C 9 9            ♠ K7            ♥ 86            ♦ KQ985            ♣ 8732            E W ♠ T986            N 5 5 ♥ JT4            S 5 5 ♦ 7            H 3 3 ♣ AKQ65            D 9 3            C 3 3            Opt res: EW 4DX;100</p>	<p>N S ♠ AQ8 Pts Fr %            N 11 11 ♥ 2            S 9 8 ♦ K732            H 11 11 ♣ AK852            D 7 6            C 8 8            ♠ 7652            ♥ T85            ♦ AT96            ♣ Q3            E W ♠ T93            N 2 2 ♥ AKQ9763            S 4 4 ♦ 8            H 1 1 ♣ T9            D 6 6            C 4 4            Opt res: NS 3N;460</p>
<p>N S ♠ K7 Pts Fr %            N 11 11 ♥ 52            S 11 11 ♦ AT952            H 9 9 ♣ A654            D 10 10            C 8 8            ♠ JT64            ♥ 6            ♦ K86            ♣ K8732            E W ♠ AQ853            N 1 1 ♥ AKQ9            S 2 2 ♦ Q4            H 4 4 ♣ T9            D 1 1            C 5 5            Opt res: NS 3N;660</p>	<p>N S ♠ 9843 Pts Fr %            N 8 8 ♥ AJ75            S 9 9 ♦ A86            H 8 8 ♣ K5            D 5 5            C 5 5            ♠ 5            ♥ T3            ♦ KJT75            ♣ A7632            E W ♠ AKT62            N 4 4 ♥ K42            S 3 3 ♦ 932            H 5 5 ♣ 94            D 8 7            C 8 8            Opt res: NS 3S;140</p>	<p>N S ♠ 965 Pts Fr %            N 8 7 ♥ QJ3            S 5 5 ♦ J82            H 7 7 ♣ AJT7            D 8 8            C 5 5            ♠ AQ8742            ♥ 962            ♦ 3            ♣ 984            E W ♠ KT3            N 5 5 ♥ AT87            S 7 7 ♦ KT754            H 5 4 ♣ 5            D 5 5            C 8 8            Opt res: N 2N;120</p>
<p>N S ♠ 7 Pts Fr %            N 7 9 ♥ T74            S 5 5 ♦ AJ5432            H 6 7 ♣ K82            D 9 10            C 8 8            ♠ KJ85            ♥ AJ953            ♦ T9            ♣ T3            E W ♠ AQ2            N 4 4 ♥ KQ6            S 8 8 ♦ KQ6            H 6 6 ♣ Q654            D 3 3            C 5 5            Opt res: EW 4SX;500</p>	<p>N S ♠ QJ987 Pts Fr %            N 5 5 ♥ K95            S 5 5 ♦ 73            H 11 11 ♣ J65            D 9 9            C 3 3            ♠ AT4            ♥ J76            ♦ A2            ♣ AQ983            E W ♠ 5            N 7 7 ♥ AQT843            S 8 8 ♦ KJT965            H 2 2 ♣ -            D 3 2            C 10 10            Opt res: EW 6CX;300</p>	<p>N S ♠ A743 Pts Fr %            N 5 5 ♥ KT76            S 3 3 ♦ J8            H 7 6 ♣ K52            D 4 4            C 4 4            ♠ QT2            ♥ A9432            ♦ T4            ♣ T43            E W ♠ J6            N 8 8 ♥ QJ85            S 9 9 ♦ 9653            H 6 6 ♣ Q97            D 9 9            C 9 9            Opt res: EW 1S;-140</p>
<p>N S ♠ Q83 Pts Fr %            N 6 6 ♥ KJ92            S 7 7 ♦ A84            H 8 8 ♣ J92            D 4 4            C 3 4            ♠ AJ9            ♥ 8            ♦ KJ2            ♣ AKQT54            E W ♠ K765            N 7 7 ♥ AQT43            S 5 5 ♦ T75            H 5 5 ♣ 6            D 8 8            C 9 9            Opt res: EW 3C;-110</p>	<p>N S ♠ AKQ7 Pts Fr %            N 13 13 ♥ 9732            S 12 12 ♦ A5            H 13 13 ♣ A43            D 13 13            C 8 8            ♠ T93            ♥ 5            ♦ J63            ♣ KT9852            E W ♠ 42            N - - ♥ AKJT64            S 1 1 ♦ KQT9            H - - ♣ J            D - -            C 5 5            Opt res: NS 7N;1520</p>	

<p>N S N 6 6 S 5 5 H 8 8 D 8 8 C 6 6</p> <p>♠ 973 ♥ A6432 ♦ AT75 ♣ K</p> <p>♠ Q854 ♥ T95 ♦ 9643 ♣ 93</p> <p>15 ♠ AKJT ♥ K7 S/NS ♦ J2 ♣ AQ872</p> <p>E W N 7 7 S 8 8 H 4 4 D 5 5 C 7 7</p> <p>♠ 62 ♥ QJ8 ♦ KQ8 ♣ JT654</p> <p>Opt res: EW 2S;-110</p>	<p>N S N 8 8 S 9 9 H 7 7 D 7 7 C 5 5</p> <p>♠ AQJ74 ♥ 963 ♦ A7 ♣ K53</p> <p>♠ 92 ♥ AKQ8 ♦ K98 ♣ QT82</p> <p>16 ♠ 865 ♥ J2 W/EW ♦ Q653 ♣ J964</p> <p>E W N 5 5 S 4 4 H 6 6 D 6 6 C 7 7</p> <p>♠ KT3 ♥ T754 ♦ JT42 ♣ A7</p> <p>Opt res: NS 1S;140</p>	<p>N S N 8 8 S 12 12 H 6 6 D 12 12 C 5 5</p> <p>♠ - ♥ AK86 ♦ JT98642 ♣ 94</p> <p>♠ 983 ♥ Q532 ♦ K ♣ AKJ87</p> <p>17 ♠ 64 ♥ JT974 N/- ♦ 7 ♣ QT652</p> <p>E W N - - S - - H 7 7 D - - C 7 7</p> <p>♠ AKQJT752 ♥ - ♦ AQ53 ♣ 3</p> <p>Opt res: NS 6S;980</p>
<p>N S N 7 7 S 8 8 H 8 8 D 8 8 C 8 8</p> <p>♠ 63 ♥ A7 ♦ KJ984 ♣ K953</p> <p>♠ T74 ♥ KT65 ♦ AT75 ♣ 87</p> <p>18 ♠ KQ95 ♥ Q9 E/NS ♦ Q32 ♣ QT62</p> <p>E W N 6 6 S 5 5 H 5 5 D 5 5 C 4 4</p> <p>♠ AJ82 ♥ J8432 ♦ 6 ♣ AJ4</p> <p>Opt res: NS 2S/2H;110</p>	<p>N S N 9 9 S 10 10 H 5 5 D 6 6 C 8 8</p> <p>♠ Q97 ♥ KQ ♦ KQJ ♣ K9753</p> <p>♠ 8 ♥ T98732 ♦ 8542 ♣ Q2</p> <p>19 ♠ AJ64 ♥ J5 S/EW ♦ AT73 ♣ A64</p> <p>E W N 3 3 S 3 3 H 7 7 D 6 6 C 4 4</p> <p>♠ KT532 ♥ A64 ♦ 96 ♣ JT8</p> <p>Opt res: NS 4S;420</p>	<p>N S N 10 10 S 10 10 H 8 8 D 9 9 C 11 11</p> <p>♠ KT6 ♥ 2 ♦ K765 ♣ AKQT8</p> <p>♠ 53 ♥ K873 ♦ J982 ♣ J93</p> <p>20 ♠ Q742 ♥ AJ65 W/All ♦ A3 ♣ 742</p> <p>E W N 3 3 S 2 2 H 5 5 D 3 3 C 2 2</p> <p>♠ AJ98 ♥ QT94 ♦ QT4 ♣ 65</p> <p>Opt res: NS 3N;630</p>
<p>N S N 2 2 S 2 2 H 9 9 D 7 7 C 1 1</p> <p>♠ Q74 ♥ QJ873 ♦ KT92 ♣ J</p> <p>♠ AJ985 ♥ 9 ♦ 863 ♣ AK95</p> <p>21 ♠ KT2 ♥ K64 N/NS ♦ A5 ♣ QT762</p> <p>E W N 11 8 S 11 11 H 4 4 D 4 4 C 12 12</p> <p>♠ 63 ♥ AT52 ♦ QJ74 ♣ 843</p> <p>Opt res: NS 6HX;-800</p>	<p>N S N 5 5 S 3 3 H 8 8 D 5 5 C 6 6</p> <p>♠ 2 ♥ T532 ♦ T975 ♣ 8732</p> <p>♠ J854 ♥ Q87 ♦ K83 ♣ AK9</p> <p>22 ♠ KQ973 ♥ J E/EW ♦ QJ64 ♣ JT6</p> <p>E W N 7 7 S 10 10 H 5 5 D 8 8 C 7 7</p> <p>♠ AT6 ♥ AK964 ♦ A2 ♣ Q54</p> <p>Opt res: NS 5HX;-500</p>	<p>N S N 4 4 S 4 4 H 8 8 D 5 5 C 6 6</p> <p>♠ 98 ♥ 964 ♦ T8 ♣ QT9876</p> <p>♠ QJT6532 ♥ A ♦ 4 ♣ A432</p> <p>23 ♠ A ♥ QT53 S/All ♦ J97653 ♣ K5</p> <p>E W N 8 8 S 9 9 H 5 5 D 8 8 C 7 7</p> <p>♠ K74 ♥ KJ872 ♦ AKQ2 ♣ J</p> <p>Opt res: EW 2S;-140</p>
<p>N S N 1 1 S 1 1 H 4 4 D 1 1 C 9 9</p> <p>♠ J4 ♥ T8742 ♦ 96 ♣ QJ75</p> <p>♠ AT9 ♥ KQJ93 ♦ K742 ♣ 6</p> <p>24 ♠ KQ8653 ♥ 6 W/- ♦ AQJT85 ♣ -</p> <p>E W N 4 4 S 12 12 H 8 8 D 12 12 C 4 4</p> <p>♠ 72 ♥ A5 ♦ 3 ♣ AKT98432</p> <p>Opt res: NS 7CX;-800</p>	<p>N S N 2 2 S 7 7 H 2 2 D 4 4 C 1 1</p> <p>♠ KQJ763 ♥ T ♦ KJ6 ♣ K83</p> <p>♠ A ♥ AKQJ9 ♦ Q75 ♣ AQ62</p> <p>25 ♠ T82 ♥ 65 N/EW ♦ A832 ♣ JT97</p> <p>E W N 9 9 S 5 6 H 10 10 D 9 9 C 11 12</p> <p>♠ 954 ♥ 87432 ♦ T94 ♣ 54</p> <p>Opt res: NS 6SX;-1100</p>	<p>N S N 6 6 S 11 11 H 8 8 D 13 13 C 5 5</p> <p>♠ KJ653 ♥ 64 ♦ Q2 ♣ 8732</p> <p>♠ Q82 ♥ KQJ92 ♦ J86 ♣ 96</p> <p>26 ♠ 974 ♥ T7 E/All ♦ 9 ♣ AKQJT54</p> <p>E W N - - S - - H 4 4 D - - C 8 8</p> <p>♠ AT ♥ A853 ♦ AKT7543 ♣ -</p> <p>Opt res: EW 8CX;1700</p>
<p>N S N 3 3 S 6 6 H 3 3 D 8 8 C 9 9</p> <p>♠ A432 ♥ Q ♦ 4 ♣ KQJT986</p> <p>♠ JT ♥ KJ97543 ♦ QT6 ♣ A</p> <p>S/- ♠ Q8765 ♥ AT6 ♦ K3 ♣ 752</p> <p>27 ♠ K9 ♥ 82 ♦ AJ98752 ♣ 43</p> <p>E W N 8 8 S 6 6 H 9 9 D 5 5 C 3 3</p> <p>Opt res: NS 4CX;-100</p>	<p>N S N 6 6 S 9 9 H 5 5 D 7 7 C 5 5</p> <p>♠ AQ65 ♥ AKJ5 ♦ J2 ♣ J74</p> <p>♠ K ♥ QT987 ♦ KQ6 ♣ AKQ5</p> <p>28 ♠ 987 ♥ 432 W/NS ♦ A98 ♣ T632</p> <p>E W N 5 5 S 2 2 H 7 7 D 5 6 C 8 8</p> <p>♠ JT432 ♥ 6 ♦ T7543 ♣ 98</p> <p>Opt res: NS 3S;140</p>	



<p>N S ♠ Q9532 Pts Fr %            N 6 6 ♥ T3            S 7 7 ♦ 84            H 5 4 ♣ T743            D 4 4            C 6 6</p> <p>♠ JT            ♥ K87 1 ♠ A84            ♦ AT52 N/- ♥ J964            ♣ K952 ♣ Q8</p> <p>E W ♠ K76            N 7 7 ♥ AQ52            S 5 5 ♦ 763            H 8 8 ♣ AJ6            D 9 9            C 7 7</p> <p>Opt res: EW 2H/3D;-110</p>	<p>N S ♠ JT43 Pts Fr %            N 2 1 ♥ 8            S 4 4 ♦ J43            H 2 1 ♣ Q9743            D 6 6            C 3 3</p> <p>♠ A5 ♠ KQ96            ♥ AK765 2 ♥ QJ9            ♦ T2 E/NS ♦ Q86            ♣ J652 ♣ AKT</p> <p>E W ♠ 872            N 11 8 ♥ T432            S 9 9 ♦ AK975            H 11 11 ♣ 8            D 7 7            C 9 9</p> <p>Opt res: E 3N;-460</p>	<p>N S ♠ 84 Pts Fr %            N 5 5 ♥ KJ7            S 4 4 ♦ KQ72            H 6 6 ♣ AJ94            D 6 5            C 7 7</p> <p>♠ KJT6 ♠ AQ93            ♥ AQT3 3 ♥ 52            ♦ AJ53 S/EW ♦ 984            ♣ 3 ♣ QT87</p> <p>E W ♠ 752            N 8 8 ♥ 9864            S 9 9 ♦ T6            H 7 7 ♣ K652            D 8 8            C 6 6</p> <p>Opt res: EW 2S;-140</p>
<p>N S ♠ T982 Pts Fr %            N 5 5 ♥ KJ3            S 7 7 ♦ K94            H 5 5 ♣ T32            D 3 3            C 3 3</p> <p>♠ AJ64 ♠ Q            ♥ 974 4 ♥ AT5            ♦ T85 W/All ♦ QJ72            ♣ AK7 ♣ QJ964</p> <p>E W ♠ K753            N 8 8 ♥ Q862            S 6 6 ♦ A63            H 8 8 ♣ 85            D 9 9            C 10 10</p> <p>Opt res: EW 2C;-130</p>	<p>N S ♠ T Pts Fr %            N 3 3 ♥ AKQT83            S 4 4 ♦ 852            H 8 8 ♣ Q53            D 3 3            C 2 2</p> <p>♠ J63 ♠ AKQ9            ♥ 52 5 ♥ J7            ♦ T973 N/NS ♦ AK4            ♣ J982 ♣ AK64</p> <p>E W ♠ 87542            N 7 7 ♥ 964            S 9 9 ♦ QJ6            H 5 5 ♣ T7            D 10 10            C 10 10</p> <p>Opt res: EW 2S;-140</p>	<p>N S ♠ 7 Pts Fr %            N 6 6 ♥ KJ64            S 4 4 ♦ J93            H 9 8 ♣ AK954            D 8 8            C 9 9</p> <p>♠ K9542 ♠ AQJ63            ♥ A8 6 ♥ Q95            ♦ A54 E/EW ♦ T87            ♣ J87 ♣ 63</p> <p>E W ♠ T8            N 7 7 ♥ T732            S 8 8 ♦ KQ62            H 4 4 ♣ QT2            D 4 4            C 4 4</p> <p>Opt res: NS 3H;140</p>
<p>N S ♠ K852 Pts Fr %            N 1 1 ♥ J87            S 9 9 ♦ T2            H 9 9 ♣ KT52            D 1 1            C 1 1</p> <p>♠ AJ ♠ Q9            ♥ 65 7 ♥ AQ            ♦ AKJ3 S/All ♦ 98765            ♣ Q8763 ♣ AJ94</p> <p>E W ♠ T7643            N 12 12 ♥ KT9432            S 4 4 ♦ Q4            H 4 4 ♣ -            D 11 11            C 12 12</p> <p>Opt res: NS 7SX;-1100</p>	<p>N S ♠ 9842 Pts Fr %            N 4 4 ♥ JT632            S 7 7 ♦ J98            H 10 10 ♣ 8            D 4 4            C 4 4</p> <p>♠ 753 ♠ QT6            ♥ 74 8 ♥ K8            ♦ K5 W/- ♦ AQT742            ♣ JT7432 ♣ AK</p> <p>E W ♠ AKJ            N 9 4 ♥ AQ95            S 5 4 ♦ 63            H 3 3 ♣ Q965            D 9 8            C 8 7</p> <p>Opt res: E 4NX;100</p>	<p>N S ♠ KQJ32 Pts Fr %            N 7 7 ♥ T            S 8 8 ♦ QJ7            H 6 6 ♣ QJ43            D 4 4            C 7 7</p> <p>♠ AT98 ♠ 5            ♥ A9843 9 ♥ Q7            ♦ T94 N/EW ♦ A8532            ♣ 5 ♣ KT982</p> <p>E W ♠ 764            N 6 6 ♥ KJ652            S 5 5 ♦ K6            H 6 6 ♣ A76            D 8 8            C 6 6</p> <p>Opt res: NS 2S;110</p>
<p>N S ♠ 6 Pts Fr %            N 8 8 ♥ K72            S 5 5 ♦ K962            H 6 6 ♣ J7543            D 5 5            C 9 9</p> <p>♠ T97432 ♠ KJ            ♥ 5 10 ♥ AJ9643            ♦ T754 E/All ♦ A83            ♣ AK ♣ 62</p> <p>E W ♠ AQ85            N 4 4 ♥ QT8            S 8 8 ♦ QJ            H 7 7 ♣ QT98            D 6 6            C 4 4</p> <p>Opt res: NS 2N;120</p>	<p>N S ♠ AT92 Pts Fr %            N 2 2 ♥ 63            S 2 2 ♦ T9863            H 1 1 ♣ T6            D 4 4            C 5 5</p> <p>♠ K6 ♠ QJ543            ♥ AKQ2 11 ♥ T9854            ♦ AQ42 S/- ♦ J            ♣ J95 ♣ AK</p> <p>E W ♠ 87            N 11 11 ♥ J7            S 11 11 ♦ K75            H 12 12 ♣ Q87432            D 9 9            C 8 8</p> <p>Opt res: EW 6H;-980</p>	<p>N S ♠ KQJ Pts Fr %            N 8 8 ♥ AKQT53            S 7 7 ♦ 3            H 9 9 ♣ 754            D 10 10            C 7 7</p> <p>♠ 954 ♠ A863            ♥ J982 12 ♥ 74            ♦ 872 W/NS ♦ A94            ♣ KQT ♣ J982</p> <p>E W ♠ T72            N 2 2 ♥ 6            S 4 5 ♦ KQJT65            H 2 2 ♣ A63            D 2 2            C 6 6</p> <p>Opt res: NS 1H;140</p>
<p>N S ♠ 982 Pts Fr %            N 5 5 ♥ AQ            S 5 5 ♦ JT43            H 4 4 ♣ T982            D 5 5            C 4 4</p> <p>♠ 75 ♠ AJT6            ♥ 98764 13 ♥ J32            ♦ Q96 N/All ♦ AK7            ♣ AQ4 ♣ KJ3</p> <p>E W ♠ KQ43            N 8 8 ♥ KT5            S 8 8 ♦ 852            H 9 9 ♣ 765            D 8 8            C 8 8</p> <p>Opt res: EW 1H;-140</p>	<p>N S ♠ KQ642 Pts Fr %            N 8 8 ♥ KT            S 7 7 ♦ A5            H 8 8 ♣ AKQ4            D 8 8            C 8 8</p> <p>♠ 3 ♠ JT9875            ♥ AQJ9 14 ♥ 87            ♦ KT9 E/- ♦ Q83            ♣ 98653 ♣ J7</p> <p>E W ♠ A            N 5 5 ♥ 65432            S 5 5 ♦ J7642            H 5 5 ♣ T2            D 5 5            C 5 5</p> <p>Opt res: NS 1N;120</p>	

D:\BOS\Emmet121007 - E:\Maha121007 - E\at.pdf

<p>N S ♠ A982 Pts Fr %                      N 4 4                      S 6 6                      H 1 1                      D 4 4                      C 6 6                      ♣ KJT86                      ♠ K4                      ♥ K32                      ♦ KQ732                      ♣ Q42                      E W ♠ QT76                      N 7 7                      S 7 7                      H 10 10                      D 8 8                      C 6 6                      ♥ J53                      ♥ J54                      ♦ T654                      ♣ A73                      Opt res: EW 4H;-420</p>	<p>N S ♠ 9642 Pts Fr %                      N 9 9                      S 6 6                      H 5 5                      D 9 9                      C 10 10                      ♣ Q                      ♠ Q85                      ♥ AJ85                      ♦ QJ5                      ♣ T64                      E W ♠ KJT7                      N 3 3                      S 6 6                      H 7 7                      D 3 3                      C 3 3                      ♥ Q2                      ♦ 32                      ♣ AKJ7532                      Opt res: NS 3N;400</p>	<p>N S ♠ T72 Pts Fr %                      N 5 5                      S 3 3                      H 5 5                      D 4 4                      C 7 7                      ♣ A84                      ♠ A653                      ♥ K73                      ♦ AKT3                      ♣ JT                      E W ♠ KQ84                      N 8 8                      S 9 9                      H 8 7                      D 9 9                      C 6 6                      ♥ J9                      ♥ AT5                      ♦ J54                      ♣ Q7653                      Opt res: EW 2S;-140</p>
<p>N S ♠ KT753 Pts Fr %                      N 6 6                      S 8 8                      H 2 2                      D 7 7                      C - -                      ♣ 7                      ♠ -                      ♥ AQ98743                      ♦ 96                      ♣ AK54                      E/NS ♠ 984                      ♥ T                      ♦ KJ8                      ♣ QT9632                      E W ♠ AQJ62                      N 7 7                      S 4 4                      H 11 11                      D 4 4                      C 12 12                      ♥ J62                      ♦ A73                      ♣ J8                      Opt res: EW 6C;-920</p>	<p>N S ♠ K9643 Pts Fr %                      N 7 7                      S 9 9                      H 9 9                      D 5 5                      C 5 5                      ♣ 8                      ♠ QT5                      ♥ Q32                      ♦ AJ93                      ♣ T74                      E W ♠ J8                      N 6 6                      S 4 4                      H 4 4                      D 8 8                      C 8 8                      ♥ T96                      ♦ T62                      ♣ K963                      Opt res: NS 2S/2H;140</p>	<p>N S ♠ 42 Pts Fr %                      N 6 6                      S 3 3                      H 6 6                      D 5 5                      C 5 5                      ♣ AJ84                      ♠ KQJ5                      ♥ QJ8                      ♦ 7                      ♣ Q9763                      E W ♠ AT83                      N 7 7                      S 10 10                      H 7 7                      D 8 8                      C 7 8                      ♥ T743                      ♦ 642                      ♣ KT5                      Opt res: EW 4S;-620</p>
<p>N S ♠ 9876 Pts Fr %                      N 2 2                      S 7 7                      H 8 8                      D 2 2                      C 2 2                      ♣ A7632                      ♠ A2                      ♥ KQ7                      ♦ A74                      ♣ KQ854                      E/NS ♠ JT3                      ♥ 4                      ♦ KQJT63                      ♣ JT9                      E W ♠ KQ54                      N 10 8                      S 6 6                      H 4 4                      D 10 10                      C 10 9                      ♥ AJ8652                      ♦ 985                      ♣ -                      Opt res: E 3N;-430</p>	<p>N S ♠ A976 Pts Fr %                      N 4 4                      S 7 7                      H 7 7                      D 3 3                      C 7 7                      ♣ AT84                      ♠ 4                      ♥ AKQ6                      ♦ QJT653                      ♣ Q6                      E/EW ♠ QT53                      ♥ T                      ♦ AK82                      ♣ J972                      E W ♠ KJ82                      N 7 7                      S 6 6                      H 6 6                      D 10 10                      C 6 6                      ♥ 98752                      ♦ 7                      ♣ K53                      Opt res: EW 3D;-130</p>	<p>N S ♠ 762 Pts Fr %                      N 4 5                      S 4 4                      H 5 5                      D 4 4                      C 5 5                      ♣ AK97                      ♠ AKT98                      ♥ QJT                      ♦ K92                      ♣ J6                      E/NS ♠ 5                      ♥ A73                      ♦ AT874                      ♣ Q843                      E W ♠ QJ43                      N 9 8                      S 9 8                      H 7 7                      D 9 9                      C 7 7                      ♥ K4                      ♦ QJ53                      ♣ T52                      Opt res: E 3N;-600</p>
<p>N S ♠ J6 Pts Fr %                      N 9 9                      S 6 6                      H 10 10                      D 7 7                      C 11 11                      ♣ KJ4                      ♠ T7532                      ♥ AT87                      ♦ Q62                      ♣ 5                      E/NS ♠ K98                      ♥ 62                      ♦ AT984                      ♣ 972                      E W ♠ AQ4                      N 2 2                      S 6 6                      H 2 2                      D 5 6                      C 2 2                      ♥ J43                      ♦ 7                      ♣ AQT863                      Opt res: NS 4H;420</p>	<p>N S ♠ J53 Pts Fr %                      N 6 6                      S 6 6                      H 8 8                      D 4 4                      C 8 8                      ♣ J943                      ♠ T8                      ♥ KJT                      ♦ 9863                      ♣ T752                      E/NS ♠ AK974                      ♥ 85                      ♦ K542                      ♣ A8                      E W ♠ Q62                      N 6 6                      S 7 7                      H 5 5                      D 8 8                      C 5 5                      ♥ AQ7642                      ♦ A                      ♣ KQ6                      Opt res: NS 2H;110</p>	<p>N S ♠ QJ Pts Fr %                      N 7 7                      S 4 4                      H 7 8                      D 5 5                      C 5 4                      ♣ A542                      ♠ 9643                      ♥ AT975                      ♦ -                      ♣ QT96                      E/NS ♠ K872                      ♥ -                      ♦ KQJ753                      ♣ KJ7                      E W ♠ AT5                      N 6 6                      S 9 9                      H 5 5                      D 7 6                      C 7 7                      ♥ J8642                      ♦ AT6                      ♣ 83                      Opt res: EW 2S;-140</p>
<p>N S ♠ KJ4 Pts Fr %                      N 4 4                      S 7 7                      H 6 6                      D 6 6                      C 4 4                      ♣ 54                      ♠ T97                      ♥ Q54                      ♦ K92                      ♣ 9763                      E/NS ♠ Q8                      ♥ K82                      ♦ AJ4                      ♣ AKJT8                      E W ♠ A6532                      N 7 7                      S 6 5                      H 7 6                      D 6 6                      C 9 8                      ♥ A93                      ♦ Q75                      ♣ Q2                      Opt res: E 3C;-110</p>	<p>N S ♠ AQ9 Pts Fr %                      N 7 7                      S 7 7                      H 8 8                      D 7 7                      C 7 7                      ♣ 7                      ♠ KJT3                      ♥ 2                      ♦ KQ9                      ♣ QT863                      E/NS ♠ 652                      ♥ AT973                      ♦ 8652                      ♣ K                      E W ♠ 874                      N 5 5                      S 6 6                      H 5 5                      D 6 6                      C 6 6                      ♥ 6                      ♦ T73                      ♣ AJ9542                      Opt res: NS 2H;110</p>	



<p>N S N 9 9 S 9 9 H 10 10 D 7 7 C 3 3</p> <p>♠ AQJ85 ♥ KQ2 ♦ QT65 ♣ 7</p> <p>T972 ♥54 ♦K732 ♣K62</p> <p>1</p> <p>♠ K3 ♥ 7 ♦ AJ8 ♣ QJT9843</p> <p>E W N 4 4 S 3 3 H 3 3 D 6 6 C 10 10</p> <p>♠ 64 ♥ AJT9863 ♦ 94 ♣ A5</p> <p>Opt res: EW 5CX;100</p>	<p>N S N 2 2 S 2 2 H 6 6 D 7 7 C 8 8</p> <p>♠ 2 ♥ AKT6 ♦ QJ6 ♣ JT853</p> <p>A4 ♥J87432 ♦95 ♣KQ9</p> <p>2</p> <p>♠ KQJT9865 ♥ 9 ♦ K4 ♣ A2</p> <p>E W N 3 3 S 10 10 H 7 7 D 3 2 C 4 4</p> <p>♠ 73 ♥ Q5 ♦ AT8732 ♣ 764</p> <p>Opt res: EW 4S;-420</p>	<p>N S N 9 9 S 6 6 H 8 8 D 13 13 C 11 11</p> <p>♠ AT8 ♥ A9752 ♦ J7653 ♣ -</p> <p>532 ♥KJT863 ♦T ♣Q52</p> <p>3</p> <p>♠ KQJ974 ♥ 4 ♦ 42 ♣ J976</p> <p>E W N 4 4 S 6 7 H 5 5 D - - C 2 2</p> <p>♠ 6 ♥ Q ♦ AKQ98 ♣ AKT843</p> <p>Opt res: NS 7D;1440</p>
<p>N S N 6 6 S 4 4 H 5 5 D 7 7 C 7 7</p> <p>♠ A4 ♥ Q98 ♦ J8743 ♣ Q85</p> <p>KQ72 ♥AT6 ♦AT9 ♣J73</p> <p>4</p> <p>♠ JT85 ♥ 5432 ♦ K65 ♣ A2</p> <p>E W N 7 7 S 9 9 H 8 8 D 6 6 C 5 5</p> <p>♠ 963 ♥ KJ7 ♦ Q2 ♣ KT964</p> <p>Opt res: EW 1S;-140</p>	<p>N S N 4 4 S 7 7 H 7 6 D 2 2 C 4 4</p> <p>♠ J98 ♥ J72 ♦ K63 ♣ A932</p> <p>64 ♥T8 ♦AQJT87 ♣865</p> <p>5</p> <p>♠ AT5 ♥ AKQ ♦ 942 ♣ KQ74</p> <p>E W N 9 9 S 6 6 H 6 6 D 11 11 C 9 9</p> <p>♠ KQ732 ♥ 96543 ♦ 5 ♣ JT</p> <p>Opt res: EW 3N/5D;-400</p>	<p>N S N 4 4 S 4 4 H 3 3 D 2 2 C 8 8</p> <p>♠ J875 ♥ K6 ♦ K ♣ AQ9543</p> <p>AT63 ♥QT732 ♦A62 ♣6</p> <p>6</p> <p>♠ K92 ♥ A8 ♦ QJT85 ♣ JT8</p> <p>E W N 7 7 S 9 9 H 10 10 D 11 11 C 5 5</p> <p>♠ Q4 ♥ J954 ♦ 9743 ♣ K72</p> <p>Opt res: EW 4H;-620</p>
<p>N S N 5 5 S 3 3 H 7 7 D 4 4 C 5 5</p> <p>♠ 7 ♥ JT8532 ♦ Q2 ♣ A652</p> <p>J983 ♥KQ ♦T6 ♣KJT43</p> <p>7</p> <p>♠ QT65 ♥ A9 ♦ AK9875 ♣ 9</p> <p>E W N 7 7 S 10 10 H 5 5 D 8 8 C 8 8</p> <p>♠ AK42 ♥ 764 ♦ J43 ♣ Q87</p> <p>Opt res: EW 4S;-620</p>	<p>N S N 6 6 S 4 4 H 5 5 D 4 4 C 9 9</p> <p>♠ AJ62 ♥ AQ8 ♦ T43 ♣ Q75</p> <p>KQ753 ♥J762 ♦9765 ♣-</p> <p>8</p> <p>♠ T984 ♥ KT5 ♦ AKJ ♣ AJ9</p> <p>E W N 6 6 S 9 9 H 8 8 D 9 9 C 4 4</p> <p>♠ - ♥ 943 ♦ Q82 ♣ KT86432</p> <p>Opt res: NS 4CX;-100</p>	<p>N S N 7 7 S 5 5 H 8 8 D 5 5 C 8 8</p> <p>♠ 76 ♥ AK54 ♦ A52 ♣ A932</p> <p>QJ54 ♥QJ9 ♦KQ86 ♣74</p> <p>9</p> <p>♠ AK932 ♥ 32 ♦ T74 ♣ 865</p> <p>E W N 6 6 S 8 8 H 5 5 D 7 7 C 5 5</p> <p>♠ T8 ♥ T876 ♦ J93 ♣ KQJT</p> <p>Opt res: NS 3HX;-100</p>
<p>N S N 3 3 S 4 4 H 3 3 D 4 4 C 3 3</p> <p>♠ QT53 ♥ 972 ♦ JT82 ♣ T9</p> <p>42 ♥QT4 ♦AK9 ♣AKJ73</p> <p>10</p> <p>♠ AK97 ♥ J83 ♦ 7654 ♣ Q8</p> <p>E W N 10 10 S 8 8 H 9 9 D 9 9 C 10 10</p> <p>♠ J86 ♥ AK65 ♦ Q3 ♣ 6542</p> <p>Opt res: EW 3N;-630</p>	<p>N S N 3 3 S 9 9 H 4 4 D 4 4 C 2 2</p> <p>♠ T987653 ♥ - ♦ AQ ♣ QJ62</p> <p>A ♥AKT ♦K98643 ♣K75</p> <p>11</p> <p>♠ K4 ♥ Q842 ♦ J ♣ AT9843</p> <p>E W N 10 10 S 3 3 H 8 8 D 9 8 C 10 11</p> <p>♠ QJ2 ♥ J97653 ♦ T752 ♣ -</p> <p>Opt res: NS 5SX;-300</p>	<p>N S N 11 11 S 9 9 H 10 10 D 11 11 C 12 12</p> <p>♠ KQ4 ♥ AT732 ♦ K5 ♣ Q96</p> <p>T7 ♥Q965 ♦862 ♣J752</p> <p>12</p> <p>♠ AJ863 ♥ J84 ♦ QT93 ♣ 3</p> <p>E W N 1 1 S 4 4 H 3 3 D 2 2 C 1 1</p> <p>♠ 952 ♥ K ♦ AJ74 ♣ AKT84</p> <p>Opt res: NS 6C;1370</p>
<p>N S N 7 7 S 4 4 H 5 6 D 5 5 C 7 7</p> <p>♠ AJ6 ♥ A42 ♦ T3 ♣ KJT72</p> <p>Q8753 ♥KJ96 ♦J96 ♣5</p> <p>13</p> <p>♠ K94 ♥ 85 ♦ AKQ2 ♣ Q863</p> <p>E W N 6 6 S 9 9 H 7 7 D 7 7 C 5 5</p> <p>♠ T2 ♥ QT73 ♦ 8754 ♣ A94</p> <p>Opt res: EW 2S;-140</p>	<p>N S N 4 4 S 4 4 H 4 4 D 6 6 C 7 7</p> <p>♠ 974 ♥ J5 ♦ AK8 ♣ AKJ62</p> <p>AQ2 ♥AQ73 ♦QT92 ♣93</p> <p>14</p> <p>♠ KJT86 ♥ K98 ♦ 63 ♣ T84</p> <p>E W N 6 6 S 9 9 H 8 8 D 6 6 C 5 5</p> <p>♠ 53 ♥ T642 ♦ J754 ♣ Q75</p> <p>Opt res: EW 2S;-140</p>	

<p>N S N 8 8 S 6 6 H 8 8 D 8 8 C 8 8</p> <p>♠ J5 ♥ K9532 ♦ A64 ♣ A62</p> <p>♠ KT86 ♥ A76 ♦ 75 ♣ KJT8</p> <p>9432 15 ♥ Q84 S/NS ♦ QT32 ♣ Q9</p> <p>E W N 5 5 S 6 6 H 4 4 D 4 4 C 5 5</p> <p>♠ AQ7 ♥ JT ♦ KJ98 ♣ 7543</p> <p>Opt res: NS 1N;-120</p>	<p>N S N 7 8 S 8 8 H 8 8 D 7 7 C 7 7</p> <p>♠ 83 ♥ A832 ♦ Q9 ♣ QT865</p> <p>♠ AJ65 ♥ 94 ♦ J43 ♣ KJ43</p> <p>72 16 ♥ QT65 W/EW ♦ A872 ♣ A92</p> <p>E W N 5 6 S 4 4 H 5 5 D 5 6 C 6 6</p> <p>♠ KQT94 ♥ KJ7 ♦ KT65 ♣ 7</p> <p>Opt res: S 1N;-120</p>	<p>N S N 8 8 S 4 4 H 9 9 D 4 4 C 9 9</p> <p>♠ 87 ♥ J74 ♦ J3 ♣ AK9762</p> <p>♠ QT532 ♥ T3 ♦ 98754 ♣ 3</p> <p>17 ♠ AJ9 ♥ 986 N/- ♦ AKQ ♣ QT85</p> <p>E W N 5 5 S 9 9 H 4 4 D 9 9 C 4 4</p> <p>♠ K64 ♥ AKQ52 ♦ T62 ♣ J4</p> <p>Opt res: NS 4HX;-100</p>
<p>N S N - - S 1 1 H 2 2 D - - C 1 1</p> <p>♠ 2 ♥ K632 ♦ T63 ♣ 98543</p> <p>♠ QT65 ♥ AQ98 ♦ J9 ♣ A72</p> <p>18 ♠ AK4 ♥ T E/NS ♦ AKQ42 ♣ KQJ6</p> <p>E W N 13 13 S 12 12 H 11 11 D 13 13 C 11 12</p> <p>♠ J9873 ♥ J754 ♦ 875 ♣ T</p> <p>Opt res: EW 7N;-1520</p>	<p>N S N 2 2 S 4 4 H 7 7 D 5 5 C 3 2</p> <p>♠ AJ843 ♥ 72 ♦ T74 ♣ K92</p> <p>♠ Q95 ♥ QJ4 ♦ K93 ♣ QT85</p> <p>19 ♠ KT72 ♥ A3 S/EW ♦ A82 ♣ AJ73</p> <p>E W N 10 10 S 9 9 H 6 6 D 8 8 C 10 10</p> <p>♠ 6 ♥ KT9865 ♦ QJ65 ♣ 64</p> <p>Opt res: EW 4N;-630</p>	<p>N S N 6 6 S 3 3 H 10 10 D 3 4 C 11 11</p> <p>♠ 6 ♥ KJT83 ♦ 9 ♣ KQT942</p> <p>♠ J7432 ♥ Q9 ♦ KJ742 ♣ 6</p> <p>20 ♠ KQT ♥ A64 W/All ♦ T86 ♣ A853</p> <p>E W N 6 6 S 9 9 H 3 3 D 9 9 C 2 2</p> <p>♠ A985 ♥ 752 ♦ AQ53 ♣ J7</p> <p>Opt res: EW 5SX;500</p>
<p>N S N 8 8 S 8 8 H 10 10 D 7 7 C 10 10</p> <p>♠ - ♥ AJ5 ♦ Q643 ♣ KJT986</p> <p>♠ 9643 ♥ K32 ♦ KJ97 ♣ 42</p> <p>21 ♠ AQJ8 ♥ T94 N/NS ♦ AT82 ♣ 75</p> <p>E W N 5 5 S 5 5 H 3 3 D 6 6 C 3 3</p> <p>♠ KT752 ♥ Q876 ♦ 5 ♣ AQ3</p> <p>Opt res: NS 4H;-620</p>	<p>N S N 6 6 S 4 4 H 6 6 D 7 7 C 9 9</p> <p>♠ 64 ♥ J732 ♦ Q98 ♣ KT72</p> <p>♠ J8 ♥ KQT95 ♦ JT653 ♣ Q</p> <p>22 ♠ KQT9532 ♥ A4 E/EW ♦ 7 ♣ J94</p> <p>E W N 5 5 S 9 9 H 7 7 D 6 6 C 4 4</p> <p>♠ A7 ♥ 86 ♦ AK42 ♣ A8653</p> <p>Opt res: NS 4CX;-100</p>	<p>N S N 5 5 S 4 4 H 9 9 D 9 9 C 6 6</p> <p>♠ T9 ♥ AT852 ♦ KQ93 ♣ Q3</p> <p>♠ K72 ♥ 943 ♦ J86 ♣ JT64</p> <p>23 ♠ AJ8643 ♥ K6 S/All ♦ T5 ♣ A75</p> <p>E W N 7 7 S 9 9 H 4 4 D 4 4 C 7 7</p> <p>♠ Q5 ♥ QJ7 ♦ A742 ♣ K982</p> <p>Opt res: EW 3S;-140</p>
<p>N S N 6 6 S 7 7 H 6 6 D 7 7 C 6 6</p> <p>♠ Q964 ♥ 76 ♦ 9742 ♣ T32</p> <p>♠ A72 ♥ T98 ♦ J53 ♣ J987</p> <p>24 ♠ J83 ♥ KQ54 W/- ♦ A86 ♣ AQ6</p> <p>E W N 7 7 S 6 6 H 7 7 D 6 6 C 7 7</p> <p>♠ KT5 ♥ AJ32 ♦ KQT ♣ K54</p> <p>Opt res: EW 1N;-90</p>	<p>N S N 5 5 S 6 6 H 8 7 D 7 7 C 4 4</p> <p>♠ 642 ♥ T62 ♦ AKJT3 ♣ K2</p> <p>♠ KT53 ♥ AJ5 ♦ 764 ♣ T85</p> <p>25 ♠ 97 ♥ Q9 N/EW ♦ 952 ♣ AQJ964</p> <p>E W N 7 7 S 6 6 H 5 5 D 5 5 C 9 9</p> <p>♠ AQJ8 ♥ K8743 ♦ Q8 ♣ 73</p> <p>Opt res: N 3HX;-100</p>	<p>N S N 5 5 S 8 8 H 7 7 D 5 5 C 8 8</p> <p>♠ QT84 ♥ QT832 ♦ Q ♣ J72</p> <p>♠ 92 ♥ AKJ65 ♦ AT4 ♣ Q43</p> <p>26 ♠ AJ3 ♥ 97 E/All ♦ J9653 ♣ 986</p> <p>E W N 6 6 S 4 4 H 6 6 D 8 8 C 5 5</p> <p>♠ K765 ♥ 4 ♦ K872 ♣ AKT5</p> <p>Opt res: NS 2S;-110</p>
<p>N S N 8 8 S 10 10 H 11 11 D 13 13 C 4 4</p> <p>♠ AK ♥ 763 ♦ QJT62 ♣ J64</p> <p>♠ 97542 ♥ T2 ♦ K ♣ KQ852</p> <p>27 ♠ 6 ♥ Q954 S/- ♦ 843 ♣ AT973</p> <p>E W N - - S - - H 1 1 D - - C 9 8</p> <p>♠ QJT83 ♥ AKJ8 ♦ A975 ♣ -</p> <p>Opt res: E 8CX;1100</p>	<p>N S N 8 8 S 3 3 H 8 8 D 3 3 C 4 4</p> <p>♠ A6 ♥ AJ8652 ♦ T7 ♣ T97</p> <p>♠ QJ84 ♥ T7 ♦ AJ52 ♣ KJ5</p> <p>28 ♠ KT93 ♥ K W/NS ♦ K843 ♣ Q432</p> <p>E W N 5 5 S 10 10 H 5 5 D 10 10 C 8 8</p> <p>♠ 752 ♥ Q943 ♦ Q96 ♣ A86</p> <p>Opt res: EW 4S;-420</p>	

<p>N S ♠ 9 Pts Fr %            N 10 10            S 5 5            H 10 10            D 9 9            C 6 6</p> <p>♥ AKJ6532            ♦ J2            ♣ AQ2</p> <p>♠ QT432            ♥ Q            ♦ T8            ♣ KJT53</p> <p>1</p> <p>♠ A765            ♥ T84            ♦ AQ43            ♣ 86</p> <p>E W ♠ KJ8            N 2 2            S 8 8            H 2 2            D 4 3            C 6 6</p> <p>♥ 97            ♦ K9765            ♣ 974</p> <p>Opt res: NS 4N;430</p>	<p>N S ♠ A653 Pts Fr %            N 8 8            S 11 11            H 10 10            D 8 8            C 11 11</p> <p>♥ K            ♦ 54            ♣ KQ9853</p> <p>♠ T92            ♥ J73            ♦ K72            ♣ JT42</p> <p>2</p> <p>♠ J84            ♥ 9852            ♦ AQJT6            ♣ 7</p> <p>E W ♠ KQ7            N 1 1            S 1 1            H - -            D 5 5            C - 1</p> <p>♥ AQT64            ♦ 983            ♣ A6</p> <p>Opt res: NS 4S;650</p>	<p>N S ♠ J95 Pts Fr %            N 10 10            S 7 7            H 6 6            D 9 9            C 8 8</p> <p>♥ KQ2            ♦ AK65            ♣ K62</p> <p>♠ Q8            ♥ T986543            ♦ Q93            ♣ 8</p> <p>3</p> <p>S/EW ♠ A7643            ♥ 7            ♦ J2            ♣ AT953</p> <p>E W ♠ KT2            N 3 3            S 6 6            H 7 7            D 3 3            C 5 5</p> <p>♥ AJ            ♦ T874            ♣ QJ74</p> <p>Opt res: NS 3N;430</p>
<p>N S ♠ A852 Pts Fr %            N 6 6            S 10 10            H 8 8            D 3 3            C 8 8</p> <p>♥ K983            ♦ AJ            ♣ K82</p> <p>♠ 976            ♥ A75            ♦ K86432            ♣ T</p> <p>4</p> <p>♠ Q            ♥ QT            ♦ QT975            ♣ A9763</p> <p>E W ♠ KJT43            N 4 4            S 3 3            H 3 3            D 10 10            C 5 5</p> <p>♥ J642            ♣ QJ54</p> <p>Opt res: EW 5DX;200</p>	<p>N S ♠ Q96 Pts Fr %            N 10 10            S 5 5            H 10 10            D 7 7            C 7 7</p> <p>♥ AK43            ♦ KJ9            ♣ AK5</p> <p>♠ T8542            ♥ J5            ♦ QT532            ♣ 4</p> <p>5</p> <p>♠ AK3            ♥ 92            ♦ A7            ♣ JT8732</p> <p>E W ♠ J7            N 3 3            S 7 7            H 3 3            D 6 6            C 6 6</p> <p>♥ QT876            ♦ 864            ♣ Q96</p> <p>Opt res: NS 4N;630</p>	<p>N S ♠ AKT8 Pts Fr %            N 5 5            S 5 5            H 6 6            D 5 5            C 7 7</p> <p>♥ J4            ♦ A94            ♣ J873</p> <p>♠ 94            ♥ KQT2            ♦ Q753            ♣ AT4</p> <p>6</p> <p>♠ QJ753            ♥ 83            ♦ KJ6            ♣ Q65</p> <p>E W ♠ 62            N 7 7            S 7 7            H 7 7            D 8 8            C 6 6</p> <p>♥ A9765            ♦ T82            ♣ K92</p> <p>Opt res: EW 1D/1N;-90</p>
<p>N S ♠ A8 Pts Fr %            N 10 10            S 10 10            H 12 12            D 11 11            C 8 8</p> <p>♥ KJ94            ♦ T9743            ♣ KQ</p> <p>♠ T32            ♥ 85            ♦ 652            ♣ JT542</p> <p>7</p> <p>♠ QJ74            ♥ T62            ♦ AJ8            ♣ 863</p> <p>E W ♠ K965            N 2 2            S 3 3            H 1 1            D 2 2            C 4 4</p> <p>♥ AQ73            ♦ KQ            ♣ A97</p> <p>Opt res: NS 6H;1430</p>	<p>N S ♠ - Pts Fr %            N 3 3            S 1 1            H 7 7            D 5 6            C 6 6</p> <p>♥ 9732            ♦ AT842            ♣ Q763</p> <p>♠ KT943            ♥ AJT8            ♦ 976            ♣ A</p> <p>8</p> <p>♠ AJ8652            ♥ Q            ♦ 53            ♣ K984</p> <p>E W ♠ Q7            N 8 8            S 11 11            H 6 6            D 6 6            C 6 6</p> <p>♥ K654            ♦ KQJ            ♣ JT52</p> <p>Opt res: EW 4S;-450</p>	<p>N S ♠ QT82 Pts Fr %            N 7 7            S 7 7            H 9 9            D 6 6            C 6 6</p> <p>♥ T94            ♦ AJ9            ♣ 962</p> <p>♠ K763            ♥ Q7            ♦ KT7            ♣ KJ43</p> <p>9</p> <p>♠ A94            ♥ 32            ♦ 8543            ♣ AQ75</p> <p>E W ♠ J5            N 4 4            S 6 6            H 4 4            D 6 6            C 7 7</p> <p>♥ AKJ865            ♦ Q62            ♣ T8</p> <p>Opt res: NS 1H;140</p>
<p>N S ♠ 5 Pts Fr %            N 1 4            S - 1            H 7 8            D 3 4            C 5 5</p> <p>♥ KT98            ♦ QT7542            ♣ 92</p> <p>♠ AQT432            ♥ 5432            ♦ 9            ♣ AK</p> <p>10</p> <p>♠ 976            ♥ -            ♦ AKJ863            ♣ Q843</p> <p>E W ♠ KJ8            N 7 7            S 11 11            H 5 5            D 9 9            C 7 7</p> <p>♥ AQJ76            ♣ JT765</p> <p>Opt res: EW 4S;-650</p>	<p>N S ♠ KT9754 Pts Fr %            N 9 9            S 11 11            H 6 6            D 7 6            C 6 6</p> <p>♥ A96            ♦ AJ2            ♣ A</p> <p>♠ J32            ♥ J8743            ♦ Q75            ♣ T6</p> <p>11</p> <p>♠ A            ♥ QT2            ♦ K643            ♣ KQJ75</p> <p>E W ♠ Q86            N 4 4            S 2 2            H 7 7            D 6 6            C 6 6</p> <p>♥ K5            ♦ T98            ♣ 98432</p> <p>Opt res: NS 4S;450</p>	<p>N S ♠ AT6 Pts Fr %            N 7 7            S 5 5            H 8 8            D 6 6            C 3 3</p> <p>♥ A87542            ♦ Q952            ♣ -</p> <p>♠ KJ75            ♥ 6            ♦ 8            ♣ AJT7532</p> <p>12</p> <p>♠ Q84            ♥ T93            ♦ AKT643            ♣ Q</p> <p>E W ♠ 932            N 6 5            S 7 7            H 5 5            D 7 7            C 9 9</p> <p>♥ KQJ            ♦ J7            ♣ K9864</p> <p>Opt res: EW 3C;-110</p>
<p>N S ♠ J3 Pts Fr %            N 5 5            S 3 3            H 5 5            D 6 6            C 3 4</p> <p>♥ T765            ♦ JT9            ♣ T864</p> <p>♠ KT42            ♥ K            ♦ AQ63            ♣ KQ52</p> <p>13</p> <p>♠ 9765            ♥ A9832            ♦ 5            ♣ J97</p> <p>E W ♠ AQ8            N 8 8            S 10 10            H 8 8            D 7 7            C 9 9</p> <p>♥ QJ4            ♦ K8742            ♣ A3</p> <p>Opt res: EW 4S;-620</p>	<p>N S ♠ KJ Pts Fr %            N 6 6            S 3 3            H 10 10            D 7 7            C 3 3</p> <p>♥ KJT7543            ♦ K97            ♣ 7</p> <p>♠ AQ3            ♥ Q98            ♦ T6            ♣ KT954</p> <p>14</p> <p>♠ T6542            ♥ 6            ♦ A852            ♣ AQ3</p> <p>E W ♠ 987            N 6 6            S 10 10            H 3 3            D 6 6            C 9 9</p> <p>♥ A2            ♦ QJ43            ♣ J862</p> <p>Opt res: NS 5HX;-100</p>	

<p>N S ♠ T96 Pts Fr % N 1 1 ♥ K543 S 1 1 ♦ JT62 H 4 4 ♣ Q6 D 2 2 C 1 1 ♠ AJ842 ♥ Q9 ♦ AKQ9 ♣ 72 E W ♠ 75 N 12 12 ♥ A76 S 11 12 ♦ 84 H 9 9 ♣ AKJ953 D 10 11 C 12 12 ♠ KQ3 ♥ JT82 ♦ 753 ♣ T84 Opt res: EW 6N;-990</p>	<p>N S ♠ QJ75 Pts Fr % N 5 5 ♥ 87 S 6 6 ♦ K732 H 5 5 ♣ J63 D 6 6 C 7 6 ♠ T643 ♥ 532 ♦ JT4 ♣ KT4 E W ♠ K82 N 8 8 ♥ AQJ4 S 7 7 ♦ AQ9 H 8 8 ♣ Q82 D 7 6 C 7 6 ♠ A9 ♥ KT96 ♦ 865 ♣ A975 Opt res: EW 2N;-120</p>	<p>N S ♠ Q432 Pts Fr % N 2 2 ♥ T82 S 2 2 ♦ Q3 H 1 1 ♣ KJ64 D 2 2 C 3 3 ♠ AKJ9 ♥ QJ76 ♦ AJ8 ♣ A8 E W ♠ T N 11 11 ♥ A954 S 10 10 ♦ KT42 H 11 12 ♣ Q532 D 11 11 C 10 10 ♠ 8765 ♥ K3 ♦ 9765 ♣ T97 Opt res: W 6H;-980</p>
<p>N S ♠ AK Pts Fr % N 9 9 ♥ 965 S 11 11 ♦ AJ9 H 7 7 ♣ KT864 D 9 9 C 9 9 ♠ 984 ♥ A743 ♦ QT3 ♣ QJ3 E W ♠ JT N 2 2 ♥ KJT2 S - - ♦ 8742 H 5 5 ♣ 952 D 3 3 C 4 4 ♠ Q76532 ♥ Q8 ♦ K65 ♣ A7 Opt res: NS 4S;-650</p>	<p>N S ♠ 865 Pts Fr % N 4 4 ♥ T6 S 3 3 ♦ Q72 H 2 2 ♣ KQT42 D 4 4 C 5 5 ♠ K73 ♥ AK985 ♦ JT654 ♣ - E W ♠ QJT9 N 9 9 ♥ J74 S 10 10 ♦ K H 11 11 ♣ AJ876 D 9 9 C 8 8 ♠ A42 ♥ Q32 ♦ A983 ♣ 953 Opt res: EW 4H;-650</p>	<p>N S ♠ KT95 Pts Fr % N 8 8 ♥ 874 S 7 7 ♦ AJ9 H 6 6 ♣ A97 D 5 5 C 7 7 ♠ A643 ♥ T53 ♦ QT654 ♣ 2 E W ♠ 82 N 5 5 ♥ KQ62 S 5 5 ♦ K73 H 7 7 ♣ KQJ3 D 7 7 C 6 6 ♠ QJ7 ♥ AJ9 ♦ 82 ♣ T8654 Opt res: NS 1N;-120</p>
<p>N S ♠ KQT42 Pts Fr % N 6 6 ♥ AK75 S 7 6 ♦ 63 H 7 7 ♣ 85 D 6 5 C 6 5 ♠ J976 ♥ 84 ♦ K84 ♣ 9763 E W ♠ A8 N 6 6 ♥ QT96 S 6 6 ♦ AT97 H 6 6 ♣ AQJ D 7 7 C 7 7 ♠ 53 ♥ J32 ♦ QJ52 ♣ KT42 Opt res: N 1S/NS 1H;-80</p>	<p>N S ♠ T8 Pts Fr % N 4 4 ♥ QT974 S 6 6 ♦ A9 H 5 5 ♣ KJ64 D 2 2 C 6 6 ♠ A753 ♥ AK32 ♦ Q875 ♣ A E W ♠ Q4 N 9 9 ♥ J8 S 6 6 ♦ KJT32 H 7 7 ♣ Q972 D 11 11 C 7 6 ♠ KJ962 ♥ 65 ♦ 64 ♣ T853 Opt res: EW 3N/5D;-600</p>	<p>N S ♠ 7 Pts Fr % N 3 3 ♥ J7542 S 3 3 ♦ T543 H 8 8 ♣ A95 D 7 7 C 7 7 ♠ 854 ♥ A6 ♦ KQ96 ♣ QJ83 E W ♠ AKJ9632 N 8 8 ♥ 83 S 9 9 ♦ 72 H 4 4 ♣ 42 D 6 6 C 5 5 ♠ QT ♥ KQT9 ♦ AJ8 ♣ KT76 Opt res: EW 2S;-140</p>
<p>N S ♠ KT64 Pts Fr % N 8 8 ♥ KJ83 S 8 8 ♦ A765 H 9 9 ♣ J D 6 6 C 7 7 ♠ J97 ♥ Q9 ♦ JT9842 ♣ 84 E W ♠ AQ8 N 5 5 ♥ T54 S 4 4 ♦ K H 4 4 ♣ KQT653 D 7 7 C 6 6 ♠ 532 ♥ A762 ♦ Q3 ♣ A972 Opt res: NS 2H;-140</p>	<p>N S ♠ A953 Pts Fr % N 7 7 ♥ J5 S 8 8 ♦ K64 H 5 5 ♣ AJ42 D 4 4 C 8 8 ♠ T7 ♥ KT2 ♦ A952 ♣ KT86 E W ♠ Q84 N 6 6 ♥ AQ764 S 5 5 ♦ Q873 H 8 8 ♣ 5 D 9 9 C 5 5 ♠ KJ62 ♥ 983 ♦ JT ♣ Q973 Opt res: NS 3SX;-100</p>	<p>N S ♠ AJ983 Pts Fr % N 2 2 ♥ QJ64 S 6 6 ♦ J75 H 8 8 ♣ 5 D 3 3 C 2 2 ♠ T642 ♥ 5 ♦ A2 ♣ QJ9743 E W ♠ K7 N 9 9 ♥ AK8 S 7 7 ♦ KQ9863 H 5 5 ♣ KT D 10 10 C 11 11 ♠ Q5 ♥ T9732 ♦ T4 ♣ A862 Opt res: EW 3N/5C;-600</p>
<p>N S ♠ K2 Pts Fr % N 9 9 ♥ 6 S 5 5 ♦ AKJT863 H 5 5 ♣ JT2 D 9 9 C 7 7 ♠ Q6543 ♥ AJ4 ♦ Q ♣ A854 E W ♠ J87 N 4 4 ♥ Q8753 S 8 8 ♦ 954 H 7 7 ♣ K9 D 3 3 C 5 5 ♠ AT9 ♥ KT92 ♦ 72 ♣ Q763 Opt res: EW 4SX;-300</p>	<p>N S ♠ 92 Pts Fr % N 6 6 ♥ QJ5 S 5 5 ♦ KQJ5 H 9 9 ♣ AQJ8 D 6 6 C 7 7 ♠ KQ843 ♥ A82 ♦ A42 ♣ K6 E W ♠ JT N 7 7 ♥ K6 S 7 7 ♦ T9863 H 4 4 ♣ 9732 D 7 7 C 5 5 ♠ A765 ♥ T9743 ♦ 7 ♣ T54 Opt res: NS 3H;-140</p>	