

兵庫県知事杯 OPEN TEAMS Session 1 Flight B 2012年10月6日(土)

1

♠ J85
♥ 743
♦ 952
♣ AKJ10

♠ 62
♥ A82
♦ K4
♣ 876542

♠ A97
♥ KQ96
♦ 1086
♣ Q93

♠ KQ1043
♥ J105
♦ AQJ73
♣

Board (1) Av: NS=+180

N-S	E-W	Contract	N-S	E-W	IMP
9	5	4S	S 4	420	6
4	7	4S	S 4	420	6
1	10	4S	S 4	420	6
8	2	3Cx	W-2	300	3
6	3	2S	S 4	170	0
2	8	2S	S 4	170	0
3	6	2S	S 3	140	-1
5	9	4S	S-1	50	-6
10	1	4S	S-2	100	-7
7	4	4S	S-2	100	-7

2

♠ 10963
♥ J83
♦ Q5
♣ AKJ5

♠ J7
♥ K1054
♦ 9742
♣ Q98

♠ AQ852
♥ AQ62
♦ 106
♣ 103

♠ K4
♥ 97
♦ AKJ83
♣ 7642

Board (2) Av: NS=+30

N-S	E-W	Contract	N-S	E-W	IMP
3	6	2NT	N 4	180	4
5	9	3D	S 4	130	3
1	10	2H	E-2	100	2
9	5	2H	E-2	100	2
7	4	2H	E-1	50	1
6	3	2H	E-1	50	1
2	8	2H	E-1	50	1
4	7	2S	E 2	110	-4
10	1	2H	E 2	110	-4
8	2	2H	E 2	110	-4

3

♠ 653
♥ QJ4
♦ A92
♣ KJ83

♠ 842
♥ AK103
♦ J1083
♣ 102

♠ KJ97
♥ 982
♦ KQ654
♣ 9

♠ AQ10
♥ 765
♦ 7
♣ AQ7654

Board (3) Av: NS=+300

N-S	E-W	Contract	N-S	E-W	IMP
3	6	3NT	N 4	430	4
6	3	5C	S 5	400	3
5	9	3NT	N 3	400	3
7	4	3NT	N 3	400	3
9	5	3NT	N 3	400	3
8	2	3NT	N 3	400	3
1	10	3C	S 5	150	-4
4	7	3C	S 5	150	-4
10	1	4C	S 4	130	-5
2	8	5C	S-1	50	-8

4

♠ 9743
♥ J1074
♦ AK103
♣ Q

♠ AQ108
♥ Q32
♦ J752
♣ A5

♠ 62
♥ AK9
♦ 4
♣ KJ87642

♠ KJ5
♥ 865
♦ Q986
♣ 1093

Board (4) Av: NS=-560

N-S	E-W	Contract	N-S	E-W	IMP
8	2	1NT	E 5	210	8
7	4	2NT	E 6	240	8
6	3	1NT	E 6	240	8
5	9	3NT	W 5	660	-3
4	7	3NT	W 5	660	-3
2	8	3NT	W 5	660	-3
3	6	3NT	E 5	660	-3
9	5	3NT	E 5	660	-3
1	10	3NT	E 6	690	-4
10	1	3NT	W 7	720	-4

5

♠ J92
♥ K974
♦ 3
♣ AQ1076

♠ 864
♥ QJ108
♦ AJ7
♣ J95

♠ Q75
♥ A65
♦ KQ54
♣ 832

♠ AK103
♥ 32
♦ 109862
♣ K4

Board (5) Av: NS=+10

N-S	E-W	Contract	N-S	E-W	IMP
10	1	1NT	N 1	90	2
5	9	1NT	N 1	90	2
6	3	Passout			0
4	7	Passout			0
7	4	Passout			0
2	8	Passout			0
1	10	Passout			0
9	5	Passout			0
8	2	Passout			0
3	6	1NT	N-1	100	-3

6

♠ 7
♥ AK984
♦ K7542
♣ 54

♠ AJ10853
♥ J52
♦ Q
♣ KJ7

♠ Q2
♥ 763
♦ A3
♣ AQ10963

♠ K964
♥ Q10
♦ J10986
♣ 82

Board (6) Av: NS=-390

N-S	E-W	Contract	N-S	E-W	IMP
8	2	4S	W-1	100	10
2	8	3C	E 4	130	6
4	7	3S	W 3	140	6
5	9	3S	W 4	170	6
10	1	3S	W 4	170	6
9	5	4S	W 4	620	-6
7	4	4S	W 4	620	-6
1	10	4S	W 4	620	-6
3	6	4S	W 4	620	-6
6	3	4S	W 4	620	-6

7

♠ 10
♥ 752
♦ J752
♣ K8542

♠ 87542
♥ A10643
♦ A
♣ J7

♠ QJ9
♥ KJ8
♦ K103
♣ AQ93

♠ AK63
♥ Q9
♦ Q9864
♣ 106

Board (7) Av: NS=-640

N-S	E-W	Contract	N-S	E-W	IMP
6	3	4H	E-1	100	12
1	10	4S	E 4	620	1
7	4	4H	E 4	620	1
5	9	4H	E 4	620	1
8	2	3NT	E 4	630	0
9	5	4S	E 5	650	0
4	7	4S	E 5	650	0
2	8	4S	E 5	650	0
3	6	4S	E 5	650	0
10	1	5Dx	S-4	1100	-10

8

♠ QJ2
♥ 82
♦ K105
♣ AJ974

♠ AK1095
♥ Q53
♦ 9642
♣ 2

♠ 76
♥ AKJ1076
♦ Q7
♣ 1086

♠ 843
♥ 94
♦ AJ83
♣ KQ53

Board (8) Av: NS=-240

N-S	E-W	Contract	N-S	E-W	IMP
1	10	3S	E 4	170	2
9	5	3H	E 4	170	2
6	3	3H	E 4	170	2
2	8	3H	E 4	170	2
8	2	2H	E 4	170	2
5	9	3H	E 5	200	1
4	7	3H	E 5	200	1
3	6	4H	E 4	420	-5
10	1	4H	E 4	420	-5
7	4	4H	E 4	420	-5

9

♠ K7
♥ 865
♦ AJ53
♣ A1072

♠ 108653
♥ KJ42
♦ K104
♣ 9

♠ AQ4
♥ A93
♦ Q986
♣ Q63

♠ J92
♥ Q107
♦ 72
♣ KJ854

Board (9) Av: NS=-140

N-S	E-W	Contract	N-S	E-W	IMP
1	10	3S	W-1	100	6
9	5	1NT	S-1	50	3
7	4	1NT	S-1	50	3
8	2	1NT	S-1	50	3
3	6	3C	N-2	100	1
4	7	3C	N-2	100	1
2	8	1NT	N-2	100	1
6	3	3C	N-3	150	0
10	1	4Cx	N-3	500	-8
5	9	3Hx	E 4	930	-13

10

♠ K953
♥ 105
♦ K97
♣ QJ73

♠ 102
♥ AK862
♦ A10432
♣ A

N
W — E
S

♠ 8
♥ Q94
♦ QJ85
♣ K10985

♠ AQJ764
♥ J73
♦ 6
♣ 642

Board (10) Av: NS=-610

N-S	E-W	Contract	N-S	E-W	IMP
1	10	4S	S-2	200	9
9	5	4Sx	S-2	500	3
7	4	4Sx	S-2	500	3
10	1	5H	W 5	650	-1
8	2	5H	W 5	650	-1
3	6	4H	W 5	650	-1
5	9	4H	W 5	650	-1
2	8	4H	W 5	650	-1
6	3	4H	W 5	650	-1
4	7	4H	W 5	650	-1

11

♠ J7
♥ Q10843
♦ A75
♣ A710

♠ 6
♥ AK52
♦ KQ102
♣ 8643

N
W — E
S

♠ KQ109432
♥ J
♦ J864
♣ 5

♠ A85
♥ 976
♦ 93
♣ AK972

Board (11) Av: NS=-250

N-S	E-W	Contract	N-S	E-W	IMP
6	3	4H	N 4	420	12
4	7	4H	N-1	50	5
9	5	3S	E 4	170	2
2	8	3S	E 4	170	2
5	9	2S	E 4	170	2
7	4	3S	E 5	200	2
1	10	4S	E 4	420	-5
10	1	4S	E 4	420	-5
3	6	4S	E 4	420	-5
8	2	4S	E 5	450	-5

12

♠ J98
♥ 1052
♦ K53
♣ 10984

♠ 7654
♥ QJ973
♦ 109
♣ AJ

N
W — E
S

♠ A3
♥ AK6
♦ A86
♣ KQ765

♠ KQ102
♥ 84
♦ QJ742
♣ 32

Board (12) Av: NS=-480

N-S	E-W	Contract	N-S	E-W	IMP
10	1	5C	W 6	420	2
6	3	4H	E 6	480	0
7	4	4H	E 6	480	0
9	5	4H	E 6	480	0
3	6	4H	E 6	480	0
1	10	4H	E 6	480	0
2	8	4H	E 6	480	0
8	2	3NT	E 6	490	0
5	9	3NT	E 6	490	0
4	7	3NT	E 6	490	0

13

♠ K95
♥ 754
♦ AJ106
♣ 753

♠ A62
♥ Q103
♦ K843
♣ Q64

N
W — E
S

♠ AJ986
♥ Q9752
♣ AK8

♠ QJ108743
♥ K2
♦
♣ J1092

Board (13) Av: NS=-170

N-S	E-W	Contract	N-S	E-W	IMP
2	8	5H	E-2	200	9
1	10	5H	E-2	200	9
7	4	5H	E-1	100	7
5	9	5H	E-1	100	7
4	7	4H	E-1	100	7
3	6	4S	S-2	200	-1
9	5	4Sx	S-2	500	-8
8	2	4Sx	S-2	500	-8
10	1	4H	W 4	620	-10
6	3	4H	E 4	620	-10

14

♠ Q3
♥ K10732
♦ J10965
♣ 7

♠ AK10962
♥ Q8
♦ K73
♣ 93

N
W — E
S

♠ 85
♥ AJ
♦ Q82
♣ AK10654

♠ J74
♥ 9654
♦ A4
♣ QJ82

Board (14) Av: NS=-440

N-S	E-W	Contract	N-S	E-W	IMP
4	7	4S	W 4	420	1
3	6	4S	W 4	420	1
9	5	4S	W 4	420	1
7	4	4S	W 4	420	1
1	10	4S	W 4	420	1
5	9	4S	W 5	450	0
8	2	4S	W 5	450	0
10	1	4S	W 5	450	0
6	3	4S	W 5	450	0
2	8	4S	W 5	450	0

15

♠ AK965
♥ K2
♦ A9
♣ AQ104

♠ 32
♥ Q10874
♦ Q85
♣ 976

N
W — E
S

♠ Q4
♥ A963
♦ 7632
♣ J52

♠ J1087
♥ J5
♦ KJ104
♣ K83

Board (15) Av: NS=+690

N-S	E-W	Contract	N-S	E-W	IMP
6	3	6S	N 6	1430	12
2	8	4S	N 7	710	1
9	5	4S	N 7	710	1
7	4	3NT	N 6	690	0
3	6	5S	N 6	680	0
1	10	4S	N 6	680	0
5	9	4S	N 6	680	0
10	1	4S	N 6	680	0
4	7	4S	N 6	680	0
8	2	5S	N 5	650	-1

16

♠ 96
♥ 654
♦ AK62
♣ KQ95

♠ 2
♥ KJ102
♦ J1095
♣ J1087

N
W — E
S

♠ J83
♥ Q987
♦ Q43
♣ 642

♠ AKQ10754
♥ A3
♦ 87
♣ A3

Board (16) Av: NS=+760

N-S	E-W	Contract	N-S	E-W	IMP
2	8	7NT	N 7	1520	13
5	9	6S	S 7	1010	6
3	6	6S	S 7	1010	6
8	2	6S	S 7	1010	6
1	10	6S	S 7	1010	6
7	4	4S	S 7	510	-6
9	5	4S	S 7	510	-6
10	1	4S	S 7	510	-6
4	7	5S	S 6	480	-7
6	3	3S	S 7	260	-11

17

♠ Q64
♥ AK32
♦ AK2
♣ 763

♠ AK3
♥ 1098
♦ 754
♣ AKQJ

N
W — E
S

♠ J9872
♥ Q5
♦ 103
♣ 10854

♠ 105
♥ J764
♦ QJ986
♣ 92

Board (17) Av: NS=+70

N-S	E-W	Contract	N-S	E-W	IMP
5	9	1NT	N 4	180	3
4	7	1NT	N 2	120	2
9	5	3D	S 3	110	1
6	3	1NT	N 1	90	1
7	4	1NT	N 1	90	1
10	1	1NT	N 1	90	1
8	2	1NT	N 1	90	1
3	6	1NT	N 1	90	1
1	10	2S	E 2	110	-5
2	8	2S	E 2	110	-5

18

♠ QJ103
♥ 107
♦ AKJ109
♣ J3

♠ 84
♥ KQ9864
♦ 73
♣ K102

N
W — E
S

♠ 7
♥ A52
♦ Q842
♣ A8765

♠ AK9652
♥ J3
♦ 65
♣ Q94

Board (18) Av: NS=-80

N-S	E-W	Contract	N-S	E-W	IMP
8	2	3S	S 4	170	6
6	3	5Hx	W-1	100	5
9	5	4S	S-1	100	-1
4	7	4S	S-1	100	-1
5	9	4S	S-1	100	-1
7	4	4S	S-1	100	-1
10	1	4S	S-1	100	-1
1	10	4S	S-1	100	-1
3	6	4S	S-1	100	-1
2	8	4S	S-1	100	-1

19

♠ QJ9
♥ KJ832
♦ A5
♣ 976

♠ A532
♥ 105
♦ 432
♣ KJ42

N
W — E
S

♠ K74
♥ AQ74
♦ K86
♣ AQ3

♠ 1086
♥ 96
♦ QJ1097
♣ 1085

20

♠ 732
♥ 965
♦ AJ9
♣ QJ106

♠ AKQ86
♥ 1072
♦ 105
♣ AK3

N
W — E
S

♠ 104
♥ AQ43
♦ K7
♣ 98742

♠ J95
♥ KJ8
♦ Q86432
♣ 5

21

♠ KJ7
♥ 964
♦ 1084
♣ KJ43

♠ 642
♥ A7
♦ K9532
♣ Q102

N
W — E
S

♠ AQ108
♥ KQJ52
♦ A7
♣ 87

♠ 953
♥ 1083
♦ QJ6
♣ A965

Board (19) Av: NS=-610

N-S	E-W	Contract	N-S	E-W	IMP
6	8	2C W 4		130	10
10	4	3NT E 3		600	0
5	3	3NT E 3		600	0
4	10	3NT E 3		600	0
3	5	3NT E 3		600	0
2	9	3NT E 3		600	0
9	2	3NT E 3		600	0
8	6	3NT E 4		630	-1
7	1	3NT E 4		630	-1
1	7	3NT E 4		630	-1

Board (20) Av: NS=-490

N-S	E-W	Contract	N-S	E-W	IMP
9	2	2D S-1		100	9
2	9	2S W 4		170	8
1	7	2S W 4		170	8
4	10	3NT E 3		600	-3
6	8	3NT E 3		600	-3
8	6	3NT E 3		600	-3
3	5	3NT E 3		600	-3
7	1	3NT E 3		600	-3
5	3	3NT E 3		600	-3
10	4	4S W 4		620	-4

Board (21) Av: NS=-200

N-S	E-W	Contract	N-S	E-W	IMP
4	10	4H E-2		100	7
2	9	3NT W-1		50	6
8	6	2H E 4		170	1
5	3	2H E 4		170	1
1	7	2H E 4		170	1
9	2	2H E 4		170	1
3	5	2H E 5		200	0
6	8	3NT W 3		400	-5
10	4	3NT W 3		400	-5
7	1	3NT W 4		430	-6

22

♠ Q1086
♥ AK1054
♦
♣ Q876

♠ K42
♥ Q76
♦ KJ962
♣ 93

N
W — E
S

♠ A953
♥ J92
♦ Q85
♣ A105

♠ J7
♥ 83
♦ A10743
♣ KJ42

23

♠ K107
♥ A5
♦ A9743
♣ K76

♠ J952
♥ Q8763
♦ 852
♣ 9

N
W — E
S

♠ 83
♥ 102
♦ Q10
♣ AQJ8542

♠ AQ64
♥ KJ94
♦ KJ6
♣ 103

24

♠ KJ76
♥ Q1054
♦ 82
♣ J54

♠ Q1095
♥ J92
♦ AK93
♣ 87

N
W — E
S

♠ A4
♥ A76
♦ Q754
♣ A1062

♠ 832
♥ K83
♦ J106
♣ KQ93

Board (22) Av: NS=+110

N-S	E-W	Contract	N-S	E-W	IMP
2	9	3S E-4		400	7
4	10	2H N 3		140	1
1	7	2H N 3		140	1
7	1	2H N 3		140	1
6	8	3C N 4		130	1
3	5	2C N 4		130	1
5	3	3C N 3		110	0
8	6	2H N 2		110	0
10	4	3H N-1		50	-4
9	2	2H N-1		50	-4

Board (23) Av: NS=+650

N-S	E-W	Contract	N-S	E-W	IMP
9	2	3NT S 5		660	0
4	10	3NT N 5		660	0
10	4	3NT N 5		660	0
3	5	3NT N 5		660	0
6	8	3NT N 5		660	0
2	9	3NT N 5		660	0
7	1	3NT N 4		630	-1
1	7	3NT N 4		630	-1
8	6	3NT N 3		600	-2
5	3	3NT N 3		600	-2

Board (24) Av: NS=-150

N-S	E-W	Contract	N-S	E-W	IMP
3	5	2D E 2		90	2
1	7	1NT E 1		90	2
4	10	1NT E 1		90	2
10	4	1NT E 1		90	2
9	2	1NT E 1		90	2
6	8	3D E 3		110	1
8	6	1NT E 3		150	0
5	3	1NT E 3		150	0
2	9	3NT E 3		400	-6
7	1	3NT E 3		400	-6

25

♠ 43
♥ 72
♦ K96
♣ AK10983

♠ AJ92
♥ 943
♦ 543
♣ Q42

N
W — E
S

♠ K876
♥ AKQJ105
♦ 2
♣ 76

♠ Q105
♥ 86
♦ AQJ1087
♣ J5

26

♠ A1094
♥ 106
♦ 9
♣ A87432

♠ 653
♥ 754
♦ KQJ87
♣ Q6

N
W — E
S

♠ KJ
♥ AKQ32
♦ A43
♣ KJ10

♠ Q872
♥ J98
♦ 10652
♣ 95

27

♠ 63
♥ QJ10
♦ KJ85
♣ J765

♠ Q1097
♥ K7653
♦ 92
♣ 108

N
W — E
S

♠ 854
♥ 84
♦ A107
♣ KQ943

♠ AKJ2
♥ A92
♦ Q643
♣ A2

Board (25) Av: NS=-330

N-S	E-W	Contract	N-S	E-W	IMP
1	7	4D S-1		50	7
8	6	3H E 3		140	5
10	4	3H E 3		140	5
6	8	3H E 4		170	4
2	9	3H E 4		170	4
4	10	3H E 4		170	4
7	1	4H E 4		620	-7
5	3	4H E 4		620	-7
3	5	4H E 4		620	-7
9	2	4Hx E 4		790	-10

Board (26) Av: NS=-670

N-S	E-W	Contract	N-S	E-W	IMP
9	2	4H E 5		650	1
3	5	4H E 5		650	1
6	8	3NT E 5		660	0
4	10	3NT E 5		660	0
1	7	3NT E 5		660	0
7	1	3NT E 5		660	0
8	6	4H E 6		680	0
10	4	4H E 6		680	0
2	9	4H E 6		680	0
5	3	3NT E 6		690	-1

Board (27) Av: NS=+290

N-S	E-W	Contract	N-S	E-W	IMP
4	10	3NT N 3		400	3
3	5	3NT N 3		400	3
8	6	3NT N 3		400	3
6	8	3NT N 3		400	3
2	9	3NT N 3		400	3
1	7	3NT N 3		400	3
9	2	3NT N 3		400	3
5	3	3NT S-1		50	-8
10	4	3NT N-1		50	-8
7	1	3NT N-1		50	-8

28

♠ AK87
♥ QJ9
♦ 1073
♣ 843

♠ J106432
♥ A852
♦ K4
♣ Q

N E
W S

♠ Q95
♥ K107
♦ 8
♣ AK9752

♠ 643
♥ Q1097
♦ AQJ9652
♣ J106

29

♠ AJ72
♥ 42
♦ 65
♣ QJ843

♠ KQ1096
♥ AKJ8653
♦ 2
♣

N E
W S

♠ 43
♥
♦ AKJ108743
♣ A106

♠ 85
♥ Q1097
♦ Q9
♣ K9752

30

♠ A84
♥ KJ9
♦ AK6
♣ AK87

♠ KQ1065
♥ A108532
♦ J6
♣ J6

N E
W S

♠ J9732
♥ 76
♦ QJ82
♣ 104

♠ Q4
♥
♦ 1097543
♣ Q9532

Board (28) Av: NS=-400

N-S	E-W	Contract	N-S	E-W	IMP
2	9	3S	W 4	170	6
6	8	3S	W 4	170	6
8	6	3S	W 4	170	6
4	10	4S	W 4	420	-1
1	7	4S	W 4	420	-1
9	2	4S	W 4	420	-1
7	1	4S	W 4	420	-1
3	5	4Sx	W 4	590	-5
5	3	4Sx	W 4	590	-5
10	4	5Dx	S-4	1100	-12

Board (29) Av: NS=-580

N-S	E-W	Contract	N-S	E-W	IMP
4	10	6S	W-4	400	14
10	4	6S	W-4	400	14
6	8	6H	W-2	200	13
8	6	4H	W 4	620	-1
7	1	4H	W 4	620	-1
1	7	4H	W 4	620	-1
9	2	4H	W 4	620	-1
5	3	6D	E 6	1370	-13
2	9	6D	E 6	1370	-13
3	5	6NT	E 6	1440	-13

Board (30) Av: NS=+230

N-S	E-W	Contract	N-S	E-W	IMP
10	4	3NT	N 4	430	5
6	8	3NT	N 4	430	5
8	6	3NT	N 4	430	5
3	5	5C	N 5	400	5
2	9	5Sx	E-2	300	2
9	2	4Sx	W-2	300	2
4	10	4S	W-2	100	-4
1	7	6C	N-1	50	-7
5	3	6C	N-1	50	-7
7	1	4Sx	W 4	590	-13

31

♠ Q109853
♥ J
♦ AJ9
♣ 762

♠ A
♥ AQ9864
♦ 765
♣ J83

N E
W S

♠ J4
♥ K72
♦ K842
♣ AK94

♠ K762
♥ 1053
♦ Q103
♣ Q105

32

♠ 972
♥
♦ A852
♣ Q108542

♠ 85
♥ KJ973
♦ 943
♣ J63

N E
W S

♠ QJ1064
♥ 105
♦ KQJ7
♣ AK

♠ AK3
♥ AQ8642
♦ 106
♣ 97

33

♠ J94
♥ J72
♦ 10952
♣ 1094

♠ 83
♥ 83
♦ KJ87
♣ Q8763

N E
W S

♠ K1065
♥ AK10954
♦ 3
♣ 52

♠ AQ72
♥ Q6
♦ AQ64
♣ AKJ

Board (31) Av: NS=-450

N-S	E-W	Contract	N-S	E-W	IMP
5	3	4H	W 4	420	1
8	6	4H	W 4	420	1
6	8	4H	W 4	420	1
4	10	4H	W 4	420	1
1	7	4H	W 4	420	1
9	2	4H	W 5	450	0
2	9	4H	W 5	450	0
7	1	4H	W 6	480	-1
3	5	4Sx	N-2	500	-2
10	4	4Sx	N-2	500	-2

Board (32) Av: NS=-110

N-S	E-W	Contract	N-S	E-W	IMP
6	8	3S	E-2	200	7
4	10	2H	E-1	100	5
3	5	3C	N-1	50	2
1	7	3C	N-1	50	2
10	4	3S	E 3	140	-1
2	9	3S	E 3	140	-1
8	6	3H	S-4	200	-3
9	2	3H	S-4	200	-3
5	3	3H	S-4	200	-3
7	1	3Hx	S-4	800	-12

Board (33) Av: NS=-140

N-S	E-W	Contract	N-S	E-W	IMP
7	1	3H	E-2	100	6
1	7	4D	N-2	100	1
6	8	3D	N-2	100	1
10	4	3D	N-2	100	1
2	9	5D	N-3	150	0
9	2	4S	N-3	150	0
3	5	4D	N-3	150	0
4	10	5D	N-4	200	-2
8	6	4S	N-4	200	-2
5	3	3NT	N-4	200	-2

34

♠ 853
♥ KQ1065
♦ 32
♣ 765

♠ 76
♥ A742
♦ AKJ
♣ AJ98

N E
W S

♠ AQJ1094
♥ 8
♦ Q765
♣ 102

♠ K2
♥ J93
♦ 10984
♣ KQ43

35

♠ J765
♥ J763
♦ AQ8
♣ A4

♠ K982
♥ KQ4
♦ K953
♣ 108

N E
W S

♠ 43
♥ A109
♦ J642
♣ KJ97

♠ AQ10
♥ 852
♦ 107
♣ Q6532

36

♠ K7
♥ A9753
♦ K108763
♣

♠ QJ98
♥ QJ10864
♦ Q2
♣ 8

N E
W S

♠ A653
♥
♦ AJ9
♣ KQJ1054

♠ 1042
♥ K2
♦ 54
♣ A97632

Board (34) Av: NS=-420

N-S	E-W	Contract	N-S	E-W	IMP
5	3	6S	E-1	50	10
1	7	2S	E 5	200	6
7	1	4S	W 5	450	-1
8	6	4S	E 5	450	-1
10	4	4S	E 5	450	-1
6	8	4S	E 5	450	-1
4	10	4S	E 5	450	-1
2	9	4S	E 5	450	-1
9	2	4S	E 5	450	-1
3	5	4S	E 5	450	-1

Board (35) Av: NS=+90

N-S	E-W	Contract	N-S	E-W	IMP
4	10	1NT	S 1	90	0
5	3	1NT	S 1	90	0
10	4	1NT	S 1	90	0
8	6	1NT	S 1	90	0
6	8	1NT	S 1	90	0
7	1	1NT	S 1	90	0
1	7	1NT	S 1	90	0
2	9	1NT	S 1	90	0
3	5	1NT	S 1	90	0
9	2	1NT	S 1	90	0

Board (36) Av: NS=-190

N-S	E-W	Contract	N-S	E-W	IMP
1	7	3D	W-2	200	9
10	4	5C	E-1	100	7
4	10	4S	W-1	100	7
2	9	3C	E-1	100	7
9	2	3S	E 4	170	1
7	1	3S	W 5	200	0
3	5	3D	N-2	200	0
5	3	3NT	W 3	600	-9
8	6	3NT	E 4	630	-10
6	8	4S	W 5	650	-10

兵庫県知事杯 OPEN TEAMS Session 2 Flight B 2012年10月6日(土)

1

♠ AKQJ
♥ KQ542
♦ 63
♣ 107

♠ 1062
♥ 973
♦ KJ1098
♣ 93

♠ 9754
♥ J1086
♦ A4
♣ Q82

♠ 83
♥ A
♦ Q752
♣ AKJ654

Board (1) Av: NS=+440

N-S	E-W	Contract	N-S	E-W	IMP
4	6	3NT N 7	520		2
5	2	3NT N 6	490		2
6	4	3NT N 6	490		2
3	7	3NT S 4	430		0
8	10	3NT S 4	430		0
10	8	3NT N 4	430		0
1	9	4H N 4	420		-1
7	3	4H N 4	420		-1
2	5	3NT N 3	400		-1
9	1	6C N-2	100		-11

2

♠ 10
♥ 76432
♦ K
♣ AKQJ97

♠ AKJ9864
♥ 985
♦ Q5
♣ 2

♠ 7532
♥ AQJ
♦ A10976
♣ 6

♠ Q
♥ K10
♦ J8432
♣ 108543

Board (2) Av: NS=-350

N-S	E-W	Contract	N-S	E-W	IMP
10	8	5S W-1	50		9
9	1	6C N-2	200		4
3	7	5Cx N-1	200		4
1	9	5Cx N-1	200		4
8	10	4S W 4	420		-2
4	6	5S W 5	450		-3
2	5	4S W 5	450		-3
6	4	4S W 5	450		-3
7	3	4S W 5	450		-3
5	2	4S W 5	450		-3

3

♠ Q10982
♥ K73
♦ J3
♣ KQJ

♠ A53
♥ 85
♦ AQ652
♣ 732

♠ 74
♥ J1094
♦ 874
♣ A865

♠ KJ6
♥ AQ62
♦ K109
♣ 1094

Board (3) Av: NS=-50

N-S	E-W	Contract	N-S	E-W	IMP
8	10	3S N 3	140		5
7	3	4S N-1	50		0
4	6	4S N-1	50		0
6	4	4S N-1	50		0
3	7	4S N-1	50		0
9	1	4S N-1	50		0
1	9	4S N-1	50		0
5	2	4S N-1	50		0
2	5	4S N-1	50		0
10	8	3NT S-1	50		0

4

♠ K54
♥ Q6532
♦ K93
♣ 76

♠ Q10872
♥ K97
♦ A62
♣ 103

♠ A96
♥ A8
♦ QJ4
♣ AKJ52

♠ J3
♥ J104
♦ 10875
♣ Q984

Board (4) Av: NS=-640

N-S	E-W	Contract	N-S	E-W	IMP
10	8	3NT E 3	600		1
5	2	4S W 4	620		1
8	10	4S W 4	620		1
4	6	4S W 5	650		0
6	4	4S W 5	650		0
1	9	4S W 5	650		0
2	5	4S W 5	650		0
9	1	4S W 5	650		0
7	3	4S W 5	650		0
3	7	4S W 5	650		0

5

♠ Q2
♥ A72
♦ AQ97
♣ KQ76

♠ KJ95
♥ QJ10643
♦ 4
♣ 43

♠ 10863
♥ 5
♦ J1032
♣ A985

♠ A74
♥ K98
♦ K865
♣ J102

Board (5) Av: NS=+630

N-S	E-W	Contract	N-S	E-W	IMP
5	2	3NT N 5	660		1
4	6	3NT N 4	630		0
6	4	3NT N 4	630		0
10	8	3NT N 4	630		0
8	10	3NT N 4	630		0
7	3	3NT N 4	630		0
9	1	3NT N 4	630		0
1	9	3NT N 4	630		0
3	7	3NT N 4	630		0
2	5	3NT N 3	600		-1

6

♠ A8532
♥ 2
♦ J7532
♣ 97

♠ 976
♥ 1083
♦ K10986
♣ K2

♠ K10
♥ AJ965
♦ A4
♣ J1085

♠ QJ4
♥ KQ74
♦ Q
♣ AQ643

Board (6) Av: NS=-10

N-S	E-W	Contract	N-S	E-W	IMP
8	10	2S N 3	140		4
10	8	2NT S 2	120		4
2	5	2S N 2	110		3
1	9	3H E-1	100		3
7	3	2S S-1	50		-1
9	1	2S S-1	50		-1
3	7	4S N-2	100		-3
5	2	4S N-2	100		-3
4	6	2H E 2	110		-3
6	4	2H E 2	110		-3

7

♠ K107
♥ J532
♦ K742
♣ KQ

♠ QJ9642
♥ Q6
♦ 10
♣ 8743

♠ A
♥ 109874
♦ 9863
♣ A96

♠ 853
♥ AK
♦ AQJ5
♣ J1052

Board (7) Av: NS=+650

N-S	E-W	Contract	N-S	E-W	IMP
8	10	3NT S 5	660		0
6	4	3NT S 5	660		0
4	6	3NT S 5	660		0
1	9	3NT S 5	660		0
2	5	3NT S 5	660		0
10	8	3NT S 4	630		-1
5	2	3NT S 4	630		-1
9	1	3NT S 4	630		-1
7	3	3NT S 4	630		-1
3	7	3NT S 4	630		-1

8

♠ KJ6
♥ Q54
♦ AJ95
♣ 1098

♠ 1095
♥ 10632
♦ 6
♣ AK432

♠ AQ73
♥ A7
♦ KQ72
♣ J75

♠ 842
♥ KJ98
♦ 10843
♣ Q6

Board (8) Av: NS=-150

N-S	E-W	Contract	N-S	E-W	IMP
10	8	1NT E 2	120		1
8	10	1NT E 2	120		1
1	9	1NT E 2	120		1
3	7	3C E 4	130		1
6	4	2S E 3	140		0
5	2	2D N-3	150		0
7	3	1NT E 3	150		0
9	1	2S E 4	170		-1
4	6	1NT E 5	210		-2
2	5	3NT E 4	430		-7

9

♠ J8
♥ KQ106
♦ 10986
♣ 862

♠ A976
♥ J87
♦ AJ7
♣ KQ4

♠ 43
♥ A532
♦ 54
♣ J10975

♠ KQ1052
♥ 94
♦ KQ32
♣ A3

Board (9) Av: NS=-50

N-S	E-W	Contract	N-S	E-W	IMP
6	4	3C E-1	100		4
5	2	2D S 2	90		4
4	6	2D S-1	50		0
10	8	2D S-1	50		0
3	7	2D S-1	50		0
8	10	1NT W 1	90		-1
1	9	1NT W 1	90		-1
9	1	1NT W 1	90		-1
7	3	1NT W 1	90		-1
2	5	1NT W 2	120		-2

兵庫県知事杯 OPEN TEAMS Session 2 Flight B 2012年10月6日(土)

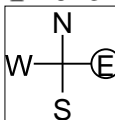
10

♠ QJ108
 ♠ K8652
 ♠ K643

♠ KQ965
 ♠ 965
 ♠ 10
 ♠ A1082

♠ J4
 ♠ AK743
 ♠ J9743
 ♠ 9

♠ A108732
 ♠ 2
 ♠ AQ
 ♠ QJ75



Board (10) Av: NS=-60

N-S	E-W	Contract	N-S	E-W	IMP
8	10	3Cx S 3	670		12
5	2	2NT N 2	120		5
4	6	3H E-1	100		4
1	9	3H E-1	100		4
6	4	3C S-1	100		-1
3	7	2S S-1	100		-1
2	5	3S S-2	200		-4
9	1	3C S-2	200		-4
7	3	2S S-2	200		-4
10	8	2S S-3	300		-6

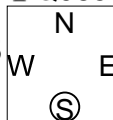
11

♠ K
 ♠ K62
 ♠ KQJ3
 ♠ Q9852

♠ 742
 ♠ Q875
 ♠ 9742
 ♠ 106

♠ AJ1098
 ♠ 9
 ♠ 10865
 ♠ 743

♠ Q653
 ♠ AJ1043
 ♠ A
 ♠ AKJ



Board (11) Av: NS=+190

N-S	E-W	Contract	N-S	E-W	IMP
5	2	6NT N 6	990		13
6	4	6H S 6	980		13
8	10	5H S 5	450		6
9	1	5H S 5	450		6
7	3	6H S-1	50		-6
4	6	6H S-1	50		-6
2	5	5H S-1	50		-6
3	7	6H S-2	100		-7
10	8	6H S-2	100		-7
1	9	6H S-3	150		-8

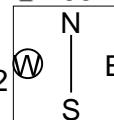
12

♠ 65
 ♠ 10873
 ♠ 9764
 ♠ K65

♠ K108
 ♠ AJ6
 ♠ 10852
 ♠ QJ7

♠ AQJ43
 ♠ K5
 ♠ KQ
 ♠ 10942

♠ 972
 ♠ Q942
 ♠ AJ3
 ♠ A83



Board (12) Av: NS=-420

N-S	E-W	Contract	N-S	E-W	IMP
4	6	4S E 4	420		0
7	3	4S E 4	420		0
10	8	4S E 4	420		0
6	4	4S E 4	420		0
3	7	4S E 4	420		0
9	1	4S E 4	420		0
1	9	4S E 4	420		0
5	2	4S E 4	420		0
2	5	4S E 4	420		0
8	10	3NT E 4	430		0

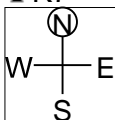
13

♠ 52
 ♠ KJ92
 ♠ J9742
 ♠ K7

♠ KQ1098
 ♠ 3
 ♠ AK6
 ♠ A1064

♠ AJ6
 ♠ A875
 ♠ 1085
 ♠ QJ5

♠ 743
 ♠ Q1064
 ♠ Q3
 ♠ 9832



Board (13) Av: NS=-400

N-S	E-W	Contract	N-S	E-W	IMP
9	1	2S E 3	140		
1	9	2S E 2	110		
6	4	6S W-1	100		11
5	2	6S W-1	100		11
7	3	6S W-1	100		11
10	8	4S W 5	650		-6
4	6	4S W 5	650		-6
2	5	4S W 5	650		-6
3	7	4S W 5	650		-6
8	10	3NT W 5	660		-6

14

♠ Q3
 ♠ Q652
 ♠ J108654
 ♠ 8

♠ J72
 ♠ 974
 ♠ K72
 ♠ 9643

♠ 10654
 ♠ AK1083
 ♠ A
 ♠ AK7

♠ AK98
 ♠ J
 ♠ Q93
 ♠ QJ1052



Board (14) Av: NS=+10

N-S	E-W	Contract	N-S	E-W	IMP
8	10	4D N 4	130		3
10	8	3D N 3	110		3
1	9	4H E-2	100		3
2	5	4H E-1	50		1
7	3	3H E-1	50		1
6	4	3H E-1	50		1
3	7	4D N-1	50		-2
5	2	2NT W 2	120		-4
9	1	3H E 3	140		-4
4	6	2H E 3	140		-4

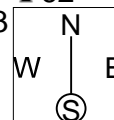
15

♠ J976
 ♠ 10853
 ♠ Q75
 ♠ 62

♠ KQ1083
 ♠ J92
 ♠ A
 ♠ Q843

♠ A54
 ♠ K64
 ♠ 98642
 ♠ K9

♠ 2
 ♠ AQ7
 ♠ KJ103
 ♠ AJ1075



Board (15) Av: NS=-30

N-S	E-W	Contract	N-S	E-W	IMP
6	4	4S W-2	100		4
7	3	4S W-2	100		4
10	8	3S W-1	50		2
2	5	3S W-1	50		2
8	10	2S W-1	50		2
4	6	2S W 2	110		-2
5	2	2S W 2	110		-2
1	9	2S W 2	110		-2
3	7	2S W 3	140		-3
9	1	2S W 3	140		-3

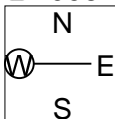
16

♠ AJ92
 ♠ J63
 ♠ Q72
 ♠ 1098

♠ K8764
 ♠ 975
 ♠ J543
 ♠ Q

♠ Q105
 ♠ AK8
 ♠ A1098
 ♠ AK6

♠ 3
 ♠ Q1042
 ♠ K6
 ♠ J75432



Board (16) Av: NS=-80

N-S	E-W	Contract	N-S	E-W	IMP
8	10	4S E-1	100		5
6	4	4S E-1	100		5
7	3	4S E-1	100		5
1	9	4S E-1	100		5
9	1	4S E-1	100		5
2	5	4S E-1	100		5
3	7	3NT E-1	100		5
10	8	4S E 4	620		-11
5	2	4S E 4	620		-11
4	6	4S E 4	620		-11

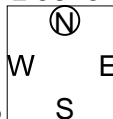
17

♠ J942
 ♠ K
 ♠ A87
 ♠ 98432

♠ A75
 ♠ 742
 ♠ Q32
 ♠ Q1075

♠ KQ6
 ♠ A9865
 ♠ J1064
 ♠ A

♠ 1083
 ♠ QJ103
 ♠ K95
 ♠ KJ6



Board (17) Av: NS=-10

N-S	E-W	Contract	N-S	E-W	IMP
2	5	4H E-2	100		3
8	10	4H E-2	100		3
1	9	4H E-2	100		3
10	8	4H E-1	50		2
6	4	1NT W-1	50		2
9	1	2S N-1	50		-1
3	7	2H E 2	110		-3
4	6	2H E 2	110		-3
7	3	2H E 2	110		-3
5	2	2H E 3	140		-4

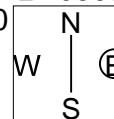
18

♠ A983
 ♠ Q3
 ♠ 1097
 ♠ 10865

♠ KQJ10
 ♠ A64
 ♠ AJ2
 ♠ 942

♠ 76542
 ♠ K2
 ♠ Q643
 ♠ A3

♠ J109875
 ♠ K85
 ♠ KQJ7



Board (18) Av: NS=-330

N-S	E-W	Contract	N-S	E-W	IMP
3	7	2H S 2	110		10
1	9	4S W-1	50		9
9	1	3S W 4	170		4
4	6	3NT W 3	400		-2
10	8	4S W 4	420		-3
8	10	4S W 4	420		-3
5	2	4S W 4	420		-3
2	5	4S W 4	420		-3
7	3	4S W 4	420		-3
6	4	4S E 4	420		-3

兵庫県知事杯 OPEN TEAMS Session 3 Flight B 2012年10月7日(日)

1

♠ 97
♥ A32
♦ A4
♣ KJ10872

♠ Q108
♥ 1084
♦ J9763
♣ 65

♠ KJ5432
♥ 7
♦ 105
♣ AQ43

♠ A6
♥ KQJ965
♦ KQ82
♣ 9

Board (1) Av: NS=+330

N-S	E-W	Contract	N-S	E-W	IMP
1	6	6Hx S 6	1210		13
6	1	6H S 6	980		12
10	2	5H S 5	450		3
8	3	4H S 5	450		3
5	7	4H S 5	450		3
7	5	4H S 4	420		3
2	10	6H S-1		50	-9
3	8	6H S-1		50	-9
4	9	6H S-1		50	-9
9	4	6H S-1		50	-9

2

♠ AJ1093
♥ 4
♦ 72
♣ KQ865

♠ K764
♥ 987
♦ Q10984
♣ J

♠ Q8
♥ AK53
♦ AK3
♣ A1097

♠ 52
♥ QJ1062
♦ J65
♣ 432

Board (2) Av: NS=-450

N-S	E-W	Contract	N-S	E-W	IMP
5	7	3NT E 3	400		2
3	8	3NT E 4	430		1
4	9	3NT E 4	430		1
7	5	3NT E 4	430		1
1	6	3NT E 4	430		1
6	1	3NT E 5	460		0
10	2	3NT E 5	460		0
9	4	3NT E 5	460		0
8	3	3NT E 5	460		0
2	10	3NT E 5	460		0

3

♠ 4
♥ AK875
♦ KJ97
♣ A75

♠ AKQJ72
♥ Q3
♦ 84
♣ Q108

♠ 108653
♥ 642
♦ 62
♣ 642

♠ 9
♥ J109
♦ AQ1053
♣ KJ93

Board (3) Av: NS=+510

N-S	E-W	Contract	N-S	E-W	IMP
9	4	6D S 6	920		9
2	10	4Sx W-3	800		7
8	3	5H N 6	480		-1
3	8	5H N 6	480		-1
10	2	5H N 6	480		-1
7	5	4H N 6	480		-1
5	7	4H N 6	480		-1
1	6	4H N 6	480		-1
6	1	5D S 6	420		-3
4	9	5D S 5	400		-3

4

♠ KJ
♥ A4
♦ J109842
♣ 952

♠ Q872
♥ J873
♦ Q76
♣ QJ

♠ 5
♥ Q10952
♦ AK53
♣ 1086

♠ A109643
♥ K6
♦
♣ AK743

Board (4) Av: NS=+650

N-S	E-W	Contract	N-S	E-W	IMP
6	1	4S S 6	680		1
4	9	4S S 5	650		0
8	3	4S S 5	650		0
7	5	4S S 5	650		0
5	7	4S S 5	650		0
1	6	4S S 5	650		0
10	2	4S S 5	650		0
3	8	4S S 5	650		0
2	10	5C S 6	620		-1
9	4	3NT S 3	600		-2

5

♠ A732
♥ 9753
♦ A
♣ AQJ10

♠ J964
♥ Q104
♦ KQ832
♣ 9

♠ K105
♥ AK2
♦ 64
♣ K8732

♠ Q8
♥ J86
♦ J10975
♣ 654

Board (5) Av: NS=+10

N-S	E-W	Contract	N-S	E-W	IMP
5	7	1NT N 2	120		3
4	9	3NT E-2	100		3
10	2	1NT N 1	90		2
1	6	1H N 1	80		2
8	3	2NT E-1	50		1
7	5	2NT E-1	50		1
2	10	1NT N-1		100	-3
9	4	1C N-1		100	-3
6	1	2NT E 2		120	-4
3	8	1Dx S-2		500	-11

6

♠ 65
♥ A54
♦ KQJ643
♣ 62

♠ AK74
♥ K103
♦ 72
♣ K843

♠ J98
♥ Q972
♦ 108
♣ A1097

♠ Q1032
♥ J86
♦ A95
♣ QJ5

Board (6) Av: NS=-50

N-S	E-W	Contract	N-S	E-W	IMP
9	4	1NT S 3	150		5
5	7	3D N 3	110		4
4	9	3S W-1	100		4
6	1	3D N-1		50	0
7	5	3D N-2		100	-2
8	3	3D N-2		100	-2
10	2	3D N-2		100	-2
3	8	2H E 2		110	-2
1	6	3H E 3		140	-3
2	10	3H E 3		140	-3

7

♠ K3
♥ AKQ853
♦ 9653
♣ 3

♠ J95
♥ J109
♦ Q107
♣ Q1072

♠ AQ2
♥ 76
♦ AK84
♣ AKJ8

♠ 108764
♥ 42
♦ J2
♣ 9654

Board (7) Av: NS=-180

N-S	E-W	Contract	N-S	E-W	IMP
5	7	3NT W-2	200		9
8	3	5C W-1	100		7
2	10	3C E 4		130	2
7	5	4C W 5		150	1
1	6	4C W 5		150	1
3	8	3C W 5		150	1
6	1	3C W 5		150	1
9	4	2Hx N-1		200	-1
10	2	5C W 5		600	-9
4	9	5C W 5		600	-9

8

♠ J75
♥ AQJ82
♦ 8
♣ J1096

♠ AQ1092
♥ 53
♦ AK105
♣ K7

♠ 843
♥ K1064
♦ Q74
♣ AQ5

♠ K6
♥ 97
♦ J9632
♣ 8432

Board (8) Av: NS=-450

N-S	E-W	Contract	N-S	E-W	IMP
4	9	4S W 5	450		0
8	3	4S W 5	450		0
7	5	4S W 5	450		0
5	7	4S W 5	450		0
3	8	4S W 5	450		0
1	6	4S W 5	450		0
6	1	4S W 5	450		0
10	2	4S W 5	450		0
2	10	4S W 5	450		0
9	4	4S E 5	450		0

9

♠ A942
♥ 95
♦ J6432
♣ J7

♠ 10765
♥ QJ82
♦ 9
♣ K963

♠ K83
♥ 764
♦ Q1085
♣ Q54

♠ QJ
♥ AK103
♦ AK7
♣ A1082

Board (9) Av: NS=+120

N-S	E-W	Contract	N-S	E-W	IMP
3	8	3NT S 5	460		8
8	3	3NT S 3	400		7
2	10	3NT S 3	400		7
6	1	3NT S 3	400		7
9	4	3NT S-1		50	-5
7	5	3NT S-1		50	-5
5	7	3NT S-1		50	-5
10	2	3NT S-1		50	-5
1	6	3NT S-1		50	-5
4	9	3NT S-1		50	-5

10

♠ 10862
♥ 42
♦ 542
♣ A962

♠ 975 ♠ AKQ4
♥ AQ9 ♥ 10853
♦ K9 ♦ AJ
♣ QJ1074 ♣ K83

W — | — E
N — | — S

♠ J3
♥ KJ76
♦ Q108763
♣ 5

Board (10) Av: NS=-650

N-S	E-W	Contract	N-S	E-W	IMP
7	5	4NT E 4	630		1
3	8	3NT E 4	630		1
5	7	3NT E 4	630		1
2	10	3NT E 4	630		1
9	4	3NT E 5	660		0
6	1	3NT E 5	660		0
1	6	3NT E 5	660		0
10	2	3NT E 5	660		0
8	3	3NT E 5	660		0
4	9	3NT E 6	690		-1

11

♠ KQ92
♥ AK8
♦ 103
♣ 9863

♠ 107 ♠ 54
♥ 952 ♥ QJ10764
♦ KQ52 ♦ J987
♣ QJ72 ♣ 10

W — | — E
N — | — S

♠ AJ863
♥ 3
♦ A64
♣ AK54

Board (11) Av: NS=+70

N-S	E-W	Contract	N-S	E-W	IMP
5	7	4S N 5	450		9
10	2	4S S 4	420		8
7	5	4S S 4	420		8
9	4	6S S-1	50		-3
1	6	6S S-1	50		-3
8	3	6S S-1	50		-3
2	10	6S S-1	50		-3
6	1	6S S-1	50		-3
3	8	6S S-1	50		-3
4	9	6S S-2	100		-5

12

♠ QJ96
♥ AK109
♦ 103
♣ A109

♠ 84 ♠ K1032
♥ 864 ♥ J7
♦ AQJ542 ♦ K986
♣ 86 ♣ 542

W — | — E
N — | — S

♠ A75
♥ Q532
♦ 7
♣ KQJ73

Board (12) Av: NS=+690

N-S	E-W	Contract	N-S	E-W	IMP
3	8	5Dx W-4	800		3
8	3	4H S 7	710		1
6	1	4H S 7	710		1
4	9	5H N 6	680		0
7	5	4H S 6	680		0
9	4	4H S 6	680		0
10	2	4H S 6	680		0
1	6	4H S 6	680		0
2	10	4H N 6	680		0
5	7	2S N 4	170		-11

13

♠ A8532
♥ 95
♦ 9854
♣ 42

♠ KQ106 ♠ 97
♥ A ♥ Q107642
♦ J1032 ♦ AQ
♣ A985 ♣ J63

W — | — E
N — | — S

♠ J4
♥ KJ83
♦ K76
♣ KQ107

Board (13) Av: NS=+70

N-S	E-W	Contract	N-S	E-W	IMP
2	10	2H E-2	200		4
9	4	2H E-2	200		4
3	8	2H E-2	200		4
6	1	3H W-1	100		1
5	7	2NT W-1	100		1
4	9	2H E-1	100		1
10	2	2H E-1	100		1
7	5	2NT W 2	120		-5
1	6	2NT W 2	120		-5
8	3	2S N-2	200		-7

14

♠ AQJ5
♥ 109543
♦ A2
♣ A5

♠ 1094 ♠ K763
♥ J6 ♥ 8
♦ KJ10983 ♦ Q654
♣ J9 ♣ K762

W — | — E
N — | — S

♠ 82
♥ AKQ72
♦ 7
♣ Q10843

Board (14) Av: NS=+200

N-S	E-W	Contract	N-S	E-W	IMP
4	9	6H N 6	980		13
5	7	4H N 6	480		7
10	2	4H S 5	450		6
1	6	4H S 5	450		6
3	8	4H N 5	450		6
7	5	6H S-1	50		-6
6	1	6H S-1	50		-6
9	4	6H S-1	50		-6
2	10	6H S-1	50		-6
8	3	7H S-2	100		-7

15

♠ 9
♥ J
♦ A8632
♣ AKQ1093

♠ AKQJ742 ♠ 853
♥ 54 ♥ AK83
♦ ♦ Q974
♣ J864 ♣ 52

W — | — E
N — | — S

♠ 106
♥ Q109762
♦ KJ105
♣ 7

Board (15) Av: NS=-120

N-S	E-W	Contract	N-S	E-W	IMP
9	4	5D S 5	600		12
2	10	5Sx W-2	300		9
3	8	5S W-1	50		5
6	1	5S W-1	50		5
10	2	5C N-1	100		1
5	7	5C N-1	100		1
7	5	5D S-3	300		-5
1	6	4S W 4	420		-7
4	9	4S W 4	420		-7
8	3	5Dx S-2	500		-9

16

♠ Q
♥ J9632
♦ 94
♣ KQ1084

♠ J6 ♠ A1097
♥ Q5 ♥ 10
♦ 108653 ♦ AKQ72
♣ 6532 ♣ J97

W — | — E
N — | — S

♠ K85432
♥ AK874
♦ J
♣ A

Board (16) Av: NS=+450

N-S	E-W	Contract	N-S	E-W	IMP
1	6	4H N 6	480		1
4	9	5H N 5	450		0
8	3	5H N 5	450		0
5	7	4H N 5	450		0
7	5	4H N 5	450		0
6	1	4H N 5	450		0
2	10	4H N 5	450		0
3	8	4H N 5	450		0
10	2	4H N 5	450		0
9	4	1S S 3	140		-7

17

♠ K62
♥ J
♦ QJ42
♣ AQ842

♠ 9843 ♠ AQ10
♥ 9832 ♥ AKQ54
♦ K3 ♦ A1097
♣ 1063 ♣ 7

W — | — E
N — | — S

♠ J75
♥ 1076
♦ 865
♣ KJ95

Board (17) Av: NS=-370

N-S	E-W	Contract	N-S	E-W	IMP
2	10	3H W 4	170		5
4	9	3H E 5	200		5
9	4	2H E 5	200		5
3	8	4H W 4	420		-2
1	6	4H W 4	420		-2
5	7	4H E 4	420		-2
6	1	4H E 4	420		-2
10	2	4H E 4	420		-2
8	3	4H W 5	450		-2
7	5	4H E 5	450		-2

18

♠ Q72
♥ K1083
♦ KJ842
♣ 7

♠ KJ3 ♠ A64
♥ 9752 ♥ 6
♦ 6 ♦ Q95
♣ KJ1064 ♣ AQ9853

W — | — E
N — | — S

♠ 10985
♥ AQJ4
♦ A1073
♣ A2

Board (18) Av: NS=-80

N-S	E-W	Contract	N-S	E-W	IMP
7	5	3D N 3	110		5
5	7	5Cx E-1	100		5
6	1	5C E-1	50		4
2	10	1NT E 2	120		-1
4	9	4C E 4	130		-2
8	3	4C E 4	130		-2
10	2	4C E 4	130		-2
3	8	4C E 4	130		-2
1	6	3C E 4	130		-2
9	4	5H N-2	200		-3

兵庫県知事杯 OPEN TEAMS Session 4 Flight B 2012年10月7日(日)

1

♠KQ9643
♥64
♦QJ64
♣J

♠J107
♥AK52
♦98
♣A952

♠85
♥QJ109873
♦K
♣K76

♠A2
♥
♦A107532
♣Q10843

Board (1) Av: NS=+170

N-S	E-W	Contract	N-S	E-W	IMP
7	9	4Sx N 6	790		12
5	4	4S N 6	480		7
3	10	4S N 6	480		7
9	7	3S N 4	170		0
8	1	5H W-2	100		-2
6	2	5H W-2	100		-2
1	8	4H W-1	50		-3
4	5	4H W-1	50		-3
10	3	4Sx N-1	100		-7
2	6	4H W 4	420		-11

2

♠KQ
♥A1097
♦K643
♣853

♠72
♥KQ8652
♦J9
♣AK2

♠J1085
♥
♦Q8752
♣J1096

♠A9643
♥J43
♦A10
♣Q74

Board (2) Av: NS=+110

N-S	E-W	Contract	N-S	E-W	IMP
1	8	2NT N 6	240		4
6	2	2NT N 4	180		2
7	9	2NT N 3	150		1
4	5	2NT N 3	150		1
10	3	2S S 3	140		1
5	4	2NT N 2	120		0
2	6	2NT N 2	120		0
9	7	2NT N 2	120		0
8	1	3NT S-1	100		-5
3	10	2NT N-1	100		-5

3

♠AJ108754
♥6
♦83
♣Q92

♠K93
♥AKJ3
♦A6
♣J876

♠Q62
♥Q842
♦Q104
♣K104

♠
♥10975
♦KJ9752
♣A53

Board (3) Av: NS=+70

N-S	E-W	Contract	N-S	E-W	IMP
5	4	5H W-3	300		6
9	7	4H W-2	200		4
1	8	4H W-2	200		4
2	6	3NT E-2	200		4
8	1	3NT E-2	200		4
6	2	3NT E-2	200		4
7	9	4H E-1	100		1
3	10	3S N-1	50		-3
4	5	4Sx N-3	500		-11
10	3	3NT E 3	600		-12

4

♠AJ543
♥J9
♦A65
♣K105

♠1086
♥Q8432
♦KJ8
♣J2

♠Q9
♥K1076
♦10
♣A98643

♠K72
♥A5
♦Q97432
♣Q7

Board (4) Av: NS=+340

N-S	E-W	Contract	N-S	E-W	IMP
4	5	4S N 5	650		7
9	7	4S N 5	650		7
5	4	4S N 4	620		7
2	6	4S N 4	620		7
1	8	3S N 5	200		-4
8	1	3S N 4	170		-5
3	10	2S N 4	170		-5
10	3	3S N 3	140		-5
7	9	3S N 3	140		-5
6	2	2S N 3	140		-5

5

♠AK
♥Q32
♦1083
♣AKQ95

♠1098
♥A10
♦J52
♣108742

♠76432
♥9654
♦Q94
♣3

♠QJ5
♥KJ87
♦AK76
♣J6

Board (5) Av: NS=+860

N-S	E-W	Contract	N-S	E-W	IMP
6	2	6NT N 6	1440		11
7	9	6NT N 6	1440		11
4	5	6NT N 6	1440		11
8	1	6NT N 6	1440		11
9	7	6NT N 6	1440		11
2	6	6NT N 6	1440		11
1	8	6NT N-1	100		-14
5	4	6NT N-1	100		-14
3	10	6NT N-1	100		-14
10	3	6NT N-1	100		-14

6

♠AK754
♥A985
♦974
♣8

♠QJ1073
♥QJ8
♦K9742
♣K9742

♠J832
♥K
♦K63
♣Q10653

♠Q1096
♥642
♦A1052
♣AJ

Board (6) Av: NS=+10

N-S	E-W	Contract	N-S	E-W	IMP
2	6	3S N 3	140		4
7	9	3S N 3	140		4
1	8	2S N 3	140		4
3	10	Passout			0
8	1	Passout			0
5	4	4S N-1	50		-2
9	7	4S N-1	50		-2
6	2	4S N-1	50		-2
10	3	4S N-1	50		-2
4	5	3S N-1	50		-2

7

♠Q9
♥K5
♦Q10
♣AJ107543

♠AK10653
♥A
♦AK83
♣K8

♠J7
♥J1062
♦76542
♣Q6

♠842
♥Q98743
♦J9
♣92

Board (7) Av: NS=-570

N-S	E-W	Contract	N-S	E-W	IMP
9	7	2S E 5	200		9
6	2	3S E 6	230		8
4	5	2S E 6	230		8
7	9	4S E 6	680		-3
5	4	4S E 6	680		-3
1	8	4S E 6	680		-3
2	6	4S E 6	680		-3
8	1	4S E 6	680		-3
3	10	4S E 6	680		-3
10	3	6D W 6	1370		-13

8

♠KJ
♥AQ8
♦KQJ10
♣AK84

♠Q109872
♥KJ1074
♦
♣Q9

♠643
♥6
♦A8753
♣10532

♠A5
♥9532
♦9642
♣J76

Board (8) Av: NS=+210

N-S	E-W	Contract	N-S	E-W	IMP
4	5	3NT N 4	430		6
6	2	3NT N 4	430		6
1	8	3NT S 3	400		5
9	7	3NT N 3	400		5
3	10	3NT N 3	400		5
2	6	4Sx E-2	300		3
8	1	3NT S-1	50		-6
5	4	3NT N-2	100		-7
7	9	2S E 2	110		-8
10	3	4Sx E 4	590		-13

9

♠K1072
♥42
♦KJ9864
♣J

♠Q643
♥AJ86
♦A
♣KQ74

♠9
♥Q103
♦107532
♣A1085

♠AJ85
♥K975
♦Q
♣9632

Board (9) Av: NS=+50

N-S	E-W	Contract	N-S	E-W	IMP
5	4	5C E-3	300		6
1	8	4C E-3	300		6
2	6	2Dx N 2	180		4
8	1	2S N 4	170		3
6	2	2D S 2	90		1
3	10	2S N-1	50		-3
9	7	2D N-1	50		-3
7	9	3D N-2	100		-4
10	3	1NT E 2	120		-5
4	5	1NT E 2	120		-5

兵庫県知事杯 OPEN TEAMS Session 4 Flight B 2012年10月7日(日)

10

Hand cards for Board 10: ♠ J86, ♥ KQ983, ♦ J64, ♣ Q3, ♠ 32, ♥ J10652, ♦ 953, ♣ 1096, N-S diagram, ♠ AKQ1074, ♥ 74, ♦ K7, ♣ 854, ♠ 95, ♥ A, ♦ AQ1082, ♣ AKJ72

11

Hand cards for Board 11: ♠ AK84, ♥ 1052, ♦ 1053, ♣ K96, ♠ J93, ♥ A9, ♦ AKJ7, ♣ 10732, N-S diagram, ♠ Q2, ♥ KQ876, ♦ Q9, ♣ AQJ4, ♠ 10765, ♥ J43, ♦ 8642, ♣ 85

12

Hand cards for Board 12: ♠ A7, ♥ J72, ♦ AKQ102, ♣ K109, ♠ Q109865, ♥ A, ♦ 9864, ♣ J5, N-S diagram, ♠ K4, ♥ Q95, ♦ J53, ♣ Q6432, ♠ J32, ♥ K108643, ♦ 7, ♣ A87

Board (10) Av: NS=+230. Table with columns: N-S, E-W, Contract, N-S, E-W, IMP. Rows 6-10, 2.

Board (11) Av: NS=-470. Table with columns: N-S, E-W, Contract, N-S, E-W, IMP. Rows 8, 10, 4, 5, 7, 9, 2, 6, 1, 3.

Board (12) Av: NS=+660. Table with columns: N-S, E-W, Contract, N-S, E-W, IMP. Rows 1, 8, 5, 10, 9, 4, 2, 6, 3, 7.

13

Hand cards for Board 13: ♠ KJ10862, ♥ 96, ♦ 832, ♣ A6, ♠ Q, ♥ AJ1032, ♦ AQ65, ♣ K42, N-S diagram, ♠ 9543, ♥ 87, ♦ K74, ♣ Q1097, ♠ A7, ♥ KQ54, ♦ J109, ♣ J853

14

Hand cards for Board 14: ♠ 62, ♥ QJ987, ♦ J43, ♣ 653, ♠ AKJ103, ♥ 54, ♦ KQ2, ♣ KQ10, N-S diagram, ♠ 985, ♥ A102, ♦ A1065, ♣ J87, ♠ Q74, ♥ K63, ♦ 987, ♣ A942

15

Hand cards for Board 15: ♠ 9, ♥ A10843, ♦ AKQ97, ♣ J3, ♠ Q643, ♥ QJ976, ♦ 2, ♣ 974, N-S diagram, ♠ J10875, ♥ K, ♦ 853, ♣ KQ105, ♠ AK2, ♥ 52, ♦ J1064, ♣ A862

Board (13) Av: NS=-130. Table with columns: N-S, E-W, Contract, N-S, E-W, IMP. Rows 1, 4, 7, 10, 5, 2, 8, 9, 6, 3.

Board (14) Av: NS=-460. Table with columns: N-S, E-W, Contract, N-S, E-W, IMP. Rows 5, 7, 3, 10, 1, 8, 9, 2, 6, 4.

Board (15) Av: NS=+600. Table with columns: N-S, E-W, Contract, N-S, E-W, IMP. Rows 5, 4, 10, 7, 9, 8, 1, 2, 3, 6.

16

Hand cards for Board 16: ♠ A973, ♥ Q9, ♦ 108652, ♣ J8, ♠ KJ, ♥ AJ105, ♦ Q3, ♣ Q10975, N-S diagram, ♠ Q54, ♥ K843, ♦ K7, ♣ K643, ♠ 10862, ♥ 762, ♦ AJ94, ♣ A2

17

Hand cards for Board 17: ♠ AQJ, ♥ AJ10974, ♦ KQ3, ♣ Q, ♠ K964, ♥ Q8, ♦ J97, ♣ AK103, N-S diagram, ♠ 7, ♥ 653, ♦ 106542, ♣ J954, ♠ 108532, ♥ K2, ♦ A8, ♣ 8762

18

Hand cards for Board 18: ♠ AJ875, ♥ 832, ♦ 83, ♣ AKQ, ♠ 4, ♥ Q64, ♦ AJ54, ♣ 109764, N-S diagram, ♠ K2, ♥ K7, ♦ KQ10962, ♣ 532, ♠ Q10963, ♥ AJ1095, ♦ 7, ♣ J8

Board (16) Av: NS=-270. Table with columns: N-S, E-W, Contract, N-S, E-W, IMP. Rows 1, 4, 9, 8, 5, 7, 6, 3, 2, 10.

Board (17) Av: NS=+490. Table with columns: N-S, E-W, Contract, N-S, E-W, IMP. Rows 10, 5, 1, 6, 8, 3, 4, 9, 2, 7.

Board (18) Av: NS=+240. Table with columns: N-S, E-W, Contract, N-S, E-W, IMP. Rows 7, 4, 3, 8, 1, 2, 5, 6, 9, 10.

兵庫県知事杯 OPEN TEAMS Session 4 Flight B 2012年10月7日(日)

28

♠ J108532
♥ 9
♦ J109
♣ K63
♠ AQ6
♥ Q10432
♦ K85
♣ 87
N
|
W — E
|
S
♠ K97
♥ J76
♦ AQ7
♣ AJ94
♠ 4
♥ AK85
♦ 6432
♣ Q1052

Board (28) Av: NS=-240
N-S E-W Contract N-S E-W IMP
2 7 4H E-1 50 7
7 2 4H E-1 50 7
3 9 4H E-1 50 7
4 8 4H E-1 50 7
1 5 4H W 4 420 -5
10 6 4H E 4 420 -5
6 10 4H E 4 420 -5
9 3 4H E 4 420 -5
5 1 4H E 4 420 -5
8 4 3NT W 4 430 -5

29

♠ A95
♥ J765
♦ A85
♣ J83
♠ 832
♥ AK10832
♦ 932
♣ K
N
|
W — E
|
S
♠ J10
♥ Q4
♦ KQ764
♣ 10972
♠ KQ764
♥ 9
♦ J10
♣ AQ654

Board (29) Av: NS=+160
N-S E-W Contract N-S E-W IMP
2 7 4S S 4 620 10
1 5 4S S 4 620 10
10 6 3S S 5 200 1
4 8 2S S 5 200 1
9 3 2S S 4 170 0
8 4 3S S 3 140 -1
7 2 2S S 3 140 -1
3 9 4S S-1 100 -6
6 10 4S S-1 100 -6
5 1 3NT N-1 100 -6

30

♠ 1095
♥ AJ932
♦ 5
♣ 8632
♠ AKJ876
♥ 7
♦ AJ
♣ Q954
N
|
W — E
|
S
♠ KQ10654
♥ Q10973
♣ J7
♠ Q432
♥ 8
♦ K8642
♣ AK10

Board (30) Av: NS=-20
N-S E-W Contract N-S E-W IMP
5 1 4Sx W-3 500 11
1 5 4S W-2 100 3
3 9 3H E-2 100 3
8 4 3S W-1 50 2
9 3 3NT W-1 50 2
4 8 1NT S-2 100 -2
10 6 2S W 2 110 -3
7 2 2S W 2 110 -3
2 7 2S W 3 140 -3
6 10 2Hx E 2 470 -10

31

♠ AQ1098
♥ J95
♦ QJ6
♣ 93
♠ K4
♥ 742
♦ 1092
♣ QJ874
N
|
W — E
|
S
♠ J76
♥ Q863
♦ 743
♣ A102
♠ 532
♥ AK10
♦ AK85
♣ K65

Board (31) Av: NS=+650
N-S E-W Contract N-S E-W IMP
4 8 4S S 5 650 0
9 3 4S S 5 650 0
6 10 4S S 5 650 0
8 4 4S S 5 650 0
10 6 4S S 5 650 0
5 1 4S S 5 650 0
1 5 4S S 5 650 0
7 2 4S S 5 650 0
2 7 4S S 5 650 0
3 9 3NT S 4 630 -1

32

♠ 4
♥ A7
♦ A107
♣ AKQJ854
♠ AQJ953
♥ 10986
♦ J2
♣ 10
N
|
W — E
|
S
♠ K876
♥ KQ5
♦ K943
♣ 93
♠ 102
♥ J432
♦ Q865
♣ 762

Board (32) Av: NS=+40
N-S E-W Contract N-S E-W IMP
4 8 5C N 5 400 8
6 10 4C N 5 150 3
3 9 4C N 5 150 3
1 5 4C N 4 130 3
7 2 4C N 4 130 3
8 4 5C N-1 50 -3
5 1 5C N-1 50 -3
10 6 5C N-1 50 -3
2 7 6C N-2 100 -4
9 3 3S W 4 170 -5

33

♠ Q
♥ 1053
♦ Q543
♣ A10984
♠ AJ1085
♥ 96
♦ KJ102
♣ Q6
N
|
W — E
|
S
♠ K432
♥ J742
♦ 98
♣ J52
♠ 976
♥ AKQ8
♦ A76
♣ K73

Board (33) Av: NS=-90
N-S E-W Contract N-S E-W IMP
3 9 2NT S 2 120 5
8 4 3NT S-1 50 1
4 8 3NT S-1 50 1
6 10 3NT S-2 100 0
10 6 3NT S-2 100 0
9 3 3NT S-2 100 0
5 1 3NT S-2 100 0
1 5 3NT S-2 100 0
7 2 2S W 2 110 -1
2 7 3NT S-3 150 -2

34

♠ Q6
♥ A9432
♦ 82
♣ AQ108
♠ 92
♥ Q1075
♦ AQ543
♣ 62
N
|
W — E
|
S
♠ J10743
♥ KJ6
♦ 1097
♣ KJ
♠ AK85
♥ 8
♦ KJ6
♣ 97543

Board (34) Av: NS=+80
N-S E-W Contract N-S E-W IMP
2 7 3NT S 3 600 11
10 6 3C N 4 130 2
1 5 3C N 4 130 2
7 2 1NT S 2 120 1
5 1 1NT N 2 120 1
3 9 2C S 3 110 1
8 4 2D W-2 100 1
9 3 Passout -2
4 8 3NT S-1 100 -5
6 10 3NT S-2 200 -7

35

♠ K653
♥ 1064
♦ 10842
♣ 63
♠ AQ102
♥ K53
♦ 75
♣ 9875
N
|
W — E
|
S
♠ J
♥ AJ2
♦ AK963
♣ AK104
♠ 9874
♥ Q987
♦ QJ
♣ QJ2

Board (35) Av: NS=-630
N-S E-W Contract N-S E-W IMP
8 4 3NT W-1 100 12
2 7 3NT W 3 600 1
10 6 3NT W 3 600 1
4 8 3NT W 4 630 0
5 1 3NT W 4 630 0
1 5 3NT E 4 630 0
3 9 3NT E 4 630 0
7 2 3NT E 5 660 -1
6 10 3NT E 5 660 -1
9 3 3NT E 5 660 -1

36

♠ AJ
♥ 72
♦ AQJ104
♣ AQ62
♠ K10752
♥ 654
♦ 976
♣ J9
N
|
W — E
|
S
♠ 4
♥ AKJ93
♦ K853
♣ K87
♠ Q9863
♥ Q108
♦ 2
♣ 10543

Board (36) Av: NS=+30
N-S E-W Contract N-S E-W IMP
2 7 3C N 3 110 2
10 6 2S S 2 110 2
3 9 2C N 3 110 2
9 3 2H E-1 100 2
1 5 2H E-1 100 2
4 8 2C N 2 90 2
7 2 4C N-1 100 -4
5 1 3C N-1 100 -4
8 4 3C N-1 100 -4
6 10 4S S-3 300 -8

1

♠AQJ83
♥7
♦KQ1052
♣97

♠K1052
♥AJ964
♦J93
♣Q

♠9764
♥K53
♦A8
♣KJ42

Board (1) Av: NS=-60

N-S	E-W	Contract	N-S	E-W	IMP
3	2	5Hx E-2	300		8
10	7	4S N-1	50		0
6	9	4S N-1	50		0
7	10	4S N-1	50		0
5	8	4S N-1	50		0
4	1	4S N-1	50		0
2	3	4S N-1	50		0
1	4	4S N-1	50		0
9	6	4Sx N-1	100		-1
8	5	4S N-2	100		-1

2

♠QJ109
♥AJ32
♦K2
♣1032

♠732
♥1084
♦QJ3
♣QJ64

♠K84
♥K96
♦1095
♣A975

Board (2) Av: NS=+30

N-S	E-W	Contract	N-S	E-W	IMP
3	2	1NT S 3	150		3
8	5	2S N 3	140		3
4	1	2C S 3	110		2
5	8	2D W-2	100		2
9	6	2C S 2	90		2
1	4	2C S 2	90		2
7	10	1D W 1	70		-3
6	9	3C S-1	100		-4
2	3	2C S-1	100		-4
10	7	1NT S-1	100		-4

3

♠K94
♥86
♦J106
♣AKJ82

♠QJ85
♥7542
♦Q2
♣Q73

♠A732
♥AJ103
♦A4
♣1096

Board (3) Av: NS=+400

N-S	E-W	Contract	N-S	E-W	IMP
9	6	3NT S 5	460		2
6	9	3NT S 3	400		0
10	7	3NT S 3	400		0
7	10	3NT S 3	400		0
5	8	3NT S 3	400		0
1	4	3NT S 3	400		0
4	1	3NT S 3	400		0
2	3	3NT S 3	400		0
3	2	3NT S 3	400		0
8	5	3NT N-1	50		-10

4

♠J3
♥J10532
♦Q82
♣753

♠98
♥Q4
♦K1073
♣AQ862

♠AKQ10762
♥A76
♦A6
♣4

Board (4) Av: NS=+280

N-S	E-W	Contract	N-S	E-W	IMP
8	5	4S S 5	650		9
4	1	4S S 5	650		9
6	9	4S S 5	650		9
7	10	4S S 4	620		8
3	2	3S S 6	230		-2
9	6	3S S 4	170		-3
5	8	1S S 3	140		-4
10	7	4S S-1	100		-9
2	3	4S S-1	100		-9
1	4	4S S-1	100		-9

5

♠KQJ10
♥Q10872
♦J
♣AK4

♠A985
♥943
♦1065
♣Q76

♠43
♥A5
♦Q98742
♣1092

Board (5) Av: NS=+200

N-S	E-W	Contract	N-S	E-W	IMP
4	1	3NT S 4	630		10
10	7	3NT S 4	630		10
2	3	2NT S 3	150		-2
1	4	3H N 3	140		-2
6	9	2H N 3	140		-2
9	6	2H N 3	140		-2
3	2	2H N 3	140		-2
8	5	2H N 3	140		-2
5	8	2NT S 2	120		-2
7	10	4H N-1	100		-7

6

♠7
♥AKQJ1063
♦J10985
♣

♠AQJ984
♥4
♦
♣J98762

♠K53
♥852
♦K32
♣AQ54

Board (6) Av: NS=+180

N-S	E-W	Contract	N-S	E-W	IMP
7	10	5H N 5	450		7
5	8	5H N 5	450		7
10	7	4H N 5	450		7
9	6	4H N 4	420		6
3	2	4Sx E-1	200		1
2	3	5S E-1	100		-2
6	9	6H N-1	50		-6
1	4	5H N-1	50		-6
4	1	5H N-1	50		-6
8	5	7Hx N-3	500		-12

7

♠Q
♥10987653
♦943
♣82

♠A82
♥AQ
♦
♣AKJ97653

♠KJ1063
♥J
♦AKJ1065
♣10

Board (7) Av: NS=-710

N-S	E-W	Contract	N-S	E-W	IMP
5	8	4C E 6	170		11
7	10	3C E 6	170		11
9	6	5C E 5	600		3
10	7	5C E 6	620		3
1	4	5C E 6	620		3
4	1	5C E 6	620		3
3	2	3NT W 6	690		1
8	5	5Cx E 6	950		-6
6	9	6C E 6	1370		-12
2	3	6C E 6	1370		-12

8

♠AKQ1032
♥64
♦J842
♣Q

♠96
♥AKJ7
♦KQ10753
♣A

♠75
♥103
♦
♣KJ10976532

Board (8) Av: NS=-130

N-S	E-W	Contract	N-S	E-W	IMP
3	2	5Cx S 5	550		12
1	4	5C S 5	400		11
8	5	5Cx S-1	100		1
9	6	5Cx S-1	100		1
2	3	5Cx S-1	100		1
4	1	4S N-2	100		1
10	7	4S N-2	100		1
5	8	5H W 5	450		-8
6	9	4H W 5	450		-8
7	10	4H W 5	450		-8

9

♠KJ93
♥KQ76
♦9
♣9854

♠62
♥J9852
♦1072
♣KQ2

♠AQ1054
♥104
♦KQJ8
♣J10

Board (9) Av: NS=+240

N-S	E-W	Contract	N-S	E-W	IMP
3	2	4S S 4	420		5
5	8	4S S 4	420		5
10	7	4S S 4	420		5
4	1	4S S 4	420		5
1	4	4S S 4	420		5
9	6	3S S 4	170		-2
2	3	3S S 4	170		-2
6	9	4S S-1	50		-7
7	10	4S S-1	50		-7
8	5	4S S-1	50		-7

1

♠ J1053
♥ 1043
♦ K98
♣ 1076

♠ 9
♥ A75
♦ Q103
♣ AKQJ52

♠ K76
♥ KQJ982
♦ AJ
♣ 84

♠ AQ842
♥ 6
♦ 76542
♣ 93

Board (1) Av: NS=-930

N-S	E-W	Contract	N-S	E-W	IMP
4	2	5C W 6	420		11
2	4	4H E 7	510		9
6	5	6H E 6	980		-2
7	8	6H E 6	980		-2
9	10	6H E 6	980		-2
3	1	6H E 6	980		-2
10	9	6H E 6	980		-2
1	3	6H E 7	1010		-2
5	6	6H E 7	1010		-2
8	7	6H E 7	1010		-2

2

♠ KJ852
♥ K9862
♦ 8
♣ 84

♠ 64
♥ AJ7
♦ K532
♣ KQJ2

♠ AQ973
♥ 10
♦ AQJ109
♣ A9

♠ 10
♥ Q543
♦ 764
♣ 107653

Board (2) Av: NS=-830

N-S	E-W	Contract	N-S	E-W	IMP
8	7	3NT W 5	460		9
10	9	3NT W 5	460		9
4	2	3NT W 7	520		7
5	6	6D W 7	940		-3
3	1	6D E 7	940		-3
9	10	6D E 7	940		-3
1	3	6D E 7	940		-3
2	4	6D E 7	940		-3
6	5	6D E 7	940		-3
7	8	6D E 7	940		-3

3

♠ 109874
♥ 54
♦ A843
♣ QJ

♠ J2
♥ QJ632
♦ K5
♣ A1093

♠ Q3
♥ AK987
♦ QJ107
♣ 65

♠ AK65
♥ 10
♦ 962
♣ K8742

Board (3) Av: NS=+140

N-S	E-W	Contract	N-S	E-W	IMP
4	2	4Sx N 4	590		10
8	7	4S N 4	420		7
5	6	4H W-1	100		-1
1	3	4H W-1	100		-1
3	1	4H W-1	100		-1
10	9	4H E-1	100		-1
9	10	4H E-1	100		-1
2	4	4H E-1	100		-1
6	5	4H E-1	100		-1
7	8	4H E-1	100		-1

4

♠ Q3
♥ A94
♦ 9764
♣ QJ102

♠ A9
♥ KQJ6
♦ KJ103
♣ A85

♠ K8542
♥ 852
♦ A8
♣ 964

♠ J1076
♥ 1073
♦ Q52
♣ K73

Board (4) Av: NS=-510

N-S	E-W	Contract	N-S	E-W	IMP
7	8	3NT W-1	100		12
1	3	3NT W-1	100		12
9	10	3NT W 3	600		-3
8	7	3NT W 3	600		-3
10	9	3NT W 3	600		-3
6	5	3NT W 3	600		-3
2	4	3NT W 3	600		-3
3	1	3NT W 3	600		-3
5	6	3NT W 3	600		-3
4	2	4S E 4	620		-3

5

♠ 92
♥ 432
♦ J752
♣ AJ94

♠ Q108
♥ 1085
♦ A63
♣ K873

♠ AKJ6543
♥ KQ97
♦
♣ Q2

♠ 7
♥ AJ6
♦ KQ10984
♣ 1065

Board (5) Av: NS=-420

N-S	E-W	Contract	N-S	E-W	IMP
7	8	4S E 4	420		0
10	9	4S E 4	420		0
9	10	4S E 4	420		0
8	7	4S E 4	420		0
3	1	4S E 4	420		0
5	6	4S E 4	420		0
2	4	4S E 4	420		0
4	2	4S E 4	420		0
1	3	4S E 5	450		-1
6	5	4S E 5	450		-1

6

♠ Q86
♥ 1075
♦ 654
♣ AQJ2

♠ KJ74
♥ 8
♦ KQ9
♣ K9543

♠ 1053
♥ KQJ63
♦ A10
♣ 1087

♠ A92
♥ A942
♦ J8732
♣ 6

Board (6) Av: NS=+140

N-S	E-W	Contract	N-S	E-W	IMP
1	3	2NT W-3	300		4
7	8	2D E-3	300		4
10	9	2NT E-2	200		2
9	10	2NT E-2	200		2
2	4	1NT E-2	200		2
5	6	2H E-1	100		-1
3	1	1NT E-1	100		-1
8	7	1NT E-1	100		-1
6	5	2C W 2	90		-6
4	2	2NT E 2	120		-6

7

♠ KQ9732
♥ 873
♦ J2
♣ J8

♠ J84
♥ AQ109
♦ Q7
♣ K962

♠ A106
♥ J65
♦ K983
♣ Q43

♠ 5
♥ K42
♦ A10654
♣ A1075

Board (7) Av: NS=-170

N-S	E-W	Contract	N-S	E-W	IMP
8	7	2S N-1	100		2
5	6	2S N-1	100		2
9	10	2D S-1	100		2
6	5	1NT W 2	120		2
3	1	1NT E 3	150		1
4	2	2S N-2	200		-1
2	4	2S N-2	200		-1
10	9	2S N-2	200		-1
7	8	3S N-3	300		-4
1	3	2S N-3	300		-4

8

♠ QJ432
♥ A9
♦ K6
♣ KJ98

♠ A
♥ 752
♦ 9875432
♣ 53

♠ 85
♥ KQ843
♦ AQ
♣ AQ64

♠ K10976
♥ J106
♦ J10
♣ 1072

Board (8) Av: NS=-180

N-S	E-W	Contract	N-S	E-W	IMP
8	7	3S N-1	50		4
5	6	3S N-1	50		4
10	9	4S N-2	100		2
6	5	4S N-2	100		2
2	4	4S N-2	100		2
7	8	4S N-3	150		1
9	10	4Sx N-2	300		-3
3	1	4Sx N-2	300		-3
4	2	4Sx N-2	300		-3
1	3	4H E 5	450		-7

9

♠ 10982
♥ K76
♦ KJ53
♣ 87

♠ KQ7654
♥ J84
♦ 84
♣ A10

♠ J3
♥ AQ10952
♦ AQ7
♣ J9

♠ A
♥ 3
♦ 10962
♣ KQ65432

Board (9) Av: NS=-640

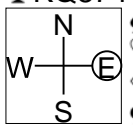
N-S	E-W	Contract	N-S	E-W	IMP
10	9	4H E 4	620		1
7	8	4H E 4	620		1
8	7	4H E 4	620		1
1	3	4H E 4	620		1
2	4	4H E 4	620		1
3	1	5H E 5	650		0
9	10	4H E 5	650		0
6	5	4H E 5	650		0
5	6	4H E 6	680		-1
4	2	4H E 6	680		-1

兵庫県知事杯 OPEN TEAMS Session 6 Flight B 2012年10月8日(月)

10

♠A10
♥KQ63
♦KJ
♣KQ874
♠8754
♥92
♦Q53
♣J962

♠KQ9 J632
♥A108 J754
♦A1092 8764
♣A53 ♣10



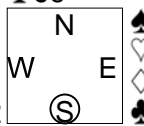
Board (10) Av: NS=+140

Table with columns: N-S, E-W, Contract, N-S, E-W, IMP. Contains 10 rows of contract results.

11

♠A2
♥KQJ952
♦AK7
♣J9
♠J7
♥A107
♦Q9543
♣Q106

♠Q853 K10964
♥4 ♥863
♦J8 ♦1062
♣AK8752 ♣43



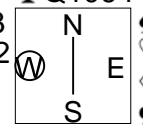
Board (11) Av: NS=+470

Table with columns: N-S, E-W, Contract, N-S, E-W, IMP. Contains 10 rows of contract results.

12

♠AK8
♥A854
♦92
♣Q1064
♠9765
♥Q
♦AK876
♣J97

♠J1043 Q2
♥K7632 J109
♦10 ♦QJ543
♣K32 ♣A85



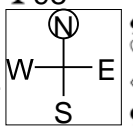
Board (12) Av: NS=+30

Table with columns: N-S, E-W, Contract, N-S, E-W, IMP. Contains 10 rows of contract results.

13

♠AK4
♥K82
♦KJ632
♣98
♠Q95
♥AQ4
♦8
♣QJ7542

♠8732 J106
♥J753 ♥1096
♦1054 ♦AQ97
♣106 ♣AK3



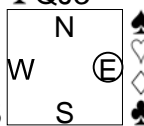
Board (13) Av: NS=+450

Table with columns: N-S, E-W, Contract, N-S, E-W, IMP. Contains 10 rows of contract results.

14

♠Q1052
♥AQ85
♦86
♣QJ3
♠K86
♥K
♦QJ952
♣9842

♠AJ 9743
♥J9632 ♥1074
♦A4 ♦K1073
♣AK105 ♣76



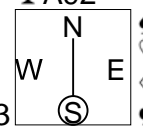
Board (14) Av: NS=-50

Table with columns: N-S, E-W, Contract, N-S, E-W, IMP. Contains 10 rows of contract results.

15

♠K1072
♥AK1032
♦K
♣A92
♠A54
♥Q98
♦QJ1065
♣105

♠963 QJ8
♥74 ♥J65
♦872 ♦A943
♣KQ763 ♣J84



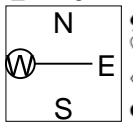
Board (15) Av: NS=+670

Table with columns: N-S, E-W, Contract, N-S, E-W, IMP. Contains 10 rows of contract results.

16

♠J1076
♥82
♦1072
♣A1072
♠AQ853
♥1094
♦A4
♣Q84

♠K9 42
♥AKQ63 ♥J75
♦985 ♦KQJ63
♣K65 ♣J93



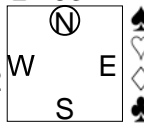
Board (16) Av: NS=-230

Table with columns: N-S, E-W, Contract, N-S, E-W, IMP. Contains 10 rows of contract results.

17

♠102
♥Q9742
♦953
♣763
♠Q8
♥J1053
♦86
♣KQ542

♠K53 AJ9764
♥A86 ♥K
♦AKQ72 ♦J104
♣J8 ♣A109



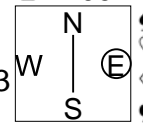
Board (17) Av: NS=-950

Table with columns: N-S, E-W, Contract, N-S, E-W, IMP. Contains 10 rows of contract results.

18

♠A9862
♥Q653
♦
♣K1097
♠J10743
♥J4
♦J108
♣AQJ

♠Q5 K
♥K72 ♥A1098
♦Q9743 ♦AK652
♣654 ♣832



Board (18) Av: NS=+490

Table with columns: N-S, E-W, Contract, N-S, E-W, IMP. Contains 10 rows of contract results.

19

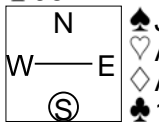
♠84 ♡Q987542 ♢54 ♣J6

♠AK1097652 ♠J3 ♠AKJ3 ♠A1082 ♠1054

♡J93 ♡AKJ3 ♡Q ♡106 ♡KQ76 ♡A98732

♠AK1097652 ♠J3 ♠AKJ3 ♠A1082 ♠1054

♡J93 ♡AKJ3 ♡Q ♡106 ♡KQ76 ♡A98732



Board (19) Av: NS=-770

N-S	E-W	Contract	N-S	E-W	IMP
7	6	5S	W 5	650	3
3	4	4S	W 5	650	3
10	5	4S	W 6	680	3
6	7	4S	W 6	680	3
8	9	4S	W 6	680	3
5	10	4S	W 6	680	3
4	3	4S	W 6	680	3
9	8	4S	W 6	680	3
1	2	6S	W 6	1430	-12
2	1	6S	W 6	1430	-12

20

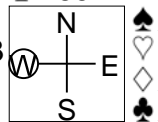
♠843 ♡7 ♢98652 ♣K862

♠K75 ♠AQ109 ♠AJ1043 ♠95 ♠A743 ♠AQ10

♡J973 ♠J62 ♠KQ862 ♠KJ10 ♠54

♠K75 ♠AQ109 ♠AJ1043 ♠95 ♠A743 ♠AQ10

♡J973 ♠J62 ♠KQ862 ♠KJ10 ♠54



Board (20) Av: NS=-620

N-S	E-W	Contract	N-S	E-W	IMP
8	9	3NT	E 3	600	1
6	7	3NT	E 3	600	1
3	4	3NT	E 3	600	1
1	2	3NT	E 3	600	1
2	1	3NT	E 3	600	1
7	6	3NT	E 4	630	0
5	10	3NT	E 4	630	0
9	8	3NT	E 5	660	-1
10	5	3NT	E 5	660	-1
4	3	3NT	E 6	690	-2

21

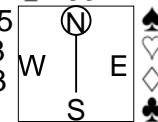
♠KJ1074 ♡K64 ♢92 ♣AJ3

♠AQ65 ♠932 ♠AJ53 ♠Q ♠A743 ♠AQ10

♡K103 ♠8 ♠Q9 ♠109872 ♠AJ864 ♠K6

♠AQ65 ♠932 ♠AJ53 ♠Q ♠A743 ♠AQ10

♡K103 ♠8 ♠Q9 ♠109872 ♠AJ864 ♠K6



Board (21) Av: NS=+80

N-S	E-W	Contract	N-S	E-W	IMP
5	10	3D	E-5	250	5
3	4	2H	S 3	140	2
2	1	2H	S 3	140	2
10	5	2H	S 2	110	1
9	8	2H	S 2	110	1
7	6	2NT	W-2	100	1
1	2	3C	E-1	50	-1
6	7	1NT	W-1	50	-1
4	3	2H	S-1	100	-5
8	9	2D	S-1	100	-5

22

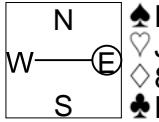
♠A5 ♡K2 ♢KQ952 ♣7632

♠8642 ♠KQJ ♠AQ1086 ♠J954 ♠876 ♠K109

♡43 ♠10973 ♠AJ10 ♠AQ85

♠8642 ♠KQJ ♠AQ1086 ♠J954 ♠876 ♠K109

♡43 ♠10973 ♠AJ10 ♠AQ85



Board (22) Av: NS=+130

N-S	E-W	Contract	N-S	E-W	IMP
2	1	2NT	N 5	210	2
4	3	2NT	N 4	180	2
5	10	2NT	N 4	180	2
1	2	2NT	N 4	180	2
6	7	2NT	N 3	150	1
10	5	3D	N 4	130	0
9	8	3C	N 4	130	0
7	6	2NT	S 2	120	0
8	9	Passout			-4
3	4	5D	N-1	50	-5

23

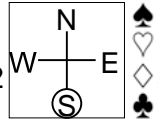
♠KQ105 ♡J97 ♢9 ♣AJ642

♠AJ2 ♠9863 ♠K52 ♠AQ10864 ♠8742 ♠J6 ♠983 ♠7

♡74 ♠74 ♠3 ♠AKQ1053 ♠KQ105

♠AJ2 ♠9863 ♠K52 ♠AQ10864 ♠8742 ♠J6 ♠983 ♠7

♡74 ♠74 ♠3 ♠AKQ1053 ♠KQ105



Board (23) Av: NS=+280

N-S	E-W	Contract	N-S	E-W	IMP
10	5	5C	S 6	620	8
8	9	5C	S 5	600	8
3	4	5C	S 5	600	8
4	3	5C	S 5	600	8
2	1	5C	S 5	600	8
5	10	3Hx	E-1	200	-2
7	6	4C	S 5	150	-4
9	8	3NT	N-2	200	-10
6	7	3NT	N-3	300	-11
1	2	4S	N-4	400	-12

24

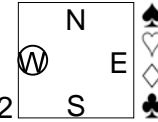
♠KQ63 ♡J9752 ♢K83 ♣K

♠106 ♠A9875 ♠976 ♠Q8 ♠QJ54 ♠75

♡QJ986432 ♠J1042 ♠AK43 ♠A102 ♠A10

♠106 ♠A9875 ♠976 ♠Q8 ♠QJ54 ♠75

♡QJ986432 ♠J1042 ♠AK43 ♠A102 ♠A10



Board (24) Av: NS=+470

N-S	E-W	Contract	N-S	E-W	IMP
2	1	5H	S 6	480	0
7	6	4H	S 6	480	0
1	2	4H	S 6	480	0
10	5	4H	N 6	480	0
5	10	4H	N 6	480	0
3	4	4H	N 5	450	-1
8	9	4H	N 5	450	-1
4	3	4H	N 5	450	-1
6	7	4H	N 5	450	-1
9	8	6H	N-1	50	-11

25

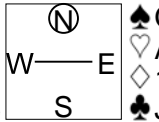
♠K8 ♡Q98 ♢K9842 ♣853

♠A7 ♠Q106542 ♠3 ♠AJ62 ♠AQJ63 ♠10 ♠KQ1096 ♠J2

♡J93 ♠J93 ♠K10754 ♠75 ♠A74

♠A7 ♠Q106542 ♠3 ♠AJ62 ♠AQJ63 ♠10 ♠KQ1096 ♠J2

♡J93 ♠J93 ♠K10754 ♠75 ♠A74



Board (25) Av: NS=-230

N-S	E-W	Contract	N-S	E-W	IMP
3	4	4S	E-2	200	10
10	5	4S	E-1	100	8
8	9	4S	E-1	100	8
7	6	4S	E-1	100	8
6	7	3C	W 3	110	3
1	2	3C	W 3	110	3
2	1	4S	E 4	620	-9
9	8	4S	E 5	650	-9
4	3	4S	E 5	650	-9
5	10	4S	E 5	650	-9

26

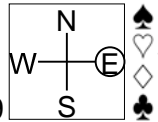
♠10 ♡Q10942 ♢AQJ84 ♣73

♠A864 ♠K953 ♠A8 ♠J5 ♠63 ♠K92 ♠AKQJ9 ♠8642

♡QJ72 ♠QJ72 ♠K763 ♠1075 ♠105

♠A864 ♠K953 ♠A8 ♠J5 ♠63 ♠K92 ♠AKQJ9 ♠8642

♡QJ72 ♠QJ72 ♠K763 ♠1075 ♠105



Board (26) Av: NS=-400

N-S	E-W	Contract	N-S	E-W	IMP
3	4	4S	W-1	100	11
6	7	3S	W 3	140	6
5	10	3S	W 3	140	6
1	2	3S	E 4	170	6
9	8	4H	S-2	200	5
7	6	4S	W 4	620	-6
8	9	4S	W 4	620	-6
4	3	4S	W 4	620	-6
2	1	4S	W 5	650	-6
10	5	4S	W 5	650	-6

27

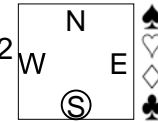
♠AJ3 ♡AJ3 ♢AKQ8652 ♣1042

♠KJ64 ♠A10832 ♠Q1052 ♠874 ♠J ♠7 ♠AJ93 ♠KQ75

♡Q975 ♠Q975 ♠K96 ♠10943 ♠86

♠KJ64 ♠A10832 ♠Q1052 ♠874 ♠J ♠7 ♠AJ93 ♠KQ75

♡Q975 ♠Q975 ♠K96 ♠10943 ♠86



Board (27) Av: NS=+340

N-S	E-W	Contract	N-S	E-W	IMP
8	9	5Dx	N 5	550	5
1	2	5Dx	N 5	550	5
5	10	6Sx	E-3	500	4
3	4	6Cx	W-3	500	4
10	5	5D	N 5	400	2
2	1	5D	N 5	400	2
4	3	5S	E-3	150	-5
6	7	4D	N 5	150	-5
9	8	5S	E-2	100	-6
7	6	4S	E-2	100	-6

28

♠ K10
♥ KJ102
♦ A952
♣ Q32

♠ J87 96432
♥ A875 Q63
♦ K86 QJ
♣ A86 1095

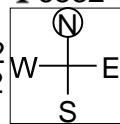


♠ AQ5
♥ 94
♦ 10743
♣ KJ74

29

♠ 10975
♥ 1053
♦ Q4
♣ 6532

♠ K4 AQ62
♥ KJ762 A84
♦ 10932 AJ87
♣ J10 K8

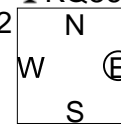


♠ J83
♥ Q9
♦ K65
♣ AQ974

30

♠ K
♥ KJ10
♦ A1065
♣ KQ864

♠ AQ7652 J108
♥ 943 A87543
♦ 9732 Q4
♣ A72 J10



♠ 943
♥ Q962
♦ KJ8
♣ 953

Board (28) Av: NS=+100

N-S	E-W	Contract	N-S	E-W	IMP
3	4	1NT S 3	150		2
10	5	1C W-3	150		2
6	7	1C W-3	150		2
8	9	2S E-2	100		0
2	1	1C W-2	100		0
1	2	1C W-2	100		0
7	6	2D S 2	90		0
4	3	2D S 2	90		0
5	10	2S E-1	50		-2
9	8	1NT S-1	100		-5

Board (29) Av: NS=-580

N-S	E-W	Contract	N-S	E-W	IMP
8	9	3S E-1	100		12
1	2	2H W 4	170		9
4	3	5D E 5	600		-1
2	1	5D E 5	600		-1
7	6	3NT E 4	630		-2
9	8	4H W 5	650		-2
3	4	4H E 5	650		-2
6	7	4H E 5	650		-2
10	5	3NT E 5	660		-2
5	10	3NT E 6	690		-3

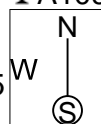
Board (30) Av: NS=-60

N-S	E-W	Contract	N-S	E-W	IMP
5	10	2NT N 2	120		5
1	2	4S W-1	50		3
7	6	4S W-1	50		3
3	4	4S W-1	50		3
10	5	5C N-2	100		-1
4	3	4C N-2	100		-1
9	8	3S W 3	140		-2
8	9	2S W 3	140		-2
6	7	3C N-3	150		-3
2	1	5Cx N-2	300		-6

31

♠ K96
♥ Q8
♦ J8
♣ A109842

♠ AJ1042 Q73
♥ 4 109762
♦ AQ1065 9743
♣ J3 5

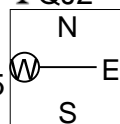


♠ 85
♥ AKJ53
♦ K2
♣ KQ76

32

♠ 10742
♥ J1097
♦ J7
♣ QJ2

♠ QJ5 K63
♥ 8654 AQ32
♦ Q985 A3
♣ 95 AK103

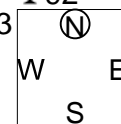


♠ A98
♥ K
♦ K10642
♣ 8764

33

♠ Q86
♥ 10754
♦ KQ32
♣ 92

♠ KJ1093 5
♥ A96 QJ32
♦ AJ 108764
♣ 1086 AQJ



♠ A742
♥ K8
♦ 95
♣ K7543

Board (31) Av: NS=+390

N-S	E-W	Contract	N-S	E-W	IMP
4	3	4H S 5	650		6
5	10	5C S 6	620		6
7	6	5C S 6	620		6
3	4	5C N 6	620		6
2	1	5C S 5	600		5
10	5	4C S 6	170		-6
8	9	4C N 6	170		-6
1	2	3H S 4	170		-6
6	7	3H S 4	170		-6
9	8	3Dx E 4	570		-14

Board (32) Av: NS=+190

N-S	E-W	Contract	N-S	E-W	IMP
9	8	4H E-2	200		0
7	6	4H E-2	200		0
8	9	4H E-2	200		0
4	3	4H E-2	200		0
2	1	4H E-2	200		0
5	10	4H E-2	200		0
3	4	4H E-2	200		0
6	7	3NT E-2	200		0
1	2	4H E-1	100		-3
10	5	4H E-1	100		-3

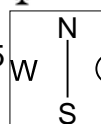
Board (33) Av: NS=-60

N-S	E-W	Contract	N-S	E-W	IMP
2	1	2NT E-1	50		3
5	10	2D E-1	50		3
1	2	1D E-1	50		3
10	5	2C S-1	50		0
4	3	2D E 2	90		-1
9	8	1NT E 1	90		-1
3	4	1NT E 1	90		-1
7	6	2NT E 2	120		-2
8	9	1NT E 2	120		-2
6	7	2D N-3	150		-3

34

♠ KQ94
♥ K9432
♦ A1096
♣

♠ 108 AJ765
♥ AQJ5 87
♦ J73 854
♣ 9754 1062

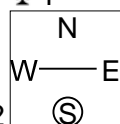


♠ 32
♥ 106
♦ KQ2
♣ AKQJ83

35

♠ QJ10985
♥ Q104
♦ 1054
♣ 4

♠ A4 K72
♥ A7 9865
♦ K76 QJ98
♣ KQJ732 A6

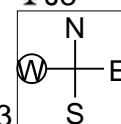


♠ 63
♥ KJ32
♦ A32
♣ 10985

36

♠ A9
♥ AJ962
♦ J742
♣ J8

♠ J106 K83
♥ 10 KQ853
♦ Q108 AK3
♣ AKQ543 109



♠ Q7542
♥ 74
♦ 965
♣ 762

Board (34) Av: NS=+650

N-S	E-W	Contract	N-S	E-W	IMP
7	6	3NT N 6	690		1
1	2	3NT S 5	660		0
2	1	3NT S 5	660		0
6	7	3NT N 5	660		0
9	8	3NT N 5	660		0
10	5	3NT N 5	660		0
5	10	3NT N 5	660		0
4	3	3NT S 4	630		-1
3	4	3NT N 4	630		-1
8	9	3NT N 3	600		-2

Board (35) Av: NS=-660

N-S	E-W	Contract	N-S	E-W	IMP
8	9	3C W 6	170		10
2	1	5C W 6	620		1
9	8	5C W 6	620		1
7	6	3NT E 4	630		1
1	2	3NT W 5	660		0
5	10	3NT W 6	690		-1
3	4	3NT W 6	690		-1
10	5	3NT W 6	690		-1
6	7	3NT W 6	690		-1
4	3	3NT E 6	690		-1

Board (36) Av: NS=-640

N-S	E-W	Contract	N-S	E-W	IMP
9	8	5C W 5	600		1
6	7	3NT E 4	630		0
7	6	3NT E 4	630		0
8	9	3NT E 4	630		0
1	2	3NT E 4	630		0
2	1	3NT E 4	630		0
5	10	3NT E 5	660		-1
3	4	3NT E 5	660		-1
4	3	3NT E 5	660		-1
10	5	3NT E 6	690		-2