

兵庫県知事杯 OPEN TEAMS Session 1 Flight A 2012年10月6日(土)

1

♠ J85
♥ 743
♦ 952
♣ AKJ10

♠ 62
♥ A82
♦ K4
♣ 876542

♠ A97
♥ KQ96
♦ 1086
♣ Q93

♠ KQ1043
♥ J105
♦ AQJ73
♣

Board (1) Av: NS=+220

N-S	E-W	Contract	N-S	E-W	IMP
4	7	4S	S 5	450	6
8	2	4S	S 4	420	5
6	3	4S	S 4	420	5
7	4	4S	S 4	420	5
3	6	3S	S 4	170	-2
2	8	2S	S 4	170	-2
9	5	2S	S 4	170	-2
10	1	3C	E-2	100	-3
5	9	4S	S-2	100	-8
1	10	4S	S-3	150	-9

2

♠ 10963
♥ J83
♦ Q5
♣ AKJ5

♠ J7
♥ K1054
♦ 9742
♣ Q98

♠ AQ852
♥ AQ62
♦ 106
♣ 103

♠ K4
♥ 97
♦ AKJ83
♣ 7642

Board (2) Av: NS=-80

N-S	E-W	Contract	N-S	E-W	IMP
2	8	2NT	N 2	120	5
3	6	3H	E-2	100	5
7	4	3NT	N-1	100	-1
5	9	3NT	N-1	100	-1
4	7	2H	E 2	110	-1
9	5	2H	E 2	110	-1
8	2	2H	E 2	110	-1
10	1	2H	E 2	110	-1
6	3	2H	E 2	110	-1
1	10	2H	E 2	110	-1

3

♠ 653
♥ QJ4
♦ A92
♣ KJ83

♠ 842
♥ AK103
♦ J1083
♣ 102

♠ KJ97
♥ 982
♦ KQ654
♣ 9

♠ AQ10
♥ 765
♦ 7
♣ AQ7654

Board (3) Av: NS=+310

N-S	E-W	Contract	N-S	E-W	IMP
6	3	5C	S 5	400	3
7	4	3NT	N 3	400	3
3	6	3NT	N 3	400	3
5	9	3NT	N 3	400	3
10	1	3NT	N 3	400	3
2	8	3NT	N 3	400	3
1	10	3D	E-2	200	-3
8	2	3C	S 5	150	-4
9	5	3C	S 4	130	-5
4	7	3C	S 4	130	-5

4

♠ 9743
♥ J1074
♦ AK103
♣ Q

♠ AQ108
♥ Q32
♦ J752
♣ A5

♠ 62
♥ AK9
♦ 4
♣ KJ87642

♠ KJ5
♥ 865
♦ Q986
♣ 1093

Board (4) Av: NS=-600

N-S	E-W	Contract	N-S	E-W	IMP
3	6	1NT	E 5	210	9
2	8	2NT	E 7	270	8
9	5	3NT	W 3	600	0
8	2	3NT	W 3	600	0
1	10	5C	W 6	620	-1
5	9	3NT	W 5	660	-2
4	7	3NT	W 5	660	-2
10	1	3NT	W 6	690	-3
6	3	3NT	W 6	690	-3
7	4	3NT	W 6	690	-3

5

♠ J92
♥ K974
♦ 3
♣ AQ1076

♠ 864
♥ QJ108
♦ AJ7
♣ J95

♠ Q75
♥ A65
♦ KQ54
♣ 832

♠ AK103
♥ 32
♦ 109862
♣ K4

Board (5) Av: NS=-10

N-S	E-W	Contract	N-S	E-W	IMP
8	2	2NT	N 3	150	4
6	3	2S	S 3	140	4
5	9	Passout			0
7	4	Passout			0
9	5	Passout			0
3	6	Passout			0
2	8	Passout			0
1	10	1NT	E 1	90	-2
10	1	3C	N-1	100	-3
4	7	1NT	N-1	100	-3

6

♠ 7
♥ AK984
♦ K7542
♣ 54

♠ AJ10853
♥ J52
♦ Q
♣ KJ7

♠ Q2
♥ 763
♦ A3
♣ AQ10963

♠ K964
♥ Q10
♦ J10986
♣ 82

Board (6) Av: NS=-480

N-S	E-W	Contract	N-S	E-W	IMP
5	9	4D	S-1	50	10
7	4	3S	W 4	170	7
2	8	3S	W 5	200	7
6	3	5Dx	S-2	300	5
9	5	4S	W 4	620	-4
1	10	4S	W 4	620	-4
10	1	4S	W 4	620	-4
3	6	4S	W 4	620	-4
8	2	3NT	W 5	660	-5
4	7	4Sx	W 4	790	-7

7

♠ 10
♥ 752
♦ J752
♣ K8542

♠ 87542
♥ A10643
♦ A
♣ J7

♠ QJ9
♥ KJ8
♦ K103
♣ AQ93

♠ AK63
♥ Q9
♦ Q9864
♣ 106

Board (7) Av: NS=-580

N-S	E-W	Contract	N-S	E-W	IMP
4	7	3H	E 5	200	9
1	10	2S	W 5	200	9
7	4	4S	W 4	620	-1
5	9	4S	W 4	620	-1
10	1	4S	E 4	620	-1
8	2	4S	W 5	650	-2
9	5	4S	E 5	650	-2
3	6	4H	W 5	650	-2
6	3	4H	E 5	650	-2
2	8	4H	E 5	650	-2

8

♠ QJ2
♥ 82
♦ K105
♣ AJ974

♠ AK1095
♥ Q53
♦ 9642
♣ 2

♠ 76
♥ AKJ1076
♦ Q7
♣ 1086

♠ 843
♥ 94
♦ AJ83
♣ KQ53

Board (8) Av: NS=-290

N-S	E-W	Contract	N-S	E-W	IMP
5	9	4C	N-2	100	5
3	6	2H	E 2	110	5
8	2	3H	E 4	170	3
6	3	3H	E 4	170	3
4	7	2H	E 4	170	3
7	4	4H	E 4	420	-4
10	1	4H	E 4	420	-4
2	8	4H	E 4	420	-4
9	5	4H	E 5	450	-4
1	10	4H	E 5	450	-4

9

♠ K7
♥ 865
♦ AJ53
♣ A1072

♠ 108653
♥ KJ42
♦ K104
♣ 9

♠ AQ4
♥ A93
♦ Q986
♣ Q63

♠ J92
♥ Q107
♦ 72
♣ KJ854

Board (9) Av: NS=-100

N-S	E-W	Contract	N-S	E-W	IMP
6	3	1NT	S-1	50	2
3	6	1NT	S-1	50	2
1	10	3C	S-2	100	0
4	7	2C	N-2	100	0
8	2	1NT	S-2	100	0
7	4	1NT	S-2	100	0
10	1	1NT	S-2	100	0
2	8	2H	W 2	110	0
9	5	3S	W 3	140	-1
5	9	1NT	N-4	200	-3

10

♠ K953
♥ 105
♦ K97
♣ QJ73

♠ 102
♥ AK862
♦ A10432
♣ A

N
W — E
S

♠ 8
♥ Q94
♦ QJ85
♣ K10985

♠ AQJ764
♥ J73
♦ 6
♣ 642

11

♠ J7
♥ Q10843
♦ A75
♣ A710

♠ 6
♥ AK52
♦ KQ102
♣ 8643

N
W — E
S

♠ KQ109432
♥ J
♦ J864
♣ 5

♠ A85
♥ 976
♦ 93
♣ AK972

12

♠ J98
♥ 1052
♦ K53
♣ 10984

♠ 7654
♥ QJ973
♦ 109
♣ AJ

N
W — E
S

♠ A3
♥ AK6
♦ A86
♣ KQ765

♠ KQ102
♥ 84
♦ QJ742
♣ 32

Board (10) Av: NS=-640

N-S	E-W	Contract	N-S	E-W	IMP
10	1	4Sx S-2	500		4
2	8	5D W 5	600		1
4	7	4H W 5	650		0
7	4	4H W 5	650		0
9	5	4H W 5	650		0
6	3	4H W 5	650		0
1	10	4H W 5	650		0
8	2	4H W 5	650		0
3	6	4H W 5	650		0
5	9	4H E 5	650		0

Board (11) Av: NS=-330

N-S	E-W	Contract	N-S	E-W	IMP
5	9	3H S-2	100		6
6	3	3S E 3	140		5
3	6	3S E 4	170		4
2	8	3S E 4	170		4
1	10	3S E 4	170		4
9	5	4S E 4	420		-3
4	7	4S E 4	420		-3
8	2	4Sx E 4	590		-6
10	1	4Sx E 4	590		-6
7	4	4Sx E 4	590		-6

Board (12) Av: NS=-480

N-S	E-W	Contract	N-S	E-W	IMP
8	2	4H W 6	480		0
9	5	4H W 6	480		0
3	6	4H W 6	480		0
7	4	4H E 6	480		0
4	7	4H E 6	480		0
1	10	4H E 6	480		0
6	3	4H E 6	480		0
10	1	4H E 6	480		0
2	8	3NT E 6	490		0
5	9	3NT E 6	490		0

13

♠ K95
♥ 754
♦ AJ106
♣ 753

♠ A62
♥ Q103
♦ K843
♣ Q64

N
W — E
S

♠ AJ986
♥ Q9752
♣ AK8

♠ QJ108743
♥ K2
♦
♣ J1092

14

♠ Q3
♥ K10732
♦ J10965
♣ 7

♠ AK10962
♥ Q8
♦ K73
♣ 93

N
W — E
S

♠ 85
♥ AJ
♦ Q82
♣ AK10654

♠ J74
♥ 9654
♦ A4
♣ QJ82

15

♠ AK965
♥ K2
♦ A9
♣ AQ104

♠ 32
♥ Q10874
♦ Q85
♣ 976

N
W — E
S

♠ Q4
♥ A963
♦ 7632
♣ J52

♠ J1087
♥ J5
♦ KJ104
♣ K83

Board (13) Av: NS=-80

N-S	E-W	Contract	N-S	E-W	IMP
5	9	5H E-2	200		7
3	6	5D E-2	200		7
4	7	5H E-1	100		5
6	3	5D E-1	100		5
10	1	5D E-1	100		5
1	10	4H E-1	100		5
2	8	4S S-2	200		-3
9	5	4Sx S-2	500		-9
8	2	4Sx S-2	500		-9
7	4	4H E 4	620		-11

Board (14) Av: NS=-440

N-S	E-W	Contract	N-S	E-W	IMP
4	7	4S W 4	420		1
8	2	4S E 4	420		1
9	5	4S E 4	420		1
6	3	3NT E 4	430		0
3	6	3NT E 4	430		0
7	4	4S W 5	450		0
5	9	4S W 5	450		0
2	8	4S W 5	450		0
10	1	4S W 5	450		0
1	10	4S E 5	450		0

Board (15) Av: NS=+790

N-S	E-W	Contract	N-S	E-W	IMP
5	9	6S N 6	1430		12
8	2	6S N 6	1430		12
4	7	4S N 7	710		-2
6	3	4S N 7	710		-2
7	4	4S N 7	710		-2
10	1	4S N 7	710		-2
1	10	4S N 7	710		-2
9	5	4S N 6	680		-3
2	8	4S N 6	680		-3
3	6	4S N 6	680		-3

16

♠ 96
♥ 654
♦ AK62
♣ KQ95

♠ 2
♥ KJ102
♦ J1095
♣ J1087

N
W — E
S

♠ J83
♥ Q987
♦ Q43
♣ 642

♠ AKQ10754
♥ A3
♦ 87
♣ A3

17

♠ Q64
♥ AK32
♦ AK2
♣ 763

♠ AK3
♥ 1098
♦ 754
♣ AKQJ

N
W — E
S

♠ J9872
♥ Q5
♦ 103
♣ 10854

♠ 105
♥ J764
♦ QJ986
♣ 92

18

♠ QJ103
♥ 107
♦ AKJ109
♣ J3

♠ 84
♥ KQ9864
♦ 73
♣ K102

N
W — E
S

♠ 7
♥ A52
♦ Q842
♣ A8765

♠ AK9652
♥ J3
♦ 65
♣ Q94

Board (16) Av: NS=+1140

N-S	E-W	Contract	N-S	E-W	IMP
4	7	7S S 7	1510		9
7	4	7S S 7	1510		9
3	6	7S S 7	1510		9
10	1	7S S 7	1510		9
9	5	6S S 7	1010		-4
6	3	6S S 7	1010		-4
1	10	6S S 7	1010		-4
5	9	6S N 7	1010		-4
2	8	4S S 7	510		-12
8	2	2D N-1	50		-15

Board (17) Av: NS=+40

N-S	E-W	Contract	N-S	E-W	IMP
6	3	1NT N 1	90		2
9	5	1NT N 1	90		2
7	4	1NT N 1	90		2
4	7	1NT N 1	90		2
3	6	1NT N 1	90		2
10	1	1NT N 1	90		2
1	10	3C E-1	50		0
2	8	2C W 2		90	-4
5	9	2S W 2		110	-4
8	2	2S E 2		110	-4

Board (18) Av: NS=-60

N-S	E-W	Contract	N-S	E-W	IMP
5	9	5Hx W-2	300		8
8	2	5Hx W-1	100		4
1	10	5Hx W-1	100		4
4	7	4S S-1		100	-1
3	6	4S S-1		100	-1
10	1	4S S-1		100	-1
2	8	4S S-1		100	-1
9	5	3H W 3		140	-2
6	3	3H E 3		140	-2
7	4	5H W 5		450	-9

19

♠ QJ9
♥ KJ832
♦ A5
♣ 976

♠ A532
♥ 105
♦ 432
♣ KJ42

N
W — E
S

♠ K74
♥ AQ74
♦ K86
♣ AQ3

♠ 1086
♥ 96
♦ QJ1097
♣ 1085

20

♠ 732
♥ 965
♦ AJ9
♣ QJ106

♠ AKQ86
♥ 1072
♦ 105
♣ AK3

N
W — E
S

♠ 104
♥ AQ43
♦ K7
♣ 98742

♠ J95
♥ KJ8
♦ Q86432
♣ 5

21

♠ KJ7
♥ 964
♦ 1084
♣ KJ43

♠ 642
♥ A7
♦ K9532
♣ Q102

N
W — E
S

♠ AQ108
♥ KQJ52
♦ A7
♣ 87

♠ 953
♥ 1083
♦ QJ6
♣ A965

Board (19) Av: NS=-550

N-S	E-W	Contract	N-S	E-W	IMP
5	3	2S	W 3	140	9
2	9	2S	W 4	170	9
6	8	3NT	E 3	600	-2
4	10	3NT	E 3	600	-2
8	6	3NT	E 3	600	-2
1	7	3NT	E 3	600	-2
7	1	3NT	E 3	600	-2
3	5	3NT	E 4	630	-2
9	2	3NT	E 4	630	-2
10	4	3NT	E 4	630	-2

Board (20) Av: NS=-550

N-S	E-W	Contract	N-S	E-W	IMP
1	7	3S	W 3	140	9
5	3	2S	W 3	140	9
4	10	3NT	W 3	600	-2
10	4	3NT	E 3	600	-2
8	6	3NT	E 3	600	-2
2	9	3NT	E 3	600	-2
7	1	3NT	E 3	600	-2
6	8	4S	W 4	620	-2
9	2	4S	W 4	620	-2
3	5	3NT	W 4	630	-2

Board (21) Av: NS=-280

N-S	E-W	Contract	N-S	E-W	IMP
4	10	2NT	E 3	150	4
9	2	3H	E 5	200	2
5	3	2S	E 5	200	2
6	8	2H	E 5	200	2
8	6	2H	E 5	200	2
3	5	2H	E 5	200	2
1	7	3NT	W 3	400	-3
10	4	3NT	W 3	400	-3
7	1	3NT	W 3	400	-3
2	9	4S	E 5	450	-5

22

♠ Q1086
♥ AK1054
♦
♣ Q876

♠ K42
♥ Q76
♦ KJ962
♣ 93

N
W — E
S

♠ A953
♥ J92
♦ Q85
♣ A105

♠ J7
♥ 83
♦ A10743
♣ KJ42

23

♠ K107
♥ A5
♦ A9743
♣ K76

♠ J952
♥ Q8763
♦ 852
♣ 9

N
W — E
S

♠ 83
♥ 102
♦ Q10
♣ AQJ8542

♠ AQ64
♥ KJ94
♦ KJ6
♣ 103

24

♠ KJ76
♥ Q1054
♦ 82
♣ J54

♠ Q1095
♥ J92
♦ AK93
♣ 87

N
W — E
S

♠ A4
♥ A76
♦ Q754
♣ A1062

♠ 832
♥ K83
♦ J106
♣ KQ93

Board (22) Av: NS=+100

N-S	E-W	Contract	N-S	E-W	IMP
5	3	2H	S 3	140	1
2	9	2H	S 3	140	1
3	5	2H	N 3	140	1
9	2	2H	N 3	140	1
7	1	3C	N 3	110	0
4	10	3C	N 3	110	0
8	6	2H	N 2	110	0
6	8	2C	N 3	110	0
1	7	1NT	S-1	50	-4
10	4	5C	N-2	100	-5

Board (23) Av: NS=+650

N-S	E-W	Contract	N-S	E-W	IMP
5	3	3Cx	E-3	800	4
4	10	3NT	S 5	660	0
8	6	3NT	S 5	660	0
3	5	3NT	N 5	660	0
7	1	3NT	N 5	660	0
2	9	3NT	N 5	660	0
9	2	3NT	N 5	660	0
6	8	3NT	S 4	630	-1
1	7	3NT	N 4	630	-1
10	4	4S	N 4	620	-1

Board (24) Av: NS=-20

N-S	E-W	Contract	N-S	E-W	IMP
7	1	3NT	W-1	50	2
8	6	3NT	E-1	50	2
10	4	3NT	E-1	50	2
9	2	3NT	E-1	50	2
1	7	3NT	E-1	50	2
2	9	2D	E 2	90	-2
4	10	1NT	E 1	90	-2
5	3	1NT	E 1	90	-2
3	5	1NT	E 2	120	-3
6	8	1NT	E 3	150	-4

25

♠ 43
♥ 72
♦ K96
♣ AK10983

♠ AJ92
♥ 943
♦ 543
♣ Q42

N
W — E
S

♠ K876
♥ AKQJ105
♦ 2
♣ 76

♠ Q105
♥ 86
♦ AQJ1087
♣ J5

26

♠ A1094
♥ 106
♦ 9
♣ A87432

♠ 653
♥ 754
♦ KQJ87
♣ Q6

N
W — E
S

♠ KJ
♥ AKQ32
♦ A43
♣ KJ10

♠ Q872
♥ J98
♦ 10652
♣ 95

27

♠ 63
♥ QJ10
♦ KJ85
♣ J765

♠ Q1097
♥ K7653
♦ 92
♣ 108

N
W — E
S

♠ 854
♥ 84
♦ A107
♣ KQ943

♠ AKJ2
♥ A92
♦ Q643
♣ A2

Board (25) Av: NS=-70

N-S	E-W	Contract	N-S	E-W	IMP
9	2	5Dx	S 5	550	12
5	3	5H	E-1	100	5
2	9	4H	E-1	100	5
8	6	4D	S-1	50	1
1	7	4D	S-1	50	1
7	1	3H	E 3	140	-2
6	8	3H	E 4	170	-3
10	4	3H	E 4	170	-3
4	10	3H	E 4	170	-3
3	5	4H	E 4	620	-11

Board (26) Av: NS=-660

N-S	E-W	Contract	N-S	E-W	IMP
5	3	3NT	E 5	660	0
8	6	3NT	E 5	660	0
10	4	3NT	E 5	660	0
4	10	3NT	E 5	660	0
7	1	3NT	E 5	660	0
3	5	3NT	E 5	660	0
9	2	3NT	E 5	660	0
2	9	3NT	E 5	660	0
1	7	4H	E 6	680	-1
6	8	4H	E 6	680	-1

Board (27) Av: NS=+370

N-S	E-W	Contract	N-S	E-W	IMP
4	10	3NT	N 5	460	3
5	3	3NT	N 3	400	1
6	8	3NT	N 3	400	1
10	4	3NT	N 3	400	1
8	6	3NT	N 3	400	1
7	1	3NT	N 3	400	1
3	5	3NT	N 3	400	1
9	2	3NT	N 3	400	1
1	7	2NT	N 3	150	-6
2	9	2D	S 3	110	-6

28

♠ AK87
♥ QJ9
♦ 1073
♣ 843

♠ J106432
♥ A852
♦ K4
♣ Q

N E
W S

♠ Q95
♥ K107
♦ 8
♣ AK9752

♠ 643
♥ Q1097
♦ AQJ9652
♣ J106

Board (28) Av: NS=-240

N-S	E-W	Contract	N-S	E-W	IMP
1	7 5S	W-1	50		7
2	9 4S	W-1	50		7
5	3 3C	E-1	50		7
4	10 3C	E 4	130		3
10	4 3S	W 4	170		2
6	8 4S	W 4	420		-5
7	1 4S	W 4	420		-5
9	2 4S	W 4	420		-5
8	6 4S	W 4	420		-5
3	5 4H	E 4	420		-5

29

♠ AJ72
♥ 42
♦ 65
♣ QJ843

♠ KQ1096
♥ AKJ8653
♦ 2
♣

N E
W S

♠ 43
♥
♦ AKJ108743
♣ A106

♠ 85
♥ Q1097
♦ Q9
♣ K9752

Board (29) Av: NS=-690

N-S	E-W	Contract	N-S	E-W	IMP
6	8 7Sx	E-4	1100		18
2	9 6H	W-2	200		13
10	4 6D	E-2	200		13
1	7 3NT	E 3	600		3
8	6 5D	E 6	620		2
3	5 5D	E 6	620		2
9	2 6D	E 6	1370		-12
7	1 6D	E 6	1370		-12
4	10 6D	E 6	1370		-12
5	3 6D	E 6	1370		-12

30

♠ A84
♥ KJ9
♦ AK6
♣ AK87

♠ KQ1065
♥ A108532
♦ J6
♣

N E
W S

♠ J9732
♥ 76
♦ QJ82
♣ 104

♠ Q4
♥
♦ 1097543
♣ Q9532

Board (30) Av: NS=-110

N-S	E-W	Contract	N-S	E-W	IMP
7	1 5C	S 5	400		11
8	6 6C	S-1	50		2
2	9 3NT	N-1	50		2
6	8 6NT	N-2	100		0
1	7 6D	S-2	100		0
4	10 6Cx	N-1	100		0
3	5 5Dx	S-1	100		0
10	4 5Dx	S-1	100		0
5	3 6Dx	S-2	300		-5
9	2 7NTxN-5		1100		-14

31

♠ Q109853
♥ J
♦ AJ9
♣ 762

♠ A
♥ AQ9864
♦ 765
♣ J83

N E
W S

♠ J4
♥ K72
♦ K842
♣ AK94

♠ K762
♥ 1053
♦ Q103
♣ Q105

Board (31) Av: NS=-430

N-S	E-W	Contract	N-S	E-W	IMP
3	5 5H	W-1	50		10
1	7 4H	W 4	420		0
5	3 4H	W 4	420		0
10	4 4H	W 4	420		0
7	1 4H	W 4	420		0
2	9 4H	W 4	420		0
8	6 4H	W 5	450		-1
9	2 4H	W 5	450		-1
4	10 4H	W 5	450		-1
6	8 4Sx	N-2	500		-2

32

♠ 972
♥
♦ A852
♣ Q108542

♠ 85
♥ KJ973
♦ 943
♣ J63

N E
W S

♠ QJ1064
♥ 105
♦ KQJ7
♣ AK

♠ AK3
♥ AQ8642
♦ 106
♣ 97

Board (32) Av: NS=-90

N-S	E-W	Contract	N-S	E-W	IMP
10	4 3NT	E-1	100		5
9	2 3C	N-1	50		1
5	3 3C	N-1	50		1
3	5 3C	N-1	50		1
6	8 3C	N-1	50		1
2	9 3C	N-2	100		0
4	10 2H	S-2	100		0
1	7 2H	S-3	150		-2
8	6 3H	S-4	200		-3
7	1 3H	S-4	200		-3

33

♠ J94
♥ J72
♦ 10952
♣ 1094

♠ 83
♥ 83
♦ KJ87
♣ Q8763

N E
W S

♠ K1065
♥ AK10954
♦ 3
♣ 52

♠ AQ72
♥ Q6
♦ AQ64
♣ AKJ

Board (33) Av: NS=-140

N-S	E-W	Contract	N-S	E-W	IMP
2	9 3Hx	W-2	300		10
4	10 4D	N-2	100		1
6	8 3D	N-2	100		1
7	1 3D	N-2	100		1
9	2 4S	N-3	150		0
10	4 4S	N-3	150		0
3	5 3NT	N-3	150		0
8	6 4S	N-4	200		-2
1	7 4S	N-4	200		-2
5	3 4S	N-4	200		-2

34

♠ 853
♥ KQ1065
♦ 32
♣ 765

♠ 76
♥ A742
♦ AKJ
♣ AJ98

N E
W S

♠ AQJ1094
♥ 8
♦ Q765
♣ 102

♠ K2
♥ J93
♦ 10984
♣ KQ43

Board (34) Av: NS=-450

N-S	E-W	Contract	N-S	E-W	IMP
6	8 4S	W 5	450		0
5	3 4S	W 5	450		0
8	6 4S	W 5	450		0
1	7 4S	E 5	450		0
4	10 4S	E 5	450		0
7	1 4S	E 5	450		0
2	9 4S	E 5	450		0
3	5 4S	E 5	450		0
9	2 4S	E 5	450		0
10	4 4S	E 6	480		-1

35

♠ J765
♥ J763
♦ AQ8
♣ A4

♠ K982
♥ KQ4
♦ K953
♣ 108

N E
W S

♠ 43
♥ A109
♦ J642
♣ KJ97

♠ AQ10
♥ 852
♦ 107
♣ Q6532

Board (35) Av: NS=+40

N-S	E-W	Contract	N-S	E-W	IMP
6	8 1NT	S 3	150		3
2	9 1NT	N 2	120		2
4	10 1NT	S 1	90		2
10	4 1NT	S 1	90		2
8	6 1NT	S 1	90		2
3	5 1NT	S 1	90		2
1	7 1NT	S-1	50		-3
7	1 1NT	S-1	50		-3
9	2 1NT	S-1	50		-3
5	3 1NT	N-1	50		-3

36

♠ K7
♥ A9753
♦ K108763
♣

♠ QJ98
♥ QJ10864
♦ Q2
♣ 8

N E
W S

♠ A653
♥
♦ AJ9
♣ KQJ1054

♠ 1042
♥ K2
♦ 54
♣ A97632

Board (36) Av: NS=-470

N-S	E-W	Contract	N-S	E-W	IMP
6	8 4Sx	W-2	500		14
5	3 4S	W-1	100		11
1	7 3C	E 3	110		8
8	6 3NT	E 3	600		-4
4	10 4S	W 4	620		-4
9	2 4S	W 4	620		-4
7	1 4S	E 4	620		-4
3	5 4S	E 5	650		-5
10	4 3NT	E 5	660		-5
2	9 5Dx	N-3	800		-8

兵庫県知事杯 OPEN TEAMS Session 2 Flight A 2012年10月6日(土)

1

♠ AKQJ
♥ KQ542
♦ 63
♣ 107

♠ 1062
♥ 973
♦ KJ1098
♣ 93

♠ 9754
♥ J1086
♦ A4
♣ Q82

♠ 83
♥ A
♦ Q752
♣ AKJ654

Board (1) Av: NS=+420

N-S	E-W	Contract	N-S	E-W	IMP
1	9	3NT S 5	460		1
4	6	3NT S 4	430		0
7	3	3NT S 4	430		0
10	8	3NT S 4	430		0
8	10	3NT S 4	430		0
3	7	3NT S 4	430		0
6	4	3NT N 4	430		0
2	5	3NT S 3	400		-1
9	1	3NT N 3	400		-1
5	2	3C S 4	130		-7

2

♠ 10
♥ 76432
♦ K
♣ AKQJ97

♠ AKJ9864
♥ 985
♦ Q5
♣ 2

♠ 7532
♥ AQJ
♦ A10976
♣ 6

♠ Q
♥ K10
♦ J8432
♣ 108543

Board (2) Av: NS=-290

N-S	E-W	Contract	N-S	E-W	IMP
4	6	6S W-1	50		8
2	5	5S W-1	50		8
1	9	5S W-1	50		8
8	10	5Cx N-1	200		3
3	7	5S W 5	450		-4
9	1	5S W 5	450		-4
10	8	4S W 5	450		-4
6	4	4S W 5	450		-4
7	3	4S W 5	450		-4
5	2	4S W 5	450		-4

3

♠ Q10982
♥ K73
♦ J3
♣ KQJ

♠ A53
♥ 85
♦ AQ652
♣ 732

♠ 74
♥ J1094
♦ 874
♣ A865

♠ KJ6
♥ AQ62
♦ K109
♣ 1094

Board (3) Av: NS=-30

N-S	E-W	Contract	N-S	E-W	IMP
10	8	4S N 4	420		10
2	5	1NT S 2	120		4
5	2	4S S-1	50		-1
4	6	4S N-1	50		-1
6	4	4S N-1	50		-1
8	10	4S N-1	50		-1
9	1	4S N-1	50		-1
3	7	4S N-1	50		-1
7	3	4S N-1	50		-1
1	9	3NT S-2	100		-2

4

♠ K54
♥ Q6532
♦ K93
♣ 76

♠ Q10872
♥ K97
♦ A62
♣ 103

♠ A96
♥ A8
♦ QJ4
♣ AKJ52

♠ J3
♥ J104
♦ 10875
♣ Q984

Board (4) Av: NS=-640

N-S	E-W	Contract	N-S	E-W	IMP
7	3	3NT E 3	600		1
4	6	3NT E 3	600		1
1	9	5S W 5	650		0
10	8	5S E 5	650		0
3	7	4S W 5	650		0
8	10	4S E 5	650		0
5	2	4S E 5	650		0
6	4	4S E 5	650		0
2	5	4S E 5	650		0
9	1	4S E 5	650		0

5

♠ Q2
♥ A72
♦ AQ97
♣ KQ76

♠ KJ95
♥ QJ10643
♦ 4
♣ 43

♠ 10863
♥ 5
♦ J1032
♣ A985

♠ A74
♥ K98
♦ K865
♣ J102

Board (5) Av: NS=+630

N-S	E-W	Contract	N-S	E-W	IMP
10	8	4Hx W-4	800		5
1	9	3NT N 5	660		1
6	4	3NT N 4	630		0
4	6	3NT N 4	630		0
3	7	3NT N 4	630		0
8	10	3NT N 4	630		0
5	2	3NT N 4	630		0
2	5	3NT N 4	630		0
7	3	3NT N 4	630		0
9	1	3NT N 4	630		0

6

♠ A8532
♥ 2
♦ J7532
♣ 97

♠ 976
♥ 1083
♦ K10986
♣ K2

♠ K10
♥ AJ965
♦ A4
♣ J1085

♠ QJ4
♥ KQ74
♦ Q
♣ AQ643

Board (6) Av: NS=-20

N-S	E-W	Contract	N-S	E-W	IMP
7	3	2S S 4	170		5
4	6	3S N 3	140		4
3	7	2S N 2	110		4
8	10	2S N 2	110		4
1	9	4S N-2	100		-2
9	1	4S N-2	100		-2
5	2	4S N-2	100		-2
10	8	2H E 2	110		-3
6	4	2H E 2	110		-3
2	5	3NT S-5	250		-6

7

♠ K107
♥ J532
♦ K742
♣ KQ

♠ QJ9642
♥ Q6
♦ 10
♣ 8743

♠ A
♥ 109874
♦ 9863
♣ A96

♠ 853
♥ AK
♦ AQJ5
♣ J1052

Board (7) Av: NS=+640

N-S	E-W	Contract	N-S	E-W	IMP
3	7	3NT S 5	660		1
10	8	3NT S 5	660		1
2	5	3NT S 5	660		1
1	9	3NT S 5	660		1
8	10	3NT S 4	630		0
5	2	3NT S 4	630		0
4	6	3NT S 4	630		0
9	1	3NT S 4	630		0
7	3	3NT S 4	630		0
6	4	3NT S 3	600		-1

8

♠ KJ6
♥ Q54
♦ AJ95
♣ 1098

♠ 1095
♥ 10632
♦ 6
♣ AK432

♠ AQ73
♥ A7
♦ KQ72
♣ J75

♠ 842
♥ KJ98
♦ 10843
♣ Q6

Board (8) Av: NS=-200

N-S	E-W	Contract	N-S	E-W	IMP
6	4	3NT E-1	50		6
3	7	3NT E-1	50		6
4	6	2NT E-1	50		6
8	10	1NT E 2	120		2
10	8	2S E 3	140		2
1	9	3C E 6	170		1
9	1	3NT E 3	400		-5
2	5	4S E 4	420		-6
7	3	3NT E 5	460		-6
5	2	1NTxS-3	500		-7

9

♠ J8
♥ KQ106
♦ 10986
♣ 862

♠ A976
♥ J87
♦ AJ7
♣ KQ4

♠ 43
♥ A532
♦ 54
♣ J10975

♠ KQ1052
♥ 94
♦ KQ32
♣ A3

Board (9) Av: NS=-20

N-S	E-W	Contract	N-S	E-W	IMP
4	6	3C E-1	100		3
5	2	2D S 2	90		3
6	4	2D S 2	90		3
10	8	2D S 2	90		3
7	3	3D S-1	50		-1
8	10	2S S-1	50		-1
2	5	1NT W 1	90		-2
1	9	1NT W 1	90		-2
3	7	1NT W 2	120		-3
9	1	1NT W 2	120		-3

兵庫県知事杯 OPEN TEAMS Session 2 Flight A 2012年10月6日(土)

10

♥ QJ108
♦ K8652
♣ K643

♠ KQ965
♥ 965
♦ 10
♣ A1082

N
W — E
S

♠ J4
♥ AK743
♦ J9743
♣ 9

♠ A108732
♥ 2
♦ AQ
♣ QJ75

11

♠ K
♥ K62
♦ KQJ3
♣ Q9852

♠ 742
♥ Q875
♦ 9742
♣ 106

N
W — E
S

♠ AJ1098
♥ 9
♦ 10865
♣ 743

♠ Q653
♥ AJ1043
♦ A
♣ AKJ

12

♠ 65
♥ 10873
♦ 9764
♣ K65

♠ K108
♥ AJ6
♦ 10852
♣ QJ7

N
W — E
S

♠ AQJ43
♥ K5
♦ KQ
♣ 10942

♠ 972
♥ Q942
♦ AJ3
♣ A83

Board (10) Av: NS=-60

N-S	E-W	Contract	N-S	E-W	IMP
7	3	3Hx	E-1	200	6
6	4	3H	E-1	100	4
9	1	3H	E-1	100	4
10	8	4C	S-1	100	-1
4	6	2S	S-1	100	-1
3	7	2S	S-1	100	-1
8	10	2NT	S-1	100	-1
2	5	2NT	N-1	100	-1
1	9	3H	W 3	140	-2
5	2	2S	S-2	200	-4

Board (11) Av: NS=+260

N-S	E-W	Contract	N-S	E-W	IMP
4	6	6C	N 6	920	12
2	5	4NT	N 6	490	6
1	9	5H	S 6	480	6
10	8	4H	S 6	480	6
3	7	5H	S 5	450	5
9	1	5H	S 5	450	5
6	4	6H	S-1	50	-7
8	10	6H	S-2	100	-8
5	2	6H	S-2	100	-8
7	3	4H	S-2	100	-8

Board (12) Av: NS=-420

N-S	E-W	Contract	N-S	E-W	IMP
4	6	4S	E 4	420	0
7	3	4S	E 4	420	0
6	4	4S	E 4	420	0
10	8	4S	E 4	420	0
8	10	4S	E 4	420	0
1	9	4S	E 4	420	0
9	1	4S	E 4	420	0
3	7	4S	E 4	420	0
5	2	4S	E 4	420	0
2	5	3NT	E 4	430	0

13

♠ 52
♥ KJ92
♦ J9742
♣ K7

♠ KQ1098
♥ 3
♦ AK6
♣ A1064

N
W — E
S

♠ AJ6
♥ A875
♦ 1085
♣ QJ5

♠ 743
♥ Q1064
♦ Q3
♣ 9832

14

♠ Q3
♥ Q652
♦ J108654
♣ 8

♠ J72
♥ 974
♦ K72
♣ 9643

N
W — E
S

♠ 10654
♥ AK1083
♦ A
♣ AK7

♠ AK98
♥ J
♦ Q93
♣ QJ1052

15

♠ J976
♥ 10853
♦ Q75
♣ 62

♠ KQ1083
♥ J92
♦ A
♣ Q843

N
W — E
S

♠ A54
♥ K64
♦ 98642
♣ K9

♠ 2
♥ AQ7
♦ KJ103
♣ AJ1075

Board (13) Av: NS=-660

N-S	E-W	Contract	N-S	E-W	IMP
8	10	6C	E-4	400	14
5	2	6C	E-2	200	13
3	7	6S	W-1	100	13
2	5	4S	E 5	650	0
4	6	4S	W 6	680	-1
7	3	4S	W 6	680	-1
1	9	4S	W 6	680	-1
10	8	6S	W 6	1430	-13
9	1	6S	W 6	1430	-13
6	4	6S	W 6	1430	-13

Board (14) Av: NS=-80

N-S	E-W	Contract	N-S	E-W	IMP
1	9	4H	E-2	100	5
8	10	4H	W-1	50	4
3	7	4H	E-1	50	4
10	8	4H	E-1	50	4
9	1	4H	E-1	50	4
7	3	3H	E 3	140	-2
4	6	2H	E 3	140	-2
5	2	3H	E 4	170	-3
6	4	4H	E 4	420	-8
2	5	4H	E 4	420	-8

Board (15) Av: NS=-20

N-S	E-W	Contract	N-S	E-W	IMP
3	7	4S	W-2	100	3
1	9	4S	W-2	100	3
10	8	4S	W-1	50	2
2	5	3S	W-1	50	2
6	4	2S	W-1	50	2
9	1	2S	W 2	110	-3
8	10	2S	W 2	110	-3
7	3	2S	W 2	110	-3
4	6	2S	W 2	110	-3
5	2	2S	W 3	140	-3

16

♠ AJ92
♥ J63
♦ Q72
♣ 1098

♠ K8764
♥ 975
♦ J543
♣ Q

N
W — E
S

♠ Q105
♥ AK8
♦ A1098
♣ AK6

♠ 3
♥ Q1042
♦ K6
♣ J75432

17

♠ J942
♥ K
♦ A87
♣ 98432

♠ A75
♥ 742
♦ Q32
♣ Q1075

N
W — E
S

♠ KQ6
♥ A9865
♦ J1064
♣ A

♠ 1083
♥ QJ103
♦ K95
♣ KJ6

18

♠ A983
♥ Q3
♦ 1097
♣ 10865

♠ KQJ10
♥ A64
♦ AJ2
♣ 942

N
W — E
S

♠ 76542
♥ K2
♦ Q643
♣ A3

♠ J109875
♥ K85
♦ KQJ7

Board (16) Av: NS=-350

N-S	E-W	Contract	N-S	E-W	IMP
8	10	4S	E-3	300	12
5	2	4S	E-1	100	10
1	9	4S	E-1	100	10
9	1	4S	E-1	100	10
10	8	3NT	E 3	600	-6
2	5	4S	E 4	620	-7
3	7	4S	E 4	620	-7
6	4	4S	E 4	620	-7
7	3	4S	E 4	620	-7
4	6	4S	E 4	620	-7

Board (17) Av: NS=-110

N-S	E-W	Contract	N-S	E-W	IMP
1	9	3H	E-1	50	4
7	3	2H	E 2	110	0
4	6	2H	E 2	110	0
10	8	2H	E 2	110	0
3	7	2H	E 2	110	0
9	1	2H	E 2	110	0
2	5	2H	E 2	110	0
5	2	2H	E 2	110	0
8	10	3H	E 3	140	-1
6	4	2H	E 3	140	-1

Board (18) Av: NS=-300

N-S	E-W	Contract	N-S	E-W	IMP
1	9	4S	W-1	50	8
8	10	3S	W 4	170	4
2	5	3S	W 4	170	4
7	3	3S	W 4	170	4
5	2	3S	W 5	200	3
6	4	4S	W 4	420	-3
9	1	4S	W 4	420	-3
3	7	4S	E 4	420	-3
10	8	4S	W 5	450	-4
4	6	4S	W 5	450	-4

兵庫県知事杯 OPEN TEAMS Session 3 Flight A 2012年10月7日(日)

1

♠ 97
♥ A32
♦ A4
♣ KJ10872

♠ Q108
♥ 1084
♦ J9763
♣ 65

♠ KJ5432
♥ 7
♦ 105
♣ AQ43

♠ A6
♥ KQJ965
♦ KQ82
♣ 9

Board (1) Av: NS=+370

N-S	E-W	Contract	N-S	E-W	IMP
3	8	6H S 6	980		12
5	7	5H N 6	480		3
7	5	5H S 5	450		2
9	4	5H S 5	450		2
2	10	5H S 5	450		2
10	2	5H S 5	450		2
8	3	4H S 5	450		2
1	6	4Sx E-2	300		-2
4	9	6H S-1		50	-9
6	1	6H S-1		50	-9

2

♠ AJ1093
♥ 4
♦ 72
♣ KQ865

♠ K764
♥ 987
♦ Q10984
♣ J

♠ Q8
♥ AK53
♦ AK3
♣ A1097

♠ 52
♥ QJ1062
♦ J65
♣ 432

Board (2) Av: NS=-300

N-S	E-W	Contract	N-S	E-W	IMP
1	6	4S E-2	100		9
7	5	4H E-2	100		9
6	1	4H E-2	100		9
5	7	3NT E 3		400	-3
4	9	3NT E 4		430	-4
3	8	3NT E 4		430	-4
2	10	3NT E 4		430	-4
8	3	3NT E 4		430	-4
9	4	3NT E 5		460	-4
10	2	3NT E 5		460	-4

3

♠ 4
♥ AK875
♦ KJ97
♣ A75

♠ AKQJ72
♥ Q3
♦ 84
♣ Q108

♠ 108653
♥ 642
♦ 62
♣ 642

♠ 9
♥ J109
♦ AQ1053
♣ KJ93

Board (3) Av: NS=+560

N-S	E-W	Contract	N-S	E-W	IMP
10	2	6D S 6	920		8
9	4	4Sx W-3	800		6
7	5	4Sx W-3	800		6
6	1	5H S 6	480		-2
4	9	5H N 6	480		-2
1	6	5H N 6	480		-2
2	10	5H N 6	480		-2
3	8	5H N 6	480		-2
8	3	5H N 6	480		-2
5	7	4H N 6	480		-2

4

♠ KJ
♥ A4
♦ J109842
♣ 952

♠ Q872
♥ J873
♦ Q76
♣ QJ

♠ 5
♥ Q10952
♦ AK53
♣ 1086

♠ A109643
♥ K6
♦
♣ AK743

Board (4) Av: NS=+650

N-S	E-W	Contract	N-S	E-W	IMP
9	4	4S S 5	650		0
4	9	4S S 5	650		0
7	5	4S S 5	650		0
5	7	4S S 5	650		0
3	8	4S S 5	650		0
10	2	4S S 5	650		0
1	6	4S S 5	650		0
2	10	4S N 5	650		0
6	1	5C S 6	620		-1
8	3	3C S 6	170		-10

5

♠ A732
♥ 9753
♦ A
♣ AQJ10

♠ J964
♥ Q104
♦ KQ832
♣ 9

♠ K105
♥ AK2
♦ 64
♣ K8732

♠ Q8
♥ J86
♦ J10975
♣ 654

Board (5) Av: NS=+50

N-S	E-W	Contract	N-S	E-W	IMP
10	2	1Cx N 1	140		3
4	9	1H N 2	110		2
8	3	1NT N 1	90		1
5	7	1NT N 1	90		1
2	10	1NT N 1	90		1
1	6	1NT E-1	50		0
7	5	1NT E-1	50		0
3	8	1H E-1	50		0
9	4	1C N-1		100	-4
6	1	2Dx N-3		800	-13

6

♠ 65
♥ A54
♦ KQJ643
♣ 62

♠ AK74
♥ K103
♦ 72
♣ K843

♠ J98
♥ Q972
♦ 108
♣ A1097

♠ Q1032
♥ J86
♦ A95
♣ QJ5

Board (6) Av: NS=+20

N-S	E-W	Contract	N-S	E-W	IMP
6	1	3NT S 3	400		9
3	8	1NT S 2	120		3
7	5	3D N 3	110		3
5	7	3D N 3	110		3
4	9	4C W-1	100		2
2	10	3D N-1		50	-2
1	6	3D N-1		50	-2
8	3	3D N-2		100	-3
9	4	3D N-2		100	-3
10	2	2H E 2		110	-4

7

♠ K3
♥ AKQ853
♦ 9653
♣ 3

♠ J95
♥ J109
♦ Q107
♣ Q1072

♠ AQ2
♥ 76
♦ AK84
♣ AKJ8

♠ 108764
♥ 42
♦ J2
♣ 9654

Board (7) Av: NS=-190

N-S	E-W	Contract	N-S	E-W	IMP
10	2	3NT W-2	200		9
3	8	3NT W-2	200		9
7	5	4S W-1	100		7
2	10	4C W 5		150	1
4	9	3C W 5		150	1
1	6	3C W 5		150	1
6	1	3C W 5		150	1
5	7	5C W 5		600	-9
9	4	5C W 5		600	-9
8	3	4Hx N-4		1100	-14

8

♠ J75
♥ AQJ82
♦ 8
♣ J1096

♠ AQ1092
♥ 53
♦ AK105
♣ K7

♠ 843
♥ K1064
♦ Q74
♣ AQ5

♠ K6
♥ 97
♦ J9632
♣ 8432

Board (8) Av: NS=-450

N-S	E-W	Contract	N-S	E-W	IMP
2	10	4S W 4		420	1
7	5	3NT E 4		430	1
4	9	4S W 5		450	0
5	7	4S W 5		450	0
1	6	4S W 5		450	0
3	8	4S W 5		450	0
6	1	4S W 5		450	0
10	2	3NT E 5		460	0
8	3	3NT E 5		460	0
9	4	3NT W 7		520	-2

9

♠ A942
♥ 95
♦ J6432
♣ J7

♠ 10765
♥ QJ82
♦ 9
♣ K963

♠ K83
♥ 764
♦ Q1085
♣ Q54

♠ QJ
♥ AK103
♦ AK7
♣ A1082

Board (9) Av: NS=+120

N-S	E-W	Contract	N-S	E-W	IMP
7	5	3NT S 4	430		7
3	8	3NT S 3	400		7
2	10	3NT S 3	400		7
6	1	3NT S 3	400		7
9	4	3NT S-1		50	-5
1	6	3NT S-1		50	-5
4	9	3NT S-1		50	-5
10	2	3NT S-1		50	-5
8	3	3NT S-1		50	-5
5	7	3NT S-2		100	-6

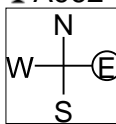
兵庫県知事杯 OPEN TEAMS Session 3 Flight A 2012年10月7日(日)

10

♠ 10862
♥ 42
♦ 542
♣ A962

♠ AKQ4
♥ 10853
♦ AJ
♣ K83

♠ J3
♥ KJ76
♦ Q108763
♣ 5

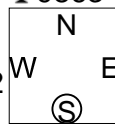


11

♠ KQ92
♥ AK8
♦ 103
♣ 9863

♠ 54
♥ QJ10764
♦ J987
♣ 10

♠ AJ863
♥ 3
♦ A64
♣ AK54

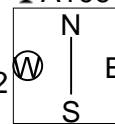


12

♠ QJ96
♥ AK109
♦ 103
♣ A109

♠ K1032
♥ J7
♦ K986
♣ 542

♠ A75
♥ Q532
♦ 7
♣ KQJ73



Board (10) Av: NS=-670

N-S	E-W	Contract	N-S	E-W	IMP
10	2	4S	E 4	620	2
9	4	3NT	E 5	660	0
7	5	3NT	E 5	660	0
4	9	3NT	E 5	660	0
6	1	3NT	E 5	660	0
3	8	3NT	E 5	660	0
2	10	3NT	E 5	660	0
8	3	3NT	W 6	690	-1
1	6	3NT	E 6	690	-1
5	7	3NT	E 6	690	-1

Board (11) Av: NS=+50

N-S	E-W	Contract	N-S	E-W	IMP
10	2	4S	S 5	450	9
8	3	4S	S 4	420	9
6	1	3Dx	E-2	300	6
5	7	6S	S-1	50	-3
4	9	6S	S-1	50	-3
9	4	6S	S-1	50	-3
1	6	6S	S-1	50	-3
7	5	6S	S-1	50	-3
3	8	6S	S-2	100	-4
2	10	6S	S-2	100	-4

Board (12) Av: NS=+660

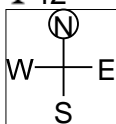
N-S	E-W	Contract	N-S	E-W	IMP
9	4	6H	N 6	1430	13
8	3	5Dx	W-4	800	4
3	8	5Dx	W-4	800	4
6	1	5Dx	W-4	800	4
4	9	4H	S 6	680	1
1	6	4H	S 6	680	1
5	7	4H	N 6	680	1
10	2	4H	N 6	680	1
7	5	4D	E-3	150	-11
2	10	3D	W-2	100	-11

13

♠ A8532
♥ 95
♦ 9854
♣ 42

♠ 97
♥ Q107642
♦ AQ
♣ J63

♠ J4
♥ KJ83
♦ K76
♣ KQ107

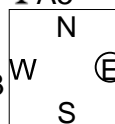


14

♠ AQJ5
♥ 109543
♦ A2
♣ A5

♠ K763
♥ 8
♦ Q654
♣ K762

♠ 82
♥ AKQ72
♦ 7
♣ Q10843

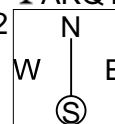


15

♠ 9
♥ J
♦ A8632
♣ AKQ1093

♠ 853
♥ AK83
♦ Q974
♣ 52

♠ 106
♥ Q109762
♦ KJ105
♣ 7



Board (13) Av: NS=+20

N-S	E-W	Contract	N-S	E-W	IMP
4	9	3NT	W-2	200	5
3	8	3H	E-2	200	5
1	6	2H	E-2	200	5
10	2	3NT	W-1	100	2
7	5	2NT	W-1	100	2
6	1	2H	E-1	100	2
2	10	2H	E 2	110	-4
5	7	2S	N-2	200	-6
9	4	2S	N-2	200	-6
8	3	2NT	S-4	400	-9

Board (14) Av: NS=+330

N-S	E-W	Contract	N-S	E-W	IMP
4	9	6H	S 6	980	12
10	2	6H	S 6	980	12
3	8	6H	S 6	980	12
9	4	5H	S 5	450	3
7	5	4H	S 5	450	3
6	1	7H	S-1	50	-9
5	7	6H	S-1	50	-9
1	6	6H	S-1	50	-9
2	10	6H	S-1	50	-9
8	3	6H	S-1	50	-9

Board (15) Av: NS=-350

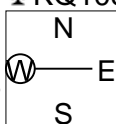
N-S	E-W	Contract	N-S	E-W	IMP
9	4	5S	W-1	50	9
1	6	5Hx	S-1	200	4
5	7	5Dx	S-1	200	4
6	1	5Cx	N-1	200	4
4	9	4S	W 4	420	-2
2	10	4S	W 4	420	-2
7	5	4S	W 4	420	-2
10	2	4S	W 4	420	-2
3	8	6Dx	S-2	500	-4
8	3	5Cx	N-2	500	-4

16

♠ Q
♥ J9632
♦ 94
♣ KQ1084

♠ A1097
♥ 10
♦ AKQ72
♣ J97

♠ K85432
♥ AK874
♦ J
♣ A

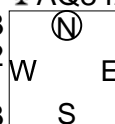


17

♠ K62
♥ J
♦ QJ42
♣ AQ842

♠ AQ10
♥ AKQ54
♦ A1097
♣ 7

♠ J75
♥ 1076
♦ 865
♣ KJ95

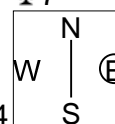


18

♠ Q72
♥ K1083
♦ KJ842
♣ 7

♠ A64
♥ 6
♦ Q95
♣ AQ9853

♠ 10985
♥ AQJ4
♦ A1073
♣ A2



Board (16) Av: NS=+450

N-S	E-W	Contract	N-S	E-W	IMP
10	2	4H	N 6	480	1
7	5	4H	N 6	480	1
4	9	5H	N 5	450	0
9	4	4H	S 5	450	0
3	8	4H	S 5	450	0
6	1	4H	S 5	450	0
1	6	4H	N 5	450	0
8	3	4H	N 5	450	0
2	10	4H	N 5	450	0
5	7	1S	S 3	140	-7

Board (17) Av: NS=-430

N-S	E-W	Contract	N-S	E-W	IMP
8	3	3H	E 5	200	6
5	7	4H	W 4	420	0
2	10	4H	W 4	420	0
4	9	4H	W 4	420	0
3	8	4H	E 4	420	0
1	6	4H	E 4	420	0
10	2	4H	E 4	420	0
9	4	4H	W 5	450	-1
7	5	4H	E 5	450	-1
6	1	4H	E 5	450	-1

Board (18) Av: NS=-60

N-S	E-W	Contract	N-S	E-W	IMP
2	10	5Cx	E-1	100	4
8	3	5C	E-1	50	3
10	2	5C	E-1	50	3
6	1	5C	E-1	50	3
9	4	4C	E 4	130	-2
7	5	4C	E 4	130	-2
5	7	4C	E 4	130	-2
1	6	4C	E 4	130	-2
3	8	4C	E 4	130	-2
4	9	4C	E 4	130	-2

1

♠ KQ9643
♥ 64
♦ QJ64
♣ J

♠ J107
♥ AK52
♦ 98
♣ A952

♠ A2
♥
♦ A107532
♣ Q10843

Board (1) Av: NS=+310

N-S	E-W	Contract	N-S	E-W	IMP
2	6	4S	N 6	480	5
3	10	4S	N 6	480	5
1	8	4S	N 5	450	4
4	5	4S	N 5	450	4
8	1	4S	N 5	450	4
6	2	5Hx	W-2	300	0
5	4	2S	N 6	230	-2
7	9	5H	W-1	50	-6
9	7	5H	W-1	50	-6
10	3	4H	W 4	420	-12

2

♠ KQ
♥ A1097
♦ K643
♣ 853

♠ J1085
♥
♦ Q8752
♣ J1096

♠ A9643
♥ J43
♦ A10
♣ Q74

Board (2) Av: NS=+50

N-S	E-W	Contract	N-S	E-W	IMP
3	10	3NT	N 3	600	11
10	3	2NT	N 4	180	4
1	8	2NT	N 3	150	3
9	7	2NT	N 3	150	3
7	9	2NT	N 2	120	2
6	2	2S	S 2	110	2
8	1	3NT	N-1	100	-4
2	6	3NT	N-1	100	-4
4	5	2NT	N-1	100	-4
5	4	3NT	N-3	300	-8

3

♠ AJ108754
♥ 6
♦ 83
♣ Q92

♠ Q62
♥ Q842
♦ Q104
♣ K104

♠ K93
♥ AKJ3
♦ A6
♣ J876

♠
♥ 10975
♦ KJ9752
♣ A53

Board (3) Av: NS=-90

N-S	E-W	Contract	N-S	E-W	IMP
2	6	4H	W-2	200	7
6	2	3H	W-2	200	7
9	7	4H	W-1	100	5
8	1	4H	E-1	100	5
5	4	3NT	E-1	100	5
4	5	3S	N-1	50	1
10	3	4Sx	N-2	300	-5
7	9	4Sx	N-2	300	-5
3	10	3NT	E 3	600	-11
1	8	3NT	E 4	630	-11

4

♠ AJ543
♥ J9
♦ A65
♣ K105

♠ Q9
♥ K1076
♦ 10
♣ A98643

♠ 1086
♥ Q8432
♦ KJ8
♣ J2

♠ K72
♥ A5
♦ Q97432
♣ Q7

Board (4) Av: NS=+520

N-S	E-W	Contract	N-S	E-W	IMP
6	2	4S	N 5	650	4
4	5	4S	N 5	650	4
10	3	4S	N 5	650	4
3	10	4S	N 5	650	4
2	6	4S	N 5	650	4
5	4	4S	N 4	620	3
9	7	4S	N 4	620	3
1	8	3S	N 4	170	-8
8	1	3S	N 4	170	-8
7	9	3S	N 3	140	-9

5

♠ AK
♥ Q32
♦ 1083
♣ AKQ95

♠ 76432
♥ 9654
♦ Q94
♣ 3

♠ QJ5
♥ KJ87
♦ AK76
♣ J6

Board (5) Av: NS=+1250

N-S	E-W	Contract	N-S	E-W	IMP
5	4	6NT	N 6	1440	5
4	5	6NT	N 6	1440	5
9	7	6NT	N 6	1440	5
7	9	6NT	N 6	1440	5
3	10	6NT	N 6	1440	5
1	8	6NT	N 6	1440	5
6	2	6NT	N 6	1440	5
2	6	6NT	N 6	1440	5
10	3	6NT	N-1	100	-16
8	1	6NT	N-1	100	-16

6

♠ AK754
♥ A985
♦ 974
♣ 8

♠ J832
♥ K
♦ K63
♣ Q10653

♠ QJ1073
♥ QJ8
♦ K9742
♣

♠ Q1096
♥ 642
♦ A1052
♣ AJ

Board (6) Av: NS=-10

N-S	E-W	Contract	N-S	E-W	IMP
7	9	5Cx	W-1	200	5
9	7	3S	N 3	140	4
3	10	3S	N 3	140	4
5	4	4S	S-1	50	-1
2	6	4S	S-1	50	-1
1	8	4S	N-1	50	-1
4	5	4S	N-1	50	-1
10	3	4S	N-1	50	-1
6	2	4S	S-2	100	-3
8	1	4S	N-2	100	-3

7

♠ Q9
♥ K5
♦ Q10
♣ AJ107543

♠ J7
♥ J1062
♦ 76542
♣ Q6

♠ AK10653
♥ A
♦ AK83
♣ K8

♠ 842
♥ Q98743
♦ J9
♣ 92

Board (7) Av: NS=-610

N-S	E-W	Contract	N-S	E-W	IMP
8	1	2S	E 6	230	9
9	7	2S	E 6	230	9
1	8	4S	E 5	650	-1
7	9	4S	E 5	650	-1
2	6	4S	E 5	650	-1
6	2	4S	E 5	650	-1
5	4	4S	E 6	680	-2
10	3	4S	E 6	680	-2
4	5	4S	E 6	680	-2
3	10	6D	W 7	1390	-13

8

♠ KJ
♥ AQ8
♦ KQJ10
♣ AK84

♠ 643
♥ 6
♦ A8753
♣ 10532

♠ Q109872
♥ KJ1074
♦
♣ Q9

♠ A5
♥ 9532
♦ 9642
♣ J76

Board (8) Av: NS=+180

N-S	E-W	Contract	N-S	E-W	IMP
3	10	4Sx	E-3	500	8
6	2	4Sx	W-2	300	3
2	6	4Sx	E-2	300	3
5	4	4Sx	E-2	300	3
10	3	4Sx	E-1	100	-2
8	1	4Sx	E-1	100	-2
1	8	4Sx	E-1	100	-2
7	9	3Sx	E-1	100	-2
9	7	3Sx	E-1	100	-2
4	5	3NT	N-1	50	-6

9

♠ K1072
♥ 42
♦ KJ9864
♣ J

♠ 9
♥ Q103
♦ 107532
♣ A1085

♠ Q643
♥ AJ86
♦ A
♣ KQ74

♠ AJ85
♥ K975
♦ Q
♣ 9632

Board (9) Av: NS=+10

N-S	E-W	Contract	N-S	E-W	IMP
6	2	4Sx	S 4	590	11
8	1	4C	E-2	200	5
10	3	2Dx	N 2	180	5
5	4	2S	S 3	140	4
9	7	2D	N-1	50	-2
7	9	2C	E 2	90	-3
2	6	3C	E 3	110	-3
4	5	3C	E 3	110	-3
3	10	2C	E 3	110	-3
1	8	2NT	E 2	120	-4

兵庫県知事杯 OPEN TEAMS Session 4 Flight A 2012年10月7日(日)

10

♠ J86
♥ KQ983
♦ J64
♣ Q3

♠ AKQ1074
♥ 74
♦ K7
♣ 854

♠ 32
♥ J10652
♦ 953
♣ 1096

♠ 95
♥ A
♦ AQ1082
♣ AKJ72

N
W—E
S

Board (10) Av: NS=+100

N-S	E-W	Contract	N-S	E-W	IMP
9	7	5D N 5	600		11
8	1	5D N 5	600		11
1	8	5D N 5	600		11
7	9	4D S 5	150		2
4	5	4D N 4	130		1
10	3	5D N-1	100		-5
5	4	3NT S-2	200		-7
2	6	3NT S-2	200		-7
3	10	3NT N-2	200		-7
6	2	3NT N-2	200		-7

11

♠ AK84
♥ 1052
♦ 1053
♣ K96

♠ Q2
♥ KQ876
♦ Q9
♣ AQJ4

♠ J93
♥ A9
♦ AKJ7
♣ 10732

♠ 10765
♥ J43
♦ 8642
♣ 85

N
W—E
S

Board (11) Av: NS=-400

N-S	E-W	Contract	N-S	E-W	IMP
1	8	6C E-1	50		10
9	7	5C W-1	50		10
4	5	3NT W 5	460		-2
5	4	3NT W 5	460		-2
7	9	3NT W 5	460		-2
3	10	3NT W 5	460		-2
2	6	3NT W 5	460		-2
6	2	3NT W 5	460		-2
8	1	3NT W 5	460		-2
10	3	3Sx N-5	1100		-12

12

♠ A7
♥ J72
♦ AKQ102
♣ K109

♠ K4
♥ Q95
♦ J53
♣ Q6432

♠ Q109865
♥ A
♦ 9864
♣ J5

♠ J32
♥ K108643
♦ 7
♣ A87

N
W—E
S

Board (12) Av: NS=+550

N-S	E-W	Contract	N-S	E-W	IMP
6	2	4H N 6	680		4
4	5	4H S 5	650		3
9	7	4H S 5	650		3
1	8	4H S 5	650		3
3	10	4H N 5	650		3
7	9	4H N 5	650		3
5	4	4H S 4	620		2
8	1	3NT N 3	600		2
10	3	3NT N-1	100		-12
2	6	3NT N-3	300		-13

13

♠ KJ10862
♥ 96
♦ 832
♣ A6

♠ 9543
♥ 87
♦ K74
♣ Q1097

♠ Q
♥ AJ1032
♦ AQ65
♣ K42

♠ A7
♥ KQ54
♦ J109
♣ J853

N
W—E
S

Board (13) Av: NS=-40

N-S	E-W	Contract	N-S	E-W	IMP
7	9	3H W-2	200		6
1	8	3H W-2	200		6
9	7	3C W-1	100		4
5	4	3C W-1	100		4
2	6	3S N-1	100		-2
6	2	2H W 2	110		-2
3	10	3H W 3	140		-3
4	5	3H W 4	170		-4
8	1	3H W 4	170		-4
10	3	3H W 4	170		-4

14

♠ 62
♥ QJ987
♦ J43
♣ 653

♠ 985
♥ A102
♦ A1065
♣ J87

♠ AKJ103
♥ 54
♦ KQ2
♣ KQ10

♠ Q74
♥ K63
♦ 987
♣ A942

N
W—E
S

Board (14) Av: NS=-460

N-S	E-W	Contract	N-S	E-W	IMP
10	3	3NT W 3	400		2
3	10	4S W 5	450		0
5	4	4S W 5	450		0
6	2	4S W 5	450		0
1	8	4S W 5	450		0
2	6	3NT W 5	460		0
9	7	4S W 6	480		-1
7	9	4S W 6	480		-1
8	1	4S W 6	480		-1
4	5	4S W 6	480		-1

15

♠ 9
♥ A10843
♦ AKQ97
♣ J3

♠ J10875
♥ K
♦ 853
♣ KQ105

♠ Q643
♥ QJ976
♦ 2
♣ 974

♠ AK2
♥ 52
♦ J1064
♣ A862

N
W—E
S

Board (15) Av: NS=+620

N-S	E-W	Contract	N-S	E-W	IMP
4	5	6D N 6	1370		13
10	3	6D N 6	1370		13
5	4	5D S 6	620		0
3	10	5D S 6	620		0
7	9	5D N 6	620		0
9	7	3NT S 3	600		-1
6	2	3NT S 3	600		-1
1	8	3NT S 3	600		-1
8	1	6D S-1	100		-12
2	6	6D S-1	100		-12

16

♠ A973
♥ Q9
♦ 108652
♣ J8

♠ Q54
♥ K843
♦ K7
♣ K643

♠ KJ
♥ AJ105
♦ Q3
♣ Q10975

♠ 10862
♥ 762
♦ AJ94
♣ A2

N
W—E
S

Board (16) Av: NS=-260

N-S	E-W	Contract	N-S	E-W	IMP
6	2	4H E-1	100		8
3	10	4H E-1	100		8
5	4	4H E-1	100		8
1	8	4H E-1	100		8
2	6	4H E-1	100		8
9	7	4H E 4	620		-8
7	9	4H E 4	620		-8
8	1	4H E 4	620		-8
10	3	4H E 4	620		-8
4	5	4H E 4	620		-8

17

♠ AQJ
♥ AJ10974
♦ KQ3
♣ Q

♠ 7
♥ 653
♦ 106542
♣ J954

♠ K964
♥ Q8
♦ J97
♣ AK103

♠ 108532
♥ K2
♦ A8
♣ 8762

N
W—E
S

Board (17) Av: NS=+400

N-S	E-W	Contract	N-S	E-W	IMP
2	6	5H N 6	480		2
9	7	4H N 6	480		2
4	5	4H N 6	480		2
10	3	4H N 6	480		2
3	10	4H N 6	480		2
6	2	4H N 6	480		2
8	1	4H N 5	450		2
5	4	4S S 4	420		1
1	8	4S S-1	50		-10
7	9	4S S-1	50		-10

18

♠ AJ875
♥ 832
♦ 83
♣ AKQ

♠ K2
♥ K7
♦ KQ10962
♣ 532

♠ 4
♥ Q64
♦ AJ54
♣ 109764

♠ Q10963
♥ AJ1095
♦ 7
♣ J8

N
W—E
S

Board (18) Av: NS=+450

N-S	E-W	Contract	N-S	E-W	IMP
6	2	4S S 5	650		5
5	4	4S N 4	620		5
7	9	4S N 4	620		5
10	3	4S N 4	620		5
8	1	4S N 4	620		5
9	7	4S N 4	620		5
4	5	5Dx E-2	300		-4
2	6	5Dx E-2	300		-4
1	8	5S N-1	100		-11
3	10	5S N-1	100		-11

19

♠62
♥J2
♦K965
♣K9742

♠J743
♥954
♦AQ87
♣J5

N
W—E
S

♠AK10
♥AK63
♦1042
♣Q83

♠Q985
♥Q1087
♦J3
♣A106

Board (19) Av: NS=+90

N-S	E-W	Contract	N-S	E-W	IMP
2	7	3NT E-3	300		5
5	1	3NT E-3	300		5
4	8	3S W-2	200		3
6	10	3NT E-2	200		3
7	2	3NT E-2	200		3
8	4	3NT E-1	100		0
10	6	1NT E 1		90	-5
1	5	1NT E 1		90	-5
3	9	1NT E 1		90	-5
9	3	1NT E 1		90	-5

20

♠K97
♥J543
♦A8
♣KJ105

♠Q84
♥92
♦J10762
♣K62

N
W—E
S

♠J106
♥AK1076
♦K9
♣987

♠A532
♥Q8
♦Q543
♣A43

Board (20) Av: NS=+30

N-S	E-W	Contract	N-S	E-W	IMP
7	2	1NT N 3	150		3
1	5	2NT N 2	120		3
4	8	2NT N 2	120		3
10	6	1NT N 2	120		3
8	4	1NT N 1	90		2
5	1	1NT N 1	90		2
9	3	3NT N-1		100	-4
3	9	3C N-1		100	-4
2	7	3C N-1		100	-4
6	10	3NT N-2		200	-6

21

♠J93
♥AJ103
♦10
♣J8742

♠Q8
♥6542
♦Q8532
♣Q10

N
W—E
S

♠A10762
♥KQ
♦J97
♣AK6

♠K54
♥987
♦AK64
♣953

Board (21) Av: NS=-60

N-S	E-W	Contract	N-S	E-W	IMP
8	4	3NT W-2	100		4
7	2	2NT W-1	50		3
2	7	2NT W-1	50		3
1	5	2NT W-1	50		3
9	3	2S E 2		110	-2
10	6	1NT W 2		120	-2
6	10	2NT E 2		120	-2
3	9	3D W 4		130	-2
4	8	1NT E 3		150	-3
5	1	1NT E 4		180	-3

22

♠AQ1052
♥10963
♦K74
♣10

♠K6
♥AJ8542
♦
♣J8763

N
W—E
S

♠J974
♥Q7
♦A82
♣AQ42

♠83
♥K
♦QJ109653
♣K95

Board (22) Av: NS=-120

N-S	E-W	Contract	N-S	E-W	IMP
9	3	6C E-3	300		9
7	2	6C E-3	300		9
8	4	5C E-2	200		8
1	5	4H W-1	100		6
4	8	5Dx S-1		100	1
2	7	5Dx S-1		100	1
5	1	5Dx S-1		100	1
6	10	4H W 4		620	-11
3	9	4H W 4		620	-11
10	6	4H E 4		620	-11

23

♠K109
♥Q82
♦J1043
♣A104

♠AJ872
♥109743
♦Q
♣KJ

N
W—E
S

♠Q64
♥AK65
♦7
♣98752

♠53
♥J
♦AK98652
♣Q63

Board (23) Av: NS=-10

N-S	E-W	Contract	N-S	E-W	IMP
4	8	3NT N 3	600		12
1	5	4H W-2	200		5
5	1	4D S 4	130		4
10	6	3D S 4	130		4
7	2	5H W-1	100		3
3	9	4H E-1	100		3
9	3	4H E-1	100		3
6	10	5Dx S-1		200	-5
2	7	4H E 4		620	-12
8	4	4H E 4		620	-12

24

♠AQ75
♥KQ75
♦K92
♣A2

♠KJ10
♥
♦J543
♣QJ9864

N
W—E
S

♠9642
♥10843
♦76
♣K73

♠83
♥AJ962
♦AQ108
♣105

Board (24) Av: NS=+330

N-S	E-W	Contract	N-S	E-W	IMP
5	1	6H S 6	980		12
7	2	4H S 6	480		4
3	9	4H S 6	480		4
8	4	4H S 5	450		3
6	10	4H S 5	450		3
9	3	4H S 5	450		3
10	6	4H S 5	450		3
1	5	6H S-1		50	-9
2	7	6H S-1		50	-9
4	8	6H S-1		50	-9

25

♠87
♥J109642
♦A6
♣J93

♠QJ96
♥Q8
♦J10
♣AK1054

N
W—E
S

♠105
♥A75
♦K742
♣Q862

♠AK432
♥K3
♦Q9853
♣7

Board (25) Av: NS=-60

N-S	E-W	Contract	N-S	E-W	IMP
4	8	2H S 3	140		5
9	3	2H N 2	110		5
8	4	3S S-1		50	0
5	1	3H N-1		50	0
7	2	3H N-1		50	0
1	5	3S S-2		100	-1
3	9	3C W 3		110	-2
6	10	3C E 3		110	-2
2	7	4C E 4		130	-2
10	6	3C E 4		130	-2

26

♠8
♥103
♦KJ9742
♣KQ93

♠Q9643
♥J86
♦105
♣A85

N
W—E
S

♠AJ72
♥KQ2
♦Q3
♣10762

♠K105
♥A9754
♦A86
♣J4

Board (26) Av: NS=+140

N-S	E-W	Contract	N-S	E-W	IMP
5	1	3S W-2	200		2
3	9	3S W-2	200		2
9	3	4D N 5	150		0
8	4	3D N 5	150		0
1	5	3D N 5	150		0
7	2	3D N 5	150		0
2	7	3H S 3	140		0
10	6	2S W-1	100		-1
6	10	2S W-1	100		-1
4	8	2S W-1	100		-1

27

♠98
♥987
♦KQ105
♣10983

♠QJ5
♥KJ5
♦AJ643
♣64

N
W—E
S

♠A32
♥1042
♦9872
♣QJ7

♠K10764
♥AQ63
♦
♣AK52

Board (27) Av: NS=+210

N-S	E-W	Contract	N-S	E-W	IMP
2	7	3Dx W-3	500		7
4	8	3Dx W-3	500		7
1	5	3Dx W-3	500		7
10	6	2S S 4	170		-1
3	9	3H S 3	140		-2
6	10	1S S 3	140		-2
5	1	1S S 3	140		-2
7	2	1S S 2	110		-3
8	4	3H S-1		50	-6
9	3	2H S-1		50	-6

28

♠ J108532
♥ 9
♦ J109
♣ K63

♠ AQ6
♥ Q10432
♦ K85
♣ 87

N
W | E
S

♠ K97
♥ J76
♦ AQ7
♣ AJ94

♠ 4
♥ AK85
♦ 6432
♣ Q1052

Board (28) Av: NS=-360

N-S	E-W	Contract	N-S	E-W	IMP
10	6	Cancel			
6	10	4H W-1	50		9
5	1	4H E-1	50		9
8	4	4H W 4		420	-2
7	2	4H W 4		420	-2
4	8	4H E 4		420	-2
2	7	4H E 4		420	-2
1	5	3NT E 4		430	-2
3	9	3NT E 4		430	-2
9	3	3NT E 4		430	-2

29

♠ A95
♥ J765
♦ A85
♣ J83

♠ 832
♥ AK10832
♦ 932
♣ K

N
W | E
S

♠ J10
♥ Q4
♦ KQ764
♣ 10972

♠ KQ764
♥ 9
♦ J10
♣ AQ654

Board (29) Av: NS=+290

N-S	E-W	Contract	N-S	E-W	IMP
8	4	3NT N 4	630		8
3	9	4S S 4	620		8
9	3	4S S 4	620		8
6	10	4S S 4	620		8
1	5	4S S 4	620		8
2	7	2S S 3	140		-4
10	6	4S S-1		100	-9
5	1	4S S-1		100	-9
7	2	4S S-1		100	-9
4	8	4S S-1		100	-9

30

♠ 1095
♥ AJ932
♦ 5
♣ 8632

♠ AKJ876
♥ 7
♦ AJ
♣ Q954

N
W | E
S

♠ KQ10654
♥ Q10973
♣ J7

♠ Q432
♥ 8
♦ K8642
♣ AK10

Board (30) Av: NS=-30

N-S	E-W	Contract	N-S	E-W	IMP
5	1	3Hx E-2	300		8
7	2	3NT E-2	100		4
4	8	3Hx E-1	100		4
3	9	3H E-2	100		4
6	10	2Hx E-1	100		4
1	5	3S W-1	50		2
10	6	3NT W-1	50		2
2	7	2S W-1	50		2
9	3	4Dx S-4		800	-13
8	4	2HxxE 3		840	-13

31

♠ AQ1098
♥ J95
♦ QJ6
♣ 93

♠ K4
♥ 742
♦ 1092
♣ QJ874

N
W | E
S

♠ J76
♥ Q863
♦ 743
♣ A102

♠ 532
♥ AK10
♦ AK85
♣ K65

Board (31) Av: NS=+650

N-S	E-W	Contract	N-S	E-W	IMP
9	3	4S S 5	650		0
10	6	4S S 5	650		0
6	10	4S S 5	650		0
8	4	4S S 5	650		0
3	9	4S S 5	650		0
5	1	4S S 5	650		0
7	2	4S S 5	650		0
2	7	4S S 5	650		0
1	5	4S N 5	650		0
4	8	3NT S 4	630		-1

32

♠ 4
♥ A7
♦ A107
♣ AKQJ854

♠ AQJ953
♥ 10986
♦ J2
♣ 10

N
W | E
S

♠ K876
♥ KQ5
♦ K943
♣ 93

♠ 102
♥ J432
♦ Q865
♣ 762

Board (32) Av: NS=+30

N-S	E-W	Contract	N-S	E-W	IMP
6	10	5C N 5	400		9
2	7	4C N 5	150		3
4	8	4C N 4	130		3
10	6	4C N 4	130		3
8	4	1NT N 1	90		2
9	3	5C N-1		50	-2
7	2	5C N-1		50	-2
1	5	5C N-1		50	-2
5	1	5Cx N-1		100	-4
3	9	5Cx N-2		300	-8

33

♠ Q
♥ 1053
♦ Q543
♣ A10984

♠ AJ1085
♥ 96
♦ KJ102
♣ Q6

N
W | E
S

♠ K432
♥ J742
♦ 98
♣ J52

♠ 976
♥ AKQ8
♦ A76
♣ K73

Board (33) Av: NS=-20

N-S	E-W	Contract	N-S	E-W	IMP
10	6	4H S 4	420		10
2	7	1NT S 2	120		4
4	8	3S W-1	50		2
5	1	3S W-1	50		2
6	10	2NT S-1		50	-1
1	5	1NT S-1		50	-1
7	2	3NT S-2		100	-2
3	9	3NT S-2		100	-2
8	4	3NT S-2		100	-2
9	3	3NT S-3		150	-4

34

♠ Q6
♥ A9432
♦ 82
♣ AQ108

♠ 92
♥ Q1075
♦ AQ543
♣ 62

N
W | E
S

♠ J10743
♥ KJ6
♦ 1097
♣ KJ

♠ AK85
♥ 8
♦ KJ6
♣ 97543

Board (34) Av: NS=-50

N-S	E-W	Contract	N-S	E-W	IMP
7	2	5C S 5	600		12
3	9	3C S 4	130		5
5	1	3C N 4	130		5
9	3	3C N 4	130		5
1	5	5C S-1		100	-2
4	8	3NT S-1		100	-2
6	10	2H N-1		100	-2
8	4	1NT S-2		200	-4
2	7	3NT S-3		300	-6
10	6	3NT S-5		500	-10

35

♠ K653
♥ 1064
♦ 10842
♣ 63

♠ AQ102
♥ K53
♦ 75
♣ 9875

N
W | E
S

♠ J
♥ AJ2
♦ AK963
♣ AK104

♠ 9874
♥ Q987
♦ QJ
♣ QJ2

Board (35) Av: NS=-550

N-S	E-W	Contract	N-S	E-W	IMP
4	8	3NT W-2	200		13
3	9	6C E-1	100		12
7	2	3NT W 4		630	-2
8	4	3NT E 4		630	-2
6	10	3NT E 4		630	-2
1	5	3NT E 4		630	-2
2	7	3NT E 4		630	-2
10	6	3NT E 5		660	-3
9	3	3NT E 5		660	-3
5	1	6C E 6		1370	-13

36

♠ AJ
♥ 72
♦ AQJ104
♣ AQ62

♠ K10752
♥ 654
♦ 976
♣ J9

N
W | E
S

♠ 4
♥ AKJ93
♦ K853
♣ K87

♠ Q9863
♥ Q108
♦ 2
♣ 10543

Board (36) Av: NS=+100

N-S	E-W	Contract	N-S	E-W	IMP
9	3	3Hx E-2	500		9
6	10	3H E-2	200		3
2	7	4C N 4	130		1
4	8	3C N 4	130		1
1	5	3C N 4	130		1
7	2	3C N 3	110		0
5	1	3C N 3	110		0
10	6	2H E-1	100		0
3	9	4C N-1		100	-5
8	4	3C N-1		100	-5

兵庫県知事杯 OPEN TEAMS Session 5 Flight A 2012年10月8日(月)

1

♠AQJ83
♥7
♦KQ1052
♣97

♠K1052
♥AJ964
♦J93
♣Q

♠9764
♥K53
♦A8
♣KJ42

Board (1) Av: NS=+40

N-S	E-W	Contract	N-S	E-W	IMP
8	5	5Hx E-2	300		6
3	2	5Hx E-2	300		6
1	4	5Hx E-2	300		6
7	10	4S N-1		50	-3
9	6	4S N-1		50	-3
10	7	4S N-1		50	-3
6	9	4S N-1		50	-3
4	1	4S N-1		50	-3
2	3	4S N-1		50	-3
5	8	4S N-1		50	-3

2

♠QJ109
♥AJ32
♦K2
♣1032

♠732
♥1084
♦QJ3
♣QJ64

♠K84
♥K96
♦1095
♣A975

Board (2) Av: NS=+110

N-S	E-W	Contract	N-S	E-W	IMP
1	4	1NT S 3	150		1
5	8	1NT E-3	150		1
10	7	1NT S 2	120		0
3	2	2H S 2	110		0
7	10	2C S 3	110		0
8	5	1NT E-2	100		0
2	3	2C S 2	90		-1
9	6	2C S 2	90		-1
6	9	1NT S 1	90		-1
4	1	1NT E 1		90	-5

3

♠K94
♥86
♦J106
♣AKJ82

♠QJ85
♥7542
♦Q2
♣Q73

♠A732
♥AJ103
♦A4
♣1096

Board (3) Av: NS=+410

N-S	E-W	Contract	N-S	E-W	IMP
9	6	3NT S 4	430		1
7	10	3NT S 4	430		1
5	8	3NT S 4	430		1
8	5	3NT S 3	400		0
1	4	3NT S 3	400		0
4	1	3NT S 3	400		0
2	3	3NT S 3	400		0
10	7	3NT N 3	400		0
3	2	3NT N 3	400		0
6	9	4C N-1		50	-10

4

♠J3
♥J10532
♦Q82
♣753

♠98
♥Q4
♦K1073
♣AQ862

♠AKQ10762
♥A76
♦A6
♣4

Board (4) Av: NS=+380

N-S	E-W	Contract	N-S	E-W	IMP
7	10	4S S 5	650		7
3	2	4S S 4	620		6
6	9	4S S 4	620		6
4	1	4S S 4	620		6
1	4	4S S 4	620		6
5	8	3S S 4	170		-5
9	6	3S S 3	140		-6
10	7	1S S 3	140		-6
2	3	1S S 2	110		-7
8	5	4S S-1		100	-10

5

♠KQJ10
♥Q10872
♦J
♣AK4

♠A985
♥943
♦1065
♣Q76

♠43
♥A5
♦Q98742
♣1092

Board (5) Av: NS=+160

N-S	E-W	Contract	N-S	E-W	IMP
2	3	3NT S 3	600		10
6	9	3NT N 3	600		10
7	10	2NT S 3	150		0
5	8	2H S 3	140		-1
3	2	2H N 3	140		-1
9	6	2NT S 2	120		-1
1	4	2H N 2	110		-2
4	1	2D S 3	110		-2
8	5	4H N-1		100	-6
10	7	3NT S-2		200	-8

6

♠7
♥AKQJ1063
♦J10985
♣

♠AQJ984
♥4
♦
♣J98762

♠K53
♥852
♦K32
♣AQ54

Board (6) Av: NS=+110

N-S	E-W	Contract	N-S	E-W	IMP
2	3	4H N 5	450		8
7	10	4H N 5	450		8
8	5	4H N 5	450		8
10	7	5S E-1	100		0
3	2	4S E-1	100		0
6	9	5H S-1		50	-4
1	4	5H N-1		50	-4
9	6	5H N-1		50	-4
5	8	5H N-1		50	-4
4	1	5H N-2		100	-5

7

♠Q
♥10987653
♦943
♣82

♠A82
♥AQ
♦
♣AKJ97653

♠KJ1063
♥J
♦AKJ1065
♣10

Board (7) Av: NS=-630

N-S	E-W	Contract	N-S	E-W	IMP
3	2	3NT E-2	200		13
10	7	5C E 6	620		0
6	9	5C E 6	620		0
7	10	5C E 6	620		0
5	8	5C E 6	620		0
4	1	5C E 6	620		0
1	4	5C E 6	620		0
8	5	4NT E 5	660		-1
2	3	3NT E 6	690		-2
9	6	5Dx S-3	800		-5

8

♠AKQ1032
♥64
♦J842
♣Q

♠96
♥AKJ7
♦KQ10753
♣A

♠75
♥103
♦
♣KJ10976532

Board (8) Av: NS=-170

N-S	E-W	Contract	N-S	E-W	IMP
4	1	5Cx S 5	550		12
6	9	5C S-1		50	3
8	5	5Cx S-1		100	2
3	2	5Cx S-1		100	2
10	7	5Cx S-1		100	2
7	10	5Cx S-1		100	2
1	4	4S N-3		150	1
5	8	6Cx S-2		300	-4
9	6	5H W 5		450	-7
2	3	5H W 5		450	-7

9

♠KJ93
♥KQ76
♦9
♣9854

♠62
♥J9852
♦1072
♣KQ2

♠AQ1054
♥104
♦KQJ8
♣J10

Board (9) Av: NS=+120

N-S	E-W	Contract	N-S	E-W	IMP
2	3	4S S 4	420		7
7	10	4S S 4	420		7
5	8	4S S 4	420		7
9	6	3S S 4	170		2
6	9	3S S 3	140		1
10	7	4S S-1		50	-5
3	2	4S S-1		50	-5
4	1	4S S-1		50	-5
8	5	4S S-1		50	-5
1	4	4S S-1		50	-5

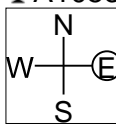
10

♠ J7
♥ KQJ985
♦ A
♣ A1053

♠ K2
♥ A102
♦ K1072
♣ J976

♠ AQ108654
♥ 6
♦ 98
♣ Q42

♠ 93
♥ 743
♦ QJ6543
♣ K8



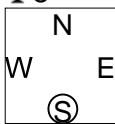
11

♠ J9853
♥ Q654
♦ 632
♣ 8

♠ K72
♥ A983
♦ AQJ95
♣ 2

♠ 1064
♥ KJ10
♦ 104
♣ AQJ93

♠ AQ
♥ 72
♦ K87
♣ K107654



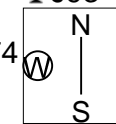
12

♠ Q106
♥ 653
♦ K742
♣ J93

♠ 754
♥ A1074
♦ AQ3
♣ K54

♠ J982
♥ 82
♦ J96
♣ Q1076

♠ AK3
♥ KQJ9
♦ 1085
♣ A82



Board (10) Av: NS=+250

N-S	E-W	Contract	N-S	E-W	IMP
4	1	4H	N 5	650	9
2	3	4H	N 5	650	9
8	5	4H	N 4	620	9
5	8	3H	N 6	230	-1
6	9	4S	E-2	200	-2
9	6	3Sx	E-1	200	-2
3	2	4S	E-1	100	-4
1	4	4S	E-1	100	-4
7	10	5H	N-1	100	-8
10	7	4S	E 4	620	-13

Board (11) Av: NS=-400

N-S	E-W	Contract	N-S	E-W	IMP
5	8	3H	E 5	200	5
8	5	1NT	E 5	210	5
4	1	2C	S-5	250	4
7	10	3NT	E 4	430	-1
6	9	3NT	E 4	430	-1
2	3	3NT	E 4	430	-1
10	7	3NT	E 4	430	-1
1	4	1Cx	S-3	500	-3
3	2	1Cx	S-3	500	-3
9	6	2Cx	S-5	1100	-12

Board (12) Av: NS=+50

N-S	E-W	Contract	N-S	E-W	IMP
9	6	1NTxS	1	180	4
6	9	1NT	S 3	150	3
1	4	1NT	S 2	120	2
7	10	1NT	S 2	120	2
3	2	2D	N 2	90	1
4	1	2D	N 2	90	1
8	5	2S	E-1	50	0
5	8	3D	N-1	100	-4
2	3	2NT	S-1	100	-4
10	7	2D	N-1	100	-4

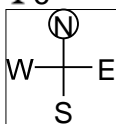
13

♠ Q632
♥ J9532
♦ K104
♣ 6

♠ K
♥ 6
♦ Q732
♣ QJ109854

♠ A109874
♥ Q8
♦ A85
♣ K3

♠ J5
♥ AK1074
♦ J96
♣ A72



Board (13) Av: NS=+190

N-S	E-W	Contract	N-S	E-W	IMP
9	6	4H	S 4	620	10
4	1	4H	S 4	620	10
10	7	4H	S 4	620	10
8	5	5C	W-2	200	0
7	10	5C	W-2	200	0
2	3	5C	W-2	200	0
1	4	3C	W 3	110	-7
5	8	3C	W 3	110	-7
6	9	3C	W 3	110	-7
3	2	2S	E 3	140	-8

14

♠ Q82
♥ A1074
♦ AQ4
♣ 542

♠ 9753
♥ 8
♦ J965
♣ Q1097

♠ AK4
♥ K92
♦ 10872
♣ A63

♠ J106
♥ QJ653
♦ K3
♣ KJ8



Board (14) Av: NS=+90

N-S	E-W	Contract	N-S	E-W	IMP
1	4	3NT	N 3	400	7
3	2	3H	S 3	140	2
6	9	3H	S 3	140	2
7	10	3H	S 3	140	2
5	8	2H	S 3	140	2
9	6	2H	N 3	140	2
4	1	2NT	N 2	120	1
10	7	3NT	N-1	50	-4
8	5	3NT	N-1	50	-4
2	3	3NT	N-2	100	-5

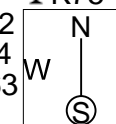
15

♠ KQ73
♥ KJ7653
♦
♣ K75

♠ A982
♥ 1084
♦ AK63
♣ 109

♠ 65
♥ Q92
♦ 9742
♣ AJ42

♠ J104
♥ A
♦ QJ1085
♣ Q863



Board (15) Av: NS=+230

N-S	E-W	Contract	N-S	E-W	IMP
4	1	4H	N 5	650	9
9	6	4H	N 4	620	9
6	9	3NT	S 3	600	9
8	5	3Dx	W-2	300	2
7	10	3H	N 3	140	-3
1	4	3C	N 3	110	-3
2	3	2Dx	W-1	100	-4
3	2	2D	W-2	100	-4
5	8	2NT	S-1	100	-8
10	7	2Dx	W 2	180	-9

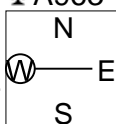
16

♠ 982
♥ K84
♦ 632
♣ A963

♠ KJ1073
♥ Q2
♦ Q10874
♣ 10

♠ AQ64
♥ 765
♦ AJ9
♣ K87

♠ 5
♥ AJ1093
♦ K5
♣ QJ542



Board (16) Av: NS=-110

N-S	E-W	Contract	N-S	E-W	IMP
10	7	4S	W-1	100	5
1	4	4S	W-1	100	5
4	1	4H	S-1	50	2
9	6	3S	W 3	140	-1
6	9	3S	W 3	140	-1
5	8	3S	W 3	140	-1
3	2	2S	W 3	140	-1
7	10	3S	W 4	170	-2
2	3	3S	W 4	170	-2
8	5	4S	W 4	620	-11

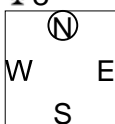
17

♠ A4
♥ J985
♦ A96543
♣ 8

♠ K10865
♥ A1043
♦ 2
♣ K64

♠ 9732
♥ Q76
♦ 8
♣ AJ1095

♠ QJ
♥ K2
♦ KQJ107
♣ Q732



Board (17) Av: NS=+10

N-S	E-W	Contract	N-S	E-W	IMP
10	7	5Dx	S 5	550	11
5	8	4Sx	E-2	300	7
3	2	4Sx	W-1	100	3
9	6	5D	S-1	50	-2
4	1	5D	S-1	50	-2
1	4	5D	S-1	50	-2
7	10	5D	N-1	50	-2
8	5	5D	N-1	50	-2
6	9	3NT	S-1	50	-2
2	3	4Sx	W 4	590	-12

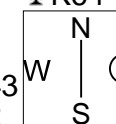
18

♠ 5
♥ QJ95432
♦ J2
♣ K64

♠ J862
♥ 10
♦ K1043
♣ A932

♠ 107
♥ K876
♦ Q86
♣ Q1085

♠ AKQ943
♥ A
♦ A975
♣ J7



Board (18) Av: NS=+120

N-S	E-W	Contract	N-S	E-W	IMP
1	4	Cancel			
3	2	4H	N 4	620	11
7	10	4H	N 4	620	11
2	3	4H	N 4	620	11
4	1	Av-			-3
6	9	4S	S-1	100	-6
5	8	4S	S-1	100	-6
9	6	3NT	N-1	100	-6
10	7	4S	S-2	200	-8
8	5	4S	S-2	200	-8

兵庫県知事杯 OPEN TEAMS Session 6 Flight A 2012年10月8日(月)

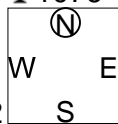
1

♠ J1053
♥ 1043
♦ K98
♣ 1076

♠ K76
♥ KQJ982
♦ AJ
♣ 84

♠ AQ842
♥ 6
♦ 76542
♣ 93

♠ 9
♥ A75
♦ Q103
♣ AKQJ52



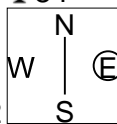
2

♠ KJ852
♥ K9862
♦ 8
♣ 84

♠ AQ973
♥ 10
♦ AQJ109
♣ A9

♠ 10
♥ Q543
♦ 764
♣ 107653

♠ 64
♥ AJ7
♦ K532
♣ KQJ2



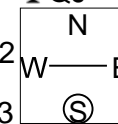
3

♠ 109874
♥ 54
♦ A843
♣ QJ

♠ Q3
♥ AK987
♦ QJ107
♣ 65

♠ AK65
♥ 10
♦ 962
♣ K8742

♠ J2
♥ QJ632
♦ K5
♣ A1093



Board (1) Av: NS=-1000

N-S	E-W	Contract	N-S	E-W	IMP
1	3	6C	W 6	920	2
5	6	6H	E 6	980	1
6	5	6H	E 6	980	1
10	9	6H	E 6	980	1
4	2	6H	E 6	980	1
9	10	6H	E 7	1010	0
3	1	6H	E 7	1010	0
8	7	6H	E 7	1010	0
2	4	6H	E 7	1010	0
7	8	6H	E 7	1010	0

Board (2) Av: NS=-1130

N-S	E-W	Contract	N-S	E-W	IMP
10	9	3NT	W 6	490	12
8	7	6D	W 7	940	5
5	6	6D	E 7	940	5
7	8	6D	E 7	940	5
2	4	6D	E 7	940	5
4	2	6D	E 7	940	5
9	10	7D	E 7	1440	-7
1	3	7D	E 7	1440	-7
6	5	7D	E 7	1440	-7
3	1	7D	E 7	1440	-7

Board (3) Av: NS=+120

N-S	E-W	Contract	N-S	E-W	IMP
6	5	4S	N 4	420	7
1	3	5H	W-2	200	2
8	7	3S	N 3	140	1
10	9	4H	W-1	100	-1
7	8	4H	W-1	100	-1
2	4	4H	W-1	100	-1
3	1	4H	W-1	100	-1
5	6	4H	W-1	100	-1
9	10	4H	E-1	100	-1
4	2	4S	N-1	50	-5

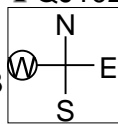
4

♠ Q3
♥ A94
♦ 9764
♣ QJ102

♠ K8542
♥ 852
♦ A8
♣ 964

♠ J1076
♥ 1073
♦ Q52
♣ K73

♠ A9
♥ KQJ6
♦ KJ103
♣ A85



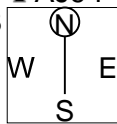
5

♠ 92
♥ 432
♦ J752
♣ AJ94

♠ AKJ6543
♥ KQ97
♦
♣ Q2

♠ 7
♥ AJ6
♦ KQ10984
♣ 1065

♠ Q108
♥ 1085
♦ A63
♣ K873



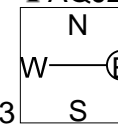
6

♠ Q86
♥ 1075
♦ 654
♣ AQJ2

♠ 1053
♥ KQJ63
♦ A10
♣ 1087

♠ A92
♥ A942
♦ J8732
♣ 6

♠ KJ74
♥ 8
♦ KQ9
♣ K9543



Board (4) Av: NS=-600

N-S	E-W	Contract	N-S	E-W	IMP
6	5	3NT	W-1	100	12
10	9	3NT	W 3	600	0
9	10	3NT	W 3	600	0
7	8	3NT	W 3	600	0
3	1	3NT	W 3	600	0
5	6	3NT	W 3	600	0
4	2	3NT	W 3	600	0
2	4	3NT	W 3	600	0
1	3	3NT	W 4	630	-1
8	7	3NT	W 4	630	-1

Board (5) Av: NS=-420

N-S	E-W	Contract	N-S	E-W	IMP
7	8	4S	E 4	420	0
6	5	4S	E 4	420	0
10	9	4S	E 4	420	0
8	7	4S	E 4	420	0
5	6	4S	E 4	420	0
3	1	4S	E 4	420	0
1	3	4S	E 4	420	0
4	2	4S	E 4	420	0
2	4	4S	E 4	420	0
9	10	4S	E 5	450	-1

Board (6) Av: NS=+180

N-S	E-W	Contract	N-S	E-W	IMP
6	5	4S	W-3	300	3
2	4	2NT	W-2	200	1
7	8	2NT	E-2	200	1
5	6	2NT	E-2	200	1
3	1	2NT	E-2	200	1
9	10	2D	E-2	200	1
10	9	2D	E-2	200	1
4	2	2H	E-1	100	-2
1	3	1NT	E-1	100	-2
8	7	2H	E 2	110	-7

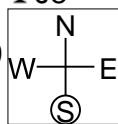
7

♠ KQ9732
♥ 873
♦ J2
♣ J8

♠ A106
♥ J65
♦ K983
♣ Q43

♠ 5
♥ K42
♦ A10654
♣ A1075

♠ J84
♥ AQ109
♦ Q7
♣ K962



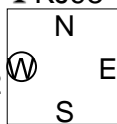
8

♠ QJ432
♥ A9
♦ K6
♣ KJ98

♠ 85
♥ KQ843
♦ AQ
♣ AQ64

♠ K10976
♥ J106
♦ J10
♣ 1072

♠ A
♥ 752
♦ 9875432
♣ 53



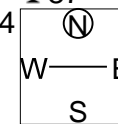
9

♠ 10982
♥ K76
♦ KJ53
♣ 87

♠ J3
♥ AQ10952
♦ AQ7
♣ J9

♠ A
♥ 3
♦ 10962
♣ KQ65432

♠ KQ7654
♥ J84
♦ 84
♣ A10



Board (7) Av: NS=-170

N-S	E-W	Contract	N-S	E-W	IMP
7	8	2S	N 2	110	7
6	5	2S	N-1	100	2
3	1	1NT	E 2	120	2
2	4	1NT	E 2	120	2
5	6	1NT	E 3	150	1
10	9	2S	N-2	200	-1
8	7	2S	N-2	200	-1
1	3	2S	N-2	200	-1
4	2	2S	N-3	300	-4
9	10	2S	N-3	300	-4

Board (8) Av: NS=-380

N-S	E-W	Contract	N-S	E-W	IMP
9	10	3S	N-1	50	8
8	7	4S	N-2	100	7
7	8	4Sx	N-2	300	2
10	9	5D	W 6	420	-1
6	5	5H	E 5	450	-2
2	4	4H	E 5	450	-2
3	1	4H	E 5	450	-2
5	6	4H	E 5	450	-2
4	2	4H	E 5	450	-2
1	3	4Sx	S-3	500	-3

Board (9) Av: NS=-650

N-S	E-W	Contract	N-S	E-W	IMP
1	3	3H	W 5	200	10
10	9	4S	W 4	620	1
5	6	4H	E 5	650	0
7	8	4H	E 5	650	0
9	10	4H	E 5	650	0
2	4	4H	E 5	650	0
4	2	4H	E 5	650	0
3	1	4H	E 5	650	0
8	7	5H	E 6	680	-1
6	5	4H	E 6	680	-1

10

♠ A10
♥ KQ63
♦ KJ
♣ KQ874

♠ KQ9
♥ A108
♦ A1092
♣ A53

♠ J632
♥ J754
♦ 8764
♣ 10

♠ 8754
♥ 92
♦ Q53
♣ J962

W N E S

11

♠ A2
♥ KQJ952
♦ AK7
♣ J9

♠ Q853
♥ 4
♦ J8
♣ AK8752

♠ K10964
♥ 863
♦ 1062
♣ 43

♠ J7
♥ A107
♦ Q9543
♣ Q106

W N E S

12

♠ AK8
♥ A854
♦ 92
♣ Q1064

♠ J1043
♥ K7632
♦ 10
♣ K32

♠ Q2
♥ J109
♦ QJ543
♣ A85

♠ 9765
♥ Q
♦ AK876
♣ J97

W N E S

Board (10) Av: NS=-60

N-S	E-W	Contract	N-S	E-W	IMP
3	1	1NT N 3	150		5
5	6	3C S 3	110		5
1	3	3D E-1	100		4
7	8	2D W 2	90		-1
8	7	2D W 2	90		-1
4	2	2D W 2	90		-1
10	9	2D W 3	110		-2
2	4	2H E 3	140		-2
6	5	2H N-2	200		-4
9	10	2H N-2	200		-4

Board (11) Av: NS=+450

N-S	E-W	Contract	N-S	E-W	IMP
9	10	4H N 6	480		1
2	4	4H N 6	480		1
5	6	5H N 5	450		0
7	8	4H N 5	450		0
10	9	4H N 5	450		0
6	5	4H N 5	450		0
4	2	4H N 5	450		0
1	3	4H N 5	450		0
3	1	4H N 4	420		-1
8	7	4S E-2	100		-8

Board (12) Av: NS=-10

N-S	E-W	Contract	N-S	E-W	IMP
1	3	1NT N 2	120		4
5	6	1NT S 1	90		3
3	1	1NT N 1	90		3
9	10	1NT N 1	90		3
6	5	2H W-1	50		2
10	9	3S S-1	100		-3
7	8	3NT S-1	100		-3
2	4	2S S-1	100		-3
8	7	2S S-1	100		-3
4	2	2C N-1	100		-3

13

♠ AK4
♥ K82
♦ KJ632
♣ 98

♠ 8732
♥ J753
♦ 1054
♣ 106

♠ J106
♥ 1096
♦ AQ97
♣ AK3

♠ Q95
♥ AQ4
♦ 8
♣ QJ7542

W N E S

14

♠ Q1052
♥ AQ85
♦ 86
♣ QJ3

♠ AJ
♥ J9632
♦ A4
♣ AK105

♠ 9743
♥ 1074
♦ K1073
♣ 76

♠ K86
♥ K
♦ QJ952
♣ 9842

W N E S

15

♠ K1072
♥ AK1032
♦ K
♣ A92

♠ 963
♥ 74
♦ 872
♣ KQ763

♠ QJ8
♥ J65
♦ A943
♣ J84

♠ A54
♥ Q98
♦ QJ1065
♣ 105

W N E S

Board (13) Av: NS=+580

N-S	E-W	Contract	N-S	E-W	IMP
2	4	3NT N 5	660		2
5	6	3NT N 5	660		2
8	7	3NT S 4	630		2
9	10	3NT S 4	630		2
10	9	3NT S 4	630		2
3	1	3NT S 4	630		2
4	2	3NT S 4	630		2
6	5	3NT N 4	630		2
1	3	1DxxN 1	230		-8
7	8	1NT S 4	180		-9

Board (14) Av: NS=-10

N-S	E-W	Contract	N-S	E-W	IMP
6	5	4H W-2	100		3
4	2	3H W-1	50		2
8	7	3H W-1	50		2
3	1	3H W-1	50		2
10	9	2S N-1	50		-1
5	6	2S N-1	50		-1
7	8	2D S-2	100		-3
2	4	1H W 2	110		-3
9	10	1H W 2	110		-3

Board (15) Av: NS=+670

N-S	E-W	Contract	N-S	E-W	IMP
7	8	3NT S 6	690		1
5	6	4H N 6	680		0
6	5	4H N 6	680		0
10	9	4H N 6	680		0
2	4	4H N 6	680		0
1	3	4H N 6	680		0
9	10	4H N 5	650		-1
4	2	4H N 5	650		-1
3	1	4H N 5	650		-1
8	7	4H N 5	650		-1

16

♠ J1076
♥ 82
♦ 1072
♣ A1072

♠ K9
♥ AKQ63
♦ 985
♣ K65

♠ 42
♥ J75
♦ KQJ63
♣ J93

♠ AQ853
♥ 1094
♦ A4
♣ Q84

W N E S

17

♠ 102
♥ Q9742
♦ 953
♣ 763

♠ K53
♥ A86
♦ AKQ72
♣ J8

♠ AJ9764
♥ K
♦ J104
♣ A109

♠ Q8
♥ J1053
♦ 86
♣ KQ542

W N E S

18

♠ A9862
♥ Q653
♦
♣ K1097

♠ Q5
♥ K72
♦ Q9743
♣ 654

♠ K
♥ A1098
♦ AK652
♣ 832

♠ J10743
♥ J4
♦ J108
♣ AQJ

W N E S

Board (16) Av: NS=-210

N-S	E-W	Contract	N-S	E-W	IMP
6	5	3NT W-3	300		11
9	10	2NT W-1	100		7
3	1	4S S-1	50		4
5	6	3S S-1	50		4
4	2	3S S-2	100		3
8	7	4S S-3	150		2
7	8	3S S-3	150		2
10	9	4H W 4	620		-9
2	4	4H W 4	620		-9
1	3	4H W 4	620		-9

Board (17) Av: NS=-940

N-S	E-W	Contract	N-S	E-W	IMP
8	7	5S E 7	510		10
9	10	5S E 7	510		10
3	1	6S E 6	980		-1
7	8	6S E 7	1010		-2
10	9	6S E 7	1010		-2
6	5	6S E 7	1010		-2
2	4	6S E 7	1010		-2
1	3	6S E 7	1010		-2
5	6	6S E 7	1010		-2
4	2	6S E 7	1010		-2

Board (18) Av: NS=+430

N-S	E-W	Contract	N-S	E-W	IMP
4	2	5S S 5	650		6
7	8	5S S 5	650		6
6	5	4S S 5	650		6
2	4	4S S 5	650		6
3	1	4S S 5	650		6
8	7	5Dx E-2	300		-4
5	6	3S S 5	200		-6
10	9	3S S 5	200		-6
1	3	3S S 4	170		-6
9	10	5Dx E-1	100		-8

19

♠84
♥Q987542
♦54
♣J6

♠AK1097652
♥J93
♦J93
♣KQ

♠J3
♥AKJ3
♦A1082
♣1054

♠Q
♥106
♦KQ76
♣A98732

Board (19) Av: NS=-680

N-S	E-W	Contract	N-S	E-W	IMP
6	7	3NT E 5	660		1
7	6	5S W 6	680		0
9	8	5S W 6	680		0
8	9	4S W 6	680		0
1	2	4S W 6	680		0
10	5	4S W 6	680		0
3	4	4S W 6	680		0
2	1	4S W 6	680		0
5	10	4S W 6	680		0
4	3	4S W 6	680		0

20

♠843
♥7
♦98652
♣K862

♠K75
♥AJ1043
♦Q
♣J973

♠AQ109
♥95
♦A743
♣AQ10

♠J62
♥KQ862
♦KJ10
♣54

Board (20) Av: NS=-640

N-S	E-W	Contract	N-S	E-W	IMP
9	8	4S E-1	100		12
6	7	3NT E 3	600		1
10	5	3NT E 3	600		1
8	9	3NT E 4	630		0
5	10	3NT E 4	630		0
2	1	4S E 5	650		0
1	2	4S E 5	650		0
3	4	4S E 6	680		-1
4	3	3NT E 6	690		-2
7	6	3NT E 6	690		-2

21

♠KJ1074
♥K64
♦92
♣AJ3

♠AQ65
♥AJ53
♦K103
♣Q9

♠932
♥Q
♦Q75
♣1087542

♠8
♥109872
♦AJ864
♣K6

Board (21) Av: NS=+40

N-S	E-W	Contract	N-S	E-W	IMP
3	4	3H W-5	250		5
6	7	4C E-3	150		3
1	2	2H S 3	140		3
10	5	3C E-2	100		2
9	8	2NT W-2	100		2
8	9	2D S 2	90		2
7	6	2C E 2		90	-4
4	3	2NT S-1		100	-4
2	1	2D S-1		100	-4
5	10	2D S-2		200	-6

22

♠A5
♥K2
♦KQ952
♣7632

♠8642
♥AQ1086
♦43
♣J4

♠KQJ
♥J954
♦876
♣K109

♠10973
♥73
♦AJ10
♣AQ85

Board (22) Av: NS=+290

N-S	E-W	Contract	N-S	E-W	IMP
4	3	3NT N 4	430		4
1	2	3NT N 4	430		4
6	7	3NT S 3	400		3
10	5	3NT S 3	400		3
5	10	3NT S 3	400		3
9	8	4H W-3	300		0
2	1	1NT S 3	150		-4
8	9	4D N 4	130		-4
3	4	2NT N 2	120		-5
7	6	2NT N 2	120		-5

23

♠KQ105
♥J97
♦9
♣AJ642

♠AJ2
♥K52
♦8742
♣983

♠9863
♥AQ10864
♦J6
♣7

♠74
♥3
♦AKQ1053
♣KQ105

Board (23) Av: NS=+560

N-S	E-W	Contract	N-S	E-W	IMP
8	9	6C S 6	1370		13
10	5	3NT N 6	690		4
1	2	5C S 6	620		2
4	3	5C S 6	620		2
2	1	5C S 6	620		2
7	6	5C S 5	600		1
3	4	5C S 5	600		1
5	10	5C S 5	600		1
6	7	3C N 5	150		-9
9	8	3NT N-3		300	-13

24

♠KQ63
♥J9752
♦K83
♣K

♠106
♥976
♦QJ986432

♠A9875
♥Q8
♦QJ54
♣75

♠J1042
♥AK43
♦A102
♣A10

Board (24) Av: NS=+420

N-S	E-W	Contract	N-S	E-W	IMP
2	1	6H S 6	980		11
4	3	4Hx N 5	690		7
5	10	5H N 6	480		2
9	8	4H S 6	480		2
3	4	4H S 6	480		2
1	2	4H N 6	480		2
6	7	4H N 6	480		2
8	9	5Cx W-2	300		-3
10	5	6H N-1		50	-10
7	6	6Hx N-1		100	-11

25

♠K8
♥Q98
♦K9842
♣853

♠A7
♥3
♦AQJ63
♣KQ1096

♠Q106542
♥AJ62
♦10
♣J2

♠J93
♥K10754
♦75
♣A74

Board (25) Av: NS=-130

N-S	E-W	Contract	N-S	E-W	IMP
3	4	4S E-2	200		8
8	9	4S E-2	200		8
10	5	4S E-1	100		6
7	6	4S E-1	100		6
9	8	4S E-1	100		6
6	7	4C E 4		130	0
2	1	3C W 4		130	0
4	3	4S E 4		620	-10
1	2	4S E 5		650	-11
5	10	4S E 5		650	-11

26

♠10
♥Q10942
♦AQJ84
♣73

♠A864
♥A8
♦63
♣AKQJ9

♠K953
♥J5
♦K92
♣8642

♠QJ72
♥K763
♦1075
♣105

Board (26) Av: NS=-290

N-S	E-W	Contract	N-S	E-W	IMP
10	5	4S W-1	100		9
1	2	4S W-1	100		9
9	8	4S E-1	100		9
6	7	4S E-1	100		9
7	6	4C W 4		130	4
5	10	3NT E 3		600	-7
3	4	4S W 4		620	-8
8	9	4S W 4		620	-8
4	3	4S E 4		620	-8
2	1	5Hx N-3		800	-11

27

♠AJ3
♥AKQ8652
♣1042

♠KJ64
♥Q1052
♦J
♣AJ93

♠A10832
♥874
♦7
♣KQ75

♠Q975
♥K96
♦10943
♣86

Board (27) Av: NS=+420

N-S	E-W	Contract	N-S	E-W	IMP
8	9	5Dx N 5	550		4
3	4	5Dx N 5	550		4
9	8	5Sx E-3	500		2
7	6	5D S 5	400		-1
1	2	5D N 5	400		-1
2	1	5D N 5	400		-1
4	3	5D N 5	400		-1
5	10	5D N 5	400		-1
6	7	5Sx E-2	300		-3
10	5	6Dx N-1		100	-11

28

♠ K10
♥ KJ102
♦ A952
♣ Q32

♠ J87 96432
♥ A875 Q63
♦ K86 QJ
♣ A86 1095



♠ AQ5
♥ 94
♦ 10743
♣ KJ74

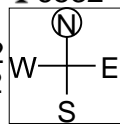
Board (28) Av: NS=+120

N-S	E-W	Contract	N-S	E-W	IMP
6	7	1NT W-3	150		1
7	6	1NT S 3	150		1
8	9	1NT S 3	150		1
9	8	1C W-3	150		1
5	10	2D S 3	110		0
3	4	1NT W-2	100		-1
2	1	1NT W-2	100		-1
10	5	1NT W-2	100		-1
4	3	1NT W-2	100		-1
1	2	1C W-2	100		-1

29

♠ 10975
♥ 1053
♦ Q4
♣ 6532

♠ K4 AQ62
♥ KJ762 A84
♦ 10932 AJ87
♣ J10 K8



♠ J83
♥ Q9
♦ K65
♣ AQ974

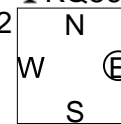
Board (29) Av: NS=-620

N-S	E-W	Contract	N-S	E-W	IMP
4	3	4D E 5	150		10
2	1	5D E 5	600		1
8	9	4H W 4	620		0
7	6	4H W 4	620		0
3	4	4H W 4	620		0
1	2	4H W 4	620		0
9	8	3NT E 4	630		0
5	10	3NT E 4	630		0
6	7	3NT E 4	630		0
10	5	4H W 5	650		-1

30

♠ K
♥ KJ10
♦ A1065
♣ KQ864

♠ AQ7652 J108
♥ 9732 A87543
♦ 9732 Q4
♣ A72 J10



♠ 943
♥ Q962
♦ KJ8
♣ 953

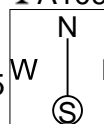
Board (30) Av: NS=-50

N-S	E-W	Contract	N-S	E-W	IMP
7	6	2NT N 5	210		6
4	3	2H W-3	150		5
1	2	4S W-1	50		3
2	1	4S W-1	50		3
5	10	2NT N-2		100	-2
8	9	3S W 3	140		-3
9	8	3S W 3	140		-3
3	4	3S W 3	140		-3
10	5	3S W 3	140		-3
6	7	3S W 3	140		-3

31

♠ K96
♥ Q8
♦ J8
♣ A109842

♠ AJ1042 Q73
♥ 4 109762
♦ AQ1065 9743
♣ J3 5



♠ 85
♥ AKJ53
♦ K2
♣ KQ76

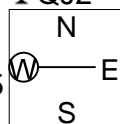
Board (31) Av: NS=+440

N-S	E-W	Contract	N-S	E-W	IMP
6	7	3NT N 5	660		6
10	5	3NT N 5	660		6
4	3	3NT N 5	660		6
2	1	3NT N 5	660		6
9	8	5C N 6	620		5
3	4	5C S 5	600		4
7	6	5C S 5	600		4
1	2	5Dx E-1	100		-8
5	10	4S E 4		420	-13
8	9	4Sx E 4		590	-14

32

♠ 10742
♥ J1097
♦ J7
♣ QJ2

♠ QJ5 K63
♥ 8654 AQ32
♦ Q985 A3
♣ 95 AK103



♠ A98
♥ K
♦ K10642
♣ 8764

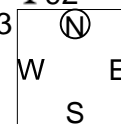
Board (32) Av: NS=+190

N-S	E-W	Contract	N-S	E-W	IMP
6	7	4H W-2	200		0
9	8	4H E-2	200		0
7	6	4H E-2	200		0
8	9	4H E-2	200		0
5	10	4H E-2	200		0
1	2	4H E-2	200		0
4	3	4H E-2	200		0
3	4	4H E-2	200		0
2	1	4H E-1	100		-3
10	5	3NT E 3		600	-13

33

♠ Q86
♥ 10754
♦ KQ32
♣ 92

♠ KJ1093 5
♥ A96 QJ32
♦ AJ 108764
♣ 1086 AQJ



♠ A742
♥ K8
♦ 95
♣ K7543

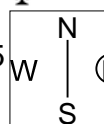
Board (33) Av: NS=-80

N-S	E-W	Contract	N-S	E-W	IMP
9	8	3NT E-4	200		7
7	6	3NT E-2	100		5
10	5	1NT E 1		90	0
6	7	1NT E 1		90	0
3	4	1NT E 1		90	0
8	9	2D E 3		110	-1
1	2	1NT E 2		120	-1
4	3	1NT E 2		120	-1
5	10	1NT E 2		120	-1
2	1	1NT E 4		180	-3

34

♠ KQ94
♥ K9432
♦ A1096
♣

♠ 108 AJ765
♥ AQJ5 87
♦ J73 854
♣ 9754 1062



♠ 32
♥ 106
♦ KQ2
♣ AKQJ83

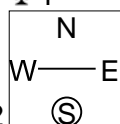
Board (34) Av: NS=+660

N-S	E-W	Contract	N-S	E-W	IMP
3	4	6D N 6	1370		12
4	3	3NT S 5	660		0
6	7	3NT N 5	660		0
7	6	3NT N 5	660		0
8	9	3NT N 5	660		0
10	5	3NT N 5	660		0
1	2	3NT N 5	660		0
2	1	3NT N 5	660		0
9	8	3NT N 5	660		0
5	10	6D S-1		100	-13

35

♠ QJ10985
♥ Q104
♦ 1054
♣ 4

♠ A4 K72
♥ A7 9865
♦ K76 QJ98
♣ KQJ732 A6



♠ 63
♥ KJ32
♦ A32
♣ 10985

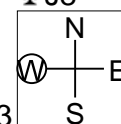
Board (35) Av: NS=-670

N-S	E-W	Contract	N-S	E-W	IMP
2	1	3NT W 3	600		2
4	3	3NT E 3	600		2
3	4	5C W 6	620		2
6	7	3NT W 6	690		-1
7	6	3NT W 6	690		-1
9	8	3NT W 6	690		-1
5	10	3NT W 6	690		-1
8	9	3NT E 6	690		-1
1	2	3NT E 6	690		-1
10	5	6C W 6		1370	-12

36

♠ A9
♥ AJ962
♦ J742
♣ J8

♠ J106 K83
♥ 10 KQ853
♦ Q108 AK3
♣ AKQ543 109



♠ Q7542
♥ 74
♦ 965
♣ 762

Board (36) Av: NS=-620

N-S	E-W	Contract	N-S	E-W	IMP
4	3	3NT E 3	600		1
5	10	3NT E 3	600		1
6	7	3NT E 3	600		1
1	2	3NT E 3	600		1
3	4	3NT E 3	600		1
7	6	3NT E 4	630		0
8	9	3NT E 4	630		0
10	5	3NT E 4	630		0
9	8	3NT E 5	660		-1
2	1	3NT E 5	660		-1