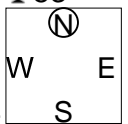


兵庫県知事杯 OPEN TEAMS Session 1 Flight B 2011年10月8日(土)

1

♠K86  
♥KQ103  
♦K1075  
♣53

♠QJ42  
♥72  
♦Q  
♣AKQ964



♠97  
♥AJ965  
♦A632  
♣J7

♠A1053  
♥84  
♦J984  
♣1082

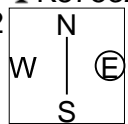
Board (1) Av: NS=-130

N-S	E-W	Contract	N-S	E-W	IMP
10	1	3NT E-1	50		5
1	10	3H E-1	50		5
7	4	2C W 3		110	1
5	9	2C W 3		110	1
4	7	2NT E 2		120	0
9	5	1NT E 2		120	0
8	2	3C W 4		130	0
6	3	2C W 4		130	0
3	6	3NT W 3		400	-7
2	8	3NT W 4		430	-7

2

♠43  
♥8  
♦KJ92  
♣K87532

♠109762  
♥2  
♦Q763  
♣1064



♠KQJ5  
♥AKJ976  
♦105  
♣A

♠A8  
♥Q10543  
♦A84  
♣QJ9

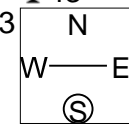
Board (2) Av: NS=0

N-S	E-W	Contract	N-S	E-W	IMP
9	5	3Cx N 3	670		12
1	10	3Hx E-2	300		7
4	7	4S E-1	50		2
10	1	2H W-1	50		2
3	6	1H E-1	50		2
7	4	1H E 1		80	-2
8	2	1H E 1		80	-2
5	9	1H E 1		80	-2
2	8	2NT S-2		200	-5
6	3	4S W 4		420	-9

3

♠AQ85  
♥A975  
♦J93  
♣43

♠J10943  
♥J4  
♦Q876  
♣A6



♠K762  
♥Q6  
♦K104  
♣K1075

♠K10832  
♥A52  
♣QJ982

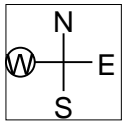
Board (3) Av: NS=+250

N-S	E-W	Contract	N-S	E-W	IMP
7	4	4H S 5	450		5
4	7	4H S 5	450		5
1	10	4H S 4	420		5
10	1	4H S 4	420		5
5	9	3H S 5	200		-2
3	6	3H S 5	200		-2
6	3	1H S 5	200		-2
9	5	3H S 3	140		-3
8	2	4H S-1		50	-7
2	8	4H S-1		50	-7

4

♠A62  
♥1052  
♦A86  
♣K932

♠Q54  
♥Q84  
♦1032  
♣J654



♠J1097  
♥KJ976  
♦J95  
♣A

♠K83  
♥A3  
♦KQ74  
♣Q1087

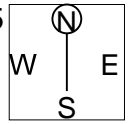
Board (4) Av: NS=+70

N-S	E-W	Contract	N-S	E-W	IMP
8	2	3NT S 3	600		11
6	3	1NT N 3	150		2
7	4	3C N 4	130		2
5	9	3C N 4	130		2
1	10	1NT N 2	120		2
4	7	2H E-1	100		1
10	1	2H E-1	100		1
3	6	5C N-1		100	-5
9	5	3NT S-1		100	-5
2	8	3NT S-1		100	-5

5

♠32  
♥J73  
♦AJ753  
♣A102

♠KJ1085  
♥AK  
♦1082  
♣Q53



♠74  
♥Q1098654  
♦9  
♣K64

♠AQ96  
♥2  
♦KQ64  
♣J987

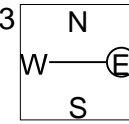
Board (5) Av: NS=-70

N-S	E-W	Contract	N-S	E-W	IMP
7	4	4D N 4	130		5
2	8	4D N 4	130		5
5	9	5Hx E-1	100		5
8	2	5D N-1		100	-1
1	10	3D S-1		100	-1
9	5	3H E 3		140	-2
4	7	3H E 3		140	-2
3	6	3H E 3		140	-2
6	3	3H E 4		170	-3
10	1	3H E 5		200	-4

6

♠QJ9  
♥K  
♦J974  
♣AK1083

♠108543  
♥10975  
♦K  
♣QJ2



♠A76  
♥842  
♦A1085  
♣964

♠K2  
♥AQJ63  
♦Q632  
♣75

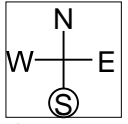
Board (6) Av: NS=+360

N-S	E-W	Contract	N-S	E-W	IMP
6	3	3NT S 4	430		2
7	4	3NT S 4	430		2
9	5	3NT N 4	430		2
3	6	3NT N 4	430		2
2	8	3NT N 4	430		2
5	9	3NT S 3	400		1
4	7	3NT N 3	400		1
8	2	3NT N 3	400		1
1	10	3NT N-1		50	-9
10	1	3NT N-1		50	-9

7

♠7642  
♥QJ865  
♦8  
♣QJ4

♠AJ  
♥109742  
♦KJ1092  
♣3



♠8  
♥K  
♦7543  
♣AK108765

♠KQ10953  
♥A3  
♦AQ6  
♣92

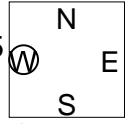
Board (7) Av: NS=+240

N-S	E-W	Contract	N-S	E-W	IMP
6	3	4S S 5	650		9
1	10	4S S 5	650		9
3	6	4S S 4	620		9
5	9	4S S 4	620		9
7	4	5Dx E-1	200		-1
9	5	3S S 3	140		-3
8	2	4S S-1		100	-8
2	8	4S S-1		100	-8
4	7	4S S-1		100	-8
10	1	4H S-3		300	-11

8

♠J1092  
♥4  
♦K8752  
♣K65

♠865  
♥AQJ975  
♦A3  
♣Q2



♠AQ3  
♥10863  
♦J4  
♣AJ109

♠K74  
♥K2  
♦Q1096  
♣8743

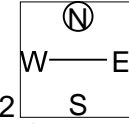
Board (8) Av: NS=-470

N-S	E-W	Contract	N-S	E-W	IMP
3	6	4H W 4	420		2
7	4	5H W 5	450		1
1	10	4H W 5	450		1
5	9	4H W 5	450		1
2	8	4H W 5	450		1
9	5	4H W 6	480		0
10	1	4H W 6	480		0
8	2	4H W 6	480		0
6	3	4H W 6	480		0
4	7	4H W 6	480		0

9

♠Q632  
♥A986  
♦J3  
♣J65

♠K107  
♥J42  
♦K5  
♣K10942



♠A854  
♥K10  
♦AQ1087  
♣Q8

♠J9  
♥Q753  
♦9642  
♣A73

Board (9) Av: NS=-610

N-S	E-W	Contract	N-S	E-W	IMP
6	3	1NT W 4	180		10
7	4	3NT E 3	600		0
4	7	3NT E 3	600		0
5	9	3NT E 3	600		0
1	10	3NT E 3	600		0
10	1	3NT E 3	600		0
2	8	3NT E 3	600		0
3	6	3NT W 4	630		-1
9	5	3NT E 5	660		-2
8	2	3NT E 5	660		-2

兵庫県知事杯 OPEN TEAMS Session 1 Flight B 2011年10月8日(土)

10

♠ J  
♥ 8654  
♦ 109853  
♣ KJ8

♠ Q3      ♠ A10964  
♥ A1073    ♥ 92  
♦ A64      ♦ KJ72  
♣ 10654    ♣ 32

W — | — E  
N — | — S

♠ K8752  
♥ KQJ  
♦ Q  
♣ AQ97

Board (10) Av: NS=-80

N-S	E-W	Contract	N-S	E-W	IMP
8	2	2C	S 2	90	5
1	10	2C	S 2	90	5
7	4	2C	S-1	100	-1
4	7	2C	S-1	100	-1
3	6	2C	S-1	100	-1
10	1	2C	S-1	100	-1
5	9	1S	S-1	100	-1
9	5	1S	S-1	100	-1
6	3	1S	S-1	100	-1
2	8	2C	S-2	200	-3

11

♠ Q75  
♥ J102  
♦ A763  
♣ Q107

♠ AJ964      ♠ K1082  
♥ AK65      ♥ 74  
♦              ♦ KQ954  
♣ AK63      ♣ 85

W — | — E  
N — | — S

♠ 3  
♥ Q983  
♦ J1082  
♣ J942

Board (11) Av: NS=-520

N-S	E-W	Contract	N-S	E-W	IMP
5	9	5S	W-1	50	11
7	4	4S	W 5	450	2
4	7	4S	W 5	450	2
8	2	4S	W 5	450	2
1	10	4S	W 5	450	2
2	8	4S	W 5	450	2
3	6	5S	W 6	480	1
9	5	4S	W 6	480	1
6	3	6S	W 6	980	-10
10	1	6S	W 6	980	-10

12

♠ AKQJ10  
♥ 53  
♦ AK43  
♣ AJ

♠ 987532      ♠      ♠ AQ6  
♥ 9874      ♥      ♥ Q876  
♦              ♦      ♦ Q98762  
♣ K43      ♣      ♣

W — | — E  
N — | — S

♠ 64  
♥ KJ102  
♦ J10952  
♣ 105

Board (12) Av: NS=-80

N-S	E-W	Contract	N-S	E-W	IMP
9	5	3NT	S 5	660	12
1	10	3NT	N 3	600	12
10	1	5D	S-1	100	-1
2	8	5D	S-1	100	-1
3	6	4S	N-1	100	-1
5	9	4S	N-2	200	-3
4	7	4S	N-2	200	-3
7	4	3NT	N-2	200	-3
8	2	5S	N-3	300	-6
6	3	4S	N-3	300	-6

13

♠ K86532  
♥ K108  
♦ J94  
♣ K

♠ AQ7      ♠ J104  
♥ Q96      ♥ 543  
♦ 108      ♦ A53  
♣ AJ942    ♣ Q873

W — | — E  
N — | — S

♠ 9  
♥ AJ72  
♦ KQ762  
♣ 1065

Board (13) Av: NS=+130

N-S	E-W	Contract	N-S	E-W	IMP
1	10	2C	W-3	300	5
2	8	3C	W-2	200	2
3	6	2C	W-2	200	2
7	4	3D	S 3	110	-1
9	5	2S	N 2	110	-1
10	1	2S	N 2	110	-1
4	7	2S	N 2	110	-1
8	2	2NT	W-1	100	-1
6	3	2C	W-1	100	-1
5	9	2S	N-1	100	-6

14

♠ 964  
♥ K4  
♦ KJ92  
♣ A642

♠ K53      ♠ AQ10872  
♥ QJ7652    ♥      ♥  
♦ 764      ♦ Q105  
♣ 8      ♣ QJ103

W — | — E  
N — | — S

♠ J  
♥ A10983  
♦ A83  
♣ K975

Board (14) Av: NS=-60

N-S	E-W	Contract	N-S	E-W	IMP
10	1	4Sx	E-1	100	4
4	7	3Sx	E-1	100	4
1	10	3Sx	E-1	100	4
8	2	5C	N-1	50	0
7	4	4C	S-1	50	0
9	5	3S	E 3	140	-2
5	9	3S	E 3	140	-2
3	6	3S	E 3	140	-2
6	3	2S	E 3	140	-2
2	8	3Hx	S-2	300	-6

15

♠ Q10532  
♥ K43  
♦ KQ3  
♣ Q9

♠ A6      ♠ J984  
♥ Q107    ♥ A962  
♦ A875    ♦ 102  
♣ KJ107   ♣ 832

W — | — E  
N — | — S

♠ K7  
♥ J85  
♦ J964  
♣ A654

Board (15) Av: NS=-10

N-S	E-W	Contract	N-S	E-W	IMP
8	2	1NT	S 1	90	3
5	9	1NT	S 1	90	3
9	5	1NT	S 1	90	3
3	6	1NT	W-1	50	2
6	3	1NT	E-1	50	2
7	4	2C	W 2	90	-2
1	10	1NT	W 1	90	-2
2	8	1NT	W 1	90	-2
4	7	1NT	S-1	100	-3
10	1	1NT	S-1	100	-3

16

♠ 10952  
♥ 1084  
♦ K842  
♣ K3

♠ QJ      ♠ A873  
♥ QJ53    ♥ 62  
♦ AQ76    ♦ J53  
♣ J95      ♣ Q1086

W — | — E  
N — | — S

♠ K64  
♥ AK97  
♦ 109  
♣ A742

Board (16) Av: NS=0

N-S	E-W	Contract	N-S	E-W	IMP
5	9	2H	N 3	140	4
3	6	1NT	W-1	100	3
1	10	1NT	W-1	100	3
4	7	1NT	N 1	90	3
6	3	1NT	N 1	90	3
9	5	1NT	W 1	90	-3
10	1	1NT	W 1	90	-3
8	2	1NT	W 1	90	-3
2	8	1NT	W 1	90	-3
7	4	1NT	W 2	120	-3

17

♠ AJ82  
♥ Q1064  
♦ 10  
♣ AJ96

♠ Q109      ♠ K765  
♥ J972      ♥ AK3  
♦ AQJ876    ♦      ♦  
♣              ♣ Q87542

W — | — E  
N — | — S

♠ 43  
♥ 85  
♦ K95432  
♣ K103

Board (17) Av: NS=-220

N-S	E-W	Contract	N-S	E-W	IMP
9	5	2C	E-2	100	8
6	3	2D	W 2	90	4
3	6	2D	S-2	100	3
5	9	2S	E 3	140	2
7	4	2D	S-3	150	2
1	10	2D	S-3	150	2
2	8	2D	S-3	150	2
8	2	2Dx	S-3	500	-7
4	7	2Dx	S-3	500	-7
10	1	2Dx	S-4	800	-11

18

♠ Q106  
♥ J9843  
♦ 2  
♣ K1043

♠ K      ♠ AJ95  
♥ 5      ♥ AQ1076  
♦ AKQJ86543    ♦ 7  
♣ A5      ♣ Q98

W — | — E  
N — | — S

♠ 87432  
♥ K2  
♦ 109  
♣ J762

Board (18) Av: NS=-940

N-S	E-W	Contract	N-S	E-W	IMP
4	7	6D	W 7	940	0
6	3	6D	W 7	940	0
9	5	6D	W 7	940	0
5	9	6D	W 7	940	0
3	6	6D	W 7	940	0
2	8	6D	W 7	940	0
1	10	6D	W 7	940	0
8	2	6D	E 7	940	0
7	4	6D	E 7	940	0
10	1	7D	W 7	1440	-11

19

♠ K9843  
♥ K5  
♦ J63  
♣ Q76

♠ A752 ♠ QJ6  
♥ 9732 ♥ AQ1064  
♦ A752 W—E ♦ Q1098  
♣ 9 ♣ J

♠ 10  
♥ J8  
♦ K4  
♣ AK1085432

Board (19) Av: NS=+70

N-S	E-W	Contract	N-S	E-W	IMP
1	7	3NT N 4	430		8
4	10	3NT N 3	400		8
7	1	3NT N 3	400		8
5	3	4H E-2	200		4
2	9	4C S 4	130		2
9	2	4C S-1		50	-3
10	4	4C S-1		50	-3
8	6	3H E 4		170	-6
3	5	5Cx S-2		300	-9
6	8	4H E 5		650	-12

20

♠ J62  
♥ KQJ  
♦ AJ104  
♣ KQ8

♠ A5 ♠ KQ4  
♥ 98742 ♥ A10  
♦ K76 W—E ♦ 9532  
♣ 752 ♣ J963

♠ 109873  
♥ 653  
♦ Q8  
♣ A104

Board (20) Av: NS=+140

N-S	E-W	Contract	N-S	E-W	IMP
3	5	2S N 4	170		1
1	7	2S N 4	170		1
8	6	2S N 3	140		0
4	10	2S N 3	140		0
10	4	2S N 3	140		0
5	3	2S N 3	140		0
7	1	2S N 3	140		0
2	9	2S N 3	140		0
9	2	2S N 3	140		0
6	8	2S N 2	110		-1

21

♠ 986  
♥ J108  
♦ A87  
♣ J752

♠ KQ3 ♠ J1072  
♥ AK632 ♥ 75  
♦ 1064 W—E ♦ J952  
♣ Q8 ♣ AK9

♠ A54  
♥ Q94  
♦ KQ3  
♣ 10643

Board (21) Av: NS=-160

N-S	E-W	Contract	N-S	E-W	IMP
10	4	1NT E 1		90	2
4	10	1NT W 2		120	1
5	3	1NT W 2		120	1
7	1	1NT W 2		120	1
2	9	1NT E 3		150	0
1	7	1NT W 4		180	-1
3	5	1NT W 4		180	-1
9	2	1NT E 4		180	-1
8	6	2C S-2		200	-1
6	8	4S E 4		420	-6

22

♠ KQJ1083  
♥ J7  
♦ J7  
♣ KQ542

♠ J963 ♠ Q8754  
♥ 75 ♥ 942  
♦ 53 W—E ♦ KQ86  
♣ A10763 ♣ 9

♠ AK102  
♥ A6  
♦ A10942  
♣ J8

Board (22) Av: NS=+440

N-S	E-W	Contract	N-S	E-W	IMP
4	10	4H N 6	480		1
8	6	5H N 5	450		0
10	4	4H S 5	450		0
6	8	4H S 5	450		0
7	1	4H S 5	450		0
9	2	4H S 5	450		0
3	5	4H N 5	450		0
1	7	4H S 4	420		-1
5	3	4H S 4	420		-1
2	9	6H S-1		50	-10

23

♠ A87  
♥ 94  
♦ AQJ92  
♣ A92

♠ 542 ♠ KQ96  
♥ A10765 ♥ KQ83  
♦ 6 W—E ♦ K85  
♣ QJ87 ♣ 106

♠ J103  
♥ J2  
♦ 10743  
♣ K543

Board (23) Av: NS=+30

N-S	E-W	Contract	N-S	E-W	IMP
8	6	1NT N 2	120		3
5	3	1NT N 2	120		3
4	10	1NT N 2	120		3
9	2	1NT N 2	120		3
7	1	1NT N 2	120		3
1	7	1NT N 2	120		3
10	4	1NT N-1		100	-4
6	8	1NT N-1		100	-4
3	5	3H W 3		140	-5
2	9	1NT N-2		200	-6

24

♠ 96532  
♥ J  
♦ 532  
♣ Q984

♠ KJ1084 ♠ AQ832  
♥ 1095 ♥ AQ832  
♦ Q86 W—E ♦ KJ107  
♣ J2 ♣ A653

♠ AQ7  
♥ K764  
♦ A94  
♣ K107

Board (24) Av: NS=-180

N-S	E-W	Contract	N-S	E-W	IMP
2	9	3S N-2		100	2
4	10	2S N-2		100	2
7	1	2H E 3		140	1
3	5	3S N-3		150	1
1	7	3S N-3		150	1
10	4	2S S-3		150	1
5	3	2H E 4		170	0
8	6	4Sx N-2		300	-3
9	2	3Sx N-2		300	-3
6	8	3Sx N-3		500	-8

25

♠ Q103  
♥ J742  
♦ 5  
♣ AK975

♠ K872 ♠ 95  
♥ KQ973 ♥ K9863  
♦ QJ63 W—E ♦ J1082  
♣ QJ63 ♣ 104

♠ AJ64  
♥ AQ105  
♦ A64  
♣ 82

Board (25) Av: NS=+420

N-S	E-W	Contract	N-S	E-W	IMP
7	1	4H N 5	450		1
4	10	4H S 4	420		0
10	4	4H S 4	420		0
6	8	4H S 4	420		0
8	6	4H S 4	420		0
1	7	4H S 4	420		0
9	2	4H S 4	420		0
2	9	4H S 4	420		0
3	5	4H N 4	420		0
5	3	4H S-1		50	-10

26

♠ 1087  
♥ J864  
♦ KJ  
♣ QJ63

♠ J9652 ♠ AQ43  
♥ KQ2 ♥ A107  
♦ 1064 W—E ♦ A8532  
♣ K2 ♣ 9

♠ K  
♥ 953  
♦ Q97  
♣ A108754

Board (26) Av: NS=-140

N-S	E-W	Contract	N-S	E-W	IMP
2	9	4S W-1		100	6
6	8	4S W-1		100	6
3	5	4S W-1		100	6
7	1	4S W-1		100	6
8	6	4S E-1		100	6
10	4	3S W 3		140	0
1	7	2S W 3		140	0
5	3	4S W 4		620	-10
9	2	4S W 4		620	-10
4	10	4S W 4		620	-10

27

♠ J4  
♥ 7543  
♦ KQJ4  
♣ 864

♠ K7653 ♠ 8  
♥ A ♥ QJ1092  
♦ A1063 W—E ♦ 85  
♣ KQ5 ♣ AJ1032

♠ AQ1092  
♥ K86  
♦ 972  
♣ 97

Board (27) Av: NS=-340

N-S	E-W	Contract	N-S	E-W	IMP
8	6	2H E 2		110	6
2	9	2H E 4		170	5
1	7	2H E 5		200	4
3	5	2NT E 5		210	4
9	2	3NT W 4		430	-3
10	4	3NT E 4		430	-3
4	10	3NT E 4		430	-3
5	3	3NT E 4		430	-3
7	1	3NT E 4		430	-3
6	8	3NT E 5		460	-3

**28**

♠ J7  
♥ QJ2  
♦ J10  
♣ AQJ1083

♠ K1065  
♥ K103  
♦ AQ72  
♣ 52

N E  
W S

♠ AQ984  
♥ 9854  
♦ 4  
♣ 976

♠ 32  
♥ A76  
♦ K98653  
♣ K4

Board (28) Av: NS=-130

N-S	E-W	Contract	N-S	E-W	IMP
9	2	3S W-1	50		5
7	1	3NT S-1	100		1
10	4	3C N-1	100		1
8	6	3C N-1	100		1
5	3	3S W 3	140		0
1	7	3S E 3	140		0
3	5	2S W 3	140		0
2	9	2S W 3	140		0
4	10	2S W 3	140		0
6	8	2S E 3	140		0

**29**

♠ KQ10  
♥ KQ86  
♦ KQJ  
♣ J83

♠ 765  
♥ J94  
♦ 104  
♣ AQ1064

N E  
W S

♠ AJ842  
♥ A3  
♦ 9872  
♣ 95

♠ 93  
♥ 10752  
♦ A653  
♣ K72

Board (29) Av: NS=+90

N-S	E-W	Contract	N-S	E-W	IMP
8	6	1NT N 4	180		3
3	5	1NT N 3	150		2
5	3	1NT N 3	150		2
1	7	1NT N 2	120		1
4	10	1NT N 2	120		1
6	8	1NT N 1	90		0
9	2	1NT N 1	90		0
7	1	1NT N 1	90		0
2	9	1NT N-1	100		-5
10	4	1NT N-1	100		-5

**30**

♠ 8  
♥ Q109863  
♦ 76  
♣ AQ65

♠ KJ  
♥ A2  
♦ QJ1084  
♣ 9874

N E  
W S

♠ 9763  
♥ J4  
♦ 9532  
♣ J103

♠ AQ10542  
♥ K75  
♦ AK  
♣ K2

Board (30) Av: NS=+470

N-S	E-W	Contract	N-S	E-W	IMP
1	7	6NT N 6	990		11
5	3	4H N 6	480		0
10	4	4H N 6	480		0
6	8	4H N 6	480		0
8	6	4H N 6	480		0
2	9	4H N 6	480		0
7	1	4S S 5	450		-1
3	5	4S S 5	450		-1
9	2	4S S 4	420		-2
4	10	4S S 4	420		-2

**31**

♠ QJ98542  
♥ Q4  
♦  
♣ A862

♠ A106  
♥ 1062  
♦ K752  
♣ K95

N E  
W S

♠ 73  
♥ AKJ85  
♦ J83  
♣ QJ4

♠ K  
♥ 973  
♦ AQ10964  
♣ 1073

Board (31) Av: NS=-120

N-S	E-W	Contract	N-S	E-W	IMP
5	3	4H E-1	50		5
8	6	3S N-1	100		1
6	8	3S N-1	100		1
9	2	3S N-1	100		1
3	5	3S N-1	100		1
2	9	3S N-1	100		1
1	7	3H E 3	140		-1
7	1	3H E 3	140		-1
4	10	3H E 4	170		-2
10	4	3H E 4	170		-2

**32**

♠ 54  
♥ AQ987  
♦ KQ106  
♣ 98

♠ AQ986  
♥ K2  
♦ A932  
♣ K10

N E  
W S

♠ 10732  
♥ J63  
♦ 54  
♣ AQJ4

♠ KJ  
♥ 1054  
♦ J87  
♣ 76532

Board (32) Av: NS=-620

N-S	E-W	Contract	N-S	E-W	IMP
2	9	4S W-1	100		12
10	4	3S W 6	230		9
5	3	4S W 5	650		-1
8	6	4S W 5	650		-1
1	7	4S W 6	680		-2
6	8	4S W 6	680		-2
4	10	4S W 6	680		-2
7	1	4S W 6	680		-2
9	2	4S W 6	680		-2
3	5	4S W 6	680		-2

**33**

♠ J32  
♥ Q82  
♦ KJ1062  
♣ 87

♠ Q1074  
♥ A53  
♦ 985  
♣ K54

N E  
W S

♠ AK965  
♥ 10974  
♦ Q743  
♣

♠ 8  
♥ KJ6  
♦ A  
♣ AQJ109632

Board (33) Av: NS=-30

N-S	E-W	Contract	N-S	E-W	IMP
6	8	3C S 4	130		4
2	9	3C S 4	130		4
3	5	3C W-1	50		2
5	3	5C S-1	50		-1
4	10	5C S-1	50		-1
9	2	5C S-1	50		-1
8	6	5C S-1	50		-1
10	4	5Cx S-1	100		-2
7	1	3S E 3	140		-3
1	7	3NT N-5	250		-6

**34**

♠ 3  
♥ A97  
♦ 965  
♣ Q98652

♠ AKJ  
♥ 63  
♦ J10742  
♣ K43

N E  
W S

♠ 108642  
♥ Q842  
♦ 8  
♣ AJ10

♠ Q975  
♥ KJ105  
♦ AKQ3  
♣ 7

Board (34) Av: NS=-40

N-S	E-W	Contract	N-S	E-W	IMP
8	6	2NT N 2	120		4
2	9	1NT N 2	120		4
5	3	1NT N 1	90		4
10	4	1NT N 1	90		4
4	10	3H N-1	100		-2
7	1	1NT N-1	100		-2
9	2	1NT N-1	100		-2
3	5	1NT N-1	100		-2
1	7	4H N-2	200		-4
6	8	3NT N-2	200		-4

**35**

♠ 95  
♥ QJ982  
♦ K9  
♣ AKJ6

♠ A74  
♥ A765  
♦ A106  
♣ 1095

N E  
W S

♠ J10832  
♥  
♦ QJ42  
♣ Q873

♠ KQ6  
♥ K1043  
♦ 8753  
♣ 42

Board (35) Av: NS=+310

N-S	E-W	Contract	N-S	E-W	IMP
6	8	4Hx N 4	590		7
2	9	4Sx E-2	500		5
1	7	4Sx E-2	500		5
3	5	4H N 4	420		3
7	1	4H N 4	420		3
9	2	4S E-2	200		-3
8	6	3H N 4	170		-4
4	10	2H N 4	170		-4
5	3	3S E-1	100		-5
10	4	3H N-1	50		-8

**36**

♠ K106  
♥ J5  
♦ Q742  
♣ AJ96

♠ A95  
♥ A842  
♦ 853  
♣ 543

N E  
W S

♠ 7432  
♥ K96  
♦ AJ9  
♣ 1082

♠ QJ8  
♥ Q1073  
♦ K106  
♣ KQ7

Board (36) Av: NS=+130

N-S	E-W	Contract	N-S	E-W	IMP
4	10	2NT S 4	180		2
8	6	2NT S 3	150		1
10	4	2NT S 3	150		1
6	8	2NT S 3	150		1
1	7	2NT N 3	150		1
9	2	2C S 4	130		0
3	5	2NT S 2	120		0
7	1	2C S 3	110		-1
2	9	2C S 3	110		-1
5	3	3NT N-1	100		-6

兵庫県知事杯 OPEN TEAMS Session 2 Flight B 2011年10月8日(土)

1

♠AJ65  
♥K94  
♦J2  
♣KQJ7

♠108  
♥8632  
♦Q97  
♣A985

♠K73  
♥A10  
♦K10654  
♣1043

W N E S

♠Q942  
♥QJ75  
♦A83  
♣62

Board (1) Av: NS=+180

N-S	E-W	Contract	N-S	E-W	IMP
2	5	4S	N 5	450	7
4	6	4S	N 4	420	6
1	9	4S	N 4	420	6
8	10	4S	N 4	420	6
7	3	3S	N 4	170	0
5	2	2S	N 4	170	0
6	4	4S	N-1	50	-6
9	1	4S	N-1	50	-6
3	7	4S	N-1	50	-6
10	8	3S	N-1	50	-6

2

♠AQ982  
♥Q3  
♦Q2  
♣KJ92

♠K1063  
♥7  
♦K1084  
♣10876

♠54  
♥A10654  
♦AJ65  
♣A3

W N E S

♠J7  
♥KJ982  
♦973  
♣Q54

Board (2) Av: NS=-100

N-S	E-W	Contract	N-S	E-W	IMP
8	10	1S	N 1	80	5
4	6	2D	W 2	90	0
6	4	1NT	E 1	90	0
5	2	1NT	E 1	90	0
2	5	1NT	E 1	90	0
1	9	1NT	S-1	100	0
7	3	2D	W 3	110	0
10	8	2D	W 4	130	-1
9	1	2D	W 4	130	-1
3	7	2D	W 4	130	-1

3

♠J10832  
♥Q10843  
♦Q7  
♣10

♠K  
♥AJ95  
♦K8652  
♣K32

♠975  
♥76  
♦J93  
♣QJ875

W N E S

♠AQ64  
♥K2  
♦A104  
♣A964

Board (3) Av: NS=+200

N-S	E-W	Contract	N-S	E-W	IMP
9	1	4S	N 5	450	6
8	10	4S	S 4	420	6
3	7	3S	N 5	200	0
5	2	2S	S 5	200	0
2	5	3S	S 4	170	-1
7	3	2S	S 4	170	-1
1	9	2S	S 3	140	-2
6	4	2H	S 3	140	-2
4	6	2H	S 3	140	-2
10	8	4S	S-1	50	-6

4

♠KQ109  
♥3  
♦K10975  
♣A62

♠873  
♥10985  
♦QJ82  
♣J10

♠A42  
♥AKQ74  
♦A4  
♣Q75

W N E S

♠J65  
♥J62  
♦63  
♣K9843

Board (4) Av: NS=+180

N-S	E-W	Contract	N-S	E-W	IMP
4	6	4H	W-2	200	1
7	3	4H	W-2	200	1
8	10	4H	W-2	200	1
6	4	4H	W-2	200	1
3	7	4H	W-2	200	1
2	5	4H	W-2	200	1
1	9	4H	W-2	200	1
10	8	4H	W-1	100	-2
5	2	4H	W-1	100	-2
9	1	2H	W 2	110	-7

5

♠K964  
♥K10  
♦A3  
♣AQJ104

♠10  
♥8432  
♦K87652  
♣52

♠AQ72  
♥Q97  
♦9  
♣K8763

W N E S

♠J853  
♥AJ65  
♦QJ104  
♣9

Board (5) Av: NS=+350

N-S	E-W	Contract	N-S	E-W	IMP
5	2	4S	N 4	620	7
6	4	4S	N 4	620	7
4	6	4S	N 4	620	7
1	9	4S	N 4	620	7
8	10	4S	N 4	620	7
7	3	3NT	N 3	600	6
10	8	4S	N-1	100	-10
9	1	4S	N-1	100	-10
3	7	4S	N-1	100	-10
2	5	4S	N-2	200	-11

6

♠A  
♥AK972  
♦J952  
♣Q86

♠Q9743  
♥63  
♦K8  
♣KJ32

♠J865  
♥Q54  
♦Q10  
♣A1097

W N E S

♠K102  
♥J108  
♦A7643  
♣54

Board (6) Av: NS=+150

N-S	E-W	Contract	N-S	E-W	IMP
6	4	3S	E-2	200	2
4	6	3H	N 5	200	2
3	7	3H	N 4	170	1
7	3	2H	N 4	170	1
8	10	2H	N 4	170	1
2	5	2H	N 4	170	1
5	2	3H	N 3	140	0
9	1	2H	N 2	110	-1
1	9	2S	E-1	100	-2
10	8	2S	E 2	110	-6

7

♠76  
♥K864  
♦K87  
♣AJ86

♠A8  
♥109532  
♦932  
♣K92

♠KQJ1093  
♥AQ  
♦10  
♣Q754

W N E S

♠542  
♥J7  
♦AQJ654  
♣103

Board (7) Av: NS=-90

N-S	E-W	Contract	N-S	E-W	IMP
7	3	4S	W-2	200	7
2	5	3D	S 3	110	5
5	2	4S	W-1	100	5
4	6	2S	W 2	110	-1
3	7	2S	W 3	140	-2
8	10	3S	W 4	170	-2
10	8	3S	W 4	170	-2
1	9	3S	W 4	170	-2
9	1	2S	W 4	170	-2
6	4	2S	W 4	170	-2

8

♠K1084  
♥AJ987  
♦Q8  
♣KJ

♠A9752  
♥K6542  
♦J  
♣109

♠J  
♥Q3  
♦A9762  
♣86432

W N E S

♠Q63  
♥10  
♦K10543  
♣AQ75

Board (8) Av: NS=+310

N-S	E-W	Contract	N-S	E-W	IMP
7	3	3NT	S 4	430	3
5	2	3NT	S 4	430	3
4	6	3NT	S 4	430	3
10	8	3NT	N 4	430	3
8	10	3NT	N 4	430	3
1	9	3NT	N 3	400	3
2	5	2NT	N 4	180	-4
3	7	2C	N 2	90	-6
6	4	2C	W-1	50	-6
9	1	3NT	S-1	50	-8

9

♠AK2  
♥K86  
♦J5  
♣A10865

♠J1043  
♥7  
♦K10843  
♣KQ3

♠765  
♥QJ10543  
♦  
♣J742

W N E S

♠Q98  
♥A92  
♦AQ9762  
♣9

Board (9) Av: NS=+430

N-S	E-W	Contract	N-S	E-W	IMP
2	5	3NT	N 6	490	2
4	6	3NT	N 5	460	1
7	3	3NT	N 5	460	1
8	10	3NT	N 4	430	0
6	4	3NT	N 4	430	0
5	2	3NT	N 4	430	0
1	9	3NT	N 3	400	-1
9	1	3NT	N 3	400	-1
3	7	3NT	N 3	400	-1
10	8	6Dx	S-1	100	-11

兵庫県知事杯 OPEN TEAMS Session 2 Flight B 2011年10月8日(土)

10

♠ J964  
♥ QJ  
♦ AQJ10  
♣ 654

♠ KQ83  
♥ AK987  
♦ 2  
♣ 982

N  
W — E  
S

♠ A102  
♥ 105  
♦ K987  
♣ J1073

♠ 75  
♥ 6432  
♦ 6543  
♣ AKQ

11

♠ A986542  
♥ 103  
♦ K  
♣ AQ8

♠ Q3  
♥ J8754  
♦ A108  
♣ 974

N  
W — E  
S

♠ K107  
♥ Q  
♦ J9653  
♣ J1052

♠ J  
♥ AK962  
♦ Q742  
♣ K63

12

♠ KJ9762  
♥ AQ9  
♦ K  
♣ KQ6

♠ 1084  
♥ J8632  
♦ Q52  
♣ 82

N  
W — E  
S

♠ Q53  
♥ 1054  
♦ 10874  
♣ 743

♠ A  
♥ K7  
♦ AJ963  
♣ AJ1095

Board (10) Av: NS=-140

N-S	E-W	Contract	N-S	E-W	IMP
1	9	1NT E-1	100		6
4	6	2H W 2	110		1
10	8	2C W 3	110		1
2	5	1NT E 2	120		1
3	7	1NT E 2	120		1
6	4	2S E 3	140		0
8	10	1NT E 3	150		0
9	1	2H W 4	170		-1
5	2	3D S-2	200		-2
7	3	3D S-2	200		-2

Board (11) Av: NS=+310

N-S	E-W	Contract	N-S	E-W	IMP
5	2	4S N 5	450		4
1	9	4S N 5	450		4
4	6	3NT S 4	430		3
6	4	4S N 4	420		3
10	8	4S N 4	420		3
3	7	4S N 4	420		3
9	1	4S N 4	420		3
8	10	3NT S-1	50		-8
7	3	3NT S-1	50		-8
2	5	3NT S-3	150		-10

Board (12) Av: NS=+1220

N-S	E-W	Contract	N-S	E-W	IMP
9	1	6NT S 6	1440		6
8	10	6S N 6	1430		5
10	8	6S N 6	1430		5
4	6	6C S 7	1390		5
1	9	6C S 7	1390		5
3	7	6C S 7	1390		5
5	2	6C S 6	1370		4
2	5	3NT N 6	690		-11
7	3	3NT N 6	690		-11
6	4	4S N 6	680		-11

13

♠ AQ75  
♥ J93  
♦ AQ65  
♣ A8

♠ J2  
♥ AK42  
♦ K7  
♣ QJ1032

N  
W — E  
S

♠ K109  
♥ Q10  
♦ 10942  
♣ K764

♠ 8643  
♥ 8765  
♦ J83  
♣ 95

14

♠ K92  
♥ J10872  
♦ J7  
♣ QJ7

♠ AQ  
♥ AK  
♦ K10643  
♣ K1032

N  
W — E  
S

♠ 8764  
♥ Q9653  
♦ A82  
♣ 5

♠ J1053  
♥ 4  
♦ Q95  
♣ A9864

15

♠ K98  
♥ A865  
♦ Q1083  
♣ 32

♠ 105  
♥ KJ109  
♦ A  
♣ AQJ987

N  
W — E  
S

♠ J42  
♥ 432  
♦ K765  
♣ 1065

♠ AQ763  
♥ Q7  
♦ J942  
♣ K4

Board (13) Av: NS=-230

N-S	E-W	Contract	N-S	E-W	IMP
8	10	2S N 2	110		8
4	6	1NT N-1	100		4
3	7	1NT N-2	200		1
6	4	1NT N-2	200		1
2	5	1NT N-2	200		1
5	2	1NT N-2	200		1
10	8	1NT N-3	300		-2
9	1	1NT N-3	300		-2
1	9	1NT N-3	300		-2
7	3	1NT N-3	300		-2

Board (14) Av: NS=-290

N-S	E-W	Contract	N-S	E-W	IMP
4	6	3NT W-4	200		10
9	1	3NT E-1	50		8
8	10	2NT W 2	120		5
2	5	2NT W 4	180		3
7	3	3NT W 3	400		-3
3	7	3NT W 3	400		-3
5	2	3NT W 3	400		-3
10	8	3NT W 3	400		-3
1	9	3NT W 4	430		-4
6	4	3NT W 4	430		-4

Board (15) Av: NS=+50

N-S	E-W	Contract	N-S	E-W	IMP
6	4	4H W-4	200		4
2	5	3S S 3	140		3
4	6	2S S 3	140		3
9	1	2S S 2	110		2
5	2	4C W-2	100		2
10	8	4C W-1	50		0
3	7	4C W-1	50		0
8	10	3C W 3	110		-4
1	9	3C W 3	110		-4
7	3	3C W 4	130		-5

16

♠ 1097  
♥ K8762  
♦ Q5  
♣ 1064

♠ AQJ652  
♥ J43  
♦ 2  
♣ Q92

N  
W — E  
S

♠ 843  
♥ AQ1095  
♦ A  
♣ AK83

♠ K  
♥  
♦ KJ10987643  
♣ J75

17

♠ AKQ3  
♥ 9874  
♦ A76  
♣ 96

♠ J64  
♥ J10  
♦ KQJ5  
♣ AK102

N  
W — E  
S

♠ 1082  
♥ KQ3  
♦ 10842  
♣ J75

♠ 975  
♥ A652  
♦ 93  
♣ Q843

18

♠ 1054  
♥ J1085  
♦ 976  
♣ Q73

♠ AQ97  
♥ K73  
♦ AJ5  
♣ 952

N  
W — E  
S

♠ K6  
♥ 42  
♦ Q842  
♣ AJ1084

♠ J832  
♥ AQ96  
♦ K103  
♣ K6

Board (16) Av: NS=-930

N-S	E-W	Contract	N-S	E-W	IMP
4	6	5Dx S-3	500		10
5	2	5Dx S-3	500		10
1	9	4H E 6	680		6
6	4	5S W 7	710		6
3	7	5S W 7	710		6
7	3	6Dx S-4	800		4
2	5	5Hx E 7	1250		-8
8	10	4Hx E 7	1390		-10
10	8	6H E 6	1430		-11
9	1	6H E 7	1460		-11

Board (17) Av: NS=+90

N-S	E-W	Contract	N-S	E-W	IMP
7	3	2S E-3	150		2
8	10	2H S 2	110		1
4	6	2H S 2	110		1
6	4	2H S 2	110		1
10	8	2H S 2	110		1
1	9	2H S 2	110		1
2	5	2H S 2	110		1
5	2	2H S 2	110		1
3	7	2H S-1	50		-4
9	1	2H S-1	50		-4

Board (18) Av: NS=-250

N-S	E-W	Contract	N-S	E-W	IMP
8	10	2NT W 3	150		3
10	8	2C E 5	150		3
3	7	1NT E 3	150		3
5	2	1NT E 3	150		3
4	6	1D S-2	200		2
2	5	1D S-2	200		2
1	9	1D S-3	300		-2
7	3	3NT W 3	400		-4
6	4	3NT W 4	430		-5
9	1	3NT W 5	460		-5

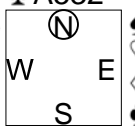
1

♠ J2  
♥ K5  
♦ AKQ108  
♣ A532

♠ K1076  
♥ A73  
♦ 943  
♣ K98

♠ A943  
♥ J109864  
♦ 2  
♣ Q4

♠ Q85  
♥ Q2  
♦ J765  
♣ J1076



Board (1) Av: NS=-20

N-S	E-W	Contract	N-S	E-W	IMP
5	7	1NT N 1	90		3
9	4	1NT N 1	90		3
7	5	1NT N 1	90		3
6	1	1NT N 1	90		3
3	8	4D N-1		50	-1
10	2	5D N-2		100	-2
2	10	4D N-2		100	-2
8	3	4D N-2		100	-2
4	9	3NT S-2		100	-2
1	6	3H E 3		140	-3

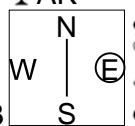
2

♠ KJ108732  
♥ 2  
♦ A83  
♣ AK

♠ Q  
♥ J8654  
♦  
♣ Q1098653

♠ 94  
♥ K10  
♦ Q107654  
♣ 742

♠ A65  
♥ AQ973  
♦ KJ92  
♣ J



Board (2) Av: NS=+1450

N-S	E-W	Contract	N-S	E-W	IMP
4	9	7S N 7	2210		13
1	6	7S N 7	2210		13
8	3	6S N 7	1460		0
5	7	6S N 7	1460		0
3	8	6S N 7	1460		0
2	10	6S N 7	1460		0
7	5	6S N 6	1430		-1
10	2	6S N 6	1430		-1
6	1	4S N 6	680		-13
9	4	3S N 7	260		-15

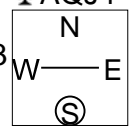
3

♠ Q6  
♥ QJ102  
♦ 754  
♣ AQJ4

♠ AK8  
♥ 98543  
♦ 93  
♣ 1083

♠ 10543  
♥ A6  
♦ KQJ106  
♣ 92

♠ J972  
♥ K7  
♦ A82  
♣ K765



Board (3) Av: NS=-10

N-S	E-W	Contract	N-S	E-W	IMP
5	7	3C N 4	130		4
3	8	3C N 4	130		4
4	9	1S S 2	110		3
10	2	1S S 1	80		3
7	5	3NT S-1		50	-1
6	1	1NT S-1		50	-1
1	6	2NT N-2		100	-3
9	4	2NT N-2		100	-3
8	3	2NT N-2		100	-3
2	10	2NT N-2		100	-3

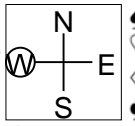
4

♠ 97653  
♥ QJ742  
♦ J  
♣ 83

♠ 10  
♥ A10983  
♦ 964  
♣ KQ74

♠ J2  
♥ 6  
♦ AK1087532  
♣ AJ

♠ AKQ84  
♥ K5  
♦ Q  
♣ 109652



Board (4) Av: NS=-660

N-S	E-W	Contract	N-S	E-W	IMP
6	1	6S S-4	400		6
4	9	5D E 6	620		1
5	7	5D E 6	620		1
7	5	5D E 6	620		1
3	8	5D E 6	620		1
2	10	5D E 6	620		1
10	2	5D E 6	620		1
1	6	5D E 6	620		1
8	3	5Dx E 6	950		-7
9	4	6D E 6	1370		-12

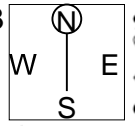
5

♠ 1082  
♥ KJ2  
♦ 9862  
♣ K43

♠ KQJ73  
♥ 73  
♦ A103  
♣ 965

♠ A  
♥ Q1094  
♦ QJ54  
♣ A1072

♠ 9654  
♥ A865  
♦ K7  
♣ QJ8



Board (5) Av: NS=-250

N-S	E-W	Contract	N-S	E-W	IMP
8	3	3D E-1	50		7
2	10	2S W 3	140		3
7	5	2NT E 3	150		3
5	7	2NT E 4	180		2
4	9	2NT E 5	210		1
3	8	2NT E 5	210		1
1	6	1NT E 5	210		1
9	4	3NT E 5	460		-5
6	1	3NT E 5	460		-5
10	2	3NT E 5	460		-5

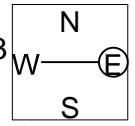
6

♠ K75  
♥ Q2  
♦ AKJ4  
♣ KJ102

♠ J643  
♥ AK1063  
♦ Q1032  
♣

♠ 10  
♥ 754  
♦ 98  
♣ A976543

♠ AQ982  
♥ J98  
♦ 765  
♣ Q8



Board (6) Av: NS=+70

N-S	E-W	Contract	N-S	E-W	IMP
3	8	4Hx W-2	500		10
1	6	4S N 4	420		8
2	10	3S S 3	140		2
9	4	2S S 3	140		2
6	1	3H W-1	100		1
4	9	4S S-1		50	-3
8	3	4S N-1		50	-3
7	5	3S S-1		50	-3
5	7	4S N-2		100	-5
10	2	5D S-4		200	-7

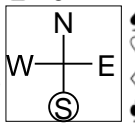
7

♠ KJ9  
♥ AQ97  
♦ K8543  
♣ 10

♠ 43  
♥ KJ54  
♦ Q976  
♣ K62

♠ AQ82  
♥ 83  
♦ AJ10  
♣ 9754

♠ 10765  
♥ 1062  
♦ 2  
♣ AQJ83



Board (7) Av: NS=+10

N-S	E-W	Contract	N-S	E-W	IMP
1	6	2H N 3	140		4
8	3	1S S 3	140		4
5	7	1S S 3	140		4
10	2	1S S 2	110		3
4	9	1NT N 1	90		2
7	5	2S S-1		100	-3
6	1	2D N-1		100	-3
2	10	2D N-1		100	-3
9	4	1NT N-1		100	-3
3	8	2S S-2		200	-5

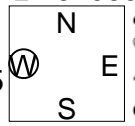
8

♠ 74  
♥ KQ3  
♦ K72  
♣ AJ1065

♠ K65  
♥ 1084  
♦ Q985  
♣ KQ4

♠ J982  
♥ J9762  
♦ 64  
♣ 83

♠ AQ103  
♥ A5  
♦ AJ103  
♣ 972



Board (8) Av: NS=+450

N-S	E-W	Contract	N-S	E-W	IMP
5	7	3NT S 6	490		1
7	5	3NT N 5	460		0
8	3	3NT N 5	460		0
4	9	3NT N 5	460		0
1	6	3NT N 5	460		0
2	10	3NT N 5	460		0
10	2	3NT N 5	460		0
3	8	3NT N 4	430		-1
6	1	3NT N 4	430		-1
9	4	3NT N 4	430		-1

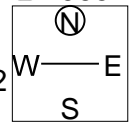
9

♠ Q943  
♥ KJ  
♦ 975  
♣ A965

♠ 72  
♥ Q943  
♦ A1082  
♣ 874

♠ AK1065  
♥ A7  
♦ KQ63  
♣ J2

♠ J8  
♥ 108652  
♦ J4  
♣ KQ103



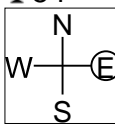
Board (9) Av: NS=-10

N-S	E-W	Contract	N-S	E-W	IMP
3	8	3NT W-2	200		5
4	9	2NT W-1	100		3
8	3	2NT W-1	100		3
5	7	2NT W-1	100		3
2	10	2NT W-1	100		3
7	5	2D E 2		90	-2
9	4	2D E 3		110	-3
6	1	2NT W 2		120	-3
10	2	2NT W 2		120	-3
1	6	2D E 4		130	-3

10

♠ QJ53  
♥ J1095  
♦ K96  
♣ 54

♠ AK742  
♥ K63  
♦ J82  
♣ 107



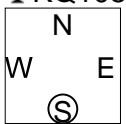
♠ 10  
♥ 874  
♦ A1043  
♣ AJ982

♠ 986  
♥ AQ2  
♦ Q75  
♣ KQ63

11

♠ 932  
♥ KJ109  
♦ K5  
♣ KQ105

♠ J  
♥ AQ6543  
♦ J84  
♣ J76



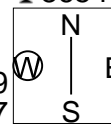
♠ KQ106  
♥ 72  
♦ A973  
♣ A92

♠ A8754  
♥ 8  
♦ Q1062  
♣ 843

12

♠ 85  
♥ Q86  
♦ 8654  
♣ 8654

♠ A  
♥ J3  
♦ KQJ109  
♣ AQJ107



♠ K743  
♥ A1092  
♦ A2  
♣ K93

♠ QJ10962  
♥ K754  
♦ 73  
♣ 2

Board (10) Av: NS=-90

N-S	E-W	Contract	N-S	E-W	IMP
1	6	2H S 2	110		5
9	4	2S W-1	100		5
8	3	2H S-1		100	0
6	1	1NT S-1		100	0
5	7	2D E 3	110		-1
10	2	1NT E 2	120		-1
4	9	1NT E 2	120		-1
2	10	1NT E 2	120		-1
3	8	1NT E 3	150		-2
7	5	2H S-2	200		-3

Board (11) Av: NS=+10

N-S	E-W	Contract	N-S	E-W	IMP
7	5	2Hx W-1	100		3
1	6	2H W-2	100		3
6	1	3H W-1	50		1
9	4	3H W-1	50		1
8	3	2H W-1	50		1
2	10	2H W-1	50		1
3	8	2S S-1		50	-2
5	7	1S S-1		50	-2
10	2	2H W 2	110		-3
4	9	2H W 2	110		-3

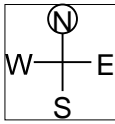
Board (12) Av: NS=-760

N-S	E-W	Contract	N-S	E-W	IMP
3	8	5C W 7	440		8
9	4	3NT W 7	520		6
1	6	3NT E 7	520		6
7	5	3NT E 7	520		6
2	10	3NT E 7	520		6
10	2	6C W 7	940		-5
4	9	6NT W 7	1020		-6
6	1	6NT E 7	1020		-6
8	3	6NT E 7	1020		-6
5	7	7C W 7	1440		-12

13

♠ K5  
♥ 10952  
♦ KJ5  
♣ 10964

♠ 9632  
♥ Q3  
♦ A1087  
♣ J72



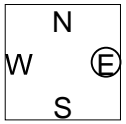
♠ AQ87  
♥ AKJ74  
♦ Q62  
♣ 5

♠ J104  
♥ 86  
♦ 943  
♣ AKQ83

14

♠ 42  
♥ Q842  
♦ 87  
♣ A10732

♠ K1073  
♥ 1096  
♦ AK6  
♣ J96



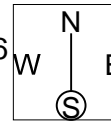
♠ QJ8  
♥ J7  
♦ Q10432  
♣ K85

♠ A965  
♥ AK53  
♦ J95  
♣ Q4

15

♠ QJ85  
♥ J2  
♦ KQ8752  
♣ 7

♠ 92  
♥ Q1086  
♦ 643  
♣ A865



♠ K107643  
♥ 53  
♦ AJ10  
♣ K2

♠ A  
♥ AK974  
♦ 9  
♣ QJ10943

Board (13) Av: NS=-570

N-S	E-W	Contract	N-S	E-W	IMP
8	3	4S E-1	100		12
2	10	3S W 4		170	9
5	7	4S W 4	620		-2
4	9	4S W 4	620		-2
7	5	4S W 4	620		-2
1	6	4S W 4	620		-2
6	1	4S W 4	620		-2
10	2	4S E 4	620		-2
3	8	4S W 5	650		-2
9	4	4S E 5	650		-2

Board (14) Av: NS=+90

N-S	E-W	Contract	N-S	E-W	IMP
4	9	2H N 4	170		2
7	5	2H N 4	170		2
10	2	2H N 3	140		2
8	3	2H N 3	140		2
5	7	2H N 2	110		1
1	6	2H N 2	110		1
3	8	2H N 2	110		1
2	10	2H N-1		50	-4
6	1	2H N-1		50	-4
9	4	2S E 2	110		-5

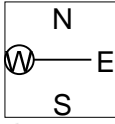
Board (15) Av: NS=-60

N-S	E-W	Contract	N-S	E-W	IMP
4	9	4H S 4	620		12
3	8	2H S 3	140		5
5	7	2H S 2	110		5
9	4	4H S-1		100	-1
6	1	4H S-1		100	-1
7	5	3NT N-1		100	-1
1	6	3NT N-1		100	-1
8	3	2H S-1		100	-1
2	10	3NT N-2		200	-4
10	2	4H S-3		300	-6

16

♠ K65  
♥ QJ7  
♦ 103  
♣ 85432

♠ AJ92  
♥ A  
♦ 9752  
♣ AK97



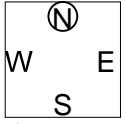
♠ 87  
♥ 9543  
♦ AQJ864  
♣ 10

♠ Q1043  
♥ K10862  
♦ K  
♣ QJ6

17

♠ KQJ  
♥ 10943  
♦ Q8  
♣ Q842

♠ 10754  
♥ AK62  
♦ 106  
♣ A75



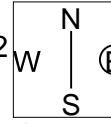
♠ A982  
♥ J85  
♦ J95432  
♣

♠ 63  
♥ Q7  
♦ AK7  
♣ KJ10963

18

♠ 7  
♥ 1097  
♦ J10743  
♣ J852

♠ K8  
♥ AJ8532  
♦ AK2  
♣ Q9



♠ A652  
♥ Q64  
♦ Q86  
♣ AK4

♠ QJ10943  
♥ K  
♦ 95  
♣ 10763

Board (16) Av: NS=-360

N-S	E-W	Contract	N-S	E-W	IMP
7	5	3NT W-1	100		10
1	6	3NT W-1	100		10
8	3	3D E 5		150	5
10	2	1NT E 3	150		5
5	7	2D W 6	170		5
2	10	3NT W 3	600		-6
9	4	5D W 6	620		-6
6	1	3NT W 4	630		-7
3	8	3NT W 5	660		-7
4	9	3NT W 6	690		-8

Board (17) Av: NS=+120

N-S	E-W	Contract	N-S	E-W	IMP
2	10	3NT S 3	400		7
6	1	3NT N 3	400		7
5	7	3C S 4	130		0
4	9	3C S 4	130		0
3	8	3C S 3	110		0
9	4	3C S 3	110		0
10	2	3C S 3	110		0
7	5	3D E-1	50		-2
1	6	3NT N-1		50	-5
8	3	3NT N-1		50	-5

Board (18) Av: NS=-1010

N-S	E-W	Contract	N-S	E-W	IMP
3	8	6H E 6	980		1
4	9	6H E 7	1010		0
8	3	6H E 7	1010		0
5	7	6H E 7	1010		0
9	4	6H E 7	1010		0
2	10	6H E 7	1010		0
6	1	6H E 7	1010		0
7	5	6H E 7	1010		0
10	2	6H E 7	1010		0
1	6	2Sx S-4	1100		-3



1

♠ 98752  
♥ 53  
♦ J107632  
♣ A

♠ KQJ1063  
♥ AKQ6  
♦ AK8  
♣

♠ A  
♥ J1098742  
♦ 542  
♣ A4

♠ 4  
♥  
♦ QJ109763  
♣ KQ985

Board (1) Av: NS=-1070

N-S	E-W	Contract	N-S	E-W	IMP
1	8	7Cx S-4		800	7
4	5	6H E 7		1010	2
10	3	6H E 7		1010	2
7	9	6H E 7		1010	2
5	4	6H E 7		1010	2
2	6	6H E 7		1010	2
6	2	6H E 7		1010	2
3	10	6H E 7		1010	2
9	7	7H E 7		1510	-10
8	1	7NT W 7		1520	-10

2

♠ K9  
♥ 42  
♦ J1086  
♣ A6543

♠ 1052  
♥ AKQ1095  
♦ 32  
♣ Q8

♠ AQ87  
♥ 83  
♦ AQ954  
♣ K2

♠ J643  
♥ J76  
♦ K7  
♣ J1097

Board (2) Av: NS=-440

N-S	E-W	Contract	N-S	E-W	IMP
10	3	4H W 4		420	1
3	10	4H E 4		420	1
4	5	4H E 4		420	1
8	1	4H E 4		420	1
1	8	4H E 4		420	1
5	4	4H W 5		450	0
6	2	4H W 5		450	0
9	7	4H E 5		450	0
7	9	4H E 5		450	0
2	6	4H E 5		450	0

3

♠ 2  
♥ KQJ4  
♦ J7632  
♣ A109

♠ AQ106  
♥ 76  
♦ Q109  
♣ K652

♠ KJ985  
♥ 109  
♦ K4  
♣ QJ73

♠ 743  
♥ A8532  
♦ A85  
♣ 84

Board (3) Av: NS=-90

N-S	E-W	Contract	N-S	E-W	IMP
4	5	3H N 3		140	6
1	8	4S E-1		100	5
7	9	Passout			3
3	10	5H N-2		100	0
5	4	3S E 3		140	-2
8	1	3S E 3		140	-2
2	6	3S E 3		140	-2
6	2	3S E 3		140	-2
9	7	2S E 3		140	-2
10	3	2S E 3		140	-2

4

♠ 1098542  
♥ J  
♦ A85  
♣ A86

♠ AQ  
♥ 654  
♦ 109643  
♣ K109

♠ 3  
♥ AK1098732  
♦ QJ  
♣ 53

♠ KJ76  
♥ Q  
♦ K72  
♣ QJ742

Board (4) Av: NS=-100

N-S	E-W	Contract	N-S	E-W	IMP
3	10	5H E-2		200	7
9	7	5H E-1		100	5
4	5	5H E-1		100	5
5	4	4H E-1		100	5
1	8	4S N-1		100	0
2	6	4S N-1		100	0
8	1	4S N-1		100	0
7	9	4S N-2		200	-3
6	2	4H E 4		620	-11
10	3	5H E 6		680	-11

5

♠  
♥ Q5  
♦ AK108754  
♣ KJ96

♠ 98653  
♥ AK74  
♦ Q  
♣ AQ4

♠ KJ1042  
♥ 10632  
♦ J9  
♣ 75

♠ AQ7  
♥ J98  
♦ 632  
♣ 10832

Board (5) Av: NS=+190

N-S	E-W	Contract	N-S	E-W	IMP
10	3	5Cx N 5		750	11
8	1	3NT S 3		600	9
1	8	5Sx E-3		500	7
9	7	4D N 5		150	-1
7	9	4D N 4		130	-2
5	4	4S E-2		100	-3
3	10	4S E-2		100	-3
2	6	3S E-1		50	-4
6	2	5D N-1		100	-7
4	5	5D N-1		100	-7

6

♠ K3  
♥ AQ92  
♦ 86  
♣ QJ962

♠ 10952  
♥ J74  
♦ K5  
♣ AK87

♠ J74  
♥ K10653  
♦ AJ104  
♣ 4

♠ AQ86  
♥ 8  
♦ Q9732  
♣ 1053

Board (6) Av: NS=-40

N-S	E-W	Contract	N-S	E-W	IMP
7	9	3H E-1		100	4
6	2	2H E-1		100	4
4	5	2H E-1		100	4
8	1	Passout			1
9	7	1NT N-1		50	0
1	8	2H E 2		110	-2
3	10	2H E 2		110	-2
10	3	2H E 2		110	-2
5	4	1H E 2		110	-2
2	6	2Hx E 2		670	-12

7

♠ KJ5  
♥ A4  
♦ 107  
♣ AJ9732

♠ 107  
♥ J1093  
♦ QJ62  
♣ 865

♠ A98432  
♥ KQ8  
♦ 843  
♣ 4

♠ Q6  
♥ 7652  
♦ AK95  
♣ KQ10

Board (7) Av: NS=+620

N-S	E-W	Contract	N-S	E-W	IMP
5	4	3NT N 5		660	1
6	2	3NT N 5		660	1
1	8	3NT N 5		660	1
7	9	3NT N 5		660	1
4	5	3NT S 3		600	-1
8	1	3NT S 3		600	-1
9	7	3NT S 3		600	-1
2	6	3NT S 3		600	-1
10	3	3NT N 3		600	-1
3	10	6C N-1		100	-12

8

♠ 65  
♥ QJ875  
♦ KQJ5  
♣ 83

♠ AKJ83  
♥ AK10  
♦ A96  
♣ 95

♠ Q92  
♥ 962  
♦ 107  
♣ QJ1076

♠ 1074  
♥ 43  
♦ 8432  
♣ AK42

Board (8) Av: NS=-310

N-S	E-W	Contract	N-S	E-W	IMP
10	3	4S W-1		50	8
7	9	4S W-1		50	8
9	7	3S W 4		170	4
1	8	1S W 4		170	4
5	4	4S W 4		420	-3
8	1	4S W 4		420	-3
3	10	4S W 5		450	-4
6	2	4S W 5		450	-4
2	6	4S W 5		450	-4
4	5	4S W 5		450	-4

9

♠ J10  
♥ 105  
♦ AK8732  
♣ 985

♠ KQ32  
♥ QJ98  
♦ Q9  
♣ Q74

♠ 7654  
♥ A32  
♦ J1064  
♣ K3

♠ A98  
♥ K764  
♦ 5  
♣ AJ1062

Board (9) Av: NS=+110

N-S	E-W	Contract	N-S	E-W	IMP
6	2	1NT S 3		150	1
3	10	3C S 4		130	1
10	3	1NT S 2		120	0
7	9	3S E-1		100	0
5	4	2S E-1		100	0
4	5	2S E-1		100	0
2	6	2S E-1		100	0
1	8	2S E-1		100	0
8	1	2D N 2		90	-1
9	7	2C S 2		90	-1

兵庫県知事杯 OPEN TEAMS Session 4 Flight B 2011年10月9日(日)

10

♠ Q10753  
♥ A103  
♦ AKJ9  
♣ 2

♠ K942  
♥ 872  
♦ Q843  
♣ 108

♠ A8  
♥ K954  
♦ 62  
♣ AJ764

N  
W — E  
S

♠ J6  
♥ QJ6  
♦ 1075  
♣ KQ953

11

♠ AJ982  
♥ AK53  
♦ 973  
♣ 2

♠ 63  
♥ 98  
♦ AQ542  
♣ AKQ9

♠ K107  
♥ QJ107  
♦ 6  
♣ J10753

N  
W — E  
S

♠ Q54  
♥ 642  
♦ KJ108  
♣ 864

12

♠ J108532  
♥ 942  
♦ J92  
♣ 8

♠ KQ7  
♥ KJ  
♦ A764  
♣ AJ74

♠ 964  
♥ Q1065  
♦ 1053  
♣ 1096

N  
W — E  
S

♠ A  
♥ A873  
♦ KQ8  
♣ KQ532

Board (10) Av: NS=+340

N-S	E-W	Contract	N-S	E-W	IMP
2	6	3NT S 3	600		6
7	9	3NT S 3	600		6
10	3	3NT S 3	600		6
8	1	3NT S 3	600		6
1	8	3NT N 3	600		6
5	4	3NT N 3	600		6
9	7	3NT S-1		100	-10
3	10	3NT S-1		100	-10
4	5	3NT S-1		100	-10
6	2	3NT S-2		200	-11

Board (11) Av: NS=+190

N-S	E-W	Contract	N-S	E-W	IMP
3	10	4H N 5	450		6
9	7	4S N 4	420		6
4	5	4S N 4	420		6
5	4	4S N 4	420		6
7	9	3S N 4	170		-1
2	6	5D W-2	100		-3
6	2	4D E-1	50		-4
10	3	4D E-1	50		-4
1	8	4S N-2		100	-7
8	1	3D E 3		110	-7

Board (12) Av: NS=-1290

N-S	E-W	Contract	N-S	E-W	IMP
5	4	6C W 7	940		8
2	6	6NT W 7	1020		7
8	1	6NT W 7	1020		7
3	10	6NT E 7	1020		7
7	9	7C W 7	1440		-4
10	3	7C W 7	1440		-4
6	2	7C W 7	1440		-4
1	8	7C W 7	1440		-4
9	7	7NT W 7	1520		-6
4	5	7NT E 7	1520		-6

13

♠ A  
♥ J1054  
♦ A1073  
♣ J753

♠ QJ106  
♥ KQ962  
♦ 2  
♣ 1042

♠ 7543  
♥ A73  
♦ Q85  
♣ AK8

N  
W — E  
S

♠ K982  
♥ 8  
♦ KJ964  
♣ Q96

14

♠ A1064  
♥ 10965  
♦ QJ2  
♣ A9

♠ 972  
♥ AQJ432  
♦ A93  
♣ 7

♠ K85  
♥ K8  
♦ 1076  
♣ KQJ42

N  
W — E  
S

♠ QJ3  
♥ 7  
♦ K854  
♣ 108653

15

♠ 10864  
♥ KQ74  
♦ A652  
♣ A

♠ AK  
♥ AJ32  
♦ 1098  
♣ QJ93

♠ Q3  
♥ 1095  
♦ J74  
♣ K8765

N  
W — E  
S

♠ J9752  
♥ 86  
♦ KQ3  
♣ 1042

Board (13) Av: NS=-70

N-S	E-W	Contract	N-S	E-W	IMP
6	2	1NT N 1	90		4
7	9	1NT N 1	90		4
3	10	1NT N 1	90		4
5	4	3C S-1		100	-1
2	6	1NT S-1		100	-1
8	1	1NT N-1		100	-1
10	3	1NT N-1		100	-1
9	7	2S E 2		110	-1
1	8	3C S-2		200	-4
4	5	3NT N-3		300	-6

Board (14) Av: NS=-30

N-S	E-W	Contract	N-S	E-W	IMP
10	3	2NT N 3	150		5
4	5	2S N 3	140		5
7	9	2S N 2	110		4
8	1	3NT N-1		50	-1
5	4	3NT N-1		50	-1
1	8	3NT S-2		100	-2
2	6	3NT N-2		100	-2
3	10	3C S-2		100	-2
6	2	2S N-2		100	-2
9	7	2NT N-3		150	-3

Board (15) Av: NS=-130

N-S	E-W	Contract	N-S	E-W	IMP
5	4	2S E-1		50	5
10	3	2S E 2		110	1
6	2	2S E 2		110	1
8	1	2S E 2		110	1
7	9	2S E 2		110	1
4	5	1S W 2		110	1
1	8	2NT E 2		120	0
9	7	2S E 3		140	0
3	10	1NT S-2		200	-2
2	6	1NT S-3		300	-5

16

♠ 73  
♥ 6  
♦ K1097  
♣ QJ7432

♠ AKJ9852  
♥  
♦ 63  
♣ A1098

♠ Q64  
♥ Q10982  
♦ AJ  
♣ K65

N  
W — E  
S

♠ 10  
♥ AKJ7543  
♦ Q8542  
♣

17

♠ KJ2  
♥ A95  
♦ AQ  
♣ A10862

♠ AQ87  
♥ KJ63  
♦ J64  
♣ K9

♠ 6543  
♥ 87  
♦ 8532  
♣ 743

N  
W — E  
S

♠ 109  
♥ Q1042  
♦ K1097  
♣ QJ5

18

♠ 98  
♥ Q  
♦ J1074  
♣ AJ9632

♠ J1064  
♥ KJ9653  
♦ Q9  
♣ 10

♠ Q7  
♥ 74  
♦ 86532  
♣ KQ75

N  
W — E  
S

♠ AK532  
♥ A1082  
♦ AK  
♣ 84

Board (16) Av: NS=+80

N-S	E-W	Contract	N-S	E-W	IMP
1	8	4S E-3	300		6
10	3	4H W-2	200		3
8	1	4H W-2	200		3
9	7	4S E-1	100		1
4	5	4S E-1	100		1
5	4	4S E-1	100		1
2	6	4S E-1	100		1
3	10	4S E-1	100		1
6	2	5Cx N-2		300	-9
7	9	4S E 4		620	-12

Board (17) Av: NS=-140

N-S	E-W	Contract	N-S	E-W	IMP
1	8	4H W-1		50	5
7	9	3C N-2		100	1
4	5	2H W 3		140	0
5	4	2H W 3		140	0
9	7	2H W 3		140	0
10	3	2H W 3		140	0
8	1	2H W 3		140	0
6	2	2H W 3		140	0
3	10	2H W 3		140	0
2	6	3H W 4		170	-1

Board (18) Av: NS=-500

N-S	E-W	Contract	N-S	E-W	IMP
6	2	5H E 6	480		1
5	4	4S W 6	480		1
7	9	4H E 6	480		1
4	5	4S W 7	510		0
9	7	4S W 7	510		0
10	3	4S W 7	510		0
8	1	4S W 7	510		0
1	8	4S W 7	510		0
3	10	4S W 7	510		0
2	6	4S W 7	510		0

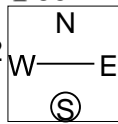
### 19

♠ AKJ2  
♥ 3  
♦ Q9764  
♣ 852

♠ Q1098743  
♥  
♦ J832  
♣ 73

♠ 5  
♥ KQ9875  
♦ AK5  
♣ AJ4

♠ 6  
♥ AJ10642  
♦ 10  
♣ KQ1096



Board (19) Av: NS=-160

N-S	E-W	Contract	N-S	E-W	IMP
4	8	3NT N 3	400		11
1	5	3NT N 3	400		11
3	9	2S E-1	100		6
10	6	3NT N-2	100		2
6	10	3NT N-2	100		2
5	1	3NT N-2	100		2
8	4	4H S-3	150		0
7	2	4Hx S-3	500		-8
9	3	4Hx S-4	800		-12
2	7	4Hx S-4	800		-12

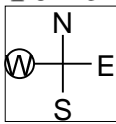
### 20

♠ KJ4  
♥ J8  
♦ J73  
♣ 87432

♠ Q1097  
♥ 6  
♦ A64  
♣ KQJ96

♠ A865  
♥ A109754  
♦ K9  
♣ A

♠ 32  
♥ KQ32  
♦ Q10852  
♣ 105



Board (20) Av: NS=+70

N-S	E-W	Contract	N-S	E-W	IMP
4	8	3D W-2	200		4
10	6	2H S 3	140		2
5	1	2H S 3	140		2
9	3	2H S 2	110		1
2	7	2H S 2	110		1
6	10	2H S 2	110		1
3	9	1NT E-1	100		1
7	2	1NT W 1		90	-4
8	4	2H S-1		100	-5
1	5	1NT E 2		120	-5

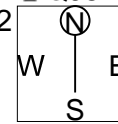
### 21

♠ AQ  
♥ K96  
♦ A106  
♣ QJ876

♠ 83  
♥ 10852  
♦ KJ97  
♣ K54

♠ J1096  
♥ QJ73  
♦ 852  
♣ 109

♠ K7542  
♥ A4  
♦ Q43  
♣ A32



Board (21) Av: NS=+80

N-S	E-W	Contract	N-S	E-W	IMP
7	2	1NT N 3	150		2
5	1	1NT N 3	150		2
6	10	1NT N 3	150		2
4	8	1NT N 1	90		0
8	4	1NT N 1	90		0
10	6	1NT N 1	90		0
1	5	1NT N 1	90		0
3	9	1NT N 1	90		0
9	3	1NT N-1		100	-5
2	7	1NT N-1		100	-5

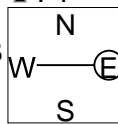
### 22

♠ AKJ763  
♥  
♦ AQ643  
♣ 74

♠ AK42  
♥ AK42  
♦ K972  
♣ AJ952

♠ Q1054  
♥ J76  
♦ 108  
♣ Q1083

♠ 982  
♥ Q109853  
♦ J5  
♣ K6



Board (22) Av: NS=-290

N-S	E-W	Contract	N-S	E-W	IMP
8	4	5S N-1	50		6
3	9	5S N-1	50		6
10	6	4S N-1	50		6
9	3	4S N-1	50		6
5	1	4S N-1	50		6
1	5	5Sx N-1	100		5
2	7	5H W 5	650		-8
6	10	5H W 5	650		-8
7	2	5H W 6	680		-9
4	8	5Hx E 6	1050		-13

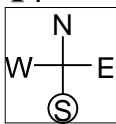
### 23

♠ Q64  
♥ J96  
♦ J97632  
♣ 7

♠ A73  
♥ K1053  
♦ K10  
♣ A1095

♠ 1098  
♥ AQ42  
♦ AQ  
♣ KQ84

♠ KJ52  
♥ 87  
♦ 854  
♣ J632



Board (23) Av: NS=-10

N-S	E-W	Contract	N-S	E-W	IMP
7	2	3D N 4	130		4
10	6	3D N 4	130		4
4	8	3D N 3	110		3
1	5	2H S 2	110		3
2	7	2H S 2	110		3
3	9	2H S-1		100	-3
6	10	1NT S-1		100	-3
8	4	1NT S-1		100	-3
5	1	1NT S-2		200	-5
9	3	1NT S-2		200	-5

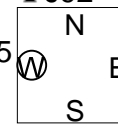
### 24

♠ Q7  
♥ 743  
♦ KQ1042  
♣ J92

♠ J832  
♥ 82  
♦ A73  
♣ KQ108

♠ AK10965  
♥ J  
♦ 96  
♣ 7654

♠ 4  
♥ AKQ10965  
♦ J85  
♣ A3



Board (24) Av: NS=-480

N-S	E-W	Contract	N-S	E-W	IMP
4	8	4H W 6	480		0
9	3	4H W 6	480		0
8	4	4H W 6	480		0
10	6	4H W 6	480		0
6	10	4H W 6	480		0
1	5	4H W 6	480		0
5	1	4H W 6	480		0
3	9	4H W 6	480		0
7	2	4H W 6	480		0
2	7	4H E 6	480		0

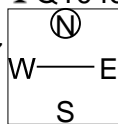
### 25

♠ J543  
♥ 62  
♦ A53  
♣ Q1043

♠ Q972  
♥ 8  
♦ 9762  
♣ KJ97

♠ AK  
♥ AKJ543  
♦ Q104  
♣ 82

♠ 1086  
♥ Q1097  
♦ KJ8  
♣ A65



Board (25) Av: NS=-80

N-S	E-W	Contract	N-S	E-W	IMP
3	9	2H S 2	110		5
2	7	Passout			2
8	4	3H S-1	50		1
9	3	4H S-2	100		-1
4	8	4H S-2	100		-1
10	6	4H S-2	100		-1
6	10	3H S-2	100		-1
1	5	3H S-2	100		-1
7	2	3H S-2	100		-1
5	1	3NT N-4	200		-3

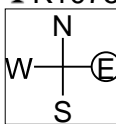
### 26

♠ 2  
♥ 42  
♦ KQ104  
♣ K107532

♠ K8764  
♥ AQ63  
♦ 6  
♣ QJ4

♠ AJ109  
♥  
♦ AJ975  
♣ A986

♠ Q53  
♥ KJ109875  
♦ 832  
♣



Board (26) Av: NS=+210

N-S	E-W	Contract	N-S	E-W	IMP
7	2	6C S 6	1370		15
8	4	6C N 6	1370		15
9	3	6Hx W-3	800		11
2	7	5D S 6	620		9
6	10	3S E-2	200		0
1	5	5H W-1	100		-3
3	9	2S E 3		140	-8
10	6	4H W 4		620	-13
4	8	4H E 4		620	-13
5	1	4H E 5		650	-13

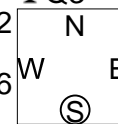
### 27

♠ J53  
♥ KQ86  
♦ 9542  
♣ Q3

♠ AKQ7  
♥ A975  
♦ Q3  
♣ K108

♠ 106  
♥ 102  
♦ AKJ8  
♣ J9765

♠ 9842  
♥ J43  
♦ 1076  
♣ A42



Board (27) Av: NS=-120

N-S	E-W	Contract	N-S	E-W	IMP
10	6	4S W-1	50		5
3	9	4S W-1	50		5
5	1	3D S-1		50	2
8	4	1C E 1		70	2
1	5	1C E 1		70	2
7	2	1C E 1		70	2
4	8	3S W 3		140	-1
9	3	3S W 4		170	-2
2	7	4S W 4		420	-7
6	10	4S W 4		420	-7

### 28

♠ A1052  
♥ AQ4  
♦ A103  
♣ J85

♠ KQ43  
♥ J872  
♦ Q982  
♣ Q

♠ J98  
♥  
♦ KJ54  
♣ K106432

♠ 76  
♥ K109653  
♦ 76  
♣ A97

Board (28) Av: NS=-110

N-S	E-W	Contract	N-S	E-W	IMP
2	7	2H N 3	140		6
10	6	2H N 3	140		6
4	8	4H N-1		100	0
8	4	4H N-1		100	0
1	5	4H N-1		100	0
5	1	4H N-1		100	0
7	2	5H N-2		200	-3
3	9	4H S-2		200	-3
9	3	4H N-2		200	-3
6	10	4H N-2		200	-3

### 29

♠ 1054  
♥ AJ109  
♦ 8753  
♣ K2

♠ K76  
♥ KQ76  
♦ A6  
♣ AJ104

♠ Q2  
♥ 84  
♦ Q102  
♣ Q98753

♠ AJ983  
♥ 532  
♦ KJ94  
♣ 6

Board (29) Av: NS=-110

N-S	E-W	Contract	N-S	E-W	IMP
2	7	1NT W 1		90	1
10	6	1NT W 1		90	1
1	5	1NT W 1		90	1
4	8	3H N-1		100	0
9	3	3C W 3		110	0
5	1	3C W 3		110	0
8	4	3C E 3		110	0
6	10	1NT W 2		120	0
3	9	1NT W 3		150	-1
7	2	3NT W 3		600	-10

### 30

♠ A8  
♥ AK104  
♦ J864  
♣ KQJ

♠ KQJ97  
♥ 76  
♦ K10  
♣ 9853

♠ 65  
♥ QJ832  
♦ A95  
♣ 642

♠ 10432  
♥ 95  
♦ Q732  
♣ A107

Board (30) Av: NS=-20

N-S	E-W	Contract	N-S	E-W	IMP	
3	9	2NT N 3		150	5	
1	5	2NT N 2		120	4	
8	4	2H E-2		100	3	
9	3	2S W-1		50	2	
10	6	2NT N-1			50	-1
5	1	2NT N-1			50	-1
7	2	3NT N-2			100	-2
6	10	2NT S-2			100	-2
2	7	3NT S-3			150	-4
4	8	3NT N-3			150	-4

### 31

♠ A43  
♥ AQJ9  
♦ K943  
♣ 75

♠ J96  
♥ 4  
♦ J8765  
♣ 10863

♠ 1052  
♥ K852  
♦ Q  
♣ AKJ92

♠ KQ87  
♥ 10763  
♦ A102  
♣ Q4

Board (31) Av: NS=+30

N-S	E-W	Contract	N-S	E-W	IMP	
6	10	4H N 4		620	11	
10	6	3H N 4		170	4	
7	2	2H S 3		140	3	
3	9	2D N 2		90	2	
9	3	1NT S 1		90	2	
1	5	3C E-1		50	1	
2	7	2C E 2			90	-3
4	8	4H S-1			100	-4
8	4	4H N-1			100	-4
5	1	4H N-1			100	-4

### 32

♠ 10  
♥ Q4  
♦ AK942  
♣ 109653

♠ 64  
♥ A852  
♦ J107  
♣ KJ82

♠ 9872  
♥ KJ1093  
♦ 863  
♣ 4

♠ AKQJ53  
♥ 76  
♦ Q5  
♣ AQ7

Board (32) Av: NS=+360

N-S	E-W	Contract	N-S	E-W	IMP	
6	10	4S S 6		480	3	
9	3	4S S 6		480	3	
1	5	4S S 6		480	3	
5	1	4S S 6		480	3	
10	6	4S S 5		450	3	
3	9	4S S 4		420	2	
8	4	4S S 4		420	2	
2	7	2S S 6		230	-4	
7	2	3NT N-1			50	-9
4	8	3NT N-1			50	-9

### 33

♠ Q1083  
♥ AJ76  
♦ 109  
♣ K87

♠ K542  
♥ K  
♦ 743  
♣ Q10952

♠ A  
♥ Q9542  
♦ KQJ6  
♣ 643

♠ J976  
♥ 1083  
♦ A852  
♣ AJ

Board (33) Av: NS=+60

N-S	E-W	Contract	N-S	E-W	IMP	
8	4	2S N 2		110	2	
4	8	3NT E-2		100	1	
5	1	2H E-2		100	1	
1	5	2NT W-1		50	0	
2	7	2H E-1		50	0	
6	10	2H E-1		50	0	
7	2	2D E-1		50	0	
10	6	2D E-1		50	0	
9	3	2D E-1		50	0	
3	9	2NT W 2			120	-5

### 34

♠ K1098  
♥ Q87  
♦ AJ1064  
♣ 7

♠ Q632  
♥ A10654  
♦ 32  
♣ J3

♠ A5  
♥ K93  
♦ KQ98  
♣ K985

♠ J74  
♥ J2  
♦ 75  
♣ AQ10642

Board (34) Av: NS=-120

N-S	E-W	Contract	N-S	E-W	IMP
4	8	4Hx E-2		300	9
3	9	2S N-1		100	1
10	6	2H E 2		110	0
9	3	2H E 2		110	0
7	2	2H E 2		110	0
1	5	1NT E 2		120	0
5	1	3H E 3		140	-1
8	4	2H W 3		140	-1
6	10	2H E 3		140	-1
2	7	3H E 4		170	-2

### 35

♠ KJ9853  
♥  
♦ AK654  
♣ 105

♠ Q6  
♥ J108743  
♦ 2  
♣ AJ94

♠ 102  
♥ AK9652  
♦ 987  
♣ K2

♠ A74  
♥ Q  
♦ QJ103  
♣ Q8763

Board (35) Av: NS=+450

N-S	E-W	Contract	N-S	E-W	IMP
4	8	5S N 6		480	1
10	6	4S N 6		480	1
1	5	5S N 5		450	0
5	1	5S N 5		450	0
8	4	4S N 5		450	0
6	10	4S N 5		450	0
3	9	4S N 5		450	0
2	7	4S N 5		450	0
9	3	4S N 5		450	0
7	2	5H E-1		100	-8

### 36

♠ AJ63  
♥ AKJ106  
♦ K4  
♣ K10

♠ Q109  
♥ Q984  
♦ 10973  
♣ Q8

♠ 75  
♥ 7  
♦ AQJ62  
♣ A7643

♠ K842  
♥ 532  
♦ 85  
♣ J952

Board (36) Av: NS=-20

N-S	E-W	Contract	N-S	E-W	IMP	
1	5	4S N 4		620	12	
8	4	4H N 4		620	12	
2	7	3S N 3		140	4	
6	10	5H N-1			100	-2
4	8	4H N-1			100	-2
5	1	4H N-1			100	-2
3	9	4S N-2			200	-5
10	6	4H N-2			200	-5
9	3	4H N-2			200	-5
7	2	4Dx W 4			710	-12

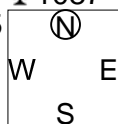
兵庫県知事杯 OPEN TEAMS Session 5 Flight B 2011年10月10日(月)

1

♠ K743  
♥ 1092  
♦ QJ5  
♣ 1087

♠ J2  
♥ AJ875  
♦ AK7  
♣ J62

♠ AQ6  
♥ K63  
♦ 10986  
♣ K95



Board (1) Av: NS=-110

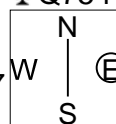
N-S	E-W	Contract	N-S	E-W	IMP
1	4	2C E-1	50		4
10	7	1NT E 1	90		1
6	9	1NT E 1	90		1
7	10	1NT E 1	90		1
2	3	1NT E 1	90		1
9	6	1NT E 2	120		0
5	8	1NT E 2	120		0
4	1	2H E 3	140		-1
3	2	1NT E 3	150		-1
8	5	1NT E 4	180		-2

2

♠ 986  
♥ K2  
♦ 9853  
♣ Q754

♠ KJ42  
♥ AQ105  
♦ A642  
♣ 3

♠ 10753  
♥ 643  
♦ Q  
♣ AK986



Board (2) Av: NS=-480

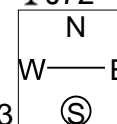
N-S	E-W	Contract	N-S	E-W	IMP
6	9	4H W 6	480		0
8	5	4H W 6	480		0
9	6	4H W 6	480		0
10	7	4H W 6	480		0
7	10	4H W 6	480		0
4	1	4H W 6	480		0
1	4	4H W 6	480		0
2	3	4H W 6	480		0
5	8	4H W 6	480		0
3	2	4H W 6	480		0

3

♠ QJ103  
♥ A1064  
♦ A7  
♣ J72

♠ K854  
♥ Q95  
♦ QJ109  
♣ AK

♠ 72  
♥ K72  
♦ K8652  
♣ Q104



Board (3) Av: NS=+40

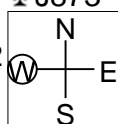
N-S	E-W	Contract	N-S	E-W	IMP
3	2	1NT N 2	120		2
2	3	1NT E-1	100		2
5	8	1NT E-1	100		2
4	1	1NT E-1	100		2
8	5	1NT S 1	90		2
1	4	1NT N 1	90		2
6	9	2D S-1		50	-3
10	7	1NT N-1		50	-3
7	10	1NT E 1		90	-4
9	6	2H N-2		100	-4

4

♠ A874  
♥ 8  
♦ A1098  
♣ J873

♠ K9532  
♥ 3  
♦ 7432  
♣ 964

♠ QJ10  
♥ KQ754  
♦ Q5  
♣ Q52



Board (4) Av: NS=-90

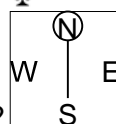
N-S	E-W	Contract	N-S	E-W	IMP
10	7	3H W-3	300		9
1	4	1H W-1	100		5
8	5	1H W-1	100		5
9	6	1H W 1		80	0
3	2	2NT S-1		100	0
5	8	1H W 2		110	-1
2	3	1H W 2		110	-1
4	1	2NT S-2		200	-3
6	9	2S N-3		300	-5
7	10	2Hx W 2		670	-11

5

♠ A8  
♥ 765432  
♦ K6542  
♣

♠ KQ1097  
♥ AKJ8  
♦ A3  
♣ J3

♠ 65432  
♥ 109  
♦ J10  
♣ 7654



Board (5) Av: NS=-970

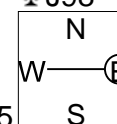
N-S	E-W	Contract	N-S	E-W	IMP
6	9	6C W-1	50		14
10	7	6C W 6	920		2
4	1	6C W 6	920		2
1	4	6C W 6	920		2
2	3	6NT W 6	990		-1
9	6	6NT W 6	990		-1
3	2	6NT E 6	990		-1
8	5	6NT E 6	990		-1
5	8	6NT W 7	1020		-2
7	10	6NT W 7	1020		-2

6

♠ A832  
♥ Q764  
♦ A10  
♣ J98

♠ 5  
♥ A9832  
♦ 872  
♣ Q632

♠ KQ1076  
♥ KJ  
♦ KJ64  
♣ 74



Board (6) Av: NS=+420

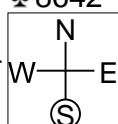
N-S	E-W	Contract	N-S	E-W	IMP
1	4	4S S 5	450		1
9	6	4S S 4	420		0
6	9	4S S 4	420		0
10	7	4S S 4	420		0
7	10	4S S 4	420		0
8	5	4S S 4	420		0
4	1	4S S 4	420		0
3	2	4S S 4	420		0
5	8	4S S 4	420		0
2	3	3S S 4	170		-6

7

♠ AKQJ832  
♥ 62  
♦  
♣ 8642

♠ 1094  
♥ J103  
♦ KJ10732  
♣ Q

♠ 76  
♥ K87  
♦ AQ86  
♣ K953



Board (7) Av: NS=-190

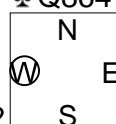
N-S	E-W	Contract	N-S	E-W	IMP
3	2	4S N-1	100		3
7	10	3S N-1	100		3
6	9	4S N-2	200		0
10	7	4S N-2	200		0
9	6	4S N-2	200		0
8	5	4S N-2	200		0
1	4	4S N-2	200		0
2	3	4S N-2	200		0
5	8	4S N-2	200		0
4	1	4S N-3	300		-3

8

♠ 10942  
♥ 102  
♦ J86  
♣ Q864

♠ Q83  
♥ A875  
♦ KQ32  
♣ 97

♠ AKJ65  
♥ Q64  
♦ A105  
♣ 105



Board (8) Av: NS=-20

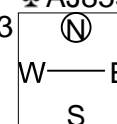
N-S	E-W	Contract	N-S	E-W	IMP
2	3	4H W-2	100		3
3	2	4H E-2	100		3
5	8	4H E-2	100		3
8	5	4H E-1	50		2
9	6	4H E-1	50		2
10	7	4H E-1	50		2
7	10	2NT E-1	50		2
1	4	3H E 3		140	-3
6	9	4H E 4		420	-9
4	1	4Sx S-3		500	-10

9

♠ 72  
♥ A3  
♦ A1086  
♣ AJ853

♠ Q108  
♥ QJ1098  
♦ 932  
♣ 42

♠ AK4  
♥ K72  
♦ KJ7  
♣ K1096



Board (9) Av: NS=+520

N-S	E-W	Contract	N-S	E-W	IMP
10	7	6NT S 7	1020		11
8	5	6NT S 6	990		10
2	3	3NT S 7	520		0
1	4	3NT N 7	520		0
7	10	3NT S 6	490		-1
9	6	3NT S 6	490		-1
4	1	3NT S 6	490		-1
6	9	5C N 6	420		-3
5	8	1NT S 7	270		-6
3	2	2C N 7	190		-8

10

♠ KJ  
♥ AQ9432  
♦  
♣ A10932

♠ A876 ♠ Q109  
♥ K5 ♥ J6  
♦ 108765 ♦ KQJ932  
♣ QJ ♣ 65

W — E  
N — S

♠ 5432  
♥ 1087  
♦ A4  
♣ K874

11

♠ 10  
♥ KQ73  
♦ Q53  
♣ AQ963

♠ QJ984 ♠ 2  
♥ A9854 ♥ J62  
♦ A10 ♦ J742  
♣ 2 ♣ J8754

W — E  
N — S

♠ AK7653  
♥ 10  
♦ K986  
♣ K10

12

♠ K432  
♥ J84  
♦ 108  
♣ K872

♠ A1032 ♠ AJ1096  
♥ AKJ5 ♥ Q9  
♦ QJ963 ♦ Q963  
♣ QJ963 ♣ 104

W — E  
N — S

♠ Q875  
♥ K765  
♦ 742  
♣ A5

Board (10) Av: NS=+670

N-S	E-W	Contract	N-S	E-W	IMP
8	5	4H N 6	680		0
10	7	4H N 6	680		0
7	10	4H N 6	680		0
9	6	4H N 6	680		0
5	8	4H N 6	680		0
3	2	4H N 6	680		0
6	9	4H N 5	650		-1
2	3	4H N 5	650		-1
1	4	4H N 4	620		-2
4	1	6H N-1	100		-13

Board (11) Av: NS=+180

N-S	E-W	Contract	N-S	E-W	IMP
8	5	3NT N 4	430		6
3	2	3NT N 3	400		6
6	9	3NT N 3	400		6
4	1	3NT N 3	400		6
7	10	3NT N 3	400		6
1	4	2Hx W-1	100		-2
5	8	3NT N-1	50		-6
2	3	4S S-2	100		-7
10	7	4S S-2	100		-7
9	6	4Sx S-2	300		-10

Board (12) Av: NS=-220

N-S	E-W	Contract	N-S	E-W	IMP
4	1	2C W 3	110		3
1	4	2C W 3	110		3
5	8	3D E 4	130		3
7	10	2C W 4	130		3
9	6	1NT W 3	150		2
2	3	2NT W 5	210		0
6	9	2NT E 5	210		0
3	2	3NT W 3	400		-5
10	7	3NT W 4	430		-5
8	5	3NT E 4	430		-5

13

♠ Q85  
♥ 10652  
♦ AK1085  
♣ 2

♠ 9 ♠ J73  
♥ AKQ873 ♥ J  
♦ 9742 ♦ QJ6  
♣ J6 ♣ Q109843

W — E  
N — S

♠ AK10642  
♥ 94  
♦ 3  
♣ AK75

14

♠ Q10  
♥ AKJ1062  
♦ AKJ6  
♣ 4

♠ K96 ♠ AJ8754  
♥ Q95 ♥ 84  
♦ Q108 ♦ 952  
♣ AQJ3 ♣ 85

W — E  
N — S

♠ 32  
♥ 73  
♦ 743  
♣ K109762

15

♠ 4  
♥ A96  
♦ AKJ9864  
♣ K2

♠ J732 ♠ AK85  
♥ 8753 ♥ 1042  
♦ Q105 ♦ 2  
♣ A9 ♣ J10863

W — E  
N — S

♠ Q1096  
♥ KQJ  
♦ 73  
♣ Q754

Board (13) Av: NS=+650

N-S	E-W	Contract	N-S	E-W	IMP
6	9	4S S 5	650		0
8	5	4S S 5	650		0
10	7	4S S 5	650		0
7	10	4S S 5	650		0
5	8	4S S 5	650		0
1	4	4S S 5	650		0
2	3	4S S 5	650		0
3	2	4S S 5	650		0
4	1	4S N 5	650		0
9	6	4S S 4	620		-1

Board (14) Av: NS=-40

N-S	E-W	Contract	N-S	E-W	IMP
1	4	4Sx E-2	300		8
2	3	3S E-2	100		4
6	9	4S E-1	50		3
9	6	4H N-1	50		0
3	2	4H N-1	50		0
7	10	3H N-1	50		0
5	8	5H N-2	100		-2
8	5	5H N-2	100		-2
4	1	4H N-2	100		-2
10	7	3S E 3	140		-3

Board (15) Av: NS=+630

N-S	E-W	Contract	N-S	E-W	IMP
1	4	3NT N 6	690		2
8	5	3NT N 5	660		1
10	7	3NT S 4	630		0
7	10	3NT S 4	630		0
5	8	3NT S 4	630		0
4	1	3NT S 4	630		0
3	2	3NT S 4	630		0
9	6	3NT S 3	600		-1
6	9	3NT S 3	600		-1
2	3	3NT S-1	100		-12

16

♠ Q9852  
♥ 5  
♦ J103  
♣ AQJ5

♠ 3 ♠ J1076  
♥ 10643 ♥ K872  
♦ A964 ♦ Q87  
♣ K872 ♣ 104

W — E  
N — S

♠ AK4  
♥ AQJ9  
♦ K52  
♣ 963

17

♠ K1083  
♥ K9  
♦ 109  
♣ AQ876

♠ 962 ♠ AQJ54  
♥ 10752 ♥ QJ8  
♦ AQ2 ♦ K7  
♣ K102 ♣ J94

W — E  
N — S

♠ 7  
♥ A643  
♦ J86543  
♣ 53

18

♠ 3  
♥ Q10987  
♦ K93  
♣ 9764

♠ 10764 ♠ AJ52  
♥ 85 ♥ AK642  
♦ KQJ10852 ♦ 1064  
♣ KQJ10852 ♣ 3

W — E  
N — S

♠ KQ98  
♥ J53  
♦ AQJ72  
♣ A

Board (16) Av: NS=+310

N-S	E-W	Contract	N-S	E-W	IMP
2	3	4S S 5	450		4
9	6	4S S 5	450		4
8	5	4S S 4	420		3
6	9	4S S 4	420		3
7	10	4S S 4	420		3
4	1	4S S 4	420		3
3	2	4S S 4	420		3
1	4	5S N-1	50		-8
10	7	4S S-1	50		-8
5	8	4S S-2	100		-9

Board (17) Av: NS=+50

N-S	E-W	Contract	N-S	E-W	IMP
8	5	3S E-3	150		3
3	2	2S E-2	100		2
1	4	2S E-2	100		2
7	10	2S E-2	100		2
9	6	2S E-2	100		2
2	3	2S E-1	50		0
10	7	2S E-1	50		0
4	1	3D S-1	50		-3
5	8	3D S-1	50		-3
6	9	3NT N-4	200		-6

Board (18) Av: NS=+120

N-S	E-W	Contract	N-S	E-W	IMP
2	3	4S E-5	250		4
7	10	4S E-4	200		2
1	4	3S W-4	200		2
6	9	2S W-3	150		1
5	8	3D S 3	110		0
9	6	3S E-2	100		-1
8	5	2S W-2	100		-1
10	7	2S W-1	50		-2
3	2	2S W-1	50		-2
4	1	4D S-1	100		-6

兵庫県知事杯 OPEN TEAMS Session 6 Flight B 2011年10月10日(月)

1

♠A6  
♥A109643  
♦J83  
♣106

♠83  
♥K72  
♦K75  
♣KJ753

♠KJ10542  
♥Q  
♦A2  
♣Q942

♠Q97  
♥J85  
♦Q10964  
♣A8

Board (1) Av: NS=+20

N-S	E-W	Contract	N-S	E-W	IMP
9	10	3NT W-4	200		5
4	2	3H N 3	140		3
1	3	3H N 3	140		3
3	1	4S E-1	50		1
8	7	4C E-1	50		1
7	8	3S E-1	50		1
2	4	3H N-1		50	-2
5	6	2S E 2		110	-4
10	9	3S E 3		140	-4
6	5	3S E 3		140	-4

2

♠J76  
♥QJ1084  
♦2  
♣KQ87

♠AK53  
♥K63  
♦KQ  
♣6532

♠10982  
♥A75  
♦1098653  
♣

♠Q4  
♥92  
♦AJ74  
♣AJ1094

Board (2) Av: NS=0

N-S	E-W	Contract	N-S	E-W	IMP
10	9	3Dx E-2	300		7
9	10	1NT S 3	150		4
4	2	2H N 2	110		3
1	3	3NT W-2	100		3
2	4	3D E-1	50		2
5	6	1NT W 1		90	-3
6	5	3NT N-1		100	-3
3	1	2D E 3		110	-3
7	8	2S W 3		140	-4
8	7	2S W 4		170	-5

3

♠K97  
♥K109642  
♦K  
♣1094

♠Q532  
♥AJ  
♦9652  
♣AQ6

♠A1086  
♥Q7  
♦J10874  
♣53

♠J4  
♥853  
♦AQ3  
♣KJ872

Board (3) Av: NS=+70

N-S	E-W	Contract	N-S	E-W	IMP
9	10	3S W-3	300		6
4	2	3S E-2	200		4
2	4	3D W-2	200		4
3	1	3H N 3	140		2
10	9	3H N 3	140		2
8	7	3S W-1	100		1
5	6	3H N-1		50	-3
6	5	3H N-1		50	-3
1	3	3S W 3		140	-5
7	8	3S W 3		140	-5

4

♠954  
♥Q8  
♦Q632  
♣AK102

♠AJ872  
♥J62  
♦1098  
♣96

♠6  
♥A10954  
♦AKJ74  
♣QJ

♠KQ103  
♥K73  
♦5  
♣87543

Board (4) Av: NS=-160

N-S	E-W	Contract	N-S	E-W	IMP
7	8	4H E-1	100		6
2	4	2H E 2		110	2
5	6	3H E 3		140	1
6	5	3H E 4		170	0
8	7	3H E 4		170	0
3	1	3H E 4		170	0
4	2	3H E 4		170	0
1	3	3H E 4		170	0
9	10	3H E 5		200	-1
10	9	4H E 4		620	-10

5

♠A1082  
♥53  
♦AK52  
♣965

♠53  
♥106  
♦87643  
♣AQ107

♠K64  
♥AKQJ9  
♦QJ  
♣K32

♠QJ97  
♥8742  
♦109  
♣J84

Board (5) Av: NS=-310

N-S	E-W	Contract	N-S	E-W	IMP
9	10	2H E 3		140	5
5	6	2NT W 3		150	4
4	2	2H E 4		170	4
7	8	2NT W 4		180	4
3	1	2NT W 4		180	4
8	7	4H E 4		420	-3
1	3	3NT W 4		430	-3
6	5	3NT W 4		430	-3
10	9	1Dx N-2		500	-5
2	4	1Dx N-2		500	-5

6

♠KQ5  
♥AQ86  
♦98742  
♣2

♠J10862  
♥K75  
♦AK10  
♣54

♠93  
♥J92  
♦Q653  
♣K983

♠A74  
♥1043  
♦J  
♣AQJ1076

Board (6) Av: NS=+340

N-S	E-W	Contract	N-S	E-W	IMP
2	4	3NT N 4	430		3
6	5	3NT N 4	430		3
7	8	3NT N 4	430		3
8	7	3NT N 3	400		2
5	6	3NT N 3	400		2
3	1	3NT N 3	400		2
1	3	3NT N 3	400		2
9	10	3C S 4		130	-5
4	2	2C S 4		130	-5
10	9	2NT N 2		120	-6

7

♠J106  
♥AK54  
♦Q86  
♣973

♠K9  
♥108  
♦K1043  
♣AKQ42

♠Q8543  
♥932  
♦A52  
♣85

♠A72  
♥QJ76  
♦J97  
♣J106

Board (7) Av: NS=-140

N-S	E-W	Contract	N-S	E-W	IMP
9	10	4S E-2	200		8
4	2	2C W 3		110	1
7	8	2S W 3		140	0
10	9	2S W 3		140	0
8	7	2S W 3		140	0
1	3	2S W 3		140	0
3	1	2S W 3		140	0
2	4	2S W 3		140	0
5	6	2S W 3		140	0
6	5	3H S-3		300	-4

8

♠Q2  
♥K9864  
♦AQJ3  
♣65

♠96  
♥AQJ10  
♦K102  
♣K872

♠74  
♥732  
♦9654  
♣QJ93

♠AKJ10853  
♥5  
♦87  
♣A104

Board (8) Av: NS=+460

N-S	E-W	Contract	N-S	E-W	IMP
5	6	4S S 6	480		1
10	9	4S S 6	480		1
3	1	4S S 6	480		1
1	3	4S S 6	480		1
8	7	4S S 5	450		0
9	10	4S S 5	450		0
7	8	4S S 5	450		0
4	2	4S S 5	450		0
2	4	4S S 5	450		0
6	5	3S S 5	200		-6

9

♠QJ42  
♥J10  
♦K1042  
♣KJ3

♠1097  
♥7543  
♦AJ3  
♣Q62

♠A63  
♥96  
♦Q975  
♣A1094

♠K85  
♥AKQ82  
♦86  
♣875

Board (9) Av: NS=+160

N-S	E-W	Contract	N-S	E-W	IMP
3	1	3NT N 3	400		6
1	3	3NT N 3	400		6
10	9	1NT E-2	200		1
5	6	2NT N 4	180		1
7	8	3H S 4		170	0
9	10	1S N 4		170	0
2	4	2NT N 2		120	-1
4	2	1S N 2		110	-2
8	7	3NT S-1		50	-5
6	5	3NT N-1		50	-5

10

♠ KQJ986  
♥ 63  
♦ 953  
♣ A6

♠ A1042  
♥ Q  
♦ A1082  
♣ J1094

♠ 75  
♥ 109875  
♦ KJ  
♣ KQ52

N  
W — E  
S

♠ 3  
♥ AKJ42  
♦ Q764  
♣ 873

11

♠ KQ84  
♥ 93  
♦ Q653  
♣ 1095

♠ AJ973  
♥ A76  
♦ 4  
♣ QJ87

♠ 5  
♥ KQJ1054  
♦ A102  
♣ 632

N  
W — E  
S

♠ 1062  
♥ 82  
♦ KJ987  
♣ AK4

12

♠ K932  
♥ 654  
♦ KQJ10  
♣ Q5

♠ 5  
♥ J9872  
♦ A643  
♣ A106

♠ Q108764  
♥ 10  
♦ 95  
♣ 9742

N  
W — E  
S

♠ AJ  
♥ AKQ3  
♦ 872  
♣ KJ83

Board (10) Av: NS=-20

N-S	E-W	Contract	N-S	E-W	IMP
4	2	2S	N 2	110	4
6	5	2S	N 2	110	4
7	8	2S	N 2	110	4
3	1	2S	N 2	110	4
1	3	2S	N 2	110	4
9	10	2S	N-1	100	-2
2	4	2H	S-1	100	-2
5	6	2NT	S-2	200	-5
10	9	2H	S-2	200	-5
8	7	4S	N-3	300	-7

Board (11) Av: NS=-420

N-S	E-W	Contract	N-S	E-W	IMP
7	8	4H	W 4	420	0
6	5	4H	W 4	420	0
8	7	4H	W 4	420	0
10	9	4H	W 4	420	0
9	10	4H	W 4	420	0
3	1	4H	W 4	420	0
1	3	4H	W 4	420	0
2	4	4H	W 4	420	0
5	6	4H	W 4	420	0
4	2	4H	W 4	420	0

Board (12) Av: NS=+650

N-S	E-W	Contract	N-S	E-W	IMP
5	6	3NT	S 5	660	0
7	8	3NT	S 5	660	0
10	9	3NT	S 5	660	0
4	2	3NT	S 5	660	0
1	3	3NT	S 5	660	0
3	1	3NT	S 5	660	0
2	4	3NT	N 5	660	0
6	5	3NT	S 4	630	-1
9	10	3NT	S 4	630	-1
8	7	3NT	S 4	630	-1

13

♠ K95  
♥ 2  
♦ AQJ109  
♣ A876

♠ A107  
♥ Q8543  
♦ K3  
♣ J43

♠ 84  
♥ A10976  
♦ 87  
♣ Q1095

N  
W — E  
S

♠ QJ632  
♥ KJ  
♦ 6542  
♣ K2

14

♠ 8752  
♥ AKJ1054  
♦ A2  
♣ Q

♠ A  
♥ 976  
♦ 9854  
♣ A10742

♠ 109643  
♥ Q  
♦ KQ106  
♣ 983

N  
W — E  
S

♠ KQJ  
♥ 832  
♦ J73  
♣ KJ65

15

♠ Q1043  
♥ 3  
♦ QJ3  
♣ Q10942

♠ 87652  
♥ K  
♦ K8764  
♣ K8

♠ 9  
♥ AQJ8764  
♦ A  
♣ J765

N  
W — E  
S

♠ AKJ  
♥ 10952  
♦ 10952  
♣ A3

Board (13) Av: NS=+570

N-S	E-W	Contract	N-S	E-W	IMP
7	8	4S	S 4	620	2
5	6	4S	S 4	620	2
9	10	4S	S 4	620	2
8	7	4S	S 4	620	2
3	1	4S	S 4	620	2
1	3	4S	S 4	620	2
2	4	4S	S 4	620	2
4	2	4S	S 4	620	2
10	9	3Hx	E-1	200	-9
6	5	4S	S-1	100	-12

Board (14) Av: NS=+420

N-S	E-W	Contract	N-S	E-W	IMP
7	8	4H	N 5	450	1
5	6	4H	N 5	450	1
9	10	4H	N 4	420	0
8	7	4H	N 4	420	0
10	9	4H	N 4	420	0
6	5	4H	N 4	420	0
3	1	4H	N 4	420	0
4	2	4H	N 4	420	0
1	3	4H	N 4	420	0
2	4	3H	N 4	170	-6

Board (15) Av: NS=-50

N-S	E-W	Contract	N-S	E-W	IMP
4	2	4H	W-1	50	3
6	5	4H	W-1	50	3
2	4	4H	W-1	50	3
5	6	4H	W-1	50	3
3	1	4H	W-1	50	3
9	10	2H	W 3	140	-3
10	9	2H	W 3	140	-3
1	3	2H	W 3	140	-3
7	8	2H	W 3	140	-3
8	7	3H	W 4	170	-3

16

♠ A972  
♥ K10432  
♦  
♣ AKJ3

♠ KQ103  
♥ AQJ6  
♦ AJ  
♣ Q108

♠ J65  
♥ 75  
♦ KQ8764  
♣ 97

N  
W — E  
S

♠ 84  
♥ 98  
♦ 109532  
♣ 6542

17

♠ J9743  
♥ 84  
♦ KQ96  
♣ J5

♠ KQ82  
♥ AQ2  
♦ J72  
♣ 873

♠ 6  
♥ J965  
♦ 1053  
♣ AKQ102

N  
W — E  
S

♠ A105  
♥ K1073  
♦ A84  
♣ 964

18

♠ AQJ105  
♥ A1093  
♦ K95  
♣ 5

♠ K872  
♥ 754  
♦ 104  
♣ AQJ7

♠ 43  
♥ KQJ86  
♦ J863  
♣ K8

N  
W — E  
S

♠ 96  
♥ 2  
♦ AQ72  
♣ 1096432

Board (16) Av: NS=-490

N-S	E-W	Contract	N-S	E-W	IMP
3	1	2H	N 2	110	12
2	4	3D	W 3	110	9
9	10	3D	W 3	110	9
4	2	3NT	E 3	600	-3
10	9	3NT	E 3	600	-3
8	7	3NT	E 4	630	-4
1	3	3NT	E 4	630	-4
5	6	3NT	E 4	630	-4
6	5	3NT	E 4	630	-4
7	8	3NT	E 5	660	-5

Board (17) Av: NS=+20

N-S	E-W	Contract	N-S	E-W	IMP
10	9	2S	N 3	140	3
4	2	1S	N 2	110	3
7	8	1S	N 2	110	3
6	5	3NT	E-2	100	2
5	6	3C	E-1	50	1
2	4	3C	E-1	50	1
1	3	3S	N-1	50	-2
9	10	1NT	W 1	90	-3
8	7	3C	E 3	110	-4
3	1	3C	E 3	110	-4

Board (18) Av: NS=+110

N-S	E-W	Contract	N-S	E-W	IMP
9	10	3NT	S 3	600	10
5	6	2S	N 4	170	2
3	1	2S	N 3	140	1
6	5	2S	N 3	140	1
4	2	2S	N 2	110	0
8	7	3H	W-2	100	0
7	8	3H	W-2	100	0
2	4	3H	W-2	100	0
1	3	3H	W-1	50	-2
10	9	3C	S-1	100	-5



19

♠ K97543  
♥ J862  
♦ J  
♣ 85

♠ AQJ  
♥ AKQ10973  
♦ Q92  
♣ Q92

N  
W—E  
S

♠ 8  
♥ 4  
♦ K10965  
♣ AK10763

♠ 1062  
♥ 5  
♦ AQ87432  
♣ J4

20

♠ 9643  
♥ 984  
♦ 8  
♣ AQ764

♠ AK1087  
♥ J10  
♦ A63  
♣ KJ9

N  
W—E  
S

♠ J  
♥ AQ765  
♦ 74  
♣ 108532

♠ Q52  
♥ K32  
♦ KQJ10952  
♣

21

♠ QJ87  
♥ J952  
♦ 10942  
♣ 6

♠ 54  
♥ A743  
♦ 53  
♣ AQ742

N  
W—E  
S

♠ 106  
♥ K86  
♦ 8  
♣ KJ109853

♠ AK932  
♥ Q10  
♦ AKQJ76  
♣

Board (19) Av: NS=-830

N-S	E-W	Contract	N-S	E-W	IMP
6	7	7H W-1	100		14
8	9	3Dx S-3	500		8
2	1	5C W 5	600		6
10	5	4H W 5	650		5
5	10	5H W 6	680		4
7	6	5H W 6	680		4
1	2	4H W 6	680		4
3	4	6C E 7	1390		-11
4	3	6H E 6	1430		-12
9	8	6Hx W 6	1660		-13

Board (20) Av: NS=+120

N-S	E-W	Contract	N-S	E-W	IMP
4	3	2NT E-4	400		7
5	10	2NT E-4	400		7
8	9	2NT E-3	300		5
7	6	2NT E-3	300		5
9	8	2NT E-2	200		2
3	4	2D S 2	90		-1
1	2	3D S-1	100		-6
2	1	2D S-1	100		-6
6	7	2H W 3	140		-6
10	5	4Dx S-2	500		-12

Board (21) Av: NS=+620

N-S	E-W	Contract	N-S	E-W	IMP
9	8	7Cx E-4	800		5
4	3	5S S 5	650		1
6	7	5S S 5	650		1
2	1	5S S 5	650		1
1	2	5D S 5	600		-1
7	6	5D S 5	600		-1
8	9	5D S 5	600		-1
3	4	5D S 5	600		-1
5	10	5D S 5	600		-1
10	5	5D S 5	600		-1

22

♠ 43  
♥ QJ4  
♦ KQ84  
♣ KQ83

♠ KJ10  
♥ AK10853  
♦ 952  
♣ 2

N  
W—E  
S

♠ A98752  
♥ 92  
♦ J3  
♣ 1097

♠ Q6  
♥ 76  
♦ A1076  
♣ AJ654

23

♠ K1073  
♥ AK98  
♦ A8  
♣ 654

♠ QJ96  
♥ Q72  
♦ Q1075  
♣ A8

N  
W—E  
S

♠ 52  
♥ 1063  
♦ 432  
♣ J10973

♠ A84  
♥ J54  
♦ KJ96  
♣ KQ2

24

♠ 76542  
♥ 5  
♦ 654  
♣ A652

♠ 10  
♥ AJ7  
♦ AQJ1073  
♣ Q74

N  
W—E  
S

♠ KQ93  
♥ Q8432  
♦ K9  
♣ KJ

♠ AJ8  
♥ K1096  
♦ 82  
♣ 10983

Board (22) Av: NS=-30

N-S	E-W	Contract	N-S	E-W	IMP
2	1	3NT N 4	430		10
6	7	3C S 3	110		4
5	10	3C S 3	110		4
10	5	3C N 3	110		4
4	3	4C N-1	50		-1
8	9	5D N-2	100		-2
1	2	2H W 2	110		-2
3	4	2H W 3	140		-3
9	8	3NT N-4	200		-5
7	6	3NT N-4	200		-5

Board (23) Av: NS=+630

N-S	E-W	Contract	N-S	E-W	IMP
9	8	3NT S 5	660		1
10	5	3NT S 5	660		1
6	7	3NT S 5	660		1
5	10	3NT S 5	660		1
8	9	3NT S 4	630		0
3	4	3NT S 4	630		0
1	2	3NT S 3	600		-1
2	1	3NT S 3	600		-1
4	3	3NT S 3	600		-1
7	6	3NT S-1	100		-12

Board (24) Av: NS=-140

N-S	E-W	Contract	N-S	E-W	IMP
5	10	4H E-1	50		5
10	5	4H E-1	50		5
6	7	4H E-1	50		5
2	1	4H E-1	50		5
3	4	4H E-1	50		5
1	2	4H E-1	50		5
4	3	3NT E 4	430		-7
9	8	3NT E 5	460		-8
8	9	3NT E 5	460		-8
7	6	3NT E 5	460		-8

25

♠ K83  
♥ AQ62  
♦ 762  
♣ AK10

♠ AJ1097642  
♥ 8  
♦ A  
♣ 742

N  
W—E  
S

♠ 5  
♥ KJ9  
♦ KJ1095  
♣ Q985

♠ Q  
♥ 107543  
♦ Q843  
♣ J63

26

♠ AQJ53  
♥ 982  
♦ AJ62  
♣ 10

♠ K109  
♥ A64  
♦ 97543  
♣ 62

N  
W—E  
S

♠ 74  
♥ QJ5  
♦ 10  
♣ AKQJ943

♠ 862  
♥ K1073  
♦ KQ8  
♣ 875

27

♠ Q4  
♥ QJ107  
♦ J1083  
♣ A74

♠ AJ6  
♥ 4  
♦ 9654  
♣ J8632

N  
W—E  
S

♠ K853  
♥ A98  
♦ A2  
♣ KQ105

♠ 10972  
♥ K6532  
♦ KQ7  
♣ 9

Board (25) Av: NS=-80

N-S	E-W	Contract	N-S	E-W	IMP
9	8	4Sx W-1	200		7
4	3	4S W-1	100		5
10	5	3H N-1	50		1
1	2	3H N-1	50		1
2	1	4H N-2	100		-1
5	10	3H N-2	100		-1
3	4	3S W 3	140		-2
7	6	3S W 3	140		-2
6	7	3S W 3	140		-2
8	9	5Hx N-4	800		-12

Board (26) Av: NS=+20

N-S	E-W	Contract	N-S	E-W	IMP
3	4	3S N 3	140		3
5	10	3S N 3	140		3
8	9	4C W-1	100		2
10	5	4C E-1	100		2
7	6	4C E-1	100		2
9	8	3NT E-1	100		2
6	7	3C E 3	110		-4
2	1	3C E 4	130		-4
1	2	3C E 4	130		-4
4	3	3NT W 3	600		-12

Board (27) Av: NS=-100

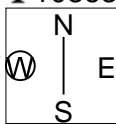
N-S	E-W	Contract	N-S	E-W	IMP
5	10	2H N 3	140		6
1	2	2H N 3	140		6
7	6	1NT E 2	120		-1
10	5	1NT E 2	120		-1
2	1	1NT E 2	120		-1
4	3	1NT E 2	120		-1
9	8	3C E 4	130		-1
6	7	1NT E 3	150		-2
8	9	1NT E 3	150		-2
3	4	1NT E 3	150		-2

28

♠ 10963  
♥ KQ73  
♦ 4  
♣ 10863

♠ A2 ♠ KJ854  
♥ A864 ♥ 92  
♦ K972 ♦ AQJ10  
♣ KJ7 ♣ A4

♠ Q7  
♥ J105  
♦ 8653  
♣ Q952

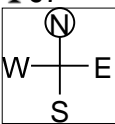


29

♠ A98  
♥ J7  
♦ 1076543  
♣ J7

♠ Q10765 ♠ K32  
♥ KQ96 ♥ 82  
♦ 2 ♦ J98  
♣ 1065 ♣ AQ843

♠ J4  
♥ A10543  
♦ AKQ  
♣ K92

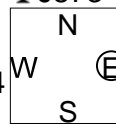


30

♠ K83  
♥ AKJ93  
♦ 2  
♣ J873

♠ AQ74 ♠ J962  
♥ 87 ♥ 642  
♦ QJ854 ♦ 73  
♣ 65 ♣ AKQ10

♠ 105  
♥ Q105  
♦ AK1096  
♣ 942



Board (28) Av: NS=-570

N-S	E-W	Contract	N-S	E-W	IMP
10	5	6NT W-2	100		12
8	9	4NT W 4	430		4
9	8	3NT W 4	430		4
1	2	3NT W 4	430		4
2	1	3NT W 5	460		3
7	6	3NT W 6	490		2
5	10	3NT W 6	490		2
4	3	6D E 6	920		-8
6	7	6D E 7	940		-9
3	4	6D E 7	940		-9

Board (29) Av: NS=+160

N-S	E-W	Contract	N-S	E-W	IMP
7	6	3NT N 3	600		10
1	2	3NT N 3	600		10
6	7	2NT N 4	180		1
8	9	2NT N 3	150		0
5	10	2D S 4	130		-1
4	3	3D S 3	110		-2
2	1	3D S 3	110		-2
9	8	2H S 2	110		-2
10	5	1NT S-1	100		-6
3	4	2S W 2	110		-7

Board (30) Av: NS=+70

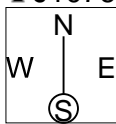
N-S	E-W	Contract	N-S	E-W	IMP
7	6	2H N 3	140		2
5	10	2H N 3	140		2
9	8	2H N 3	140		2
8	9	2H N 3	140		2
1	2	2H N 3	140		2
6	7	1NT S 2	120		2
10	5	3S W-1	50		-1
3	4	4H N-1	50		-3
4	3	3C S-2	100		-5
2	1	2S W 2	110		-5

31

♠ 63  
♥ 43  
♦ 975  
♣ J107632

♠ A874 ♠ KQJ1095  
♥ QJ105 ♥ K6  
♦ J64 ♦ K10  
♣ K5 ♣ Q84

♠ 2  
♥ A9872  
♦ AQ832  
♣ A9

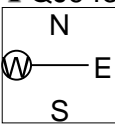


32

♠ 2  
♥ AK53  
♦ AK2  
♣ QJ943

♠ KQ10 ♠ AJ983  
♥ 92 ♥ J76  
♦ 10765 ♦ J43  
♣ 10872 ♣ K6

♠ 7654  
♥ Q1084  
♦ Q98  
♣ A5

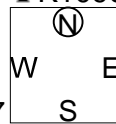


33

♠ 107  
♥ K73  
♦ K5  
♣ K109632

♠ KJ6 ♠ 98543  
♥ Q109 ♥ J854  
♦ 98 ♦ AQJ  
♣ AQJ87 ♣ 4

♠ AQ2  
♥ A62  
♦ 1076432  
♣ 5



Board (31) Av: NS=-430

N-S	E-W	Contract	N-S	E-W	IMP
5	10	3S E 5	200		6
8	9	4S E 4	420		0
10	5	4S E 4	420		0
7	6	4S E 4	420		0
3	4	4S E 4	420		0
4	3	4S E 4	420		0
9	8	4S E 5	450		-1
2	1	4S E 5	450		-1
1	2	4S E 5	450		-1
6	7	4S E 5	450		-1

Board (32) Av: NS=+460

N-S	E-W	Contract	N-S	E-W	IMP
4	3	4H N 6	480		1
10	5	4H N 6	480		1
3	4	4H N 6	480		1
5	10	4H N 6	480		1
7	6	4H N 5	450		0
9	8	4H N 5	450		0
8	9	4H N 5	450		0
2	1	4H N 5	450		0
1	2	4H N 5	450		0
6	7	4H N 5	450		0

Board (33) Av: NS=-60

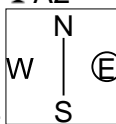
N-S	E-W	Contract	N-S	E-W	IMP
8	9	2C W-2	100		4
1	2	2C W-2	100		4
9	8	2C S 2	90		4
5	10	4S E-1	50		3
10	5	3S E 3	140		-2
6	7	2S E 3	140		-2
2	1	3C N-3	150		-3
7	6	1NT W 3	150		-3
4	3	2S E 4	170		-3
3	4	2S E 4	170		-3

34

♠ AQJ9  
♥ 1065  
♦ J765  
♣ A2

♠ 107653 ♠ KQJ8432  
♥ A7 ♥ KQJ8432  
♦ 4 ♦ AK93  
♣ KQ1064 ♣ 98

♠ K842  
♥ 9  
♦ Q1082  
♣ J753

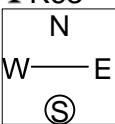


35

♠ J4  
♥ Q1096  
♦ KJ52  
♣ K63

♠ KQ872 ♠ A9  
♥ A876 ♥ J8753  
♦ AQJ10 ♦ Q1094  
♣ AQJ10 ♣ 54

♠ 10653  
♥ AK42  
♦ 3  
♣ 9872

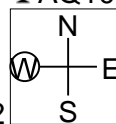


36

♠ A2  
♥ AKQ96  
♦ J  
♣ AQ1083

♠ J4 ♠ K98  
♥ 542 ♥ J107  
♦ 84 ♦ Q107532  
♣ J96542 ♣ K

♠ Q107653  
♥ 83  
♦ AK96  
♣ 7



Board (34) Av: NS=-470

N-S	E-W	Contract	N-S	E-W	IMP
5	10	4H E 5	450		1
7	6	4H E 5	450		1
8	9	4H E 5	450		1
2	1	4H E 5	450		1
1	2	4H E 5	450		1
9	8	4H E 6	480		0
6	7	4H E 6	480		0
4	3	4H E 6	480		0
10	5	4H E 6	480		0
3	4	6H E 6	980		-11

Board (35) Av: NS=-140

N-S	E-W	Contract	N-S	E-W	IMP
3	4	3S W-1	100		6
9	8	3D W 3	110		1
10	5	2S W 2	110		1
1	2	2S W 3	140		0
6	7	2S W 3	140		0
8	9	2S W 3	140		0
2	1	2S W 3	140		0
5	10	2S W 3	140		0
4	3	2S W 4	170		-1
7	6	4S W 4	620		-10

Board (36) Av: NS=+650

N-S	E-W	Contract	N-S	E-W	IMP
5	10	4S S 6	680		1
1	2	4H N 6	680		1
8	9	3NT S 5	660		0
10	5	3NT S 5	660		0
7	6	4S S 5	650		0
4	3	4S S 5	650		0
2	1	4H N 5	650		0
3	4	4H N 4	620		-1
9	8	3NT S 3	600		-2
6	7	6S S-1	100		-13