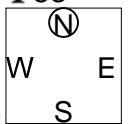


兵庫県知事杯 OPEN TEAMS Session 1 Flight A 2011年10月8日(土)

1

♠K86
♥KQ103
♦K1075
♣53

♠QJ42
♥72
♦Q
♣AKQ964



♠97
♥AJ965
♦A632
♣J7

♠A1053
♥84
♦J984
♣1082

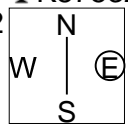
Board (1) Av: NS=-160

N-S	E-W	Contract	N-S	E-W	IMP
1	10	3NT E-1	50		5
2	8	2D S-2	100		2
4	7	2C W 3	110		2
9	5	3C W 4	130		1
7	4	3C E 4	130		1
8	2	3C E 4	130		1
5	9	2C W 4	130		1
3	6	2C W 4	130		1
10	1	3NT W 3	400		-6
6	3	3NT W 3	400		-6

2

♠43
♥8
♦KJ92
♣K87532

♠109762
♥2
♦Q763
♣1064



♠KQJ5
♥AKJ976
♦105
♣A

♠A8
♥Q10543
♦A84
♣QJ9

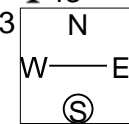
Board (2) Av: NS=-140

N-S	E-W	Contract	N-S	E-W	IMP
4	7	4S W-1	50		5
9	5	1H E 1	80		2
5	9	1H E 1	80		2
7	4	1H E 1	80		2
10	1	1H E 1	80		2
3	6	1H E 1	80		2
2	8	1H E 2	110		1
1	10	4Cx N-1	200		-2
8	2	4S W 4	420		-7
6	3	4S W 5	450		-7

3

♠AQ85
♥A975
♦J93
♣43

♠J10943
♥J4
♦Q876
♣A6



♠K762
♥Q6
♦K104
♣K1075

♠K10832
♥A52
♣QJ982

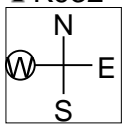
Board (3) Av: NS=+400

N-S	E-W	Contract	N-S	E-W	IMP
8	2	4H S 5	450		2
7	4	4H S 5	450		2
6	3	4H S 5	450		2
9	5	4H S 5	450		2
2	8	4H S 5	450		2
5	9	4H S 4	420		1
10	1	4H S 4	420		1
3	6	4H S 4	420		1
4	7	3H S 4	170		-6
1	10	3H S 3	140		-6

4

♠A62
♥1052
♦A86
♣K932

♠Q54
♥Q84
♦1032
♣J654



♠J1097
♥KJ976
♦J95
♣A

♠K83
♥A3
♦KQ74
♣Q1087

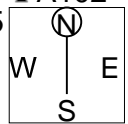
Board (4) Av: NS=+50

N-S	E-W	Contract	N-S	E-W	IMP
2	8	3NT N 4	630		11
5	9	3NT N 3	600		11
7	4	3C N 4	130		2
1	10	3C N 4	130		2
10	1	5C N-1	100		-4
3	6	4C N-1	100		-4
8	2	3NT S-1	100		-4
9	5	3NT S-1	100		-4
6	3	3NT N-1	100		-4
4	7	3NT N-1	100		-4

5

♠32
♥J73
♦AJ753
♣A102

♠KJ1085
♥AK
♦1082
♣Q53



♠74
♥Q1098654
♦9
♣K64

♠AQ96
♥2
♦KQ64
♣J987

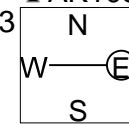
Board (5) Av: NS=-130

N-S	E-W	Contract	N-S	E-W	IMP
5	9	4D N 4	130		6
2	8	2D S 3	110		6
4	7	4H E-1	50		5
6	3	5D N-1	100		1
3	6	5D N-1	100		1
1	10	5D N-1	100		1
7	4	3H E 4	170		-1
10	1	3H E 4	170		-1
9	5	3Hx E 3	530		-9
8	2	4Hx E 4	590		-10

6

♠QJ9
♥K
♦J974
♣AK1083

♠108543
♥10975
♦K
♣QJ2



♠A76
♥842
♦A1085
♣964

♠K2
♥AQJ63
♦Q632
♣75

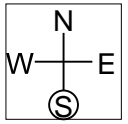
Board (6) Av: NS=+420

N-S	E-W	Contract	N-S	E-W	IMP
7	4	3NT S 4	430		0
5	9	3NT S 4	430		0
1	10	3NT S 4	430		0
4	7	3NT N 4	430		0
9	5	3NT N 4	430		0
8	2	3NT N 4	430		0
10	1	3NT N 4	430		0
2	8	3NT N 3	400		-1
6	3	3NT N 3	400		-1
3	6	3NT S-1	50		-10

7

♠7642
♥QJ865
♦8
♣QJ4

♠AJ
♥109742
♦KJ1092
♣3



♠8
♥K
♦7543
♣AK108765

♠KQ10953
♥A3
♦AQ6
♣92

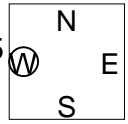
Board (7) Av: NS=+480

N-S	E-W	Contract	N-S	E-W	IMP
9	5	5Dx E-3	800		8
7	4	4Sx S 4	790		7
1	10	4S S 4	620		4
6	3	4S S 4	620		4
2	8	4S S 4	620		4
8	2	4S S 4	620		4
5	9	5Dx E-2	500		1
10	1	5Dx W-1	200		-7
3	6	4S S-1	100		-11
4	7	4S S-1	100		-11

8

♠J1092
♥4
♦K8752
♣K65

♠865
♥AQJ975
♦A3
♣Q2



♠AQ3
♥10863
♦J4
♣AJ109

♠K74
♥K2
♦Q1096
♣8743

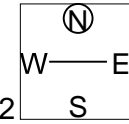
Board (8) Av: NS=-460

N-S	E-W	Contract	N-S	E-W	IMP
2	8	5H W 5	450		0
9	5	4H W 5	450		0
4	7	4H W 5	450		0
6	3	4H W 5	450		0
3	6	4H W 5	450		0
10	1	4H W 5	450		0
8	2	4H W 5	450		0
1	10	4H W 6	480		-1
5	9	4H W 6	480		-1
7	4	4H W 6	480		-1

9

♠Q632
♥A986
♦J3
♣J65

♠K107
♥J42
♦K5
♣K10942



♠A854
♥K10
♦AQ1087
♣Q8

♠J9
♥Q753
♦9642
♣A73

Board (9) Av: NS=-430

N-S	E-W	Contract	N-S	E-W	IMP
9	5	2H S-2	100		8
7	4	2D E 3	110		8
5	9	1NT W 4	180		6
2	8	1NT W 4	180		6
4	7	3NT E 3	600		-5
1	10	3NT E 3	600		-5
8	2	3NT E 3	600		-5
10	1	3NT E 3	600		-5
3	6	3NT E 3	600		-5
6	3	3NT E 5	660		-6

兵庫県知事杯 OPEN TEAMS Session 1 Flight A 2011年10月8日(土)

10

♠ J
♥ 8654
♦ 109853
♣ KJ8

♠ Q3 ♠ A10964
♥ A1073 ♥ 92
♦ A64 ♦ KJ72
♣ 10654 ♣ 32

W — E
N — S

♠ K8752
♥ KQJ
♦ Q
♣ AQ97

Board (10) Av: NS=-70

N-S	E-W	Contract	N-S	E-W	IMP
8	2	1NT S 1	90		4
4	7	1S S 1	80		4
7	4	1S S 1	80		4
3	6	2NT N-1	100		-1
6	3	1S S-1	100		-1
10	1	1S S-1	100		-1
2	8	1S S-1	100		-1
9	5	1S S-1	100		-1
1	10	2C S-2	200		-4
5	9	1S S-2	200		-4

11

♠ Q75
♥ J102
♦ A763
♣ Q107

♠ AJ964 ♠ K1082
♥ AK65 ♥ 74
♦ ♦ KQ954
♣ AK63 ♣ 85

W — E
N — S

♠ 3
♥ Q983
♦ J1082
♣ J942

Board (11) Av: NS=-790

N-S	E-W	Contract	N-S	E-W	IMP
2	8	5S W 5	450		8
7	4	4S W 5	450		8
5	9	4S W 5	450		8
9	5	4S W 6	480		7
4	7	6S W 6	980		-5
1	10	6S W 6	980		-5
8	2	6S W 6	980		-5
3	6	6S W 7	1010		-6
10	1	6S W 7	1010		-6
6	3	6S W 7	1010		-6

12

♠ AKQJ10
♥ 53
♦ AK43
♣ AJ

♠ 987532 ♠ ♠ AQ6
♥ 9874 ♥ ♥ Q876
♦ ♦ ♦ Q98762
♣ K43 ♣ ♣

W — E
N — S

♠ 64
♥ KJ102
♦ J10952
♣ 105

Board (12) Av: NS=+540

N-S	E-W	Contract	N-S	E-W	IMP
9	5	5Cx E-4	800		6
3	6	5Cx E-4	800		6
10	1	3NT N 5	660		3
5	9	3NT N 4	630		3
1	10	4S N 4	620		2
2	8	4S N 4	620		2
8	2	4S N 4	620		2
6	3	5Cx E-3	500		-1
7	4	4S N-1	100		-12
4	7	4S N-1	100		-12

13

♠ K86532
♥ K108
♦ J94
♣ K

♠ AQ7 ♠ J104
♥ Q96 ♥ 543
♦ 108 ♦ A53
♣ AJ942 ♣ Q873

W — E
N — S

♠ 9
♥ AJ72
♦ KQ762
♣ 1065

Board (13) Av: NS=+90

N-S	E-W	Contract	N-S	E-W	IMP
3	6	3C W-3	300		5
5	9	3C W-2	200		3
6	3	1S N 4	170		2
7	4	2S N 3	140		2
4	7	1S N 3	140		2
8	2	2S N 2	110		1
10	1	2S N 2	110		1
9	5	1NT W 1	90		-5
2	8	3H N-1	100		-5
1	10	3D S-1	100		-5

14

♠ 964
♥ K4
♦ KJ92
♣ A642

♠ K53 ♠ AQ10872
♥ QJ7652 ♥ ♥
♦ 764 ♦ Q105
♣ 8 ♣ QJ103

W — E
N — S

♠ J
♥ A10983
♦ A83
♣ K975

Board (14) Av: NS=-90

N-S	E-W	Contract	N-S	E-W	IMP
7	4	4Cx N 4	510		12
4	7	4Sx E-1	100		5
8	2	3S E-1	50		1
3	6	4C N-1	50		1
2	8	4C N-2	100		0
10	1	4C N-2	100		0
1	10	4H S-3	150		-2
5	9	3S E 4	170		-2
9	5	5Cx S-2	300		-5
6	3	4S E 4	420		-8

15

♠ Q10532
♥ K43
♦ KQ3
♣ Q9

♠ A6 ♠ J984
♥ Q107 ♥ A962
♦ A875 ♦ 102
♣ KJ107 ♣ 832

W — E
N — S

♠ K7
♥ J85
♦ J964
♣ A654

Board (15) Av: NS=-110

N-S	E-W	Contract	N-S	E-W	IMP
4	7	1NT S 2	120		6
5	9	1NT W 1	90		1
10	1	2S N-1	100		0
6	3	1NT S-1	100		0
2	8	1NT S-1	100		0
9	5	2H E 2	110		0
7	4	2C W 3	110		0
8	2	1NT W 2	120		0
3	6	1NT W 2	120		0
1	10	2H E 3	140		-1

16

♠ 10952
♥ 1084
♦ K842
♣ K3

♠ QJ ♠ A873
♥ QJ53 ♥ 62
♦ AQ76 ♦ J53
♣ J95 ♣ Q1086

W — E
N — S

♠ K64
♥ AK97
♦ 109
♣ A742

Board (16) Av: NS=+10

N-S	E-W	Contract	N-S	E-W	IMP
5	9	1NT W-2	200		5
1	10	1NT N 2	120		3
7	4	1NT N 1	90		2
8	2	1NT N 1	90		2
2	8	1NT N 1	90		2
9	5	1NT N-1	50		-2
3	6	1NT W 1	90		-3
6	3	1NT W 1	90		-3
4	7	1NT W 1	90		-3
10	1	1NT N-2	100		-3

17

♠ AJ82
♥ Q1064
♦ 10
♣ AJ96

♠ Q109 ♠ K765
♥ J972 ♥ AK3
♦ AQJ876 ♦ ♦
♣ ♣ Q87542

W — E
N — S

♠ 43
♥ 85
♦ K95432
♣ K103

Board (17) Av: NS=-140

N-S	E-W	Contract	N-S	E-W	IMP
3	6	3NT E-1	50		5
10	1	1NT N-1	50		3
5	9	2C E 2	90		2
4	7	2D S-2	100		1
2	8	2D S-2	100		1
6	3	1NTxN-1	100		1
1	10	2S E 3	140		0
9	5	2D S-4	200		-2
7	4	2Dx S-2	300		-4
8	2	1DxxN-3	1000		-13

18

♠ Q106
♥ J9843
♦ 2
♣ K1043

♠ K ♠ AJ95
♥ 5 ♥ AQ1076
♦ AKQJ86543 ♦ 7
♣ A5 ♣ Q98

W — E
N — S

♠ 87432
♥ K2
♦ 109
♣ J762

Board (18) Av: NS=-1170

N-S	E-W	Contract	N-S	E-W	IMP
10	1	5D W 7	440		12
3	6	5D W 7	440		12
5	9	6D W 6	920		6
9	5	6D E 7	940		6
7	4	6NT E 6	990		5
1	10	7NT E 7	1520		-8
2	8	7NT E 7	1520		-8
8	2	7NT E 7	1520		-8
6	3	7NT E 7	1520		-8
4	7	7NT E 7	1520		-8

19

♠ K9843
♥ K5
♦ J63
♣ Q76

♠ A752 ♠ QJ6
♥ 9732 ♥ AQ1064
♦ A752 W—E ♦ Q1098
♣ 9 ♣ J

♠ 10
♥ J8
♦ K4
♣ AK1085432

Board (19) Av: NS=+10

N-S	E-W	Contract	N-S	E-W	IMP
8	6	3NT N 3	400		9
10	4	3NT N 3	400		9
3	5	3NT N 3	400		9
9	2	3C S 4	130		3
1	7	4C S-1		50	-2
7	1	4C S-1		50	-2
6	8	3NT S-3		150	-4
2	9	5Cx S-2		300	-7
5	3	5Cx S-2		300	-7
4	10	5Cx S-3		500	-11

20

♠ J62
♥ KQJ
♦ AJ104
♣ KQ8

♠ A5 ♠ KQ4
♥ 98742 ♥ A10
♦ K76 W—E ♦ 9532
♣ 752 ♣ J963

♠ 109873
♥ 653
♦ Q8
♣ A104

Board (20) Av: NS=+140

N-S	E-W	Contract	N-S	E-W	IMP
4	10	2S N 3	140		0
5	3	2S N 3	140		0
8	6	2S N 3	140		0
10	4	2S N 3	140		0
3	5	2S N 3	140		0
7	1	2S N 3	140		0
1	7	2S N 3	140		0
9	2	2S N 3	140		0
2	9	2S N 3	140		0
6	8	1NT N 2	120		-1

21

♠ 986
♥ J108
♦ A87
♣ J752

♠ KQ3 ♠ J1072
♥ AK632 ♥ 75
♦ 1064 W—E ♦ J952
♣ Q8 ♣ AK9

♠ A54
♥ Q94
♦ KQ3
♣ 10643

Board (21) Av: NS=-140

N-S	E-W	Contract	N-S	E-W	IMP
9	2	2NT W 2	120		1
3	5	1NT W 2	120		1
4	10	1NT W 2	120		1
6	8	1NT W 2	120		1
8	6	2S E 3	140		0
10	4	2H W 3	140		0
2	9	1NT W 3	150		0
7	1	1NT W 4	180		-1
5	3	1NT W 4	180		-1
1	7	1NT E 4	180		-1

22

♠ KQJ1083
♥ J7
♦ J7
♣ KQ542

♠ J963 ♠ Q8754
♥ 75 ♥ 942
♦ 53 W—E ♦ KQ86
♣ A10763 ♣ 9

♠ AK102
♥ A6
♦ A10942
♣ J8

Board (22) Av: NS=+270

N-S	E-W	Contract	N-S	E-W	IMP
8	6	6H S 6	980		12
7	1	4H S 6	480		5
10	4	5H S 5	450		5
4	10	5H N 5	450		5
1	7	4H N 5	450		5
3	5	4H N 5	450		5
6	8	6H S-1		50	-8
2	9	6H S-1		50	-8
9	2	6H S-1		50	-8
5	3	6H N-1		50	-8

23

♠ A87
♥ 94
♦ AQJ92
♣ A92

♠ 542 ♠ KQ96
♥ A10765 ♥ KQ83
♦ 6 W—E ♦ K85
♣ QJ87 ♣ 106

♠ J103
♥ J2
♦ 10743
♣ K543

Board (23) Av: NS=+90

N-S	E-W	Contract	N-S	E-W	IMP
4	10	1NT N 2	120		1
3	5	1NT N 2	120		1
8	6	1NT N 2	120		1
6	8	1NT N 2	120		1
1	7	1NT N 2	120		1
9	2	1NT N 2	120		1
2	9	4H W-1		100	0
10	4	1NT N 1	90		0
5	3	1NT S-1		100	-5
7	1	1NT N-1		100	-5

24

♠ 96532
♥ J
♦ 532
♣ Q984

♠ KJ1084 ♠ AQ832
♥ 1095 ♥ AQ832
♦ Q86 W—E ♦ KJ107
♣ J2 ♣ A653

♠ AQ7
♥ K764
♦ A94
♣ K107

Board (24) Av: NS=-130

N-S	E-W	Contract	N-S	E-W	IMP
10	4	4D W-2	100		6
6	8	4H E-1		50	5
3	5	3H E 3		140	0
5	3	3H E 3		140	0
1	7	3H E 3		140	0
7	1	2H E 3		140	0
8	6	2H E 3		140	0
4	10	3S N-3		150	-1
9	2	3S N-4		200	-2
2	9	4H E 4		420	-7

25

♠ Q103
♥ J742
♦ 5
♣ AK975

♠ K872 ♠ 95
♥ KQ973 ♥ K9863
♦ QJ63 W—E ♦ J1082
♣ QJ63 ♣ 104

♠ AJ64
♥ AQ105
♦ A64
♣ 82

Board (25) Av: NS=+420

N-S	E-W	Contract	N-S	E-W	IMP
6	8	4H S 4	420		0
4	10	4H S 4	420		0
10	4	4H S 4	420		0
9	2	4H S 4	420		0
7	1	4H S 4	420		0
3	5	4H S 4	420		0
2	9	4H S 4	420		0
8	6	4H N 4	420		0
1	7	4H N 4	420		0
5	3	4H N 4	420		0

26

♠ 1087
♥ J864
♦ KJ
♣ QJ63

♠ J9652 ♠ AQ43
♥ KQ2 ♥ A107
♦ 1064 W—E ♦ A8532
♣ K2 ♣ 9

♠ K
♥ 953
♦ Q97
♣ A108754

Board (26) Av: NS=-350

N-S	E-W	Contract	N-S	E-W	IMP
10	4	4S W-1	100		10
6	8	4S W-1	100		10
1	7	4S W-1	100		10
7	1	4S W-1	100		10
4	10	4S W 4		620	-7
8	6	4S W 4		620	-7
9	2	4S W 4		620	-7
2	9	4S W 4		620	-7
5	3	4S W 4		620	-7
3	5	4S W 4		620	-7

27

♠ J4
♥ 7543
♦ KQJ4
♣ 864

♠ K7653 ♠ 8
♥ A ♥ QJ1092
♦ A1063 W—E ♦ 85
♣ KQ5 ♣ AJ1032

♠ AQ1092
♥ K86
♦ 972
♣ 97

Board (27) Av: NS=-160

N-S	E-W	Contract	N-S	E-W	IMP
4	10	3NT W-1	50		5
8	6	3NT W-1	50		5
10	4	3H W 3		140	1
3	5	2H E 3		140	1
2	9	2H E 3		140	1
9	2	2H E 3		140	1
5	3	3H E 4		170	0
7	1	2H E 4		170	0
6	8	3NT E 4		430	-7
1	7	3NT E 5		460	-7

28

♠ J7
♥ QJ2
♦ J10
♣ AQJ1083

♠ K1065
♥ K103
♦ AQ72
♣ 52

N E
W S

♠ AQ984
♥ 9854
♦ 4
♣ 976

♠ 32
♥ A76
♦ K98653
♣ K4

Board (28) Av: NS=-140

N-S	E-W	Contract	N-S	E-W	IMP
6	8	3C	N 4	130	7
4	10	3C	N-1	100	1
10	4	2S	W 2	110	1
5	3	3S	W 3	140	0
1	7	3S	W 3	140	0
8	6	2S	W 3	140	0
7	1	2S	W 3	140	0
3	5	2S	W 3	140	0
2	9	3S	W 4	170	-1
9	2	3NT	S-2	200	-2

29

♠ KQ10
♥ KQ86
♦ KQJ
♣ J83

♠ 765
♥ J94
♦ 104
♣ AQ1064

N E
W S

♠ AJ842
♥ A3
♦ 9872
♣ 95

♠ 93
♥ 10752
♦ A653
♣ K72

Board (29) Av: NS=-50

N-S	E-W	Contract	N-S	E-W	IMP
1	7	1NT	N 3	150	5
10	4	1NT	N 2	120	5
6	8	1NT	N 2	120	5
4	10	1NT	N 1	90	4
5	3	1NT	N-1	100	-2
9	2	1NT	N-1	100	-2
3	5	1NT	N-1	100	-2
8	6	3H	N-2	200	-4
7	1	1NT	N-2	200	-4
2	9	1NT	N-4	400	-8

30

♠ 8
♥ Q109863
♦ 76
♣ AQ65

♠ KJ
♥ A2
♦ QJ1084
♣ 9874

N E
W S

♠ 9763
♥ J4
♦ 9532
♣ J103

♠ AQ10542
♥ K75
♦ AK
♣ K2

Board (30) Av: NS=+480

N-S	E-W	Contract	N-S	E-W	IMP
9	2	6H	N 6	980	11
10	4	3NT	N 6	490	0
7	1	5H	N 6	480	0
8	6	4H	S 6	480	0
1	7	4H	N 6	480	0
5	3	4H	N 6	480	0
2	9	4H	N 6	480	0
3	5	4H	N 6	480	0
6	8	4H	N 5	450	-1
4	10	4S	S 4	420	-2

31

♠ QJ98542
♥ Q4
♦
♣ A862

♠ A106
♥ 1062
♦ K752
♣ K95

N E
W S

♠ 73
♥ AKJ85
♦ J83
♣ QJ4

♠ K
♥ 973
♦ AQ10964
♣ 1073

Board (31) Av: NS=-130

N-S	E-W	Contract	N-S	E-W	IMP
8	6	3C	E-3	150	7
2	9	4S	N-1	100	1
3	5	3S	N-1	100	1
1	7	3S	N-1	100	1
9	2	3S	N-1	100	1
6	8	3H	E 3	140	0
7	1	3H	E 3	140	0
4	10	3H	E 4	170	-1
5	3	4S	N-2	200	-2
10	4	4H	E 4	420	-7

32

♠ 54
♥ AQ987
♦ KQ106
♣ 98

♠ AQ986
♥ K2
♦ A932
♣ K10

N E
W S

♠ 10732
♥ J63
♦ 54
♣ AQJ4

♠ KJ
♥ 1054
♦ J87
♣ 76532

Board (32) Av: NS=-600

N-S	E-W	Contract	N-S	E-W	IMP
10	4	2S	W 3	140	10
1	7	2S	W 5	200	9
2	9	4S	W 4	620	-1
9	2	4S	W 4	620	-1
6	8	4S	W 5	650	-2
8	6	4S	W 5	650	-2
3	5	4S	W 6	680	-2
5	3	4S	W 6	680	-2
4	10	4S	W 6	680	-2
7	1	4S	E 6	680	-2

33

♠ J32
♥ Q82
♦ KJ1062
♣ 87

♠ Q1074
♥ A53
♦ 985
♣ K54

N E
W S

♠ AK965
♥ 10974
♦ Q743
♣

♠ 8
♥ KJ6
♦ A
♣ AQJ109632

Board (33) Av: NS=+40

N-S	E-W	Contract	N-S	E-W	IMP
2	9	4C	S 4	130	3
5	3	4C	S 4	130	3
3	5	4C	S 4	130	3
7	1	4C	S 4	130	3
8	6	4S	W-1	50	0
1	7	4S	E-1	50	0
6	8	5C	S-1	50	-3
9	2	5C	S-1	50	-3
4	10	5C	S-1	50	-3
10	4	5C	S-1	50	-3

34

♠ 3
♥ A97
♦ 965
♣ Q98652

♠ AKJ
♥ 63
♦ J10742
♣ K43

N E
W S

♠ 108642
♥ Q842
♦ 8
♣ AJ10

♠ Q975
♥ KJ105
♦ AKQ3
♣ 7

Board (34) Av: NS=-130

N-S	E-W	Contract	N-S	E-W	IMP
9	2	3H	N 3	140	7
2	9	2C	N 2	90	6
6	8	3H	N-1	100	1
7	1	1NT	N-1	100	1
10	4	2S	W 2	110	1
1	7	4H	N-2	200	-2
3	5	4H	N-2	200	-2
8	6	3NT	S-2	200	-2
4	10	3H	N-2	200	-2
5	3	1NT	N-3	300	-5

35

♠ 95
♥ QJ982
♦ K9
♣ AKJ6

♠ A74
♥ A765
♦ A106
♣ 1095

N E
W S

♠ J10832
♥
♦ QJ42
♣ Q873

♠ KQ6
♥ K1043
♦ 8753
♣ 42

Board (35) Av: NS=+250

N-S	E-W	Contract	N-S	E-W	IMP
4	10	4Hx	N 4	590	8
9	2	4H	N 4	420	5
3	5	4H	N 4	420	5
7	1	4H	N 4	420	5
2	9	4S	E-2	200	-2
6	8	3S	E-2	200	-2
1	7	4S	E-1	100	-4
10	4	3S	W-1	100	-4
8	6	3S	E-1	100	-4
5	3	4H	N-2	100	-8

36

♠ K106
♥ J5
♦ Q742
♣ AJ96

♠ A95
♥ A842
♦ 853
♣ 543

N E
W S

♠ 7432
♥ K96
♦ AJ9
♣ 1082

♠ QJ8
♥ Q1073
♦ K106
♣ KQ7

Board (36) Av: NS=+300

N-S	E-W	Contract	N-S	E-W	IMP
6	8	3NT	S 3	600	7
9	2	3NT	N 3	600	7
10	4	3NT	N 3	600	7
8	6	3NT	N 3	600	7
7	1	2NT	S 3	150	-4
1	7	2NT	N 2	120	-5
5	3	1NT	S 2	120	-5
4	10	2C	S 3	110	-5
2	9	1D	N 3	110	-5
3	5	3NT	S-1	100	-9

兵庫県知事杯 OPEN TEAMS Session 2 Flight A 2011年10月8日(土)

1

♠AJ65
♥K94
♦J2
♣KQJ7

♠108
♥8632
♦Q97
♣A985

♠K73
♥A10
♦K10654
♣1043

W N E S

♠Q942
♥QJ75
♦A83
♣62

Board (1) Av: NS=+330

N-S	E-W	Contract	N-S	E-W	IMP
5	2	4S	N	4	420
10	8	4S	N	4	420
4	6	4S	N	4	420
1	9	4S	N	4	420
9	1	4S	N	4	420
2	5	4S	N	4	420
3	7	3S	N	5	200
8	10	2S	S	4	170
6	4	3S	N	3	140
7	3	4S	N-1		50

2

♠AQ982
♥Q3
♦Q2
♣KJ92

♠K1063
♥7
♦K1084
♣10876

♠54
♥A10654
♦AJ65
♣A3

W N E S

♠J7
♥KJ982
♦973
♣Q54

Board (2) Av: NS=-80

N-S	E-W	Contract	N-S	E-W	IMP
4	6	2C	E-1		50
3	7	1NT	E-1		50
7	3	1NT	E	1	90
2	5	1NT	E	1	90
8	10	2S	N-1		100
9	1	2NT	S-1		100
5	2	1S	N-1		100
6	4	2D	W	3	110
1	9	2D	W	4	130
10	8	2D	W	5	150

3

♠J10832
♥Q10843
♦Q7
♣10

♠K
♥AJ95
♦K8652
♣K32

♠975
♥76
♦J93
♣QJ875

W N E S

♠AQ64
♥K2
♦A104
♣A964

Board (3) Av: NS=+300

N-S	E-W	Contract	N-S	E-W	IMP
6	4	4S	S	5	450
10	8	4S	S	5	450
1	9	4S	N	5	450
4	6	4S	N	5	450
5	2	4S	S	4	420
2	5	4S	N	4	420
7	3	2H	S	3	140
3	7	2H	S	2	110
9	1	4S	S-1		50
8	10	4S	N-1		50

4

♠KQ109
♥3
♦K10975
♣A62

♠873
♥10985
♦QJ82
♣J10

♠A42
♥AKQ74
♦A4
♣Q75

W N E S

♠J65
♥J62
♦63
♣K9843

Board (4) Av: NS=+150

N-S	E-W	Contract	N-S	E-W	IMP
8	10	4H	W-2		200
7	3	4H	W-2		200
1	9	4H	W-2		200
9	1	4H	W-2		200
5	2	3NT	W-2		200
10	8	4H	W-1		100
2	5	3H	W-1		100
3	7	3H	W-1		100
6	4	2NT	W-1		100
4	6	3H	W	3	140

5

♠K964
♥K10
♦A3
♣AQJ104

♠10
♥8432
♦K87652
♣52

♠AQ72
♥Q97
♦9
♣K8763

W N E S

♠J853
♥AJ65
♦QJ104
♣9

Board (5) Av: NS=+440

N-S	E-W	Contract	N-S	E-W	IMP
1	9	3NTxW-5			1100
2	5	4S	N	5	650
8	10	3NT	N	4	630
6	4	4S	S	4	620
7	3	4S	N	4	620
9	1	4S	N	4	620
4	6	3NT	N	3	600
10	8	4S	N-1		100
5	2	4S	N-1		100
3	7	4S	N-1		100

6

♠A
♥AK972
♦J952
♣Q86

♠Q9743
♥63
♦K8
♣KJ32

♠J865
♥Q54
♦Q10
♣A1097

W N E S

♠K102
♥J108
♦A7643
♣54

Board (6) Av: NS=+240

N-S	E-W	Contract	N-S	E-W	IMP
8	10	4H	N	4	420
9	1	4H	N	4	420
1	9	4H	N	4	420
7	3	3H	N	5	200
6	4	3H	N	4	170
4	6	3H	N	4	170
2	5	3H	N	4	170
5	2	3H	N	4	170
10	8	2H	N	4	170
3	7	2S	E-1		100

7

♠76
♥K864
♦K87
♣AJ86

♠A8
♥109532
♦932
♣K92

♠KQJ1093
♥AQ
♦10
♣Q754

W N E S

♠542
♥J7
♦AQJ654
♣103

Board (7) Av: NS=-70

N-S	E-W	Contract	N-S	E-W	IMP
6	4	4S	W-2		200
10	8	3D	S	3	110
1	9	3D	S	3	110
3	7	3S	W-1		100
8	10	3S	W-1		100
2	5	2S	W	2	110
4	6	3S	W	3	140
9	1	2S	W	3	140
7	3	4S	W	4	620
5	2	4S	W	4	620

8

♠K1084
♥AJ987
♦Q8
♣KJ

♠A9752
♥K6542
♦J
♣109

♠J
♥Q3
♦A9762
♣86432

W N E S

♠Q63
♥10
♦K10543
♣AQ75

Board (8) Av: NS=+340

N-S	E-W	Contract	N-S	E-W	IMP
6	4	3NT	S	5	460
2	5	3NT	S	4	430
4	6	3NT	S	4	430
3	7	3NT	N	4	430
5	2	4H	N	4	420
9	1	3NT	N	3	400
7	3	3NT	N	3	400
1	9	2S	S	2	110
8	10	2D	S	3	110
10	8	3C	N-1		50

9

♠AK2
♥K86
♦J5
♣A10865

♠J1043
♥7
♦K10843
♣KQ3

♠765
♥QJ10543
♦
♣J742

W N E S

♠Q98
♥A92
♦AQ9762
♣9

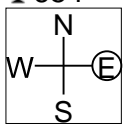
Board (9) Av: NS=+410

N-S	E-W	Contract	N-S	E-W	IMP
10	8	3NT	N	4	430
4	6	3NT	N	4	430
9	1	3NT	N	4	430
3	7	3NT	N	4	430
1	9	3NT	N	3	400
8	10	3NT	N	3	400
5	2	3NT	N	3	400
2	5	3NT	N	3	400
7	3	3NT	N	3	400
6	4	6Dx	S-1		100

10

♠ J964
♥ QJ
♦ AQJ10
♣ 654

♠ KQ83
♥ AK987
♦ 2
♣ 982



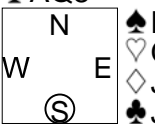
♠ A102
♥ 105
♦ K987
♣ J1073

♠ 75
♥ 6432
♦ 6543
♣ AKQ

11

♠ A986542
♥ 103
♦ K
♣ AQ8

♠ Q3
♥ J8754
♦ A108
♣ 974



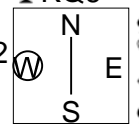
♠ K107
♥ Q
♦ J9653
♣ J1052

♠ J
♥ AK962
♦ Q742
♣ K63

12

♠ KJ9762
♥ AQ9
♦ K
♣ KQ6

♠ 1084
♥ J8632
♦ Q52
♣ 82



♠ Q53
♥ 1054
♦ 10874
♣ 743

♠ A
♥ K7
♦ AJ963
♣ AJ1095

Board (10) Av: NS=-130

N-S	E-W	Contract	N-S	E-W	IMP
7	3	2D	S-1	100	1
10	8	2D	S-1	100	1
8	10	2H	W 2	110	1
2	5	2H	E 2	110	1
5	2	2H	W 3	140	0
6	4	2H	E 3	140	0
1	9	1NT	E 3	150	-1
3	7	1NT	E 3	150	-1
4	6	1NT	E 3	150	-1
9	1	1NT	E 4	180	-2

Board (11) Av: NS=+310

N-S	E-W	Contract	N-S	E-W	IMP
2	5	4S	N 5	450	4
3	7	4S	N 5	450	4
1	9	3NT	S 4	430	3
10	8	3NT	S 4	430	3
8	10	3NT	N 4	430	3
4	6	4S	N 4	420	3
7	3	4S	N 4	420	3
9	1	3NT	S-1	50	-8
5	2	3NT	S-1	50	-8
6	4	3NT	S-2	100	-9

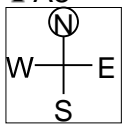
Board (12) Av: NS=+1520

N-S	E-W	Contract	N-S	E-W	IMP
2	5	7C	S 7	2140	12
8	10	7C	N 7	2140	12
9	1	6NT	S 6	1440	-2
4	6	6NT	N 6	1440	-2
10	8	6NT	N 6	1440	-2
3	7	6NT	N 6	1440	-2
1	9	6NT	N 6	1440	-2
7	3	6C	S 7	1390	-4
6	4	6C	S 7	1390	-4
5	2	3NT	N 6	690	-13

13

♠ AQ75
♥ J93
♦ AQ65
♣ A8

♠ J2
♥ AK42
♦ K7
♣ QJ1032



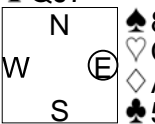
♠ K109
♥ Q10
♦ 10942
♣ K764

♠ 8643
♥ 8765
♦ J83
♣ 95

14

♠ K92
♥ J10872
♦ J7
♣ QJ7

♠ AQ
♥ AK
♦ K10643
♣ K1032



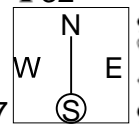
♠ 8764
♥ Q9653
♦ A82
♣ 5

♠ J1053
♥ 4
♦ Q95
♣ A9864

15

♠ K98
♥ A865
♦ Q1083
♣ 32

♠ 105
♥ KJ109
♦ A
♣ AQJ987



♠ J42
♥ 432
♦ K765
♣ 1065

♠ AQ763
♥ Q7
♦ J942
♣ K4

Board (13) Av: NS=-210

N-S	E-W	Contract	N-S	E-W	IMP
1	9	2S	N-1	100	3
6	4	3C	E 3	110	3
4	6	1NT	N-2	200	0
10	8	1NT	N-2	200	0
3	7	1NT	N-2	200	0
5	2	1NT	N-2	200	0
2	5	1NT	N-2	200	0
8	10	1NT	N-3	300	-3
7	3	1NT	N-3	300	-3
9	1	1NT	N-4	400	-5

Board (14) Av: NS=-130

N-S	E-W	Contract	N-S	E-W	IMP
3	7	4H	E-3	150	7
6	4	3NT	W-3	150	7
10	8	4H	E-2	100	6
4	6	4H	W-1	50	5
7	3	3NT	W-1	50	5
9	1	2NT	W 4	180	-2
1	9	3NT	W 3	400	-7
2	5	3NT	W 3	400	-7
5	2	3NT	W 3	400	-7
8	10	3NT	W 4	430	-7

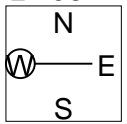
Board (15) Av: NS=+30

N-S	E-W	Contract	N-S	E-W	IMP
5	2	3S	S 3	140	3
10	8	3S	S 3	140	3
7	3	2S	S 2	110	2
6	4	4C	W-1	50	1
8	10	4C	W-1	50	1
2	5	4C	W-1	50	1
3	7	4C	W-1	50	1
9	1	4S	S-1	100	-4
1	9	3C	W 3	110	-4
4	6	3C	W 4	130	-4

16

♠ 1097
♥ K8762
♦ Q5
♣ 1064

♠ AQJ652
♥ J43
♦ 2
♣ Q92



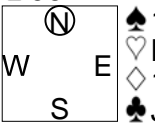
♠ 843
♥ AQ1095
♦ A
♣ AK83

♠ K
♥
♦ KJ10987643
♣ J75

17

♠ AKQ3
♥ 9874
♦ A76
♣ 96

♠ J64
♥ J10
♦ KQJ5
♣ AK102



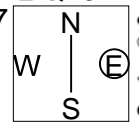
♠ 1082
♥ KQ3
♦ 10842
♣ J75

♠ 975
♥ A652
♦ 93
♣ Q843

18

♠ 1054
♥ J1085
♦ 976
♣ Q73

♠ AQ97
♥ K73
♦ AJ5
♣ 952



♠ K6
♥ 42
♦ Q842
♣ AJ1084

♠ J832
♥ AQ96
♦ K103
♣ K6

Board (16) Av: NS=-670

N-S	E-W	Contract	N-S	E-W	IMP
7	3	5Dx	S-3	500	5
5	2	5Dx	S-3	500	5
3	7	5H	E 6	680	0
8	10	5H	E 6	680	0
4	6	4S	W 6	680	0
2	5	5S	W 7	710	-1
6	4	4S	W 7	710	-1
9	1	4H	E 7	710	-1
1	9	4H	E 7	710	-1
10	8	6H	E 6	1430	-13

Board (17) Av: NS=+110

N-S	E-W	Contract	N-S	E-W	IMP
4	6	2S	E-3	150	1
8	10	2S	E-3	150	1
2	5	2S	E-3	150	1
9	1	2S	E-3	150	1
6	4	2H	S 3	140	1
10	8	2H	S 2	110	0
1	9	2H	S 2	110	0
3	7	2H	S 2	110	0
7	3	3H	S-1	50	-4
5	2	2H	S-1	50	-4

Board (18) Av: NS=-200

N-S	E-W	Contract	N-S	E-W	IMP
3	7	1NT	E 2	120	2
10	8	2C	E 4	130	2
7	3	2C	E 4	130	2
5	2	2C	E 4	130	2
2	5	2C	E 4	130	2
6	4	1NT	E 3	150	2
1	9	1NT	E 3	150	2
4	6	3NT	W 3	400	-5
9	1	3NT	W 3	400	-5
8	10	3NT	W 5	460	-6

兵庫県知事杯 OPEN TEAMS Session 3 Flight A 2011年10月9日(日)

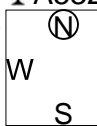
1

♠ J2
♥ K5
♦ AKQ108
♣ A532

♠ K1076
♥ A73
♦ 943
♣ K98

♠ A943
♥ J109864
♦ 2
♣ Q4

♠ Q85
♥ Q2
♦ J765
♣ J1076



Board (1) Av: NS=-20

N-S	E-W	Contract	N-S	E-W	IMP
3	8	3D N 3	110		4
7	5	1NT N 1	90		3
5	7	4S E-1	50		2
9	4	4H W-1	50		2
4	9	4H E-1	50		2
6	1	4D N-1		50	-1
2	10	3NT S-2		100	-2
1	6	3H E 3		140	-3
8	3	3H E 3		140	-3
10	2	2H W 3		140	-3

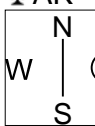
2

♠ KJ108732
♥ 2
♦ A83
♣ AK

♠ Q
♥ J8654
♦
♣ Q1098653

♠ 94
♥ K10
♦ Q107654
♣ 742

♠ A65
♥ AQ973
♦ KJ92
♣ J



Board (2) Av: NS=+1450

N-S	E-W	Contract	N-S	E-W	IMP
9	4	7NT S 7	2220		13
8	3	7NT N 7	2220		13
7	5	7S N 7	2210		13
6	1	6S N 7	1460		0
10	2	6S N 7	1460		0
5	7	6S N 6	1430		-1
3	8	6S N 6	1430		-1
2	10	4S N 7	710		-12
4	9	4S N 7	710		-12
1	6	7S N-1		100	-17

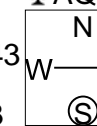
3

♠ Q6
♥ QJ102
♦ 754
♣ AQJ4

♠ AK8
♥ 98543
♦ 93
♣ 1083

♠ 10543
♥ A6
♦ KQJ106
♣ 92

♠ J972
♥ K7
♦ A82
♣ K765



Board (3) Av: NS=-60

N-S	E-W	Contract	N-S	E-W	IMP
5	7	2NT S 2	120		5
8	3	2D W-1		100	4
9	4	3C S-1		50	0
3	8	3C N-1		50	0
6	1	3C N-1		50	0
4	9	2NT N-1		50	0
1	6	1NT N-1		50	0
10	2	5C S-3		150	-3
7	5	3NT S-3		150	-3
2	10	3NT N-3		150	-3

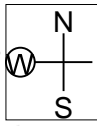
4

♠ 97653
♥ QJ742
♦ J
♣ 83

♠ 10
♥ A10983
♦ 964
♣ KQ74

♠ J2
♥ 6
♦ AK1087532
♣ AJ

♠ AKQ84
♥ K5
♦ Q
♣ 109652



Board (4) Av: NS=-640

N-S	E-W	Contract	N-S	E-W	IMP
5	7	4S S-2		200	10
8	3	5D E 6		620	1
4	9	5D E 6		620	1
7	5	5D E 6		620	1
3	8	5D E 6		620	1
1	6	5D E 6		620	1
6	1	5D E 6		620	1
10	2	5D E 6		620	1
9	4	5Sx S-3		800	-4
2	10	5Sx S-3		800	-4

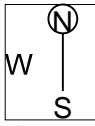
5

♠ 1082
♥ KJ2
♦ 9862
♣ K43

♠ KQJ73
♥ 73
♦ A103
♣ 965

♠ A
♥ Q1094
♦ QJ54
♣ A1072

♠ 9654
♥ A865
♦ K7
♣ QJ8



Board (5) Av: NS=-250

N-S	E-W	Contract	N-S	E-W	IMP
6	1	2S W 3		140	3
3	8	2NT E 3		150	3
8	3	1NT E 3		150	3
5	7	2NT E 5		210	1
4	9	2NT E 5		210	1
7	5	2NT E 5		210	1
1	6	1NT E 5		210	1
2	10	3NT E 3		400	-4
9	4	3NT E 4		430	-5
10	2	3NT E 4		430	-5

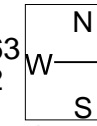
6

♠ K75
♥ Q2
♦ AKJ4
♣ KJ102

♠ J643
♥ AK1063
♦ Q1032
♣

♠ 10
♥ 754
♦ 98
♣ A976543

♠ AQ982
♥ J98
♦ 765
♣ Q8



Board (6) Av: NS=+20

N-S	E-W	Contract	N-S	E-W	IMP
2	10	3S S 3		140	3
3	8	3S S 3		140	3
1	6	3S S 3		140	3
9	4	2S S 3		140	3
7	5	4S S-1		50	-2
5	7	4S S-1		50	-2
10	2	4S S-1		50	-2
6	1	4S S-1		50	-2
8	3	4S S-1		50	-2
4	9	4S N-2		100	-3

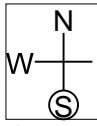
7

♠ KJ9
♥ AQ97
♦ K8543
♣ 10

♠ 43
♥ KJ54
♦ Q976
♣ K62

♠ AQ82
♥ 83
♦ AJ10
♣ 9754

♠ 10765
♥ 1062
♦ 2
♣ AQJ83



Board (7) Av: NS=-40

N-S	E-W	Contract	N-S	E-W	IMP
7	5	1S S 4		170	5
10	2	2S S 2		110	4
9	4	2S S 2		110	4
2	10	1NT S 1		90	4
8	3	2S S-1		100	-2
1	6	2S S-1		100	-2
6	1	1S S-1		100	-2
4	9	1NT N-1		100	-2
5	7	2S S-2		200	-4
3	8	2S S-4		400	-8

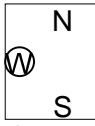
8

♠ 74
♥ KQ3
♦ K72
♣ AJ1065

♠ K65
♥ 1084
♦ Q985
♣ KQ4

♠ J982
♥ J9762
♦ 64
♣ 83

♠ AQ103
♥ A5
♦ AJ103
♣ 972



Board (8) Av: NS=+460

N-S	E-W	Contract	N-S	E-W	IMP
4	9	3NT N 5		460	0
8	3	3NT N 5		460	0
5	7	3NT N 5		460	0
9	4	3NT N 5		460	0
3	8	3NT N 5		460	0
6	1	3NT N 5		460	0
1	6	3NT N 5		460	0
10	2	3NT N 5		460	0
2	10	3NT N 5		460	0
7	5	1NT N 5		210	-6

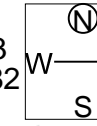
9

♠ Q943
♥ KJ
♦ 975
♣ A965

♠ 72
♥ Q943
♦ A1082
♣ 874

♠ AK1065
♥ A7
♦ KQ63
♣ J2

♠ J8
♥ 108652
♦ J4
♣ KQ103



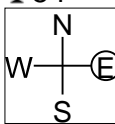
Board (9) Av: NS=-40

N-S	E-W	Contract	N-S	E-W	IMP
4	9	3NT W-2		200	6
8	3	3NT W-1		100	4
5	7	2NT W-1		100	4
6	1	2NT W-1		100	4
9	4	2S E 2		110	-2
7	5	2D E 3		110	-2
2	10	2D E 3		110	-2
3	8	2NT W 2		120	-2
10	2	2D E 4		130	-3
1	6	3H S-4		200	-4

10

♠ QJ53
♥ J1095
♦ K96
♣ 54

♠ AK742
♥ K63
♦ J82
♣ 107



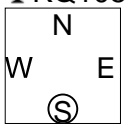
♠ 10
♥ 874
♦ A1043
♣ AJ982

♠ 986
♥ AQ2
♦ Q75
♣ KQ63

11

♠ 932
♥ KJ109
♦ K5
♣ KQ105

♠ J
♥ AQ6543
♦ J84
♣ J76



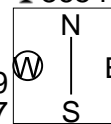
♠ KQ106
♥ 72
♦ A973
♣ A92

♠ A8754
♥ 8
♦ Q1062
♣ 843

12

♠ 85
♥ Q86
♦ 8654
♣ 8654

♠ A
♥ J3
♦ KQJ109
♣ AQJ107



♠ K743
♥ A1092
♦ A2
♣ K93

♠ QJ10962
♥ K754
♦ 73
♣ 2

Board (10) Av: NS=0

N-S	E-W	Contract	N-S	E-W	IMP
2	10	1NT S 2	120		3
6	1	1NT N 2	120		3
3	8	1NT E-1	100		3
4	9	1NT S 1	90		3
9	4	1NT N 1	90		3
5	7	2H S-1	100		-3
8	3	2H S-1	100		-3
1	6	1NT S-1	100		-3
10	2	1NT E 2	120		-3
7	5	2C S-3	300		-7

Board (11) Av: NS=+20

N-S	E-W	Contract	N-S	E-W	IMP
3	8	2H W-1	50		1
4	9	2H W-1	50		1
5	7	2H W-1	50		1
10	2	2H W-1	50		1
6	1	2H W-1	50		1
1	6	2H W-1	50		1
2	10	2H W-1	50		1
8	3	2S S-1	50	50	-2
7	5	2H W 2	110		-4
9	4	2H W 2	110		-4

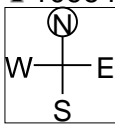
Board (12) Av: NS=-980

N-S	E-W	Contract	N-S	E-W	IMP
7	5	3NT E 7	520		10
3	8	6D W 7	940		1
4	9	6C W 7	940		1
5	7	6C W 7	940		1
8	3	6C W 7	940		1
9	4	6NT W 7	1020		-1
1	6	6NT W 7	1020		-1
10	2	6NT E 7	1020		-1
6	1	6NT E 7	1020		-1
2	10	7C W 7	1440		-10

13

♠ K5
♥ 10952
♦ KJ5
♣ 10964

♠ 9632
♥ Q3
♦ A1087
♣ J72



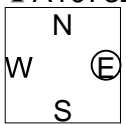
♠ AQ87
♥ AKJ74
♦ Q62
♣ 5

♠ J104
♥ 86
♦ 943
♣ AKQ83

14

♠ 42
♥ Q842
♦ 87
♣ A10732

♠ K1073
♥ 1096
♦ AK6
♣ J96



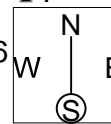
♠ QJ8
♥ J7
♦ Q10432
♣ K85

♠ A965
♥ AK53
♦ J95
♣ Q4

15

♠ QJ85
♥ J2
♦ KQ8752
♣ 7

♠ 92
♥ Q1086
♦ 643
♣ A865



♠ K107643
♥ 53
♦ AJ10
♣ K2

♠ A
♥ AK974
♦ 9
♣ QJ10943

Board (13) Av: NS=-430

N-S	E-W	Contract	N-S	E-W	IMP
9	4	4S E-2	200		12
7	5	4S E-1	100		11
2	10	3S W 5	200		6
1	6	3C S-2	200		6
3	8	4S W 4	620		-5
8	3	4S W 4	620		-5
10	2	4S W 4	620		-5
4	9	4S W 5	650		-6
5	7	4S W 5	650		-6
6	1	4S W 5	650		-6

Board (14) Av: NS=+120

N-S	E-W	Contract	N-S	E-W	IMP
2	10	2H N 4	170		2
8	3	2H N 4	170		2
7	5	2H N 4	170		2
6	1	2H N 4	170		2
1	6	2H N 3	140		1
3	8	2H N 3	140		1
9	4	2H N 2	110		0
4	9	2H N 2	110		0
5	7	1NT S-1	50	50	-5
10	2	2S W 3	140		-6

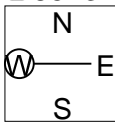
Board (15) Av: NS=-90

N-S	E-W	Contract	N-S	E-W	IMP
9	4	2H S 3	140		6
6	1	2H S 3	140		6
4	9	2H S 2	110		5
3	8	2H S 2	110		5
1	6	3NT N-1	100		0
8	3	3H S-1	100		0
7	5	4H S-2	200		-3
5	7	4NT N-3	300		-5
2	10	5C S-4	400		-7
10	2	4Hx S-3	800		-12

16

♠ K65
♥ QJ7
♦ 103
♣ 85432

♠ AJ92
♥ A
♦ 9752
♣ AK97



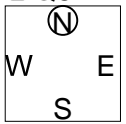
♠ 87
♥ 9543
♦ AQJ864
♣ 10

♠ Q1043
♥ K10862
♦ K
♣ QJ6

17

♠ KQJ
♥ 10943
♦ Q8
♣ Q842

♠ 10754
♥ AK62
♦ 106
♣ A75



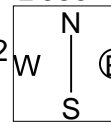
♠ A982
♥ J85
♦ J95432
♣

♠ 63
♥ Q7
♦ AK7
♣ KJ10963

18

♠ 7
♥ 1097
♦ J10743
♣ J852

♠ K8
♥ AJ8532
♦ AK2
♣ Q9



♠ A652
♥ Q64
♦ Q86
♣ AK4

♠ QJ10943
♥ K
♦ 95
♣ 10763

Board (16) Av: NS=-410

N-S	E-W	Contract	N-S	E-W	IMP
6	1	3NT W-1	100		11
9	4	3NT W-1	100		11
7	5	2D W 5	150		6
2	10	4D W 6	170		6
4	9	5D E 5	600		-5
8	3	5D E 5	600		-5
10	2	5D E 5	600		-5
3	8	3NT W 3	600		-5
1	6	5D W 6	620		-5
5	7	3NT W 5	660		-6

Board (17) Av: NS=+40

N-S	E-W	Contract	N-S	E-W	IMP
8	3	3NT N 3	400		8
5	7	1NT S 4	180		4
10	2	3C S 4	130		3
3	8	3C S 3	110		2
9	4	3H W-2	100		2
7	5	5C S-1	50	50	-3
6	1	4C S-1	50	50	-3
4	9	4C S-1	50	50	-3
1	6	3NT N-1	50	50	-3
2	10	3S E 3	140		-5

Board (18) Av: NS=-1000

N-S	E-W	Contract	N-S	E-W	IMP
10	2	6H E 6	980		1
8	3	6H E 6	980		1
2	10	6H E 6	980		1
3	8	6H E 6	980		1
6	1	6H E 6	980		1
5	7	6H E 7	1010		0
7	5	6H E 7	1010		0
1	6	6H E 7	1010		0
4	9	6H E 7	1010		0
9	4	6NT E 7	1020		-1

兵庫県知事杯 OPEN TEAMS Session 4 Flight A 2011年10月9日(日)

1

♠ 98752
♥ 53
♦ J107632
♣ A

♠ KQJ1063
♥ AKQ6
♦ AK8
♣

♠ A
♥ J1098742
♦ 542
♣ A4

♠ 4
♥
♦ QJ109763
♣ KQ985

Board (1) Av: NS=-930

N-S	E-W	Contract	N-S	E-W	IMP
8	1	5C W-9	450		16
5	4	7Hx E-1	100		14
9	7	7H W-1	50		14
1	8	6H E 6	980		-2
2	6	6H E 6	980		-2
3	10	7Dx S-5	1100		-5
7	9	7H E 7	1510		-11
10	3	7H E 7	1510		-11
6	2	7NT W 7	1520		-11
4	5	7NT W 7	1520		-11

2

♠ K9
♥ 42
♦ J1086
♣ A6543

♠ 1052
♥ AKQ1095
♦ 32
♣ Q8

♠ AQ87
♥ 83
♦ AQ954
♣ K2

♠ J643
♥ J76
♦ K7
♣ J1097

Board (2) Av: NS=-430

N-S	E-W	Contract	N-S	E-W	IMP
4	5	4H W 4	420		0
10	3	4H W 4	420		0
5	4	4H W 4	420		0
1	8	4H W 4	420		0
7	9	4H W 4	420		0
9	7	4H E 4	420		0
6	2	4H W 5	450		-1
3	10	4H E 5	450		-1
8	1	4H E 5	450		-1
2	6	4H E 5	450		-1

3

♠ 2
♥ KQJ4
♦ J7632
♣ A109

♠ AQ106
♥ 76
♦ Q109
♣ K652

♠ KJ985
♥ 109
♦ K4
♣ QJ73

♠ 743
♥ A8532
♦ A85
♣ 84

Board (3) Av: NS=-90

N-S	E-W	Contract	N-S	E-W	IMP
10	3	4H N 4	420		11
3	10	Passout			3
5	4	5H N-1	50		1
1	8	4H N-1	50		1
2	6	4H N-1	50		1
7	9	3S E 3	140		-2
4	5	3S E 3	140		-2
6	2	3S E 3	140		-2
9	7	3S E 4	170		-2
8	1	3S E 4	170		-2

4

♠ 1098542
♥ J
♦ A85
♣ A86

♠ AQ
♥ 654
♦ 109643
♣ K109

♠ 3
♥ AK1098732
♦ QJ
♣ 53

♠ KJ76
♥ Q
♦ K72
♣ QJ742

Board (4) Av: NS=+50

N-S	E-W	Contract	N-S	E-W	IMP
2	6	5Hx E-2	500		10
8	1	5Hx E-2	500		10
9	7	4H E-1	100		2
4	5	4H E-1	100		2
3	10	4H E-1	100		2
6	2	4H E-1	100		2
10	3	4S N-1	100		-4
1	8	4S S-2	200		-6
5	4	4S N-2	200		-6
7	9	4Sx N-2	500		-11

5

♠
♥ Q5
♦ AK108754
♣ KJ96

♠ 98653
♥ AK74
♦ Q
♣ AQ4

♠ KJ1042
♥ 10632
♦ J9
♣ 75

♠ AQ7
♥ J98
♦ 632
♣ 10832

Board (5) Av: NS=+80

N-S	E-W	Contract	N-S	E-W	IMP
6	2	5C N 5	600		11
4	5	5Sx E-3	500		9
1	8	4D N 4	130		2
2	6	3D N 4	130		2
5	4	4S W-2	100		1
9	7	4S E-2	100		1
3	10	4S E-2	100		1
7	9	5Dx N-1	200		-7
10	3	5Dx N-1	200		-7
8	1	5Cx N-2	500		-11

6

♠ K3
♥ AQ92
♦ 86
♣ QJ962

♠ 10952
♥ J74
♦ K5
♣ AK87

♠ J74
♥ K10653
♦ AJ104
♣ 4

♠ AQ86
♥ 8
♦ Q9732
♣ 1053

Board (6) Av: NS=-40

N-S	E-W	Contract	N-S	E-W	IMP
1	8	1NT N 2	120		4
10	3	3C N 3	110		4
5	4	1NT S 1	90		4
8	1	2D N-1	50		0
2	6	1NT N-1	50		0
7	9	1NT E 1	90		-2
9	7	1NT E 1	90		-2
4	5	1NT N-2	100		-2
3	10	2H E 2	110		-2
6	2	1Hx E 3	560		-11

7

♠ KJ5
♥ A4
♦ 107
♣ AJ9732

♠ 107
♥ J1093
♦ QJ62
♣ 865

♠ A98432
♥ KQ8
♦ 843
♣ 4

♠ Q6
♥ 7652
♦ AK95
♣ KQ10

Board (7) Av: NS=+630

N-S	E-W	Contract	N-S	E-W	IMP
6	2	3NT N 5	660		1
4	5	3NT N 5	660		1
10	3	3NT N 5	660		1
2	6	3NT N 5	660		1
5	4	3NT N 5	660		1
7	9	5C N 5	600		-1
1	8	3NT S 3	600		-1
8	1	3NT S 3	600		-1
9	7	3NT S 3	600		-1
3	10	3NT N 3	600		-1

8

♠ 65
♥ QJ875
♦ KQJ5
♣ 83

♠ AKJ83
♥ AK10
♦ A96
♣ 95

♠ Q92
♥ 962
♦ 107
♣ QJ1076

♠ 1074
♥ 43
♦ 8432
♣ AK42

Board (8) Av: NS=-180

N-S	E-W	Contract	N-S	E-W	IMP
6	2	4S W-1	50		6
7	9	3NT W-1	50		6
10	3	3NT W-1	50		6
8	1	3NT W-1	50		6
5	4	3S W 4	170		0
4	5	1S W 4	170		0
2	6	3NT W 3	400		-6
9	7	4S W 4	420		-6
1	8	4S W 4	420		-6
3	10	4S W 4	420		-6

9

♠ J10
♥ 105
♦ AK8732
♣ 985

♠ KQ32
♥ QJ98
♦ Q9
♣ Q74

♠ 7654
♥ A32
♦ J1064
♣ K3

♠ A98
♥ K764
♦ 5
♣ AJ1062

Board (9) Av: NS=+40

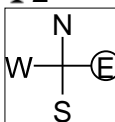
N-S	E-W	Contract	N-S	E-W	IMP
5	4	3S E-2	200		4
6	2	2S E-1	100		2
10	3	2D N 2	90		2
9	7	2D N 2	90		2
1	8	2D N 2	90		2
2	6	2C S 2	90		2
3	10	3D N-1	50		-3
7	9	3D N-1	50		-3
4	5	3D N-1	50		-3
8	1	3D N-2	100		-4

10

♠ Q10753
♥ A103
♦ AKJ9
♣ 2

♠ K942
♥ 872
♦ Q843
♣ 108

♠ A8
♥ K954
♦ 62
♣ AJ764

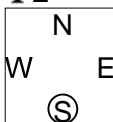


11

♠ AJ982
♥ AK53
♦ 973
♣ 2

♠ 63
♥ 98
♦ AQ542
♣ AKQ9

♠ K107
♥ QJ107
♦ 6
♣ J10753

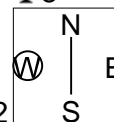


12

♠ J108532
♥ 942
♦ J92
♣ 8

♠ KQ7
♥ KJ
♦ A764
♣ AJ74

♠ 964
♥ Q1065
♦ 1053
♣ 1096



Board (10) Av: NS=+250

N-S	E-W	Contract	N-S	E-W	IMP
7	9	3NT S 3	600		8
6	2	3NT S 3	600		8
4	5	3NT S 3	600		8
8	1	3NT S 3	600		8
1	8	3NT N 3	600		8
9	7	3NT S-1		100	-8
3	10	3NT S-1		100	-8
2	6	3NT S-1		100	-8
10	3	3NT S-1		100	-8
5	4	3NT S-2		200	-10

Board (11) Av: NS=+250

N-S	E-W	Contract	N-S	E-W	IMP
5	4	4H N 5	450		5
10	3	4S N 4	420		5
9	7	4S N 4	420		5
2	6	4H N 4	420		5
1	8	5Dx E-2	300		2
3	10	3S N 4	170		-2
7	9	3S N 3	140		-3
6	2	4D E-1	50		-5
4	5	4D E-1	50		-5
8	1	3D E 3		110	-8

Board (12) Av: NS=-1270

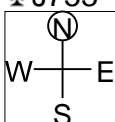
N-S	E-W	Contract	N-S	E-W	IMP
5	4	6C W 7	940		8
7	9	6C W 7	940		8
9	7	6NT E 7	1020		6
1	8	6NT E 7	1020		6
4	5	7D E 7	1440		-5
8	1	7C W 7	1440		-5
3	10	7C W 7	1440		-5
10	3	7C W 7	1440		-5
6	2	7C W 7	1440		-5
2	6	7NT E 7	1520		-6

13

♠ A
♥ J1054
♦ A1073
♣ J753

♠ QJ106
♥ KQ962
♦ 2
♣ 1042

♠ 7543
♥ A73
♦ Q85
♣ AK8



Board (13) Av: NS=+30

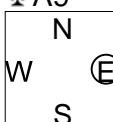
N-S	E-W	Contract	N-S	E-W	IMP
3	10	2S E-2	200		5
1	8	2C S 3	110		2
4	5	1NT S 1	90		2
6	2	1NT S 1	90		2
9	7	1NT S 1	90		2
8	1	1NT N 1	90		2
5	4	1NT N 1	90		2
10	3	1NT N-1		100	-4
2	6	3H N-2		200	-6
7	9	3NT S-3		300	-8

14

♠ A1064
♥ 10965
♦ QJ2
♣ A9

♠ 972
♥ AQJ432
♦ A93
♣ 7

♠ K85
♥ K8
♦ 1076
♣ KQJ42



Board (14) Av: NS=-20

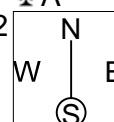
N-S	E-W	Contract	N-S	E-W	IMP
1	8	3NT N 4	430		10
10	3	2NT N 3	150		5
7	9	2NT N 3	150		5
8	1	3NT S-1		50	-1
5	4	3NT N-1		50	-1
9	7	3C S-1		50	-1
3	10	4S N-2		100	-2
6	2	2S N-2		100	-2
2	6	2S N-2		100	-2
4	5	2H E 2		110	-3

15

♠ 10864
♥ KQ74
♦ A652
♣ A

♠ AK
♥ AJ32
♦ 1098
♣ QJ93

♠ Q3
♥ 1095
♦ J74
♣ K8765



Board (15) Av: NS=-140

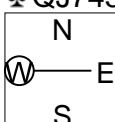
N-S	E-W	Contract	N-S	E-W	IMP
4	5	1H E-2	100		6
6	2	1H E 1		80	2
3	10	1H E 1		80	2
5	4	2S W 2		110	1
10	3	2S E 2		110	1
9	7	2S E 2		110	1
7	9	1NT S-2		200	-2
1	8	1NT S-2		200	-2
2	6	1NT S-2		200	-2
8	1	1NT S-2		200	-2

16

♠ 73
♥ 6
♦ K1097
♣ QJ7432

♠ AKJ9852
♥ 63
♦ A1098
♣

♠ Q64
♥ Q10982
♦ AJ
♣ K65



Board (16) Av: NS=+140

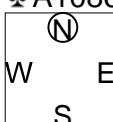
N-S	E-W	Contract	N-S	E-W	IMP
7	9	4H W-3	300		4
3	10	4S E-2	200		2
1	8	4H W-2	200		2
2	6	4H W-2	200		2
5	4	4S E-1	100		-1
8	1	4S E-1	100		-1
9	7	4S E-1	100		-1
6	2	4S E-1	100		-1
4	5	4S E-1	100		-1
10	3	4H W-1	100		-1

17

♠ KJ2
♥ A95
♦ AQ
♣ A10862

♠ AQ87
♥ KJ63
♦ J64
♣ K9

♠ 6543
♥ 87
♦ 8532
♣ 743



Board (17) Av: NS=-160

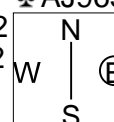
N-S	E-W	Contract	N-S	E-W	IMP
8	1	3C N-1		50	3
9	7	2H W 3		140	1
5	4	2H W 3		140	1
6	2	2H W 3		140	1
3	10	2H W 3		140	1
1	8	2S N-3		150	0
2	6	2H W 4		170	0
4	5	2H W 4		170	0
10	3	2NT N-4		200	-1
7	9	2Sx S-2		300	-4

18

♠ 98
♥ Q
♦ J1074
♣ AJ9632

♠ J1064
♥ KJ9653
♦ Q9
♣ 10

♠ Q7
♥ 74
♦ 86532
♣ KQ75



Board (18) Av: NS=-510

N-S	E-W	Contract	N-S	E-W	IMP
4	5	5H E 6	480		1
1	8	4S W 6	480		1
7	9	4S W 7	510		0
5	4	4S W 7	510		0
9	7	4S W 7	510		0
8	1	4S W 7	510		0
2	6	4S W 7	510		0
6	2	4S W 7	510		0
3	10	4S W 7	510		0
10	3	6S W 7	1010		-11

19

Hand 19: AKJ2, 3, Q9764, 852, 6, AJ10642, 10, KQ1096, N, W, E, S, Q1098743, J832, 73, 5, KQ9875, AK5, AJ4

20

Hand 20: KJ4, J8, J73, 87432, 32, KQ32, Q10852, 105, N, W, E, S, Q1097, 6, A64, KQJ96, A865, A109754, K9, A

21

Hand 21: AQ, K96, A106, QJ876, K7542, A4, Q43, A32, N, W, E, S, 83, 10852, KJ97, K54, J1096, QJ73, 852, 109

Board (19) Av: NS=-140. Table with columns N-S, E-W, Contract, N-S, E-W, IMP. Rows 1-9.

Board (20) Av: NS=+90. Table with columns N-S, E-W, Contract, N-S, E-W, IMP. Rows 3-10, 4.

Board (21) Av: NS=+90. Table with columns N-S, E-W, Contract, N-S, E-W, IMP. Rows 8-10, 6.

22

Hand 22: AKJ763, AQ643, 74, 982, Q109853, J5, K6, N, W, E, S, AK42, K972, AJ952, Q1054, J76, 108, Q1083

23

Hand 23: Q64, J96, J97632, 7, KJ52, 87, 854, J632, N, W, E, S, A73, K1053, K10, A1095, 1098, AQ42, AQ, KQ84

24

Hand 24: Q7, 743, KQ1042, J92, 4, AKQ10965, J85, A3, N, W, E, S, J832, 82, A73, KQ108, AK10965, J, 96, 7654

Board (22) Av: NS=-540. Table with columns N-S, E-W, Contract, N-S, E-W, IMP. Rows 5-10, 7.

Board (23) Av: NS=+80. Table with columns N-S, E-W, Contract, N-S, E-W, IMP. Rows 8-10, 3, 9.

Board (24) Av: NS=-480. Table with columns N-S, E-W, Contract, N-S, E-W, IMP. Rows 9-10, 6.

25

Hand 25: J543, 62, A53, Q1043, 1086, Q1097, KJ8, A65, N, W, E, S, Q972, 8, 9762, KJ97, AK, AKJ543, Q104, 82

26

Hand 26: 2, 42, KQ104, K107532, Q53, KJ109875, 832, N, W, E, S, K8764, AQ63, 6, QJ4, AJ109, AJ975, A986

27

Hand 27: J53, KQ86, 9542, Q3, 9842, J43, 1076, A42, N, W, E, S, AKQ7, A975, Q3, K108, 106, 102, AKJ8, J9765

Board (25) Av: NS=-80. Table with columns N-S, E-W, Contract, N-S, E-W, IMP. Rows 8-9, 10, 4, 6, 3, 5, 1, 7, 2, 9.

Board (26) Av: NS=-50. Table with columns N-S, E-W, Contract, N-S, E-W, IMP. Rows 7, 2, 8, 5, 6, 1, 4, 3, 10, 9.

Board (27) Av: NS=0. Table with columns N-S, E-W, Contract, N-S, E-W, IMP. Rows 4, 6, 2, 8, 7, 10, 5, 3, 9, 1, 5.

28

♠ A1052
♥ AQ4
♦ A103
♣ J85

♠ KQ43
♥ J872
♦ Q982
♣ Q



♠ J98
♥
♦ KJ54
♣ K106432

♠ 76
♥ K109653
♦ 76
♣ A97

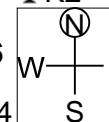
Board (28) Av: NS=-30

N-S	E-W	Contract	N-S	E-W	IMP
4	8	4H N 4	620		12
8	4	2NT E-5	250		7
7	2	3H N 3	140		5
9	3	4H N-1		100	-2
6	10	4H N-1		100	-2
5	1	4H N-1		100	-2
1	5	4H N-1		100	-2
3	9	4H N-1		100	-2
10	6	3NT N-1		100	-2
2	7	3NT N-1		100	-2

29

♠ 1054
♥ AJ109
♦ 8753
♣ K2

♠ K76
♥ KQ76
♦ A6
♣ AJ104



♠ Q2
♥ 84
♦ Q102
♣ Q98753

♠ AJ983
♥ 532
♦ KJ94
♣ 6

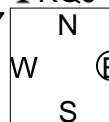
Board (29) Av: NS=-100

N-S	E-W	Contract	N-S	E-W	IMP
10	6	3NT E-1	100		5
3	9	1NT W 1		90	0
4	8	1NT W 1		90	0
6	10	1NT W 1		90	0
2	7	1NT W 1		90	0
8	4	3C W 3		110	0
5	1	3C W 3		110	0
1	5	3C W 3		110	0
7	2	1NT W 2		120	-1
9	3	1NT W 3		150	-2

30

♠ A8
♥ AK104
♦ J864
♣ KQJ

♠ KQJ97
♥ 76
♦ K10
♣ 9853



♠ 65
♥ QJ832
♦ A95
♣ 642

♠ 10432
♥ 95
♦ Q732
♣ A107

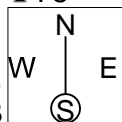
Board (30) Av: NS=-60

N-S	E-W	Contract	N-S	E-W	IMP
2	7	3D N 3	110		5
5	1	1NT N 1	90		4
8	4	3D S-1		50	0
6	10	2NT N-1		50	0
7	2	4D S-2		100	-1
9	3	3NT S-2		100	-1
4	8	3NT N-2		100	-1
3	9	3D S-2		100	-1
1	5	2NT S-2		100	-1
10	6	3NT S-3		150	-3

31

♠ A43
♥ AQJ9
♦ K943
♣ 75

♠ J96
♥ 4
♦ J8765
♣ 10863



♠ 1052
♥ K852
♦ Q
♣ AKJ92

♠ KQ87
♥ 10763
♦ A102
♣ Q4

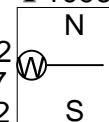
Board (31) Av: NS=+160

N-S	E-W	Contract	N-S	E-W	IMP
2	7	4H N 4	620		10
4	8	4H N 4	620		10
1	5	4H N 4	620		10
3	9	3H S 3	140		-1
5	1	2H S 3	140		-1
7	2	2H N 3	140		-1
6	10	4H N-1		100	-6
8	4	4H N-1		100	-6
10	6	2Cx W 2		180	-8
9	3	3NT N-2		200	-8

32

♠ 10
♥ Q4
♦ AK942
♣ 109653

♠ 64
♥ A852
♦ J107
♣ KJ82



♠ 9872
♥ KJ1093
♦ 863
♣ 4

♠ AKQJ53
♥ 76
♦ Q5
♣ AQ7

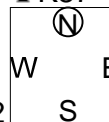
Board (32) Av: NS=+310

N-S	E-W	Contract	N-S	E-W	IMP
7	2	4S S 7	510		5
6	10	4S S 6	480		5
8	4	4S S 6	480		5
10	6	4S S 6	480		5
2	7	4S S 6	480		5
5	1	5S S 5	450		4
4	8	3S S 4	170		-4
1	5	3NT N-1		50	-8
3	9	3NT N-1		50	-8
9	3	3NT N-1		50	-8

33

♠ Q1083
♥ AJ76
♦ 109
♣ K87

♠ K542
♥ K
♦ 743
♣ Q10952



♠ A
♥ Q9542
♦ KQJ6
♣ 643

♠ J976
♥ 1083
♦ A852
♣ AJ

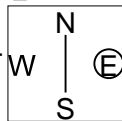
Board (33) Av: NS=+30

N-S	E-W	Contract	N-S	E-W	IMP
8	4	2H W-2	100		2
9	3	2H E-2	100		2
4	8	2H E-2	100		2
5	1	2H E-2	100		2
2	7	2H E-1	50		1
3	9	2H E-1	50		1
6	10	2D E-1	50		1
7	2	2D E 2		90	-3
10	6	2NT N-2		100	-4
1	5	1NT E 2		120	-4

34

♠ K1098
♥ Q87
♦ AJ1064
♣ 7

♠ Q632
♥ A10654
♦ 32
♣ J3



♠ A5
♥ K93
♦ KQ98
♣ K985

♠ J74
♥ J2
♦ 75
♣ AQ10642

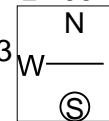
Board (34) Av: NS=-30

N-S	E-W	Contract	N-S	E-W	IMP
10	6	2NT E-3	150		5
7	2	3H E-2	100		4
5	1	4H E-1	50		2
3	9	3H W-1	50		2
4	8	3H E-1	50		2
6	10	2H W 2		110	-2
1	5	2H W 2		110	-2
2	7	2H W 3		140	-3
8	4	2H E 3		140	-3
9	3	2H E 3		140	-3

35

♠ KJ9853
♥
♦ AK654
♣ 105

♠ Q6
♥ J108743
♦ 2
♣ AJ94



♠ 102
♥ AK9652
♦ 987
♣ K2

♠ A74
♥ Q
♦ QJ103
♣ Q8763

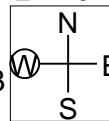
Board (35) Av: NS=+450

N-S	E-W	Contract	N-S	E-W	IMP
10	6	5Sx N 5	650		5
9	3	4S N 5	450		0
4	8	4S N 5	450		0
8	4	4S N 5	450		0
1	5	4S N 5	450		0
5	1	4S N 5	450		0
2	7	4S N 5	450		0
7	2	4S N 5	450		0
3	9	4S N 4	420		-1
6	10	6S N-1		50	-11

36

♠ AJ63
♥ AKJ106
♦ K4
♣ K10

♠ Q109
♥ Q984
♦ 10973
♣ Q8



♠ 75
♥ 7
♦ AQJ62
♣ A7643

♠ K842
♥ 532
♦ 85
♣ J952

Board (36) Av: NS=+50

N-S	E-W	Contract	N-S	E-W	IMP
4	8	4S N 5	650		12
7	2	3H N 4	170		3
1	5	3H N 4	170		3
6	10	3H N 3	140		3
5	1	3H N 3	140		3
3	9	4D W-1	100		2
8	4	4H N-1		100	-4
9	3	3H N-1		100	-4
10	6	3D W 3		110	-4
2	7	4H N-2		200	-6

兵庫県知事杯 OPEN TEAMS Session 5 Flight A 2011年10月10日(月)

1

♠K743
♥1092
♦QJ5
♣1087

♠J2
♥AJ875
♦AK7
♣J62

♠AQ6
♥K63
♦10986
♣K95

♠10985
♥Q4
♦432
♣AQ43

W N E S

Board (1) Av: NS=-120

N-S	E-W	Contract	N-S	E-W	IMP
9	6	1NT S 1	90		5
8	5	1NT E 1	90		1
4	1	1NT E 1	90		1
6	9	1NT E 2	120		0
5	8	1NT E 2	120		0
2	3	1NT E 2	120		0
3	2	1NT E 2	120		0
10	7	1NT N-3	150		-1
1	4	1NT E 3	150		-1
7	10	1NT E 3	150		-1

2

♠986
♥K2
♦9853
♣Q754

♠KJ42
♥AQ105
♦A642
♣3

♠10753
♥643
♦Q
♣AK986

♠AQ
♥J987
♦KJ107
♣J102

W N E S

Board (2) Av: NS=-480

N-S	E-W	Contract	N-S	E-W	IMP
4	1	3NT W-1	50		11
6	9	5H W 6	480		0
8	5	4H W 6	480		0
10	7	4H W 6	480		0
7	10	4H W 6	480		0
1	4	4H W 6	480		0
2	3	4H W 6	480		0
5	8	4H W 6	480		0
3	2	4H W 6	480		0
9	6	3Cx S-2	500		-1

3

♠QJ103
♥A1064
♦A7
♣J72

♠K854
♥Q95
♦QJ109
♣AK

♠72
♥K72
♦K8652
♣Q104

♠A96
♥J83
♦43
♣98653

W N E S

Board (3) Av: NS=-50

N-S	E-W	Contract	N-S	E-W	IMP
1	4	1NTxN 1	180		6
8	5	1NT S 1	90		4
6	9	1NT N 1	90		4
3	2	1NT N-1		50	0
9	6	1NT E 1	90		-1
2	3	1NT E 1	90		-1
5	8	1NT E 1	90		-1
7	10	2D N-2	100		-2
10	7	1NT E 2	120		-2
4	1	1NT E 2	120		-2

4

♠A874
♥8
♦A1098
♣J873

♠K9532
♥3
♦7432
♣964

♠QJ10
♥KQ754
♦Q5
♣Q52

♠6
♥AJ10962
♦KJ6
♣AK10

W N E S

Board (4) Av: NS=-50

N-S	E-W	Contract	N-S	E-W	IMP
5	8	3H W-2	200		6
3	2	3H W-1	100		4
2	3	1NT S 1	90		4
9	6	1H W 1	80		-1
4	1	1H W 1	80		-1
7	10	1H W 2	110		-2
6	9	1H W 2	110		-2
10	7	1H W 2	110		-2
8	5	1H W 2	110		-2
1	4	2S N-2	200		-4

5

♠A8
♥765432
♦K6542
♣

♠KQ1097
♥AKJ8
♦A3
♣J3

♠65432
♥109
♦J10
♣7654

♠J
♥Q
♦Q987
♣AKQ10982

W N E S

Board (5) Av: NS=-890

N-S	E-W	Contract	N-S	E-W	IMP
8	5	3NT E 6	490		9
9	6	2Dx S-2	500		9
7	10	6C W 6	920		-1
5	8	6C W 6	920		-1
4	1	6C W 6	920		-1
2	3	6C W 6	920		-1
3	2	6C W 7	940		-2
10	7	6NT W 6	990		-3
6	9	6NT W 6	990		-3
1	4	4Hx S-7	2000		-15

6

♠A832
♥Q764
♦A10
♣J98

♠5
♥A9832
♦872
♣Q632

♠KQ1076
♥KJ
♦KJ64
♣74

♠J94
♥105
♦Q953
♣AK105

W N E S

Board (6) Av: NS=+390

N-S	E-W	Contract	N-S	E-W	IMP
6	9	4S S 4	420		1
8	5	4S S 4	420		1
7	10	4S S 4	420		1
9	6	4S S 4	420		1
10	7	4S S 4	420		1
5	8	4S S 4	420		1
2	3	4S S 4	420		1
3	2	4S S 4	420		1
4	1	1S S 5	200		-5
1	4	3S S 4	170		-6

7

♠AKQJ832
♥62
♦
♣8642

♠1094
♥J103
♦KJ10732
♣Q

♠76
♥K87
♦AQ86
♣K953

♠5
♥AQ954
♦954
♣AJ107

W N E S

Board (7) Av: NS=-190

N-S	E-W	Contract	N-S	E-W	IMP
6	9	4S N-1	100		3
3	2	4S N-1	100		3
1	4	4S N-1	100		3
4	1	4S S-2	200		0
10	7	4S N-2	200		0
9	6	4S N-2	200		0
2	3	4S N-2	200		0
5	8	4S N-2	200		0
8	5	4S N-3	300		-3
7	10	4S N-3	300		-3

8

♠10942
♥102
♦J86
♣Q864

♠Q83
♥A875
♦KQ32
♣97

♠AKJ65
♥Q64
♦A105
♣105

♠7
♥KJ93
♦974
♣AKJ32

W N E S

Board (8) Av: NS=-110

N-S	E-W	Contract	N-S	E-W	IMP
5	8	4H W-2	100		5
1	4	4H E-1	50		4
6	9	4H E-1	50		4
3	2	4H E-1	50		4
2	3	4H E-1	50		4
7	10	3S S-2	100		0
8	5	3H E 3	140		-1
10	7	4H E 4	420		-7
4	1	4H E 4	420		-7
9	6	4H E 4	420		-7

9

♠72
♥A3
♦A1086
♣AJ853

♠Q108
♥QJ1098
♦932
♣42

♠AK4
♥K72
♦KJ7
♣K1096

♠J9653
♥654
♦Q54
♣Q7

W N E S

Board (9) Av: NS=+720

N-S	E-W	Contract	N-S	E-W	IMP
4	1	6C N 7	940		6
5	8	6C N 7	940		6
1	4	6C N 6	920		5
6	9	6C N 6	920		5
3	2	6C N 6	920		5
7	10	3NT S 7	520		-5
10	7	3NT S 7	520		-5
8	5	3NT S 7	520		-5
2	3	3NT S 7	520		-5
9	6	3NT N 5	460		-6

10

♠ KJ
♥ AQ9432
♦
♣ A10932

♠ A876 ♠ Q109
♥ K5 ♥ J6
♦ 108765 ♦ KQJ932
♣ QJ ♣ 65

N
W — E
S

♠ 5432
♥ 1087
♦ A4
♣ K874

11

♠ 10
♥ KQ73
♦ Q53
♣ AQ963

♠ QJ984 ♠ 2
♥ A9854 ♥ J62
♦ A10 ♦ J742
♣ 2 ♣ J8754

N
W — E
S

♠ AK7653
♥ 10
♦ K986
♣ K10

12

♠ K432
♥ J84
♦ 108
♣ K872

♠ A1032 ♠ AJ1096
♥ AKJ5 ♥ Q9
♦ QJ963 ♦ Q963
♣ QJ963 ♣ 104

N
W — E
S

♠ Q875
♥ K765
♦ 742
♣ A5

Board (10) Av: NS=+610

N-S	E-W	Contract	N-S	E-W	IMP
8	5	6H	N 6	1430	13
5	8	4H	N 6	680	2
10	7	4H	N 6	680	2
4	1	4H	N 6	680	2
1	4	4H	N 6	680	2
7	10	5H	N 5	650	1
3	2	4H	N 5	650	1
9	6	3NT	W-6	600	0
2	3	3H	N 6	230	-9
6	9	3H	N 5	200	-9

Board (11) Av: NS=+100

N-S	E-W	Contract	N-S	E-W	IMP
2	3	3NTxN	3	550	10
7	10	3NT	N 4	430	8
4	1	3NT	N 4	430	8
1	4	3NT	N 3	400	7
9	6	3NT	N-1	50	-4
5	8	3NT	N-1	50	-4
3	2	4S	S-2	100	-5
10	7	3NT	N-2	100	-5
6	9	3NxxN-1		200	-7
8	5	4Sx	S-2	300	-9

Board (12) Av: NS=-220

N-S	E-W	Contract	N-S	E-W	IMP
7	10	2S	E-2	100	8
6	9	2C	W 3	110	3
8	5	2C	W 4	130	3
5	8	2C	E 5	150	2
4	1	1NT	W 4	180	1
10	7	1NT	W 5	210	0
1	4	1NT	W 5	210	0
2	3	3NT	W 3	400	-5
9	6	3NT	W 3	400	-5
3	2	3NT	W 4	430	-5

13

♠ Q85
♥ 10652
♦ AK1085
♣ 2

♠ 9 ♠ J73
♥ AKQ873 ♥ J
♦ 9742 ♦ QJ6
♣ J6 ♣ Q109843

N
W — E
S

♠ AK10642
♥ 94
♦ 3
♣ AK75

14

♠ Q10
♥ AKJ1062
♦ AKJ6
♣ 4

♠ K96 ♠ AJ8754
♥ Q95 ♥ 84
♦ Q108 ♦ 952
♣ AQJ3 ♣ 85

N
W — E
S

♠ 32
♥ 73
♦ 743
♣ K109762

15

♠ 4
♥ A96
♦ AKJ9864
♣ K2

♠ J732 ♠ AK85
♥ 8753 ♥ 1042
♦ Q105 ♦ 2
♣ A9 ♣ J10863

N
W — E
S

♠ Q1096
♥ KQJ
♦ 73
♣ Q754

Board (13) Av: NS=+640

N-S	E-W	Contract	N-S	E-W	IMP
9	6	4S	S 5	650	0
8	5	4S	S 5	650	0
6	9	4S	S 5	650	0
3	2	4S	S 5	650	0
10	7	4S	S 5	650	0
7	10	4S	S 5	650	0
2	3	4S	S 5	650	0
4	1	4S	S 4	620	-1
1	4	4S	S 4	620	-1
5	8	4S	N 4	620	-1

Board (14) Av: NS=-60

N-S	E-W	Contract	N-S	E-W	IMP
5	8	3H	N 4	170	6
10	7	4Sx	E-1	100	4
6	9	4H	N-1	50	0
2	3	4H	N-1	50	0
1	4	4H	N-2	100	-1
9	6	4H	N-2	100	-1
3	2	4H	N-2	100	-1
4	1	4H	N-2	100	-1
8	5	4H	N-2	100	-1
7	10	3H	N-2	100	-1

Board (15) Av: NS=+400

N-S	E-W	Contract	N-S	E-W	IMP
1	4	3NT	S 5	660	6
2	3	3NT	S 4	630	6
6	9	3NT	S 3	600	5
10	7	3NT	S 3	600	5
5	8	3NT	S 3	600	5
4	1	3NT	S 3	600	5
8	5	2D	N 5	150	-6
9	6	2D	N 5	150	-6
3	2	3NT	S-1	100	-11
7	10	3NT	S-2	200	-12

16

♠ Q9852
♥ 5
♦ J103
♣ AQJ5

♠ 3 ♠ J1076
♥ 10643 ♥ K872
♦ A964 ♦ Q87
♣ K872 ♣ 104

N
W — E
S

♠ AK4
♥ AQJ9
♦ K52
♣ 963

17

♠ K1083
♥ K9
♦ 109
♣ AQ876

♠ 962 ♠ AQJ54
♥ 10752 ♥ QJ8
♦ AQ2 ♦ K7
♣ K102 ♣ J94

N
W — E
S

♠ 7
♥ A643
♦ J86543
♣ 53

18

♠ 3
♥ Q10987
♦ K93
♣ 9764

♠ 10764 ♠ AJ52
♥ 85 ♥ AK642
♦ KQJ10852 ♦ 1064
♣ KQJ10852 ♣ 3

N
W — E
S

♠ KQ98
♥ J53
♦ AQJ72
♣ A

Board (16) Av: NS=+420

N-S	E-W	Contract	N-S	E-W	IMP
8	5	3NT	S 5	460	1
5	8	4S	S 5	450	1
9	6	4S	S 4	420	0
6	9	4S	S 4	420	0
7	10	4S	S 4	420	0
2	3	4S	S 4	420	0
4	1	4S	S 4	420	0
1	4	4S	S 4	420	0
3	2	4S	S 4	420	0
10	7	4S	N 4	420	0

Board (17) Av: NS=0

N-S	E-W	Contract	N-S	E-W	IMP
1	4	4S	E-4	200	5
10	7	2S	E-1	50	2
9	6	2S	E-1	50	2
7	10	2S	E-1	50	2
4	1	2S	E-1	50	2
3	2	2S	E-1	50	2
8	5	3D	N-1	50	-2
2	3	2S	E 2	110	-3
5	8	2S	E 2	110	-3
6	9	1NT	W 2	120	-3

Board (18) Av: NS=+220

N-S	E-W	Contract	N-S	E-W	IMP
5	8	3NT	N 5	660	10
1	4	4Sx	W-3	500	7
10	7	4Sx	E-3	500	7
8	5	3S	W-3	150	-2
7	10	4D	S 4	130	-3
6	9	3D	S 4	130	-3
3	2	3D	S 4	130	-3
2	3	3D	S 3	110	-3
9	6	3S	W-2	100	-3
4	1	2Cx	W 3	280	-11

兵庫県知事杯 OPEN TEAMS Session 6 Flight A 2011年10月10日(月)

1

♠A6
♥A109643
♦J83
♣106

♠83
♥K72
♦K75
♣KJ753

♠KJ10542
♥Q
♦A2
♣Q942

♠Q97
♥J85
♦Q10964
♣A8

Board (1) Av: NS=-50

N-S	E-W	Contract	N-S	E-W	IMP
3	1	3NT W-3	150		5
10	9	3H N 3	140		5
1	3	4S E-1	50		3
2	4	4C E-1	50		3
9	10	4H N-2	100		-2
6	5	2S E 2	110		-2
5	6	3S E 3	140		-3
7	8	3S E 3	140		-3
8	7	2S E 3	140		-3
4	2	3S E 4	170		-3

2

♠J76
♥QJ1084
♦2
♣KQ87

♠AK53
♥K63
♦KQ
♣6532

♠10982
♥A75
♦1098653
♣

♠Q4
♥92
♦AJ74
♣AJ1094

Board (2) Av: NS=-170

N-S	E-W	Contract	N-S	E-W	IMP
8	7	3D E-1	50		6
10	9	3D E 3	110		2
5	6	2D E 3	110		2
7	8	3S E 4	170		0
1	3	5Cx S-1	200		-1
4	2	5C S-2	200		-1
9	10	3S W 5	200		-1
6	5	3S W 5	200		-1
3	1	2S W 5	200		-1
2	4	4S W 5	450		-7

3

♠K97
♥K109642
♦K
♣1094

♠Q532
♥AJ
♦9652
♣AQ6

♠A1086
♥Q7
♦J10874
♣53

♠J4
♥853
♦AQ3
♣KJ872

Board (3) Av: NS=-80

N-S	E-W	Contract	N-S	E-W	IMP
6	5	4S W-2	200		7
8	7	2H S 2	110		5
9	10	3D W-1	100		5
2	4	4H N-2	100		-1
4	2	2S W 2	110		-1
3	1	3S W 3	140		-2
10	9	3S W 3	140		-2
1	3	3S W 4	170		-3
5	6	3S W 4	170		-3
7	8	3S W 4	170		-3

4

♠954
♥Q8
♦Q632
♣AK102

♠AJ872
♥J62
♦1098
♣96

♠6
♥A10954
♦AKJ74
♣QJ

♠KQ103
♥K73
♦5
♣87543

Board (4) Av: NS=-50

N-S	E-W	Contract	N-S	E-W	IMP
6	5	4H E-2	200		6
9	10	4H E-1	100		4
2	4	4H E-1	100		4
7	8	4H E-1	100		4
1	3	3H E 3	140		-3
3	1	3H E 3	140		-3
4	2	3H E 3	140		-3
8	7	2H E 3	140		-3
10	9	3H E 4	170		-3
5	6	4H W 4	620		-11

5

♠A1082
♥53
♦AK52
♣965

♠53
♥106
♦87643
♣AQ107

♠K64
♥AKQJ9
♦QJ
♣K32

♠QJ97
♥8742
♦109
♣J84

Board (5) Av: NS=-250

N-S	E-W	Contract	N-S	E-W	IMP
5	6	2H E 3	140		3
7	8	1H E 3	140		3
4	2	1H E 4	170		2
1	3	3H E 5	200		2
8	7	2H E 5	200		2
2	4	1H E 5	200		2
9	10	2NT W 5	210		1
10	9	3NT W 4	430		-5
3	1	3NT E 4	430		-5
6	5	3NT E 4	430		-5

6

♠KQ5
♥AQ86
♦98742
♣2

♠J10862
♥K75
♦AK10
♣54

♠93
♥J92
♦Q653
♣K983

♠A74
♥1043
♦J
♣AQJ1076

Board (6) Av: NS=+300

N-S	E-W	Contract	N-S	E-W	IMP
5	6	3NT N 4	430		4
6	5	3NT N 3	400		3
7	8	3NT N 3	400		3
10	9	3NT N 3	400		3
1	3	3NT N 3	400		3
3	1	3NT N 3	400		3
8	7	2S W-3	300		0
2	4	2NT N 4	180		-3
4	2	3NT N-1	50		-8
9	10	3NT N-1	50		-8

7

♠J106
♥AK54
♦Q86
♣973

♠K9
♥108
♦K1043
♣AKQ42

♠Q8543
♥932
♦A52
♣85

♠A72
♥QJ76
♦J97
♣J106

Board (7) Av: NS=-140

N-S	E-W	Contract	N-S	E-W	IMP
4	2	4S E-1	100		6
2	4	2S W 2	110		1
7	8	2S W 3	140		0
9	10	2S W 3	140		0
10	9	2S W 3	140		0
6	5	2S W 3	140		0
3	1	2S W 3	140		0
1	3	2S W 3	140		0
5	6	2S W 3	140		0
8	7	2S W 4	170		-1

8

♠Q2
♥K9864
♦AQJ3
♣65

♠96
♥AQJ10
♦K102
♣K872

♠74
♥732
♦9654
♣QJ93

♠AKJ10853
♥5
♦87
♣A104

Board (8) Av: NS=+460

N-S	E-W	Contract	N-S	E-W	IMP
8	7	4S S 6	480		1
3	1	4S S 6	480		1
5	6	4S S 6	480		1
7	8	4S S 5	450		0
10	9	4S S 5	450		0
9	10	4S S 5	450		0
4	2	4S S 5	450		0
2	4	4S S 5	450		0
6	5	4S S 5	450		0
1	3	4S S 5	450		0

9

♠QJ42
♥J10
♦K1042
♣KJ3

♠1097
♥7543
♦AJ3
♣Q62

♠A63
♥96
♦Q975
♣A1094

♠K85
♥AKQ82
♦86
♣875

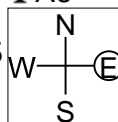
Board (9) Av: NS=+170

N-S	E-W	Contract	N-S	E-W	IMP
3	1	2Cx W-2	500		8
6	5	2Cx E-2	500		8
1	3	3NT N 3	400		6
10	9	2NT N 4	180		0
4	2	2NT N 3	150		-1
8	7	2H N 3	140		-1
7	8	1S N 2	110		-2
5	6	3NT S-1	50		-6
2	4	3NT N-1	50		-6
9	10	3NT N-1	50		-6

10

♠ KQJ986
♥ 63
♦ 953
♣ A6

♠ 75
♥ 109875
♦ KJ
♣ KQ52



♠ A1042
♥ Q
♦ A1082
♣ J1094

♠ 3
♥ AKJ42
♦ Q764
♣ 873

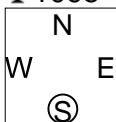
Board (10) Av: NS=+70

N-S	E-W	Contract	N-S	E-W	IMP
6	5	2S	N 2	110	1
9	10	2S	N 2	110	1
8	7	2S	N 2	110	1
7	8	2S	N 2	110	1
10	9	2S	N 2	110	1
2	4	2S	N 2	110	1
4	2	2S	N 2	110	1
3	1	Passout			-2
5	6	2S	N-1	100	-5
1	3	4S	N-3	300	-9

11

♠ KQ84
♥ 93
♦ Q653
♣ 1095

♠ 5
♥ KQJ1054
♦ A102
♣ 632



♠ AJ973
♥ A76
♦ 4
♣ QJ87

♠ 1062
♥ 82
♦ KJ987
♣ AK4

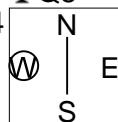
Board (11) Av: NS=-420

N-S	E-W	Contract	N-S	E-W	IMP
7	8	4H	W 4	420	0
6	5	4H	W 4	420	0
8	7	4H	W 4	420	0
10	9	4H	W 4	420	0
9	10	4H	W 4	420	0
2	4	4H	W 4	420	0
1	3	4H	W 4	420	0
5	6	4H	W 4	420	0
4	2	4H	W 5	450	-1
3	1	4H	W 5	450	-1

12

♠ K932
♥ 654
♦ KQJ10
♣ Q5

♠ Q108764
♥ 10
♦ 95
♣ 9742



♠ 5
♥ J9872
♦ A643
♣ A106

♠ AJ
♥ AKQ3
♦ 872
♣ KJ83

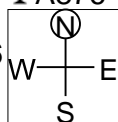
Board (12) Av: NS=+650

N-S	E-W	Contract	N-S	E-W	IMP
3	1	4NT	N 5	660	0
2	4	4NT	N 5	660	0
8	7	3NT	S 5	660	0
7	8	3NT	S 5	660	0
10	9	3NT	S 5	660	0
9	10	3NT	S 5	660	0
5	6	3NT	N 5	660	0
4	2	3NT	S 4	630	-1
6	5	3NT	N 4	630	-1
1	3	6NTxS-1		200	-13

13

♠ K95
♥ 2
♦ AQJ109
♣ A876

♠ 84
♥ A10976
♦ 87
♣ Q1095



♠ A107
♥ Q8543
♦ K3
♣ J43

♠ QJ632
♥ KJ
♦ 6542
♣ K2

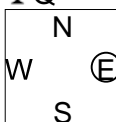
Board (13) Av: NS=+620

N-S	E-W	Contract	N-S	E-W	IMP
6	5	4S	S 5	650	1
1	3	4S	S 5	650	1
8	7	4S	S 4	620	0
7	8	4S	S 4	620	0
10	9	4S	S 4	620	0
2	4	4S	S 4	620	0
3	1	4S	S 4	620	0
5	6	4S	S 4	620	0
4	2	4S	S 4	620	0
9	10	6D	N-3	300	-14

14

♠ 8752
♥ AKJ1054
♦ A2
♣ Q

♠ 109643
♥ Q
♦ KQ106
♣ 983



♠ A
♥ 976
♦ 9854
♣ A10742

♠ KQJ
♥ 832
♦ J73
♣ KJ65

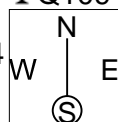
Board (14) Av: NS=+420

N-S	E-W	Contract	N-S	E-W	IMP
9	10	4H	N 5	450	1
8	7	4H	S 4	420	0
6	5	4H	N 4	420	0
7	8	4H	N 4	420	0
10	9	4H	N 4	420	0
3	1	4H	N 4	420	0
1	3	4H	N 4	420	0
2	4	4H	N 4	420	0
5	6	4H	N 4	420	0
4	2	4H	N 4	420	0

15

♠ Q1043
♥ 3
♦ QJ3
♣ Q10942

♠ 9
♥ AQJ8764
♦ A
♣ J765



♠ 87652
♥ K
♦ K8764
♣ K8

♠ AKJ
♥ 10952
♦ 10952
♣ A3

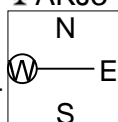
Board (15) Av: NS=-130

N-S	E-W	Contract	N-S	E-W	IMP
5	6	4H	W-1	50	5
7	8	4H	W-1	50	5
10	9	4H	W-1	50	5
4	2	4H	W-1	50	5
1	3	4H	W-1	50	5
6	5	2H	W 4	170	-1
3	1	2S	N-2	200	-2
2	4	4H	W 4	420	-7
9	10	4H	W 4	420	-7
8	7	4H	W 4	420	-7

16

♠ A972
♥ K10432
♦
♣ AKJ3

♠ J65
♥ 75
♦ KQ8764
♣ 97



♠ KQ103
♥ AQJ6
♦ AJ
♣ Q108

♠ 84
♥ 98
♦ 109532
♣ 6542

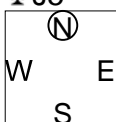
Board (16) Av: NS=-620

N-S	E-W	Contract	N-S	E-W	IMP
9	10	2S	E 3	140	10
2	4	3NT	W 3	600	1
7	8	3NT	E 3	600	1
10	9	3NT	E 3	600	1
8	7	3NT	E 4	630	0
3	1	3NT	E 4	630	0
5	6	3NT	E 4	630	0
4	2	3NT	E 4	630	0
1	3	3NT	E 5	660	-1
6	5	3NTxE	3	750	-4

17

♠ J9743
♥ 84
♦ KQ96
♣ J5

♠ 6
♥ J965
♦ 1053
♣ AKQ102



♠ KQ82
♥ AQ2
♦ J72
♣ 873

♠ A105
♥ K1073
♦ A84
♣ 964

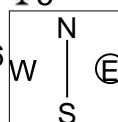
Board (17) Av: NS=+40

N-S	E-W	Contract	N-S	E-W	IMP
10	9	5C	E-3	150	3
5	6	3S	N 3	140	3
2	4	3D	N 3	110	2
3	1	4C	E-2	100	2
8	7	4C	E-2	100	2
7	8	3C	E-1	50	0
1	3	3C	E-1	50	0
4	2	3S	N-2	100	-4
9	10	3C	E 3	110	-4
6	5	1NT	E 2	120	-4

18

♠ AQJ105
♥ A1093
♦ K95
♣ 5

♠ 43
♥ KQJ86
♦ J863
♣ K8



♠ K872
♥ 754
♦ 104
♣ AQJ7

♠ 96
♥ 2
♦ AQ72
♣ 1096432

Board (18) Av: NS=+110

N-S	E-W	Contract	N-S	E-W	IMP
6	5	3S	N 3	140	1
7	8	2S	N 3	140	1
8	7	2S	N 3	140	1
9	10	3H	W-2	100	0
5	6	3H	W-2	100	0
3	1	3H	W-2	100	0
1	3	3H	W-2	100	0
4	2	3H	W-2	100	0
2	4	3H	W-2	100	0
10	9	2H	W-1	50	-2

19

♠ K97543
♥ J862
♦ J
♣ 85

♠ AQJ
♥ AKQ10973
♦
♣ Q92

♠ 8
♥ 4
♦ K10965
♣ AK10763

♠ 1062
♥ 5
♦ AQ87432
♣ J4

Board (19) Av: NS=-1020

N-S	E-W	Contract	N-S	E-W	IMP
5	10	7H W-1	100		15
10	5	3Dx S-3	500		11
6	7	4NT E 4	630		9
8	9	4H W 6	680		8
9	8	4H W 6	680		8
1	2	4H W 6	680		8
3	4	6H W 6	1430		-9
2	1	6H W 6	1430		-9
7	6	7C W 7	2140		-15
4	3	7C E 7	2140		-15

20

♠ 9643
♥ 984
♦ 8
♣ AQ764

♠ AK1087
♥ J10
♦ A63
♣ KJ9

♠ J
♥ AQ765
♦ 74
♣ 108532

♠ Q52
♥ K32
♦ KQJ10952
♣

Board (20) Av: NS=+100

N-S	E-W	Contract	N-S	E-W	IMP
9	8	3NT E-5	500		9
3	4	4C E-3	300		5
5	10	3NT E-3	300		5
8	9	4H E-2	200		3
1	2	4H E-2	200		3
4	3	3D S 3	110		0
7	6	4H W-1	100		0
10	5	2H E 2	110	110	-5
2	1	3D S-3	300	300	-9
6	7	4H E 4	620	620	-12

21

♠ QJ87
♥ J952
♦ 10942
♣ 6

♠ 54
♥ A743
♦ 53
♣ AQ742

♠ 106
♥ K86
♦ 8
♣ KJ109853

♠ AK932
♥ Q10
♦ AKQJ76
♣

Board (21) Av: NS=+430

N-S	E-W	Contract	N-S	E-W	IMP
6	7	7Cx E-4	800		9
5	10	5D S 5	600		5
8	9	5D S 5	600		5
4	3	5D S 5	600		5
2	1	5D S 5	600		5
1	2	5D S 5	600		5
3	4	5D S 5	600		5
9	8	6S N-1	100	100	-11
10	5	6D S-1	100	100	-11
7	6	6Dx S-1	200	200	-12

22

♠ 43
♥ QJ4
♦ KQ84
♣ KQ83

♠ KJ10
♥ AK10853
♦ 952
♣ 2

♠ A98752
♥ 92
♦ J3
♣ 1097

♠ Q6
♥ 76
♦ A1076
♣ AJ654

Board (22) Av: NS=+150

N-S	E-W	Contract	N-S	E-W	IMP
8	9	3NT S 4	430		7
1	2	3NT S 4	430		7
10	5	3NT N 4	430		7
6	7	3NT N 4	430		7
9	8	3C S 3	110		-1
2	1	3C S 3	110		-1
4	3	4D N-1	50	50	-5
7	6	3NT N-1	50	50	-5
5	10	2H W 5	200	200	-8
3	4	1H W 5	200	200	-8

23

♠ K1073
♥ AK98
♦ A8
♣ 654

♠ QJ96
♥ Q72
♦ Q1075
♣ A8

♠ 52
♥ 1063
♦ 432
♣ J10973

♠ A84
♥ J54
♦ KJ96
♣ KQ2

Board (23) Av: NS=+520

N-S	E-W	Contract	N-S	E-W	IMP
9	8	3NT S 5	660		4
6	7	3NT S 4	630		3
8	9	3NT S 4	630		3
3	4	3NT S 4	630		3
7	6	3NT S 3	600		2
10	5	3NT S 3	600		2
2	1	3NT S 3	600		2
4	3	3NT S 3	600		2
5	10	3NT S-1	100	100	-12
1	2	4H N-2	200	200	-12

24

♠ 76542
♥ 5
♦ 654
♣ A652

♠ 10
♥ AJ7
♦ AQJ1073
♣ Q74

♠ KQ93
♥ Q8432
♦ K9
♣ KJ

♠ AJ8
♥ K1096
♦ 82
♣ 10983

Board (24) Av: NS=-390

N-S	E-W	Contract	N-S	E-W	IMP
3	4	4H E-1	50		10
9	8	4H E-1	50		10
7	6	4H E 4	420		-1
6	7	3NT E 5	460		-2
1	2	3NT E 5	460		-2
8	9	3NT E 5	460		-2
4	3	3NT E 5	460		-2
2	1	3NT E 5	460		-2
10	5	3NT E 5	460		-2
5	10	3NT E 5	460		-2

25

♠ K83
♥ AQ62
♦ 762
♣ AK10

♠ AJ1097642
♥ 8
♦ A
♣ 742

♠ 5
♥ KJ9
♦ KJ1095
♣ Q985

♠ Q
♥ 107543
♦ Q843
♣ J63

Board (25) Av: NS=-130

N-S	E-W	Contract	N-S	E-W	IMP
7	6	4Sx E-1	200		8
10	5	4S W-1	100		6
9	8	4H N-1	50	50	2
6	7	3H N-1	50	50	2
5	10	3S W 3	140	140	0
2	1	3S W 3	140	140	0
4	3	3S W 3	140	140	0
3	4	4H N-3	150	150	-1
1	2	4Hx S-3	500	500	-9
8	9	3Sx W 3	730	730	-12

26

♠ AQJ53
♥ 982
♦ AJ62
♣ 10

♠ K109
♥ A64
♦ 97543
♣ 62

♠ 74
♥ QJ5
♦ 10
♣ AKQJ943

♠ 862
♥ K1073
♦ KQ8
♣ 875

Board (26) Av: NS=-130

N-S	E-W	Contract	N-S	E-W	IMP
8	9	3NT W-5	500		12
6	7	5C E-2	200		8
7	6	3S N 3	140		7
4	3	3S N 3	140		7
10	5	3C E 3	110	110	1
2	1	3C E 3	110	110	1
5	10	2C E 3	110	110	1
9	8	3NT W 3	600	600	-10
3	4	3NT W 3	600	600	-10
1	2	3NT W 3	600	600	-10

27

♠ Q4
♥ QJ107
♦ J1083
♣ A74

♠ AJ6
♥ 4
♦ 9654
♣ J8632

♠ K853
♥ A98
♦ A2
♣ KQ105

♠ 10972
♥ K6532
♦ KQ7
♣ 9

Board (27) Av: NS=-90

N-S	E-W	Contract	N-S	E-W	IMP
10	5	4H N-1	50	50	1
5	10	4H N-1	50	50	1
8	9	4H N-1	50	50	1
6	7	4H N-1	50	50	1
1	2	4H N-1	50	50	1
9	8	1NT E 2	120	120	-1
2	1	1NT E 2	120	120	-1
4	3	1NT E 2	120	120	-1
7	6	1NT E 3	150	150	-2
3	4	1NT E 3	150	150	-2

28

♠ 10963
♥ KQ73
♦ 4
♣ 10863

♠ A2 ♠ KJ854
♥ A864 ♥ 92
♦ K972 ♦ AQJ10
♣ KJ7 ♣ A4

♠ Q7
♥ J105
♦ 8653
♣ Q952

29

♠ A98
♥ J7
♦ 1076543
♣ J7

♠ Q10765 ♠ K32
♥ KQ96 ♥ 82
♦ 2 ♦ J98
♣ 1065 ♣ AQ843

♠ J4
♥ A10543
♦ AKQ
♣ K92

30

♠ K83
♥ AKJ93
♦ 2
♣ J873

♠ AQ74 ♠ J962
♥ 87 ♥ 642
♦ QJ854 ♦ 73
♣ 65 ♣ AKQ10

♠ 105
♥ Q105
♦ AK1096
♣ 942

Board (28) Av: NS=-620

N-S	E-W	Contract	N-S	E-W	IMP
4	3	6D E-1	50		12
3	4	3NT W 3	400		6
6	7	4NT W 4	430		5
8	9	3NT W 4	430		5
7	6	3NT W 5	460		4
5	10	3NT W 5	460		4
10	5	6D W 6	920		-7
9	8	6D E 6	920		-7
2	1	6D E 6	920		-7
1	2	6D E 6	920		-7

Board (29) Av: NS=+270

N-S	E-W	Contract	N-S	E-W	IMP
9	8	3NT S 4	630		8
7	6	3NT N 4	630		8
5	10	3NT N 3	600		8
3	4	3NT N 3	600		8
1	2	3D N 4	130		-4
8	9	3D N 3	110		-4
4	3	1NT S 1	90		-5
6	7	1NT S 1	90		-5
10	5	3D N-1	100		-9
2	1	2NT N-3	300		-11

Board (30) Av: NS=+100

N-S	E-W	Contract	N-S	E-W	IMP
2	1	3H N 3	140		1
10	5	2H N 3	140		1
6	7	2H N 3	140		1
9	8	2H N 3	140		1
5	10	2H N 3	140		1
1	2	2H N 3	140		1
3	4	4S W-2	100		0
8	9	3S W-1	50		-2
4	3	4H N-1	50		-4
7	6	4H N-2	100		-5

31

♠ 63
♥ 43
♦ 975
♣ J107632

♠ A874 ♠ KQJ1095
♥ QJ105 ♥ K6
♦ J64 ♦ K10
♣ K5 ♣ Q84

♠ 2
♥ A9872
♦ AQ832
♣ A9

32

♠ 2
♥ AK53
♦ AK2
♣ QJ943

♠ KQ10 ♠ AJ983
♥ 92 ♥ J76
♦ 10765 ♦ J43
♣ 10872 ♣ K6

♠ 7654
♥ Q1084
♦ Q98
♣ A5

33

♠ 107
♥ K73
♦ K5
♣ K109632

♠ KJ6 ♠ 98543
♥ Q109 ♥ J854
♦ 98 ♦ AQJ
♣ AQJ87 ♣ 4

♠ AQ2
♥ A62
♦ 1076432
♣ 5

Board (31) Av: NS=-440

N-S	E-W	Contract	N-S	E-W	IMP
9	8	4S E 4	420		1
7	6	4S E 4	420		1
1	2	4S E 4	420		1
10	5	3NT W 4	430		0
5	10	4S E 5	450		0
8	9	4S E 5	450		0
6	7	4S E 5	450		0
4	3	4S E 5	450		0
2	1	4S E 5	450		0
3	4	4S E 5	450		0

Board (32) Av: NS=+450

N-S	E-W	Contract	N-S	E-W	IMP
1	2	4H S 6	480		1
9	8	4H N 6	480		1
5	10	4H S 5	450		0
4	3	4H S 5	450		0
10	5	4H S 5	450		0
7	6	4H N 5	450		0
3	4	4H N 5	450		0
2	1	4H N 5	450		0
6	7	4H N 5	450		0
8	9	5C N-1	50		-11

Board (33) Av: NS=-30

N-S	E-W	Contract	N-S	E-W	IMP
6	7	2C W-3	150		5
10	5	4H W-2	100		4
8	9	3S E-2	100		4
3	4	2C W-2	100		4
5	10	4S E-1	50		2
2	1	2S E 3	140		-3
9	8	2S E 3	140		-3
1	2	2S E 4	170		-4
4	3	2S E 4	170		-4
7	6	2S E 4	170		-4

34

♠ AQJ9
♥ 1065
♦ J765
♣ A2

♠ 107653 ♠ KQJ8432
♥ A7 ♥ KQJ8432
♦ 4 ♦ AK93
♣ KQ1064 ♣ 98

♠ K842
♥ 9
♦ Q1082
♣ J753

35

♠ J4
♥ Q1096
♦ KJ52
♣ K63

♠ KQ872 ♠ A9
♥ A876 ♥ J8753
♦ AQJ10 ♦ Q1094
♣ AQJ10 ♣ 54

♠ 10653
♥ AK42
♦ 3
♣ 9872

36

♠ A2
♥ AKQ96
♦ J
♣ AQ1083

♠ J4 ♠ K98
♥ 542 ♥ J107
♦ 84 ♦ Q107532
♣ J96542 ♣ K

♠ Q107653
♥ 83
♦ AK96
♣ 7

Board (34) Av: NS=-480

N-S	E-W	Contract	N-S	E-W	IMP
8	9	4H E 5	450		1
9	8	4H E 5	450		1
10	5	4H W 6	480		0
1	2	4H E 6	480		0
6	7	4H E 6	480		0
7	6	4H E 6	480		0
3	4	4H E 6	480		0
2	1	4H E 6	480		0
5	10	4H E 6	480		0
4	3	4H E 6	480		0

Board (35) Av: NS=-70

N-S	E-W	Contract	N-S	E-W	IMP
2	1	5D W-2	200		7
7	6	5D E-2	200		7
4	3	3NT E-1	100		5
5	10	2S W 2	110		-1
8	9	2S W 3	140		-2
10	5	2S W 3	140		-2
3	4	2S W 3	140		-2
9	8	2S W 3	140		-2
1	2	3S W 4	170		-3
6	7	5Dx W 5	750		-12

Board (36) Av: NS=+750

N-S	E-W	Contract	N-S	E-W	IMP
6	7	6S S 6	1430		12
3	4	6H N 6	1430		12
1	2	5NT N 6	690		-2
5	10	4S S 6	680		-2
2	1	4H N 5	650		-3
7	6	4H N 5	650		-3
4	3	4H N 5	650		-3
9	8	3NT S 4	630		-3
10	5	3NT S 3	600		-4
8	9	6S S-1	100		-13