

第15回NRM杯 Session 1 Flight C 2010年6月19日(土)

**1**

♠KJ982  
♥  
♦KQ42  
♣Q1098

♠AQ5 ♠764  
♥A73 ♥Q965  
♦653 ♦87  
♣A762 ♣KJ54

♠103  
♥KJ10842  
♦AJ109  
♣3

**2**

♠K8762  
♥Q2  
♦AQ10987  
♣

♠954 ♠Q10  
♥KJ10743 ♥9  
♦53 ♦K42  
♣Q7 ♣AJ109864

♠AJ3  
♥A865  
♦J6  
♣K532

**3**

♠Q632  
♥109865  
♦10  
♣A52

♠A ♠K1098754  
♥AKQ743 ♥975  
♦K64 ♦J84  
♣K63 ♣

♠J  
♥J2  
♦AQJ832  
♣Q1097

**4**

♠K97  
♥AQ9  
♦KJ93  
♣Q103

♠AJ106 ♠Q42  
♥76 ♥5  
♦104 ♦AQ76  
♣K9642 ♣AJ875

♠853  
♥KJ108432  
♦852  
♣

**5**

♠1094  
♥K105  
♦Q10  
♣Q7642

♠J762 ♠K3  
♥9 ♥43  
♦AJ987 ♦K6542  
♣1095 ♣AJ83

♠AQ85  
♥AQJ8762  
♦3  
♣K

Board (1) Av: NS=+20

N-S	E-W	Contract	N-S	E-W	IMP
7	5	3D	N 4	130	3
15	9	2S	N 2	110	3
11	13	2H	S 2	110	3
6	12	2H	S 2	110	3
18	3	4S	N-1	50	-2
16	2	4S	N-1	50	-2
4	8	3H	S-1	50	-2
1	17	2H	N-1	50	-2
10	14	3H	S-2	100	-3

Board (2) Av: NS=+490

N-S	E-W	Contract	N-S	E-W	IMP
10	14	4S	N 6	680	5
7	5	4S	N 5	650	4
6	12	4S	N 5	650	4
4	8	4S	N 5	650	4
18	3	4S	N 4	620	4
1	17	4S	N 4	620	4
15	9	3S	N 4	170	-8
11	13	2H	W-2	100	-9
16	2	3NT	S-3	300	-13

Board (3) Av: NS=-110

N-S	E-W	Contract	N-S	E-W	IMP
1	17	5S	E-2	200	7
10	14	4S	E-1	100	5
11	13	4S	E-1	100	5
16	2	4S	E-1	100	5
4	8	4S	E-1	100	5
6	12	4S	E-1	100	5
18	3	4S	E 4	620	-11
7	5	4S	E 4	620	-11
15	9	4S	E 4	620	-11

Board (4) Av: NS=-50

N-S	E-W	Contract	N-S	E-W	IMP
18	3	4H	N 4	620	12
10	14	2H	N 3	140	5
15	9	2H	N 3	140	5
1	17	4H	N-1	100	-2
4	8	4H	N-1	100	-2
7	5	4H	N-1	100	-2
6	12	4H	N-1	100	-2
11	13	4H	N-2	200	-4
16	2	5C	W 5	600	-11

Board (5) Av: NS=+630

N-S	E-W	Contract	N-S	E-W	IMP
7	5	4H	S 5	650	1
10	14	4H	S 5	650	1
11	13	4H	S 5	650	1
1	17	4H	S 5	650	1
16	2	4H	S 4	620	0
18	3	4H	S 4	620	0
4	8	4H	S 4	620	0
6	12	4H	S 4	620	0
15	9	3H	S 5	200	-10

**6**

♠K985  
♥QJ9  
♦63  
♣A972

♠4 ♠QJ73  
♥AK10765 ♥3  
♦874 ♦KJ1052  
♣K54 ♣Q86

♠A1062  
♥842  
♦AQ9  
♣J103

**7**

♠A632  
♥AK95  
♦J954  
♣2

♠Q ♠1087  
♥874 ♥J32  
♦K1073 ♦A2  
♣K10975 ♣AQJ83

♠KJ954  
♥Q106  
♦Q86  
♣64

**8**

♠AQJ73  
♥Q96  
♦Q82  
♣Q2

♠9842 ♠K6  
♥J103 ♥A75  
♦KJ9873 ♦AK9765  
♣KJ9873 ♣54

♠105  
♥KJ108432  
♦4  
♣A106

**9**

♠A108  
♥10752  
♦J763  
♣Q10

♠KQ965 ♠4  
♥AQ9 ♥KJ8  
♦Q102 ♦A84  
♣K4 ♣J98532

♠J732  
♥643  
♦K95  
♣A76

**10**

♠KQ98  
♥Q3  
♦AQ106  
♣KQ8

♠106542 ♠7  
♥A652 ♥KJ1094  
♦84 ♦K32  
♣32 ♣J654

♠AJ3  
♥87  
♦J975  
♣A1097

Board (6) Av: NS=+20

N-S	E-W	Contract	N-S	E-W	IMP
15	9	2NT	E-3	300	7
10	14	2S	S 2	110	3
6	12	2S	N 2	110	3
1	17	2H	W-1	100	2
7	5	2H	W-1	100	2
11	13	2S	S-1	50	-2
18	3	2H	W 2	110	-4
4	8	2H	W 2	110	-4
16	2	2H	W 3	140	-4

Board (7) Av: NS=+130

N-S	E-W	Contract	N-S	E-W	IMP
18	3	2S	S 4	170	1
10	14	2S	S 4	170	1
6	12	3S	S 3	140	0
4	8	3S	N 3	140	0
15	9	2S	S 3	140	0
7	5	2S	S 3	140	0
1	17	4C	E-1	100	-1
16	2	4C	E-1	100	-1
11	13	4C	E-1	100	-1

Board (8) Av: NS=+150

N-S	E-W	Contract	N-S	E-W	IMP
15	12	4H	S 4	420	7
4	17	4H	S 4	420	7
5	10	5Dx	E-2	300	4
18	6	3H	S 4	170	1
8	1	3H	S 4	170	1
14	7	3H	S 3	140	0
9	3	4H	S-1	50	-5
13	2	4D	E 4	130	-7
11	16	5H	S-3	150	-7

Board (9) Av: NS=-80

N-S	E-W	Contract	N-S	E-W	IMP
15	12	3NT	W-1	100	5
4	17	3NT	W-1	100	5
18	6	2D	W-1	100	5
5	10	2D	W-1	100	5
14	7	2D	W 2	90	0
9	3	2D	W 2	90	0
8	1	2D	W 2	90	0
11	16	3NT	W 3	600	-11
13	2	3NT	E 3	600	-11

Board (10) Av: NS=+60

N-S	E-W	Contract	N-S	E-W	IMP
15	12	3NT	S 3	600	11
4	17	3NT	S 3	600	11
18	6	3S	N 3	140	2
14	7	2S	N 2	110	2
8	1	5D	N-1	100	-4
5	10	3NT	N-1	100	-4
9	3	3NT	N-1	100	-4
13	2	3NT	N-1	100	-4
11	16	3NT	S-2	200	-6

第15回NRM杯 Session 1 Flight C 2010年6月19日(土)

**11**

♠AKJ985  
♥2  
♦10743  
♣87

♠7 ♠Q1062  
♥Q973 ♥A654  
♦A865 ♦J92  
♣J643 ♣KQ

♠43  
♥KJ108  
♦KQ  
♣A10952

**12**

♠KQ76  
♥AJ9  
♦K64  
♣KJ4

♠8 ♠A1092  
♥1042 ♥83  
♦AJ8532 ♦Q107  
♣872 ♣A1096

♠J543  
♥KQ765  
♦9  
♣Q53

**13**

♠854  
♥1064  
♦9872  
♣1076

♠Q973 ♠2  
♥AK832 ♥J95  
♦QJ ♦A1053  
♣53 ♣J9842

♠AKJ106  
♥Q7  
♦K64  
♣AKQ

**14**

♠J103  
♥98  
♦K743  
♣K763

♠AQ ♠K865  
♥J743 ♥AKQ65  
♦A98 ♦QJ10  
♣A1084 ♣Q

♠9742  
♥102  
♦652  
♣J952

**15**

♠KQ10432  
♥964  
♦J  
♣K52

♠J1073 ♠A65  
♥AQ62 ♥Q52  
♣AQ1083 ♦874  
♣J974

♠J987  
♥AK8  
♦K10953  
♣6

Board (11) Av: NS=+100

N-S	E-W	Contract	N-S	E-W	IMP
14	7 3S	N 3	140		1
11	16 2S	N 3	140		1
18	6 2S	N 3	140		1
4	17 2S	N 3	140		1
5	10 2S	N 2	110		0
15	12 2S	N 2	110		0
8	1 2S	N 2	110		0
9	3 4S	N-1	50		-4
13	2 4S	N-2	100		-5

Board (12) Av: NS=-110

N-S	E-W	Contract	N-S	E-W	IMP
18	6 4S	N 4	620		12
11	16 4S	N-1	100		0
13	2 4S	N-1	100		0
15	12 4S	N-1	100		0
5	10 4S	N-1	100		0
8	1 4S	N-1	100		0
9	3 4S	N-1	100		0
4	17 4H	N-2	200		-3
14	7 4H	N-2	200		-3

Board (13) Av: NS=-230

N-S	E-W	Contract	N-S	E-W	IMP
15	12 3Hx	W-1	200		10
11	16 2S	S 2	110		8
18	6 4S	S-2	200		1
8	1 2NT	S-2	200		1
9	3 2NT	S-2	200		1
5	10 4S	S-3	300		-2
4	17 4S	S-4	400		-5
13	2 4S	S-4	400		-5
14	7 4S	S-4	400		-5

Board (14) Av: NS=-910

N-S	E-W	Contract	N-S	E-W	IMP
11	16 7H	E-1	50		14
8	1 4H	E 6	480		10
14	7 6H	E 6	980		-2
15	12 6H	E 6	980		-2
18	6 6H	E 6	980		-2
13	2 6H	E 6	980		-2
5	10 6H	E 6	980		-2
9	3 6H	E 6	980		-2
4	17 6H	E 6	980		-2

Board (15) Av: NS=+490

N-S	E-W	Contract	N-S	E-W	IMP
13	8 5Cx	W-4	800		7
14	1 4Sx	N 4	790		7
4	11 4Sx	N 4	790		7
15	3 4S	N 4	620		4
9	6 4S	N 4	620		4
10	17 4S	N 4	620		4
16	5 5C	W-2	100		-9
18	12 5S	N-1	100		-11
2	7 4S	N-1	100		-11

**16**

♠K75  
♥AQJ94  
♦K73  
♣K5

♠AQ102 ♠J3  
♥K7 ♥8632  
♦1082 ♦AJ54  
♣A986 ♣1073

♠9864  
♥105  
♦Q96  
♣QJ42

**17**

♠KQJ103  
♥QJ107  
♦2  
♣1083

♠42 ♠A  
♥AK986 ♥4  
♦KJ874 ♦A1093  
♣5 ♣AKQJ762

♠98765  
♥532  
♦Q65  
♣94

**18**

♠K92  
♥J3  
♦J3  
♣QJ10983

♠1076 ♠854  
♥A9842 ♥Q75  
♦A1087 ♦K9654  
♣4 ♣AK

♠AQJ3  
♥K106  
♦Q2  
♣7652

**19**

♠J106  
♥9  
♦KQ432  
♣A1096

♠Q75 ♠AK9832  
♥4 ♥AQ75  
♦A10876 ♦KJ2  
♣Q754 ♣KJ2

♠4  
♥KJ108632  
♦J95  
♣83

**20**

♠63  
♥94  
♦1076  
♣QJ10972

♠AQJ742 ♠1085  
♥753 ♥AK1086  
♦KQ ♦J854  
♣K6 ♣8

♠K9  
♥QJ2  
♦A932  
♣A543

Board (16) Av: NS=+160

N-S	E-W	Contract	N-S	E-W	IMP
15	3 2C	W-3	300		4
10	17 2D	E-2	200		1
18	12 2C	W-2	200		1
16	5 2C	W-2	200		1
4	11 2H	N 4	170		0
9	6 1NT	N 3	150		0
14	1 2H	N 2	110		-2
2	7 2D	E-1	100		-2
13	8 1NT	W-1	100		-2

Board (17) Av: NS=-830

N-S	E-W	Contract	N-S	E-W	IMP
10	17 3NT	E 6	490		8
13	8 3NT	E 6	490		8
2	7 3NT	E 7	520		7
18	12 6D	W 6	920		-3
9	6 6C	E 6	920		-3
4	11 6C	E 6	920		-3
14	1 6NT	E 6	990		-4
15	3 6NT	E 7	1020		-5
16	5 7C	E 7	1440		-12

Board (18) Av: NS=-80

N-S	E-W	Contract	N-S	E-W	IMP
18	12 4H	W-1	50		4
10	17 3H	W-1	50		4
4	11 Passout				2
2	7 3D	E 3	110		-1
9	6 2H	W 2	110		-1
16	5 3D	E 4	130		-2
13	8 3D	E 4	130		-2
15	3 3D	E 4	130		-2
14	1 3H	W 4	170		-3

Board (19) Av: NS=-570

N-S	E-W	Contract	N-S	E-W	IMP
16	5 6S	E-1	100		12
18	12 3S	E 4	170		9
15	3 4S	E 4	620		-2
10	17 4S	E 4	620		-2
2	7 4S	E 5	650		-2
14	1 4S	E 5	650		-2
4	11 4S	E 5	650		-2
9	6 4S	E 5	650		-2
13	8 4S	E 5	650		-2

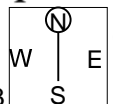
Board (20) Av: NS=-570

N-S	E-W	Contract	N-S	E-W	IMP
2	7 3S	W 4	170		9
18	12 2S	W 5	200		9
16	5 4S	W 4	620		-2
10	17 4S	W 4	620		-2
14	1 4S	W 4	620		-2
13	8 4S	W 5	650		-2
15	3 4S	W 5	650		-2
4	11 4S	W 5	650		-2
9	6 4S	W 5	650		-2

第15回NRM杯 Session 1 Flight C 2010年6月19日(土)

21

♠QJ106  
♥AKQ1062  
♦AK4  
♣



♠K52  
♥5  
♦53  
♣AQ109863

♠A984  
♥J987  
♦J9  
♣KJ4

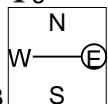
♠73  
♥43  
♦Q108762  
♣752

Board (21) Av: NS=+390

N-S	E-W	Contract	N-S	E-W	IMP
16	5	4H	N 6	680	7
9	6	4H	N 5	650	6
2	7	4H	N 5	650	6
10	17	4H	N 4	620	6
14	1	5Cx	W-2	300	-3
18	12	3H	N 5	200	-5
4	11	1H	N 5	200	-5
15	3	4Cx	E-1	100	-7
13	8	6D	N-2	200	-11

22

♠QJ104  
♥Q654  
♦A1073  
♣6



♠K763  
♥103  
♦KJ8  
♣AQ103

♠A95  
♥AJ2  
♦964  
♣J742

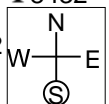
♠82  
♥K987  
♦Q52  
♣K985

Board (22) Av: NS=+40

N-S	E-W	Contract	N-S	E-W	IMP
4	14	2H	S 2	110	2
7	17	2H	S 2	110	2
8	16	2H	S 2	110	2
9	18	2H	S 2	110	2
1	11	3C	W-1	100	2
15	6	2NT	W-1	100	2
13	5	2NT	E 2	120	-4
12	3	1NT	E 2	120	-4
2	10	2NT	W 3	150	-5

23

♠75  
♥9  
♦K97652  
♣8432



♠964  
♥K10732  
♦QJ3  
♣106

♠AK32  
♥AQ84  
♦4  
♣QJ95

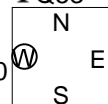
♠QJ108  
♥J65  
♦A108  
♣AK7

Board (23) Av: NS=-40

N-S	E-W	Contract	N-S	E-W	IMP
13	5	3D	S 3	110	4
15	6	3D	N 3	110	4
2	10	3D	N 3	110	4
4	14	3H	W-1	100	4
8	16	3D	N-1	100	-2
12	3	1NT	S-1	100	-2
1	11	1NT	S-2	200	-4
9	18	1NT	S-2	200	-4
7	17	3NT	S-3	300	-6

24

♠963  
♥J76  
♦K642  
♣Q53



♠J1085  
♥10532  
♦AQJ10  
♣K

♠A7  
♥Q984  
♦53  
♣J9842

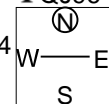
♠KQ42  
♥AK  
♦987  
♣A1076

Board (24) Av: NS=+100

N-S	E-W	Contract	N-S	E-W	IMP
7	17	1NT	S 2	120	1
12	3	1NT	S 2	120	1
9	18	1NT	S 2	120	1
8	16	1NT	S 2	120	1
13	5	1NT	S 2	120	1
2	10	2S	N 2	110	0
15	6	1NT	S 1	90	0
4	14	3H	E-1	50	-2
1	11	2H	E 2	110	-5

25

♠KQ1082  
♥3  
♦AJ2  
♣QJ96



♠7653  
♥109764  
♦5  
♣K85

♠J  
♥QJ5  
♦Q1098764  
♣43

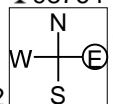
♠A94  
♥AK82  
♦K3  
♣A1072

Board (25) Av: NS=+980

N-S	E-W	Contract	N-S	E-W	IMP
12	3	6S	N 6	980	0
9	18	6S	N 6	980	0
15	6	6S	N 6	980	0
13	5	6S	N 6	980	0
8	16	6S	N 6	980	0
2	10	6S	N 6	980	0
1	11	6S	N 6	980	0
7	17	6S	N 6	980	0
4	14	6S	N 6	980	0

26

♠A1074  
♥Q92  
♦J  
♣98764



♠KQ82  
♥87  
♦103  
♣AQJ102

♠63  
♥AJ6543  
♦A974  
♣3

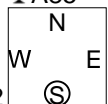
♠J95  
♥K10  
♦KQ8652  
♣K5

Board (26) Av: NS=-160

N-S	E-W	Contract	N-S	E-W	IMP
8	16	4H	E-1	100	6
1	11	2H	E 2	110	2
9	18	2H	E 2	110	2
15	6	2H	E 2	110	2
4	14	2H	E 2	110	2
12	3	2H	E 4	170	0
7	17	3D	S-2	200	-1
2	10	3NT	N-3	300	-4
13	5	3D	S-3	300	-4

27

♠A75  
♥432  
♦Q964  
♣A85



♠QJ4  
♥K75  
♦8  
♣QJ10932

♠98632  
♥AQJ96  
♦A103  
♣

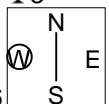
♠K10  
♥108  
♦KJ752  
♣K764

Board (27) Av: NS=-240

N-S	E-W	Contract	N-S	E-W	IMP
15	6	4S	E-1	50	7
4	14	4D	N-1	50	5
8	16	2H	E 2	110	4
1	11	2S	E 3	140	3
7	17	2S	E 3	140	3
13	5	4S	E 4	420	-5
12	3	4S	E 4	420	-5
2	10	4S	E 4	420	-5
9	18	4H	W 4	420	-5

28

♠AQ10973  
♥6  
♦KQJ74  
♣3



♠J  
♥AQ2  
♦A98  
♣KQJ1076

♠K542  
♥K10853  
♦2  
♣A98

♠86  
♥J974  
♦10653  
♣542

Board (28) Av: NS=-440

N-S	E-W	Contract	N-S	E-W	IMP
4	14	4S	N-2	200	6
12	3	5C	W 5	400	1
8	16	5C	W 6	420	1
9	18	5C	W 7	440	0
13	5	5H	E 5	450	0
2	10	5H	E 5	450	0
1	11	4H	E 5	450	0
7	17	5Dx	N-2	500	-2
15	6	5Dx	N-5	1400	-14

第15回NRM杯 Session 2 Flight C 2010年6月19日(土)

**1**

♠K1082  
♥6  
♦AQJ965  
♣109

♠J74  
♥K8432  
♦74  
♣652

♠Q96  
♥AQ5  
♦K32  
♣AK87

♠A53  
♥J1097  
♦108  
♣QJ43

**2**

♠7  
♥AKJ92  
♦AQ8652  
♣4

♠J103  
♥7543  
♦J74  
♣872

♠Q9864  
♥1086  
♦K3  
♣A95

♠AK52  
♥Q  
♦109  
♣KQJ1063

**3**

♠AK3  
♥10  
♦1087542  
♣Q94

♠Q1075  
♥AQ  
♦AK  
♣J10873

♠J864  
♥J9853  
♦Q9  
♣K5

♠92  
♥K7642  
♦J63  
♣A62

**4**

♠K52  
♥J108752  
♦A6  
♣AJ

♠108743  
♥K63  
♦J102  
♣95

♠A  
♥94  
♦8543  
♣KQ10842

♠QJ96  
♥AQ  
♦KQ97  
♣763

**5**

♠QJ98  
♥6532  
♦432  
♣AK

♠K643  
♥AKJ7  
♦AKQ  
♣Q5

♠A2  
♥104  
♦J75  
♣J87642

♠1075  
♥Q98  
♦10986  
♣1093

Board (1) Av: NS=+110

N-S	E-W	Contract	N-S	E-W	IMP
10	4	3Hx E-2	300		5
18	2	3NT E-4	200		3
13	7	3D N 3	110		0
9	5	4H W-2	100		0
3	17	3H E-2	100		0
1	16	2NT E-2	100		0
14	12	2NT E-2	100		0
8	6	2H E-1	50		-2
11	15	1C E 1		70	-5

Board (2) Av: NS=+680

N-S	E-W	Contract	N-S	E-W	IMP
9	5	6NT S 6	1440		13
14	12	3NT S 6	690		0
10	4	3NT S 6	690		0
8	6	3NT N 6	690		0
3	17	3NT N 6	690		0
11	15	3NT S 5	660		-1
18	2	3NT S 5	660		-1
1	16	3NT N 5	660		-1
13	7	4H N 5	650		-1

Board (3) Av: NS=+30

N-S	E-W	Contract	N-S	E-W	IMP
10	4	1NT W-2	200		5
9	5	2D N 3	110		2
13	7	4S W-1	100		2
11	15	2H W-1	100		2
3	17	2H W-1	100		2
8	6	2H W-1	100		2
1	16	2H W 2		110	-4
14	12	2S W 4		170	-5
18	2	3NT W 3		600	-12

Board (4) Av: NS=+460

N-S	E-W	Contract	N-S	E-W	IMP
8	6	4H N 5	650		5
10	4	4H N 4	620		4
14	12	4H N 4	620		4
11	15	4H N 4	620		4
1	16	4H N 4	620		4
3	17	4H N 4	620		4
13	7	3Cx E-1	200		-6
9	5	3NT S-1		100	-11
18	2	3NT S-3		300	-13

Board (5) Av: NS=-400

N-S	E-W	Contract	N-S	E-W	IMP
11	15	3NT W 3		400	0
10	4	3NT W 3		400	0
18	2	3NT W 3		400	0
14	12	3NT W 3		400	0
1	16	3NT W 3		400	0
3	17	3NT W 3		400	0
9	5	3NT W 3		400	0
8	6	3NT W 3		400	0
13	7	3NT E 3		400	0

**6**

♠AKQJ7  
♥J7  
♦7  
♣76543

♠1032  
♥A32  
♦KQJ92  
♣A2

♠854  
♥Q98  
♦10853  
♣J108

♠96  
♥K10654  
♦A64  
♣KQ9

**7**

♠J842  
♥KJ95  
♦A  
♣QJ72

♠Q876  
♥Q109542  
♦984

♠A103  
♥1043  
♦KJ7  
♣K1065

♠KQ9765  
♥A2  
♦863  
♣A3

**8**

♠10  
♥105  
♦J975  
♣KQ10853

♠96542  
♥QJ93  
♦8  
♣AJ2

♠Q3  
♥A872  
♦KQ106  
♣764

♠AKJ87  
♥K64  
♦A432  
♣9

**9**

♠A862  
♥J85  
♦A105  
♣642

♠J93  
♥K97  
♦KQ9862  
♣7

♠K7  
♥AQ642  
♦3  
♣KJ985

♠Q1054  
♥103  
♦J74  
♣AQ103

**10**

♠1095  
♥A10985  
♦Q8  
♣Q43

♠AQ72  
♥QJ42  
♦J765  
♣10

♠K8  
♥K76  
♦1092  
♣J9852

♠J643  
♥3  
♦AK43  
♣AK76

Board (6) Av: NS=+40

N-S	E-W	Contract	N-S	E-W	IMP
8	6	4S N 4	420		9
10	4	3NT S 3	400		8
18	2	3H S 3	140		3
13	7	2S N 2	110		2
9	5	4S N-1		50	-3
11	15	4S N-2		100	-4
3	17	3NT N-2		100	-4
1	16	2NT S-2		100	-4
14	12	2NT S-2		100	-4

Board (7) Av: NS=+680

N-S	E-W	Contract	N-S	E-W	IMP
3	17	6S S 6	1430		13
18	2	4S S 6	680		0
11	15	4S S 6	680		0
13	7	4S S 6	680		0
10	4	4S S 6	680		0
8	6	4S S 6	680		0
9	5	4S S 6	680		0
1	16	4S S 5	650		-1
14	12	4S S 5	650		-1

Board (8) Av: NS=+20

N-S	E-W	Contract	N-S	E-W	IMP
17	12	1S S 3	140		3
8	15	3C N 3	110		3
7	1	2D S 3	110		3
5	18	3H E-1	50		1
4	16	2H E-1	50		1
3	14	2H E-1	50		1
13	10	2S S-2		100	-3
6	11	2D S-2		100	-3
2	9	3NT N-3		150	-5

Board (9) Av: NS=+60

N-S	E-W	Contract	N-S	E-W	IMP
3	14	4H E-3	300		6
17	12	4H E-2	200		4
8	15	3H E-2	200		4
2	9	4H E-1	100		1
6	11	4H E-1	100		1
5	18	4H E-1	100		1
13	10	3H E 3		140	-5
4	16	3H E 3		140	-5
7	1	4H E 4		620	-12

Board (10) Av: NS=+30

N-S	E-W	Contract	N-S	E-W	IMP
8	15	1NT N 4	180		4
3	14	1NT N 3	150		3
7	1	1S S 3	140		3
6	11	1NT S 2	120		3
2	9	1NT S 2	120		3
4	16	1NT E 1		90	-3
17	12	2D S-1		100	-4
5	18	2D S-1		100	-4
13	10	3NT N-2		200	-6

第15回NRM杯 Session 2 Flight C 2010年6月19日(土)

**11**

♠KJ9  
♥2  
♦Q974  
♣98653

♠Q1074  
♥AKQ4  
♦A8  
♣A72

N  
W E  
S

♠8652  
♥J765  
♦K1062  
♣10

♠A3  
♥10983  
♦J53  
♣KQJ4

Board (11) Av: NS=-210

N-S	E-W	Contract	N-S	E-W	IMP
2	9	3NT W-2	100		7
8	15	4H E-1	50		6
5	18	1C W-1	50		6
13	10	3H E 3	140		2
17	12	1H W 3	140		2
7	1	4S E 4	420		-5
6	11	4H E 4	420		-5
3	14	4H E 4	420		-5
4	16	4H E 4	420		-5

**12**

♠982  
♥AKQ10842  
♦J7  
♣J

♠J753  
♥5  
♦AQ102  
♣10863

N  
W E  
S

♠AQ  
♥J7  
♦653  
♣KQ9754

♠K1064  
♥963  
♦K984  
♣A2

Board (12) Av: NS=+290

N-S	E-W	Contract	N-S	E-W	IMP
4	16	4H N 4	620		8
5	18	4H N 4	620		8
2	9	4H N 4	620		8
7	1	4H N 4	620		8
17	12	50x E-2	300		0
3	14	5Cx E-1	100		-5
13	10	5H N-1	100		-9
8	15	5H N-1	100		-9
6	11	4C E 4	130		-9

**13**

♠KJ864  
♥KQ32  
♦KQ8  
♣6

♠A3  
♥A974  
♦A632  
♣Q82

N  
W E  
S

♠Q105  
♥J10  
♦J754  
♣K974

♠972  
♥865  
♦109  
♣AJ1053

Board (13) Av: NS=+50

N-S	E-W	Contract	N-S	E-W	IMP
3	14	3C E-4	400		8
17	12	3C E-3	300		6
6	11	2S N 3	140		3
2	9	2S N 2	110		2
5	18	2S N 2	110		2
7	1	3S N-1	100		-4
8	15	3S N-1	100		-4
4	16	3S N-1	100		-4
13	10	4S N-2	200		-6

**14**

♠KQ1082  
♥A8  
♦76  
♣Q983

♠J  
♥KQJ62  
♦83  
♣J6542

N  
W E  
S

♠954  
♥1093  
♦K10954  
♣K10

♠A763  
♥754  
♦AQJ2  
♣A7

Board (14) Av: NS=+450

N-S	E-W	Contract	N-S	E-W	IMP
8	15	4S S 5	450		0
6	11	4S S 5	450		0
17	12	4S S 5	450		0
13	10	4S S 5	450		0
2	9	4S S 5	450		0
3	14	4S S 5	450		0
4	16	4S S 5	450		0
5	18	4S N 5	450		0
7	1	2NT S 4	180		-7

**15**

♠9643  
♥J7  
♦Q843  
♣KQ10

♠Q72  
♥K1043  
♦52  
♣A432

N  
W E  
S

♠KJ10  
♥AQ982  
♦AKJ109  
♣

♠A85  
♥65  
♦76  
♣J98765

Board (15) Av: NS=-620

N-S	E-W	Contract	N-S	E-W	IMP
11	18	5H E 6	480		4
1	13	5H E 6	480		4
8	3	4H E 6	480		4
14	9	4H E 6	480		4
4	7	4H E 6	480		4
6	17	4H E 6	480		4
16	10	6H E 6	980		-8
2	15	6H E 6	980		-8
12	5	6H E 6	980		-8

**16**

♠874  
♥10876  
♦  
♣K108742

♠AKJ10  
♥4  
♦KQ9873  
♣96

N  
W E  
S

♠Q95  
♥AKQ52  
♦A652  
♣Q

♠632  
♥J93  
♦J104  
♣AJ53

Board (16) Av: NS=-1370

N-S	E-W	Contract	N-S	E-W	IMP
4	7	5D W 6	620		13
12	5	6D W 6	1370		0
11	18	6D W 6	1370		0
14	9	6D W 6	1370		0
1	13	6D W 6	1370		0
2	15	6D W 6	1370		0
6	17	6D E 6	1370		0
16	10	6D W 7	1390		-1
8	3	6D W 7	1390		-1

**17**

♠Q975  
♥QJ75  
♦Q3  
♣1087

♠1064  
♥632  
♦AJ987  
♣32

N  
W E  
S

♠J82  
♥AK8  
♦10652  
♣K96

♠AK3  
♥1094  
♦K4  
♣AQJ54

Board (17) Av: NS=+180

N-S	E-W	Contract	N-S	E-W	IMP
8	3	3NT S 4	430		6
11	18	1NT S 4	180		0
12	5	1NT S 4	180		0
14	9	1NT S 4	180		0
16	10	1NT S 4	180		0
2	15	1NT S 4	180		0
4	7	1NT S 4	180		0
6	17	1NT S 4	180		0
1	13	1NT S 1	90		-3

**18**

♠2  
♥1098  
♦108763  
♣K753

♠AK76  
♥53  
♦AQJ42  
♣96

N  
W E  
S

♠J983  
♥AKQ  
♦5  
♣AJ1084

♠Q1054  
♥J7642  
♦K9  
♣Q2

Board (18) Av: NS=-290

N-S	E-W	Contract	N-S	E-W	IMP
11	18	6S E-2	100		9
12	5	5S E-1	50		8
8	3	4S E-1	50		8
16	10	3NT E 3	400		-3
1	13	4S E 4	420		-4
2	15	4S E 4	420		-4
6	17	4S E 5	450		-4
4	7	3NT E 5	460		-5
14	9	6S W 6	980		-12

**19**

♠53  
♥Q2  
♦K75  
♣AKJ1053

♠J8  
♥AJ9843  
♦109  
♣872

N  
W E  
S

♠AQ10972  
♥75  
♦A3  
♣Q64

♠K64  
♥K106  
♦QJ8642  
♣9

Board (19) Av: NS=+130

N-S	E-W	Contract	N-S	E-W	IMP
16	10	4Sx E-3	800		12
1	13	3S E-2	200		2
11	18	2D S 4	130		0
6	17	2C N 4	130		0
2	15	3C N 3	110		-1
12	5	2C N 3	110		-1
14	9	3S E-1	100		-1
4	7	3S E-1	100		-1
8	3	2S E-1	100		-1

**20**

♠J865  
♥76  
♦AK53  
♣Q43

♠AQ1042  
♥Q3  
♦984  
♣A105

N  
W E  
S

♠97  
♥K105  
♦QJ102  
♣J872

♠K3  
♥AJ9842  
♦76  
♣K96

Board (20) Av: NS=+60

N-S	E-W	Contract	N-S	E-W	IMP
2	15	3NT N 3	600		11
14	9	2NT E-5	500		10
16	10	2H S 4	170		3
12	5	2H S 3	140		2
6	17	3H S-1	100		-4
11	18	2H S-1	100		-4
8	3	2H S-1	100		-4
1	13	2S W 2	110		-5
4	7	2S W 2	110		-5

第15回NRM杯 Session 2 Flight C 2010年6月19日(土)

**21**

♠AJ10  
♥10984  
♦K96  
♣K95

♠Q4 ♠K763  
♥Q763 ♥J2  
♦Q87 ♦A1052  
♣AQJ3 ♣874

♠9852  
♥AK5  
♦J43  
♣1062

**22**

♠K7  
♥KQJ976  
♦Q3  
♣964

♠8543 ♠AQ2  
♥A52 ♥♥10843  
♦KJ1082 ♦♦974  
♣3 ♣♠AJ5

♠J1096  
♥  
♦A65  
♣KQ10872

**23**

♠87652  
♥K7  
♦AK6  
♣Q97

♠QJ103 ♠A4  
♥A64 ♥♥QJ985  
♦Q1042 ♦♦J3  
♣65 ♣♠AJ103

♠K9  
♥1032  
♦9875  
♣K842

**24**

♠843  
♥AK8753  
♦KJ87

♠AKJ2 ♠Q10976  
♥1096 ♥♥KQ72  
♦J962 ♦♦  
♣63 ♣♠A954

♠8543  
♥AJ5  
♦Q104  
♣Q102

**25**

♠K3  
♥7632  
♦KJ865  
♣82

♠Q9854 ♠A106  
♥A9 ♥♥854  
♦A9 ♦♦104  
♣K1075 ♣♠AQ964

♠J72  
♥KQJ10  
♦Q732  
♣J3

Board (21) Av: NS=-10

N-S	E-W	Contract	N-S	E-W	IMP
6	17	1NT W-1	50		2
16	10	1NT W-1	50		2
4	7	1NT W-1	50		2
8	3	1NT W-1	50		2
2	15	1NT W-1	50		2
14	9	1NT W 1		90	-2
12	5	1NT W 1		90	-2
11	18	1NT W 1		90	-2
1	13	1NT W 2		120	-3

Board (22) Av: NS=-70

N-S	E-W	Contract	N-S	E-W	IMP
5	15	2H N 2	110		5
9	17	2H N 2	110		5
11	3	Passout			2
4	13	3NT S-2		100	-1
8	18	3H N-2		100	-1
6	14	2H N-2		100	-1
10	1	3NT S-3		150	-2
12	2	2H N-3		150	-2
16	7	3NT S-4		200	-4

Board (23) Av: NS=-140

N-S	E-W	Contract	N-S	E-W	IMP
5	15	3H E-1	100		6
10	1	1NT S-1		100	1
8	18	2NT W 2		120	1
11	3	3H W 3		140	0
9	17	3H E 3		140	0
12	2	3H E 4		170	-1
6	14	3H E 4		170	-1
16	7	3H E 4		170	-1
4	13	4H E 4		620	-10

Board (24) Av: NS=-60

N-S	E-W	Contract	N-S	E-W	IMP
4	13	4D N 4	130		5
6	14	2D N 2	90		4
8	18	4S E-1	50		3
11	3	5Dx N-1		100	-1
5	15	4Dx N-1		100	-1
16	7	2S E 2		110	-2
9	17	2S E 2		110	-2
12	2	3S E 4		170	-3
10	1	2S E 4		170	-3

Board (25) Av: NS=-510

N-S	E-W	Contract	N-S	E-W	IMP
16	7	4S W-1	100		12
8	18	2S W 5		200	7
5	15	2S W 5		200	7
4	13	3NT E 3		600	-3
12	2	4S W 5		650	-4
9	17	4S W 5		650	-4
11	3	4S W 5		650	-4
6	14	4S W 5		650	-4
10	1	4S W 5		650	-4

**26**

♠A4  
♥98763  
♦KJ653  
♣K

♠KQJ10762 ♠83  
♥5 ♥♥AK104  
♦AQ109 ♦♦84  
♣4 ♣♠AQ986

♠95  
♥QJ2  
♦72  
♣J107532

**27**

♠76  
♥K963  
♦  
♠AQJ7654

♠KQ1053 ♠A2  
♥AQ2 ♥♥J8  
♦1092 ♦♦KQJ853  
♣K10 ♣♠982

♠J984  
♥10754  
♦A764  
♣3

**28**

♠A  
♥KQ95  
♦10832  
♣7542

♠1098432 ♠QJ7  
♥AJ87 ♥♥1032  
♦Q4 ♦♦AJ7  
♣K ♣♠A983

♠K65  
♥64  
♦K965  
♣QJ106

Board (26) Av: NS=-650

N-S	E-W	Contract	N-S	E-W	IMP
12	2	4S W 4		620	1
9	17	4S W 5		650	0
10	1	4S W 5		650	0
11	3	4S W 5		650	0
4	13	4S W 5		650	0
6	14	4S W 5		650	0
5	15	4S W 5		650	0
16	7	4S W 6		680	-1
8	18	4S W 6		680	-1

Board (27) Av: NS=-140

N-S	E-W	Contract	N-S	E-W	IMP
5	15	5D E-1	50		5
10	1	4S W-1	50		5
9	17	4S E-1	50		5
11	3	3NT W-1	50		5
6	14	3D E 4		130	0
12	2	3S W 3		140	0
16	7	3NT W 4		430	-7
4	13	3NT W 4		430	-7
8	18	5Hx N-5		1100	-14

Board (28) Av: NS=-90

N-S	E-W	Contract	N-S	E-W	IMP
5	15	4S W-1	50		4
11	3	4S W-1	50		4
4	13	4H W-1	50		4
10	1	3S W 3		140	-2
6	14	3S E 3		140	-2
16	7	2S W 3		140	-2
12	2	2S W 3		140	-2
9	17	2S W 3		140	-2
8	18	1S W 3		140	-2

第15回NRM杯 Session 3 Flight C 2010年6月20日(日)

**1**

♠9  
♥KQ865  
♦106  
♣J9875

♠AQ875  
♥A4  
♦KJ873  
♣Q

♠J102  
♥732  
♦Q9542  
♣AK

♠K643  
♥J109  
♦A  
♣106432

**2**

♠Q6  
♥J103  
♦9753  
♣J1065

♠AJ  
♥AK965  
♦Q6  
♣AK83

♠K1043  
♥Q74  
♦A1042  
♣Q7

♠98752  
♥82  
♦KJ8  
♣942

**3**

♠A83  
♥10972  
♦A763  
♣75

♠972  
♥Q65  
♦K1052  
♣J106

♠Q64  
♥AK8  
♦J984  
♣A83

♠KJ105  
♥J43  
♦Q  
♣KQ942

**4**

♠K73  
♥1084  
♦102  
♣AK1076

♠A  
♥KJ2  
♦KQ85  
♣QJ942

♠542  
♥9753  
♦AJ94  
♣83

♠QJ10986  
♥AQ6  
♦763  
♣5

**5**

♠9874  
♥AJ9  
♦K843  
♣AK

♠AJ  
♥Q10854  
♦A97  
♣J32

♠106532  
♥K  
♦J62  
♣Q1096

♠KQ  
♥7632  
♦Q105  
♣8754

Board (1) Av: NS=-350

N-S	E-W	Contract	N-S	E-W	IMP
8	14	3S	W 3	140	5
18	1	2S	W 4	170	5
12	13	3S	W 6	230	3
15	10	3S	W 6	230	3
4	9	5D	E 5	400	-2
2	17	4S	W 6	480	-4
3	16	4S	W 6	480	-4
5	11	4S	W 6	480	-4
7	6	4S	W 6	480	-4

Board (2) Av: NS=-840

N-S	E-W	Contract	N-S	E-W	IMP
2	17	6H	W-2	100	14
18	1	4H	W 6	480	8
4	9	4H	W 6	480	8
12	13	6H	W 6	980	-4
3	16	6H	W 6	980	-4
8	14	6H	W 6	980	-4
15	10	6NT	W 6	990	-4
7	6	6H	W 7	1010	-5
5	11	6H	W 7	1010	-5

Board (3) Av: NS=-10

N-S	E-W	Contract	N-S	E-W	IMP
3	16	1NT	N 2	120	4
4	9	1NT	N 2	120	4
7	6	2S	S 2	110	3
8	14	1NT	N-1	50	-1
15	10	1NT	N-1	50	-1
5	11	1NT	N-1	50	-1
2	17	1NT	N-1	50	-1
18	1	1NT	N-2	100	-3
12	13	1NT	N-2	100	-3

Board (4) Av: NS=+90

N-S	E-W	Contract	N-S	E-W	IMP
4	9	5D	E-2	200	3
2	17	3S	S 4	170	2
18	1	3S	S 3	140	2
7	6	2S	S 3	140	2
15	10	4D	W-1	100	0
12	13	3D	W-1	100	0
5	11	1NT	W-1	100	0
3	16	3S	S-1	100	-5
8	14	1NT	W 2	120	-5

Board (5) Av: NS=+120

N-S	E-W	Contract	N-S	E-W	IMP
7	6	1NT	N 3	150	1
2	17	1NT	N 3	150	1
8	14	1NT	N 2	120	0
12	13	1NT	N 2	120	0
15	10	1NT	N 2	120	0
18	1	1NT	N 2	120	0
4	9	2S	E-2	100	-1
3	16	1NT	N 1	90	-1
5	11	1NT	N 1	90	-1

**6**

♠4  
♥K4  
♦Q94  
♣Q986432

♠Q96  
♥AQ97  
♦AK52  
♣105

♠KJ73  
♥J10852  
♦1063  
♣7

♠A10852  
♥63  
♦J87  
♣AKJ

**7**

♠1084  
♥4  
♦A986  
♣AK1082

♠A762  
♥8632  
♦1074  
♣96

♠KJ5  
♥107  
♦J532  
♣QJ74

♠Q93  
♥AKQJ95  
♦KQ  
♣53

**8**

♠J932  
♥832  
♦6  
♣J8532

♠Q764  
♥AQ64  
♦A954  
♣A

♠105  
♥J9  
♦J8732  
♣K1074

♠AK8  
♥K1075  
♦KQ10  
♣Q96

**9**

♠AK763  
♥AQJ108  
♦Q52  
♣

♠42  
♥K72  
♦983  
♣107652

♠10  
♥53  
♦AK1074  
♣AQJ84

♠QJ985  
♥964  
♦J6  
♣K93

**10**

♠A6  
♥QJ10542  
♦1086  
♣97

♠1098732  
♥7  
♦53  
♣KQJ6

♠QJ4  
♥A986  
♦AQJ4  
♣85

♠K5  
♥K3  
♦K972  
♣A10432

Board (6) Av: NS=+70

N-S	E-W	Contract	N-S	E-W	IMP
12	13	4C	N 4	130	2
15	10	4C	N 4	130	2
8	14	2C	S 4	130	2
2	17	2C	N 3	110	1
3	16	3H	W-1	100	1
7	6	3H	E-1	100	1
4	9	5C	S-1	50	-3
5	11	5C	S-1	50	-3
18	1	5C	N-1	50	-3

Board (7) Av: NS=+670

N-S	E-W	Contract	N-S	E-W	IMP
7	6	3NT	N 7	720	2
2	17	4H	S 6	680	0
15	10	4H	S 6	680	0
18	1	4H	S 6	680	0
4	9	4H	S 6	680	0
3	16	4H	S 5	650	-1
5	11	4H	S 5	650	-1
8	14	4H	S 5	650	-1
12	13	4H	N 5	650	-1

Board (8) Av: NS=-260

N-S	E-W	Contract	N-S	E-W	IMP
18	10	4D	W-1	50	7
13	9	3S	N-1	50	5
14	11	1NT	W 1	90	5
4	12	2S	N-2	100	4
8	2	3D	W 3	110	4
6	16	4S	N-4	200	2
1	15	4Sx	N-3	500	-6
3	7	3NTxS-4		800	-11
17	5	4Sx	N-6	1400	-15

Board (9) Av: NS=+450

N-S	E-W	Contract	N-S	E-W	IMP
3	7	4S	N 6	480	1
18	10	5S	N 5	450	0
1	15	5S	N 5	450	0
14	11	4S	N 5	450	0
8	2	4S	N 5	450	0
17	5	4S	N 5	450	0
4	12	4S	N 5	450	0
6	16	4S	N 5	450	0
13	9	4S	N 5	450	0

Board (10) Av: NS=-50

N-S	E-W	Contract	N-S	E-W	IMP
14	11	3H	N 3	140	5
6	16	4S	W-1	100	4
4	12	4S	W-1	100	4
13	9	4S	E-1	100	4
18	10	2S	W 3	140	-3
1	15	2S	W 3	140	-3
8	2	2S	W 3	140	-3
17	5	3C	S-2	200	-4
3	7	4S	E 4	620	-11

第15回NRM杯 Session 3 Flight C 2010年6月20日(日)

**11**

♠ J9  
♥ J10842  
♦ QJ  
♣ 10973

♠ K108  
♥ 73  
♦ A10762  
♣ K54

N ♠ AQ5432  
W ♠ K96  
E ♠ 43  
S ♠ Q8

♠ 76  
♥ AQ5  
♦ K985  
♣ AJ62

Board (11) Av: NS=-110

N-S	E-W	Contract	N-S	E-W	IMP
4	12	4S E-1	50		4
18	10	4S E-1	50		4
13	9	3H N-1		50	2
14	11	2S E 3	140		-1
8	2	2S E 3	140		-1
1	15	3S E 4	170		-2
3	7	3S E 4	170		-2
6	16	2S E 4	170		-2
17	5	3S E 5	200		-3

**12**

♠ 86542  
♥ AK5  
♦ 9864  
♣ Q

♠ 103  
♥ QJ102  
♦ 32  
♣ J9764

N ♠ A97  
W ♠ 74  
E ♠ AKQ5  
S ♠ K832

♠ KQJ  
♥ 9863  
♦ J107  
♣ A105

Board (12) Av: NS=+80

N-S	E-W	Contract	N-S	E-W	IMP
13	9	1NT E-3	150		2
18	10	1NT E-3	150		2
6	16	1NT E-2	100		1
17	5	1NT E-2	100		1
14	11	1NT E-1	50		-1
3	7	1NT E-1	50		-1
4	12	1NT E-1	50		-1
1	15	1NT E-1	50		-1
8	2	2S N-1		100	-5

**13**

♠ 76542  
♥ J  
♦ 62  
♣ QJ865

♠ 103  
♥ A7654  
♦ A87  
♣ K109

N ♠ AQJ8  
W ♠ 1098  
E ♠ J543  
S ♠ A7

♠ K9  
♥ KQ32  
♦ KQ109  
♣ 432

Board (13) Av: NS=+130

N-S	E-W	Contract	N-S	E-W	IMP
6	16	4H W-3	300		5
14	11	4H W-2	200		2
17	5	4H W-2	200		2
8	2	2NT W-2	200		2
1	15	1NT W-2	200		2
3	7	4H W-1	100		-1
4	12	3NT W-1	100		-1
18	10	2NT W 2		120	-6
13	9	2NT W 5		210	-8

**14**

♠ J98  
♥ AJ  
♦ KQ102  
♣ A1042

♠ 653  
♥ 10987652  
♦ A7  
♣ 7

N ♠ AKQ104  
W ♠ 43  
E ♠ 9863  
S ♠ J3

♠ 72  
♥ KQ  
♦ J54  
♣ KQ9865

Board (14) Av: NS=-120

N-S	E-W	Contract	N-S	E-W	IMP
3	7	5C S-1	50		2
1	15	5C N-1	50		2
8	2	3NT N-1	50		2
18	10	3NT N-1	50		2
4	12	3NT N-1	50		2
14	11	3NT N-2	100		1
13	9	4NT N-3	150		-1
17	5	4S W 4	420		-7
6	16	3Hx E 3	530		-9

**15**

♠ 97  
♥ K52  
♦ KQ97542  
♣ 7

♠ KJ532  
♥ J96  
♦ 8  
♣ K1062

N ♠ 84  
W ♠ AQ1043  
E ♠ AJ  
S ♠ AJ84

♠ AQ106  
♥ 87  
♦ 1063  
♣ Q953

Board (15) Av: NS=-450

N-S	E-W	Contract	N-S	E-W	IMP
14	2	3NT E-1	50		11
11	17	4H E 5	450		0
9	1	4H E 5	450		0
3	13	4H E 5	450		0
12	16	4H E 5	450		0
6	10	4H E 5	450		0
7	15	4H E 5	450		0
8	5	4H E 5	450		0
4	18	4H E 6	480		-1

**16**

♠ QJ1072  
♥ AK93  
♦ 1075  
♣ 6

♠ A643  
♥ QJ1054  
♦ 2  
♣ 1093

N ♠ 9  
W ♠ 8762  
E ♠ K9  
S ♠ AKQ842

♠ K85  
♥  
♦ AQJ8643  
♣ J75

Board (16) Av: NS=+250

N-S	E-W	Contract	N-S	E-W	IMP
8	5	4S N 5	450		5
6	10	4S N 4	420		5
12	16	4S N 4	420		5
14	2	5D S 5	400		4
4	18	5D S 5	400		4
9	1	4Hx W-1	200		-2
11	17	6S N-1		50	-7
7	15	4S N-1		50	-7
3	13	4S N-2		100	-8

**17**

♠ Q873  
♥ J852  
♦ A10  
♣ J72

♠ K1096  
♥ 7  
♦ QJ654  
♣ A65

N ♠ 542  
W ♠ KQ43  
E ♠ 32  
S ♠ K1084

♠ AJ  
♥ A1096  
♦ K987  
♣ Q93

Board (17) Av: NS=+70

N-S	E-W	Contract	N-S	E-W	IMP
14	2	3S W-4	200		4
9	1	2H N 3	140		2
7	15	2H N 3	140		2
12	16	2H N 2	110		1
8	5	2H N 2	110		1
4	18	2H N 2	110		1
3	13	2H N-1		50	-3
6	10	2H N-1		50	-3
11	17	2H N-1		50	-3

**18**

♠ J52  
♥ A72  
♦ A5432  
♣ J9

♠ KQ106  
♥ KJ8  
♦ KJ106  
♣ 107

N ♠ A43  
W ♠ Q654  
E ♠ 98  
S ♠ KQ32

♠ 987  
♥ 1093  
♦ Q7  
♣ A8654

Board (18) Av: NS=-250

N-S	E-W	Contract	N-S	E-W	IMP
11	17	3NT E-2	100		4
3	13	3NT E-1	50		2
8	5	2NT E 4		180	2
9	1	2NT E 4		180	2
7	15	2NT E 4		180	2
12	16	3NT E 4		430	-5
14	2	3NT E 4		430	-5
6	10	3NT E 4		430	-5
4	18	3NT W 5		460	-5

**19**

♠ AKJ84  
♥ 73  
♦ A1085  
♣ A10

♠ 53  
♥ AQJ109864  
♦ K  
♣ 94

N ♠ Q1072  
W ♠ 2  
E ♠ Q762  
S ♠ J752

♠ 96  
♥ K5  
♦ J943  
♣ KQ863

Board (19) Av: NS=-30

N-S	E-W	Contract	N-S	E-W	IMP
3	13	3NT S 3	400		10
9	1	3S N 3	140		5
6	10	2H W-1	100		4
14	2	3S N-1		50	-1
8	5	4S N-2		100	-2
4	18	4S N-2		100	-2
7	15	4S N-2		100	-2
12	16	3S N-2		100	-2
11	17	4S N-3		150	-3

**20**

♠ J10963  
♥ 754  
♦ A5  
♣ K109

♠ 7  
♥ AQ963  
♦ K10943  
♣ 62

N ♠ A8542  
W ♠ J  
E ♠ QJ62  
S ♠ Q53

♠ KQ  
♥ K1082  
♦ 87  
♣ AJ874

Board (20) Av: NS=-40

N-S	E-W	Contract	N-S	E-W	IMP
6	10	3H W-2	200		6
7	15	1NT S 2	120		4
9	1	3C S 3	110		4
8	5	3S N-1		100	-2
11	17	3S N-1		100	-2
14	2	2C S-1		100	-2
3	13	1NT N-1		100	-2
12	16	2H W 2		110	-2
4	18	2D W 4		130	-3



第15回NRM杯 Session 3 Flight C 2010年6月20日(日)

21

♠ J9853  
♥ 43  
♦ 8753  
♣ 96

♠ KQ42  
♥ 85  
♦ J  
♣ 1085432

♠ A1076  
♥ AKQJ72  
♦ A64  
♣

22

♠ A2  
♥ 75432  
♦ J953  
♣ 74

♠ 108654  
♥ A96  
♦ 42  
♣ A63

♠ KQ73  
♥ KQ  
♦ K87  
♣ QJ92

♠ J9  
♥ J108  
♦ AQ106  
♣ K1085

23

♠ AKJ65  
♥ A73  
♦ K86  
♣ Q5

♠ 9  
♥ J652  
♦ J107  
♣ 108632

♠ 1072  
♥ 1094  
♦ 542  
♣ AKJ7

♠ Q843  
♥ KQ8  
♦ AQ93  
♣ 94

24

♠ AKQ1076  
♥ J82  
♦ AKQ5  
♣

♠ 4  
♥ Q5  
♦ 94  
♣ AKQJ7532

♠ 853  
♥ 1097643  
♦ 107  
♣ 106

♠ J92  
♥ AK  
♦ J8632  
♣ 984

25

♠ 862  
♥ 6  
♦ 10875  
♣ K10432

♠ 3  
♥ KJ10432  
♦ AKJ3  
♣ A8

♠ J74  
♥ A985  
♦ 92  
♣ Q975

♠ AKQ1095  
♥ Q7  
♦ Q64  
♣ J6

Board (21) Av: NS=+40

N-S	E-W	Contract	N-S	E-W	IMP
3	13	Cancel			
9	1 5S	S 5	650		12
11	17 5Cx	E-1	100		2
6	10 5Cx	E-1	100		2
4	18 5C	W-1	50		0
12	16 5C	W-1	50		0
8	5 5C	E-1	50		0
7	15 4C	E 4	130		-5
14	2 5Hx	S-2	500		-11

Board (22) Av: NS=+50

N-S	E-W	Contract	N-S	E-W	IMP
10	3 4S	W-1	100		2
18	7 4S	E-1	100		2
12	1 4S	E-1	100		2
14	5 4S	E-1	100		2
2	11 4S	E-1	100		2
8	17 4S	E-1	100		2
16	9	Passout			-2
6	13 2S	W 4	170		-6
15	4 4S	E 4	620		-12

Board (23) Av: NS=+550

N-S	E-W	Contract	N-S	E-W	IMP
16	9 4S	N 6	680		4
18	7 4S	N 6	680		4
15	4 5S	N 5	650		3
2	11 5S	N 5	650		3
12	1 5S	N 5	650		3
10	3 5S	N 5	650		3
8	17 4S	N 5	650		3
6	13 6S	N-1	100		-12
14	5 6S	N-1	100		-12

Board (24) Av: NS=+710

N-S	E-W	Contract	N-S	E-W	IMP
10	3 7D	S 7	1440		12
12	1 7D	S 7	1440		12
18	7 6S	N 7	1010		7
6	13 5S	N 7	510		-5
14	5 5S	N 7	510		-5
15	4 4S	N 7	510		-5
8	17 4S	N 7	510		-5
2	11 5Cx	W-3	500		-5
16	9 5D	S 7	440		-7

Board (25) Av: NS=-650

N-S	E-W	Contract	N-S	E-W	IMP
2	11 3S	S-1	50		12
16	9 5H	W 5	650		0
15	4 5H	W 5	650		0
6	13 5H	W 5	650		0
14	5 5H	W 5	650		0
18	7 4H	W 5	650		0
8	17 4H	W 5	650		0
10	3 4H	W 5	650		0
12	1 4H	W 5	650		0

26

♠ AKQ74  
♥ 652  
♦ Q965  
♣ 5

♠ J86  
♥ AQ109  
♦ K843  
♣ 74

♠ 105  
♥ 8743  
♦ J102  
♣ KJ109

♠ 932  
♥ KJ  
♦ A7  
♣ AQ8632

27

♠ AK  
♥ 9  
♦ Q1083  
♣ QJ10653

♠ QJ62  
♥ AK4  
♦ K72  
♣ A82

♠ 1075  
♥ 72  
♦ AJ954  
♣ K94

♠ 9843  
♥ QJ108653  
♦ 6  
♣ 7

28

♠ K1073  
♥ A973  
♦ KQJ7  
♣ 5

♠ A42  
♥ Q1085  
♦ 10842  
♣ 102

♠ QJ9  
♥ K42  
♦ A96  
♣ AQJ9

♠ 865  
♥ J6  
♦ 53  
♣ K87643

Board (26) Av: NS=+450

N-S	E-W	Contract	N-S	E-W	IMP
2	11 3NT	N 4	630		5
15	4 4S	N 4	620		5
16	9 4S	N 4	620		5
18	7 4S	N 4	620		5
12	1 4S	N 4	620		5
8	17 3NT	S 3	600		4
6	13 2S	N 4	170		-7
14	5 4S	N-1	100		-11
10	3 4S	N-1	100		-11

Board (27) Av: NS=-130

N-S	E-W	Contract	N-S	E-W	IMP
16	9 3NT	W-3	150		7
18	7 3NT	W-2	100		6
12	1 2NT	W-1	50		5
8	17 3C	N-2	100		1
15	4 3D	E 3	110		1
2	11 2S	W 3	140		0
14	5 3Hx	S-2	300		-5
10	3 3NT	W 3	400		-7
6	13 3NT	W 3	400		-7

Board (28) Av: NS=-70

N-S	E-W	Contract	N-S	E-W	IMP
12	1 2H	W-4	200		7
2	11 3NT	E-1	50		3
14	5 3NT	E-1	50		3
16	9 1NT	E 1	90		-1
18	7 1NT	E 1	90		-1
15	4 1NT	E 2	120		-2
8	17 1NT	E 2	120		-2
10	3 1NT	E 4	180		-3
6	13 2C	S-2	200		-4

第15回NRM杯 Session 4 Flight C 2010年6月20日(日)

**1**

♠KQ97  
♥Q9876  
♦K73  
♣10

♠A1065  
♥A  
♦AQ52  
♣KQJ6

♠J2  
♥KJ42  
♦J984  
♣A84

♠843  
♥1053  
♦106  
♣97532

Board (1) Av: NS=-450

N-S	E-W	Contract	N-S	E-W	IMP
7	12	6Dx W-1	100		11
8	11	3NT W 4	430		1
5	4	3NT W 4	430		1
13	17	3NT W 5	460		0
18	16	3NT W 5	460		0
6	3	3NT W 5	460		0
14	15	3NT E 5	460		0
10	9	3NT E 5	460		0
2	1	3NT E 6	490		-1

**2**

♠10  
♥9872  
♦Q932  
♣10973

♠A87643  
♥AJ  
♦1074  
♣J2

♠KQJ92  
♥K653  
♦J6  
♣AQ

♠5  
♥Q104  
♦AK85  
♣K8654

Board (2) Av: NS=-430

N-S	E-W	Contract	N-S	E-W	IMP
13	17	4S E 4	420		0
8	11	4S E 4	420		0
18	16	4S E 4	420		0
14	15	4S E 4	420		0
2	1	4S E 4	420		0
7	12	4S E 4	420		0
6	3	4S E 5	450		-1
5	4	4S E 5	450		-1
10	9	4S E 5	450		-1

**3**

♠Q96  
♥AQ3  
♦Q1074  
♣Q92

♠K1074  
♥KJ6  
♦A6  
♣J1087

♠A  
♥10874  
♦J8532  
♣AK3

♠J8532  
♥952  
♦K9  
♣654

Board (3) Av: NS=-20

N-S	E-W	Contract	N-S	E-W	IMP
13	17	3NT W-4	400		9
14	15	3NT W-2	200		6
10	9	3NT E-2	200		6
5	4	3NT E-2	200		6
8	11	2NT W 2	120		-3
6	3	1H E 3	140		-3
2	1	1NT N-3	150		-4
7	12	1Sx S-2	300		-7
18	16	3NT E 3	600		-11

**4**

♠952  
♥A  
♦QJ8  
♣KQJ732

♠J76  
♥Q83  
♦6  
♣A109864

♠AK103  
♥542  
♦A109542  
♣Q84

♠Q84  
♥KJ10976  
♦K73  
♣5

Board (4) Av: NS=-20

N-S	E-W	Contract	N-S	E-W	IMP
13	17	2H S 2	110		4
10	9	2H S 2	110		4
2	1	2H S 2	110		4
14	15	2H S 2	110		4
18	16	2H S-1	100		-2
5	4	2H S-1	100		-2
7	12	2H S-1	100		-2
8	11	2H S-2	200		-5
6	3	3H S-3	300		-7

**5**

♠Q10853  
♥K84  
♦62  
♣A82

♠AK4  
♥A1065  
♦J54  
♣K96

♠962  
♥Q3  
♦AQ98  
♣QJ54

♠J7  
♥J972  
♦K1073  
♣1073

Board (5) Av: NS=-40

N-S	E-W	Contract	N-S	E-W	IMP
8	11	3NT E-4	200		6
10	9	3NT W-3	150		5
18	16	3NT W-2	100		4
7	12	3NT W-2	100		4
5	4	3NT W-2	100		4
13	17	3NT W-1	50		3
2	1	3NT W 3	400		-8
14	15	3NT W 3	400		-8
6	3	3NT W 3	400		-8

**6**

♠J6  
♥AQ9  
♦A63  
♣AQJ104

♠KQ92  
♥2  
♦74  
♣K87652

♠A543  
♥108654  
♦KJ9  
♣9

♠1087  
♥KJ73  
♦Q10852  
♣3

Board (6) Av: NS=-20

N-S	E-W	Contract	N-S	E-W	IMP
7	12	2NT N 2	120		4
18	16	2NT N 2	120		4
5	4	3D S 3	110		4
13	17	3NT N-1	50		-1
8	11	3NT N-1	50		-1
6	3	3NT N-1	50		-1
14	15	4H S-2	100		-2
10	9	4H S-2	100		-2
2	1	3NT N-2	100		-2

**7**

♠1063  
♥KQ  
♦832  
♣AJ1085

♠AK9  
♥J973  
♦A7  
♣KQ63

♠5  
♥A852  
♦Q10964  
♣742

♠QJ8742  
♥1064  
♦KJ5  
♣9

Board (7) Av: NS=+60

N-S	E-W	Contract	N-S	E-W	IMP
5	4	3NT W-5	500		10
7	12	4Hx E-1	200		4
18	16	2NT W-2	200		4
8	11	1NT W-2	200		4
10	9	2H W-1	100		1
2	1	1NT W 1	90		-4
6	3	1NT W 1	90		-4
14	15	3S S-1	100		-4
13	17	2C S-2	200		-6

**8**

♠765  
♥Q8  
♦Q1087  
♣K983

♠AK2  
♥K743  
♦A42  
♣A104

♠Q1094  
♥J952  
♦J965  
♣7

♠J83  
♥A106  
♦K3  
♣QJ652

Board (8) Av: NS=-80

N-S	E-W	Contract	N-S	E-W	IMP
15	16	1NT S 1	90		5
1	3	4H E-1	50		4
18	13	1NT W-1	50		4
4	2	1C W 1	70		0
9	12	2NT W 2	120		-1
10	11	2H W 3	140		-2
17	14	3H E 4	170		-3
5	6	3H E 4	170		-3
7	8	4H E 4	420		-8

**9**

♠J95  
♥Q73  
♦82  
♣AQ1097

♠1084  
♥J106  
♦AQ53  
♣532

♠Q32  
♥AK984  
♦J74  
♣J4

♠AK76  
♥52  
♦K1096  
♣K86

Board (9) Av: NS=+90

N-S	E-W	Contract	N-S	E-W	IMP
5	6	2NT N 2	120		1
7	8	2NT N 2	120		1
10	11	1NT N 2	120		1
15	16	1NT N 2	120		1
4	2	1NT N 2	120		1
1	3	1NT N 2	120		1
17	14	3C N 3	110		1
9	12	3C N-1	50		-4
18	13	2H E 2	110		-5

**10**

♠AK985  
♥AJ5  
♦AQ43  
♣6

♠J102  
♥10763  
♦K6  
♣Q1092

♠Q3  
♥K9  
♦J9875  
♣J743

♠764  
♥Q842  
♦102  
♣AK85

Board (10) Av: NS=+640

N-S	E-W	Contract	N-S	E-W	IMP
15	16	4S N 5	650		0
17	14	4S N 5	650		0
10	11	4S N 5	650		0
18	13	4S N 5	650		0
4	2	4S N 5	650		0
5	6	4S N 5	650		0
1	3	4S N 4	620		-1
7	8	4S N 4	620		-1
9	12	4S N 4	620		-1

第15回NRM杯 Session 4 Flight C 2010年6月20日(日)

**11**

♠ J  
♥ 10632  
♦ KJ762  
♣ A103

♠ A975432  
♥ A95  
♦ A  
♣ 74

N E  
W S

♠ Q10  
♥ KJ4  
♦ 1083  
♣ QJ652

♠ K86  
♥ Q87  
♦ Q954  
♣ K98

Board (11) Av: NS=-160

N-S	E-W	Contract	N-S	E-W	IMP
9	12	4Dx S-1		100	2
1	3	2S W 2		110	2
4	2	2S W 3		140	1
5	6	2S W 3		140	1
7	8	3S W 4		170	0
15	16	2S W 4		170	0
18	13	2S W 4		170	0
17	14	2S W 5		200	-1
10	11	4S W 5		450	-7

**12**

♠ 863  
♥ A  
♦ AQ9543  
♣ K87

♠ KQ104  
♥ 1082  
♦ KJ2  
♣ J105

N E  
W S

♠ A752  
♥ J965  
♦ 1076  
♣ Q4

♠ J9  
♥ KQ743  
♦ 8  
♣ A9632

Board (12) Av: NS=+120

N-S	E-W	Contract	N-S	E-W	IMP
4	2	2H S 3		140	1
7	8	2H S 3		140	1
5	6	3D N 4		130	0
17	14	2D N 4		130	0
9	12	2D N 4		130	0
15	16	2D N 3		110	0
10	11	2D N 3		110	0
1	3	2D N 2		90	-1
18	13	3NT S-1		100	-6

**13**

♠ 1032  
♥ 1072  
♦ AKQ  
♣ AJ32

♠ AJ4  
♥ 54  
♦ 763  
♣ Q10976

N E  
W S

♠ 875  
♥ KQ9  
♦ 109842  
♣ 85

♠ KQ96  
♥ AJ863  
♦ J5  
♣ K4

Board (13) Av: NS=+640

N-S	E-W	Contract	N-S	E-W	IMP
1	3	3NT N 5		660	1
7	8	4H S 5		650	0
17	14	4H S 5		650	0
4	2	4H S 5		650	0
5	6	4H S 5		650	0
15	16	4H S 4		620	-1
18	13	4H S 4		620	-1
10	11	4H S 4		620	-1
9	12	3NT N 3		600	-1

**14**

♠ KQ103  
♥ K32  
♦ A6  
♣ AQ108

♠ A752  
♥ Q10985  
♦ 83  
♣ 62

N E  
W S

♠ J4  
♥ A74  
♦ QJ109  
♣ KJ75

♠ 986  
♥ J6  
♦ K7542  
♣ 943

Board (14) Av: NS=-10

N-S	E-W	Contract	N-S	E-W	IMP
10	11	2H W-2		100	3
15	16	1NT N 1		90	3
1	3	2H W-1		50	2
4	2	2H W-1		50	2
7	8	2S S-1		50	-1
5	6	1NT N-1		50	-1
9	12	1NT N-1		50	-1
17	14	1NT N-2		100	-3
18	13	2H W 2		110	-3

**15**

♠ 2  
♥ Q1042  
♦ K1097  
♣ Q1032

♠ AK7  
♥ KJ986  
♦ A  
♣ K874

N E  
W S

♠ 109  
♥ 753  
♦ QJ865  
♣ A96

♠ QJ86543  
♥ A  
♦ 432  
♣ J5

Board (15) Av: NS=-60

N-S	E-W	Contract	N-S	E-W	IMP
5	3	3NT W-3		150	5
9	7	4Hx W-1		100	4
4	1	4H W-2		100	4
8	10	4H W-2		100	4
15	18	4H W-1		50	3
14	13	4H W-1		50	3
17	16	4H W 4		420	-8
12	11	4H W 4		420	-8
6	2	4H W 4		420	-8

**16**

♠ A73  
♥ Q4  
♦ QJ9532  
♣ 63

♠ 10985  
♥ AK95  
♦ 4  
♣ KQ94

N E  
W S

♠ K64  
♥ 10832  
♦ K1087  
♣ 87

♠ QJ2  
♥ J76  
♦ A6  
♣ AJ1052

Board (16) Av: NS=-50

N-S	E-W	Contract	N-S	E-W	IMP
17	16	3H E-1		100	4
4	1	3H E-1		100	4
9	7	2H E-1		100	4
15	18	4D N-2		100	-2
14	13	2H E 2		110	-2
12	11	2H E 2		110	-2
8	10	2H E 2		110	-2
6	2	2H E 2		110	-2
5	3	2H E 3		140	-3

**17**

♠ AKQJ  
♥ K764  
♦ K7  
♣ 1097

♠ 107632  
♥ 2  
♦ 542  
♣ 8642

N E  
W S

♠ 85  
♥ QJ983  
♦ AJ6  
♣ KJ5

♠ 94  
♥ A105  
♦ Q10983  
♣ AQ3

Board (17) Av: NS=+460

N-S	E-W	Contract	N-S	E-W	IMP
5	3	3NT N 6		490	1
4	1	3NT N 6		490	1
12	11	3NT N 5		460	0
15	18	3NT N 5		460	0
17	16	3NT N 5		460	0
8	10	3NT N 5		460	0
6	2	3NT N 5		460	0
9	7	3NT N 5		460	0
14	13	3NT N 4		430	-1

**18**

♠ 87  
♥ KQ64  
♦ A87642  
♣ 3

♠ A1094  
♥ 9  
♦ KJ  
♣ QJ10985

N E  
W S

♠ KJ53  
♥ A83  
♦ 93  
♣ K762

♠ Q62  
♥ J10752  
♦ Q105  
♣ A4

Board (18) Av: NS=-310

N-S	E-W	Contract	N-S	E-W	IMP
4	1	Passout			7
8	10	3S E 3		140	5
15	18	3S E 3		140	5
12	11	3S E 4		170	4
5	3	4S W 4		420	-3
14	13	4S W 4		420	-3
9	7	4S W 5		450	-4
17	16	4S E 5		450	-4
6	2	4S E 5		450	-4

**19**

♠ K9762  
♥ Q86  
♦ 976  
♣ Q3

♠ Q54  
♥ 952  
♦ J3  
♣ A9762

N E  
W S

♠ AJ10  
♥ KJ104  
♦ A4  
♣ J1054

♠ 83  
♥ A73  
♦ KQ10852  
♣ K8

Board (19) Av: NS=-50

N-S	E-W	Contract	N-S	E-W	IMP
5	3	2D S 3		110	4
6	2	2D N 2		90	4
8	10	3D S-1		50	0
4	1	3D S-1		50	0
17	16	2D S-1		50	0
15	18	3D S-2		100	-2
9	7	3D S-2		100	-2
12	11	3D S-2		100	-2
14	13	3D S-2		100	-2

**20**

♠ 53  
♥ KJ952  
♦ 43  
♣ 8743

♠ 1087  
♥ 1073  
♦ AK62  
♣ A102

N E  
W S

♠ 642  
♥ AQ  
♦ Q1098  
♣ KJ96

♠ AKQJ9  
♥ 864  
♦ J75  
♣ Q5

Board (20) Av: NS=-60

N-S	E-W	Contract	N-S	E-W	IMP
17	16	4D W-1		100	4
4	1	3D E-1		100	4
8	10	3C E-1		100	4
5	3	2D W 3		110	-2
12	11	1NT E 2		120	-2
9	7	4D W 4		130	-2
15	18	3D E 4		130	-2
14	13	3D E 4		130	-2
6	2	2D E 4		130	-2

第15回NRM杯 Session 4 Flight C 2010年6月20日(日)

**21**

♠K6  
♥A843  
♦874  
♣8653

♠AJ52  
♥Q7  
♦AJ32  
♣A104

♠10743  
♥KJ65  
♦Q105  
♣J9

♠Q98  
♥1092  
♦K96  
♣KQ72

**22**

♠32  
♥A9843  
♦Q642  
♣A9

♠AQJ75  
♥KQ5  
♦J7  
♣Q84

♠1096  
♥107  
♦A1083  
♣K632

♠K84  
♥J62  
♦K95  
♣J1075

**23**

♠K432  
♥K65  
♦KJ95  
♣K9

♠J86  
♥QJ10872  
♦74  
♣64

♠AQ9  
♥43  
♦AQ103  
♣A1072

♠1075  
♥A9  
♦862  
♣QJ853

**24**

♠985  
♥982  
♦KQ763  
♣62

♠KQ7632  
♥AQ7  
♦108  
♣J9

♠4  
♥K103  
♦A9542  
♣A1074

♠AJ10  
♥J654  
♦J  
♣KQ853

**25**

♠J74  
♥A3  
♦AK  
♣AKQ1084

♠K1062  
♥Q1087  
♦983  
♣95

♠AQ853  
♥KJ5  
♦10754  
♣J

♠9  
♥9642  
♦QJ62  
♣7632

Board (21) Av: NS=-140

N-S	E-W	Contract	N-S	E-W	IMP
14	13	4S W-1	50		5
5	3	1NT W 1		90	2
6	2	1NT W 2		120	1
12	11	1NT W 3		150	0
9	7	1NT W 3		150	0
4	1	1NT W 3		150	0
8	10	2S W 4		170	-1
17	16	1NT W 4		180	-1
15	18	1NT W 4		180	-1

Board (22) Av: NS=-160

N-S	E-W	Contract	N-S	E-W	IMP
3	2	3H N-2		100	2
8	12	3S W 3		140	1
11	9	2S W 3		140	1
17	18	3S W 4		170	0
6	4	3S W 4		170	0
15	13	2S W 4		170	0
1	5	2S W 4		170	0
10	7	2S W 4		170	0
14	16	1NT W 4		180	-1

Board (23) Av: NS=-170

N-S	E-W	Contract	N-S	E-W	IMP
11	9	2H E 3		140	1
1	5	2H E 3		140	1
15	13	2H E 4		170	0
14	16	2H E 4		170	0
17	18	2H E 4		170	0
6	4	2H E 4		170	0
3	2	2H E 4		170	0
10	7	2H E 4		170	0
8	12	2H E 4		170	0

Board (24) Av: NS=-120

N-S	E-W	Contract	N-S	E-W	IMP
3	2	3NT E-2		100	6
11	9	2S W 2		110	0
17	18	2NT E 2		120	0
14	16	2NT E 2		120	0
1	5	2NT E 2		120	0
6	4	2NT E 2		120	0
8	12	2NT E 2		120	0
10	7	2NT E 3		150	-1
15	13	2NT E 3		150	-1

Board (25) Av: NS=+280

N-S	E-W	Contract	N-S	E-W	IMP
15	13	5C N 6		420	4
10	7	5C N 6		420	4
1	5	3NT N 3		400	3
3	2	3NT N 3		400	3
14	16	2NT N 5		210	-2
17	18	2NT N 5		210	-2
6	4	4C N 6		170	-3
8	12	2NT N 2		120	-4
11	9	2NT N 2		120	-4

**26**

♠AK32  
♥KQ7  
♦A4  
♣J763

♠64  
♥864  
♦1063  
♣Q10985

♠1098  
♥932  
♦KJ982  
♣A4

♠QJ75  
♥AJ105  
♦Q75  
♣K2

**27**

♠A7  
♥Q106  
♦8532  
♣AK104

♠10643  
♥KJ7  
♦AJ  
♣QJ96

♠J852  
♥A532  
♦K1097  
♣3

♠KQ9  
♥984  
♦Q64  
♣8752

**28**

♠AK1062  
♥K2  
♦10743  
♣107

♠98  
♥Q10765  
♦KJ5  
♣854

♠5  
♥A943  
♦Q2  
♣AQJ963

♠QJ743  
♥J8  
♦A986  
♣K2

**29**

♠AK10862  
♥A109  
♦K42  
♣6

♠Q743  
♥Q6  
♦1086  
♣A1098

♠95  
♥KJ753  
♦QJ3  
♣K52

♠J  
♥842  
♦A975  
♣QJ743

**30**

♠K82  
♥108  
♦K2  
♣KQJ1095

♠96543  
♥AJ74  
♦53  
♣32

♠AQ107  
♥K52  
♦AJ1094  
♣A

♠J  
♥Q963  
♦Q876  
♣8764

Board (26) Av: NS=+670

N-S	E-W	Contract	N-S	E-W	IMP
10	7	6S N 6		1430	13
1	5	4S N 6		680	0
11	9	4S N 6		680	0
14	16	4S N 6		680	0
6	4	4S N 6		680	0
15	13	5S N 5		650	-1
17	18	5S N 5		650	-1
8	12	4S N 5		650	-1
3	2	4S N 5		650	-1

Board (27) Av: NS=-130

N-S	E-W	Contract	N-S	E-W	IMP
17	18	1NT W-1		50	5
3	2	2S E 2		110	1
11	9	1NT W 2		120	0
6	4	3S W 3		140	0
15	13	3S W 3		140	0
1	5	2S W 3		140	0
14	16	2S W 3		140	0
8	12	2S W 3		140	0
10	7	2S W 3		140	0

Board (28) Av: NS=-50

N-S	E-W	Contract	N-S	E-W	IMP
10	7	3S S 3		140	5
17	18	5H E-2		100	4
15	13	5H E-2		100	4
3	2	4S S-1		100	-2
6	4	4S S-1		100	-2
1	5	4S S-1		100	-2
8	12	4S N-1		100	-2
11	9	3C E 5		150	-3
14	16	4Sx S-1		200	-4

Board (29) Av: NS=+110

N-S	E-W	Contract	N-S	E-W	IMP
7	11	2S N 3		140	1
15	17	2S N 3		140	1
10	12	2S N 2		110	0
3	4	2S N 2		110	0
14	18	2S N 2		110	0
6	1	2S N 2		110	0
9	8	2S N 2		110	0
5	2	1NT E-1		100	0
13	16	4S N-1		100	-5

Board (30) Av: NS=-380

N-S	E-W	Contract	N-S	E-W	IMP
5	2	5S W-2		100	10
7	11	4S E-1		50	10
13	16	5S W 5		450	-2
10	12	4S W 5		450	-2
9	8	4S W 5		450	-2
3	4	4S W 5		450	-2
6	1	4S W 5		450	-2
14	18	4S W 6		480	-3
15	17	5Cx N-3		500	-3

第15回NRM杯 Session 4 Flight C 2010年6月20日(日)

31

♠ J9  
♥ A104  
♦ 654  
♣ AK983

♠ Q87632  
♥ J  
♦ AJ7  
♣ 1072

N		♠ A10
W		♥ 9652
E		♦ K1092
S		♣ Q64

♠ K54  
♥ KQ873  
♦ Q83  
♣ J5

32

♠ Q753  
♥ AQJ852  
♦ 10  
♣ A6

♠ KJ10962  
♥ K973  
♦ 7  
♣ 73

N		♠ 4
W		♥ KQ95432
E		♦ QJ954
S		♣ QJ954

♠ A8  
♥ 1064  
♦ AJ86  
♣ K1082

33

♠ AJ1092  
♥ K83  
♦ 874  
♣ 85

♠ Q54  
♥ 52  
♦ J652  
♣ QJ94

N		♠ K76
W		♥ A10964
E		♦ AKQ10
S		♣ 6

♠ 83  
♥ QJ7  
♦ 93  
♣ AK10732

34

♠ J105  
♥ 103  
♦ A87  
♣ KQ1097

♠ 74  
♥ A974  
♦ QJ1062  
♣ J6

N		♠ AQ6
W		♥ KQJ8
E		♦ K5
S		♣ 8543

♠ K9832  
♥ 652  
♦ 943  
♣ A2

35

♠ 5  
♥ QJ83  
♦ 109532  
♣ Q84

♠ AKQJ84  
♥ AK10  
♦ AKJ  
♣ 6

N		♠ 10962
W		♥ 642
E		♦ 86
S		♣ J1095

♠ 73  
♥ 975  
♦ Q74  
♣ AK732

Board (31) Av: NS=-100

N-S	E-W	Contract	N-S	E-W	IMP
10	12	2S	W-1	50	4
15	17	2S	W-1	50	4
14	18	3H	S-1	100	0
9	8	2H	S-1	100	0
3	4	2S	W 2	110	0
6	1	2S	W 2	110	0
7	11	2S	W 2	110	0
13	16	4H	S-2	200	-3
5	2	4H	S-2	200	-3

Board (32) Av: NS=+460

N-S	E-W	Contract	N-S	E-W	IMP
13	16	4Dx	E-3	800	8
9	8	4H	S 6	480	1
5	2	4H	N 6	480	1
15	17	4H	N 5	450	0
14	18	4H	N 5	450	0
10	12	4H	N 5	450	0
6	1	4H	N 5	450	0
7	11	4H	N 5	450	0
3	4	4H	N 5	450	0

Board (33) Av: NS=-100

N-S	E-W	Contract	N-S	E-W	IMP
7	11	3H	E-1	50	4
15	17	2S	N-1	50	2
3	4	3C	S-2	100	0
6	1	3C	S-2	100	0
10	12	2S	N-2	100	0
9	8	3D	E 3	110	0
13	16	3D	E 3	110	0
5	2	3D	E 3	110	0
14	18	2D	E 3	110	0

Board (34) Av: NS=-40

N-S	E-W	Contract	N-S	E-W	IMP
7	11	2NT	E-4	200	6
15	17	4H	W-3	150	5
6	1	4H	W-1	50	3
14	18	4H	E-1	50	3
13	16	3H	E 3	140	-3
10	12	3H	E 3	140	-3
5	2	3H	E 3	140	-3
9	8	3H	E 3	140	-3
3	4	2H	E 3	140	-3

Board (35) Av: NS=-780

N-S	E-W	Contract	N-S	E-W	IMP
6	1	4S	W 5	650	4
14	18	4S	W 5	650	4
5	2	4S	W 5	650	4
15	17	4S	W 6	680	3
9	8	4S	W 6	680	3
7	11	4S	W 6	680	3
3	4	4S	W 6	680	3
10	12	6S	W 6	1430	-12
13	16	6S	E 6	1430	-12