

木村六郎杯 Session 1 Flight B 2010年2月20日(土)

1

♠ QJ1064
♥ 108
♦ 97
♣ AQ104

♠ 8
♥ J32
♦ AKQJ865
♣ J6

♠ 972
♥ A654
♦ 32
♣ 8753

♠ AK53
♥ KQ97
♦ 104
♣ K92

2

♠ A
♥ A1072
♦ 874
♣ AQ1052

♠ K932
♥ Q9543
♦ KQ9
♣ 4

♠ QJ1074
♥ J86
♦ AJ6
♣ J6

♠ 865
♥ K
♦ 10532
♣ K9873

3

♠ J763
♥ AQ109
♦ 953
♣ K8

♠ K8
♥ 652
♦ Q74
♣ AJ765

♠ A52
♥ 873
♦ A2
♣ Q9432

♠ Q1094
♥ KJ4
♦ KJ1086
♣ 10

Board (1) Av: NS=+420

N-S	E-W	Contract	N-S	E-W	IMP
8	7	4S	S	4	420
5	6	4S	S	4	420
6	5	4S	S	4	420
4	3	4S	S	4	420
3	4	4S	S	4	420
1	9	4S	N	4	420
7	8	4S	N	4	420
9	1	4S	N	4	420

Board (2) Av: NS=+40

N-S	E-W	Contract	N-S	E-W	IMP
8	7	4H	W	-3	150
5	6	4D	W	-3	150
4	3	4C	N	4	130
6	5	4S	E	-2	100
9	1	3H	W	-2	100
3	4	5C	N	-1	100
1	9	3S	E	3	140
7	8	3S	E	3	140

Board (3) Av: NS=0

N-S	E-W	Contract	N-S	E-W	IMP
8	7	3C	E	-1	100
5	6	Passout			0
6	5	Passout			0
7	8	Passout			0
9	1	Passout			0
3	4	Passout			0
1	9	Passout			0
4	3	3D	N	-1	50

4

♠ 9
♥ Q97
♦ QJ109543
♣ QJ

♠ AKJ832
♥ AKJ3
♦ 6
♣ 97

♠ 76
♥ 82
♦ K72
♣ A85432

♠ Q1054
♥ 10654
♦ A8
♣ K106

5

♠ Q62
♥ KQ109
♦ J852
♣ K3

♠ KJ5
♥ J8752
♦ K10
♣ A102

♠ A1043
♥ 64
♦ AQ74
♣ J76

♠ 987
♥ A3
♦ 963
♣ Q9854

6

♠ 876
♥ K975
♦ J74
♣ 1063

♠ 109
♥ QJ4
♦ AQ532
♣ A42

♠ AQ52
♥ A62
♦ K
♣ KQJ97

♠ KJ43
♥ 1083
♦ 10986
♣ 85

Board (4) Av: NS=-260

N-S	E-W	Contract	N-S	E-W	IMP
8	7	4S	W	-1	100
7	8	4S	W	-1	100
9	1	4S	W	-1	100
1	9	4S	W	-1	100
6	5	4S	W	4	620
5	6	4S	W	4	620
4	3	4S	W	4	620
3	4	4S	W	5	650

Board (5) Av: NS=-150

N-S	E-W	Contract	N-S	E-W	IMP
7	8	1S	E	2	110
1	9	2NT	W	2	120
6	5	2NT	E	2	120
4	3	2NT	W	3	150
9	1	1NT	W	3	150
5	6	2NT	E	4	180
3	4	2C	S	-2	200
8	7	4S	E	4	420

Board (6) Av: NS=-400

N-S	E-W	Contract	N-S	E-W	IMP
4	3	7C	E	-2	200
9	1	6C	E	-2	200
3	4	6NT	E	-1	100
1	9	4NT	E	5	660
8	7	3NT	W	5	660
6	5	3NT	E	5	660
7	8	3NT	E	6	690
5	6	6NT	W	6	1440

7

♠ AJ109
♥ 4
♦ AJ86
♣ J1073

♠ K75
♥ AKJ98
♦ Q
♣ AQ94

♠ Q8
♥ Q75
♦ 1097432
♣ 82

♠ 6432
♥ 10632
♦ K5
♣ K65

8

♠ KJ7
♥ A107
♦ 98532
♣ 73

♠ 65
♥ KQ832
♦ AQ
♣ J942

♠ A98
♥ 6
♦ KJ104
♣ AQ1086

♠ Q10432
♥ J954
♦ 76
♣ K5

9

♠ A8753
♥ KJ7
♦ KJ7
♣ A3

♠ KJ4
♥ Q9543
♦ Q4
♣ J84

♠ Q92
♥ 106
♦ 108532
♣ KQ9

♠ 106
♥ A82
♦ A96
♣ 107652

Board (7) Av: NS=-400

N-S	E-W	Contract	N-S	E-W	IMP
3	4	4H	W	-1	100
1	9	2H	W	3	140
6	5	3H	W	4	170
4	3	3Sx	S	-1	200
7	8	4H	W	4	620
8	7	4H	W	4	620
9	1	4H	E	4	620
5	6	4H	W	5	650

Board (8) Av: NS=-160

N-S	E-W	Contract	N-S	E-W	IMP
6	5	3NT	E	-2	100
5	6	3NT	E	-2	100
1	9	3NT	E	-2	100
7	8	3NT	E	-2	100
8	7	5C	E	5	400
9	1	3NT	W	4	430
4	3	3NT	W	4	430
3	4	3NT	E	4	430

Board (9) Av: NS=+330

N-S	E-W	Contract	N-S	E-W	IMP
6	5	3NT	S	4	430
4	3	3NT	N	4	430
7	8	3NT	N	4	430
5	6	3NT	S	3	400
3	4	3NT	S	3	400
8	7	2S	N	4	170
9	1	1NT	S	3	150
1	9	2S	N	3	140

木村六郎杯 Session 1 Flight B 2010年2月20日(土)

10

♠ J973
♥ 10
♦ Q1097
♣ QJ104

♠ A4
♥ K32
♦ KJ863
♣ K85

N
W — E
S

♠ 8
♥ Q9876
♦ 52
♣ 97632

♠ KQ10652
♥ AJ54
♦ A4
♣ A

11

♠ 2
♥ Q1062
♦ Q9432
♣ KQ3

♠ Q865
♥ AJ9
♦ AKJ7
♣ 106

N
W — E
S

♠ J10
♥ K8754
♦ 106
♣ A872

♠ AK9743
♥ 3
♦ 85
♣ J954

12

♠ J104
♥ 32
♦ KQJ8
♣ Q643

♠ K865
♥ KQ86
♦ 652
♣ 97

N
W — E
S

♠ A93
♥ A974
♦ A7
♣ K1085

♠ Q72
♥ J105
♦ 10943
♣ AJ2

Board (10) Av: NS=+670

N-S	E-W	Contract	N-S	E-W	IMP
7	8	4S	S 6	680	0
5	6	4S	S 6	680	0
1	9	4S	S 6	680	0
9	1	4S	S 6	680	0
3	4	5S	S 5	650	-1
8	7	4S	S 5	650	-1
4	3	4S	S 5	650	-1
6	5	4S	S 5	650	-1

Board (11) Av: NS=+70

N-S	E-W	Contract	N-S	E-W	IMP
8	7	4H	W-3	150	2
9	1	3NT	W-3	150	2
7	8	4H	W-2	100	1
4	3	4H	W-2	100	1
6	5	3NT	E-1	50	-1
5	6	2NT	W-1	50	-1
1	9	2S	S-1	50	-3
3	4	2S	S-1	50	-3

Board (12) Av: NS=-10

N-S	E-W	Contract	N-S	E-W	IMP
4	3	4H	E-2	100	3
6	5	4H	E-1	50	2
7	8	4H	E-1	50	2
8	7	4H	E-1	50	2
9	1	4H	E-1	50	2
1	9	2NT	E 2	120	-3
5	6	3H	E 3	140	-4
3	4	4H	E 4	420	-9

13

♠ J1087
♥ Q10743
♦ A6
♣ Q7

♠ Q64
♥ J8
♦ K10532
♣ K64

N
W — E
S

♠ A932
♥ K2
♦ QJ
♣ AJ1092

♠ K5
♥ A965
♦ 9874
♣ 853

14

♠ J1097
♥ K
♦ AQ984
♣ 972

♠ A65
♥ AQ3
♦ K1075
♣ A53

N
W — E
S

♠ K8
♥ 1096542
♦ J32
♣ Q10

♠ Q432
♥ J87
♦ 6
♣ KJ864

15

♠ J872
♥ K42
♦ 10952
♣ 42

♠ Q653
♥ AQJ84
♦ QJ108
♣ QJ108

N
W — E
S

♠ AQ954
♥ AJ9
♦ 63
♣ A96

♠ K1063
♥ 1087
♦ K7
♣ K753

Board (13) Av: NS=-10

N-S	E-W	Contract	N-S	E-W	IMP
5	6	1NT	W-4	400	9
4	3	2H	S 2	110	3
8	7	3NT	E-1	100	3
1	9	1NT	W-1	100	3
9	1	2C	E 3	110	-3
6	5	1NT	W 2	120	-3
3	4	1NT	E 3	150	-4
7	8	3NT	E 3	600	-11

Board (14) Av: NS=-50

N-S	E-W	Contract	N-S	E-W	IMP
7	8	4H	W-2	100	4
9	1	4H	W-2	100	4
4	3	4H	W-2	100	4
6	5	2H	W 2	110	-2
3	4	2H	W 2	110	-2
1	9	2H	W 3	140	-3
5	6	2H	W 3	140	-3
8	7	4H	W 4	420	-9

Board (15) Av: NS=-440

N-S	E-W	Contract	N-S	E-W	IMP
3	9	6D	W-1	50	10
5	2	3NT	W 3	400	1
4	7	3NT	W 4	430	0
1	8	3NT	W 4	430	0
8	1	3NT	E 4	430	0
7	4	3NT	W 5	460	-1
2	5	3NT	E 5	460	-1
9	3	3NT	E 5	460	-1

16

♠ Q95
♥ 107
♦ K94
♣ 109832

♠ A64
♥ AK2
♦ AQ1086
♣ Q4

N
W — E
S

♠ J87
♥ QJ4
♦ J72
♣ AK65

♠ K1032
♥ 98653
♦ 53
♣ J7

17

♠ QJ8
♥ 102
♦ AJ65
♣ AQ108

♠ K1065
♥ K9654
♦ 983
♣ 5

N
W — E
S

♠ A9742
♥ A7
♦ KQ10
♣ KJ7

♠ 3
♥ QJ83
♦ 742
♣ 96432

18

♠ AK
♥ QJ1073
♦ 5432
♣ 97

♠ 873
♥ 96
♦ J8
♣ KQJ1043

N
W — E
S

♠ 105
♥ 2
♦ AQ1096
♣ A8652

♠ QJ9642
♥ AK854
♦ K7
♣

Board (16) Av: NS=-150

N-S	E-W	Contract	N-S	E-W	IMP
8	1	6NT	W-1	100	6
7	4	6NT	W-1	100	6
4	7	6NT	E-1	100	6
5	2	6NT	E-1	100	6
2	5	6NT	E-1	100	6
3	9	4NT	E 5	660	-11
1	8	3NT	E 5	660	-11
9	3	4NT	E 6	690	-11

Board (17) Av: NS=-380

N-S	E-W	Contract	N-S	E-W	IMP
5	2	3NT	E-1	50	10
1	8	2S	E 5	200	5
9	3	4S	E 4	420	-1
4	7	4S	E 4	420	-1
7	4	4S	E 4	420	-1
2	5	4S	E 4	420	-1
8	1	4S	E 4	420	-1
3	9	4S	E 4	420	-1

Board (18) Av: NS=+600

N-S	E-W	Contract	N-S	E-W	IMP
5	2	6H	S 6	1430	13
2	5	5H	S 7	710	3
7	4	5H	N 7	710	3
8	1	5H	N 7	710	3
9	3	5H	S 6	680	2
3	9	6Cx	E-3	500	-3
1	8	5Cx	E-2	300	-7
4	7	5C	E-2	100	-11

19

♠ A8
♥ QJ4
♦ AJ73
♣ KQ65

♠ K972
♥ 63
♦ 964
♣ 10972

N
W — E
S

♠ J53
♥ 1098
♦ KQ1052
♣ J3

♠ Q1064
♥ AK752
♦ 8
♣ A84

20

♠ J98
♥ A6
♦ J2
♣ J98654

♠ K6542
♥ K952
♦ A1065
♣

N
W — E
S

♠ Q3
♥ Q873
♦ 983
♣ Q1032

♠ A107
♥ J104
♦ KQ74
♣ AK7

21

♠ A85
♥ 973
♦ Q94
♣ Q754

♠ Q10763
♥ K
♦ AK7
♣ AKJ6

N
W — E
S

♠ KJ942
♥ Q64
♦ 862
♣ 102

♠
♥ AJ10852
♦ J1053
♣ 983

Board (19) Av: NS=+900

N-S	E-W	Contract	N-S	E-W	IMP
2	5	3Dx	E-4	1100	5
9	3	6H	S 6	980	2
3	9	6H	S 6	980	2
7	4	6H	S 6	980	2
1	8	6H	S 6	980	2
8	1	6H	S 6	980	2
5	2	4H	S 6	480	-9
4	7	6H	S-1	50	-14

Board (20) Av: NS=+40

N-S	E-W	Contract	N-S	E-W	IMP
4	7	3NT	S 4	630	11
3	9	1NT	S 2	120	2
1	8	3C	S 3	110	2
9	3	3C	N 3	110	2
8	1	2C	N 2	90	2
2	5	2H	W 2	110	-4
5	2	2H	W 2	110	-4
7	4	2H	E 3	140	-5

Board (21) Av: NS=-450

N-S	E-W	Contract	N-S	E-W	IMP
9	3	4S	E 4	420	1
5	2	5S	W 5	450	0
8	1	5S	W 5	450	0
3	9	5S	E 5	450	0
4	7	5S	E 5	450	0
2	5	4S	W 5	450	0
7	4	4S	W 5	450	0
1	8	4S	E 5	450	0

22

♠ Q9
♥ AK432
♦ 2
♣ A8754

♠ KJ852
♥ 85
♦ KJ7
♣ 963

N
W — E
S

♠ 74
♥ QJ10976
♦ AQ63
♣ Q

♠ A1063
♥
♦ 109854
♣ KJ102

23

♠ KQJ87
♥ J74
♦ 763
♣ 74

♠ 1042
♥ A102
♦ AQJ10
♣ AQ6

N
W — E
S

♠ 65
♥ K63
♦ K92
♣ J10532

♠ A93
♥ Q985
♦ 854
♣ K98

24

♠ 984
♥ 62
♦ Q9
♣ AKQ1084

♠ Q10765
♥ A5
♦ 7653
♣ 65

N
W — E
S

♠ KJ
♥ Q10973
♦ AK
♣ J932

♠ A32
♥ KJ84
♦ J10842
♣ 7

Board (22) Av: NS=+140

N-S	E-W	Contract	N-S	E-W	IMP
7	4	5C	N 5	400	6
5	2	2H	E-2	200	2
9	3	3C	N 5	150	0
4	7	4C	N 4	130	0
8	1	4C	N 4	130	0
3	9	2C	N 3	110	-1
1	8	2H	E-1	100	-1
2	5	3NT	N-1	50	-5

Board (23) Av: NS=-120

N-S	E-W	Contract	N-S	E-W	IMP
9	3	1NT	W 2	120	0
4	7	1NT	W 2	120	0
7	4	1NT	W 2	120	0
5	2	1NT	W 2	120	0
8	1	1NT	W 2	120	0
1	8	1NT	W 2	120	0
2	5	1NT	W 2	120	0
3	9	3Sx	N-4	1100	-14

Board (24) Av: NS=-60

N-S	E-W	Contract	N-S	E-W	IMP
5	2	4H	E-4	200	6
2	5	1NT	S 1	90	4
4	7	2C	N-1	50	0
3	9	3C	N-2	100	-1
8	1	3C	N-2	100	-1
9	3	2C	N-2	100	-1
1	8	1NT	S-2	100	-1
7	4	1NT	S-3	150	-3

25

♠ Q653
♥ 6
♦ K865
♣ K963

♠ 9
♥ AK942
♦ J732
♣ 542

N
W — E
S

♠ K1074
♥ QJ1073
♦ 109
♣ J7

♠ AJ82
♥ 85
♦ AQ4
♣ AQ108

26

♠ 1082
♥ 10873
♦ 842
♣ K85

♠ QJ4
♥ 9
♦ AJ653
♣ AQ64

N
W — E
S

♠ K73
♥ AJ42
♦ Q9
♣ J1092

♠ A965
♥ KQ65
♦ K107
♣ 73

27

♠ QJ865
♥
♦ 98542
♣ K53

♠ 1072
♥ KJ4
♦ A1063
♣ J106

N
W — E
S

♠ 943
♥ 107632
♦ KJ
♣ A72

♠ AK
♥ AQ985
♦ Q7
♣ Q984

Board (25) Av: NS=+420

N-S	E-W	Contract	N-S	E-W	IMP
2	5	4S	S 5	450	1
9	3	4S	S 4	420	0
7	4	4S	S 4	420	0
4	7	4S	S 4	420	0
3	9	4S	S 4	420	0
1	8	4S	S 4	420	0
8	1	4S	S 4	420	0
5	2	4S	S 4	420	0

Board (26) Av: NS=-440

N-S	E-W	Contract	N-S	E-W	IMP
9	3	1NT	W 2	120	8
7	4	2NT	W 3	150	7
2	5	1NT	E 3	150	7
3	9	10x	N-2	500	-2
5	2	3NT	W 3	600	-4
4	7	3NT	E 3	600	-4
8	1	3NT	W 4	630	-5
1	8	10x	S-3	800	-8

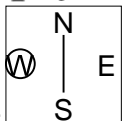
Board (27) Av: NS=+80

N-S	E-W	Contract	N-S	E-W	IMP
5	2	3S	N 3	140	2
3	9	2S	S 2	110	1
2	5	2C	S 3	110	1
8	1	2C	S 3	110	1
7	4	2C	S 2	90	0
1	8	2C	S 2	90	0
4	7	2C	S-1	50	-4
9	3	3NT	S-2	100	-5

28

♠ Q8654
♥ 1063
♦ J105
♣ K3

♠ 2
♥ Q2
♦ Q9642
♣ Q10874



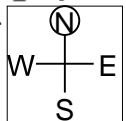
♠ 1073
♥ AK854
♦ 3
♣ A952

♠ AKJ9
♥ J97
♦ AK87
♣ J6

29

♠ 103
♥ J64
♦ AK843
♣ KJ2

♠ KJ94
♥ Q93
♦ 9652
♣ 86



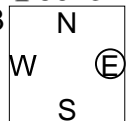
♠ AQ5
♥ K752
♦ 10
♣ AQ975

♠ 8762
♥ A108
♦ QJ7
♣ 1043

30

♠ 762
♥ 83
♦ QJ8
♣ 86432

♠ AJ953
♥ KJ96
♦ 9
♣ QJ5



♠ Q84
♥ AQ4
♦ 64
♣ AK1097

♠ K10
♥ 10752
♦ AK107532
♣

Board (28) Av: NS=-160

N-S	E-W	Contract	N-S	E-W	IMP
1	8	2S N 2	110		7
2	5	3S N-1	100		2
9	3	3S N-1	100		2
7	4	3C E 4	130		1
8	1	4S N-2	200		-1
3	9	4S N-2	200		-1
5	2	2H E 5	200		-1
4	7	4Cx E 4	510		-8

Board (29)

N-S	E-W	Contract	N-S	E-W	IMP
6	2	3H W-2	200		
2	6	3C E-1	100		

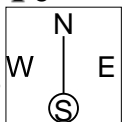
Board (30)

N-S	E-W	Contract	N-S	E-W	IMP
6	2	4H E 5	450		
2	6	4H E 5	450		

31

♠ AQ109865
♥ Q42
♦ 108
♣ 6

♠ 3
♥ J87
♦ AKQJ93
♣ 1097



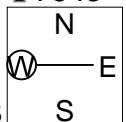
♠ J742
♥ 10
♦ 76
♣ KQJ854

♠ K
♥ AK9653
♦ 542
♣ A32

32

♠ KQ4
♥ KJ9
♦ A96
♣ 7543

♠ 875
♥ Q102
♦ J74
♣ KJ108



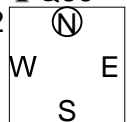
♠ 92
♥ 7643
♦ 10832
♣ 962

♠ AJ1063
♥ A85
♦ KQ5
♣ AQ

33

♠ 9
♥ K1032
♦ 98762
♣ Q86

♠ AKJ1052
♥ A74
♦
♣ K952



♠ 764
♥ 965
♦ A1054
♣ AJ4

♠ Q83
♥ QJ8
♦ KQJ3
♣ 1073

Board (31)

N-S	E-W	Contract	N-S	E-W	IMP
6	2	4H S 4	620		
2	6	4H S 4	620		

Board (32)

N-S	E-W	Contract	N-S	E-W	IMP
6	2	6S S 6	980		
2	6	6NT N 6	990		

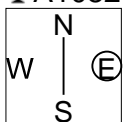
Board (33)

N-S	E-W	Contract	N-S	E-W	IMP
6	2	4S W 4	420		
2	6	4S W 4	420		

34

♠ 9653
♥ A2
♦ 543
♣ A1082

♠ KJ4
♥ QJ9643
♦ K2
♣ 74



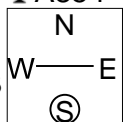
♠ AQ7
♥ 5
♦ A10987
♣ K963

♠ 1082
♥ K1087
♦ QJ6
♣ QJ5

35

♠ Q1075
♥ Q7
♦ 1062
♣ A854

♠ 843
♥ K96
♦ Q873
♣ Q72



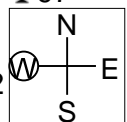
♠ AK9
♥ J82
♦ K94
♣ K1096

♠ J62
♥ A10543
♦ AJ5
♣ J3

36

♠ KJ93
♥ J843
♦ 1085
♣ 97

♠ A10
♥ 65
♦ AQ932
♣ AK52



♠ Q8765
♥ AK107
♦ K
♣ 1083

♠ 42
♥ Q92
♦ J764
♣ QJ64

Board (34)

N-S	E-W	Contract	N-S	E-W	IMP
6	2	4H W-2	100		
2	6	3NT E 3	400		

Board (35)

N-S	E-W	Contract	N-S	E-W	IMP
6	2	1NT W-1	100		
2	6	1H S 1	80		

Board (36)

N-S	E-W	Contract	N-S	E-W	IMP
6	2	3NT W 3	600		
2	6	3NT W 5	660		

木村六郎杯 Session 1 Flight B 2010年2月20日(土)

37

♠ AQ73
♥ 109432
♦ Q5
♣ 64

♠ 94
♥ J65
♦ 108763
♣ A107

♠ K85
♥ 8
♦ AJ42
♣ KQJ32

♠ J1062
♥ AKQ7
♦ K9
♣ 985

W N E S

38

♠ 643
♥ K
♦ J7542
♣ KJ98

♠ AQJ72
♥ Q53
♦ 109
♣ 753

♠ 1095
♥ 984
♦ Q86
♣ A642

♠ K8
♥ AJ10762
♦ AK3
♣ Q10

W N E S

39

♠ 52
♥ Q104
♦ AQJ84
♣ 952

♠ J876
♥ K965
♦ 92
♣ J84

♠ K
♥ A872
♦ K107
♣ AKQ73

♠ AQ10943
♥ J3
♦ 653
♣ 106

W N E S

Board (37)

N-S	E-W	Contract	N-S	E-W	IMP
6	2	3H	N 3	140	
2	6	3H	S 3	140	

Board (38)

N-S	E-W	Contract	N-S	E-W	IMP
6	2	3H	S 3	140	
2	6	4H	S-1	50	

Board (39)

N-S	E-W	Contract	N-S	E-W	IMP
6	2	4H	W 4	620	
2	6	4H	W 4	620	

40

♠ Q7
♥ 85432
♦ 72
♣ K1096

♠ A108
♥ Q97
♦ J85
♣ A754

♠ K32
♥ KJ10
♦ Q9643
♣ 32

♠ J9654
♥ A6
♦ AK10
♣ QJ8

W N E S

41

♠ Q10
♥ KQJ
♦ 97653
♣ A54

♠ A54
♥ A543
♦ K1042
♣ 82

♠ J982
♥ 1072
♦ Q8
♣ KQ107

♠ K763
♥ 986
♦ AJ
♣ J963

W N E S

42

♠ Q1032
♥ 932
♦
♣ Q109543

♠ A865
♥ A64
♦ AK1084
♣ J

♠ KJ94
♥ 7
♦ J9752
♣ A82

♠ 7
♥ KQJ1085
♦ Q63
♣ K76

W N E S

Board (40)

N-S	E-W	Contract	N-S	E-W	IMP
6	2	2H	N-1	50	
2	6	1NT	N-2	100	

Board (41)

N-S	E-W	Contract	N-S	E-W	IMP
6	2	1NT	N 2	120	
2	6	1NT	N 1	90	

Board (42)

N-S	E-W	Contract	N-S	E-W	IMP
6	2	4D	W 6	170	
2	6	4S	W 5	650	

木村六郎杯 Session 2 Flight B 2010年2月20日(土)

1

♠ 8632
♥ QJ65
♦ J
♣ AK72

♠ Q54
♥ 4
♦ AKQ854
♣ Q103

W N E S

♠ KJ9
♥ AK1092
♦ 102
♣ 985

♠ A107
♥ 873
♦ 9763
♣ J64

2

♠ 95
♥ Q92
♦ 104
♣ AQJ865

♠ 8732
♥ KJ1063
♦ QJ3
♣ 2

W N E S

♠ AKQJ6
♥ A8
♦ 9
♣ K9743

♠ 104
♥ 754
♦ AK87652
♣ 10

3

♠ Q
♥ AJ7
♦ 975
♣ AK10872

♠ J987643
♥
♦ 1064
♣ 965

W N E S

♠ 102
♥ KQ10965
♦ AQ8
♣ Q4

♠ AK5
♥ 8432
♦ KJ32
♣ J3

Board (1) Av: NS=-320

N-S	E-W	Contract	N-S	E-W	IMP
7	1	3NT E-1	50		9
6	9	2D W 3	110		5
2	4	3D W 4	130		5
5	8	3NT E 3	400		-2
1	7	3NT E 3	400		-2
4	2	3NT W 4	430		-3
9	6	3NT E 4	430		-3
8	5	3NT E 4	430		-3

Board (2) Av: NS=-280

N-S	E-W	Contract	N-S	E-W	IMP
2	4	5S E-1	50		8
1	7	5S E-1	50		8
9	6	4S E-1	50		8
7	1	4S E 4	420		-4
8	5	5S E 5	450		-5
4	2	4S E 5	450		-5
6	9	4S E 5	450		-5
5	8	4S E 5	450		-5

Board (3) Av: NS=+420

N-S	E-W	Contract	N-S	E-W	IMP
9	6	3NT S 5	460		1
7	1	3NT S 4	430		0
5	8	3NT N 4	430		0
1	7	3NT N 4	430		0
6	9	3NT S 3	400		-1
4	2	3NT S 3	400		-1
2	4	3NT S 3	400		-1
8	5	3NT S 3	400		-1

4

♠ A82
♥ 109875
♦ 872
♣ Q2

♠ KQ3
♥ Q42
♦ QJ64
♣ J76

W N E S

♠ 1095
♥ J63
♦ A10
♣ AK984

♠ J764
♥ AK
♦ K953
♣ 1053

5

♠ AJ873
♥ K865
♦ J65
♣ K

♠ 10962
♥ A9
♦ Q97
♣ Q1064

W N E S

♠ Q4
♥ 42
♦ A1032
♣ A9852

♠ K5
♥ QJ1073
♦ K84
♣ J73

6

♠ K3
♥ K
♦ A76432
♣ Q1086

♠ Q1076
♥ A986
♦ K8
♣ J54

W N E S

♠ A85
♥ Q105
♦ QJ105
♣ K97

♠ J942
♥ J7432
♦ 9
♣ A32

Board (4) Av: NS=-80

N-S	E-W	Contract	N-S	E-W	IMP
4	2	2NT W-1	100		5
2	4	2NT E-1	100		5
8	5	1NT E 1	90		0
7	1	1NT E 1	90		0
5	8	2NT W 2	120		-1
9	6	1NT E 2	120		-1
6	9	2NT E 3	150		-2
1	7	3NT W 3	600		-11

Board (5) Av: NS=+160

N-S	E-W	Contract	N-S	E-W	IMP
8	5	4H N 4	620		10
5	8	4H N 4	620		10
7	1	4H N 4	620		10
9	6	3H S 3	140		-1
2	4	4H S-1	100		-6
6	9	4H S-1	100		-6
1	7	4H N-2	200		-8
4	2	4H N-2	200		-8

Board (6) Av: NS=-130

N-S	E-W	Contract	N-S	E-W	IMP
1	7	2C N 2	90		6
4	2	2D N-1	50		2
2	4	2NT E 2	120		0
9	6	1NT E 2	120		0
7	1	1NT E 3	150		-1
5	8	2NT E 4	180		-2
8	5	1NT E 4	180		-2
6	9	1NT E 4	180		-2

7

♠ Q97
♥ A92
♦ 108
♣ K8532

♠ A84
♥ J7654
♦ Q5
♣ J96

W N E S

♠ K6532
♥ Q108
♦ J92
♣ A10

♠ J10
♥ K3
♦ AK7643
♣ Q74

8

♠ 84
♥ KJ10853
♦ Q6
♣ 983

♠ AK10
♥ 974
♦ 8
♣ KQJ762

W N E S

♠ J9753
♥ A2
♦ 9542
♣ A4

♠ Q62
♥ Q6
♦ AKJ1073
♣ 105

9

♠ KJ10
♥ K1053
♦ KJ9
♣ 973

♠ 9843
♥ 6
♦ AQ103
♣ AQJ5

W N E S

♠ A75
♥ 9842
♦ 864
♣ K62

♠ Q62
♥ AQJ7
♦ 752
♣ 1084

Board (7) Av: NS=+100

N-S	E-W	Contract	N-S	E-W	IMP
8	5	3D S 3	110		0
6	9	3D S 3	110		0
1	7	3D S 3	110		0
2	4	2D S 3	110		0
5	8	2S E-1	100		0
9	6	2S E-1	100		0
4	2	2D S 2	90		0
7	1	1NT N 1	90		0

Board (8) Av: NS=-320

N-S	E-W	Contract	N-S	E-W	IMP
6	9	4S E-2	100		9
8	5	2S E 4	170		4
7	1	3S E 6	230		3
9	6	2S E 6	230		3
4	2	3NT E 3	400		-2
1	7	4S E 5	450		-4
5	8	4S E 5	450		-4
2	4	4S E 6	480		-4

Board (9) Av: NS=-60

N-S	E-W	Contract	N-S	E-W	IMP
9	6	1NT E-1	100		4
1	7	1NT E-1	100		4
7	1	2C W 2	90		-1
6	9	1NT E 1	90		-1
4	2	1NT E 1	90		-1
8	5	1NT E 1	90		-1
2	4	1NT E 1	90		-1
5	8	1NT E 1	90		-1

10

♠AQ97
♥K7
♦AJ5
♣Q974

♠J1032
♥92
♦Q1094
♣632

♠K8654
♥543
♦2
♣AJ85

♠
♥AQJ1086
♦K8763
♣K10

N
W—E
S

11

♠AKQ
♥AK5
♦KJ75
♣KQ7

♠J962
♥Q3
♦Q10943
♣106

♠753
♥J10642
♦2
♣J952

♠1084
♥987
♦A86
♣A843

N
W—E
S

12

♠KQ8532
♥KQ10
♦K8
♣102

♠AJ
♥93
♦J654
♣AK976

♠7
♥A875
♦AQ10932
♣54

♠10964
♥J642
♦7
♣QJ83

N
W—E
S

Board (10) Av: NS=+420

N-S	E-W	Contract	N-S	E-W	IMP
8	5	3NT N 6	690		7
4	2	3NT N 6	690		7
7	1	4H S 6	680		6
6	9	4H S 6	680		6
1	7	3NT N 5	660		6
5	8	6H S-1	100		-11
2	4	6D S-1	100		-11
9	6	5D S-1	100		-11

Board (11) Av: NS=-50

N-S	E-W	Contract	N-S	E-W	IMP
9	6	6NT N 6	990		14
6	9	6NT S-1	50		0
5	8	6NT S-1	50		0
2	4	6NT S-1	50		0
1	7	6NT N-1	50		0
8	5	6NT N-1	50		0
7	1	6NT N-1	50		0
4	2	6NT N-1	50		0

Board (12) Av: NS=-370

N-S	E-W	Contract	N-S	E-W	IMP
4	2	4C W 4	130		6
9	6	4D E 6	170		5
8	5	5D E 5	400		-1
2	4	5D E 5	400		-1
7	1	5C W 5	400		-1
1	7	5D E 6	420		-2
5	8	5D E 6	420		-2
6	9	3NT W 4	430		-2

13

♠542
♥KQ105
♦Q65
♣AJ6

♠Q983
♥92
♦973
♣K942

♠A
♥AJ83
♦AK82
♣Q875

♠KJ1076
♥764
♦J104
♣103

N
W—E
S

14

♠J5
♥J963
♦Q932
♣K93

♠A9
♥AQ842
♦754
♣J54

♠Q10642
♥K1075
♦J86
♣8

♠K873
♥
♦AK10
♣AQ10762

N
W—E
S

15

♠102
♥53
♦AK107
♣Q8742

♠K987
♥AQ9842
♦9
♣96

♠QJ6543
♥K106
♦64
♣AJ

♠A
♥J7
♦QJ8532
♣K1053

N
W—E
S

Board (13) Av: NS=-20

N-S	E-W	Contract	N-S	E-W	IMP
6	9	3D W-2	200		6
8	5	2NT E-1	100		3
2	4	1NT N 1	90		3
7	1	1NT N 1	90		3
1	7	2S N-1	100		-2
4	2	2NT E 3	150		-4
9	6	1NT E 3	150		-4
5	8	1NT E 3	150		-4

Board (14) Av: NS=+180

N-S	E-W	Contract	N-S	E-W	IMP
6	9	3NT N 5	460		7
9	6	3NT N 4	430		6
8	5	5C S 6	420		6
4	2	4C S 5	150		-1
1	7	3H W-2	100		-2
5	8	3H W-1	50		-4
2	4	3NT N-2	100		-7
7	1	3NT N-6	300		-10

Board (15) Av: NS=-430

N-S	E-W	Contract	N-S	E-W	IMP
1	6	5Dx S-1	200		6
5	3	4S E 4	420		0
4	9	4S E 4	420		0
9	4	4S E 4	420		0
3	5	4S E 4	420		0
7	2	4S E 4	420		0
6	1	4H W 5	450		-1
2	7	4H W 5	450		-1

16

♠5
♥KJ8
♦K94
♣AKJ843

♠832
♥9532
♦Q762
♣92

♠KQ1094
♥A1074
♦AJ5
♣6

♠AJ76
♥Q6
♦1083
♣Q1075

N
W—E
S

17

♠Q4
♥KJ109
♦7
♣QJ10985

♠AK107
♥AQ83
♦Q1053
♣3

♠9653
♥76
♦AKJ86
♣72

♠J82
♥542
♦942
♣AK64

N
W—E
S

18

♠Q107
♥972
♦952
♣10753

♠J543
♥1063
♦763
♣962

♠9862
♥5
♦AKJ8
♣KQJ4

♠AK
♥AKQJ84
♦Q104
♣A8

N
W—E
S

Board (16) Av: NS=+290

N-S	E-W	Contract	N-S	E-W	IMP
3	5	3NT S 4	430		4
1	6	3NT N 4	430		4
4	9	3NT N 4	430		4
2	7	3NT S 3	400		3
9	4	3H E-2	200		-3
7	2	2C N 5	150		-4
5	3	4C N 4	130		-4
6	1	5C N-1	50		-8

Board (17) Av: NS=-370

N-S	E-W	Contract	N-S	E-W	IMP
2	7	4S W-1	50		9
3	5	3D W 4	130		6
7	2	4S W 4	420		-2
9	4	4S E 4	420		-2
5	3	4S E 4	420		-2
6	1	4S E 4	420		-2
1	6	4S E 4	420		-2
4	9	4S W 5	450		-2

Board (18) Av: NS=+300

N-S	E-W	Contract	N-S	E-W	IMP
2	7	4H S 4	620		8
5	3	4H S 4	620		8
9	4	4H S 4	620		8
1	6	3NT S 3	600		7
7	2	2H S 4	170		-4
3	5	4H S-1	100		-9
6	1	4H S-1	100		-9
4	9	4H N-1	100		-9

19

♠ J962
♥ Q8
♦ Q10
♣ 98632

♠ KQ54
♥ K542
♦ 87432
♣

N
W — E
S

♠ 10
♥ A1096
♦ K65
♣ QJ754

♠ A873
♥ J73
♦ AJ9
♣ AK10

20

♠ AQJ52
♥ Q10853
♦ K5
♣ 6

♠ K987
♥ KJ
♦ 987
♣ A1072

N
W — E
S

♠ 4
♥ A97
♦ AQJ1064
♣ K93

♠ 1063
♥ 642
♦ 32
♣ QJ854

21

♠ AQ
♥ AKJ10953
♦ 8
♣ Q76

♠ 107632
♥ 2
♦ 10743
♣ K53

N
W — E
S

♠ J95
♥ 864
♦ AQ965
♣ A4

♠ K84
♥ Q7
♦ KJ2
♣ J10982

Board (19) Av: NS=+110

N-S	E-W	Contract	N-S	E-W	IMP
4	9	2C	E-3	300	5
3	5	1NT	S 2	120	0
7	2	1NT	S 2	120	0
6	1	1NT	S 2	120	0
9	4	1NT	S 1	90	-1
5	3	1NT	S 1	90	-1
2	7	1NT	S 1	90	-1
1	6	1NT	S 1	90	-1

Board (20) Av: NS=-590

N-S	E-W	Contract	N-S	E-W	IMP
3	5	3D	E 5	150	10
4	9	3S	N-2	200	9
9	4	3NT	W 5	660	-2
5	3	3NT	W 5	660	-2
1	6	3NT	W 5	660	-2
7	2	3NT	W 5	660	-2
2	7	3NT	W 6	690	-3
6	1	3NT	W 6	690	-3

Board (21) Av: NS=+280

N-S	E-W	Contract	N-S	E-W	IMP
9	4	5H	N 5	650	9
4	9	4H	N 5	650	9
5	3	4H	N 5	650	9
6	1	4H	N 5	650	9
1	6	4H	N-1	100	-9
2	7	4H	N-1	100	-9
7	2	4H	N-1	100	-9
3	5	4H	N-1	100	-9

22

♠ Q1082
♥ 1064
♦ Q87
♣ J94

♠ A9
♥ A872
♦ AK43
♣ K76

N
W — E
S

♠ KJ4
♥ J5
♦ J95
♣ AQ1032

♠ 7653
♥ KQ93
♦ 1062
♣ 85

23

♠ K6
♥ A9
♦ A53
♣ QJ9763

♠ 2
♥ KJ1076543
♦ 84
♣ K8

N
W — E
S

♠ J9854
♥ Q8
♦ KQ109
♣ A10

♠ AQ1073
♥ 2
♦ J762
♣ 542

24

♠ 83
♥ J106
♦ K987432
♣ 4

♠ Q6542
♥ KQ42
♦
♣ Q985

N
W — E
S

♠ KJ9
♥ 97
♦ AQJ106
♣ K76

♠ A107
♥ A853
♦ 5
♣ AJ1032

Board (22) Av: NS=-680

N-S	E-W	Contract	N-S	E-W	IMP
1	6	6NT	E-1	100	13
9	4	4NT	E 5	660	1
6	1	3NT	E 5	660	1
7	2	4NT	E 6	690	0
4	9	3NT	E 6	690	0
2	7	3NT	E 6	690	0
3	5	3NT	E 6	690	0
5	3	3NT	E 6	690	0

Board (23) Av: NS=-380

N-S	E-W	Contract	N-S	E-W	IMP
1	6	5Hx	W-1	200	11
9	4	3H	W 4	170	5
6	1	2H	W 4	170	5
4	9	5Cx	N-1	200	5
5	3	3NT	N-5	500	-3
7	2	4H	W 4	620	-6
2	7	4H	W 4	620	-6
3	5	4H	W 4	620	-6

Board (24) Av: NS=-130

N-S	E-W	Contract	N-S	E-W	IMP
3	5	2Dx	E-2	300	10
9	4	2S	W 2	110	1
5	3	2S	W 2	110	1
1	6	2S	W 2	110	1
6	1	2S	W 3	140	0
4	9	2S	N-3	150	-1
7	2	2S	W 4	170	-1
2	7	3Dx	N-2	300	-5

25

♠ AQJ842
♥ 73
♦ Q64
♣ Q10

♠ K6
♥ QJ10654
♦ A92
♣ J2

N
W — E
S

♠ 953
♥ K
♦ 10873
♣ AK865

♠ 107
♥ A982
♦ KJ5
♣ 9743

26

♠ 1082
♥ A963
♦ AKJ832
♣

♠ A76
♥ KQ764
♦ KJ1085
♣

N
W — E
S

♠ KJ1093
♥ 53
♦ Q72
♣ Q95

♠ Q8542
♥ AJ9
♦ 4
♣ 10764

27

♠ A73
♥ K109
♦ A10
♣ KQ873

♠ J
♥ A763
♦ Q9742
♣ A62

N
W — E
S

♠ Q10854
♥ 84
♦ K85
♣ 1095

♠ K962
♥ QJ52
♦ J63
♣ J4

Board (25) Av: NS=+130

N-S	E-W	Contract	N-S	E-W	IMP
7	2	2S	N 4	170	1
6	1	3S	N 3	140	0
5	3	2S	N 3	140	0
9	4	2S	N 3	140	0
2	7	2S	N 3	140	0
1	6	2S	N 3	140	0
3	5	4H	W-1	100	-1
4	9	3H	W 3	140	-7

Board (26) Av: NS=+280

N-S	E-W	Contract	N-S	E-W	IMP
4	9	4Cx	N 4	710	10
2	7	5C	N 5	600	8
9	4	5D	W-4	400	3
7	2	4H	W-3	300	1
5	3	4C	N 5	150	-4
6	1	3C	N 4	130	-4
1	6	4H	W-1	100	-5
3	5	2D	N-4	400	-12

Board (27) Av: NS=+90

N-S	E-W	Contract	N-S	E-W	IMP
6	1	3NT	N 4	430	8
7	2	3NT	N 3	400	7
5	3	1NT	N 4	180	3
3	5	2NT	N 2	120	1
2	7	2S	E-1	50	-1
9	4	3NT	N-2	100	-5
4	9	3NT	N-2	100	-5
1	6	3NT	N-2	100	-5

28

♠ QJ1073
♥ QJ1054
♦ A
♣ K5

♠ AK86
♥ K9
♦ K743
♣ 1082

♠ 542
♥ A86
♦ 65
♣ Q9763

W N E S

W (V) N E S

♠ 9
♥ 732
♦ QJ10982
♣ AJ4

29

♠ 103
♥ J64
♦ AK843
♣ KJ2

♠ AQ5
♥ K752
♦ 10
♣ AQ975

♠ 8762
♥ A108
♦ QJ7
♣ 1043

W N E S

W (N) N E S

♠ KJ94
♥ Q93
♦ 9652
♣ 86

30

♠ 762
♥ 83
♦ QJ8
♣ 86432

♠ Q84
♥ AQ4
♦ 64
♣ AK1097

♠ K10
♥ 10752
♦ AK107532
♣

W N E S

W (E) N E S

♠ AJ953
♥ KJ96
♦ 9
♣ QJ5

Board (28) Av: NS=-40

N-S	E-W	Contract	N-S	E-W	IMP
5	3	3S	N 3	140	5
2	7	3H	N 3	140	5
4	9	2S	N 3	140	5
1	6	2S	N 2	110	4
3	5	4S	N-1	100	-2
6	1	4Sx	N-1	200	-4
7	2	4S	N-3	300	-6
9	4	3S	N-4	400	-8

Board (29)

N-S	E-W	Contract	N-S	E-W	IMP
8	3	2C	E 3	110	
3	8	2C	E 2	90	

Board (30)

N-S	E-W	Contract	N-S	E-W	IMP
8	3	4S	E 6	480	
3	8	3NT	E-3	150	

31

♠ AQ109865
♥ Q42
♦ 108
♣ 6

♠ J742
♥ 10
♦ 76
♣ KQJ854

♠ K
♥ AK9653
♦ 542
♣ A32

W N E S

W (S) N E S

♠ 3
♥ J87
♦ AKQJ93
♣ 1097

32

♠ KQ4
♥ KJ9
♦ A96
♣ 7543

♠ 875
♥ Q102
♦ J74
♣ KJ108

♠ 92
♥ 7643
♦ 10832
♣ 962

♠ AJ1063
♥ A85
♦ KQ5
♣ AQ

W N E S

W (V) N E S

Board (31)

N-S	E-W	Contract	N-S	E-W	IMP
8	3	4H	S-2	200	
3	8	5H	S-1	100	

Board (32)

N-S	E-W	Contract	N-S	E-W	IMP
8	3	6S	S 6	980	
3	8	6S	S 6	980	

33

♠ 9
♥ K1032
♦ 98762
♣ Q86

♠ 764
♥ 965
♦ A1054
♣ AJ4

♠ Q83
♥ QJ8
♦ KQJ3
♣ 1073

W N E S

W (N) N E S

Board (33)

N-S	E-W	Contract	N-S	E-W	IMP
8	3	4S	W 5	450	
3	8	4S	W 5	450	

34

♠ 9653
♥ A2
♦ 543
♣ A1082

♠ AQ7
♥ 5
♦ A10987
♣ K963

♠ 1082
♥ K1087
♦ QJ6
♣ QJ5

W N E S

W (E) N E S

♠ KJ4
♥ QJ9643
♦ K2
♣ 74

35

♠ Q1075
♥ Q7
♦ 1062
♣ A854

♠ 843
♥ K96
♦ Q873
♣ Q72

♠ AK9
♥ J82
♦ K94
♣ K1096

♠ J62
♥ A10543
♦ AJ5
♣ J3

W N E S

W (S) N E S

Board (34)

N-S	E-W	Contract	N-S	E-W	IMP
8	3	3NT	E 3	400	
3	8	2H	W 3	140	

Board (35)

N-S	E-W	Contract	N-S	E-W	IMP
8	3	1NT	W-2	200	
3	8	2H	S 2	110	

36

♠ KJ93
♥ J843
♦ 1085
♣ 97

♠ Q8765
♥ AK107
♦ K
♣ 1083

♠ 42
♥ Q92
♦ J764
♣ QJ64

W N E S

W (V) N E S

Board (36)

N-S	E-W	Contract	N-S	E-W	IMP
8	3	3NT	W 5	660	
3	8	3NT	W 4	630	

木村六郎杯 Session 2 Flight B 2010年2月20日(土)

37

♠ AQ73
♥ 109432
♦ Q5
♣ 64

♠ 94
♥ J65
♦ 108763
♣ A107

♠ K85
♥ 8
♦ AJ42
♣ KQJ32

♠ J1062
♥ AKQ7
♦ K9
♣ 985

W N E S

38

♠ 643
♥ K
♦ J7542
♣ KJ98

♠ AQJ72
♥ Q53
♦ 109
♣ 753

♠ 1095
♥ 984
♦ Q86
♣ A642

♠ K8
♥ AJ10762
♦ AK3
♣ Q10

W N E S

39

♠ 52
♥ Q104
♦ AQJ84
♣ 952

♠ J876
♥ K965
♦ 92
♣ J84

♠ K
♥ A872
♦ K107
♣ AKQ73

♠ AQ10943
♥ J3
♦ 653
♣ 106

W N E S

Board (37)

N-S	E-W	Contract	N-S	E-W	IMP
8	3	2S	N 3	140	
3	8	2H	S 3	140	

Board (38)

N-S	E-W	Contract	N-S	E-W	IMP
8	3	4H	S-1	50	
3	8	4H	S-1	50	

Board (39)

N-S	E-W	Contract	N-S	E-W	IMP
8	3	2S	S-1	100	
3	8	4H	W 4	620	

40

♠ Q7
♥ 85432
♦ 72
♣ K1096

♠ A108
♥ Q97
♦ J85
♣ A754

♠ K32
♥ KJ10
♦ Q9643
♣ 32

♠ J9654
♥ A6
♦ AK10
♣ QJ8

W N E S

41

♠ Q10
♥ KQJ
♦ 97653
♣ A54

♠ A54
♥ A543
♦ K1042
♣ 82

♠ J982
♥ 1072
♦ Q8
♣ KQ107

♠ K763
♥ 986
♦ AJ
♣ J963

W N E S

42

♠ Q1032
♥ 932
♦
♣ Q109543

♠ A865
♥ A64
♦ AK1084
♣ J

♠ KJ94
♥ 7
♦ J9752
♣ A82

♠ 7
♥ KQJ1085
♦ Q63
♣ K76

W N E S

Board (40)

N-S	E-W	Contract	N-S	E-W	IMP
8	3	2H	S 2	110	
3	8	2H	S-1	50	

Board (41)

N-S	E-W	Contract	N-S	E-W	IMP
8	3	Passout			
3	8	1NT	N 1	90	

Board (42)

N-S	E-W	Contract	N-S	E-W	IMP
8	3	3NT	W 3	600	
3	8	5D	W 7	640	

木村六郎杯 Session 3 Flight B 2010年2月21日(日)

1

♠ 987
♥ 82
♦ KJ1092
♣ 964

♠ 105432
♥ AJ106
♦ A54
♣ A

W N E S

♠ KQ943
♥ 76
♦ KJ10872
♣ AKQJ6

♥ 75
♦ Q83
♣ Q53

2

♠ KQ9
♥ KJ7
♦ KJ65
♣ J73

♠ J832
♥ Q103
♦ Q3
♣ KQ109

W N E S

♠ 1075
♥ 9852
♦ 8
♣ 86542

♠ A64
♥ A64
♦ A109742
♣ A

3

♠ 5
♥ 107
♦ Q96
♣ A1097543

♠ 7643
♥ 865
♦ K102
♣ KQ8

W N E S

♠ AQJ102
♥ KQJ42
♦ J
♣ J6

♠ K98
♥ A93
♦ A87543
♣ 2

Board (1) Av: NS=-520

N-S	E-W	Contract	N-S	E-W	IMP
9	2	2S	S-1	50	10
8	6	3C	E 5	150	9
3	7	4H	W 6	480	1
4	5	4H	E 6	480	1
5	4	4H	E 7	510	0
2	9	4H	E 7	510	0
7	3	6H	E 6	980	-10
6	8	6H	E 7	1010	-10

Board (2) Av: NS=+1060

N-S	E-W	Contract	N-S	E-W	IMP
8	6	6D	S 7	1390	8
4	5	6D	S 7	1390	8
9	2	6D	S 7	1390	8
2	9	6D	S 7	1390	8
5	4	3NT	S 7	720	-8
6	8	3NT	S 7	720	-8
7	3	3NT	N 7	720	-8
3	7	3NT	S 6	690	-9

Board (3) Av: NS=+50

N-S	E-W	Contract	N-S	E-W	IMP
9	2	4S	W-2	200	4
4	5	4S	E-2	200	4
5	4	4S	E-2	200	4
3	7	4S	E-2	200	4
6	8	3S	W-1	100	2
8	6	5Dx	S-1	100	-4
2	9	5Dx	S-2	300	-8
7	3	5Cx	N-2	300	-8

4

♠ 7
♥ 9732
♦ 83
♣ KJ9543

♠ AJ108654
♥ Q4
♦ A72
♣ 2

W N E S

♠ K1085
♥ KJ1065
♦ Q1086
♣ KQ932

♥ AJ6
♦ Q94
♣ A7

5

♠ 10
♥ Q86
♦ J965
♣ KJ1097

♠ 9873
♥ AJ54
♦ AK32
♣ 8

W N E S

♠ K42
♥ 973
♦ Q8
♣ AQ432

♠ AQJ65
♥ K102
♦ 1074
♣ 65

6

♠ 742
♥ A10873
♦ KQ96
♣ Q

♠ 5
♥ 96
♦ J
♣ AKJ1098654

W N E S

♠ Q98
♥ J52
♦ A87542
♣ 7

♠ AKJ1063
♥ KQ4
♦ 103
♣ 32

Board (4) Av: NS=-110

N-S	E-W	Contract	N-S	E-W	IMP
3	7	4Sx	E-2	500	12
4	5	2S	W 2	110	0
6	8	2S	W 2	110	0
5	4	2S	W 2	110	0
7	3	2S	W 2	110	0
9	2	2S	W 2	110	0
8	6	2S	W 2	110	0
2	9	2S	E 2	110	0

Board (5) Av: NS=-20

N-S	E-W	Contract	N-S	E-W	IMP
8	6	3NT	E-3	150	5
7	3	3NT	E-2	100	3
2	9	1NT	N 1	90	3
4	5	2C	E-1	50	2
3	7	2S	S-1	100	-2
9	2	1NT	E 2	120	-3
5	4	1NT	E 2	120	-3
6	8	1NT	N-2	200	-5

Board (6) Av: NS=0

N-S	E-W	Contract	N-S	E-W	IMP
8	6	4S	S 4	420	9
4	5	4S	N 4	420	9
2	9	5Cx	W-1	200	5
5	4	5S	S-2	100	-3
6	8	4S	S-2	100	-3
9	2	4S	S-2	100	-3
3	7	5Sx	S-2	300	-7
7	3	5Cx	W 5	750	-13

7

♠ AQJ3
♥ 1098652
♦ A
♣ A3

♠ K109
♥ AQ
♦ KQJ1074
♣ 95

W N E S

♠ 82
♥ KJ3
♦ 65
♣ Q108642

♠ 7654
♥ 74
♦ 9832
♣ KJ7

8

♠ 2
♥ AKJ5
♦ 862
♣ A9765

♠ AK863
♥ 106
♦ 7
♣ KJ1043

W N E S

♠ QJ974
♥ Q9
♦ K1053
♣ Q8

♠ 105
♥ 87432
♦ AQJ94
♣ 2

9

♠ AJ10953
♥ K73
♦ AJ5
♣ 6

♠ 64
♥ AJ1084
♦ KQ84
♣ A7

W N E S

♠ Q2
♥ 92
♦ 1063
♣ QJ10842

♠ K87
♥ Q65
♦ 972
♣ K953

Board (7) Av: NS=-40

N-S	E-W	Contract	N-S	E-W	IMP
7	3	3D	W-2	200	6
3	7	2H	N 4	170	5
9	2	2S	S 2	110	4
6	8	2D	W 2	90	-2
4	5	3S	S-1	100	-2
5	4	3S	N-1	100	-2
8	6	4S	N-2	200	-4
2	9	3NT	E 4	630	-11

Board (8) Av: NS=+130

N-S	E-W	Contract	N-S	E-W	IMP
6	8	5Hx	S 6	750	12
3	7	5Sx	E-2	300	5
7	3	5S	W-2	100	-1
8	6	4S	W-2	100	-1
9	2	4S	E-2	100	-1
2	9	4S	E-2	100	-1
5	4	4S	W-1	50	-2
4	5	4S	W 4	420	-11

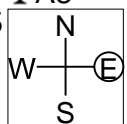
Board (9) Av: NS=+120

N-S	E-W	Contract	N-S	E-W	IMP
8	6	4S	N 4	420	7
4	5	5D	E-4	400	7
3	7	3S	N 3	140	1
9	2	3S	N 3	140	1
6	8	2S	N 2	110	0
2	9	4S	N-1	50	-5
7	3	4S	N-1	50	-5
5	4	4S	N-1	50	-5

10

♠942
♥A643
♦AK108
♣A8

♠AJ105
♥J7
♦6532
♣754



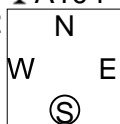
♠86
♥K10852
♦J9
♣KQJ3

♠KQ73
♥Q9
♦Q74
♣10962

11

♠A75
♥Q84
♦K984
♣A104

♠J1096432
♥K3
♦75
♣Q6



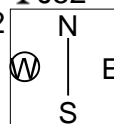
♠J765
♥AJ106
♦J9873

♠KQ8
♥A1092
♦Q32
♣K52

12

♠KJ9
♥J107
♦Q842
♣J52

♠Q10872
♥863
♦K106
♣K7



♠3
♥AKQ94
♦A75
♣10643

♠A654
♥52
♦J93
♣AQ98

Board (10) Av: NS=+130

N-S	E-W	Contract	N-S	E-W	IMP
6	8	3NT N 3	600		10
3	7	2NT N 3	150		1
7	3	2NT N 3	150		1
8	6	2NT N 2	120		0
4	5	2NT N 2	120		0
9	2	2NT N 2	120		0
2	9	2NT N 2	120		0
5	4	4S S-2	200		-8

Board (11) Av: NS=+340

N-S	E-W	Contract	N-S	E-W	IMP
4	5	3NT N 4	430		3
6	8	3NT N 4	430		3
8	6	3NT N 4	430		3
9	2	3NT N 4	430		3
3	7	3NT S 3	400		2
5	4	3NT S 3	400		2
2	9	3NT S-1		50	-9
7	3	3NT N-1		50	-9

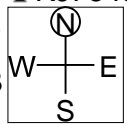
Board (12) Av: NS=-80

N-S	E-W	Contract	N-S	E-W	IMP
5	4	4H E-1	50		4
2	9	4H E-1	50		4
7	3	3H E-1	50		4
9	2	2H E 3		140	-2
4	5	2H E 3		140	-2
3	7	2H E 3		140	-2
8	6	3H E 4		170	-3
6	8	3S N-4		400	-8

13

♠A7
♥8
♦AKJ6
♣KJ7643

♠J1092
♥K2
♦10743
♣1082



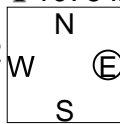
♠KQ653
♥653
♦Q92
♣A9

♠84
♥AQJ10974
♦85
♣Q5

14

♠95
♥875
♦543
♣107642

♠K72
♥KQJ2
♦QJ7
♣J53



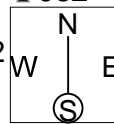
♠Q84
♥10643
♦9
♣AKQ98

♠AJ1063
♥A9
♦AK10862
♣

15

♠A10742
♥J
♦A865
♣982

♠QJ
♥87432
♦Q43
♣AQ5



♠85
♥KQ1065
♦K107
♣K76

♠K963
♥A9
♦J92
♣J1043

Board (13) Av: NS=+620

N-S	E-W	Contract	N-S	E-W	IMP
8	6	4Sx E-4	1100		10
5	4	4H S 4	620		0
6	8	4H S 4	620		0
2	9	4H S 4	620		0
3	7	4H S 4	620		0
9	2	4H S 4	620		0
7	3	4H S 4	620		0
4	5	3NT N-2	200		-13

Board (14) Av: NS=-70

N-S	E-W	Contract	N-S	E-W	IMP
2	9	3Dx S 4	570		12
8	6	3D S 4	130		5
9	2	3D S 4	130		5
5	4	4H W-1	50		3
4	5	4H E-1	50		3
7	3	5Dx S-2		300	-6
3	7	4Sx S-3		500	-10
6	8	5Sx S-5		1100	-14

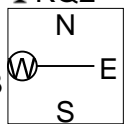
Board (15) Av: NS=+50

N-S	E-W	Contract	N-S	E-W	IMP
6	7	5H W-3	150		3
2	3	4H W-1	50		0
8	9	4H E-1	50		0
7	6	4H E-1	50		0
1	5	4H E-1	50		0
5	1	4H E-1	50		0
3	2	4H E-1	50		0
9	8	Passout			-2

16

♠942
♥Q9754
♦Q8
♣KQ2

♠AK8
♥J2
♦A107643
♣73



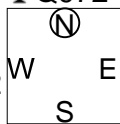
♠1065
♥AK6
♦KJ
♣AJ1054

♠QJ73
♥1083
♦952
♣986

17

♠3
♥95
♦KJ9653
♣Q972

♠AK
♥QJ4
♦AQ102
♣AJ104



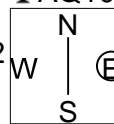
♠Q98754
♥AK62
♦7
♣K8

♠J1062
♥10873
♦84
♣653

18

♠K852
♥6
♦10763
♣AQ108

♠J93
♥9742
♦J42
♣K94



♠A10
♥AKJ103
♦A
♣J6532

♠Q764
♥Q85
♦KQ985
♣7

Board (16) Av: NS=-670

N-S	E-W	Contract	N-S	E-W	IMP
8	9	2NT E 6	240		10
6	7	3NT W 5	660		0
9	8	3NT W 5	660		0
3	2	3NT E 5	660		0
2	3	3NT E 5	660		0
1	5	3NT W 6	690		-1
7	6	3NT E 6	690		-1
5	1	3NT E 6	690		-1

Board (17) Av: NS=-990

N-S	E-W	Contract	N-S	E-W	IMP
8	9	6S E 6	980		0
9	8	6S E 6	980		0
6	7	6NT W 6	990		0
7	6	6NT W 6	990		0
5	1	6NT W 6	990		0
2	3	6NT W 6	990		0
1	5	6NT W 6	990		0
3	2	6NT E 6	990		0

Board (18) Av: NS=+60

N-S	E-W	Contract	N-S	E-W	IMP
6	7	4Sx S 4	790		12
1	5	4H E-2	100		1
7	6	4H E-1	50		0
9	8	4H E-1	50		0
5	1	4H E-1	50		0
2	3	4H E-1	50		0
3	2	3H E-1	50		0
8	9	3H E 3		140	-5

19

♠ J874
♥ K1064
♦ QJ102
♣ J

♠ A10932
♥ Q87
♦ 53
♣ Q86

♠ 6
♥ 932
♦ A76
♣ K105432

N
W—E
S

20

♠ A982
♥ 10732
♦ J72
♣ KJ

♠ KQJ43
♥ 8
♦ A98
♣ Q874

♠ 10
♥ AKQJ5
♦ K543
♣ 963

♠ 765
♥ 964
♦ Q106
♣ A1052

N
W—E
S

21

♠ Q4
♥ K82
♦ A1098753
♣ 7

♠ K3
♥ 764
♦ K6
♣ 1096543

♠ J86
♥ AQJ5
♦ Q42
♣ KJ2

♠ A109752
♥ 1093
♦ J
♣ AQ8

N
W—E
S

Board (19) Av: NS=+120

N-S	E-W	Contract	N-S	E-W	IMP
7	6	4S	W-2	200	2
6	7	4S	W-2	200	2
9	8	4S	W-1	100	-1
8	9	4S	W-1	100	-1
5	1	4S	W-1	100	-1
1	5	4S	W-1	100	-1
3	2	4S	W-1	100	-1
2	3	3NT	W 4	630	-13

Board (20) Av: NS=-600

N-S	E-W	Contract	N-S	E-W	IMP
6	7	3NT	E 3	600	0
8	9	3NT	E 3	600	0
9	8	3NT	E 3	600	0
3	2	3NT	E 3	600	0
5	1	3NT	E 3	600	0
1	5	3NT	E 3	600	0
7	6	4H	W 4	620	-1
2	3	3NT	W 4	630	-1

Board (21) Av: NS=+110

N-S	E-W	Contract	N-S	E-W	IMP
8	9	3S	S 5	200	3
1	5	3S	S 3	140	1
5	1	3S	S 3	140	1
2	3	3D	N 4	130	1
3	2	3D	N 3	110	0
9	8	2D	N 2	90	-1
6	7	3NT	E-1	50	-2
7	6	3C	E 3	110	-6

22

♠ J6
♥ KQ1062
♦ A1074
♣ A6

♠ 75
♥ 985
♦ K6
♣ KJ9875

♠ AK8432
♥ A3
♦ J83
♣ 43

♠ Q109
♥ J74
♦ Q952
♣ Q102

N
W—E
S

23

♠ J96
♥ AJ72
♦ QJ75
♣ A9

♠ AQ87
♥ 95
♦ 942
♣ 8743

♠ K105
♥ K104
♦ AK
♣ KQJ52

♠ 432
♥ Q863
♦ 10863
♣ 106

N
W—E
S

24

♠ K1072
♥ A1074
♦ 102
♣ A76

♠ 95
♥ J2
♦ QJ953
♣ Q1098

♠ A6
♥ KQ8
♦ A876
♣ KJ32

♠ QJ843
♥ 9653
♦ K4
♣ 54

N
W—E
S

Board (22) Av: NS=-80

N-S	E-W	Contract	N-S	E-W	IMP
6	7	2H	N 2	110	5
1	5	3H	N-1	50	1
8	9	3H	N-1	50	1
7	6	2H	N-1	50	1
9	8	4H	N-2	100	-1
2	3	3NT	S-2	100	-1
3	2	3H	N-2	100	-1
5	1	3H	N-2	100	-1

Board (23) Av: NS=-400

N-S	E-W	Contract	N-S	E-W	IMP
2	3	2NT	W 4	180	6
1	5	2NT	W 4	180	6
8	9	1NT	W 4	180	6
3	2	1NT	W 4	180	6
9	8	3NT	W 3	600	-5
5	1	3NT	W 4	630	-6
6	7	3NT	W 4	630	-6
7	6	3NT	W 5	660	-6

Board (24) Av: NS=-110

N-S	E-W	Contract	N-S	E-W	IMP
6	7	3NT	W-2	100	5
8	9	1NT	W 1	90	1
7	6	1NT	W 1	90	1
9	8	1NT	W 1	90	1
5	1	1NT	W 1	90	1
2	3	3H	N-2	100	0
1	5	1NT	W 4	180	-2
3	2	1NT	W 4	180	-2

25

♠ KQ974
♥ AK54
♦ 75
♣ 82

♠ AJ5
♥ J
♦ 9863
♣ AK974

♠ 10832
♥ 10632
♦ A10
♣ J53

♠ 6
♥ Q987
♦ KQJ42
♣ Q106

N
W—E
S

26

♠ 1074
♥ AJ85
♦ Q972
♣ J10

♠ Q85
♥ K103
♦ K3
♣ A8743

♠ AKJ9
♥ Q97
♦ J10
♣ Q965

♠ 632
♥ 642
♦ A8654
♣ K2

N
W—E
S

27

♠ 1082
♥ AK83
♦ K73
♣ 852

♠ AKQ5
♥ J107
♦ A6
♣ AKQ3

♠ 976
♥ 64
♦ J109854
♣ J10

♠ J43
♥ Q952
♦ Q2
♣ 9764

N
W—E
S

Board (25) Av: NS=-70

N-S	E-W	Contract	N-S	E-W	IMP
9	8	3H	N 3	140	5
5	1	4H	N-1	50	1
8	9	3H	N-1	50	1
1	5	3H	N-1	50	1
3	2	3H	N-1	50	1
2	3	4H	N-2	100	-1
6	7	4H	N-2	100	-1
7	6	4H	N-2	100	-1

Board (26) Av: NS=+70

N-S	E-W	Contract	N-S	E-W	IMP
3	2	3NT	E-2	200	4
7	6	3NT	E-2	200	4
9	8	3NT	E-2	200	4
5	1	3NT	E-2	200	4
1	5	3NT	E-2	200	4
2	3	3NT	E-2	200	4
8	9	3NT	E 3	600	-12
6	7	3NT	E 4	630	-12

Board (27) Av: NS=-360

N-S	E-W	Contract	N-S	E-W	IMP
5	1	2NT	E 3	150	5
9	8	2NT	E 3	150	5
7	6	3NT	E 3	400	-1
1	5	3NT	E 3	400	-1
6	7	3NT	E 3	400	-1
2	3	3NT	E 3	400	-1
3	2	3NT	E 3	400	-1
8	9	4S	E 4	420	-2

28

♠ Q4
♥ KQ102
♦ K10876
♣ 98

♠ KJ97 ♥ 84 ♦ Q43 ♣ KQ64	<table border="1" style="border-collapse: collapse; width: 60px; height: 60px; margin: auto;"> <tr><td style="text-align: center;">N</td></tr> <tr><td style="text-align: center;"> </td></tr> <tr><td style="text-align: center;">E</td></tr> <tr><td style="text-align: center;"> </td></tr> <tr><td style="text-align: center;">S</td></tr> </table>	N		E		S	♠ A106 ♥ 7653 ♦ J ♣ AJ1075
N							
E							
S							

♠ 8532
♥ AJ9
♦ A952
♣ 32

29

♠ 105
♥ AK986
♦ 53
♣ AK32

♠ KQJ3 ♥ 10 ♦ KJ94 ♣ 10865	<table border="1" style="border-collapse: collapse; width: 60px; height: 60px; margin: auto;"> <tr><td style="text-align: center;">N</td></tr> <tr><td style="text-align: center;"> </td></tr> <tr><td style="text-align: center;">E</td></tr> <tr><td style="text-align: center;"> </td></tr> <tr><td style="text-align: center;">S</td></tr> </table>	N		E		S	♠ 76 ♥ 7532 ♦ Q1076 ♣ J74
N							
E							
S							

♠ A9842
♥ QJ4
♦ A82
♣ Q9

30

♠ KQ3
♥ 1063
♦ AQ64
♣ AKJ

♠ 1095 ♥ AK5 ♦ J7532 ♣ Q5	<table border="1" style="border-collapse: collapse; width: 60px; height: 60px; margin: auto;"> <tr><td style="text-align: center;">N</td></tr> <tr><td style="text-align: center;"> </td></tr> <tr><td style="text-align: center;">E</td></tr> <tr><td style="text-align: center;"> </td></tr> <tr><td style="text-align: center;">S</td></tr> </table>	N		E		S	♠ 8742 ♥ J42 ♦ 109 ♣ 10863
N							
E							
S							

♠ AJ6
♥ Q987
♦ K8
♣ 9742

Board (28) Av: NS=0

N-S	E-W	Contract	N-S	E-W	IMP
2	3	2S E-3	150		4
7	6	Passout			0
9	8	Passout			0
8	9	Passout			0
5	1	Passout			0
1	5	Passout			0
3	2	Passout			0
6	7	1S W 1	80		-2

Board (29)

N-S	E-W	Contract	N-S	E-W	IMP
4	1	4H N 5	650		
1	4	4H N 5	650		

Board (30)

N-S	E-W	Contract	N-S	E-W	IMP
4	1	3NT N 5	460		
1	4	3NT N 5	460		

31

♠ J93
♥ 107
♦ Q52
♣ AK854

♠ Q2 ♥ KQ4 ♦ J98643 ♣ J10	<table border="1" style="border-collapse: collapse; width: 60px; height: 60px; margin: auto;"> <tr><td style="text-align: center;">N</td></tr> <tr><td style="text-align: center;"> </td></tr> <tr><td style="text-align: center;">E</td></tr> <tr><td style="text-align: center;"> </td></tr> <tr><td style="text-align: center;">S</td></tr> </table>	N		E		S	♠ A8764 ♥ J86 ♦ AK ♣ 762
N							
E							
S							

♠ K105
♥ A9532
♦ 107
♣ Q93

32

♠ Q873
♥ QJ
♦ 8
♣ AQ10863

♠ K94 ♥ 953 ♦ AQ1096 ♣ K5	<table border="1" style="border-collapse: collapse; width: 60px; height: 60px; margin: auto;"> <tr><td style="text-align: center;">N</td></tr> <tr><td style="text-align: center;"> </td></tr> <tr><td style="text-align: center;">E</td></tr> <tr><td style="text-align: center;"> </td></tr> <tr><td style="text-align: center;">S</td></tr> </table>	N		E		S	♠ 652 ♥ A84 ♦ KJ542 ♣ J7
N							
E							
S							

♠ AJ10
♥ K10762
♦ 73
♣ 942

33

♠ A5
♥ Q42
♦ AK1098
♣ AJ9

♠ K4 ♥ J109 ♦ J532 ♣ K872	<table border="1" style="border-collapse: collapse; width: 60px; height: 60px; margin: auto;"> <tr><td style="text-align: center;">N</td></tr> <tr><td style="text-align: center;"> </td></tr> <tr><td style="text-align: center;">E</td></tr> <tr><td style="text-align: center;"> </td></tr> <tr><td style="text-align: center;">S</td></tr> </table>	N		E		S	♠ Q10973 ♥ K3 ♦ Q76 ♣ Q53
N							
E							
S							

♠ J862
♥ A8765
♦ 4
♣ 1064

Board (31)

N-S	E-W	Contract	N-S	E-W	IMP
4	1	1NT N 1	90		
1	4	2D W 2	90		

Board (32)

N-S	E-W	Contract	N-S	E-W	IMP
4	1	4C N 4	130		
1	4	3D W-1	100		

Board (33)

N-S	E-W	Contract	N-S	E-W	IMP
4	1	2NT N 2	120		
1	4	4H S 4	420		

34

♠ KJ
♥ Q95
♦ J4
♣ QJ9765

♠ Q9532 ♥ 4 ♦ Q9653 ♣ 104	<table border="1" style="border-collapse: collapse; width: 60px; height: 60px; margin: auto;"> <tr><td style="text-align: center;">N</td></tr> <tr><td style="text-align: center;"> </td></tr> <tr><td style="text-align: center;">E</td></tr> <tr><td style="text-align: center;"> </td></tr> <tr><td style="text-align: center;">S</td></tr> </table>	N		E		S	♠ A876 ♥ AK1087 ♦ AK ♣ 32
N							
E							
S							

♠ 104
♥ J632
♦ 10872
♣ AK8

35

♠ QJ76
♥ Q985
♦
♣ AKJ83

♠ 542 ♥ 1062 ♦ AQ752 ♣ 107	<table border="1" style="border-collapse: collapse; width: 60px; height: 60px; margin: auto;"> <tr><td style="text-align: center;">N</td></tr> <tr><td style="text-align: center;"> </td></tr> <tr><td style="text-align: center;">E</td></tr> <tr><td style="text-align: center;"> </td></tr> <tr><td style="text-align: center;">S</td></tr> </table>	N		E		S	♠ K93 ♥ J3 ♦ J10943 ♣ 652
N							
E							
S							

♠ A108
♥ AK74
♦ K86
♣ Q94

36

♠ 102
♥ J985
♦ AQJ42
♣ J6

♠ AK863 ♥ 7 ♦ 10 ♣ AK10842	<table border="1" style="border-collapse: collapse; width: 60px; height: 60px; margin: auto;"> <tr><td style="text-align: center;">N</td></tr> <tr><td style="text-align: center;"> </td></tr> <tr><td style="text-align: center;">E</td></tr> <tr><td style="text-align: center;"> </td></tr> <tr><td style="text-align: center;">S</td></tr> </table>	N		E		S	♠ Q974 ♥ A10643 ♦ K ♣ 753
N							
E							
S							

♠ J5
♥ KQ2
♦ 987653
♣ Q9

Board (34)

N-S	E-W	Contract	N-S	E-W	IMP
4	1	3C N-2	200		
1	4	4S W 4	420		

Board (35)

N-S	E-W	Contract	N-S	E-W	IMP
4	1	6H N 7	1010		
1	4	6H S 7	1010		

Board (36)

N-S	E-W	Contract	N-S	E-W	IMP
4	1	4S W 6	680		
1	4	6S W 7	1460		

37

♠ 952
♥ Q106
♦ J753
♣ 754

♠ 764
♥ A97
♦ A62
♣ AQ93

	N	
W		E
	S	

♠ KQ10
♥ KJ53
♦ 1084
♣ J62

♠ AJ83
♥ 842
♦ KQ9
♣ K108

38

♠ 8
♥ KQ7
♦ Q106543
♣ A103

♠ A752
♥ A9853
♦ K9
♣ 92

	N	
W		E
	S	

♠ KQJ6
♥ J2
♦ A
♣ KQJ875

♠ 10943
♥ 1064
♦ J872
♣ 64

39

♠ KQ
♥ Q10743
♦ 9753
♣ 73

♠ A10875
♥ 98
♦ A104
♣ KQ6

	N	
W		E
	S	

♠ J643
♥ J2
♦ Q862
♣ A109

♠ 92
♥ AK65
♦ KJ
♣ J8542

Board (37)

N-S	E-W	Contract	N-S	E-W	IMP
4	1	3NT W-1	50		
1	4	2H E 4		170	

Board (38)

N-S	E-W	Contract	N-S	E-W	IMP
4	1	5S E-1	100		
1	4	4S E 5		650	

Board (39)

N-S	E-W	Contract	N-S	E-W	IMP
4	1	3S W 3	140		
1	4	3S W 3		140	

40

♠ QJ106
♥ 72
♦ 873
♣ KQ54

♠ 98
♥ Q854
♦ J965
♣ 987

	N	
W		E
	S	

♠ AK42
♥ A963
♦ K42
♣ 32

♠ 753
♥ KJ10
♦ AQ10
♣ AJ106

41

♠ KQ1094
♥ 954
♦ 74
♣ 632

♠ 2
♥ AJ73
♦ AJ9865
♣ QJ

	N	
W		E
	S	

♠ J865
♥ K86
♦ 3
♣ K10875

♠ A73
♥ Q102
♦ KQ102
♣ A94

42

♠ AJ10754
♥ 107
♦ K642
♣ 10

♠ 63
♥ A964
♦ AQ95
♣ 987

	N	
W		E
	S	

♠ KQ2
♥ KQ8532
♦ 1087
♣ 6

♠ 98
♥ J
♦ J3
♣ AKQJ5432

Board (40)

N-S	E-W	Contract	N-S	E-W	IMP
4	1	2NT S 2	120		
1	4	2NT S 2		120	

Board (41)

N-S	E-W	Contract	N-S	E-W	IMP
4	1	1NTxN 2	280		
1	4	2S S-2		100	

Board (42)

N-S	E-W	Contract	N-S	E-W	IMP
4	1	3NT S-3	300		
1	4	4H E 4		620	

木村六郎杯 Session 4 Flight B 2010年2月21日(日)

1

♠ Q98
♥ QJ1083
♦ J82
♣ A6

♠ AKJ ♠ 1043
♥ AK754 ♥ 2
♦ AK9 ♦ 10743
♣ 32 ♣ QJ954

W E
N S

♠ 7652
♥ 96
♦ Q65
♣ K1087

2

♠ J93
♥ QJ7
♦ A743
♣ AJ5

♠ K62 ♠ 10875
♥ 98 ♥ K54
♦ K10865 ♦ QJ2
♣ 643 ♣ Q97

W E
N S

♠ AQ4
♥ A10632
♦ 9
♣ K1082

3

♠ Q96
♥ Q
♦ A1098542
♣ A5

♠ 82 ♠ J753
♥ A9875 ♥ 62
♦ K6 ♦ Q73
♣ Q876 ♣ J932

W E
N S

♠ AK104
♥ KJ1043
♦ J
♣ K104

Board (1) Av: NS=+60

N-S	E-W	Contract	N-S	E-W	IMP
1	3	3NT W-3	150		3
9	5	3NT E-3	150		3
5	9	3NT W-2	100		1
8	2	3NT W-2	100		1
6	4	3NT E-2	100		1
3	1	2H N-1		50	-3
4	6	2H N-1		50	-3
2	8	1H W 1		80	-4

Board (2) Av: NS=+680

N-S	E-W	Contract	N-S	E-W	IMP
6	4	6H S 6	1430		13
4	6	4H S 6	680		0
9	5	4H S 6	680		0
5	9	4H S 6	680		0
1	3	4H S 6	680		0
8	2	4H S 6	680		0
2	8	4H N 6	680		0
3	1	4H S 5	650		-1

Board (3) Av: NS=+440

N-S	E-W	Contract	N-S	E-W	IMP
6	4	3NT S 5	460		1
4	6	3NT S 5	460		1
5	9	3NT S 5	460		1
8	2	3NT N 5	460		1
9	5	3NT S 4	430		0
1	3	3NT S 3	400		-1
2	8	3NT N 3	400		-1
3	1	3NT N 3	400		-1

4

♠ K10
♥ A
♦ J74
♣ J875432

♠ Q ♠ 98542
♥ KQJ86432 ♥ 95
♦ KQ8 ♦ 6532
♣ Q ♣ A9

W E
N S

♠ AJ763
♥ 107
♦ A109
♣ K106

5

♠ 4
♥ KQJ982
♦ Q6
♣ K432

♠ Q105 ♠ J7632
♥ A4 ♥ 5
♦ AK1095 ♦ J87
♣ A65 ♣ Q987

W E
N S

♠ AK98
♥ 10763
♦ 432
♣ J10

6

♠ K5
♥ KJ64
♦ J532
♣ 1097

♠ 1073 ♠ QJ98
♥ A10 ♥ 9872
♦ K76 ♦ A
♣ 86432 ♣ AKQJ

W E
N S

♠ A642
♥ Q53
♦ Q10984
♣ 5

Board (4) Av: NS=+30

N-S	E-W	Contract	N-S	E-W	IMP
4	6	4C N 6	170		4
5	9	3C N 5	150		3
6	4	4H W-1	100		2
8	2	4H W-1	100		2
2	8	4H E-1	100		2
3	1	3H W 3		140	-5
1	3	3H W 3		140	-5
9	5	3H W 4		170	-5

Board (5) Av: NS=+50

N-S	E-W	Contract	N-S	E-W	IMP
1	3	5Dx W-2	300		6
9	5	4Sx E-2	300		6
3	1	3H N 3	140		3
2	8	3H N 3	140		3
6	4	4H N-1		100	-4
8	2	3H N-1		100	-4
4	6	3H N-1		100	-4
5	9	2S W 2		110	-4

Board (6) Av: NS=-290

N-S	E-W	Contract	N-S	E-W	IMP
1	3	2H N-2	100		5
2	8	1NT E 2	120		5
4	6	3C E 4	130		4
3	1	2C E 4	130		4
6	4	3C E 5	150		4
9	5	3NT W 3	600		-7
5	9	3NT W 4	630		-8
8	2	3NT E 4	630		-8

7

♠ K983
♥ AKQ94
♦ 7
♣ KJ2

♠ QJ10 ♠ A65
♥ J10762 ♥ 85
♦ AQ ♦ KJ643
♣ 1084 ♣ 753

W E
N S

♠ 742
♥ 3
♦ 109852
♣ AQ96

8

♠ A64
♥ Q753
♦ K52
♣ 732

♠ K932 ♠ Q1085
♥ AK10 ♥ J964
♦ AQJ43 ♦ 97
♣ 8 ♣ AK5

W E
N S

♠ J7
♥ 82
♦ 1086
♣ QJ10964

9

♠ K2
♥ J6
♦ KJ985
♣ Q742

♠ A6543 ♠ Q7
♥ AK ♥ Q9752
♦ 632 ♦ A1074
♣ K95 ♣ J6

W E
N S

♠ J1098
♥ 10843
♦ Q
♣ A1083

Board (7) Av: NS=+50

N-S	E-W	Contract	N-S	E-W	IMP
5	9	2Dx E-1	200		4
1	3	2Dx E-1	200		4
4	6	2C N 3	110		2
8	2	2C N 3	110		2
3	1	2C N 2	90		1
6	4	3NT S-1		100	-4
9	5	3C S-1		100	-4
2	8	2C N-1		100	-4

Board (8) Av: NS=-440

N-S	E-W	Contract	N-S	E-W	IMP
4	6	6S W-1	50		10
9	5	4S W 4		420	1
2	8	4S W 4		420	1
8	2	4S W 4		420	1
6	4	5S W 5		450	0
1	3	4S W 5		450	0
5	9	4S W 5		450	0
3	1	4S W 5		450	0

Board (9) Av: NS=-20

N-S	E-W	Contract	N-S	E-W	IMP
5	9	3NT E-1	100		3
9	5	2H E-1	100		3
1	3	1NT E-1	100		3
3	1	2D N-1		50	-1
2	8	1NT N-1		50	-1
6	4	1NT E 1		90	-2
8	2	1NT E 2		120	-3
4	6	2S W 3		140	-3

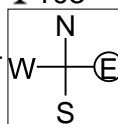
10

♠ AKJ
♥ J632
♦ K653
♣ 103

♠ Q732
♥ Q7
♦ Q72
♣ K987

♠ 1098
♥ K5
♦ A94
♣ AQJ62

♠ 654
♥ A10984
♦ J108
♣ 54



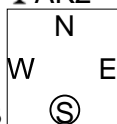
11

♠ AQ763
♥ 82
♦ 1063
♣ AK2

♠ KJ5
♥ KQ10953
♦ AQ
♣ Q6

♠ 1082
♥ A6
♦ KJ9872
♣ 109

♠ 94
♥ J74
♦ 54
♣ J87543



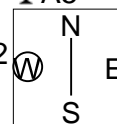
12

♠ J1082
♥ AJ6
♦ K642
♣ A5

♠ Q7
♥ K1095
♦ J75
♣ KQ43

♠ K9643
♥
♦ AQ1083
♣ J109

♠ A5
♥ Q87432
♦ 9
♣ 8762



Board (10) Av: NS=+600

N-S	E-W	Contract	N-S	E-W	IMP
6	4	3NT S 3	600		0
4	6	3NT S 3	600		0
9	5	3NT S 3	600		0
5	9	3NT S 3	600		0
3	1	3NT S 3	600		0
1	3	3NT S 3	600		0
8	2	3NT S 3	600		0
2	8	3NT S 3	600		0

Board (11) Av: NS=-70

N-S	E-W	Contract	N-S	E-W	IMP
6	4	4Hx E-2	300		9
9	5	4H E-1	50		3
5	9	3H E-1	50		3
3	1	4Sx N-1		100	-1
1	3	3H E 3	140		-2
8	2	3H E 3	140		-2
4	6	3H E 3	140		-2
2	8	3H E 4	170		-3

Board (12) Av: NS=+670

N-S	E-W	Contract	N-S	E-W	IMP
9	5	6S S 6	1430		13
4	6	4S S 6	680		0
6	4	4S S 6	680		0
3	1	4S S 6	680		0
8	2	4S N 6	680		0
1	3	4S S 5	650		-1
2	8	4S N 5	650		-1
5	9	5Hx W-3	500		-5

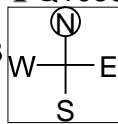
13

♠ AK7654
♥ J7
♦ 9
♣ Q1053

♠ QJ93
♥ 94
♦ QJ6
♣ J864

♠ 8
♥ K652
♦ K105432
♣ A9

♠ 102
♥ AQ1083
♦ A87
♣ K72



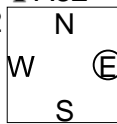
14

♠ A8653
♥ Q54
♦ K5
♣ A82

♠ K
♥ 98762
♦ Q976
♣ Q73

♠ 4
♥ AJ103
♦ J43
♣ J9654

♠ QJ10972
♥ K
♦ A1082
♣ K10



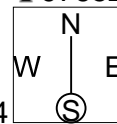
15

♠ 92
♥ 1092
♦ 1096
♣ 97652

♠ J10
♥ AKQ85
♦ QJ543
♣ 3

♠ AK876
♥ J764
♦ A82
♣ A

♠ Q543
♥ 3
♦ K7
♣ KQJ1084



Board (13) Av: NS=0

N-S	E-W	Contract	N-S	E-W	IMP
9	5	3Hx W-3	800		13
1	3	3H W-3	300		7
4	6	2S N 2	110		3
2	8	2S N 2	110		3
5	9	3D S-1		100	-3
8	2	3NT S-2		200	-5
6	4	2NT S-2		200	-5
3	1	2NT S-3		300	-7

Board (14) Av: NS=-30

N-S	E-W	Contract	N-S	E-W	IMP
9	5	2S W-1	50		2
4	6	2S W-1	50		2
3	1	2S W-1	50		2
8	2	2S W-1	50		2
5	9	2S W 2		110	-2
6	4	2S W 2		110	-2
2	8	2S W 2		110	-2
1	3	2D W 3		110	-2

Board (15) Av: NS=+110

N-S	E-W	Contract	N-S	E-W	IMP
4	8	4D E-3	150		1
2	1	4C W-3	150		1
8	4	3NT W-2	100		0
7	5	3NT W-2	100		0
1	2	3NT W-2	100		0
3	6	3NT W-2	100		0
5	7	3C W-2	100		0
6	3	3NT W 5		460	-11

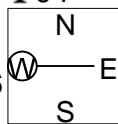
16

♠ KQ52
♥ Q973
♦ 432
♣ 94

♠ A10974
♥ J10
♦ K87
♣ AJ7

♠ 6
♥ K854
♦ QJ5
♣ 106532

♠ J83
♥ A62
♦ A1096
♣ KQ8



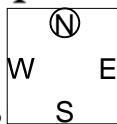
17

♠ J863
♥ Q10986
♦ KQ104
♣

♠ KQ42
♥ A3
♦ J972
♣ J76

♠ 1095
♥ KJ2
♦ 63
♣ K9842

♠ A7
♥ 754
♦ A85
♣ AQ1053



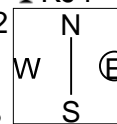
18

♠ 4
♥ 742
♦ KJ7632
♣ KJ4

♠ AK107
♥ AJ5
♦ 108
♣ A652

♠ J86
♥ KQ1063
♦ 954
♣ Q7

♠ Q9532
♥ 98
♦ AQ
♣ 10983



Board (16) Av: NS=-620

N-S	E-W	Contract	N-S	E-W	IMP
6	3	4S W 4	620		0
4	8	4S E 4	620		0
8	4	4S E 4	620		0
5	7	4S E 4	620		0
2	1	4S E 4	620		0
3	6	4S E 4	620		0
1	2	4S E 4	620		0
7	5	4S E 6	680		-2

Board (17) Av: NS=-240

N-S	E-W	Contract	N-S	E-W	IMP
3	6	4C W-1	50		7
1	2	3C W 3		110	4
7	5	4C W 4		130	3
2	1	3C W 5		150	3
4	8	1NT W 5		210	1
6	3	3NT W 3		400	-4
8	4	3NT W 4		430	-5
5	7	3NT E 4		430	-5

Board (18) Av: NS=-110

N-S	E-W	Contract	N-S	E-W	IMP
4	8	4S E-1	50		4
8	4	4S E-1	50		4
3	6	4S E-1	50		4
1	2	4S E-1	50		4
2	1	4S E-1	50		4
7	5	4S E 4		420	-7
5	7	4S E 4		420	-7
6	3	4S E 4		420	-7

19

♠ Q2
♥ AK732
♦ 64
♣ 9765

♠ AJ107
♥ 954
♦ 7
♣ AKJ83

N
W — E
S

♠ K9653
♥
♦ AKQ953
♣ Q10

♠ 84
♥ QJ1086
♦ J1082
♣ 42

20

♠ QJ953
♥ J962
♦ J2
♣ J10

♠ A10862
♥ A4
♦ AQ73
♣ 52

N
W — E
S

♠ K
♥ K875
♦ 1054
♣ KQ863

♠ 74
♥ Q103
♦ K986
♣ A974

21

♠ A95
♥ Q
♦ Q543
♣ AK652

♠ 32
♥ 10653
♦ J82
♣ 10843

N
W — E
S

♠ 10764
♥ K842
♦ 1076
♣ J9

♠ KQJ8
♥ AJ97
♦ AK9
♣ Q7

Board (19) Av: NS=-960

N-S	E-W	Contract	N-S	E-W	IMP
6	3	4S	E 6	680	7
1	2	4S	E 7	710	6
8	4	4S	E 7	710	6
2	1	4S	E 7	710	6
3	6	4S	E 7	710	6
7	5	6S	E 7	1460	-11
5	7	6S	E 7	1460	-11
4	8	6S	E 7	1460	-11

Board (20) Av: NS=+180

N-S	E-W	Contract	N-S	E-W	IMP
5	7	3NT	E-2	200	1
8	4	3NT	E-2	200	1
3	6	3NT	E-2	200	1
7	5	3NT	E-2	200	1
2	1	3NT	E-2	200	1
1	2	2NT	E-2	200	1
6	3	3NT	E-1	100	-2
4	8	3NT	W 3	600	-13

Board (21) Av: NS=+1600

N-S	E-W	Contract	N-S	E-W	IMP
6	3	7NT	S 7	2220	12
7	5	7NT	N 7	2220	12
8	4	6NT	N 7	1470	-4
5	7	6NT	N 7	1470	-4
1	2	6NT	N 7	1470	-4
4	8	6NT	N 7	1470	-4
2	1	6NT	N 7	1470	-4
3	6	6NT	N 6	1440	-4

22

♠ A642
♥ 93
♦ AJ1086
♣ 108

♠ 85
♥ Q42
♦ 752
♣ AQJ96

N
W — E
S

♠ QJ97
♥ KJ108765
♦ K
♣ 4

♠ K103
♥ A
♦ Q943
♣ K7532

23

♠ AJ82
♥ 863
♦ KQ
♣ J1083

♠ Q10543
♥ 95
♦ A8
♣ 9654

N
W — E
S

♠ K96
♥ AKQ4
♦ J965
♣ Q2

♠ 7
♥ J1072
♦ 107432
♣ AK7

24

♠ KQ9743
♥ A3
♦ 109
♣ K84

♠ 52
♥ 108
♦ AKQJ63
♣ Q106

N
W — E
S

♠ AJ86
♥ 9754
♦ 7
♣ AJ75

♠ 10
♥ KQJ62
♦ 8542
♣ 932

Board (22) Av: NS=+60

N-S	E-W	Contract	N-S	E-W	IMP
2	1	5H	E-2	200	4
7	5	5H	E-2	200	4
4	8	4H	E-2	200	4
5	7	3S	N 3	140	2
1	2	4H	E-1	100	1
6	3	3H	E 3	140	-5
8	4	3H	E 3	140	-5
3	6	4Hx	E 4	790	-13

Board (23) Av: NS=-120

N-S	E-W	Contract	N-S	E-W	IMP
7	5	4S	W-1	100	6
4	8	1S	W 1	80	1
6	3	2S	W 2	110	0
2	1	2S	E 2	110	0
8	4	2S	E 2	110	0
1	2	2S	E 3	140	-1
5	7	2S	E 3	140	-1
3	6	2S	E 3	140	-1

Board (24) Av: NS=-130

N-S	E-W	Contract	N-S	E-W	IMP
3	6	2S	N-1	50	2
2	1	2S	N-1	50	2
6	3	2S	N-2	100	1
8	4	3D	W 4	130	0
1	2	3D	W 5	150	-1
5	7	2D	W 5	150	-1
7	5	1NT	E 4	180	-2
4	8	3NT	W 5	460	-8

25

♠ 2
♥ A9
♦ K843
♣ AK9754

♠ A109
♥ Q852
♦ AQ7
♣ QJ6

N
W — E
S

♠ KQJ653
♥ 63
♦ J52
♣ 32

♠ 874
♥ KJ1074
♦ 1096
♣ 108

26

♠ A92
♥ K63
♦ J652
♣ Q72

♠ KJ853
♥ 92
♦ KQ103
♣ K9

N
W — E
S

♠ 64
♥ J1054
♦ A98
♣ J1063

♠ Q107
♥ AQ87
♦ 74
♣ A854

27

♠ A10
♥ 974
♦ Q8543
♣ 986

♠ KJ975
♥ AQ6
♦ K7
♣ Q43

N
W — E
S

♠ 632
♥ J52
♦ J1092
♣ KJ5

♠ Q84
♥ K1083
♦ A6
♣ A1072

Board (25) Av: NS=-10

N-S	E-W	Contract	N-S	E-W	IMP
6	3	4S	E-2	200	5
7	5	3S	E-1	100	3
5	7	3S	E-1	100	3
3	6	3S	E-1	100	3
4	8	4C	N-2	100	-3
8	4	2S	E 2	110	-3
1	2	2NT	W 2	120	-3
2	1	2NT	W 2	120	-3

Board (26) Av: NS=+110

N-S	E-W	Contract	N-S	E-W	IMP
4	8	2S	W-3	300	5
5	7	1NT	N 2	120	0
3	6	1NT	N 2	120	0
7	5	1NT	N 2	120	0
2	1	1NT	N 2	120	0
1	2	1NT	N 1	90	-1
6	3	1NT	N 1	90	-1
8	4	1NT	N 1	90	-1

Board (27) Av: NS=-60

N-S	E-W	Contract	N-S	E-W	IMP
5	7	3S	W-2	100	4
4	8	3S	W-1	50	3
1	2	2S	W-1	50	3
6	3	1NT	S-2	100	-1
2	1	2S	W 2	110	-2
8	4	2S	W 2	110	-2
7	5	2S	W 3	140	-2
3	6	1S	W 3	140	-2

28

♠ AJ102
♥ Q52
♦ K72
♣ 973

♠ K95
♥ 106
♦ A1063
♣ AK84

♠ 87
♥ A983
♦ QJ95
♣ QJ6

♠ Q643
♥ KJ74
♦ 84
♣ 1052

W N E S

29

♠ J2
♥ 8
♦ AQ9854
♣ QJ96

♠ K9854
♥ 3
♦ 63
♣ K10753

♠ 106
♥ K107654
♦ 102
♣ A84

♠ AQ73
♥ AQJ92
♦ KJ7
♣ 2

W N E S

30

♠ 8752
♥ K63
♦ Q842
♣ J8

♠ J9
♥ J54
♦ KJ965
♣ 963

♠ Q4
♥ AQ1098
♦ A10
♣ KQ74

♠ AK1063
♥ 72
♦ 73
♣ A1052

W N E S

Board (28) Av: NS=-140

N-S	E-W	Contract	N-S	E-W	IMP
4	8	1NT W 1		90	2
8	4	1NT W 2		120	1
5	7	1NT W 2		120	1
7	5	1NT W 3		150	0
2	1	1NT W 3		150	0
1	2	1NT W 3		150	0
6	3	1NT W 3		150	0
3	6	1NT W 3		150	0

Board (29)

N-S	E-W	Contract	N-S	E-W	IMP
9	7	5D N 5	600		
7	9	3NT N 5	660		

Board (30)

N-S	E-W	Contract	N-S	E-W	IMP
9	7	4H E-1	50		
7	9	4H E-2	100		

31

♠ 5
♥ QJ8762
♦ AKQ3
♣ K10

♠ J743
♥ AK5
♦ J10974
♣ 2

♠ A1062
♥ 94
♦ 2
♣ AQJ943

♠ KQ98
♥ 103
♦ 865
♣ 8765

W N E S

32

♠ Q97652
♥ 10
♦ Q1052
♣ Q5

♠ A4
♥ K852
♦ AJ864
♣ K9

♠ KJ83
♥ Q643
♦ K7
♣ 1064

♠ 10
♥ AJ97
♦ 93
♣ AJ8732

W N E S

33

♠ Q1095
♥ J862
♦ K84
♣ Q6

♠ 843
♥ Q10
♦ J1063
♣ A854

♠ A
♥ K4
♦ AQ9752
♣ KJ93

♠ KJ762
♥ A9753
♦
♣ 1072

W N E S

Board (31)

N-S	E-W	Contract	N-S	E-W	IMP
9	7	4S W 4	420		
7	9	2S E 3	140		

Board (32)

N-S	E-W	Contract	N-S	E-W	IMP
9	7	4H W-1	100		
7	9	3Cx S-1	100		

Board (33)

N-S	E-W	Contract	N-S	E-W	IMP
9	7	5D E 6	420		
7	9	4D E 6	170		

34

♠ AQ74
♥ QJ872
♦ 10
♣ K75

♠ J103
♥ A94
♦ 74
♣ AJ1043

♠ K92
♥ K106
♦ AJ9652
♣ 9

♠ 865
♥ 53
♦ KQ83
♣ Q862

W N E S

35

♠ 32
♥ KJ65
♦ 987
♣ A764

♠ A10964
♥ AQ7
♦ A3
♣ 1053

♠ KJ7
♥ 9842
♦ K10642
♣ J

♠ Q85
♥ 103
♦ QJ5
♣ KQ982

W N E S

36

♠ AQ9
♥ J94
♦ J63
♣ A932

♠ K102
♥ 1032
♦ AKQ874
♣ J

♠ 876543
♥ 765
♦ 9
♣ K75

♠ J
♥ AKQ8
♦ 1052
♣ Q10864

W N E S

Board (34)

N-S	E-W	Contract	N-S	E-W	IMP
9	7	2NT W-2	100		
7	9	2D E-1	50		

Board (35)

N-S	E-W	Contract	N-S	E-W	IMP
9	7	2S W 5	200		
7	9	2S W 4	170		

Board (36)

N-S	E-W	Contract	N-S	E-W	IMP
9	7	3S E-3	300		
7	9	3H S 3	140		

37

♠ KQ103
♥ A10875
♦ 104
♣ A10

♠ J74
♥ Q942
♦ QJ2
♣ Q93

♠ A9865
♥
♦ AK8653
♣ 54

♠ 2
♥ KJ63
♦ 97
♣ KJ8762

W N E S

38

♠ K742
♥ QJ97
♦ AJ73
♣ 7

♠ AQ109
♥ A4
♦ 109
♣ AQ943

♠ 3
♥ K86532
♦ KQ52
♣ J5

♠ J865
♥ 10
♦ 864
♣ K10862

W N E S

39

♠ Q75
♥ J10764
♦ 1074
♣ 97

♠ 1093
♥ Q
♦ AQJ98532
♣ K

♠ AKJ862
♥ AK3
♦
♣ A643

♠ 4
♥ 9852
♦ K6
♣ QJ10852

W N E S

Board (37)

N-S	E-W	Contract	N-S	E-W	IMP
9	7	5Dx E-2	300		
7	9	4H N 4	620		

Board (38)

N-S	E-W	Contract	N-S	E-W	IMP
9	7	4H E-1	100		
7	9	4H E-1	100		

Board (39)

N-S	E-W	Contract	N-S	E-W	IMP
9	7	6S E 6	1430		
7	9	6S W 7	1460		

40

♠ 73
♥ Q983
♦ J753
♣ Q103

♠ K985
♥ K6
♦ A842
♣ 752

♠ AQ102
♥ AJ1074
♦ 96
♣ 94

♠ J64
♥ 52
♦ KQ10
♣ AKJ86

W N E S

41

♠ K8432
♥ K75
♦ Q87
♣ Q9

♠ A
♥ A1086
♦ KJ10965
♣ A5

♠ J95
♥ QJ92
♦ A43
♣ K62

♠ Q1076
♥ 43
♦ 2
♣ J108743

W N E S

42

♠ 93
♥ KQ1086
♦ A975
♣ J2

♠ 87
♥ A43
♦ J1084
♣ AK53

♠ J9752
♥ KQ3
♦ Q10964
♣ AKQJ106542

♠
♥
♦ 62
♣ 87

W N E S

Board (40)

N-S	E-W	Contract	N-S	E-W	IMP
9	7	3S E 3	140		
7	9	3S W 3	140		

Board (41)

N-S	E-W	Contract	N-S	E-W	IMP
9	7	3NT W-1	100		
7	9	4Sx N-3	500		

Board (42)

N-S	E-W	Contract	N-S	E-W	IMP
9	7	5Cx W 5	750		
7	9	4S S 5	650		