

木村六郎杯 Session 1 Flight A 2010年2月20日(土)

**1**

♠ QJ1064  
♥ 108  
♦ 97  
♣ AQ104

♠ 8  
♥ J32  
♦ AKQJ865  
♣ J6

♠ 972  
♥ A654  
♦ 32  
♣ 8753

♠ AK53  
♥ KQ97  
♦ 104  
♣ K92

**2**

♠ A  
♥ A1072  
♦ 874  
♣ AQ1052

♠ K932  
♥ Q9543  
♦ KQ9  
♣ 4

♠ QJ1074  
♥ J86  
♦ AJ6  
♣ J6

♠ 865  
♥ K  
♦ 10532  
♣ K9873

**3**

♠ J763  
♥ AQ109  
♦ 953  
♣ K8

♠ K8  
♥ 652  
♦ Q74  
♣ AJ765

♠ A52  
♥ 873  
♦ A2  
♣ Q9432

♠ Q1094  
♥ KJ4  
♦ KJ1086  
♣ 10

Board (1) Av: NS=+400

N-S	E-W	Contract	N-S	E-W	IMP
3	4	4S	N 5	450	2
7	8	4S	S 4	420	1
4	3	4S	S 4	420	1
1	9	4S	S 4	420	1
9	1	4S	S 4	420	1
5	6	4S	N 4	420	1
6	5	5Dx	E-2	300	-3
8	7	4D	W-2	100	-7

Board (2) Av: NS=+10

N-S	E-W	Contract	N-S	E-W	IMP
9	1	4C	N 4	130	3
4	3	4C	N 4	130	3
1	9	4S	E-2	100	3
7	8	3S	E-1	50	1
5	6	3S	E-1	50	1
8	7	5C	N-1	100	-3
6	5	5Cx	N-1	200	-5
3	4	4S	E 4	420	-10

Board (3) Av: NS=-10

N-S	E-W	Contract	N-S	E-W	IMP
8	7	2H	N 2	110	3
5	6	Passout			0
6	5	Passout			0
1	9	Passout			0
9	1	Passout			0
3	4	Passout			0
4	3	3S	S-1	50	-1
7	8	2S	S-1	50	-1

**4**

♠ 9  
♥ Q97  
♦ QJ109543  
♣ QJ

♠ AKJ832  
♥ AKJ3  
♦ 6  
♣ 97

♠ 76  
♥ 82  
♦ K72  
♣ A85432

♠ Q1054  
♥ 10654  
♦ A8  
♣ K106

**5**

♠ Q62  
♥ KQ109  
♦ J852  
♣ K3

♠ KJ5  
♥ J8752  
♦ K10  
♣ A102

♠ A1043  
♥ 64  
♦ AQ74  
♣ J76

♠ 987  
♥ A3  
♦ 963  
♣ Q9854

**6**

♠ 876  
♥ K975  
♦ J74  
♣ 1063

♠ 109  
♥ QJ4  
♦ AQ532  
♣ A42

♠ AQ52  
♥ A62  
♦ K  
♣ KQJ97

♠ KJ43  
♥ 1083  
♦ 10986  
♣ 85

Board (4) Av: NS=-30

N-S	E-W	Contract	N-S	E-W	IMP
4	3	4S	W-1	100	4
7	8	4S	W-1	100	4
3	4	4S	W-1	100	4
1	9	4S	W-1	100	4
8	7	3S	W 3	140	-3
6	5	3S	W 3	140	-3
9	1	3S	W 4	170	-4
5	6	4S	W 5	650	-12

Board (5) Av: NS=-110

N-S	E-W	Contract	N-S	E-W	IMP
1	9	4S	E-1	50	4
4	3	3NT	E-1	50	4
3	4	3NT	E-1	50	4
9	1	1S	E 2	110	0
7	8	2NT	W 3	150	-1
6	5	1S	E 4	170	-2
8	7	2C	S-3	300	-5
5	6	3NT	E 3	400	-7

Board (6) Av: NS=-760

N-S	E-W	Contract	N-S	E-W	IMP
8	7	6NT	W-2	200	14
1	9	6NT	W-1	100	13
3	4	6NT	W-1	100	13
6	5	3NT	W 5	660	3
7	8	6C	E 6	1370	-12
4	3	6C	E 6	1370	-12
9	1	6C	E 6	1370	-12
5	6	6NT	W 6	1440	-12

**7**

♠ AJ109  
♥ 4  
♦ AJ86  
♣ J1073

♠ K75  
♥ AKJ98  
♦ Q  
♣ AQ94

♠ Q8  
♥ Q75  
♦ 1097432  
♣ 82

♠ 6432  
♥ 10632  
♦ K5  
♣ K65

**8**

♠ KJ7  
♥ A107  
♦ 98532  
♣ 73

♠ 65  
♥ KQ832  
♦ AQ  
♣ J942

♠ A98  
♥ 6  
♦ KJ104  
♣ AQ1086

♠ Q10432  
♥ J954  
♦ 76  
♣ K5

**9**

♠ A8753  
♥ KJ7  
♦ KJ7  
♣ A3

♠ KJ4  
♥ Q9543  
♦ Q4  
♣ J84

♠ Q92  
♥ 106  
♦ 108532  
♣ KQ9

♠ 106  
♥ A82  
♦ A96  
♣ 107652

Board (7) Av: NS=-170

N-S	E-W	Contract	N-S	E-W	IMP
7	8	3H	W 3	140	1
1	9	3H	W 3	140	1
5	6	3H	W 4	170	0
6	5	3H	W 4	170	0
9	1	3H	W 4	170	0
8	7	3H	W 4	170	0
4	3	3H	W 5	200	-1
3	4	3H	W 5	200	-1

Board (8) Av: NS=-60

N-S	E-W	Contract	N-S	E-W	IMP
4	3	6C	E-2	100	4
5	6	3NT	E-2	100	4
7	8	3NT	E-2	100	4
1	9	3NT	E-2	100	4
6	5	5C	E-1	50	3
9	1	4Sx	S-2	300	-6
8	7	5C	E 5	400	-8
3	4	5C	E 5	400	-8

Board (9) Av: NS=+330

N-S	E-W	Contract	N-S	E-W	IMP
3	4	3NT	N 4	430	3
8	7	3NT	N 4	430	3
1	9	3NT	N 4	430	3
6	5	3NT	S 3	400	2
7	8	3NT	N 3	400	2
5	6	2S	N 4	170	-4
4	3	2S	N 4	170	-4
9	1	3H	N-1	50	-9

木村六郎杯 Session 1 Flight A 2010年2月20日(土)

10

♠ J973  
♥ 10  
♦ Q1097  
♣ QJ104

♠ A4  
♥ K32  
♦ KJ863  
♣ K85

N  
W — E  
S

♠ 8  
♥ Q9876  
♦ 52  
♣ 97632

♠ KQ10652  
♥ AJ54  
♦ A4  
♣ A

11

♠ 2  
♥ Q1062  
♦ Q9432  
♣ KQ3

♠ Q865  
♥ AJ9  
♦ AKJ7  
♣ 106

N  
W — E  
S

♠ J10  
♥ K8754  
♦ 106  
♣ A872

♠ AK9743  
♥ 3  
♦ 85  
♣ J954

12

♠ J104  
♥ 32  
♦ KQJ8  
♣ Q643

♠ K865  
♥ KQ86  
♦ 652  
♣ 97

N  
W — E  
S

♠ A93  
♥ A974  
♦ A7  
♣ K1085

♠ Q72  
♥ J105  
♦ 10943  
♣ AJ2

Board (10) Av: NS=+650

N-S	E-W	Contract	N-S	E-W	IMP
5	6	4S	S 6	680	1
4	3	5S	S 5	650	0
3	4	5S	S 5	650	0
8	7	4S	S 5	650	0
7	8	4S	S 5	650	0
6	5	4S	S 5	650	0
9	1	4S	S 5	650	0
1	9	4S	S 5	650	0

Board (11) Av: NS=0

N-S	E-W	Contract	N-S	E-W	IMP
5	6	4H	W-2	100	3
6	5	4H	W-1	50	2
9	1	4H	W-1	50	2
3	4	3NT	W-1	50	2
7	8	3H	W-1	50	2
4	3	2S	S-1	50	-2
8	7	3H	W 3	140	-4
1	9	3Sx	S-3	500	-11

Board (12) Av: NS=-90

N-S	E-W	Contract	N-S	E-W	IMP
4	3	4H	E-1	50	4
5	6	4H	E-1	50	4
6	5	4H	E-1	50	4
1	9	4H	E-1	50	4
7	8	2H	E 2	110	-1
8	7	3H	E 3	140	-2
3	4	4H	W 4	420	-8
9	1	4H	E 4	420	-8

13

♠ J1087  
♥ Q10743  
♦ A6  
♣ Q7

♠ Q64  
♥ J8  
♦ K10532  
♣ K64

N  
W — E  
S

♠ A932  
♥ K2  
♦ QJ  
♣ AJ1092

♠ K5  
♥ A965  
♦ 9874  
♣ 853

14

♠ J1097  
♥ K  
♦ AQ984  
♣ 972

♠ A65  
♥ AQ3  
♦ K1075  
♣ A53

N  
W — E  
S

♠ K8  
♥ 1096542  
♦ J32  
♣ Q10

♠ Q432  
♥ J87  
♦ 6  
♣ KJ864

15

♠ J872  
♥ K42  
♦ 10952  
♣ 42

♠ Q653  
♥ AQJ84  
♦ QJ108  
♣ QJ108

N  
W — E  
S

♠ AQ954  
♥ AJ9  
♦ 63  
♣ A96

♠ K1063  
♥ 1087  
♦ K7  
♣ K753

Board (13) Av: NS=-180

N-S	E-W	Contract	N-S	E-W	IMP
6	5	3NT	E-1	100	7
3	4	3NT	E-1	100	7
8	7	1NT	W 1	90	3
9	1	3C	E 4	130	2
5	6	2C	E 4	130	2
4	3	2C	E 5	150	1
1	9	3NT	E 5	660	-10
7	8	3NT	E 5	660	-10

Board (14) Av: NS=-100

N-S	E-W	Contract	N-S	E-W	IMP
7	8	4H	W-2	100	5
5	6	4H	E-2	100	5
8	7	2H	W 2	110	0
4	3	2H	W 2	110	0
1	9	2H	W 3	140	-1
3	4	2H	W 3	140	-1
9	1	3H	W 4	170	-2
6	5	2H	W 4	170	-2

Board (15) Av: NS=-460

N-S	E-W	Contract	N-S	E-W	IMP
1	8	3NT	W 4	430	1
9	3	3NT	E 4	430	1
4	7	3NT	E 4	430	1
3	9	3NT	W 5	460	0
5	2	3NT	E 5	460	0
7	4	4H	E 6	480	-1
8	1	3NT	W 6	490	-1
2	5	3NT	E 6	490	-1

16

♠ Q95  
♥ 107  
♦ K94  
♣ 109832

♠ A64  
♥ AK2  
♦ AQ1086  
♣ Q4

N  
W — E  
S

♠ J87  
♥ QJ4  
♦ J72  
♣ AK65

♠ K1032  
♥ 98653  
♦ 53  
♣ J7

17

♠ QJ8  
♥ 102  
♦ AJ65  
♣ AQ108

♠ K1065  
♥ K9654  
♦ 983  
♣ 5

N  
W — E  
S

♠ A9742  
♥ A7  
♦ KQ10  
♣ KJ7

♠ 3  
♥ QJ83  
♦ 742  
♣ 96432

18

♠ AK  
♥ QJ1073  
♦ 5432  
♣ 97

♠ 873  
♥ 96  
♦ J8  
♣ KQJ1043

N  
W — E  
S

♠ 105  
♥ 2  
♦ AQ1096  
♣ A8652

♠ QJ9642  
♥ AK854  
♦ K7  
♣

Board (16) Av: NS=-410

N-S	E-W	Contract	N-S	E-W	IMP
2	5	6NT	W-1	100	11
9	3	6NT	W-1	100	11
1	8	6NT	W-1	100	11
3	9	4NT	W 5	660	-6
5	2	4NT	W 5	660	-6
7	4	4NT	E 5	660	-6
8	1	3NT	E 5	660	-6
4	7	3NT	E 5	660	-6

Board (17) Av: NS=-380

N-S	E-W	Contract	N-S	E-W	IMP
3	9	2H	E 2	110	7
7	4	3S	E 4	170	5
8	1	3NT	E 3	400	-1
1	8	4S	E 4	420	-1
4	7	4S	E 4	420	-1
9	3	4S	E 4	420	-1
2	5	4S	E 4	420	-1
5	2	4S	E 4	420	-1

Board (18) Av: NS=+950

N-S	E-W	Contract	N-S	E-W	IMP
2	5	6Hx	S 7	1860	14
4	7	6H	N 7	1460	11
1	8	6H	N 6	1430	10
7	4	5H	S 7	710	-6
3	9	4H	N 7	710	-6
8	1	5H	S 6	680	-7
5	2	5H	S 6	680	-7
9	3	5Cx	E-2	300	-12

木村六郎杯 Session 1 Flight A 2010年2月20日(土)

19

♠ A8  
♥ QJ4  
♦ AJ73  
♣ KQ65

♠ K972  
♥ 63  
♦ 964  
♣ 10972

N  
W — E  
S

♠ J53  
♥ 1098  
♦ KQ1052  
♣ J3

♠ Q1064  
♥ AK752  
♦ 8  
♣ A84

20

♠ J98  
♥ A6  
♦ J2  
♣ J98654

♠ K6542  
♥ K952  
♦ A1065  
♣

N  
W — E  
S

♠ Q3  
♥ Q873  
♦ 983  
♣ Q1032

♠ A107  
♥ J104  
♦ KQ74  
♣ AK7

21

♠ A85  
♥ 973  
♦ Q94  
♣ Q754

♠ Q10763  
♥ K  
♦ AK7  
♣ AKJ6

N  
W — E  
S

♠ KJ942  
♥ Q64  
♦ 862  
♣ 102

♠  
♥ AJ10852  
♦ J1053  
♣ 983

Board (19) Av: NS=+900

N-S	E-W	Contract	N-S	E-W	IMP
7	4	6H	S 6	980	2
3	9	6H	S 6	980	2
4	7	6H	S 6	980	2
1	8	6H	S 6	980	2
8	1	6H	S 6	980	2
2	5	6H	S 6	980	2
5	2	4H	S 6	480	-9
9	3	4H	S 6	480	-9

Board (20) Av: NS=+70

N-S	E-W	Contract	N-S	E-W	IMP
2	5	3NT	N 4	630	11
1	8	3C	S 3	110	1
4	7	2C	N 3	110	1
7	4	2H	W-1	100	1
8	1	1NT	E-1	100	1
3	9	1NT	S 1	90	1
9	3	3C	S-1	100	-5
5	2	3H	E 4	170	-6

Board (21) Av: NS=-450

N-S	E-W	Contract	N-S	E-W	IMP
7	4	3S	W 5	200	6
5	2	4S	E 4	420	1
8	1	4S	W 5	450	0
1	8	4S	W 5	450	0
2	5	4S	E 5	450	0
4	7	4S	E 5	450	0
3	9	4S	E 5	450	0
9	3	4S	E 5	450	0

22

♠ Q9  
♥ AK432  
♦ 2  
♣ A8754

♠ KJ852  
♥ 85  
♦ KJ7  
♣ 963

N  
W — E  
S

♠ 74  
♥ QJ10976  
♦ AQ63  
♣ Q

♠ A1063  
♥  
♦ 109854  
♣ KJ102

23

♠ KQJ87  
♥ J74  
♦ 763  
♣ 74

♠ 1042  
♥ A102  
♦ AQJ10  
♣ AQ6

N  
W — E  
S

♠ 65  
♥ K63  
♦ K92  
♣ J10532

♠ A93  
♥ Q985  
♦ 854  
♣ K98

24

♠ 984  
♥ 62  
♦ Q9  
♣ AKQ1084

♠ Q10765  
♥ A5  
♦ 7653  
♣ 65

N  
W — E  
S

♠ KJ  
♥ Q10973  
♦ AK  
♣ J932

♠ A32  
♥ KJ84  
♦ J10842  
♣ 7

Board (22) Av: NS=+30

N-S	E-W	Contract	N-S	E-W	IMP
8	1	2H	E-2	200	5
5	2	4C	N 5	150	3
3	9	2H	E-1	100	2
7	4	2H	E-1	100	2
1	8	5C	N-1	50	-2
9	3	5C	N-1	50	-2
4	7	3NT	N-1	50	-2
2	5	2H	E 2	110	-4

Board (23) Av: NS=-110

N-S	E-W	Contract	N-S	E-W	IMP
5	2	3NT	W-1	100	5
7	4	1NT	W 1	90	1
2	5	1NT	W 1	90	1
9	3	1NT	W 2	120	0
4	7	1NT	W 2	120	0
8	1	1NT	W 2	120	0
3	9	1NT	W 2	120	0
1	8	3NT	E 4	630	-11

Board (24) Av: NS=-100

N-S	E-W	Contract	N-S	E-W	IMP
5	2	2C	N 2	90	5
7	4	2H	E-1	50	4
8	1	3C	N-2	100	0
1	8	1NT	S-2	100	0
2	5	3C	N-3	150	-2
3	9	1NT	S-3	150	-2
4	7	1NT	S-3	150	-2
9	3	1NT	S-3	150	-2

25

♠ Q653  
♥ 6  
♦ K865  
♣ K963

♠ 9  
♥ AK942  
♦ J732  
♣ 542

N  
W — E  
S

♠ K1074  
♥ QJ1073  
♦ 109  
♣ J7

♠ AJ82  
♥ 85  
♦ AQ4  
♣ AQ108

26

♠ 1082  
♥ 10873  
♦ 842  
♣ K85

♠ QJ4  
♥ 9  
♦ AJ653  
♣ AQ64

N  
W — E  
S

♠ K73  
♥ AJ42  
♦ Q9  
♣ J1092

♠ A965  
♥ KQ65  
♦ K107  
♣ 73

27

♠ QJ865  
♥  
♦ 98542  
♣ K53

♠ 1072  
♥ KJ4  
♦ A1063  
♣ J106

N  
W — E  
S

♠ 943  
♥ 107632  
♦ KJ  
♣ A72

♠ AK  
♥ AQ985  
♦ Q7  
♣ Q984

Board (25) Av: NS=+430

N-S	E-W	Contract	N-S	E-W	IMP
8	1	4S	S 5	450	1
7	4	4S	S 5	450	1
2	5	4S	N 5	450	1
9	3	4S	S 4	420	0
4	7	4S	S 4	420	0
5	2	4S	S 4	420	0
3	9	4S	S 4	420	0
1	8	5C	S 5	400	-1

Board (26) Av: NS=-330

N-S	E-W	Contract	N-S	E-W	IMP
8	1	3NT	E-1	100	10
3	9	2NT	W 2	120	5
4	7	2H	N-2	200	4
9	3	1Hx	N-1	200	4
5	2	1NT	E 5	210	3
7	4	3NT	E 3	600	-7
1	8	3NT	E 4	630	-7
2	5	10x	S-3	800	-10

Board (27) Av: NS=+10

N-S	E-W	Contract	N-S	E-W	IMP
3	9	2S	S 3	140	4
1	8	2C	S 3	110	3
2	5	2C	S 2	90	2
8	1	2C	S 2	90	2
4	7	4C	N-1	50	-2
5	2	2C	S-1	50	-2
9	3	4S	S-3	150	-4
7	4	3NT	S-3	150	-4

木村六郎杯 Session 1 Flight A 2010年2月20日(土)

28

♠ Q8654  
♥ 1063  
♦ J105  
♣ K3

♠ 2  
♥ Q2  
♦ Q9642  
♣ Q10874

N		E
W		S

♠ 1073  
♥ AK854  
♦ 3  
♣ A952

♠ AKJ9  
♥ J97  
♦ AK87  
♣ J6

29

♠ 103  
♥ J64  
♦ AK843  
♣ KJ2

♠ KJ94  
♥ Q93  
♦ 9652  
♣ 86

N		E
W		S

♠ AQ5  
♥ K752  
♦ 10  
♣ AQ975

♠ 8762  
♥ A108  
♦ QJ7  
♣ 1043

30

♠ 762  
♥ 83  
♦ QJ8  
♣ 86432

♠ AJ953  
♥ KJ96  
♦ 9  
♣ QJ5

N		E
W		S

♠ Q84  
♥ AQ4  
♦ 64  
♣ AK1097

♠ K10  
♥ 10752  
♦ AK107532  
♣

Board (28) Av: NS=-20

N-S	E-W	Contract	N-S	E-W	IMP
7	4	3S	S 3	140	4
2	5	2S	S 2	110	4
9	3	1NT	S 1	90	3
4	7	1NT	S 1	90	3
8	1	4S	N-1	100	-2
1	8	4S	N-1	100	-2
5	2	4S	N-2	200	-5
3	9	4S	N-2	200	-5

Board (29)

N-S	E-W	Contract	N-S	E-W	IMP
6	2	1NT	S-1	100	
2	6	4S	W-2	200	

Board (30)

N-S	E-W	Contract	N-S	E-W	IMP
6	2	6H	E-2	100	
2	6	4H	E 5	450	

31

♠ AQ109865  
♥ Q42  
♦ 108  
♣ 6

♠ 3  
♥ J87  
♦ AKQJ93  
♣ 1097

N		E
W		S

♠ J742  
♥ 10  
♦ 76  
♣ KQJ854

♠ K  
♥ AK9653  
♦ 542  
♣ A32

32

♠ KQ4  
♥ KJ9  
♦ A96  
♣ 7543

♠ 875  
♥ Q102  
♦ J74  
♣ KJ108

N		E
W		S

♠ 92  
♥ 7643  
♦ 10832  
♣ 962

♠ AJ1063  
♥ A85  
♦ KQ5  
♣ AQ

33

♠ 9  
♥ K1032  
♦ 98762  
♣ Q86

♠ AKJ1052  
♥ A74  
♦  
♣ K952

N		E
W		S

♠ 764  
♥ 965  
♦ A1054  
♣ AJ4

♠ Q83  
♥ QJ8  
♦ KQJ3  
♣ 1073

Board (31)

N-S	E-W	Contract	N-S	E-W	IMP
6	2	4H	S 4	620	
2	6	5S	N-1	100	

Board (32)

N-S	E-W	Contract	N-S	E-W	IMP
6	2	6S	S 6	980	
2	6	6S	N 6	980	

Board (33)

N-S	E-W	Contract	N-S	E-W	IMP
6	2	4S	W 5	450	
2	6	4S	W 5	450	

34

♠ 9653  
♥ A2  
♦ 543  
♣ A1082

♠ KJ4  
♥ QJ9643  
♦ K2  
♣ 74

N		E
W		S

♠ AQ7  
♥ 5  
♦ A10987  
♣ K963

♠ 1082  
♥ K1087  
♦ QJ6  
♣ QJ5

35

♠ Q1075  
♥ Q7  
♦ 1062  
♣ A854

♠ 843  
♥ K96  
♦ Q873  
♣ Q72

N		E
W		S

♠ AK9  
♥ J82  
♦ K94  
♣ K1096

♠ J62  
♥ A10543  
♦ AJ5  
♣ J3

36

♠ KJ93  
♥ J843  
♦ 1085  
♣ 97

♠ A10  
♥ 65  
♦ AQ932  
♣ AK52

N		E
W		S

♠ Q8765  
♥ AK107  
♦ K  
♣ 1083

♠ 42  
♥ Q92  
♦ J764  
♣ QJ64

Board (34)

N-S	E-W	Contract	N-S	E-W	IMP
6	2	2H	W 3	140	
2	6	2H	W 3	140	

Board (35)

N-S	E-W	Contract	N-S	E-W	IMP
6	2	2H	S-1	50	
2	6	1NT	S-1	50	

Board (36)

N-S	E-W	Contract	N-S	E-W	IMP
6	2	3NT	E 4	630	
2	6	3NT	E 4	630	

37

♠ AQ73  
♥ 109432  
♦ Q5  
♣ 64

♠ 94  
♥ J65  
♦ 108763  
♣ A107

♠ K85  
♥ 8  
♦ AJ42  
♣ KQJ32

♠ J1062  
♥ AKQ7  
♦ K9  
♣ 985

W N E S

38

♠ 643  
♥ K  
♦ J7542  
♣ KJ98

♠ AQJ72  
♥ Q53  
♦ 109  
♣ 753

♠ 1095  
♥ 984  
♦ Q86  
♣ A642

♠ K8  
♥ AJ10762  
♦ AK3  
♣ Q10

W N E S

39

♠ 52  
♥ Q104  
♦ AQJ84  
♣ 952

♠ J876  
♥ K965  
♦ 92  
♣ J84

♠ K  
♥ A872  
♦ K107  
♣ AKQ73

♠ AQ10943  
♥ J3  
♦ 653  
♣ 106

W N E S

Board (37)

N-S	E-W	Contract	N-S	E-W	IMP
6	2	3H	S 3	140	
2	6	1H	N 3	140	

Board (38)

N-S	E-W	Contract	N-S	E-W	IMP
6	2	4H	S-1	50	
2	6	4H	S-1	50	

Board (39)

N-S	E-W	Contract	N-S	E-W	IMP
6	2	4H	W 4	620	
2	6	3H	W 4	170	

40

♠ Q7  
♥ 85432  
♦ 72  
♣ K1096

♠ A108  
♥ Q97  
♦ J85  
♣ A754

♠ K32  
♥ KJ10  
♦ Q9643  
♣ 32

♠ J9654  
♥ A6  
♦ AK10  
♣ QJ8

W N E S

41

♠ Q10  
♥ KQJ  
♦ 97653  
♣ A54

♠ A54  
♥ A543  
♦ K1042  
♣ 82

♠ J982  
♥ 1072  
♦ Q8  
♣ KQ107

♠ K763  
♥ 986  
♦ AJ  
♣ J963

W N E S

42

♠ Q1032  
♥ 932  
♦  
♣ Q109543

♠ A865  
♥ A64  
♦ AK1084  
♣ J

♠ KJ94  
♥ 7  
♦ J9752  
♣ A82

♠ 7  
♥ KQJ1085  
♦ Q63  
♣ K76

W N E S

Board (40)

N-S	E-W	Contract	N-S	E-W	IMP
6	2	2S	S-1	50	
2	6	2C	S-1	50	

Board (41)

N-S	E-W	Contract	N-S	E-W	IMP
6	2	1NT	N 2	120	
2	6	1NT	N 1	90	

Board (42)

N-S	E-W	Contract	N-S	E-W	IMP
6	2	5D	E 7	640	
2	6	5Sx	E 6	1050	

木村六郎杯 Session 2 Flight A 2010年2月20日(土)

1

♠ 8632  
♥ QJ65  
♦ J  
♣ AK72

♠ Q54  
♥ 4  
♦ AKQ854  
♣ Q103

♠ KJ9  
♥ AK1092  
♦ 102  
♣ 985

♠ A107  
♥ 873  
♦ 9763  
♣ J64

W N E S

2

♠ 95  
♥ Q92  
♦ 104  
♣ AQJ865

♠ 8732  
♥ KJ1063  
♦ QJ3  
♣ 2

♠ AKQJ6  
♥ A8  
♦ 9  
♣ K9743

♠ 104  
♥ 754  
♦ AK87652  
♣ 10

W N E S

3

♠ Q  
♥ AJ7  
♦ 975  
♣ AK10872

♠ J987643  
♥  
♦ 1064  
♣ 965

♠ 102  
♥ KQ10965  
♦ AQ8  
♣ Q4

♠ AK5  
♥ 8432  
♦ KJ32  
♣ J3

W N E S

Board (1) Av: NS=-370

N-S	E-W	Contract	N-S	E-W	IMP
2	4	3NT E-1	50		9
1	7	2NT W 5	210		4
6	9	3NT W 3	400		-1
4	2	3NT W 3	400		-1
9	6	3NT E 3	400		-1
8	5	3NT E 3	400		-1
7	1	3NT W 4	430		-2
5	8	3NT E 4	430		-2

Board (2) Av: NS=-440

N-S	E-W	Contract	N-S	E-W	IMP
9	6	4S E 4	420		1
8	5	4S E 4	420		1
7	1	4S E 4	420		1
1	7	4S E 4	420		1
4	2	5S E 5	450		0
2	4	5S E 5	450		0
5	8	4S E 5	450		0
6	9	4S E 5	450		0

Board (3) Av: NS=+430

N-S	E-W	Contract	N-S	E-W	IMP
2	4	3NT S 5	460		1
9	6	3NT N 5	460		1
5	8	3NT N 4	430		0
8	5	3NT N 4	430		0
6	9	3NT N 4	430		0
7	1	3NT S 3	400		-1
1	7	3NT S 3	400		-1
4	2	3NT N 3	400		-1

4

♠ A82  
♥ 109875  
♦ 872  
♣ Q2

♠ KQ3  
♥ Q42  
♦ QJ64  
♣ J76

♠ 1095  
♥ J63  
♦ A10  
♣ AK984

♠ J764  
♥ AK  
♦ K953  
♣ 1053

W N E S

5

♠ AJ873  
♥ K865  
♦ J65  
♣ K

♠ 10962  
♥ A9  
♦ Q97  
♣ Q1064

♠ Q4  
♥ 42  
♦ A1032  
♣ A9852

♠ K5  
♥ QJ1073  
♦ K84  
♣ J73

W N E S

6

♠ K3  
♥ K  
♦ A76432  
♣ Q1086

♠ Q1076  
♥ A986  
♦ K8  
♣ J54

♠ A85  
♥ Q105  
♦ QJ105  
♣ K97

♠ J942  
♥ J7432  
♦ 9  
♣ A32

W N E S

Board (4) Av: NS=-40

N-S	E-W	Contract	N-S	E-W	IMP
4	2	3NT E-1	100		4
5	8	3C E-1	100		4
1	7	2NT E-1	100		4
8	5	1NT W 1	90		-2
9	6	2NT E 2	120		-2
2	4	2NT E 2	120		-2
7	1	2NT E 2	120		-2
6	9	2NT E 3	150		-3

Board (5) Av: NS=+420

N-S	E-W	Contract	N-S	E-W	IMP
8	5	4H N 4	620		5
6	9	4H N 4	620		5
9	6	4H N 4	620		5
4	2	4H N 4	620		5
1	7	4H N 4	620		5
5	8	3H N 3	140		-7
2	4	4H S-1	100		-11
7	1	4H S-1	100		-11

Board (6) Av: NS=-110

N-S	E-W	Contract	N-S	E-W	IMP
2	4	2H W-2	200		7
5	8	2H E-1	100		5
4	2	1NT E 2	120		0
6	9	1NT E 3	150		-1
7	1	1NT E 3	150		-1
1	7	1NT E 3	150		-1
9	6	1NT E 4	180		-2
8	5	1NT E 4	180		-2

7

♠ Q97  
♥ A92  
♦ 108  
♣ K8532

♠ A84  
♥ J7654  
♦ Q5  
♣ J96

♠ K6532  
♥ Q108  
♦ J92  
♣ A10

♠ J10  
♥ K3  
♦ AK7643  
♣ Q74

W N E S

8

♠ 84  
♥ KJ10853  
♦ Q6  
♣ 983

♠ AK10  
♥ 974  
♦ 8  
♣ KQJ762

♠ J9753  
♥ A2  
♦ 9542  
♣ A4

♠ Q62  
♥ Q6  
♦ AKJ1073  
♣ 105

W N E S

9

♠ KJ10  
♥ K1053  
♦ KJ9  
♣ 973

♠ 9843  
♥ 6  
♦ AQ103  
♣ AQJ5

♠ A75  
♥ 9842  
♦ 864  
♣ K62

♠ Q62  
♥ AQJ7  
♦ 752  
♣ 1084

W N E S

Board (7) Av: NS=+100

N-S	E-W	Contract	N-S	E-W	IMP
8	5	2Sx E-1	200		3
2	4	3D S 3	110		0
7	1	2D S 3	110		0
4	2	2S E-1	100		0
6	9	2S E-1	100		0
5	8	2H W-1	100		0
1	7	1S E-1	100		0
9	6	2D S 2	90		0

Board (8) Av: NS=-230

N-S	E-W	Contract	N-S	E-W	IMP
5	8	3H N-1	50		5
4	2	3D S-2	100		4
2	4	3S E 3	140		3
8	5	3C W 6	170		2
6	9	3S E 5	200		1
9	6	4Hx N-2	300		-2
1	7	4S E 5	450		-6
7	1	4S E 5	450		-6

Board (9) Av: NS=+30

N-S	E-W	Contract	N-S	E-W	IMP
5	8	1NT E-2	200		5
7	1	1NTxN 1	180		4
6	9	2H S 2	110		2
4	2	1NT E-1	100		2
1	7	2H S-1	50		-2
9	6	2H W 2	90		-3
2	4	2C E 2	90		-3
8	5	1NT E 1	90		-3

木村六郎杯 Session 2 Flight A 2010年2月20日(土)

10

♠AQ97  
♥K7  
♦AJ5  
♣Q974

♠J1032  
♥92  
♦Q1094  
♣632

♠K8654  
♥543  
♦2  
♣AJ85

♠  
♥AQJ1086  
♦K8763  
♣K10

N  
W—E  
S

11

♠AKQ  
♥AK5  
♦KJ75  
♣KQ7

♠J962  
♥Q3  
♦Q10943  
♣106

♠753  
♥J10642  
♦2  
♣J952

♠1084  
♥987  
♦A86  
♣A843

N  
W—E  
S

12

♠KQ8532  
♥KQ10  
♦K8  
♣102

♠AJ  
♥93  
♦J654  
♣AK976

♠7  
♥A875  
♦AQ10932  
♣54

♠10964  
♥J642  
♦7  
♣QJ83

N  
W—E  
S

Board (10) Av: NS=+550

N-S	E-W	Contract	N-S	E-W	IMP
2	4	6H S 6	1430		13
5	8	3NT N 6	690		4
4	2	3NT N 6	690		4
8	5	4H S 6	680		4
6	9	3NT N 5	660		3
1	7	3NT N 5	660		3
9	6	6D S-1	100		-12
7	1	6D N-1	100		-12

Board (11) Av: NS=+300

N-S	E-W	Contract	N-S	E-W	IMP
7	1	2Sx E-6	1400		15
2	4	6NT S 7	1020		12
8	5	3NT N 5	460		4
4	2	3NT N 5	460		4
5	8	6NT S-1	50		-8
9	6	6NT N-1	50		-8
6	9	6NT N-1	50		-8
1	7	6NT N-1	50		-8

Board (12) Av: NS=-300

N-S	E-W	Contract	N-S	E-W	IMP
8	5	3S N-1	100		5
5	8	4D E 6	170		4
4	2	4D E 6	170		4
1	7	3S N-2	200		3
7	1	5D E 6	420		-3
2	4	5D E 6	420		-3
9	6	3NT W 4	430		-4
6	9	6D W 6	920		-12

13

♠542  
♥KQ105  
♦Q65  
♣AJ6

♠Q983  
♥92  
♦973  
♣K942

♠A  
♥AJ83  
♦AK82  
♣Q875

♠KJ1076  
♥764  
♦J104  
♣103

N  
W—E  
S

14

♠J5  
♥J963  
♦Q932  
♣K93

♠A9  
♥AQ842  
♦754  
♣J54

♠Q10642  
♥K1075  
♦J86  
♣8

♠K873  
♥  
♦AK10  
♣AQ10762

N  
W—E  
S

15

♠102  
♥53  
♦AK107  
♣Q8742

♠K987  
♥AQ9842  
♦9  
♣96

♠QJ6543  
♥K106  
♦64  
♣AJ

♠A  
♥J7  
♦QJ8532  
♣K1053

N  
W—E  
S

Board (13) Av: NS=-130

N-S	E-W	Contract	N-S	E-W	IMP
4	2	1NT E 1	90		1
2	4	2S S-1	100		1
6	9	2D W 3	110		1
5	8	2D E 3	110		1
7	1	1NT E 2	120		0
9	6	1NT E 3	150		-1
1	7	2S S-2	200		-2
8	5	2Sx S-2	500		-9

Board (14) Av: NS=+250

N-S	E-W	Contract	N-S	E-W	IMP
8	5	4Hx W-3	500		6
4	2	4Hx W-3	500		6
6	9	5C S 5	400		4
1	7	4C S 6	170		-2
7	1	4D N 5	150		-3
2	4	4D N 5	150		-3
9	6	4C S 5	150		-3
5	8	5C S-1	50		-7

Board (15) Av: NS=-310

N-S	E-W	Contract	N-S	E-W	IMP
3	5	4D S 4	130		10
7	2	5Dx S-1	200		3
1	6	5Dx S-1	200		3
5	3	3H W 5	200		3
4	9	4S E 4	420		-3
6	1	4S E 4	420		-3
9	4	4S E 4	420		-3
2	7	5Sx E 5	650		-8

16

♠5  
♥KJ8  
♦K94  
♣AKJ843

♠832  
♥9532  
♦Q762  
♣92

♠KQ1094  
♥A1074  
♦AJ5  
♣6

♠AJ76  
♥Q6  
♦1083  
♣Q1075

N  
W—E  
S

17

♠Q4  
♥KJ109  
♦7  
♣QJ10985

♠AK107  
♥AQ83  
♦Q1053  
♣3

♠9653  
♥76  
♦AKJ86  
♣72

♠J82  
♥542  
♦942  
♣AK64

N  
W—E  
S

18

♠Q107  
♥972  
♦952  
♣10753

♠J543  
♥1063  
♦763  
♣962

♠9862  
♥5  
♦AKJ8  
♣KQJ4

♠AK  
♥AKQJ84  
♦Q104  
♣A8

N  
W—E  
S

Board (16) Av: NS=+420

N-S	E-W	Contract	N-S	E-W	IMP
7	2	3NT S 4	430		0
3	5	3NT S 4	430		0
5	3	3NT S 4	430		0
1	6	3NT S 4	430		0
2	7	3NT S 4	430		0
4	9	3NT S 3	400		-1
6	1	3NT S 3	400		-1
9	4	3NT S-1	50		-10

Board (17) Av: NS=-370

N-S	E-W	Contract	N-S	E-W	IMP
3	5	3D W 4	130		6
9	4	3D W 4	130		6
7	2	5D W 5	400		-1
4	9	4S E 4	420		-2
1	6	4S E 4	420		-2
5	3	4S E 4	420		-2
2	7	4S E 4	420		-2
6	1	4S E 4	420		-2

Board (18) Av: NS=+290

N-S	E-W	Contract	N-S	E-W	IMP
2	7	3NT S 3	600		7
3	5	3NT S 3	600		7
7	2	3NT S 3	600		7
6	1	3NT N 3	600		7
9	4	3H S 3	140		-4
4	9	4H S-1	100		-9
5	3	4H S-1	100		-9
1	6	4H N-1	100		-9

19

♠ J962  
♥ Q8  
♦ Q10  
♣ 98632

♠ KQ54  
♥ K542  
♦ 87432  
♣

N  
W — E  
S

♠ 10  
♥ A1096  
♦ K65  
♣ QJ754

♠ A873  
♥ J73  
♦ AJ9  
♣ AK10

20

♠ AQJ52  
♥ Q10853  
♦ K5  
♣ 6

♠ K987  
♥ KJ  
♦ 987  
♣ A1072

N  
W — E  
S

♠ 4  
♥ A97  
♦ AQJ1064  
♣ K93

♠ 1063  
♥ 642  
♦ 32  
♣ QJ854

21

♠ AQ  
♥ AKJ10953  
♦ 8  
♣ Q76

♠ 107632  
♥ 2  
♦ 10743  
♣ K53

N  
W — E  
S

♠ J95  
♥ 864  
♦ AQ965  
♣ A4

♠ K84  
♥ Q7  
♦ KJ2  
♣ J10982

Board (19) Av: NS=+110

N-S	E-W	Contract	N-S	E-W	IMP
9	4	1NT S 3	150		1
7	2	1NT S 2	120		0
1	6	1NT S 2	120		0
6	1	1NT S 2	120		0
5	3	2C E-1	100		0
4	9	1NT S 1	90		-1
3	5	1NT S 1	90		-1
2	7	4S N-3	150		-6

Board (20) Av: NS=-650

N-S	E-W	Contract	N-S	E-W	IMP
4	9	5D E 5	600		2
9	4	5D E 5	600		2
5	3	3NT W 5	660		0
1	6	3NT W 5	660		0
3	5	3NT W 5	660		0
6	1	3NT W 5	660		0
2	7	3NT W 5	660		0
7	2	3NT W 5	660		0

Board (21) Av: NS=+280

N-S	E-W	Contract	N-S	E-W	IMP
3	5	4H N 5	650		9
5	3	4H N 5	650		9
2	7	4H N 5	650		9
9	4	4H N 5	650		9
4	9	4H N-1	100		-9
1	6	4H N-1	100		-9
6	1	4H N-1	100		-9
7	2	4H N-1	100		-9

22

♠ Q1082  
♥ 1064  
♦ Q87  
♣ J94

♠ A9  
♥ A872  
♦ AK43  
♣ K76

N  
W — E  
S

♠ KJ4  
♥ J5  
♦ J95  
♣ AQ1032

♠ 7653  
♥ KQ93  
♦ 1062  
♣ 85

23

♠ K6  
♥ A9  
♦ A53  
♣ QJ9763

♠ 2  
♥ KJ1076543  
♦ 84  
♣ K8

N  
W — E  
S

♠ J9854  
♥ Q8  
♦ KQ109  
♣ A10

♠ AQ1073  
♥ 2  
♦ J762  
♣ 542

24

♠ 83  
♥ J106  
♦ K987432  
♣ 4

♠ Q6542  
♥ KQ42  
♦  
♣ Q985

N  
W — E  
S

♠ KJ9  
♥ 97  
♦ AQJ106  
♣ K76

♠ A107  
♥ A853  
♦ 5  
♣ AJ1032

Board (22) Av: NS=-680

N-S	E-W	Contract	N-S	E-W	IMP
4	9	6NT E-1	100		13
1	6	3NT E 4	630		2
9	4	4NT E 5	660		1
5	3	4NT E 6	690		0
6	1	3NT E 6	690		0
7	2	3NT E 6	690		0
3	5	3NT E 6	690		0
2	7	3NT E 7	720		-1

Board (23) Av: NS=-390

N-S	E-W	Contract	N-S	E-W	IMP
7	2	6H W-1	100		10
4	9	5C N-1	100		7
9	4	3H W 4	170		6
6	1	5Cx N-1	200		5
1	6	4H W 4	620		-6
5	3	4H W 4	620		-6
2	7	4H W 4	620		-6
3	5	4H W 4	620		-6

Board (24) Av: NS=-100

N-S	E-W	Contract	N-S	E-W	IMP
6	1	4S W-2	100		5
1	6	4S E-2	100		5
9	4	2D E-2	100		5
5	3	2Dx N-1	100		0
4	9	2S W 2	110		0
7	2	3Dx N-2	300		-5
2	7	3Dx N-2	300		-5
3	5	2Cx S-2	300		-5

25

♠ AQJ842  
♥ 73  
♦ Q64  
♣ Q10

♠ K6  
♥ QJ10654  
♦ A92  
♣ J2

N  
W — E  
S

♠ 953  
♥ K  
♦ 10873  
♣ AK865

♠ 107  
♥ A982  
♦ KJ5  
♣ 9743

26

♠ 1082  
♥ A963  
♦ AKJ832  
♣

♠ A76  
♥ KQ764  
♦ KJ1085  
♣

N  
W — E  
S

♠ KJ1093  
♥ 53  
♦ Q72  
♣ Q95

♠ Q8542  
♥ AJ9  
♦ 4  
♣ 10764

27

♠ A73  
♥ K109  
♦ A10  
♣ KQ873

♠ J  
♥ A763  
♦ Q9742  
♣ A62

N  
W — E  
S

♠ Q10854  
♥ 84  
♦ K85  
♣ 1095

♠ K962  
♥ QJ52  
♦ J63  
♣ J4

Board (25) Av: NS=+140

N-S	E-W	Contract	N-S	E-W	IMP
9	4	2S N 4	170		1
1	6	3S N 3	140		0
6	1	3S N 3	140		0
3	5	2S S 3	140		0
5	3	2S N 3	140		0
4	9	2S N 3	140		0
2	7	2S N 2	110		-1
7	2	3H W-1	100		-1

Board (26) Av: NS=+230

N-S	E-W	Contract	N-S	E-W	IMP
4	9	5Cx N 5	750		11
2	7	3Sx E-2	500		7
9	4	4S E-3	300		2
3	5	3D W-2	200		-1
1	6	4C N 5	150		-2
6	1	3S E-1	100		-4
5	3	3D W-1	100		-4
7	2	3NT S-2	200		-10

Board (27) Av: NS=+80

N-S	E-W	Contract	N-S	E-W	IMP
5	3	3NT N 3	400		8
7	2	3NT N 3	400		8
2	7	1NT N 3	150		2
1	6	2H S 2	110		1
9	4	3NT N-1	50		-4
3	5	3NT N-1	50		-4
6	1	3NT N-2	100		-5
4	9	3NT N-2	100		-5



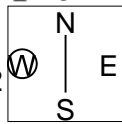
28

♠ QJ1073  
♥ QJ1054  
♦ A  
♣ K5

♠ AK86  
♥ K9  
♦ K743  
♣ 1082

♠ 542  
♥ A86  
♦ 65  
♣ Q9763

♠ 9  
♥ 732  
♦ QJ10982  
♣ AJ4



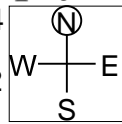
29

♠ 103  
♥ J64  
♦ AK843  
♣ KJ2

♠ AQ5  
♥ K752  
♦ 10  
♣ AQ975

♠ 8762  
♥ A108  
♦ QJ7  
♣ 1043

♠ KJ94  
♥ Q93  
♦ 9652  
♣ 86



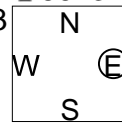
30

♠ 762  
♥ 83  
♦ QJ8  
♣ 86432

♠ Q84  
♥ AQ4  
♦ 64  
♣ AK1097

♠ K10  
♥ 10752  
♦ AK107532  
♣

♠ AJ953  
♥ KJ96  
♦ 9  
♣ QJ5



Board (28) Av: NS=+110

N-S	E-W	Contract	N-S	E-W	IMP
1	6	2S	N 4	170	2
5	3	3S	N 3	140	1
4	9	3S	N 3	140	1
7	2	3S	N 3	140	1
2	7	2S	N 3	140	1
9	4	4D	W-1	50	-2
3	5	3NT	E-1	50	-2
6	1	4H	N-1	100	-5

Board (29)

N-S	E-W	Contract	N-S	E-W	IMP
8	3	1NT	N 1	90	
3	8	2H	E-1	100	

Board (30)

N-S	E-W	Contract	N-S	E-W	IMP
8	3	4S	W 5	450	
3	8	5Dx	S-3	500	

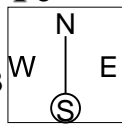
31

♠ AQ109865  
♥ Q42  
♦ 108  
♣ 6

♠ J742  
♥ 10  
♦ 76  
♣ KQJ854

♠ K  
♥ AK9653  
♦ 542  
♣ A32

♠ 3  
♥ J87  
♦ AKQJ93  
♣ 1097



32

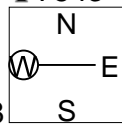
♠ KQ4  
♥ KJ9  
♦ A96  
♣ 7543

♠ 875  
♥ Q102  
♦ J74  
♣ KJ108

♠ 92  
♥ 7643  
♦ 10832  
♣ 962

♠ AJ1063  
♥ A85  
♦ KQ5  
♣ AQ

♠ 875  
♥ Q102  
♦ J74  
♣ KJ108



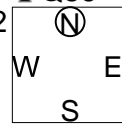
33

♠ 9  
♥ K1032  
♦ 98762  
♣ Q86

♠ 764  
♥ 965  
♦ A1054  
♣ AJ4

♠ Q83  
♥ QJ8  
♦ KQJ3  
♣ 1073

♠ AKJ1052  
♥ A74  
♦  
♣ K952



Board (31)

N-S	E-W	Contract	N-S	E-W	IMP
8	3	4H	S-2	200	
3	8	5Cx	E-1	100	

Board (32)

N-S	E-W	Contract	N-S	E-W	IMP
8	3	7NT	N-1	50	
3	8	6NT	N 6	990	

Board (33)

N-S	E-W	Contract	N-S	E-W	IMP
8	3	4S	W 5	450	
3	8	4S	W 5	450	

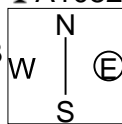
34

♠ 9653  
♥ A2  
♦ 543  
♣ A1082

♠ AQ7  
♥ 5  
♦ A10987  
♣ K963

♠ 1082  
♥ K1087  
♦ QJ6  
♣ QJ5

♠ KJ4  
♥ QJ9643  
♦ K2  
♣ 74



35

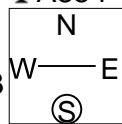
♠ Q1075  
♥ Q7  
♦ 1062  
♣ A854

♠ 843  
♥ K96  
♦ Q873  
♣ Q72

♠ AK9  
♥ J82  
♦ K94  
♣ K1096

♠ J62  
♥ A10543  
♦ AJ5  
♣ J3

♠ 843  
♥ K96  
♦ Q873  
♣ Q72



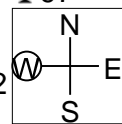
36

♠ KJ93  
♥ J843  
♦ 1085  
♣ 97

♠ Q8765  
♥ AK107  
♦ K  
♣ 1083

♠ 42  
♥ Q92  
♦ J764  
♣ QJ64

♠ A10  
♥ 65  
♦ AQ932  
♣ AK52



Board (34)

N-S	E-W	Contract	N-S	E-W	IMP
8	3	2H	W 3	140	
3	8	2H	W 3	140	

Board (35)

N-S	E-W	Contract	N-S	E-W	IMP
8	3	2H	S-2	100	
3	8	1NT	S 1	90	

Board (36)

N-S	E-W	Contract	N-S	E-W	IMP
8	3	4NT	E 4	630	
3	8	6S	E-2	200	

37

♠ AQ73  
♥ 109432  
♦ Q5  
♣ 64

♠ 94  
♥ J65  
♦ 108763  
♣ A107

♠ K85  
♥ 8  
♦ AJ42  
♣ KQJ32

♠ J1062  
♥ AKQ7  
♦ K9  
♣ 985

W N E S

38

♠ 643  
♥ K  
♦ J7542  
♣ KJ98

♠ AQJ72  
♥ Q53  
♦ 109  
♣ 753

♠ 1095  
♥ 984  
♦ Q86  
♣ A642

♠ K8  
♥ AJ10762  
♦ AK3  
♣ Q10

W N E S

39

♠ 52  
♥ Q104  
♦ AQJ84  
♣ 952

♠ J876  
♥ K965  
♦ 92  
♣ J84

♠ K  
♥ A872  
♦ K107  
♣ AKQ73

♠ AQ10943  
♥ J3  
♦ 653  
♣ 106

W N E S

Board (37)

N-S	E-W	Contract	N-S	E-W	IMP
8	3	2H N 3	140		
3	8	2H N 3	140		

Board (38)

N-S	E-W	Contract	N-S	E-W	IMP
8	3	3H S-1	50		
3	8	4H S-1	50		

Board (39)

N-S	E-W	Contract	N-S	E-W	IMP
8	3	4H W 4	620		
3	8	4H E 4	620		

40

♠ Q7  
♥ 85432  
♦ 72  
♣ K1096

♠ A108  
♥ Q97  
♦ J85  
♣ A754

♠ K32  
♥ KJ10  
♦ Q9643  
♣ 32

♠ J9654  
♥ A6  
♦ AK10  
♣ QJ8

W N E S

41

♠ Q10  
♥ KQJ  
♦ 97653  
♣ A54

♠ A54  
♥ A543  
♦ K1042  
♣ 82

♠ J982  
♥ 1072  
♦ Q8  
♣ KQ107

♠ K763  
♥ 986  
♦ AJ  
♣ J963

W N E S

42

♠ Q1032  
♥ 932  
♦  
♣ Q109543

♠ A865  
♥ A64  
♦ AK1084  
♣ J

♠ KJ94  
♥ 7  
♦ J9752  
♣ A82

♠ 7  
♥ KQJ1085  
♦ Q63  
♣ K76

W N E S

Board (40)

N-S	E-W	Contract	N-S	E-W	IMP
8	3	1S S 2	110		
3	8	2H S 2	110		

Board (41)

N-S	E-W	Contract	N-S	E-W	IMP
8	3	1NTxW 1	180		
3	8	1NT N 1	90		

Board (42)

N-S	E-W	Contract	N-S	E-W	IMP
8	3	4S W 5	650		
3	8	5D W 6	620		

木村六郎杯 Session 3 Flight A 2010年2月21日(日)

1

♠ 987  
♥ 82  
♦ KJ1092  
♣ 964

♠ 105432  
♥ AJ106  
♦ A54  
♣ A

W N E S

♠ KQ943  
♥ 76  
♦ KJ10872  
♣ AKQJ6

♥ 75  
♦ Q83  
♣ Q53

2

♠ KQ9  
♥ KJ7  
♦ KJ65  
♣ J73

♠ J832  
♥ Q103  
♦ Q3  
♣ KQ109

W N E S

♠ 1075  
♥ 9852  
♦ 8  
♣ 86542

♠ A64  
♥ A64  
♦ A109742  
♣ A

3

♠ 5  
♥ 107  
♦ Q96  
♣ A1097543

♠ 7643  
♥ 865  
♦ K102  
♣ KQ8

W N E S

♠ AQJ102  
♥ KQJ42  
♦ J  
♣ J6

♠ K98  
♥ A93  
♦ A87543  
♣ 2

Board (1) Av: NS=-550

N-S	E-W	Contract	N-S	E-W	IMP
5	4	3H	W 7	260	7
4	5	3Sx	S-2	300	6
8	6	5H	W 6	480	2
6	8	4H	E 7	510	1
9	2	4H	E 7	510	1
3	7	4H	E 7	510	1
2	9	6H	W 7	1010	-10
7	3	6H	W 7	1010	-10

Board (2) Av: NS=+1060

N-S	E-W	Contract	N-S	E-W	IMP
2	9	7D	S 7	2140	14
7	3	6D	S 7	1390	8
3	7	6D	S 7	1390	8
9	2	6D	S 7	1390	8
6	8	4NT	S 7	720	-8
4	5	3NT	S 7	720	-8
8	6	3NT	N 7	720	-8
5	4	3NT	N 7	720	-8

Board (3) Av: NS=+70

N-S	E-W	Contract	N-S	E-W	IMP
9	2	2D	E-4	400	8
7	3	4S	W-2	200	4
5	4	4S	E-2	200	4
2	9	3S	W-1	100	1
4	5	3S	E-1	100	1
3	7	5Dx	S-1	100	-5
8	6	4D	S-2	100	-5
6	8	5Dx	S-2	300	-9

4

♠ 7  
♥ 9732  
♦ 83  
♣ KJ9543

♠ AJ108654  
♥ Q4  
♦ A72  
♣ 2

W N E S

♠ K1085  
♥ KJ1065  
♦ Q1086  
♣ KQ932

♥ AJ6  
♦ Q94  
♣ A7

5

♠ 10  
♥ Q86  
♦ J965  
♣ KJ1097

♠ 9873  
♥ AJ54  
♦ AK32  
♣ 8

W N E S

♠ K42  
♥ 973  
♦ Q8  
♣ AQ432

♠ AQJ65  
♥ K102  
♦ 1074  
♣ 65

6

♠ 742  
♥ A10873  
♦ KQ96  
♣ Q

♠ 5  
♥ 96  
♦ J  
♣ AKJ1098654

W N E S

♠ Q98  
♥ J52  
♦ A87542  
♣ 7

♠ AKJ1063  
♥ KQ4  
♦ 103  
♣ 32

Board (4) Av: NS=-60

N-S	E-W	Contract	N-S	E-W	IMP
2	9	4Sx	W-1	200	6
5	4	3NT	E-2	200	6
8	6	2S	W 2	110	-2
6	8	2S	W 2	110	-2
3	7	2S	W 2	110	-2
9	2	2S	W 2	110	-2
7	3	2S	W 2	110	-2
4	5	3NTxS	S-3	800	-12

Board (5) Av: NS=-40

N-S	E-W	Contract	N-S	E-W	IMP
8	6	3C	E-3	150	5
5	4	3NT	E-2	100	4
6	8	3C	E-2	100	4
4	5	1NT	N 1	90	4
2	9	2C	E-1	50	3
9	2	2NT	E 3	150	-3
3	7	2S	S-4	400	-8
7	3	2Cx	N-2	500	-10

Board (6) Av: NS=+110

N-S	E-W	Contract	N-S	E-W	IMP
8	6	5Cx	W-1	200	3
4	5	5Cx	W-1	200	3
9	2	5Cx	W-1	200	3
7	3	5Cx	W-1	200	3
6	8	5Cx	E-1	200	3
2	9	4S	S-1	50	-4
3	7	5S	S-2	100	-5
5	4	4Cx	W 4	710	-13

7

♠ AQJ3  
♥ 1098652  
♦ A  
♣ A3

♠ K109  
♥ AQ  
♦ KQJ1074  
♣ 95

W N E S

♠ 82  
♥ KJ3  
♦ 65  
♣ Q108642

♠ 7654  
♥ 74  
♦ 9832  
♣ KJ7

8

♠ 2  
♥ AKJ5  
♦ 862  
♣ A9765

♠ AK863  
♥ 106  
♦ 7  
♣ KJ1043

W N E S

♠ QJ974  
♥ Q9  
♦ K1053  
♣ Q8

♠ 105  
♥ 87432  
♦ AQJ94  
♣ 2

9

♠ AJ10953  
♥ K73  
♦ AJ5  
♣ 6

♠ 64  
♥ AJ1084  
♦ KQ84  
♣ A7

W N E S

♠ Q2  
♥ 92  
♦ 1063  
♣ QJ10842

♠ K87  
♥ Q65  
♦ 972  
♣ K953

Board (7) Av: NS=+130

N-S	E-W	Contract	N-S	E-W	IMP
2	9	3C	E-2	200	2
8	6	3H	N 4	170	1
3	7	2S	S 4	170	1
5	4	2S	N 3	140	0
7	3	3NT	W-1	100	-1
9	2	3NT	W-1	100	-1
4	5	3NT	W-1	100	-1
6	8	3S	N-1	100	-6

Board (8) Av: NS=+480

N-S	E-W	Contract	N-S	E-W	IMP
8	6	5Hx	S 7	850	9
3	7	5Hx	S 6	750	7
6	8	5Hx	S 6	750	7
2	9	5Hx	S 5	650	5
4	5	5H	S 6	480	0
7	3	4D	S 4	130	-8
5	4	4S	W-2	100	-9
9	2	4S	W-2	100	-9

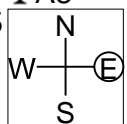
Board (9) Av: NS=+50

N-S	E-W	Contract	N-S	E-W	IMP
5	4	4S	N 4	420	9
8	6	3S	N 3	140	3
3	7	3S	N 3	140	3
9	2	3S	N 3	140	3
4	5	4S	N-1	50	-3
2	9	4S	N-1	50	-3
7	3	3S	N-1	50	-3
6	8	3S	N-1	50	-3

10

♠942  
♥A643  
♦AK108  
♣A8

♠AJ105  
♥J7  
♦6532  
♣754



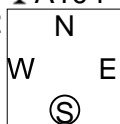
♠86  
♥K10852  
♦J9  
♣KQJ3

♠KQ73  
♥Q9  
♦Q74  
♣10962

11

♠A75  
♥Q84  
♦K984  
♣A104

♠J1096432  
♥K3  
♦75  
♣Q6



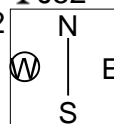
♠J765  
♥AJ106  
♦J9873

♠KQ8  
♥A1092  
♦Q32  
♣K52

12

♠KJ9  
♥J107  
♦Q842  
♣J52

♠Q10872  
♥863  
♦K106  
♣K7



♠3  
♥AKQ94  
♦A75  
♣10643

♠A654  
♥52  
♦J93  
♣AQ98

Board (10) Av: NS=-40

N-S	E-W	Contract	N-S	E-W	IMP
7	3	3NT N 3	600		12
3	7	2NT N 2	120		4
4	5	2NT N 2	120		4
8	6	3NT N-1	100		-2
9	2	3NT N-1	100		-2
5	4	2S S-1	100		-2
2	9	3NT N-2	200		-4
6	8	4Sx N-3	800		-13

Board (11) Av: NS=+350

N-S	E-W	Contract	N-S	E-W	IMP
9	2	3NT N 5	460		3
3	7	3NT S 4	430		2
4	5	3NT N 4	430		2
5	4	3NT N 4	430		2
8	6	3NT S 4	430		2
7	3	3NT S 3	400		2
6	8	3NT S-1	50		-9
2	9	3NT N-1	50		-9

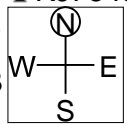
Board (12) Av: NS=-150

N-S	E-W	Contract	N-S	E-W	IMP
5	4	3H E 3	140		0
6	8	3H E 3	140		0
2	9	3H E 3	140		0
4	5	2H W 3	140		0
9	2	2H E 3	140		0
7	3	2H E 3	140		0
8	6	2H E 4	170		-1
3	7	3D N-2	200		-2

13

♠A7  
♥8  
♦AKJ6  
♣KJ7643

♠J1092  
♥K2  
♦10743  
♣1082



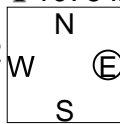
♠KQ653  
♥653  
♦Q92  
♣A9

♠84  
♥AQJ10974  
♦85  
♣Q5

14

♠95  
♥875  
♦543  
♣107642

♠K72  
♥KQJ2  
♦QJ7  
♣J53



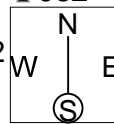
♠Q84  
♥10643  
♦9  
♣AKQ98

♠AJ1063  
♥A9  
♦AK10862  
♣

15

♠A10742  
♥J  
♦A865  
♣982

♠QJ  
♥87432  
♦Q43  
♣AQ5



♠85  
♥KQ1065  
♦K107  
♣K76

♠K963  
♥A9  
♦J92  
♣J1043

Board (13) Av: NS=+620

N-S	E-W	Contract	N-S	E-W	IMP
4	5	4H S 4	620		0
5	4	4H S 4	620		0
6	8	4H S 4	620		0
8	6	4H S 4	620		0
2	9	4H S 4	620		0
9	2	4H S 4	620		0
3	7	4H S 4	620		0
7	3	5C N-2	200		-13

Board (14) Av: NS=-30

N-S	E-W	Contract	N-S	E-W	IMP
3	7	4Hx W-2	300		8
5	4	3NT E-3	150		5
7	3	4Hx E-1	100		4
8	6	5Dx S-1	100		-2
6	8	5Dx S-1	100		-2
2	9	5Dx S-1	100		-2
4	5	5Dx S-1	100		-2
9	2	5Dx S-2	300		-7

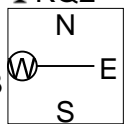
Board (15) Av: NS=+30

N-S	E-W	Contract	N-S	E-W	IMP
7	6	2S N 2	110		2
2	3	4H E-2	100		2
8	9	4H E-1	50		1
9	8	Passout			-1
6	7	Passout			-1
1	5	Passout			-1
3	2	Passout			-1
5	1	3S N-1	100		-4

16

♠942  
♥Q9754  
♦Q8  
♣KQ2

♠AK8  
♥J2  
♦A107643  
♣73



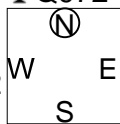
♠1065  
♥AK6  
♦KJ  
♣AJ1054

♠QJ73  
♥1083  
♦952  
♣986

17

♠3  
♥95  
♦KJ9653  
♣Q972

♠AK  
♥QJ4  
♦AQ102  
♣AJ104



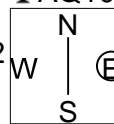
♠Q98754  
♥AK62  
♦7  
♣K8

♠J1062  
♥10873  
♦84  
♣653

18

♠K852  
♥6  
♦10763  
♣AQ108

♠J93  
♥9742  
♦J42  
♣K94



♠A10  
♥AKJ103  
♦A  
♣J6532

♠Q764  
♥Q85  
♦KQ985  
♣7

Board (16) Av: NS=-660

N-S	E-W	Contract	N-S	E-W	IMP
5	1	5D W 5	600		2
2	3	3NT W 4	630		1
9	8	3NT E 4	630		1
3	2	3NT W 5	660		0
1	5	3NT E 5	660		0
7	6	3NT E 5	660		0
8	9	3NT W 6	690		-1
6	7	3NT E 6	690		-1

Board (17) Av: NS=-640

N-S	E-W	Contract	N-S	E-W	IMP
6	7	7S E-1	50		12
7	6	7NT W-1	50		12
9	8	6C W-1	50		12
1	5	6S E 6	980		-8
3	2	6S E 6	980		-8
5	1	6NT W 6	990		-8
8	9	6NT W 6	990		-8
2	3	6NT W 6	990		-8

Board (18) Av: NS=0

N-S	E-W	Contract	N-S	E-W	IMP
5	1	3S N 4	170		5
7	6	4H E-3	150		4
6	7	5H E-2	100		3
8	9	4H E-1	50		2
3	2	4H E-1	50		2
2	3	4H E-1	50		2
9	8	4H E 4	420		-9
1	5	4H E 4	420		-9

木村六郎杯 Session 3 Flight A 2010年2月21日(日)

19

♠ J874  
♥ K1064  
♦ QJ102  
♣ J

♠ A10932  
♥ Q87  
♦ 53  
♣ Q86

♠ 6  
♥ 932  
♦ A76  
♣ K105432

W — E  
N — S  
⑤

20

♠ A982  
♥ 10732  
♦ J72  
♣ KJ

♠ KQJ43  
♥ 8  
♦ A98  
♣ Q874

♠ 10  
♥ AKQJ5  
♦ K543  
♣ 963

♠ 765  
♥ 964  
♦ Q106  
♣ A1052

W — E  
N — S  
⑤

21

♠ Q4  
♥ K82  
♦ A1098753  
♣ 7

♠ K3  
♥ 764  
♦ K6  
♣ 1096543

♠ J86  
♥ AQJ5  
♦ Q42  
♣ KJ2

♠ A109752  
♥ 1093  
♦ J  
♣ AQ8

W — E  
N — S  
⑤

Board (19) Av: NS=-610

N-S	E-W	Contract	N-S	E-W	IMP
1	5	4S	W-1	100	12
8	9	3NT	W 3	600	0
7	6	3NT	W 3	600	0
5	1	3NT	W 3	600	0
9	8	4S	W 4	620	0
3	2	4S	W 4	620	0
6	7	4S	W 4	620	0
2	3	3NT	W 4	630	-1

Board (20) Av: NS=-600

N-S	E-W	Contract	N-S	E-W	IMP
6	7	3NT	E 3	600	0
7	6	3NT	E 3	600	0
8	9	3NT	E 3	600	0
9	8	3NT	E 3	600	0
1	5	3NT	E 3	600	0
5	1	3NT	E 3	600	0
2	3	3NT	E 3	600	0
3	2	3NT	E 5	660	-2

Board (21) Av: NS=+140

N-S	E-W	Contract	N-S	E-W	IMP
6	7	4S	S 4	620	10
5	1	2S	S 5	200	2
9	8	2S	S 4	170	1
7	6	3S	S 3	140	0
2	3	3D	N 3	110	0
8	9	2S	S 2	110	-1
1	5	2D	N 2	90	-2
3	2	4S	S-2	200	-8

22

♠ J6  
♥ KQ1062  
♦ A1074  
♣ A6

♠ 75  
♥ 985  
♦ K6  
♣ KJ9875

♠ AK8432  
♥ A3  
♦ J83  
♣ 43

♠ Q109  
♥ J74  
♦ Q952  
♣ Q102

W — E  
N — S  
⑤

23

♠ J96  
♥ AJ72  
♦ QJ75  
♣ A9

♠ AQ87  
♥ 95  
♦ 942  
♣ 8743

♠ K105  
♥ K104  
♦ AK  
♣ KQJ52

♠ 432  
♥ Q863  
♦ 10863  
♣ 106

W — E  
N — S  
⑤

24

♠ K1072  
♥ A1074  
♦ 102  
♣ A76

♠ 95  
♥ J2  
♦ QJ953  
♣ Q1098

♠ A6  
♥ KQ8  
♦ A876  
♣ KJ32

♠ QJ843  
♥ 9653  
♦ K4  
♣ 54

W — E  
N — S  
⑤

Board (22) Av: NS=-70

N-S	E-W	Contract	N-S	E-W	IMP
2	3	3H	N-1	50	1
6	7	3H	N-1	50	1
1	5	3H	N-1	50	1
5	1	3H	N-1	50	1
8	9	2H	N-1	50	1
7	6	3H	N-2	100	-1
9	8	3C	W 3	110	-1
3	2	2S	W 2	110	-1

Board (23) Av: NS=-620

N-S	E-W	Contract	N-S	E-W	IMP
6	7	2NT	W 4	180	10
9	8	3NT	W 3	600	1
3	2	3NT	W 3	600	1
7	6	3NT	W 4	630	0
8	9	3NT	W 4	630	0
5	1	3NT	W 4	630	0
2	3	3NT	W 4	630	0
1	5	3NT	W 5	660	-1

Board (24) Av: NS=-120

N-S	E-W	Contract	N-S	E-W	IMP
7	6	1NT	W 1	90	1
8	9	1NT	W 1	90	1
6	7	1NT	E 1	90	1
1	5	3H	N-2	100	1
9	8	3D	W 3	110	0
2	3	4S	S-3	150	-1
5	1	2NT	N-3	150	-1
3	2	1NT	W 4	180	-2

25

♠ KQ974  
♥ AK54  
♦ 75  
♣ 82

♠ AJ5  
♥ J  
♦ 9863  
♣ AK974

♠ 10832  
♥ 10632  
♦ A10  
♣ J53

♠ 6  
♥ Q987  
♦ KQJ42  
♣ Q106

W — E  
N — S  
⑤

26

♠ 1074  
♥ AJ85  
♦ Q972  
♣ J10

♠ Q85  
♥ K103  
♦ K3  
♣ A8743

♠ AKJ9  
♥ Q97  
♦ J10  
♣ Q965

♠ 632  
♥ 642  
♦ A8654  
♣ K2

W — E  
N — S  
⑤

27

♠ 1082  
♥ AK83  
♦ K73  
♣ 852

♠ AKQ5  
♥ J107  
♦ A6  
♣ AKQ3

♠ 976  
♥ 64  
♦ J109854  
♣ J10

♠ J43  
♥ Q952  
♦ Q2  
♣ 9764

W — E  
N — S  
⑤

Board (25) Av: NS=-50

N-S	E-W	Contract	N-S	E-W	IMP
2	3	3H	N 3	140	5
1	5	3H	N 3	140	5
6	7	4H	N-1	50	0
9	8	4H	N-2	100	-2
8	9	4H	N-2	100	-2
5	1	4H	N-2	100	-2
3	2	4H	N-2	100	-2
7	6	3H	N-2	100	-2

Board (26) Av: NS=+150

N-S	E-W	Contract	N-S	E-W	IMP
7	6	3NT	E-2	200	2
6	7	3NT	E-2	200	2
1	5	3NT	E-2	200	2
8	9	3NT	E-2	200	2
9	8	5C	E-1	100	-2
3	2	3NT	E-1	100	-2
2	3	3NT	E-1	100	-2
5	1	3NT	E 3	600	-13

Board (27) Av: NS=-410

N-S	E-W	Contract	N-S	E-W	IMP
9	8	3D	W 3	110	7
6	7	3NT	E 3	400	0
1	5	3NT	E 3	400	0
3	2	3NT	E 3	400	0
5	1	3NT	E 3	400	0
8	9	4S	W 4	420	0
2	3	4S	E 4	420	0
7	6	1NTxN-3		500	-3

28

♠ Q4  
♥ KQ102  
♦ K10876  
♣ 98

♠ KJ97  
♥ 84  
♦ Q43  
♣ KQ64

♠ A106  
♥ 7653  
♦ J  
♣ AJ1075

♠ 8532  
♥ AJ9  
♦ A952  
♣ 32

29

♠ 105  
♥ AK986  
♦ 53  
♣ AK32

♠ KQJ3  
♥ 10  
♦ KJ94  
♣ 10865

♠ 76  
♥ 7532  
♦ Q1076  
♣ J74

♠ A9842  
♥ QJ4  
♦ A82  
♣ Q9

30

♠ KQ3  
♥ 1063  
♦ AQ64  
♣ AKJ

♠ 1095  
♥ AK5  
♦ J7532  
♣ Q5

♠ 8742  
♥ J42  
♦ 109  
♣ 10863

♠ AJ6  
♥ Q987  
♦ K8  
♣ 9742

Board (28) Av: NS=-100

N-S	E-W	Contract	N-S	E-W	IMP
7	6	4C E-1	50		4
6	7	Passout			3
8	9	Passout			3
9	8	4C W 4	130		-1
5	1	3C E 4	130		-1
3	2	1S W 3	140		-1
1	5	2S W 4	170		-2
2	3	1S W 4	170		-2

Board (29)

N-S	E-W	Contract	N-S	E-W	IMP
4	1	4H N 5	650		
1	4	4H N 6	680		

Board (30)

N-S	E-W	Contract	N-S	E-W	IMP
4	1	3NT N 5	460		
1	4	3NT N 5	460		

31

♠ J93  
♥ 107  
♦ Q52  
♣ AK854

♠ Q2  
♥ KQ4  
♦ J98643  
♣ J10

♠ A8764  
♥ J86  
♦ AK  
♣ 762

♠ K105  
♥ A9532  
♦ 107  
♣ Q93

32

♠ Q873  
♥ QJ  
♦ 8  
♣ AQ10863

♠ K94  
♥ 953  
♦ AQ1096  
♣ K5

♠ 652  
♥ A84  
♦ KJ542  
♣ J7

♠ AJ10  
♥ K10762  
♦ 73  
♣ 942

33

♠ A5  
♥ Q42  
♦ AK1098  
♣ AJ9

♠ K4  
♥ J109  
♦ J532  
♣ K872

♠ Q10973  
♥ K3  
♦ Q76  
♣ Q53

♠ J862  
♥ A8765  
♦ 4  
♣ 1064

Board (31)

N-S	E-W	Contract	N-S	E-W	IMP
4	1	1NT W-2	100		
1	4	2S E-1	50		

Board (32)

N-S	E-W	Contract	N-S	E-W	IMP
4	1	5Dx W-5	1400		
1	4	4C N 4	130		

Board (33)

N-S	E-W	Contract	N-S	E-W	IMP
4	1	3NT N-2	100		
1	4	2NT N-1	50		

34

♠ KJ  
♥ Q95  
♦ J4  
♣ QJ9765

♠ Q9532  
♥ 4  
♦ Q9653  
♣ 104

♠ A876  
♥ AK1087  
♦ AK  
♣ 32

♠ 104  
♥ J632  
♦ 10872  
♣ AK8

35

♠ QJ76  
♥ Q985  
♦  
♣ AKJ83

♠ 542  
♥ 1062  
♦ AQ752  
♣ 107

♠ K93  
♥ J3  
♦ J10943  
♣ 652

♠ A108  
♥ AK74  
♦ K86  
♣ Q94

36

♠ 102  
♥ J985  
♦ AQJ42  
♣ J6

♠ AK863  
♥ 7  
♦ 10  
♣ AK10842

♠ Q974  
♥ A10643  
♦ K  
♣ 753

♠ J5  
♥ KQ2  
♦ 987653  
♣ Q9

Board (34)

N-S	E-W	Contract	N-S	E-W	IMP
4	1	4S W 4	420		
1	4	3D W 5	150		

Board (35)

N-S	E-W	Contract	N-S	E-W	IMP
4	1	4H S 7	510		
1	4	4H S 7	510		

Board (36)

N-S	E-W	Contract	N-S	E-W	IMP
4	1	5Dx N-4	1100		
1	4	4S W 7	710		

37

♠ 952  
♥ Q106  
♦ J753  
♣ 754

♠ 764  
♥ A97  
♦ A62  
♣ AQ93

	N	
W		E
	S	

♠ KQ10  
♥ KJ53  
♦ 1084  
♣ J62

♠ AJ83  
♥ 842  
♦ KQ9  
♣ K108

38

♠ 8  
♥ KQ7  
♦ Q106543  
♣ A103

♠ A752  
♥ A9853  
♦ K9  
♣ 92

	N	
W		E
	S	

♠ KQJ6  
♥ J2  
♦ A  
♣ KQJ875

♠ 10943  
♥ 1064  
♦ J872  
♣ 64

39

♠ KQ  
♥ Q10743  
♦ 9753  
♣ 73

♠ A10875  
♥ 98  
♦ A104  
♣ KQ6

	N	
W		E
	S	

♠ J643  
♥ J2  
♦ Q862  
♣ A109

♠ 92  
♥ AK65  
♦ KJ  
♣ J8542

Board (37)

N-S	E-W	Contract	N-S	E-W	IMP
4	1	1NT W	4	180	
1	4	1C S-2	200		

Board (38)

N-S	E-W	Contract	N-S	E-W	IMP
4	1	5S E	6	680	
1	4	4S E	6	680	

Board (39)

N-S	E-W	Contract	N-S	E-W	IMP
4	1	3S W	3	140	
1	4	3S W	3	140	

40

♠ QJ106  
♥ 72  
♦ 873  
♣ KQ54

♠ 98  
♥ Q854  
♦ J965  
♣ 987

	N	
W		E
	S	

♠ AK42  
♥ A963  
♦ K42  
♣ 32

♠ 753  
♥ KJ10  
♦ AQ10  
♣ AJ106

41

♠ KQ1094  
♥ 954  
♦ 74  
♣ 632

♠ 2  
♥ AJ73  
♦ AJ9865  
♣ QJ

	N	
W		E
	S	

♠ J865  
♥ K86  
♦ 3  
♣ K10875

♠ A73  
♥ Q102  
♦ KQ102  
♣ A94

42

♠ AJ10754  
♥ 107  
♦ K642  
♣ 10

♠ 63  
♥ A964  
♦ AQ95  
♣ 987

	N	
W		E
	S	

♠ KQ2  
♥ KQ8532  
♦ 1087  
♣ 6

♠ 98  
♥ J  
♦ J3  
♣ AKQJ5432

Board (40)

N-S	E-W	Contract	N-S	E-W	IMP
4	1	2NT S	2	120	
1	4	2S N	3	140	

Board (41)

N-S	E-W	Contract	N-S	E-W	IMP
4	1	2S S-2	100		
1	4	2S S-2	100		

Board (42)

N-S	E-W	Contract	N-S	E-W	IMP
4	1	3H E	4	170	
1	4	4Hx E	4	790	

木村六郎杯 Session 4 Flight A 2010年2月21日(日)

1

♠ Q98  
♥ QJ1083  
♦ J82  
♣ A6

♠ AKJ    ♠ 1043  
♥ AK754    ♥ 2  
♦ AK9    ♦ 10743  
♣ 32    ♣ QJ954

W    E  
N    S

♠ 7652  
♥ 96  
♦ Q65  
♣ K1087

2

♠ J93  
♥ QJ7  
♦ A743  
♣ AJ5

♠ K62    ♠ 10875  
♥ 98    ♥ K54  
♦ K10865    ♦ QJ2  
♣ 643    ♣ Q97

W    E  
N    S

♠ AQ4  
♥ A10632  
♦ 9  
♣ K1082

3

♠ Q96  
♥ Q  
♦ A1098542  
♣ A5

♠ 82    ♠ J753  
♥ A9875    ♥ 62  
♦ K6    ♦ Q73  
♣ Q876    ♣ J932

W    E  
N    S

♠ AK104  
♥ KJ1043  
♦ J  
♣ K104

Board (1) Av: NS=+100

N-S	E-W	Contract	N-S	E-W	IMP
9	5	3NT W-3	150		2
1	3	3NT W-3	150		2
8	2	3NT W-2	100		0
5	9	3NT W-2	100		0
4	6	3NT W-2	100		0
3	1	3NT W-2	100		0
6	4	1H W-1	50		-2
2	8	1H W-1	50		-2

Board (2) Av: NS=+660

N-S	E-W	Contract	N-S	E-W	IMP
4	6	3NT S 6	690		1
6	4	4H S 6	680		1
1	3	4H S 6	680		1
5	9	4H S 5	650		0
9	5	4H S 5	650		0
3	1	4H S 5	650		0
2	8	4H S 5	650		0
8	2	4H S 5	650		0

Board (3) Av: NS=+420

N-S	E-W	Contract	N-S	E-W	IMP
4	6	3NT S 5	460		1
9	5	3NT N 5	460		1
6	4	3NT S 4	430		0
1	3	3NT S 3	400		-1
2	8	3NT S 3	400		-1
3	1	3NT S 3	400		-1
8	2	3NT S 3	400		-1
5	9	3NT N 3	400		-1

4

♠ K10  
♥ A  
♦ J74  
♣ J875432

♠ Q    ♠ 98542  
♥ KQJ86432    ♥ 95  
♦ KQ8    ♦ 6532  
♣ Q    ♣ A9

W    E  
N    S

♠ AJ763  
♥ 107  
♦ A109  
♣ K106

5

♠ 4  
♥ KQJ982  
♦ Q6  
♣ K432

♠ Q105    ♠ J7632  
♥ A4    ♥ 5  
♦ AK1095    ♦ J87  
♣ A65    ♣ Q987

W    E  
N    S

♠ AK98  
♥ 10763  
♦ 432  
♣ J10

6

♠ K5  
♥ KJ64  
♦ J532  
♣ 1097

♠ 1073    ♠ QJ98  
♥ A10    ♥ 9872  
♦ K76    ♦ A  
♣ 86432    ♣ AKQJ

W    E  
N    S

♠ A642  
♥ Q53  
♦ Q10984  
♣ 5

Board (4) Av: NS=+80

N-S	E-W	Contract	N-S	E-W	IMP
2	8	5Cx N 5	750		12
6	4	5C N 5	600		11
9	5	4Hx W-1	200		3
1	3	4H W-1	100		1
4	6	4H W-1	100		1
8	2	4H W-1	100		1
3	1	4H W 4	620		-12
5	9	4H W 4	620		-12

Board (5) Av: NS=+30

N-S	E-W	Contract	N-S	E-W	IMP
6	4	5Dx W-2	300		7
5	9	5D W-2	100		2
8	2	4Sx W-1	100		2
9	5	4Sx E-1	100		2
2	8	4Sx E-1	100		2
1	3	4H N-1	100		-4
4	6	4H N-1	100		-4
3	1	3S E 3	140		-5

Board (6) Av: NS=-180

N-S	E-W	Contract	N-S	E-W	IMP
4	6	3NT W-1	100		7
2	8	3NT E-1	100		7
6	4	1NT E 2	120		2
1	3	2C E 4	130		2
3	1	3C E 5	150		1
8	2	3C E 5	150		1
9	5	3NT E 3	600		-9
5	9	3NT E 3	600		-9

7

♠ K983  
♥ AKQ94  
♦ 7  
♣ KJ2

♠ QJ10    ♠ A65  
♥ J10762    ♥ 85  
♦ AQ    ♦ KJ643  
♣ 1084    ♣ 753

W    E  
N    S

♠ 742  
♥ 3  
♦ 109852  
♣ AQ96

8

♠ A64  
♥ Q753  
♦ K52  
♣ 732

♠ K932    ♠ Q1085  
♥ AK10    ♥ J964  
♦ AQJ43    ♦ 97  
♣ 8    ♣ AK5

W    E  
N    S

♠ J7  
♥ 82  
♦ 1086  
♣ QJ10964

9

♠ K2  
♥ J6  
♦ KJ985  
♣ Q742

♠ A6543    ♠ Q7  
♥ AK    ♥ Q9752  
♦ 632    ♦ A1074  
♣ K95    ♣ J6

W    E  
N    S

♠ J1098  
♥ 10843  
♦ Q  
♣ A1083

Board (7) Av: NS=+70

N-S	E-W	Contract	N-S	E-W	IMP
6	4	2NT S 2	120		2
3	1	2NT S 2	120		2
9	5	2C N 3	110		1
4	6	2C N 2	90		1
2	8	2C N 2	90		1
8	2	2C N 2	90		1
5	9	2NT S-1	100		-5
1	3	2C N-1	100		-5

Board (8) Av: NS=-260

N-S	E-W	Contract	N-S	E-W	IMP
5	9	6S W-2	100		8
2	8	6S E-2	100		8
9	5	5S W-2	100		8
4	6	4S W 4	420		-4
3	1	4S W 4	420		-4
1	3	4S W 5	450		-5
8	2	4S W 5	450		-5
6	4	4S W 5	450		-5

Board (9) Av: NS=0

N-S	E-W	Contract	N-S	E-W	IMP
2	8	3C S 3	110		3
5	9	2S W-1	100		3
3	1	2S W-1	100		3
4	6	1NT E-1	100		3
6	4	1NT E 1	90		-3
9	5	2S W 2	110		-3
1	3	2S W 2	110		-3
8	2	2S W 2	110		-3



10

♠ AKJ  
♥ J632  
♦ K653  
♣ 103

♠ Q732  
♥ Q7  
♦ Q72  
♣ K987

♠ 1098  
♥ K5  
♦ A94  
♣ AQJ62

W N E S

W — E

♠ 654  
♥ A10984  
♦ J108  
♣ 54

11

♠ AQ763  
♥ 82  
♦ 1063  
♣ AK2

♠ KJ5  
♥ KQ10953  
♦ AQ  
♣ Q6

♠ 1082  
♥ A6  
♦ KJ9872  
♣ 109

W N E S

W — E

♠ 94  
♥ J74  
♦ 54  
♣ J87543

12

♠ J1082  
♥ AJ6  
♦ K642  
♣ A5

♠ Q7  
♥ K1095  
♦ J75  
♣ KQ43

♠ K9643  
♥  
♦ AQ1083  
♣ J109

W N E S

W — E

♠ A5  
♥ Q87432  
♦ 9  
♣ 8762

Board (10) Av: NS=+370

N-S	E-W	Contract	N-S	E-W	IMP
4	6	3NT S 4	630		6
8	2	3NT S 3	600		6
9	5	3NT S 3	600		6
1	3	3NT S 3	600		6
2	8	3NT S 3	600		6
5	9	3NT S-1	100		-10
3	1	3NT S-1	100		-10
6	4	3NT S-2	200		-11

Board (11) Av: NS=+80

N-S	E-W	Contract	N-S	E-W	IMP
6	4	3S N 3	140		2
4	6	3S N 3	140		2
2	8	3S N 3	140		2
8	2	4H E-2	100		1
5	9	3NT E-2	100		1
3	1	3H E-1	50		-1
1	3	4S N-1	50		-4
9	5	3S N-1	50		-4

Board (12) Av: NS=+590

N-S	E-W	Contract	N-S	E-W	IMP
6	4	4S S 6	680		3
4	6	4S S 6	680		3
2	8	4S S 6	680		3
8	2	4S S 6	680		3
5	9	4S S 6	680		3
9	5	5Hx W-3	500		-3
1	3	4Hx E-2	300		-7
3	1	3NT E-5	250		-8

13

♠ AK7654  
♥ J7  
♦ 9  
♣ Q1053

♠ QJ93  
♥ 94  
♦ QJ6  
♣ J864

♠ 8  
♥ K652  
♦ K105432  
♣ A9

W N E S

W — E

♠ 102  
♥ AQ1083  
♦ A87  
♣ K72

14

♠ A8653  
♥ Q54  
♦ K5  
♣ A82

♠ K  
♥ 98762  
♦ Q976  
♣ Q73

♠ 4  
♥ AJ103  
♦ J43  
♣ J9654

W N E S

W — E

♠ QJ10972  
♥ K  
♦ A1082  
♣ K10

15

♠ 92  
♥ 1092  
♦ 1096  
♣ 97652

♠ J10  
♥ AKQ85  
♦ QJ543  
♣ 3

♠ AK876  
♥ J764  
♦ A82  
♣ A

W N E S

W — E

♠ Q543  
♥ 3  
♦ K7  
♣ KQJ1084

Board (13) Av: NS=-50

N-S	E-W	Contract	N-S	E-W	IMP
4	6	3NT E-1	100		4
9	5	2NT E-1	100		4
3	1	2D S 2	90		4
8	2	3S N-1	100		-2
1	3	2S N-1	100		-2
6	4	2S N-1	100		-2
2	8	3D S-2	200		-4
5	9	3D S-2	200		-4

Board (14) Av: NS=-30

N-S	E-W	Contract	N-S	E-W	IMP
5	9	2H N 2	110		4
6	4	2S W-1	50		2
3	1	2S W-1	50		2
2	8	2D W-1	50		2
1	3	2D W 2	90		-2
9	5	2S W 2	110		-2
4	6	2S E 2	110		-2
8	2	2D E 3	110		-2

Board (15) Av: NS=+100

N-S	E-W	Contract	N-S	E-W	IMP
8	4	4Dx E-2	300		5
4	6	3NTxW-2	300		5
5	7	3NT W-2	100		0
6	3	3NT W-2	100		0
1	2	3NT W-2	100		0
2	1	3C W-2	100		0
7	5	2S S-1	100		-5
3	6	3S S-3	300		-9

16

♠ KQ52  
♥ Q973  
♦ 432  
♣ 94

♠ A10974  
♥ J10  
♦ K87  
♣ AJ7

♠ 6  
♥ K854  
♦ QJ5  
♣ 106532

W N E S

W — E

♠ J83  
♥ A62  
♦ A1096  
♣ KQ8

17

♠ J863  
♥ Q10986  
♦ KQ104  
♣

♠ KQ42  
♥ A3  
♦ J972  
♣ J76

♠ 1095  
♥ KJ2  
♦ 63  
♣ K9842

W N E S

W — E

♠ A7  
♥ 754  
♦ A85  
♣ AQ1053

18

♠ 4  
♥ 742  
♦ KJ7632  
♣ KJ4

♠ AK107  
♥ AJ5  
♦ 108  
♣ A652

♠ J86  
♥ KQ1063  
♦ 954  
♣ Q7

W N E S

W — E

♠ Q9532  
♥ 98  
♦ AQ  
♣ 10983

Board (16) Av: NS=-630

N-S	E-W	Contract	N-S	E-W	IMP
2	1	3NT W 3	600		1
8	4	4S W 4	620		0
4	8	4S E 4	620		0
7	5	4S E 4	620		0
1	2	4S E 4	620		0
6	3	4S E 4	620		0
3	6	3NT W 5	660		-1
5	7	4S E 6	680		-2

Board (17) Av: NS=-100

N-S	E-W	Contract	N-S	E-W	IMP
2	1	3NT W-2	100		5
3	6	3NT W-1	50		4
7	5	3NT E-1	50		4
8	4	3H N-1	50		2
4	8	1S E 2	110		0
5	7	3C W 4	130		-1
1	2	3NT E 3	400		-7
6	3	3NT E 3	400		-7

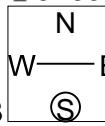
Board (18) Av: NS=+50

N-S	E-W	Contract	N-S	E-W	IMP
8	4	4S E-1	50		0
4	8	4S E-1	50		0
7	5	4S E-1	50		0
5	7	4S E-1	50		0
2	1	4S E-1	50		0
1	2	4S E-1	50		0
6	3	4S E-1	50		0
3	6	4S E-1	50		0

19

♠ Q2  
♥ AK732  
♦ 64  
♣ 9765

♠ AJ107  
♥ 954  
♦ 7  
♣ AKJ83



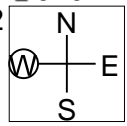
♠ K9653  
♥  
♦ AKQ953  
♣ Q10

♠ 84  
♥ QJ1086  
♦ J1082  
♣ 42

20

♠ QJ953  
♥ J962  
♦ J2  
♣ J10

♠ A10862  
♥ A4  
♦ AQ73  
♣ 52



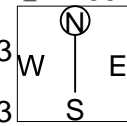
♠ K  
♥ K875  
♦ 1054  
♣ KQ863

♠ 74  
♥ Q103  
♦ K986  
♣ A974

21

♠ A95  
♥ Q  
♦ Q543  
♣ AK652

♠ 32  
♥ 10653  
♦ J82  
♣ 10843



♠ 10764  
♥ K842  
♦ 1076  
♣ J9

♠ KQJ8  
♥ AJ97  
♦ AK9  
♣ Q7

Board (19) Av: NS=-1440

Table with 6 columns: N-S, E-W, Contract, N-S, E-W, IMP. Rows show scores for various contracts like 4S, 6C, 6S, 6W, 6S, 6S, 6S, 6S, 6S, 6S.

Board (20) Av: NS=+150

Table with 6 columns: N-S, E-W, Contract, N-S, E-W, IMP. Rows show scores for various contracts like 3NT, 3NT, 3NT, 3NT, 3NT, 2NT, 3NT.

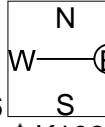
Board (21) Av: NS=+1580

Table with 6 columns: N-S, E-W, Contract, N-S, E-W, IMP. Rows show scores for various contracts like 7NT, 7NT, 7NT, 6NT, 6NT, 6NT, 6NT, 6D, 7NT.

22

♠ A642  
♥ 93  
♦ AJ1086  
♣ 108

♠ 85  
♥ Q42  
♦ 752  
♣ AQJ96



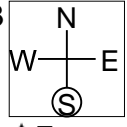
♠ QJ97  
♥ KJ108765  
♦ K  
♣ 4

♠ K103  
♥ A  
♦ Q943  
♣ K7532

23

♠ AJ82  
♥ 863  
♦ KQ  
♣ J1083

♠ Q10543  
♥ 95  
♦ A8  
♣ 9654



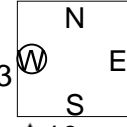
♠ K96  
♥ AKQ4  
♦ J965  
♣ Q2

♠ 7  
♥ J1072  
♦ 107432  
♣ AK7

24

♠ KQ9743  
♥ A3  
♦ 109  
♣ K84

♠ 52  
♥ 108  
♦ AKQJ63  
♣ Q106



♠ AJ86  
♥ 9754  
♦ 7  
♣ AJ75

♠ 10  
♥ KQJ62  
♦ 8542  
♣ 932

Board (22) Av: NS=-120

Table with 6 columns: N-S, E-W, Contract, N-S, E-W, IMP. Rows show scores for various contracts like 4Hx, 3S, 4H, 4H, 4S, 3H, 4Hx, 5CxS.

Board (23) Av: NS=-110

Table with 6 columns: N-S, E-W, Contract, N-S, E-W, IMP. Rows show scores for various contracts like 1NT, 1H, 2S, 4S, 2S, 3S, 2S, 8S.

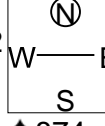
Board (24) Av: NS=-180

Table with 6 columns: N-S, E-W, Contract, N-S, E-W, IMP. Rows show scores for various contracts like 2S, 2S, 2D, 1NT, 2D, 4D, 3NT, 3NT.

25

♠ 2  
♥ A9  
♦ K843  
♣ AK9754

♠ A109  
♥ Q852  
♦ AQ7  
♣ QJ6



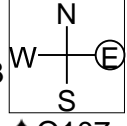
♠ KQJ653  
♥ 63  
♦ J52  
♣ 32

♠ 874  
♥ KJ1074  
♦ 1096  
♣ 108

26

♠ A92  
♥ K63  
♦ J652  
♣ Q72

♠ KJ853  
♥ 92  
♦ KQ103  
♣ K9



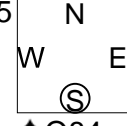
♠ 64  
♥ J1054  
♦ A98  
♣ J1063

♠ Q107  
♥ AQ87  
♦ 74  
♣ A854

27

♠ A10  
♥ 974  
♦ Q8543  
♣ 986

♠ KJ975  
♥ AQ6  
♦ K7  
♣ Q43



♠ 632  
♥ J52  
♦ J1092  
♣ KJ5

♠ Q84  
♥ K1083  
♦ A6  
♣ A1072

Board (25) Av: NS=-70

Table with 6 columns: N-S, E-W, Contract, N-S, E-W, IMP. Rows show scores for various contracts like 4S, 4S, 8S, 5S, 3H, 7H, 3NT, 6NT.

Board (26) Av: NS=+100

Table with 6 columns: N-S, E-W, Contract, N-S, E-W, IMP. Rows show scores for various contracts like 1NT, 1NT, 1NT, 1NT, 2NT, 4NT, 1NT, 8NT.

Board (27) Av: NS=-30

Table with 6 columns: N-S, E-W, Contract, N-S, E-W, IMP. Rows show scores for various contracts like 2S, 4S, 5S, 1S, 3NT, 2S, 7S, 8S, 2S.

28

♠ AJ102  
♥ Q52  
♦ K72  
♣ 973

♠ K95  
♥ 106  
♦ A1063  
♣ AK84

♠ 87  
♥ A983  
♦ QJ95  
♣ QJ6

♠ Q643  
♥ KJ74  
♦ 84  
♣ 1052

W N E S

29

♠ J2  
♥ 8  
♦ AQ9854  
♣ QJ96

♠ K9854  
♥ 3  
♦ 63  
♣ K10753

♠ 106  
♥ K107654  
♦ 102  
♣ A84

♠ AQ73  
♥ AQJ92  
♦ KJ7  
♣ 2

W N E S

30

♠ 8752  
♥ K63  
♦ Q842  
♣ J8

♠ J9  
♥ J54  
♦ KJ965  
♣ 963

♠ Q4  
♥ AQ1098  
♦ A10  
♣ KQ74

♠ AK1063  
♥ 72  
♦ 73  
♣ A1052

W N E S

Board (28) Av: NS=-130

N-S	E-W	Contract	N-S	E-W	IMP
5	7	2D E 3		110	1
7	5	1NT W 2		120	0
1	2	1NT W 2		120	0
2	1	1NT W 2		120	0
8	4	1NT E 2		120	0
6	3	2D E 4		130	0
4	8	1NT W 3		150	-1
3	6	3NT W 3		400	-7

Board (29)

N-S	E-W	Contract	N-S	E-W	IMP
9	7	5D N 5		600	
7	9	5D N 5		600	

Board (30)

N-S	E-W	Contract	N-S	E-W	IMP
9	7	3S S-1		50	
7	9	3H E 3		140	

31

♠ 5  
♥ QJ8762  
♦ AKQ3  
♣ K10

♠ J743  
♥ AK5  
♦ J10974  
♣ 2

♠ A1062  
♥ 94  
♦ 2  
♣ AQJ943

♠ KQ98  
♥ 103  
♦ 865  
♣ 8765

W N E S

32

♠ Q97652  
♥ 10  
♦ Q1052  
♣ Q5

♠ A4  
♥ K852  
♦ AJ864  
♣ K9

♠ KJ83  
♥ Q643  
♦ K7  
♣ 1064

♠ 10  
♥ AJ97  
♦ 93  
♣ AJ8732

W N E S

33

♠ Q1095  
♥ J862  
♦ K84  
♣ Q6

♠ 843  
♥ Q10  
♦ J1063  
♣ A854

♠ A  
♥ K4  
♦ AQ9752  
♣ KJ93

♠ KJ762  
♥ A9753  
♦  
♣ 1072

W N E S

Board (31)

N-S	E-W	Contract	N-S	E-W	IMP
9	7	2D N-1		100	
7	9	4Sx E 4		590	

Board (32)

N-S	E-W	Contract	N-S	E-W	IMP
9	7	4H W-2		200	
7	9	4H W-2		200	

Board (33)

N-S	E-W	Contract	N-S	E-W	IMP
9	7	5D E 6		420	
7	9	5D E 5		400	

34

♠ AQ74  
♥ QJ872  
♦ 10  
♣ K75

♠ J103  
♥ A94  
♦ 74  
♣ AJ1043

♠ K92  
♥ K106  
♦ AJ9652  
♣ 9

♠ 865  
♥ 53  
♦ KQ83  
♣ Q862

W N E S

35

♠ 32  
♥ KJ65  
♦ 987  
♣ A764

♠ A10964  
♥ AQ7  
♦ A3  
♣ 1053

♠ KJ7  
♥ 9842  
♦ K10642  
♣ J

♠ Q85  
♥ 103  
♦ QJ5  
♣ KQ982

W N E S

36

♠ AQ9  
♥ J94  
♦ J63  
♣ A932

♠ K102  
♥ 1032  
♦ AKQ874  
♣ J

♠ 876543  
♥ 765  
♦ 9  
♣ K75

♠ J  
♥ AKQ8  
♦ 1052  
♣ Q10864

W N E S

Board (34)

N-S	E-W	Contract	N-S	E-W	IMP
9	7	3C S-2		200	
7	9	2NT W 2		120	

Board (35)

N-S	E-W	Contract	N-S	E-W	IMP
9	7	4S W-1		100	
7	9	4S W 4		620	

Board (36)

N-S	E-W	Contract	N-S	E-W	IMP
9	7	4C N-1		100	
7	9	3D W-4		400	

37

♠ KQ103  
♥ A10875  
♦ 104  
♣ A10

♠ J74  
♥ Q942  
♦ QJ2  
♣ Q93

♠ A9865  
♥  
♦ AK8653  
♣ 54

♠ 2  
♥ KJ63  
♦ 97  
♣ KJ8762

W N E S

38

♠ K742  
♥ QJ97  
♦ AJ73  
♣ 7

♠ AQ109  
♥ A4  
♦ 109  
♣ AQ943

♠ 3  
♥ K86532  
♦ KQ52  
♣ J5

♠ J865  
♥ 10  
♦ 864  
♣ K10862

W N E S

39

♠ Q75  
♥ J10764  
♦ 1074  
♣ 97

♠ 1093  
♥ Q  
♦ AQJ98532  
♣ K

♠ AKJ862  
♥ AK3  
♦  
♣ A643

♠ 4  
♥ 9852  
♦ K6  
♣ QJ10852

W N E S

Board (37)

N-S	E-W	Contract	N-S	E-W	IMP
9	7	4H N 4	620		
7	9	5Dx E-2	300		

Board (38)

N-S	E-W	Contract	N-S	E-W	IMP
9	7	4H W 4	620		
7	9	2H E 4	170		

Board (39)

N-S	E-W	Contract	N-S	E-W	IMP
9	7	6S E 6	1430		
7	9	6S E 7	1460		

40

♠ 73  
♥ Q983  
♦ J753  
♣ Q103

♠ K985  
♥ K6  
♦ A842  
♣ 752

♠ AQ102  
♥ AJ1074  
♦ 96  
♣ 94

♠ J64  
♥ 52  
♦ KQ10  
♣ AKJ86

W N E S

41

♠ K8432  
♥ K75  
♦ Q87  
♣ Q9

♠ A  
♥ A1086  
♦ KJ10965  
♣ A5

♠ J95  
♥ QJ92  
♦ A43  
♣ K62

♠ Q1076  
♥ 43  
♦ 2  
♣ J108743

W N E S

42

♠ 93  
♥ KQ1086  
♦ A975  
♣ J2

♠ 87  
♥ A43  
♦ J1084  
♣ AK53

♠ J9752  
♥ KQ3  
♦ Q10964  
♣ AKQJ106542

♠  
♥  
♦ 62  
♣ 87

W N E S

Board (40)

N-S	E-W	Contract	N-S	E-W	IMP
9	7	3S E 4	170		
7	9	4S E-1	50		

Board (41)

N-S	E-W	Contract	N-S	E-W	IMP
9	7	4H W 6	680		
7	9	3NT E-1	100		

Board (42)

N-S	E-W	Contract	N-S	E-W	IMP
9	7	4S S 4	620		
7	9	4S N 4	620		