

第14回NRM杯 Session 1 Flight D 2009年6月27日(土)

1

♠ 942
 ♥ KJ73
 ♦ J4
 ♣ Q1084
 ♠ AKJ108
 ♥ 10852
 ♦ AK
 ♣ J6
 ♠ Q
 ♥ AQ96
 ♦ Q98763
 ♣ K7
 ♠ 7653
 ♥ 4
 ♦ 1052
 ♣ A9532

2

♠ AQ7
 ♥ K942
 ♦ A10873
 ♣ 8
 ♠ K4
 ♥ A10753
 ♦ J5
 ♣ KQ93
 ♠ 962
 ♥ 8
 ♦ KQ92
 ♣ AJ762
 ♠ J10853
 ♥ QJ6
 ♦ 64
 ♣ 1054

3

♠ 5
 ♥ 65
 ♦ AJ943
 ♣ Q10852
 ♠ 109632
 ♥ A73
 ♦ K1085
 ♣ 3
 ♠ AKQJ74
 ♥ K1084
 ♦ 7
 ♣ J6
 ♠ 8
 ♥ QJ92
 ♦ Q62
 ♣ AK974

4

♠ AK852
 ♥
 ♦ KQ9654
 ♣ J2
 ♠ 93
 ♥ K96
 ♦ AJ1032
 ♣ AK4
 ♠ Q76
 ♥ J1084
 ♦ 87
 ♣ 9853
 ♠ J104
 ♥ AQ7532
 ♦
 ♣ Q1076

Board (1) Av: NS=-450

N-S	E-W	Contract	N-S	E-W	IMP
1	17	4H W 4	420		1
4	8	4H W 5	450		0
6	12	4H W 6	480		-1
7	5	5H W 6	480		-1
10	14	4H W 5	450		0
11	13	4H W 4	420		1
15	9	5H W 5	450		0
16	2	3NT E 6	490		-1
18	3	4H W 4	420		1

Board (2) Av: NS=-110

N-S	E-W	Contract	N-S	E-W	IMP
1	17	2NT W 3	150		-1
4	8	2NT E 3	150		-1
6	12	3NT W 3	400		-7
7	5	3C W 3	110		0
10	14	3C E 3	110		0
11	13	2D N-2	200		-3
15	9	2S S 3	140		6
16	2	2NT E-2	100		5
18	3	3C W 5	150		-1

Board (3) Av: NS=-210

N-S	E-W	Contract	N-S	E-W	IMP
1	17	5S E-1	100		7
4	8	4S E 4	620		-9
6	12	4S E 4	620		-9
7	5	4S E 4	620		-9
10	14	5S E-1	100		7
11	13	5S W-1	100		7
15	9	5Sx E-1	200		9
16	2	4S E 4	620		-9
18	3	5S W-1	100		7

Board (4) Av: NS=-130

N-S	E-W	Contract	N-S	E-W	IMP
1	17	4S N-1	100		1
4	8	4S N-1	100		1
6	12	4Sx N-2	500		-9
7	5	3Hx E-3	800		14
10	14	2H S-1	100		1
11	13	3D N-3	300		-5
15	9	2S N 2	110		6
16	2	2S N-1	100		1
18	3	4S N-3	300		-5

5

♠ A1087
 ♥ 1075
 ♦ 32
 ♣ K1042
 ♠ Q64
 ♥ K9832
 ♦ QJ105
 ♣ 8
 ♠ J52
 ♥ Q4
 ♦ AK964
 ♣ 963
 ♠ K93
 ♥ AJ6
 ♦ 87
 ♣ AQJ75

6

♠ J
 ♥ A7543
 ♦ 976
 ♣ K1074
 ♠ AK10
 ♥ K
 ♦ AK103
 ♣ A9853
 ♠ 6542
 ♥ Q1092
 ♦ J84
 ♣ Q2
 ♠ Q9873
 ♥ J86
 ♦ Q52
 ♣ J6

7

♠ AKQ
 ♥ 83
 ♦ A5432
 ♣ 1097
 ♠ J103
 ♥ A52
 ♦ K107
 ♣ KQ63
 ♠ 98
 ♥ Q764
 ♦ 986
 ♣ AJ84
 ♠ 76542
 ♥ KJ109
 ♦ QJ
 ♣ 52

8

♠ K742
 ♥ K6
 ♦ AQ532
 ♣ J6
 ♠ 10
 ♥ 10954
 ♦ 10964
 ♣ 10987
 ♠ 65
 ♥ A872
 ♦ 8
 ♣ AKQ432
 ♠ AQJ983
 ♥ QJ3
 ♦ KJ7
 ♣ 5

Board (5) Av: NS=+50

N-S	E-W	Contract	N-S	E-W	IMP
1	17	2D E 3	110		-4
4	8	1NT S 2	120		2
6	12	2S N 2	110		2
7	5	3D E 3	110		-4
10	14	1NT S 2	120		2
11	13	1NT S 4	180		4
15	9	Cancel			
16	2	1NT S 3	150		3
18	3	2D W 5	150		-5

Board (6) Av: NS=-270

N-S	E-W	Contract	N-S	E-W	IMP
1	17	1NT W 3	150		3
4	8	5D E-1	100		9
6	12	3NT E 4	630		-8
7	5	1C W 4	130		4
10	14	3D W 4	130		4
11	13	2Hx N-2	300		-1
15	9	3NT E 4	630		-8
16	2	4NT E-1	100		9
18	3	4S E 4	620		-8

Board (7) Av: NS=+170

N-S	E-W	Contract	N-S	E-W	IMP
1	17	1NT W-1	100		-2
4	8	1NT W-2	200		1
6	12	1NT W-2	200		1
7	5	2S S 3	140		-1
10	14	1NT W-2	200		1
11	13	3C E-2	200		1
15	9	2S S 3	140		-1
16	2	3C W-2	200		1
18	3	1NT W-1	100		-2

Board (8) Av: NS=+240

N-S	E-W	Contract	N-S	E-W	IMP
4	17	6S N-1	50		-7
5	10	5Cx E-2	300		2
8	1	5Cx E-2	300		2
9	3	5S S 5	450		5
11	16	5Cx E-2	300		2
13	2	6S S-1	50		-7
14	7	4S N 5	450		5
15	12	6S N-1	50		-7
18	6	5S S 5	450		5

9

♠AQ5
 ♥A93
 ♦K105
 ♣KJ95
 ♠10762
 ♥KJ742
 ♦2
 ♣A84
 (N)
 W—E
 S
 ♠K4
 ♥1085
 ♦AQJ9764
 ♣Q
 ♠J983
 ♥Q6
 ♦83
 ♣107632

Board (9) Av: NS=-140

N-S	E-W	Contract	N-S	E-W	IMP
4	17	2D E 4	130		0
5	10	2H W 3	140		0
8	1	2D W 4	130		0
9	3	2D W 4	130		0
11	16	2D E 5	150		0
13	2	1NT N-2	100		1
14	7	2D W 4	130		0
15	12	4H W 5	650		-11
18	6	3H W 4	170		-1

10

♠742
 ♥Q
 ♦AJ53
 ♣J9754
 ♠AKQJ8
 ♥1087
 ♦Q972
 ♣2
 (N)
 W—E
 S
 ♠93
 ♥J9542
 ♦K864
 ♣108
 ♠1065
 ♥AK63
 ♦10
 ♣AKQ63

Board (10) Av: NS=+130

N-S	E-W	Contract	N-S	E-W	IMP
4	17	3C S 4	130		0
5	10	4C S 4	130		0
8	1	3H E 3	140		-7
9	3	2C S 4	130		0
11	16	4C S 4	130		0
13	2	4C N 4	130		0
14	7	4C S 4	130		0
15	12	4C S 4	130		0
18	6	3C S 4	130		0

11

♠A76
 ♥A1085
 ♦7652
 ♣KQ
 ♠K1084
 ♥732
 ♦A9
 ♣J1085
 (N)
 W—E
 S
 ♠Q952
 ♥QJ964
 ♦Q3
 ♣97
 ♠J3
 ♥K
 ♦KJ1084
 ♣A6432

Board (11) Av: NS=+130

N-S	E-W	Contract	N-S	E-W	IMP
4	17	3NT N-2	100		-6
5	10	5D S 6	420		7
8	1	3NT N-1	50		-5
9	3	3NT N-1	50		-5
11	16	3NT N-3	150		-7
13	2	3NT N-2	100		-6
14	7	3NT N 4	430		7
15	12	3NT N 3	400		7
18	6	3NT N 3	400		7

12

♠QJ1072
 ♥AQ983
 ♦4
 ♣94
 ♠A93
 ♥J
 ♦J1063
 ♣A8632
 (N)
 W—E
 S
 ♠K64
 ♥654
 ♦Q72
 ♣KQJ10
 ♠85
 ♥K1072
 ♦AK985
 ♣75

Board (12) Av: NS=+60

N-S	E-W	Contract	N-S	E-W	IMP
4	17	Passout			-2
5	10	3H N 4	170		3
8	1	Passout			-2
9	3	Passout			-2
11	16	3H N 3	140		2
13	2	Passout			-2
14	7	Passout			-2
15	12	3H N 3	140		2
18	6	3S N 3	140		2

13

♠KQ107
 ♥4
 ♦8762
 ♣8742
 ♠9863
 ♥63
 ♦Q103
 ♣Q1053
 (N)
 W—E
 S
 ♠54
 ♥AQJ85
 ♦94
 ♣KJ96
 ♠AJ2
 ♥K10972
 ♦AKJ5
 ♣A

Board (13) Av: NS=+240

N-S	E-W	Contract	N-S	E-W	IMP
4	17	4S N 4	620		9
5	10	4S N-1	100		-8
8	1	3NT S 3	600		8
9	3	4S N-2	200		-10
11	16	2NT S 3	150		-3
13	2	1H E-2	200		-1
14	7	3NT S 4	630		9
15	12	1H S 2	110		-4
18	6	1NT S 2	120		-3

14

♠KQ104
 ♥10852
 ♦Q9
 ♣962
 ♠J975
 ♥Q
 ♦K10543
 ♣853
 (N)
 W—E
 S
 ♠862
 ♥A763
 ♦AJ
 ♣AJ104
 ♠A3
 ♥KJ94
 ♦8762
 ♣KQ7

Board (14) Av: NS=+30

N-S	E-W	Contract	N-S	E-W	IMP
4	17	2D E-1	50		1
5	10	1NT E-1	50		1
8	1	1NT E-1	50		1
9	3	1NT E-2	100		2
11	16	2H N 2	110		2
13	2	1NT E-2	100		2
14	7	2H N-1	50		-2
15	12	2NT S-3	150		-5
18	6	1NT E 1	90		-3

15

♠A6543
 ♥A64
 ♦K864
 ♣4
 ♠K7
 ♥Q832
 ♦72
 ♣AJ763
 (N)
 W—E
 S
 ♠8
 ♥J97
 ♦Q953
 ♣KQ982
 ♠QJ1092
 ♥K105
 ♦AJ10
 ♣105

Board (15) Av: NS=+350

N-S	E-W	Contract	N-S	E-W	IMP
2	7	5Cx E-3	500		4
4	11	5S N-1	100		-10
9	6	4S N-1	100		-10
10	17	4S N 6	680		8
13	8	Passout			-8
14	1	4S N 6	680		8
15	3	4S N 5	650		7
16	5	4S S 4	620		7
18	12	5C W-2	100		-6

16

♠Q652
 ♥
 ♦KQ73
 ♣Q9832
 ♠AJ107
 ♥Q10952
 ♦2
 ♣764
 (N)
 W—E
 S
 ♠K98
 ♥K63
 ♦J109865
 ♣5
 ♠43
 ♥AJ874
 ♦A4
 ♣AKJ10

Board (16) Av: NS=+330

N-S	E-W	Contract	N-S	E-W	IMP
2	7	3NT N 3	400		2
4	11	2D E-1	100		-6
9	6	3NT S 3	400		2
10	17	3NT N 3	400		2
13	8	6C S-2	100		-10
14	1	3NT S 3	400		2
15	3	2NT N 4	180		-4
16	5	3NT S 3	400		2
18	12	3NT S 3	400		2

17

♠K107
♥J108
♦J9
♣J8763

♠5
♥Q742
♦Q108743
♣Q5

♠AQ982
♥AK
♦AK5
♣A104

♠J643
♥9653
♦62
♣K92

18

♠A10975
♥AQ9
♦43
♣KJ6

♠KJ2
♥KJ
♦7
♣Q1098754

♠3
♥1087542
♦J10852
♣3

♠Q864
♥63
♦AKQ96
♣A2

19

♠Q108
♥KJ75
♦KQ
♣7643

♠763
♥8
♦J107532
♣J92

♠AJ92
♥AQ10642
♦6
♣85

♠K54
♥93
♦A984
♣AKQ10

20

♠QJ102
♥J3
♦AJ985
♣42

♠7543
♥K72
♦Q1062
♣KQ

♠AK86
♥A865
♦
♣A10853

♠9
♥Q1094
♦K743
♣J976

Board (17) Av: NS=-610

N-S	E-W	Contract	N-S	E-W	IMP
2	7	6NT E 6	990		-9
4	11	6D W 6	920		-7
9	6	5D W 7	440		5
10	17	3NT W 6	490		3
13	8	3NT E 7	520		3
14	1	3NT E 6	490		3
15	3	6D W 6	920		-7
16	5	5D W 7	440		5
18	12	3NT E 6	490		3

Board (18) Av: NS=+650

N-S	E-W	Contract	N-S	E-W	IMP
2	7	3NT S 5	660		0
4	11	4S S 5	650		0
9	6	6S N-2		200	-13
10	17	4S N 5	650		0
13	8	4S S 5	650		0
14	1	4S S 5	650		0
15	3	4S S 5	650		0
16	5	4S N 5	650		0
18	12	4S N 6	680		1

Board (19) Av: NS=+210

N-S	E-W	Contract	N-S	E-W	IMP
2	7	3NT S-1	50		-6
4	11	3NT S-2	100		-7
9	6	3NT S-1	50		-6
10	17	3NT S 3	400		5
13	8	3NT S 3	400		5
14	1	3NT S 3	400		5
15	3	3NT S 3	400		5
16	5	2Hx E-2	500		7
18	12	3NT S-1	50		-6

Board (20) Av: NS=-10

N-S	E-W	Contract	N-S	E-W	IMP
2	7	4S W-1	100		3
4	11	4S W-1	100		3
9	6	4S W-1	100		3
10	17	5S E-1	100		3
13	8	4S W-1	100		3
14	1	4S W-1	100		3
15	3	4S W-2	200		5
16	5	5Dx N-3		800	-13
18	12	4S W 5	650		-12

21

♠97652
♥643
♦6
♣QJ86

♠4
♥Q10872
♦987
♣AK107

♠AK3
♥J5
♦AKQJ43
♣43

♠QJ108
♥AK9
♦1052
♣952

22

♠A983
♥83
♦A876
♣QJ3

♠K
♥AQ65
♦KQ432
♣1092

♠J10642
♥7
♦1095
♣K875

♠Q75
♥KJ10942
♦J
♣A64

23

♠K7432
♥J10
♦J976
♣32

♠96
♥AQ4
♦KQ8532
♣104

♠108
♥K7653
♦4
♣KQJ98

♠AQJ5
♥982
♦A10
♣A765

24

♠J86
♥AK964
♦AK5
♣104

♠A105
♥Q7
♦98742
♣J96

♠K743
♥J85
♦QJ
♣A872

♠Q92
♥1032
♦1063
♣KQ53

Board (21) Av: NS=-420

N-S	E-W	Contract	N-S	E-W	IMP
2	7	5D E 5	400		1
4	11	5D E 5	400		1
9	6	3NT E 4	430		0
10	17	3NT E 4	430		0
13	8	5D E 5	400		1
14	1	3NT E 4	430		0
15	3	5D E 5	400		1
16	5	3NT E 5	460		-1
18	12	3NT W 5	460		-1

Board (22) Av: NS=+60

N-S	E-W	Contract	N-S	E-W	IMP
1	11	3H S 4	170		3
2	10	4H S-1		50	-3
4	14	3H S 3	140		2
7	17	2NT N-1		50	-3
8	16	4H S-1		50	-3
9	18	2NT N 3	150		3
12	3	4H S-1		50	-3
13	5	3H S 3	140		2
15	6	3Dx W-2	500		10

Board (23) Av: NS=+50

N-S	E-W	Contract	N-S	E-W	IMP
1	11	4Hx E 4		790	-13
2	10	2S S 3	140		3
4	14	2S S 4	170		3
7	17	4S S-2		200	-6
8	16	2D W-3	300		6
9	18	2S S 3	140		3
12	3	3H E 4		170	-6
13	5	4Hx W-1	200		4
15	6	4H W-1	100		2

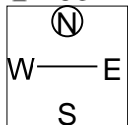
Board (24) Av: NS=+90

N-S	E-W	Contract	N-S	E-W	IMP
1	11	4H N-1		50	-4
2	10	3S E-4	200		3
4	14	2H N 3	140		2
7	17	4H N-1		50	-4
8	16	2H N 2	110		1
9	18	2H N 2	110		1
12	3	3H N 3	140		2
13	5	2H N 2	110		1
15	6	Cancel			

25

♠864
♥A10732
♦Q10
♣K63

♠J109532
♥Q8
♦9874
♣10



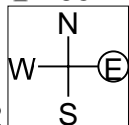
♠AKQ
♥J965
♦K52
♣AJ9

♠7
♥K4
♦AJ63
♣Q87542

26

♠AJ7
♥AQ93
♦KJ6
♣A65

♠
♥KJ86
♦72
♣KJ109842



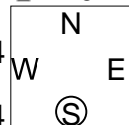
♠Q842
♥752
♦Q1093
♣Q3

♠K109653
♥104
♦A854
♣7

27

♠AQJ10
♥QJ83
♦A105
♣K10

♠53
♥K974
♦KQ6
♣A964



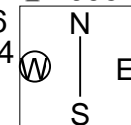
♠9762
♥A52
♦742
♣QJ3

♠K84
♥106
♦J983
♣8752

28

♠753
♥AQ75
♦43
♣KJ95

♠KQ96
♥10984
♦J6
♣632



♠J842
♥K63
♦KQ72
♣74

♠A10
♥J2
♦A10985
♣AQ108

Board (25) Av: NS=+80

N-S	E-W	Contract	N-S	E-W	IMP
1	11	4S W-2	200		3
2	10	2S W 2		110	-5
4	14	4S W-2	200		3
7	17	3S W-1	100		1
8	16	1S W 2		110	-5
9	18	2S W 3		140	-6
12	3	4S W-2	200		3
13	5	3S W-1	100		1
15	6	4S W-2	200		3

Board (26) Av: NS=+580

N-S	E-W	Contract	N-S	E-W	IMP
1	11	6S S-1		100	-12
2	10	3S N 5	200		-9
4	14	4S S 5	650		2
7	17	4S S 4	620		1
8	16	3NT N 5	660		2
9	18	4S S 5	650		2
12	3	4S S 5	650		2
13	5	4S S 5	650		2
15	6	5Cx W-3	800		6

Board (27) Av: NS=+80

N-S	E-W	Contract	N-S	E-W	IMP
1	11	1NT N 2	120		1
2	10	1NT W-2	100		1
4	14	1NT N 2	120		1
7	17	2S S 2	110		1
8	16	1NT N 3	150		2
9	18	1NT N 2	120		1
12	3	1NT W 1		90	-5
13	5	2D S 2	90		0
15	6	1NT W 1		90	-5

Board (28) Av: NS=+70

N-S	E-W	Contract	N-S	E-W	IMP
1	11	3NT S-1		100	-5
2	10	3NT S 3	600		11
4	14	3NT S 3	600		11
7	17	3NT S-1		100	-5
8	16	3NT S-1		100	-5
9	18	3NT S-1		100	-5
12	3	3C S 4	130		2
13	5	3NT S-1		100	-5
15	6	3C N 4	130		2

第14回NRM杯 Session 2 Flight D 2009年6月27日(土)

1

♠ A7532
♥ J
♦ J9432
♣ KJ

♠ 108
♥ KQ8
♦ AQ8
♣ 107642

W (N) E
S

♠ J94
♥ 642
♦ 107
♣ A9853

♠ KQ6
♥ A109753
♦ K65
♣ Q

Board (1) Av: NS=+150

N-S	E-W	Contract	N-S	E-W	IMP
1	16 2H	S 4	170		1
3	17 4S	N 4	420		7
8	6 2H	S 4	170		1
9	5 4S	N-1		50	-5
10	4 2H	S 3	140		0
11	15 2S	N 3	140		0
13	7 2H	S 4	170		1
14	12 4Cx	W-2	300		4
18	2 4S	N-1		50	-5

2

♠ 102
♥ AQJ107
♦ K643
♣ 108

♠ AK976
♥ 62
♦ Q2
♣ A972

W (N) E
S

♠ Q85
♥ K9
♦ 985
♣ Q6543

♠ J43
♥ 8543
♦ AJ107
♣ KJ

Board (2) Av: NS=-80

N-S	E-W	Contract	N-S	E-W	IMP
1	16 3S	W 3	140		-2
3	17 3H	N 3	140		6
8	6 2S	W 3	140		-2
9	5 3H	N 3	140		6
10	4 3H	N-1		100	-1
11	15 3H	N-1		100	-1
13	7 4H	N-1		100	-1
14	12 3H	N-1		100	-1
18	2 3S	W 3	140		-2

3

♠ AQ874
♥ AJ2
♦ K10653
♣

♠ K96
♥ Q108
♦ Q42
♣ 9843

W (N) E
S

♠ J1032
♥ 763
♦ 97
♣ AQJ6

♠ 5
♥ K954
♦ AJ8
♣ K10752

Board (3) Av: NS=+320

N-S	E-W	Contract	N-S	E-W	IMP
1	16 3NT	S 5	460		4
3	17 3NT	S 3	400		2
8	6 3D	N 5	150		-5
9	5 2NT	S 4	180		-4
10	4 3NT	S 4	430		3
11	15 2NT	S 4	180		-4
13	7 3NT	S 4	430		3
14	12 3NT	S 4	430		3
18	2 3D	N 6	170		-4

4

♠ J5
♥ A543
♦ KQJ94
♣ K4

♠ 1098763
♥ 9862
♦ 62
♣ A

W (N) E
S

♠ 2
♥ J7
♦ A8753
♣ 109763

♠ AKQ4
♥ KQ10
♦ 10
♣ QJ852

Board (4) Av: NS=+660

N-S	E-W	Contract	N-S	E-W	IMP
1	16 3NT	N 5	660		0
3	17 3NT	N 5	660		0
8	6 3NT	N 5	660		0
9	5 3NT	S 5	660		0
10	4 3NT	N 5	660		0
11	15 3NT	N 5	660		0
13	7 3NT	S 5	660		0
14	12 3NT	N 5	660		0
18	2 1C	S 4	130		-11

5

♠ 1064
♥ A
♦ KJ42
♣ AQJ109

♠ AJ72
♥ 108
♦ Q1065
♣ 864

W (N) E
S

♠ K983
♥ KJ9654
♦ A7
♣ 2

♠ Q5
♥ Q732
♦ 983
♣ K753

Board (5) Av: NS=-80

N-S	E-W	Contract	N-S	E-W	IMP
1	16 2S	W 4	170		-3
3	17 3C	N 3	110		5
8	6 3NT	S-2		200	-3
9	5 4S	E 4		420	-8
10	4 3H	E-1	50		4
11	15 2H	E-1	50		4
13	7 3S	W-3	150		6
14	12 2S	W 4	170		-3
18	2 4C	N-2		200	-3

6

♠ AQ106
♥ KQ83
♦ 9642
♣ 8

♠ J75
♥ AJ102
♦ AKJ7
♣ 74

W (N) E
S

♠ 4
♥ 9
♦ Q83
♣ AKQJ10953

♠ K9832
♥ 7654
♦ 105
♣ 62

Board (6) Av: NS=-640

N-S	E-W	Contract	N-S	E-W	IMP
1	16 3NT	E-1	100		12
3	17 5C	E 6		620	1
8	6 3NT	W 3		600	1
9	5 5C	E 7		640	0
10	4 3NT	E 3		600	1
11	15 3NT	W 7		720	-2
13	7 3NT	E 3		600	1
14	12 3NT	W 7		720	-2
18	2 6NT	E 6		1440	-13

7

♠ A10
♥ AQ8
♦ AJ1032
♣ Q95

♠ 762
♥ J97
♦ K8
♣ A10642

W (N) E
S

♠ KQJ8
♥ K1054
♦ Q75
♣ 87

♠ 9543
♥ 632
♦ 964
♣ KJ3

Board (7) Av: NS=+120

N-S	E-W	Contract	N-S	E-W	IMP
1	16 1NT	N 2	120		0
3	17 1NT	N 3	150		1
8	6 1NT	N 1	90		-1
9	5 1NT	N 3	150		1
10	4 1NT	N 2	120		0
11	15 1NT	N 3	150		1
13	7 1NT	N 1	90		-1
14	12 1NT	N 1	90		-1
18	2 1NT	N 2	120		0

8

♠ AK4
♥ Q10862
♦ A10
♣ 1092

♠ J103
♥ K54
♦ KJ65
♣ J54

W (N) E
S

♠ Q982
♥ AJ73
♦ Q3
♣ KQ7

♠ 765
♥ 9
♦ 98742
♣ A863

Board (8) Av: NS=-40

N-S	E-W	Contract	N-S	E-W	IMP
2	9 1H	N-1		50	0
3	14 1H	N-1		50	0
4	16 2D	W-1	50		3
5	18 1H	N-2		100	-2
6	11 1H	N-1		50	0
7	1 1H	N-1		50	0
8	15 2S	E-1	50		3
13	10 1H	N-1		50	0
17	12 1H	N-1		50	0

第14回NRM杯 Session 2 Flight D 2009年6月27日(土)

9

♠ A762
 ♥ KQ85
 ♦ A109
 ♣ 106
 ♠ Q3
 ♥ 1074
 ♦ KQ865
 ♣ J72
 (N)
 W — E
 S
 ♠ KJ1094
 ♥ 962
 ♦ 4
 ♣ A854
 ♠ 85
 ♥ AJ3
 ♦ J732
 ♣ KQ93

10

♠ Q82
 ♥ 875
 ♦ AJ98
 ♣ K74
 ♠ J103
 ♥ 96
 ♦ K42
 ♣ A9862
 (N)
 W — E
 S
 ♠ A96
 ♥ AKQ103
 ♦ 753
 ♣ J5
 ♠ K754
 ♥ J42
 ♦ Q106
 ♣ Q103

11

♠ 976
 ♥ Q87
 ♦ Q10542
 ♣ AK
 ♠ AJ54
 ♥ J92
 ♦ K93
 ♣ 543
 (N)
 W — E
 S
 ♠ KQ1032
 ♥ K10
 ♦ AJ8
 ♣ J72
 ♠ 8
 ♥ A6543
 ♦ 76
 ♣ Q10986

12

♠ A1092
 ♥ K8642
 ♦ AJ5
 ♣ 5
 ♠ J876
 ♥ A1095
 ♦ 73
 ♣ QJ7
 (N)
 W — E
 S
 ♠ Q5
 ♥ J3
 ♦ K86
 ♣ K109642
 ♠ K43
 ♥ Q7
 ♦ Q10942
 ♣ A83

Board (9) Av: NS=-40

N-S	E-W	Contract	N-S	E-W	IMP
2	9	3NT N-3	150		-3
3	14	3NT N-1	50		0
4	16	3NT N 4	430		10
5	18	3NT N-2	100		-2
6	11	2NT N 3	150		5
7	1	3NT N-1	50		0
8	15	3NT N-2	100		-2
13	10	2NT N-1	50		0
17	12	2NT N-1	50		0

Board (10) Av: NS=-110

N-S	E-W	Contract	N-S	E-W	IMP
2	9	2H E-1	100		5
3	14	2H E 2	110		0
4	16	2H E 2	110		0
5	18	2S S-2	200		-3
6	11	2H E 2	110		0
7	1	2H E 2	110		0
8	15	2H E 3	140		-1
13	10	1NT W 2	120		0
17	12	1NT W 1	90		1

Board (11) Av: NS=-80

N-S	E-W	Contract	N-S	E-W	IMP
2	9	2S E 2	110		-1
3	14	4Sx E-1	100		5
4	16	2S E 3	140		-2
5	18	4S E-1	50		4
6	11	2S E 3	140		-2
7	1	4S E-1	50		4
8	15	2S E 4	170		-3
13	10	4H N-2	100		-1
17	12	3S E 3	140		-2

Board (12) Av: NS=+30

N-S	E-W	Contract	N-S	E-W	IMP
2	9	3D S 5	150		3
3	14	2NT S-1	100		-4
4	16	3D S 3	110		2
5	18	3D S 4	130		3
6	11	4Sx S 4	790		13
7	1	3D N 3	110		2
8	15	3NT S-3	300		-8
13	10	3D N 4	130		3
17	12	3NT S-3	300		-8

13

♠ K94
 ♥ 10986
 ♦ 102
 ♣ J972
 ♠ Q10875
 ♥ KJ2
 ♦
 ♣ AK853
 (N)
 W — E
 S
 ♠ J632
 ♥ 53
 ♦ K98764
 ♣ 4
 ♠ A
 ♥ AQ74
 ♦ AQJ53
 ♣ Q106

14

♠ A985
 ♥ K752
 ♦ K65
 ♣ 82
 ♠ J104
 ♥ Q6
 ♦ A9843
 ♣ K94
 (N)
 W — E
 S
 ♠ K632
 ♥ A843
 ♦ Q
 ♣ AJ75
 ♠ Q7
 ♥ J109
 ♦ J1072
 ♣ Q1063

15

♠ 3
 ♥ 96
 ♦ 6432
 ♣ AJ10964
 ♠ KJ86
 ♥ AJ83
 ♦ AQJ7
 ♣ K
 (N)
 W — E
 S
 ♠ Q1094
 ♥ 1074
 ♦ K98
 ♣ Q52
 ♠ A752
 ♥ KQ52
 ♦ 105
 ♣ 873

16

♠ 108642
 ♥ Q107
 ♦ 7
 ♣ K642
 ♠ AK753
 ♥ A9
 ♦ J1042
 ♣ Q7
 (N)
 W — E
 S
 ♠ QJ
 ♥
 ♦ KQ9653
 ♣ J10985
 ♠ 9
 ♥ KJ865432
 ♦ A8
 ♣ A3

Board (13) Av: NS=-90

N-S	E-W	Contract	N-S	E-W	IMP
2	9	4H S-3	300		-5
3	14	4S W-1	100		5
4	16	3H N-1	100		0
5	18	4H S-2	200		-3
6	11	3S W-1	100		5
7	1	1Dx S-1	200		-3
8	15	3S E 3	140		-2
13	10	4H S-2	200		-3
17	12	5Sx W-2	500		11

Board (14) Av: NS=-30

N-S	E-W	Contract	N-S	E-W	IMP
2	9	1NT W 1	90		-2
3	14	2D S-3	150		-3
4	16	1NT W 1	90		-2
5	18	1NT W-2	100		4
6	11	2C E-1	50		2
7	1	2C E 3	110		-2
8	15	1NTxS 1	180		5
13	10	2C E 2	90		-2
17	12	2D W-1	50		2

Board (15) Av: NS=-150

N-S	E-W	Contract	N-S	E-W	IMP
1	13	3S E 4	170		-1
2	15	3S W 4	170		-1
4	7	4S W-1	50		5
6	17	4S W 5	450		-7
8	3	4S E 4	420		-7
11	18	4S E-1	50		5
12	5	4S E 4	420		-7
14	9	4S E-1	50		5
16	10	4S E-1	50		5

Board (16) Av: NS=+390

N-S	E-W	Contract	N-S	E-W	IMP
1	13	5Hx S 5	650		6
2	15	4S W-2	200		-5
4	7	4S W-4	400		0
6	17	4H S 5	450		2
8	3	3S W-2	200		-5
11	18	5D E-2	200		-5
12	5	4Hx S 5	690		7
14	9	5Hx S 5	650		6
16	10	4S W-2	200		-5

17

♠K9732
♥72
♦9832
♣AQ

♠QJ864
♥J864
♦6
♣854

♠A105
♥AK109
♦QJ7
♣K32

♠
♥Q53
♦AK1054
♣J10976

18

♠K1054
♥K875
♦5
♣AJ105

♠93
♥
♦AJ964
♣987643

♠J876
♥AQ10932
♦32
♣K

♠AQ2
♥J64
♦KQ1087
♣Q2

19

♠A32
♥A6
♦J764
♣9532

♠K754
♥QJ
♦Q103
♣AKQ8

♠J86
♥K1072
♦9852
♣106

♠Q109
♥98543
♦AK
♣J74

20

♠A863
♥2
♦KQ98
♣A986

♠KJ5
♥KJ94
♦10
♣K10754

♠1072
♥Q873
♦J65
♣J32

♠Q94
♥A1065
♦A7432
♣Q

Board (17) Av: NS=+60

N-S	E-W	Contract	N-S	E-W	IMP
1	13 4H	E-2	100		1
2	15 3S	W-2	100		1
4	7 2S	E 2		110	-5
6	17 3H	E-1	50		0
8	3 2S	E 2		110	-5
11	18 4S	W-3	150		3
12	5 3D	N 3	110		2
14	9 3S	E-1	50		0
16	10 4H	W-2	100		1

Board (18) Av: NS=+210

N-S	E-W	Contract	N-S	E-W	IMP
1	13 4Cx	W-4	800		11
2	15 3NT	N-1		100	-7
4	7 3NT	N-1		100	-7
6	17 4Hx	E-6	1400		15
8	3 3NT	N 3	600		9
11	18 2H	E-4	200		0
12	5 2H	E-4	200		0
14	9 3NT	S-1		100	-7
16	10 3D	S-2		200	-9

Board (19) Av: NS=-20

N-S	E-W	Contract	N-S	E-W	IMP
1	13 1NT	W 2		120	-3
2	15	Cancel			
4	7 1NT	W-1	100		3
6	17 1NT	W 3		150	-4
8	3 1NT	W 2		120	-3
11	18 1NT	W-1	100		3
12	5 2H	S 2	110		4
14	9 1NT	W 3		150	-4
16	10 1NT	W-1	100		3

Board (20) Av: NS=+350

N-S	E-W	Contract	N-S	E-W	IMP
1	13 1H	W 1		80	-10
2	15 3NT	N-1		100	-10
4	7 3NT	N 4	630		7
6	17 3NT	N 4	630		7
8	3 2S	N 4	170		-5
11	18 3NT	N 3	600		6
12	5 3NT	N 3	600		6
14	9 3NT	N 3	600		6
16	10 2C	N-1		100	-10

21

♠1092
♥1076
♦KQ43
♣AJ10

♠K8
♥K54
♦A9852
♣842

♠AQJ53
♥J32
♦J
♣Q975

♠764
♥AQ98
♦1076
♣K63

22

♠A109
♥9643
♦96
♣Q1092

♠863
♥872
♦KJ52
♣J76

♠KJ4
♥AKQ10
♦Q108
♣853

♠Q752
♥J5
♦A743
♣AK4

23

♠KQ65
♥Q85
♦Q1074
♣32

♠A32
♥AK1097
♦K983
♣8

♠109874
♥3
♦J65
♣KQ97

♠J
♥J642
♦A2
♣AJ10654

24

♠QJ103
♥974
♦832
♣AQ6

♠98542
♥AKJ108
♦Q4
♣4

♠AK6
♥Q63
♦AKJ65
♣87

♠7
♥52
♦1097
♣KJ109532

Board (21) Av: NS=-50

N-S	E-W	Contract	N-S	E-W	IMP
1	13 2S	E-1	50		3
2	15	Passout			2
4	7 2NT	W 2		120	-2
6	17 2S	E-1	50		3
8	3 2NT	W 4		180	-4
11	18	Passout			2
12	5 2NT	W 2		120	-2
14	9	Passout			2
16	10 2S	E 3		140	-3

Board (22) Av: NS=-30

N-S	E-W	Contract	N-S	E-W	IMP
4	13 1NT	E-1	100		4
5	15 1NT	E 1		90	-2
6	14 1NT	W-1	100		4
8	18 1NT	E 2		120	-3
9	17 1NT	E 3		150	-3
10	1 2S	S-1		50	-1
11	3 1NT	E-1	100		4
12	2 1NT	E 1		90	-2
16	7 1NT	E 1		90	-2

Board (23) Av: NS=+100

N-S	E-W	Contract	N-S	E-W	IMP
4	13 4S	E-2	200		3
5	15 2H	W 2		110	-5
6	14 4S	E-3	300		5
8	18 3S	E-1	100		0
9	17 1H	W 1		80	-5
10	1 2S	E-1	100		0
11	3 3S	E-2	200		3
12	2 2Dx	W 2		180	-7
16	7 2S	E-3	300		5

Board (24) Av: NS=-170

N-S	E-W	Contract	N-S	E-W	IMP
4	13 4H	E 6		480	-7
5	15 4H	W 6		480	-7
6	14 5S	W-1	50		6
8	18 4H	E 6		480	-7
9	17 6S	W-1	50		6
10	1 4H	E 6		480	-7
11	3 6Sx	W-1	100		7
12	2 5Sx	W-1	100		7
16	7 5S	W-1	50		6

25

♠ K42
♥ 7
♦ KQJ97
♣ QJ106

♠ A98653
♥ K54
♦ A63
♣ 7

♠ Q107
♥ AJ92
♦ 105
♣ A982

♠ J
♥ Q10863
♦ 842
♣ K543

26

♠ KJ942
♥
♦ AK3
♣ KJ865

♠ 108
♥ KQ6
♦ Q98752
♣ Q4

♠ 73
♥ A753
♦ J64
♣ A972

♠ AQ65
♥ J109842
♦ 10
♣ 103

27

♠
♥ 743
♦ AKQJ107
♣ 10985

♠ AKJ
♥ Q865
♦ 9542
♣ 63

♠ Q93
♥ AKJ2
♦ 863
♣ A74

♠ 10876542
♥ 109
♦
♣ KQJ2

28

♠ KJ62
♥ A52
♦ AKJ
♣ K103

♠ Q975
♥ 8
♦ Q107532
♣ Q7

♠ A103
♥ KQ10
♦ 96
♣ A9654

♠ 84
♥ J97643
♦ 84
♣ J82

Board (25) Av: NS=-200

N-S	E-W	Contract	N-S	E-W	IMP
4	13	3C	N-1	50	4
5	15	2S	W 4	170	1
6	14	3S	W 3	140	2
8	18	3C	N-2	100	3
9	17	2S	W 4	170	1
10	1	4S	W 4	620	-9
11	3	4S	W-1	100	7
12	2	4S	W 4	620	-9
16	7	3S	W 3	140	2

Board (26) Av: NS=+680

N-S	E-W	Contract	N-S	E-W	IMP
4	13	4S	N 6	680	0
5	15	4S	N 6	680	0
6	14	5S	N 5	650	-1
8	18	4S	N 6	680	0
9	17	4S	N 6	680	0
10	1	4S	N 6	680	0
11	3	4S	N 5	650	-1
12	2	4S	N 6	680	0
16	7	4S	N 6	680	0

Board (27) Av: NS=-80

N-S	E-W	Contract	N-S	E-W	IMP
4	13	3S	S-3	150	-2
5	15	4H	W-2	100	5
6	14	4D	S-1	50	1
8	18	3S	S-2	100	-1
9	17	3H	E 3	140	-2
10	1	3NT	W-2	100	5
11	3	4Sx	S-3	500	-9
12	2	4S	S-3	150	-2
16	7	3S	S-2	100	-1

Board (28) Av: NS=+90

N-S	E-W	Contract	N-S	E-W	IMP
4	13	1C	N 1	70	-1
5	15	2H	N 3	140	2
6	14	2H	S 3	140	2
8	18	1C	N 1	70	-1
9	17	3H	S 3	140	2
10	1	2H	S 3	140	2
11	3	2H	S 3	140	2
12	2	4H	S-1	100	-5
16	7	4Hx	S-1	200	-7

1

♠3
♥K74
♦KJ754
♣AQ85

♠AKJ2
♥109
♦A10986
♣106

♠954
♥QJ62
♦3
♣K9432

♠Q10876
♥A853
♦Q2
♣J7

2

♠QJ1093
♥K653
♦7
♣AJ8

♠AK2
♥AJ9
♦AKJ854
♣2

♠7654
♥102
♦Q6
♣KQ1094

♠8
♥Q874
♦10932
♣7653

3

♠10632
♥10
♦92
♣KJ10753

♠AK9
♥K8
♦AKJ753
♣A2

♠QJ74
♥54
♦Q1084
♣986

♠85
♥AQJ97632
♦6
♣Q4

4

♠107
♥K102
♦AQ74
♣K632

♠AKJ54
♥Q543
♦K2
♣105

♠Q832
♥AJ976
♦6
♣Q74

♠96
♥8
♦J109853
♣AJ98

Board (1) Av: NS=-40

N-S	E-W	Contract	N-S	E-W	IMP
2	17	2NT S-1		50	0
3	16	2S S-3	150		-3
4	9	2D N-1		50	0
5	11	2D N-1		50	0
7	6	3H E-2	100		4
8	14	2NT S-1		50	0
12	13	2S S-2	100		-2
15	10	1NT N 2	120		4
18	1	2D N-1		50	0

Board (2) Av: NS=-350

N-S	E-W	Contract	N-S	E-W	IMP
2	17	3NT W 6		490	-4
3	16	2H N-2		200	4
4	9	2D W 4		130	6
5	11	3NT E 5		460	-3
7	6	3S E 3		140	5
8	14	5D E 6		420	-2
12	13	3NT W 4		430	-2
15	10	5D W 5		400	-2
18	1	3NT W 4		430	-2

Board (3) Av: NS=-650

N-S	E-W	Contract	N-S	E-W	IMP
2	17	4S E 5		650	0
3	16	4S E 6		680	-1
4	9	4S E 5		650	0
5	11	4S E 5		650	0
7	6	5D W 5		600	2
8	14	5S E 5		650	0
12	13	5D W 5		600	2
15	10	5S E 5		650	0
18	1	3NT W 6		690	-1

Board (4) Av: NS=-80

N-S	E-W	Contract	N-S	E-W	IMP
2	17	5D S-2		200	-3
3	16	4S W-2	200		7
4	9	4S W-1	100		5
5	11	4S W-1	100		5
7	6	4S W 5		650	-11
8	14	3S W 3		140	-2
12	13	4S W 5		650	-11
15	10	4S W-1	100		5
18	1	4S W-1	100		5

5

♠7653
♥1095
♦KQ83
♣86

♠J942
♥Q7
♦1095
♣J532

♠KQ10
♥KJ862
♦7
♣AQ109

♠A8
♥A43
♦AJ642
♣K74

6

♠J52
♥A9
♦KJ103
♣K874

♠K10
♥K84
♦92
♣AQ10652

♠Q9743
♥Q1053
♦854
♣9

♠A86
♥J762
♦AQ76
♣J3

7

♠Q1076
♥72
♦AKJ7
♣1095

♠AK5
♥KQ10653
♦8
♣K87

♠J43
♥J4
♦109432
♣Q43

♠982
♥A98
♦Q65
♣AJ62

8

♠107
♥43
♦K8652
♣KQ94

♠KQ86
♥KQ5
♦A4
♣J852

♠AJ952
♥A982
♦Q103
♣7

♠43
♥J1076
♦J97
♣A1063

Board (5) Av: NS=+70

N-S	E-W	Contract	N-S	E-W	IMP
2	17	3C E 3		110	-5
3	16	2D S 3	110		1
4	9	1NT S 2	120		2
5	11	1NT S 1	90		1
7	6	1NT S 1	90		1
8	14	5D S-2		200	-7
12	13	1NT S 1	90		1
15	10	1NT S 1	90		1
18	1	3D S 3	110		1

Board (6) Av: NS=+180

N-S	E-W	Contract	N-S	E-W	IMP
2	17	3D S 3	110		-2
3	16	3NT N 4	430		6
4	9	2NT N 3	150		-1
5	11	3NT N-1		50	-6
7	6	3D S-1		50	-6
8	14	2NT N 2	120		-2
12	13	2D N 3	110		-2
15	10	2Sx E-2	500		8
18	1	3NT N 3	400		6

Board (7) Av: NS=-80

N-S	E-W	Contract	N-S	E-W	IMP
2	17	1H W 2		110	-1
3	16	3H W-1	100		5
4	9	1H W 2		110	-1
5	11	3H W-1	100		5
7	6	1H W 2		110	-1
8	14	2H W 3		140	-2
12	13	1H W 2		110	-1
15	10	2S N-1	100		-1
18	1	1H W 2		110	-1

Board (8) Av: NS=-450

N-S	E-W	Contract	N-S	E-W	IMP
1	15	4S W 5		450	0
3	7	4S W 5		450	0
4	12	4S W 5		450	0
6	16	4H W 5		450	0
8	2	4S W 5		450	0
13	9	4S W 5		450	0
14	11	4S W 5		450	0
17	5	6S W-1	50		11
18	10	4S W 6		480	-1

第14回NRM杯 Session 3 Flight D 2009年6月28日(日)

9

♠ 9754
♥
♦ AQJ104
♣ K1095

♠ Q32 ♠ AKJ10
♥ J75 ♥ AQ109
♦ 652 ♦ K3
♣ J872 ♣ A64

♠ 86
♥ K86432
♦ 987
♣ Q3

10

♠ AKJ872
♥ A5
♦ 4
♣ AK42

♠ 103 ♠ 94
♥ KJ742 ♥ Q9863
♦ K8532 ♦ AJ
♣ 5 ♣ 10873

♠ Q65
♥ 10
♦ Q10976
♣ QJ96

11

♠ KJ10
♥ J10
♦ AKJ95
♣ AK4

♠ 86532 ♠ AQ4
♥ Q5 ♥ K7632
♦ 10432 ♦ Q87
♣ 85 ♣ J6

♠ 97
♥ A984
♦ 6
♣ Q109732

12

♠ K8653
♥ Q4
♦ K5
♣ 10742

♠ AJ94 ♠ Q10
♥ 98 ♥ J7632
♦ 87632 ♦ Q104
♣ 85 ♣ AQ9

♠ 72
♥ AK105
♦ AJ9
♣ KJ63

Board (9) Av: NS=-110

N-S	E-W	Contract	N-S	E-W	IMP
1	15	3NT E-2	200		7
3	7	3NT E 3		600	-10
4	12	3NT E-1	100		5
6	16	2H S-3		150	-1
8	2	3NT E 4		630	-11
13	9	3NT E-1	100		5
14	11	2NT E 4		180	-2
17	5	4H W-1	100		5
18	10	2NT E 2		120	0

Board (10) Av: NS=+1110

N-S	E-W	Contract	N-S	E-W	IMP
1	15	6S N 6	1430		8
3	7	6S N 6	1430		8
4	12	4S N 6	680		-10
6	16	6S N 6	1430		8
8	2	6S N 6	1430		8
13	9	4S N 6	680		-10
14	11	4S N 6	680		-10
17	5	4S N 6	680		-10
18	10	6S N 6	1430		8

Board (11) Av: NS=+390

N-S	E-W	Contract	N-S	E-W	IMP
1	15	6C S-1		50	-10
3	7	3NT S 5	460		2
4	12	3NT N 4	430		1
6	16	3NT N 4	430		1
8	2	3NT N 4	430		1
13	9	3NT N 4	430		1
14	11	3NT N 3	400		0
17	5	3C N 6	170		-6
18	10	3NT N 5	460		2

Board (12) Av: NS=+490

N-S	E-W	Contract	N-S	E-W	IMP
1	15	3NT S 3	600		3
3	7	3NT S 4	630		4
4	12	2NT S 4	180		-7
6	16	3NT S 5	660		5
8	2	1NT E-2	100		-9
13	9	3NT S 4	630		4
14	11	3NT S 4	630		4
17	5	3NT S 5	660		5
18	10	1NT E-2	100		-9

13

♠ 76
♥ K7543
♦ 107643
♣ 4

♠ AK94 ♠ J82
♥ Q1086 ♥ J9
♦ K ♦ 95
♣ 10976 ♣ KQJ853

♠ Q1053
♥ A2
♦ AQJ82
♣ A2

14

♠ Q2
♥ AKJ6
♦ QJ85
♣ AJ5

♠ K108 ♠ J7653
♥ Q ♥ 853
♦ 1096 ♦ K73
♣ Q108732 ♣ K4

♠ A94
♥ 109742
♦ A42
♣ 96

15

♠ J109
♥ 1095
♦ AQ
♣ QJ732

♠ Q3 ♠ AK54
♥ AK764 ♥ Q32
♦ 10862 ♦ 95
♣ K9 ♣ A1086

♠ 8762
♥ J8
♦ KJ743
♣ 54

16

♠ 964
♥ J85
♦ J864
♣ 1082

♠ A72 ♠ KQ5
♥ AK97 ♥ 103
♦ Q32 ♦ A109
♣ 953 ♣ QJ764

♠ J1083
♥ Q642
♦ K75
♣ AK

Board (13) Av: NS=-20

N-S	E-W	Contract	N-S	E-W	IMP
1	15	2H S 2	110		4
3	7	5D S-1		100	-2
4	12	2H S-2		200	-5
6	16	5D S-1		100	-2
8	2	2H S 3	140		4
13	9	4D S 4	130		4
14	11	2H S 3	140		4
17	5	2H N-3		300	-7
18	10	4C E 4		130	-3

Board (14) Av: NS=+400

N-S	E-W	Contract	N-S	E-W	IMP
1	15	4H S 4	420		1
3	7	1D N 5	150		-6
4	12	4H S 4	420		1
6	16	4H S 5	450		2
8	2	4H S 4	420		1
13	9	4H S 4	420		1
14	11	3H N 5	200		-5
17	5	4H S 5	450		2
18	10	4H N 6	480		2

Board (15) Av: NS=-440

N-S	E-W	Contract	N-S	E-W	IMP
3	13	4H W 4		420	1
4	18	4H W 5		450	0
6	10	4H W 4		420	1
7	15	4H W 5		450	0
8	5	4H W 4		420	1
9	1	4H W 4		420	1
11	17	4H W 6		480	-1
12	16	4H W 5		450	0
14	2	4H W 5		450	0

Board (16) Av: NS=-200

N-S	E-W	Contract	N-S	E-W	IMP
3	13	3NT W 4		630	-10
4	18	3NT E-1	100		7
6	10	3NT E-1	100		7
7	15	3NT W-1	100		7
8	5	3NT W-1	100		7
9	1	2NT E-1	100		7
11	17	3NT W 5		660	-10
12	16	3NT E 3		600	-9
14	2	3NT W 3		600	-9

17

♠ 105
♥ Q10
♦ J84
♣ KQJ975

♠ AQ876
♥ 8732
♦ 109
♣ 102

♠ AKJ64
♥ AK653
♦ 864
♣ 864

♠ KJ9432
♥ 95
♦ Q72
♣ A3

18

♠ KQ
♥ QJ86
♦ 9
♣ AJ10975

♠ AK3
♥ KQJ863
♦ KQ43
♣ KQ43

♠ J10965432
♥ 2
♦ A5
♣ 86

♠ A87
♥ 109754
♦ 10742
♣ 2

19

♠ J
♥ K
♦ AKQ987
♣ AQ1073

♠ K76
♥ A1053
♦ 53
♣ J942

♠ 1042
♥ J764
♦ J10642
♣ K

♠ AQ9853
♥ Q982
♦
♣ 865

20

♠ AKQJ4
♥ J7
♦ J3
♣ Q863

♠ 2
♥ A1062
♦ KQ6
♣ AKJ75

♠ 1075
♥ KQ953
♦ 1054
♣ 104

♠ 9863
♥ 84
♦ A9872
♣ 92

Board (17) Av: NS=-440

N-S	E-W	Contract	N-S	E-W	IMP
3	13	4H W 4	420		1
4	18	4H E 5	450		0
6	10	4H E 6	480		-1
7	15	4H E 4	420		1
8	5	4H E 4	420		1
9	1	4H E 6	480		-1
11	17	4H E 4	420		1
12	16	4Sx S-4	800		-8
14	2	4H E 4	420		1

Board (18) Av: NS=+80

N-S	E-W	Contract	N-S	E-W	IMP
3	13	4S E-1	50		-1
4	18	6NT W-2	100		1
6	10	5S E-3	150		2
7	15	7Dx W-3	500		9
8	5	4S E-1	50		-1
9	1	4S E-1	50		-1
11	17	6D W-1	50		-1
12	16	4S E-1	50		-1
14	2	4S E-2	100		1

Board (19) Av: NS=+60

N-S	E-W	Contract	N-S	E-W	IMP
3	13	6C N-4	200		-6
4	18	4S S-1	50		-3
6	10	4S S 4	420		8
7	15	5D N-2	100		-4
8	5	5C N-3	150		-5
9	1	5C N-1	50		-3
11	17	3NT N 3	400		8
12	16	4C N-1	50		-3
14	2	4S S 4	420		8

Board (20) Av: NS=-410

N-S	E-W	Contract	N-S	E-W	IMP
3	13	2S N 2	110		11
4	18	4H W 5	650		-6
6	10	4S N-2	200		5
7	15	4Sx N-2	500		-3
8	5	5H E 5	650		-6
9	1	5H E 5	650		-6
11	17	3S N-1	100		7
12	16	3S N-1	100		7
14	2	4H W 5	650		-6

21

♠ AKJ1084
♥ 109
♦ J2
♣ Q87

♠ AKJ852
♥ AKJ852
♦ A9763
♣ 53

♠ Q53
♥ 763
♦ 10854
♣ AJ10

♠ 9762
♥ Q4
♦ KQ
♣ K9642

22

♠ K952
♥ QJ2
♦ 7
♣ AQ1053

♠ 1087
♥ 653
♦ K98
♣ K986

♠ 43
♥ K10874
♦ A653
♣ 74

♠ AQJ6
♥ A9
♦ QJ1042
♣ J2

23

♠ AK76
♥ A
♦ QJ7
♣ KJ932

♠ 3
♥ Q854
♦ 10982
♣ A1076

♠ 42
♥ K7632
♦ A53
♣ 854

♠ QJ10985
♥ J109
♦ K64
♣ Q

24

♠ Q95
♥ J765
♦ A752
♣ K4

♠ AKJ10
♥ 1098
♦ KQ64
♣ A5

♠ 764
♥ A32
♦ 83
♣ 109632

♠ 832
♥ KQ4
♦ J109
♣ QJ87

Board (21) Av: NS=-380

N-S	E-W	Contract	N-S	E-W	IMP
3	13	3Sx N-1	200		5
4	18	4S N-2	200		5
6	10	4H W 5	450		-2
7	15	5H W 5	450		-2
8	5	3H W 5	200		5
9	1	4H W 5	450		-2
11	17	5H W 5	450		-2
12	16	4H W 5	450		-2
14	2	4H W 5	450		-2

Board (22) Av: NS=+440

N-S	E-W	Contract	N-S	E-W	IMP
2	11	6S S 6	980		11
6	13	4S N 5	450		0
8	17	3NT S 3	400		-1
10	3	4S N 5	450		0
12	1	5S S 5	450		0
14	5	4S S 5	450		0
15	4	5S S 5	450		0
16	9	6S N-1	50		-10
18	7	3NT S 4	430		0

Board (23) Av: NS=+650

N-S	E-W	Contract	N-S	E-W	IMP
2	11	4S S 5	650		0
6	13	5S S 6	680		1
8	17	4S S 5	650		0
10	3	4S S 5	650		0
12	1	4S S 6	680		1
14	5	4S S 5	650		0
15	4	4S N 5	650		0
16	9	4S S 5	650		0
18	7	4S S 5	650		0

Board (24) Av: NS=-20

N-S	E-W	Contract	N-S	E-W	IMP
2	11	1NT W-1	50		2
6	13	1NT W-1	50		2
8	17	1NT W 1	90		-2
10	3	2H N-1	50		-1
12	1	1NT W 1	90		-2
14	5	1NT W 1	90		-2
15	4	1NT W 2	120		-3
16	9	1NT W-2	100		3
18	7	1NT W-1	50		2

25

♠K973
♥KQ6
♦65
♣KQ83

♠A104
♥A103
♦J109
♣J765

♠J865
♥J972
♦KQ832
♣

♠Q2
♥854
♦A74
♣A10942

Diagram: A 2x2 grid with N, S, E, W. N has a circle with 'N', S has a circle with 'S', and E has a circle with 'E'. There are lines connecting N to E and S to W.

26

♠9653
♥A983
♦10
♣AQ98

♠Q7
♥J10652
♦KJ3
♣KJ5

♠AJ10
♥KQ
♦Q98652
♣107

♠K842
♥74
♦A74
♣6432

Diagram: A 2x2 grid with N, S, E, W. N has a circle with 'N', S has a circle with 'S', and E has a circle with 'E'. There are lines connecting N to E and S to W.

27

♠Q74
♥J765
♦J6
♣KQ93

♠10
♥Q942
♦Q10954
♣A108

♠A9653
♥83
♦32
♣J652

♠KJ82
♥AK10
♦AK87
♣74

Diagram: A 2x2 grid with N, S, E, W. N has a circle with 'N', S has a circle with 'S', and E has a circle with 'E'. There are lines connecting N to E and S to W.

28

♠AK1086
♥86
♦A84
♣QJ4

♠Q
♥K94
♦Q103
♣1097532

♠J95
♥AQJ1073
♦96
♣AK

♠7432
♥52
♦KJ752
♣86

Diagram: A 2x2 grid with N, S, E, W. N has a circle with 'N', S has a circle with 'S', and E has a circle with 'E'. There are lines connecting N to E and S to W.

Board (25) Av: NS=+40

N-S	E-W	Contract	N-S	E-W	IMP
2	11	4C N-1		50	-3
6	13	3NT N-2	100		-4
8	17	2NT N 2	120		2
10	3	3C N 3	110		2
12	1	3NT S-1		50	-3
14	5	4C N-1		50	-3
15	4	2C N 3	110		2
16	9	2NT N 2	120		2
18	7	3Hx W-3	800		13

Board (26) Av: NS=+20

N-S	E-W	Contract	N-S	E-W	IMP
2	11	2NT E 3		150	-5
6	13	3D E-1	100		2
8	17	4H W-2	200		5
10	3	3NT W-2	200		5
12	1	3NT E-1	100		2
14	5	2H W 2		110	-4
15	4	3D E-1	100		2
16	9	2D E 2		90	-3
18	7	3NT E 3		600	-12

Board (27) Av: NS=+340

N-S	E-W	Contract	N-S	E-W	IMP
2	11	3NT S 3	400		2
6	13	3NT S 4	430		3
8	17	3NT S-1		50	-9
10	3	3NT N 3	400		2
12	1	3NT S 4	430		3
14	5	3NT N 3	400		2
15	4	3NT N-1		50	-9
16	9	3NT N 4	430		3
18	7	3NT N 3	400		2

Board (28) Av: NS=-320

N-S	E-W	Contract	N-S	E-W	IMP
2	11	4H E 4		420	-3
6	13	2S N 2	110		10
8	17	3H E 3		140	5
10	3	4H E 4		420	-3
12	1	4H E 5		450	-4
14	5	4H E 5		450	-4
15	4	3H E 4		170	4
16	9	4Hx E 4		590	-7
18	7	2H E 4		170	4

第14回NRM杯 Session 4 Flight D 2009年6月28日(日)

1

♠AQ102
♥A7
♦AQ765
♣104

♠K863
♥K94
♦82
♣J732

W N E S

♠J74
♥Q1083
♦KJ103
♣98

♠95
♥J652
♦94
♣AKQ65

2

♠K10
♥A8
♦AKJ64
♣7632

♠4
♥KQJ4
♦Q732
♣J854

W N E S

♠QJ85
♥532
♦985
♣Q109

♠A97632
♥10976
♦10
♣AK

3

♠109432
♥753
♦J5
♣J108

♠KJ5
♥J82
♦Q4
♣Q9763

W N E S

♠Q8
♥AK10
♦K876
♣A542

♠A76
♥Q964
♦A10932
♣K

4

♠Q2
♥Q952
♦AK109
♣J105

♠103
♥A1083
♦Q732
♣Q32

W N E S

♠984
♥764
♦84
♣A9876

♠AKJ765
♥KJ
♦J65
♣K4

Board (1) Av: NS=+210

N-S	E-W	Contract	N-S	E-W	IMP
2	1	3NT N 3	400		5
5	4	3NT S 4	430		6
6	3	3NT N-1		50	-6
7	12	3NT N-1		50	-6
8	11	3NT N 4	430		6
10	9	3NT N-2		100	-7
13	17	3NT S 4	430		6
14	15	3NT S-3		150	-8
18	16	3NT N 4	430		6

Board (2) Av: NS=+410

N-S	E-W	Contract	N-S	E-W	IMP
2	1	4S S 4	620		5
5	4	4S S 4	620		5
6	3	4S S-1		100	-11
7	12	4S S-1		100	-11
8	11	5S S-1		100	-11
10	9	3NT N 4	630		6
13	17	4S S 4	620		5
14	15	3NT N 3	600		5
18	16	3NT S 4	630		6

Board (3) Av: NS=-410

N-S	E-W	Contract	N-S	E-W	IMP
2	1	3NT E 3		600	-5
5	4	3NT E 3		600	-5
6	3	3NT E 4		630	-6
7	12	3NT E 3		600	-5
8	11	3NT E 5		660	-6
10	9	2C W 4		130	7
13	17	3NT E-2	200		12
14	15	3C W 4		130	7
18	16	1NT E 4		180	6

Board (4) Av: NS=+520

N-S	E-W	Contract	N-S	E-W	IMP
2	1	4S S 5	650		4
5	4	4S S 5	650		4
6	3	4S S 5	650		4
7	12	3S S 4	170		-8
8	11	4S S 6	680		4
10	9	4S S 5	650		4
13	17	3S S 5	200		-8
14	15	4S S 5	650		4
18	16	2S S 5	200		-8

5

♠AK93
♥976
♦AQ43
♣75

♠J862
♥10854
♦98
♣K62

W N E S

♠Q74
♥Q3
♦K107
♣AQ1094

♠105
♥AKJ2
♦J652
♣J83

6

♠AKJ10862
♥7
♦Q83
♣52

♠Q95
♥AQ105
♦A5
♣AQ108

W N E S

♠74
♥K43
♦KJ642
♣K43

♠3
♥J9862
♦1097
♣J976

7

♠4
♥754
♦A872
♣KQ1054

♠KJ873
♥J
♦K105
♣8762

W N E S

♠Q109
♥AQ1086
♦93
♣AJ3

♠A652
♥K932
♦QJ64
♣9

8

♠Q3
♥J864
♦KJ97
♣A97

♠A1085
♥93
♦A2
♣J10653

W N E S

♠K92
♥KQ7
♦Q10864
♣Q2

♠J764
♥A1052
♦53
♣K84

Board (5) Av: NS=-70

N-S	E-W	Contract	N-S	E-W	IMP
2	1	3D N 3	110		5
5	4	3D N 3	110		5
6	3	4D N 4	130		5
7	12	5D N-1		100	-1
8	11	3D N-1		100	-1
10	9	4S N-2		200	-4
13	17	4D N-1		100	-1
14	15	4D N-2		200	-4
18	16	4H S-2		200	-4

Board (6) Av: NS=-660

N-S	E-W	Contract	N-S	E-W	IMP
2	1	3NT W 6		690	-1
5	4	4Sx N-4		800	-4
6	3	3NT W 3		600	2
7	12	4Sx N-4		800	-4
8	11	4H W-1	100		13
10	9	4Sx N-3		500	4
13	17	3NT W 3		600	2
14	15	3NT W 4		630	1
18	16	4Sx N-4		800	-4

Board (7) Av: NS=-90

N-S	E-W	Contract	N-S	E-W	IMP
2	1	2S W 2		110	-1
5	4	1NT E 1		90	0
6	3	2NT S-2		200	-3
7	12	3NT W-1	100		5
8	11	2S W 2		110	-1
10	9	2C N-2		200	-3
13	17	2S W 2		110	-1
14	15	2S W-1	100		5
18	16	1NT E 1		90	0

Board (8) Av: NS=-40

N-S	E-W	Contract	N-S	E-W	IMP
1	3	1NT E 2		120	-2
4	2	1S W 1		80	-1
5	6	2S W 2		110	-2
7	8	1NT E 2		120	-2
9	12	2H N 2		110	4
10	11	3NT E-1	50		3
15	16	1NT E 1		90	-2
18	13	1NT E-2	100		4

9

♠ J87
♥ A42
♦ K10532
♣ 65

♠ AQ2
♥ QJ975
♦ QJ87
♣ 4

♠ K1054
♥ K
♦ A964
♣ AKQ7

♠ 963
♥ 10863
♦
♣ J109832

W — E
S

10

♠ 8542
♥ KJ4
♦ Q43
♣ 543

♠ 9
♥ 985
♦ A1065
♣ J9862

♠ KQJ10
♥ A1073
♦ 9872
♣ Q

♠ A763
♥ Q62
♦ KJ
♣ AK107

W — E
S

11

♠ 7643
♥ AJ86
♦
♣ AJ1095

♠ K1095
♥ Q10752
♦ J64
♣ K

♠ AJ8
♥ 43
♦ K952
♣ Q643

♠ Q2
♥ K9
♦ AQ10873
♣ 872

W — E
S

12

♠ KJ53
♥ AK10
♦ AQ3
♣ KJ6

♠ Q6
♥ J84
♦ KJ65
♣ A942

♠ A42
♥ 753
♦ 10984
♣ Q53

♠ 10987
♥ Q962
♦ 72
♣ 1087

W — E
S

Board (9) Av: NS=-280

N-S	E-W	Contract	N-S	E-W	IMP
1	3	3NT E 5		660	-9
4	2	6NT E-1 100			9
5	6	3NT E 5		660	-9
7	8	6NT E-1 100			9
9	12	6NT E-1 100			9
10	11	5NT E 5		660	-9
15	16	6NT W 6		1440	-15
18	13	5D E-1 100			9

Board (10) Av: NS=-150

N-S	E-W	Contract	N-S	E-W	IMP
1	3	2S N-1		100	2
4	2	1NT S 1 90			6
5	6	4Sx N-2		500	-8
7	8	2S N-1		100	2
9	12	2S N-1		100	2
10	11	3Sx N-2		500	-8
15	16	3S N-2		200	-2
18	13	3D E-2 200			8

Board (11) Av: NS=+20

N-S	E-W	Contract	N-S	E-W	IMP
1	3	3NT N-1		50	-2
4	2	3D S-2		100	-3
5	6	2D S-1		50	-2
7	8	2NT N 3		150	4
9	12	3NT E-5		250	6
10	11	Passout			-1
15	16	1NT S 4		180	4
18	13	3D S-2		100	-3

Board (12) Av: NS=+130

N-S	E-W	Contract	N-S	E-W	IMP
1	3	2NT N 3		150	1
4	2	2NT N 2		120	0
5	6	2NT N 2		120	0
7	8	2NT N 2		120	0
9	12	2NT N 2		120	0
10	11	2NT N-2		200	-8
15	16	1NT N 4		180	2
18	13	2NT N 3		150	1

13

♠ 98764
♥ J832
♦ A4
♣ 32

♠ KQ3
♥ AK4
♦ J97652
♣ 5

♠ J2
♥ Q1096
♦ Q108
♣ KQ87

♠ A105
♥ 75
♦ K3
♣ AJ10964

W — E
S

14

♠ Q1043
♥ Q85
♦ J98
♣ 963

♠ 87
♥ A72
♦ AKQ53
♣ 874

♠ AKJ
♥ KJ943
♦ 104
♣ QJ10

♠ 9652
♥ 106
♦ 762
♣ AK52

W — E
S

15

♠ 10963
♥ J
♦ KQ95432
♣ 9

♠ Q542
♥ Q76
♦ A6
♣ KJ76

♠ AK
♥ AK92
♦ J8
♣ A10542

♠ J87
♥ 108543
♦ 107
♣ Q83

W — E
S

16

♠ K98
♥ A9654
♦ 8
♣ 9762

♠ J10763
♥ 103
♦ 6
♣ AK1054

♠ Q2
♥ K10975432
♦ Q83
♣ Q83

♠ AQ542
♥ KJ87
♦ AQJ
♣ J

W — E
S

Board (13) Av: NS=-80

N-S	E-W	Contract	N-S	E-W	IMP
1	3	3D W 3		110	-1
4	2	3S N-1		100	-1
5	6	2NT S-3		300	-6
7	8	2D W 3		110	-1
9	12	4H E-1 100			5
10	11	2NT E-1 100			5
15	16	3D W 3		110	-1
18	13	2D W 4		130	-2

Board (14) Av: NS=-470

N-S	E-W	Contract	N-S	E-W	IMP
1	3	4H E 5		450	1
4	2	4NT E 5		460	0
5	6	3NT E 6		490	-1
7	8	3NT E 6		490	-1
9	12	4H E 5		450	1
10	11	3NT E 7		520	-2
15	16	4H E 5		450	1
18	13	6H E-2 100			11

Board (15) Av: NS=-570

N-S	E-W	Contract	N-S	E-W	IMP
4	1	6C W 6		920	-8
5	3	6C W 7		940	-9
6	2	4NT W-1		50	12
8	10	6C W 6		920	-8
9	7	6NT E-5		250	13
12	11	5C W 6		420	4
14	13	6C W 6		920	-8
15	18	6NT E 6		990	-9
17	16	6H E-1		50	12

Board (16) Av: NS=+280

N-S	E-W	Contract	N-S	E-W	IMP
4	1	4H N 5		450	5
5	3	6Sx S-3		500	-13
6	2	4H N 5		450	5
8	10	6Sx S-2		300	-11
9	7	4H N 5		450	5
12	11	4H N 6		480	5
14	13	4H N 5		450	5
15	18	4S S-1		50	-8
17	16	4H N 6		480	5

17

♠ A98542
♥ 432
♦ J104
♣ 6

♠ KQ
♥ 109765
♦ A
♣ QJ974

♠ 107
♥ AQJ
♦ 62
♣ AK10853

♠ J63
♥ K8
♦ KQ98753
♣ 2

18

♠ 985
♥ QJ8752
♦ 96
♣ K2

♠ AQ10
♥ 109
♦ KQ103
♣ Q873

♠ 743
♥ AK643
♦ A875
♣ 10

♠ KJ62
♥
♦ J42
♣ AJ9654

19

♠ Q75
♥ QJ98
♦ K108
♣ A53

♠ AK8
♥ K76
♦ QJ6
♣ K1094

♠ J962
♥ 105
♦ A9743
♣ 76

♠ 1043
♥ A432
♦ 52
♣ QJ82

20

♠ QJ853
♥ 984
♦ A7
♣ 832

♠ A10
♥ AQ7
♦ Q8
♣ J109764

♠ 2
♥ J62
♦ J1096432
♣ AQ

♠ K9764
♥ K1053
♦ K5
♣ K5

Board (17) Av: NS=-370

N-S	E-W	Contract	N-S	E-W	IMP
4	1	4H W 4	420	-2	
5	3	4C E 5	150	6	
6	2	5Dx S-2	300	2	
8	10	4H W 5	450	-2	
9	7	4H W 5	450	-2	
12	11	5D S-2	100	7	
14	13	4H W 5	450	-2	
15	18	5C E 5	400	-1	
17	16	5C E 5	400	-1	

Board (18) Av: NS=-300

N-S	E-W	Contract	N-S	E-W	IMP
4	1	5D E 5	400	-3	
5	3	3NT W 4	430	-4	
6	2	3NT W 3	400	-3	
8	10	3NT W-1	50	8	
9	7	2D W 3	110	5	
12	11	3NT W 4	430	-4	
14	13	3NT W 3	400	-3	
15	18	3NT W 3	400	-3	
17	16	4H E-1	50	8	

Board (19) Av: NS=+70

N-S	E-W	Contract	N-S	E-W	IMP
4	1	1NT W-1	100	1	
5	3	1NT W-1	100	1	
6	2	1NT W-1	100	1	
8	10	1NT W-1	100	1	
9	7	1NT W-1	100	1	
12	11	1NT W-1	100	1	
14	13	1NT W-1	100	1	
15	18	1NT W 1	90	-4	
17	16	2D E 4	130	-5	

Board (20) Av: NS=-40

N-S	E-W	Contract	N-S	E-W	IMP
4	1	5Dx E-1	200	6	
5	3	3S N 3	140	5	
6	2	3D E 4	130	-3	
8	10	3S S-1	100	-2	
9	7	3Sx S-1	200	-4	
12	11	4S N-1	100	-2	
14	13	3S S-1	100	-2	
15	18	3S N 3	140	5	
17	16	2D E 4	130	-3	

21

♠ KJ52
♥ K7
♦ KQJ84
♣ 64

♠ A97
♥ 10952
♦ 532
♣ 1095

♠ Q83
♥ AQJ83
♦ A107
♣ AK

♠ 1064
♥ 64
♦ 96
♣ QJ8732

22

♠ 852
♥ AQ10
♦ 98
♣ K10942

♠ 7
♥ J654
♦ AJ32
♣ A763

♠ QJ1064
♥ 87
♦ KQ74
♣ Q5

♠ AK93
♥ K932
♦ 1065
♣ J8

23

♠ K832
♥ A962
♦ Q876
♣ 2

♠ AQJ1095
♥ J
♦ K93
♣ A53

♠ 64
♥ 1053
♦ 1042
♣ QJ1084

♠ 7
♥ KQ874
♦ AJ5
♣ K976

24

♠ KJ64
♥ 1054
♦ A84
♣ 942

♠ 1097
♥ 7
♦ K952
♣ QJ876

♠ AQ82
♥ KQJ9
♦ Q3
♣ A53

♠ 53
♥ A8632
♦ J1076
♣ K10

Board (21) Av: NS=-350

N-S	E-W	Contract	N-S	E-W	IMP
4	1	4H W 4	420	-2	
5	3	4H E 4	420	-2	
6	2	4H W 4	420	-2	
8	10	4H W 4	420	-2	
9	7	3H W 4	170	5	
12	11	4H W 5	450	-3	
14	13	2D E-2	100	10	
15	18	4H W 4	420	-2	
17	16	3C S-2	200	4	

Board (22) Av: NS=+10

N-S	E-W	Contract	N-S	E-W	IMP
1	5	1NT W-1	100	3	
3	2	Passout		0	
6	4	Passout		0	
8	12	Passout		0	
10	7	Passout		0	
11	9	Passout		0	
14	16	2S E-2	200	5	
15	13	Passout		0	
17	18	Passout		0	

Board (23) Av: NS=+500

N-S	E-W	Contract	N-S	E-W	IMP
1	5	4H S 4	620	3	
3	2	4Sx W-1	200	-7	
6	4	4H N 4	620	3	
8	12	3S W 3	140	-12	
10	7	4H S 4	620	3	
11	9	3H S 4	170	-8	
14	16	4H S 4	620	3	
15	13	4H S 4	620	3	
17	18	4H S 4	620	3	

Board (24) Av: NS=-390

N-S	E-W	Contract	N-S	E-W	IMP
1	5	3Hx S-3	500	-3	
3	2	3NT E 3	400	0	
6	4	3NT E 3	400	0	
8	12	3NT W 3	400	0	
10	7	3NT E 4	430	-1	
11	9	2NT E 4	180	5	
14	16	3NT E 4	430	-1	
15	13	3C E 3	110	7	
17	18	3NT E 5	460	-2	

25

♠ J93
♥ 9
♦ Q9742
♣ 9765

♠ Q8642
♥ 764
♦ A3
♣ K82

♠ A10
♥ KQJ102
♦ 865
♣ AJ4

♠ K75
♥ A853
♦ KJ10
♣ Q103

Diagram: N (North), S (South), E (East), W (West). N and S are connected by a line, as are E and W.

26

♠ KQ9
♥ J6
♦ AQJ64
♣ KQ9

♠ J104
♥ Q108743
♦ 5
♣ J75

♠ A76
♥ A92
♦ K83
♣ A862

♠ 8532
♥ K5
♦ 10972
♣ 1043

Diagram: N (North), S (South), E (East), W (West). N and S are connected by a line, as are E and W.

27

♠ AQ97
♥ K63
♦ A63
♣ 832

♠ 84
♥ AQ1042
♦ Q
♣ J10754

♠ KJ653
♥ J7
♦ 9742
♣ A9

♠ 102
♥ 985
♦ KJ1085
♣ KQ6

Diagram: N (North), S (South), E (East), W (West). N and S are connected by a line, as are E and W.

28

♠ J943
♥ AQ6
♦ 86
♣ K965

♠ K865
♥ KJ52
♦ 104
♣ 1043

♠ A2
♥ 10987
♦ AKQ75
♣ J8

♠ Q107
♥ 43
♦ J932
♣ AQ72

Diagram: N (North), S (South), E (East), W (West). N and S are connected by a line, as are E and W.

Board (25) Av: NS=-260

N-S	E-W	Contract	N-S	E-W	IMP
1	5	4H E 4	620	-8	
3	2	2NT E 2	120	4	
6	4	4H E 5	650	-9	
8	12	4H E 4	620	-8	
10	7	2NT E 5	210	2	
11	9	3NT E-1 100		8	
14	16	2H E 4	170	3	
15	13	2H E 5	200	2	
17	18	4H E-1 100		8	

Board (26) Av: NS=-130

N-S	E-W	Contract	N-S	E-W	IMP
1	5	3D S-2	200	-2	
3	2	3H E 3	140	0	
6	4	2H E 2	110	1	
8	12	2H W 3	140	0	
10	7	2H E 2	110	1	
11	9	3H E 3	140	0	
14	16	3H E 3	140	0	
15	13	2H E 2	110	1	
17	18	4H E-2 200		8	

Board (27) Av: NS=+30

N-S	E-W	Contract	N-S	E-W	IMP
1	5	3C N-4	200	-6	
3	2	2Hx W-2 300		7	
6	4	1NT S 3 150		3	
8	12	3D S-1	50	-2	
10	7	1S E 3	140	-5	
11	9	3D N-1	50	-2	
14	16	2D S 2 90		2	
15	13	1NT W-1 50		1	
17	18	2NT N 3 150		3	

Board (28) Av: NS=-120

N-S	E-W	Contract	N-S	E-W	IMP
1	5	1NT E 1	90	1	
3	2	3H W 3	140	-1	
6	4	2H W 2	110	0	
8	12	4H W 4	420	-7	
10	7	2H W 2	110	0	
11	9	2H W 2	110	0	
14	16	2H W 2	110	0	
15	13	2H W 3	140	-1	
17	18	3H W-1 50		5	

29

♠ A65432
♥ 109
♦ K
♣ AQ43

♠ KJ
♥ 6
♦ A8762
♣ KJ652

♠ 10987
♥ AKJ732
♦ 43
♣ 9

♠ Q
♥ Q854
♦ QJ1095
♣ 1087

Diagram: N (North), S (South), E (East), W (West). N and S are connected by a line, as are E and W.

30

♠ K6543
♥ 54
♦ 732
♣ KJ5

♠ AQ82
♥ A6
♦ Q985
♣ 1098

♠ J1097
♥ K73
♦ KJ106
♣ 64

♠ Q
♥ QJ10982
♦ A4
♣ AQ732

Diagram: N (North), S (South), E (East), W (West). N and S are connected by a line, as are E and W.

31

♠ K53
♥ KJ753
♦ J3
♣ 953

♠ Q76
♥ 98
♦ K87
♣ AJ1042

♠ AJ2
♥ 42
♦ A10642
♣ K86

♠ 10984
♥ AQ106
♦ Q95
♣ Q7

Diagram: N (North), S (South), E (East), W (West). N and S are connected by a line, as are E and W.

32

♠ J876
♥ AQ10
♦ A97
♣ A63

♠ A9543
♥ 84
♦ 1032
♣ 1042

♠ KQ2
♥ 5
♦ KQ54
♣ QJ985

♠ 10
♥ KJ97632
♦ J86
♣ K7

Diagram: N (North), S (South), E (East), W (West). N and S are connected by a line, as are E and W.

Board (29) Av: NS=+30

N-S	E-W	Contract	N-S	E-W	IMP
3	4	3H E-1 100		2	
5	2	2S N-1	100	-4	
6	1	3D S-1	100	-4	
7	11	2NT W-1 100		2	
9	8	2S N-3	300	-8	
10	12	2S N-1	100	-4	
13	16	2NT W-3 300		7	
14	18	2H E-1 100		2	
15	17	3H E-2 200		5	

Board (30) Av: NS=+170

N-S	E-W	Contract	N-S	E-W	IMP
3	4	2H S 4	170	0	
5	2	3C S 5	150	-1	
6	1	2H S 5	200	1	
7	11	3D E 3	110	-7	
9	8	2H S 4	170	0	
10	12	2H S 4	170	0	
13	16	4H S 4	420	6	
14	18	3C S 4	130	-1	
15	17	3H S 4	170	0	

Board (31) Av: NS=-140

N-S	E-W	Contract	N-S	E-W	IMP
3	4	1NT W 3	150	0	
5	2	1NT W 2	120	1	
6	1	1NT W 2	120	1	
7	11	2C W 4	130	0	
9	8	2C W 5	150	0	
10	12	2H N-1	100	1	
13	16	1NT W 3	150	0	
14	18	3D E 4	130	0	
15	17	3NT E 3	400	-6	

Board (32) Av: NS=+440

N-S	E-W	Contract	N-S	E-W	IMP
3	4	4H N 5	450	0	
5	2	4H N 5	450	0	
6	1	5H N 5	450	0	
7	11	4H N 5	450	0	
9	8	4H N 4	420	-1	
10	12	4H N 4	420	-1	
13	16	4H N 4	420	-1	
14	18	4H N 4	420	-1	
15	17	4H N 5	450	0	

33

♠ A83
♥ AQ965
♦ 1065
♣ J10

♠ K
♥ K102
♦ A87
♣ AKQ985

♠ J752
♥ 43
♦ KQ93
♣ 743

♠ Q10964
♥ J87
♦ J42
♣ 62

(N) W E S

34

♠ A1062
♥ K8763
♦ AQ
♣ 93

♠ 97
♥ A42
♦ 10852
♣ AK74

♠ K83
♥ QJ5
♦ J97
♣ J1052

♠ QJ54
♥ 109
♦ K643
♣ Q86

(N) W E S

35

♠ A
♥ J1097
♦ 108432
♣ A83

♠ Q95
♥ 863
♦ 5
♣ KQ9762

♠ KJ6
♥ Q52
♦ QJ76
♣ 1054

(N) W E S

♠ 1087432
♥ AK4
♦ AK9
♣ J

Board (33) Av: NS=-320

N-S	E-W	Contract	N-S	E-W	IMP
3	4	3NT W 4		430	-3
5	2	3NT W 4		430	-3
6	1	3NT W 5		460	-4
7	11	3C W 4		130	5
9	8	4C W 5		150	5
10	12	3NT W 5		460	-4
13	16	2C W 4		130	5
14	18	3NT W 5		460	-4
15	17	1NT W 5		210	3

Board (34) Av: NS=-10

N-S	E-W	Contract	N-S	E-W	IMP
3	4	1NT E-1	50		2
5	2	1NT E 1		90	-2
6	1	2S S 3	140		4
7	11	2S S 3	140		4
9	8	2S S 3	140		4
10	12	2S S-1		100	-3
13	16	2S S-1		100	-3
14	18	1NT E 1		90	-2
15	17	2D W 2		90	-2

Board (35) Av: NS=+190

N-S	E-W	Contract	N-S	E-W	IMP
3	4	3NT N 4	430		6
5	2	4S S 4	420		6
6	1	2S S 3	140		-2
7	11	2S S 3	140		-2
9	8	2S S 3	140		-2
10	12	2S S 3	140		-2
13	16	2S S 4	170		-1
14	18	3NT N-1		50	-6
15	17	2S S 5	200		0