

木村六郎杯 Session 1 Flight C 2009年2月21日(土)

**1**

♠7  
♥J1095  
♦AQ96  
♣10532

♠AKQ10942  
♥Q6  
♦J5  
♣AK

♠J8653  
♥K3  
♦108  
♣QJ94

W E  
S

♠A8742  
♥A8742  
♦K7432  
♣876

**2**

♠8  
♥KJ3  
♦K10873  
♣J1032

♠A7432  
♥109  
♦J4  
♣AK74

♠1096  
♥AQ7652  
♦AQ95  
♣

W N E  
S

♠KQJ5  
♥84  
♦62  
♣Q9865

**3**

♠852  
♥AKJ52  
♦94  
♣864

♠AKQ1097  
♥Q84  
♦J6  
♣J107

♠KJ43  
♥763  
♦A32  
♣AQ9

W N E  
S

♠6  
♥109  
♦KQ10875  
♣K532

Board (1) Av: NS=-390

N-S	E-W	Contract	N-S	E-W	IMP
6	5	6S E-2	100		10
8	7	5S E-1	50		10
9	1	4S E 5	450		-2
1	9	4S E 6	480		-3
7	8	4S E 6	480		-3
3	4	4S E 6	480		-3
4	3	4S E 6	480		-3
5	6	4S E 6	480		-3

Board (2) Av: NS=+80

N-S	E-W	Contract	N-S	E-W	IMP
3	4	5Sx E-2	300		6
5	6	5S E-3	150		2
8	7	4S E-2	100		1
6	5	4S E-1	50		-1
1	9	4S E-1	50		-1
4	3	4S E-1	50		-1
9	1	4S E-1	50		-1
7	8	4H W 4	420		-11

Board (3) Av: NS=+120

N-S	E-W	Contract	N-S	E-W	IMP
3	4	4S W-2	200		2
7	8	4S W-2	200		2
1	9	4S W-2	200		2
9	1	4S W-2	200		2
6	5	3S W-1	100		-1
4	3	3S E-1	100		-1
8	7	2S W 2	110		-6
5	6	2S W 2	110		-6

**4**

♠9  
♥KJ1095432  
♦1087  
♣9

♠A762  
♥  
♦QJ65  
♣KJ1063

♠J10843  
♥76  
♦A4  
♣A752

W N E  
S

♠KQ5  
♥AQ8  
♦K932  
♣Q84

**5**

♠1097643  
♥6  
♦98  
♣9843

♠AK9742  
♥AK9742  
♦1043  
♣QJ52

♠K852  
♥QJ53  
♦752  
♣A7

W N E  
S

♠AQJ  
♥108  
♦AKQJ6  
♣K106

**6**

♠5  
♥A9762  
♦AQJ4  
♣J82

♠AQ984  
♥J105  
♦K93  
♣A3

♠J  
♥Q843  
♦10875  
♣KQ109

W N E  
S

♠K107632  
♥K  
♦62  
♣7654

Board (4) Av: NS=-230

N-S	E-W	Contract	N-S	E-W	IMP
1	9	4H N 4	620		13
4	3	4Sx E-1	200		10
8	7	4S W-1	100		8
6	5	4H S-2	200		1
7	8	4H N-2	200		1
9	1	4S W 5	650		-9
5	6	4S W 5	650		-9
3	4	4Sx W 5	990		-13

Board (5) Av: NS=-140

N-S	E-W	Contract	N-S	E-W	IMP
7	8	3S N 3	140		7
3	4	5Hx E-1	100		6
6	5	4S N-1	100		1
1	9	4S N-1	100		1
8	7	3S S-1	100		1
9	1	4Sx N-1	200		-2
5	6	4H E 4	420		-7
4	3	4Hx E 4	590		-10

Board (6) Av: NS=-120

N-S	E-W	Contract	N-S	E-W	IMP
9	1	3D E-4	400		11
8	7	2C S-1	50		2
5	6	2H N-2	100		1
6	5	2H N-2	100		1
3	4	2H N-2	100		1
1	9	2H N-3	150		-1
7	8	2H N-4	200		-2
4	3	3NT W 3	600		-10

**7**

♠A53  
♥AKJ87  
♦Q8  
♣AKJ

♠Q10762  
♥63  
♦A653  
♣Q10

♠K8  
♥104  
♦K1094  
♣97532

W N E  
S

♠J94  
♥Q952  
♦J72  
♣864

**8**

♠QJ9872  
♥K1075  
♦6  
♣A10

♠6  
♥864  
♦A984  
♣Q8643

♠A3  
♥AQJ9  
♦KJ52  
♣KJ5

W N E  
S

♠K1054  
♥32  
♦Q1073  
♣972

**9**

♠K  
♥KJ1084  
♦J75  
♣7642

♠Q10843  
♥952  
♦862  
♣A9

♠A9765  
♥73  
♦KQ4  
♣KQ10

W N E  
S

♠J2  
♥AQ6  
♦A1093  
♣J853

Board (7) Av: NS=+140

N-S	E-W	Contract	N-S	E-W	IMP
1	9	4H S 4	620		10
7	8	4H N 4	620		10
9	1	4H N 4	620		10
6	5	4H N-1	100		-6
8	7	4H N-1	100		-6
3	4	4H N-1	100		-6
5	6	4H N-1	100		-6
4	3	4H N-2	200		-8

Board (8) Av: NS=-80

N-S	E-W	Contract	N-S	E-W	IMP
3	4	3Sx N 3	530		12
8	7	3H W-2	100		5
1	9	4S N-1	50		1
7	8	4D W 4	130		-2
5	6	4D W 4	130		-2
4	3	4D W 4	130		-2
6	5	3D W 4	130		-2
9	1	3NT E 3	400		-8

Board (9) Av: NS=-160

N-S	E-W	Contract	N-S	E-W	IMP
7	8	4C N-2	100		2
1	9	2S W 3	140		1
9	1	2S W 3	140		1
3	4	3H N-3	150		0
8	7	3S W 4	170		0
6	5	3S W 4	170		0
4	3	3S W 4	170		0
5	6	2S W 4	170		0

10

♠AJ7  
♥AK2  
♦QJ8  
♣AK109

♠Q65  
♥Q10843  
♦642  
♣32

♠K104  
♥J975  
♦A5  
♣7654

♠9832  
♥6  
♦K10973  
♣QJ8

N  
W—E  
S

11

♠QJ8762  
♥K2  
♦64  
♣J85

♠5  
♥A8764  
♦J875  
♣974

♠A1043  
♥J53  
♦KQ93  
♣K6

♠K9  
♥Q109  
♦A102  
♣AQ1032

N  
W—E  
S

12

♠AQ7  
♥K984  
♦K10853  
♣7

♠108543  
♥Q2  
♦94  
♣KJ108

♠96  
♥A65  
♦AJ6  
♣A6532

♠KJ2  
♥J1073  
♦Q72  
♣Q94

N  
W—E  
S

Board (10) Av: NS=+650

N-S	E-W	Contract	N-S	E-W	IMP
5	6	3NT N 5	660		0
6	5	3NT N 5	660		0
8	7	3NT N 5	660		0
3	4	3NT N 5	660		0
1	9	3NT N 5	660		0
9	1	3NT N 4	630		-1
4	3	5D S 5	600		-2
7	8	5D N 5	600		-2

Board (11) Av: NS=+60

N-S	E-W	Contract	N-S	E-W	IMP
8	7	4S S 5	450		9
6	5	3S S 4	170		3
4	3	2S S 4	170		3
5	6	2S S 3	140		2
7	8	4S S-1		50	-3
1	9	4S S-1		50	-3
9	1	3NT S-1		50	-3
3	4	4S S-2		100	-4

Board (12) Av: NS=+140

N-S	E-W	Contract	N-S	E-W	IMP
6	5	5Cx E-4	800		12
8	7	4H N 4	620		10
3	4	3NT E-3	150		0
7	8	3H N 3	140		0
1	9	2H S 3	140		0
5	6	4H N-1		100	-6
4	3	2S W 2		110	-6
9	1	3H N-2		200	-8

13

♠K43  
♥J87  
♦J32  
♣Q872

♠J75  
♥K43  
♦754  
♣KJ65

♠AQ10  
♥Q10952  
♦A9  
♣A103

♠9862  
♥A6  
♦KQ1086  
♣94

N  
W—E  
S

14

♠976542  
♥9  
♦8  
♣AKQJ9

♠J83  
♥Q84  
♦54  
♣106543

♠AQ  
♥AJ1065  
♦Q10732  
♣2

♠K10  
♥K732  
♦AKJ96  
♣87

N  
W—E  
S

15

♠Q  
♥QJ984  
♦A  
♣Q108742

♠A1098  
♥K75  
♦J1093  
♣A6

♠KJ754  
♥A10  
♦KQ5  
♣KJ9

♠632  
♥632  
♦87642  
♣53

N  
W—E  
S

Board (13) Av: NS=-310

N-S	E-W	Contract	N-S	E-W	IMP
9	1	3NT E-1	100		9
3	4	1NT E 2		120	5
7	8	3H E 3		140	5
1	9	3H E 4		170	4
6	5	3H E 5		200	3
4	3	4H E 4		620	-7
5	6	4H E 4		620	-7
8	7	3NT E 5		660	-8

Board (14) Av: NS=+380

N-S	E-W	Contract	N-S	E-W	IMP
7	8	4S N 5	450		2
1	9	4S N 5	450		2
5	6	4S N 4	420		1
6	5	4S N 4	420		1
4	3	4S N 4	420		1
3	4	3NT S 3	400		1
8	7	3S N 4	170		-5
9	1	2H E-1	50		-8

Board (15) Av: NS=-480

N-S	E-W	Contract	N-S	E-W	IMP
9	3	5S E 6	480		0
8	1	4S W 6	480		0
3	9	4S E 6	480		0
7	4	4S E 6	480		0
1	8	4S E 6	480		0
2	5	4S E 6	480		0
5	2	4S E 6	480		0
4	7	6S E 6	980		-11

16

♠J987  
♥AQ84  
♦83  
♣AK10

♠10532  
♥K5  
♦AKJ1094  
♣6

♠AKQ6  
♥1097  
♦5  
♣QJ985

♠4  
♥J632  
♦Q762  
♣7432

N  
W—E  
S

17

♠AKJ72  
♥J76  
♦J853  
♣3

♠Q8543  
♥10543  
♦Q64  
♣7

♠10  
♥KQ9  
♦A9  
♣KJ98642

♠96  
♥A82  
♦K1072  
♣AQ105

N  
W—E  
S

18

♠QJ1065  
♥J9763  
♦  
♣A73

♠K82  
♥A5  
♦Q109832  
♣109

♠93  
♥Q84  
♦A754  
♣J652

♠A74  
♥K102  
♦KJ6  
♣KQ84

N  
W—E  
S

Board (16) Av: NS=+170

N-S	E-W	Contract	N-S	E-W	IMP
8	1	4S W-2	200		1
3	9	4S E-2	200		1
7	4	4S E-2	200		1
4	7	3NT E-2	200		1
5	2	3NT E-2	200		1
1	8	4S E-1	100		-2
2	5	4S E-1	100		-2
9	3	4S E 4		620	-13

Board (17) Av: NS=-20

N-S	E-W	Contract	N-S	E-W	IMP
2	5	3C E-2	100		3
4	7	3C E-1	50		2
3	9	2C E-1	50		2
7	4	2C E-1	50		2
1	8	2C E 2		90	-2
5	2	2C E 2		90	-2
9	3	5D S-2		100	-2
8	1	3NT S-2		100	-2

Board (18) Av: NS=+390

N-S	E-W	Contract	N-S	E-W	IMP
4	7	4S S 5	650		6
1	8	4H S 5	650		6
3	9	4S S 4	620		6
7	4	4S S 4	620		6
2	5	4H S 4	620		6
8	1	4S S-1		100	-10
9	3	4S S-1		100	-10
5	2	3NT S-3		300	-12

19

♠ 108763  
♥ K2  
♦ 9432  
♣ 42

♠ A5  
♥ 1075  
♦ 876  
♣ KQ863

N  
W — E  
S

♠ Q  
♥ A98643  
♦ AKJ5  
♣ 109

♠ KJ942  
♥ QJ  
♦ Q10  
♣ AJ75

20

♠ A104  
♥ 983  
♦ 82  
♣ KQJ98

♠ 6  
♥ Q642  
♦ AKQ  
♣ A10432

N  
W — E  
S

♠ J87532  
♥ AJ5  
♦ 1043  
♣ 5

♠ KQ9  
♥ K107  
♦ J9765  
♣ 76

21

♠ J72  
♥ K3  
♦ 1075  
♣ AK432

♠ 83  
♥ 1084  
♦ AJ964  
♣ 1095

N  
W — E  
S

♠ AK1094  
♥ J972  
♦ K83  
♣ 8

♠ Q65  
♥ AQ65  
♦ Q2  
♣ QJ76

Board (19) Av: NS=-300

N-S	E-W	Contract	N-S	E-W	IMP
1	8	3S	S-1	50	6
4	7	4S	S-2	100	5
9	3	3S	S-2	100	5
7	4	4S	S-3	150	4
3	9	3H	E 4	170	4
8	1	5H	E 5	650	-8
2	5	5H	E 5	650	-8
5	2	4H	E 5	650	-8

Board (20) Av: NS=-80

N-S	E-W	Contract	N-S	E-W	IMP
7	4	3S	E-2	200	7
3	9	2NT	W-1	100	5
4	7	2S	E 2	110	-1
9	3	2S	E 2	110	-1
8	1	2S	E 2	110	-1
2	5	2S	E 2	110	-1
5	2	2S	E 2	110	-1
1	8	2S	E 3	140	-2

Board (21) Av: NS=-50

N-S	E-W	Contract	N-S	E-W	IMP
3	9	3C	N 3	110	4
2	5	2C	N 2	90	4
5	2	1S	E-1	50	3
4	7	3C	S-1	100	-2
7	4	3C	N-1	100	-2
1	8	3C	N-1	100	-2
8	1	1S	E 3	140	-3
9	3	2H	S-3	300	-6

22

♠ 32  
♥ 63  
♦ AK764  
♣ K875

♠ QJ9876  
♥ A82  
♦ Q  
♣ QJ10

N  
W — E  
S

♠ A54  
♥ KQ1074  
♦ J102  
♣ A6

♠ K10  
♥ J95  
♦ 9853  
♣ 9432

23

♠ A93  
♥ AQ95  
♦ A102  
♣ Q73

♠ KQ754  
♥ 83  
♦ J53  
♣ AJ5

N  
W — E  
S

♠ J1086  
♥ J1072  
♦ KQ96  
♣ 8

♠ 2  
♥ K64  
♦ 874  
♣ K109642

24

♠ K1076  
♥ QJ6  
♦ A  
♣ KQ982

♠ QJ  
♥ K109853  
♦ 53  
♣ AJ7

N  
W — E  
S

♠ 2  
♥ A72  
♦ QJ1042  
♣ 6543

♠ A98543  
♥ 4  
♦ K9876  
♣ 10

Board (22) Av: NS=-650

N-S	E-W	Contract	N-S	E-W	IMP
3	9	4H	E 4	620	1
5	2	5S	W 5	650	0
7	4	4S	W 5	650	0
1	8	4S	W 5	650	0
8	1	4S	W 5	650	0
2	5	4S	W 5	650	0
9	3	4H	E 5	650	0
4	7	4H	E 5	650	0

Board (23) Av: NS=+80

N-S	E-W	Contract	N-S	E-W	IMP
8	1	3C	N 5	150	2
2	5	3C	S 4	130	2
3	9	3C	N 4	130	2
4	7	3C	N 3	110	1
5	2	3C	N 3	110	1
1	8	1NT	N 1	90	0
7	4	1NT	N-1	100	-5
9	3	3D	N-4	400	-10

Board (24) Av: NS=+440

N-S	E-W	Contract	N-S	E-W	IMP
5	2	5S	S 6	480	1
8	1	4S	S 5	450	0
4	7	4S	N 5	450	0
3	9	4S	N 5	450	0
1	8	4S	N 5	450	0
7	4	4S	S 4	420	-1
2	5	4S	S 4	420	-1
9	3	4H	E-1	50	-9

25

♠ A84  
♥ 972  
♦ QJ9  
♣ 8654

♠ Q92  
♥ J864  
♦ 865  
♣ AQ10

N  
W — E  
S

♠ KJ6  
♥ A1053  
♦ A107  
♣ 932

♠ 10753  
♥ KQ  
♦ K432  
♣ KJ7

26

♠ J1095  
♥ AJ1096  
♦ 95  
♣ 105

♠ A6  
♥ Q53  
♦ KJ43  
♣ AKJ4

N  
W — E  
S

♠ KQ87432  
♥ 862  
♦ Q62  
♣ Q62

♠ K8742  
♥ AQ107  
♦ 9873  
♣ 9873

27

♠ J2  
♥ A4  
♦ AQ87  
♣ J10986

♠ Q65  
♥ KJ9763  
♦ 52  
♣ K7

N  
W — E  
S

♠ A874  
♥ Q108  
♦ KJ  
♣ Q542

♠ K1093  
♥ 52  
♦ 109643  
♣ A3

Board (25) Av: NS=-90

N-S	E-W	Contract	N-S	E-W	IMP
3	9	2H	W-1	100	5
9	3	2H	W-1	100	5
5	2	2S	N-2	100	0
1	8	2H	W 2	110	-1
7	4	1NT	E 2	120	-1
4	7	3H	W 3	140	-2
2	5	2H	W 3	140	-2
8	1	2S	N-3	150	-2

Board (26) Av: NS=-650

N-S	E-W	Contract	N-S	E-W	IMP
2	5	5Hx	N-1	200	10
5	2	4S	E 4	620	1
9	3	4S	E 5	650	0
7	4	4S	E 5	650	0
4	7	4S	E 5	650	0
1	8	4S	E 5	650	0
8	1	4S	E 5	650	0
3	9	4S	E 5	650	0

Board (27) Av: NS=-50

N-S	E-W	Contract	N-S	E-W	IMP
7	4	3Cx	N 3	470	11
5	2	1NT	N 1	90	4
3	9	3H	W-1	50	3
8	1	4D	S-2	100	-2
4	7	2H	W 2	110	-2
1	8	2H	W 2	110	-2
2	5	3H	W 3	140	-3
9	3	3H	W 4	170	-3

**28**

♠ K87632  
♥ KJ106  
♦ 96  
♣ 4

♠ AJ104  
♥ AQ42  
♦ QJ  
♣ J105

N  
W | E  
S

♠ Q5  
♥ 73  
♦ AK873  
♣ KQ73

♠ 9  
♥ 985  
♦ 10542  
♣ A9862

**29**

♠ QJ6  
♥ 1084  
♦ J2  
♣ AQ752

♠ A1032  
♥ 3  
♦ A109765  
♣ K8

N  
W | E  
S

♠ 95  
♥ AKQJ76  
♦ K84  
♣ J4

♠ K874  
♥ 952  
♦ Q3  
♣ 10963

**30**

♠ KQ8  
♥ A1097  
♦ 8764  
♣ A10

♠ 972  
♥ 2  
♦ K3  
♣ KQJ9652

N  
W | E  
S

♠ J64  
♥ Q53  
♦ AQJ1052  
♣ 7

♠ A1053  
♥ KJ864  
♦ 9  
♣ 843

Board (28) Av: NS=-460

N-S	E-W	Contract	N-S	E-W	IMP
4	7	3NT W 4	430		1
5	2	3NT W 5	460		0
7	4	3NT W 5	460		0
1	8	3NT W 5	460		0
2	5	3NT W 5	460		0
3	9	3NT E 5	460		0
9	3	3NT E 5	460		0
8	1	3Sx N-3	800		-8

Board (29)

N-S	E-W	Contract	N-S	E-W	IMP
6	2	4H E 5	650		
2	6	5H E 5	650		

Board (30)

N-S	E-W	Contract	N-S	E-W	IMP
6	2	4H S 5	450		
2	6	4H S 4	420		

**31**

♠ KQJ5  
♥ KJ97  
♦ 86  
♣ A108

♠ A984  
♥ 4  
♦ Q92  
♣ KJ943

N  
W | E  
S

♠ 103  
♥ Q652  
♦ AJ54  
♣ Q62

♠ 762  
♥ A1083  
♦ K1073  
♣ 75

**32**

♠ Q964  
♥ J987652  
♦ J  
♣ J

♠ 7  
♥ Q43  
♦ 65  
♣ K1097532

N  
W | E  
S

♠ AJ10532  
♥ K  
♦ AK842  
♣ 6

♠ K8  
♥ A10  
♦ Q10973  
♣ AQ84

**33**

♠ K53  
♥ AK63  
♦ 1072  
♣ 653

♠ Q10  
♥ Q872  
♦ AJ84  
♣ J87

N  
W | E  
S

♠ J8742  
♥ J94  
♦ 95  
♣ 1094

♠ A96  
♥ 105  
♦ KQ63  
♣ AKQ2

Board (31)

N-S	E-W	Contract	N-S	E-W	IMP
6	2	3H S 3	140		
2	6	3H S 3	140		

Board (32)

N-S	E-W	Contract	N-S	E-W	IMP
6	2	4H N-2	100		
2	6	3H N-1	50		

Board (33)

N-S	E-W	Contract	N-S	E-W	IMP
6	2	3NT S 4	430		
2	6	3NT S 3	400		

**34**

♠ 865  
♥ 643  
♦ AQ105  
♣ 942

♠ QJ  
♥ J9  
♦ K9864  
♣ Q876

N  
W | E  
S

♠ 742  
♥ AQ82  
♦ J32  
♣ AJ5

♠ AK1093  
♥ K1075  
♦ 7  
♣ K103

**35**

♠ 765  
♥ A86  
♦ 963  
♣ J964

♠ AK8  
♥ 7532  
♦ K84  
♣ A73

N  
W | E  
S

♠ QJ4  
♥ K1094  
♦ Q1052  
♣ K2

♠ 10932  
♥ QJ  
♦ AJ7  
♣ Q1085

**36**

♠ K83  
♥ KJ65  
♦ Q103  
♣ Q94

♠ AQJ10754  
♥ A9  
♦ A4  
♣ 72

N  
W | E  
S

♠ Q87432  
♥ J986  
♦ AKJ

♠ 962  
♥ 10  
♦ K752  
♣ 108653

Board (34)

N-S	E-W	Contract	N-S	E-W	IMP
6	2	2S S-1	100		
2	6	3S S 3	140		

Board (35)

N-S	E-W	Contract	N-S	E-W	IMP
6	2	4H E-2	200		
2	6	3NT E-1	100		

Board (36)

N-S	E-W	Contract	N-S	E-W	IMP
6	2	4S W 5	650		
2	6	3NT E 5	660		

37

♠ A8  
♥ 74  
♦ J975  
♣ Q7542

♠ 10752  
♥ KQ10862  
♦ K82  
♣

♠ QJ4  
♥ A95  
♦ 1063  
♣ KJ103

♠ K963  
♥ J3  
♦ AQ4  
♣ A986

W N E S

38

♠ 1054  
♥ K108  
♦ A32  
♣ 10853

♠ AKJ93  
♥ J97  
♦ K1074  
♣ 7

♠ Q2  
♥ Q42  
♦ 965  
♣ AKJ94

♠ 876  
♥ A653  
♦ QJ8  
♣ Q62

W N E S

39

♠ 876  
♥ KQ5  
♦ A8  
♣ K9852

♠ 9  
♥ J10973  
♦ J95  
♣ Q1074

♠ AK105  
♥ A8  
♦ KQ7632  
♣ 6

♠ QJ432  
♥ 642  
♦ 104  
♣ AJ3

W N E S

Board (37)

N-S	E-W	Contract	N-S	E-W	IMP
6	2	4H W-1	50		
2	6	3C S-1	100		

Board (38)

N-S	E-W	Contract	N-S	E-W	IMP
6	2	3NT E-2	200		
2	6	2S W 2	110		

Board (39)

N-S	E-W	Contract	N-S	E-W	IMP
6	2	5D E-1	100		
2	6	2S S-2	200		

40

♠ 10653  
♥ KQJ  
♦ 983  
♣ J95

♠ QJ9  
♥ 964  
♦ K10  
♣ KQ1042

♠ 2  
♥ A752  
♦ AQJ74  
♣ A86

♠ AK874  
♥ 1083  
♦ 652  
♣ 73

W N E S

41

♠ 5  
♥ AK1097  
♦ KQ86  
♣ KJ8

♠ AK7643  
♥ J63  
♦ A4  
♣ 53

♠ 109  
♥ Q852  
♦ 10953  
♣ Q62

♠ QJ82  
♥ 4  
♦ J72  
♣ A10974

W N E S

42

♠ Q6  
♥ 108432  
♦ 9875  
♣ 75

♠ J85  
♥ QJ65  
♦ 102  
♣ AK103

♠ A10432  
♥ K9  
♦ AQJ3  
♣ 84

♠ K97  
♥ A7  
♦ K64  
♣ QJ962

W N E S

Board (40)

N-S	E-W	Contract	N-S	E-W	IMP
6	2	3NT W 5	460		
2	6	3NT W 5	460		

Board (41)

N-S	E-W	Contract	N-S	E-W	IMP
6	2	2D N 3	110		
2	6	3C S 4	130		

Board (42)

N-S	E-W	Contract	N-S	E-W	IMP
6	2	4S E 4	620		
2	6	4S E 4	620		

木村六郎杯 Session 2 Flight C 2009年2月21日(土)

**1**

♠ KQJ43  
♥ 10764  
♦ 2  
♣ A93

♠ 82  
♥ KQJ852  
♦ K85  
♣ 104

♠ A5  
♥ A9  
♦ Q1063  
♣ QJ875

W N E S

♠ 10976  
♥ 3  
♦ AJ974  
♣ K62

**2**

♠ AKJ  
♥ A5  
♦ QJ109653  
♣ 4

♠ Q10974  
♥ KJ109  
♦ A  
♣ K97

♠ 863  
♥ Q7642  
♦ 74  
♣ J103

W N E S

♠ 52  
♥ 83  
♦ K82  
♣ AQ8652

**3**

♠ QJ8  
♥ A92  
♦ A10764  
♣ 82

♠ 632  
♥ 76  
♦ 85  
♣ AQJ1073

♠ K105  
♥ 10543  
♦ KQ932  
♣ 4

W N E S

♠ A974  
♥ KQJ8  
♦ J  
♣ K965

Board (1) Av: NS=+120

N-S	E-W	Contract	N-S	E-W	IMP
7	1	4S	N 4	420	7
4	2	3S	N 4	170	2
9	6	3S	N 4	170	2
8	5	5H	W-3	150	1
5	8	5C	E-3	150	1
2	4	4H	E-1	50	-2
1	7	3H	W-1	50	-2
6	9	3H	W-1	50	-2

Board (2) Av: NS=+290

N-S	E-W	Contract	N-S	E-W	IMP
7	1	5D	N 6	620	8
5	8	5D	N 6	620	8
1	7	5Hx	W-3	500	5
9	6	4D	N 6	170	-3
2	4	4D	N 6	170	-3
4	2	5H	W-3	150	-4
6	9	3D	N 5	150	-4
8	5	3H	W 3	140	-10

Board (3) Av: NS=+200

N-S	E-W	Contract	N-S	E-W	IMP
4	2	3NT	N 4	430	6
9	6	3NT	S 3	400	5
1	7	3NT	S 3	400	5
2	4	3NT	N 3	400	5
7	1	2D	N 2	90	-3
5	8	3NT	S-1	50	-6
6	9	3NT	S-1	50	-6
8	5	3NT	S-1	50	-6

**4**

♠ 95  
♥ J754  
♦ 862  
♣ AK95

♠ AJ108732  
♥ 3  
♦ 1093  
♣ 108

♠ 64  
♥ AK  
♦ AQJ4  
♣ QJ732

W N E S

♠ KQ  
♥ Q109862  
♦ K75  
♣ 64

**5**

♠ KQ106532  
♥ KJ1098  
♦  
♣ 6

♠ 4  
♥ AQ43  
♦ K98  
♣ AQJ72

♠ 7  
♥ 765  
♦ AQ1065  
♣ K943

W N E S

♠ AJ98  
♥ 2  
♦ J7432  
♣ 1085

**6**

♠ AKJ1093  
♥ KJ8  
♦ QJ73  
♣

♠ Q6  
♥ 10952  
♦ AK  
♣ AQ962

♠ 7542  
♥ Q43  
♦ 52  
♣ J1084

W N E S

♠ 8  
♥ A76  
♦ 109864  
♣ K753

Board (4) Av: NS=-270

N-S	E-W	Contract	N-S	E-W	IMP
6	9	3NT	E-4	400	12
4	2	2H	W-3	300	11
2	4	3S	W-1	100	9
7	1	2S	E 4	170	3
1	7	3NT	E 3	600	-8
8	5	4S	W 4	620	-8
5	8	4S	W 4	620	-8
9	6	4S	E 4	620	-8

Board (5) Av: NS=+630

N-S	E-W	Contract	N-S	E-W	IMP
5	8	4Sx	N 5	990	8
4	2	5Sx	N 5	850	6
1	7	5S	N 5	650	1
7	1	5S	N 5	650	1
6	9	4S	N 5	650	1
9	6	4S	N 5	650	1
2	4	5Dx	E-2	300	-8
8	5	5Dx	E-2	300	-8

Board (6) Av: NS=+220

N-S	E-W	Contract	N-S	E-W	IMP
6	9	3NT	S 4	430	5
5	8	5D	N 5	400	5
2	4	2S	N 5	200	-1
1	7	2S	N 5	200	-1
7	1	2S	N 5	200	-1
9	6	2S	N 4	170	-2
4	2	3D	N 5	150	-2
8	5	3D	N 5	150	-2

**7**

♠ 3  
♥ AQ754  
♦ 10986  
♣ 972

♠ 865  
♥ K9  
♦ AK52  
♣ Q865

♠ K109  
♥ 8632  
♦ 74  
♣ AKJ10

W N E S

♠ AQJ742  
♥ J10  
♦ QJ3  
♣ 43

**8**

♠ K98653  
♥ AQ32  
♦  
♣ J73

♠ QJ104  
♥ 6  
♦ AK9652  
♣ 108

♠ J10874  
♥ Q873  
♦ Q642  
♣

W N E S

♠ A72  
♥ K95  
♦ J104  
♣ AK95

**9**

♠ AJ106  
♥ A9  
♦ A4  
♣ 107632

♠ 752  
♥ J10872  
♦ 93  
♣ KQJ

♠ Q9  
♥ 643  
♦ QJ108762  
♣ A

W N E S

♠ K843  
♥ KQ5  
♦ K5  
♣ 9854

Board (7) Av: NS=+90

N-S	E-W	Contract	N-S	E-W	IMP
4	2	3NT	E-2	200	3
6	9	2S	S 4	170	2
9	6	2S	S 2	110	1
7	1	2S	S 2	110	1
1	7	2S	S 2	110	1
8	5	2S	N 2	110	1
2	4	2S	S-1	100	-5
5	8	2S	S-1	100	-5

Board (8) Av: NS=+250

N-S	E-W	Contract	N-S	E-W	IMP
4	2	4Sx	S 4	590	8
1	7	4S	N 5	450	5
8	5	4S	N 4	420	5
6	9	4S	N 4	420	5
9	6	3S	N 4	170	-2
2	4	5Dx	W-1	100	-4
5	8	4S	N-1	50	-7
7	1	5Sx	N-1	100	-8

Board (9) Av: NS=+70

N-S	E-W	Contract	N-S	E-W	IMP
2	4	4S	S 4	420	8
5	8	4S	S 4	420	8
8	5	3S	S 4	170	3
9	6	4S	S-1	50	-3
1	7	4S	S-1	50	-3
7	1	4S	S-1	50	-3
4	2	4S	N-1	50	-3
6	9	4S	N-1	50	-3

10

♠ 73  
♥ KJ95  
♦ A1053  
♣ 865

♠ AKJ1065  
♥ 7642  
♦ 2  
♣ Q2

N  
W — E  
S

♠ 9842  
♥ A10  
♦ J7  
♣ AJ1093

♠ Q  
♥ Q83  
♦ KQ9864  
♣ K74

11

♠ 52  
♥ K9632  
♦ K92  
♣ 1075

♠ 7  
♥ Q1084  
♦ 10873  
♣ A982

N  
W — E  
S

♠ AJ98  
♥ AJ7  
♦ AQ64  
♣ K3

♠ KQ10643  
♥ 5  
♦ J5  
♣ QJ64

12

♠ QJ8  
♥ 9532  
♦ AK106  
♣ 95

♠ AK10974  
♥ J6  
♦ 742  
♣ 82

N  
W — E  
S

♠ 62  
♥ K  
♦ QJ3  
♣ AQJ7643

♠ 53  
♥ AQ10874  
♦ 985  
♣ K10

Board (10) Av: NS=-430

N-S	E-W	Contract	N-S	E-W	IMP
6	9	3S	W 5	200	6
5	8	3S	W 5	200	6
8	5	3S	W 5	200	6
7	1	3S	W 5	200	6
1	7	4S	W 5	650	-6
2	4	4S	W 5	650	-6
4	2	4S	E 5	650	-6
9	6	4Sx	W 5	990	-11

Board (11) Av: NS=-280

N-S	E-W	Contract	N-S	E-W	IMP
1	7	4H	W-1	50	8
7	1	3NT	E-1	50	8
5	8	2NT	E 2	120	4
9	6	3NT	E 3	400	-3
6	9	3NT	E 3	400	-3
8	5	3NT	E 3	400	-3
4	2	3NT	E 3	400	-3
2	4	3Sx	S-3	500	-6

Board (12) Av: NS=+80

N-S	E-W	Contract	N-S	E-W	IMP
7	1	4Sx	W-2	300	6
4	2	3NT	E-4	200	3
8	5	3S	W-1	50	-1
5	8	3S	W-1	50	-1
1	7	3S	W-1	50	-1
2	4	3S	W-1	50	-1
9	6	2S	W-1	50	-1
6	9	4H	S-1	100	-5

13

♠ 1032  
♥ 7652  
♦ 6  
♣ AK542

♠ K964  
♥ J104  
♦ J102  
♣ 863

N  
W — E  
S

♠ QJ87  
♥ AQ98  
♦ K985  
♣ 7

♠ A5  
♥ K3  
♦ AQ743  
♣ QJ109

14

♠ 1098  
♥ K10983  
♦ Q106  
♣ J9

♠ AJ6  
♥ Q4  
♦ 952  
♣ A10643

N  
W — E  
S

♠ Q73  
♥ 76  
♦ AK743  
♣ K85

♠ K542  
♥ AJ52  
♦ J8  
♣ Q72

15

♠ AK87  
♥ J832  
♦ QJ9  
♣ K10

♠ 9  
♥ AQ1075  
♦ 108  
♣ Q9875

N  
W — E  
S

♠ Q6432  
♥ 964  
♦ A6543  
♣

♠ J105  
♥ K  
♦ K72  
♣ AJ6432

Board (13) Av: NS=+240

N-S	E-W	Contract	N-S	E-W	IMP
9	6	3NT	S 3	600	8
1	7	3NT	S 3	600	8
6	9	1NT	S 5	210	-1
4	2	1NT	S 4	180	-2
7	1	1NT	S 3	150	-3
5	8	1NT	S 3	150	-3
2	4	1NT	S 2	120	-3
8	5	2S	W-1	100	-4

Board (14) Av: NS=-70

N-S	E-W	Contract	N-S	E-W	IMP
6	9	3NT	W-2	100	5
9	6	2NT	W-1	50	3
1	7	2NT	W-1	50	3
7	1	3H	N-2	100	-1
4	2	2NT	W 2	120	-2
5	8	1NT	W 2	120	-2
8	5	3H	N-3	150	-2
2	4	2NT	W 4	180	-3

Board (15) Av: NS=-30

N-S	E-W	Contract	N-S	E-W	IMP
3	5	3NT	N 3	600	12
1	6	3NT	N 3	600	12
4	9	3NT	N-1	100	-2
7	2	3NT	N-1	100	-2
6	1	3NT	N-1	100	-2
5	3	3NT	N-2	200	-5
2	7	5C	S-3	300	-7
9	4	4S	N-4	400	-9

16

♠ J9874  
♥ Q  
♦ Q  
♣ KQ9762

♠ K5  
♥ J10982  
♦ KJ65  
♣ A4

N  
W — E  
S

♠ AQ10  
♥ A653  
♦ A1092  
♣ 83

♠ 632  
♥ K74  
♦ 8743  
♣ J105

17

♠ K962  
♥ AQ103  
♦ K82  
♣ 96

♠ A1085  
♥ K96  
♦ 94  
♣ K752

N  
W — E  
S

♠ 74  
♥ J852  
♦ QJ75  
♣ A104

♠ QJ3  
♥ 74  
♦ A1063  
♣ QJ83

18

♠ Q3  
♥ K10875  
♦ 82  
♣ AQJ2

♠ 97654  
♥ Q9  
♦ J9  
♣ 8763

N  
W — E  
S

♠ AJ  
♥ A32  
♦ KQ653  
♣ 954

♠ K1082  
♥ J64  
♦ A1074  
♣ K10

Board (16) Av: NS=-670

N-S	E-W	Contract	N-S	E-W	IMP
4	9	4H	W 4	620	2
7	2	4H	W 5	650	1
5	3	4H	W 5	650	1
1	6	5H	W 6	680	0
9	4	4H	W 6	680	0
6	1	4H	W 6	680	0
3	5	4H	W 6	680	0
2	7	6H	W 6	1430	-13

Board (17) Av: NS=+110

N-S	E-W	Contract	N-S	E-W	IMP
4	9	3NT	S 3	400	7
1	6	3NT	N 3	400	7
6	1	2NT	N 3	150	1
2	7	1NT	S 2	120	0
3	5	1NT	S 1	90	-1
9	4	3D	N-1	50	-4
5	3	3D	N-1	50	-4
7	2	4S	S-3	150	-6

Board (18) Av: NS=+150

N-S	E-W	Contract	N-S	E-W	IMP
1	6	4H	N 4	620	10
5	3	3H	N 4	170	1
4	9	2H	N 4	170	1
7	2	2H	N 4	170	1
6	1	2H	N 4	170	1
9	4	2S	W-2	100	-2
2	7	1NT	E-2	100	-2
3	5	4H	N-1	100	-6

19

♠ QJ93  
♥ AJ102  
♦ A  
♣ 10985

♠ A105  
♥ 8  
♦ Q8652  
♣ J763

N  
W — E  
S

♠ K8742  
♥ 53  
♦ 73  
♣ AQ42

♠ 6  
♥ KQ9764  
♦ KJ1094  
♣ K

20

♠ A74  
♥ 72  
♦ 872  
♣ AK973

♠ QJ653  
♥ 986  
♦ K10  
♣ 865

N  
W — E  
S

♠ K10  
♥ AKQJ103  
♦ A63  
♣ QJ

♠ 982  
♥ 54  
♦ QJ954  
♣ 1042

21

♠ QJ107  
♥ Q9  
♦ A102  
♣ J1093

♠ A983  
♥ KJ  
♦ KQJ9  
♣ 654

N  
W — E  
S

♠ A8653  
♥ A8653  
♦ 8764  
♣ AKQ2

♠ K6542  
♥ 10742  
♦ 53  
♣ 87

Board (19) Av: NS=+450

N-S	E-W	Contract	N-S	E-W	IMP
7	2	4H S 6	480		1
9	4	4H S 5	450		0
3	5	4H S 5	450		0
5	3	4H S 5	450		0
1	6	4H S 5	450		0
6	1	4H S 5	450		0
2	7	4H S 5	450		0
4	9	5H S-1	50		-11

Board (20) Av: NS=-620

N-S	E-W	Contract	N-S	E-W	IMP
5	3	4H E 4	620		0
3	5	4H E 4	620		0
9	4	4H E 4	620		0
4	9	4H E 4	620		0
6	1	4H E 4	620		0
1	6	4H E 4	620		0
7	2	4H E 4	620		0
2	7	4H E 4	620		0

Board (21) Av: NS=-240

N-S	E-W	Contract	N-S	E-W	IMP
1	6	3NT W-3	150		9
9	4	3NT E-2	100		8
2	7	3NT W-1	50		7
6	1	3NT W 3		400	-4
4	9	3NT E 3		400	-4
5	3	3NT E 3		400	-4
3	5	3NT E 3		400	-4
7	2	3NT W 4		430	-5

22

♠ J1065  
♥ AQ  
♦ 104  
♣ Q8754

♠ AQ97  
♥ 763  
♦ KQ987  
♣ 9

N  
W — E  
S

♠ 82  
♥ 985  
♦ A652  
♣ KJ106

♠ K43  
♥ KJ1042  
♦ J3  
♣ A32

23

♠ 7  
♥ AQJ86  
♦ AJ3  
♣ Q1043

♠ J10965  
♥ 105  
♦ K87  
♣ 862

N  
W — E  
S

♠ 842  
♥ K432  
♦ 10965  
♣ J9

♠ AKQ3  
♥ 97  
♦ Q42  
♣ AK75

24

♠ 10875  
♥ 1094  
♦ AK753  
♣ 7

♠ J96  
♥ A65  
♦ Q84  
♣ 8432

N  
W — E  
S

♠ KQ42  
♥ 32  
♦ 2  
♣ KQ10965

♠ A3  
♥ KQJ87  
♦ J1096  
♣ AJ

Board (22) Av: NS=-70

N-S	E-W	Contract	N-S	E-W	IMP
9	4	1NT N 1	90		4
1	6	2H S-1	50		1
4	9	1NT S-1	50		1
6	1	1NT S-1	50		1
3	5	1NT S-1	50		1
7	2	1NT S-1	50		1
5	3	3C S-3	150		-2
2	7	3Dx W 3	670		-12

Board (23) Av: NS=+1290

N-S	E-W	Contract	N-S	E-W	IMP
2	7	6NT S 6	1440		4
6	1	6NT S 6	1440		4
5	3	6NT S 6	1440		4
3	5	6NT N 6	1440		4
1	6	6C S 6	1370		2
7	2	6C S 6	1370		2
4	9	5H N 6	680		-12
9	4	6NT N-1	100		-16

Board (24) Av: NS=+340

N-S	E-W	Contract	N-S	E-W	IMP
5	3	4H S 6	480		4
6	1	4H S 6	480		4
3	5	4H S 5	450		3
1	6	4H S 4	420		2
2	7	5Cx E-2	300		-1
7	2	3H S 5	200		-4
4	9	2H S 4	170		-5
9	4	2D S 5	150		-5

25

♠ K92  
♥ AJ962  
♦ A  
♣ J1042

♠ 1064  
♥ K54  
♦ KQJ8  
♣ KQ5

N  
W — E  
S

♠ AJ5  
♥ Q10  
♦ 109654  
♣ A73

♠ Q873  
♥ 873  
♦ 732  
♣ 986

26

♠ A975  
♥ AKQ85  
♦ A2  
♣ 98

♠ KJ2  
♥ 76  
♦ Q8643  
♣ J63

N  
W — E  
S

♠ Q843  
♥ J9432  
♦  
♣ K742

♠ 106  
♥ 10  
♦ KJ10975  
♣ AQ105

27

♠ Q9875  
♥ A  
♦ AK96  
♣ AK5

♠ K10642  
♥ K62  
♦ J3  
♣ QJ3

N  
W — E  
S

♠ J3  
♥ J853  
♦ Q85  
♣ 10762

♠ A  
♥ Q10974  
♦ 10742  
♣ 984

Board (25) Av: NS=-290

N-S	E-W	Contract	N-S	E-W	IMP
4	9	1H N-1	50		6
9	4	1H N-1	50		6
5	3	3D E 4	130		4
6	1	3D E 4	130		4
3	5	2H N-3	150		4
1	6	3NT W 4	630		-8
2	7	3NT W 4	630		-8
7	2	3NT W 4	630		-8

Board (26) Av: NS=+640

N-S	E-W	Contract	N-S	E-W	IMP
3	5	3NT S 6	690		2
1	6	3NT S 6	690		2
4	9	3NT N 6	690		2
9	4	3NT S 4	630		0
5	3	3NT N 4	630		0
7	2	5D S 5	600		-1
2	7	3NT S 3	600		-1
6	1	3NT N 3	600		-1

Board (27) Av: NS=+30

N-S	E-W	Contract	N-S	E-W	IMP
4	9	3NT S 5	460		10
5	3	3NT S 4	430		9
6	1	6D N-1	50		-2
3	5	3NT S-1	50		-2
2	7	3NT S-1	50		-2
9	4	3NT N-1	50		-2
7	2	3NT N-1	50		-2
1	6	3NT S-2	100		-4



28

♠ AKJ105  
♥ 2  
♦ Q952  
♣ 542

♠ 864  
♥ KJ  
♦ 10876  
♣ Q1083

N			E
W			S

♠ Q932  
♥ AQ1096  
♦ K4  
♣ AJ

♠ 7  
♥ 87543  
♦ AJ3  
♣ K976

29

♠ 9875  
♥ 97  
♦ A75  
♣ AQJ8

♠ AQJ2  
♥ KJ  
♦ 6  
♣ K76543

N			E
W			S

♠ K3  
♥ Q653  
♦ J109843  
♣ 2

♠ 1064  
♥ A10842  
♦ KQ2  
♣ 109

30

♠ 86  
♥ 109652  
♦ J2  
♣ Q1042

♠ A95  
♥ K7  
♦ KQ64  
♣ J975

N			E
W			S

♠ J73  
♥ QJ83  
♦ 1083  
♣ K63

♠ KQ1042  
♥ A4  
♦ A975  
♣ A8

Board (28) Av: NS=+10

N-S	E-W	Contract	N-S	E-W	IMP
4	9	2S E-3	150		4
6	1	2S N 2	110		3
2	7	3H E-1	50		1
5	3	1NT E-1	50		1
7	2	1NT E-1	50		1
9	4	1NT E 1		90	-3
1	6	2NT W 2		120	-4
3	5	2NT W 2		120	-4

Board (29)

N-S	E-W	Contract	N-S	E-W	IMP
8	3	2D E-1	100		
3	8	2D W 3		110	

Board (30)

N-S	E-W	Contract	N-S	E-W	IMP
8	3	1S S 2	110		
3	8	2NT W-2		100	

31

♠ A  
♥ K10432  
♦ J42  
♣ Q632

♠ Q98432  
♥ J9  
♦ A9  
♣ A85

N			E
W			S

♠ KJ6  
♥ AQ765  
♦ 763  
♣ 97

♠ 1075  
♥ 8  
♦ KQ1085  
♣ KJ104

32

♠ Q102  
♥ QJ742  
♦ A  
♣ QJ43

♠ 6  
♥ 98  
♦ 1098732  
♣ K986

N			E
W			S

♠ AJ84  
♥ A63  
♦ KQ54  
♣ A5

♠ K9753  
♥ K105  
♦ J6  
♣ 1072

33

♠ Q7  
♥ 763  
♦ Q9642  
♣ Q108

♠ K852  
♥ Q2  
♦ K5  
♣ K9752

N			E
W			S

♠ J6  
♥ KJ1085  
♦ A103  
♣ J43

♠ A10943  
♥ A94  
♦ J87  
♣ A6

Board (31)

N-S	E-W	Contract	N-S	E-W	IMP
8	3	3S W 3	140		
3	8	3S W 3		140	

Board (32)

N-S	E-W	Contract	N-S	E-W	IMP
8	3	3NT E-2	200		
3	8	2NT E 2		120	

Board (33)

N-S	E-W	Contract	N-S	E-W	IMP
8	3	2S S-3	150		
3	8	2S S 2	110		

34

♠ 87  
♥ 853  
♦ AQ972  
♣ A63

♠ J9542  
♥ 72  
♦ 863  
♣ QJ10

N			E
W			S

♠ AQ6  
♥ QJ1064  
♦ 105  
♣ 742

♠ K103  
♥ AK9  
♦ KJ4  
♣ K985

35

♠ K32  
♥ AQJ9762  
♦ 10  
♣ Q3

♠ 1097654  
♥ 5  
♦ AJ974  
♣ 10

N			E
W			S

♠ AQJ  
♥ 10  
♦ 853  
♣ AK8542

♠ 8  
♥ K843  
♦ KQ62  
♣ J976

36

♠ Q106  
♥ A874  
♦ K6  
♣ J1032

♠ A43  
♥ J93  
♦ A1095  
♣ Q98

N			E
W			S

♠ KJ985  
♥  
♦ Q7432  
♣ 654

♠ 72  
♥ KQ10652  
♦ J8  
♣ AK7

Board (34)

N-S	E-W	Contract	N-S	E-W	IMP
8	3	3NT S 4	630		
3	8	3NT S 4		630	

Board (35)

N-S	E-W	Contract	N-S	E-W	IMP
8	3	4S W-2	200		
3	8	4H N 4		420	

Board (36)

N-S	E-W	Contract	N-S	E-W	IMP
8	3	4H S 5	650		
3	8	4H S-1		100	

37

♠ J93  
♥ KJ843  
♦ J8  
♣ KQJ

♠ KQ10762  
♥ 765  
♦ 2  
♣ 1086

♠ A54  
♥ AQ9  
♦ AQ4  
♣ A432

♠ 8  
♥ 102  
♦ K1097653  
♣ 975

♠ N  
♥ W  
♦ E  
♣ S

38

♠ Q109  
♥ 97  
♦ AKQJ4  
♣ KQ8

♠ 82  
♥ QJ6543  
♦ 952  
♣ 73

♠ K76  
♥ K1082  
♦ 7  
♣ A10652

♠ AJ543  
♥ A  
♦ 10863  
♣ J94

♠ N  
♥ W  
♦ E  
♣ S

39

♠ KQ63  
♥ Q109543  
♦ Q86  
♣

♠ J984  
♥ A2  
♦ A1053  
♣ 1096

♠ 752  
♥ K76  
♦ KJ42  
♣ A73

♠ A10  
♥ J8  
♦ 97  
♣ KQJ8542

♠ N  
♥ W  
♦ E  
♣ S

Board (37)

N-S	E-W	Contract	N-S	E-W	IMP
8	3	6H N 6	1430		
3	8	6H N-1		100	

Board (38)

N-S	E-W	Contract	N-S	E-W	IMP
8	3	5C S 6	420		
3	8	3NT N 6	490		

Board (39)

N-S	E-W	Contract	N-S	E-W	IMP
8	3	4H N 5	650		
3	8	4H N 4	620		

40

♠ K10  
♥ 973  
♦ A107  
♣ J9873

♠ 765  
♥ AJ5  
♦ 863  
♣ AK62

♠ Q9842  
♥ 10862  
♦ Q4  
♣ Q5

♠ AJ3  
♥ KQ4  
♦ KJ952  
♣ 104

♠ N  
♥ W  
♦ E  
♣ S

41

♠ Q653  
♥ A7  
♦ 642  
♣ KQ43

♠ 872  
♥ QJ852  
♦ A95  
♣ J8

♠ AK4  
♥ 10643  
♦ 83  
♣ 10762

♠ J109  
♥ K9  
♦ KQJ107  
♣ A95

♠ N  
♥ W  
♦ E  
♣ S

42

♠ 874  
♥ AJ1094  
♦ 1084  
♣ 73

♠ A9  
♥ 85  
♦ AKJ63  
♣ K1095

♠ K1052  
♥ K2  
♦ Q2  
♣ AJ842

♠ QJ63  
♥ Q763  
♦ 975  
♣ Q6

♠ N  
♥ W  
♦ E  
♣ S

Board (40)

N-S	E-W	Contract	N-S	E-W	IMP
8	3	3NT W-1	50		
3	8	3NT W 3		400	

Board (41)

N-S	E-W	Contract	N-S	E-W	IMP
8	3	2S S 2	110		
3	8	2C S 2	90		

Board (42)

N-S	E-W	Contract	N-S	E-W	IMP
8	3	2D E-1	100		
3	8	2D E 4		130	

**1**

♠ AK8642  
♥ 72  
♦ A  
♣ AQ98

♠ 1073  
♥ J10843  
♦ 8  
♣ 6532

♠ 5  
♥ KQ  
♦ 76532  
♣ KJ1074

♠ QJ9  
♥ A965  
♦ KQJ1094  
♣

**2**

♠ Q87  
♥ 73  
♦ J2  
♣ AKQ632

♠ A106  
♥ K95  
♦ K953  
♣ J54

♠ J9542  
♥ 1084  
♦ Q106  
♣ 87

♠ K3  
♥ AQJ62  
♦ A874  
♣ 109

**3**

♠ QJ8  
♥ QJ74  
♦ 107  
♣ 10853

♠ AK10654  
♥ 93  
♦ Q85  
♣ J7

♠ 973  
♥ A105  
♦ K32  
♣ K962

♠ 2  
♥ K862  
♦ AJ964  
♣ AQ4

Board (1) Av: NS=+1100

N-S	E-W	Contract	N-S	E-W	IMP
3	7	7S	N 7	1510	9
2	9	7S	N 7	1510	9
4	5	6NT	N 7	1020	-2
8	6	6S	N 7	1010	-3
6	8	6S	N 7	1010	-3
5	4	6S	N 7	1010	-3
7	3	6S	N 7	1010	-3
9	2	6S	N-1	50	-15

Board (2) Av: NS=+650

N-S	E-W	Contract	N-S	E-W	IMP
8	6	3NT	S 5	660	0
9	2	3NT	S 5	660	0
4	5	3NT	N 5	660	0
2	9	3NT	N 5	660	0
6	8	3NT	S 4	630	-1
5	4	3NT	N 4	630	-1
7	3	3NT	N 4	630	-1
3	7	3NT	S 3	600	-2

Board (3) Av: NS=+120

N-S	E-W	Contract	N-S	E-W	IMP
5	4	4S	W-3	300	5
2	9	4S	W-2	200	2
7	3	3S	W-2	200	2
3	7	3S	W-2	200	2
4	5	3S	W-1	100	-1
6	8	2S	W-1	100	-1
9	2	4D	S-2	100	-6
8	6	2S	W 2	110	-6

**4**

♠ K87  
♥ J543  
♦ 75  
♣ K732

♠ J109  
♥ K87  
♦ K942  
♣ Q86

♠ Q543  
♥ AQ9  
♦ J10  
♣ J954

♠ A62  
♥ 1062  
♦ AQ863  
♣ A10

**5**

♠ A75  
♥ Q1073  
♦ AKJ6  
♣ QJ

♠ Q986  
♥ AK98  
♦ Q97  
♣ 84

♠ KJ432  
♥ J64  
♦ 432  
♣ 63

♠ 10  
♥ 52  
♦ 1085  
♣ AK109752

**6**

♠ 102  
♥ K82  
♦ A4  
♣ J109762

♠ K98543  
♥ A974  
♦ Q5  
♣ Q

♠ AJ6  
♥ 103  
♦ KJ987  
♣ K85

♠ Q7  
♥ QJ65  
♦ 10632  
♣ A43

Board (4) Av: NS=-20

N-S	E-W	Contract	N-S	E-W	IMP
8	6	1NT	W-1	100	3
6	8	1NT	S 1	90	3
2	9	1NT	S 1	90	3
3	7	1NT	S 1	90	3
9	2	1NT	S-1	100	-2
5	4	1NT	S-1	100	-2
4	5	2D	S-2	200	-5
7	3	1NT	S-2	200	-5

Board (5) Av: NS=+650

N-S	E-W	Contract	N-S	E-W	IMP
7	3	6C	S 6	1370	12
8	6	3NT	N 6	690	1
5	4	3NT	N 6	690	1
9	2	3NT	N 5	660	0
6	8	3NT	N 4	630	-1
3	7	3NT	N 4	630	-1
2	9	5C	S 6	620	-1
4	5	5C	N 5	600	-2

Board (6) Av: NS=-640

N-S	E-W	Contract	N-S	E-W	IMP
5	4	4S	W 4	620	1
9	2	4S	W 4	620	1
8	6	4S	W 4	620	1
7	3	4S	E 4	620	1
6	8	4S	W 5	650	0
2	9	4S	W 5	650	0
4	5	4S	W 5	650	0
3	7	4S	W 5	650	0

**7**

♠ 1097  
♥ 93  
♦ QJ82  
♣ AQ76

♠ Q863  
♥ AQ52  
♦ AK7  
♣ K5

♠ KJ54  
♥ J106  
♦ 54  
♣ 9843

♠ A2  
♥ K874  
♦ 10963  
♣ J102

**8**

♠ 2  
♥ J982  
♦ 10973  
♣ J642

♠ AQ1075  
♥ Q7  
♦ K85  
♣ AK9

♠ 983  
♥ 654  
♦ QJ6  
♣ Q1073

♠ KJ64  
♥ AK103  
♦ A42  
♣ 85

**9**

♠ 107632  
♥ J54  
♦ KJ106  
♣ K

♠ J984  
♥ A1083  
♦ A94  
♣ 105

♠ Q5  
♥ Q7  
♦ Q8732  
♣ QJ63

♠ AK  
♥ K962  
♦ 5  
♣ A98742

Board (7) Av: NS=-110

N-S	E-W	Contract	N-S	E-W	IMP
6	8	4S	E-2	200	7
9	2	4S	E-1	100	5
5	4	1D	W-1	100	5
2	9	1D	W-1	100	5
3	7	3S	E 3	140	-1
8	6	3S	E 4	170	-2
7	3	4S	E 4	620	-11
4	5	4S	E 4	620	-11

Board (8) Av: NS=-10

N-S	E-W	Contract	N-S	E-W	IMP
5	4	4S	W-2	100	3
8	6	4S	W-2	100	3
9	2	4S	W-2	100	3
2	9	1NT	S 1	90	3
6	8	3S	W-1	50	2
3	7	3S	W-1	50	2
7	3	4S	W 4	420	-9
4	5	4Sx	W 4	590	-11

Board (9) Av: NS=+20

N-S	E-W	Contract	N-S	E-W	IMP
9	2	2S	N 2	110	3
5	4	2S	N 2	110	3
3	7	2C	S 2	90	2
6	8	2C	S 2	90	2
4	5	4S	N-1	50	-2
7	3	3NT	S-1	50	-2
8	6	2NT	S-1	50	-2
2	9	2C	S-1	50	-2

10

♠ AJ62  
♥ 865  
♦ J943  
♣ AQ

♠ Q109854  
♥ A10  
♦ 75  
♣ K74

N  
W — E  
S

♠ K73  
♥ KJ94  
♦ 82  
♣ 10863

♠ Q732  
♥ AKQ106  
♣ J952

11

♠ KQ  
♥ K105  
♦ AK9873  
♣ Q8

♠ 853  
♥ AJ9  
♦ Q42  
♣ J742

N  
W — E  
S

♠ J764  
♥ 82  
♦ J1065  
♣ A96

♠ A1092  
♥ Q7643  
♦  
♣ K1053

12

♠ Q74  
♥ 106  
♦ Q1072  
♣ 10754

♠ KJ653  
♥ Q2  
♦ A9853  
♣ 9

N  
W — E  
S

♠ A1082  
♥ AKJ843  
♦ K6  
♣ 3

♠ 9  
♥ 975  
♦ J4  
♣ AKQJ862

Board (10) Av: NS=+260

N-S	E-W	Contract	N-S	E-W	IMP
8	6	3NT N 4	630		9
5	4	3NT N 3	600		8
6	8	3NT N 3	600		8
4	5	2NT N 3	150		-3
3	7	2NT N 3	150		-3
9	2	3D S 4	130		-4
2	9	3NT N-1		100	-8
7	3	3NT N-1		100	-8

Board (11) Av: NS=+420

N-S	E-W	Contract	N-S	E-W	IMP
2	9	4H S 4	420		0
4	5	4H N 4	420		0
5	4	4H N 4	420		0
8	6	4H N 4	420		0
9	2	4H N 4	420		0
3	7	4H N 4	420		0
7	3	3NT S 3	400		-1
6	8	2D S 3	110		-7

Board (12) Av: NS=-380

N-S	E-W	Contract	N-S	E-W	IMP
9	2	6S W-1	50		10
6	8	6S W-1	50		10
5	4	4S W 5		450	-2
7	3	4S W 5		450	-2
2	9	4S W 5		450	-2
4	5	4S E 6		480	-3
8	6	4H E 6		480	-3
3	7	5Cx S-3		800	-9

13

♠ AQJ742  
♥ J5  
♦ 5  
♣ 10986

♠ K9  
♥ K2  
♦ AQ109732  
♣ A5

N  
W — E  
S

♠ 1085  
♥ AQ87  
♦ KJ8  
♣ KQ3

♠ 63  
♥ 109643  
♦ 64  
♣ J742

14

♠ 2  
♥ 9  
♦ AJ7653  
♣ J10743

♠ A10963  
♥ J542  
♦ 94  
♣ Q5

N  
W — E  
S

♠ QJ74  
♥ A873  
♦ K102  
♣ A8

♠ K85  
♥ KQ106  
♦ Q8  
♣ K962

15

♠ Q876  
♥ K7  
♦ AK1082  
♣ 85

♠ J5432  
♥ 86  
♦ Q63  
♣ 1097

N  
W — E  
S

♠ A10  
♥ Q10532  
♦ 5  
♣ KQJ43

♠ K9  
♥ AJ94  
♦ J974  
♣ A62

Board (13) Av: NS=-1140

N-S	E-W	Contract	N-S	E-W	IMP
3	7	5D W 6	620		11
7	3	5D W 6	620		11
5	4	5D W 6	620		11
6	8	6D W 6	1370		-6
2	9	6D W 6	1370		-6
4	5	6D W 7	1390		-6
8	6	6NT E 7	1470		-8
9	2	6NT E 7	1470		-8

Board (14) Av: NS=-140

N-S	E-W	Contract	N-S	E-W	IMP
6	8	3S W-1	50		5
7	3	3S W 3		140	0
5	4	3S W 3		140	0
2	9	3S W 3		140	0
9	2	2S W 3		140	0
3	7	2S W 3		140	0
4	5	2S E 3		140	0
8	6	3S W 4		170	-1

Board (15) Av: NS=+50

N-S	E-W	Contract	N-S	E-W	IMP
2	3	3NT S 5	660		12
6	7	5D S 5	600		11
5	1	4D S 6	170		3
9	8	4D S 5	150		3
8	9	3NT S-2		200	-6
7	6	3NT S-2		200	-6
1	5	3NT N-2		200	-6
3	2	3NT N-2		200	-6

16

♠ A1073  
♥ J32  
♦ J94  
♣ K87

♠ 9865  
♥ K9  
♦ A2  
♣ J10543

N  
W — E  
S

♠ K42  
♥ Q754  
♦ 107  
♣ Q962

♠ QJ  
♥ A1086  
♦ KQ8653  
♣ A

17

♠ 10963  
♥ J43  
♦ KQ10  
♣ K43

♠ K54  
♥ 985  
♦ 62  
♣ AQ1095

N  
W — E  
S

♠ AQJ  
♥ Q762  
♦ J754  
♣ 82

♠ 872  
♥ AK10  
♦ A983  
♣ J76

18

♠ J4  
♥ AJ10942  
♦ 8532  
♣ 3

♠ AKQ106532  
♥ 7  
♦ 10  
♣ QJ5

N  
W — E  
S

♠ 8  
♥ Q  
♦ AKQJ76  
♣ 87642

♠ 97  
♥ K8653  
♦ 94  
♣ AK109

Board (16) Av: NS=+330

N-S	E-W	Contract	N-S	E-W	IMP
7	6	3NT N 4	430		3
9	8	3NT N 4	430		3
1	5	3NT N 4	430		3
5	1	5D S 5	400		2
2	3	3NT S 3	400		2
3	2	2NT N 3	150		-5
8	9	2D S 5	150		-5
6	7	2D S 4	130		-5

Board (17) Av: NS=+100

N-S	E-W	Contract	N-S	E-W	IMP
2	3	1NT S 2	120		1
8	9	1NT S 2	120		1
1	5	2S N 2	110		0
7	6	1NT S 1	90		0
6	7	1NT S 1	90		0
5	1	1NT S 1	90		0
9	8	1NT N 1	90		0
3	2	Passout			-3

Board (18) Av: NS=-80

N-S	E-W	Contract	N-S	E-W	IMP
3	2	6C E-5	250		8
5	1	6S W-3	150		6
9	8	5S W-2	100		5
8	9	5S W-2	100		5
7	6	4S W-1	50		4
2	3	4S W 4		420	-8
1	5	4S W 6		480	-9
6	7	5Hx S-2		500	-9

19

♠ K43  
♥ 65  
♦ K82  
♣ A10832

♠ A76 ♠ Q8  
♥ J1074 ♥ K2  
♦ A74 ♠ Q10953  
♣ 765 ♣ KJ94

W — E  
N — S  
♠ J10952  
♥ AQ983  
♦ J6  
♣ Q

20

♠ KJ42  
♥ K93  
♦ 54  
♣ K973

♠ A7 ♠ 1065  
♥ 1065 ♥ AJ82  
♦ A987 ♠ KJ103  
♣ A642 ♣ 105

W — E  
N — S  
♠ Q983  
♥ Q74  
♦ Q62  
♣ QJ8

21

♠ Q3  
♥ A943  
♦ AK9  
♣ AQ54

♠ AKJ102 ♠ 9765  
♥ K65 ♥ J1082  
♦ Q7 ♠ J32  
♣ 1062 ♣ 98

W — E  
N — S  
♠ 84  
♥ Q7  
♦ 108654  
♣ KJ73

Board (19) Av: NS=+30

N-S	E-W	Contract	N-S	E-W	IMP
1	5	3S	S 4	170	4
8	9	3S	S 3	140	3
7	6	3S	S 3	140	3
9	8	Passout			-1
2	3	Passout			-1
3	2	3S	N-1	50	-2
6	7	2H	S-1	50	-2
5	1	4S	S-2	100	-4

Board (20) Av: NS=-40

N-S	E-W	Contract	N-S	E-W	IMP
6	7	1NT	W-1	100	4
5	1	1NT	W-1	100	4
8	9	1NT	W-1	100	4
7	6	1NT	W 1	90	-2
2	3	1NT	E 1	90	-2
3	2	2D	E 3	110	-2
9	8	1NT	W 2	120	-2
1	5	1NT	W 2	120	-2

Board (21) Av: NS=-70

N-S	E-W	Contract	N-S	E-W	IMP
8	9	3D	S 4	130	5
9	8	2NT	N 2	120	5
5	1	4C	N-1	100	-1
1	5	4C	N-1	100	-1
6	7	4C	N-1	100	-1
3	2	4C	N-1	100	-1
7	6	2S	W 2	110	-1
2	3	5C	N-2	200	-4

22

♠ 763  
♥ 953  
♦ AKQ65  
♣ 106

♠ 10 ♠ AKQJ9842  
♥ AKQJ76 ♥ 82  
♦ 97432 ♠ K87  
♣ J ♣

W — E  
N — S  
♠ 5  
♥ 104  
♦ J108  
♣ AQ95432

23

♠ KQ4  
♥ 764  
♦ KJ106  
♣ Q82

♠ A ♠ 10963  
♥ AKQ1098 ♥ J32  
♦ 952 ♠ Q87  
♣ 963 ♣ K107

W — E  
N — S  
♠ J8752  
♥ 5  
♦ A43  
♣ AJ54

24

♠ J108  
♥ J9  
♦ AK93  
♣ AQ32

♠ 9532 ♠ AQ4  
♥ AQ10 ♥ 76543  
♦ Q7 ♠ J85  
♣ K864 ♣ 105

W — E  
N — S  
♠ K76  
♥ K82  
♦ 10642  
♣ J97

Board (22) Av: NS=-710

N-S	E-W	Contract	N-S	E-W	IMP
7	6	5S	E 6	680	1
6	7	4S	E 6	680	1
9	8	4S	E 7	710	0
3	2	4S	E 7	710	0
2	3	4S	E 7	710	0
1	5	4H	W 7	710	0
8	9	4H	W 7	710	0
5	1	6S	W 7	1460	-13

Board (23) Av: NS=+40

N-S	E-W	Contract	N-S	E-W	IMP
8	9	4H	W-3	300	6
2	3	3S	S 4	170	4
6	7	2S	S 2	110	2
9	8	3H	W-1	100	2
7	6	3H	W-1	100	2
3	2	2H	W 2	110	-4
1	5	2H	W 3	140	-5
5	1	2H	W 3	140	-5

Board (24) Av: NS=+110

N-S	E-W	Contract	N-S	E-W	IMP
8	9	1NT	N 3	150	1
9	8	1NT	N 3	150	1
6	7	1NT	N 2	120	0
5	1	1NT	N 2	120	0
3	2	2H	E-2	100	0
1	5	1NT	N 1	90	-1
2	3	1NT	N 1	90	-1
7	6	1NT	N 1	90	-1

25

♠ Q98  
♥ 109  
♦ AKQ92  
♣ Q53

♠ 1072 ♠ AJ  
♥ QJ8 ♥ K73  
♦ 10543 ♠ J876  
♣ K104 ♣ A762

W — E  
N — S  
♠ K6543  
♥ A6542  
♦  
♣ J98

26

♠ 953  
♥ AJ542  
♦ 75  
♣ KQ6

♠ 8 ♠ AJ1042  
♥ K87 ♥ Q10963  
♦ A432 ♠ K8  
♣ J9542 ♣ 7

W — E  
N — S  
♠ KQ76  
♥  
♦ QJ1096  
♣ A1083

27

♠ 5432  
♥ 1092  
♦ 965  
♣ J107

♠ KJ87 ♠ Q6  
♥ AJ8 ♥ Q765  
♦ A104 ♠ Q73  
♣ K43 ♣ AQ82

W — E  
N — S  
♠ A109  
♥ K43  
♦ KJ82  
♣ 965

Board (25) Av: NS=+140

N-S	E-W	Contract	N-S	E-W	IMP
6	7	2H	W-3	300	4
5	1	2S	S 4	170	1
3	2	1NT	N 3	150	0
9	8	3S	S 3	140	0
8	9	2S	S 3	140	0
2	3	2S	S 3	140	0
1	5	2S	S 2	110	-1
7	6	4S	S-1	50	-5

Board (26) Av: NS=+10

N-S	E-W	Contract	N-S	E-W	IMP
1	5	3NT	N 3	600	11
3	2	2NT	S 2	120	3
8	9	1NT	N 2	120	3
2	3	3H	E-1	100	3
5	1	3D	S-1	100	-3
9	8	3C	N-1	100	-3
6	7	2H	E 2	110	-3
7	6	2H	E 2	110	-3

Board (27) Av: NS=-450

N-S	E-W	Contract	N-S	E-W	IMP
8	9	4H	W-1	50	11
6	7	3NT	W 4	430	1
9	8	3NT	W 4	430	1
2	3	3NT	W 4	430	1
5	1	3NT	W 5	460	0
1	5	3NT	W 5	460	0
3	2	3NT	W 5	460	0
7	6	3NT	E 5	460	0

**28**

♠ 73  
♥ QJ1076  
♦ J843  
♣ J7

♠ J6  
♥ K984  
♦ AKQ  
♣ 10632

♠ K10542  
♥ A  
♦ 10952  
♣ A84

♠ AQ98  
♥ 532  
♦ 76  
♣ KQ95

**29**

♠ A8  
♥ K10876  
♦ KQJ  
♣ K72

♠ KQ104  
♥ Q3  
♦ 8  
♣ QJ9653

♠ J953  
♥ AJ54  
♦ 97532  
♣

♠ 762  
♥ 92  
♦ A1064  
♣ A1084

**30**

♠ KJ76  
♥ 10  
♦ AJ986  
♣ A105

♠ 10952  
♥ J97  
♦ 1074  
♣ 842

♠ A4  
♥ AQ84  
♦ KQ53  
♣ K76

♠ Q83  
♥ K6532  
♦ 2  
♣ QJ93

Board (28) Av: NS=-10

N-S	E-W	Contract	N-S	E-W	IMP
8	9	3NT W-2	100		3
5	1	3NT W-2	100		3
6	7	2NT W-2	100		3
2	3	2NT W-2	100		3
9	8	2S E 2		110	-3
1	5	2NT W 2		120	-3
3	2	2NT W 2		120	-3
7	6	2NT W 2		120	-3

Board (29)

N-S	E-W	Contract	N-S	E-W	IMP
4	1	3NT N-1		100	
1	4	4H N-2		200	

Board (30)

N-S	E-W	Contract	N-S	E-W	IMP
4	1	3NTxN-1		100	
1	4	2S N 3	140		

**31**

♠ 542  
♥ QJ10  
♦ K763  
♣ J85

♠ AK98  
♥ 974  
♦ AQ102  
♣ A9

♠ Q103  
♥ A6532  
♦ 985  
♣ K2

♠ J76  
♥ K8  
♦ J4  
♣ Q107643

**32**

♠ K103  
♥ A873  
♦ K1052  
♣ QJ

♠ 74  
♥ J54  
♦ AQ9  
♣ 98752

♠ J95  
♥ 96  
♦ 7643  
♣ AK64

♠ AQ862  
♥ KQ102  
♦ J8  
♣ 103

**33**

♠ 9  
♥ Q9543  
♦ J108  
♣ AJ74

♠ Q852  
♥ KJ6  
♦ AK9  
♣ KQ8

♠ K106  
♥ A1082  
♦ 654  
♣ 952

♠ AJ743  
♥ 7  
♦ Q732  
♣ 1063

Board (31)

N-S	E-W	Contract	N-S	E-W	IMP
4	1	4H W 4		420	
1	4	4H W 4		420	

Board (32)

N-S	E-W	Contract	N-S	E-W	IMP
4	1	4S S 4	420		
1	4	4H N 4	420		

Board (33)

N-S	E-W	Contract	N-S	E-W	IMP
4	1	1NT W 3		150	
1	4	3NT E 3		400	

**34**

♠ A8732  
♥ Q3  
♦ 85  
♣ 8632

♠ 65  
♥ AKJ1087652  
♦ J  
♣ 10

♠ KQJ  
♥ 94  
♦ K10964  
♣ KQ5

♠ 1094  
♥  
♦ AQ732  
♣ AJ974

**35**

♠ 82  
♥ J743  
♦ 93  
♣ Q10962

♠ AKQ9  
♥ 108  
♦ KQ54  
♣ K84

♠ 10643  
♥ AKQ2  
♦ A1082  
♣ A

♠ J75  
♥ 965  
♦ J76  
♣ J753

**36**

♠ QJ95  
♥ QJ5  
♦ Q72  
♣ 1082

♠ K10432  
♥ 1083  
♦ 43  
♣ 943

♠ 86  
♥ A764  
♦ AKJ96  
♣ J6

♠ A7  
♥ K92  
♦ 1085  
♣ AKQ75

Board (34)

N-S	E-W	Contract	N-S	E-W	IMP
4	1	6NTxW-2	300		
1	4	6H W-1	50		

Board (35)

N-S	E-W	Contract	N-S	E-W	IMP
4	1	6S W 7	1460		
1	4	6S W 7	1460		

Board (36)

N-S	E-W	Contract	N-S	E-W	IMP
4	1	3C S-1		100	
1	4	3NT S 3	600		

**37**

♠ KQ1087  
♥ Q8  
♦ K42  
♣ Q85

♠ A96  
♥ KJ95  
♦ Q98  
♣ 632

♠ 53  
♥ 7632  
♦ J3  
♣ AK1094

♠ J42  
♥ A104  
♦ A10765  
♣ J7

Board (37)

N-S	E-W	Contract	N-S	E-W	IMP
4	1	2S	N 3	140	
1	4	1S	N 3	140	

**38**

♠ J862  
♥ KQJ3  
♦ A94  
♣ 54

♠ A953  
♥ 765  
♦ QJ7  
♣ 862

♠ KQ74  
♥ 109  
♦ K8532  
♣ KJ

♠ 10  
♥ A842  
♦ 106  
♣ AQ10973

Board (38)

N-S	E-W	Contract	N-S	E-W	IMP
4	1	3C	S 5	150	
1	4	3NT	N 5	460	

**39**

♠ K85  
♥ J1086  
♦ A9  
♣ J1074

♠ 97  
♥ Q97  
♦ J743  
♣ 9653

♠ AJ62  
♥ AK2  
♦ K1086  
♣ A2

♠ Q1043  
♥ 543  
♦ Q52  
♣ KQ8

Board (39)

N-S	E-W	Contract	N-S	E-W	IMP
4	1	1D	E 3	110	
1	4	1D	E 3	110	

**40**

♠ QJ5  
♥ AK2  
♦ Q103  
♣ KQJ6

♠ 7432  
♥ Q96  
♦ AJ54  
♣ 74

♠ AK109  
♥ J10  
♦ K987  
♣ A53

♠ 86  
♥ 87543  
♦ 62  
♣ 10982

Board (40)

N-S	E-W	Contract	N-S	E-W	IMP
4	1	3S	E-1	50	
1	4	1NT	E 1	90	

**41**

♠ J43  
♥ AQ76  
♦ A10987  
♣ 9

♠ Q1062  
♥ J43  
♦ 63  
♣ AQ84

♠ A8  
♥ K982  
♦ J2  
♣ J10752

♠ K975  
♥ 105  
♦ KQ54  
♣ K63

Board (41)

N-S	E-W	Contract	N-S	E-W	IMP
4	1	3D	S 3	110	
1	4	2NT	N-2	100	

**42**

♠ 752  
♥ Q102  
♦ Q82  
♣ K973

♠ K3  
♥ AJ83  
♦ A10943  
♣ Q6

♠ AQJ104  
♥ K75  
♦ 65  
♣ AJ2

♠ 986  
♥ 964  
♦ KJ7  
♣ 10854

Board (42)

N-S	E-W	Contract	N-S	E-W	IMP
4	1	3NT	E 5	660	
1	4	3NT	W 5	660	

**1**

♠ 93  
♥ Q1043  
♦ K964  
♣ AJ4

♠ KQ754  
♥ AJ6  
♦ J52  
♣ 82

W E  
S

♠ J10  
♥ 952  
♦ AQ1073  
♣ K106

♠ A862  
♥ K87  
♦ 8  
♣ Q9753

**2**

♠ 74  
♥ J32  
♦ A9  
♣ AJ10972

♠ A9  
♥ AK8  
♦ KQJ108743  
♣

W N E  
S

♠ KQ865  
♥ 10954  
♦ 52  
♣ 84

♠ J1032  
♥ Q76  
♦ 6  
♣ KQ653

**3**

♠ A8  
♥ A104  
♦ AQ97  
♣ J952

♠ J1097  
♥ K832  
♦ 1032  
♣ A8

W N E  
S

♠ KQ3  
♥ J975  
♦ K64  
♣ 643

♠ 6542  
♥ Q6  
♦ J85  
♣ KQ107

Board (1) Av: NS=-110

N-S	E-W	Contract	N-S	E-W	IMP
2	8	Passout			3
9	5	1NT E 1		90	1
1	3	2S W 2		110	0
4	6	1NT W 2		120	0
5	9	1NT E 2		120	0
3	1	1NT E 2		120	0
8	2	1NT E 2		120	0
6	4	1NT E 2		120	0

Board (2) Av: NS=-500

N-S	E-W	Contract	N-S	E-W	IMP
1	3	5D W 5		400	3
6	4	5D W 6		420	2
9	5	5D W 6		420	2
8	2	5D W 6		420	2
2	8	5D W 6		420	2
4	6	5D E 6		420	2
3	1	6D W 6		920	-9
5	9	6D W 6		920	-9

Board (3) Av: NS=+70

N-S	E-W	Contract	N-S	E-W	IMP
2	8	2NT N 3	150		2
5	9	2NT N 3	150		2
1	3	2NT N 3	150		2
3	1	2NT N 3	150		2
6	4	2NT N 2	120		2
9	5	3NT N-1		50	-3
8	2	2NT N-2		100	-5
4	6	2NT N-2		100	-5

**4**

♠ K10532  
♥ J8  
♦ J732  
♣ 109

♠ 8  
♥ 742  
♦ AKQ9  
♣ KQ765

W N E  
S

♠ AQ94  
♥ KQ1095  
♦ 865  
♣ 8

♠ J76  
♥ A63  
♦ 104  
♣ AJ432

**5**

♠ Q8  
♥ K765  
♦ KQ9752  
♣ 7

♠ 65  
♥ A832  
♦ 1084  
♣ Q843

W N E  
S

♠ AKJ102  
♥ Q4  
♦ A  
♣ J10965

♠ 9743  
♥ J109  
♦ J63  
♣ AK2

**6**

♠  
♥ Q109543  
♦ KQ  
♣ K8753

♠ AKQ8  
♥ AJ72  
♦ A10963  
♣

W N E  
S

♠ J953  
♥ K  
♦ J75  
♣ AQJ64

♠ 107642  
♥ 86  
♦ 842  
♣ 1092

Board (4) Av: NS=-630

N-S	E-W	Contract	N-S	E-W	IMP
5	9	2NT W 4		180	10
4	6	4H E 4		620	0
6	4	4H E 4		620	0
8	2	3NT E 4		630	0
1	3	3NT E 4		630	0
9	5	4H E 5		650	-1
2	8	4H E 5		650	-1
3	1	4H E 5		650	-1

Board (5) Av: NS=-100

N-S	E-W	Contract	N-S	E-W	IMP
8	2	5C E-1		50	4
2	8	4S E-1		50	4
1	3	3D N-1		100	0
6	4	4C E 4		130	-1
5	9	3S E 3		140	-1
3	1	2S E 3		140	-1
4	6	3C E 5		150	-2
9	5	1S E 4		170	-2

Board (6) Av: NS=+170

N-S	E-W	Contract	N-S	E-W	IMP
1	3	6S W-3	300		4
6	4	6S E-3	300		4
4	6	6S W-2	200		1
3	1	6S W-2	200		1
9	5	6S E-1	100		-2
2	8	6S E-1	100		-2
8	2	6S E-1	100		-2
5	9	2S E 5		200	-9

**7**

♠ J943  
♥ A8  
♦ 7654  
♣ 1054

♠ AQ5  
♥ 10654  
♦ AK3  
♣ AQ9

W N E  
S

♠ 108762  
♥ QJ72  
♦ 2  
♣ KJ3

♠ K  
♥ K93  
♦ QJ1098  
♣ 8762

**8**

♠ 432  
♥ 9  
♦ AKQ1062  
♣ 986

♠ AJ975  
♥ KQ2  
♦ 985  
♣ J4

W N E  
S

♠ K106  
♥ A8654  
♦ 3  
♣ AK102

♠ Q8  
♥ J1073  
♦ J74  
♣ Q753

**9**

♠ AQ4  
♥ AK875  
♦ KJ1093  
♣

♠ K1098  
♥ 1042  
♦ AQ  
♣ Q1095

W N E  
S

♠ J765  
♥ Q3  
♦ 86  
♣ AJ742

♠ 32  
♥ J96  
♦ 7542  
♣ K863

Board (7) Av: NS=-620

N-S	E-W	Contract	N-S	E-W	IMP
1	3	3NT W-1	100		12
8	2	4S E 4		620	0
5	9	4H E 4		620	0
9	5	4H E 4		620	0
3	1	4H E 4		620	0
2	8	4H E 4		620	0
6	4	3NT E 4		630	0
4	6	4H E 5		650	-1

Board (8) Av: NS=-300

N-S	E-W	Contract	N-S	E-W	IMP
2	8	4H E-1		50	8
3	1	4H E-1		50	8
6	4	3H E 4		170	4
9	5	4H E 4		420	-3
4	6	4H E 4		420	-3
1	3	4H E 4		420	-3
8	2	4H E 4		420	-3
5	9	5H E 5		450	-4

Board (9) Av: NS=+260

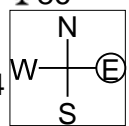
N-S	E-W	Contract	N-S	E-W	IMP
3	1	4H N 5	450		5
1	3	4H N 5	450		5
9	5	4H N 4	420		4
6	4	1H N 5	200		-2
5	9	1H N 5	200		-2
4	6	1H N 5	200		-2
8	2	2S E-1	100		-4
2	8	4H N-1		50	-7



10

♠65  
♥Q652  
♦Q7532  
♣86

♠AJ103  
♥A  
♦AK10984  
♣Q5



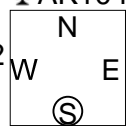
♠84  
♥J843  
♦J  
♣A109743

♠KQ972  
♥K1097  
♦6  
♣KJ2

11

♠AKQJ9  
♥  
♦KQJ7  
♣AK104

♠1083  
♥AQ982  
♦8642  
♣2



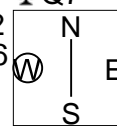
♠7  
♥1063  
♦A103  
♣QJ7653

♠6542  
♥KJ754  
♦95  
♣98

12

♠QJ9  
♥K732  
♦Q832  
♣Q7

♠AK52  
♥AQ96  
♦J5  
♣AK9



♠1043  
♥54  
♦AK4  
♣86532

♠876  
♥J108  
♦10976  
♣J104

Board (10) Av: NS=-370

N-S	E-W	Contract	N-S	E-W	IMP
5	9	3D W-1	100		10
1	3	3D W 4	130		6
8	2	2D W 4	130		6
4	6	3H S-2	200		5
6	4	2Hx S-2	500		-4
2	8	3NT W 3	600		-6
9	5	3NT W 4	630		-6
3	1	3Dx W 4	870		-11

Board (11) Av: NS=+360

N-S	E-W	Contract	N-S	E-W	IMP
1	3	4S N 6	480		3
6	4	4S N 5	450		3
4	6	4S N 5	450		3
2	8	4S N 5	450		3
5	9	4S N 4	420		2
8	2	4S N 4	420		2
9	5	6S N-1	50		-9
3	1	6S N-1	50		-9

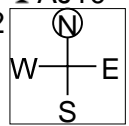
Board (12) Av: NS=-460

N-S	E-W	Contract	N-S	E-W	IMP
1	3	3NT W 4	430		1
4	6	3NT W 5	460		0
6	4	3NT W 5	460		0
9	5	3NT W 5	460		0
3	1	3NT W 5	460		0
8	2	3NT W 5	460		0
2	8	3NT E 5	460		0
5	9	3NT W 6	490		-1

13

♠K96  
♥A52  
♦A1082  
♣AJ10

♠A832  
♥J9  
♦J654  
♣743



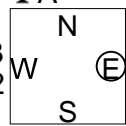
♠Q1075  
♥74  
♦K973  
♣KQ8

♠J4  
♥KQ10863  
♦Q  
♣9652

14

♠K873  
♥AK92  
♦K863  
♣A

♠J10  
♥J1063  
♦10972  
♣KJ2



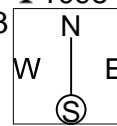
♠952  
♥Q5  
♦AJ4  
♣Q10843

♠AQ64  
♥874  
♦Q5  
♣9765

15

♠A862  
♥J9432  
♦5  
♣1098

♠K10543  
♥AQ10  
♦AJ6  
♣A2



♠K8765  
♥K10832  
♦KJ5  
♣KJ5

♠QJ97  
♥  
♦Q974  
♣Q7643

Board (13) Av: NS=+490

N-S	E-W	Contract	N-S	E-W	IMP
4	6	4H N 5	650		4
6	4	4H N 5	650		4
5	9	4H N 5	650		4
1	3	4H N 5	650		4
3	1	4H N 4	620		4
9	5	3H S 4	170		-8
2	8	2H S 4	170		-8
8	2	4H N-1	100		-11

Board (14) Av: NS=+270

N-S	E-W	Contract	N-S	E-W	IMP
6	4	4S S 5	450		5
1	3	4S N 5	450		5
5	9	4S S 4	420		4
8	2	4S S 4	420		4
3	1	4S S 4	420		4
2	8	4S N-1	50		-8
9	5	3NT N-1	50		-8
4	6	3NT N-4	200		-10

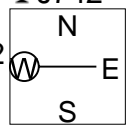
Board (15) Av: NS=-350

N-S	E-W	Contract	N-S	E-W	IMP
1	2	6H E-1	50		9
3	6	3NT E-1	50		9
6	3	3NT E 3	400		-2
2	1	4H E 4	420		-2
5	7	3NT E 4	430		-2
7	5	3NT E 4	430		-2
4	8	3NT E 5	460		-3
8	4	3NT E 5	460		-3

16

♠J106  
♥A9  
♦K743  
♣J742

♠K9  
♥Q86532  
♦82  
♣A86



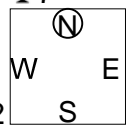
♠Q83  
♥J1074  
♦J1096  
♣93

♠A7542  
♥K  
♦AQ5  
♣KQ105

17

♠10864  
♥Q653  
♦KJ93  
♣7

♠J2  
♥A97  
♦7  
♣AQ109432



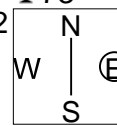
♠953  
♥KJ1084  
♦Q852  
♣8

♠AKQ7  
♥2  
♦A1064  
♣KJ65

18

♠AKQ  
♥A864  
♦7532  
♣73

♠107432  
♥J3  
♦AKJ10  
♣K8



♠J5  
♥K9752  
♦Q4  
♣J962

♠986  
♥Q10  
♦986  
♣AQ1054

Board (16) Av: NS=+440

N-S	E-W	Contract	N-S	E-W	IMP
6	3	4S S 5	450		0
5	7	4S S 5	450		0
7	5	4S S 5	450		0
3	6	4S S 5	450		0
2	1	4S S 4	420		-1
1	2	4S S 4	420		-1
8	4	4S S 4	420		-1
4	8	2S S 5	200		-6

Board (17) Av: NS=+200

N-S	E-W	Contract	N-S	E-W	IMP
6	3	4S S 4	420		6
4	8	4S S 4	420		6
5	7	4S S 4	420		6
2	1	3S S 3	140		-2
8	4	3S S 3	140		-2
3	6	3C W-2	100		-3
7	5	4S S-1	50		-6
1	2	4S S-2	100		-7

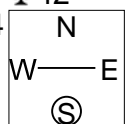
Board (18) Av: NS=-30

N-S	E-W	Contract	N-S	E-W	IMP
5	7	2S W-1	50		2
8	4	2S W-1	50		2
6	3	1NT E-1	50		2
4	8	1NT E-1	50		2
3	6	2C S-1	100		-2
7	5	2S W 2	110		-2
1	2	2S W 2	110		-2
2	1	2S W 2	110		-2

19

♠ Q9732  
♥ AQ  
♦ A982  
♣ 42

♠ K1084  
♥ J8762  
♦ QJ7  
♣ 7



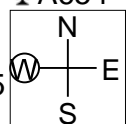
♠ A  
♥ K103  
♦ K104  
♣ KQ10865

♠ J65  
♥ 954  
♦ 653  
♣ AJ93

20

♠ 7  
♥ 9865  
♦ AK107  
♣ A654

♠ Q3  
♥ K103  
♦ QJ865  
♣ K108



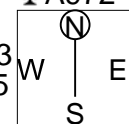
♠ J1062  
♥ QJ42  
♦ 932  
♣ 72

♠ AK9854  
♥ A7  
♦ 4  
♣ QJ93

21

♠ K32  
♥ A2  
♦ QJ94  
♣ A972

♠ J54  
♥ K8543  
♦ 10765  
♣ 6



♠ 87  
♥ Q10976  
♦ AK82  
♣ K5

♠ AQ1096  
♥ J  
♦ 3  
♣ QJ10843

Board (19) Av: NS=+90

N-S	E-W	Contract	N-S	E-W	IMP
5	7	4C	E-2	200	3
3	6	3C	E-2	200	3
8	4	3C	E-1	100	0
7	5	3C	E-1	100	0
4	8	3C	E-1	100	0
1	2	3C	E-1	100	0
6	3	2C	E 2	90	-5
2	1	4H	W 4	620	-12

Board (20) Av: NS=+610

N-S	E-W	Contract	N-S	E-W	IMP
4	8	4S	S 4	620	0
5	7	4S	S 4	620	0
7	5	4S	S 4	620	0
3	6	4S	S 4	620	0
2	1	3NT	N 3	600	0
1	2	3NT	N 3	600	0
8	4	3NT	N 3	600	0
6	3	3NT	N-2	200	-13

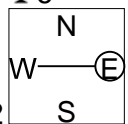
Board (21) Av: NS=+630

N-S	E-W	Contract	N-S	E-W	IMP
4	8	4S	S 5	650	1
8	4	4S	S 5	650	1
7	5	4S	S 5	650	1
2	1	4S	S 5	650	1
1	2	4S	S 5	650	1
3	6	4S	S 5	650	1
5	7	5Hx	E-3	500	-4
6	3	7C	N-2	200	-13

22

♠ K843  
♥ 73  
♦ 976543  
♣ 6

♠ 102  
♥ Q52  
♦ A108  
♣ AJ1052



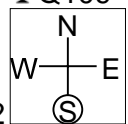
♠ AQJ97  
♥ AK84  
♦ K2  
♣ 97

♠ 65  
♥ J1096  
♦ QJ  
♣ KQ843

23

♠ A642  
♥ K106  
♦ A103  
♣ Q109

♠ QJ9  
♥ AJ  
♦ J92  
♣ KJ732



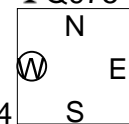
♠ 87  
♥ Q8743  
♦ Q84  
♣ A64

♠ K1053  
♥ 952  
♦ K765  
♣ 85

24

♠ A95  
♥ 98432  
♦ 7  
♣ Q975

♠ KJ64  
♥ AJ5  
♦ 10  
♣ K10864



♠ Q73  
♥ 10  
♦ Q98643  
♣ AJ3

♠ 1082  
♥ KQ76  
♦ AKJ52  
♣ 2

Board (22) Av: NS=-650

N-S	E-W	Contract	N-S	E-W	IMP
6	3	4H	E 4	620	1
3	6	3NT	W 4	630	1
5	7	3NT	W 4	630	1
8	4	3NT	W 5	660	0
7	5	3NT	W 5	660	0
2	1	3NT	W 5	660	0
1	2	3NT	E 5	660	0
4	8	3NT	W 6	690	-1

Board (23) Av: NS=+10

N-S	E-W	Contract	N-S	E-W	IMP
7	5	3C	W-3	300	7
3	6	1S	S 2	110	3
5	7	2H	E-1	100	3
4	8	1NT	E-1	100	3
8	4	2C	W 2	90	-3
1	2	1NT	W 1	90	-3
2	1	1NT	W 1	90	-3
6	3	1NT	W 2	120	-4

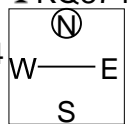
Board (24) Av: NS=+80

N-S	E-W	Contract	N-S	E-W	IMP
1	2	3H	S 3	140	2
2	1	3H	N 3	140	2
8	4	2H	N 2	110	1
5	7	2H	N 2	110	1
4	8	2H	N 2	110	1
3	6	3Dx	E-1	100	1
7	5	2D	E 2	90	-5
6	3	2C	W 3	110	-5

25

♠ AK3  
♥ 87  
♦ KJ4  
♣ KQ874

♠ 1085  
♥ 109654  
♦ A1082  
♣ 6



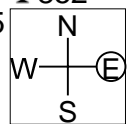
♠ J942  
♥ AKQ  
♦ Q753  
♣ 105

♠ Q76  
♥ J32  
♦ 96  
♣ AJ932

26

♠ 62  
♥ AJ763  
♦ QJ7  
♣ 852

♠ AKQ1095  
♥ K  
♦ K9863  
♣ 4



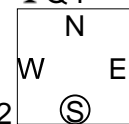
♠ J7  
♥ Q10542  
♦ A5  
♣ KQ76

♠ 843  
♥ 98  
♦ 1042  
♣ AJ1093

27

♠ Q1092  
♥ Q106  
♦ AJ97  
♣ Q4

♠ A6  
♥ 752  
♦ K102  
♣ 107652



♠ K53  
♥ J9843  
♦ 64  
♣ K83

♠ J874  
♥ AK  
♦ Q853  
♣ AJ9

Board (25) Av: NS=+20

N-S	E-W	Contract	N-S	E-W	IMP
3	6	3NT	N 3	400	9
1	2	3NT	N 3	400	9
8	4	3NT	N-1	50	-2
5	7	3NT	N-1	50	-2
7	5	3NT	N-1	50	-2
6	3	3NT	N-1	50	-2
2	1	3NT	N-2	100	-3
4	8	3NT	N-2	100	-3

Board (26) Av: NS=-640

N-S	E-W	Contract	N-S	E-W	IMP
1	2	4NT	E-2	200	13
3	6	3NT	E 3	600	1
6	3	4S	W 4	620	1
4	8	3NT	E 4	630	0
8	4	4S	W 5	650	0
5	7	4S	W 5	650	0
2	1	4S	W 6	680	-1
7	5	6S	W 6	1430	-13

Board (27) Av: NS=+420

N-S	E-W	Contract	N-S	E-W	IMP
8	4	4S	S 4	420	0
4	8	4S	S 4	420	0
7	5	4S	S 4	420	0
5	7	4S	S 4	420	0
2	1	4S	S 4	420	0
1	2	4S	S 4	420	0
6	3	4S	S 4	420	0
3	6	4S	S 4	420	0

**28**

♠ 105  
♥ AK1097  
♦ AJ95  
♣ KQ

♠ Q4  
♥ Q8652  
♦ 6  
♣ J10732

N  
W | E  
S

♠ 62  
♥ 3  
♦ 87432  
♣ A9864

♠ AKJ9873  
♥ J4  
♦ KQ10  
♣ 5

**29**

♠ J107543  
♥ K2  
♦ J73  
♣ J7

♠ Q62  
♥ J74  
♦ Q9842  
♣ A6

N  
W | E  
S

♠ A9  
♥ 9863  
♦ K5  
♣ KQ1053

♠ K8  
♥ AQ105  
♦ A106  
♣ 9842

**30**

♠ J98  
♥ A5  
♦ A8642  
♣ 874

♠ Q10653  
♥ Q93  
♦ J53  
♣ K10

N  
W | E  
S

♠ 742  
♥ K108742  
♦ K7  
♣ 96

♠ AK  
♥ J6  
♦ Q109  
♣ AQJ532

Board (28) Av: NS=+680

N-S	E-W	Contract	N-S	E-W	IMP
1	2	6NT N 7	1470		13
3	6	5S S 7	710		1
5	7	5S S 7	710		1
8	4	4S S 7	710		1
4	8	4S S 7	710		1
6	3	4S S 7	710		1
2	1	5Cx W-3	500		-5
7	5	6S S-1	100		-13

Board (29)

N-S	E-W	Contract	N-S	E-W	IMP
9	7	1NT E 2	120		
7	9	1NT E 1	90		

Board (30)

N-S	E-W	Contract	N-S	E-W	IMP
9	7	3NT N-2	100		
7	9	3NT N-2	100		

**31**

♠ QJ10  
♥ KQ3  
♦ 1094  
♣ AJ54

♠ A32  
♥ 10962  
♦ Q3  
♣ K1083

N  
W | E  
S

♠ K7  
♥ AJ87  
♦ KJ752  
♣ 72

♠ 98654  
♥ 54  
♦ A86  
♣ Q96

**32**

♠ K82  
♥ 73  
♦ QJ1096  
♣ K54

♠ 643  
♥ KQ92  
♦ K743  
♣ 32

N  
W | E  
S

♠ AJ5  
♥ AJ1065  
♦ 52  
♣ 1076

♠ Q1097  
♥ 84  
♦ A8  
♣ AQJ98

**33**

♠ 10  
♥ K107  
♦ J1052  
♣ K10864

♠ QJ875  
♥ 8652  
♦ 8  
♣ A32

N  
W | E  
S

♠ A642  
♥ Q4  
♦ AKQ7  
♣ Q75

♠ K93  
♥ AJ93  
♦ 9643  
♣ J9

Board (31)

N-S	E-W	Contract	N-S	E-W	IMP
9	7	1NT W 2	120		
7	9	3H E 4	170		

Board (32)

N-S	E-W	Contract	N-S	E-W	IMP
9	7	3H E 3	140		
7	9	3C S 3	110		

Board (33)

N-S	E-W	Contract	N-S	E-W	IMP
9	7	4S E 4	420		
7	9	4S E-1	50		

**34**

♠ K876  
♥ A93  
♦ 1076  
♣ A54

♠ Q532  
♥ 864  
♦ AKJ8  
♣ K3

N  
W | E  
S

♠ J9  
♥ J1075  
♦ Q952  
♣ Q62

♠ A104  
♥ KQ2  
♦ 43  
♣ J10987

**35**

♠ 532  
♥ 10  
♦ J52  
♣ QJ7652

♠ KQ4  
♥ 98  
♦ K10743  
♣ K93

N  
W | E  
S

♠ J986  
♥ QJ652  
♦ Q96  
♣ 4

♠ A107  
♥ AK743  
♦ A8  
♣ A108

**36**

♠ J64  
♥ 98  
♦ K876  
♣ 10652

♠ AK1073  
♥ Q7  
♦ J105  
♣ Q98

N  
W | E  
S

♠ 985  
♥ 1064  
♦ Q43  
♣ AKJ7

♠ Q2  
♥ AKJ532  
♦ A92  
♣ 43

Board (34)

N-S	E-W	Contract	N-S	E-W	IMP
9	7	1NT E-2	100		
7	9	2D W 2	90		

Board (35)

N-S	E-W	Contract	N-S	E-W	IMP
9	7	1H S 1	80		
7	9	1H S-1	50		

Board (36)

N-S	E-W	Contract	N-S	E-W	IMP
9	7	2H W 2	110		
7	9	3S W-1	100		

**37**

♠ 9743  
♥ K2  
♦ 1075  
♣ 9542

♠ A852  
♥ 63  
♦ KJ2  
♣ KQ83

	N	
W		E
	S	

♠ K  
♥ J1087  
♦ Q963  
♣ A1076

♠ QJ106  
♥ AQ954  
♦ A84  
♣ J

**38**

♠ QJ10632  
♥ 2  
♦ 8643  
♣ 87

♠ K4  
♥ QJ108  
♦ QJ10  
♣ A1094

	N	
W		E
	S	

♠ A75  
♥ K93  
♦ 952  
♣ KQ32

♠ 98  
♥ A7654  
♦ AK7  
♣ J65

**39**

♠ AKQ8  
♥ 74  
♦ Q872  
♣ AQJ

♠ 1095  
♥ K3  
♦ KJ104  
♣ K732

	N	
W		E
	S	

♠ 642  
♥ J985  
♦ 653  
♣ 965

♠ J73  
♥ AQ1062  
♦ A9  
♣ 1084

Board (37)

N-S	E-W	Contract	N-S	E-W	IMP
9	7	1NT E 3	150		
7	9	1NT E 3	150		

Board (38)

N-S	E-W	Contract	N-S	E-W	IMP
9	7	3NT W 4	630		
7	9	3NT W 3	600		

Board (39)

N-S	E-W	Contract	N-S	E-W	IMP
9	7	3NT N 4	630		
7	9	3NT N 4	630		

**40**

♠ Q654  
♥ J  
♦ A1032  
♣ AQ32

♠ 107  
♥ Q642  
♦ QJ65  
♣ J94

	N	
W		E
	S	

♠ AKJ2  
♥ AK  
♦ 987  
♣ K1075

♠ 983  
♥ 1098753  
♦ K4  
♣ 86

**41**

♠ 7432  
♥ J1074  
♦ K9  
♣ AK7

♠ AQ86  
♥ A3  
♦ A1084  
♣ 1095

	N	
W		E
	S	

♠ KJ5  
♥ Q95  
♦ QJ753  
♣ J4

♠ 109  
♥ K862  
♦ 62  
♣ Q8632

**42**

♠ A6  
♥ Q2  
♦ AQJ85  
♣ A1073

♠ Q752  
♥ AK6543  
♦ 74  
♣ K

	N	
W		E
	S	

♠ K1043  
♥ J107  
♦ K106  
♣ 952

♠ J98  
♥ 98  
♦ 932  
♣ QJ864

Board (40)

N-S	E-W	Contract	N-S	E-W	IMP
9	7	1NT E 4	180		
7	9	1NT E 3	150		

Board (41)

N-S	E-W	Contract	N-S	E-W	IMP
9	7	3S W 3	140		
7	9	3NT W-2	200		

Board (42)

N-S	E-W	Contract	N-S	E-W	IMP
9	7	3H W 3	140		
7	9	4H W 4	620		