

木村六郎杯 Session 1 Flight B 2009年2月21日(土)

1

♠7
♥J1095
♦AQ96
♣10532

♠AKQ10942
♥Q6
♦J5
♣AK

♠J8653
♥K3
♦108
♣QJ94

W E
S

♠A8742
♥A8742
♦K7432
♣876

2

♠8
♥KJ3
♦K10873
♣J1032

♠A7432
♥109
♦J4
♣AK74

♠1096
♥AQ7652
♦AQ95
♣

W N E
S

♠KQJ5
♥84
♦62
♣Q9865

3

♠852
♥AKJ52
♦94
♣864

♠KJ43
♥763
♦A32
♣AQ9

♠AQ1097
♥Q84
♦J6
♣J107

W N E
S

♠6
♥109
♦KQ10875
♣K532

Board (1) Av: NS=-280

N-S	E-W	Contract	N-S	E-W	IMP
6	5	5S	W-1	50	8
7	8	5S	E-1	50	8
9	1	5S	E-1	50	8
3	4	4S	E 4	420	-4
1	9	4S	E 4	420	-4
8	7	4S	E 5	450	-5
4	3	4S	E 6	480	-5
5	6	4S	E 6	480	-5

Board (2) Av: NS=+110

N-S	E-W	Contract	N-S	E-W	IMP
3	4	6Sx	E-4	800	12
6	5	4S	E-3	150	1
7	8	4S	E-3	150	1
4	3	5S	E-2	100	0
8	7	4S	E-2	100	0
9	1	4S	E-2	100	0
1	9	5H	W-1	50	-2
5	6	4S	E-1	50	-2

Board (3) Av: NS=+180

N-S	E-W	Contract	N-S	E-W	IMP
4	3	4S	W-2	200	1
6	5	4S	W-2	200	1
3	4	4S	W-2	200	1
7	8	4S	W-2	200	1
9	1	4S	W-2	200	1
1	9	4S	E-2	200	1
5	6	3S	W-1	100	-2
8	7	4D	S-3	150	-8

4

♠9
♥KJ1095432
♦1087
♣9

♠A762
♥
♦QJ65
♣KJ1063

♠J10843
♥76
♦A4
♣A752

W N E
S

♠KQ5
♥AQ8
♦K932
♣Q84

5

♠1097643
♥6
♦98
♣9843

♠AK9742
♥AK9742
♦1043
♣QJ52

♠K852
♥QJ53
♦752
♣A7

W N E
S

♠AQJ
♥108
♦AKQJ6
♣K106

6

♠5
♥A9762
♦AQJ4
♣J82

♠AQ984
♥J105
♦K93
♣A3

♠J
♥Q843
♦10875
♣KQ109

W N E
S

♠K107632
♥K
♦62
♣7654

Board (4) Av: NS=-630

N-S	E-W	Contract	N-S	E-W	IMP
6	5	4H	N 4	620	15
7	8	4Hx	S-1	200	10
3	4	5Hx	N-2	500	4
4	3	4S	W 5	650	-1
1	9	4S	W 5	650	-1
8	7	4Sx	W 4	790	-4
5	6	4Sx	W 5	990	-8
9	1	4Sx	W 5	990	-8

Board (5) Av: NS=-300

N-S	E-W	Contract	N-S	E-W	IMP
5	6	5Hx	E-1	100	9
9	1	4S	S-1	100	5
6	5	3H	E 4	170	4
3	4	4Sx	N-1	200	3
8	7	4H	E 4	420	-3
4	3	4H	E 4	420	-3
1	9	5Sx	N-2	500	-5
7	8	5Sx	N-3	800	-11

Board (6) Av: NS=-80

N-S	E-W	Contract	N-S	E-W	IMP
8	7	3D	E-2	200	7
7	8	2D	E-2	200	7
5	6	2H	N-2	100	-1
9	1	2H	N-2	100	-1
3	4	2H	N-2	100	-1
4	3	2H	N-3	150	-2
1	9	2H	N-4	200	-3
6	5	2C	S-4	200	-3

7

♠A53
♥AKJ87
♦Q8
♣AKJ

♠Q10762
♥63
♦A653
♣Q10

♠K8
♥104
♦K1094
♣97532

W N E
S

♠J94
♥Q952
♦J72
♣864

8

♠QJ9872
♥K1075
♦6
♣A10

♠6
♥864
♦A984
♣Q8643

♠A3
♥AQJ9
♦KJ52
♣KJ5

W N E
S

♠K1054
♥32
♦Q1073
♣972

9

♠K
♥KJ1084
♦J75
♣7642

♠Q10843
♥952
♦862
♣A9

♠A9765
♥73
♦KQ4
♣KQ10

W N E
S

♠J2
♥AQ6
♦A1093
♣J853

Board (7) Av: NS=+360

N-S	E-W	Contract	N-S	E-W	IMP
1	9	4H	S 4	620	6
5	6	4H	N 4	620	6
6	5	4H	N 4	620	6
8	7	4H	N 4	620	6
3	4	4H	N 4	620	6
4	3	4H	S-1	100	-10
7	8	4H	N-2	200	-11
9	1	3C	N-3	300	-12

Board (8) Av: NS=-30

N-S	E-W	Contract	N-S	E-W	IMP
3	4	3NT	W-5	250	7
8	7	3NT	W-2	100	4
5	6	5D	W-1	50	2
4	3	5D	W-1	50	2
7	8	4Sx	N-1	100	-2
1	9	4D	W 4	130	-3
9	1	4D	W 4	130	-3
6	5	5Sx	N-2	300	-7

Board (9) Av: NS=-250

N-S	E-W	Contract	N-S	E-W	IMP
5	6	3S	W 3	140	3
4	3	3S	W 4	170	2
3	4	3S	W 4	170	2
9	1	3S	W 4	170	2
7	8	2S	W 4	170	2
1	9	2S	W 4	170	2
8	7	4S	W 4	620	-9
6	5	4S	W 4	620	-9

10

♠AJ7
♥AK2
♦QJ8
♣AK109

♠Q65
♥Q10843
♦642
♣32

♠K104
♥J975
♦A5
♣7654

♠9832
♥6
♦K10973
♣QJ8

N
W—E
S

11

♠QJ8762
♥K2
♦64
♣J85

♠5
♥A8764
♦J875
♣974

♠A1043
♥J53
♦KQ93
♣K6

♠K9
♥Q109
♦A102
♣AQ1032

N
W—E
S

12

♠AQ7
♥K984
♦K10853
♣7

♠108543
♥Q2
♦94
♣KJ108

♠96
♥A65
♦AJ6
♣A6532

♠KJ2
♥J1073
♦Q72
♣Q94

N
W—E
S

Board (10) Av: NS=+660

N-S	E-W	Contract	N-S	E-W	IMP
3	4	3NT N 6	690		1
6	5	3NT N 5	660		0
8	7	3NT N 5	660		0
7	8	3NT N 5	660		0
5	6	3NT N 5	660		0
1	9	3NT N 5	660		0
9	1	3NT N 5	660		0
4	3	3NT N 5	660		0

Board (11) Av: NS=+130

N-S	E-W	Contract	N-S	E-W	IMP
4	3	4S S 4	420		7
7	8	4S S 4	420		7
3	4	3S S 4	170		1
9	1	3S S 3	140		0
6	5	2S S 3	140		0
8	7	4S S-1	50		-5
1	9	4S S-1	50		-5
5	6	3S S-1	50		-5

Board (12) Av: NS=+30

N-S	E-W	Contract	N-S	E-W	IMP
6	5	3H N 3	140		3
5	6	3H N 3	140		3
7	8	3H N 3	140		3
8	7	3C E-1	50		1
4	3	3C E-1	50		1
1	9	4H N-1	100		-4
9	1	3H S-1	100		-4
3	4	3C E 3	110		-4

13

♠K43
♥J87
♦J32
♣Q872

♠J75
♥K43
♦754
♣KJ65

♠AQ10
♥Q10952
♦A9
♣A103

♠9862
♥A6
♦KQ1086
♣94

N
W—E
S

14

♠976542
♥9
♦8
♣AKQJ9

♠J83
♥Q84
♦54
♣106543

♠AQ
♥AJ1065
♦Q10732
♣2

♠K10
♥K732
♦AKJ96
♣87

N
W—E
S

15

♠Q
♥QJ984
♦A
♣Q108742

♠A1098
♥K75
♦J1093
♣A6

♠KJ754
♥A10
♦KQ5
♣KJ9

♠632
♥632
♦87642
♣53

N
W—E
S

Board (13) Av: NS=-220

N-S	E-W	Contract	N-S	E-W	IMP
9	1	3NT E-2	200		9
4	3	3NT E-1	100		8
5	6	3NT E-1	100		8
1	9	1NT E 1	90		4
8	7	3H E 4	170		2
3	4	4H E 4	620		-9
6	5	4H E 4	620		-9
7	8	3NT E 5	660		-10

Board (14) Av: NS=+440

N-S	E-W	Contract	N-S	E-W	IMP
1	9	3NT S 5	460		1
7	8	4S S 5	450		0
6	5	4S N 5	450		0
4	3	4S N 5	450		0
9	1	4S N 4	420		-1
8	7	4S N 4	420		-1
3	4	4S N 4	420		-1
5	6	2S N 5	200		-6

Board (15) Av: NS=-480

N-S	E-W	Contract	N-S	E-W	IMP
1	8	5S W 6	480		0
3	9	5S E 6	480		0
2	5	5S E 6	480		0
8	1	5S E 6	480		0
4	7	4S E 6	480		0
9	3	4S E 6	480		0
5	2	4S E 6	480		0
7	4	3NT E 6	490		0

16

♠J987
♥AQ84
♦83
♣AK10

♠10532
♥K5
♦AKJ1094
♣6

♠AKQ6
♥1097
♦5
♣QJ985

♠4
♥J632
♦Q762
♣7432

N
W—E
S

17

♠AKJ72
♥J76
♦J853
♣3

♠Q8543
♥10543
♦Q64
♣7

♠10
♥KQ9
♦A9
♣KJ98642

♠96
♥A82
♦K1072
♣AQ105

N
W—E
S

18

♠QJ1065
♥J9763
♦
♣A73

♠K82
♥A5
♦Q109832
♣109

♠93
♥Q84
♦A754
♣J652

♠A74
♥K102
♦KJ6
♣KQ84

N
W—E
S

Board (16) Av: NS=-150

N-S	E-W	Contract	N-S	E-W	IMP
2	5	4S E-2	200		8
7	4	4S E-2	200		8
3	9	3NT W-2	200		8
4	7	4S E-1	100		6
5	2	3D W 4	130		1
1	8	4S W 4	620		-10
8	1	4S W 4	620		-10
9	3	4S W 4	620		-10

Board (17) Av: NS=+170

N-S	E-W	Contract	N-S	E-W	IMP
8	1	4Cx E-3	500		8
3	9	3NT S 3	400		6
2	5	4H E-5	250		2
5	2	2S N 2	110		-2
9	3	3C E-2	100		-2
4	7	2C E-2	100		-2
1	8	2C E-1	50		-3
7	4	2C E 2	90		-6

Board (18) Av: NS=+480

N-S	E-W	Contract	N-S	E-W	IMP
3	9	4S S 5	650		5
8	1	4S S 5	650		5
1	8	4S S 5	650		5
9	3	4H S 5	650		5
4	7	4H S 4	620		4
2	5	4H S 4	620		4
7	4	3NT S-3	300		-13
5	2	3NT S-3	300		-13

19

♠ 108763
♥ K2
♦ 9432
♣ 42

♠ A5
♥ 1075
♦ 876
♣ KQ863

N
W — E
S

♠ Q
♥ A98643
♦ AKJ5
♣ 109

♠ KJ942
♥ QJ
♦ Q10
♣ AJ75

20

♠ A104
♥ 983
♦ 82
♣ KQJ98

♠ 6
♥ Q642
♦ AKQ
♣ A10432

N
W — E
S

♠ J87532
♥ AJ5
♦ 1043
♣ 5

♠ KQ9
♥ K107
♦ J9765
♣ 76

21

♠ J72
♥ K3
♦ 1075
♣ AK432

♠ 83
♥ 1084
♦ AJ964
♣ 1095

N
W — E
S

♠ AK1094
♥ J972
♦ K83
♣ 8

♠ Q65
♥ AQ65
♦ Q2
♣ QJ76

Board (19) Av: NS=-230

N-S	E-W	Contract	N-S	E-W	IMP
7	4	3S	S-1	50	5
9	3	4S	S-2	100	4
4	7	4S	S-2	100	4
8	1	4S	S-2	100	4
5	2	4S	S-3	150	2
1	8	4Sx	S-2	300	-2
3	9	4H	E 5	650	-9
2	5	4H	E 5	650	-9

Board (20) Av: NS=-80

N-S	E-W	Contract	N-S	E-W	IMP
4	7	3S	E-1	100	5
5	2	2NT	W-1	100	5
7	4	2S	E 2	110	-1
9	3	2S	E 2	110	-1
3	9	2S	E 2	110	-1
1	8	2S	E 2	110	-1
8	1	2S	E 2	110	-1
2	5	2S	E 2	110	-1

Board (21) Av: NS=+10

N-S	E-W	Contract	N-S	E-W	IMP
8	1	3NT	S 3	600	11
3	9	2H	E-2	100	3
9	3	3D	W-1	50	1
7	4	2S	E-1	50	1
1	8	2S	E-1	50	1
5	2	3C	N-1	100	-3
2	5	3C	N-1	100	-3
4	7	2S	E 3	140	-4

22

♠ 32
♥ 63
♦ AK764
♣ K875

♠ QJ9876
♥ A82
♦ Q
♣ QJ10

N
W — E
S

♠ A54
♥ KQ1074
♦ J102
♣ A6

♠ K10
♥ J95
♦ 9853
♣ 9432

23

♠ A93
♥ AQ95
♦ A102
♣ Q73

♠ KQ754
♥ 83
♦ J53
♣ AJ5

N
W — E
S

♠ J1086
♥ J1072
♦ KQ96
♣ 8

♠ 2
♥ K64
♦ 874
♣ K109642

24

♠ K1076
♥ QJ6
♦ A
♣ KQ982

♠ QJ
♥ K109853
♦ 53
♣ AJ7

N
W — E
S

♠ 2
♥ A72
♦ QJ1042
♣ 6543

♠ A98543
♥ 4
♦ K9876
♣ 10

Board (22) Av: NS=-650

N-S	E-W	Contract	N-S	E-W	IMP
7	4	5H	E 5	650	0
9	3	4S	W 5	650	0
4	7	4S	W 5	650	0
1	8	4S	W 5	650	0
2	5	4S	W 5	650	0
8	1	4S	W 5	650	0
5	2	4S	W 5	650	0
3	9	4H	E 5	650	0

Board (23) Av: NS=-30

N-S	E-W	Contract	N-S	E-W	IMP
3	9	3C	N 3	110	4
9	3	3C	N 3	110	4
8	1	3C	N 3	110	4
4	7	3S	W-1	100	4
1	8	4C	S-1	100	-2
2	5	2S	W 4	170	-4
5	2	5C	S-2	200	-5
7	4	3NT	N-3	300	-7

Board (24) Av: NS=+450

N-S	E-W	Contract	N-S	E-W	IMP
3	9	4S	S 6	480	1
7	4	4S	S 5	450	0
9	3	4S	S 5	450	0
4	7	4S	S 5	450	0
1	8	4S	S 5	450	0
2	5	4S	S 5	450	0
5	2	4S	N 5	450	0
8	1	4S	N 5	450	0

25

♠ A84
♥ 972
♦ QJ9
♣ 8654

♠ Q92
♥ J864
♦ 865
♣ AQ10

N
W — E
S

♠ KJ6
♥ A1053
♦ A107
♣ 932

♠ 10753
♥ KQ
♦ K432
♣ KJ7

26

♠ J1095
♥ AJ1096
♦ 95
♣ 105

♠ A6
♥ Q53
♦ KJ43
♣ AKJ4

N
W — E
S

♠ KQ87432
♥ 862
♦ Q62
♣ Q62

♠ K8742
♥ AQ107
♦ 9873
♣ 9873

27

♠ J2
♥ A4
♦ AQ87
♣ J10986

♠ Q65
♥ KJ9763
♦ 52
♣ K7

N
W — E
S

♠ A874
♥ Q108
♦ KJ
♣ Q542

♠ K1093
♥ 52
♦ 109643
♣ A3

Board (25) Av: NS=-140

N-S	E-W	Contract	N-S	E-W	IMP
5	2	3H	W-1	100	6
3	9	2H	E 2	110	1
1	8	1NT	W 2	120	1
8	1	2H	W 3	140	0
2	5	2H	W 3	140	0
7	4	2S	N-3	150	0
4	7	2S	N-3	150	0
9	3	2S	N-3	150	0

Board (26) Av: NS=-650

N-S	E-W	Contract	N-S	E-W	IMP
9	3	3Hx	N 3	730	16
1	8	4S	E 4	620	1
8	1	4S	W 5	650	0
2	5	4S	W 5	650	0
7	4	4S	E 5	650	0
4	7	4S	E 5	650	0
3	9	4S	E 5	650	0
5	2	3NTxW	3	750	-3

Board (27) Av: NS=-110

N-S	E-W	Contract	N-S	E-W	IMP
7	4	3H	W-1	50	4
1	8	3H	W-1	50	4
3	9	3H	W 3	140	-1
4	7	3H	W 3	140	-1
2	5	3H	W 3	140	-1
8	1	2H	W 3	140	-1
5	2	2H	W 3	140	-1
9	3	3S	S-3	150	-1

28

♠ K87632
♥ KJ106
♦ 96
♣ 4

♠ AJ104
♥ AQ42
♦ QJ
♣ J105

N
W | E
S

♠ Q5
♥ 73
♦ AK873
♣ KQ73

♠ 9
♥ 985
♦ 10542
♣ A9862

29

♠ QJ6
♥ 1084
♦ J2
♣ AQ752

♠ A1032
♥ 3
♦ A109765
♣ K8

N
W | E
S

♠ 95
♥ AKQJ76
♦ K84
♣ J4

♠ K874
♥ 952
♦ Q3
♣ 10963

30

♠ KQ8
♥ A1097
♦ 8764
♣ A10

♠ 972
♥ 2
♦ K3
♣ KQJ9652

N
W | E
S

♠ J64
♥ Q53
♦ AQJ1052
♣ 7

♠ A1053
♥ KJ864
♦ 9
♣ 843

Board (28) Av: NS=-430

N-S	E-W	Contract	N-S	E-W	IMP
7	4	3NT W 3		400	1
3	9	3NT W 4		430	0
9	3	3NT W 4		430	0
1	8	3NT W 4		430	0
8	1	3NT W 4		430	0
2	5	3NT W 4		430	0
5	2	3NT W 4		430	0
4	7	3NT W 5		460	-1

Board (29)

N-S	E-W	Contract	N-S	E-W	IMP
6	2	4H E 5		650	
2	6	4H E 6		680	

Board (30)

N-S	E-W	Contract	N-S	E-W	IMP
6	2	4H S 5	450		
2	6	3C W 3		110	

31

♠ KQJ5
♥ KJ97
♦ 86
♣ A108

♠ A984
♥ 4
♦ Q92
♣ KJ943

N
W | E
S

♠ 103
♥ Q652
♦ AJ54
♣ Q62

♠ 762
♥ A1083
♦ K1073
♣ 75

32

♠ Q964
♥ J987652
♦ J
♣ J

♠ 7
♥ Q43
♦ 65
♣ K1097532

N
W | E
S

♠ AJ10532
♥ K
♦ AK842
♣ 6

♠ K8
♥ A10
♦ Q10973
♣ AQ84

33

♠ K53
♥ AK63
♦ 1072
♣ 653

♠ Q10
♥ Q872
♦ AJ84
♣ J87

N
W | E
S

♠ J8742
♥ J94
♦ 95
♣ 1094

♠ A96
♥ 105
♦ KQ63
♣ AKQ2

Board (31)

N-S	E-W	Contract	N-S	E-W	IMP
6	2	3D E-2	100		
2	6	2H S 2		110	

Board (32)

N-S	E-W	Contract	N-S	E-W	IMP
6	2	3H N-2		100	
2	6	4Sx E-3	800		

Board (33)

N-S	E-W	Contract	N-S	E-W	IMP
6	2	3NT S 5	460		
2	6	3NT S 3		400	

34

♠ 865
♥ 643
♦ AQ105
♣ 942

♠ QJ
♥ J9
♦ K9864
♣ Q876

N
W | E
S

♠ 742
♥ AQ82
♦ J32
♣ AJ5

♠ AK1093
♥ K1075
♦ 7
♣ K103

35

♠ 765
♥ A86
♦ 963
♣ J964

♠ AK8
♥ 7532
♦ K84
♣ A73

N
W | E
S

♠ QJ4
♥ K1094
♦ Q1052
♣ K2

♠ 10932
♥ QJ
♦ AJ7
♣ Q1085

36

♠ K83
♥ KJ65
♦ Q103
♣ Q94

♠ AQJ10754
♥ A9
♦ A4
♣ 72

N
W | E
S

♠ Q87432
♥ J986
♦ AKJ

♠ 962
♥ 10
♦ K752
♣ 108653

Board (34)

N-S	E-W	Contract	N-S	E-W	IMP
6	2	3S S-1	100		
2	6	1NT E-3	150		

Board (35)

N-S	E-W	Contract	N-S	E-W	IMP
6	2	3NT E-2	200		
2	6	3NT E-2	200		

Board (36)

N-S	E-W	Contract	N-S	E-W	IMP
6	2	3NT E 3		600	
2	6	4S W 4		620	

37

♠ A8
♥ 74
♦ J975
♣ Q7542

♠ 10752
♥ KQ10862
♦ K82
♣

♠ QJ4
♥ A95
♦ 1063
♣ KJ103

♠ K963
♥ J3
♦ AQ4
♣ A986

W N E S

Board (37)

N-S	E-W	Contract	N-S	E-W	IMP
6	2	3H W 3	140		
2	6	3H W 4	170		

38

♠ 1054
♥ K108
♦ A32
♣ 10853

♠ AKJ93
♥ J97
♦ K1074
♣ 7

♠ Q2
♥ Q42
♦ 965
♣ AKJ94

♠ 876
♥ A653
♦ QJ8
♣ Q62

W N E S

Board (38)

N-S	E-W	Contract	N-S	E-W	IMP
6	2	3NT E-2	200		
2	6	3NT E-1	100		

39

♠ 876
♥ KQ5
♦ A8
♣ K9852

♠ 9
♥ J10973
♦ J95
♣ Q1074

♠ AK105
♥ A8
♦ KQ7632
♣ 6

♠ QJ432
♥ 642
♦ 104
♣ AJ3

W N E S

Board (39)

N-S	E-W	Contract	N-S	E-W	IMP
6	2	3H W-1	100		
2	6	1NT N-3	300		

40

♠ 10653
♥ KQJ
♦ 983
♣ J95

♠ QJ9
♥ 964
♦ K10
♣ KQ1042

♠ 2
♥ A752
♦ AQJ74
♣ A86

♠ AK874
♥ 1083
♦ 652
♣ 73

W N E S

Board (40)

N-S	E-W	Contract	N-S	E-W	IMP
6	2	2S S-2	100		
2	6	3NT W 5	460		

41

♠ 5
♥ AK1097
♦ KQ86
♣ KJ8

♠ AK7643
♥ J63
♦ A4
♣ 53

♠ 109
♥ Q852
♦ 10953
♣ Q62

♠ QJ82
♥ 4
♦ J72
♣ A10974

W N E S

Board (41)

N-S	E-W	Contract	N-S	E-W	IMP
6	2	2D N 3	110		
2	6	2D N 3	110		

42

♠ Q6
♥ 108432
♦ 9875
♣ 75

♠ J85
♥ QJ65
♦ 102
♣ AK103

♠ A10432
♥ K9
♦ AQJ3
♣ 84

♠ K97
♥ A7
♦ K64
♣ QJ962

W N E S

Board (42)

N-S	E-W	Contract	N-S	E-W	IMP
6	2	3NT W 3	600		
2	6	3S E 4	170		

木村六郎杯 Session 2 Flight B 2009年2月21日(土)

1

♠ KQJ43
♥ 10764
♦ 2
♣ A93

♠ 82
♥ KQJ852
♦ K85
♣ 104

♠ A5
♥ A9
♦ Q1063
♣ QJ875

W N E S

♠ 10976
♥ 3
♦ AJ974
♣ K62

2

♠ AKJ
♥ A5
♦ QJ109653
♣ 4

♠ Q10974
♥ KJ109
♦ A
♣ K97

♠ 863
♥ Q7642
♦ 74
♣ J103

W N E S

♠ 52
♥ 83
♦ K82
♣ AQ8652

3

♠ QJ8
♥ A92
♦ A10764
♣ 82

♠ 632
♥ 76
♦ 85
♣ AQJ1073

♠ K105
♥ 10543
♦ KQ932
♣ 4

W N E S

♠ A974
♥ KQJ8
♦ J
♣ K965

Board (1) Av: NS=+300

N-S	E-W	Contract	N-S	E-W	IMP
7	1	4Sx	N 4	590	7
9	6	4S	N 4	420	3
2	4	4S	N 4	420	3
1	7	4S	N 4	420	3
5	8	3S	N 5	200	-3
4	2	3S	N 4	170	-4
6	9	3S	N 4	170	-4
8	5	3S	N 4	170	-4

Board (2) Av: NS=+540

N-S	E-W	Contract	N-S	E-W	IMP
8	5	5Dx	N 6	950	9
5	8	5D	N 6	620	2
6	9	5D	N 6	620	2
4	2	5D	N 6	620	2
7	1	5D	N 6	620	2
2	4	5D	N 5	600	2
1	7	3D	N 6	170	-9
9	6	4D	N 5	150	-9

Board (3) Av: NS=+100

N-S	E-W	Contract	N-S	E-W	IMP
2	4	3NT	S 3	400	7
4	2	3NT	S 3	400	7
5	8	3NT	S 3	400	7
9	6	4S	N-1	50	-4
7	1	3NT	S-1	50	-4
6	9	3NT	N-1	50	-4
8	5	3NT	N-1	50	-4
1	7	3NT	N-4	200	-7

4

♠ 95
♥ J754
♦ 862
♣ AK95

♠ AJ108732
♥ 3
♦ 1093
♣ 108

♠ 64
♥ AK
♦ AQJ4
♣ QJ732

W N E S

♠ KQ
♥ Q109862
♦ K75
♣ 64

5

♠ KQ106532
♥ KJ1098
♦
♣ 6

♠ 4
♥ AQ43
♦ K98
♣ AQJ72

♠ 7
♥ 765
♦ AQ1065
♣ K943

W N E S

♠ AJ98
♥ 2
♦ J7432
♣ 1085

6

♠ AKJ1093
♥ KJ8
♦ QJ73
♣

♠ Q6
♥ 10952
♦ AK
♣ AQ962

♠ 7542
♥ Q43
♦ 52
♣ J1084

W N E S

♠ 8
♥ A76
♦ 109864
♣ K753

Board (4) Av: NS=-500

N-S	E-W	Contract	N-S	E-W	IMP
1	7	3NT	E-4	400	14
4	2	4S	E-1	100	12
8	5	4S	W 4	620	-3
9	6	4S	W 4	620	-3
5	8	4S	W 4	620	-3
2	4	4S	W 4	620	-3
7	1	4S	E 4	620	-3
6	9	4S	E 4	620	-3

Board (5) Av: NS=+520

N-S	E-W	Contract	N-S	E-W	IMP
8	5	5Sx	N 5	850	8
9	6	5Sx	N 5	850	8
2	4	5Sx	N 5	850	8
5	8	5S	N 5	650	4
7	1	4S	N 4	620	3
1	7	5D	E-2	100	-9
4	2	5C	W-1	50	-10
6	9	6Sx	N-1	200	-12

Board (6) Av: NS=+290

N-S	E-W	Contract	N-S	E-W	IMP
9	6	5Dx	S 5	550	6
5	8	1NTxW-2	500	5	5
2	4	4S	N 5	450	4
4	2	3S	N 5	200	-3
7	1	3C	W-2	200	-3
1	7	2S	N 5	200	-3
6	9	2S	N 5	200	-3
8	5	3S	N 4	170	-3

7

♠ 3
♥ AQ754
♦ 10986
♣ 972

♠ 865
♥ K9
♦ AK52
♣ Q865

♠ K109
♥ 8632
♦ 74
♣ AKJ10

W N E S

♠ AQJ742
♥ J10
♦ QJ3
♣ 43

8

♠ K98653
♥ AQ32
♦
♣ J73

♠ QJ104
♥ 6
♦ AK9652
♣ 108

♠ J10874
♥ Q873
♣ Q642

W N E S

♠ A72
♥ K95
♦ J104
♣ AK95

9

♠ AJ106
♥ A9
♦ A4
♣ 107632

♠ 752
♥ J10872
♦ 93
♣ KQJ

♠ Q9
♥ 643
♦ QJ108762
♣ A

W N E S

♠ K843
♥ KQ5
♦ K5
♣ 9854

Board (7) Av: NS=+110

N-S	E-W	Contract	N-S	E-W	IMP
4	2	2S	S 2	110	0
8	5	2S	S 2	110	0
9	6	2S	S 2	110	0
7	1	2S	S 2	110	0
1	7	2S	S 2	110	0
2	4	2S	S 2	110	0
6	9	3NT	E-1	100	0
5	8	2S	S-1	100	-5

Board (8) Av: NS=+250

N-S	E-W	Contract	N-S	E-W	IMP
8	5	4S	N 5	450	5
4	2	4S	N 4	420	5
1	7	4S	N 4	420	5
9	6	5Dx	W-2	300	2
6	9	5Dx	W-2	300	2
2	4	5Dx	W-1	100	-4
5	8	5S	N-1	50	-7
7	1	4S	N-1	50	-7

Board (9) Av: NS=+210

N-S	E-W	Contract	N-S	E-W	IMP
7	1	4S	S 4	420	5
1	7	4S	S 4	420	5
6	9	4S	N 4	420	5
5	8	3S	S 4	170	-1
8	5	3S	N 3	140	-2
2	4	2S	S 3	140	-2
9	6	4S	S-1	50	-6
4	2	4S	S-1	50	-6

10

♠ 73
♥ KJ95
♦ A1053
♣ 865

♠ AKJ1065
♥ 7642
♦ 2
♣ Q2

N
W — | — E
S

♠ 9842
♥ A10
♦ J7
♣ AJ1093

♠ Q
♥ Q83
♦ KQ9864
♣ K74

11

♠ 52
♥ K9632
♦ K92
♣ 1075

♠ 7
♥ Q1084
♦ 10873
♣ A982

N
W — | — E
S

♠ AJ98
♥ AJ7
♦ AQ64
♣ K3

♠ KQ10643
♥ 5
♦ J5
♣ QJ64

12

♠ QJ8
♥ 9532
♦ AK106
♣ 95

♠ AK10974
♥ J6
♦ 742
♣ 82

N
W — | — E
S

♠ 62
♥ K
♦ QJ3
♣ AQJ7643

♠ 53
♥ AQ10874
♦ 985
♣ K10

Board (10) Av: NS=-490

N-S	E-W	Contract	N-S	E-W	IMP
4	2	3S	W 5	200	7
5	8	3S	W 5	200	7
6	9	3S	W 5	200	7
1	7	4S	W 4	620	-4
7	1	4S	W 4	620	-4
9	6	4S	W 5	650	-4
2	4	4S	W 5	650	-4
8	5	4S	W 5	650	-4

Board (11) Av: NS=-120

N-S	E-W	Contract	N-S	E-W	IMP
8	5	3NT	W-3	150	7
2	4	3NT	E-2	100	6
4	2	3NT	E-1	50	5
5	8	3NT	E-1	50	5
1	7	2NT	E 2	120	0
9	6	3NT	E 3	400	-7
6	9	3NT	E 3	400	-7
7	1	3NT	E 3	400	-7

Board (12) Av: NS=+10

N-S	E-W	Contract	N-S	E-W	IMP
7	1	4S	W-3	150	4
5	8	3S	W-1	50	1
8	5	3S	W-1	50	1
6	9	3S	W-1	50	1
1	7	3S	W-1	50	1
2	4	2S	W-1	50	1
9	6	4H	S-2	200	-5
4	2	4H	S-2	200	-5

13

♠ 1032
♥ 7652
♦ 6
♣ AK542

♠ K964
♥ J104
♦ J102
♣ 863

N
W — | — E
S

♠ QJ87
♥ AQ98
♦ K985
♣ 7

♠ A5
♥ K3
♦ AQ743
♣ QJ109

14

♠ 1098
♥ K10983
♦ Q106
♣ J9

♠ AJ6
♥ Q4
♦ 952
♣ A10643

N
W — | — E
S

♠ Q73
♥ 76
♦ AK743
♣ K85

♠ K542
♥ AJ52
♦ J8
♣ Q72

15

♠ AK87
♥ J832
♦ QJ9
♣ K10

♠ 9
♥ AQ1075
♦ 108
♣ Q9875

N
W — | — E
S

♠ Q6432
♥ 964
♦ A6543
♣

♠ J105
♥ K
♦ K72
♣ AJ6432

Board (13) Av: NS=+600

N-S	E-W	Contract	N-S	E-W	IMP
8	5	3NT	S 3	600	0
5	8	3NT	S 3	600	0
9	6	3NT	S 3	600	0
6	9	3NT	S 3	600	0
7	1	3NT	S 3	600	0
1	7	3NT	S 3	600	0
2	4	3NT	S 3	600	0
4	2	1NT	S 3	150	-10

Board (14) Av: NS=+30

N-S	E-W	Contract	N-S	E-W	IMP
8	5	3NT	W-3	150	3
2	4	2NT	W-2	100	2
7	1	4D	E-1	50	1
6	9	3NT	E-1	50	1
5	8	3C	W-1	50	1
1	7	3H	N-1	50	-2
9	6	2H	N-1	50	-2
4	2	2C	W 2	90	-3

Board (15) Av: NS=0

N-S	E-W	Contract	N-S	E-W	IMP
1	6	3NT	N 4	630	12
5	3	3NT	N 3	600	12
4	9	4Dx	E-2	300	7
2	7	3NT	N-1	100	-3
6	1	3NT	N-2	200	-5
3	5	5C	S-3	300	-7
9	4	4S	N-3	300	-7
7	2	3NT	N-3	300	-7

16

♠ J9874
♥ Q
♦ Q
♣ KQ9762

♠ K5
♥ J10982
♦ KJ65
♣ A4

N
W — | — E
S

♠ AQ10
♥ A653
♦ A1092
♣ 83

♠ 632
♥ K74
♦ 8743
♣ J105

17

♠ K962
♥ AQ103
♦ K82
♣ 96

♠ A1085
♥ K96
♦ 94
♣ K752

N
W — | — E
S

♠ 74
♥ J852
♦ QJ75
♣ A104

♠ QJ3
♥ 74
♦ A1063
♣ QJ83

18

♠ Q3
♥ K10875
♦ 82
♣ AQJ2

♠ 97654
♥ Q9
♦ J9
♣ 8763

N
W — | — E
S

♠ AJ
♥ A32
♦ KQ653
♣ 954

♠ K1082
♥ J64
♦ A1074
♣ K10

Board (16) Av: NS=-680

N-S	E-W	Contract	N-S	E-W	IMP
7	2	4Sx	N-3	500	5
9	4	4H	W 6	680	0
5	3	4H	W 6	680	0
4	9	4H	W 6	680	0
3	5	4H	W 6	680	0
1	6	4H	W 6	680	0
6	1	4H	W 6	680	0
2	7	4Sx	N-4	800	-3

Board (17) Av: NS=+70

N-S	E-W	Contract	N-S	E-W	IMP
2	7	2NT	S 3	150	2
6	1	1NT	S 3	150	2
1	6	1NT	S 3	150	2
3	5	1NT	S 2	120	2
7	2	1NT	S 1	90	1
5	3	3D	N-1	50	-3
4	9	2NT	N-1	50	-3
9	4	2D	N-1	50	-3

Board (18) Av: NS=+250

N-S	E-W	Contract	N-S	E-W	IMP
6	1	3NT	S 4	630	9
5	3	4H	N 4	620	9
1	6	2H	N 5	200	-2
9	4	2H	N 4	170	-2
4	9	2H	N 4	170	-2
2	7	2H	N 4	170	-2
3	5	2S	W-3	150	-3
7	2	2S	E-3	150	-3

19

♠ QJ93
♥ AJ102
♦ A
♣ 10985

♠ A105
♥ 8
♦ Q8652
♣ J763

N
W — E
S

♠ K8742
♥ 53
♦ 73
♣ AQ42

♠ 6
♥ KQ9764
♦ KJ1094
♣ K

20

♠ A74
♥ 72
♦ 872
♣ AK973

♠ QJ653
♥ 986
♦ K10
♣ 865

N
W — E
S

♠ K10
♥ AKQJ103
♦ A63
♣ QJ

♠ 982
♥ 54
♦ QJ954
♣ 1042

21

♠ QJ107
♥ Q9
♦ A102
♣ J1093

♠ A983
♥ KJ
♦ KQJ9
♣ 654

N
W — E
S

♠ A8653
♥ 8764
♦ AKQ2
♣

♠ K6542
♥ 10742
♦ 53
♣ 87

Board (19) Av: NS=+450

N-S	E-W	Contract	N-S	E-W	IMP
9	4	4H	S 6	480	1
3	5	5H	S 5	450	0
1	6	4H	S 5	450	0
5	3	4H	S 5	450	0
4	9	4H	S 5	450	0
6	1	4H	S 5	450	0
2	7	4H	S 5	450	0
7	2	4H	S 4	420	-1

Board (20) Av: NS=-620

N-S	E-W	Contract	N-S	E-W	IMP
5	3	4H	E 4	620	0
3	5	4H	E 4	620	0
9	4	4H	E 4	620	0
4	9	4H	E 4	620	0
6	1	4H	E 4	620	0
1	6	4H	E 4	620	0
7	2	4H	E 4	620	0
2	7	4H	E 4	620	0

Board (21) Av: NS=-190

N-S	E-W	Contract	N-S	E-W	IMP
2	7	3NT	W-3	150	8
7	2	3NT	W-2	100	7
5	3	3NT	W-1	50	6
1	6	3NT	W-1	50	6
3	5	4H	E 4	420	-6
4	9	3NT	W 4	430	-6
9	4	3NT	E 5	460	-7
6	1	3NT	W 6	490	-7

22

♠ J1065
♥ AQ
♦ 104
♣ Q8754

♠ AQ97
♥ 763
♦ KQ987
♣ 9

N
W — E
S

♠ 82
♥ 985
♦ A652
♣ KJ106

♠ K43
♥ KJ1042
♦ J3
♣ A32

23

♠ 7
♥ AQJ86
♦ AJ3
♣ Q1043

♠ J10965
♥ 105
♦ K87
♣ 862

N
W — E
S

♠ 842
♥ K432
♦ 10965
♣ J9

♠ AKQ3
♥ 97
♦ Q42
♣ AK75

24

♠ 10875
♥ 1094
♦ AK753
♣ 7

♠ J96
♥ A65
♦ Q84
♣ 8432

N
W — E
S

♠ KQ42
♥ 32
♦ 2
♣ KQ10965

♠ A3
♥ KQJ87
♦ J1096
♣ AJ

Board (22) Av: NS=-80

N-S	E-W	Contract	N-S	E-W	IMP
7	2	2H	S 2	110	5
1	6	2H	S 2	110	5
9	4	1NT	S-1	50	1
4	9	3H	S-2	100	-1
2	7	4D	E 4	130	-2
3	5	3H	S-3	150	-2
5	3	1NT	S-3	150	-2
6	1	3Dx	W 3	670	-11

Board (23) Av: NS=+1420

N-S	E-W	Contract	N-S	E-W	IMP
3	5	6NT	S 6	1440	1
4	9	6NT	S 6	1440	1
9	4	6NT	S 6	1440	1
7	2	6NT	S 6	1440	1
1	6	6NT	S 6	1440	1
6	1	6C	S 6	1370	-2
5	3	6C	S 6	1370	-2
2	7	4H	N 6	680	-12

Board (24) Av: NS=+380

N-S	E-W	Contract	N-S	E-W	IMP
4	9	4H	S 6	480	3
6	1	4H	S 6	480	3
1	6	4H	S 6	480	3
3	5	4H	S 5	450	2
5	3	4H	S 4	420	1
9	4	2H	S 6	230	-4
2	7	2H	S 6	230	-4
7	2	2H	S 5	200	-5

25

♠ K92
♥ AJ962
♦ A
♣ J1042

♠ 1064
♥ K54
♦ KQJ8
♣ KQ5

N
W — E
S

♠ AJ5
♥ Q10
♦ 109654
♣ A73

♠ Q873
♥ 873
♦ 732
♣ 986

26

♠ A975
♥ AKQ85
♦ A2
♣ 98

♠ KJ2
♥ 76
♦ Q8643
♣ J63

N
W — E
S

♠ Q843
♥ J9432
♦
♣ K742

♠ 106
♥ 10
♦ KJ10975
♣ AQ105

27

♠ Q9875
♥ A
♦ AK96
♣ AK5

♠ K10642
♥ K62
♦ J3
♣ QJ3

N
W — E
S

♠ J3
♥ J853
♦ Q85
♣ 10762

♠ A
♥ Q10974
♦ 10742
♣ 984

Board (25) Av: NS=-530

N-S	E-W	Contract	N-S	E-W	IMP
9	4	3H	N-1	50	10
7	2	3D	E 4	130	9
3	5	3NT	W 3	600	-2
5	3	3NT	W 3	600	-2
2	7	3NT	W 3	600	-2
1	6	3NT	W 4	630	-3
4	9	3NT	W 4	630	-3
6	1	3NT	W 4	630	-3

Board (26) Av: NS=+640

N-S	E-W	Contract	N-S	E-W	IMP
2	7	3NT	S 6	690	2
9	4	3NT	S 5	660	1
1	6	3NT	S 5	660	1
4	9	4NT	S 4	630	0
6	1	3NT	S 4	630	0
7	2	3NT	S 4	630	0
3	5	5D	S 5	600	-1
5	3	3NT	S 3	600	-1

Board (27) Av: NS=+100

N-S	E-W	Contract	N-S	E-W	IMP
9	4	5D	N 5	400	7
7	2	3NT	S 3	400	7
6	1	3NT	S 3	400	7
2	7	5D	N-1	50	-4
4	9	3NT	S-1	50	-4
1	6	3NT	S-1	50	-4
3	5	3NT	S-1	50	-4
5	3	3NT	S-2	100	-5

28

♠ AKJ105
♥ 2
♦ Q952
♣ 542

♠ 864
♥ KJ
♦ 10876
♣ Q1083

N
W | E
S

♠ Q932
♥ AQ1096
♦ K4
♣ AJ

♠ 7
♥ 87543
♦ AJ3
♣ K976

29

♠ 9875
♥ 97
♦ A75
♣ AQJ8

♠ AQJ2
♥ KJ
♦ 6
♣ K76543

N
W | E
S

♠ K3
♥ Q653
♦ J109843
♣ 2

♠ 1064
♥ A10842
♦ KQ2
♣ 109

30

♠ 86
♥ 109652
♦ J2
♣ Q1042

♠ A95
♥ K7
♦ KQ64
♣ J975

N
W | E
S

♠ J73
♥ QJ83
♦ 1083
♣ K63

♠ KQ1042
♥ A4
♦ A975
♣ A8

Board (28) Av: NS=-20

N-S	E-W	Contract	N-S	E-W	IMP
6	1	2S N 3	140		4
5	3	2S N 2	110		4
7	2	2H W-1	50		2
9	4	2H E-1	50		2
2	7	1NT E 1		90	-2
1	6	2H E 2		110	-3
3	5	2H E 2		110	-3
4	9	2NT W 2		120	-3

Board (29)

N-S	E-W	Contract	N-S	E-W	IMP
8	3	1NT E 3		150	
3	8	2D W 2		90	

Board (30)

N-S	E-W	Contract	N-S	E-W	IMP
8	3	1S S 3	140		
3	8	1S S 3	140		

31

♠ A
♥ K10432
♦ J42
♣ Q632

♠ Q98432
♥ J9
♦ A9
♣ A85

N
W | E
S

♠ KJ6
♥ AQ765
♦ 763
♣ 97

♠ 1075
♥ 8
♦ KQ1085
♣ KJ104

32

♠ Q102
♥ QJ742
♦ A
♣ QJ43

♠ 6
♥ 98
♦ 1098732
♣ K986

N
W | E
S

♠ AJ84
♥ A63
♦ KQ54
♣ A5

♠ K9753
♥ K105
♦ J6
♣ 1072

33

♠ Q7
♥ 763
♦ Q9642
♣ Q108

♠ K852
♥ Q2
♦ K5
♣ K9752

N
W | E
S

♠ J6
♥ KJ1085
♦ A103
♣ J43

♠ A10943
♥ A94
♦ J87
♣ A6

Board (31)

N-S	E-W	Contract	N-S	E-W	IMP
8	3	3S W 3	140		
3	8	3S W 3	140		

Board (32)

N-S	E-W	Contract	N-S	E-W	IMP
8	3	4D W 5	150		
3	8	2H N 2	110		

Board (33)

N-S	E-W	Contract	N-S	E-W	IMP
8	3	2D S-2	100		
3	8	2S S-1	50		

34

♠ 87
♥ 853
♦ AQ972
♣ A63

♠ J9542
♥ 72
♦ 863
♣ QJ10

N
W | E
S

♠ AQ6
♥ QJ1064
♦ 105
♣ 742

♠ K103
♥ AK9
♦ KJ4
♣ K985

35

♠ K32
♥ AQJ9762
♦ 10
♣ Q3

♠ 1097654
♥ 5
♦ AJ974
♣ 10

N
W | E
S

♠ AQJ
♥ 10
♦ 853
♣ AK8542

♠ 8
♥ K843
♦ KQ62
♣ J976

36

♠ Q106
♥ A874
♦ K6
♣ J1032

♠ A43
♥ J93
♦ A1095
♣ Q98

N
W | E
S

♠ KJ985
♥
♦ Q7432
♣ 654

♠ 72
♥ KQ10652
♦ J8
♣ AK7

Board (34)

N-S	E-W	Contract	N-S	E-W	IMP
8	3	3NT S 4	630		
3	8	3NT S 4	630		

Board (35)

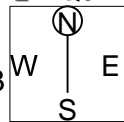
N-S	E-W	Contract	N-S	E-W	IMP
8	3	4H N-1	50		
3	8	5S W 5	650		

Board (36)

N-S	E-W	Contract	N-S	E-W	IMP
8	3	4H S-1	100		
3	8	4H S 5	650		

37

♠ J93
♥ KJ843
♦ J8
♣ KQJ



♠ A54
♥ AQ9
♦ AQ4
♣ A432

♠ KQ10762
♥ 765
♦ 2
♣ 1086

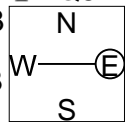
♠ 8
♥ 102
♦ K1097653
♣ 975

Board (37)

N-S	E-W	Contract	N-S	E-W	IMP
8	3	6H N 6	1430		
3	8	6H N-1		100	

38

♠ Q109
♥ 97
♦ AKQJ4
♣ KQ8



♠ K76
♥ K1082
♦ 7
♣ A10652

♠ AJ543
♥ A
♦ 10863
♣ J94

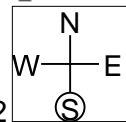
♠ 82
♥ QJ6543
♦ 952
♣ 73

Board (38)

N-S	E-W	Contract	N-S	E-W	IMP
8	3	3NT N 6	490		
3	8	2Hx E-3	800		

39

♠ KQ63
♥ Q109543
♦ Q86
♣



♠ 752
♥ K76
♦ KJ42
♣ A73

♠ A10
♥ J8
♦ 97
♣ KQJ8542

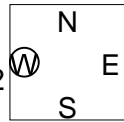
♠ J984
♥ A2
♦ A1053
♣ 1096

Board (39)

N-S	E-W	Contract	N-S	E-W	IMP
8	3	3NT E-2	200		
3	8	4Hx N 4	790		

40

♠ K10
♥ 973
♦ A107
♣ J9873



♠ Q9842
♥ 10862
♦ Q4
♣ Q5

♠ 765
♥ AJ5
♦ 863
♣ AK62

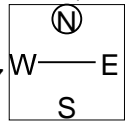
♠ AJ3
♥ KQ4
♦ KJ952
♣ 104

Board (40)

N-S	E-W	Contract	N-S	E-W	IMP
8	3	3NT W 4	430		
3	8	3NT E-2	100		

41

♠ Q653
♥ A7
♦ 642
♣ KQ43



♠ AK4
♥ 10643
♦ 83
♣ 10762

♠ J109
♥ K9
♦ KQJ107
♣ A95

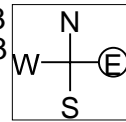
♠ 872
♥ QJ852
♦ A95
♣ J8

Board (41)

N-S	E-W	Contract	N-S	E-W	IMP
8	3	1NT W 1	90		
3	8	3NT W-2	200		

42

♠ 874
♥ AJ1094
♦ 1084
♣ 73



♠ K1052
♥ K2
♦ Q2
♣ AJ842

♠ QJ63
♥ Q763
♦ 975
♣ Q6

♠ A9
♥ 85
♦ AKJ63
♣ K1095

Board (42)

N-S	E-W	Contract	N-S	E-W	IMP
8	3	3D E 3	110		
3	8	1NT E 1	90		

木村六郎杯 Session 3 Flight B 2009年2月22日(日)

1

♠ AK8642
♥ 72
♦ A
♣ AQ98

♠ 1073
♥ J10843
♦ 8
♣ 6532

♠ 5
♥ KQ
♦ 76532
♣ KJ1074

♠ QJ9
♥ A965
♦ KQJ1094
♣

2

♠ Q87
♥ 73
♦ J2
♣ AKQ632

♠ A106
♥ K95
♦ K953
♣ J54

♠ J9542
♥ 1084
♦ Q106
♣ 87

♠ K3
♥ AQJ62
♦ A874
♣ 109

3

♠ QJ8
♥ QJ74
♦ 107
♣ 10853

♠ AK10654
♥ 93
♦ Q85
♣ J7

♠ 973
♥ A105
♦ K32
♣ K962

♠ 2
♥ K862
♦ AJ964
♣ AQ4

Board (1) Av: NS=+1100

N-S	E-W	Contract	N-S	E-W	IMP
5	4	7S	N 7	1510	9
4	5	7S	N 7	1510	9
9	2	6NT	N 7	1020	-2
8	6	6S	N 7	1010	-3
6	8	6S	N 7	1010	-3
2	9	6S	N 7	1010	-3
3	7	6S	N 7	1010	-3
7	3	6S	N 7	1010	-3

Board (2) Av: NS=+620

N-S	E-W	Contract	N-S	E-W	IMP
3	7	3NT	S 5	660	1
9	2	3NT	S 5	660	1
7	3	3NT	S 4	630	0
5	4	3NT	N 4	630	0
8	6	3NT	N 3	600	-1
2	9	3NT	N 3	600	-1
4	5	3NT	N 3	600	-1
6	8	3NT	S-1	100	-12

Board (3) Av: NS=+100

N-S	E-W	Contract	N-S	E-W	IMP
7	3	4S	W-2	200	3
9	2	3S	W-2	200	3
5	4	3H	S 4	170	2
8	6	3S	W-1	100	0
4	5	3S	W-1	100	0
3	7	3S	W-1	100	0
6	8	4H	S-1	50	-4
2	9	2S	W 2	110	-5

4

♠ K87
♥ J543
♦ 75
♣ K732

♠ J109
♥ K87
♦ K942
♣ Q86

♠ Q543
♥ AQ9
♦ J10
♣ J954

♠ A62
♥ 1062
♦ AQ863
♣ A10

5

♠ A75
♥ Q1073
♦ AKJ6
♣ QJ

♠ Q986
♥ AK98
♦ Q97
♣ 84

♠ KJ432
♥ J64
♦ 432
♣ 63

♠ 10
♥ 52
♦ 1085
♣ AK109752

6

♠ 102
♥ K82
♦ A4
♣ J109762

♠ K98543
♥ A974
♦ Q5
♣ Q

♠ AJ6
♥ 103
♦ KJ987
♣ K85

♠ Q7
♥ QJ65
♦ 10632
♣ A43

Board (4) Av: NS=-80

N-S	E-W	Contract	N-S	E-W	IMP
9	2	2Cx	E-1	200	7
3	7	1NT	S 1	90	5
5	4	1NT	W 1	90	0
6	8	1NT	W 1	90	0
4	5	1NT	S-1	100	-1
7	3	1NT	S-1	100	-1
8	6	1NT	S-2	200	-3
2	9	1NT	N-2	200	-3

Board (5) Av: NS=+670

N-S	E-W	Contract	N-S	E-W	IMP
3	7	3NT	N 6	690	1
4	5	3NT	N 6	690	1
9	2	3NT	N 6	690	1
8	6	3NT	N 5	660	0
6	8	3NT	N 5	660	0
5	4	3NT	N 5	660	0
2	9	3NT	N 4	630	-1
7	3	3NT	N 4	630	-1

Board (6) Av: NS=-560

N-S	E-W	Contract	N-S	E-W	IMP
3	7	4S	W-1	100	12
6	8	3S	W 5	200	8
5	4	4S	W 4	620	-2
8	6	4S	W 4	620	-2
4	5	4S	W 4	620	-2
2	9	4S	W 5	650	-3
9	2	4S	W 5	650	-3
7	3	4S	W 6	680	-3

7

♠ 1097
♥ 93
♦ QJ82
♣ AQ76

♠ Q863
♥ AQ52
♦ AK7
♣ K5

♠ KJ54
♥ J106
♦ 54
♣ 9843

♠ A2
♥ K874
♦ 10963
♣ J102

8

♠ 2
♥ J982
♦ 10973
♣ J642

♠ AQ1075
♥ Q7
♦ K85
♣ AK9

♠ 983
♥ 654
♦ QJ6
♣ Q1073

♠ KJ64
♥ AK103
♦ A42
♣ 85

9

♠ 107632
♥ J54
♦ KJ106
♣ K

♠ J984
♥ A1083
♦ A94
♣ 105

♠ Q5
♥ Q7
♦ Q8732
♣ QJ63

♠ AK
♥ K962
♦ 5
♣ A98742

Board (7) Av: NS=-250

N-S	E-W	Contract	N-S	E-W	IMP
5	4	4S	E-1	100	8
9	2	1D	W-1	100	8
8	6	1D	W 1	70	5
3	7	3S	E 3	140	3
7	3	3S	E 4	170	2
2	9	4S	E 4	620	-9
6	8	4S	E 4	620	-9
4	5	4S	E 4	620	-9

Board (8) Av: NS=-110

N-S	E-W	Contract	N-S	E-W	IMP
5	4	3S	W-1	50	4
6	8	3NT	E-1	50	4
2	9	2NT	E-1	50	4
9	2	1NT	S-1	50	2
3	7	1NT	S-2	100	0
4	5	2S	W 4	170	-2
8	6	4S	W 4	420	-7
7	3	4S	W 4	420	-7

Board (9) Av: NS=+80

N-S	E-W	Contract	N-S	E-W	IMP
9	2	2H	S 4	170	3
7	3	2C	S 3	110	1
3	7	2C	S 3	110	1
2	9	2C	S 3	110	1
5	4	2C	S 2	90	0
4	5	2C	S 2	90	0
6	8	3NT	N-1	50	-4
8	6	2C	S-1	50	-4

10

♠ AJ62
♥ 865
♦ J943
♣ AQ

♠ K73
♥ KJ94
♦ 82
♣ 10863

♠ Q732
♥ AKQ106
♣ J952

♠ Q109854
♥ A10
♦ 75
♣ K74

N
W — E
S

11

♠ KQ
♥ K105
♦ AK9873
♣ Q8

♠ 853
♥ AJ9
♦ Q42
♣ J742

♠ A1092
♥ Q7643
♦
♣ K1053

♠ J764
♥ 82
♦ J1065
♣ A96

N
W — E
S

12

♠ Q74
♥ 106
♦ Q1072
♣ 10754

♠ A1082
♥ AKJ843
♦ K6
♣ 3

♠ 9
♥ 975
♦ J4
♣ AKQJ862

♠ KJ653
♥ Q2
♦ A9853
♣ 9

N
W — E
S

Board (10) Av: NS=-30

N-S	E-W	Contract	N-S	E-W	IMP
8	6	3NT N 3	600		12
4	5	3Sx W-2	500		11
6	8	5D S-1	100		-2
5	4	5D S-1	100		-2
3	7	3NT N-1	100		-2
7	3	3NT N-1	100		-2
2	9	3NT N-3	300		-7
9	2	3NT N-4	400		-9

Board (11) Av: NS=+430

N-S	E-W	Contract	N-S	E-W	IMP
8	6	4H S 5	450		1
3	7	4H N 5	450		1
7	3	3NT S 4	430		0
4	5	3NT N 4	430		0
2	9	4H S 4	420		0
5	4	4H S 4	420		0
9	2	3NT S 3	400		-1
6	8	3NT N-1	50		-10

Board (12) Av: NS=-460

N-S	E-W	Contract	N-S	E-W	IMP
4	5	6S W-1	50		11
2	9	6S W-1	50		11
5	4	5S W 5	450		0
6	8	4S W 5	450		0
9	2	4S W 5	450		0
3	7	4S W 5	450		0
8	6	6S W 6	980		-11
7	3	6S E 6	980		-11

13

♠ AQJ742
♥ J5
♦ 5
♣ 10986

♠ 1085
♥ AQ87
♦ KJ8
♣ KQ3

♠ 63
♥ 109643
♦ 64
♣ J742

♠ K9
♥ K2
♦ AQ109732
♣ A5

N
W — E
S

14

♠ 2
♥ 9
♦ AJ7653
♣ J10743

♠ A10963
♥ J542
♦ 94
♣ Q5

♠ K85
♥ KQ106
♦ Q8
♣ K962

♠ QJ74
♥ A873
♦ K102
♣ A8

N
W — E
S

15

♠ Q876
♥ K7
♦ AK1082
♣ 85

♠ A10
♥ Q10532
♦ 5
♣ KQJ43

♠ K9
♥ AJ94
♦ J974
♣ A62

♠ J5432
♥ 86
♦ Q63
♣ 1097

N
W — E
S

Board (13) Av: NS=-770

N-S	E-W	Contract	N-S	E-W	IMP
5	4	6D E-1	100		13
7	3	3D W 7	190		11
9	2	3D E 7	190		11
3	7	3NT W 6	690		2
8	6	3NT W 7	720		2
6	8	6D W 6	1370		-12
4	5	6NT W 7	1470		-12
2	9	6NT E 7	1470		-12

Board (14) Av: NS=-130

N-S	E-W	Contract	N-S	E-W	IMP
5	4	4Sx W-1	100		6
7	3	5C N-2	100		1
8	6	3S W 3	140		0
9	2	3S W 3	140		0
2	9	2S W 3	140		0
3	7	2S W 3	140		0
4	5	2S W 3	140		0
6	8	3S W 4	170		-1

Board (15) Av: NS=-30

N-S	E-W	Contract	N-S	E-W	IMP
3	2	5D S 5	600		12
8	9	5D S 5	600		12
2	3	5D S-1	100		-2
6	7	3NT S-1	100		-2
7	6	4NT S-2	200		-5
9	8	3NT S-2	200		-5
5	1	3NT S-2	200		-5
1	5	3NT N-2	200		-5

16

♠ A1073
♥ J32
♦ J94
♣ K87

♠ K42
♥ Q754
♦ 107
♣ Q962

♠ QJ
♥ A1086
♦ KQ8653
♣ A

♠ 9865
♥ K9
♦ A2
♣ J10543

N
W — E
S

17

♠ 10963
♥ J43
♦ KQ10
♣ K43

♠ K54
♥ 985
♦ 62
♣ AQ1095

♠ 872
♥ AK10
♦ A983
♣ J76

♠ AQJ
♥ Q762
♦ J754
♣ 82

N
W — E
S

18

♠ J4
♥ AJ10942
♦ 8532
♣ 3

♠ 8
♥ Q
♦ AKQJ76
♣ 87642

♠ 97
♥ K8653
♦ 94
♣ AK109

♠ AKQ106532
♥ 7
♦ 10
♣ QJ5

N
W — E
S

Board (16) Av: NS=+410

N-S	E-W	Contract	N-S	E-W	IMP
5	1	3NT S 5	460		2
8	9	3NT N 4	430		1
6	7	5D S 5	400		0
3	2	5D S 5	400		0
7	6	3NT S 3	400		0
1	5	3NT N 3	400		0
2	3	3NT N 3	400		0
9	8	4D S 5	150		-6

Board (17) Av: NS=+100

N-S	E-W	Contract	N-S	E-W	IMP
9	8	2NT E-3	150		2
3	2	1NT S 2	120		1
5	1	1NT S 2	120		1
1	5	2D S 3	110		0
8	9	1NT S 1	90		0
2	3	1NT S 1	90		0
6	7	1NT S 1	90		0
7	6	1NT S 1	90		0

Board (18) Av: NS=-20

N-S	E-W	Contract	N-S	E-W	IMP
5	1	5S W-2	100		3
9	8	5S W-2	100		3
7	6	5S W-1	50		2
8	9	4S W-1	50		2
3	2	4S W-1	50		2
2	3	4S W-1	50		2
6	7	4S W 4	420		-9
1	5	5Hx S-2	500		-10

19

♠ K43
♥ 65
♦ K82
♣ A10832

♠ A76
♥ J1074
♦ A74
♣ 765

N
W — E
S

♠ Q8
♥ K2
♦ Q10953
♣ KJ94

♠ J10952
♥ AQ983
♦ J6
♣ Q

Board (19) Av: NS=+20

N-S	E-W	Contract	N-S	E-W	IMP
7	6	3S S 3	140		3
8	9	2S S 2	110		3
6	7	Passout			-1
3	2	Passout			-1
1	5	Passout			-1
5	1	Passout			-1
2	3	Passout			-1
9	8	4S S-3	150		-5

20

♠ KJ42
♥ K93
♦ 54
♣ K973

♠ A7
♥ 1065
♦ A987
♣ A642

N
W — E
S

♠ 1065
♥ AJ82
♦ KJ103
♣ 105

♠ Q983
♥ Q74
♦ Q62
♣ QJ8

Board (20) Av: NS=0

N-S	E-W	Contract	N-S	E-W	IMP
3	2	1NT W-2	200		5
2	3	2S S 2	110		3
7	6	1NT W-1	100		3
6	7	1NT W-1	100		3
8	9	2D W 2	90		-3
9	8	3D W 3	110		-3
1	5	3D W 3	110		-3
5	1	3D W 3	110		-3

21

♠ Q3
♥ A943
♦ AK9
♣ AQ54

♠ AKJ102
♥ K65
♦ Q7
♣ 1062

N
W — E
S

♠ 9765
♥ J1082
♦ J32
♣ 98

♠ 84
♥ Q7
♦ 108654
♣ KJ73

Board (21) Av: NS=-30

N-S	E-W	Contract	N-S	E-W	IMP
6	7	4C N 4	130		4
5	1	3D S 4	130		4
2	3	3C N 3	110		4
7	6	5D S-1	100		-2
8	9	5C N-1	100		-2
3	2	4D S-1	100		-2
9	8	4C N-1	100		-2
1	5	4C N-1	100		-2

22

♠ 763
♥ 953
♦ AKQ65
♣ 106

♠ 10
♥ AKQJ76
♦ 97432
♣ J

N
W — E
S

♠ AKQJ9842
♥ 82
♦
♣ K87

♠ 5
♥ 104
♦ J108
♣ AQ95432

Board (22) Av: NS=-710

N-S	E-W	Contract	N-S	E-W	IMP
9	8	7S E-1	100		13
7	6	4S E 7	710		0
8	9	4S E 7	710		0
1	5	4S E 7	710		0
6	7	4S E 7	710		0
5	1	4S E 7	710		0
2	3	4S E 7	710		0
3	2	4S E 7	710		0

23

♠ KQ4
♥ 764
♦ KJ106
♣ Q82

♠ A
♥ AKQ1098
♦ 952
♣ 963

N
W — E
S

♠ 10963
♥ J32
♦ Q87
♣ K107

♠ J8752
♥ 5
♦ A43
♣ AJ54

Board (23) Av: NS=+150

N-S	E-W	Contract	N-S	E-W	IMP
2	3	4S S 4	620		10
5	1	4H W-3	300		4
6	7	3S S 3	140		0
3	2	3S S 3	140		0
9	8	3H W-1	100		-2
7	6	3H W-1	100		-2
1	5	2H W-1	100		-2
8	9	2H W 2	110		-6

24

♠ J108
♥ J9
♦ AK93
♣ AQ32

♠ 9532
♥ AQ10
♦ Q7
♣ K864

N
W — E
S

♠ AQ4
♥ 76543
♦ J85
♣ 105

♠ K76
♥ K82
♦ 10642
♣ J97

Board (24) Av: NS=+100

N-S	E-W	Contract	N-S	E-W	IMP
3	2	1NT N 3	150		2
7	6	1NT N 2	120		1
9	8	1NT N 1	90		0
8	9	1NT N 1	90		0
6	7	1NT N 1	90		0
1	5	1NT N 1	90		0
5	1	1NT N 1	90		0
2	3	1NT N 1	90		0

25

♠ Q98
♥ 109
♦ AKQ92
♣ Q53

♠ 1072
♥ QJ8
♦ 10543
♣ K104

N
W — E
S

♠ AJ
♥ K73
♦ J876
♣ A762

♠ K6543
♥ A6542
♦
♣ J98

Board (25) Av: NS=+140

N-S	E-W	Contract	N-S	E-W	IMP
3	2	4S S 4	420		7
2	3	2S S 4	170		1
8	9	2S S 4	170		1
1	5	2S S 3	140		0
9	8	2S S 2	110		-1
7	6	2S S 2	110		-1
5	1	2S S 2	110		-1
6	7	2S S 2	110		-1

26

♠ 953
♥ AJ542
♦ 75
♣ KQ6

♠ 8
♥ K87
♦ A432
♣ J9542

N
W — E
S

♠ AJ1042
♥ Q10963
♦ K8
♣ 7

♠ KQ76
♥
♦ QJ1096
♣ A1083

Board (26) Av: NS=-180

N-S	E-W	Contract	N-S	E-W	IMP
6	7	1NT N 3	150		8
5	1	2C S-1	100		2
9	8	2H E 3	140		1
3	2	2H E 3	140		1
8	9	3NT S-2	200		-1
1	5	3NT S-2	200		-1
7	6	4C S-3	300		-3
2	3	3C N-3	300		-3

27

♠ 5432
♥ 1092
♦ 965
♣ J107

♠ KJ87
♥ AJ8
♦ A104
♣ K43

N
W — E
S

♠ Q6
♥ Q765
♦ Q73
♣ AQ82

♠ A109
♥ K43
♦ KJ82
♣ 965

Board (27) Av: NS=-450

N-S	E-W	Contract	N-S	E-W	IMP
7	6	3NT W 3	400		2
9	8	3NT W 3	400		2
2	3	3NT W 4	430		1
8	9	3NT W 5	460		0
1	5	3NT W 5	460		0
5	1	3NT W 5	460		0
3	2	3NT W 5	460		0
6	7	3NT W 5	460		0

28

♠ 73
♥ QJ1076
♦ J843
♣ J7

♠ J6
♥ K984
♦ AKQ
♣ 10632

♠ K10542
♥ A
♦ 10952
♣ A84

♠ AQ98
♥ 532
♦ 76
♣ KQ95

29

♠ A8
♥ K10876
♦ KQJ
♣ K72

♠ KQ104
♥ Q3
♦ 8
♣ QJ9653

♠ J953
♥ AJ54
♦ 97532
♣

♠ 762
♥ 92
♦ A1064
♣ A1084

30

♠ KJ76
♥ 10
♦ AJ986
♣ A105

♠ 10952
♥ J97
♦ 1074
♣ 842

♠ A4
♥ AQ84
♦ KQ53
♣ K76

♠ Q83
♥ K6532
♦ 2
♣ QJ93

Board (28) Av: NS=+60

N-S	E-W	Contract	N-S	E-W	IMP
6	7	3NT W-2	100		1
8	9	3NT W-2	100		1
9	8	3NT W-2	100		1
1	5	3NT W-2	100		1
5	1	2NT W-2	100		1
3	2	2NT W-1	50		0
7	6	2NT E 2		120	-5
2	3	2NT W 3		150	-5

Board (29)

N-S	E-W	Contract	N-S	E-W	IMP
4	1	3NT S-2		200	
1	4	2H N 2	110		

Board (30)

N-S	E-W	Contract	N-S	E-W	IMP
4	1	1NT N 2	120		
1	4	1NT N 2	120		

31

♠ 542
♥ QJ10
♦ K763
♣ J85

♠ AK98
♥ 974
♦ AQ102
♣ A9

♠ Q103
♥ A6532
♦ 985
♣ K2

♠ J76
♥ K8
♦ J4
♣ Q107643

32

♠ K103
♥ A873
♦ K1052
♣ QJ

♠ 74
♥ J54
♦ AQ9
♣ 98752

♠ J95
♥ 96
♦ 7643
♣ AK64

♠ AQ862
♥ KQ102
♦ J8
♣ 103

33

♠ 9
♥ Q9543
♦ J108
♣ AJ74

♠ Q852
♥ KJ6
♦ AK9
♣ KQ8

♠ K106
♥ A1082
♦ 654
♣ 952

♠ AJ743
♥ 7
♦ Q732
♣ 1063

Board (31)

N-S	E-W	Contract	N-S	E-W	IMP
4	1	4H W 4		420	
1	4	4H W 4		420	

Board (32)

N-S	E-W	Contract	N-S	E-W	IMP
4	1	4S S 4		420	
1	4	4S S 4		420	

Board (33)

N-S	E-W	Contract	N-S	E-W	IMP
4	1	3NT E-1	50		
1	4	2NT E 4		180	

34

♠ A8732
♥ Q3
♦ 85
♣ 8632

♠ 65
♥ AKJ1087652
♦ J
♣ 10

♠ KQJ
♥ 94
♦ K10964
♣ KQ5

♠ 1094
♥
♦ AQ732
♣ AJ974

35

♠ 82
♥ J743
♦ 93
♣ Q10962

♠ AKQ9
♥ 108
♦ KQ54
♣ K84

♠ 10643
♥ AKQ2
♦ A1082
♣ A

♠ J75
♥ 965
♦ J76
♣ J753

36

♠ QJ95
♥ QJ5
♦ Q72
♣ 1082

♠ K10432
♥ 1083
♦ 43
♣ 943

♠ 86
♥ A764
♦ AKJ96
♣ J6

♠ A7
♥ K92
♦ 1085
♣ AKQ75

Board (34)

N-S	E-W	Contract	N-S	E-W	IMP
4	1	4H W 5		450	
1	4	3H W 4		170	

Board (35)

N-S	E-W	Contract	N-S	E-W	IMP
4	1	6S W 7		1460	
1	4	7S W 7		2210	

Board (36)

N-S	E-W	Contract	N-S	E-W	IMP
4	1	1NT S 3	150		
1	4	3NT S 3		600	

37

♠ KQ1087
♥ Q8
♦ K42
♣ Q85

♠ A96
♥ KJ95
♦ Q98
♣ 632

♠ 53
♥ 7632
♦ J3
♣ AK1094

♠ J42
♥ A104
♦ A10765
♣ J7

Board (37)

N-S	E-W	Contract	N-S	E-W	IMP
4	1	3S	N 3	140	
1	4	3S	N 3	140	

38

♠ J862
♥ KQJ3
♦ A94
♣ 54

♠ A953
♥ 765
♦ QJ7
♣ 862

♠ KQ74
♥ 109
♦ K8532
♣ KJ

♠ 10
♥ A842
♦ 106
♣ AQ10973

Board (38)

N-S	E-W	Contract	N-S	E-W	IMP
4	1	3NT	N 5	460	
1	4	4H	S 6	480	

39

♠ K85
♥ J1086
♦ A9
♣ J1074

♠ 97
♥ Q97
♦ J743
♣ 9653

♠ AJ62
♥ AK2
♦ K1086
♣ A2

♠ Q1043
♥ 543
♦ Q52
♣ KQ8

Board (39)

N-S	E-W	Contract	N-S	E-W	IMP
4	1	1D	E 3	110	
1	4	1D	E 3	110	

40

♠ QJ5
♥ AK2
♦ Q103
♣ KQJ6

♠ 7432
♥ Q96
♦ AJ54
♣ 74

♠ AK109
♥ J10
♦ K987
♣ A53

♠ 86
♥ 87543
♦ 62
♣ 10982

Board (40)

N-S	E-W	Contract	N-S	E-W	IMP
4	1	1NT	E 1	90	
1	4	1NT	E-1	50	

41

♠ J43
♥ AQ76
♦ A10987
♣ 9

♠ Q1062
♥ J43
♦ 63
♣ AQ84

♠ A8
♥ K982
♦ J2
♣ J10752

♠ K975
♥ 105
♦ KQ54
♣ K63

Board (41)

N-S	E-W	Contract	N-S	E-W	IMP
4	1	3NT	S-1	50	
1	4	3NT	S-2	100	

42

♠ 752
♥ Q102
♦ Q82
♣ K973

♠ K3
♥ AJ83
♦ A10943
♣ Q6

♠ AQJ104
♥ K75
♦ 65
♣ AJ2

♠ 986
♥ 964
♦ KJ7
♣ 10854

Board (42)

N-S	E-W	Contract	N-S	E-W	IMP
4	1	3NT	E 5	660	
1	4	3NT	E 5	660	

木村六郎杯 Session 4 Flight B 2009年2月22日(日)

1

♠ 93
♥ Q1043
♦ K964
♣ AJ4

♠ KQ754
♥ AJ6
♦ J52
♣ 82

♠ J10
♥ 952
♦ AQ1073
♣ K106

♠ A862
♥ K87
♦ 8
♣ Q9753

2

♠ 74
♥ J32
♦ A9
♣ AJ10972

♠ A9
♥ AK8
♦ KQJ108743
♣

♠ KQ865
♥ 10954
♦ 52
♣ 84

♠ J1032
♥ Q76
♦ 6
♣ KQ653

3

♠ A8
♥ A104
♦ AQ97
♣ J952

♠ J1097
♥ K832
♦ 1032
♣ A8

♠ KQ3
♥ J975
♦ K64
♣ 643

♠ 6542
♥ Q6
♦ J85
♣ KQ107

Board (1) Av: NS=-10

N-S	E-W	Contract	N-S	E-W	IMP
8	2	3C S 3	110		3
4	6	3S W-1	50		2
6	4	3D W-1	50		2
3	1	1NT E-1	50		2
5	9	Passout			0
9	5	1NT E 1	90		-2
2	8	2D E 3	110		-3
1	3	2D E 4	130		-3

Board (2) Av: NS=-420

N-S	E-W	Contract	N-S	E-W	IMP
8	2	5D W 6	420		0
6	4	5D W 6	420		0
9	5	5D W 6	420		0
3	1	5D W 6	420		0
1	3	5D W 6	420		0
2	8	5D W 6	420		0
4	6	5D E 6	420		0
5	9	5D E 6	420		0

Board (3) Av: NS=+80

N-S	E-W	Contract	N-S	E-W	IMP
6	4	2NT N 3	150		2
9	5	2NT N 3	150		2
5	9	1NT N 3	150		2
8	2	1NT N 3	150		2
2	8	2C N 3	110		1
4	6	4NT N-1	50		-4
1	3	2NT N-1	50		-4
3	1	2NT N-2	100		-5

4

♠ K10532
♥ J8
♦ J732
♣ 109

♠ 8
♥ 742
♦ AKQ9
♣ KQ765

♠ AQ94
♥ KQ1095
♦ 865
♣ 8

♠ J76
♥ A63
♦ 104
♣ AJ432

5

♠ Q8
♥ K765
♦ KQ9752
♣ 7

♠ 65
♥ A832
♦ 1084
♣ Q843

♠ AKJ102
♥ Q4
♦ A
♣ J10965

♠ 9743
♥ J109
♦ J63
♣ AK2

6

♠
♥ Q109543
♦ KQ
♣ K8753

♠ AKQ8
♥ AJ72
♦ A10963
♣

♠ J953
♥ K
♦ J75
♣ AQJ64

♠ 107642
♥ 86
♦ 842
♣ 1092

Board (4) Av: NS=-620

N-S	E-W	Contract	N-S	E-W	IMP
9	5	2H E 5	200		9
2	8	3NT W 3	600		1
5	9	4H E 4	620		0
1	3	4H E 4	620		0
4	6	4H E 4	620		0
6	4	3NT E 4	630		0
3	1	4H E 5	650		-1
8	2	4H E 5	650		-1

Board (5) Av: NS=-270

N-S	E-W	Contract	N-S	E-W	IMP
6	4	5C E-1	50		8
9	5	4C E 4	130		4
5	9	3C E 5	150		3
2	8	3C E 5	150		3
4	6	5C E 5	400		-4
3	1	5C E 5	400		-4
8	2	5C E 5	400		-4
1	3	5Cx E 5	550		-7

Board (6) Av: NS=-90

N-S	E-W	Contract	N-S	E-W	IMP
3	1	6S E-3	300		9
8	2	6S E-2	200		7
5	9	6S E-2	200		7
2	8	6S E-2	200		7
9	5	6S E-1	100		5
1	3	4S E 4	620		-11
6	4	4S E 4	620		-11
4	6	3NT W 5	660		-11

7

♠ J943
♥ A8
♦ 7654
♣ 1054

♠ AQ5
♥ 10654
♦ AK3
♣ AQ9

♠ 108762
♥ QJ72
♦ 2
♣ KJ3

♠ K
♥ K93
♦ QJ1098
♣ 8762

8

♠ 432
♥ 9
♦ AKQ1062
♣ 986

♠ AJ975
♥ KQ2
♦ 985
♣ J4

♠ K106
♥ A8654
♦ 3
♣ AK102

♠ Q8
♥ J1073
♦ J74
♣ Q753

9

♠ AQ4
♥ AK875
♦ KJ1093
♣

♠ K1098
♥ 1042
♦ AQ
♣ Q1095

♠ J765
♥ Q3
♦ 86
♣ AJ742

♠ 32
♥ J96
♦ 7542
♣ K863

Board (7) Av: NS=-620

N-S	E-W	Contract	N-S	E-W	IMP
3	1	3NT W-1	100		12
6	4	4S E 4	620		0
9	5	4H E 4	620		0
5	9	4H E 4	620		0
4	6	4H E 4	620		0
1	3	4H E 4	620		0
8	2	4H E 4	620		0
2	8	3NT W 4	630		0

Board (8) Av: NS=-350

N-S	E-W	Contract	N-S	E-W	IMP
9	5	6H E-3	150		11
6	4	4H E-1	50		9
5	9	4S W 4	420		-2
1	3	4H E 4	420		-2
4	6	4H E 4	420		-2
3	1	4H E 4	420		-2
2	8	4S W 5	450		-3
8	2	4S W 6	480		-4

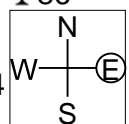
Board (9) Av: NS=+360

N-S	E-W	Contract	N-S	E-W	IMP
4	6	4H N 5	450		3
6	4	4H N 5	450		3
2	8	4H N 5	450		3
1	3	4H N 5	450		3
9	5	4H N 4	420		2
5	9	3S E-3	300		-2
8	2	3D N 3	110		-6
3	1	3S W-1	100		-6

10

♠65
♥Q652
♦Q7532
♣86

♠AJ103
♥A
♦AK10984
♣Q5



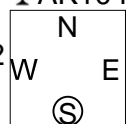
♠84
♥J843
♦J
♣A109743

♠KQ972
♥K1097
♦6
♣KJ2

11

♠AKQJ9
♥
♦KQJ7
♣AK104

♠1083
♥AQ982
♦8642
♣2



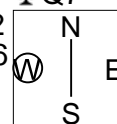
♠7
♥1063
♦A103
♣QJ7653

♠6542
♥KJ754
♦95
♣98

12

♠QJ9
♥K732
♦Q832
♣Q7

♠AK52
♥AQ96
♦J5
♣AK9



♠1043
♥54
♦AK4
♣86532

♠876
♥J108
♦10976
♣J104

Board (10) Av: NS=-440

N-S	E-W	Contract	N-S	E-W	IMP
2	8	3NT W-2	200		12
6	4	3H S-1	100		8
1	3	3H N-1	100		8
8	2	2H S-1	100		8
4	6	3NT W 3	600		-4
5	9	3NT W 4	630		-5
9	5	4Hx S-4	1100		-12
3	1	2DxxW 4	1560		-15

Board (11) Av: NS=+200

N-S	E-W	Contract	N-S	E-W	IMP
3	1	4S N 6	480		7
6	4	4S N 5	450		6
4	6	4S N 5	450		6
2	8	4S N 5	450		6
9	5	6S N-1	50		-6
1	3	6S N-1	50		-6
8	2	6S N-1	50		-6
5	9	6S N-2	100		-7

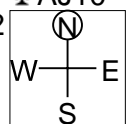
Board (12) Av: NS=-460

N-S	E-W	Contract	N-S	E-W	IMP
9	5	3NT W 4	430		1
3	1	3NT W 4	430		1
6	4	3NT W 5	460		0
5	9	3NT W 5	460		0
1	3	3NT W 5	460		0
2	8	3NT W 5	460		0
8	2	3NT W 5	460		0
4	6	3NT W 5	460		0

13

♠K96
♥A52
♦A1082
♣AJ10

♠A832
♥J9
♦J654
♣743



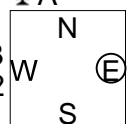
♠Q1075
♥74
♦K973
♣KQ8

♠J4
♥KQ10863
♦Q
♣9652

14

♠K873
♥AK92
♦K863
♣A

♠J10
♥J1063
♦10972
♣KJ2



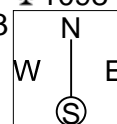
♠952
♥Q5
♦AJ4
♣Q10843

♠AQ64
♥874
♦Q5
♣9765

15

♠A862
♥J9432
♦5
♣1098

♠K10543
♥AQ10
♦AJ6
♣A2



♠K8765
♥K10832
♦KJ5

♠QJ97
♥
♦Q974
♣Q7643

Board (13) Av: NS=+640

N-S	E-W	Contract	N-S	E-W	IMP
8	2	4H N 5	650		0
6	4	4H N 5	650		0
2	8	4H N 5	650		0
1	3	4H N 5	650		0
9	5	4H N 4	620		-1
5	9	4H N 4	620		-1
3	1	4H N 4	620		-1
4	6	4H N 4	620		-1

Board (14) Av: NS=+440

N-S	E-W	Contract	N-S	E-W	IMP
8	2	4S S 5	450		0
6	4	4S S 5	450		0
1	3	4S S 5	450		0
3	1	4S S 5	450		0
9	5	4S S 4	420		-1
5	9	4S S 4	420		-1
4	6	4S S 4	420		-1
2	8	2S S 4	170		-7

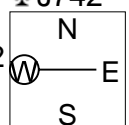
Board (15) Av: NS=-420

N-S	E-W	Contract	N-S	E-W	IMP
1	2	4H E-1	50		10
5	7	5D W 5	400		1
4	8	3NT E 3	400		1
8	4	4H E 4	420		0
7	5	3NT E 4	430		0
2	1	3NT E 4	430		0
3	6	3NT E 4	430		0
6	3	3NT E 4	430		0

16

♠J106
♥A9
♦K743
♣J742

♠K9
♥Q86532
♦82
♣A86



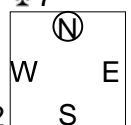
♠Q83
♥J1074
♦J1096
♣93

♠A7542
♥K
♦AQ5
♣KQ105

17

♠10864
♥Q653
♦KJ93
♣7

♠J2
♥A97
♦7
♣AQ109432



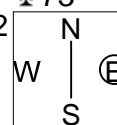
♠953
♥KJ1084
♦Q852
♣8

♠AKQ7
♥2
♦A1064
♣KJ65

18

♠AKQ
♥A864
♦7532
♣73

♠107432
♥J3
♦AKJ10
♣K8



♠J5
♥K9752
♦Q4
♣J962

♠986
♥Q10
♦986
♣AQ1054

Board (16) Av: NS=+430

N-S	E-W	Contract	N-S	E-W	IMP
5	7	4S S 5	450		1
7	5	4S S 5	450		1
1	2	4S S 5	450		1
2	1	4S S 4	420		0
3	6	4S S 4	420		0
8	4	4S S 4	420		0
6	3	4S S 4	420		0
4	8	4S S 4	420		0

Board (17) Av: NS=+150

N-S	E-W	Contract	N-S	E-W	IMP
3	6	5Cx W-3	500		8
8	4	4S S 5	450		7
7	5	3NT S 4	430		7
2	1	3S S 3	140		0
4	8	5S S-1	50		-5
1	2	4S S-1	50		-5
6	3	4S S-1	50		-5
5	7	5D S-2	100		-6

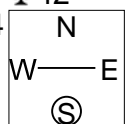
Board (18) Av: NS=-50

N-S	E-W	Contract	N-S	E-W	IMP
5	7	2S W-1	50		3
7	5	2S W-1	50		3
1	2	1NT E-1	50		3
8	4	1NT E 1	90		-1
2	1	2C S-1	100		-2
3	6	2S W 2	110		-2
6	3	2S W 2	110		-2
4	8	2S W 2	110		-2

19

♠ Q9732
♥ AQ
♦ A982
♣ 42

♠ K1084
♥ J8762
♦ QJ7
♣ 7



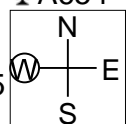
♠ A
♥ K103
♦ K104
♣ KQ10865

♠ J65
♥ 954
♦ 653
♣ AJ93

20

♠ 7
♥ 9865
♦ AK107
♣ A654

♠ Q3
♥ K103
♦ QJ865
♣ K108



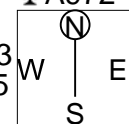
♠ J1062
♥ QJ42
♦ 932
♣ 72

♠ AK9854
♥ A7
♦ 4
♣ QJ93

21

♠ K32
♥ A2
♦ QJ94
♣ A972

♠ J54
♥ K8543
♦ 10765
♣ 6



♠ 87
♥ Q10976
♦ AK82
♣ K5

♠ AQ1096
♥ J
♦ 3
♣ QJ10843

Board (19) Av: NS=-30

N-S	E-W	Contract	N-S	E-W	IMP
4	8	3C	E-2	200	6
5	7	3C	E-1	100	4
8	4	3C	E-1	100	4
6	3	3C	E-1	100	4
1	2	3C	E-1	100	4
3	6	2S	N-1	50	-1
7	5	4Sx	N-3	500	-10
2	1	4H	W 4	620	-11

Board (20) Av: NS=+260

N-S	E-W	Contract	N-S	E-W	IMP
3	6	4S	S 4	620	8
5	7	4S	S 4	620	8
2	1	4S	S 4	620	8
8	4	3NT	N 3	600	8
7	5	6C	S-1	100	-8
1	2	3NT	N-1	100	-8
4	8	3NT	N-1	100	-8
6	3	3NT	N-2	200	-10

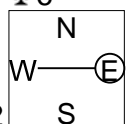
Board (21) Av: NS=+530

N-S	E-W	Contract	N-S	E-W	IMP
3	6	5S	S 5	650	3
5	7	5S	S 5	650	3
8	4	4S	S 5	650	3
2	1	4S	N 5	650	3
7	5	5C	N 5	600	2
6	3	5Hx	E-3	500	-1
4	8	4H	E-2	100	-10
1	2	6C	N-1	100	-12

22

♠ K843
♥ 73
♦ 976543
♣ 6

♠ 102
♥ Q52
♦ A108
♣ AJ1052



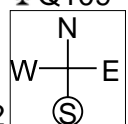
♠ AQJ97
♥ AK84
♦ K2
♣ 97

♠ 65
♥ J1096
♦ QJ
♣ KQ843

23

♠ A642
♥ K106
♦ A103
♣ Q109

♠ QJ9
♥ AJ
♦ J92
♣ KJ732



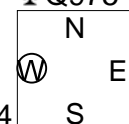
♠ 87
♥ Q8743
♦ Q84
♣ A64

♠ K1053
♥ 952
♦ K765
♣ 85

24

♠ A95
♥ 98432
♦ 7
♣ Q975

♠ KJ64
♥ AJ5
♦ 10
♣ K10864



♠ Q73
♥ 10
♦ Q98643
♣ AJ3

♠ 1082
♥ KQ76
♦ AKJ52
♣ 2

Board (22) Av: NS=-660

N-S	E-W	Contract	N-S	E-W	IMP
5	7	3NT	W 4	630	1
1	2	3NT	W 4	630	1
8	4	3NT	W 5	660	0
7	5	3NT	W 5	660	0
4	8	3NT	W 5	660	0
3	6	3NT	W 5	660	0
6	3	3NT	W 5	660	0
2	1	3NT	W 6	690	-1

Board (23) Av: NS=+40

N-S	E-W	Contract	N-S	E-W	IMP
3	6	3C	W-2	200	4
1	2	2S	S 2	110	2
4	8	2S	S 2	110	2
6	3	2S	N 2	110	2
5	7	1NT	W-1	100	2
7	5	1NT	W 1	90	-4
2	1	1NT	W 1	90	-4
8	4	1NT	W 2	120	-4

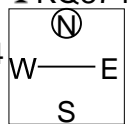
Board (24) Av: NS=+20

N-S	E-W	Contract	N-S	E-W	IMP
6	3	3H	S 3	140	3
2	1	3H	S 3	140	3
4	8	3NT	W-2	100	2
5	7	2D	E-1	50	1
1	2	4H	S-1	50	-2
3	6	4H	N-1	50	-2
7	5	3H	N-1	50	-2
8	4	3C	W 3	110	-4

25

♠ AK3
♥ 87
♦ KJ4
♣ KQ874

♠ 1085
♥ 109654
♦ A1082
♣ 6



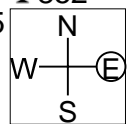
♠ J942
♥ AKQ
♦ Q753
♣ 105

♠ Q76
♥ J32
♦ 96
♣ AJ932

26

♠ 62
♥ AJ763
♦ QJ7
♣ 852

♠ AKQ1095
♥ K
♦ K9863
♣ 4



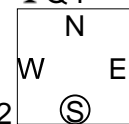
♠ J7
♥ Q10542
♦ A5
♣ KQ76

♠ 843
♥ 98
♦ 1042
♣ AJ1093

27

♠ Q1092
♥ Q106
♦ AJ97
♣ Q4

♠ A6
♥ 752
♦ K102
♣ 107652



♠ K53
♥ J9843
♦ 64
♣ K83

♠ J874
♥ AK
♦ Q853
♣ AJ9

Board (25) Av: NS=+170

N-S	E-W	Contract	N-S	E-W	IMP
6	3	3NT	N 3	400	6
4	8	3NT	N 3	400	6
7	5	3NT	N 3	400	6
1	2	3NT	N 3	400	6
2	1	4C	N-1	50	-6
3	6	3NT	N-1	50	-6
8	4	3NT	N-2	100	-7
5	7	3NT	N-2	100	-7

Board (26) Av: NS=-630

N-S	E-W	Contract	N-S	E-W	IMP
7	5	3NT	E 3	600	1
2	1	3NT	E 3	600	1
1	2	3NT	E 3	600	1
4	8	4S	W 4	620	0
5	7	4S	W 5	650	-1
8	4	4S	W 5	650	-1
6	3	4S	W 5	650	-1
3	6	4S	W 6	680	-2

Board (27) Av: NS=+420

N-S	E-W	Contract	N-S	E-W	IMP
4	8	4S	S 5	450	1
5	7	3NT	S 4	430	0
7	5	4S	S 4	420	0
8	4	4S	S 4	420	0
2	1	4S	S 4	420	0
1	2	4S	S 4	420	0
6	3	4S	S 4	420	0
3	6	4S	N 4	420	0

28

♠ 105
♥ AK1097
♦ AJ95
♣ KQ

♠ Q4
♥ Q8652
♦ 6
♣ J10732

N
W | E
S

♠ 62
♥ 3
♦ 87432
♣ A9864

♠ AKJ9873
♥ J4
♦ KQ10
♣ 5

29

♠ J107543
♥ K2
♦ J73
♣ J7

♠ Q62
♥ J74
♦ Q9842
♣ A6

N
W | E
S

♠ A9
♥ 9863
♦ K5
♣ KQ1053

♠ K8
♥ AQ105
♦ A106
♣ 9842

30

♠ J98
♥ A5
♦ A8642
♣ 874

♠ Q10653
♥ Q93
♦ J53
♣ K10

N
W | E
S

♠ 742
♥ K108742
♦ K7
♣ 96

♠ AK
♥ J6
♦ Q109
♣ AQJ532

Board (28) Av: NS=+940

N-S	E-W	Contract	N-S	E-W	IMP
6	3	6S	S 7	1460	11
4	8	6S	S 7	1460	11
3	6	6S	S 6	1430	10
5	7	4S	S 7	710	-6
2	1	4S	S 7	710	-6
8	4	5S	N 6	680	-6
7	5	5H	N 5	650	-7
1	2	4S	S 4	620	-8

Board (29)

N-S	E-W	Contract	N-S	E-W	IMP
9	7	1NT	W 2	120	
7	9	1NT	W 1	90	

Board (30)

N-S	E-W	Contract	N-S	E-W	IMP
9	7	3C	S 4	130	
7	9	5C	S-1	50	

31

♠ QJ10
♥ KQ3
♦ 1094
♣ AJ54

♠ A32
♥ 10962
♦ Q3
♣ K1083

N
W | E
S

♠ K7
♥ AJ87
♦ KJ752
♣ 72

♠ 98654
♥ 54
♦ A86
♣ Q96

32

♠ K82
♥ 73
♦ QJ1096
♣ K54

♠ 643
♥ KQ92
♦ K743
♣ 32

N
W | E
S

♠ AJ5
♥ AJ1065
♦ 52
♣ 1076

♠ Q1097
♥ 84
♦ A8
♣ AQJ98

33

♠ 10
♥ K107
♦ J1052
♣ K10864

♠ QJ875
♥ 8652
♦ 8
♣ A32

N
W | E
S

♠ A642
♥ Q4
♦ AKQ7
♣ Q75

♠ K93
♥ AJ93
♦ 9643
♣ J9

Board (31)

N-S	E-W	Contract	N-S	E-W	IMP
9	7	2D	E 2	90	
7	9	1S	S 1	80	

Board (32)

N-S	E-W	Contract	N-S	E-W	IMP
9	7	3H	E-1	100	
7	9	2S	S 2	110	

Board (33)

N-S	E-W	Contract	N-S	E-W	IMP
9	7	4S	E-1	50	
7	9	4S	E 4	420	

34

♠ K876
♥ A93
♦ 1076
♣ A54

♠ Q532
♥ 864
♦ AKJ8
♣ K3

N
W | E
S

♠ J9
♥ J1075
♦ Q952
♣ Q62

♠ A104
♥ KQ2
♦ 43
♣ J10987

35

♠ 532
♥ 10
♦ J52
♣ QJ7652

♠ KQ4
♥ 98
♦ K10743
♣ K93

N
W | E
S

♠ J986
♥ QJ652
♦ Q96
♣ 4

♠ A107
♥ AK743
♦ A8
♣ A108

36

♠ J64
♥ 98
♦ K876
♣ 10652

♠ AK1073
♥ Q7
♦ J105
♣ Q98

N
W | E
S

♠ 985
♥ 1064
♦ Q43
♣ AKJ7

♠ Q2
♥ AKJ532
♦ A92
♣ 43

Board (34)

N-S	E-W	Contract	N-S	E-W	IMP
9	7	3D	W-2	100	
7	9	3C	S 3	110	

Board (35)

N-S	E-W	Contract	N-S	E-W	IMP
9	7	1H	S 1	80	
7	9	1H	S-2	100	

Board (36)

N-S	E-W	Contract	N-S	E-W	IMP
9	7	2S	W-1	100	
7	9	2S	W 3	140	

37

♠ 9743
♥ K2
♦ 1075
♣ 9542

♠ A852
♥ 63
♦ KJ2
♣ KQ83

	N	
W		E
	S	

♠ K
♥ J1087
♦ Q963
♣ A1076

♠ QJ106
♥ AQ954
♦ A84
♣ J

Board (37)

N-S	E-W	Contract	N-S	E-W	IMP
9	7	1NT E 2	120		
7	9	2S N-1	100		

38

♠ QJ10632
♥ 2
♦ 8643
♣ 87

♠ K4
♥ QJ108
♦ QJ10
♣ A1094

	N	
W		E
	S	

♠ A75
♥ K93
♦ 952
♣ KQ32

♠ 98
♥ A7654
♦ AK7
♣ J65

Board (38)

N-S	E-W	Contract	N-S	E-W	IMP
9	7	3NT W 4	630		
7	9	3NT W 3	600		

39

♠ AKQ8
♥ 74
♦ Q872
♣ AQJ

♠ 1095
♥ K3
♦ KJ104
♣ K732

	N	
W		E
	S	

♠ 642
♥ J985
♦ 653
♣ 965

♠ J73
♥ AQ1062
♦ A9
♣ 1084

Board (39)

N-S	E-W	Contract	N-S	E-W	IMP
9	7	3NT S 4	630		
7	9	3NT N 5	660		

40

♠ Q654
♥ J
♦ A1032
♣ AQ32

♠ 107
♥ Q642
♦ QJ65
♣ J94

	N	
W		E
	S	

♠ AKJ2
♥ AK
♦ 987
♣ K1075

♠ 983
♥ 1098753
♦ K4
♣ 86

Board (40)

N-S	E-W	Contract	N-S	E-W	IMP
9	7	1NT E 4	180		
7	9	2H S 2	110		

41

♠ 7432
♥ J1074
♦ K9
♣ AK7

♠ AQ86
♥ A3
♦ A1084
♣ 1095

	N	
W		E
	S	

♠ KJ5
♥ Q95
♦ QJ753
♣ J4

♠ 109
♥ K862
♦ 62
♣ Q8632

Board (41)

N-S	E-W	Contract	N-S	E-W	IMP
9	7	3NT W 4	630		
7	9	3S E 4	170		

42

♠ A6
♥ Q2
♦ AQJ85
♣ A1073

♠ Q752
♥ AK6543
♦ 74
♣ K

	N	
W		E
	S	

♠ K1043
♥ J107
♦ K106
♣ 952

♠ J98
♥ 98
♦ 932
♣ QJ864

Board (42)

N-S	E-W	Contract	N-S	E-W	IMP
9	7	3H E 3	140		
7	9	4H W-1	100		