

兵庫県知事杯 Session1 Flight B 2009年10月10日(土)

1

♠ AKQ2  
♥ K6  
♦ A863  
♣ AJ5

♠ 4  
♥ 94  
♦ KQJ952  
♣ Q743

♠ 9863  
♥ 82  
♦ 107  
♣ K10962

♠ J1075  
♥ AQJ10753  
♦ 4  
♣ 8

2

♠ A54  
♥ 5  
♦ KJ86  
♣ AQ1098

♠ J76  
♥ KJ62  
♦ 10943  
♣ 52

♠ Q1093  
♥ 109843  
♦  
♣ K764

♠ K82  
♥ AQ7  
♦ AQ752  
♣ J3

3

♠ J84  
♥ QJ975  
♦ A52  
♣ 86

♠ K1092  
♥ 104  
♦ 43  
♣ KQ1052

♠ 63  
♥ AK862  
♦ J6  
♣ AJ43

♠ AQ75  
♥ 3  
♦ KQ10987  
♣ 97

Board (1) Av: NS=+170

N-S	E-W	Contract	N-S	E-W	IMP
10	9	3NT N 4	430		6
9	10	4S N 4	420		6
7	8	4S N 4	420		6
15	13	4S N 4	420		6
17	14	4S N 4	420		6
5	4	4S N 4	420		6
1	6	4S N 4	420		6
6	1	5Hx W-2	300		4
18	16	5Hx W-2	300		4
2	3	2NT N 4	180		0
12	11	3D E-3	150		-1
16	18	4S N-1	50		-6
13	15	4S N-1	50		-6
11	12	3H W 3	140		-7
8	7	3H E 3	140		-7
4	5	3H W 4	170		-8
14	17	3H W 4	170		-8
3	2	3H E 4	170		-8

Board (2) Av: NS=+80

N-S	E-W	Contract	N-S	E-W	IMP
8	7	2C N 5	150		2
18	16	2C N 5	150		2
17	14	2S N 3	140		2
3	2	4C N 4	130		2
10	9	3C S 4	130		2
4	5	2C N 3	110		1
16	18	1NTxW-1	100		1
12	11	1NT W-2	100		1
14	17	1NT W-2	100		1
1	6	1NT W-1	50		-1
13	15	1NT W-1	50		-1
15	13	1NT W-1	50		-1
2	3	1NT W-1	50		-1
5	4	1NT W-1	50		-1
6	1	1NT W-1	50		-1
9	10	1NT W-1	50		-1
11	12	1NT W 1	90		-5
7	8	2D S-2	200		-7

Board (3) Av: NS=+20

N-S	E-W	Contract	N-S	E-W	IMP
17	14	4H S 4	420		9
11	12	4H S 4	420		9
7	8	3H S 4	170		4
6	1	3H S 3	140		3
12	11	4S W-1	100		2
3	2	4S W-1	100		2
13	15	4H S-1	50		-2
18	16	4H S-1	50		-2
16	18	4H S-1	50		-2
14	17	4H S-1	50		-2
15	13	4H S-1	50		-2
2	3	4H S-1	50		-2
4	5	4H S-1	50		-2
8	7	4H S-1	50		-2
1	6	4H S-1	50		-2
9	10	4H S-1	50		-2
10	9	5H S-2	100		-3
5	4	3S E 4	170		-5

4

♠ KJ  
♥ J972  
♦ J105  
♣ Q652

♠ Q754  
♥ Q10865  
♦ A98  
♣ 3

♠ A10982  
♥ K  
♦ 7  
♣ AKJ987

♠ 63  
♥ A43  
♦ KQ6432  
♣ 104

5

♠ J1093  
♥ QJ6  
♦ J94  
♣ K74

♠ AQ65  
♥  
♦ K7652  
♣ Q986

♠ 842  
♥ AK10973  
♦  
♣ AJ103

♠ K7  
♥ 8542  
♦ AQ1083  
♣ 52

6

♠ K8  
♥ KQJ8  
♦ J85  
♣ KQJ5

♠ AQ75  
♥ A1072  
♦ 104  
♣ A76

♠ J93  
♥ 543  
♦ K3  
♣ 109832

♠ 10642  
♥ 96  
♦ AQ9762  
♣ 4

Board (4) Av: NS=+330

N-S	E-W	Contract	N-S	E-W	IMP
5	4	4S S 4	620		7
1	6	4S S 4	620		7
9	10	5C S 5	600		7
13	15	5C S 5	600		7
14	17	5C S 5	600		7
12	11	5C S 5	600		7
4	5	5C S 5	600		7
6	1	5C S 5	600		7
8	7	5C N 5	600		7
17	14	3NT N 3	600		7
2	3	3S S 4	170		-4
15	13	2S S 4	170		-4
18	16	2S S 4	170		-4
10	9	4C S 5	150		-5
16	18	3C S 5	150		-5
3	2	4S S-4	400		-12
7	8	4S S-5	500		-13
11	12	4S S-5	500		-13

Board (5) Av: NS=-250

N-S	E-W	Contract	N-S	E-W	IMP
15	13	4H S 4	620		13
17	14	3H S 4	170		9
13	15	5D W-1	50		7
8	7	5D E-1	50		7
7	8	4H S-1	100		4
3	2	4D E 5	150		3
18	16	4D E 5	150		3
10	9	3D E 5	150		3
6	1	2D E 6	170		2
4	5	5Hx S-1	200		2
14	17	5D E 5	400		-4
12	11	5D E 5	400		-4
11	12	5D E 5	400		-4
5	4	5Dx W 5	550		-7
1	6	5Dx W 5	550		-7
9	10	5Dx E 5	550		-7
16	18	5Dx E 5	550		-7
2	3	5Dx E 5	550		-7

Board (6) Av: NS=-170

N-S	E-W	Contract	N-S	E-W	IMP
9	10	3H S-2	100		2
10	9	3C S-2	100		2
5	4	3S W 3	140		1
8	7	3S W 3	140		1
16	18	2S W 3	140		1
15	13	2S W 3	140		1
7	8	2S W 4	170		0
11	12	2S W 4	170		0
3	2	2S W 4	170		0
12	11	3H S-4	200		-1
17	14	2S W 5	200		-1
13	15	2S W 5	200		-1
18	16	2S W 5	200		-1
2	3	2S N-4	200		-1
6	1	2S E 5	200		-1
14	17	2NT S-4	200		-1
1	6	2H N-4	200		-1
4	5	3S W 6	230		-2

兵庫県知事杯 Session1 Flight B 2009年10月10日(土)

7

♠1093  
♥AJ72  
♦74  
♣K652

♠AKQ64  
♥Q543  
♦1092  
♣Q

♠52  
♥986  
♦J63  
♣A9874

♠J87  
♥K10  
♦AKQ85  
♣J103

N  
W—E  
S

8

♠A9853  
♥K72  
♦K42  
♣J7

♠K62  
♥Q986  
♦763  
♣1095

♠QJ104  
♥J1054  
♦A10  
♣AK2

♠7  
♥A3  
♦QJ985  
♣Q8643

N  
W—E  
S

9

♠Q4  
♥J95  
♦K10987  
♣A63

♠J865  
♥K76  
♦J4  
♣J542

♠973  
♥104  
♦Q652  
♣Q987

♠AK102  
♥AQ832  
♦A3  
♣K10

N  
W—E  
S

Board (7) Av: NS=+10

N-S	E-W	Contract	N-S	E-W	IMP
4	5	2S E-2	200		5
10	9	2D S 3	110		3
9	10	2S E-1	100		3
11	12	1S W-1	100		3
13	15	1S E-1	100		3
18	16	2D S 2	90		2
3	2	2D S 2	90		2
2	3	2D S 2	90		2
6	1	1NT S 1	90		2
17	14	1NT S 1	90		2
15	13	1S E 1	80		-3
1	6	1S E 1	80		-3
5	4	2D S-1	100		-3
14	17	2D S-1	100		-3
16	18	2D S-1	100		-3
8	7	2D S-1	100		-3
7	8	3D S-2	200		-5
12	11	2D S-2	200		-5

Board (8) Av: NS=+10

N-S	E-W	Contract	N-S	E-W	IMP
13	15	4D N 4	130		3
12	11	3D N 4	130		3
8	7	3D N 4	130		3
3	2	3D N 4	130		3
6	1	3D N 4	130		3
9	10	3D N 4	130		3
5	4	3D N 3	110		3
2	3	1NT W-1	50		1
16	18	4D N-1	50		-2
11	12	2S N-1	50		-2
7	8	2S N-1	50		-2
4	5	2S N-1	50		-2
10	9	2S N-1	50		-2
1	6	2S N-1	50		-2
18	16	1NT W 1	90		-3
17	14	1NT W 2	120		-4
15	13	1NT W 3	150		-4
14	17	1NT W 3	150		-4

Board (9) Av: NS=+620

N-S	E-W	Contract	N-S	E-W	IMP
13	15	6H S 7	1010		9
16	18	6H S 7	1010		9
15	13	6NT S 6	990		9
14	17	6H S 6	980		8
12	11	6H S 6	980		8
6	1	3NT S 7	520		-3
8	7	4H S 7	510		-3
2	3	4H S 7	510		-3
7	8	4H S 7	510		-3
3	2	3NT S 6	490		-4
10	9	3NT N 6	490		-4
1	6	5H S 6	480		-4
18	16	4H S 6	480		-4
17	14	4H S 6	480		-4
5	4	4H S 6	480		-4
9	10	4H S 6	480		-4
11	12	4H S 6	480		-4
4	5	6C S-2	100		-12

10

♠Q873  
♥QJ854  
♦83  
♣Q5

♠A6  
♥A1073  
♦9762  
♣AK7

♠K9542  
♥K9  
♦KJ5  
♣642

♠J10  
♥62  
♦AQ104  
♣J10983

N  
W—E  
S

11

♠J82  
♥AK10862  
♦9  
♣1083

♠A643  
♥3  
♦QJ643  
♣542

♠Q97  
♥QJ954  
♦AK2  
♣76

♠K105  
♥7  
♦10875  
♣AKQJ9

N  
W—E  
S

12

♠K109764  
♥652  
♦107  
♣73

♠32  
♥KQ7  
♦832  
♣A8654

♠8  
♥AJ104  
♦K954  
♣Q1092

♠AQJ5  
♥983  
♦AQJ6  
♣KJ

N  
W—E  
S

Board (10) Av: NS=-160

N-S	E-W	Contract	N-S	E-W	IMP
9	8	3NT E-3	300		10
12	7	3NT E-2	200		8
8	9	3NT E-2	200		8
18	17	3NT E-1	100		6
10	11	3NT E-1	100		6
16	15	3NT E-1	100		6
14	13	3NT E-1	100		6
3	6	3NT E-1	100		6
5	1	3NT E-1	100		6
7	12	3NT E-1	100		6
11	10	2NT E 2	120		1
15	16	3NT E 3	600		-10
17	18	3NT E 3	600		-10
2	4	3NT E 3	600		-10
6	3	3NT E 3	600		-10
4	2	3NT E 3	600		-10
13	14	3NT E 3	600		-10
1	5	4S W 4	620		-10

Board (11) Av: NS=+130

N-S	E-W	Contract	N-S	E-W	IMP
11	10	1Hx E-4	800		12
3	6	1Hx W-3	500		9
6	3	1Hx W-3	500		9
9	8	5C S 5	400		7
7	12	2S E-4	200		2
2	4	2C S 3	110		-1
10	11	2S E-2	100		-1
13	14	1H W-2	100		-1
18	17	2C S 2	90		-1
12	7	2C S 2	90		-1
14	13	1NT N 1	90		-1
8	9	1NT N 1	90		-1
16	15	3D W-1	50		-2
1	5	3D E-1	50		-2
15	16	1NT N-1	50		-5
17	18	2D E 2	90		-6
5	1	2D E 2	90		-6
4	2	3NT N-2	100		-6

Board (12) Av: NS=-130

N-S	E-W	Contract	N-S	E-W	IMP
10	11	2S N 4	170		7
1	5	1D S 3	110		6
17	18	1D S 1	70		5
9	8	4S N-1	100		1
4	2	4S N-1	100		1
16	15	3S S-1	100		1
18	17	3S N-1	100		1
13	14	3S N-1	100		1
11	10	1D S-1	100		1
15	16	4S N-2	200		-2
2	4	4S N-2	200		-2
8	9	4S N-2	200		-2
5	1	4S N-2	200		-2
14	13	4S N-2	200		-2
7	12	4S N-2	200		-2
12	7	4S N-2	200		-2
3	6	4S N-2	200		-2
6	3	4S N-2	200		-2

13

♠ AQ104  
♥ 92  
♦ 4  
♣ QJ6542

♠ J3  
♥ QJ1063  
♦ AQ952  
♣ 10

♠ K972  
♥ K8  
♦ K108  
♣ AK93

♠ 865  
♥ A754  
♦ J763  
♣ 87

14

♠ J9  
♥ 102  
♦ J63  
♣ A109652

♠ Q102  
♥ 643  
♦ A92  
♣ K843

♠ AK8743  
♥ AJ85  
♦ 74  
♣ 7

♠ 65  
♥ KQ97  
♦ KQ1085  
♣ QJ

15

♠ 3  
♥ 8542  
♦ J9  
♣ KQ10863

♠ 752  
♥ K93  
♦ AKQ10754  
♣

♠ AQJ10964  
♥ Q  
♦ 832  
♣ A2

♠ K8  
♥ AJ1076  
♦ 6  
♣ J9754

Board (13) Av: NS=-630

N-S	E-W	Contract	N-S	E-W	IMP
18	17	3NT E 3	600		1
9	8	3NT E 3	600		1
1	5	3NT E 3	600		1
17	18	3NT E 4	630		0
5	1	3NT E 4	630		0
10	11	3NT E 4	630		0
15	16	3NT E 4	630		0
11	10	3NT E 4	630		0
3	6	3NT E 4	630		0
4	2	3NT E 4	630		0
6	3	3NT E 4	630		0
12	7	3NT E 4	630		0
7	12	3NT E 4	630		0
16	15	3NT E 5	660		-1
8	9	3NT E 5	660		-1
13	14	3NT E 5	660		-1
14	13	3NT E 5	660		-1
2	4	3NT E 6	690		-2

Board (14) Av: NS=-30

N-S	E-W	Contract	N-S	E-W	IMP
15	16	Cancel			
16	15	4S E-2	100		4
1	5	4S E-2	100		4
9	8	3S E-2	100		4
11	10	4S E-1	50		2
17	18	4S E-1	50		2
18	17	4S E-1	50		2
14	13	4S E-1	50		2
8	9	4S E-1	50		2
2	4	4S E-1	50		2
3	6	3S E 3		140	-3
4	2	3S E 3		140	-3
5	1	3S E 3		140	-3
6	3	3S E 3		140	-3
12	7	3S E 3		140	-3
7	12	3S E 3		140	-3
10	11	3S E 4		170	-4
13	14	4S E 4		420	-9

Board (15) Av: NS=-260

N-S	E-W	Contract	N-S	E-W	IMP
3	6	6S E-1	50		7
6	3	6S E-1	50		7
8	9	6S E-1	50		7
2	4	6S E-1	50		7
1	5	6S E-1	50		7
15	16	6D W-1	50		7
12	7	6D W-1	50		7
16	15	5S E 5		450	-5
11	10	5S E 5		450	-5
5	1	5S E 5		450	-5
18	17	5S E 5		450	-5
4	2	4S E 5		450	-5
17	18	4S E 5		450	-5
14	13	4S E 5		450	-5
9	8	4S E 5		450	-5
7	12	4S E 5		450	-5
13	14	4S E 5		450	-5
10	11	4S E 5		450	-5

16

♠ Q1087  
♥ AQJ975  
♦ A  
♣ K9

♠ 9  
♥ 102  
♦ KQ10875  
♣ Q843

♠ AKJ642  
♥ K  
♦ 62  
♣ AJ102

♠ 53  
♥ 8643  
♦ J943  
♣ 765

17

♠ 743  
♥ 7  
♦ KQ765  
♣ A1076

♠ 1096  
♥ Q10862  
♦ J98  
♣ 52

♠ KQJ82  
♥ AJ94  
♦ 10  
♣ Q83

♠ A5  
♥ K53  
♦ A432  
♣ KJ94

18

♠ J74  
♥ J108  
♦ 976  
♣ KQJ2

♠ 2  
♥ AK94  
♦ K10854  
♣ A53

♠ K1098  
♥ Q2  
♦ AQ3  
♣ 10964

♠ AQ653  
♥ 7653  
♦ J2  
♣ 87

Board (16) Av: NS=-100

N-S	E-W	Contract	N-S	E-W	IMP
1	5	4S E-4	400		11
2	4	4Sx E-1	200		7
12	7	3S E-2	200		7
18	17	3S E-1	100		5
9	8	4Hx N-1		100	0
8	9	4H N-2		100	0
17	18	4H N-2		100	0
16	15	4H N-2		100	0
15	16	4H N-2		100	0
3	6	4H N-2		100	0
6	3	4H N-2		100	0
4	2	3C E 3		110	0
5	1	3S E 3		140	-1
10	11	5H S-3		150	-2
7	12	5H N-3		150	-2
13	14	4Hx N-2		300	-5
14	13	4S E 4		620	-11
11	10	4Sx E 4		790	-12

Board (17) Av: NS=+270

N-S	E-W	Contract	N-S	E-W	IMP
15	16	3NTxS 4	650		9
13	14	3NT S 4	430		4
14	13	3NT S 4	430		4
10	11	3NT S 4	430		4
9	8	3NT S 4	430		4
18	17	3NT S 4	430		4
2	4	5D N 6		420	4
5	1	5D N 6		420	4
11	10	5D N 5		400	4
16	15	4D N 6		170	-3
17	18	4D N 6		170	-3
6	3	3D N 6		170	-3
1	5	3D N 6		170	-3
8	9	4S E-3		150	-3
3	6	4H E-2		100	-5
4	2	2S E-2		100	-5
12	7	3NT S-1		50	-8
7	12	2NT S-1		50	-8

Board (18) Av: NS=-410

N-S	E-W	Contract	N-S	E-W	IMP
15	16	5D W-1	50		10
16	15	2D W 4		130	7
8	9	3NT W 3		400	0
1	5	3NT W 3		400	0
11	10	3NT E 3		400	0
13	14	3NT W 4		430	-1
10	11	3NT W 4		430	-1
17	18	3NT W 4		430	-1
5	1	3NT W 4		430	-1
14	13	3NT W 4		430	-1
6	3	3NT W 4		430	-1
3	6	3NT W 4		430	-1
4	2	3NT W 4		430	-1
7	12	3NT W 4		430	-1
9	8	3NT W 4		430	-1
2	4	3NT W 4		430	-1
12	7	3NT W 4		430	-1
18	17	3NT E 4		430	-1

19

♠ Q643  
♥ J4  
♦ AK9873  
♣ 2

♠ A985    ♠ KJ10  
♥ 3        ♥ 10965  
♦ Q102    ♦ 64  
♣ 109865   ♣ KQJ7

W — E

♠ 72  
♥ AKQ872  
♦ J5  
♣ A43

20

♠ K9642  
♥ AJ108  
♦ K1043

♠ A9654    ♠ KQJ3  
♥ A        ♥ J8753  
♦ 543      ♦ 6  
♣ QJ52    ♣ 976

W — E

♠ 10872  
♥ Q10  
♦ KQ972  
♣ A8

21

♠ AK3  
♥ KJ86  
♦ J95  
♣ Q85

♠ QJ765    ♠ 1042  
♥ 953       ♥ Q7  
♦ A1073    ♦ 8642  
♣ A        ♣ 7632

W — E

♠ 98  
♥ A1042  
♦ KQ  
♣ KJ1094

Board (19) Av: NS=+420

N-S	E-W	Contract	N-S	E-W	IMP
12	9	4H S 4	420		0
13	18	4H S 4	420		0
10	8	4H S 4	420		0
9	12	4H S 4	420		0
15	14	4H S 4	420		0
16	17	4H S 4	420		0
18	13	4H S 4	420		0
14	15	4H S 4	420		0
17	16	4H S 4	420		0
4	1	4H S 4	420		0
2	6	4H S 4	420		0
5	3	4H S 4	420		0
1	4	4H S 4	420		0
7	11	4H S 4	420		0
6	2	4H N 4	420		0
3	5	4H N 4	420		0
8	10	4H N 4	420		0
11	7	3NT N 3	400		-1

Board (20) Av: NS=+210

N-S	E-W	Contract	N-S	E-W	IMP
15	14	3D E-7	700		10
3	5	5D S 5	600		9
16	17	5D S 5	600		9
1	4	5D N 5	600		9
14	15	2NT E-3	300		0
6	2	4Sx W-1	200		3
9	12	4D S 5	150		-2
13	18	3D N 5	150		-2
2	6	3D N 5	150		-2
5	3	2NT S 3	150		-2
7	11	2NT S 3	150		-2
10	8	2NT S 2	120		-3
8	10	2NT S 2	120		-3
17	16	2H N 2	110		-3
4	1	4S W-1	100		-3
11	7	6D S-1	100		-7
18	13	5D S-1	100		-7
12	9	3S W 3	140		-8

Board (21) Av: NS=+640

N-S	E-W	Contract	N-S	E-W	IMP
9	12	4H S 6	680		1
13	18	4H S 6	680		1
8	10	4H S 5	650		0
10	8	4H S 5	650		0
15	14	4H S 5	650		0
12	9	4H S 5	650		0
6	2	4H S 5	650		0
1	4	4H S 5	650		0
2	6	4H S 5	650		0
4	1	3NT N 4	630		0
7	11	3NT N 4	630		0
17	16	4H S 4	620		-1
11	7	4H S 4	620		-1
16	17	4H S 4	620		-1
3	5	4H S 4	620		-1
5	3	4H S 4	620		-1
18	13	4H S 4	620		-1
14	15	3NT N 3	600		-1

22

♠ QJ97432  
♥ 6  
♦ Q4  
♣ Q72

♠ K8        ♠ A6  
♥ QJ5432   ♥ AK9  
♦ J         ♦ AK632  
♣ 9853     ♣ K64

W — E

♠ 105  
♥ 1087  
♦ 109875  
♣ AJ10

23

♠ 10982  
♥ J6  
♦ KQ852  
♣ 95

♠ A        ♠ KJ543  
♥ 98754   ♥ A102  
♦ AJ964   ♦ 3  
♣ 43      ♣ AQJ10

W — E

♠ Q76  
♥ KQ3  
♦ 107  
♣ K8762

24

♠ 53  
♥ K10  
♦ AQ863  
♣ 8752

♠ KQJ7    ♠ A9864  
♥ Q42     ♥ A53  
♦ J9       ♦ 754  
♣ AJ96    ♣ K3

W — E

♠ 102  
♥ J9876  
♦ K102  
♣ Q104

Board (22) Av: NS=-320

N-S	E-W	Contract	N-S	E-W	IMP
5	3	6H E-2	200		11
17	16	6H E-2	200		11
7	11	5H W-1	100		9
16	17	5H E-1	100		9
10	8	5H E-1	100		9
18	13	5H E-1	100		9
1	4	5H E-1	100		9
3	5	4Sx N-2	300		1
14	15	4H E 4	620		-7
2	6	4H E 4	620		-7
15	14	4H E 4	620		-7
8	10	4H E 4	620		-7
4	1	4H E 4	620		-7
6	2	4H E 4	620		-7
11	7	4H E 4	620		-7
9	12	4H E 4	620		-7
13	18	4H E 4	620		-7
12	9	4H E 4	620		-7

Board (23) Av: NS=-110

N-S	E-W	Contract	N-S	E-W	IMP
3	5	3NT E-3	300		9
13	18	3NT W-2	200		7
6	2	2D W-2	200		7
12	9	2D W-2	200		7
11	7	4H W-1	100		5
10	8	4H W-1	100		5
14	15	4H W-1	100		5
9	12	4H W-1	100		5
1	4	2S E-1	100		5
5	3	2S E 2	110		0
15	14	2S E 2	110		0
17	16	3H E 3	140		-1
16	17	2S E 3	140		-1
18	13	3Dx N-2	500		-9
8	10	3NT W 3	600		-10
2	6	3NT W 3	600		-10
7	11	4H W 4	620		-11
4	1	2Cx N-3	800		-12

Board (24) Av: NS=-420

N-S	E-W	Contract	N-S	E-W	IMP
16	17	4S E-1	50		10
18	13	3S E 5	200		6
7	11	4S E 4	420		0
11	7	4S E 4	420		0
10	8	4S E 4	420		0
13	18	4S E 4	420		0
4	1	4S E 4	420		0
1	4	4S E 4	420		0
2	6	4S E 4	420		0
14	15	4S E 4	420		0
15	14	4S E 4	420		0
17	16	5S E 5	450		-1
3	5	4S E 5	450		-1
8	10	4S E 5	450		-1
6	2	4S E 5	450		-1
12	9	4S E 5	450		-1
9	12	4S E 5	450		-1
5	3	4S E 5	450		-1

25

♠ Q1087  
♥ 83  
♦ Q542  
♣ J95

♠ 9652 ♠ J3  
♥ Q42 ♡ AK76  
♦ AJ6 ♢ K973  
♣ 1086 ♣ K43

♠ AK4  
♥ J1095  
♦ 108  
♣ AQ72

26

♠ Q105  
♥ 986  
♦ 964  
♣ A1064

♠ 8764 ♠ AKJ32  
♥ AKJ10 ♡ 53  
♦ J85 ♢ Q  
♣ K2 ♣ QJ853

♠ 9  
♥ Q742  
♦ AK10732  
♣ 97

27

♠ K8  
♥ KJ10854  
♦ K102  
♣ Q8

♠ Q7543 ♠ J1096  
♥ 92 ♡ AQ76  
♦ 4 ♢ J97  
♣ AKJ107 ♣ 53

♠ A2  
♥ 3  
♦ AQ8653  
♣ 9642

Board (25) Av: NS=+80

N-S	E-W	Contract	N-S	E-W	IMP
5	3	3D E-4	400		8
17	16	2D E-3	300		6
8	10	1NT E-2	200		3
7	11	1NT E-2	200		3
16	17	1NT E-2	200		3
4	1	1NT E-2	200		3
3	5	1NT E-2	200		3
13	18	1NT N 2	120		1
9	12	1NT E-1	100		1
12	9	1NT E-1	100		1
10	8	1NT E-1	100		1
2	6	1S N 1	80		0
15	14	1NT E 1		90	-5
6	2	1NT E 1		90	-5
1	4	1NT E 1		90	-5
14	15	2C N-2		100	-5
18	13	1NT E 2		120	-5
11	7	1NT E 2		120	-5

Board (26) Av: NS=-620

N-S	E-W	Contract	N-S	E-W	IMP
12	9	4S E 4	620		0
13	18	4S E 4	620		0
8	10	4S E 4	620		0
9	12	4S E 4	620		0
16	17	4S E 4	620		0
17	16	4S E 4	620		0
18	13	4S E 4	620		0
14	15	4S E 4	620		0
2	6	4S E 4	620		0
6	2	4S E 4	620		0
1	4	4S E 4	620		0
4	1	4S E 4	620		0
3	5	4S E 4	620		0
11	7	4S E 4	620		0
7	11	4S E 4	620		0
5	3	4S E 4	620		0
15	14	4S E 5	650		-1
10	8	4S E 5	650		-1

Board (27) Av: NS=-180

N-S	E-W	Contract	N-S	E-W	IMP
8	10	2H N 5	200		9
5	3	4D S-1		50	4
1	4	4D S-1		50	4
17	16	4D S-1		50	4
6	2	4D S-1		50	4
2	6	4D S-1		50	4
12	9	5D S-2		100	2
14	15	3S W 4		170	0
18	13	3S W 4		170	0
10	8	3S W 4		170	0
3	5	3S W 4		170	0
7	11	2S W 4		170	0
16	17	2S W 4		170	0
11	7	2S W 4		170	0
4	1	4S W 4		420	-6
9	12	4S W 4		420	-6
15	14	4S E 4		420	-6
13	18	4S E 4		420	-6

28

♠ 1083  
♥ AK75  
♦ KQ6  
♣ J94

♠ 976 ♠ AKJ2  
♥ J1086 ♡ Q32  
♦ 74 ♢ J9  
♣ Q752 ♣ AK108

♠ Q54  
♥ 94  
♦ A108532  
♣ 63

29

♠ AJ105  
♥ 942  
♦ AJ6  
♣ J32

♠ 86 ♠ K932  
♥ A1075 ♡ J  
♦ 9542 ♢ K1083  
♣ KQ5 ♣ 10964

♠ Q74  
♥ KQ863  
♦ Q7  
♣ A87

30

♠ QJ53  
♥ QJ  
♦ AK9  
♣ QJ85

♠ A64 ♠ 7  
♥ 108632 ♡ A7  
♦ Q62 ♢ J108754  
♣ 93 ♣ AK72

♠ K10982  
♥ K954  
♦ 3  
♣ 1064

Board (28) Av: NS=+90

N-S	E-W	Contract	N-S	E-W	IMP
13	17	1NT N 4	180		3
2	5	4H W-3	150		2
6	4	1NT S 3	150		2
3	1	1NT E-3	150		2
11	9	2D S 3	110		1
1	3	2D N 3	110		1
9	11	1NT E-2	100		0
16	14	1NT E-2	100		0
17	13	1NT E-2	100		0
12	8	1NT E-2	100		0
7	10	1NT E-2	100		0
10	7	1NT E-2	100		0
8	12	1NT E-2	100		0
15	18	2H W-1	50		-1
18	15	1NT E-1	50		-1
4	6	1NT E-1	50		-1
5	2	3D S-1		100	-5
14	16	2S E 3		140	-6

Board (29) Av: NS=-90

N-S	E-W	Contract	N-S	E-W	IMP
2	5	3Dx W-1	200		7
6	4	2S E-2	200		7
12	8	2H S 2	110		5
14	16	2H S 2	110		5
17	13	2H S 2	110		5
16	14	1S N 2	110		5
8	12	2H S-1		100	0
10	7	2H S-1		100	0
5	2	2H S-1		100	0
1	3	2H S-1		100	0
13	17	4H S-2		200	-3
11	9	4H S-2		200	-3
7	10	4H S-2		200	-3
18	15	3H S-2		200	-3
4	6	2C N-2		200	-3
9	11	4H S-3		300	-5
15	18	4H S-3		300	-5
3	1	4H S-3		300	-5

Board (30) Av: NS=-60

N-S	E-W	Contract	N-S	E-W	IMP
7	10	3S S 3	140		5
12	8	2S S 3	140		5
17	13	2S S 2	110		5
6	4	5Dx E-1	100		4
18	15	3S S-1		50	0
13	17	3S S-1		50	0
3	1	3S N-1		50	0
9	11	4S S-2		100	-1
1	3	4S S-2		100	-1
5	2	3S S-2		100	-1
11	9	4D E 4		130	-2
15	18	3D E 4		130	-2
14	16	3D E 4		130	-2
8	12	2D E 4		130	-2
10	7	2D E 4		130	-2
4	6	2D E 4		130	-2
16	14	3NT S-3		150	-3
2	5	4Dx E 4		510	-10

31

♠ Q653  
♥ 3  
♦ KJ8542  
♣ A6

♠ J10972  
♥ AQ6  
♦ A9  
♣ K104

♠ A4  
♥ J942  
♦ Q10763  
♣ 73

♠ K8  
♥ K10875  
♦  
♣ QJ9852

32

♠ Q52  
♥ 876  
♦ A7652  
♣ 82

♠ K74  
♥ 952  
♦ J1043  
♣ KQ6

♠ A10983  
♥ A  
♦ 9  
♣ J109743

♠ J6  
♥ KQJ1043  
♦ KQ8  
♣ A5

33

♠ 2  
♥ 53  
♦ 10984  
♣ J98765

♠ KQ6  
♥ A982  
♦ QJ762  
♣ A

♠ AJ73  
♥ QJ4  
♦ 5  
♣ KQ1032

♠ 109854  
♥ K1076  
♦ AK3  
♣ 4

Board (31) Av: NS=-90

N-S	E-W	Contract	N-S	E-W	IMP
13	17	2H S 2	110		5
2	5	2D E-2	100		5
4	6	2S W-1	50		4
10	7	2S W-1	50		4
3	1	2S W-1	50		4
15	18	2S W-1	50		4
12	8	2D E-1	50		4
6	4	1NT E-1	50		4
5	2	3C S-1	100		0
16	14	2S W 2	110		-1
18	15	4C S-2	200		-3
14	16	2H S-2	200		-3
8	12	2H S-2	200		-3
9	11	2D S-2	200		-3
11	9	4H S-3	300		-5
17	13	2H S-3	300		-5
1	3	2D N-3	300		-5
7	10	3D N-4	400		-7

Board (32) Av: NS=+80

N-S	E-W	Contract	N-S	E-W	IMP
11	9	4H S 5	450		9
9	11	4H S 4	420		8
15	18	4H S 4	420		8
1	3	4H S 4	420		8
13	17	3H S 4	170		3
5	2	3H S 4	170		3
3	1	3H S 4	170		3
16	14	3H S 3	140		2
17	13	3H S 3	140		2
14	16	4H S-1	50		-4
6	4	4H S-1	50		-4
4	6	4H S-1	50		-4
12	8	4H S-1	50		-4
8	12	4H S-1	50		-4
2	5	3S E 4	170		-6
7	10	3S E 4	170		-6
18	15	3S E 5	200		-7
10	7	4Sx E 4	790		-13

Board (33) Av: NS=-430

N-S	E-W	Contract	N-S	E-W	IMP
4	6	3NT W 3	400		1
3	1	3NT W 3	400		1
7	10	3NT E 3	400		1
1	3	3NT E 3	400		1
16	14	3NT E 3	400		1
8	12	3NT W 4	430		0
5	2	3NT W 4	430		0
6	4	3NT W 4	430		0
11	9	3NT E 4	430		0
2	5	3NT E 4	430		0
15	18	3NT E 4	430		0
10	7	3NT E 4	430		0
9	11	3NT E 4	430		0
12	8	3NT W 5	460		-1
18	15	3NT W 5	460		-1
13	17	3NT W 5	460		-1
17	13	3NT W 5	460		-1
14	16	1Sx S-3	500		-2

34

♠ AJ9  
♥ J742  
♦ J108  
♣ KQJ

♠ 63  
♥ 10863  
♦ A732  
♣ 1087

♠ Q1087  
♥ AK95  
♦ Q9  
♣ 652

♠ K542  
♥ Q  
♦ K654  
♣ A943

35

♠ Q52  
♥ K  
♦ A8753  
♣ J974

♠ KJ106  
♥ J987  
♦ KQ10  
♣ Q6

♠ 84  
♥ 106532  
♦ J62  
♣ K103

♠ A973  
♥ AQ4  
♦ 94  
♣ A852

36

♠ K52  
♥ 9765  
♦ J93  
♣ Q62

♠ 863  
♥ Q1083  
♦ KQ864  
♣ K

♠ AQ10974  
♥ K2  
♦ 107  
♣ AJ3

♠ J  
♥ AJ4  
♦ A52  
♣ 1098754

Board (34) Av: NS=+150

N-S	E-W	Contract	N-S	E-W	IMP
15	18	3NT N 4	630		10
3	1	3NT N 4	630		10
12	8	3NT N 4	630		10
6	4	3NT N 3	600		10
1	3	3NT N 3	600		10
5	2	3NT N 3	600		10
10	7	2H W-3	150		0
17	13	1NT N 3	150		0
9	11	3NT S-1	100		-6
16	14	3NT N-1	100		-6
14	16	3NT N-1	100		-6
18	15	3NT N-1	100		-6
4	6	3NT N-1	100		-6
7	10	3NT N-1	100		-6
8	12	2S N-1	100		-6
2	5	2NT N-1	100		-6
13	17	2NT N-1	100		-6
11	9	3NT N-2	200		-8

Board (35) Av: NS=+140

N-S	E-W	Contract	N-S	E-W	IMP
6	4	3NT S 4	430		7
16	14	3NT N 4	430		7
9	11	3NT N 4	430		7
4	6	3H E-2	200		2
5	2	1NT S 3	150		0
14	16	1NT S 3	150		0
13	17	1NT S 3	150		0
3	1	1NT S 2	120		-1
11	9	1NT S 2	120		-1
15	18	1NT S 2	120		-1
8	12	1NT N 2	120		-1
10	7	1NT N 2	120		-1
1	3	3C S 3	110		-1
7	10	3C N 3	110		-1
12	8	4C S-1	50		-5
18	15	3NT S-1	50		-5
2	5	3NT S-1	50		-5
17	13	3NT S-1	50		-5

Board (36) Av: NS=-580

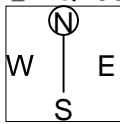
N-S	E-W	Contract	N-S	E-W	IMP
9	11	2D W 2	90		10
12	8	2S E 4	170		9
11	9	2S E 5	200		9
4	6	3NT N-6	600		-1
18	15	4S E 4	620		-1
2	5	4S E 4	620		-1
8	12	4S E 4	620		-1
17	13	4S E 5	650		-2
14	16	4S E 5	650		-2
1	3	4S E 5	650		-2
15	18	4S E 5	650		-2
16	14	4S E 5	650		-2
13	17	4S E 5	650		-2
5	2	4S E 5	650		-2
7	10	4S E 5	650		-2
6	4	4S E 5	650		-2
3	1	4S E 5	650		-2
10	7	4S E 6	680		-3

37

♠ 10732  
♥ A986  
♦ 7

♣ AQ103

♠ AQ8  
♥ J1042  
♦ AK854  
♣ 2



♠ K4  
♥ 3  
♦ Q109632  
♣ J754

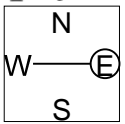
♠ J965  
♥ KQ75  
♦ J  
♣ K986

38

♠ AJ  
♥ AQ752  
♦ K863

♣ K3

♠ K84  
♥ J9  
♦ AQ102  
♣ AQJ2



♠ 105  
♥ K10864  
♦ 94  
♣ 10985

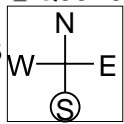
♠ Q97632  
♥ 3  
♦ J75  
♣ 764

39

♠ KJ865  
♥ 7  
♦ 52

♣ QJ976

♠ A1074  
♥ AKJ103  
♦ Q3  
♣ A8



♠ 32  
♥ Q984  
♦ K10  
♣ K10432

♠ Q9  
♥ 652  
♦ AJ98764  
♣ 5

Board (37) Av: NS=-300

N-S	E-W	Contract	N-S	E-W	IMP
4	3	3H N-1		100	5
3	4	4D W 5		150	4
14	18	4D E 5		150	4
9	7	4D W 6		170	4
5	6	4D W 6		170	4
6	5	3D W 6		170	4
11	8	3D W 6		170	4
10	12	4H N-2		200	3
7	9	4C S-2		200	3
16	13	3H S-2		200	3
8	11	5D E 5		400	-3
15	17	5D W 6		420	-3
1	2	5D W 6		420	-3
2	1	5D E 6		420	-3
13	16	3NT W 4		430	-4
17	15	5Dx W 5		550	-6
18	14	5Dx W 6		650	-8
12	10	5Dx W 6		650	-8

Board (38) Av: NS=-70

N-S	E-W	Contract	N-S	E-W	IMP
9	7	2S S 2		110	5
16	13	2S S 2		110	5
10	12	2S S 2		110	5
7	9	3D N-1		50	1
5	6	3D N-1		50	1
15	17	3D N-1		50	1
12	10	2S S-1		50	1
17	15	2S S-1		50	1
18	14	3S S-2		100	-1
13	16	3D N-2		100	-1
4	3	2H N-2		100	-1
6	5	2H W 2		110	-1
14	18	2H W 2		110	-1
8	11	2H E 2		110	-1
2	1	2H W 3		140	-2
11	8	2H S-3		150	-2
1	2	2H N-3		150	-2
3	4	2H N-3		150	-2

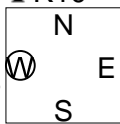
Board (39) Av: NS=-570

N-S	E-W	Contract	N-S	E-W	IMP
9	7	5H W-1	100		12
6	5	3H W 4		170	9
11	8	3H E 4		170	9
14	18	4H W 4		620	-2
18	14	4H W 4		620	-2
13	16	4H W 4		620	-2
8	11	4H W 4		620	-2
2	1	4H W 4		620	-2
1	2	4H W 4		620	-2
7	9	4H W 4		620	-2
5	6	4H W 4		620	-2
16	13	4H E 4		620	-2
15	17	4H W 5		650	-2
17	15	4H W 5		650	-2
4	3	4H W 5		650	-2
12	10	4H W 5		650	-2
3	4	4H W 5		650	-2
10	12	4H E 5		650	-2

40

♠ 9742  
♥ 9843  
♦ Q52  
♣ K10

♠ J  
♥ J7  
♦ KJ10743  
♣ QJ83



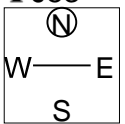
♠ AK1083  
♥ A1065  
♦ 96  
♣ 95

♠ Q65  
♥ KQ2  
♦ A8  
♣ A7642

41

♠ K53  
♥ A76  
♦ Q1064  
♣ J53

♠ Q104  
♥ QJ10984  
♦ K  
♣ A42



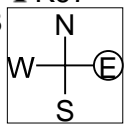
♠ J9876  
♥ 32  
♦ AJ3  
♣ K97

♠ A2  
♥ K5  
♦ 98752  
♣ Q1086

42

♠ AJ3  
♥ AK983  
♦ 52  
♣ K97

♠ KQ98  
♥ Q42  
♦ J9  
♣ A542



♠ 1072  
♥ J5  
♦ KQ1084  
♣ 1063

♠ 654  
♥ 1076  
♦ A763  
♣ QJ8

Board (40) Av: NS=-40

N-S	E-W	Contract	N-S	E-W	IMP
16	13	2NT W-3		150	5
6	5	2H E-2		100	4
13	16	3D W-1		50	3
11	8	3D W-1		50	3
15	17	2S E-1		50	3
10	12	2H E-1		50	3
18	14	3C S-1		50	0
2	1	2C S-1		50	0
1	2	1NT S-1		50	0
7	9	2D W 2		90	-2
3	4	2D W 2		90	-2
8	11	3H N-2		100	-2
5	6	2NT S-2		100	-2
4	3	2D W 3		110	-2
17	15	2D W 3		110	-2
14	18	2D W 3		110	-2
9	7	2D W 3		110	-2
12	10	2D W 4		130	-3

Board (41) Av: NS=-110

N-S	E-W	Contract	N-S	E-W	IMP
15	17	4H W-1	100		5
10	12	3D S-1		50	2
7	9	3D N-1		50	2
11	8	3D N-1		50	2
17	15	3D N-1		50	2
6	5	2S E 2		110	0
1	2	2H W 2		110	0
4	3	2H W 2		110	0
8	11	2H E 2		110	0
18	14	2H W 3		140	-1
14	18	2H W 3		140	-1
9	7	2H W 3		140	-1
2	1	2H W 3		140	-1
5	6	2H W 3		140	-1
3	4	2H W 3		140	-1
12	10	2H W 3		140	-1
13	16	2H W 3		140	-1
16	13	1NT N-3		150	-1

Board (42) Av: NS=+120

N-S	E-W	Contract	N-S	E-W	IMP
7	9	3NT S 3		600	10
12	10	2H N 4		170	2
3	4	1NT N 3		150	1
6	5	3H N 3		140	1
11	8	2H N 3		140	1
14	18	2H N 3		140	1
15	17	2H N 3		140	1
13	16	2H N 3		140	1
16	13	2H N 3		140	1
1	2	2H N 3		140	1
2	1	2H N 3		140	1
9	7	2H N 3		140	1
17	15	2H N 3		140	1
10	12	1H N 3		140	1
4	3	1NT N 2		120	0
18	14	1H N 2		110	0
8	11	3H N-1		100	-6
5	6	2NT N-2		200	-8

43

♠ 42  
♥ K975  
♦ J10986  
♣ 98

♠ J1086  
♥ Q102  
♦ Q532  
♣ Q2

♠ K97  
♥ AJ6  
♦ K4  
♣ J10753

♠ AQ53  
♥ 843  
♦ A7  
♣ AK64

N  
W E  
S

44

♠ AJ2  
♥ A763  
♦ 873  
♣ 852

♠ 8543  
♥ Q4  
♦ A6  
♣ 109763

♠ 97  
♥ J10982  
♦ Q  
♣ AKQJ4

♠ KQ106  
♥ K5  
♦ KJ109542  
♣

N  
W E  
S

45

♠ J87  
♥ A2  
♦ Q108  
♣ Q10875

♠ 43  
♥ J10975  
♦ A43  
♣ A32

♠ AK6  
♥ KQ83  
♦ J96  
♣ J64

♠ Q10952  
♥ 64  
♦ K752  
♣ K9

N  
W E  
S

Board (43) Av: NS=-80

N-S	E-W	Contract	N-S	E-W	IMP
13	16	1NT S 1	90		5
7	9	1NT S-1		50	1
6	5	1NT S-1		50	1
11	8	1NT S-1		50	1
9	7	1NT S-1		50	1
14	18	1NT S-1		50	1
15	17	1NT S-1		50	1
5	6	1NT S-1		50	1
12	10	1NT S-2		100	-1
16	13	1NT S-2		100	-1
18	14	1NT S-2		100	-1
1	2	1NT S-2		100	-1
2	1	1NT S-2		100	-1
4	3	1NT S-2		100	-1
3	4	1NT S-2		100	-1
17	15	1NT S-2		100	-1
8	11	1NT N-2		100	-1
10	12	1NT E 2		120	-1

Board (44) Av: NS=+290

N-S	E-W	Contract	N-S	E-W	IMP
12	10	5Hx E-6	1400		15
5	6	5Dx S 6	950		12
7	9	5D S 6	620		8
9	7	5D S 6	620		8
15	17	5D S 6	620		8
2	1	5D S 6	620		8
10	12	4D S 6	170		-3
17	15	4D S 6	170		-3
1	2	4D S 6	170		-3
3	4	3D S 6	170		-3
8	11	3D S 6	170		-3
13	16	4D N 5	150		-4
18	14	3H E-3	150		-4
11	8	5C E-2	100		-5
6	5	4C E-1	50		-6
14	18	4C E-1	50		-6
4	3	2NT N-1		100	-9
16	13	3NT N-3		300	-11

Board (45) Av: NS=-90

N-S	E-W	Contract	N-S	E-W	IMP
5	6	4H W-2	200		7
18	14	2S S 2	110		5
11	8	4H W-1	100		5
7	9	4H W-1	100		5
14	18	4H W-1	100		5
10	12	4H W-1	100		5
8	11	4H E-1	100		5
6	5	3NT E-1	100		5
12	10	2H W 2		110	-1
13	16	2H W 2		110	-1
16	13	2H W 3		140	-2
17	15	2H W 3		140	-2
2	1	2H W 3		140	-2
9	7	2H W 3		140	-2
1	2	2H W 3		140	-2
4	3	4H W 4		620	-11
15	17	4H W 4		620	-11
3	4	4H W 4		620	-11



兵庫県知事杯 Session 2 Flight B 2009年10月11日(日)

1

♠ 109876  
♥ Q32  
♦ A76  
♣ Q7

♠ KQ54  
♥ J9875  
♦ J82  
♣ 2

♠ A3  
♥ 1064  
♦ KQ1053  
♣ 1098

♠ J2  
♥ AK  
♦ 94  
♣ AKJ6543

W N E S

2

♠ 854  
♥ AQ654  
♦ K10975  
♣

♠ AKQ10  
♥ J32  
♦ Q642  
♣ J10

♠ J3  
♥ 1097  
♦ 83  
♣ AK6542

♠ 9762  
♥ K8  
♦ AJ  
♣ Q9873

W N E S

3

♠ AKQ1083  
♥ 42  
♦  
♣ QJ754

♠ 96  
♥ AQ10  
♦ AK10764  
♣ 63

♠ 7542  
♥ K865  
♦ Q983  
♣ K

♠ J  
♥ J973  
♦ J52  
♣ A10982

W N E S

Board (1) Av: NS=+400

N-S	E-W	Contract	N-S	E-W	IMP
12	15	3NT S 6	490		3
11	14	3NT S 5	460		2
6	8	3NT S 5	460		2
5	7	3NT N 5	460		2
8	6	3NT N 5	460		2
15	12	3NT N 5	460		2
10	13	3NT N 5	460		2
9	4	3NT N 5	460		2
3	18	3NT N 5	460		2
1	17	3NT N 5	460		2
16	2	3NT N 5	460		2
17	1	3NT N 4	430		1
4	9	5C S 5	400		0
18	3	5C S 5	400		0
13	10	4Hx W-2	300		-3
2	16	4C S 5	150		-6
7	5	3C S 5	150		-6
14	11	3C S 5	150		-6

Board (2) Av: NS=+40

N-S	E-W	Contract	N-S	E-W	IMP
1	17	2H N 4	170		4
2	16	3NT W-3	150		3
6	8	1NT S 2	120		2
14	11	3C E-2	100		2
8	6	2C E-2	100		2
7	5	2C E-2	100		2
13	10	2C E-2	100		2
3	18	2C E-2	100		2
16	2	2C E-2	100		2
17	1	2C E-2	100		2
4	9	2C E-2	100		2
12	15	1NT S 1	90		2
11	14	1NT E 1		90	-4
15	12	1NT E 1		90	-4
5	7	2NT S-1		100	-4
9	4	2NT S-1		100	-4
18	3	2H N-1		100	-4
10	13	3NT S-2		200	-6

Board (3) Av: NS=+380

N-S	E-W	Contract	N-S	E-W	IMP
3	18	5Cx N 7	750		9
4	9	4Sx N 5	690		7
9	4	5S N 5	450		2
8	6	4S N 5	450		2
6	8	4S N 5	450		2
13	10	4S N 5	450		2
2	16	4S N 5	450		2
10	13	4S N 5	450		2
5	7	4S N 5	450		2
18	3	5C N 7	440		2
1	17	5C S 6	420		1
16	2	4S N 4	420		1
15	12	5Dx W-1	200		-5
11	14	2S N 5	200		-5
12	15	4C N 7	190		-5
7	5	4C N 7	190		-5
17	1	3C N 7	190		-5
14	11	3D W 4		130	-11

4

♠ A9843  
♥ KJ52  
♦ A43  
♣ 10

♠ Q7652  
♥ 9  
♦ 1075  
♣ KJ83

♠ K10  
♥ A108  
♦ Q82  
♣ A9765

♠ J  
♥ Q7643  
♦ KJ96  
♣ Q42

W N E S

5

♠ AQ4  
♥ AK1086  
♦ 863  
♣ K6

♠ 109862  
♥ 973  
♦ K52  
♣ A4

♠ K73  
♥ J5  
♦ J10  
♣ QJ9875

♠ J5  
♥ Q42  
♦ AQ974  
♣ 1032

W N E S

6

♠ 42  
♥ AKQ64  
♦ 1084  
♣ AJ10

♠ A106  
♥ 1053  
♦ K952  
♣ 543

♠ Q953  
♥ 872  
♦ J  
♣ KQ987

♠ KJ87  
♥ J9  
♦ AQ763  
♣ 62

W N E S

Board (4) Av: NS=+410

N-S	E-W	Contract	N-S	E-W	IMP
12	15	5Cx E-3	800		9
7	5	4H N 5	650		6
3	18	4H N 5	650		6
6	8	4H N 5	650		6
15	12	4H N 5	650		6
17	1	4H S 4	620		5
5	7	4H N 4	620		5
18	3	4H N 4	620		5
10	13	5Cx E-2	500		3
2	16	5Cx E-2	500		3
13	10	3H N 5	200		-5
11	14	3H N 5	200		-5
9	4	3H N 5	200		-5
14	11	2H N 5	200		-5
4	9	2H N 4	170		-6
1	17	3C W-1	100		-7
16	2	1NT E-1	100		-7
8	6	2D N-1		100	-11

Board (5) Av: NS=+590

N-S	E-W	Contract	N-S	E-W	IMP
6	8	4H N 5	650		2
7	5	4H N 5	650		2
2	16	4H N 5	650		2
1	17	4H N 5	650		2
14	11	3NT N 4	630		1
8	6	4H N 4	620		1
11	14	4H N 4	620		1
10	13	4H N 4	620		1
12	15	4H N 4	620		1
15	12	4H N 4	620		1
13	10	4H N 4	620		1
18	3	4H N 4	620		1
3	18	4H N 4	620		1
17	1	4H N 4	620		1
5	7	4H N 4	620		1
9	4	3NT N 3	600		0
4	9	1NT N 2	120		-10
16	2	3NT N-1		100	-12

Board (6) Av: NS=+370

N-S	E-W	Contract	N-S	E-W	IMP
13	10	3NT S 5	460		3
2	16	3NT S 4	430		2
4	9	3NT N 4	430		2
5	7	3NT N 4	430		2
6	8	3NT N 4	430		2
16	2	3NT N 4	430		2
1	17	3NT N 4	430		2
14	11	4H N 4	420		2
10	13	3NT S 3	400		1
8	6	3NT N 3	400		1
12	15	3NT N 3	400		1
3	18	3NT N 3	400		1
18	3	3NT N 3	400		1
17	1	3NT N 3	400		1
11	14	3H S 4	170		-5
7	5	2H N 4	170		-5
9	4	2H N 3	140		-6
15	12	3NT N-1		50	-9

7

♠ J95  
♥ AQ853  
♦ 1064  
♣ K6

♠ 43  
♥ K10762  
♦ KJ  
♣ A543

♠ AK8  
♥ 4  
♦ AQ8532  
♣ J92

♠ Q10762  
♥ J9  
♦ 97  
♣ Q1087

8

♠ J8  
♥ KQ96  
♦ 10874  
♣ Q96

♠ Q764  
♥ 543  
♦ J  
♣ A8732

♠ K109  
♥ AJ108  
♦ A962  
♣ K10

♠ A532  
♥ 72  
♦ KQ53  
♣ J54

9

♠ K8  
♥ KQ  
♦ K32  
♣ AJ9643

♠ 964  
♥ 1095  
♦ Q954  
♣ KQ5

♠ AQ753  
♥ A762  
♦ 87  
♣ 108

♠ J102  
♥ J843  
♦ AJ106  
♣ 72

Board (7) Av: NS=-560

N-S	E-W	Contract	N-S	E-W	IMP
8	6	5D E-1	100		12
10	13	4D E-1	100		12
12	15	3NT W 3		600	-1
7	5	3NT E 3		600	-1
13	10	3NT E 3		600	-1
1	17	3NT E 3		600	-1
6	8	3NT E 3		600	-1
11	14	3NT E 3		600	-1
16	2	3NT E 3		600	-1
2	16	3NT E 3		600	-1
14	11	3NT E 3		600	-1
4	9	3NT E 3		600	-1
18	3	3NT E 3		600	-1
3	18	3NT W 4		630	-2
17	1	3NT W 4		630	-2
5	7	3NT W 4		630	-2
9	4	3NT W 4		630	-2
15	12	3NT E 4		630	-2

Board (8) Av: NS=-130

N-S	E-W	Contract	N-S	E-W	IMP
3	18	1NT E 1		90	1
7	5	1NT E 1		90	1
2	16	2H E 2		110	1
4	9	2NT E 2		120	0
9	4	1NT E 2		120	0
12	15	1NT E 2		120	0
1	17	1NT E 2		120	0
17	1	1NT E 2		120	0
13	10	1NT E 3		150	-1
11	14	1NT E 3		150	-1
15	12	1NT E 3		150	-1
14	11	1NT E 3		150	-1
5	7	1NT E 3		150	-1
18	3	1NT E 3		150	-1
16	2	1NT E 3		150	-1
6	8	1NT E 3		150	-1
8	6	1NT E 3		150	-1
10	13	2H E 4		170	-1

Board (9) Av: NS=+10

N-S	E-W	Contract	N-S	E-W	IMP
17	1	3H W-3	300		7
3	18	3C N 3	110		3
15	12	3C N 3	110		3
4	9	2D N 2	90		2
5	7	1NT N 1	90		2
8	6	1NT N 1	90		2
1	17	1NT N 1	90		2
10	13	1NT N 1	90		2
16	2	3C N-1		50	-2
14	11	3C N-1		50	-2
9	4	3C N-1		50	-2
13	10	1NT N-1		50	-2
2	16	1NT N-1		50	-2
18	3	1NT N-1		50	-2
6	8	1NT N-1		50	-2
7	5	1NT N-1		50	-2
11	14	3NT S-2		100	-3
12	15	3NT N-2		100	-3

10

♠ J104  
♥ Q109743  
♦ 1095  
♣ Q

♠ 85  
♥ K652  
♦ J63  
♣ 8765

♠ A763  
♥ J  
♦ A742  
♣ AJ93

♠ KQ92  
♥ A8  
♦ KQ8  
♣ K1042

Board (10) Av: NS=+100

N-S	E-W	Contract	N-S	E-W	IMP
13	11	2Hx S 2	670		11
10	15	2H S 3	140		1
5	9	2H S 3	140		1
14	12	2H S 3	140		1
15	10	2H S 3	140		1
1	16	2H S 3	140		1
12	14	2H N 3	140		1
18	2	2H S 2	110		0
7	6	2H S 2	110		0
17	3	2H S 2	110		0
11	13	2H S 2	110		0
3	17	2H S 2	110		0
4	8	2H S 2	110		0
9	5	2H S 2	110		0
6	7	2H S 2	110		0
8	4	4H S-1		100	-5
16	1	4H S-1		100	-5
2	18	4H S-2		200	-7

11

♠ 10953  
♥ A6  
♦ 832  
♣ Q952

♠ AQ872  
♥ 104  
♦ KQ10  
♣ AK3

♠ K6  
♥ J83  
♦ A954  
♣ 10764

♠ J4  
♥ KQ9752  
♦ J76  
♣ J8

Board (11) Av: NS=-240

N-S	E-W	Contract	N-S	E-W	IMP
15	10	3NT E-2	100		8
18	2	3NT E-2	100		8
17	3	3NT E-2	100		8
7	6	4S W-1		50	7
12	14	4S E-1		50	7
6	7	3S W 3		140	3
9	5	3S W 3		140	3
8	4	3S W 3		140	3
11	13	4S W 4		420	-5
10	15	4S W 4		420	-5
13	11	4S W 4		420	-5
2	18	4S W 4		420	-5
16	1	4S W 4		420	-5
1	16	4S W 4		420	-5
5	9	4S W 4		420	-5
3	17	4S W 4		420	-5
14	12	3NT E 4		430	-5
4	8	3NT E 4		430	-5

12

♠ 10743  
♥ 54  
♦ AQ92  
♣ Q92

♠ J98  
♥ K108  
♦ 843  
♣ J763

♠ K65  
♥ A6  
♦ KJ765  
♣ A85

♠ AQ2  
♥ QJ9732  
♦ 10  
♣ K104

Board (12) Av: NS=+90

N-S	E-W	Contract	N-S	E-W	IMP
8	4	3D E-3	150		2
12	14	2H S 3	140		2
6	7	2H S 3	140		2
16	1	2H S 3	140		2
2	18	2H S 3	140		2
1	16	2H S 2	110		1
4	8	2H S 2	110		1
3	17	2H S 2	110		1
11	13	2H S 2	110		1
9	5	2H N 2	110		1
7	6	3D W-2	100		0
14	12	3D E-2	100		0
17	3	3D E-1	50		-1
5	9	3D E-1	50		-1
18	2	1NT E-1	50		-1
13	11	1NT E-1	50		-1
10	15	1NT E 1		90	-5
15	10	2H S-1		100	-5

13

♠ AJ98  
♥ AQ95  
♦ K65  
♣ 64

♠ K75  
♥ K643  
♦ 1032  
♣ 952

♠ 10642  
♥ 10  
♦ QJ9  
♣ AKJ87

♠ Q3  
♥ J872  
♦ A874  
♣ Q103

14

♠ A5  
♥ Q1052  
♦ 643  
♣ J1093

♠ KQ83  
♥ 86  
♦ 872  
♣ Q875

♠ 10964  
♥ 4  
♦ AKQ95  
♣ A64

♠ J72  
♥ AKJ973  
♦ J10  
♣ K2

15

♠ QJ10964  
♥ 83  
♦ 987  
♣ A10

♠ AK109  
♥ J102  
♦ KJ9873  
♣ KJ9873

♠ AK872  
♥ J  
♦ AK65  
♣ 654

♠ 53  
♥ Q76542  
♦ Q43  
♣ Q2

Board (13) Av: NS=+190

N-S	E-W	Contract	N-S	E-W	IMP
15	10	2S	W-5	500	7
16	1	3C	W-3	300	3
8	4	3C	E-3	300	3
18	2	2S	W-3	300	3
6	7	2S	W-2	200	0
2	18	2H	S 5	200	0
17	3	3H	S 4	170	-1
3	17	3H	S 4	170	-1
7	6	3H	S 4	170	-1
1	16	3H	N 4	170	-1
12	14	2H	S 4	170	-1
11	13	2H	N 4	170	-1
9	5	2H	N 4	170	-1
14	12	2H	N 4	170	-1
13	11	3H	S 3	140	-2
4	8	2H	S 3	140	-2
10	15	3D	N 4	130	-2
5	9	2NT	N 2	120	-2

Board (14) Av: NS=-160

N-S	E-W	Contract	N-S	E-W	IMP
15	10	3H	S 3	140	7
9	5	3H	S 3	140	7
5	9	4S	E-1	50	5
12	14	4S	E-1	50	5
10	15	3S	W 3	140	1
6	7	3S	E 3	140	1
4	8	3S	E 3	140	1
8	4	3S	W 4	170	0
11	13	3S	E 4	170	0
7	6	3S	E 4	170	0
3	17	3S	E 4	170	0
18	2	3S	E 4	170	0
13	11	2S	E 4	170	0
14	12	3S	E 5	200	-1
2	18	5Hx	S-2	300	-4
16	1	4S	E 4	420	-6
17	3	4S	E 4	420	-6
1	16	4S	E 5	450	-7

Board (15) Av: NS=-510

N-S	E-W	Contract	N-S	E-W	IMP
17	3	6C	W-1	50	11
5	9	6C	W-1	50	11
4	8	3NT	W-1	50	11
3	17	3NT	W 3	400	3
1	16	3NT	E 4	430	2
12	14	3NT	E 4	430	2
10	15	3NT	E 4	430	2
15	10	3NT	E 5	460	2
18	2	3NT	E 5	460	2
2	18	3NT	E 5	460	2
14	12	3NT	E 6	490	1
16	1	3NT	E 6	490	1
11	13	2Sx	N-3	800	-7
9	5	2Sx	N-3	800	-7
7	6	2Sx	N-3	800	-7
13	11	6C	W 6	920	-9
6	7	6C	W 6	920	-9
8	4	6NT	E 6	990	-10

16

♠ K10943  
♥ A10732  
♦  
♣ 864

♠ AQJ76  
♥ 96  
♦ 864  
♣ K107

♠ KQ  
♥ AKQJ753  
♦ A953  
♣ A953

♠ 852  
♥ J854  
♦ 1092  
♣ QJ2

17

♠ A9543  
♥ J108  
♦ J43  
♣ 54

♠ QJ76  
♥ 97542  
♦ A9  
♣ A7

♠ K8  
♥ AKQ  
♦ Q87  
♣ J10963

♠ 102  
♥ 63  
♦ K10652  
♣ KQ82

18

♠ KQ4  
♥ Q42  
♦ Q432  
♣ 1043

♠ J108753  
♥ AKJ3  
♦ K6  
♣ 6

♠ A  
♥ 875  
♦ J10  
♣ AKJ9852

♠ 962  
♥ 1096  
♦ A9875  
♣ Q7

Board (16) Av: NS=-480

N-S	E-W	Contract	N-S	E-W	IMP
11	13	4S	W-3	300	13
1	16	4S	W-2	200	12
6	7	6D	E-1	100	11
13	11	6D	E-1	100	11
9	5	5D	E-1	100	11
4	8	2D	E 6	170	7
18	2	5D	E 5	600	-3
16	1	5D	E 5	600	-3
15	10	3NT	E 5	660	-5
10	15	3NT	E 5	660	-5
7	6	3NT	E 5	660	-5
8	4	3NT	E 5	660	-5
5	9	3NT	E 5	660	-5
12	14	3NT	E 6	690	-5
14	12	3NT	E 6	690	-5
3	17	3NT	E 6	690	-5
17	3	6D	E 6	1370	-13
2	18	6D	E 6	1370	-13

Board (17) Av: NS=-440

N-S	E-W	Contract	N-S	E-W	IMP
6	7	4H	E 4	420	1
5	9	4H	E 4	420	1
10	15	4H	E 4	420	1
7	6	4H	E 4	420	1
18	2	4H	E 4	420	1
1	16	4H	E 4	420	1
15	10	3NT	E 4	430	0
2	18	3NT	E 4	430	0
4	8	3NT	E 4	430	0
12	14	4H	E 5	450	0
14	12	4H	E 5	450	0
11	13	4H	E 5	450	0
8	4	4H	E 5	450	0
17	3	4H	E 5	450	0
9	5	4H	E 5	450	0
16	1	4H	E 5	450	0
3	17	4H	E 5	450	0
13	11	4H	E 6	480	-1

Board (18) Av: NS=-40

N-S	E-W	Contract	N-S	E-W	IMP
4	8	4H	W-2	100	4
13	11	5C	E-1	50	3
17	3	5C	E-1	50	3
12	14	5C	E-1	50	3
6	7	5C	E-1	50	3
9	5	5C	E-1	50	3
18	2	5C	E-1	50	3
16	1	4S	W-1	50	3
15	10	4S	W-1	50	3
1	16	4H	W-1	50	3
3	17	4H	W-1	50	3
10	15	3NT	W-1	50	3
11	13	3NT	W-1	50	3
2	18	3NT	E-1	50	3
5	9	5C	E 5	400	-8
14	12	4S	W 4	420	-9
7	6	4H	W 4	420	-9
8	4	4H	E 5	450	-9

兵庫県知事杯 Session 3 Flight B 2009年10月11日(日)

1

♠ K32  
♥ 6  
♦ A102  
♣ J98632

♠ A1087 ♠ QJ94  
♥ J8 ♥ KQ104  
♦ 73 ♦ Q986  
♣ AQ1074 ♣ K

W N E S

♠ 65  
♥ A97532  
♦ KJ54  
♣ 5

2

♠ 109753  
♥  
♦ AQ743  
♣ 952

♠ 4 ♠ AQJ2  
♥ KJ87432 ♥ AQ95  
♦ 109 ♦ K8652  
♣ KJ3 ♣

W N E S

♠ K86  
♥ 106  
♦ J  
♣ AQ108764

3

♠ K985  
♥ 109  
♦ 1042  
♣ KQ105

♠ A32 ♠ 764  
♥ K642 ♥ J83  
♦ AJ963 ♦ KQ85  
♣ 6 ♣ 982

W N E S

♠ QJ10  
♥ AQ75  
♦ 7  
♣ AJ743

Board (1) Av: NS=+70

N-S	E-W	Contract	N-S	E-W	IMP
6	14	4S W-3	150		2
15	4	4S E-3	150		2
5	13	4S E-3	150		2
10	18	4S E-3	150		2
8	2	4S E-3	150		2
1	7	4S E-3	150		2
2	8	4S E-3	150		2
17	12	4S W-2	100		1
3	9	4S E-2	100		1
14	6	4S E-2	100		1
18	10	3S E-2	100		1
7	1	4S E-1	50		-1
11	16	4S E-1	50		-1
4	15	3S W-1	50		-1
12	17	3Hx S-1	100		-5
13	5	3S E 3	140		-5
9	3	3S E 3	140		-5
16	11	4S W 4	420		-10

Board (2) Av: NS=-550

N-S	E-W	Contract	N-S	E-W	IMP
10	18	6H W-1	50		12
5	13	5Cx S-1	200		8
15	4	4H W 4	420		4
2	8	4H W 5	450		3
18	10	5H W 6	480		2
13	5	5H W 6	480		2
7	1	5H W 6	480		2
16	11	5H W 6	480		2
6	14	5H W 6	480		2
11	16	4H W 6	480		2
12	17	4H W 6	480		2
17	12	4H W 6	480		2
4	15	4H W 6	480		2
1	7	4H E 6	480		2
8	2	6H W 6	980		-10
14	6	6H W 6	980		-10
9	3	6H W 6	980		-10
3	9	6H W 6	980		-10

Board (3) Av: NS=+130

N-S	E-W	Contract	N-S	E-W	IMP
5	13	4S N 4	420		7
18	10	3D E-2	200		2
3	9	3S N 4	170		1
17	12	3S N 4	170		1
9	3	2S N 4	170		1
13	5	3S S 5	150		1
6	14	2S N 3	140		0
1	7	4C S 4	130		0
4	15	2C S 4	130		0
8	2	2C S 4	130		0
12	17	1NT S 2	120		0
16	11	2S N 2	110		-1
10	18	3D W-1	100		-1
15	4	3D E-1	100		-1
14	6	1NT S 1	90		-1
7	1	1NT S 1	90		-1
11	16	1NT S 1	90		-1
2	8	2Dx W 2	180		-7

4

♠ AQ10853  
♥  
♦ J9653  
♣ 93

♠ 76 ♠ KJ9  
♥ AQ92 ♥ K8754  
♦ 1074 ♦ Q  
♣ KQJ8 ♣ 7652

W N E S

♠ 42  
♥ J1063  
♦ AK82  
♣ A104

5

♠ 542  
♥ 5  
♦ KJ5  
♣ AKJ873

♠ A103 ♠ Q976  
♥ QJ2 ♥ K84  
♦ AQ9832 ♦ 1074  
♣ 4 ♣ 962

W N E S

♠ KJ8  
♥ A109763  
♦ 6  
♣ Q105

6

♠ AQ4  
♥ AJ842  
♦ K8  
♣ 1093

♠ 9875 ♠ K632  
♥ Q ♥ K3  
♦ Q32 ♦ 10976  
♣ AQ752 ♣ 864

W N E S

♠ J10  
♥ 109765  
♦ AJ54  
♣ KJ

Board (4) Av: NS=+150

N-S	E-W	Contract	N-S	E-W	IMP
11	16	4Sx N 4	790		12
9	3	4Sx N 4	790		12
12	17	4S N 4	620		10
4	15	4S N 4	620		10
10	18	4Hx W-1	200		2
6	14	4Hx W-1	200		2
18	10	4Hx E-1	200		2
7	1	3S N 4	170		1
5	13	3S N 4	170		1
8	2	3S N 4	170		1
3	9	4H E-1	100		-2
16	11	3H W 3	140		-7
15	4	3H E 3	140		-7
14	6	3H E 3	140		-7
13	5	2H W 3	140		-7
2	8	3H W 4	170		-8
17	12	3H E 4	170		-8
1	7	3Hx W 4	930		-14

Board (5) Av: NS=+290

N-S	E-W	Contract	N-S	E-W	IMP
14	6	3NT N 4	630		8
18	10	5C N 5	600		7
2	8	5C N 5	600		7
7	1	5C N 5	600		7
16	11	3NT N 3	600		7
9	3	3NT N 3	600		7
5	13	3NT N 3	600		7
6	14	3H S 4	170		-3
12	17	3C N 5	150		-4
17	12	3H S 3	140		-4
1	7	3H S 3	140		-4
10	18	3C N 4	130		-4
3	9	2H S 2	110		-5
15	4	3D W-2	100		-5
4	15	3D W-1	50		-6
8	2	3D W-1	50		-6
11	16	3D W-1	50		-6
13	5	3H S-1	100		-9

Board (6) Av: NS=+360

N-S	E-W	Contract	N-S	E-W	IMP
14	6	4H N 4	420		2
10	18	4H N 4	420		2
13	5	4H N 4	420		2
6	14	4H N 4	420		2
12	17	4H N 4	420		2
17	12	4H N 4	420		2
18	10	4H N 4	420		2
11	16	4H N 4	420		2
5	13	4H N 4	420		2
1	7	4H N 4	420		2
2	8	4H N 4	420		2
7	1	4H N 4	420		2
3	9	4H N 4	420		2
15	4	4H N 4	420		2
4	15	3H N 4	170		-5
8	2	3H N 3	140		-6
9	3	4H N-1	50		-9
16	11	4H N-2	100		-10

7

♠ 32  
♥ 96  
♦ 109542  
♣ KQ72

♠ K10876  
♥ AJ5  
♦ Q83  
♣ J6

N  
W — E  
S

♠ J54  
♥ Q7432  
♦ AK6  
♣ A4

♠ AQ9  
♥ K108  
♦ J7  
♣ 109853

8

♠ 106  
♥ K1084  
♦ AQ52  
♣ 762

♠ K84  
♥ AQ3  
♦ KJ63  
♣ AK9

N  
W — E  
S

♠ A532  
♥ J952  
♦ 74  
♣ Q103

♠ QJ97  
♥ 76  
♦ 1098  
♣ J854

9

♠ QJ10876  
♥ AQ103  
♦ AQ  
♣ K

♠ 4  
♥ 9642  
♦ 952  
♣ 107432

N  
W — E  
S

♠ 2  
♥ KJ85  
♦ KJ7643  
♣ Q5

♠ AK953  
♥ 7  
♦ 108  
♣ AJ986

Board (7) Av: NS=-470

N-S	E-W	Contract	N-S	E-W	IMP
11	16	5H E-1	100		11
13	5	4H E-1	100		11
15	4	4H E-1	100		11
2	8	2H E 3		140	8
4	15	2H E 4		170	7
6	14	4S W 4		620	-4
8	2	4S E 4		620	-4
17	12	4H E 4		620	-4
14	6	4H E 4		620	-4
12	17	4H E 4		620	-4
18	10	4H E 4		620	-4
3	9	4H E 4		620	-4
7	1	4H E 4		620	-4
1	7	4H E 4		620	-4
5	13	4H E 4		620	-4
9	3	4H E 4		620	-4
16	11	4S W 5		650	-5
10	18	4H E 5		650	-5

Board (8) Av: NS=-110

N-S	E-W	Contract	N-S	E-W	IMP
11	6	14 3NT E-3	150		6
11	11	16 3NT W-2	100		5
9	3	3NT W-2	100		5
18	10	3NT W-2	100		5
8	2	3NT W-2	100		5
16	11	3NT W-1	50		4
10	18	3NT W-1	50		4
5	13	3NT W-1	50		4
2	8	3NT W-1	50		4
3	9	3NT W-1	50		4
4	15	3NT W-1	50		4
12	17	3NT W 3		400	-7
17	12	3NT W 3		400	-7
15	4	3NT W 3		400	-7
7	1	3NT W 3		400	-7
1	7	3NT W 3		400	-7
14	6	3NT W 3		400	-7
13	5	3NT W 3		400	-7

Board (9) Av: NS=+1100

N-S	E-W	Contract	N-S	E-W	IMP
10	18	7S N 7	1510		9
18	10	7S N 7	1510		9
6	14	7S N 7	1510		9
15	4	7S N 7	1510		9
5	5	13 7S N 7	1510		9
5	13	7S N 7	1510		9
16	11	7S N 7	1510		9
11	16	7S N 7	1510		9
14	6	6S N 7	1010		-3
17	12	6S N 7	1010		-3
9	3	6S N 7	1010		-3
2	8	6S N 7	1010		-3
8	2	6S N 7	1010		-3
7	1	6S N 7	1010		-3
1	7	6S N 7	1010		-3
13	5	4S N 7	510		-11
4	15	4S N 7	510		-11
3	9	4S N 7	510		-11
12	17	7NT S-5		250	-16

10

♠ QJ975  
♥ A732  
♦ K9  
♣ K2

♠ AK1064  
♥ 108  
♦ 8  
♣ QJ873

N  
W — E  
S

♠ 832  
♥ 95  
♦ A106543  
♣ 65

11

♠ A62  
♥ A765  
♦ 82  
♣ J874

♠ Q1098  
♥ KJ3  
♦ AJ64  
♣ K6

N  
W — E  
S

♠ J543  
♥ 84  
♦ K10  
♣ AQ1093

♠ K7  
♥ Q1092  
♦ Q9753  
♣ 52

12

♠ K64  
♥ J9  
♦ A42  
♣ KQ1054

♠ A108752  
♥ K83  
♦ 1053  
♣ 9

N  
W — E  
S

♠ Q  
♥ 74  
♦ KQ976  
♣ AJ762

♠ J93  
♥ AQ10652  
♦ J8  
♣ 83

Board (10) Av: NS=-150

N-S	E-W	Contract	N-S	E-W	IMP
7	2	5C W-1	100		6
12	16	5C W-1	100		6
10	17	5C W-1	100		6
16	12	5C W-1	100		6
9	1	5C W-1	100		6
2	7	5C E-1	100		6
15	6	5C E-1	100		6
17	10	4H E-1	100		6
1	9	3NT E-1	100		6
5	14	3NT E-1	100		6
4	13	3C W 4		130	1
6	15	3C E 4		130	1
3	8	2Sx N-2		500	-8
13	4	5C E 5		600	-10
14	5	3NT W 3		600	-10
18	11	3NT W 4		630	-10
8	3	3NT W 4		630	-10
11	18	3NT E 5		660	-11

Board (11) Av: NS=-300

N-S	E-W	Contract	N-S	E-W	IMP
2	7	4S E-1	50		8
13	4	3S E 3		140	4
16	12	3S E 4		170	4
6	15	2S E 4		170	4
14	5	2S E 4		170	4
17	10	2S E 4		170	4
7	2	2S E 4		170	4
3	8	2S E 4		170	4
4	13	2S E 5		200	3
9	1	3NT W 3		400	-3
18	11	4S W 4		420	-3
11	18	4S E 4		420	-3
8	3	4S E 4		420	-3
5	14	4S E 4		420	-3
12	16	3NT W 4		430	-4
1	9	3NT W 4		430	-4
10	17	4S E 5		450	-4
15	6	4S E 5		450	-4

Board (12) Av: NS=-110

N-S	E-W	Contract	N-S	E-W	IMP
13	4	3NT N 3	600		12
4	13	3D E-1	50		4
10	17	3D E-1	50		4
11	18	3D E-1	50		4
5	14	3D E-1	50		4
9	1	3D E-1	50		4
6	15	3H S-1		100	0
8	3	2S W 2		110	0
2	7	2S W 2		110	0
14	5	2S E 2		110	0
18	11	2S W 3		140	-1
12	16	4H S-2		200	-3
15	6	4H S-2		200	-3
7	2	2H S-2		200	-3
1	9	2H S-2		200	-3
3	8	4H S-3		300	-5
17	10	4H S-4		400	-7
16	12	3Dx E 4		570	-10

13

♠ KQ  
♥ AK95  
♦ Q862  
♣ 743

♠ 965  
♥ 10642  
♦ J43  
♣ AQ2

♠ 1082  
♥ 83  
♦ A109  
♣ KJ1095

♠ AJ743  
♥ QJ7  
♦ K75  
♣ 86

14

♠ 963  
♥ KQ106  
♦ Q73  
♣ K86

♠ K8742  
♥ J83  
♦ J1042  
♣ 9

♠ A10  
♥ A95  
♦ 86  
♣ J107543

♠ QJ5  
♥ 742  
♦ AK95  
♣ AQ2

15

♠ A3  
♥ AK942  
♦ J954  
♣ AK

♠ KQ108  
♥ 85  
♦ 82  
♣ Q10974

♠ J542  
♥  
♦ KQ10763  
♣ 865

♠ 976  
♥ QJ10763  
♦ A  
♣ J32

Board (13) Av: NS=+140

N-S	E-W	Contract	N-S	E-W	IMP
6	15	3S W-3	300		4
4	13	3S W-3	300		4
8	3	2S W-2	200		2
11	18	2S W-2	200		2
9	1	1NT S 2	120		-1
14	5	1NT S 2	120		-1
15	6	1NT S 2	120		-1
1	9	1NT S 2	120		-1
10	17	1NT S 2	120		-1
7	2	1NT S 2	120		-1
12	16	1NT S 2	120		-1
2	7	1NT S 2	120		-1
18	11	1NT S 2	120		-1
13	4	1NT S 2	120		-1
16	12	3C N 3	110		-1
5	14	2S W-1	100		-1
3	8	1NT S 1	90		-2
17	10	1NT S-1		100	-6

Board (14) Av: NS=-70

N-S	E-W	Contract	N-S	E-W	IMP
6	15	1NT W-4	200		7
15	6	3C S 3	110		5
12	16	2S W-1	50		3
17	10	2S W-1	50		3
5	14	2S W-1	50		3
9	1	2S W 2		110	-1
14	5	2S W 2		110	-1
10	17	2S W 2		110	-1
18	11	2S W 2		110	-1
7	2	2S W 2		110	-1
3	8	2S W 2		110	-1
2	7	2S W 2		110	-1
11	18	2S W 2		110	-1
13	4	2S W 2		110	-1
8	3	2S E 2		110	-1
1	9	2S E 2		110	-1
16	12	2S W 3		140	-2
4	13	2S W 3		140	-2

Board (15) Av: NS=+550

N-S	E-W	Contract	N-S	E-W	IMP
5	14	3NT N 5	660		3
17	10	3NT S 4	630		2
6	15	3NT N 4	630		2
15	6	3NT N 4	630		2
14	5	3NT N 4	630		2
16	12	3NT N 4	630		2
12	16	3NT N 4	630		2
18	11	3NT N 4	630		2
1	9	3NT N 4	630		2
9	1	3NT N 4	630		2
2	7	3NT N 4	630		2
8	3	3NT N 4	630		2
13	4	3NT N 4	630		2
7	2	5D N 5	600		2
3	8	5D N 5	600		2
4	13	2NT S 4	180		-9
10	17	6D S-1		100	-12
11	18	6D S-1		100	-12

16

♠ AJ108  
♥ 964  
♦ 853  
♣ K87

♠ Q642  
♥ A3  
♦ KJ76  
♣ A95

♠ 7  
♥ KQJ85  
♦ Q104  
♣ J1042

♠ K953  
♥ 1072  
♦ A92  
♣ Q63

17

♠ 962  
♥ 732  
♦ AJ9  
♣ Q765

♠ K108  
♥ 105  
♦ KQ10853  
♣ J8

♠ A54  
♥ Q8  
♦ 7642  
♣ A1092

♠ QJ73  
♥ AKJ964  
♦  
♣ K43

18

♠ 4  
♥ A9874  
♦ A3  
♣ A9854

♠ 952  
♥ 3  
♦ KQJ10852  
♣ KJ

♠ AKJ10876  
♥ J  
♦ 976  
♣ Q3

♠ Q3  
♥ KQ10652  
♦ 4  
♣ 10762

Board (16) Av: NS=+130

N-S	E-W	Contract	N-S	E-W	IMP
5	14	4Sx E-3	800		12
16	12	4S E-3	300		5
6	15	3S W-3	300		5
17	10	3S E-2	200		2
14	5	3S E-2	200		2
18	11	2S E-2	200		2
15	6	3S E-1	100		-1
2	7	2S W-1	100		-1
13	4	2S W-1	100		-1
3	8	2S E-1	100		-1
11	18	2S E-1	100		-1
12	16	2S E-1	100		-1
10	17	2S E-1	100		-1
9	1	2S E-1	100		-1
4	13	2S E-1	100		-1
8	3	2S E-1	100		-1
7	2	3H S-2		100	-6
1	9	2S E 2		110	-6

Board (17) Av: NS=-290

N-S	E-W	Contract	N-S	E-W	IMP
18	11	3NT E-1	50		8
7	2	2H W 4		170	3
11	18	2H W 4		170	3
6	15	2H W 4		170	3
13	4	3H W 5		200	3
14	5	2H W 5		200	3
10	17	2H W 5		200	3
9	1	2H W 5		200	3
4	13	2H W 5		200	3
2	7	2H W 5		200	3
8	3	2H W 5		200	3
3	8	4H W 4		420	-4
12	16	4H W 5		450	-4
17	10	4H W 5		450	-4
1	9	4H W 5		450	-4
5	14	4H W 5		450	-4
15	6	4H W 5		450	-4
16	12	2Hx W 4		670	-9

Board (18) Av: NS=+30

N-S	E-W	Contract	N-S	E-W	IMP
3	8	4S S 4	620		11
6	15	4S S 4	620		11
16	12	4S S 4	620		11
8	3	3H E-5	250		6
18	11	3H W-4	200		5
14	5	3S S 4	170		4
13	4	2S S 4	170		4
4	13	4D E-2	100		2
11	18	4S S-1		100	-4
17	10	4S S-1		100	-4
15	6	4S S-1		100	-4
2	7	4S S-1		100	-4
9	1	4S S-1		100	-4
5	14	4S S-1		100	-4
7	2	5H N-3		300	-8
12	16	4H N-3		300	-8
10	17	3NT N-4		400	-10
1	9	3NT N-5		500	-11

# 19

♠ A106  
♥ J972  
♦ K  
♣ J10983

♠ QJ972  
♥ 543  
♦ 1082  
♣ 74

♠ K54  
♥ AK1086  
♦ 9  
♣ A652

♠ 83  
♥ Q  
♦ AQJ76543  
♣ KQ

N  
W—E  
S

# 20

♠ 83  
♥ J763  
♦ AKQ95  
♣ KJ

♠ Q76  
♥ KQ94  
♦ 6  
♣ 76432

♠ A9  
♥ A1082  
♦ J842  
♣ AQ10

♠ KJ10542  
♥ 5  
♦ 1073  
♣ 985

N  
W—E  
S

# 21

♠ Q9763  
♥ QJ83  
♦ KJ4  
♣ A

♠ J2  
♥ 1062  
♦ Q7653  
♣ 1043

♠ AK8  
♥ K4  
♦ A109  
♣ KQ762

♠ 1054  
♥ A975  
♦ 82  
♣ J985

N  
W—E  
S

Board (19) Av: NS=+240

N-S	E-W	Contract	N-S	E-W	IMP
18	12	3NTxN 5	750		11
5	15	3NT N 4	430		5
6	13	3NT N 4	430		5
12	18	3NT N 4	430		5
11	17	3NT S 3	400		4
4	14	3NT N 3	400		4
17	11	3NT N 3	400		4
10	16	2D S 6	170		-2
3	7	3D S 5	150		-3
16	10	2D S 5	150		-3
8	1	3D S 4	130		-3
14	4	3D S 4	130		-3
1	8	3D S 4	130		-3
2	9	2D S 4	130		-3
9	2	2D S 4	130		-3
13	6	2D S 4	130		-3
15	5	2D S 4	130		-3
7	3	5D S-1	50		-7

Board (20) Av: NS=-60

N-S	E-W	Contract	N-S	E-W	IMP
15	5	2S S 2	110		5
5	15	2S S 2	110		5
6	13	2S S 2	110		5
12	18	2S S 2	110		5
11	17	2S S 2	110		5
1	8	2S S 2	110		5
10	16	4H E-1	100		4
18	12	1NT E 1	90		-1
4	14	2S S-1	100		-1
17	11	3H E 3	140		-2
8	1	1NT E 3	150		-3
2	9	3H W 4	170		-3
3	7	1NT E 4	180		-3
13	6	1NT E 4	180		-3
14	4	2Sx S-1	200		-4
16	10	2S S-2	200		-4
7	3	2S N-2	200		-4
9	2	1NT E 5	210		-4

Board (21) Av: NS=+210

N-S	E-W	Contract	N-S	E-W	IMP
16	10	3NTxE-6	1400		15
17	11	3NT E-6	300		3
13	6	3NT E-5	250		1
4	14	3NT E-5	250		1
2	9	3NT E-5	250		1
12	18	3NT E-5	250		1
18	12	2NT E-5	250		1
5	15	2NT E-5	250		1
7	3	2NT E-5	250		1
8	1	2NT E-4	200		0
11	17	3NT E-3	150		-2
14	4	3NT E-3	150		-2
15	5	3NT E-3	150		-2
9	2	2NT E-3	150		-2
3	7	2NT E-3	150		-2
1	8	2NT E-3	150		-2
10	16	3S N 3	140		-2
6	13	3C E-1	50		-4

# 22

♠ 7  
♥ KJ102  
♦ 86  
♣ AQ10653

♠ Q1054  
♥ Q7  
♦ 54  
♣ K9874

♠ KJ93  
♥ A5  
♦ KQJ1072  
♣ J

♠ A862  
♥ 98643  
♦ A93  
♣ 2

N  
W—E  
S

# 23

♠ KQ654  
♥ 74  
♦ AQ107  
♣ 95

♠ 8  
♥ AJ82  
♦ KJ65  
♣ Q432

♠ AJ102  
♥ Q653  
♦ 93  
♣ J87

♠ 973  
♥ K109  
♦ 842  
♣ AK106

N  
W—E  
S

# 24

♠ QJ  
♥ QJ8643  
♦ AJ  
♣ Q86

♠ K76  
♥ 95  
♦ K9875  
♣ A53

♠ A109843  
♥ K7  
♦ Q104  
♣ 107

♠ 52  
♥ A102  
♦ 632  
♣ KJ942

N  
W—E  
S

Board (22) Av: NS=-150

N-S	E-W	Contract	N-S	E-W	IMP
11	17	4Sx E-2	500		12
15	5	4H S 4	420		11
12	18	4Sx W-1	200		8
2	9	4S W-2	200		8
1	8	3S W-2	200		8
16	10	4S W-1	100		6
3	7	4S W-1	100		6
18	12	4S E-1	100		6
7	3	5Hx S-1	100		2
8	1	3S W 3	140		0
4	14	3S W 3	140		0
5	15	3S W 4	170		-1
17	11	4S W 4	620		-10
9	2	4S W 4	620		-10
6	13	4S W 4	620		-10
13	6	4S W 4	620		-10
10	16	4S W 4	620		-10
14	4	4S E 4	620		-10

Board (23) Av: NS=-20

N-S	E-W	Contract	N-S	E-W	IMP
15	5	4H E-3	300		8
4	14	2S N 2	110		4
5	15	2S N 2	110		4
17	11	2S N 2	110		4
16	10	2S N 2	110		4
6	13	2S N 2	110		4
1	8	2S N 2	110		4
7	3	2S N 2	110		4
8	1	3H E-1	100		3
9	2	3S N-1	100		-2
12	18	2S N-1	100		-2
11	17	2S N-1	100		-2
13	6	2S N-1	100		-2
3	7	3S N-2	200		-5
18	12	3S N-2	200		-5
10	16	3S N-2	200		-5
2	9	3S N-2	200		-5
14	4	3S N-3	300		-7

Board (24) Av: NS=-130

N-S	E-W	Contract	N-S	E-W	IMP
17	11	4H N 5	450		11
11	17	3H N 3	140		7
14	4	3H N 3	140		7
10	16	4H N-1	50		2
1	8	3S E 3	140		0
12	18	3S E 3	140		0
2	9	3S E 3	140		0
13	6	3S E 4	170		-1
15	5	3S E 4	170		-1
9	2	3S E 4	170		-1
16	10	3S E 5	200		-2
7	3	3S E 5	200		-2
3	7	3S E 5	200		-2
4	14	3S E 5	200		-2
6	13	3S E 5	200		-2
18	12	3S E 5	200		-2
5	15	2S E 5	200		-2
8	1	4S E 5	450		-8

25

♠ 102  
♥ QJ6  
♦ 9843  
♣ A985

♠ Q984  
♥ A108543  
♦ K  
♣ 32

♠ AKJ53  
♥  
♦ QJ65  
♣ KJ106

♠ 76  
♥ K972  
♦ A1072  
♣ Q74

W — E  
S

26

♠ AKQ  
♥ J105  
♦ QJ32  
♣ J106

♠ J9874  
♥ A73  
♦ A  
♣ Q753

♠ KQ864  
♥  
♦ 1098764  
♣ 92

♠ 106532  
♥ 92  
♦ K5  
♣ AK84

W — E  
S

27

♠ AQ1096  
♥ 2  
♦ KQ  
♣ 87654

♠ K7432  
♥ Q4  
♦ A9753  
♣ A

♠ 85  
♥ K10965  
♦ J62  
♣ K103

♠ J  
♥ AJ873  
♦ 1084  
♣ QJ92

W — E  
S

Board (25) Av: NS=-650

N-S	E-W	Contract	N-S	E-W	IMP
4	14	4S	E 4	620	1
8	1	4S	E 4	620	1
11	17	4S	E 4	620	1
10	16	5S	E 5	650	0
17	11	5S	E 5	650	0
16	10	4S	W 5	650	0
6	13	4S	E 5	650	0
13	6	4S	E 5	650	0
12	18	4S	E 5	650	0
18	12	4S	E 5	650	0
9	2	4S	E 5	650	0
3	7	4S	E 5	650	0
1	8	4S	E 5	650	0
2	9	4S	E 5	650	0
5	15	4S	E 5	650	0
15	5	4S	E 5	650	0
7	3	4S	E 5	650	0
14	4	4S	E 5	650	0

Board (26) Av: NS=-80

N-S	E-W	Contract	N-S	E-W	IMP
12	18	2D	E-2	200	7
15	5	1S	W-2	200	7
4	14	1S	S 3	140	6
17	11	2S	W-1	100	5
5	15	2C	W-1	100	5
13	6	2D	E 2	90	0
18	12	2D	E 2	90	0
6	13	2D	E 2	90	0
1	8	2D	E 2	90	0
7	3	2D	E 2	90	0
8	1	2D	E 2	90	0
14	4	4S	S-2	200	-3
11	17	4S	S-2	200	-3
9	2	3NT	N-2	200	-3
16	10	3NT	N-2	200	-3
10	16	3NT	N-2	200	-3
3	7	2C	S-2	200	-3
2	9	3NT	N-3	300	-6

Board (27) Av: NS=+130

N-S	E-W	Contract	N-S	E-W	IMP
7	3	2Sx	W-2	300	5
3	7	2Sx	W-2	300	5
14	4	3S	W-3	150	1
10	16	2S	W-3	150	1
5	15	2S	W-3	150	1
12	18	2S	W-3	150	1
2	9	2S	W-3	150	1
9	2	2S	W-3	150	1
18	12	4C	N 4	130	0
11	17	3C	N 4	130	0
17	11	3NT	E-2	100	-1
8	1	2S	W-2	100	-1
1	8	2S	W-2	100	-1
13	6	2S	W-2	100	-1
4	14	2S	W-2	100	-1
6	13	2S	E-2	100	-1
15	5	2H	E-1	50	-2
16	10	2H	E 2	110	-6

28

♠ 652  
♥ KJ3  
♦ AJ976  
♣ 104

♠ Q983  
♥ Q98  
♦ 85  
♣ KJ75

♠ J1074  
♥ 4  
♦ KQ432  
♣ A92

♠ AK  
♥ A107652  
♦ 10  
♣ Q863

W — E  
S

29

♠ QJ109  
♥ 85  
♦ KJ53  
♣ 1054

♠ K82  
♥ AQJ4  
♦ 1064  
♣ Q93

♠ A6  
♥ 1097632  
♦ AQ97  
♣ 6

♠ 7543  
♥ K  
♦ 82  
♣ AKJ872

W — E  
S

30

♠ K97  
♥ AKJ10754  
♦ J  
♣ 93

♠ J2  
♥ Q8  
♦ 974  
♣ AK8742

♠ A8  
♥ 962  
♦ AQ86532  
♣ 10

♠ Q106543  
♥ 3  
♦ K10  
♣ QJ65

W — E  
S

Board (28) Av: NS=+150

N-S	E-W	Contract	N-S	E-W	IMP
1	18	4H	S 4	620	10
8	5	4H	N 4	620	10
6	9	4Sx	E-3	500	8
9	6	4Sx	W-2	300	4
16	3	4Sx	E-2	300	4
3	16	4Sx	E-2	300	4
5	8	3H	S 4	170	1
14	10	3H	S 3	140	0
11	15	3H	S 3	140	0
10	14	2H	S 3	140	0
12	13	4Sx	E-1	100	-2
7	4	4S	E-2	100	-2
4	7	3S	E-1	50	-3
15	11	4H	S-1	100	-6
2	17	4H	S-1	100	-6
17	2	3H	S-1	100	-6
13	12	3H	S-1	100	-6
18	1	4H	S-2	200	-8

Board (29) Av: NS=-580

N-S	E-W	Contract	N-S	E-W	IMP
4	7	3S	N-2	200	9
10	14	3H	E 5	200	9
9	6	2S	N-2	200	9
11	15	1H	E 6	230	8
5	8	4H	E 4	620	-1
7	4	4H	E 4	620	-1
2	17	4H	E 5	650	-2
16	3	4H	E 5	650	-2
3	16	4H	W 6	680	-3
15	11	4H	E 6	680	-3
14	10	4H	E 6	680	-3
13	12	4H	E 6	680	-3
12	13	4H	E 6	680	-3
17	2	4H	E 6	680	-3
18	1	4H	E 6	680	-3
1	18	4H	E 6	680	-3
6	9	4H	E 6	680	-3
8	5	4H	E 6	680	-3

Board (30) Av: NS=+10

N-S	E-W	Contract	N-S	E-W	IMP
3	16	4Sx	S 4	590	11
15	11	4S	S 4	420	9
12	13	5Dx	E-1	100	3
18	1	5Dx	E-1	100	3
16	3	5D	E-1	50	1
5	8	5D	E-1	50	1
17	2	5D	E-1	50	1
13	12	5H	N-1	50	-2
11	15	4S	S-1	50	-2
8	5	4S	S-1	50	-2
7	4	4S	S-1	50	-2
2	17	4H	N-1	50	-2
4	7	4H	N-1	50	-2
1	18	4H	N-1	50	-2
9	6	4H	N-1	50	-2
6	9	5Sx	S-1	100	-3
14	10	4Sx	S-1	100	-3
10	14	5Sx	S-3	500	-11



31

♠ J10765  
♥ J1082  
♦ 95  
♣ Q3

♠ 984  
♥ A95  
♦ K86  
♣ AJ109

♠ KQ2  
♥ Q76  
♦ AQ742  
♣ 65

W N E  
S

♠ A3  
♥ K43  
♦ J103  
♣ K8742

32

♠ Q  
♥ 9632  
♦ KQ962  
♣ A103

♠ AJ1094  
♥ AKJ  
♦ A  
♣ 9642

♠ K87  
♥ 108754  
♦ 1054  
♣ K8

W N E  
S

♠ 6532  
♥ Q  
♦ J873  
♣ QJ75

33

♠ AJ106  
♥ J98432  
♦ K8  
♣ A

♠ 4  
♥ K107  
♦ Q742  
♣ KJ1043

♠ KQ973  
♥ A6  
♦ 953  
♣ 965

W N E  
S

♠ 852  
♥ Q5  
♦ AJ106  
♣ Q872

Board (31) Av: NS=-270

N-S	E-W	Contract	N-S	E-W	IMP
10	14	3NT W-1	50		8
7	4	3NT W-1	50		8
11	15	3NT W-1	50		8
17	2	3NT W-1	50		8
5	8	3NT W-1	50		8
18	1	3NT W-1	50		8
15	11	3NT W 3		400	-4
12	13	3NT W 3		400	-4
4	7	3NT W 3		400	-4
13	12	3NT E 3		400	-4
14	10	3NT E 3		400	-4
8	5	3NT E 3		400	-4
2	17	3NT E 3		400	-4
1	18	3NT E 3		400	-4
3	16	3NT W 4		430	-4
9	6	3NT W 4		430	-4
6	9	3NT W 4		430	-4
16	3	3NT E 4		430	-4

Board (32) Av: NS=-430

N-S	E-W	Contract	N-S	E-W	IMP
2	17	4S W-1	100		11
3	16	4S W-1	100		11
13	12	3S W 4		170	6
5	8	3S W 4		170	6
9	6	3S W 5		200	6
10	14	3S W 6		230	5
11	15	3S W 6		230	5
16	3	3C S-6		300	4
1	18	5Dx N-3		500	-2
7	4	4S W 4		620	-5
14	10	4S W 4		620	-5
8	5	4S W 4		620	-5
18	1	4S W 5		650	-6
4	7	4S W 5		650	-6
6	9	4S W 5		650	-6
17	2	4S W 6		680	-6
12	13	4S W 6		680	-6
15	11	4S W 6		680	-6

Board (33) Av: NS=+90

N-S	E-W	Contract	N-S	E-W	IMP
3	16	1NT N 3	150		2
5	8	3H N 3	140		2
8	5	2H N 3	140		2
9	6	2H N 3	140		2
1	18	2H N 3	140		2
12	13	2H N 3	140		2
15	11	2H N 3	140		2
14	10	2H N 3	140		2
17	2	2H N 3	140		2
2	17	2H N 3	140		2
18	1	2H N 3	140		2
4	7	2H N 3	140		2
6	9	1NT W-2	100		0
11	15	4H N-1		50	-4
7	4	4H N-1		50	-4
16	3	4H N-1		50	-4
13	12	4H N-1		50	-4
10	14	3H N-1		50	-4

34

♠ 65  
♥ Q10  
♦ AK96542  
♣ A4

♠ KJ2  
♥ AK987  
♦ 8  
♣ KJ96

♠ 10983  
♥ 32  
♦ J103  
♣ Q872

W N E  
S

♠ AQ74  
♥ J654  
♦ Q7  
♣ 1053

35

♠ Q843  
♥ 42  
♦ J42  
♣ KJ53

♠ KJ92  
♥ AJ87  
♦ A107  
♣ 86

♠ A6  
♥ Q965  
♦ K85  
♣ A942

W N E  
S

♠ 1075  
♥ K103  
♦ Q963  
♣ Q107

36

♠ 9642  
♥ Q87  
♦ J86  
♣ AQ6

♠ AQJ108  
♥ A94  
♦ K4  
♣ J94

♠ 53  
♥ 65  
♦ Q10972  
♣ 10852

W N E  
S

♠ K7  
♥ KJ1032  
♦ A53  
♣ K73

Board (34) Av: NS=+130

N-S	E-W	Contract	N-S	E-W	IMP
7	4	3NT S 6	690		11
15	11	3NT S 4	630		11
2	17	3D N 5	150		1
14	10	3D N 4	130		0
8	5	3D N 4	130		0
12	13	3D N 4	130		0
18	1	3D N 4	130		0
4	7	3D N 4	130		0
16	3	3D N 4	130		0
5	8	2D N 4	130		0
17	2	3D N 3	110		-1
11	15	4H W-2	100		-1
3	16	3S E-2	100		-1
6	9	3H W-1	50		-2
13	12	3C W-1	50		-2
10	14	3C W-1	50		-2
1	18	3C E 3		110	-6
9	6	2H W 2		110	-6

Board (35) Av: NS=-630

N-S	E-W	Contract	N-S	E-W	IMP
8	5	4H E-1	100		12
7	4	4H E 4		620	0
11	15	4H E 4		620	0
14	10	4H E 4		620	0
6	9	4H E 4		620	0
9	6	4H E 4		620	0
2	17	4H E 4		620	0
1	18	4H E 4		620	0
12	13	4H E 4		620	0
15	11	4H E 4		620	0
3	16	4H E 4		620	0
13	12	4H E 5		650	-1
10	14	4H E 5		650	-1
17	2	4H E 5		650	-1
18	1	4H E 5		650	-1
16	3	4H E 5		650	-1
5	8	4H E 5		650	-1
4	7	4H E 5		650	-1

Board (36) Av: NS=-30

N-S	E-W	Contract	N-S	E-W	IMP
9	6	3H S 3	140		5
7	4	3H S 3	140		5
10	14	3H S 3	140		5
13	12	3H S 3	140		5
12	13	2H S 3	140		5
4	7	2H S 2	110		4
5	8	1NT W 1		90	-2
2	17	1NT W 1		90	-2
1	18	4H S-1		100	-2
15	11	4H S-1		100	-2
6	9	4H S-1		100	-2
3	16	4H S-1		100	-2
14	10	3H S-1		100	-2
18	1	3H S-1		100	-2
16	3	1NT W 2		120	-3
17	2	1NT E 2		120	-3
8	5	4H S-2		200	-5
11	15	3S N-3		300	-7

兵庫県知事杯 Session 4 Flight B 2009年10月12日(月)

1

♠ AK102  
♥ J7  
♦ Q105  
♣ 10752

♠ Q83  
♥ AQ543  
♦ 86  
♣ 643

♠ J54  
♥ 82  
♦ J932  
♣ AKQJ

W N E S

♠ 976  
♥ K1096  
♦ AK74  
♣ 98

2

♠ QJ96  
♥ Q4  
♦ K982  
♣ Q98

♠ A1054  
♥ A10  
♦ 3  
♣ A107532

♠ 72  
♥ J72  
♦ AQJ106  
♣ K64

W N E S

♠ K83  
♥ K98653  
♦ 754  
♣ J

3

♠ J5  
♥ QJ9753  
♦ AKJ3  
♣ J

♠ A762  
♥ K642  
♦ 74  
♣ KQ6

♠ K4  
♥ A108  
♦ 965  
♣ A10542

W N E S

♠ Q10983  
♥  
♦ Q1082  
♣ 9873

Board (1) Av: NS=-60

N-S	E-W	Contract	N-S	E-W	IMP
5	16	2H W-2	100		4
2	11	2H W-1	50		3
9	15	2H W-1	50		3
6	18	1NT E-1	50		3
16	5	2S N-1	50		0
18	6	1NT S-1	50		0
13	7	1NT E 1	90		-1
8	14	1NT E 1	90		-1
7	13	1NT E 1	90		-1
3	12	1NT E 1	90		-1
11	2	1NT E 1	90		-1
10	1	1NT E 1	90		-1
1	10	1NT E 1	90		-1
17	4	1NT E 1	90		-1
15	9	1NT E 2	120		-2
4	17	1NT E 2	120		-2
12	3	1NT E 2	120		-2
14	8	1NTx E 2	280		-6

Board (2) Av: NS=-240

N-S	E-W	Contract	N-S	E-W	IMP
6	18	2H S 2	110		8
16	5	5C W-1	50		7
15	9	5C W-1	50		7
14	8	3D E-1	50		7
4	17	3D E 3	110		4
8	14	3C W 4	130		3
9	15	3C W 4	130		3
18	6	3C W 4	130		3
5	16	2C W 5	150		3
3	12	5C W 5	400		-4
1	10	5C W 5	400		-4
13	7	5C W 5	400		-4
11	2	3NT W 3	400		-4
10	1	3NT W 3	400		-4
17	4	3NT E 3	400		-4
7	13	3NT W 4	430		-5
2	11	3NT E 4	430		-5
12	3	3NT E 5	460		-6

Board (3) Av: NS=-310

N-S	E-W	Contract	N-S	E-W	IMP
1	10	3D N 3	110		9
3	12	5C W-1	100		9
17	4	3H N-3	150		4
6	18	2NT E 3	150		4
13	7	2NT E 3	150		4
7	13	2NT E 3	150		4
14	8	2NT E 3	150		4
15	9	2NT E 3	150		4
5	16	2NT E 3	150		4
4	17	2NT E 3	150		4
8	14	3H N-4	200		3
2	11	3NT W 3	600		-7
10	1	3NT W 3	600		-7
12	3	3NT E 3	600		-7
18	6	3NT E 3	600		-7
9	15	3NT E 3	600		-7
11	2	3NT W 4	630		-8
16	5	4Dx N-4	800		-10

4

♠ Q4  
♥ 52  
♦ 109853  
♣ 9876

♠ J1082  
♥ J108  
♦ KJ64  
♣ K4

♠ AK96  
♥ AK643  
♦ 2  
♣ 1052

W N E S

♠ 753  
♥ Q97  
♦ AQ7  
♣ AQJ3

5

♠ K76  
♥ A75  
♦ KJ109  
♣ 986

♠ A32  
♥ Q94  
♦ Q532  
♣ AJ3

♠ 98  
♥ KJ32  
♦ A6  
♣ KQ1052

W N E S

♠ QJ1054  
♥ 1086  
♦ 874  
♣ 74

6

♠ AK105  
♥ 962  
♦ 76  
♣ A763

♠ Q984  
♥ 73  
♦ Q1043  
♣ J82

♠ 76  
♥ KQ105  
♦ K8  
♣ KQ954

W N E S

♠ J32  
♥ AJ84  
♦ AJ952  
♣ 10

Board (4) Av: NS=-290

N-S	E-W	Contract	N-S	E-W	IMP
13	7	2H E 3	140		4
1	10	1NT W 3	150		4
17	4	3H W 4	170		3
16	5	2S W 4	170		3
5	16	2H W 4	170		3
10	1	2H E 4	170		3
6	18	2H E 4	170		3
7	13	2H E 4	170		3
8	14	2H E 4	170		3
18	6	2H E 4	170		3
4	17	2H E 4	170		3
14	8	2H E 4	170		3
12	3	2H E 5	200		3
2	11	3D N-5	500		-5
3	12	4H E 4	620		-8
9	15	4H E 4	620		-8
15	9	1NTx S-3	800		-11
11	2	2Hx E 5	1270		-14

Board (5) Av: NS=-440

N-S	E-W	Contract	N-S	E-W	IMP
17	4	3NT W 3	400		1
1	10	3NT W 3	400		1
4	17	3NT E 3	400		1
9	15	3NT W 4	430		0
6	18	3NT W 4	430		0
18	6	3NT W 4	430		0
15	9	3NT W 4	430		0
12	3	3NT W 4	430		0
14	8	3NT E 4	430		0
2	11	3NT E 4	430		0
8	14	3NT E 4	430		0
10	1	3NT W 5	460		-1
5	16	3NT W 5	460		-1
13	7	3NT W 5	460		-1
16	5	3NT W 5	460		-1
7	13	3NT W 5	460		-1
3	12	3NT E 5	460		-1
11	2	3NT E 5	460		-1

Board (6) Av: NS=+40

N-S	E-W	Contract	N-S	E-W	IMP
17	4	2S N 3	140		3
4	17	2S N 3	140		3
5	16	2S N 3	140		3
10	1	1NT N 2	120		2
6	18	2S N 2	110		2
14	8	2S N 2	110		2
13	7	2S N 2	110		2
11	2	2H S 2	110		2
1	10	1NT E-1	100		2
8	14	1NT N 1	90		2
15	9	1NT N 1	90		2
16	5	3H N-1	50		-3
9	15	2NT N-1	50		-3
3	12	1NT N-1	50		-3
2	11	1NT E 1	90		-4
7	13	3NT N-2	100		-4
12	3	3NT N-2	100		-4
18	6	4H S-3	150		-5

**7**

♠94  
♥6  
♦107652  
♣AJ1042

♠KJ2  
♥9742  
♦A9  
♣Q876

N  
W—|—E  
S

♠A10853  
♥AK85  
♦Q83  
♣5

♠Q76  
♥QJ103  
♦KJ4  
♣K93

**8**

♠A43  
♥A10965  
♦K3  
♣K32

♠J10  
♥J  
♦109842  
♣AQ1076

N  
W—|—E  
S

♠KQ9862  
♥Q874  
♦J  
♣84

♠75  
♥K32  
♦AQ765  
♣J95

**9**

♠Q63  
♥AQ10543  
♦4  
♣AQ9

♠J5  
♥K87  
♦9763  
♣J642

N  
W—|—E  
S

♠K92  
♥J6  
♦AKQJ82  
♣87

♠A10874  
♥92  
♦105  
♣K1053

Board (7) Av: NS=0

N-S	E-W	Contract	N-S	E-W	IMP
1	10	3Cx S 3	670		12
12	3	4H W-3	300		7
11	2	3H E-3	300		7
4	17	4S E-2	200		5
14	8	4H E-2	200		5
8	14	3H W-2	200		5
10	1	4S E-1	100		3
5	16	4H W-1	100		3
17	4	4H W-1	100		3
18	6	3H W-1	100		3
7	13	2S E 2	110		-3
16	5	3S E 3	140		-4
6	18	2S E 3	140		-4
13	7	3H W 4	170		-5
15	9	2H W 4	170		-5
3	12	3Cx S-1	200		-5
9	15	4H W 4	620		-12
2	11	4H E 4	620		-12

Board (8) Av: NS=+110

N-S	E-W	Contract	N-S	E-W	IMP
12	18	6 5Cx E-4	800		12
8	14	4H N 4	420		7
9	15	4H N 4	420		7
5	16	4H N 4	420		7
1	10	4Sx E-2	300		5
15	9	4Sx E-2	300		5
12	3	4Sx E-2	300		5
10	1	2H N 3	140		1
3	12	4S E-2	100		0
11	2	4H N-1	50		-4
6	18	4H N-1	50		-4
17	4	4H N-1	50		-4
2	11	4H N-2	100		-5
14	8	4H N-2	100		-5
16	5	4H N-2	100		-5
7	13	4H N-2	100		-5
4	17	4H N-2	100		-5
13	7	3H N-2	100		-5

Board (9) Av: NS=+70

N-S	E-W	Contract	N-S	E-W	IMP
4	17	3D E-2	200		4
8	14	3H N 3	140		2
6	18	3H N 3	140		2
17	4	3H N 3	140		2
1	10	3H N 3	140		2
9	15	3H N 3	140		2
14	8	3H N 3	140		2
18	6	2H S 3	140		2
13	7	2H N 3	140		2
10	1	4D E-1	100		1
7	13	3D E-1	100		1
15	9	3D E-1	100		1
11	2	4H N-1	50		-3
2	11	4H N-1	50		-3
16	5	4H N-1	50		-3
3	12	3H N-1	50		-3
5	16	3H N-2	100		-5
12	3	3H N-2	100		-5

**10**

♠1032  
♥AQJ54  
♦A62  
♣A8

♠8754  
♥97  
♦874  
♣Q932

N  
W—|—E  
S

♠Q  
♥K10832  
♦Q103  
♣K1065

♠AKJ96  
♥6  
♦KJ95  
♣J74

**11**

♠52  
♥J1065  
♦84  
♣KQJ107

♠AJ106  
♥A2  
♦AJ9653  
♣A

N  
W—|—E  
S

♠943  
♥K8743  
♦Q2  
♣842

♠KQ87  
♥Q9  
♦K107  
♣9653

**12**

♠K10985  
♥A9  
♦6543  
♣63

♠A  
♥K7543  
♦Q1082  
♣Q102

N  
W—|—E  
S

♠763  
♥862  
♦KJ9  
♣A954

♠QJ42  
♥QJ10  
♦A7  
♣KJ87

Board (10) Av: NS=+530

N-S	E-W	Contract	N-S	E-W	IMP
1	11	6S S 6	1430		14
7	15	4S S 7	710		5
18	4	5S S 6	680		4
15	7	4S S 6	680		4
3	10	4S S 6	680		4
8	13	4S S 6	680		4
2	12	4S S 6	680		4
12	2	4S S 6	680		4
11	1	4S S 6	680		4
5	17	3NT N 5	660		4
16	6	5S N 5	650		3
13	8	4S S 5	650		3
6	16	4S S 5	650		3
4	18	4S S 5	650		3
10	3	6S S-1	100		-12
17	5	6S S-1	100		-12
14	9	5S S-1	100		-12
9	14	6S S-2	200		-12

Board (11) Av: NS=-130

N-S	E-W	Contract	N-S	E-W	IMP
14	9	4H E-2	100		6
3	10	5D W-1	50		5
7	15	4H E-1	50		5
9	14	4H E-1	50		5
10	3	3NT E-1	50		5
5	17	Passout			4
11	1	2S W 2	110		1
2	12	1S W 2	110		1
15	7	3D W 4	130		0
13	8	3D W 4	130		0
12	2	1S W 3	140		0
6	16	1S W 3	140		0
17	5	3D W 5	150		-1
16	6	3D E 5	150		-1
8	13	3NT E 3	400		-7
1	11	4H E 4	420		-7
18	4	4S W 5	450		-8
4	18	4Sx W 4	590		-10

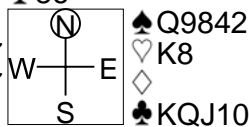
Board (12) Av: NS=+70

N-S	E-W	Contract	N-S	E-W	IMP
9	14	3H W-4	200		4
11	1	2S S 4	170		3
7	15	2S N 4	170		3
18	4	2S N 4	170		3
12	2	2S N 4	170		3
14	9	3S N 3	140		2
8	13	3S N 3	140		2
16	6	2S N 3	140		2
5	17	3H W-2	100		1
6	16	2H W-2	100		1
10	3	3H W-1	50		-1
4	18	3H W-1	50		-1
1	11	2H W-1	50		-1
3	10	1NT E-1	50		-1
13	8	4S N-1	100		-5
15	7	3S N-1	100		-5
17	5	2H W 2	110		-5
2	12	2H W 2	110		-5

13

♠ AKJ5  
♥ J106543  
♦ 10  
♣ 86

♠ 76  
♥ AQ97  
♦ KQ97  
♣ A72

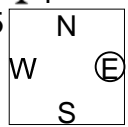


♠ 103  
♥ 2  
♦ AJ865432  
♣ 53

14

♠ AK63  
♥ AK976  
♦ K64  
♣ 4

♠ QJ1095  
♥ 103  
♦ QJ87  
♣ 76

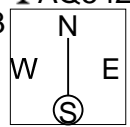


♠ 87  
♥ QJ5  
♦ 93  
♣ KQJ1095

15

♠ 872  
♥ KQJ3  
♦ 3  
♣ AQ542

♠ QJ6543  
♥ 4  
♦ A85  
♣ 986



♠ A9  
♥ 98762  
♦ J1094  
♣ K10

Board (13) Av: NS=-340

N-S	E-W	Contract	N-S	E-W	IMP
8	13	7NTxW-3	800		15
9	14	6NTxW-2	500		13
16	6	5H W-4	400		12
15	7	6NT W-2	200		11
7	15	5S E-2	200		11
13	8	5NT W-1	100		10
6	16	4S W-1	100		10
2	12	5C E 5	600		-6
10	3	5C E 5	600		-6
4	18	3NT W 3	600		-6
11	1	3NT W 4	630		-7
3	10	3NT W 4	630		-7
5	17	3NT W 5	660		-8
18	4	3NT W 5	660		-8
14	9	3NT W 6	690		-8
17	5	4Dx S-3	800		-10
12	2	5Dx S-4	1100		-13
1	11	3Hx N-4	1100		-13

Board (14) Av: NS=+450

N-S	E-W	Contract	N-S	E-W	IMP
12	2	4H N 6	480		1
10	3	4H N 6	480		1
4	18	4H N 6	480		1
14	9	4H N 6	480		1
16	6	5H N 5	450		0
15	7	5H N 5	450		0
6	16	4H N 5	450		0
9	14	4H N 5	450		0
13	8	4H N 5	450		0
17	5	4H N 5	450		0
2	12	4H N 5	450		0
11	1	4H N 5	450		0
5	17	4H N 5	450		0
18	4	4H N 5	450		0
1	11	4H N 4	420		-1
7	15	4H N 4	420		-1
3	10	4H N 4	420		-1
8	13	4H N 4	420		-1

Board (15) Av: NS=0

N-S	E-W	Contract	N-S	E-W	IMP
16	6	4H N 4	620		12
4	18	4Dx E-3	500		11
7	15	2H S 5	200		5
13	8	3H S 4	170		5
18	4	3H S 4	170		5
3	10	3H N 4	170		5
14	9	4S W-1	50		2
2	12	4S W-1	50		2
6	16	3S W 3	140		-4
8	13	3S W 3	140		-4
9	14	2S W 3	140		-4
1	11	2S W 3	140		-4
15	7	2S W 3	140		-4
5	17	2S W 3	140		-4
11	1	2S W 3	140		-4
10	3	3S W 4	170		-5
17	5	2S W 4	170		-5
12	2	2S W 4	170		-5

16

♠ KJ10  
♥ 10  
♦ AQ762  
♣ 10954

♠ 865432  
♥ KJ76  
♦ 109  
♣ K

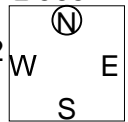


♠ AQ7  
♥ 985  
♦ 84  
♣ Q8762

17

♠ AQ10  
♥ 965  
♦ 8764  
♣ 965

♠ 5432  
♥ AQ102  
♦ Q103  
♣ 72

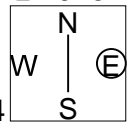


♠ K987  
♥ 73  
♦ 2  
♣ QJ10843

18

♠ KJ  
♥ KJ1097  
♦ A3  
♣ KJ73

♠ 43  
♥ 6  
♦ KQ742  
♣ A10984



♠ A1097652  
♥ 5432  
♦ 65  
♣

Board (16) Av: NS=-520

N-S	E-W	Contract	N-S	E-W	IMP
10	3	5H E-1	100		12
8	13	5H E-1	100		12
5	17	3H E 3	140		9
15	7	3H E 4	170		8
7	15	4H E 4	620		-3
17	5	4H E 4	620		-3
13	8	4H E 4	620		-3
9	14	4H E 4	620		-3
1	11	4H E 4	620		-3
4	18	4H E 4	620		-3
2	12	4H E 4	620		-3
12	2	4H E 4	620		-3
3	10	4H E 4	620		-3
11	1	4H E 4	620		-3
14	9	4H E 5	650		-4
6	16	4H E 5	650		-4
16	6	4H E 5	650		-4
18	4	4H E 5	650		-4

Board (17) Av: NS=-420

N-S	E-W	Contract	N-S	E-W	IMP
6	16	4S E-5	250		12
18	4	6H W-1	50		10
14	9	4H W 5	450		-1
17	5	4H W 5	450		-1
13	8	4H W 5	450		-1
15	7	4H W 5	450		-1
7	15	4H W 5	450		-1
16	6	4H W 5	450		-1
1	11	4H W 5	450		-1
2	12	4H W 5	450		-1
11	1	4H E 5	450		-1
8	13	4H E 5	450		-1
9	14	4H E 5	450		-1
3	10	4H E 5	450		-1
10	3	4H E 5	450		-1
4	18	4H E 5	450		-1
12	2	4H E 5	450		-1
5	17	4NT E 5	460		-1

Board (18) Av: NS=+200

N-S	E-W	Contract	N-S	E-W	IMP
2	12	4Hx N 4	790		11
18	4	4H N 5	650		10
4	18	4H N 5	650		10
9	14	4H N 5	650		10
8	13	4H N 4	620		9
7	15	4H N 4	620		9
1	11	5Dx E-2	300		3
6	16	5D E-3	150		-2
12	2	5C E-3	150		-2
3	10	5Dx E-1	100		-3
10	3	5S S-1	100		-7
14	9	5S S-1	100		-7
5	17	5H N-1	100		-7
17	5	4H N-1	100		-7
13	8	4H N-1	100		-7
16	6	4H N-1	100		-7
15	7	4H N-1	100		-7
11	1	3S S-1	100		-7

1

♠ 942  
♥ A63  
♦ QJ8  
♣ AKJ5

♠ KQJ7  
♥ K109  
♦ 63  
♣ 10742

♠ A105  
♥ J542  
♦ A97  
♣ Q98

♠ 863  
♥ Q87  
♦ K10542  
♣ 63

W N E S

2

♠ J852  
♥ A74  
♦ A4  
♣ AK102

♠ K97  
♥ KQ1052  
♦ Q10  
♣ 983

♠ A1064  
♥ J9  
♦ 98753  
♣ Q5

♠ Q3  
♥ 863  
♦ KJ62  
♣ J764

W N E S

3

♠ 86  
♥ 108  
♦ 75  
♣ KQ109762

♠ QJ3  
♥ AJ4  
♦ AJ82  
♣ AJ5

♠ K75  
♥ Q96532  
♦ K9  
♣ 84

♠ A10942  
♥ K7  
♦ Q10643  
♣ 3

W N E S

Board (1) Av: NS=-60

N-S	E-W	Contract	N-S	E-W	IMP
13	1	1NT N 1	90		4
16	9	1NT N 1	90		4
7	17	1NT N-1	50		0
6	11	1NT N-1	50		0
5	10	1NT N-1	50		0
18	8	1NT N-1	50		0
8	18	1NT N-1	50		0
17	7	1NT N-1	50		0
3	15	1NT N-1	50		0
12	4	1NT N-1	50		0
14	2	1NT N-2	100		-1
9	16	1NT N-2	100		-1
1	13	1NT N-2	100		-1
2	14	1NT N-2	100		-1
4	12	1NT N-2	100		-1
10	5	1NT N-2	100		-1
15	3	1NT N-2	100		-1
11	6	1NT N-2	100		-1

Board (2) Av: NS=0

N-S	E-W	Contract	N-S	E-W	IMP
17	7	1NT N 2	120		3
8	18	1NT N 2	120		3
6	11	1NT N 2	120		3
13	1	1NT N 2	120		3
18	8	3C N 3	110		3
2	14	2C N 3	110		3
1	13	1S E-2	100		3
7	17	1NT N 1	90		3
16	9	1NT N 1	90		3
12	4	1NT N 1	90		3
14	2	2H W-1	50		2
3	15	1NT N-1	100		-3
15	3	1NT N-1	100		-3
5	10	3NT N-2	200		-5
9	16	2NT N-2	200		-5
10	5	2NT N-2	200		-5
4	12	2NT N-2	200		-5
11	6	3D S-5	500		-11

Board (3) Av: NS=-650

N-S	E-W	Contract	N-S	E-W	IMP
2	14	4H W 4	620		1
18	8	4H W 4	620		1
12	4	4H E 4	620		1
7	17	4H E 4	620		1
4	12	3NT W 4	630		1
1	13	3NT W 4	630		1
13	1	3NT W 4	630		1
11	6	4H E 5	650		0
17	7	4H E 5	650		0
9	16	4H E 5	650		0
16	9	4H E 5	650		0
3	15	4H E 5	650		0
10	5	4H E 5	650		0
5	10	4H E 5	650		0
15	3	5H E 6	680		-1
14	2	4H E 6	680		-1
6	11	4H E 6	680		-1
8	18	4H E 6	680		-1

4

♠ KQ873  
♥ A6  
♦ K  
♣ 108752

♠ AJ105  
♥ K3  
♦ Q109852  
♣ 4

♠ 42  
♥ 752  
♦ 764  
♣ AKJ93

♠ 96  
♥ QJ10984  
♦ AJ3  
♣ Q6

W N E S

5

♠ K10987  
♥ AQ842  
♦  
♣ Q104

♠ Q4  
♥ 93  
♦ KQ108432  
♣ 76

♠ AJ52  
♥ J10  
♦ A96  
♣ AKJ9

♠ 63  
♥ K765  
♦ J75  
♣ 8532

W N E S

6

♠ J62  
♥ KQ1052  
♦ 842  
♣ 87

♠ Q83  
♥ 96  
♦ AJ10753  
♣ A9

♠ K1074  
♥ A84  
♦ K  
♣ Q6543

♠ A95  
♥ J73  
♦ Q96  
♣ KJ102

W N E S

Board (4) Av: NS=+80

N-S	E-W	Contract	N-S	E-W	IMP
9	16	4H S 4	620		11
6	11	3NT S 3	600		11
2	14	3H S 4	170		3
12	4	3H S 3	140		2
17	7	3H S 3	140		2
18	8	3H S 3	140		2
13	1	3H S 3	140		2
11	6	2H S 3	140		2
7	17	2H S 3	140		2
3	15	2H S 3	140		2
14	2	2H S 3	140		2
15	3	2S N 2	110		1
10	5	3NT N-1	100		-5
8	18	3H S-1	100		-5
1	13	4H W 4	130		-5
4	12	4H S-2	200		-7
5	10	4H S-2	200		-7
16	9	4S N-3	300		-9

Board (5) Av: NS=-350

N-S	E-W	Contract	N-S	E-W	IMP
6	11	6D W-1	50		9
17	7	3NT W-1	50		9
11	6	3NT E-1	50		9
13	1	3NT E-1	50		9
8	18	4D W 5	150		5
14	2	4D W 6	170		5
5	10	3NT E 5	460		-3
9	16	3NT E 5	460		-3
1	13	3NT E 5	460		-3
4	12	3NT E 5	460		-3
18	8	3NT E 6	490		-4
2	14	3NT E 7	520		-5
16	9	3NT E 7	520		-5
3	15	3NT E 7	520		-5
10	5	3NT E 7	520		-5
12	4	3NT E 7	520		-5
7	17	3NT E 7	520		-5
15	3	3NT E 7	520		-5

Board (6) Av: NS=-80

N-S	E-W	Contract	N-S	E-W	IMP
2	14	3NT E-1	100		5
15	3	3NT E-1	100		5
5	10	3NT E-1	100		5
9	16	3NT E-1	100		5
3	15	3H N-2	100		-1
8	18	3H N-2	100		-1
1	13	3D W 3	110		-1
14	2	3D W 3	110		-1
12	4	2NT W 2	120		-1
16	9	3D W 4	130		-2
17	7	3D W 4	130		-2
11	6	3D W 4	130		-2
4	12	3D W 4	130		-2
6	11	2D W 4	130		-2
13	1	3H N-3	150		-2
10	5	2NT W 3	150		-2
7	17	2NT E 3	150		-2
18	8	2NT E 3	150		-2

7

♠ KJ864  
♥ 8  
♦ A10762  
♣ A4

♠ 105 ♠ 9732  
♥ J1097 ♥ Q3  
♦ QJ5 ♦ K9  
♣ Q1093 ♣ KJ876

W N E S

♠ AQ  
♥ AK6542  
♦ 843  
♣ 52

8

♠ KJ10983  
♥ Q2  
♦ AQ  
♣ J32

♠ Q64 ♠ 52  
♥ K4 ♥ AJ106  
♦ J75 ♦ K83  
♣ A10854 ♣ KQ97

W N E S

♠ A7  
♥ 98753  
♦ 109642  
♣ 6

9

♠ Q10632  
♥ 864  
♦ 74  
♣ K43

♠ 5 ♠ KJ7  
♥ A532 ♥ K107  
♦ J95 ♦ AQ1086  
♣ J10985 ♣ 76

W N E S

♠ A984  
♥ QJ9  
♦ K32  
♣ AQ2

Board (7) Av: NS=+170

N-S	E-W	Contract	N-S	E-W	IMP
12	4	4S	N 5	650	10
16	9	4S	N 5	650	10
5	10	4S	N 4	620	10
11	6	3NT	N 3	600	10
2	14	3NT	N 3	600	10
8	18	3NT	N 3	600	10
14	2	3NT	N 3	600	10
17	7	4S	N-1	100	-7
7	17	4S	N-1	100	-7
9	16	4S	N-1	100	-7
1	13	4S	N-1	100	-7
4	12	4S	N-1	100	-7
13	1	4S	N-1	100	-7
3	15	4S	N-1	100	-7
6	11	4H	S-1	100	-7
15	3	4H	S-1	100	-7
18	8	3NT	N-1	100	-7
10	5	4S	N-2	200	-9

Board (8) Av: NS=-100

N-S	E-W	Contract	N-S	E-W	IMP
6	11	3NT	W-3	150	6
5	10	2S	N 3	140	6
7	17	1NT	E-1	50	4
16	9	3S	N-1	50	2
17	7	2S	N-1	50	2
11	6	3C	W 3	110	0
1	13	3C	W 3	110	0
15	3	3C	W 3	110	0
14	2	4C	W 4	130	-1
3	15	3C	W 4	130	-1
10	5	3C	W 4	130	-1
12	4	2C	W 4	130	-1
9	16	3C	W 5	150	-2
4	12	3C	W 5	150	-2
8	18	3C	E 5	150	-2
2	14	1NT	W 4	180	-2
13	1	1NT	E 4	180	-2
18	8	5Sx	N-3	500	-9

Board (9) Av: NS=+100

N-S	E-W	Contract	N-S	E-W	IMP
6	11	3S	S 3	140	1
1	13	3S	S 3	140	1
15	3	2S	S 3	140	1
14	2	2S	S 3	140	1
7	17	2S	S 3	140	1
18	8	2S	N 3	140	1
8	18	2S	S 2	110	0
10	5	2S	S 2	110	0
2	14	2S	S 2	110	0
13	1	2S	S 2	110	0
3	15	2S	S 2	110	0
9	16	2S	S 2	110	0
17	7	2S	S 2	110	0
16	9	2S	N 2	110	0
5	10	2S	N 2	110	0
4	12	3S	S-1	50	-4
11	6	3S	S-1	50	-4
12	4	1NT	E 2	120	-6

10

♠ A1086432  
♥ 7  
♦ AQ5  
♣ 107

♠ 7 ♠ 7  
♥ AQJ986 ♥ AQJ986  
♦ 93 ♦ 93  
♣ A986 ♣ A986

W N E S

♠ KQJ95  
♥ K102  
♦ 62  
♣ Q42

11

♠ A92  
♥ A107  
♦ K43  
♣ J762

♠ J86 ♠ 107  
♥ 986 ♥ KJ5  
♦ QJ8 ♦ A10762  
♣ AK98 ♣ 1043

W N E S

♠ KQ543  
♥ Q432  
♦ 95  
♣ Q5

12

♠ 10  
♥ KJ6  
♦ A82  
♣ J98764

♠ A98 ♠ K7642  
♥ Q7543 ♥ 8  
♦ 43 ♦ KQ7  
♣ KQ5 ♣ A1032

W N E S

♠ QJ53  
♥ A1092  
♦ J10965  
♣

Board (10) Av: NS=+200

N-S	E-W	Contract	N-S	E-W	IMP
7	18	4S	S 4	620	9
14	3	4S	S 4	620	9
9	17	4S	S 4	620	9
1	15	4S	S 4	620	9
15	1	4S	S 4	620	9
5	11	4S	N 4	620	9
3	14	4S	N 4	620	9
17	9	6H	E-2	200	0
12	6	3S	S 3	140	-2
16	8	5H	E-1	100	-3
11	5	5H	E-1	100	-3
4	10	5S	S-1	100	-7
2	13	5S	S-1	100	-7
13	2	5S	S-1	100	-7
10	4	5S	N-1	100	-7
18	7	4S	S-2	200	-9
8	16	6Sx	S-2	500	-12
6	12	6Sx	S-2	500	-12

Board (11) Av: NS=+30

N-S	E-W	Contract	N-S	E-W	IMP
6	12	2S	S 3	140	3
5	11	2S	S 3	140	3
7	18	2S	S 2	110	2
12	6	2S	S 2	110	2
3	14	2S	S 2	110	2
16	8	2S	S 2	110	2
13	2	2S	S 2	110	2
15	1	2S	S 2	110	2
2	13	3D	E-1	50	1
11	5	3S	S-1	50	-2
10	4	3S	S-1	50	-2
17	9	3S	S-1	50	-2
9	17	2S	S-1	50	-2
1	15	2S	S-1	50	-2
8	16	2S	S-1	50	-2
4	10	2S	S-1	50	-2
18	7	2S	S-1	50	-2
14	3	3S	S-2	100	-4

Board (12) Av: NS=-10

N-S	E-W	Contract	N-S	E-W	IMP
4	10	4S	E-3	150	4
9	17	4S	E-2	100	3
16	8	4S	W-1	50	2
6	12	4S	E-1	50	2
7	18	4S	E-1	50	2
11	5	4S	E-1	50	2
2	13	4S	E-1	50	2
17	9	4S	E-1	50	2
8	16	4S	E-1	50	2
14	3	4S	E-1	50	2
18	7	3S	E-1	50	2
15	1	2S	E 2	110	-3
1	15	2S	E 2	110	-3
13	2	2S	E 2	110	-3
5	11	3S	E 3	140	-4
12	6	2S	E 3	140	-4
10	4	2S	E 3	140	-4
3	14	2S	E 3	140	-4

13

♠ Q104  
♥ 9843  
♦ 5  
♣ KQ1064

♠ K83  
♥ Q652  
♦ AJ10764  
♣

♠ 9762  
♥ A7  
♦ K2  
♣ J9875

♠ AJ5  
♥ KJ10  
♦ Q983  
♣ A32

14

♠ K84  
♥ A9  
♦ AKJ62  
♣ 842

♠ QJ10932  
♥ J753  
♦ 9  
♣ K3

♠ 7  
♥ K8642  
♦ 10874  
♣ 975

♠ A65  
♥ Q10  
♦ Q53  
♣ AQJ106

15

♠ KQ84  
♥ QJ  
♦ J  
♣ J109763

♠ 1097632  
♥ 82  
♦ 7643  
♣ 8

♠ J5  
♥ A1094  
♦ 109852  
♣ 42

♠ A  
♥ K7653  
♦ AKQ  
♣ AKQ5

Board (13) Av: NS=-150

N-S	E-W	Contract	N-S	E-W	IMP
7	18	2NT S 2	120		7
3	14	2NT S 2	120		7
2	13	2H S 2	110		6
4	10	2D W 2		90	2
8	16	2D W 2		90	2
6	12	2D E 2		90	2
13	2	1NT S-1		100	2
10	4	2D W 4		130	1
5	11	2NT S-2		200	-2
18	7	2NT S-2		200	-2
14	3	2NT S-2		200	-2
12	6	2NT S-2		200	-2
11	5	2H S-2		200	-2
15	1	1NT S-2		200	-2
16	8	3NT S-3		300	-4
1	15	3C N-3		300	-4
9	17	2NT S-3		300	-4
17	9	2NT S-4		400	-6

Board (14) Av: NS=+490

N-S	E-W	Contract	N-S	E-W	IMP
6	12	6NT S 6	990		11
10	4	4NT S 6	490		0
5	11	4NT S 6	490		0
17	9	4NT S 6	490		0
7	18	4NT S 6	490		0
12	6	4NT S 6	490		0
1	15	4NT S 6	490		0
15	1	3NT S 6	490		0
4	10	3NT S 6	490		0
8	16	3NT S 6	490		0
18	7	3NT S 6	490		0
3	14	3NT S 6	490		0
14	3	3NT S 6	490		0
13	2	3NT S 6	490		0
11	5	3NT S 6	490		0
9	17	3NT N 6	490		0
16	8	3NT N 6	490		0
2	13	5D N 6	420		-2

Board (15) Av: NS=+1410

N-S	E-W	Contract	N-S	E-W	IMP
15	1	7C S 7	2140		12
4	10	7C S 7	2140		12
12	6	6NT S 6	1440		1
8	16	6NT S 6	1440		1
7	18	6NT S 6	1440		1
6	12	6NT S 6	1440		1
17	9	6NT S 6	1440		1
13	2	6NT S 6	1440		1
3	14	6NT S 6	1440		1
9	17	6C S 7	1390		-1
1	15	6C S 7	1390		-1
10	4	6C S 7	1390		-1
2	13	6C S 7	1390		-1
5	11	6C S 7	1390		-1
11	5	6C S 7	1390		-1
18	7	6C N 6	1370		-1
14	3	5H N 5	650		-13
16	8	6H S-1		100	-17

16

♠ 10953  
♥ J75  
♦ 764  
♣ KJ8

♠ A8  
♥ Q643  
♦ AKJ  
♣ Q1065

♠ J42  
♥ K108  
♦ Q105  
♣ A932

♠ KQ76  
♥ A92  
♦ 9832  
♣ 74

17

♠ Q10983  
♥ K2  
♦ Q732  
♣ 93

♠ J42  
♥ QJ875  
♦ A84  
♣ K6

♠ 5  
♥ 1063  
♦ K1096  
♣ AQ1082

♠ AK76  
♥ A94  
♦ J5  
♣ J754

18

♠ QJ865  
♥ J642  
♦ 753  
♣ J

♠ K43  
♥ K1093  
♦  
♣ K108752

♠ 107  
♥ Q87  
♦ KQ2  
♣ AQ964

♠ A92  
♥ A5  
♦ AJ109864  
♣ 3

Board (16) Av: NS=+120

N-S	E-W	Contract	N-S	E-W	IMP
13	2	3NT W-2	200		2
10	4	3NT W-2	200		2
7	18	3NT W-2	200		2
3	14	3NT W-2	200		2
18	7	3NT W-1	100		-1
12	6	3NT W-1	100		-1
16	8	3NT W-1	100		-1
9	17	3NT W-1	100		-1
8	16	3NT W-1	100		-1
17	9	3NT W-1	100		-1
15	1	3NT W-1	100		-1
14	3	3NT W-1	100		-1
2	13	3NT W-1	100		-1
1	15	3NT W-1	100		-1
11	5	3NT W-1	100		-1
5	11	3NT W-1	100		-1
4	10	3NT E-1	100		-1
6	12	3NT W 3		600	-12

Board (17) Av: NS=-20

N-S	E-W	Contract	N-S	E-W	IMP
3	14	3S N 3	140		4
12	6	3S N 3	140		4
11	5	3S N 3	140		4
9	17	3S N 3	140		4
5	11	3S N 3	140		4
15	1	3S N 3	140		4
10	4	2S N 3	140		4
2	13	4H W-2	100		3
17	9	4S N-1		50	-1
1	15	3S N-1		50	-1
16	8	3S N-1		50	-1
13	2	3S N-1		50	-1
18	7	3S N-1		50	-1
6	12	3S N-1		50	-1
7	18	3H E 4		170	-4
4	10	4H W 4		420	-9
8	16	4H W 4		420	-9
14	3	4Hx W 4		590	-11

Board (18) Av: NS=-280

N-S	E-W	Contract	N-S	E-W	IMP
10	4	3Dx S 3	670		14
7	18	4H W-4	200		10
18	7	5Cx E-1	100		9
9	17	4H W-1	50		8
2	13	4C E 4		130	4
15	1	4C E 5		150	4
5	11	4S N-2		200	2
12	6	5D S-3		300	-1
8	16	5C E 5		400	-3
17	9	5C E 5		400	-3
4	10	5C E 5		400	-3
14	3	3NT E 3		400	-3
6	12	3NT E 3		400	-3
11	5	3NT E 4		430	-4
13	2	5Cx E 5		550	-7
1	15	5Cx E 5		550	-7
3	14	5Cx E 5		550	-7
16	8	5Cx E 5		550	-7

19

♠ KJ73  
♥ AKJ85  
♦ A8  
♣ 94

♠ 642  
♥ Q103  
♦ Q6  
♣ AKQ53

W — E

♠ A985  
♥ 4  
♦ K103  
♣ J10762

♠ Q10  
♥ 9762  
♦ J97542  
♣ 8

20

♠ J10652  
♥ J72  
♦ Q2  
♣ 862

♠ 73  
♥ 964  
♦ A54  
♣ Q9754

N — E

♠ A94  
♥ A53  
♦ J10863  
♣ AK

♠ KQ8  
♥ KQ108  
♦ K97  
♣ J103

21

♠ KQ1084  
♥ 108  
♦ 93  
♣ J754

♠ 97  
♥ J42  
♦ AQJ54  
♣ AK8

W — E

♠ A65  
♥ AK96  
♦ 108  
♣ Q632

♠ J32  
♥ Q753  
♦ K762  
♣ 109

Board (19) Av: NS=+170

N-S	E-W	Contract	N-S	E-W	IMP
6	10	4H N 4	420		6
3	13	4H N 4	420		6
8	17	4H N 4	420		6
16	7	4H N 4	420		6
13	3	5C W-2	200		1
15	2	3S E-2	200		1
18	9	3H N 4	170		0
7	16	3H N 4	170		0
14	1	3H N 4	170		0
1	14	3H N 4	170		0
17	8	3H N 3	140		-1
10	6	3H N 3	140		-1
9	18	3H N 3	140		-1
2	15	4C W-1	100		-2
4	11	4H S-1		50	-6
11	4	4H N-1		50	-6
5	12	4Hx N-1		100	-7
12	5	4C W 4		130	-7

Board (20) Av: NS=-120

N-S	E-W	Contract	N-S	E-W	IMP
6	10	1NT E 1	90		1
11	4	1NT E 1	90		1
2	15	1NT W 2	120		0
10	6	1NT E 2	120		0
12	5	1NT E 2	120		0
9	18	1NT E 2	120		0
18	9	1NT E 2	120		0
16	7	1NT E 2	120		0
8	17	1NT E 2	120		0
15	2	1NT E 2	120		0
3	13	1NT E 2	120		0
1	14	1NT E 2	120		0
14	1	1NT E 2	120		0
13	3	1NT E 2	120		0
5	12	1NT E 2	120		0
4	11	1NT E 3	150		-1
7	16	1NT E 3	150		-1
17	8	1NT E 4	180		-2

Board (21) Av: NS=-450

N-S	E-W	Contract	N-S	E-W	IMP
5	12	2D W 4	130		8
1	14	3NT E 3	400		2
6	10	3NT E 3	400		2
7	16	3NT E 3	400		2
15	2	3NT E 3	400		2
11	4	3NT W 4	430		1
12	5	3NT E 4	430		1
3	13	3NT E 4	430		1
16	7	3NT E 5	460		0
9	18	3NT E 5	460		0
8	17	3NT E 5	460		0
2	15	3NT E 5	460		0
4	11	3NT E 5	460		0
13	3	3NT E 6	490		-1
18	9	3NT E 6	490		-1
14	1	3NT E 6	490		-1
10	6	3NT E 6	490		-1
17	8	3NT E 7	520		-2

22

♠ Q5  
♥ A85  
♦ Q84  
♣ KJ975

♠ AK63  
♥ KQ92  
♦ AJ107  
♣ 4

W — E

♠ J982  
♥ 1043  
♦ K3  
♣ AQ86

♠ 1074  
♥ J76  
♦ 9652  
♣ 1032

23

♠ J9  
♥ K10432  
♦ 9763  
♣ J2

♠ 53  
♥ 98765  
♦ Q5  
♣ K853

N — E

♠ Q1087  
♥ J  
♦ J10842  
♣ A104

♠ AK642  
♥ AQ  
♦ AK  
♣ Q976

24

♠ AK97  
♥ 108  
♦ AQ109765  
♣

♠ 863  
♥ AQ43  
♦ J82  
♣ Q103

W — E

♠ 104  
♥ K9652  
♦ K3  
♣ KJ84

♠ QJ52  
♥ J7  
♦ 4  
♣ A97652

Board (22) Av: NS=-660

N-S	E-W	Contract	N-S	E-W	IMP
6	10	3NT E 3	600		2
15	2	3NT E 3	600		2
3	13	3NT E 3	600		2
9	18	4H W 4	620		1
10	6	4S E 5	650		0
12	5	4S E 5	650		0
2	15	4S E 5	650		0
5	12	4S E 5	650		0
17	8	3NT E 5	660		0
1	14	3NT E 5	660		0
7	16	4S W 6	680		-1
18	9	4S W 6	680		-1
8	17	4S E 6	680		-1
13	3	4S E 6	680		-1
4	11	4S E 6	680		-1
11	4	4S E 6	680		-1
16	7	3NT E 6	690		-1
14	1	3NT E 6	690		-1

Board (23) Av: NS=-70

N-S	E-W	Contract	N-S	E-W	IMP
9	18	3NT S 3	600		12
13	3	3NT S 3	600		12
11	4	1S S 2	110		5
14	1	4S S-1		100	-1
7	16	4H S-1		100	-1
18	9	4H N-1		100	-1
17	8	3NT S-1		100	-1
6	10	3NT S-1		100	-1
8	17	3NT S-1		100	-1
2	15	3NT S-1		100	-1
4	11	3NT S-1		100	-1
15	2	3NT S-1		100	-1
12	5	3NT S-1		100	-1
16	7	4S S-2		200	-4
3	13	3NT S-2		200	-4
1	14	3NT S-2		200	-4
10	6	3NT N-2		200	-4
5	12	3NT N-3		300	-6

Board (24) Av: NS=+430

N-S	E-W	Contract	N-S	E-W	IMP
2	15	4S S 6	480		2
7	16	4S S 6	480		2
5	12	4S N 6	480		2
16	7	4S N 6	480		2
1	14	4S N 6	480		2
4	11	4S S 5	450		1
8	17	4S N 5	450		1
18	9	4S N 5	450		1
9	18	4S N 5	450		1
17	8	4S N 5	450		1
6	10	4S N 5	450		1
3	13	4S N 5	450		1
11	4	4S S 4	420		0
10	6	4S N 4	420		0
14	1	4S N 4	420		0
12	5	4S N 4	420		0
15	2	3S N 5	200		-6
13	3	3S N 5	200		-6



25

♠ Q53  
♥ J1092  
♦ 1042  
♣ KQ3

♠ AK962 (N) ♠ J1087  
♥ K4 ♥ Q86  
♦ A763 ♦ KQ5  
♣ A2 ♣ 1074

W — E  
S

♠ 4  
♥ A753  
♦ J98  
♣ J9865

26

♠ A4  
♥ K3  
♦ AJ976  
♣ AK72

♠ 108732 (N) ♠ K65  
♥ J10985 ♥ Q74  
♦ 10 ♦ Q52  
♣ J6 ♣ 9543

W — E  
S

♠ QJ9  
♥ A62  
♦ K843  
♣ Q108

27

♠ A732  
♥ A32  
♦ K74  
♣ AQ8

♠ J54 (N) ♠ K8  
♥ 104 ♥ KQ8  
♦ AQ963 ♦ J852  
♣ KJ7 ♣ 10654

W — E  
S

♠ Q1096  
♥ J9765  
♦ 10  
♣ 932

Board (25) Av: NS=-580

N-S	E-W	Contract	N-S	E-W	IMP
7	16	6S W-2	200		13
5	12	5S W-1	100		12
17	8	3NT W 3	600		-1
12	5	4S W 4	620		-1
6	10	4S W 4	620		-1
10	6	4S W 4	620		-1
9	18	4S W 4	620		-1
16	7	4S W 4	620		-1
1	14	4S W 4	620		-1
15	2	4S W 4	620		-1
2	15	4S W 4	620		-1
14	1	4S W 4	620		-1
3	13	4S W 4	620		-1
11	4	4S W 4	620		-1
13	3	4S W 4	620		-1
18	9	4S E 4	620		-1
4	11	4S W 5	650		-2
8	17	4S W 5	650		-2

Board (26) Av: NS=+220

N-S	E-W	Contract	N-S	E-W	IMP
13	3	6NT S 6	1440		15
2	15	6NT S 6	1440		15
4	11	6D S 6	1370		15
7	16	6D S 6	1370		15
6	10	2NT N 6	240		1
17	8	4D S 5	150		-2
5	12	7D S-1	100		-8
16	7	6NT S-1	100		-8
18	9	6NT S-1	100		-8
1	14	6NT S-1	100		-8
3	13	6NT S-1	100		-8
14	1	6NT N-1	100		-8
9	18	6D S-1	100		-8
12	5	6D S-1	100		-8
8	17	6D S-1	100		-8
11	4	6D S-1	100		-8
10	6	6D S-1	100		-8
15	2	6NT S-2	200		-9

Board (27) Av: NS=+120

N-S	E-W	Contract	N-S	E-W	IMP
6	10	3H S 3	140		1
3	13	3H N 3	140		1
7	16	3H N 3	140		1
10	6	3H N 3	140		1
17	8	2S N 3	140		1
2	15	2H N 3	140		1
1	14	2H N 3	140		1
15	2	2H N 3	140		1
8	17	2H N 3	140		1
16	7	2H S 2	110		0
11	4	2H N 2	110		0
14	1	2H N 2	110		0
4	11	2H N 2	110		0
5	12	2H N 2	110		0
13	3	4D E-2	100		-1
18	9	3D W-1	50		-2
12	5	3D E-1	50		-2
9	18	1NT N-1	50		-5

28

♠ A1094  
♥ KQJ62  
♦ AJ  
♣ Q2

♠ KQ7 (N) ♠ J632  
♥ 107 ♥ 954  
♦ Q109865 ♦ K  
♣ 109 ♣ AKJ64

W — E  
S

♠ 85  
♥ A83  
♦ 7432  
♣ 8753

29

♠ J95  
♥ A10  
♦ J962  
♣ 10976

♠ 103 (N) ♠ A64  
♥ K8753 ♥ J42  
♦ A5 ♦ KQ873  
♣ K832 ♣ AJ

W — E  
S

♠ KQ872  
♥ Q96  
♦ 104  
♣ Q54

30

♠ KQ75  
♥ QJ843  
♦ 652  
♣ 9

♠ 83 (N) ♠ AJ10  
♥ K92 ♥ A5  
♦ A103 ♦ QJ987  
♣ QJ1042 ♣ AK3

W — E  
S

♠ 9642  
♥ 1076  
♦ K4  
♣ 8765

Board (28) Av: NS=+20

N-S	E-W	Contract	N-S	E-W	IMP
6	17	3S W-3	150		4
14	7	3H N 3	140		3
3	11	3H N 3	140		3
4	16	3H N 3	140		3
9	13	3H N 3	140		3
12	1	3H N 3	140		3
18	5	2H N 3	140		3
7	14	2H N 3	140		3
10	2	2H N 2	110		3
13	9	3S W-1	50		1
2	10	3H S-1	100		-3
15	8	3H N-1	100		-3
11	3	3H N-1	100		-3
16	4	3H N-1	100		-3
17	6	3H N-1	100		-3
5	18	3H N-1	100		-3
8	15	3H N-2	200		-6
1	12	3H S-3	300		-8

Board (29) Av: NS=-170

N-S	E-W	Contract	N-S	E-W	IMP
9	13	4H E-2	200		9
17	6	4H E-1	100		7
6	17	4H E-1	100		7
5	18	4H E-1	100		7
13	9	4H E-1	100		7
8	15	4H E-1	100		7
7	14	4H E-1	100		7
12	1	4H E-1	100		7
3	11	4H E-1	100		7
2	10	4H E-1	100		7
1	12	4H E-1	100		7
18	5	4H W 4	620		-10
16	4	4H E 4	620		-10
15	8	4H E 4	620		-10
11	3	4H E 4	620		-10
4	16	4H E 4	620		-10
14	7	4H E 4	620		-10
10	2	4H E 4	620		-10

Board (30) Av: NS=-550

N-S	E-W	Contract	N-S	E-W	IMP
11	3	4NT E 7	520		1
7	14	4NT E 7	520		1
2	10	4NT E 7	520		1
18	5	3NT W 7	520		1
6	17	3NT W 7	520		1
15	8	3NT W 7	520		1
13	9	3NT W 7	520		1
14	7	3NT W 7	520		1
8	15	3NT W 7	520		1
1	12	3NT W 7	520		1
10	2	3NT W 7	520		1
12	1	3NT W 7	520		1
5	18	3NT W 7	520		1
3	11	3NT E 7	520		1
9	13	3NT E 7	520		1
17	6	3NT E 7	520		1
4	16	6NT W 7	1020		-10
16	4	6NT E 7	1020		-10

31

♠ K987  
♥ 1098  
♦ K764  
♣ A3

♠ Q532  
♥ AKQ  
♦ QJ1052  
♣ 2

♠ A10  
♥ J743  
♦ A9  
♣ 108765

♠ J64  
♥ 652  
♦ 83  
♣ KQJ94

32

♠ A64  
♥ QJ63  
♦ AJ83  
♣ Q8

♠ 5  
♥ A95  
♦ 752  
♣ A75432

♠ K982  
♥ K842  
♦ KQ6  
♣ J9

♠ QJ1073  
♥ 107  
♦ 1094  
♣ K106

33

♠ Q10  
♥ AJ10  
♦ 9  
♣ KQJ9853

♠ 876543  
♥ K3  
♦ 1075  
♣ 102

♠ 9  
♥ 9872  
♦ AK864  
♣ A76

♠ AKJ2  
♥ Q654  
♦ QJ32  
♣ 4

Board (31) Av: NS=-120

N-S	E-W	Contract	N-S	E-W	IMP
4	16	4H W-2	100		6
13	9	1NT E 1	90		1
9	13	1NT E 1	90		1
12	1	1NT E 1	90		1
2	10	1NT E 1	90		1
8	15	1NT E 2	120		0
15	8	1NT E 2	120		0
16	4	1NT E 2	120		0
10	2	1NT E 2	120		0
3	11	1NT E 2	120		0
14	7	1NT E 2	120		0
1	12	1NT E 3	150		-1
7	14	1NT E 3	150		-1
5	18	1NT E 3	150		-1
11	3	1NT E 3	150		-1
18	5	1NT E 3	150		-1
17	6	1NT E 3	150		-1
6	17	1NT E 3	150		-1

Board (32) Av: NS=+10

N-S	E-W	Contract	N-S	E-W	IMP
11	3	2NT E-3	300		7
13	9	1NT N 2	120		3
6	17	2S S 2	110		3
18	5	2S S 2	110		3
9	13	2S S 2	110		3
7	14	2S S 2	110		3
14	7	2S N 2	110		3
5	18	3C W-1	100		3
10	2	2S S-1	50		-2
15	8	2S S-1	50		-2
16	4	2S S-1	50		-2
3	11	1NT N-1	50		-2
2	10	2C W 2	90		-3
17	6	2C W 2	90		-3
1	12	3S S-2	100		-3
4	16	2D N-2	100		-3
8	15	3C W 3	110		-3
12	1	3C W 3	110		-3

Board (33) Av: NS=+440

N-S	E-W	Contract	N-S	E-W	IMP
13	9	3NT S 6	490		2
10	2	3NT N 6	490		2
14	7	3NT S 5	460		1
9	13	3NT S 5	460		1
15	8	3NT S 5	460		1
17	6	3NT S 4	430		0
6	17	3NT S 4	430		0
8	15	3NT S 4	430		0
7	14	3NT S 4	430		0
18	5	3NT S 4	430		0
3	11	3NT S 4	430		0
2	10	3NT S 4	430		0
12	1	3NT S 4	430		0
11	3	3NT S 4	430		0
1	12	3NT S 4	430		0
16	4	3NT S 4	430		0
4	16	3NT S 4	430		0
5	18	3NT S-1	50		-10

34

♠ K7  
♥ K10  
♦ KJ8  
♣ KQJ982

♠ J  
♥ Q763  
♦ Q1097  
♣ 6543

♠ 10964  
♥ J542  
♦ A53  
♣ A10

♠ AQ8532  
♥ A98  
♦ 642  
♣ 7

35

♠ A1092  
♥ A9  
♦ 95  
♣ AJ1075

♠ KJ73  
♥ J863  
♦ Q7  
♣ K64

♠ Q5  
♥ 754  
♦ A10842  
♣ Q82

♠ 864  
♥ KQ102  
♦ KJ63  
♣ 93

36

♠ AQ  
♥ J96  
♦ Q65  
♣ AQ1074

♠ J954  
♥ 832  
♦ 98  
♣ J965

♠ 7632  
♥ A10  
♦ A7432  
♣ K2

♠ K108  
♥ KQ754  
♦ KJ10  
♣ 83

Board (34) Av: NS=+540

N-S	E-W	Contract	N-S	E-W	IMP
8	15	3NT N 6	690		4
10	2	3NT N 6	690		4
3	11	4S S 5	650		3
15	8	4S N 5	650		3
16	4	3NT N 4	630		3
11	3	3NT N 4	630		3
17	6	4S S 4	620		2
1	12	4S S 4	620		2
12	1	4S S 4	620		2
4	16	4S S 4	620		2
9	13	4S N 4	620		2
13	9	4S N 4	620		2
7	14	4S N 4	620		2
5	18	4S N 4	620		2
6	17	4S N 4	620		2
18	5	5S N-1	100		-12
14	7	4S S-1	100		-12
2	10	6S S-2	200		-12

Board (35) Av: NS=+140

N-S	E-W	Contract	N-S	E-W	IMP
5	18	2D E-2	200		2
1	12	1NT S 4	180		1
7	14	1NT S 4	180		1
2	10	1NT S 4	180		1
6	17	1NT S 3	150		0
13	9	1NT S 3	150		0
8	15	1NT S 3	150		0
14	7	1NT S 3	150		0
4	16	1NT S 3	150		0
10	2	1NT S 3	150		0
11	3	1NT S 2	120		-1
17	6	1NT S 2	120		-1
18	5	1NT S 2	120		-1
3	11	2S S 2	110		-1
16	4	2S N 2	110		-1
9	13	2C N 2	90		-2
12	1	1NT S 1	90		-2
15	8	1NT S-1	50		-5

Board (36) Av: NS=+310

N-S	E-W	Contract	N-S	E-W	IMP
16	4	3NT N 4	630		8
15	8	4H N 4	620		7
14	7	4H N 4	620		7
17	6	4H N 4	620		7
6	17	4H N 4	620		7
9	13	4H N 4	620		7
13	9	4H N 4	620		7
12	1	4H N 4	620		7
3	11	4H N 4	620		7
10	2	4H N 4	620		7
8	15	4H N-1	100		-9
1	12	4H N-1	100		-9
7	14	4H N-1	100		-9
11	3	4H N-1	100		-9
2	10	4H N-1	100		-9
4	16	4H N-1	100		-9
18	5	4H N-1	100		-9
5	18	4H N-1	100		-9